



Table 1: Northern Region Micron Price Guides

WEEK 15			12 MONTH COMPARISONS								3 YEAR COMPARISONS					*10 YEAR COMPARISONS				
Mic.	9/10/2014	1/10/2014	9/10/2013	Now		Now		Now				Now				* 16-17.5um since Aug 05	Now			
Price	Current	Weekly	This time	compared		12 Month	compared	12 Month	compared			compared				*10 year	compared			
Guides	Price	Change	Last Year	to Last Year		Low	to Low	High	to High	Low	High	Average	to 3yr ave	Percentile		Low	High	Average	to *10yr ave	Percentile
NRI	1072	+13 1.2%	1142	-70 -6%		1006	+66 7%	1171	-99 -8%	894	1491	1103	-31 -3%	43%		657	1491	961	+111 12%	75%
16*	1460	0	1520	-60 -4%		1350	+110 8%	1630	-170 -10%	1350	2800	1693	-233 -14%	12%		1350	2800	1720	-260 -15%	12%
16.5*	1350	0	1420	-70 -5%		1300	+50 4%	1500	-150 -10%	1300	2680	1557	-207 -13%	10%		1280	2680	1581	-231 -15%	16%
17*	1340	+20 1.5%	1380	-40 -3%		1245	+95 8%	1440	-100 -7%	1245	2530	1433	-93 -6%	31%		1104	2530	1440	-100 -7%	49%
17.5*	1310	0	1340	-30 -2%		1190	+120 10%	1420	-110 -8%	1185	2360	1375	-65 -5%	39%		1020	2360	1374	-64 -5%	54%
18	1258	+21 1.7%	1315	-57 -4%		1161	+97 8%	1394	-136 -10%	1149	2193	1322	-64 -5%	37%		915	2193	1275	-17 -1%	58%
18.5	1248	+26 2.1%	1297	-49 -4%		1137	+111 10%	1367	-119 -9%	1097	1963	1288	-40 -3%	41%		843	1963	1210	+38 3%	63%
19	1201	+8 0.7%	1290	-89 -7%		1113	+88 8%	1331	-130 -10%	1046	1776	1261	-60 -5%	38%		803	1776	1141	+60 5%	67%
19.5	1185	+16 1.4%	1276	-91 -7%		1093	+92 8%	1317	-132 -10%	958	1670	1234	-49 -4%	43%		749	1670	1075	+110 10%	73%
20	1179	+24 2.0%	1260	-81 -6%		1088	+91 8%	1287	-108 -8%	910	1588	1211	-32 -3%	47%		700	1588	1019	+160 16%	76%
21	1166	+20 1.7%	1253	-87 -7%		1089	+77 7%	1281	-115 -9%	887	1522	1197	-31 -3%	47%		668	1522	980	+186 19%	77%
22	1156	+28 2.4%	1236	-80 -6%		1072	+84 8%	1267	-111 -9%	861	1461	1174	-18 -2%	49%		659	1461	952	+204 21%	78%
23	1139	+31 2.7%	1204	-65 -5%		1040	+99 10%	1248	-109 -9%	834	1347	1150	-11 -1%	55%		651	1347	924	+215 23%	80%
24	1060	+12 1.1%	1105	-45 -4%		983	+77 8%	1123	-63 -6%	786	1213	1066	-6 -1%	57%		638	1213	861	+199 23%	81%
25	947	+7 0.7%	934	+13 1%		799	+148 19%	947	0 0%	664	1049	909	+38 4%	79%		566	1049	747	+200 27%	91%
26	820	0	821	-1 0%		734	+86 12%	825	-5 -1%	582	939	806	+14 2%	67%		532	939	671	+149 22%	85%
28	683	-1 -0.1%	647	+36 6%		639	+44 7%	694	-11 -2%	443	734	635	+48 8%	89%		424	734	529	+154 29%	95%
30	663	+3 0.5%	624	+39 6%		615	+48 8%	660	+3 0%	388	670	594	+69 12%	98%		343	670	475	+188 40%	99%
32	614	+1 0.2%	549	+65 12%		549	+65 12%	614	0 0%	350	638	519	+95 18%	98%		297	638	422	+192 45%	99%
MC	785	+8 1.0%	825	-40 -5%		764	+21 3%	829	-44 -5%	535	874	737	+48 7%	71%		390	874	587	+198 34%	87%
AU BALES OFFERED		40,893	* Due to the irregular market quoting for some fine wool categories, figures shown relating to micron categories below 18 micron are an estimate based on the																	
AU BALES SOLD		38,386	AWEX Premium & Discounts Report & other available information.																	
AU PASSED-IN%		6.1%	* For any category, where there is insufficient quantity offered to enable AWEX to quote, a quote will be provided based on the best available information.																	
AUD/USD		0.88816	* 10 Year data is not available for 16 to 17.5 microns, therefore 10 year statistics for those micron categories only date back as far as August 2005.																	

Source: Australian Wool Exchange, Australian Wool Innovation, Riemann, x-rates.com, Reserve Bank of Australia, Australian Wool Testing Authority.

Disclaimer: Jemalong Wool Pty Ltd make no representations about the content and suitability of the information contained in this report. Specifically, Jemalong Wool does not warrant, guarantee or make any representations regarding the correctness, accuracy, reliability, currency, or any other aspect regarding characteristics or use of information presented in these materials. The user accepts sole responsibility and risk associated with the use and results of these materials, irrespective of the purpose of which such use or results are applied. In no event shall Jemalong Wool be liable for any loss or damages (including without limitation special, or consequential damages), where in an action of contract, negligence,

MARKET COMMENTARY

Following on from the previous week's gains, this week's market saw the Northern Region indicator gain a further 13 cents. 40,893 bales of were offered over the course of two days, with a clearance rate of 93.9%

Wednesday saw strong competition in the finer micron ranges, boosting them by a further 20 cents, while the medium to broader micron ranges rose 10-15 cents (AWEX reported the higher mid break lots to be most affected, a reversal to the pattern of recent times).

Fine, low Vm skirtings rose by 5-10 cents while other descriptions remained firm. Locks and stains were 5 cents dearer while crutchings and crossbreds remained unchanged.

While sentiment at the finer end of the market remained strong on Thursday the fine Micron Price Guides showed only slight movement (in sellers favour), while the medium to broader range lifted a further 10-15 cents.

A further 10-20 cents was also added to the skirting market, with 8% Vm lots benefiting the most, while the oddment market received a further 5 cent lift while at the same time the crossbred market was fully firm.

On Thursday the forward market saw some renewed activity, following a quiet two months. 29,000 kg were traded for Oct – January settlement with prices for 21 microns trading at slight premiums to the physical market.

The next few weeks will see slightly larger offerings come onto the market (when compared to the same period last season) with ~50,000 bales on offer next week , followed by ~46,000 the following week.

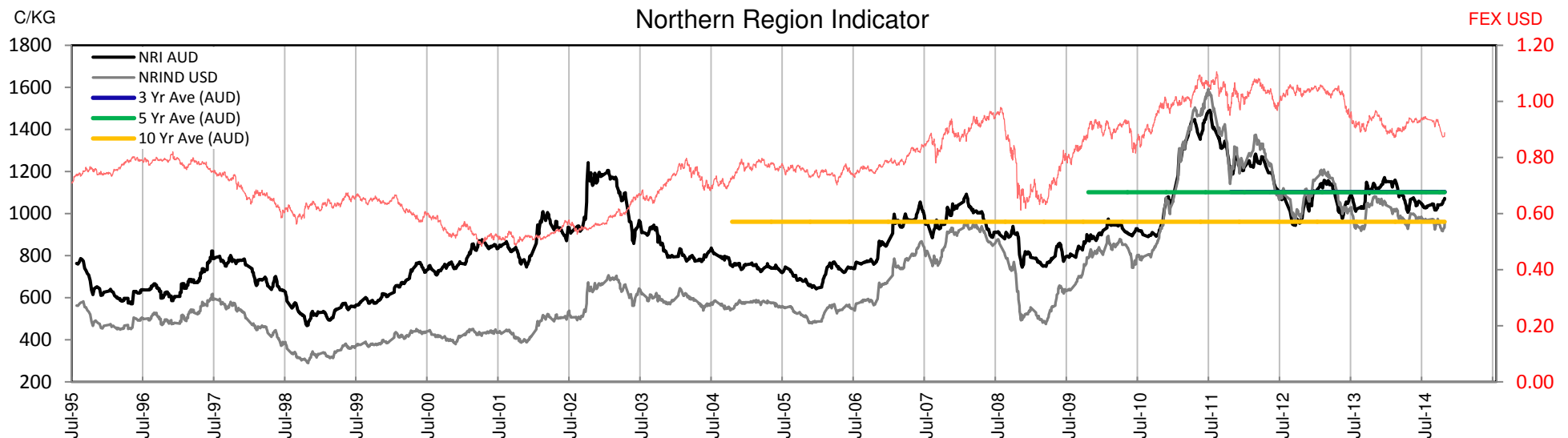




Table 2: Three Year Decile Table, since: 1/10/2011

Decile %	16	16.5	17	17.5	18	18.5	19	19.5	20	21	22	23	24	25	26	28	30	32	MC
1 10%	1420	1350	1270	1220	1173	1137	1080	999	955	938	914	891	830	706	624	463	413	361	598
2 20%	1540	1405	1296	1250	1197	1165	1131	1102	1076	1063	1041	1016	957	827	740	561	508	445	628
3 30%	1560	1430	1340	1285	1232	1194	1165	1138	1125	1111	1089	1068	995	863	760	595	548	476	675
4 40%	1620	1480	1380	1320	1275	1243	1209	1170	1145	1137	1128	1100	1025	884	783	623	574	490	714
5 50%	1690	1520	1410	1355	1315	1284	1260	1219	1192	1177	1158	1129	1046	894	800	638	582	500	734
6 60%	1800	1604	1464	1409	1366	1335	1296	1271	1233	1218	1199	1165	1065	906	810	648	603	535	752
7 70%	2000	1856	1680	1565	1500	1443	1374	1324	1269	1251	1221	1190	1083	917	824	659	624	554	781
8 80%	2150	1944	1780	1674	1590	1504	1457	1403	1348	1307	1256	1219	1099	948	849	671	632	564	809
9 90%	2700	2512	2392	2206	2018	1814	1618	1473	1391	1341	1301	1255	1132	984	876	684	640	580	819
10 100%	2800	2680	2530	2360	2193	1963	1776	1670	1588	1522	1461	1347	1213	1049	939	734	670	638	874
MPG	1460	1350	1340	1310	1258	1248	1201	1185	1179	1166	1156	1139	1060	947	820	683	663	614	785
3 Yr Percentile	12%	10%	31%	39%	37%	41%	38%	43%	47%	47%	49%	55%	57%	79%	67%	89%	98%	98%	71%

Table 3: Ten Year Decile Table, sinc 1/10/2004

Decile %	16	16.5	17	17.5	18	18.5	19	19.5	20	21	22	23	24	25	26	28	30	32	MC
1 10%	1448	1340	1200	1150	1014	983	925	849	786	736	709	692	669	595	555	444	377	325	415
2 20%	1500	1380	1250	1185	1076	1015	948	878	822	757	729	710	683	630	571	456	398	348	439
3 30%	1550	1400	1271	1214	1140	1083	1016	941	858	820	805	789	751	648	588	466	410	359	464
4 40%	1580	1430	1305	1260	1181	1137	1071	987	927	897	872	843	794	671	601	473	424	380	526
5 50%	1600	1470	1345	1300	1214	1172	1113	1057	1002	963	928	896	827	703	618	481	431	394	579
6 60%	1650	1500	1390	1340	1269	1221	1157	1116	1075	1022	970	934	860	736	646	496	439	404	619
7 70%	1720	1570	1440	1400	1344	1284	1219	1166	1132	1116	1091	1071	996	867	763	597	550	479	681
8 80%	1826	1720	1550	1490	1407	1334	1286	1247	1212	1197	1176	1138	1056	899	804	643	590	513	744
9 90%	2100	1935	1742	1655	1563	1490	1437	1396	1333	1292	1247	1209	1096	934	835	668	629	560	801
10 100%	2800	2680	2530	2360	2193	1963	1776	1670	1588	1522	1461	1347	1213	1049	939	734	670	638	874
MPG	1460	1350	1340	1310	1258	1248	1201	1185	1179	1166	1156	1139	1060	947	820	683	663	614	785
10 Yr Percentile	12%	16%	49%	54%	58%	63%	67%	73%	76%	77%	78%	80%	81%	91%	85%	95%	99%	99%	87%

Decile Tables are a useful tool for working out price targets.

Percentiles are a more accurate guide to where the market is currently trading (The higher the percentile, the stronger the market).

Definitions:

* A Percentile, is a value on a scale of one hundred that indicates the percent of a distribution that is equal to or below it. In general a percentile between 25% and 75% is considered normal, a percentile below 25% is considered below normal and a percentile above 75% is considered above normal.

Three and ten year percentiles shown on the bottom line of table 2 & 3 (above) and in table 1 (on page 1), detail the amount of time during the past 3 & 10 years where the market has traded either at or below its current price.

* Deciles are a method of sorting ranked data into 10 equal groups. The data may be ranked from largest to smallest or vice versa.

The above Decile tables sort price Percentiles into 10 equal groups (in ascending order), with table 2 ranking the previous 3 years prices, while table 3 ranks prices over the previous 10 year

Example: In Table 2, a Decile Rank of 6 for 19 microns, shows 19 microns have traded at or below 1296 for 60% of the time, over the past three years.

In Table 3, a Decile Rank of 6 for 19 microns, shows 19 microns have traded at or below 1157 for 60% of the time, over the past ten years.



Table 4: Riemann Forwards, latest trades as at: Last Date

Any highlighted in yellow are recent trades, trading since: Friday, 3 October 2014

CONTRACT MICRON		18.5um	19um	19.5um	21um	22um	23um	28um	30um
CONTRACT MONTH	Oct-2014				9/10/14 1170	5/02/14 1170			
	Nov-2014				9/10/14 1175				9/10/14 640
	Dec-2014				9/10/14 1170			9/10/14 670	
	Jan-2015				9/10/14 1150				22/08/14 600
	Feb-2015							22/08/14 625	22/08/14 600
	Mar-2015								
	Apr-2015								
	May-2015								
	Jun-2015								
	Jul-2015								
	Aug-2015								
	Sep-2015								
	Oct-2015				12/06/13 1080				
	Nov-2015								
	Dec-2015								
	Jan-2016								
	Feb-2016								
	Mar-2016								
	Apr-2016								
	May-2016								
	Jun-2016								
	Jul-2016								
	Aug-2016								

Explanatory Notes: Prices quoted reflect the most recent trades, at time of print.

Disclaimer: While all due care has been taken in the preparation of this document, no warranty is made as to its accuracy, reliability or completeness. To the extent permitted by law neither Jemalong or their sources including subsidiaries and staff, accept liability to any person for loss or damage arising from the use of this information.



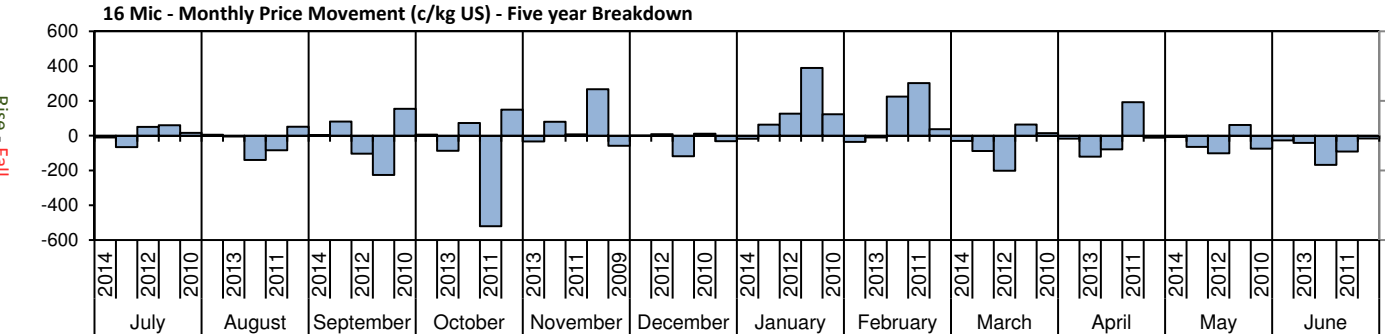
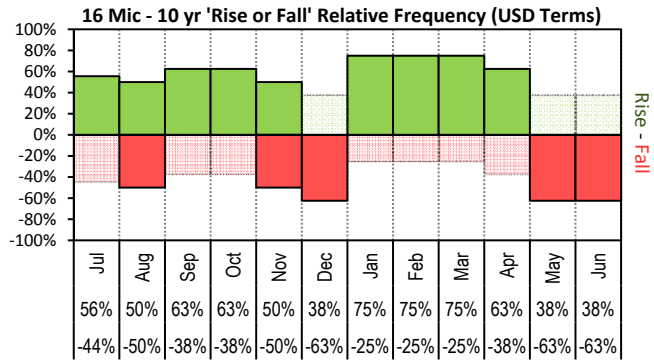
Table 5: National Market Share

	Rank	Current Selling Week Week 15			Previous Selling Week Week 14			Last Season 2013-14			2 Years Ago 2012-13			3 Years Ago 2011-12			5 Years Ago 2009-10			10 Years Ago 2004-05		
		Buyer	Bales	MS%	Buyer	Bales	MS%	Buyer	Bales	MS%	Buyer	Bales	MS%	Buyer	Bales	MS%	Buyer	Bales	MS%	Buyer	Bales	MS%
Top 10, Auction Buyers	1	TECM	4,745	12%	TECM	5,824	14%	TECM	205,136	13%	TECM	179,176	10%	VTRA	229,207	14%	VTRA	187,529	11%	ITOS	197,278	9%
	2	#N/A	#N/A	#N/A	AMEM	3,707	9%	FOXN	134,581	8%	VTRA	163,810	9%	TECM	153,616	9%	TECM	170,705	10%	BWEA	183,123	8%
	3	AMEM	3,235	8%	FOXN	3,541	9%	CTXS	122,964	8%	FOXN	143,826	8%	FOXN	136,698	8%	QCTB	124,619	7%	RWRS	158,390	7%
	4	FOXN	3,114	8%	TIAM	2,921	7%	AMEM	111,263	7%	LEMM	126,564	7%	QCTB	112,745	7%	FOXN	120,964	7%	PLEX	126,856	6%
	5	LEMM	3,060	8%	PMWF	2,905	7%	LEMM	109,224	7%	QCTB	98,756	6%	WIEM	100,817	6%	KATS	104,262	6%	MODM	112,956	5%
	6	CTXS	2,727	7%	LEMM	2,655	7%	TIAM	105,736	7%	PMWF	96,935	6%	LEMM	88,348	5%	LEMM	93,672	5%	TECM	109,505	5%
	7	PMWF	2,688	7%	KATS	1,896	5%	QCTB	88,700	5%	MODM	84,363	5%	MODM	74,646	4%	WIEM	93,529	5%	ADSS	101,474	4%
	8	TIAM	2,351	6%	GSAS	1,755	4%	MODM	79,977	5%	CTXS	82,166	5%	CTXS	69,266	4%	RWRS	88,732	5%	PMWF	97,867	4%
	9	GSAS	1,879	5%	MODM	1,524	4%	PMWF	77,875	5%	AMEM	77,849	4%	PMWF	64,659	4%	PMWF	85,981	5%	GSAS	97,754	4%
	10	MCHA	1,135	3%	KATS	1,347	3%	GSAS	54,462	3%	KATS	65,782	4%	GSAS	58,233	3%	MODM	65,991	4%	FOXN	97,298	4%
MFLC TOP 5	1	MODM	12,838	55%	TECM	3,295	14%	TECM	106,291	12%	VTRA	118,432	12%	VTRA	171,425	19%	VTRA	161,860	16%	ITOS	165,880	12%
	2	TECM	3,338	14%	PMWF	2,892	12%	CTXS	87,889	10%	LEMM	110,118	11%	QCTB	86,901	10%	QCTB	108,716	11%	BWEA	123,477	9%
	3	PMWF	2,544	11%	FOXN	2,409	10%	LEMM	82,374	9%	PMWF	93,136	10%	TECM	76,083	8%	PMWF	79,407	8%	RWRS	92,731	7%
	4	FOXN	2,002	9%	AMEM	2,367	10%	FOXN	80,423	9%	TECM	89,286	9%	LEMM	68,961	8%	LEMM	72,585	7%	PMWF	91,549	7%
	5	LEMM	1,871	8%	TIAM	1,591	7%	PMWF	69,890	8%	QCTB	71,715	7%	PMWF	60,070	7%	TECM	72,153	7%	ADSS	81,634	6%
MSKT TOP 5	1	TIAM	1,033	17%	TIAM	1,323	19%	TIAM	47,607	19%	MODM	37,284	14%	WIEM	43,156	16%	WIEM	38,838	14%	PLEX	59,898	16%
	2	AMEM	1,004	17%	AMEM	858	13%	TECM	31,474	12%	TECM	34,301	13%	MODM	30,285	11%	MODM	35,564	12%	MODM	48,703	13%
	3	MODM	764	13%	TECM	771	11%	AMEM	29,775	12%	WIEM	27,916	10%	TECM	25,264	9%	TECM	27,266	10%	GSAS	44,078	12%
	4	LEMM	429	7%	MODM	717	10%	MODM	23,791	9%	TIAM	24,196	9%	PLEX	21,990	8%	WCWF	16,963	6%	BWEA	34,546	9%
	5	WCWF	407	7%	KATS	682	10%	GSAS	13,843	5%	AMEM	23,012	8%	GSAS	16,284	6%	RWRS	16,541	6%	RWRS	29,257	8%
XB TOP 5	1	CTXS	926	19%	KATS	1,181	22%	TECM	40,364	15%	FOXN	39,356	14%	FOXN	41,689	15%	TECM	46,985	20%	FOXN	39,839	19%
	2	FOXN	677	14%	TECM	1,045	20%	CTXS	34,779	13%	TECM	30,323	11%	VTRA	31,427	12%	FOXN	46,090	20%	TECM	21,724	10%
	3	KATS	671	14%	FOXN	641	12%	FOXN	24,218	9%	VTRA	27,832	10%	TECM	31,094	11%	MODM	13,021	6%	BWEA	19,820	9%
	4	TECM	484	10%	AMEM	394	8%	MODM	21,512	8%	KATS	26,057	9%	QCTB	22,610	8%	QCTB	12,973	6%	MOPS	15,511	7%
	5	LEMM	352	7%	LEMM	384	7%	AMEM	20,336	7%	CTXS	25,631	9%	CTXS	19,985	7%	MOPS	12,341	5%	MODM	15,479	7%
ODDS TOP 5	1	MCHA	958	24%	MCHA	792	19%	MCHA	36,085	17%	MCHA	35,985	16%	FOXN	34,603	15%	MCHA	30,629	14%	MCHA	48,293	18%
	2	TECM	532	13%	TECM	713	18%	TECM	27,007	13%	FOXN	28,185	12%	MCHA	30,689	13%	RWRS	24,675	11%	FOXN	34,078	12%
	3	LEMM	408	10%	VWPM	549	13%	VWPM	22,432	11%	TECM	25,266	11%	VWPM	22,219	10%	TECM	24,301	11%	RWRS	27,833	10%
	4	SNWF	401	10%	LEMM	380	9%	FOXN	18,811	9%	VWPM	20,692	9%	VTRA	21,495	9%	VWPM	19,198	9%	MAFM	22,270	8%
	5	VWPM	369	9%	SENN	281	7%	RWRS	13,524	6%	VTRA	13,022	6%	TECM	21,175	9%	FOXN	18,736	8%	DAWS	16,861	6%
Auction Totals		<u>Offered</u>	<u>Sold</u>		<u>Offered</u>	<u>Sold</u>		<u>Bales Sold</u>	<u>\$/Bale</u>		<u>Bales Sold</u>	<u>\$/Bale</u>		<u>Bales Sold</u>	<u>\$/Bale</u>		<u>Bales Sold</u>	<u>\$/Bale</u>		<u>Bales Sold</u>	<u>\$/Bale</u>	
		40,893	38,386		43,146	40,290		1,625,115	\$1,509		1,742,881	\$1,418		1,683,024	\$1,599		1,735,172	\$1,159		2,264,258	\$1,098	
		<u>Passed-In</u>	<u>PI%</u>		<u>Passed-In</u>	<u>PI%</u>		<u>Export Value</u>			<u>Export Value</u>			<u>Export Value</u>			<u>Export Value</u>			<u>Export Value</u>		
		2,507	6.1%		2,856	6.6%		\$2,453,067,610			\$2,470,844,153			\$2,691,010,531			\$2,011,128,450			\$2,487,197,893		

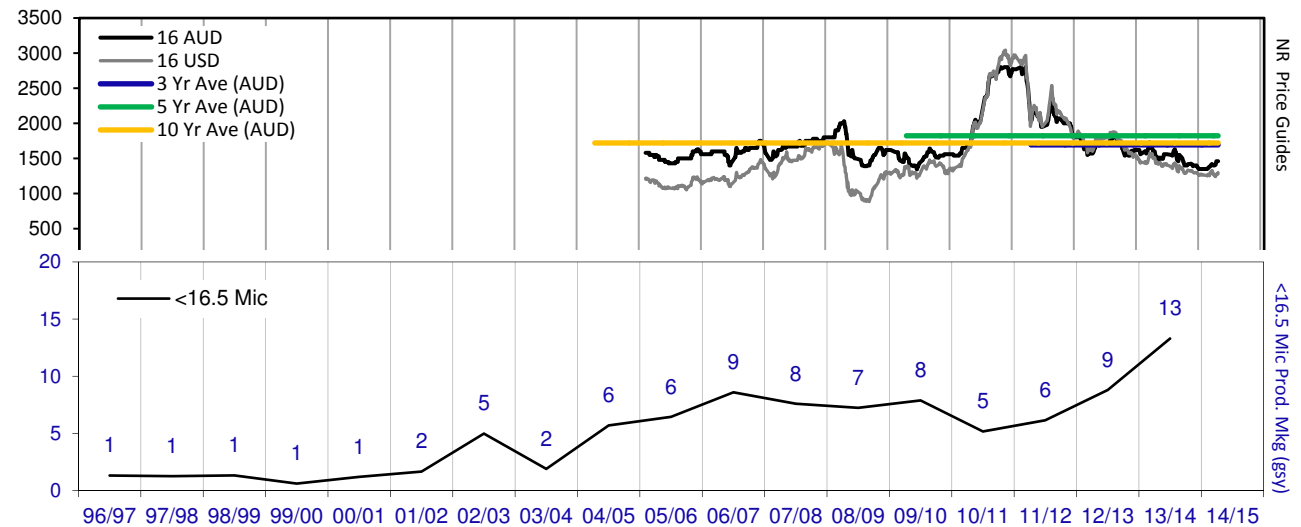
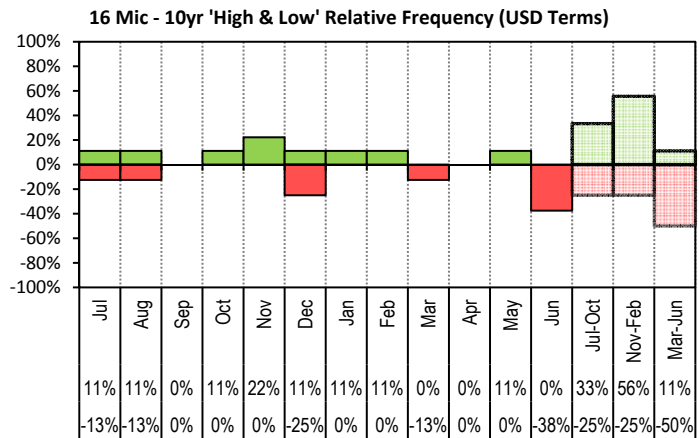


Table 6: NSW Production Statistics

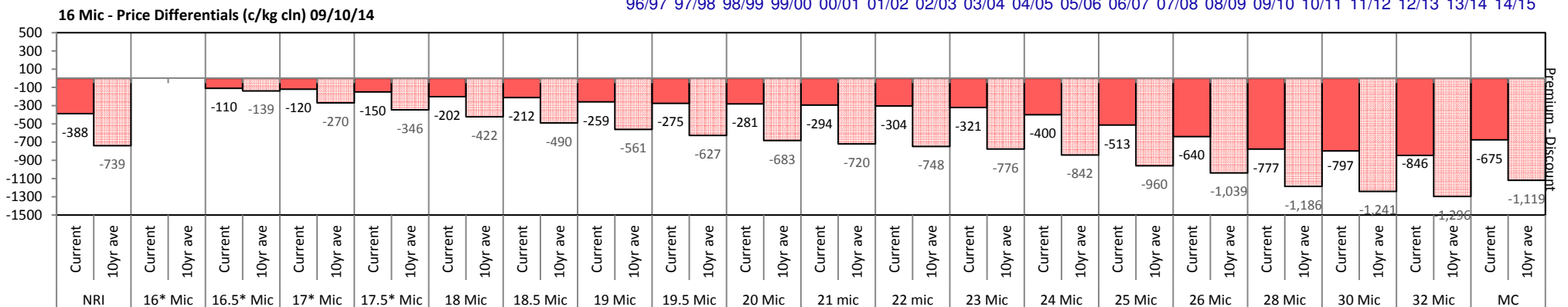
MAX		MIN	MAX GAIN	MAX REDUCTION															
2013-14					Auction	+/-		+/-		Yield %	+/-		Length	+/-		Strength	+/-		Ave Price
Statistical Devision, Area Code & Towns					Bales (FH)	Micron	YoY	Vmb %	YoY	Sch Dry	YoY	mm	YoY	Nkt	YoY	c/kg			
Northern	N02	Tenterfield, Glen Innes			9,043	19.3	-0.2	2.0	0.2	71.6	-1.1	80	-0.2	40	-1.1	814			
	N03	Guyra			35,036	18.5	-0.4	1.8	0.0	72.1	-1.7	81	-0.5	40	-2.4	907			
	N04	Inverell			3,636	18.1	-1.0	3.3	-0.1	69.5	-0.1	82	-0.5	37	-1.3	783			
	N05	Armidale			2,056	19.8	0.0	4.2	0.3	67.3	-2.0	85	2.4	35	-2.7	696			
	N06	Tamworth, Gunnedah, Quirindi			6,082	20.4	-0.1	3.4	-0.6	67.2	-1.3	84	0.0	36	-1.6	711			
	N07	Moree			5,368	19.5	-0.5	3.2	-1.0	63.7	-0.8	86	-1.9	36	-0.2	643			
	N08	Narrabri			3,130	19.2	-0.7	2.5	-1.1	66.0	-1.4	86	-1.9	36	-3.1	680			
North Western & Far West	N09	Cobar, Bourke, Wanaaring			1,040	19.7	-0.8	3.8	-0.5	60.0	-0.7	85	-2.8	36	-0.6	628			
	N12	Walgett			7,303	19.6	-0.3	3.1	-1.1	62.5	-1.6	84	-2.3	36	-1.3	654			
	N13	Nyngan			18,168	20.3	-0.2	5.1	0.1	61.7	-2.0	88	0.3	37	-0.1	612			
	N14	Dubbo, Narromine			22,210	21.2	-0.4	3.7	-0.6	62.0	-1.1	86	0.5	35	-1.2	574			
	N16	Dunedoo			6,111	19.6	-0.4	2.5	-0.9	67.0	-0.8	88	0.5	35	0.3	683			
	N17	Mudgee, Wellington, Gulgong			21,223	19.6	-0.1	2.2	-1.2	68.3	0.0	84	0.8	38	-0.3	747			
	N33	Coonabarabran			3,028	20.4	-0.4	3.6	-1.0	65.8	-1.1	85	0.5	35	0.6	634			
	N34	Coonamble			6,854	20.1	-0.3	3.8	-0.6	61.2	-2.2	85	-1.5	36	0.8	633			
	N36	Gilgandra, Gulargambone			6,306	21.2	-0.4	3.6	-0.3	63.0	-2.0	86	-0.5	35	-0.4	601			
	N40	Brewarrina			4,294	19.3	-0.8	2.0	-0.3	65.4	-1.2	81	-5.0	39	0.3	711			
Central West	N10	Wilcannia, Broken Hill			22,079	20.6	-0.7	2.3	-0.5	59.7	-1.4	87	-2.3	36	-1.7	626			
	N15	Forbes, Parkes, Cowra			50,604	21.7	0.1	2.7	-0.6	63.6	-0.4	88	1.4	35	-1.8	592			
	N18	Lithgow, Oberon			2,900	20.6	-0.1	1.8	-1.5	69.2	1.2	83	0.1	38	0.1	717			
	N19	Orange, Bathurst			51,340	22.0	-0.1	1.4	-0.8	68.9	-0.5	85	0.8	37	-1.3	670			
	N25	West Wyalong			24,469	20.6	-0.4	2.6	-0.3	62.2	-1.2	88	-0.7	35	-1.3	622			
	N35	Condobolin, Lake Cargelligo			10,158	20.6	-0.4	4.5	-0.9	60.5	0.4	86	-0.8	36	-0.3	590			
Murrumbidgee	N26	Cootamundra, Temora			25,927	21.7	-0.4	1.9	-0.3	63.1	-1.0	86	0.3	34	-0.7	585			
	N27	Adelong, Gundagai			10,395	21.4	-0.3	1.6	-1.1	67.6	-0.5	88	0.2	34	-1.7	640			
	N29	Wagga, Narrandera			32,025	21.9	-0.8	1.6	0.0	64.4	-1.8	88	-2.1	3	-33.2	603			
	N37	Griffith, Hillston			11,341	21.4	-0.6	4.1	0.1	61.2	0.0	85	0.9	38	-2.8	604			
	N39	Hay, Coleambally			16,531	20.4	-0.9	3.5	0.0	62.3	-1.7	88	-2.6	36	-3.4	652			
Murray	N11	Wentworth, Balranald			15,035	20.7	-1.0	4.0	-0.8	60.1	-0.8	89	-2.4	35	-2.1	626			
	N28	Albury, Corowa, Holbrook			27,382	21.5	-0.4	1.4	-0.1	66.1	-0.9	87	-2.3	34	-3.5	634			
	N31	Deniliquin			19,849	20.7	-0.6	2.4	-0.1	64.7	-1.0	84	-3.8	33	-6.4	658			
	N38	Finley, Berrigan, Jerilderie			8,648	20.4	-0.5	2.6	0.1	63.8	-1.3	85	-3.0	35	-3.9	644			
South Eastern	N23	Goulburn, Young, Yass			86,997	19.7	-0.5	1.3	-0.4	68.4	-1.0	85	-1.1	36	-1.8	738			
	N24	Monaro (Cooma, Bombala)			34,714	19.8	-0.4	1.5	-0.4	69.6	0.1	89	-0.6	36	-0.7	698			
	N32	A.C.T.			174	20.1	-0.3	3.9	0.8	59.2	-2.6	88	-1.4	31	0.1	568			
	N43	South Coast (Bega)			418	18.9	-0.2	0.8	0.0	73.0	-1.3	87	2.5	39	-3.6	840			
NSW	AWEX Sale Statistics 13-14				648,006	20.6	-0.4	2.3	-0.4	65.5	-0.9	86	-0.8	36	-1.8	677			
AWTA Mthly Key Test Data			Bales Tested	+/- YoY	Micron	+/- YoY	VMB	+/- YoY	Yld	+/- YoY	Lth	+/- YoY	Nkt	+/- YoY	POBM +/-				
AUSTRALIA	Current	September	199,371	-1,220	20.6	0.2	1.9	0.1	65.7	0.5	92	2.5	33	-0.4	56	4.8			
	Season	Y.T.D.	464,287	-4,684	20.6	0.1	2.0	0.0	64.9	0.3	90	2.0	34	-1.0	53	3.0			
	Previous	2013-14	468,971	-894.0	20.5	-0.4	2.0	-0.6	64.6	-0.9	88	-1.0	35	-1.0	50	4.0			
	Seasons	2012-13	469,865	-24551.0	20.9	-0.2	2.6	-0.2	65.5	0.3	89	0.0	36	1.0	46	5.0			
	Y.T.D.	2011-12	494,416	47,657	21.1	0.0	2.8	0.5	65.2	1.6	89	-0.3	35	1.4	51	-2.0			

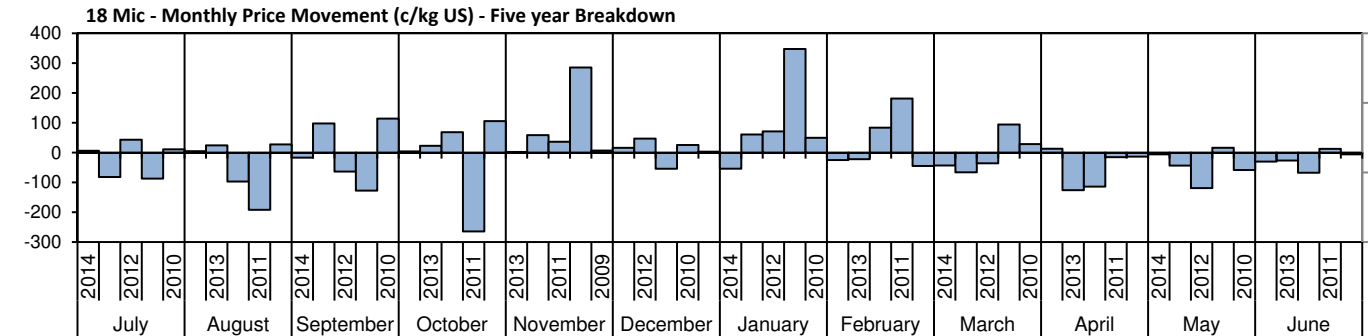
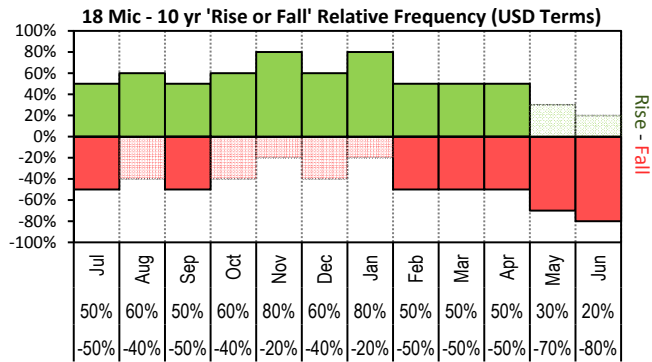


The above 'Rise or Fall' graph, shows how often the market has risen or fallen in a given month over the past 10 years, it does not show the extent of the movement only the frequency of direction. The 'Monthly Price Movement' graph shows the extent of movement for each month, for the past 5 years.

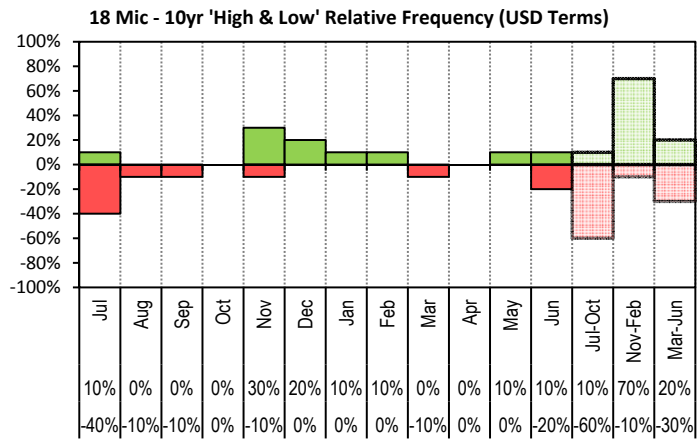


The above graph, shows how often the '12 month high & low' have been achieved for a given month over the past 10 years. It is not a measure of probability.

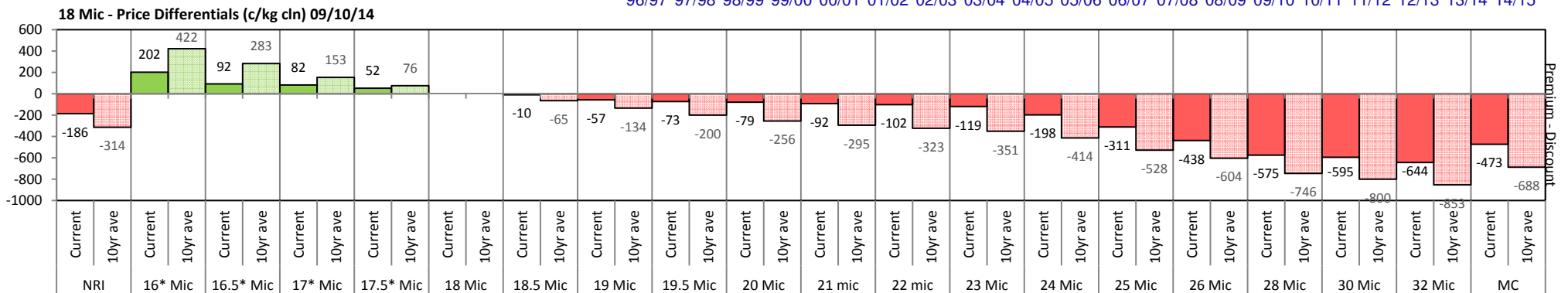
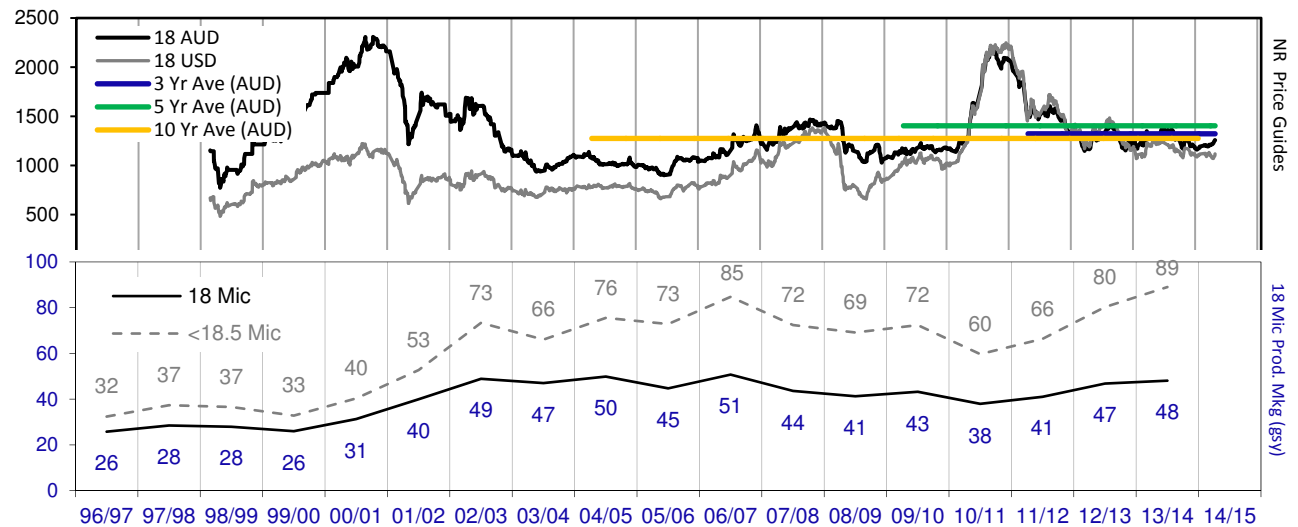


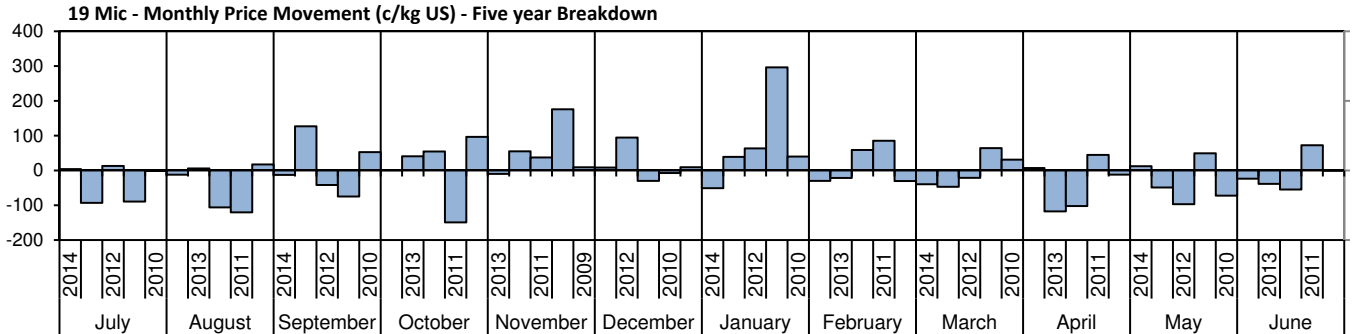
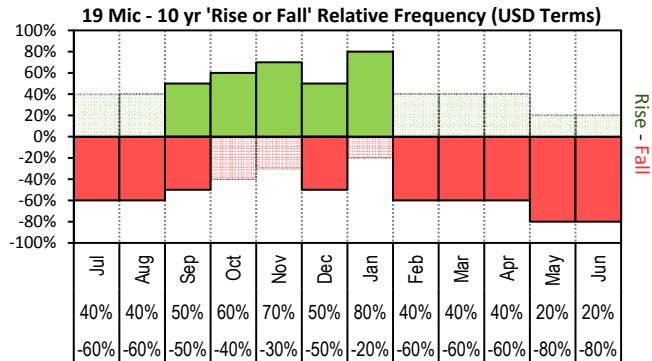


The above 'Rise or Fall' graph, shows how often the market has risen or fallen in a given month over the past 10 years, it does not show the extent of the movement only the frequency of direction. The 'Monthly Price Movement' graph shows the extent of movement for each month, for the past 5 years.

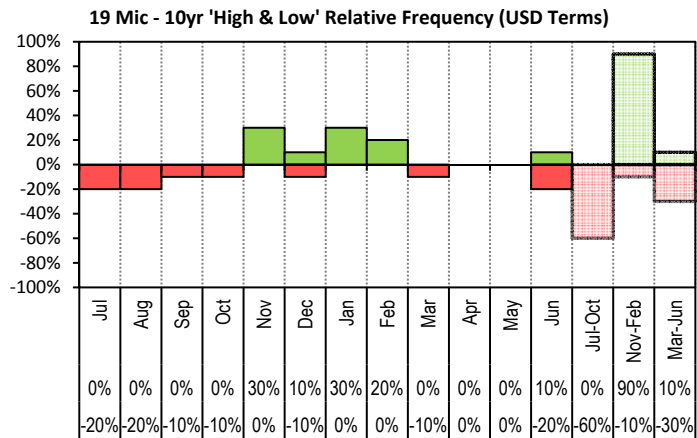


The above graph, shows how often the '12 month high & low' have been achieved for a given month over the past 10 years. It is not a measure of probability.

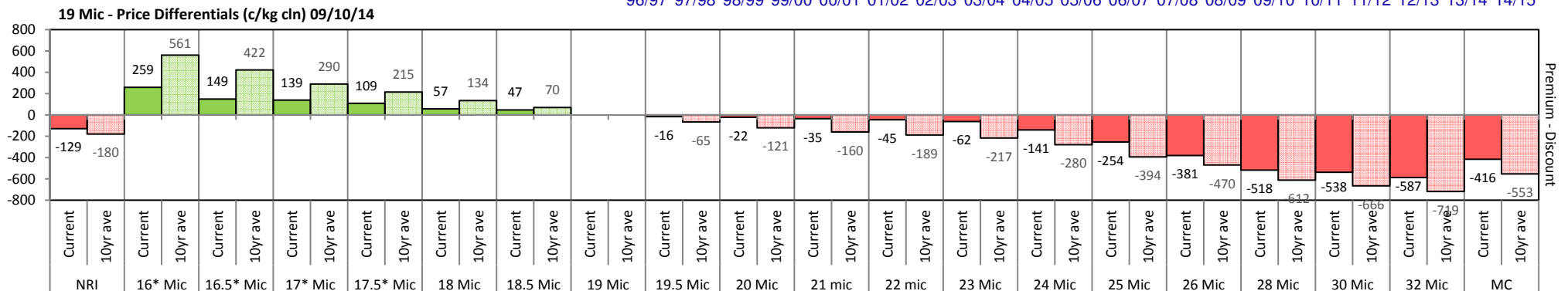
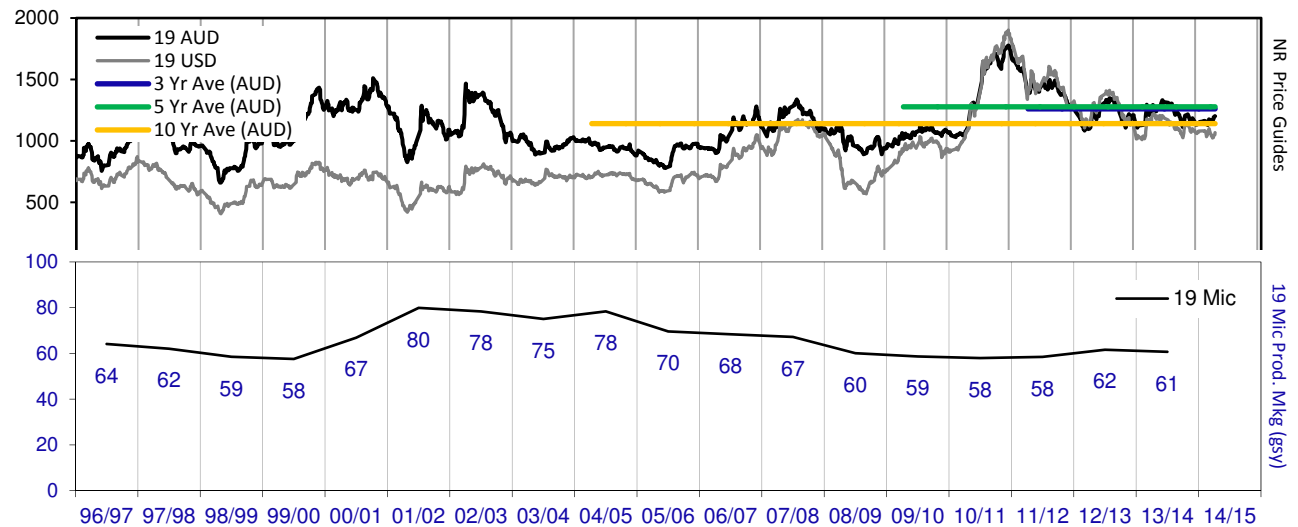


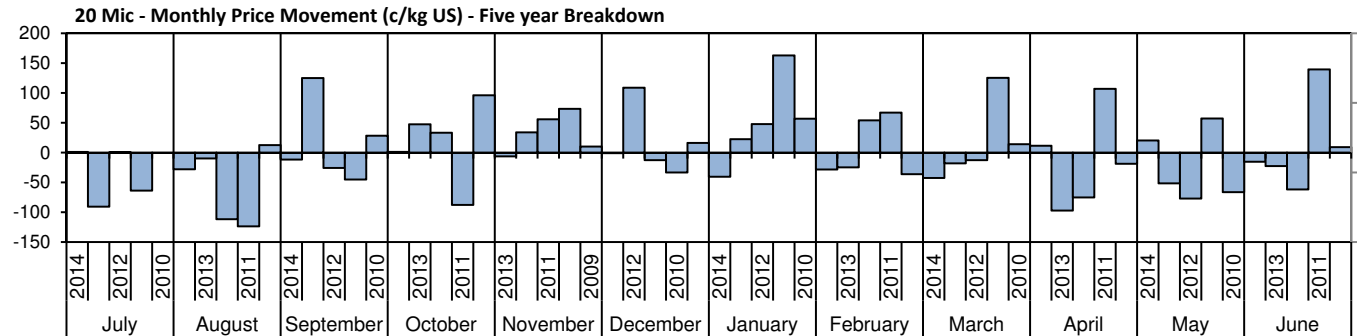
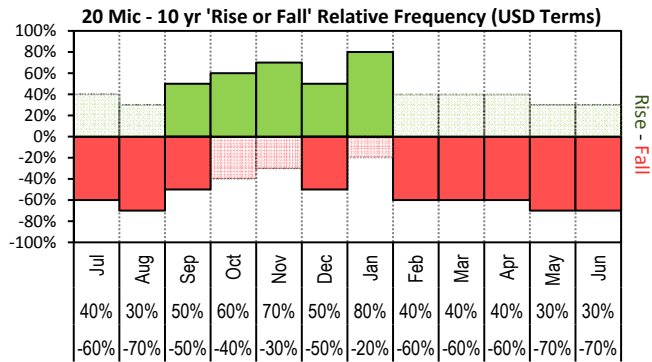


The above 'Rise or Fall' graph, shows how often the market has risen or fallen in a given month over the past 10 years, it does not show the extent of the movement only the frequency of direction. The 'Monthly Price Movement' graph shows the extent of movement for each month, for the past 5 years.

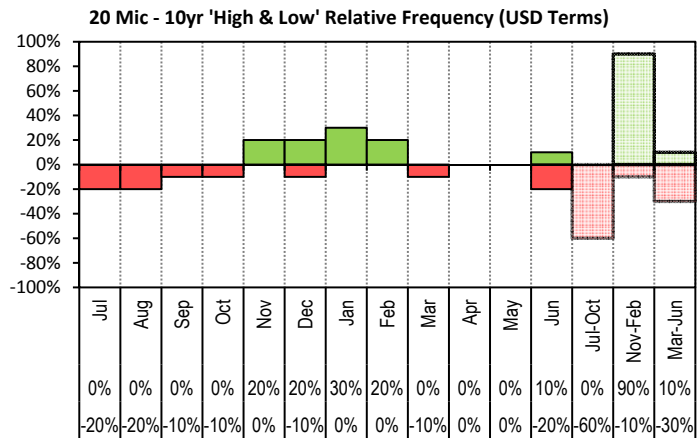


The above graph, shows how often the '12 month high & low' have been achieved for a given month over the past 10 years. It is not a measure of probability.

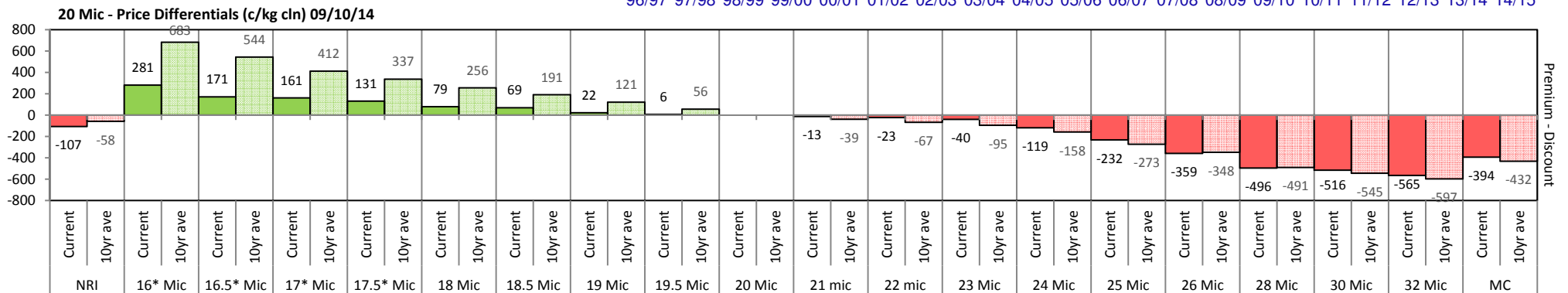
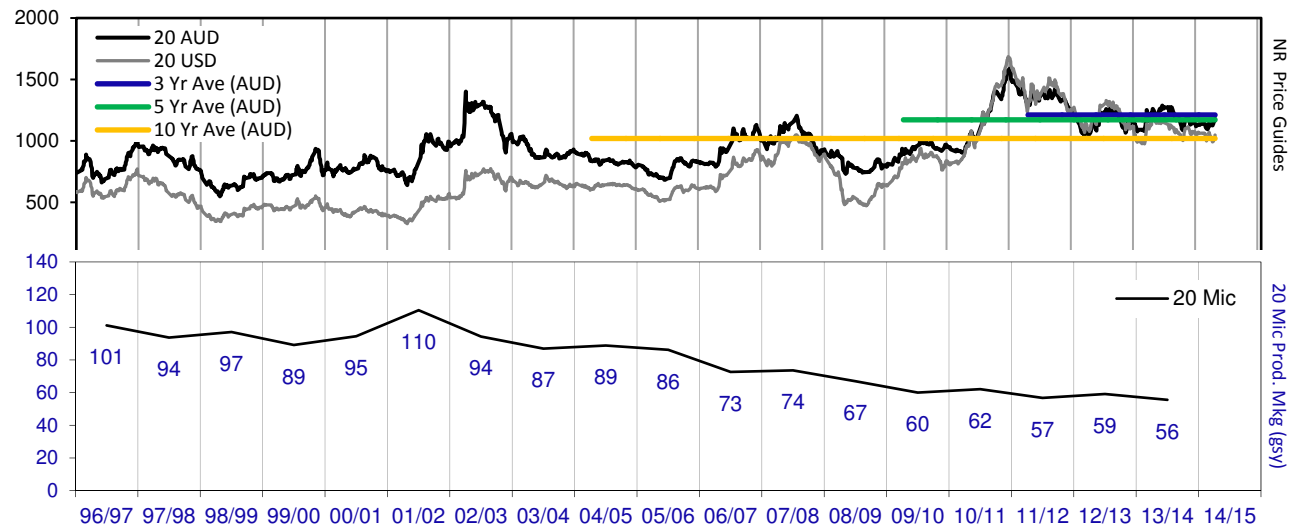


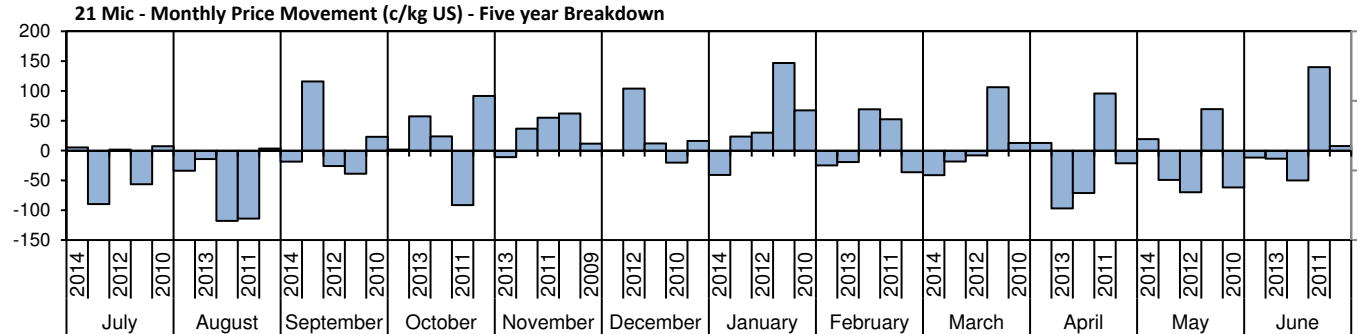
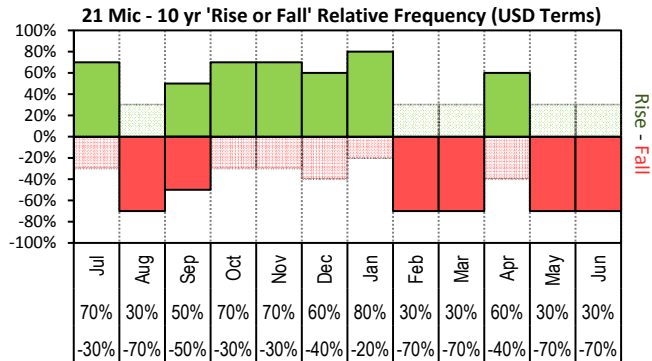


The above 'Rise or Fall' graph, shows how often the market has risen or fallen in a given month over the past 10 years, it does not show the extent of the movement only the frequency of direction. The 'Monthly Price Movement' graph shows the extent of movement for each month, for the past 5 years.

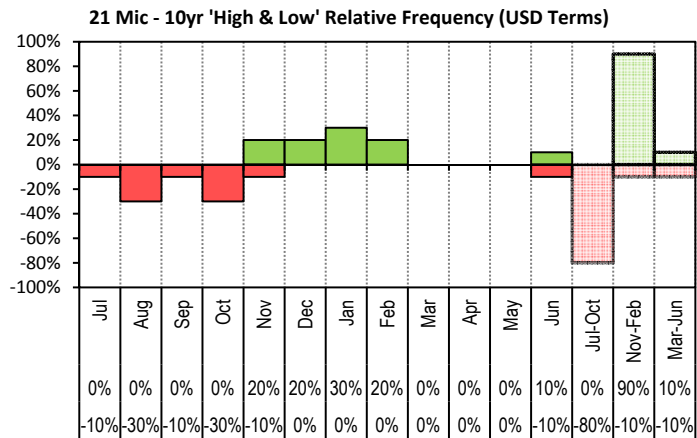


The above graph, shows how often the '12 month high & low' have been achieved for a given month over the past 10 years. It is not a measure of probability.

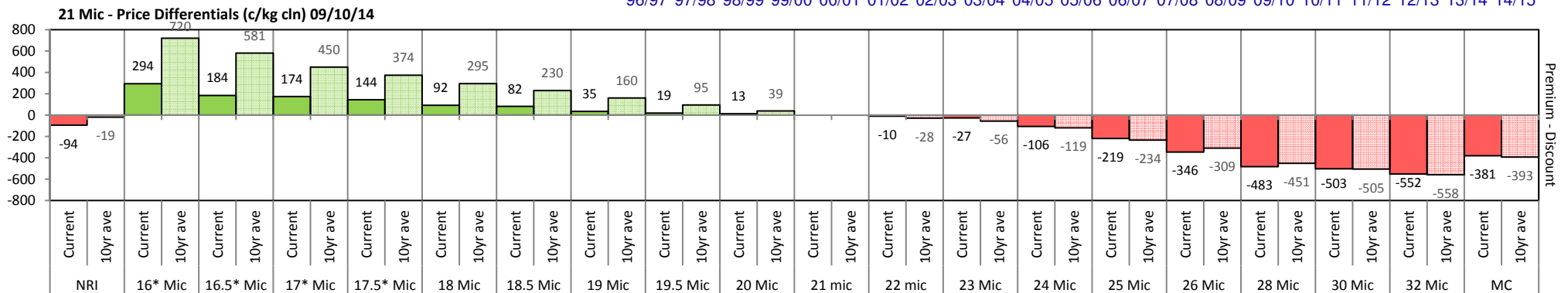
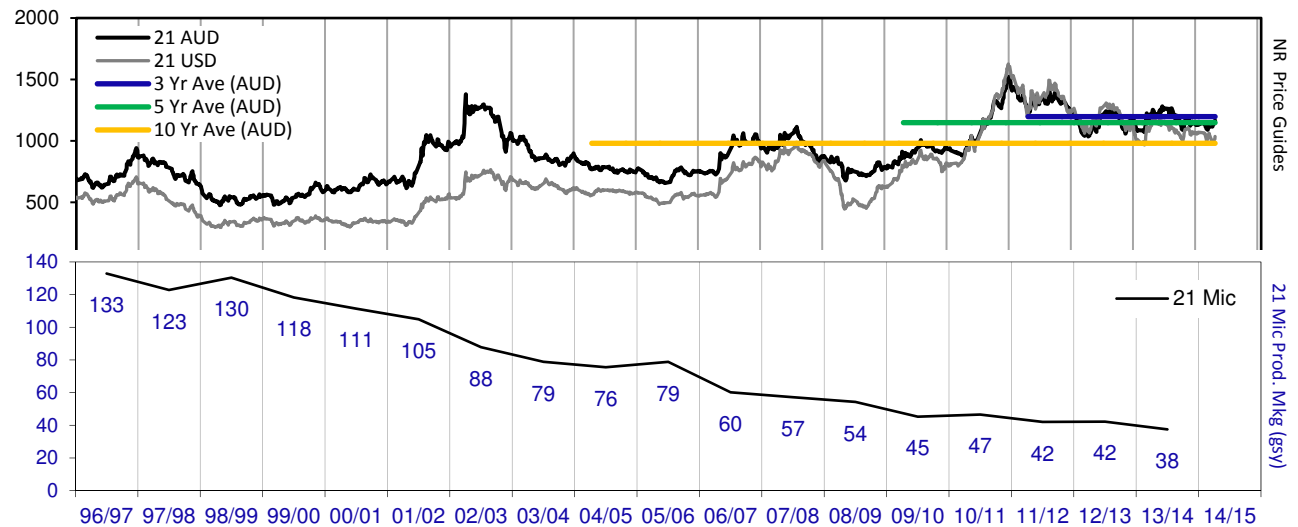


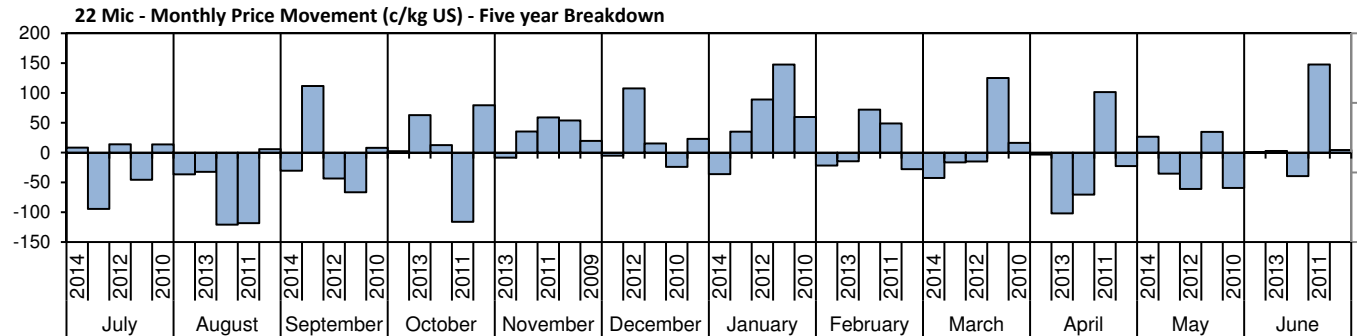
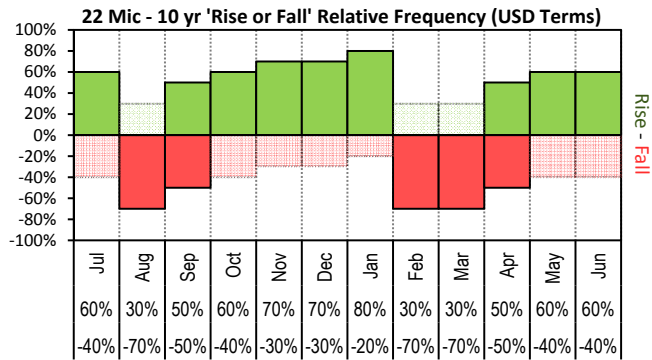


The above 'Rise or Fall' graph, shows how often the market has risen or fallen in a given month over the past 10 years, it does not show the extent of the movement only the frequency of direction. The 'Monthly Price Movement' graph shows the extent of movement for each month, for the past 5 years.

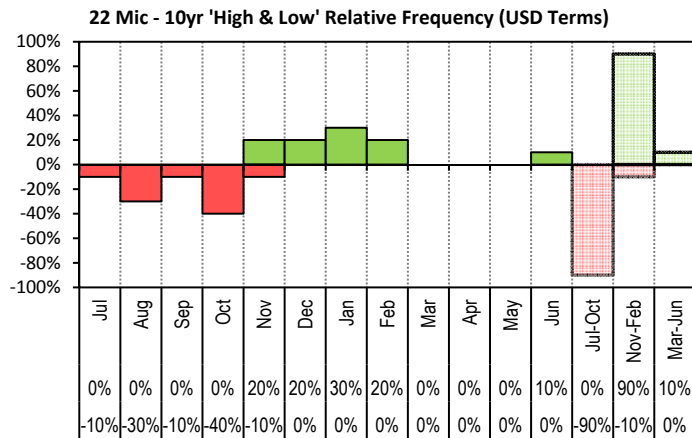


The above graph, shows how often the '12 month high & low' have been achieved for a given month over the past 10 years. It is not a measure of probability.

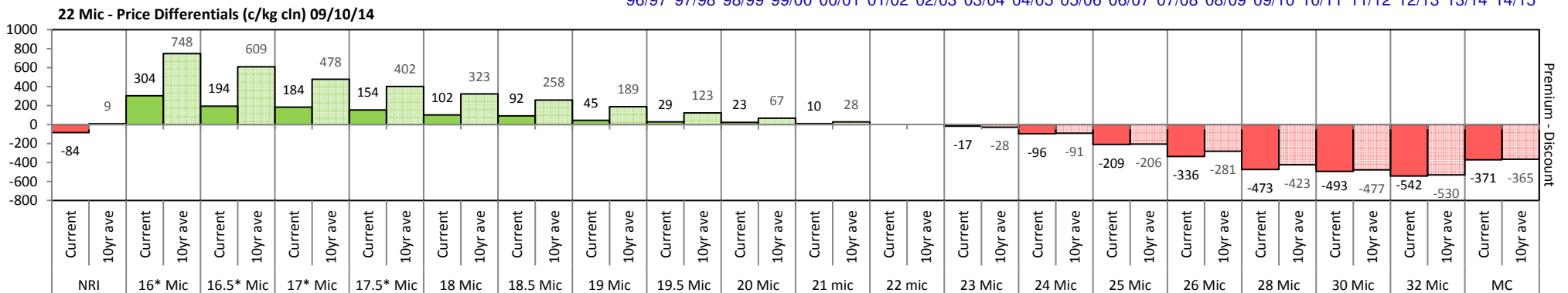
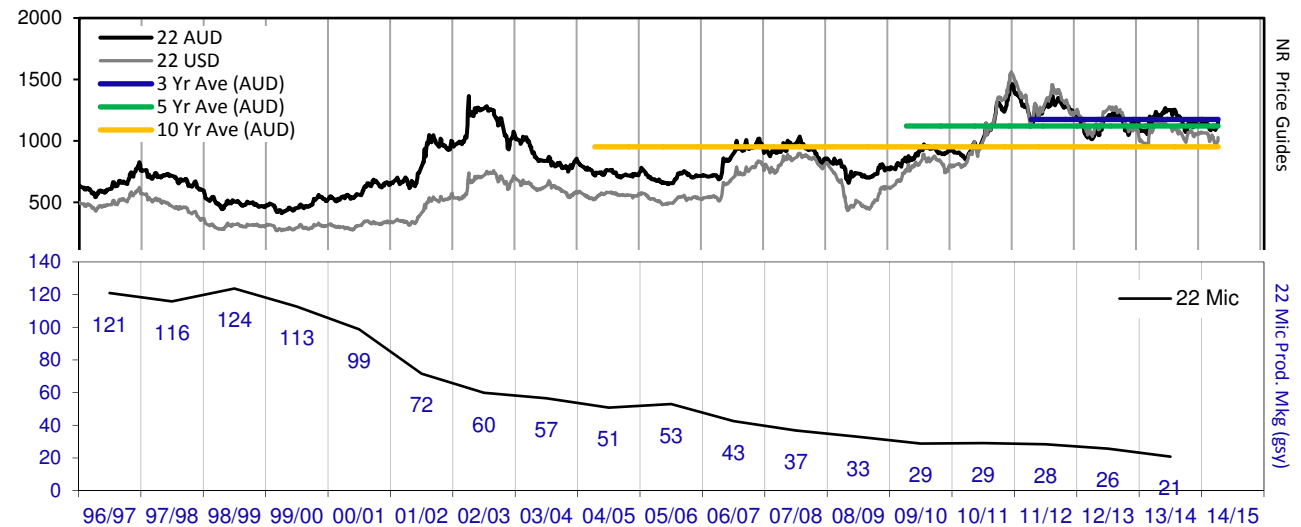


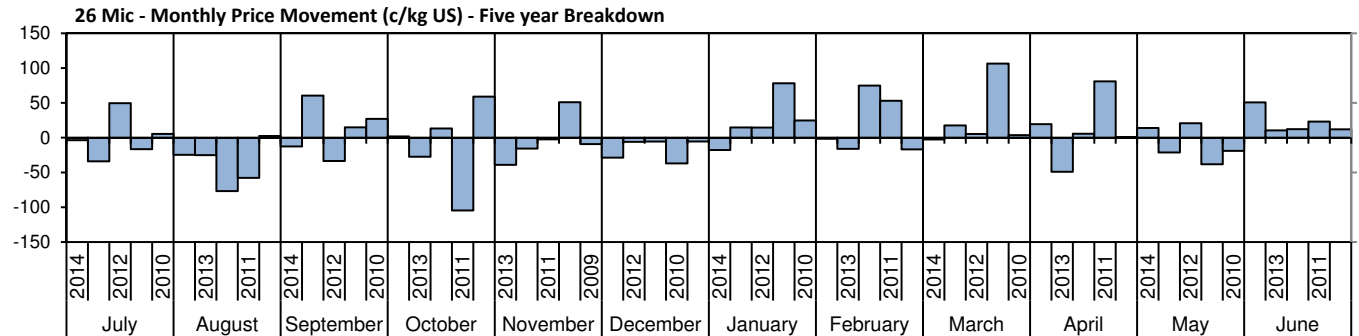
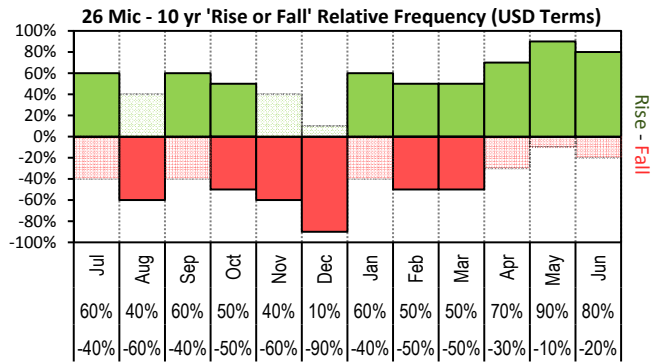


The above 'Rise or Fall' graph, shows how often the market has risen or fallen in a given month over the past 10 years, it does not show the extent of the movement only the frequency of direction. The 'Monthly Price Movement' graph shows the extent of movement for each month, for the past 5 years.

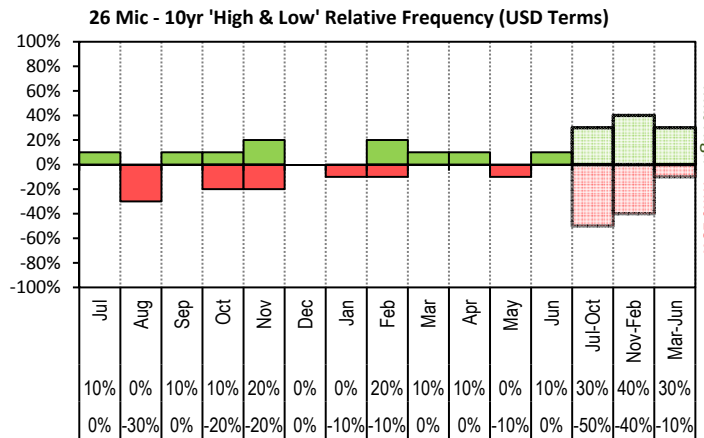


The above graph, shows how often the '12 month high & low' have been achieved for a given month over the past 10 years. It is not a measure of probability.

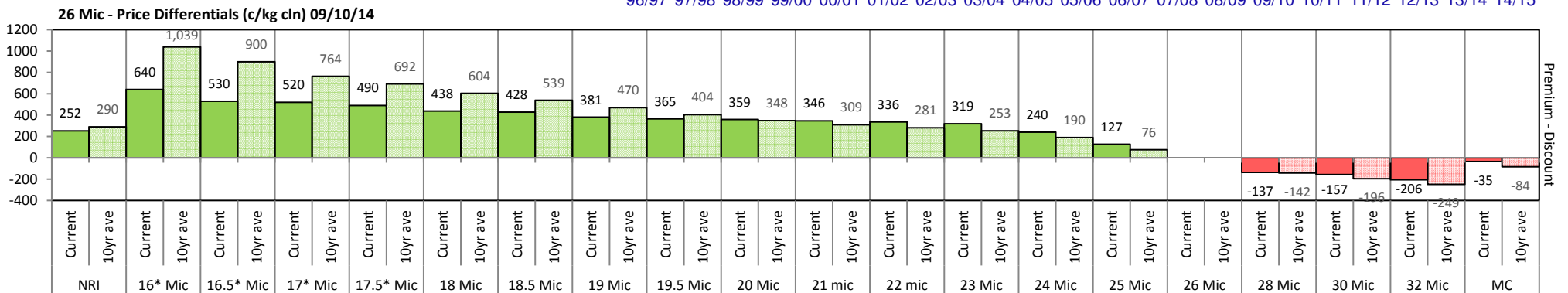
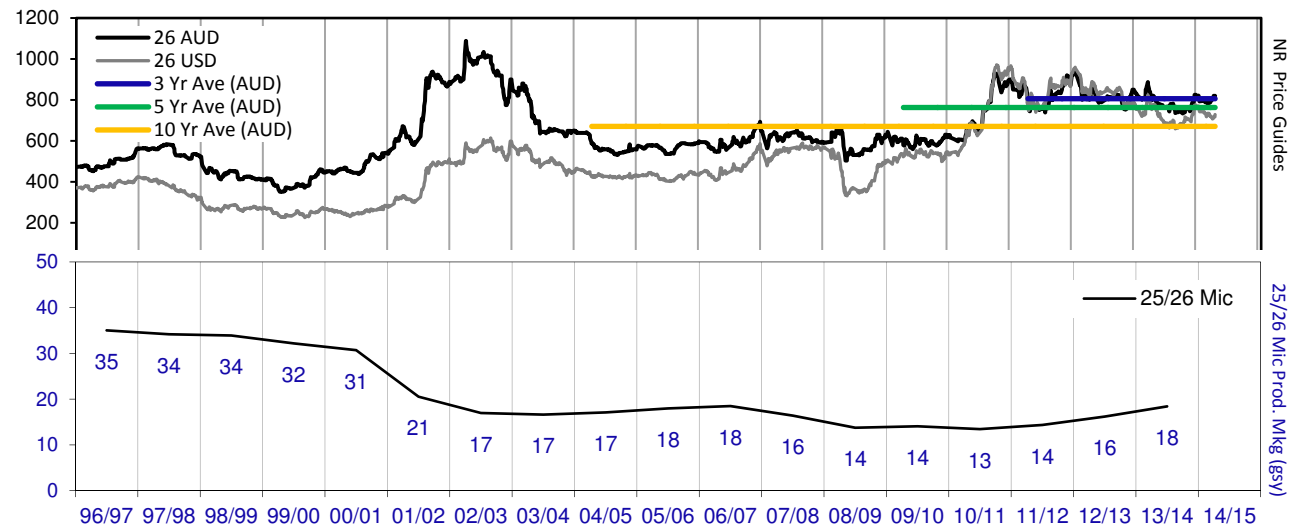


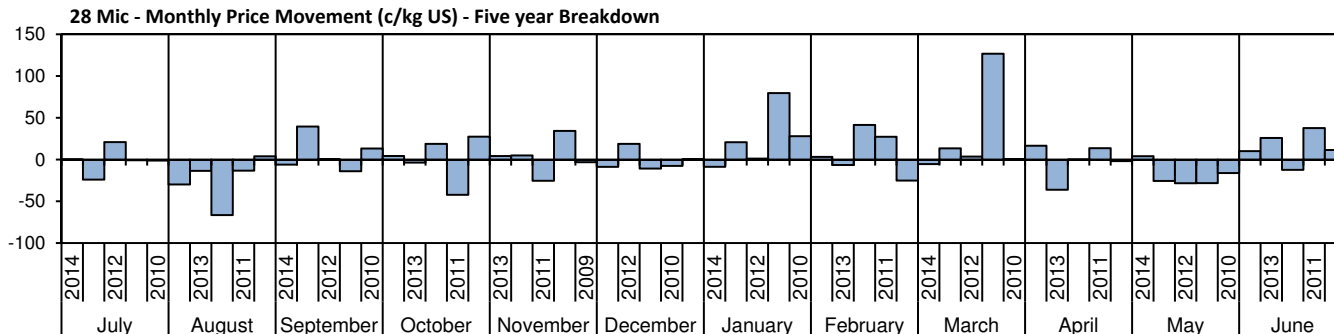
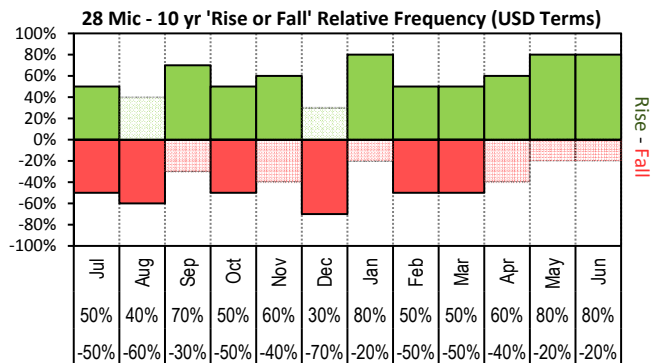


The above 'Rise or Fall' graph, shows how often the market has risen or fallen in a given month over the past 10 years, it does not show the extent of the movement only the frequency of direction. The 'Monthly Price Movement' graph shows the extent of movement for each month, for the past 5 years.

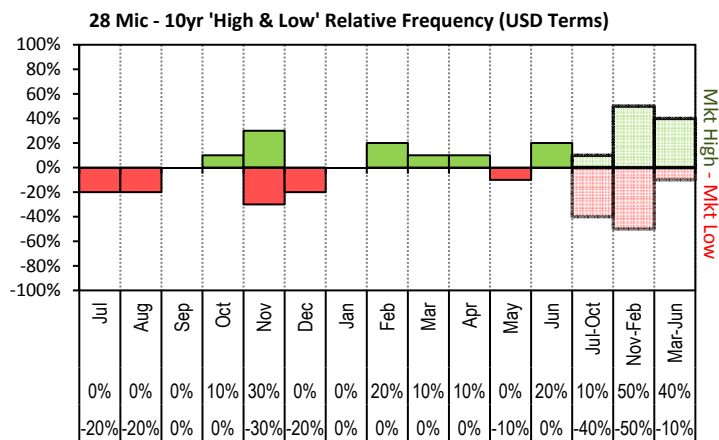


The above graph, shows how often the '12 month high & low' have been achieved for a given month over the past 10 years. It is not a measure of probability.

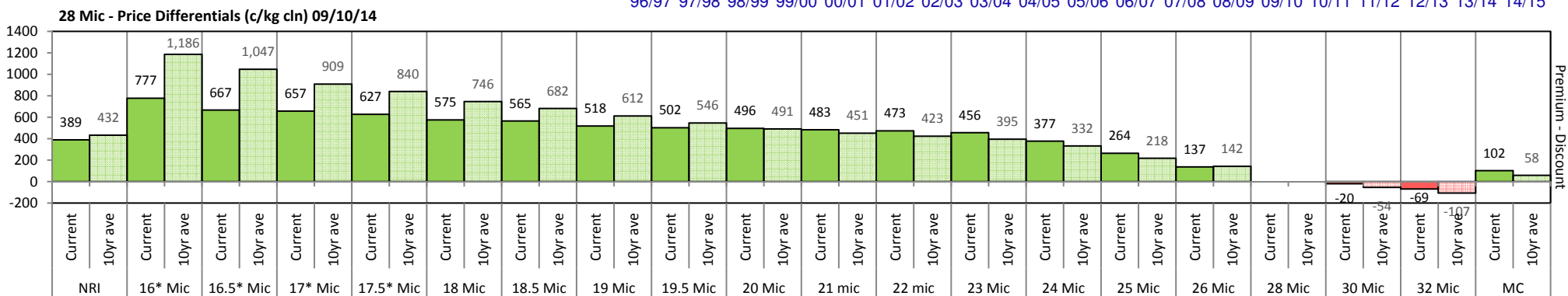
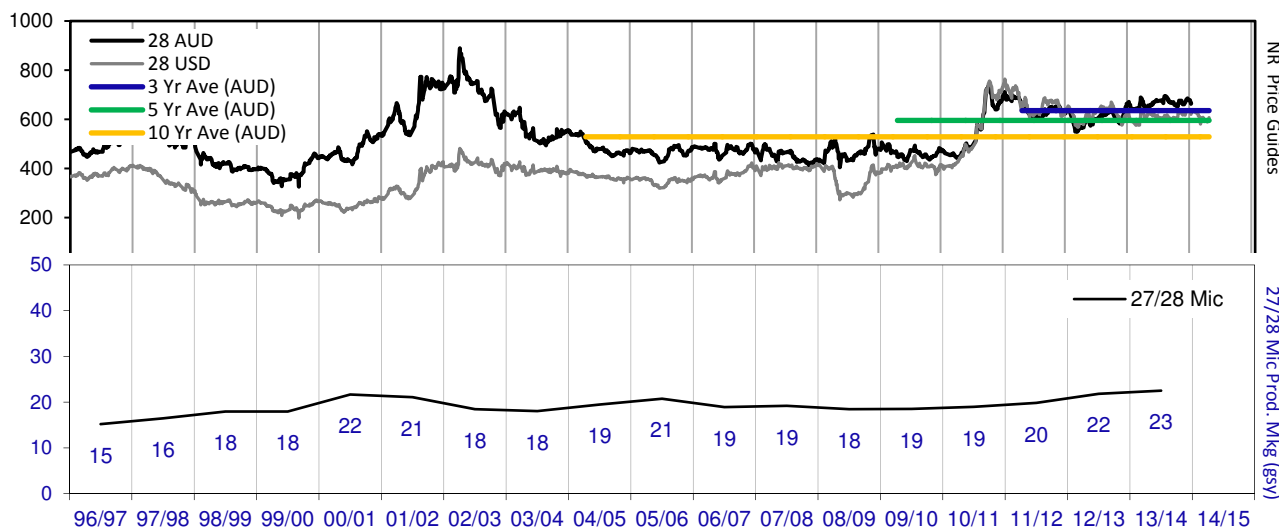


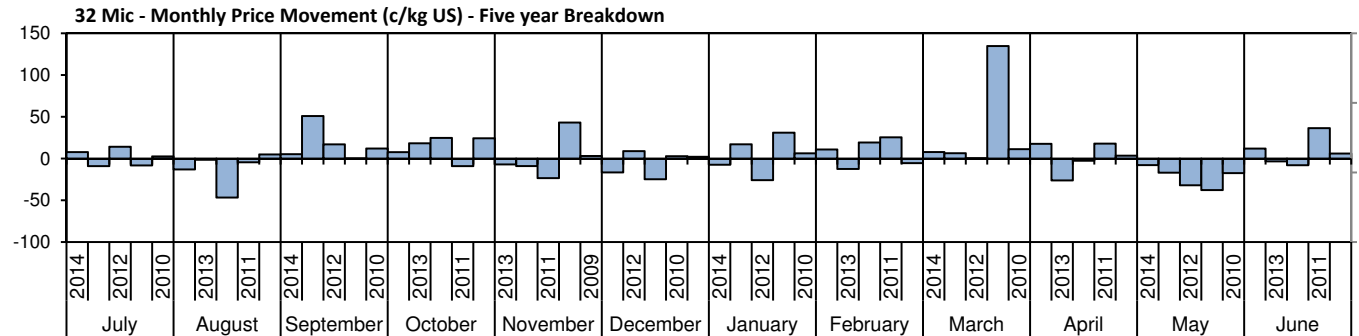
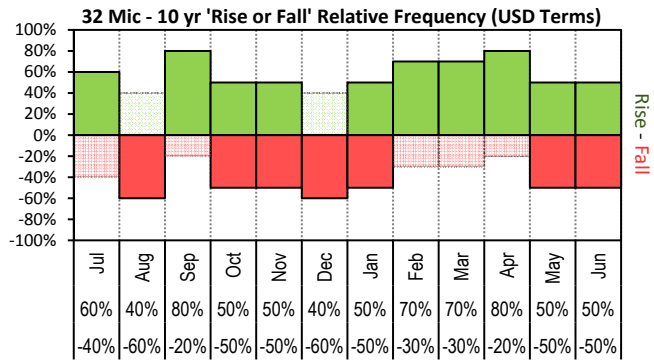


The above 'Rise or Fall' graph, shows how often the market has risen or fallen in a given month over the past 10 years, it does not show the extent of the movement only the frequency of direction. The 'Monthly Price Movement' graph shows the extent of movement for each month, for the past 5 years.

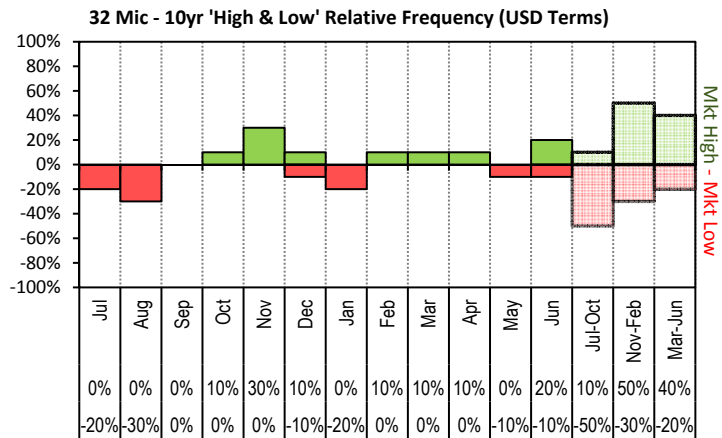


The above graph, shows how often the '12 month high & low' have been achieved for a given month over the past 10 years. It is not a measure of probability.

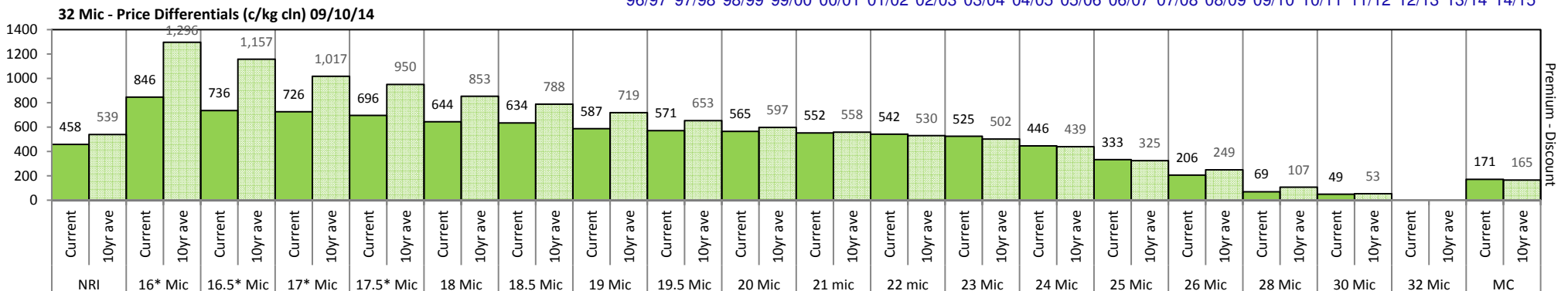
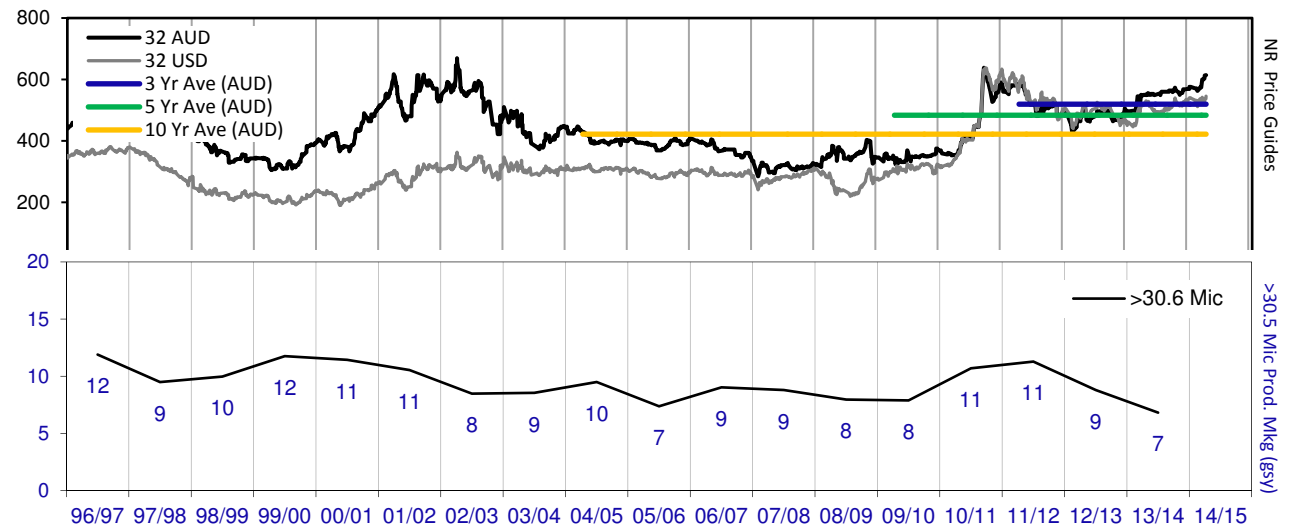


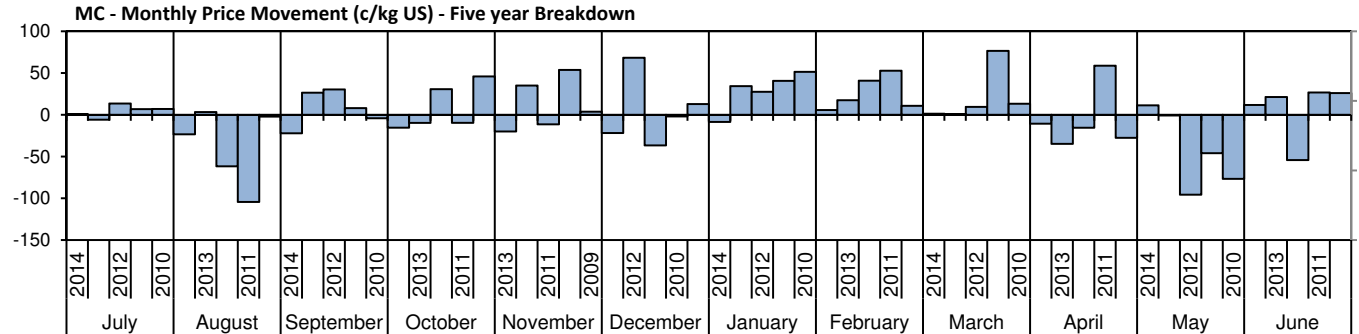
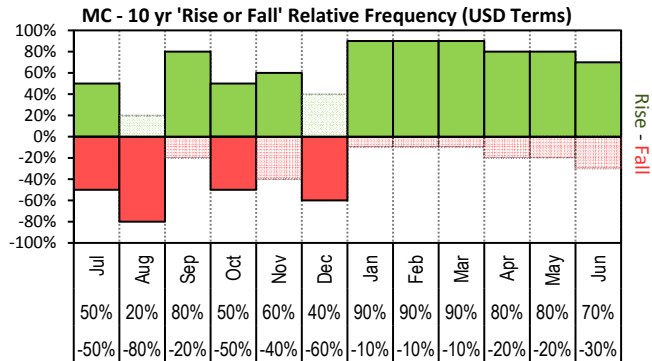


The above 'Rise or Fall' graph, shows how often the market has risen or fallen in a given month over the past 10 years, it does not show the extent of the movement only the frequency of direction. The 'Monthly Price Movement' graph shows the extent of movement for each month, for the past 5 years.

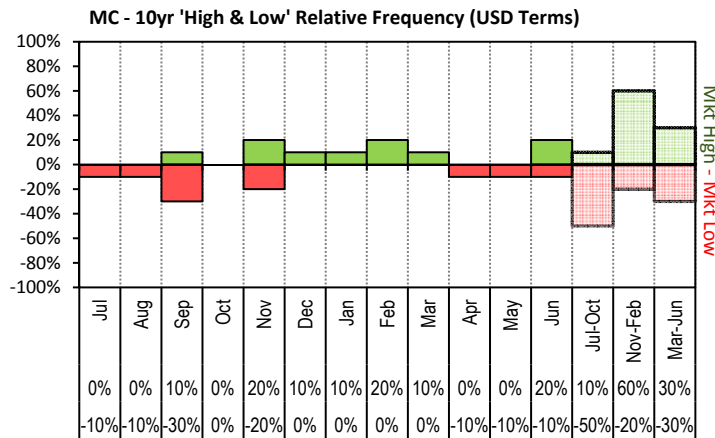


The above graph, shows how often the '12 month high & low' have been achieved for a given month over the past 10 years. It is not a measure of probability.

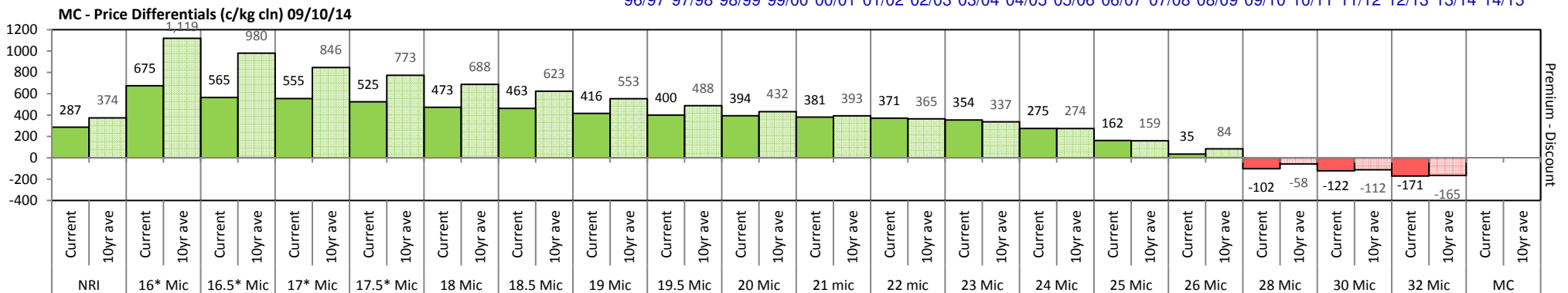
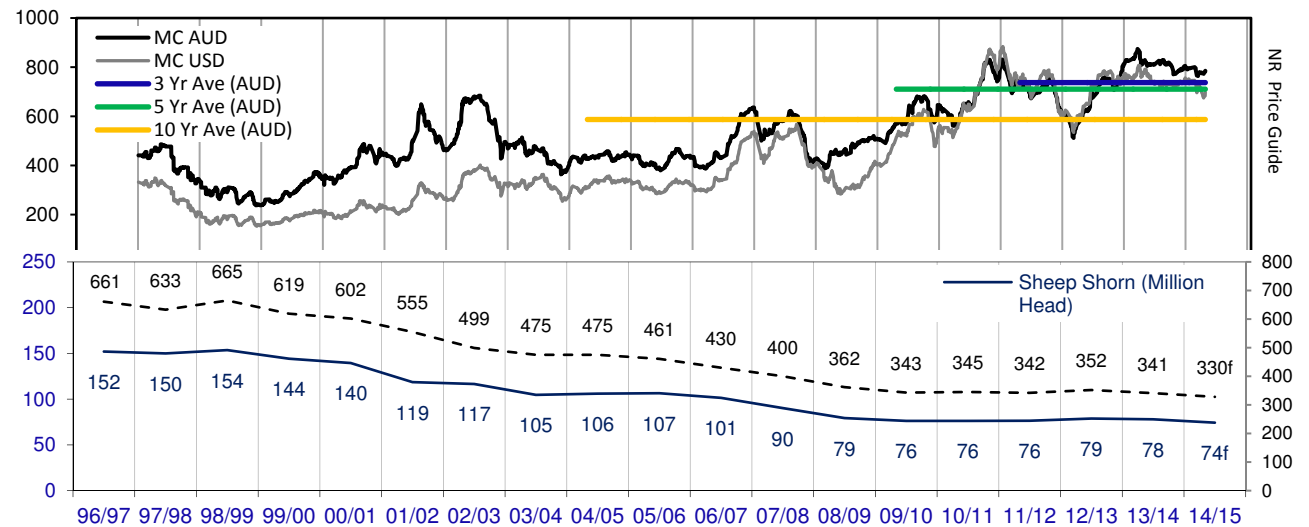




The above 'Rise or Fall' graph, shows how often the market has risen or fallen in a given month over the past 10 years, it does not show the extent of the movement only the frequency of direction. The 'Monthly Price Movement' graph shows the extent of movement for each month, for the past 5 years.



The above graph, shows how often the '12 month high & low' have been achieved for a given month over the past 10 years. It is not a measure of probability.





Two Year Export Snapshot (Greasy Equivalent - Million Kilos)

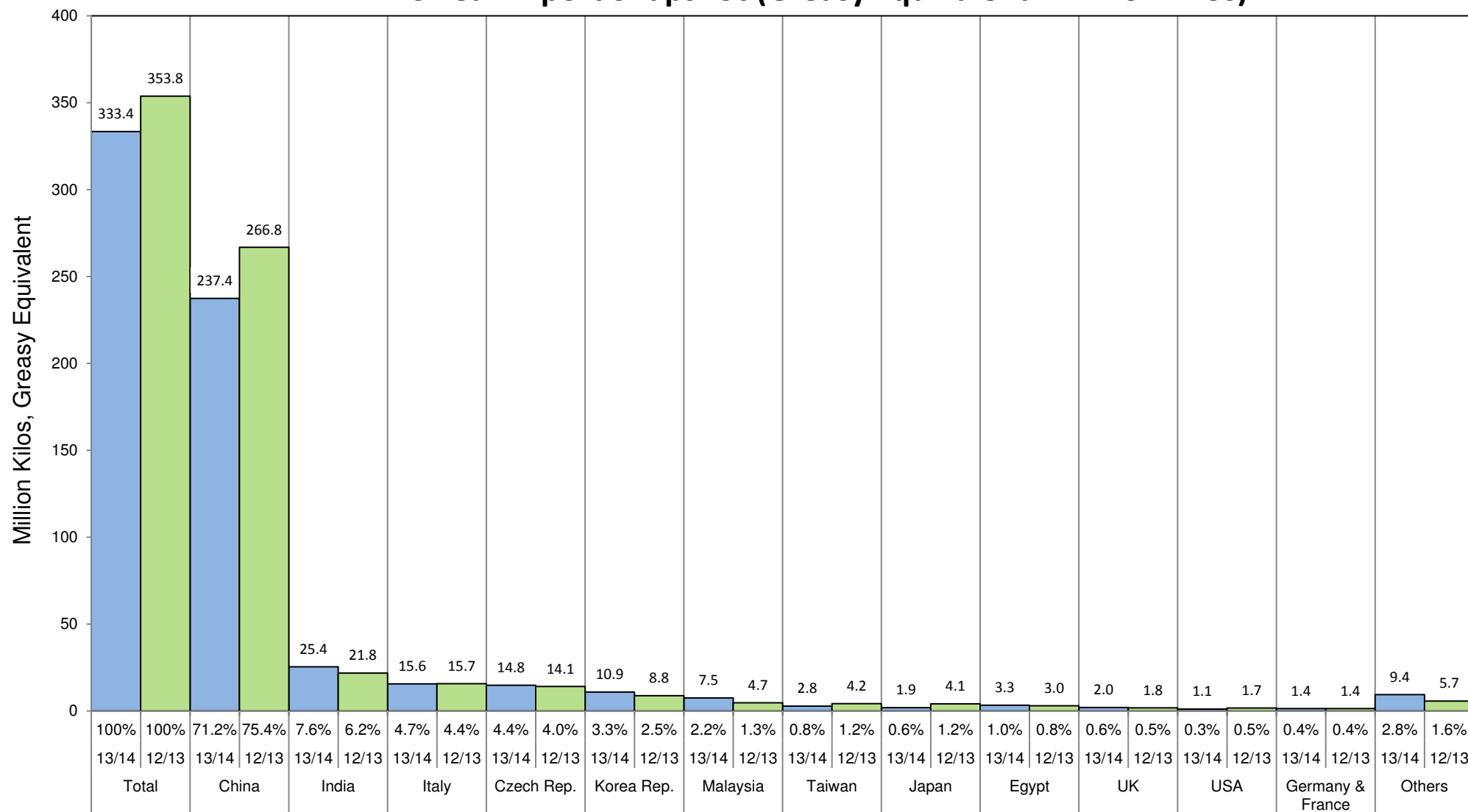




Table 7: Returns pr head for skirted fleece wool.

Skirted FLC Weight 9 Kg		Micron																	
		16	16.5	17	17.5	18	18.5	19	19.5	20	21	22	23	24	25	26	28	30	32
Yield (Sch Dry)	25% Current	\$33	\$30	\$30	\$29	\$28	\$28	\$27	\$27	\$27	\$26	\$26	\$26	\$24	\$21	\$18	\$15	\$15	\$14
	10yr ave.	\$39	\$36	\$32	\$31	\$29	\$27	\$26	\$24	\$23	\$22	\$21	\$21	\$19	\$17	\$15	\$12	\$11	\$9
	30% Current	\$39	\$36	\$36	\$35	\$34	\$34	\$32	\$32	\$32	\$31	\$31	\$31	\$29	\$26	\$22	\$18	\$18	\$17
	10yr ave.	\$46	\$43	\$39	\$37	\$34	\$33	\$31	\$29	\$28	\$26	\$26	\$25	\$23	\$20	\$18	\$14	\$13	\$11
	35% Current	\$46	\$43	\$42	\$41	\$40	\$39	\$38	\$37	\$37	\$37	\$36	\$36	\$33	\$30	\$26	\$22	\$21	\$19
	10yr ave.	\$54	\$50	\$45	\$43	\$40	\$38	\$36	\$34	\$32	\$31	\$30	\$29	\$27	\$24	\$21	\$17	\$15	\$13
	40% Current	\$53	\$49	\$48	\$47	\$45	\$45	\$43	\$43	\$42	\$42	\$42	\$41	\$38	\$34	\$30	\$25	\$24	\$22
	10yr ave.	\$62	\$57	\$52	\$49	\$46	\$44	\$41	\$39	\$37	\$35	\$34	\$33	\$31	\$27	\$24	\$19	\$17	\$15
	45% Current	\$59	\$55	\$54	\$53	\$51	\$51	\$49	\$48	\$48	\$47	\$47	\$46	\$43	\$38	\$33	\$28	\$27	\$25
	10yr ave.	\$70	\$64	\$58	\$56	\$52	\$49	\$46	\$44	\$41	\$40	\$39	\$37	\$35	\$30	\$27	\$21	\$19	\$17
	50% Current	\$66	\$61	\$60	\$59	\$57	\$56	\$54	\$53	\$53	\$52	\$52	\$51	\$48	\$43	\$37	\$31	\$30	\$28
	10yr ave.	\$77	\$71	\$65	\$62	\$57	\$54	\$51	\$48	\$46	\$44	\$43	\$42	\$39	\$34	\$30	\$24	\$21	\$19
	55% Current	\$72	\$67	\$66	\$65	\$62	\$62	\$59	\$59	\$58	\$58	\$57	\$56	\$52	\$47	\$41	\$34	\$33	\$30
	10yr ave.	\$85	\$78	\$71	\$68	\$63	\$60	\$56	\$53	\$50	\$49	\$47	\$46	\$43	\$37	\$33	\$26	\$24	\$21
	60% Current	\$79	\$73	\$72	\$71	\$68	\$67	\$65	\$64	\$64	\$63	\$62	\$62	\$57	\$51	\$44	\$37	\$36	\$33
	10yr ave.	\$93	\$85	\$78	\$74	\$69	\$65	\$62	\$58	\$55	\$53	\$51	\$50	\$46	\$40	\$36	\$29	\$26	\$23
	65% Current	\$85	\$79	\$78	\$77	\$74	\$73	\$70	\$69	\$69	\$68	\$68	\$67	\$62	\$55	\$48	\$40	\$39	\$36
	10yr ave.	\$101	\$92	\$84	\$80	\$75	\$71	\$67	\$63	\$60	\$57	\$56	\$54	\$50	\$44	\$39	\$31	\$28	\$25
	70% Current	\$92	\$85	\$84	\$83	\$79	\$79	\$76	\$75	\$74	\$73	\$73	\$72	\$67	\$60	\$52	\$43	\$42	\$39
	10yr ave.	\$108	\$100	\$91	\$87	\$80	\$76	\$72	\$68	\$64	\$62	\$60	\$58	\$54	\$47	\$42	\$33	\$30	\$27
	75% Current	\$99	\$91	\$90	\$88	\$85	\$84	\$81	\$80	\$80	\$79	\$78	\$77	\$72	\$64	\$55	\$46	\$45	\$41
	10yr ave.	\$116	\$107	\$97	\$93	\$86	\$82	\$77	\$73	\$69	\$66	\$64	\$62	\$58	\$50	\$45	\$36	\$32	\$28
	80% Current	\$105	\$97	\$96	\$94	\$91	\$90	\$86	\$85	\$85	\$84	\$83	\$82	\$76	\$68	\$59	\$49	\$48	\$44
	10yr ave.	\$124	\$114	\$104	\$99	\$92	\$87	\$82	\$77	\$73	\$71	\$69	\$67	\$62	\$54	\$48	\$38	\$34	\$30
	85% Current	\$112	\$103	\$103	\$100	\$96	\$95	\$92	\$91	\$90	\$89	\$88	\$87	\$81	\$72	\$63	\$52	\$51	\$47
	10yr ave.	\$132	\$121	\$110	\$105	\$98	\$93	\$87	\$82	\$78	\$75	\$73	\$71	\$66	\$57	\$51	\$40	\$36	\$32

The above shows estimated returns per head for skirted fleece wool. These figures do not take into account the value of skirtings and oddments and do not take into account discounts that may apply for faults under individual circumstances. These figures are based on a market index of 100% and should be used as a guide only. Returns over \$30 / head for fleece wool are highlighted.



Table 8: Returns pr head for skirted fleece wool.

Skirted FLC Weight 8 Kg		Micron																	
		16	16.5	17	17.5	18	18.5	19	19.5	20	21	22	23	24	25	26	28	30	32
Yield (Sch Dry)	25% Current	\$29	\$27	\$27	\$26	\$25	\$25	\$24	\$24	\$24	\$23	\$23	\$23	\$21	\$19	\$16	\$14	\$13	\$12
	10yr ave.	\$34	\$32	\$29	\$27	\$26	\$24	\$23	\$22	\$20	\$20	\$19	\$18	\$17	\$15	\$13	\$11	\$10	\$8
	30% Current	\$35	\$32	\$32	\$31	\$30	\$30	\$29	\$28	\$28	\$28	\$28	\$27	\$25	\$23	\$20	\$16	\$16	\$15
	10yr ave.	\$41	\$38	\$35	\$33	\$31	\$29	\$27	\$26	\$24	\$24	\$23	\$22	\$21	\$18	\$16	\$13	\$11	\$10
	35% Current	\$41	\$38	\$38	\$37	\$35	\$35	\$34	\$33	\$33	\$33	\$32	\$32	\$30	\$27	\$23	\$19	\$19	\$17
	10yr ave.	\$48	\$44	\$40	\$38	\$36	\$34	\$32	\$30	\$29	\$27	\$27	\$26	\$24	\$21	\$19	\$15	\$13	\$12
	40% Current	\$47	\$43	\$43	\$42	\$40	\$40	\$38	\$38	\$38	\$37	\$37	\$36	\$34	\$30	\$26	\$22	\$21	\$20
	10yr ave.	\$55	\$51	\$46	\$44	\$41	\$39	\$37	\$34	\$33	\$31	\$30	\$30	\$28	\$24	\$21	\$17	\$15	\$14
	45% Current	\$53	\$49	\$48	\$47	\$45	\$45	\$43	\$43	\$42	\$42	\$42	\$41	\$38	\$34	\$30	\$25	\$24	\$22
	10yr ave.	\$62	\$57	\$52	\$49	\$46	\$44	\$41	\$39	\$37	\$35	\$34	\$33	\$31	\$27	\$24	\$19	\$17	\$15
	50% Current	\$58	\$54	\$54	\$52	\$50	\$50	\$48	\$47	\$47	\$47	\$46	\$46	\$42	\$38	\$33	\$27	\$27	\$25
	10yr ave.	\$69	\$63	\$58	\$55	\$51	\$48	\$46	\$43	\$41	\$39	\$38	\$37	\$34	\$30	\$27	\$21	\$19	\$17
	55% Current	\$64	\$59	\$59	\$58	\$55	\$55	\$53	\$52	\$52	\$51	\$51	\$50	\$47	\$42	\$36	\$30	\$29	\$27
	10yr ave.	\$76	\$70	\$63	\$60	\$56	\$53	\$50	\$47	\$45	\$43	\$42	\$41	\$38	\$33	\$30	\$23	\$21	\$19
	60% Current	\$70	\$65	\$64	\$63	\$60	\$60	\$58	\$57	\$57	\$56	\$55	\$55	\$51	\$45	\$39	\$33	\$32	\$29
	10yr ave.	\$83	\$76	\$69	\$66	\$61	\$58	\$55	\$52	\$49	\$47	\$46	\$44	\$41	\$36	\$32	\$25	\$23	\$20
	65% Current	\$76	\$70	\$70	\$68	\$65	\$65	\$62	\$62	\$61	\$61	\$60	\$59	\$55	\$49	\$43	\$36	\$34	\$32
	10yr ave.	\$89	\$82	\$75	\$71	\$66	\$63	\$59	\$56	\$53	\$51	\$50	\$48	\$45	\$39	\$35	\$28	\$25	\$22
	70% Current	\$82	\$76	\$75	\$73	\$70	\$70	\$67	\$66	\$66	\$65	\$65	\$64	\$59	\$53	\$46	\$38	\$37	\$34
	10yr ave.	\$96	\$89	\$81	\$77	\$71	\$68	\$64	\$60	\$57	\$55	\$53	\$52	\$48	\$42	\$38	\$30	\$27	\$24
	75% Current	\$88	\$81	\$80	\$79	\$75	\$75	\$72	\$71	\$71	\$70	\$69	\$68	\$64	\$57	\$49	\$41	\$40	\$37
	10yr ave.	\$103	\$95	\$86	\$82	\$77	\$73	\$68	\$65	\$61	\$59	\$57	\$55	\$52	\$45	\$40	\$32	\$29	\$25
	80% Current	\$93	\$86	\$86	\$84	\$81	\$80	\$77	\$76	\$75	\$75	\$74	\$73	\$68	\$61	\$52	\$44	\$42	\$39
	10yr ave.	\$110	\$101	\$92	\$88	\$82	\$77	\$73	\$69	\$65	\$63	\$61	\$59	\$55	\$48	\$43	\$34	\$30	\$27
	85% Current	\$99	\$92	\$91	\$89	\$86	\$85	\$82	\$81	\$80	\$79	\$79	\$77	\$72	\$64	\$56	\$46	\$45	\$42
	10yr ave.	\$117	\$108	\$98	\$93	\$87	\$82	\$78	\$73	\$69	\$67	\$65	\$63	\$59	\$51	\$46	\$36	\$32	\$29

The above shows estimated returns per head for skirted fleece wool. These figures do not take into account the value of skirtings and oddments and do not take into account discounts that may apply for faults under individual circumstances. These figures are based on a market index of 100% and should be used as a guide only. Returns over \$30 / head for fleece wool are highlighted.



Table 9: Returns pr head for skirted fleece wool.

Skirted FLC Weight		Micron																	
7 Kg		16	16.5	17	17.5	18	18.5	19	19.5	20	21	22	23	24	25	26	28	30	32
Yield (Sch Dry)	25% Current	\$26	\$24	\$23	\$23	\$22	\$22	\$21	\$21	\$21	\$20	\$20	\$20	\$19	\$17	\$14	\$12	\$12	\$11
	10yr ave.	\$30	\$28	\$25	\$24	\$22	\$21	\$20	\$19	\$18	\$17	\$17	\$16	\$15	\$13	\$12	\$9	\$8	\$7
	30% Current	\$31	\$28	\$28	\$28	\$26	\$26	\$25	\$25	\$25	\$24	\$24	\$24	\$22	\$20	\$17	\$14	\$14	\$13
	10yr ave.	\$36	\$33	\$30	\$29	\$27	\$25	\$24	\$23	\$21	\$21	\$20	\$19	\$18	\$16	\$14	\$11	\$10	\$9
	35% Current	\$36	\$33	\$33	\$32	\$31	\$31	\$29	\$29	\$29	\$29	\$28	\$28	\$26	\$23	\$20	\$17	\$16	\$15
	10yr ave.	\$42	\$39	\$35	\$34	\$31	\$30	\$28	\$26	\$25	\$24	\$23	\$23	\$21	\$18	\$16	\$13	\$12	\$10
	40% Current	\$41	\$38	\$38	\$37	\$35	\$35	\$34	\$33	\$33	\$33	\$32	\$32	\$30	\$27	\$23	\$19	\$19	\$17
	10yr ave.	\$48	\$44	\$40	\$38	\$36	\$34	\$32	\$30	\$29	\$27	\$27	\$26	\$24	\$21	\$19	\$15	\$13	\$12
	45% Current	\$46	\$43	\$42	\$41	\$40	\$39	\$38	\$37	\$37	\$37	\$36	\$36	\$33	\$30	\$26	\$22	\$21	\$19
	10yr ave.	\$54	\$50	\$45	\$43	\$40	\$38	\$36	\$34	\$32	\$31	\$30	\$29	\$27	\$24	\$21	\$17	\$15	\$13
	50% Current	\$51	\$47	\$47	\$46	\$44	\$44	\$42	\$41	\$41	\$41	\$40	\$40	\$37	\$33	\$29	\$24	\$23	\$21
	10yr ave.	\$60	\$55	\$50	\$48	\$45	\$42	\$40	\$38	\$36	\$34	\$33	\$32	\$30	\$26	\$23	\$19	\$17	\$15
	55% Current	\$56	\$52	\$52	\$50	\$48	\$48	\$46	\$46	\$45	\$45	\$45	\$44	\$41	\$36	\$32	\$26	\$26	\$24
	10yr ave.	\$66	\$61	\$55	\$53	\$49	\$47	\$44	\$41	\$39	\$38	\$37	\$36	\$33	\$29	\$26	\$20	\$18	\$16
	60% Current	\$61	\$57	\$56	\$55	\$53	\$52	\$50	\$50	\$50	\$49	\$49	\$48	\$45	\$40	\$34	\$29	\$28	\$26
	10yr ave.	\$72	\$66	\$60	\$58	\$54	\$51	\$48	\$45	\$43	\$41	\$40	\$39	\$36	\$31	\$28	\$22	\$20	\$18
	65% Current	\$66	\$61	\$61	\$60	\$57	\$57	\$55	\$54	\$54	\$53	\$53	\$52	\$48	\$43	\$37	\$31	\$30	\$28
	10yr ave.	\$78	\$72	\$66	\$63	\$58	\$55	\$52	\$49	\$46	\$45	\$43	\$42	\$39	\$34	\$31	\$24	\$22	\$19
	70% Current	\$72	\$66	\$66	\$64	\$62	\$61	\$59	\$58	\$58	\$57	\$57	\$56	\$52	\$46	\$40	\$33	\$32	\$30
	10yr ave.	\$84	\$77	\$71	\$67	\$62	\$59	\$56	\$53	\$50	\$48	\$47	\$45	\$42	\$37	\$33	\$26	\$23	\$21
	75% Current	\$77	\$71	\$70	\$69	\$66	\$66	\$63	\$62	\$62	\$61	\$61	\$60	\$56	\$50	\$43	\$36	\$35	\$32
	10yr ave.	\$90	\$83	\$76	\$72	\$67	\$64	\$60	\$56	\$53	\$51	\$50	\$49	\$45	\$39	\$35	\$28	\$25	\$22
	80% Current	\$82	\$76	\$75	\$73	\$70	\$70	\$67	\$66	\$66	\$65	\$65	\$64	\$59	\$53	\$46	\$38	\$37	\$34
	10yr ave.	\$96	\$89	\$81	\$77	\$71	\$68	\$64	\$60	\$57	\$55	\$53	\$52	\$48	\$42	\$38	\$30	\$27	\$24
	85% Current	\$87	\$80	\$80	\$78	\$75	\$74	\$71	\$71	\$70	\$69	\$69	\$68	\$63	\$56	\$49	\$41	\$39	\$37
	10yr ave.	\$102	\$94	\$86	\$82	\$76	\$72	\$68	\$64	\$61	\$58	\$57	\$55	\$51	\$44	\$40	\$31	\$28	\$25

The above shows estimated returns per head for skirted fleece wool. These figures do not take into account the value of skirtings and oddments and do not take into account discounts that may apply for faults under individual circumstances. These figures are based on a market index of 100% and should be used as a guide only. Returns over \$30 / head for fleece wool are highlighted.



Table 10: Returns pr head for skirted fleece wool.

Skirted FLC Weight 6 Kg			Micron																	
			16	16.5	17	17.5	18	18.5	19	19.5	20	21	22	23	24	25	26	28	30	32
Yield (Sch Dry)	25%	Current	\$22	\$20	\$20	\$20	\$19	\$19	\$18	\$18	\$18	\$17	\$17	\$17	\$16	\$14	\$12	\$10	\$10	\$9
		10yr ave.	\$26	\$24	\$22	\$21	\$19	\$18	\$17	\$16	\$15	\$15	\$14	\$14	\$13	\$11	\$10	\$8	\$7	\$6
	30%	Current	\$26	\$24	\$24	\$24	\$23	\$22	\$22	\$21	\$21	\$21	\$21	\$21	\$19	\$17	\$15	\$12	\$12	\$11
		10yr ave.	\$31	\$28	\$26	\$25	\$23	\$22	\$21	\$19	\$18	\$18	\$17	\$17	\$15	\$13	\$12	\$10	\$9	\$8
	35%	Current	\$31	\$28	\$28	\$28	\$26	\$26	\$25	\$25	\$25	\$24	\$24	\$24	\$22	\$20	\$17	\$14	\$14	\$13
		10yr ave.	\$36	\$33	\$30	\$29	\$27	\$25	\$24	\$23	\$21	\$21	\$20	\$19	\$18	\$16	\$14	\$11	\$10	\$9
	40%	Current	\$35	\$32	\$32	\$31	\$30	\$30	\$29	\$28	\$28	\$28	\$28	\$27	\$25	\$23	\$20	\$16	\$16	\$15
		10yr ave.	\$41	\$38	\$35	\$33	\$31	\$29	\$27	\$26	\$24	\$24	\$23	\$22	\$21	\$18	\$16	\$13	\$11	\$10
	45%	Current	\$39	\$36	\$36	\$35	\$34	\$34	\$32	\$32	\$32	\$31	\$31	\$31	\$29	\$26	\$22	\$18	\$18	\$17
		10yr ave.	\$46	\$43	\$39	\$37	\$34	\$33	\$31	\$29	\$28	\$26	\$26	\$25	\$23	\$20	\$18	\$14	\$13	\$11
	50%	Current	\$44	\$41	\$40	\$39	\$38	\$37	\$36	\$36	\$35	\$35	\$35	\$34	\$32	\$28	\$25	\$20	\$20	\$18
		10yr ave.	\$52	\$47	\$43	\$41	\$38	\$36	\$34	\$32	\$31	\$29	\$29	\$28	\$26	\$22	\$20	\$16	\$14	\$13
	55%	Current	\$48	\$45	\$44	\$43	\$42	\$41	\$40	\$39	\$39	\$38	\$38	\$38	\$35	\$31	\$27	\$23	\$22	\$20
		10yr ave.	\$57	\$52	\$48	\$45	\$42	\$40	\$38	\$35	\$34	\$32	\$31	\$30	\$28	\$25	\$22	\$17	\$16	\$14
	60%	Current	\$53	\$49	\$48	\$47	\$45	\$45	\$43	\$43	\$42	\$42	\$42	\$41	\$38	\$34	\$30	\$25	\$24	\$22
		10yr ave.	\$62	\$57	\$52	\$49	\$46	\$44	\$41	\$39	\$37	\$35	\$34	\$33	\$31	\$27	\$24	\$19	\$17	\$15
	65%	Current	\$57	\$53	\$52	\$51	\$49	\$49	\$47	\$46	\$46	\$45	\$45	\$44	\$41	\$37	\$32	\$27	\$26	\$24
		10yr ave.	\$67	\$62	\$56	\$54	\$50	\$47	\$44	\$42	\$40	\$38	\$37	\$36	\$34	\$29	\$26	\$21	\$19	\$16
	70%	Current	\$61	\$57	\$56	\$55	\$53	\$52	\$50	\$50	\$50	\$49	\$49	\$48	\$45	\$40	\$34	\$29	\$28	\$26
		10yr ave.	\$72	\$66	\$60	\$58	\$54	\$51	\$48	\$45	\$43	\$41	\$40	\$39	\$36	\$31	\$28	\$22	\$20	\$18
	75%	Current	\$66	\$61	\$60	\$59	\$57	\$56	\$54	\$53	\$53	\$52	\$52	\$51	\$48	\$43	\$37	\$31	\$30	\$28
		10yr ave.	\$77	\$71	\$65	\$62	\$57	\$54	\$51	\$48	\$46	\$44	\$43	\$42	\$39	\$34	\$30	\$24	\$21	\$19
	80%	Current	\$70	\$65	\$64	\$63	\$60	\$60	\$58	\$57	\$57	\$56	\$55	\$55	\$51	\$45	\$39	\$33	\$32	\$29
		10yr ave.	\$83	\$76	\$69	\$66	\$61	\$58	\$55	\$52	\$49	\$47	\$46	\$44	\$41	\$36	\$32	\$25	\$23	\$20
	85%	Current	\$74	\$69	\$68	\$67	\$64	\$64	\$61	\$60	\$60	\$59	\$59	\$58	\$54	\$48	\$42	\$35	\$34	\$31
		10yr ave.	\$88	\$81	\$73	\$70	\$65	\$62	\$58	\$55	\$52	\$50	\$49	\$47	\$44	\$38	\$34	\$27	\$24	\$22

The above shows estimated returns per head for skirted fleece wool. These figures do not take into account the value of skirtings and oddments and do not take into account discounts that may apply for faults under individual circumstances. These figures are based on a market index of 100% and should be used as a guide only. Returns over \$30 / head for fleece wool are highlighted.



Table 11: Returns pr head for skirted fleece wool.

Skirted FLC Weight 5 Kg			Micron																	
			16	16.5	17	17.5	18	18.5	19	19.5	20	21	22	23	24	25	26	28	30	32
Yield (Sch Dry)	25%	Current	\$18	\$17	\$17	\$16	\$16	\$16	\$15	\$15	\$15	\$15	\$14	\$14	\$13	\$12	\$10	\$9	\$8	\$8
		10yr ave.	\$22	\$20	\$18	\$17	\$16	\$15	\$14	\$13	\$13	\$12	\$12	\$12	\$12	\$11	\$9	\$8	\$7	\$6
	30%	Current	\$22	\$20	\$20	\$20	\$19	\$19	\$18	\$18	\$18	\$17	\$17	\$17	\$16	\$14	\$12	\$10	\$10	\$9
		10yr ave.	\$26	\$24	\$22	\$21	\$19	\$18	\$17	\$16	\$15	\$15	\$14	\$14	\$13	\$11	\$10	\$8	\$7	\$6
	35%	Current	\$26	\$24	\$23	\$23	\$22	\$22	\$21	\$21	\$21	\$20	\$20	\$20	\$19	\$17	\$14	\$12	\$12	\$11
		10yr ave.	\$30	\$28	\$25	\$24	\$22	\$21	\$20	\$19	\$18	\$17	\$17	\$16	\$15	\$13	\$12	\$9	\$8	\$7
	40%	Current	\$29	\$27	\$27	\$26	\$25	\$25	\$24	\$24	\$24	\$23	\$23	\$23	\$21	\$19	\$16	\$14	\$13	\$12
		10yr ave.	\$34	\$32	\$29	\$27	\$26	\$24	\$23	\$22	\$20	\$20	\$19	\$18	\$17	\$15	\$13	\$11	\$10	\$8
	45%	Current	\$33	\$30	\$30	\$29	\$28	\$28	\$27	\$27	\$27	\$26	\$26	\$26	\$24	\$21	\$18	\$15	\$15	\$14
		10yr ave.	\$39	\$36	\$32	\$31	\$29	\$27	\$26	\$24	\$23	\$22	\$21	\$21	\$19	\$17	\$15	\$12	\$11	\$9
	50%	Current	\$37	\$34	\$34	\$33	\$31	\$31	\$30	\$30	\$29	\$29	\$29	\$28	\$27	\$24	\$21	\$17	\$17	\$15
		10yr ave.	\$43	\$40	\$36	\$34	\$32	\$30	\$29	\$27	\$25	\$25	\$24	\$23	\$22	\$19	\$17	\$13	\$12	\$11
	55%	Current	\$40	\$37	\$37	\$36	\$35	\$34	\$33	\$33	\$32	\$32	\$32	\$31	\$29	\$26	\$23	\$19	\$18	\$17
		10yr ave.	\$47	\$43	\$40	\$38	\$35	\$33	\$31	\$30	\$28	\$27	\$26	\$25	\$24	\$21	\$18	\$15	\$13	\$12
	60%	Current	\$44	\$41	\$40	\$39	\$38	\$37	\$36	\$36	\$35	\$35	\$35	\$34	\$32	\$28	\$25	\$20	\$20	\$18
		10yr ave.	\$52	\$47	\$43	\$41	\$38	\$36	\$34	\$32	\$31	\$29	\$29	\$28	\$26	\$22	\$20	\$16	\$14	\$13
	65%	Current	\$47	\$44	\$44	\$43	\$41	\$41	\$39	\$39	\$38	\$38	\$38	\$37	\$34	\$31	\$27	\$22	\$22	\$20
		10yr ave.	\$56	\$51	\$47	\$45	\$41	\$39	\$37	\$35	\$33	\$32	\$31	\$30	\$28	\$24	\$22	\$17	\$15	\$14
	70%	Current	\$51	\$47	\$47	\$46	\$44	\$44	\$42	\$41	\$41	\$41	\$40	\$40	\$37	\$33	\$29	\$24	\$23	\$21
		10yr ave.	\$60	\$55	\$50	\$48	\$45	\$42	\$40	\$38	\$36	\$34	\$33	\$32	\$30	\$26	\$23	\$19	\$17	\$15
	75%	Current	\$55	\$51	\$50	\$49	\$47	\$47	\$45	\$44	\$44	\$44	\$43	\$43	\$40	\$36	\$31	\$26	\$25	\$23
		10yr ave.	\$65	\$59	\$54	\$52	\$48	\$45	\$43	\$40	\$38	\$37	\$36	\$35	\$32	\$28	\$25	\$20	\$18	\$16
	80%	Current	\$58	\$54	\$54	\$52	\$50	\$50	\$48	\$47	\$47	\$47	\$46	\$46	\$42	\$38	\$33	\$27	\$27	\$25
		10yr ave.	\$69	\$63	\$58	\$55	\$51	\$48	\$46	\$43	\$41	\$39	\$38	\$37	\$34	\$30	\$27	\$21	\$19	\$17
	85%	Current	\$62	\$57	\$57	\$56	\$53	\$53	\$51	\$50	\$50	\$50	\$49	\$48	\$45	\$40	\$35	\$29	\$28	\$26
		10yr ave.	\$73	\$67	\$61	\$58	\$54	\$51	\$48	\$46	\$43	\$42	\$40	\$39	\$37	\$32	\$29	\$22	\$20	\$18

The above shows estimated returns per head for skirted fleece wool. These figures do not take into account the value of skirtings and oddments and do not take into account discounts that may apply for faults under individual circumstances. These figures are based on a market index of 100% and should be used as a guide only. Returns over \$30 / head for fleece wool are highlighted.



Table 12: Returns pr head for skirted fleece wool.

Skirted FLC Weight 4 Kg		Micron																	
		16	16.5	17	17.5	18	18.5	19	19.5	20	21	22	23	24	25	26	28	30	32
Yield (Sch Dry)	25% Current	\$15	\$14	\$13	\$13	\$13	\$12	\$12	\$12	\$12	\$12	\$12	\$11	\$11	\$9	\$8	\$7	\$7	\$6
	10yr ave.	\$17	\$16	\$14	\$14	\$13	\$12	\$11	\$11	\$10	\$10	\$10	\$9	\$9	\$7	\$7	\$5	\$5	\$4
	30% Current	\$18	\$16	\$16	\$16	\$15	\$15	\$14	\$14	\$14	\$14	\$14	\$14	\$13	\$11	\$10	\$8	\$8	\$7
	10yr ave.	\$21	\$19	\$17	\$16	\$15	\$15	\$14	\$13	\$12	\$12	\$11	\$11	\$10	\$9	\$8	\$6	\$6	\$5
	35% Current	\$20	\$19	\$19	\$18	\$18	\$17	\$17	\$17	\$17	\$16	\$16	\$16	\$15	\$13	\$11	\$10	\$9	\$9
	10yr ave.	\$24	\$22	\$20	\$19	\$18	\$17	\$16	\$15	\$14	\$14	\$13	\$13	\$12	\$10	\$9	\$7	\$7	\$6
	40% Current	\$23	\$22	\$21	\$21	\$20	\$20	\$19	\$19	\$19	\$19	\$18	\$18	\$17	\$15	\$13	\$11	\$11	\$10
	10yr ave.	\$28	\$25	\$23	\$22	\$20	\$19	\$18	\$17	\$16	\$16	\$15	\$15	\$14	\$12	\$11	\$8	\$8	\$7
	45% Current	\$26	\$24	\$24	\$24	\$23	\$22	\$22	\$21	\$21	\$21	\$21	\$21	\$19	\$17	\$15	\$12	\$12	\$11
	10yr ave.	\$31	\$28	\$26	\$25	\$23	\$22	\$21	\$19	\$18	\$18	\$17	\$17	\$15	\$13	\$12	\$10	\$9	\$8
	50% Current	\$29	\$27	\$27	\$26	\$25	\$25	\$24	\$24	\$24	\$23	\$23	\$23	\$21	\$19	\$16	\$14	\$13	\$12
	10yr ave.	\$34	\$32	\$29	\$27	\$26	\$24	\$23	\$22	\$20	\$20	\$19	\$18	\$17	\$15	\$13	\$11	\$10	\$8
	55% Current	\$32	\$30	\$29	\$29	\$28	\$27	\$26	\$26	\$26	\$26	\$25	\$25	\$23	\$21	\$18	\$15	\$15	\$14
	10yr ave.	\$38	\$35	\$32	\$30	\$28	\$27	\$25	\$24	\$22	\$22	\$21	\$20	\$19	\$16	\$15	\$12	\$10	\$9
	60% Current	\$35	\$32	\$32	\$31	\$30	\$30	\$29	\$28	\$28	\$28	\$28	\$27	\$25	\$23	\$20	\$16	\$16	\$15
	10yr ave.	\$41	\$38	\$35	\$33	\$31	\$29	\$27	\$26	\$24	\$24	\$23	\$22	\$21	\$18	\$16	\$13	\$11	\$10
	65% Current	\$38	\$35	\$35	\$34	\$33	\$32	\$31	\$31	\$31	\$30	\$30	\$30	\$28	\$25	\$21	\$18	\$17	\$16
	10yr ave.	\$45	\$41	\$37	\$36	\$33	\$31	\$30	\$28	\$26	\$25	\$25	\$24	\$22	\$19	\$17	\$14	\$12	\$11
	70% Current	\$41	\$38	\$38	\$37	\$35	\$35	\$34	\$33	\$33	\$33	\$32	\$32	\$30	\$27	\$23	\$19	\$19	\$17
	10yr ave.	\$48	\$44	\$40	\$38	\$36	\$34	\$32	\$30	\$29	\$27	\$27	\$26	\$24	\$21	\$19	\$15	\$13	\$12
	75% Current	\$44	\$41	\$40	\$39	\$38	\$37	\$36	\$36	\$35	\$35	\$35	\$34	\$32	\$28	\$25	\$20	\$20	\$18
	10yr ave.	\$52	\$47	\$43	\$41	\$38	\$36	\$34	\$32	\$31	\$29	\$29	\$28	\$26	\$22	\$20	\$16	\$14	\$13
	80% Current	\$47	\$43	\$43	\$42	\$40	\$40	\$38	\$38	\$38	\$37	\$37	\$36	\$34	\$30	\$26	\$22	\$21	\$20
	10yr ave.	\$55	\$51	\$46	\$44	\$41	\$39	\$37	\$34	\$33	\$31	\$30	\$30	\$28	\$24	\$21	\$17	\$15	\$14
	85% Current	\$50	\$46	\$46	\$45	\$43	\$42	\$41	\$40	\$40	\$40	\$39	\$39	\$36	\$32	\$28	\$23	\$23	\$21
	10yr ave.	\$58	\$54	\$49	\$47	\$43	\$41	\$39	\$37	\$35	\$33	\$32	\$31	\$29	\$25	\$23	\$18	\$16	\$14

The above shows estimated returns per head for skirted fleece wool. These figures do not take into account the value of skirtings and oddments and do not take into account discounts that may apply for faults under individual circumstances. These figures are based on a market index of 100% and should be used as a guide only. Returns over \$30 / head for fleece wool are highlighted.



Table 13: Returns pr head for skirted fleece wool.

Skirted FLC Weight 3 Kg		Micron																	
		16	16.5	17	17.5	18	18.5	19	19.5	20	21	22	23	24	25	26	28	30	32
Yield (Sch Dry)	25% Current	\$11	\$10	\$10	\$10	\$9	\$9	\$9	\$9	\$9	\$9	\$9	\$9	\$8	\$7	\$6	\$5	\$5	\$5
	10yr ave.	\$13	\$12	\$11	\$10	\$10	\$9	\$9	\$8	\$8	\$7	\$7	\$7	\$6	\$6	\$5	\$4	\$4	\$3
	30% Current	\$13	\$12	\$12	\$12	\$11	\$11	\$11	\$11	\$11	\$10	\$10	\$10	\$10	\$9	\$7	\$6	\$6	\$6
	10yr ave.	\$15	\$14	\$13	\$12	\$11	\$11	\$10	\$10	\$9	\$9	\$9	\$8	\$8	\$7	\$6	\$5	\$4	\$4
	35% Current	\$15	\$14	\$14	\$14	\$13	\$13	\$13	\$12	\$12	\$12	\$12	\$12	\$11	\$10	\$9	\$7	\$7	\$6
	10yr ave.	\$18	\$17	\$15	\$14	\$13	\$13	\$12	\$11	\$11	\$10	\$10	\$10	\$9	\$8	\$7	\$6	\$5	\$4
	40% Current	\$18	\$16	\$16	\$16	\$15	\$15	\$14	\$14	\$14	\$14	\$14	\$14	\$13	\$11	\$10	\$8	\$8	\$7
	10yr ave.	\$21	\$19	\$17	\$16	\$15	\$15	\$14	\$13	\$12	\$12	\$11	\$11	\$10	\$9	\$8	\$6	\$6	\$5
	45% Current	\$20	\$18	\$18	\$18	\$17	\$17	\$16	\$16	\$16	\$16	\$16	\$15	\$14	\$13	\$11	\$9	\$9	\$8
	10yr ave.	\$23	\$21	\$19	\$19	\$17	\$16	\$15	\$15	\$14	\$13	\$13	\$12	\$12	\$10	\$9	\$7	\$6	\$6
	50% Current	\$22	\$20	\$20	\$20	\$19	\$19	\$18	\$18	\$18	\$17	\$17	\$17	\$16	\$14	\$12	\$10	\$10	\$9
	10yr ave.	\$26	\$24	\$22	\$21	\$19	\$18	\$17	\$16	\$15	\$15	\$14	\$14	\$13	\$11	\$10	\$8	\$7	\$6
	55% Current	\$24	\$22	\$22	\$22	\$21	\$21	\$20	\$20	\$19	\$19	\$19	\$19	\$17	\$16	\$14	\$11	\$11	\$10
	10yr ave.	\$28	\$26	\$24	\$23	\$21	\$20	\$19	\$18	\$17	\$16	\$16	\$15	\$14	\$12	\$11	\$9	\$8	\$7
	60% Current	\$26	\$24	\$24	\$24	\$23	\$22	\$22	\$21	\$21	\$21	\$21	\$21	\$19	\$17	\$15	\$12	\$12	\$11
	10yr ave.	\$31	\$28	\$26	\$25	\$23	\$22	\$21	\$19	\$18	\$18	\$17	\$17	\$15	\$13	\$12	\$10	\$9	\$8
	65% Current	\$28	\$26	\$26	\$26	\$25	\$24	\$23	\$23	\$23	\$23	\$23	\$22	\$21	\$18	\$16	\$13	\$13	\$12
	10yr ave.	\$34	\$31	\$28	\$27	\$25	\$24	\$22	\$21	\$20	\$19	\$19	\$18	\$17	\$15	\$13	\$10	\$9	\$8
	70% Current	\$31	\$28	\$28	\$28	\$26	\$26	\$25	\$25	\$25	\$24	\$24	\$24	\$22	\$20	\$17	\$14	\$14	\$13
	10yr ave.	\$36	\$33	\$30	\$29	\$27	\$25	\$24	\$23	\$21	\$21	\$20	\$19	\$18	\$16	\$14	\$11	\$10	\$9
	75% Current	\$33	\$30	\$30	\$29	\$28	\$28	\$27	\$27	\$27	\$26	\$26	\$26	\$24	\$21	\$18	\$15	\$15	\$14
	10yr ave.	\$39	\$36	\$32	\$31	\$29	\$27	\$26	\$24	\$23	\$22	\$21	\$21	\$19	\$17	\$15	\$12	\$11	\$9
	80% Current	\$35	\$32	\$32	\$31	\$30	\$30	\$29	\$28	\$28	\$28	\$28	\$27	\$25	\$23	\$20	\$16	\$16	\$15
	10yr ave.	\$41	\$38	\$35	\$33	\$31	\$29	\$27	\$26	\$24	\$24	\$23	\$22	\$21	\$18	\$16	\$13	\$11	\$10
	85% Current	\$37	\$34	\$34	\$33	\$32	\$32	\$31	\$30	\$30	\$30	\$29	\$29	\$27	\$24	\$21	\$17	\$17	\$16
	10yr ave.	\$44	\$40	\$37	\$35	\$33	\$31	\$29	\$27	\$26	\$25	\$24	\$24	\$22	\$19	\$17	\$13	\$12	\$11

The above shows estimated returns per head for skirted fleece wool. These figures do not take into account the value of skirtings and oddments and do not take into account discounts that may apply for faults under individual circumstances. These figures are based on a market index of 100% and should be used as a guide only. Returns over \$30 / head for fleece wool are highlighted.



Table 14: Returns pr head for skirted fleece wool.

Skirted FLC Weight 2 Kg		Micron																	
		16	16.5	17	17.5	18	18.5	19	19.5	20	21	22	23	24	25	26	28	30	32
Yield (Sch Dry)	25% Current	\$7	\$7	\$7	\$7	\$6	\$6	\$6	\$6	\$6	\$6	\$6	\$6	\$5	\$5	\$4	\$3	\$3	\$3
	10yr ave.	\$9	\$8	\$7	\$7	\$6	\$6	\$6	\$5	\$5	\$5	\$5	\$5	\$4	\$4	\$3	\$3	\$2	\$2
	30% Current	\$9	\$8	\$8	\$8	\$8	\$7	\$7	\$7	\$7	\$7	\$7	\$7	\$6	\$6	\$5	\$4	\$4	\$4
	10yr ave.	\$10	\$9	\$9	\$8	\$8	\$7	\$7	\$6	\$6	\$6	\$6	\$6	\$5	\$4	\$4	\$3	\$3	\$3
	35% Current	\$10	\$9	\$9	\$9	\$9	\$9	\$8	\$8	\$8	\$8	\$8	\$8	\$7	\$7	\$6	\$5	\$5	\$4
	10yr ave.	\$12	\$11	\$10	\$10	\$9	\$8	\$8	\$8	\$7	\$7	\$7	\$6	\$6	\$5	\$5	\$4	\$3	\$3
	40% Current	\$12	\$11	\$11	\$10	\$10	\$10	\$10	\$9	\$9	\$9	\$9	\$9	\$8	\$8	\$7	\$5	\$5	\$5
	10yr ave.	\$14	\$13	\$12	\$11	\$10	\$10	\$9	\$9	\$8	\$8	\$8	\$7	\$7	\$6	\$5	\$4	\$4	\$3
	45% Current	\$13	\$12	\$12	\$12	\$11	\$11	\$11	\$11	\$11	\$10	\$10	\$10	\$10	\$9	\$7	\$6	\$6	\$6
	10yr ave.	\$15	\$14	\$13	\$12	\$11	\$11	\$10	\$10	\$9	\$9	\$9	\$8	\$8	\$7	\$6	\$5	\$4	\$4
	50% Current	\$15	\$14	\$13	\$13	\$13	\$12	\$12	\$12	\$12	\$12	\$12	\$11	\$11	\$9	\$8	\$7	\$7	\$6
	10yr ave.	\$17	\$16	\$14	\$14	\$13	\$12	\$11	\$11	\$10	\$10	\$10	\$9	\$9	\$7	\$7	\$5	\$5	\$4
	55% Current	\$16	\$15	\$15	\$14	\$14	\$14	\$13	\$13	\$13	\$13	\$13	\$13	\$12	\$10	\$9	\$8	\$7	\$7
	10yr ave.	\$19	\$17	\$16	\$15	\$14	\$13	\$13	\$12	\$11	\$11	\$10	\$10	\$9	\$8	\$7	\$6	\$5	\$5
	60% Current	\$18	\$16	\$16	\$16	\$15	\$15	\$14	\$14	\$14	\$14	\$14	\$14	\$13	\$11	\$10	\$8	\$8	\$7
	10yr ave.	\$21	\$19	\$17	\$16	\$15	\$15	\$14	\$13	\$12	\$12	\$11	\$11	\$10	\$9	\$8	\$6	\$6	\$5
	65% Current	\$19	\$18	\$17	\$17	\$16	\$16	\$16	\$15	\$15	\$15	\$15	\$15	\$14	\$12	\$11	\$9	\$9	\$8
	10yr ave.	\$22	\$21	\$19	\$18	\$17	\$16	\$15	\$14	\$13	\$13	\$12	\$12	\$11	\$10	\$9	\$7	\$6	\$5
	70% Current	\$20	\$19	\$19	\$18	\$18	\$17	\$17	\$17	\$17	\$16	\$16	\$16	\$15	\$13	\$11	\$10	\$9	\$9
	10yr ave.	\$24	\$22	\$20	\$19	\$18	\$17	\$16	\$15	\$14	\$14	\$13	\$13	\$12	\$10	\$9	\$7	\$7	\$6
	75% Current	\$22	\$20	\$20	\$20	\$19	\$19	\$18	\$18	\$18	\$17	\$17	\$17	\$16	\$14	\$12	\$10	\$10	\$9
	10yr ave.	\$26	\$24	\$22	\$21	\$19	\$18	\$17	\$16	\$15	\$15	\$14	\$14	\$13	\$11	\$10	\$8	\$7	\$6
	80% Current	\$23	\$22	\$21	\$21	\$20	\$20	\$19	\$19	\$19	\$19	\$18	\$18	\$17	\$15	\$13	\$11	\$11	\$10
	10yr ave.	\$28	\$25	\$23	\$22	\$20	\$19	\$18	\$17	\$16	\$16	\$15	\$15	\$14	\$12	\$11	\$8	\$8	\$7
	85% Current	\$25	\$23	\$23	\$22	\$21	\$21	\$20	\$20	\$20	\$20	\$20	\$19	\$18	\$16	\$14	\$12	\$11	\$10
	10yr ave.	\$29	\$27	\$24	\$23	\$22	\$21	\$19	\$18	\$17	\$17	\$16	\$16	\$15	\$13	\$11	\$9	\$8	\$7

The above shows estimated returns per head for skirted fleece wool. These figures do not take into account the value of skirtings and oddments and do not take into account discounts that may apply for faults under individual circumstances. These figures are based on a market index of 100% and should be used as a guide only. Returns over \$30 / head for fleece wool are highlighted.