



Table 1: Northern Region Micron Price Guides

CURRENT MARKET				PERCENTILES		AVERAGES						12 MONTH COMPARISONS								TRADING RANGE		
Mic. Price Guides	31/03/2011 Current Price	24/03/2011 Weekly Change	Now			Now			30/03/2010	Now		Now		Now		Clean c/kg						
				3yr	10yr	3 year Average	compared to 3yr ave	10 year Average	compared to 10yr ave	This time Last Year	compared to Last Year	12 Month Low	compared to Low	12 Month High	compared to High	12 Mth	3 Year	10 Year				
NRI	1444	+2 0.1%		100%	100%	921	+523 57%	884	+560 63%	936	+508 54%	890	+554 62%	1444	0 0%	554	695	786				
16*	2730	0		100%		1709	+1021 60%			1515	+1215 80%	1510	+1220 81%	2730	0 0%	1220	1345					
16.5*	2620	-20 -0.8%		98%		1573	+1047 67%			1425	+1195 84%	1395	+1225 88%	2640	-20 -1%	1245	1383					
17*	2520	0		99%	99%	1447	+1073 74%	1398	+1122 80%	1270	+1250 98%	1230	+1290 105%	2530	-10 0%	1300	1357	1559				
17.5*	2360	0		100%		1371	+989 72%			1195	+1165 97%	1175	+1185 101%	2360	0 0%	1185	1272					
18	2132	-31 -1.5%		96%	95%	1302	+830 64%	1280	+852 67%	1159	+973 84%	1134	+998 88%	2193	-61 -3%	1059	1158	1392				
18.5	1921	-18 -0.9%		95%		1215	+706 58%			1121	+800 71%	1088	+833 77%	1963	-42 -2%	875	992					
19	1708	+3 0.2%		100%	100%	1102	+606 55%	1073	+635 59%	1092	+616 56%	1031	+677 66%	1708	0 0%	677	814	904				
19.5	1523	+5 0.3%		99%		1001	+522 52%			1019	+504 49%	952	+571 60%	1524	-1 0%	572	710					
20	1398	+5 0.4%		100%	99%	921	+477 52%	925	+473 51%	964	+434 45%	904	+494 55%	1398	0 0%	494	658	717				
21	1324	+3 0.2%		100%	99%	888	+436 49%	883	+441 50%	942	+382 41%	878	+446 51%	1324	0 0%	446	636	737				
22	1301	-11 -0.8%		98%	99%	866	+435 50%	860	+441 51%	933	+368 39%	847	+454 54%	1313	-12 -1%	466	638	732				
23	1281	-10 -0.8%		98%	99%	842	+439 52%	839	+442 53%	921	+360 39%	827	+454 55%	1291	-10 -1%	464	628	719				
24	1165	-5 -0.4%		99%	95%	794	+371 47%	801	+364 45%	838	+327 39%	780	+385 49%	1170	-5 0%	390	522	691				
25	1045	-3 -0.3%		99%	94%	685	+360 53%	718	+327 46%	675	+370 55%	660	+385 58%	1048	-3 0%	388	482	635				
26	928	0		100%	93%	615	+313 51%	657	+271 41%	587	+341 58%	577	+351 61%	928	0 0%	351	424	573				
28	731	-3 -0.4%		99%	91%	475	+256 54%	525	+206 39%	450	+281 62%	436	+295 68%	734	-3 0%	298	315	465				
30	668	-1 -0.1%		98%	99%	415	+253 61%	459	+209 46%	394	+274 70%	382	+286 75%	670	-2 0%	288	321	385				
32	616	-13 -2.1%		98%	98%	364	+252 69%	415	+201 48%	352	+264 75%	349	+267 77%	638	-22 -3%	289	325	372				
MC	819	+5 0.6%		100%	100%	555	+264 48%	507	+312 62%	674	+145 22%	561	+258 46%	819	0 0%	258	427	439				

Note:

* Due to the irregular market quoting for some fine wool categories, figures shown relating to micron categories below 18 micron are an estimate based on the AWEX Premium & Discounts Report & other available information.

* For any category, where there is insufficient quantity offered to enable AWEX to quote, a quote will be provided based on the best available information.

* 10 Year data is not available for some micron categories, which may result in blank spaces in the table above.

Definitions:

* A Percentile, is a value on a scale of one hundred that indicates the percent of a distribution that is equal to or below it. In general a percentile between 25% and 75% is considered normal, a percentile below 25% is considered below normal and a percentile above 75% is considered above normal.

Three and ten year percentiles shown in the table above, detail the period of time during the past 3 & 10 years that the market has traded either at or below its current price.

The higher the percentile, the stronger the market.

Source: Australian Wool Exchange, Australian Wool Innovation, Sydney Futures Exchange, x-rates.com

Disclaimer: While all due care has been taken in the preparation of this document, no warranty is made as to its accuracy, reliability or completeness. To the extent permitted by law neither Jemalong or their sources including subsidiaries and staff, accept liability to any person for loss or damage arising from the use of this information.



MARKET COMMENTARY

One Australian Dollar = \$ 1.03 US, as of 31/03/2011

NORTHERN REGION –Sale Week 38/10 (49,412 bales offered nationally)

On Wednesday -Despite the rise in the Aud, continued support resulted in most microns gaining 3-5 cents. Fine microns were few and far between, however those on offer held firm at last weeks levels. All merino skirtings remained unchanged, with continued heavy discounting for the cot and colour "off" types. In the oddments, Locks & Crutchings were firm while stains finished slightly dearer. 27-30 micron crossbreds eased slightly losing 3-5 cents off their previous levels.

On Thursday -The market was generally steady for the bulk of the offering, with 19 to 21 micron posting little or no movement. A small offering of the finer microns lacked support, with the 18 micron area 20 to 25 cents cheaper, 22 & 23 microns also struggled for quantity and retreated 10 cents. Merino Skirtings gained momentum as the sale progressed with 19 micron and broader finishing 20 cents dearer by the close of trade. In the oddments 19 micron and broader locks gained 5 cents, while crutchings & stains remained firm. A small and poor offering of crossbreds left most microns unchanged on a nominal basis.

Northern Region Indicator (Monthly Averages)

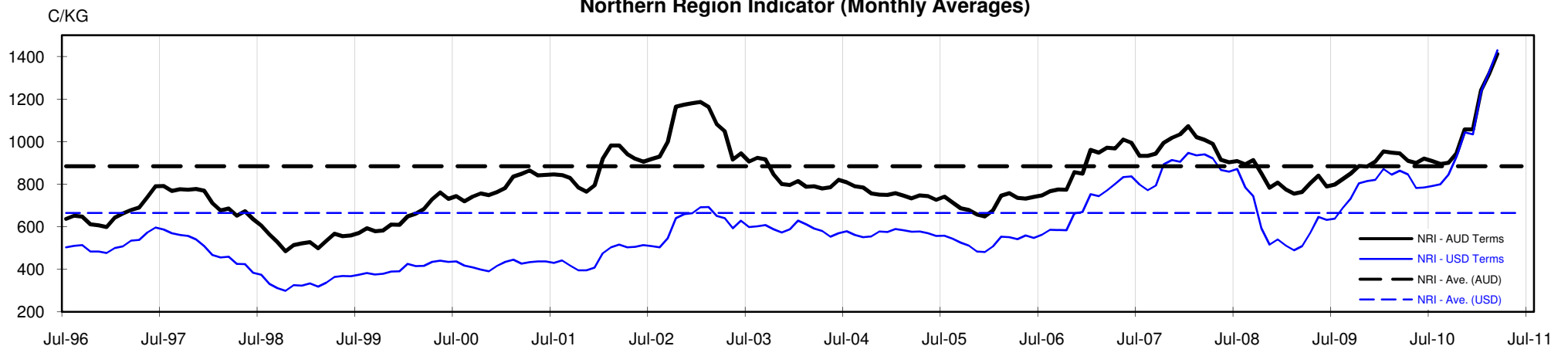




Table 4: 19 micron SFE

Wednesday, 30 March 2011

Delivery Mth	Apr-11	Jun-11	Aug-11	Oct-11	Dec-11	Feb-11	Apr-12	Jun-12	Aug-12
19 Micron SFE	1685	1670	1637	1595	1560	1528	1458	1428	1420
Average	1162	1175	1185	1193	1220	1114	1300	1384	1412
Maximum	1685	1670	1637	1595	1560	1670	1458	1450	1450
Minimum	1025	1034	1034	1034	1034	983	1106	1210	1385

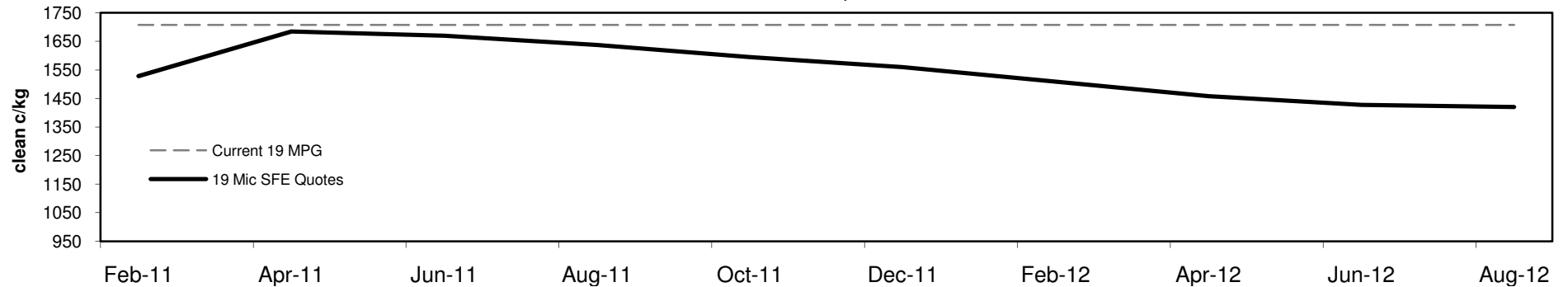
Table 5: 19 micron SFE, as a percentile of the 19 micron MPG

3 Year Percentile	97%	97%	95%	93%	93%	92%	91%	91%	91%
10 Year Percentile	99%	99%	98%	98%	98%	97%	97%	97%	97%

Table 6: 19 micron SFE, compared to MPG

Current 19 MPG	-23	-1%	-38	-2%	-71	-4%	-113	-7%	-148	-9%	-180	-11%	-250	-15%	-280	-16%	-288	-17%
19 MPG, 1 Year Average	+445	36%	+430	35%	+397	32%	+355	29%	+320	26%	+288	23%	+218	18%	+188	15%	+180	15%
19 MPG, 3 Year Average	+583	53%	+568	52%	+535	49%	+493	45%	+458	42%	+426	39%	+356	32%	+326	30%	+318	29%
19 MPG, 10 Year Average	+612	57%	+597	56%	+564	53%	+522	49%	+487	45%	+455	42%	+385	36%	+355	33%	+347	32%

19 MICRON SFE, QUOTES



19 Micron SFE, Front month movement

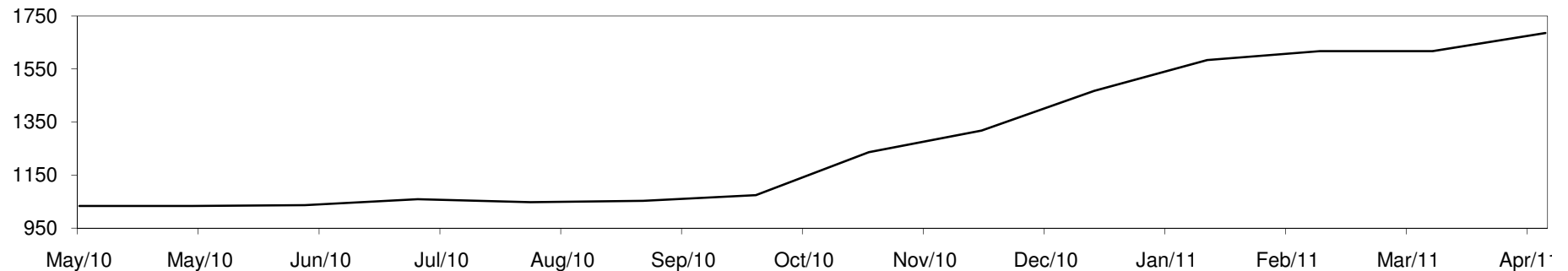




Table 7: 21 micron SFE

Wednesday, 30 March 2011

Delivery Mth	Apr-11	Jun-11	Aug-11	Oct-11	Dec-11	Feb-11	Apr-12	Jun-12	Aug-12
21 Micron SFE	1340	1327	1287	1240	1197	1090	1148	1092	1090
Average	987	989	984	978	980	962	1041	1043	1066
Maximum	1340	1327	1287	1240	1197	1327	1149	1093	1093
Minimum	891	890	880	880	880	860	934	990	1048

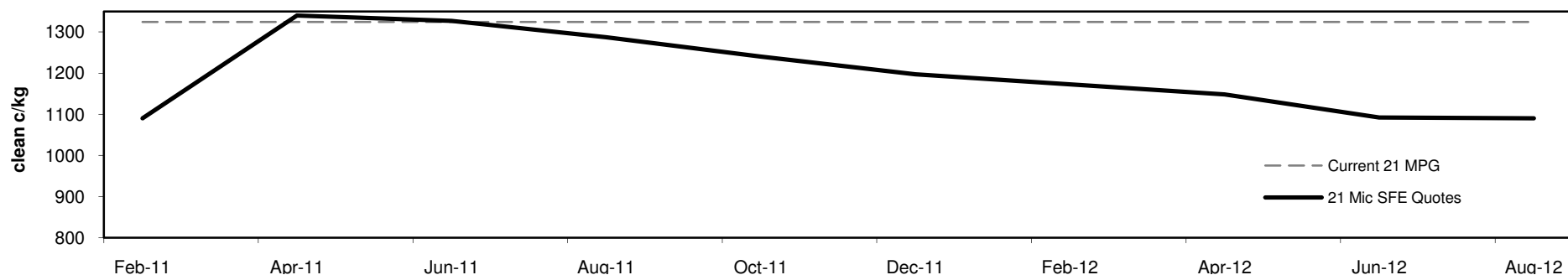
Table 8: 21 micron SFE, as a percentile of the 21 micron MPG

3 Year Percentile	100%	100%	98%	98%	97%	91%	94%	91%	91%
10 Year Percentile	99%	99%	99%	95%	93%	91%	92%	91%	91%

Table 9: 21 micron SFE, compared to MPG

Current 21 MPG	+16	1%	+3	0%	-37	-3%	-84	-6%	-127	-10%	-234	-18%	-176	-13%	-232	-18%	-234	-18%
21 MPG, 1 Year Average	+344	35%	+331	33%	+291	29%	+244	24%	+201	20%	+94	9%	+152	15%	+96	10%	+94	9%
21 MPG, 3 Year Average	+452	51%	+439	49%	+399	45%	+352	40%	+309	35%	+202	23%	+260	29%	+204	23%	+202	23%
21 MPG, 10 Year Average	+457	52%	+444	50%	+404	46%	+357	40%	+314	36%	+207	23%	+265	30%	+209	24%	+207	23%

21 MICRON SFE, QUOTES



21 Micron SFE, Front month movement

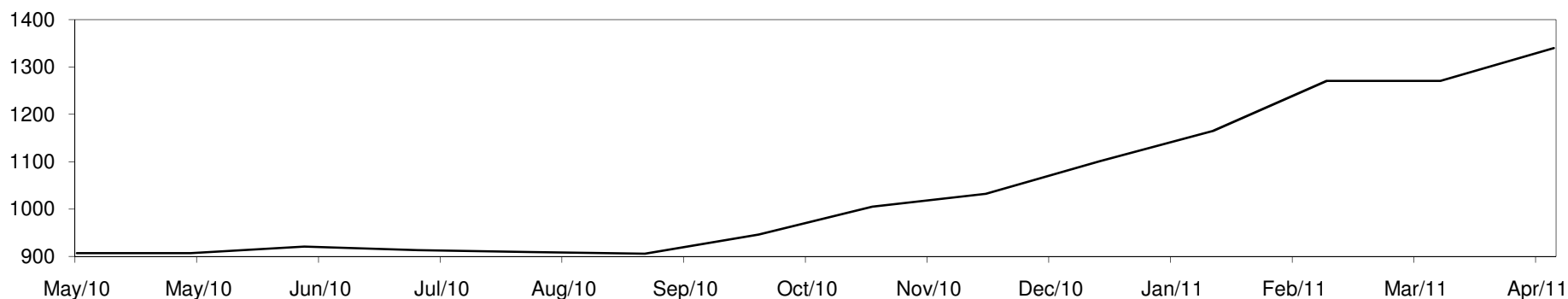




Table 10: 23 micron SFE

Wednesday, 30 March 2011

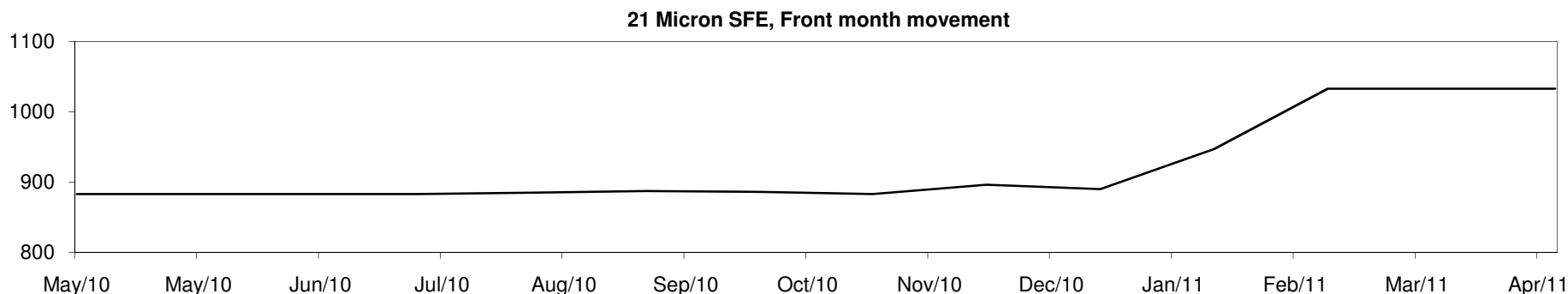
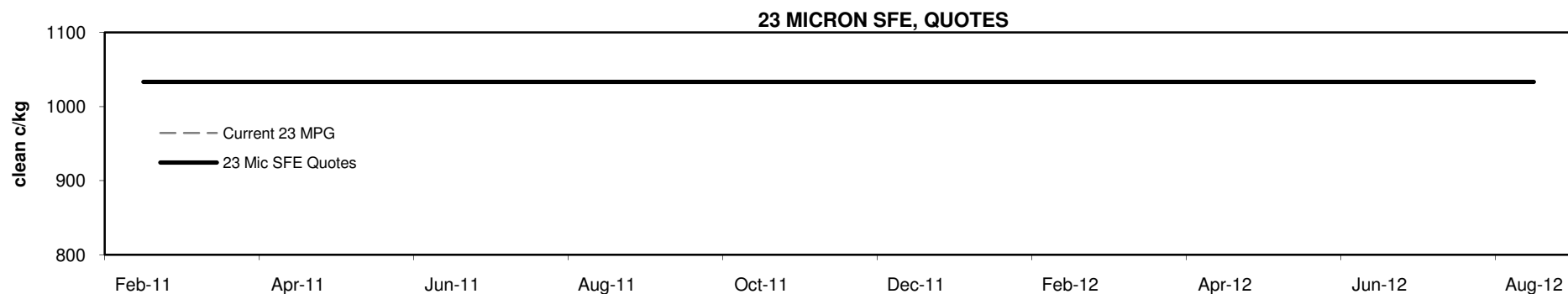
Delivery Mth	Apr-11	Jun-11	Aug-11	Oct-11	Dec-11	Feb-11	Apr-12	Jun-12	Aug-12
23 Micron SFE	1033	1033	1033	1033	1033	1033	1033	1033	1033
Average	889	901	907	904	909	870	930	957	1033
Maximum	1033	1033	1033	1033	1033	1033	1033	1033	1033
Minimum	803	803	883	883	883	760	883	890	1033

Table 11: 23 micron SFE, as a percentile of the 23 micron MPG

3 Year Percentile	93%	93%	93%	93%	93%	93%	93%	93%	93%
10 Year Percentile	91%	91%	91%	91%	91%	91%	91%	91%	91%

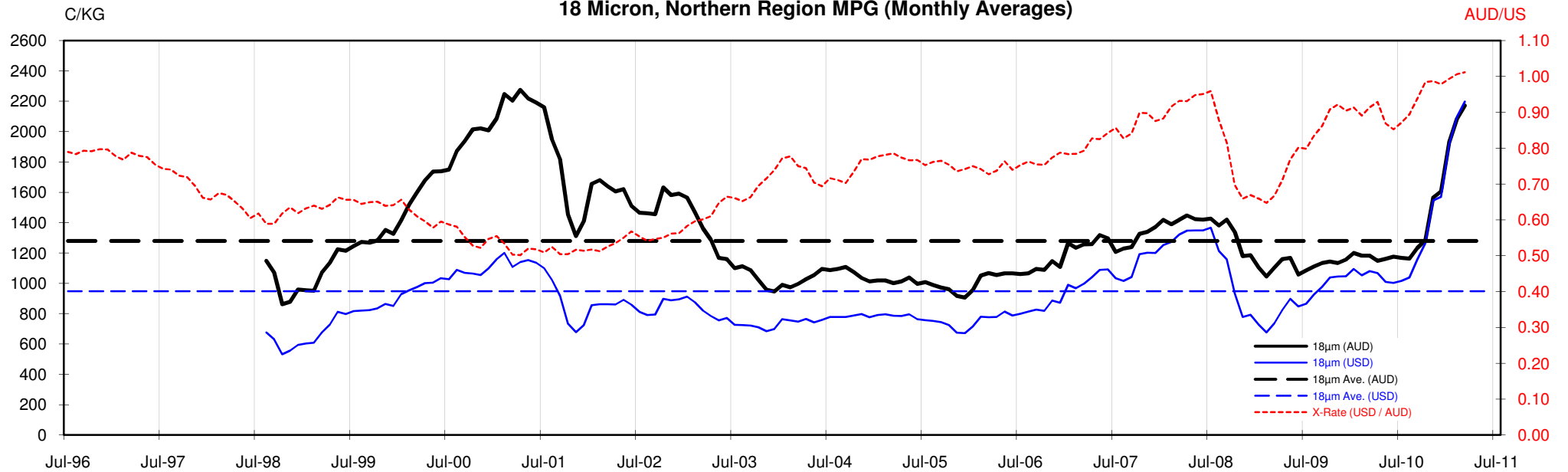
Table 12: 23 micron SFE, compared to MPG

Current 23 MPG	-248	-19%	-248	-19%	-248	-19%	-248	-19%	-248	-19%	-248	-19%	-248	-19%	-248	-19%	-248	-19%
23 MPG, 1 Year Average	+99	11%	+99	11%	+99	11%	+99	11%	+99	11%	+99	11%	+99	11%	+99	11%	+99	11%
23 MPG, 3 Year Average	+191	23%	+191	23%	+191	23%	+191	23%	+191	23%	+191	23%	+191	23%	+191	23%	+191	23%
23 MPG, 10 Year Average	+194	23%	+194	23%	+194	23%	+194	23%	+194	23%	+194	23%	+194	23%	+194	23%	+194	23%

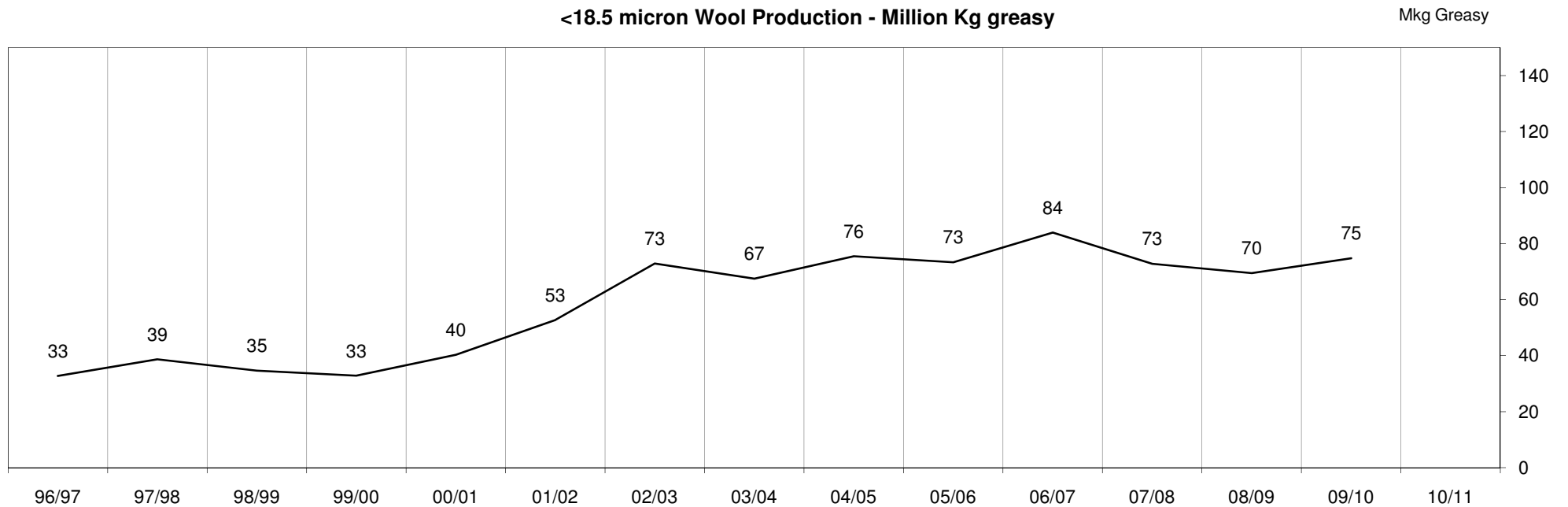


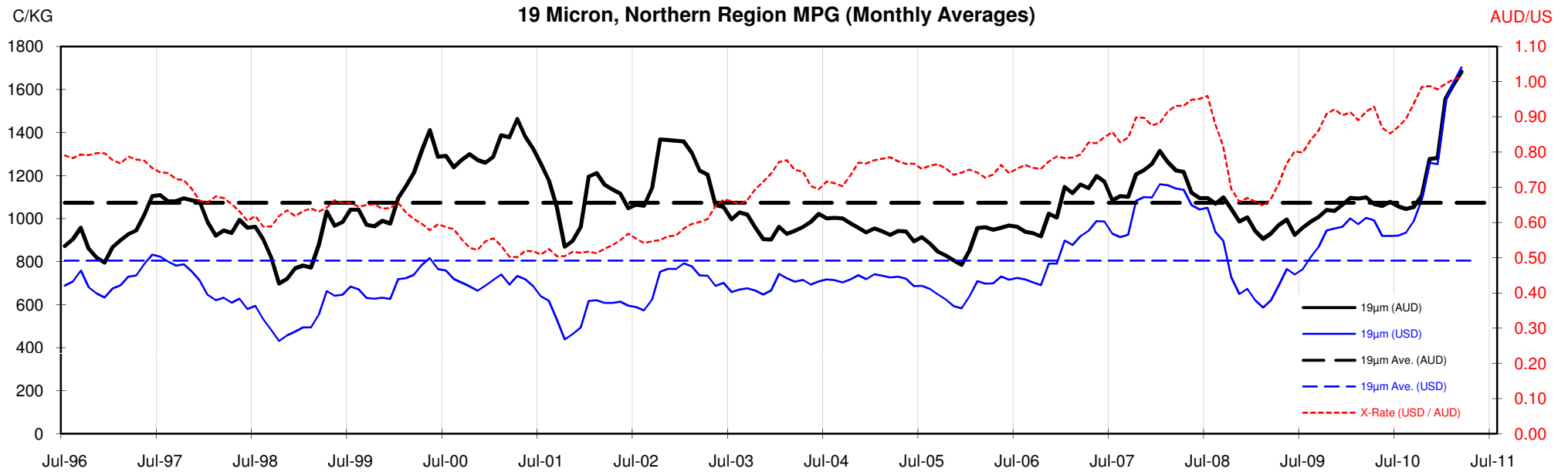


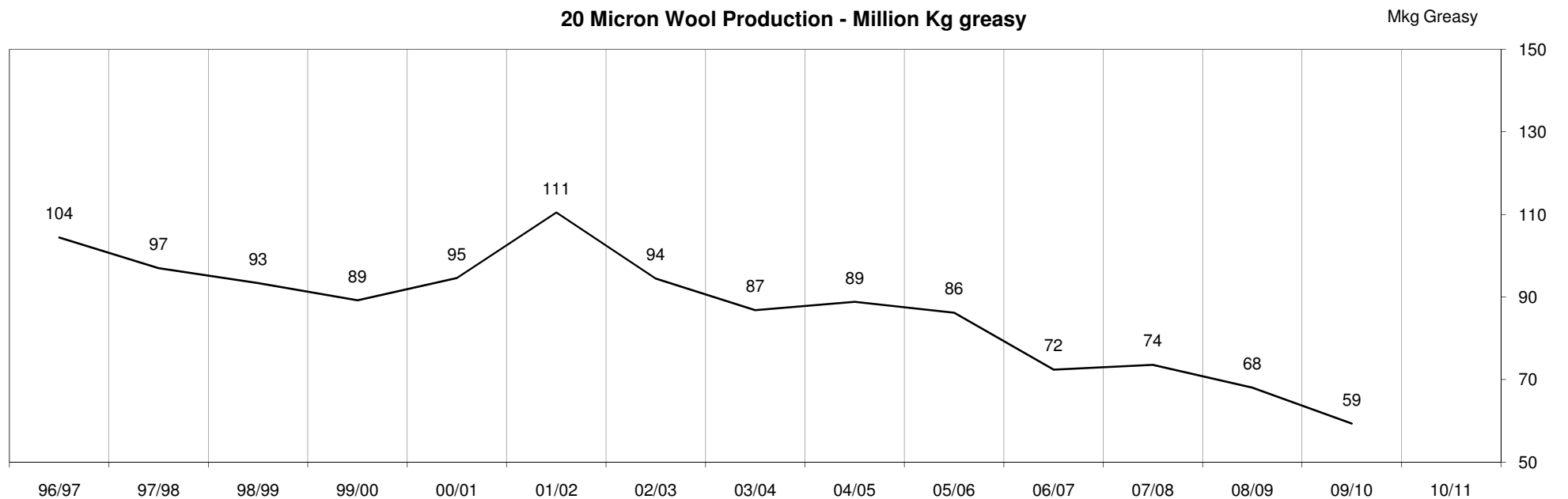
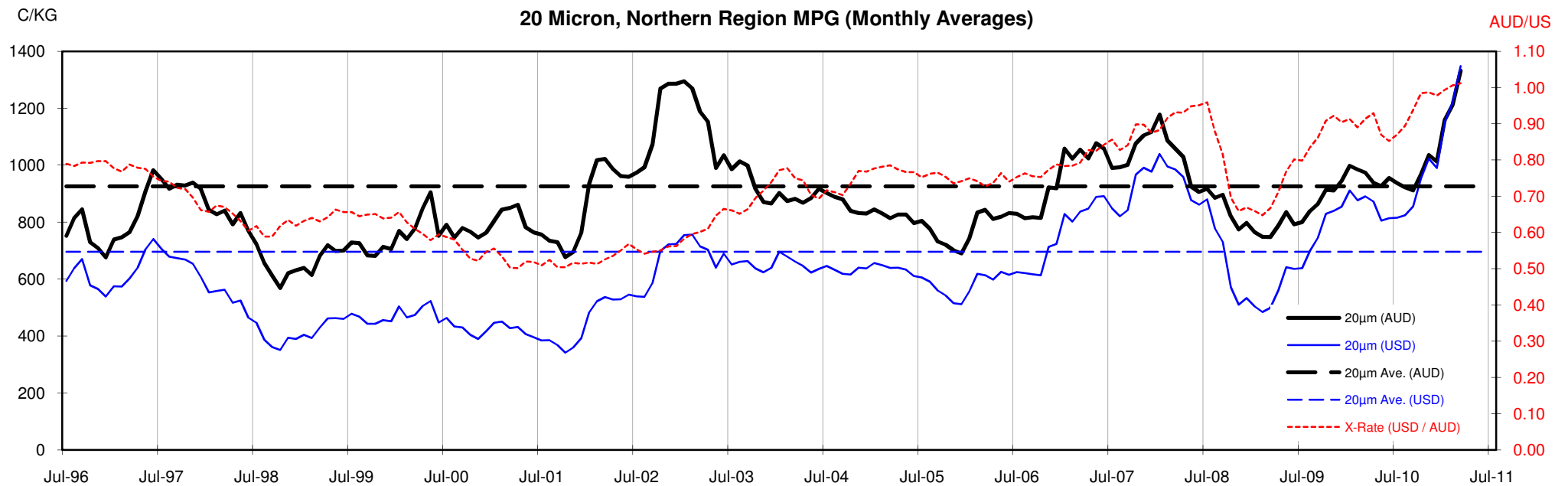
18 Micron, Northern Region MPG (Monthly Averages)

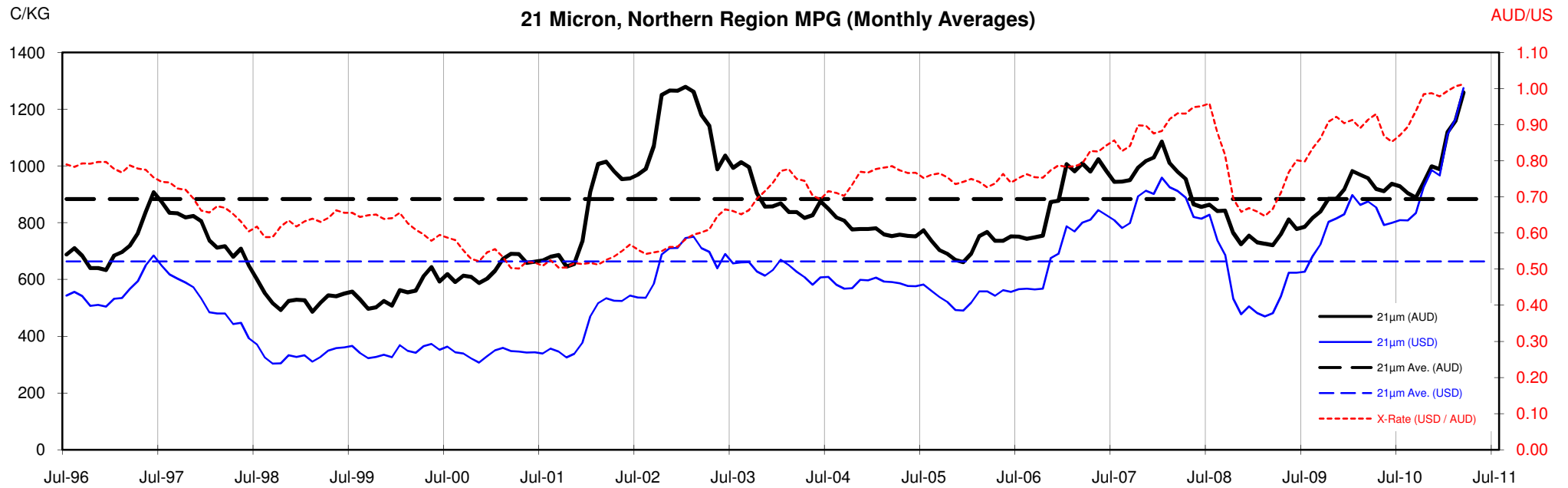


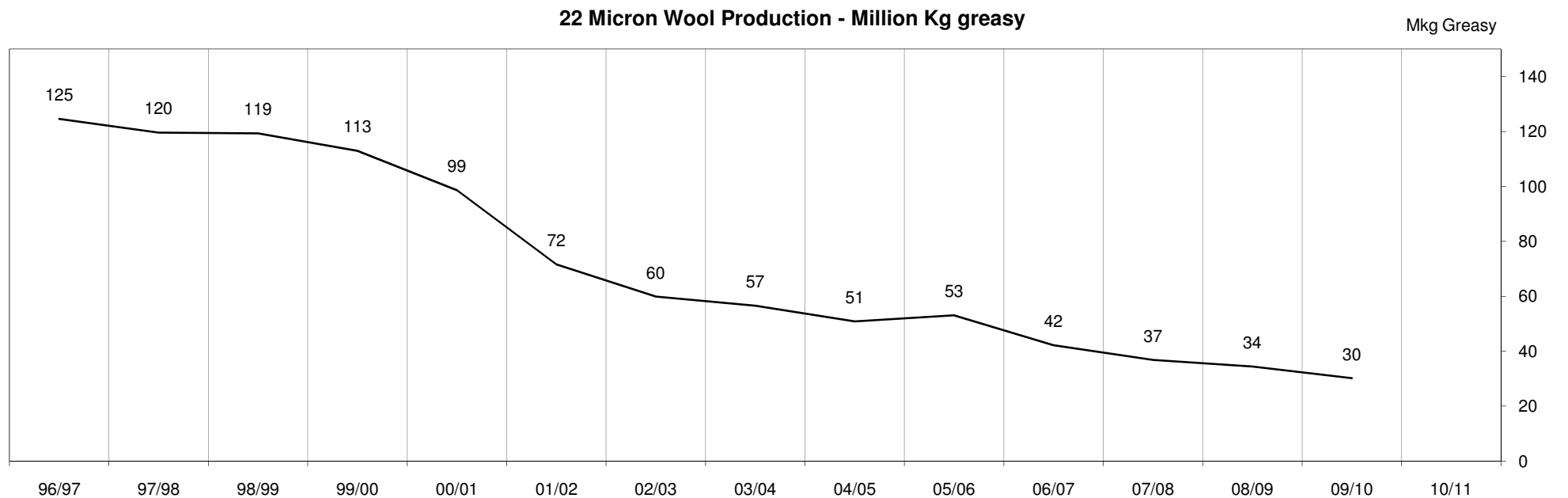
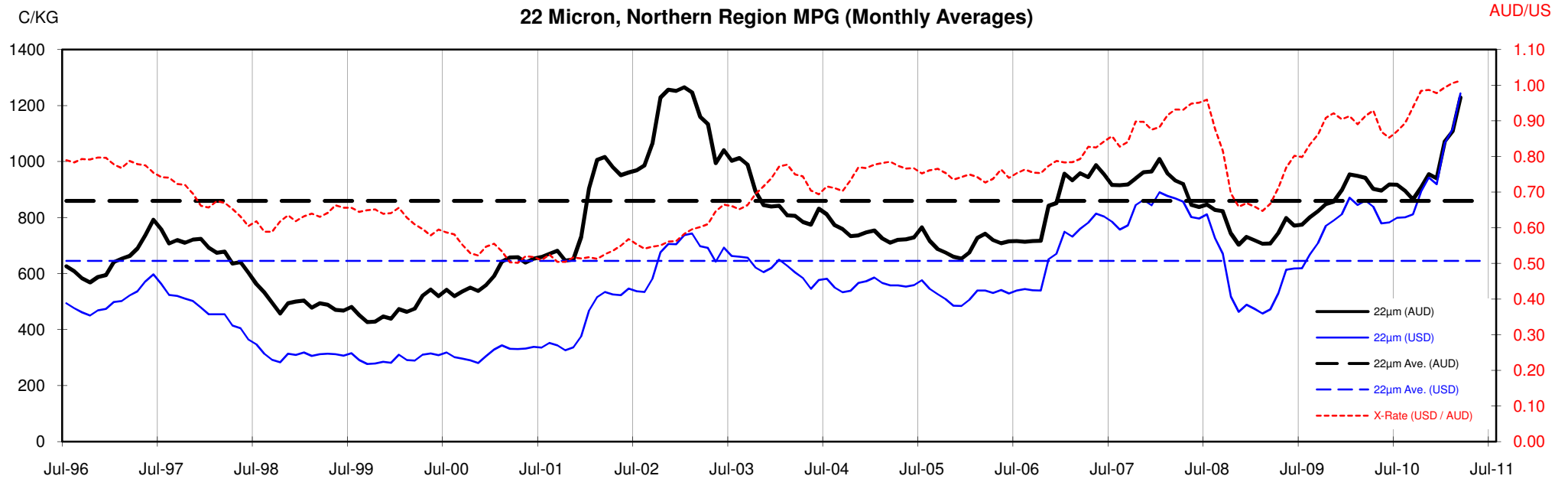
<18.5 micron Wool Production - Million Kg greasy

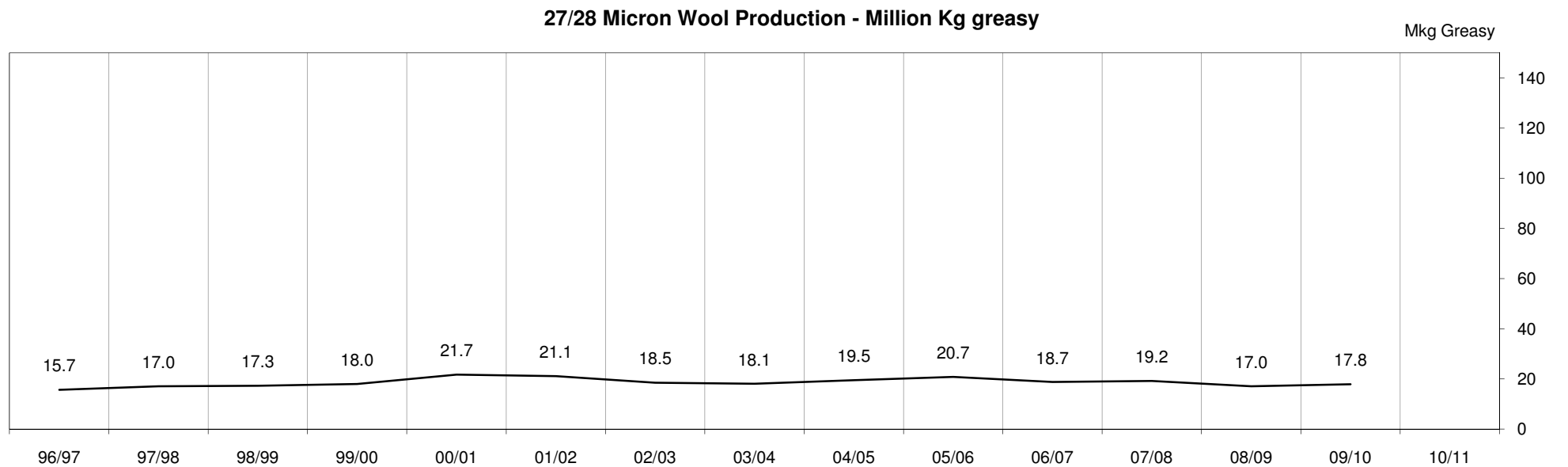
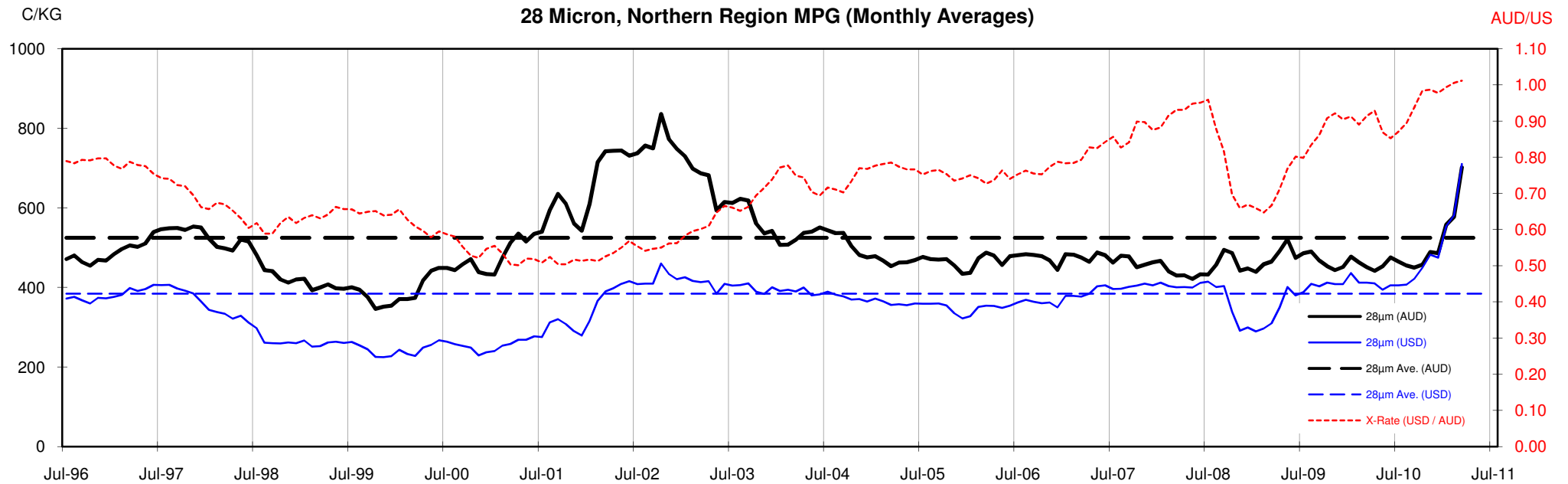












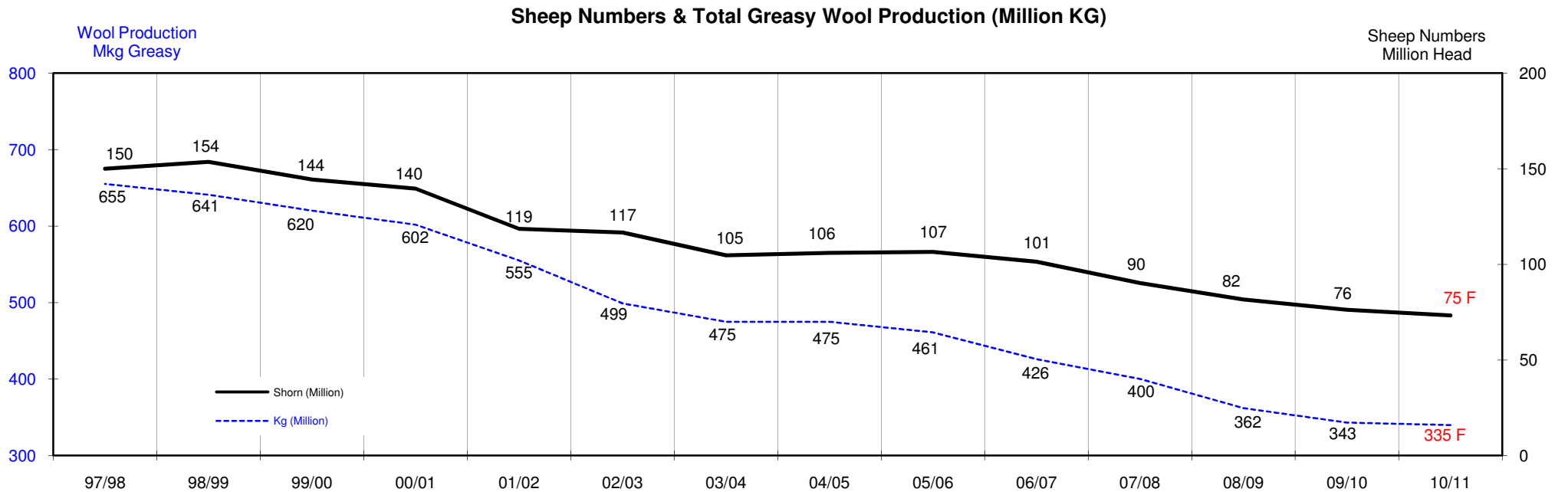
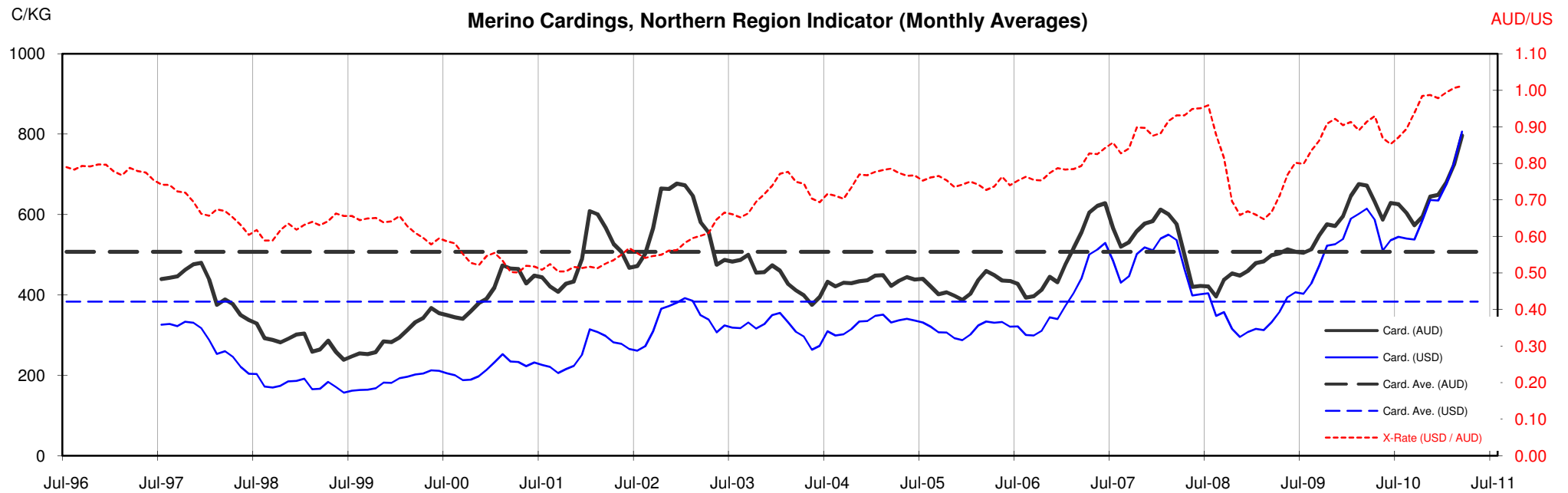




Table 13: Returns pr head for skirted fleece wool.

Skirted FLC Weight		Micron																	
9 Kg		16	16.5	17	17.5	18	18.5	19	19.5	20	21	22	23	24	25	26	28	30	32
Yield (Sch Dry)	25% Current	\$61	\$59	\$57	\$53	\$48	\$43	\$38	\$34	\$31	\$30	\$29	\$29	\$26	\$24	\$21	\$16	\$15	\$14
	10yr ave.			\$31		\$29		\$24		\$21	\$20	\$19	\$19	\$18	\$16	\$15	\$12	\$10	\$9
	30% Current	\$74	\$71	\$68	\$64	\$58	\$52	\$46	\$41	\$38	\$36	\$35	\$35	\$31	\$28	\$25	\$20	\$18	\$17
	10yr ave.			\$38		\$35		\$29		\$25	\$24	\$23	\$23	\$22	\$19	\$18	\$14	\$12	\$11
	35% Current	\$86	\$83	\$79	\$74	\$67	\$61	\$54	\$48	\$44	\$42	\$41	\$40	\$37	\$33	\$29	\$23	\$21	\$19
	10yr ave.			\$44		\$40		\$34		\$29	\$28	\$27	\$26	\$25	\$23	\$21	\$17	\$14	\$13
	40% Current	\$98	\$94	\$91	\$85	\$77	\$69	\$61	\$55	\$50	\$48	\$47	\$46	\$42	\$38	\$33	\$26	\$24	\$22
	10yr ave.			\$50		\$46		\$39		\$33	\$32	\$31	\$30	\$29	\$26	\$24	\$19	\$17	\$15
	45% Current	\$111	\$106	\$102	\$96	\$86	\$78	\$69	\$62	\$57	\$54	\$53	\$52	\$47	\$42	\$38	\$30	\$27	\$25
	10yr ave.			\$57		\$52		\$43		\$37	\$36	\$35	\$34	\$32	\$29	\$27	\$21	\$19	\$17
	50% Current	\$123	\$118	\$113	\$106	\$96	\$86	\$77	\$69	\$63	\$60	\$59	\$58	\$52	\$47	\$42	\$33	\$30	\$28
	10yr ave.			\$63		\$58		\$48		\$42	\$40	\$39	\$38	\$36	\$32	\$30	\$24	\$21	\$19
	55% Current	\$135	\$130	\$125	\$117	\$106	\$95	\$85	\$75	\$69	\$66	\$64	\$63	\$58	\$52	\$46	\$36	\$33	\$30
	10yr ave.			\$69		\$63		\$53		\$46	\$44	\$43	\$42	\$40	\$36	\$33	\$26	\$23	\$21
	60% Current	\$147	\$141	\$136	\$127	\$115	\$104	\$92	\$82	\$75	\$71	\$70	\$69	\$63	\$56	\$50	\$39	\$36	\$33
	10yr ave.			\$75		\$69		\$58		\$50	\$48	\$46	\$45	\$43	\$39	\$35	\$28	\$25	\$22
	65% Current	\$160	\$153	\$147	\$138	\$125	\$112	\$100	\$89	\$82	\$77	\$76	\$75	\$68	\$61	\$54	\$43	\$39	\$36
	10yr ave.			\$82		\$75		\$63		\$54	\$52	\$50	\$49	\$47	\$42	\$38	\$31	\$27	\$24
	70% Current	\$172	\$165	\$159	\$149	\$134	\$121	\$108	\$96	\$88	\$83	\$82	\$81	\$73	\$66	\$58	\$46	\$42	\$39
	10yr ave.			\$88		\$81		\$68		\$58	\$56	\$54	\$53	\$50	\$45	\$41	\$33	\$29	\$26
	75% Current	\$184	\$177	\$170	\$159	\$144	\$130	\$115	\$103	\$94	\$89	\$88	\$86	\$79	\$71	\$63	\$49	\$45	\$42
	10yr ave.			\$94		\$86		\$72		\$62	\$60	\$58	\$57	\$54	\$48	\$44	\$35	\$31	\$28
	80% Current	\$197	\$189	\$181	\$170	\$154	\$138	\$123	\$110	\$101	\$95	\$94	\$92	\$84	\$75	\$67	\$53	\$48	\$44
	10yr ave.			\$101		\$92		\$77		\$67	\$64	\$62	\$60	\$58	\$52	\$47	\$38	\$33	\$30
	85% Current	\$209	\$200	\$193	\$181	\$163	\$147	\$131	\$117	\$107	\$101	\$100	\$98	\$89	\$80	\$71	\$56	\$51	\$47
	10yr ave.			\$107		\$98		\$82		\$71	\$68	\$66	\$64	\$61	\$55	\$50	\$40	\$35	\$32

The above shows estimated returns per head for skirted fleece wool. These figures do not take into account the value of skirtings and oddments and do not take into account discounts that may apply for faults under individual circumstances. These figures are based on a market index of 100% and should be used as a guide only. Returns over \$30 / head for fleece wool are highlighted.

Source: Australian Wool Exchange, Australian Wool Innovation, Sydney Futures Exchange, x-rates.com

Disclaimer: While all due care has been taken in the preparation of this document, no warranty is made as to its accuracy, reliability or completeness. To the extent permitted by law neither Jemalong or their sources including subsidiaries and staff, accept liability to any person for loss or damage arising from the use of this information.



Table 14: Returns pr head for skirted fleece wool.

Skirted FLC Weight		Micron																	
8 Kg		16	16.5	17	17.5	18	18.5	19	19.5	20	21	22	23	24	25	26	28	30	32
Yield (Sch Dry)	25% Current	\$55	\$52	\$50	\$47	\$43	\$38	\$34	\$30	\$28	\$26	\$26	\$26	\$23	\$21	\$19	\$15	\$13	\$12
	10yr ave.			\$28		\$26		\$21		\$19	\$18	\$17	\$17	\$16	\$14	\$13	\$11	\$9	\$8
	30% Current	\$66	\$63	\$60	\$57	\$51	\$46	\$41	\$37	\$34	\$32	\$31	\$31	\$28	\$25	\$22	\$18	\$16	\$15
	10yr ave.			\$34		\$31		\$26		\$22	\$21	\$21	\$20	\$19	\$17	\$16	\$13	\$11	\$10
	35% Current	\$76	\$73	\$71	\$66	\$60	\$54	\$48	\$43	\$39	\$37	\$36	\$36	\$33	\$29	\$26	\$20	\$19	\$17
	10yr ave.			\$39		\$36		\$30		\$26	\$25	\$24	\$23	\$22	\$20	\$18	\$15	\$13	\$12
	40% Current	\$87	\$84	\$81	\$76	\$68	\$61	\$55	\$49	\$45	\$42	\$42	\$41	\$37	\$33	\$30	\$23	\$21	\$20
	10yr ave.			\$45		\$41		\$34		\$30	\$28	\$28	\$27	\$26	\$23	\$21	\$17	\$15	\$13
	45% Current	\$98	\$94	\$91	\$85	\$77	\$69	\$61	\$55	\$50	\$48	\$47	\$46	\$42	\$38	\$33	\$26	\$24	\$22
	10yr ave.			\$50		\$46		\$39		\$33	\$32	\$31	\$30	\$29	\$26	\$24	\$19	\$17	\$15
	50% Current	\$109	\$105	\$101	\$94	\$85	\$77	\$68	\$61	\$56	\$53	\$52	\$51	\$47	\$42	\$37	\$29	\$27	\$25
	10yr ave.			\$56		\$51		\$43		\$37	\$35	\$34	\$34	\$32	\$29	\$26	\$21	\$18	\$17
	55% Current	\$120	\$115	\$111	\$104	\$94	\$85	\$75	\$67	\$62	\$58	\$57	\$56	\$51	\$46	\$41	\$32	\$29	\$27
	10yr ave.			\$62		\$56		\$47		\$41	\$39	\$38	\$37	\$35	\$32	\$29	\$23	\$20	\$18
	60% Current	\$131	\$126	\$121	\$113	\$102	\$92	\$82	\$73	\$67	\$64	\$62	\$61	\$56	\$50	\$45	\$35	\$32	\$30
	10yr ave.			\$67		\$61		\$52		\$44	\$42	\$41	\$40	\$38	\$34	\$32	\$25	\$22	\$20
	65% Current	\$142	\$136	\$131	\$123	\$111	\$100	\$89	\$79	\$73	\$69	\$68	\$67	\$61	\$54	\$48	\$38	\$35	\$32
	10yr ave.			\$73		\$67		\$56		\$48	\$46	\$45	\$44	\$42	\$37	\$34	\$27	\$24	\$22
	70% Current	\$153	\$147	\$141	\$132	\$119	\$108	\$96	\$85	\$78	\$74	\$73	\$72	\$65	\$59	\$52	\$41	\$37	\$34
	10yr ave.			\$78		\$72		\$60		\$52	\$49	\$48	\$47	\$45	\$40	\$37	\$29	\$26	\$23
	75% Current	\$164	\$157	\$151	\$142	\$128	\$115	\$102	\$91	\$84	\$79	\$78	\$77	\$70	\$63	\$56	\$44	\$40	\$37
	10yr ave.			\$84		\$77		\$64		\$56	\$53	\$52	\$50	\$48	\$43	\$39	\$32	\$28	\$25
	80% Current	\$175	\$168	\$161	\$151	\$136	\$123	\$109	\$97	\$89	\$85	\$83	\$82	\$75	\$67	\$59	\$47	\$43	\$39
	10yr ave.			\$89		\$82		\$69		\$59	\$57	\$55	\$54	\$51	\$46	\$42	\$34	\$29	\$27
	85% Current	\$186	\$178	\$171	\$160	\$145	\$131	\$116	\$104	\$95	\$90	\$88	\$87	\$79	\$71	\$63	\$50	\$45	\$42
	10yr ave.			\$95		\$87		\$73		\$63	\$60	\$58	\$57	\$54	\$49	\$45	\$36	\$31	\$28

The above shows estimated returns per head for skirted fleece wool. These figures do not take into account the value of skirtings and oddments and do not take into account discounts that may apply for faults under individual circumstances. These figures are based on a market index of 100% and should be used as a guide only. Returns over \$30 / head for fleece wool are highlighted.

Source: Australian Wool Exchange, Australian Wool Innovation, Sydney Futures Exchange, x-rates.com

Disclaimer: While all due care has been taken in the preparation of this document, no warranty is made as to its accuracy, reliability or completeness. To the extent permitted by law neither Jemalong or their sources including subsidiaries and staff, accept liability to any person for loss or damage arising from the use of this information.



Table 15: Returns pr head for skirted fleece wool.

Skirted FLC Weight		Micron																		
		16	16.5	17	17.5	18	18.5	19	19.5	20	21	22	23	24	25	26	28	30	32	
Yield (Sch Dry)	25%	Current	\$48	\$46	\$44	\$41	\$37	\$34	\$30	\$27	\$24	\$23	\$23	\$22	\$20	\$18	\$16	\$13	\$12	\$11
	10yr ave.			\$24		\$22		\$19		\$16	\$15	\$15	\$15	\$14	\$13	\$11	\$9	\$8	\$7	
	30%	Current	\$57	\$55	\$53	\$50	\$45	\$40	\$36	\$32	\$29	\$28	\$27	\$27	\$24	\$22	\$19	\$15	\$14	\$13
	10yr ave.			\$29		\$27		\$23		\$19	\$19	\$18	\$18	\$17	\$15	\$14	\$11	\$10	\$9	
	35%	Current	\$67	\$64	\$62	\$58	\$52	\$47	\$42	\$37	\$34	\$32	\$32	\$31	\$29	\$26	\$23	\$18	\$16	\$15
	10yr ave.			\$34		\$31		\$26		\$23	\$22	\$21	\$21	\$20	\$18	\$16	\$13	\$11	\$10	
	40%	Current	\$76	\$73	\$71	\$66	\$60	\$54	\$48	\$43	\$39	\$37	\$36	\$36	\$33	\$29	\$26	\$20	\$19	\$17
	10yr ave.			\$39		\$36		\$30		\$26	\$25	\$24	\$23	\$22	\$20	\$18	\$15	\$13	\$12	
	45%	Current	\$86	\$83	\$79	\$74	\$67	\$61	\$54	\$48	\$44	\$42	\$41	\$40	\$37	\$33	\$29	\$23	\$21	\$19
	10yr ave.			\$44		\$40		\$34		\$29	\$28	\$27	\$26	\$25	\$23	\$21	\$17	\$14	\$13	
	50%	Current	\$96	\$92	\$88	\$83	\$75	\$67	\$60	\$53	\$49	\$46	\$46	\$45	\$41	\$37	\$32	\$26	\$23	\$22
	10yr ave.			\$49		\$45		\$38		\$32	\$31	\$30	\$29	\$28	\$25	\$23	\$18	\$16	\$15	
	55%	Current	\$105	\$101	\$97	\$91	\$82	\$74	\$66	\$59	\$54	\$51	\$50	\$49	\$45	\$40	\$36	\$28	\$26	\$24
	10yr ave.			\$54		\$49		\$41		\$36	\$34	\$33	\$32	\$31	\$28	\$25	\$20	\$18	\$16	
60%	Current	\$115	\$110	\$106	\$99	\$90	\$81	\$72	\$64	\$59	\$56	\$55	\$54	\$49	\$44	\$39	\$31	\$28	\$26	
10yr ave.			\$59		\$54		\$45		\$39	\$37	\$36	\$35	\$34	\$30	\$28	\$22	\$19	\$17		
65%	Current	\$124	\$119	\$115	\$107	\$97	\$87	\$78	\$69	\$64	\$60	\$59	\$58	\$53	\$48	\$42	\$33	\$30	\$28	
10yr ave.			\$64		\$58		\$49		\$42	\$40	\$39	\$38	\$36	\$33	\$30	\$24	\$21	\$19		
70%	Current	\$134	\$128	\$123	\$116	\$104	\$94	\$84	\$75	\$69	\$65	\$64	\$63	\$57	\$51	\$45	\$36	\$33	\$30	
10yr ave.			\$69		\$63		\$53		\$45	\$43	\$42	\$41	\$39	\$35	\$32	\$26	\$22	\$20		
75%	Current	\$143	\$138	\$132	\$124	\$112	\$101	\$90	\$80	\$73	\$70	\$68	\$67	\$61	\$55	\$49	\$38	\$35	\$32	
10yr ave.			\$73		\$67		\$56		\$49	\$46	\$45	\$44	\$42	\$38	\$34	\$28	\$24	\$22		
80%	Current	\$153	\$147	\$141	\$132	\$119	\$108	\$96	\$85	\$78	\$74	\$73	\$72	\$65	\$59	\$52	\$41	\$37	\$34	
10yr ave.			\$78		\$72		\$60		\$52	\$49	\$48	\$47	\$45	\$40	\$37	\$29	\$26	\$23		
85%	Current	\$162	\$156	\$150	\$140	\$127	\$114	\$102	\$91	\$83	\$79	\$77	\$76	\$69	\$62	\$55	\$43	\$40	\$37	
10yr ave.			\$83		\$76		\$64		\$55	\$53	\$51	\$50	\$48	\$43	\$39	\$31	\$27	\$25		

The above shows estimated returns per head for skirted fleece wool. These figures do not take into account the value of skirtings and oddments and do not take into account discounts that may apply for faults under individual circumstances. These figures are based on a market index of 100% and should be used as a guide only. Returns over \$30 / head for fleece wool are highlighted.

Source: Australian Wool Exchange, Australian Wool Innovation, Sydney Futures Exchange, x-rates.com

Disclaimer: While all due care has been taken in the preparation of this document, no warranty is made as to its accuracy, reliability or completeness. To the extent permitted by law neither Jemalong or their sources including subsidiaries and staff, accept liability to any person for loss or damage arising from the use of this information.



Table 16: Returns pr head for skirted fleece wool.

Skirted FLC Weight		Micron																	
6 Kg		16	16.5	17	17.5	18	18.5	19	19.5	20	21	22	23	24	25	26	28	30	32
Yield (Sch Dry)	25% Current	\$41	\$39	\$38	\$35	\$32	\$29	\$26	\$23	\$21	\$20	\$20	\$19	\$17	\$16	\$14	\$11	\$10	\$9
	10yr ave.			\$21		\$19		\$16		\$14	\$13	\$13	\$13	\$12	\$11	\$10	\$8	\$7	\$6
	30% Current	\$49	\$47	\$45	\$42	\$38	\$35	\$31	\$27	\$25	\$24	\$23	\$23	\$21	\$19	\$17	\$13	\$12	\$11
	10yr ave.			\$25		\$23		\$19		\$17	\$16	\$15	\$15	\$14	\$13	\$12	\$9	\$8	\$7
	35% Current	\$57	\$55	\$53	\$50	\$45	\$40	\$36	\$32	\$29	\$28	\$27	\$27	\$24	\$22	\$19	\$15	\$14	\$13
	10yr ave.			\$29		\$27		\$23		\$19	\$19	\$18	\$18	\$17	\$15	\$14	\$11	\$10	\$9
	40% Current	\$66	\$63	\$60	\$57	\$51	\$46	\$41	\$37	\$34	\$32	\$31	\$31	\$28	\$25	\$22	\$18	\$16	\$15
	10yr ave.			\$34		\$31		\$26		\$22	\$21	\$21	\$20	\$19	\$17	\$16	\$13	\$11	\$10
	45% Current	\$74	\$71	\$68	\$64	\$58	\$52	\$46	\$41	\$38	\$36	\$35	\$35	\$31	\$28	\$25	\$20	\$18	\$17
	10yr ave.			\$38		\$35		\$29		\$25	\$24	\$23	\$23	\$22	\$19	\$18	\$14	\$12	\$11
	50% Current	\$82	\$79	\$76	\$71	\$64	\$58	\$51	\$46	\$42	\$40	\$39	\$38	\$35	\$31	\$28	\$22	\$20	\$18
	10yr ave.			\$42		\$38		\$32		\$28	\$26	\$26	\$25	\$24	\$22	\$20	\$16	\$14	\$12
	55% Current	\$90	\$86	\$83	\$78	\$70	\$63	\$56	\$50	\$46	\$44	\$43	\$42	\$38	\$34	\$31	\$24	\$22	\$20
	10yr ave.			\$46		\$42		\$35		\$31	\$29	\$28	\$28	\$26	\$24	\$22	\$17	\$15	\$14
	60% Current	\$98	\$94	\$91	\$85	\$77	\$69	\$61	\$55	\$50	\$48	\$47	\$46	\$42	\$38	\$33	\$26	\$24	\$22
	10yr ave.			\$50		\$46		\$39		\$33	\$32	\$31	\$30	\$29	\$26	\$24	\$19	\$17	\$15
	65% Current	\$106	\$102	\$98	\$92	\$83	\$75	\$67	\$59	\$55	\$52	\$51	\$50	\$45	\$41	\$36	\$29	\$26	\$24
	10yr ave.			\$55		\$50		\$42		\$36	\$34	\$34	\$33	\$31	\$28	\$26	\$20	\$18	\$16
	70% Current	\$115	\$110	\$106	\$99	\$90	\$81	\$72	\$64	\$59	\$56	\$55	\$54	\$49	\$44	\$39	\$31	\$28	\$26
	10yr ave.			\$59		\$54		\$45		\$39	\$37	\$36	\$35	\$34	\$30	\$28	\$22	\$19	\$17
	75% Current	\$123	\$118	\$113	\$106	\$96	\$86	\$77	\$69	\$63	\$60	\$59	\$58	\$52	\$47	\$42	\$33	\$30	\$28
	10yr ave.			\$63		\$58		\$48		\$42	\$40	\$39	\$38	\$36	\$32	\$30	\$24	\$21	\$19
	80% Current	\$131	\$126	\$121	\$113	\$102	\$92	\$82	\$73	\$67	\$64	\$62	\$61	\$56	\$50	\$45	\$35	\$32	\$30
	10yr ave.			\$67		\$61		\$52		\$44	\$42	\$41	\$40	\$38	\$34	\$32	\$25	\$22	\$20
	85% Current	\$139	\$134	\$129	\$120	\$109	\$98	\$87	\$78	\$71	\$68	\$66	\$65	\$59	\$53	\$47	\$37	\$34	\$31
	10yr ave.			\$71		\$65		\$55		\$47	\$45	\$44	\$43	\$41	\$37	\$34	\$27	\$23	\$21

The above shows estimated returns per head for skirted fleece wool. These figures do not take into account the value of skirtings and oddments and do not take into account discounts that may apply for faults under individual circumstances. These figures are based on a market index of 100% and should be used as a guide only. Returns over \$30 / head for fleece wool are highlighted.

Source: Australian Wool Exchange, Australian Wool Innovation, Sydney Futures Exchange, x-rates.com

Disclaimer: While all due care has been taken in the preparation of this document, no warranty is made as to its accuracy, reliability or completeness. To the extent permitted by law neither Jemalong or their sources including subsidiaries and staff, accept liability to any person for loss or damage arising from the use of this information.



Table 17: Returns pr head for skirted fleece wool.

Skirted FLC Weight		Micron																	
5 Kg		16	16.5	17	17.5	18	18.5	19	19.5	20	21	22	23	24	25	26	28	30	32
Yield (Sch Dry)	25% Current	\$34	\$33	\$32	\$30	\$27	\$24	\$21	\$19	\$17	\$17	\$16	\$16	\$15	\$13	\$12	\$9	\$8	\$8
	10yr ave.			\$17	\$16			\$13		\$12	\$11	\$11	\$10	\$10	\$9	\$8	\$7	\$6	\$5
	30% Current	\$41	\$39	\$38	\$35	\$32	\$29	\$26	\$23	\$21	\$20	\$20	\$19	\$17	\$16	\$14	\$11	\$10	\$9
	10yr ave.			\$21		\$19		\$16		\$14	\$13	\$13	\$13	\$12	\$11	\$10	\$8	\$7	\$6
	35% Current	\$48	\$46	\$44	\$41	\$37	\$34	\$30	\$27	\$24	\$23	\$23	\$22	\$20	\$18	\$16	\$13	\$12	\$11
	10yr ave.			\$24		\$22		\$19		\$16	\$15	\$15	\$15	\$14	\$13	\$11	\$9	\$8	\$7
	40% Current	\$55	\$52	\$50	\$47	\$43	\$38	\$34	\$30	\$28	\$26	\$26	\$26	\$23	\$21	\$19	\$15	\$13	\$12
	10yr ave.			\$28		\$26		\$21		\$19	\$18	\$17	\$17	\$16	\$14	\$13	\$11	\$9	\$8
	45% Current	\$61	\$59	\$57	\$53	\$48	\$43	\$38	\$34	\$31	\$30	\$29	\$29	\$26	\$24	\$21	\$16	\$15	\$14
	10yr ave.			\$31		\$29		\$24		\$21	\$20	\$19	\$19	\$18	\$16	\$15	\$12	\$10	\$9
	50% Current	\$68	\$66	\$63	\$59	\$53	\$48	\$43	\$38	\$35	\$33	\$33	\$32	\$29	\$26	\$23	\$18	\$17	\$15
	10yr ave.			\$35		\$32		\$27		\$23	\$22	\$22	\$21	\$20	\$18	\$16	\$13	\$11	\$10
	55% Current	\$75	\$72	\$69	\$65	\$59	\$53	\$47	\$42	\$38	\$36	\$36	\$35	\$32	\$29	\$26	\$20	\$18	\$17
	10yr ave.			\$38		\$35		\$30		\$25	\$24	\$24	\$23	\$22	\$20	\$18	\$14	\$13	\$11
	60% Current	\$82	\$79	\$76	\$71	\$64	\$58	\$51	\$46	\$42	\$40	\$39	\$38	\$35	\$31	\$28	\$22	\$20	\$18
	10yr ave.			\$42		\$38		\$32		\$28	\$26	\$26	\$25	\$24	\$22	\$20	\$16	\$14	\$12
	65% Current	\$89	\$85	\$82	\$77	\$69	\$62	\$56	\$49	\$45	\$43	\$42	\$42	\$38	\$34	\$30	\$24	\$22	\$20
	10yr ave.			\$45		\$42		\$35		\$30	\$29	\$28	\$27	\$26	\$23	\$21	\$17	\$15	\$13
	70% Current	\$96	\$92	\$88	\$83	\$75	\$67	\$60	\$53	\$49	\$46	\$46	\$45	\$41	\$37	\$32	\$26	\$23	\$22
	10yr ave.			\$49		\$45		\$38		\$32	\$31	\$30	\$29	\$28	\$25	\$23	\$18	\$16	\$15
	75% Current	\$102	\$98	\$95	\$89	\$80	\$72	\$64	\$57	\$52	\$50	\$49	\$48	\$44	\$39	\$35	\$27	\$25	\$23
	10yr ave.			\$52		\$48		\$40		\$35	\$33	\$32	\$31	\$30	\$27	\$25	\$20	\$17	\$16
	80% Current	\$109	\$105	\$101	\$94	\$85	\$77	\$68	\$61	\$56	\$53	\$52	\$51	\$47	\$42	\$37	\$29	\$27	\$25
	10yr ave.			\$56		\$51		\$43		\$37	\$35	\$34	\$34	\$32	\$29	\$26	\$21	\$18	\$17
	85% Current	\$116	\$111	\$107	\$100	\$91	\$82	\$73	\$65	\$59	\$56	\$55	\$54	\$50	\$44	\$39	\$31	\$28	\$26
	10yr ave.			\$59		\$54		\$46		\$39	\$38	\$37	\$36	\$34	\$31	\$28	\$22	\$20	\$18

The above shows estimated returns per head for skirted fleece wool. These figures do not take into account the value of skirtings and oddments and do not take into account discounts that may apply for faults under individual circumstances. These figures are based on a market index of 100% and should be used as a guide only. Returns over \$30 / head for fleece wool are highlighted.

Source: Australian Wool Exchange, Australian Wool Innovation, Sydney Futures Exchange, x-rates.com

Disclaimer: While all due care has been taken in the preparation of this document, no warranty is made as to its accuracy, reliability or completeness. To the extent permitted by law neither Jemalong or their sources including subsidiaries and staff, accept liability to any person for loss or damage arising from the use of this information.



Table 18: Returns pr head for skirted fleece wool.

Skirted FLC Weight		Micron																	
4 Kg		16	16.5	17	17.5	18	18.5	19	19.5	20	21	22	23	24	25	26	28	30	32
Yield (Sch Dry)	25% Current	\$27	\$26	\$25	\$24	\$21	\$19	\$17	\$15	\$14	\$13	\$13	\$13	\$12	\$10	\$9	\$7	\$7	\$6
	10yr ave.			\$14		\$13		\$11		\$9	\$9	\$9	\$8	\$8	\$7	\$7	\$5	\$5	\$4
	30% Current	\$33	\$31	\$30	\$28	\$26	\$23	\$20	\$18	\$17	\$16	\$16	\$15	\$14	\$13	\$11	\$9	\$8	\$7
	10yr ave.			\$17		\$15		\$13		\$11	\$11	\$10	\$10	\$10	\$9	\$8	\$6	\$6	\$5
	35% Current	\$38	\$37	\$35	\$33	\$30	\$27	\$24	\$21	\$20	\$19	\$18	\$18	\$16	\$15	\$13	\$10	\$9	\$9
	10yr ave.			\$20		\$18		\$15		\$13	\$12	\$12	\$12	\$11	\$10	\$9	\$7	\$6	\$6
	40% Current	\$44	\$42	\$40	\$38	\$34	\$31	\$27	\$24	\$22	\$21	\$21	\$20	\$19	\$17	\$15	\$12	\$11	\$10
	10yr ave.			\$22		\$20		\$17		\$15	\$14	\$14	\$13	\$13	\$11	\$11	\$8	\$7	\$7
	45% Current	\$49	\$47	\$45	\$42	\$38	\$35	\$31	\$27	\$25	\$24	\$23	\$23	\$21	\$19	\$17	\$13	\$12	\$11
	10yr ave.			\$25		\$23		\$19		\$17	\$16	\$15	\$15	\$14	\$13	\$12	\$9	\$8	\$7
	50% Current	\$55	\$52	\$50	\$47	\$43	\$38	\$34	\$30	\$28	\$26	\$26	\$26	\$23	\$21	\$19	\$15	\$13	\$12
	10yr ave.			\$28		\$26		\$21		\$19	\$18	\$17	\$17	\$16	\$14	\$13	\$11	\$9	\$8
	55% Current	\$60	\$58	\$55	\$52	\$47	\$42	\$38	\$34	\$31	\$29	\$29	\$28	\$26	\$23	\$20	\$16	\$15	\$14
	10yr ave.			\$31		\$28		\$24		\$20	\$19	\$19	\$18	\$18	\$16	\$14	\$12	\$10	\$9
	60% Current	\$66	\$63	\$60	\$57	\$51	\$46	\$41	\$37	\$34	\$32	\$31	\$31	\$28	\$25	\$22	\$18	\$16	\$15
	10yr ave.			\$34		\$31		\$26		\$22	\$21	\$21	\$20	\$19	\$17	\$16	\$13	\$11	\$10
	65% Current	\$71	\$68	\$66	\$61	\$55	\$50	\$44	\$40	\$36	\$34	\$34	\$33	\$30	\$27	\$24	\$19	\$17	\$16
	10yr ave.			\$36		\$33		\$28		\$24	\$23	\$22	\$22	\$21	\$19	\$17	\$14	\$12	\$11
	70% Current	\$76	\$73	\$71	\$66	\$60	\$54	\$48	\$43	\$39	\$37	\$36	\$36	\$33	\$29	\$26	\$20	\$19	\$17
	10yr ave.			\$39		\$36		\$30		\$26	\$25	\$24	\$23	\$22	\$20	\$18	\$15	\$13	\$12
	75% Current	\$82	\$79	\$76	\$71	\$64	\$58	\$51	\$46	\$42	\$40	\$39	\$38	\$35	\$31	\$28	\$22	\$20	\$18
	10yr ave.			\$42		\$38		\$32		\$28	\$26	\$26	\$25	\$24	\$22	\$20	\$16	\$14	\$12
	80% Current	\$87	\$84	\$81	\$76	\$68	\$61	\$55	\$49	\$45	\$42	\$42	\$41	\$37	\$33	\$30	\$23	\$21	\$20
	10yr ave.			\$45		\$41		\$34		\$30	\$28	\$28	\$27	\$26	\$23	\$21	\$17	\$15	\$13
	85% Current	\$93	\$89	\$86	\$80	\$72	\$65	\$58	\$52	\$48	\$45	\$44	\$44	\$40	\$36	\$32	\$25	\$23	\$21
	10yr ave.			\$48		\$44		\$36		\$31	\$30	\$29	\$29	\$27	\$24	\$22	\$18	\$16	\$14

The above shows estimated returns per head for skirted fleece wool. These figures do not take into account the value of skirtings and oddments and do not take into account discounts that may apply for faults under individual circumstances. These figures are based on a market index of 100% and should be used as a guide only. Returns over \$30 / head for fleece wool are highlighted.

Source: Australian Wool Exchange, Australian Wool Innovation, Sydney Futures Exchange, x-rates.com

Disclaimer: While all due care has been taken in the preparation of this document, no warranty is made as to its accuracy, reliability or completeness. To the extent permitted by law neither Jemalong or their sources including subsidiaries and staff, accept liability to any person for loss or damage arising from the use of this information.



Table 19: Returns pr head for skirted fleece wool.

Skirted FLC Weight 3 Kg		Micron																	
		16	16.5	17	17.5	18	18.5	19	19.5	20	21	22	23	24	25	26	28	30	32
Yield (Sch Dry)	25% Current	\$20	\$20	\$19	\$18	\$16	\$14	\$13	\$11	\$10	\$10	\$10	\$10	\$9	\$8	\$7	\$5	\$5	\$5
	10yr ave.			\$10		\$10		\$8		\$7	\$7	\$6	\$6	\$6	\$5	\$5	\$4	\$3	\$3
	30% Current	\$25	\$24	\$23	\$21	\$19	\$17	\$15	\$14	\$13	\$12	\$12	\$12	\$10	\$9	\$8	\$7	\$6	\$6
	10yr ave.			\$13		\$12		\$10		\$8	\$8	\$8	\$8	\$7	\$6	\$6	\$5	\$4	\$4
	35% Current	\$29	\$28	\$26	\$25	\$22	\$20	\$18	\$16	\$15	\$14	\$14	\$13	\$12	\$11	\$10	\$8	\$7	\$6
	10yr ave.			\$15		\$13		\$11		\$10	\$9	\$9	\$9	\$8	\$8	\$7	\$6	\$5	\$4
	40% Current	\$33	\$31	\$30	\$28	\$26	\$23	\$20	\$18	\$17	\$16	\$16	\$15	\$14	\$13	\$11	\$9	\$8	\$7
	10yr ave.			\$17		\$15		\$13		\$11	\$11	\$10	\$10	\$10	\$9	\$8	\$6	\$6	\$5
	45% Current	\$37	\$35	\$34	\$32	\$29	\$26	\$23	\$21	\$19	\$18	\$18	\$17	\$16	\$14	\$13	\$10	\$9	\$8
	10yr ave.			\$19		\$17		\$14		\$12	\$12	\$12	\$11	\$11	\$10	\$9	\$7	\$6	\$6
	50% Current	\$41	\$39	\$38	\$35	\$32	\$29	\$26	\$23	\$21	\$20	\$20	\$19	\$17	\$16	\$14	\$11	\$10	\$9
	10yr ave.			\$21		\$19		\$16		\$14	\$13	\$13	\$13	\$12	\$11	\$10	\$8	\$7	\$6
	55% Current	\$45	\$43	\$42	\$39	\$35	\$32	\$28	\$25	\$23	\$22	\$21	\$21	\$19	\$17	\$15	\$12	\$11	\$10
	10yr ave.			\$23		\$21		\$18		\$15	\$15	\$14	\$14	\$13	\$12	\$11	\$9	\$8	\$7
	60% Current	\$49	\$47	\$45	\$42	\$38	\$35	\$31	\$27	\$25	\$24	\$23	\$23	\$21	\$19	\$17	\$13	\$12	\$11
	10yr ave.			\$25		\$23		\$19		\$17	\$16	\$15	\$15	\$14	\$13	\$12	\$9	\$8	\$7
	65% Current	\$53	\$51	\$49	\$46	\$42	\$37	\$33	\$30	\$27	\$26	\$25	\$25	\$23	\$20	\$18	\$14	\$13	\$12
	10yr ave.			\$27		\$25		\$21		\$18	\$17	\$17	\$16	\$16	\$14	\$13	\$10	\$9	\$8
	70% Current	\$57	\$55	\$53	\$50	\$45	\$40	\$36	\$32	\$29	\$28	\$27	\$27	\$24	\$22	\$19	\$15	\$14	\$13
	10yr ave.			\$29		\$27		\$23		\$19	\$19	\$18	\$18	\$17	\$15	\$14	\$11	\$10	\$9
	75% Current	\$61	\$59	\$57	\$53	\$48	\$43	\$38	\$34	\$31	\$30	\$29	\$29	\$26	\$24	\$21	\$16	\$15	\$14
	10yr ave.			\$31		\$29		\$24		\$21	\$20	\$19	\$19	\$18	\$16	\$15	\$12	\$10	\$9
	80% Current	\$66	\$63	\$60	\$57	\$51	\$46	\$41	\$37	\$34	\$32	\$31	\$31	\$28	\$25	\$22	\$18	\$16	\$15
	10yr ave.			\$34		\$31		\$26		\$22	\$21	\$21	\$20	\$19	\$17	\$16	\$13	\$11	\$10
	85% Current	\$70	\$67	\$64	\$60	\$54	\$49	\$44	\$39	\$36	\$34	\$33	\$33	\$30	\$27	\$24	\$19	\$17	\$16
	10yr ave.			\$36		\$33		\$27		\$24	\$23	\$22	\$21	\$20	\$18	\$17	\$13	\$12	\$11

The above shows estimated returns per head for skirted fleece wool. These figures do not take into account the value of skirtings and oddments and do not take into account discounts that may apply for faults under individual circumstances. These figures are based on a market index of 100% and should be used as a guide only. Returns over \$30 / head for fleece wool are highlighted.

Source: Australian Wool Exchange, Australian Wool Innovation, Sydney Futures Exchange, x-rates.com

Disclaimer: While all due care has been taken in the preparation of this document, no warranty is made as to its accuracy, reliability or completeness. To the extent permitted by law neither Jemalong or their sources including subsidiaries and staff, accept liability to any person for loss or damage arising from the use of this information.



Table 20: Returns pr head for skirted fleece wool.

Skirted FLC Weight 2 Kg		Micron																	
		16	16.5	17	17.5	18	18.5	19	19.5	20	21	22	23	24	25	26	28	30	32
Yield (Sch Dry)	25% Current	\$14	\$13	\$13	\$12	\$11	\$10	\$9	\$8	\$7	\$7	\$7	\$6	\$6	\$5	\$5	\$4	\$3	\$3
	10yr ave.			\$7		\$6		\$5		\$5	\$4	\$4	\$4	\$4	\$4	\$3	\$3	\$2	\$2
	30% Current	\$16	\$16	\$15	\$14	\$13	\$12	\$10	\$9	\$8	\$8	\$8	\$8	\$7	\$6	\$6	\$4	\$4	\$4
	10yr ave.			\$8		\$8		\$6		\$6	\$5	\$5	\$5	\$5	\$4	\$4	\$3	\$3	\$2
	35% Current	\$19	\$18	\$18	\$17	\$15	\$13	\$12	\$11	\$10	\$9	\$9	\$9	\$8	\$7	\$6	\$5	\$5	\$4
	10yr ave.			\$10		\$9		\$8		\$6	\$6	\$6	\$6	\$6	\$5	\$5	\$4	\$3	\$3
	40% Current	\$22	\$21	\$20	\$19	\$17	\$15	\$14	\$12	\$11	\$11	\$10	\$10	\$9	\$8	\$7	\$6	\$5	\$5
	10yr ave.			\$11		\$10		\$9		\$7	\$7	\$7	\$7	\$6	\$6	\$5	\$4	\$4	\$3
	45% Current	\$25	\$24	\$23	\$21	\$19	\$17	\$15	\$14	\$13	\$12	\$12	\$12	\$10	\$9	\$8	\$7	\$6	\$6
	10yr ave.			\$13		\$12		\$10		\$8	\$8	\$8	\$8	\$7	\$6	\$6	\$5	\$4	\$4
	50% Current	\$27	\$26	\$25	\$24	\$21	\$19	\$17	\$15	\$14	\$13	\$13	\$13	\$12	\$10	\$9	\$7	\$7	\$6
	10yr ave.			\$14		\$13		\$11		\$9	\$9	\$9	\$8	\$8	\$7	\$7	\$5	\$5	\$4
	55% Current	\$30	\$29	\$28	\$26	\$23	\$21	\$19	\$17	\$15	\$15	\$14	\$14	\$13	\$11	\$10	\$8	\$7	\$7
	10yr ave.			\$15		\$14		\$12		\$10	\$10	\$9	\$9	\$9	\$8	\$7	\$6	\$5	\$5
	60% Current	\$33	\$31	\$30	\$28	\$26	\$23	\$20	\$18	\$17	\$16	\$16	\$15	\$14	\$13	\$11	\$9	\$8	\$7
	10yr ave.			\$17		\$15		\$13		\$11	\$11	\$10	\$10	\$10	\$9	\$8	\$6	\$6	\$5
	65% Current	\$35	\$34	\$33	\$31	\$28	\$25	\$22	\$20	\$18	\$17	\$17	\$17	\$15	\$14	\$12	\$10	\$9	\$8
	10yr ave.			\$18		\$17		\$14		\$12	\$11	\$11	\$11	\$10	\$9	\$9	\$7	\$6	\$5
	70% Current	\$38	\$37	\$35	\$33	\$30	\$27	\$24	\$21	\$20	\$19	\$18	\$18	\$16	\$15	\$13	\$10	\$9	\$9
	10yr ave.			\$20		\$18		\$15		\$13	\$12	\$12	\$12	\$11	\$10	\$9	\$7	\$6	\$6
	75% Current	\$41	\$39	\$38	\$35	\$32	\$29	\$26	\$23	\$21	\$20	\$20	\$19	\$17	\$16	\$14	\$11	\$10	\$9
	10yr ave.			\$21		\$19		\$16		\$14	\$13	\$13	\$13	\$12	\$11	\$10	\$8	\$7	\$6
	80% Current	\$44	\$42	\$40	\$38	\$34	\$31	\$27	\$24	\$22	\$21	\$21	\$20	\$19	\$17	\$15	\$12	\$11	\$10
	10yr ave.			\$22		\$20		\$17		\$15	\$14	\$14	\$13	\$13	\$11	\$11	\$8	\$7	\$7
	85% Current	\$46	\$45	\$43	\$40	\$36	\$33	\$29	\$26	\$24	\$23	\$22	\$22	\$20	\$18	\$16	\$12	\$11	\$10
	10yr ave.			\$24		\$22		\$18		\$16	\$15	\$15	\$14	\$14	\$12	\$11	\$9	\$8	\$7

The above shows estimated returns per head for skirted fleece wool. These figures do not take into account the value of skirtings and oddments and do not take into account discounts that may apply for faults under individual circumstances. These figures are based on a market index of 100% and should be used as a guide only. Returns over \$30 / head for fleece wool are highlighted.

Source: Australian Wool Exchange, Australian Wool Innovation, Sydney Futures Exchange, x-rates.com

Disclaimer: While all due care has been taken in the preparation of this document, no warranty is made as to its accuracy, reliability or completeness. To the extent permitted by law neither Jemalong or their sources including subsidiaries and staff, accept liability to any person for loss or damage arising from the use of this information.