



Table 1: Northern Region Micron Price Guides

WEEK 44			12 MONTH COMPARISONS								3 YEAR COMPARISONS					10 YEAR COMPARISONS				
30/04/2026		22/04/2026	30/04/2025	Now		Now		Now		Now			Percentile	10 year		Now		Percentile		
MPG	Current Price	Weekly Change	This time Last Year	compared to Last Year	12 Month Low	compared to Low	12 Month High	compared to High	Low	High	Average	compared to 3yr ave		Low	High	Average	compared to 10yr ave			
NRI	1970	+10 0.5%	1253	+717 57%	1224	+746 61%	1970	0 0%	1117	1970	1304	+666 51%	100%	1022	2163	1479	+491 33%	92%		
15*	2795 n	+10 0.4%	2375	+420 18%	2275	+520 23%	2795	0 0%	2275	2975	2509	+286 11%	95%	1638	3750	2442	+353 14%	76%		
15.5*	2750 n	+25 0.9%	2125	+625 29%	2070	+680 33%	2750	0 0%	2070	2825	2297	+453 20%	96%	1612	3450	2403	+347 14%	76%		
16*	2687 n	+10 0.4%	1850	+837 45%	1762	+925 52%	2687	0 0%	1762	2687	2031	+656 32%	100%	1575	3300	2348	+339 14%	76%		
16.5	2667 n	+5 0.2%	1722	+945 55%	1680	+987 59%	2667	0 0%	1670	2667	1941	+726 37%	100%	1546	3187	2235	+432 19%	82%		
17	2642	+16 0.6%	1682	+960 57%	1648	+994 60%	2642	0 0%	1600	2642	1850	+792 43%	100%	1478	3008	2129	+513 24%	89%		
17.5	2612	+9 0.3%	1628	+984 60%	1609	+1003 62%	2612	0 0%	1508	2612	1769	+843 48%	100%	1383	2845	2024	+588 29%	95%		
18	2555	+17 0.7%	1603	+952 59%	1558	+997 64%	2555	0 0%	1432	2555	1692	+863 51%	100%	1272	2708	1914	+641 33%	97%		
18.5	2474	+6 0.2%	1569	+905 58%	1532	+942 61%	2474	0 0%	1358	2474	1623	+851 52%	100%	1174	2591	1811	+663 37%	97%		
19	2354	-2 -0.1%	1520	+834 55%	1482	+872 59%	2356	-2 0%	1327	2356	1565	+789 50%	99%	1117	2465	1717	+637 37%	96%		
19.5	2272	-5 -0.2%	1501	+771 51%	1453	+819 56%	2277	-5 0%	1289	2277	1523	+749 49%	99%	1081	2404	1647	+625 38%	93%		
20	2193 n	-19 -0.9%	1466	+727 50%	1432	+761 53%	2212	-19 -1%	1262	2212	1487	+706 47%	99%	1048	2391	1588	+605 38%	91%		
21	2154 n	-26 -1.2%	1464	+690 47%	1400	+754 54%	2180	-26 -1%	1232	2180	1456	+698 48%	99%	1016	2368	1538	+616 40%	90%		
22	2150 n	0	1462	+688 47%	1380	+770 56%	2150	0 0%	1200	2150	1426	+724 51%	100%	1009	2342	1504	+646 43%	91%		
23	1700 n	0	1195	+505 42%	1195	+505 42%	1700	0 0%	960	1700	1200	+500 42%	100%	957	2316	1374	+326 24%	84%		
24	1320 n	0	800	+520 65%	800	+520 65%	1320	0 0%	766	1320	926	+394 43%	100%	770	2114	1191	+129 11%	69%		
25	1050 n	-30 -2.8%	730	+320 44%	711	+339 48%	1088	-38 -3%	635	1088	768	+282 37%	96%	635	1801	1009	+41 4%	60%		
26	928 n	+13 1.4%	598	+330 55%	588	+340 58%	942	-14 -1%	465	942	620	+308 50%	98%	465	1545	871	+57 7%	61%		
28	732 n	+27 3.8%	430	+302 70%	420	+312 74%	732	0 0%	290	732	447	+285 64%	100%	310	1318	611	+121 20%	65%		
30	600 n	+10 1.7%	375	+225 60%	358	+242 68%	635	-35 -6%	255	635	396	+204 52%	95%	285	998	499	+101 20%	72%		
32	502 n	-6 -1.2%	330	+172 52%	322	+180 56%	510	-8 -2%	227	510	336	+166 49%	96%	210	659	364	+138 38%	87%		
MC	1116 n	+7 0.6%	733	+383 52%	700	+416 59%	1116	0 0%	689	1116	756	+360 48%	100%	656	1563	959	+157 16%	77%		
AU BALES OFFERED	37,744		* 16.5 is the lowest Micron Price Guide (MPG) published by The Australian Wool Exchange (AWEX). Therefore MPG's below 16.5 micron are an estimate based on the best available information at the time of publication. Likewise, for any category where there is insufficient quantity offered to enable AWEX to quote, a quote will also be provided.																	
AU BALES SOLD	35,139		* Recording of 15 & 15.5 micron commenced in October 2017, and as a result some historic data is not yet available for those MPG's. Where historic data is not available an estimate based on '16 micron statistics' and incorporating the existing 15 & 15.5 micron data, will be provided as a guide.																	
AU PASSED-IN%	6.9%																			
AUD/USD	0.7113	-0.8%																		

Source: Australian Wool Exchange, Australian Wool Innovation, Riemann, x-rates.com, Reserve Bank of Australia, Australian Wool Testing Authority, Australian Bureau Statistics (ABS), Woolmark.

Disclaimer: Jemalong Wool Pty Ltd make no representations about the content and suitability of the information contained in this report. Specifically, Jemalong Wool does not warrant, guarantee or make any representations regarding the correctness, accuracy, reliability, currency, or any other aspect regarding characteristics or use of information presented in these materials. The user accepts sole responsibility and risk associated with the use and results of these materials, irrespective of the purpose of which such use or results are applied. In no event shall Jemalong Wool be liable for any loss or damages arising out of or in connection with the use of these materials.

Copyright © Jemalong Wool Pty Ltd, 2006-2026. Apart from any use permitted under the Copyright Act 1968, no part may be copied or reproduced by any process nor stored electronically without the written permission of Jemalong Wool Pty Ltd. This report has been compiled by Jemalong Wool Pty Ltd for internal use and for the benefit of Jemalong Wool clients. You should only read this report if you are authorised to do so, if you are not authorised then you must destroy all electronic and paper copies immediately. Under no circumstance are you permitted to forward this report to a third-party.

**MARKET COMMENTARY** Source: AWEX

The wool market recorded a small overall rise this week, taking a breath from the sharp upward trajectory seen over the previous few selling series. There were 37,744 bales offered to the trade (4,078 more than in the previous series).

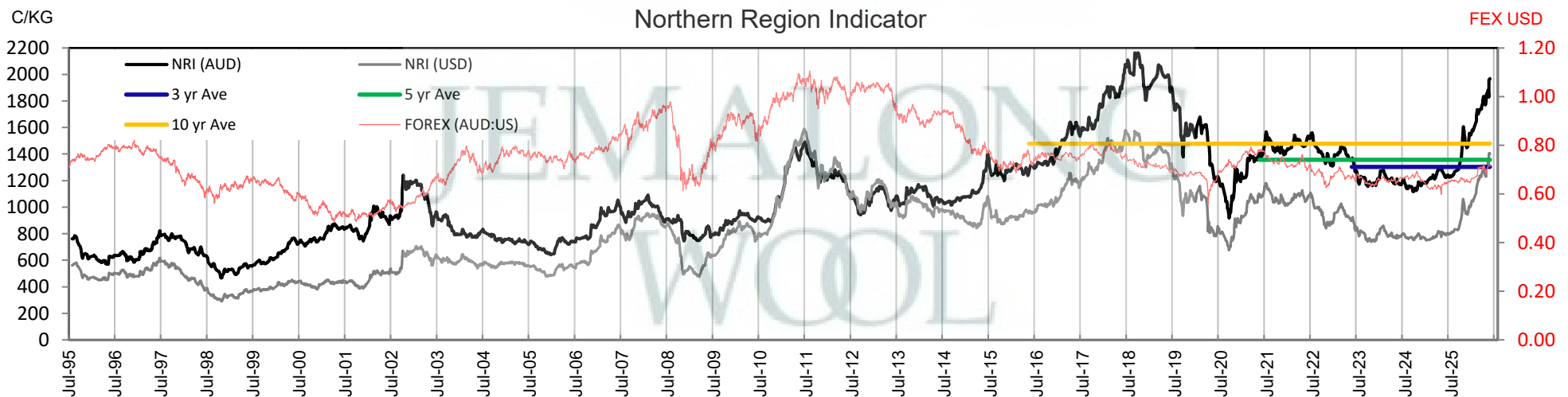
The recent higher prices have brought wool out of the hold stacks and into the market, resulting in a volume greater than forecast (+52,512 bales, or 3.9%) being offered season-to-date.

This week saw an unusual selling pattern due to the Anzac Day Public Holiday. Only Sydney and Fremantle held Public Holidays on Monday, leaving Melbourne to open proceedings in isolation on Tuesday. There were mixed results in the merino fleece sector, with a range of movements recorded for those MPG's. Rises in the crossbred, skirting and oddment sectors helped push the EMI up 4 cents, extending its run of gains to seven weeks, during which it has added 175 cents (10.2%).

On Wednesday, all three centres were in operation, and movements in the MPG's ranged from plus 21 to minus 36 cents. By the end of the day, the EMI had surrendered the 4 cents gained the previous day.

On the final day of selling, it was Sydney's turn to sell in isolation, and the market finished the week strongly, with the MPG's added 4-16 cents. The EMI gained 2 cents to close the week 2 cents dearer at 1,897.

Next week's offering is forecast to reduce to 34,290 bales.





**Table 2: Three Year Decile Table, since: 1/04/2023**

Decile %	16	16.5	17	17.5	18	18.5	19	19.5	20	21	22	23	24	25	26	28	30	32	MC
1 10%	1825	1728	1658	1582	1494	1431	1388	1344	1308	1275	1223	1019	800	671	498	340	317	263	699
2 20%	1845	1763	1680	1605	1522	1450	1405	1360	1324	1288	1250	1080	821	688	525	350	327	285	702
3 30%	1891	1792	1700	1623	1541	1468	1414	1376	1338	1307	1274	1100	858	697	550	364	335	290	707
4 40%	1914	1807	1715	1636	1567	1494	1436	1390	1357	1317	1290	1120	876	710	561	375	340	300	711
5 50%	1927	1830	1731	1659	1591	1524	1470	1429	1387	1343	1315	1143	888	726	578	390	355	307	722
6 60%	2025	1900	1774	1683	1615	1557	1507	1472	1442	1412	1391	1184	920	732	595	416	370	326	731
7 70%	2075	1998	1860	1744	1650	1592	1539	1510	1477	1455	1432	1220	979	780	620	448	387	337	747
8 80%	2233	2181	2067	1963	1867	1761	1663	1610	1584	1565	1544	1350	995	850	746	616	505	396	805
9 90%	2405	2321	2238	2193	2129	2076	2028	1989	1952	1938	1935	1496	1131	975	835	670	580	485	843
10 100%	2687	2667	2642	2612	2555	2474	2356	2277	2212	2180	2150	1700	1320	1088	942	732	635	510	1116
MPG	2687	2667	2642	2612	2555	2474	2354	2272	2193	2154	2150	1700	1320	1050	928	732	600	502	1116
3 Yr Percentile	100%	100%	100%	100%	100%	100%	99%	99%	99%	99%	100%	100%	100%	96%	98%	100%	95%	96%	100%

**Table 3: Ten Year Decile Table, since: 1/04/2016**

Decile %	16	16.5	17	17.5	18	18.5	19	19.5	20	21	22	23	24	25	26	28	30	32	MC
1 10%	1800	1712	1641	1579	1514	1449	1392	1351	1312	1260	1213	1079	860	697	550	350	320	240	706
2 20%	1901	1793	1705	1631	1561	1504	1454	1408	1348	1290	1251	1106	900	732	592	378	335	253	730
3 30%	2005	1887	1783	1697	1617	1566	1516	1471	1382	1315	1285	1129	951	801	654	412	355	276	805
4 40%	2140	2040	1983	1912	1806	1680	1583	1497	1427	1363	1329	1158	979	846	727	460	380	295	869
5 50%	2297	2221	2144	2023	1915	1802	1660	1539	1467	1421	1386	1220	1010	877	772	533	445	335	906
6 60%	2460	2349	2258	2163	2012	1864	1732	1621	1535	1473	1441	1356	1226	1047	907	683	560	398	993
7 70%	2600	2521	2386	2255	2113	1960	1824	1742	1660	1601	1531	1448	1328	1173	1070	759	594	435	1079
8 80%	2810	2636	2513	2387	2215	2109	1999	1899	1861	1808	1777	1634	1490	1250	1140	819	665	466	1146
9 90%	3060	2861	2665	2513	2396	2305	2233	2184	2153	2139	2118	1961	1810	1502	1320	932	710	508	1264
10 100%	3300	3187	3008	2845	2708	2591	2465	2404	2391	2368	2342	2316	2114	1801	1545	1318	998	659	1563
MPG	2687	2667	2642	2612	2555	2474	2354	2272	2193	2154	2150	1700	1320	1050	928	732	600	502	1116
10 Yr Percentile	76%	82%	89%	95%	97%	97%	96%	93%	91%	90%	91%	84%	69%	60%	61%	65%	72%	87%	77%

**Definitions:**

\* A Percentile, is a value on a scale of one hundred that indicates the percent of a distribution that is equal to or below it. In general a percentile between 25% and 75% is considered normal, a percentile below 25% is considered below normal and a percentile above 75% is considered above normal.

Three and ten year percentiles shown on the bottom line of table 2 & 3 (above) and in table 1 (on page 1), detail the amount of time during the past 3 & 10 years where the market has traded either at or below its current price.

\* Deciles are a method of sorting ranked data into 10 equal groups. The data may be ranked from largest to smallest or vice versa.

The above Decile tables sort price Percentiles into 10 equal groups (in ascending order), with table 2 ranking the previous 3 years prices, while table 3 ranks prices over the previous 10 years

**Example:** In Table 2, a Decile Rank of 6 for 19 microns, shows 19 microns have traded at or below 1507 for 60% of the time, over the past three years.

In Table 3, a Decile Rank of 6 for 19 microns, shows 19 microns have traded at or below 1732 for 60% of the time, over the past ten years.



Table 4: Riemann Forwards, as at: **30/04/26** Any highlighted in yellow are recent trades, trading since: **Thursday, 23 April 2026**

MICRON (Total Traded = 42)	18um (2 Traded)	18.5um (2 Traded)	19um (20 Traded)	19.5um (3 Traded)	21um (15 Traded)	22um (0 Traded)	23um (0 Traded)	28um (0 Traded)	30um (0 Traded)
Apr-2026 (6)			23/02/26 <b>2060</b> (5)		13/01/26 <b>1875</b> (1)				
May-2026 (8)	11/02/26 <b>2225</b> (1)		13/01/26 <b>1950</b> (2)	23/02/26 <b>2070</b> (2)	20/02/26 <b>2020</b> (3)				
Jun-2026 (13)		1/04/26 <b>2200</b> (2)	25/03/26 <b>2020</b> (8)		1/04/26 <b>1950</b> (3)				
Jul-2026 (4)			14/04/26 <b>2100</b> (2)	20/04/26 <b>2100</b> (1)	14/04/26 <b>2055</b> (1)				
Aug-2026 (1)			21/04/26 <b>2235</b> (1)						
Sep-2026 (2)					27/04/26 <b>2045</b> (2)				
Oct-2026 (6)	20/04/26 <b>2280</b> (1)		20/04/26 <b>2110</b> (2)		21/04/26 <b>2000</b> (3)				
Nov-2026 (2)					21/04/26 <b>2005</b> (2)				
Dec-2026									
Jan-2027									
Feb-2027									
Mar-2027									
Apr-2027									
May-2027									
Jun-2027									
Jul-2027									
Aug-2027									
Sep-2027									
Oct-2027									
Nov-2027									
Dec-2027									
Jan-2028									
Feb-2028									

Explanatory Notes: Prices quoted reflect the most recent trades, at time of print.

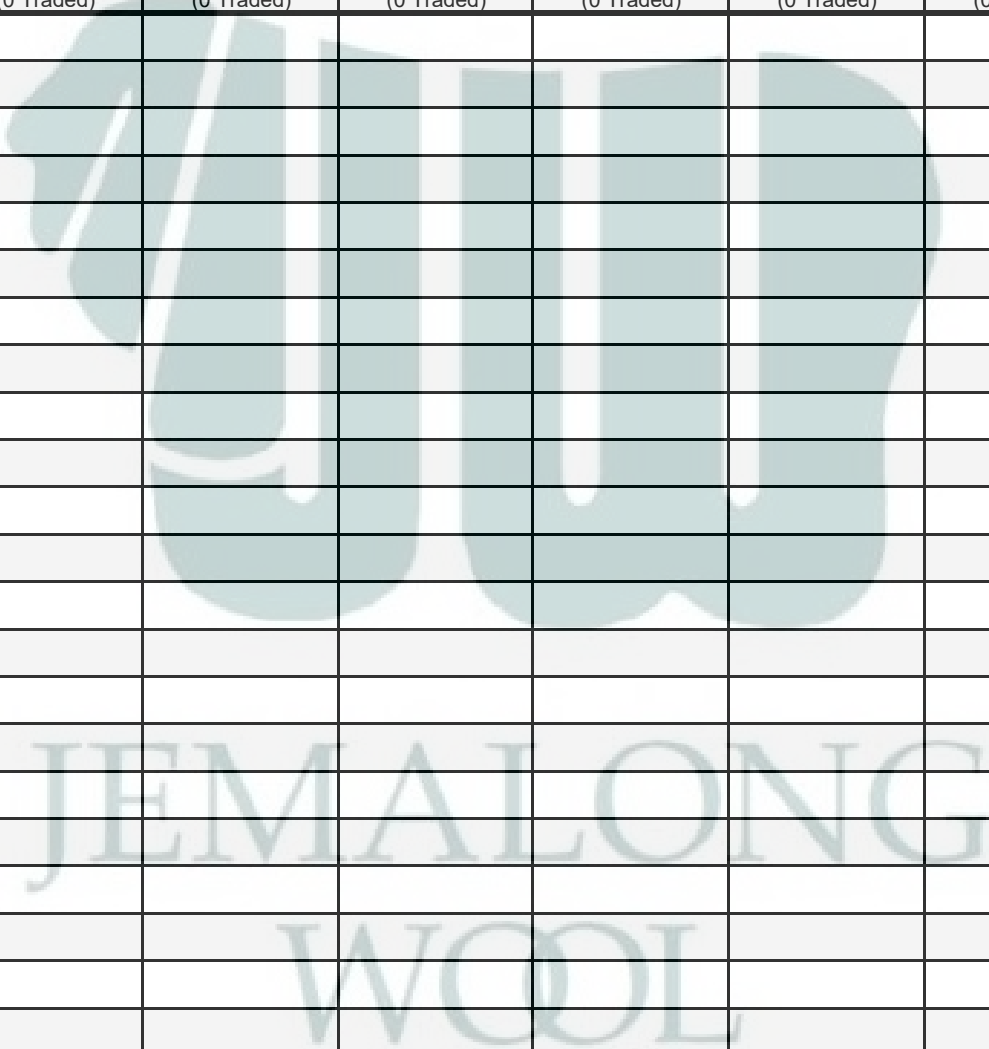
Disclaimer: While all due care has been taken in the preparation of this document, no warranty is made as to its accuracy, reliability or completeness. To the extent permitted by law neither Jemalong or their sources including subsidiaries and staff, accept liability to any person for loss or damage arising from the use of this information.



Table 5: Riemann Options, as at: **30/04/26** Any highlighted in yellow are recent trades, trading since: **Friday, 24 April 2026**

MICRON (Total Traded = 0)	18um Strike - Premium (0 Traded)	18.5um Strike - Premium (0 Traded)	19um Strike - Premium (0 Traded)	19.5um Strike - Premium (0 Traded)	21um Strike - Premium (0 Traded)	22um Strike - Premium (0 Traded)	23um Strike - Premium (0 Traded)	28um Strike - Premium (0 Traded)	30um Strike - Premium (0 Traded)
Apr-2026									
May-2026									
Jun-2026									
Jul-2026									
Aug-2026									
Sep-2026									
Oct-2026									
Nov-2026									
Dec-2026									
Jan-2027									
Feb-2027									
Mar-2027									
Apr-2027									
May-2027									
Jun-2027									
Jul-2027									
Aug-2027									
Sep-2027									
Oct-2027									
Nov-2027									
Dec-2027									
Jan-2028									
Feb-2028									

OPTIONS CONTRACT MONTH





**Table 6: National Market Share**

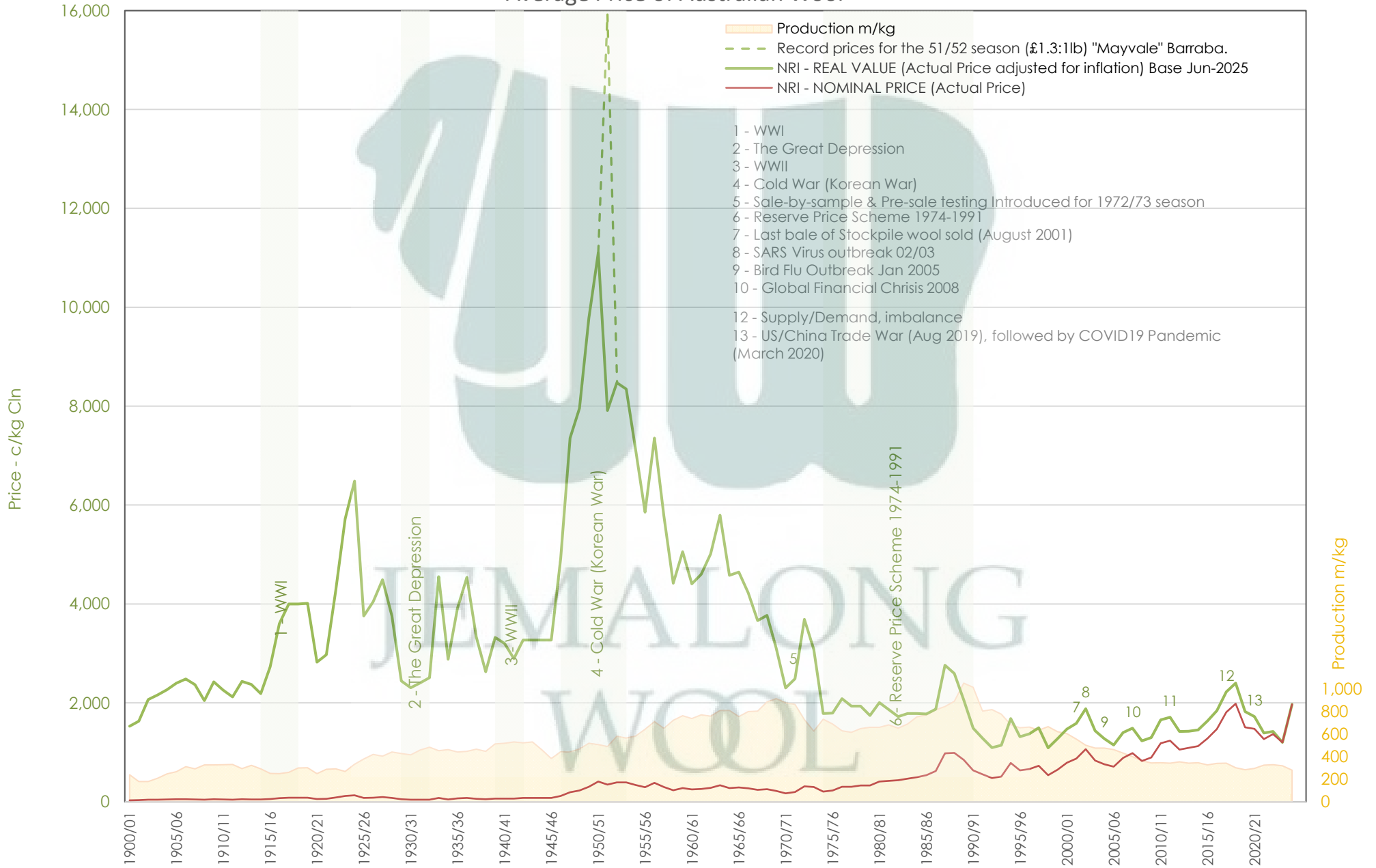
	Rank	Current Selling Week Week 44			Previous Selling Week Week 43			Last Season 2024-25			2 Years Ago 2023-24			3 Years Ago 2022-23			5 Years Ago 2020-21			10 Years Ago 2015-16		
		Buyer	Bales	MS%	Buyer	Bales	MS%	Buyer	Bales	MS%	Buyer	Bales	MS%	Buyer	Bales	MS%	Buyer	Bales	MS%	Buyer	Bales	MS%
Top 10, Auction Buyers	1	TECM	7,063	20%	TECM	6,920	21%	TECM	229,513	16%	TECM	269,885	16%	TECM	236,574	15%	TECM	228,018	15%	TECM	223,011	13%
	2	EWES	4,747	14%	PMWF	4,483	14%	EWES	183,456	13%	EWES	200,309	12%	EWES	184,465	11%	EWES	159,908	10%	CTXS	158,343	10%
	3	PMWF	3,004	9%	EWES	3,777	12%	TIAM	155,816	11%	TIAM	163,248	10%	TIAM	165,940	10%	FOXM	129,251	8%	FOXM	151,685	9%
	4	TIAM	2,910	8%	FOXM	2,680	8%	FOXM	115,227	8%	PMWF	130,958	8%	FOXM	114,903	7%	TIAM	121,176	8%	LEMM	124,422	8%
	5	SMAM	2,874	8%	TIAM	2,146	7%	SMAM	102,067	7%	FOXM	112,236	7%	AMEM	94,128	6%	UWCM	100,677	6%	TIAM	105,610	6%
	6	AMEM	2,340	7%	AMEM	2,073	6%	PMWF	101,929	7%	PEAM	110,013	7%	PMWF	92,939	6%	LEMM	98,471	6%	AMEM	104,017	6%
	7	PEAM	2,232	6%	SMAM	1,658	5%	AMEM	79,894	6%	AMEM	103,230	6%	UWCM	81,113	5%	AMEM	90,244	6%	GWEA	91,407	6%
	8	FOXM	2,191	6%	UWCM	1,388	4%	PEAM	78,127	6%	UWCM	90,284	5%	SMAM	81,046	5%	PMWF	84,389	5%	MODM	83,453	5%
	9	UWCM	1,540	4%	MEWS	1,342	4%	UWCM	73,595	5%	SMAM	76,401	5%	PEAM	76,571	5%	MODM	70,426	4%	PMWF	82,132	5%
	10	MEWS	1,050	3%	PEAM	1,167	4%	MEWS	41,323	3%	MEWS	67,040	4%	MEWS	64,650	4%	KATS	63,487	4%	MCHA	64,453	4%
MFLC TOP 5	1	TECM	4,102	20%	TECM	3,842	20%	TIAM	113,479	15%	TECM	147,611	16%	TECM	128,047	15%	TECM	131,264	15%	CTXS	124,326	13%
	2	PMWF	2,711	13%	PMWF	3,797	20%	TECM	108,786	14%	PMWF	124,594	14%	TIAM	115,988	14%	TIAM	93,870	10%	TECM	112,996	12%
	3	EWES	2,380	11%	EWES	2,038	11%	PMWF	95,314	12%	TIAM	117,878	13%	EWES	93,911	11%	EWES	83,559	9%	LEMM	91,475	10%
	4	TIAM	2,320	11%	FOXM	1,873	10%	EWES	94,695	12%	EWES	103,468	12%	PMWF	87,904	10%	LEMM	81,281	9%	FOXM	84,992	9%
	5	SMAM	2,294	11%	TIAM	1,591	8%	SMAM	79,384	10%	MEWS	65,151	7%	MEWS	63,681	7%	PMWF	80,872	9%	PMWF	77,550	8%
MSKT TOP 5	1	TECM	1,281	24%	TECM	1,157	24%	TECM	52,792	24%	TECM	51,028	20%	EWES	46,781	18%	TECM	42,521	18%	TIAM	41,055	17%
	2	EWES	1,181	22%	AMEM	771	16%	EWES	40,704	18%	EWES	50,301	20%	TECM	45,453	17%	UWCM	34,928	14%	TECM	39,290	16%
	3	AMEM	882	17%	EWES	723	15%	TIAM	26,993	12%	TIAM	34,378	14%	TIAM	36,973	14%	EWES	34,884	14%	AMEM	29,982	12%
	4	SMAM	401	8%	PMWF	521	11%	AMEM	18,460	8%	AMEM	26,328	10%	SMAM	18,671	7%	WCWF	21,915	9%	MODM	26,227	11%
	5	TIAM	349	7%	FOXM	343	7%	SMAM	17,308	8%	FOXM	13,839	5%	FOXM	17,752	7%	TIAM	18,193	8%	FOXM	18,153	7%
XB TOP 5	1	TECM	1,245	22%	TECM	1,478	26%	TECM	43,969	17%	PEAM	68,181	22%	PEAM	54,447	18%	MODM	34,090	15%	TECM	46,757	17%
	2	PEAM	951	17%	UWCM	789	14%	PEAM	43,966	17%	TECM	48,337	15%	TECM	41,194	14%	TECM	33,794	15%	KATS	27,734	10%
	3	EWES	718	13%	EWES	668	12%	EWES	30,639	12%	KATS	28,741	9%	MODM	28,282	9%	PEAM	30,636	13%	FOXM	27,096	10%
	4	UWCM	583	10%	KATS	608	11%	UWCM	24,901	9%	EWES	27,305	9%	EWES	25,981	9%	EWES	22,525	10%	CTXS	22,768	8%
	5	FOXM	399	7%	PEAM	448	8%	KATS	20,772	8%	UWCM	24,830	8%	UWCM	23,318	8%	UWCM	18,968	8%	MODM	21,130	8%
ODDS TOP 5	1	UWCM	672	19%	UWCM	469	14%	UWCM	25,237	16%	UWCM	31,740	16%	MCHA	29,569	16%	FOXM	25,868	13%	MCHA	39,964	20%
	2	EWES	468	13%	TECM	443	14%	TECM	23,966	15%	TECM	22,909	12%	UWCM	29,451	16%	MCHA	23,579	12%	VWPM	30,258	15%
	3	MCHA	441	13%	AMEM	434	13%	FOXM	19,320	12%	FOXM	19,823	10%	TECM	21,880	12%	UWCM	21,008	11%	TECM	23,968	12%
	4	TECM	435	13%	MCHA	389	12%	EWES	17,418	11%	EWES	19,235	10%	EWES	17,792	9%	TECM	20,439	11%	FOXM	21,444	11%
	5	AMEM	317	9%	EWES	348	11%	MCHA	13,272	8%	MCHA	16,141	8%	FOXM	16,585	9%	EWES	18,940	10%	GWEA	10,802	5%
Auction Totals		<u>Bales Sold</u>	<u>\$/Bale</u>		<u>Bales Sold</u>	<u>\$/Bale</u>	<u>Bales Sold</u>	<u>\$/Bale</u>	<u>Bales Sold</u>	<u>\$/Bale</u>	<u>Bales Sold</u>	<u>\$/Bale</u>	<u>Bales Sold</u>	<u>\$/Bale</u>	<u>Bales Sold</u>	<u>\$/Bale</u>	<u>Bales Sold</u>	<u>\$/Bale</u>	<u>Bales Sold</u>	<u>\$/Bale</u>		
		35,139	\$ 2,224		32,722	\$ 2,168	1,419,576	\$1,362	1,659,483	\$1,348	1,607,799	\$1,503	1,558,820	\$1,455	1,652,727	\$1,424						
		<u>Auction Value</u>		<u>Auction Value</u>		<u>Auction Value</u>		<u>Auction Value</u>		<u>Auction Value</u>		<u>Auction Value</u>		<u>Auction Value</u>		<u>Auction Value</u>		<u>Auction Value</u>				
		\$78,150,000		\$70,950,000		\$1,933,603,248		\$2,236,630,000		\$2,416,900,000		\$2,267,750,000		\$2,354,185,590								

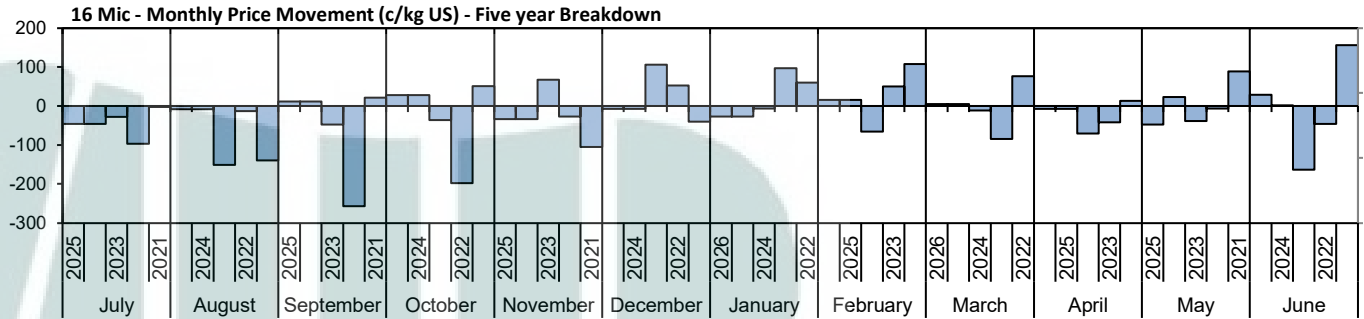
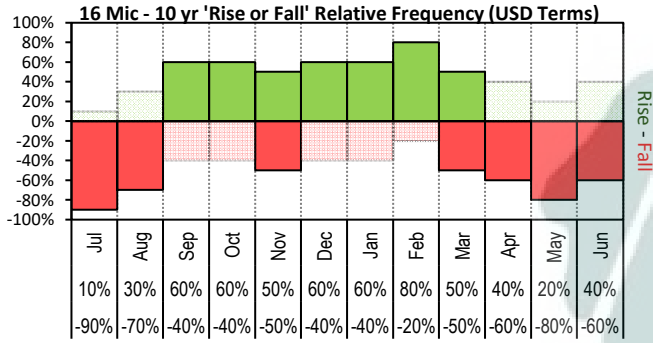


Table 7: NSW Production Statistics

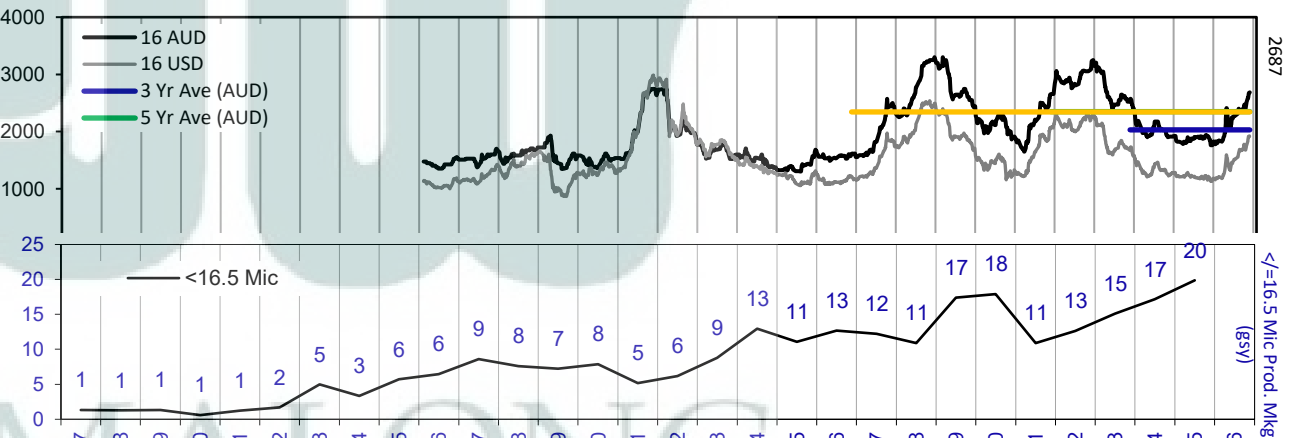
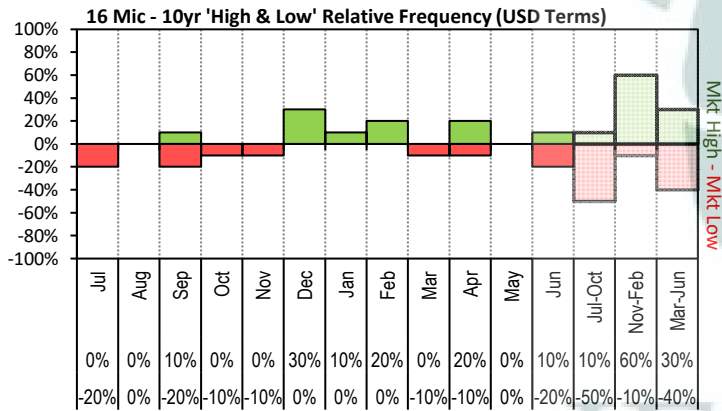
		MAX	MIN	MAX GAIN	MAX REDUCTION												
2024-25																	
Statistical Devision, Area Code & Towns		Auction Bales (FH)	Micron	+/- YoY	Vmb %	+/- YoY	Yield % Sch Dry	+/- YoY	Length mm	+/- YoY	Strength Nkt	+/- YoY	Ave Price c/kg				
Northern	N02 Tenterfield, Glen Innes	5,110	18.8	-0.8	2.1	0.5	70.5	-0.5	84	2.8	40	-2.6	1016				
	N03 Guyra	36,593	20.2	-0.7	2.2	0.4	66.0	-2.4	83	1.3	37	-3.4	926				
	N04 Inverell	3,277	19.0	0.4	3.7	0.4	67.4	-0.5	87	3.6	36	-2.6	846				
	N05 Armidale	543	19.2	0.6	3.3	-1.0	69.8	1.5	85	0.9	38	-0.8	889				
	N06 Tamworth, Gunnedah, Quirindi	4,430	20.3	-0.1	4.2	0.2	66.2	-1.2	85	1.8	41	-0.2	802				
	N07 Moree	2,863	19.5	0.5	5.4	-0.4	60.2	-1.1	91	5.6	37	-0.5	668				
	N08 Narrabri	2,091	19.7	0.7	4.6	-1.2	63.5	0.6	86	4.9	41	-0.2	740				
	North Western & Far West	N09 Cobar, Bourke, Wanaaring	7,005	19.5	0.1	4.7	-0.4	59.4	0.5	90	2.7	38	-1.7	688			
N12 Walgett		8,652	19.3	0.0	6.4	-1.4	60.1	1.0	90	4.4	36	-2.2	676				
N13 Nyngan		16,258	19.6	0.1	6.9	-0.2	59.3	-0.9	89	2.6	39	0.9	659				
N14 Dubbo, Narromine		17,475	21.5	0.5	4.3	0.0	62.5	-0.5	87	2.9	39	0.5	590				
N16 Dunedoo		5,160	20.5	0.4	3.8	0.4	65.8	-0.1	85	1.8	39	1.1	714				
N17 Mudgee, Wellington, Gulgong		18,133	19.9	0.4	2.7	0.0	67.4	-0.5	85	3.6	40	-0.7	847				
N33 Coonabarabran		2,372	20.1	-0.3	4.3	0.3	65.4	-0.3	87	2.4	38	0.1	717				
N34 Coonamble		6,020	20.3	0.2	5.8	0.9	62.3	-0.7	88	2.0	39	2.3	664				
N36 Gilgandra, Gulargambone		5,501	21.2	0.2	4.0	0.0	63.7	-0.7	89	3.5	39	-0.4	647				
N40 Brewarrina		5,860	19.8	0.2	5.8	-0.9	59.6	-0.2	91	3.7	39	-0.2	687				
N10 Wilcannia, Broken Hill	17,987	20.1	0.0	4.1	-0.3	57.7	0.4	93	2.7	37	0.1	660					
Central West	N15 Forbes, Parkes, Cowra	32,103	20.6	0.1	3.1	-0.2	64.6	-0.3	88	3.6	38	-1.6	693				
	N18 Lithgow, Oberon	1,860	22.2	0.0	1.5	0.0	70.8	-0.3	90	5.0	39	-3.6	824				
	N19 Orange, Bathurst	44,594	21.8	-0.1	2.2	0.2	68.3	-0.8	88	3.0	38	-2.0	730				
	N25 West Wyalong	17,602	19.8	-0.1	2.8	-0.3	63.5	-0.3	91	3.5	37	-1.4	730				
	N35 Condobolin, Lake Cargelligo	7,253	20.7	0.3	5.1	-0.8	61.0	0.4	90	6.4	40	1.4	611				
Murrumbidgee	N26 Cootamundra, Temora	22,208	20.9	-0.3	1.8	0.0	64.5	-1.9	90	0.9	36	-2.2	678				
	N27 Adelong, Gundagai	11,481	20.7	-1.0	2.2	0.4	66.2	-2.6	89	0.6	36	-2.6	746				
	N29 Wagga, Narrandera	30,930	21.4	-0.3	2.0	-0.1	63.5	-1.8	88	-0.7	35	-2.9	647				
	N37 Griffith, Hillston	10,676	21.0	-0.3	4.0	-1.3	63.0	1.4	88	5.0	41	-1.6	651				
	N39 Hay, Coleambally	18,427	20.0	0.0	4.2	-2.1	63.4	1.4	88	1.6	41	-0.5	740				
Murray	N11 Wentworth, Balranald	12,070	20.8	0.2	5.3	-1.2	60.2	1.6	94	1.5	38	1.6	635				
	N28 Albury, Corowa, Holbrook	27,445	21.0	-0.5	1.5	0.0	64.4	-2.9	85	-1.8	35	-3.9	725				
	N31 Deniliquin	21,720	20.5	-0.2	3.2	-1.0	64.9	0.3	90	2.5	37	-3.2	710				
	N38 Finley, Berrigan, Jerilderie	8,139	20.0	0.1	2.6	-1.0	64.6	0.1	87	2.1	40	-0.5	762				
South Eastern	N23 Goulburn, Young, Yass	95,490	19.8	-0.2	1.7	0.2	68.3	-1.3	88	0.9	37	-1.5	851				
	N24 Monaro (Cooma, Bombala)	28,406	19.2	-0.3	1.4	-0.2	70.1	-0.4	90	1.1	36	-0.8	911				
	N32 A.C.T.	214	18.8	1.2	1.8	0.6	67.1	-4.6	88	2.1	35	-3.9	871				
	N43 South Coast (Bega)	279	18.4	-0.2	1.1	0.3	74.3	-0.2	86	-2.1	40	-4.3	1099				
NSW	AWEX Sale Statistics 24-25	612,559	20.4	-0.2	2.8	-0.1	65.3	-0.9	88	1.8	38	-1.3	773				
AWTA Mthly Key Test Data		Bales Tested	+/- YoY	Micron	+/- YoY	VMB	+/- YoY	Yld	+/- YoY	Lth	+/- YoY	Nkt	+/- YoY	POBM +/-			
AUSTRALIA	Current Season	March Y.T.D	149,424	-17,142	20.7	0.2	2.6	0.2	62.2	-0.5	85	0.3	33	0.9	45 -2.2		
	Previous Seasons	2024-25	1,166,742	-122,801	20.5	0.0	2.2	0.0	64.1	-0.6	88	0.0	33	0.0	46 0.0		
	2023-24	1,289,543	-129,206	20.5	-0.3	2.2	0.0	64.7	-1.1	88	0.0	33	-2.0	46 -4.0			
	2022-23	1,418,749	-42,870	20.8	0.0	2.2	0.0	65.8	-0.6	88	-2.0	35	0.0	50 -2.0			
	Y.T.D.	2022-23	1,461,619	36,767	20.8	-0.1	2.2	0.0	66.4	1.1	90	1.0	35	-0.1	48 -0.4		

### Average Price of Australian Wool

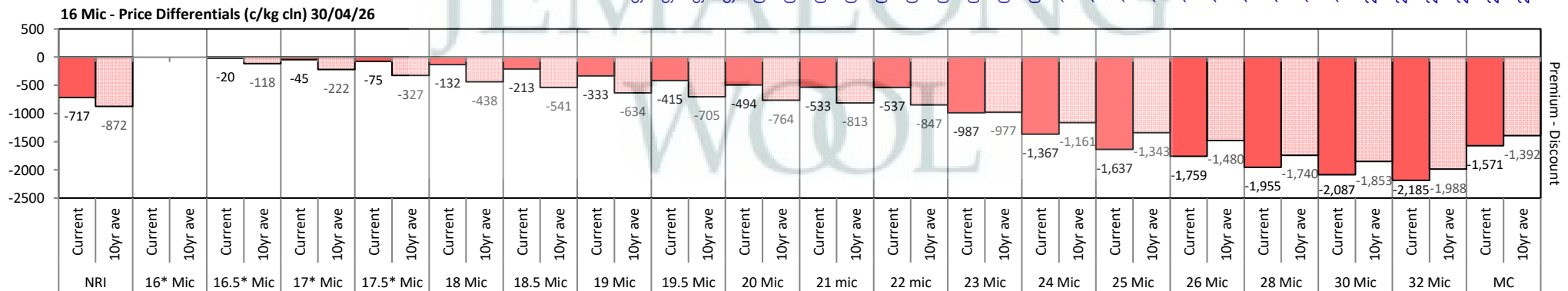


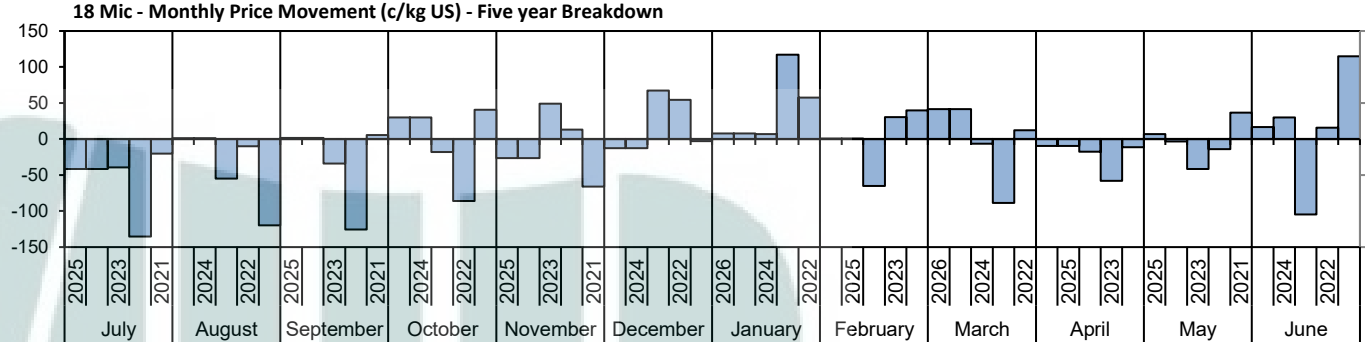
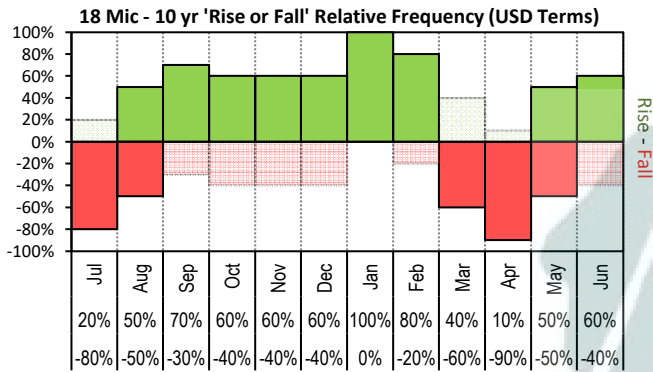


The above 'Rise or Fall' graph, shows how often the market has risen or fallen in a given month over the past 10 years, it does not show the extent of the movement only the frequency of direction. The 'Monthly Price Movement' graph shows the extent of movement for each month, for the past 5 years.

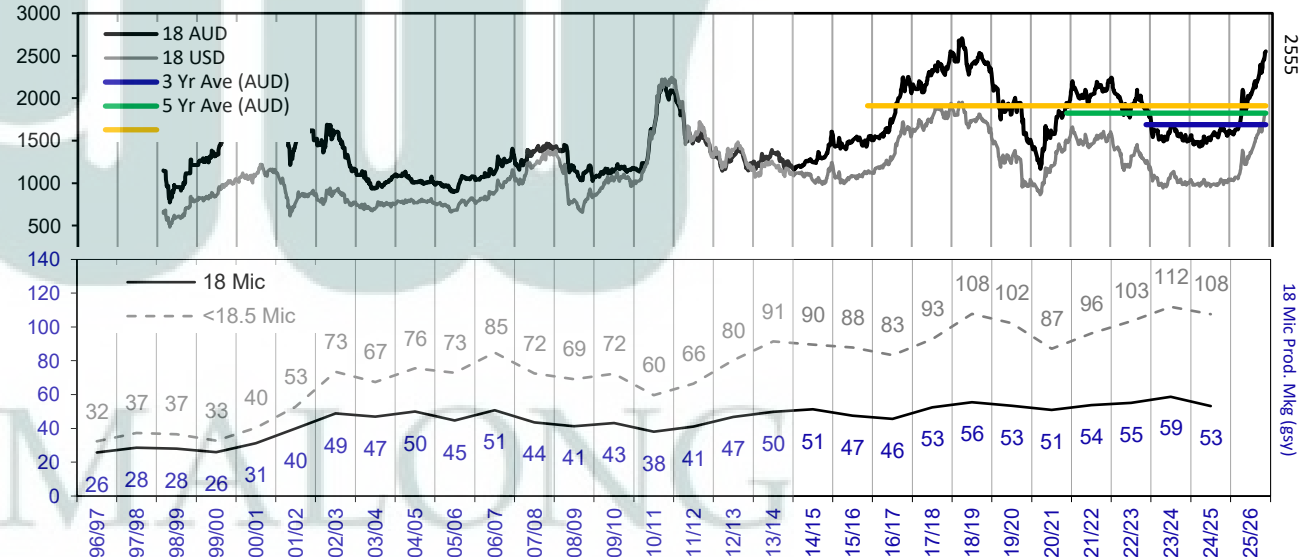
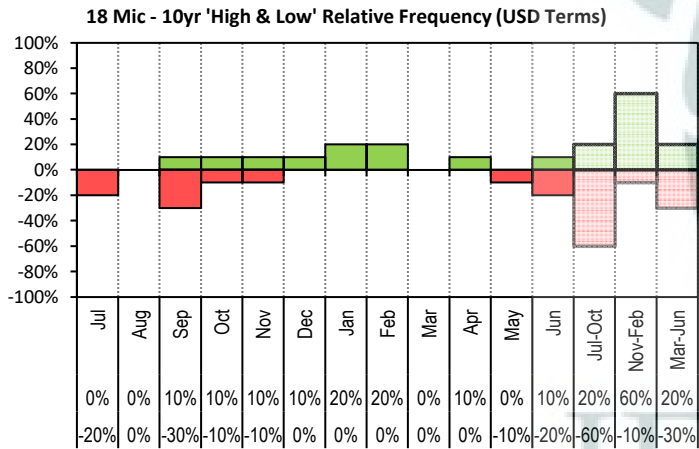


The above graph, shows how often the '12 month high & low' have been achieved for a

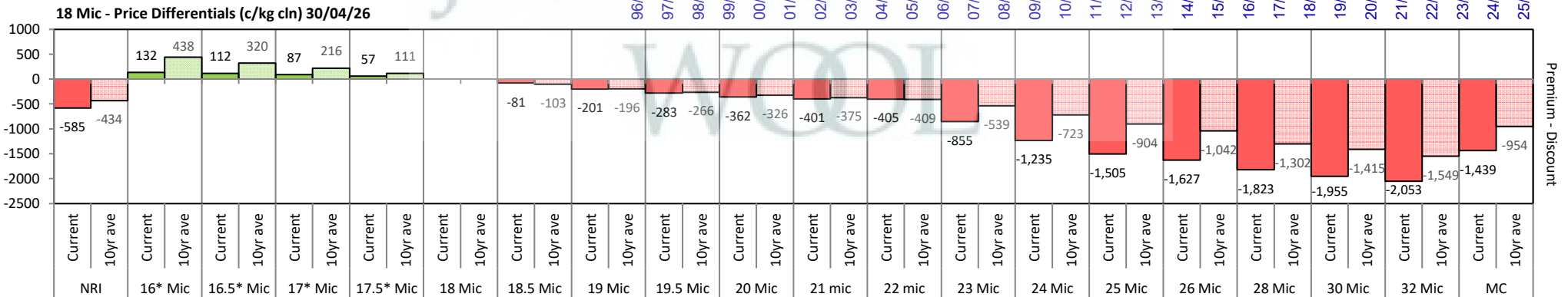


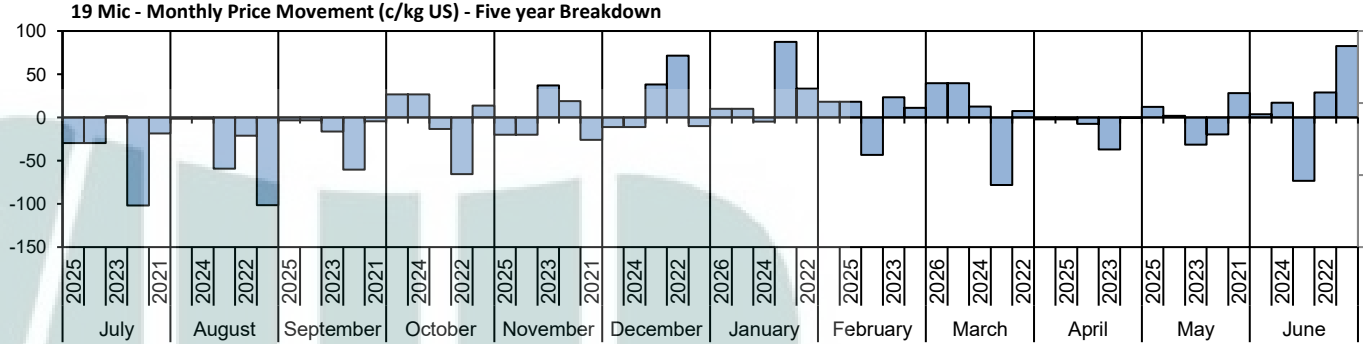
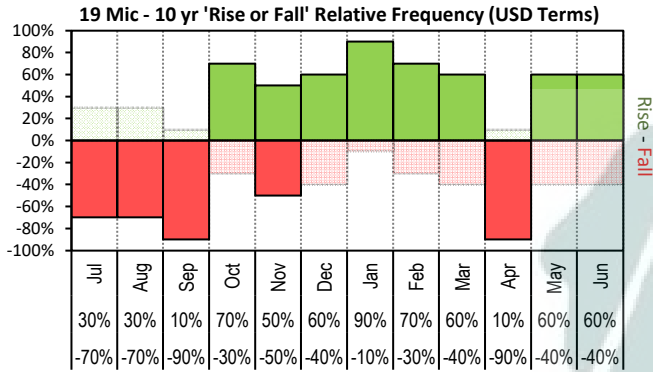


The above 'Rise or Fall' graph, shows how often the market has risen or fallen in a given month over the past 10 years, it does not show the extent of the movement only the frequency of direction. The 'Monthly Price Movement' graph shows the extent of movement for each month, for the past 5 years.

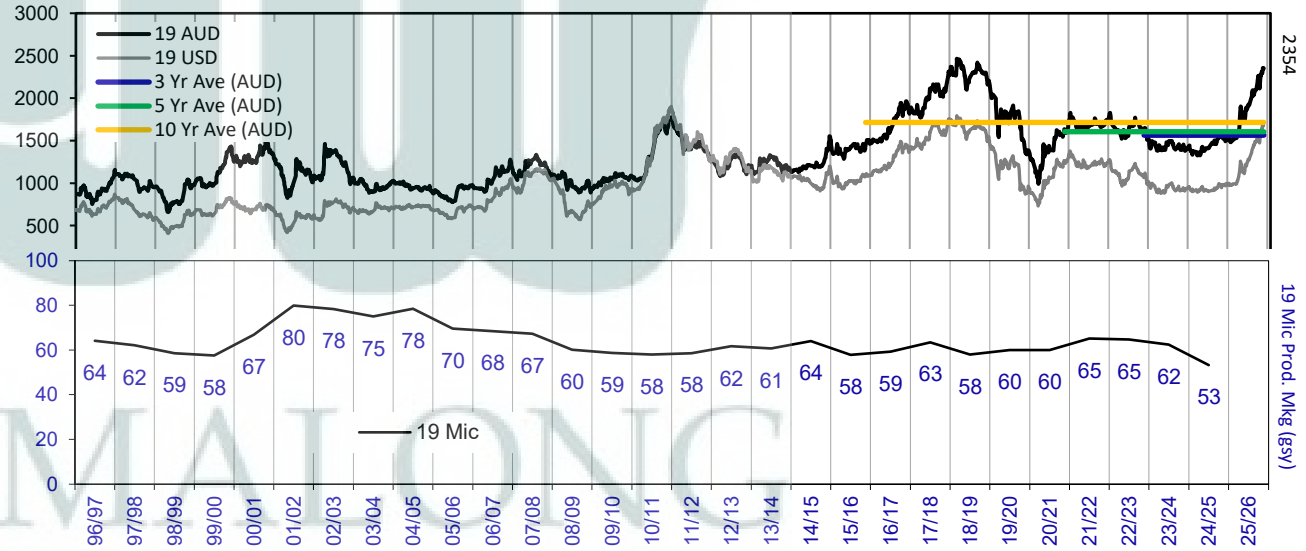
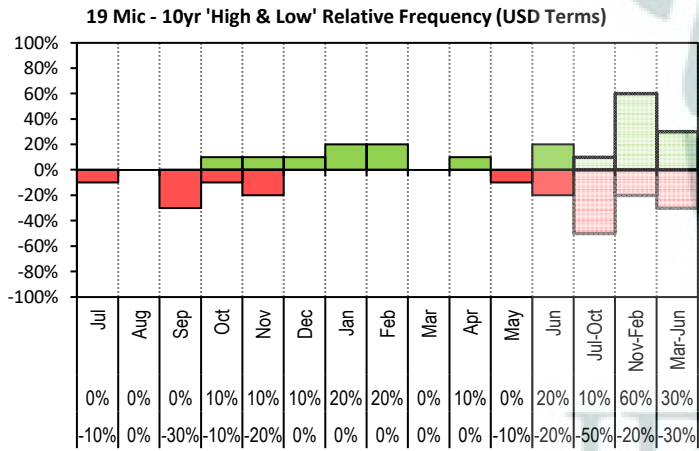


The above graph, shows how often the '12 month high & low' have been achieved for a given month over the past 10 years. It is not a measure of probability.

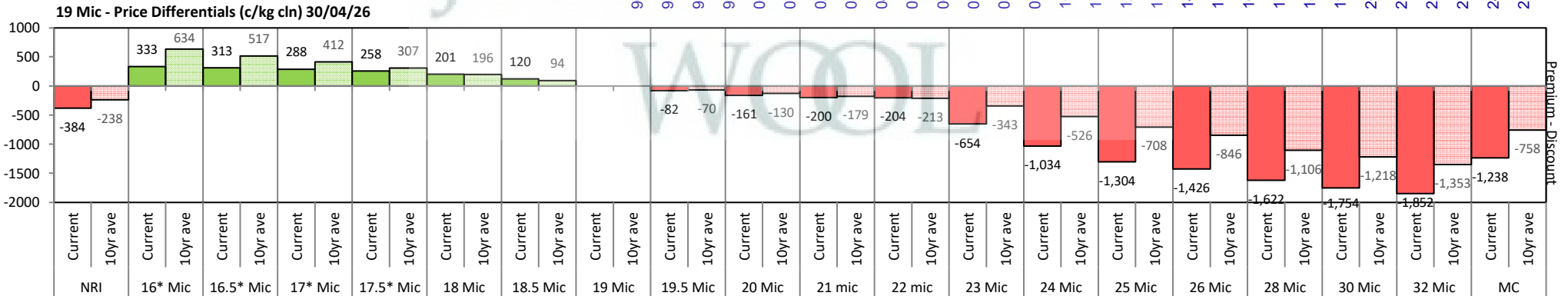


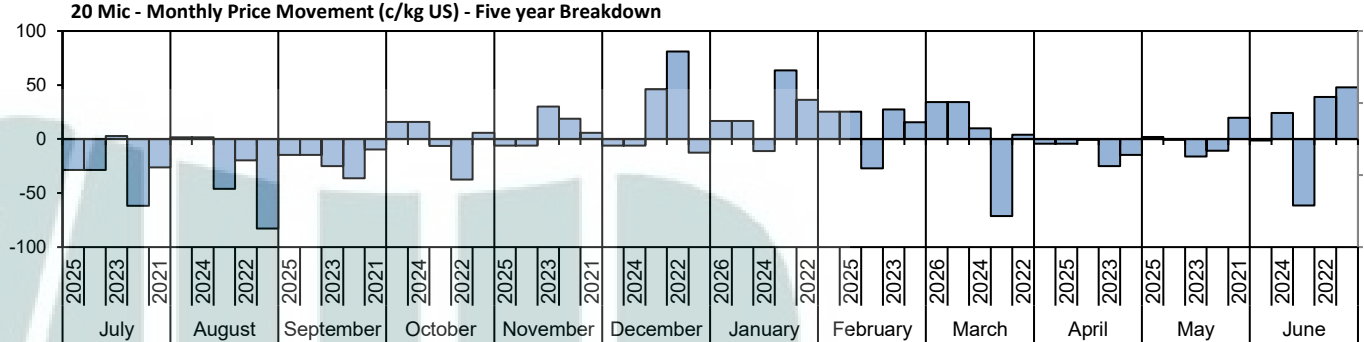
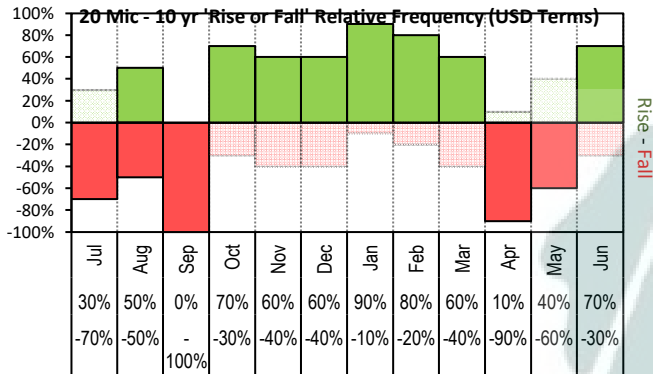


The above 'Rise or Fall' graph, shows how often the market has risen or fallen in a given month over the past 10 years, it does not show the extent of the movement only the frequency of direction. The 'Monthly Price Movement' graph shows the extent of movement for each month, for the past 5 years.

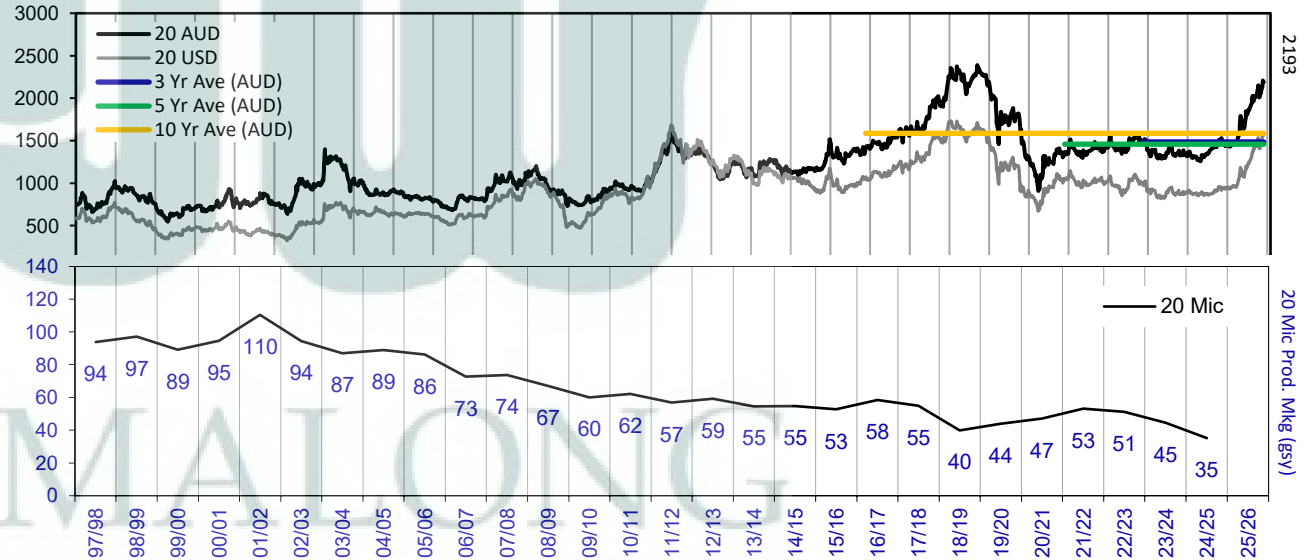
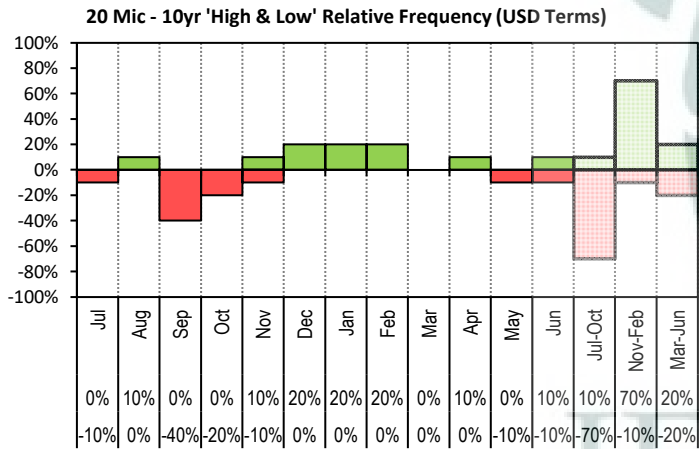


The above graph, shows how often the '12 month high & low' have been achieved for a given month over the past 10 years. It is not a measure of probability.

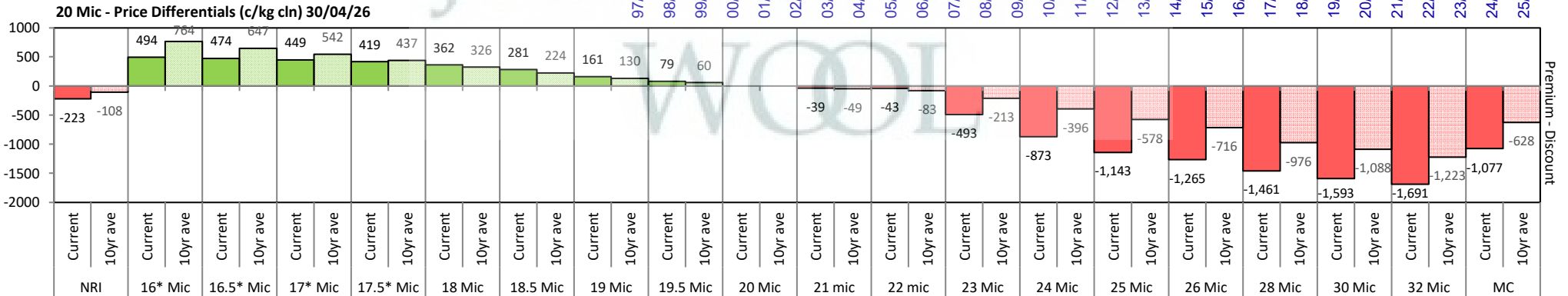


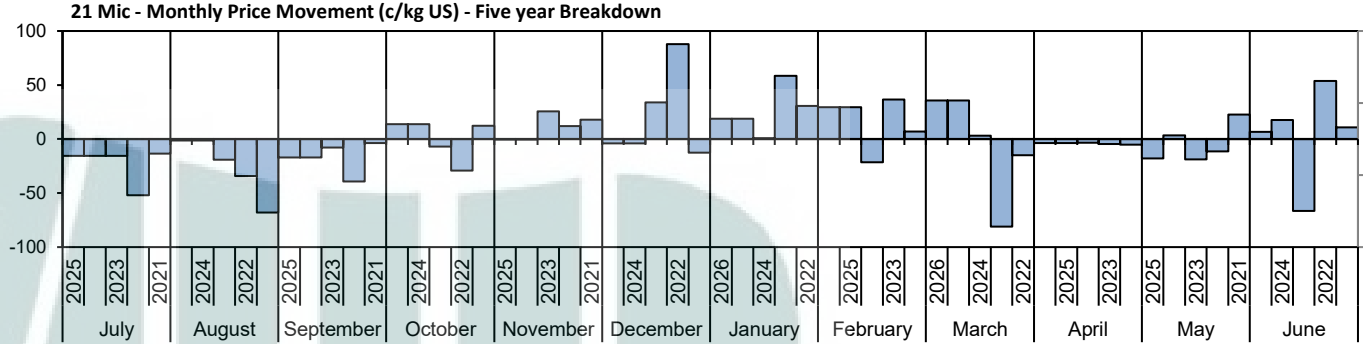
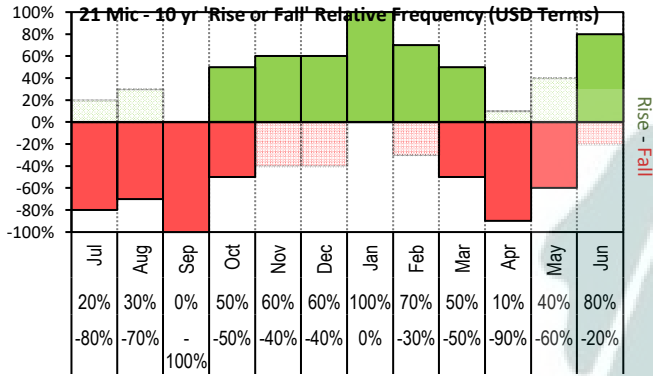


The above 'Rise or Fall' graph, shows how often the market has risen or fallen in a given month over the past 10 years, it does not show the extent of the movement only the frequency of direction. The 'Monthly Price Movement' graph shows the extent of movement for each month, for the past 5 years.

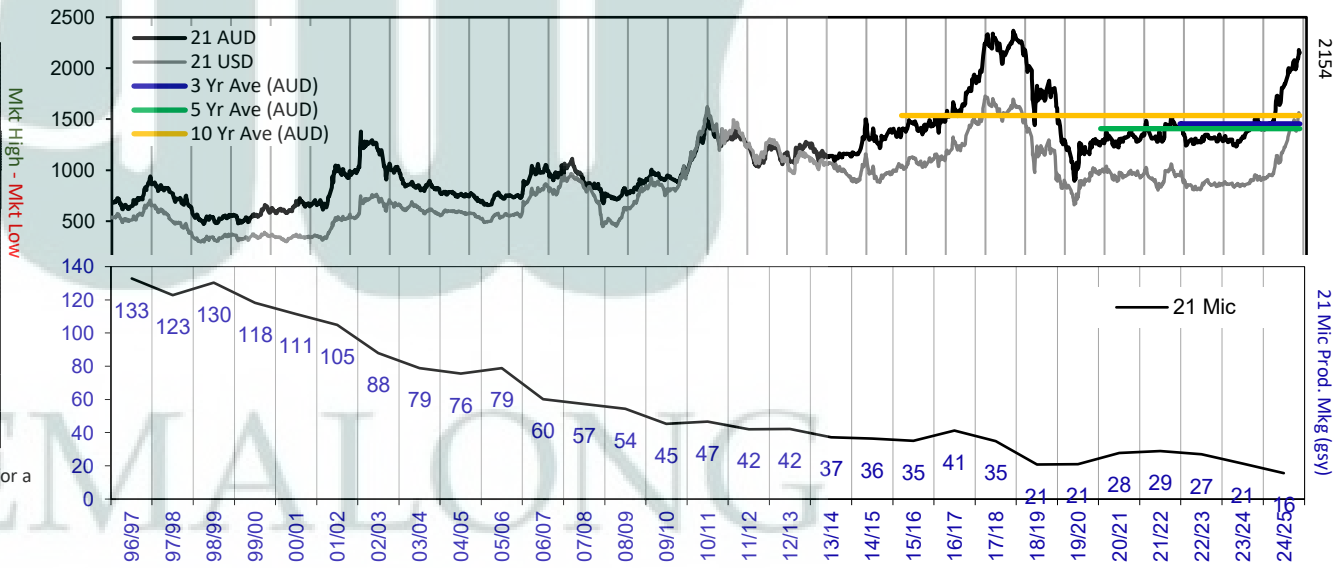
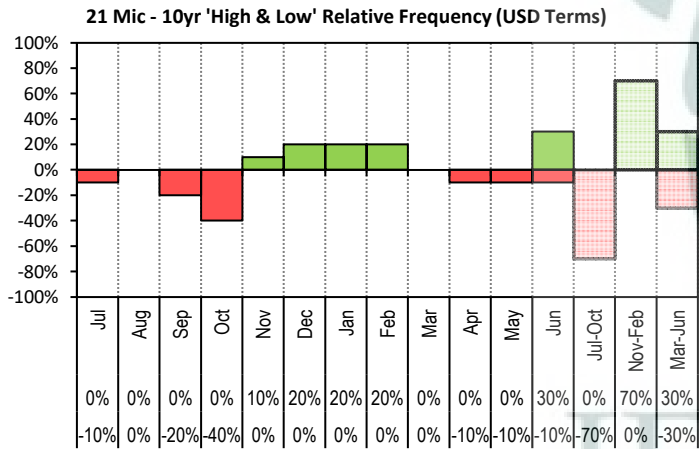


The above graph, shows how often the '12 month high & low' have been achieved for a given month over the past 10 years. It is not a measure of probability.

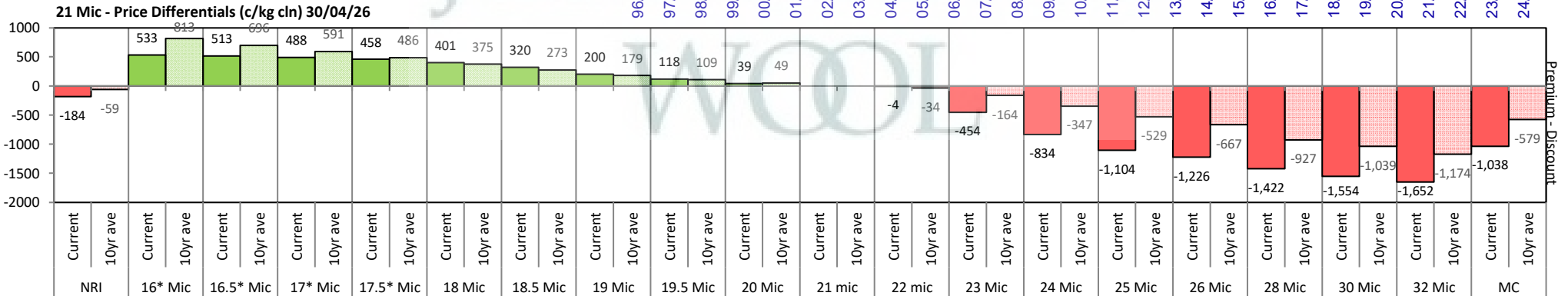


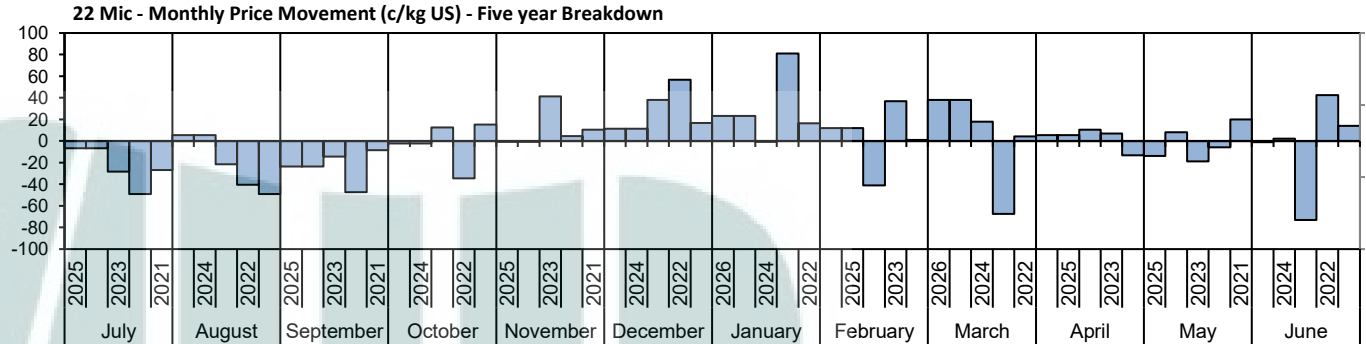
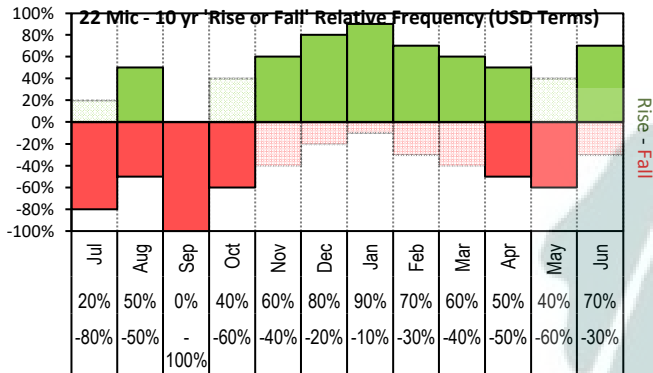


The above 'Rise or Fall' graph, shows how often the market has risen or fallen in a given month over the past 10 years, it does not show the extent of the movement only the frequency of direction. The 'Monthly Price Movement' graph shows the extent of movement for each month, for the past 5 years.

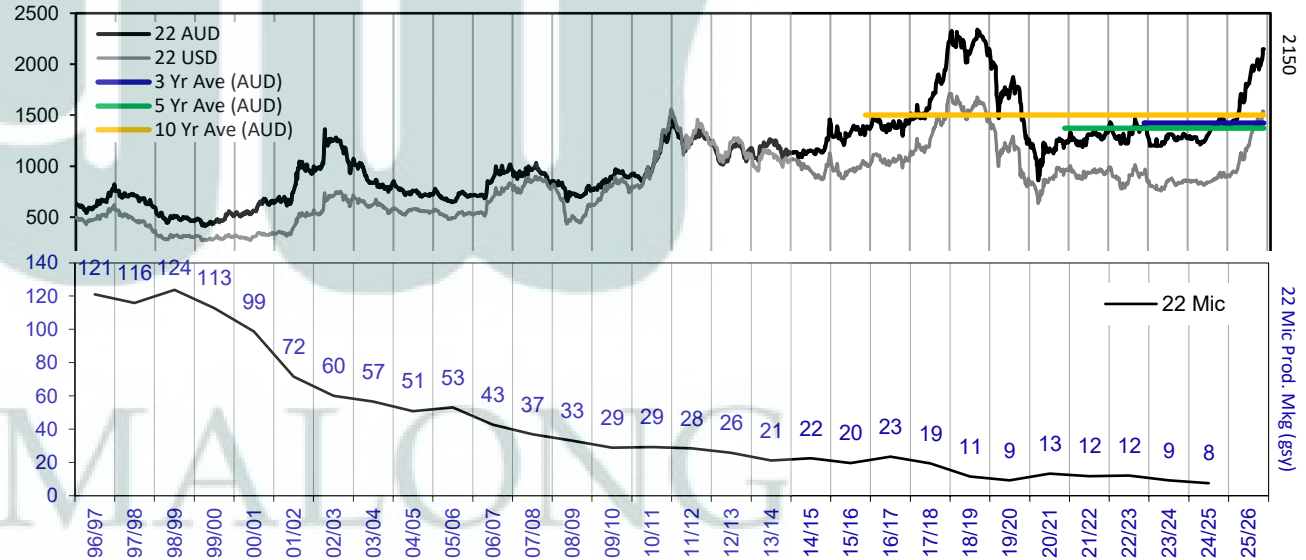
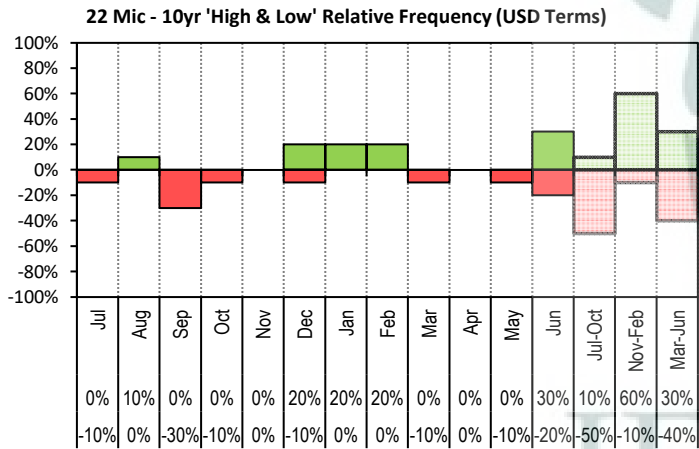


The above graph, shows how often the '12 month high & low' have been achieved for a given month over the past 10 years. It is not a measure of probability.

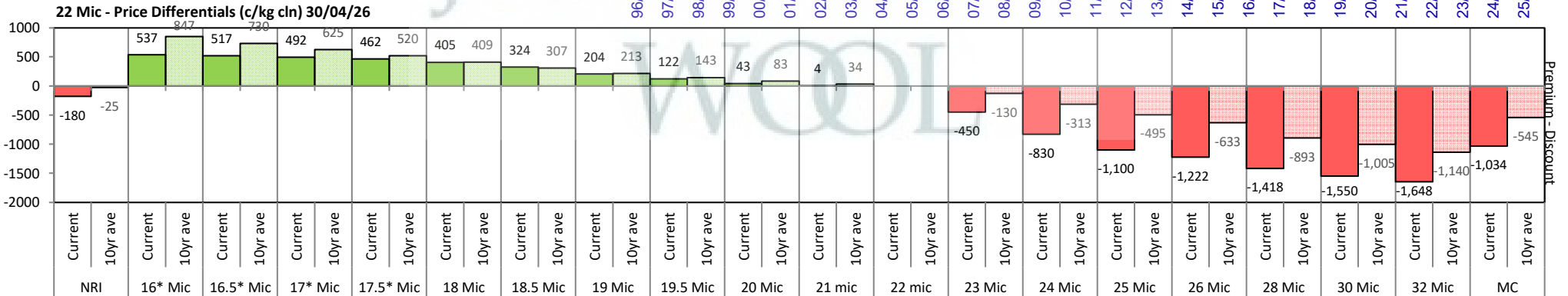


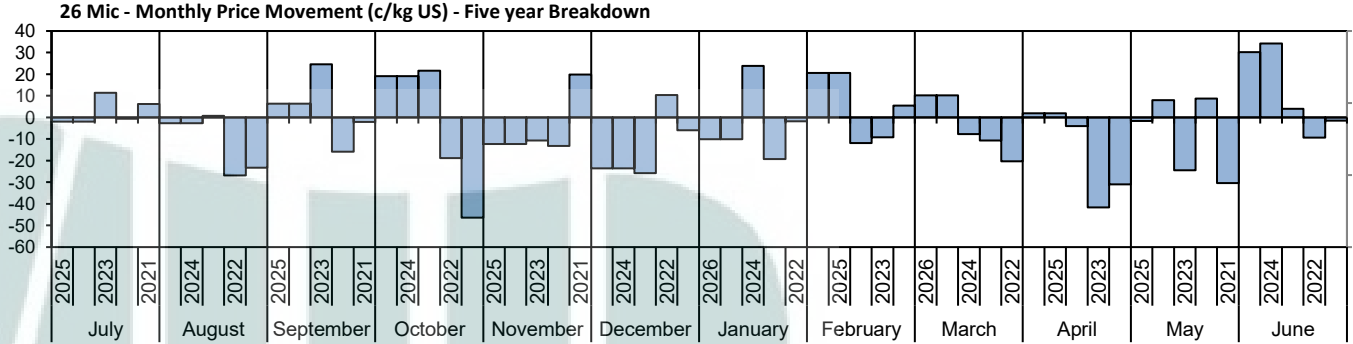
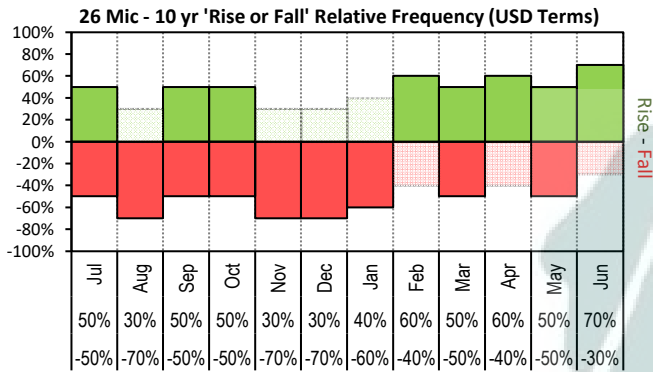


The above 'Rise or Fall' graph, shows how often the market has risen or fallen in a given month over the past 10 years, it does not show the extent of the movement only the frequency of direction. The 'Monthly Price Movement' graph shows the extent of movement for each month, for the past 5 years.

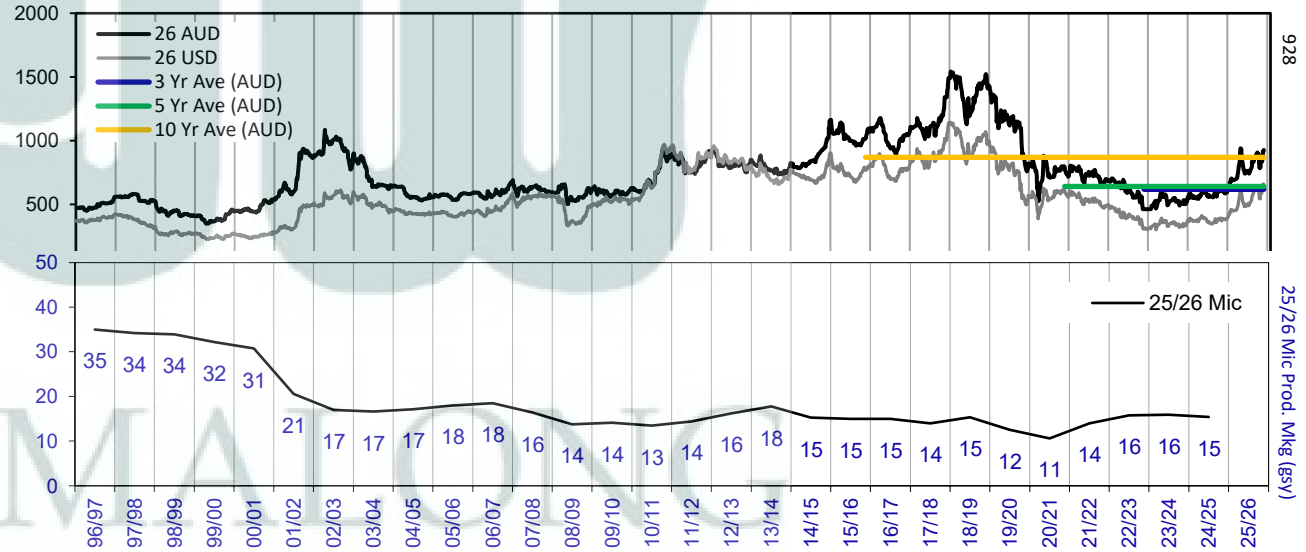
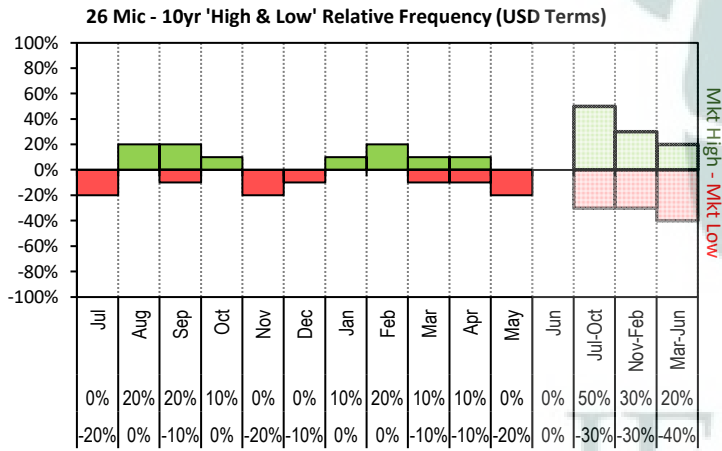


The above graph, shows how often the '12 month high & low' have been achieved for a given month over the past 10 years. It is not a measure of probability.

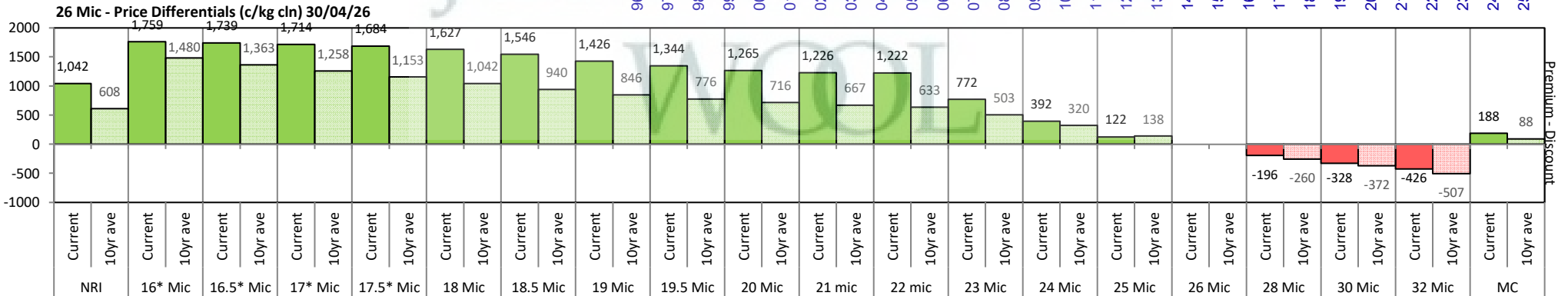


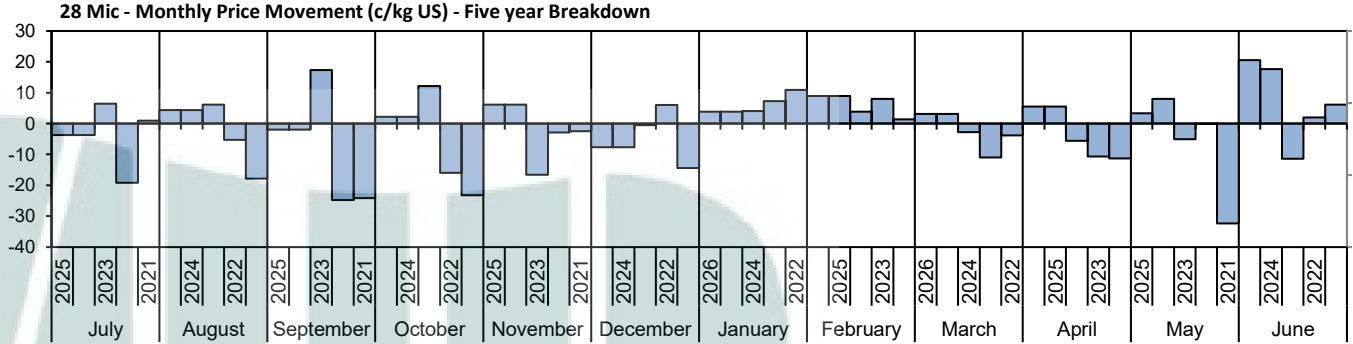
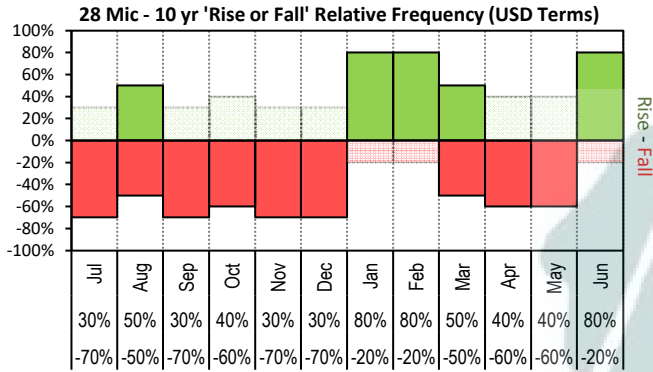


The above 'Rise or Fall' graph, shows how often the market has risen or fallen in a given month over the past 10 years, it does not show the extent of the movement only the frequency of direction. The 'Monthly Price Movement' graph shows the extent of movement for each month, for the past 5 years.

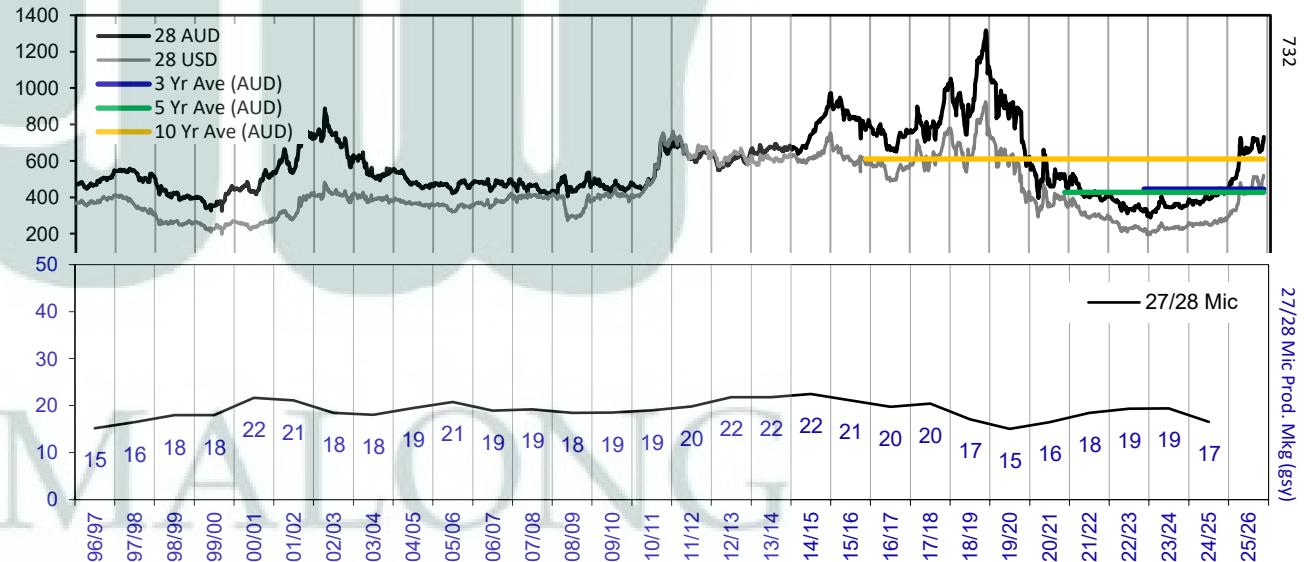
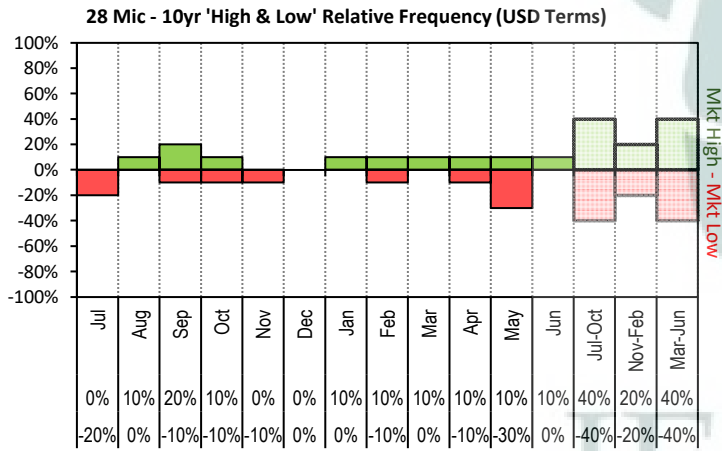


The above graph, shows how often the '12 month high & low' have been achieved for a given month over the past 10 years. It is not a measure of probability.

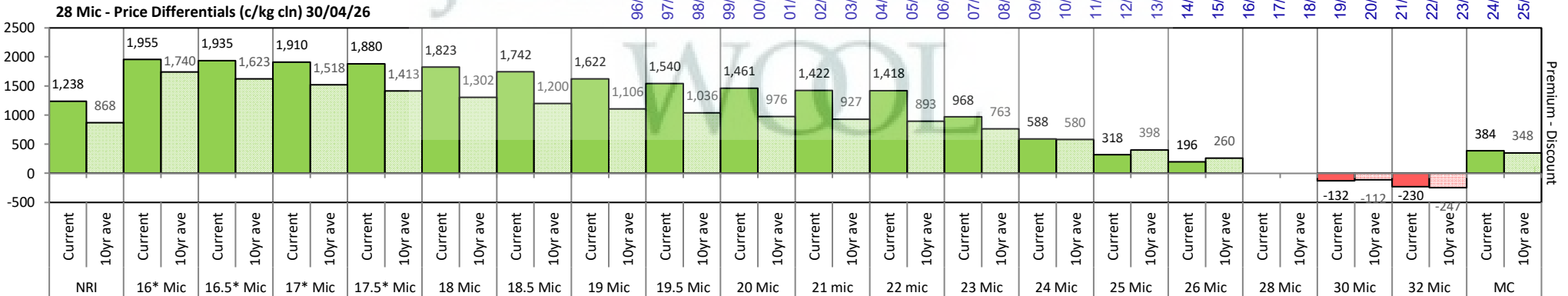


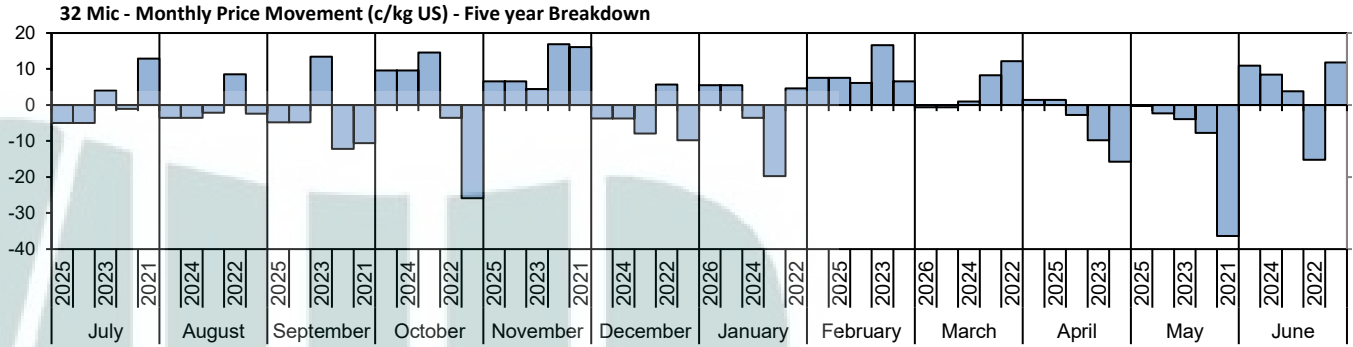
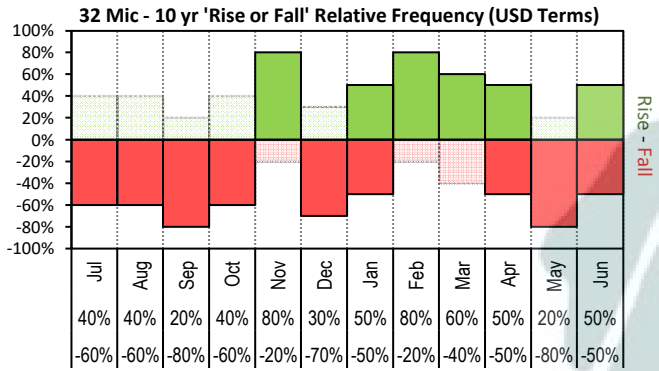


The above 'Rise or Fall' graph, shows how often the market has risen or fallen in a given month over the past 10 years, it does not show the extent of the movement only the frequency of direction. The 'Monthly Price Movement' graph shows the extent of movement for each month, for the past 5 years.

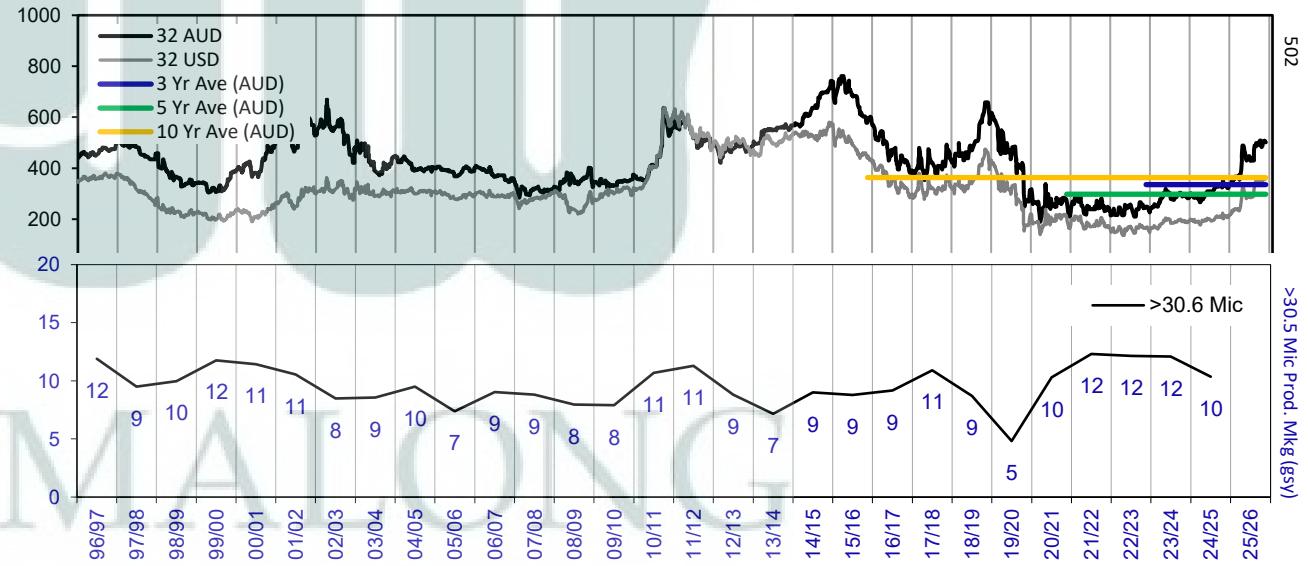
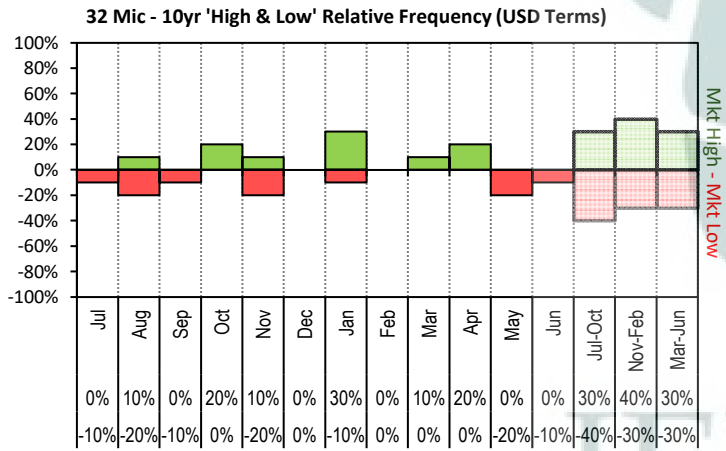


The above graph, shows how often the '12 month high & low' have been achieved for a given month over the past 10 years. It is not a measure of probability.

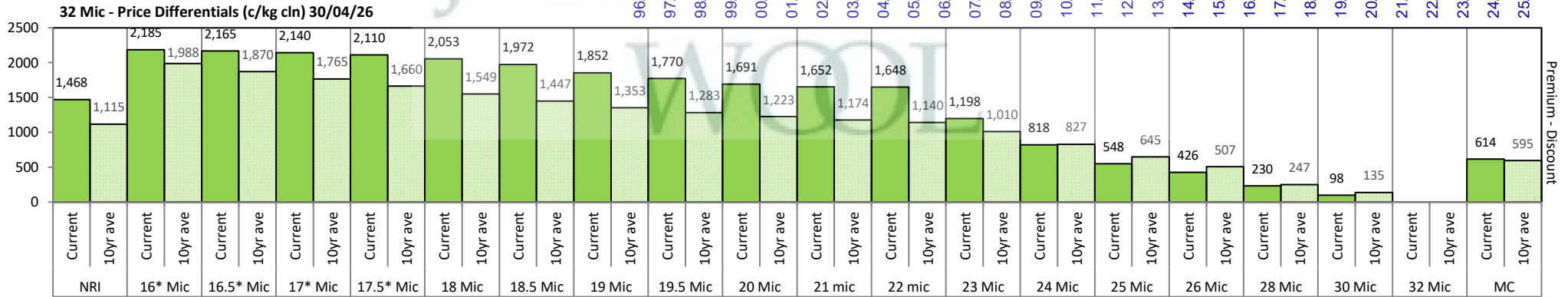


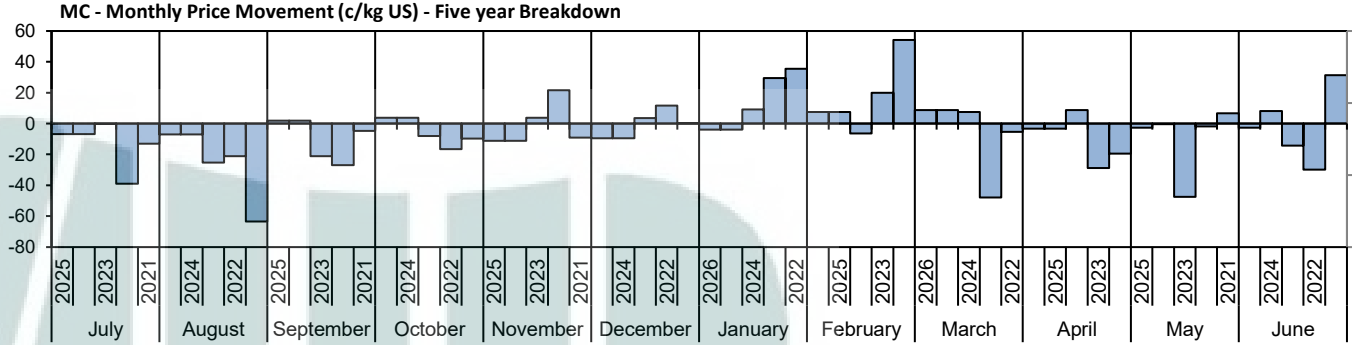
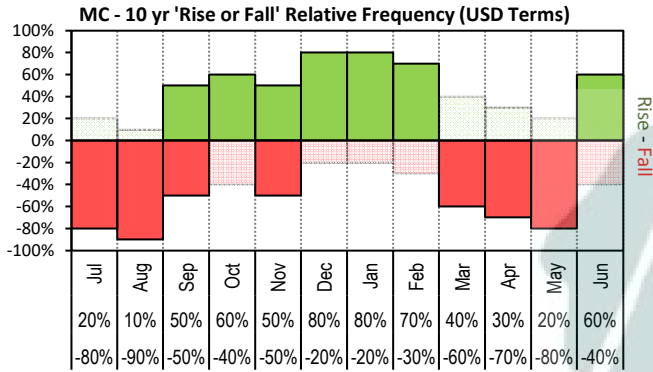


The above 'Rise or Fall' graph, shows how often the market has risen or fallen in a given month over the past 10 years, it does not show the extent of the movement only the frequency of direction. The 'Monthly Price Movement' graph shows the extent of movement for each month, for the past 5 years.

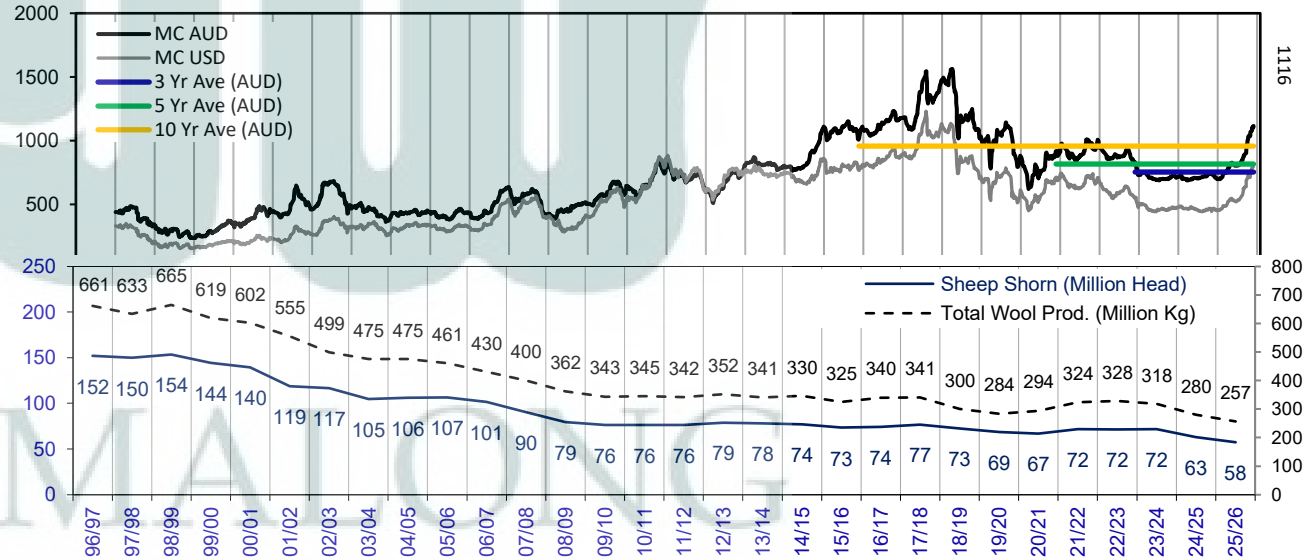
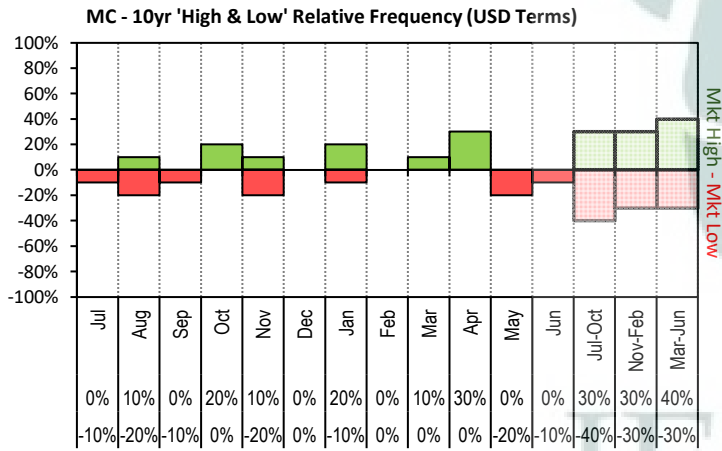


The above graph, shows how often the '12 month high & low' have been achieved for a given month over the past 10 years. It is not a measure of probability.

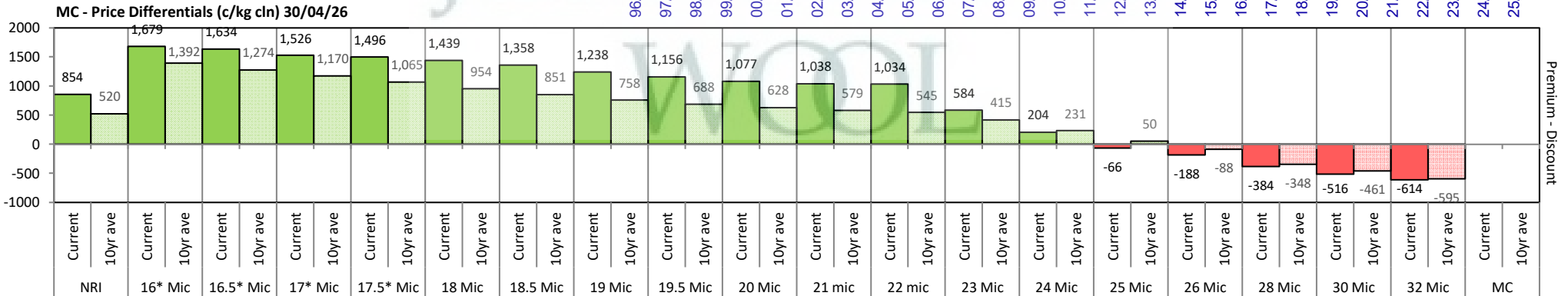




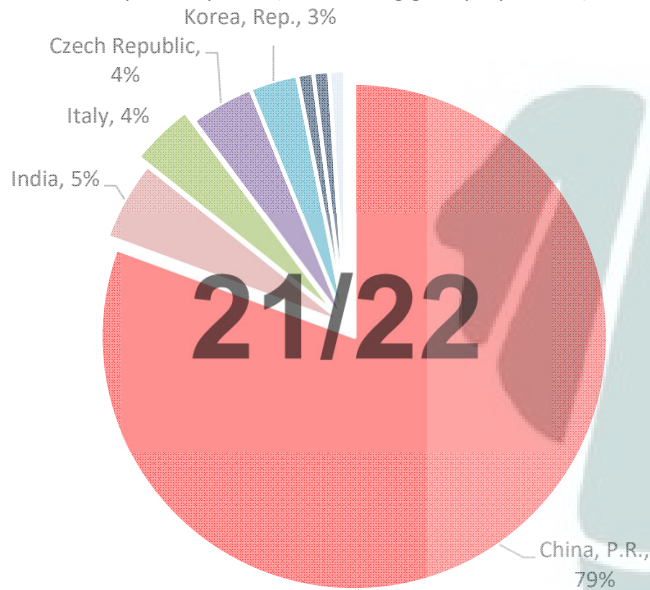
The above 'Rise or Fall' graph, shows how often the market has risen or fallen in a given month over the past 10 years, it does not show the extent of the movement only the frequency of direction. The 'Monthly Price Movement' graph shows the extent of movement for each month, for the past 5 years.



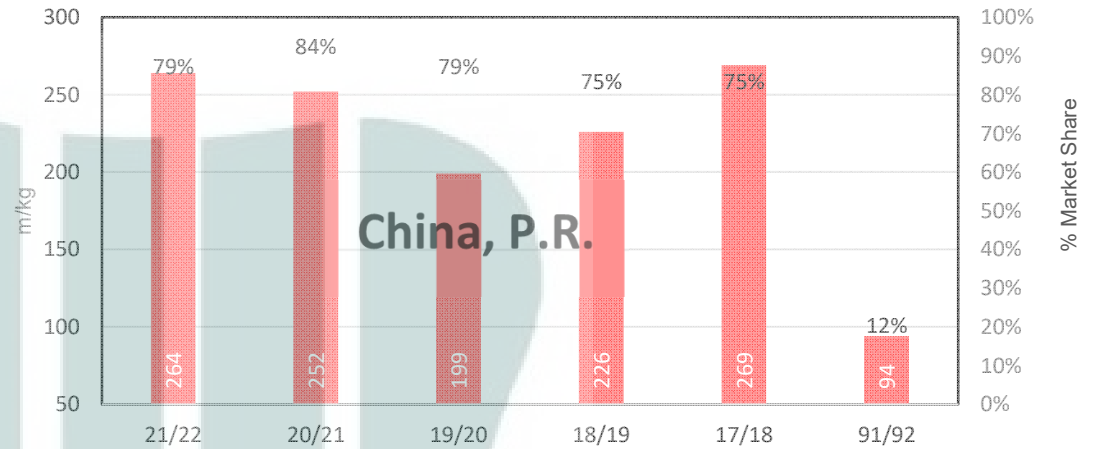
The above graph, shows how often the '12 month high & low' have been achieved for a given month over the past 10 years. It is not a measure of probability.



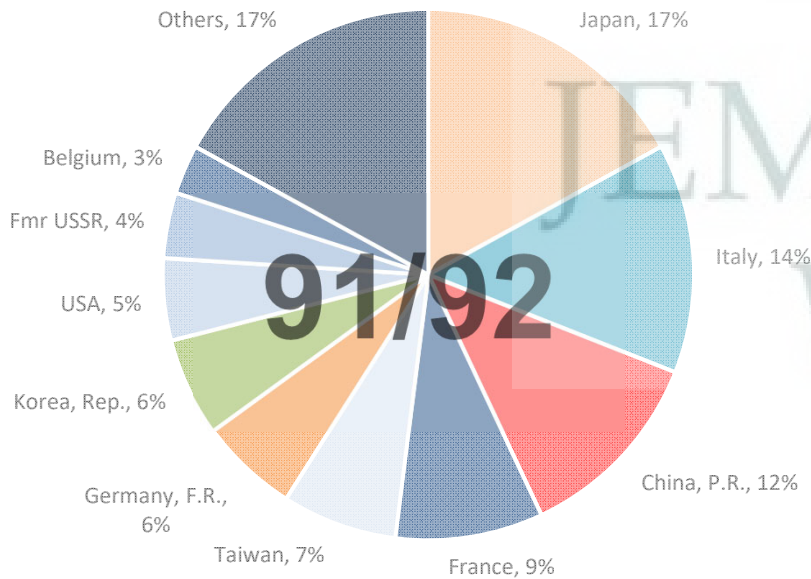
21/22 - Export Snap Shot (335.46 m/kg greasy equivalent)



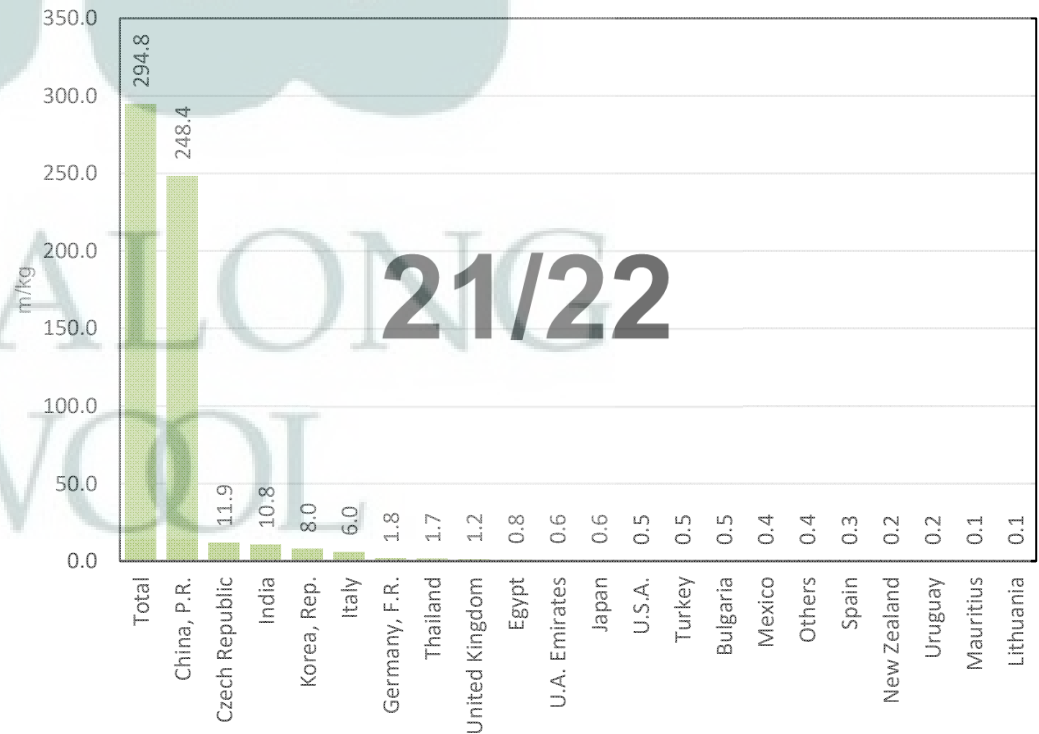
China, P.R. (Largest Market Share)



91/92 - Export Snap Shot (784.7 m/kg greasy equivalent)



Seasonal Change m/kg



**Table 8: Returns pr head for skirted fleece wool.**

Skirted FLC Weight <b>9 Kg</b>		Micron																	
		16	16.5	17	17.5	18	18.5	19	19.5	20	21	22	23	24	25	26	28	30	32
Yield (Sch Dry)	25% Current	\$60	\$60	\$59	\$59	\$57	\$56	\$53	\$51	\$49	\$48	\$48	\$38	\$30	\$24	\$21	\$16	\$14	\$11
	10yr ave.	\$53	\$50	\$48	\$46	\$43	\$41	\$39	\$37	\$36	\$35	\$34	\$31	\$27	\$23	\$20	\$14	\$11	\$8
	30% Current	\$73	\$72	\$71	\$71	\$69	\$67	\$64	\$61	\$59	\$58	\$58	\$46	\$36	\$28	\$25	\$20	\$16	\$14
	10yr ave.	\$63	\$60	\$57	\$55	\$52	\$49	\$46	\$44	\$43	\$42	\$41	\$37	\$32	\$27	\$24	\$16	\$13	\$10
	35% Current	\$85	\$84	\$83	\$82	\$80	\$78	\$74	\$72	\$69	\$68	\$68	\$54	\$42	\$33	\$29	\$23	\$19	\$16
	10yr ave.	\$74	\$70	\$67	\$64	\$60	\$57	\$54	\$52	\$50	\$48	\$47	\$43	\$38	\$32	\$27	\$19	\$16	\$11
	40% Current	\$97	\$96	\$95	\$94	\$92	\$89	\$85	\$82	\$79	\$78	\$77	\$61	\$48	\$38	\$33	\$26	\$22	\$18
	10yr ave.	\$85	\$80	\$77	\$73	\$69	\$65	\$62	\$59	\$57	\$55	\$54	\$49	\$43	\$36	\$31	\$22	\$18	\$13
	45% Current	\$109	\$108	\$107	\$106	\$103	\$100	\$95	\$92	\$89	\$87	\$87	\$69	\$53	\$43	\$38	\$30	\$24	\$20
	10yr ave.	\$95	\$91	\$86	\$82	\$78	\$73	\$70	\$67	\$64	\$62	\$61	\$56	\$48	\$41	\$35	\$25	\$20	\$15
	50% Current	\$121	\$120	\$119	\$118	\$115	\$111	\$106	\$102	\$99	\$97	\$97	\$77	\$59	\$47	\$42	\$33	\$27	\$23
	10yr ave.	\$106	\$101	\$96	\$91	\$86	\$81	\$77	\$74	\$71	\$69	\$68	\$62	\$54	\$45	\$39	\$27	\$22	\$16
	55% Current	\$133	\$132	\$131	\$129	\$126	\$122	\$117	\$112	\$109	\$107	\$106	\$84	\$65	\$52	\$46	\$36	\$30	\$25
	10yr ave.	\$116	\$111	\$105	\$100	\$95	\$90	\$85	\$82	\$79	\$76	\$74	\$68	\$59	\$50	\$43	\$30	\$25	\$18
	60% Current	\$145	\$144	\$143	\$141	\$138	\$134	\$127	\$123	\$118	\$116	\$116	\$92	\$71	\$57	\$50	\$40	\$32	\$27
	10yr ave.	\$127	\$121	\$115	\$109	\$103	\$98	\$93	\$89	\$86	\$83	\$81	\$74	\$64	\$54	\$47	\$33	\$27	\$20
	65% Current	\$157	\$156	\$155	\$153	\$149	\$145	\$138	\$133	\$128	\$126	\$126	\$99	\$77	\$61	\$54	\$43	\$35	\$29
	10yr ave.	\$137	\$131	\$125	\$118	\$112	\$106	\$100	\$96	\$93	\$90	\$88	\$80	\$70	\$59	\$51	\$36	\$29	\$21
	70% Current	\$169	\$168	\$166	\$165	\$161	\$156	\$148	\$143	\$138	\$136	\$135	\$107	\$83	\$66	\$58	\$46	\$38	\$32
10yr ave.	\$148	\$141	\$134	\$128	\$121	\$114	\$108	\$104	\$100	\$97	\$95	\$87	\$75	\$64	\$55	\$38	\$31	\$23	
75% Current	\$181	\$180	\$178	\$176	\$172	\$167	\$159	\$153	\$148	\$145	\$145	\$115	\$89	\$71	\$63	\$49	\$41	\$34	
10yr ave.	\$158	\$151	\$144	\$137	\$129	\$122	\$116	\$111	\$107	\$104	\$102	\$93	\$80	\$68	\$59	\$41	\$34	\$25	
80% Current	\$193	\$192	\$190	\$188	\$184	\$178	\$169	\$164	\$158	\$155	\$155	\$122	\$95	\$76	\$67	\$53	\$43	\$36	
10yr ave.	\$169	\$161	\$153	\$146	\$138	\$130	\$124	\$119	\$114	\$111	\$108	\$99	\$86	\$73	\$63	\$44	\$36	\$26	
85% Current	\$206	\$204	\$202	\$200	\$195	\$189	\$180	\$174	\$168	\$165	\$164	\$130	\$101	\$80	\$71	\$56	\$46	\$38	
10yr ave.	\$180	\$171	\$163	\$155	\$146	\$139	\$131	\$126	\$121	\$118	\$115	\$105	\$91	\$77	\$67	\$47	\$38	\$28	

The above shows estimated returns per head for skirted fleece wool. These figures do not take into account the value of skirtings and oddments and do not take into account discounts that may apply for faults under individual circumstances. These figures are based on a market index of 100% and should be used as a guide only. Returns over \$30 / head for fleece wool are highlighted.

**Table 9: Returns pr head for skirted fleece wool.**

Skirted FLC Weight <b>8 Kg</b>		Micron																	
		16	16.5	17	17.5	18	18.5	19	19.5	20	21	22	23	24	25	26	28	30	32
Yield (Sch Dry)	25% Current	\$54	\$53	\$53	\$52	\$51	\$49	\$47	\$45	\$44	\$43	\$43	\$34	\$26	\$21	\$19	\$15	\$12	\$10
	10yr ave.	\$47	\$45	\$43	\$40	\$38	\$36	\$34	\$33	\$32	\$31	\$30	\$27	\$24	\$20	\$17	\$12	\$10	\$7
	30% Current	\$64	\$64	\$63	\$63	\$61	\$59	\$56	\$55	\$53	\$52	\$52	\$41	\$32	\$25	\$22	\$18	\$14	\$12
	10yr ave.	\$56	\$54	\$51	\$49	\$46	\$43	\$41	\$40	\$38	\$37	\$36	\$33	\$29	\$24	\$21	\$15	\$12	\$9
	35% Current	\$75	\$75	\$74	\$73	\$72	\$69	\$66	\$64	\$61	\$60	\$60	\$48	\$37	\$29	\$26	\$20	\$17	\$14
	10yr ave.	\$66	\$63	\$60	\$57	\$54	\$51	\$48	\$46	\$44	\$43	\$42	\$38	\$33	\$28	\$24	\$17	\$14	\$10
	40% Current	\$86	\$85	\$85	\$84	\$82	\$79	\$75	\$73	\$70	\$69	\$69	\$54	\$42	\$34	\$30	\$23	\$19	\$16
	10yr ave.	\$75	\$72	\$68	\$65	\$61	\$58	\$55	\$53	\$51	\$49	\$48	\$44	\$38	\$32	\$28	\$20	\$16	\$12
	45% Current	\$97	\$96	\$95	\$94	\$92	\$89	\$85	\$82	\$79	\$78	\$77	\$61	\$48	\$38	\$33	\$26	\$22	\$18
	10yr ave.	\$85	\$80	\$77	\$73	\$69	\$65	\$62	\$59	\$57	\$55	\$54	\$49	\$43	\$36	\$31	\$22	\$18	\$13
	50% Current	\$107	\$107	\$106	\$104	\$102	\$99	\$94	\$91	\$88	\$86	\$86	\$68	\$53	\$42	\$37	\$29	\$24	\$20
	10yr ave.	\$94	\$89	\$85	\$81	\$77	\$72	\$69	\$66	\$64	\$62	\$60	\$55	\$48	\$40	\$35	\$24	\$20	\$15
	55% Current	\$118	\$117	\$116	\$115	\$112	\$109	\$104	\$100	\$96	\$95	\$95	\$75	\$58	\$46	\$41	\$32	\$26	\$22
	10yr ave.	\$103	\$98	\$94	\$89	\$84	\$80	\$76	\$72	\$70	\$68	\$66	\$60	\$52	\$44	\$38	\$27	\$22	\$16
	60% Current	\$129	\$128	\$127	\$125	\$123	\$119	\$113	\$109	\$105	\$103	\$103	\$82	\$63	\$50	\$45	\$35	\$29	\$24
	10yr ave.	\$113	\$107	\$102	\$97	\$92	\$87	\$82	\$79	\$76	\$74	\$72	\$66	\$57	\$48	\$42	\$29	\$24	\$17
	65% Current	\$140	\$139	\$137	\$136	\$133	\$129	\$122	\$118	\$114	\$112	\$112	\$88	\$69	\$55	\$48	\$38	\$31	\$26
	10yr ave.	\$122	\$116	\$111	\$105	\$100	\$94	\$89	\$86	\$83	\$80	\$78	\$71	\$62	\$52	\$45	\$32	\$26	\$19
70% Current	\$150	\$149	\$148	\$146	\$143	\$139	\$132	\$127	\$123	\$121	\$120	\$95	\$74	\$59	\$52	\$41	\$34	\$28	
10yr ave.	\$131	\$125	\$119	\$113	\$107	\$101	\$96	\$92	\$89	\$86	\$84	\$77	\$67	\$57	\$49	\$34	\$28	\$20	
75% Current	\$161	\$160	\$159	\$157	\$153	\$148	\$141	\$136	\$132	\$129	\$129	\$102	\$79	\$63	\$56	\$44	\$36	\$30	
10yr ave.	\$141	\$134	\$128	\$121	\$115	\$109	\$103	\$99	\$95	\$92	\$90	\$82	\$71	\$61	\$52	\$37	\$30	\$22	
80% Current	\$172	\$171	\$169	\$167	\$164	\$158	\$151	\$145	\$140	\$138	\$138	\$109	\$84	\$67	\$59	\$47	\$38	\$32	
10yr ave.	\$150	\$143	\$136	\$130	\$122	\$116	\$110	\$105	\$102	\$98	\$96	\$88	\$76	\$65	\$56	\$39	\$32	\$23	
85% Current	\$183	\$181	\$180	\$178	\$174	\$168	\$160	\$154	\$149	\$146	\$146	\$116	\$90	\$71	\$63	\$50	\$41	\$34	
10yr ave.	\$160	\$152	\$145	\$138	\$130	\$123	\$117	\$112	\$108	\$105	\$102	\$93	\$81	\$69	\$59	\$42	\$34	\$25	

The above shows estimated returns per head for skirted fleece wool. These figures do not take into account the value of skirtings and oddments and do not take into account discounts that may apply for faults under individual circumstances. These figures are based on a market index of 100% and should be used as a guide only. Returns over \$30 / head for fleece wool are highlighted.

Table 10: Returns pr head for skirted fleece wool.

Skirted FLC Weight <b>7 Kg</b>		Micron																	
		16	16.5	17	17.5	18	18.5	19	19.5	20	21	22	23	24	25	26	28	30	32
Yield (Sch Dry)	25% Current	\$47	\$47	\$46	\$46	\$45	\$43	\$41	\$40	\$38	\$38	\$38	\$30	\$23	\$18	\$16	\$13	\$11	\$9
	10yr ave.	\$41	\$39	\$37	\$35	\$33	\$32	\$30	\$29	\$28	\$27	\$26	\$24	\$21	\$18	\$15	\$11	\$9	\$6
	30% Current	\$56	\$56	\$55	\$55	\$54	\$52	\$49	\$48	\$46	\$45	\$45	\$36	\$28	\$22	\$19	\$15	\$13	\$11
	10yr ave.	\$49	\$47	\$45	\$43	\$40	\$38	\$36	\$35	\$33	\$32	\$32	\$29	\$25	\$21	\$18	\$13	\$10	\$8
	35% Current	\$66	\$65	\$65	\$64	\$63	\$61	\$58	\$56	\$54	\$53	\$53	\$42	\$32	\$26	\$23	\$18	\$15	\$12
	10yr ave.	\$58	\$55	\$52	\$50	\$47	\$44	\$42	\$40	\$39	\$38	\$37	\$34	\$29	\$25	\$21	\$15	\$12	\$9
	40% Current	\$75	\$75	\$74	\$73	\$72	\$69	\$66	\$64	\$61	\$60	\$60	\$48	\$37	\$29	\$26	\$20	\$17	\$14
	10yr ave.	\$66	\$63	\$60	\$57	\$54	\$51	\$48	\$46	\$44	\$43	\$42	\$38	\$33	\$28	\$24	\$17	\$14	\$10
	45% Current	\$85	\$84	\$83	\$82	\$80	\$78	\$74	\$72	\$69	\$68	\$68	\$54	\$42	\$33	\$29	\$23	\$19	\$16
	10yr ave.	\$74	\$70	\$67	\$64	\$60	\$57	\$54	\$52	\$50	\$48	\$47	\$43	\$38	\$32	\$27	\$19	\$16	\$11
	50% Current	\$94	\$93	\$92	\$91	\$89	\$87	\$82	\$80	\$77	\$75	\$75	\$60	\$46	\$37	\$32	\$26	\$21	\$18
	10yr ave.	\$82	\$78	\$75	\$71	\$67	\$63	\$60	\$58	\$56	\$54	\$53	\$48	\$42	\$35	\$30	\$21	\$17	\$13
	55% Current	\$103	\$103	\$102	\$101	\$98	\$95	\$91	\$87	\$84	\$83	\$83	\$65	\$51	\$40	\$36	\$28	\$23	\$19
	10yr ave.	\$90	\$86	\$82	\$78	\$74	\$70	\$66	\$63	\$61	\$59	\$58	\$53	\$46	\$39	\$34	\$24	\$19	\$14
	60% Current	\$113	\$112	\$111	\$110	\$107	\$104	\$99	\$95	\$92	\$90	\$90	\$71	\$55	\$44	\$39	\$31	\$25	\$21
	10yr ave.	\$99	\$94	\$89	\$85	\$80	\$76	\$72	\$69	\$67	\$65	\$63	\$58	\$50	\$42	\$37	\$26	\$21	\$15
	65% Current	\$122	\$121	\$120	\$119	\$116	\$113	\$107	\$103	\$100	\$98	\$98	\$77	\$60	\$48	\$42	\$33	\$27	\$23
	10yr ave.	\$107	\$102	\$97	\$92	\$87	\$82	\$78	\$75	\$72	\$70	\$68	\$63	\$54	\$46	\$40	\$28	\$23	\$17
	70% Current	\$132	\$131	\$129	\$128	\$125	\$121	\$115	\$111	\$107	\$106	\$105	\$83	\$65	\$51	\$45	\$36	\$29	\$25
10yr ave.	\$115	\$110	\$104	\$99	\$94	\$89	\$84	\$81	\$78	\$75	\$74	\$67	\$58	\$49	\$43	\$30	\$24	\$18	
75% Current	\$141	\$140	\$139	\$137	\$134	\$130	\$124	\$119	\$115	\$113	\$113	\$89	\$69	\$55	\$49	\$38	\$32	\$26	
10yr ave.	\$123	\$117	\$112	\$106	\$100	\$95	\$90	\$86	\$83	\$81	\$79	\$72	\$63	\$53	\$46	\$32	\$26	\$19	
80% Current	\$150	\$149	\$148	\$146	\$143	\$139	\$132	\$127	\$123	\$121	\$120	\$95	\$74	\$59	\$52	\$41	\$34	\$28	
10yr ave.	\$131	\$125	\$119	\$113	\$107	\$101	\$96	\$92	\$89	\$86	\$84	\$77	\$67	\$57	\$49	\$34	\$28	\$20	
85% Current	\$160	\$159	\$157	\$155	\$152	\$147	\$140	\$135	\$130	\$128	\$128	\$101	\$79	\$62	\$55	\$44	\$36	\$30	
10yr ave.	\$140	\$133	\$127	\$120	\$114	\$108	\$102	\$98	\$94	\$92	\$89	\$82	\$71	\$60	\$52	\$36	\$30	\$22	

The above shows estimated returns per head for skirted fleece wool. These figures do not take into account the value of skirtings and oddments and do not take into account discounts that may apply for faults under individual circumstances. These figures are based on a market index of 100% and should be used as a guide only. Returns over \$30 / head for fleece wool are highlighted.

Table 11: Returns pr head for skirted fleece wool.

Skirted FLC Weight 6 Kg		Micron																	
		16	16.5	17	17.5	18	18.5	19	19.5	20	21	22	23	24	25	26	28	30	32
Yield (Sch Dry)	25% Current	\$40	\$40	\$40	\$39	\$38	\$37	\$35	\$34	\$33	\$32	\$32	\$26	\$20	\$16	\$14	\$11	\$9	\$8
	10yr ave.	\$35	\$34	\$32	\$30	\$29	\$27	\$26	\$25	\$24	\$23	\$23	\$21	\$18	\$15	\$13	\$9	\$7	\$5
	30% Current	\$48	\$48	\$48	\$47	\$46	\$45	\$42	\$41	\$39	\$39	\$39	\$31	\$24	\$19	\$17	\$13	\$11	\$9
	10yr ave.	\$42	\$40	\$38	\$36	\$34	\$33	\$31	\$30	\$29	\$28	\$27	\$25	\$21	\$18	\$16	\$11	\$9	\$7
	35% Current	\$56	\$56	\$55	\$55	\$54	\$52	\$49	\$48	\$46	\$45	\$45	\$36	\$28	\$22	\$19	\$15	\$13	\$11
	10yr ave.	\$49	\$47	\$45	\$43	\$40	\$38	\$36	\$35	\$33	\$32	\$32	\$29	\$25	\$21	\$18	\$13	\$10	\$8
	40% Current	\$64	\$64	\$63	\$63	\$61	\$59	\$56	\$55	\$53	\$52	\$52	\$41	\$32	\$25	\$22	\$18	\$14	\$12
	10yr ave.	\$56	\$54	\$51	\$49	\$46	\$43	\$41	\$40	\$38	\$37	\$36	\$33	\$29	\$24	\$21	\$15	\$12	\$9
	45% Current	\$73	\$72	\$71	\$71	\$69	\$67	\$64	\$61	\$59	\$58	\$58	\$46	\$36	\$28	\$25	\$20	\$16	\$14
	10yr ave.	\$63	\$60	\$57	\$55	\$52	\$49	\$46	\$44	\$43	\$42	\$41	\$37	\$32	\$27	\$24	\$16	\$13	\$10
	50% Current	\$81	\$80	\$79	\$78	\$77	\$74	\$71	\$68	\$66	\$65	\$65	\$51	\$40	\$32	\$28	\$22	\$18	\$15
	10yr ave.	\$70	\$67	\$64	\$61	\$57	\$54	\$52	\$49	\$48	\$46	\$45	\$41	\$36	\$30	\$26	\$18	\$15	\$11
	55% Current	\$89	\$88	\$87	\$86	\$84	\$82	\$78	\$75	\$72	\$71	\$71	\$56	\$44	\$35	\$31	\$24	\$20	\$17
	10yr ave.	\$77	\$74	\$70	\$67	\$63	\$60	\$57	\$54	\$52	\$51	\$50	\$45	\$39	\$33	\$29	\$20	\$16	\$12
	60% Current	\$97	\$96	\$95	\$94	\$92	\$89	\$85	\$82	\$79	\$78	\$77	\$61	\$48	\$38	\$33	\$26	\$22	\$18
	10yr ave.	\$85	\$80	\$77	\$73	\$69	\$65	\$62	\$59	\$57	\$55	\$54	\$49	\$43	\$36	\$31	\$22	\$18	\$13
	65% Current	\$105	\$104	\$103	\$102	\$100	\$96	\$92	\$89	\$86	\$84	\$84	\$66	\$51	\$41	\$36	\$29	\$23	\$20
	10yr ave.	\$92	\$87	\$83	\$79	\$75	\$71	\$67	\$64	\$62	\$60	\$59	\$54	\$46	\$39	\$34	\$24	\$19	\$14
	70% Current	\$113	\$112	\$111	\$110	\$107	\$104	\$99	\$95	\$92	\$90	\$90	\$71	\$55	\$44	\$39	\$31	\$25	\$21
	10yr ave.	\$99	\$94	\$89	\$85	\$80	\$76	\$72	\$69	\$67	\$65	\$63	\$58	\$50	\$42	\$37	\$26	\$21	\$15
75% Current	\$121	\$120	\$119	\$118	\$115	\$111	\$106	\$102	\$99	\$97	\$97	\$77	\$59	\$47	\$42	\$33	\$27	\$23	
10yr ave.	\$106	\$101	\$96	\$91	\$86	\$81	\$77	\$74	\$71	\$69	\$68	\$62	\$54	\$45	\$39	\$27	\$22	\$16	
80% Current	\$129	\$128	\$127	\$125	\$123	\$119	\$113	\$109	\$105	\$103	\$103	\$82	\$63	\$50	\$45	\$35	\$29	\$24	
10yr ave.	\$113	\$107	\$102	\$97	\$92	\$87	\$82	\$79	\$76	\$74	\$72	\$66	\$57	\$48	\$42	\$29	\$24	\$17	
85% Current	\$137	\$136	\$135	\$133	\$130	\$126	\$120	\$116	\$112	\$110	\$110	\$87	\$67	\$54	\$47	\$37	\$31	\$26	
10yr ave.	\$120	\$114	\$109	\$103	\$98	\$92	\$88	\$84	\$81	\$78	\$77	\$70	\$61	\$51	\$44	\$31	\$25	\$19	

The above shows estimated returns per head for skirted fleece wool. These figures do not take into account the value of skirtings and oddments and do not take into account discounts that may apply for faults under individual circumstances. These figures are based on a market index of 100% and should be used as a guide only. Returns over \$30 / head for fleece wool are highlighted.

Table 12: Returns pr head for skirted fleece wool.

Skirted FLC Weight 5 Kg		Micron																	
		16	16.5	17	17.5	18	18.5	19	19.5	20	21	22	23	24	25	26	28	30	32
Yield (Sch Dry)	25% Current	\$34	\$33	\$33	\$33	\$32	\$31	\$29	\$28	\$27	\$27	\$21	\$17	\$13	\$12	\$9	\$8	\$6	
	25% 10yr ave.	\$29	\$28	\$27	\$25	\$24	\$23	\$21	\$21	\$20	\$19	\$19	\$17	\$15	\$13	\$11	\$8	\$6	\$5
	30% Current	\$40	\$40	\$40	\$39	\$38	\$37	\$35	\$34	\$33	\$32	\$32	\$26	\$20	\$16	\$14	\$11	\$9	\$8
	30% 10yr ave.	\$35	\$34	\$32	\$30	\$29	\$27	\$26	\$25	\$24	\$23	\$23	\$21	\$18	\$15	\$13	\$9	\$7	\$5
	35% Current	\$47	\$47	\$46	\$46	\$45	\$43	\$41	\$40	\$38	\$38	\$38	\$30	\$23	\$18	\$16	\$13	\$11	\$9
	35% 10yr ave.	\$41	\$39	\$37	\$35	\$33	\$32	\$30	\$29	\$28	\$27	\$26	\$24	\$21	\$18	\$15	\$11	\$9	\$6
	40% Current	\$54	\$53	\$53	\$52	\$51	\$49	\$47	\$45	\$44	\$43	\$43	\$34	\$26	\$21	\$19	\$15	\$12	\$10
	40% 10yr ave.	\$47	\$45	\$43	\$40	\$38	\$36	\$34	\$33	\$32	\$31	\$30	\$27	\$24	\$20	\$17	\$12	\$10	\$7
	45% Current	\$60	\$60	\$59	\$59	\$57	\$56	\$53	\$51	\$49	\$48	\$48	\$38	\$30	\$24	\$21	\$16	\$14	\$11
	45% 10yr ave.	\$53	\$50	\$48	\$46	\$43	\$41	\$39	\$37	\$36	\$35	\$34	\$31	\$27	\$23	\$20	\$14	\$11	\$8
	50% Current	\$67	\$67	\$66	\$65	\$64	\$62	\$59	\$57	\$55	\$54	\$54	\$43	\$33	\$26	\$23	\$18	\$15	\$13
	50% 10yr ave.	\$59	\$56	\$53	\$51	\$48	\$45	\$43	\$41	\$40	\$38	\$38	\$34	\$30	\$25	\$22	\$15	\$12	\$9
	55% Current	\$74	\$73	\$73	\$72	\$70	\$68	\$65	\$62	\$60	\$59	\$59	\$47	\$36	\$29	\$26	\$20	\$17	\$14
	55% 10yr ave.	\$65	\$61	\$59	\$56	\$53	\$50	\$47	\$45	\$44	\$42	\$41	\$38	\$33	\$28	\$24	\$17	\$14	\$10
	60% Current	\$81	\$80	\$79	\$78	\$77	\$74	\$71	\$68	\$66	\$65	\$65	\$51	\$40	\$32	\$28	\$22	\$18	\$15
	60% 10yr ave.	\$70	\$67	\$64	\$61	\$57	\$54	\$52	\$49	\$48	\$46	\$45	\$41	\$36	\$30	\$26	\$18	\$15	\$11
	65% Current	\$87	\$87	\$86	\$85	\$83	\$80	\$77	\$74	\$71	\$70	\$70	\$55	\$43	\$34	\$30	\$24	\$20	\$16
65% 10yr ave.	\$76	\$73	\$69	\$66	\$62	\$59	\$56	\$54	\$52	\$50	\$49	\$45	\$39	\$33	\$28	\$20	\$16	\$12	
70% Current	\$94	\$93	\$92	\$91	\$89	\$87	\$82	\$80	\$77	\$75	\$75	\$60	\$46	\$37	\$32	\$26	\$21	\$18	
70% 10yr ave.	\$82	\$78	\$75	\$71	\$67	\$63	\$60	\$58	\$56	\$54	\$53	\$48	\$42	\$35	\$30	\$21	\$17	\$13	
75% Current	\$101	\$100	\$99	\$98	\$96	\$93	\$88	\$85	\$82	\$81	\$81	\$64	\$50	\$39	\$35	\$27	\$23	\$19	
75% 10yr ave.	\$88	\$84	\$80	\$76	\$72	\$68	\$64	\$62	\$60	\$58	\$56	\$52	\$45	\$38	\$33	\$23	\$19	\$14	
80% Current	\$107	\$107	\$106	\$104	\$102	\$99	\$94	\$91	\$88	\$86	\$86	\$68	\$53	\$42	\$37	\$29	\$24	\$20	
80% 10yr ave.	\$94	\$89	\$85	\$81	\$77	\$72	\$69	\$66	\$64	\$62	\$60	\$55	\$48	\$40	\$35	\$24	\$20	\$15	
85% Current	\$114	\$113	\$112	\$111	\$109	\$105	\$100	\$97	\$93	\$92	\$91	\$72	\$56	\$45	\$39	\$31	\$26	\$21	
85% 10yr ave.	\$100	\$95	\$90	\$86	\$81	\$77	\$73	\$70	\$67	\$65	\$64	\$58	\$51	\$43	\$37	\$26	\$21	\$15	

The above shows estimated returns per head for skirted fleece wool. These figures do not take into account the value of skirtings and oddments and do not take into account discounts that may apply for faults under individual circumstances. These figures are based on a market index of 100% and should be used as a guide only. Returns over \$30 / head for fleece wool are highlighted.



Table 13: Returns pr head for skirted fleece wool.

Skirted FLC Weight 4 Kg		Micron																	
		16	16.5	17	17.5	18	18.5	19	19.5	20	21	22	23	24	25	26	28	30	32
Yield (Sch Dry)	25% Current	\$27	\$27	\$26	\$26	\$26	\$25	\$24	\$23	\$22	\$22	\$22	\$17	\$13	\$11	\$9	\$7	\$6	\$5
	10yr ave.	\$23	\$22	\$21	\$20	\$19	\$18	\$17	\$16	\$16	\$15	\$15	\$14	\$12	\$10	\$9	\$6	\$5	\$4
	30% Current	\$32	\$32	\$32	\$31	\$31	\$30	\$28	\$27	\$26	\$26	\$26	\$20	\$16	\$13	\$11	\$9	\$7	\$6
	10yr ave.	\$28	\$27	\$26	\$24	\$23	\$22	\$21	\$20	\$19	\$18	\$18	\$16	\$14	\$12	\$10	\$7	\$6	\$4
	35% Current	\$38	\$37	\$37	\$37	\$36	\$35	\$33	\$32	\$31	\$30	\$30	\$24	\$18	\$15	\$13	\$10	\$8	\$7
	10yr ave.	\$33	\$31	\$30	\$28	\$27	\$25	\$24	\$23	\$22	\$22	\$21	\$19	\$17	\$14	\$12	\$9	\$7	\$5
	40% Current	\$43	\$43	\$42	\$42	\$41	\$40	\$38	\$36	\$35	\$34	\$34	\$27	\$21	\$17	\$15	\$12	\$10	\$8
	10yr ave.	\$38	\$36	\$34	\$32	\$31	\$29	\$27	\$26	\$25	\$25	\$24	\$22	\$19	\$16	\$14	\$10	\$8	\$6
	45% Current	\$48	\$48	\$48	\$47	\$46	\$45	\$42	\$41	\$39	\$39	\$39	\$31	\$24	\$19	\$17	\$13	\$11	\$9
	10yr ave.	\$42	\$40	\$38	\$36	\$34	\$33	\$31	\$30	\$29	\$28	\$27	\$25	\$21	\$18	\$16	\$11	\$9	\$7
	50% Current	\$54	\$53	\$53	\$52	\$51	\$49	\$47	\$45	\$44	\$43	\$43	\$34	\$26	\$21	\$19	\$15	\$12	\$10
	10yr ave.	\$47	\$45	\$43	\$40	\$38	\$36	\$34	\$33	\$32	\$31	\$30	\$27	\$24	\$20	\$17	\$12	\$10	\$7
	55% Current	\$59	\$59	\$58	\$57	\$56	\$54	\$52	\$50	\$48	\$47	\$47	\$37	\$29	\$23	\$20	\$16	\$13	\$11
	10yr ave.	\$52	\$49	\$47	\$45	\$42	\$40	\$38	\$36	\$35	\$34	\$33	\$30	\$26	\$22	\$19	\$13	\$11	\$8
	60% Current	\$64	\$64	\$63	\$63	\$61	\$59	\$56	\$55	\$53	\$52	\$52	\$41	\$32	\$25	\$22	\$18	\$14	\$12
	10yr ave.	\$56	\$54	\$51	\$49	\$46	\$43	\$41	\$40	\$38	\$37	\$36	\$33	\$29	\$24	\$21	\$15	\$12	\$9
	65% Current	\$70	\$69	\$69	\$68	\$66	\$64	\$61	\$59	\$57	\$56	\$56	\$44	\$34	\$27	\$24	\$19	\$16	\$13
	10yr ave.	\$61	\$58	\$55	\$53	\$50	\$47	\$45	\$43	\$41	\$40	\$39	\$36	\$31	\$26	\$23	\$16	\$13	\$9
	70% Current	\$75	\$75	\$74	\$73	\$72	\$69	\$66	\$64	\$61	\$60	\$60	\$48	\$37	\$29	\$26	\$20	\$17	\$14
	10yr ave.	\$66	\$63	\$60	\$57	\$54	\$51	\$48	\$46	\$44	\$43	\$42	\$38	\$33	\$28	\$24	\$17	\$14	\$10
75% Current	\$81	\$80	\$79	\$78	\$77	\$74	\$71	\$68	\$66	\$65	\$65	\$51	\$40	\$32	\$28	\$22	\$18	\$15	
10yr ave.	\$70	\$67	\$64	\$61	\$57	\$54	\$52	\$49	\$48	\$46	\$45	\$41	\$36	\$30	\$26	\$18	\$15	\$11	
80% Current	\$86	\$85	\$85	\$84	\$82	\$79	\$75	\$73	\$70	\$69	\$69	\$54	\$42	\$34	\$30	\$23	\$19	\$16	
10yr ave.	\$75	\$72	\$68	\$65	\$61	\$58	\$55	\$53	\$51	\$49	\$48	\$44	\$38	\$32	\$28	\$20	\$16	\$12	
85% Current	\$91	\$91	\$90	\$89	\$87	\$84	\$80	\$77	\$75	\$73	\$73	\$58	\$45	\$36	\$32	\$25	\$20	\$17	
10yr ave.	\$80	\$76	\$72	\$69	\$65	\$62	\$58	\$56	\$54	\$52	\$51	\$47	\$40	\$34	\$30	\$21	\$17	\$12	

The above shows estimated returns per head for skirted fleece wool. These figures do not take into account the value of skirtings and oddments and do not take into account discounts that may apply for faults under individual circumstances. These figures are based on a market index of 100% and should be used as a guide only. Returns over \$30 / head for fleece wool are highlighted.

Table 14: Returns pr head for skirted fleece wool.

Skirted FLC Weight <b>3 Kg</b>		Micron																	
		16	16.5	17	17.5	18	18.5	19	19.5	20	21	22	23	24	25	26	28	30	32
Yield (Sch Dry)	25% Current	\$20	\$20	\$20	\$20	\$19	\$19	\$18	\$17	\$16	\$16	\$16	\$13	\$10	\$8	\$7	\$5	\$5	\$4
	10yr ave.	\$18	\$17	\$16	\$15	\$14	\$14	\$13	\$12	\$12	\$12	\$11	\$10	\$9	\$8	\$7	\$5	\$4	\$3
	30% Current	\$24	\$24	\$24	\$24	\$23	\$22	\$21	\$20	\$20	\$19	\$19	\$15	\$12	\$9	\$8	\$7	\$5	\$5
	10yr ave.	\$21	\$20	\$19	\$18	\$17	\$16	\$15	\$15	\$14	\$14	\$14	\$12	\$11	\$9	\$8	\$5	\$4	\$3
	35% Current	\$28	\$28	\$28	\$27	\$27	\$26	\$25	\$24	\$23	\$23	\$23	\$18	\$14	\$11	\$10	\$8	\$6	\$5
	10yr ave.	\$25	\$23	\$22	\$21	\$20	\$19	\$18	\$17	\$17	\$16	\$16	\$14	\$13	\$11	\$9	\$6	\$5	\$4
	40% Current	\$32	\$32	\$32	\$31	\$31	\$30	\$28	\$27	\$26	\$26	\$26	\$20	\$16	\$13	\$11	\$9	\$7	\$6
	10yr ave.	\$28	\$27	\$26	\$24	\$23	\$22	\$21	\$20	\$19	\$18	\$18	\$16	\$14	\$12	\$10	\$7	\$6	\$4
	45% Current	\$36	\$36	\$36	\$35	\$34	\$33	\$32	\$31	\$30	\$29	\$29	\$23	\$18	\$14	\$13	\$10	\$8	\$7
	10yr ave.	\$32	\$30	\$29	\$27	\$26	\$24	\$23	\$22	\$21	\$21	\$20	\$19	\$16	\$14	\$12	\$8	\$7	\$5
	50% Current	\$40	\$40	\$40	\$39	\$38	\$37	\$35	\$34	\$33	\$32	\$32	\$26	\$20	\$16	\$14	\$11	\$9	\$8
	10yr ave.	\$35	\$34	\$32	\$30	\$29	\$27	\$26	\$25	\$24	\$23	\$23	\$21	\$18	\$15	\$13	\$9	\$7	\$5
	55% Current	\$44	\$44	\$44	\$43	\$42	\$41	\$39	\$37	\$36	\$36	\$35	\$28	\$22	\$17	\$15	\$12	\$10	\$8
	10yr ave.	\$39	\$37	\$35	\$33	\$32	\$30	\$28	\$27	\$26	\$25	\$25	\$23	\$20	\$17	\$14	\$10	\$8	\$6
	60% Current	\$48	\$48	\$48	\$47	\$46	\$45	\$42	\$41	\$39	\$39	\$39	\$31	\$24	\$19	\$17	\$13	\$11	\$9
	10yr ave.	\$42	\$40	\$38	\$36	\$34	\$33	\$31	\$30	\$29	\$28	\$27	\$25	\$21	\$18	\$16	\$11	\$9	\$7
	65% Current	\$52	\$52	\$52	\$51	\$50	\$48	\$46	\$44	\$43	\$42	\$42	\$33	\$26	\$20	\$18	\$14	\$12	\$10
	10yr ave.	\$46	\$44	\$42	\$39	\$37	\$35	\$33	\$32	\$31	\$30	\$29	\$27	\$23	\$20	\$17	\$12	\$10	\$7
70% Current	\$56	\$56	\$55	\$55	\$54	\$52	\$49	\$48	\$46	\$45	\$45	\$36	\$28	\$22	\$19	\$15	\$13	\$11	
10yr ave.	\$49	\$47	\$45	\$43	\$40	\$38	\$36	\$35	\$33	\$32	\$32	\$29	\$25	\$21	\$18	\$13	\$10	\$8	
75% Current	\$60	\$60	\$59	\$59	\$57	\$56	\$53	\$51	\$49	\$48	\$48	\$38	\$30	\$24	\$21	\$16	\$14	\$11	
10yr ave.	\$53	\$50	\$48	\$46	\$43	\$41	\$39	\$37	\$36	\$35	\$34	\$31	\$27	\$23	\$20	\$14	\$11	\$8	
80% Current	\$64	\$64	\$63	\$63	\$61	\$59	\$56	\$55	\$53	\$52	\$52	\$41	\$32	\$25	\$22	\$18	\$14	\$12	
10yr ave.	\$56	\$54	\$51	\$49	\$46	\$43	\$41	\$40	\$38	\$37	\$36	\$33	\$29	\$24	\$21	\$15	\$12	\$9	
85% Current	\$69	\$68	\$67	\$67	\$65	\$63	\$60	\$58	\$56	\$55	\$55	\$43	\$34	\$27	\$24	\$19	\$15	\$13	
10yr ave.	\$60	\$57	\$54	\$52	\$49	\$46	\$44	\$42	\$40	\$39	\$38	\$35	\$30	\$26	\$22	\$16	\$13	\$9	

The above shows estimated returns per head for skirted fleece wool. These figures do not take into account the value of skirtings and oddments and do not take into account discounts that may apply for faults under individual circumstances. These figures are based on a market index of 100% and should be used as a guide only. Returns over \$30 / head for fleece wool are highlighted.



Table 15: Returns pr head for skirted fleece wool.

Skirted FLC Weight <b>2 Kg</b>		Micron																	
		16	16.5	17	17.5	18	18.5	19	19.5	20	21	22	23	24	25	26	28	30	32
Yield (Sch Dry)	25% Current	\$13	\$13	\$13	\$13	\$13	\$12	\$12	\$11	\$11	\$11	\$11	\$9	\$7	\$5	\$5	\$4	\$3	\$3
	10yr ave.	\$12	\$11	\$11	\$10	\$10	\$9	\$9	\$8	\$8	\$8	\$8	\$7	\$6	\$5	\$4	\$3	\$2	\$2
	30% Current	\$16	\$16	\$16	\$16	\$15	\$15	\$14	\$14	\$13	\$13	\$13	\$10	\$8	\$6	\$6	\$4	\$4	\$3
	10yr ave.	\$14	\$13	\$13	\$12	\$11	\$11	\$10	\$10	\$10	\$9	\$9	\$8	\$7	\$6	\$5	\$4	\$3	\$2
	35% Current	\$19	\$19	\$18	\$18	\$18	\$17	\$16	\$16	\$15	\$15	\$15	\$12	\$9	\$7	\$6	\$5	\$4	\$4
	10yr ave.	\$16	\$16	\$15	\$14	\$13	\$13	\$12	\$12	\$11	\$11	\$11	\$10	\$8	\$7	\$6	\$4	\$3	\$3
	40% Current	\$21	\$21	\$21	\$21	\$20	\$20	\$19	\$18	\$18	\$17	\$17	\$14	\$11	\$8	\$7	\$6	\$5	\$4
	10yr ave.	\$19	\$18	\$17	\$16	\$15	\$14	\$14	\$13	\$13	\$12	\$12	\$11	\$10	\$8	\$7	\$5	\$4	\$3
	45% Current	\$24	\$24	\$24	\$24	\$23	\$22	\$21	\$20	\$20	\$19	\$19	\$15	\$12	\$9	\$8	\$7	\$5	\$5
	10yr ave.	\$21	\$20	\$19	\$18	\$17	\$16	\$15	\$15	\$14	\$14	\$14	\$12	\$11	\$9	\$8	\$5	\$4	\$3
	50% Current	\$27	\$27	\$26	\$26	\$26	\$25	\$24	\$23	\$22	\$22	\$22	\$17	\$13	\$11	\$9	\$7	\$6	\$5
	10yr ave.	\$23	\$22	\$21	\$20	\$19	\$18	\$17	\$16	\$16	\$15	\$15	\$14	\$12	\$10	\$9	\$6	\$5	\$4
	55% Current	\$30	\$29	\$29	\$29	\$28	\$27	\$26	\$25	\$24	\$24	\$24	\$19	\$15	\$12	\$10	\$8	\$7	\$6
	10yr ave.	\$26	\$25	\$23	\$22	\$21	\$20	\$19	\$18	\$17	\$17	\$17	\$15	\$13	\$11	\$10	\$7	\$5	\$4
	60% Current	\$32	\$32	\$32	\$31	\$31	\$30	\$28	\$27	\$26	\$26	\$26	\$20	\$16	\$13	\$11	\$9	\$7	\$6
	10yr ave.	\$28	\$27	\$26	\$24	\$23	\$22	\$21	\$20	\$19	\$18	\$18	\$16	\$14	\$12	\$10	\$7	\$6	\$4
	65% Current	\$35	\$35	\$34	\$34	\$33	\$32	\$31	\$30	\$29	\$28	\$28	\$22	\$17	\$14	\$12	\$10	\$8	\$7
10yr ave.	\$31	\$29	\$28	\$26	\$25	\$24	\$22	\$21	\$21	\$20	\$20	\$18	\$15	\$13	\$11	\$8	\$6	\$5	
70% Current	\$38	\$37	\$37	\$37	\$36	\$35	\$33	\$32	\$31	\$30	\$30	\$24	\$18	\$15	\$13	\$10	\$8	\$7	
10yr ave.	\$33	\$31	\$30	\$28	\$27	\$25	\$24	\$23	\$22	\$22	\$21	\$19	\$17	\$14	\$12	\$9	\$7	\$5	
75% Current	\$40	\$40	\$40	\$39	\$38	\$37	\$35	\$34	\$33	\$32	\$32	\$26	\$20	\$16	\$14	\$11	\$9	\$8	
10yr ave.	\$35	\$34	\$32	\$30	\$29	\$27	\$26	\$25	\$24	\$23	\$23	\$21	\$18	\$15	\$13	\$9	\$7	\$5	
80% Current	\$43	\$43	\$42	\$42	\$41	\$40	\$38	\$36	\$35	\$34	\$34	\$27	\$21	\$17	\$15	\$12	\$10	\$8	
10yr ave.	\$38	\$36	\$34	\$32	\$31	\$29	\$27	\$26	\$25	\$25	\$24	\$22	\$19	\$16	\$14	\$10	\$8	\$6	
85% Current	\$46	\$45	\$45	\$44	\$43	\$42	\$40	\$39	\$37	\$37	\$37	\$29	\$22	\$18	\$16	\$12	\$10	\$9	
10yr ave.	\$40	\$38	\$36	\$34	\$33	\$31	\$29	\$28	\$27	\$26	\$26	\$23	\$20	\$17	\$15	\$10	\$8	\$6	

The above shows estimated returns per head for skirted fleece wool. These figures do not take into account the value of skirtings and oddments and do not take into account discounts that may apply for faults under individual circumstances. These figures are based on a market index of 100% and should be used as a guide only. Returns over \$30 / head for fleece wool are highlighted.