



# JEMALONG WOOL BULLETIN

(week ending 31/10/2013)

Table 1: Northern Region Micron Price Guides

WEEK 18				12 MONTH COMPARISONS								3 YEAR COMPARISONS						*10 YEAR COMPARISONS					
Mic.	31/10/2013	24/10/2013		31/10/2012	Now		Now		Now				Now		Percentile	* 16-17.5um since Aug 05			Now		Percentile		
Price	Current	Weekly		This time	compared	12 Month	compared	12 Month	compared				compared					*10 year	compared				
Guides	Price	Change		Last Year	to Last Year	Low	to Low	High	to High	Low	High	Average	to 3yr ave		Low	High	Average	to *10yr ave					
NRI	1116	+1 0.1%		1077	+39 4%	976	+140 14%	1158	-42 -4%	948	1491	1176	-60 -5%	41%	657	1491	935	+181 19%	83%				
16*	1510	+40 2.6%		1750	-240 -14%	1470	+40 3%	1810	-300 -17%	1510	2800	2030	-520 -26%	1%	1390	2800	1747	-237 -14%	16%				
16.5*	1420	+20 1.4%		1600	-180 -11%	1400	+20 1%	1660	-240 -14%	1400	2680	1872	-452 -24%	9%	1280	2680	1602	-182 -11%	35%				
17*	1350	+10 0.7%		1475	-125 -8%	1250	+100 8%	1530	-180 -12%	1285	2530	1716	-366 -21%	19%	1100	2530	1441	-91 -6%	52%				
17.5*	1310	+10 0.8%		1410	-100 -7%	1200	+110 9%	1465	-155 -11%	1230	2360	1618	-308 -19%	22%	1020	2360	1381	-71 -5%	53%				
18	1285	+6 0.5%		1359	-74 -5%	1153	+132 11%	1416	-131 -9%	1158	2193	1527	-242 -16%	25%	916	2193	1252	+33 3%	66%				
18.5	1274	+12 0.9%		1299	-25 -2%	1122	+152 14%	1378	-104 -8%	1125	1963	1447	-173 -12%	29%	843	1963	1187	+87 7%	71%				
19	1260	+15 1.2%		1264	-4 0%	1108	+152 14%	1348	-88 -7%	1097	1776	1373	-113 -8%	32%	803	1776	1117	+143 13%	79%				
19.5	1236	+5 0.4%		1215	+21 2%	1085	+151 14%	1310	-74 -6%	1072	1670	1307	-71 -5%	36%	749	1670	1051	+185 18%	81%				
20	1215	+3 0.2%		1170	+45 4%	1067	+148 14%	1270	-55 -4%	1006	1588	1251	-36 -3%	40%	700	1588	993	+222 22%	83%				
21	1210	-1 -0.1%		1136	+74 7%	1059	+151 14%	1253	-43 -3%	979	1522	1222	-12 -1%	44%	668	1522	950	+260 27%	84%				
22	1202	-1 -0.1%		1094	+108 10%	1047	+155 15%	1236	-34 -3%	938	1461	1188	+14 1%	50%	659	1461	919	+283 31%	86%				
23	1204	+16 1.3%		1075	+129 12%	1036	+168 16%	1219	-15 -1%	894	1347	1144	+60 5%	69%	651	1347	890	+314 35%	91%				
24	1088	+9 0.8%		996	+92 9%	959	+129 13%	1140	-52 -5%	828	1213	1047	+41 4%	65%	638	1213	831	+257 31%	90%				
25	895	+2 0.2%		906	-11 -1%	840	+55 7%	957	-62 -6%	750	1049	916	-21 -2%	35%	566	1049	730	+165 23%	81%				
26	791	-9 -1.1%		848	-57 -7%	753	+38 5%	887	-96 -11%	658	939	817	-26 -3%	26%	532	939	660	+131 20%	79%				
28	659	+11 1.7%		599	+60 10%	574	+85 15%	689	-30 -4%	483	734	624	+35 6%	79%	424	734	517	+142 27%	94%				
30	629	+4 0.6%		554	+75 14%	526	+103 20%	650	-21 -3%	435	670	574	+55 10%	88%	343	670	460	+169 37%	96%				
32	553	+4 0.7%		500	+53 11%	463	+90 19%	554	-1 0%	404	638	507	+46 9%	78%	297	638	410	+143 35%	93%				
MC	805	-15 -1.9%		622	+183 29%	621	+184 30%	874	-69 -8%	532	874	720	+85 12%	80%	380	874	553	+252 46%	94%				
BALES OFFERED		43,240	* Due to the irregular market quoting for some fine wool categories, figures shown relating to micron categories below 18 micron are an estimate based on the																				
BALES SOLD		39,230	AWEX Premium & Discounts Report & other available information.																				
PASSED-IN%		9.3%	* For any category, where there is insufficient quantity offered to enable AWEX to quote, a quote will be provided based on the best available information.																				
AUD/USD		0.94980	* 10 Year data is not available for 16 to 17.5 microns, therefore 10 year statistics for those micron categories only date back as far as August 2005.																				

Source: Australian Wool Exchange, Australian Wool Innovation, Riemann, x-rates.com, Reserve Bank of Australia, Australian Wool Testing Authority.

Disclaimer: Jemalong Wool Pty Ltd make no representations about the content and suitability of the information contained in this report. Specifically, Jemalong Wool does not warrant, guarantee or make any representations regarding the correctness, accuracy, reliability, currency, or any other aspect regarding characteristics or use of information presented in these materials. The user accepts sole responsibility and risk associated with the use and results of these materials, irrespective of the purpose of which such use or results are applied. In no event shall Jemalong Wool be liable for any loss or damages (including without limitation special, or consequential damages), where in an action of contract, negligence,



## MARKET COMMENTARY

This week saw the market firm across most micron categories, and in places regain some of last week's lost ground. 43,240 bales were offered for sale, a reduction in excess of 5,000 when compared to Mondays forecast, and with a reasonably high passed-in rate of 9.3%, only 39,230 were sold for the series.

Tuesdays Melbourne sale was slightly cheaper, comprising of a mixture of both Australian and New Zealand stored wool.

Wednesday's market rebounded in Melbourne with most MPG's closing firm to 10 cents dearer. Sydney however posted mixed results with the finer end generally 10-15 cents dearer, while the medium to broader microns closed in buyers favour. Skirtings were 10-20 cents cheaper with the 5-6% Vm types most affected. Crossbreds were also mixed, with the finer end 5-10 cents cheaper while the broader end gained 5 cents. The carding market continued to ease, with locks 15-20 cents cheaper while stains and crutchings lost 10 cents.

On Thursday, the market appeared to strengthen as the day progressed. Melbourne closed slightly dearer with the strongest support around 21 microns, while some of the lower spec types continued to ease. Most types in Sydney were firm to slightly dearer, with 19 microns the strongest performer, gaining 15-20 cents.

Once again the forward market was flat this week with no contracts trading on Riemann. There is however a notable difference between grower & buyer expectations and interestingly, one of the stronger forward traders was also absent from the top 5 Auction buyer list, for the first time this season.

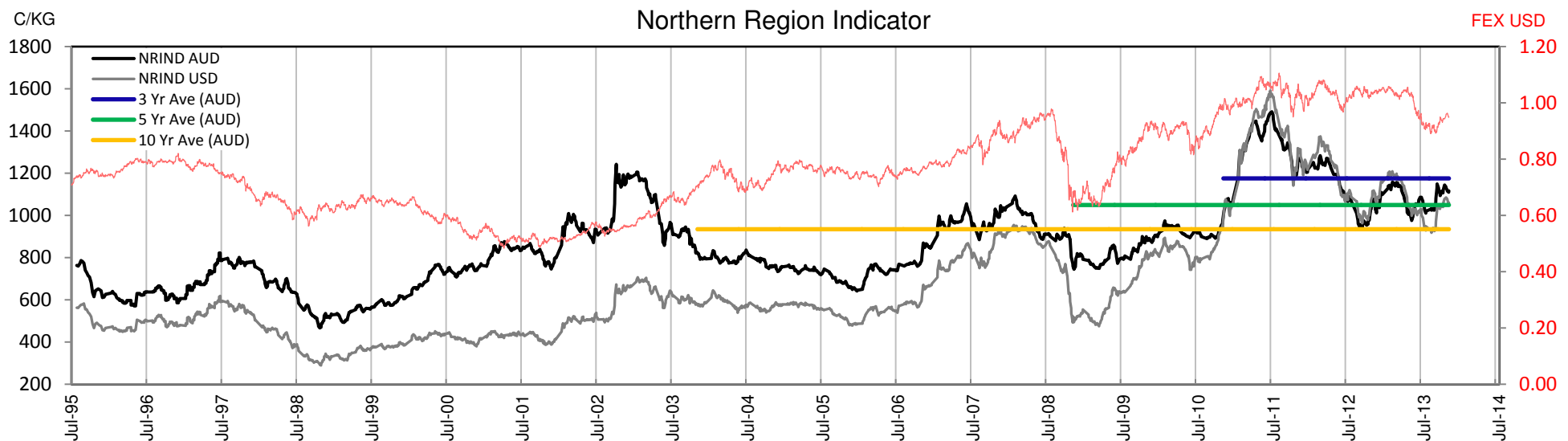




Table 2: Three Year Decile Table, since: 1/10/2010

Decile %	16	16.5	17	17.5	18	18.5	19	19.5	20	21	22	23	24	25	26	28	30	32	MC
1 10%	1590	1426	1313	1265	1202	1166	1134	1106	1076	1064	1044	1016	958	847	753	563	509	445	608
2 20%	1620	1480	1355	1305	1263	1231	1200	1148	1125	1105	1085	1058	988	884	771	584	541	468	649
3 30%	1698	1540	1410	1340	1304	1275	1256	1191	1163	1138	1122	1079	1004	891	800	600	554	482	694
4 40%	1790	1600	1450	1402	1354	1315	1289	1255	1212	1195	1169	1128	1032	900	808	623	575	491	715
5 50%	1970	1830	1610	1520	1455	1396	1327	1289	1244	1228	1200	1163	1053	909	818	631	581	496	730
6 60%	2050	1880	1700	1600	1526	1466	1408	1359	1295	1254	1220	1186	1078	923	829	643	590	512	743
7 70%	2150	1942	1780	1672	1590	1504	1456	1403	1348	1306	1255	1204	1096	944	849	650	603	540	752
8 80%	2600	2450	2246	2050	1842	1685	1572	1448	1379	1330	1287	1233	1112	970	867	662	618	558	804
9 90%	2750	2600	2420	2264	2072	1867	1660	1499	1405	1362	1318	1271	1143	1000	890	688	632	581	825
10 100%	2800	2680	2530	2360	2193	1963	1776	1670	1588	1522	1461	1347	1213	1049	939	734	670	638	874
MPG	1510	1420	1350	1310	1285	1274	1260	1236	1215	1210	1202	1204	1088	895	791	659	629	553	805
3 Yr Percentile	1%	9%	19%	22%	25%	29%	32%	36%	40%	44%	50%	69%	65%	35%	26%	79%	88%	78%	80%

Table 3: Ten Year Decile Table, since: 1/10/2003

Decile %	16	16.5	17	17.5	18	18.5	19	19.5	20	21	22	23	24	25	26	28	30	32	MC
1 10%	1480	1350	1187	1145	1000	966	914	850	788	738	710	691	667	596	556	445	377	326	408
2 20%	1530	1400	1240	1175	1047	1002	942	879	824	760	730	705	678	627	573	457	398	349	430
3 30%	1560	1415	1265	1205	1086	1034	974	912	853	805	775	750	709	645	588	467	410	361	443
4 40%	1600	1450	1300	1255	1139	1083	1020	955	894	852	828	806	761	662	601	474	425	381	467
5 50%	1620	1480	1340	1300	1186	1137	1071	987	928	897	870	843	800	684	618	483	432	394	526
6 60%	1670	1510	1390	1350	1239	1188	1114	1058	1004	964	929	897	827	705	639	499	440	403	580
7 70%	1750	1600	1445	1420	1320	1265	1189	1134	1076	1029	974	934	860	745	664	540	474	431	621
8 80%	1950	1730	1570	1500	1403	1323	1267	1212	1170	1137	1114	1076	1004	891	799	600	553	481	693
9 90%	2150	1950	1766	1680	1555	1484	1431	1386	1328	1284	1236	1191	1085	929	834	645	594	518	748
10 100%	2800	2680	2530	2360	2193	1963	1776	1670	1588	1522	1461	1347	1213	1049	939	734	670	638	874
MPG	1510	1420	1350	1310	1285	1274	1260	1236	1215	1210	1202	1204	1088	895	791	659	629	553	805
10 Yr Percentile	16%	35%	52%	53%	66%	71%	79%	81%	83%	84%	86%	91%	90%	81%	79%	94%	96%	93%	94%

**Decile Tables** are a useful tool for working out price targets.

**Percentiles** are a more accurate guide to where the market is currently trading (The higher the percentile, the stronger the market).

#### Definitions:

\* A Percentile, is a value on a scale of one hundred that indicates the percent of a distribution that is equal to or below it. In general a percentile between 25% and 75% is considered normal, a percentile below 25% is considered below normal and a percentile above 75% is considered above normal.

Three and ten year percentiles shown on the bottom line of table 2 & 3 (above) and in table 1 (on page 1), detail the amount of time during the past 3 & 10 years where the market has traded either at or below its current price.

\* Deciles are a method of sorting ranked data into 10 equal groups. The data may be ranked from largest to smallest or vice versa.

The above Decile tables sort price Percentiles into 10 equal groups (in ascending order), with table 2 ranking the previous 3 years prices, while table 3 ranks prices over the previous 10 year

**Example:** In Table 2, a Decile Rank of 6 for 19 microns, shows 19 microns have traded at or below 1408 for 60% of the time, over the past three years.

In Table 3, a Decile Rank of 6 for 19 microns, shows 19 microns have traded at or below 1114 for 60% of the time, over the past ten years.



# JEMALONG WOOL BULLETIN

(week ending 31/10/2013)

Table 4: Riemann Forwards, latest trades as at: Thursday 17/10/2013 12:35

Any highlighted in yellow are recent trades, trading since: Friday, 25 October 2013

CONTRACT MICRON	18.5um	19um	19.5um	21um	22um	23um	28um	30um
Oct-2013		11/09/13 1235	4/09/13 1240	9/10/13 1260	30/09/13 1190	3/09/13 1150		
Nov-2013		5/03/13 1310		10/10/13 1240				12/06/13 550
Dec-2013		30/01/13 1320	2/09/13 1180	11/10/13 1240	8/10/13 1200			
Jan-2014		1/10/13 1310		9/10/13 1250			29/08/13 630	
Feb-2014		18/12/12 1250		17/10/13 1220				
Mar-2014		9/10/13 1350		9/10/13 1247				
Apr-2014		10/10/13 1300		30/09/13 1200				
May-2014				9/10/13 1225				
Jun-2014				9/10/13 1220	9/10/13 1200			
Jul-2014				10/10/13 1225				
Aug-2014				9/10/13 1200				
Sep-2014				9/10/13 1200				
Oct-2014				27/09/13 1120				
Nov-2014								
Dec-2014								
Jan-2015								
Feb-2015								
Mar-2015								
Apr-2015								
May-2015								
Jun-2015								
Jul-2015								
Aug-2015								

Explanatory Notes: Prices quoted reflect the most recent trades, at time of print.

Disclaimer: While all due care has been taken in the preparation of this document, no warranty is made as to its accuracy, reliability or completeness. To the extent permitted by law neither Jemalong or their sources including subsidiaries and staff, accept liability to any person for loss or damage arising from the use of this information.



# JEMALONG WOOL BULLETIN

(week ending 31/10/2013)

Table 5: National Market Share

	Rank	Current Selling Week Week 18			Previous Selling Week Week 17			Last Season 2012-13			2 Years Ago 2011-12			3 Years Ago 2010-11			5 Years Ago 2008-09			10 Years Ago 2003-04		
		Buyer	Bales	MS%	Buyer	Bales	MS%	Buyer	Bales	MS%	Buyer	Bales	MS%	Buyer	Bales	MS%	Buyer	Bales	MS%	Buyer	Bales	MS%
Top 10, Auction Buyers	1	TECM	4,094	10%	TECM	5,556	16%	TECM	179,176	10%	VTRA	229,207	14%	VTRA	209,391	12%	TECM	207,010	12%	ITOS	235,726	11%
	2	CTXS	3,362	9%	LEMM	3,132	9%	VTRA	163,810	9%	TECM	153,616	9%	TECM	179,439	10%	FOXM	127,295	7%	BWEA	158,769	7%
	3	QCTB	3,066	8%	CTXS	2,879	8%	FOXM	143,826	8%	FOXM	136,698	8%	FOXM	142,143	8%	ABB	120,742	7%	PLEX	151,168	7%
	4	TIAM	3,003	8%	AMEM	2,248	6%	LEMM	126,564	7%	QCTB	112,745	7%	QCTB	120,699	7%	WIEM	111,432	6%	LEMM	127,649	6%
	5	FOXM	2,835	7%	TIAM	2,161	6%	QCTB	98,756	6%	WIEM	100,817	6%	WIEM	99,585	6%	LEMM	103,040	6%	RWRS	126,145	6%
	6	AMEM	2,558	7%	FOXM	2,153	6%	PMWF	96,935	6%	LEMM	88,348	5%	LEMM	85,346	5%	KATS	99,613	6%	MODM	121,461	6%
	7	LEMM	2,425	6%	MCHA	1,870	5%	MODM	84,363	5%	MODM	74,646	4%	MODM	81,981	5%	PMWF	80,995	5%	ADSS	120,262	6%
	8	PMWF	1,783	5%	GSAS	1,609	5%	CTXS	82,166	5%	CTXS	69,266	4%	PMWF	77,588	4%	RWRS	63,736	4%	FOXM	84,578	4%
	9	MODM	1,633	4%	ZLIM	1,574	4%	AMEM	77,849	4%	PMWF	64,659	4%	CTXS	75,127	4%	BWEA	61,930	4%	GSAS	83,137	4%
	10	ZLIM	1,330	3%	QCTB	1,343	4%	KATS	65,782	4%	GSAS	58,233	3%	KATS	67,867	4%	PLEX	60,943	3%	TECM	80,168	4%
MFLC TOP 5	1	CTXS	2,376	11%	TECM	3,175	16%	VTRA	118,432	12%	VTRA	171,425	19%	VTRA	169,191	17%	ABB	103,759	10%	ITOS	195,318	15%
	2	QCTB	2,206	10%	CTXS	2,378	12%	LEMM	110,118	11%	QCTB	86,901	10%	QCTB	98,673	10%	TECM	87,221	9%	ADSS	107,535	8%
	3	TECM	2,110	10%	LEMM	2,340	12%	PMWF	93,136	10%	TECM	76,083	8%	TECM	79,395	8%	LEMM	84,758	8%	BWEA	95,591	7%
	4	FOXM	1,746	8%	ZLIM	1,434	7%	TECM	89,286	9%	LEMM	68,961	8%	PMWF	71,718	7%	PMWF	76,778	8%	LEMM	90,541	7%
	5	LEMM	1,655	8%	FOXM	1,349	7%	QCTB	71,715	7%	PMWF	60,070	7%	LEMM	70,280	7%	KATS	76,726	8%	RWRS	82,647	6%
MSKT TOP 5	1	TIAM	1,739	28%	TIAM	1,251	22%	MODM	37,284	14%	WIEM	43,156	16%	MODM	39,745	14%	PLEX	37,871	13%	PLEX	63,186	17%
	2	AMEM	755	12%	AMEM	926	16%	TECM	34,301	13%	MODM	30,285	11%	WIEM	36,566	13%	WIEM	33,859	12%	MODM	47,008	13%
	3	MODM	539	9%	LEMM	641	11%	WIEM	27,916	10%	TECM	25,264	9%	TECM	28,858	10%	MODM	28,540	10%	GSAS	36,194	10%
	4	LEMM	501	8%	TECM	456	8%	TIAM	24,196	9%	PLEX	21,990	8%	PLEX	23,282	8%	FOXM	18,936	7%	BWEA	32,347	9%
	5	TECM	361	6%	WCWF	245	4%	AMEM	23,012	8%	GSAS	16,284	6%	FOXM	16,098	6%	GSAS	18,523	6%	LEMM	28,595	8%
XBFS TOP 5	1	CTXS	986	15%	TECM	1,150	21%	FOXM	39,356	14%	FOXM	41,689	15%	FOXM	48,708	19%	TECM	87,455	38%	BWEA	26,673	14%
	2	TECM	868	13%	AMEM	607	11%	TECM	30,323	11%	VTRA	31,427	12%	TECM	43,133	17%	FOXM	42,053	18%	FOXM	25,096	13%
	3	MODM	686	11%	CTXS	501	9%	VTRA	27,832	10%	TECM	31,094	11%	VTRA	20,904	8%	KATS	13,002	6%	TECM	20,352	11%
	4	QCTB	574	9%	KATS	478	9%	KATS	26,057	9%	QCTB	22,610	8%	MODM	20,556	8%	WCWF	11,989	5%	ITOS	15,082	8%
	5	FOXM	471	7%	FOXM	391	7%	CTXS	25,631	9%	CTXS	19,985	7%	CTXS	16,667	7%	MOPS	11,051	5%	MODM	12,658	7%
ODDS TOP 5	1	TECM	755	15%	MCHA	1,329	28%	MCHA	35,985	16%	FOXM	34,603	15%	MCHA	30,570	13%	MCHA	36,454	17%	MCHA	50,531	20%
	2	MCHA	588	12%	TECM	775	16%	FOXM	28,185	12%	MCHA	30,689	13%	TECM	28,053	12%	FOXM	24,114	11%	FOXM	37,097	15%
	3	VWPM	510	10%	SNWF	534	11%	TECM	25,266	11%	VWPM	22,219	10%	FOXM	27,422	12%	MAFM	18,568	8%	MAFM	20,235	8%
	4	FOXM	428	8%	VWPM	375	8%	VWPM	20,692	9%	VTRA	21,495	9%	VWPM	22,267	10%	TECM	17,571	8%	RWRS	11,904	5%
	5	SNWF	368	7%	FOXM	265	5%	VTRA	13,022	6%	TECM	21,175	9%	RWRS	15,878	7%	RWRS	16,248	7%	ITOS	9,637	4%
Totals		<u>Offered</u>	<u>Sold</u>		<u>Offered</u>	<u>Sold</u>		<u>Auction Bales Sold</u>			<u>Auction Bales Sold</u>			<u>Auction Bales Sold</u>			<u>Auction Bales Sold</u>			<u>Auction Bales Sold</u>		
		43,240	39,230		41,410	35,653		1,742,881			1,683,024			1,786,249			1,755,070			2,130,684		
		<u>Passed-In</u>	<u>PI%</u>		<u>Passed-In</u>	<u>PI%</u>		<u>Export Value</u>			<u>Export Value</u>			<u>Export Value</u>			<u>Export Value</u>			<u>Export Value</u>		
		4,010	9.3%		5,757	13.9%		\$2,272,770,228			\$2,691,010,531			\$2,619,977,188			\$2,008,440,340			\$2,487,625,451		



# JEMALONG WOOL BULLETIN

(week ending 31/10/2013)

Page 6/25

Table 6: NSW Production Statistics

2012-13		Auction		+/-		+/-	Yield %	+/-	Length	+/-	Strength	+/-	Ave Price
Statistical Devision, Area Code & Towns		Bales (FH)	Micron	YoY	Vmb %	YoY	Sch Dry	YoY	mm	YoY	Nkt	YoY	c/kg
Northern	N02 Tenterfield, Glen Innes	9,672	19.5	-0.6	1.8	-0.7	72.7	1.6	81	-0.7	41	0.4	829
	N03 Guyra	36,328	18.9	-0.1	1.8	-0.5	73.7	1.5	81	-0.9	42	1.0	948
	N04 Inverell	4,372	19.1	0.2	3.4	-1.3	69.7	0.7	83	-1.6	38	-0.6	759
	N05 Armidale	1,984	19.9	0.1	3.9	-0.7	69.4	1.5	82	-1.2	38	-0.5	710
	N06 Tamworth, Gunnedah, Quirindi	6,492	20.5	0.1	4.0	-0.7	68.5	1.1	84	-0.2	38	-0.7	708
	N07 Moree	6,363	20.0	-0.1	4.2	-1.2	64.5	0.7	87	-1.9	36	0.8	619
	N08 Narrabri	3,263	19.9	0.1	3.6	-1.3	67.3	2.0	88	-0.2	39	1.9	621
North Western & Far West	N09 Cobar, Bourke, Wanaaring	12,329	20.5	-0.2	4.3	-0.8	60.7	0.0	88	0.2	37	0.2	591
	N12 Walgett	8,512	19.9	-0.3	4.3	-1.8	64.1	1.8	86	0.1	37	1.8	616
	N13 Nyngan	18,905	20.5	-0.1	4.9	-2.0	63.7	2.3	88	0.0	37	1.1	597
	N14 Dubbo, Narromine	21,765	21.6	0.0	4.3	-1.0	63.1	1.1	85	0.0	36	0.4	539
	N16 Dunedoo	6,893	20.0	0.0	3.4	-0.2	67.8	-0.6	88	-0.4	34	0.2	678
	N17 Mudgee, Wellington, Gulgong	20,969	19.7	-0.1	3.4	-0.3	68.3	0.4	83	0.2	38	0.7	728
	N33 Coonabarabran	3,677	20.9	0.1	4.6	0.1	67.0	0.4	85	1.7	34	-1.6	611
	N34 Coonamble	8,142	20.4	-0.1	4.4	-2.4	63.4	1.5	87	2.7	35	0.9	605
	N36 Gilgandra, Gulargambone	6,030	21.5	-0.1	3.9	-0.7	65.0	0.3	86	-0.3	36	0.3	580
	N40 Brewarrina	7,487	20.2	0.0	2.3	-0.9	66.6	1.8	86	-1.7	39	4.0	688
	N10 Wilcannia, Broken Hill	25,295	21.3	-0.5	2.8	-0.9	61.1	-0.2	89	-1.4	37	1.1	595
Central West	N15 Forbes, Parkes, Cowra	47,591	21.5	0.0	3.3	-0.8	64.1	0.6	86	-0.2	36	0.1	570
	N18 Lithgow, Oberon	3,402	20.7	-0.2	3.3	-0.3	68.0	0.0	83	1.1	38	0.3	672
	N19 Orange, Bathurst	50,922	22.1	-0.2	2.3	-0.5	69.4	1.0	85	0.3	38	1.4	646
	N25 West Wyalong	25,261	21.0	-0.3	2.9	-0.6	63.4	-0.6	89	-0.5	36	0.8	592
	N35 Condobolin, Lake Cargelligo	10,701	21.0	-0.3	5.3	-1.1	60.1	-9.8	86	0.2	36	-0.8	535
Murrumbidgee	N26 Cootamundra, Temora	26,106	22.1	-0.1	2.1	-0.5	64.1	-0.3	86	-0.8	35	0.6	568
	N27 Adelong, Gundagai	10,213	21.6	-0.5	2.7	-1.0	68.1	0.4	88	0.6	36	0.2	616
	N29 Wagga, Narrandera	32,841	22.7	-0.1	1.6	-0.6	66.2	-0.9	90	0.3	36	1.3	572
	N37 Griffith, Hillston	12,036	22.0	-0.2	4.1	-0.9	61.1	-1.3	84	-2.2	40	1.3	545
	N39 Hay, Coleambally	17,044	21.3	-0.1	3.4	-1.9	64.0	0.1	90	2.4	39	-0.9	614
Murray	N11 Wentworth, Balranald	17,328	21.7	-0.3	4.8	-2.0	60.9	0.9	92	1.5	38	0.3	555
	N28 Albury, Corowa, Holbrook	28,883	21.9	-0.3	1.5	-0.3	67.0	-0.6	89	-0.1	37	1.8	613
	N31 Deniliquin	23,340	21.3	-0.1	2.5	-1.1	65.7	-0.1	88	0.4	39	1.2	622
	N38 Finley, Berrigan, Jerilderie	9,124	21.0	-0.3	2.5	-0.9	65.2	-0.3	88	-1.5	39	1.1	630
South Eastern	N23 Goulburn, Young, Yass	94,784	20.1	-0.1	1.7	-0.7	69.5	0.7	86	0.3	38	1.7	714
	N24 Monaro (Cooma, Bombala)	37,228	20.3	-0.2	1.9	-0.5	69.6	1.5	90	0.5	37	1.5	666
	N32 A.C.T.	183	20.4	0.7	3.1	-1.6	61.7	-2.5	89	9.0	31	-3.0	594
	N43 South Coast (Bega)	409	19.2	0.3	0.8	-1.8	74.3	3.9	84	3.3	42	2.9	862
NSW	AWEX Sale Statistics 12-13	685,519	21.0	-0.1	2.8	-0.8	66.4	0.6	87	0.1	38	1.0	658

AWTA Mthly Key Test Data		Bales Tested	Micron	+/- MoM	VMB	+/- MoM	Yld	+/- MoM	Lth	+/- MoM	Nkt	+/- MoM	POBM +/-
NSW	Sep-2013	62,784	20.3	0.2	4.7	-0.2	64.6	0.8	87	0.9	37	-1.2	53 1.0
Australia	Sep-2013	200,591	20.4	0.0	1.8	-0.3	65.2	0.8	89	1.5	34	-1.6	51 1.5

MAX MIN Max Gain Max Reduction

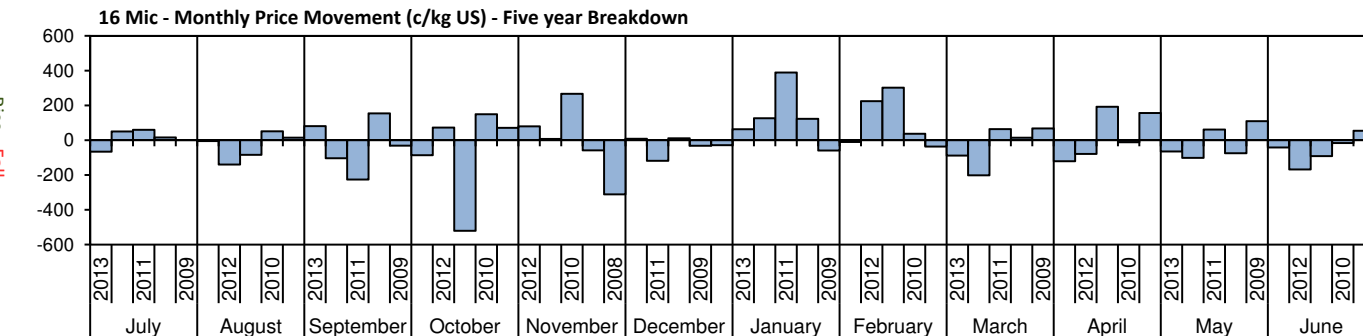
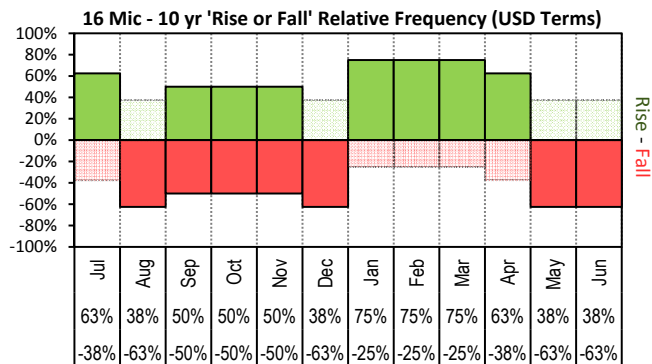




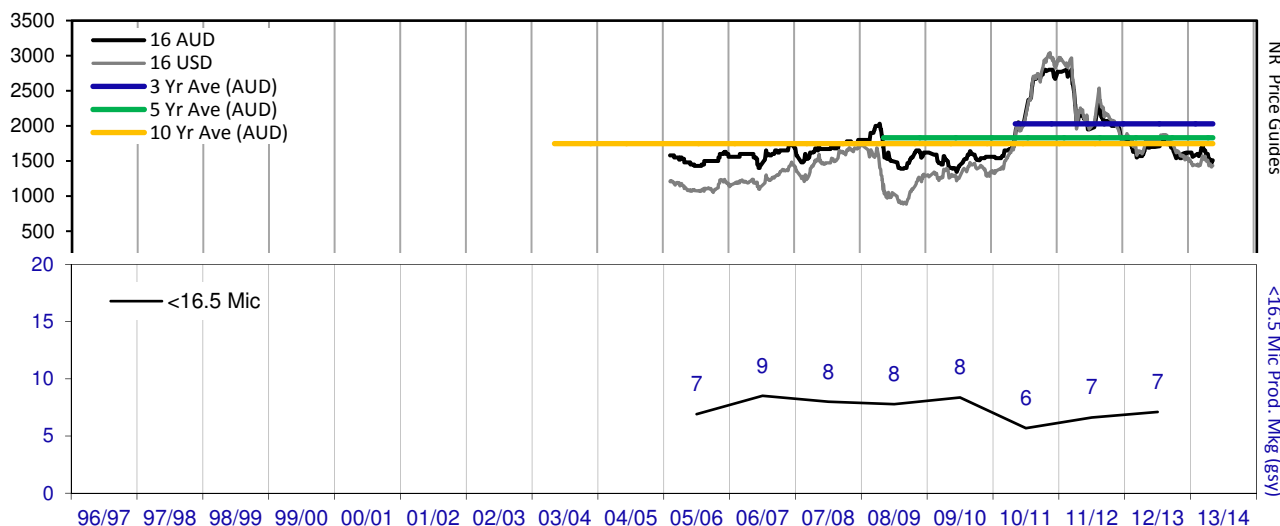
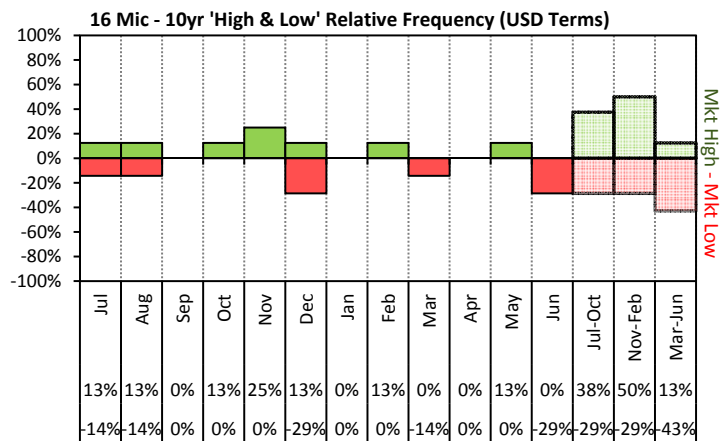
# JEMALONG WOOL BULLETIN

(week ending 31/10/2013)

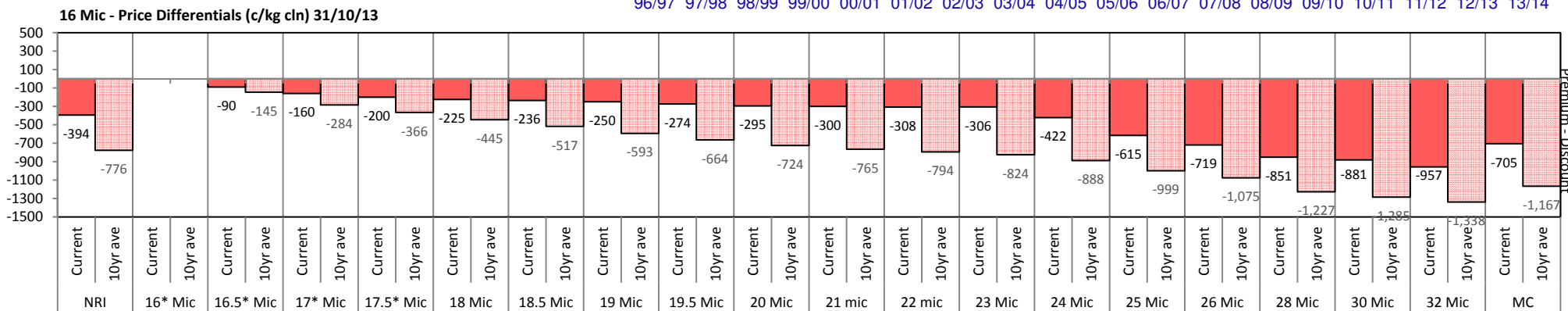
Page 7/25



The above 'Rise or Fall' graph, shows how often the market has risen or fallen in a given month over the past 10 years, it does not show the extent of the movement only the frequency of direction. The 'Monthly Price Movement' graph shows the extent of movement for each month, for the past 5 years.



The above graph, shows how often the '12 month high & low' have been achieved for a given month over the past 10 years. It is not a measure of probability.

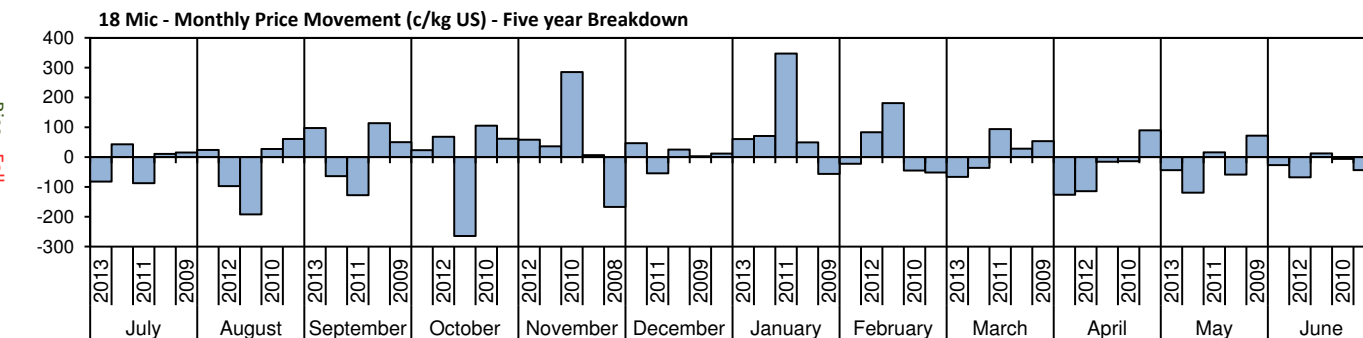
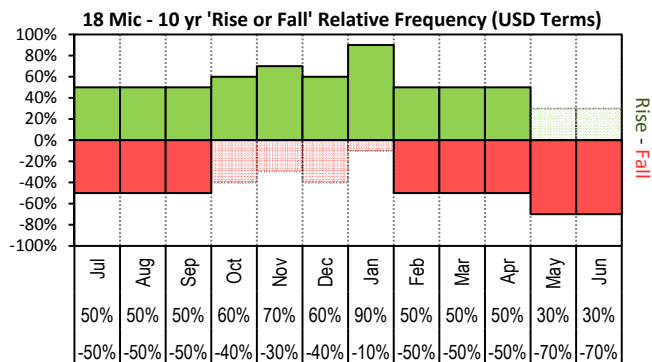




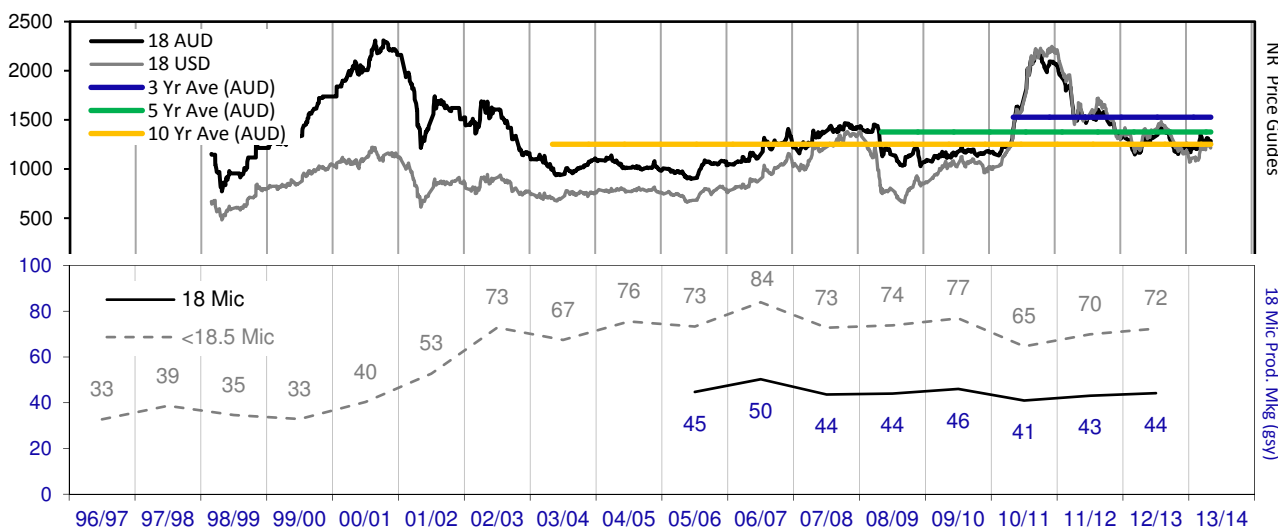
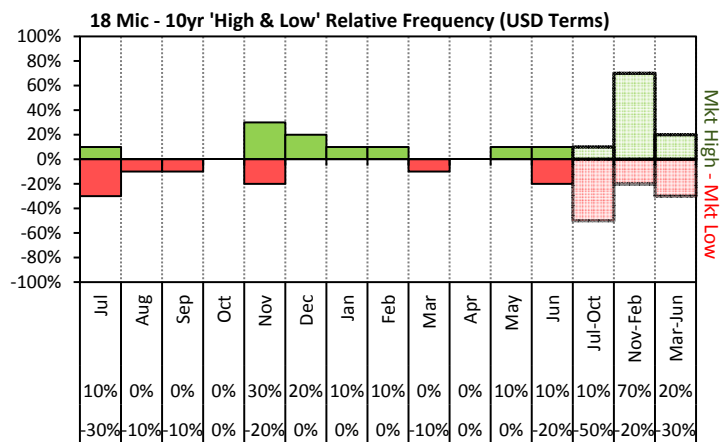
# JEMALONG WOOL BULLETIN

(week ending 31/10/2013)

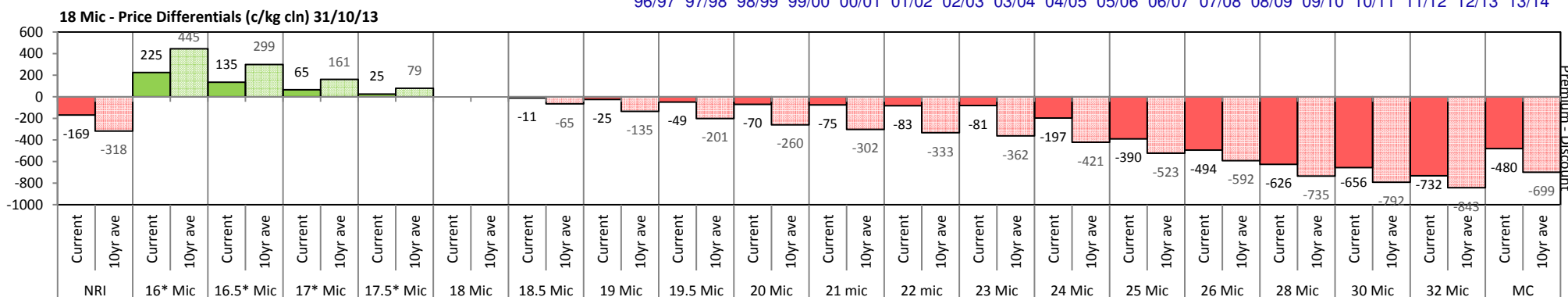
Page 8/25



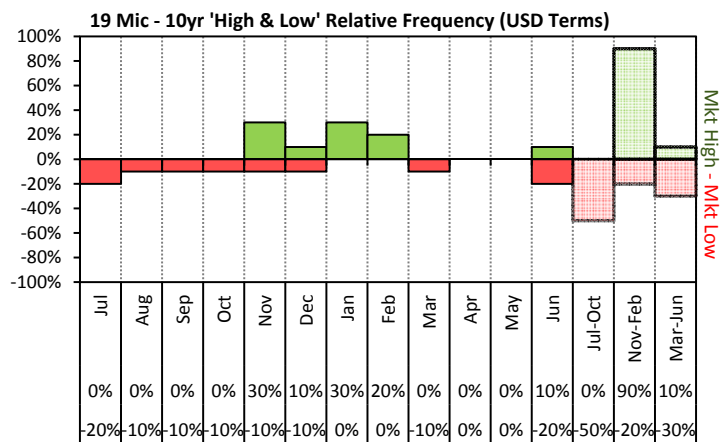
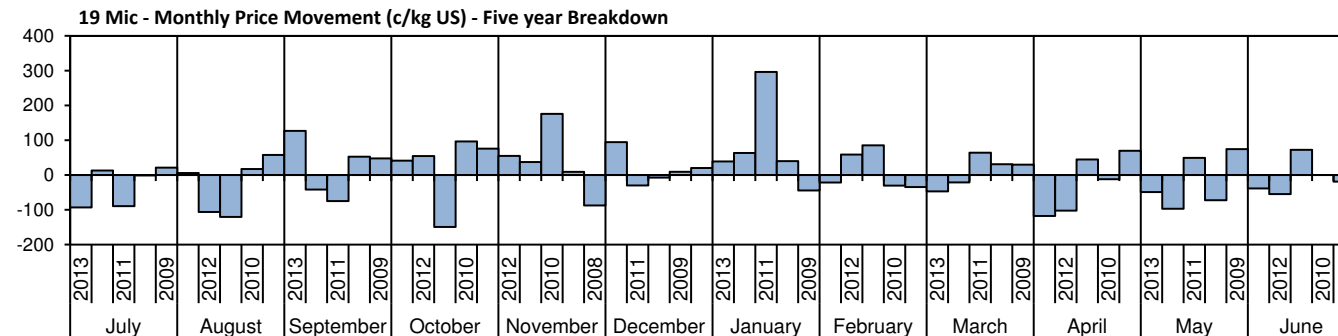
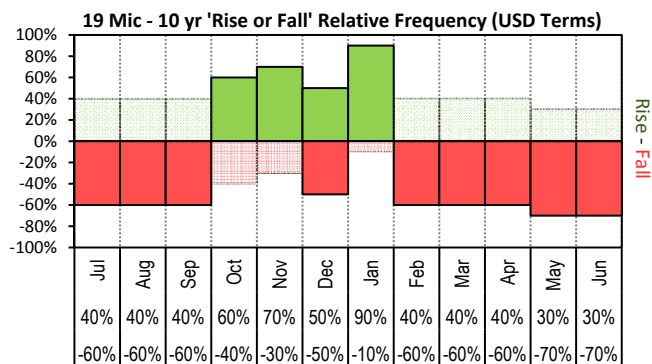
The above 'Rise or Fall' graph, shows how often the market has risen or fallen in a given month over the past 10 years, it does not show the extent of the movement only the frequency of direction. The 'Monthly Price Movement' graph shows the extent of movement for each month, for the past 5 years.



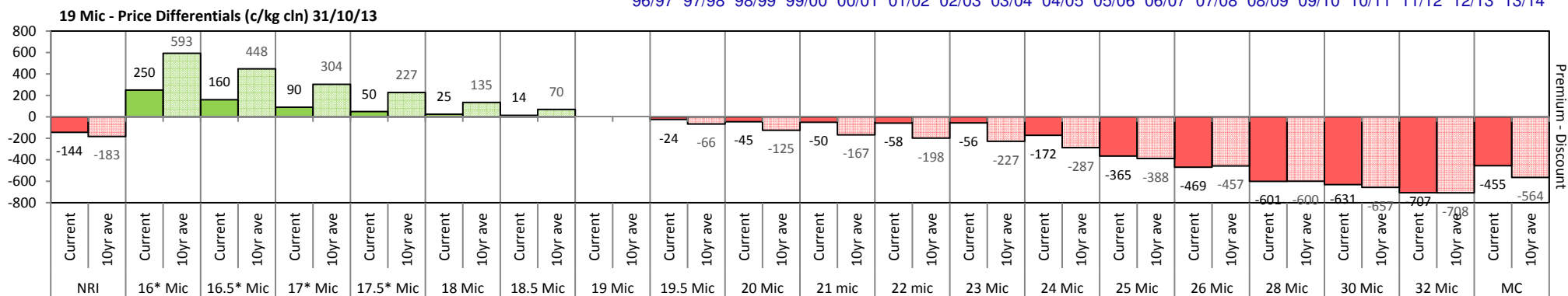
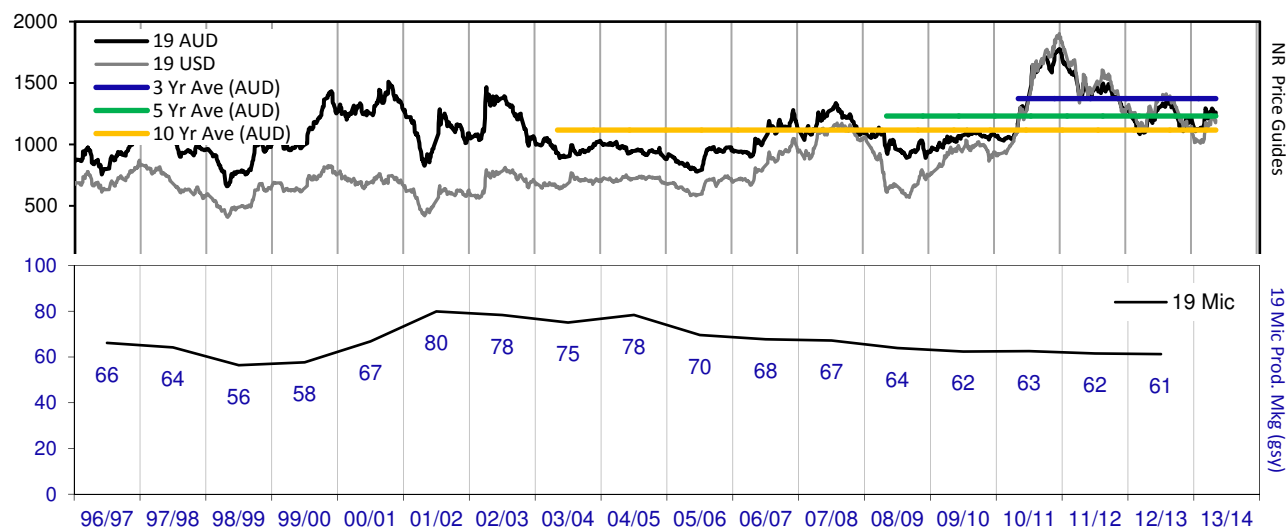
The above graph, shows how often the '12 month high & low' have been achieved for a given month over the past 10 years. It is not a measure of probability.







The above graph, shows how often the '12 month high & low' have been achieved for a given month over the past 10 years. It is not a measure of probability.

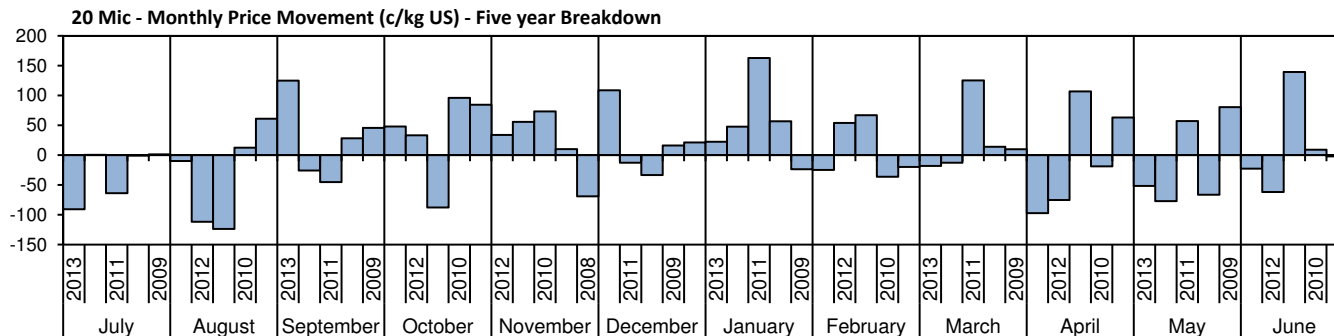
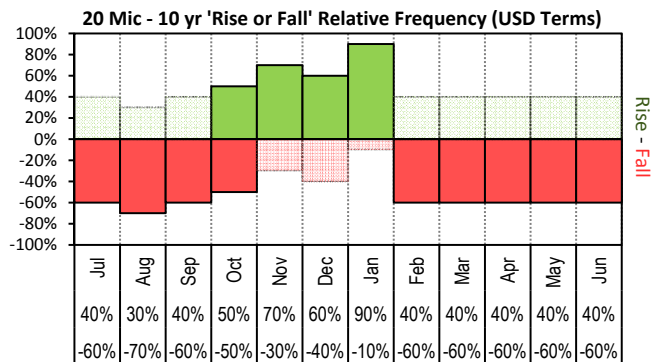




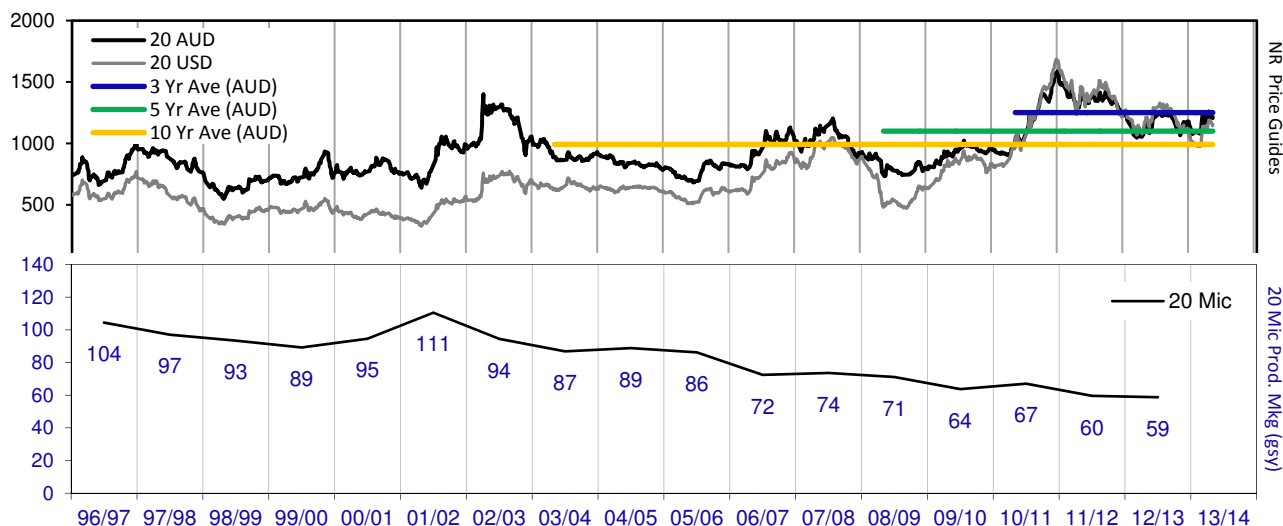
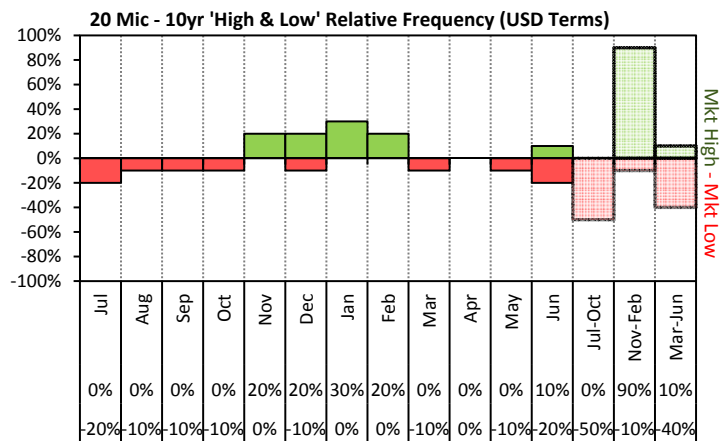
# JEMALONG WOOL BULLETIN

(week ending 31/10/2013)

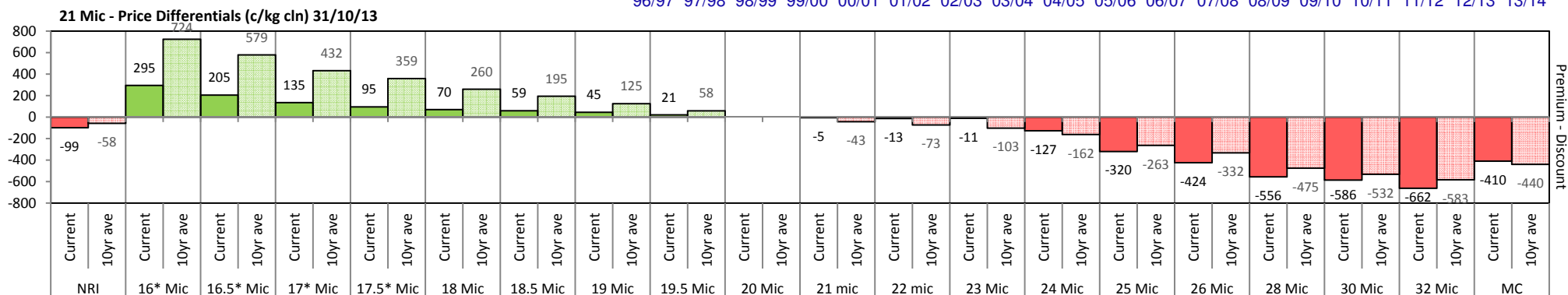
Page 10/25



The above 'Rise or Fall' graph, shows how often the market has risen or fallen in a given month over the past 10 years, it does not show the extent of the movement only the frequency of direction. The 'Monthly Price Movement' graph shows the extent of movement for each month, for the past 5 years.



The above graph, shows how often the '12 month high & low' have been achieved for a given month over the past 10 years. It is not a measure of probability.

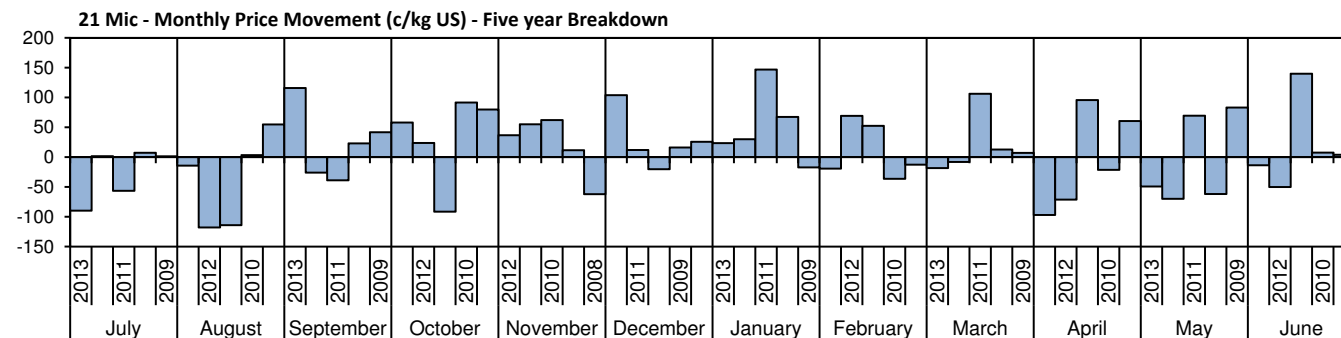
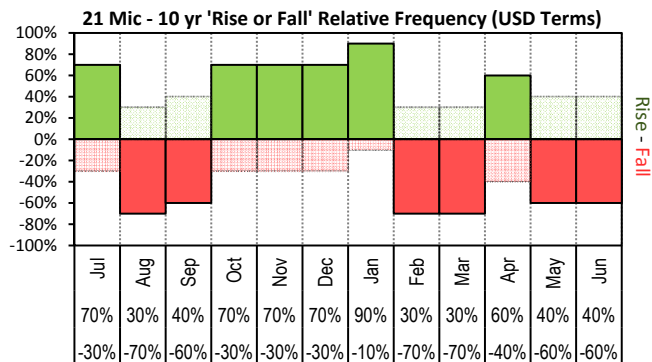




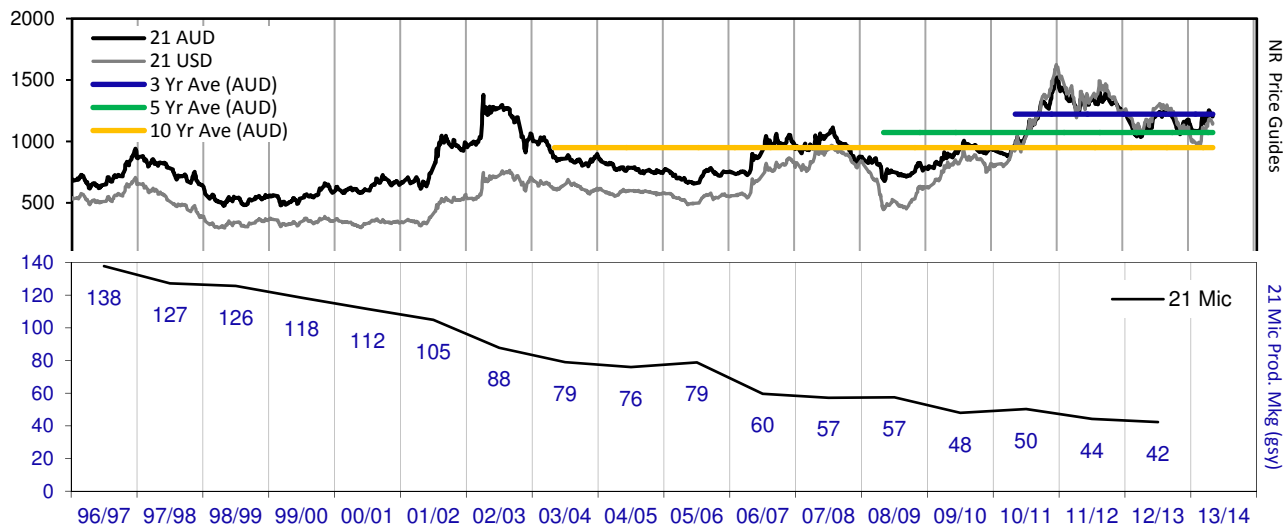
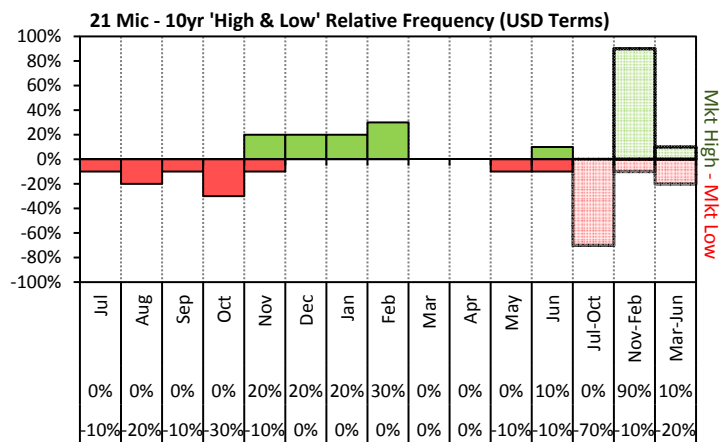
# JEMALONG WOOL BULLETIN

(week ending 31/10/2013)

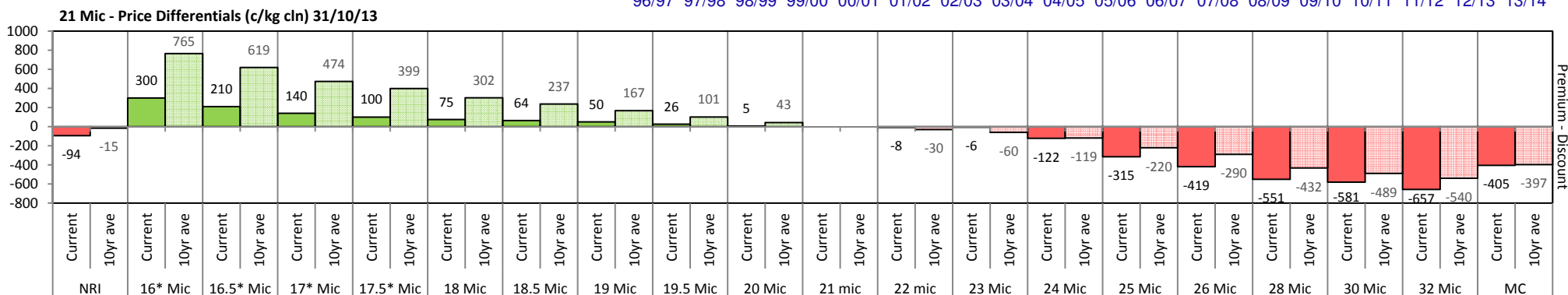
Page 11/25



The above 'Rise or Fall' graph, shows how often the market has risen or fallen in a given month over the past 10 years, it does not show the extent of the movement only the frequency of direction. The 'Monthly Price Movement' graph shows the extent of movement for each month, for the past 5 years.



The above graph, shows how often the '12 month high & low' have been achieved for a given month over the past 10 years. It is not a measure of probability.

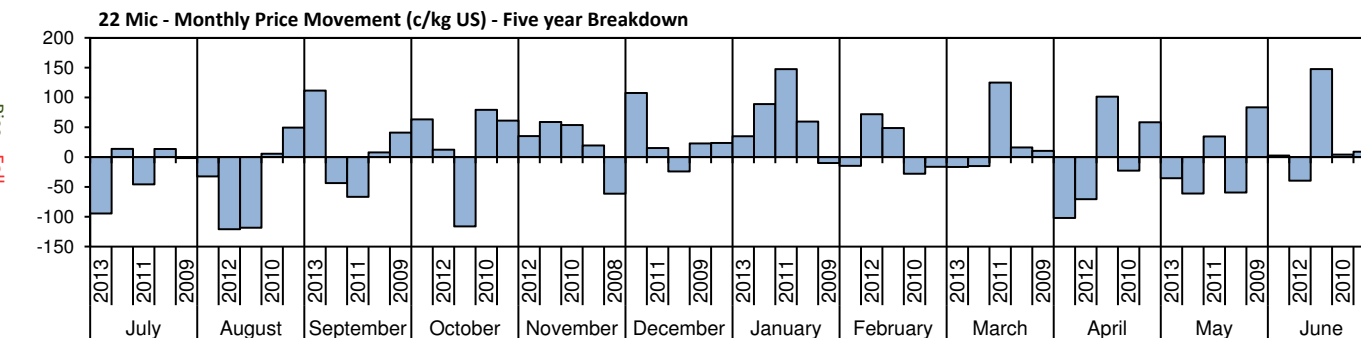
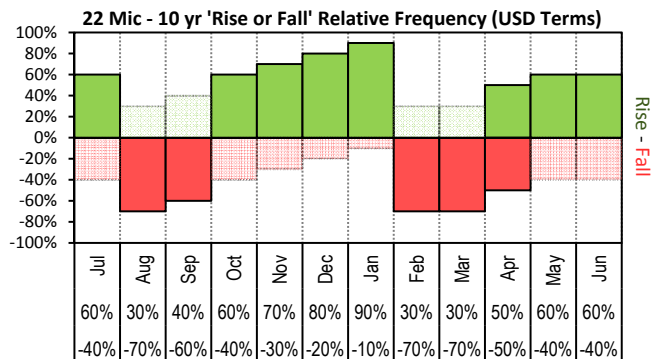




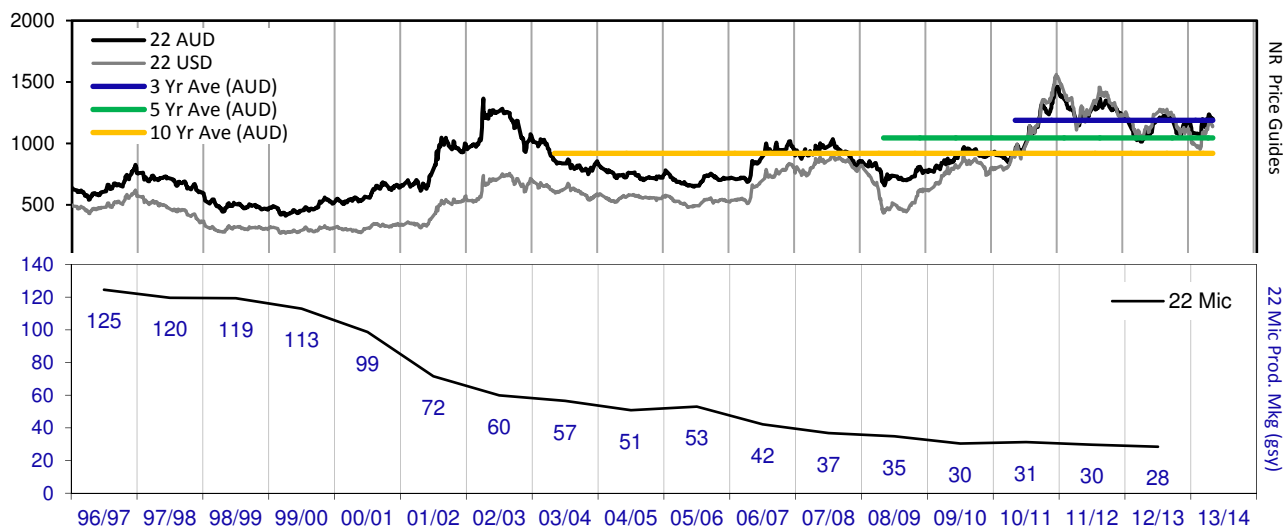
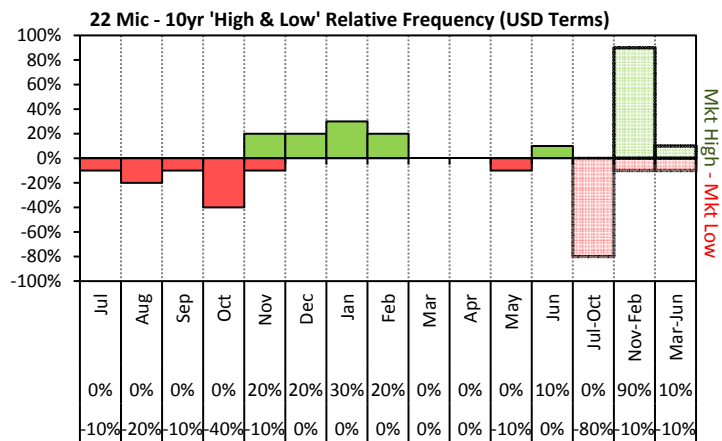
# JEMALONG WOOL BULLETIN

(week ending 31/10/2013)

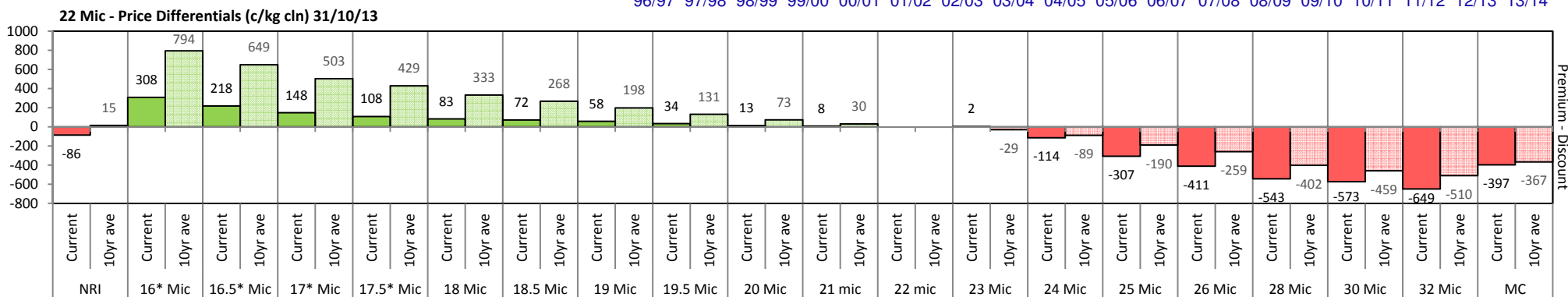
Page 12/25



The above 'Rise or Fall' graph, shows how often the market has risen or fallen in a given month over the past 10 years, it does not show the extent of the movement only the frequency of direction. The 'Monthly Price Movement' graph shows the extent of movement for each month, for the past 5 years.



The above graph, shows how often the '12 month high & low' have been achieved for a given month over the past 10 years. It is not a measure of probability.

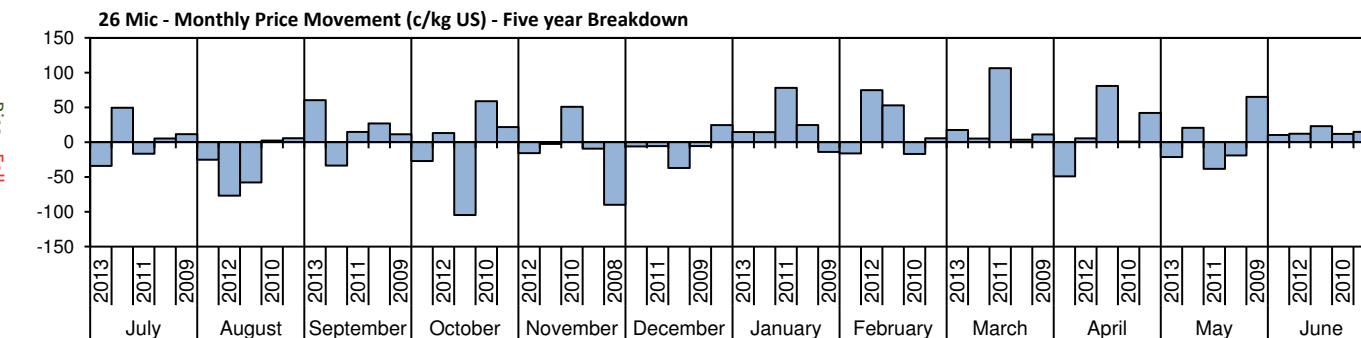
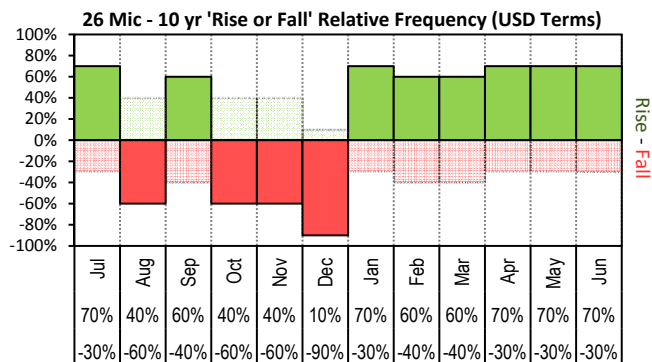




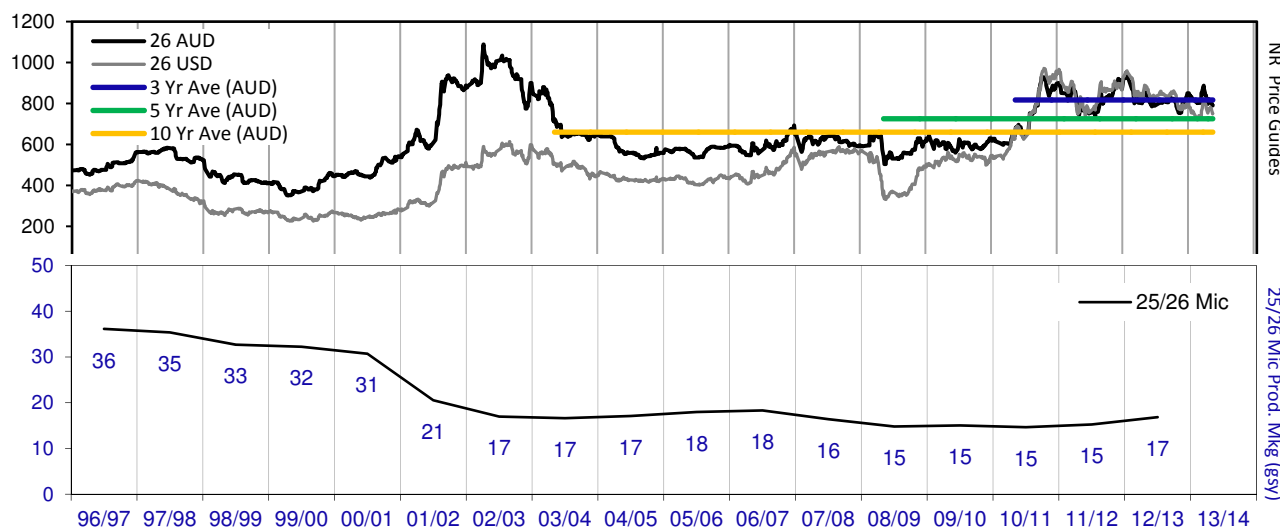
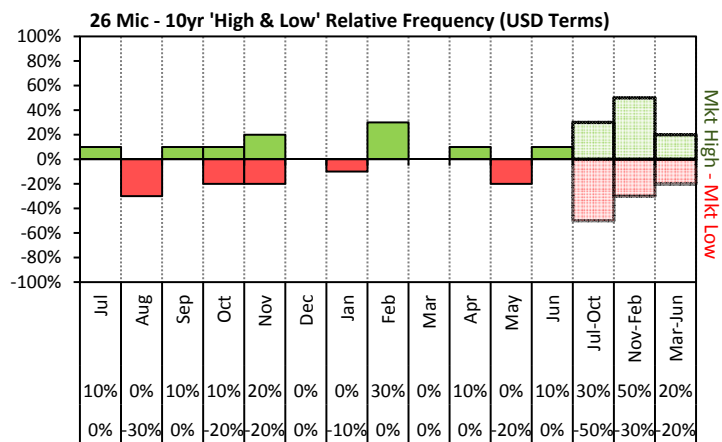
# JEMALONG WOOL BULLETIN

(week ending 31/10/2013)

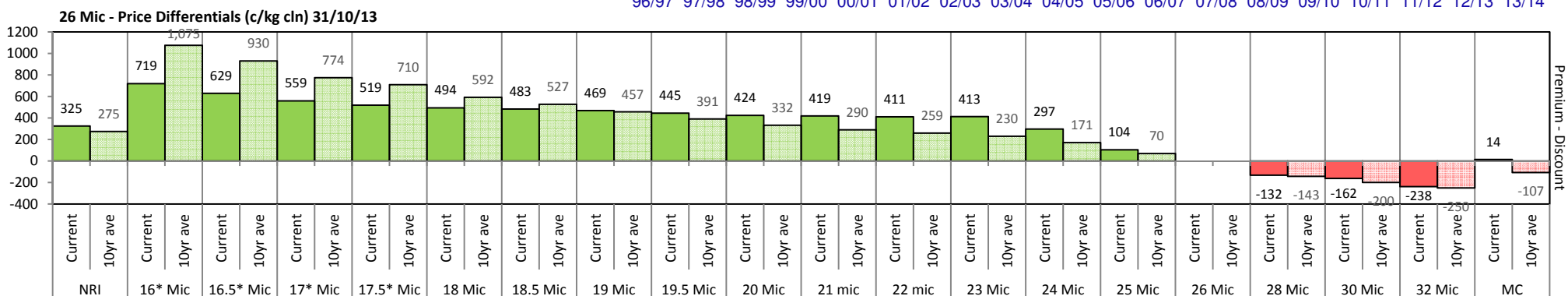
Page 13/25



The above 'Rise or Fall' graph, shows how often the market has risen or fallen in a given month over the past 10 years, it does not show the extent of the movement only the frequency of direction. The 'Monthly Price Movement' graph shows the extent of movement for each month, for the past 5 years.



The above graph, shows how often the '12 month high & low' have been achieved for a given month over the past 10 years. It is not a measure of probability.

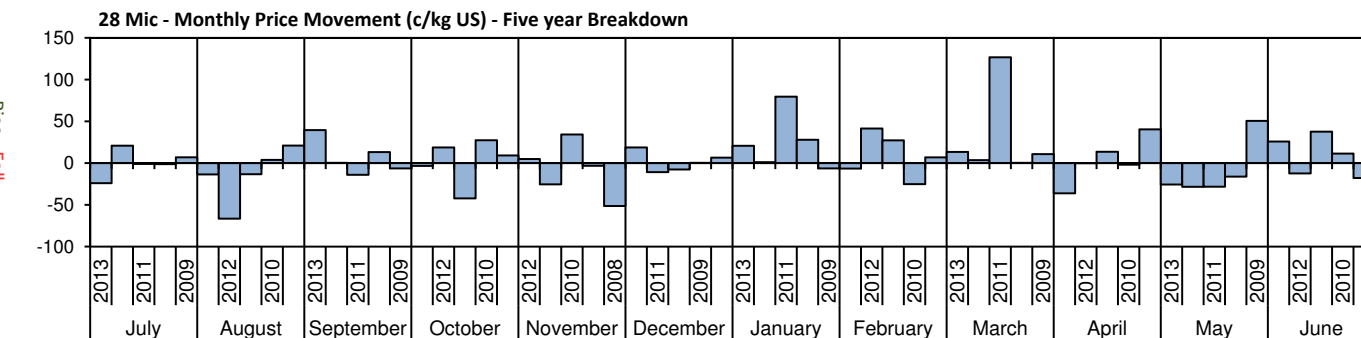
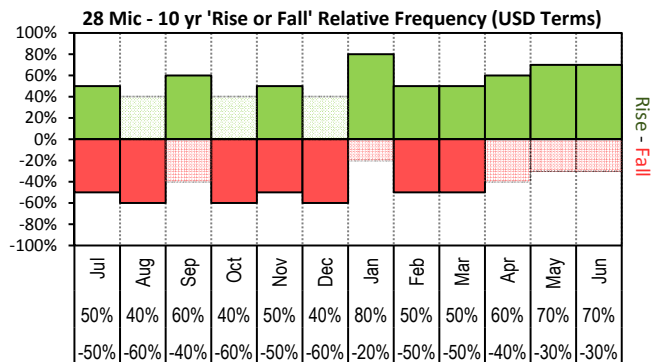




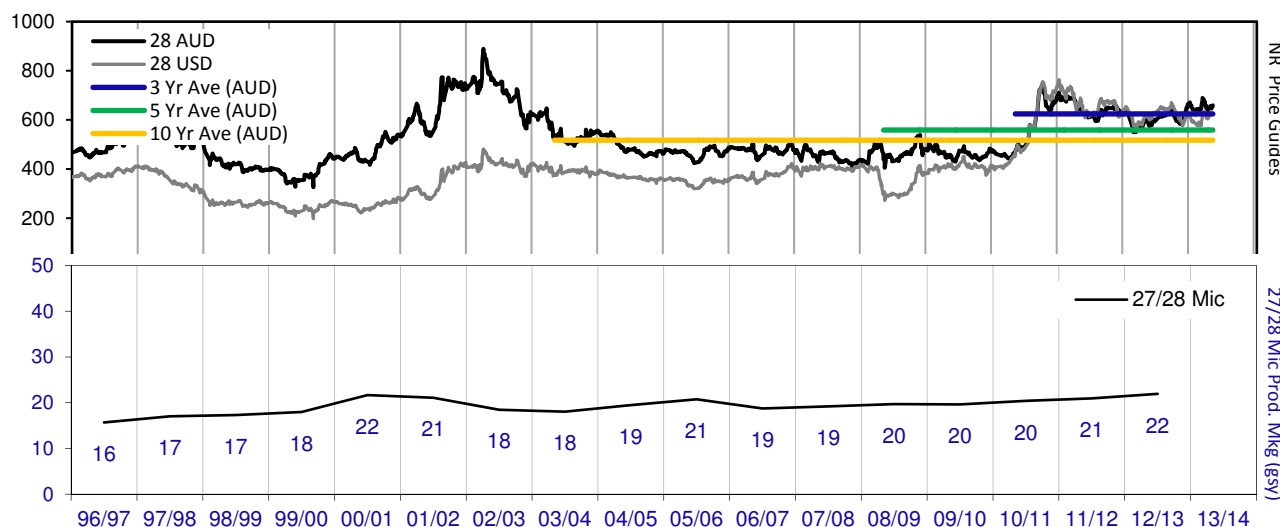
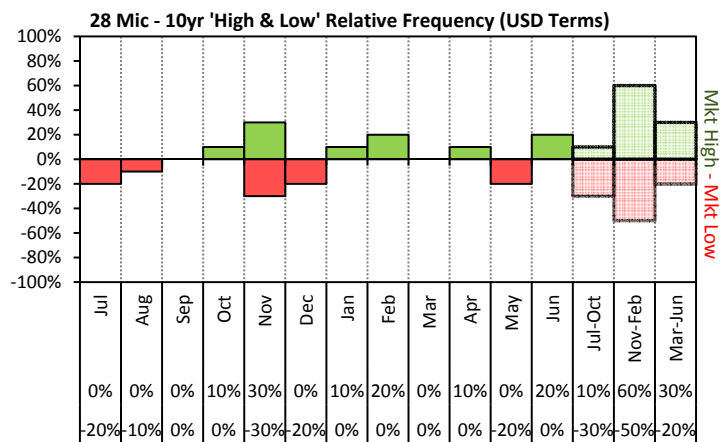
# JEMALONG WOOL BULLETIN

(week ending 31/10/2013)

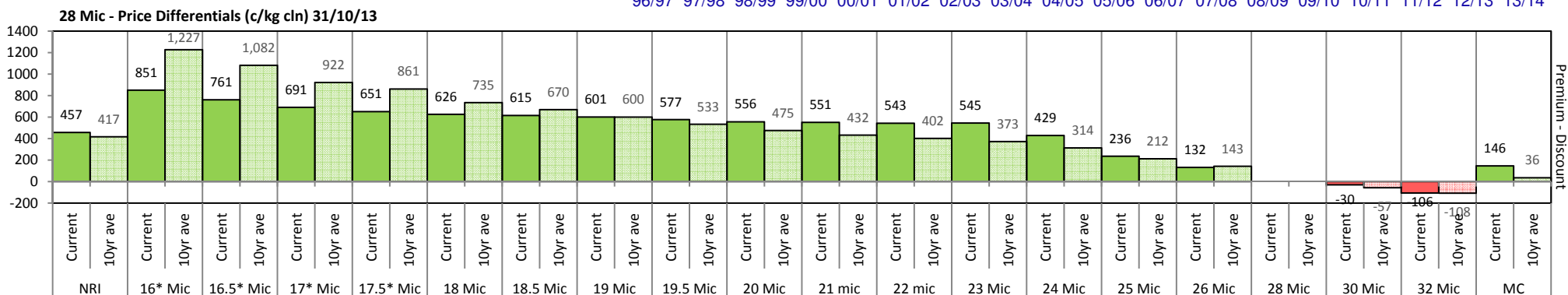
Page 14/25



The above 'Rise or Fall' graph, shows how often the market has risen or fallen in a given month over the past 10 years, it does not show the extent of the movement only the frequency of direction. The 'Monthly Price Movement' graph shows the extent of movement for each month, for the past 5 years.



The above graph, shows how often the '12 month high & low' have been achieved for a given month over the past 10 years. It is not a measure of probability.



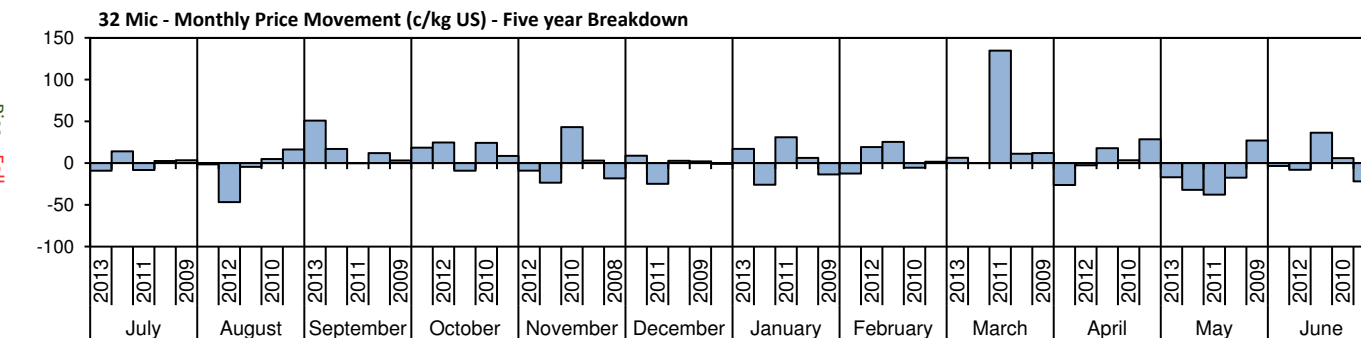
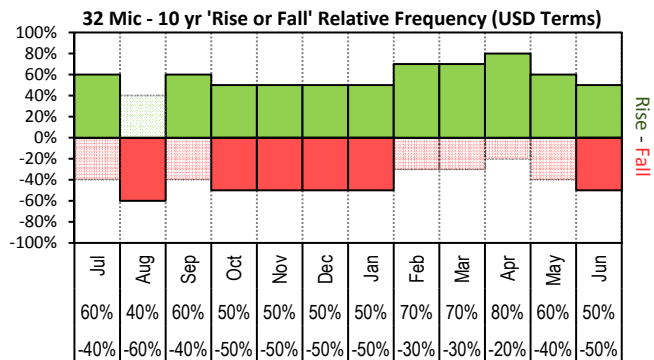




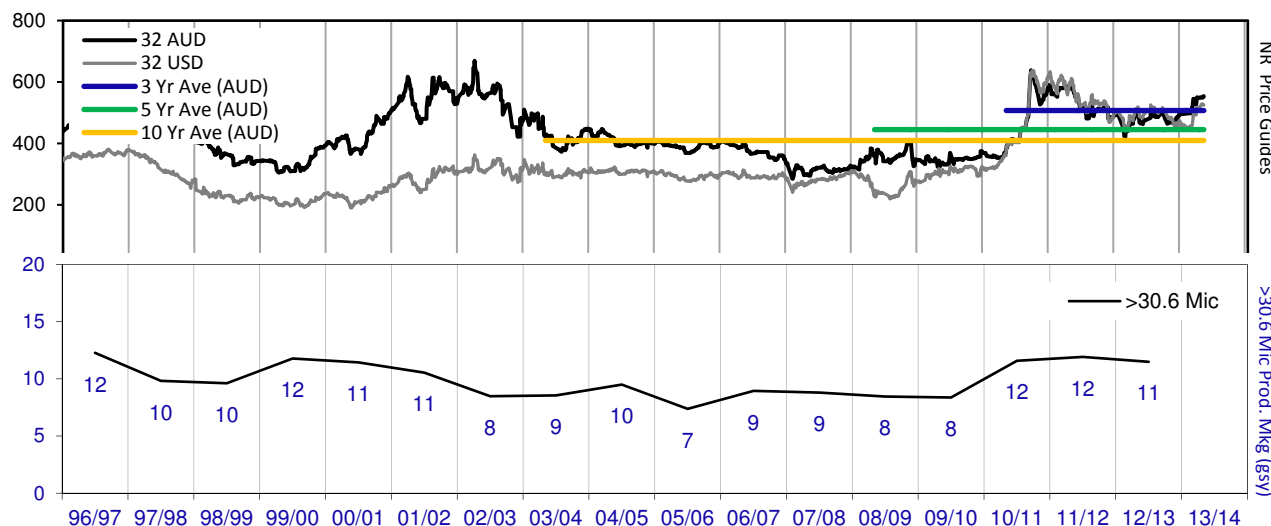
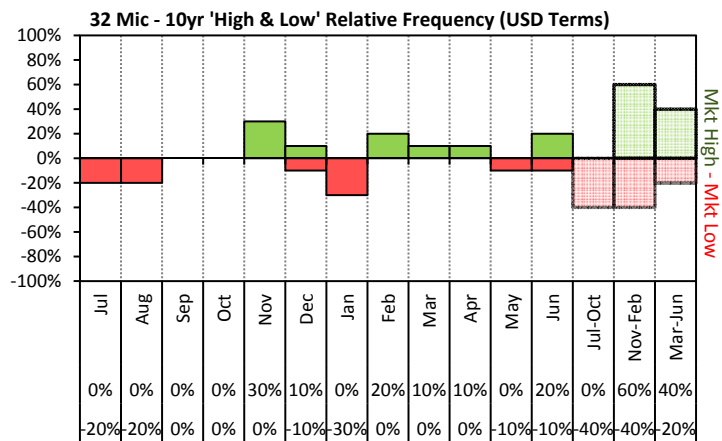
# JEMALONG WOOL BULLETIN

(week ending 31/10/2013)

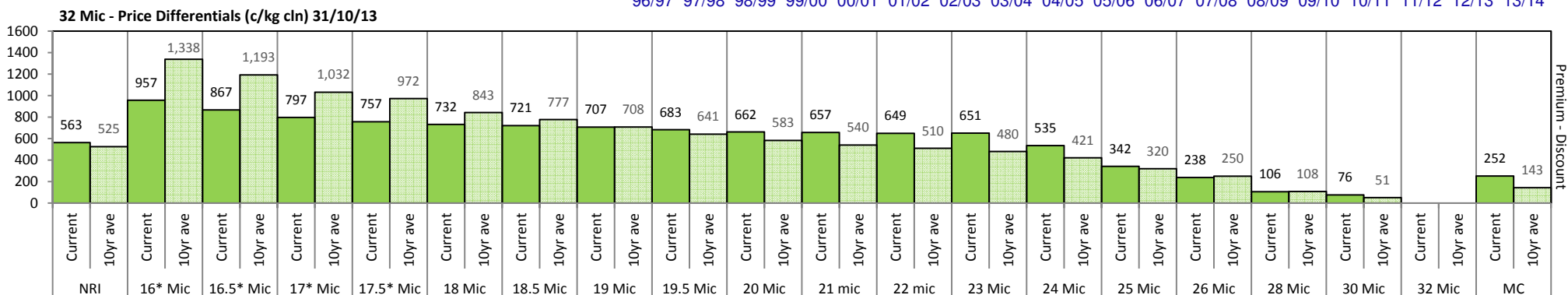
Page 15/25



The above 'Rise or Fall' graph, shows how often the market has risen or fallen in a given month over the past 10 years, it does not show the extent of the movement only the frequency of direction. The 'Monthly Price Movement' graph shows the extent of movement for each month, for the past 5 years.



The above graph, shows how often the '12 month high & low' have been achieved for a given month over the past 10 years. It is not a measure of probability.







## Two Year Export Snapshot (Greasy Equivalent - Million Kilos)

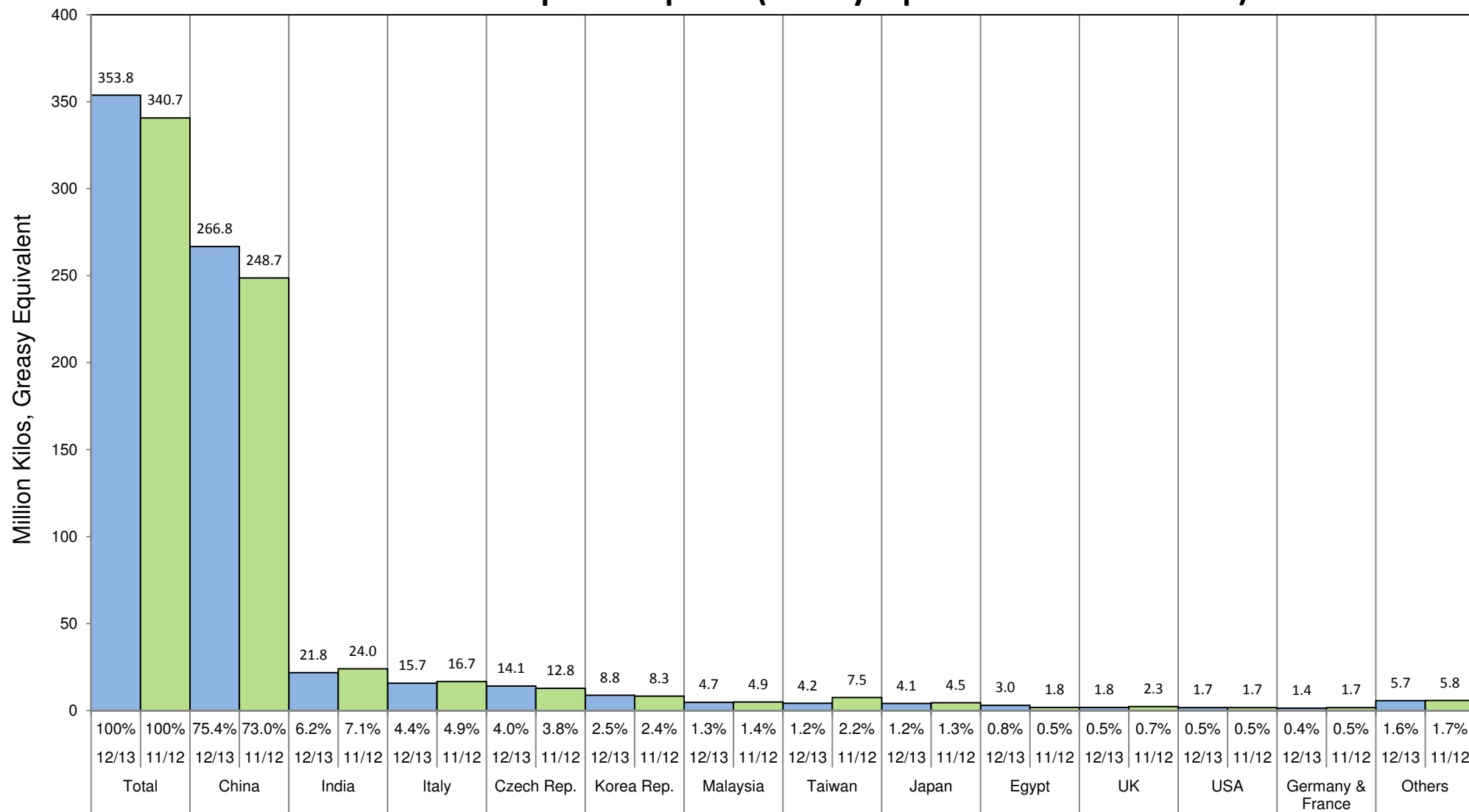




Table 7: Returns pr head for skirted fleece wool.

Skirted FLC Weight		Micron																	
9 Kg		16	16.5	17	17.5	18	18.5	19	19.5	20	21	22	23	24	25	26	28	30	32
Yield (Sch Dry)	25% Current	\$34	\$32	\$30	\$29	\$27	\$25	\$23	\$21	\$18	\$17	\$16	\$16	\$16	\$13	\$13	\$10	\$10	\$8
	10yr ave.	\$39	\$36	\$32	\$31	\$28	\$27	\$25	\$24	\$22	\$21	\$21	\$20	\$19	\$16	\$15	\$12	\$10	\$9
	30% Current	\$41	\$38	\$36	\$35	\$32	\$30	\$28	\$25	\$22	\$20	\$20	\$19	\$19	\$16	\$15	\$12	\$12	\$10
	10yr ave.	\$47	\$43	\$39	\$37	\$34	\$32	\$30	\$28	\$27	\$26	\$25	\$24	\$22	\$20	\$18	\$14	\$12	\$11
	35% Current	\$48	\$44	\$42	\$40	\$38	\$35	\$33	\$30	\$25	\$24	\$23	\$23	\$22	\$18	\$18	\$14	\$13	\$12
	10yr ave.	\$55	\$50	\$45	\$44	\$39	\$37	\$35	\$33	\$31	\$30	\$29	\$28	\$26	\$23	\$21	\$16	\$14	\$13
	40% Current	\$55	\$50	\$48	\$46	\$43	\$40	\$37	\$34	\$29	\$27	\$26	\$26	\$25	\$21	\$20	\$17	\$15	\$13
	10yr ave.	\$63	\$58	\$52	\$50	\$45	\$43	\$40	\$38	\$36	\$34	\$33	\$32	\$30	\$26	\$24	\$19	\$17	\$15
	45% Current	\$62	\$57	\$53	\$52	\$48	\$45	\$42	\$38	\$33	\$31	\$30	\$29	\$28	\$24	\$23	\$19	\$17	\$15
	10yr ave.	\$71	\$65	\$58	\$56	\$51	\$48	\$45	\$43	\$40	\$38	\$37	\$36	\$34	\$30	\$27	\$21	\$19	\$17
	50% Current	\$68	\$63	\$59	\$58	\$54	\$50	\$47	\$42	\$36	\$34	\$33	\$32	\$31	\$26	\$25	\$21	\$19	\$17
	10yr ave.	\$79	\$72	\$65	\$62	\$56	\$53	\$50	\$47	\$45	\$43	\$41	\$40	\$37	\$33	\$30	\$23	\$21	\$18
	55% Current	\$75	\$69	\$65	\$63	\$59	\$55	\$51	\$47	\$40	\$38	\$36	\$36	\$34	\$29	\$28	\$23	\$21	\$18
	10yr ave.	\$86	\$79	\$71	\$68	\$62	\$59	\$55	\$52	\$49	\$47	\$45	\$44	\$41	\$36	\$33	\$26	\$23	\$20
	60% Current	\$82	\$76	\$71	\$69	\$64	\$60	\$56	\$51	\$44	\$41	\$39	\$39	\$37	\$31	\$30	\$25	\$23	\$20
	10yr ave.	\$94	\$87	\$78	\$75	\$68	\$64	\$60	\$57	\$54	\$51	\$50	\$48	\$45	\$39	\$36	\$28	\$25	\$22
	65% Current	\$89	\$82	\$77	\$75	\$70	\$65	\$61	\$55	\$47	\$44	\$43	\$42	\$41	\$34	\$33	\$27	\$25	\$22
	10yr ave.	\$102	\$94	\$84	\$81	\$73	\$69	\$65	\$61	\$58	\$56	\$54	\$52	\$49	\$43	\$39	\$30	\$27	\$24
	70% Current	\$96	\$88	\$83	\$81	\$75	\$70	\$65	\$59	\$51	\$48	\$46	\$45	\$44	\$37	\$35	\$29	\$27	\$23
	10yr ave.	\$110	\$101	\$91	\$87	\$79	\$75	\$70	\$66	\$63	\$60	\$58	\$56	\$52	\$46	\$42	\$33	\$29	\$26
	75% Current	\$103	\$95	\$89	\$86	\$81	\$75	\$70	\$64	\$55	\$51	\$49	\$49	\$47	\$39	\$38	\$31	\$29	\$25
	10yr ave.	\$118	\$108	\$97	\$93	\$85	\$80	\$75	\$71	\$67	\$64	\$62	\$60	\$56	\$49	\$45	\$35	\$31	\$28
	80% Current	\$109	\$101	\$95	\$92	\$86	\$80	\$75	\$68	\$58	\$55	\$52	\$52	\$50	\$42	\$40	\$33	\$31	\$27
	10yr ave.	\$126	\$115	\$104	\$99	\$90	\$85	\$80	\$76	\$71	\$68	\$66	\$64	\$60	\$53	\$48	\$37	\$33	\$30
	85% Current	\$116	\$107	\$101	\$98	\$91	\$85	\$79	\$72	\$62	\$58	\$56	\$55	\$53	\$45	\$43	\$35	\$33	\$28
	10yr ave.	\$134	\$123	\$110	\$106	\$96	\$91	\$85	\$80	\$76	\$73	\$70	\$68	\$64	\$56	\$50	\$40	\$35	\$31

The above shows estimated returns per head for skirted fleece wool. These figures do not take into account the value of skirtings and oddments and do not take into account discounts that may apply for faults under individual circumstances. These figures are based on a market index of 100% and should be used as a guide only. Returns over \$30 / head for fleece wool are highlighted.



Table 8: Returns pr head for skirted fleece wool.

Skirted FLC Weight 8 Kg		Micron																	
		16	16.5	17	17.5	18	18.5	19	19.5	20	21	22	23	24	25	26	28	30	32
Yield (Sch Dry)	25% Current	\$30	\$28	\$26	\$26	\$24	\$22	\$21	\$19	\$16	\$15	\$15	\$14	\$14	\$12	\$11	\$9	\$9	\$7
	10yr ave.	\$35	\$32	\$29	\$28	\$25	\$24	\$22	\$21	\$20	\$19	\$18	\$18	\$17	\$15	\$13	\$10	\$9	\$8
	30% Current	\$36	\$34	\$32	\$31	\$29	\$27	\$25	\$23	\$19	\$18	\$17	\$17	\$17	\$14	\$13	\$11	\$10	\$9
	10yr ave.	\$42	\$38	\$35	\$33	\$30	\$28	\$27	\$25	\$24	\$23	\$22	\$21	\$20	\$18	\$16	\$12	\$11	\$10
	35% Current	\$43	\$39	\$37	\$36	\$33	\$31	\$29	\$26	\$23	\$21	\$20	\$20	\$19	\$16	\$16	\$13	\$12	\$10
	10yr ave.	\$49	\$45	\$40	\$39	\$35	\$33	\$31	\$29	\$28	\$27	\$26	\$25	\$23	\$20	\$18	\$14	\$13	\$11
	40% Current	\$49	\$45	\$42	\$41	\$38	\$36	\$33	\$30	\$26	\$24	\$23	\$23	\$22	\$19	\$18	\$15	\$14	\$12
	10yr ave.	\$56	\$51	\$46	\$44	\$40	\$38	\$36	\$34	\$32	\$30	\$29	\$28	\$27	\$23	\$21	\$17	\$15	\$13
	45% Current	\$55	\$50	\$48	\$46	\$43	\$40	\$37	\$34	\$29	\$27	\$26	\$26	\$25	\$21	\$20	\$17	\$15	\$13
	10yr ave.	\$63	\$58	\$52	\$50	\$45	\$43	\$40	\$38	\$36	\$34	\$33	\$32	\$30	\$26	\$24	\$19	\$17	\$15
	50% Current	\$61	\$56	\$53	\$51	\$48	\$45	\$42	\$38	\$32	\$30	\$29	\$29	\$28	\$23	\$22	\$18	\$17	\$15
	10yr ave.	\$70	\$64	\$58	\$55	\$50	\$47	\$45	\$42	\$40	\$38	\$37	\$36	\$33	\$29	\$26	\$21	\$18	\$16
	55% Current	\$67	\$62	\$58	\$56	\$53	\$49	\$46	\$41	\$36	\$33	\$32	\$32	\$31	\$26	\$25	\$20	\$19	\$16
	10yr ave.	\$77	\$70	\$63	\$61	\$55	\$52	\$49	\$46	\$44	\$42	\$40	\$39	\$37	\$32	\$29	\$23	\$20	\$18
	60% Current	\$73	\$67	\$63	\$61	\$57	\$54	\$50	\$45	\$39	\$36	\$35	\$35	\$33	\$28	\$27	\$22	\$20	\$18
	10yr ave.	\$84	\$77	\$69	\$66	\$60	\$57	\$54	\$50	\$48	\$46	\$44	\$43	\$40	\$35	\$32	\$25	\$22	\$20
	65% Current	\$79	\$73	\$69	\$67	\$62	\$58	\$54	\$49	\$42	\$39	\$38	\$38	\$36	\$30	\$29	\$24	\$22	\$19
	10yr ave.	\$91	\$83	\$75	\$72	\$65	\$62	\$58	\$55	\$52	\$49	\$48	\$46	\$43	\$38	\$34	\$27	\$24	\$21
	70% Current	\$85	\$78	\$74	\$72	\$67	\$62	\$58	\$53	\$45	\$43	\$41	\$40	\$39	\$33	\$31	\$26	\$24	\$21
	10yr ave.	\$98	\$90	\$81	\$77	\$70	\$66	\$63	\$59	\$56	\$53	\$51	\$50	\$47	\$41	\$37	\$29	\$26	\$23
	75% Current	\$91	\$84	\$79	\$77	\$72	\$67	\$62	\$57	\$48	\$46	\$44	\$43	\$42	\$35	\$34	\$28	\$26	\$22
	10yr ave.	\$105	\$96	\$86	\$83	\$75	\$71	\$67	\$63	\$60	\$57	\$55	\$53	\$50	\$44	\$40	\$31	\$28	\$25
	80% Current	\$97	\$90	\$84	\$82	\$76	\$71	\$66	\$60	\$52	\$49	\$47	\$46	\$44	\$37	\$36	\$29	\$27	\$24
	10yr ave.	\$112	\$103	\$92	\$88	\$80	\$76	\$71	\$67	\$64	\$61	\$59	\$57	\$53	\$47	\$42	\$33	\$29	\$26
	85% Current	\$103	\$95	\$90	\$87	\$81	\$76	\$71	\$64	\$55	\$52	\$50	\$49	\$47	\$40	\$38	\$31	\$29	\$25
	10yr ave.	\$119	\$109	\$98	\$94	\$85	\$81	\$76	\$71	\$68	\$65	\$62	\$61	\$57	\$50	\$45	\$35	\$31	\$28

The above shows estimated returns per head for skirted fleece wool. These figures do not take into account the value of skirtings and oddments and do not take into account discounts that may apply for faults under individual circumstances. These figures are based on a market index of 100% and should be used as a guide only. Returns over \$30 / head for fleece wool are highlighted.



Table 9: Returns pr head for skirted fleece wool.

Skirted FLC Weight		Micron																	
7 Kg		16	16.5	17	17.5	18	18.5	19	19.5	20	21	22	23	24	25	26	28	30	32
Yield (Sch Dry)	25% Current	\$27	\$25	\$23	\$22	\$21	\$20	\$18	\$16	\$14	\$13	\$13	\$13	\$12	\$10	\$10	\$8	\$7	\$6
	10yr ave.	\$31	\$28	\$25	\$24	\$22	\$21	\$20	\$18	\$17	\$17	\$16	\$16	\$15	\$13	\$12	\$9	\$8	\$7
	30% Current	\$32	\$29	\$28	\$27	\$25	\$23	\$22	\$20	\$17	\$16	\$15	\$15	\$15	\$12	\$12	\$10	\$9	\$8
	10yr ave.	\$37	\$34	\$30	\$29	\$26	\$25	\$23	\$22	\$21	\$20	\$19	\$19	\$17	\$15	\$14	\$11	\$10	\$9
	35% Current	\$37	\$34	\$32	\$31	\$29	\$27	\$25	\$23	\$20	\$19	\$18	\$18	\$17	\$14	\$14	\$11	\$10	\$9
	10yr ave.	\$43	\$39	\$35	\$34	\$31	\$29	\$27	\$26	\$24	\$23	\$23	\$22	\$20	\$18	\$16	\$13	\$11	\$10
	40% Current	\$43	\$39	\$37	\$36	\$33	\$31	\$29	\$26	\$23	\$21	\$20	\$20	\$19	\$16	\$16	\$13	\$12	\$10
	10yr ave.	\$49	\$45	\$40	\$39	\$35	\$33	\$31	\$29	\$28	\$27	\$26	\$25	\$23	\$20	\$18	\$14	\$13	\$11
	45% Current	\$48	\$44	\$42	\$40	\$38	\$35	\$33	\$30	\$25	\$24	\$23	\$23	\$22	\$18	\$18	\$14	\$13	\$12
	10yr ave.	\$55	\$50	\$45	\$44	\$39	\$37	\$35	\$33	\$31	\$30	\$29	\$28	\$26	\$23	\$21	\$16	\$14	\$13
	50% Current	\$53	\$49	\$46	\$45	\$42	\$39	\$36	\$33	\$28	\$27	\$26	\$25	\$24	\$20	\$20	\$16	\$15	\$13
	10yr ave.	\$61	\$56	\$50	\$48	\$44	\$42	\$39	\$37	\$35	\$33	\$32	\$31	\$29	\$26	\$23	\$18	\$16	\$14
	55% Current	\$59	\$54	\$51	\$49	\$46	\$43	\$40	\$36	\$31	\$29	\$28	\$28	\$27	\$22	\$22	\$18	\$16	\$14
	10yr ave.	\$67	\$62	\$55	\$53	\$48	\$46	\$43	\$40	\$38	\$37	\$35	\$34	\$32	\$28	\$25	\$20	\$18	\$16
	60% Current	\$64	\$59	\$55	\$54	\$50	\$47	\$44	\$40	\$34	\$32	\$31	\$30	\$29	\$24	\$24	\$19	\$18	\$15
	10yr ave.	\$73	\$67	\$61	\$58	\$53	\$50	\$47	\$44	\$42	\$40	\$39	\$37	\$35	\$31	\$28	\$22	\$19	\$17
	65% Current	\$69	\$64	\$60	\$58	\$54	\$51	\$47	\$43	\$37	\$35	\$33	\$33	\$32	\$26	\$26	\$21	\$19	\$17
	10yr ave.	\$79	\$73	\$66	\$63	\$57	\$54	\$51	\$48	\$45	\$43	\$42	\$40	\$38	\$33	\$30	\$24	\$21	\$19
	70% Current	\$74	\$69	\$65	\$63	\$59	\$55	\$51	\$46	\$40	\$37	\$36	\$35	\$34	\$29	\$28	\$22	\$21	\$18
	10yr ave.	\$86	\$78	\$71	\$68	\$61	\$58	\$55	\$51	\$49	\$47	\$45	\$44	\$41	\$36	\$32	\$25	\$23	\$20
	75% Current	\$80	\$74	\$69	\$67	\$63	\$59	\$54	\$49	\$42	\$40	\$38	\$38	\$36	\$31	\$30	\$24	\$22	\$19
	10yr ave.	\$92	\$84	\$76	\$73	\$66	\$62	\$59	\$55	\$52	\$50	\$48	\$47	\$44	\$38	\$35	\$27	\$24	\$22
	80% Current	\$85	\$78	\$74	\$72	\$67	\$62	\$58	\$53	\$45	\$43	\$41	\$40	\$39	\$33	\$31	\$26	\$24	\$21
	10yr ave.	\$98	\$90	\$81	\$77	\$70	\$66	\$63	\$59	\$56	\$53	\$51	\$50	\$47	\$41	\$37	\$29	\$26	\$23
	85% Current	\$90	\$83	\$79	\$76	\$71	\$66	\$62	\$56	\$48	\$45	\$43	\$43	\$41	\$35	\$33	\$27	\$25	\$22
	10yr ave.	\$104	\$95	\$86	\$82	\$74	\$71	\$66	\$63	\$59	\$57	\$55	\$53	\$49	\$43	\$39	\$31	\$27	\$24

The above shows estimated returns per head for skirted fleece wool. These figures do not take into account the value of skirtings and oddments and do not take into account discounts that may apply for faults under individual circumstances. These figures are based on a market index of 100% and should be used as a guide only. Returns over \$30 / head for fleece wool are highlighted.





Table 10: Returns pr head for skirted fleece wool.

Skirted FLC Weight		Micron																	
6 Kg		16	16.5	17	17.5	18	18.5	19	19.5	20	21	22	23	24	25	26	28	30	32
Yield (Sch Dry)	25% Current	\$23	\$21	\$20	\$19	\$18	\$17	\$16	\$14	\$12	\$11	\$11	\$11	\$10	\$9	\$8	\$7	\$6	\$6
	10yr ave.	\$26	\$24	\$22	\$21	\$19	\$18	\$17	\$16	\$15	\$14	\$14	\$13	\$12	\$11	\$10	\$8	\$7	\$6
	30% Current	\$27	\$25	\$24	\$23	\$21	\$20	\$19	\$17	\$15	\$14	\$13	\$13	\$12	\$10	\$10	\$8	\$8	\$7
	10yr ave.	\$31	\$29	\$26	\$25	\$23	\$21	\$20	\$19	\$18	\$17	\$17	\$16	\$15	\$13	\$12	\$9	\$8	\$7
	35% Current	\$32	\$29	\$28	\$27	\$25	\$23	\$22	\$20	\$17	\$16	\$15	\$15	\$15	\$12	\$12	\$10	\$9	\$8
	10yr ave.	\$37	\$34	\$30	\$29	\$26	\$25	\$23	\$22	\$21	\$20	\$19	\$19	\$17	\$15	\$14	\$11	\$10	\$9
	40% Current	\$36	\$34	\$32	\$31	\$29	\$27	\$25	\$23	\$19	\$18	\$17	\$17	\$17	\$14	\$13	\$11	\$10	\$9
	10yr ave.	\$42	\$38	\$35	\$33	\$30	\$28	\$27	\$25	\$24	\$23	\$22	\$21	\$20	\$18	\$16	\$12	\$11	\$10
	45% Current	\$41	\$38	\$36	\$35	\$32	\$30	\$28	\$25	\$22	\$20	\$20	\$19	\$19	\$16	\$15	\$12	\$12	\$10
	10yr ave.	\$47	\$43	\$39	\$37	\$34	\$32	\$30	\$28	\$27	\$26	\$25	\$24	\$22	\$20	\$18	\$14	\$12	\$11
	50% Current	\$46	\$42	\$40	\$38	\$36	\$33	\$31	\$28	\$24	\$23	\$22	\$22	\$21	\$17	\$17	\$14	\$13	\$11
	10yr ave.	\$52	\$48	\$43	\$41	\$38	\$36	\$34	\$32	\$30	\$29	\$28	\$27	\$25	\$22	\$20	\$16	\$14	\$12
	55% Current	\$50	\$46	\$44	\$42	\$39	\$37	\$34	\$31	\$27	\$25	\$24	\$24	\$23	\$19	\$19	\$15	\$14	\$12
	10yr ave.	\$58	\$53	\$48	\$46	\$41	\$39	\$37	\$35	\$33	\$31	\$30	\$29	\$27	\$24	\$22	\$17	\$15	\$14
	60% Current	\$55	\$50	\$48	\$46	\$43	\$40	\$37	\$34	\$29	\$27	\$26	\$26	\$25	\$21	\$20	\$17	\$15	\$13
	10yr ave.	\$63	\$58	\$52	\$50	\$45	\$43	\$40	\$38	\$36	\$34	\$33	\$32	\$30	\$26	\$24	\$19	\$17	\$15
	65% Current	\$59	\$55	\$51	\$50	\$47	\$43	\$40	\$37	\$32	\$30	\$28	\$28	\$27	\$23	\$22	\$18	\$17	\$14
	10yr ave.	\$68	\$62	\$56	\$54	\$49	\$46	\$44	\$41	\$39	\$37	\$36	\$35	\$32	\$28	\$26	\$20	\$18	\$16
	70% Current	\$64	\$59	\$55	\$54	\$50	\$47	\$44	\$40	\$34	\$32	\$31	\$30	\$29	\$24	\$24	\$19	\$18	\$15
	10yr ave.	\$73	\$67	\$61	\$58	\$53	\$50	\$47	\$44	\$42	\$40	\$39	\$37	\$35	\$31	\$28	\$22	\$19	\$17
	75% Current	\$68	\$63	\$59	\$58	\$54	\$50	\$47	\$42	\$36	\$34	\$33	\$32	\$31	\$26	\$25	\$21	\$19	\$17
	10yr ave.	\$79	\$72	\$65	\$62	\$56	\$53	\$50	\$47	\$45	\$43	\$41	\$40	\$37	\$33	\$30	\$23	\$21	\$18
	80% Current	\$73	\$67	\$63	\$61	\$57	\$54	\$50	\$45	\$39	\$36	\$35	\$35	\$33	\$28	\$27	\$22	\$20	\$18
	10yr ave.	\$84	\$77	\$69	\$66	\$60	\$57	\$54	\$50	\$48	\$46	\$44	\$43	\$40	\$35	\$32	\$25	\$22	\$20
	85% Current	\$78	\$71	\$67	\$65	\$61	\$57	\$53	\$48	\$41	\$39	\$37	\$37	\$35	\$30	\$29	\$23	\$22	\$19
	10yr ave.	\$89	\$82	\$73	\$70	\$64	\$61	\$57	\$54	\$51	\$48	\$47	\$45	\$42	\$37	\$34	\$26	\$23	\$21

The above shows estimated returns per head for skirted fleece wool. These figures do not take into account the value of skirtings and oddments and do not take into account discounts that may apply for faults under individual circumstances. These figures are based on a market index of 100% and should be used as a guide only. Returns over \$30 / head for fleece wool are highlighted.



Table 11: Returns pr head for skirted fleece wool.

Skirted FLC Weight		Micron																	
5 Kg		16	16.5	17	17.5	18	18.5	19	19.5	20	21	22	23	24	25	26	28	30	32
Yield (Sch Dry)	25% Current	\$19	\$18	\$17	\$16	\$15	\$14	\$13	\$12	\$10	\$9	\$9	\$9	\$9	\$7	\$7	\$6	\$5	\$5
	10yr ave.	\$22	\$20	\$18	\$17	\$16	\$15	\$14	\$13	\$12	\$12	\$11	\$11	\$10	\$9	\$8	\$6	\$6	\$5
	30% Current	\$23	\$21	\$20	\$19	\$18	\$17	\$16	\$14	\$12	\$11	\$11	\$11	\$10	\$9	\$8	\$7	\$6	\$6
	10yr ave.	\$26	\$24	\$22	\$21	\$19	\$18	\$17	\$16	\$15	\$14	\$14	\$13	\$12	\$11	\$10	\$8	\$7	\$6
	35% Current	\$27	\$25	\$23	\$22	\$21	\$20	\$18	\$16	\$14	\$13	\$13	\$13	\$12	\$10	\$10	\$8	\$7	\$6
	10yr ave.	\$31	\$28	\$25	\$24	\$22	\$21	\$20	\$18	\$17	\$17	\$16	\$16	\$15	\$13	\$12	\$9	\$8	\$7
	40% Current	\$30	\$28	\$26	\$26	\$24	\$22	\$21	\$19	\$16	\$15	\$15	\$14	\$14	\$12	\$11	\$9	\$9	\$7
	10yr ave.	\$35	\$32	\$29	\$28	\$25	\$24	\$22	\$21	\$20	\$19	\$18	\$18	\$17	\$15	\$13	\$10	\$9	\$8
	45% Current	\$34	\$32	\$30	\$29	\$27	\$25	\$23	\$21	\$18	\$17	\$16	\$16	\$16	\$13	\$13	\$10	\$10	\$8
	10yr ave.	\$39	\$36	\$32	\$31	\$28	\$27	\$25	\$24	\$22	\$21	\$21	\$20	\$19	\$16	\$15	\$12	\$10	\$9
	50% Current	\$38	\$35	\$33	\$32	\$30	\$28	\$26	\$24	\$20	\$19	\$18	\$18	\$17	\$15	\$14	\$11	\$11	\$9
	10yr ave.	\$44	\$40	\$36	\$35	\$31	\$30	\$28	\$26	\$25	\$24	\$23	\$22	\$21	\$18	\$17	\$13	\$12	\$10
	55% Current	\$42	\$39	\$36	\$35	\$33	\$31	\$29	\$26	\$22	\$21	\$20	\$20	\$19	\$16	\$15	\$13	\$12	\$10
	10yr ave.	\$48	\$44	\$40	\$38	\$34	\$33	\$31	\$29	\$27	\$26	\$25	\$24	\$23	\$20	\$18	\$14	\$13	\$11
	60% Current	\$46	\$42	\$40	\$38	\$36	\$33	\$31	\$28	\$24	\$23	\$22	\$22	\$21	\$17	\$17	\$14	\$13	\$11
	10yr ave.	\$52	\$48	\$43	\$41	\$38	\$36	\$34	\$32	\$30	\$29	\$28	\$27	\$25	\$22	\$20	\$16	\$14	\$12
	65% Current	\$49	\$46	\$43	\$42	\$39	\$36	\$34	\$31	\$26	\$25	\$24	\$23	\$23	\$19	\$18	\$15	\$14	\$12
	10yr ave.	\$57	\$52	\$47	\$45	\$41	\$39	\$36	\$34	\$32	\$31	\$30	\$29	\$27	\$24	\$21	\$17	\$15	\$13
	70% Current	\$53	\$49	\$46	\$45	\$42	\$39	\$36	\$33	\$28	\$27	\$26	\$25	\$24	\$20	\$20	\$16	\$15	\$13
	10yr ave.	\$61	\$56	\$50	\$48	\$44	\$42	\$39	\$37	\$35	\$33	\$32	\$31	\$29	\$26	\$23	\$18	\$16	\$14
	75% Current	\$57	\$53	\$50	\$48	\$45	\$42	\$39	\$35	\$30	\$28	\$27	\$27	\$26	\$22	\$21	\$17	\$16	\$14
	10yr ave.	\$66	\$60	\$54	\$52	\$47	\$45	\$42	\$39	\$37	\$36	\$34	\$33	\$31	\$27	\$25	\$19	\$17	\$15
	80% Current	\$61	\$56	\$53	\$51	\$48	\$45	\$42	\$38	\$32	\$30	\$29	\$29	\$28	\$23	\$22	\$18	\$17	\$15
	10yr ave.	\$70	\$64	\$58	\$55	\$50	\$47	\$45	\$42	\$40	\$38	\$37	\$36	\$33	\$29	\$26	\$21	\$18	\$16
	85% Current	\$65	\$60	\$56	\$54	\$51	\$47	\$44	\$40	\$34	\$32	\$31	\$31	\$29	\$25	\$24	\$20	\$18	\$16
	10yr ave.	\$74	\$68	\$61	\$59	\$53	\$50	\$47	\$45	\$42	\$40	\$39	\$38	\$35	\$31	\$28	\$22	\$20	\$17

The above shows estimated returns per head for skirted fleece wool. These figures do not take into account the value of skirtings and oddments and do not take into account discounts that may apply for faults under individual circumstances. These figures are based on a market index of 100% and should be used as a guide only. Returns over \$30 / head for fleece wool are highlighted.



Table 12: Returns pr head for skirted fleece wool.

Skirted FLC Weight		Micron																	
4 Kg		16	16.5	17	17.5	18	18.5	19	19.5	20	21	22	23	24	25	26	28	30	32
Yield (Sch Dry)	25% Current	\$15	\$14	\$13	\$13	\$12	\$11	\$10	\$9	\$8	\$8	\$7	\$7	\$7	\$6	\$6	\$5	\$4	\$4
	10yr ave.	\$17	\$16	\$14	\$14	\$13	\$12	\$11	\$11	\$10	\$10	\$9	\$9	\$8	\$7	\$7	\$5	\$5	\$4
	30% Current	\$18	\$17	\$16	\$15	\$14	\$13	\$12	\$11	\$10	\$9	\$9	\$9	\$8	\$7	\$7	\$6	\$5	\$4
	10yr ave.	\$21	\$19	\$17	\$17	\$15	\$14	\$13	\$13	\$12	\$11	\$11	\$11	\$10	\$9	\$8	\$6	\$6	\$5
	35% Current	\$21	\$20	\$18	\$18	\$17	\$16	\$15	\$13	\$11	\$11	\$10	\$10	\$10	\$8	\$8	\$6	\$6	\$5
	10yr ave.	\$24	\$22	\$20	\$19	\$18	\$17	\$16	\$15	\$14	\$13	\$13	\$12	\$12	\$10	\$9	\$7	\$6	\$6
	40% Current	\$24	\$22	\$21	\$20	\$19	\$18	\$17	\$15	\$13	\$12	\$12	\$12	\$11	\$9	\$9	\$7	\$7	\$6
	10yr ave.	\$28	\$26	\$23	\$22	\$20	\$19	\$18	\$17	\$16	\$15	\$15	\$14	\$13	\$12	\$11	\$8	\$7	\$7
	45% Current	\$27	\$25	\$24	\$23	\$21	\$20	\$19	\$17	\$15	\$14	\$13	\$13	\$12	\$10	\$10	\$8	\$8	\$7
	10yr ave.	\$31	\$29	\$26	\$25	\$23	\$21	\$20	\$19	\$18	\$17	\$17	\$16	\$15	\$13	\$12	\$9	\$8	\$7
	50% Current	\$30	\$28	\$26	\$26	\$24	\$22	\$21	\$19	\$16	\$15	\$15	\$14	\$14	\$12	\$11	\$9	\$9	\$7
	10yr ave.	\$35	\$32	\$29	\$28	\$25	\$24	\$22	\$21	\$20	\$19	\$18	\$18	\$17	\$15	\$13	\$10	\$9	\$8
	55% Current	\$33	\$31	\$29	\$28	\$26	\$25	\$23	\$21	\$18	\$17	\$16	\$16	\$15	\$13	\$12	\$10	\$9	\$8
	10yr ave.	\$38	\$35	\$32	\$30	\$28	\$26	\$25	\$23	\$22	\$21	\$20	\$20	\$18	\$16	\$15	\$11	\$10	\$9
	60% Current	\$36	\$34	\$32	\$31	\$29	\$27	\$25	\$23	\$19	\$18	\$17	\$17	\$17	\$14	\$13	\$11	\$10	\$9
	10yr ave.	\$42	\$38	\$35	\$33	\$30	\$28	\$27	\$25	\$24	\$23	\$22	\$21	\$20	\$18	\$16	\$12	\$11	\$10
	65% Current	\$40	\$36	\$34	\$33	\$31	\$29	\$27	\$24	\$21	\$20	\$19	\$19	\$18	\$15	\$15	\$12	\$11	\$10
	10yr ave.	\$45	\$42	\$37	\$36	\$33	\$31	\$29	\$27	\$26	\$25	\$24	\$23	\$22	\$19	\$17	\$13	\$12	\$11
	70% Current	\$43	\$39	\$37	\$36	\$33	\$31	\$29	\$26	\$23	\$21	\$20	\$20	\$19	\$16	\$16	\$13	\$12	\$10
	10yr ave.	\$49	\$45	\$40	\$39	\$35	\$33	\$31	\$29	\$28	\$27	\$26	\$25	\$23	\$20	\$18	\$14	\$13	\$11
	75% Current	\$46	\$42	\$40	\$38	\$36	\$33	\$31	\$28	\$24	\$23	\$22	\$22	\$21	\$17	\$17	\$14	\$13	\$11
	10yr ave.	\$52	\$48	\$43	\$41	\$38	\$36	\$34	\$32	\$30	\$29	\$28	\$27	\$25	\$22	\$20	\$16	\$14	\$12
	80% Current	\$49	\$45	\$42	\$41	\$38	\$36	\$33	\$30	\$26	\$24	\$23	\$23	\$22	\$19	\$18	\$15	\$14	\$12
	10yr ave.	\$56	\$51	\$46	\$44	\$40	\$38	\$36	\$34	\$32	\$30	\$29	\$28	\$27	\$23	\$21	\$17	\$15	\$13
	85% Current	\$52	\$48	\$45	\$44	\$41	\$38	\$35	\$32	\$27	\$26	\$25	\$25	\$24	\$20	\$19	\$16	\$14	\$13
	10yr ave.	\$59	\$54	\$49	\$47	\$43	\$40	\$38	\$36	\$34	\$32	\$31	\$30	\$28	\$25	\$22	\$18	\$16	\$14

The above shows estimated returns per head for skirted fleece wool. These figures do not take into account the value of skirtings and oddments and do not take into account discounts that may apply for faults under individual circumstances. These figures are based on a market index of 100% and should be used as a guide only. Returns over \$30 / head for fleece wool are highlighted.



Table 13: Returns pr head for skirted fleece wool.

Skirted FLC Weight <b>3 Kg</b>		Micron																	
		16	16.5	17	17.5	18	18.5	19	19.5	20	21	22	23	24	25	26	28	30	32
Yield (Sch Dry)	25% Current	\$11	\$11	\$10	\$10	\$9	\$8	\$8	\$7	\$6	\$6	\$5	\$5	\$5	\$4	\$4	\$3	\$3	\$3
	10yr ave.	\$13	\$12	\$11	\$10	\$9	\$9	\$8	\$8	\$7	\$7	\$7	\$7	\$6	\$5	\$5	\$4	\$3	\$3
	30% Current	\$14	\$13	\$12	\$12	\$11	\$10	\$9	\$8	\$7	\$7	\$7	\$6	\$6	\$5	\$5	\$4	\$4	\$3
	10yr ave.	\$16	\$14	\$13	\$12	\$11	\$11	\$10	\$9	\$9	\$9	\$8	\$8	\$7	\$7	\$6	\$5	\$4	\$4
	35% Current	\$16	\$15	\$14	\$13	\$13	\$12	\$11	\$10	\$8	\$8	\$8	\$8	\$7	\$6	\$6	\$5	\$4	\$4
	10yr ave.	\$18	\$17	\$15	\$15	\$13	\$12	\$12	\$11	\$10	\$10	\$10	\$9	\$9	\$8	\$7	\$5	\$5	\$4
	40% Current	\$18	\$17	\$16	\$15	\$14	\$13	\$12	\$11	\$10	\$9	\$9	\$9	\$8	\$7	\$7	\$6	\$5	\$4
	10yr ave.	\$21	\$19	\$17	\$17	\$15	\$14	\$13	\$13	\$12	\$11	\$11	\$11	\$10	\$9	\$8	\$6	\$6	\$5
	45% Current	\$21	\$19	\$18	\$17	\$16	\$15	\$14	\$13	\$11	\$10	\$10	\$10	\$9	\$8	\$8	\$6	\$6	\$5
	10yr ave.	\$24	\$22	\$19	\$19	\$17	\$16	\$15	\$14	\$13	\$13	\$12	\$12	\$11	\$10	\$9	\$7	\$6	\$6
	50% Current	\$23	\$21	\$20	\$19	\$18	\$17	\$16	\$14	\$12	\$11	\$11	\$11	\$10	\$9	\$8	\$7	\$6	\$6
	10yr ave.	\$26	\$24	\$22	\$21	\$19	\$18	\$17	\$16	\$15	\$14	\$14	\$13	\$12	\$11	\$10	\$8	\$7	\$6
	55% Current	\$25	\$23	\$22	\$21	\$20	\$18	\$17	\$16	\$13	\$13	\$12	\$12	\$11	\$10	\$9	\$8	\$7	\$6
	10yr ave.	\$29	\$26	\$24	\$23	\$21	\$20	\$18	\$17	\$16	\$16	\$15	\$15	\$14	\$12	\$11	\$9	\$8	\$7
	60% Current	\$27	\$25	\$24	\$23	\$21	\$20	\$19	\$17	\$15	\$14	\$13	\$13	\$12	\$10	\$10	\$8	\$8	\$7
	10yr ave.	\$31	\$29	\$26	\$25	\$23	\$21	\$20	\$19	\$18	\$17	\$17	\$16	\$15	\$13	\$12	\$9	\$8	\$7
	65% Current	\$30	\$27	\$26	\$25	\$23	\$22	\$20	\$18	\$16	\$15	\$14	\$14	\$14	\$11	\$11	\$9	\$8	\$7
	10yr ave.	\$34	\$31	\$28	\$27	\$24	\$23	\$22	\$20	\$19	\$19	\$18	\$17	\$16	\$14	\$13	\$10	\$9	\$8
	70% Current	\$32	\$29	\$28	\$27	\$25	\$23	\$22	\$20	\$17	\$16	\$15	\$15	\$15	\$12	\$12	\$10	\$9	\$8
	10yr ave.	\$37	\$34	\$30	\$29	\$26	\$25	\$23	\$22	\$21	\$20	\$19	\$19	\$17	\$15	\$14	\$11	\$10	\$9
	75% Current	\$34	\$32	\$30	\$29	\$27	\$25	\$23	\$21	\$18	\$17	\$16	\$16	\$16	\$13	\$13	\$10	\$10	\$8
	10yr ave.	\$39	\$36	\$32	\$31	\$28	\$27	\$25	\$24	\$22	\$21	\$21	\$20	\$19	\$16	\$15	\$12	\$10	\$9
	80% Current	\$36	\$34	\$32	\$31	\$29	\$27	\$25	\$23	\$19	\$18	\$17	\$17	\$17	\$14	\$13	\$11	\$10	\$9
	10yr ave.	\$42	\$38	\$35	\$33	\$30	\$28	\$27	\$25	\$24	\$23	\$22	\$21	\$20	\$18	\$16	\$12	\$11	\$10
	85% Current	\$39	\$36	\$34	\$33	\$30	\$28	\$26	\$24	\$21	\$19	\$19	\$18	\$18	\$15	\$14	\$12	\$11	\$9
	10yr ave.	\$45	\$41	\$37	\$35	\$32	\$30	\$28	\$27	\$25	\$24	\$23	\$23	\$21	\$19	\$17	\$13	\$12	\$10

The above shows estimated returns per head for skirted fleece wool. These figures do not take into account the value of skirtings and oddments and do not take into account discounts that may apply for faults under individual circumstances. These figures are based on a market index of 100% and should be used as a guide only. Returns over \$30 / head for fleece wool are highlighted.



Table 14: Returns pr head for skirted fleece wool.

Skirted FLC Weight  2 Kg			Micron																	
			16	16.5	17	17.5	18	18.5	19	19.5	20	21	22	23	24	25	26	28	30	32
Yield (Sch Dry)	25%	Current	\$8	\$7	\$7	\$6	\$6	\$6	\$5	\$5	\$4	\$4	\$4	\$4	\$3	\$3	\$3	\$2	\$2	\$2
		10yr ave.	\$9	\$8	\$7	\$7	\$6	\$6	\$6	\$5	\$5	\$5	\$5	\$4	\$4	\$4	\$3	\$3	\$2	\$2
	30%	Current	\$9	\$8	\$8	\$8	\$7	\$7	\$6	\$6	\$5	\$5	\$4	\$4	\$4	\$3	\$3	\$3	\$3	\$2
		10yr ave.	\$10	\$10	\$9	\$8	\$8	\$7	\$7	\$6	\$6	\$6	\$6	\$5	\$5	\$4	\$4	\$3	\$3	\$2
	35%	Current	\$11	\$10	\$9	\$9	\$8	\$8	\$7	\$7	\$6	\$5	\$5	\$5	\$5	\$4	\$4	\$3	\$3	\$3
		10yr ave.	\$12	\$11	\$10	\$10	\$9	\$8	\$8	\$7	\$7	\$7	\$6	\$6	\$6	\$5	\$5	\$4	\$3	\$3
	40%	Current	\$12	\$11	\$11	\$10	\$10	\$9	\$8	\$8	\$6	\$6	\$6	\$6	\$6	\$5	\$4	\$4	\$3	\$3
		10yr ave.	\$14	\$13	\$12	\$11	\$10	\$9	\$9	\$8	\$8	\$8	\$7	\$7	\$7	\$6	\$5	\$4	\$4	\$3
	45%	Current	\$14	\$13	\$12	\$12	\$11	\$10	\$9	\$8	\$7	\$7	\$7	\$6	\$6	\$5	\$5	\$4	\$4	\$3
		10yr ave.	\$16	\$14	\$13	\$12	\$11	\$11	\$10	\$9	\$9	\$9	\$8	\$8	\$7	\$7	\$6	\$5	\$4	\$4
	50%	Current	\$15	\$14	\$13	\$13	\$12	\$11	\$10	\$9	\$8	\$8	\$7	\$7	\$7	\$6	\$6	\$5	\$4	\$4
		10yr ave.	\$17	\$16	\$14	\$14	\$13	\$12	\$11	\$11	\$10	\$10	\$9	\$9	\$8	\$7	\$7	\$5	\$5	\$4
	55%	Current	\$17	\$15	\$15	\$14	\$13	\$12	\$11	\$10	\$9	\$8	\$8	\$8	\$8	\$6	\$6	\$5	\$5	\$4
		10yr ave.	\$19	\$18	\$16	\$15	\$14	\$13	\$12	\$12	\$11	\$10	\$10	\$10	\$9	\$8	\$7	\$6	\$5	\$5
	60%	Current	\$18	\$17	\$16	\$15	\$14	\$13	\$12	\$11	\$10	\$9	\$9	\$9	\$8	\$7	\$7	\$6	\$5	\$4
		10yr ave.	\$21	\$19	\$17	\$17	\$15	\$14	\$13	\$13	\$12	\$11	\$11	\$11	\$10	\$9	\$8	\$6	\$6	\$5
	65%	Current	\$20	\$18	\$17	\$17	\$16	\$14	\$13	\$12	\$11	\$10	\$9	\$9	\$9	\$8	\$7	\$6	\$6	\$5
		10yr ave.	\$23	\$21	\$19	\$18	\$16	\$15	\$15	\$14	\$13	\$12	\$12	\$12	\$11	\$9	\$9	\$7	\$6	\$5
	70%	Current	\$21	\$20	\$18	\$18	\$17	\$16	\$15	\$13	\$11	\$11	\$10	\$10	\$10	\$8	\$8	\$6	\$6	\$5
		10yr ave.	\$24	\$22	\$20	\$19	\$18	\$17	\$16	\$15	\$14	\$13	\$13	\$12	\$12	\$10	\$9	\$7	\$6	\$6
	75%	Current	\$23	\$21	\$20	\$19	\$18	\$17	\$16	\$14	\$12	\$11	\$11	\$11	\$10	\$9	\$8	\$7	\$6	\$6
		10yr ave.	\$26	\$24	\$22	\$21	\$19	\$18	\$17	\$16	\$15	\$14	\$14	\$13	\$12	\$11	\$10	\$8	\$7	\$6
	80%	Current	\$24	\$22	\$21	\$20	\$19	\$18	\$17	\$15	\$13	\$12	\$12	\$12	\$11	\$9	\$9	\$7	\$7	\$6
		10yr ave.	\$28	\$26	\$23	\$22	\$20	\$19	\$18	\$17	\$16	\$15	\$15	\$14	\$13	\$12	\$11	\$8	\$7	\$7
	85%	Current	\$26	\$24	\$22	\$22	\$20	\$19	\$18	\$16	\$14	\$13	\$12	\$12	\$12	\$10	\$10	\$8	\$7	\$6
		10yr ave.	\$30	\$27	\$24	\$23	\$21	\$20	\$19	\$18	\$17	\$16	\$16	\$15	\$14	\$12	\$11	\$9	\$8	\$7

The above shows estimated returns per head for skirted fleece wool. These figures do not take into account the value of skirtings and oddments and do not take into account discounts that may apply for faults under individual circumstances. These figures are based on a market index of 100% and should be used as a guide only. Returns over \$30 / head for fleece wool are highlighted.