



JEMALONG WOOL BULLETIN

(week ending 1/09/2011)

Table 1: Northern Region Micron Price Guides

CURRENT MARKET				12 MONTH COMPARISONS								3 YEAR COMPARISONS						10 YEAR COMPARISONS						
Mic.	1/09/2011	24/08/2011		31/08/2010	Now		Now		Now					Now		Percentile								
Price	Current	Weekly		This time	compared		compared		compared		Low	High	Average	compared			Low	High	10 year	compared				
Guides	Price	Change		Last Year	to Last Year		to Low		to High		Low	High	Average	to 3yr ave			Low	High	Average	to 10yr ave		Percentile		
NRI	1319	+4	0.3%	897	+422	47%	911	+408	45%	1491	-172	-12%	749	1491	1000	+319	32%	83%	658	1491	912	+407	45%	95%
16*	2750	0		1570	+1180	75%	1670	+1080	65%	2800	-50	-2%	1385	2800	1866	+884	47%	91%						
16.5*	2500	+40	1.6%	1440	+1060	74%	1500	+1000	67%	2680	-180	-7%	1248	2680	1717	+783	46%	84%						
17*	2320	+40	1.7%	1300	+1020	78%	1390	+930	67%	2530	-210	-8%	1166	2530	1585	+735	46%	83%	1100	2659	1445	+875	61%	92%
17.5*	2050	+20	1.0%	1220	+830	68%	1300	+750	58%	2360	-310	-13%	1081	2360	1486	+564	38%	81%						
18	1827	+3	0.2%	1186	+641	54%	1237	+590	48%	2193	-366	-17%	1035	2193	1395	+432	31%	79%	916	2193	1274	+553	43%	94%
18.5	1650	-4	-0.2%	1140	+510	45%	1163	+487	42%	1963	-313	-16%	971	1963	1298	+352	27%	78%	843	1963				
19	1567	-5	-0.3%	1050	+517	49%	1058	+509	48%	1776	-209	-12%	894	1776	1191	+376	32%	80%	804	1776	1092	+475	43%	94%
19.5	1474	+1	0.1%	963	+511	53%	973	+501	51%	1670	-196	-12%	814	1670	1088	+386	35%	86%	749	1670				
20	1382	+5	0.4%	917	+465	51%	931	+451	48%	1588	-206	-13%	739	1588	1006	+376	37%	89%	684	1588	958	+424	44%	96%
21	1338	+10	0.7%	897	+441	49%	914	+424	46%	1522	-184	-12%	686	1522	972	+366	38%	91%	645	1522	918	+420	46%	97%
22	1276	-11	-0.9%	882	+394	45%	885	+391	44%	1461	-185	-13%	673	1461	946	+330	35%	88%	643	1461	893	+383	43%	96%
23	1175	+1	0.1%	871	+304	35%	849	+326	38%	1324	-149	-11%	663	1324	910	+265	29%	85%	642	1340	868	+307	35%	90%
24	1015	0		811	+204	25%	787	+228	29%	1170	-155	-13%	647	1170	839	+176	21%	86%	637	1299	822	+193	23%	88%
25	886	+2	0.2%	695	+191	27%	716	+170	24%	1048	-162	-15%	565	1048	727	+159	22%	84%	567	1198	735	+151	21%	78%
26	828	-1	-0.1%	607	+221	36%	613	+215	35%	928	-100	-11%	504	928	658	+170	26%	85%	532	1088	672	+156	23%	79%
28	688	-3	-0.4%	456	+232	51%	449	+239	53%	734	-46	-6%	431	734	514	+174	34%	92%	424	889	531	+157	30%	85%
30	632	+1	0.2%	403	+229	57%	390	+242	62%	670	-38	-6%	377	670	458	+174	38%	94%	344	729	463	+169	37%	94%
32	581	0		358	+223	62%	354	+227	64%	638	-57	-9%	326	638	405	+176	43%	94%	297	669	417	+164	39%	93%
MC	705	+3	0.4%	604	+101	17%	569	+136	24%	831	-126	-15%	444	831	611	+94	15%	82%	380	831	524	+181	35%	95%

Note:

* Due to the irregular market quoting for some fine wool categories, figures shown relating to micron categories below 18 micron are an estimate based on the AWEX Premium & Discounts Report & other available information.

* For any category, where there is insufficient quantity offered to enable AWEX to quote, a quote will be provided based on the best available information.

* 10 Year data is not available for some micron categories, which may result in blank spaces in the table above.

Definitions:

* A Percentile, is a value on a scale of one hundred that indicates the percent of a distribution that is equal to or below it. In general a percentile between 25% and 75% is considered normal, a percentile below 25% is considered below normal and a percentile above 75% is considered above normal.

Three and ten year percentiles shown in the table above, detail the period of time during the past 3 & 10 years that the market has traded either at or below its current price.

The higher the percentile, the stronger the market.

Source: Australian Wool Exchange, Australian Wool Innovation, Sydney Futures Exchange, x-rates.com

Disclaimer: While all due care has been taken in the preparation of this document, no warranty is made as to its accuracy, reliability or completeness. To the extent permitted by law neither Jemalong or their sources including subsidiaries and staff, accept liability to any person for loss or damage arising from the use of this information.



MARKET COMMENTARY

One Australian Dollar = \$ 1.07 US, as of 1/09/2011

NORTHERN REGION –Sale Week 9/11 (42,597 bales offered nationally)

On Wednesday - With a higher AUD the market opened on a softer note, however early seller resistance prompted improved buyer support towards the end of trade. 19 to 21 microns closed firm (tending in sellers favour) with the FNF lots attracting the most interest. The finer end was a little irregular with the better types maintaining solid support, while the rest of the market was patchy. Merino skirtings were unmoved through out the day with some of the burrier lots tending in sellers favour. All oddment categories remained fully firm and unchanged, while a limited offering of crossbreds ended the day where they started. 12.9% PI

On Wednesday - A generally solid market for 19.5 to 22 micron fleece. 20 to 21microns rose 5-10 cents, however the finer end continued to be patchy with 18.5 & 19 microns contracting (as support waned for the lower style and strength types) on the other hand, the better style fine wools enjoyed continued interest from Italian buyers. Good competition had the lower Vm skirtings (<5%) tending in sellers favour, while the burrier types (6-8%) were 10-20 cents dearer. In the oddments, locks & crutchings remained unchanged while stains lifted by 10 cents. Another small offering of crossbreds left 27 to 30 microns fully firm. 8.5% PI

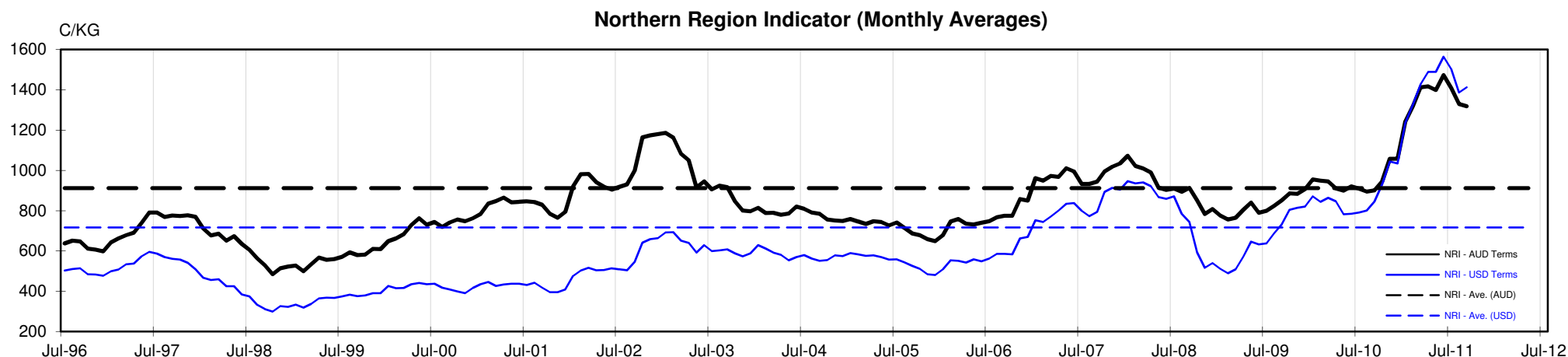




Table 4: 19 micron SFE

Wednesday, 31 August 2011

Delivery Mth	Oct-11	Dec-11	Feb-11	Apr-12	Jun-12	Aug-12	Oct-12	Dec-12	Feb-12
19 Micron SFE	1600	1545	1495	1445	1395	1365	1355	1355	1315
Average	1302	1324	1113	1375	1414	1404	1410	1410	1353
Maximum	1707	1677	1605	1622	1612	1525	1525	1525	1652
Minimum	1034	1034	983	1106	1210	1285	1285	1285	1053

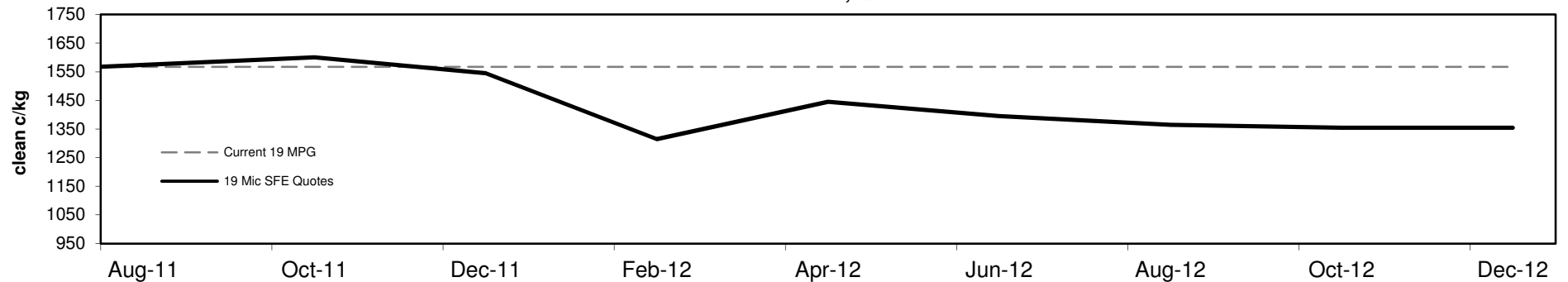
Table 5: 19 micron SFE, as a percentile of the 19 micron MPG

3 Year Percentile	83%	78%	78%	78%	78%	78%	78%	78%	78%
10 Year Percentile	95%	94%	94%	94%	93%	92%	91%	91%	89%

Table 6: 19 micron SFE, compared to MPG

SFE - MPG	+33	2%	-22	-1%	-72	-5%	-122	-8%	-172	-11%	-202	-13%	-212	-14%	-212	-14%	-252	-16%
SFE - MPG, 1 year Ave.	+63	4%	+8	1%	-42	-3%	-92	-6%	-142	-9%	-172	-11%	-182	-12%	-182	-12%	-222	-14%
SFE - MPG, 3 year Ave.	+409	34%	+354	30%	+304	26%	+254	21%	+204	17%	+174	15%	+164	14%	+164	14%	+124	10%
SFE - MPG, 10 year Ave.	+508	47%	+453	41%	+403	37%	+353	32%	+303	28%	+273	25%	+263	24%	+263	24%	+223	20%

19 MICRON SFE, QUOTES



19 Micron SFE, Front month movement

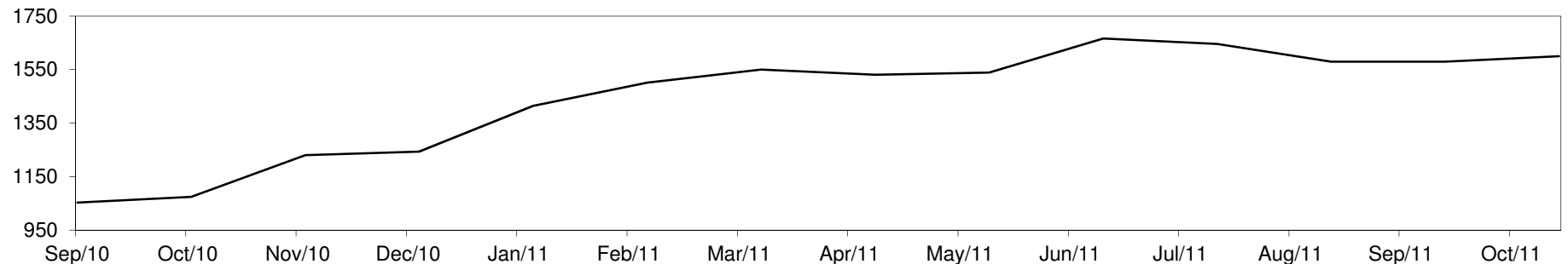




Table 7: 21 micron SFE

Wednesday, 31 August 2011

Delivery Mth	Oct-11	Dec-11	Feb-11	Apr-12	Jun-12	Aug-12	Oct-12	Dec-12	Feb-12
21 Micron SFE	1380	1325	1283	1263	1218	1086	1161	1128	1086
Average	1071	1076	962	1107	1103	1136	1150	1150	1085
Maximum	1434	1411	1325	1303	1326	1316	1283	1283	1393
Minimum	880	880	860	934	990	1046	1013	1013	880

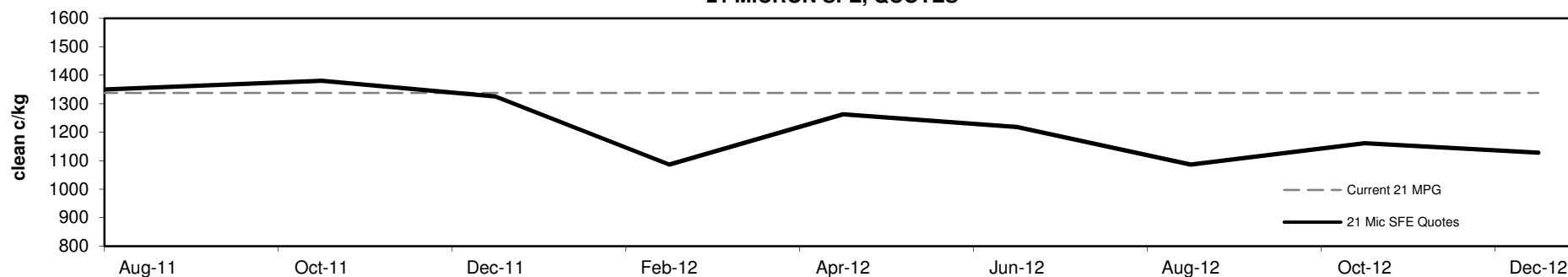
Table 8: 21 micron SFE, as a percentile of the 21 micron MPG

3 Year Percentile	93%	90%	86%	85%	84%	78%	81%	80%	78%
10 Year Percentile	98%	97%	95%	93%	90%	87%	89%	88%	87%

Table 9: 21 micron SFE, compared to MPG

SFE - MPG	+42	3%	-13	-1%	-55	-4%	-75	-6%	-120	-9%	-252	-19%	-177	-13%	-210	-16%	-252	-19%
SFE - MPG, 1 year Ave.	+154	13%	+99	8%	+57	5%	+37	3%	-8	-1%	-140	-11%	-65	-5%	-98	-8%	-140	-11%
SFE - MPG, 3 year Ave.	+408	42%	+353	36%	+311	32%	+291	30%	+246	25%	+114	12%	+189	19%	+156	16%	+114	12%
SFE - MPG, 10 year Ave.	+462	50%	+407	44%	+365	40%	+345	38%	+300	33%	+168	18%	+243	26%	+210	23%	+168	18%

21 MICRON SFE, QUOTES



21 Micron SFE, Front month movement

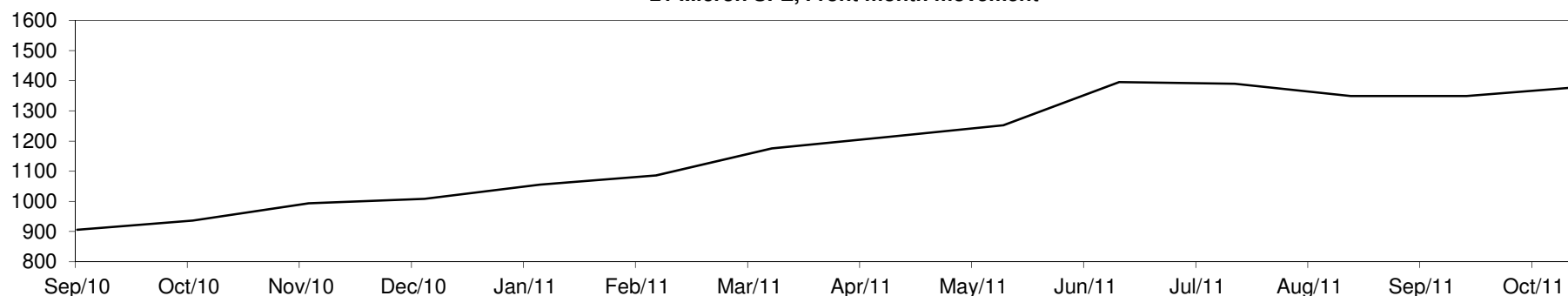




Table 10: 23 micron SFE

Wednesday, 31 August 2011

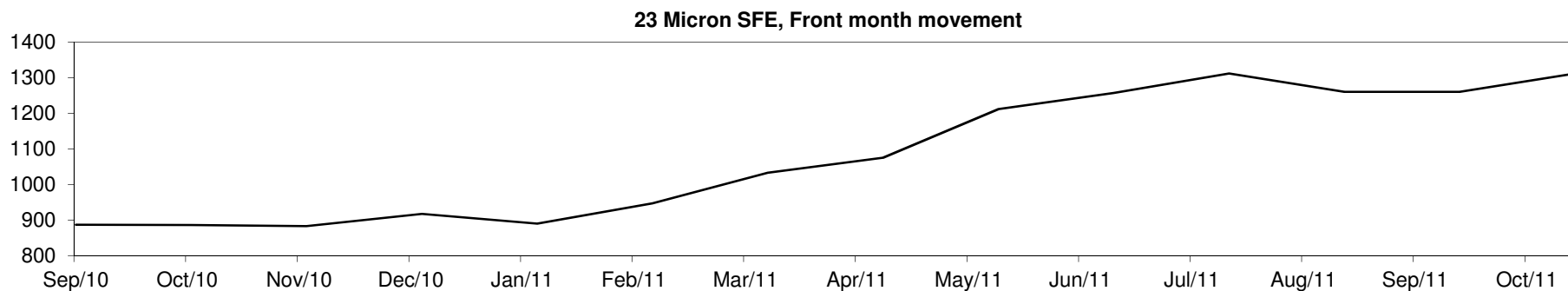
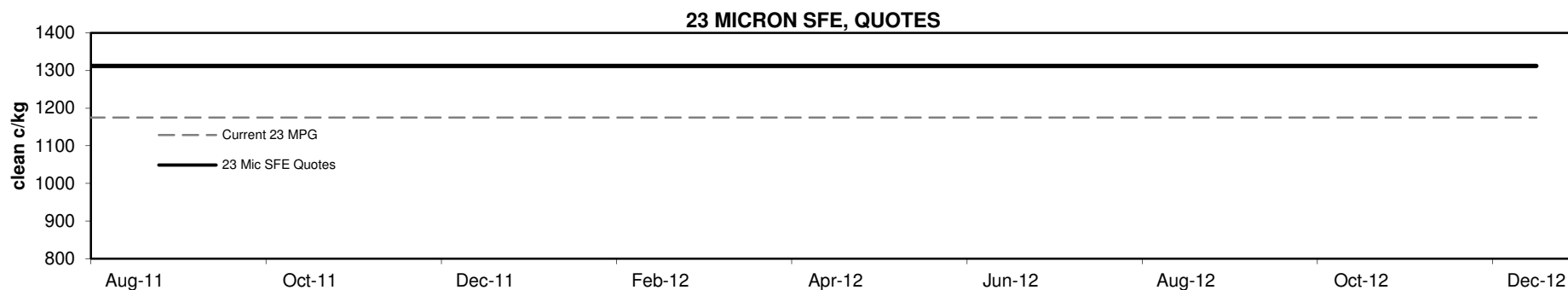
Delivery Mth	Oct-11	Dec-11	Feb-11	Apr-12	Jun-12	Aug-12	Oct-12	Dec-12	Feb-12
23 Micron SFE	1312	1312	1312	1312	1312	1312	1312	1312	1312
Average	991	1009	870	1066	1109	1177	1250	1250	1032
Maximum	1312	1312	1312	1312	1312	1312	1312	1312	1312
Minimum	883	883	760	883	890	1033	1191	1191	883

Table 11: 23 micron SFE, as a percentile of the 23 micron MPG

3 Year Percentile	98%	98%	98%	98%	98%	98%	98%	98%	98%
10 Year Percentile	99%	99%	99%	99%	99%	99%	99%	99%	99%

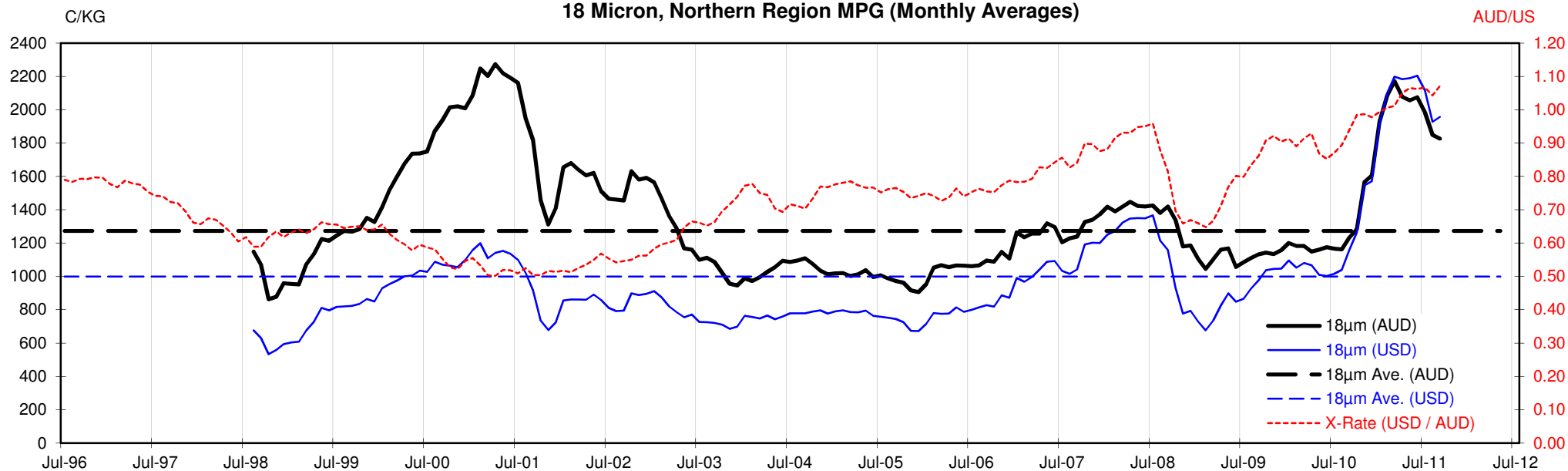
Table 12: 23 micron SFE, compared to MPG

SFE - MPG	+137	12%	+137	12%	+137	12%	+137	12%	+137	12%	+137	12%	+137	12%	+137	12%	+137	12%
SFE - MPG, 1 year Ave.	+199	18%	+199	18%	+199	18%	+199	18%	+199	18%	+199	18%	+199	18%	+199	18%	+199	18%
SFE - MPG, 3 year Ave.	+402	44%	+402	44%	+402	44%	+402	44%	+402	44%	+402	44%	+402	44%	+402	44%	+402	44%
SFE - MPG, 10 year Ave.	+444	51%	+444	51%	+444	51%	+444	51%	+444	51%	+444	51%	+444	51%	+444	51%	+444	51%

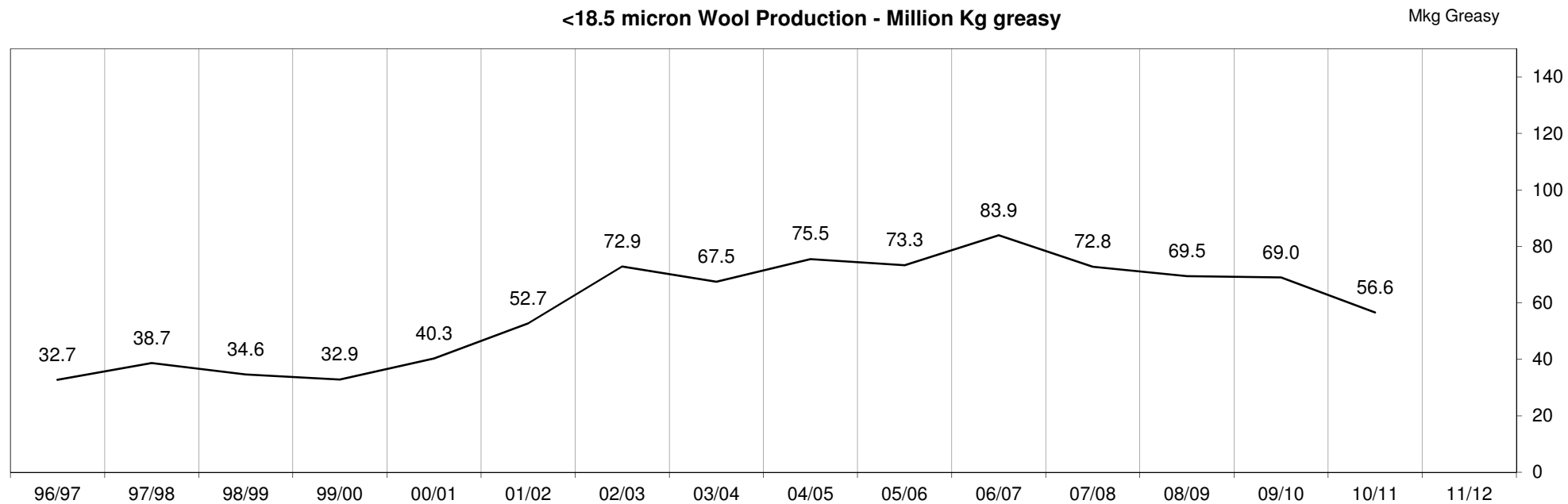


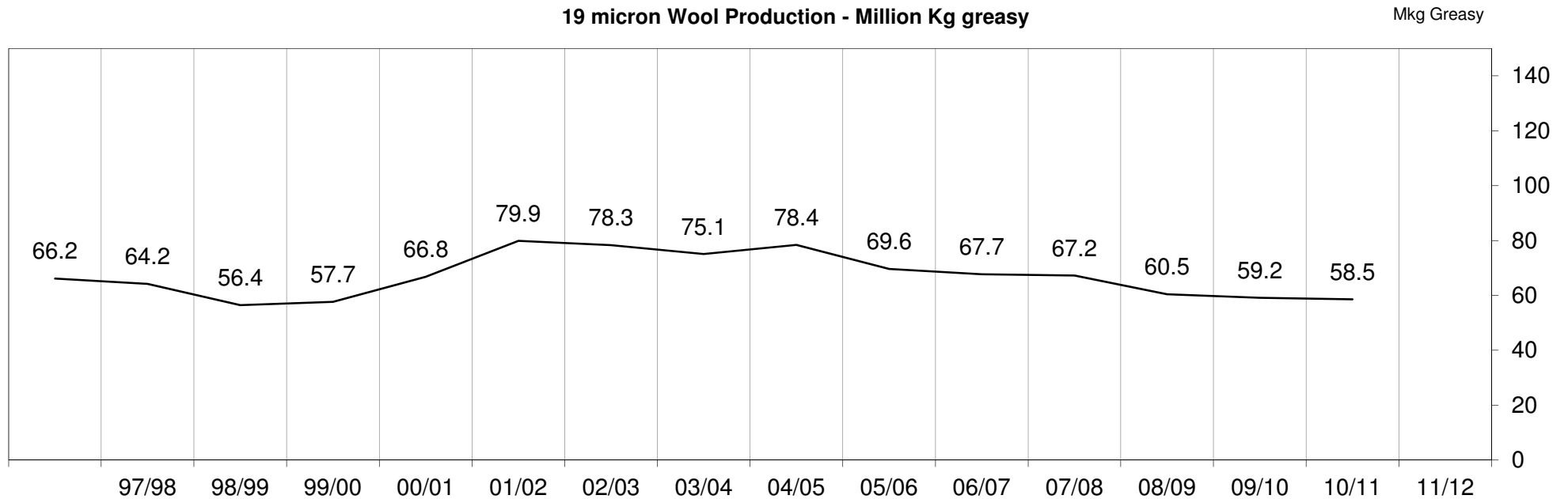
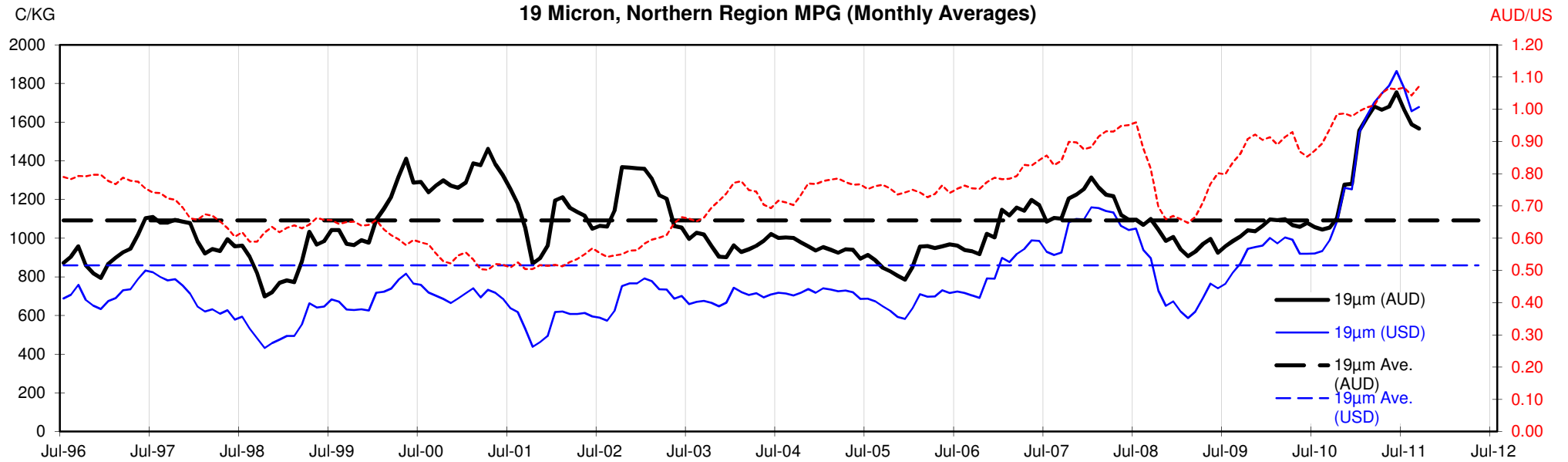


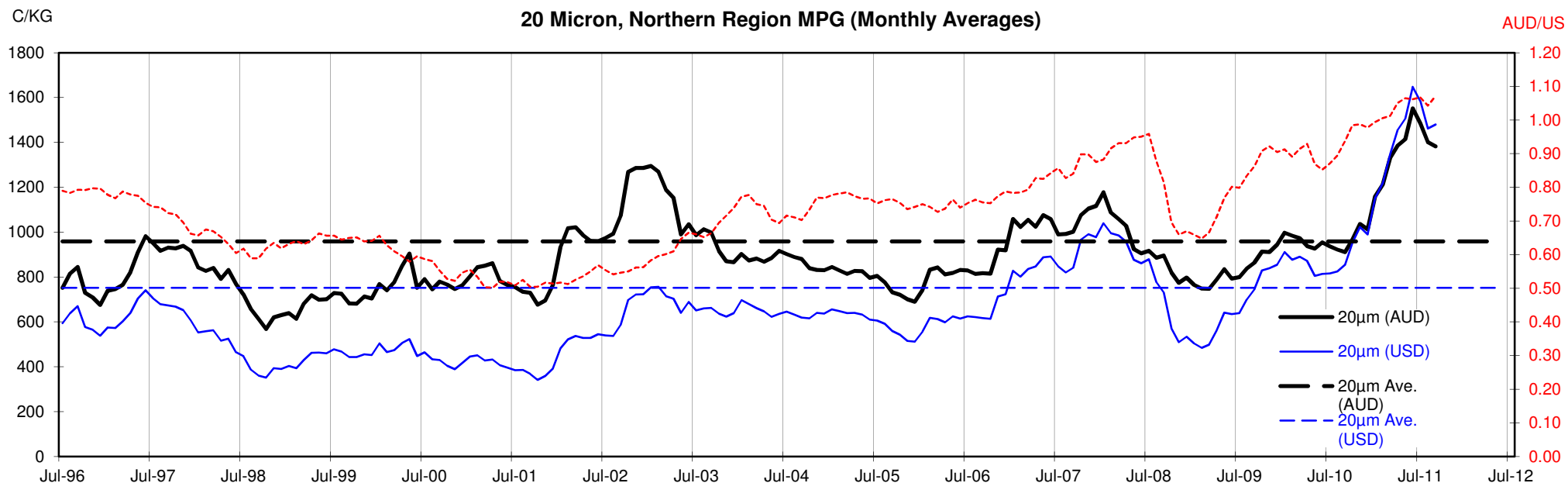
18 Micron, Northern Region MPG (Monthly Averages)

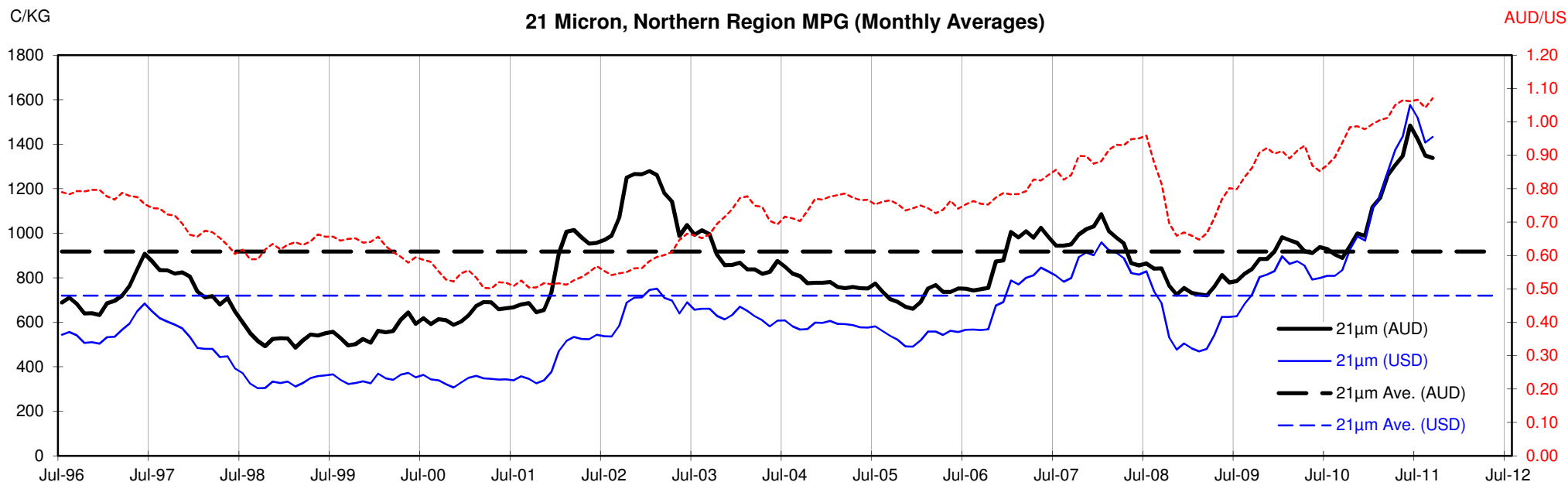


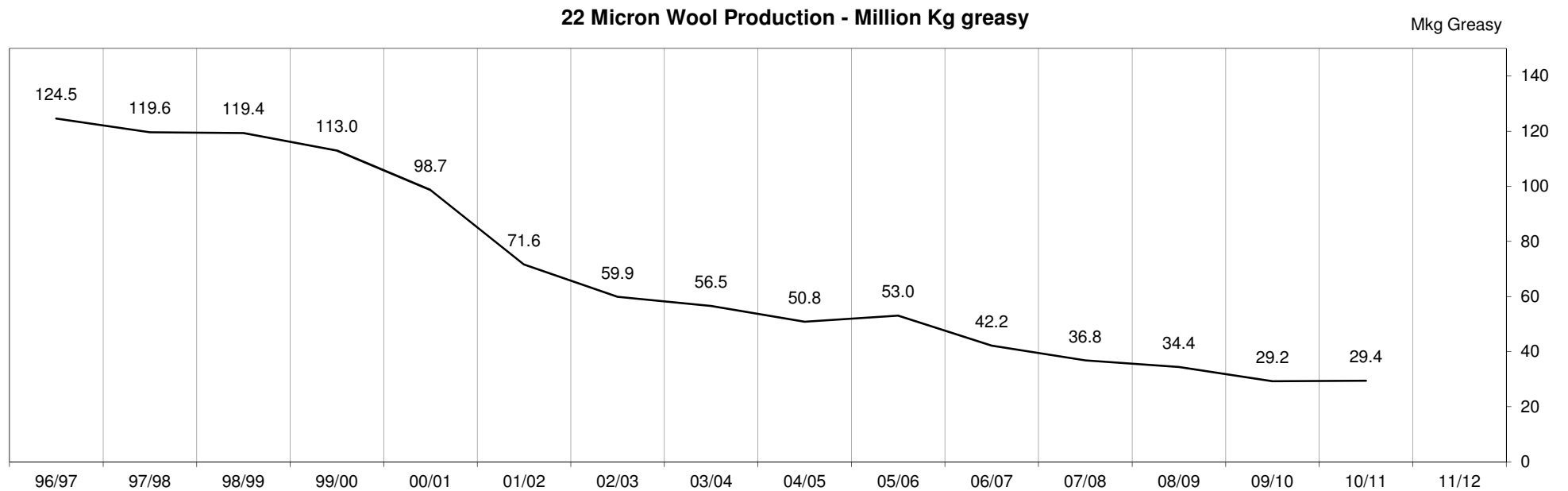
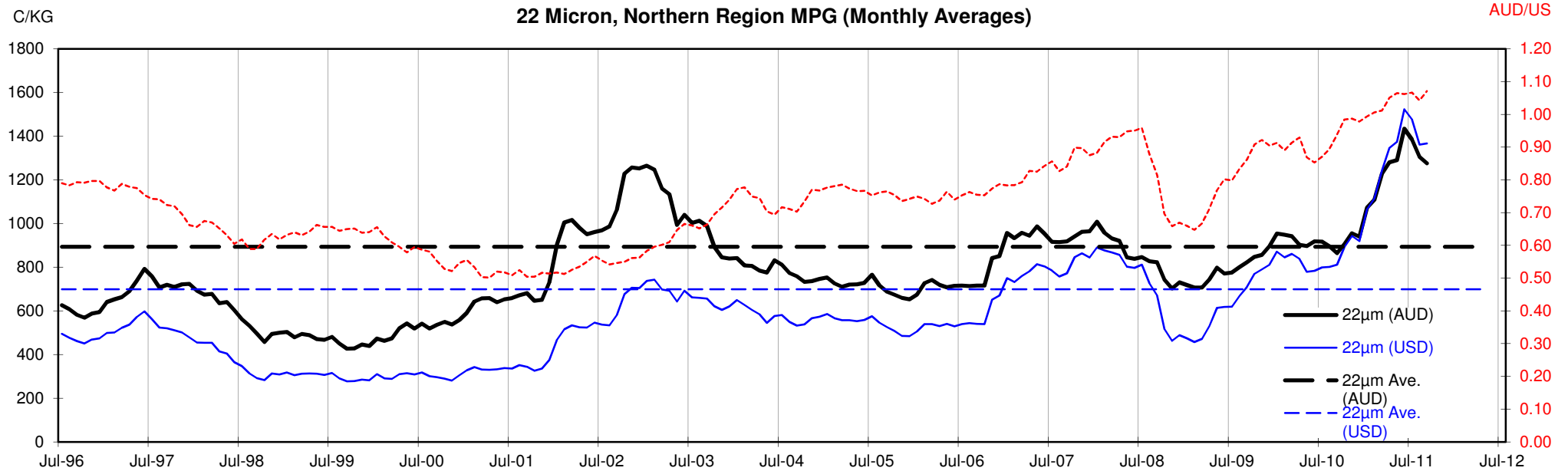
<18.5 micron Wool Production - Million Kg greasy

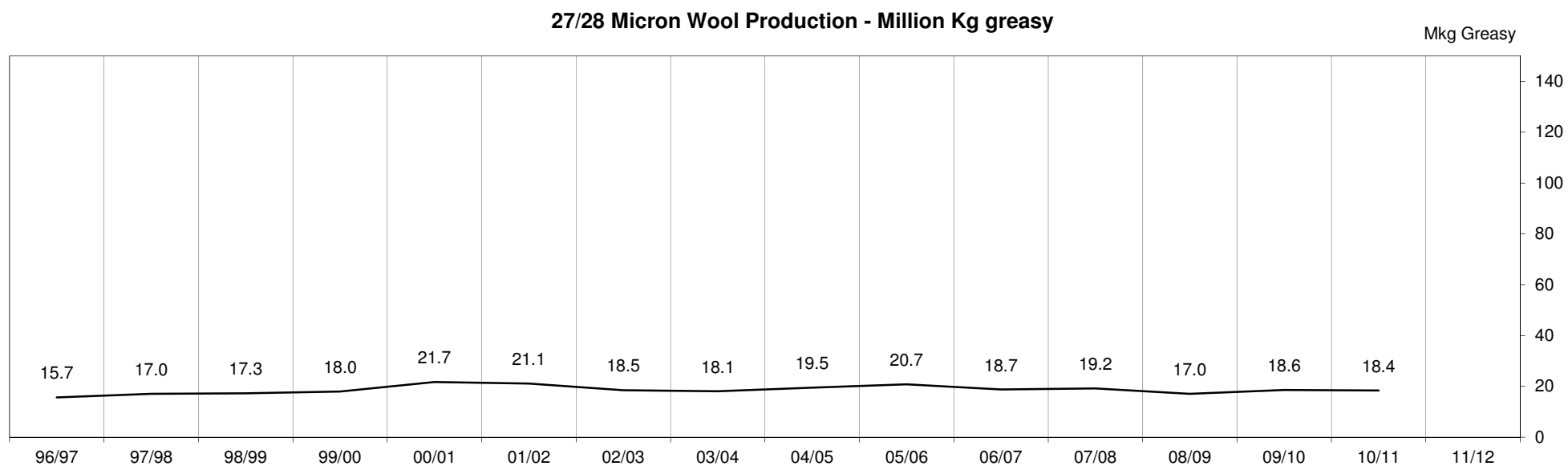
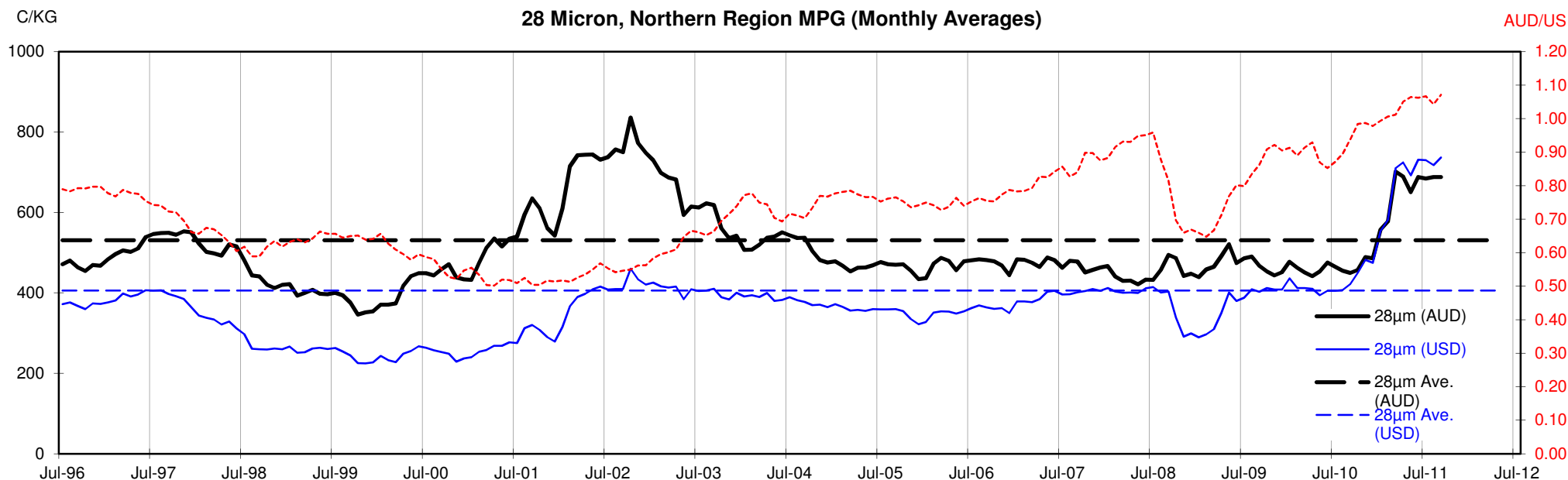












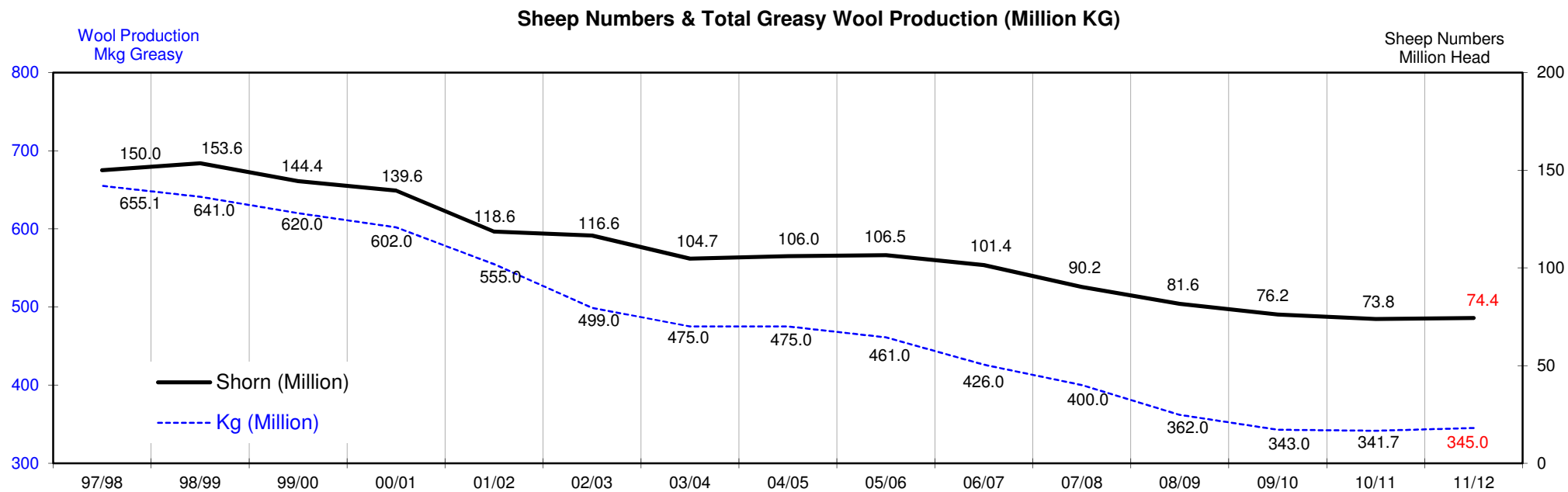
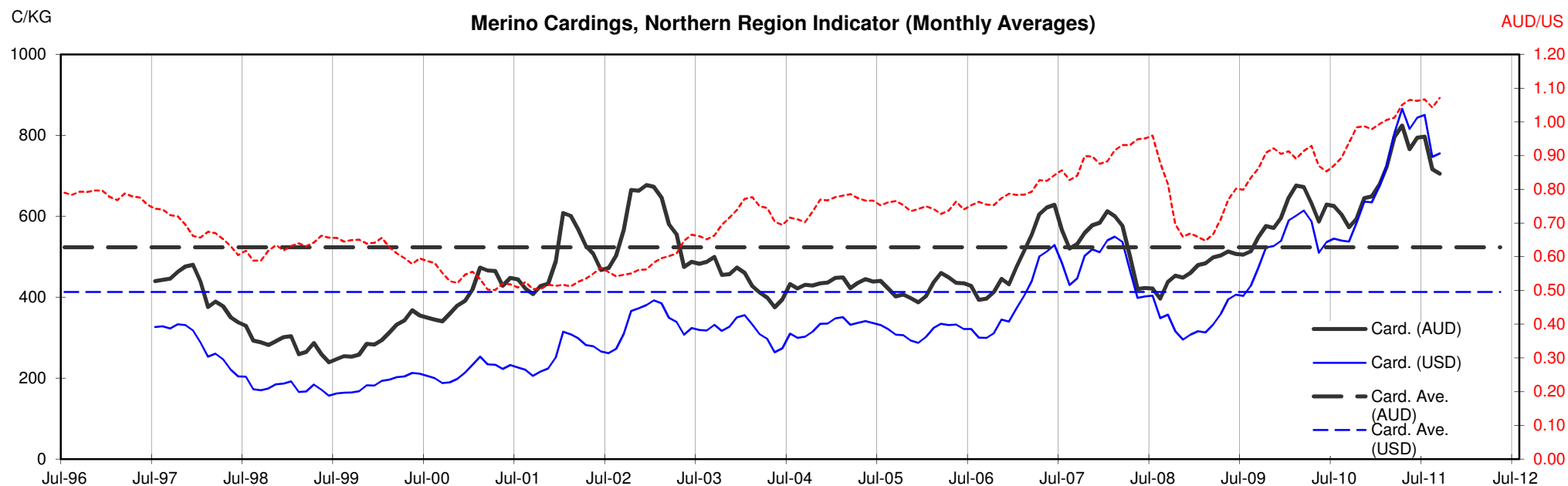




Table 13: Returns pr head for skirted fleece wool.

Skirted FLC Weight		Micron																	
9 Kg		16	16.5	17	17.5	18	18.5	19	19.5	20	21	22	23	24	25	26	28	30	32
Yield (Sch Dry)	25% Current	\$62	\$56	\$52	\$46	\$41	\$37	\$35	\$33	\$31	\$30	\$29	\$26	\$23	\$20	\$19	\$15	\$14	\$13
	10yr ave.			\$33		\$29		\$25		\$22	\$21	\$20	\$20	\$18	\$17	\$15	\$12	\$10	\$9
	30% Current	\$74	\$68	\$63	\$55	\$49	\$45	\$42	\$40	\$37	\$36	\$34	\$32	\$27	\$24	\$22	\$19	\$17	\$16
	10yr ave.			\$39		\$34		\$29		\$26	\$25	\$24	\$23	\$22	\$20	\$18	\$14	\$13	\$11
	35% Current	\$87	\$79	\$73	\$65	\$58	\$52	\$49	\$46	\$44	\$42	\$40	\$37	\$32	\$28	\$26	\$22	\$20	\$18
	10yr ave.			\$46		\$40		\$34		\$30	\$29	\$28	\$27	\$26	\$23	\$21	\$17	\$15	\$13
	40% Current	\$99	\$90	\$84	\$74	\$66	\$59	\$56	\$53	\$50	\$48	\$46	\$42	\$37	\$32	\$30	\$25	\$23	\$21
	10yr ave.			\$52		\$46		\$39		\$34	\$33	\$32	\$31	\$30	\$26	\$24	\$19	\$17	\$15
	45% Current	\$111	\$101	\$94	\$83	\$74	\$67	\$63	\$60	\$56	\$54	\$52	\$48	\$41	\$36	\$34	\$28	\$26	\$24
	10yr ave.			\$59		\$52		\$44		\$39	\$37	\$36	\$35	\$33	\$30	\$27	\$22	\$19	\$17
	50% Current	\$124	\$113	\$104	\$92	\$82	\$74	\$71	\$66	\$62	\$60	\$57	\$53	\$46	\$40	\$37	\$31	\$28	\$26
	10yr ave.			\$65		\$57		\$49		\$43	\$41	\$40	\$39	\$37	\$33	\$30	\$24	\$21	\$19
	55% Current	\$136	\$124	\$115	\$101	\$90	\$82	\$78	\$73	\$68	\$66	\$63	\$58	\$50	\$44	\$41	\$34	\$31	\$29
	10yr ave.			\$72		\$63		\$54		\$47	\$45	\$44	\$43	\$41	\$36	\$33	\$26	\$23	\$21
	60% Current	\$149	\$135	\$125	\$111	\$99	\$89	\$85	\$80	\$75	\$72	\$69	\$63	\$55	\$48	\$45	\$37	\$34	\$31
	10yr ave.			\$78		\$69		\$59		\$52	\$50	\$48	\$47	\$44	\$40	\$36	\$29	\$25	\$23
	65% Current	\$161	\$146	\$136	\$120	\$107	\$97	\$92	\$86	\$81	\$78	\$75	\$69	\$59	\$52	\$48	\$40	\$37	\$34
	10yr ave.			\$85		\$75		\$64		\$56	\$54	\$52	\$51	\$48	\$43	\$39	\$31	\$27	\$24
	70% Current	\$173	\$158	\$146	\$129	\$115	\$104	\$99	\$93	\$87	\$84	\$80	\$74	\$64	\$56	\$52	\$43	\$40	\$37
	10yr ave.			\$91		\$80		\$69		\$60	\$58	\$56	\$55	\$52	\$46	\$42	\$33	\$29	\$26
	75% Current	\$186	\$169	\$157	\$138	\$123	\$111	\$106	\$99	\$93	\$90	\$86	\$79	\$69	\$60	\$56	\$46	\$43	\$39
	10yr ave.			\$98		\$86		\$74		\$65	\$62	\$60	\$59	\$55	\$50	\$45	\$36	\$31	\$28
	80% Current	\$198	\$180	\$167	\$148	\$132	\$119	\$113	\$106	\$100	\$96	\$92	\$85	\$73	\$64	\$60	\$50	\$46	\$42
	10yr ave.			\$104		\$92		\$79		\$69	\$66	\$64	\$62	\$59	\$53	\$48	\$38	\$33	\$30
	85% Current	\$210	\$191	\$177	\$157	\$140	\$126	\$120	\$113	\$106	\$102	\$98	\$90	\$78	\$68	\$63	\$53	\$48	\$44
	10yr ave.			\$111		\$97		\$84		\$73	\$70	\$68	\$66	\$63	\$56	\$51	\$41	\$35	\$32

The above shows estimated returns per head for skirted fleece wool. These figures do not take into account the value of skirtings and oddments and do not take into account discounts that may apply for faults under individual circumstances. These figures are based on a market index of 100% and should be used as a guide only. Returns over \$30 / head for fleece wool are highlighted.

Source: Australian Wool Exchange, Australian Wool Innovation, Sydney Futures Exchange, x-rates.com

Disclaimer: While all due care has been taken in the preparation of this document, no warranty is made as to its accuracy, reliability or completeness. To the extent permitted by law neither Jemalong or their sources including subsidiaries and staff, accept liability to any person for loss or damage arising from the use of this information.



Table 14: Returns pr head for skirted fleece wool.

Skirted FLC Weight 8 Kg		Micron																	
		16	16.5	17	17.5	18	18.5	19	19.5	20	21	22	23	24	25	26	28	30	32
Yield (Sch Dry)	25% Current	\$55	\$50	\$46	\$41	\$37	\$33	\$31	\$29	\$28	\$27	\$26	\$24	\$20	\$18	\$17	\$14	\$13	\$12
	10yr ave.			\$29		\$25		\$22		\$19	\$18	\$18	\$17	\$16	\$15	\$13	\$11	\$9	\$8
	30% Current	\$66	\$60	\$56	\$49	\$44	\$40	\$38	\$35	\$33	\$32	\$31	\$28	\$24	\$21	\$20	\$17	\$15	\$14
	10yr ave.			\$35		\$31		\$26		\$23	\$22	\$21	\$21	\$20	\$18	\$16	\$13	\$11	\$10
	35% Current	\$77	\$70	\$65	\$57	\$51	\$46	\$44	\$41	\$39	\$37	\$36	\$33	\$28	\$25	\$23	\$19	\$18	\$16
	10yr ave.			\$40		\$36		\$31		\$27	\$26	\$25	\$24	\$23	\$21	\$19	\$15	\$13	\$12
	40% Current	\$88	\$80	\$74	\$66	\$58	\$53	\$50	\$47	\$44	\$43	\$41	\$38	\$32	\$28	\$26	\$22	\$20	\$19
	10yr ave.			\$46		\$41		\$35		\$31	\$29	\$29	\$28	\$26	\$24	\$22	\$17	\$15	\$13
	45% Current	\$99	\$90	\$84	\$74	\$66	\$59	\$56	\$53	\$50	\$48	\$46	\$42	\$37	\$32	\$30	\$25	\$23	\$21
	10yr ave.			\$52		\$46		\$39		\$34	\$33	\$32	\$31	\$30	\$26	\$24	\$19	\$17	\$15
	50% Current	\$110	\$100	\$93	\$82	\$73	\$66	\$63	\$59	\$55	\$54	\$51	\$47	\$41	\$35	\$33	\$28	\$25	\$23
	10yr ave.			\$58		\$51		\$44		\$38	\$37	\$36	\$35	\$33	\$29	\$27	\$21	\$19	\$17
	55% Current	\$121	\$110	\$102	\$90	\$80	\$73	\$69	\$65	\$61	\$59	\$56	\$52	\$45	\$39	\$36	\$30	\$28	\$26
	10yr ave.			\$64		\$56		\$48		\$42	\$40	\$39	\$38	\$36	\$32	\$30	\$23	\$20	\$18
	60% Current	\$132	\$120	\$111	\$98	\$88	\$79	\$75	\$71	\$66	\$64	\$61	\$56	\$49	\$43	\$40	\$33	\$30	\$28
	10yr ave.			\$69		\$61		\$52		\$46	\$44	\$43	\$42	\$39	\$35	\$32	\$25	\$22	\$20
	65% Current	\$143	\$130	\$121	\$107	\$95	\$86	\$81	\$77	\$72	\$70	\$66	\$61	\$53	\$46	\$43	\$36	\$33	\$30
	10yr ave.			\$75		\$66		\$57		\$50	\$48	\$46	\$45	\$43	\$38	\$35	\$28	\$24	\$22
	70% Current	\$154	\$140	\$130	\$115	\$102	\$92	\$88	\$83	\$77	\$75	\$71	\$66	\$57	\$50	\$46	\$39	\$35	\$33
	10yr ave.			\$81		\$71		\$61		\$54	\$51	\$50	\$49	\$46	\$41	\$38	\$30	\$26	\$23
	75% Current	\$165	\$150	\$139	\$123	\$110	\$99	\$94	\$88	\$83	\$80	\$77	\$71	\$61	\$53	\$50	\$41	\$38	\$35
	10yr ave.			\$87		\$76		\$66		\$57	\$55	\$54	\$52	\$49	\$44	\$40	\$32	\$28	\$25
	80% Current	\$176	\$160	\$148	\$131	\$117	\$106	\$100	\$94	\$88	\$86	\$82	\$75	\$65	\$57	\$53	\$44	\$40	\$37
	10yr ave.			\$92		\$82		\$70		\$61	\$59	\$57	\$56	\$53	\$47	\$43	\$34	\$30	\$27
	85% Current	\$187	\$170	\$158	\$139	\$124	\$112	\$107	\$100	\$94	\$91	\$87	\$80	\$69	\$60	\$56	\$47	\$43	\$40
	10yr ave.			\$98		\$87		\$74		\$65	\$62	\$61	\$59	\$56	\$50	\$46	\$36	\$31	\$28

The above shows estimated returns per head for skirted fleece wool. These figures do not take into account the value of skirtings and oddments and do not take into account discounts that may apply for faults under individual circumstances. These figures are based on a market index of 100% and should be used as a guide only. Returns over \$30 / head for fleece wool are highlighted.

Source: Australian Wool Exchange, Australian Wool Innovation, Sydney Futures Exchange, x-rates.com

Disclaimer: While all due care has been taken in the preparation of this document, no warranty is made as to its accuracy, reliability or completeness. To the extent permitted by law neither Jemalong or their sources including subsidiaries and staff, accept liability to any person for loss or damage arising from the use of this information.



Table 15: Returns pr head for skirted fleece wool.

Skirted FLC Weight		Micron																	
7 Kg		16	16.5	17	17.5	18	18.5	19	19.5	20	21	22	23	24	25	26	28	30	32
Yield (Sch Dry)	25% Current	\$48	\$44	\$41	\$36	\$32	\$29	\$27	\$26	\$24	\$23	\$22	\$21	\$18	\$16	\$14	\$12	\$11	\$10
	10yr ave.			\$25	\$22	\$19			\$17	\$16	\$16	\$15	\$14	\$13	\$12	\$9	\$8	\$7	
	30% Current	\$58	\$53	\$49	\$43	\$38	\$35	\$33	\$31	\$29	\$28	\$27	\$25	\$21	\$19	\$17	\$14	\$13	\$12
	10yr ave.			\$30	\$27	\$23			\$20	\$19	\$19	\$18	\$17	\$15	\$14	\$11	\$10	\$9	
	35% Current	\$67	\$61	\$57	\$50	\$45	\$40	\$38	\$36	\$34	\$33	\$31	\$29	\$25	\$22	\$20	\$17	\$15	\$14
	10yr ave.			\$35	\$31	\$27			\$23	\$22	\$22	\$21	\$20	\$18	\$16	\$13	\$11	\$10	
	40% Current	\$77	\$70	\$65	\$57	\$51	\$46	\$44	\$41	\$39	\$37	\$36	\$33	\$28	\$25	\$23	\$19	\$18	\$16
	10yr ave.			\$40	\$36	\$31			\$27	\$26	\$25	\$24	\$23	\$21	\$19	\$15	\$13	\$12	
	45% Current	\$87	\$79	\$73	\$65	\$58	\$52	\$49	\$46	\$44	\$42	\$40	\$37	\$32	\$28	\$26	\$22	\$20	\$18
	10yr ave.			\$46	\$40	\$34			\$30	\$29	\$28	\$27	\$26	\$23	\$21	\$17	\$15	\$13	
	50% Current	\$96	\$88	\$81	\$72	\$64	\$58	\$55	\$52	\$48	\$47	\$45	\$41	\$36	\$31	\$29	\$24	\$22	\$20
	10yr ave.			\$51	\$45	\$38			\$34	\$32	\$31	\$30	\$29	\$26	\$24	\$19	\$16	\$15	
	55% Current	\$106	\$96	\$89	\$79	\$70	\$64	\$60	\$57	\$53	\$52	\$49	\$45	\$39	\$34	\$32	\$26	\$24	\$22
	10yr ave.			\$56	\$49	\$42			\$37	\$35	\$34	\$33	\$32	\$28	\$26	\$20	\$18	\$16	
	60% Current	\$116	\$105	\$97	\$86	\$77	\$69	\$66	\$62	\$58	\$56	\$54	\$49	\$43	\$37	\$35	\$29	\$27	\$24
	10yr ave.			\$61	\$54	\$46			\$40	\$39	\$38	\$36	\$35	\$31	\$28	\$22	\$19	\$18	
	65% Current	\$125	\$114	\$106	\$93	\$83	\$75	\$71	\$67	\$63	\$61	\$58	\$53	\$46	\$40	\$38	\$31	\$29	\$26
	10yr ave.			\$66	\$58	\$50			\$44	\$42	\$41	\$39	\$37	\$33	\$31	\$24	\$21	\$19	
	70% Current	\$135	\$123	\$114	\$100	\$90	\$81	\$77	\$72	\$68	\$66	\$63	\$58	\$50	\$43	\$41	\$34	\$31	\$28
	10yr ave.			\$71	\$62	\$54			\$47	\$45	\$44	\$43	\$40	\$36	\$33	\$26	\$23	\$20	
	75% Current	\$144	\$131	\$122	\$108	\$96	\$87	\$82	\$77	\$73	\$70	\$67	\$62	\$53	\$47	\$43	\$36	\$33	\$31
	10yr ave.			\$76	\$67	\$57			\$50	\$48	\$47	\$46	\$43	\$39	\$35	\$28	\$24	\$22	
	80% Current	\$154	\$140	\$130	\$115	\$102	\$92	\$88	\$83	\$77	\$75	\$71	\$66	\$57	\$50	\$46	\$39	\$35	\$33
	10yr ave.			\$81	\$71	\$61			\$54	\$51	\$50	\$49	\$46	\$41	\$38	\$30	\$26	\$23	
	85% Current	\$164	\$149	\$138	\$122	\$109	\$98	\$93	\$88	\$82	\$80	\$76	\$70	\$60	\$53	\$49	\$41	\$38	\$35
	10yr ave.			\$86	\$76	\$65			\$57	\$55	\$53	\$52	\$49	\$44	\$40	\$32	\$28	\$25	

The above shows estimated returns per head for skirted fleece wool. These figures do not take into account the value of skirtings and oddments and do not take into account discounts that may apply for faults under individual circumstances. These figures are based on a market index of 100% and should be used as a guide only. Returns over \$30 / head for fleece wool are highlighted.

Source: Australian Wool Exchange, Australian Wool Innovation, Sydney Futures Exchange, x-rates.com

Disclaimer: While all due care has been taken in the preparation of this document, no warranty is made as to its accuracy, reliability or completeness. To the extent permitted by law neither Jemalong or their sources including subsidiaries and staff, accept liability to any person for loss or damage arising from the use of this information.



Table 16: Returns pr head for skirted fleece wool.

Skirted FLC Weight		Micron																	
6 Kg		16	16.5	17	17.5	18	18.5	19	19.5	20	21	22	23	24	25	26	28	30	32
Yield (Sch Dry)	25% Current	\$41	\$38	\$35	\$31	\$27	\$25	\$24	\$22	\$21	\$20	\$19	\$18	\$15	\$13	\$12	\$10	\$9	\$9
	10yr ave.			\$22	\$19		\$16			\$14	\$14	\$13	\$13	\$12	\$11	\$10	\$8	\$7	\$6
	30% Current	\$50	\$45	\$42	\$37	\$33	\$30	\$28	\$27	\$25	\$24	\$23	\$21	\$18	\$16	\$15	\$12	\$11	\$10
	10yr ave.			\$26		\$23		\$20		\$17	\$17	\$16	\$16	\$15	\$13	\$12	\$10	\$8	\$8
	35% Current	\$58	\$53	\$49	\$43	\$38	\$35	\$33	\$31	\$29	\$28	\$27	\$25	\$21	\$19	\$17	\$14	\$13	\$12
	10yr ave.			\$30		\$27		\$23		\$20	\$19	\$19	\$18	\$17	\$15	\$14	\$11	\$10	\$9
	40% Current	\$66	\$60	\$56	\$49	\$44	\$40	\$38	\$35	\$33	\$32	\$31	\$28	\$24	\$21	\$20	\$17	\$15	\$14
	10yr ave.			\$35		\$31		\$26		\$23	\$22	\$21	\$21	\$20	\$18	\$16	\$13	\$11	\$10
	45% Current	\$74	\$68	\$63	\$55	\$49	\$45	\$42	\$40	\$37	\$36	\$34	\$32	\$27	\$24	\$22	\$19	\$17	\$16
	10yr ave.			\$39		\$34		\$29		\$26	\$25	\$24	\$23	\$22	\$20	\$18	\$14	\$13	\$11
	50% Current	\$83	\$75	\$70	\$62	\$55	\$50	\$47	\$44	\$41	\$40	\$38	\$35	\$30	\$27	\$25	\$21	\$19	\$17
	10yr ave.			\$43		\$38		\$33		\$29	\$28	\$27	\$26	\$25	\$22	\$20	\$16	\$14	\$13
	55% Current	\$91	\$83	\$77	\$68	\$60	\$54	\$52	\$49	\$46	\$44	\$42	\$39	\$33	\$29	\$27	\$23	\$21	\$19
	10yr ave.			\$48		\$42		\$36		\$32	\$30	\$29	\$29	\$27	\$24	\$22	\$18	\$15	\$14
	60% Current	\$99	\$90	\$84	\$74	\$66	\$59	\$56	\$53	\$50	\$48	\$46	\$42	\$37	\$32	\$30	\$25	\$23	\$21
	10yr ave.			\$52		\$46		\$39		\$34	\$33	\$32	\$31	\$30	\$26	\$24	\$19	\$17	\$15
	65% Current	\$107	\$98	\$90	\$80	\$71	\$64	\$61	\$57	\$54	\$52	\$50	\$46	\$40	\$35	\$32	\$27	\$25	\$23
	10yr ave.			\$56		\$50		\$43		\$37	\$36	\$35	\$34	\$32	\$29	\$26	\$21	\$18	\$16
	70% Current	\$116	\$105	\$97	\$86	\$77	\$69	\$66	\$62	\$58	\$56	\$54	\$49	\$43	\$37	\$35	\$29	\$27	\$24
	10yr ave.			\$61		\$54		\$46		\$40	\$39	\$38	\$36	\$35	\$31	\$28	\$22	\$19	\$18
	75% Current	\$124	\$113	\$104	\$92	\$82	\$74	\$71	\$66	\$62	\$60	\$57	\$53	\$46	\$40	\$37	\$31	\$28	\$26
	10yr ave.			\$65		\$57		\$49		\$43	\$41	\$40	\$39	\$37	\$33	\$30	\$24	\$21	\$19
	80% Current	\$132	\$120	\$111	\$98	\$88	\$79	\$75	\$71	\$66	\$64	\$61	\$56	\$49	\$43	\$40	\$33	\$30	\$28
	10yr ave.			\$69		\$61		\$52		\$46	\$44	\$43	\$42	\$39	\$35	\$32	\$25	\$22	\$20
	85% Current	\$140	\$128	\$118	\$105	\$93	\$84	\$80	\$75	\$70	\$68	\$65	\$60	\$52	\$45	\$42	\$35	\$32	\$30
	10yr ave.			\$74		\$65		\$56		\$49	\$47	\$46	\$44	\$42	\$37	\$34	\$27	\$24	\$21

The above shows estimated returns per head for skirted fleece wool. These figures do not take into account the value of skirtings and oddments and do not take into account discounts that may apply for faults under individual circumstances. These figures are based on a market index of 100% and should be used as a guide only. Returns over \$30 / head for fleece wool are highlighted.

Source: Australian Wool Exchange, Australian Wool Innovation, Sydney Futures Exchange, x-rates.com

Disclaimer: While all due care has been taken in the preparation of this document, no warranty is made as to its accuracy, reliability or completeness. To the extent permitted by law neither Jemalong or their sources including subsidiaries and staff, accept liability to any person for loss or damage arising from the use of this information.



Table 17: Returns pr head for skirted fleece wool.

Skirted FLC Weight		Micron																	
5 Kg		16	16.5	17	17.5	18	18.5	19	19.5	20	21	22	23	24	25	26	28	30	32
Yield (Sch Dry)	25% Current	\$34	\$31	\$29	\$26	\$23	\$21	\$20	\$18	\$17	\$17	\$16	\$15	\$13	\$11	\$10	\$9	\$8	\$7
	10yr ave.			\$18		\$16		\$14		\$12	\$11	\$11	\$11	\$10	\$9	\$8	\$7	\$6	\$5
	30% Current	\$41	\$38	\$35	\$31	\$27	\$25	\$24	\$22	\$21	\$20	\$19	\$18	\$15	\$13	\$12	\$10	\$9	\$9
	10yr ave.			\$22		\$19		\$16		\$14	\$14	\$13	\$13	\$12	\$11	\$10	\$8	\$7	\$6
	35% Current	\$48	\$44	\$41	\$36	\$32	\$29	\$27	\$26	\$24	\$23	\$22	\$21	\$18	\$16	\$14	\$12	\$11	\$10
	10yr ave.			\$25		\$22		\$19		\$17	\$16	\$16	\$15	\$14	\$13	\$12	\$9	\$8	\$7
	40% Current	\$55	\$50	\$46	\$41	\$37	\$33	\$31	\$29	\$28	\$27	\$26	\$24	\$20	\$18	\$17	\$14	\$13	\$12
	10yr ave.			\$29		\$25		\$22		\$19	\$18	\$18	\$17	\$16	\$15	\$13	\$11	\$9	\$8
	45% Current	\$62	\$56	\$52	\$46	\$41	\$37	\$35	\$33	\$31	\$30	\$29	\$26	\$23	\$20	\$19	\$15	\$14	\$13
	10yr ave.			\$33		\$29		\$25		\$22	\$21	\$20	\$20	\$18	\$17	\$15	\$12	\$10	\$9
	50% Current	\$69	\$63	\$58	\$51	\$46	\$41	\$39	\$37	\$35	\$33	\$32	\$29	\$25	\$22	\$21	\$17	\$16	\$15
	10yr ave.			\$36		\$32		\$27		\$24	\$23	\$22	\$22	\$21	\$18	\$17	\$13	\$12	\$10
	55% Current	\$76	\$69	\$64	\$56	\$50	\$45	\$43	\$41	\$38	\$37	\$35	\$32	\$28	\$24	\$23	\$19	\$17	\$16
	10yr ave.			\$40		\$35		\$30		\$26	\$25	\$25	\$24	\$23	\$20	\$18	\$15	\$13	\$11
	60% Current	\$83	\$75	\$70	\$62	\$55	\$50	\$47	\$44	\$41	\$40	\$38	\$35	\$30	\$27	\$25	\$21	\$19	\$17
	10yr ave.			\$43		\$38		\$33		\$29	\$28	\$27	\$26	\$25	\$22	\$20	\$16	\$14	\$13
	65% Current	\$89	\$81	\$75	\$67	\$59	\$54	\$51	\$48	\$45	\$43	\$41	\$38	\$33	\$29	\$27	\$22	\$21	\$19
	10yr ave.			\$47		\$41		\$35		\$31	\$30	\$29	\$28	\$27	\$24	\$22	\$17	\$15	\$14
	70% Current	\$96	\$88	\$81	\$72	\$64	\$58	\$55	\$52	\$48	\$47	\$45	\$41	\$36	\$31	\$29	\$24	\$22	\$20
	10yr ave.			\$51		\$45		\$38		\$34	\$32	\$31	\$30	\$29	\$26	\$24	\$19	\$16	\$15
	75% Current	\$103	\$94	\$87	\$77	\$69	\$62	\$59	\$55	\$52	\$50	\$48	\$44	\$38	\$33	\$31	\$26	\$24	\$22
	10yr ave.			\$54		\$48		\$41		\$36	\$34	\$33	\$33	\$31	\$28	\$25	\$20	\$17	\$16
	80% Current	\$110	\$100	\$93	\$82	\$73	\$66	\$63	\$59	\$55	\$54	\$51	\$47	\$41	\$35	\$33	\$28	\$25	\$23
	10yr ave.			\$58		\$51		\$44		\$38	\$37	\$36	\$35	\$33	\$29	\$27	\$21	\$19	\$17
	85% Current	\$117	\$106	\$99	\$87	\$78	\$70	\$67	\$63	\$59	\$57	\$54	\$50	\$43	\$38	\$35	\$29	\$27	\$25
	10yr ave.			\$61		\$54		\$46		\$41	\$39	\$38	\$37	\$35	\$31	\$29	\$23	\$20	\$18

The above shows estimated returns per head for skirted fleece wool. These figures do not take into account the value of skirtings and oddments and do not take into account discounts that may apply for faults under individual circumstances. These figures are based on a market index of 100% and should be used as a guide only. Returns over \$30 / head for fleece wool are highlighted.

Source: Australian Wool Exchange, Australian Wool Innovation, Sydney Futures Exchange, x-rates.com

Disclaimer: While all due care has been taken in the preparation of this document, no warranty is made as to its accuracy, reliability or completeness. To the extent permitted by law neither Jemalong or their sources including subsidiaries and staff, accept liability to any person for loss or damage arising from the use of this information.



Table 18: Returns pr head for skirted fleece wool.

Skirted FLC Weight		Micron																	
4 Kg		16	16.5	17	17.5	18	18.5	19	19.5	20	21	22	23	24	25	26	28	30	32
Yield (Sch Dry)	25% Current	\$28	\$25	\$23	\$21	\$18	\$17	\$16	\$15	\$14	\$13	\$13	\$12	\$10	\$9	\$8	\$7	\$6	\$6
	10yr ave.			\$14		\$13		\$11		\$10	\$9	\$9	\$9	\$8	\$7	\$7	\$5	\$5	\$4
	30% Current	\$33	\$30	\$28	\$25	\$22	\$20	\$19	\$18	\$17	\$16	\$15	\$14	\$12	\$11	\$10	\$8	\$8	\$7
	10yr ave.			\$17		\$15		\$13		\$11	\$11	\$11	\$10	\$10	\$9	\$8	\$6	\$6	\$5
	35% Current	\$39	\$35	\$32	\$29	\$26	\$23	\$22	\$21	\$19	\$19	\$18	\$16	\$14	\$12	\$12	\$10	\$9	\$8
	10yr ave.			\$20		\$18		\$15		\$13	\$13	\$13	\$12	\$12	\$10	\$9	\$7	\$6	\$6
	40% Current	\$44	\$40	\$37	\$33	\$29	\$26	\$25	\$24	\$22	\$21	\$20	\$19	\$16	\$14	\$13	\$11	\$10	\$9
	10yr ave.			\$23		\$20		\$17		\$15	\$15	\$14	\$14	\$13	\$12	\$11	\$8	\$7	\$7
	45% Current	\$50	\$45	\$42	\$37	\$33	\$30	\$28	\$27	\$25	\$24	\$23	\$21	\$18	\$16	\$15	\$12	\$11	\$10
	10yr ave.			\$26		\$23		\$20		\$17	\$17	\$16	\$16	\$15	\$13	\$12	\$10	\$8	\$8
	50% Current	\$55	\$50	\$46	\$41	\$37	\$33	\$31	\$29	\$28	\$27	\$26	\$24	\$20	\$18	\$17	\$14	\$13	\$12
	10yr ave.			\$29		\$25		\$22		\$19	\$18	\$18	\$17	\$16	\$15	\$13	\$11	\$9	\$8
	55% Current	\$61	\$55	\$51	\$45	\$40	\$36	\$34	\$32	\$30	\$29	\$28	\$26	\$22	\$19	\$18	\$15	\$14	\$13
	10yr ave.			\$32		\$28		\$24		\$21	\$20	\$20	\$19	\$18	\$16	\$15	\$12	\$10	\$9
	60% Current	\$66	\$60	\$56	\$49	\$44	\$40	\$38	\$35	\$33	\$32	\$31	\$28	\$24	\$21	\$20	\$17	\$15	\$14
	10yr ave.			\$35		\$31		\$26		\$23	\$22	\$21	\$21	\$20	\$18	\$16	\$13	\$11	\$10
	65% Current	\$72	\$65	\$60	\$53	\$48	\$43	\$41	\$38	\$36	\$35	\$33	\$31	\$26	\$23	\$22	\$18	\$16	\$15
	10yr ave.			\$38		\$33		\$28		\$25	\$24	\$23	\$23	\$21	\$19	\$17	\$14	\$12	\$11
	70% Current	\$77	\$70	\$65	\$57	\$51	\$46	\$44	\$41	\$39	\$37	\$36	\$33	\$28	\$25	\$23	\$19	\$18	\$16
	10yr ave.			\$40		\$36		\$31		\$27	\$26	\$25	\$24	\$23	\$21	\$19	\$15	\$13	\$12
	75% Current	\$83	\$75	\$70	\$62	\$55	\$50	\$47	\$44	\$41	\$40	\$38	\$35	\$30	\$27	\$25	\$21	\$19	\$17
	10yr ave.			\$43		\$38		\$33		\$29	\$28	\$27	\$26	\$25	\$22	\$20	\$16	\$14	\$13
	80% Current	\$88	\$80	\$74	\$66	\$58	\$53	\$50	\$47	\$44	\$43	\$41	\$38	\$32	\$28	\$26	\$22	\$20	\$19
	10yr ave.			\$46		\$41		\$35		\$31	\$29	\$29	\$28	\$26	\$24	\$22	\$17	\$15	\$13
	85% Current	\$94	\$85	\$79	\$70	\$62	\$56	\$53	\$50	\$47	\$45	\$43	\$40	\$35	\$30	\$28	\$23	\$21	\$20
	10yr ave.			\$49		\$43		\$37		\$33	\$31	\$30	\$30	\$28	\$25	\$23	\$18	\$16	\$14

The above shows estimated returns per head for skirted fleece wool. These figures do not take into account the value of skirtings and oddments and do not take into account discounts that may apply for faults under individual circumstances. These figures are based on a market index of 100% and should be used as a guide only. Returns over \$30 / head for fleece wool are highlighted.

Source: Australian Wool Exchange, Australian Wool Innovation, Sydney Futures Exchange, x-rates.com

Disclaimer: While all due care has been taken in the preparation of this document, no warranty is made as to its accuracy, reliability or completeness. To the extent permitted by law neither Jemalong or their sources including subsidiaries and staff, accept liability to any person for loss or damage arising from the use of this information.



Table 19: Returns pr head for skirted fleece wool.

Skirted FLC Weight		Micron																	
3 Kg		16	16.5	17	17.5	18	18.5	19	19.5	20	21	22	23	24	25	26	28	30	32
Yield (Sch Dry)	25% Current	\$21	\$19	\$17	\$15	\$14	\$12	\$12	\$11	\$10	\$10	\$10	\$9	\$8	\$7	\$6	\$5	\$5	\$4
	10yr ave.			\$11		\$10		\$8		\$7	\$7	\$7	\$7	\$6	\$6	\$5	\$4	\$3	\$3
	30% Current	\$25	\$23	\$21	\$18	\$16	\$15	\$14	\$13	\$12	\$12	\$11	\$11	\$9	\$8	\$7	\$6	\$6	\$5
	10yr ave.			\$13		\$11		\$10		\$9	\$8	\$8	\$8	\$7	\$7	\$6	\$5	\$4	\$4
	35% Current	\$29	\$26	\$24	\$22	\$19	\$17	\$16	\$15	\$15	\$14	\$13	\$12	\$11	\$9	\$9	\$7	\$7	\$6
	10yr ave.			\$15		\$13		\$11		\$10	\$10	\$9	\$9	\$9	\$8	\$7	\$6	\$5	\$4
	40% Current	\$33	\$30	\$28	\$25	\$22	\$20	\$19	\$18	\$17	\$16	\$15	\$14	\$12	\$11	\$10	\$8	\$8	\$7
	10yr ave.			\$17		\$15		\$13		\$11	\$11	\$11	\$10	\$10	\$9	\$8	\$6	\$6	\$5
	45% Current	\$37	\$34	\$31	\$28	\$25	\$22	\$21	\$20	\$19	\$18	\$17	\$16	\$14	\$12	\$11	\$9	\$9	\$8
	10yr ave.			\$20		\$17		\$15		\$13	\$12	\$12	\$12	\$11	\$10	\$9	\$7	\$6	\$6
	50% Current	\$41	\$38	\$35	\$31	\$27	\$25	\$24	\$22	\$21	\$20	\$19	\$18	\$15	\$13	\$12	\$10	\$9	\$9
	10yr ave.			\$22		\$19		\$16		\$14	\$14	\$13	\$13	\$12	\$11	\$10	\$8	\$7	\$6
	55% Current	\$45	\$41	\$38	\$34	\$30	\$27	\$26	\$24	\$23	\$22	\$21	\$19	\$17	\$15	\$14	\$11	\$10	\$10
	10yr ave.			\$24		\$21		\$18		\$16	\$15	\$15	\$14	\$14	\$12	\$11	\$9	\$8	\$7
	60% Current	\$50	\$45	\$42	\$37	\$33	\$30	\$28	\$27	\$25	\$24	\$23	\$21	\$18	\$16	\$15	\$12	\$11	\$10
	10yr ave.			\$26		\$23		\$20		\$17	\$17	\$16	\$16	\$15	\$13	\$12	\$10	\$8	\$8
	65% Current	\$54	\$49	\$45	\$40	\$36	\$32	\$31	\$29	\$27	\$26	\$25	\$23	\$20	\$17	\$16	\$13	\$12	\$11
	10yr ave.			\$28		\$25		\$21		\$19	\$18	\$17	\$17	\$16	\$14	\$13	\$10	\$9	\$8
	70% Current	\$58	\$53	\$49	\$43	\$38	\$35	\$33	\$31	\$29	\$28	\$27	\$25	\$21	\$19	\$17	\$14	\$13	\$12
	10yr ave.			\$30		\$27		\$23		\$20	\$19	\$19	\$18	\$17	\$15	\$14	\$11	\$10	\$9
	75% Current	\$62	\$56	\$52	\$46	\$41	\$37	\$35	\$33	\$31	\$30	\$29	\$26	\$23	\$20	\$19	\$15	\$14	\$13
	10yr ave.			\$33		\$29		\$25		\$22	\$21	\$20	\$20	\$18	\$17	\$15	\$12	\$10	\$9
	80% Current	\$66	\$60	\$56	\$49	\$44	\$40	\$38	\$35	\$33	\$32	\$31	\$28	\$24	\$21	\$20	\$17	\$15	\$14
	10yr ave.			\$35		\$31		\$26		\$23	\$22	\$21	\$21	\$20	\$18	\$16	\$13	\$11	\$10
	85% Current	\$70	\$64	\$59	\$52	\$47	\$42	\$40	\$38	\$35	\$34	\$33	\$30	\$26	\$23	\$21	\$18	\$16	\$15
	10yr ave.			\$37		\$32		\$28		\$24	\$23	\$23	\$22	\$21	\$19	\$17	\$14	\$12	\$11

The above shows estimated returns per head for skirted fleece wool. These figures do not take into account the value of skirtings and oddments and do not take into account discounts that may apply for faults under individual circumstances. These figures are based on a market index of 100% and should be used as a guide only. Returns over \$30 / head for fleece wool are highlighted.

Source: Australian Wool Exchange, Australian Wool Innovation, Sydney Futures Exchange, x-rates.com

Disclaimer: While all due care has been taken in the preparation of this document, no warranty is made as to its accuracy, reliability or completeness. To the extent permitted by law neither Jemalong or their sources including subsidiaries and staff, accept liability to any person for loss or damage arising from the use of this information.



Table 20: Returns pr head for skirted fleece wool.

Skirted FLC Weight		Micron																	
2 Kg		16	16.5	17	17.5	18	18.5	19	19.5	20	21	22	23	24	25	26	28	30	32
Yield (Sch Dry)	25% Current	\$14	\$13	\$12	\$10	\$9	\$8	\$8	\$7	\$7	\$7	\$6	\$6	\$5	\$4	\$4	\$3	\$3	\$3
	10yr ave.			\$7		\$6		\$5		\$5	\$5	\$4	\$4	\$4	\$4	\$3	\$3	\$2	\$2
	30% Current	\$17	\$15	\$14	\$12	\$11	\$10	\$9	\$9	\$8	\$8	\$8	\$7	\$6	\$5	\$5	\$4	\$4	\$3
	10yr ave.			\$9		\$8		\$7		\$6	\$6	\$5	\$5	\$5	\$4	\$4	\$3	\$3	\$3
	35% Current	\$19	\$18	\$16	\$14	\$13	\$12	\$11	\$10	\$10	\$9	\$9	\$8	\$7	\$6	\$6	\$5	\$4	\$4
	10yr ave.			\$10		\$9		\$8		\$7	\$6	\$6	\$6	\$6	\$5	\$5	\$4	\$3	\$3
	40% Current	\$22	\$20	\$19	\$16	\$15	\$13	\$13	\$12	\$11	\$11	\$10	\$9	\$8	\$7	\$7	\$6	\$5	\$5
	10yr ave.			\$12		\$10		\$9		\$8	\$7	\$7	\$7	\$7	\$6	\$5	\$4	\$4	\$3
	45% Current	\$25	\$23	\$21	\$18	\$16	\$15	\$14	\$13	\$12	\$12	\$11	\$11	\$9	\$8	\$7	\$6	\$6	\$5
	10yr ave.			\$13		\$11		\$10		\$9	\$8	\$8	\$8	\$7	\$7	\$6	\$5	\$4	\$4
	50% Current	\$28	\$25	\$23	\$21	\$18	\$17	\$16	\$15	\$14	\$13	\$13	\$12	\$10	\$9	\$8	\$7	\$6	\$6
	10yr ave.			\$14		\$13		\$11		\$10	\$9	\$9	\$9	\$8	\$7	\$7	\$5	\$5	\$4
	55% Current	\$30	\$28	\$26	\$23	\$20	\$18	\$17	\$16	\$15	\$15	\$14	\$13	\$11	\$10	\$9	\$8	\$7	\$6
	10yr ave.			\$16		\$14		\$12		\$11	\$10	\$10	\$10	\$9	\$8	\$7	\$6	\$5	\$5
	60% Current	\$33	\$30	\$28	\$25	\$22	\$20	\$19	\$18	\$17	\$16	\$15	\$14	\$12	\$11	\$10	\$8	\$8	\$7
	10yr ave.			\$17		\$15		\$13		\$11	\$11	\$11	\$10	\$10	\$9	\$8	\$6	\$6	\$5
	65% Current	\$36	\$33	\$30	\$27	\$24	\$21	\$20	\$19	\$18	\$17	\$17	\$15	\$13	\$12	\$11	\$9	\$8	\$8
	10yr ave.			\$19		\$17		\$14		\$12	\$12	\$12	\$11	\$11	\$10	\$9	\$7	\$6	\$5
	70% Current	\$39	\$35	\$32	\$29	\$26	\$23	\$22	\$21	\$19	\$19	\$18	\$16	\$14	\$12	\$12	\$10	\$9	\$8
	10yr ave.			\$20		\$18		\$15		\$13	\$13	\$13	\$12	\$12	\$10	\$9	\$7	\$6	\$6
	75% Current	\$41	\$38	\$35	\$31	\$27	\$25	\$24	\$22	\$21	\$20	\$19	\$18	\$15	\$13	\$12	\$10	\$9	\$9
	10yr ave.			\$22		\$19		\$16		\$14	\$14	\$13	\$13	\$12	\$11	\$10	\$8	\$7	\$6
	80% Current	\$44	\$40	\$37	\$33	\$29	\$26	\$25	\$24	\$22	\$21	\$20	\$19	\$16	\$14	\$13	\$11	\$10	\$9
	10yr ave.			\$23		\$20		\$17		\$15	\$15	\$14	\$14	\$13	\$12	\$11	\$8	\$7	\$7
	85% Current	\$47	\$43	\$39	\$35	\$31	\$28	\$27	\$25	\$23	\$23	\$22	\$20	\$17	\$15	\$14	\$12	\$11	\$10
	10yr ave.			\$25		\$22		\$19		\$16	\$16	\$15	\$15	\$14	\$12	\$11	\$9	\$8	\$7

The above shows estimated returns per head for skirted fleece wool. These figures do not take into account the value of skirtings and oddments and do not take into account discounts that may apply for faults under individual circumstances. These figures are based on a market index of 100% and should be used as a guide only. Returns over \$30 / head for fleece wool are highlighted.

Source: Australian Wool Exchange, Australian Wool Innovation, Sydney Futures Exchange, x-rates.com

Disclaimer: While all due care has been taken in the preparation of this document, no warranty is made as to its accuracy, reliability or completeness. To the extent permitted by law neither Jemalong or their sources including subsidiaries and staff, accept liability to any person for loss or damage arising from the use of this information.