



JEMALONG WOOL BULLETIN

(week ending 1/12/2011)

Table 1: Northern Region Micron Price Guides

CURRENT MARKET				12 MONTH COMPARISONS								3 YEAR COMPARISONS					Percentile	10 YEAR COMPARISONS					Percentile	
Mic.	1/12/2011	24/11/2011		1/12/2010	Now		Now		Now					Now										
Price	Current	Weekly		This time	compared		compared		compared		Low	High	Average	compared			Low	High	10 year	compared				
Guides	Price	Change		Last Year	to Last Year		to Low		to High		Low	High	Average	to 3yr ave			Low	High	Average	to 10yr ave				
NRI	1232	+1	0.1%	1043	+189	18%	1043	+189	18%	1491	-259	-17%	751	1491	1034	+198	19%	73%	657	1491	923	+309	33%	92%
16*	2100	0		2020	+80	4%	2020	+80	4%	2800	-700	-25%	1385	2800	1899	+201	11%	71%						
16.5*	1850	-30	-1.6%	1870	-20	-1%	1850	0	0%	2680	-830	-31%	1248	2680	1746	+104	6%	64%						
17*	1680	-50	-3.0%	1770	-90	-5%	1680	0	0%	2530	-850	-34%	1166	2530	1609	+71	4%	63%	1100	2530	1445	+235	16%	84%
17.5*	1560	-20	-1.3%	1680	-120	-7%	1560	0	0%	2360	-800	-34%	1081	2360	1507	+53	4%	63%						
18	1500	-40	-2.7%	1588	-88	-6%	1492	+8	1%	2193	-693	-32%	1035	2193	1417	+83	6%	64%	916	2193	1276	+224	18%	80%
18.5	1460	-33	-2.3%	1461	-1	0%	1431	+29	2%	1963	-503	-26%	971	1963	1326	+134	10%	66%						
19	1427	-9	-0.6%	1257	+170	14%	1257	+170	14%	1776	-349	-20%	894	1776	1226	+201	16%	71%	803	1776	1105	+322	29%	92%
19.5	1408	+4	0.3%	1094	+314	29%	1094	+314	29%	1670	-262	-16%	816	1670	1129	+279	25%	77%						
20	1372	+19	1.4%	986	+386	39%	986	+386	39%	1588	-216	-14%	745	1588	1052	+320	30%	83%	700	1588	974	+398	41%	95%
21	1355	+32	2.4%	956	+399	42%	956	+399	42%	1522	-167	-11%	721	1522	1019	+336	33%	91%	668	1522	934	+421	45%	97%
22	1243	+26	2.1%	913	+330	36%	913	+330	36%	1461	-218	-15%	702	1461	986	+257	26%	82%	659	1461	907	+336	37%	91%
23	1157	+20	1.7%	889	+268	30%	889	+268	30%	1324	-167	-13%	690	1324	942	+215	23%	82%	652	1340	879	+278	32%	89%
24	1047	+27	2.6%	830	+217	26%	820	+227	28%	1170	-123	-11%	664	1170	868	+179	21%	88%	638	1299	831	+216	26%	90%
25	892	+13	1.5%	760	+132	17%	738	+154	21%	1048	-156	-15%	566	1048	753	+139	18%	79%	567	1198	741	+151	20%	77%
26	769	+8	1.0%	678	+91	13%	634	+135	21%	928	-159	-17%	532	928	676	+93	14%	75%	532	1088	677	+92	14%	74%
28	622	-8	-1.3%	488	+134	27%	483	+139	29%	734	-112	-15%	434	734	529	+93	18%	73%	424	889	533	+89	17%	77%
30	576	-6	-1.0%	444	+132	30%	434	+142	33%	670	-94	-14%	378	670	473	+103	22%	74%	344	729	464	+112	24%	79%
32	548	-6	-1.1%	414	+134	32%	405	+143	35%	638	-90	-14%	326	638	421	+127	30%	77%	297	669	419	+129	31%	82%
MC	698	-38	-5.4%	649	+49	8%	632	+66	10%	831	-133	-16%	477	831	634	+64	10%	71%	380	831	531	+167	31%	92%

Note:

* Due to the irregular market quoting for some fine wool categories, figures shown relating to micron categories below 18 micron are an estimate based on the AWEX Premium & Discounts Report & other available information.

* For any category, where there is insufficient quantity offered to enable AWEX to quote, a quote will be provided based on the best available information.

* 10 Year data is not available for some micron categories, which may result in blank spaces in the table above.

Definitions:

* A Percentile, is a value on a scale of one hundred that indicates the percent of a distribution that is equal to or below it. In general a percentile between 25% and 75% is considered normal, a percentile below 25% is considered below normal and a percentile above 75% is considered above normal.

Three and ten year percentiles shown in the table above, detail the period of time during the past 3 & 10 years that the market has traded either at or below its current price.

The higher the percentile, the stronger the market.

Source: Australian Wool Exchange, Australian Wool Innovation, Sydney Futures Exchange, x-rates.com

Disclaimer: While all due care has been taken in the preparation of this document, no warranty is made as to its accuracy, reliability or completeness. To the extent permitted by law neither Jemalong or their sources including subsidiaries and staff, accept liability to any person for loss or damage arising from the use of this information.



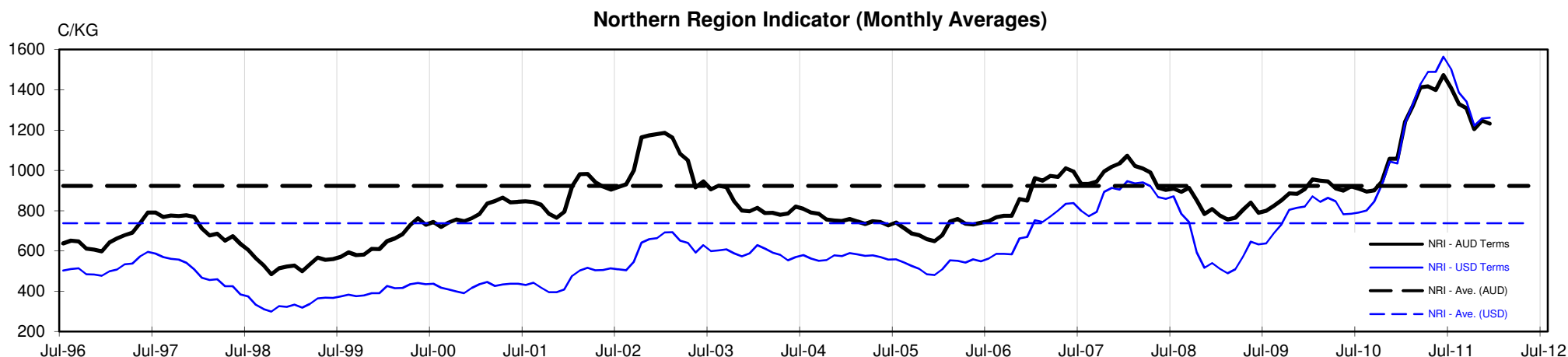
MARKET COMMENTARY

One Australian Dollar = \$ 1.02 US, as of 1/12/2011

NORTHERN REGION –Sale Week 22/11 (50,603 bales offered nationally)

Wednesdays market took a leap of faith as buyers pushed most micron categories higher. Medium microns rose 15 to 20 cents while the broader range of 20 to 21 microns finished 40 cents above their previous levels and 22 microns and broader were 50 cents dearer. Fine microns were well supported for the better style and strength lots, despite some irregularities for the lower style types (which remained generally firm). Wide spread competition had all merino skirtings 10-20 cents dearer with the 5% Vm and greater types most affected. In the oddments, fine locks remained unchanged while 19 micron and broader eased 10 cents. Crutchings closed in sellers favour while stains were fully firm. After last weeks limited crossbred offering, improved volumes equated to solid support with 27 to 30 microns par to 5 cents dearer. 12.6% PI

Thursdays market had a rethink, on the back of the previous days rise and the stronger AUD. 19.5 micron and broader were all reduced by 10-15 cents where as the finer micron ranges lacked support, easing 30-40 cents across all descriptions. Skirtings also lost ground, and were generally 20 cents cheaper with 20 micron and broader most affected. In the oddments, locks lost 50 cents, while crutchings & stains were 20 cents cheaper. The crossbred market also drifted a little lower with 27 microns remaining firm while 28 micron and broader eased 5-10 cents. 15.2% PI





JEMALONG WOOL BULLETIN

(week ending 1/12/2011)

Table 4: 19 micron SFE

Wednesday, 30 November 2011

Delivery Mth	Dec-11	Feb-12	Apr-12	Jun-12	Aug-12	Oct-12	Dec-12	Feb-13	Mar-13
19 Micron SFE	1480	1450	1420	1390	1380	1380	1340	1340	1340
Average	1351	1371	1385	1406	1394	1394	1394	1356	1333
Maximum	1677	1652	1622	1612	1525	1525	1525	1525	1375
Minimum	1034	1053	1106	1210	1285	1285	1285	1265	1265

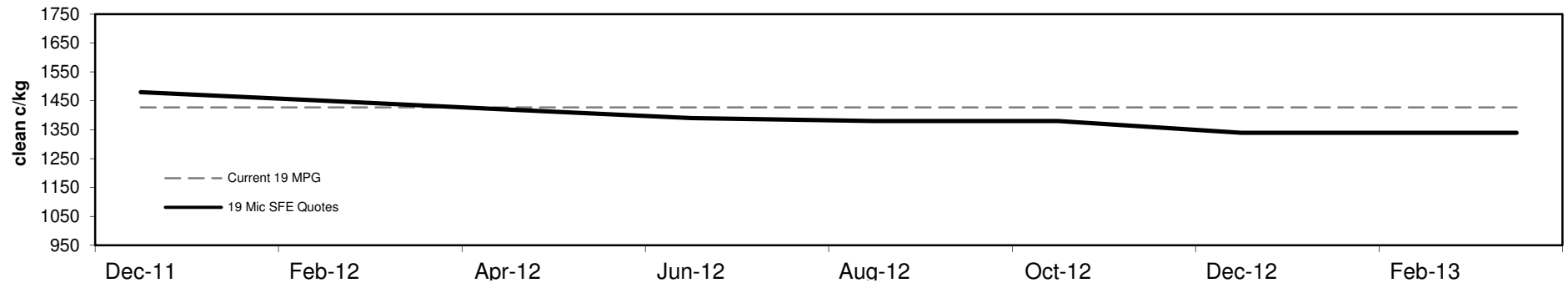
Table 5: 19 micron SFE, as a percentile of the 19 micron MPG

3 Year Percentile	74%	73%	71%	68%	68%	68%	67%	67%	67%
10 Year Percentile	93%	92%	92%	90%	90%	90%	88%	88%	88%

Table 6: 19 micron SFE, compared to MPG

SFE - MPG	+53	4%	+23	2%	-7	0%	-37	-3%	-47	-3%	-47	-3%	-87	-6%	-87	-6%	-87	-6%
SFE - MPG, 1 year Ave.	-108	-7%	-138	-9%	-168	-11%	-198	-12%	-208	-13%	-208	-13%	-248	-16%	-248	-16%	-248	-16%
SFE - MPG, 3 year Ave.	+254	21%	+224	18%	+194	16%	+164	13%	+154	13%	+154	13%	+114	9%	+114	9%	+114	9%
SFE - MPG, 10 year Ave.	+375	34%	+345	31%	+315	29%	+285	26%	+275	25%	+275	25%	+235	21%	+235	21%	+235	21%

19 MICRON SFE, QUOTES



19 Micron SFE, Front month movement

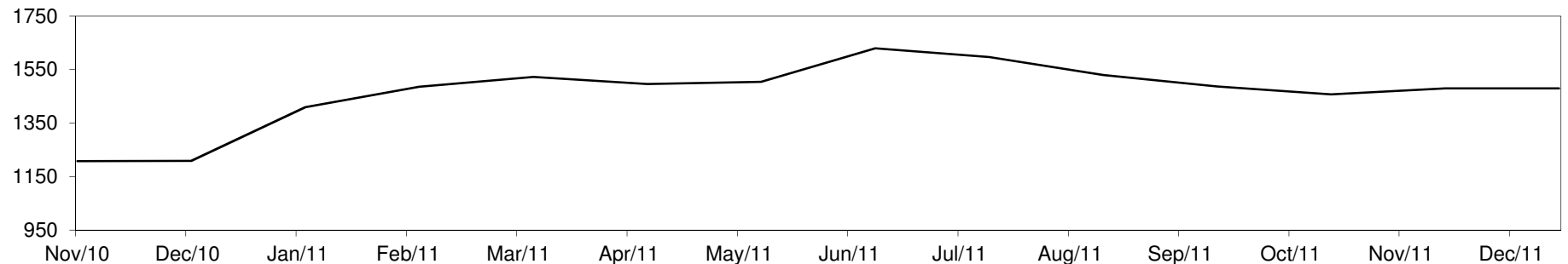




Table 7: 21 micron SFE

Wednesday, 30 November 2011

Delivery Mth	Dec-11	Feb-12	Apr-12	Jun-12	Aug-12	Oct-12	Dec-12	Feb-13	Mar-13
21 Micron SFE	1335	1340	1315	1290	1267	1118	1174	1139	1118
Average	1121	1130	1146	1144	1150	1147	1147	1145	1116
Maximum	1411	1393	1349	1337	1321	1283	1283	1222	1186
Minimum	880	880	934	990	1046	1013	1013	1080	1048

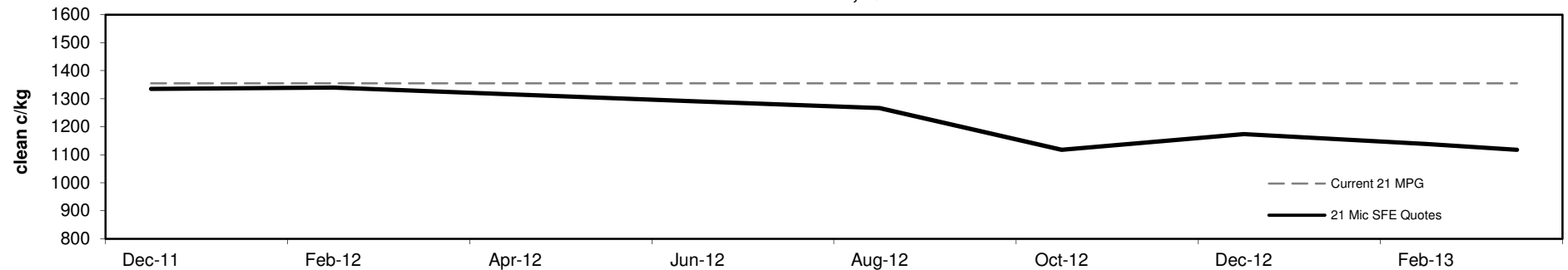
Table 8: 21 micron SFE, as a percentile of the 21 micron MPG

3 Year Percentile	88%	89%	83%	80%	77%	69%	72%	70%	69%
10 Year Percentile	96%	97%	95%	94%	91%	85%	86%	85%	85%

Table 9: 21 micron SFE, compared to MPG

SFE - MPG	-20	-1%	-15	-1%	-40	-3%	-65	-5%	-88	-6%	-237	-17%	-181	-13%	-216	-16%	-237	-17%
SFE - MPG, 1 year Ave.	+25	2%	+30	2%	+5	0%	-20	-2%	-43	-3%	-192	-15%	-136	-10%	-171	-13%	-192	-15%
SFE - MPG, 3 year Ave.	+316	31%	+321	31%	+296	29%	+271	27%	+248	24%	+99	10%	+155	15%	+120	12%	+99	10%
SFE - MPG, 10 year Ave.	+401	43%	+406	43%	+381	41%	+356	38%	+333	36%	+184	20%	+240	26%	+205	22%	+184	20%

21 MICRON SFE, QUOTES



21 Micron SFE, Front month movement

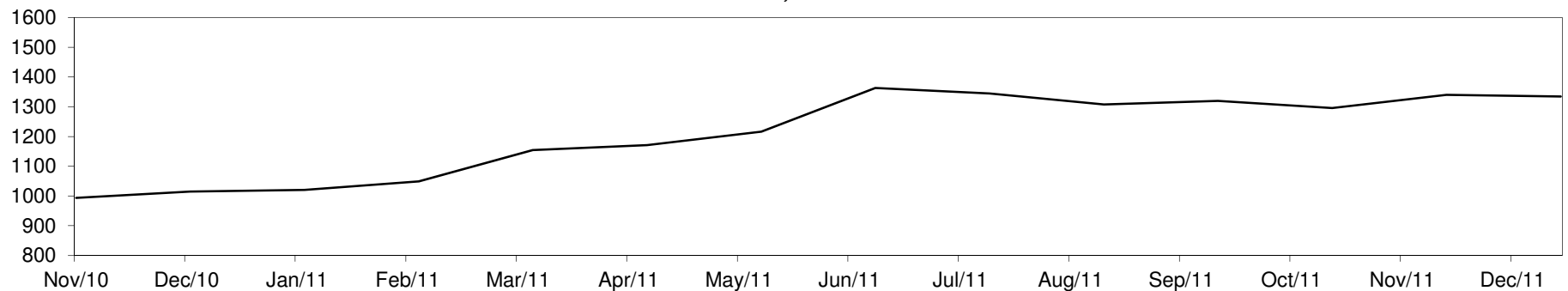




Table 10: 23 micron SFE

Wednesday, 30 November 2011

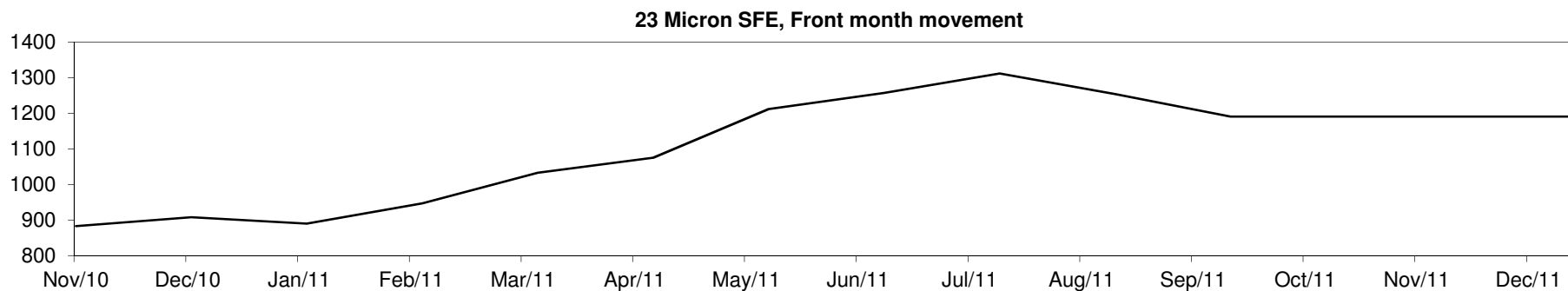
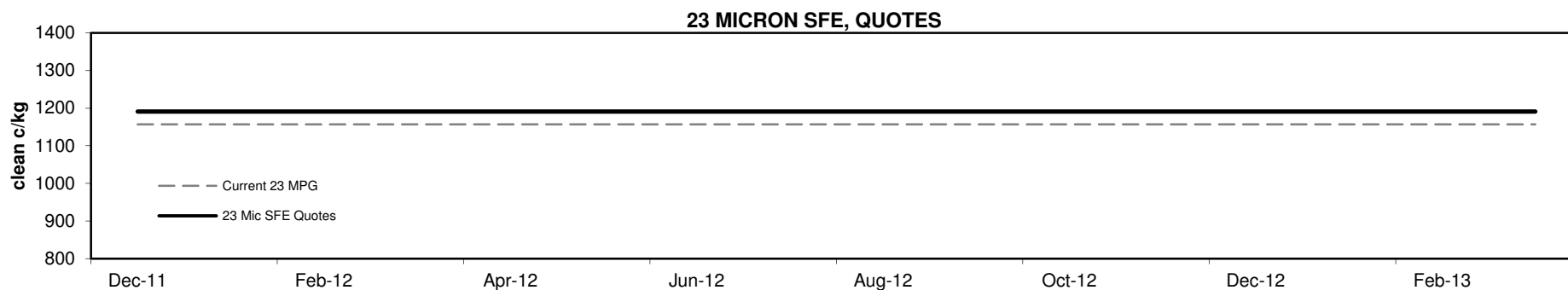
Delivery Mth	Dec-11	Feb-12	Apr-12	Jun-12	Aug-12	Oct-12	Dec-12	Feb-13	Mar-13
23 Micron SFE	1191	1191	1191	1191	1191	1191	1191	1191	1191
Average	1042	1065	1096	1133	1181	1222	1222	1225	1191
Maximum	1312	1312	1312	1312	1312	1312	1312	1312	1191
Minimum	883	883	883	890	1033	1191	1191	1191	1191

Table 11: 23 micron SFE, as a percentile of the 23 micron MPG

3 Year Percentile	87%	87%	87%	87%	87%	87%	87%	87%	87%
10 Year Percentile	91%	91%	91%	91%	91%	91%	91%	91%	91%

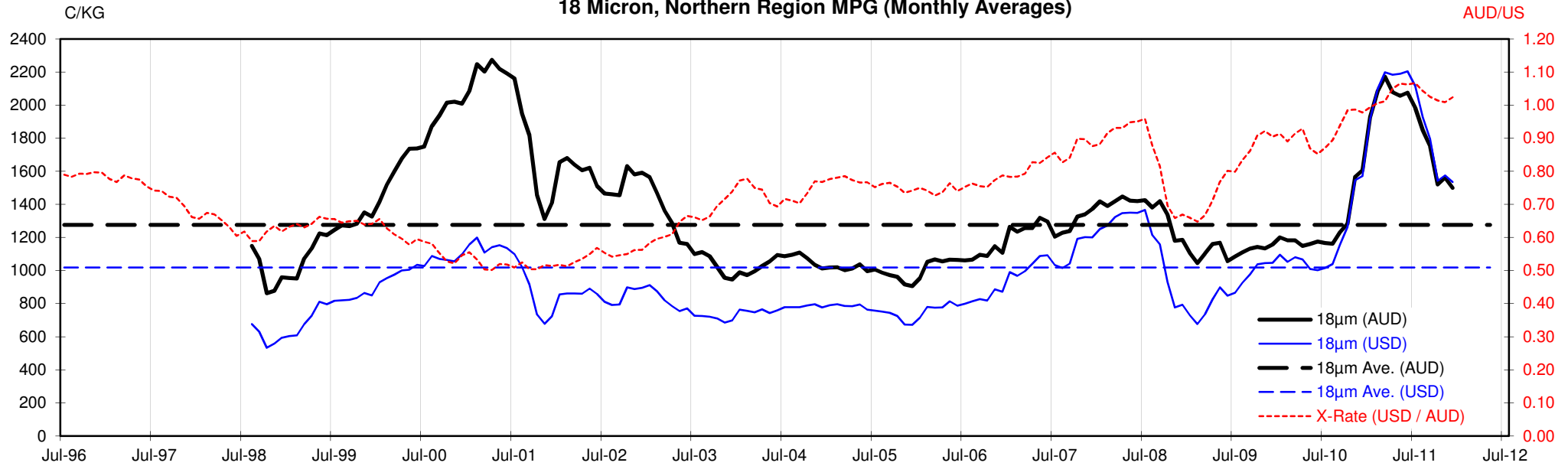
Table 12: 23 micron SFE, compared to MPG

SFE - MPG	+34	3%	+34	3%	+34	3%	+34	3%	+34	3%	+34	3%	+34	3%	+34	3%	+34	3%
SFE - MPG, 1 year Ave.	+25	2%	+25	2%	+25	2%	+25	2%	+25	2%	+25	2%	+25	2%	+25	2%	+25	2%
SFE - MPG, 3 year Ave.	+249	26%	+249	26%	+249	26%	+249	26%	+249	26%	+249	26%	+249	26%	+249	26%	+249	26%
SFE - MPG, 10 year Ave.	+312	36%	+312	36%	+312	36%	+312	36%	+312	36%	+312	36%	+312	36%	+312	36%	+312	36%

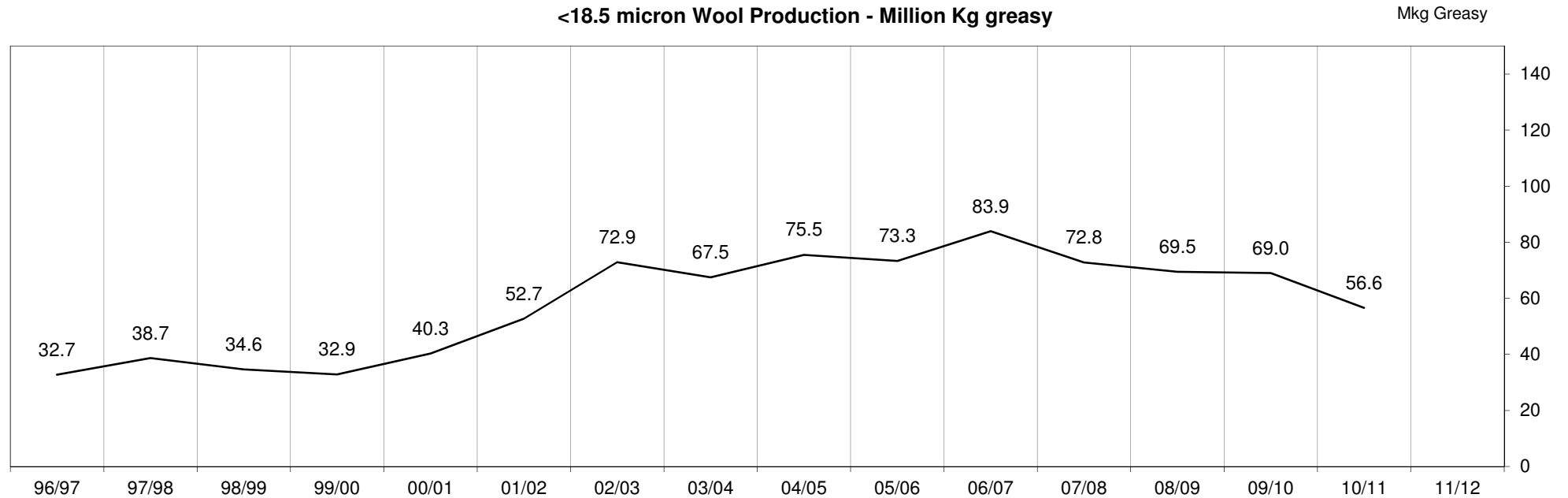


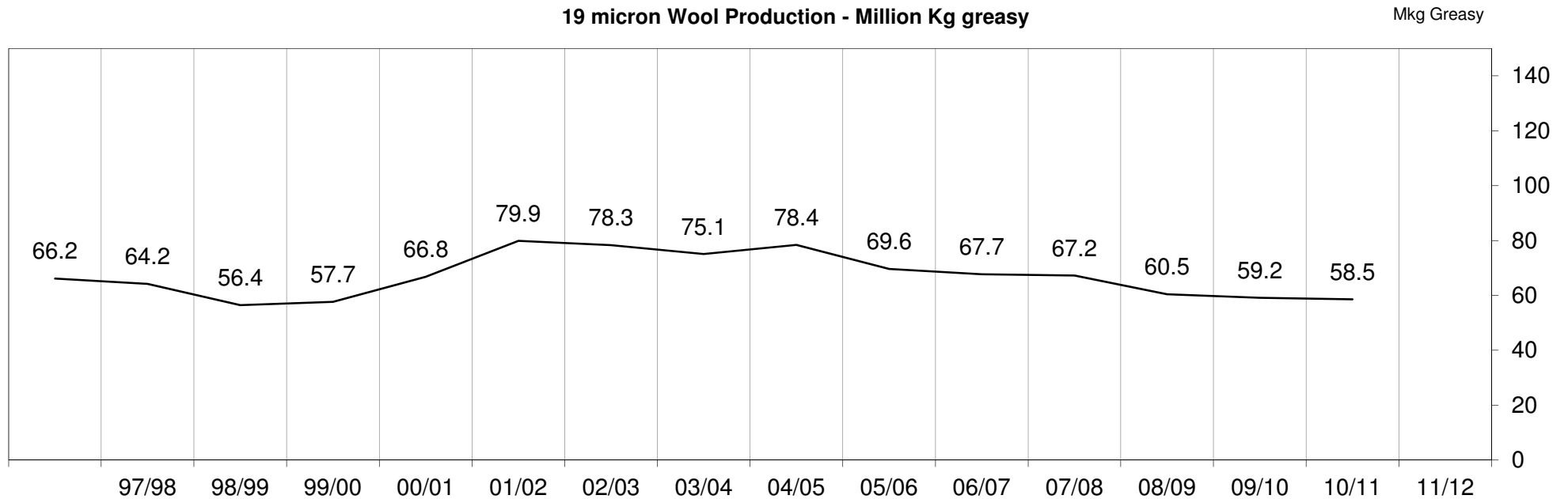
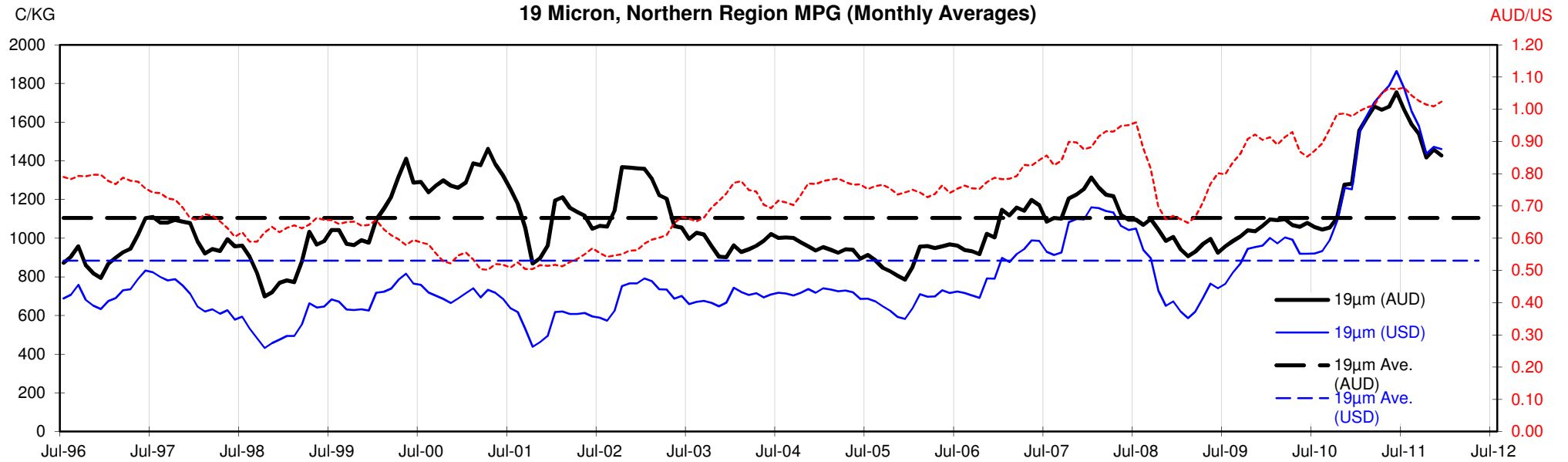


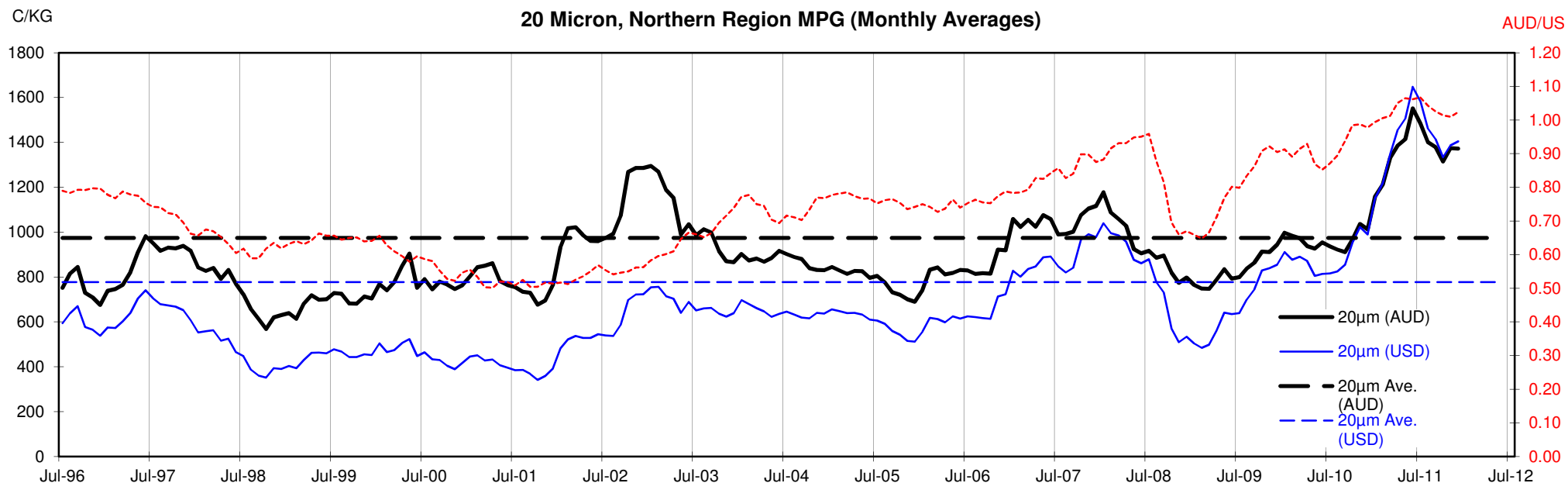
18 Micron, Northern Region MPG (Monthly Averages)

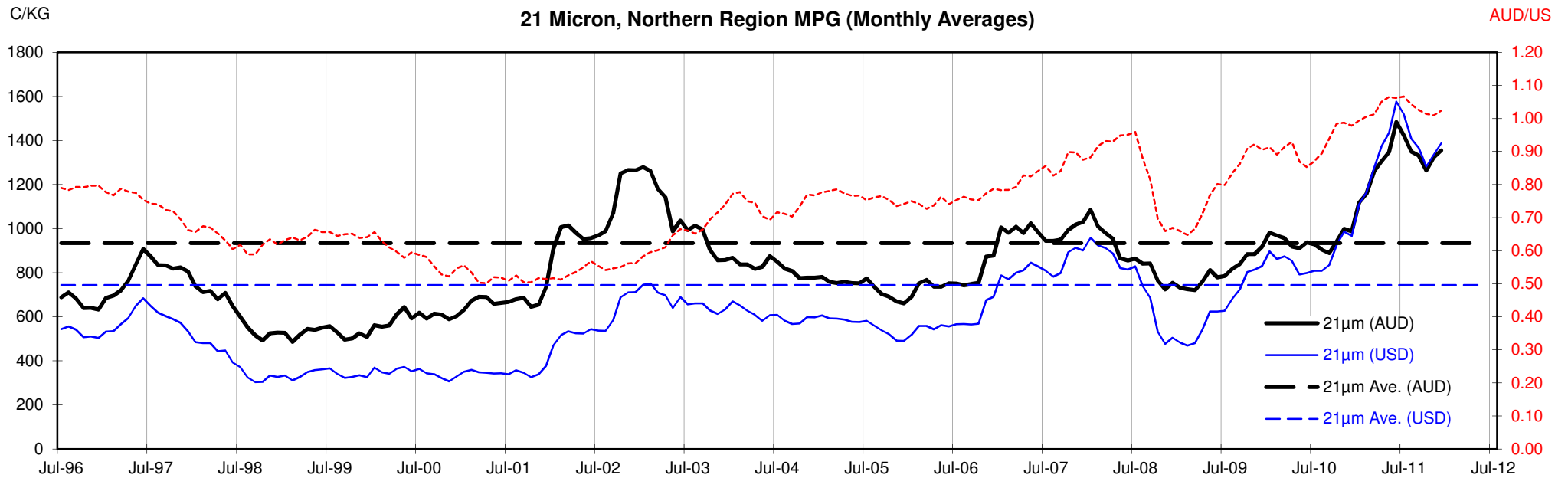


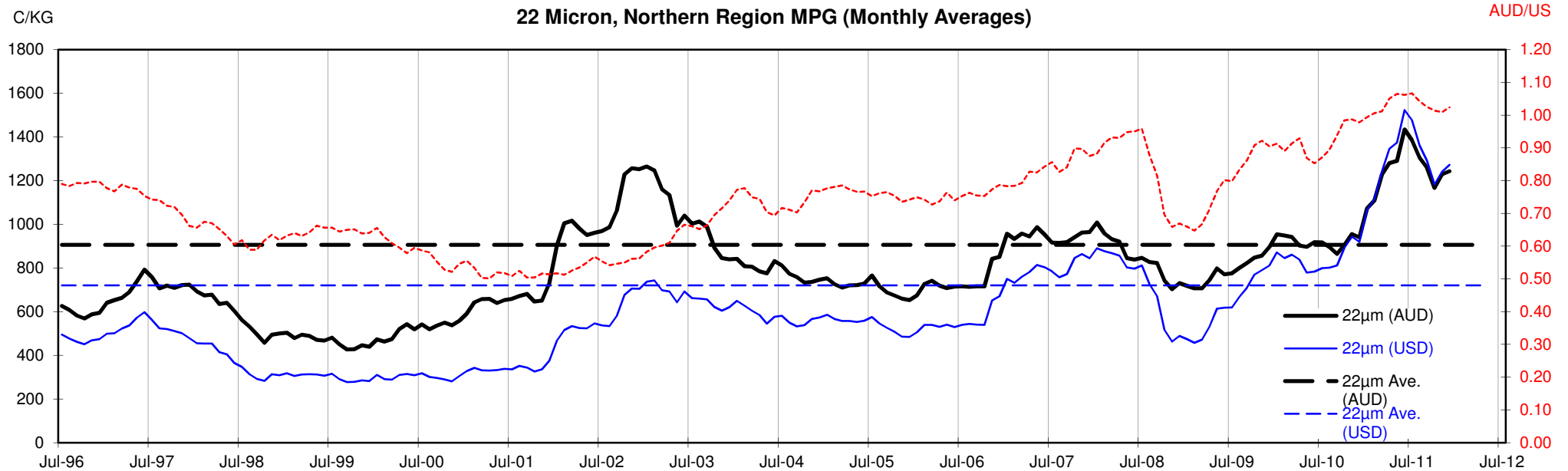
<18.5 micron Wool Production - Million Kg greasy

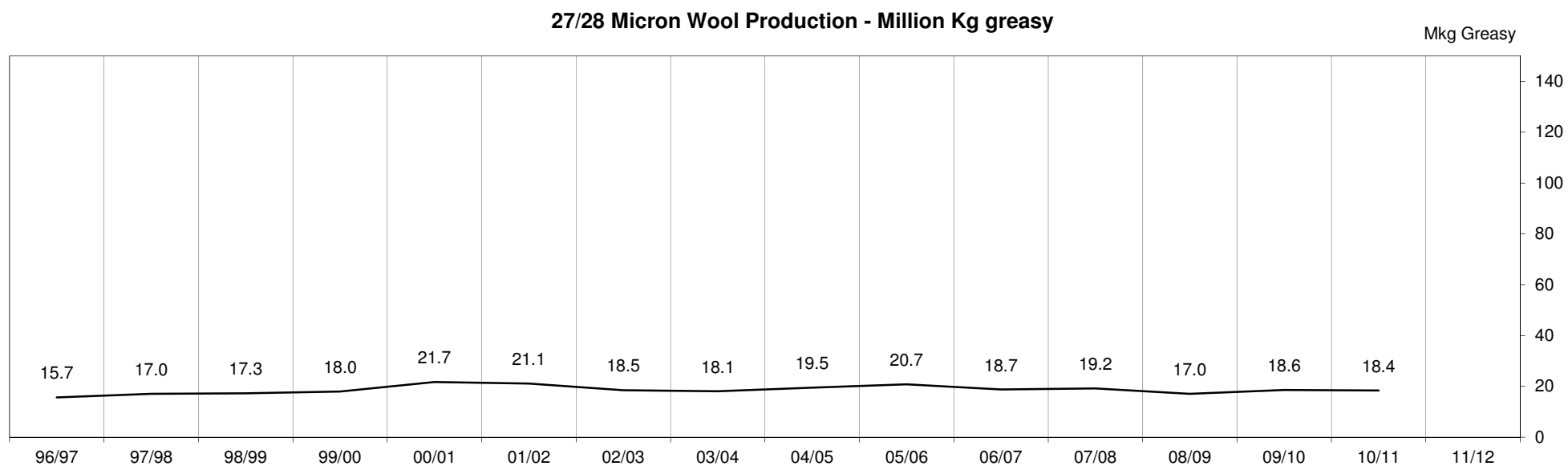
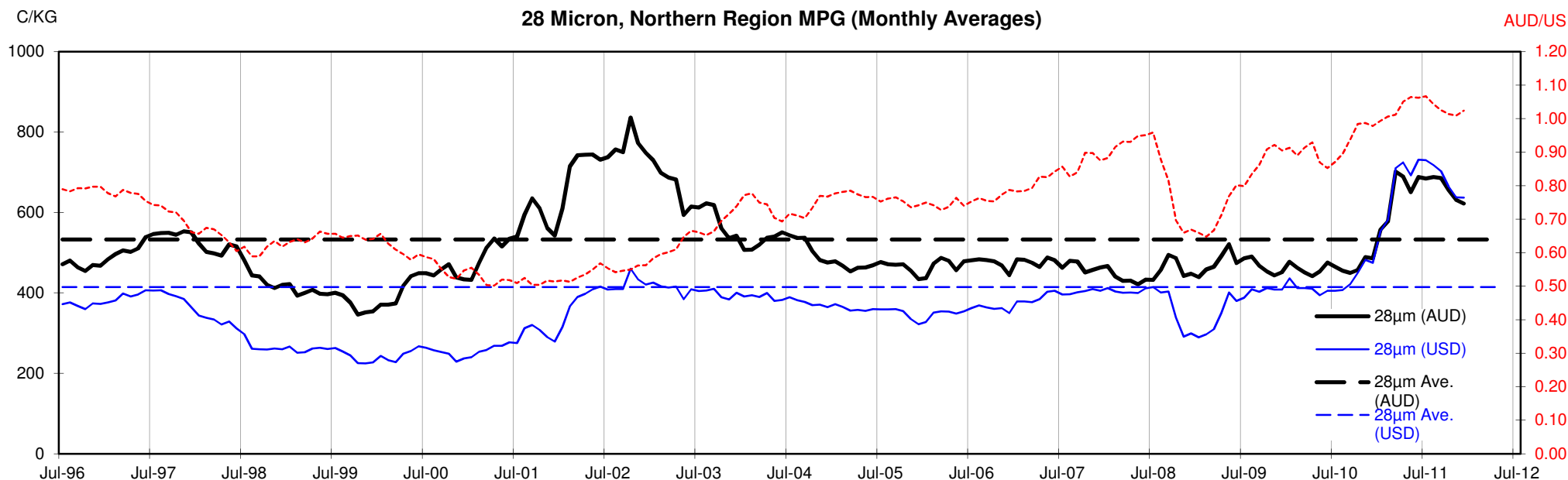












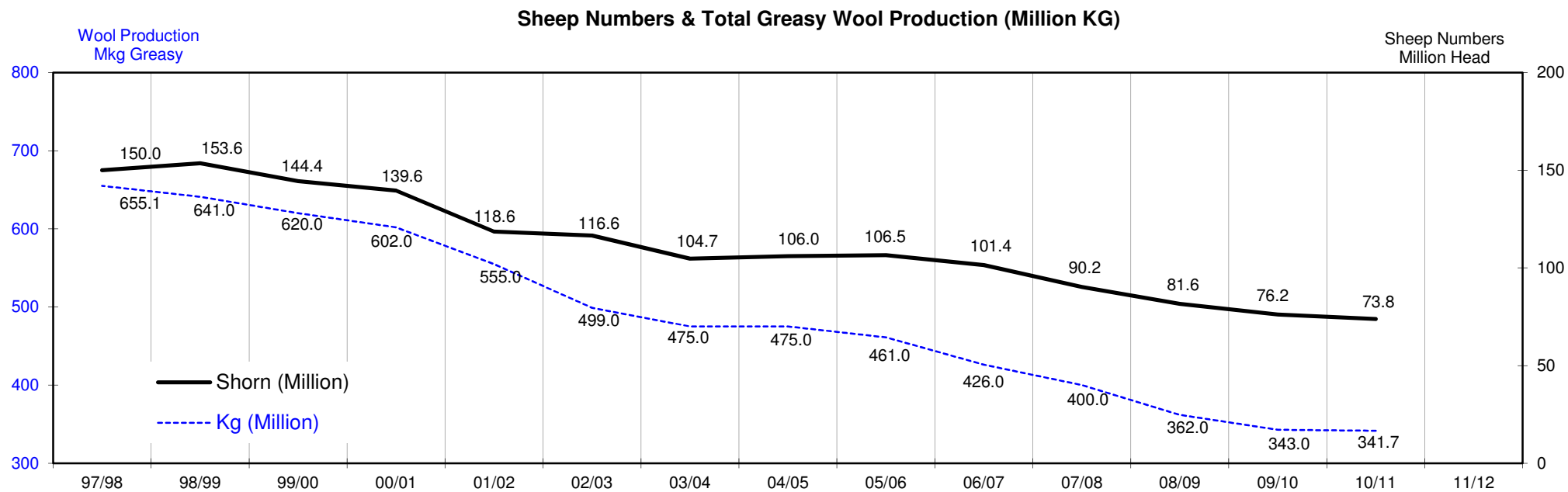
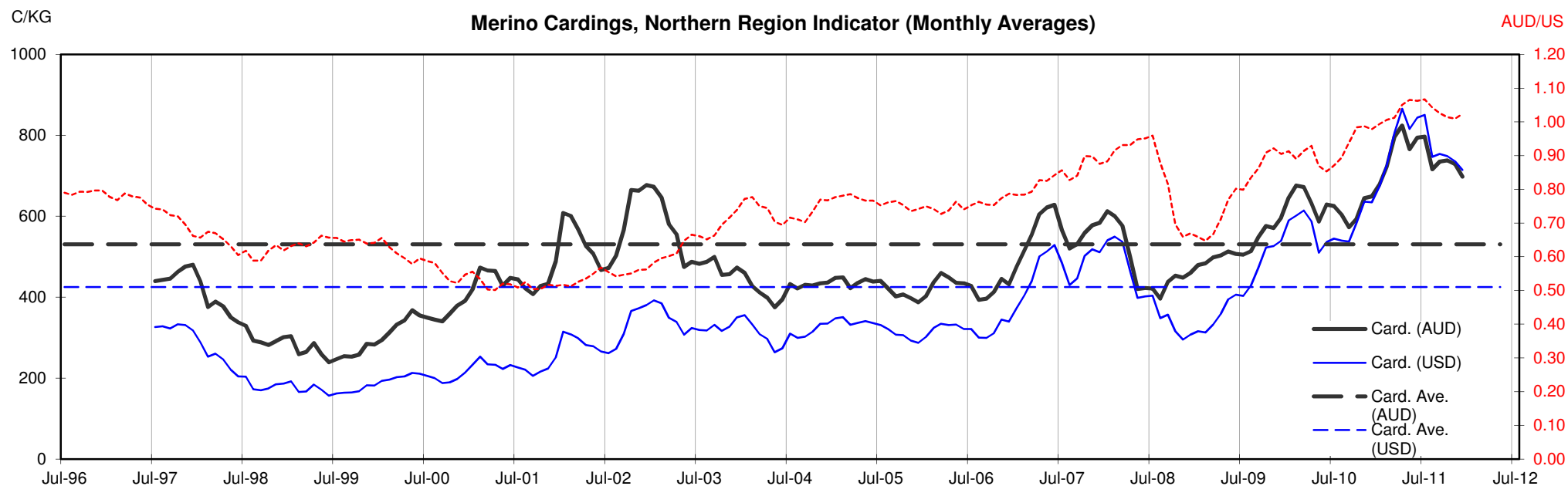




Table 13: Returns pr head for skirted fleece wool.

Skirted FLC Weight		Micron																	
9 Kg		16	16.5	17	17.5	18	18.5	19	19.5	20	21	22	23	24	25	26	28	30	32
Yield (Sch Dry)	25% Current	\$47	\$42	\$38	\$35	\$34	\$33	\$32	\$32	\$31	\$30	\$28	\$26	\$24	\$20	\$17	\$14	\$13	\$12
	10yr ave.			\$33		\$29		\$25		\$22	\$21	\$20	\$20	\$19	\$17	\$15	\$12	\$10	\$9
	30% Current	\$57	\$50	\$45	\$42	\$41	\$39	\$39	\$38	\$37	\$37	\$34	\$31	\$28	\$24	\$21	\$17	\$16	\$15
	10yr ave.			\$39		\$34		\$30		\$26	\$25	\$24	\$24	\$22	\$20	\$18	\$14	\$13	\$11
	35% Current	\$66	\$58	\$53	\$49	\$47	\$46	\$45	\$44	\$43	\$43	\$39	\$36	\$33	\$28	\$24	\$20	\$18	\$17
	10yr ave.			\$46		\$40		\$35		\$31	\$29	\$29	\$28	\$26	\$23	\$21	\$17	\$15	\$13
	40% Current	\$76	\$67	\$60	\$56	\$54	\$53	\$51	\$51	\$49	\$49	\$45	\$42	\$38	\$32	\$28	\$22	\$21	\$20
	10yr ave.			\$52		\$46		\$40		\$35	\$34	\$33	\$32	\$30	\$27	\$24	\$19	\$17	\$15
	45% Current	\$85	\$75	\$68	\$63	\$61	\$59	\$58	\$57	\$56	\$55	\$50	\$47	\$42	\$36	\$31	\$25	\$23	\$22
	10yr ave.			\$59		\$52		\$45		\$39	\$38	\$37	\$36	\$34	\$30	\$27	\$22	\$19	\$17
	50% Current	\$95	\$83	\$76	\$70	\$68	\$66	\$64	\$63	\$62	\$61	\$56	\$52	\$47	\$40	\$35	\$28	\$26	\$25
	10yr ave.			\$65		\$57		\$50		\$44	\$42	\$41	\$40	\$37	\$33	\$30	\$24	\$21	\$19
	55% Current	\$104	\$92	\$83	\$77	\$74	\$72	\$71	\$70	\$68	\$67	\$62	\$57	\$52	\$44	\$38	\$31	\$29	\$27
	10yr ave.			\$72		\$63		\$55		\$48	\$46	\$45	\$44	\$41	\$37	\$34	\$26	\$23	\$21
	60% Current	\$113	\$100	\$91	\$84	\$81	\$79	\$77	\$76	\$74	\$73	\$67	\$62	\$57	\$48	\$42	\$34	\$31	\$30
	10yr ave.			\$78		\$69		\$60		\$53	\$50	\$49	\$47	\$45	\$40	\$37	\$29	\$25	\$23
	65% Current	\$123	\$108	\$98	\$91	\$88	\$85	\$83	\$82	\$80	\$79	\$73	\$68	\$61	\$52	\$45	\$36	\$34	\$32
	10yr ave.			\$85		\$75		\$65		\$57	\$55	\$53	\$51	\$49	\$43	\$40	\$31	\$27	\$25
	70% Current	\$132	\$117	\$106	\$98	\$95	\$92	\$90	\$89	\$86	\$85	\$78	\$73	\$66	\$56	\$48	\$39	\$36	\$35
	10yr ave.			\$91		\$80		\$70		\$61	\$59	\$57	\$55	\$52	\$47	\$43	\$34	\$29	\$26
	75% Current	\$142	\$125	\$113	\$105	\$101	\$99	\$96	\$95	\$93	\$91	\$84	\$78	\$71	\$60	\$52	\$42	\$39	\$37
	10yr ave.			\$98		\$86		\$75		\$66	\$63	\$61	\$59	\$56	\$50	\$46	\$36	\$31	\$28
	80% Current	\$151	\$133	\$121	\$112	\$108	\$105	\$103	\$101	\$99	\$98	\$89	\$83	\$75	\$64	\$55	\$45	\$41	\$39
	10yr ave.			\$104		\$92		\$80		\$70	\$67	\$65	\$63	\$60	\$53	\$49	\$38	\$33	\$30
	85% Current	\$161	\$142	\$129	\$119	\$115	\$112	\$109	\$108	\$105	\$104	\$95	\$89	\$80	\$68	\$59	\$48	\$44	\$42
	10yr ave.			\$111		\$98		\$85		\$75	\$71	\$69	\$67	\$64	\$57	\$52	\$41	\$35	\$32

The above shows estimated returns per head for skirted fleece wool. These figures do not take into account the value of skirtings and oddments and do not take into account discounts that may apply for faults under individual circumstances. These figures are based on a market index of 100% and should be used as a guide only. Returns over \$30 / head for fleece wool are highlighted.

Source: Australian Wool Exchange, Australian Wool Innovation, Sydney Futures Exchange, x-rates.com

Disclaimer: While all due care has been taken in the preparation of this document, no warranty is made as to its accuracy, reliability or completeness. To the extent permitted by law neither Jemalong or their sources including subsidiaries and staff, accept liability to any person for loss or damage arising from the use of this information.



Table 14: Returns pr head for skirted fleece wool.

Skirted FLC Weight		Micron																	
8 Kg		16	16.5	17	17.5	18	18.5	19	19.5	20	21	22	23	24	25	26	28	30	32
Yield (Sch Dry)	25% Current	\$42	\$37	\$34	\$31	\$30	\$29	\$29	\$28	\$27	\$27	\$25	\$23	\$21	\$18	\$15	\$12	\$12	\$11
	10yr ave.			\$29		\$26		\$22		\$19	\$19	\$18	\$18	\$17	\$15	\$14	\$11	\$9	\$8
	30% Current	\$50	\$44	\$40	\$37	\$36	\$35	\$34	\$34	\$33	\$33	\$30	\$28	\$25	\$21	\$18	\$15	\$14	\$13
	10yr ave.			\$35		\$31		\$27		\$23	\$22	\$22	\$21	\$20	\$18	\$16	\$13	\$11	\$10
	35% Current	\$59	\$52	\$47	\$44	\$42	\$41	\$40	\$39	\$38	\$38	\$35	\$32	\$29	\$25	\$22	\$17	\$16	\$15
	10yr ave.			\$40		\$36		\$31		\$27	\$26	\$25	\$25	\$23	\$21	\$19	\$15	\$13	\$12
	40% Current	\$67	\$59	\$54	\$50	\$48	\$47	\$46	\$45	\$44	\$43	\$40	\$37	\$34	\$29	\$25	\$20	\$18	\$18
	10yr ave.			\$46		\$41		\$35		\$31	\$30	\$29	\$28	\$27	\$24	\$22	\$17	\$15	\$13
	45% Current	\$76	\$67	\$60	\$56	\$54	\$53	\$51	\$51	\$49	\$49	\$45	\$42	\$38	\$32	\$28	\$22	\$21	\$20
	10yr ave.			\$52		\$46		\$40		\$35	\$34	\$33	\$32	\$30	\$27	\$24	\$19	\$17	\$15
	50% Current	\$84	\$74	\$67	\$62	\$60	\$58	\$57	\$56	\$55	\$54	\$50	\$46	\$42	\$36	\$31	\$25	\$23	\$22
	10yr ave.			\$58		\$51		\$44		\$39	\$37	\$36	\$35	\$33	\$30	\$27	\$21	\$19	\$17
	55% Current	\$92	\$81	\$74	\$69	\$66	\$64	\$63	\$62	\$60	\$60	\$55	\$51	\$46	\$39	\$34	\$27	\$25	\$24
	10yr ave.			\$64		\$56		\$49		\$43	\$41	\$40	\$39	\$37	\$33	\$30	\$23	\$20	\$18
	60% Current	\$101	\$89	\$81	\$75	\$72	\$70	\$68	\$68	\$66	\$65	\$60	\$56	\$50	\$43	\$37	\$30	\$28	\$26
	10yr ave.			\$69		\$61		\$53		\$47	\$45	\$44	\$42	\$40	\$36	\$32	\$26	\$22	\$20
	65% Current	\$109	\$96	\$87	\$81	\$78	\$76	\$74	\$73	\$71	\$70	\$65	\$60	\$54	\$46	\$40	\$32	\$30	\$28
	10yr ave.			\$75		\$66		\$57		\$51	\$49	\$47	\$46	\$43	\$39	\$35	\$28	\$24	\$22
	70% Current	\$118	\$104	\$94	\$87	\$84	\$82	\$80	\$79	\$77	\$76	\$70	\$65	\$59	\$50	\$43	\$35	\$32	\$31
	10yr ave.			\$81		\$71		\$62		\$55	\$52	\$51	\$49	\$47	\$41	\$38	\$30	\$26	\$23
	75% Current	\$126	\$111	\$101	\$94	\$90	\$88	\$86	\$84	\$82	\$81	\$75	\$69	\$63	\$54	\$46	\$37	\$35	\$33
	10yr ave.			\$87		\$77		\$66		\$58	\$56	\$54	\$53	\$50	\$44	\$41	\$32	\$28	\$25
	80% Current	\$134	\$118	\$108	\$100	\$96	\$93	\$91	\$90	\$88	\$87	\$80	\$74	\$67	\$57	\$49	\$40	\$37	\$35
	10yr ave.			\$92		\$82		\$71		\$62	\$60	\$58	\$56	\$53	\$47	\$43	\$34	\$30	\$27
	85% Current	\$143	\$126	\$114	\$106	\$102	\$99	\$97	\$96	\$93	\$92	\$85	\$79	\$71	\$61	\$52	\$42	\$39	\$37
	10yr ave.			\$98		\$87		\$75		\$66	\$64	\$62	\$60	\$57	\$50	\$46	\$36	\$32	\$28

The above shows estimated returns per head for skirted fleece wool. These figures do not take into account the value of skirtings and oddments and do not take into account discounts that may apply for faults under individual circumstances. These figures are based on a market index of 100% and should be used as a guide only. Returns over \$30 / head for fleece wool are highlighted.

Source: Australian Wool Exchange, Australian Wool Innovation, Sydney Futures Exchange, x-rates.com

Disclaimer: While all due care has been taken in the preparation of this document, no warranty is made as to its accuracy, reliability or completeness. To the extent permitted by law neither Jemalong or their sources including subsidiaries and staff, accept liability to any person for loss or damage arising from the use of this information.



Table 15: Returns pr head for skirted fleece wool.

Skirted FLC Weight		Micron																	
7 Kg		16	16.5	17	17.5	18	18.5	19	19.5	20	21	22	23	24	25	26	28	30	32
Yield (Sch Dry)	25% Current	\$37	\$32	\$29	\$27	\$26	\$26	\$25	\$25	\$24	\$24	\$22	\$20	\$18	\$16	\$13	\$11	\$10	\$10
	10yr ave.			\$25		\$22		\$19		\$17	\$16	\$16	\$15	\$15	\$13	\$12	\$9	\$8	\$7
	30% Current	\$44	\$39	\$35	\$33	\$32	\$31	\$30	\$30	\$29	\$28	\$26	\$24	\$22	\$19	\$16	\$13	\$12	\$12
	10yr ave.			\$30		\$27		\$23		\$20	\$20	\$19	\$18	\$17	\$16	\$14	\$11	\$10	\$9
	35% Current	\$51	\$45	\$41	\$38	\$37	\$36	\$35	\$34	\$34	\$33	\$30	\$28	\$26	\$22	\$19	\$15	\$14	\$13
	10yr ave.			\$35		\$31		\$27		\$24	\$23	\$22	\$22	\$20	\$18	\$17	\$13	\$11	\$10
	40% Current	\$59	\$52	\$47	\$44	\$42	\$41	\$40	\$39	\$38	\$38	\$35	\$32	\$29	\$25	\$22	\$17	\$16	\$15
	10yr ave.			\$40		\$36		\$31		\$27	\$26	\$25	\$25	\$23	\$21	\$19	\$15	\$13	\$12
	45% Current	\$66	\$58	\$53	\$49	\$47	\$46	\$45	\$44	\$43	\$43	\$39	\$36	\$33	\$28	\$24	\$20	\$18	\$17
	10yr ave.			\$46		\$40		\$35		\$31	\$29	\$29	\$28	\$26	\$23	\$21	\$17	\$15	\$13
	50% Current	\$74	\$65	\$59	\$55	\$53	\$51	\$50	\$49	\$48	\$47	\$44	\$40	\$37	\$31	\$27	\$22	\$20	\$19
	10yr ave.			\$51		\$45		\$39		\$34	\$33	\$32	\$31	\$29	\$26	\$24	\$19	\$16	\$15
	55% Current	\$81	\$71	\$65	\$60	\$58	\$56	\$55	\$54	\$53	\$52	\$48	\$45	\$40	\$34	\$30	\$24	\$22	\$21
	10yr ave.			\$56		\$49		\$43		\$37	\$36	\$35	\$34	\$32	\$29	\$26	\$21	\$18	\$16
	60% Current	\$88	\$78	\$71	\$66	\$63	\$61	\$60	\$59	\$58	\$57	\$52	\$49	\$44	\$37	\$32	\$26	\$24	\$23
	10yr ave.			\$61		\$54		\$46		\$41	\$39	\$38	\$37	\$35	\$31	\$28	\$22	\$19	\$18
	65% Current	\$96	\$84	\$76	\$71	\$68	\$66	\$65	\$64	\$62	\$62	\$57	\$53	\$48	\$41	\$35	\$28	\$26	\$25
	10yr ave.			\$66		\$58		\$50		\$44	\$42	\$41	\$40	\$38	\$34	\$31	\$24	\$21	\$19
	70% Current	\$103	\$91	\$82	\$76	\$74	\$72	\$70	\$69	\$67	\$66	\$61	\$57	\$51	\$44	\$38	\$30	\$28	\$27
	10yr ave.			\$71		\$63		\$54		\$48	\$46	\$44	\$43	\$41	\$36	\$33	\$26	\$23	\$21
	75% Current	\$110	\$97	\$88	\$82	\$79	\$77	\$75	\$74	\$72	\$71	\$65	\$61	\$55	\$47	\$40	\$33	\$30	\$29
	10yr ave.			\$76		\$67		\$58		\$51	\$49	\$48	\$46	\$44	\$39	\$36	\$28	\$24	\$22
	80% Current	\$118	\$104	\$94	\$87	\$84	\$82	\$80	\$79	\$77	\$76	\$70	\$65	\$59	\$50	\$43	\$35	\$32	\$31
	10yr ave.			\$81		\$71		\$62		\$55	\$52	\$51	\$49	\$47	\$41	\$38	\$30	\$26	\$23
	85% Current	\$125	\$110	\$100	\$93	\$89	\$87	\$85	\$84	\$82	\$81	\$74	\$69	\$62	\$53	\$46	\$37	\$34	\$33
	10yr ave.			\$86		\$76		\$66		\$58	\$56	\$54	\$52	\$49	\$44	\$40	\$32	\$28	\$25

The above shows estimated returns per head for skirted fleece wool. These figures do not take into account the value of skirtings and oddments and do not take into account discounts that may apply for faults under individual circumstances. These figures are based on a market index of 100% and should be used as a guide only. Returns over \$30 / head for fleece wool are highlighted.

Source: Australian Wool Exchange, Australian Wool Innovation, Sydney Futures Exchange, x-rates.com

Disclaimer: While all due care has been taken in the preparation of this document, no warranty is made as to its accuracy, reliability or completeness. To the extent permitted by law neither Jemalong or their sources including subsidiaries and staff, accept liability to any person for loss or damage arising from the use of this information.



Table 16: Returns pr head for skirted fleece wool.

Skirted FLC Weight		Micron																	
6 Kg		16	16.5	17	17.5	18	18.5	19	19.5	20	21	22	23	24	25	26	28	30	32
Yield (Sch Dry)	25% Current	\$32	\$28	\$25	\$23	\$23	\$22	\$21	\$21	\$21	\$20	\$19	\$17	\$16	\$13	\$12	\$9	\$9	\$8
	10yr ave.			\$22		\$19		\$17		\$15	\$14	\$14	\$13	\$12	\$11	\$10	\$8	\$7	\$6
	30% Current	\$38	\$33	\$30	\$28	\$27	\$26	\$26	\$25	\$25	\$24	\$22	\$21	\$19	\$16	\$14	\$11	\$10	\$10
	10yr ave.			\$26		\$23		\$20		\$18	\$17	\$16	\$16	\$15	\$13	\$12	\$10	\$8	\$8
	35% Current	\$44	\$39	\$35	\$33	\$32	\$31	\$30	\$30	\$29	\$28	\$26	\$24	\$22	\$19	\$16	\$13	\$12	\$12
	10yr ave.			\$30		\$27		\$23		\$20	\$20	\$19	\$18	\$17	\$16	\$14	\$11	\$10	\$9
	40% Current	\$50	\$44	\$40	\$37	\$36	\$35	\$34	\$34	\$33	\$33	\$30	\$28	\$25	\$21	\$18	\$15	\$14	\$13
	10yr ave.			\$35		\$31		\$27		\$23	\$22	\$22	\$21	\$20	\$18	\$16	\$13	\$11	\$10
	45% Current	\$57	\$50	\$45	\$42	\$41	\$39	\$39	\$38	\$37	\$37	\$34	\$31	\$28	\$24	\$21	\$17	\$16	\$15
	10yr ave.			\$39		\$34		\$30		\$26	\$25	\$24	\$24	\$22	\$20	\$18	\$14	\$13	\$11
	50% Current	\$63	\$56	\$50	\$47	\$45	\$44	\$43	\$42	\$41	\$41	\$37	\$35	\$31	\$27	\$23	\$19	\$17	\$16
	10yr ave.			\$43		\$38		\$33		\$29	\$28	\$27	\$26	\$25	\$22	\$20	\$16	\$14	\$13
	55% Current	\$69	\$61	\$55	\$51	\$50	\$48	\$47	\$46	\$45	\$45	\$41	\$38	\$35	\$29	\$25	\$21	\$19	\$18
	10yr ave.			\$48		\$42		\$36		\$32	\$31	\$30	\$29	\$27	\$24	\$22	\$18	\$15	\$14
	60% Current	\$76	\$67	\$60	\$56	\$54	\$53	\$51	\$51	\$49	\$49	\$45	\$42	\$38	\$32	\$28	\$22	\$21	\$20
	10yr ave.			\$52		\$46		\$40		\$35	\$34	\$33	\$32	\$30	\$27	\$24	\$19	\$17	\$15
	65% Current	\$82	\$72	\$66	\$61	\$59	\$57	\$56	\$55	\$54	\$53	\$48	\$45	\$41	\$35	\$30	\$24	\$22	\$21
	10yr ave.			\$56		\$50		\$43		\$38	\$36	\$35	\$34	\$32	\$29	\$26	\$21	\$18	\$16
	70% Current	\$88	\$78	\$71	\$66	\$63	\$61	\$60	\$59	\$58	\$57	\$52	\$49	\$44	\$37	\$32	\$26	\$24	\$23
	10yr ave.			\$61		\$54		\$46		\$41	\$39	\$38	\$37	\$35	\$31	\$28	\$22	\$19	\$18
	75% Current	\$95	\$83	\$76	\$70	\$68	\$66	\$64	\$63	\$62	\$61	\$56	\$52	\$47	\$40	\$35	\$28	\$26	\$25
	10yr ave.			\$65		\$57		\$50		\$44	\$42	\$41	\$40	\$37	\$33	\$30	\$24	\$21	\$19
	80% Current	\$101	\$89	\$81	\$75	\$72	\$70	\$68	\$68	\$66	\$65	\$60	\$56	\$50	\$43	\$37	\$30	\$28	\$26
	10yr ave.			\$69		\$61		\$53		\$47	\$45	\$44	\$42	\$40	\$36	\$32	\$26	\$22	\$20
	85% Current	\$107	\$94	\$86	\$80	\$77	\$74	\$73	\$72	\$70	\$69	\$63	\$59	\$53	\$45	\$39	\$32	\$29	\$28
	10yr ave.			\$74		\$65		\$56		\$50	\$48	\$46	\$45	\$42	\$38	\$35	\$27	\$24	\$21

The above shows estimated returns per head for skirted fleece wool. These figures do not take into account the value of skirtings and oddments and do not take into account discounts that may apply for faults under individual circumstances. These figures are based on a market index of 100% and should be used as a guide only. Returns over \$30 / head for fleece wool are highlighted.

Source: Australian Wool Exchange, Australian Wool Innovation, Sydney Futures Exchange, x-rates.com

Disclaimer: While all due care has been taken in the preparation of this document, no warranty is made as to its accuracy, reliability or completeness. To the extent permitted by law neither Jemalong or their sources including subsidiaries and staff, accept liability to any person for loss or damage arising from the use of this information.



Table 17: Returns pr head for skirted fleece wool.

Skirted FLC Weight		Micron																	
5 Kg		16	16.5	17	17.5	18	18.5	19	19.5	20	21	22	23	24	25	26	28	30	32
Yield (Sch Dry)	25% Current	\$26	\$23	\$21	\$20	\$19	\$18	\$18	\$18	\$17	\$17	\$16	\$14	\$13	\$11	\$10	\$8	\$7	\$7
	10yr ave.			\$18		\$16		\$14		\$12	\$12	\$11	\$11	\$10	\$9	\$8	\$7	\$6	\$5
	30% Current	\$32	\$28	\$25	\$23	\$23	\$22	\$21	\$21	\$21	\$20	\$19	\$17	\$16	\$13	\$12	\$9	\$9	\$8
	10yr ave.			\$22		\$19		\$17		\$15	\$14	\$14	\$13	\$12	\$11	\$10	\$8	\$7	\$6
	35% Current	\$37	\$32	\$29	\$27	\$26	\$26	\$25	\$25	\$24	\$24	\$22	\$20	\$18	\$16	\$13	\$11	\$10	\$10
	10yr ave.			\$25		\$22		\$19		\$17	\$16	\$16	\$15	\$15	\$13	\$12	\$9	\$8	\$7
	40% Current	\$42	\$37	\$34	\$31	\$30	\$29	\$29	\$28	\$27	\$27	\$25	\$23	\$21	\$18	\$15	\$12	\$12	\$11
	10yr ave.			\$29		\$26		\$22		\$19	\$19	\$18	\$18	\$17	\$15	\$14	\$11	\$9	\$8
	45% Current	\$47	\$42	\$38	\$35	\$34	\$33	\$32	\$32	\$31	\$30	\$28	\$26	\$24	\$20	\$17	\$14	\$13	\$12
	10yr ave.			\$33		\$29		\$25		\$22	\$21	\$20	\$20	\$19	\$17	\$15	\$12	\$10	\$9
	50% Current	\$53	\$46	\$42	\$39	\$38	\$37	\$36	\$35	\$34	\$34	\$31	\$29	\$26	\$22	\$19	\$16	\$14	\$14
	10yr ave.			\$36		\$32		\$28		\$24	\$23	\$23	\$22	\$21	\$19	\$17	\$13	\$12	\$10
	55% Current	\$58	\$51	\$46	\$43	\$41	\$40	\$39	\$39	\$38	\$37	\$34	\$32	\$29	\$25	\$21	\$17	\$16	\$15
	10yr ave.			\$40		\$35		\$30		\$27	\$26	\$25	\$24	\$23	\$20	\$19	\$15	\$13	\$12
	60% Current	\$63	\$56	\$50	\$47	\$45	\$44	\$43	\$42	\$41	\$41	\$37	\$35	\$31	\$27	\$23	\$19	\$17	\$16
	10yr ave.			\$43		\$38		\$33		\$29	\$28	\$27	\$26	\$25	\$22	\$20	\$16	\$14	\$13
	65% Current	\$68	\$60	\$55	\$51	\$49	\$47	\$46	\$46	\$45	\$44	\$40	\$38	\$34	\$29	\$25	\$20	\$19	\$18
	10yr ave.			\$47		\$41		\$36		\$32	\$30	\$29	\$29	\$27	\$24	\$22	\$17	\$15	\$14
	70% Current	\$74	\$65	\$59	\$55	\$53	\$51	\$50	\$49	\$48	\$47	\$44	\$40	\$37	\$31	\$27	\$22	\$20	\$19
	10yr ave.			\$51		\$45		\$39		\$34	\$33	\$32	\$31	\$29	\$26	\$24	\$19	\$16	\$15
	75% Current	\$79	\$69	\$63	\$59	\$56	\$55	\$54	\$53	\$51	\$51	\$47	\$43	\$39	\$33	\$29	\$23	\$22	\$21
	10yr ave.			\$54		\$48		\$41		\$37	\$35	\$34	\$33	\$31	\$28	\$25	\$20	\$17	\$16
	80% Current	\$84	\$74	\$67	\$62	\$60	\$58	\$57	\$56	\$55	\$54	\$50	\$46	\$42	\$36	\$31	\$25	\$23	\$22
	10yr ave.			\$58		\$51		\$44		\$39	\$37	\$36	\$35	\$33	\$30	\$27	\$21	\$19	\$17
	85% Current	\$89	\$79	\$71	\$66	\$64	\$62	\$61	\$60	\$58	\$58	\$53	\$49	\$44	\$38	\$33	\$26	\$24	\$23
	10yr ave.			\$61		\$54		\$47		\$41	\$40	\$39	\$37	\$35	\$31	\$29	\$23	\$20	\$18

The above shows estimated returns per head for skirted fleece wool. These figures do not take into account the value of skirtings and oddments and do not take into account discounts that may apply for faults under individual circumstances. These figures are based on a market index of 100% and should be used as a guide only. Returns over \$30 / head for fleece wool are highlighted.

Source: Australian Wool Exchange, Australian Wool Innovation, Sydney Futures Exchange, x-rates.com

Disclaimer: While all due care has been taken in the preparation of this document, no warranty is made as to its accuracy, reliability or completeness. To the extent permitted by law neither Jemalong or their sources including subsidiaries and staff, accept liability to any person for loss or damage arising from the use of this information.



Table 18: Returns pr head for skirted fleece wool.

Skirted FLC Weight		Micron																	
4 Kg		16	16.5	17	17.5	18	18.5	19	19.5	20	21	22	23	24	25	26	28	30	32
Yield (Sch Dry)	25% Current	\$21	\$19	\$17	\$16	\$15	\$15	\$14	\$14	\$14	\$14	\$12	\$12	\$10	\$9	\$8	\$6	\$6	\$5
	10yr ave.			\$14		\$13		\$11		\$10	\$9	\$9	\$9	\$8	\$7	\$7	\$5	\$5	\$4
	30% Current	\$25	\$22	\$20	\$19	\$18	\$18	\$17	\$17	\$16	\$16	\$15	\$14	\$13	\$11	\$9	\$7	\$7	\$7
	10yr ave.			\$17		\$15		\$13		\$12	\$11	\$11	\$11	\$10	\$9	\$8	\$6	\$6	\$5
	35% Current	\$29	\$26	\$24	\$22	\$21	\$20	\$20	\$20	\$19	\$19	\$17	\$16	\$15	\$12	\$11	\$9	\$8	\$8
	10yr ave.			\$20		\$18		\$15		\$14	\$13	\$13	\$12	\$12	\$10	\$9	\$7	\$6	\$6
	40% Current	\$34	\$30	\$27	\$25	\$24	\$23	\$23	\$23	\$22	\$22	\$20	\$19	\$17	\$14	\$12	\$10	\$9	\$9
	10yr ave.			\$23		\$20		\$18		\$16	\$15	\$15	\$14	\$13	\$12	\$11	\$9	\$7	\$7
	45% Current	\$38	\$33	\$30	\$28	\$27	\$26	\$26	\$25	\$25	\$24	\$22	\$21	\$19	\$16	\$14	\$11	\$10	\$10
	10yr ave.			\$26		\$23		\$20		\$18	\$17	\$16	\$16	\$15	\$13	\$12	\$10	\$8	\$8
	50% Current	\$42	\$37	\$34	\$31	\$30	\$29	\$29	\$28	\$27	\$27	\$25	\$23	\$21	\$18	\$15	\$12	\$12	\$11
	10yr ave.			\$29		\$26		\$22		\$19	\$19	\$18	\$18	\$17	\$15	\$14	\$11	\$9	\$8
	55% Current	\$46	\$41	\$37	\$34	\$33	\$32	\$31	\$31	\$30	\$30	\$27	\$25	\$23	\$20	\$17	\$14	\$13	\$12
	10yr ave.			\$32		\$28		\$24		\$21	\$21	\$20	\$19	\$18	\$16	\$15	\$12	\$10	\$9
	60% Current	\$50	\$44	\$40	\$37	\$36	\$35	\$34	\$34	\$33	\$33	\$30	\$28	\$25	\$21	\$18	\$15	\$14	\$13
	10yr ave.			\$35		\$31		\$27		\$23	\$22	\$22	\$21	\$20	\$18	\$16	\$13	\$11	\$10
	65% Current	\$55	\$48	\$44	\$41	\$39	\$38	\$37	\$37	\$36	\$35	\$32	\$30	\$27	\$23	\$20	\$16	\$15	\$14
	10yr ave.			\$38		\$33		\$29		\$25	\$24	\$24	\$23	\$22	\$19	\$18	\$14	\$12	\$11
	70% Current	\$59	\$52	\$47	\$44	\$42	\$41	\$40	\$39	\$38	\$38	\$35	\$32	\$29	\$25	\$22	\$17	\$16	\$15
	10yr ave.			\$40		\$36		\$31		\$27	\$26	\$25	\$25	\$23	\$21	\$19	\$15	\$13	\$12
	75% Current	\$63	\$56	\$50	\$47	\$45	\$44	\$43	\$42	\$41	\$41	\$37	\$35	\$31	\$27	\$23	\$19	\$17	\$16
	10yr ave.			\$43		\$38		\$33		\$29	\$28	\$27	\$26	\$25	\$22	\$20	\$16	\$14	\$13
	80% Current	\$67	\$59	\$54	\$50	\$48	\$47	\$46	\$45	\$44	\$43	\$40	\$37	\$34	\$29	\$25	\$20	\$18	\$18
	10yr ave.			\$46		\$41		\$35		\$31	\$30	\$29	\$28	\$27	\$24	\$22	\$17	\$15	\$13
	85% Current	\$71	\$63	\$57	\$53	\$51	\$50	\$49	\$48	\$47	\$46	\$42	\$39	\$36	\$30	\$26	\$21	\$20	\$19
	10yr ave.			\$49		\$43		\$38		\$33	\$32	\$31	\$30	\$28	\$25	\$23	\$18	\$16	\$14

The above shows estimated returns per head for skirted fleece wool. These figures do not take into account the value of skirtings and oddments and do not take into account discounts that may apply for faults under individual circumstances. These figures are based on a market index of 100% and should be used as a guide only. Returns over \$30 / head for fleece wool are highlighted.

Source: Australian Wool Exchange, Australian Wool Innovation, Sydney Futures Exchange, x-rates.com

Disclaimer: While all due care has been taken in the preparation of this document, no warranty is made as to its accuracy, reliability or completeness. To the extent permitted by law neither Jemalong or their sources including subsidiaries and staff, accept liability to any person for loss or damage arising from the use of this information.



Table 19: Returns pr head for skirted fleece wool.

Skirted FLC Weight 3 Kg		Micron																	
		16	16.5	17	17.5	18	18.5	19	19.5	20	21	22	23	24	25	26	28	30	32
Yield (Sch Dry)	25% Current	\$16	\$14	\$13	\$12	\$11	\$11	\$11	\$11	\$10	\$10	\$9	\$9	\$8	\$7	\$6	\$5	\$4	\$4
	10yr ave.			\$11		\$10		\$8		\$7	\$7	\$7	\$7	\$6	\$6	\$5	\$4	\$3	\$3
	30% Current	\$19	\$17	\$15	\$14	\$14	\$13	\$13	\$13	\$12	\$12	\$11	\$10	\$9	\$8	\$7	\$6	\$5	\$5
	10yr ave.			\$13		\$11		\$10		\$9	\$8	\$8	\$8	\$7	\$7	\$6	\$5	\$4	\$4
	35% Current	\$22	\$19	\$18	\$16	\$16	\$15	\$15	\$15	\$14	\$14	\$13	\$12	\$11	\$9	\$8	\$7	\$6	\$6
	10yr ave.			\$15		\$13		\$12		\$10	\$10	\$10	\$9	\$9	\$8	\$7	\$6	\$5	\$4
	40% Current	\$25	\$22	\$20	\$19	\$18	\$18	\$17	\$17	\$16	\$16	\$15	\$14	\$13	\$11	\$9	\$7	\$7	\$7
	10yr ave.			\$17		\$15		\$13		\$12	\$11	\$11	\$11	\$10	\$9	\$8	\$6	\$6	\$5
	45% Current	\$28	\$25	\$23	\$21	\$20	\$20	\$19	\$19	\$19	\$18	\$17	\$16	\$14	\$12	\$10	\$8	\$8	\$7
	10yr ave.			\$20		\$17		\$15		\$13	\$13	\$12	\$12	\$11	\$10	\$9	\$7	\$6	\$6
	50% Current	\$32	\$28	\$25	\$23	\$23	\$22	\$21	\$21	\$21	\$20	\$19	\$17	\$16	\$13	\$12	\$9	\$9	\$8
	10yr ave.			\$22		\$19		\$17		\$15	\$14	\$14	\$13	\$12	\$11	\$10	\$8	\$7	\$6
	55% Current	\$35	\$31	\$28	\$26	\$25	\$24	\$24	\$23	\$23	\$22	\$21	\$19	\$17	\$15	\$13	\$10	\$10	\$9
	10yr ave.			\$24		\$21		\$18		\$16	\$15	\$15	\$15	\$14	\$12	\$11	\$9	\$8	\$7
	60% Current	\$38	\$33	\$30	\$28	\$27	\$26	\$26	\$25	\$25	\$24	\$22	\$21	\$19	\$16	\$14	\$11	\$10	\$10
	10yr ave.			\$26		\$23		\$20		\$18	\$17	\$16	\$16	\$15	\$13	\$12	\$10	\$8	\$8
	65% Current	\$41	\$36	\$33	\$30	\$29	\$28	\$28	\$27	\$27	\$26	\$24	\$23	\$20	\$17	\$15	\$12	\$11	\$11
	10yr ave.			\$28		\$25		\$22		\$19	\$18	\$18	\$17	\$16	\$14	\$13	\$10	\$9	\$8
	70% Current	\$44	\$39	\$35	\$33	\$32	\$31	\$30	\$30	\$29	\$28	\$26	\$24	\$22	\$19	\$16	\$13	\$12	\$12
	10yr ave.			\$30		\$27		\$23		\$20	\$20	\$19	\$18	\$17	\$16	\$14	\$11	\$10	\$9
	75% Current	\$47	\$42	\$38	\$35	\$34	\$33	\$32	\$32	\$31	\$30	\$28	\$26	\$24	\$20	\$17	\$14	\$13	\$12
	10yr ave.			\$33		\$29		\$25		\$22	\$21	\$20	\$20	\$19	\$17	\$15	\$12	\$10	\$9
	80% Current	\$50	\$44	\$40	\$37	\$36	\$35	\$34	\$34	\$33	\$33	\$30	\$28	\$25	\$21	\$18	\$15	\$14	\$13
	10yr ave.			\$35		\$31		\$27		\$23	\$22	\$22	\$21	\$20	\$18	\$16	\$13	\$11	\$10
	85% Current	\$54	\$47	\$43	\$40	\$38	\$37	\$36	\$36	\$35	\$35	\$32	\$30	\$27	\$23	\$20	\$16	\$15	\$14
	10yr ave.			\$37		\$33		\$28		\$25	\$24	\$23	\$22	\$21	\$19	\$17	\$14	\$12	\$11

The above shows estimated returns per head for skirted fleece wool. These figures do not take into account the value of skirtings and oddments and do not take into account discounts that may apply for faults under individual circumstances. These figures are based on a market index of 100% and should be used as a guide only. Returns over \$30 / head for fleece wool are highlighted.

Source: Australian Wool Exchange, Australian Wool Innovation, Sydney Futures Exchange, x-rates.com

Disclaimer: While all due care has been taken in the preparation of this document, no warranty is made as to its accuracy, reliability or completeness. To the extent permitted by law neither Jemalong or their sources including subsidiaries and staff, accept liability to any person for loss or damage arising from the use of this information.



Table 20: Returns pr head for skirted fleece wool.

Skirted FLC Weight 2 Kg		Micron																	
		16	16.5	17	17.5	18	18.5	19	19.5	20	21	22	23	24	25	26	28	30	32
Yield (Sch Dry)	25% Current	\$11	\$9	\$8	\$8	\$8	\$7	\$7	\$7	\$7	\$7	\$6	\$6	\$5	\$4	\$4	\$3	\$3	\$3
	10yr ave.			\$7		\$6		\$6		\$5	\$5	\$5	\$4	\$4	\$4	\$3	\$3	\$2	\$2
	30% Current	\$13	\$11	\$10	\$9	\$9	\$9	\$9	\$8	\$8	\$8	\$7	\$7	\$6	\$5	\$5	\$4	\$3	\$3
	10yr ave.			\$9		\$8		\$7		\$6	\$6	\$5	\$5	\$5	\$4	\$4	\$3	\$3	\$3
	35% Current	\$15	\$13	\$12	\$11	\$11	\$10	\$10	\$10	\$10	\$9	\$9	\$8	\$7	\$6	\$5	\$4	\$4	\$4
	10yr ave.			\$10		\$9		\$8		\$7	\$7	\$6	\$6	\$6	\$5	\$5	\$4	\$3	\$3
	40% Current	\$17	\$15	\$13	\$12	\$12	\$12	\$11	\$11	\$11	\$11	\$10	\$9	\$8	\$7	\$6	\$5	\$5	\$4
	10yr ave.			\$12		\$10		\$9		\$8	\$7	\$7	\$7	\$7	\$6	\$5	\$4	\$4	\$3
	45% Current	\$19	\$17	\$15	\$14	\$14	\$13	\$13	\$13	\$12	\$12	\$11	\$10	\$9	\$8	\$7	\$6	\$5	\$5
	10yr ave.			\$13		\$11		\$10		\$9	\$8	\$8	\$8	\$7	\$7	\$6	\$5	\$4	\$4
	50% Current	\$21	\$19	\$17	\$16	\$15	\$15	\$14	\$14	\$14	\$14	\$12	\$12	\$10	\$9	\$8	\$6	\$6	\$5
	10yr ave.			\$14		\$13		\$11		\$10	\$9	\$9	\$9	\$8	\$7	\$7	\$5	\$5	\$4
	55% Current	\$23	\$20	\$18	\$17	\$17	\$16	\$16	\$15	\$15	\$15	\$14	\$13	\$12	\$10	\$8	\$7	\$6	\$6
	10yr ave.			\$16		\$14		\$12		\$11	\$10	\$10	\$10	\$9	\$8	\$7	\$6	\$5	\$5
	60% Current	\$25	\$22	\$20	\$19	\$18	\$18	\$17	\$17	\$16	\$16	\$15	\$14	\$13	\$11	\$9	\$7	\$7	\$7
	10yr ave.			\$17		\$15		\$13		\$12	\$11	\$11	\$11	\$10	\$9	\$8	\$6	\$6	\$5
	65% Current	\$27	\$24	\$22	\$20	\$20	\$19	\$19	\$18	\$18	\$18	\$16	\$15	\$14	\$12	\$10	\$8	\$7	\$7
	10yr ave.			\$19		\$17		\$14		\$13	\$12	\$12	\$11	\$11	\$10	\$9	\$7	\$6	\$5
	70% Current	\$29	\$26	\$24	\$22	\$21	\$20	\$20	\$20	\$19	\$19	\$17	\$16	\$15	\$12	\$11	\$9	\$8	\$8
	10yr ave.			\$20		\$18		\$15		\$14	\$13	\$13	\$12	\$12	\$10	\$9	\$7	\$6	\$6
	75% Current	\$32	\$28	\$25	\$23	\$23	\$22	\$21	\$21	\$21	\$20	\$19	\$17	\$16	\$13	\$12	\$9	\$9	\$8
	10yr ave.			\$22		\$19		\$17		\$15	\$14	\$14	\$13	\$12	\$11	\$10	\$8	\$7	\$6
	80% Current	\$34	\$30	\$27	\$25	\$24	\$23	\$23	\$23	\$22	\$22	\$20	\$19	\$17	\$14	\$12	\$10	\$9	\$9
	10yr ave.			\$23		\$20		\$18		\$16	\$15	\$15	\$14	\$13	\$12	\$11	\$9	\$7	\$7
	85% Current	\$36	\$31	\$29	\$27	\$26	\$25	\$24	\$24	\$23	\$23	\$21	\$20	\$18	\$15	\$13	\$11	\$10	\$9
	10yr ave.			\$25		\$22		\$19		\$17	\$16	\$15	\$15	\$14	\$13	\$12	\$9	\$8	\$7

The above shows estimated returns per head for skirted fleece wool. These figures do not take into account the value of skirtings and oddments and do not take into account discounts that may apply for faults under individual circumstances. These figures are based on a market index of 100% and should be used as a guide only. Returns over \$30 / head for fleece wool are highlighted.

Source: Australian Wool Exchange, Australian Wool Innovation, Sydney Futures Exchange, x-rates.com

Disclaimer: While all due care has been taken in the preparation of this document, no warranty is made as to its accuracy, reliability or completeness. To the extent permitted by law neither Jemalong or their sources including subsidiaries and staff, accept liability to any person for loss or damage arising from the use of this information.