



JEMALONG WOOL BULLETIN

(week ending 2/02/2012)

Table 1: Northern Region Micron Price Guides

CURRENT MARKET				12 MONTH COMPARISONS								3 YEAR COMPARISONS						Percentile	10 YEAR COMPARISONS					Percentile
Mic. Price Guides	2/02/2012 Current Price	25/01/2012 Weekly Change		2/02/2011 This time Last Year	Now compared to Last Year	12 Month Low	Now compared to Low	12 Month High	Now compared to High	Low	High	Average	Now compared to 3yr ave		Low	High	10 year Average		Now compared to 10yr ave					
NRI	1220	-7 -0.6%		1289	-69 -5%	1188	+32 3%	1491	-271 -18%	767	1491	1059	+161 15%	68%		657	1491	927	+293 32%	91%				
16*	2250	+100 4.4%		2570	-320 -12%	1950	+300 15%	2800	-550 -20%	1385	2800	1937	+313 16%	74%										
16.5*	1980	+80 4.0%		2500	-520 -21%	1800	+180 10%	2680	-700 -26%	1280	2680	1780	+200 11%	74%										
17*	1700	-10 -0.6%		2370	-670 -28%	1620	+80 5%	2530	-830 -33%	1180	2530	1635	+65 4%	64%		1100	2530	1449	+251 17%	85%				
17.5*	1600	-20 -1.3%		2260	-660 -29%	1530	+70 5%	2360	-760 -32%	1130	2360	1533	+67 4%	65%										
18	1499	-14 -0.9%		2023	-524 -26%	1469	+30 2%	2193	-694 -32%	1042	2193	1442	+57 4%	60%		916	2193	1274	+225 18%	80%				
18.5	1455	-12 -0.8%		1862	-407 -22%	1431	+24 2%	1963	-508 -26%	975	1963	1352	+103 8%	62%										
19	1418	-13 -0.9%		1621	-203 -13%	1391	+27 2%	1776	-358 -20%	901	1776	1254	+164 13%	67%		803	1776	1108	+310 28%	91%				
19.5	1396	-7 -0.5%		1374	+22 2%	1344	+52 4%	1670	-274 -16%	830	1670	1160	+236 20%	71%										
20	1346	-6 -0.4%		1186	+160 13%	1186	+160 13%	1588	-242 -15%	746	1588	1085	+261 24%	75%		700	1588	981	+365 37%	93%				
21	1302	-6 -0.5%		1144	+158 14%	1137	+165 15%	1522	-220 -14%	722	1522	1051	+251 24%	77%		668	1522	940	+362 39%	93%				
22	1290	+2 0.2%		1086	+204 19%	1086	+204 19%	1461	-171 -12%	708	1461	1018	+272 27%	88%		659	1461	912	+378 41%	96%				
23	1255	-16 -1.3%		1047	+208 20%	1037	+218 21%	1324	-69 -5%	695	1324	973	+282 29%	91%		652	1340	884	+371 42%	97%				
24	1117	-18 -1.6%		988	+129 13%	983	+134 14%	1170	-53 -5%	669	1170	893	+224 25%	96%		638	1299	834	+283 34%	93%				
25	902	+11 1.2%		840	+62 7%	840	+62 7%	1048	-146 -14%	574	1048	770	+132 17%	82%		567	1198	742	+160 22%	79%				
26	759	-2 -0.3%		748	+11 1%	739	+20 3%	928	-169 -18%	556	928	688	+71 10%	71%		532	1088	676	+83 12%	74%				
28	596	0		568	+28 5%	558	+38 7%	734	-138 -19%	435	734	537	+59 11%	68%		424	889	532	+64 12%	75%				
30	524	-4 -0.8%		501	+23 5%	500	+24 5%	670	-146 -22%	378	670	479	+45 9%	67%		344	729	463	+61 13%	76%				
32	482	+1 0.2%		448	+34 8%	445	+37 8%	638	-156 -24%	326	638	429	+53 12%	69%		297	669	417	+65 16%	77%				
MC	697	0		691	+6 1%	673	+24 4%	831	-134 -16%	493	831	646	+51 8%	69%		380	831	532	+165 31%	91%				

Note:

* Due to the irregular market quoting for some fine wool categories, figures shown relating to micron categories below 18 micron are an estimate based on the AWEX Premium & Discounts Report & other available information.

* For any category, where there is insufficient quantity offered to enable AWEX to quote, a quote will be provided based on the best available information.

* 10 Year data is not available for some micron categories, which may result in blank spaces in the table above.

Definitions:

* A Percentile, is a value on a scale of one hundred that indicates the percent of a distribution that is equal to or below it. In general a percentile between 25% and 75% is considered normal, a percentile below 25% is considered below normal and a percentile above 75% is considered above normal.

Three and ten year percentiles shown in the table above, detail the period of time during the past 3 & 10 years that the market has traded either at or below its current price.

The higher the percentile, the stronger the market.

Source: Australian Wool Exchange, Australian Wool Innovation, Sydney Futures Exchange, x-rates.com

Disclaimer: While all due care has been taken in the preparation of this document, no warranty is made as to its accuracy, reliability or completeness. To the extent permitted by law neither Jemalong or their sources including subsidiaries and staff, accept liability to any person for loss or damage arising from the use of this information.



MARKET COMMENTARY

One Australian Dollar = \$ 1.07 US, as of 2/02/2012

NORTHERN REGION –Sale Week 31/11 (bales offered nationally)

Wednesdays offering was the second smallest of the season, prices remained reasonably steady for Merino fleece. 17.5 to 19 microns lost some ground, however the losses were minimal and selected lots still managed to find good support. Superfine types continue to show strength with 16.5 microns the standout performer today. Despite a reasonably small offering in the 16.5 micron range the more stylish types were 50 to 80 cents clean dearer. In the skirtings, best length and style were unchanged, however lower styles particularly around the 18-18.5 range were up to 10 cents cheaper. Locks and Crutchings were generally unchanged as were the crossbreds, with the odd lot tending 5 cents cheaper. 10.9% PI

Thursdays market drifted lower over the course of the day with 17.5 to 19.5 microns most affected (losing 10 cents), while the broader microns (20-21um) eased by a modest 5 cents. The superfine types found better support to close firm for selected types and in particular the 16.5 micron range which gained a further 10 cents. Most merino skirtings & oddments remained unchanged on a solid market, while the crossbred market was tending cheaper for the lower style types (on an otherwise unchanged market). 6.4% PI

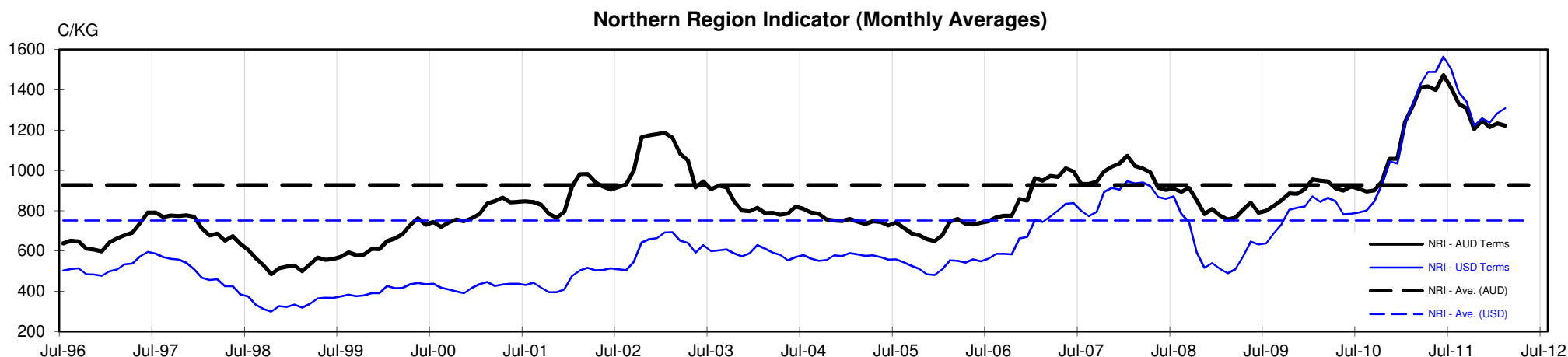




Table 4: 19 micron SFE

Wednesday, 1 February 2012

Delivery Mth	Feb-12	Apr-12	Jun-12	Aug-12	Oct-12	Dec-12	Feb-13	Mar-13	Apr-13
19 Micron SFE	1397	1367	1337	1327	1327	1287	1287	1287	1287
Average	1375	1384	1399	1386	1384	1384	1343	1323	1323
Maximum	1652	1622	1612	1525	1525	1525	1525	1375	1375
Minimum	1053	1106	1210	1285	1285	1285	1265	1265	1265

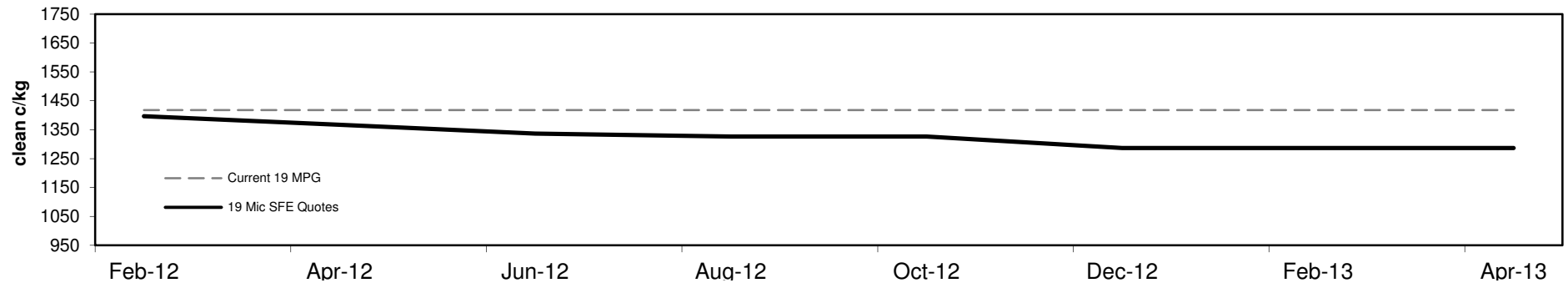
Table 5: 19 micron SFE, as a percentile of the 19 micron MPG

3 Year Percentile	64%	63%	63%	63%	63%	60%	60%	60%	60%
10 Year Percentile	89%	88%	87%	86%	86%	83%	83%	83%	83%

Table 6: 19 micron SFE, compared to MPG

SFE - MPG	-21	-1%	-51	-4%	-81	-6%	-91	-6%	-91	-6%	-131	-9%	-131	-9%	-131	-9%	-131	-9%
SFE - MPG, 1 year Ave.	-164	-11%	-194	-12%	-224	-14%	-234	-15%	-234	-15%	-274	-18%	-274	-18%	-274	-18%	-274	-18%
SFE - MPG, 3 year Ave.	+143	11%	+113	9%	+83	7%	+73	6%	+73	6%	+33	3%	+33	3%	+33	3%	+33	3%
SFE - MPG, 10 year Ave.	+289	26%	+259	23%	+229	21%	+219	20%	+219	20%	+179	16%	+179	16%	+179	16%	+179	16%

19 MICRON SFE, QUOTES



19 Micron SFE, Front month movement

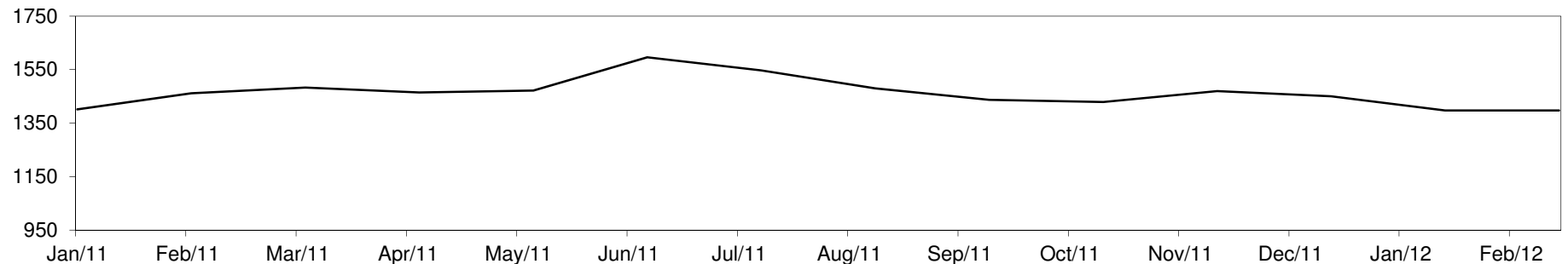




Table 7: 21 micron SFE

Wednesday, 1 February 2012

Delivery Mth	Feb-12	Apr-12	Jun-12	Aug-12	Oct-12	Dec-12	Feb-13	Mar-13	Apr-13
21 Micron SFE	1285	1260	1236	1204	1151	1075	1096	1075	1075
Average	1148	1163	1161	1165	1150	1150	1141	1121	1121
Maximum	1393	1360	1347	1321	1283	1283	1222	1187	1187
Minimum	880	934	990	1046	1013	1013	1075	1048	1048

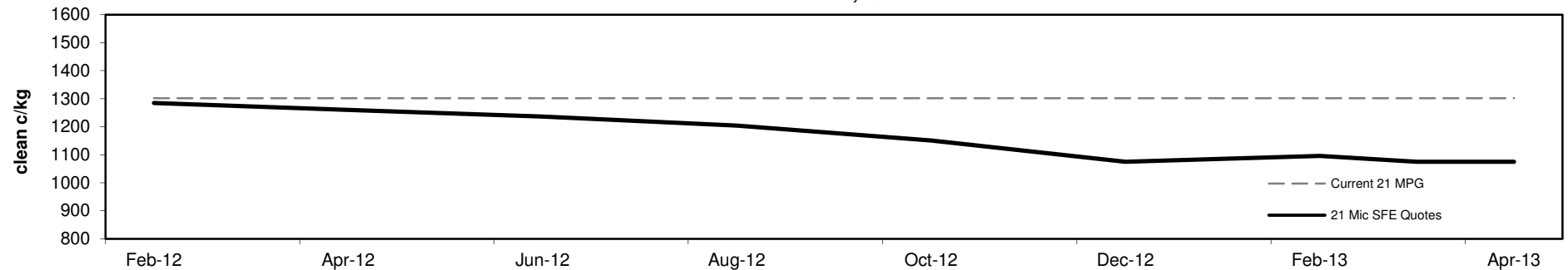
Table 8: 21 micron SFE, as a percentile of the 21 micron MPG

3 Year Percentile	74%	72%	70%	69%	66%	63%	63%	63%	63%
10 Year Percentile	92%	89%	87%	86%	84%	83%	83%	83%	83%

Table 9: 21 micron SFE, compared to MPG

SFE - MPG	-17	-1%	-42	-3%	-66	-5%	-98	-8%	-151	-12%	-227	-17%	-206	-16%	-227	-17%	-227	-17%
SFE - MPG, 1 year Ave.	-51	-4%	-76	-6%	-100	-7%	-132	-10%	-185	-14%	-261	-20%	-240	-18%	-261	-20%	-261	-20%
SFE - MPG, 3 year Ave.	+234	22%	+209	20%	+185	18%	+153	15%	+100	10%	+24	2%	+45	4%	+24	2%	+24	2%
SFE - MPG, 10 year Ave.	+345	37%	+320	34%	+296	32%	+264	28%	+211	22%	+135	14%	+156	17%	+135	14%	+135	14%

21 MICRON SFE, QUOTES



21 Micron SFE, Front month movement

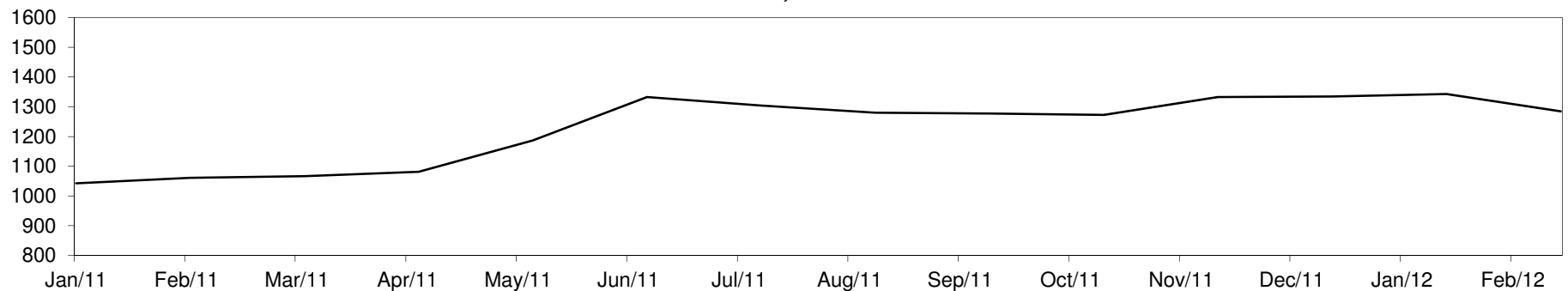




Table 10: 23 micron SFE

Wednesday, 1 February 2012

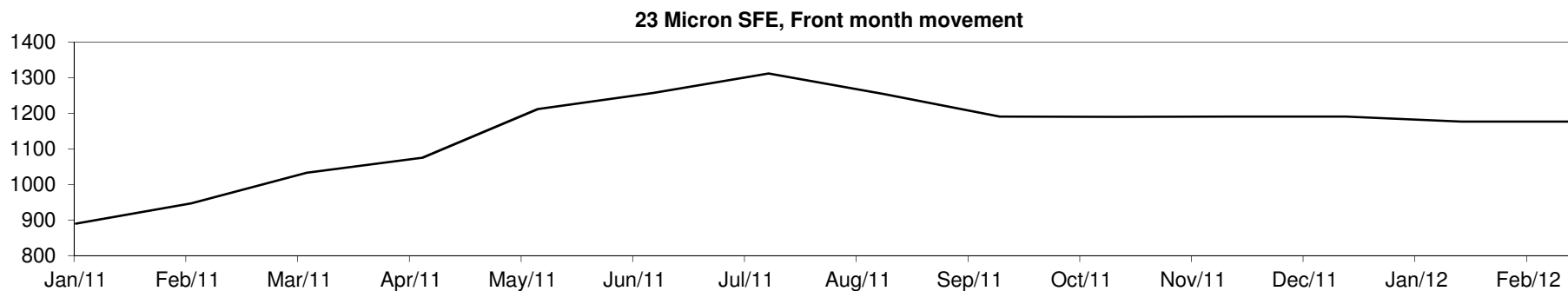
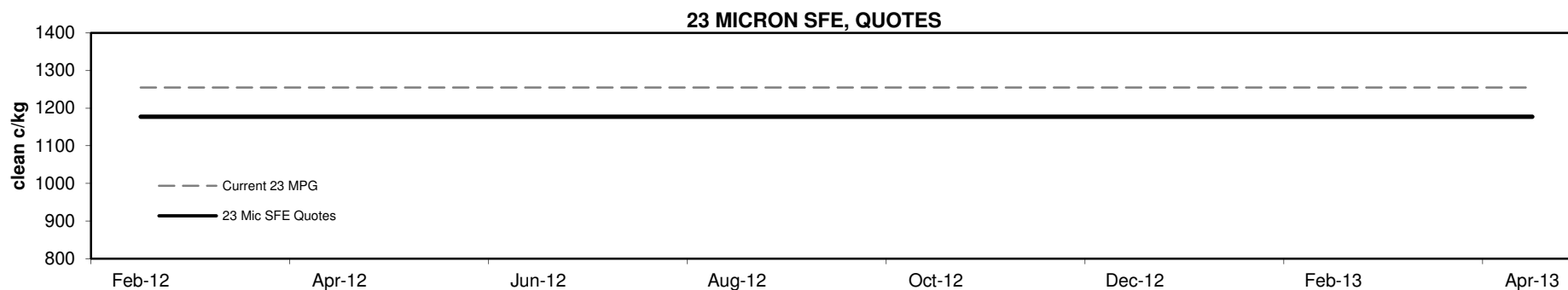
Delivery Mth	Feb-12	Apr-12	Jun-12	Aug-12	Oct-12	Dec-12	Feb-13	Mar-13	Apr-13
23 Micron SFE	1177	1177	1177	1177	1177	1177	1177	1177	1177
Average	1076	1105	1139	1181	1215	1215	1215	1188	1188
Maximum	1312	1312	1312	1312	1312	1312	1312	1191	1191
Minimum	883	883	890	1033	1177	1177	1177	1177	1177

Table 11: 23 micron SFE, as a percentile of the 23 micron MPG

3 Year Percentile	82%	82%	82%	82%	82%	82%	82%	82%	82%
10 Year Percentile	89%	89%	89%	89%	89%	89%	89%	89%	89%

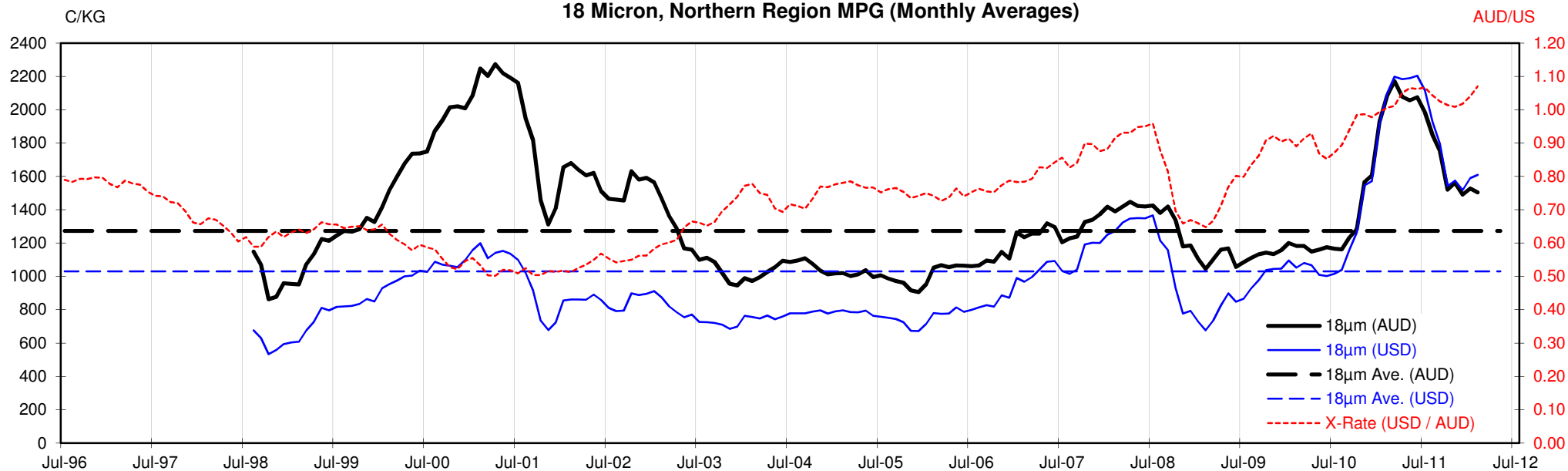
Table 12: 23 micron SFE, compared to MPG

SFE - MPG	-78	-6%	-78	-6%	-78	-6%	-78	-6%	-78	-6%	-78	-6%	-78	-6%	-78	-6%	-78	-6%
SFE - MPG, 1 year Ave.	-23	-2%	-23	-2%	-23	-2%	-23	-2%	-23	-2%	-23	-2%	-23	-2%	-23	-2%	-23	-2%
SFE - MPG, 3 year Ave.	+204	21%	+204	21%	+204	21%	+204	21%	+204	21%	+204	21%	+204	21%	+204	21%	+204	21%
SFE - MPG, 10 year Ave.	+293	33%	+293	33%	+293	33%	+293	33%	+293	33%	+293	33%	+293	33%	+293	33%	+293	33%

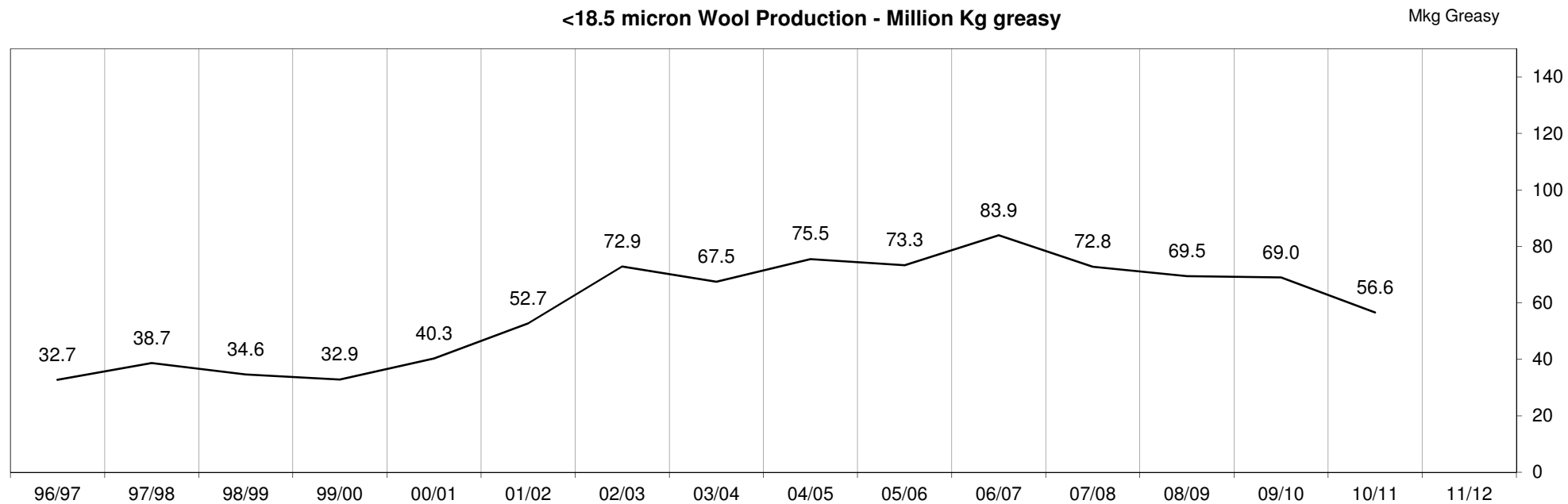


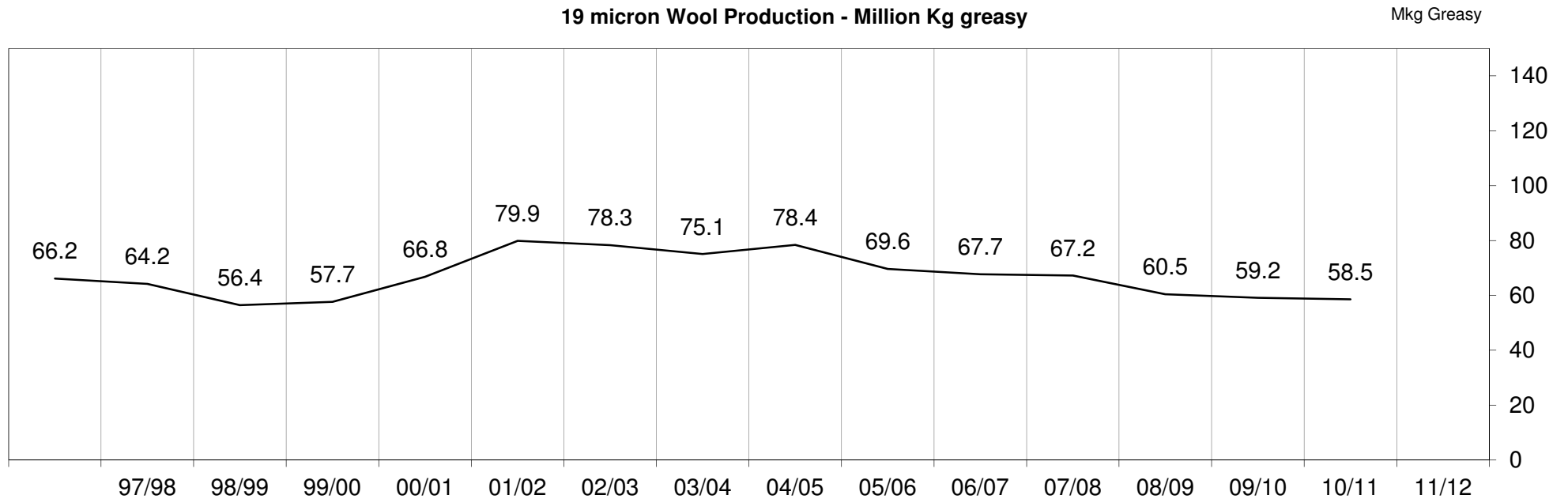
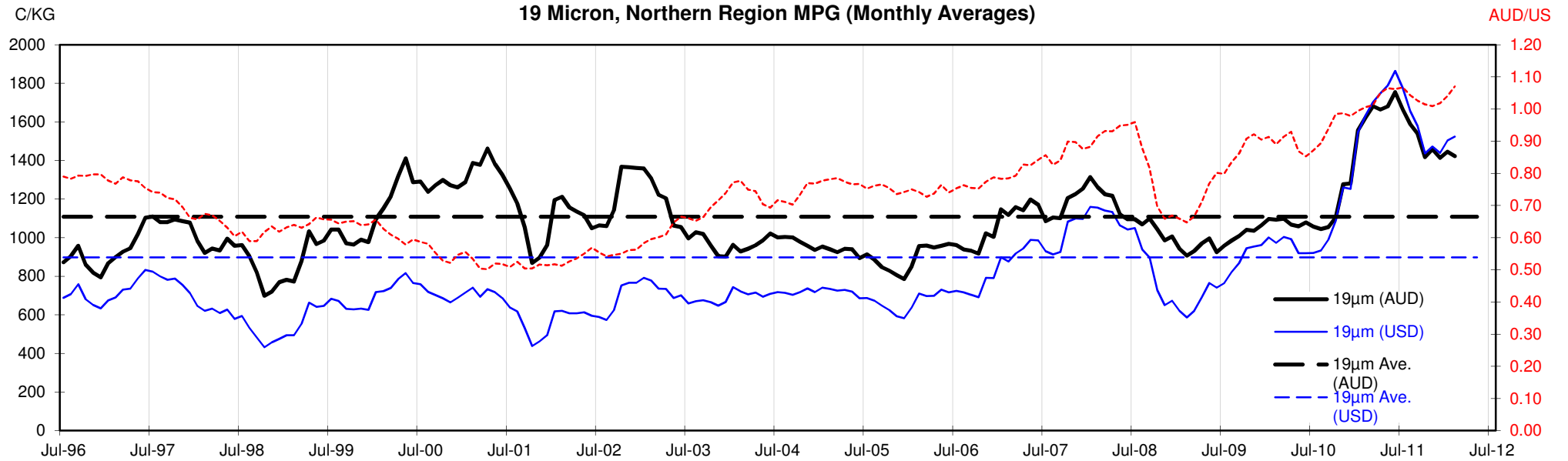


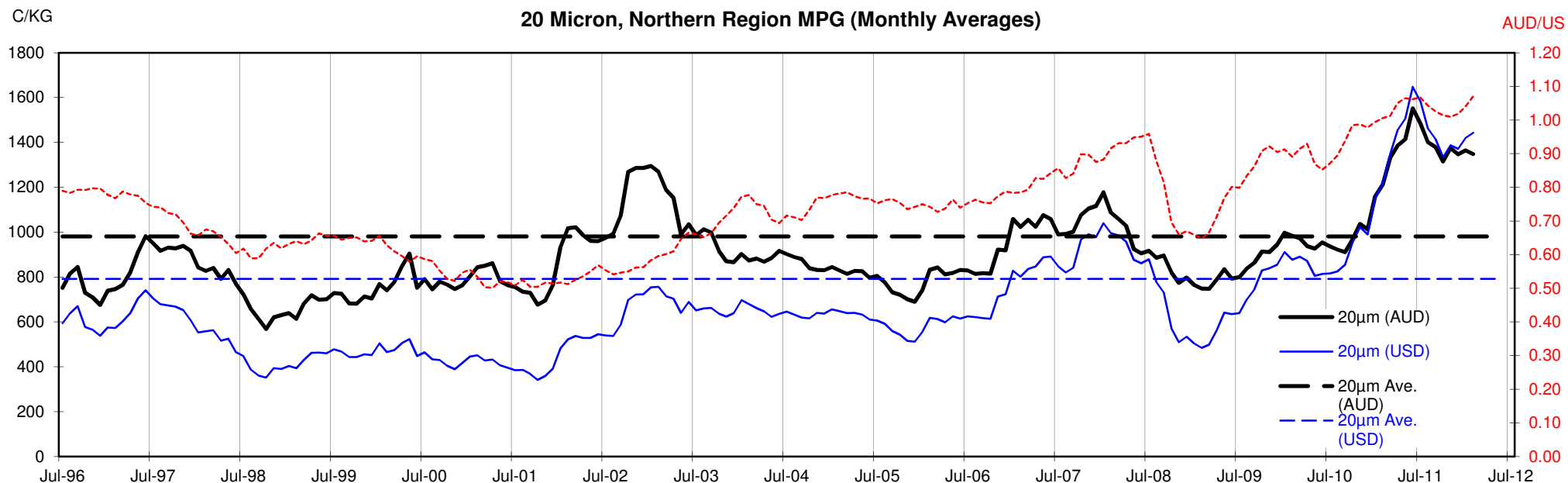
18 Micron, Northern Region MPG (Monthly Averages)

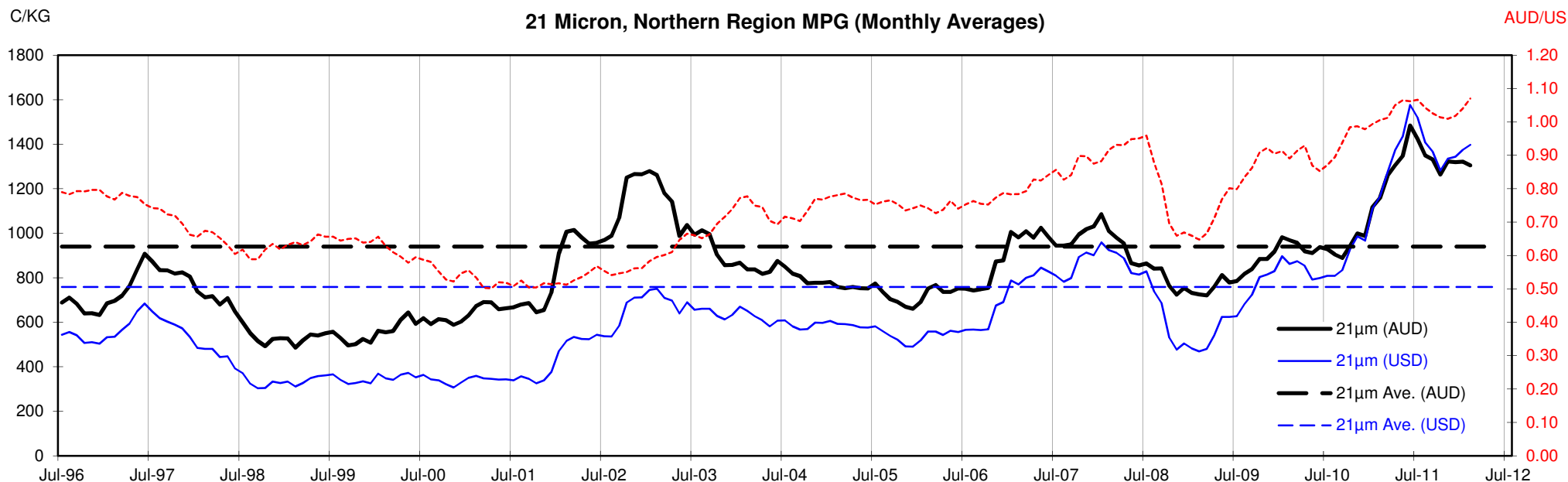


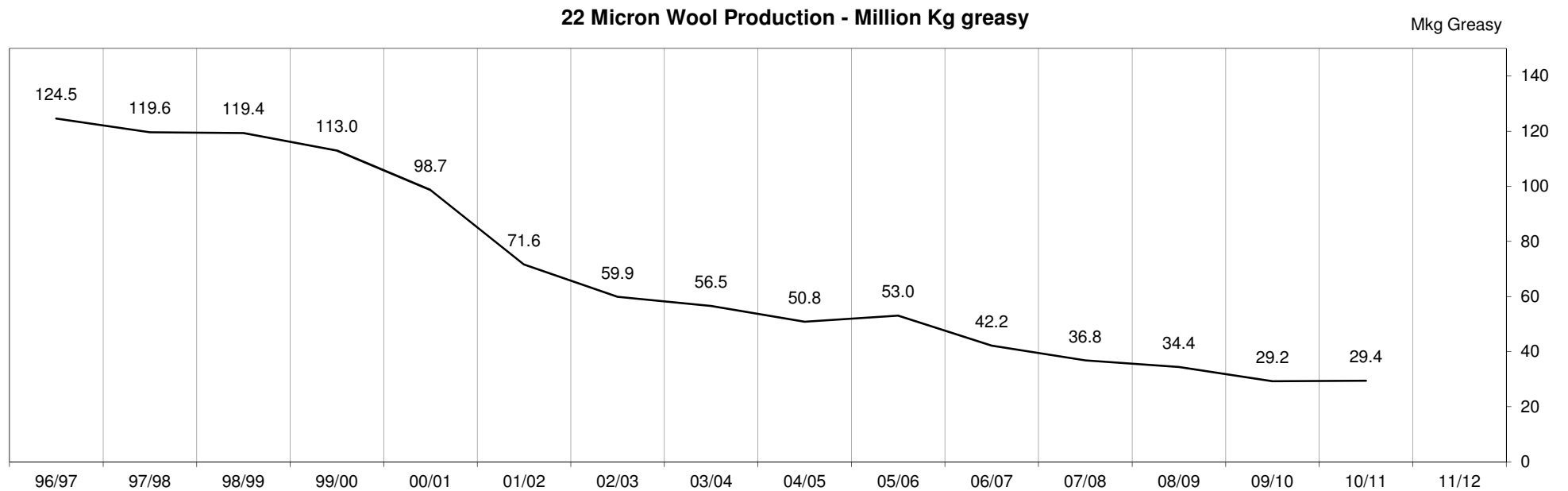
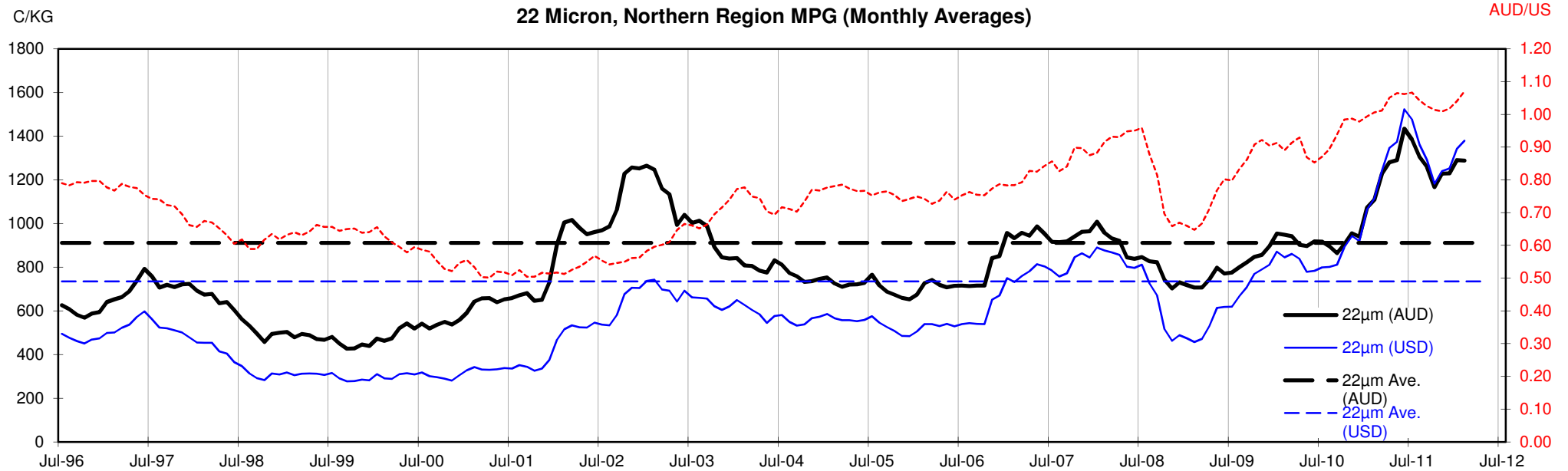
<18.5 micron Wool Production - Million Kg greasy

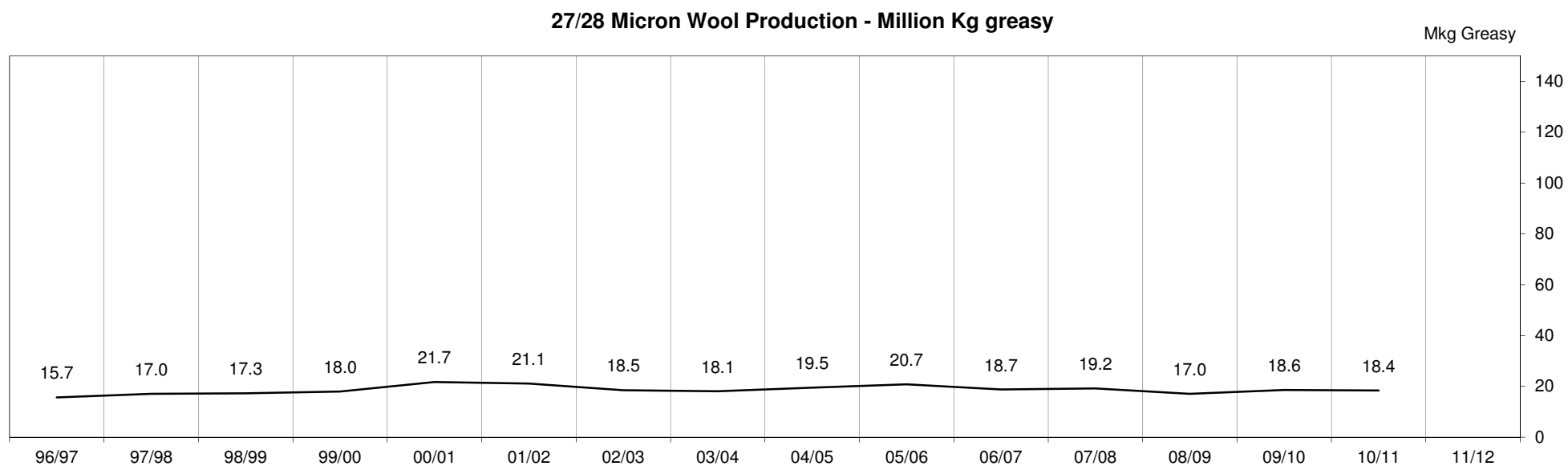
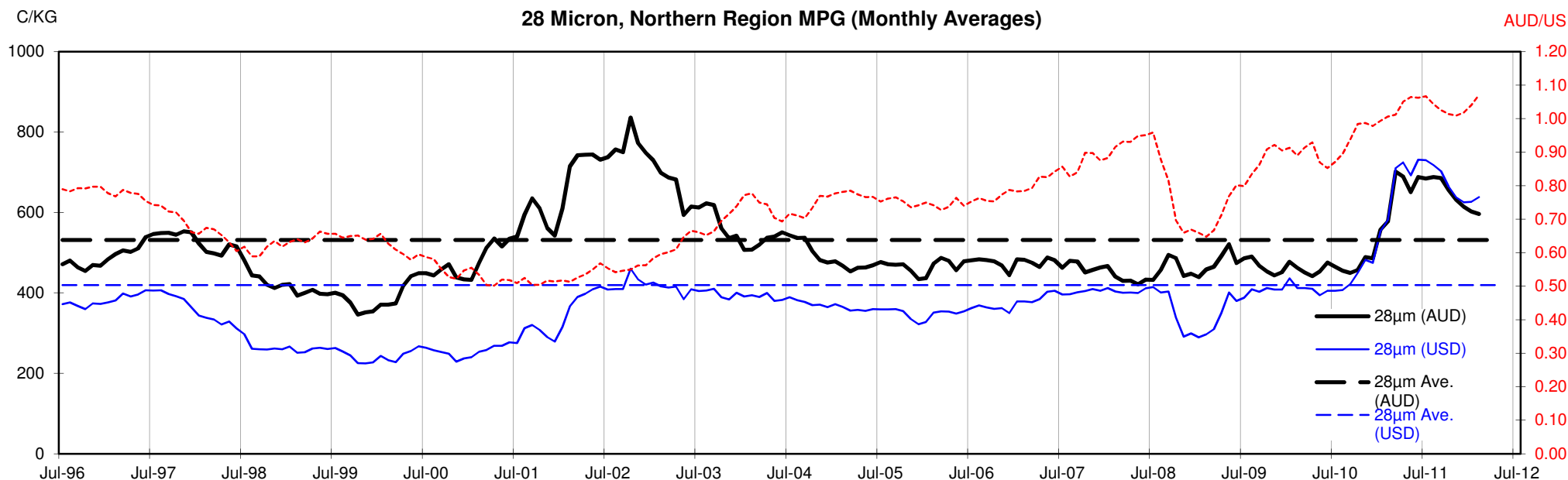












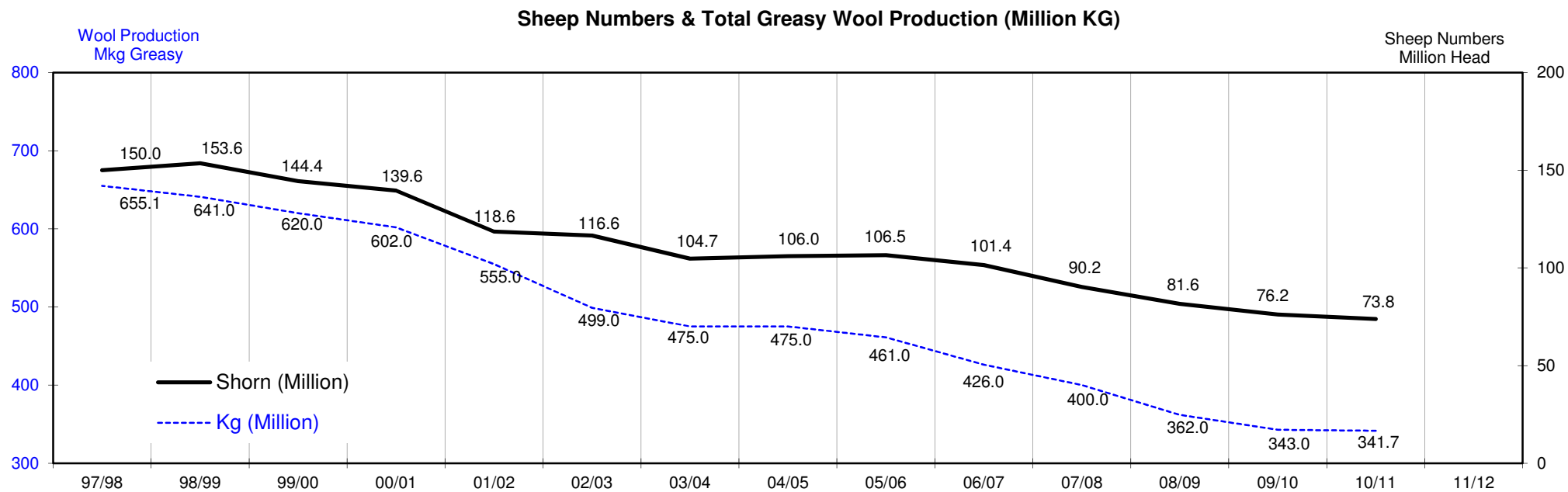
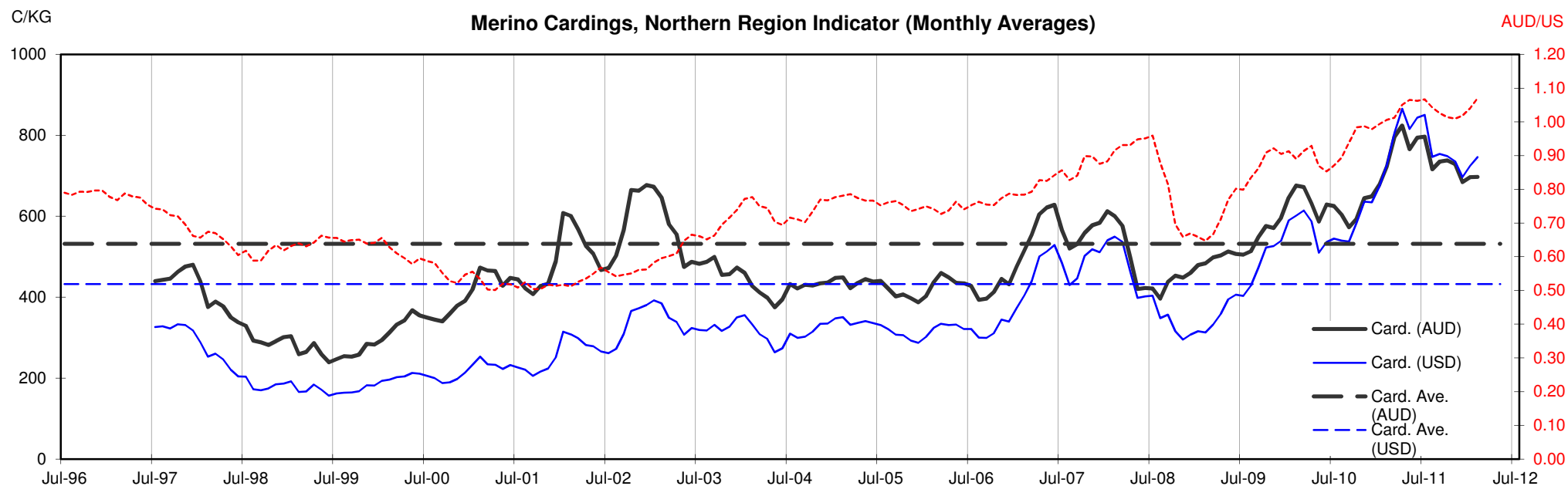




Table 13: Returns pr head for skirted fleece wool.

Skirted FLC Weight		Micron																	
9 Kg		16	16.5	17	17.5	18	18.5	19	19.5	20	21	22	23	24	25	26	28	30	32
Yield (Sch Dry)	25% Current	\$51	\$45	\$38	\$36	\$34	\$33	\$32	\$31	\$30	\$29	\$29	\$28	\$25	\$20	\$17	\$13	\$12	\$11
	10yr ave.			\$33		\$29		\$25		\$22	\$21	\$21	\$20	\$19	\$17	\$15	\$12	\$10	\$9
	30% Current	\$61	\$53	\$46	\$43	\$40	\$39	\$38	\$38	\$36	\$35	\$35	\$34	\$30	\$24	\$20	\$16	\$14	\$13
	10yr ave.			\$39		\$34		\$30		\$26	\$25	\$25	\$24	\$23	\$20	\$18	\$14	\$13	\$11
	35% Current	\$71	\$62	\$54	\$50	\$47	\$46	\$45	\$44	\$42	\$41	\$41	\$40	\$35	\$28	\$24	\$19	\$17	\$15
	10yr ave.			\$46		\$40		\$35		\$31	\$30	\$29	\$28	\$26	\$23	\$21	\$17	\$15	\$13
	40% Current	\$81	\$71	\$61	\$58	\$54	\$52	\$51	\$50	\$48	\$47	\$46	\$45	\$40	\$32	\$27	\$21	\$19	\$17
	10yr ave.			\$52		\$46		\$40		\$35	\$34	\$33	\$32	\$30	\$27	\$24	\$19	\$17	\$15
	45% Current	\$91	\$80	\$69	\$65	\$61	\$59	\$57	\$57	\$55	\$53	\$52	\$51	\$45	\$37	\$31	\$24	\$21	\$20
	10yr ave.			\$59		\$52		\$45		\$40	\$38	\$37	\$36	\$34	\$30	\$27	\$22	\$19	\$17
	50% Current	\$101	\$89	\$77	\$72	\$67	\$65	\$64	\$63	\$61	\$59	\$58	\$56	\$50	\$41	\$34	\$27	\$24	\$22
	10yr ave.			\$65		\$57		\$50		\$44	\$42	\$41	\$40	\$38	\$33	\$30	\$24	\$21	\$19
	55% Current	\$111	\$98	\$84	\$79	\$74	\$72	\$70	\$69	\$67	\$64	\$64	\$62	\$55	\$45	\$38	\$30	\$26	\$24
	10yr ave.			\$72		\$63		\$55		\$49	\$47	\$45	\$44	\$41	\$37	\$33	\$26	\$23	\$21
	60% Current	\$122	\$107	\$92	\$86	\$81	\$79	\$77	\$75	\$73	\$70	\$70	\$68	\$60	\$49	\$41	\$32	\$28	\$26
	10yr ave.			\$78		\$69		\$60		\$53	\$51	\$49	\$48	\$45	\$40	\$37	\$29	\$25	\$23
	65% Current	\$132	\$116	\$99	\$94	\$88	\$85	\$83	\$82	\$79	\$76	\$75	\$73	\$65	\$53	\$44	\$35	\$31	\$28
	10yr ave.			\$85		\$75		\$65		\$57	\$55	\$53	\$52	\$49	\$43	\$40	\$31	\$27	\$24
	70% Current	\$142	\$125	\$107	\$101	\$94	\$92	\$89	\$88	\$85	\$82	\$81	\$79	\$70	\$57	\$48	\$38	\$33	\$30
	10yr ave.			\$91		\$80		\$70		\$62	\$59	\$57	\$56	\$53	\$47	\$43	\$34	\$29	\$26
	75% Current	\$152	\$134	\$115	\$108	\$101	\$98	\$96	\$94	\$91	\$88	\$87	\$85	\$75	\$61	\$51	\$40	\$35	\$33
	10yr ave.			\$98		\$86		\$75		\$66	\$63	\$62	\$60	\$56	\$50	\$46	\$36	\$31	\$28
	80% Current	\$162	\$143	\$122	\$115	\$108	\$105	\$102	\$101	\$97	\$94	\$93	\$90	\$80	\$65	\$55	\$43	\$38	\$35
	10yr ave.			\$104		\$92		\$80		\$71	\$68	\$66	\$64	\$60	\$53	\$49	\$38	\$33	\$30
	85% Current	\$172	\$151	\$130	\$122	\$115	\$111	\$108	\$107	\$103	\$100	\$99	\$96	\$85	\$69	\$58	\$46	\$40	\$37
	10yr ave.			\$111		\$97		\$85		\$75	\$72	\$70	\$68	\$64	\$57	\$52	\$41	\$35	\$32

The above shows estimated returns per head for skirted fleece wool. These figures do not take into account the value of skirtings and oddments and do not take into account discounts that may apply for faults under individual circumstances. These figures are based on a market index of 100% and should be used as a guide only. Returns over \$30 / head for fleece wool are highlighted.

Source: Australian Wool Exchange, Australian Wool Innovation, Sydney Futures Exchange, x-rates.com

Disclaimer: While all due care has been taken in the preparation of this document, no warranty is made as to its accuracy, reliability or completeness. To the extent permitted by law neither Jemalong or their sources including subsidiaries and staff, accept liability to any person for loss or damage arising from the use of this information.



Table 14: Returns pr head for skirted fleece wool.

Skirted FLC Weight		Micron																	
8 Kg		16	16.5	17	17.5	18	18.5	19	19.5	20	21	22	23	24	25	26	28	30	32
Yield (Sch Dry)	25% Current	\$45	\$40	\$34	\$32	\$30	\$29	\$28	\$28	\$27	\$26	\$26	\$25	\$22	\$18	\$15	\$12	\$10	\$10
	10yr ave.			\$29		\$25		\$22		\$20	\$19	\$18	\$18	\$17	\$15	\$14	\$11	\$9	\$8
	30% Current	\$54	\$48	\$41	\$38	\$36	\$35	\$34	\$34	\$32	\$31	\$31	\$30	\$27	\$22	\$18	\$14	\$13	\$12
	10yr ave.			\$35		\$31		\$27		\$24	\$23	\$22	\$21	\$20	\$18	\$16	\$13	\$11	\$10
	35% Current	\$63	\$55	\$48	\$45	\$42	\$41	\$40	\$39	\$38	\$36	\$36	\$35	\$31	\$25	\$21	\$17	\$15	\$13
	10yr ave.			\$41		\$36		\$31		\$27	\$26	\$26	\$25	\$23	\$21	\$19	\$15	\$13	\$12
	40% Current	\$72	\$63	\$54	\$51	\$48	\$47	\$45	\$45	\$43	\$42	\$41	\$40	\$36	\$29	\$24	\$19	\$17	\$15
	10yr ave.			\$46		\$41		\$35		\$31	\$30	\$29	\$28	\$27	\$24	\$22	\$17	\$15	\$13
	45% Current	\$81	\$71	\$61	\$58	\$54	\$52	\$51	\$50	\$48	\$47	\$46	\$45	\$40	\$32	\$27	\$21	\$19	\$17
	10yr ave.			\$52		\$46		\$40		\$35	\$34	\$33	\$32	\$30	\$27	\$24	\$19	\$17	\$15
	50% Current	\$90	\$79	\$68	\$64	\$60	\$58	\$57	\$56	\$54	\$52	\$52	\$50	\$45	\$36	\$30	\$24	\$21	\$19
	10yr ave.			\$58		\$51		\$44		\$39	\$38	\$36	\$35	\$33	\$30	\$27	\$21	\$19	\$17
	55% Current	\$99	\$87	\$75	\$70	\$66	\$64	\$62	\$61	\$59	\$57	\$57	\$55	\$49	\$40	\$33	\$26	\$23	\$21
	10yr ave.			\$64		\$56		\$49		\$43	\$41	\$40	\$39	\$37	\$33	\$30	\$23	\$20	\$18
	60% Current	\$108	\$95	\$82	\$77	\$72	\$70	\$68	\$67	\$65	\$62	\$62	\$60	\$54	\$43	\$36	\$29	\$25	\$23
	10yr ave.			\$70		\$61		\$53		\$47	\$45	\$44	\$42	\$40	\$36	\$32	\$26	\$22	\$20
	65% Current	\$117	\$103	\$88	\$83	\$78	\$76	\$74	\$73	\$70	\$68	\$67	\$65	\$58	\$47	\$39	\$31	\$27	\$25
	10yr ave.			\$75		\$66		\$58		\$51	\$49	\$47	\$46	\$43	\$39	\$35	\$28	\$24	\$22
	70% Current	\$126	\$111	\$95	\$90	\$84	\$81	\$79	\$78	\$75	\$73	\$72	\$70	\$63	\$51	\$43	\$33	\$29	\$27
	10yr ave.			\$81		\$71		\$62		\$55	\$53	\$51	\$50	\$47	\$42	\$38	\$30	\$26	\$23
	75% Current	\$135	\$119	\$102	\$96	\$90	\$87	\$85	\$84	\$81	\$78	\$77	\$75	\$67	\$54	\$46	\$36	\$31	\$29
	10yr ave.			\$87		\$76		\$66		\$59	\$56	\$55	\$53	\$50	\$45	\$41	\$32	\$28	\$25
	80% Current	\$144	\$127	\$109	\$102	\$96	\$93	\$91	\$89	\$86	\$83	\$83	\$80	\$71	\$58	\$49	\$38	\$34	\$31
	10yr ave.			\$93		\$82		\$71		\$63	\$60	\$58	\$57	\$53	\$47	\$43	\$34	\$30	\$27
	85% Current	\$153	\$135	\$116	\$109	\$102	\$99	\$96	\$95	\$92	\$89	\$88	\$85	\$76	\$61	\$52	\$41	\$36	\$33
	10yr ave.			\$99		\$87		\$75		\$67	\$64	\$62	\$60	\$57	\$50	\$46	\$36	\$31	\$28

The above shows estimated returns per head for skirted fleece wool. These figures do not take into account the value of skirtings and oddments and do not take into account discounts that may apply for faults under individual circumstances. These figures are based on a market index of 100% and should be used as a guide only. Returns over \$30 / head for fleece wool are highlighted.

Source: Australian Wool Exchange, Australian Wool Innovation, Sydney Futures Exchange, x-rates.com

Disclaimer: While all due care has been taken in the preparation of this document, no warranty is made as to its accuracy, reliability or completeness. To the extent permitted by law neither Jemalong or their sources including subsidiaries and staff, accept liability to any person for loss or damage arising from the use of this information.



Table 15: Returns pr head for skirted fleece wool.

Skirted FLC Weight		Micron																	
7 Kg		16	16.5	17	17.5	18	18.5	19	19.5	20	21	22	23	24	25	26	28	30	32
Yield (Sch Dry)	25% Current	\$39	\$35	\$30	\$28	\$26	\$25	\$25	\$24	\$24	\$23	\$23	\$22	\$20	\$16	\$13	\$10	\$9	\$8
	10yr ave.			\$25		\$22		\$19		\$17	\$16	\$16	\$15	\$15	\$13	\$12	\$9	\$8	\$7
	30% Current	\$47	\$42	\$36	\$34	\$31	\$31	\$30	\$29	\$28	\$27	\$27	\$26	\$23	\$19	\$16	\$13	\$11	\$10
	10yr ave.			\$30		\$27		\$23		\$21	\$20	\$19	\$19	\$18	\$16	\$14	\$11	\$10	\$9
	35% Current	\$55	\$49	\$42	\$39	\$37	\$36	\$35	\$34	\$33	\$32	\$32	\$31	\$27	\$22	\$19	\$15	\$13	\$12
	10yr ave.			\$36		\$31		\$27		\$24	\$23	\$22	\$22	\$20	\$18	\$17	\$13	\$11	\$10
	40% Current	\$63	\$55	\$48	\$45	\$42	\$41	\$40	\$39	\$38	\$36	\$36	\$35	\$31	\$25	\$21	\$17	\$15	\$13
	10yr ave.			\$41		\$36		\$31		\$27	\$26	\$26	\$25	\$23	\$21	\$19	\$15	\$13	\$12
	45% Current	\$71	\$62	\$54	\$50	\$47	\$46	\$45	\$44	\$42	\$41	\$41	\$40	\$35	\$28	\$24	\$19	\$17	\$15
	10yr ave.			\$46		\$40		\$35		\$31	\$30	\$29	\$28	\$26	\$23	\$21	\$17	\$15	\$13
	50% Current	\$79	\$69	\$60	\$56	\$52	\$51	\$50	\$49	\$47	\$46	\$45	\$44	\$39	\$32	\$27	\$21	\$18	\$17
	10yr ave.			\$51		\$45		\$39		\$34	\$33	\$32	\$31	\$29	\$26	\$24	\$19	\$16	\$15
	55% Current	\$87	\$76	\$65	\$62	\$58	\$56	\$55	\$54	\$52	\$50	\$50	\$48	\$43	\$35	\$29	\$23	\$20	\$19
	10yr ave.			\$56		\$49		\$43		\$38	\$36	\$35	\$34	\$32	\$29	\$26	\$20	\$18	\$16
	60% Current	\$95	\$83	\$71	\$67	\$63	\$61	\$60	\$59	\$57	\$55	\$54	\$53	\$47	\$38	\$32	\$25	\$22	\$20
	10yr ave.			\$61		\$54		\$47		\$41	\$39	\$38	\$37	\$35	\$31	\$28	\$22	\$19	\$18
	65% Current	\$102	\$90	\$77	\$73	\$68	\$66	\$65	\$64	\$61	\$59	\$59	\$57	\$51	\$41	\$35	\$27	\$24	\$22
	10yr ave.			\$66		\$58		\$50		\$45	\$43	\$41	\$40	\$38	\$34	\$31	\$24	\$21	\$19
	70% Current	\$110	\$97	\$83	\$78	\$73	\$71	\$69	\$68	\$66	\$64	\$63	\$61	\$55	\$44	\$37	\$29	\$26	\$24
	10yr ave.			\$71		\$62		\$54		\$48	\$46	\$45	\$43	\$41	\$36	\$33	\$26	\$23	\$20
	75% Current	\$118	\$104	\$89	\$84	\$79	\$76	\$74	\$73	\$71	\$68	\$68	\$66	\$59	\$47	\$40	\$31	\$28	\$25
	10yr ave.			\$76		\$67		\$58		\$52	\$49	\$48	\$46	\$44	\$39	\$35	\$28	\$24	\$22
	80% Current	\$126	\$111	\$95	\$90	\$84	\$81	\$79	\$78	\$75	\$73	\$72	\$70	\$63	\$51	\$43	\$33	\$29	\$27
	10yr ave.			\$81		\$71		\$62		\$55	\$53	\$51	\$50	\$47	\$42	\$38	\$30	\$26	\$23
	85% Current	\$134	\$118	\$101	\$95	\$89	\$87	\$84	\$83	\$80	\$77	\$77	\$75	\$66	\$54	\$45	\$35	\$31	\$29
	10yr ave.			\$86		\$76		\$66		\$58	\$56	\$54	\$53	\$50	\$44	\$40	\$32	\$28	\$25

The above shows estimated returns per head for skirted fleece wool. These figures do not take into account the value of skirtings and oddments and do not take into account discounts that may apply for faults under individual circumstances. These figures are based on a market index of 100% and should be used as a guide only. Returns over \$30 / head for fleece wool are highlighted.

Source: Australian Wool Exchange, Australian Wool Innovation, Sydney Futures Exchange, x-rates.com

Disclaimer: While all due care has been taken in the preparation of this document, no warranty is made as to its accuracy, reliability or completeness. To the extent permitted by law neither Jemalong or their sources including subsidiaries and staff, accept liability to any person for loss or damage arising from the use of this information.



Table 16: Returns pr head for skirted fleece wool.

Skirted FLC Weight		Micron																	
6 Kg		16	16.5	17	17.5	18	18.5	19	19.5	20	21	22	23	24	25	26	28	30	32
Yield (Sch Dry)	25% Current	\$34	\$30	\$26	\$24	\$22	\$22	\$21	\$21	\$20	\$20	\$19	\$19	\$17	\$14	\$11	\$9	\$8	\$7
	10yr ave.			\$22		\$19		\$17		\$15	\$14	\$14	\$13	\$13	\$11	\$10	\$8	\$7	\$6
	30% Current	\$41	\$36	\$31	\$29	\$27	\$26	\$26	\$25	\$24	\$23	\$23	\$23	\$20	\$16	\$14	\$11	\$9	\$9
	10yr ave.			\$26		\$23		\$20		\$18	\$17	\$16	\$16	\$15	\$13	\$12	\$10	\$8	\$8
	35% Current	\$47	\$42	\$36	\$34	\$31	\$31	\$30	\$29	\$28	\$27	\$27	\$26	\$23	\$19	\$16	\$13	\$11	\$10
	10yr ave.			\$30		\$27		\$23		\$21	\$20	\$19	\$19	\$18	\$16	\$14	\$11	\$10	\$9
	40% Current	\$54	\$48	\$41	\$38	\$36	\$35	\$34	\$34	\$32	\$31	\$31	\$30	\$27	\$22	\$18	\$14	\$13	\$12
	10yr ave.			\$35		\$31		\$27		\$24	\$23	\$22	\$21	\$20	\$18	\$16	\$13	\$11	\$10
	45% Current	\$61	\$53	\$46	\$43	\$40	\$39	\$38	\$38	\$36	\$35	\$35	\$34	\$30	\$24	\$20	\$16	\$14	\$13
	10yr ave.			\$39		\$34		\$30		\$26	\$25	\$25	\$24	\$23	\$20	\$18	\$14	\$13	\$11
	50% Current	\$68	\$59	\$51	\$48	\$45	\$44	\$43	\$42	\$40	\$39	\$39	\$38	\$34	\$27	\$23	\$18	\$16	\$14
	10yr ave.			\$43		\$38		\$33		\$29	\$28	\$27	\$27	\$25	\$22	\$20	\$16	\$14	\$13
	55% Current	\$74	\$65	\$56	\$53	\$49	\$48	\$47	\$46	\$44	\$43	\$43	\$41	\$37	\$30	\$25	\$20	\$17	\$16
	10yr ave.			\$48		\$42		\$37		\$32	\$31	\$30	\$29	\$28	\$24	\$22	\$18	\$15	\$14
	60% Current	\$81	\$71	\$61	\$58	\$54	\$52	\$51	\$50	\$48	\$47	\$46	\$45	\$40	\$32	\$27	\$21	\$19	\$17
	10yr ave.			\$52		\$46		\$40		\$35	\$34	\$33	\$32	\$30	\$27	\$24	\$19	\$17	\$15
	65% Current	\$88	\$77	\$66	\$62	\$58	\$57	\$55	\$54	\$52	\$51	\$50	\$49	\$44	\$35	\$30	\$23	\$20	\$19
	10yr ave.			\$57		\$50		\$43		\$38	\$37	\$36	\$34	\$33	\$29	\$26	\$21	\$18	\$16
	70% Current	\$95	\$83	\$71	\$67	\$63	\$61	\$60	\$59	\$57	\$55	\$54	\$53	\$47	\$38	\$32	\$25	\$22	\$20
	10yr ave.			\$61		\$54		\$47		\$41	\$39	\$38	\$37	\$35	\$31	\$28	\$22	\$19	\$18
	75% Current	\$101	\$89	\$77	\$72	\$67	\$65	\$64	\$63	\$61	\$59	\$58	\$56	\$50	\$41	\$34	\$27	\$24	\$22
	10yr ave.			\$65		\$57		\$50		\$44	\$42	\$41	\$40	\$38	\$33	\$30	\$24	\$21	\$19
	80% Current	\$108	\$95	\$82	\$77	\$72	\$70	\$68	\$67	\$65	\$62	\$62	\$60	\$54	\$43	\$36	\$29	\$25	\$23
	10yr ave.			\$70		\$61		\$53		\$47	\$45	\$44	\$42	\$40	\$36	\$32	\$26	\$22	\$20
	85% Current	\$115	\$101	\$87	\$82	\$76	\$74	\$72	\$71	\$69	\$66	\$66	\$64	\$57	\$46	\$39	\$30	\$27	\$25
	10yr ave.			\$74		\$65		\$57		\$50	\$48	\$47	\$45	\$43	\$38	\$34	\$27	\$24	\$21

The above shows estimated returns per head for skirted fleece wool. These figures do not take into account the value of skirtings and oddments and do not take into account discounts that may apply for faults under individual circumstances. These figures are based on a market index of 100% and should be used as a guide only. Returns over \$30 / head for fleece wool are highlighted.

Source: Australian Wool Exchange, Australian Wool Innovation, Sydney Futures Exchange, x-rates.com

Disclaimer: While all due care has been taken in the preparation of this document, no warranty is made as to its accuracy, reliability or completeness. To the extent permitted by law neither Jemalong or their sources including subsidiaries and staff, accept liability to any person for loss or damage arising from the use of this information.



Table 17: Returns pr head for skirted fleece wool.

Skirted FLC Weight		Micron																	
5 Kg		16	16.5	17	17.5	18	18.5	19	19.5	20	21	22	23	24	25	26	28	30	32
Yield (Sch Dry)	25% Current	\$28	\$25	\$21	\$20	\$19	\$18	\$18	\$17	\$17	\$16	\$16	\$16	\$14	\$11	\$9	\$7	\$7	\$6
	10yr ave.			\$18		\$16		\$14		\$12	\$12	\$11	\$11	\$10	\$9	\$8	\$7	\$6	\$5
	30% Current	\$34	\$30	\$26	\$24	\$22	\$22	\$21	\$21	\$20	\$20	\$19	\$19	\$17	\$14	\$11	\$9	\$8	\$7
	10yr ave.			\$22		\$19		\$17		\$15	\$14	\$14	\$13	\$13	\$11	\$10	\$8	\$7	\$6
	35% Current	\$39	\$35	\$30	\$28	\$26	\$25	\$25	\$24	\$24	\$23	\$23	\$22	\$20	\$16	\$13	\$10	\$9	\$8
	10yr ave.			\$25		\$22		\$19		\$17	\$16	\$16	\$15	\$15	\$13	\$12	\$9	\$8	\$7
	40% Current	\$45	\$40	\$34	\$32	\$30	\$29	\$28	\$28	\$27	\$26	\$26	\$25	\$22	\$18	\$15	\$12	\$10	\$10
	10yr ave.			\$29		\$25		\$22		\$20	\$19	\$18	\$18	\$17	\$15	\$14	\$11	\$9	\$8
	45% Current	\$51	\$45	\$38	\$36	\$34	\$33	\$32	\$31	\$30	\$29	\$29	\$28	\$25	\$20	\$17	\$13	\$12	\$11
	10yr ave.			\$33		\$29		\$25		\$22	\$21	\$21	\$20	\$19	\$17	\$15	\$12	\$10	\$9
	50% Current	\$56	\$50	\$43	\$40	\$37	\$36	\$35	\$35	\$34	\$33	\$32	\$31	\$28	\$23	\$19	\$15	\$13	\$12
	10yr ave.			\$36		\$32		\$28		\$25	\$24	\$23	\$22	\$21	\$19	\$17	\$13	\$12	\$10
	55% Current	\$62	\$54	\$47	\$44	\$41	\$40	\$39	\$38	\$37	\$36	\$35	\$35	\$31	\$25	\$21	\$16	\$14	\$13
	10yr ave.			\$40		\$35		\$30		\$27	\$26	\$25	\$24	\$23	\$20	\$19	\$15	\$13	\$11
	60% Current	\$68	\$59	\$51	\$48	\$45	\$44	\$43	\$42	\$40	\$39	\$39	\$38	\$34	\$27	\$23	\$18	\$16	\$14
	10yr ave.			\$43		\$38		\$33		\$29	\$28	\$27	\$27	\$25	\$22	\$20	\$16	\$14	\$13
	65% Current	\$73	\$64	\$55	\$52	\$49	\$47	\$46	\$45	\$44	\$42	\$42	\$41	\$36	\$29	\$25	\$19	\$17	\$16
	10yr ave.			\$47		\$41		\$36		\$32	\$31	\$30	\$29	\$27	\$24	\$22	\$17	\$15	\$14
	70% Current	\$79	\$69	\$60	\$56	\$52	\$51	\$50	\$49	\$47	\$46	\$45	\$44	\$39	\$32	\$27	\$21	\$18	\$17
	10yr ave.			\$51		\$45		\$39		\$34	\$33	\$32	\$31	\$29	\$26	\$24	\$19	\$16	\$15
	75% Current	\$84	\$74	\$64	\$60	\$56	\$55	\$53	\$52	\$50	\$49	\$48	\$47	\$42	\$34	\$28	\$22	\$20	\$18
	10yr ave.			\$54		\$48		\$42		\$37	\$35	\$34	\$33	\$31	\$28	\$25	\$20	\$17	\$16
	80% Current	\$90	\$79	\$68	\$64	\$60	\$58	\$57	\$56	\$54	\$52	\$52	\$50	\$45	\$36	\$30	\$24	\$21	\$19
	10yr ave.			\$58		\$51		\$44		\$39	\$38	\$36	\$35	\$33	\$30	\$27	\$21	\$19	\$17
	85% Current	\$96	\$84	\$72	\$68	\$64	\$62	\$60	\$59	\$57	\$55	\$55	\$53	\$47	\$38	\$32	\$25	\$22	\$20
	10yr ave.			\$62		\$54		\$47		\$42	\$40	\$39	\$38	\$35	\$32	\$29	\$23	\$20	\$18

The above shows estimated returns per head for skirted fleece wool. These figures do not take into account the value of skirtings and oddments and do not take into account discounts that may apply for faults under individual circumstances. These figures are based on a market index of 100% and should be used as a guide only. Returns over \$30 / head for fleece wool are highlighted.

Source: Australian Wool Exchange, Australian Wool Innovation, Sydney Futures Exchange, x-rates.com

Disclaimer: While all due care has been taken in the preparation of this document, no warranty is made as to its accuracy, reliability or completeness. To the extent permitted by law neither Jemalong or their sources including subsidiaries and staff, accept liability to any person for loss or damage arising from the use of this information.



Table 18: Returns pr head for skirted fleece wool.

Skirted FLC Weight		Micron																	
4 Kg		16	16.5	17	17.5	18	18.5	19	19.5	20	21	22	23	24	25	26	28	30	32
Yield (Sch Dry)	25% Current	\$23	\$20	\$17	\$16	\$15	\$15	\$14	\$14	\$13	\$13	\$13	\$13	\$11	\$9	\$8	\$6	\$5	\$5
	10yr ave.			\$14		\$13		\$11		\$10	\$9	\$9	\$9	\$8	\$7	\$7	\$5	\$5	\$4
	30% Current	\$27	\$24	\$20	\$19	\$18	\$17	\$17	\$17	\$16	\$16	\$15	\$15	\$13	\$11	\$9	\$7	\$6	\$6
	10yr ave.			\$17		\$15		\$13		\$12	\$11	\$11	\$11	\$10	\$9	\$8	\$6	\$6	\$5
	35% Current	\$32	\$28	\$24	\$22	\$21	\$20	\$20	\$20	\$19	\$18	\$18	\$18	\$16	\$13	\$11	\$8	\$7	\$7
	10yr ave.			\$20		\$18		\$16		\$14	\$13	\$13	\$12	\$12	\$10	\$9	\$7	\$6	\$6
	40% Current	\$36	\$32	\$27	\$26	\$24	\$23	\$23	\$22	\$22	\$21	\$21	\$20	\$18	\$14	\$12	\$10	\$8	\$8
	10yr ave.			\$23		\$20		\$18		\$16	\$15	\$15	\$14	\$13	\$12	\$11	\$9	\$7	\$7
	45% Current	\$41	\$36	\$31	\$29	\$27	\$26	\$26	\$25	\$24	\$23	\$23	\$23	\$20	\$16	\$14	\$11	\$9	\$9
	10yr ave.			\$26		\$23		\$20		\$18	\$17	\$16	\$16	\$15	\$13	\$12	\$10	\$8	\$8
	50% Current	\$45	\$40	\$34	\$32	\$30	\$29	\$28	\$28	\$27	\$26	\$26	\$25	\$22	\$18	\$15	\$12	\$10	\$10
	10yr ave.			\$29		\$25		\$22		\$20	\$19	\$18	\$18	\$17	\$15	\$14	\$11	\$9	\$8
	55% Current	\$50	\$44	\$37	\$35	\$33	\$32	\$31	\$31	\$30	\$29	\$28	\$28	\$25	\$20	\$17	\$13	\$12	\$11
	10yr ave.			\$32		\$28		\$24		\$22	\$21	\$20	\$19	\$18	\$16	\$15	\$12	\$10	\$9
	60% Current	\$54	\$48	\$41	\$38	\$36	\$35	\$34	\$34	\$32	\$31	\$31	\$30	\$27	\$22	\$18	\$14	\$13	\$12
	10yr ave.			\$35		\$31		\$27		\$24	\$23	\$22	\$21	\$20	\$18	\$16	\$13	\$11	\$10
	65% Current	\$59	\$51	\$44	\$42	\$39	\$38	\$37	\$36	\$35	\$34	\$34	\$33	\$29	\$23	\$20	\$15	\$14	\$13
	10yr ave.			\$38		\$33		\$29		\$26	\$24	\$24	\$23	\$22	\$19	\$18	\$14	\$12	\$11
	70% Current	\$63	\$55	\$48	\$45	\$42	\$41	\$40	\$39	\$38	\$36	\$36	\$35	\$31	\$25	\$21	\$17	\$15	\$13
	10yr ave.			\$41		\$36		\$31		\$27	\$26	\$26	\$25	\$23	\$21	\$19	\$15	\$13	\$12
	75% Current	\$68	\$59	\$51	\$48	\$45	\$44	\$43	\$42	\$40	\$39	\$39	\$38	\$34	\$27	\$23	\$18	\$16	\$14
	10yr ave.			\$43		\$38		\$33		\$29	\$28	\$27	\$27	\$25	\$22	\$20	\$16	\$14	\$13
	80% Current	\$72	\$63	\$54	\$51	\$48	\$47	\$45	\$45	\$43	\$42	\$41	\$40	\$36	\$29	\$24	\$19	\$17	\$15
	10yr ave.			\$46		\$41		\$35		\$31	\$30	\$29	\$28	\$27	\$24	\$22	\$17	\$15	\$13
	85% Current	\$77	\$67	\$58	\$54	\$51	\$49	\$48	\$47	\$46	\$44	\$44	\$43	\$38	\$31	\$26	\$20	\$18	\$16
	10yr ave.			\$49		\$43		\$38		\$33	\$32	\$31	\$30	\$28	\$25	\$23	\$18	\$16	\$14

The above shows estimated returns per head for skirted fleece wool. These figures do not take into account the value of skirtings and oddments and do not take into account discounts that may apply for faults under individual circumstances. These figures are based on a market index of 100% and should be used as a guide only. Returns over \$30 / head for fleece wool are highlighted.

Source: Australian Wool Exchange, Australian Wool Innovation, Sydney Futures Exchange, x-rates.com

Disclaimer: While all due care has been taken in the preparation of this document, no warranty is made as to its accuracy, reliability or completeness. To the extent permitted by law neither Jemalong or their sources including subsidiaries and staff, accept liability to any person for loss or damage arising from the use of this information.



Table 19: Returns pr head for skirted fleece wool.

Skirted FLC Weight		Micron																	
3 Kg		16	16.5	17	17.5	18	18.5	19	19.5	20	21	22	23	24	25	26	28	30	32
Yield (Sch Dry)	25% Current	\$17	\$15	\$13	\$12	\$11	\$11	\$11	\$10	\$10	\$10	\$10	\$9	\$8	\$7	\$6	\$4	\$4	\$4
	10yr ave.			\$11		\$10		\$8		\$7	\$7	\$7	\$7	\$6	\$6	\$5	\$4	\$3	\$3
	30% Current	\$20	\$18	\$15	\$14	\$13	\$13	\$13	\$13	\$12	\$12	\$12	\$11	\$10	\$8	\$7	\$5	\$5	\$4
	10yr ave.			\$13		\$11		\$10		\$9	\$8	\$8	\$8	\$8	\$7	\$6	\$5	\$4	\$4
	35% Current	\$24	\$21	\$18	\$17	\$16	\$15	\$15	\$15	\$14	\$14	\$14	\$13	\$12	\$9	\$8	\$6	\$6	\$5
	10yr ave.			\$15		\$13		\$12		\$10	\$10	\$10	\$9	\$9	\$8	\$7	\$6	\$5	\$4
	40% Current	\$27	\$24	\$20	\$19	\$18	\$17	\$17	\$17	\$16	\$16	\$15	\$15	\$13	\$11	\$9	\$7	\$6	\$6
	10yr ave.			\$17		\$15		\$13		\$12	\$11	\$11	\$11	\$10	\$9	\$8	\$6	\$6	\$5
	45% Current	\$30	\$27	\$23	\$22	\$20	\$20	\$19	\$19	\$18	\$18	\$17	\$17	\$15	\$12	\$10	\$8	\$7	\$7
	10yr ave.			\$20		\$17		\$15		\$13	\$13	\$12	\$12	\$11	\$10	\$9	\$7	\$6	\$6
	50% Current	\$34	\$30	\$26	\$24	\$22	\$22	\$21	\$21	\$20	\$20	\$19	\$19	\$17	\$14	\$11	\$9	\$8	\$7
	10yr ave.			\$22		\$19		\$17		\$15	\$14	\$14	\$13	\$13	\$11	\$10	\$8	\$7	\$6
	55% Current	\$37	\$33	\$28	\$26	\$25	\$24	\$23	\$23	\$22	\$21	\$21	\$21	\$18	\$15	\$13	\$10	\$9	\$8
	10yr ave.			\$24		\$21		\$18		\$16	\$16	\$15	\$15	\$14	\$12	\$11	\$9	\$8	\$7
	60% Current	\$41	\$36	\$31	\$29	\$27	\$26	\$26	\$25	\$24	\$23	\$23	\$23	\$20	\$16	\$14	\$11	\$9	\$9
	10yr ave.			\$26		\$23		\$20		\$18	\$17	\$16	\$16	\$15	\$13	\$12	\$10	\$8	\$8
	65% Current	\$44	\$39	\$33	\$31	\$29	\$28	\$28	\$27	\$26	\$25	\$25	\$24	\$22	\$18	\$15	\$12	\$10	\$9
	10yr ave.			\$28		\$25		\$22		\$19	\$18	\$18	\$17	\$16	\$14	\$13	\$10	\$9	\$8
	70% Current	\$47	\$42	\$36	\$34	\$31	\$31	\$30	\$29	\$28	\$27	\$27	\$26	\$23	\$19	\$16	\$13	\$11	\$10
	10yr ave.			\$30		\$27		\$23		\$21	\$20	\$19	\$19	\$18	\$16	\$14	\$11	\$10	\$9
	75% Current	\$51	\$45	\$38	\$36	\$34	\$33	\$32	\$31	\$30	\$29	\$29	\$28	\$25	\$20	\$17	\$13	\$12	\$11
	10yr ave.			\$33		\$29		\$25		\$22	\$21	\$21	\$20	\$19	\$17	\$15	\$12	\$10	\$9
	80% Current	\$54	\$48	\$41	\$38	\$36	\$35	\$34	\$34	\$32	\$31	\$31	\$30	\$27	\$22	\$18	\$14	\$13	\$12
	10yr ave.			\$35		\$31		\$27		\$24	\$23	\$22	\$21	\$20	\$18	\$16	\$13	\$11	\$10
	85% Current	\$57	\$50	\$43	\$41	\$38	\$37	\$36	\$36	\$34	\$33	\$33	\$32	\$28	\$23	\$19	\$15	\$13	\$12
	10yr ave.			\$37		\$32		\$28		\$25	\$24	\$23	\$23	\$21	\$19	\$17	\$14	\$12	\$11

The above shows estimated returns per head for skirted fleece wool. These figures do not take into account the value of skirtings and oddments and do not take into account discounts that may apply for faults under individual circumstances. These figures are based on a market index of 100% and should be used as a guide only. Returns over \$30 / head for fleece wool are highlighted.

Source: Australian Wool Exchange, Australian Wool Innovation, Sydney Futures Exchange, x-rates.com

Disclaimer: While all due care has been taken in the preparation of this document, no warranty is made as to its accuracy, reliability or completeness. To the extent permitted by law neither Jemalong or their sources including subsidiaries and staff, accept liability to any person for loss or damage arising from the use of this information.



Table 20: Returns pr head for skirted fleece wool.

Skirted FLC Weight		Micron																	
2 Kg		16	16.5	17	17.5	18	18.5	19	19.5	20	21	22	23	24	25	26	28	30	32
Yield (Sch Dry)	25% Current	\$11	\$10	\$9	\$8	\$7	\$7	\$7	\$7	\$7	\$7	\$6	\$6	\$6	\$5	\$4	\$3	\$3	\$2
	10yr ave.			\$7		\$6		\$6		\$5	\$5	\$5	\$4	\$4	\$4	\$3	\$3	\$2	\$2
	30% Current	\$14	\$12	\$10	\$10	\$9	\$9	\$9	\$8	\$8	\$8	\$8	\$8	\$7	\$5	\$5	\$4	\$3	\$3
	10yr ave.			\$9		\$8		\$7		\$6	\$6	\$5	\$5	\$5	\$4	\$4	\$3	\$3	\$3
	35% Current	\$16	\$14	\$12	\$11	\$10	\$10	\$10	\$10	\$9	\$9	\$9	\$9	\$8	\$6	\$5	\$4	\$4	\$3
	10yr ave.			\$10		\$9		\$8		\$7	\$7	\$6	\$6	\$6	\$5	\$5	\$4	\$3	\$3
	40% Current	\$18	\$16	\$14	\$13	\$12	\$12	\$11	\$11	\$11	\$10	\$10	\$10	\$9	\$7	\$6	\$5	\$4	\$4
	10yr ave.			\$12		\$10		\$9		\$8	\$8	\$7	\$7	\$7	\$6	\$5	\$4	\$4	\$3
	45% Current	\$20	\$18	\$15	\$14	\$13	\$13	\$13	\$13	\$12	\$12	\$12	\$11	\$10	\$8	\$7	\$5	\$5	\$4
	10yr ave.			\$13		\$11		\$10		\$9	\$8	\$8	\$8	\$8	\$7	\$6	\$5	\$4	\$4
	50% Current	\$23	\$20	\$17	\$16	\$15	\$15	\$14	\$14	\$13	\$13	\$13	\$13	\$11	\$9	\$8	\$6	\$5	\$5
	10yr ave.			\$14		\$13		\$11		\$10	\$9	\$9	\$9	\$8	\$7	\$7	\$5	\$5	\$4
	55% Current	\$25	\$22	\$19	\$18	\$16	\$16	\$16	\$15	\$15	\$14	\$14	\$14	\$12	\$10	\$8	\$7	\$6	\$5
	10yr ave.			\$16		\$14		\$12		\$11	\$10	\$10	\$10	\$9	\$8	\$7	\$6	\$5	\$5
	60% Current	\$27	\$24	\$20	\$19	\$18	\$17	\$17	\$17	\$16	\$16	\$15	\$15	\$13	\$11	\$9	\$7	\$6	\$6
	10yr ave.			\$17		\$15		\$13		\$12	\$11	\$11	\$11	\$10	\$9	\$8	\$6	\$6	\$5
	65% Current	\$29	\$26	\$22	\$21	\$19	\$19	\$18	\$18	\$17	\$17	\$17	\$16	\$15	\$12	\$10	\$8	\$7	\$6
	10yr ave.			\$19		\$17		\$14		\$13	\$12	\$12	\$11	\$11	\$10	\$9	\$7	\$6	\$5
	70% Current	\$32	\$28	\$24	\$22	\$21	\$20	\$20	\$20	\$19	\$18	\$18	\$18	\$16	\$13	\$11	\$8	\$7	\$7
	10yr ave.			\$20		\$18		\$16		\$14	\$13	\$13	\$12	\$12	\$10	\$9	\$7	\$6	\$6
	75% Current	\$34	\$30	\$26	\$24	\$22	\$22	\$21	\$21	\$20	\$20	\$19	\$19	\$17	\$14	\$11	\$9	\$8	\$7
	10yr ave.			\$22		\$19		\$17		\$15	\$14	\$14	\$13	\$13	\$11	\$10	\$8	\$7	\$6
	80% Current	\$36	\$32	\$27	\$26	\$24	\$23	\$23	\$22	\$22	\$21	\$21	\$20	\$18	\$14	\$12	\$10	\$8	\$8
	10yr ave.			\$23		\$20		\$18		\$16	\$15	\$15	\$14	\$13	\$12	\$11	\$9	\$7	\$7
	85% Current	\$38	\$34	\$29	\$27	\$25	\$25	\$24	\$24	\$23	\$22	\$22	\$21	\$19	\$15	\$13	\$10	\$9	\$8
	10yr ave.			\$25		\$22		\$19		\$17	\$16	\$16	\$15	\$14	\$13	\$11	\$9	\$8	\$7

The above shows estimated returns per head for skirted fleece wool. These figures do not take into account the value of skirtings and oddments and do not take into account discounts that may apply for faults under individual circumstances. These figures are based on a market index of 100% and should be used as a guide only. Returns over \$30 / head for fleece wool are highlighted.

Source: Australian Wool Exchange, Australian Wool Innovation, Sydney Futures Exchange, x-rates.com

Disclaimer: While all due care has been taken in the preparation of this document, no warranty is made as to its accuracy, reliability or completeness. To the extent permitted by law neither Jemalong or their sources including subsidiaries and staff, accept liability to any person for loss or damage arising from the use of this information.