



Table 1: Northern Region Micron Price Guides

WEEK 40			12 MONTH COMPARISONS								3 YEAR COMPARISONS					10 YEAR COMPARISONS				
1/04/2026		24/03/2026	1/04/2025	Now		Now		Now		Now			Percentile	10 year		Now		Percentile		
MPG	Price	Weekly Change	Last Year	compared to Last Year	Low	to Low	High	to High	Low	High	Average	compared to 3yr ave		Low	High	Average	to 10yr ave			
NRI	1848	+77 4.3%	1283	+565 44%	1224	+624 51%	1848	0 0%	1117	1848	1292	+556 43%	100%	1020	2163	1474	+374 25%	86%		
15*	2675 n	+18 0.7%	2430	+245 10%	2275	+400 18%	2750	-75 -3%	2275	2975	2514	+161 6%	89%	1672	3750	2483	+192 8%	64%		
15.5*	2580 n	+65 2.6%	2225	+355 16%	2070	+510 25%	2580	0 0%	2070	2825	2301	+279 12%	95%	1613	3450	2395	+185 8%	64%		
16*	2520 n	+115 4.8%	1927	+593 31%	1762	+758 43%	2520	0 0%	1762	2575	2029	+491 24%	98%	1575	3300	2339	+181 8%	64%		
16.5	2514 n	+130 5.5%	1793	+721 40%	1680	+834 50%	2514	0 0%	1670	2514	1935	+579 30%	100%	1546	3187	2226	+288 13%	70%		
17	2480	+125 5.3%	1730	+750 43%	1648	+832 50%	2480	0 0%	1600	2480	1841	+639 35%	100%	1478	3008	2121	+359 17%	77%		
17.5	2455	+123 5.3%	1677	+778 46%	1609	+846 53%	2455	0 0%	1508	2455	1758	+697 40%	100%	1383	2845	2016	+439 22%	85%		
18	2423	+124 5.4%	1625	+798 49%	1558	+865 56%	2423	0 0%	1432	2423	1678	+745 44%	100%	1272	2708	1906	+517 27%	92%		
18.5	2346	+118 5.3%	1586	+760 48%	1532	+814 53%	2346	0 0%	1358	2346	1607	+739 46%	100%	1174	2591	1804	+542 30%	92%		
19	2260	+142 6.7%	1550	+710 46%	1482	+778 52%	2274	-14 -1%	1327	2274	1549	+711 46%	99%	1116	2465	1711	+549 32%	91%		
19.5	2105	+56 2.7%	1527	+578 38%	1453	+652 45%	2208	-103 -5%	1289	2208	1508	+597 40%	97%	1078	2404	1641	+464 28%	88%		
20	2060 n	+44 2.2%	1500	+560 37%	1432	+628 44%	2154	-94 -4%	1262	2154	1472	+588 40%	97%	1047	2391	1582	+478 30%	87%		
21	2050 n	+59 3.0%	1503	+547 36%	1400	+650 46%	2080	-30 -1%	1232	2080	1440	+610 42%	98%	1015	2368	1533	+517 34%	88%		
22	1990 n	0	1484	+506 34%	1380	+610 44%	2050	-60 -3%	1200	2050	1410	+580 41%	98%	1009	2342	1499	+491 33%	87%		
23	1573 n	+33 2.1%	1129	+444 39%	1129	+444 39%	1575	-2 0%	960	1575	1188	+385 32%	99%	957	2316	1372	+201 15%	77%		
24	1238 n	+138 12.5%	880	+358 41%	800	+438 55%	1238	0 0%	766	1238	916	+322 35%	100%	770	2114	1190	+48 4%	61%		
25	1060 n	+95 9.8%	722	+338 47%	711	+349 49%	1088	-28 -3%	635	1088	761	+299 39%	96%	635	1801	1009	+51 5%	61%		
26	835 n	+45 5.7%	626	+209 33%	588	+247 42%	942	-107 -11%	465	942	611	+224 37%	91%	465	1545	872	-37 -4%	56%		
28	660 n	+10 1.5%	435	+225 52%	420	+240 57%	728	-68 -9%	290	728	438	+222 51%	88%	309	1318	612	+48 8%	56%		
30	560 n	-2 -0.4%	380	+180 47%	358	+202 56%	635	-75 -12%	255	635	390	+170 44%	88%	285	998	500	+60 12%	61%		
32	505 n	+17 3.5%	330	+175 53%	322	+183 57%	510	-5 -1%	227	510	330	+175 53%	98%	210	659	365	+140 38%	88%		
MC	1068 n	+33 3.2%	739	+329 45%	700	+368 53%	1068	0 0%	689	1068	750	+318 42%	100%	656	1563	959	+109 11%	69%		
AU BALES OFFERED	36,252		* 16.5 is the lowest Micron Price Guide (MPG) published by The Australian Wool Exchange (AWEX). Therefore MPG's below 16.5 micron are an estimate based on the best available information at the time of publication. Likewise, for any category where there is insufficient quantity offered to enable AWEX to quote, a quote will also be provided.																	
AU BALES SOLD	35,602		* Recording of 15 & 15.5 micron commenced in October 2017, and as a result some historic data is not yet available for those MPG's. Where historic data is not available an estimate based on '16 micron statistics' and incorporating the existing 15 & 15.5 micron data, will be provided as a guide.																	
AU PASSED-IN%	1.8%																			
AUD/USD	0.6904 -1.0%																			

Source: Australian Wool Exchange, Australian Wool Innovation, Riemann, x-rates.com, Reserve Bank of Australia, Australian Wool Testing Authority, Australian Bureau Statistics (ABS), Woolmark.

Disclaimer: Jemalong Wool Pty Ltd make no representations about the content and suitability of the information contained in this report. Specifically, Jemalong Wool does not warrant, guarantee or make any representations regarding the correctness, accuracy, reliability, currency, or any other aspect regarding characteristics or use of information presented in these materials. The user accepts sole responsibility and risk associated with the use and results of these materials, irrespective of the purpose of which such use or results are applied. In no event shall Jemalong Wool be liable for any loss or damages arising out of or in connection with the use of these materials.

Copyright © Jemalong Wool Pty Ltd, 2006-2026. Apart from any use permitted under the Copyright Act 1968, no part may be copied or reproduced by any process nor stored electronically without the written permission of Jemalong Wool Pty Ltd. This report has been compiled by Jemalong Wool Pty Ltd for internal use and for the benefit of Jemalong Wool clients. You should only read this report if you are authorised to do so, if you are not authorised then you must destroy all electronic and paper copies immediately. Under no circumstance are you permitted to forward this report to a third-party.

MARKET COMMENTARY Source: AWEX

After two successive weeks of losses, the wool market rebounded strongly this series. 36,252 bales were available to the trade (3,421 bales less than in the previous series).

The market was on the rise from the opening hammer. Higher-yielding, low-vegetable-matter lots and those with favourable additional measurements, were the most sought-after; however, all lots recorded increases as buyers fought for market share.

On Day one, the Merino MPGs gained 3-88 cents, pushing the EMI 20 cents higher. Currency played a large role, with the market losing 7 US cents for the day.

The market took off on the second day of selling . This time currency played almost no part in the rises, the increases attributed to buyer demand and the knowledge that this would be the last buying opportunity until after the upcoming Easter recess. The MPGs for merino fleece rose 31-99 cents, pushing the EMI up by 42 cents for the day (the largest daily rise in the EMI since the beginning of January). The EMI closed the week 62 cents higher at 1,786. After a small increase in the AUD, the EMI gained 39 US cent (closing the week at 1,234).

Next week is the annual Easter recess, sales will resume week commencing Monday the 13th of April.

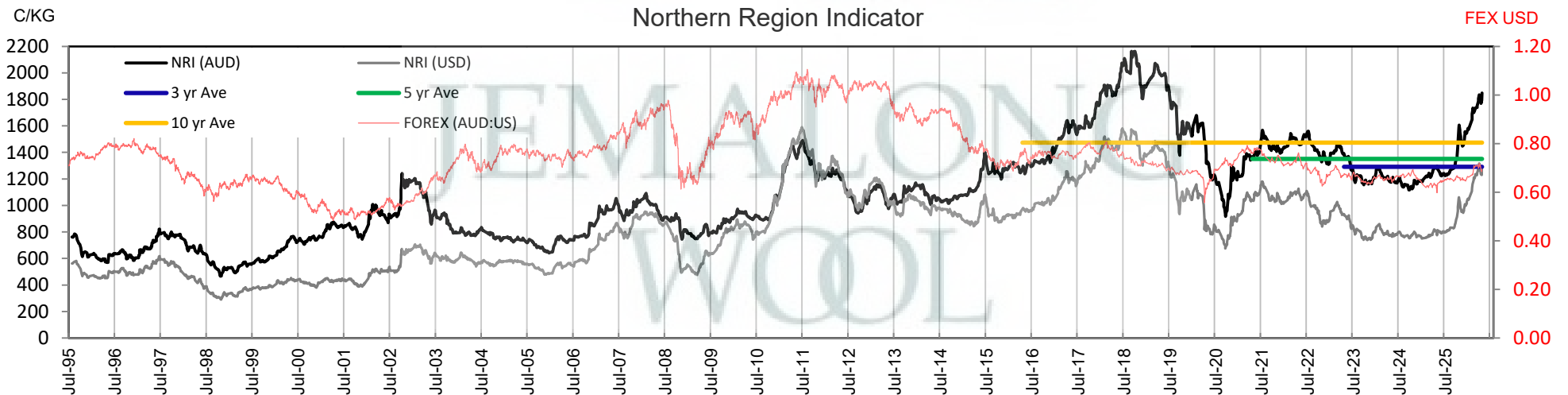




Table 2: Three Year Decile Table, since: 1/04/2023

Decile %	16	16.5	17	17.5	18	18.5	19	19.5	20	21	22	23	24	25	26	28	30	32	MC
1 10%	1825	1726	1658	1579	1494	1430	1387	1343	1307	1275	1221	1015	800	670	496	338	317	261	699
2 20%	1845	1762	1680	1605	1520	1450	1405	1360	1324	1288	1250	1080	820	687	522	350	327	283	701
3 30%	1890	1789	1700	1622	1539	1467	1413	1376	1336	1306	1270	1100	858	697	547	360	335	290	707
4 40%	1912	1806	1712	1633	1562	1492	1433	1388	1354	1315	1286	1120	870	707	561	375	340	298	711
5 50%	1926	1826	1730	1657	1586	1520	1466	1422	1384	1335	1313	1135	885	723	577	390	355	305	721
6 60%	2000	1887	1768	1679	1612	1552	1501	1462	1440	1410	1389	1168	920	732	595	414	365	324	730
7 70%	2062	1975	1857	1729	1642	1588	1535	1502	1470	1445	1420	1200	970	759	615	440	382	337	741
8 80%	2192	2104	2040	1930	1838	1688	1622	1575	1531	1514	1488	1275	990	833	725	549	458	368	790
9 90%	2377	2300	2201	2113	2046	1981	1908	1865	1842	1816	1809	1480	1090	953	817	669	570	467	826
10 100%	2575	2514	2480	2455	2423	2346	2274	2208	2154	2080	2050	1575	1238	1088	942	728	635	510	1068
MPG	2520	2514	2480	2455	2423	2346	2260	2105	2060	2050	1990	1573	1238	1060	835	660	560	505	1068
3 Yr Percentile	98%	100%	100%	100%	100%	100%	99%	97%	97%	98%	98%	99%	100%	96%	91%	88%	88%	98%	100%

Table 3: Ten Year Decile Table, since: 1/04/2016

Decile %	16	16.5	17	17.5	18	18.5	19	19.5	20	21	22	23	24	25	26	28	30	32	MC
1 10%	1800	1712	1639	1578	1514	1448	1392	1351	1312	1259	1212	1079	859	697	550	350	320	240	706
2 20%	1900	1793	1705	1630	1560	1504	1451	1408	1347	1290	1250	1106	900	732	592	377	335	253	730
3 30%	2005	1887	1778	1692	1616	1559	1515	1469	1381	1314	1285	1129	951	801	652	410	355	275	805
4 40%	2130	2038	1978	1905	1802	1678	1581	1497	1426	1360	1328	1157	979	845	725	460	380	295	868
5 50%	2295	2218	2137	2020	1913	1799	1656	1537	1466	1419	1386	1220	1010	876	771	530	440	332	903
6 60%	2450	2347	2258	2160	2011	1861	1728	1606	1531	1470	1438	1355	1220	1048	905	681	560	396	987
7 70%	2600	2514	2380	2250	2110	1958	1818	1732	1654	1590	1520	1445	1330	1176	1072	760	594	435	1071
8 80%	2810	2634	2507	2378	2210	2098	1985	1893	1836	1793	1771	1624	1490	1252	1140	820	665	465	1146
9 90%	3060	2863	2665	2509	2390	2284	2204	2168	2149	2129	2110	1962	1811	1505	1321	934	710	508	1281
10 100%	3300	3187	3008	2845	2708	2591	2465	2404	2391	2368	2342	2316	2114	1801	1545	1318	998	659	1563
MPG	2520	2514	2480	2455	2423	2346	2260	2105	2060	2050	1990	1573	1238	1060	835	660	560	505	1068
10 Yr Percentile	64%	70%	77%	85%	92%	92%	91%	88%	87%	88%	87%	77%	61%	61%	56%	56%	61%	88%	69%

Definitions:

- * A Percentile, is a value on a scale of one hundred that indicates the percent of a distribution that is equal to or below it. In general a percentile between 25% and 75% is considered normal, a percentile below 25% is considered below normal and a percentile above 75% is considered above normal.
Three and ten year percentiles shown on the bottom line of table 2 & 3 (above) and in table 1 (on page 1), detail the amount of time during the past 3 & 10 years where the market has traded either at or below its current price.
 - * Deciles are a method of sorting ranked data into 10 equal groups. The data may be ranked from largest to smallest or vice versa.
The above Decile tables sort price Percentiles into 10 equal groups (in ascending order), with table 2 ranking the previous 3 years prices, while table 3 ranks prices over the previous 10 years
- Example:** In Table 2, a Decile Rank of 6 for 19 microns, shows 19 microns have traded at or below 1501 for 60% of the time, over the past three years.
In Table 3, a Decile Rank of 6 for 19 microns, shows 19 microns have traded at or below 1728 for 60% of the time, over the past ten years.



Table 4: Riemann Forwards, as at: **1/04/26** Any highlighted in yellow are recent trades, trading since: **Thursday, 26 March 2026**

MICRON (Total Traded = 33)	18um (1 Traded)	18.5um (2 Traded)	19um (17 Traded)	19.5um (2 Traded)	21um (11 Traded)	22um (0 Traded)	23um (0 Traded)	28um (0 Traded)	30um (0 Traded)
Apr-2026 (6)			23/02/26 2060 (5)		13/01/26 1875 (1)				
May-2026 (8)	11/02/26 2225 (1)		13/01/26 1950 (2)	23/02/26 2070 (2)	20/02/26 2020 (3)				
Jun-2026 (13)		1/04/26 2200 (2)	25/03/26 2020 (8)		1/04/26 1950 (3)				
Jul-2026 (1)			26/02/26 2000 (1)						
Aug-2026									
Sep-2026 (1)					9/12/25 1800 (1)				
Oct-2026 (3)			1/04/26 1990 (1)		14/01/26 1875 (2)				
Nov-2026 (1)					9/12/25 1805 (1)				
Dec-2026									
Jan-2027									
Feb-2027									
Mar-2027									
Apr-2027									
May-2027									
Jun-2027									
Jul-2027									
Aug-2027									
Sep-2027									
Oct-2027									
Nov-2027									
Dec-2027									
Jan-2028									
Feb-2028									

Explanatory Notes: Prices quoted reflect the most recent trades, at time of print.

Disclaimer: While all due care has been taken in the preparation of this document, no warranty is made as to its accuracy, reliability or completeness. To the extent permitted by law neither Jemalong or their sources including subsidiaries and staff, accept liability to any person for loss or damage arising from the use of this information.



Table 5: Riemann Options, as at: **1/04/26** Any highlighted in yellow are recent trades, trading since: **Friday, 27 March 2026**

MICRON (Total Traded = 0)	18um Strike - Premium (0 Traded)	18.5um Strike - Premium (0 Traded)	19um Strike - Premium (0 Traded)	19.5um Strike - Premium (0 Traded)	21um Strike - Premium (0 Traded)	22um Strike - Premium (0 Traded)	23um Strike - Premium (0 Traded)	28um Strike - Premium (0 Traded)	30um Strike - Premium (0 Traded)
Apr-2026									
May-2026									
Jun-2026									
Jul-2026									
Aug-2026									
Sep-2026									
Oct-2026									
Nov-2026									
Dec-2026									
Jan-2027									
Feb-2027									
Mar-2027									
Apr-2027									
May-2027									
Jun-2027									
Jul-2027									
Aug-2027									
Sep-2027									
Oct-2027									
Nov-2027									
Dec-2027									
Jan-2028									
Feb-2028									

OPTIONS CONTRACT MONTH

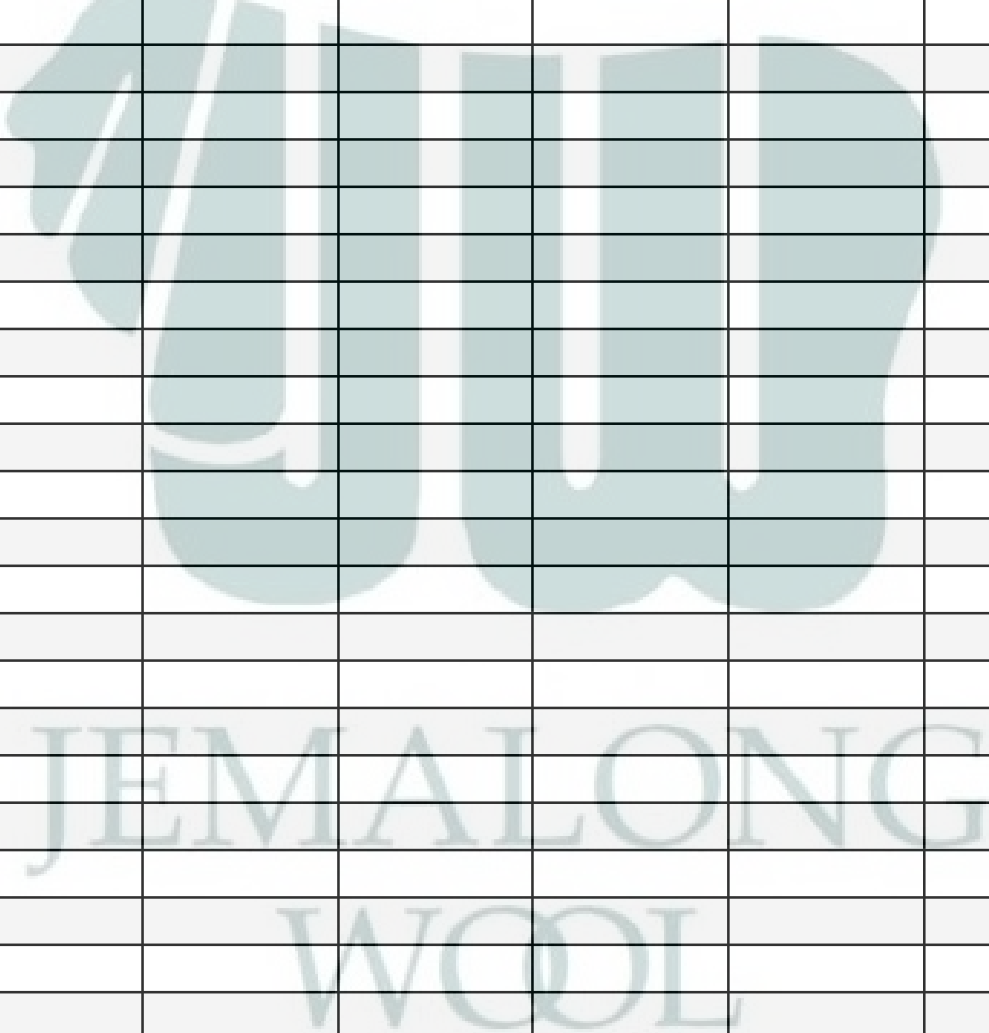




Table 6: National Market Share

	Rank	Current Selling Week Week 40			Previous Selling Week Week 39			Last Season 2024-25			2 Years Ago 2023-24			3 Years Ago 2022-23			5 Years Ago 2020-21			10 Years Ago 2015-16		
		Buyer	Bales	MS%	Buyer	Bales	MS%	Buyer	Bales	MS%	Buyer	Bales	MS%	Buyer	Bales	MS%	Buyer	Bales	MS%	Buyer	Bales	MS%
Top 10, Auction Buyers	1	TECM	6,361	18%	TECM	6,344	18%	TECM	229,513	16%	TECM	269,885	16%	TECM	236,574	15%	TECM	228,018	15%	TECM	223,011	13%
	2	PMWF	5,365	15%	PMWF	4,639	13%	EWES	183,456	13%	EWES	200,309	12%	EWES	184,465	11%	EWES	159,908	10%	CTXS	158,343	10%
	3	EWES	3,920	11%	TIAM	4,176	12%	TIAM	155,816	11%	TIAM	163,248	10%	TIAM	165,940	10%	FOXM	129,251	8%	FOXM	151,685	9%
	4	AMEM	3,245	9%	EWES	4,082	11%	FOXM	115,227	8%	PMWF	130,958	8%	FOXM	114,903	7%	TIAM	121,176	8%	LEMM	124,422	8%
	5	TIAM	2,831	8%	SMAM	3,537	10%	SMAM	102,067	7%	FOXM	112,236	7%	AMEM	94,128	6%	UWCM	100,677	6%	TIAM	105,610	6%
	6	SMAM	2,407	7%	UWCM	2,456	7%	PMWF	101,929	7%	PEAM	110,013	7%	PMWF	92,939	6%	LEMM	98,471	6%	AMEM	104,017	6%
	7	FOXM	2,291	6%	AMEM	2,020	6%	AMEM	79,894	6%	AMEM	103,230	6%	UWCM	81,113	5%	AMEM	90,244	6%	GWEA	91,407	6%
	8	UWCM	2,067	6%	PEAM	1,521	4%	PEAM	78,127	6%	UWCM	90,284	5%	SMAM	81,046	5%	PMWF	84,389	5%	MODM	83,453	5%
	9	PEAM	1,709	5%	FOXM	1,244	3%	UWCM	73,595	5%	SMAM	76,401	5%	PEAM	76,571	5%	MODM	70,426	4%	PMWF	82,132	5%
	10	MEWS	1,045	3%	MODM	701	2%	MEWS	41,323	3%	MEWS	67,040	4%	MEWS	64,650	4%	KATS	63,487	4%	MCHA	64,453	4%
MFLC TOP 5	1	PMWF	4,464	22%	PMWF	3,813	19%	TIAM	113,479	15%	TECM	147,611	16%	TECM	128,047	15%	TECM	131,264	15%	CTXS	124,326	13%
	2	TECM	2,829	14%	TECM	3,241	16%	TECM	108,786	14%	PMWF	124,594	14%	TIAM	115,988	14%	TIAM	93,870	10%	TECM	112,996	12%
	3	EWES	2,186	11%	TIAM	3,214	16%	PMWF	95,314	12%	TIAM	117,878	13%	EWES	93,911	11%	EWES	83,559	9%	LEMM	91,475	10%
	4	TIAM	2,093	10%	SMAM	3,074	15%	EWES	94,695	12%	EWES	103,468	12%	PMWF	87,904	10%	LEMM	81,281	9%	FOXM	84,992	9%
	5	SMAM	2,031	10%	EWES	1,830	9%	SMAM	79,384	10%	MEWS	65,151	7%	MEWS	63,681	7%	PMWF	80,872	9%	PMWF	77,550	8%
MSKT TOP 5	1	AMEM	1,136	23%	EWES	1,090	21%	TECM	52,792	24%	TECM	51,028	20%	EWES	46,781	18%	TECM	42,521	18%	TIAM	41,055	17%
	2	TECM	821	16%	TECM	978	19%	EWES	40,704	18%	EWES	50,301	20%	TECM	45,453	17%	UWCM	34,928	14%	TECM	39,290	16%
	3	EWES	715	14%	PMWF	609	12%	TIAM	26,993	12%	TIAM	34,378	14%	TIAM	36,973	14%	EWES	34,884	14%	AMEM	29,982	12%
	4	PMWF	687	14%	AMEM	580	11%	AMEM	18,460	8%	AMEM	26,328	10%	SMAM	18,671	7%	WCWF	21,915	9%	MODM	26,227	11%
	5	FOXM	394	8%	TIAM	444	9%	SMAM	17,308	8%	FOXM	13,839	5%	FOXM	17,752	7%	TIAM	18,193	8%	FOXM	18,153	7%
XB TOP 5	1	TECM	2,076	31%	TECM	1,560	24%	TECM	43,969	17%	PEAM	68,181	22%	PEAM	54,447	18%	MODM	34,090	15%	TECM	46,757	17%
	2	PEAM	994	15%	PEAM	877	14%	PEAM	43,966	17%	TECM	48,337	15%	TECM	41,194	14%	TECM	33,794	15%	KATS	27,734	10%
	3	UWCM	961	14%	UWCM	706	11%	EWES	30,639	12%	KATS	28,741	9%	MODM	28,282	9%	PEAM	30,636	13%	FOXM	27,096	10%
	4	EWES	701	11%	EWES	681	11%	UWCM	24,901	9%	EWES	27,305	9%	EWES	25,981	9%	EWES	22,525	10%	CTXS	22,768	8%
	5	FOXM	403	6%	TIAM	475	7%	KATS	20,772	8%	UWCM	24,830	8%	UWCM	23,318	8%	UWCM	18,968	8%	MODM	21,130	8%
ODDS TOP 5	1	UWCM	968	25%	UWCM	1,337	31%	UWCM	25,237	16%	UWCM	31,740	16%	MCHA	29,569	16%	FOXM	25,868	13%	MCHA	39,964	20%
	2	TECM	635	16%	TECM	565	13%	TECM	23,966	15%	TECM	22,909	12%	UWCM	29,451	16%	MCHA	23,579	12%	VWPM	30,258	15%
	3	AMEM	378	10%	EWES	481	11%	FOXM	19,320	12%	FOXM	19,823	10%	TECM	21,880	12%	UWCM	21,008	11%	TECM	23,968	12%
	4	MCHA	352	9%	MCHA	417	10%	EWES	17,418	11%	EWES	19,235	10%	EWES	17,792	9%	TECM	20,439	11%	FOXM	21,444	11%
	5	EWES	318	8%	AMEM	227	5%	MCHA	13,272	8%	MCHA	16,141	8%	FOXM	16,585	9%	EWES	18,940	10%	GWEA	10,802	5%
Auction Totals		<u>Bales Sold</u>	<u>\$/Bale</u>		<u>Bales Sold</u>	<u>\$/Bale</u>	<u>Bales Sold</u>	<u>\$/Bale</u>	<u>Bales Sold</u>	<u>\$/Bale</u>	<u>Bales Sold</u>	<u>\$/Bale</u>	<u>Bales Sold</u>	<u>\$/Bale</u>	<u>Bales Sold</u>	<u>\$/Bale</u>	<u>Bales Sold</u>	<u>\$/Bale</u>	<u>Bales Sold</u>	<u>\$/Bale</u>		
		35,602	\$ 1,996		36,140	\$ 1,957	1,419,576	\$1,362	1,659,483	\$1,348	1,607,799	\$1,503	1,558,820	\$1,455	1,652,727	\$1,424						
		<u>Auction Value</u>		<u>Auction Value</u>		<u>Auction Value</u>		<u>Auction Value</u>		<u>Auction Value</u>		<u>Auction Value</u>		<u>Auction Value</u>		<u>Auction Value</u>		<u>Auction Value</u>				
		\$71,070,000		\$70,710,000		\$1,933,603,248		\$2,236,630,000		\$2,416,900,000		\$2,267,750,000		\$2,354,185,590								

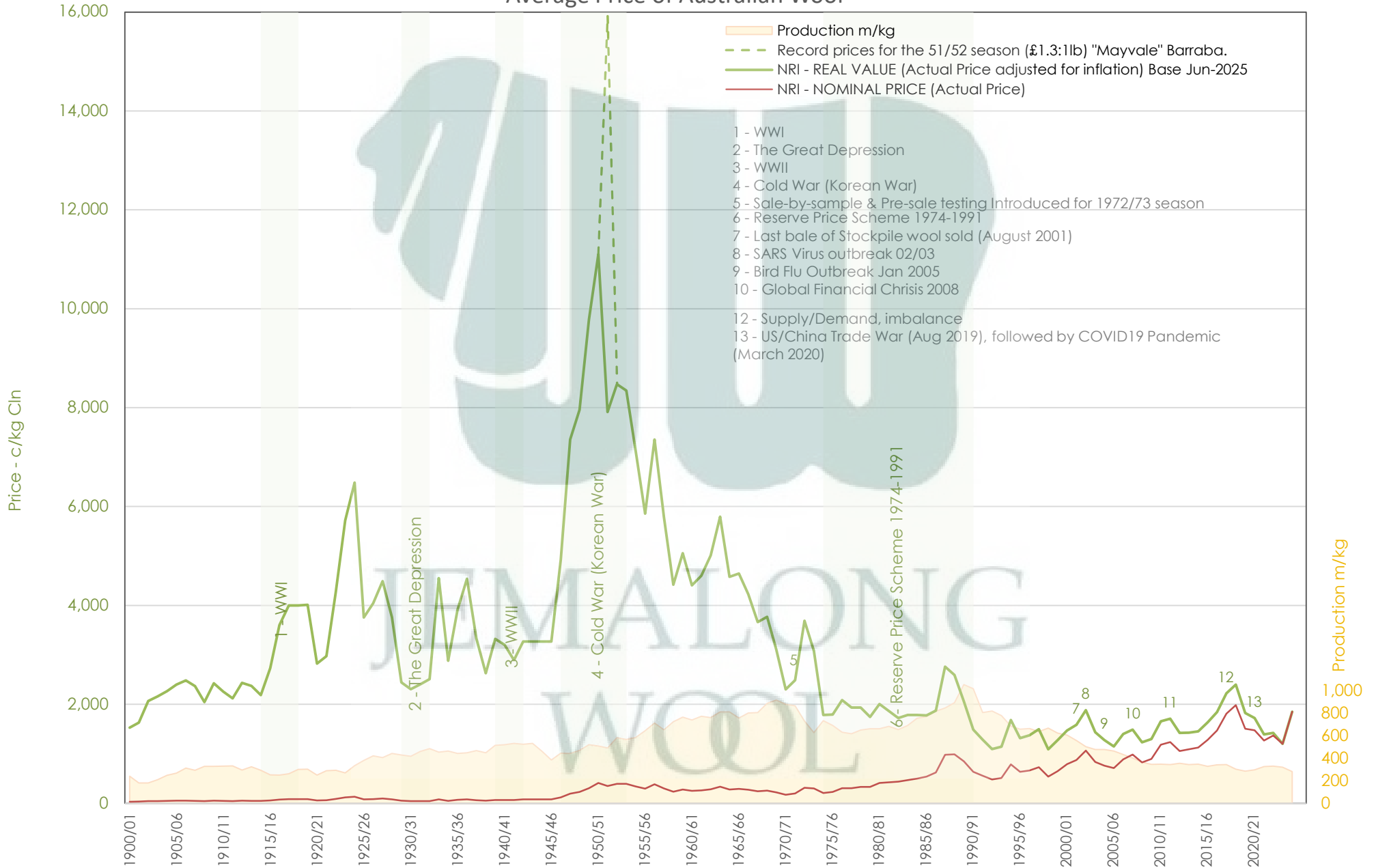


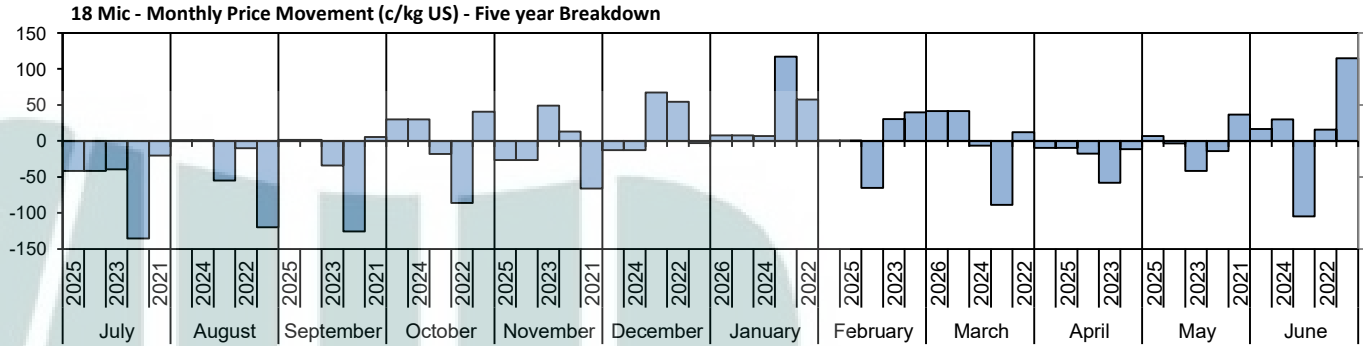
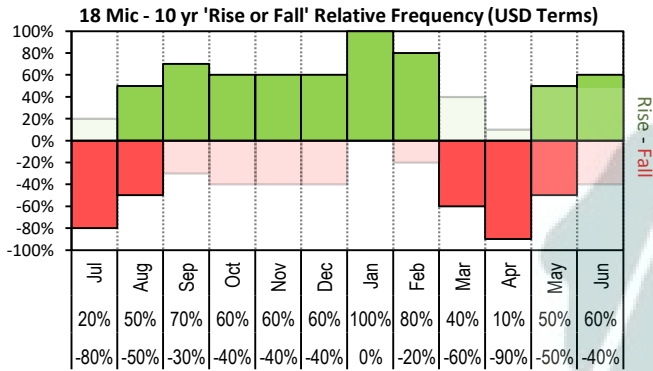
Table 7: NSW Production Statistics

		MAX	MIN	MAX GAIN	MAX REDUCTION												
2024-25																	
Statistical Devision, Area Code & Towns		Auction Bales (FH)	Micron	+/- YoY	Vmb %	+/- YoY	Yield % Sch Dry	+/- YoY	Length mm	+/- YoY	Strength Nkt	+/- YoY	Ave Price c/kg				
Northern	N02 Tenterfield, Glen Innes	5,110	18.8	-0.8	2.1	0.5	70.5	-0.5	84	2.8	40	-2.6	1016				
	N03 Guyra	36,593	20.2	-0.7	2.2	0.4	66.0	-2.4	83	1.3	37	-3.4	926				
	N04 Inverell	3,277	19.0	0.4	3.7	0.4	67.4	-0.5	87	3.6	36	-2.6	846				
	N05 Armidale	543	19.2	0.6	3.3	-1.0	69.8	1.5	85	0.9	38	-0.8	889				
	N06 Tamworth, Gunnedah, Quirindi	4,430	20.3	-0.1	4.2	0.2	66.2	-1.2	85	1.8	41	-0.2	802				
	N07 Moree	2,863	19.5	0.5	5.4	-0.4	60.2	-1.1	91	5.6	37	-0.5	668				
	N08 Narrabri	2,091	19.7	0.7	4.6	-1.2	63.5	0.6	86	4.9	41	-0.2	740				
	North Western & Far West	N09 Cobar, Bourke, Wanaaring	7,005	19.5	0.1	4.7	-0.4	59.4	0.5	90	2.7	38	-1.7	688			
N12 Walgett		8,652	19.3	0.0	6.4	-1.4	60.1	1.0	90	4.4	36	-2.2	676				
N13 Nyngan		16,258	19.6	0.1	6.9	-0.2	59.3	-0.9	89	2.6	39	0.9	659				
N14 Dubbo, Narromine		17,475	21.5	0.5	4.3	0.0	62.5	-0.5	87	2.9	39	0.5	590				
N16 Dunedoo		5,160	20.5	0.4	3.8	0.4	65.8	-0.1	85	1.8	39	1.1	714				
N17 Mudgee, Wellington, Gulgong		18,133	19.9	0.4	2.7	0.0	67.4	-0.5	85	3.6	40	-0.7	847				
N33 Coonabarabran		2,372	20.1	-0.3	4.3	0.3	65.4	-0.3	87	2.4	38	0.1	717				
N34 Coonamble		6,020	20.3	0.2	5.8	0.9	62.3	-0.7	88	2.0	39	2.3	664				
N36 Gilgandra, Gulargambone		5,501	21.2	0.2	4.0	0.0	63.7	-0.7	89	3.5	39	-0.4	647				
N40 Brewarrina		5,860	19.8	0.2	5.8	-0.9	59.6	-0.2	91	3.7	39	-0.2	687				
N10 Wilcannia, Broken Hill	17,987	20.1	0.0	4.1	-0.3	57.7	0.4	93	2.7	37	0.1	660					
Central West	N15 Forbes, Parkes, Cowra	32,103	20.6	0.1	3.1	-0.2	64.6	-0.3	88	3.6	38	-1.6	693				
	N18 Lithgow, Oberon	1,860	22.2	0.0	1.5	0.0	70.8	-0.3	90	5.0	39	-3.6	824				
	N19 Orange, Bathurst	44,594	21.8	-0.1	2.2	0.2	68.3	-0.8	88	3.0	38	-2.0	730				
	N25 West Wyalong	17,602	19.8	-0.1	2.8	-0.3	63.5	-0.3	91	3.5	37	-1.4	730				
	N35 Condobolin, Lake Cargelligo	7,253	20.7	0.3	5.1	-0.8	61.0	0.4	90	6.4	40	1.4	611				
Murrumbidgee	N26 Cootamundra, Temora	22,208	20.9	-0.3	1.8	0.0	64.5	-1.9	90	0.9	36	-2.2	678				
	N27 Adelong, Gundagai	11,481	20.7	-1.0	2.2	0.4	66.2	-2.6	89	0.6	36	-2.6	746				
	N29 Wagga, Narrandera	30,930	21.4	-0.3	2.0	-0.1	63.5	-1.8	88	-0.7	35	-2.9	647				
	N37 Griffith, Hillston	10,676	21.0	-0.3	4.0	-1.3	63.0	1.4	88	5.0	41	-1.6	651				
	N39 Hay, Coleambally	18,427	20.0	0.0	4.2	-2.1	63.4	1.4	88	1.6	41	-0.5	740				
Murray	N11 Wentworth, Balranald	12,070	20.8	0.2	5.3	-1.2	60.2	1.6	94	1.5	38	1.6	635				
	N28 Albury, Corowa, Holbrook	27,445	21.0	-0.5	1.5	0.0	64.4	-2.9	85	-1.8	35	-3.9	725				
	N31 Deniliquin	21,720	20.5	-0.2	3.2	-1.0	64.9	0.3	90	2.5	37	-3.2	710				
	N38 Finley, Berrigan, Jerilderie	8,139	20.0	0.1	2.6	-1.0	64.6	0.1	87	2.1	40	-0.5	762				
South Eastern	N23 Goulburn, Young, Yass	95,490	19.8	-0.2	1.7	0.2	68.3	-1.3	88	0.9	37	-1.5	851				
	N24 Monaro (Cooma, Bombala)	28,406	19.2	-0.3	1.4	-0.2	70.1	-0.4	90	1.1	36	-0.8	911				
	N32 A.C.T.	214	18.8	1.2	1.8	0.6	67.1	-4.6	88	2.1	35	-3.9	871				
	N43 South Coast (Bega)	279	18.4	-0.2	1.1	0.3	74.3	-0.2	86	-2.1	40	-4.3	1099				
NSW	AWEX Sale Statistics 24-25	612,559	20.4	-0.2	2.8	-0.1	65.3	-0.9	88	1.8	38	-1.3	773				

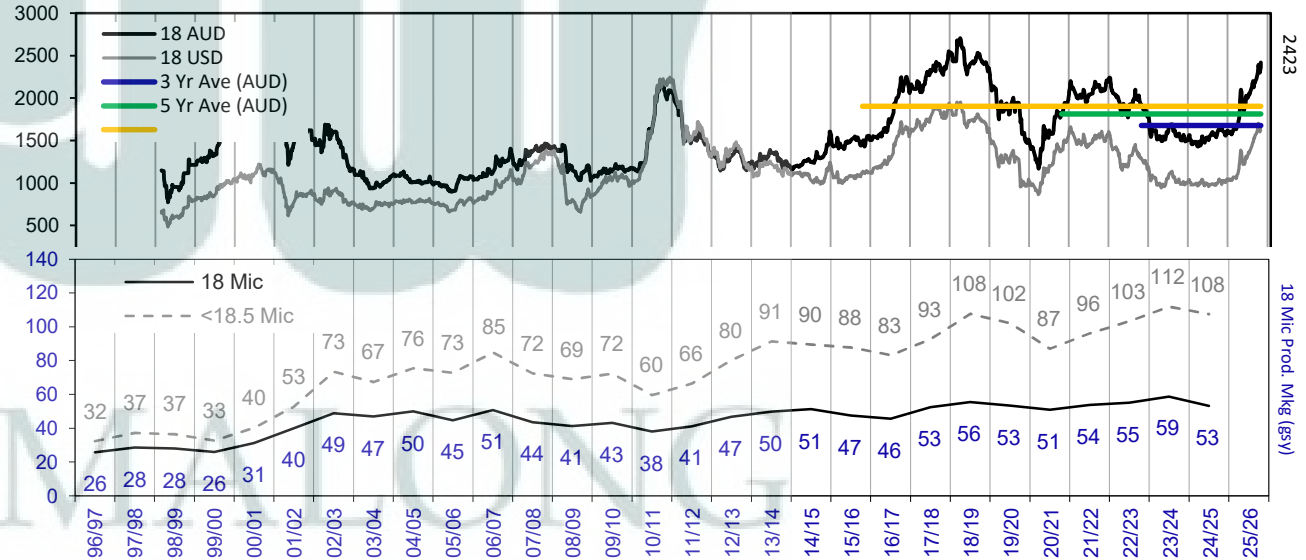
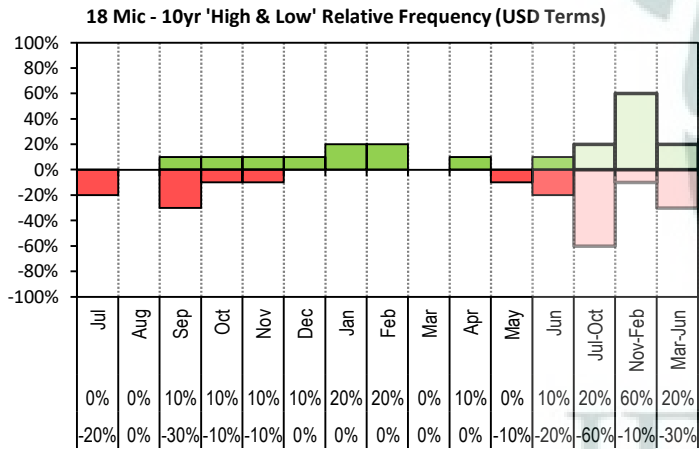
AWTA Mthly Key Test Data			Bales Tested	+/- YoY	Micron	+/- YoY	VMB	+/- YoY	Yld	+/- YoY	Lth	+/- YoY	Nkt	+/- YoY	POBM +/-
AUSTRALIA	Current Season	February Y.T.D	144,668	-8,250	21.3	0.3	2.3	0.0	63.6	-0.5	87	1.1	31	0.3	49 -0.9
	Previous Seasons	2024-25	1,017,318	-105,659	0.0	-20.5	0.0	-2.2	0.0	-65.0	0	-88.0	0	-34.0	0 -46.0
		2023-24	1,122,977	-125674	20.5	-0.3	2.2	-0.1	65.0	-0.9	88	0.0	34	-1.0	46 -4.0
		2022-23	1,248,651	7769	20.8	0.0	2.3	0.1	65.9	-0.6	88	-2.0	35	0.0	50 -1.0
	Y.T.D.	2022-23	1,240,882	27,809	20.8	0.0	2.2	0.0	66.5	1.0	90	1.1	35	-0.1	49 -0.1

Average Price of Australian Wool

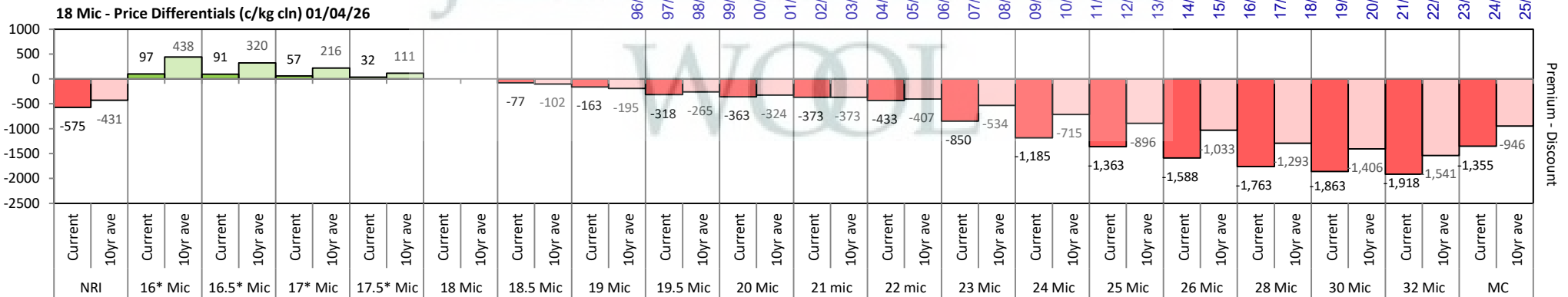


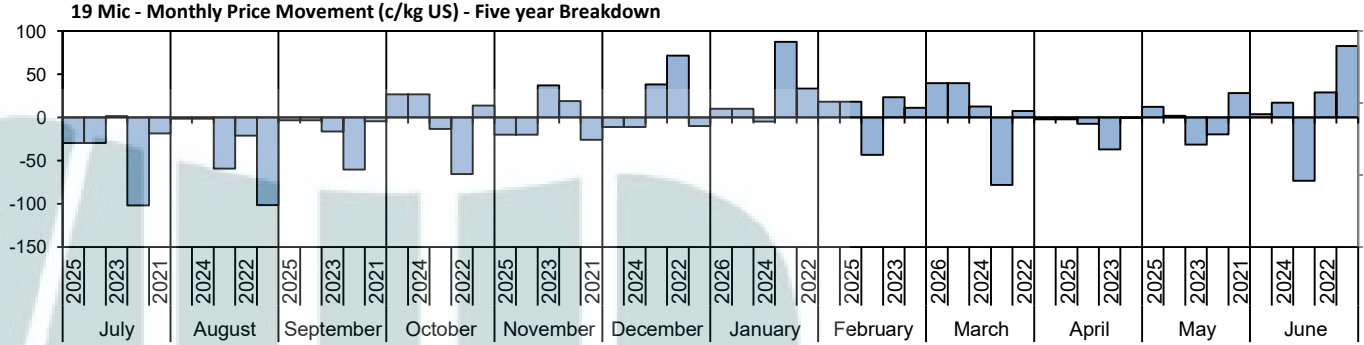
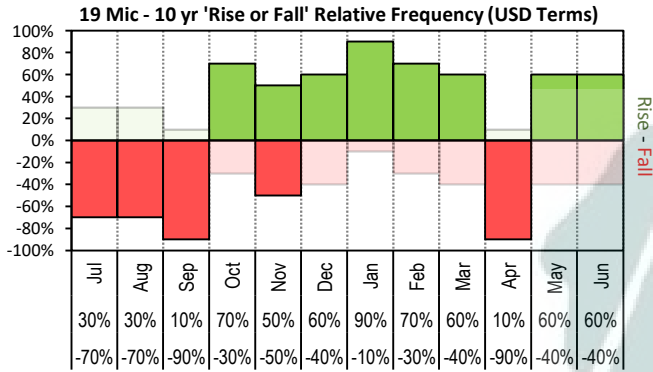


The above 'Rise or Fall' graph, shows how often the market has risen or fallen in a given month over the past 10 years, it does not show the extent of the movement only the frequency of direction. The 'Monthly Price Movement' graph shows the extent of movement for each month, for the past 5 years.

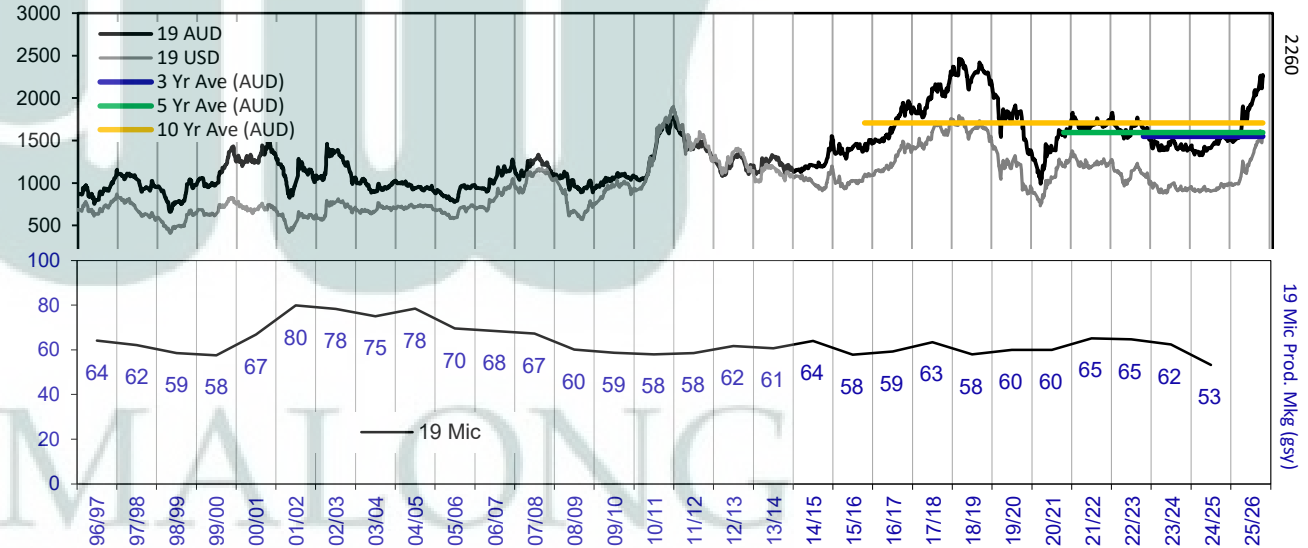
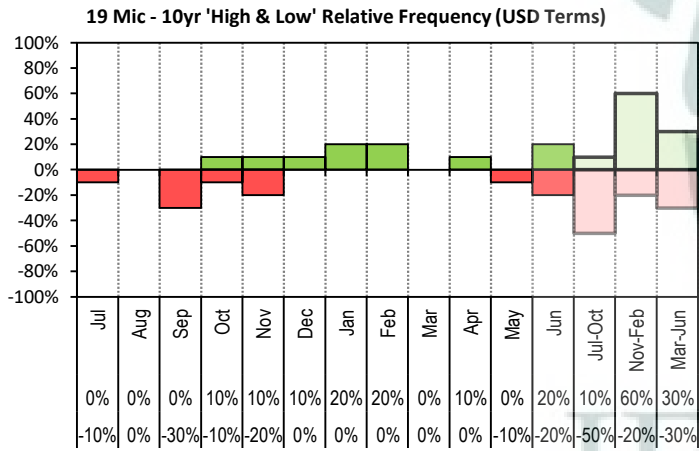


The above graph, shows how often the '12 month high & low' have been achieved for a given month over the past 10 years. It is not a measure of probability.

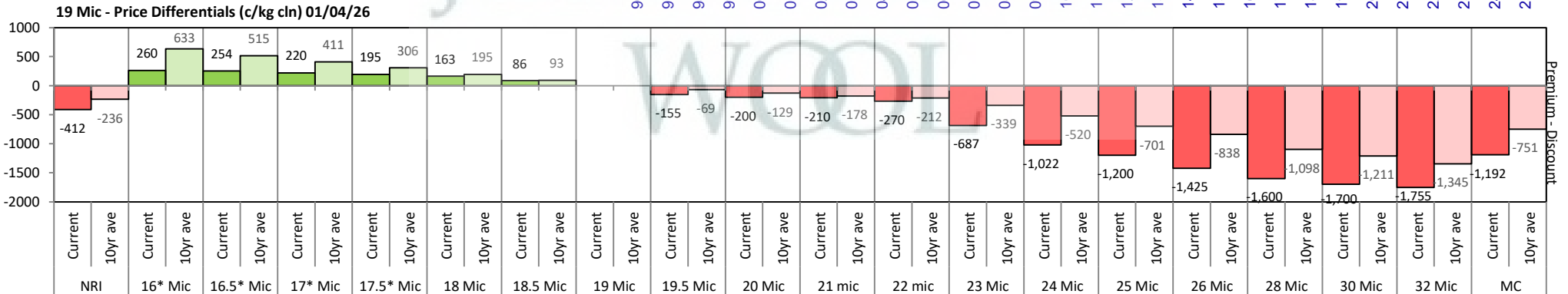


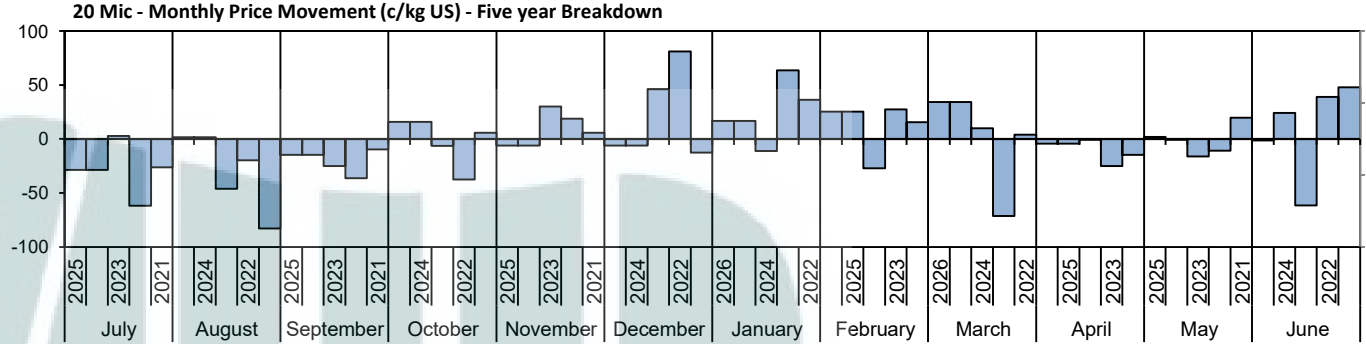
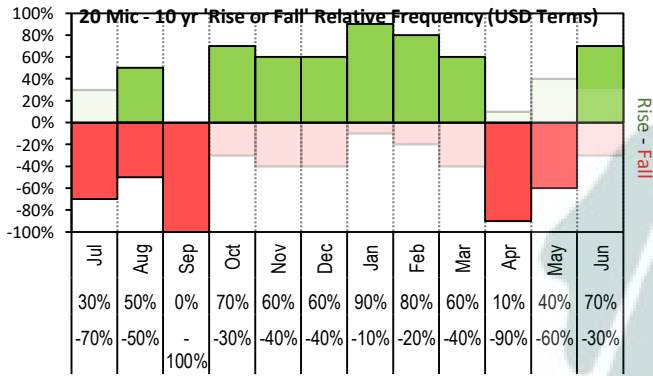


The above 'Rise or Fall' graph, shows how often the market has risen or fallen in a given month over the past 10 years, it does not show the extent of the movement only the frequency of direction. The 'Monthly Price Movement' graph shows the extent of movement for each month, for the past 5 years.

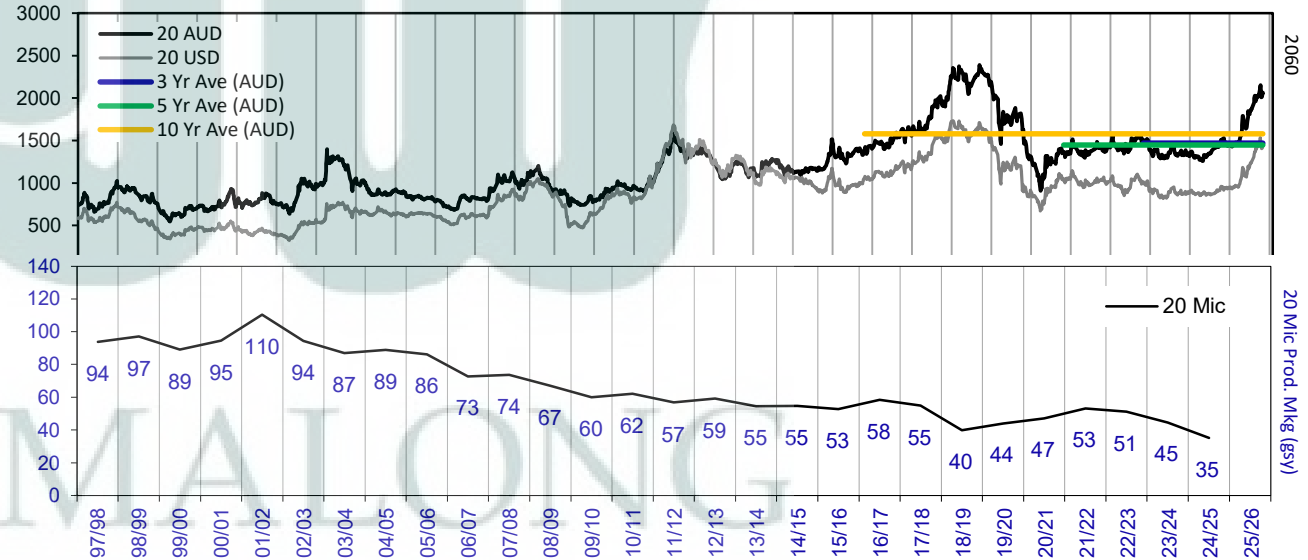
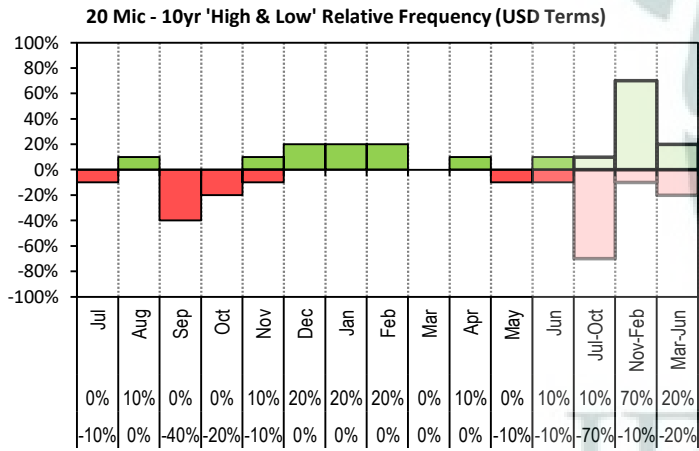


The above graph, shows how often the '12 month high & low' have been achieved for a given month over the past 10 years. It is not a measure of probability.

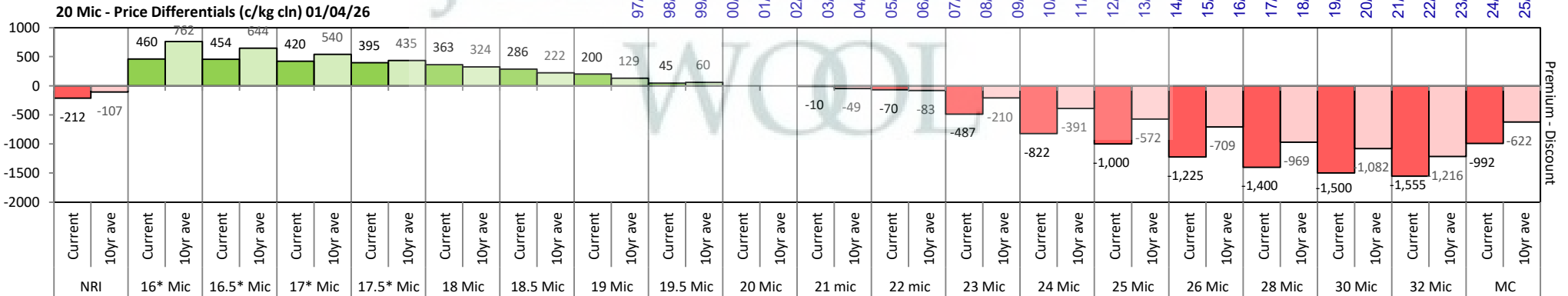


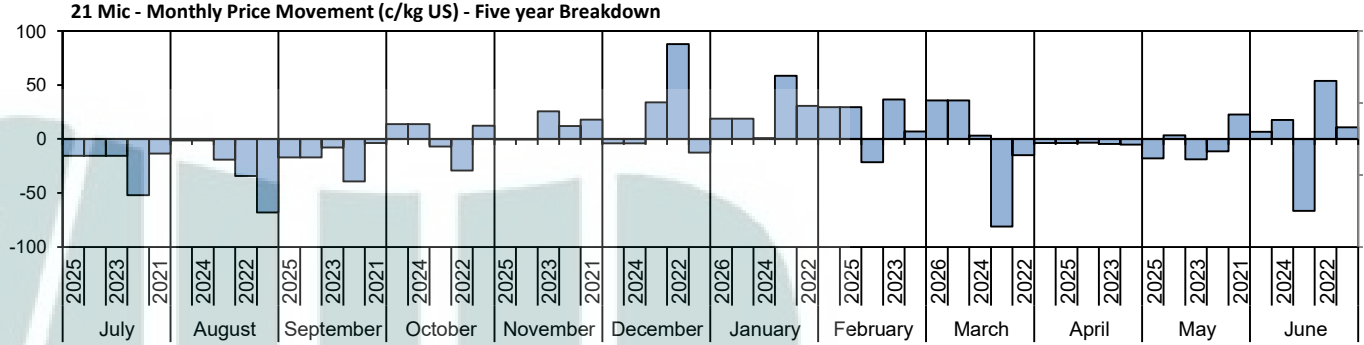
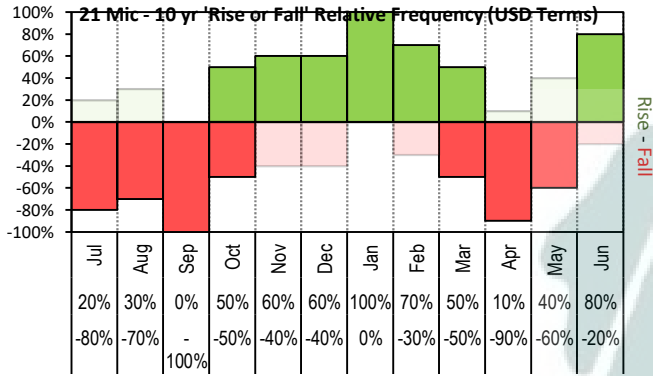


The above 'Rise or Fall' graph, shows how often the market has risen or fallen in a given month over the past 10 years, it does not show the extent of the movement only the frequency of direction. The 'Monthly Price Movement' graph shows the extent of movement for each month, for the past 5 years.

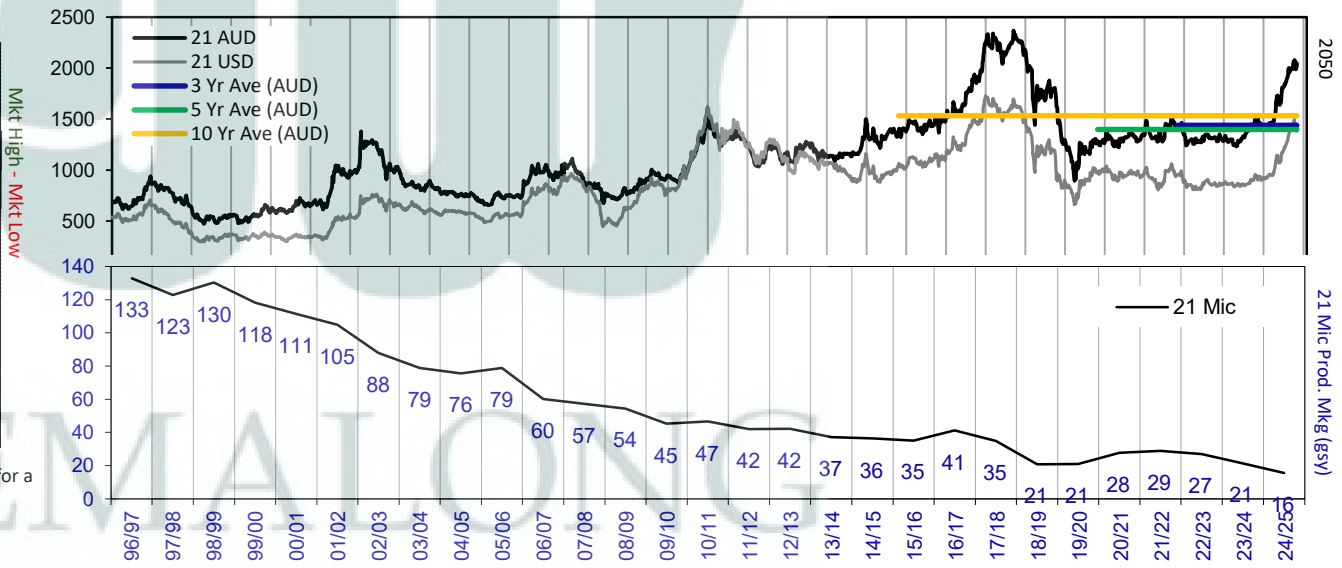
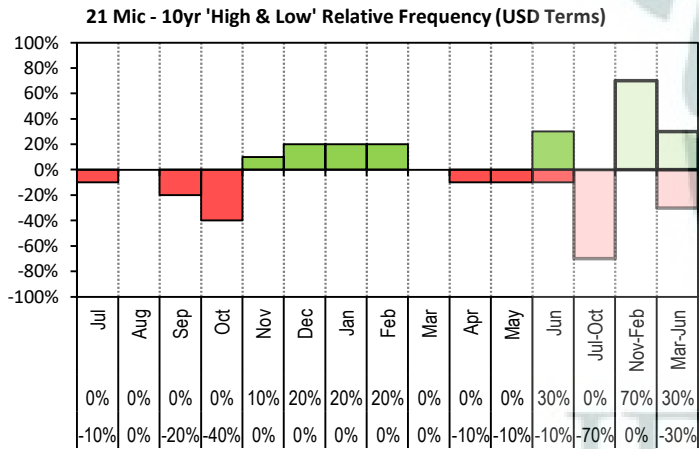


The above graph, shows how often the '12 month high & low' have been achieved for a given month over the past 10 years. It is not a measure of probability.

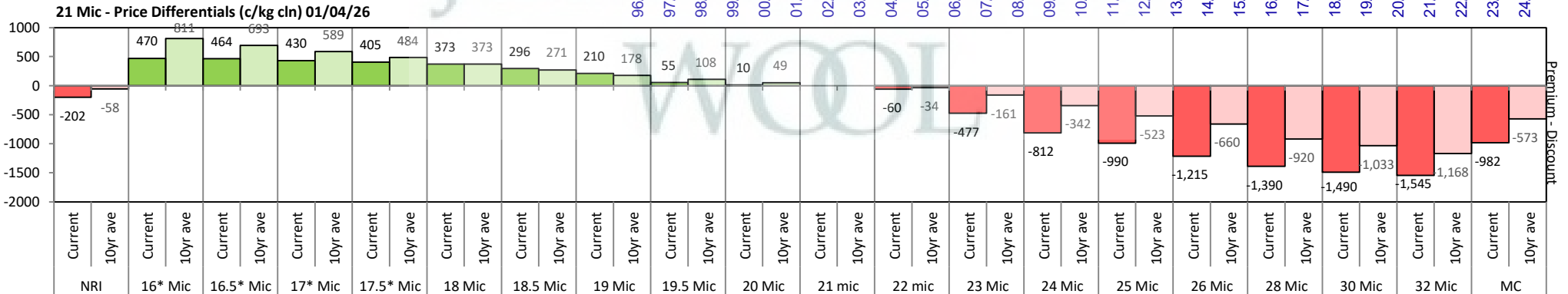


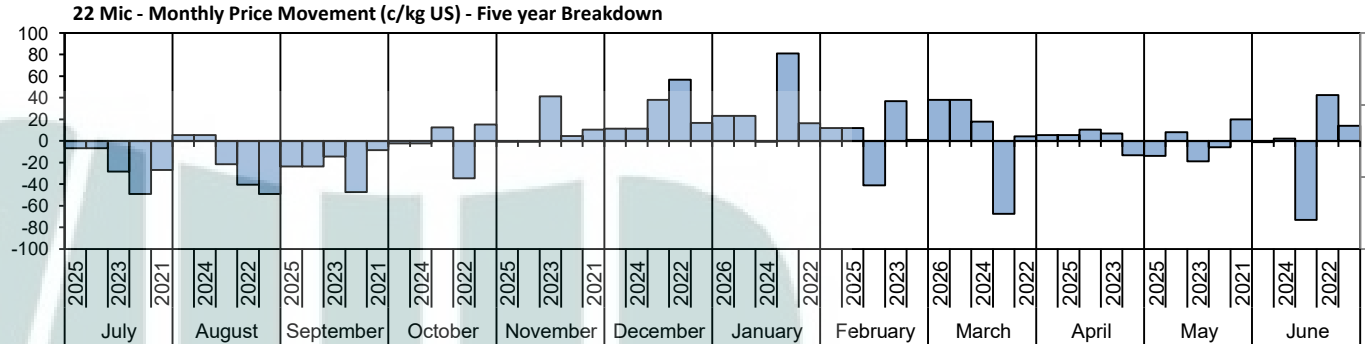
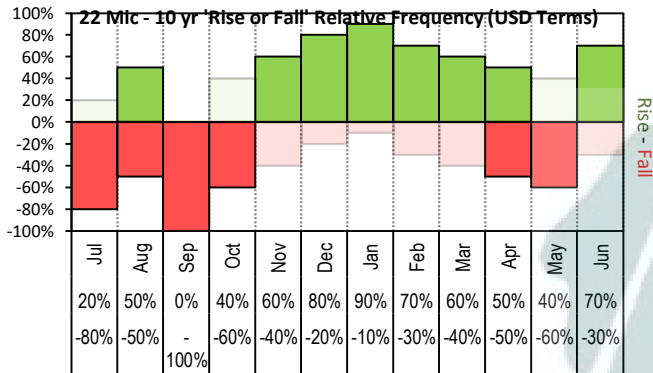


The above 'Rise or Fall' graph, shows how often the market has risen or fallen in a given month over the past 10 years, it does not show the extent of the movement only the frequency of direction. The 'Monthly Price Movement' graph shows the extent of movement for each month, for the past 5 years.

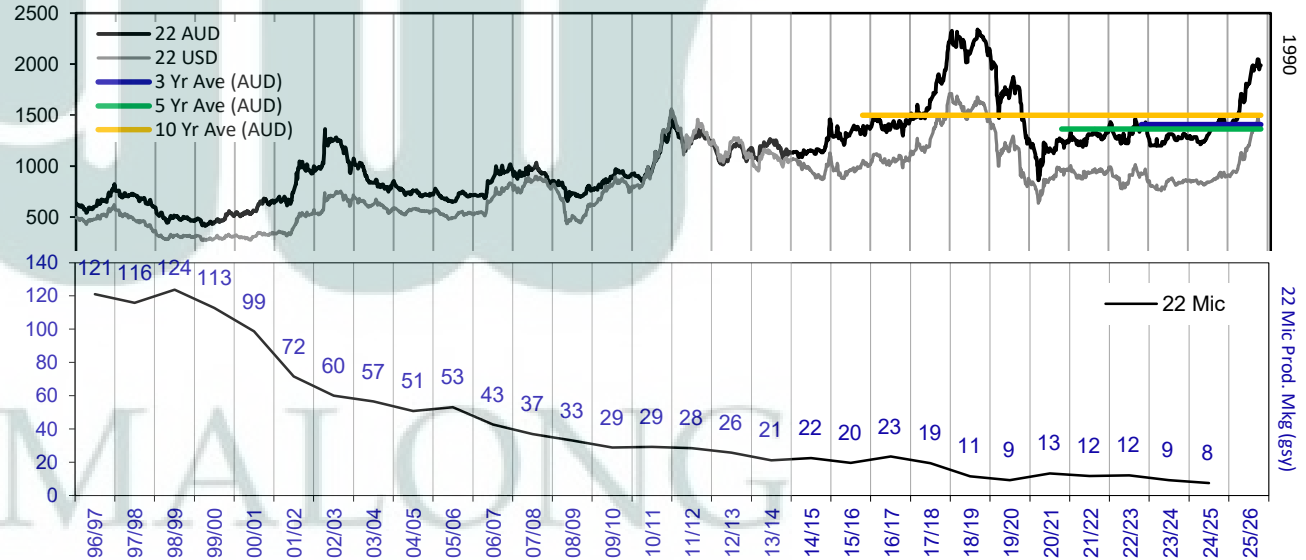
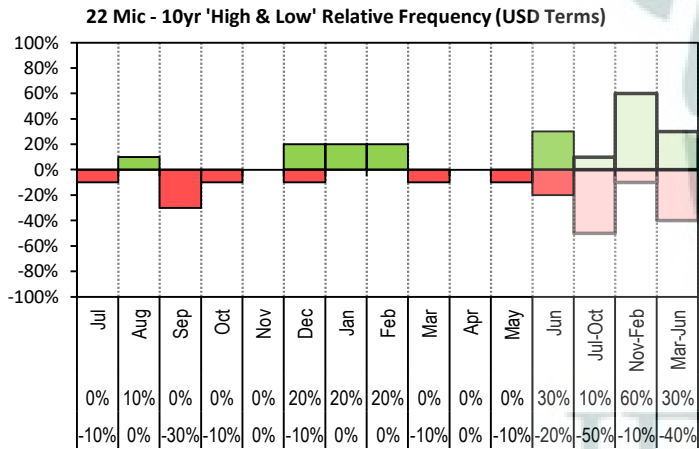


The above graph, shows how often the '12 month high & low' have been achieved for a given month over the past 10 years. It is not a measure of probability.

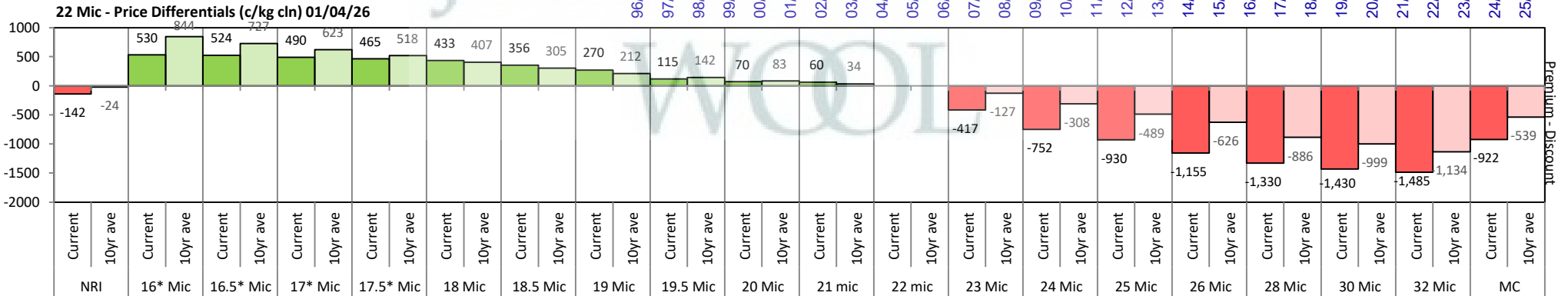


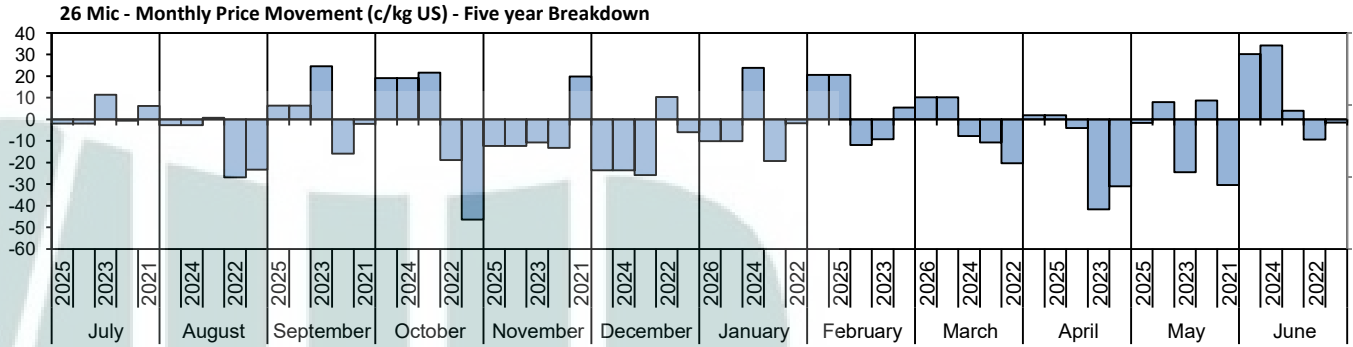
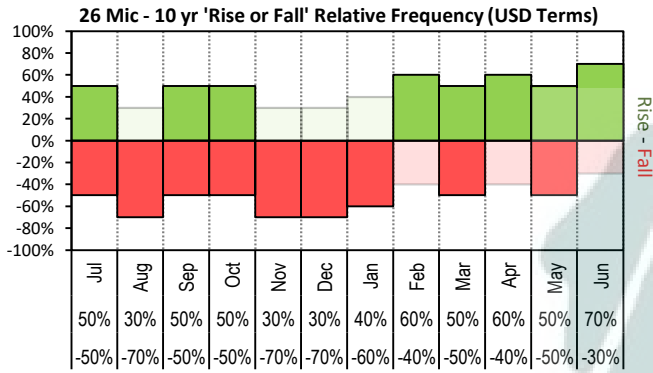


The above 'Rise or Fall' graph, shows how often the market has risen or fallen in a given month over the past 10 years, it does not show the extent of the movement only the frequency of direction. The 'Monthly Price Movement' graph shows the extent of movement for each month, for the past 5 years.

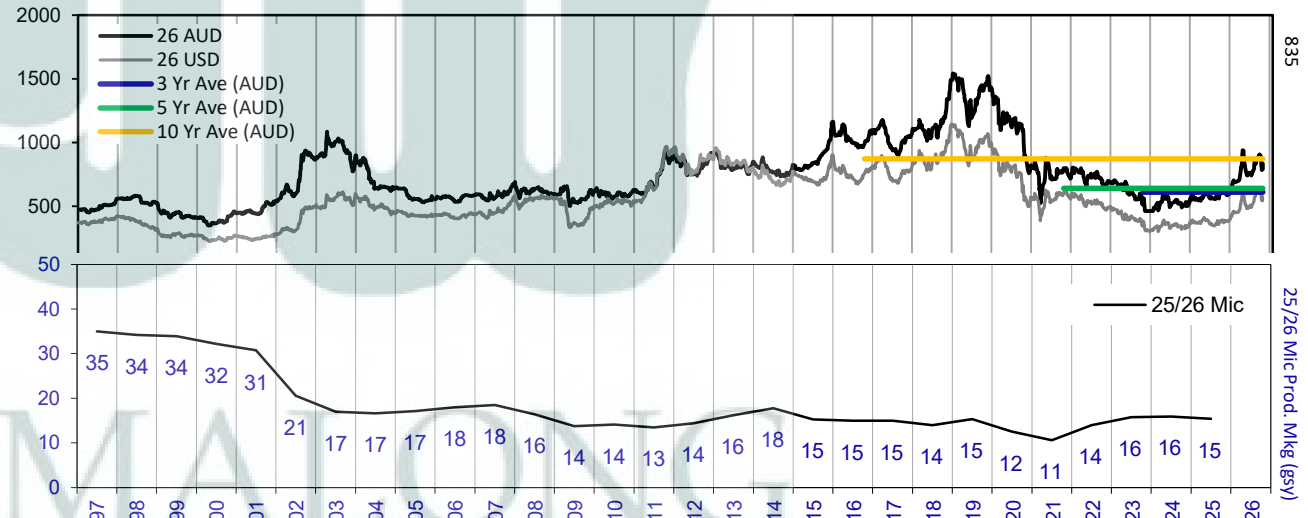
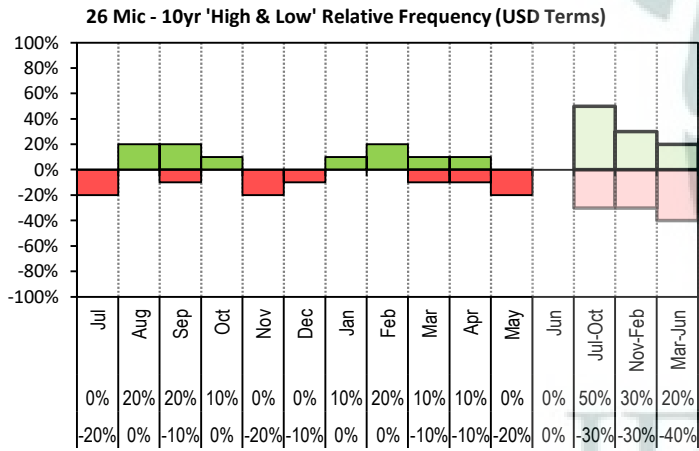


The above graph, shows how often the '12 month high & low' have been achieved for a given month over the past 10 years. It is not a measure of probability.

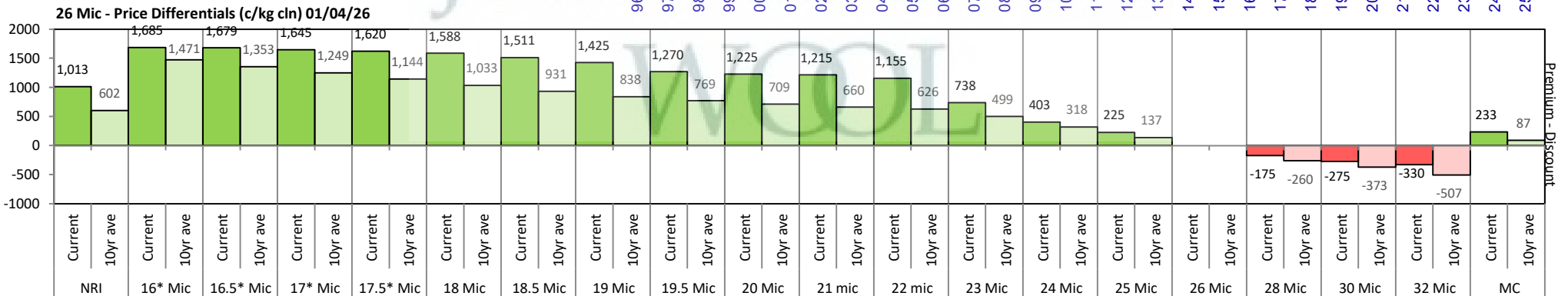


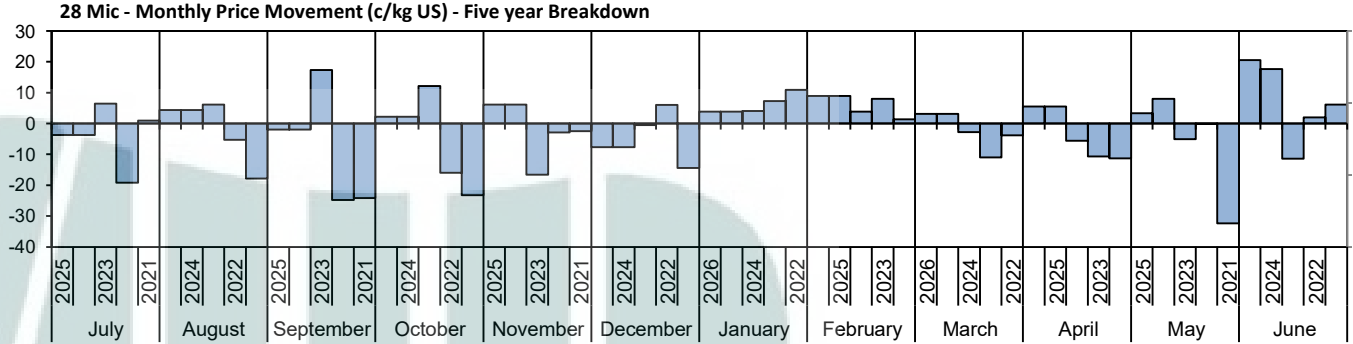
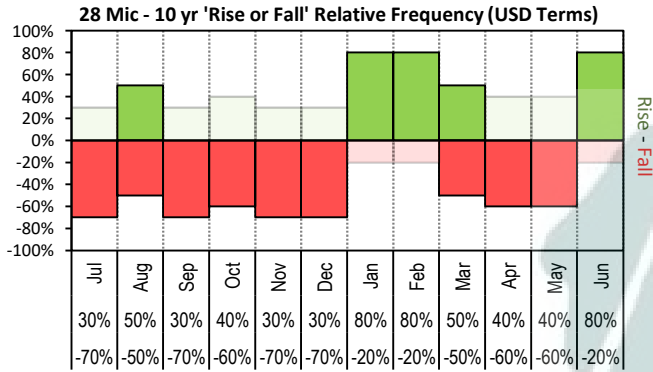


The above 'Rise or Fall' graph, shows how often the market has risen or fallen in a given month over the past 10 years, it does not show the extent of the movement only the frequency of direction. The 'Monthly Price Movement' graph shows the extent of movement for each month, for the past 5 years.

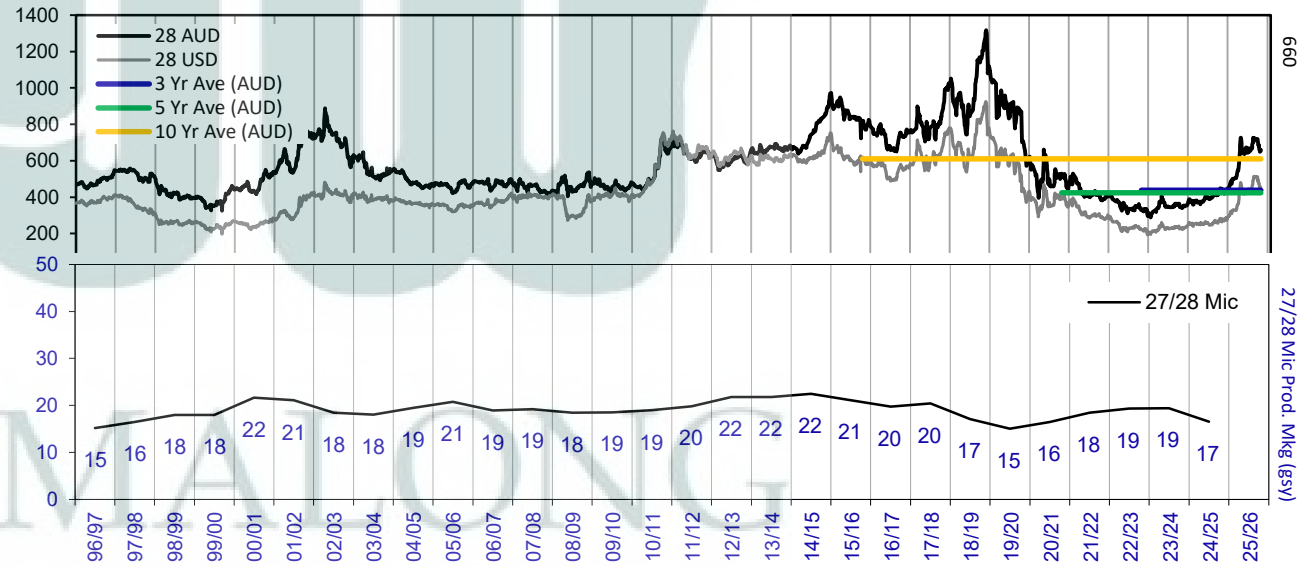
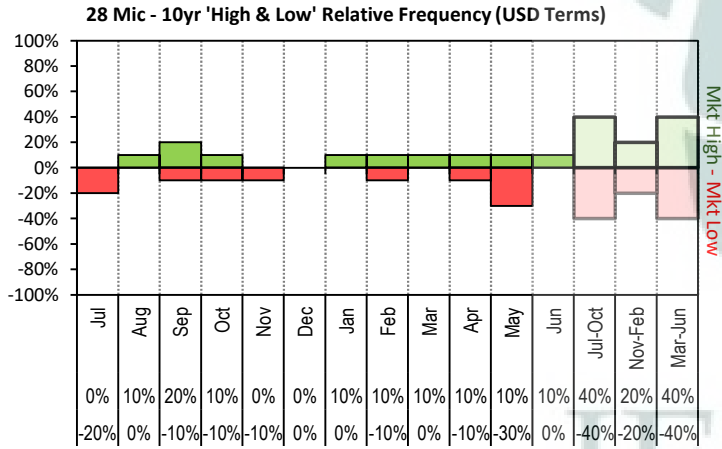


The above graph, shows how often the '12 month high & low' have been achieved for a given month over the past 10 years. It is not a measure of probability.

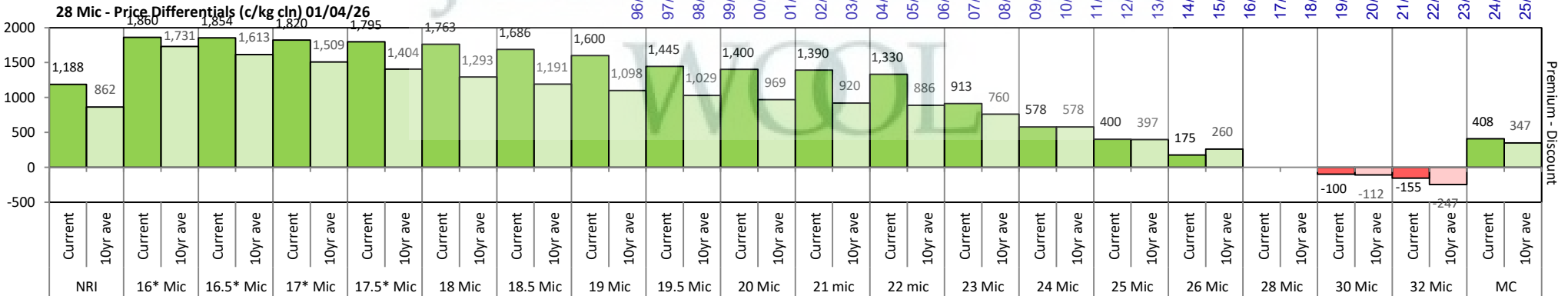


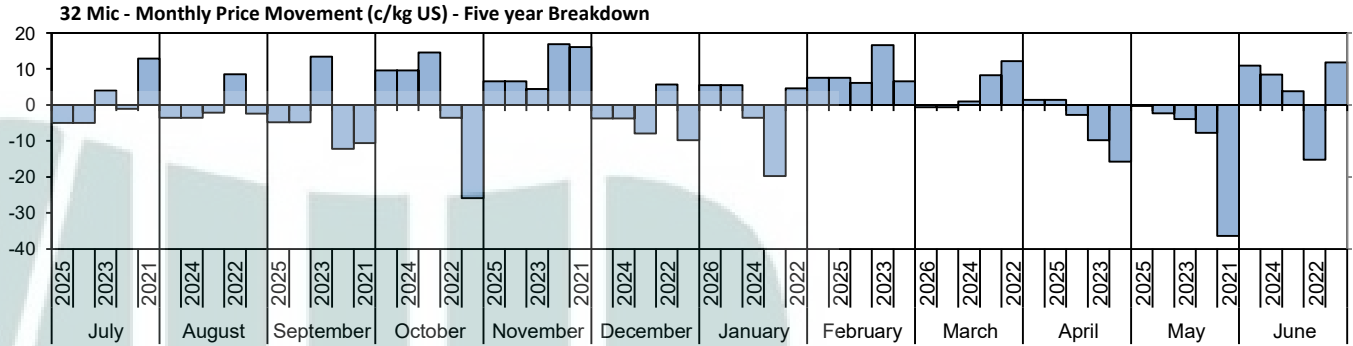
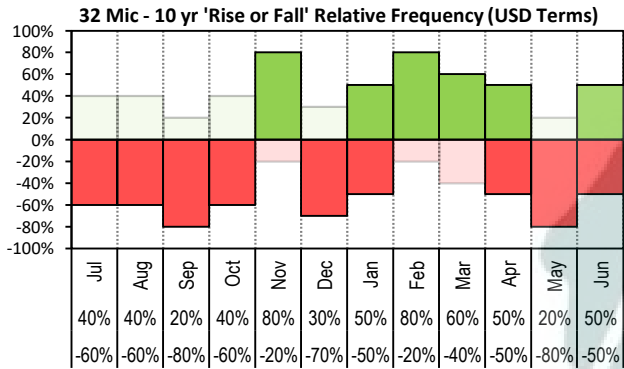


The above 'Rise or Fall' graph, shows how often the market has risen or fallen in a given month over the past 10 years, it does not show the extent of the movement only the frequency of direction. The 'Monthly Price Movement' graph shows the extent of movement for each month, for the past 5 years.

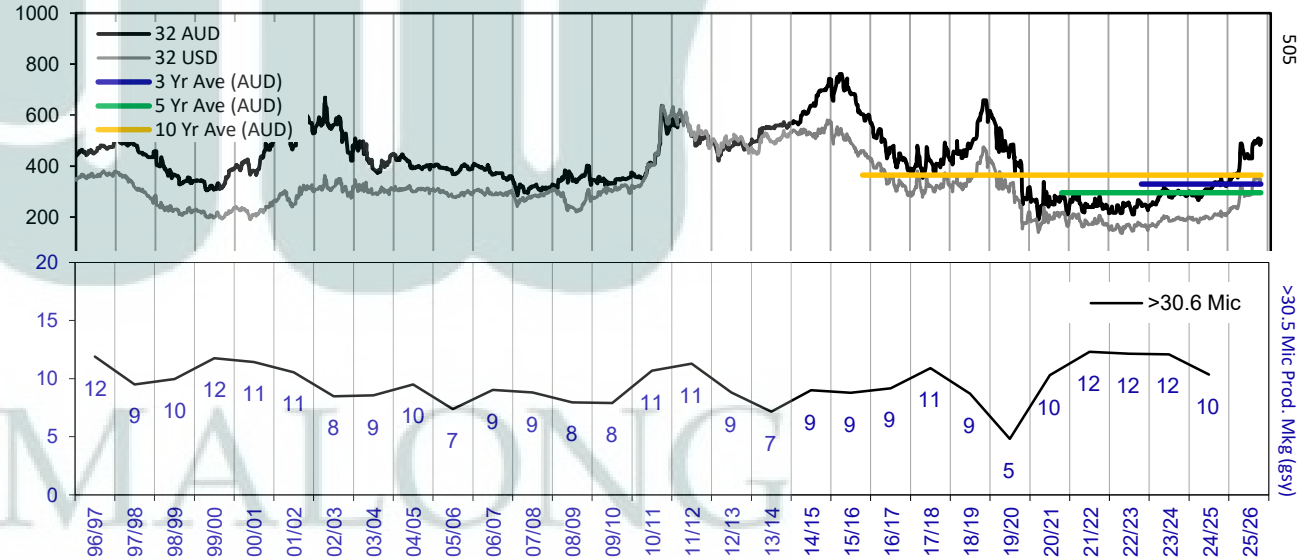
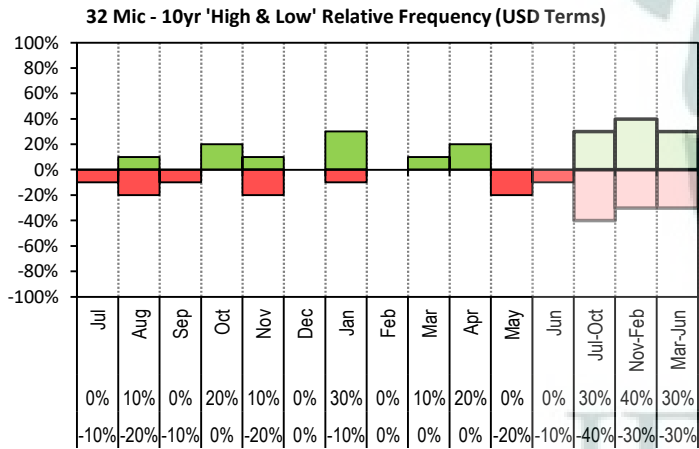


The above graph, shows how often the '12 month high & low' have been achieved for a given month over the past 10 years. It is not a measure of probability.

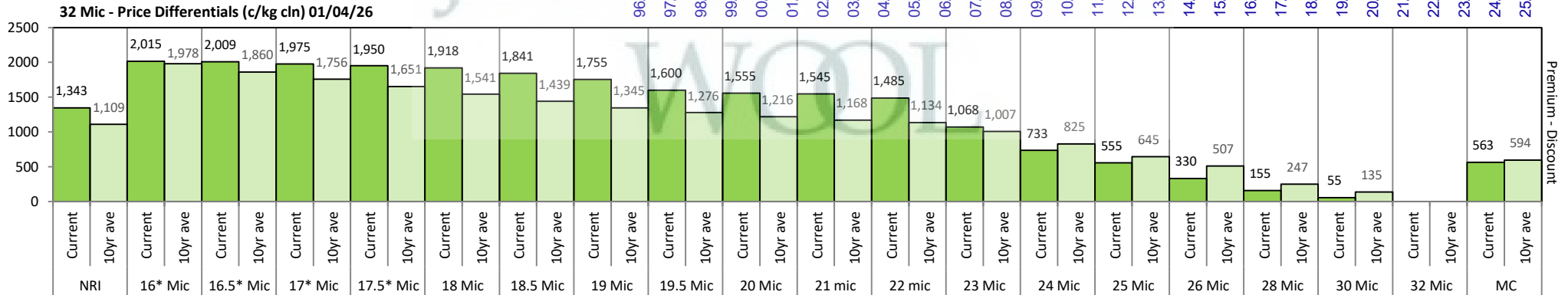


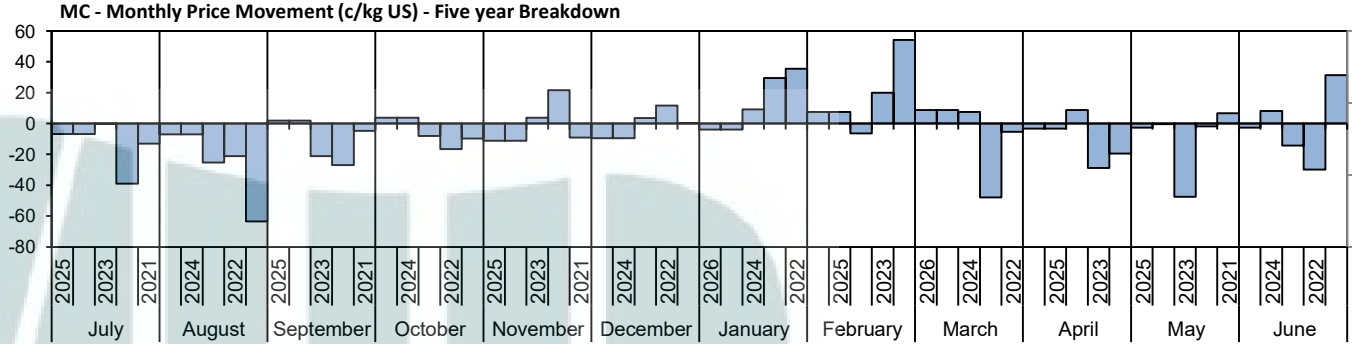
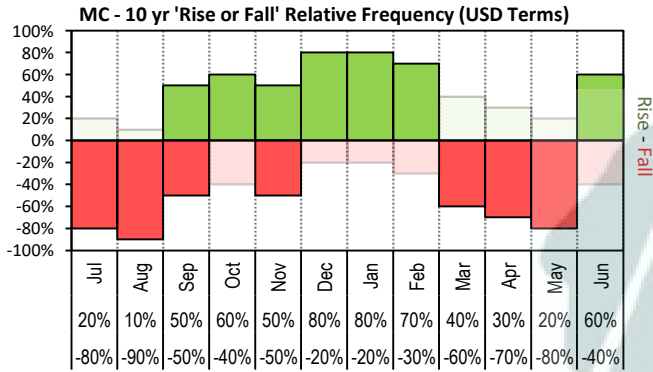


The above 'Rise or Fall' graph, shows how often the market has risen or fallen in a given month over the past 10 years, it does not show the extent of the movement only the frequency of direction. The 'Monthly Price Movement' graph shows the extent of movement for each month, for the past 5 years.

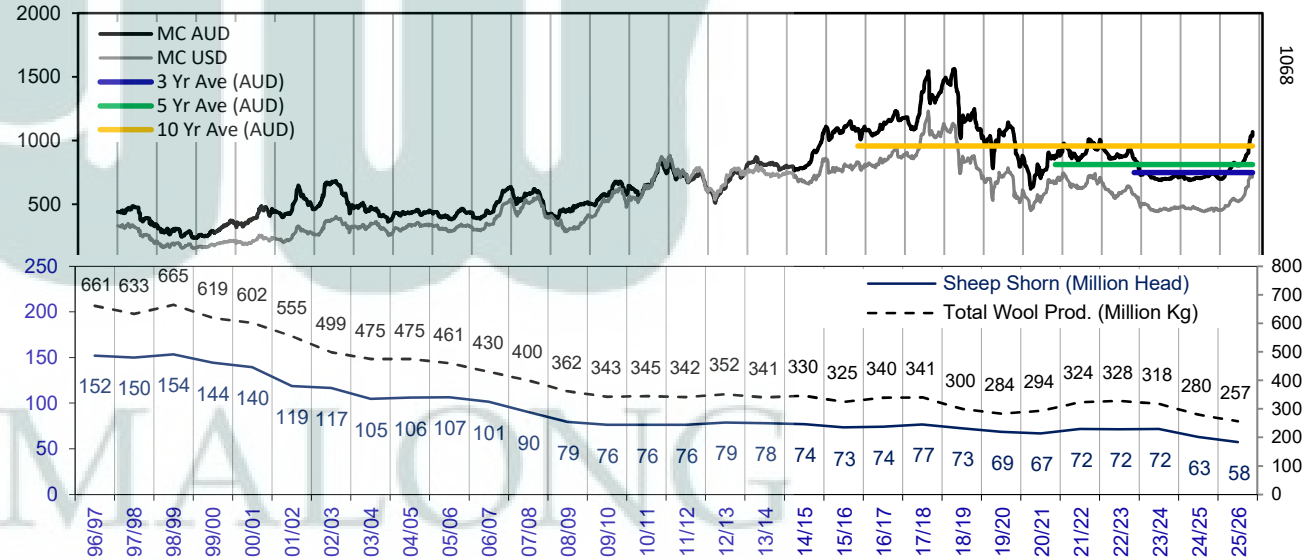
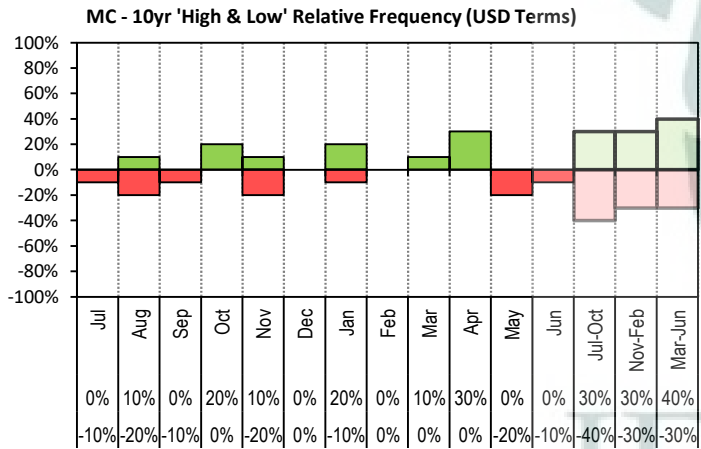


The above graph, shows how often the '12 month high & low' have been achieved for a given month over the past 10 years. It is not a measure of probability.

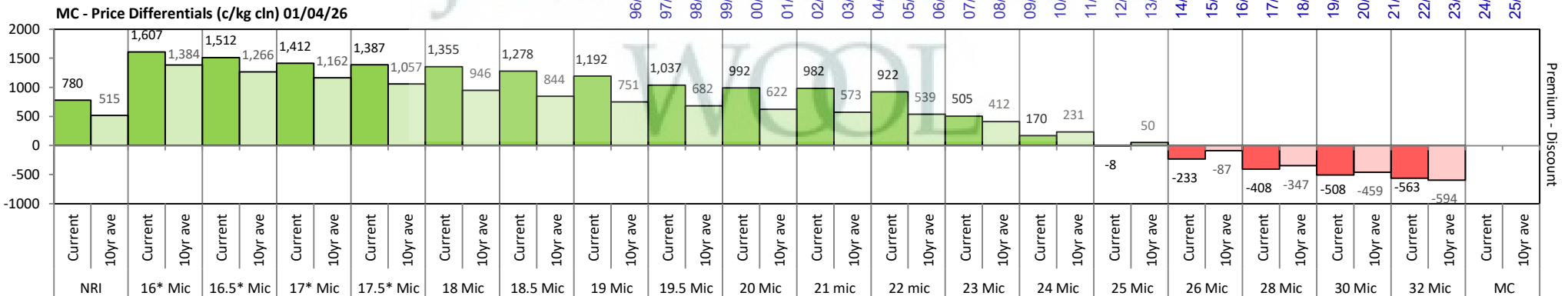




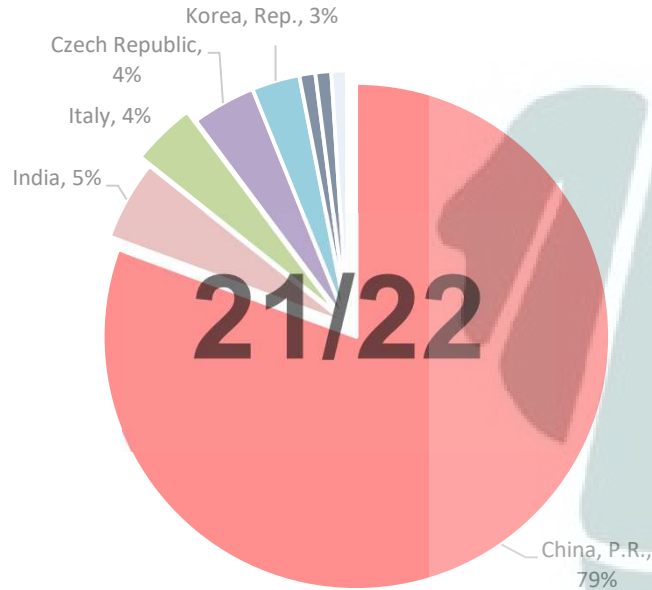
The above 'Rise or Fall' graph, shows how often the market has risen or fallen in a given month over the past 10 years, it does not show the extent of the movement only the frequency of direction. The 'Monthly Price Movement' graph shows the extent of movement for each month, for the past 5 years.



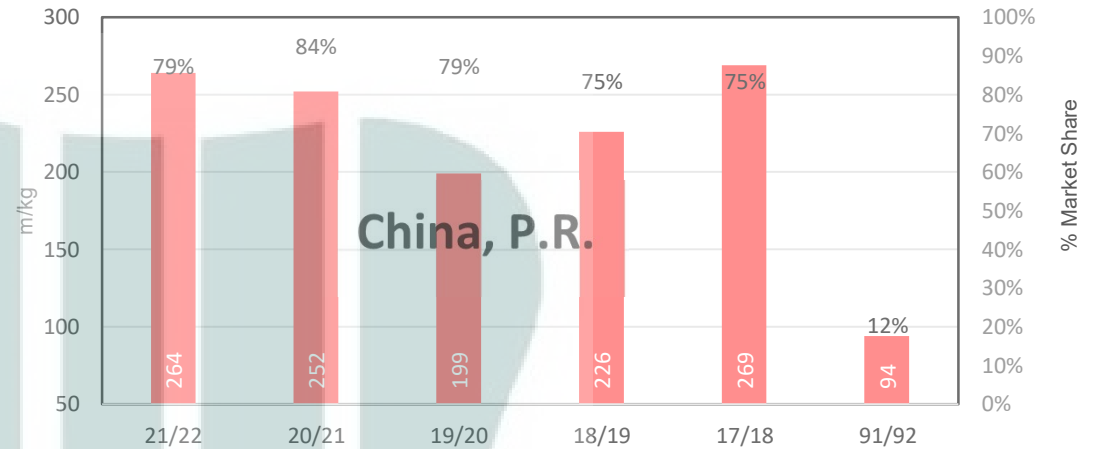
The above graph, shows how often the '12 month high & low' have been achieved for a given month over the past 10 years. It is not a measure of probability.



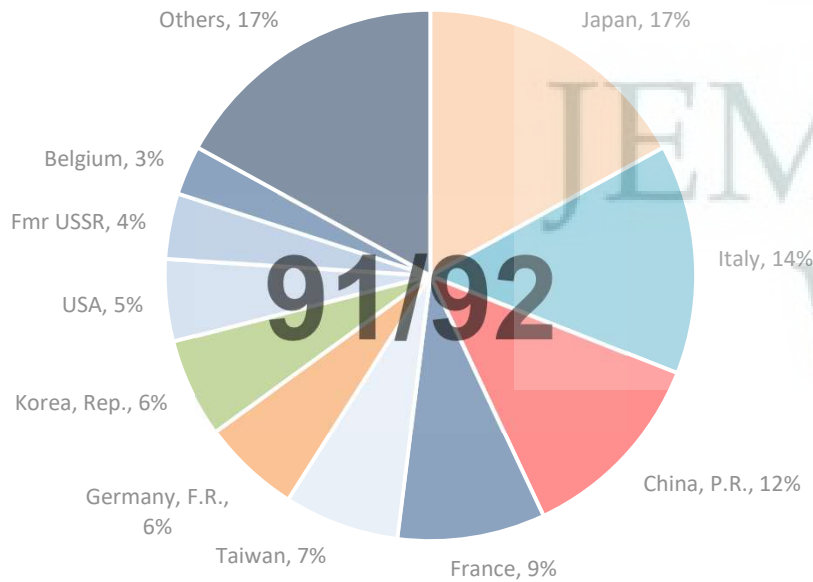
21/22 - Export Snap Shot (335.46 m/kg greasy equivalent)



China, P.R. (Largest Market Share)



91/92 - Export Snap Shot (784.7 m/kg greasy equivalent)



Seasonal Change m/kg

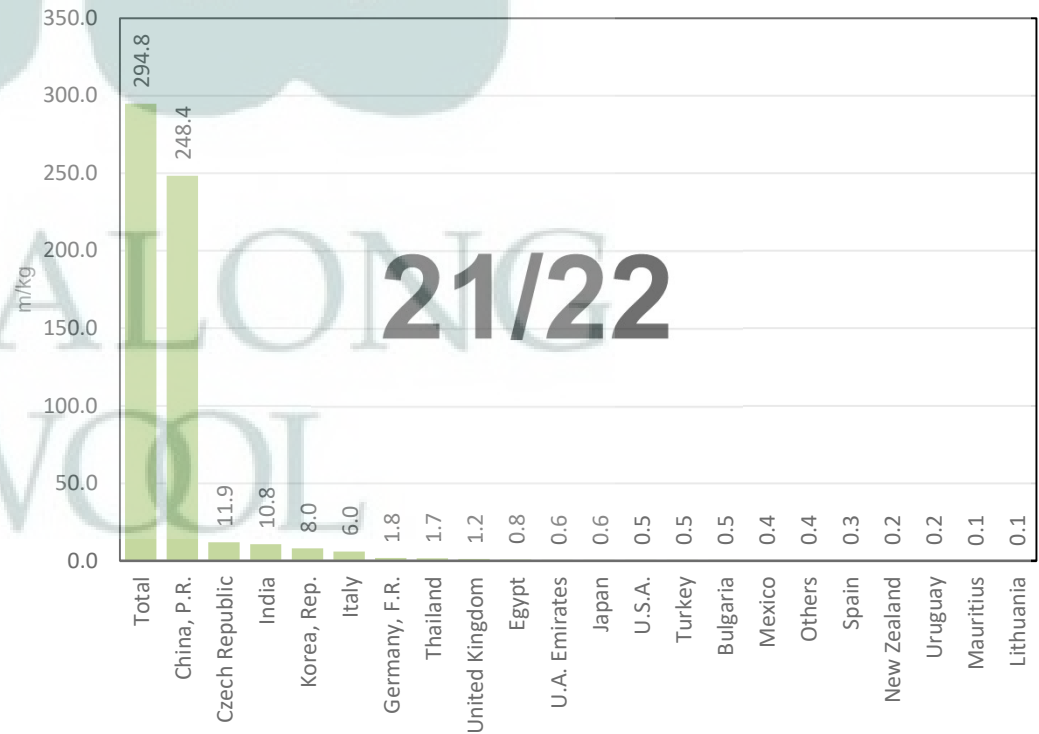


Table 8: Returns pr head for skirted fleece wool.

Skirted FLC Weight 9 Kg		Micron																	
		16	16.5	17	17.5	18	18.5	19	19.5	20	21	22	23	24	25	26	28	30	32
Yield (Sch Dry)	25% Current	\$57	\$57	\$56	\$55	\$55	\$53	\$51	\$47	\$46	\$46	\$45	\$35	\$28	\$24	\$19	\$15	\$13	\$11
	10yr ave.	\$53	\$50	\$48	\$45	\$43	\$41	\$38	\$37	\$36	\$34	\$34	\$31	\$27	\$23	\$20	\$14	\$11	\$8
	30% Current	\$68	\$68	\$67	\$66	\$65	\$63	\$61	\$57	\$56	\$55	\$54	\$42	\$33	\$29	\$23	\$18	\$15	\$14
	10yr ave.	\$63	\$60	\$57	\$54	\$51	\$49	\$46	\$44	\$43	\$41	\$40	\$37	\$32	\$27	\$24	\$17	\$14	\$10
	35% Current	\$79	\$79	\$78	\$77	\$76	\$74	\$71	\$66	\$65	\$65	\$63	\$50	\$39	\$33	\$26	\$21	\$18	\$16
	10yr ave.	\$74	\$70	\$67	\$64	\$60	\$57	\$54	\$52	\$50	\$48	\$47	\$43	\$37	\$32	\$27	\$19	\$16	\$11
	40% Current	\$91	\$91	\$89	\$88	\$87	\$84	\$81	\$76	\$74	\$74	\$72	\$57	\$45	\$38	\$30	\$24	\$20	\$18
	10yr ave.	\$84	\$80	\$76	\$73	\$69	\$65	\$62	\$59	\$57	\$55	\$54	\$49	\$43	\$36	\$31	\$22	\$18	\$13
	45% Current	\$102	\$102	\$100	\$99	\$98	\$95	\$92	\$85	\$83	\$83	\$81	\$64	\$50	\$43	\$34	\$27	\$23	\$20
	10yr ave.	\$95	\$90	\$86	\$82	\$77	\$73	\$69	\$66	\$64	\$62	\$61	\$56	\$48	\$41	\$35	\$25	\$20	\$15
	50% Current	\$113	\$113	\$112	\$110	\$109	\$106	\$102	\$95	\$93	\$92	\$90	\$71	\$56	\$48	\$38	\$30	\$25	\$23
	10yr ave.	\$105	\$100	\$95	\$91	\$86	\$81	\$77	\$74	\$71	\$69	\$67	\$62	\$54	\$45	\$39	\$28	\$23	\$16
	55% Current	\$125	\$124	\$123	\$122	\$120	\$116	\$112	\$104	\$102	\$101	\$99	\$78	\$61	\$52	\$41	\$33	\$28	\$25
	10yr ave.	\$116	\$110	\$105	\$100	\$94	\$89	\$85	\$81	\$78	\$76	\$74	\$68	\$59	\$50	\$43	\$30	\$25	\$18
	60% Current	\$136	\$136	\$134	\$133	\$131	\$127	\$122	\$114	\$111	\$111	\$107	\$85	\$67	\$57	\$45	\$36	\$30	\$27
	10yr ave.	\$126	\$120	\$115	\$109	\$103	\$97	\$92	\$89	\$85	\$83	\$81	\$74	\$64	\$54	\$47	\$33	\$27	\$20
	65% Current	\$147	\$147	\$145	\$144	\$142	\$137	\$132	\$123	\$121	\$120	\$116	\$92	\$72	\$62	\$49	\$39	\$33	\$30
	10yr ave.	\$137	\$130	\$124	\$118	\$112	\$106	\$100	\$96	\$93	\$90	\$88	\$80	\$70	\$59	\$51	\$36	\$29	\$21
	70% Current	\$159	\$158	\$156	\$155	\$153	\$148	\$142	\$133	\$130	\$129	\$125	\$99	\$78	\$67	\$53	\$42	\$35	\$32
10yr ave.	\$147	\$140	\$134	\$127	\$120	\$114	\$108	\$103	\$100	\$97	\$94	\$86	\$75	\$64	\$55	\$39	\$32	\$23	
75% Current	\$170	\$170	\$167	\$166	\$164	\$158	\$153	\$142	\$139	\$138	\$134	\$106	\$84	\$72	\$56	\$45	\$38	\$34	
10yr ave.	\$158	\$150	\$143	\$136	\$129	\$122	\$115	\$111	\$107	\$103	\$101	\$93	\$80	\$68	\$59	\$41	\$34	\$25	
80% Current	\$181	\$181	\$179	\$177	\$174	\$169	\$163	\$152	\$148	\$148	\$143	\$113	\$89	\$76	\$60	\$48	\$40	\$36	
10yr ave.	\$168	\$160	\$153	\$145	\$137	\$130	\$123	\$118	\$114	\$110	\$108	\$99	\$86	\$73	\$63	\$44	\$36	\$26	
85% Current	\$193	\$192	\$190	\$188	\$185	\$179	\$173	\$161	\$158	\$157	\$152	\$120	\$95	\$81	\$64	\$50	\$43	\$39	
10yr ave.	\$179	\$170	\$162	\$154	\$146	\$138	\$131	\$126	\$121	\$117	\$115	\$105	\$91	\$77	\$67	\$47	\$38	\$28	

The above shows estimated returns per head for skirted fleece wool. These figures do not take into account the value of skirtings and oddments and do not take into account discounts that may apply for faults under individual circumstances. These figures are based on a market index of 100% and should be used as a guide only. Returns over \$30 / head for fleece wool are highlighted.

Table 9: Returns pr head for skirted fleece wool.

Skirted FLC Weight 8 Kg		Micron																	
		16	16.5	17	17.5	18	18.5	19	19.5	20	21	22	23	24	25	26	28	30	32
Yield (Sch Dry)	25% Current	\$50	\$50	\$50	\$49	\$48	\$47	\$45	\$42	\$41	\$41	\$40	\$31	\$25	\$21	\$17	\$13	\$11	\$10
	10yr ave.	\$47	\$45	\$42	\$40	\$38	\$36	\$34	\$33	\$32	\$31	\$30	\$27	\$24	\$20	\$17	\$12	\$10	\$7
	30% Current	\$60	\$60	\$60	\$59	\$58	\$56	\$54	\$51	\$49	\$49	\$48	\$38	\$30	\$25	\$20	\$16	\$13	\$12
	10yr ave.	\$56	\$53	\$51	\$48	\$46	\$43	\$41	\$39	\$38	\$37	\$36	\$33	\$29	\$24	\$21	\$15	\$12	\$9
	35% Current	\$71	\$70	\$69	\$69	\$68	\$66	\$63	\$59	\$58	\$57	\$56	\$44	\$35	\$30	\$23	\$18	\$16	\$14
	10yr ave.	\$65	\$62	\$59	\$56	\$53	\$51	\$48	\$46	\$44	\$43	\$42	\$38	\$33	\$28	\$24	\$17	\$14	\$10
	40% Current	\$81	\$80	\$79	\$79	\$78	\$75	\$72	\$67	\$66	\$66	\$64	\$50	\$40	\$34	\$27	\$21	\$18	\$16
	10yr ave.	\$75	\$71	\$68	\$65	\$61	\$58	\$55	\$53	\$51	\$49	\$48	\$44	\$38	\$32	\$28	\$20	\$16	\$12
	45% Current	\$91	\$91	\$89	\$88	\$87	\$84	\$81	\$76	\$74	\$74	\$72	\$57	\$45	\$38	\$30	\$24	\$20	\$18
	10yr ave.	\$84	\$80	\$76	\$73	\$69	\$65	\$62	\$59	\$57	\$55	\$54	\$49	\$43	\$36	\$31	\$22	\$18	\$13
	50% Current	\$101	\$101	\$99	\$98	\$97	\$94	\$90	\$84	\$82	\$82	\$80	\$63	\$50	\$42	\$33	\$26	\$22	\$20
	10yr ave.	\$94	\$89	\$85	\$81	\$76	\$72	\$68	\$66	\$63	\$61	\$60	\$55	\$48	\$40	\$35	\$24	\$20	\$15
	55% Current	\$111	\$111	\$109	\$108	\$107	\$103	\$99	\$93	\$91	\$90	\$88	\$69	\$54	\$47	\$37	\$29	\$25	\$22
	10yr ave.	\$103	\$98	\$93	\$89	\$84	\$79	\$75	\$72	\$70	\$67	\$66	\$60	\$52	\$44	\$38	\$27	\$22	\$16
	60% Current	\$121	\$121	\$119	\$118	\$116	\$113	\$108	\$101	\$99	\$98	\$96	\$76	\$59	\$51	\$40	\$32	\$27	\$24
	10yr ave.	\$112	\$107	\$102	\$97	\$91	\$87	\$82	\$79	\$76	\$74	\$72	\$66	\$57	\$48	\$42	\$29	\$24	\$18
	65% Current	\$131	\$131	\$129	\$128	\$126	\$122	\$118	\$109	\$107	\$107	\$103	\$82	\$64	\$55	\$43	\$34	\$29	\$26
	10yr ave.	\$122	\$116	\$110	\$105	\$99	\$94	\$89	\$85	\$82	\$80	\$78	\$71	\$62	\$52	\$45	\$32	\$26	\$19
	70% Current	\$141	\$141	\$139	\$137	\$136	\$131	\$127	\$118	\$115	\$115	\$111	\$88	\$69	\$59	\$47	\$37	\$31	\$28
	10yr ave.	\$131	\$125	\$119	\$113	\$107	\$101	\$96	\$92	\$89	\$86	\$84	\$77	\$67	\$57	\$49	\$34	\$28	\$20
75% Current	\$151	\$151	\$149	\$147	\$145	\$141	\$136	\$126	\$124	\$123	\$119	\$94	\$74	\$64	\$50	\$40	\$34	\$30	
10yr ave.	\$140	\$134	\$127	\$121	\$114	\$108	\$103	\$98	\$95	\$92	\$90	\$82	\$71	\$61	\$52	\$37	\$30	\$22	
80% Current	\$161	\$161	\$159	\$157	\$155	\$150	\$145	\$135	\$132	\$131	\$127	\$101	\$79	\$68	\$53	\$42	\$36	\$32	
10yr ave.	\$150	\$142	\$136	\$129	\$122	\$115	\$110	\$105	\$101	\$98	\$96	\$88	\$76	\$65	\$56	\$39	\$32	\$23	
85% Current	\$171	\$171	\$169	\$167	\$165	\$160	\$154	\$143	\$140	\$139	\$135	\$107	\$84	\$72	\$57	\$45	\$38	\$34	
10yr ave.	\$159	\$151	\$144	\$137	\$130	\$123	\$116	\$112	\$108	\$104	\$102	\$93	\$81	\$69	\$59	\$42	\$34	\$25	

The above shows estimated returns per head for skirted fleece wool. These figures do not take into account the value of skirtings and oddments and do not take into account discounts that may apply for faults under individual circumstances. These figures are based on a market index of 100% and should be used as a guide only. Returns over \$30 / head for fleece wool are highlighted.

Table 10: Returns pr head for skirted fleece wool.

Skirted FLC Weight 7 Kg		Micron																	
		16	16.5	17	17.5	18	18.5	19	19.5	20	21	22	23	24	25	26	28	30	32
Yield (Sch Dry)	25% Current	\$44	\$44	\$43	\$43	\$42	\$41	\$40	\$37	\$36	\$36	\$35	\$28	\$22	\$19	\$15	\$12	\$10	\$9
	10yr ave.	\$41	\$39	\$37	\$35	\$33	\$32	\$30	\$29	\$28	\$27	\$26	\$24	\$21	\$18	\$15	\$11	\$9	\$6
	30% Current	\$53	\$53	\$52	\$52	\$51	\$49	\$47	\$44	\$43	\$43	\$42	\$33	\$26	\$22	\$18	\$14	\$12	\$11
	10yr ave.	\$49	\$47	\$45	\$42	\$40	\$38	\$36	\$34	\$33	\$32	\$31	\$29	\$25	\$21	\$18	\$13	\$11	\$8
	35% Current	\$62	\$62	\$61	\$60	\$59	\$57	\$55	\$52	\$50	\$50	\$49	\$39	\$30	\$26	\$20	\$16	\$14	\$12
	10yr ave.	\$57	\$55	\$52	\$49	\$47	\$44	\$42	\$40	\$39	\$38	\$37	\$34	\$29	\$25	\$21	\$15	\$12	\$9
	40% Current	\$71	\$70	\$69	\$69	\$68	\$66	\$63	\$59	\$58	\$57	\$56	\$44	\$35	\$30	\$23	\$18	\$16	\$14
	10yr ave.	\$65	\$62	\$59	\$56	\$53	\$51	\$48	\$46	\$44	\$43	\$42	\$38	\$33	\$28	\$24	\$17	\$14	\$10
	45% Current	\$79	\$79	\$78	\$77	\$76	\$74	\$71	\$66	\$65	\$65	\$63	\$50	\$39	\$33	\$26	\$21	\$18	\$16
	10yr ave.	\$74	\$70	\$67	\$64	\$60	\$57	\$54	\$52	\$50	\$48	\$47	\$43	\$37	\$32	\$27	\$19	\$16	\$11
	50% Current	\$88	\$88	\$87	\$86	\$85	\$82	\$79	\$74	\$72	\$72	\$70	\$55	\$43	\$37	\$29	\$23	\$20	\$18
	10yr ave.	\$82	\$78	\$74	\$71	\$67	\$63	\$60	\$57	\$55	\$54	\$52	\$48	\$42	\$35	\$31	\$21	\$18	\$13
	55% Current	\$97	\$97	\$95	\$95	\$93	\$90	\$87	\$81	\$79	\$79	\$77	\$61	\$48	\$41	\$32	\$25	\$22	\$19
	10yr ave.	\$90	\$86	\$82	\$78	\$73	\$69	\$66	\$63	\$61	\$59	\$58	\$53	\$46	\$39	\$34	\$24	\$19	\$14
	60% Current	\$106	\$106	\$104	\$103	\$102	\$99	\$95	\$88	\$87	\$86	\$84	\$66	\$52	\$45	\$35	\$28	\$24	\$21
	10yr ave.	\$98	\$93	\$89	\$85	\$80	\$76	\$72	\$69	\$66	\$64	\$63	\$58	\$50	\$42	\$37	\$26	\$21	\$15
	65% Current	\$115	\$114	\$113	\$112	\$110	\$107	\$103	\$96	\$94	\$93	\$91	\$72	\$56	\$48	\$38	\$30	\$25	\$23
	10yr ave.	\$106	\$101	\$97	\$92	\$87	\$82	\$78	\$75	\$72	\$70	\$68	\$62	\$54	\$46	\$40	\$28	\$23	\$17
70% Current	\$123	\$123	\$122	\$120	\$119	\$115	\$111	\$103	\$101	\$100	\$98	\$77	\$61	\$52	\$41	\$32	\$27	\$25	
10yr ave.	\$115	\$109	\$104	\$99	\$93	\$88	\$84	\$80	\$78	\$75	\$73	\$67	\$58	\$49	\$43	\$30	\$25	\$18	
75% Current	\$132	\$132	\$130	\$129	\$127	\$123	\$119	\$111	\$108	\$108	\$104	\$83	\$65	\$56	\$44	\$35	\$29	\$27	
10yr ave.	\$123	\$117	\$111	\$106	\$100	\$95	\$90	\$86	\$83	\$80	\$79	\$72	\$62	\$53	\$46	\$32	\$26	\$19	
80% Current	\$141	\$141	\$139	\$137	\$136	\$131	\$127	\$118	\$115	\$115	\$111	\$88	\$69	\$59	\$47	\$37	\$31	\$28	
10yr ave.	\$131	\$125	\$119	\$113	\$107	\$101	\$96	\$92	\$89	\$86	\$84	\$77	\$67	\$57	\$49	\$34	\$28	\$20	
85% Current	\$150	\$150	\$148	\$146	\$144	\$140	\$134	\$125	\$123	\$122	\$118	\$94	\$74	\$63	\$50	\$39	\$33	\$30	
10yr ave.	\$139	\$132	\$126	\$120	\$113	\$107	\$102	\$98	\$94	\$91	\$89	\$82	\$71	\$60	\$52	\$36	\$30	\$22	

The above shows estimated returns per head for skirted fleece wool. These figures do not take into account the value of skirtings and oddments and do not take into account discounts that may apply for faults under individual circumstances. These figures are based on a market index of 100% and should be used as a guide only. Returns over \$30 / head for fleece wool are highlighted.

Table 11: Returns pr head for skirted fleece wool.

Skirted FLC Weight 6 Kg		Micron																	
		16	16.5	17	17.5	18	18.5	19	19.5	20	21	22	23	24	25	26	28	30	32
Yield (Sch Dry)	25% Current	\$38	\$38	\$37	\$37	\$36	\$35	\$34	\$32	\$31	\$31	\$30	\$24	\$19	\$16	\$13	\$10	\$8	\$8
	10yr ave.	\$35	\$33	\$32	\$30	\$29	\$27	\$26	\$25	\$24	\$23	\$22	\$21	\$18	\$15	\$13	\$9	\$8	\$5
	30% Current	\$45	\$45	\$45	\$44	\$44	\$42	\$41	\$38	\$37	\$37	\$36	\$28	\$22	\$19	\$15	\$12	\$10	\$9
	10yr ave.	\$42	\$40	\$38	\$36	\$34	\$32	\$31	\$30	\$28	\$28	\$27	\$25	\$21	\$18	\$16	\$11	\$9	\$7
	35% Current	\$53	\$53	\$52	\$52	\$51	\$49	\$47	\$44	\$43	\$43	\$42	\$33	\$26	\$22	\$18	\$14	\$12	\$11
	10yr ave.	\$49	\$47	\$45	\$42	\$40	\$38	\$36	\$34	\$33	\$32	\$31	\$29	\$25	\$21	\$18	\$13	\$11	\$8
	40% Current	\$60	\$60	\$60	\$59	\$58	\$56	\$54	\$51	\$49	\$49	\$48	\$38	\$30	\$25	\$20	\$16	\$13	\$12
	10yr ave.	\$56	\$53	\$51	\$48	\$46	\$43	\$41	\$39	\$38	\$37	\$36	\$33	\$29	\$24	\$21	\$15	\$12	\$9
	45% Current	\$68	\$68	\$67	\$66	\$65	\$63	\$61	\$57	\$56	\$55	\$54	\$42	\$33	\$29	\$23	\$18	\$15	\$14
	10yr ave.	\$63	\$60	\$57	\$54	\$51	\$49	\$46	\$44	\$43	\$41	\$40	\$37	\$32	\$27	\$24	\$17	\$14	\$10
	50% Current	\$76	\$75	\$74	\$74	\$73	\$70	\$68	\$63	\$62	\$62	\$60	\$47	\$37	\$32	\$25	\$20	\$17	\$15
	10yr ave.	\$70	\$67	\$64	\$60	\$57	\$54	\$51	\$49	\$47	\$46	\$45	\$41	\$36	\$30	\$26	\$18	\$15	\$11
	55% Current	\$83	\$83	\$82	\$81	\$80	\$77	\$75	\$69	\$68	\$68	\$66	\$52	\$41	\$35	\$28	\$22	\$18	\$17
	10yr ave.	\$77	\$73	\$70	\$67	\$63	\$60	\$56	\$54	\$52	\$51	\$49	\$45	\$39	\$33	\$29	\$20	\$17	\$12
	60% Current	\$91	\$91	\$89	\$88	\$87	\$84	\$81	\$76	\$74	\$74	\$72	\$57	\$45	\$38	\$30	\$24	\$20	\$18
	10yr ave.	\$84	\$80	\$76	\$73	\$69	\$65	\$62	\$59	\$57	\$55	\$54	\$49	\$43	\$36	\$31	\$22	\$18	\$13
	65% Current	\$98	\$98	\$97	\$96	\$94	\$91	\$88	\$82	\$80	\$80	\$78	\$61	\$48	\$41	\$33	\$26	\$22	\$20
	10yr ave.	\$91	\$87	\$83	\$79	\$74	\$70	\$67	\$64	\$62	\$60	\$58	\$54	\$46	\$39	\$34	\$24	\$20	\$14
	70% Current	\$106	\$106	\$104	\$103	\$102	\$99	\$95	\$88	\$87	\$86	\$84	\$66	\$52	\$45	\$35	\$28	\$24	\$21
	10yr ave.	\$98	\$93	\$89	\$85	\$80	\$76	\$72	\$69	\$66	\$64	\$63	\$58	\$50	\$42	\$37	\$26	\$21	\$15
75% Current	\$113	\$113	\$112	\$110	\$109	\$106	\$102	\$95	\$93	\$92	\$90	\$71	\$56	\$48	\$38	\$30	\$25	\$23	
10yr ave.	\$105	\$100	\$95	\$91	\$86	\$81	\$77	\$74	\$71	\$69	\$67	\$62	\$54	\$45	\$39	\$28	\$23	\$16	
80% Current	\$121	\$121	\$119	\$118	\$116	\$113	\$108	\$101	\$99	\$98	\$96	\$76	\$59	\$51	\$40	\$32	\$27	\$24	
10yr ave.	\$112	\$107	\$102	\$97	\$91	\$87	\$82	\$79	\$76	\$74	\$72	\$66	\$57	\$48	\$42	\$29	\$24	\$18	
85% Current	\$129	\$128	\$126	\$125	\$124	\$120	\$115	\$107	\$105	\$105	\$101	\$80	\$63	\$54	\$43	\$34	\$29	\$26	
10yr ave.	\$119	\$114	\$108	\$103	\$97	\$92	\$87	\$84	\$81	\$78	\$76	\$70	\$61	\$51	\$44	\$31	\$26	\$19	

The above shows estimated returns per head for skirted fleece wool. These figures do not take into account the value of skirtings and oddments and do not take into account discounts that may apply for faults under individual circumstances. These figures are based on a market index of 100% and should be used as a guide only. Returns over \$30 / head for fleece wool are highlighted.

Table 12: Returns pr head for skirted fleece wool.

Skirted FLC Weight 5 Kg		Micron																	
		16	16.5	17	17.5	18	18.5	19	19.5	20	21	22	23	24	25	26	28	30	32
Yield (Sch Dry)	25% Current	\$32	\$31	\$31	\$31	\$30	\$29	\$28	\$26	\$26	\$26	\$25	\$20	\$15	\$13	\$10	\$8	\$7	\$6
	25% 10yr ave.	\$29	\$28	\$27	\$25	\$24	\$23	\$21	\$21	\$20	\$19	\$19	\$17	\$15	\$13	\$11	\$8	\$6	\$5
	30% Current	\$38	\$38	\$37	\$37	\$36	\$35	\$34	\$32	\$31	\$31	\$30	\$24	\$19	\$16	\$13	\$10	\$8	\$8
	30% 10yr ave.	\$35	\$33	\$32	\$30	\$29	\$27	\$26	\$25	\$24	\$23	\$22	\$21	\$18	\$15	\$13	\$9	\$8	\$5
	35% Current	\$44	\$44	\$43	\$43	\$42	\$41	\$40	\$37	\$36	\$36	\$35	\$28	\$22	\$19	\$15	\$12	\$10	\$9
	35% 10yr ave.	\$41	\$39	\$37	\$35	\$33	\$32	\$30	\$29	\$28	\$27	\$26	\$24	\$21	\$18	\$15	\$11	\$9	\$6
	40% Current	\$50	\$50	\$50	\$49	\$48	\$47	\$45	\$42	\$41	\$41	\$40	\$31	\$25	\$21	\$17	\$13	\$11	\$10
	40% 10yr ave.	\$47	\$45	\$42	\$40	\$38	\$36	\$34	\$33	\$32	\$31	\$30	\$27	\$24	\$20	\$17	\$12	\$10	\$7
	45% Current	\$57	\$57	\$56	\$55	\$55	\$53	\$51	\$47	\$46	\$46	\$45	\$35	\$28	\$24	\$19	\$15	\$13	\$11
	45% 10yr ave.	\$53	\$50	\$48	\$45	\$43	\$41	\$38	\$37	\$36	\$34	\$34	\$31	\$27	\$23	\$20	\$14	\$11	\$8
	50% Current	\$63	\$63	\$62	\$61	\$61	\$59	\$57	\$53	\$52	\$51	\$50	\$39	\$31	\$27	\$21	\$17	\$14	\$13
	50% 10yr ave.	\$58	\$56	\$53	\$50	\$48	\$45	\$43	\$41	\$40	\$38	\$37	\$34	\$30	\$25	\$22	\$15	\$13	\$9
	55% Current	\$69	\$69	\$68	\$68	\$67	\$65	\$62	\$58	\$57	\$56	\$55	\$43	\$34	\$29	\$23	\$18	\$15	\$14
	55% 10yr ave.	\$64	\$61	\$58	\$55	\$52	\$50	\$47	\$45	\$44	\$42	\$41	\$38	\$33	\$28	\$24	\$17	\$14	\$10
	60% Current	\$76	\$75	\$74	\$74	\$73	\$70	\$68	\$63	\$62	\$62	\$60	\$47	\$37	\$32	\$25	\$20	\$17	\$15
	60% 10yr ave.	\$70	\$67	\$64	\$60	\$57	\$54	\$51	\$49	\$47	\$46	\$45	\$41	\$36	\$30	\$26	\$18	\$15	\$11
	65% Current	\$82	\$82	\$81	\$80	\$79	\$76	\$73	\$68	\$67	\$67	\$65	\$51	\$40	\$34	\$27	\$21	\$18	\$16
65% 10yr ave.	\$76	\$72	\$69	\$66	\$62	\$59	\$56	\$53	\$51	\$50	\$49	\$45	\$39	\$33	\$28	\$20	\$16	\$12	
70% Current	\$88	\$88	\$87	\$86	\$85	\$82	\$79	\$74	\$72	\$72	\$70	\$55	\$43	\$37	\$29	\$23	\$20	\$18	
70% 10yr ave.	\$82	\$78	\$74	\$71	\$67	\$63	\$60	\$57	\$55	\$54	\$52	\$48	\$42	\$35	\$31	\$21	\$18	\$13	
75% Current	\$95	\$94	\$93	\$92	\$91	\$88	\$85	\$79	\$77	\$77	\$75	\$59	\$46	\$40	\$31	\$25	\$21	\$19	
75% 10yr ave.	\$88	\$83	\$80	\$76	\$71	\$68	\$64	\$62	\$59	\$57	\$56	\$51	\$45	\$38	\$33	\$23	\$19	\$14	
80% Current	\$101	\$101	\$99	\$98	\$97	\$94	\$90	\$84	\$82	\$82	\$80	\$63	\$50	\$42	\$33	\$26	\$22	\$20	
80% 10yr ave.	\$94	\$89	\$85	\$81	\$76	\$72	\$68	\$66	\$63	\$61	\$60	\$55	\$48	\$40	\$35	\$24	\$20	\$15	
85% Current	\$107	\$107	\$105	\$104	\$103	\$100	\$96	\$89	\$88	\$87	\$85	\$67	\$53	\$45	\$35	\$28	\$24	\$21	
85% 10yr ave.	\$99	\$95	\$90	\$86	\$81	\$77	\$73	\$70	\$67	\$65	\$64	\$58	\$51	\$43	\$37	\$26	\$21	\$16	

The above shows estimated returns per head for skirted fleece wool. These figures do not take into account the value of skirtings and oddments and do not take into account discounts that may apply for faults under individual circumstances. These figures are based on a market index of 100% and should be used as a guide only. Returns over \$30 / head for fleece wool are highlighted.



Table 13: Returns pr head for skirted fleece wool.

Skirted FLC Weight 4 Kg		Micron																	
		16	16.5	17	17.5	18	18.5	19	19.5	20	21	22	23	24	25	26	28	30	32
Yield (Sch Dry)	25% Current	\$25	\$25	\$25	\$25	\$24	\$23	\$23	\$21	\$21	\$21	\$20	\$16	\$12	\$11	\$8	\$7	\$6	\$5
	10yr ave.	\$23	\$22	\$21	\$20	\$19	\$18	\$17	\$16	\$16	\$15	\$15	\$14	\$12	\$10	\$9	\$6	\$5	\$4
	30% Current	\$30	\$30	\$30	\$29	\$29	\$28	\$27	\$25	\$25	\$25	\$24	\$19	\$15	\$13	\$10	\$8	\$7	\$6
	10yr ave.	\$28	\$27	\$25	\$24	\$23	\$22	\$21	\$20	\$19	\$18	\$18	\$16	\$14	\$12	\$10	\$7	\$6	\$4
	35% Current	\$35	\$35	\$35	\$34	\$34	\$33	\$32	\$29	\$29	\$29	\$28	\$22	\$17	\$15	\$12	\$9	\$8	\$7
	10yr ave.	\$33	\$31	\$30	\$28	\$27	\$25	\$24	\$23	\$22	\$21	\$21	\$19	\$17	\$14	\$12	\$9	\$7	\$5
	40% Current	\$40	\$40	\$40	\$39	\$39	\$38	\$36	\$34	\$33	\$33	\$32	\$25	\$20	\$17	\$13	\$11	\$9	\$8
	10yr ave.	\$37	\$36	\$34	\$32	\$30	\$29	\$27	\$26	\$25	\$25	\$24	\$22	\$19	\$16	\$14	\$10	\$8	\$6
	45% Current	\$45	\$45	\$45	\$44	\$44	\$42	\$41	\$38	\$37	\$37	\$36	\$28	\$22	\$19	\$15	\$12	\$10	\$9
	10yr ave.	\$42	\$40	\$38	\$36	\$34	\$32	\$31	\$30	\$28	\$28	\$27	\$25	\$21	\$18	\$16	\$11	\$9	\$7
	50% Current	\$50	\$50	\$50	\$49	\$48	\$47	\$45	\$42	\$41	\$41	\$40	\$31	\$25	\$21	\$17	\$13	\$11	\$10
	10yr ave.	\$47	\$45	\$42	\$40	\$38	\$36	\$34	\$33	\$32	\$31	\$30	\$27	\$24	\$20	\$17	\$12	\$10	\$7
	55% Current	\$55	\$55	\$55	\$54	\$53	\$52	\$50	\$46	\$45	\$45	\$44	\$35	\$27	\$23	\$18	\$15	\$12	\$11
	10yr ave.	\$51	\$49	\$47	\$44	\$42	\$40	\$38	\$36	\$35	\$34	\$33	\$30	\$26	\$22	\$19	\$13	\$11	\$8
	60% Current	\$60	\$60	\$60	\$59	\$58	\$56	\$54	\$51	\$49	\$49	\$48	\$38	\$30	\$25	\$20	\$16	\$13	\$12
	10yr ave.	\$56	\$53	\$51	\$48	\$46	\$43	\$41	\$39	\$38	\$37	\$36	\$33	\$29	\$24	\$21	\$15	\$12	\$9
	65% Current	\$66	\$65	\$64	\$64	\$63	\$61	\$59	\$55	\$54	\$53	\$52	\$41	\$32	\$28	\$22	\$17	\$15	\$13
10yr ave.	\$61	\$58	\$55	\$52	\$50	\$47	\$44	\$43	\$41	\$40	\$39	\$36	\$31	\$26	\$23	\$16	\$13	\$9	
70% Current	\$71	\$70	\$69	\$69	\$68	\$66	\$63	\$59	\$58	\$57	\$56	\$44	\$35	\$30	\$23	\$18	\$16	\$14	
10yr ave.	\$65	\$62	\$59	\$56	\$53	\$51	\$48	\$46	\$44	\$43	\$42	\$38	\$33	\$28	\$24	\$17	\$14	\$10	
75% Current	\$76	\$75	\$74	\$74	\$73	\$70	\$68	\$63	\$62	\$62	\$60	\$47	\$37	\$32	\$25	\$20	\$17	\$15	
10yr ave.	\$70	\$67	\$64	\$60	\$57	\$54	\$51	\$49	\$47	\$46	\$45	\$41	\$36	\$30	\$26	\$18	\$15	\$11	
80% Current	\$81	\$80	\$79	\$79	\$78	\$75	\$72	\$67	\$66	\$66	\$64	\$50	\$40	\$34	\$27	\$21	\$18	\$16	
10yr ave.	\$75	\$71	\$68	\$65	\$61	\$58	\$55	\$53	\$51	\$49	\$48	\$44	\$38	\$32	\$28	\$20	\$16	\$12	
85% Current	\$86	\$85	\$84	\$83	\$82	\$80	\$77	\$72	\$70	\$70	\$68	\$53	\$42	\$36	\$28	\$22	\$19	\$17	
10yr ave.	\$80	\$76	\$72	\$69	\$65	\$61	\$58	\$56	\$54	\$52	\$51	\$47	\$40	\$34	\$30	\$21	\$17	\$12	

The above shows estimated returns per head for skirted fleece wool. These figures do not take into account the value of skirtings and oddments and do not take into account discounts that may apply for faults under individual circumstances. These figures are based on a market index of 100% and should be used as a guide only. Returns over \$30 / head for fleece wool are highlighted.

Table 14: Returns pr head for skirted fleece wool.

Skirted FLC Weight 3 Kg		Micron																	
		16	16.5	17	17.5	18	18.5	19	19.5	20	21	22	23	24	25	26	28	30	32
Yield (Sch Dry)	25% Current	\$19	\$19	\$19	\$18	\$18	\$18	\$17	\$16	\$15	\$15	\$15	\$12	\$9	\$8	\$6	\$5	\$4	\$4
	10yr ave.	\$18	\$17	\$16	\$15	\$14	\$14	\$13	\$12	\$12	\$11	\$11	\$10	\$9	\$8	\$7	\$5	\$4	\$3
	30% Current	\$23	\$23	\$22	\$22	\$22	\$21	\$20	\$19	\$19	\$18	\$18	\$14	\$11	\$10	\$8	\$6	\$5	\$5
	10yr ave.	\$21	\$20	\$19	\$18	\$17	\$16	\$15	\$15	\$14	\$14	\$13	\$12	\$11	\$9	\$8	\$6	\$5	\$3
	35% Current	\$26	\$26	\$26	\$26	\$25	\$25	\$24	\$22	\$22	\$22	\$21	\$17	\$13	\$11	\$9	\$7	\$6	\$5
	10yr ave.	\$25	\$23	\$22	\$21	\$20	\$19	\$18	\$17	\$17	\$16	\$16	\$14	\$12	\$11	\$9	\$6	\$5	\$4
	40% Current	\$30	\$30	\$30	\$29	\$29	\$28	\$27	\$25	\$25	\$25	\$24	\$19	\$15	\$13	\$10	\$8	\$7	\$6
	10yr ave.	\$28	\$27	\$25	\$24	\$23	\$22	\$21	\$20	\$19	\$18	\$18	\$16	\$14	\$12	\$10	\$7	\$6	\$4
	45% Current	\$34	\$34	\$33	\$33	\$33	\$32	\$31	\$28	\$28	\$28	\$27	\$21	\$17	\$14	\$11	\$9	\$8	\$7
	10yr ave.	\$32	\$30	\$29	\$27	\$26	\$24	\$23	\$22	\$21	\$21	\$20	\$19	\$16	\$14	\$12	\$8	\$7	\$5
	50% Current	\$38	\$38	\$37	\$37	\$36	\$35	\$34	\$32	\$31	\$31	\$30	\$24	\$19	\$16	\$13	\$10	\$8	\$8
	10yr ave.	\$35	\$33	\$32	\$30	\$29	\$27	\$26	\$25	\$24	\$23	\$22	\$21	\$18	\$15	\$13	\$9	\$8	\$5
	55% Current	\$42	\$41	\$41	\$41	\$40	\$39	\$37	\$35	\$34	\$34	\$33	\$26	\$20	\$17	\$14	\$11	\$9	\$8
	10yr ave.	\$39	\$37	\$35	\$33	\$31	\$30	\$28	\$27	\$26	\$25	\$25	\$23	\$20	\$17	\$14	\$10	\$8	\$6
	60% Current	\$45	\$45	\$45	\$44	\$44	\$42	\$41	\$38	\$37	\$37	\$36	\$28	\$22	\$19	\$15	\$12	\$10	\$9
	10yr ave.	\$42	\$40	\$38	\$36	\$34	\$32	\$31	\$30	\$28	\$28	\$27	\$25	\$21	\$18	\$16	\$11	\$9	\$7
	65% Current	\$49	\$49	\$48	\$48	\$47	\$46	\$44	\$41	\$40	\$40	\$39	\$31	\$24	\$21	\$16	\$13	\$11	\$10
	10yr ave.	\$46	\$43	\$41	\$39	\$37	\$35	\$33	\$32	\$31	\$30	\$29	\$27	\$23	\$20	\$17	\$12	\$10	\$7
70% Current	\$53	\$53	\$52	\$52	\$51	\$49	\$47	\$44	\$43	\$43	\$42	\$33	\$26	\$22	\$18	\$14	\$12	\$11	
10yr ave.	\$49	\$47	\$45	\$42	\$40	\$38	\$36	\$34	\$33	\$32	\$31	\$29	\$25	\$21	\$18	\$13	\$11	\$8	
75% Current	\$57	\$57	\$56	\$55	\$55	\$53	\$51	\$47	\$46	\$46	\$45	\$35	\$28	\$24	\$19	\$15	\$13	\$11	
10yr ave.	\$53	\$50	\$48	\$45	\$43	\$41	\$38	\$37	\$36	\$34	\$34	\$31	\$27	\$23	\$20	\$14	\$11	\$8	
80% Current	\$60	\$60	\$60	\$59	\$58	\$56	\$54	\$51	\$49	\$49	\$48	\$38	\$30	\$25	\$20	\$16	\$13	\$12	
10yr ave.	\$56	\$53	\$51	\$48	\$46	\$43	\$41	\$39	\$38	\$37	\$36	\$33	\$29	\$24	\$21	\$15	\$12	\$9	
85% Current	\$64	\$64	\$63	\$63	\$62	\$60	\$58	\$54	\$53	\$52	\$51	\$40	\$32	\$27	\$21	\$17	\$14	\$13	
10yr ave.	\$60	\$57	\$54	\$51	\$49	\$46	\$44	\$42	\$40	\$39	\$38	\$35	\$30	\$26	\$22	\$16	\$13	\$9	

The above shows estimated returns per head for skirted fleece wool. These figures do not take into account the value of skirtings and oddments and do not take into account discounts that may apply for faults under individual circumstances. These figures are based on a market index of 100% and should be used as a guide only. Returns over \$30 / head for fleece wool are highlighted.



Table 15: Returns pr head for skirted fleece wool.

Skirted FLC Weight 2 Kg		Micron																	
		16	16.5	17	17.5	18	18.5	19	19.5	20	21	22	23	24	25	26	28	30	32
Yield (Sch Dry)	25% Current	\$13	\$13	\$12	\$12	\$12	\$12	\$11	\$11	\$10	\$10	\$10	\$8	\$6	\$5	\$4	\$3	\$3	\$3
	10yr ave.	\$12	\$11	\$11	\$10	\$10	\$9	\$9	\$8	\$8	\$8	\$7	\$7	\$6	\$5	\$4	\$3	\$3	\$2
	30% Current	\$15	\$15	\$15	\$15	\$15	\$14	\$14	\$13	\$12	\$12	\$12	\$9	\$7	\$6	\$5	\$4	\$3	\$3
	10yr ave.	\$14	\$13	\$13	\$12	\$11	\$11	\$10	\$10	\$9	\$9	\$9	\$8	\$7	\$6	\$5	\$4	\$3	\$2
	35% Current	\$18	\$18	\$17	\$17	\$17	\$16	\$16	\$15	\$14	\$14	\$14	\$11	\$9	\$7	\$6	\$5	\$4	\$4
	10yr ave.	\$16	\$16	\$15	\$14	\$13	\$13	\$12	\$11	\$11	\$11	\$10	\$10	\$8	\$7	\$6	\$4	\$4	\$3
	40% Current	\$20	\$20	\$20	\$20	\$19	\$19	\$18	\$17	\$16	\$16	\$16	\$13	\$10	\$8	\$7	\$5	\$4	\$4
	10yr ave.	\$19	\$18	\$17	\$16	\$15	\$14	\$14	\$13	\$13	\$12	\$12	\$11	\$10	\$8	\$7	\$5	\$4	\$3
	45% Current	\$23	\$23	\$22	\$22	\$22	\$21	\$20	\$19	\$19	\$18	\$18	\$14	\$11	\$10	\$8	\$6	\$5	\$5
	10yr ave.	\$21	\$20	\$19	\$18	\$17	\$16	\$15	\$15	\$14	\$14	\$13	\$12	\$11	\$9	\$8	\$6	\$5	\$3
	50% Current	\$25	\$25	\$25	\$25	\$24	\$23	\$23	\$21	\$21	\$21	\$20	\$16	\$12	\$11	\$8	\$7	\$6	\$5
	10yr ave.	\$23	\$22	\$21	\$20	\$19	\$18	\$17	\$16	\$16	\$15	\$15	\$14	\$12	\$10	\$9	\$6	\$5	\$4
	55% Current	\$28	\$28	\$27	\$27	\$27	\$26	\$25	\$23	\$23	\$23	\$22	\$17	\$14	\$12	\$9	\$7	\$6	\$6
	10yr ave.	\$26	\$24	\$23	\$22	\$21	\$20	\$19	\$18	\$17	\$17	\$16	\$15	\$13	\$11	\$10	\$7	\$6	\$4
	60% Current	\$30	\$30	\$30	\$29	\$29	\$28	\$27	\$25	\$25	\$25	\$24	\$19	\$15	\$13	\$10	\$8	\$7	\$6
	10yr ave.	\$28	\$27	\$25	\$24	\$23	\$22	\$21	\$20	\$19	\$18	\$18	\$16	\$14	\$12	\$10	\$7	\$6	\$4
	65% Current	\$33	\$33	\$32	\$32	\$31	\$30	\$29	\$27	\$27	\$27	\$26	\$20	\$16	\$14	\$11	\$9	\$7	\$7
10yr ave.	\$30	\$29	\$28	\$26	\$25	\$23	\$22	\$21	\$21	\$20	\$19	\$18	\$15	\$13	\$11	\$8	\$7	\$5	
70% Current	\$35	\$35	\$35	\$34	\$34	\$33	\$32	\$29	\$29	\$29	\$28	\$22	\$17	\$15	\$12	\$9	\$8	\$7	
10yr ave.	\$33	\$31	\$30	\$28	\$27	\$25	\$24	\$23	\$22	\$21	\$21	\$19	\$17	\$14	\$12	\$9	\$7	\$5	
75% Current	\$38	\$38	\$37	\$37	\$36	\$35	\$34	\$32	\$31	\$31	\$30	\$24	\$19	\$16	\$13	\$10	\$8	\$8	
10yr ave.	\$35	\$33	\$32	\$30	\$29	\$27	\$26	\$25	\$24	\$23	\$22	\$21	\$18	\$15	\$13	\$9	\$8	\$5	
80% Current	\$40	\$40	\$40	\$39	\$39	\$38	\$36	\$34	\$33	\$33	\$32	\$25	\$20	\$17	\$13	\$11	\$9	\$8	
10yr ave.	\$37	\$36	\$34	\$32	\$30	\$29	\$27	\$26	\$25	\$25	\$24	\$22	\$19	\$16	\$14	\$10	\$8	\$6	
85% Current	\$43	\$43	\$42	\$42	\$41	\$40	\$38	\$36	\$35	\$35	\$34	\$27	\$21	\$18	\$14	\$11	\$10	\$9	
10yr ave.	\$40	\$38	\$36	\$34	\$32	\$31	\$29	\$28	\$27	\$26	\$25	\$23	\$20	\$17	\$15	\$10	\$9	\$6	

The above shows estimated returns per head for skirted fleece wool. These figures do not take into account the value of skirtings and oddments and do not take into account discounts that may apply for faults under individual circumstances. These figures are based on a market index of 100% and should be used as a guide only. Returns over \$30 / head for fleece wool are highlighted.