



JEMALONG WOOL BULLETIN

(week ending 2/06/2011)

Table 1: Northern Region Micron Price Guides

CURRENT MARKET				12 MONTH COMPARISONS								3 YEAR COMPARISONS					10 YEAR COMPARISONS					
Mic.	2/06/2011	26/05/2011		1/06/2010	Now		Now		Now													
Price	Current	Weekly		This time	compared		compared		compared													
Guides	Price	Change		Last Year	to Last Year		to Last Year		to Last Year													
NRI	1456	+12 0.8%		905	+551 61%		890	+566 64%		1456	0 0%		749	1456	962	+494 51%	100%	658	1456	899	+557 62%	100%
16*	2700	-100 -3.7%		1560	+1140 73%		1540	+1160 75%		2800	-100 -4%		1385	2800	1792	+908 51%	93%					
16.5*	2550	-70 -2.7%		1415	+1135 80%		1395	+1155 83%		2670	-120 -4%		1250	2670	1647	+903 55%	91%					
17*	2430	0		1265	+1165 92%		1230	+1200 98%		2530	-100 -4%		1168	2530	1521	+909 60%	94%	1100	2659	1430	+1000 70%	97%
17.5*	2290	0		1210	+1080 89%		1185	+1105 93%		2360	-70 -3%		1083	2360	1437	+853 59%	95%					
18	2091	-3 -0.1%		1172	+919 78%		1138	+953 84%		2193	-102 -5%		1035	2193	1356	+735 54%	93%	916	2193	1276	+815 64%	97%
18.5	1894	-1 -0.1%		1118	+776 69%		1110	+784 71%		1963	-69 -4%		971	1963	1262	+632 50%	94%	843	1963			
19	1759	+10 0.6%		1070	+689 64%		1031	+728 71%		1759	0 0%		894	1759	1148	+611 53%	100%	804	1759	1081	+678 63%	100%
19.5	1633	+23 1.4%		988	+645 65%		952	+681 72%		1633	0 0%		814	1633	1044	+589 56%	100%	749	1633			
20	1518	+20 1.3%		930	+588 63%		904	+614 68%		1518	0 0%		739	1518	961	+557 58%	100%	684	1518	941	+577 61%	100%
21	1444	+21 1.5%		917	+527 57%		878	+566 64%		1444	0 0%		687	1444	928	+516 56%	100%	645	1444	900	+544 60%	100%
22	1386	+26 1.9%		902	+484 54%		847	+539 64%		1386	0 0%		674	1386	903	+483 53%	100%	643	1386	876	+510 58%	100%
23	1268	+17 1.3%		883	+385 44%		827	+441 53%		1291	-23 -2%		663	1291	876	+392 45%	98%	640	1340	854	+414 48%	99%
24	1072	+23 2.1%		834	+238 29%		780	+292 37%		1170	-98 -8%		647	1170	817	+255 31%	95%	635	1299	812	+260 32%	92%
25	956	0		706	+250 35%		695	+261 38%		1048	-92 -9%		565	1048	709	+247 35%	95%	567	1198	728	+228 31%	88%
26	867	-20 -2.3%		613	+254 41%		598	+269 45%		928	-61 -7%		504	928	639	+228 36%	94%	532	1088	666	+201 30%	84%
28	671	-5 -0.7%		464	+207 45%		443	+228 51%		734	-63 -9%		427	734	495	+176 36%	95%	424	889	529	+142 27%	85%
30	616	-2 -0.3%		412	+204 50%		389	+227 58%		670	-54 -8%		355	670	436	+180 41%	95%	344	729	461	+155 34%	89%
32	558	-2 -0.4%		356	+202 57%		353	+205 58%		638	-80 -13%		321	638	384	+174 45%	94%	297	669	417	+141 34%	86%
MC	747	+5 0.7%		582	+165 28%		561	+186 33%		830	-83 -10%		392	830	583	+164 28%	91%	380	830	515	+232 45%	97%

Note:

* Due to the irregular market quoting for some fine wool categories, figures shown relating to micron categories below 18 micron are an estimate based on the AWEX Premium & Discounts Report & other available information.

* For any category, where there is insufficient quantity offered to enable AWEX to quote, a quote will be provided based on the best available information.

* 10 Year data is not available for some micron categories, which may result in blank spaces in the table above.

Definitions:

* A Percentile, is a value on a scale of one hundred that indicates the percent of a distribution that is equal to or below it. In general a percentile between 25% and 75% is considered normal, a percentile below 25% is considered below normal and a percentile above 75% is considered above normal.

Three and ten year percentiles shown in the table above, detail the period of time during the past 3 & 10 years that the market has traded either at or below its current price.

The higher the percentile, the stronger the market.

Source: Australian Wool Exchange, Australian Wool Innovation, Sydney Futures Exchange, x-rates.com

Disclaimer: While all due care has been taken in the preparation of this document, no warranty is made as to its accuracy, reliability or completeness. To the extent permitted by law neither Jemalong or their sources including subsidiaries and staff, accept liability to any person for loss or damage arising from the use of this information.



MARKET COMMENTARY

One Australian Dollar = \$ 1.06 US, as of 2/06/2011

NORTHERN REGION –Sale Week 48/10 (36,860 bales offered nationally)

On Wednesday - The market was well supported leaving 19 to 21 microns par to 5 cents dearer, while a limited offering of 22 microns and broader were 15 cents dearer. Still thin on the ground, a slightly better offering in the finer end had 18 microns closing irregular and 17 microns remaining unchanged. Skirtings rose despite the limited selection of straight types, most descriptions from 3% to 8% Vm gained around 20 cents. Oddments also moved forward, with locks & crutchings improving by 5 to 10 cents, while stains remained firm.

On Thursday - The market maintained momentum and gained a further 15 to 20 cents with buyers paying higher premiums for FNF lots. 19.5 to 22 microns gained up to 20 cents while 19 microns were generally 10 cents dearer. A very limited offering in the fine end had the finer microns unchanged on a nominal basis. Skirtings remained fully firm with low Vm lots attracting strong interest. In the oddments, middle micron LKS closed in sellers favour, crutchings were firm while stains were irregular. There were only minor movements in the crossbreds with 27 to 30 microns closing in sellers favour.

Northern Region Indicator (Monthly Averages)

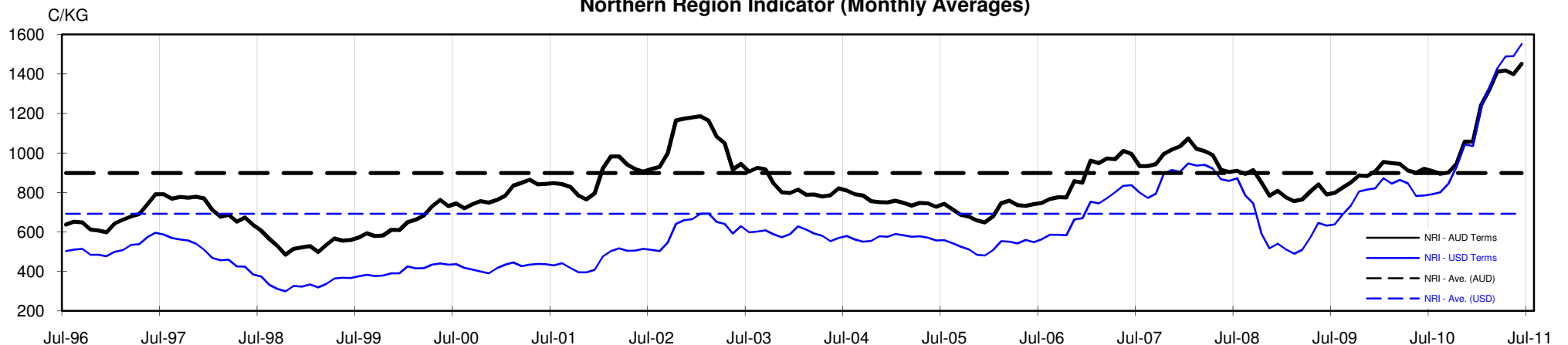




Table 4: 19 micron SFE

Wednesday, 1 June 2011

Delivery Mth	Jun-11	Aug-11	Oct-11	Dec-11	Feb-11	Apr-12	Jun-12	Aug-12	Oct-12
19 Micron SFE	1735	1665	1595	1555	1523	1475	1465	1455	1455
Average	1231	1238	1244	1270	1114	1335	1387	1385	1374
Maximum	1735	1665	1595	1560	1665	1475	1465	1455	1455
Minimum	1034	1034	1034	1034	983	1106	1210	1285	1285

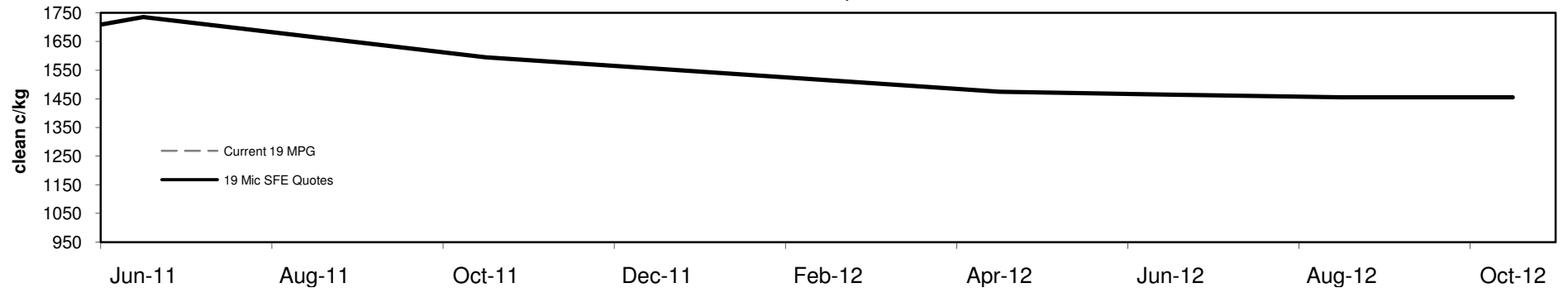
Table 5: 19 micron SFE, as a percentile of the 19 micron MPG

3 Year Percentile	98%	94%	88%	87%	86%	85%	85%	85%	85%
10 Year Percentile	99%	98%	96%	96%	96%	96%	96%	96%	96%

Table 6: 19 micron SFE, compared to MPG

SFE - MPG	-24	-1%	-94	-5%	-164	-9%	-204	-12%	-236	-13%	-284	-16%	-294	-17%	-304	-17%	-304	-17%
SFE - MPG, 1 year Ave.	+337	24%	+267	19%	+197	14%	+157	11%	+125	9%	+77	6%	+67	5%	+57	4%	+57	4%
SFE - MPG, 3 year Ave.	+587	51%	+517	45%	+447	39%	+407	35%	+375	33%	+327	28%	+317	28%	+307	27%	+307	27%
SFE - MPG, 10 year Ave.	+654	61%	+584	54%	+514	48%	+474	44%	+442	41%	+394	36%	+384	36%	+374	35%	+374	35%

19 MICRON SFE, QUOTES



19 Micron SFE, Front month movement

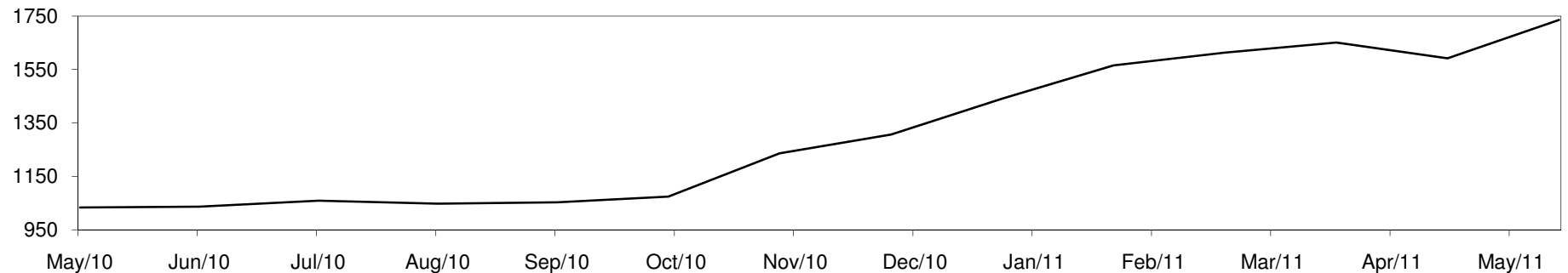




Table 7: 21 micron SFE

Wednesday, 1 June 2011

Delivery Mth	Jun-11	Aug-11	Oct-11	Dec-11	Feb-11	Apr-12	Jun-12	Aug-12	Oct-12
21 Micron SFE	1475	1420	1358	1308	1290	1172	1215	1205	1172
Average	1029	1025	1017	1019	962	1059	1066	1085	1085
Maximum	1475	1420	1358	1308	1420	1172	1215	1205	1172
Minimum	890	880	880	880	860	934	990	1046	1013

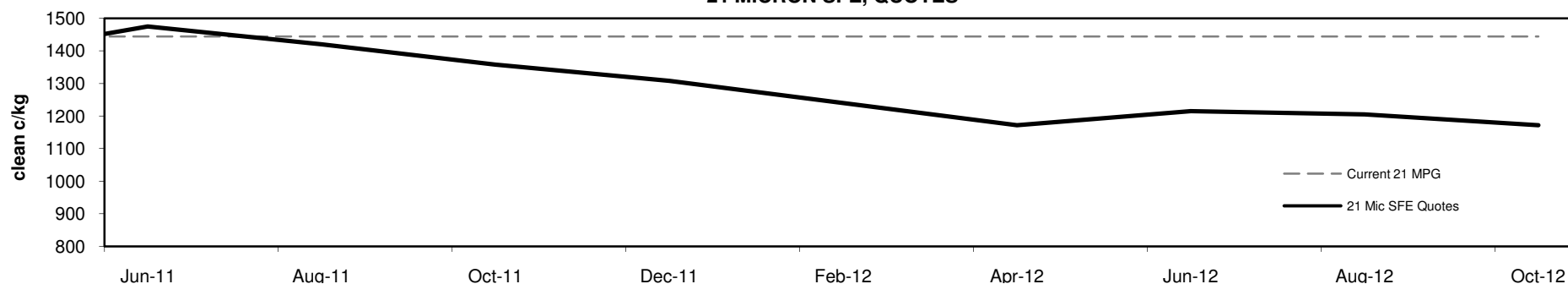
Table 8: 21 micron SFE, as a percentile of the 21 micron MPG

3 Year Percentile	100%	99%	98%	95%	94%	89%	91%	91%	89%
10 Year Percentile	100%	99%	99%	98%	98%	91%	92%	92%	91%

Table 9: 21 micron SFE, compared to MPG

SFE - MPG	+31	2%	-24	-2%	-86	-6%	-136	-9%	-154	-11%	-272	-19%	-229	-16%	-239	-17%	-272	-19%
SFE - MPG, 1 year Ave.	+369	33%	+314	28%	+252	23%	+202	18%	+184	17%	+66	6%	+109	10%	+99	9%	+66	6%
SFE - MPG, 3 year Ave.	+547	59%	+492	53%	+430	46%	+380	41%	+362	39%	+244	26%	+287	31%	+277	30%	+244	26%
SFE - MPG, 10 year Ave.	+575	64%	+520	58%	+458	51%	+408	45%	+390	43%	+272	30%	+315	35%	+305	34%	+272	30%

21 MICRON SFE, QUOTES



21 Micron SFE, Front month movement

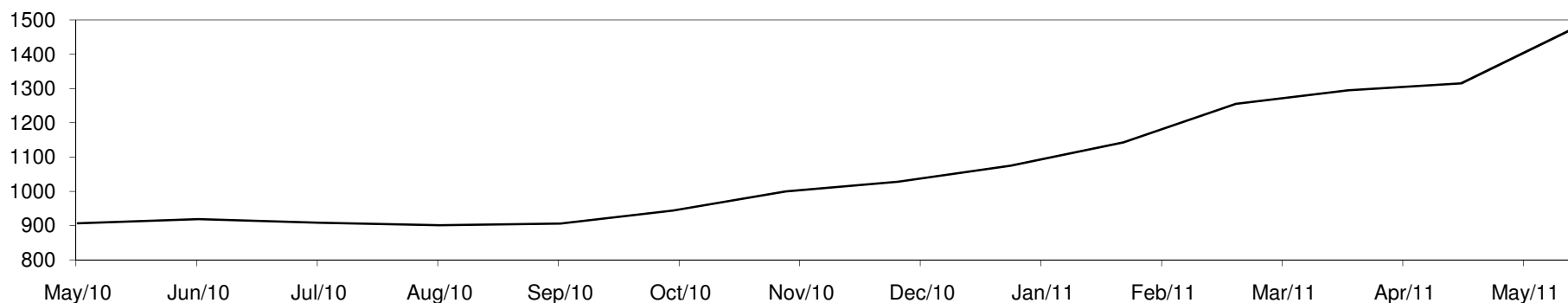




Table 10: 23 micron SFE

Wednesday, 1 June 2011

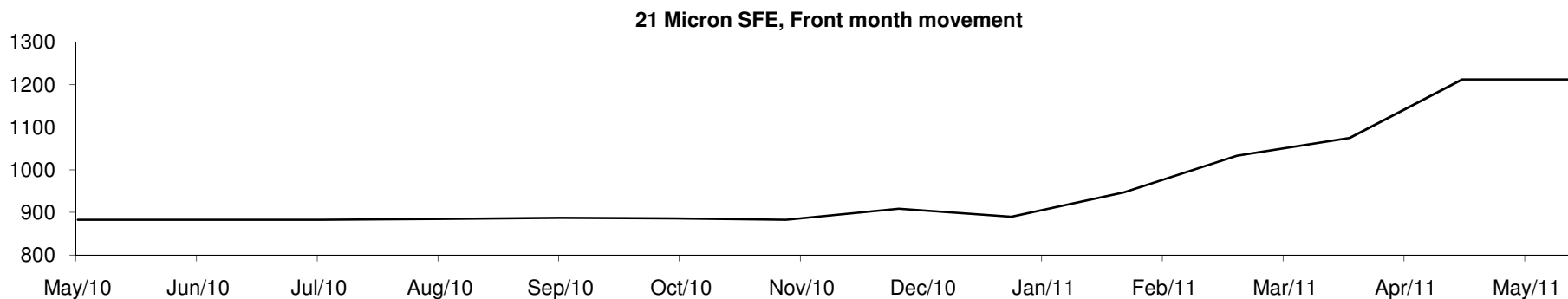
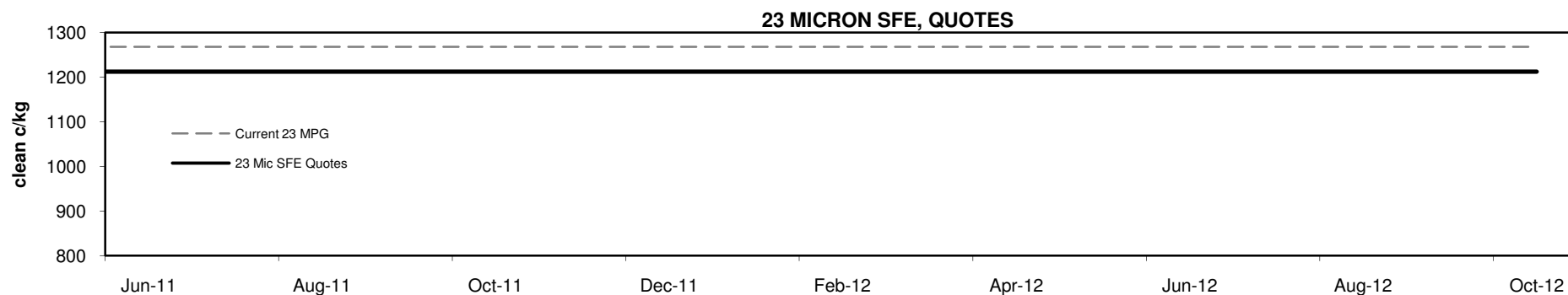
Delivery Mth	Jun-11	Aug-11	Oct-11	Dec-11	Feb-11	Apr-12	Jun-12	Aug-12	Oct-12
23 Micron SFE	1212	1212	1212	1212	1212	1212	1212	1212	1212
Average	930	939	941	952	870	994	1033	1106	1212
Maximum	1212	1212	1212	1212	1212	1212	1212	1212	1212
Minimum	803	883	883	883	760	883	890	1033	1212

Table 11: 23 micron SFE, as a percentile of the 23 micron MPG

3 Year Percentile	93%	93%	93%	93%	93%	93%	93%	93%	93%
10 Year Percentile	94%	94%	94%	94%	94%	94%	94%	94%	94%

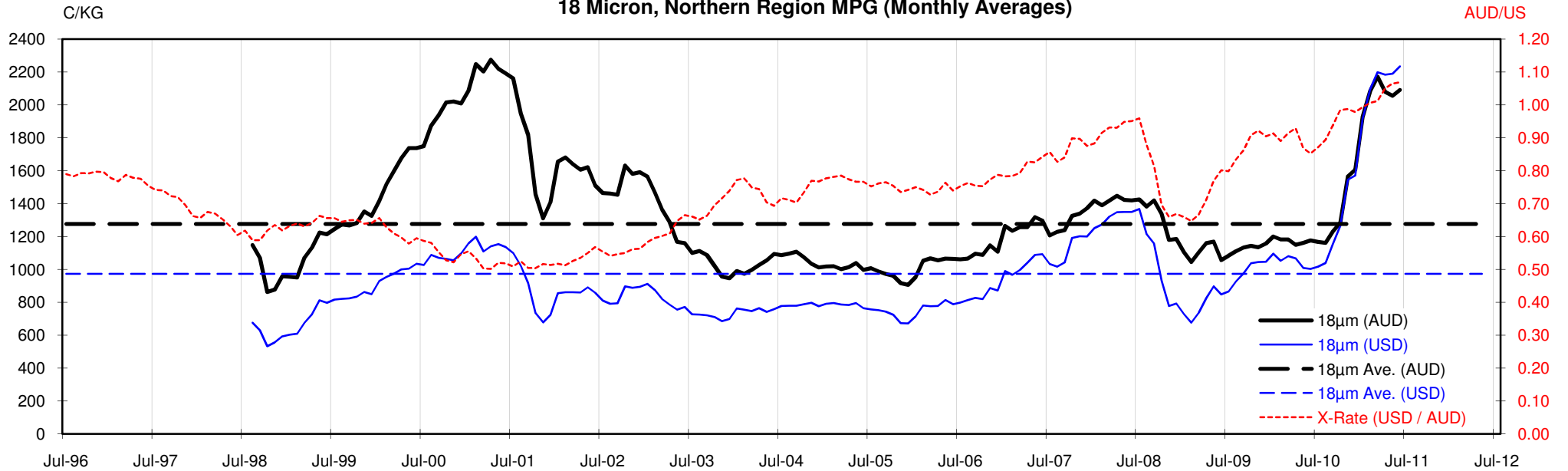
Table 12: 23 micron SFE, compared to MPG

SFE - MPG	-56	-4%	-56	-4%	-56	-4%	-56	-4%	-56	-4%	-56	-4%	-56	-4%	-56	-4%	-56	-4%
SFE - MPG, 1 year Ave.	+187	18%	+187	18%	+187	18%	+187	18%	+187	18%	+187	18%	+187	18%	+187	18%	+187	18%
SFE - MPG, 3 year Ave.	+336	38%	+336	38%	+336	38%	+336	38%	+336	38%	+336	38%	+336	38%	+336	38%	+336	38%
SFE - MPG, 10 year Ave.	+358	42%	+358	42%	+358	42%	+358	42%	+358	42%	+358	42%	+358	42%	+358	42%	+358	42%

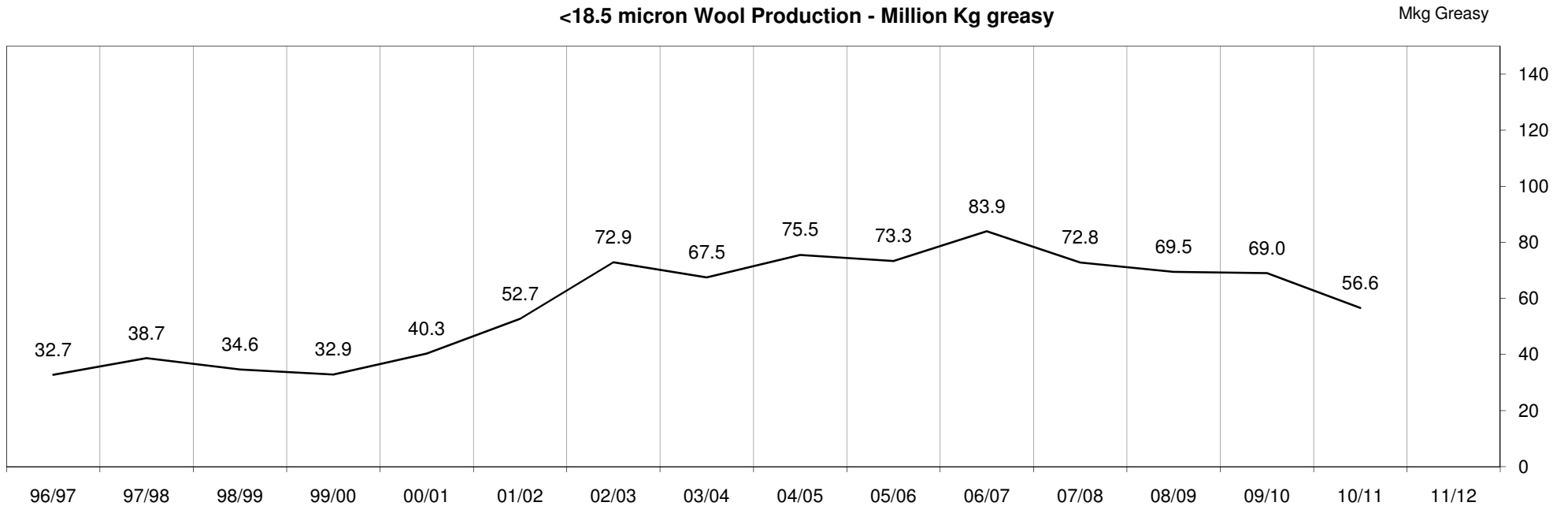


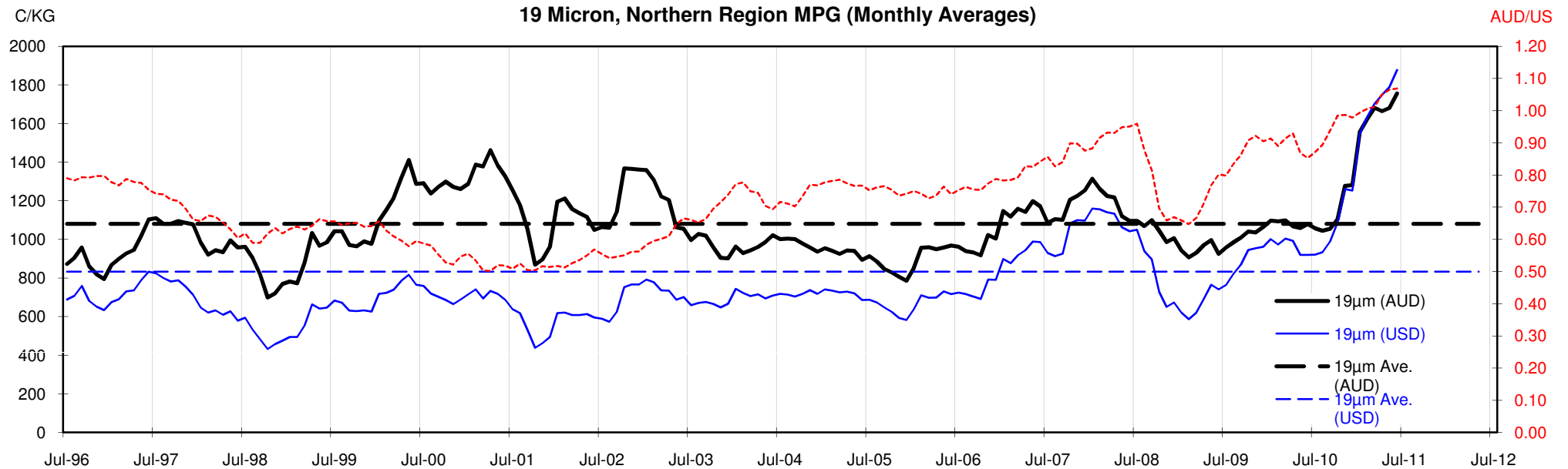


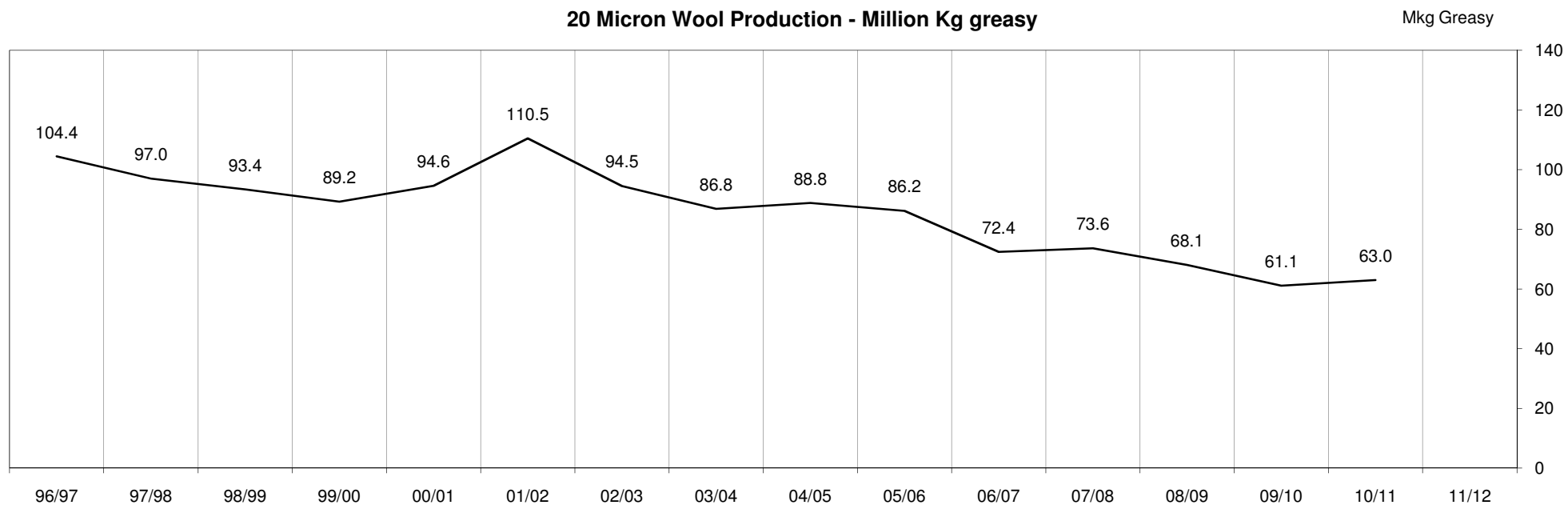
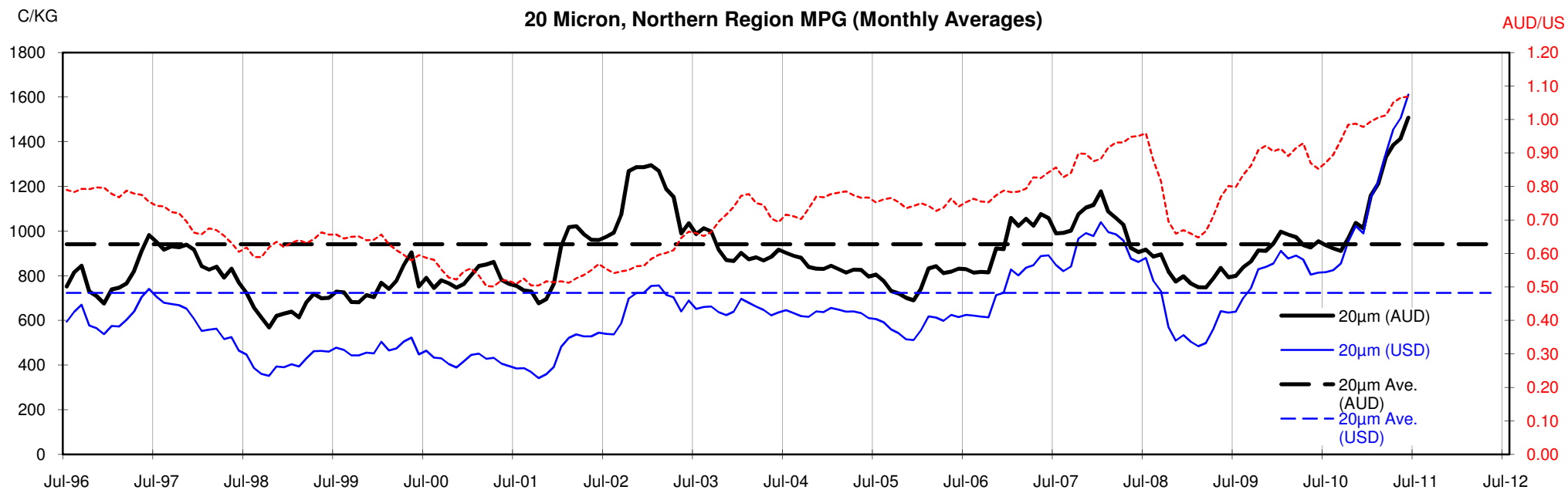
18 Micron, Northern Region MPG (Monthly Averages)

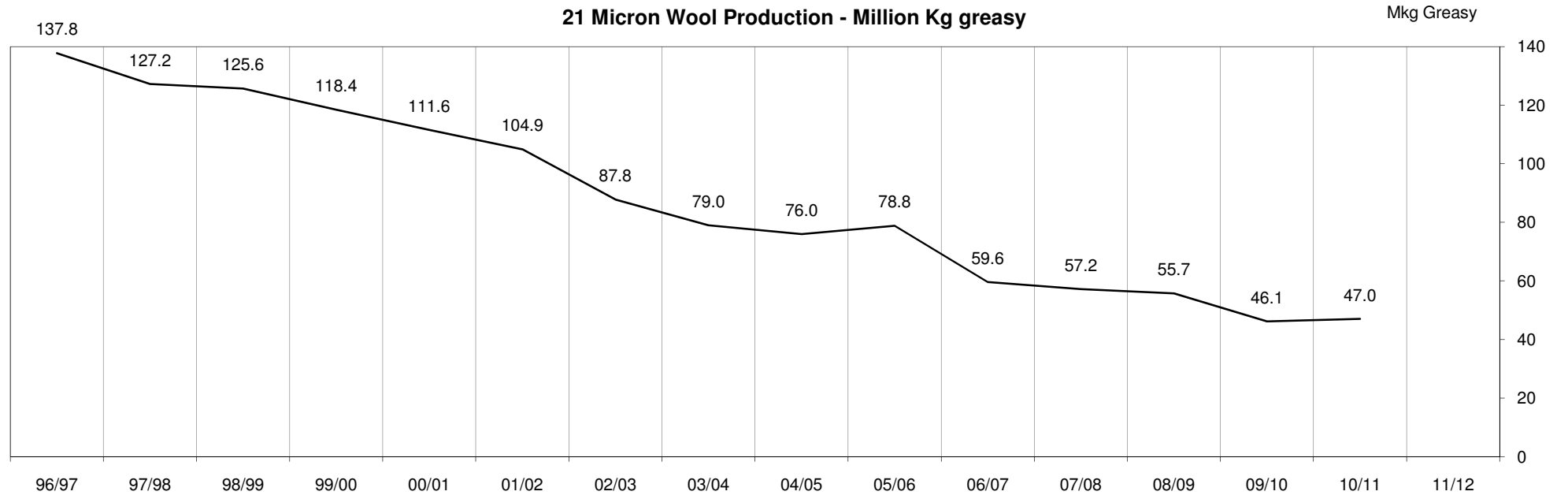
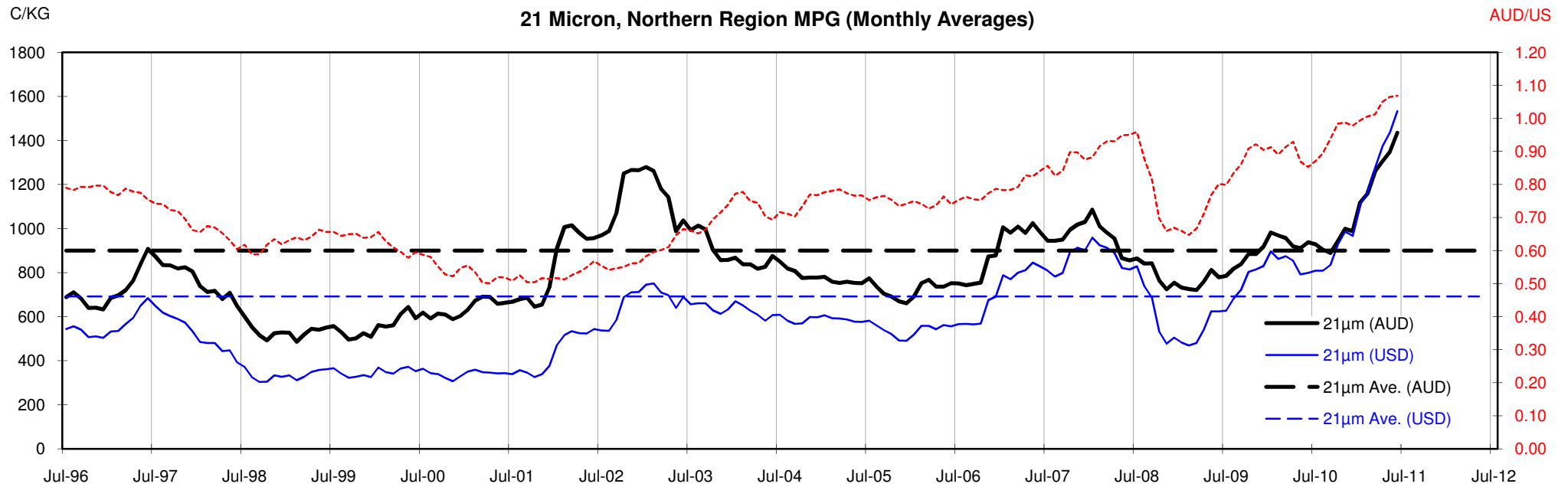


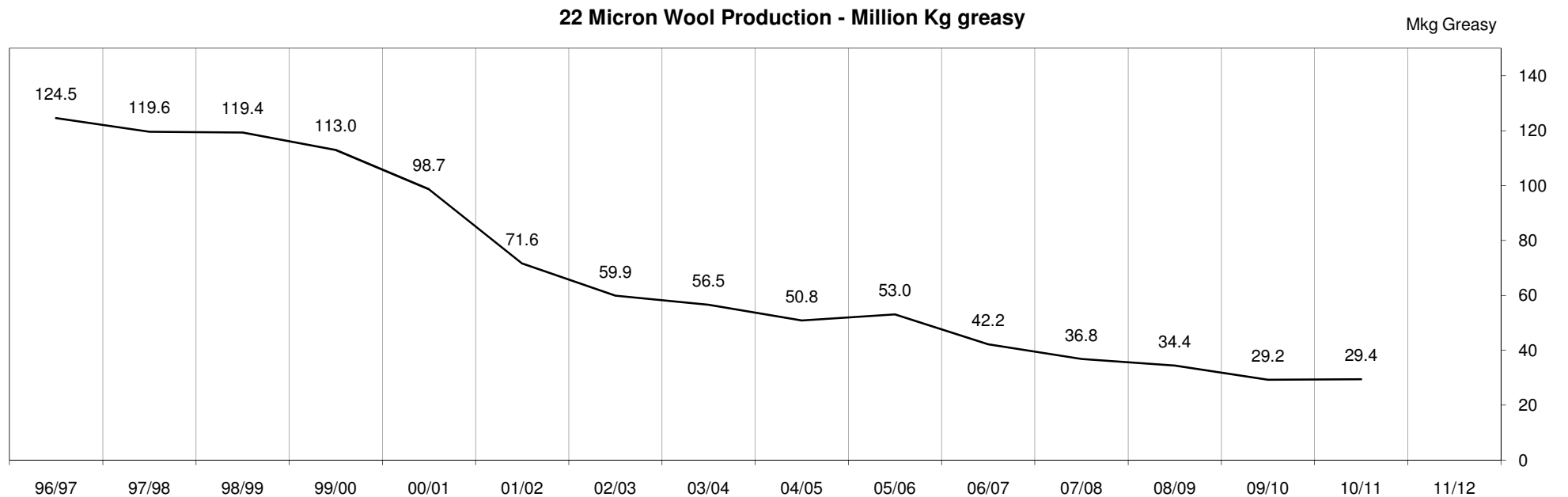
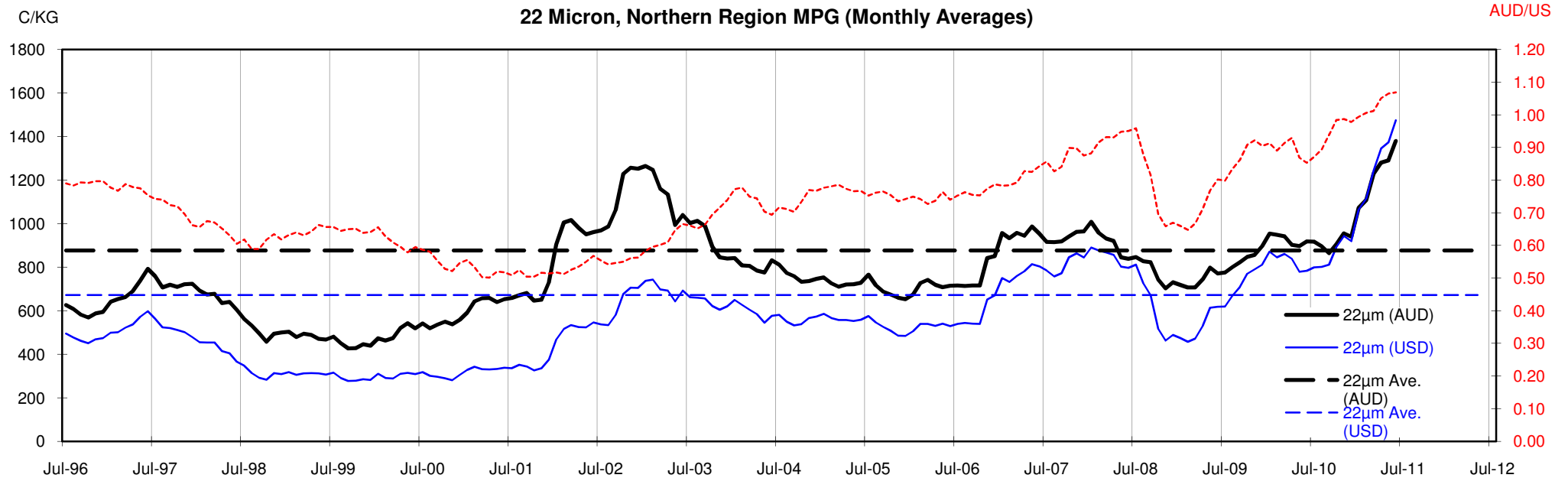
<18.5 micron Wool Production - Million Kg greasy

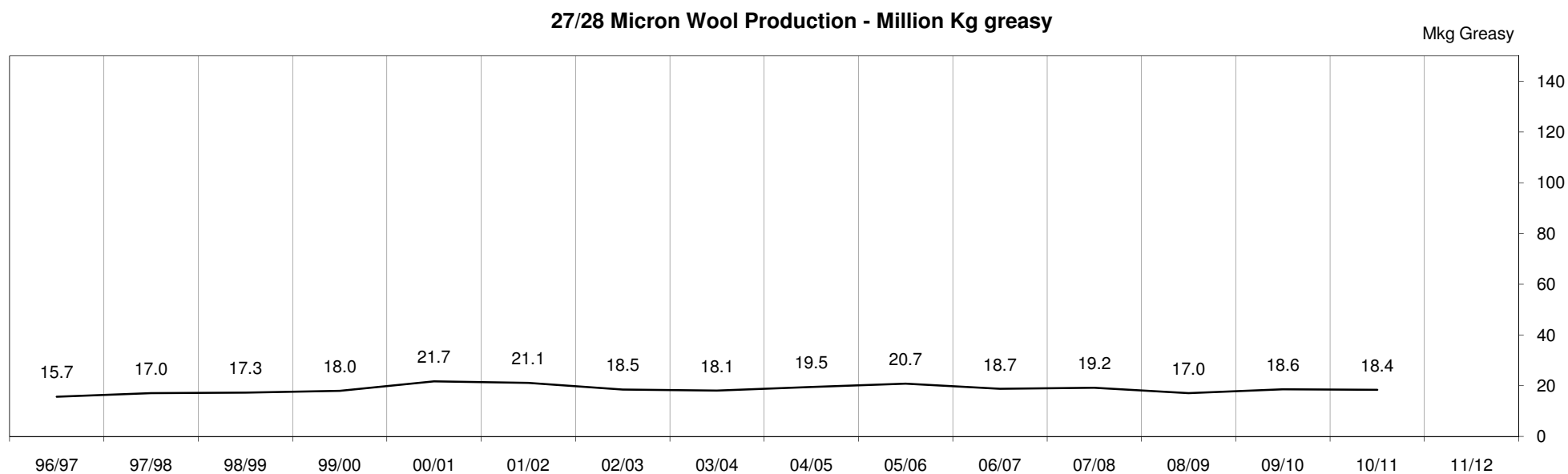
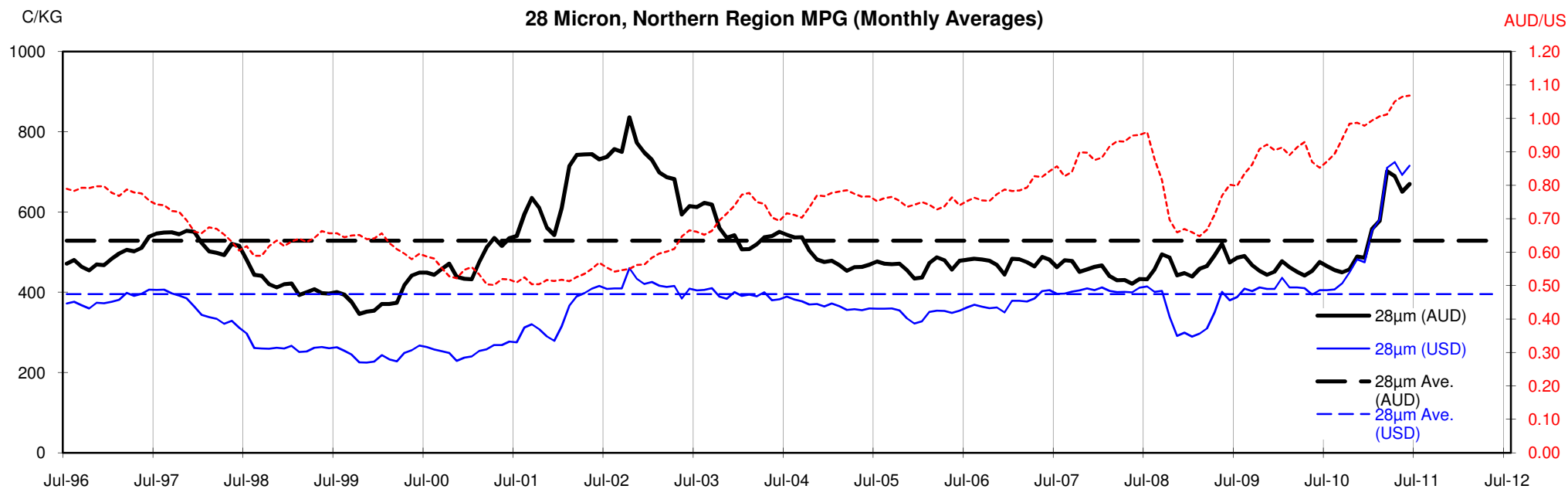












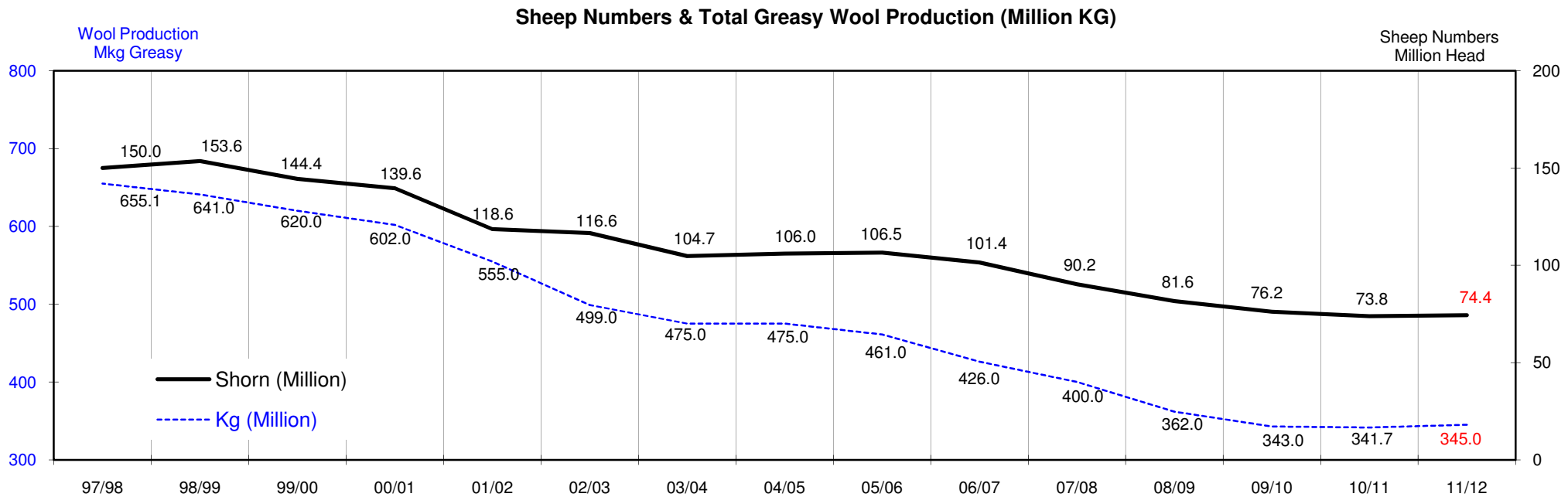
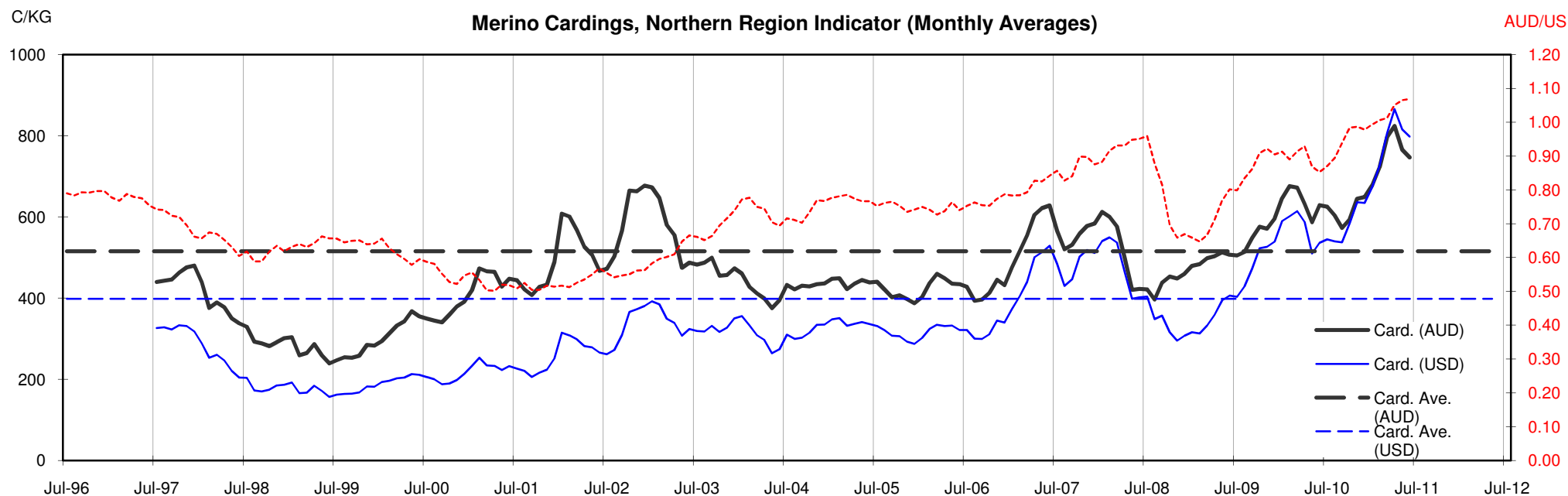




Table 13: Returns pr head for skirted fleece wool.

Skirted FLC Weight		Micron																	
9 Kg		16	16.5	17	17.5	18	18.5	19	19.5	20	21	22	23	24	25	26	28	30	32
Yield (Sch Dry)	25% Current	\$61	\$57	\$55	\$52	\$47	\$43	\$40	\$37	\$34	\$32	\$31	\$29	\$24	\$22	\$20	\$15	\$14	\$13
	10yr ave.			\$32		\$29		\$24		\$21	\$20	\$20	\$19	\$18	\$16	\$15	\$12	\$10	\$9
	30% Current	\$73	\$69	\$66	\$62	\$56	\$51	\$47	\$44	\$41	\$39	\$37	\$34	\$29	\$26	\$23	\$18	\$17	\$15
	10yr ave.			\$39		\$34		\$29		\$25	\$24	\$24	\$23	\$22	\$20	\$18	\$14	\$12	\$11
	35% Current	\$85	\$80	\$77	\$72	\$66	\$60	\$55	\$51	\$48	\$45	\$44	\$40	\$34	\$30	\$27	\$21	\$19	\$18
	10yr ave.			\$45		\$40		\$34		\$30	\$28	\$28	\$27	\$26	\$23	\$21	\$17	\$15	\$13
	40% Current	\$97	\$92	\$87	\$82	\$75	\$68	\$63	\$59	\$55	\$52	\$50	\$46	\$39	\$34	\$31	\$24	\$22	\$20
	10yr ave.			\$51		\$46		\$39		\$34	\$32	\$32	\$31	\$29	\$26	\$24	\$19	\$17	\$15
	45% Current	\$109	\$103	\$98	\$93	\$85	\$77	\$71	\$66	\$61	\$58	\$56	\$51	\$43	\$39	\$35	\$27	\$25	\$23
	10yr ave.			\$58		\$52		\$44		\$38	\$36	\$35	\$35	\$33	\$29	\$27	\$21	\$19	\$17
	50% Current	\$122	\$115	\$109	\$103	\$94	\$85	\$79	\$73	\$68	\$65	\$62	\$57	\$48	\$43	\$39	\$30	\$28	\$25
	10yr ave.			\$64		\$57		\$49		\$42	\$41	\$39	\$38	\$37	\$33	\$30	\$24	\$21	\$19
	55% Current	\$134	\$126	\$120	\$113	\$104	\$94	\$87	\$81	\$75	\$71	\$69	\$63	\$53	\$47	\$43	\$33	\$30	\$28
	10yr ave.			\$71		\$63		\$54		\$47	\$45	\$43	\$42	\$40	\$36	\$33	\$26	\$23	\$21
	60% Current	\$146	\$138	\$131	\$124	\$113	\$102	\$95	\$88	\$82	\$78	\$75	\$68	\$58	\$52	\$47	\$36	\$33	\$30
	10yr ave.			\$77		\$69		\$58		\$51	\$49	\$47	\$46	\$44	\$39	\$36	\$29	\$25	\$23
	65% Current	\$158	\$149	\$142	\$134	\$122	\$111	\$103	\$96	\$89	\$84	\$81	\$74	\$63	\$56	\$51	\$39	\$36	\$33
	10yr ave.			\$84		\$75		\$63		\$55	\$53	\$51	\$50	\$48	\$43	\$39	\$31	\$27	\$24
	70% Current	\$170	\$161	\$153	\$144	\$132	\$119	\$111	\$103	\$96	\$91	\$87	\$80	\$68	\$60	\$55	\$42	\$39	\$35
	10yr ave.			\$90		\$80		\$68		\$59	\$57	\$55	\$54	\$51	\$46	\$42	\$33	\$29	\$26
	75% Current	\$182	\$172	\$164	\$155	\$141	\$128	\$119	\$110	\$102	\$97	\$94	\$86	\$72	\$65	\$59	\$45	\$42	\$38
	10yr ave.			\$97		\$86		\$73		\$64	\$61	\$59	\$58	\$55	\$49	\$45	\$36	\$31	\$28
	80% Current	\$194	\$184	\$175	\$165	\$151	\$136	\$127	\$118	\$109	\$104	\$100	\$91	\$77	\$69	\$62	\$48	\$44	\$40
	10yr ave.			\$103		\$92		\$78		\$68	\$65	\$63	\$61	\$58	\$52	\$48	\$38	\$33	\$30
	85% Current	\$207	\$195	\$186	\$175	\$160	\$145	\$135	\$125	\$116	\$110	\$106	\$97	\$82	\$73	\$66	\$51	\$47	\$43
	10yr ave.			\$109		\$98		\$83		\$72	\$69	\$67	\$65	\$62	\$56	\$51	\$40	\$35	\$32

The above shows estimated returns per head for skirted fleece wool. These figures do not take into account the value of skirtings and oddments and do not take into account discounts that may apply for faults under individual circumstances. These figures are based on a market index of 100% and should be used as a guide only. Returns over \$30 / head for fleece wool are highlighted.

Source: Australian Wool Exchange, Australian Wool Innovation, Sydney Futures Exchange, x-rates.com

Disclaimer: While all due care has been taken in the preparation of this document, no warranty is made as to its accuracy, reliability or completeness. To the extent permitted by law neither Jemalong or their sources including subsidiaries and staff, accept liability to any person for loss or damage arising from the use of this information.



Table 14: Returns pr head for skirted fleece wool.

Skirted FLC Weight			Micron																	
			16	16.5	17	17.5	18	18.5	19	19.5	20	21	22	23	24	25	26	28	30	32
Yield (Sch Dry)	25%	Current	\$54	\$51	\$49	\$46	\$42	\$38	\$35	\$33	\$30	\$29	\$28	\$25	\$21	\$19	\$17	\$13	\$12	\$11
		10yr ave.			\$29		\$26		\$22		\$19	\$18	\$18	\$17	\$16	\$15	\$13	\$11	\$9	\$8
	30%	Current	\$65	\$61	\$58	\$55	\$50	\$45	\$42	\$39	\$36	\$35	\$33	\$30	\$26	\$23	\$21	\$16	\$15	\$13
		10yr ave.			\$34		\$31		\$26		\$23	\$22	\$21	\$20	\$19	\$17	\$16	\$13	\$11	\$10
	35%	Current	\$76	\$71	\$68	\$64	\$59	\$53	\$49	\$46	\$43	\$40	\$39	\$36	\$30	\$27	\$24	\$19	\$17	\$16
		10yr ave.			\$40		\$36		\$30		\$26	\$25	\$25	\$24	\$23	\$20	\$19	\$15	\$13	\$12
	40%	Current	\$86	\$82	\$78	\$73	\$67	\$61	\$56	\$52	\$49	\$46	\$44	\$41	\$34	\$31	\$28	\$21	\$20	\$18
		10yr ave.			\$46		\$41		\$35		\$30	\$29	\$28	\$27	\$26	\$23	\$21	\$17	\$15	\$13
	45%	Current	\$97	\$92	\$87	\$82	\$75	\$68	\$63	\$59	\$55	\$52	\$50	\$46	\$39	\$34	\$31	\$24	\$22	\$20
		10yr ave.			\$51		\$46		\$39		\$34	\$32	\$32	\$31	\$29	\$26	\$24	\$19	\$17	\$15
	50%	Current	\$108	\$102	\$97	\$92	\$84	\$76	\$70	\$65	\$61	\$58	\$55	\$51	\$43	\$38	\$35	\$27	\$25	\$22
		10yr ave.			\$57		\$51		\$43		\$38	\$36	\$35	\$34	\$32	\$29	\$27	\$21	\$18	\$17
	55%	Current	\$119	\$112	\$107	\$101	\$92	\$83	\$77	\$72	\$67	\$64	\$61	\$56	\$47	\$42	\$38	\$30	\$27	\$25
		10yr ave.			\$63		\$56		\$48		\$41	\$40	\$39	\$38	\$36	\$32	\$29	\$23	\$20	\$18
60%	Current	\$130	\$122	\$117	\$110	\$100	\$91	\$84	\$78	\$73	\$69	\$67	\$61	\$51	\$46	\$42	\$32	\$30	\$27	
	10yr ave.			\$69		\$61		\$52		\$45	\$43	\$42	\$41	\$39	\$35	\$32	\$25	\$22	\$20	
65%	Current	\$140	\$133	\$126	\$119	\$109	\$98	\$91	\$85	\$79	\$75	\$72	\$66	\$56	\$50	\$45	\$35	\$32	\$29	
	10yr ave.			\$74		\$66		\$56		\$49	\$47	\$46	\$44	\$42	\$38	\$35	\$28	\$24	\$22	
70%	Current	\$151	\$143	\$136	\$128	\$117	\$106	\$99	\$91	\$85	\$81	\$78	\$71	\$60	\$54	\$49	\$38	\$34	\$31	
	10yr ave.			\$80		\$71		\$61		\$53	\$50	\$49	\$48	\$45	\$41	\$37	\$30	\$26	\$23	
75%	Current	\$162	\$153	\$146	\$137	\$125	\$114	\$106	\$98	\$91	\$87	\$83	\$76	\$64	\$57	\$52	\$40	\$37	\$33	
	10yr ave.			\$86		\$77		\$65		\$56	\$54	\$53	\$51	\$49	\$44	\$40	\$32	\$28	\$25	
80%	Current	\$173	\$163	\$156	\$147	\$134	\$121	\$113	\$105	\$97	\$92	\$89	\$81	\$69	\$61	\$55	\$43	\$39	\$36	
	10yr ave.			\$92		\$82		\$69		\$60	\$58	\$56	\$55	\$52	\$47	\$43	\$34	\$30	\$27	
85%	Current	\$184	\$173	\$165	\$156	\$142	\$129	\$120	\$111	\$103	\$98	\$94	\$86	\$73	\$65	\$59	\$46	\$42	\$38	
	10yr ave.			\$97		\$87		\$74		\$64	\$61	\$60	\$58	\$55	\$50	\$45	\$36	\$31	\$28	

The above shows estimated returns per head for skirted fleece wool. These figures do not take into account the value of skirtings and oddments and do not take into account discounts that may apply for faults under individual circumstances. These figures are based on a market index of 100% and should be used as a guide only. Returns over \$30 / head for fleece wool are highlighted.

Source: Australian Wool Exchange, Australian Wool Innovation, Sydney Futures Exchange, x-rates.com

Disclaimer: While all due care has been taken in the preparation of this document, no warranty is made as to its accuracy, reliability or completeness. To the extent permitted by law neither Jemalong or their sources including subsidiaries and staff, accept liability to any person for loss or damage arising from the use of this information.



Table 15: Returns pr head for skirted fleece wool.

Skirted FLC Weight		Micron																		
		16	16.5	17	17.5	18	18.5	19	19.5	20	21	22	23	24	25	26	28	30	32	
Yield (Sch Dry)	25%	Current	\$47	\$45	\$43	\$40	\$37	\$33	\$31	\$29	\$27	\$25	\$24	\$22	\$19	\$17	\$15	\$12	\$11	\$10
	10yr ave.			\$25		\$22		\$19		\$16	\$16	\$15	\$15	\$14	\$13	\$12	\$9	\$8	\$7	
	30%	Current	\$57	\$54	\$51	\$48	\$44	\$40	\$37	\$34	\$32	\$30	\$29	\$27	\$23	\$20	\$18	\$14	\$13	\$12
	10yr ave.			\$30		\$27		\$23		\$20	\$19	\$18	\$18	\$17	\$15	\$14	\$11	\$10	\$9	
	35%	Current	\$66	\$62	\$60	\$56	\$51	\$46	\$43	\$40	\$37	\$35	\$34	\$31	\$26	\$23	\$21	\$16	\$15	\$14
	10yr ave.			\$35		\$31		\$26		\$23	\$22	\$21	\$21	\$20	\$18	\$16	\$13	\$11	\$10	
	40%	Current	\$76	\$71	\$68	\$64	\$59	\$53	\$49	\$46	\$43	\$40	\$39	\$36	\$30	\$27	\$24	\$19	\$17	\$16
	10yr ave.			\$40		\$36		\$30		\$26	\$25	\$25	\$24	\$23	\$20	\$19	\$15	\$13	\$12	
	45%	Current	\$85	\$80	\$77	\$72	\$66	\$60	\$55	\$51	\$48	\$45	\$44	\$40	\$34	\$30	\$27	\$21	\$19	\$18
	10yr ave.			\$45		\$40		\$34		\$30	\$28	\$28	\$27	\$26	\$23	\$21	\$17	\$15	\$13	
	50%	Current	\$95	\$89	\$85	\$80	\$73	\$66	\$62	\$57	\$53	\$51	\$49	\$44	\$38	\$33	\$30	\$23	\$22	\$20
	10yr ave.			\$50		\$45		\$38		\$33	\$32	\$31	\$30	\$28	\$25	\$23	\$19	\$16	\$15	
	55%	Current	\$104	\$98	\$94	\$88	\$81	\$73	\$68	\$63	\$58	\$56	\$53	\$49	\$41	\$37	\$33	\$26	\$24	\$21
	10yr ave.			\$55		\$49		\$42		\$36	\$35	\$34	\$33	\$31	\$28	\$26	\$20	\$18	\$16	
60%	Current	\$113	\$107	\$102	\$96	\$88	\$80	\$74	\$69	\$64	\$61	\$58	\$53	\$45	\$40	\$36	\$28	\$26	\$23	
10yr ave.			\$60		\$54		\$45		\$40	\$38	\$37	\$36	\$34	\$31	\$28	\$22	\$19	\$18		
65%	Current	\$123	\$116	\$111	\$104	\$95	\$86	\$80	\$74	\$69	\$66	\$63	\$58	\$49	\$43	\$39	\$31	\$28	\$25	
10yr ave.			\$65		\$58		\$49		\$43	\$41	\$40	\$39	\$37	\$33	\$30	\$24	\$21	\$19		
70%	Current	\$132	\$125	\$119	\$112	\$102	\$93	\$86	\$80	\$74	\$71	\$68	\$62	\$53	\$47	\$42	\$33	\$30	\$27	
10yr ave.			\$70		\$63		\$53		\$46	\$44	\$43	\$42	\$40	\$36	\$33	\$26	\$23	\$20		
75%	Current	\$142	\$134	\$128	\$120	\$110	\$99	\$92	\$86	\$80	\$76	\$73	\$67	\$56	\$50	\$46	\$35	\$32	\$29	
10yr ave.			\$75		\$67		\$57		\$49	\$47	\$46	\$45	\$43	\$38	\$35	\$28	\$24	\$22		
80%	Current	\$151	\$143	\$136	\$128	\$117	\$106	\$99	\$91	\$85	\$81	\$78	\$71	\$60	\$54	\$49	\$38	\$34	\$31	
10yr ave.			\$80		\$71		\$61		\$53	\$50	\$49	\$48	\$45	\$41	\$37	\$30	\$26	\$23		
85%	Current	\$161	\$152	\$145	\$136	\$124	\$113	\$105	\$97	\$90	\$86	\$82	\$75	\$64	\$57	\$52	\$40	\$37	\$33	
10yr ave.			\$85		\$76		\$64		\$56	\$54	\$52	\$51	\$48	\$43	\$40	\$31	\$27	\$25		

The above shows estimated returns per head for skirted fleece wool. These figures do not take into account the value of skirtings and oddments and do not take into account discounts that may apply for faults under individual circumstances. These figures are based on a market index of 100% and should be used as a guide only. Returns over \$30 / head for fleece wool are highlighted.

Source: Australian Wool Exchange, Australian Wool Innovation, Sydney Futures Exchange, x-rates.com

Disclaimer: While all due care has been taken in the preparation of this document, no warranty is made as to its accuracy, reliability or completeness. To the extent permitted by law neither Jemalong or their sources including subsidiaries and staff, accept liability to any person for loss or damage arising from the use of this information.



Table 16: Returns pr head for skirted fleece wool.

Skirted FLC Weight		Micron																	
6 Kg		16	16.5	17	17.5	18	18.5	19	19.5	20	21	22	23	24	25	26	28	30	32
Yield (Sch Dry)	25% Current	\$41	\$38	\$36	\$34	\$31	\$28	\$26	\$24	\$23	\$22	\$21	\$19	\$16	\$14	\$13	\$10	\$9	\$8
	10yr ave.			\$21		\$19		\$16		\$14	\$14	\$13	\$13	\$12	\$11	\$10	\$8	\$7	\$6
	30% Current	\$49	\$46	\$44	\$41	\$38	\$34	\$32	\$29	\$27	\$26	\$25	\$23	\$19	\$17	\$16	\$12	\$11	\$10
	10yr ave.			\$26		\$23		\$19		\$17	\$16	\$16	\$15	\$15	\$13	\$12	\$10	\$8	\$8
	35% Current	\$57	\$54	\$51	\$48	\$44	\$40	\$37	\$34	\$32	\$30	\$29	\$27	\$23	\$20	\$18	\$14	\$13	\$12
	10yr ave.			\$30		\$27		\$23		\$20	\$19	\$18	\$18	\$17	\$15	\$14	\$11	\$10	\$9
	40% Current	\$65	\$61	\$58	\$55	\$50	\$45	\$42	\$39	\$36	\$35	\$33	\$30	\$26	\$23	\$21	\$16	\$15	\$13
	10yr ave.			\$34		\$31		\$26		\$23	\$22	\$21	\$20	\$19	\$17	\$16	\$13	\$11	\$10
	45% Current	\$73	\$69	\$66	\$62	\$56	\$51	\$47	\$44	\$41	\$39	\$37	\$34	\$29	\$26	\$23	\$18	\$17	\$15
	10yr ave.			\$39		\$34		\$29		\$25	\$24	\$24	\$23	\$22	\$20	\$18	\$14	\$12	\$11
	50% Current	\$81	\$77	\$73	\$69	\$63	\$57	\$53	\$49	\$46	\$43	\$42	\$38	\$32	\$29	\$26	\$20	\$18	\$17
	10yr ave.			\$43		\$38		\$32		\$28	\$27	\$26	\$26	\$24	\$22	\$20	\$16	\$14	\$13
	55% Current	\$89	\$84	\$80	\$76	\$69	\$63	\$58	\$54	\$50	\$48	\$46	\$42	\$35	\$32	\$29	\$22	\$20	\$18
	10yr ave.			\$47		\$42		\$36		\$31	\$30	\$29	\$28	\$27	\$24	\$22	\$17	\$15	\$14
	60% Current	\$97	\$92	\$87	\$82	\$75	\$68	\$63	\$59	\$55	\$52	\$50	\$46	\$39	\$34	\$31	\$24	\$22	\$20
	10yr ave.			\$51		\$46		\$39		\$34	\$32	\$32	\$31	\$29	\$26	\$24	\$19	\$17	\$15
	65% Current	\$105	\$99	\$95	\$89	\$82	\$74	\$69	\$64	\$59	\$56	\$54	\$49	\$42	\$37	\$34	\$26	\$24	\$22
	10yr ave.			\$56		\$50		\$42		\$37	\$35	\$34	\$33	\$32	\$28	\$26	\$21	\$18	\$16
	70% Current	\$113	\$107	\$102	\$96	\$88	\$80	\$74	\$69	\$64	\$61	\$58	\$53	\$45	\$40	\$36	\$28	\$26	\$23
	10yr ave.			\$60		\$54		\$45		\$40	\$38	\$37	\$36	\$34	\$31	\$28	\$22	\$19	\$18
	75% Current	\$122	\$115	\$109	\$103	\$94	\$85	\$79	\$73	\$68	\$65	\$62	\$57	\$48	\$43	\$39	\$30	\$28	\$25
	10yr ave.			\$64		\$57		\$49		\$42	\$41	\$39	\$38	\$37	\$33	\$30	\$24	\$21	\$19
	80% Current	\$130	\$122	\$117	\$110	\$100	\$91	\$84	\$78	\$73	\$69	\$67	\$61	\$51	\$46	\$42	\$32	\$30	\$27
	10yr ave.			\$69		\$61		\$52		\$45	\$43	\$42	\$41	\$39	\$35	\$32	\$25	\$22	\$20
	85% Current	\$138	\$130	\$124	\$117	\$107	\$97	\$90	\$83	\$77	\$74	\$71	\$65	\$55	\$49	\$44	\$34	\$31	\$28
	10yr ave.			\$73		\$65		\$55		\$48	\$46	\$45	\$44	\$41	\$37	\$34	\$27	\$24	\$21

The above shows estimated returns per head for skirted fleece wool. These figures do not take into account the value of skirtings and oddments and do not take into account discounts that may apply for faults under individual circumstances. These figures are based on a market index of 100% and should be used as a guide only. Returns over \$30 / head for fleece wool are highlighted.

Source: Australian Wool Exchange, Australian Wool Innovation, Sydney Futures Exchange, x-rates.com

Disclaimer: While all due care has been taken in the preparation of this document, no warranty is made as to its accuracy, reliability or completeness. To the extent permitted by law neither Jemalong or their sources including subsidiaries and staff, accept liability to any person for loss or damage arising from the use of this information.



Table 17: Returns pr head for skirted fleece wool.

Skirted FLC Weight		Micron																	
5 Kg		16	16.5	17	17.5	18	18.5	19	19.5	20	21	22	23	24	25	26	28	30	32
Yield (Sch Dry)	25% Current	\$34	\$32	\$30	\$29	\$26	\$24	\$22	\$20	\$19	\$18	\$17	\$16	\$13	\$12	\$11	\$8	\$8	\$7
	10yr ave.			\$18		\$16		\$14		\$12	\$11	\$11	\$11	\$10	\$9	\$8	\$7	\$6	\$5
	30% Current	\$41	\$38	\$36	\$34	\$31	\$28	\$26	\$24	\$23	\$22	\$21	\$19	\$16	\$14	\$13	\$10	\$9	\$8
	10yr ave.			\$21		\$19		\$16		\$14	\$14	\$13	\$13	\$12	\$11	\$10	\$8	\$7	\$6
	35% Current	\$47	\$45	\$43	\$40	\$37	\$33	\$31	\$29	\$27	\$25	\$24	\$22	\$19	\$17	\$15	\$12	\$11	\$10
	10yr ave.			\$25		\$22		\$19		\$16	\$16	\$15	\$15	\$14	\$13	\$12	\$9	\$8	\$7
	40% Current	\$54	\$51	\$49	\$46	\$42	\$38	\$35	\$33	\$30	\$29	\$28	\$25	\$21	\$19	\$17	\$13	\$12	\$11
	10yr ave.			\$29		\$26		\$22		\$19	\$18	\$18	\$17	\$16	\$15	\$13	\$11	\$9	\$8
	45% Current	\$61	\$57	\$55	\$52	\$47	\$43	\$40	\$37	\$34	\$32	\$31	\$29	\$24	\$22	\$20	\$15	\$14	\$13
	10yr ave.			\$32		\$29		\$24		\$21	\$20	\$20	\$19	\$18	\$16	\$15	\$12	\$10	\$9
	50% Current	\$68	\$64	\$61	\$57	\$52	\$47	\$44	\$41	\$38	\$36	\$35	\$32	\$27	\$24	\$22	\$17	\$15	\$14
	10yr ave.			\$36		\$32		\$27		\$24	\$23	\$22	\$21	\$20	\$18	\$17	\$13	\$12	\$10
	55% Current	\$74	\$70	\$67	\$63	\$58	\$52	\$48	\$45	\$42	\$40	\$38	\$35	\$29	\$26	\$24	\$18	\$17	\$15
	10yr ave.			\$39		\$35		\$30		\$26	\$25	\$24	\$23	\$22	\$20	\$18	\$15	\$13	\$11
	60% Current	\$81	\$77	\$73	\$69	\$63	\$57	\$53	\$49	\$46	\$43	\$42	\$38	\$32	\$29	\$26	\$20	\$18	\$17
	10yr ave.			\$43		\$38		\$32		\$28	\$27	\$26	\$26	\$24	\$22	\$20	\$16	\$14	\$13
	65% Current	\$88	\$83	\$79	\$74	\$68	\$62	\$57	\$53	\$49	\$47	\$45	\$41	\$35	\$31	\$28	\$22	\$20	\$18
	10yr ave.			\$46		\$41		\$35		\$31	\$29	\$28	\$28	\$26	\$24	\$22	\$17	\$15	\$14
	70% Current	\$95	\$89	\$85	\$80	\$73	\$66	\$62	\$57	\$53	\$51	\$49	\$44	\$38	\$33	\$30	\$23	\$22	\$20
	10yr ave.			\$50		\$45		\$38		\$33	\$32	\$31	\$30	\$28	\$25	\$23	\$19	\$16	\$15
	75% Current	\$101	\$96	\$91	\$86	\$78	\$71	\$66	\$61	\$57	\$54	\$52	\$48	\$40	\$36	\$33	\$25	\$23	\$21
	10yr ave.			\$54		\$48		\$41		\$35	\$34	\$33	\$32	\$30	\$27	\$25	\$20	\$17	\$16
	80% Current	\$108	\$102	\$97	\$92	\$84	\$76	\$70	\$65	\$61	\$58	\$55	\$51	\$43	\$38	\$35	\$27	\$25	\$22
	10yr ave.			\$57		\$51		\$43		\$38	\$36	\$35	\$34	\$32	\$29	\$27	\$21	\$18	\$17
	85% Current	\$115	\$108	\$103	\$97	\$89	\$80	\$75	\$69	\$65	\$61	\$59	\$54	\$46	\$41	\$37	\$29	\$26	\$24
	10yr ave.			\$61		\$54		\$46		\$40	\$38	\$37	\$36	\$35	\$31	\$28	\$22	\$20	\$18

The above shows estimated returns per head for skirted fleece wool. These figures do not take into account the value of skirtings and oddments and do not take into account discounts that may apply for faults under individual circumstances. These figures are based on a market index of 100% and should be used as a guide only. Returns over \$30 / head for fleece wool are highlighted.

Source: Australian Wool Exchange, Australian Wool Innovation, Sydney Futures Exchange, x-rates.com

Disclaimer: While all due care has been taken in the preparation of this document, no warranty is made as to its accuracy, reliability or completeness. To the extent permitted by law neither Jemalong or their sources including subsidiaries and staff, accept liability to any person for loss or damage arising from the use of this information.



Table 18: Returns pr head for skirted fleece wool.

Skirted FLC Weight		Micron																	
4 Kg		16	16.5	17	17.5	18	18.5	19	19.5	20	21	22	23	24	25	26	28	30	32
Yield (Sch Dry)	25% Current	\$27	\$26	\$24	\$23	\$21	\$19	\$18	\$16	\$15	\$14	\$14	\$13	\$11	\$10	\$9	\$7	\$6	\$6
	10yr ave.			\$14		\$13		\$11		\$9	\$9	\$9	\$9	\$8	\$7	\$7	\$5	\$5	\$4
	30% Current	\$32	\$31	\$29	\$27	\$25	\$23	\$21	\$20	\$18	\$17	\$17	\$15	\$13	\$11	\$10	\$8	\$7	\$7
	10yr ave.			\$17		\$15		\$13		\$11	\$11	\$11	\$10	\$10	\$9	\$8	\$6	\$6	\$5
	35% Current	\$38	\$36	\$34	\$32	\$29	\$27	\$25	\$23	\$21	\$20	\$19	\$18	\$15	\$13	\$12	\$9	\$9	\$8
	10yr ave.			\$20		\$18		\$15		\$13	\$13	\$12	\$12	\$11	\$10	\$9	\$7	\$6	\$6
	40% Current	\$43	\$41	\$39	\$37	\$33	\$30	\$28	\$26	\$24	\$23	\$22	\$20	\$17	\$15	\$14	\$11	\$10	\$9
	10yr ave.			\$23		\$20		\$17		\$15	\$14	\$14	\$14	\$13	\$12	\$11	\$8	\$7	\$7
	45% Current	\$49	\$46	\$44	\$41	\$38	\$34	\$32	\$29	\$27	\$26	\$25	\$23	\$19	\$17	\$16	\$12	\$11	\$10
	10yr ave.			\$26		\$23		\$19		\$17	\$16	\$16	\$15	\$15	\$13	\$12	\$10	\$8	\$8
	50% Current	\$54	\$51	\$49	\$46	\$42	\$38	\$35	\$33	\$30	\$29	\$28	\$25	\$21	\$19	\$17	\$13	\$12	\$11
	10yr ave.			\$29		\$26		\$22		\$19	\$18	\$18	\$17	\$16	\$15	\$13	\$11	\$9	\$8
	55% Current	\$59	\$56	\$53	\$50	\$46	\$42	\$39	\$36	\$33	\$32	\$30	\$28	\$24	\$21	\$19	\$15	\$14	\$12
	10yr ave.			\$31		\$28		\$24		\$21	\$20	\$19	\$19	\$18	\$16	\$15	\$12	\$10	\$9
	60% Current	\$65	\$61	\$58	\$55	\$50	\$45	\$42	\$39	\$36	\$35	\$33	\$30	\$26	\$23	\$21	\$16	\$15	\$13
	10yr ave.			\$34		\$31		\$26		\$23	\$22	\$21	\$20	\$19	\$17	\$16	\$13	\$11	\$10
	65% Current	\$70	\$66	\$63	\$60	\$54	\$49	\$46	\$42	\$39	\$38	\$36	\$33	\$28	\$25	\$23	\$17	\$16	\$15
	10yr ave.			\$37		\$33		\$28		\$24	\$23	\$23	\$22	\$21	\$19	\$17	\$14	\$12	\$11
	70% Current	\$76	\$71	\$68	\$64	\$59	\$53	\$49	\$46	\$43	\$40	\$39	\$36	\$30	\$27	\$24	\$19	\$17	\$16
	10yr ave.			\$40		\$36		\$30		\$26	\$25	\$25	\$24	\$23	\$20	\$19	\$15	\$13	\$12
	75% Current	\$81	\$77	\$73	\$69	\$63	\$57	\$53	\$49	\$46	\$43	\$42	\$38	\$32	\$29	\$26	\$20	\$18	\$17
	10yr ave.			\$43		\$38		\$32		\$28	\$27	\$26	\$26	\$24	\$22	\$20	\$16	\$14	\$13
	80% Current	\$86	\$82	\$78	\$73	\$67	\$61	\$56	\$52	\$49	\$46	\$44	\$41	\$34	\$31	\$28	\$21	\$20	\$18
	10yr ave.			\$46		\$41		\$35		\$30	\$29	\$28	\$27	\$26	\$23	\$21	\$17	\$15	\$13
	85% Current	\$92	\$87	\$83	\$78	\$71	\$64	\$60	\$56	\$52	\$49	\$47	\$43	\$36	\$33	\$29	\$23	\$21	\$19
	10yr ave.			\$49		\$43		\$37		\$32	\$31	\$30	\$29	\$28	\$25	\$23	\$18	\$16	\$14

The above shows estimated returns per head for skirted fleece wool. These figures do not take into account the value of skirtings and oddments and do not take into account discounts that may apply for faults under individual circumstances. These figures are based on a market index of 100% and should be used as a guide only. Returns over \$30 / head for fleece wool are highlighted.

Source: Australian Wool Exchange, Australian Wool Innovation, Sydney Futures Exchange, x-rates.com

Disclaimer: While all due care has been taken in the preparation of this document, no warranty is made as to its accuracy, reliability or completeness. To the extent permitted by law neither Jemalong or their sources including subsidiaries and staff, accept liability to any person for loss or damage arising from the use of this information.



Table 19: Returns pr head for skirted fleece wool.

Skirted FLC Weight		Micron																	
3 Kg		16	16.5	17	17.5	18	18.5	19	19.5	20	21	22	23	24	25	26	28	30	32
Yield (Sch Dry)	25% Current	\$20	\$19	\$18	\$17	\$16	\$14	\$13	\$12	\$11	\$11	\$10	\$10	\$8	\$7	\$7	\$5	\$5	\$4
	10yr ave.			\$11		\$10		\$8		\$7	\$7	\$7	\$6	\$6	\$5	\$5	\$4	\$3	\$3
	30% Current	\$24	\$23	\$22	\$21	\$19	\$17	\$16	\$15	\$14	\$13	\$12	\$11	\$10	\$9	\$8	\$6	\$6	\$5
	10yr ave.			\$13		\$11		\$10		\$8	\$8	\$8	\$8	\$7	\$7	\$6	\$5	\$4	\$4
	35% Current	\$28	\$27	\$26	\$24	\$22	\$20	\$18	\$17	\$16	\$15	\$15	\$13	\$11	\$10	\$9	\$7	\$6	\$6
	10yr ave.			\$15		\$13		\$11		\$10	\$9	\$9	\$9	\$9	\$8	\$7	\$6	\$5	\$4
	40% Current	\$32	\$31	\$29	\$27	\$25	\$23	\$21	\$20	\$18	\$17	\$17	\$15	\$13	\$11	\$10	\$8	\$7	\$7
	10yr ave.			\$17		\$15		\$13		\$11	\$11	\$11	\$10	\$10	\$9	\$8	\$6	\$6	\$5
	45% Current	\$36	\$34	\$33	\$31	\$28	\$26	\$24	\$22	\$20	\$19	\$19	\$17	\$14	\$13	\$12	\$9	\$8	\$8
	10yr ave.			\$19		\$17		\$15		\$13	\$12	\$12	\$12	\$11	\$10	\$9	\$7	\$6	\$6
	50% Current	\$41	\$38	\$36	\$34	\$31	\$28	\$26	\$24	\$23	\$22	\$21	\$19	\$16	\$14	\$13	\$10	\$9	\$8
	10yr ave.			\$21		\$19		\$16		\$14	\$14	\$13	\$13	\$12	\$11	\$10	\$8	\$7	\$6
	55% Current	\$45	\$42	\$40	\$38	\$35	\$31	\$29	\$27	\$25	\$24	\$23	\$21	\$18	\$16	\$14	\$11	\$10	\$9
	10yr ave.			\$24		\$21		\$18		\$16	\$15	\$14	\$14	\$13	\$12	\$11	\$9	\$8	\$7
	60% Current	\$49	\$46	\$44	\$41	\$38	\$34	\$32	\$29	\$27	\$26	\$25	\$23	\$19	\$17	\$16	\$12	\$11	\$10
	10yr ave.			\$26		\$23		\$19		\$17	\$16	\$16	\$15	\$15	\$13	\$12	\$10	\$8	\$8
	65% Current	\$53	\$50	\$47	\$45	\$41	\$37	\$34	\$32	\$30	\$28	\$27	\$25	\$21	\$19	\$17	\$13	\$12	\$11
	10yr ave.			\$28		\$25		\$21		\$18	\$18	\$17	\$17	\$16	\$14	\$13	\$10	\$9	\$8
	70% Current	\$57	\$54	\$51	\$48	\$44	\$40	\$37	\$34	\$32	\$30	\$29	\$27	\$23	\$20	\$18	\$14	\$13	\$12
	10yr ave.			\$30		\$27		\$23		\$20	\$19	\$18	\$18	\$17	\$15	\$14	\$11	\$10	\$9
	75% Current	\$61	\$57	\$55	\$52	\$47	\$43	\$40	\$37	\$34	\$32	\$31	\$29	\$24	\$22	\$20	\$15	\$14	\$13
	10yr ave.			\$32		\$29		\$24		\$21	\$20	\$20	\$19	\$18	\$16	\$15	\$12	\$10	\$9
	80% Current	\$65	\$61	\$58	\$55	\$50	\$45	\$42	\$39	\$36	\$35	\$33	\$30	\$26	\$23	\$21	\$16	\$15	\$13
	10yr ave.			\$34		\$31		\$26		\$23	\$22	\$21	\$20	\$19	\$17	\$16	\$13	\$11	\$10
	85% Current	\$69	\$65	\$62	\$58	\$53	\$48	\$45	\$42	\$39	\$37	\$35	\$32	\$27	\$24	\$22	\$17	\$16	\$14
	10yr ave.			\$36		\$33		\$28		\$24	\$23	\$22	\$22	\$21	\$19	\$17	\$13	\$12	\$11

The above shows estimated returns per head for skirted fleece wool. These figures do not take into account the value of skirtings and oddments and do not take into account discounts that may apply for faults under individual circumstances. These figures are based on a market index of 100% and should be used as a guide only. Returns over \$30 / head for fleece wool are highlighted.

Source: Australian Wool Exchange, Australian Wool Innovation, Sydney Futures Exchange, x-rates.com

Disclaimer: While all due care has been taken in the preparation of this document, no warranty is made as to its accuracy, reliability or completeness. To the extent permitted by law neither Jemalong or their sources including subsidiaries and staff, accept liability to any person for loss or damage arising from the use of this information.



Table 20: Returns pr head for skirted fleece wool.

Skirted FLC Weight		Micron																	
2 Kg		16	16.5	17	17.5	18	18.5	19	19.5	20	21	22	23	24	25	26	28	30	32
Yield (Sch Dry)	25% Current	\$14	\$13	\$12	\$11	\$10	\$9	\$9	\$8	\$8	\$7	\$7	\$6	\$5	\$5	\$4	\$3	\$3	\$3
	10yr ave.			\$7		\$6		\$5		\$5	\$5	\$4	\$4	\$4	\$4	\$3	\$3	\$2	\$2
	30% Current	\$16	\$15	\$15	\$14	\$13	\$11	\$11	\$10	\$9	\$9	\$8	\$8	\$6	\$6	\$5	\$4	\$4	\$3
	10yr ave.			\$9		\$8		\$6		\$6	\$5	\$5	\$5	\$5	\$4	\$4	\$3	\$3	\$3
	35% Current	\$19	\$18	\$17	\$16	\$15	\$13	\$12	\$11	\$11	\$10	\$10	\$9	\$8	\$7	\$6	\$5	\$4	\$4
	10yr ave.			\$10		\$9		\$8		\$7	\$6	\$6	\$6	\$6	\$5	\$5	\$4	\$3	\$3
	40% Current	\$22	\$20	\$19	\$18	\$17	\$15	\$14	\$13	\$12	\$12	\$11	\$10	\$9	\$8	\$7	\$5	\$5	\$4
	10yr ave.			\$11		\$10		\$9		\$8	\$7	\$7	\$7	\$6	\$6	\$5	\$4	\$4	\$3
	45% Current	\$24	\$23	\$22	\$21	\$19	\$17	\$16	\$15	\$14	\$13	\$12	\$11	\$10	\$9	\$8	\$6	\$6	\$5
	10yr ave.			\$13		\$11		\$10		\$8	\$8	\$8	\$8	\$7	\$7	\$6	\$5	\$4	\$4
	50% Current	\$27	\$26	\$24	\$23	\$21	\$19	\$18	\$16	\$15	\$14	\$14	\$13	\$11	\$10	\$9	\$7	\$6	\$6
	10yr ave.			\$14		\$13		\$11		\$9	\$9	\$9	\$9	\$8	\$7	\$7	\$5	\$5	\$4
	55% Current	\$30	\$28	\$27	\$25	\$23	\$21	\$19	\$18	\$17	\$16	\$15	\$14	\$12	\$11	\$10	\$7	\$7	\$6
	10yr ave.			\$16		\$14		\$12		\$10	\$10	\$10	\$9	\$9	\$8	\$7	\$6	\$5	\$5
	60% Current	\$32	\$31	\$29	\$27	\$25	\$23	\$21	\$20	\$18	\$17	\$17	\$15	\$13	\$11	\$10	\$8	\$7	\$7
	10yr ave.			\$17		\$15		\$13		\$11	\$11	\$11	\$10	\$10	\$9	\$8	\$6	\$6	\$5
	65% Current	\$35	\$33	\$32	\$30	\$27	\$25	\$23	\$21	\$20	\$19	\$18	\$16	\$14	\$12	\$11	\$9	\$8	\$7
	10yr ave.			\$19		\$17		\$14		\$12	\$12	\$11	\$11	\$11	\$9	\$9	\$7	\$6	\$5
	70% Current	\$38	\$36	\$34	\$32	\$29	\$27	\$25	\$23	\$21	\$20	\$19	\$18	\$15	\$13	\$12	\$9	\$9	\$8
	10yr ave.			\$20		\$18		\$15		\$13	\$13	\$12	\$12	\$11	\$10	\$9	\$7	\$6	\$6
	75% Current	\$41	\$38	\$36	\$34	\$31	\$28	\$26	\$24	\$23	\$22	\$21	\$19	\$16	\$14	\$13	\$10	\$9	\$8
	10yr ave.			\$21		\$19		\$16		\$14	\$14	\$13	\$13	\$12	\$11	\$10	\$8	\$7	\$6
	80% Current	\$43	\$41	\$39	\$37	\$33	\$30	\$28	\$26	\$24	\$23	\$22	\$20	\$17	\$15	\$14	\$11	\$10	\$9
	10yr ave.			\$23		\$20		\$17		\$15	\$14	\$14	\$14	\$13	\$12	\$11	\$8	\$7	\$7
	85% Current	\$46	\$43	\$41	\$39	\$36	\$32	\$30	\$28	\$26	\$25	\$24	\$22	\$18	\$16	\$15	\$11	\$10	\$9
	10yr ave.			\$24		\$22		\$18		\$16	\$15	\$15	\$15	\$14	\$12	\$11	\$9	\$8	\$7

The above shows estimated returns per head for skirted fleece wool. These figures do not take into account the value of skirtings and oddments and do not take into account discounts that may apply for faults under individual circumstances. These figures are based on a market index of 100% and should be used as a guide only. Returns over \$30 / head for fleece wool are highlighted.

Source: Australian Wool Exchange, Australian Wool Innovation, Sydney Futures Exchange, x-rates.com

Disclaimer: While all due care has been taken in the preparation of this document, no warranty is made as to its accuracy, reliability or completeness. To the extent permitted by law neither Jemalong or their sources including subsidiaries and staff, accept liability to any person for loss or damage arising from the use of this information.