



Table 1: Northern Region Micron Price Guides

CURRENT MARKET				PERCENTILES		AVERAGES						12 MONTH COMPARISONS								TRADING RANGE		
Mic.	2/12/2010	25/11/2010	Now			Now			1/12/2009		Now		Now		Now		Clean c/kg					
Price	Current	Weekly	3yr	10yr	<u>3 year</u>	compared	<u>10 year</u>	compared	This time	compared	12 Month	compared	12 Month	compared	12 Month	compared	12	3	10			
Guides	Price	Change			Average	to 3yr ave	Average	to 10yr ave	Last Year	to Last Year	Low	to Low	High	to High	Mth	Year	Year					
NRI	1062	+3 0.3%	96%	92%	897	+165 18%	872	+190 22%	893	+169 19%	890	+172 19%	1080	-18 -2%	190	343	584					
16*	2020	+50 2.5%	98%		1637	+383 23%			1400	+620 44%	1480	+540 36%	2050	-30 -1%	570	665						
16.5*	1870	-20 -1.1%	98%		1499	+371 25%			1295	+575 44%	1365	+505 37%	1980	-110 -6%	615	727						
17*	1770	+5 0.3%	99%	96%	1374	+396 29%	1412	+358 25%	1215	+555 46%	1230	+540 44%	1815	-45 -2%	585	645	1797					
17.5*	1680	+25 1.5%	99%		1308	+372 28%			1190	+490 41%	1175	+505 43%	1725	-45 -3%	550	640						
18	1621	+1 0.1%	98%	87%	1248	+373 30%	1283	+338 26%	1157	+464 40%	1134	+487 43%	1636	-15 -1%	502	601	1392					
18.5	1481	-1 -0.1%	98%		1171	+310 26%			1112	+369 33%	1088	+393 36%	1507	-26 -2%	419	536						
19	1290	+15 1.2%	95%	88%	1072	+218 20%	1066	+224 21%	1050	+240 23%	1031	+259 25%	1312	-22 -2%	281	443	706					
19.5	1121	+8 0.7%	87%		982	+139 14%			981	+140 14%	952	+169 18%	1168	-47 -4%	216	457						
20	1017	+20 2.0%	86%	79%	910	+107 12%	915	+102 11%	926	+91 10%	904	+113 13%	1076	-59 -5%	172	465	717					
21	1002	+26 2.6%	93%	83%	875	+127 15%	870	+132 15%	897	+105 12%	878	+124 14%	1039	-37 -4%	161	427	744					
22	944	+13 1.4%	86%	74%	851	+93 11%	847	+97 11%	867	+77 9%	847	+97 11%	990	-46 -5%	143	361	742					
23	902	+7 0.8%	82%	71%	828	+74 9%	826	+76 9%	819	+83 10%	827	+75 9%	940	-38 -4%	113	311	750					
24	830	0	77%	70%	781	+49 6%	790	+40 5%	763	+67 9%	780	+50 6%	881	-51 -6%	101	257	739					
25	760	-7 -0.9%	96%	79%	672	+88 13%	710	+50 7%	657	+103 16%	660	+100 15%	781	-21 -3%	121	215	690					
26	671	-14 -2.1%	96%	77%	603	+68 11%	650	+21 3%	571	+100 18%	576	+95 16%	696	-25 -4%	120	192	636					
28	487	-1 -0.2%	87%	52%	461	+26 6%	522	-35 -7%	434	+53 12%	436	+51 12%	502	-15 -3%	66	119	465					
30	444	0	96%	60%	400	+44 11%	456	-12 -3%	379	+65 17%	382	+62 16%	447	-3 -1%	65	128	385					
32	414	+4 1.0%	100%	62%	349	+65 19%	413	+1 0%	331	+83 25%	333	+81 24%	414	0 0%	81	108	372					
MC	650	0	91%	93%	544	+106 19%	500	+150 30%	569	+81 14%	561	+89 16%	681	-31 -5%	120	289	304					

Note:

* Due to the irregular market quoting for some fine wool categories, figures shown relating to micron categories below 18 micron are an estimate based on the AWEX Premium & Discounts Report & other available information.

* For any category, where there is insufficient quantity offered to enable AWEX to quote, a quote will be provided based on the best available information.

* 10 Year data is not available for some micron categories, which may result in blank spaces in the table above.

Definitions:

* A Percentile, is a value on a scale of one hundred that indicates the percent of a distribution that is equal to or below it. In general a percentile between 25% and 75% is considered normal, a percentile below 25% is considered below normal and a percentile above 75% is considered above normal.

Three and ten year percentiles shown in the table above, detail the period of time during the past 3 & 10 years that the market has traded either at or below its current price.

The higher the percentile, the stronger the market.

Source: Australian Wool Exchange, Australian Wool Innovation, Sydney Futures Exchange, x-rates.com

Disclaimer: While all due care has been taken in the preparation of this document, no warranty is made as to its accuracy, reliability or completeness. To the extent permitted by law neither Jemalong or their sources including subsidiaries and staff, accept liability to any person for loss or damage arising from the use of this information.



MARKET COMMENTARY

Australian Dollar 96.38 cents US as of 2/12/2010

NORTHERN REGION –Sale Week 22/10 (61,522 bales offered nationally)

While it is difficult to compare this weeks market to the previous weeks (due to the difference of types on offer), the market continued to retreat on Tuesday, with 17.5 to 18.5 microns losing 30-35 cents while 19 micron and broader were generally 20 cents cheaper. On Wednesday the market began on a softer tone and stayed flat until the end of the day when a late rally recouped most of the early losses. On Thursday a stronger AUD prompted a 30 to 40 cent rise, with 20 microns and broader 30-40 cents dearer. Strange as it may seem, a firming (or better still, a stabilising) of the AUD against the US is good news at the moment. The recent fall in value of our dollar against the US, means wool purchased a month ago has now become expensive stock.

Other factors affecting the market include shipping delays (due to quota) which have temporarily restricted some finance, a general nervousness surrounding what is happening in Korea and a lift in Chinese interest rates, however despite these factors which have contributed to the correction, in some areas of the market in recent weeks, the general sentiment remains positive for the short term.

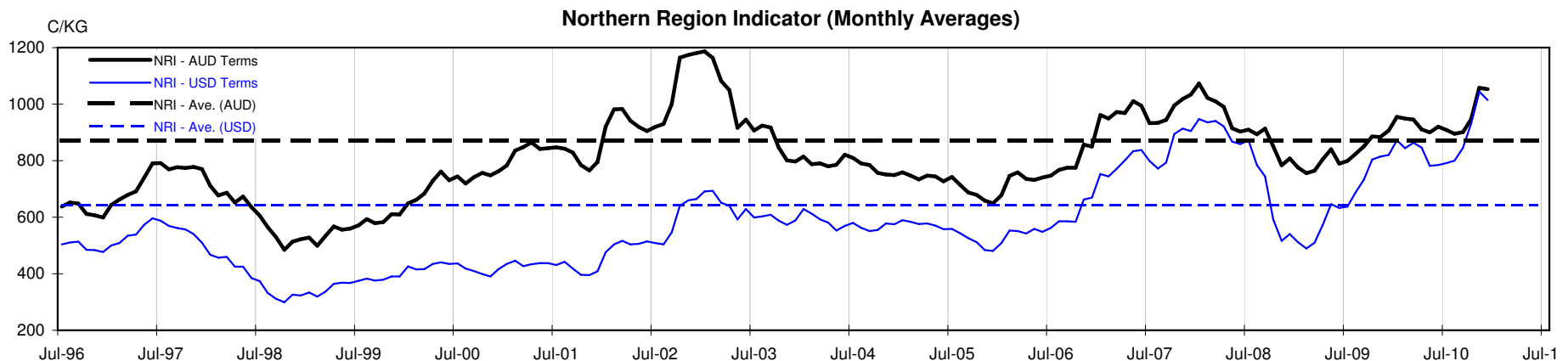




Table 4: 19 micron SFE

Wednesday, 1 December 2010

Delivery Mth	Dec-10	Feb-11	Apr-11	Jun-11	Aug-11	Oct-11	Dec-11	Feb-12	Apr-12
19 Micron SFE	1245	1245	1288	1288	1280	1237	1197	1177	1137
Average	1032	1053	1060	1068	1073	1075	1075	1086	1104
Maximum	1106	1245	1245	1288	1288	1280	1265	1240	1240
Minimum	905	936	983	1025	1034	1034	1034	1034	1053

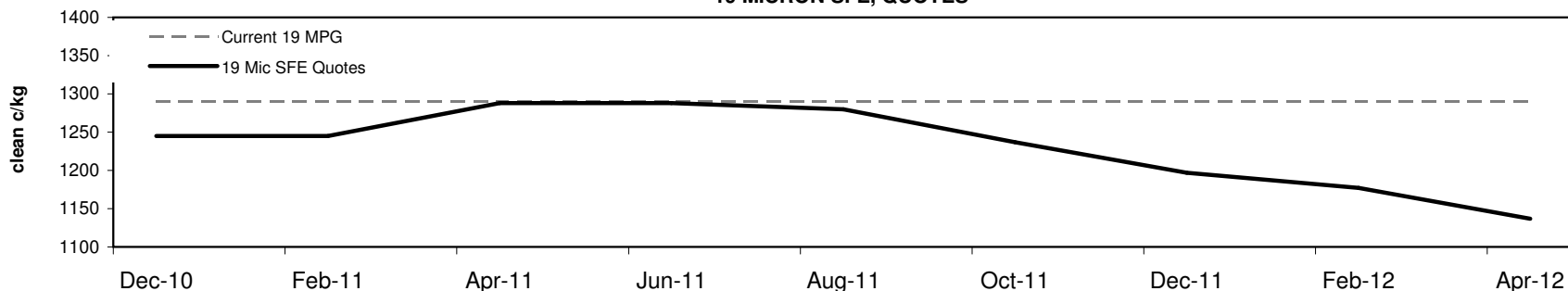
Table 5: 19 micron SFE, as a percentile of the 19 micron MPG

3 Year Percentile	91%	91%	95%	95%	94%	90%	85%	84%	82%
10 Year Percentile	85%	85%	88%	88%	88%	84%	79%	77%	72%

Table 6: 19 micron SFE, compared to MPG

Current 19 MPG	-45	-3%	-45	-3%	-2	0%	-2	0%	-10	-1%	-53	-4%	-93	-7%	-113	-9%	-153	-12%
19 MPG, 1 Year Average	+136	12%	+136	12%	+179	16%	+179	16%	+171	15%	+128	12%	+88	8%	+68	6%	+28	3%
19 MPG, 3 Year Average	+173	16%	+173	16%	+216	20%	+216	20%	+208	19%	+165	15%	+125	12%	+105	10%	+65	6%
19 MPG, 10 Year Average	+179	17%	+179	17%	+222	21%	+222	21%	+214	20%	+171	16%	+131	12%	+111	10%	+71	7%

19 MICRON SFE, QUOTES



19 MICRON SFE, FRONT MONTH PRICE MOVEMENT (mthly averages)

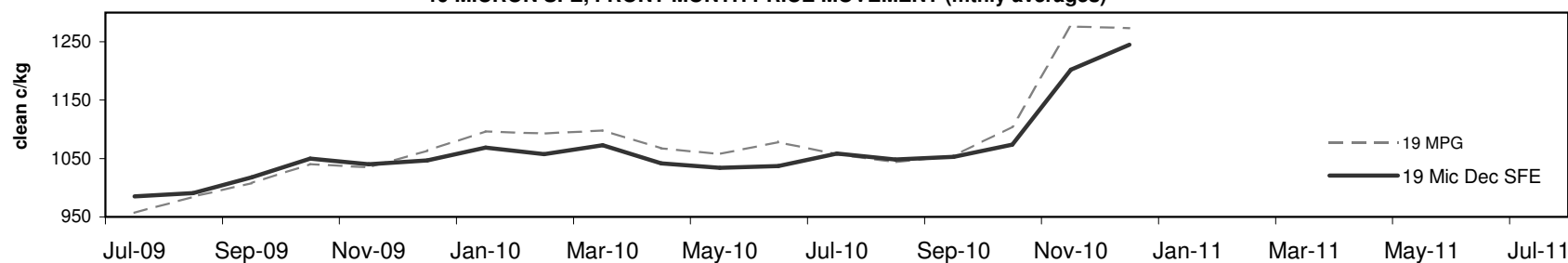




Table 7: 21 micron SFE

Wednesday, 1 December 2010

Delivery Mth	Dec-10	Feb-11	Apr-11	Jun-11	Aug-11	Oct-11	Dec-11	Feb-12	Apr-12
21 Micron SFE	985	985	983	986	986	985	986	985	985
Average	914	930	938	942	942	934	925	925	935
Maximum	1013	1020	1025	1026	1025	1015	1015	1015	1015
Minimum	780	818	860	891	890	880	880	880	880

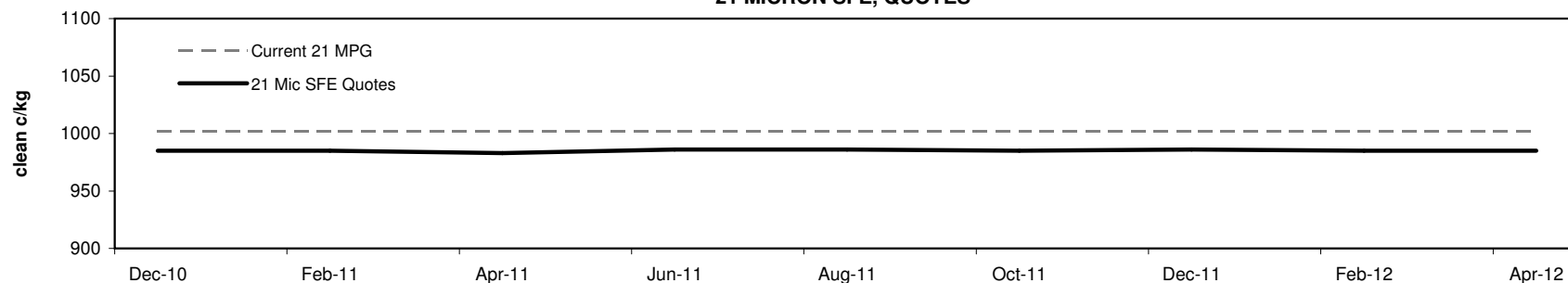
Table 8: 21 micron SFE, as a percentile of the 21 micron MPG

3 Year Percentile	90%	90%	89%	90%	90%	90%	90%	90%	90%
10 Year Percentile	78%	78%	78%	79%	79%	78%	79%	78%	78%

Table 9: 21 micron SFE, compared to MPG

Current 21 MPG	-17	-2%	-17	-2%	-19	-2%	-16	-2%	-16	-2%	-17	-2%	-16	-2%	-17	-2%	-17	-2%
21 MPG, 1 Year Average	+42	4%	+42	4%	+40	4%	+43	5%	+43	5%	+42	4%	+43	5%	+42	4%	+42	4%
21 MPG, 3 Year Average	+110	13%	+110	13%	+108	12%	+111	13%	+111	13%	+110	13%	+111	13%	+110	13%	+110	13%
21 MPG, 10 Year Average	+115	13%	+115	13%	+113	13%	+116	13%	+116	13%	+115	13%	+116	13%	+115	13%	+115	13%

21 MICRON SFE, QUOTES



21 MICRON SFE, FRONT MONTH PRICE MOVEMENT (minly averages)

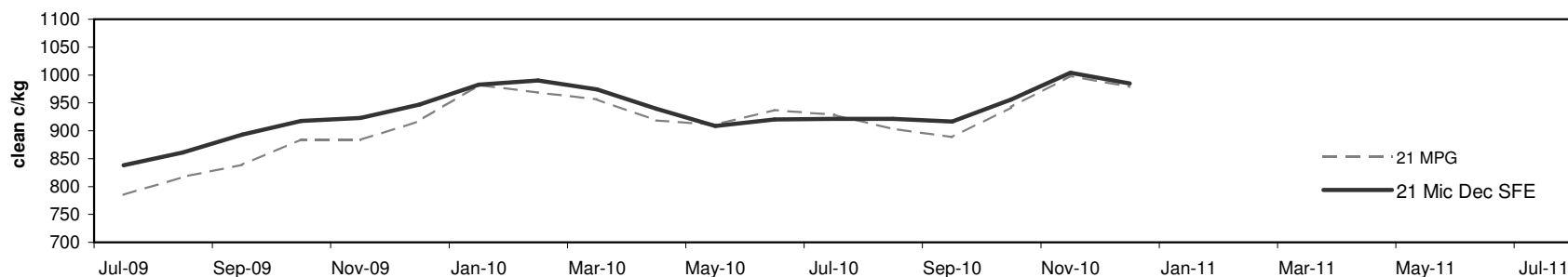




Table 10: 23 micron SFE

Wednesday, 1 December 2010

Delivery Mth	Dec-10	Feb-11	Apr-11	Jun-11	Aug-11	Oct-11	Dec-11	Feb-12	Apr-12
23 Micron SFE	883	883	883	883	883	883	883	883	883
Average	839	855	864	873	886	892	884	885	885
Maximum	927	927	927	927	927	927	887	887	887
Minimum	716	760	760	803	803	883	883	883	883

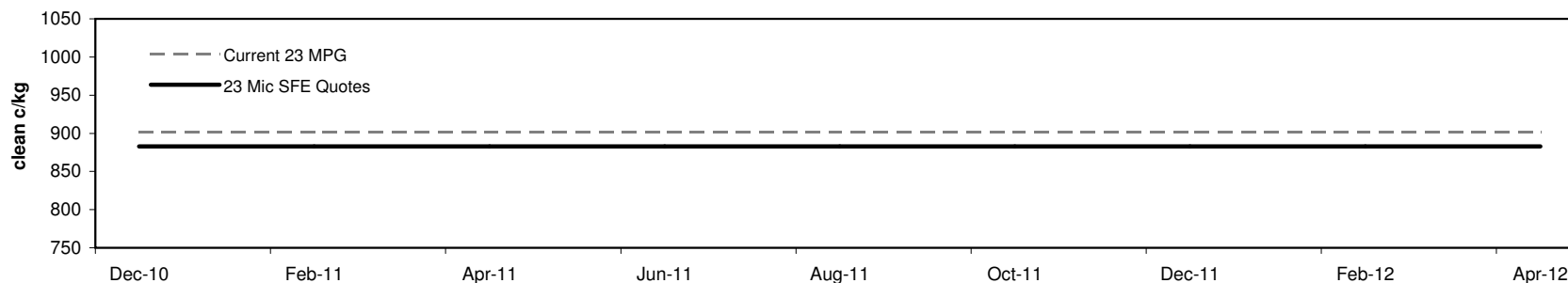
Table 11: 23 micron SFE, as a percentile of the 23 micron MPG

3 Year Percentile	69%	69%	69%	69%	69%	69%	69%	69%	69%
10 Year Percentile	64%	64%	64%	64%	64%	64%	64%	64%	64%

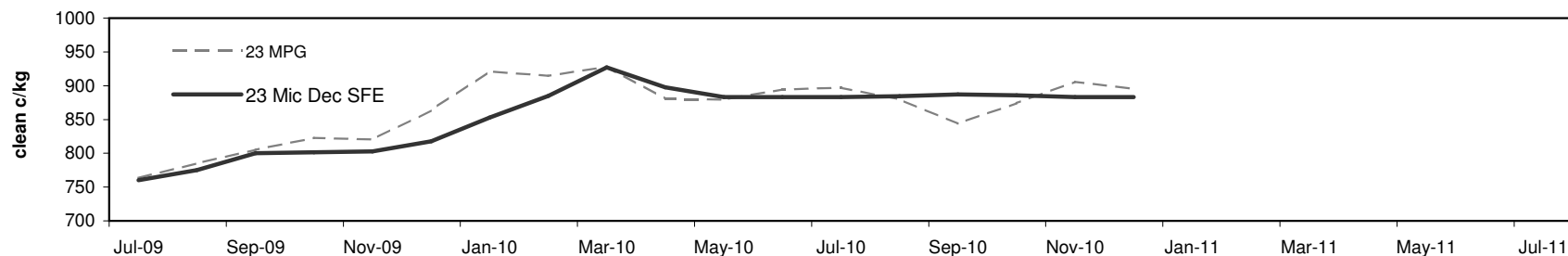
Table 12: 23 micron SFE, compared to MPG

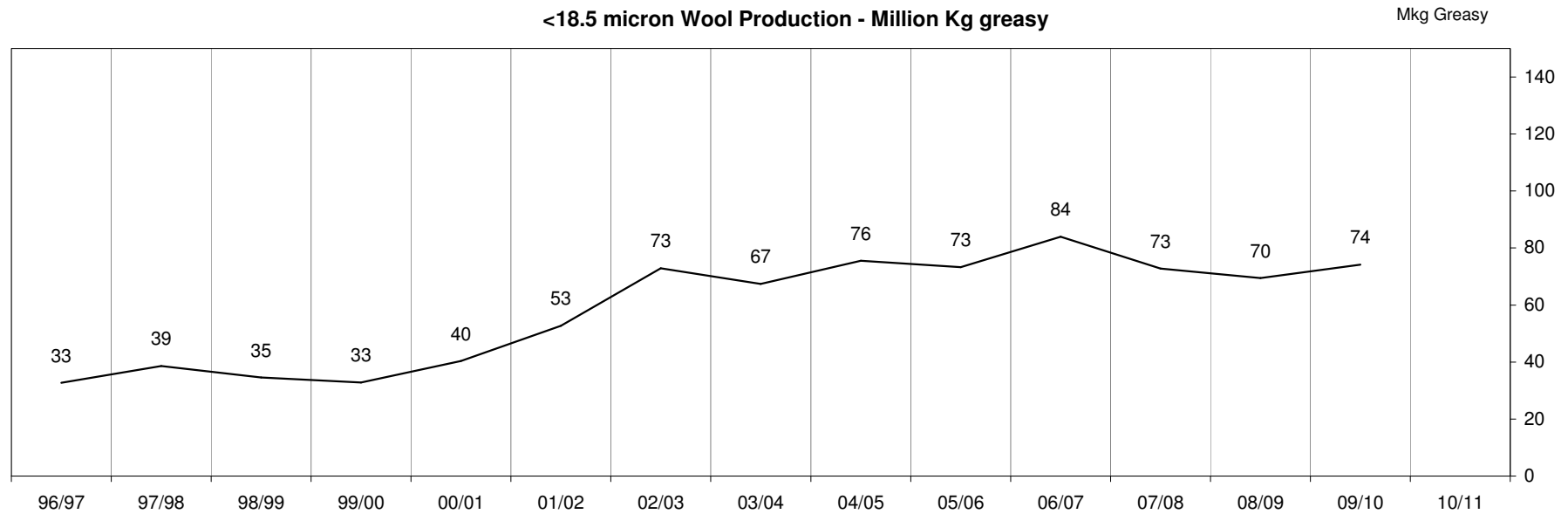
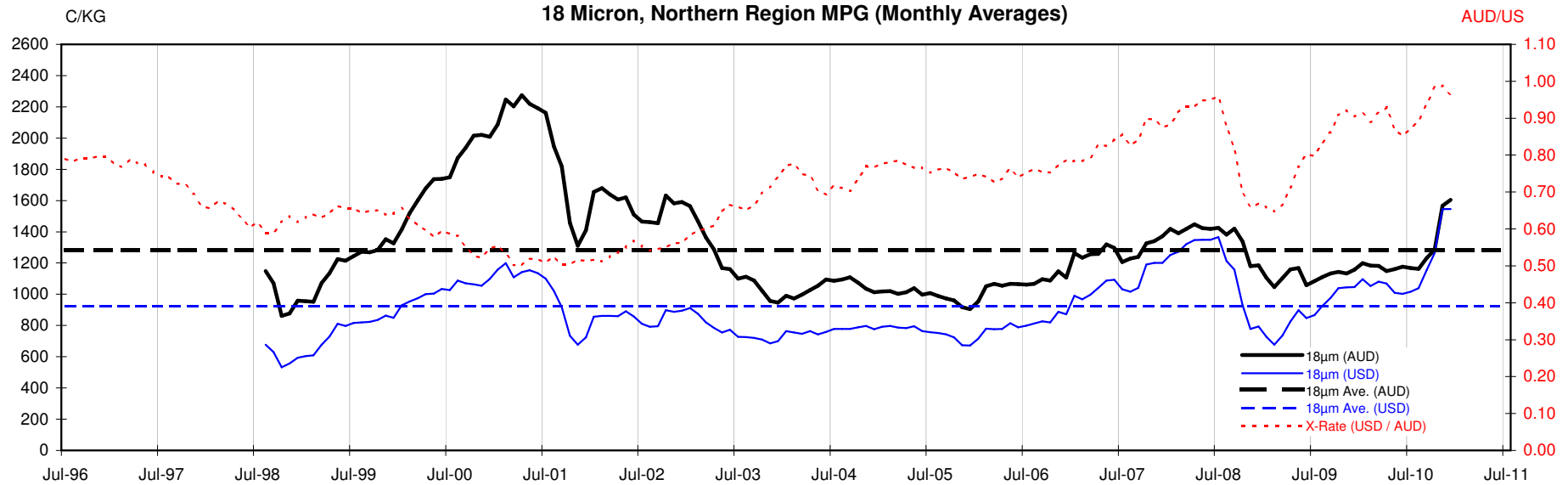
Current 19 MPG	-19	-2%	-19	-2%	-19	-2%	-19	-2%	-19	-2%	-19	-2%	-19	-2%	-19	-2%	-19	-2%
23 MPG, 1 Year Average	-10	-1%	-10	-1%	-10	-1%	-10	-1%	-10	-1%	-10	-1%	-10	-1%	-10	-1%	-10	-1%
23 MPG, 3 Year Average	+55	7%	+55	7%	+55	7%	+55	7%	+55	7%	+55	7%	+55	7%	+55	7%	+55	7%
23 MPG, 10 Year Average	+57	7%	+57	7%	+57	7%	+57	7%	+57	7%	+57	7%	+57	7%	+57	7%	+57	7%

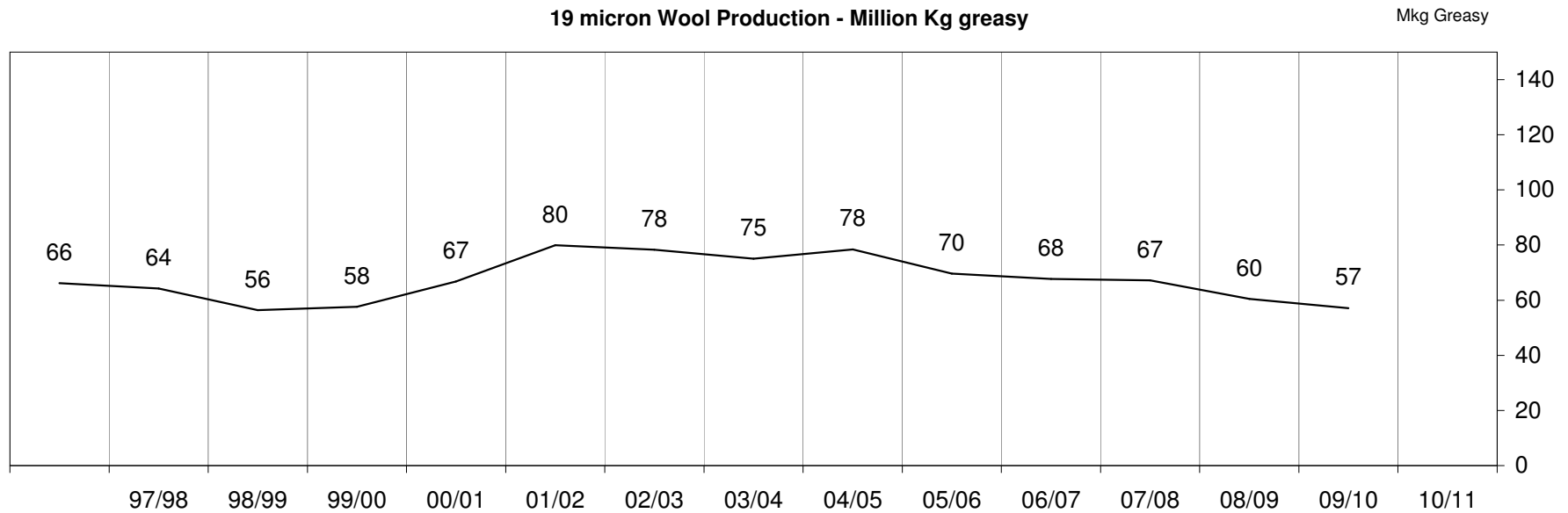
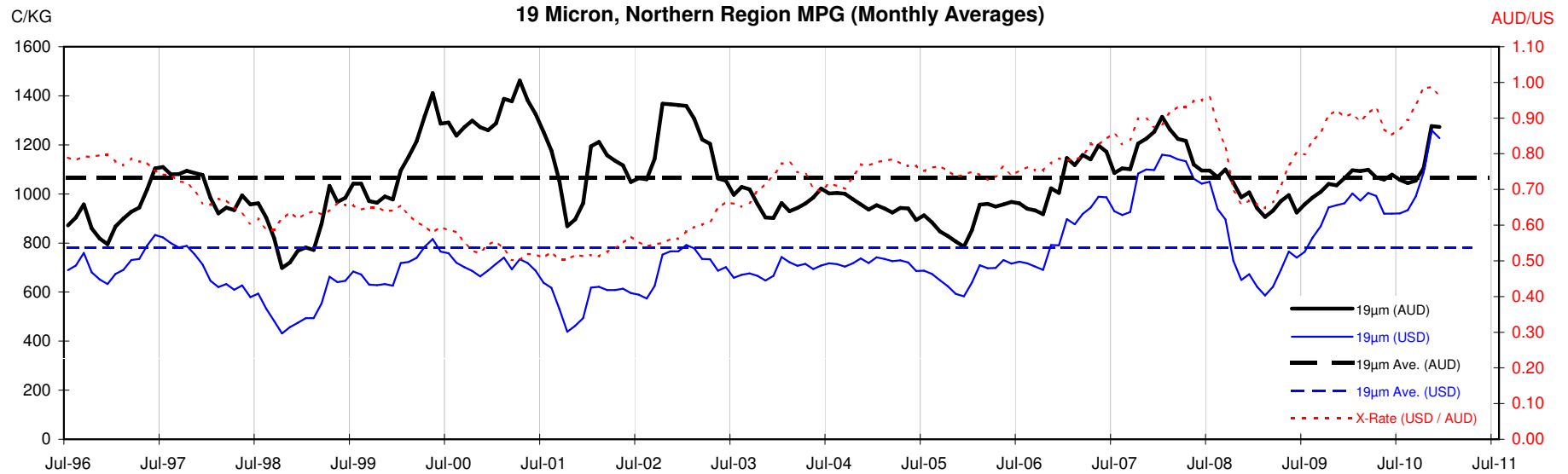
23 MICRON SFE, QUOTES

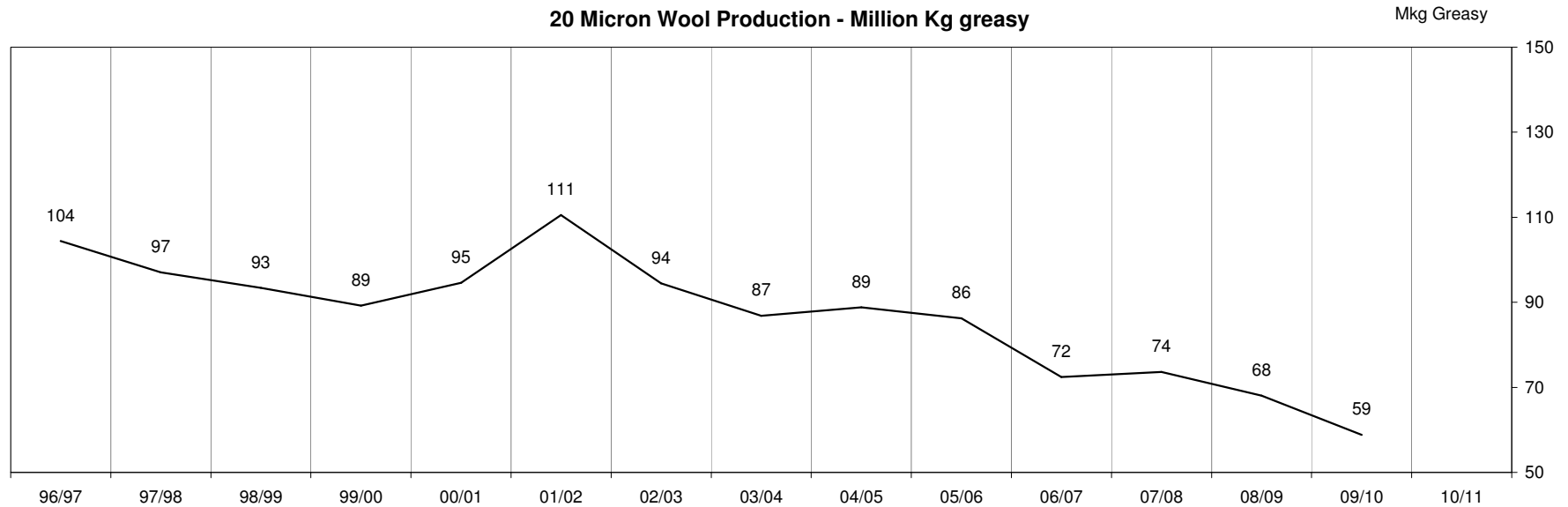
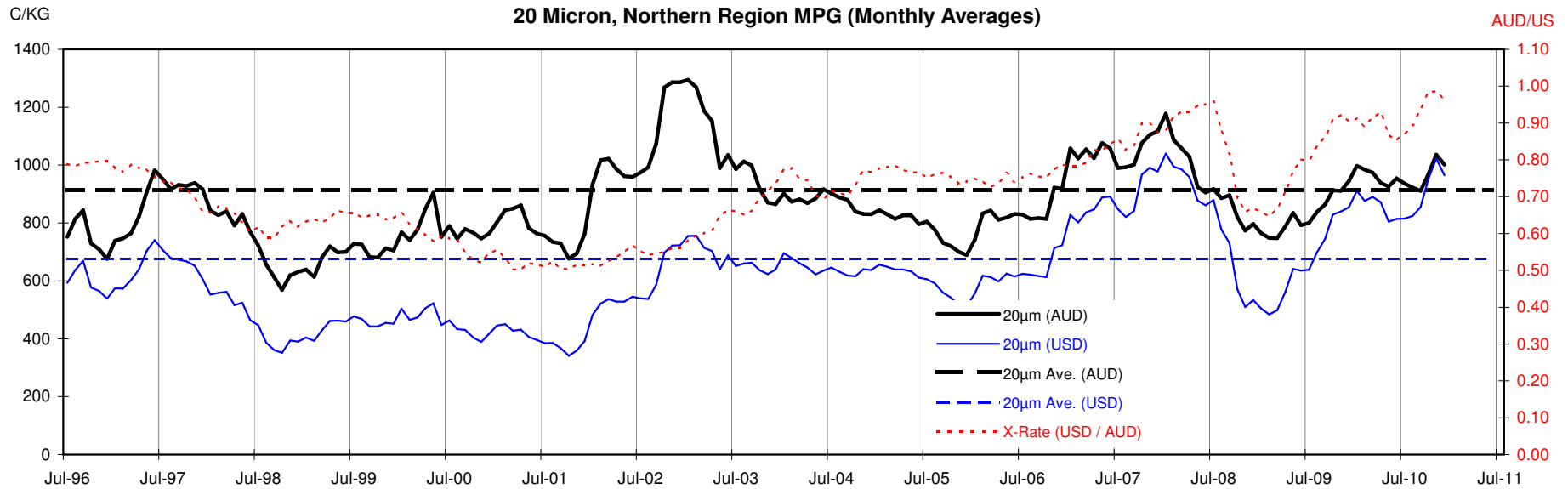


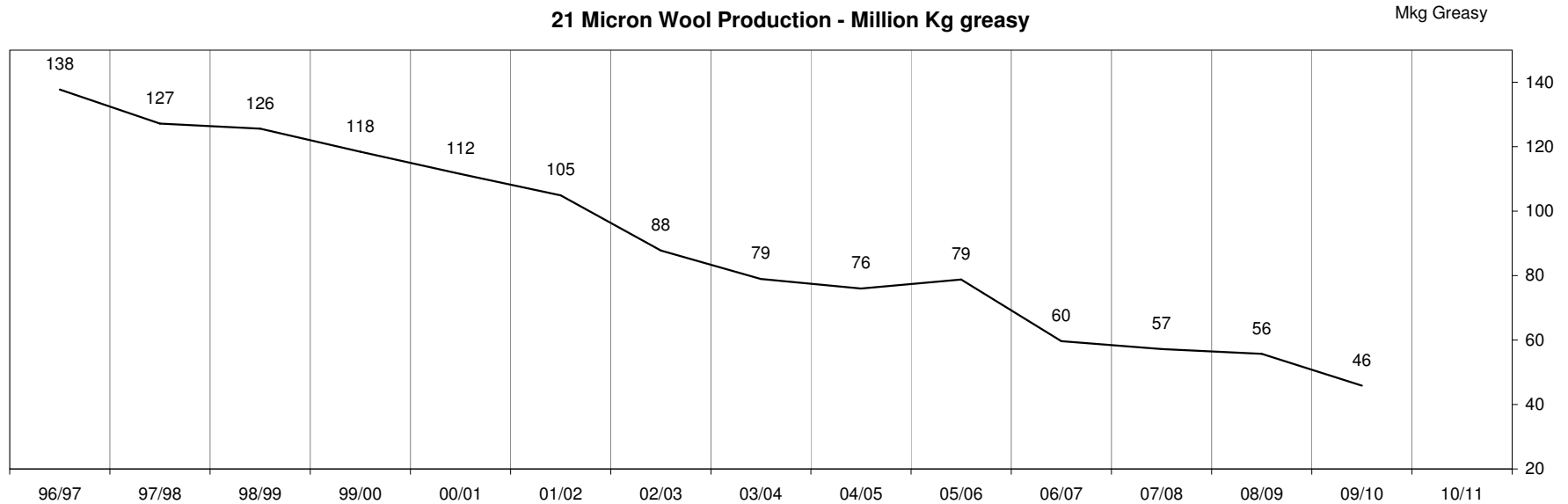
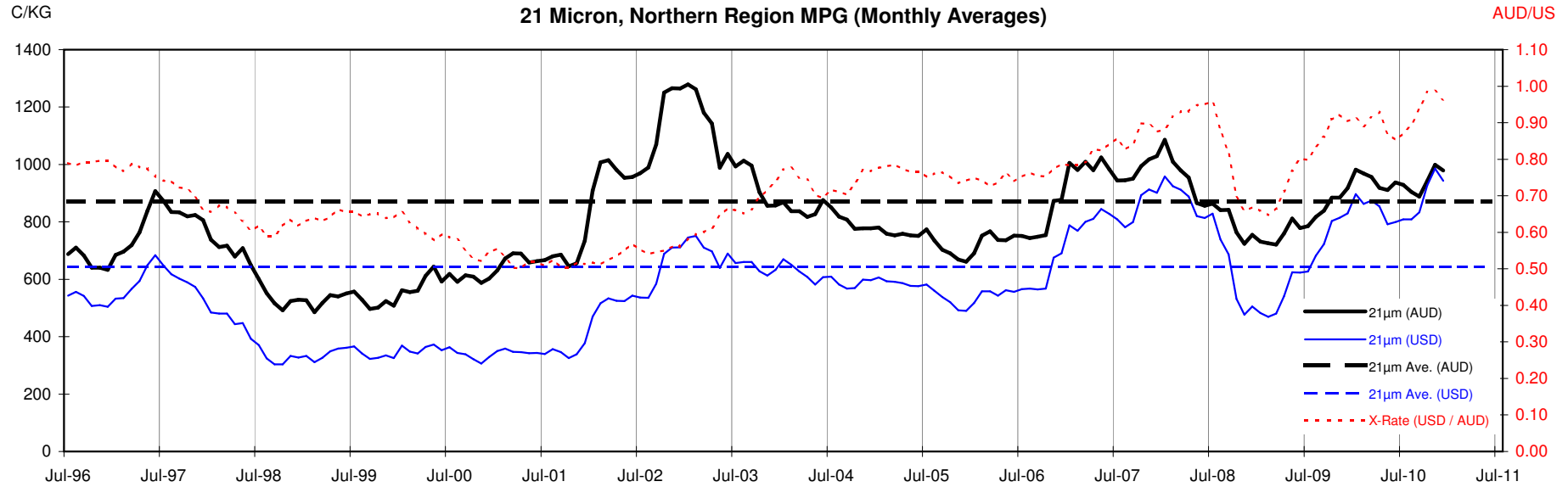
23 MICRON SFE, FRONT MONTH PRICE MOVEMENT (mthly averages)

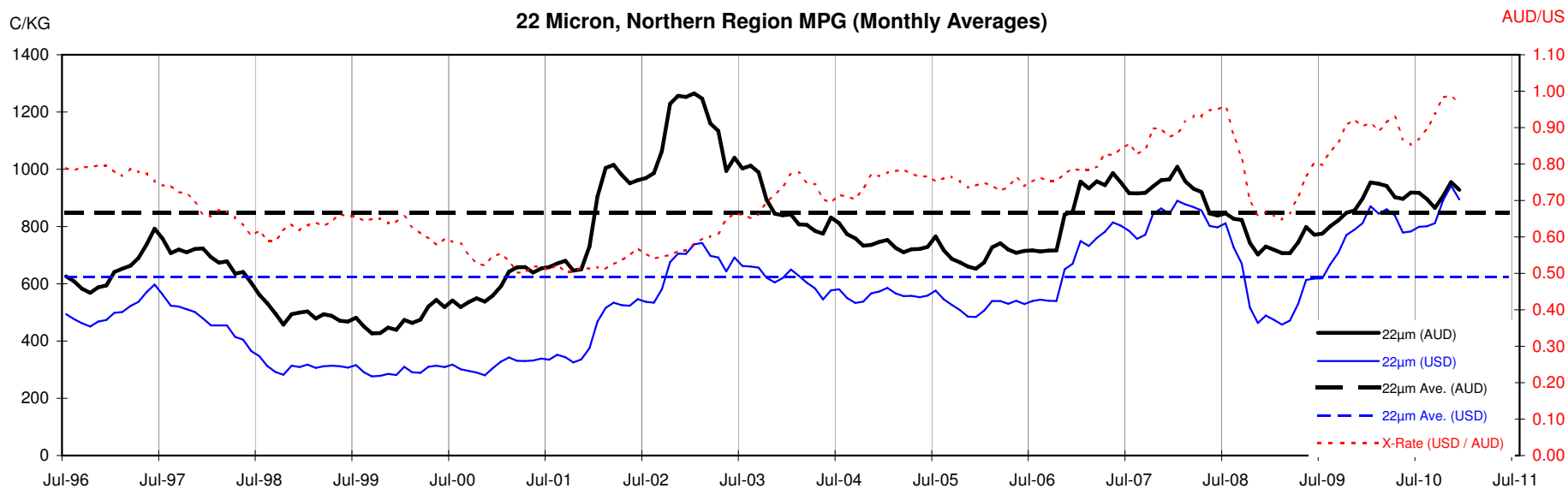


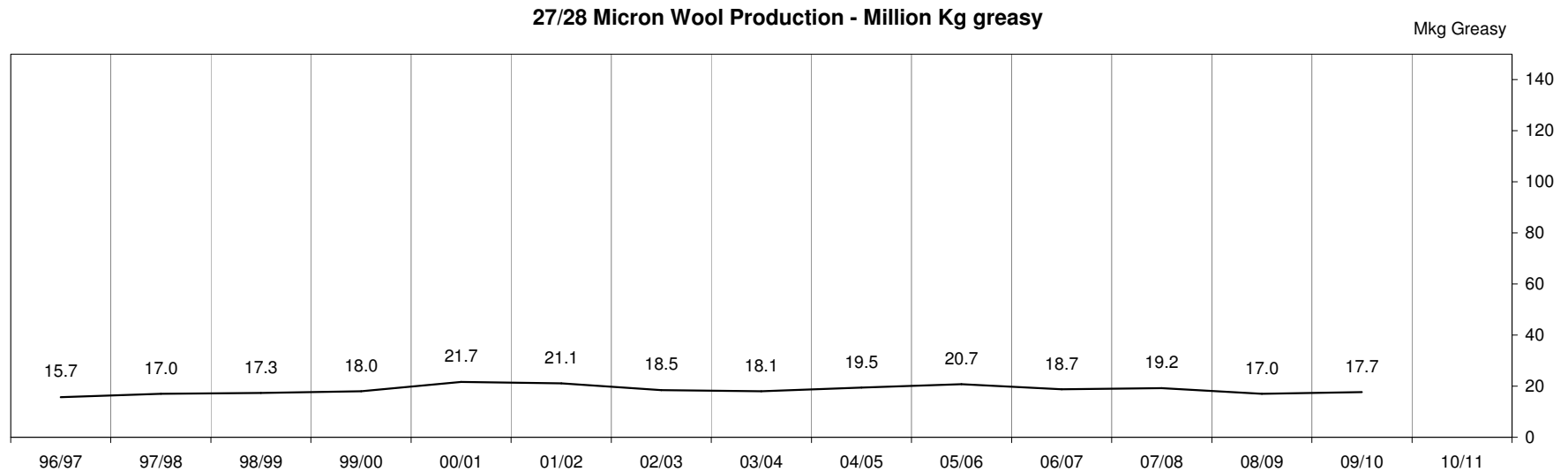
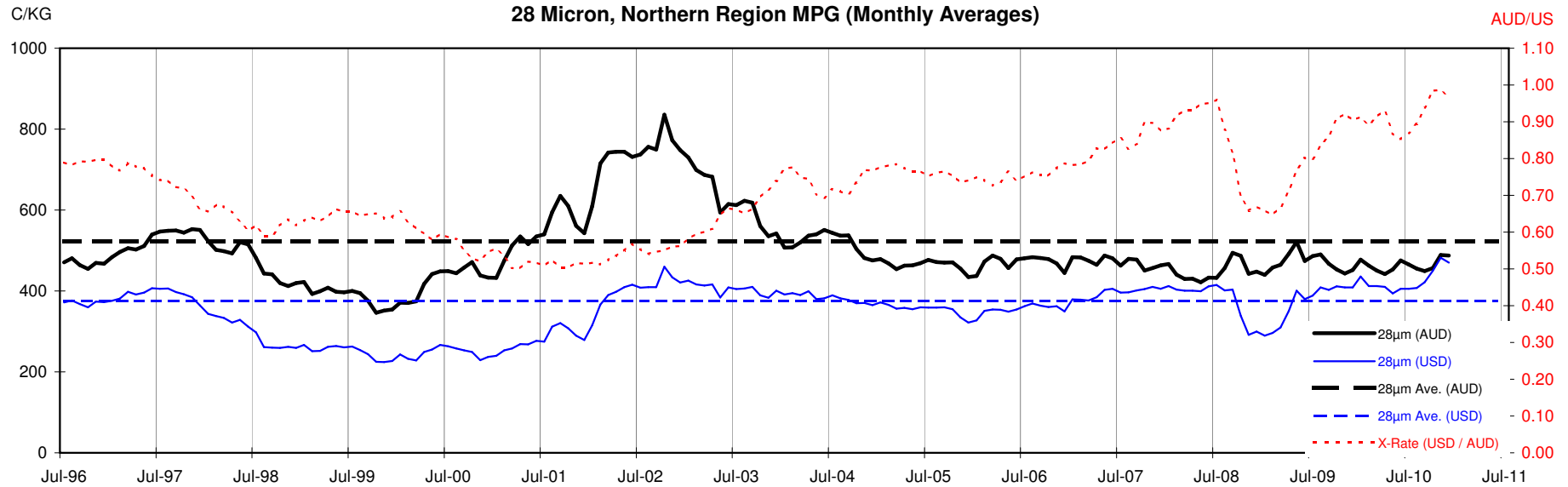












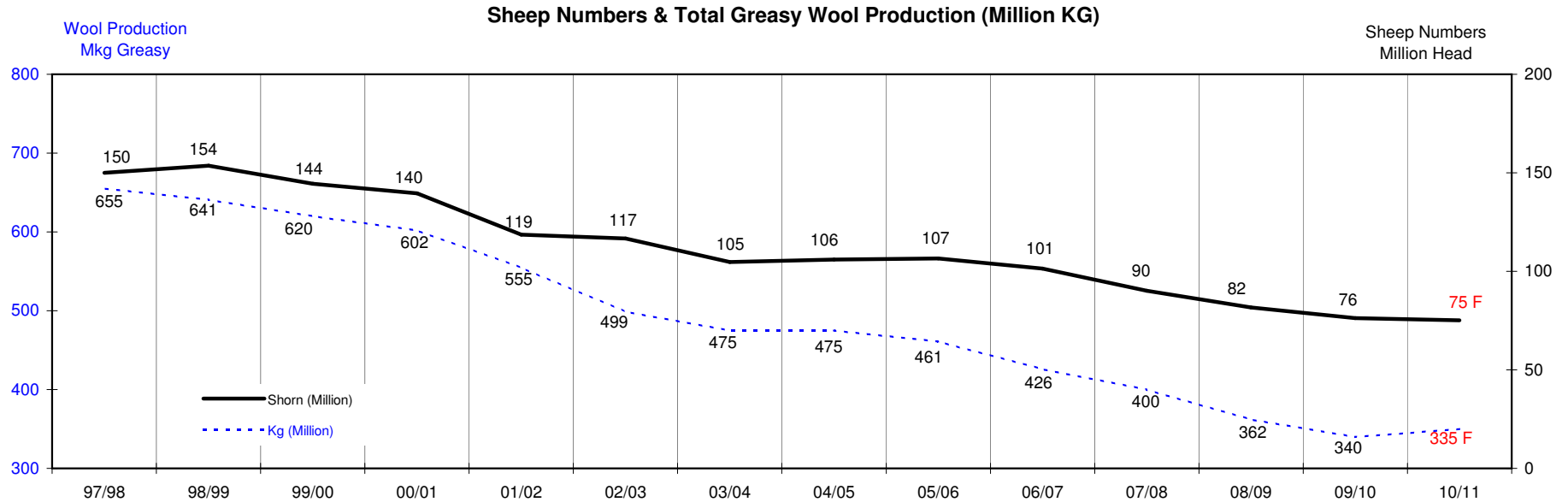
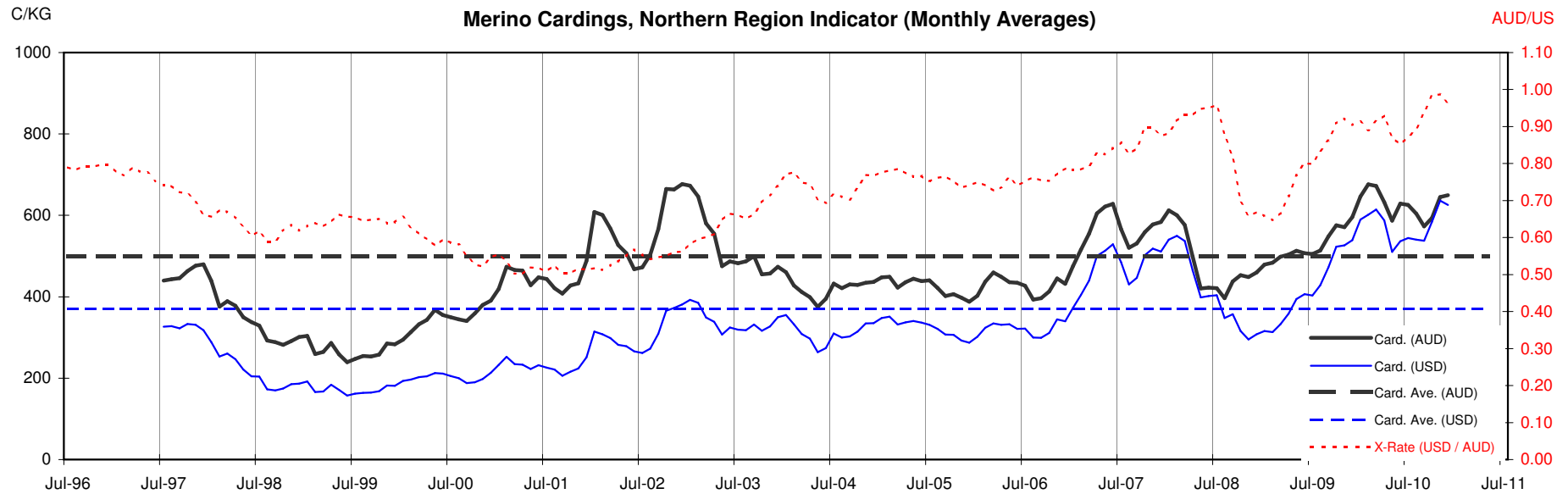




Table 13: Returns pr head for skirted fleece wool.

Skirted FLC Weight 9 Kg		Micron																	
		16	16.5	17	17.5	18	18.5	19	19.5	20	21	22	23	24	25	26	28	30	32
Yield (Sch Dry)	25% Current	\$45	\$42	\$40	\$38	\$36	\$33	\$29	\$25	\$23	\$23	\$21	\$20	\$19	\$17	\$15	\$11	\$10	\$9
	10yr ave.			\$32		\$29		\$24		\$21	\$20	\$19	\$19	\$18	\$16	\$15	\$12	\$10	\$9
	30% Current	\$55	\$50	\$48	\$45	\$44	\$40	\$35	\$30	\$27	\$27	\$25	\$24	\$22	\$21	\$18	\$13	\$12	\$11
	10yr ave.			\$38		\$35		\$29		\$25	\$23	\$23	\$22	\$21	\$19	\$18	\$14	\$12	\$11
	35% Current	\$64	\$59	\$56	\$53	\$51	\$47	\$41	\$35	\$32	\$32	\$30	\$28	\$26	\$24	\$21	\$15	\$14	\$13
	10yr ave.			\$44		\$40		\$34		\$29	\$27	\$27	\$26	\$25	\$22	\$20	\$16	\$14	\$13
	40% Current	\$73	\$67	\$64	\$60	\$58	\$53	\$46	\$40	\$37	\$36	\$34	\$32	\$30	\$27	\$24	\$18	\$16	\$15
	10yr ave.			\$51		\$46		\$38		\$33	\$31	\$30	\$30	\$28	\$26	\$23	\$19	\$16	\$15
	45% Current	\$82	\$76	\$72	\$68	\$66	\$60	\$52	\$45	\$41	\$41	\$38	\$37	\$34	\$31	\$27	\$20	\$18	\$17
	10yr ave.			\$57		\$52		\$43		\$37	\$35	\$34	\$33	\$32	\$29	\$26	\$21	\$18	\$17
	50% Current	\$91	\$84	\$80	\$76	\$73	\$67	\$58	\$50	\$46	\$45	\$42	\$41	\$37	\$34	\$30	\$22	\$20	\$19
	10yr ave.			\$64		\$58		\$48		\$41	\$39	\$38	\$37	\$36	\$32	\$29	\$23	\$21	\$19
	55% Current	\$100	\$93	\$88	\$83	\$80	\$73	\$64	\$55	\$50	\$50	\$47	\$45	\$41	\$38	\$33	\$24	\$22	\$20
	10yr ave.			\$70		\$64		\$53		\$45	\$43	\$42	\$41	\$39	\$35	\$32	\$26	\$23	\$20
	60% Current	\$109	\$101	\$96	\$91	\$88	\$80	\$70	\$61	\$55	\$54	\$51	\$49	\$45	\$41	\$36	\$26	\$24	\$22
	10yr ave.			\$76		\$69		\$58		\$49	\$47	\$46	\$45	\$43	\$38	\$35	\$28	\$25	\$22
	65% Current	\$118	\$109	\$104	\$98	\$95	\$87	\$75	\$66	\$59	\$59	\$55	\$53	\$49	\$44	\$39	\$28	\$26	\$24
	10yr ave.			\$83		\$75		\$62		\$54	\$51	\$50	\$48	\$46	\$42	\$38	\$31	\$27	\$24
	70% Current	\$127	\$118	\$112	\$106	\$102	\$93	\$81	\$71	\$64	\$63	\$59	\$57	\$52	\$48	\$42	\$31	\$28	\$26
	10yr ave.			\$89		\$81		\$67		\$58	\$55	\$53	\$52	\$50	\$45	\$41	\$33	\$29	\$26
	75% Current	\$136	\$126	\$119	\$113	\$109	\$100	\$87	\$76	\$69	\$68	\$64	\$61	\$56	\$51	\$45	\$33	\$30	\$28
	10yr ave.			\$95		\$87		\$72		\$62	\$59	\$57	\$56	\$53	\$48	\$44	\$35	\$31	\$28
	80% Current	\$145	\$135	\$127	\$121	\$117	\$107	\$93	\$81	\$73	\$72	\$68	\$65	\$60	\$55	\$48	\$35	\$32	\$30
	10yr ave.			\$102		\$92		\$77		\$66	\$63	\$61	\$59	\$57	\$51	\$47	\$38	\$33	\$30
	85% Current	\$155	\$143	\$135	\$129	\$124	\$113	\$99	\$86	\$78	\$77	\$72	\$69	\$63	\$58	\$51	\$37	\$34	\$32
	10yr ave.			\$108		\$98		\$82		\$70	\$67	\$65	\$63	\$60	\$54	\$50	\$40	\$35	\$32

The above shows estimated returns per head for skirted fleece wool. These figures do not take into account the value of skirtings and oddments and do not take into account discounts that may apply for faults under individual circumstances. These figures are based on a market index of 100% and should be used as a guide only. Returns over \$30 / head for fleece wool are highlighted.

Source: Australian Wool Exchange, Australian Wool Innovation, Sydney Futures Exchange, x-rates.com

Disclaimer: While all due care has been taken in the preparation of this document, no warranty is made as to its accuracy, reliability or completeness. To the extent permitted by law neither Jemalong or their sources including subsidiaries and staff, accept liability to any person for loss or damage arising from the use of this information.



Table 14: Returns pr head for skirted fleece wool.

Skirted FLC Weight 8 Kg		Micron																	
		16	16.5	17	17.5	18	18.5	19	19.5	20	21	22	23	24	25	26	28	30	32
Yield (Sch Dry)	25% Current	\$40	\$37	\$35	\$34	\$32	\$30	\$26	\$22	\$20	\$20	\$19	\$18	\$17	\$15	\$13	\$10	\$9	\$8
	10yr ave.			\$28		\$26		\$21		\$18	\$17	\$17	\$17	\$16	\$14	\$13	\$10	\$9	\$8
	30% Current	\$48	\$45	\$42	\$40	\$39	\$36	\$31	\$27	\$24	\$24	\$23	\$22	\$20	\$18	\$16	\$12	\$11	\$10
	10yr ave.			\$34		\$31		\$26		\$22	\$21	\$20	\$20	\$19	\$17	\$16	\$13	\$11	\$10
	35% Current	\$57	\$52	\$50	\$47	\$45	\$41	\$36	\$31	\$28	\$28	\$26	\$25	\$23	\$21	\$19	\$14	\$12	\$12
	10yr ave.			\$40		\$36		\$30		\$26	\$24	\$24	\$23	\$22	\$20	\$18	\$15	\$13	\$12
	40% Current	\$65	\$60	\$57	\$54	\$52	\$47	\$41	\$36	\$33	\$32	\$30	\$29	\$27	\$24	\$21	\$16	\$14	\$13
	10yr ave.			\$45		\$41		\$34		\$29	\$28	\$27	\$26	\$25	\$23	\$21	\$17	\$15	\$13
	45% Current	\$73	\$67	\$64	\$60	\$58	\$53	\$46	\$40	\$37	\$36	\$34	\$32	\$30	\$27	\$24	\$18	\$16	\$15
	10yr ave.			\$51		\$46		\$38		\$33	\$31	\$30	\$30	\$28	\$26	\$23	\$19	\$16	\$15
	50% Current	\$81	\$75	\$71	\$67	\$65	\$59	\$52	\$45	\$41	\$40	\$38	\$36	\$33	\$30	\$27	\$19	\$18	\$17
	10yr ave.			\$56		\$51		\$43		\$37	\$35	\$34	\$33	\$32	\$28	\$26	\$21	\$18	\$17
	55% Current	\$89	\$82	\$78	\$74	\$71	\$65	\$57	\$49	\$45	\$44	\$42	\$40	\$37	\$33	\$30	\$21	\$20	\$18
	10yr ave.			\$62		\$56		\$47		\$40	\$38	\$37	\$36	\$35	\$31	\$29	\$23	\$20	\$18
	60% Current	\$97	\$90	\$85	\$81	\$78	\$71	\$62	\$54	\$49	\$48	\$45	\$43	\$40	\$36	\$32	\$23	\$21	\$20
	10yr ave.			\$68		\$62		\$51		\$44	\$42	\$41	\$40	\$38	\$34	\$31	\$25	\$22	\$20
	65% Current	\$105	\$97	\$92	\$87	\$84	\$77	\$67	\$58	\$53	\$52	\$49	\$47	\$43	\$40	\$35	\$25	\$23	\$22
	10yr ave.			\$73		\$67		\$55		\$48	\$45	\$44	\$43	\$41	\$37	\$34	\$27	\$24	\$21
	70% Current	\$113	\$105	\$99	\$94	\$91	\$83	\$72	\$63	\$57	\$56	\$53	\$51	\$46	\$43	\$38	\$27	\$25	\$23
	10yr ave.			\$79		\$72		\$60		\$51	\$49	\$47	\$46	\$44	\$40	\$36	\$29	\$26	\$23
	75% Current	\$121	\$112	\$106	\$101	\$97	\$89	\$77	\$67	\$61	\$60	\$57	\$54	\$50	\$46	\$40	\$29	\$27	\$25
	10yr ave.			\$85		\$77		\$64		\$55	\$52	\$51	\$50	\$47	\$43	\$39	\$31	\$27	\$25
	80% Current	\$129	\$120	\$113	\$108	\$104	\$95	\$83	\$72	\$65	\$64	\$60	\$58	\$53	\$49	\$43	\$31	\$28	\$26
	10yr ave.			\$90		\$82		\$68		\$59	\$56	\$54	\$53	\$51	\$45	\$42	\$33	\$29	\$26
	85% Current	\$137	\$127	\$120	\$114	\$110	\$101	\$88	\$76	\$69	\$68	\$64	\$61	\$56	\$52	\$46	\$33	\$30	\$28
	10yr ave.			\$96		\$87		\$72		\$62	\$59	\$58	\$56	\$54	\$48	\$44	\$35	\$31	\$28

The above shows estimated returns per head for skirted fleece wool. These figures do not take into account the value of skirtings and oddments and do not take into account discounts that may apply for faults under individual circumstances. These figures are based on a market index of 100% and should be used as a guide only. Returns over \$30 / head for fleece wool are highlighted.

Source: Australian Wool Exchange, Australian Wool Innovation, Sydney Futures Exchange, x-rates.com

Disclaimer: While all due care has been taken in the preparation of this document, no warranty is made as to its accuracy, reliability or completeness. To the extent permitted by law neither Jemalong or their sources including subsidiaries and staff, accept liability to any person for loss or damage arising from the use of this information.



Table 15: Returns pr head for skirted fleece wool.

Skirted FLC Weight 7 Kg		Micron																	
		16	16.5	17	17.5	18	18.5	19	19.5	20	21	22	23	24	25	26	28	30	32
Yield (Sch Dry)	25% Current	\$35	\$33	\$31	\$29	\$28	\$26	\$23	\$20	\$18	\$18	\$17	\$16	\$15	\$13	\$12	\$9	\$8	\$7
	10yr ave.			\$25		\$22		\$19		\$16	\$15	\$15	\$14	\$14	\$12	\$11	\$9	\$8	\$7
	30% Current	\$42	\$39	\$37	\$35	\$34	\$31	\$27	\$24	\$21	\$21	\$20	\$19	\$17	\$16	\$14	\$10	\$9	\$9
	10yr ave.			\$30		\$27		\$22		\$19	\$18	\$18	\$17	\$17	\$15	\$14	\$11	\$10	\$9
	35% Current	\$49	\$46	\$43	\$41	\$40	\$36	\$32	\$27	\$25	\$25	\$23	\$22	\$20	\$19	\$16	\$12	\$11	\$10
	10yr ave.			\$35		\$31		\$26		\$22	\$21	\$21	\$20	\$19	\$17	\$16	\$13	\$11	\$10
	40% Current	\$57	\$52	\$50	\$47	\$45	\$41	\$36	\$31	\$28	\$28	\$26	\$25	\$23	\$21	\$19	\$14	\$12	\$12
	10yr ave.			\$40		\$36		\$30		\$26	\$24	\$24	\$23	\$22	\$20	\$18	\$15	\$13	\$12
	45% Current	\$64	\$59	\$56	\$53	\$51	\$47	\$41	\$35	\$32	\$32	\$30	\$28	\$26	\$24	\$21	\$15	\$14	\$13
	10yr ave.			\$44		\$40		\$34		\$29	\$27	\$27	\$26	\$25	\$22	\$20	\$16	\$14	\$13
	50% Current	\$71	\$65	\$62	\$59	\$57	\$52	\$45	\$39	\$36	\$35	\$33	\$32	\$29	\$27	\$23	\$17	\$16	\$14
	10yr ave.			\$49		\$45		\$37		\$32	\$30	\$30	\$29	\$28	\$25	\$23	\$18	\$16	\$14
	55% Current	\$78	\$72	\$68	\$65	\$62	\$57	\$50	\$43	\$39	\$39	\$36	\$35	\$32	\$29	\$26	\$19	\$17	\$16
	10yr ave.			\$54		\$49		\$41		\$35	\$33	\$33	\$32	\$30	\$27	\$25	\$20	\$18	\$16
	60% Current	\$85	\$79	\$74	\$71	\$68	\$62	\$54	\$47	\$43	\$42	\$40	\$38	\$35	\$32	\$28	\$20	\$19	\$17
	10yr ave.			\$59		\$54		\$45		\$38	\$37	\$36	\$35	\$33	\$30	\$27	\$22	\$19	\$17
	65% Current	\$92	\$85	\$81	\$76	\$74	\$67	\$59	\$51	\$46	\$46	\$43	\$41	\$38	\$35	\$31	\$22	\$20	\$19
	10yr ave.			\$64		\$58		\$49		\$42	\$40	\$39	\$38	\$36	\$32	\$30	\$24	\$21	\$19
	70% Current	\$99	\$92	\$87	\$82	\$79	\$73	\$63	\$55	\$50	\$49	\$46	\$44	\$41	\$37	\$33	\$24	\$22	\$20
	10yr ave.			\$69		\$63		\$52		\$45	\$43	\$42	\$40	\$39	\$35	\$32	\$26	\$22	\$20
	75% Current	\$106	\$98	\$93	\$88	\$85	\$78	\$68	\$59	\$53	\$53	\$50	\$47	\$44	\$40	\$35	\$26	\$23	\$22
	10yr ave.			\$74		\$67		\$56		\$48	\$46	\$44	\$43	\$41	\$37	\$34	\$27	\$24	\$22
	80% Current	\$113	\$105	\$99	\$94	\$91	\$83	\$72	\$63	\$57	\$56	\$53	\$51	\$46	\$43	\$38	\$27	\$25	\$23
	10yr ave.			\$79		\$72		\$60		\$51	\$49	\$47	\$46	\$44	\$40	\$36	\$29	\$26	\$23
	85% Current	\$120	\$111	\$105	\$100	\$96	\$88	\$77	\$67	\$61	\$60	\$56	\$54	\$49	\$45	\$40	\$29	\$26	\$25
	10yr ave.			\$84		\$76		\$63		\$54	\$52	\$50	\$49	\$47	\$42	\$39	\$31	\$27	\$25

The above shows estimated returns per head for skirted fleece wool. These figures do not take into account the value of skirtings and oddments and do not take into account discounts that may apply for faults under individual circumstances. These figures are based on a market index of 100% and should be used as a guide only. Returns over \$30 / head for fleece wool are highlighted.

Source: Australian Wool Exchange, Australian Wool Innovation, Sydney Futures Exchange, x-rates.com

Disclaimer: While all due care has been taken in the preparation of this document, no warranty is made as to its accuracy, reliability or completeness. To the extent permitted by law neither Jemalong or their sources including subsidiaries and staff, accept liability to any person for loss or damage arising from the use of this information.



Table 16: Returns pr head for skirted fleece wool.

Skirted FLC Weight 6 Kg		Micron																	
		16	16.5	17	17.5	18	18.5	19	19.5	20	21	22	23	24	25	26	28	30	32
Yield (Sch Dry)	25% Current	\$30	\$28	\$27	\$25	\$24	\$22	\$19	\$17	\$15	\$15	\$14	\$14	\$12	\$11	\$10	\$7	\$7	\$6
	10yr ave.			\$21		\$19		\$16		\$14	\$13	\$13	\$12	\$12	\$11	\$10	\$8	\$7	\$6
	30% Current	\$36	\$34	\$32	\$30	\$29	\$27	\$23	\$20	\$18	\$18	\$17	\$16	\$15	\$14	\$12	\$9	\$8	\$7
	10yr ave.			\$25		\$23		\$19		\$16	\$16	\$15	\$15	\$14	\$13	\$12	\$9	\$8	\$7
	35% Current	\$42	\$39	\$37	\$35	\$34	\$31	\$27	\$24	\$21	\$21	\$20	\$19	\$17	\$16	\$14	\$10	\$9	\$9
	10yr ave.			\$30		\$27		\$22		\$19	\$18	\$18	\$17	\$17	\$15	\$14	\$11	\$10	\$9
	40% Current	\$48	\$45	\$42	\$40	\$39	\$36	\$31	\$27	\$24	\$24	\$23	\$22	\$20	\$18	\$16	\$12	\$11	\$10
	10yr ave.			\$34		\$31		\$26		\$22	\$21	\$20	\$20	\$19	\$17	\$16	\$13	\$11	\$10
	45% Current	\$55	\$50	\$48	\$45	\$44	\$40	\$35	\$30	\$27	\$27	\$25	\$24	\$22	\$21	\$18	\$13	\$12	\$11
	10yr ave.			\$38		\$35		\$29		\$25	\$23	\$23	\$22	\$21	\$19	\$18	\$14	\$12	\$11
	50% Current	\$61	\$56	\$53	\$50	\$49	\$44	\$39	\$34	\$31	\$30	\$28	\$27	\$25	\$23	\$20	\$15	\$13	\$12
	10yr ave.			\$42		\$38		\$32		\$27	\$26	\$25	\$25	\$24	\$21	\$20	\$16	\$14	\$12
	55% Current	\$67	\$62	\$58	\$55	\$53	\$49	\$43	\$37	\$34	\$33	\$31	\$30	\$27	\$25	\$22	\$16	\$15	\$14
	10yr ave.			\$47		\$42		\$35		\$30	\$29	\$28	\$27	\$26	\$23	\$21	\$17	\$15	\$14
	60% Current	\$73	\$67	\$64	\$60	\$58	\$53	\$46	\$40	\$37	\$36	\$34	\$32	\$30	\$27	\$24	\$18	\$16	\$15
	10yr ave.			\$51		\$46		\$38		\$33	\$31	\$30	\$30	\$28	\$26	\$23	\$19	\$16	\$15
	65% Current	\$79	\$73	\$69	\$66	\$63	\$58	\$50	\$44	\$40	\$39	\$37	\$35	\$32	\$30	\$26	\$19	\$17	\$16
	10yr ave.			\$55		\$50		\$42		\$36	\$34	\$33	\$32	\$31	\$28	\$25	\$20	\$18	\$16
	70% Current	\$85	\$79	\$74	\$71	\$68	\$62	\$54	\$47	\$43	\$42	\$40	\$38	\$35	\$32	\$28	\$20	\$19	\$17
	10yr ave.			\$59		\$54		\$45		\$38	\$37	\$36	\$35	\$33	\$30	\$27	\$22	\$19	\$17
	75% Current	\$91	\$84	\$80	\$76	\$73	\$67	\$58	\$50	\$46	\$45	\$42	\$41	\$37	\$34	\$30	\$22	\$20	\$19
	10yr ave.			\$64		\$58		\$48		\$41	\$39	\$38	\$37	\$36	\$32	\$29	\$23	\$21	\$19
	80% Current	\$97	\$90	\$85	\$81	\$78	\$71	\$62	\$54	\$49	\$48	\$45	\$43	\$40	\$36	\$32	\$23	\$21	\$20
	10yr ave.			\$68		\$62		\$51		\$44	\$42	\$41	\$40	\$38	\$34	\$31	\$25	\$22	\$20
	85% Current	\$103	\$95	\$90	\$86	\$83	\$76	\$66	\$57	\$52	\$51	\$48	\$46	\$42	\$39	\$34	\$25	\$23	\$21
	10yr ave.			\$72		\$65		\$54		\$47	\$44	\$43	\$42	\$40	\$36	\$33	\$27	\$23	\$21

The above shows estimated returns per head for skirted fleece wool. These figures do not take into account the value of skirtings and oddments and do not take into account discounts that may apply for faults under individual circumstances. These figures are based on a market index of 100% and should be used as a guide only. Returns over \$30 / head for fleece wool are highlighted.

Source: Australian Wool Exchange, Australian Wool Innovation, Sydney Futures Exchange, x-rates.com

Disclaimer: While all due care has been taken in the preparation of this document, no warranty is made as to its accuracy, reliability or completeness. To the extent permitted by law neither Jemalong or their sources including subsidiaries and staff, accept liability to any person for loss or damage arising from the use of this information.



Table 17: Returns pr head for skirted fleece wool.

Skirted FLC Weight 5 Kg		Micron																	
		16	16.5	17	17.5	18	18.5	19	19.5	20	21	22	23	24	25	26	28	30	32
Yield (Sch Dry)	25% Current	\$25	\$23	\$22	\$21	\$20	\$19	\$16	\$14	\$13	\$13	\$12	\$11	\$10	\$10	\$8	\$6	\$6	\$5
	10yr ave.			\$18		\$16		\$13		\$11	\$11	\$11	\$10	\$10	\$9	\$8	\$7	\$6	\$5
	30% Current	\$30	\$28	\$27	\$25	\$24	\$22	\$19	\$17	\$15	\$15	\$14	\$14	\$12	\$11	\$10	\$7	\$7	\$6
	10yr ave.			\$21		\$19		\$16		\$14	\$13	\$13	\$12	\$12	\$11	\$10	\$8	\$7	\$6
	35% Current	\$35	\$33	\$31	\$29	\$28	\$26	\$23	\$20	\$18	\$18	\$17	\$16	\$15	\$13	\$12	\$9	\$8	\$7
	10yr ave.			\$25		\$22		\$19		\$16	\$15	\$15	\$14	\$14	\$12	\$11	\$9	\$8	\$7
	40% Current	\$40	\$37	\$35	\$34	\$32	\$30	\$26	\$22	\$20	\$20	\$19	\$18	\$17	\$15	\$13	\$10	\$9	\$8
	10yr ave.			\$28		\$26		\$21		\$18	\$17	\$17	\$17	\$16	\$14	\$13	\$10	\$9	\$8
	45% Current	\$45	\$42	\$40	\$38	\$36	\$33	\$29	\$25	\$23	\$23	\$21	\$20	\$19	\$17	\$15	\$11	\$10	\$9
	10yr ave.			\$32		\$29		\$24		\$21	\$20	\$19	\$19	\$18	\$16	\$15	\$12	\$10	\$9
	50% Current	\$51	\$47	\$44	\$42	\$41	\$37	\$32	\$28	\$25	\$25	\$24	\$23	\$21	\$19	\$17	\$12	\$11	\$10
	10yr ave.			\$35		\$32		\$27		\$23	\$22	\$21	\$21	\$20	\$18	\$16	\$13	\$11	\$10
	55% Current	\$56	\$51	\$49	\$46	\$45	\$41	\$35	\$31	\$28	\$28	\$26	\$25	\$23	\$21	\$18	\$13	\$12	\$11
	10yr ave.			\$39		\$35		\$29		\$25	\$24	\$23	\$23	\$22	\$20	\$18	\$14	\$13	\$11
	60% Current	\$61	\$56	\$53	\$50	\$49	\$44	\$39	\$34	\$31	\$30	\$28	\$27	\$25	\$23	\$20	\$15	\$13	\$12
	10yr ave.			\$42		\$38		\$32		\$27	\$26	\$25	\$25	\$24	\$21	\$20	\$16	\$14	\$12
	65% Current	\$66	\$61	\$58	\$55	\$53	\$48	\$42	\$36	\$33	\$33	\$31	\$29	\$27	\$25	\$22	\$16	\$14	\$13
	10yr ave.			\$46		\$42		\$35		\$30	\$28	\$28	\$27	\$26	\$23	\$21	\$17	\$15	\$13
	70% Current	\$71	\$65	\$62	\$59	\$57	\$52	\$45	\$39	\$36	\$35	\$33	\$32	\$29	\$27	\$23	\$17	\$16	\$14
	10yr ave.			\$49		\$45		\$37		\$32	\$30	\$30	\$29	\$28	\$25	\$23	\$18	\$16	\$14
	75% Current	\$76	\$70	\$66	\$63	\$61	\$56	\$48	\$42	\$38	\$38	\$35	\$34	\$31	\$29	\$25	\$18	\$17	\$16
	10yr ave.			\$53		\$48		\$40		\$34	\$33	\$32	\$31	\$30	\$27	\$24	\$20	\$17	\$15
	80% Current	\$81	\$75	\$71	\$67	\$65	\$59	\$52	\$45	\$41	\$40	\$38	\$36	\$33	\$30	\$27	\$19	\$18	\$17
	10yr ave.			\$56		\$51		\$43		\$37	\$35	\$34	\$33	\$32	\$28	\$26	\$21	\$18	\$17
	85% Current	\$86	\$79	\$75	\$71	\$69	\$63	\$55	\$48	\$43	\$43	\$40	\$38	\$35	\$32	\$29	\$21	\$19	\$18
	10yr ave.			\$60		\$55		\$45		\$39	\$37	\$36	\$35	\$34	\$30	\$28	\$22	\$19	\$18

The above shows estimated returns per head for skirted fleece wool. These figures do not take into account the value of skirtings and oddments and do not take into account discounts that may apply for faults under individual circumstances. These figures are based on a market index of 100% and should be used as a guide only. Returns over \$30 / head for fleece wool are highlighted.

Source: Australian Wool Exchange, Australian Wool Innovation, Sydney Futures Exchange, x-rates.com

Disclaimer: While all due care has been taken in the preparation of this document, no warranty is made as to its accuracy, reliability or completeness. To the extent permitted by law neither Jemalong or their sources including subsidiaries and staff, accept liability to any person for loss or damage arising from the use of this information.



Table 18: Returns pr head for skirted fleece wool.

Skirted FLC Weight 4 Kg		Micron																	
		16	16.5	17	17.5	18	18.5	19	19.5	20	21	22	23	24	25	26	28	30	32
Yield (Sch Dry)	25% Current	\$20	\$19	\$18	\$17	\$16	\$15	\$13	\$11	\$10	\$10	\$9	\$9	\$8	\$8	\$7	\$5	\$4	\$4
	10yr ave.			\$14		\$13		\$11		\$9	\$9	\$8	\$8	\$8	\$7	\$7	\$5	\$5	\$4
	30% Current	\$24	\$22	\$21	\$20	\$19	\$18	\$15	\$13	\$12	\$12	\$11	\$11	\$10	\$9	\$8	\$6	\$5	\$5
	10yr ave.			\$17		\$15		\$13		\$11	\$10	\$10	\$10	\$9	\$9	\$8	\$6	\$5	\$5
	35% Current	\$28	\$26	\$25	\$24	\$23	\$21	\$18	\$16	\$14	\$14	\$13	\$13	\$12	\$11	\$9	\$7	\$6	\$6
	10yr ave.			\$20		\$18		\$15		\$13	\$12	\$12	\$12	\$11	\$10	\$9	\$7	\$6	\$6
	40% Current	\$32	\$30	\$28	\$27	\$26	\$24	\$21	\$18	\$16	\$16	\$15	\$14	\$13	\$12	\$11	\$8	\$7	\$7
	10yr ave.			\$23		\$21		\$17		\$15	\$14	\$14	\$13	\$13	\$11	\$10	\$8	\$7	\$7
	45% Current	\$36	\$34	\$32	\$30	\$29	\$27	\$23	\$20	\$18	\$18	\$17	\$16	\$15	\$14	\$12	\$9	\$8	\$7
	10yr ave.			\$25		\$23		\$19		\$16	\$16	\$15	\$15	\$14	\$13	\$12	\$9	\$8	\$7
	50% Current	\$40	\$37	\$35	\$34	\$32	\$30	\$26	\$22	\$20	\$20	\$19	\$18	\$17	\$15	\$13	\$10	\$9	\$8
	10yr ave.			\$28		\$26		\$21		\$18	\$17	\$17	\$17	\$16	\$14	\$13	\$10	\$9	\$8
	55% Current	\$44	\$41	\$39	\$37	\$36	\$33	\$28	\$25	\$22	\$22	\$21	\$20	\$18	\$17	\$15	\$11	\$10	\$9
	10yr ave.			\$31		\$28		\$23		\$20	\$19	\$19	\$18	\$17	\$16	\$14	\$11	\$10	\$9
	60% Current	\$48	\$45	\$42	\$40	\$39	\$36	\$31	\$27	\$24	\$24	\$23	\$22	\$20	\$18	\$16	\$12	\$11	\$10
	10yr ave.			\$34		\$31		\$26		\$22	\$21	\$20	\$20	\$19	\$17	\$16	\$13	\$11	\$10
	65% Current	\$53	\$49	\$46	\$44	\$42	\$39	\$34	\$29	\$26	\$26	\$25	\$23	\$22	\$20	\$17	\$13	\$12	\$11
	10yr ave.			\$37		\$33		\$28		\$24	\$23	\$22	\$21	\$21	\$18	\$17	\$14	\$12	\$11
	70% Current	\$57	\$52	\$50	\$47	\$45	\$41	\$36	\$31	\$28	\$28	\$26	\$25	\$23	\$21	\$19	\$14	\$12	\$12
	10yr ave.			\$40		\$36		\$30		\$26	\$24	\$24	\$23	\$22	\$20	\$18	\$15	\$13	\$12
	75% Current	\$61	\$56	\$53	\$50	\$49	\$44	\$39	\$34	\$31	\$30	\$28	\$27	\$25	\$23	\$20	\$15	\$13	\$12
	10yr ave.			\$42		\$38		\$32		\$27	\$26	\$25	\$25	\$24	\$21	\$20	\$16	\$14	\$12
	80% Current	\$65	\$60	\$57	\$54	\$52	\$47	\$41	\$36	\$33	\$32	\$30	\$29	\$27	\$24	\$21	\$16	\$14	\$13
	10yr ave.			\$45		\$41		\$34		\$29	\$28	\$27	\$26	\$25	\$23	\$21	\$17	\$15	\$13
	85% Current	\$69	\$64	\$60	\$57	\$55	\$50	\$44	\$38	\$35	\$34	\$32	\$31	\$28	\$26	\$23	\$17	\$15	\$14
	10yr ave.			\$48		\$44		\$36		\$31	\$30	\$29	\$28	\$27	\$24	\$22	\$18	\$16	\$14

The above shows estimated returns per head for skirted fleece wool. These figures do not take into account the value of skirtings and oddments and do not take into account discounts that may apply for faults under individual circumstances. These figures are based on a market index of 100% and should be used as a guide only. Returns over \$30 / head for fleece wool are highlighted.

Source: Australian Wool Exchange, Australian Wool Innovation, Sydney Futures Exchange, x-rates.com

Disclaimer: While all due care has been taken in the preparation of this document, no warranty is made as to its accuracy, reliability or completeness. To the extent permitted by law neither Jemalong or their sources including subsidiaries and staff, accept liability to any person for loss or damage arising from the use of this information.



Table 19: Returns pr head for skirted fleece wool.

Skirted FLC Weight 3 Kg		Micron																	
		16	16.5	17	17.5	18	18.5	19	19.5	20	21	22	23	24	25	26	28	30	32
Yield (Sch Dry)	25% Current	\$15	\$14	\$13	\$13	\$12	\$11	\$10	\$8	\$8	\$8	\$7	\$7	\$6	\$6	\$5	\$4	\$3	\$3
	10yr ave.			\$11		\$10		\$8		\$7	\$7	\$6	\$6	\$6	\$5	\$5	\$4	\$3	\$3
	30% Current	\$18	\$17	\$16	\$15	\$15	\$13	\$12	\$10	\$9	\$9	\$8	\$8	\$7	\$7	\$6	\$4	\$4	\$4
	10yr ave.			\$13		\$12		\$10		\$8	\$8	\$8	\$7	\$7	\$6	\$6	\$5	\$4	\$4
	35% Current	\$21	\$20	\$19	\$18	\$17	\$16	\$14	\$12	\$11	\$11	\$10	\$9	\$9	\$8	\$7	\$5	\$5	\$4
	10yr ave.			\$15		\$13		\$11		\$10	\$9	\$9	\$9	\$8	\$7	\$7	\$5	\$5	\$4
	40% Current	\$24	\$22	\$21	\$20	\$19	\$18	\$15	\$13	\$12	\$12	\$11	\$11	\$10	\$9	\$8	\$6	\$5	\$5
	10yr ave.			\$17		\$15		\$13		\$11	\$10	\$10	\$10	\$9	\$9	\$8	\$6	\$5	\$5
	45% Current	\$27	\$25	\$24	\$23	\$22	\$20	\$17	\$15	\$14	\$14	\$13	\$12	\$11	\$10	\$9	\$7	\$6	\$6
	10yr ave.			\$19		\$17		\$14		\$12	\$12	\$11	\$11	\$11	\$10	\$9	\$7	\$6	\$6
	50% Current	\$30	\$28	\$27	\$25	\$24	\$22	\$19	\$17	\$15	\$14	\$14	\$14	\$12	\$12	\$11	\$10	\$7	\$6
	10yr ave.			\$21		\$19		\$16		\$14	\$13	\$13	\$12	\$12	\$11	\$10	\$8	\$7	\$6
	55% Current	\$33	\$31	\$29	\$28	\$27	\$24	\$21	\$18	\$17	\$17	\$16	\$15	\$14	\$13	\$11	\$8	\$7	\$7
	10yr ave.			\$23		\$21		\$18		\$15	\$14	\$14	\$14	\$13	\$12	\$11	\$9	\$8	\$7
	60% Current	\$36	\$34	\$32	\$30	\$29	\$27	\$23	\$20	\$18	\$18	\$17	\$16	\$15	\$14	\$12	\$9	\$8	\$7
	10yr ave.			\$25		\$23		\$19		\$16	\$16	\$15	\$15	\$14	\$13	\$12	\$9	\$8	\$7
	65% Current	\$39	\$36	\$35	\$33	\$32	\$29	\$25	\$22	\$20	\$20	\$18	\$18	\$16	\$15	\$13	\$9	\$9	\$8
	10yr ave.			\$28		\$25		\$21		\$18	\$17	\$17	\$16	\$15	\$14	\$13	\$10	\$9	\$8
	70% Current	\$42	\$39	\$37	\$35	\$34	\$31	\$27	\$24	\$21	\$21	\$20	\$19	\$17	\$16	\$14	\$10	\$9	\$9
	10yr ave.			\$30		\$27		\$22		\$19	\$18	\$18	\$17	\$17	\$15	\$14	\$11	\$10	\$9
	75% Current	\$45	\$42	\$40	\$38	\$36	\$33	\$29	\$25	\$23	\$23	\$21	\$20	\$19	\$17	\$15	\$11	\$10	\$9
	10yr ave.			\$32		\$29		\$24		\$21	\$20	\$19	\$19	\$18	\$16	\$15	\$12	\$10	\$9
	80% Current	\$48	\$45	\$42	\$40	\$39	\$36	\$31	\$27	\$24	\$24	\$23	\$22	\$20	\$18	\$16	\$12	\$11	\$10
	10yr ave.			\$34		\$31		\$26		\$22	\$21	\$20	\$20	\$19	\$17	\$16	\$13	\$11	\$10
	85% Current	\$52	\$48	\$45	\$43	\$41	\$38	\$33	\$29	\$26	\$26	\$24	\$23	\$21	\$19	\$17	\$12	\$11	\$11
	10yr ave.			\$36		\$33		\$27		\$23	\$22	\$22	\$21	\$20	\$18	\$17	\$13	\$12	\$11

The above shows estimated returns per head for skirted fleece wool. These figures do not take into account the value of skirtings and oddments and do not take into account discounts that may apply for faults under individual circumstances. These figures are based on a market index of 100% and should be used as a guide only. Returns over \$30 / head for fleece wool are highlighted.

Source: Australian Wool Exchange, Australian Wool Innovation, Sydney Futures Exchange, x-rates.com

Disclaimer: While all due care has been taken in the preparation of this document, no warranty is made as to its accuracy, reliability or completeness. To the extent permitted by law neither Jemalong or their sources including subsidiaries and staff, accept liability to any person for loss or damage arising from the use of this information.



Table 20: Returns pr head for skirted fleece wool.

Skirted FLC Weight 2 Kg		Micron																	
		16	16.5	17	17.5	18	18.5	19	19.5	20	21	22	23	24	25	26	28	30	32
Yield (Sch Dry)	25% Current	\$10	\$9	\$9	\$8	\$8	\$7	\$6	\$6	\$5	\$5	\$5	\$5	\$4	\$4	\$3	\$2	\$2	\$2
	10yr ave.			\$7		\$6		\$5		\$5	\$4	\$4	\$4	\$4	\$4	\$3	\$3	\$2	\$2
	30% Current	\$12	\$11	\$11	\$10	\$10	\$9	\$8	\$7	\$6	\$6	\$6	\$5	\$5	\$5	\$4	\$3	\$3	\$2
	10yr ave.			\$8		\$8		\$6		\$5	\$5	\$5	\$5	\$5	\$4	\$4	\$3	\$3	\$2
	35% Current	\$14	\$13	\$12	\$12	\$11	\$10	\$9	\$8	\$7	\$7	\$7	\$6	\$6	\$5	\$5	\$3	\$3	\$3
	10yr ave.			\$10		\$9		\$7		\$6	\$6	\$6	\$6	\$6	\$5	\$5	\$4	\$3	\$3
	40% Current	\$16	\$15	\$14	\$13	\$13	\$12	\$10	\$9	\$8	\$8	\$8	\$7	\$7	\$6	\$5	\$4	\$4	\$3
	10yr ave.			\$11		\$10		\$9		\$7	\$7	\$7	\$7	\$6	\$6	\$5	\$4	\$4	\$3
	45% Current	\$18	\$17	\$16	\$15	\$15	\$13	\$12	\$10	\$9	\$9	\$8	\$8	\$7	\$7	\$6	\$4	\$4	\$4
	10yr ave.			\$13		\$12		\$10		\$8	\$8	\$8	\$7	\$7	\$6	\$6	\$5	\$4	\$4
	50% Current	\$20	\$19	\$18	\$17	\$16	\$15	\$13	\$11	\$10	\$10	\$9	\$9	\$8	\$8	\$7	\$5	\$4	\$4
	10yr ave.			\$14		\$13		\$11		\$9	\$9	\$8	\$8	\$8	\$7	\$7	\$5	\$5	\$4
	55% Current	\$22	\$21	\$19	\$18	\$18	\$16	\$14	\$12	\$11	\$11	\$10	\$10	\$9	\$8	\$7	\$5	\$5	\$5
	10yr ave.			\$16		\$14		\$12		\$10	\$10	\$9	\$9	\$9	\$8	\$7	\$6	\$5	\$5
	60% Current	\$24	\$22	\$21	\$20	\$19	\$18	\$15	\$13	\$12	\$12	\$11	\$11	\$10	\$9	\$8	\$6	\$5	\$5
	10yr ave.			\$17		\$15		\$13		\$11	\$10	\$10	\$10	\$9	\$9	\$8	\$6	\$5	\$5
	65% Current	\$26	\$24	\$23	\$22	\$21	\$19	\$17	\$15	\$13	\$13	\$12	\$12	\$11	\$10	\$9	\$6	\$6	\$5
	10yr ave.			\$18		\$17		\$14		\$12	\$11	\$11	\$11	\$10	\$9	\$8	\$7	\$6	\$5
	70% Current	\$28	\$26	\$25	\$24	\$23	\$21	\$18	\$16	\$14	\$14	\$13	\$13	\$12	\$11	\$9	\$7	\$6	\$6
	10yr ave.			\$20		\$18		\$15		\$13	\$12	\$12	\$12	\$11	\$10	\$9	\$7	\$6	\$6
	75% Current	\$30	\$28	\$27	\$25	\$24	\$22	\$19	\$17	\$15	\$15	\$14	\$14	\$12	\$11	\$10	\$7	\$7	\$6
	10yr ave.			\$21		\$19		\$16		\$14	\$13	\$13	\$12	\$12	\$11	\$10	\$8	\$7	\$6
	80% Current	\$32	\$30	\$28	\$27	\$26	\$24	\$21	\$18	\$16	\$16	\$15	\$14	\$13	\$12	\$11	\$8	\$7	\$7
	10yr ave.			\$23		\$21		\$17		\$15	\$14	\$14	\$13	\$13	\$11	\$10	\$8	\$7	\$7
	85% Current	\$34	\$32	\$30	\$29	\$28	\$25	\$22	\$19	\$17	\$17	\$16	\$15	\$14	\$13	\$11	\$8	\$8	\$7
	10yr ave.			\$24		\$22		\$18		\$16	\$15	\$14	\$14	\$13	\$12	\$11	\$9	\$8	\$7

The above shows estimated returns per head for skirted fleece wool. These figures do not take into account the value of skirtings and oddments and do not take into account discounts that may apply for faults under individual circumstances. These figures are based on a market index of 100% and should be used as a guide only. Returns over \$30 / head for fleece wool are highlighted.

Source: Australian Wool Exchange, Australian Wool Innovation, Sydney Futures Exchange, x-rates.com

Disclaimer: While all due care has been taken in the preparation of this document, no warranty is made as to its accuracy, reliability or completeness. To the extent permitted by law neither Jemalong or their sources including subsidiaries and staff, accept liability to any person for loss or damage arising from the use of this information.