



JEMALONG WOOL BULLETIN

(week ending 3/02/2011)

Table 1: Northern Region Micron Price Guides

CURRENT MARKET					PERCENTILES		AVERAGES					12 MONTH COMPARISONS								TRADING RANGE				
Mic.	3/02/2011	27/01/2011					Now			Now			2/02/2010		Now		Now		Now		Clean c/kg			
Price	Current	Weekly																						
Guides	Price	Change		3yr	10yr	3 year	compared	10 year	compared			This time	compared	12 Month	compared	12 Month	compared	12 Month	compared	12	3	10		
						Average	to 3yr ave	Average	to 10yr ave			Last Year	to Last Year	Low	to Low	High	to High	High	to High	Mth	Year	Year		
NRI	1313	+58 4.4%		100%	100%	910	+403 44%	880	+433 49%			952	+361 38%	890	+423 48%	1313	0 0%			423	557	648		
16*	2570	+170 6.6%		100%		1680	+890 53%					1530	+1040 68%	1510	+1060 70%	2570	0 0%			1060	1015			
16.5*	2500	+200 8.0%		100%		1547	+953 62%					1400	+1100 79%	1395	+1105 79%	2500	0 0%			1105	1046			
17*	2370	+150 6.3%		100%	98%	1419	+951 67%	1400	+970 69%			1265	+1105 87%	1230	+1140 93%	2370	0 0%			1140	1049	1797		
17.5*	2260	+170 7.5%		100%		1347	+913 68%					1225	+1035 84%	1175	+1085 92%	2260	0 0%			1085	1004			
18	2077	+119 5.7%		100%	94%	1280	+797 62%	1280	+797 62%			1186	+891 75%	1134	+943 83%	2077	0 0%			943	986	1392		
18.5	1941	+138 7.1%		100%		1198	+743 62%					1149	+792 69%	1088	+853 78%	1941	0 0%			853	893			
19	1638	+78 4.8%		99%	99%	1089	+549 50%	1070	+568 53%			1093	+545 50%	1031	+607 59%	1645	-7 0%			614	751	841		
19.5	1400	+68 4.9%		99%		991	+409 41%					1032	+368 36%	952	+448 47%	1401	-1 0%			449	587			
20	1203	+56 4.7%		99%	94%	913	+290 32%	921	+282 31%			986	+217 22%	904	+299 33%	1230	-27 -2%			326	490	717		
21	1162	+51 4.4%		99%	94%	880	+282 32%	878	+284 32%			971	+191 20%	878	+284 32%	1175	-13 -1%			297	488	737		
22	1110	+50 4.5%		99%	93%	857	+253 30%	855	+255 30%			954	+156 16%	847	+263 31%	1141	-31 -3%			294	466	735		
23	1047	+31 3.0%		99%	93%	834	+213 26%	834	+213 26%			919	+128 14%	827	+220 27%	1070	-23 -2%			243	407	728		
24	988	+30 3.0%		100%	89%	786	+202 26%	797	+191 24%			859	+129 15%	780	+208 27%	988	0 0%			208	328	706		
25	845	+31 3.7%		100%	81%	677	+168 25%	715	+130 18%			686	+159 23%	660	+185 28%	845	0 0%			185	248	653		
26	748	0		99%	81%	608	+140 23%	654	+94 14%			609	+139 23%	576	+172 30%	752	-4 -1%			176	248	591		
28	567	-7 -1.2%		98%	76%	467	+100 21%	523	+44 8%			469	+98 21%	436	+131 30%	579	-12 -2%			143	160	465		
30	503	-4 -0.8%		98%	75%	407	+96 24%	457	+46 10%			402	+101 25%	382	+121 32%	509	-6 -1%			127	162	384		
32	448	-1 -0.2%		99%	72%	356	+92 26%	413	+35 8%			348	+100 29%	346	+102 29%	449	-1 0%			103	143	372		
MC	700	+11 1.6%		100%	100%	548	+152 28%	504	+196 39%			661	+39 6%	561	+139 25%	700	0 0%			139	304	316		

Note:

* Due to the irregular market quoting for some fine wool categories, figures shown relating to micron categories below 18 micron are an estimate based on the AWEX Premium & Discounts Report & other available information.

* For any category, where there is insufficient quantity offered to enable AWEX to quote, a quote will be provided based on the best available information.

* 10 Year data is not available for some micron categories, which may result in blank spaces in the table above.

Definitions:

* A Percentile, is a value on a scale of one hundred that indicates the percent of a distribution that is equal to or below it. In general a percentile between 25% and 75% is considered normal, a percentile below 25% is considered below normal and a percentile above 75% is considered above normal.

Three and ten year percentiles shown in the table above, detail the period of time during the past 3 & 10 years that the market has traded either at or below its current price.

The higher the percentile, the stronger the market.

Source: Australian Wool Exchange, Australian Wool Innovation, Sydney Futures Exchange, x-rates.com

Disclaimer: While all due care has been taken in the preparation of this document, no warranty is made as to its accuracy, reliability or completeness. To the extent permitted by law neither Jemalong or their sources including subsidiaries and staff, accept liability to any person for loss or damage arising from the use of this information.



MARKET COMMENTARY

Australian Dollar 104.07 cents US as of 3/02/2011

NORTHERN REGION –Sale Week 31/10 (45,883 bales offered nationally)

On Wednesday - The wool market continued on it's upward trajectory with gains across all microns. The finer microns categories recorded the largest rises, with gains of 80-100 cents for 17.5 micron and finer. The gains reduced along the micron spectrum with the broader end lifting by a more modest 30 cents. There was demand for all types including the lower style & strength lots. As shown in the table above, the medium to broader categories are yet to breach the highs made on 19th Jan, however the finer microns are now at new highs. Finer merino skirtings were 20-30 cents dearer on a stylish selection, others closed firm. Locks & crutchings were generally unchanged as were the majority of the crossbreds (lower style crossbreds did ease slightly).

On Thursday - The market continued to rise on the back of a smaller offering. Despite a lower styled selection, the finer microns were again in the spotlight, surging another 50-80 cents clean. With volumes reasonably limited, odd lots were up to 100 cents higher. 19 microns and broader were also well supported, closing 20 cents dearer. Best style skirtings in the finer micron categories were once again 20-30 cents dearer, others remained firm. Locks and Crutchings were up to 10 cents dearer while crossbreds were generally unchanged on a small offering.

Northern Region Indicator (Monthly Averages)

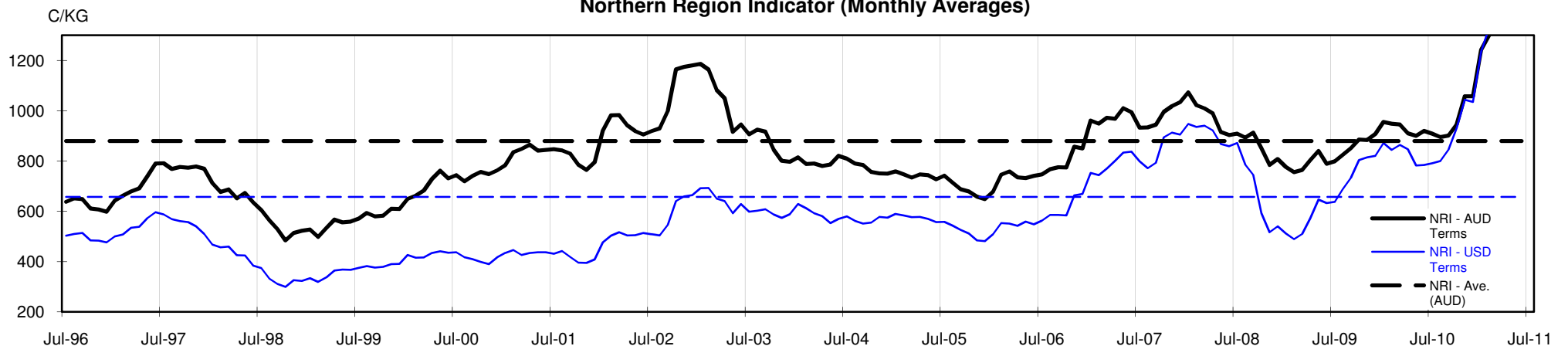




Table 4: 19 micron SFE

Wednesday, 26 January 2011

Delivery Mth	Feb-11	Apr-11	Jun-11	Aug-11	Oct-11	Dec-11	Feb-12	Apr-12	Jun-12
19 Micron SFE	1572	1550	1523	1495	1480	1474	1462	1392	1392
Average	1059	1087	1099	1106	1111	1115	1133	1163	1214
Maximum	1572	1605	1600	1573	1545	1538	1532	1520	1450
Minimum	936	983	1025	1034	1034	1034	1034	1053	1106

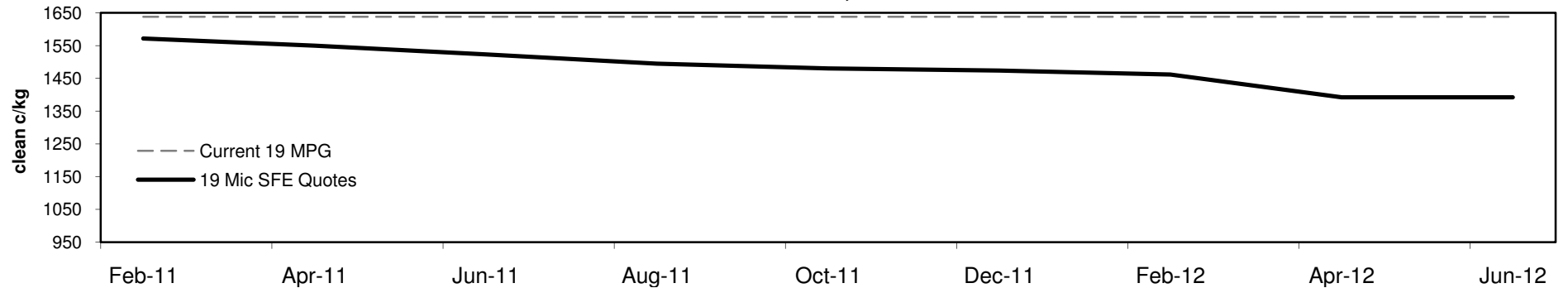
Table 5: 19 micron SFE, as a percentile of the 19 micron MPG

3 Year Percentile	99%	99%	98%	98%	98%	98%	98%	98%	98%
10 Year Percentile	99%	99%	99%	99%	99%	99%	99%	97%	97%

Table 6: 19 micron SFE, compared to MPG

Current 19 MPG	-66	-4%	-88	-5%	-115	-7%	-143	-9%	-158	-10%	-164	-10%	-176	-11%	-246	-15%	-246	-15%
19 MPG, 1 Year Average	+380	32%	+358	30%	+331	28%	+303	25%	+288	24%	+282	24%	+270	23%	+200	17%	+200	17%
19 MPG, 3 Year Average	+483	44%	+461	42%	+434	40%	+406	37%	+391	36%	+385	35%	+373	34%	+303	28%	+303	28%
19 MPG, 10 Year Average	+502	47%	+480	45%	+453	42%	+425	40%	+410	38%	+404	38%	+392	37%	+322	30%	+322	30%

19 MICRON SFE, QUOTES



19 Micron SFE, Front month movement

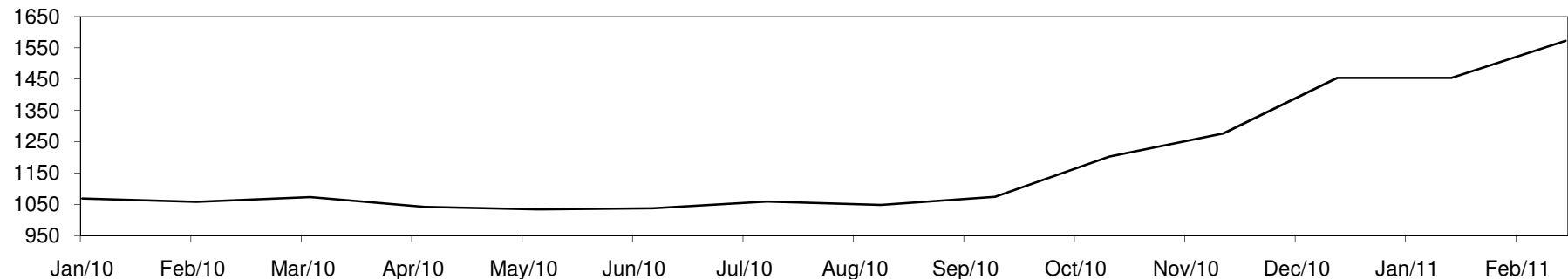




Table 7: 21 micron SFE

Wednesday, 26 January 2011

Delivery Mth	Feb-11	Apr-11	Jun-11	Aug-11	Oct-11	Dec-11	Feb-12	Apr-12	Jun-12
21 Micron SFE	1140	1105	1075	1074	1073	1053	1053	1053	1053
Average	933	950	953	953	948	942	942	961	1006
Maximum	1140	1220	1185	1160	1133	1115	1053	1080	1080
Minimum	818	860	891	890	880	880	880	880	934

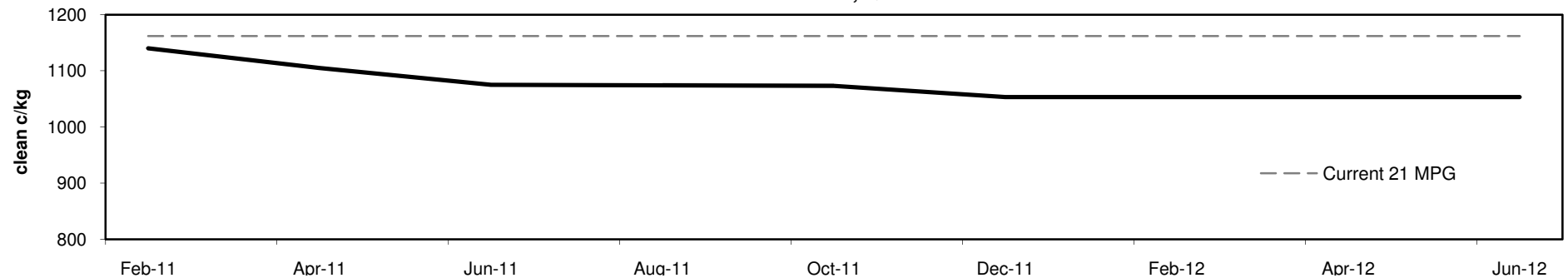
Table 8: 21 micron SFE, as a percentile of the 21 micron MPG

3 Year Percentile	99%	98%	98%	98%	98%	98%	98%	98%	98%
10 Year Percentile	93%	93%	92%	92%	92%	92%	92%	92%	92%

Table 9: 21 micron SFE, compared to MPG

Current 21 MPG	-22	-2%	-57	-5%	-87	-7%	-88	-8%	-89	-8%	-109	-9%	-109	-9%	-109	-9%	-109	-9%
21 MPG, 1 Year Average	+170	18%	+135	14%	+105	11%	+104	11%	+103	11%	+83	9%	+83	9%	+83	9%	+83	9%
21 MPG, 3 Year Average	+260	30%	+225	26%	+195	22%	+194	22%	+193	22%	+173	20%	+173	20%	+173	20%	+173	20%
21 MPG, 10 Year Average	+262	30%	+227	26%	+197	22%	+196	22%	+195	22%	+175	20%	+175	20%	+175	20%	+175	20%

21 MICRON SFE, QUOTES



21 Micron SFE, Front month movement

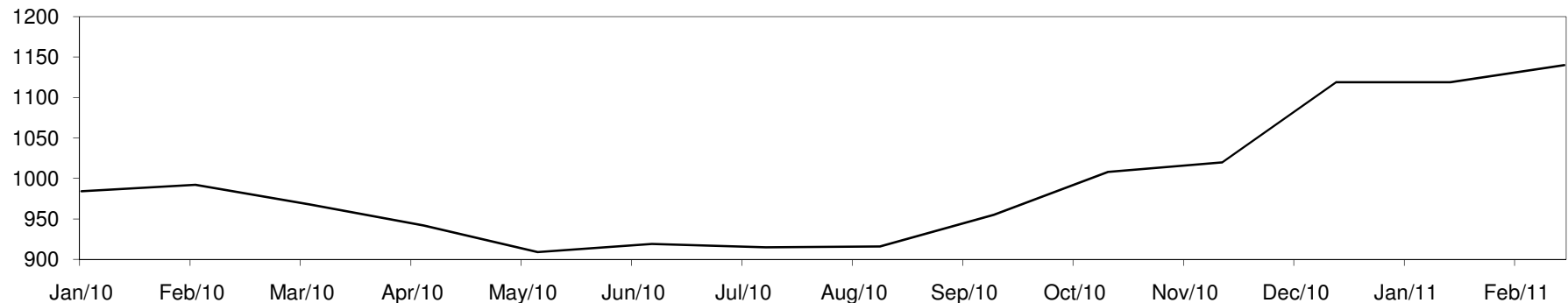




Table 10: 23 micron SFE

Wednesday, 26 January 2011

Delivery Mth	Feb-11	Apr-11	Jun-11	Aug-11	Oct-11	Dec-11	Feb-12	Apr-12	Jun-12
23 Micron SFE	890	890	890	890	890	890	890	890	890
Average	856	866	875	886	891	885	885	886	885
Maximum	927	927	927	927	927	890	890	890	890
Minimum	760	760	803	803	883	883	883	883	883

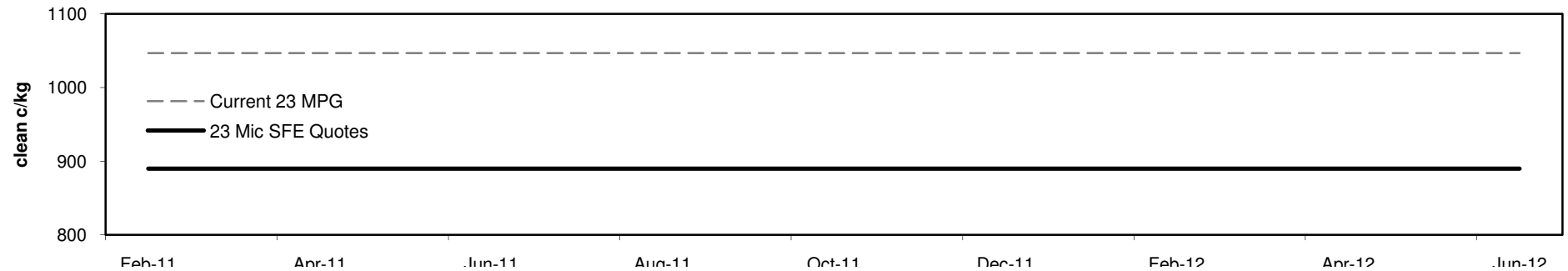
Table 11: 23 micron SFE, as a percentile of the 23 micron MPG

3 Year Percentile	72%	72%	72%	72%	72%	72%	72%	72%	72%
10 Year Percentile	65%	65%	65%	65%	65%	65%	65%	65%	65%

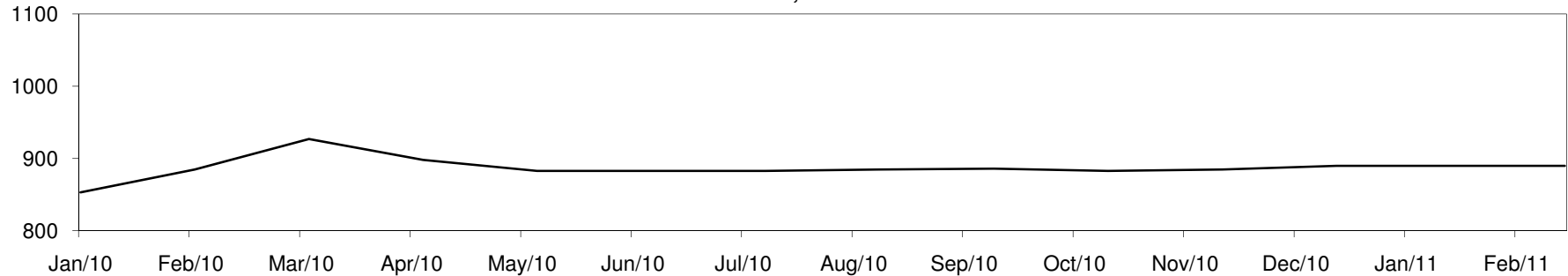
Table 12: 23 micron SFE, compared to MPG

Current 19 MPG	-157	-15%	-157	-15%	-157	-15%	-157	####	-157	-15%	-157	-15%	-157	-15%	-157	-15%	-157	-15%
23 MPG, 1 Year Average	-22	-2%	-22	-2%	-22	-2%	-22	-2%	-22	-2%	-22	-2%	-22	-2%	-22	-2%	-22	-2%
23 MPG, 3 Year Average	+56	7%	+56	7%	+56	7%	+56	7%	+56	7%	+56	7%	+56	7%	+56	7%	+56	7%
23 MPG, 10 Year Average	+56	7%	+56	7%	+56	7%	+56	7%	+56	7%	+56	7%	+56	7%	+56	7%	+56	7%

23 MICRON SFE, QUOTES

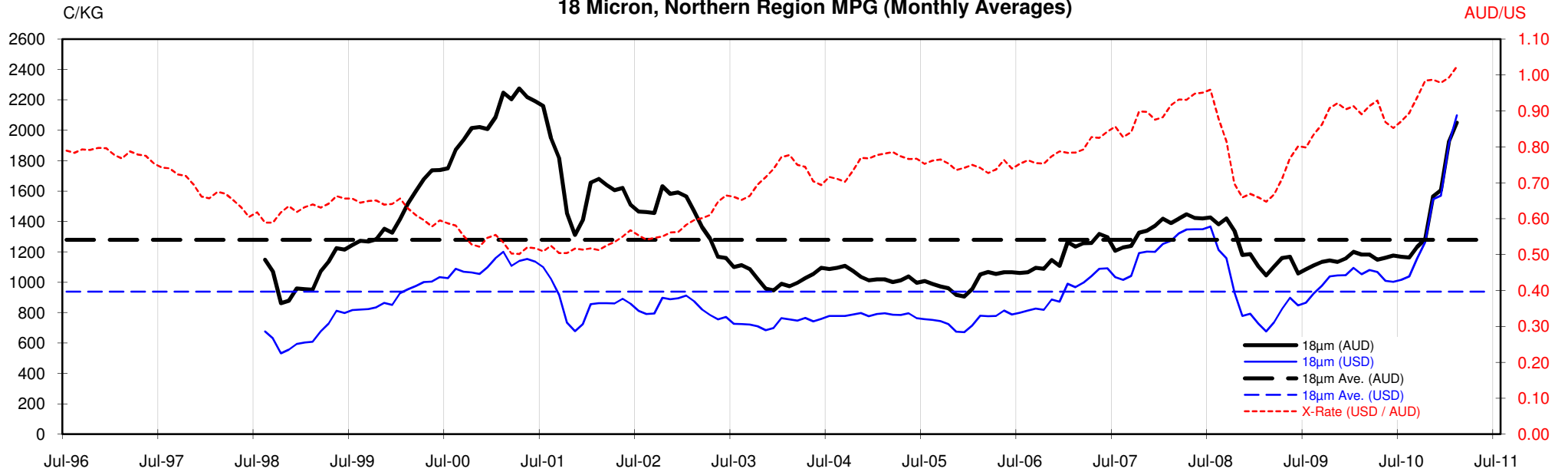


21 Micron SFE, Front month movement



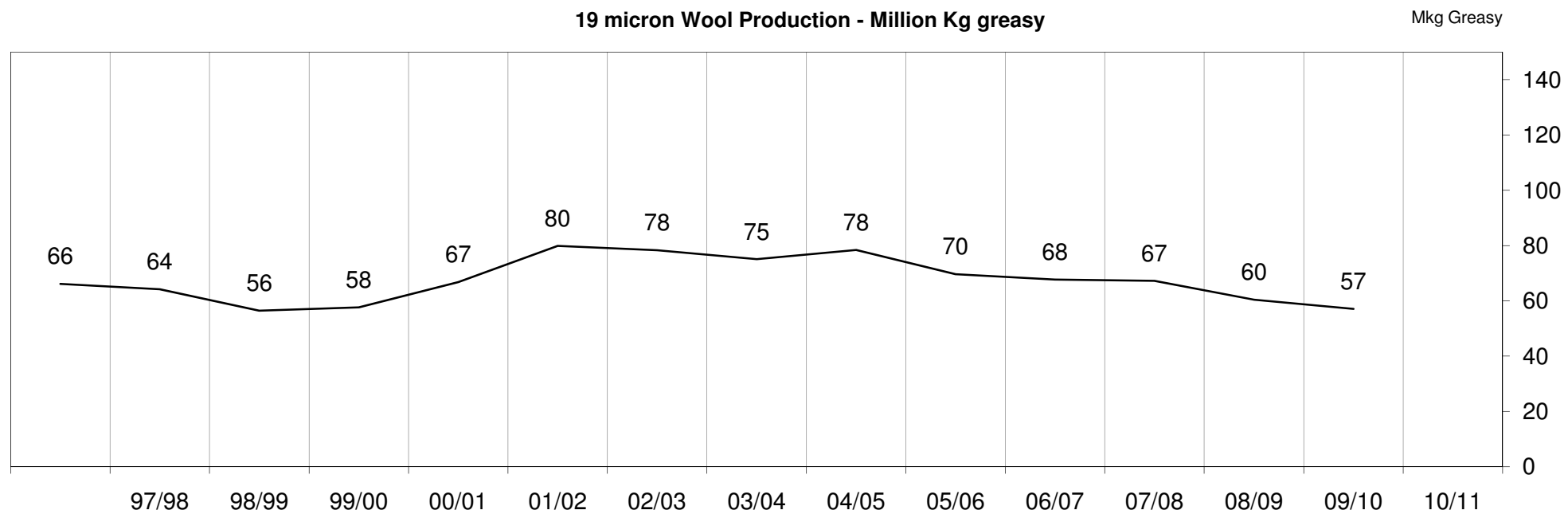
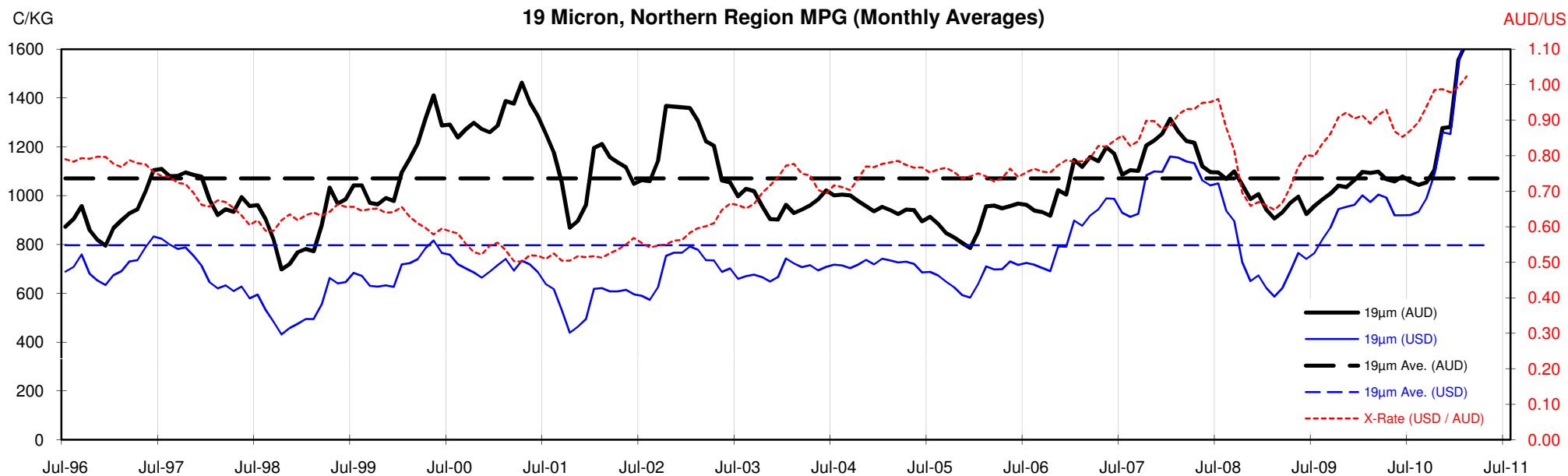


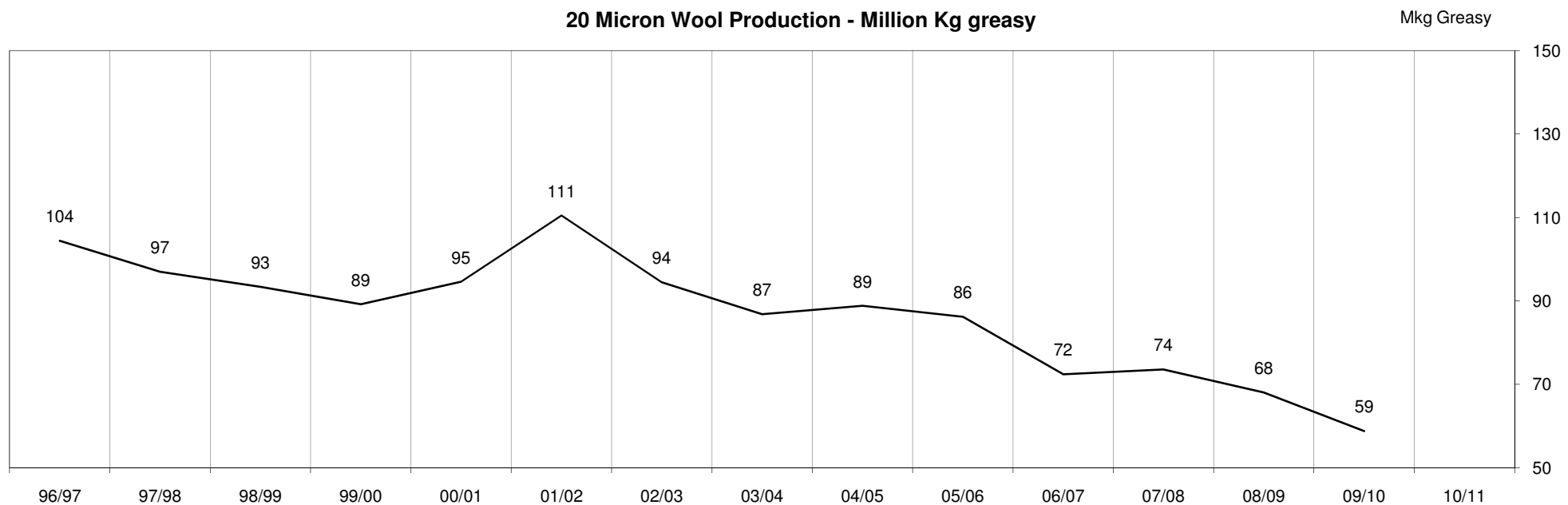
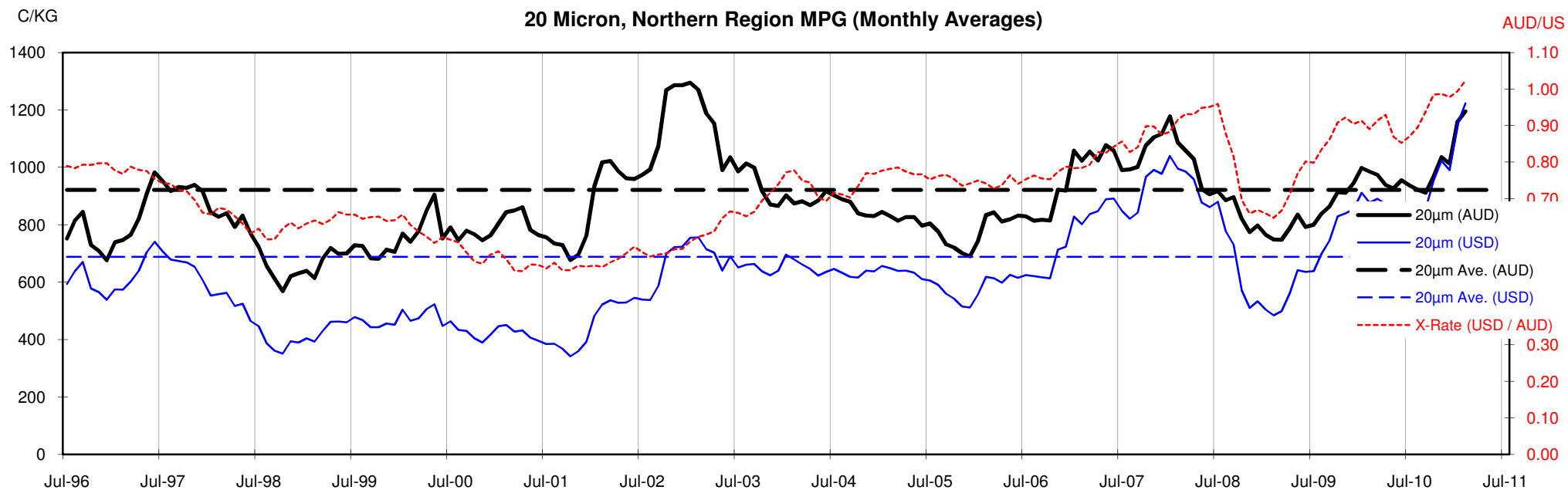
18 Micron, Northern Region MPG (Monthly Averages)

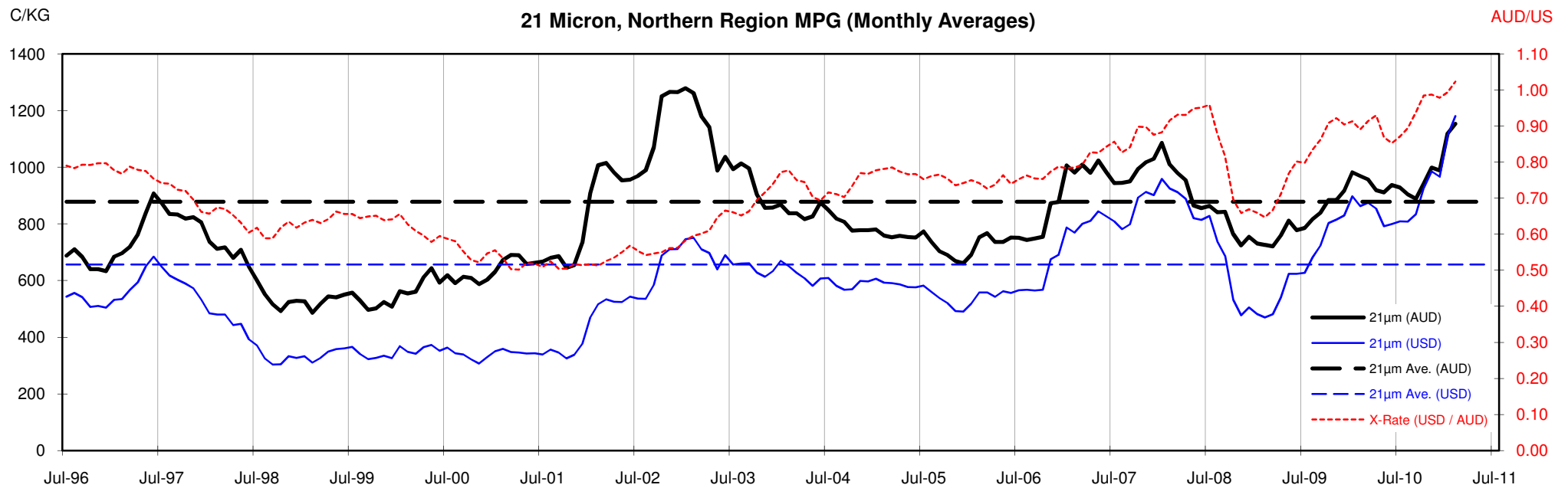


<18.5 micron Wool Production - Million Kg greasy



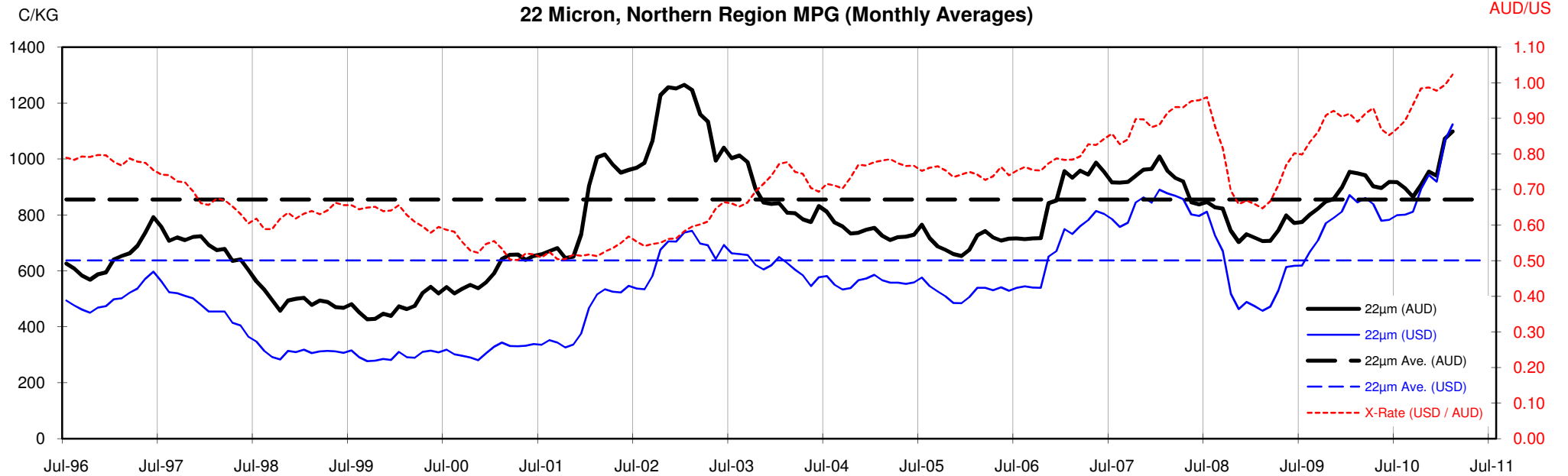




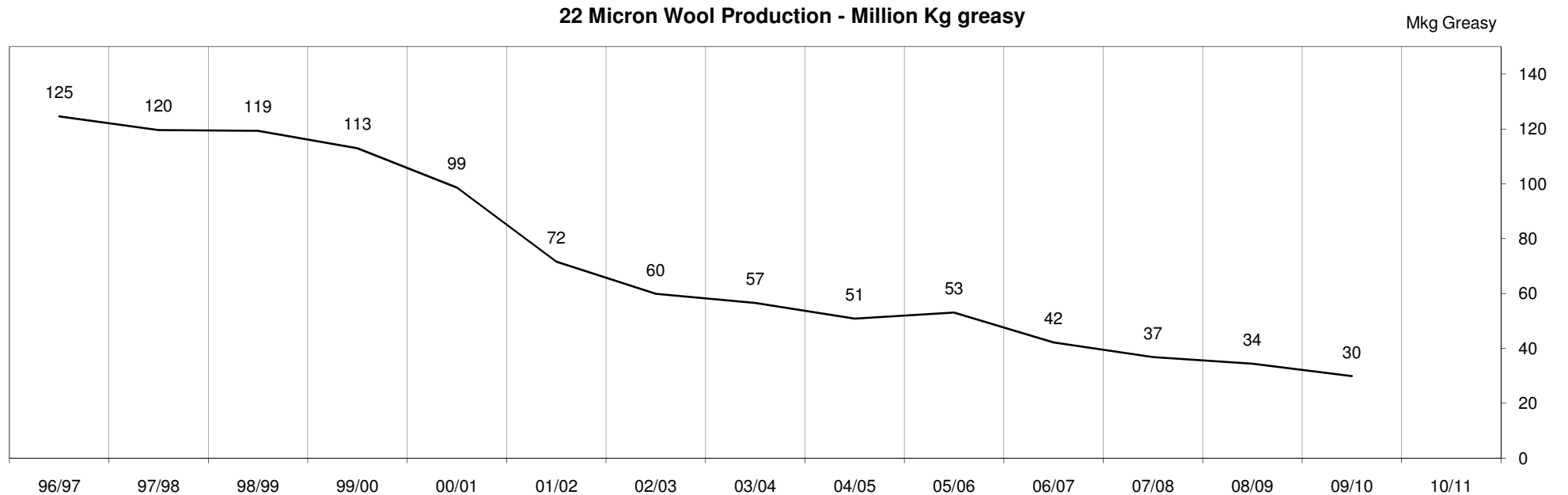


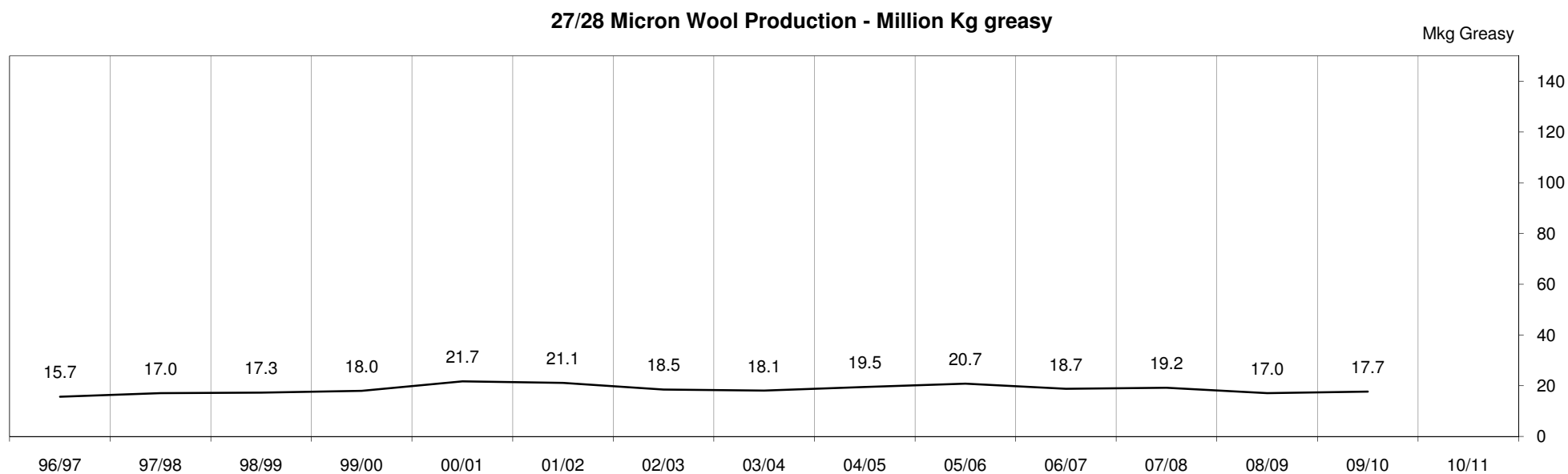
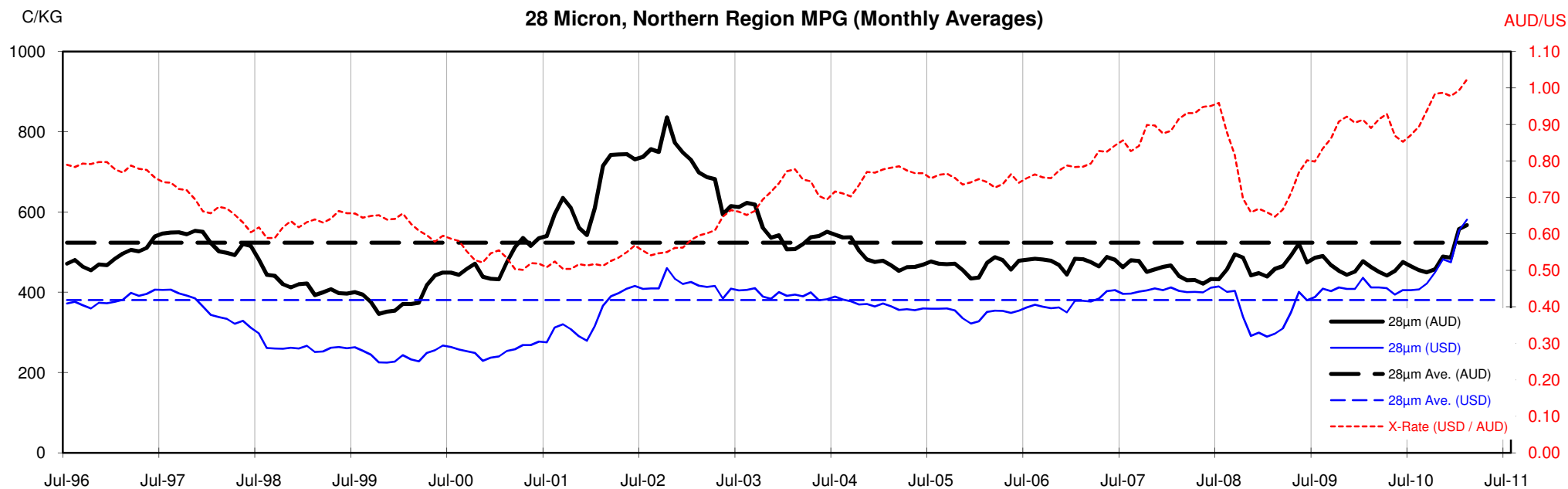


22 Micron, Northern Region MPG (Monthly Averages)



22 Micron Wool Production - Million Kg greasy





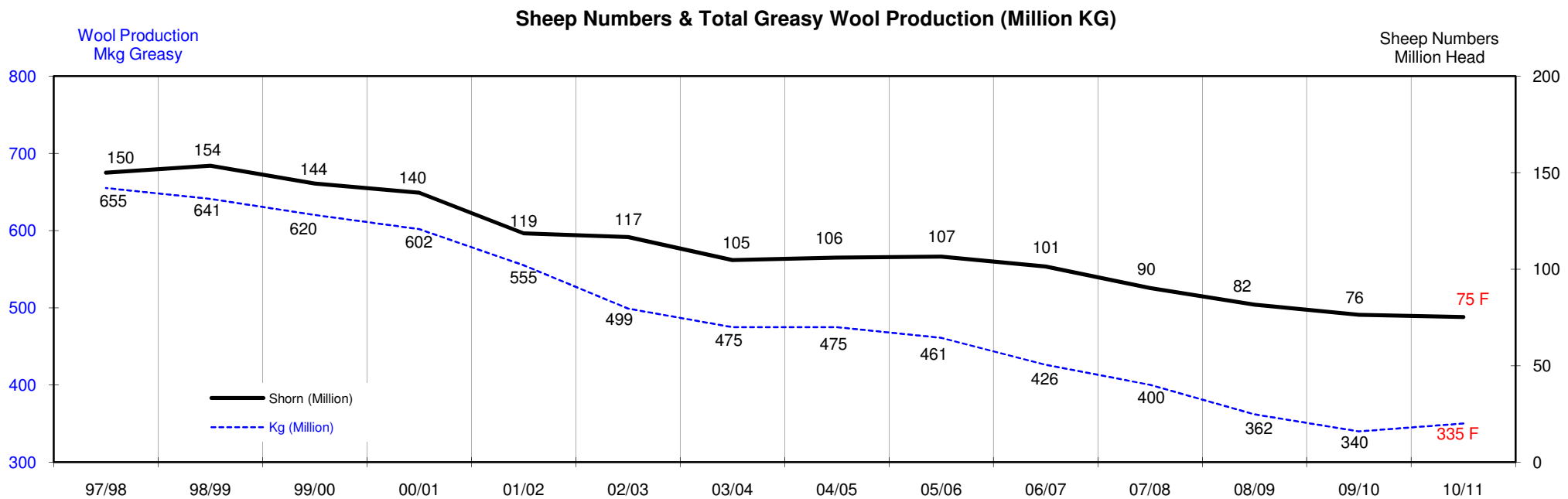
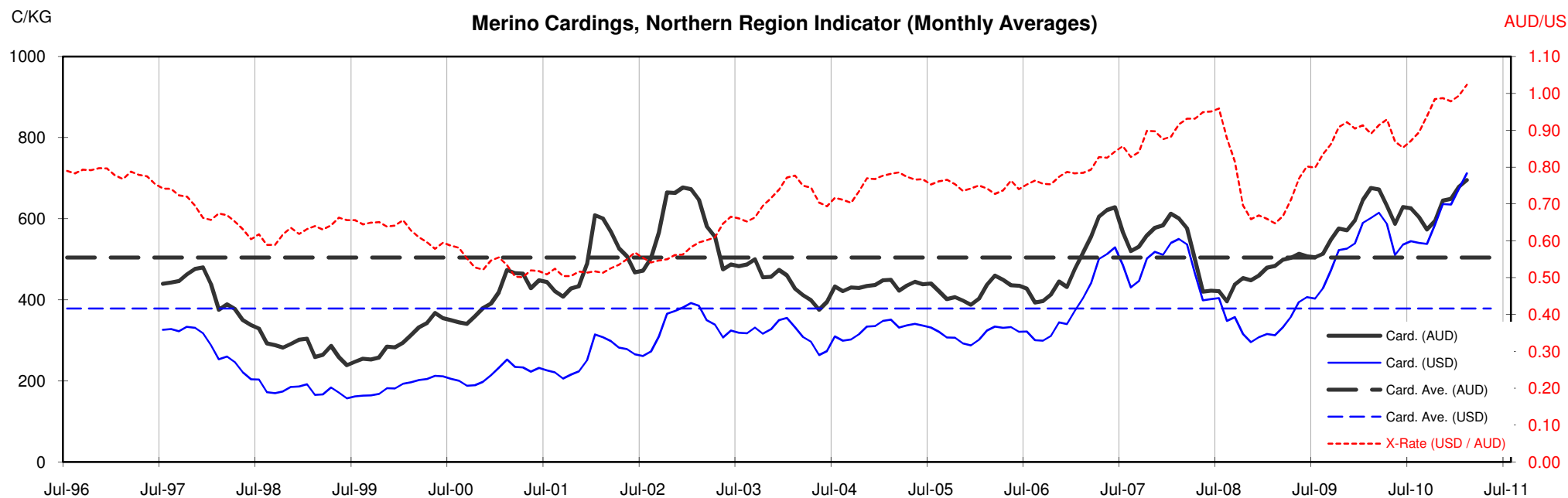




Table 13: Returns pr head for skirted fleece wool.

Skirted FLC Weight		Micron																	
9 Kg		16	16.5	17	17.5	18	18.5	19	19.5	20	21	22	23	24	25	26	28	30	32
Yield (Sch Dry)	25% Current	\$58	\$56	\$53	\$51	\$47	\$44	\$37	\$32	\$27	\$26	\$25	\$24	\$22	\$19	\$17	\$13	\$11	\$10
	10yr ave.			\$32		\$29		\$24		\$21	\$20	\$19	\$19	\$18	\$16	\$15	\$12	\$10	\$9
	30% Current	\$69	\$68	\$64	\$61	\$56	\$52	\$44	\$38	\$32	\$31	\$30	\$28	\$27	\$23	\$20	\$15	\$14	\$12
	10yr ave.			\$38		\$35		\$29		\$25	\$24	\$23	\$23	\$22	\$19	\$18	\$14	\$12	\$11
	35% Current	\$81	\$79	\$75	\$71	\$65	\$61	\$52	\$44	\$38	\$37	\$35	\$33	\$31	\$27	\$24	\$18	\$16	\$14
	10yr ave.			\$44		\$40		\$34		\$29	\$28	\$27	\$26	\$25	\$23	\$21	\$16	\$14	\$13
	40% Current	\$93	\$90	\$85	\$81	\$75	\$70	\$59	\$50	\$43	\$42	\$40	\$38	\$36	\$30	\$27	\$20	\$18	\$16
	10yr ave.			\$50		\$46		\$39		\$33	\$32	\$31	\$30	\$29	\$26	\$24	\$19	\$16	\$15
	45% Current	\$104	\$101	\$96	\$92	\$84	\$79	\$66	\$57	\$49	\$47	\$45	\$42	\$40	\$34	\$30	\$23	\$20	\$18
	10yr ave.			\$57		\$52		\$43		\$37	\$36	\$35	\$34	\$32	\$29	\$26	\$21	\$19	\$17
	50% Current	\$116	\$113	\$107	\$102	\$93	\$87	\$74	\$63	\$54	\$52	\$50	\$47	\$44	\$38	\$34	\$26	\$23	\$20
	10yr ave.			\$63		\$58		\$48		\$41	\$40	\$38	\$38	\$36	\$32	\$29	\$24	\$21	\$19
	55% Current	\$127	\$124	\$117	\$112	\$103	\$96	\$81	\$69	\$60	\$58	\$55	\$52	\$49	\$42	\$37	\$28	\$25	\$22
	10yr ave.			\$69		\$63		\$53		\$46	\$43	\$42	\$41	\$39	\$35	\$32	\$26	\$23	\$20
	60% Current	\$139	\$135	\$128	\$122	\$112	\$105	\$88	\$76	\$65	\$63	\$60	\$57	\$53	\$46	\$40	\$31	\$27	\$24
	10yr ave.			\$76		\$69		\$58		\$50	\$47	\$46	\$45	\$43	\$39	\$35	\$28	\$25	\$22
	65% Current	\$150	\$146	\$139	\$132	\$122	\$114	\$96	\$82	\$70	\$68	\$65	\$61	\$58	\$49	\$44	\$33	\$29	\$26
	10yr ave.			\$82		\$75		\$63		\$54	\$51	\$50	\$49	\$47	\$42	\$38	\$31	\$27	\$24
	70% Current	\$162	\$158	\$149	\$142	\$131	\$122	\$103	\$88	\$76	\$73	\$70	\$66	\$62	\$53	\$47	\$36	\$32	\$28
	10yr ave.			\$88		\$81		\$67		\$58	\$55	\$54	\$53	\$50	\$45	\$41	\$33	\$29	\$26
	75% Current	\$173	\$169	\$160	\$153	\$140	\$131	\$111	\$95	\$81	\$78	\$75	\$71	\$67	\$57	\$50	\$38	\$34	\$30
	10yr ave.			\$95		\$86		\$72		\$62	\$59	\$58	\$56	\$54	\$48	\$44	\$35	\$31	\$28
	80% Current	\$185	\$180	\$171	\$163	\$150	\$140	\$118	\$101	\$87	\$84	\$80	\$75	\$71	\$61	\$54	\$41	\$36	\$32
	10yr ave.			\$101		\$92		\$77		\$66	\$63	\$62	\$60	\$57	\$51	\$47	\$38	\$33	\$30
	85% Current	\$197	\$191	\$181	\$173	\$159	\$148	\$125	\$107	\$92	\$89	\$85	\$80	\$76	\$65	\$57	\$43	\$38	\$34
	10yr ave.			\$107		\$98		\$82		\$70	\$67	\$65	\$64	\$61	\$55	\$50	\$40	\$35	\$32

The above shows estimated returns per head for skirted fleece wool. These figures do not take into account the value of skirtings and oddments and do not take into account discounts that may apply for faults under individual circumstances. These figures are based on a market index of 100% and should be used as a guide only. Returns over \$30 / head for fleece wool are highlighted.

Source: Australian Wool Exchange, Australian Wool Innovation, Sydney Futures Exchange, x-rates.com

Disclaimer: While all due care has been taken in the preparation of this document, no warranty is made as to its accuracy, reliability or completeness. To the extent permitted by law neither Jemalong or their sources including subsidiaries and staff, accept liability to any person for loss or damage arising from the use of this information.



Table 14: Returns pr head for skirted fleece wool.

Skirted FLC Weight		Micron																	
8 Kg		16	16.5	17	17.5	18	18.5	19	19.5	20	21	22	23	24	25	26	28	30	32
Yield (Sch Dry)	25% Current	\$51	\$50	\$47	\$45	\$42	\$39	\$33	\$28	\$24	\$23	\$22	\$21	\$20	\$17	\$15	\$11	\$10	\$9
	10yr ave.			\$28		\$26		\$21		\$18	\$18	\$17	\$17	\$16	\$14	\$13	\$10	\$9	\$8
	30% Current	\$62	\$60	\$57	\$54	\$50	\$47	\$39	\$34	\$29	\$28	\$27	\$25	\$24	\$20	\$18	\$14	\$12	\$11
	10yr ave.			\$34		\$31		\$26		\$22	\$21	\$21	\$20	\$19	\$17	\$16	\$13	\$11	\$10
	35% Current	\$72	\$70	\$66	\$63	\$58	\$54	\$46	\$39	\$34	\$33	\$31	\$29	\$28	\$24	\$21	\$16	\$14	\$13
	10yr ave.			\$39		\$36		\$30		\$26	\$25	\$24	\$23	\$22	\$20	\$18	\$15	\$13	\$12
	40% Current	\$82	\$80	\$76	\$72	\$66	\$62	\$52	\$45	\$38	\$37	\$36	\$34	\$32	\$27	\$24	\$18	\$16	\$14
	10yr ave.			\$45		\$41		\$34		\$29	\$28	\$27	\$27	\$26	\$23	\$21	\$17	\$15	\$13
	45% Current	\$93	\$90	\$85	\$81	\$75	\$70	\$59	\$50	\$43	\$42	\$40	\$38	\$36	\$30	\$27	\$20	\$18	\$16
	10yr ave.			\$50		\$46		\$39		\$33	\$32	\$31	\$30	\$29	\$26	\$24	\$19	\$16	\$15
	50% Current	\$103	\$100	\$95	\$90	\$83	\$78	\$66	\$56	\$48	\$46	\$44	\$42	\$40	\$34	\$30	\$23	\$20	\$18
	10yr ave.			\$56		\$51		\$43		\$37	\$35	\$34	\$33	\$32	\$29	\$26	\$21	\$18	\$17
	55% Current	\$113	\$110	\$104	\$99	\$91	\$85	\$72	\$62	\$53	\$51	\$49	\$46	\$43	\$37	\$33	\$25	\$22	\$20
	10yr ave.			\$62		\$56		\$47		\$41	\$39	\$38	\$37	\$35	\$31	\$29	\$23	\$20	\$18
	60% Current	\$123	\$120	\$114	\$108	\$100	\$93	\$79	\$67	\$58	\$56	\$53	\$50	\$47	\$41	\$36	\$27	\$24	\$22
	10yr ave.			\$67		\$61		\$51		\$44	\$42	\$41	\$40	\$38	\$34	\$31	\$25	\$22	\$20
	65% Current	\$134	\$130	\$123	\$118	\$108	\$101	\$85	\$73	\$63	\$60	\$58	\$54	\$51	\$44	\$39	\$29	\$26	\$23
	10yr ave.			\$73		\$67		\$56		\$48	\$46	\$44	\$43	\$41	\$37	\$34	\$27	\$24	\$21
	70% Current	\$144	\$140	\$133	\$127	\$116	\$109	\$92	\$78	\$67	\$65	\$62	\$59	\$55	\$47	\$42	\$32	\$28	\$25
	10yr ave.			\$78		\$72		\$60		\$52	\$49	\$48	\$47	\$45	\$40	\$37	\$29	\$26	\$23
	75% Current	\$154	\$150	\$142	\$136	\$125	\$116	\$98	\$84	\$72	\$70	\$67	\$63	\$59	\$51	\$45	\$34	\$30	\$27
	10yr ave.			\$84		\$77		\$64		\$55	\$53	\$51	\$50	\$48	\$43	\$39	\$31	\$27	\$25
	80% Current	\$164	\$160	\$152	\$145	\$133	\$124	\$105	\$90	\$77	\$74	\$71	\$67	\$63	\$54	\$48	\$36	\$32	\$29
	10yr ave.			\$90		\$82		\$68		\$59	\$56	\$55	\$53	\$51	\$46	\$42	\$33	\$29	\$26
	85% Current	\$175	\$170	\$161	\$154	\$141	\$132	\$111	\$95	\$82	\$79	\$75	\$71	\$67	\$57	\$51	\$39	\$34	\$30
	10yr ave.			\$95		\$87		\$73		\$63	\$60	\$58	\$57	\$54	\$49	\$44	\$36	\$31	\$28

The above shows estimated returns per head for skirted fleece wool. These figures do not take into account the value of skirtings and oddments and do not take into account discounts that may apply for faults under individual circumstances. These figures are based on a market index of 100% and should be used as a guide only. Returns over \$30 / head for fleece wool are highlighted.

Source: Australian Wool Exchange, Australian Wool Innovation, Sydney Futures Exchange, x-rates.com

Disclaimer: While all due care has been taken in the preparation of this document, no warranty is made as to its accuracy, reliability or completeness. To the extent permitted by law neither Jemalong or their sources including subsidiaries and staff, accept liability to any person for loss or damage arising from the use of this information.



Table 15: Returns pr head for skirted fleece wool.

Skirted FLC Weight		Micron																	
7 Kg		16	16.5	17	17.5	18	18.5	19	19.5	20	21	22	23	24	25	26	28	30	32
Yield (Sch Dry)	25% Current	\$45	\$44	\$41	\$40	\$36	\$34	\$29	\$25	\$21	\$20	\$19	\$18	\$17	\$15	\$13	\$10	\$9	\$8
	10yr ave.			\$25		\$22		\$19		\$16	\$15	\$15	\$15	\$14	\$13	\$11	\$9	\$8	\$7
	30% Current	\$54	\$53	\$50	\$47	\$44	\$41	\$34	\$29	\$25	\$24	\$23	\$22	\$21	\$18	\$16	\$12	\$11	\$9
	10yr ave.			\$29		\$27		\$22		\$19	\$18	\$18	\$18	\$17	\$15	\$14	\$11	\$10	\$9
	35% Current	\$63	\$61	\$58	\$55	\$51	\$48	\$40	\$34	\$29	\$28	\$27	\$26	\$24	\$21	\$18	\$14	\$12	\$11
	10yr ave.			\$34		\$31		\$26		\$23	\$22	\$21	\$20	\$20	\$18	\$16	\$13	\$11	\$10
	40% Current	\$72	\$70	\$66	\$63	\$58	\$54	\$46	\$39	\$34	\$33	\$31	\$29	\$28	\$24	\$21	\$16	\$14	\$13
	10yr ave.			\$39		\$36		\$30		\$26	\$25	\$24	\$23	\$22	\$20	\$18	\$15	\$13	\$12
	45% Current	\$81	\$79	\$75	\$71	\$65	\$61	\$52	\$44	\$38	\$37	\$35	\$33	\$31	\$27	\$24	\$18	\$16	\$14
	10yr ave.			\$44		\$40		\$34		\$29	\$28	\$27	\$26	\$25	\$23	\$21	\$16	\$14	\$13
	50% Current	\$90	\$88	\$83	\$79	\$73	\$68	\$57	\$49	\$42	\$41	\$39	\$37	\$35	\$30	\$26	\$20	\$18	\$16
	10yr ave.			\$49		\$45		\$37		\$32	\$31	\$30	\$29	\$28	\$25	\$23	\$18	\$16	\$14
	55% Current	\$99	\$96	\$91	\$87	\$80	\$75	\$63	\$54	\$46	\$45	\$43	\$40	\$38	\$33	\$29	\$22	\$19	\$17
	10yr ave.			\$54		\$49		\$41		\$35	\$34	\$33	\$32	\$31	\$28	\$25	\$20	\$18	\$16
	60% Current	\$108	\$105	\$100	\$95	\$87	\$82	\$69	\$59	\$51	\$49	\$47	\$44	\$41	\$35	\$31	\$24	\$21	\$19
	10yr ave.			\$59		\$54		\$45		\$39	\$37	\$36	\$35	\$33	\$30	\$27	\$22	\$19	\$17
	65% Current	\$117	\$114	\$108	\$103	\$95	\$88	\$75	\$64	\$55	\$53	\$51	\$48	\$45	\$38	\$34	\$26	\$23	\$20
	10yr ave.			\$64		\$58		\$49		\$42	\$40	\$39	\$38	\$36	\$33	\$30	\$24	\$21	\$19
	70% Current	\$126	\$123	\$116	\$111	\$102	\$95	\$80	\$69	\$59	\$57	\$54	\$51	\$48	\$41	\$37	\$28	\$25	\$22
	10yr ave.			\$69		\$63		\$52		\$45	\$43	\$42	\$41	\$39	\$35	\$32	\$26	\$22	\$20
	75% Current	\$135	\$131	\$124	\$119	\$109	\$102	\$86	\$74	\$63	\$61	\$58	\$55	\$52	\$44	\$39	\$30	\$26	\$24
	10yr ave.			\$74		\$67		\$56		\$48	\$46	\$45	\$44	\$42	\$38	\$34	\$27	\$24	\$22
	80% Current	\$144	\$140	\$133	\$127	\$116	\$109	\$92	\$78	\$67	\$65	\$62	\$59	\$55	\$47	\$42	\$32	\$28	\$25
	10yr ave.			\$78		\$72		\$60		\$52	\$49	\$48	\$47	\$45	\$40	\$37	\$29	\$26	\$23
	85% Current	\$153	\$149	\$141	\$134	\$124	\$115	\$97	\$83	\$72	\$69	\$66	\$62	\$59	\$50	\$45	\$34	\$30	\$27
	10yr ave.			\$83		\$76		\$64		\$55	\$52	\$51	\$50	\$47	\$43	\$39	\$31	\$27	\$25

The above shows estimated returns per head for skirted fleece wool. These figures do not take into account the value of skirtings and oddments and do not take into account discounts that may apply for faults under individual circumstances. These figures are based on a market index of 100% and should be used as a guide only. Returns over \$30 / head for fleece wool are highlighted.

Source: Australian Wool Exchange, Australian Wool Innovation, Sydney Futures Exchange, x-rates.com

Disclaimer: While all due care has been taken in the preparation of this document, no warranty is made as to its accuracy, reliability or completeness. To the extent permitted by law neither Jemalong or their sources including subsidiaries and staff, accept liability to any person for loss or damage arising from the use of this information.



Table 16: Returns pr head for skirted fleece wool.

Skirted FLC Weight		Micron																		
		16	16.5	17	17.5	18	18.5	19	19.5	20	21	22	23	24	25	26	28	30	32	
Yield (Sch Dry)	25%	Current	\$39	\$38	\$36	\$34	\$31	\$29	\$25	\$21	\$18	\$17	\$17	\$16	\$15	\$13	\$11	\$9	\$8	\$7
		10yr ave.			\$21		\$19		\$16		\$14	\$13	\$13	\$13	\$12	\$11	\$10	\$8	\$7	\$6
	30%	Current	\$46	\$45	\$43	\$41	\$37	\$35	\$29	\$25	\$22	\$21	\$20	\$19	\$18	\$15	\$13	\$10	\$9	\$8
		10yr ave.			\$25		\$23		\$19		\$17	\$16	\$15	\$15	\$14	\$13	\$12	\$9	\$8	\$7
	35%	Current	\$54	\$53	\$50	\$47	\$44	\$41	\$34	\$29	\$25	\$24	\$23	\$22	\$21	\$18	\$16	\$12	\$11	\$9
		10yr ave.			\$29		\$27		\$22		\$19	\$18	\$18	\$18	\$17	\$15	\$14	\$11	\$10	\$9
	40%	Current	\$62	\$60	\$57	\$54	\$50	\$47	\$39	\$34	\$29	\$28	\$27	\$25	\$24	\$20	\$18	\$14	\$12	\$11
		10yr ave.			\$34		\$31		\$26		\$22	\$21	\$21	\$20	\$19	\$17	\$16	\$13	\$11	\$10
	45%	Current	\$69	\$68	\$64	\$61	\$56	\$52	\$44	\$38	\$32	\$31	\$30	\$28	\$27	\$23	\$20	\$15	\$14	\$12
		10yr ave.			\$38		\$35		\$29		\$25	\$24	\$23	\$23	\$22	\$19	\$18	\$14	\$12	\$11
	50%	Current	\$77	\$75	\$71	\$68	\$62	\$58	\$49	\$42	\$36	\$35	\$33	\$31	\$30	\$25	\$22	\$17	\$15	\$13
		10yr ave.			\$42		\$38		\$32		\$28	\$26	\$26	\$25	\$24	\$21	\$20	\$16	\$14	\$12
	55%	Current	\$85	\$83	\$78	\$75	\$69	\$64	\$54	\$46	\$40	\$38	\$37	\$35	\$33	\$28	\$25	\$19	\$17	\$15
		10yr ave.			\$46		\$42		\$35		\$30	\$29	\$28	\$28	\$26	\$24	\$22	\$17	\$15	\$14
60%	Current	\$93	\$90	\$85	\$81	\$75	\$70	\$59	\$50	\$43	\$42	\$40	\$38	\$36	\$30	\$27	\$20	\$18	\$16	
	10yr ave.			\$50		\$46		\$39		\$33	\$32	\$31	\$30	\$29	\$26	\$24	\$19	\$16	\$15	
65%	Current	\$100	\$98	\$92	\$88	\$81	\$76	\$64	\$55	\$47	\$45	\$43	\$41	\$39	\$33	\$29	\$22	\$20	\$17	
	10yr ave.			\$55		\$50		\$42		\$36	\$34	\$33	\$33	\$31	\$28	\$26	\$20	\$18	\$16	
70%	Current	\$108	\$105	\$100	\$95	\$87	\$82	\$69	\$59	\$51	\$49	\$47	\$44	\$41	\$35	\$31	\$24	\$21	\$19	
	10yr ave.			\$59		\$54		\$45		\$39	\$37	\$36	\$35	\$33	\$30	\$27	\$22	\$19	\$17	
75%	Current	\$116	\$113	\$107	\$102	\$93	\$87	\$74	\$63	\$54	\$52	\$50	\$47	\$44	\$38	\$34	\$26	\$23	\$20	
	10yr ave.			\$63		\$58		\$48		\$41	\$40	\$38	\$38	\$36	\$32	\$29	\$24	\$21	\$19	
80%	Current	\$123	\$120	\$114	\$108	\$100	\$93	\$79	\$67	\$58	\$56	\$53	\$50	\$47	\$41	\$36	\$27	\$24	\$22	
	10yr ave.			\$67		\$61		\$51		\$44	\$42	\$41	\$40	\$38	\$34	\$31	\$25	\$22	\$20	
85%	Current	\$131	\$128	\$121	\$115	\$106	\$99	\$84	\$71	\$61	\$59	\$57	\$53	\$50	\$43	\$38	\$29	\$26	\$23	
	10yr ave.			\$71		\$65		\$55		\$47	\$45	\$44	\$43	\$41	\$36	\$33	\$27	\$23	\$21	

The above shows estimated returns per head for skirted fleece wool. These figures do not take into account the value of skirtings and oddments and do not take into account discounts that may apply for faults under individual circumstances. These figures are based on a market index of 100% and should be used as a guide only. Returns over \$30 / head for fleece wool are highlighted.

Source: Australian Wool Exchange, Australian Wool Innovation, Sydney Futures Exchange, x-rates.com

Disclaimer: While all due care has been taken in the preparation of this document, no warranty is made as to its accuracy, reliability or completeness. To the extent permitted by law neither Jemalong or their sources including subsidiaries and staff, accept liability to any person for loss or damage arising from the use of this information.



Table 17: Returns pr head for skirted fleece wool.

Skirted FLC Weight		Micron																		
		16	16.5	17	17.5	18	18.5	19	19.5	20	21	22	23	24	25	26	28	30	32	
Yield (Sch Dry)	5 Kg																			
	25%	Current	\$32	\$31	\$30	\$28	\$26	\$24	\$20	\$18	\$15	\$15	\$14	\$13	\$12	\$11	\$9	\$7	\$6	\$6
		10yr ave.			\$18		\$16		\$13		\$12	\$11	\$11	\$10	\$10	\$9	\$8	\$7	\$6	\$5
	30%	Current	\$39	\$38	\$36	\$34	\$31	\$29	\$25	\$21	\$18	\$17	\$17	\$16	\$15	\$13	\$11	\$9	\$8	\$7
		10yr ave.			\$21		\$19		\$16		\$14	\$13	\$13	\$13	\$12	\$11	\$10	\$8	\$7	\$6
	35%	Current	\$45	\$44	\$41	\$40	\$36	\$34	\$29	\$25	\$21	\$20	\$19	\$18	\$17	\$15	\$13	\$10	\$9	\$8
		10yr ave.			\$25		\$22		\$19		\$16	\$15	\$15	\$15	\$14	\$13	\$11	\$9	\$8	\$7
	40%	Current	\$51	\$50	\$47	\$45	\$42	\$39	\$33	\$28	\$24	\$23	\$22	\$21	\$20	\$17	\$15	\$11	\$10	\$9
		10yr ave.			\$28		\$26		\$21		\$18	\$18	\$17	\$17	\$16	\$14	\$13	\$10	\$9	\$8
	45%	Current	\$58	\$56	\$53	\$51	\$47	\$44	\$37	\$32	\$27	\$26	\$25	\$24	\$22	\$19	\$17	\$13	\$11	\$10
		10yr ave.			\$32		\$29		\$24		\$21	\$20	\$19	\$19	\$18	\$16	\$15	\$12	\$10	\$9
	50%	Current	\$64	\$63	\$59	\$57	\$52	\$49	\$41	\$35	\$30	\$29	\$28	\$26	\$25	\$21	\$19	\$14	\$13	\$11
		10yr ave.			\$35		\$32		\$27		\$23	\$22	\$21	\$21	\$20	\$18	\$16	\$13	\$11	\$10
	55%	Current	\$71	\$69	\$65	\$62	\$57	\$53	\$45	\$39	\$33	\$32	\$31	\$29	\$27	\$23	\$21	\$16	\$14	\$12
	10yr ave.			\$39		\$35		\$29		\$25	\$24	\$24	\$23	\$22	\$20	\$18	\$14	\$13	\$11	
60%	Current	\$77	\$75	\$71	\$68	\$62	\$58	\$49	\$42	\$36	\$35	\$33	\$31	\$30	\$25	\$22	\$17	\$15	\$13	
	10yr ave.			\$42		\$38		\$32		\$28	\$26	\$26	\$25	\$24	\$21	\$20	\$16	\$14	\$12	
65%	Current	\$84	\$81	\$77	\$73	\$68	\$63	\$53	\$46	\$39	\$38	\$36	\$34	\$32	\$27	\$24	\$18	\$16	\$15	
	10yr ave.			\$46		\$42		\$35		\$30	\$29	\$28	\$27	\$26	\$23	\$21	\$17	\$15	\$13	
70%	Current	\$90	\$88	\$83	\$79	\$73	\$68	\$57	\$49	\$42	\$41	\$39	\$37	\$35	\$30	\$26	\$20	\$18	\$16	
	10yr ave.			\$49		\$45		\$37		\$32	\$31	\$30	\$29	\$28	\$25	\$23	\$18	\$16	\$14	
75%	Current	\$96	\$94	\$89	\$85	\$78	\$73	\$61	\$53	\$45	\$44	\$42	\$39	\$37	\$32	\$28	\$21	\$19	\$17	
	10yr ave.			\$53		\$48		\$40		\$35	\$33	\$32	\$31	\$30	\$27	\$25	\$20	\$17	\$15	
80%	Current	\$103	\$100	\$95	\$90	\$83	\$78	\$66	\$56	\$48	\$46	\$44	\$42	\$40	\$34	\$30	\$23	\$20	\$18	
	10yr ave.			\$56		\$51		\$43		\$37	\$35	\$34	\$33	\$32	\$29	\$26	\$21	\$18	\$17	
85%	Current	\$109	\$106	\$101	\$96	\$88	\$82	\$70	\$60	\$51	\$49	\$47	\$44	\$42	\$36	\$32	\$24	\$21	\$19	
	10yr ave.			\$60		\$54		\$45		\$39	\$37	\$36	\$35	\$34	\$30	\$28	\$22	\$19	\$18	

The above shows estimated returns per head for skirted fleece wool. These figures do not take into account the value of skirtings and oddments and do not take into account discounts that may apply for faults under individual circumstances. These figures are based on a market index of 100% and should be used as a guide only. Returns over \$30 / head for fleece wool are highlighted.

Source: Australian Wool Exchange, Australian Wool Innovation, Sydney Futures Exchange, x-rates.com

Disclaimer: While all due care has been taken in the preparation of this document, no warranty is made as to its accuracy, reliability or completeness. To the extent permitted by law neither Jemalong or their sources including subsidiaries and staff, accept liability to any person for loss or damage arising from the use of this information.



Table 18: Returns pr head for skirted fleece wool.

Skirted FLC Weight		Micron																	
4 Kg		16	16.5	17	17.5	18	18.5	19	19.5	20	21	22	23	24	25	26	28	30	32
Yield (Sch Dry)	25% Current	\$26	\$25	\$24	\$23	\$21	\$19	\$16	\$14	\$12	\$12	\$11	\$10	\$10	\$8	\$7	\$6	\$5	\$4
	10yr ave.			\$14		\$13		\$11		\$9	\$9	\$9	\$8	\$8	\$7	\$7	\$5	\$5	\$4
	30% Current	\$31	\$30	\$28	\$27	\$25	\$23	\$20	\$17	\$14	\$14	\$13	\$13	\$12	\$10	\$9	\$7	\$6	\$5
	10yr ave.			\$17		\$15		\$13		\$11	\$11	\$10	\$10	\$10	\$9	\$8	\$6	\$5	\$5
	35% Current	\$36	\$35	\$33	\$32	\$29	\$27	\$23	\$20	\$17	\$16	\$16	\$15	\$14	\$12	\$10	\$8	\$7	\$6
	10yr ave.			\$20		\$18		\$15		\$13	\$12	\$12	\$12	\$11	\$10	\$9	\$7	\$6	\$6
	40% Current	\$41	\$40	\$38	\$36	\$33	\$31	\$26	\$22	\$19	\$19	\$18	\$17	\$16	\$14	\$12	\$9	\$8	\$7
	10yr ave.			\$22		\$20		\$17		\$15	\$14	\$14	\$13	\$13	\$11	\$10	\$8	\$7	\$7
	45% Current	\$46	\$45	\$43	\$41	\$37	\$35	\$29	\$25	\$22	\$21	\$20	\$19	\$18	\$15	\$13	\$10	\$9	\$8
	10yr ave.			\$25		\$23		\$19		\$17	\$16	\$15	\$15	\$14	\$13	\$12	\$9	\$8	\$7
	50% Current	\$51	\$50	\$47	\$45	\$42	\$39	\$33	\$28	\$24	\$23	\$22	\$21	\$20	\$17	\$15	\$11	\$10	\$9
	10yr ave.			\$28		\$26		\$21		\$18	\$18	\$17	\$17	\$16	\$14	\$13	\$10	\$9	\$8
	55% Current	\$57	\$55	\$52	\$50	\$46	\$43	\$36	\$31	\$26	\$26	\$24	\$23	\$22	\$19	\$16	\$12	\$11	\$10
	10yr ave.			\$31		\$28		\$24		\$20	\$19	\$19	\$18	\$18	\$16	\$14	\$12	\$10	\$9
	60% Current	\$62	\$60	\$57	\$54	\$50	\$47	\$39	\$34	\$29	\$28	\$27	\$25	\$24	\$20	\$18	\$14	\$12	\$11
	10yr ave.			\$34		\$31		\$26		\$22	\$21	\$21	\$20	\$19	\$17	\$16	\$13	\$11	\$10
	65% Current	\$67	\$65	\$62	\$59	\$54	\$50	\$43	\$36	\$31	\$30	\$29	\$27	\$26	\$22	\$19	\$15	\$13	\$12
	10yr ave.			\$36		\$33		\$28		\$24	\$23	\$22	\$22	\$21	\$19	\$17	\$14	\$12	\$11
	70% Current	\$72	\$70	\$66	\$63	\$58	\$54	\$46	\$39	\$34	\$33	\$31	\$29	\$28	\$24	\$21	\$16	\$14	\$13
	10yr ave.			\$39		\$36		\$30		\$26	\$25	\$24	\$23	\$22	\$20	\$18	\$15	\$13	\$12
	75% Current	\$77	\$75	\$71	\$68	\$62	\$58	\$49	\$42	\$36	\$35	\$33	\$31	\$30	\$25	\$22	\$17	\$15	\$13
	10yr ave.			\$42		\$38		\$32		\$28	\$26	\$26	\$25	\$24	\$21	\$20	\$16	\$14	\$12
	80% Current	\$82	\$80	\$76	\$72	\$66	\$62	\$52	\$45	\$38	\$37	\$36	\$34	\$32	\$27	\$24	\$18	\$16	\$14
	10yr ave.			\$45		\$41		\$34		\$29	\$28	\$27	\$27	\$26	\$23	\$21	\$17	\$15	\$13
	85% Current	\$87	\$85	\$81	\$77	\$71	\$66	\$56	\$48	\$41	\$40	\$38	\$36	\$34	\$29	\$25	\$19	\$17	\$15
	10yr ave.			\$48		\$44		\$36		\$31	\$30	\$29	\$28	\$27	\$24	\$22	\$18	\$16	\$14

The above shows estimated returns per head for skirted fleece wool. These figures do not take into account the value of skirtings and oddments and do not take into account discounts that may apply for faults under individual circumstances. These figures are based on a market index of 100% and should be used as a guide only. Returns over \$30 / head for fleece wool are highlighted.

Source: Australian Wool Exchange, Australian Wool Innovation, Sydney Futures Exchange, x-rates.com

Disclaimer: While all due care has been taken in the preparation of this document, no warranty is made as to its accuracy, reliability or completeness. To the extent permitted by law neither Jemalong or their sources including subsidiaries and staff, accept liability to any person for loss or damage arising from the use of this information.



Table 19: Returns pr head for skirted fleece wool.

Skirted FLC Weight		Micron																	
3 Kg		16	16.5	17	17.5	18	18.5	19	19.5	20	21	22	23	24	25	26	28	30	32
Yield (Sch Dry)	25% Current	\$19	\$19	\$18	\$17	\$16	\$15	\$12	\$11	\$9	\$9	\$8	\$8	\$7	\$6	\$6	\$4	\$4	\$3
	10yr ave.			\$11		\$10		\$8		\$7	\$7	\$6	\$6	\$6	\$5	\$5	\$4	\$3	\$3
	30% Current	\$23	\$23	\$21	\$20	\$19	\$17	\$15	\$13	\$11	\$10	\$10	\$9	\$9	\$8	\$7	\$5	\$5	\$4
	10yr ave.			\$13		\$12		\$10		\$8	\$8	\$8	\$8	\$7	\$6	\$6	\$5	\$4	\$4
	35% Current	\$27	\$26	\$25	\$24	\$22	\$20	\$17	\$15	\$13	\$12	\$12	\$11	\$10	\$9	\$8	\$6	\$5	\$5
	10yr ave.			\$15		\$13		\$11		\$10	\$9	\$9	\$9	\$8	\$8	\$7	\$5	\$5	\$4
	40% Current	\$31	\$30	\$28	\$27	\$25	\$23	\$20	\$17	\$14	\$14	\$13	\$13	\$12	\$10	\$9	\$7	\$6	\$5
	10yr ave.			\$17		\$15		\$13		\$11	\$11	\$10	\$10	\$10	\$9	\$8	\$6	\$5	\$5
	45% Current	\$35	\$34	\$32	\$31	\$28	\$26	\$22	\$19	\$16	\$16	\$15	\$14	\$13	\$11	\$10	\$8	\$7	\$6
	10yr ave.			\$19		\$17		\$14		\$12	\$12	\$12	\$11	\$11	\$10	\$9	\$7	\$6	\$6
	50% Current	\$39	\$38	\$36	\$34	\$31	\$29	\$25	\$21	\$18	\$17	\$17	\$16	\$15	\$13	\$11	\$9	\$8	\$7
	10yr ave.			\$21		\$19		\$16		\$14	\$13	\$13	\$13	\$12	\$11	\$10	\$8	\$7	\$6
	55% Current	\$42	\$41	\$39	\$37	\$34	\$32	\$27	\$23	\$20	\$19	\$18	\$17	\$16	\$14	\$12	\$9	\$8	\$7
	10yr ave.			\$23		\$21		\$18		\$15	\$14	\$14	\$14	\$13	\$12	\$11	\$9	\$8	\$7
	60% Current	\$46	\$45	\$43	\$41	\$37	\$35	\$29	\$25	\$22	\$21	\$20	\$19	\$18	\$15	\$13	\$10	\$9	\$8
	10yr ave.			\$25		\$23		\$19		\$17	\$16	\$15	\$15	\$14	\$13	\$12	\$9	\$8	\$7
	65% Current	\$50	\$49	\$46	\$44	\$41	\$38	\$32	\$27	\$23	\$23	\$22	\$20	\$19	\$16	\$15	\$11	\$10	\$9
	10yr ave.			\$27		\$25		\$21		\$18	\$17	\$17	\$16	\$16	\$14	\$13	\$10	\$9	\$8
	70% Current	\$54	\$53	\$50	\$47	\$44	\$41	\$34	\$29	\$25	\$24	\$23	\$22	\$21	\$18	\$16	\$12	\$11	\$9
	10yr ave.			\$29		\$27		\$22		\$19	\$18	\$18	\$18	\$17	\$15	\$14	\$11	\$10	\$9
	75% Current	\$58	\$56	\$53	\$51	\$47	\$44	\$37	\$32	\$27	\$26	\$25	\$24	\$22	\$19	\$17	\$13	\$11	\$10
	10yr ave.			\$32		\$29		\$24		\$21	\$20	\$19	\$19	\$18	\$16	\$15	\$12	\$10	\$9
	80% Current	\$62	\$60	\$57	\$54	\$50	\$47	\$39	\$34	\$29	\$28	\$27	\$25	\$24	\$20	\$18	\$14	\$12	\$11
	10yr ave.			\$34		\$31		\$26		\$22	\$21	\$21	\$20	\$19	\$17	\$16	\$13	\$11	\$10
	85% Current	\$66	\$64	\$60	\$58	\$53	\$49	\$42	\$36	\$31	\$30	\$28	\$27	\$25	\$22	\$19	\$14	\$13	\$11
	10yr ave.			\$36		\$33		\$27		\$23	\$22	\$22	\$21	\$20	\$18	\$17	\$13	\$12	\$11

The above shows estimated returns per head for skirted fleece wool. These figures do not take into account the value of skirtings and oddments and do not take into account discounts that may apply for faults under individual circumstances. These figures are based on a market index of 100% and should be used as a guide only. Returns over \$30 / head for fleece wool are highlighted.

Source: Australian Wool Exchange, Australian Wool Innovation, Sydney Futures Exchange, x-rates.com

Disclaimer: While all due care has been taken in the preparation of this document, no warranty is made as to its accuracy, reliability or completeness. To the extent permitted by law neither Jemalong or their sources including subsidiaries and staff, accept liability to any person for loss or damage arising from the use of this information.



Table 20: Returns pr head for skirted fleece wool.

Skirted FLC Weight		Micron																	
2 Kg		16	16.5	17	17.5	18	18.5	19	19.5	20	21	22	23	24	25	26	28	30	32
Yield (Sch Dry)	25% Current	\$13	\$13	\$12	\$11	\$10	\$10	\$8	\$7	\$6	\$6	\$6	\$5	\$5	\$4	\$4	\$3	\$3	\$2
	10yr ave.			\$7		\$6		\$5		\$5	\$4	\$4	\$4	\$4	\$4	\$3	\$3	\$2	\$2
	30% Current	\$15	\$15	\$14	\$14	\$12	\$12	\$10	\$8	\$7	\$7	\$7	\$6	\$6	\$5	\$4	\$3	\$3	\$3
	10yr ave.			\$8		\$8		\$6		\$6	\$5	\$5	\$5	\$5	\$4	\$4	\$3	\$3	\$2
	35% Current	\$18	\$18	\$17	\$16	\$15	\$14	\$11	\$10	\$8	\$8	\$8	\$7	\$7	\$6	\$5	\$4	\$4	\$3
	10yr ave.			\$10		\$9		\$7		\$6	\$6	\$6	\$6	\$6	\$5	\$5	\$4	\$3	\$3
	40% Current	\$21	\$20	\$19	\$18	\$17	\$16	\$13	\$11	\$10	\$9	\$9	\$8	\$8	\$7	\$6	\$5	\$4	\$4
	10yr ave.			\$11		\$10		\$9		\$7	\$7	\$7	\$7	\$6	\$6	\$5	\$4	\$4	\$3
	45% Current	\$23	\$23	\$21	\$20	\$19	\$17	\$15	\$13	\$11	\$10	\$10	\$9	\$9	\$8	\$7	\$5	\$5	\$4
	10yr ave.			\$13		\$12		\$10		\$8	\$8	\$8	\$8	\$7	\$6	\$6	\$5	\$4	\$4
	50% Current	\$26	\$25	\$24	\$23	\$21	\$19	\$16	\$14	\$12	\$12	\$11	\$10	\$10	\$8	\$7	\$6	\$5	\$4
	10yr ave.			\$14		\$13		\$11		\$9	\$9	\$9	\$8	\$8	\$7	\$7	\$5	\$5	\$4
	55% Current	\$28	\$28	\$26	\$25	\$23	\$21	\$18	\$15	\$13	\$13	\$12	\$12	\$11	\$9	\$8	\$6	\$6	\$5
	10yr ave.			\$15		\$14		\$12		\$10	\$10	\$9	\$9	\$9	\$8	\$7	\$6	\$5	\$5
	60% Current	\$31	\$30	\$28	\$27	\$25	\$23	\$20	\$17	\$14	\$14	\$13	\$13	\$12	\$10	\$9	\$7	\$6	\$5
	10yr ave.			\$17		\$15		\$13		\$11	\$11	\$10	\$10	\$10	\$9	\$8	\$6	\$5	\$5
	65% Current	\$33	\$33	\$31	\$29	\$27	\$25	\$21	\$18	\$16	\$15	\$14	\$14	\$13	\$11	\$10	\$7	\$7	\$6
	10yr ave.			\$18		\$17		\$14		\$12	\$11	\$11	\$11	\$10	\$9	\$9	\$7	\$6	\$5
	70% Current	\$36	\$35	\$33	\$32	\$29	\$27	\$23	\$20	\$17	\$16	\$16	\$15	\$14	\$12	\$10	\$8	\$7	\$6
	10yr ave.			\$20		\$18		\$15		\$13	\$12	\$12	\$12	\$11	\$10	\$9	\$7	\$6	\$6
	75% Current	\$39	\$38	\$36	\$34	\$31	\$29	\$25	\$21	\$18	\$17	\$17	\$16	\$15	\$13	\$11	\$9	\$8	\$7
	10yr ave.			\$21		\$19		\$16		\$14	\$13	\$13	\$13	\$12	\$11	\$10	\$8	\$7	\$6
	80% Current	\$41	\$40	\$38	\$36	\$33	\$31	\$26	\$22	\$19	\$19	\$18	\$17	\$16	\$14	\$12	\$9	\$8	\$7
	10yr ave.			\$22		\$20		\$17		\$15	\$14	\$14	\$13	\$13	\$11	\$10	\$8	\$7	\$7
	85% Current	\$44	\$43	\$40	\$38	\$35	\$33	\$28	\$24	\$20	\$20	\$19	\$18	\$17	\$14	\$13	\$10	\$9	\$8
	10yr ave.			\$24		\$22		\$18		\$16	\$15	\$15	\$14	\$14	\$12	\$11	\$9	\$8	\$7

The above shows estimated returns per head for skirted fleece wool. These figures do not take into account the value of skirtings and oddments and do not take into account discounts that may apply for faults under individual circumstances. These figures are based on a market index of 100% and should be used as a guide only. Returns over \$30 / head for fleece wool are highlighted.

Source: Australian Wool Exchange, Australian Wool Innovation, Sydney Futures Exchange, x-rates.com

Disclaimer: While all due care has been taken in the preparation of this document, no warranty is made as to its accuracy, reliability or completeness. To the extent permitted by law neither Jemalong or their sources including subsidiaries and staff, accept liability to any person for loss or damage arising from the use of this information.