



JEMALONG WOOL BULLETIN

(week ending 3/03/2011)

Table 1: Northern Region Micron Price Guides

CURRENT MARKET				PERCENTILES		AVERAGES						12 MONTH COMPARISONS								TRADING RANGE		
Mic.	3/03/2011	24/02/2011	Now			Now			2/03/2010		Now		Now		Now		Clean c/kg					
Price	Current	Weekly				3 year	compared		10 year	compared		This time	compared	12 Month	compared	12 Month	compared	12	3	10		
Guides	Price	Change		3yr	10yr	Average	to 3yr ave		Average	to 10yr ave		Last Year	to Last Year	Low	to Low	High	to High	Mth	Year	Year		
NRI	1372	+24 1.7%		100%	100%	920	+452 49%		884	+488 55%		946	+426 45%	890	+482 54%	1372	0 0%	482	601	714		
16*	2700	+30 1.1%		100%		1708	+992 58%					1640	+1060 65%	1510	+1190 79%	2700	0 0%	1190	1315			
16.5*	2590	+40 1.5%		100%		1572	+1018 65%					1490	+1100 74%	1395	+1195 86%	2590	0 0%	1195	1296			
17*	2500	+100 4.0%		100%	99%	1446	+1054 73%		1398	+1102 79%		1290	+1210 94%	1230	+1270 103%	2500	0 0%	1270	1250	1559		
17.5*	2330	+100 4.3%		99%		1370	+960 70%					1220	+1110 91%	1175	+1155 98%	2330	0 0%	1155	1305			
18	2189	+91 4.2%		100%	97%	1302	+887 68%		1280	+909 71%		1188	+1001 84%	1134	+1055 93%	2189	0 0%	1055	1089	1392		
18.5	1949	+84 4.3%		99%		1215	+734 60%					1148	+801 70%	1088	+861 79%	1963	-14 -1%	875	992			
19	1646	+18 1.1%		99%	99%	1101	+545 50%		1073	+573 53%		1097	+549 50%	1031	+615 60%	1658	-12 -1%	627	764	854		
19.5	1444	+12 0.8%		100%		999	+445 45%					1025	+419 41%	952	+492 52%	1444	0 0%	492	618			
20	1259	+12 1.0%		100%	96%	919	+340 37%		924	+335 36%		975	+284 29%	904	+355 39%	1259	0 0%	355	507	717		
21	1188	0		100%	94%	886	+302 34%		883	+305 35%		953	+235 25%	878	+310 35%	1188	0 0%	310	501	737		
22	1134	0		99%	93%	863	+271 31%		859	+275 32%		935	+199 21%	847	+287 34%	1141	-7 -1%	294	466	732		
23	1081	0		100%	93%	839	+242 29%		838	+243 29%		907	+174 19%	827	+254 31%	1081	0 0%	254	418	719		
24	1004	0		100%	91%	791	+213 27%		800	+204 26%		823	+181 22%	780	+224 29%	1004	0 0%	224	357	691		
25	899	0		100%	83%	683	+216 32%		718	+181 25%		660	+239 36%	660	+239 36%	899	0 0%	239	333	635		
26	790	0		99%	81%	613	+177 29%		657	+133 20%		589	+201 34%	577	+213 37%	794	-4 -1%	217	290	573		
28	653	+36 5.5%		100%	85%	473	+180 38%		525	+128 24%		455	+198 44%	436	+217 50%	653	0 0%	217	198	465		
30	579	+36 6.2%		100%	85%	413	+166 40%		458	+121 26%		396	+183 46%	382	+197 52%	579	0 0%	197	196	385		
32	521	+42 8.1%		100%	82%	362	+159 44%		414	+107 26%		348	+173 50%	349	+172 49%	521	0 0%	172	173	372		
MC	751	+1 0.1%		100%	100%	554	+197 36%		507	+244 48%		676	+75 11%	561	+190 34%	751	0 0%	190	358	371		

Note:

* Due to the irregular market quoting for some fine wool categories, figures shown relating to micron categories below 18 micron are an estimate based on the AWEX Premium & Discounts Report & other available information.

* For any category, where there is insufficient quantity offered to enable AWEX to quote, a quote will be provided based on the best available information.

* 10 Year data is not available for some micron categories, which may result in blank spaces in the table above.

Definitions:

* A Percentile, is a value on a scale of one hundred that indicates the percent of a distribution that is equal to or below it. In general a percentile between 25% and 75% is considered normal, a percentile below 25% is considered below normal and a percentile above 75% is considered above normal.

Three and ten year percentiles shown in the table above, detail the period of time during the past 3 & 10 years that the market has traded either at or below its current price.

The higher the percentile, the stronger the market.

Source: Australian Wool Exchange, Australian Wool Innovation, Sydney Futures Exchange, x-rates.com

Disclaimer: While all due care has been taken in the preparation of this document, no warranty is made as to its accuracy, reliability or completeness. To the extent permitted by law neither Jemalong or their sources including subsidiaries and staff, accept liability to any person for loss or damage arising from the use of this information.



MARKET COMMENTARY

One Australian Dollar = \$ 1.02 US, as of 3/03/2011

NORTHERN REGION –Sale Week 35/10 (44,852 bales offered nationally)

On Tuesday - 18 micron and finer, Best & Spinners styles with high Nkt surged 70-100 cents, other types were generally par to slightly dearer. The skirting market reflected the fleece market, with 17 micron and finer up to 100 cents dearer, 18 microns rose by 40 while 19 microns were marginally higher. Fine oddments were also strong with 17 micron LKS rising around 80 cents, while 18 micron LKS were 40 cents dearer. 27 to 32 micron crossbreds were 10-15 cents dearer.

On Wednesday - The 17 micron area continued to increase, with spinners styles gaining another 30-40 cents, while the Best top maker lots remained in sellers favour. Other microns remained fully firm with 19 microns gaining 10 cents. All merino skirtings remained firm, tending in sellers favour, finer locks once again crept higher as did crutchings, with the better bulkier crutchings posting solid premiums. Crossbreds once again attracted good support with 27 to 30 microns lifting 15 to 20 cents.

On Thursday - Merino fleece continued to rise with the more stylish high Nkt types most affected, a good selection of low vm spinners style skirtings commanded significant premiums over the best & good style lots (which ended the day firm). Locks closed fully firm while a good quality offering of crutchings attracted strong premiums. A smaller offering of crossbred wool had 27 to 30 microns 5 to 10 cents dearer.

Northern Region Indicator (Monthly Averages)

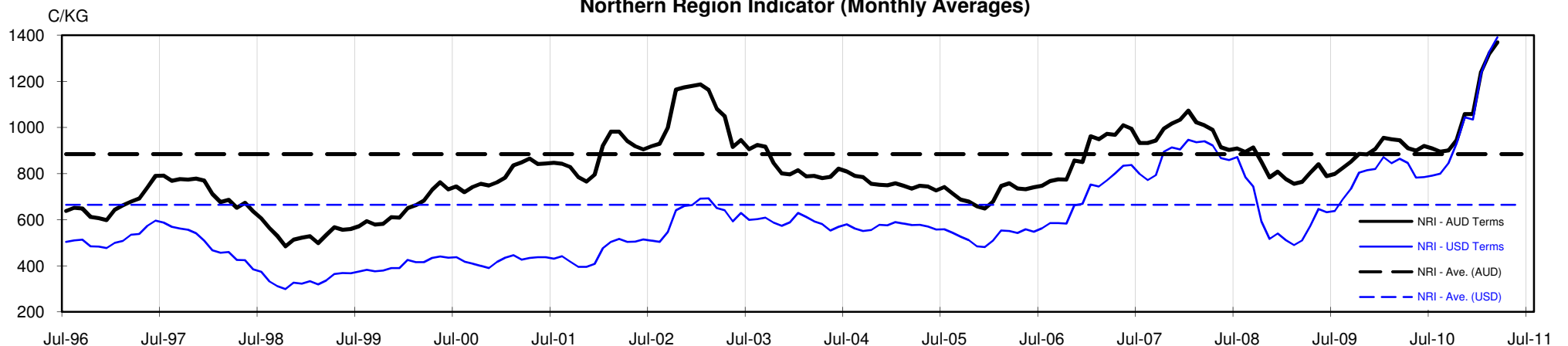




Table 4: 19 micron SFE

Wednesday, 2 March 2011

Delivery Mth	Apr-11	Jun-11	Aug-11	Oct-11	Dec-11	Feb-12	Apr-12	Jun-12	Aug-12
19 Micron SFE	1600	1588	1543	1525	1505	1455	1385	1385	1385
Average	1113	1135	1145	1152	1271	1184	1221	1271	1371
Maximum	1605	1600	1590	1562	1450	1532	1520	1450	1450
Minimum	983	1025	1034	1034	1106	1034	1053	1106	1210

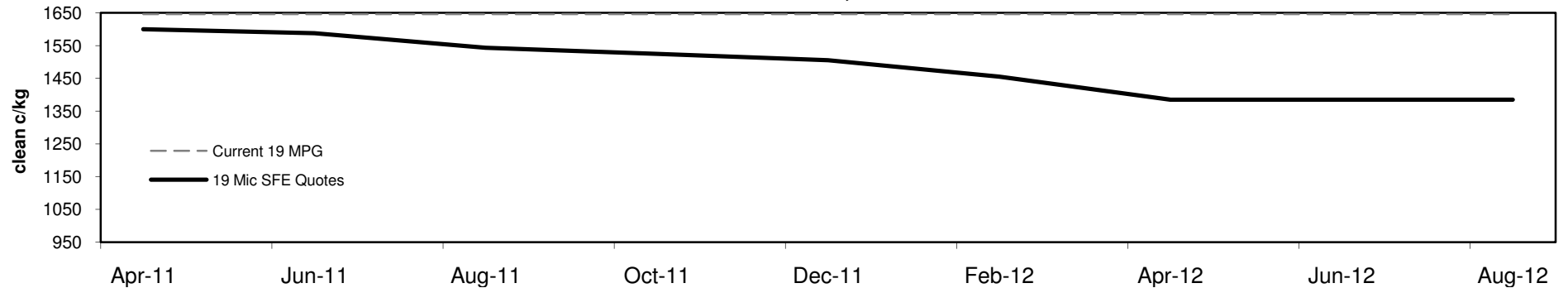
Table 5: 19 micron SFE, as a percentile of the 19 micron MPG

3 Year Percentile	97%	97%	95%	95%	95%	95%	95%	95%	95%
10 Year Percentile	99%	98%	98%	98%	98%	98%	96%	96%	96%

Table 6: 19 micron SFE, compared to MPG

Current 19 MPG	-46	-3%	-58	-4%	-103	-6%	-121	-7%	-141	-9%	-191	-12%	-261	-16%	-261	-16%	-261	-16%
19 MPG, 1 Year Average	+363	29%	+351	28%	+306	25%	+288	23%	+268	22%	+218	18%	+148	12%	+148	12%	+148	12%
19 MPG, 3 Year Average	+499	45%	+487	44%	+442	40%	+424	39%	+404	37%	+354	32%	+284	26%	+284	26%	+284	26%
19 MPG, 10 Year Average	+527	49%	+515	48%	+470	44%	+452	42%	+432	40%	+382	36%	+312	29%	+312	29%	+312	29%

19 MICRON SFE, QUOTES



19 Micron SFE, Front month movement

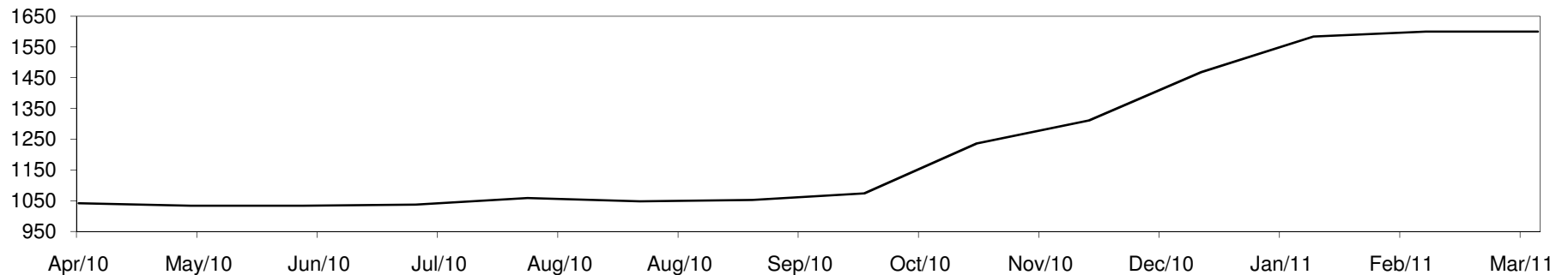




Table 7: 21 micron SFE

Wednesday, 2 March 2011

Delivery Mth	Apr-11	Jun-11	Aug-11	Oct-11	Dec-11	Feb-12	Apr-12	Jun-12	Aug-12
21 Micron SFE	1190	1193	1163	1117	1115	1054	1096	1054	1054
Average	962	969	970	964	1022	959	980	1022	1031
Maximum	1220	1193	1193	1163	1096	1115	1080	1096	1064
Minimum	860	891	890	880	934	880	880	934	990

Table 8: 21 micron SFE, as a percentile of the 21 micron MPG

3 Year Percentile	100%	100%	98%	96%	96%	95%	95%	95%	95%
10 Year Percentile	94%	94%	93%	92%	92%	90%	91%	90%	90%

Table 9: 21 micron SFE, compared to MPG

Current 21 MPG	+2	0%	+5	0%	-25	-2%	-71	-6%	-73	-6%	-134	-11%	-92	-8%	-134	-11%	-134	-11%
21 MPG, 1 Year Average	+200	20%	+203	21%	+173	17%	+127	13%	+125	13%	+64	6%	+106	11%	+64	6%	+64	6%
21 MPG, 3 Year Average	+304	34%	+307	35%	+277	31%	+231	26%	+229	26%	+168	19%	+210	24%	+168	19%	+168	19%
21 MPG, 10 Year Average	+307	35%	+310	35%	+280	32%	+234	27%	+232	26%	+171	19%	+213	24%	+171	19%	+171	19%

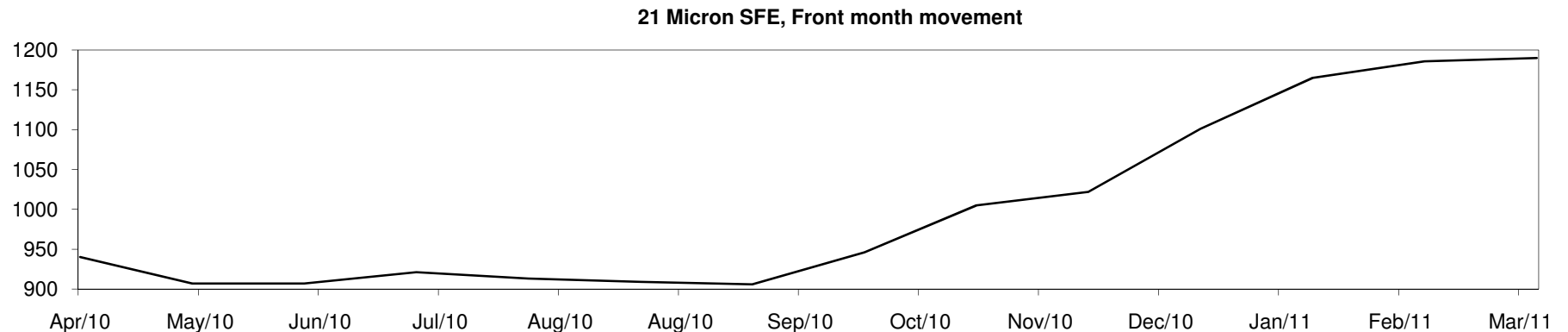
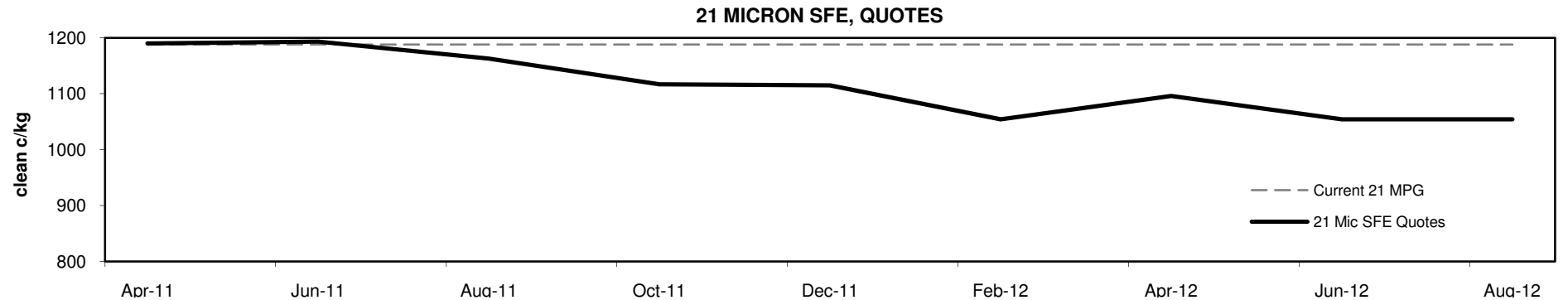




Table 10: 23 micron SFE

Wednesday, 2 March 2011

Delivery Mth	Apr-11	Jun-11	Aug-11	Oct-11	Dec-11	Feb-12	Apr-12	Jun-12	Aug-12
23 Micron SFE	1033	1033	1033	1033	1033	1033	1033	1033	1033
Average	870	880	892	897	892	895	899	906	923
Maximum	1033	1033	1033	1033	1033	1033	1033	1033	1033
Minimum	760	803	803	883	883	883	883	883	890

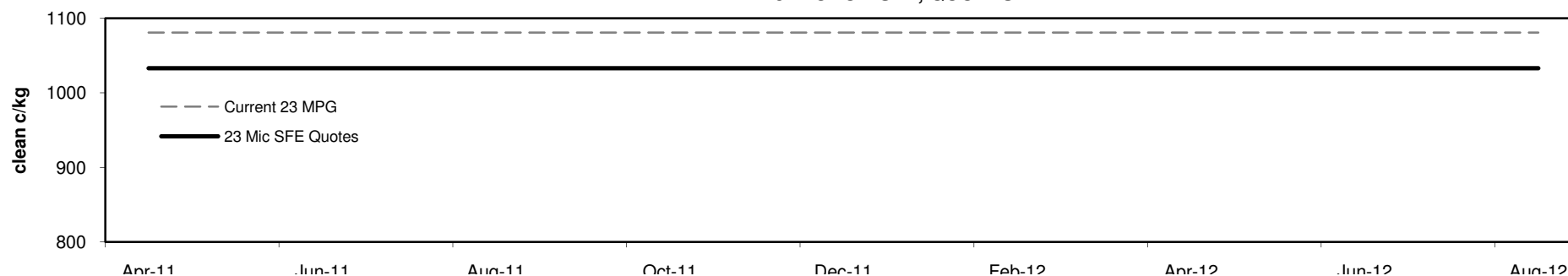
Table 11: 23 micron SFE, as a percentile of the 23 micron MPG

3 Year Percentile	97%	97%	97%	97%	97%	97%	97%	97%	97%
10 Year Percentile	91%	91%	91%	91%	91%	91%	91%	91%	91%

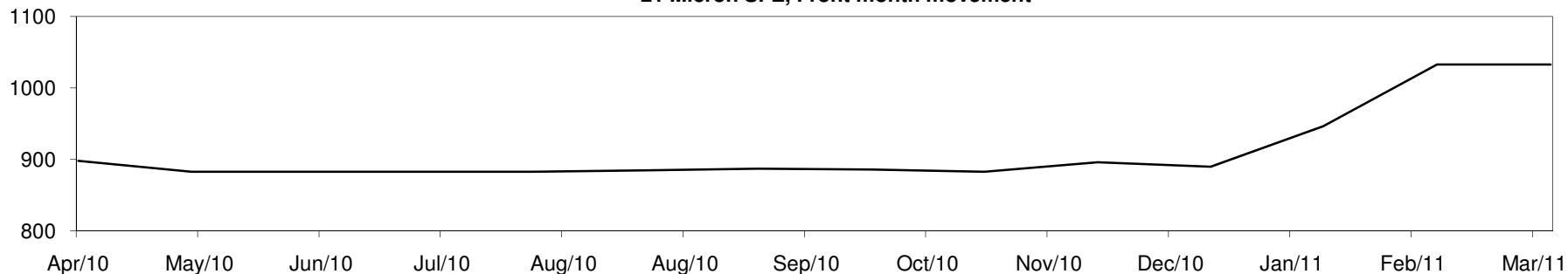
Table 12: 23 micron SFE, compared to MPG

Current 19 MPG	-48	-4%	-48	-4%	-48	-4%	-48	-4%	-48	-4%	-48	-4%	-48	-4%	-48	-4%	-48	-4%
23 MPG, 1 Year Average	+108	12%	+108	12%	+108	12%	+108	12%	+108	12%	+108	12%	+108	12%	+108	12%	+108	12%
23 MPG, 3 Year Average	+194	23%	+194	23%	+194	23%	+194	23%	+194	23%	+194	23%	+194	23%	+194	23%	+194	23%
23 MPG, 10 Year Average	+195	23%	+195	23%	+195	23%	+195	23%	+195	23%	+195	23%	+195	23%	+195	23%	+195	23%

23 MICRON SFE, QUOTES

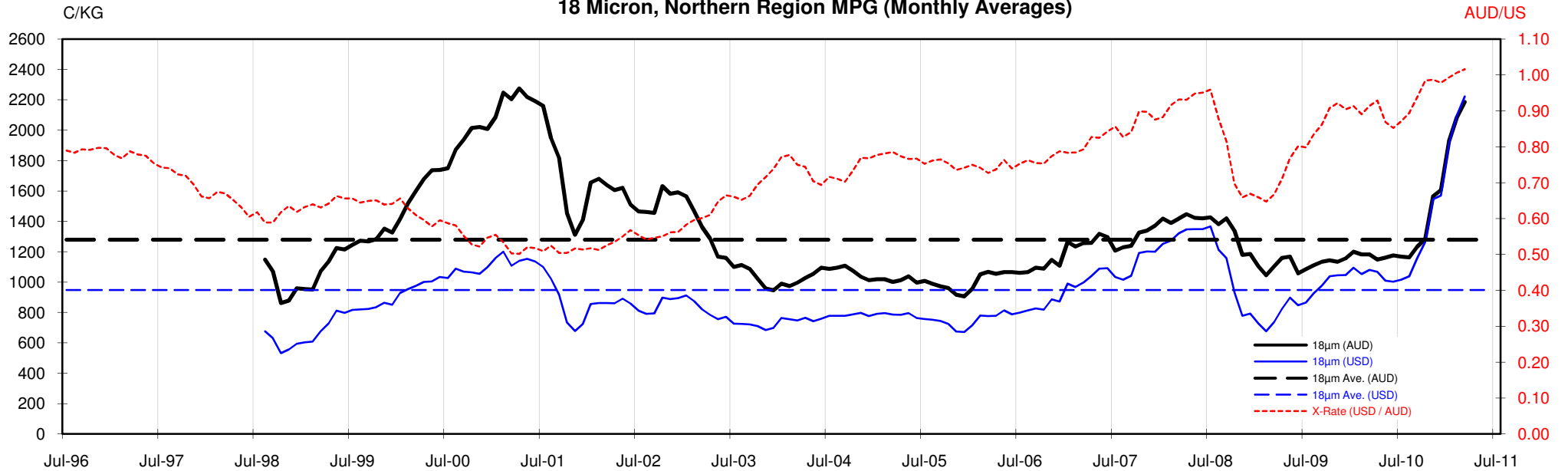


21 Micron SFE, Front month movement



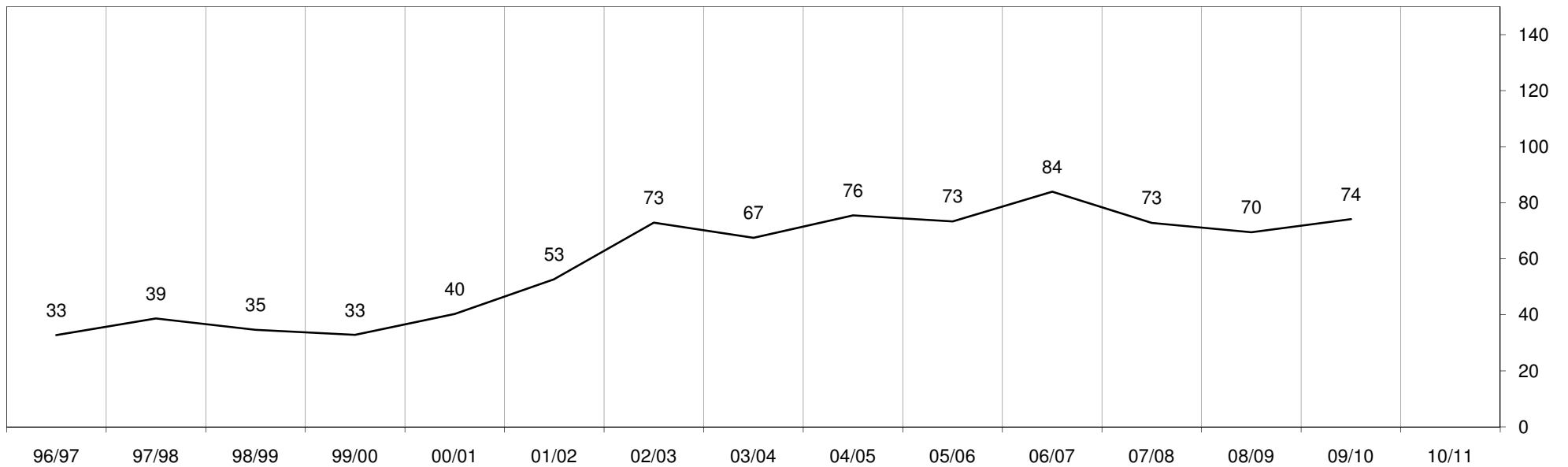


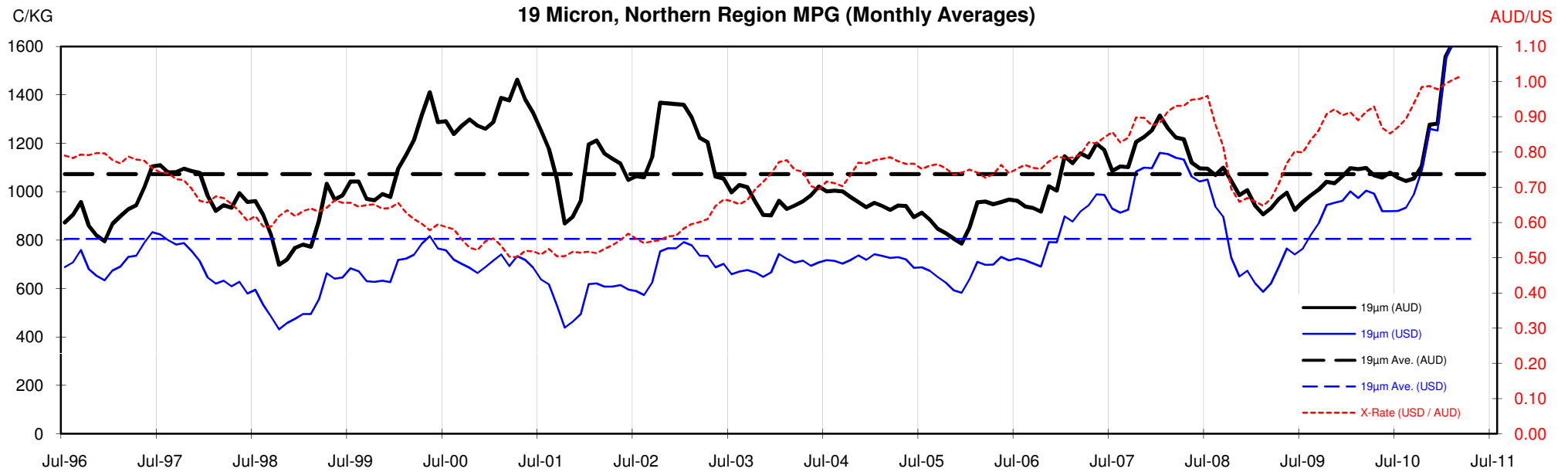
18 Micron, Northern Region MPG (Monthly Averages)

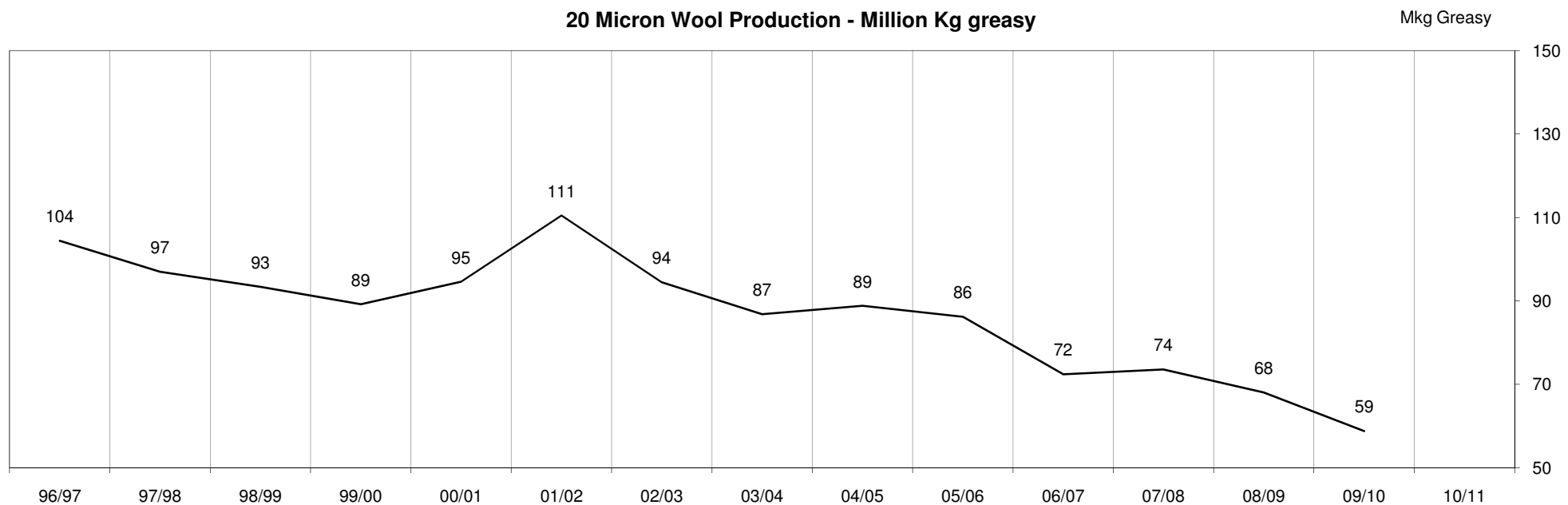
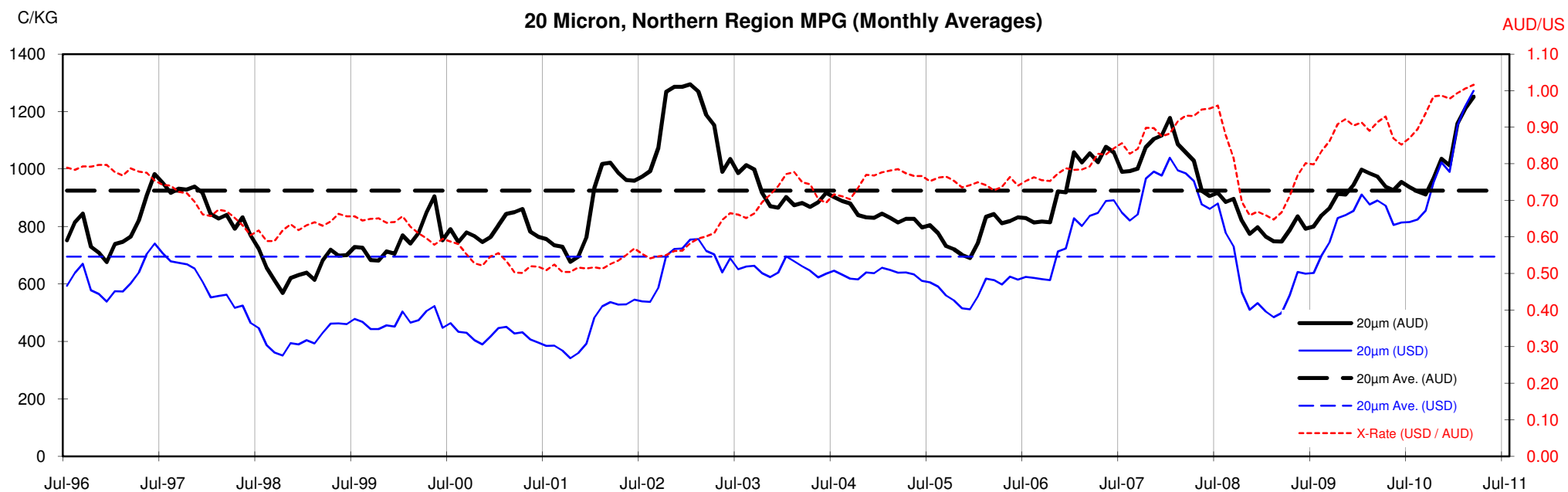


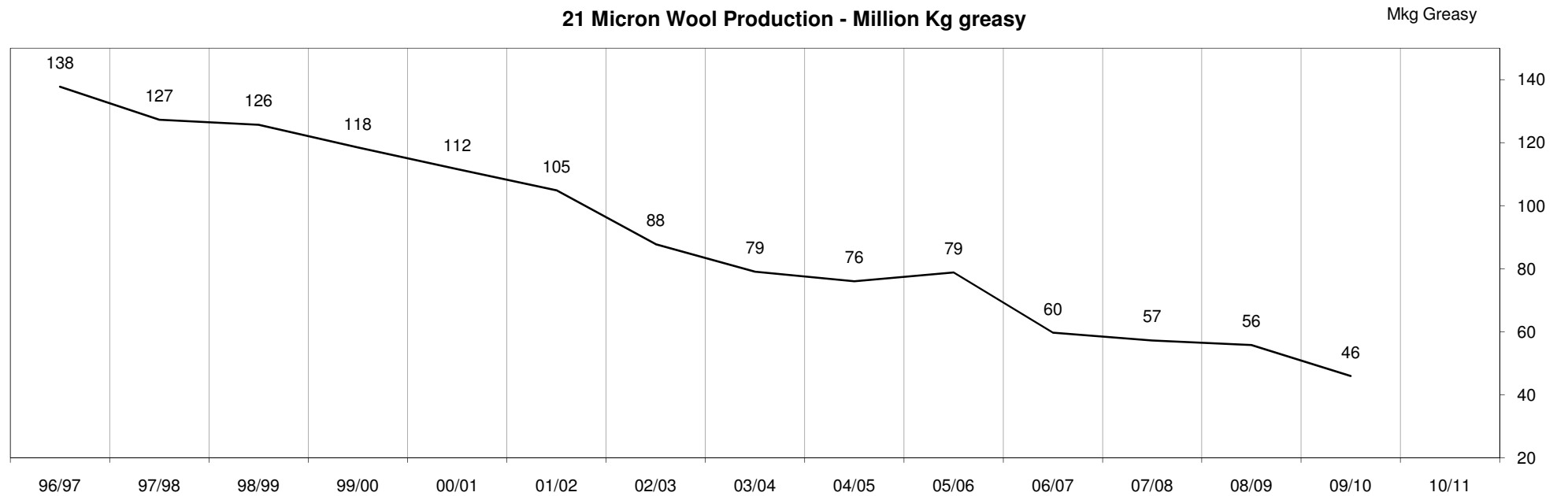
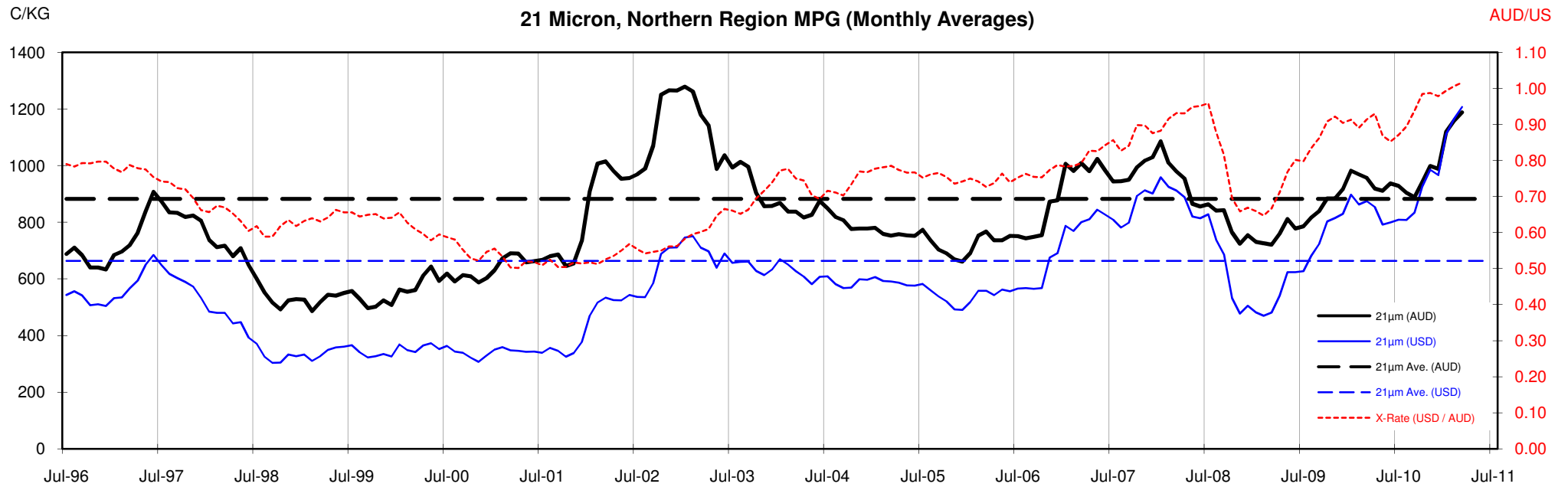
<18.5 micron Wool Production - Million Kg greasy

Mkg Greasy



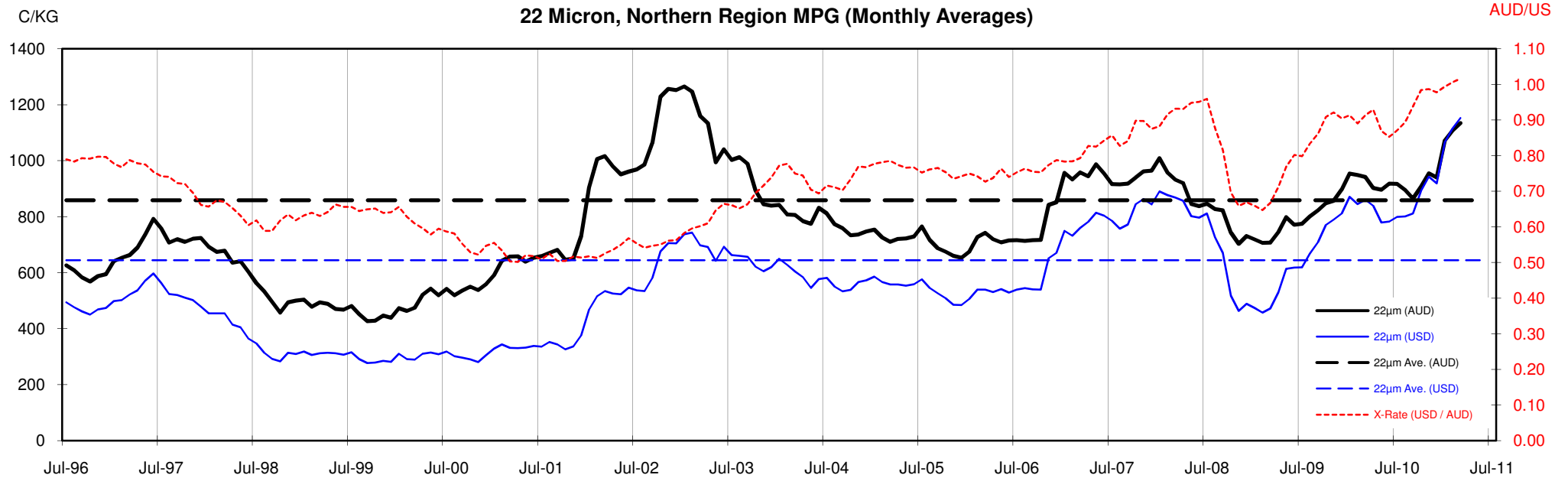






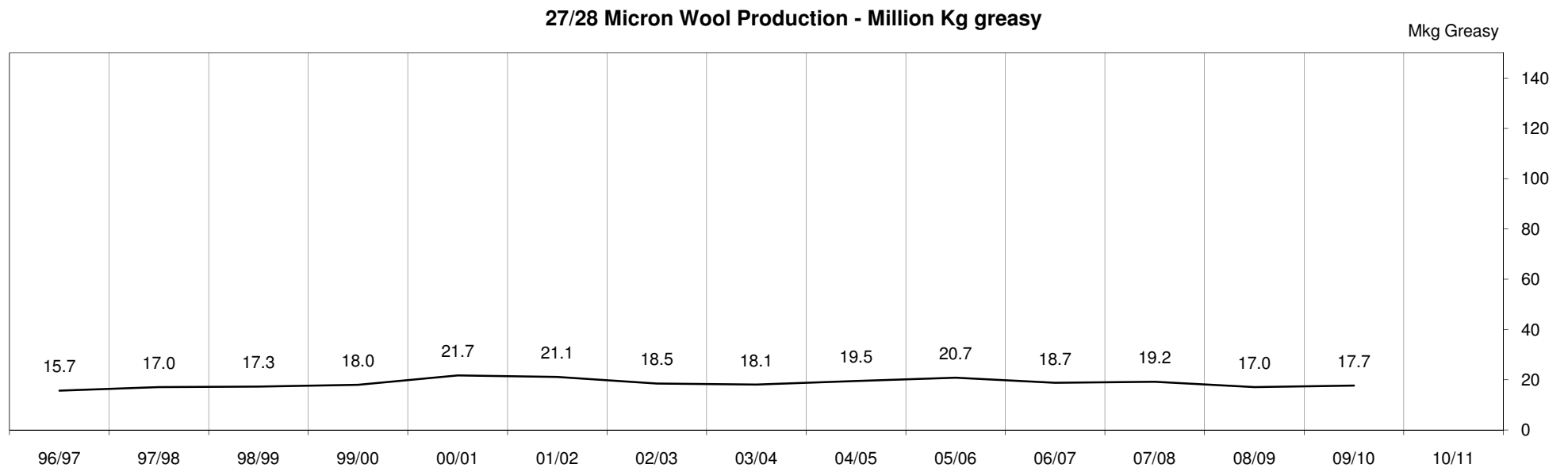
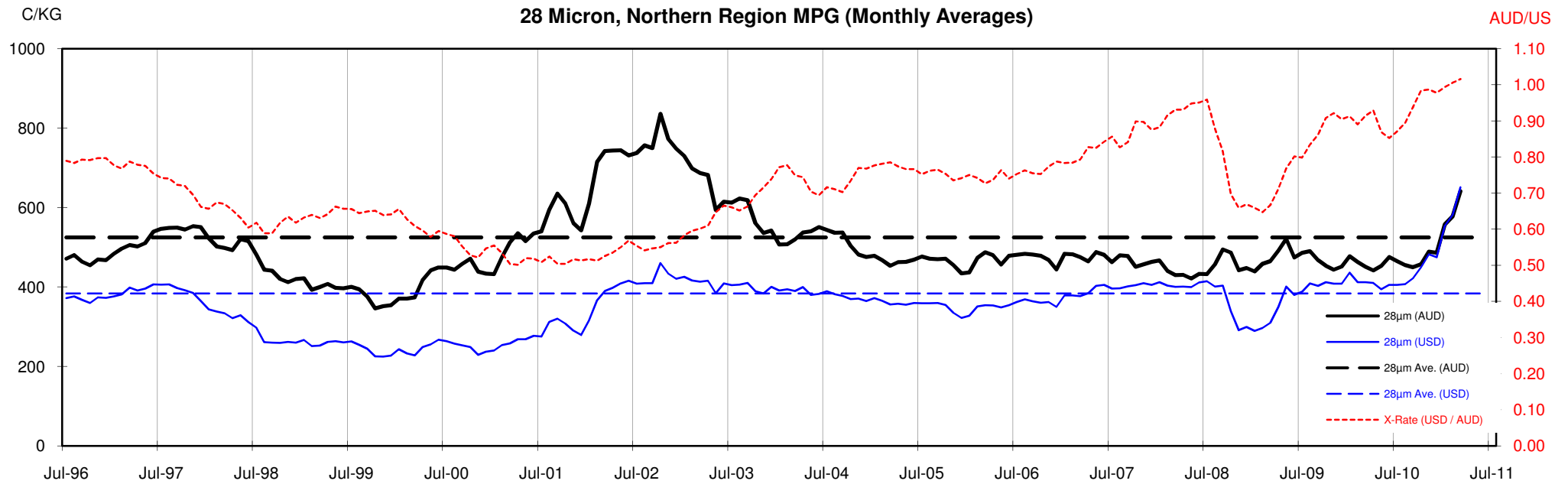


22 Micron, Northern Region MPG (Monthly Averages)



22 Micron Wool Production - Million Kg greasy





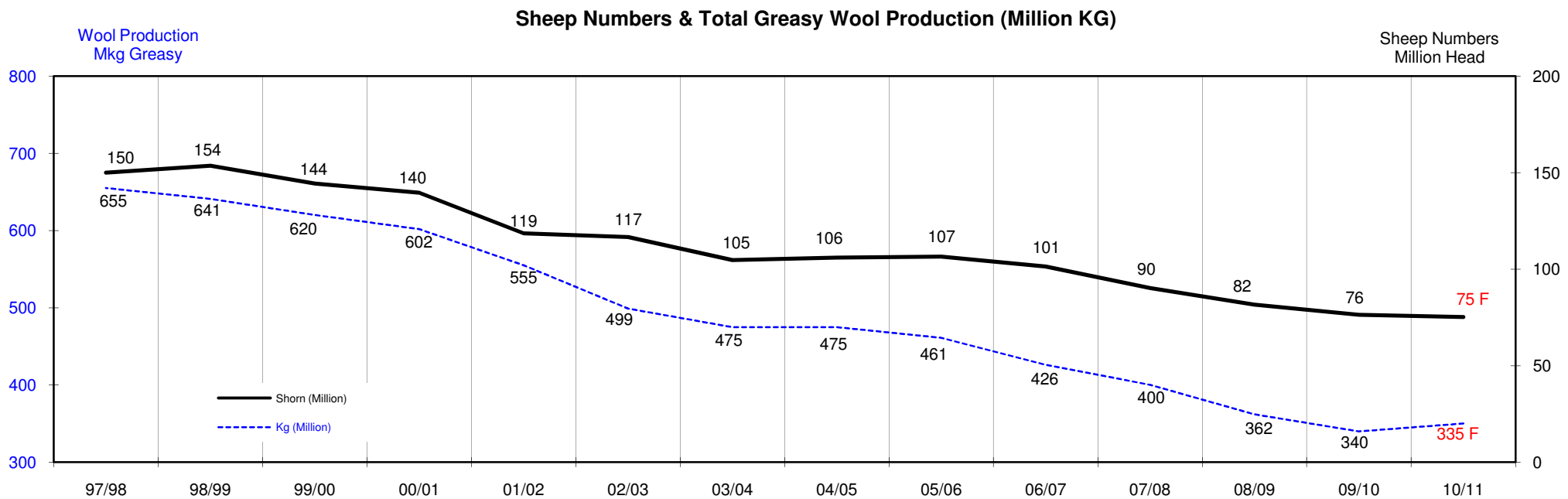
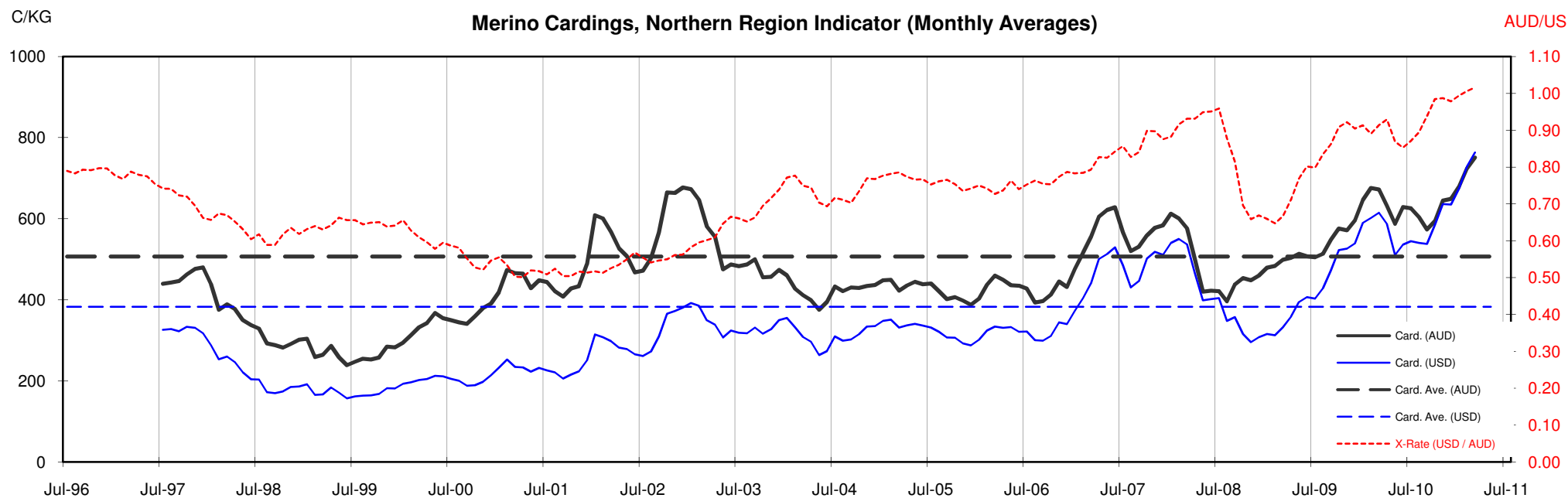




Table 13: Returns pr head for skirted fleece wool.

Skirted FLC Weight		Micron																	
9 Kg		16	16.5	17	17.5	18	18.5	19	19.5	20	21	22	23	24	25	26	28	30	32
Yield (Sch Dry)	25% Current	\$61	\$58	\$56	\$52	\$49	\$44	\$37	\$32	\$28	\$27	\$26	\$24	\$23	\$20	\$18	\$15	\$13	\$12
	10yr ave.			\$31		\$29		\$24		\$21	\$20	\$19	\$19	\$18	\$16	\$15	\$12	\$10	\$9
	30% Current	\$73	\$70	\$68	\$63	\$59	\$53	\$44	\$39	\$34	\$32	\$31	\$29	\$27	\$24	\$21	\$18	\$16	\$14
	10yr ave.			\$38		\$35		\$29		\$25	\$24	\$23	\$23	\$22	\$19	\$18	\$14	\$12	\$11
	35% Current	\$85	\$82	\$79	\$73	\$69	\$61	\$52	\$45	\$40	\$37	\$36	\$34	\$32	\$28	\$25	\$21	\$18	\$16
	10yr ave.			\$44		\$40		\$34		\$29	\$28	\$27	\$26	\$25	\$23	\$21	\$17	\$14	\$13
	40% Current	\$97	\$93	\$90	\$84	\$79	\$70	\$59	\$52	\$45	\$43	\$41	\$39	\$36	\$32	\$28	\$24	\$21	\$19
	10yr ave.			\$50		\$46		\$39		\$33	\$32	\$31	\$30	\$29	\$26	\$24	\$19	\$16	\$15
	45% Current	\$109	\$105	\$101	\$94	\$89	\$79	\$67	\$58	\$51	\$48	\$46	\$44	\$41	\$36	\$32	\$26	\$23	\$21
	10yr ave.			\$57		\$52		\$43		\$37	\$36	\$35	\$34	\$32	\$29	\$27	\$21	\$19	\$17
	50% Current	\$122	\$117	\$113	\$105	\$99	\$88	\$74	\$65	\$57	\$53	\$51	\$49	\$45	\$40	\$36	\$29	\$26	\$23
	10yr ave.			\$63		\$58		\$48		\$42	\$40	\$39	\$38	\$36	\$32	\$30	\$24	\$21	\$19
	55% Current	\$134	\$128	\$124	\$115	\$108	\$96	\$81	\$71	\$62	\$59	\$56	\$54	\$50	\$45	\$39	\$32	\$29	\$26
	10yr ave.			\$69		\$63		\$53		\$46	\$44	\$43	\$41	\$40	\$36	\$33	\$26	\$23	\$20
	60% Current	\$146	\$140	\$135	\$126	\$118	\$105	\$89	\$78	\$68	\$64	\$61	\$58	\$54	\$49	\$43	\$35	\$31	\$28
	10yr ave.			\$75		\$69		\$58		\$50	\$48	\$46	\$45	\$43	\$39	\$35	\$28	\$25	\$22
	65% Current	\$158	\$152	\$146	\$136	\$128	\$114	\$96	\$84	\$74	\$69	\$66	\$63	\$59	\$53	\$46	\$38	\$34	\$30
	10yr ave.			\$82		\$75		\$63		\$54	\$52	\$50	\$49	\$47	\$42	\$38	\$31	\$27	\$24
	70% Current	\$170	\$163	\$158	\$147	\$138	\$123	\$104	\$91	\$79	\$75	\$71	\$68	\$63	\$57	\$50	\$41	\$36	\$33
	10yr ave.			\$88		\$81		\$68		\$58	\$56	\$54	\$53	\$50	\$45	\$41	\$33	\$29	\$26
	75% Current	\$182	\$175	\$169	\$157	\$148	\$132	\$111	\$97	\$85	\$80	\$77	\$73	\$68	\$61	\$53	\$44	\$39	\$35
	10yr ave.			\$94		\$86		\$72		\$62	\$60	\$58	\$57	\$54	\$48	\$44	\$35	\$31	\$28
	80% Current	\$194	\$186	\$180	\$168	\$158	\$140	\$119	\$104	\$91	\$86	\$82	\$78	\$72	\$65	\$57	\$47	\$42	\$38
	10yr ave.			\$101		\$92		\$77		\$67	\$64	\$62	\$60	\$58	\$52	\$47	\$38	\$33	\$30
	85% Current	\$207	\$198	\$191	\$178	\$167	\$149	\$126	\$110	\$96	\$91	\$87	\$83	\$77	\$69	\$60	\$50	\$44	\$40
	10yr ave.			\$107		\$98		\$82		\$71	\$68	\$66	\$64	\$61	\$55	\$50	\$40	\$35	\$32

The above shows estimated returns per head for skirted fleece wool. These figures do not take into account the value of skirtings and oddments and do not take into account discounts that may apply for faults under individual circumstances. These figures are based on a market index of 100% and should be used as a guide only. Returns over \$30 / head for fleece wool are highlighted.

Source: Australian Wool Exchange, Australian Wool Innovation, Sydney Futures Exchange, x-rates.com

Disclaimer: While all due care has been taken in the preparation of this document, no warranty is made as to its accuracy, reliability or completeness. To the extent permitted by law neither Jemalong or their sources including subsidiaries and staff, accept liability to any person for loss or damage arising from the use of this information.



Table 14: Returns pr head for skirted fleece wool.

Skirted FLC Weight 8 Kg			Micron																	
			16	16.5	17	17.5	18	18.5	19	19.5	20	21	22	23	24	25	26	28	30	32
Yield (Sch Dry)	25%	Current	\$54	\$52	\$50	\$47	\$44	\$39	\$33	\$29	\$25	\$24	\$23	\$22	\$20	\$18	\$16	\$13	\$12	\$10
		10yr ave.			\$28		\$26		\$21		\$18	\$18	\$17	\$17	\$16	\$14	\$13	\$11	\$9	\$8
	30%	Current	\$65	\$62	\$60	\$56	\$53	\$47	\$40	\$35	\$30	\$29	\$27	\$26	\$24	\$22	\$19	\$16	\$14	\$13
		10yr ave.			\$34		\$31		\$26		\$22	\$21	\$21	\$20	\$19	\$17	\$16	\$13	\$11	\$10
	35%	Current	\$76	\$73	\$70	\$65	\$61	\$55	\$46	\$40	\$35	\$33	\$32	\$30	\$28	\$25	\$22	\$18	\$16	\$15
		10yr ave.			\$39		\$36		\$30		\$26	\$25	\$24	\$23	\$22	\$20	\$18	\$15	\$13	\$12
	40%	Current	\$86	\$83	\$80	\$75	\$70	\$62	\$53	\$46	\$40	\$38	\$36	\$35	\$32	\$29	\$25	\$21	\$19	\$17
		10yr ave.			\$45		\$41		\$34		\$30	\$28	\$27	\$27	\$26	\$23	\$21	\$17	\$15	\$13
	45%	Current	\$97	\$93	\$90	\$84	\$79	\$70	\$59	\$52	\$45	\$43	\$41	\$39	\$36	\$32	\$28	\$24	\$21	\$19
		10yr ave.			\$50		\$46		\$39		\$33	\$32	\$31	\$30	\$29	\$26	\$24	\$19	\$16	\$15
	50%	Current	\$108	\$104	\$100	\$93	\$88	\$78	\$66	\$58	\$50	\$48	\$45	\$43	\$40	\$36	\$32	\$26	\$23	\$21
		10yr ave.			\$56		\$51		\$43		\$37	\$35	\$34	\$34	\$32	\$29	\$26	\$21	\$18	\$17
	55%	Current	\$119	\$114	\$110	\$103	\$96	\$86	\$72	\$64	\$55	\$52	\$50	\$48	\$44	\$40	\$35	\$29	\$25	\$23
		10yr ave.			\$62		\$56		\$47		\$41	\$39	\$38	\$37	\$35	\$32	\$29	\$23	\$20	\$18
60%	Current	\$130	\$124	\$120	\$112	\$105	\$94	\$79	\$69	\$60	\$57	\$54	\$52	\$48	\$43	\$38	\$31	\$28	\$25	
	10yr ave.			\$67		\$61		\$52		\$44	\$42	\$41	\$40	\$38	\$34	\$32	\$25	\$22	\$20	
65%	Current	\$140	\$135	\$130	\$121	\$114	\$101	\$86	\$75	\$65	\$62	\$59	\$56	\$52	\$47	\$41	\$34	\$30	\$27	
	10yr ave.			\$73		\$67		\$56		\$48	\$46	\$45	\$44	\$42	\$37	\$34	\$27	\$24	\$22	
70%	Current	\$151	\$145	\$140	\$130	\$123	\$109	\$92	\$81	\$71	\$67	\$64	\$61	\$56	\$50	\$44	\$37	\$32	\$29	
	10yr ave.			\$78		\$72		\$60		\$52	\$49	\$48	\$47	\$45	\$40	\$37	\$29	\$26	\$23	
75%	Current	\$162	\$155	\$150	\$140	\$131	\$117	\$99	\$87	\$76	\$71	\$68	\$65	\$60	\$54	\$47	\$39	\$35	\$31	
	10yr ave.			\$84		\$77		\$64		\$55	\$53	\$52	\$50	\$48	\$43	\$39	\$32	\$27	\$25	
80%	Current	\$173	\$166	\$160	\$149	\$140	\$125	\$105	\$92	\$81	\$76	\$73	\$69	\$64	\$58	\$51	\$42	\$37	\$33	
	10yr ave.			\$89		\$82		\$69		\$59	\$57	\$55	\$54	\$51	\$46	\$42	\$34	\$29	\$26	
85%	Current	\$184	\$176	\$170	\$158	\$149	\$133	\$112	\$98	\$86	\$81	\$77	\$74	\$68	\$61	\$54	\$44	\$39	\$35	
	10yr ave.			\$95		\$87		\$73		\$63	\$60	\$58	\$57	\$54	\$49	\$45	\$36	\$31	\$28	

The above shows estimated returns per head for skirted fleece wool. These figures do not take into account the value of skirtings and oddments and do not take into account discounts that may apply for faults under individual circumstances. These figures are based on a market index of 100% and should be used as a guide only. Returns over \$30 / head for fleece wool are highlighted.

Source: Australian Wool Exchange, Australian Wool Innovation, Sydney Futures Exchange, x-rates.com

Disclaimer: While all due care has been taken in the preparation of this document, no warranty is made as to its accuracy, reliability or completeness. To the extent permitted by law neither Jemalong or their sources including subsidiaries and staff, accept liability to any person for loss or damage arising from the use of this information.



Table 15: Returns pr head for skirted fleece wool.

Skirted FLC Weight 7 Kg			Micron																	
			16	16.5	17	17.5	18	18.5	19	19.5	20	21	22	23	24	25	26	28	30	32
Yield (Sch Dry)	25%	Current	\$47	\$45	\$44	\$41	\$38	\$34	\$29	\$25	\$22	\$21	\$20	\$19	\$18	\$16	\$14	\$11	\$10	\$9
		10yr ave.			\$24		\$22		\$19		\$16	\$15	\$15	\$15	\$14	\$13	\$11	\$9	\$8	\$7
	30%	Current	\$57	\$54	\$53	\$49	\$46	\$41	\$35	\$30	\$26	\$25	\$24	\$23	\$21	\$19	\$17	\$14	\$12	\$11
		10yr ave.			\$29		\$27		\$23		\$19	\$19	\$18	\$18	\$17	\$15	\$14	\$11	\$10	\$9
	35%	Current	\$66	\$63	\$61	\$57	\$54	\$48	\$40	\$35	\$31	\$29	\$28	\$26	\$25	\$22	\$19	\$16	\$14	\$13
		10yr ave.			\$34		\$31		\$26		\$23	\$22	\$21	\$21	\$20	\$18	\$16	\$13	\$11	\$10
	40%	Current	\$76	\$73	\$70	\$65	\$61	\$55	\$46	\$40	\$35	\$33	\$32	\$30	\$28	\$25	\$22	\$18	\$16	\$15
		10yr ave.			\$39		\$36		\$30		\$26	\$25	\$24	\$23	\$22	\$20	\$18	\$15	\$13	\$12
	45%	Current	\$85	\$82	\$79	\$73	\$69	\$61	\$52	\$45	\$40	\$37	\$36	\$34	\$32	\$28	\$25	\$21	\$18	\$16
		10yr ave.			\$44		\$40		\$34		\$29	\$28	\$27	\$26	\$25	\$23	\$21	\$17	\$14	\$13
	50%	Current	\$95	\$91	\$88	\$82	\$77	\$68	\$58	\$51	\$44	\$42	\$40	\$38	\$35	\$31	\$28	\$23	\$20	\$18
		10yr ave.			\$49		\$45		\$38		\$32	\$31	\$30	\$29	\$28	\$25	\$23	\$18	\$16	\$14
	55%	Current	\$104	\$100	\$96	\$90	\$84	\$75	\$63	\$56	\$48	\$46	\$44	\$42	\$39	\$35	\$30	\$25	\$22	\$20
		10yr ave.			\$54		\$49		\$41		\$36	\$34	\$33	\$32	\$31	\$28	\$25	\$20	\$18	\$16
60%	Current	\$113	\$109	\$105	\$98	\$92	\$82	\$69	\$61	\$53	\$50	\$48	\$45	\$42	\$38	\$33	\$27	\$24	\$22	
	10yr ave.			\$59		\$54		\$45		\$39	\$37	\$36	\$35	\$34	\$30	\$28	\$22	\$19	\$17	
65%	Current	\$123	\$118	\$114	\$106	\$100	\$89	\$75	\$66	\$57	\$54	\$52	\$49	\$46	\$41	\$36	\$30	\$26	\$24	
	10yr ave.			\$64		\$58		\$49		\$42	\$40	\$39	\$38	\$36	\$33	\$30	\$24	\$21	\$19	
70%	Current	\$132	\$127	\$123	\$114	\$107	\$96	\$81	\$71	\$62	\$58	\$56	\$53	\$49	\$44	\$39	\$32	\$28	\$26	
	10yr ave.			\$69		\$63		\$53		\$45	\$43	\$42	\$41	\$39	\$35	\$32	\$26	\$22	\$20	
75%	Current	\$142	\$136	\$131	\$122	\$115	\$102	\$86	\$76	\$66	\$62	\$60	\$57	\$53	\$47	\$41	\$34	\$30	\$27	
	10yr ave.			\$73		\$67		\$56		\$49	\$46	\$45	\$44	\$42	\$38	\$34	\$28	\$24	\$22	
80%	Current	\$151	\$145	\$140	\$130	\$123	\$109	\$92	\$81	\$71	\$67	\$64	\$61	\$56	\$50	\$44	\$37	\$32	\$29	
	10yr ave.			\$78		\$72		\$60		\$52	\$49	\$48	\$47	\$45	\$40	\$37	\$29	\$26	\$23	
85%	Current	\$161	\$154	\$149	\$139	\$130	\$116	\$98	\$86	\$75	\$71	\$67	\$64	\$60	\$53	\$47	\$39	\$34	\$31	
	10yr ave.			\$83		\$76		\$64		\$55	\$53	\$51	\$50	\$48	\$43	\$39	\$31	\$27	\$25	

The above shows estimated returns per head for skirted fleece wool. These figures do not take into account the value of skirtings and oddments and do not take into account discounts that may apply for faults under individual circumstances. These figures are based on a market index of 100% and should be used as a guide only. Returns over \$30 / head for fleece wool are highlighted.

Source: Australian Wool Exchange, Australian Wool Innovation, Sydney Futures Exchange, x-rates.com

Disclaimer: While all due care has been taken in the preparation of this document, no warranty is made as to its accuracy, reliability or completeness. To the extent permitted by law neither Jemalong or their sources including subsidiaries and staff, accept liability to any person for loss or damage arising from the use of this information.



Table 16: Returns pr head for skirted fleece wool.

Skirted FLC Weight		Micron																	
6 Kg		16	16.5	17	17.5	18	18.5	19	19.5	20	21	22	23	24	25	26	28	30	32
Yield (Sch Dry)	25% Current	\$41	\$39	\$38	\$35	\$33	\$29	\$25	\$22	\$19	\$18	\$17	\$16	\$15	\$13	\$12	\$10	\$9	\$8
	10yr ave.			\$21		\$19		\$16		\$14	\$13	\$13	\$13	\$12	\$11	\$10	\$8	\$7	\$6
	30% Current	\$49	\$47	\$45	\$42	\$39	\$35	\$30	\$26	\$23	\$21	\$20	\$19	\$18	\$16	\$14	\$12	\$10	\$9
	10yr ave.			\$25		\$23		\$19		\$17	\$16	\$15	\$15	\$14	\$13	\$12	\$9	\$8	\$7
	35% Current	\$57	\$54	\$53	\$49	\$46	\$41	\$35	\$30	\$26	\$25	\$24	\$23	\$21	\$19	\$17	\$14	\$12	\$11
	10yr ave.			\$29		\$27		\$23		\$19	\$19	\$18	\$18	\$17	\$15	\$14	\$11	\$10	\$9
	40% Current	\$65	\$62	\$60	\$56	\$53	\$47	\$40	\$35	\$30	\$29	\$27	\$26	\$24	\$22	\$19	\$16	\$14	\$13
	10yr ave.			\$34		\$31		\$26		\$22	\$21	\$21	\$20	\$19	\$17	\$16	\$13	\$11	\$10
	45% Current	\$73	\$70	\$68	\$63	\$59	\$53	\$44	\$39	\$34	\$32	\$31	\$29	\$27	\$24	\$21	\$18	\$16	\$14
	10yr ave.			\$38		\$35		\$29		\$25	\$24	\$23	\$23	\$22	\$19	\$18	\$14	\$12	\$11
	50% Current	\$81	\$78	\$75	\$70	\$66	\$58	\$49	\$43	\$38	\$36	\$34	\$32	\$30	\$27	\$24	\$20	\$17	\$16
	10yr ave.			\$42		\$38		\$32		\$28	\$26	\$26	\$25	\$24	\$22	\$20	\$16	\$14	\$12
	55% Current	\$89	\$85	\$83	\$77	\$72	\$64	\$54	\$48	\$42	\$39	\$37	\$36	\$33	\$30	\$26	\$22	\$19	\$17
	10yr ave.			\$46		\$42		\$35		\$30	\$29	\$28	\$28	\$26	\$24	\$22	\$17	\$15	\$14
	60% Current	\$97	\$93	\$90	\$84	\$79	\$70	\$59	\$52	\$45	\$43	\$41	\$39	\$36	\$32	\$28	\$24	\$21	\$19
	10yr ave.			\$50		\$46		\$39		\$33	\$32	\$31	\$30	\$29	\$26	\$24	\$19	\$16	\$15
	65% Current	\$105	\$101	\$98	\$91	\$85	\$76	\$64	\$56	\$49	\$46	\$44	\$42	\$39	\$35	\$31	\$25	\$23	\$20
	10yr ave.			\$55		\$50		\$42		\$36	\$34	\$34	\$33	\$31	\$28	\$26	\$20	\$18	\$16
	70% Current	\$113	\$109	\$105	\$98	\$92	\$82	\$69	\$61	\$53	\$50	\$48	\$45	\$42	\$38	\$33	\$27	\$24	\$22
	10yr ave.			\$59		\$54		\$45		\$39	\$37	\$36	\$35	\$34	\$30	\$28	\$22	\$19	\$17
	75% Current	\$122	\$117	\$113	\$105	\$99	\$88	\$74	\$65	\$57	\$53	\$51	\$49	\$45	\$40	\$36	\$29	\$26	\$23
	10yr ave.			\$63		\$58		\$48		\$42	\$40	\$39	\$38	\$36	\$32	\$30	\$24	\$21	\$19
	80% Current	\$130	\$124	\$120	\$112	\$105	\$94	\$79	\$69	\$60	\$57	\$54	\$52	\$48	\$43	\$38	\$31	\$28	\$25
	10yr ave.			\$67		\$61		\$52		\$44	\$42	\$41	\$40	\$38	\$34	\$32	\$25	\$22	\$20
	85% Current	\$138	\$132	\$128	\$119	\$112	\$99	\$84	\$74	\$64	\$61	\$58	\$55	\$51	\$46	\$40	\$33	\$30	\$27
	10yr ave.			\$71		\$65		\$55		\$47	\$45	\$44	\$43	\$41	\$37	\$34	\$27	\$23	\$21

The above shows estimated returns per head for skirted fleece wool. These figures do not take into account the value of skirtings and oddments and do not take into account discounts that may apply for faults under individual circumstances. These figures are based on a market index of 100% and should be used as a guide only. Returns over \$30 / head for fleece wool are highlighted.

Source: Australian Wool Exchange, Australian Wool Innovation, Sydney Futures Exchange, x-rates.com

Disclaimer: While all due care has been taken in the preparation of this document, no warranty is made as to its accuracy, reliability or completeness. To the extent permitted by law neither Jemalong or their sources including subsidiaries and staff, accept liability to any person for loss or damage arising from the use of this information.



Table 17: Returns pr head for skirted fleece wool.

Skirted FLC Weight		Micron																		
		16	16.5	17	17.5	18	18.5	19	19.5	20	21	22	23	24	25	26	28	30	32	
Yield (Sch Dry)	25%	Current	\$34	\$32	\$31	\$29	\$27	\$24	\$21	\$18	\$16	\$15	\$14	\$14	\$13	\$11	\$10	\$8	\$7	\$7
	10yr ave.			\$17		\$16		\$13		\$12	\$11	\$11	\$10	\$10	\$9	\$8	\$7	\$6	\$5	
	30%	Current	\$41	\$39	\$38	\$35	\$33	\$29	\$25	\$22	\$19	\$18	\$17	\$16	\$15	\$13	\$12	\$10	\$9	\$8
	10yr ave.			\$21		\$19		\$16		\$14	\$13	\$13	\$13	\$12	\$11	\$10	\$8	\$7	\$6	
	35%	Current	\$47	\$45	\$44	\$41	\$38	\$34	\$29	\$25	\$22	\$21	\$20	\$19	\$18	\$16	\$14	\$11	\$10	\$9
	10yr ave.			\$24		\$22		\$19		\$16	\$15	\$15	\$15	\$14	\$13	\$11	\$9	\$8	\$7	
	40%	Current	\$54	\$52	\$50	\$47	\$44	\$39	\$33	\$29	\$25	\$24	\$23	\$22	\$20	\$18	\$16	\$13	\$12	\$10
	10yr ave.			\$28		\$26		\$21		\$18	\$18	\$17	\$17	\$16	\$14	\$13	\$11	\$9	\$8	
	45%	Current	\$61	\$58	\$56	\$52	\$49	\$44	\$37	\$32	\$28	\$27	\$26	\$24	\$23	\$20	\$18	\$15	\$13	\$12
	10yr ave.			\$31		\$29		\$24		\$21	\$20	\$19	\$19	\$18	\$16	\$15	\$12	\$10	\$9	
	50%	Current	\$68	\$65	\$63	\$58	\$55	\$49	\$41	\$36	\$31	\$30	\$28	\$27	\$25	\$22	\$20	\$16	\$14	\$13
	10yr ave.			\$35		\$32		\$27		\$23	\$22	\$21	\$21	\$20	\$18	\$16	\$13	\$11	\$10	
	55%	Current	\$74	\$71	\$69	\$64	\$60	\$54	\$45	\$40	\$35	\$33	\$31	\$30	\$28	\$25	\$22	\$18	\$16	\$14
	10yr ave.			\$38		\$35		\$30		\$25	\$24	\$24	\$23	\$22	\$20	\$18	\$14	\$13	\$11	
60%	Current	\$81	\$78	\$75	\$70	\$66	\$58	\$49	\$43	\$38	\$36	\$34	\$32	\$30	\$27	\$24	\$20	\$17	\$16	
10yr ave.			\$42		\$38		\$32		\$28	\$26	\$26	\$25	\$24	\$22	\$20	\$16	\$14	\$12		
65%	Current	\$88	\$84	\$81	\$76	\$71	\$63	\$53	\$47	\$41	\$39	\$37	\$35	\$33	\$29	\$26	\$21	\$19	\$17	
10yr ave.			\$45		\$42		\$35		\$30	\$29	\$28	\$27	\$26	\$23	\$21	\$17	\$15	\$13		
70%	Current	\$95	\$91	\$88	\$82	\$77	\$68	\$58	\$51	\$44	\$42	\$40	\$38	\$35	\$31	\$28	\$23	\$20	\$18	
10yr ave.			\$49		\$45		\$38		\$32	\$31	\$30	\$29	\$28	\$25	\$23	\$18	\$16	\$14		
75%	Current	\$101	\$97	\$94	\$87	\$82	\$73	\$62	\$54	\$47	\$45	\$43	\$41	\$38	\$34	\$30	\$24	\$22	\$20	
10yr ave.			\$52		\$48		\$40		\$35	\$33	\$32	\$31	\$30	\$27	\$25	\$20	\$17	\$16		
80%	Current	\$108	\$104	\$100	\$93	\$88	\$78	\$66	\$58	\$50	\$48	\$45	\$43	\$40	\$36	\$32	\$26	\$23	\$21	
10yr ave.			\$56		\$51		\$43		\$37	\$35	\$34	\$34	\$32	\$29	\$26	\$21	\$18	\$17		
85%	Current	\$115	\$110	\$106	\$99	\$93	\$83	\$70	\$61	\$54	\$50	\$48	\$46	\$43	\$38	\$34	\$28	\$25	\$22	
10yr ave.			\$59		\$54		\$46		\$39	\$38	\$37	\$36	\$34	\$31	\$28	\$22	\$19	\$18		

The above shows estimated returns per head for skirted fleece wool. These figures do not take into account the value of skirtings and oddments and do not take into account discounts that may apply for faults under individual circumstances. These figures are based on a market index of 100% and should be used as a guide only. Returns over \$30 / head for fleece wool are highlighted.

Source: Australian Wool Exchange, Australian Wool Innovation, Sydney Futures Exchange, x-rates.com

Disclaimer: While all due care has been taken in the preparation of this document, no warranty is made as to its accuracy, reliability or completeness. To the extent permitted by law neither Jemalong or their sources including subsidiaries and staff, accept liability to any person for loss or damage arising from the use of this information.



Table 18: Returns pr head for skirted fleece wool.

Skirted FLC Weight		Micron																	
4 Kg		16	16.5	17	17.5	18	18.5	19	19.5	20	21	22	23	24	25	26	28	30	32
Yield (Sch Dry)	25% Current	\$27	\$26	\$25	\$23	\$22	\$19	\$16	\$14	\$13	\$12	\$11	\$11	\$10	\$9	\$8	\$7	\$6	\$5
	10yr ave.			\$14		\$13		\$11		\$9	\$9	\$9	\$8	\$8	\$7	\$7	\$5	\$5	\$4
	30% Current	\$32	\$31	\$30	\$28	\$26	\$23	\$20	\$17	\$15	\$14	\$14	\$13	\$12	\$11	\$9	\$8	\$7	\$6
	10yr ave.			\$17		\$15		\$13		\$11	\$11	\$10	\$10	\$10	\$9	\$8	\$6	\$5	\$5
	35% Current	\$38	\$36	\$35	\$33	\$31	\$27	\$23	\$20	\$18	\$17	\$16	\$15	\$14	\$13	\$11	\$9	\$8	\$7
	10yr ave.			\$20		\$18		\$15		\$13	\$12	\$12	\$12	\$11	\$10	\$9	\$7	\$6	\$6
	40% Current	\$43	\$41	\$40	\$37	\$35	\$31	\$26	\$23	\$20	\$19	\$18	\$17	\$16	\$14	\$13	\$10	\$9	\$8
	10yr ave.			\$22		\$20		\$17		\$15	\$14	\$14	\$13	\$13	\$11	\$11	\$8	\$7	\$7
	45% Current	\$49	\$47	\$45	\$42	\$39	\$35	\$30	\$26	\$23	\$21	\$20	\$19	\$18	\$16	\$14	\$12	\$10	\$9
	10yr ave.			\$25		\$23		\$19		\$17	\$16	\$15	\$15	\$14	\$13	\$12	\$9	\$8	\$7
	50% Current	\$54	\$52	\$50	\$47	\$44	\$39	\$33	\$29	\$25	\$24	\$23	\$22	\$20	\$18	\$16	\$13	\$12	\$10
	10yr ave.			\$28		\$26		\$21		\$18	\$18	\$17	\$17	\$16	\$14	\$13	\$11	\$9	\$8
	55% Current	\$59	\$57	\$55	\$51	\$48	\$43	\$36	\$32	\$28	\$26	\$25	\$24	\$22	\$20	\$17	\$14	\$13	\$11
	10yr ave.			\$31		\$28		\$24		\$20	\$19	\$19	\$18	\$18	\$16	\$14	\$12	\$10	\$9
	60% Current	\$65	\$62	\$60	\$56	\$53	\$47	\$40	\$35	\$30	\$29	\$27	\$26	\$24	\$22	\$19	\$16	\$14	\$13
	10yr ave.			\$34		\$31		\$26		\$22	\$21	\$21	\$20	\$19	\$17	\$16	\$13	\$11	\$10
	65% Current	\$70	\$67	\$65	\$61	\$57	\$51	\$43	\$38	\$33	\$31	\$29	\$28	\$26	\$23	\$21	\$17	\$15	\$14
	10yr ave.			\$36		\$33		\$28		\$24	\$23	\$22	\$22	\$21	\$19	\$17	\$14	\$12	\$11
	70% Current	\$76	\$73	\$70	\$65	\$61	\$55	\$46	\$40	\$35	\$33	\$32	\$30	\$28	\$25	\$22	\$18	\$16	\$15
	10yr ave.			\$39		\$36		\$30		\$26	\$25	\$24	\$23	\$22	\$20	\$18	\$15	\$13	\$12
	75% Current	\$81	\$78	\$75	\$70	\$66	\$58	\$49	\$43	\$38	\$36	\$34	\$32	\$30	\$27	\$24	\$20	\$17	\$16
	10yr ave.			\$42		\$38		\$32		\$28	\$26	\$26	\$25	\$24	\$22	\$20	\$16	\$14	\$12
	80% Current	\$86	\$83	\$80	\$75	\$70	\$62	\$53	\$46	\$40	\$38	\$36	\$35	\$32	\$29	\$25	\$21	\$19	\$17
	10yr ave.			\$45		\$41		\$34		\$30	\$28	\$27	\$27	\$26	\$23	\$21	\$17	\$15	\$13
	85% Current	\$92	\$88	\$85	\$79	\$74	\$66	\$56	\$49	\$43	\$40	\$39	\$37	\$34	\$31	\$27	\$22	\$20	\$18
	10yr ave.			\$48		\$44		\$36		\$31	\$30	\$29	\$28	\$27	\$24	\$22	\$18	\$16	\$14

The above shows estimated returns per head for skirted fleece wool. These figures do not take into account the value of skirtings and oddments and do not take into account discounts that may apply for faults under individual circumstances. These figures are based on a market index of 100% and should be used as a guide only. Returns over \$30 / head for fleece wool are highlighted.

Source: Australian Wool Exchange, Australian Wool Innovation, Sydney Futures Exchange, x-rates.com

Disclaimer: While all due care has been taken in the preparation of this document, no warranty is made as to its accuracy, reliability or completeness. To the extent permitted by law neither Jemalong or their sources including subsidiaries and staff, accept liability to any person for loss or damage arising from the use of this information.



Table 19: Returns pr head for skirted fleece wool.

Skirted FLC Weight 3 Kg		Micron																	
		16	16.5	17	17.5	18	18.5	19	19.5	20	21	22	23	24	25	26	28	30	32
Yield (Sch Dry)	25% Current	\$20	\$19	\$19	\$17	\$16	\$15	\$12	\$11	\$9	\$9	\$9	\$8	\$8	\$7	\$6	\$5	\$4	\$4
	10yr ave.			\$10		\$10		\$8		\$7	\$7	\$6	\$6	\$6	\$5	\$5	\$4	\$3	\$3
	30% Current	\$24	\$23	\$23	\$21	\$20	\$18	\$15	\$13	\$11	\$11	\$10	\$10	\$9	\$8	\$7	\$6	\$5	\$5
	10yr ave.			\$13		\$12		\$10		\$8	\$8	\$8	\$8	\$7	\$6	\$6	\$5	\$4	\$4
	35% Current	\$28	\$27	\$26	\$24	\$23	\$20	\$17	\$15	\$13	\$12	\$12	\$11	\$11	\$9	\$8	\$7	\$6	\$5
	10yr ave.			\$15		\$13		\$11		\$10	\$9	\$9	\$9	\$8	\$8	\$7	\$6	\$5	\$4
	40% Current	\$32	\$31	\$30	\$28	\$26	\$23	\$20	\$17	\$15	\$14	\$14	\$13	\$12	\$11	\$9	\$8	\$7	\$6
	10yr ave.			\$17		\$15		\$13		\$11	\$11	\$10	\$10	\$10	\$9	\$8	\$6	\$5	\$5
	45% Current	\$36	\$35	\$34	\$31	\$30	\$26	\$22	\$19	\$17	\$16	\$15	\$15	\$14	\$12	\$11	\$9	\$8	\$7
	10yr ave.			\$19		\$17		\$14		\$12	\$12	\$12	\$11	\$11	\$10	\$9	\$7	\$6	\$6
	50% Current	\$41	\$39	\$38	\$35	\$33	\$29	\$25	\$22	\$19	\$18	\$17	\$16	\$15	\$13	\$12	\$10	\$9	\$8
	10yr ave.			\$21		\$19		\$16		\$14	\$13	\$13	\$13	\$12	\$11	\$10	\$8	\$7	\$6
	55% Current	\$45	\$43	\$41	\$38	\$36	\$32	\$27	\$24	\$21	\$20	\$19	\$18	\$17	\$15	\$13	\$11	\$10	\$9
	10yr ave.			\$23		\$21		\$18		\$15	\$15	\$14	\$14	\$13	\$12	\$11	\$9	\$8	\$7
	60% Current	\$49	\$47	\$45	\$42	\$39	\$35	\$30	\$26	\$23	\$21	\$20	\$19	\$18	\$16	\$14	\$12	\$10	\$9
	10yr ave.			\$25		\$23		\$19		\$17	\$16	\$15	\$15	\$14	\$13	\$12	\$9	\$8	\$7
	65% Current	\$53	\$51	\$49	\$45	\$43	\$38	\$32	\$28	\$25	\$23	\$22	\$21	\$20	\$18	\$15	\$13	\$11	\$10
	10yr ave.			\$27		\$25		\$21		\$18	\$17	\$17	\$16	\$16	\$14	\$13	\$10	\$9	\$8
	70% Current	\$57	\$54	\$53	\$49	\$46	\$41	\$35	\$30	\$26	\$25	\$24	\$23	\$21	\$19	\$17	\$14	\$12	\$11
	10yr ave.			\$29		\$27		\$23		\$19	\$19	\$18	\$18	\$17	\$15	\$14	\$11	\$10	\$9
	75% Current	\$61	\$58	\$56	\$52	\$49	\$44	\$37	\$32	\$28	\$27	\$26	\$24	\$23	\$20	\$18	\$15	\$13	\$12
	10yr ave.			\$31		\$29		\$24		\$21	\$20	\$19	\$19	\$18	\$16	\$15	\$12	\$10	\$9
	80% Current	\$65	\$62	\$60	\$56	\$53	\$47	\$40	\$35	\$30	\$29	\$27	\$26	\$24	\$22	\$19	\$16	\$14	\$13
	10yr ave.			\$34		\$31		\$26		\$22	\$21	\$21	\$20	\$19	\$17	\$16	\$13	\$11	\$10
	85% Current	\$69	\$66	\$64	\$59	\$56	\$50	\$42	\$37	\$32	\$30	\$29	\$28	\$26	\$23	\$20	\$17	\$15	\$13
	10yr ave.			\$36		\$33		\$27		\$24	\$23	\$22	\$21	\$20	\$18	\$17	\$13	\$12	\$11

The above shows estimated returns per head for skirted fleece wool. These figures do not take into account the value of skirtings and oddments and do not take into account discounts that may apply for faults under individual circumstances. These figures are based on a market index of 100% and should be used as a guide only. Returns over \$30 / head for fleece wool are highlighted.

Source: Australian Wool Exchange, Australian Wool Innovation, Sydney Futures Exchange, x-rates.com

Disclaimer: While all due care has been taken in the preparation of this document, no warranty is made as to its accuracy, reliability or completeness. To the extent permitted by law neither Jemalong or their sources including subsidiaries and staff, accept liability to any person for loss or damage arising from the use of this information.



Table 20: Returns pr head for skirted fleece wool.

Skirted FLC Weight		Micron																	
2 Kg		16	16.5	17	17.5	18	18.5	19	19.5	20	21	22	23	24	25	26	28	30	32
Yield (Sch Dry)	25% Current	\$14	\$13	\$13	\$12	\$11	\$10	\$8	\$7	\$6	\$6	\$6	\$5	\$5	\$4	\$4	\$3	\$3	\$3
	10yr ave.			\$7		\$6		\$5		\$5	\$4	\$4	\$4	\$4	\$4	\$3	\$3	\$2	\$2
	30% Current	\$16	\$16	\$15	\$14	\$13	\$12	\$10	\$9	\$8	\$7	\$7	\$6	\$6	\$5	\$5	\$4	\$3	\$3
	10yr ave.			\$8		\$8		\$6		\$6	\$5	\$5	\$5	\$5	\$4	\$4	\$3	\$3	\$2
	35% Current	\$19	\$18	\$18	\$16	\$15	\$14	\$12	\$10	\$9	\$8	\$8	\$8	\$7	\$6	\$6	\$5	\$4	\$4
	10yr ave.			\$10		\$9		\$8		\$6	\$6	\$6	\$6	\$6	\$5	\$5	\$4	\$3	\$3
	40% Current	\$22	\$21	\$20	\$19	\$18	\$16	\$13	\$12	\$10	\$10	\$9	\$9	\$8	\$7	\$6	\$5	\$5	\$4
	10yr ave.			\$11		\$10		\$9		\$7	\$7	\$7	\$7	\$6	\$6	\$5	\$4	\$4	\$3
	45% Current	\$24	\$23	\$23	\$21	\$20	\$18	\$15	\$13	\$11	\$11	\$10	\$10	\$9	\$8	\$7	\$6	\$5	\$5
	10yr ave.			\$13		\$12		\$10		\$8	\$8	\$8	\$8	\$7	\$6	\$6	\$5	\$4	\$4
	50% Current	\$27	\$26	\$25	\$23	\$22	\$19	\$16	\$14	\$13	\$12	\$11	\$11	\$10	\$9	\$8	\$7	\$6	\$5
	10yr ave.			\$14		\$13		\$11		\$9	\$9	\$9	\$8	\$8	\$7	\$7	\$5	\$5	\$4
	55% Current	\$30	\$28	\$28	\$26	\$24	\$21	\$18	\$16	\$14	\$13	\$12	\$12	\$11	\$10	\$9	\$7	\$6	\$6
	10yr ave.			\$15		\$14		\$12		\$10	\$10	\$9	\$9	\$9	\$8	\$7	\$6	\$5	\$5
	60% Current	\$32	\$31	\$30	\$28	\$26	\$23	\$20	\$17	\$15	\$14	\$14	\$13	\$12	\$11	\$9	\$8	\$7	\$6
	10yr ave.			\$17		\$15		\$13		\$11	\$11	\$10	\$10	\$10	\$9	\$8	\$6	\$5	\$5
	65% Current	\$35	\$34	\$33	\$30	\$28	\$25	\$21	\$19	\$16	\$15	\$15	\$14	\$13	\$12	\$10	\$8	\$8	\$7
	10yr ave.			\$18		\$17		\$14		\$12	\$11	\$11	\$11	\$10	\$9	\$9	\$7	\$6	\$5
	70% Current	\$38	\$36	\$35	\$33	\$31	\$27	\$23	\$20	\$18	\$17	\$16	\$15	\$14	\$13	\$11	\$9	\$8	\$7
	10yr ave.			\$20		\$18		\$15		\$13	\$12	\$12	\$12	\$11	\$10	\$9	\$7	\$6	\$6
	75% Current	\$41	\$39	\$38	\$35	\$33	\$29	\$25	\$22	\$19	\$18	\$17	\$16	\$15	\$13	\$12	\$10	\$9	\$8
	10yr ave.			\$21		\$19		\$16		\$14	\$13	\$13	\$13	\$12	\$11	\$10	\$8	\$7	\$6
	80% Current	\$43	\$41	\$40	\$37	\$35	\$31	\$26	\$23	\$20	\$19	\$18	\$17	\$16	\$14	\$13	\$10	\$9	\$8
	10yr ave.			\$22		\$20		\$17		\$15	\$14	\$14	\$13	\$13	\$11	\$11	\$8	\$7	\$7
	85% Current	\$46	\$44	\$43	\$40	\$37	\$33	\$28	\$25	\$21	\$20	\$19	\$18	\$17	\$15	\$13	\$11	\$10	\$9
	10yr ave.			\$24		\$22		\$18		\$16	\$15	\$15	\$14	\$14	\$12	\$11	\$9	\$8	\$7

The above shows estimated returns per head for skirted fleece wool. These figures do not take into account the value of skirtings and oddments and do not take into account discounts that may apply for faults under individual circumstances. These figures are based on a market index of 100% and should be used as a guide only. Returns over \$30 / head for fleece wool are highlighted.

Source: Australian Wool Exchange, Australian Wool Innovation, Sydney Futures Exchange, x-rates.com

Disclaimer: While all due care has been taken in the preparation of this document, no warranty is made as to its accuracy, reliability or completeness. To the extent permitted by law neither Jemalong or their sources including subsidiaries and staff, accept liability to any person for loss or damage arising from the use of this information.