



JEMALONG WOOL BULLETIN

(week ending 3/11/2011)

Table 1: Northern Region Micron Price Guides

CURRENT MARKET				12 MONTH COMPARISONS								3 YEAR COMPARISONS					10 YEAR COMPARISONS						
Mic. Price Guides	3/11/2011 Current Price	27/10/2011 Weekly Change		3/11/2010 This time Last Year	Now compared to Last Year		Now compared to Low	12 Month Low	Now compared to Low	12 Month High	Now compared to High		Low	High	Average	Now compared to 3yr ave	Percentile		Low	High	10 year Average	Now compared to 10yr ave	Percentile
NRI	1267	+10 0.8%		1023	+244 24%		1023	+244 24%		1491	-224 -15%		749	1491	1023	+244 24%	77%		657	1491	919	+348 38%	93%
16*	2150	0		1950	+200 10%		1950	+200 10%		2800	-650 -23%		1385	2800	1883	+267 14%	75%						
16.5*	1950	0		1780	+170 10%		1780	+170 10%		2680	-730 -27%		1252	2680	1735	+215 12%	74%						
17*	1800	-10 -0.6%		1660	+140 8%		1660	+140 8%		2530	-730 -29%		1169	2530	1600	+200 13%	73%		1100	2530	1443	+357 25%	88%
17.5*	1695	0		1560	+135 9%		1560	+135 9%		2360	-665 -28%		1084	2360	1501	+194 13%	74%						
18	1602	+5 0.3%		1433	+169 12%		1433	+169 12%		2193	-591 -27%		1035	2193	1410	+192 14%	73%		916	2193	1276	+326 26%	86%
18.5	1553	+14 0.9%		1357	+196 14%		1357	+196 14%		1963	-410 -21%		971	1963	1317	+236 18%	76%						
19	1500	+3 0.2%		1228	+272 22%		1228	+272 22%		1776	-276 -16%		894	1776	1215	+285 23%	76%		803	1776	1101	+399 36%	93%
19.5	1448	+9 0.6%		1124	+324 29%		1094	+354 32%		1670	-222 -13%		814	1670	1116	+332 30%	82%						
20	1411	+18 1.3%		1054	+357 34%		986	+425 43%		1588	-177 -11%		739	1588	1038	+373 36%	92%		700	1588	970	+441 45%	97%
21	1340	-1 -0.1%		1004	+336 33%		956	+384 40%		1522	-182 -12%		693	1522	1003	+337 34%	90%		668	1522	929	+411 44%	97%
22	1236	+18 1.5%		970	+266 27%		913	+323 35%		1461	-225 -15%		681	1461	972	+264 27%	83%		659	1461	902	+334 37%	91%
23	1116	+15 1.3%		916	+200 22%		876	+240 27%		1324	-208 -16%		663	1324	930	+186 20%	82%		651	1340	875	+241 28%	88%
24	1033	+8 0.8%		839	+194 23%		820	+213 26%		1170	-137 -12%		647	1170	858	+175 20%	87%		638	1299	828	+205 25%	90%
25	890	-12 -1.3%		766	+124 16%		738	+152 21%		1048	-158 -15%		566	1048	744	+146 20%	80%		567	1198	739	+151 20%	77%
26	794	0		683	+111 16%		634	+160 25%		928	-134 -14%		504	928	671	+123 18%	80%		532	1088	675	+119 18%	76%
28	643	-14 -2.2%		480	+163 34%		478	+165 35%		734	-91 -12%		431	734	524	+119 23%	79%		424	889	532	+111 21%	80%
30	612	-1 -0.2%		425	+187 44%		423	+189 45%		670	-58 -9%		377	670	469	+143 30%	83%		344	729	464	+148 32%	86%
32	576	-7 -1.2%		395	+181 46%		388	+188 48%		638	-62 -10%		326	638	416	+160 38%	86%		297	669	418	+158 38%	89%
MC	725	+2 0.3%		631	+94 15%		627	+98 16%		831	-106 -13%		444	831	627	+98 16%	78%		380	831	529	+196 37%	94%

Note:

* Due to the irregular market quoting for some fine wool categories, figures shown relating to micron categories below 18 micron are an estimate based on the AWEX Premium & Discounts Report & other available information.

* For any category, where there is insufficient quantity offered to enable AWEX to quote, a quote will be provided based on the best available information.

* 10 Year data is not available for some micron categories, which may result in blank spaces in the table above.

Definitions:

* A Percentile, is a value on a scale of one hundred that indicates the percent of a distribution that is equal to or below it. In general a percentile between 25% and 75% is considered normal, a percentile below 25% is considered below normal and a percentile above 75% is considered above normal.

Three and ten year percentiles shown in the table above, detail the period of time during the past 3 & 10 years that the market has traded either at or below its current price.

The higher the percentile, the stronger the market.

Source: Australian Wool Exchange, Australian Wool Innovation, Sydney Futures Exchange, x-rates.com

Disclaimer: While all due care has been taken in the preparation of this document, no warranty is made as to its accuracy, reliability or completeness. To the extent permitted by law neither Jemalong or their sources including subsidiaries and staff, accept liability to any person for loss or damage arising from the use of this information.



MARKET COMMENTARY

One Australian Dollar = \$ 1.02 US, as of 3/11/2011

NORTHERN REGION –Sale Week 18/11 (40,120 bales offered nationally)

Wednesday - The market continued moving in the right direction. 18.5 to 21.5 microns gained 15-20 cents, 18 micron and finer remained firm, with better strength lots also gaining 15-20 cents, while at the broader end 22-23 microns rose 30-40 cents (on a limited offering). A very strong market had merino skirtings propelled 50-60 cents for all <5% Vm types (with the finer microns most affected). While not as significant, the burrier lots with 8% Vm and greater still rose a healthy 30 cents. In the oddments, fine locks closed 10-20 cents dearer while 19 micron and stronger were tending in sellers' favour. Crutchings also remained fully firm with stains slightly dearer on a limited offering. 27 to 29 micron crossbreds finished unchanged while 30 micron and broader ended the day slightly higher. 3.6% PI

Thursday - The market took a step back, with fleece generally 10-15 cents easier. Most microns began the day close to their previous levels but drifted lower as the sale progressed. 20 micron bucked the trend remaining fairly firm, as did the finer microns (on a limited offering). Unlike the fleece, merino skirtings remained very solid with buyer support keeping all descriptions fully firm. All oddments remained unchanged with locks attracting good support on a reasonable selection, while crutchings & stains presented a limited offering of mostly 8-10% Vm types. In the crossbreds, the finer microns remained generally unchanged on a limited offering while 28 to 30 microns were 10 cents easier. 4.7% PI.

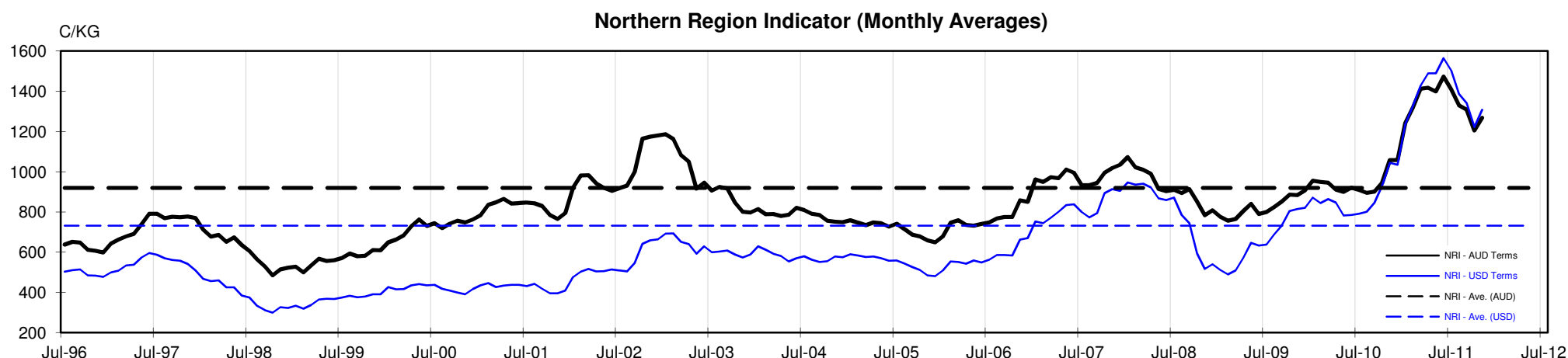




Table 4: 19 micron SFE

Wednesday, 2 November 2011

Delivery Mth	Dec-11	Feb-12	Apr-12	Jun-12	Aug-12	Oct-12	Dec-12	Feb-13	Mar-13
19 Micron SFE	1480	1475	1455	1425	1415	1415	1375	1375	1375
Average	1343	1365	1381	1405	1394	1393	1393	1356	1323
Maximum	1677	1652	1622	1612	1525	1525	1525	1525	1375
Minimum	1034	1053	1106	1210	1285	1285	1285	1265	1265

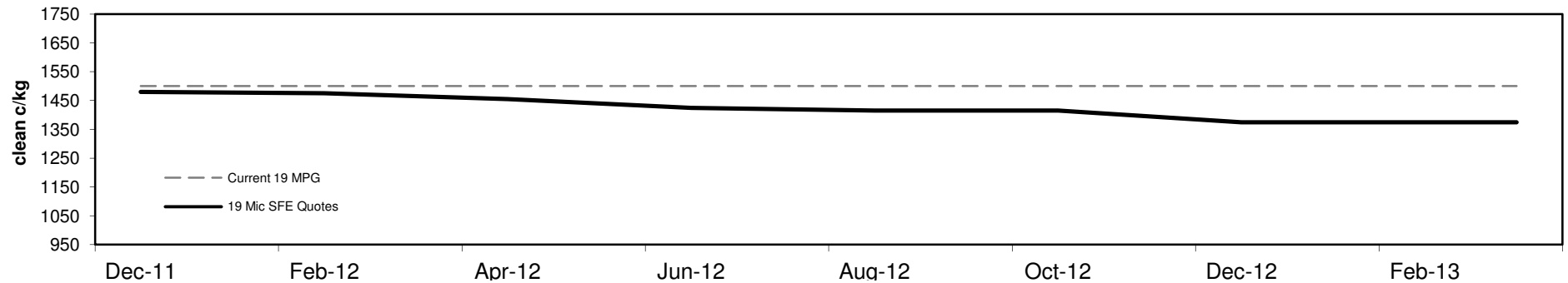
Table 5: 19 micron SFE, as a percentile of the 19 micron MPG

3 Year Percentile	76%	75%	75%	74%	74%	74%	72%	72%	72%
10 Year Percentile	93%	93%	92%	92%	92%	92%	90%	90%	90%

Table 6: 19 micron SFE, compared to MPG

SFE - MPG	-20	-1%	-25	-2%	-45	-3%	-75	-5%	-85	-6%	-85	-6%	-125	-8%	-125	-8%	-125	-8%
SFE - MPG, 1 year Ave.	-99	-6%	-104	-7%	-124	-8%	-154	-10%	-164	-10%	-164	-10%	-204	-13%	-204	-13%	-204	-13%
SFE - MPG, 3 year Ave.	+265	22%	+260	21%	+240	20%	+210	17%	+200	16%	+200	16%	+160	13%	+160	13%	+160	13%
SFE - MPG, 10 year Ave.	+379	34%	+374	34%	+354	32%	+324	29%	+314	29%	+314	29%	+274	25%	+274	25%	+274	25%

19 MICRON SFE, QUOTES



19 Micron SFE, Front month movement

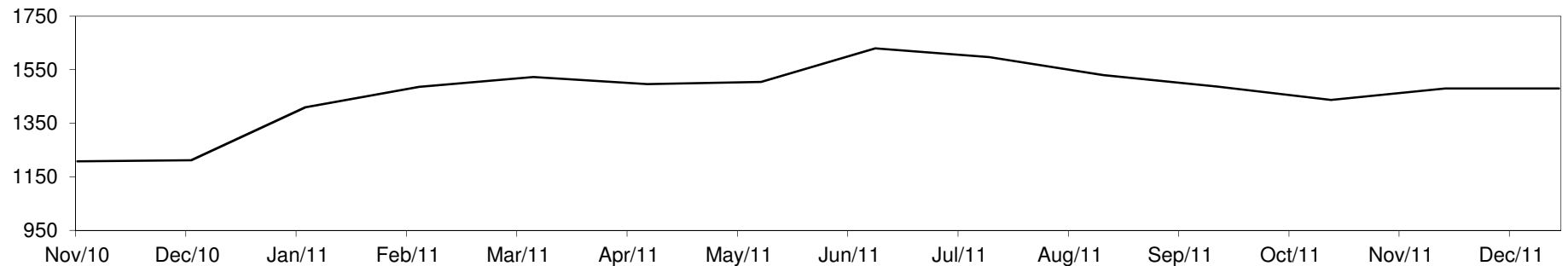




Table 7: 21 micron SFE

Wednesday, 2 November 2011

Delivery Mth	Dec-11	Feb-12	Apr-12	Jun-12	Aug-12	Oct-12	Dec-12	Feb-13	Mar-13
21 Micron SFE	1354	1375	1349	1337	1321	1161	1217	1182	1161
Average	1108	1116	1133	1129	1135	1151	1151	1136	1106
Maximum	1411	1393	1349	1337	1321	1283	1283	1222	1182
Minimum	880	880	934	990	1046	1013	1013	1080	1048

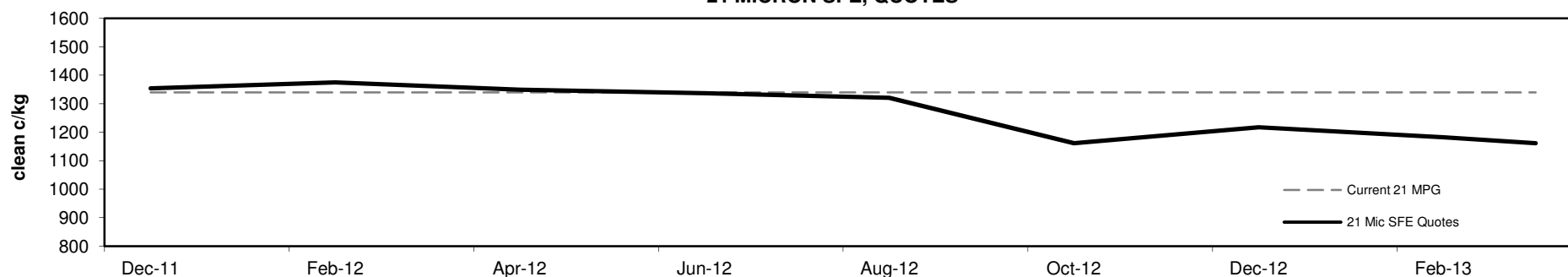
Table 8: 21 micron SFE, as a percentile of the 21 micron MPG

3 Year Percentile	92%	93%	91%	89%	86%	76%	78%	76%	76%
10 Year Percentile	97%	98%	97%	96%	96%	87%	88%	87%	87%

Table 9: 21 micron SFE, compared to MPG

SFE - MPG	+14	1%	+35	3%	+9	1%	-3	0%	-19	-1%	-179	-13%	-123	-9%	-158	-12%	-179	-13%
SFE - MPG, 1 year Ave.	+73	6%	+94	7%	+68	5%	+56	4%	+40	3%	-120	-9%	-64	-5%	-99	-8%	-120	-9%
SFE - MPG, 3 year Ave.	+351	35%	+372	37%	+346	34%	+334	33%	+318	32%	+158	16%	+214	21%	+179	18%	+158	16%
SFE - MPG, 10 year Ave.	+425	46%	+446	48%	+420	45%	+408	44%	+392	42%	+232	25%	+288	31%	+253	27%	+232	25%

21 MICRON SFE, QUOTES



21 Micron SFE, Front month movement

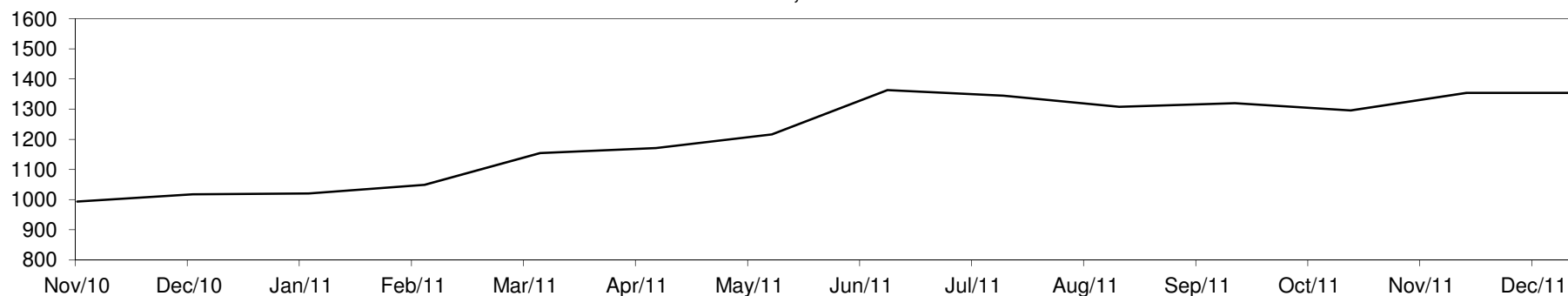




Table 10: 23 micron SFE

Wednesday, 2 November 2011

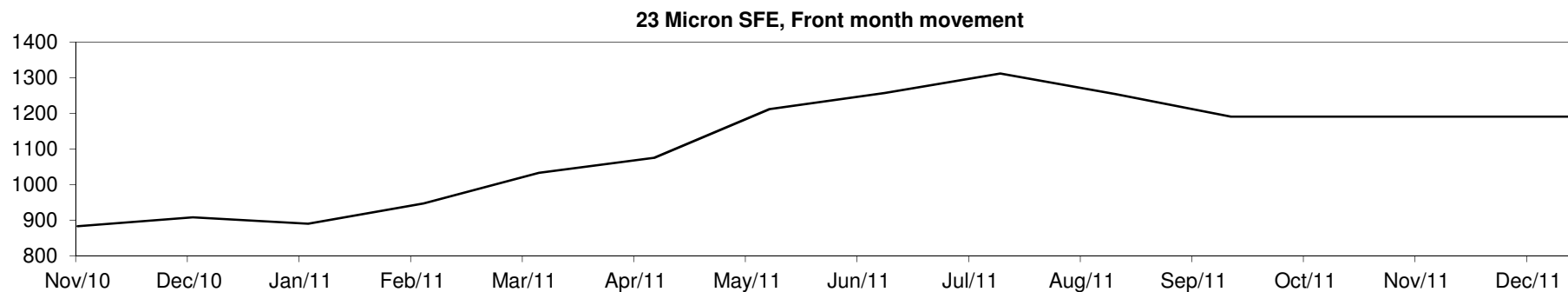
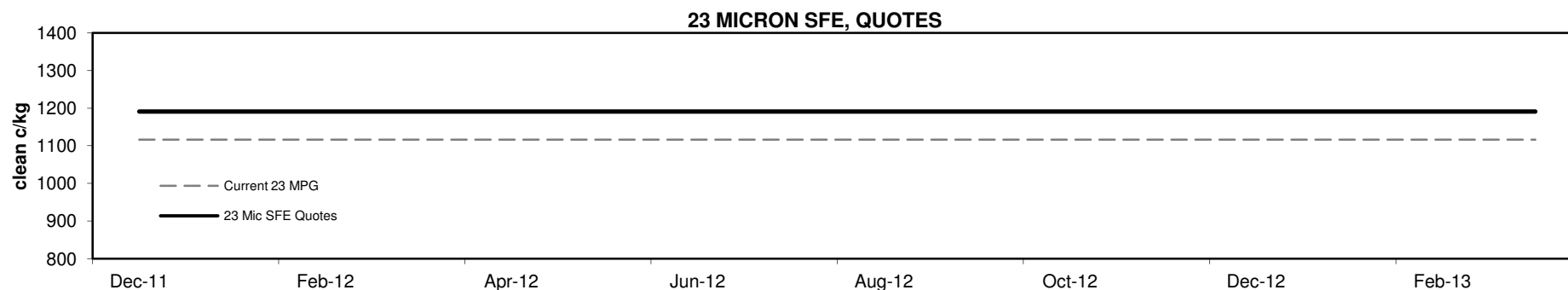
Delivery Mth	Dec-11	Feb-12	Apr-12	Jun-12	Aug-12	Oct-12	Dec-12	Feb-13	Mar-13
23 Micron SFE	1191	1191	1191	1191	1191	1191	1191	1191	1191
Average	1033	1057	1089	1127	1180	1227	1227	1233	1191
Maximum	1312	1312	1312	1312	1312	1312	1312	1312	1191
Minimum	883	883	883	890	1033	1191	1191	1191	1191

Table 11: 23 micron SFE, as a percentile of the 23 micron MPG

3 Year Percentile	87%	87%	87%	87%	87%	87%	87%	87%	87%
10 Year Percentile	91%	91%	91%	91%	91%	91%	91%	91%	91%

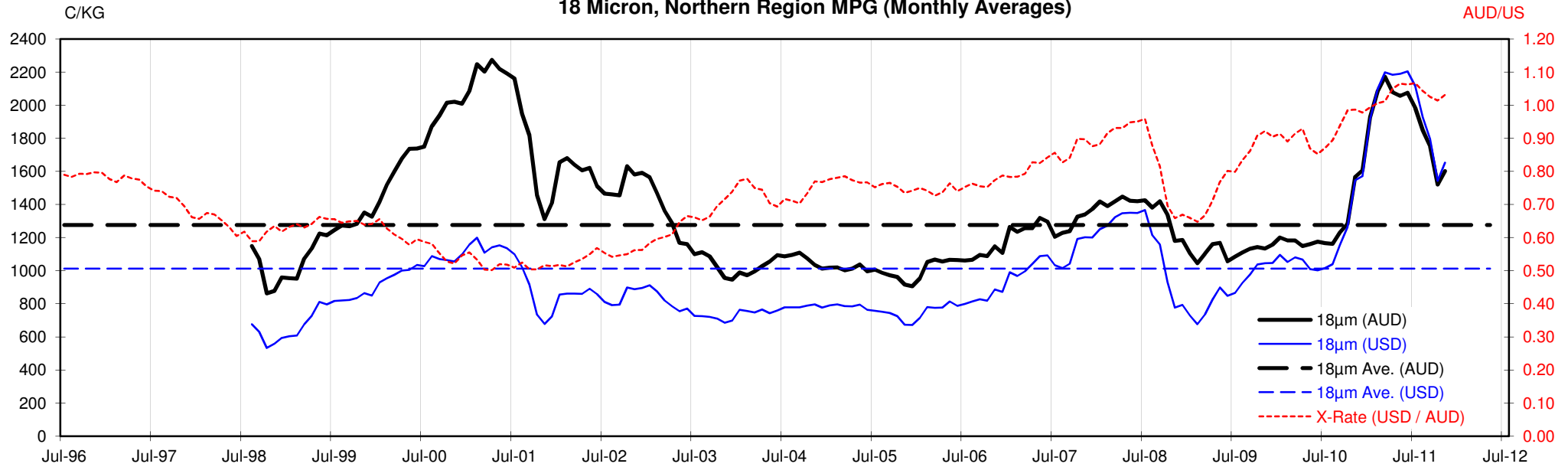
Table 12: 23 micron SFE, compared to MPG

SFE - MPG	+75	7%	+75	7%	+75	7%	+75	7%	+75	7%	+75	7%	+75	7%	+75	7%	+75	7%
SFE - MPG, 1 year Ave.	+47	4%	+47	4%	+47	4%	+47	4%	+47	4%	+47	4%	+47	4%	+47	4%	+47	4%
SFE - MPG, 3 year Ave.	+261	28%	+261	28%	+261	28%	+261	28%	+261	28%	+261	28%	+261	28%	+261	28%	+261	28%
SFE - MPG, 10 year Ave.	+316	36%	+316	36%	+316	36%	+316	36%	+316	36%	+316	36%	+316	36%	+316	36%	+316	36%

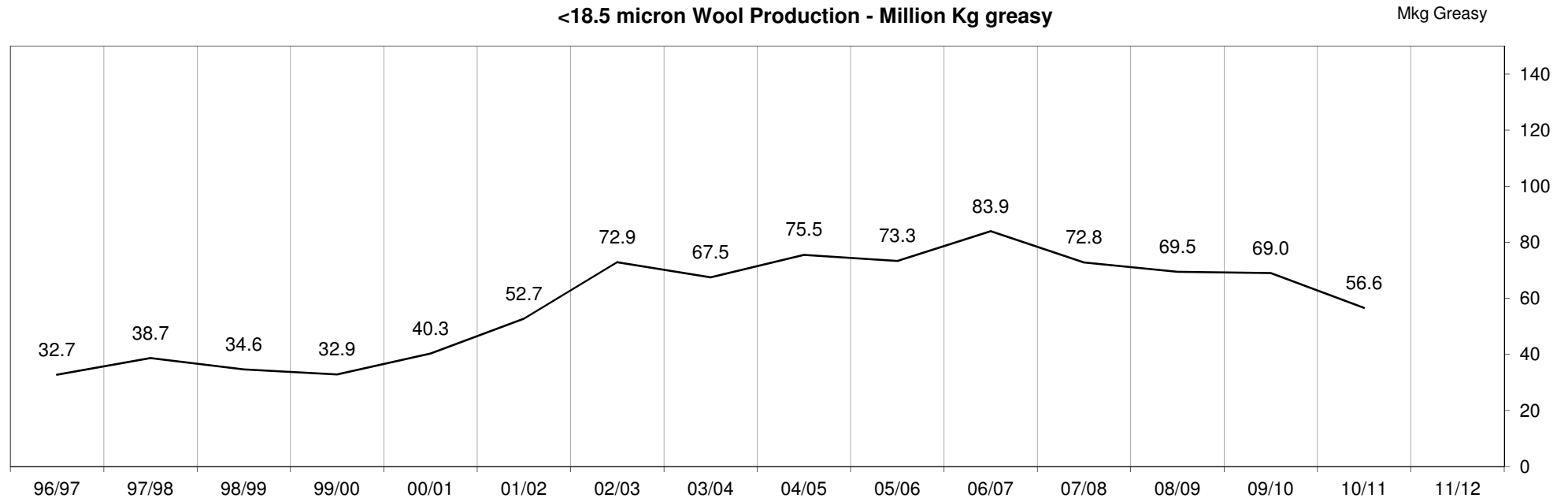


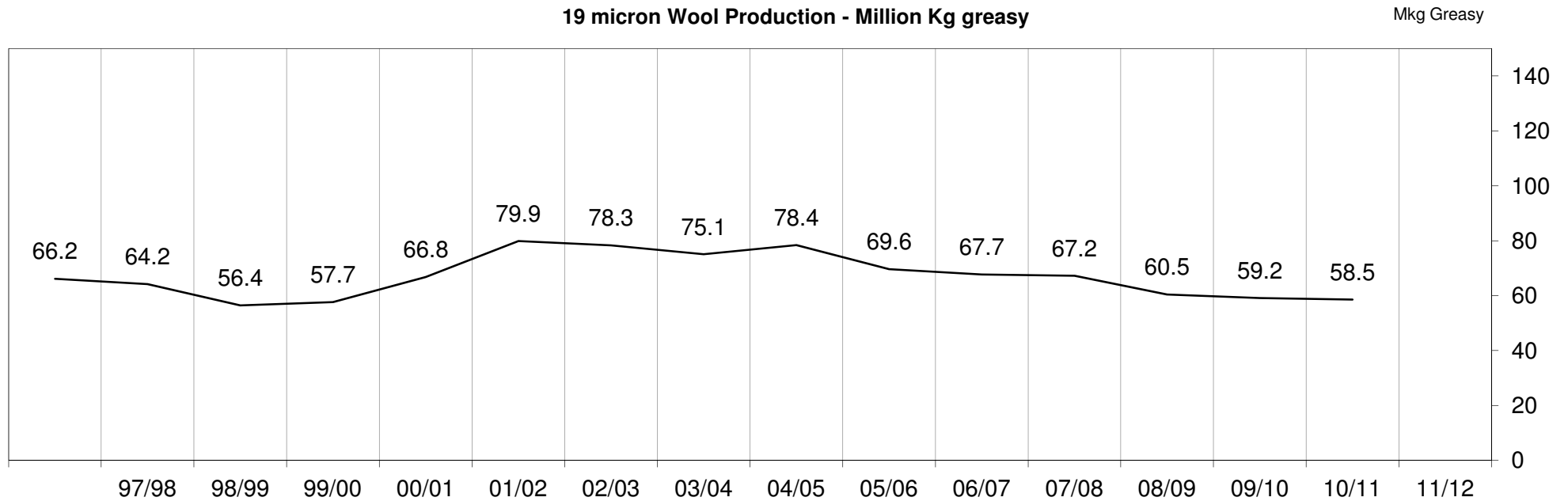
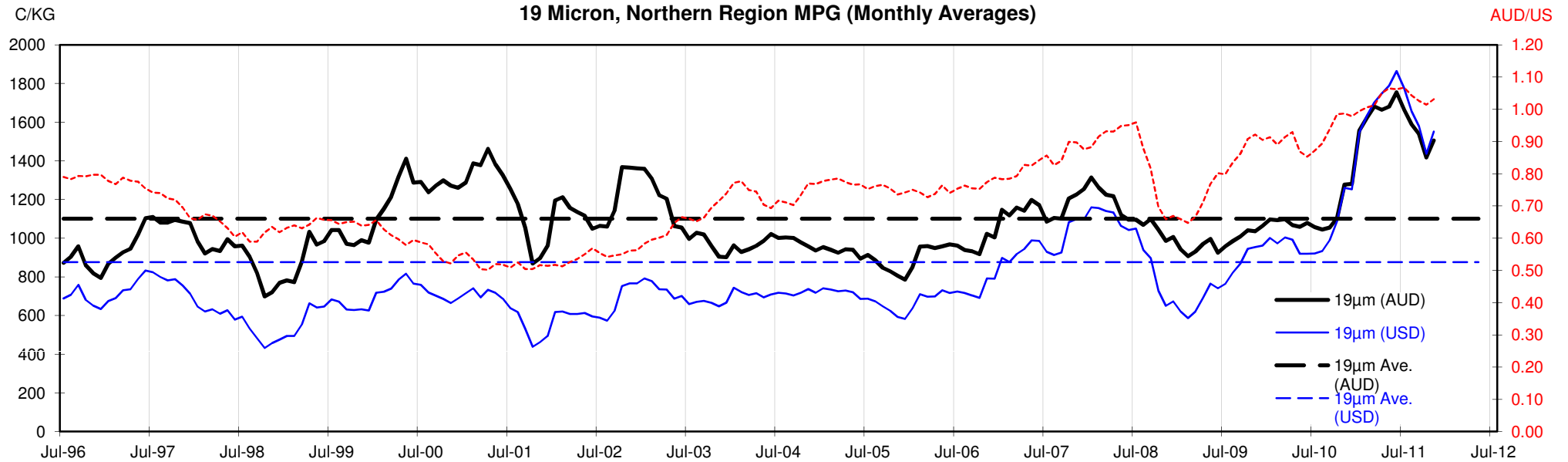


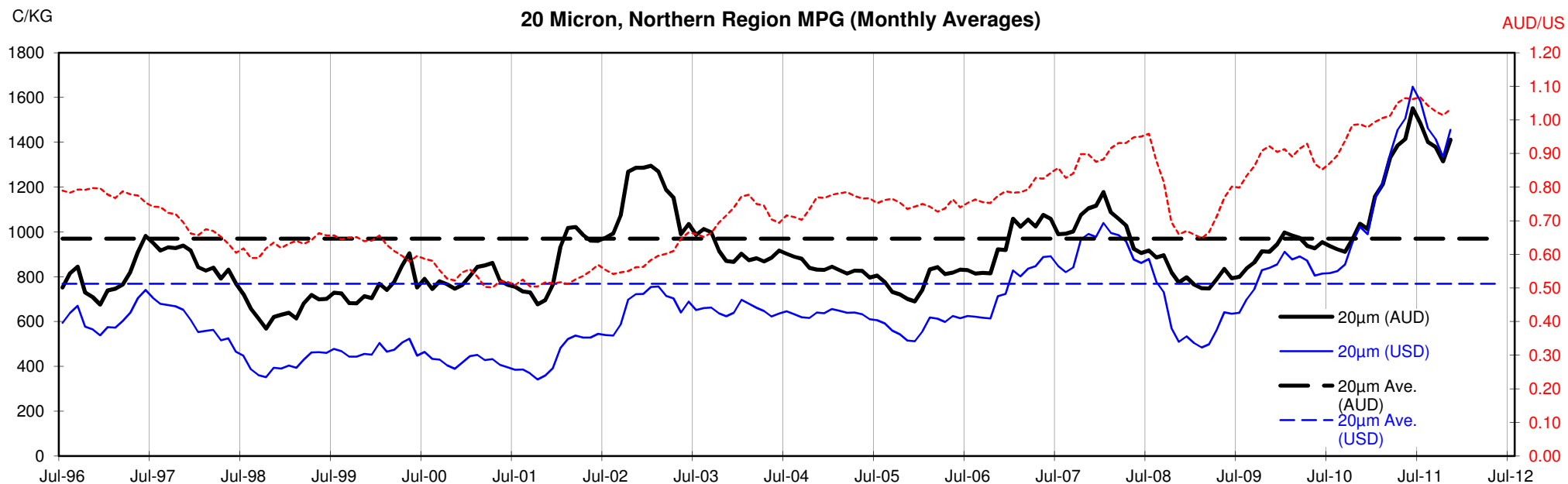
18 Micron, Northern Region MPG (Monthly Averages)

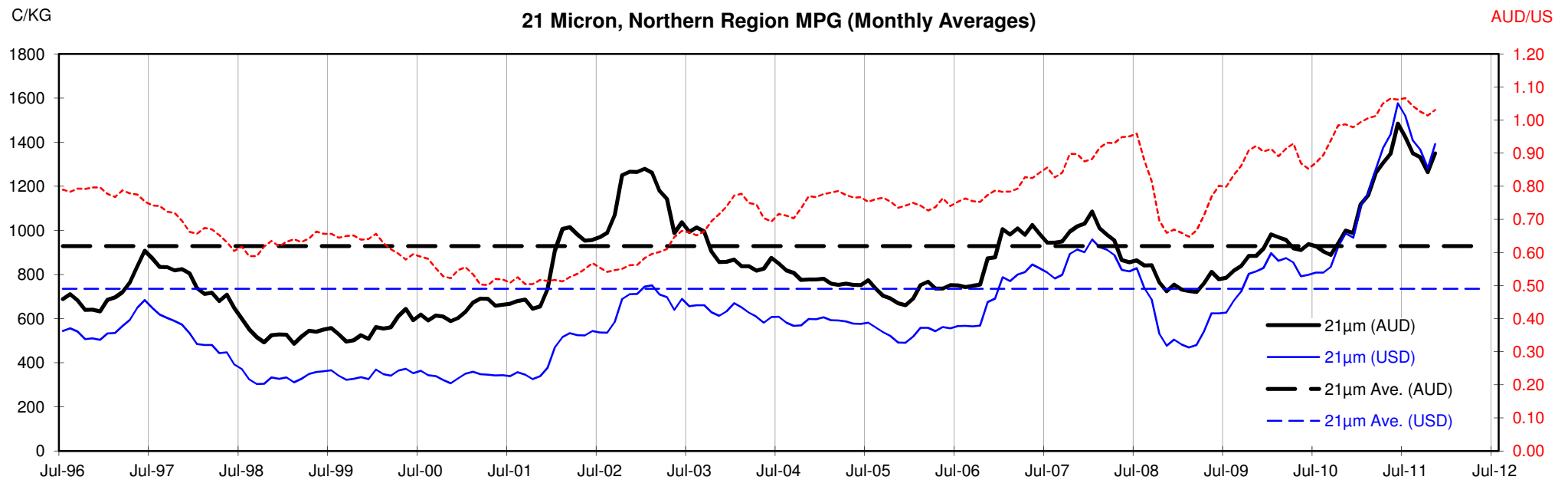


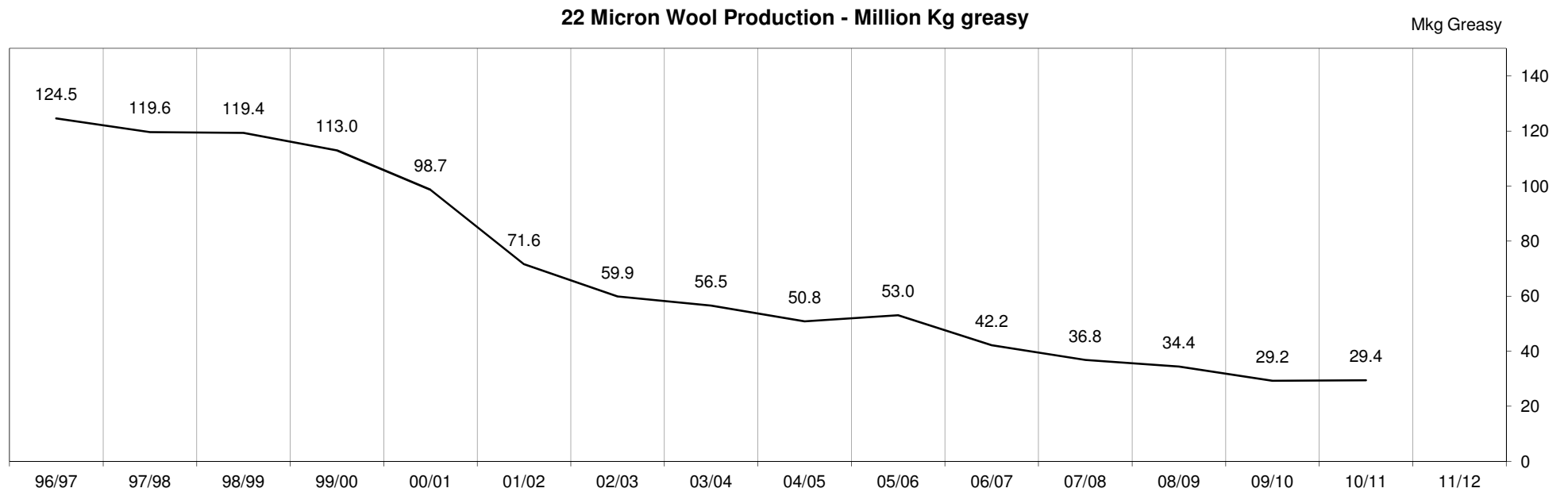
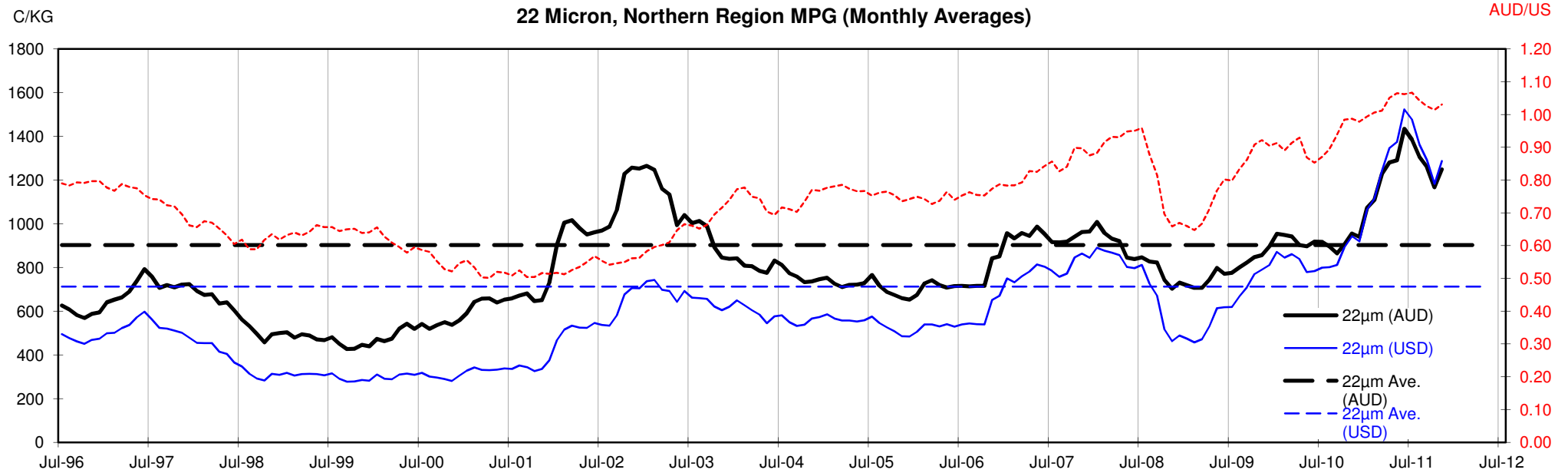
<18.5 micron Wool Production - Million Kg greasy

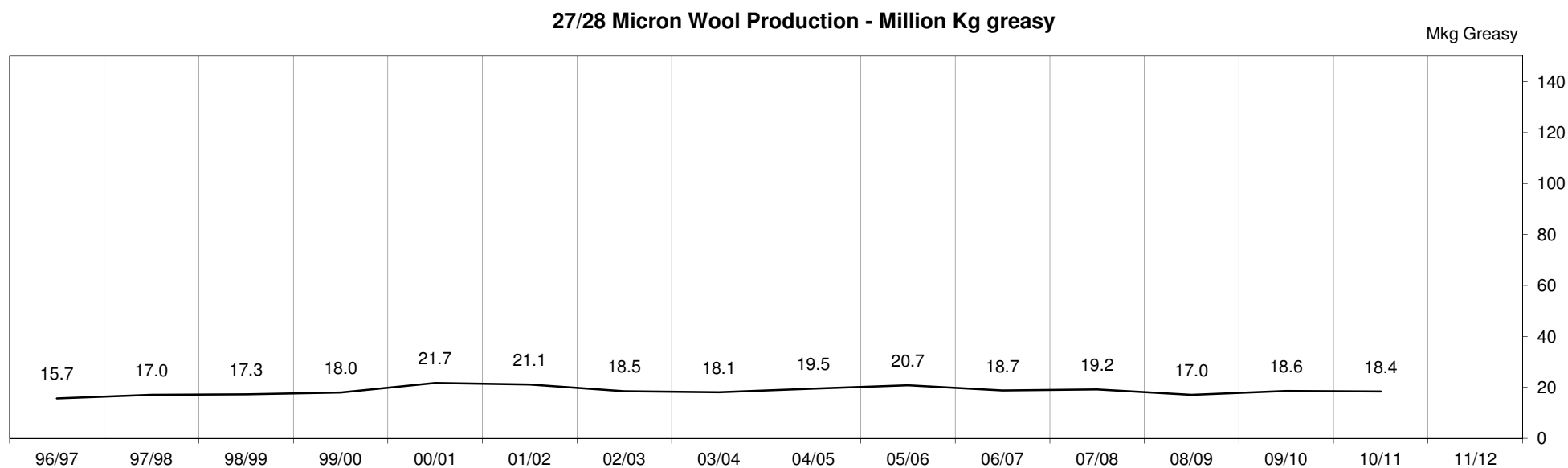
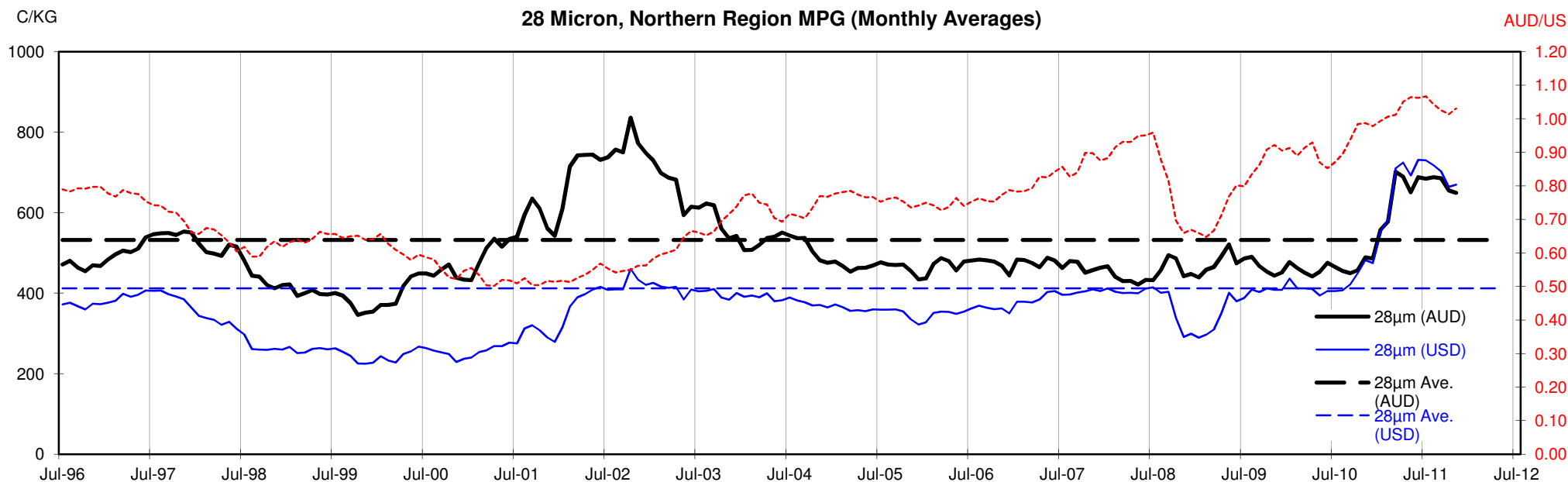












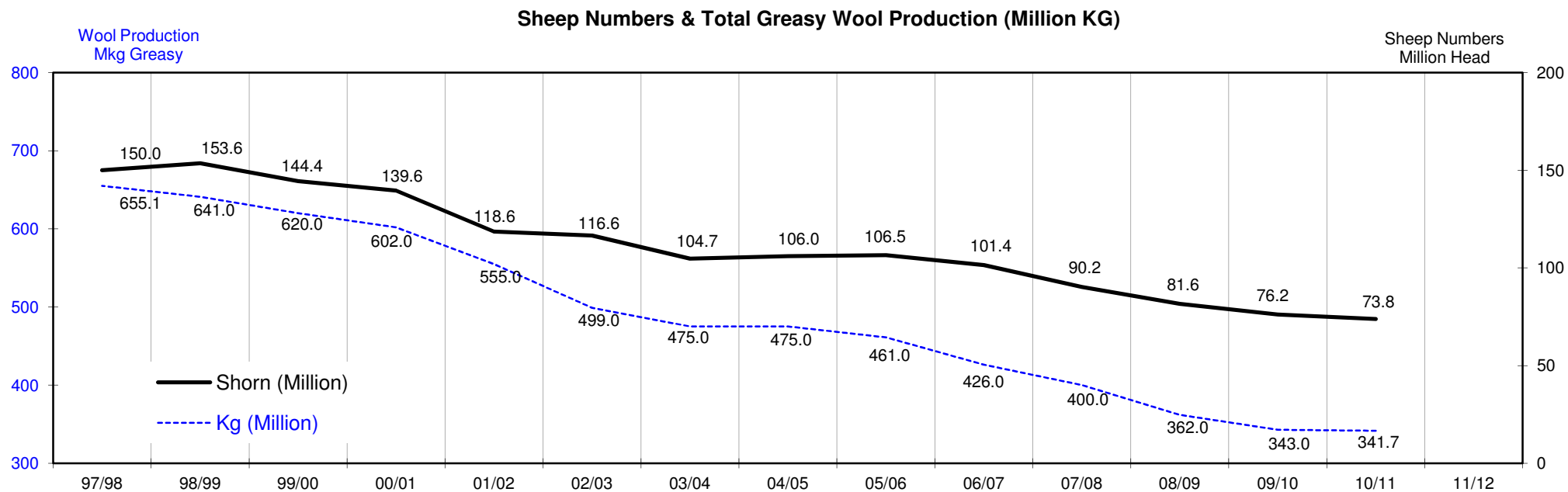
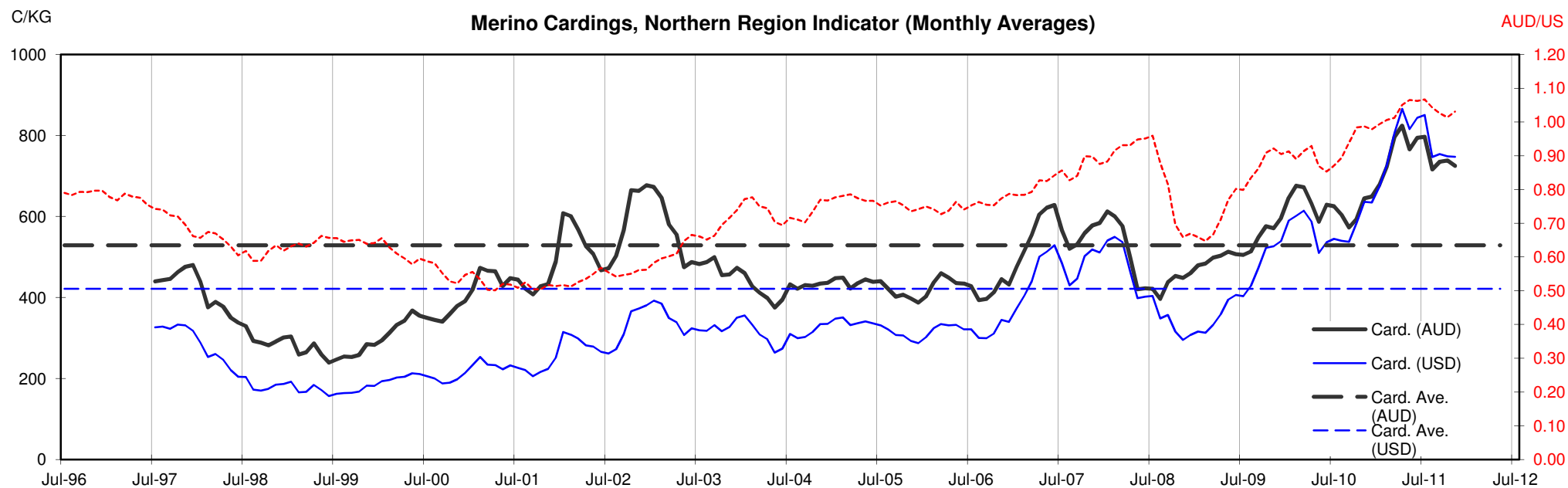




Table 13: Returns pr head for skirted fleece wool.

Skirted FLC Weight			Micron																	
			16	16.5	17	17.5	18	18.5	19	19.5	20	21	22	23	24	25	26	28	30	32
Yield (Sch Dry)	9 Kg																			
	25%	Current	\$48	\$44	\$41	\$38	\$36	\$35	\$34	\$33	\$32	\$30	\$28	\$25	\$23	\$20	\$18	\$14	\$14	\$13
		10yr ave.			\$32		\$29		\$25		\$22	\$21	\$20	\$20	\$19	\$17	\$15	\$12	\$10	\$9
	30%	Current	\$58	\$53	\$49	\$46	\$43	\$42	\$41	\$39	\$38	\$36	\$33	\$30	\$28	\$24	\$21	\$17	\$17	\$16
		10yr ave.			\$39		\$34		\$30		\$26	\$25	\$24	\$24	\$22	\$20	\$18	\$14	\$13	\$11
	35%	Current	\$68	\$61	\$57	\$53	\$50	\$49	\$47	\$46	\$44	\$42	\$39	\$35	\$33	\$28	\$25	\$20	\$19	\$18
		10yr ave.			\$45		\$40		\$35		\$31	\$29	\$28	\$28	\$26	\$23	\$21	\$17	\$15	\$13
	40%	Current	\$77	\$70	\$65	\$61	\$58	\$56	\$54	\$52	\$51	\$48	\$44	\$40	\$37	\$32	\$29	\$23	\$22	\$21
		10yr ave.			\$52		\$46		\$40		\$35	\$33	\$32	\$32	\$30	\$27	\$24	\$19	\$17	\$15
	45%	Current	\$87	\$79	\$73	\$69	\$65	\$63	\$61	\$59	\$57	\$54	\$50	\$45	\$42	\$36	\$32	\$26	\$25	\$23
		10yr ave.			\$58		\$52		\$45		\$39	\$38	\$37	\$35	\$34	\$30	\$27	\$22	\$19	\$17
	50%	Current	\$97	\$88	\$81	\$76	\$72	\$70	\$68	\$65	\$63	\$60	\$56	\$50	\$46	\$40	\$36	\$29	\$28	\$26
		10yr ave.			\$65		\$57		\$50		\$44	\$42	\$41	\$39	\$37	\$33	\$30	\$24	\$21	\$19
	55%	Current	\$106	\$97	\$89	\$84	\$79	\$77	\$74	\$72	\$70	\$66	\$61	\$55	\$51	\$44	\$39	\$32	\$30	\$29
	10yr ave.			\$71		\$63		\$54		\$48	\$46	\$45	\$43	\$41	\$37	\$33	\$26	\$23	\$21	
60%	Current	\$116	\$105	\$97	\$92	\$87	\$84	\$81	\$78	\$76	\$72	\$67	\$60	\$56	\$48	\$43	\$35	\$33	\$31	
	10yr ave.			\$78		\$69		\$59		\$52	\$50	\$49	\$47	\$45	\$40	\$36	\$29	\$25	\$23	
65%	Current	\$126	\$114	\$105	\$99	\$94	\$91	\$88	\$85	\$83	\$78	\$72	\$65	\$60	\$52	\$46	\$38	\$36	\$34	
	10yr ave.			\$84		\$75		\$64		\$57	\$54	\$53	\$51	\$48	\$43	\$39	\$31	\$27	\$24	
70%	Current	\$135	\$123	\$113	\$107	\$101	\$98	\$95	\$91	\$89	\$84	\$78	\$70	\$65	\$56	\$50	\$41	\$39	\$36	
	10yr ave.			\$91		\$80		\$69		\$61	\$59	\$57	\$55	\$52	\$47	\$43	\$34	\$29	\$26	
75%	Current	\$145	\$132	\$122	\$114	\$108	\$105	\$101	\$98	\$95	\$90	\$83	\$75	\$70	\$60	\$54	\$43	\$41	\$39	
	10yr ave.			\$97		\$86		\$74		\$65	\$63	\$61	\$59	\$56	\$50	\$46	\$36	\$31	\$28	
80%	Current	\$155	\$140	\$130	\$122	\$115	\$112	\$108	\$104	\$102	\$96	\$89	\$80	\$74	\$64	\$57	\$46	\$44	\$41	
	10yr ave.			\$104		\$92		\$79		\$70	\$67	\$65	\$63	\$60	\$53	\$49	\$38	\$33	\$30	
85%	Current	\$164	\$149	\$138	\$130	\$123	\$119	\$115	\$111	\$108	\$103	\$95	\$85	\$79	\$68	\$61	\$49	\$47	\$44	
	10yr ave.			\$110		\$98		\$84		\$74	\$71	\$69	\$67	\$63	\$57	\$52	\$41	\$35	\$32	

The above shows estimated returns per head for skirted fleece wool. These figures do not take into account the value of skirtings and oddments and do not take into account discounts that may apply for faults under individual circumstances. These figures are based on a market index of 100% and should be used as a guide only. Returns over \$30 / head for fleece wool are highlighted.

Source: Australian Wool Exchange, Australian Wool Innovation, Sydney Futures Exchange, x-rates.com

Disclaimer: While all due care has been taken in the preparation of this document, no warranty is made as to its accuracy, reliability or completeness. To the extent permitted by law neither Jemalong or their sources including subsidiaries and staff, accept liability to any person for loss or damage arising from the use of this information.



Table 14: Returns pr head for skirted fleece wool.

Skirted FLC Weight 8 Kg			Micron																	
			16	16.5	17	17.5	18	18.5	19	19.5	20	21	22	23	24	25	26	28	30	32
Yield (Sch Dry)	25%	Current	\$43	\$39	\$36	\$34	\$32	\$31	\$30	\$29	\$28	\$27	\$25	\$22	\$21	\$18	\$16	\$13	\$12	\$12
		10yr ave.			\$29		\$26		\$22		\$19	\$19	\$18	\$18	\$17	\$15	\$14	\$11	\$9	\$8
	30%	Current	\$52	\$47	\$43	\$41	\$38	\$37	\$36	\$35	\$34	\$32	\$30	\$27	\$25	\$21	\$19	\$15	\$15	\$14
		10yr ave.			\$35		\$31		\$26		\$23	\$22	\$22	\$21	\$20	\$18	\$16	\$13	\$11	\$10
	35%	Current	\$60	\$55	\$50	\$47	\$45	\$43	\$42	\$41	\$40	\$38	\$35	\$31	\$29	\$25	\$22	\$18	\$17	\$16
		10yr ave.			\$40		\$36		\$31		\$27	\$26	\$25	\$25	\$23	\$21	\$19	\$15	\$13	\$12
	40%	Current	\$69	\$62	\$58	\$54	\$51	\$50	\$48	\$46	\$45	\$43	\$40	\$36	\$33	\$28	\$25	\$21	\$20	\$18
		10yr ave.			\$46		\$41		\$35		\$31	\$30	\$29	\$28	\$26	\$24	\$22	\$17	\$15	\$13
	45%	Current	\$77	\$70	\$65	\$61	\$58	\$56	\$54	\$52	\$51	\$48	\$44	\$40	\$37	\$32	\$29	\$23	\$22	\$21
		10yr ave.			\$52		\$46		\$40		\$35	\$33	\$32	\$32	\$30	\$27	\$24	\$19	\$17	\$15
	50%	Current	\$86	\$78	\$72	\$68	\$64	\$62	\$60	\$58	\$56	\$54	\$49	\$45	\$41	\$36	\$32	\$26	\$24	\$23
		10yr ave.			\$58		\$51		\$44		\$39	\$37	\$36	\$35	\$33	\$30	\$27	\$21	\$19	\$17
	55%	Current	\$95	\$86	\$79	\$75	\$70	\$68	\$66	\$64	\$62	\$59	\$54	\$49	\$45	\$39	\$35	\$28	\$27	\$25
		10yr ave.			\$63		\$56		\$48		\$43	\$41	\$40	\$39	\$36	\$33	\$30	\$23	\$20	\$18
60%	Current	\$103	\$94	\$86	\$81	\$77	\$75	\$72	\$70	\$68	\$64	\$59	\$54	\$50	\$43	\$38	\$31	\$29	\$28	
	10yr ave.			\$69		\$61		\$53		\$47	\$45	\$43	\$42	\$40	\$35	\$32	\$26	\$22	\$20	
65%	Current	\$112	\$101	\$94	\$88	\$83	\$81	\$78	\$75	\$73	\$70	\$64	\$58	\$54	\$46	\$41	\$33	\$32	\$30	
	10yr ave.			\$75		\$66		\$57		\$50	\$48	\$47	\$46	\$43	\$38	\$35	\$28	\$24	\$22	
70%	Current	\$120	\$109	\$101	\$95	\$90	\$87	\$84	\$81	\$79	\$75	\$69	\$62	\$58	\$50	\$44	\$36	\$34	\$32	
	10yr ave.			\$81		\$71		\$62		\$54	\$52	\$51	\$49	\$46	\$41	\$38	\$30	\$26	\$23	
75%	Current	\$129	\$117	\$108	\$102	\$96	\$93	\$90	\$87	\$85	\$80	\$74	\$67	\$62	\$53	\$48	\$39	\$37	\$35	
	10yr ave.			\$87		\$77		\$66		\$58	\$56	\$54	\$53	\$50	\$44	\$41	\$32	\$28	\$25	
80%	Current	\$138	\$125	\$115	\$108	\$103	\$99	\$96	\$93	\$90	\$86	\$79	\$71	\$66	\$57	\$51	\$41	\$39	\$37	
	10yr ave.			\$92		\$82		\$70		\$62	\$59	\$58	\$56	\$53	\$47	\$43	\$34	\$30	\$27	
85%	Current	\$146	\$133	\$122	\$115	\$109	\$106	\$102	\$98	\$96	\$91	\$84	\$76	\$70	\$61	\$54	\$44	\$42	\$39	
	10yr ave.			\$98		\$87		\$75		\$66	\$63	\$61	\$60	\$56	\$50	\$46	\$36	\$32	\$28	

The above shows estimated returns per head for skirted fleece wool. These figures do not take into account the value of skirtings and oddments and do not take into account discounts that may apply for faults under individual circumstances. These figures are based on a market index of 100% and should be used as a guide only. Returns over \$30 / head for fleece wool are highlighted.

Source: Australian Wool Exchange, Australian Wool Innovation, Sydney Futures Exchange, x-rates.com

Disclaimer: While all due care has been taken in the preparation of this document, no warranty is made as to its accuracy, reliability or completeness. To the extent permitted by law neither Jemalong or their sources including subsidiaries and staff, accept liability to any person for loss or damage arising from the use of this information.



Table 15: Returns pr head for skirted fleece wool.

Skirted FLC Weight		Micron																	
7 Kg		16	16.5	17	17.5	18	18.5	19	19.5	20	21	22	23	24	25	26	28	30	32
Yield (Sch Dry)	25% Current	\$38	\$34	\$32	\$30	\$28	\$27	\$26	\$25	\$25	\$23	\$22	\$20	\$18	\$16	\$14	\$11	\$11	\$10
	10yr ave.			\$25		\$22		\$19		\$17	\$16	\$16	\$15	\$14	\$13	\$12	\$9	\$8	\$7
	30% Current	\$45	\$41	\$38	\$36	\$34	\$33	\$32	\$30	\$30	\$28	\$26	\$23	\$22	\$19	\$17	\$14	\$13	\$12
	10yr ave.			\$30		\$27		\$23		\$20	\$20	\$19	\$18	\$17	\$16	\$14	\$11	\$10	\$9
	35% Current	\$53	\$48	\$44	\$42	\$39	\$38	\$37	\$35	\$35	\$33	\$30	\$27	\$25	\$22	\$19	\$16	\$15	\$14
	10yr ave.			\$35		\$31		\$27		\$24	\$23	\$22	\$21	\$20	\$18	\$17	\$13	\$11	\$10
	40% Current	\$60	\$55	\$50	\$47	\$45	\$43	\$42	\$41	\$40	\$38	\$35	\$31	\$29	\$25	\$22	\$18	\$17	\$16
	10yr ave.			\$40		\$36		\$31		\$27	\$26	\$25	\$25	\$23	\$21	\$19	\$15	\$13	\$12
	45% Current	\$68	\$61	\$57	\$53	\$50	\$49	\$47	\$46	\$44	\$42	\$39	\$35	\$33	\$28	\$25	\$20	\$19	\$18
	10yr ave.			\$45		\$40		\$35		\$31	\$29	\$28	\$28	\$26	\$23	\$21	\$17	\$15	\$13
	50% Current	\$75	\$68	\$63	\$59	\$56	\$54	\$53	\$51	\$49	\$47	\$43	\$39	\$36	\$31	\$28	\$23	\$21	\$20
	10yr ave.			\$51		\$45		\$39		\$34	\$33	\$32	\$31	\$29	\$26	\$24	\$19	\$16	\$15
	55% Current	\$83	\$75	\$69	\$65	\$62	\$60	\$58	\$56	\$54	\$52	\$48	\$43	\$40	\$34	\$31	\$25	\$24	\$22
	10yr ave.			\$56		\$49		\$42		\$37	\$36	\$35	\$34	\$32	\$28	\$26	\$20	\$18	\$16
	60% Current	\$90	\$82	\$76	\$71	\$67	\$65	\$63	\$61	\$59	\$56	\$52	\$47	\$43	\$37	\$33	\$27	\$26	\$24
	10yr ave.			\$61		\$54		\$46		\$41	\$39	\$38	\$37	\$35	\$31	\$28	\$22	\$19	\$18
	65% Current	\$98	\$89	\$82	\$77	\$73	\$71	\$68	\$66	\$64	\$61	\$56	\$51	\$47	\$40	\$36	\$29	\$28	\$26
	10yr ave.			\$66		\$58		\$50		\$44	\$42	\$41	\$40	\$38	\$34	\$31	\$24	\$21	\$19
	70% Current	\$105	\$96	\$88	\$83	\$78	\$76	\$74	\$71	\$69	\$66	\$61	\$55	\$51	\$44	\$39	\$32	\$30	\$28
	10yr ave.			\$71		\$63		\$54		\$48	\$46	\$44	\$43	\$41	\$36	\$33	\$26	\$23	\$20
	75% Current	\$113	\$102	\$95	\$89	\$84	\$82	\$79	\$76	\$74	\$70	\$65	\$59	\$54	\$47	\$42	\$34	\$32	\$30
	10yr ave.			\$76		\$67		\$58		\$51	\$49	\$47	\$46	\$43	\$39	\$35	\$28	\$24	\$22
	80% Current	\$120	\$109	\$101	\$95	\$90	\$87	\$84	\$81	\$79	\$75	\$69	\$62	\$58	\$50	\$44	\$36	\$34	\$32
	10yr ave.			\$81		\$71		\$62		\$54	\$52	\$51	\$49	\$46	\$41	\$38	\$30	\$26	\$23
	85% Current	\$128	\$116	\$107	\$101	\$95	\$92	\$89	\$86	\$84	\$80	\$74	\$66	\$61	\$53	\$47	\$38	\$36	\$34
	10yr ave.			\$86		\$76		\$66		\$58	\$55	\$54	\$52	\$49	\$44	\$40	\$32	\$28	\$25

The above shows estimated returns per head for skirted fleece wool. These figures do not take into account the value of skirtings and oddments and do not take into account discounts that may apply for faults under individual circumstances. These figures are based on a market index of 100% and should be used as a guide only. Returns over \$30 / head for fleece wool are highlighted.

Source: Australian Wool Exchange, Australian Wool Innovation, Sydney Futures Exchange, x-rates.com

Disclaimer: While all due care has been taken in the preparation of this document, no warranty is made as to its accuracy, reliability or completeness. To the extent permitted by law neither Jemalong or their sources including subsidiaries and staff, accept liability to any person for loss or damage arising from the use of this information.



Table 16: Returns pr head for skirted fleece wool.

Skirted FLC Weight		Micron																	
6 Kg		16	16.5	17	17.5	18	18.5	19	19.5	20	21	22	23	24	25	26	28	30	32
Yield (Sch Dry)	25% Current	\$32	\$29	\$27	\$25	\$24	\$23	\$23	\$22	\$21	\$20	\$19	\$17	\$15	\$13	\$12	\$10	\$9	\$9
	10yr ave.			\$22		\$19		\$17		\$15	\$14	\$14	\$13	\$12	\$11	\$10	\$8	\$7	\$6
	30% Current	\$39	\$35	\$32	\$31	\$29	\$28	\$27	\$26	\$25	\$24	\$22	\$20	\$19	\$16	\$14	\$12	\$11	\$10
	10yr ave.			\$26		\$23		\$20		\$17	\$17	\$16	\$16	\$15	\$13	\$12	\$10	\$8	\$8
	35% Current	\$45	\$41	\$38	\$36	\$34	\$33	\$32	\$30	\$30	\$28	\$26	\$23	\$22	\$19	\$17	\$14	\$13	\$12
	10yr ave.			\$30		\$27		\$23		\$20	\$20	\$19	\$18	\$17	\$16	\$14	\$11	\$10	\$9
	40% Current	\$52	\$47	\$43	\$41	\$38	\$37	\$36	\$35	\$34	\$32	\$30	\$27	\$25	\$21	\$19	\$15	\$15	\$14
	10yr ave.			\$35		\$31		\$26		\$23	\$22	\$22	\$21	\$20	\$18	\$16	\$13	\$11	\$10
	45% Current	\$58	\$53	\$49	\$46	\$43	\$42	\$41	\$39	\$38	\$36	\$33	\$30	\$28	\$24	\$21	\$17	\$17	\$16
	10yr ave.			\$39		\$34		\$30		\$26	\$25	\$24	\$24	\$22	\$20	\$18	\$14	\$13	\$11
	50% Current	\$65	\$59	\$54	\$51	\$48	\$47	\$45	\$43	\$42	\$40	\$37	\$33	\$31	\$27	\$24	\$19	\$18	\$17
	10yr ave.			\$43		\$38		\$33		\$29	\$28	\$27	\$26	\$25	\$22	\$20	\$16	\$14	\$13
	55% Current	\$71	\$64	\$59	\$56	\$53	\$51	\$50	\$48	\$47	\$44	\$41	\$37	\$34	\$29	\$26	\$21	\$20	\$19
	10yr ave.			\$48		\$42		\$36		\$32	\$31	\$30	\$29	\$27	\$24	\$22	\$18	\$15	\$14
	60% Current	\$77	\$70	\$65	\$61	\$58	\$56	\$54	\$52	\$51	\$48	\$44	\$40	\$37	\$32	\$29	\$23	\$22	\$21
	10yr ave.			\$52		\$46		\$40		\$35	\$33	\$32	\$32	\$30	\$27	\$24	\$19	\$17	\$15
	65% Current	\$84	\$76	\$70	\$66	\$62	\$61	\$59	\$56	\$55	\$52	\$48	\$44	\$40	\$35	\$31	\$25	\$24	\$22
	10yr ave.			\$56		\$50		\$43		\$38	\$36	\$35	\$34	\$32	\$29	\$26	\$21	\$18	\$16
	70% Current	\$90	\$82	\$76	\$71	\$67	\$65	\$63	\$61	\$59	\$56	\$52	\$47	\$43	\$37	\$33	\$27	\$26	\$24
	10yr ave.			\$61		\$54		\$46		\$41	\$39	\$38	\$37	\$35	\$31	\$28	\$22	\$19	\$18
	75% Current	\$97	\$88	\$81	\$76	\$72	\$70	\$68	\$65	\$63	\$60	\$56	\$50	\$46	\$40	\$36	\$29	\$28	\$26
	10yr ave.			\$65		\$57		\$50		\$44	\$42	\$41	\$39	\$37	\$33	\$30	\$24	\$21	\$19
	80% Current	\$103	\$94	\$86	\$81	\$77	\$75	\$72	\$70	\$68	\$64	\$59	\$54	\$50	\$43	\$38	\$31	\$29	\$28
	10yr ave.			\$69		\$61		\$53		\$47	\$45	\$43	\$42	\$40	\$35	\$32	\$26	\$22	\$20
	85% Current	\$110	\$99	\$92	\$86	\$82	\$79	\$77	\$74	\$72	\$68	\$63	\$57	\$53	\$45	\$40	\$33	\$31	\$29
	10yr ave.			\$74		\$65		\$56		\$49	\$47	\$46	\$45	\$42	\$38	\$34	\$27	\$24	\$21

The above shows estimated returns per head for skirted fleece wool. These figures do not take into account the value of skirtings and oddments and do not take into account discounts that may apply for faults under individual circumstances. These figures are based on a market index of 100% and should be used as a guide only. Returns over \$30 / head for fleece wool are highlighted.

Source: Australian Wool Exchange, Australian Wool Innovation, Sydney Futures Exchange, x-rates.com

Disclaimer: While all due care has been taken in the preparation of this document, no warranty is made as to its accuracy, reliability or completeness. To the extent permitted by law neither Jemalong or their sources including subsidiaries and staff, accept liability to any person for loss or damage arising from the use of this information.



Table 17: Returns pr head for skirted fleece wool.

Skirted FLC Weight		Micron																	
5 Kg		16	16.5	17	17.5	18	18.5	19	19.5	20	21	22	23	24	25	26	28	30	32
Yield (Sch Dry)	25% Current	\$27	\$24	\$23	\$21	\$20	\$19	\$19	\$18	\$18	\$17	\$15	\$14	\$13	\$11	\$10	\$8	\$8	\$7
	10yr ave.			\$18		\$16		\$14		\$12	\$12	\$11	\$11	\$10	\$9	\$8	\$7	\$6	\$5
	30% Current	\$32	\$29	\$27	\$25	\$24	\$23	\$23	\$22	\$21	\$20	\$19	\$17	\$15	\$13	\$12	\$10	\$9	\$9
	10yr ave.			\$22		\$19		\$17		\$15	\$14	\$14	\$13	\$12	\$11	\$10	\$8	\$7	\$6
	35% Current	\$38	\$34	\$32	\$30	\$28	\$27	\$26	\$25	\$25	\$23	\$22	\$20	\$18	\$16	\$14	\$11	\$11	\$10
	10yr ave.			\$25		\$22		\$19		\$17	\$16	\$16	\$15	\$14	\$13	\$12	\$9	\$8	\$7
	40% Current	\$43	\$39	\$36	\$34	\$32	\$31	\$30	\$29	\$28	\$27	\$25	\$22	\$21	\$18	\$16	\$13	\$12	\$12
	10yr ave.			\$29		\$26		\$22		\$19	\$19	\$18	\$18	\$17	\$15	\$14	\$11	\$9	\$8
	45% Current	\$48	\$44	\$41	\$38	\$36	\$35	\$34	\$33	\$32	\$30	\$28	\$25	\$23	\$20	\$18	\$14	\$14	\$13
	10yr ave.			\$32		\$29		\$25		\$22	\$21	\$20	\$20	\$19	\$17	\$15	\$12	\$10	\$9
	50% Current	\$54	\$49	\$45	\$42	\$40	\$39	\$38	\$36	\$35	\$34	\$31	\$28	\$26	\$22	\$20	\$16	\$15	\$14
	10yr ave.			\$36		\$32		\$28		\$24	\$23	\$23	\$22	\$21	\$18	\$17	\$13	\$12	\$10
	55% Current	\$59	\$54	\$50	\$47	\$44	\$43	\$41	\$40	\$39	\$37	\$34	\$31	\$28	\$24	\$22	\$18	\$17	\$16
	10yr ave.			\$40		\$35		\$30		\$27	\$26	\$25	\$24	\$23	\$20	\$19	\$15	\$13	\$11
	60% Current	\$65	\$59	\$54	\$51	\$48	\$47	\$45	\$43	\$42	\$40	\$37	\$33	\$31	\$27	\$24	\$19	\$18	\$17
	10yr ave.			\$43		\$38		\$33		\$29	\$28	\$27	\$26	\$25	\$22	\$20	\$16	\$14	\$13
	65% Current	\$70	\$63	\$59	\$55	\$52	\$50	\$49	\$47	\$46	\$44	\$40	\$36	\$34	\$29	\$26	\$21	\$20	\$19
	10yr ave.			\$47		\$41		\$36		\$32	\$30	\$29	\$28	\$27	\$24	\$22	\$17	\$15	\$14
	70% Current	\$75	\$68	\$63	\$59	\$56	\$54	\$53	\$51	\$49	\$47	\$43	\$39	\$36	\$31	\$28	\$23	\$21	\$20
	10yr ave.			\$51		\$45		\$39		\$34	\$33	\$32	\$31	\$29	\$26	\$24	\$19	\$16	\$15
	75% Current	\$81	\$73	\$68	\$64	\$60	\$58	\$56	\$54	\$53	\$50	\$46	\$42	\$39	\$33	\$30	\$24	\$23	\$22
	10yr ave.			\$54		\$48		\$41		\$36	\$35	\$34	\$33	\$31	\$28	\$25	\$20	\$17	\$16
	80% Current	\$86	\$78	\$72	\$68	\$64	\$62	\$60	\$58	\$56	\$54	\$49	\$45	\$41	\$36	\$32	\$26	\$24	\$23
	10yr ave.			\$58		\$51		\$44		\$39	\$37	\$36	\$35	\$33	\$30	\$27	\$21	\$19	\$17
	85% Current	\$91	\$83	\$77	\$72	\$68	\$66	\$64	\$62	\$60	\$57	\$53	\$47	\$44	\$38	\$34	\$27	\$26	\$24
	10yr ave.			\$61		\$54		\$47		\$41	\$39	\$38	\$37	\$35	\$31	\$29	\$23	\$20	\$18

The above shows estimated returns per head for skirted fleece wool. These figures do not take into account the value of skirtings and oddments and do not take into account discounts that may apply for faults under individual circumstances. These figures are based on a market index of 100% and should be used as a guide only. Returns over \$30 / head for fleece wool are highlighted.

Source: Australian Wool Exchange, Australian Wool Innovation, Sydney Futures Exchange, x-rates.com

Disclaimer: While all due care has been taken in the preparation of this document, no warranty is made as to its accuracy, reliability or completeness. To the extent permitted by law neither Jemalong or their sources including subsidiaries and staff, accept liability to any person for loss or damage arising from the use of this information.



Table 18: Returns pr head for skirted fleece wool.

Skirted FLC Weight		Micron																	
4 Kg		16	16.5	17	17.5	18	18.5	19	19.5	20	21	22	23	24	25	26	28	30	32
Yield (Sch Dry)	25% Current	\$22	\$20	\$18	\$17	\$16	\$16	\$15	\$14	\$14	\$13	\$12	\$11	\$10	\$9	\$8	\$6	\$6	\$6
	10yr ave.			\$14		\$13		\$11		\$10	\$9	\$9	\$9	\$8	\$7	\$7	\$5	\$5	\$4
	30% Current	\$26	\$23	\$22	\$20	\$19	\$19	\$18	\$17	\$17	\$16	\$15	\$13	\$12	\$11	\$10	\$8	\$7	\$7
	10yr ave.			\$17		\$15		\$13		\$12	\$11	\$11	\$11	\$10	\$9	\$8	\$6	\$6	\$5
	35% Current	\$30	\$27	\$25	\$24	\$22	\$22	\$21	\$20	\$20	\$19	\$17	\$16	\$14	\$12	\$11	\$9	\$9	\$8
	10yr ave.			\$20		\$18		\$15		\$14	\$13	\$13	\$12	\$12	\$10	\$9	\$7	\$6	\$6
	40% Current	\$34	\$31	\$29	\$27	\$26	\$25	\$24	\$23	\$23	\$21	\$20	\$18	\$17	\$14	\$13	\$10	\$10	\$9
	10yr ave.			\$23		\$20		\$18		\$16	\$15	\$14	\$14	\$13	\$12	\$11	\$9	\$7	\$7
	45% Current	\$39	\$35	\$32	\$31	\$29	\$28	\$27	\$26	\$25	\$24	\$22	\$20	\$19	\$16	\$14	\$12	\$11	\$10
	10yr ave.			\$26		\$23		\$20		\$17	\$17	\$16	\$16	\$15	\$13	\$12	\$10	\$8	\$8
	50% Current	\$43	\$39	\$36	\$34	\$32	\$31	\$30	\$29	\$28	\$27	\$25	\$22	\$21	\$18	\$16	\$13	\$12	\$12
	10yr ave.			\$29		\$26		\$22		\$19	\$19	\$18	\$18	\$17	\$15	\$14	\$11	\$9	\$8
	55% Current	\$47	\$43	\$40	\$37	\$35	\$34	\$33	\$32	\$31	\$29	\$27	\$25	\$23	\$20	\$17	\$14	\$13	\$13
	10yr ave.			\$32		\$28		\$24		\$21	\$20	\$20	\$19	\$18	\$16	\$15	\$12	\$10	\$9
	60% Current	\$52	\$47	\$43	\$41	\$38	\$37	\$36	\$35	\$34	\$32	\$30	\$27	\$25	\$21	\$19	\$15	\$15	\$14
	10yr ave.			\$35		\$31		\$26		\$23	\$22	\$22	\$21	\$20	\$18	\$16	\$13	\$11	\$10
	65% Current	\$56	\$51	\$47	\$44	\$42	\$40	\$39	\$38	\$37	\$35	\$32	\$29	\$27	\$23	\$21	\$17	\$16	\$15
	10yr ave.			\$38		\$33		\$29		\$25	\$24	\$23	\$23	\$22	\$19	\$18	\$14	\$12	\$11
	70% Current	\$60	\$55	\$50	\$47	\$45	\$43	\$42	\$41	\$40	\$38	\$35	\$31	\$29	\$25	\$22	\$18	\$17	\$16
	10yr ave.			\$40		\$36		\$31		\$27	\$26	\$25	\$25	\$23	\$21	\$19	\$15	\$13	\$12
	75% Current	\$65	\$59	\$54	\$51	\$48	\$47	\$45	\$43	\$42	\$40	\$37	\$33	\$31	\$27	\$24	\$19	\$18	\$17
	10yr ave.			\$43		\$38		\$33		\$29	\$28	\$27	\$26	\$25	\$22	\$20	\$16	\$14	\$13
	80% Current	\$69	\$62	\$58	\$54	\$51	\$50	\$48	\$46	\$45	\$43	\$40	\$36	\$33	\$28	\$25	\$21	\$20	\$18
	10yr ave.			\$46		\$41		\$35		\$31	\$30	\$29	\$28	\$26	\$24	\$22	\$17	\$15	\$13
	85% Current	\$73	\$66	\$61	\$58	\$54	\$53	\$51	\$49	\$48	\$46	\$42	\$38	\$35	\$30	\$27	\$22	\$21	\$20
	10yr ave.			\$49		\$43		\$37		\$33	\$32	\$31	\$30	\$28	\$25	\$23	\$18	\$16	\$14

The above shows estimated returns per head for skirted fleece wool. These figures do not take into account the value of skirtings and oddments and do not take into account discounts that may apply for faults under individual circumstances. These figures are based on a market index of 100% and should be used as a guide only. Returns over \$30 / head for fleece wool are highlighted.

Source: Australian Wool Exchange, Australian Wool Innovation, Sydney Futures Exchange, x-rates.com

Disclaimer: While all due care has been taken in the preparation of this document, no warranty is made as to its accuracy, reliability or completeness. To the extent permitted by law neither Jemalong or their sources including subsidiaries and staff, accept liability to any person for loss or damage arising from the use of this information.



Table 19: Returns pr head for skirted fleece wool.

Skirted FLC Weight 3 Kg		Micron																	
		16	16.5	17	17.5	18	18.5	19	19.5	20	21	22	23	24	25	26	28	30	32
Yield (Sch Dry)	25% Current	\$16	\$15	\$14	\$13	\$12	\$12	\$11	\$11	\$11	\$10	\$9	\$8	\$8	\$7	\$6	\$5	\$5	\$4
	10yr ave.			\$11		\$10		\$8		\$7	\$7	\$7	\$7	\$6	\$6	\$5	\$4	\$3	\$3
	30% Current	\$19	\$18	\$16	\$15	\$14	\$14	\$14	\$13	\$13	\$12	\$11	\$10	\$9	\$8	\$7	\$6	\$6	\$5
	10yr ave.			\$13		\$11		\$10		\$9	\$8	\$8	\$8	\$7	\$7	\$6	\$5	\$4	\$4
	35% Current	\$23	\$20	\$19	\$18	\$17	\$16	\$16	\$15	\$15	\$14	\$13	\$12	\$11	\$9	\$8	\$7	\$6	\$6
	10yr ave.			\$15		\$13		\$12		\$10	\$10	\$9	\$9	\$9	\$8	\$7	\$6	\$5	\$4
	40% Current	\$26	\$23	\$22	\$20	\$19	\$19	\$18	\$17	\$17	\$16	\$15	\$13	\$12	\$11	\$10	\$8	\$7	\$7
	10yr ave.			\$17		\$15		\$13		\$12	\$11	\$11	\$11	\$10	\$9	\$8	\$6	\$6	\$5
	45% Current	\$29	\$26	\$24	\$23	\$22	\$21	\$20	\$20	\$19	\$18	\$17	\$15	\$14	\$12	\$11	\$9	\$8	\$8
	10yr ave.			\$19		\$17		\$15		\$13	\$13	\$12	\$12	\$11	\$10	\$9	\$7	\$6	\$6
	50% Current	\$32	\$29	\$27	\$25	\$24	\$23	\$23	\$22	\$21	\$20	\$19	\$17	\$15	\$13	\$12	\$10	\$9	\$9
	10yr ave.			\$22		\$19		\$17		\$15	\$14	\$14	\$13	\$12	\$11	\$10	\$8	\$7	\$6
	55% Current	\$35	\$32	\$30	\$28	\$26	\$26	\$25	\$24	\$23	\$22	\$20	\$18	\$17	\$15	\$13	\$11	\$10	\$10
	10yr ave.			\$24		\$21		\$18		\$16	\$15	\$15	\$14	\$14	\$12	\$11	\$9	\$8	\$7
	60% Current	\$39	\$35	\$32	\$31	\$29	\$28	\$27	\$26	\$25	\$24	\$22	\$20	\$19	\$16	\$14	\$12	\$11	\$10
	10yr ave.			\$26		\$23		\$20		\$17	\$17	\$16	\$16	\$15	\$13	\$12	\$10	\$8	\$8
	65% Current	\$42	\$38	\$35	\$33	\$31	\$30	\$29	\$28	\$28	\$26	\$24	\$22	\$20	\$17	\$15	\$13	\$12	\$11
	10yr ave.			\$28		\$25		\$21		\$19	\$18	\$18	\$17	\$16	\$14	\$13	\$10	\$9	\$8
	70% Current	\$45	\$41	\$38	\$36	\$34	\$33	\$32	\$30	\$30	\$28	\$26	\$23	\$22	\$19	\$17	\$14	\$13	\$12
	10yr ave.			\$30		\$27		\$23		\$20	\$20	\$19	\$18	\$17	\$16	\$14	\$11	\$10	\$9
	75% Current	\$48	\$44	\$41	\$38	\$36	\$35	\$34	\$33	\$32	\$30	\$28	\$25	\$23	\$20	\$18	\$14	\$14	\$13
	10yr ave.			\$32		\$29		\$25		\$22	\$21	\$20	\$20	\$19	\$17	\$15	\$12	\$10	\$9
	80% Current	\$52	\$47	\$43	\$41	\$38	\$37	\$36	\$35	\$34	\$32	\$30	\$27	\$25	\$21	\$19	\$15	\$15	\$14
	10yr ave.			\$35		\$31		\$26		\$23	\$22	\$22	\$21	\$20	\$18	\$16	\$13	\$11	\$10
	85% Current	\$55	\$50	\$46	\$43	\$41	\$40	\$38	\$37	\$36	\$34	\$32	\$28	\$26	\$23	\$20	\$16	\$16	\$15
	10yr ave.			\$37		\$33		\$28		\$25	\$24	\$23	\$22	\$21	\$19	\$17	\$14	\$12	\$11

The above shows estimated returns per head for skirted fleece wool. These figures do not take into account the value of skirtings and oddments and do not take into account discounts that may apply for faults under individual circumstances. These figures are based on a market index of 100% and should be used as a guide only. Returns over \$30 / head for fleece wool are highlighted.

Source: Australian Wool Exchange, Australian Wool Innovation, Sydney Futures Exchange, x-rates.com

Disclaimer: While all due care has been taken in the preparation of this document, no warranty is made as to its accuracy, reliability or completeness. To the extent permitted by law neither Jemalong or their sources including subsidiaries and staff, accept liability to any person for loss or damage arising from the use of this information.



Table 20: Returns pr head for skirted fleece wool.

Skirted FLC Weight		Micron																	
2 Kg		16	16.5	17	17.5	18	18.5	19	19.5	20	21	22	23	24	25	26	28	30	32
Yield (Sch Dry)	25% Current	\$11	\$10	\$9	\$8	\$8	\$8	\$8	\$7	\$7	\$7	\$6	\$6	\$5	\$4	\$4	\$3	\$3	\$3
	10yr ave.			\$7		\$6		\$6		\$5	\$5	\$5	\$4	\$4	\$4	\$3	\$3	\$2	\$2
	30% Current	\$13	\$12	\$11	\$10	\$10	\$9	\$9	\$9	\$8	\$8	\$7	\$7	\$6	\$5	\$5	\$4	\$4	\$3
	10yr ave.			\$9		\$8		\$7		\$6	\$6	\$5	\$5	\$5	\$4	\$4	\$3	\$3	\$3
	35% Current	\$15	\$14	\$13	\$12	\$11	\$11	\$11	\$10	\$10	\$9	\$9	\$8	\$7	\$6	\$6	\$5	\$4	\$4
	10yr ave.			\$10		\$9		\$8		\$7	\$7	\$6	\$6	\$6	\$5	\$5	\$4	\$3	\$3
	40% Current	\$17	\$16	\$14	\$14	\$13	\$12	\$12	\$12	\$11	\$11	\$10	\$9	\$8	\$7	\$6	\$5	\$5	\$5
	10yr ave.			\$12		\$10		\$9		\$8	\$7	\$7	\$7	\$7	\$6	\$5	\$4	\$4	\$3
	45% Current	\$19	\$18	\$16	\$15	\$14	\$14	\$14	\$13	\$13	\$12	\$11	\$10	\$9	\$8	\$7	\$6	\$6	\$5
	10yr ave.			\$13		\$11		\$10		\$9	\$8	\$8	\$8	\$7	\$7	\$6	\$5	\$4	\$4
	50% Current	\$22	\$20	\$18	\$17	\$16	\$16	\$15	\$14	\$14	\$13	\$12	\$11	\$10	\$9	\$8	\$6	\$6	\$6
	10yr ave.			\$14		\$13		\$11		\$10	\$9	\$9	\$9	\$8	\$7	\$7	\$5	\$5	\$4
	55% Current	\$24	\$21	\$20	\$19	\$18	\$17	\$17	\$16	\$16	\$15	\$14	\$12	\$11	\$10	\$9	\$7	\$7	\$6
	10yr ave.			\$16		\$14		\$12		\$11	\$10	\$10	\$10	\$9	\$8	\$7	\$6	\$5	\$5
	60% Current	\$26	\$23	\$22	\$20	\$19	\$19	\$18	\$17	\$17	\$16	\$15	\$13	\$12	\$11	\$10	\$8	\$7	\$7
	10yr ave.			\$17		\$15		\$13		\$12	\$11	\$11	\$11	\$10	\$9	\$8	\$6	\$6	\$5
	65% Current	\$28	\$25	\$23	\$22	\$21	\$20	\$20	\$19	\$18	\$17	\$16	\$15	\$13	\$12	\$10	\$8	\$8	\$7
	10yr ave.			\$19		\$17		\$14		\$13	\$12	\$12	\$11	\$11	\$10	\$9	\$7	\$6	\$5
	70% Current	\$30	\$27	\$25	\$24	\$22	\$22	\$21	\$20	\$20	\$19	\$17	\$16	\$14	\$12	\$11	\$9	\$9	\$8
	10yr ave.			\$20		\$18		\$15		\$14	\$13	\$13	\$12	\$12	\$10	\$9	\$7	\$6	\$6
	75% Current	\$32	\$29	\$27	\$25	\$24	\$23	\$23	\$22	\$21	\$20	\$19	\$17	\$15	\$13	\$12	\$10	\$9	\$9
	10yr ave.			\$22		\$19		\$17		\$15	\$14	\$14	\$13	\$12	\$11	\$10	\$8	\$7	\$6
	80% Current	\$34	\$31	\$29	\$27	\$26	\$25	\$24	\$23	\$23	\$21	\$20	\$18	\$17	\$14	\$13	\$10	\$10	\$9
	10yr ave.			\$23		\$20		\$18		\$16	\$15	\$14	\$14	\$13	\$12	\$11	\$9	\$7	\$7
	85% Current	\$37	\$33	\$31	\$29	\$27	\$26	\$26	\$25	\$24	\$23	\$21	\$19	\$18	\$15	\$13	\$11	\$10	\$10
	10yr ave.			\$25		\$22		\$19		\$16	\$16	\$15	\$15	\$14	\$13	\$11	\$9	\$8	\$7

The above shows estimated returns per head for skirted fleece wool. These figures do not take into account the value of skirtings and oddments and do not take into account discounts that may apply for faults under individual circumstances. These figures are based on a market index of 100% and should be used as a guide only. Returns over \$30 / head for fleece wool are highlighted.

Source: Australian Wool Exchange, Australian Wool Innovation, Sydney Futures Exchange, x-rates.com

Disclaimer: While all due care has been taken in the preparation of this document, no warranty is made as to its accuracy, reliability or completeness. To the extent permitted by law neither Jemalong or their sources including subsidiaries and staff, accept liability to any person for loss or damage arising from the use of this information.