



Table 1: Northern Region Micron Price Guides

WEEK 23			12 MONTH COMPARISONS								3 YEAR COMPARISONS					10 YEAR COMPARISONS				
2/12/2020		25/11/2020	3/12/2019	Now	Now		Now				Now		Percentile			Now		Percentile		
Current	Weekly	This time	compared	12 Month	compared	12 Month	compared	Low	High	Average	to 3yr ave	Low		High	Average	to 10yr ave				
MPG	Price	Change	Last Year	to Last Year	Low	to Low	High	to High	Low	High	Average	to 3yr ave	Low	High	Average	to 10yr ave				
NRI	1208	-1 -0.1%	1561	-353 -23%	919	+289 31%	1680	-472 -28%	919	2163	1695	-487 -29%	12%	955	2163	1377	-169 -12%	36%		
15*	2510	+50 2.0%	2305	+205 9%	1945	+565 29%	2510	0 0%	1945	3700	2721	-211 -8%	51%	1522	3700	~2351	+159 7%	65%		
15.5*	2290	0	2225	+65 3%	1800	+490 27%	2425	-135 -6%	1800	3450	2612	-322 -12%	46%	1389	3450	~2145	+145 7%	65%		
16*	2160	+50 2.4%	2145	+15 1%	1650	+510 31%	2325	-165 -7%	1650	3300	2495	-335 -13%	37%	1310	3300	2023	+137 7%	65%		
16.5	1956	-17 -0.9%	2038	-82 -4%	1482	+474 32%	2202	-246 -11%	1482	3187	2385	-429 -18%	23%	1279	3187	1918	+38 2%	59%		
17	1826	-18 -1.0%	1980	-154 -8%	1382	+444 32%	2122	-296 -14%	1382	3008	2284	-458 -20%	20%	1229	3008	1839	-13 -1%	60%		
17.5	1699	-4 -0.2%	1923	-224 -12%	1291	+408 32%	2057	-358 -17%	1291	2845	2188	-489 -22%	18%	1196	2845	1776	-77 -4%	58%		
18	1554	-6 -0.4%	1863	-309 -17%	1172	+382 33%	2007	-453 -23%	1172	2708	2090	-536 -26%	15%	1168	2708	1708	-154 -9%	51%		
18.5	1460	-9 -0.6%	1809	-349 -19%	1062	+398 37%	1949	-489 -25%	1062	2591	2001	-541 -27%	15%	1132	2591	1639	-179 -11%	43%		
19	1382	+5 0.4%	1744	-362 -21%	995	+387 39%	1918	-536 -28%	995	2465	1927	-545 -28%	15%	1096	2465	1571	-189 -12%	38%		
19.5	1303	+1 0.1%	1723	-420 -24%	949	+354 37%	1900	-597 -31%	949	2404	1887	-584 -31%	14%	1058	2404	1520	-217 -14%	34%		
20	1240	+6 0.5%	1713	-473 -28%	910	+330 36%	1888	-648 -34%	910	2391	1857	-617 -33%	13%	1049	2391	1478	-238 -16%	29%		
21	1178	0	1716	-538 -31%	898	+280 31%	1880	-702 -37%	898	2368	1828	-650 -36%	9%	1029	2368	1447	-269 -19%	22%		
22	1143	-4 -0.3%	1700	-557 -33%	863	+280 32%	1875	-732 -39%	863	2342	1805	-662 -37%	9%	1009	2342	1419	-276 -19%	18%		
23	1106	-9 -0.8%	1644	-538 -33%	814	+292 36%	1736	-630 -36%	814	2316	1743	-637 -37%	8%	962	2316	1376	-270 -20%	13%		
24	958	-73 -7.1%	1511	-553 -37%	750	+208 28%	1608	-650 -40%	750	2114	1582	-624 -39%	6%	900	2114	1267	-309 -24%	2%		
25	828	+14 1.7%	1278	-450 -35%	552	+276 50%	1338	-510 -38%	552	1801	1312	-484 -37%	9%	704	1801	1090	-262 -24%	3%		
26	723	-45 -5.9%	1168	-445 -38%	526	+197 37%	1195	-472 -39%	526	1545	1172	-449 -38%	6%	678	1545	981	-258 -26%	1%		
28	480	-10 -2.0%	855	-375 -44%	396	+84 21%	924	-444 -48%	396	1318	859	-379 -44%	4%	470	1318	751	-271 -36%	1%		
30	378	+5 1.3%	694	-316 -46%	319	+59 18%	735	-357 -49%	319	998	670	-292 -44%	3%	390	998	644	-266 -41%	0%		
32	244	-22 -8.3%	460	-216 -47%	190	+54 28%	486	-242 -50%	190	659	434	-190 -44%	4%	241	762	511	-267 -52%	1%		
MC	740	+6 0.8%	1054	-314 -30%	621	+119 19%	1145	-405 -35%	621	1563	1114	-374 -34%	9%	559	1563	955	-215 -23%	18%		
AU BALES OFFERED		36,098	* 16.5 is the lowest Micron Price Guide (MPG) published by The Australian Wool Exchange (AWEX). Therefore MPG's below 16.5 micron are an estimate based on the best available information at the time of publication. Likewise, for any category where there is insufficient quantity offered to enable AWEX to quote, a quote will also be provided.																	
AU BALES SOLD		32,435	* Recording of 15 & 15.5 micron commenced in October 2017, and as a result some historic data is not yet available for those MPG's. Where historic data is not available an estimate based on '16 micron statistics' and incorporating the existing 15 & 15.5 micron data, will be provided as a guide.																	
AU PASSED-IN%		10.1%																		
AUD/USD		0.7375 0.2%																		

Source: Australian Wool Exchange, Australian Wool Innovation, Riemann, x-rates.com, Reserve Bank of Australia, Australian Wool Testing Authority, Australian Bureau Statistics (ABS), Woolmark.

Disclaimer: Jemalong Wool Pty Ltd make no representations about the content and suitability of the information contained in this report. Specifically, Jemalong Wool does not warrant, guarantee or make any representations regarding the correctness, accuracy, reliability, currency, or any other aspect regarding characteristics or use of information presented in these materials. The user accepts sole responsibility and risk associated with the use and results of these materials, irrespective of the purpose of which such use or results are applied. In no event shall Jemalong Wool be liable for any loss or damages arising out of or in connection with the use of these materials.

Copyright © Jemalong Wool Pty Ltd, 2006-2020. Apart from any use permitted under the Copyright Act 1968, no part may be copied or reproduced by any process nor stored electronically without the written permission of Jemalong Wool Pty Ltd. This report has been compiled by Jemalong Wool Pty Ltd for internal use and for the benefit of Jemalong Wool clients. You should only read this report if you are authorised to do so, if you are not authorised then you must destroy all electronic and paper copies immediately. Under no circumstance are you permitted to forward this report to a third-party.



MARKET COMMENTARY Source: AWEX

Compared to last weeks sale, a similar volume of wool was on offer this week with 36,507 bales put before the trade. Day one saw the market fall between 1 and 44 cents, the only exception was 18 microns in the West which managed a 1 cent increase. In the final hour of selling, in the West, the market began to show signs of improvement, the improved sentiment carried into the second day of selling, pushing prices higher. The MPGs across all microns in all centres recorded positive movements of between 2 and 48 cents and by the close of trade the NRI had only conceded 1 cent, to finish the series at 1208. However due to the strengthening AUD, when viewed in US dollar terms the NRI actually gained two cents.

The crossbred sector again did not perform as well as the merinos, with substantial losses for 26 microns in the North (-6%) and for 32 microns in the South (-8%).

After the relaxing of some COVID restrictions this week, daily auction room lot limits have reverted to pre-COVID levels. This means more wool can be offered over each day, as a result next week's offering has increased with 41,827 bales currently rostered, in what will be the second last sale before the three-week Christmas recess.

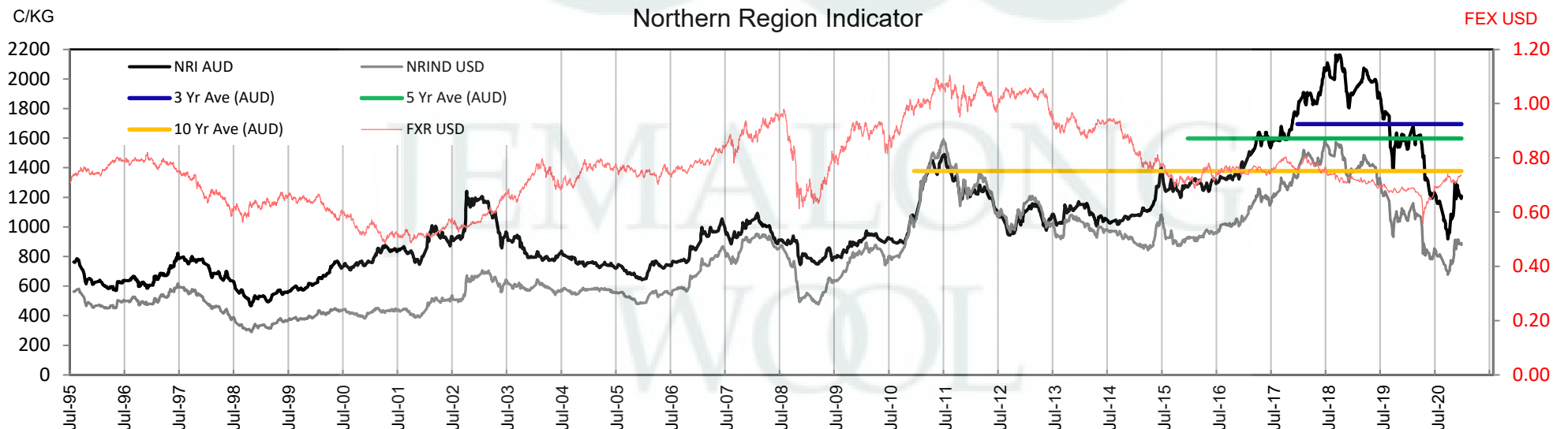




Table 2: Three Year Decile Table, since: 1/12/2017

Decile	%	16	16.5	17	17.5	18	18.5	19	19.5	20	21	22	23	24	25	26	28	30	32	MC
1	10%	1865	1732	1625	1533	1452	1372	1306	1247	1217	1179	1155	1124	1045	834	779	558	449	266	743
2	20%	2023	1937	1824	1715	1595	1540	1495	1466	1457	1443	1439	1334	1214	956	882	686	501	315	864
3	30%	2122	1999	1948	1909	1863	1818	1763	1743	1723	1713	1697	1618	1488	1232	1112	798	598	408	990
4	40%	2187	2136	2065	1988	1939	1878	1834	1815	1802	1784	1744	1661	1525	1283	1150	845	665	427	1048
5	50%	2448	2419	2394	2378	2297	2171	2076	2006	1958	1884	1837	1800	1613	1325	1195	880	690	449	1093
6	60%	2630	2569	2524	2472	2361	2241	2146	2073	2051	2032	2013	1935	1757	1449	1253	916	704	461	1159
7	70%	2750	2667	2614	2523	2405	2317	2238	2202	2179	2161	2151	2046	1831	1536	1343	959	723	470	1242
8	80%	3150	2975	2771	2580	2437	2361	2300	2279	2261	2240	2219	2192	1923	1604	1416	1021	774	507	1362
9	90%	3225	3042	2857	2693	2530	2419	2354	2318	2295	2275	2261	2212	2009	1693	1489	1116	921	596	1470
10	100%	3300	3187	3008	2845	2708	2591	2465	2404	2391	2368	2342	2316	2114	1801	1545	1318	998	659	1563
MPG		2160	1956	1826	1699	1554	1460	1382	1303	1240	1178	1143	1106	958	828	723	480	378	244	740
3 Yr Percentile		37%	23%	20%	18%	15%	15%	15%	14%	13%	9%	9%	8%	6%	9%	6%	4%	3%	4%	9%

Table 3: Ten Year Decile Table, since: 1/12/2010

Decile	%	16	16.5	17	17.5	18	18.5	19	19.5	20	21	22	23	24	25	26	28	30	32	MC
1	10%	1430	1366	1298	1271	1231	1196	1170	1145	1132	1128	1106	1081	1004	865	770	597	534	391	702
2	20%	1543	1454	1368	1327	1293	1260	1216	1194	1179	1164	1149	1128	1051	894	803	637	565	432	745
3	30%	1590	1524	1458	1412	1374	1335	1302	1275	1243	1226	1202	1166	1077	916	823	659	582	463	790
4	40%	1677	1582	1544	1513	1475	1438	1391	1359	1320	1293	1253	1215	1101	961	861	677	604	483	816
5	50%	1895	1703	1638	1590	1544	1495	1459	1418	1374	1340	1311	1275	1169	1039	928	724	630	503	923
6	60%	2090	1961	1810	1749	1688	1638	1571	1488	1438	1404	1378	1340	1237	1112	1019	772	649	549	1060
7	70%	2285	2169	2159	2086	2003	1871	1764	1671	1586	1496	1454	1404	1330	1182	1090	823	684	569	1094
8	80%	2595	2473	2391	2272	2169	2043	1897	1794	1761	1726	1700	1622	1490	1250	1143	871	722	599	1151
9	90%	2750	2667	2568	2502	2389	2269	2188	2161	2145	2129	2110	1961	1810	1502	1320	945	807	659	1264
10	100%	3300	3187	3008	2845	2708	2591	2465	2404	2391	2368	2342	2316	2114	1801	1545	1318	998	762	1563
MPG		2160	1956	1826	1699	1554	1460	1382	1303	1240	1178	1143	1106	958	828	723	480	378	244	740
10 Yr Percentile		65%	59%	60%	58%	51%	43%	38%	34%	29%	22%	18%	13%	2%	3%	1%	1%	0%	1%	18%

Definitions:

* A Percentile, is a value on a scale of one hundred that indicates the percent of a distribution that is equal to or below it. In general a percentile between 25% and 75% is considered normal, a percentile below 25% is considered below normal and a percentile above 75% is considered above normal.

Three and ten year percentiles shown on the bottom line of table 2 & 3 (above) and in table 1 (on page 1), detail the amount of time during the past 3 & 10 years where the market has traded either at or below its current price.

* Deciles are a method of sorting ranked data into 10 equal groups. The data may be ranked from largest to smallest or vice versa.

The above Decile tables sort price Percentiles into 10 equal groups (in ascending order), with table 2 ranking the previous 3 years prices, while table 3 ranks prices over the previous 10 years.

Example: In Table 2, a Decile Rank of 6 for 19 microns, shows 19 microns have traded at or below 2146 for 60% of the time, over the past three years.

In Table 3, a Decile Rank of 6 for 19 microns, shows 19 microns have traded at or below 1571 for 60% of the time, over the past ten years.



Table 4: Riemann Forwards, as at: 2/12/20 Any highlighted in yellow are recent trades, trading since: Thursday, 26 November 2020

MICRON (Total Traded = 101)		18um (11 Traded)	18.5um (0 Traded)	19um (67 Traded)	19.5um (0 Traded)	21um (21 Traded)	22um (0 Traded)	23um (0 Traded)	28um (1 Traded)	30um (1 Traded)
FORWARD CONTRACT MONTH	Dec-2020 (38)	24/09/20 1340 (6)		17/11/20 1365 (21)		25/11/20 1170 (11)				
	Jan-2021 (34)	27/11/20 1570 (4)		25/11/20 1370 (22)		25/11/20 1170 (7)				31/08/20 380 (1)
	Feb-2021 (8)			17/04/20 1415 (5)		17/04/20 1365 (2)			9/05/19 935 (1)	
	Mar-2021 (3)			13/03/20 1650 (2)		28/08/20 955 (1)				
	Apr-2021 (5)	1/09/20 1200 (1)		16/10/20 1320 (4)						
	May-2021 (6)			11/11/20 1400 (6)						
	Jun-2021 (2)			13/03/20 1650 (2)						
	Jul-2021									
	Aug-2021									
	Sep-2021									
	Oct-2021 (1)			13/10/20 1235 (1)						
	Nov-2021 (3)			9/07/20 1238 (3)						
	Dec-2021 (1)			26/05/20 1290 (1)						
	Jan-2022									
	Feb-2022									
	Mar-2022									
	Apr-2022									
	May-2022									
	Jun-2022									
	Jul-2022									
	Aug-2022									
	Sep-2022									
	Oct-2022									

Explanatory Notes: Prices quoted reflect the most recent trades, at time of print.

Disclaimer: While all due care has been taken in the preparation of this document, no warranty is made as to its accuracy, reliability or completeness. To the extent permitted by law neither Jemalong or their sources including subsidiaries and staff, accept liability to any person for loss or damage arising from the use of this information.



JEMALONG
WOOL



Table 6: National Market Share

	Rank	Current Selling Week Week 23			Previous Selling Week Week 22			Last Season 2019-20			2 Years Ago 2018-19			3 Years Ago 2017-18			5 Years Ago 2015-16			10 Years Ago 2010-11		
		Buyer	Bales	MS%	Buyer	Bales	MS%	Buyer	Bales	MS%	Buyer	Bales	MS%	Buyer	Bales	MS%	Buyer	Bales	MS%	Buyer	Bales	MS%
Top 10, Auction Buyers	1	TECM	5,300	16%	TECM	4,916	15%	TECM	176,746	15%	TECM	183,590	12%	TECM	242,275	14%	TECM	223,011	13%	VTRA	209,391	12%
	2	EWES	3,006	9%	UWCM	3,168	10%	EWES	111,152	9%	FOXN	137,101	9%	FOXN	199,258	11%	CTXS	158,343	10%	TECM	179,439	10%
	3	TIAM	2,948	9%	EWES	3,078	10%	FOXN	111,069	9%	TIAM	125,963	8%	KATS	140,688	8%	FOXN	151,685	9%	FOXN	142,143	8%
	4	UWCM	2,920	9%	LEMM	2,231	7%	TIAM	99,632	8%	SETS	117,207	8%	SETS	128,533	7%	LEMM	124,422	8%	QCTB	120,699	7%
	5	LEMM	2,175	7%	TIAM	2,152	7%	AMEM	95,222	8%	AMEM	112,113	8%	AMEM	127,831	7%	TIAM	105,610	6%	WIEM	99,585	6%
	6	AMEM	2,092	6%	AMEM	1,803	6%	PMWF	75,805	6%	EWES	94,720	6%	TIAM	121,875	7%	AMEM	104,017	6%	LEMM	85,346	5%
	7	FOXN	1,514	5%	FOXN	1,645	5%	UWCM	60,137	5%	KATS	85,234	6%	PMWF	99,301	6%	GWEA	91,407	6%	MODM	81,981	5%
	8	PMWF	1,378	4%	PMWF	1,642	5%	KATS	50,277	4%	PMWF	80,474	5%	LEMM	93,130	5%	MODM	83,453	5%	PMWF	77,588	4%
	9	KATS	1,217	4%	PEAM	1,485	5%	MCHA	49,296	4%	UWCM	65,978	4%	MODM	91,985	5%	PMWF	82,132	5%	CTXS	75,127	4%
	10	PEAM	1,161	4%	KATS	1,334	4%	SETS	45,008	4%	MCHA	63,262	4%	EWES	76,486	4%	MCHA	64,453	4%	KATS	67,867	4%
MFLC TOP 5	1	TECM	2,930	16%	TECM	3,073	17%	TECM	99,605	15%	SETS	109,434	13%	TECM	137,666	14%	CTXS	124,326	13%	VTRA	169,191	17%
	2	TIAM	2,353	13%	LEMM	1,752	10%	TIAM	72,376	11%	TECM	99,231	12%	SETS	124,030	12%	TECM	112,996	12%	QCTB	98,673	10%
	3	EWES	1,399	8%	TIAM	1,718	9%	PMWF	72,234	11%	TIAM	80,594	10%	FOXN	94,279	9%	LEMM	91,475	10%	TECM	79,395	8%
	4	LEMM	1,395	8%	EWES	1,638	9%	FOXN	61,961	9%	PMWF	72,193	9%	PMWF	87,751	9%	FOXN	84,992	9%	PMWF	71,718	7%
	5	AMEM	1,346	8%	PMWF	1,486	8%	EWES	51,367	8%	FOXN	65,851	8%	KATS	79,682	8%	PMWF	77,550	8%	LEMM	70,280	7%
MSKT TOP 5	1	TECM	930	19%	UWCM	1,098	21%	TECM	33,722	19%	AMEM	35,047	17%	TECM	44,522	17%	TIAM	41,055	17%	MODM	39,745	14%
	2	UWCM	923	19%	TECM	1,025	19%	EWES	23,530	13%	TECM	32,363	15%	AMEM	33,464	13%	TECM	39,290	16%	WIEM	36,566	13%
	3	EWES	716	15%	EWES	569	11%	AMEM	21,309	12%	TIAM	30,903	15%	TIAM	31,171	12%	AMEM	29,982	12%	TECM	28,858	10%
	4	MODM	314	7%	TIAM	355	7%	TIAM	20,170	11%	EWES	26,210	12%	EWES	23,428	9%	MODM	26,227	11%	PLEX	23,282	8%
	5	WCWF	310	6%	WCWF	346	7%	UWCM	17,510	10%	MODM	16,112	8%	FOXN	21,855	8%	FOXN	18,153	7%	FOXN	16,098	6%
XB TOP 5	1	TECM	988	18%	PEAM	761	18%	TECM	27,953	14%	TECM	35,843	14%	FOXN	51,685	17%	TECM	46,757	17%	FOXN	48,708	19%
	2	PEAM	914	17%	UWCM	534	12%	PEAM	23,607	12%	FOXN	35,810	14%	KATS	44,672	15%	KATS	27,734	10%	TECM	43,133	17%
	3	LEMM	771	14%	LEMM	472	11%	FOXN	22,019	11%	EWES	20,980	8%	TECM	38,877	13%	FOXN	27,096	10%	VTRA	20,904	8%
	4	UWCM	485	9%	TECM	422	10%	EWES	20,353	10%	MODM	19,069	7%	MODM	25,884	8%	CTXS	22,768	8%	MODM	20,556	8%
	5	AMEM	349	6%	AMEM	320	7%	AMEM	20,039	10%	AMEM	17,248	7%	EWES	24,241	8%	MODM	21,130	8%	CTXS	16,667	7%
ODDS TOP 5	1	UWCM	675	16%	UWCM	774	18%	MCHA	27,873	18%	MCHA	37,911	21%	MCHA	40,241	19%	MCHA	39,964	20%	MCHA	30,570	13%
	2	EWES	547	13%	EWES	613	14%	FOXN	18,687	12%	VWPM	26,672	15%	FOXN	31,439	15%	VWPM	30,258	15%	TECM	28,053	12%
	3	TECM	452	10%	TECM	396	9%	EWES	15,902	10%	FOXN	26,591	15%	VWPM	27,805	13%	TECM	23,968	12%	FOXN	27,422	12%
	4	VWPM	385	9%	VWPM	392	9%	VWPM	15,673	10%	EWES	16,659	9%	TECM	21,210	10%	FOXN	21,444	11%	VWPM	22,267	10%
	5	FRMF	321	7%	FOXN	377	9%	TECM	15,466	10%	TECM	16,153	9%	EWES	18,809	9%	GWEA	10,802	5%	RWRS	15,878	7%
Auction Totals		<u>Bales Sold</u>	<u>\$/Bale</u>		<u>Bales Sold</u>	<u>\$/Bale</u>		<u>Bales Sold</u>	<u>\$/Bale</u>		<u>Bales Sold</u>	<u>\$/Bale</u>		<u>Bales Sold</u>	<u>\$/Bale</u>		<u>Bales Sold</u>	<u>\$/Bale</u>		<u>Bales Sold</u>	<u>\$/Bale</u>	
		32,435	\$ 1,334		32,126	\$ 1,395		1,207,629	\$1,633		1,477,234	\$2,161		1,780,609	\$1,929		1,652,727	\$1,424		1,789,551	\$1,218	
		<u>Auction Value</u>			<u>Auction Value</u>			<u>Auction Value</u>			<u>Auction Value</u>			<u>Auction Value</u>			<u>Auction Value</u>			<u>Auction Value</u>		
		\$43,260,000			\$44,800,000			\$1,972,385,159			\$3,192,210,000			\$3,434,719,951			\$2,354,185,590			\$2,180,128,771		



Table 7: NSW Production Statistics

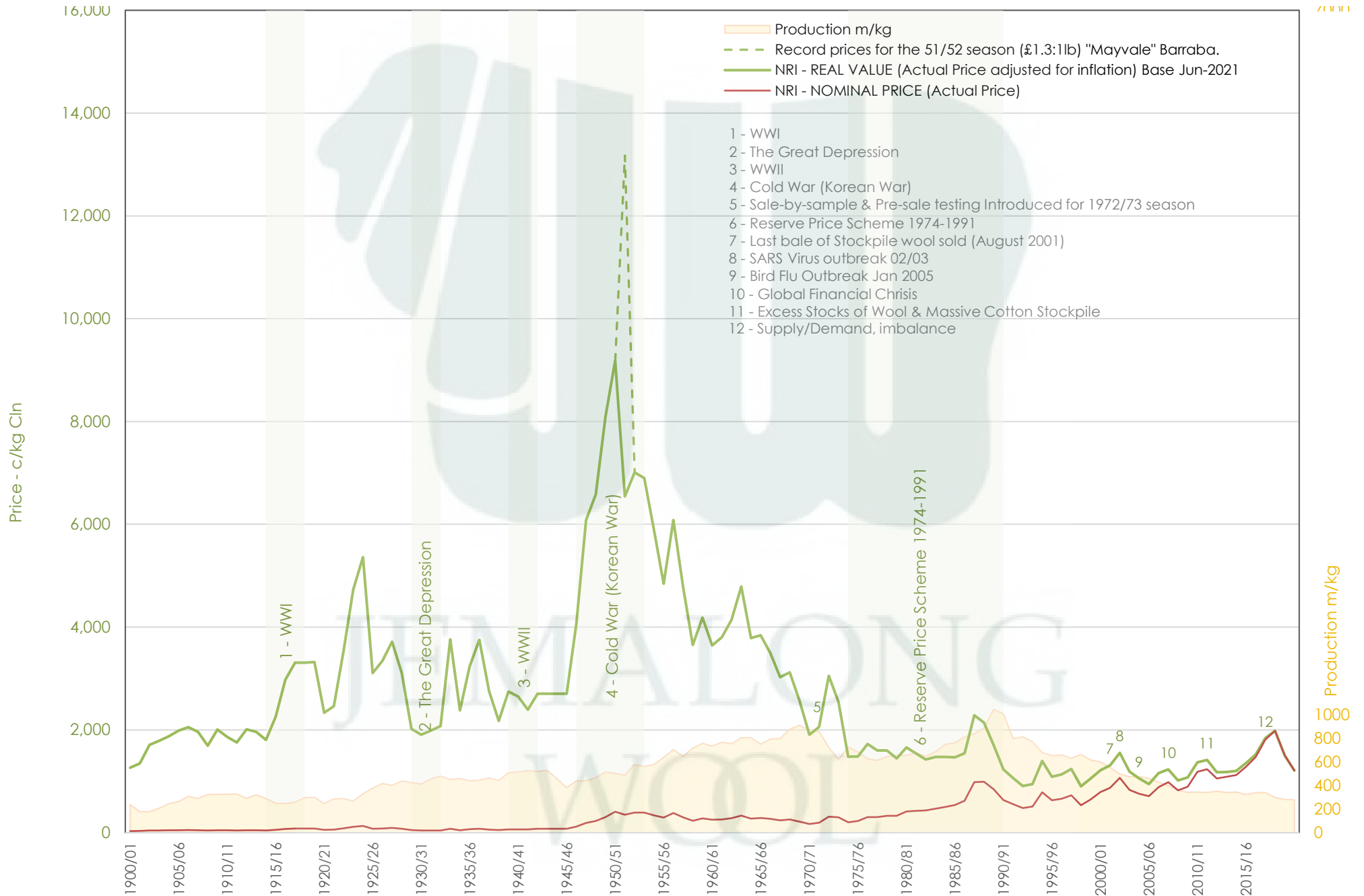
MAX			MIN		MAX GAIN		MAX REDUCTION								
2019-20				Statistical Devision, Area Code & Towns											
				Auction Bales (FH)	Micron	+/- YoY	Vmb %	+/- YoY	Yield % Sch Dry	+/- YoY	Length mm	+/- YoY	Strength Nkt	+/- YoY	Ave Price c/kg
Northern	N02	Tenterfield, Glen Innes		4,352	18.2	-0.8	1.1	-0.3	67.8	-2.4	79	-0.3	39	-1.6	1156
	N03	Guyra		28,084	19.5	0.0	1.6	0.1	63.5	-4.1	80	2.0	35	-3.1	996
	N04	Inverell		3,134	18.4	0.1	2.2	-0.4	64.7	-3.5	80	0.1	35	-0.5	1033
	N05	Armidale		770	20.0	-0.7	2.9	-0.6	64.6	-2.2	80	-2.0	39	3.2	948
	N06	Tamworth, Gunnedah, Quirindi		3,624	19.1	-0.4	2.7	-0.5	64.2	-1.0	84	5.2	37	-0.8	977
	N07	Moree		2,367	18.8	-0.4	2.4	-1.2	57.5	-2.2	78	-0.1	33	-4.3	791
	N08	Narrabri		1,373	18.8	-0.1	2.3	-0.7	58.0	-3.3	80	1.3	36	-1.2	873
	North Western & Far West	N09	Cobar, Bourke, Wanaaring		3,875	19.5	0.6	3.8	-1.2	53.9	-1.9	83	1.4	34	-0.6
N12		Walgett		4,381	18.9	0.1	3.3	-1.8	55.1	-0.5	79	-2.0	36	0.2	840
N13		Nyngan		8,659	18.9	-0.5	5.0	-1.7	54.5	-2.1	80	-0.2	35	-1.3	773
N14		Dubbo, Narromine		12,563	20.4	-0.4	3.5	-1.5	55.8	-1.6	83	1.9	34	0.3	718
N16		Dunedoo		5,224	19.8	-0.3	2.5	-1.0	60.1	-1.7	84	0.3	34	1.4	854
N17		Mudgee, Wellington, Gulgong		15,960	19.3	0.3	2.1	-0.6	61.5	-2.2	82	3.5	36	0.4	923
N33		Coonabarabran		2,263	20.0	0.3	2.7	-2.0	58.3	-2.1	85	2.3	32	0.5	790
N34		Coonamble		4,786	19.8	0.5	3.8	-1.9	53.7	-1.3	84	3.7	34	-0.8	734
N36		Gilgandra, Gulargambone		3,156	20.8	0.4	2.6	-1.1	57.2	-1.4	86	1.6	32	-0.8	740
N40		Brewarrina		3,328	19.0	-0.4	3.2	-0.2	55.7	-4.6	82	-0.6	35	-5.6	820
N10	Wilcannia, Broken Hill		7,042	20.0	0.4	2.5	-1.4	54.7	-1.9	86	4.8	36	-2.7	786	
Central West	N15	Forbes, Parkes, Cowra		24,577	19.9	0.0	1.9	-0.8	56.7	-2.7	82	1.1	36	1.4	782
	N18	Lithgow, Oberon		2,531	21.6	0.8	1.6	-0.6	67.3	0.7	88	6.3	38	-0.2	875
	N19	Orange, Bathurst		36,056	21.3	0.2	1.6	-0.4	62.7	-1.6	87	4.8	36	1.1	852
	N25	West Wyalong		17,173	19.6	-0.1	1.6	-0.7	54.9	-3.3	86	2.0	34	0.0	783
	N35	Condobolin, Lake Cargelligo		6,202	19.7	-0.1	4.0	-0.8	53.7	-2.5	82	2.1	36	0.2	723
Murrumbidgee	N26	Cootamundra, Temora		21,946	21.0	0.0	1.1	-0.6	57.6	-1.8	87	4.4	34	1.0	729
	N27	Adelong, Gundagai		10,380	20.7	-0.2	1.3	-0.3	62.8	-1.7	88	5.0	33	0.7	837
	N29	Wagga, Narrandera		27,088	21.4	0.2	1.1	-0.4	60.2	-0.9	86	3.6	33	-0.2	760
	N37	Griffith, Hillston		9,481	21.1	0.4	3.3	-1.9	57.9	-0.5	83	2.5	38	-2.7	764
	N39	Hay, Coleambally		12,096	20.1	0.4	3.1	-2.6	59.3	-1.3	86	3.8	38	-1.4	849
Murray	N11	Wentworth, Balranald		5,574	20.6	0.4	5.0	-1.7	54.4	-1.2	88	3.1	36	-3.0	785
	N28	Albury, Corowa, Holbrook		24,964	21.1	0.4	1.1	-0.4	61.4	-1.6	86	2.7	33	-0.8	800
	N31	Deniliquin		19,387	20.4	0.1	2.0	-1.1	63.2	-0.6	84	1.8	36	-1.8	891
	N38	Finley, Berrigan, Jerilderie		7,532	20.1	0.3	2.0	-0.7	60.9	-1.6	85	3.9	36	-1.6	842
South Eastern	N23	Goulburn, Young, Yass		76,824	19.7	0.3	1.1	-0.4	61.8	-3.2	88	3.8	35	-0.2	913
	N24	Monaro (Cooma, Bombala)		24,535	19.2	0.2	1.0	-0.6	66.5	-0.8	94	5.2	35	1.4	1011
	N32	A.C.T.		28	19.7	1.8	0.9	-0.8	60.9	-1.2	78	-4.0	38	8.6	921
	N43	South Coast (Bega)		392	18.6	-0.2	0.6	-0.1	72.9	0.1	90	4.0	40	-1.5	1279
NSW	AWEX Sale Statistics 19-20			458,846	20.2	0.1	1.9	-0.9	60.3	-1.8	85	3.1	35	-0.5	854

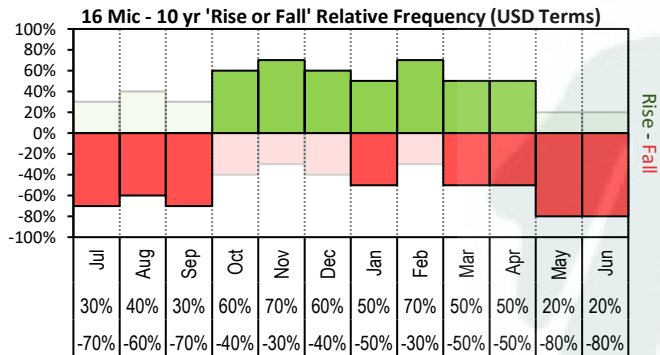
AWTA Mthly Key Test Data			Bales Tested	+/- YoY	Micron	+/- YoY	VMB	+/- YoY	Yld	+/- YoY	Lth	+/- YoY	Nkt	+/- YoY	POBM +/-
AUSTRALIA	Current Season	October	151,501	-35,115	20.4	0.3	1.6	0.1	64.7	0.8	90	2.0	34	2.5	53 3.3
		Y.T.D.	469,860	-64,307	20.3	0.3	1.7	-0.1	63.5	0.7	90	2.0	34	1.0	53 7.0
	Previous Seasons	2019-20	534,167	-67710	20.0	-0.1	1.8	-0.6	62.8	-0.8	88	2.0	33	-1.0	46 2.0
		2018-19	601,877	-63673	20.1	-0.5	2.4	-0.3	63.6	-0.5	86	-3.0	34	-1.0	44 8.0
		Y.T.D.	2017-18	665,550	48,833	20.6	0.1	2.7	0.8	64.1	-0.9	89	-1.4	35	0.0



JEMALONG WOOL BULLETIN

(week ending 2/12/2020)



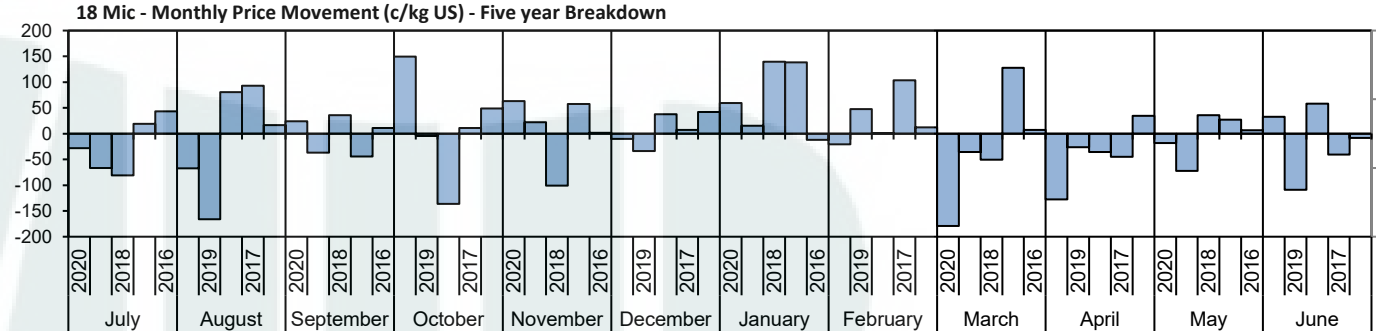
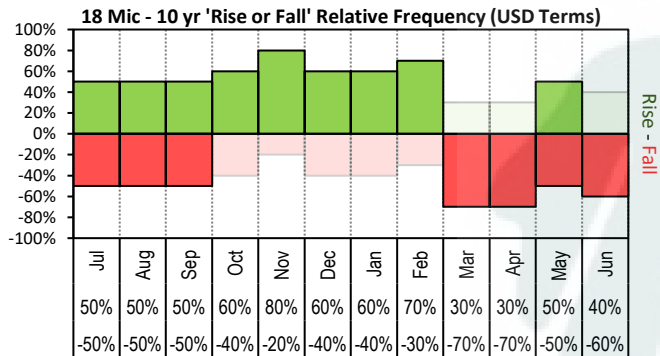




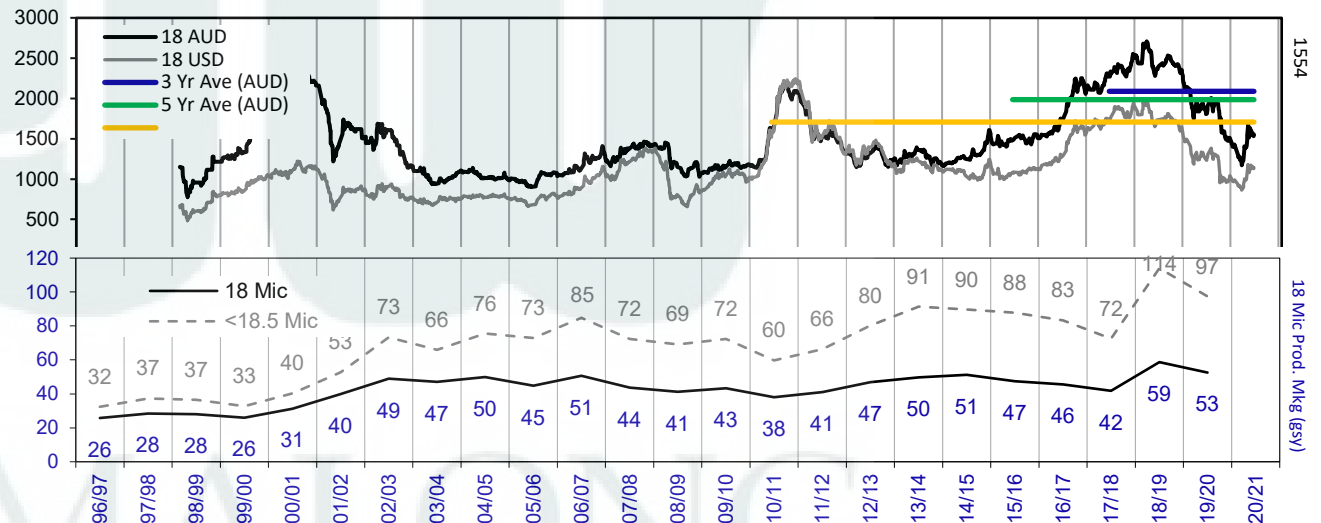
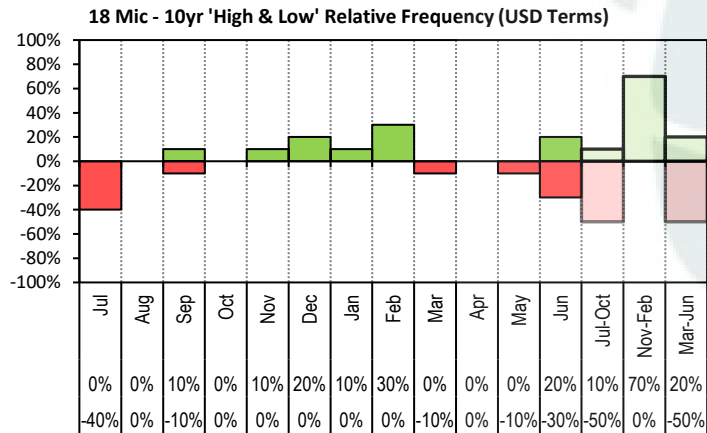
JEMALONG WOOL BULLETIN

(week ending 2/12/2020)

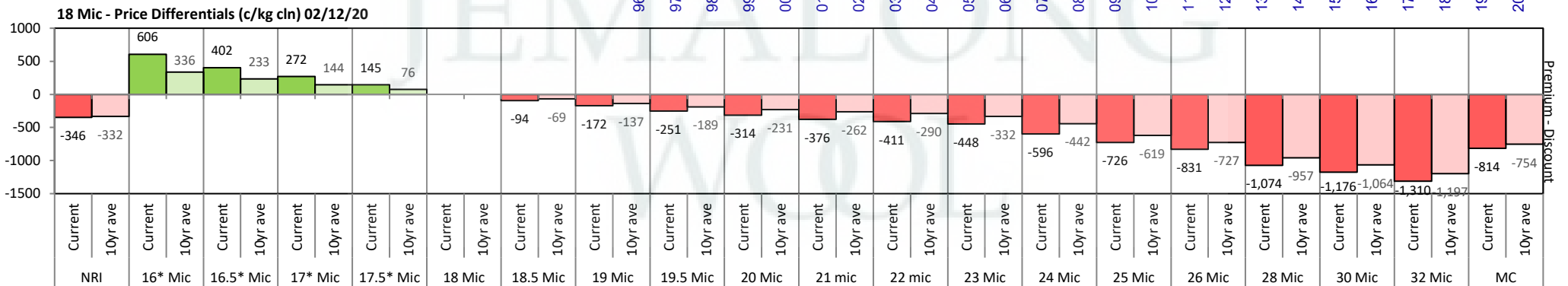
Page 10/26

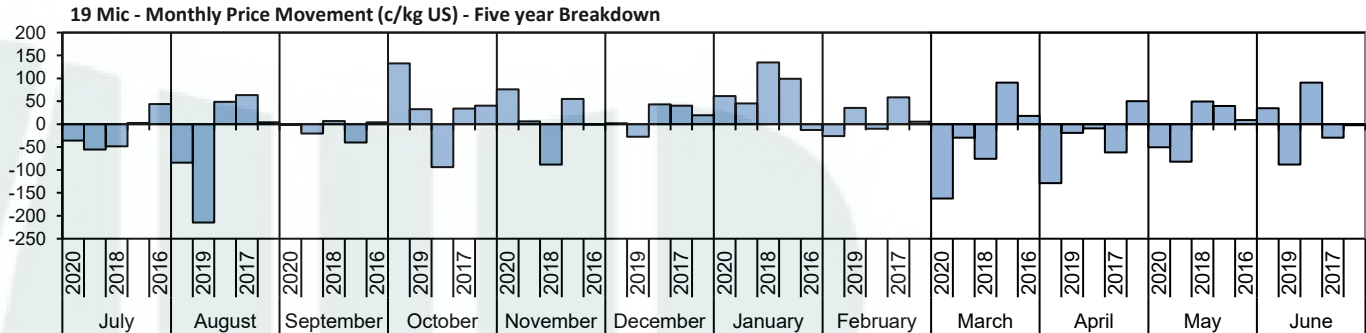
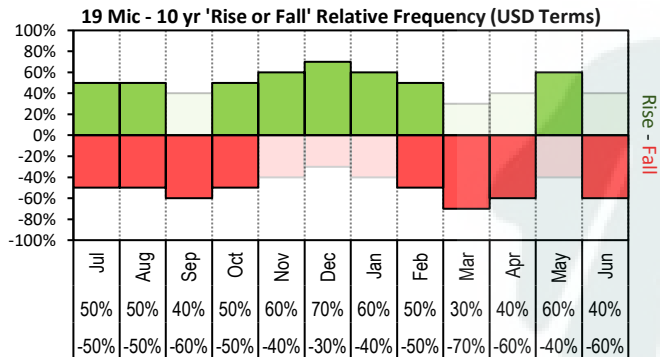


The above 'Rise or Fall' graph, shows how often the market has risen or fallen in a given month over the past 10 years, it does not show the extent of the movement only the frequency of direction. The 'Monthly Price Movement' graph shows the extent of movement for each month, for the past 5 years.

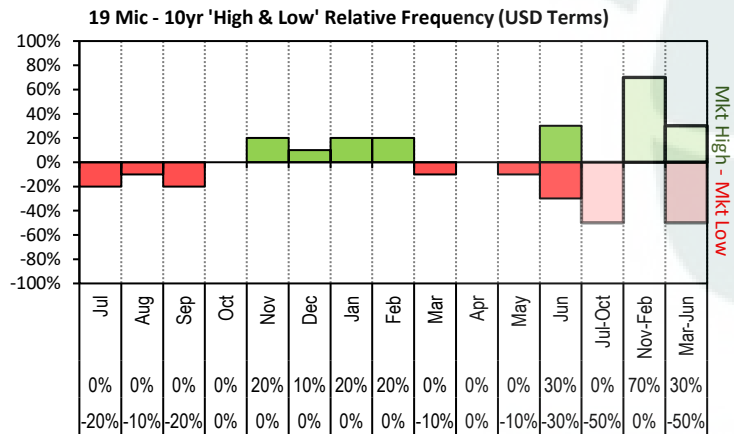


The above graph, shows how often the '12 month high & low' have been achieved for a given month over the past 10 years. It is not a measure of probability.

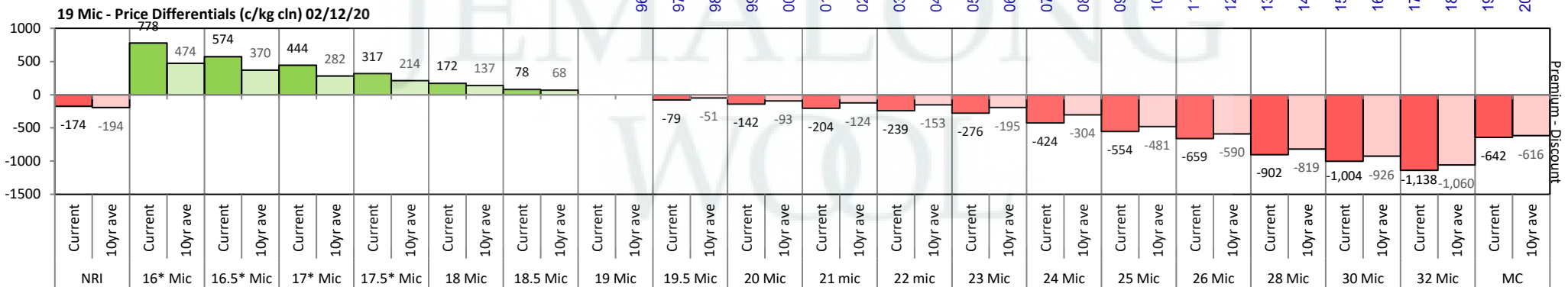
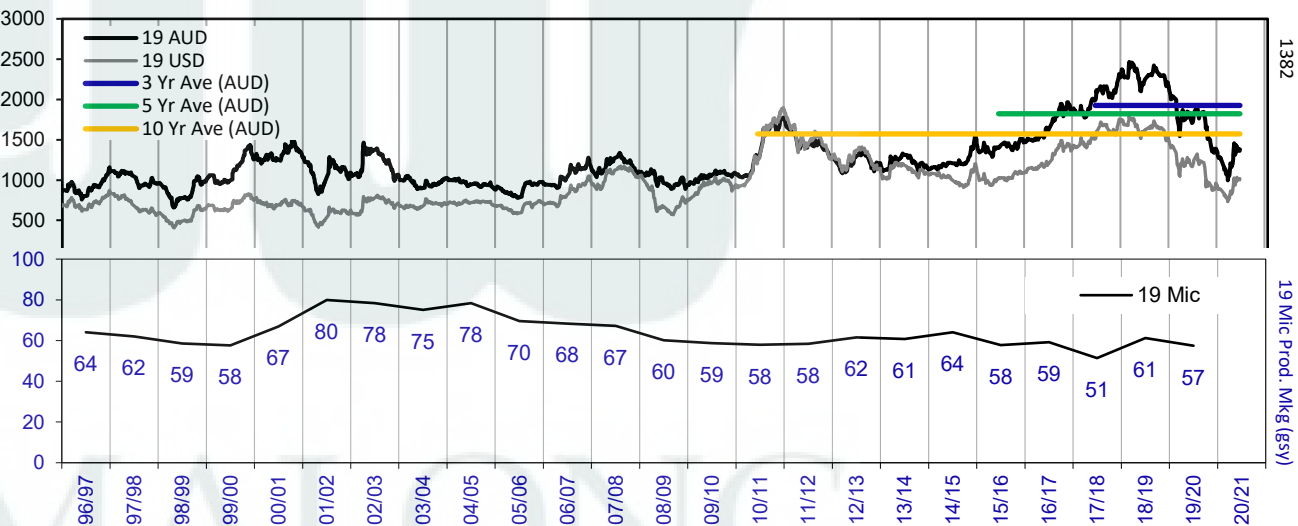




The above 'Rise or Fall' graph, shows how often the market has risen or fallen in a given month over the past 10 years, it does not show the extent of the movement only the frequency of direction. The 'Monthly Price Movement' graph shows the extent of movement for each month, for the past 5 years.



The above graph, shows how often the '12 month high & low' have been achieved for a given month over the past 10 years. It is not a measure of probability.

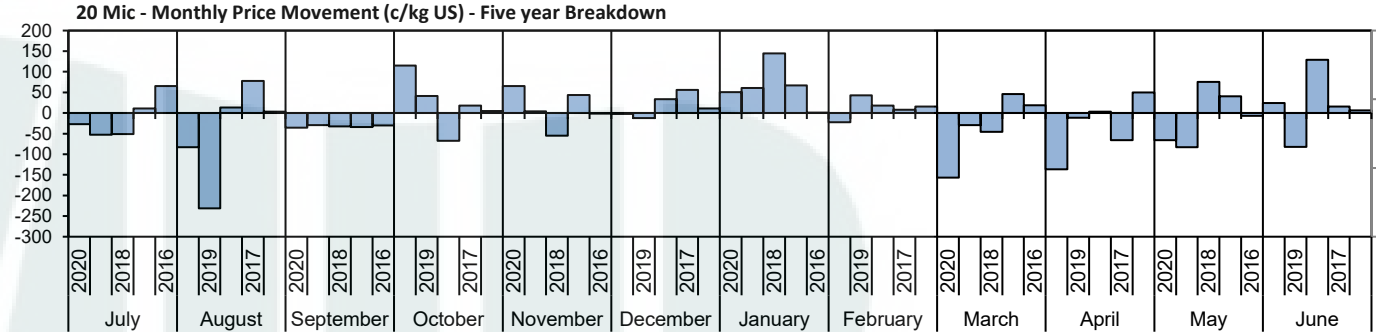
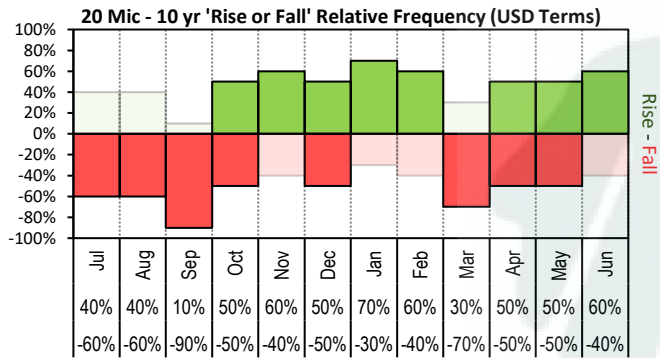




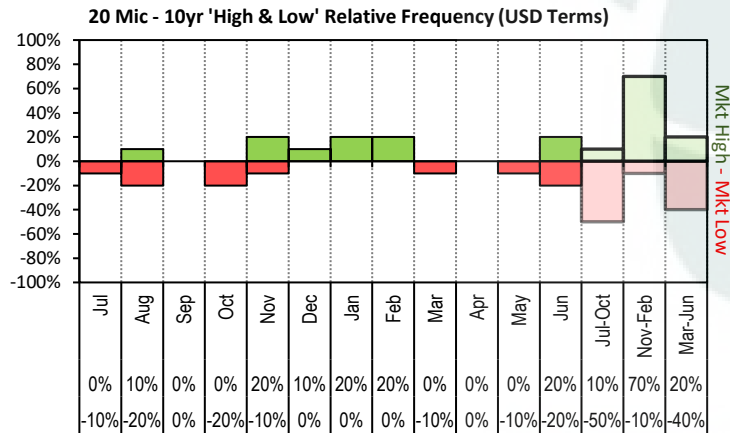
JEMALONG WOOL BULLETIN

(week ending 2/12/2020)

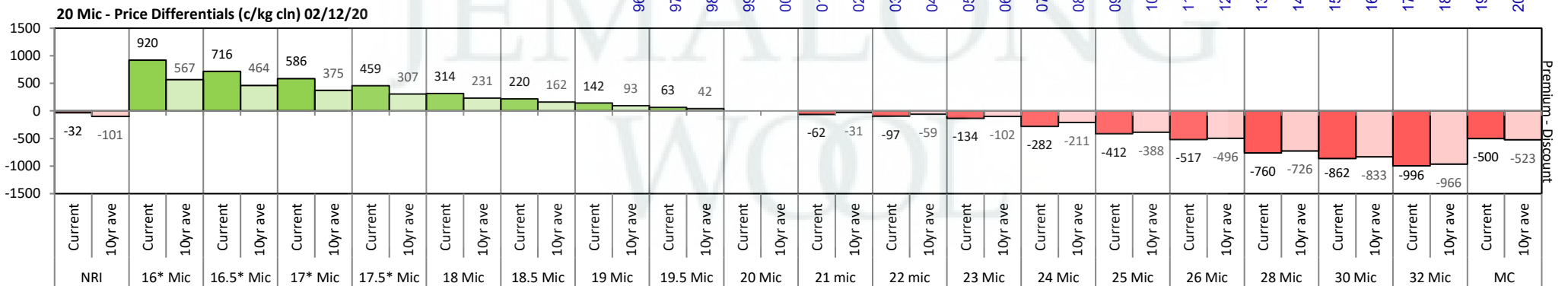
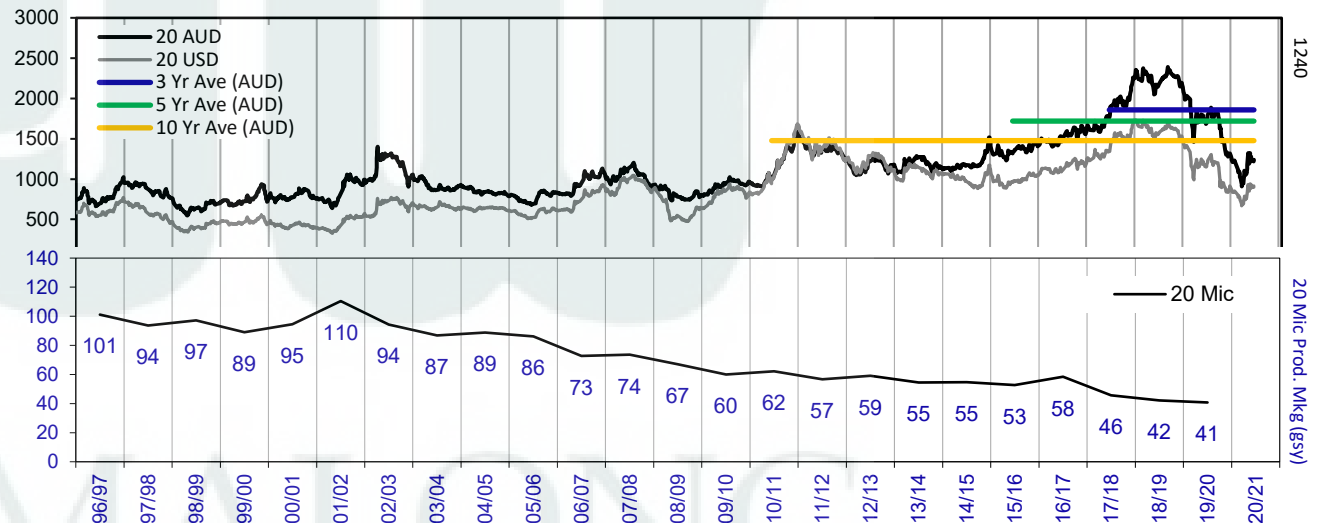
Page 12/26

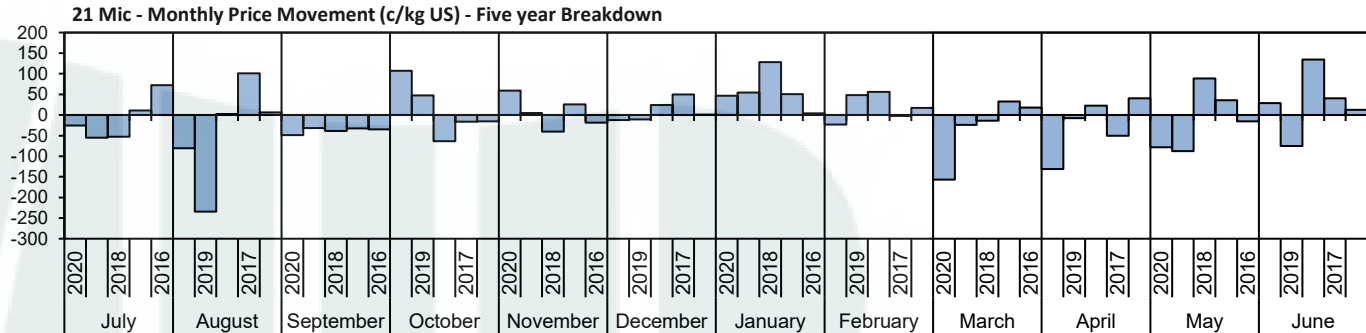
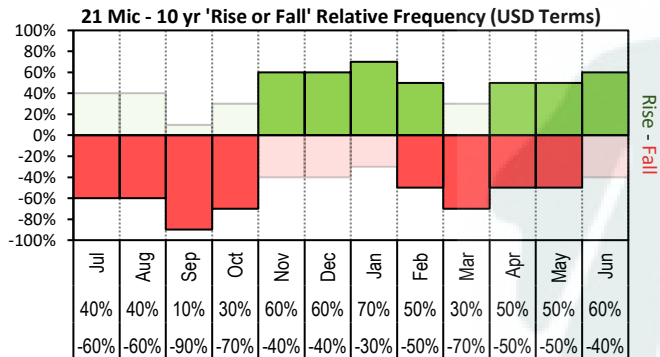


The above 'Rise or Fall' graph, shows how often the market has risen or fallen in a given month over the past 10 years, it does not show the extent of the movement only the frequency of direction. The 'Monthly Price Movement' graph shows the extent of movement for each month, for the past 5 years.

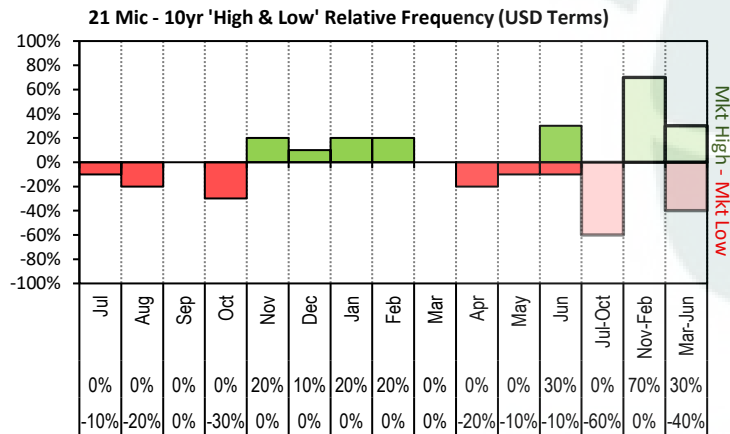


The above graph, shows how often the '12 month high & low' have been achieved for a given month over the past 10 years. It is not a measure of probability.

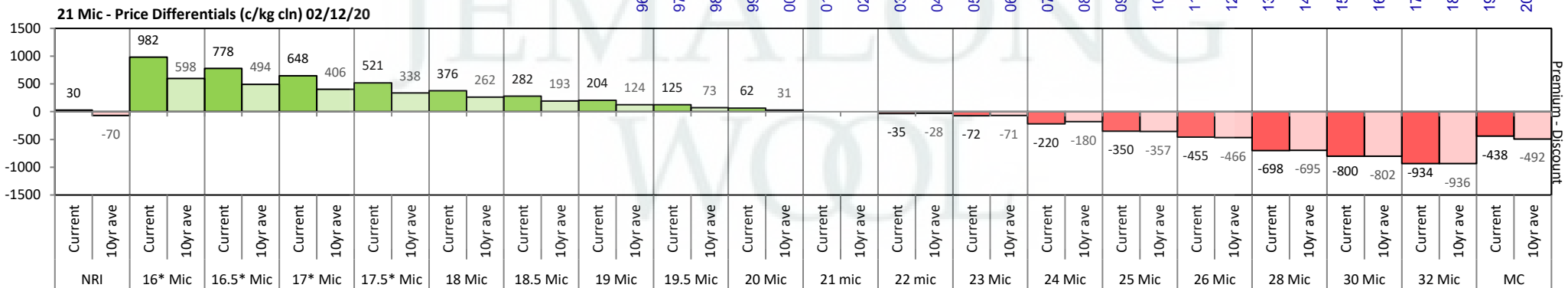
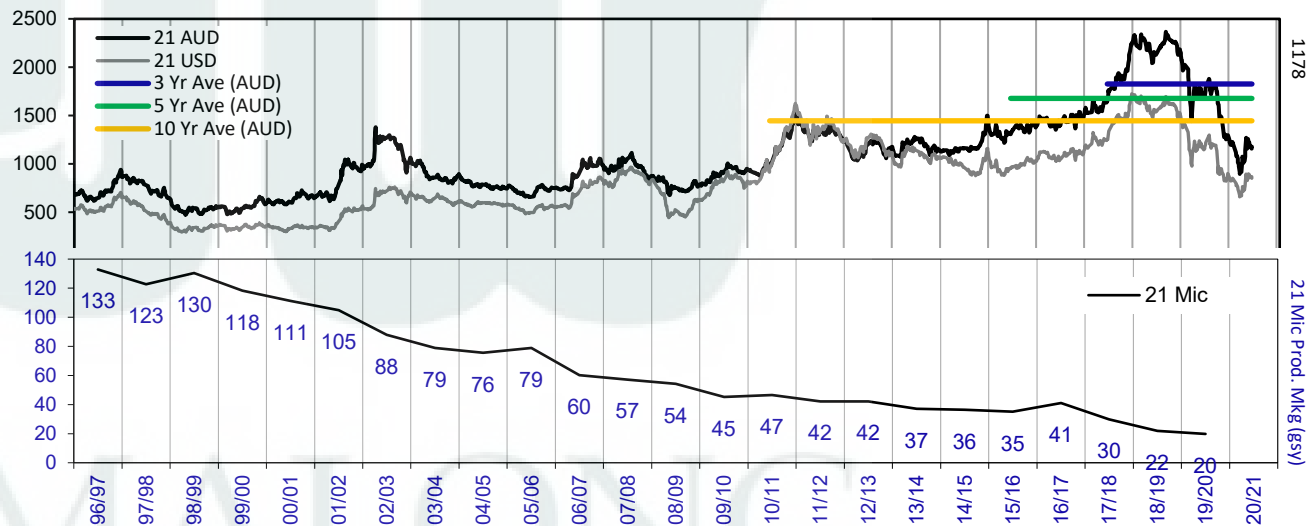


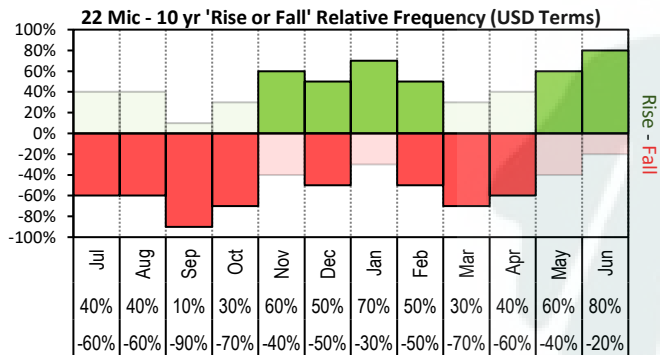


The above 'Rise or Fall' graph, shows how often the market has risen or fallen in a given month over the past 10 years, it does not show the extent of the movement only the frequency of direction. The 'Monthly Price Movement' graph shows the extent of movement for each month, for the past 5 years.

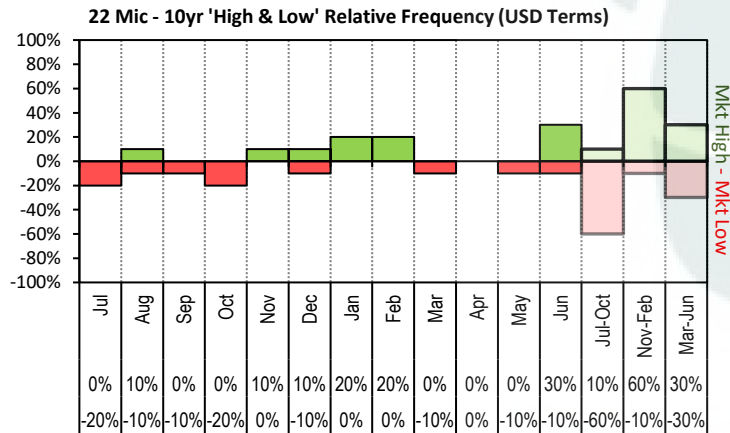
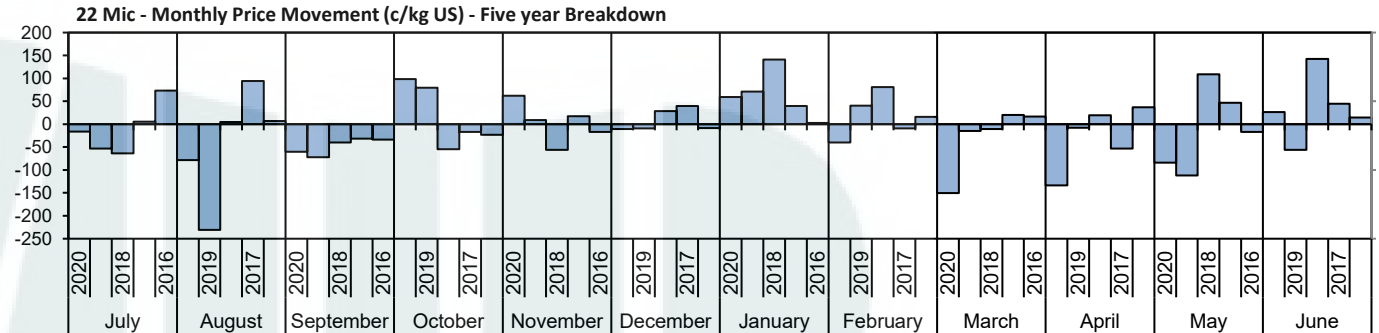


The above graph, shows how often the '12 month high & low' have been achieved for a given month over the past 10 years. It is not a measure of probability.

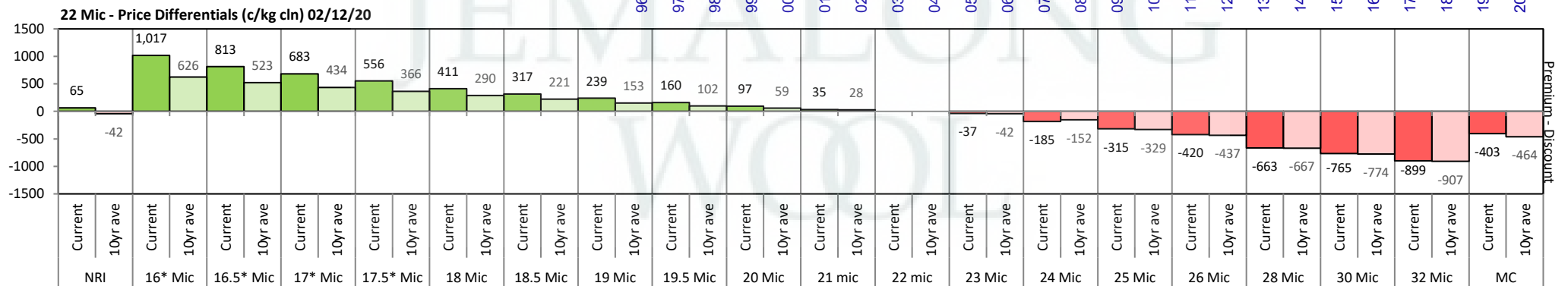
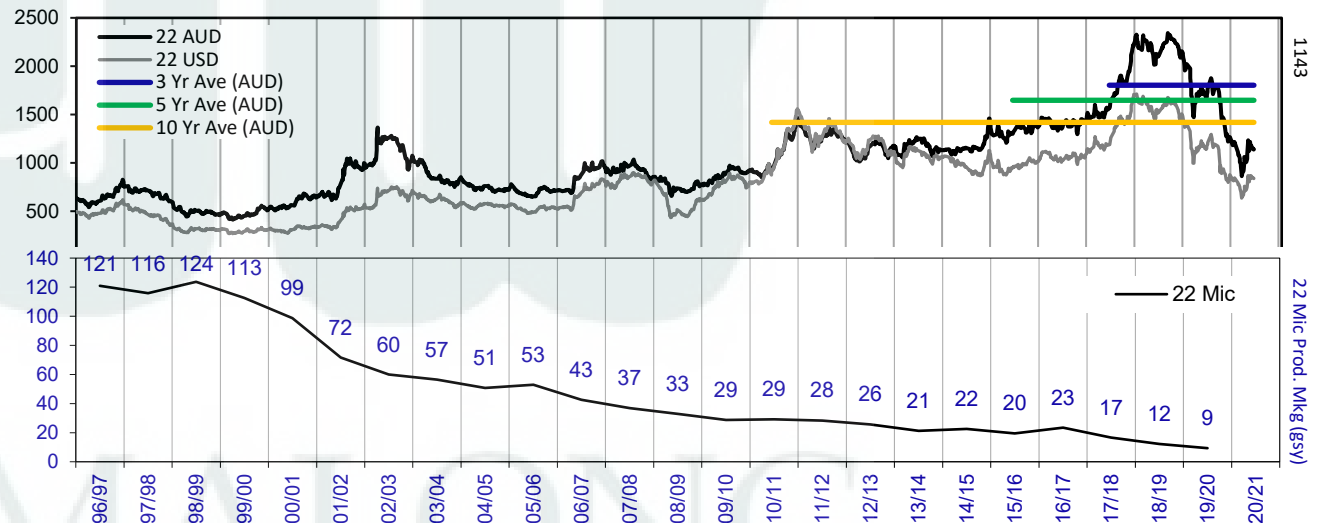


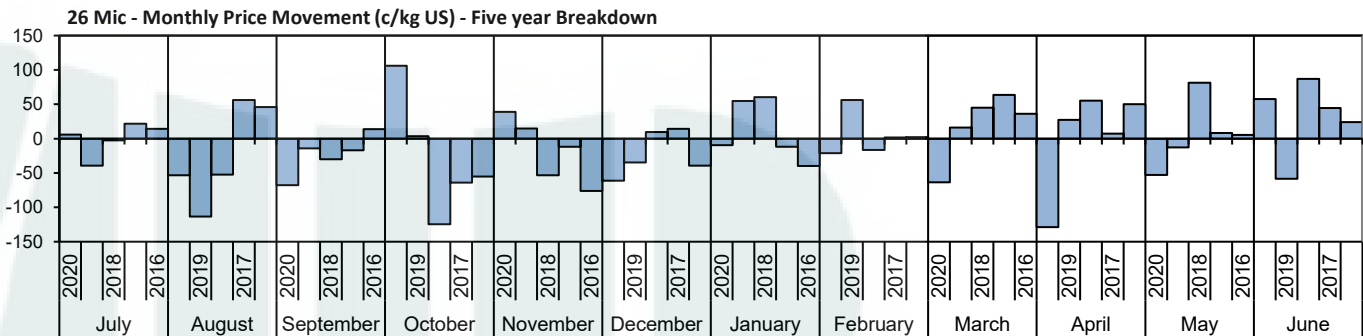
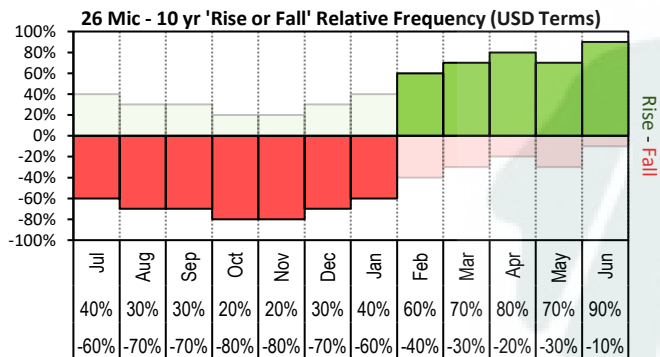


The above '**Rise or Fall**' graph, shows how often the market has risen or fallen in a given month over the past 10 years, it does not show the extent of the movement only the frequency of direction. The '**Monthly Price Movement**' graph shows the extent of movement for each month, for the past 5 years.

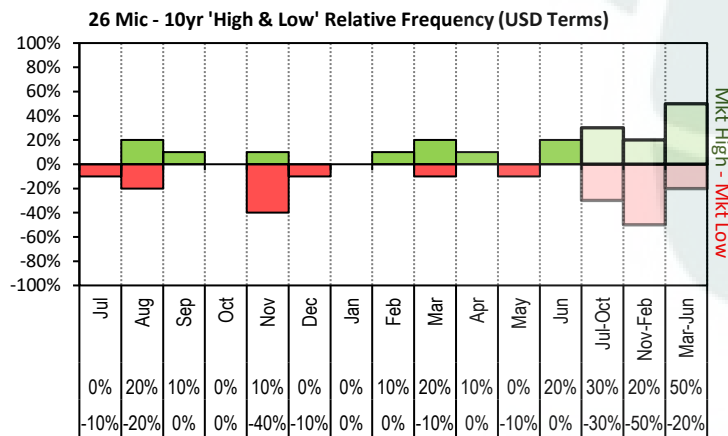


The above graph, shows how often the '12 month high & low' have been achieved for a given month over the past 10 years. It is not a measure of probability.

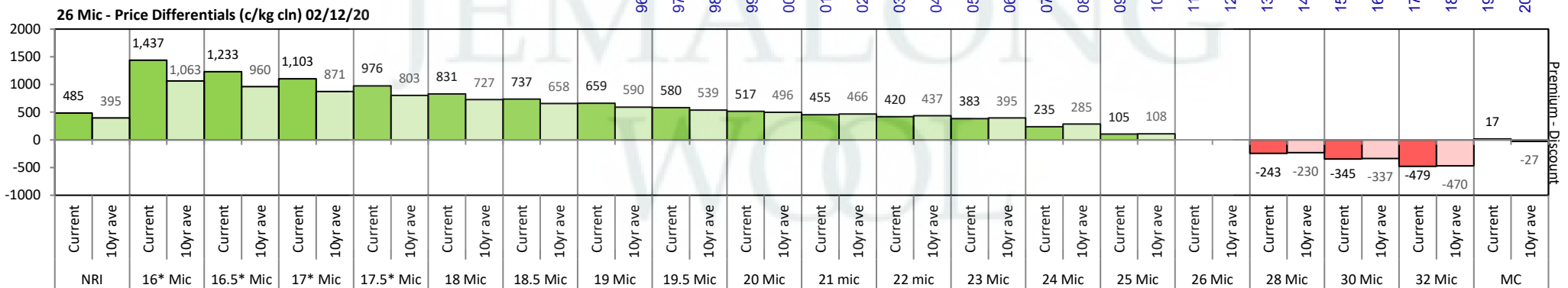
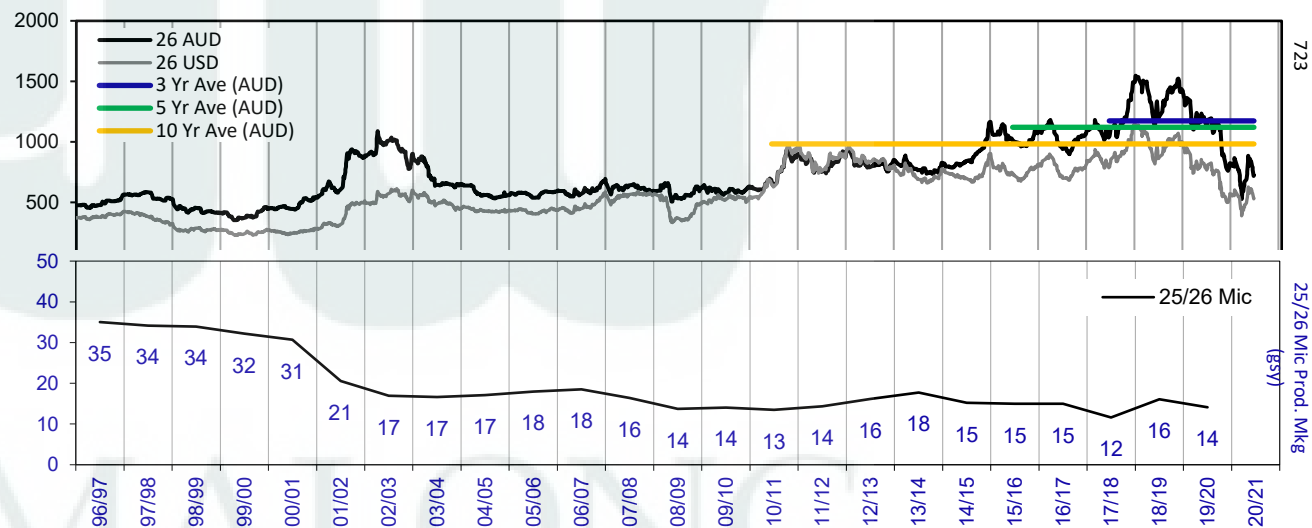


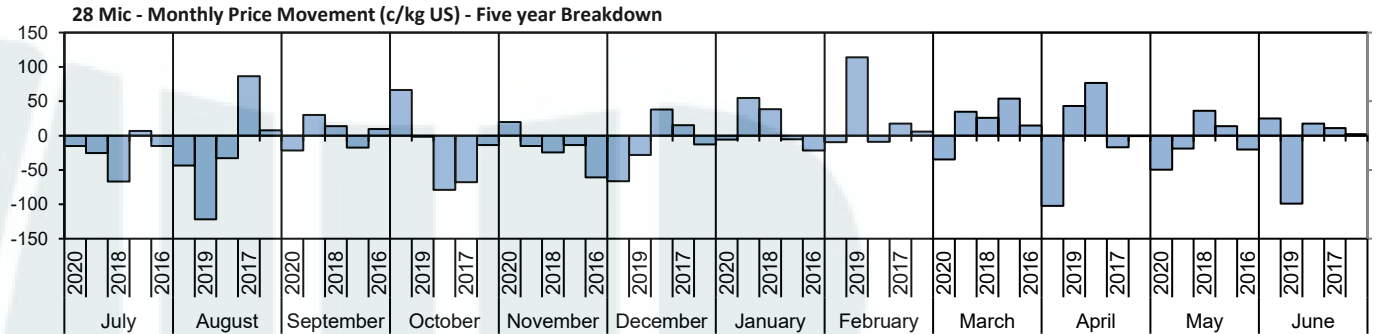
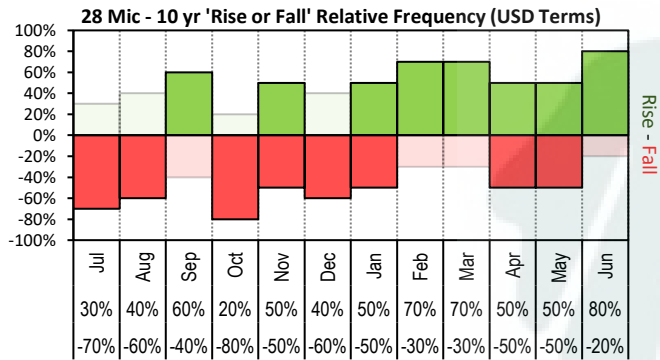


The above 'Rise or Fall' graph, shows how often the market has risen or fallen in a given month over the past 10 years, it does not show the extent of the movement only the frequency of direction. The 'Monthly Price Movement' graph shows the extent of movement for each month, for the past 5 years.

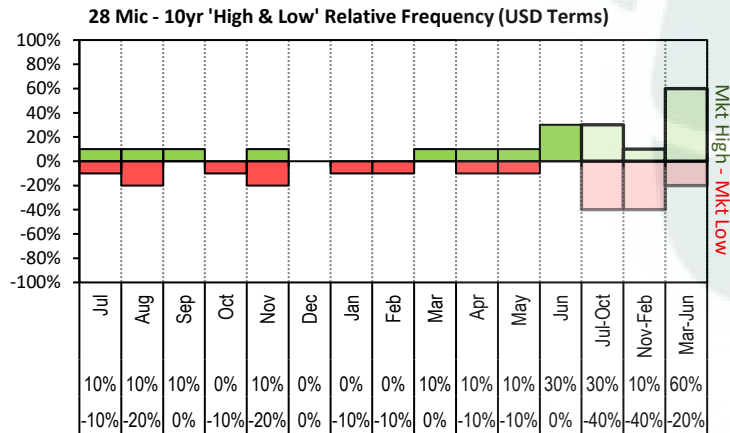


The above graph, shows how often the '12 month high & low' have been achieved for a given month over the past 10 years. It is not a measure of probability.

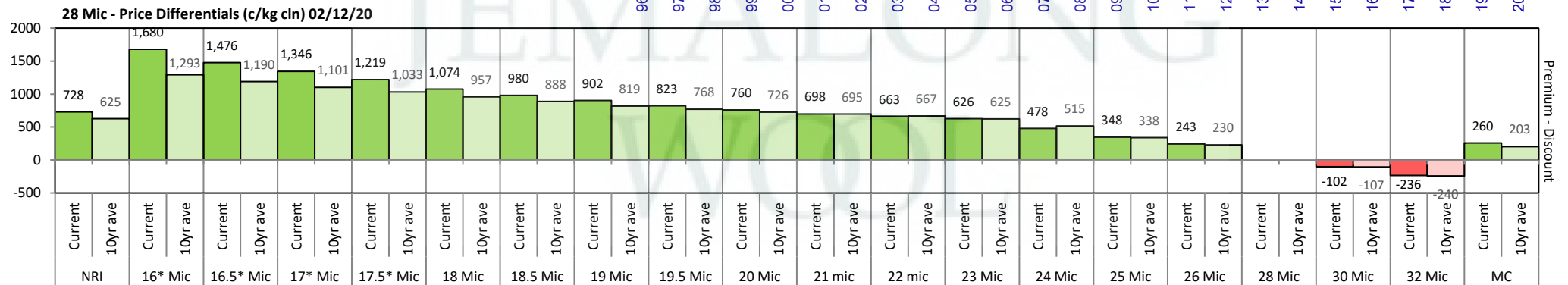
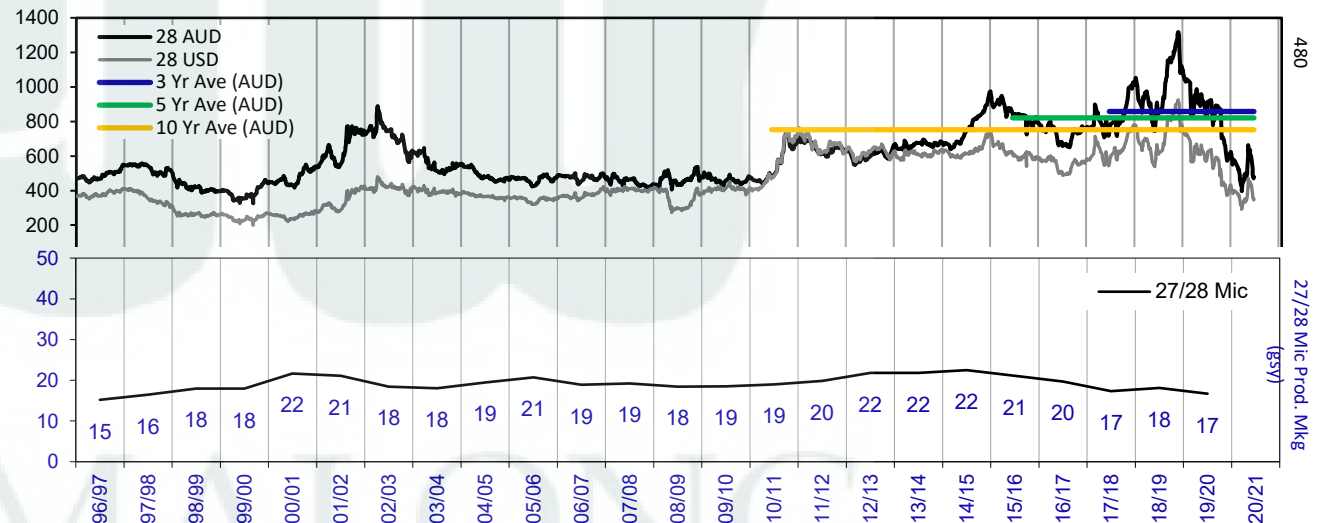


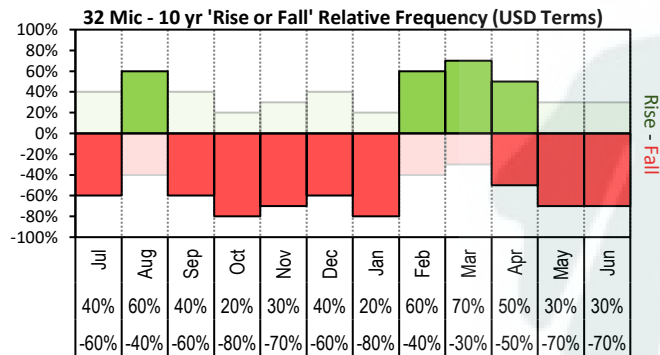


The above 'Rise or Fall' graph, shows how often the market has risen or fallen in a given month over the past 10 years, it does not show the extent of the movement only the frequency of direction. The 'Monthly Price Movement' graph shows the extent of movement for each month, for the past 5 years.

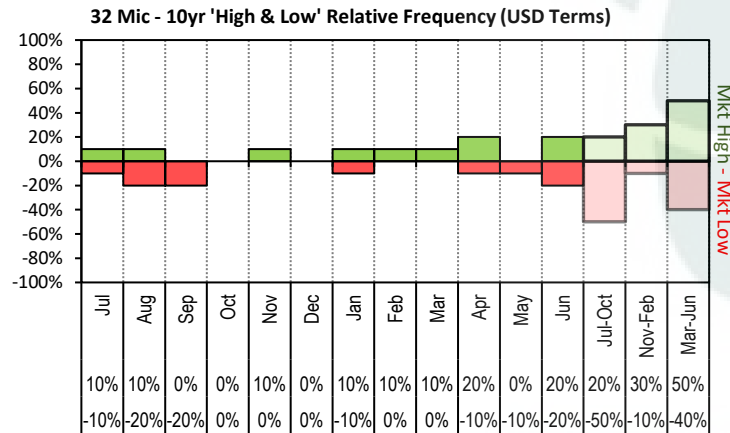
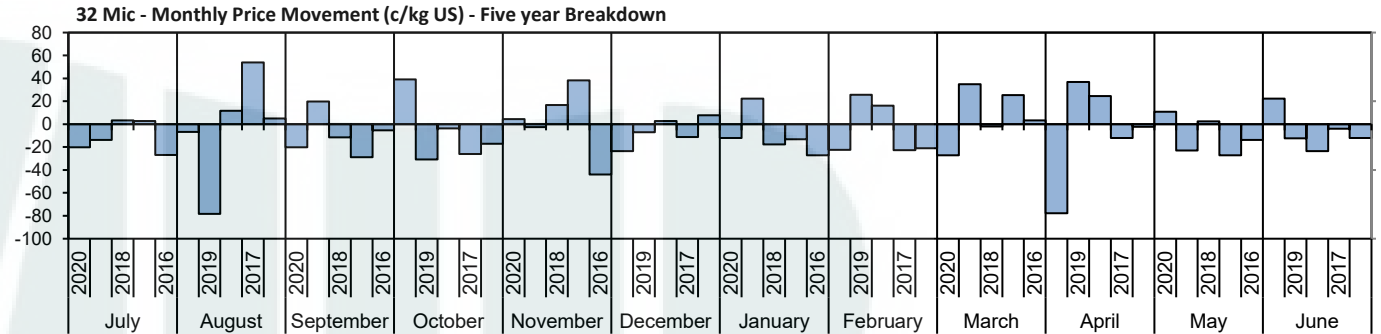


The above graph, shows how often the '12 month high & low' have been achieved for a given month over the past 10 years. It is not a measure of probability.

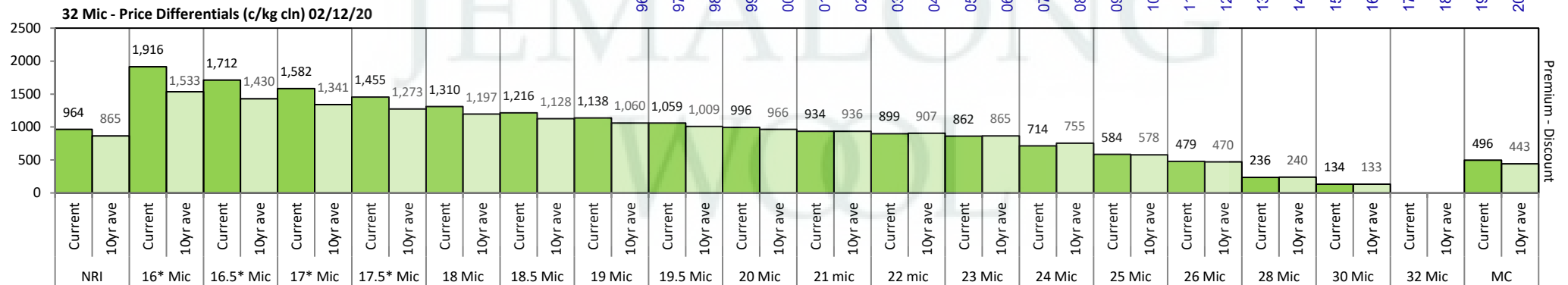
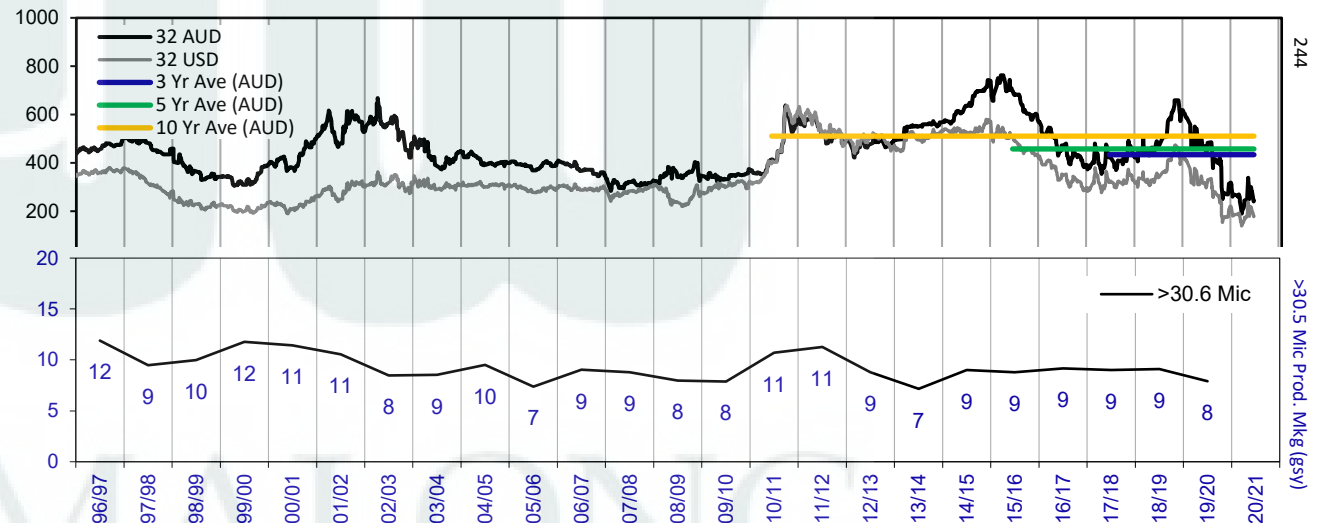




The above '**Rise or Fall**' graph, shows how often the market has risen or fallen in a given month over the past 10 years, it does not show the extent of the movement only the frequency of direction. The '**Monthly Price Movement**' graph shows the extent of movement for each month, for the past 5 years.

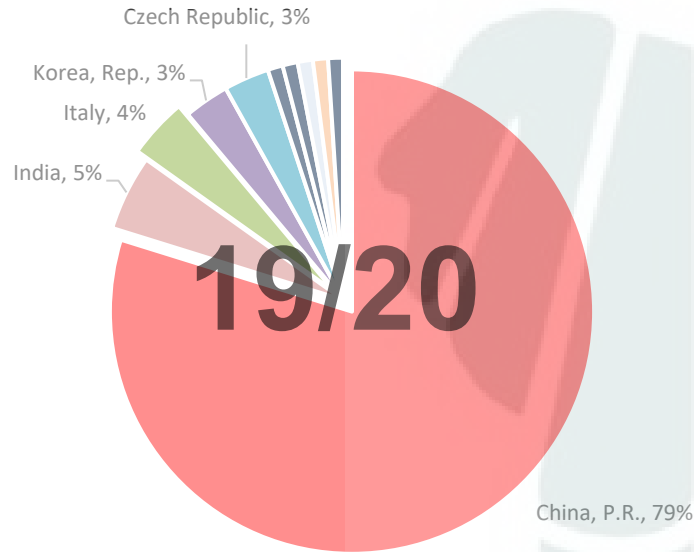


The above graph, shows how often the '12 month high & low' have been achieved for a given month over the past 10 years. It is not a measure of probability.

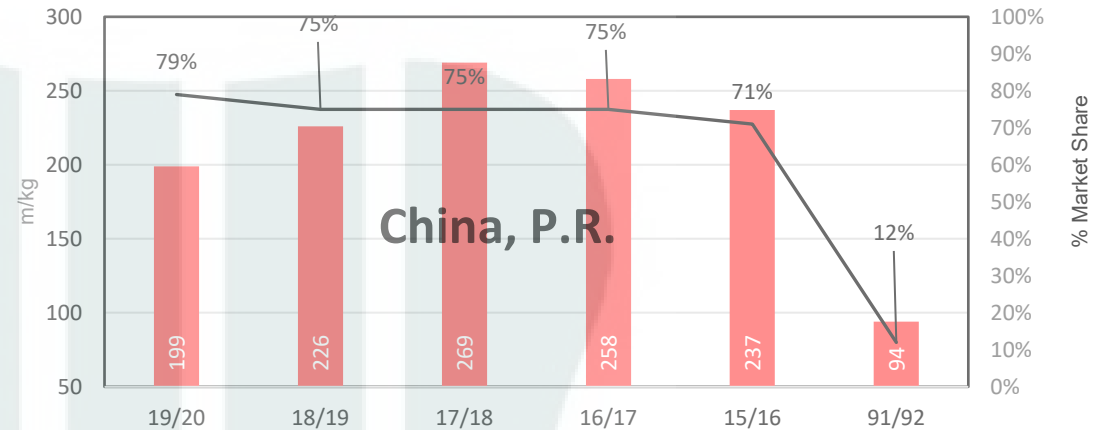




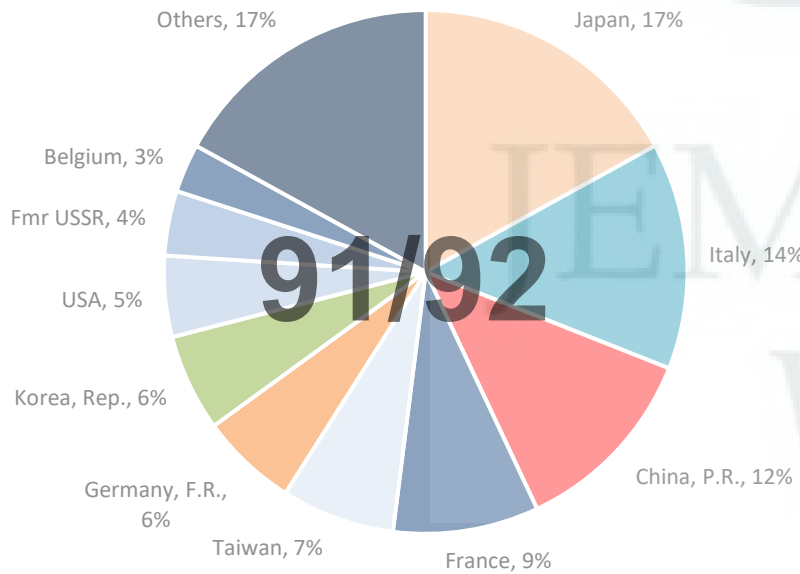
19/20 - Export Snap Shot (254.11 m/kg greasy equivalent)



China, P.R. (Largest Market Share)



91/92 - Export Snap Shot (784.7 m/kg greasy equivalent)



Seasonal Change m/kg





Table 8: Returns pr head for skirted fleece wool.

Skirted FLC Weight 9 Kg		Micron																	
		16	16.5	17	17.5	18	18.5	19	19.5	20	21	22	23	24	25	26	28	30	32
Yield (Sch Dry)	25% Current	\$49	\$44	\$41	\$38	\$35	\$33	\$31	\$29	\$28	\$27	\$26	\$25	\$22	\$19	\$16	\$11	\$9	\$5
	10yr ave.	\$46	\$43	\$41	\$40	\$38	\$37	\$35	\$34	\$33	\$33	\$32	\$31	\$29	\$25	\$22	\$17	\$14	\$11
	30% Current	\$58	\$53	\$49	\$46	\$42	\$39	\$37	\$35	\$33	\$32	\$31	\$30	\$26	\$22	\$20	\$13	\$10	\$7
	10yr ave.	\$55	\$52	\$50	\$48	\$46	\$44	\$42	\$41	\$40	\$39	\$38	\$37	\$34	\$29	\$26	\$20	\$17	\$14
	35% Current	\$68	\$62	\$58	\$54	\$49	\$46	\$44	\$41	\$39	\$37	\$36	\$35	\$30	\$26	\$23	\$15	\$12	\$8
	10yr ave.	\$64	\$60	\$58	\$56	\$54	\$52	\$49	\$48	\$47	\$46	\$45	\$43	\$40	\$34	\$31	\$24	\$20	\$16
	40% Current	\$78	\$70	\$66	\$61	\$56	\$53	\$50	\$47	\$45	\$42	\$41	\$40	\$34	\$30	\$26	\$17	\$14	\$9
	10yr ave.	\$73	\$69	\$66	\$64	\$61	\$59	\$57	\$55	\$53	\$52	\$51	\$50	\$46	\$39	\$35	\$27	\$23	\$18
	45% Current	\$87	\$79	\$74	\$69	\$63	\$59	\$56	\$53	\$50	\$48	\$46	\$45	\$39	\$34	\$29	\$19	\$15	\$10
	10yr ave.	\$82	\$78	\$74	\$72	\$69	\$66	\$64	\$62	\$60	\$59	\$57	\$56	\$51	\$44	\$40	\$30	\$26	\$21
	50% Current	\$97	\$88	\$82	\$76	\$70	\$66	\$62	\$59	\$56	\$53	\$51	\$50	\$43	\$37	\$33	\$22	\$17	\$11
	10yr ave.	\$91	\$86	\$83	\$80	\$77	\$74	\$71	\$68	\$67	\$65	\$64	\$62	\$57	\$49	\$44	\$34	\$29	\$23
	55% Current	\$107	\$97	\$90	\$84	\$77	\$72	\$68	\$64	\$61	\$58	\$57	\$55	\$47	\$41	\$36	\$24	\$19	\$12
	10yr ave.	\$100	\$95	\$91	\$88	\$85	\$81	\$78	\$75	\$73	\$72	\$70	\$68	\$63	\$54	\$49	\$37	\$32	\$25
	60% Current	\$117	\$106	\$99	\$92	\$84	\$79	\$75	\$70	\$67	\$64	\$62	\$60	\$52	\$45	\$39	\$26	\$20	\$13
	10yr ave.	\$109	\$104	\$99	\$96	\$92	\$89	\$85	\$82	\$80	\$78	\$77	\$74	\$68	\$59	\$53	\$41	\$35	\$28
	65% Current	\$126	\$114	\$107	\$99	\$91	\$85	\$81	\$76	\$73	\$69	\$67	\$65	\$56	\$48	\$42	\$28	\$22	\$14
	10yr ave.	\$118	\$112	\$108	\$104	\$100	\$96	\$92	\$89	\$86	\$85	\$83	\$80	\$74	\$64	\$57	\$44	\$38	\$30
	70% Current	\$136	\$123	\$115	\$107	\$98	\$92	\$87	\$82	\$78	\$74	\$72	\$70	\$60	\$52	\$46	\$30	\$24	\$15
	10yr ave.	\$127	\$121	\$116	\$112	\$108	\$103	\$99	\$96	\$93	\$91	\$89	\$87	\$80	\$69	\$62	\$47	\$41	\$32
	75% Current	\$146	\$132	\$123	\$115	\$105	\$99	\$93	\$88	\$84	\$80	\$77	\$75	\$65	\$56	\$49	\$32	\$26	\$16
	10yr ave.	\$137	\$129	\$124	\$120	\$115	\$111	\$106	\$103	\$100	\$98	\$96	\$93	\$86	\$74	\$66	\$51	\$43	\$34
	80% Current	\$156	\$141	\$131	\$122	\$112	\$105	\$100	\$94	\$89	\$85	\$82	\$80	\$69	\$60	\$52	\$35	\$27	\$18
	10yr ave.	\$146	\$138	\$132	\$128	\$123	\$118	\$113	\$109	\$106	\$104	\$102	\$99	\$91	\$78	\$71	\$54	\$46	\$37
	85% Current	\$165	\$150	\$140	\$130	\$119	\$112	\$106	\$100	\$95	\$90	\$87	\$85	\$73	\$63	\$55	\$37	\$29	\$19
	10yr ave.	\$155	\$147	\$141	\$136	\$131	\$125	\$120	\$116	\$113	\$111	\$109	\$105	\$97	\$83	\$75	\$57	\$49	\$39

The above shows estimated returns per head for skirted fleece wool. These figures do not take into account the value of skirtings and oddments and do not take into account discounts that may apply for faults under individual circumstances. These figures are based on a market index of 100% and should be used as a guide only. Returns over \$30 / head for fleece wool are highlighted.



Table 9: Returns pr head for skirted fleece wool.

Skirted FLC Weight 8 Kg		Micron																	
		16	16.5	17	17.5	18	18.5	19	19.5	20	21	22	23	24	25	26	28	30	32
Yield (Sch Dry)	25% Current	\$43	\$39	\$37	\$34	\$31	\$29	\$28	\$26	\$25	\$24	\$23	\$22	\$19	\$17	\$14	\$10	\$8	\$5
	10yr ave.	\$40	\$38	\$37	\$36	\$34	\$33	\$31	\$30	\$30	\$29	\$28	\$28	\$25	\$22	\$20	\$15	\$13	\$10
	30% Current	\$52	\$47	\$44	\$41	\$37	\$35	\$33	\$31	\$30	\$28	\$27	\$27	\$23	\$20	\$17	\$12	\$9	\$6
	10yr ave.	\$49	\$46	\$44	\$43	\$41	\$39	\$38	\$36	\$35	\$35	\$34	\$33	\$30	\$26	\$24	\$18	\$15	\$12
	35% Current	\$60	\$55	\$51	\$48	\$44	\$41	\$39	\$36	\$35	\$33	\$32	\$31	\$27	\$23	\$20	\$13	\$11	\$7
	10yr ave.	\$57	\$54	\$51	\$50	\$48	\$46	\$44	\$43	\$41	\$41	\$40	\$39	\$35	\$31	\$27	\$21	\$18	\$14
	40% Current	\$69	\$63	\$58	\$54	\$50	\$47	\$44	\$42	\$40	\$38	\$37	\$35	\$31	\$26	\$23	\$15	\$12	\$8
	10yr ave.	\$65	\$61	\$59	\$57	\$55	\$52	\$50	\$49	\$47	\$46	\$45	\$44	\$41	\$35	\$31	\$24	\$21	\$16
	45% Current	\$78	\$70	\$66	\$61	\$56	\$53	\$50	\$47	\$45	\$42	\$41	\$40	\$34	\$30	\$26	\$17	\$14	\$9
	10yr ave.	\$73	\$69	\$66	\$64	\$61	\$59	\$57	\$55	\$53	\$52	\$51	\$50	\$46	\$39	\$35	\$27	\$23	\$18
	50% Current	\$86	\$78	\$73	\$68	\$62	\$58	\$55	\$52	\$50	\$47	\$46	\$44	\$38	\$33	\$29	\$19	\$15	\$10
	10yr ave.	\$81	\$77	\$74	\$71	\$68	\$66	\$63	\$61	\$59	\$58	\$57	\$55	\$51	\$44	\$39	\$30	\$26	\$20
	55% Current	\$95	\$86	\$80	\$75	\$68	\$64	\$61	\$57	\$55	\$52	\$50	\$49	\$42	\$36	\$32	\$21	\$17	\$11
	10yr ave.	\$89	\$84	\$81	\$78	\$75	\$72	\$69	\$67	\$65	\$64	\$62	\$61	\$56	\$48	\$43	\$33	\$28	\$22
	60% Current	\$104	\$94	\$88	\$82	\$75	\$70	\$66	\$63	\$60	\$57	\$55	\$53	\$46	\$40	\$35	\$23	\$18	\$12
	10yr ave.	\$97	\$92	\$88	\$85	\$82	\$79	\$75	\$73	\$71	\$69	\$68	\$66	\$61	\$52	\$47	\$36	\$31	\$25
	65% Current	\$112	\$102	\$95	\$88	\$81	\$76	\$72	\$68	\$64	\$61	\$59	\$58	\$50	\$43	\$38	\$25	\$20	\$13
	10yr ave.	\$105	\$100	\$96	\$92	\$89	\$85	\$82	\$79	\$77	\$75	\$74	\$72	\$66	\$57	\$51	\$39	\$33	\$27
	70% Current	\$121	\$110	\$102	\$95	\$87	\$82	\$77	\$73	\$69	\$66	\$64	\$62	\$54	\$46	\$40	\$27	\$21	\$14
	10yr ave.	\$113	\$107	\$103	\$99	\$96	\$92	\$88	\$85	\$83	\$81	\$79	\$77	\$71	\$61	\$55	\$42	\$36	\$29
	75% Current	\$130	\$117	\$110	\$102	\$93	\$88	\$83	\$78	\$74	\$71	\$69	\$66	\$57	\$50	\$43	\$29	\$23	\$15
	10yr ave.	\$121	\$115	\$110	\$107	\$102	\$98	\$94	\$91	\$89	\$87	\$85	\$83	\$76	\$65	\$59	\$45	\$39	\$31
	80% Current	\$138	\$125	\$117	\$109	\$99	\$93	\$88	\$83	\$79	\$75	\$73	\$71	\$61	\$53	\$46	\$31	\$24	\$16
	10yr ave.	\$129	\$123	\$118	\$114	\$109	\$105	\$101	\$97	\$95	\$93	\$91	\$88	\$81	\$70	\$63	\$48	\$41	\$33
	85% Current	\$147	\$133	\$124	\$116	\$106	\$99	\$94	\$89	\$84	\$80	\$78	\$75	\$65	\$56	\$49	\$33	\$26	\$17
	10yr ave.	\$138	\$130	\$125	\$121	\$116	\$111	\$107	\$103	\$101	\$98	\$96	\$94	\$86	\$74	\$67	\$51	\$44	\$35

The above shows estimated returns per head for skirted fleece wool. These figures do not take into account the value of skirtings and oddments and do not take into account discounts that may apply for faults under individual circumstances. These figures are based on a market index of 100% and should be used as a guide only. Returns over \$30 / head for fleece wool are highlighted.



Table 10: Returns pr head for skirted fleece wool.

Skirted FLC Weight 7 Kg		Micron																		
		16	16.5	17	17.5	18	18.5	19	19.5	20	21	22	23	24	25	26	28	30	32	
Yield (Sch Dry)	25%	Current	\$38	\$34	\$32	\$30	\$27	\$26	\$24	\$23	\$22	\$21	\$20	\$19	\$17	\$14	\$13	\$8	\$7	\$4
		10yr ave.	\$35	\$34	\$32	\$31	\$30	\$29	\$27	\$27	\$26	\$25	\$25	\$24	\$22	\$19	\$17	\$13	\$11	\$9
	30%	Current	\$45	\$41	\$38	\$36	\$33	\$31	\$29	\$27	\$26	\$25	\$24	\$23	\$20	\$17	\$15	\$10	\$8	\$5
		10yr ave.	\$42	\$40	\$39	\$37	\$36	\$34	\$33	\$32	\$31	\$30	\$30	\$29	\$27	\$23	\$21	\$16	\$14	\$11
	35%	Current	\$53	\$48	\$45	\$42	\$38	\$36	\$34	\$32	\$30	\$29	\$28	\$27	\$23	\$20	\$18	\$12	\$9	\$6
		10yr ave.	\$50	\$47	\$45	\$44	\$42	\$40	\$38	\$37	\$36	\$35	\$35	\$34	\$31	\$27	\$24	\$18	\$16	\$13
	40%	Current	\$60	\$55	\$51	\$48	\$44	\$41	\$39	\$36	\$35	\$33	\$32	\$31	\$27	\$23	\$20	\$13	\$11	\$7
		10yr ave.	\$57	\$54	\$51	\$50	\$48	\$46	\$44	\$43	\$41	\$41	\$40	\$39	\$35	\$31	\$27	\$21	\$18	\$14
	45%	Current	\$68	\$62	\$58	\$54	\$49	\$46	\$44	\$41	\$39	\$37	\$36	\$35	\$30	\$26	\$23	\$15	\$12	\$8
		10yr ave.	\$64	\$60	\$58	\$56	\$54	\$52	\$49	\$48	\$47	\$46	\$45	\$43	\$40	\$34	\$31	\$24	\$20	\$16
	50%	Current	\$76	\$68	\$64	\$59	\$54	\$51	\$48	\$46	\$43	\$41	\$40	\$39	\$34	\$29	\$25	\$17	\$13	\$9
		10yr ave.	\$71	\$67	\$64	\$62	\$60	\$57	\$55	\$53	\$52	\$51	\$50	\$48	\$44	\$38	\$34	\$26	\$23	\$18
	55%	Current	\$83	\$75	\$70	\$65	\$60	\$56	\$53	\$50	\$48	\$45	\$44	\$43	\$37	\$32	\$28	\$18	\$15	\$9
		10yr ave.	\$78	\$74	\$71	\$68	\$66	\$63	\$60	\$59	\$57	\$56	\$55	\$53	\$49	\$42	\$38	\$29	\$25	\$20
	60%	Current	\$91	\$82	\$77	\$71	\$65	\$61	\$58	\$55	\$52	\$49	\$48	\$46	\$40	\$35	\$30	\$20	\$16	\$10
		10yr ave.	\$85	\$81	\$77	\$75	\$72	\$69	\$66	\$64	\$62	\$61	\$60	\$58	\$53	\$46	\$41	\$32	\$27	\$21
	65%	Current	\$98	\$89	\$83	\$77	\$71	\$66	\$63	\$59	\$56	\$54	\$52	\$50	\$44	\$38	\$33	\$22	\$17	\$11
		10yr ave.	\$92	\$87	\$84	\$81	\$78	\$75	\$71	\$69	\$67	\$66	\$65	\$63	\$58	\$50	\$45	\$34	\$29	\$23
	70%	Current	\$106	\$96	\$89	\$83	\$76	\$72	\$68	\$64	\$61	\$58	\$56	\$54	\$47	\$41	\$35	\$24	\$19	\$12
		10yr ave.	\$99	\$94	\$90	\$87	\$84	\$80	\$77	\$74	\$72	\$71	\$70	\$67	\$62	\$53	\$48	\$37	\$32	\$25
	75%	Current	\$113	\$103	\$96	\$89	\$82	\$77	\$73	\$68	\$65	\$62	\$60	\$58	\$50	\$43	\$38	\$25	\$20	\$13
		10yr ave.	\$106	\$101	\$97	\$93	\$90	\$86	\$82	\$80	\$78	\$76	\$74	\$72	\$67	\$57	\$52	\$39	\$34	\$27
	80%	Current	\$121	\$110	\$102	\$95	\$87	\$82	\$77	\$73	\$69	\$66	\$64	\$62	\$54	\$46	\$40	\$27	\$21	\$14
		10yr ave.	\$113	\$107	\$103	\$99	\$96	\$92	\$88	\$85	\$83	\$81	\$79	\$77	\$71	\$61	\$55	\$42	\$36	\$29
	85%	Current	\$129	\$116	\$109	\$101	\$92	\$87	\$82	\$78	\$74	\$70	\$68	\$66	\$57	\$49	\$43	\$29	\$22	\$15
		10yr ave.	\$120	\$114	\$109	\$106	\$102	\$98	\$93	\$90	\$88	\$86	\$84	\$82	\$75	\$65	\$58	\$45	\$38	\$30

The above shows estimated returns per head for skirted fleece wool. These figures do not take into account the value of skirtings and oddments and do not take into account discounts that may apply for faults under individual circumstances. These figures are based on a market index of 100% and should be used as a guide only. Returns over \$30 / head for fleece wool are highlighted.



Table 11: Returns pr head for skirted fleece wool.

Skirted FLC Weight 6 Kg		Micron																	
		16	16.5	17	17.5	18	18.5	19	19.5	20	21	22	23	24	25	26	28	30	32
Yield (Sch Dry)	25% Current	\$32	\$29	\$27	\$25	\$23	\$22	\$21	\$20	\$19	\$18	\$17	\$17	\$14	\$12	\$11	\$7	\$6	\$4
	10yr ave.	\$30	\$29	\$28	\$27	\$26	\$25	\$24	\$23	\$22	\$22	\$21	\$21	\$19	\$16	\$15	\$11	\$10	\$8
	30% Current	\$39	\$35	\$33	\$31	\$28	\$26	\$25	\$23	\$22	\$21	\$21	\$20	\$17	\$15	\$13	\$9	\$7	\$4
	10yr ave.	\$36	\$35	\$33	\$32	\$31	\$30	\$28	\$27	\$27	\$26	\$26	\$25	\$23	\$20	\$18	\$14	\$12	\$9
	35% Current	\$45	\$41	\$38	\$36	\$33	\$31	\$29	\$27	\$26	\$25	\$24	\$23	\$20	\$17	\$15	\$10	\$8	\$5
	10yr ave.	\$42	\$40	\$39	\$37	\$36	\$34	\$33	\$32	\$31	\$30	\$30	\$29	\$27	\$23	\$21	\$16	\$14	\$11
	40% Current	\$52	\$47	\$44	\$41	\$37	\$35	\$33	\$31	\$30	\$28	\$27	\$27	\$23	\$20	\$17	\$12	\$9	\$6
	10yr ave.	\$49	\$46	\$44	\$43	\$41	\$39	\$38	\$36	\$35	\$35	\$34	\$33	\$30	\$26	\$24	\$18	\$15	\$12
	45% Current	\$58	\$53	\$49	\$46	\$42	\$39	\$37	\$35	\$33	\$32	\$31	\$30	\$26	\$22	\$20	\$13	\$10	\$7
	10yr ave.	\$55	\$52	\$50	\$48	\$46	\$44	\$42	\$41	\$40	\$39	\$38	\$37	\$34	\$29	\$26	\$20	\$17	\$14
	50% Current	\$65	\$59	\$55	\$51	\$47	\$44	\$41	\$39	\$37	\$35	\$34	\$33	\$29	\$25	\$22	\$14	\$11	\$7
	10yr ave.	\$61	\$58	\$55	\$53	\$51	\$49	\$47	\$46	\$44	\$43	\$43	\$41	\$38	\$33	\$29	\$23	\$19	\$15
	55% Current	\$71	\$65	\$60	\$56	\$51	\$48	\$46	\$43	\$41	\$39	\$38	\$36	\$32	\$27	\$24	\$16	\$12	\$8
	10yr ave.	\$67	\$63	\$61	\$59	\$56	\$54	\$52	\$50	\$49	\$48	\$47	\$45	\$42	\$36	\$32	\$25	\$21	\$17
	60% Current	\$78	\$70	\$66	\$61	\$56	\$53	\$50	\$47	\$45	\$42	\$41	\$40	\$34	\$30	\$26	\$17	\$14	\$9
	10yr ave.	\$73	\$69	\$66	\$64	\$61	\$59	\$57	\$55	\$53	\$52	\$51	\$50	\$46	\$39	\$35	\$27	\$23	\$18
	65% Current	\$84	\$76	\$71	\$66	\$61	\$57	\$54	\$51	\$48	\$46	\$45	\$43	\$37	\$32	\$28	\$19	\$15	\$10
	10yr ave.	\$79	\$75	\$72	\$69	\$67	\$64	\$61	\$59	\$58	\$56	\$55	\$54	\$49	\$43	\$38	\$29	\$25	\$20
	70% Current	\$91	\$82	\$77	\$71	\$65	\$61	\$58	\$55	\$52	\$49	\$48	\$46	\$40	\$35	\$30	\$20	\$16	\$10
	10yr ave.	\$85	\$81	\$77	\$75	\$72	\$69	\$66	\$64	\$62	\$61	\$60	\$58	\$53	\$46	\$41	\$32	\$27	\$21
	75% Current	\$97	\$88	\$82	\$76	\$70	\$66	\$62	\$59	\$56	\$53	\$51	\$50	\$43	\$37	\$33	\$22	\$17	\$11
	10yr ave.	\$91	\$86	\$83	\$80	\$77	\$74	\$71	\$68	\$67	\$65	\$64	\$62	\$57	\$49	\$44	\$34	\$29	\$23
	80% Current	\$104	\$94	\$88	\$82	\$75	\$70	\$66	\$63	\$60	\$57	\$55	\$53	\$46	\$40	\$35	\$23	\$18	\$12
	10yr ave.	\$97	\$92	\$88	\$85	\$82	\$79	\$75	\$73	\$71	\$69	\$68	\$66	\$61	\$52	\$47	\$36	\$31	\$25
	85% Current	\$110	\$100	\$93	\$87	\$79	\$74	\$70	\$66	\$63	\$60	\$58	\$56	\$49	\$42	\$37	\$24	\$19	\$12
	10yr ave.	\$103	\$98	\$94	\$91	\$87	\$84	\$80	\$78	\$75	\$74	\$72	\$70	\$65	\$56	\$50	\$38	\$33	\$26

The above shows estimated returns per head for skirted fleece wool. These figures do not take into account the value of skirtings and oddments and do not take into account discounts that may apply for faults under individual circumstances. These figures are based on a market index of 100% and should be used as a guide only. Returns over \$30 / head for fleece wool are highlighted.



Table 12: Returns pr head for skirted fleece wool.

Skirted FLC Weight		Micron																	
5 Kg		16	16.5	17	17.5	18	18.5	19	19.5	20	21	22	23	24	25	26	28	30	32
Yield (Sch Dry)	25% Current	\$27	\$24	\$23	\$21	\$19	\$18	\$17	\$16	\$16	\$15	\$14	\$14	\$12	\$10	\$9	\$6	\$5	\$3
	10yr ave.	\$25	\$24	\$23	\$22	\$21	\$20	\$20	\$19	\$18	\$18	\$18	\$17	\$16	\$14	\$12	\$9	\$8	\$6
	30% Current	\$32	\$29	\$27	\$25	\$23	\$22	\$21	\$20	\$19	\$18	\$17	\$17	\$14	\$12	\$11	\$7	\$6	\$4
	10yr ave.	\$30	\$29	\$28	\$27	\$26	\$25	\$24	\$23	\$22	\$22	\$21	\$21	\$19	\$16	\$15	\$11	\$10	\$8
	35% Current	\$38	\$34	\$32	\$30	\$27	\$26	\$24	\$23	\$22	\$21	\$20	\$19	\$17	\$14	\$13	\$8	\$7	\$4
	10yr ave.	\$35	\$34	\$32	\$31	\$30	\$29	\$27	\$27	\$26	\$25	\$25	\$24	\$22	\$19	\$17	\$13	\$11	\$9
	40% Current	\$43	\$39	\$37	\$34	\$31	\$29	\$28	\$26	\$25	\$24	\$23	\$22	\$19	\$17	\$14	\$10	\$8	\$5
	10yr ave.	\$40	\$38	\$37	\$36	\$34	\$33	\$31	\$30	\$30	\$29	\$28	\$28	\$25	\$22	\$20	\$15	\$13	\$10
	45% Current	\$49	\$44	\$41	\$38	\$35	\$33	\$31	\$29	\$28	\$27	\$26	\$25	\$22	\$19	\$16	\$11	\$9	\$5
	10yr ave.	\$46	\$43	\$41	\$40	\$38	\$37	\$35	\$34	\$33	\$33	\$32	\$31	\$29	\$25	\$22	\$17	\$14	\$11
	50% Current	\$54	\$49	\$46	\$42	\$39	\$37	\$35	\$33	\$31	\$29	\$29	\$28	\$24	\$21	\$18	\$12	\$9	\$6
	10yr ave.	\$51	\$48	\$46	\$44	\$43	\$41	\$39	\$38	\$37	\$36	\$35	\$34	\$32	\$27	\$25	\$19	\$16	\$13
	55% Current	\$59	\$54	\$50	\$47	\$43	\$40	\$38	\$36	\$34	\$32	\$31	\$30	\$26	\$23	\$20	\$13	\$10	\$7
	10yr ave.	\$56	\$53	\$51	\$49	\$47	\$45	\$43	\$42	\$41	\$40	\$39	\$38	\$35	\$30	\$27	\$21	\$18	\$14
	60% Current	\$65	\$59	\$55	\$51	\$47	\$44	\$41	\$39	\$37	\$35	\$34	\$33	\$29	\$25	\$22	\$14	\$11	\$7
	10yr ave.	\$61	\$58	\$55	\$53	\$51	\$49	\$47	\$46	\$44	\$43	\$43	\$41	\$38	\$33	\$29	\$23	\$19	\$15
	65% Current	\$70	\$64	\$59	\$55	\$51	\$47	\$45	\$42	\$40	\$38	\$37	\$36	\$31	\$27	\$23	\$16	\$12	\$8
	10yr ave.	\$66	\$62	\$60	\$58	\$56	\$53	\$51	\$49	\$48	\$47	\$46	\$45	\$41	\$35	\$32	\$24	\$21	\$17
	70% Current	\$76	\$68	\$64	\$59	\$54	\$51	\$48	\$46	\$43	\$41	\$40	\$39	\$34	\$29	\$25	\$17	\$13	\$9
	10yr ave.	\$71	\$67	\$64	\$62	\$60	\$57	\$55	\$53	\$52	\$51	\$50	\$48	\$44	\$38	\$34	\$26	\$23	\$18
	75% Current	\$81	\$73	\$68	\$64	\$58	\$55	\$52	\$49	\$47	\$44	\$43	\$41	\$36	\$31	\$27	\$18	\$14	\$9
	10yr ave.	\$76	\$72	\$69	\$67	\$64	\$61	\$59	\$57	\$55	\$54	\$53	\$52	\$48	\$41	\$37	\$28	\$24	\$19
	80% Current	\$86	\$78	\$73	\$68	\$62	\$58	\$55	\$52	\$50	\$47	\$46	\$44	\$38	\$33	\$29	\$19	\$15	\$10
	10yr ave.	\$81	\$77	\$74	\$71	\$68	\$66	\$63	\$61	\$59	\$58	\$57	\$55	\$51	\$44	\$39	\$30	\$26	\$20
	85% Current	\$92	\$83	\$78	\$72	\$66	\$62	\$59	\$55	\$53	\$50	\$49	\$47	\$41	\$35	\$31	\$20	\$16	\$10
	10yr ave.	\$86	\$82	\$78	\$75	\$73	\$70	\$67	\$65	\$63	\$61	\$60	\$58	\$54	\$46	\$42	\$32	\$27	\$22

The above shows estimated returns per head for skirted fleece wool. These figures do not take into account the value of skirtings and oddments and do not take into account discounts that may apply for faults under individual circumstances. These figures are based on a market index of 100% and should be used as a guide only. Returns over \$30 / head for fleece wool are highlighted.



Table 13: Returns pr head for skirted fleece wool.

Skirted FLC Weight		Micron																	
4 Kg		16	16.5	17	17.5	18	18.5	19	19.5	20	21	22	23	24	25	26	28	30	32
Yield (Sch Dry)	25% Current	\$22	\$20	\$18	\$17	\$16	\$15	\$14	\$13	\$12	\$12	\$11	\$11	\$10	\$8	\$7	\$5	\$4	\$2
	10yr ave.	\$20	\$19	\$18	\$18	\$17	\$16	\$16	\$15	\$15	\$14	\$14	\$14	\$13	\$11	\$10	\$8	\$6	\$5
	30% Current	\$26	\$23	\$22	\$20	\$19	\$18	\$17	\$16	\$15	\$14	\$14	\$13	\$11	\$10	\$9	\$6	\$5	\$3
	10yr ave.	\$24	\$23	\$22	\$21	\$20	\$20	\$19	\$18	\$18	\$17	\$17	\$17	\$15	\$13	\$12	\$9	\$8	\$6
	35% Current	\$30	\$27	\$26	\$24	\$22	\$20	\$19	\$18	\$17	\$16	\$16	\$15	\$13	\$12	\$10	\$7	\$5	\$3
	10yr ave.	\$28	\$27	\$26	\$25	\$24	\$23	\$22	\$21	\$21	\$20	\$20	\$19	\$18	\$15	\$14	\$11	\$9	\$7
	40% Current	\$35	\$31	\$29	\$27	\$25	\$23	\$22	\$21	\$20	\$19	\$18	\$18	\$15	\$13	\$12	\$8	\$6	\$4
	10yr ave.	\$32	\$31	\$29	\$28	\$27	\$26	\$25	\$24	\$24	\$23	\$23	\$22	\$20	\$17	\$16	\$12	\$10	\$8
	45% Current	\$39	\$35	\$33	\$31	\$28	\$26	\$25	\$23	\$22	\$21	\$21	\$20	\$17	\$15	\$13	\$9	\$7	\$4
	10yr ave.	\$36	\$35	\$33	\$32	\$31	\$30	\$28	\$27	\$27	\$26	\$26	\$25	\$23	\$20	\$18	\$14	\$12	\$9
	50% Current	\$43	\$39	\$37	\$34	\$31	\$29	\$28	\$26	\$25	\$24	\$23	\$22	\$19	\$17	\$14	\$10	\$8	\$5
	10yr ave.	\$40	\$38	\$37	\$36	\$34	\$33	\$31	\$30	\$30	\$29	\$28	\$28	\$25	\$22	\$20	\$15	\$13	\$10
	55% Current	\$48	\$43	\$40	\$37	\$34	\$32	\$30	\$29	\$27	\$26	\$25	\$24	\$21	\$18	\$16	\$11	\$8	\$5
	10yr ave.	\$45	\$42	\$40	\$39	\$38	\$36	\$35	\$33	\$33	\$32	\$31	\$30	\$28	\$24	\$22	\$17	\$14	\$11
	60% Current	\$52	\$47	\$44	\$41	\$37	\$35	\$33	\$31	\$30	\$28	\$27	\$27	\$23	\$20	\$17	\$12	\$9	\$6
	10yr ave.	\$49	\$46	\$44	\$43	\$41	\$39	\$38	\$36	\$35	\$35	\$34	\$33	\$30	\$26	\$24	\$18	\$15	\$12
	65% Current	\$56	\$51	\$47	\$44	\$40	\$38	\$36	\$34	\$32	\$31	\$30	\$29	\$25	\$22	\$19	\$12	\$10	\$6
	10yr ave.	\$53	\$50	\$48	\$46	\$44	\$43	\$41	\$40	\$38	\$38	\$37	\$36	\$33	\$28	\$26	\$20	\$17	\$13
	70% Current	\$60	\$55	\$51	\$48	\$44	\$41	\$39	\$36	\$35	\$33	\$32	\$31	\$27	\$23	\$20	\$13	\$11	\$7
	10yr ave.	\$57	\$54	\$51	\$50	\$48	\$46	\$44	\$43	\$41	\$41	\$40	\$39	\$35	\$31	\$27	\$21	\$18	\$14
	75% Current	\$65	\$59	\$55	\$51	\$47	\$44	\$41	\$39	\$37	\$35	\$34	\$33	\$29	\$25	\$22	\$14	\$11	\$7
	10yr ave.	\$61	\$58	\$55	\$53	\$51	\$49	\$47	\$46	\$44	\$43	\$43	\$41	\$38	\$33	\$29	\$23	\$19	\$15
	80% Current	\$69	\$63	\$58	\$54	\$50	\$47	\$44	\$42	\$40	\$38	\$37	\$35	\$31	\$26	\$23	\$15	\$12	\$8
	10yr ave.	\$65	\$61	\$59	\$57	\$55	\$52	\$50	\$49	\$47	\$46	\$45	\$44	\$41	\$35	\$31	\$24	\$21	\$16
	85% Current	\$73	\$67	\$62	\$58	\$53	\$50	\$47	\$44	\$42	\$40	\$39	\$38	\$33	\$28	\$25	\$16	\$13	\$8
	10yr ave.	\$69	\$65	\$63	\$60	\$58	\$56	\$53	\$52	\$50	\$49	\$48	\$47	\$43	\$37	\$33	\$26	\$22	\$17

The above shows estimated returns per head for skirted fleece wool. These figures do not take into account the value of skirtings and oddments and do not take into account discounts that may apply for faults under individual circumstances. These figures are based on a market index of 100% and should be used as a guide only. Returns over \$30 / head for fleece wool are highlighted.



Table 14: Returns pr head for skirted fleece wool.

Skirted FLC Weight 3 Kg		Micron																		
		16	16.5	17	17.5	18	18.5	19	19.5	20	21	22	23	24	25	26	28	30	32	
Yield (Sch Dry)	25%	Current	\$16	\$15	\$14	\$13	\$12	\$11	\$10	\$10	\$9	\$9	\$9	\$8	\$7	\$6	\$5	\$4	\$3	\$2
		10yr ave.	\$15	\$14	\$14	\$13	\$13	\$12	\$12	\$11	\$11	\$11	\$11	\$10	\$10	\$8	\$7	\$6	\$5	\$4
	30%	Current	\$19	\$18	\$16	\$15	\$14	\$13	\$12	\$12	\$11	\$11	\$10	\$10	\$9	\$7	\$7	\$4	\$3	\$2
		10yr ave.	\$18	\$17	\$17	\$16	\$15	\$15	\$14	\$14	\$13	\$13	\$13	\$12	\$11	\$10	\$9	\$7	\$6	\$5
	35%	Current	\$23	\$21	\$19	\$18	\$16	\$15	\$15	\$14	\$13	\$12	\$12	\$12	\$10	\$9	\$8	\$5	\$4	\$3
		10yr ave.	\$21	\$20	\$19	\$19	\$18	\$17	\$16	\$16	\$16	\$15	\$15	\$14	\$13	\$11	\$10	\$8	\$7	\$5
	40%	Current	\$26	\$23	\$22	\$20	\$19	\$18	\$17	\$16	\$15	\$14	\$14	\$13	\$11	\$10	\$9	\$6	\$5	\$3
		10yr ave.	\$24	\$23	\$22	\$21	\$20	\$20	\$19	\$18	\$18	\$17	\$17	\$17	\$15	\$13	\$12	\$9	\$8	\$6
	45%	Current	\$29	\$26	\$25	\$23	\$21	\$20	\$19	\$18	\$17	\$16	\$15	\$15	\$13	\$11	\$10	\$6	\$5	\$3
		10yr ave.	\$27	\$26	\$25	\$24	\$23	\$22	\$21	\$21	\$20	\$20	\$19	\$19	\$17	\$15	\$13	\$10	\$9	\$7
	50%	Current	\$32	\$29	\$27	\$25	\$23	\$22	\$21	\$20	\$19	\$18	\$17	\$17	\$14	\$12	\$11	\$7	\$6	\$4
		10yr ave.	\$30	\$29	\$28	\$27	\$26	\$25	\$24	\$23	\$22	\$22	\$21	\$21	\$19	\$16	\$15	\$11	\$10	\$8
	55%	Current	\$36	\$32	\$30	\$28	\$26	\$24	\$23	\$21	\$20	\$19	\$19	\$18	\$16	\$14	\$12	\$8	\$6	\$4
		10yr ave.	\$33	\$32	\$30	\$29	\$28	\$27	\$26	\$25	\$24	\$24	\$23	\$23	\$21	\$18	\$16	\$12	\$11	\$8
	60%	Current	\$39	\$35	\$33	\$31	\$28	\$26	\$25	\$23	\$22	\$21	\$21	\$20	\$17	\$15	\$13	\$9	\$7	\$4
		10yr ave.	\$36	\$35	\$33	\$32	\$31	\$30	\$28	\$27	\$27	\$26	\$26	\$25	\$23	\$20	\$18	\$14	\$12	\$9
65%	Current	\$42	\$38	\$36	\$33	\$30	\$28	\$27	\$25	\$24	\$23	\$22	\$22	\$19	\$16	\$14	\$9	\$7	\$5	
	10yr ave.	\$39	\$37	\$36	\$35	\$33	\$32	\$31	\$30	\$29	\$28	\$28	\$27	\$25	\$21	\$19	\$15	\$13	\$10	
70%	Current	\$45	\$41	\$38	\$36	\$33	\$31	\$29	\$27	\$26	\$25	\$24	\$23	\$20	\$17	\$15	\$10	\$8	\$5	
	10yr ave.	\$42	\$40	\$39	\$37	\$36	\$34	\$33	\$32	\$31	\$30	\$30	\$29	\$27	\$23	\$21	\$16	\$14	\$11	
75%	Current	\$49	\$44	\$41	\$38	\$35	\$33	\$31	\$29	\$28	\$27	\$26	\$25	\$22	\$19	\$16	\$11	\$9	\$5	
	10yr ave.	\$46	\$43	\$41	\$40	\$38	\$37	\$35	\$34	\$33	\$33	\$32	\$31	\$29	\$25	\$22	\$17	\$14	\$11	
80%	Current	\$52	\$47	\$44	\$41	\$37	\$35	\$33	\$31	\$30	\$28	\$27	\$27	\$23	\$20	\$17	\$12	\$9	\$6	
	10yr ave.	\$49	\$46	\$44	\$43	\$41	\$39	\$38	\$36	\$35	\$35	\$34	\$33	\$30	\$26	\$24	\$18	\$15	\$12	
85%	Current	\$55	\$50	\$47	\$43	\$40	\$37	\$35	\$33	\$32	\$30	\$29	\$28	\$24	\$21	\$18	\$12	\$10	\$6	
	10yr ave.	\$52	\$49	\$47	\$45	\$44	\$42	\$40	\$39	\$38	\$37	\$36	\$35	\$32	\$28	\$25	\$19	\$16	\$13	

The above shows estimated returns per head for skirted fleece wool. These figures do not take into account the value of skirtings and oddments and do not take into account discounts that may apply for faults under individual circumstances. These figures are based on a market index of 100% and should be used as a guide only. Returns over \$30 / head for fleece wool are highlighted.



Table 15: Returns pr head for skirted fleece wool.

Skirted FLC Weight 2 Kg		Micron																	
		16	16.5	17	17.5	18	18.5	19	19.5	20	21	22	23	24	25	26	28	30	32
Yield (Sch Dry)	25% Current	\$11	\$10	\$9	\$8	\$8	\$7	\$7	\$7	\$6	\$6	\$6	\$6	\$5	\$4	\$4	\$2	\$2	\$1
	10yr ave.	\$10	\$10	\$9	\$9	\$9	\$8	\$8	\$8	\$7	\$7	\$7	\$7	\$6	\$5	\$5	\$4	\$3	\$3
	30% Current	\$13	\$12	\$11	\$10	\$9	\$9	\$8	\$8	\$7	\$7	\$7	\$7	\$6	\$5	\$4	\$3	\$2	\$1
	10yr ave.	\$12	\$12	\$11	\$11	\$10	\$10	\$9	\$9	\$9	\$9	\$9	\$8	\$8	\$7	\$6	\$5	\$4	\$3
	35% Current	\$15	\$14	\$13	\$12	\$11	\$10	\$10	\$9	\$9	\$8	\$8	\$8	\$7	\$6	\$5	\$3	\$3	\$2
	10yr ave.	\$14	\$13	\$13	\$12	\$12	\$11	\$11	\$11	\$10	\$10	\$10	\$10	\$9	\$8	\$7	\$5	\$5	\$4
	40% Current	\$17	\$16	\$15	\$14	\$12	\$12	\$11	\$10	\$10	\$9	\$9	\$9	\$8	\$7	\$6	\$4	\$3	\$2
	10yr ave.	\$16	\$15	\$15	\$14	\$14	\$13	\$13	\$12	\$12	\$12	\$11	\$11	\$10	\$9	\$8	\$6	\$5	\$4
	45% Current	\$19	\$18	\$16	\$15	\$14	\$13	\$12	\$12	\$11	\$11	\$10	\$10	\$9	\$7	\$7	\$4	\$3	\$2
	10yr ave.	\$18	\$17	\$17	\$16	\$15	\$15	\$14	\$14	\$13	\$13	\$13	\$12	\$11	\$10	\$9	\$7	\$6	\$5
	50% Current	\$22	\$20	\$18	\$17	\$16	\$15	\$14	\$13	\$12	\$12	\$11	\$11	\$10	\$8	\$7	\$5	\$4	\$2
	10yr ave.	\$20	\$19	\$18	\$18	\$17	\$16	\$16	\$15	\$15	\$14	\$14	\$14	\$13	\$11	\$10	\$8	\$6	\$5
	55% Current	\$24	\$22	\$20	\$19	\$17	\$16	\$15	\$14	\$14	\$13	\$13	\$12	\$11	\$9	\$8	\$5	\$4	\$3
	10yr ave.	\$22	\$21	\$20	\$20	\$19	\$18	\$17	\$17	\$16	\$16	\$16	\$15	\$14	\$12	\$11	\$8	\$7	\$6
	60% Current	\$26	\$23	\$22	\$20	\$19	\$18	\$17	\$16	\$15	\$14	\$14	\$13	\$11	\$10	\$9	\$6	\$5	\$3
	10yr ave.	\$24	\$23	\$22	\$21	\$20	\$20	\$19	\$18	\$18	\$17	\$17	\$17	\$15	\$13	\$12	\$9	\$8	\$6
	65% Current	\$28	\$25	\$24	\$22	\$20	\$19	\$18	\$17	\$16	\$15	\$15	\$14	\$12	\$11	\$9	\$6	\$5	\$3
	10yr ave.	\$26	\$25	\$24	\$23	\$22	\$21	\$20	\$20	\$19	\$19	\$18	\$18	\$16	\$14	\$13	\$10	\$8	\$7
	70% Current	\$30	\$27	\$26	\$24	\$22	\$20	\$19	\$18	\$17	\$16	\$16	\$15	\$13	\$12	\$10	\$7	\$5	\$3
	10yr ave.	\$28	\$27	\$26	\$25	\$24	\$23	\$22	\$21	\$21	\$20	\$20	\$19	\$18	\$15	\$14	\$11	\$9	\$7
	75% Current	\$32	\$29	\$27	\$25	\$23	\$22	\$21	\$20	\$19	\$18	\$17	\$17	\$14	\$12	\$11	\$7	\$6	\$4
	10yr ave.	\$30	\$29	\$28	\$27	\$26	\$25	\$24	\$23	\$22	\$22	\$21	\$21	\$19	\$16	\$15	\$11	\$10	\$8
	80% Current	\$35	\$31	\$29	\$27	\$25	\$23	\$22	\$21	\$20	\$19	\$18	\$18	\$15	\$13	\$12	\$8	\$6	\$4
	10yr ave.	\$32	\$31	\$29	\$28	\$27	\$26	\$25	\$24	\$24	\$23	\$23	\$22	\$20	\$17	\$16	\$12	\$10	\$8
	85% Current	\$37	\$33	\$31	\$29	\$26	\$25	\$23	\$22	\$21	\$20	\$19	\$19	\$16	\$14	\$12	\$8	\$6	\$4
	10yr ave.	\$34	\$33	\$31	\$30	\$29	\$28	\$27	\$26	\$25	\$25	\$24	\$23	\$22	\$19	\$17	\$13	\$11	\$9

The above shows estimated returns per head for skirted fleece wool. These figures do not take into account the value of skirtings and oddments and do not take into account discounts that may apply for faults under individual circumstances. These figures are based on a market index of 100% and should be used as a guide only. Returns over \$30 / head for fleece wool are highlighted.