



Table 1: Northern Region Micron Price Guides

WEEK 36				12 MONTH COMPARISONS								3 YEAR COMPARISONS					10 YEAR COMPARISONS					
3/03/2021		24/02/2021		3/03/2020		Now		Now		Now				Now		Percentile			Now		Percentile	
	Current	Weekly		This time	compared	12 Month	compared	12 Month	compared				compared		10 year		compared					
MPG	Price	Change	Last Year	to Last Year		Low	to Low	High	to High	Low	High	Average	to 3yr ave		Low	High	Average	to 10yr ave				
NRI	1378	-2 -0.1%	1618	-240 -15%		919	+459 50%	1622	-244 -15%	919	2163	1651	-273 -17%	29%	955	2163	1378	0 0%	63%			
15*	2960	0	2485	+475 19%		1945	+1015 52%	3080	-120 -4%	1945	3700	2699	+261 10%	80%	1576	3700	~2433	+527 22%	78%			
15.5*	2670	0	2405	+265 11%		1800	+870 48%	2780	-110 -4%	1800	3450	2577	+93 4%	73%	1422	3450	~2195	+475 22%	78%			
16*	2460	0	2285	+175 8%		1650	+810 49%	2510	-50 -2%	1650	3300	2448	+12 0%	57%	1310	3300	2022	+438 22%	78%			
16.5	2278	-5 -0.2%	2163	+115 5%		1482	+796 54%	2313	-35 -2%	1482	3187	2334	-56 -2%	52%	1279	3187	1917	+361 19%	74%			
17	2126	+1	2082	+44 2%		1382	+744 54%	2145	-19 -1%	1382	3008	2233	-107 -5%	51%	1229	3008	1835	+291 16%	71%			
17.5	1968	0	1993	-25 -1%		1291	+677 52%	2006	-38 -2%	1291	2845	2136	-168 -8%	43%	1196	2845	1772	+196 11%	67%			
18	1825	-15 -0.8%	1945	-120 -6%		1172	+653 56%	1945	-120 -6%	1172	2708	2039	-214 -10%	33%	1168	2708	1703	+122 7%	64%			
18.5	1693	-10 -0.6%	1876	-183 -10%		1062	+631 59%	1881	-188 -10%	1062	2591	1951	-258 -13%	30%	1132	2591	1635	+58 4%	64%			
19	1597	-14 -0.9%	1839	-242 -13%		995	+602 61%	1848	-251 -14%	995	2465	1877	-280 -15%	30%	1096	2465	1570	+27 2%	63%			
19.5	1498	-1 -0.1%	1829	-331 -18%		949	+549 58%	1838	-340 -18%	949	2404	1837	-339 -18%	29%	1058	2404	1522	-24 -2%	62%			
20	1396	-1 -0.1%	1813	-417 -23%		910	+486 53%	1823	-427 -23%	910	2391	1808	-412 -23%	26%	1049	2391	1481	-85 -6%	53%			
21	1297	+2 0.2%	1798	-501 -28%		898	+399 44%	1808	-511 -28%	898	2368	1782	-485 -27%	26%	1029	2368	1450	-153 -11%	41%			
22	1251	+2 0.2%	1783	-532 -30%		863	+388 45%	1777	-526 -30%	863	2342	1760	-509 -29%	25%	1009	2342	1421	-170 -12%	40%			
23	1120	+2 0.2%	1643	-523 -32%		814	+306 38%	1638	-518 -32%	814	2316	1698	-578 -34%	14%	962	2316	1379	-259 -19%	17%			
24	980	+2 0.2%	1511	-531 -35%		750	+230 31%	1507	-527 -35%	750	2114	1539	-559 -36%	14%	900	2114	1267	-287 -23%	6%			
25	858	+2 0.2%	1238	-380 -31%		552	+306 55%	1235	-377 -31%	552	1801	1281	-423 -33%	21%	704	1801	1090	-232 -21%	10%			
26	771	+2 0.3%	1151	-380 -33%		526	+245 47%	1145	-374 -33%	526	1545	1144	-373 -33%	16%	677	1545	982	-211 -21%	11%			
28	525	+2 0.4%	894	-369 -41%		396	+129 33%	889	-364 -41%	396	1318	836	-311 -37%	15%	460	1318	750	-225 -30%	4%			
30	461	+25 5.7%	675	-214 -32%		319	+142 45%	690	-229 -33%	319	998	656	-195 -30%	19%	374	998	642	-181 -28%	5%			
32	278	+2 0.7%	408	-130 -32%		190	+88 46%	421	-143 -34%	190	659	424	-146 -34%	23%	241	762	507	-229 -45%	6%			
MC	869	+10 1.2%	1105	-236 -21%		621	+248 40%	1098	-229 -21%	621	1563	1068	-199 -19%	26%	559	1563	958	-89 -9%	46%			
AU BALES OFFERED		46,544	* 16.5 is the lowest Micron Price Guide (MPG) published by The Australian Wool Exchange (AWEX). Therefore MPG's below 16.5 micron are an estimate based on the best available information at the time of publication. Likewise, for any category where there is insufficient quantity offered to enable AWEX to quote, a quote will also be provided. * Recording of 15 & 15.5 micron commenced in October 2017, and as a result some historic data is not yet available for those MPG's. Where historic data is not available an estimate based on '16 micron statistics' and incorporating the existing 15 & 15.5 micron data, will be provided as a guide.																			
AU BALES SOLD		42,199																				
AU PASSED-IN%		9.3%																				
AUD/USD		0.7822 -1.1%																				

Source: Australian Wool Exchange, Australian Wool Innovation, Riemann, x-rates.com, Reserve Bank of Australia, Australian Wool Testing Authority, Australian Bureau Statistics (ABS), Woolmark.

Disclaimer: Jemalong Wool Pty Ltd make no representations about the content and suitability of the information contained in this report. Specifically, Jemalong Wool does not warrant, guarantee or make any representations regarding the correctness, accuracy, reliability, currency, or any other aspect regarding characteristics or use of information presented in these materials. The user accepts sole responsibility and risk associated with the use and results of these materials, irrespective of the purpose of which such use or results are applied. In no event shall Jemalong Wool be liable for any loss or damages arising out of or in connection with the use of these materials.

Copyright © Jemalong Wool Pty Ltd, 2006-2021. Apart from any use permitted under the Copyright Act 1968, no part may be copied or reproduced by any process nor stored electronically without the written permission of Jemalong Wool Pty Ltd. This report has been compiled by Jemalong Wool Pty Ltd for internal use and for the benefit of Jemalong Wool clients. You should only read this report if you are authorised to do so, if you are not authorised then you must destroy all electronic and paper copies immediately. Under no circumstance are you permitted to forward this report to a third-party.



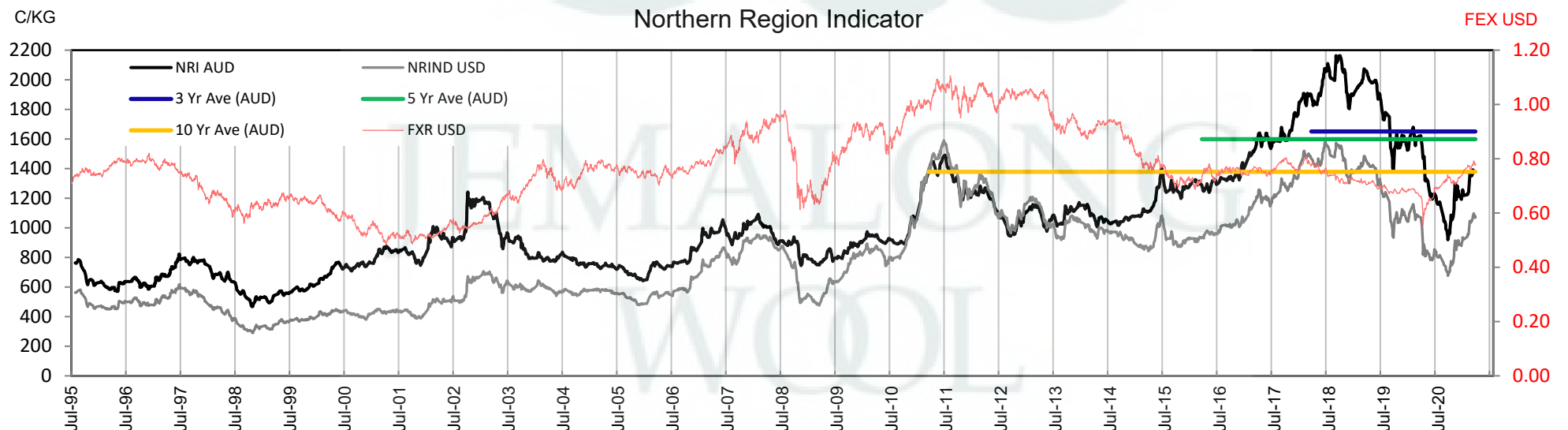
**MARKET COMMENTARY** Source: AWEX

The wool market performed with mixed results this series, with all three centres generally reporting different movements across individual MPGs. However since the selling roster changed last year (due to COVID) the closing sale in each region is not always held on the same day e.g. Sydney may close on Wednesday, while Melbourne may close on Thursday (as has been the case in recent weeks), therefore mixed weekly movements (between selling centres) is to be expected.

In general, the market remained solid over the first two days, however it noticeably diminished towards the end of the final day, with the Western Region MPGs for 18 to 19.5 micron dropping by 16-28 cents on Thursday.

Prices in the carding market increased across all three centres, with general gains of 10-20 cents evident for stains, locks and crutchings.

This week's national offering was lower than the previous sale, with 46,544 bales offered (3,594 fewer bales than the previous week). Currently there are 49,883 bales are rostered for next week's sales.





**Table 2: Three Year Decile Table, since: 1/03/2018**

Decile	%	16	16.5	17	17.5	18	18.5	19	19.5	20	21	22	23	24	25	26	28	30	32	MC
1	10%	1865	1730	1625	1527	1446	1370	1297	1245	1215	1176	1142	1110	974	825	731	494	401	256	741
2	20%	2015	1935	1814	1713	1584	1481	1396	1346	1296	1243	1198	1141	1053	855	798	573	466	274	814
3	30%	2115	1995	1908	1863	1784	1693	1595	1501	1481	1475	1470	1363	1253	1005	926	707	537	335	894
4	40%	2175	2075	2005	1948	1867	1828	1768	1752	1732	1724	1705	1626	1494	1250	1140	845	671	429	993
5	50%	2290	2192	2124	1993	1944	1883	1844	1828	1803	1792	1777	1691	1559	1319	1195	881	694	449	1051
6	60%	2510	2453	2418	2388	2318	2204	2105	2065	2056	2044	2017	1935	1772	1466	1261	919	704	463	1096
7	70%	2630	2572	2527	2475	2400	2320	2243	2203	2183	2164	2152	2054	1834	1539	1345	960	724	470	1164
8	80%	2750	2672	2620	2544	2437	2362	2301	2281	2261	2243	2223	2193	1934	1608	1418	1023	776	507	1252
9	90%	3200	3038	2857	2694	2531	2425	2355	2320	2296	2277	2261	2212	2010	1694	1489	1120	923	598	1455
10	100%	3300	3187	3008	2845	2708	2591	2465	2404	2391	2368	2342	2316	2114	1801	1545	1318	998	659	1563
MPG		2460	2278	2126	1968	1825	1693	1597	1498	1396	1297	1251	1120	980	858	771	525	461	278	869
3 Yr Percentile		57%	52%	51%	43%	33%	30%	30%	29%	26%	26%	25%	14%	14%	21%	16%	15%	19%	23%	26%

**Table 3: Ten Year Decile Table, since: 1/03/2011**

Decile	%	16	16.5	17	17.5	18	18.5	19	19.5	20	21	22	23	24	25	26	28	30	32	MC
1	10%	1430	1368	1298	1271	1231	1195	1169	1145	1131	1127	1107	1081	996	858	764	585	526	380	702
2	20%	1543	1458	1368	1326	1293	1260	1216	1194	1179	1164	1152	1126	1047	891	801	630	559	423	746
3	30%	1590	1525	1458	1412	1372	1335	1302	1274	1243	1226	1200	1159	1073	913	820	656	581	458	791
4	40%	1675	1584	1541	1512	1473	1437	1389	1353	1320	1292	1250	1209	1100	953	855	675	601	479	819
5	50%	1885	1720	1628	1588	1543	1492	1450	1414	1374	1341	1310	1274	1169	1033	929	718	629	498	926
6	60%	2085	1973	1807	1738	1635	1587	1534	1486	1439	1404	1378	1340	1238	1113	1020	773	646	545	1060
7	70%	2255	2166	2092	2002	1926	1852	1766	1671	1587	1498	1454	1404	1331	1182	1091	824	684	564	1094
8	80%	2500	2409	2324	2255	2157	2045	1898	1796	1762	1728	1702	1623	1490	1251	1143	872	722	597	1151
9	90%	2750	2666	2572	2503	2389	2269	2189	2162	2146	2129	2110	1962	1811	1504	1321	945	808	659	1272
10	100%	3300	3187	3008	2845	2708	2591	2465	2404	2391	2368	2342	2316	2114	1801	1545	1318	998	762	1563
MPG		2460	2278	2126	1968	1825	1693	1597	1498	1396	1297	1251	1120	980	858	771	525	461	278	869
10 Yr Percentile		78%	74%	71%	67%	64%	64%	63%	62%	53%	41%	40%	17%	6%	10%	11%	4%	5%	6%	46%

**Definitions:**

\* A Percentile, is a value on a scale of one hundred that indicates the percent of a distribution that is equal to or below it. In general a percentile between 25% and 75% is considered normal, a percentile below 25% is considered below normal and a percentile above 75% is considered above normal.

Three and ten year percentiles shown on the bottom line of table 2 & 3 (above) and in table 1 (on page 1), detail the amount of time during the past 3 & 10 years where the market has traded either at or below its current price.

\* Deciles are a method of sorting ranked data into 10 equal groups. The data may be ranked from largest to smallest or vice versa.

The above Decile tables sort price Percentiles into 10 equal groups (in ascending order), with table 2 ranking the previous 3 years prices, while table 3 ranks prices over the previous 10 years.

**Example:** In Table 2, a Decile Rank of 6 for 19 microns, shows 19 microns have traded at or below 2105 for 60% of the time, over the past three years.

In Table 3, a Decile Rank of 6 for 19 microns, shows 19 microns have traded at or below 1534 for 60% of the time, over the past ten years.



Table 4: Riemann Forwards, as at: **3/03/21** **Any highlighted in yellow are recent trades, trading since: Thursday, 25 February 2021**

MICRON (Total Traded = 92)		18um (2 Traded)	18.5um (0 Traded)	19um (70 Traded)	19.5um (0 Traded)	21um (17 Traded)	22um (0 Traded)	23um (0 Traded)	28um (3 Traded)	30um (0 Traded)
FORWARD CONTRACT MONTH	Mar-2021 (17)			3/03/21 <b>1600</b> (10)		4/03/21 <b>1280</b> (5)			4/03/21 <b>575</b> (2)	
	Apr-2021 (10)	1/09/20 <b>1200</b> (1)		18/02/21 <b>1650</b> (6)		16/02/21 <b>1305</b> (2)			25/02/21 <b>560</b> (1)	
	May-2021 (25)	13/01/21 <b>1635</b> (1)		2/03/21 <b>1620</b> (23)		28/01/21 <b>1300</b> (1)				
	Jun-2021 (6)			16/02/21 <b>1600</b> (6)						
	Jul-2021 (1)			22/02/21 <b>1650</b> (1)						
	Aug-2021 (2)			16/02/21 <b>1590</b> (2)						
	Sep-2021 (8)			25/02/21 <b>1600</b> (6)		17/02/21 <b>1305</b> (2)				
	Oct-2021 (11)			4/03/21 <b>1600</b> (8)		17/02/21 <b>1305</b> (3)				
	Nov-2021 (6)			1/02/21 <b>1550</b> (4)		1/02/21 <b>1280</b> (2)				
	Dec-2021 (2)			4/03/21 <b>1610</b> (2)						
	Jan-2022 (4)			22/02/21 <b>1640</b> (2)		2/02/21 <b>1280</b> (2)				
	Feb-2022									
	Mar-2022									
	Apr-2022									
	May-2022									
	Jun-2022									
	Jul-2022									
	Aug-2022									
	Sep-2022									
	Oct-2022									
	Nov-2022									
	Dec-2022									
	Jan-2023									

Explanatory Notes: Prices quoted reflect the most recent trades, at time of print.

Disclaimer: While all due care has been taken in the preparation of this document, no warranty is made as to its accuracy, reliability or completeness. To the extent permitted by law neither Jemalong or their sources including subsidiaries and staff, accept liability to any person for loss or damage arising from the use of this information.





**Table 6: National Market Share**

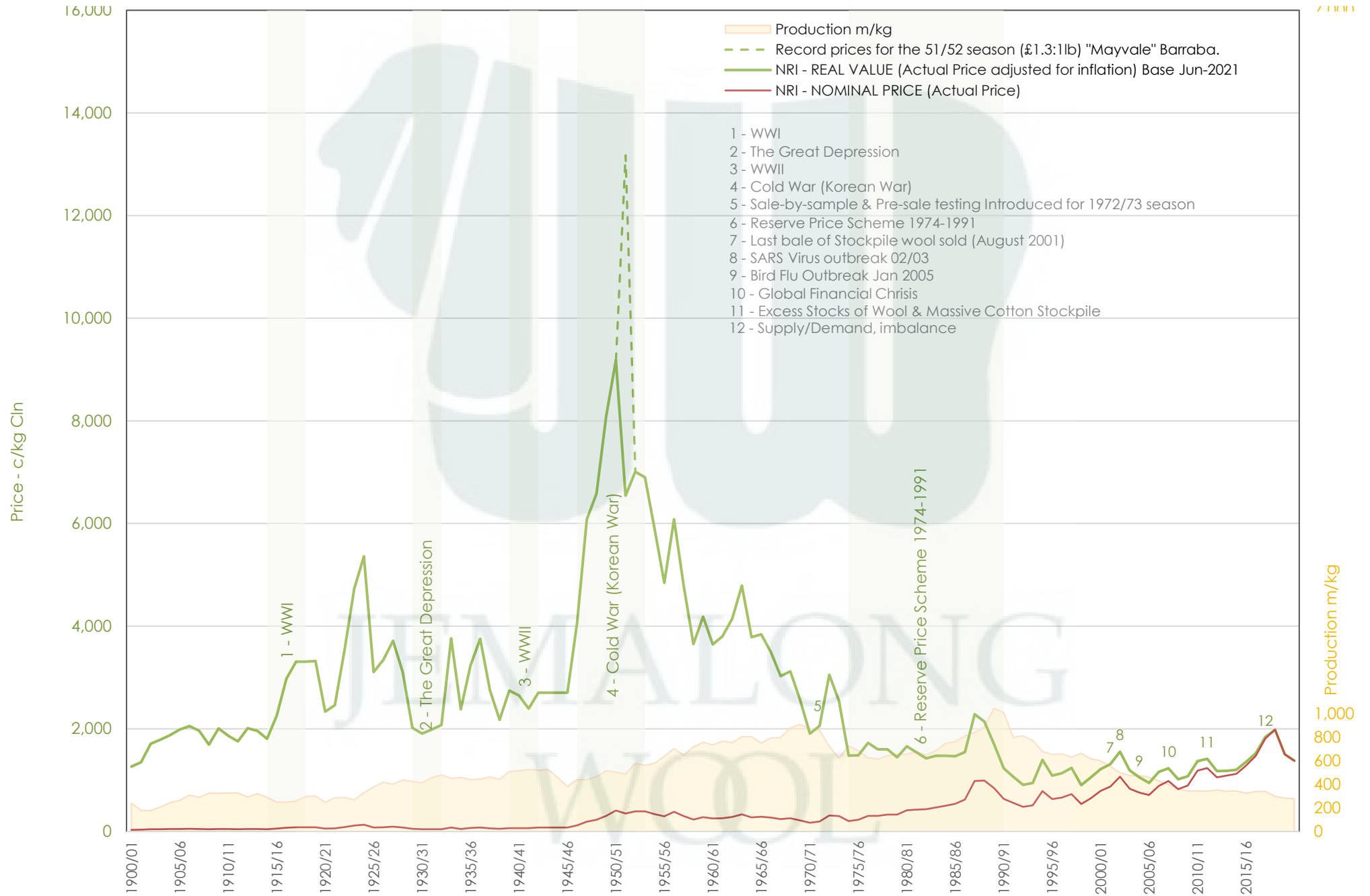
	Rank	Current Selling Week Week 36			Previous Selling Week Week 35			Last Season 2019-20			2 Years Ago 2018-19			3 Years Ago 2017-18			5 Years Ago 2015-16			10 Years Ago 2010-11		
		Buyer	Bales	MS%	Buyer	Bales	MS%	Buyer	Bales	MS%	Buyer	Bales	MS%	Buyer	Bales	MS%	Buyer	Bales	MS%	Buyer	Bales	MS%
Top 10, Auction Buyers	1	TECM	7,483	18%	TECM	6,540	16%	TECM	176,746	15%	TECM	183,590	12%	TECM	242,275	14%	TECM	223,011	13%	VTRA	209,391	12%
	2	FOXM	3,656	9%	EWES	4,164	10%	EWES	111,152	9%	FOXM	137,101	9%	FOXM	199,258	11%	CTXS	158,343	10%	TECM	179,439	10%
	3	TIAM	3,170	8%	FOXM	3,603	9%	FOXM	111,069	9%	TIAM	125,963	8%	KATS	140,688	8%	FOXM	151,685	9%	FOXM	142,143	8%
	4	UWCM	3,077	7%	AMEM	2,566	6%	TIAM	99,632	8%	SETS	117,207	8%	SETS	128,533	7%	LEMM	124,422	8%	QCTB	120,699	7%
	5	PMWF	2,598	6%	LEMM	2,027	5%	AMEM	95,222	8%	AMEM	112,113	8%	AMEM	127,831	7%	TIAM	105,610	6%	WIEM	99,585	6%
	6	LEMM	2,441	6%	UWCM	1,865	5%	PMWF	75,805	6%	EWES	94,720	6%	TIAM	121,875	7%	AMEM	104,017	6%	LEMM	85,346	5%
	7	EWES	2,369	6%	TIAM	1,736	4%	UWCM	60,137	5%	KATS	85,234	6%	PMWF	99,301	6%	GWEA	91,407	6%	MODM	81,981	5%
	8	PEAM	1,520	4%	MODM	1,735	4%	KATS	50,277	4%	PMWF	80,474	5%	LEMM	93,130	5%	MODM	83,453	5%	PMWF	77,588	4%
	9	MODM	1,473	3%	WCWF	1,726	4%	MCHA	49,296	4%	UWCM	65,978	4%	MODM	91,985	5%	PMWF	82,132	5%	CTXS	75,127	4%
	10	WCWF	1,355	3%	PMWF	1,584	4%	SETS	45,008	4%	MCHA	63,262	4%	EWES	76,486	4%	MCHA	64,453	4%	KATS	67,867	4%
MFLC TOP 5	1	TECM	4,445	18%	TECM	3,863	17%	TECM	99,605	15%	SETS	109,434	13%	TECM	137,666	14%	CTXS	124,326	13%	VTRA	169,191	17%
	2	PMWF	2,585	11%	FOXM	2,275	10%	TIAM	72,376	11%	TECM	99,231	12%	SETS	124,030	12%	TECM	112,996	12%	QCTB	98,673	10%
	3	TIAM	2,361	10%	EWES	1,826	8%	PMWF	72,234	11%	TIAM	80,594	10%	FOXM	94,279	9%	LEMM	91,475	10%	TECM	79,395	8%
	4	LEMM	2,018	8%	LEMM	1,714	8%	FOXM	61,961	9%	PMWF	72,193	9%	PMWF	87,751	9%	FOXM	84,992	9%	PMWF	71,718	7%
	5	FOXM	1,806	8%	AMEM	1,611	7%	EWES	51,367	8%	FOXM	65,851	8%	KATS	79,682	8%	PMWF	77,550	8%	LEMM	70,280	7%
MSKT TOP 5	1	TECM	1,209	20%	TECM	1,177	18%	TECM	33,722	19%	AMEM	35,047	17%	TECM	44,522	17%	TIAM	41,055	17%	MODM	39,745	14%
	2	UWCM	995	17%	WCWF	844	13%	EWES	23,530	13%	TECM	32,363	15%	AMEM	33,464	13%	TECM	39,290	16%	WIEM	36,566	13%
	3	WCWF	539	9%	EWES	831	13%	AMEM	21,309	12%	TIAM	30,903	15%	TIAM	31,171	12%	AMEM	29,982	12%	TECM	28,858	10%
	4	TIAM	491	8%	UWCM	775	12%	TIAM	20,170	11%	EWES	26,210	12%	EWES	23,428	9%	MODM	26,227	11%	PLEX	23,282	8%
	5	SMAM	475	8%	AMEM	516	8%	UWCM	17,510	10%	MODM	16,112	8%	FOXM	21,855	8%	FOXM	18,153	7%	FOXM	16,098	6%
XB TOP 5	1	TECM	1,241	19%	PEAM	1,136	17%	TECM	27,953	14%	TECM	35,843	14%	FOXM	51,685	17%	TECM	46,757	17%	FOXM	48,708	19%
	2	PEAM	1,016	16%	EWES	1,057	16%	PEAM	23,607	12%	FOXM	35,810	14%	KATS	44,672	15%	KATS	27,734	10%	TECM	43,133	17%
	3	MODM	984	15%	TECM	911	14%	FOXM	22,019	11%	EWES	20,980	8%	TECM	38,877	13%	FOXM	27,096	10%	VTRA	20,904	8%
	4	FOXM	863	13%	MODM	890	14%	EWES	20,353	10%	MODM	19,069	7%	MODM	25,884	8%	CTXS	22,768	8%	MODM	20,556	8%
	5	UWCM	526	8%	MCHA	495	8%	AMEM	20,039	10%	AMEM	17,248	7%	EWES	24,241	8%	MODM	21,130	8%	CTXS	16,667	7%
ODDS TOP 5	1	UWCM	795	14%	MCHA	877	15%	MCHA	27,873	18%	MCHA	37,911	21%	MCHA	40,241	19%	MCHA	39,964	20%	MCHA	30,570	13%
	2	MCHA	677	12%	TECM	589	10%	FOXM	18,687	12%	VWPM	26,672	15%	FOXM	31,439	15%	VWPM	30,258	15%	TECM	28,053	12%
	3	TECM	588	10%	VWPM	513	9%	EWES	15,902	10%	FOXM	26,591	15%	VWPM	27,805	13%	TECM	23,968	12%	FOXM	27,422	12%
	4	FOXM	557	10%	FOXM	512	9%	VWPM	15,673	10%	EWES	16,659	9%	TECM	21,210	10%	FOXM	21,444	11%	VWPM	22,267	10%
	5	EWES	444	8%	EWES	450	8%	TECM	15,466	10%	TECM	16,153	9%	EWES	18,809	9%	GWEA	10,802	5%	RWRS	15,878	7%
Auction Totals		<u>Bales Sold</u>	<u>\$/Bale</u>		<u>Bales Sold</u>	<u>\$/Bale</u>		<u>Bales Sold</u>	<u>\$/Bale</u>		<u>Bales Sold</u>	<u>\$/Bale</u>		<u>Bales Sold</u>	<u>\$/Bale</u>		<u>Bales Sold</u>	<u>\$/Bale</u>		<u>Bales Sold</u>	<u>\$/Bale</u>	
		42,199	\$ 1,485		40,908	\$ 1,496		1,207,629	\$1,633		1,477,234	\$2,161		1,780,609	\$1,929		1,652,727	\$1,424		1,789,551	\$1,218	
		<u>Auction Value</u>			<u>Auction Value</u>			<u>Auction Value</u>			<u>Auction Value</u>			<u>Auction Value</u>			<u>Auction Value</u>			<u>Auction Value</u>		
		\$62,650,000			\$61,200,000			\$1,972,385,159			\$3,192,210,000			\$3,434,719,951			\$2,354,185,590			\$2,180,128,771		

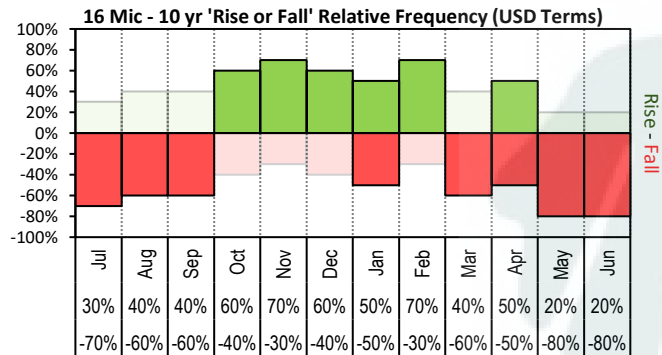


Table 7: NSW Production Statistics

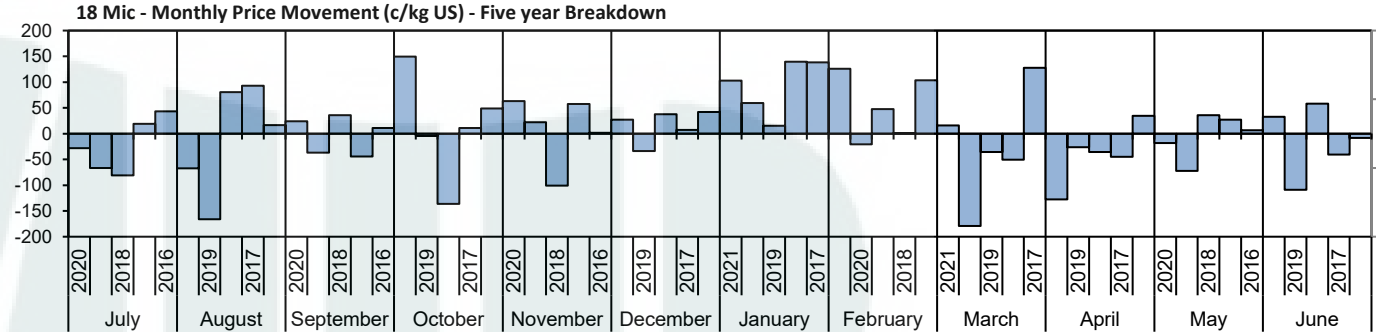
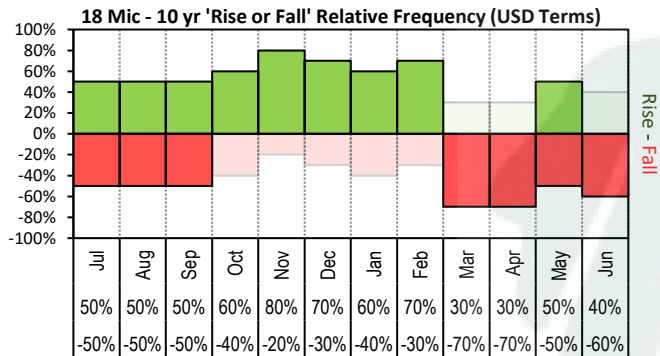
MAX			MIN		MAX GAIN		MAX REDUCTION								
2019-20															
Statistical Devision, Area Code & Towns				Auction Bales (FH)	Micron	+/- YoY	Vmb %	+/- YoY	Yield % Sch Dry	+/- YoY	Length mm	+/- YoY	Strength Nkt	+/- YoY	Ave Price c/kg
Northern	N02	Tenterfield, Glen Innes		4,352	18.2	-0.8	1.1	-0.3	67.8	-2.4	79	-0.3	39	-1.6	1156
	N03	Guyra		28,084	19.5	0.0	1.6	0.1	63.5	-4.1	80	2.0	35	-3.1	996
	N04	Inverell		3,134	18.4	0.1	2.2	-0.4	64.7	-3.5	80	0.1	35	-0.5	1033
	N05	Armidale		770	20.0	-0.7	2.9	-0.6	64.6	-2.2	80	-2.0	39	3.2	948
	N06	Tamworth, Gunnedah, Quirindi		3,624	19.1	-0.4	2.7	-0.5	64.2	-1.0	84	5.2	37	-0.8	977
	N07	Moree		2,367	18.8	-0.4	2.4	-1.2	57.5	-2.2	78	-0.1	33	-4.3	791
	N08	Narrabri		1,373	18.8	-0.1	2.3	-0.7	58.0	-3.3	80	1.3	36	-1.2	873
	North Western & Far West	N09	Cobar, Bourke, Wanaaring		3,875	19.5	0.6	3.8	-1.2	53.9	-1.9	83	1.4	34	-0.6
N12		Walgett		4,381	18.9	0.1	3.3	-1.8	55.1	-0.5	79	-2.0	36	0.2	840
N13		Nyngan		8,659	18.9	-0.5	5.0	-1.7	54.5	-2.1	80	-0.2	35	-1.3	773
N14		Dubbo, Narromine		12,563	20.4	-0.4	3.5	-1.5	55.8	-1.6	83	1.9	34	0.3	718
N16		Dunedoo		5,224	19.8	-0.3	2.5	-1.0	60.1	-1.7	84	0.3	34	1.4	854
N17		Mudgee, Wellington, Gulgong		15,960	19.3	0.3	2.1	-0.6	61.5	-2.2	82	3.5	36	0.4	923
N33		Coonabarabran		2,263	20.0	0.3	2.7	-2.0	58.3	-2.1	85	2.3	32	0.5	790
N34		Coonamble		4,786	19.8	0.5	3.8	-1.9	53.7	-1.3	84	3.7	34	-0.8	734
N36		Gilgandra, Gulargambone		3,156	20.8	0.4	2.6	-1.1	57.2	-1.4	86	1.6	32	-0.8	740
N40		Brewarrina		3,328	19.0	-0.4	3.2	-0.2	55.7	-4.6	82	-0.6	35	-5.6	820
Central West	N10	Wilcannia, Broken Hill		7,042	20.0	0.4	2.5	-1.4	54.7	-1.9	86	4.8	36	-2.7	786
	N15	Forbes, Parkes, Cowra		24,577	19.9	0.0	1.9	-0.8	56.7	-2.7	82	1.1	36	1.4	782
	N18	Lithgow, Oberon		2,531	21.6	0.8	1.6	-0.6	67.3	0.7	88	6.3	38	-0.2	875
	N19	Orange, Bathurst		36,056	21.3	0.2	1.6	-0.4	62.7	-1.6	87	4.8	36	1.1	852
	N25	West Wyalong		17,173	19.6	-0.1	1.6	-0.7	54.9	-3.3	86	2.0	34	0.0	783
Murrumbidgee	N35	Condobolin, Lake Cargelligo		6,202	19.7	-0.1	4.0	-0.8	53.7	-2.5	82	2.1	36	0.2	723
	N26	Cootamundra, Temora		21,946	21.0	0.0	1.1	-0.6	57.6	-1.8	87	4.4	34	1.0	729
	N27	Adelong, Gundagai		10,380	20.7	-0.2	1.3	-0.3	62.8	-1.7	88	5.0	33	0.7	837
	N29	Wagga, Narrandera		27,088	21.4	0.2	1.1	-0.4	60.2	-0.9	86	3.6	33	-0.2	760
	N37	Griffith, Hillston		9,481	21.1	0.4	3.3	-1.9	57.9	-0.5	83	2.5	38	-2.7	764
	N39	Hay, Coleambally		12,096	20.1	0.4	3.1	-2.6	59.3	-1.3	86	3.8	38	-1.4	849
Murray	N11	Wentworth, Balranald		5,574	20.6	0.4	5.0	-1.7	54.4	-1.2	88	3.1	36	-3.0	785
	N28	Albury, Corowa, Holbrook		24,964	21.1	0.4	1.1	-0.4	61.4	-1.6	86	2.7	33	-0.8	800
	N31	Deniliquin		19,387	20.4	0.1	2.0	-1.1	63.2	-0.6	84	1.8	36	-1.8	891
	N38	Finley, Berrigan, Jerilderie		7,532	20.1	0.3	2.0	-0.7	60.9	-1.6	85	3.9	36	-1.6	842
South Eastern	N23	Goulburn, Young, Yass		76,824	19.7	0.3	1.1	-0.4	61.8	-3.2	88	3.8	35	-0.2	913
	N24	Monaro (Cooma, Bombala)		24,535	19.2	0.2	1.0	-0.6	66.5	-0.8	94	5.2	35	1.4	1011
	N32	A.C.T.		28	19.7	1.8	0.9	-0.8	60.9	-1.2	78	-4.0	38	8.6	921
	N43	South Coast (Bega)		392	18.6	-0.2	0.6	-0.1	72.9	0.1	90	4.0	40	-1.5	1279
NSW	AWEX Sale Statistics 19-20			458,846	20.2	0.1	1.9	-0.9	60.3	-1.8	85	3.1	35	-0.5	854

AWTA Mthly Key Test Data			Bales Tested	+/- YoY	Micron	+/- YoY	VMB	+/- YoY	Yld	+/- YoY	Lth	+/- YoY	Nkt	+/- YoY	POBM +/-
AUSTRALIA	Current Season	February	177,465	25,141	21.3	0.3	2.2	0.5	64.2	3.1	88	2.7	33	2.6	46 0.1
		Y.T.D	1,094,161	-60,403	21.1	0.5	1.8	0.2	64.4	1.4	89	2.0	34	2.0	51 3.0
	Previous Seasons	2019-20	1,154,564	-75281	20.6	0.0	1.6	-0.4	63.0	-1.0	87	2.0	32	0.0	48 1.0
		2018-19	1,229,845	-155185	20.6	-0.5	2.0	-0.4	64.0	-1.6	85	-3.0	32	-2.0	47 4.0
		Y.T.D.	2017-18	1,385,030	33,912	21.1	0.1	2.4	0.5	65.6	-0.4	88	-1.8	34	0.3

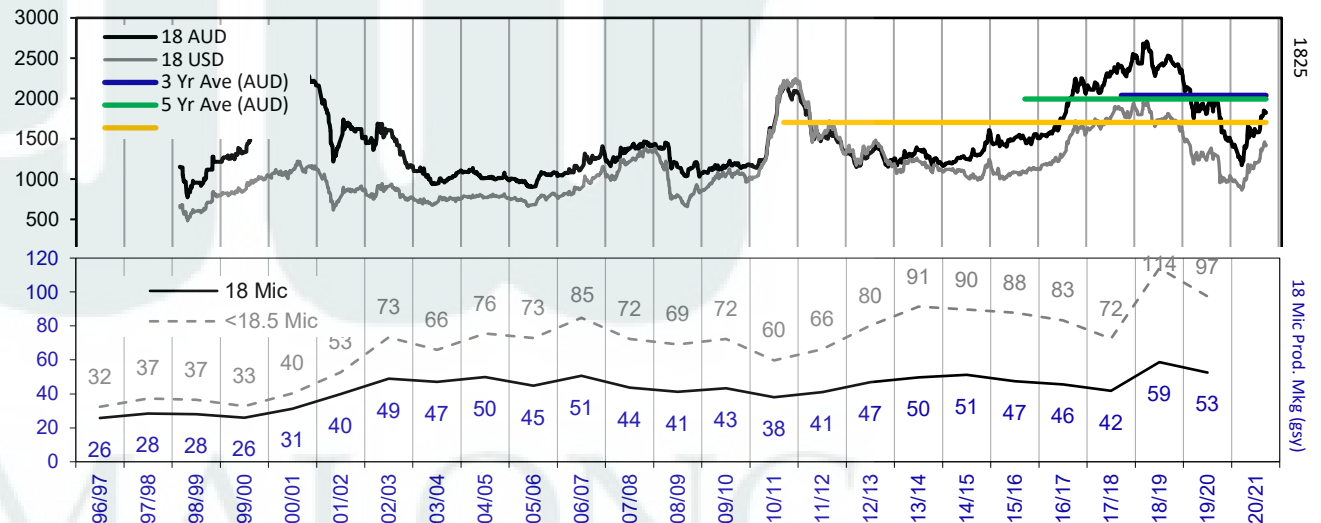
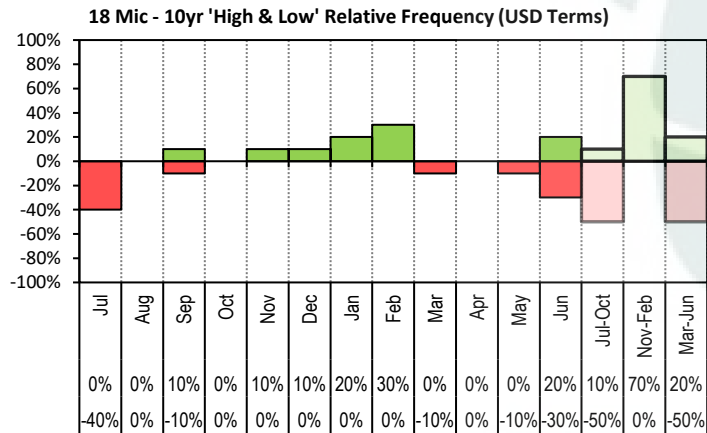




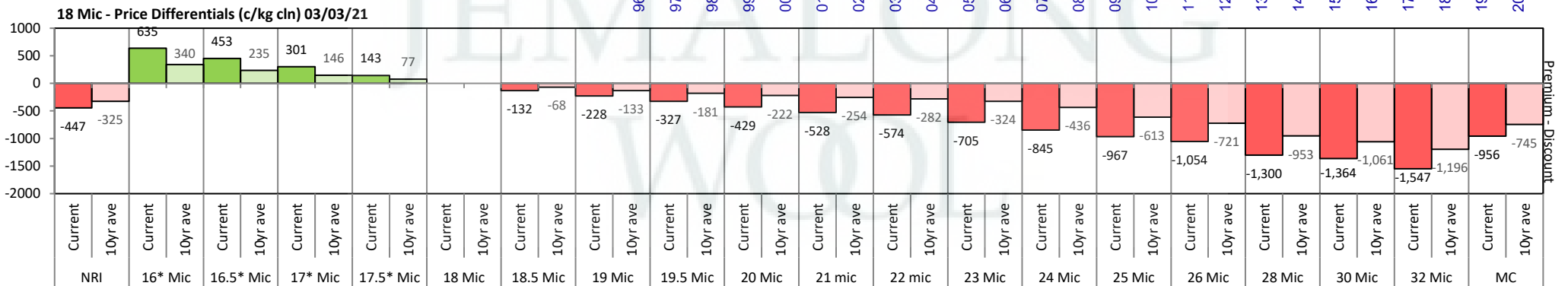




The above 'Rise or Fall' graph, shows how often the market has risen or fallen in a given month over the past 10 years, it does not show the extent of the movement only the frequency of direction. The 'Monthly Price Movement' graph shows the extent of movement for each month, for the past 5 years.



The above graph, shows how often the '12 month high & low' have been achieved for a given month over the past 10 years. It is not a measure of probability.

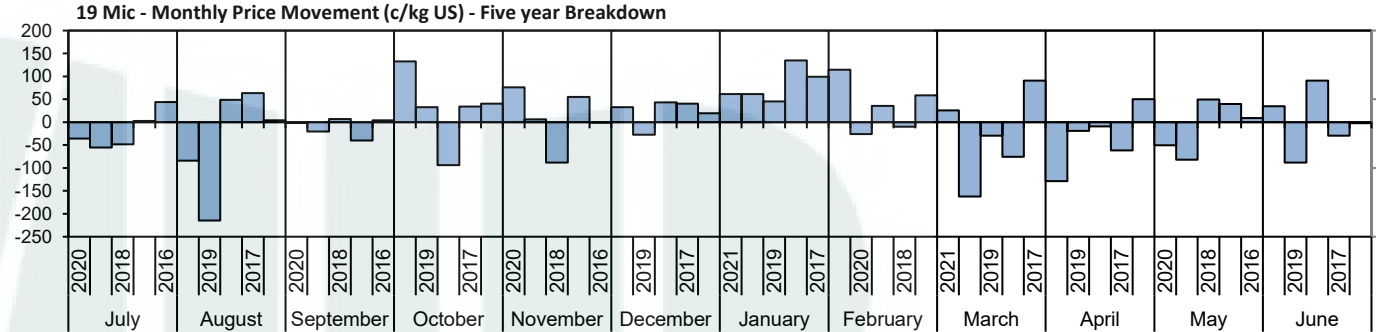
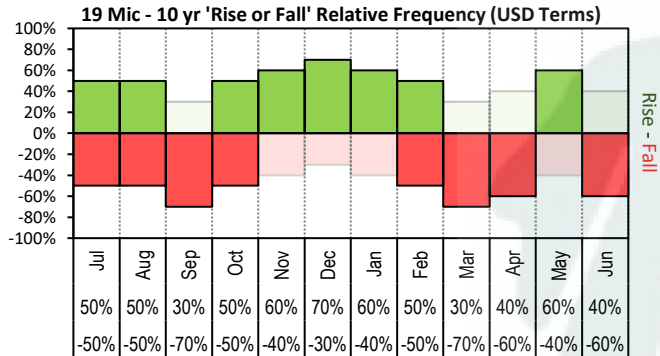




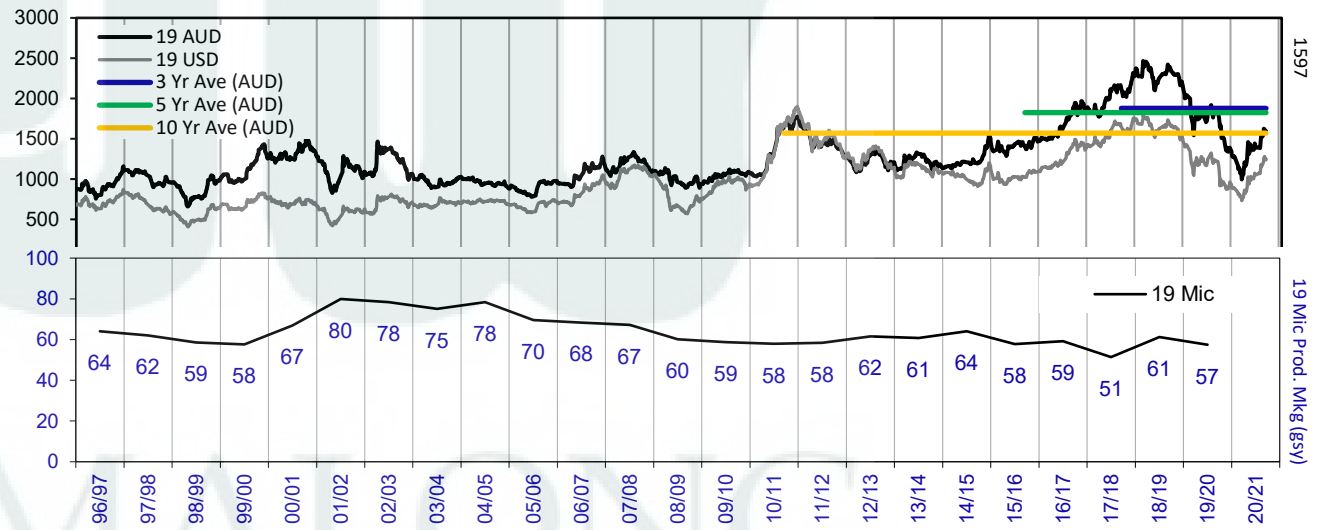
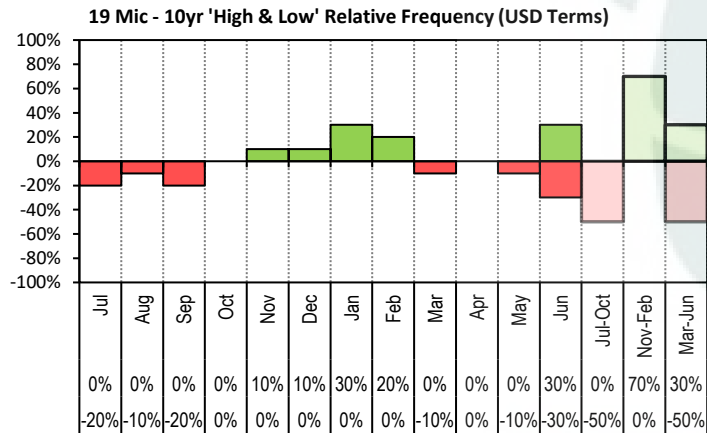
# JEMALONG WOOL BULLETIN

(week ending 4/03/2021)

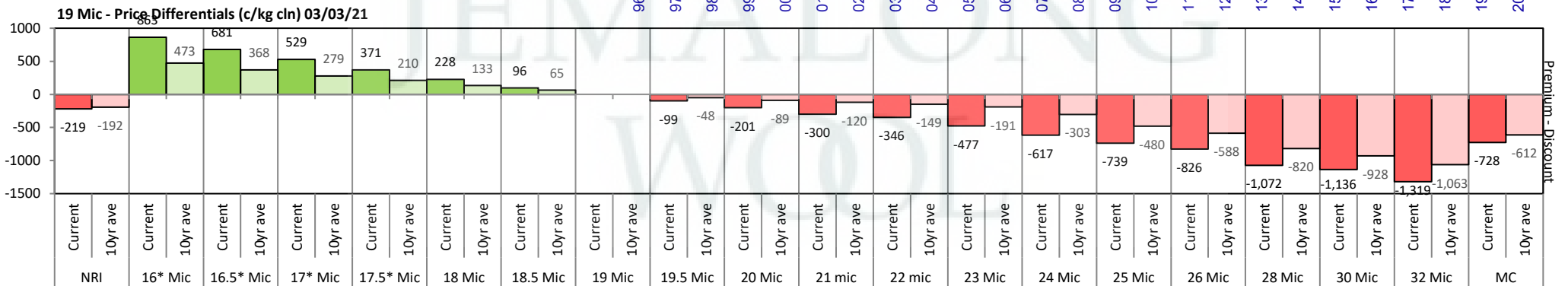
Page 10/26



The above 'Rise or Fall' graph, shows how often the market has risen or fallen in a given month over the past 10 years, it does not show the extent of the movement only the frequency of direction. The 'Monthly Price Movement' graph shows the extent of movement for each month, for the past 5 years.



The above graph, shows how often the '12 month high & low' have been achieved for a given month over the past 10 years. It is not a measure of probability.

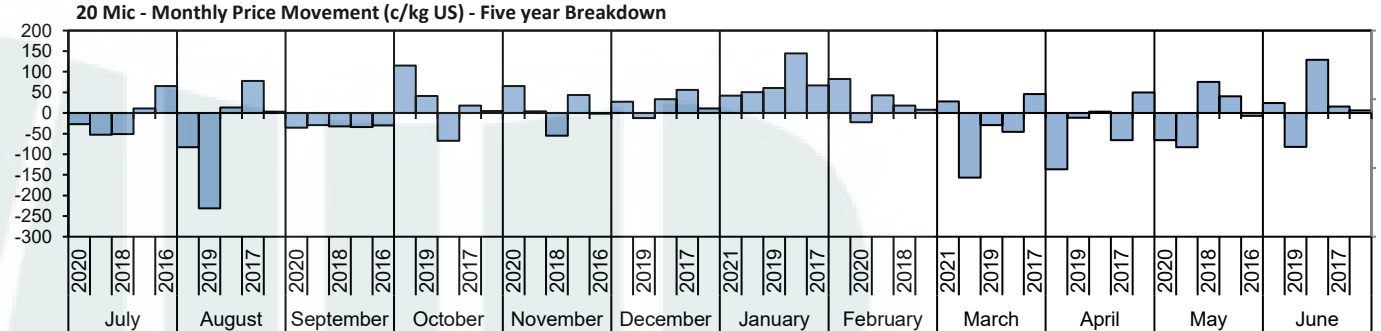
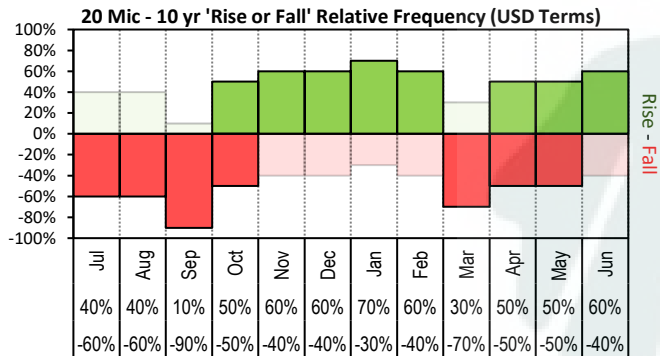




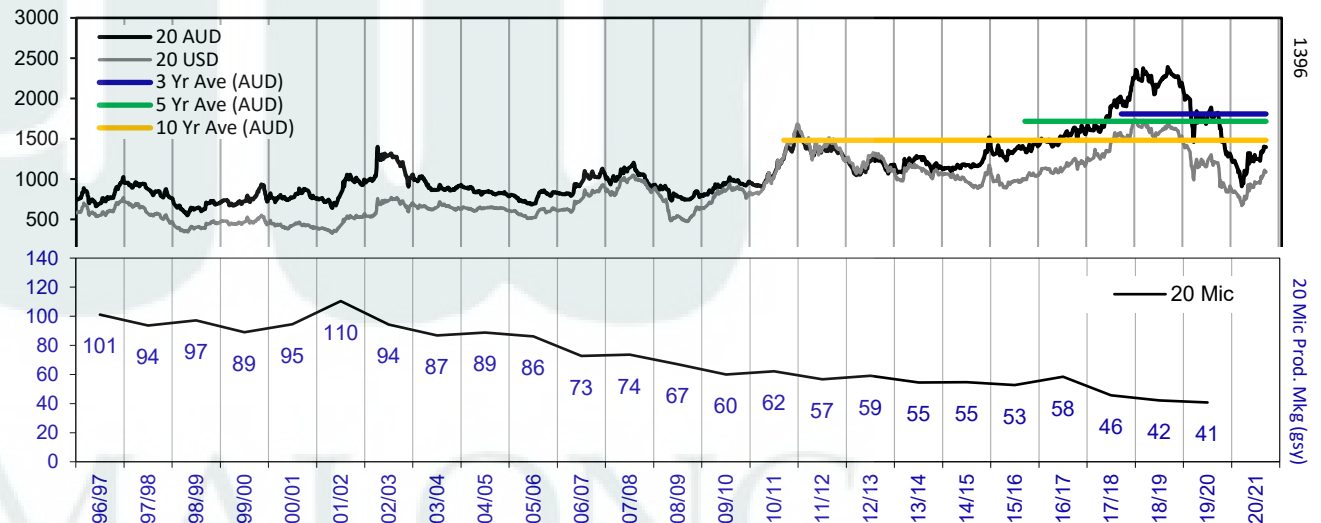
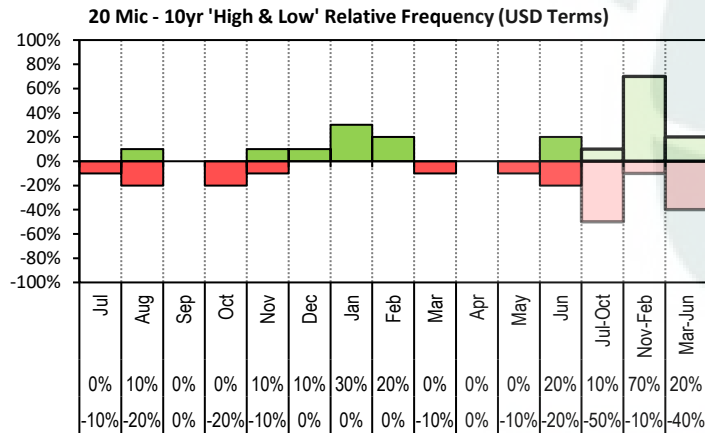
# JEMALONG WOOL BULLETIN

(week ending 4/03/2021)

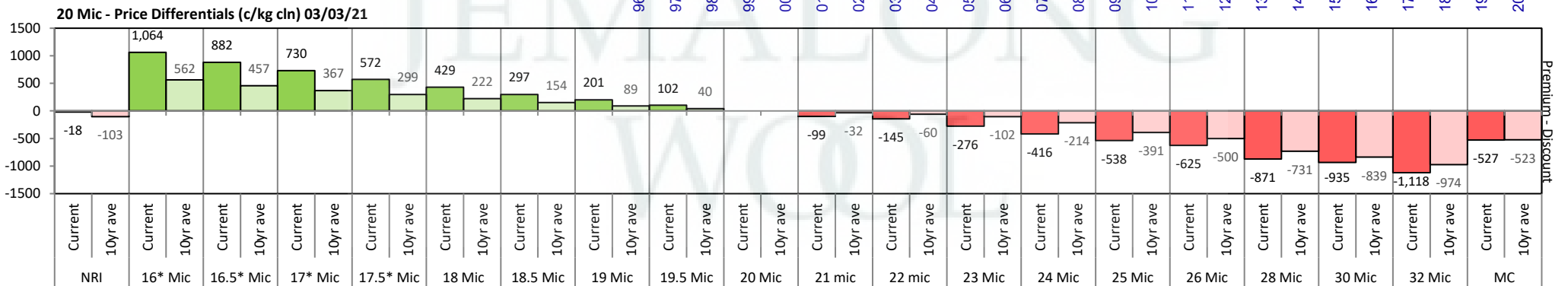
Page 11/26

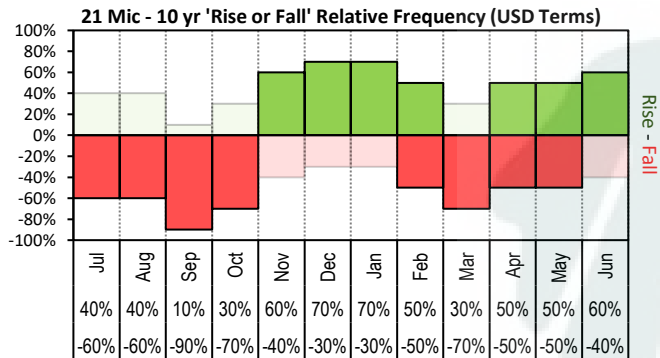


The above 'Rise or Fall' graph, shows how often the market has risen or fallen in a given month over the past 10 years, it does not show the extent of the movement only the frequency of direction. The 'Monthly Price Movement' graph shows the extent of movement for each month, for the past 5 years.



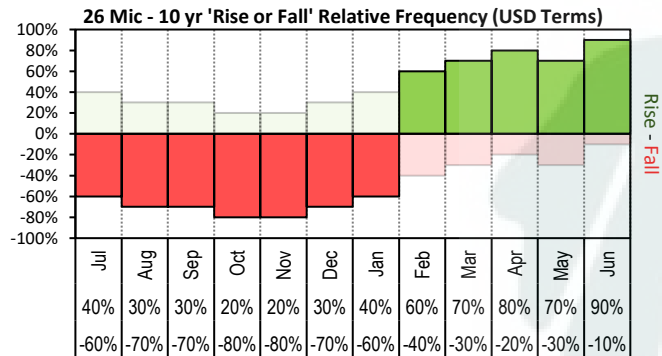
The above graph, shows how often the '12 month high & low' have been achieved for a given month over the past 10 years. It is not a measure of probability.

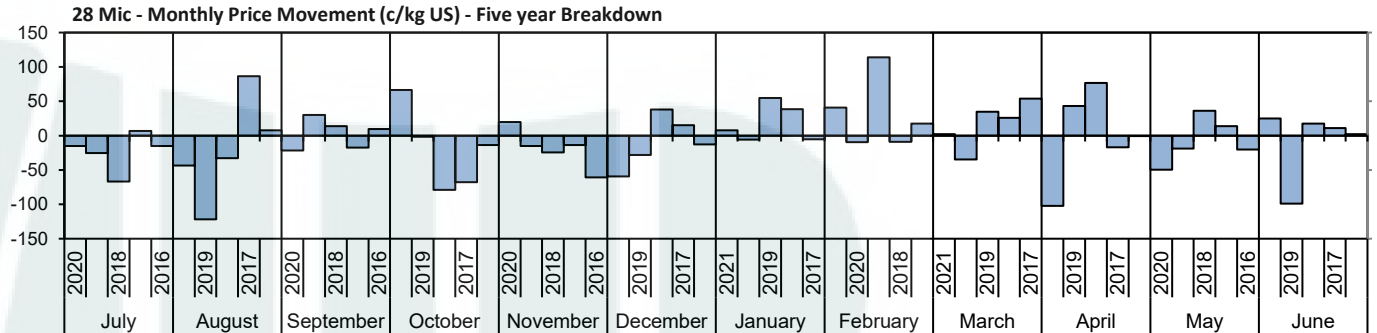
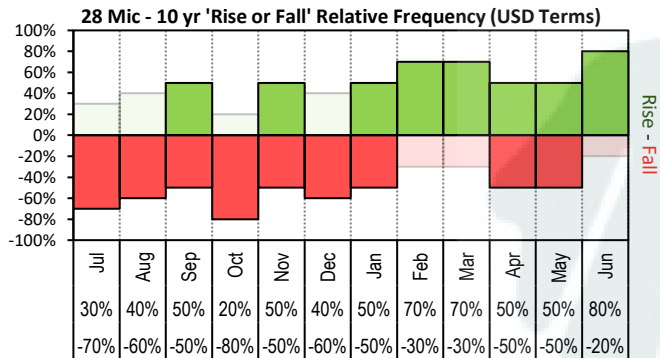




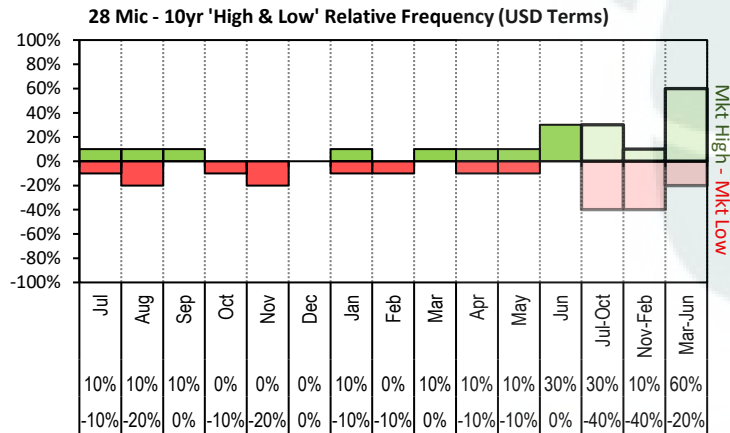




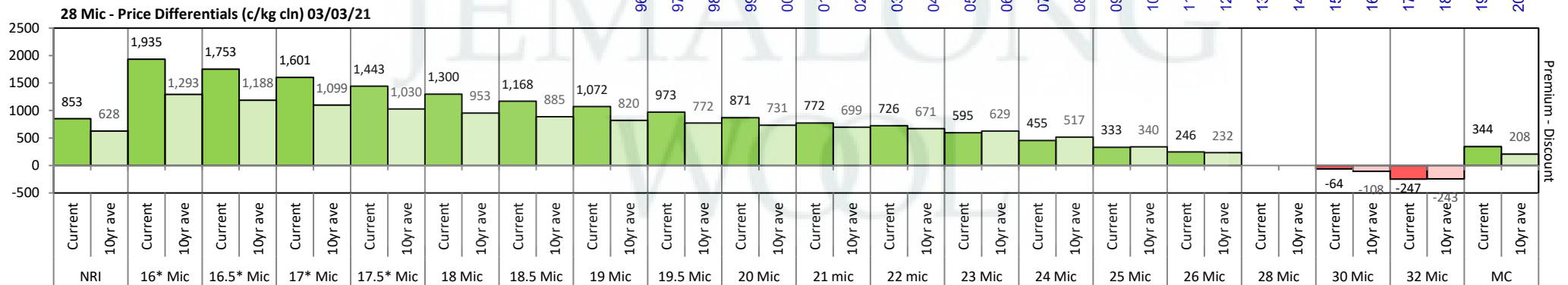
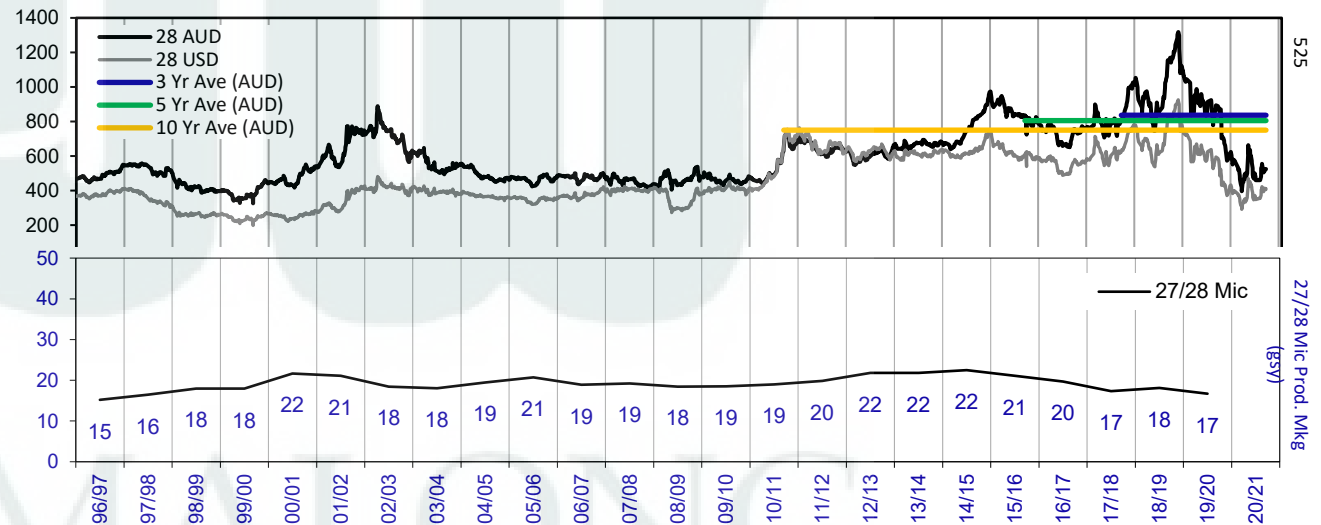


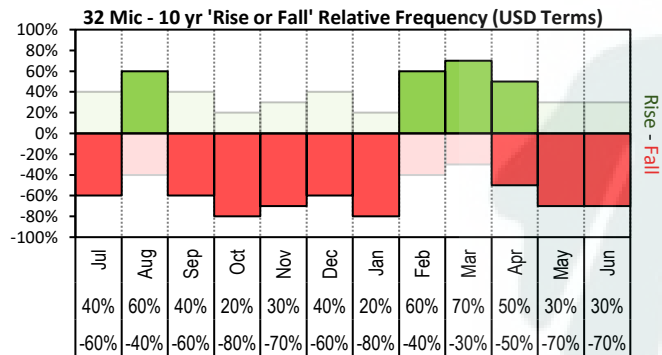


The above 'Rise or Fall' graph, shows how often the market has risen or fallen in a given month over the past 10 years, it does not show the extent of the movement only the frequency of direction. The 'Monthly Price Movement' graph shows the extent of movement for each month, for the past 5 years.



The above graph, shows how often the '12 month high & low' have been achieved for a given month over the past 10 years. It is not a measure of probability.





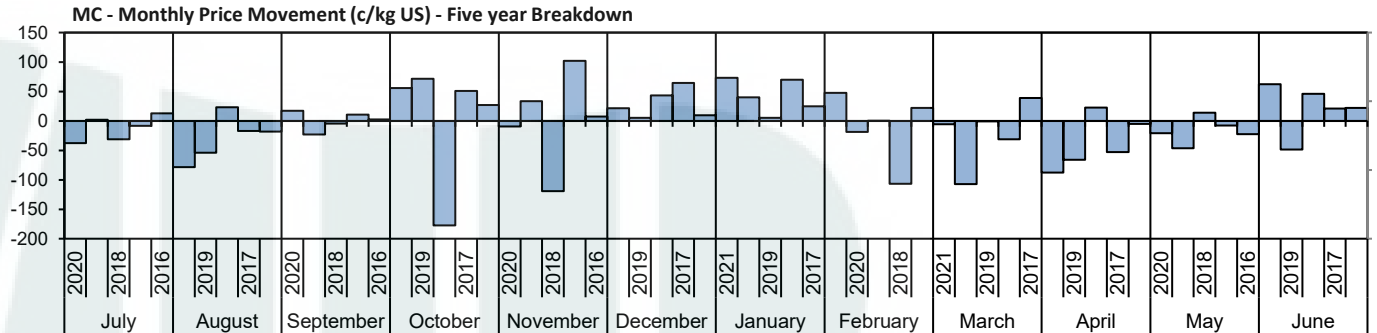
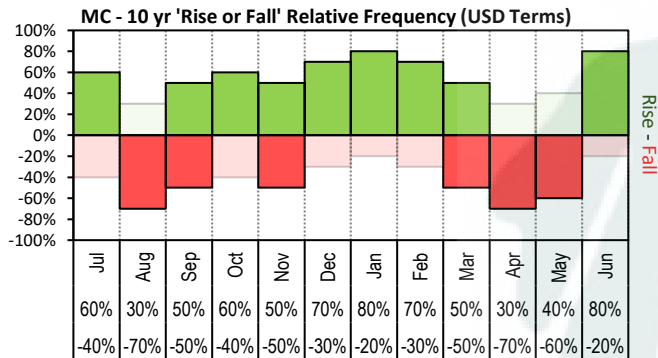




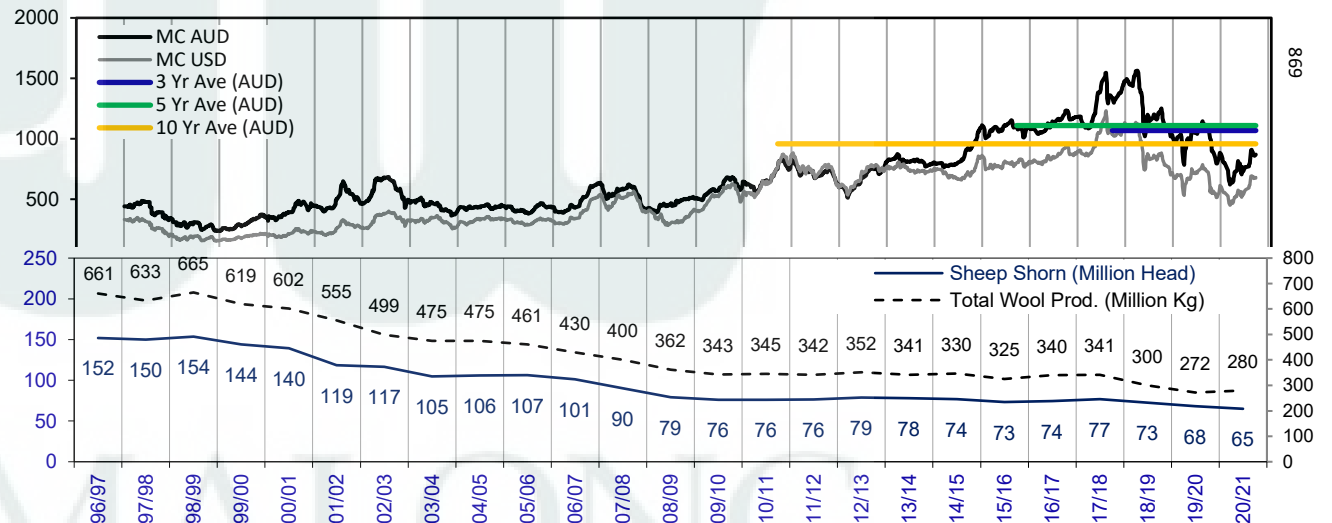
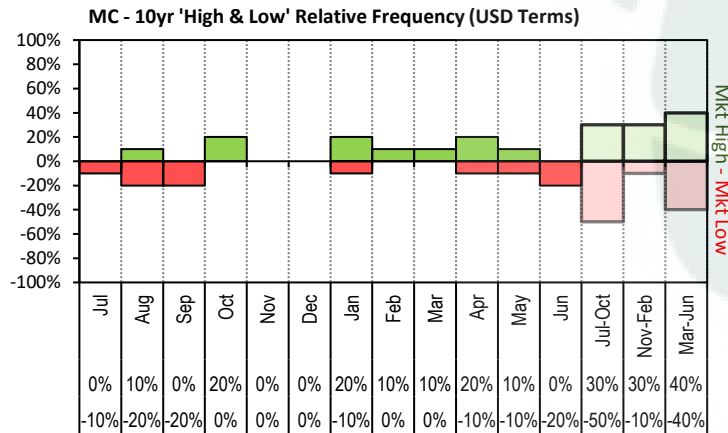
# JEMALONG WOOL BULLETIN

(week ending 4/03/2021)

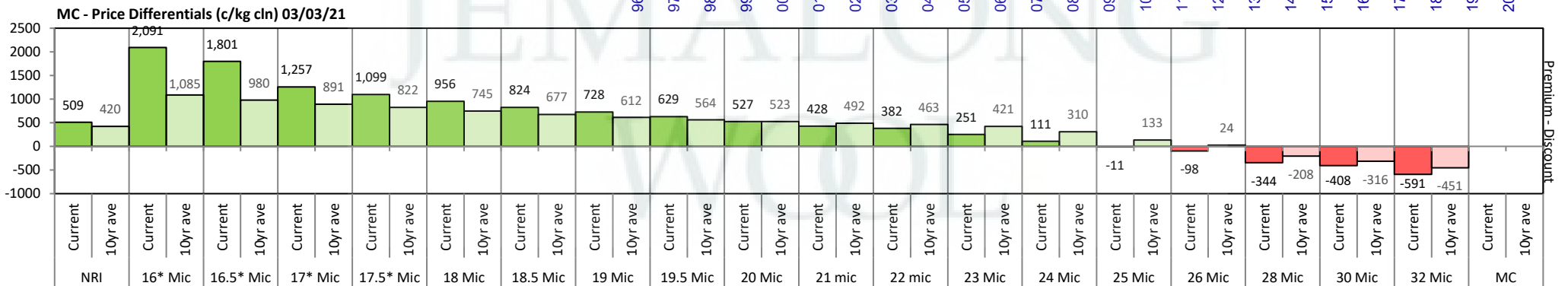
Page 17/26



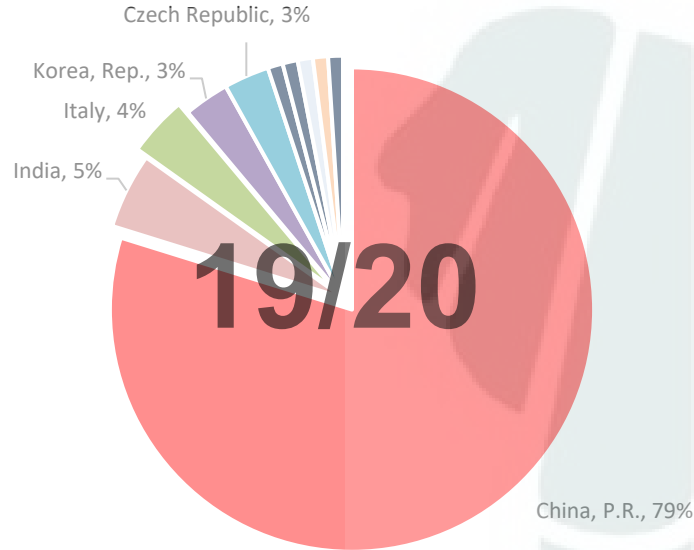
The above 'Rise or Fall' graph, shows how often the market has risen or fallen in a given month over the past 10 years, it does not show the extent of the movement only the frequency of direction. The 'Monthly Price Movement' graph shows the extent of movement for each month, for the past 5 years.



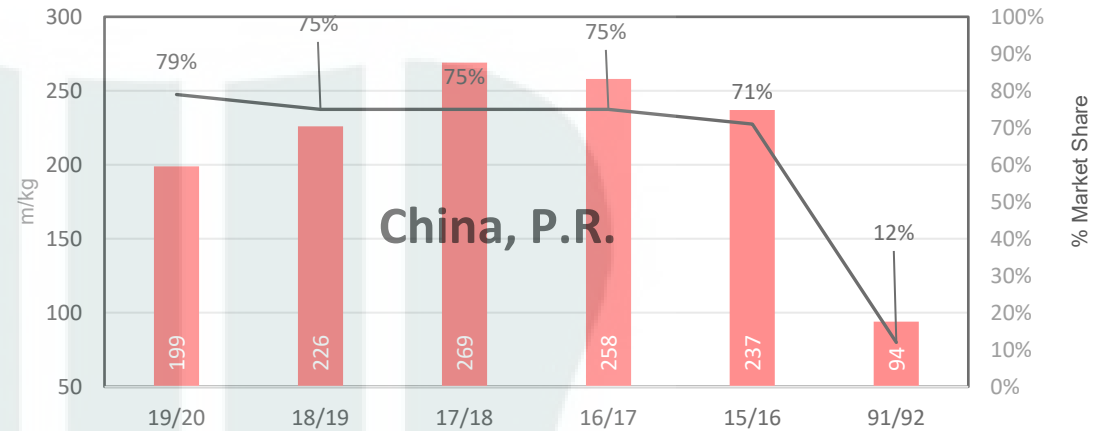
The above graph, shows how often the '12 month high & low' have been achieved for a given month over the past 10 years. It is not a measure of probability.



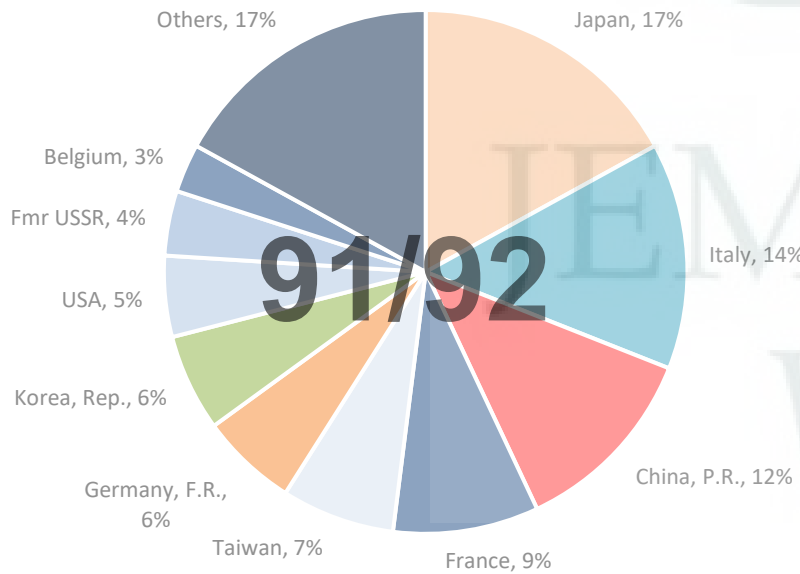
19/20 - Export Snap Shot (254.11 m/kg greasy equivalent)



China, P.R. (Largest Market Share)



91/92 - Export Snap Shot (784.7 m/kg greasy equivalent)



Seasonal Change m/kg

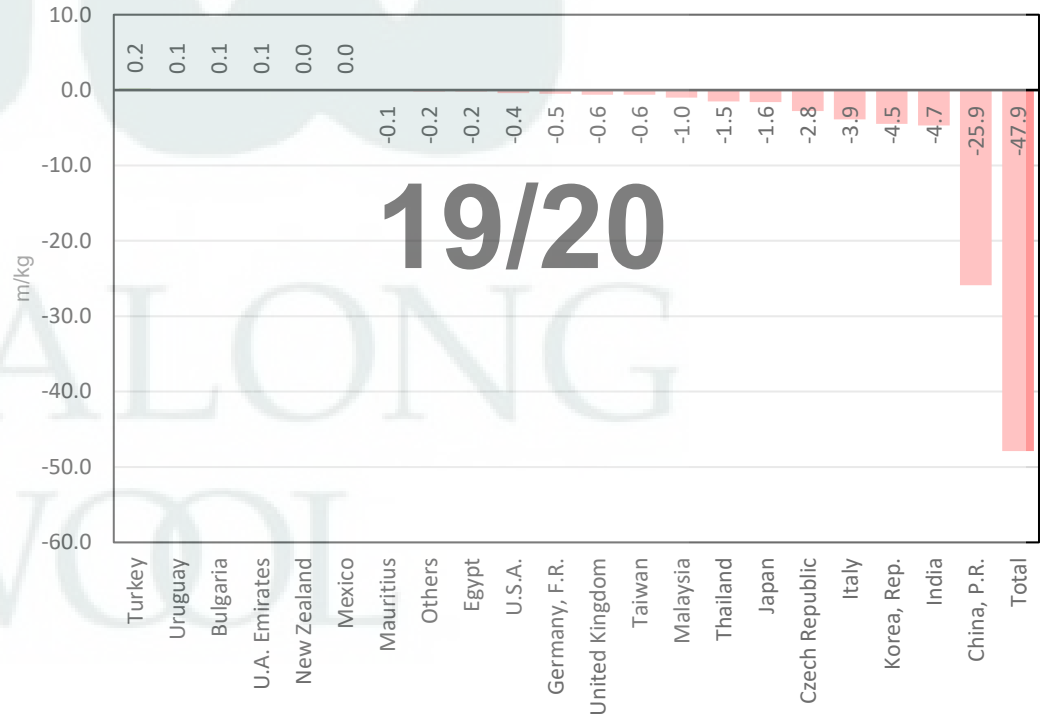




Table 8: Returns pr head for skirted fleece wool.

Skirted FLC Weight 9 Kg		Micron																	
		16	16.5	17	17.5	18	18.5	19	19.5	20	21	22	23	24	25	26	28	30	32
Yield (Sch Dry)	25% Current	\$55	\$51	\$48	\$44	\$41	\$38	\$36	\$34	\$31	\$29	\$28	\$25	\$22	\$19	\$17	\$12	\$10	\$6
	10yr ave.	\$45	\$43	\$41	\$40	\$38	\$37	\$35	\$34	\$33	\$33	\$32	\$31	\$29	\$25	\$22	\$17	\$14	\$11
	30% Current	\$66	\$62	\$57	\$53	\$49	\$46	\$43	\$40	\$38	\$35	\$34	\$30	\$26	\$23	\$21	\$14	\$12	\$8
	10yr ave.	\$55	\$52	\$50	\$48	\$46	\$44	\$42	\$41	\$40	\$39	\$38	\$37	\$34	\$29	\$27	\$20	\$17	\$14
	35% Current	\$77	\$72	\$67	\$62	\$57	\$53	\$50	\$47	\$44	\$41	\$39	\$35	\$31	\$27	\$24	\$17	\$15	\$9
	10yr ave.	\$64	\$60	\$58	\$56	\$54	\$52	\$49	\$48	\$47	\$46	\$45	\$43	\$40	\$34	\$31	\$24	\$20	\$16
	40% Current	\$89	\$82	\$77	\$71	\$66	\$61	\$57	\$54	\$50	\$47	\$45	\$40	\$35	\$31	\$28	\$19	\$17	\$10
	10yr ave.	\$73	\$69	\$66	\$64	\$61	\$59	\$57	\$55	\$53	\$52	\$51	\$50	\$46	\$39	\$35	\$27	\$23	\$18
	45% Current	\$100	\$92	\$86	\$80	\$74	\$69	\$65	\$61	\$57	\$53	\$51	\$45	\$40	\$35	\$31	\$21	\$19	\$11
	10yr ave.	\$82	\$78	\$74	\$72	\$69	\$66	\$64	\$62	\$60	\$59	\$58	\$56	\$51	\$44	\$40	\$30	\$26	\$21
	50% Current	\$111	\$103	\$96	\$89	\$82	\$76	\$72	\$67	\$63	\$58	\$56	\$50	\$44	\$39	\$35	\$24	\$21	\$13
	10yr ave.	\$91	\$86	\$83	\$80	\$77	\$74	\$71	\$68	\$67	\$65	\$64	\$62	\$57	\$49	\$44	\$34	\$29	\$23
	55% Current	\$122	\$113	\$105	\$97	\$90	\$84	\$79	\$74	\$69	\$64	\$62	\$55	\$49	\$42	\$38	\$26	\$23	\$14
	10yr ave.	\$100	\$95	\$91	\$88	\$84	\$81	\$78	\$75	\$73	\$72	\$70	\$68	\$63	\$54	\$49	\$37	\$32	\$25
	60% Current	\$133	\$123	\$115	\$106	\$99	\$91	\$86	\$81	\$75	\$70	\$68	\$60	\$53	\$46	\$42	\$28	\$25	\$15
	10yr ave.	\$109	\$104	\$99	\$96	\$92	\$88	\$85	\$82	\$80	\$78	\$77	\$74	\$68	\$59	\$53	\$41	\$35	\$27
	65% Current	\$144	\$133	\$124	\$115	\$107	\$99	\$93	\$88	\$82	\$76	\$73	\$66	\$57	\$50	\$45	\$31	\$27	\$16
	10yr ave.	\$118	\$112	\$107	\$104	\$100	\$96	\$92	\$89	\$87	\$85	\$83	\$81	\$74	\$64	\$57	\$44	\$38	\$30
	70% Current	\$155	\$144	\$134	\$124	\$115	\$107	\$101	\$94	\$88	\$82	\$79	\$71	\$62	\$54	\$49	\$33	\$29	\$18
	10yr ave.	\$127	\$121	\$116	\$112	\$107	\$103	\$99	\$96	\$93	\$91	\$90	\$87	\$80	\$69	\$62	\$47	\$40	\$32
	75% Current	\$166	\$154	\$144	\$133	\$123	\$114	\$108	\$101	\$94	\$88	\$84	\$76	\$66	\$58	\$52	\$35	\$31	\$19
	10yr ave.	\$136	\$129	\$124	\$120	\$115	\$110	\$106	\$103	\$100	\$98	\$96	\$93	\$86	\$74	\$66	\$51	\$43	\$34
	80% Current	\$177	\$164	\$153	\$142	\$131	\$122	\$115	\$108	\$101	\$93	\$90	\$81	\$71	\$62	\$56	\$38	\$33	\$20
	10yr ave.	\$146	\$138	\$132	\$128	\$123	\$118	\$113	\$110	\$107	\$104	\$102	\$99	\$91	\$78	\$71	\$54	\$46	\$37
	85% Current	\$188	\$174	\$163	\$151	\$140	\$130	\$122	\$115	\$107	\$99	\$96	\$86	\$75	\$66	\$59	\$40	\$35	\$21
	10yr ave.	\$155	\$147	\$140	\$136	\$130	\$125	\$120	\$116	\$113	\$111	\$109	\$105	\$97	\$83	\$75	\$57	\$49	\$39

The above shows estimated returns per head for skirted fleece wool. These figures do not take into account the value of skirtings and oddments and do not take into account discounts that may apply for faults under individual circumstances. These figures are based on a market index of 100% and should be used as a guide only. Returns over \$30 / head for fleece wool are highlighted.



Table 9: Returns pr head for skirted fleece wool.

Skirted FLC Weight  8 Kg		Micron																		
		16	16.5	17	17.5	18	18.5	19	19.5	20	21	22	23	24	25	26	28	30	32	
Yield (Sch Dry)	25%	Current	\$49	\$46	\$43	\$39	\$37	\$34	\$32	\$30	\$28	\$26	\$25	\$22	\$20	\$17	\$15	\$11	\$9	\$6
	10yr ave.	\$40	\$38	\$37	\$35	\$34	\$33	\$31	\$30	\$30	\$29	\$28	\$28	\$25	\$22	\$20	\$15	\$13	\$10	
	30%	Current	\$59	\$55	\$51	\$47	\$44	\$41	\$38	\$36	\$34	\$31	\$30	\$27	\$24	\$21	\$19	\$13	\$11	\$7
	10yr ave.	\$49	\$46	\$44	\$43	\$41	\$39	\$38	\$37	\$36	\$35	\$34	\$33	\$30	\$26	\$24	\$18	\$15	\$12	
	35%	Current	\$69	\$64	\$60	\$55	\$51	\$47	\$45	\$42	\$39	\$36	\$35	\$31	\$27	\$24	\$22	\$15	\$13	\$8
	10yr ave.	\$57	\$54	\$51	\$50	\$48	\$46	\$44	\$43	\$41	\$41	\$40	\$39	\$35	\$31	\$27	\$21	\$18	\$14	
	40%	Current	\$79	\$73	\$68	\$63	\$58	\$54	\$51	\$48	\$45	\$42	\$40	\$36	\$31	\$27	\$25	\$17	\$15	\$9
	10yr ave.	\$65	\$61	\$59	\$57	\$54	\$52	\$50	\$49	\$47	\$46	\$45	\$44	\$41	\$35	\$31	\$24	\$21	\$16	
	45%	Current	\$89	\$82	\$77	\$71	\$66	\$61	\$57	\$54	\$50	\$47	\$45	\$40	\$35	\$31	\$28	\$19	\$17	\$10
	10yr ave.	\$73	\$69	\$66	\$64	\$61	\$59	\$57	\$55	\$53	\$52	\$51	\$50	\$46	\$39	\$35	\$27	\$23	\$18	
	50%	Current	\$98	\$91	\$85	\$79	\$73	\$68	\$64	\$60	\$56	\$52	\$50	\$45	\$39	\$34	\$31	\$21	\$18	\$11
	10yr ave.	\$81	\$77	\$73	\$71	\$68	\$65	\$63	\$61	\$59	\$58	\$57	\$55	\$51	\$44	\$39	\$30	\$26	\$20	
	55%	Current	\$108	\$100	\$94	\$87	\$80	\$74	\$70	\$66	\$61	\$57	\$55	\$49	\$43	\$38	\$34	\$23	\$20	\$12
	10yr ave.	\$89	\$84	\$81	\$78	\$75	\$72	\$69	\$67	\$65	\$64	\$63	\$61	\$56	\$48	\$43	\$33	\$28	\$22	
	60%	Current	\$118	\$109	\$102	\$94	\$88	\$81	\$77	\$72	\$67	\$62	\$60	\$54	\$47	\$41	\$37	\$25	\$22	\$13
	10yr ave.	\$97	\$92	\$88	\$85	\$82	\$78	\$75	\$73	\$71	\$70	\$68	\$66	\$61	\$52	\$47	\$36	\$31	\$24	
	65%	Current	\$128	\$118	\$111	\$102	\$95	\$88	\$83	\$78	\$73	\$67	\$65	\$58	\$51	\$45	\$40	\$27	\$24	\$14
	10yr ave.	\$105	\$100	\$95	\$92	\$89	\$85	\$82	\$79	\$77	\$75	\$74	\$72	\$66	\$57	\$51	\$39	\$33	\$26	
	70%	Current	\$138	\$128	\$119	\$110	\$102	\$95	\$89	\$84	\$78	\$73	\$70	\$63	\$55	\$48	\$43	\$29	\$26	\$16
	10yr ave.	\$113	\$107	\$103	\$99	\$95	\$92	\$88	\$85	\$83	\$81	\$80	\$77	\$71	\$61	\$55	\$42	\$36	\$28	
75%	Current	\$148	\$137	\$128	\$118	\$110	\$102	\$96	\$90	\$84	\$78	\$75	\$67	\$59	\$51	\$46	\$32	\$28	\$17	
10yr ave.	\$121	\$115	\$110	\$106	\$102	\$98	\$94	\$91	\$89	\$87	\$85	\$83	\$76	\$65	\$59	\$45	\$39	\$30		
80%	Current	\$157	\$146	\$136	\$126	\$117	\$108	\$102	\$96	\$89	\$83	\$80	\$72	\$63	\$55	\$49	\$34	\$30	\$18	
10yr ave.	\$129	\$123	\$117	\$113	\$109	\$105	\$100	\$97	\$95	\$93	\$91	\$88	\$81	\$70	\$63	\$48	\$41	\$32		
85%	Current	\$167	\$155	\$145	\$134	\$124	\$115	\$109	\$102	\$95	\$88	\$85	\$76	\$67	\$58	\$52	\$36	\$31	\$19	
10yr ave.	\$137	\$130	\$125	\$120	\$116	\$111	\$107	\$103	\$101	\$99	\$97	\$94	\$86	\$74	\$67	\$51	\$44	\$34		

The above shows estimated returns per head for skirted fleece wool. These figures do not take into account the value of skirtings and oddments and do not take into account discounts that may apply for faults under individual circumstances. These figures are based on a market index of 100% and should be used as a guide only. Returns over \$30 / head for fleece wool are highlighted.





Table 10: Returns pr head for skirted fleece wool.

Skirted FLC Weight 7 Kg		Micron																	
		16	16.5	17	17.5	18	18.5	19	19.5	20	21	22	23	24	25	26	28	30	32
Yield (Sch Dry)	25% Current	\$43	\$40	\$37	\$34	\$32	\$30	\$28	\$26	\$24	\$23	\$22	\$20	\$17	\$15	\$13	\$9	\$8	\$5
	10yr ave.	\$35	\$34	\$32	\$31	\$30	\$29	\$27	\$27	\$26	\$25	\$25	\$24	\$22	\$19	\$17	\$13	\$11	\$9
	30% Current	\$52	\$48	\$45	\$41	\$38	\$36	\$34	\$31	\$29	\$27	\$26	\$24	\$21	\$18	\$16	\$11	\$10	\$6
	10yr ave.	\$42	\$40	\$39	\$37	\$36	\$34	\$33	\$32	\$31	\$30	\$30	\$29	\$27	\$23	\$21	\$16	\$13	\$11
	35% Current	\$60	\$56	\$52	\$48	\$45	\$41	\$39	\$37	\$34	\$32	\$31	\$27	\$24	\$21	\$19	\$13	\$11	\$7
	10yr ave.	\$50	\$47	\$45	\$43	\$42	\$40	\$38	\$37	\$36	\$36	\$35	\$34	\$31	\$27	\$24	\$18	\$16	\$12
	40% Current	\$69	\$64	\$60	\$55	\$51	\$47	\$45	\$42	\$39	\$36	\$35	\$31	\$27	\$24	\$22	\$15	\$13	\$8
	10yr ave.	\$57	\$54	\$51	\$50	\$48	\$46	\$44	\$43	\$41	\$41	\$40	\$39	\$35	\$31	\$27	\$21	\$18	\$14
	45% Current	\$77	\$72	\$67	\$62	\$57	\$53	\$50	\$47	\$44	\$41	\$39	\$35	\$31	\$27	\$24	\$17	\$15	\$9
	10yr ave.	\$64	\$60	\$58	\$56	\$54	\$52	\$49	\$48	\$47	\$46	\$45	\$43	\$40	\$34	\$31	\$24	\$20	\$16
	50% Current	\$86	\$80	\$74	\$69	\$64	\$59	\$56	\$52	\$49	\$45	\$44	\$39	\$34	\$30	\$27	\$18	\$16	\$10
	10yr ave.	\$71	\$67	\$64	\$62	\$60	\$57	\$55	\$53	\$52	\$51	\$50	\$48	\$44	\$38	\$34	\$26	\$22	\$18
	55% Current	\$95	\$88	\$82	\$76	\$70	\$65	\$61	\$58	\$54	\$50	\$48	\$43	\$38	\$33	\$30	\$20	\$18	\$11
	10yr ave.	\$78	\$74	\$71	\$68	\$66	\$63	\$60	\$59	\$57	\$56	\$55	\$53	\$49	\$42	\$38	\$29	\$25	\$20
	60% Current	\$103	\$96	\$89	\$83	\$77	\$71	\$67	\$63	\$59	\$54	\$53	\$47	\$41	\$36	\$32	\$22	\$19	\$12
	10yr ave.	\$85	\$81	\$77	\$74	\$72	\$69	\$66	\$64	\$62	\$61	\$60	\$58	\$53	\$46	\$41	\$32	\$27	\$21
	65% Current	\$112	\$104	\$97	\$90	\$83	\$77	\$73	\$68	\$64	\$59	\$57	\$51	\$45	\$39	\$35	\$24	\$21	\$13
	10yr ave.	\$92	\$87	\$83	\$81	\$77	\$74	\$71	\$69	\$67	\$66	\$65	\$63	\$58	\$50	\$45	\$34	\$29	\$23
	70% Current	\$121	\$112	\$104	\$96	\$89	\$83	\$78	\$73	\$68	\$64	\$61	\$55	\$48	\$42	\$38	\$26	\$23	\$14
	10yr ave.	\$99	\$94	\$90	\$87	\$83	\$80	\$77	\$75	\$73	\$71	\$70	\$68	\$62	\$53	\$48	\$37	\$31	\$25
	75% Current	\$129	\$120	\$112	\$103	\$96	\$89	\$84	\$79	\$73	\$68	\$66	\$59	\$51	\$45	\$40	\$28	\$24	\$15
	10yr ave.	\$106	\$101	\$96	\$93	\$89	\$86	\$82	\$80	\$78	\$76	\$75	\$72	\$67	\$57	\$52	\$39	\$34	\$27
	80% Current	\$138	\$128	\$119	\$110	\$102	\$95	\$89	\$84	\$78	\$73	\$70	\$63	\$55	\$48	\$43	\$29	\$26	\$16
	10yr ave.	\$113	\$107	\$103	\$99	\$95	\$92	\$88	\$85	\$83	\$81	\$80	\$77	\$71	\$61	\$55	\$42	\$36	\$28
	85% Current	\$146	\$136	\$126	\$117	\$109	\$101	\$95	\$89	\$83	\$77	\$74	\$67	\$58	\$51	\$46	\$31	\$27	\$17
	10yr ave.	\$120	\$114	\$109	\$105	\$101	\$97	\$93	\$91	\$88	\$86	\$85	\$82	\$75	\$65	\$58	\$45	\$38	\$30

The above shows estimated returns per head for skirted fleece wool. These figures do not take into account the value of skirtings and oddments and do not take into account discounts that may apply for faults under individual circumstances. These figures are based on a market index of 100% and should be used as a guide only. Returns over \$30 / head for fleece wool are highlighted.



Table 11: Returns pr head for skirted fleece wool.

Skirted FLC Weight 6 Kg		Micron																	
		16	16.5	17	17.5	18	18.5	19	19.5	20	21	22	23	24	25	26	28	30	32
Yield (Sch Dry)	25% Current	\$37	\$34	\$32	\$30	\$27	\$25	\$24	\$22	\$21	\$19	\$19	\$17	\$15	\$13	\$12	\$8	\$7	\$4
	10yr ave.	\$30	\$29	\$28	\$27	\$26	\$25	\$24	\$23	\$22	\$22	\$21	\$21	\$19	\$16	\$15	\$11	\$10	\$8
	30% Current	\$44	\$41	\$38	\$35	\$33	\$30	\$29	\$27	\$25	\$23	\$23	\$20	\$18	\$15	\$14	\$9	\$8	\$5
	10yr ave.	\$36	\$35	\$33	\$32	\$31	\$29	\$28	\$27	\$27	\$26	\$26	\$25	\$23	\$20	\$18	\$14	\$12	\$9
	35% Current	\$52	\$48	\$45	\$41	\$38	\$36	\$34	\$31	\$29	\$27	\$26	\$24	\$21	\$18	\$16	\$11	\$10	\$6
	10yr ave.	\$42	\$40	\$39	\$37	\$36	\$34	\$33	\$32	\$31	\$30	\$30	\$29	\$27	\$23	\$21	\$16	\$13	\$11
	40% Current	\$59	\$55	\$51	\$47	\$44	\$41	\$38	\$36	\$34	\$31	\$30	\$27	\$24	\$21	\$19	\$13	\$11	\$7
	10yr ave.	\$49	\$46	\$44	\$43	\$41	\$39	\$38	\$37	\$36	\$35	\$34	\$33	\$30	\$26	\$24	\$18	\$15	\$12
	45% Current	\$66	\$62	\$57	\$53	\$49	\$46	\$43	\$40	\$38	\$35	\$34	\$30	\$26	\$23	\$21	\$14	\$12	\$8
	10yr ave.	\$55	\$52	\$50	\$48	\$46	\$44	\$42	\$41	\$40	\$39	\$38	\$37	\$34	\$29	\$27	\$20	\$17	\$14
	50% Current	\$74	\$68	\$64	\$59	\$55	\$51	\$48	\$45	\$42	\$39	\$38	\$34	\$29	\$26	\$23	\$16	\$14	\$8
	10yr ave.	\$61	\$58	\$55	\$53	\$51	\$49	\$47	\$46	\$44	\$44	\$43	\$41	\$38	\$33	\$29	\$23	\$19	\$15
	55% Current	\$81	\$75	\$70	\$65	\$60	\$56	\$53	\$49	\$46	\$43	\$41	\$37	\$32	\$28	\$25	\$17	\$15	\$9
	10yr ave.	\$67	\$63	\$61	\$58	\$56	\$54	\$52	\$50	\$49	\$48	\$47	\$46	\$42	\$36	\$32	\$25	\$21	\$17
	60% Current	\$89	\$82	\$77	\$71	\$66	\$61	\$57	\$54	\$50	\$47	\$45	\$40	\$35	\$31	\$28	\$19	\$17	\$10
	10yr ave.	\$73	\$69	\$66	\$64	\$61	\$59	\$57	\$55	\$53	\$52	\$51	\$50	\$46	\$39	\$35	\$27	\$23	\$18
	65% Current	\$96	\$89	\$83	\$77	\$71	\$66	\$62	\$58	\$54	\$51	\$49	\$44	\$38	\$33	\$30	\$20	\$18	\$11
	10yr ave.	\$79	\$75	\$72	\$69	\$66	\$64	\$61	\$59	\$58	\$57	\$55	\$54	\$49	\$43	\$38	\$29	\$25	\$20
	70% Current	\$103	\$96	\$89	\$83	\$77	\$71	\$67	\$63	\$59	\$54	\$53	\$47	\$41	\$36	\$32	\$22	\$19	\$12
	10yr ave.	\$85	\$81	\$77	\$74	\$72	\$69	\$66	\$64	\$62	\$61	\$60	\$58	\$53	\$46	\$41	\$32	\$27	\$21
	75% Current	\$111	\$103	\$96	\$89	\$82	\$76	\$72	\$67	\$63	\$58	\$56	\$50	\$44	\$39	\$35	\$24	\$21	\$13
	10yr ave.	\$91	\$86	\$83	\$80	\$77	\$74	\$71	\$68	\$67	\$65	\$64	\$62	\$57	\$49	\$44	\$34	\$29	\$23
	80% Current	\$118	\$109	\$102	\$94	\$88	\$81	\$77	\$72	\$67	\$62	\$60	\$54	\$47	\$41	\$37	\$25	\$22	\$13
	10yr ave.	\$97	\$92	\$88	\$85	\$82	\$78	\$75	\$73	\$71	\$70	\$68	\$66	\$61	\$52	\$47	\$36	\$31	\$24
	85% Current	\$125	\$116	\$108	\$100	\$93	\$86	\$81	\$76	\$71	\$66	\$64	\$57	\$50	\$44	\$39	\$27	\$24	\$14
	10yr ave.	\$103	\$98	\$94	\$90	\$87	\$83	\$80	\$78	\$76	\$74	\$72	\$70	\$65	\$56	\$50	\$38	\$33	\$26

The above shows estimated returns per head for skirted fleece wool. These figures do not take into account the value of skirtings and oddments and do not take into account discounts that may apply for faults under individual circumstances. These figures are based on a market index of 100% and should be used as a guide only. Returns over \$30 / head for fleece wool are highlighted.



Table 12: Returns pr head for skirted fleece wool.

Skirted FLC Weight 5 Kg		Micron																	
		16	16.5	17	17.5	18	18.5	19	19.5	20	21	22	23	24	25	26	28	30	32
Yield (Sch Dry)	25% Current	\$31	\$28	\$27	\$25	\$23	\$21	\$20	\$19	\$17	\$16	\$16	\$14	\$12	\$11	\$10	\$7	\$6	\$3
	10yr ave.	\$25	\$24	\$23	\$22	\$21	\$20	\$20	\$19	\$19	\$18	\$18	\$17	\$16	\$14	\$12	\$9	\$8	\$6
	30% Current	\$37	\$34	\$32	\$30	\$27	\$25	\$24	\$22	\$21	\$19	\$19	\$17	\$15	\$13	\$12	\$8	\$7	\$4
	10yr ave.	\$30	\$29	\$28	\$27	\$26	\$25	\$24	\$23	\$22	\$22	\$21	\$21	\$19	\$16	\$15	\$11	\$10	\$8
	35% Current	\$43	\$40	\$37	\$34	\$32	\$30	\$28	\$26	\$24	\$23	\$22	\$20	\$17	\$15	\$13	\$9	\$8	\$5
	10yr ave.	\$35	\$34	\$32	\$31	\$30	\$29	\$27	\$27	\$26	\$25	\$25	\$24	\$22	\$19	\$17	\$13	\$11	\$9
	40% Current	\$49	\$46	\$43	\$39	\$37	\$34	\$32	\$30	\$28	\$26	\$25	\$22	\$20	\$17	\$15	\$11	\$9	\$6
	10yr ave.	\$40	\$38	\$37	\$35	\$34	\$33	\$31	\$30	\$30	\$29	\$28	\$28	\$25	\$22	\$20	\$15	\$13	\$10
	45% Current	\$55	\$51	\$48	\$44	\$41	\$38	\$36	\$34	\$31	\$29	\$28	\$25	\$22	\$19	\$17	\$12	\$10	\$6
	10yr ave.	\$45	\$43	\$41	\$40	\$38	\$37	\$35	\$34	\$33	\$33	\$32	\$31	\$29	\$25	\$22	\$17	\$14	\$11
	50% Current	\$62	\$57	\$53	\$49	\$46	\$42	\$40	\$37	\$35	\$32	\$31	\$28	\$25	\$21	\$19	\$13	\$12	\$7
	10yr ave.	\$51	\$48	\$46	\$44	\$43	\$41	\$39	\$38	\$37	\$36	\$36	\$34	\$32	\$27	\$25	\$19	\$16	\$13
	55% Current	\$68	\$63	\$58	\$54	\$50	\$47	\$44	\$41	\$38	\$36	\$34	\$31	\$27	\$24	\$21	\$14	\$13	\$8
	10yr ave.	\$56	\$53	\$50	\$49	\$47	\$45	\$43	\$42	\$41	\$40	\$39	\$38	\$35	\$30	\$27	\$21	\$18	\$14
	60% Current	\$74	\$68	\$64	\$59	\$55	\$51	\$48	\$45	\$42	\$39	\$38	\$34	\$29	\$26	\$23	\$16	\$14	\$8
	10yr ave.	\$61	\$58	\$55	\$53	\$51	\$49	\$47	\$46	\$44	\$44	\$43	\$41	\$38	\$33	\$29	\$23	\$19	\$15
	65% Current	\$80	\$74	\$69	\$64	\$59	\$55	\$52	\$49	\$45	\$42	\$41	\$36	\$32	\$28	\$25	\$17	\$15	\$9
	10yr ave.	\$66	\$62	\$60	\$58	\$55	\$53	\$51	\$49	\$48	\$47	\$46	\$45	\$41	\$35	\$32	\$24	\$21	\$16
	70% Current	\$86	\$80	\$74	\$69	\$64	\$59	\$56	\$52	\$49	\$45	\$44	\$39	\$34	\$30	\$27	\$18	\$16	\$10
	10yr ave.	\$71	\$67	\$64	\$62	\$60	\$57	\$55	\$53	\$52	\$51	\$50	\$48	\$44	\$38	\$34	\$26	\$22	\$18
	75% Current	\$92	\$85	\$80	\$74	\$68	\$63	\$60	\$56	\$52	\$49	\$47	\$42	\$37	\$32	\$29	\$20	\$17	\$10
	10yr ave.	\$76	\$72	\$69	\$66	\$64	\$61	\$59	\$57	\$56	\$54	\$53	\$52	\$48	\$41	\$37	\$28	\$24	\$19
	80% Current	\$98	\$91	\$85	\$79	\$73	\$68	\$64	\$60	\$56	\$52	\$50	\$45	\$39	\$34	\$31	\$21	\$18	\$11
	10yr ave.	\$81	\$77	\$73	\$71	\$68	\$65	\$63	\$61	\$59	\$58	\$57	\$55	\$51	\$44	\$39	\$30	\$26	\$20
	85% Current	\$105	\$97	\$90	\$84	\$78	\$72	\$68	\$64	\$59	\$55	\$53	\$48	\$42	\$36	\$33	\$22	\$20	\$12
	10yr ave.	\$86	\$81	\$78	\$75	\$72	\$69	\$67	\$65	\$63	\$62	\$60	\$59	\$54	\$46	\$42	\$32	\$27	\$22

The above shows estimated returns per head for skirted fleece wool. These figures do not take into account the value of skirtings and oddments and do not take into account discounts that may apply for faults under individual circumstances. These figures are based on a market index of 100% and should be used as a guide only. Returns over \$30 / head for fleece wool are highlighted.



Table 13: Returns pr head for skirted fleece wool.

Skirted FLC Weight 4 Kg		Micron																	
		16	16.5	17	17.5	18	18.5	19	19.5	20	21	22	23	24	25	26	28	30	32
Yield (Sch Dry)	25% Current	\$25	\$23	\$21	\$20	\$18	\$17	\$16	\$15	\$14	\$13	\$13	\$11	\$10	\$9	\$8	\$5	\$5	\$3
	10yr ave.	\$20	\$19	\$18	\$18	\$17	\$16	\$16	\$15	\$15	\$15	\$14	\$14	\$13	\$11	\$10	\$8	\$6	\$5
	30% Current	\$30	\$27	\$26	\$24	\$22	\$20	\$19	\$18	\$17	\$16	\$15	\$13	\$12	\$10	\$9	\$6	\$6	\$3
	10yr ave.	\$24	\$23	\$22	\$21	\$20	\$20	\$19	\$18	\$18	\$17	\$17	\$17	\$15	\$13	\$12	\$9	\$8	\$6
	35% Current	\$34	\$32	\$30	\$28	\$26	\$24	\$22	\$21	\$20	\$18	\$18	\$16	\$14	\$12	\$11	\$7	\$6	\$4
	10yr ave.	\$28	\$27	\$26	\$25	\$24	\$23	\$22	\$21	\$21	\$20	\$20	\$19	\$18	\$15	\$14	\$11	\$9	\$7
	40% Current	\$39	\$36	\$34	\$31	\$29	\$27	\$26	\$24	\$22	\$21	\$20	\$18	\$16	\$14	\$12	\$8	\$7	\$4
	10yr ave.	\$32	\$31	\$29	\$28	\$27	\$26	\$25	\$24	\$24	\$23	\$23	\$22	\$20	\$17	\$16	\$12	\$10	\$8
	45% Current	\$44	\$41	\$38	\$35	\$33	\$30	\$29	\$27	\$25	\$23	\$23	\$20	\$18	\$15	\$14	\$9	\$8	\$5
	10yr ave.	\$36	\$35	\$33	\$32	\$31	\$29	\$28	\$27	\$27	\$26	\$26	\$25	\$23	\$20	\$18	\$14	\$12	\$9
	50% Current	\$49	\$46	\$43	\$39	\$37	\$34	\$32	\$30	\$28	\$26	\$25	\$22	\$20	\$17	\$15	\$11	\$9	\$6
	10yr ave.	\$40	\$38	\$37	\$35	\$34	\$33	\$31	\$30	\$30	\$29	\$28	\$28	\$25	\$22	\$20	\$15	\$13	\$10
	55% Current	\$54	\$50	\$47	\$43	\$40	\$37	\$35	\$33	\$31	\$29	\$28	\$25	\$22	\$19	\$17	\$12	\$10	\$6
	10yr ave.	\$44	\$42	\$40	\$39	\$37	\$36	\$35	\$33	\$33	\$32	\$31	\$30	\$28	\$24	\$22	\$17	\$14	\$11
	60% Current	\$59	\$55	\$51	\$47	\$44	\$41	\$38	\$36	\$34	\$31	\$30	\$27	\$24	\$21	\$19	\$13	\$11	\$7
	10yr ave.	\$49	\$46	\$44	\$43	\$41	\$39	\$38	\$37	\$36	\$35	\$34	\$33	\$30	\$26	\$24	\$18	\$15	\$12
	65% Current	\$64	\$59	\$55	\$51	\$47	\$44	\$42	\$39	\$36	\$34	\$33	\$29	\$25	\$22	\$20	\$14	\$12	\$7
	10yr ave.	\$53	\$50	\$48	\$46	\$44	\$43	\$41	\$40	\$39	\$38	\$37	\$36	\$33	\$28	\$26	\$20	\$17	\$13
	70% Current	\$69	\$64	\$60	\$55	\$51	\$47	\$45	\$42	\$39	\$36	\$35	\$31	\$27	\$24	\$22	\$15	\$13	\$8
	10yr ave.	\$57	\$54	\$51	\$50	\$48	\$46	\$44	\$43	\$41	\$41	\$40	\$39	\$35	\$31	\$27	\$21	\$18	\$14
	75% Current	\$74	\$68	\$64	\$59	\$55	\$51	\$48	\$45	\$42	\$39	\$38	\$34	\$29	\$26	\$23	\$16	\$14	\$8
	10yr ave.	\$61	\$58	\$55	\$53	\$51	\$49	\$47	\$46	\$44	\$44	\$43	\$41	\$38	\$33	\$29	\$23	\$19	\$15
	80% Current	\$79	\$73	\$68	\$63	\$58	\$54	\$51	\$48	\$45	\$42	\$40	\$36	\$31	\$27	\$25	\$17	\$15	\$9
	10yr ave.	\$65	\$61	\$59	\$57	\$54	\$52	\$50	\$49	\$47	\$46	\$45	\$44	\$41	\$35	\$31	\$24	\$21	\$16
	85% Current	\$84	\$77	\$72	\$67	\$62	\$58	\$54	\$51	\$47	\$44	\$43	\$38	\$33	\$29	\$26	\$18	\$16	\$9
	10yr ave.	\$69	\$65	\$62	\$60	\$58	\$56	\$53	\$52	\$50	\$49	\$48	\$47	\$43	\$37	\$33	\$26	\$22	\$17

The above shows estimated returns per head for skirted fleece wool. These figures do not take into account the value of skirtings and oddments and do not take into account discounts that may apply for faults under individual circumstances. These figures are based on a market index of 100% and should be used as a guide only. Returns over \$30 / head for fleece wool are highlighted.





Table 14: Returns pr head for skirted fleece wool.

Skirted FLC Weight  3 Kg		Micron																		
		16	16.5	17	17.5	18	18.5	19	19.5	20	21	22	23	24	25	26	28	30	32	
Yield (Sch Dry)	25%	Current	\$18	\$17	\$16	\$15	\$14	\$13	\$12	\$11	\$10	\$10	\$9	\$8	\$7	\$6	\$6	\$4	\$3	\$2
		10yr ave.	\$15	\$14	\$14	\$13	\$13	\$12	\$12	\$11	\$11	\$11	\$11	\$10	\$10	\$8	\$7	\$6	\$5	\$4
	30%	Current	\$22	\$21	\$19	\$18	\$16	\$15	\$14	\$13	\$13	\$12	\$11	\$10	\$9	\$8	\$7	\$5	\$4	\$3
		10yr ave.	\$18	\$17	\$17	\$16	\$15	\$15	\$14	\$14	\$13	\$13	\$13	\$12	\$11	\$10	\$9	\$7	\$6	\$5
	35%	Current	\$26	\$24	\$22	\$21	\$19	\$18	\$17	\$16	\$15	\$14	\$13	\$12	\$10	\$9	\$8	\$6	\$5	\$3
		10yr ave.	\$21	\$20	\$19	\$19	\$18	\$17	\$16	\$16	\$16	\$15	\$15	\$14	\$13	\$11	\$10	\$8	\$7	\$5
	40%	Current	\$30	\$27	\$26	\$24	\$22	\$20	\$19	\$18	\$17	\$16	\$15	\$13	\$12	\$10	\$9	\$6	\$6	\$3
		10yr ave.	\$24	\$23	\$22	\$21	\$20	\$20	\$19	\$18	\$18	\$17	\$17	\$17	\$15	\$13	\$12	\$9	\$8	\$6
	45%	Current	\$33	\$31	\$29	\$27	\$25	\$23	\$22	\$20	\$19	\$18	\$17	\$15	\$13	\$12	\$10	\$7	\$6	\$4
		10yr ave.	\$27	\$26	\$25	\$24	\$23	\$22	\$21	\$21	\$20	\$20	\$19	\$19	\$17	\$15	\$13	\$10	\$9	\$7
	50%	Current	\$37	\$34	\$32	\$30	\$27	\$25	\$24	\$22	\$21	\$19	\$19	\$17	\$15	\$13	\$12	\$8	\$7	\$4
		10yr ave.	\$30	\$29	\$28	\$27	\$26	\$25	\$24	\$23	\$22	\$22	\$21	\$21	\$19	\$16	\$15	\$11	\$10	\$8
	55%	Current	\$41	\$38	\$35	\$32	\$30	\$28	\$26	\$25	\$23	\$21	\$21	\$18	\$16	\$14	\$13	\$9	\$8	\$5
		10yr ave.	\$33	\$32	\$30	\$29	\$28	\$27	\$26	\$25	\$24	\$24	\$23	\$23	\$21	\$18	\$16	\$12	\$11	\$8
	60%	Current	\$44	\$41	\$38	\$35	\$33	\$30	\$29	\$27	\$25	\$23	\$23	\$20	\$18	\$15	\$14	\$9	\$8	\$5
		10yr ave.	\$36	\$35	\$33	\$32	\$31	\$29	\$28	\$27	\$27	\$26	\$26	\$25	\$23	\$20	\$18	\$14	\$12	\$9
	65%	Current	\$48	\$44	\$41	\$38	\$36	\$33	\$31	\$29	\$27	\$25	\$24	\$22	\$19	\$17	\$15	\$10	\$9	\$5
		10yr ave.	\$39	\$37	\$36	\$35	\$33	\$32	\$31	\$30	\$29	\$28	\$28	\$27	\$25	\$21	\$19	\$15	\$13	\$10
	70%	Current	\$52	\$48	\$45	\$41	\$38	\$36	\$34	\$31	\$29	\$27	\$26	\$24	\$21	\$18	\$16	\$11	\$10	\$6
		10yr ave.	\$42	\$40	\$39	\$37	\$36	\$34	\$33	\$32	\$31	\$30	\$30	\$29	\$27	\$23	\$21	\$16	\$13	\$11
	75%	Current	\$55	\$51	\$48	\$44	\$41	\$38	\$36	\$34	\$31	\$29	\$28	\$25	\$22	\$19	\$17	\$12	\$10	\$6
		10yr ave.	\$45	\$43	\$41	\$40	\$38	\$37	\$35	\$34	\$33	\$33	\$32	\$31	\$29	\$25	\$22	\$17	\$14	\$11
	80%	Current	\$59	\$55	\$51	\$47	\$44	\$41	\$38	\$36	\$34	\$31	\$30	\$27	\$24	\$21	\$19	\$13	\$11	\$7
		10yr ave.	\$49	\$46	\$44	\$43	\$41	\$39	\$38	\$37	\$36	\$35	\$34	\$33	\$30	\$26	\$24	\$18	\$15	\$12
	85%	Current	\$63	\$58	\$54	\$50	\$47	\$43	\$41	\$38	\$36	\$33	\$32	\$29	\$25	\$22	\$20	\$13	\$12	\$7
		10yr ave.	\$52	\$49	\$47	\$45	\$43	\$42	\$40	\$39	\$38	\$37	\$36	\$35	\$32	\$28	\$25	\$19	\$16	\$13

The above shows estimated returns per head for skirted fleece wool. These figures do not take into account the value of skirtings and oddments and do not take into account discounts that may apply for faults under individual circumstances. These figures are based on a market index of 100% and should be used as a guide only. Returns over \$30 / head for fleece wool are highlighted.



Table 15: Returns pr head for skirted fleece wool.

Skirted FLC Weight 2 Kg		Micron																	
		16	16.5	17	17.5	18	18.5	19	19.5	20	21	22	23	24	25	26	28	30	32
Yield (Sch Dry)	25% Current	\$12	\$11	\$11	\$10	\$9	\$8	\$8	\$7	\$7	\$6	\$6	\$6	\$5	\$4	\$4	\$3	\$2	\$1
	10yr ave.	\$10	\$10	\$9	\$9	\$9	\$8	\$8	\$8	\$7	\$7	\$7	\$7	\$6	\$5	\$5	\$4	\$3	\$3
	30% Current	\$15	\$14	\$13	\$12	\$11	\$10	\$10	\$9	\$8	\$8	\$8	\$7	\$6	\$5	\$5	\$3	\$3	\$2
	10yr ave.	\$12	\$12	\$11	\$11	\$10	\$10	\$9	\$9	\$9	\$9	\$9	\$8	\$8	\$7	\$6	\$5	\$4	\$3
	35% Current	\$17	\$16	\$15	\$14	\$13	\$12	\$11	\$10	\$10	\$9	\$9	\$8	\$7	\$6	\$5	\$4	\$3	\$2
	10yr ave.	\$14	\$13	\$13	\$12	\$12	\$11	\$11	\$11	\$10	\$10	\$10	\$10	\$9	\$8	\$7	\$5	\$4	\$4
	40% Current	\$20	\$18	\$17	\$16	\$15	\$14	\$13	\$12	\$11	\$10	\$10	\$9	\$8	\$7	\$6	\$4	\$4	\$2
	10yr ave.	\$16	\$15	\$15	\$14	\$14	\$13	\$13	\$12	\$12	\$12	\$11	\$11	\$10	\$9	\$8	\$6	\$5	\$4
	45% Current	\$22	\$21	\$19	\$18	\$16	\$15	\$14	\$13	\$13	\$12	\$11	\$10	\$9	\$8	\$7	\$5	\$4	\$3
	10yr ave.	\$18	\$17	\$17	\$16	\$15	\$15	\$14	\$14	\$13	\$13	\$13	\$12	\$11	\$10	\$9	\$7	\$6	\$5
	50% Current	\$25	\$23	\$21	\$20	\$18	\$17	\$16	\$15	\$14	\$13	\$13	\$11	\$10	\$9	\$8	\$5	\$5	\$3
	10yr ave.	\$20	\$19	\$18	\$18	\$17	\$16	\$16	\$15	\$15	\$15	\$14	\$14	\$13	\$11	\$10	\$8	\$6	\$5
	55% Current	\$27	\$25	\$23	\$22	\$20	\$19	\$18	\$16	\$15	\$14	\$14	\$12	\$11	\$9	\$8	\$6	\$5	\$3
	10yr ave.	\$22	\$21	\$20	\$19	\$19	\$18	\$17	\$17	\$16	\$16	\$16	\$15	\$14	\$12	\$11	\$8	\$7	\$6
	60% Current	\$30	\$27	\$26	\$24	\$22	\$20	\$19	\$18	\$17	\$16	\$15	\$13	\$12	\$10	\$9	\$6	\$6	\$3
	10yr ave.	\$24	\$23	\$22	\$21	\$20	\$20	\$19	\$18	\$18	\$17	\$17	\$17	\$15	\$13	\$12	\$9	\$8	\$6
	65% Current	\$32	\$30	\$28	\$26	\$24	\$22	\$21	\$19	\$18	\$17	\$16	\$15	\$13	\$11	\$10	\$7	\$6	\$4
	10yr ave.	\$26	\$25	\$24	\$23	\$22	\$21	\$20	\$20	\$19	\$19	\$18	\$18	\$16	\$14	\$13	\$10	\$8	\$7
	70% Current	\$34	\$32	\$30	\$28	\$26	\$24	\$22	\$21	\$20	\$18	\$18	\$16	\$14	\$12	\$11	\$7	\$6	\$4
	10yr ave.	\$28	\$27	\$26	\$25	\$24	\$23	\$22	\$21	\$21	\$20	\$20	\$19	\$18	\$15	\$14	\$11	\$9	\$7
	75% Current	\$37	\$34	\$32	\$30	\$27	\$25	\$24	\$22	\$21	\$19	\$19	\$17	\$15	\$13	\$12	\$8	\$7	\$4
	10yr ave.	\$30	\$29	\$28	\$27	\$26	\$25	\$24	\$23	\$22	\$22	\$21	\$21	\$19	\$16	\$15	\$11	\$10	\$8
	80% Current	\$39	\$36	\$34	\$31	\$29	\$27	\$26	\$24	\$22	\$21	\$20	\$18	\$16	\$14	\$12	\$8	\$7	\$4
	10yr ave.	\$32	\$31	\$29	\$28	\$27	\$26	\$25	\$24	\$24	\$23	\$23	\$22	\$20	\$17	\$16	\$12	\$10	\$8
	85% Current	\$42	\$39	\$36	\$33	\$31	\$29	\$27	\$25	\$24	\$22	\$21	\$19	\$17	\$15	\$13	\$9	\$8	\$5
	10yr ave.	\$34	\$33	\$31	\$30	\$29	\$28	\$27	\$26	\$25	\$25	\$24	\$23	\$22	\$19	\$17	\$13	\$11	\$9

The above shows estimated returns per head for skirted fleece wool. These figures do not take into account the value of skirtings and oddments and do not take into account discounts that may apply for faults under individual circumstances. These figures are based on a market index of 100% and should be used as a guide only. Returns over \$30 / head for fleece wool are highlighted.