



Table 1: Northern Region Micron Price Guides

CURRENT MARKET				PERCENTILES		AVERAGES						12 MONTH COMPARISONS								TRADING RANGE		
Mic.	4/11/2010	28/10/2010	Now			Now			3/11/2009		Now		Now		Now		Clean c/kg					
Price	Current	Weekly	3yr	10yr	<u>3 year</u>	compared		<u>10 year</u>	compared	This time	compared	12 Month	compared	12 Month	compared	12 Month	compared	12	3	10		
Guides	Price	Change			Average	to 3yr ave	Average	to 10yr ave	Last Year	to Last Year	Low	to Low	High	to High	Mth	Year	Year					
NRI	1026	+45 4.4%	94%	90%	896	+130 15%		869	+157 18%	882	+144 16%	890	+136 15%	1026	0 0%			136	343	584		
16*	1950	+130 6.7%	96%		1626	+324 20%				1400	+550 39%	1345	+605 45%	1950	0 0%			605	645			
16.5*	1780	+175 9.8%	96%		1486	+294 20%				1295	+485 37%	1260	+520 41%	1780	0 0%			520	551			
17*	1660	+175 10.5%	97%	95%	1362	+298 22%		1407	+253 18%	1215	+445 37%	1180	+480 41%	1660	0 0%			480	503	1797		
17.5*	1560	+140 9.0%	97%		1298	+262 20%				1175	+385 33%	1160	+400 34%	1560	0 0%			400	498			
18	1466	+83 5.7%	99%	80%	1238	+228 18%		1285	+181 14%	1118	+348 31%	1134	+332 29%	1466	0 0%			332	432	1392		
18.5	1367	+63 4.6%	98%		1165	+202 17%				1081	+286 26%	1088	+279 26%	1367	0 0%			279	425			
19	1233	+65 5.3%	92%	85%	1070	+163 15%		1066	+167 16%	1034	+199 19%	1031	+202 20%	1233	0 0%			202	443	706		
19.5	1133	+66 5.8%	88%		984	+149 15%				974	+159 16%	952	+181 19%	1133	0 0%			181	457			
20	1043	+54 5.2%	88%	84%	914	+129 14%		913	+130 14%	904	+139 15%	904	+139 15%	1054	-11 -1%			150	465	717		
21	996	+46 4.6%	92%	82%	877	+119 14%		867	+129 15%	878	+118 13%	878	+118 13%	1006	-10 -1%			128	428	737		
22	962	+49 5.1%	92%	79%	853	+109 13%		844	+118 14%	839	+123 15%	847	+115 14%	971	-9 -1%			124	361	735		
23	909	+25 2.8%	84%	72%	830	+79 10%		823	+86 10%	815	+94 12%	827	+82 10%	940	-31 -3%			113	311	728		
24	839	+21 2.5%	85%	73%	782	+57 7%		787	+52 7%	766	+73 10%	779	+60 8%	881	-42 -5%			102	257	705		
25	765	+14 1.8%	99%	79%	670	+95 14%		707	+58 8%	703	+62 9%	650	+115 18%	766	-1 0%			116	201	650		
26	672	+29 4.3%	99%	77%	601	+71 12%		648	+24 4%	604	+68 11%	560	+112 20%	683	-11 -2%			123	179	589		
28	478	+16 3.3%	81%	44%	460	+18 4%		521	-43 -8%	457	+21 5%	430	+48 11%	493	-15 -3%			63	119	465		
30	423	+10 2.4%	84%	37%	397	+26 7%		455	-32 -7%	380	+43 11%	377	+46 12%	434	-11 -3%			57	128	385		
32	388	+18 4.6%	97%	42%	346	+42 12%		412	-24 -6%	326	+62 19%	331	+57 17%	395	-7 -2%			64	97	372		
MC	627	+14 2.2%	86%	89%	541	+86 16%		498	+129 26%	582	+45 8%	561	+66 12%	681	-54 -8%			120	289	304		

Note:

\* Due to the irregular market quoting for some fine wool categories, figures shown relating to micron categories below 18 micron are an estimate based on the AWEX Premium & Discounts Report & other available information.

\* For any category, where there is insufficient quantity offered to enable AWEX to quote, a quote will be provided based on the best available information.

\* 10 Year data is not available for some micron categories, which may result in blank spaces in the table above.

Definitions:

\* A Percentile, is a value on a scale of one hundred that indicates the percent of a distribution that is equal to or below it. In general a percentile between 25% and 75% is considered normal, a percentile below 25% is considered below normal and a percentile above 75% is considered above normal.

Three and ten year percentiles shown in the table above, detail the period of time during the past 3 & 10 years that the market has traded either at or below its current price.

The higher the percentile, the stronger the market.

Source: Australian Wool Exchange, Australian Wool Innovation, Sydney Futures Exchange, x-rates.com

Disclaimer: While all due care has been taken in the preparation of this document, no warranty is made as to its accuracy, reliability or completeness. To the extent permitted by law neither Jemalong or their sources including subsidiaries and staff, accept liability to any person for loss or damage arising from the use of this information.



## MARKET COMMENTARY

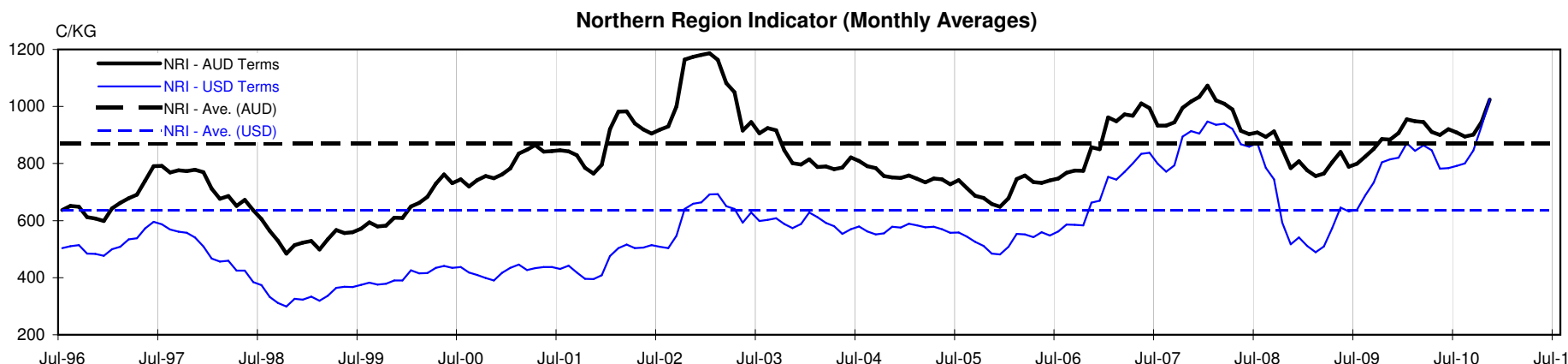
Australian Dollar 100.40 cents US as of 4/11/2010

NORTHERN REGION – Sale Week 18/10 (52,361 bales offered nationally)

Following last weeks stellar performance, it was generally felt that the market would be more stable this week, provided the AUD also remained stable. However as a result of further Chinese enquiry the market once again exploded ahead on Wednesday (despite the AUD hitting parity).

On Wednesday, the Northern Region Indicator hit its highest level since February 2008 and impressive gains were posted for all micron categories. 17.5 micron and finer jumped 90-100 cents, 18 to 22 microns were up to 60 cents higher and 23 microns and broader closed 30 cents dearer. Skirting's pushed 30-40 cents higher for the finer microns with lower VM while the broader types also improved by 10-20 cents. Finer locks were 10 cents dearer, crutching's rose 30 and stains rose 20. Fine crossbred were 30 cents dearer while the 28 to 30 micron categories were 15-20 cents dearer.

On Thursday the fine microns continued their relentless push north, while the rest of the market took a breather. 17.5 microns and finer were thrust a further 60-70 cents higher, 18 microns gained 30-40 cents and good competition had the 18.5 to 19.5 micron categories 5-10 cents dearer, while the broader end took a step backby easing 5-10 cents. Merino skirting's inched higher for the finer low Vm types, while other descriptions remained firm. 19 micron and broader locks slipped 10 cents however crutching's and stains remained unchanged.





**Table 4: 19 micron SFE**

Wednesday, 3 November 2010

Delivery Mth	Dec-10	Feb-11	Apr-11	Jun-11	Aug-11	Oct-11	Dec-11	Feb-12	Apr-12
19 Micron SFE	1160	1160	1205	1205	1205	1205	1205	1205	1205
Average	1032	1043	1050	1054	1056	1055	1052	1060	1067
Maximum	1106	1160	1160	1205	1205	1205	1205	1205	1205
Minimum	905	936	983	1025	1034	1034	1034	1034	1053

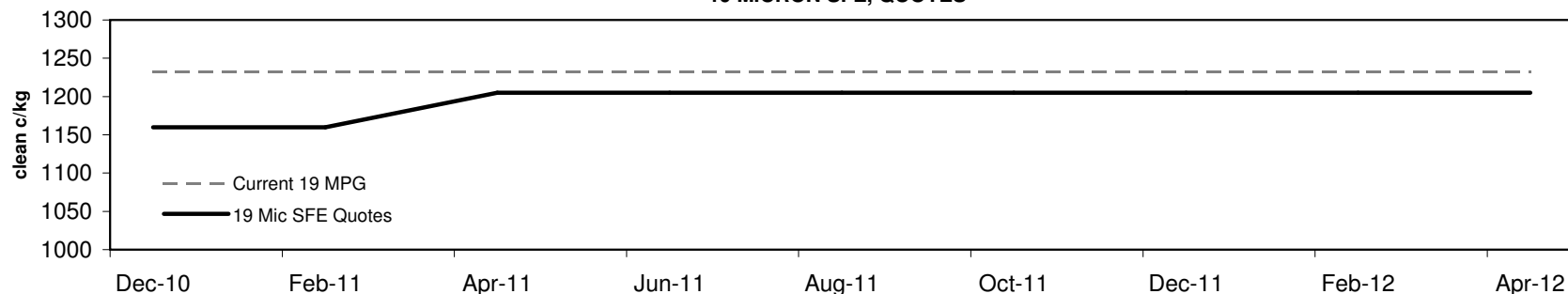
**Table 5: 19 micron SFE, as a percentile of the 19 micron MPG**

3 Year Percentile	85%	85%	87%	87%	87%	87%	87%	87%	87%
10 Year Percentile	77%	77%	81%	81%	81%	81%	81%	81%	81%

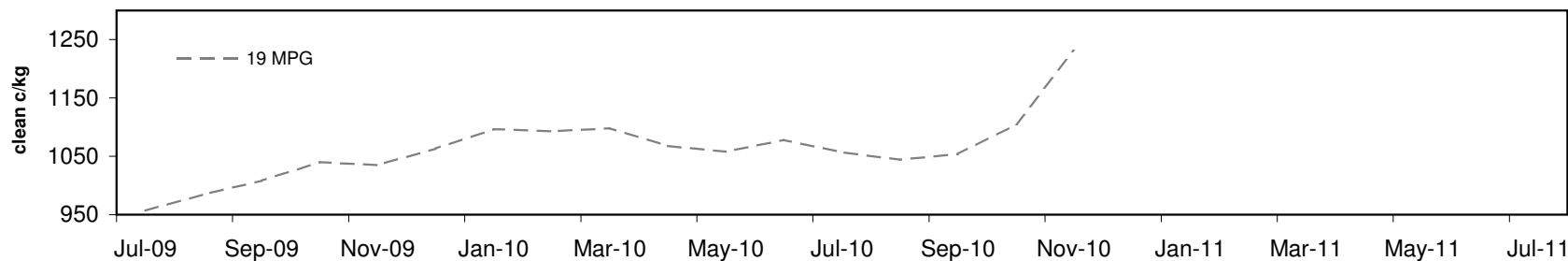
**Table 6: 19 micron SFE, compared to MPG**

Current 19 MPG	-73	-6%	-73	-6%	-28	-2%	-28	-2%	-28	-2%	-28	-2%	-28	-2%	-28	-2%	-28	-2%
19 MPG, 1 Year Average	+73	7%	+73	7%	+118	11%	+118	11%	+118	11%	+118	11%	+118	11%	+118	11%	+118	11%
19 MPG, 3 Year Average	+90	8%	+90	8%	+135	13%	+135	13%	+135	13%	+135	13%	+135	13%	+135	13%	+135	13%
19 MPG, 10 Year Average	+94	9%	+94	9%	+139	13%	+139	13%	+139	13%	+139	13%	+139	13%	+139	13%	+139	13%

**19 MICRON SFE, QUOTES**



**19 MICRON SFE, FRONT MONTH PRICE MOVEMENT (mthly averages)**





**Table 7: 21 micron SFE**

Wednesday, 3 November 2010

Delivery Mth	Dec-10	Feb-11	Apr-11	Jun-11	Aug-11	Oct-11	Dec-11	Feb-12	Apr-12
21 Micron SFE	990	1001	990	983	983	970	970	970	970
Average	914	926	933	937	937	927	915	911	912
Maximum	1013	1004	1004	1004	1004	992	970	970	970
Minimum	780	818	860	891	890	880	880	880	880

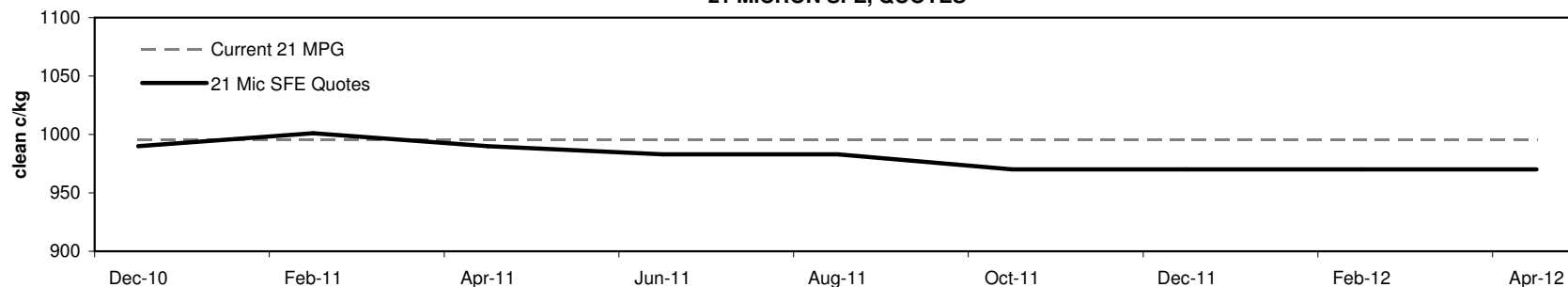
**Table 8: 21 micron SFE, as a percentile of the 21 micron MPG**

3 Year Percentile	91%	93%	91%	90%	90%	85%	85%	85%	85%
10 Year Percentile	80%	83%	80%	78%	78%	74%	74%	74%	74%

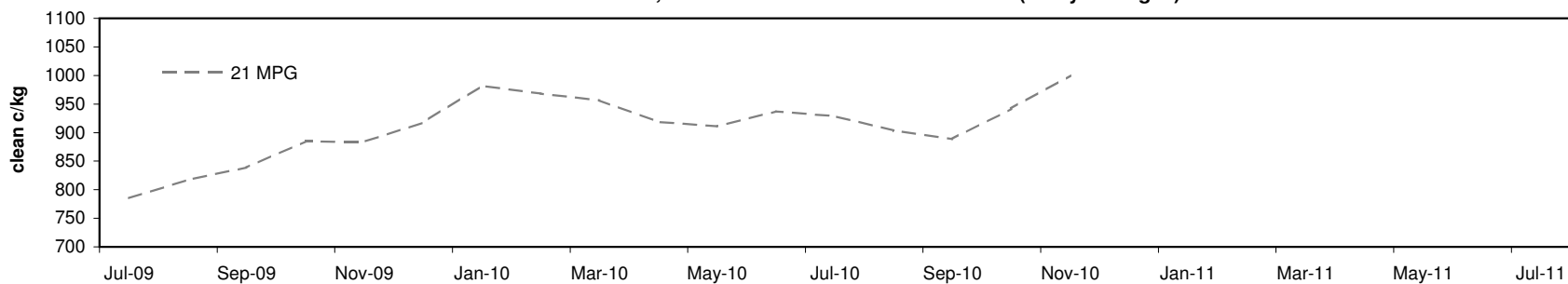
**Table 9: 21 micron SFE, compared to MPG**

Current 21 MPG	-6	-1%	+5	1%	-6	-1%	-13	-1%	-13	-1%	-26	-3%	-26	-3%	-26	-3%	-26	-3%
21 MPG, 1 Year Average	+52	6%	+63	7%	+52	6%	+45	5%	+45	5%	+32	3%	+32	3%	+32	3%	+32	3%
21 MPG, 3 Year Average	+113	13%	+124	14%	+113	13%	+106	12%	+106	12%	+93	11%	+93	11%	+93	11%	+93	11%
21 MPG, 10 Year Average	+123	14%	+134	15%	+123	14%	+116	13%	+116	13%	+103	12%	+103	12%	+103	12%	+103	12%

**21 MICRON SFE, QUOTES**



**21 MICRON SFE, FRONT MONTH PRICE MOVEMENT (mthly averages)**





**Table 10: 23 micron SFE**

Wednesday, 3 November 2010

Delivery Mth	Dec-10	Feb-11	Apr-11	Jun-11	Aug-11	Oct-11	Dec-11	Feb-12	Apr-12
23 Micron SFE	883	883	883	883	883	883	883	883	883
Average	839	853	863	872	886	893	884	885	886
Maximum	927	927	927	927	927	927	887	887	887
Minimum	716	760	760	803	803	883	883	883	883

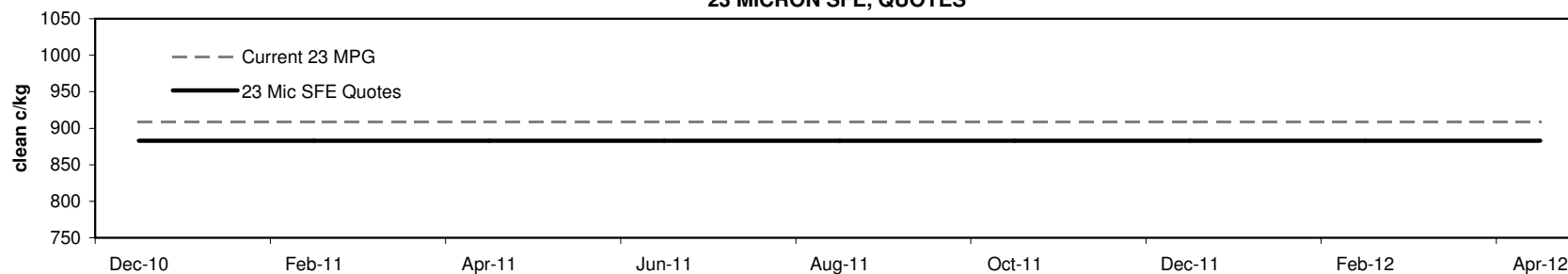
**Table 11: 23 micron SFE, as a percentile of the 23 micron MPG**

3 Year Percentile	70%	70%	70%	70%	70%	70%	70%	70%	70%
10 Year Percentile	64%	64%	64%	64%	64%	64%	64%	64%	64%

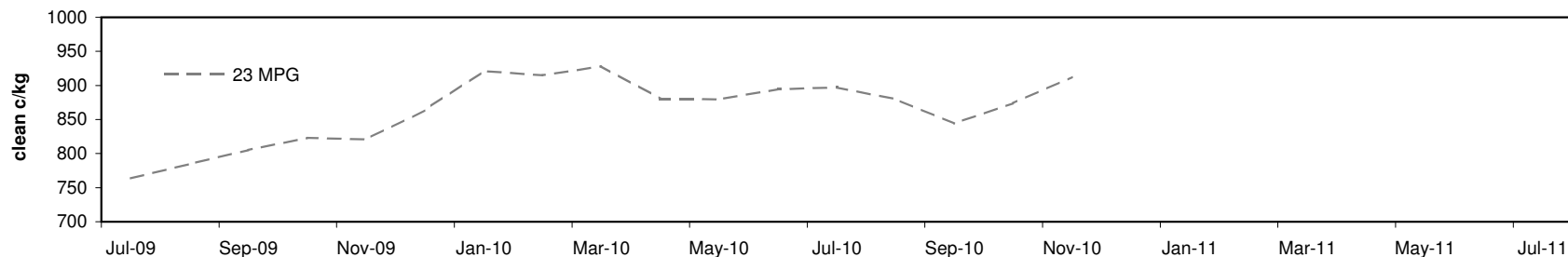
**Table 12: 23 micron SFE, compared to MPG**

Current 19 MPG	-26	-3%	-26	-3%	-26	-3%	-26	-3%	-26	-3%	-26	-3%	-26	-3%	-26	-3%	-26	-3%
23 MPG, 1 Year Average	-8	-1%	-8	-1%	-8	-1%	-8	-1%	-8	-1%	-8	-1%	-8	-1%	-8	-1%	-8	-1%
23 MPG, 3 Year Average	+53	6%	+53	6%	+53	6%	+53	6%	+53	6%	+53	6%	+53	6%	+53	6%	+53	6%
23 MPG, 10 Year Average	+60	7%	+60	7%	+60	7%	+60	7%	+60	7%	+60	7%	+60	7%	+60	7%	+60	7%

**23 MICRON SFE, QUOTES**

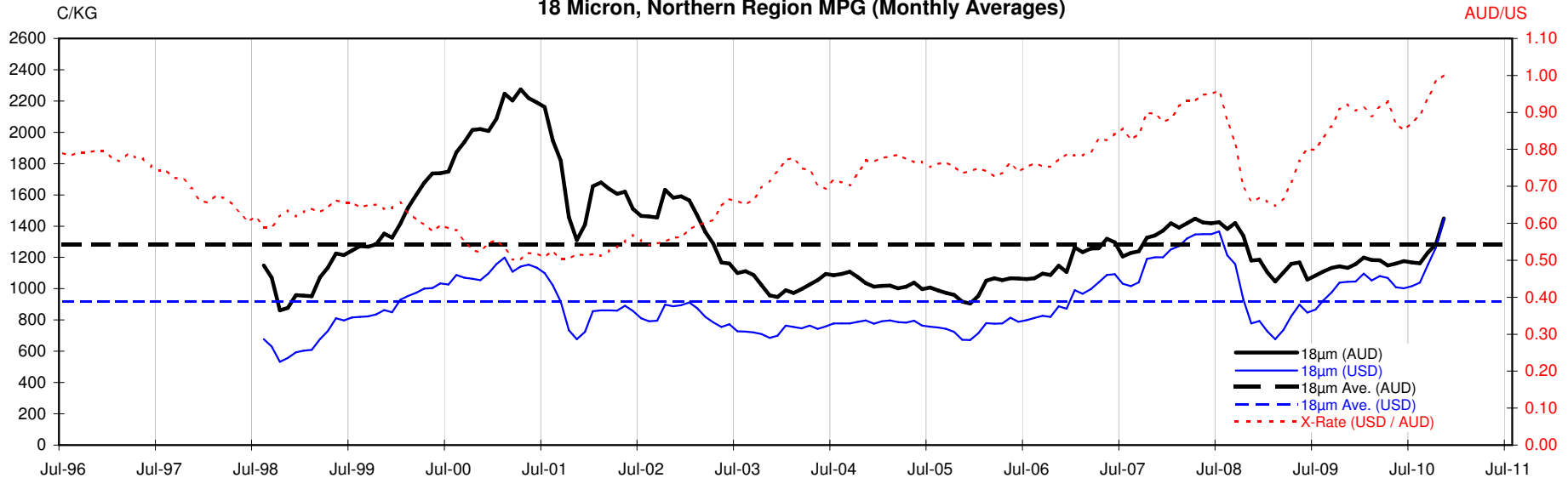


**23 MICRON SFE, FRONT MONTH PRICE MOVEMENT (mthly averages)**

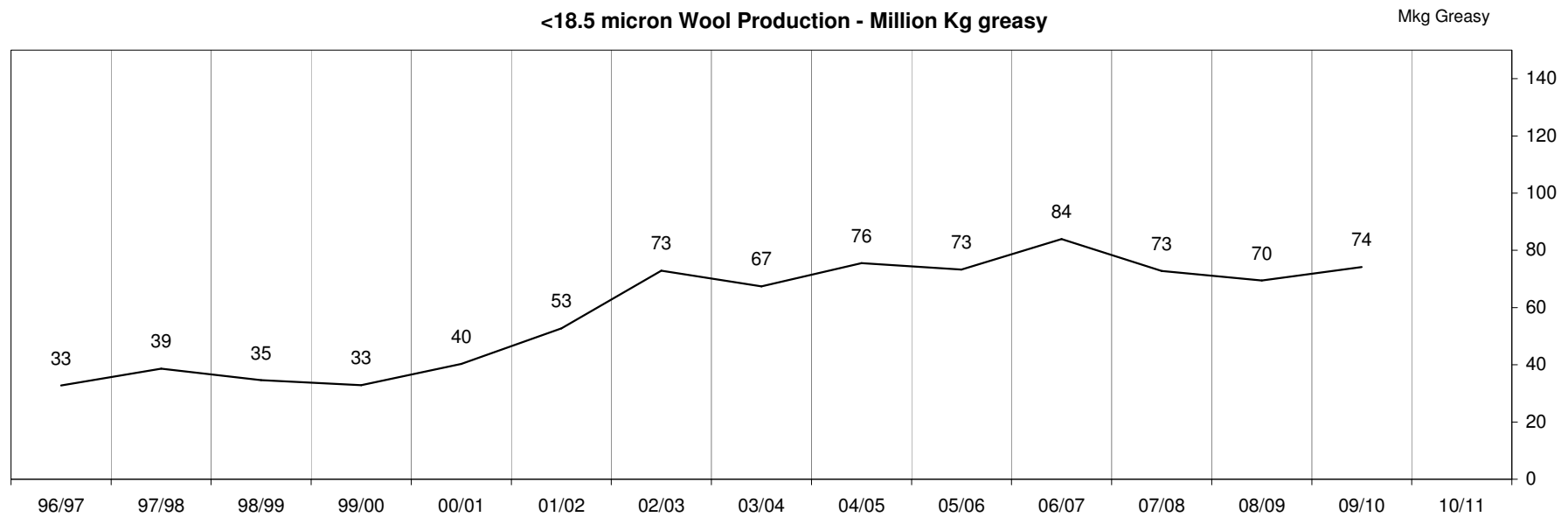


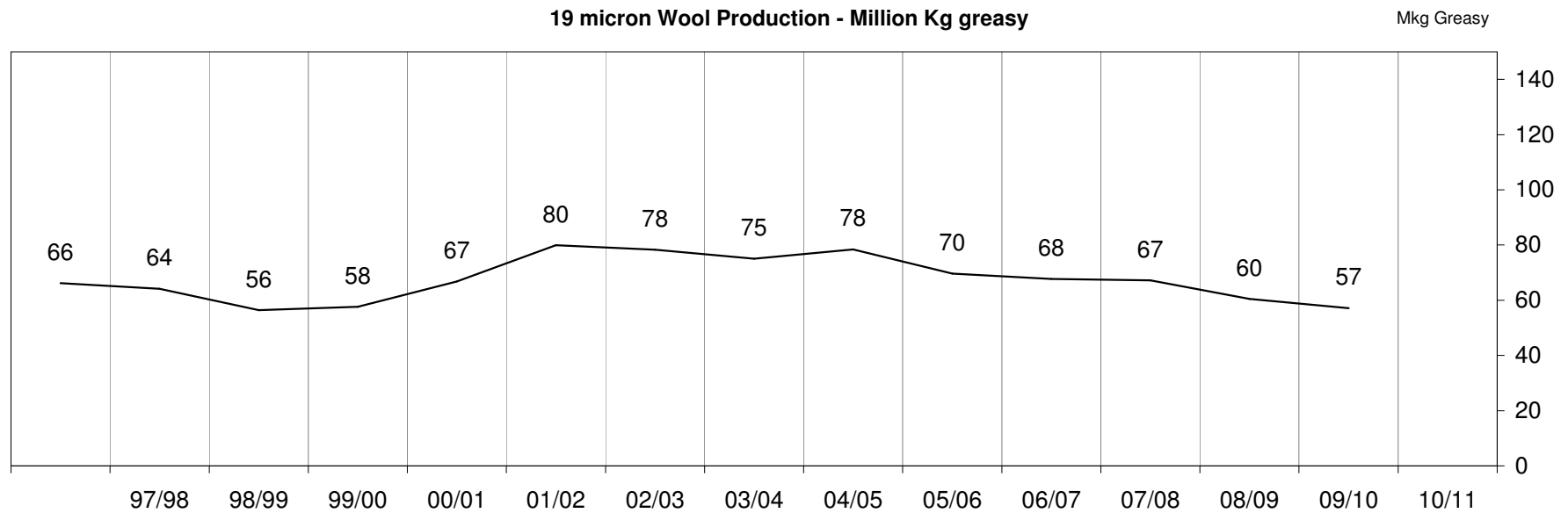
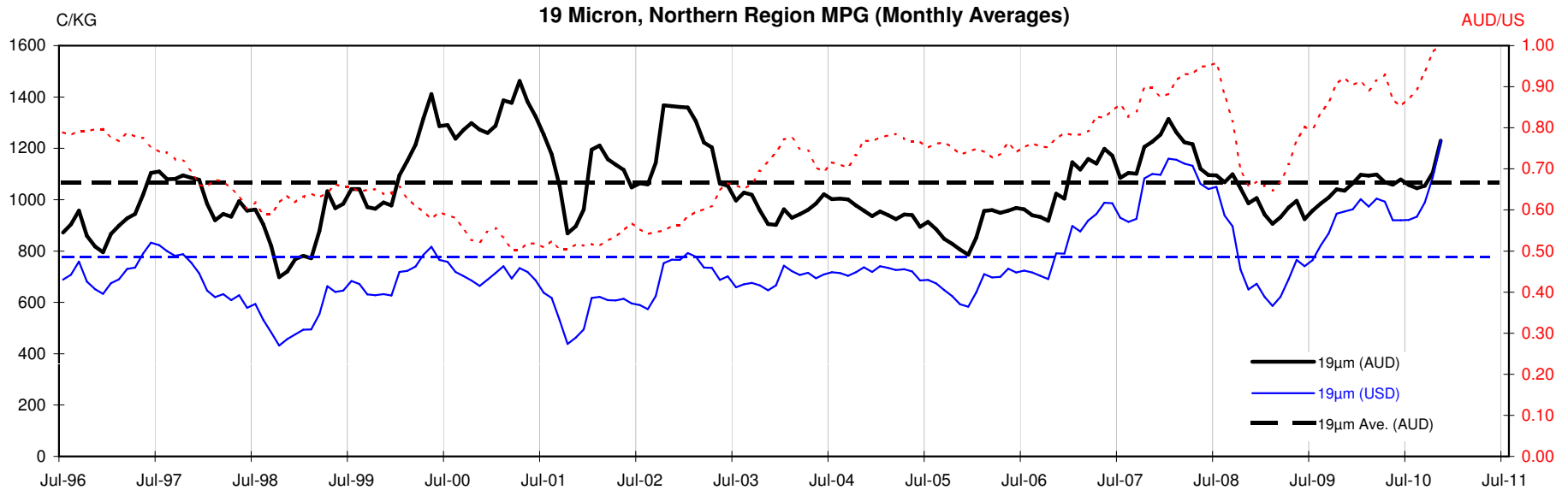


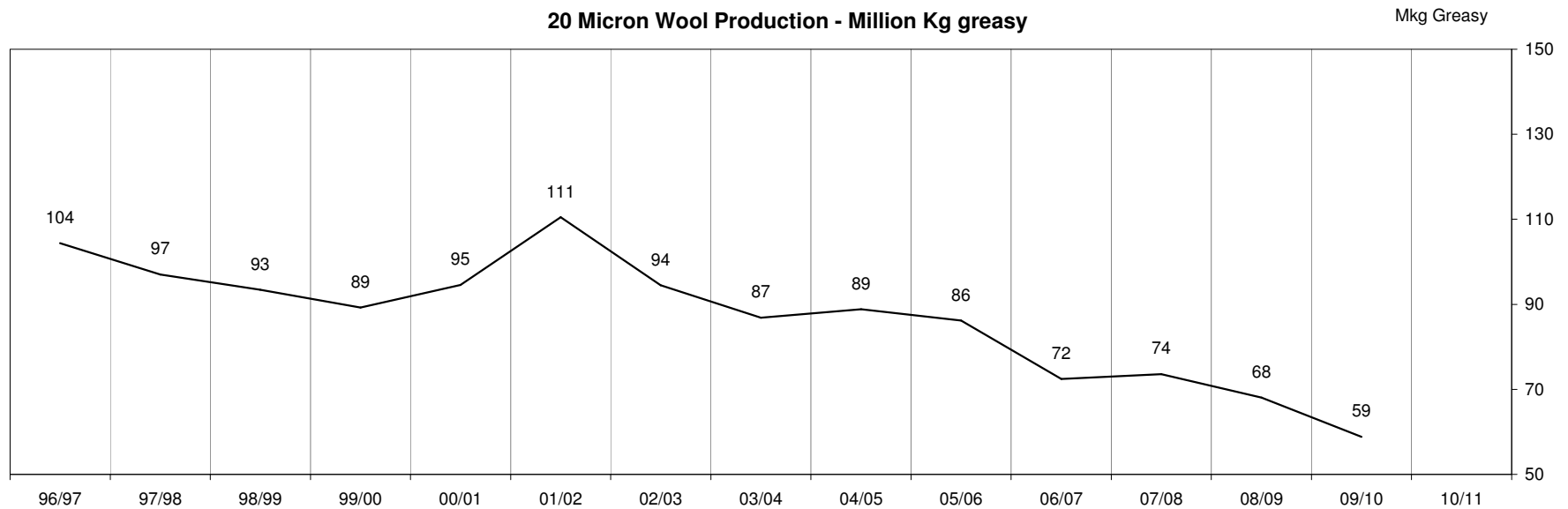
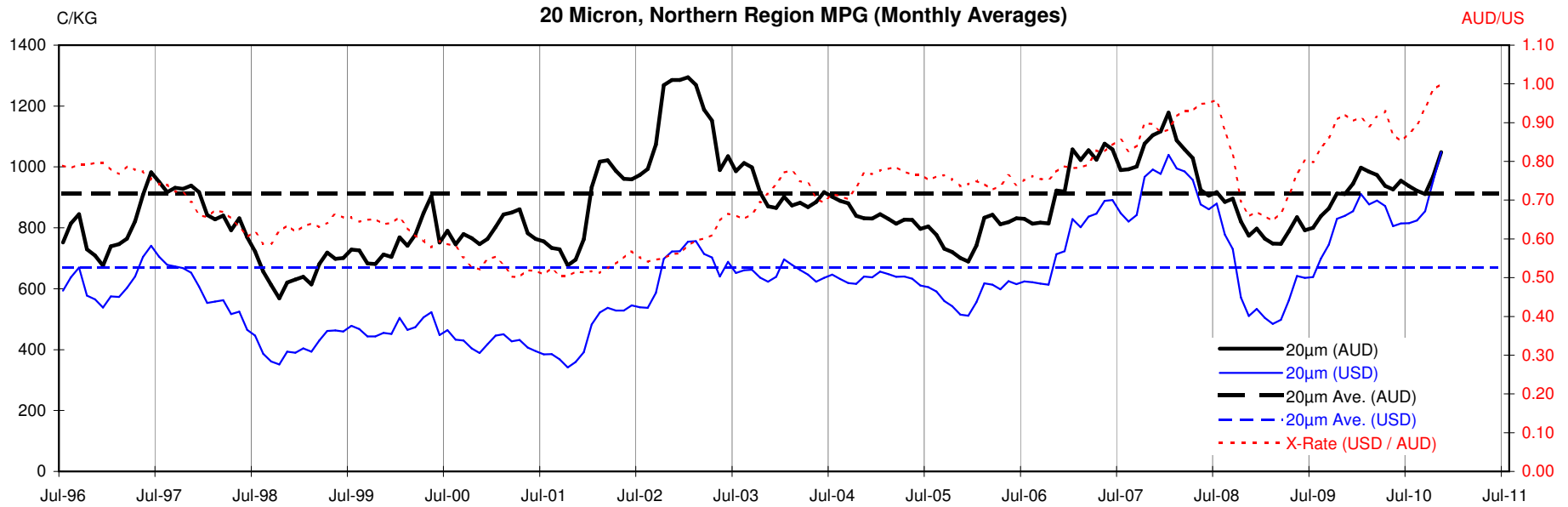
18 Micron, Northern Region MPG (Monthly Averages)



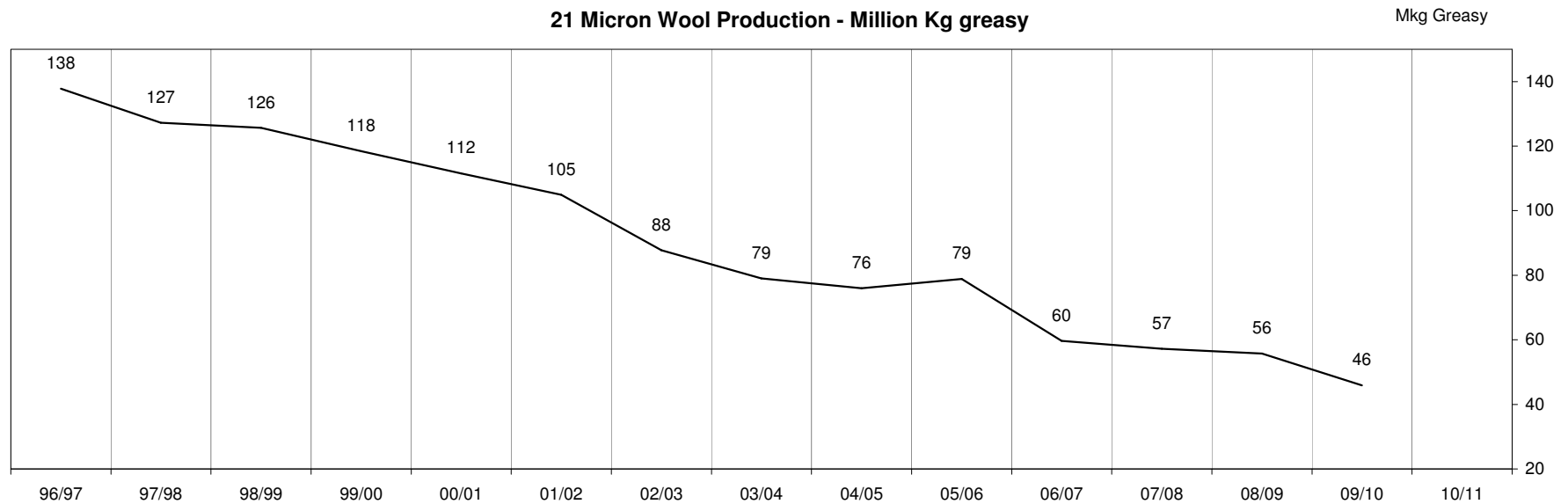
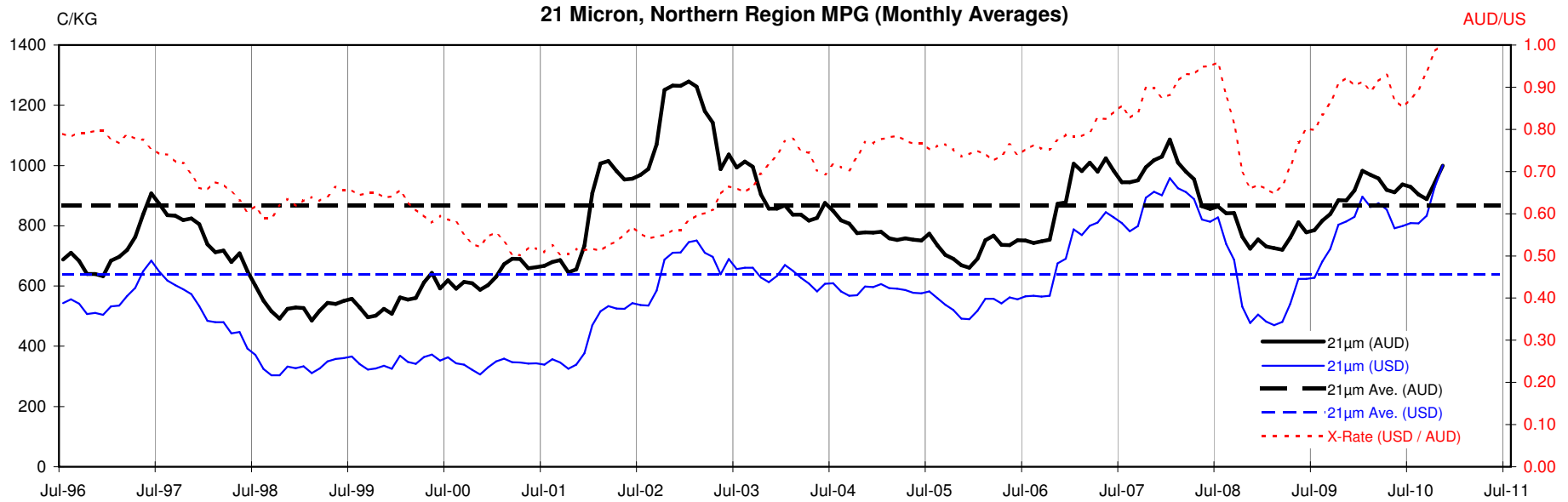
<18.5 micron Wool Production - Million Kg greasy

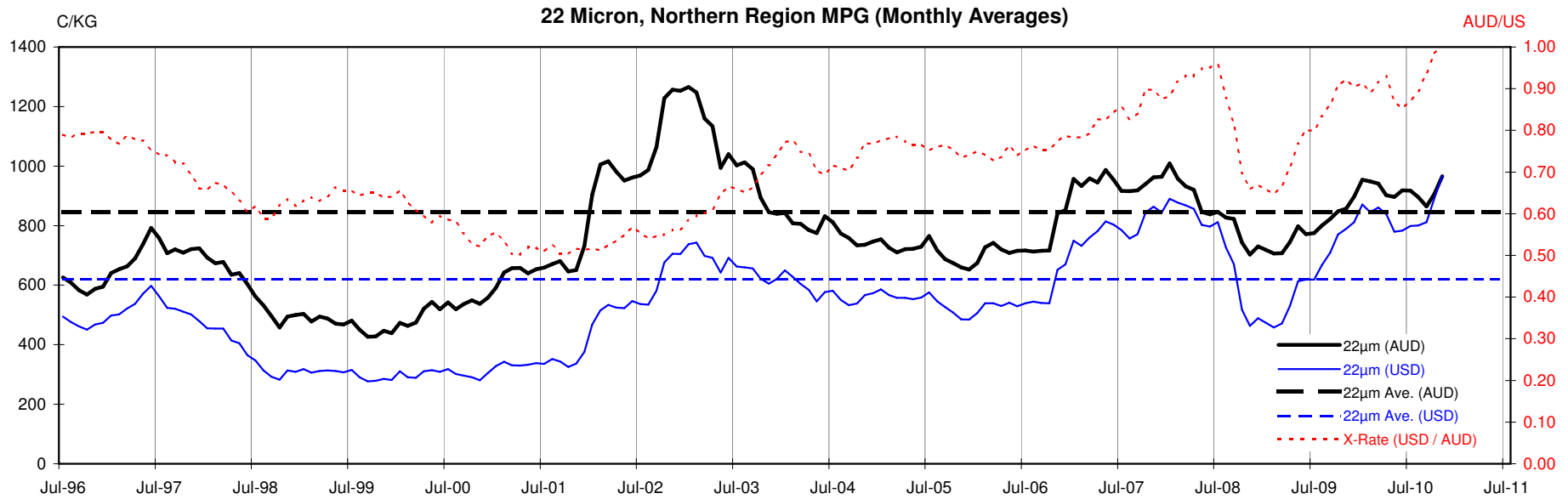


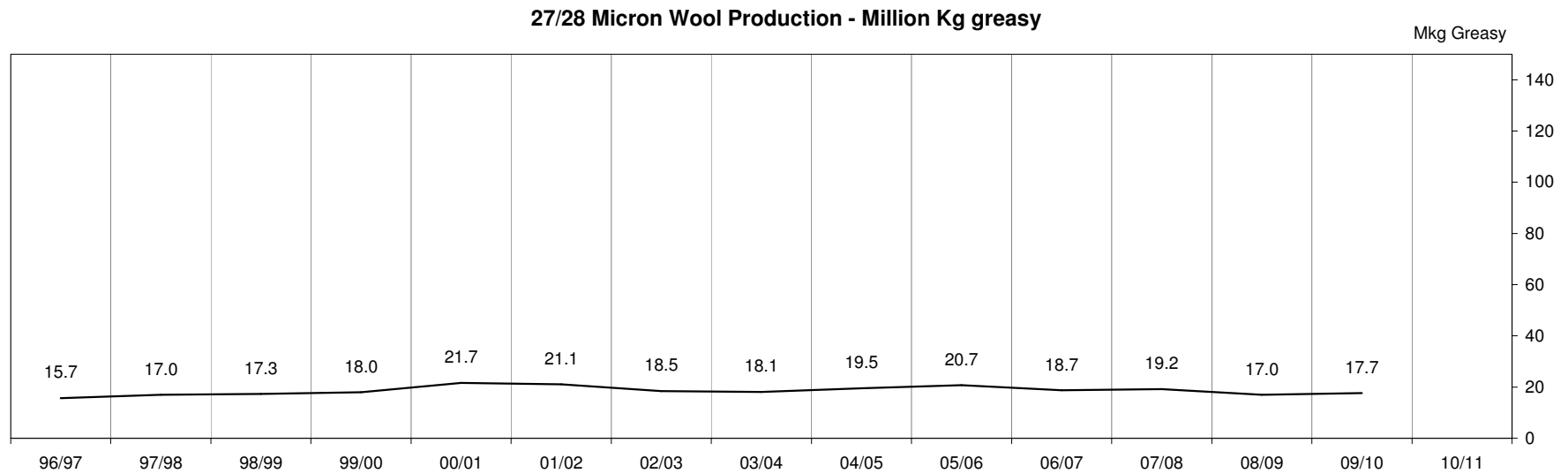
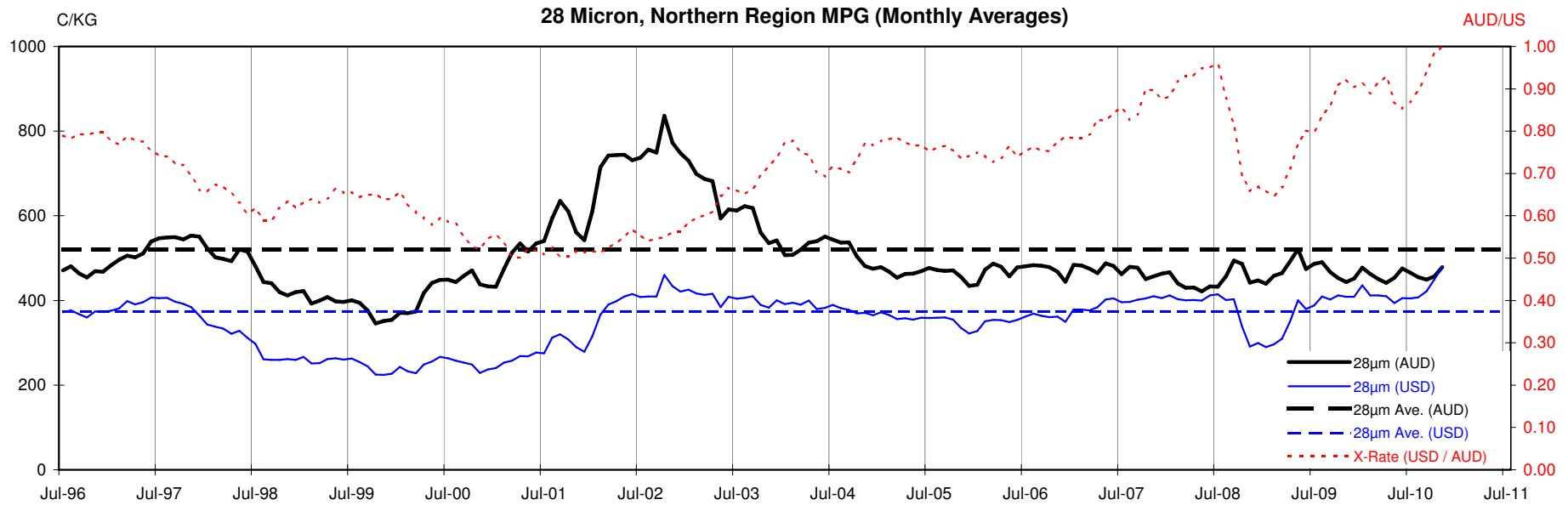












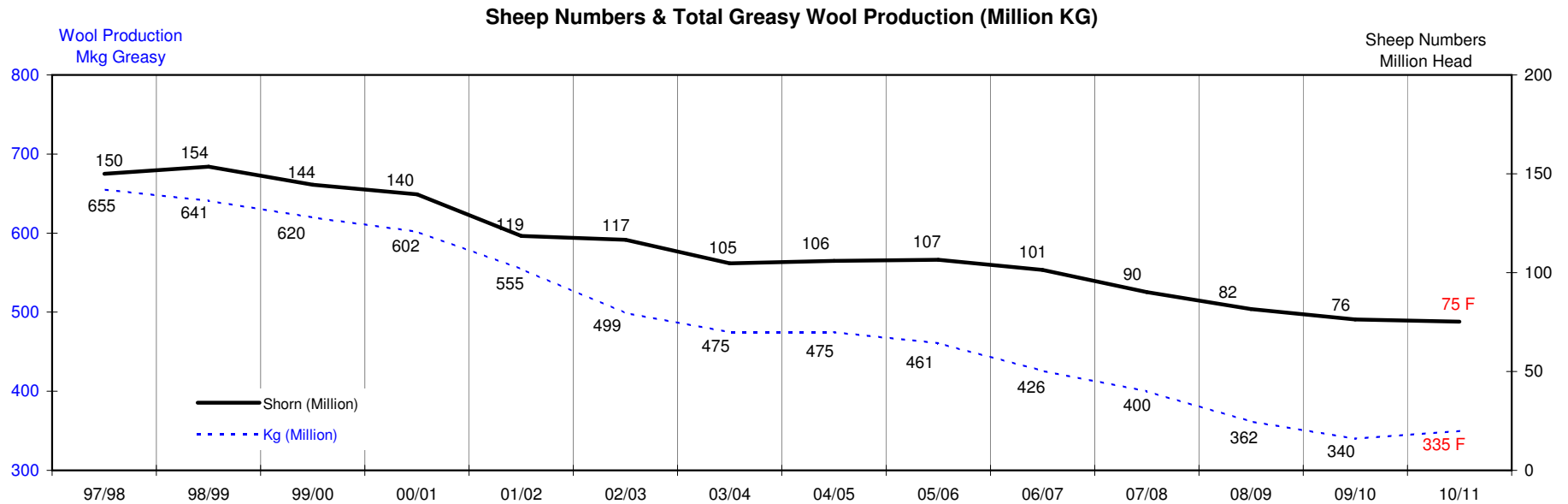
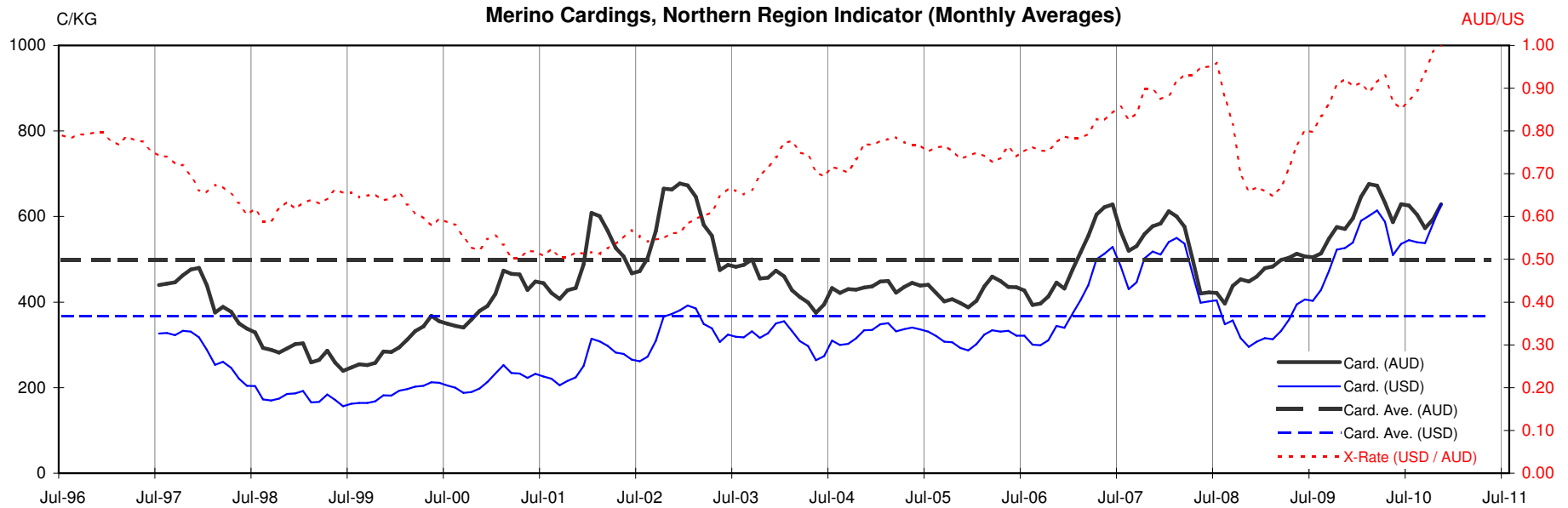




Table 13: Returns pr head for skirted fleece wool.

Skirted FLC Weight 9 Kg		Micron																	
		16	16.5	17	17.5	18	18.5	19	19.5	20	21	22	23	24	25	26	28	30	32
Yield (Sch Dry)	25% Current	\$44	\$40	\$37	\$35	\$33	\$31	\$28	\$25	\$23	\$22	\$22	\$20	\$19	\$17	\$15	\$11	\$10	\$9
	10yr ave.			\$32		\$29		\$24		\$21	\$20	\$19	\$19	\$18	\$16	\$15	\$12	\$10	\$9
	30% Current	\$53	\$48	\$45	\$42	\$40	\$37	\$33	\$31	\$28	\$27	\$26	\$25	\$23	\$21	\$18	\$13	\$11	\$10
	10yr ave.			\$38		\$35		\$29		\$25	\$23	\$23	\$22	\$21	\$19	\$17	\$14	\$12	\$11
	35% Current	\$61	\$56	\$52	\$49	\$46	\$43	\$39	\$36	\$33	\$31	\$30	\$29	\$26	\$24	\$21	\$15	\$13	\$12
	10yr ave.			\$44		\$40		\$34		\$29	\$27	\$27	\$26	\$25	\$22	\$20	\$16	\$14	\$13
	40% Current	\$70	\$64	\$60	\$56	\$53	\$49	\$44	\$41	\$38	\$36	\$35	\$33	\$30	\$28	\$24	\$17	\$15	\$14
	10yr ave.			\$51		\$46		\$38		\$33	\$31	\$30	\$30	\$28	\$25	\$23	\$19	\$16	\$15
	45% Current	\$79	\$72	\$67	\$63	\$59	\$55	\$50	\$46	\$42	\$40	\$39	\$37	\$34	\$31	\$27	\$19	\$17	\$16
	10yr ave.			\$57		\$52		\$43		\$37	\$35	\$34	\$33	\$32	\$29	\$26	\$21	\$18	\$17
	50% Current	\$88	\$80	\$75	\$70	\$66	\$62	\$55	\$51	\$47	\$45	\$43	\$41	\$38	\$34	\$30	\$22	\$19	\$17
	10yr ave.			\$63		\$58		\$48		\$41	\$39	\$38	\$37	\$35	\$32	\$29	\$23	\$20	\$19
	55% Current	\$97	\$88	\$82	\$77	\$73	\$68	\$61	\$56	\$52	\$49	\$48	\$45	\$42	\$38	\$33	\$24	\$21	\$19
	10yr ave.			\$70		\$64		\$53		\$45	\$43	\$42	\$41	\$39	\$35	\$32	\$26	\$23	\$20
	60% Current	\$105	\$96	\$90	\$84	\$79	\$74	\$67	\$61	\$56	\$54	\$52	\$49	\$45	\$41	\$36	\$26	\$23	\$21
	10yr ave.			\$76		\$69		\$58		\$49	\$47	\$46	\$44	\$42	\$38	\$35	\$28	\$25	\$22
	65% Current	\$114	\$104	\$97	\$91	\$86	\$80	\$72	\$66	\$61	\$58	\$56	\$53	\$49	\$45	\$39	\$28	\$25	\$23
	10yr ave.			\$82		\$75		\$62		\$53	\$51	\$49	\$48	\$46	\$41	\$38	\$30	\$27	\$24
	70% Current	\$123	\$112	\$105	\$98	\$92	\$86	\$78	\$71	\$66	\$63	\$61	\$57	\$53	\$48	\$42	\$30	\$27	\$24
	10yr ave.			\$89		\$81		\$67		\$58	\$55	\$53	\$52	\$50	\$45	\$41	\$33	\$29	\$26
	75% Current	\$132	\$120	\$112	\$105	\$99	\$92	\$83	\$76	\$70	\$67	\$65	\$61	\$57	\$52	\$45	\$32	\$29	\$26
	10yr ave.			\$95		\$87		\$72		\$62	\$59	\$57	\$56	\$53	\$48	\$44	\$35	\$31	\$28
	80% Current	\$140	\$128	\$120	\$112	\$106	\$98	\$89	\$82	\$75	\$72	\$69	\$65	\$60	\$55	\$48	\$34	\$30	\$28
	10yr ave.			\$101		\$93		\$77		\$66	\$62	\$61	\$59	\$57	\$51	\$47	\$38	\$33	\$30
	85% Current	\$149	\$136	\$127	\$119	\$112	\$105	\$94	\$87	\$80	\$76	\$74	\$70	\$64	\$59	\$51	\$37	\$32	\$30
	10yr ave.			\$108		\$98		\$82		\$70	\$66	\$65	\$63	\$60	\$54	\$50	\$40	\$35	\$32

The above shows estimated returns per head for skirted fleece wool. These figures do not take into account the value of skirtings and oddments and do not take into account discounts that may apply for faults under individual circumstances. These figures are based on a market index of 100% and should be used as a guide only. Returns over \$30 / head for fleece wool are highlighted.

Source: Australian Wool Exchange, Australian Wool Innovation, Sydney Futures Exchange, x-rates.com

Disclaimer: While all due care has been taken in the preparation of this document, no warranty is made as to its accuracy, reliability or completeness. To the extent permitted by law neither Jemalong or their sources including subsidiaries and staff, accept liability to any person for loss or damage arising from the use of this information.



Table 14: Returns pr head for skirted fleece wool.

Skirted FLC Weight		Micron																	
8 Kg		16	16.5	17	17.5	18	18.5	19	19.5	20	21	22	23	24	25	26	28	30	32
Yield (Sch Dry)	25% Current	\$44	\$40	\$37	\$35	\$33	\$31	\$28	\$25	\$23	\$22	\$22	\$20	\$19	\$17	\$15	\$11	\$10	\$9
	10yr ave.			\$32		\$29		\$24		\$21	\$20	\$19	\$19	\$18	\$16	\$15	\$12	\$10	\$9
	30% Current	\$53	\$48	\$45	\$42	\$40	\$37	\$33	\$31	\$28	\$27	\$26	\$25	\$23	\$21	\$18	\$13	\$11	\$10
	10yr ave.			\$38		\$35		\$29		\$25	\$23	\$23	\$22	\$21	\$19	\$17	\$14	\$12	\$11
	35% Current	\$61	\$56	\$52	\$49	\$46	\$43	\$39	\$36	\$33	\$31	\$30	\$29	\$26	\$24	\$21	\$15	\$13	\$12
	10yr ave.			\$44		\$40		\$34		\$29	\$27	\$27	\$26	\$25	\$22	\$20	\$16	\$14	\$13
	40% Current	\$70	\$64	\$60	\$56	\$53	\$49	\$44	\$41	\$38	\$36	\$35	\$33	\$30	\$28	\$24	\$17	\$15	\$14
	10yr ave.			\$51		\$46		\$38		\$33	\$31	\$30	\$30	\$28	\$25	\$23	\$19	\$16	\$15
	45% Current	\$79	\$72	\$67	\$63	\$59	\$55	\$50	\$46	\$42	\$40	\$39	\$37	\$34	\$31	\$27	\$19	\$17	\$16
	10yr ave.			\$57		\$52		\$43		\$37	\$35	\$34	\$33	\$32	\$29	\$26	\$21	\$18	\$17
	50% Current	\$88	\$80	\$75	\$70	\$66	\$62	\$55	\$51	\$47	\$45	\$43	\$41	\$38	\$34	\$30	\$22	\$19	\$17
	10yr ave.			\$63		\$58		\$48		\$41	\$39	\$38	\$37	\$35	\$32	\$29	\$23	\$20	\$19
	55% Current	\$97	\$88	\$82	\$77	\$73	\$68	\$61	\$56	\$52	\$49	\$48	\$45	\$42	\$38	\$33	\$24	\$21	\$19
	10yr ave.			\$70		\$64		\$53		\$45	\$43	\$42	\$41	\$39	\$35	\$32	\$26	\$23	\$20
	60% Current	\$105	\$96	\$90	\$84	\$79	\$74	\$67	\$61	\$56	\$54	\$52	\$49	\$45	\$41	\$36	\$26	\$23	\$21
	10yr ave.			\$76		\$69		\$58		\$49	\$47	\$46	\$44	\$42	\$38	\$35	\$28	\$25	\$22
	65% Current	\$114	\$104	\$97	\$91	\$86	\$80	\$72	\$66	\$61	\$58	\$56	\$53	\$49	\$45	\$39	\$28	\$25	\$23
	10yr ave.			\$82		\$75		\$62		\$53	\$51	\$49	\$48	\$46	\$41	\$38	\$30	\$27	\$24
	70% Current	\$123	\$112	\$105	\$98	\$92	\$86	\$78	\$71	\$66	\$63	\$61	\$57	\$53	\$48	\$42	\$30	\$27	\$24
	10yr ave.			\$89		\$81		\$67		\$58	\$55	\$53	\$52	\$50	\$45	\$41	\$33	\$29	\$26
	75% Current	\$132	\$120	\$112	\$105	\$99	\$92	\$83	\$76	\$70	\$67	\$65	\$61	\$57	\$52	\$45	\$32	\$29	\$26
	10yr ave.			\$95		\$87		\$72		\$62	\$59	\$57	\$56	\$53	\$48	\$44	\$35	\$31	\$28
	80% Current	\$140	\$128	\$120	\$112	\$106	\$98	\$89	\$82	\$75	\$72	\$69	\$65	\$60	\$55	\$48	\$34	\$30	\$28
	10yr ave.			\$101		\$93		\$77		\$66	\$62	\$61	\$59	\$57	\$51	\$47	\$38	\$33	\$30
	85% Current	\$149	\$136	\$127	\$119	\$112	\$105	\$94	\$87	\$80	\$76	\$74	\$70	\$64	\$59	\$51	\$37	\$32	\$30
	10yr ave.			\$108		\$98		\$82		\$70	\$66	\$65	\$63	\$60	\$54	\$50	\$40	\$35	\$32

The above shows estimated returns per head for skirted fleece wool. These figures do not take into account the value of skirtings and oddments and do not take into account discounts that may apply for faults under individual circumstances. These figures are based on a market index of 100% and should be used as a guide only. Returns over \$30 / head for fleece wool are highlighted.

Source: Australian Wool Exchange, Australian Wool Innovation, Sydney Futures Exchange, x-rates.com

Disclaimer: While all due care has been taken in the preparation of this document, no warranty is made as to its accuracy, reliability or completeness. To the extent permitted by law neither Jemalong or their sources including subsidiaries and staff, accept liability to any person for loss or damage arising from the use of this information.



Table 15: Returns pr head for skirted fleece wool.

Skirted FLC Weight		Micron																	
7 Kg		16	16.5	17	17.5	18	18.5	19	19.5	20	21	22	23	24	25	26	28	30	32
Yield (Sch Dry)	25% Current	\$44	\$40	\$37	\$35	\$33	\$31	\$28	\$25	\$23	\$22	\$22	\$20	\$19	\$17	\$15	\$11	\$10	\$9
	10yr ave.			\$32		\$29		\$24		\$21	\$20	\$19	\$19	\$18	\$16	\$15	\$12	\$10	\$9
	30% Current	\$53	\$48	\$45	\$42	\$40	\$37	\$33	\$31	\$28	\$27	\$26	\$25	\$23	\$21	\$18	\$13	\$11	\$10
	10yr ave.			\$38		\$35		\$29		\$25	\$23	\$23	\$22	\$21	\$19	\$17	\$14	\$12	\$11
	35% Current	\$61	\$56	\$52	\$49	\$46	\$43	\$39	\$36	\$33	\$31	\$30	\$29	\$26	\$24	\$21	\$15	\$13	\$12
	10yr ave.			\$44		\$40		\$34		\$29	\$27	\$27	\$26	\$25	\$22	\$20	\$16	\$14	\$13
	40% Current	\$70	\$64	\$60	\$56	\$53	\$49	\$44	\$41	\$38	\$36	\$35	\$33	\$30	\$28	\$24	\$17	\$15	\$14
	10yr ave.			\$51		\$46		\$38		\$33	\$31	\$30	\$30	\$28	\$25	\$23	\$19	\$16	\$15
	45% Current	\$79	\$72	\$67	\$63	\$59	\$55	\$50	\$46	\$42	\$40	\$39	\$37	\$34	\$31	\$27	\$19	\$17	\$16
	10yr ave.			\$57		\$52		\$43		\$37	\$35	\$34	\$33	\$32	\$29	\$26	\$21	\$18	\$17
	50% Current	\$88	\$80	\$75	\$70	\$66	\$62	\$55	\$51	\$47	\$45	\$43	\$41	\$38	\$34	\$30	\$22	\$19	\$17
	10yr ave.			\$63		\$58		\$48		\$41	\$39	\$38	\$37	\$35	\$32	\$29	\$23	\$20	\$19
	55% Current	\$97	\$88	\$82	\$77	\$73	\$68	\$61	\$56	\$52	\$49	\$48	\$45	\$42	\$38	\$33	\$24	\$21	\$19
	10yr ave.			\$70		\$64		\$53		\$45	\$43	\$42	\$41	\$39	\$35	\$32	\$26	\$23	\$20
	60% Current	\$105	\$96	\$90	\$84	\$79	\$74	\$67	\$61	\$56	\$54	\$52	\$49	\$45	\$41	\$36	\$26	\$23	\$21
	10yr ave.			\$76		\$69		\$58		\$49	\$47	\$46	\$44	\$42	\$38	\$35	\$28	\$25	\$22
	65% Current	\$114	\$104	\$97	\$91	\$86	\$80	\$72	\$66	\$61	\$58	\$56	\$53	\$49	\$45	\$39	\$28	\$25	\$23
	10yr ave.			\$82		\$75		\$62		\$53	\$51	\$49	\$48	\$46	\$41	\$38	\$30	\$27	\$24
	70% Current	\$123	\$112	\$105	\$98	\$92	\$86	\$78	\$71	\$66	\$63	\$61	\$57	\$53	\$48	\$42	\$30	\$27	\$24
	10yr ave.			\$89		\$81		\$67		\$58	\$55	\$53	\$52	\$50	\$45	\$41	\$33	\$29	\$26
	75% Current	\$132	\$120	\$112	\$105	\$99	\$92	\$83	\$76	\$70	\$67	\$65	\$61	\$57	\$52	\$45	\$32	\$29	\$26
	10yr ave.			\$95		\$87		\$72		\$62	\$59	\$57	\$56	\$53	\$48	\$44	\$35	\$31	\$28
	80% Current	\$140	\$128	\$120	\$112	\$106	\$98	\$89	\$82	\$75	\$72	\$69	\$65	\$60	\$55	\$48	\$34	\$30	\$28
	10yr ave.			\$101		\$93		\$77		\$66	\$62	\$61	\$59	\$57	\$51	\$47	\$38	\$33	\$30
	85% Current	\$149	\$136	\$127	\$119	\$112	\$105	\$94	\$87	\$80	\$76	\$74	\$70	\$64	\$59	\$51	\$37	\$32	\$30
	10yr ave.			\$108		\$98		\$82		\$70	\$66	\$65	\$63	\$60	\$54	\$50	\$40	\$35	\$32

The above shows estimated returns per head for skirted fleece wool. These figures do not take into account the value of skirtings and oddments and do not take into account discounts that may apply for faults under individual circumstances. These figures are based on a market index of 100% and should be used as a guide only. Returns over \$30 / head for fleece wool are highlighted.

Source: Australian Wool Exchange, Australian Wool Innovation, Sydney Futures Exchange, x-rates.com

Disclaimer: While all due care has been taken in the preparation of this document, no warranty is made as to its accuracy, reliability or completeness. To the extent permitted by law neither Jemalong or their sources including subsidiaries and staff, accept liability to any person for loss or damage arising from the use of this information.



Table 16: Returns pr head for skirted fleece wool.

Skirted FLC Weight		Micron																	
6 Kg		16	16.5	17	17.5	18	18.5	19	19.5	20	21	22	23	24	25	26	28	30	32
Yield (Sch Dry)	25% Current	\$44	\$40	\$37	\$35	\$33	\$31	\$28	\$25	\$23	\$22	\$22	\$20	\$19	\$17	\$15	\$11	\$10	\$9
	10yr ave.			\$32		\$29		\$24		\$21	\$20	\$19	\$19	\$18	\$16	\$15	\$12	\$10	\$9
	30% Current	\$53	\$48	\$45	\$42	\$40	\$37	\$33	\$31	\$28	\$27	\$26	\$25	\$23	\$21	\$18	\$13	\$11	\$10
	10yr ave.			\$38		\$35		\$29		\$25	\$23	\$23	\$22	\$21	\$19	\$17	\$14	\$12	\$11
	35% Current	\$61	\$56	\$52	\$49	\$46	\$43	\$39	\$36	\$33	\$31	\$30	\$29	\$26	\$24	\$21	\$15	\$13	\$12
	10yr ave.			\$44		\$40		\$34		\$29	\$27	\$27	\$26	\$25	\$22	\$20	\$16	\$14	\$13
	40% Current	\$70	\$64	\$60	\$56	\$53	\$49	\$44	\$41	\$38	\$36	\$35	\$33	\$30	\$28	\$24	\$17	\$15	\$14
	10yr ave.			\$51		\$46		\$38		\$33	\$31	\$30	\$30	\$28	\$25	\$23	\$19	\$16	\$15
	45% Current	\$79	\$72	\$67	\$63	\$59	\$55	\$50	\$46	\$42	\$40	\$39	\$37	\$34	\$31	\$27	\$19	\$17	\$16
	10yr ave.			\$57		\$52		\$43		\$37	\$35	\$34	\$33	\$32	\$29	\$26	\$21	\$18	\$17
	50% Current	\$88	\$80	\$75	\$70	\$66	\$62	\$55	\$51	\$47	\$45	\$43	\$41	\$38	\$34	\$30	\$22	\$19	\$17
	10yr ave.			\$63		\$58		\$48		\$41	\$39	\$38	\$37	\$35	\$32	\$29	\$23	\$20	\$19
	55% Current	\$97	\$88	\$82	\$77	\$73	\$68	\$61	\$56	\$52	\$49	\$48	\$45	\$42	\$38	\$33	\$24	\$21	\$19
	10yr ave.			\$70		\$64		\$53		\$45	\$43	\$42	\$41	\$39	\$35	\$32	\$26	\$23	\$20
	60% Current	\$105	\$96	\$90	\$84	\$79	\$74	\$67	\$61	\$56	\$54	\$52	\$49	\$45	\$41	\$36	\$26	\$23	\$21
	10yr ave.			\$76		\$69		\$58		\$49	\$47	\$46	\$44	\$42	\$38	\$35	\$28	\$25	\$22
	65% Current	\$114	\$104	\$97	\$91	\$86	\$80	\$72	\$66	\$61	\$58	\$56	\$53	\$49	\$45	\$39	\$28	\$25	\$23
	10yr ave.			\$82		\$75		\$62		\$53	\$51	\$49	\$48	\$46	\$41	\$38	\$30	\$27	\$24
	70% Current	\$123	\$112	\$105	\$98	\$92	\$86	\$78	\$71	\$66	\$63	\$61	\$57	\$53	\$48	\$42	\$30	\$27	\$24
	10yr ave.			\$89		\$81		\$67		\$58	\$55	\$53	\$52	\$50	\$45	\$41	\$33	\$29	\$26
	75% Current	\$132	\$120	\$112	\$105	\$99	\$92	\$83	\$76	\$70	\$67	\$65	\$61	\$57	\$52	\$45	\$32	\$29	\$26
	10yr ave.			\$95		\$87		\$72		\$62	\$59	\$57	\$56	\$53	\$48	\$44	\$35	\$31	\$28
	80% Current	\$140	\$128	\$120	\$112	\$106	\$98	\$89	\$82	\$75	\$72	\$69	\$65	\$60	\$55	\$48	\$34	\$30	\$28
	10yr ave.			\$101		\$93		\$77		\$66	\$62	\$61	\$59	\$57	\$51	\$47	\$38	\$33	\$30
	85% Current	\$149	\$136	\$127	\$119	\$112	\$105	\$94	\$87	\$80	\$76	\$74	\$70	\$64	\$59	\$51	\$37	\$32	\$30
	10yr ave.			\$108		\$98		\$82		\$70	\$66	\$65	\$63	\$60	\$54	\$50	\$40	\$35	\$32

The above shows estimated returns per head for skirted fleece wool. These figures do not take into account the value of skirtings and oddments and do not take into account discounts that may apply for faults under individual circumstances. These figures are based on a market index of 100% and should be used as a guide only. Returns over \$30 / head for fleece wool are highlighted.

Source: Australian Wool Exchange, Australian Wool Innovation, Sydney Futures Exchange, x-rates.com

Disclaimer: While all due care has been taken in the preparation of this document, no warranty is made as to its accuracy, reliability or completeness. To the extent permitted by law neither Jemalong or their sources including subsidiaries and staff, accept liability to any person for loss or damage arising from the use of this information.





Table 17: Returns pr head for skirted fleece wool.

Skirted FLC Weight		Micron																	
5 Kg		16	16.5	17	17.5	18	18.5	19	19.5	20	21	22	23	24	25	26	28	30	32
Yield (Sch Dry)	25% Current	\$44	\$40	\$37	\$35	\$33	\$31	\$28	\$25	\$23	\$22	\$22	\$20	\$19	\$17	\$15	\$11	\$10	\$9
	10yr ave.			\$32		\$29		\$24		\$21	\$20	\$19	\$19	\$18	\$16	\$15	\$12	\$10	\$9
	30% Current	\$53	\$48	\$45	\$42	\$40	\$37	\$33	\$31	\$28	\$27	\$26	\$25	\$23	\$21	\$18	\$13	\$11	\$10
	10yr ave.			\$38		\$35		\$29		\$25	\$23	\$23	\$22	\$21	\$19	\$17	\$14	\$12	\$11
	35% Current	\$61	\$56	\$52	\$49	\$46	\$43	\$39	\$36	\$33	\$31	\$30	\$29	\$26	\$24	\$21	\$15	\$13	\$12
	10yr ave.			\$44		\$40		\$34		\$29	\$27	\$27	\$26	\$25	\$22	\$20	\$16	\$14	\$13
	40% Current	\$70	\$64	\$60	\$56	\$53	\$49	\$44	\$41	\$38	\$36	\$35	\$33	\$30	\$28	\$24	\$17	\$15	\$14
	10yr ave.			\$51		\$46		\$38		\$33	\$31	\$30	\$30	\$28	\$25	\$23	\$19	\$16	\$15
	45% Current	\$79	\$72	\$67	\$63	\$59	\$55	\$50	\$46	\$42	\$40	\$39	\$37	\$34	\$31	\$27	\$19	\$17	\$16
	10yr ave.			\$57		\$52		\$43		\$37	\$35	\$34	\$33	\$32	\$29	\$26	\$21	\$18	\$17
	50% Current	\$88	\$80	\$75	\$70	\$66	\$62	\$55	\$51	\$47	\$45	\$43	\$41	\$38	\$34	\$30	\$22	\$19	\$17
	10yr ave.			\$63		\$58		\$48		\$41	\$39	\$38	\$37	\$35	\$32	\$29	\$23	\$20	\$19
	55% Current	\$97	\$88	\$82	\$77	\$73	\$68	\$61	\$56	\$52	\$49	\$48	\$45	\$42	\$38	\$33	\$24	\$21	\$19
	10yr ave.			\$70		\$64		\$53		\$45	\$43	\$42	\$41	\$39	\$35	\$32	\$26	\$23	\$20
	60% Current	\$105	\$96	\$90	\$84	\$79	\$74	\$67	\$61	\$56	\$54	\$52	\$49	\$45	\$41	\$36	\$26	\$23	\$21
	10yr ave.			\$76		\$69		\$58		\$49	\$47	\$46	\$44	\$42	\$38	\$35	\$28	\$25	\$22
	65% Current	\$114	\$104	\$97	\$91	\$86	\$80	\$72	\$66	\$61	\$58	\$56	\$53	\$49	\$45	\$39	\$28	\$25	\$23
	10yr ave.			\$82		\$75		\$62		\$53	\$51	\$49	\$48	\$46	\$41	\$38	\$30	\$27	\$24
	70% Current	\$123	\$112	\$105	\$98	\$92	\$86	\$78	\$71	\$66	\$63	\$61	\$57	\$53	\$48	\$42	\$30	\$27	\$24
	10yr ave.			\$89		\$81		\$67		\$58	\$55	\$53	\$52	\$50	\$45	\$41	\$33	\$29	\$26
	75% Current	\$132	\$120	\$112	\$105	\$99	\$92	\$83	\$76	\$70	\$67	\$65	\$61	\$57	\$52	\$45	\$32	\$29	\$26
	10yr ave.			\$95		\$87		\$72		\$62	\$59	\$57	\$56	\$53	\$48	\$44	\$35	\$31	\$28
	80% Current	\$140	\$128	\$120	\$112	\$106	\$98	\$89	\$82	\$75	\$72	\$69	\$65	\$60	\$55	\$48	\$34	\$30	\$28
	10yr ave.			\$101		\$93		\$77		\$66	\$62	\$61	\$59	\$57	\$51	\$47	\$38	\$33	\$30
	85% Current	\$149	\$136	\$127	\$119	\$112	\$105	\$94	\$87	\$80	\$76	\$74	\$70	\$64	\$59	\$51	\$37	\$32	\$30
	10yr ave.			\$108		\$98		\$82		\$70	\$66	\$65	\$63	\$60	\$54	\$50	\$40	\$35	\$32

The above shows estimated returns per head for skirted fleece wool. These figures do not take into account the value of skirtings and oddments and do not take into account discounts that may apply for faults under individual circumstances. These figures are based on a market index of 100% and should be used as a guide only. Returns over \$30 / head for fleece wool are highlighted.

Source: Australian Wool Exchange, Australian Wool Innovation, Sydney Futures Exchange, x-rates.com

Disclaimer: While all due care has been taken in the preparation of this document, no warranty is made as to its accuracy, reliability or completeness. To the extent permitted by law neither Jemalong or their sources including subsidiaries and staff, accept liability to any person for loss or damage arising from the use of this information.



Table 18: Returns pr head for skirted fleece wool.

Skirted FLC Weight		Micron																	
4 Kg		16	16.5	17	17.5	18	18.5	19	19.5	20	21	22	23	24	25	26	28	30	32
Yield (Sch Dry)	25% Current	\$44	\$40	\$37	\$35	\$33	\$31	\$28	\$25	\$23	\$22	\$22	\$20	\$19	\$17	\$15	\$11	\$10	\$9
	10yr ave.			\$32		\$29		\$24		\$21	\$20	\$19	\$19	\$18	\$16	\$15	\$12	\$10	\$9
	30% Current	\$53	\$48	\$45	\$42	\$40	\$37	\$33	\$31	\$28	\$27	\$26	\$25	\$23	\$21	\$18	\$13	\$11	\$10
	10yr ave.			\$38		\$35		\$29		\$25	\$23	\$23	\$22	\$21	\$19	\$17	\$14	\$12	\$11
	35% Current	\$61	\$56	\$52	\$49	\$46	\$43	\$39	\$36	\$33	\$31	\$30	\$29	\$26	\$24	\$21	\$15	\$13	\$12
	10yr ave.			\$44		\$40		\$34		\$29	\$27	\$27	\$26	\$25	\$22	\$20	\$16	\$14	\$13
	40% Current	\$70	\$64	\$60	\$56	\$53	\$49	\$44	\$41	\$38	\$36	\$35	\$33	\$30	\$28	\$24	\$17	\$15	\$14
	10yr ave.			\$51		\$46		\$38		\$33	\$31	\$30	\$30	\$28	\$25	\$23	\$19	\$16	\$15
	45% Current	\$79	\$72	\$67	\$63	\$59	\$55	\$50	\$46	\$42	\$40	\$39	\$37	\$34	\$31	\$27	\$19	\$17	\$16
	10yr ave.			\$57		\$52		\$43		\$37	\$35	\$34	\$33	\$32	\$29	\$26	\$21	\$18	\$17
	50% Current	\$88	\$80	\$75	\$70	\$66	\$62	\$55	\$51	\$47	\$45	\$43	\$41	\$38	\$34	\$30	\$22	\$19	\$17
	10yr ave.			\$63		\$58		\$48		\$41	\$39	\$38	\$37	\$35	\$32	\$29	\$23	\$20	\$19
	55% Current	\$97	\$88	\$82	\$77	\$73	\$68	\$61	\$56	\$52	\$49	\$48	\$45	\$42	\$38	\$33	\$24	\$21	\$19
	10yr ave.			\$70		\$64		\$53		\$45	\$43	\$42	\$41	\$39	\$35	\$32	\$26	\$23	\$20
	60% Current	\$105	\$96	\$90	\$84	\$79	\$74	\$67	\$61	\$56	\$54	\$52	\$49	\$45	\$41	\$36	\$26	\$23	\$21
	10yr ave.			\$76		\$69		\$58		\$49	\$47	\$46	\$44	\$42	\$38	\$35	\$28	\$25	\$22
	65% Current	\$114	\$104	\$97	\$91	\$86	\$80	\$72	\$66	\$61	\$58	\$56	\$53	\$49	\$45	\$39	\$28	\$25	\$23
	10yr ave.			\$82		\$75		\$62		\$53	\$51	\$49	\$48	\$46	\$41	\$38	\$30	\$27	\$24
	70% Current	\$123	\$112	\$105	\$98	\$92	\$86	\$78	\$71	\$66	\$63	\$61	\$57	\$53	\$48	\$42	\$30	\$27	\$24
	10yr ave.			\$89		\$81		\$67		\$58	\$55	\$53	\$52	\$50	\$45	\$41	\$33	\$29	\$26
	75% Current	\$132	\$120	\$112	\$105	\$99	\$92	\$83	\$76	\$70	\$67	\$65	\$61	\$57	\$52	\$45	\$32	\$29	\$26
	10yr ave.			\$95		\$87		\$72		\$62	\$59	\$57	\$56	\$53	\$48	\$44	\$35	\$31	\$28
	80% Current	\$140	\$128	\$120	\$112	\$106	\$98	\$89	\$82	\$75	\$72	\$69	\$65	\$60	\$55	\$48	\$34	\$30	\$28
	10yr ave.			\$101		\$93		\$77		\$66	\$62	\$61	\$59	\$57	\$51	\$47	\$38	\$33	\$30
	85% Current	\$149	\$136	\$127	\$119	\$112	\$105	\$94	\$87	\$80	\$76	\$74	\$70	\$64	\$59	\$51	\$37	\$32	\$30
	10yr ave.			\$108		\$98		\$82		\$70	\$66	\$65	\$63	\$60	\$54	\$50	\$40	\$35	\$32

The above shows estimated returns per head for skirted fleece wool. These figures do not take into account the value of skirtings and oddments and do not take into account discounts that may apply for faults under individual circumstances. These figures are based on a market index of 100% and should be used as a guide only. Returns over \$30 / head for fleece wool are highlighted.

Source: Australian Wool Exchange, Australian Wool Innovation, Sydney Futures Exchange, x-rates.com

Disclaimer: While all due care has been taken in the preparation of this document, no warranty is made as to its accuracy, reliability or completeness. To the extent permitted by law neither Jemalong or their sources including subsidiaries and staff, accept liability to any person for loss or damage arising from the use of this information.



Table 19: Returns pr head for skirted fleece wool.

Skirted FLC Weight 3 Kg		Micron																	
		16	16.5	17	17.5	18	18.5	19	19.5	20	21	22	23	24	25	26	28	30	32
Yield (Sch Dry)	25% Current	\$44	\$40	\$37	\$35	\$33	\$31	\$28	\$25	\$23	\$22	\$22	\$20	\$19	\$17	\$15	\$11	\$10	\$9
	10yr ave.			\$32		\$29		\$24		\$21	\$20	\$19	\$19	\$18	\$16	\$15	\$12	\$10	\$9
	30% Current	\$53	\$48	\$45	\$42	\$40	\$37	\$33	\$31	\$28	\$27	\$26	\$25	\$23	\$21	\$18	\$13	\$11	\$10
	10yr ave.			\$38		\$35		\$29		\$25	\$23	\$23	\$22	\$21	\$19	\$17	\$14	\$12	\$11
	35% Current	\$61	\$56	\$52	\$49	\$46	\$43	\$39	\$36	\$33	\$31	\$30	\$29	\$26	\$24	\$21	\$15	\$13	\$12
	10yr ave.			\$44		\$40		\$34		\$29	\$27	\$27	\$26	\$25	\$22	\$20	\$16	\$14	\$13
	40% Current	\$70	\$64	\$60	\$56	\$53	\$49	\$44	\$41	\$38	\$36	\$35	\$33	\$30	\$28	\$24	\$17	\$15	\$14
	10yr ave.			\$51		\$46		\$38		\$33	\$31	\$30	\$30	\$28	\$25	\$23	\$19	\$16	\$15
	45% Current	\$79	\$72	\$67	\$63	\$59	\$55	\$50	\$46	\$42	\$40	\$39	\$37	\$34	\$31	\$27	\$19	\$17	\$16
	10yr ave.			\$57		\$52		\$43		\$37	\$35	\$34	\$33	\$32	\$29	\$26	\$21	\$18	\$17
	50% Current	\$88	\$80	\$75	\$70	\$66	\$62	\$55	\$51	\$47	\$45	\$43	\$41	\$38	\$34	\$30	\$22	\$19	\$17
	10yr ave.			\$63		\$58		\$48		\$41	\$39	\$38	\$37	\$35	\$32	\$29	\$23	\$20	\$19
	55% Current	\$97	\$88	\$82	\$77	\$73	\$68	\$61	\$56	\$52	\$49	\$48	\$45	\$42	\$38	\$33	\$24	\$21	\$19
	10yr ave.			\$70		\$64		\$53		\$45	\$43	\$42	\$41	\$39	\$35	\$32	\$26	\$23	\$20
	60% Current	\$105	\$96	\$90	\$84	\$79	\$74	\$67	\$61	\$56	\$54	\$52	\$49	\$45	\$41	\$36	\$26	\$23	\$21
	10yr ave.			\$76		\$69		\$58		\$49	\$47	\$46	\$44	\$42	\$38	\$35	\$28	\$25	\$22
	65% Current	\$114	\$104	\$97	\$91	\$86	\$80	\$72	\$66	\$61	\$58	\$56	\$53	\$49	\$45	\$39	\$28	\$25	\$23
	10yr ave.			\$82		\$75		\$62		\$53	\$51	\$49	\$48	\$46	\$41	\$38	\$30	\$27	\$24
	70% Current	\$123	\$112	\$105	\$98	\$92	\$86	\$78	\$71	\$66	\$63	\$61	\$57	\$53	\$48	\$42	\$30	\$27	\$24
	10yr ave.			\$89		\$81		\$67		\$58	\$55	\$53	\$52	\$50	\$45	\$41	\$33	\$29	\$26
	75% Current	\$132	\$120	\$112	\$105	\$99	\$92	\$83	\$76	\$70	\$67	\$65	\$61	\$57	\$52	\$45	\$32	\$29	\$26
	10yr ave.			\$95		\$87		\$72		\$62	\$59	\$57	\$56	\$53	\$48	\$44	\$35	\$31	\$28
	80% Current	\$140	\$128	\$120	\$112	\$106	\$98	\$89	\$82	\$75	\$72	\$69	\$65	\$60	\$55	\$48	\$34	\$30	\$28
	10yr ave.			\$101		\$93		\$77		\$66	\$62	\$61	\$59	\$57	\$51	\$47	\$38	\$33	\$30
	85% Current	\$149	\$136	\$127	\$119	\$112	\$105	\$94	\$87	\$80	\$76	\$74	\$70	\$64	\$59	\$51	\$37	\$32	\$30
	10yr ave.			\$108		\$98		\$82		\$70	\$66	\$65	\$63	\$60	\$54	\$50	\$40	\$35	\$32

The above shows estimated returns per head for skirted fleece wool. These figures do not take into account the value of skirtings and oddments and do not take into account discounts that may apply for faults under individual circumstances. These figures are based on a market index of 100% and should be used as a guide only. Returns over \$30 / head for fleece wool are highlighted.

Source: Australian Wool Exchange, Australian Wool Innovation, Sydney Futures Exchange, x-rates.com

Disclaimer: While all due care has been taken in the preparation of this document, no warranty is made as to its accuracy, reliability or completeness. To the extent permitted by law neither Jemalong or their sources including subsidiaries and staff, accept liability to any person for loss or damage arising from the use of this information.



Table 20: Returns pr head for skirted fleece wool.

Skirted FLC Weight		Micron																	
2 Kg		16	16.5	17	17.5	18	18.5	19	19.5	20	21	22	23	24	25	26	28	30	32
Yield (Sch Dry)	25% Current	\$44	\$40	\$37	\$35	\$33	\$31	\$28	\$25	\$23	\$22	\$22	\$20	\$19	\$17	\$15	\$11	\$10	\$9
	10yr ave.			\$32		\$29		\$24		\$21	\$20	\$19	\$19	\$18	\$16	\$15	\$12	\$10	\$9
	30% Current	\$53	\$48	\$45	\$42	\$40	\$37	\$33	\$31	\$28	\$27	\$26	\$25	\$23	\$21	\$18	\$13	\$11	\$10
	10yr ave.			\$38		\$35		\$29		\$25	\$23	\$23	\$22	\$21	\$19	\$17	\$14	\$12	\$11
	35% Current	\$61	\$56	\$52	\$49	\$46	\$43	\$39	\$36	\$33	\$31	\$30	\$29	\$26	\$24	\$21	\$15	\$13	\$12
	10yr ave.			\$44		\$40		\$34		\$29	\$27	\$27	\$26	\$25	\$22	\$20	\$16	\$14	\$13
	40% Current	\$70	\$64	\$60	\$56	\$53	\$49	\$44	\$41	\$38	\$36	\$35	\$33	\$30	\$28	\$24	\$17	\$15	\$14
	10yr ave.			\$51		\$46		\$38		\$33	\$31	\$30	\$30	\$28	\$25	\$23	\$19	\$16	\$15
	45% Current	\$79	\$72	\$67	\$63	\$59	\$55	\$50	\$46	\$42	\$40	\$39	\$37	\$34	\$31	\$27	\$19	\$17	\$16
	10yr ave.			\$57		\$52		\$43		\$37	\$35	\$34	\$33	\$32	\$29	\$26	\$21	\$18	\$17
	50% Current	\$88	\$80	\$75	\$70	\$66	\$62	\$55	\$51	\$47	\$45	\$43	\$41	\$38	\$34	\$30	\$22	\$19	\$17
	10yr ave.			\$63		\$58		\$48		\$41	\$39	\$38	\$37	\$35	\$32	\$29	\$23	\$20	\$19
	55% Current	\$97	\$88	\$82	\$77	\$73	\$68	\$61	\$56	\$52	\$49	\$48	\$45	\$42	\$38	\$33	\$24	\$21	\$19
	10yr ave.			\$70		\$64		\$53		\$45	\$43	\$42	\$41	\$39	\$35	\$32	\$26	\$23	\$20
	60% Current	\$105	\$96	\$90	\$84	\$79	\$74	\$67	\$61	\$56	\$54	\$52	\$49	\$45	\$41	\$36	\$26	\$23	\$21
	10yr ave.			\$76		\$69		\$58		\$49	\$47	\$46	\$44	\$42	\$38	\$35	\$28	\$25	\$22
	65% Current	\$114	\$104	\$97	\$91	\$86	\$80	\$72	\$66	\$61	\$58	\$56	\$53	\$49	\$45	\$39	\$28	\$25	\$23
	10yr ave.			\$82		\$75		\$62		\$53	\$51	\$49	\$48	\$46	\$41	\$38	\$30	\$27	\$24
	70% Current	\$123	\$112	\$105	\$98	\$92	\$86	\$78	\$71	\$66	\$63	\$61	\$57	\$53	\$48	\$42	\$30	\$27	\$24
	10yr ave.			\$89		\$81		\$67		\$58	\$55	\$53	\$52	\$50	\$45	\$41	\$33	\$29	\$26
	75% Current	\$132	\$120	\$112	\$105	\$99	\$92	\$83	\$76	\$70	\$67	\$65	\$61	\$57	\$52	\$45	\$32	\$29	\$26
	10yr ave.			\$95		\$87		\$72		\$62	\$59	\$57	\$56	\$53	\$48	\$44	\$35	\$31	\$28
	80% Current	\$140	\$128	\$120	\$112	\$106	\$98	\$89	\$82	\$75	\$72	\$69	\$65	\$60	\$55	\$48	\$34	\$30	\$28
	10yr ave.			\$101		\$93		\$77		\$66	\$62	\$61	\$59	\$57	\$51	\$47	\$38	\$33	\$30
	85% Current	\$149	\$136	\$127	\$119	\$112	\$105	\$94	\$87	\$80	\$76	\$74	\$70	\$64	\$59	\$51	\$37	\$32	\$30
	10yr ave.			\$108		\$98		\$82		\$70	\$66	\$65	\$63	\$60	\$54	\$50	\$40	\$35	\$32

The above shows estimated returns per head for skirted fleece wool. These figures do not take into account the value of skirtings and oddments and do not take into account discounts that may apply for faults under individual circumstances. These figures are based on a market index of 100% and should be used as a guide only. Returns over \$30 / head for fleece wool are highlighted.

Source: Australian Wool Exchange, Australian Wool Innovation, Sydney Futures Exchange, x-rates.com

Disclaimer: While all due care has been taken in the preparation of this document, no warranty is made as to its accuracy, reliability or completeness. To the extent permitted by law neither Jemalong or their sources including subsidiaries and staff, accept liability to any person for loss or damage arising from the use of this information.