



**Table 1: Northern Region Micron Price Guides**

WEEK 32			12 MONTH COMPARISONS								3 YEAR COMPARISONS						*10 YEAR COMPARISONS					
Mic.	5/02/2015	29/01/2015	5/02/2014	Now		Now		Now				Now					* 16-17.5um since Aug 05	Now				
Price	Current	Weekly	This time	compared		12 Month	compared	12 Month	compared			compared					*10 year	compared				
Guides	Price	Change	Last Year	to Last Year		Low	to Low	High	to High	Low	High	Average	to 3yr ave	Percentile			Low	High	Average	to *10yr ave	Percentile	
NRI	1127	+29 2.6%	1143	-16 -1%		1006	+121 12%	1143	-16 -1%	895	1491	1087	+40 4%	58%			657	1491	972	+155 16%	81%	
16*	1510	+30 2.0%	1580	-70 -4%		1340	+170 13%	1580	-70 -4%	1340	2800	1621	-111 -7%	22%			1350	2800	1710	-200 -12%	24%	
16.5*	1480	+40 2.7%	1500	-20 -1%		1300	+180 14%	1500	-20 -1%	1300	2680	1502	-22 -1%	41%			1280	2680	1574	-94 -6%	56%	
17*	1470	+60 4.1%	1440	+30 2%		1245	+225 18%	1470	0 0%	1245	2530	1394	+76 5%	60%			1106	2530	1440	+30 2%	74%	
17.5*	1445	+55 3.8%	1400	+45 3%		1190	+255 21%	1445	0 0%	1200	2360	1346	+99 7%	63%			1020	2360	1372	+73 5%	76%	
18	1371	+53 3.9%	1348	+23 2%		1161	+210 18%	1352	+19 1%	1153	2193	1295	+76 6%	60%			914	2193	1284	+87 7%	73%	
18.5	1324	+54 4.1%	1318	+6 0%		1137	+187 16%	1318	+6 0%	1122	1963	1263	+61 5%	57%			843	1963	1219	+105 9%	78%	
19	1247	+38 3.0%	1281	-34 -3%		1113	+134 12%	1281	-34 -3%	1048	1776	1236	+11 1%	46%			803	1776	1149	+98 9%	74%	
19.5	1205	+32 2.7%	1254	-49 -4%		1093	+112 10%	1254	-49 -4%	958	1670	1211	-6 0%	47%			749	1670	1085	+120 11%	75%	
20	1186	+31 2.6%	1246	-60 -5%		1088	+98 9%	1246	-60 -5%	910	1588	1191	-5 0%	47%			700	1588	1030	+156 15%	77%	
21	1177	+38 3.2%	1239	-62 -5%		1089	+88 8%	1239	-62 -5%	887	1522	1181	-4 0%	49%			668	1522	993	+184 19%	78%	
22	1167	+45 3.9%	1236	-69 -6%		1072	+95 9%	1236	-69 -6%	861	1461	1165	+2 0%	51%			658	1461	965	+202 21%	78%	
23	1157	+47 4.1%	1243	-86 -7%		1040	+117 11%	1243	-86 -7%	834	1347	1148	+9 1%	58%			651	1347	938	+219 23%	81%	
24	1100	+40 3.6%	1119	-19 -2%		983	+117 12%	1119	-19 -2%	786	1213	1066	+34 3%	80%			638	1213	874	+226 26%	91%	
25	962	+32 3.3%	880	+82 9%		799	+163 20%	952	+10 1%	695	1049	913	+49 5%	83%			566	1049	757	+205 27%	93%	
26	870	+25 2.9%	780	+90 12%		734	+136 19%	861	+9 1%	603	939	813	+57 7%	87%			532	939	679	+191 28%	94%	
28	809	+26 3.2%	690	+119 17%		639	+170 27%	803	+6 1%	445	809	645	+164 25%	100%			424	809	536	+273 51%	100%	
30	765	+20 2.6%	649	+116 18%		615	+150 24%	760	+5 1%	393	765	605	+160 26%	100%			343	765	482	+283 59%	100%	
32	678	+33 4.9%	560	+118 21%		550	+128 23%	668	+10 1%	354	678	528	+150 28%	100%			297	678	428	+250 58%	100%	
MC	888	+35 3.9%	828	+60 7%		764	+124 16%	878	+10 1%	535	888	746	+142 19%	100%			390	888	599	+289 48%	100%	
AU BALES OFFERED		45,398	* Due to the irregular market quoting for some fine wool categories, figures shown relating to micron categories below 18 micron are an estimate based on the AWEX Premium & Discounts Report & other available information.																			
AU BALES SOLD		43,680																				
AU PASSED-IN%		3.8%	* For any category, where there is insufficient quantity offered to enable AWEX to quote, a quote will be provided based on the best available information.																			
AUD/USD		0.77690																				
			* 10 Year data is not available for 16 to 17.5 microns, therefore 10 year statistics for those micron categories only date back as far as August 2005.																			

Source: Australian Wool Exchange, Australian Wool Innovation, Riemann, x-rates.com, Reserve Bank of Australia, Australian Wool Testing Authority.

Disclaimer: Jemalong Wool Pty Ltd make no representations about the content and suitability of the information contained in this report. Specifically, Jemalong Wool does not warrant, guarantee or make any representations regarding the correctness, accuracy, reliability, currency, or any other aspect regarding characteristics or use of information presented in these materials. The user accepts sole responsibility and risk associated with the use and results of these materials, irrespective of the purpose of which such use or results are applied. In no event shall Jemalong Wool be liable for any loss or damages (including without limitation special, or consequential damages), where in an action of contract, negligence,

## MARKET COMMENTARY

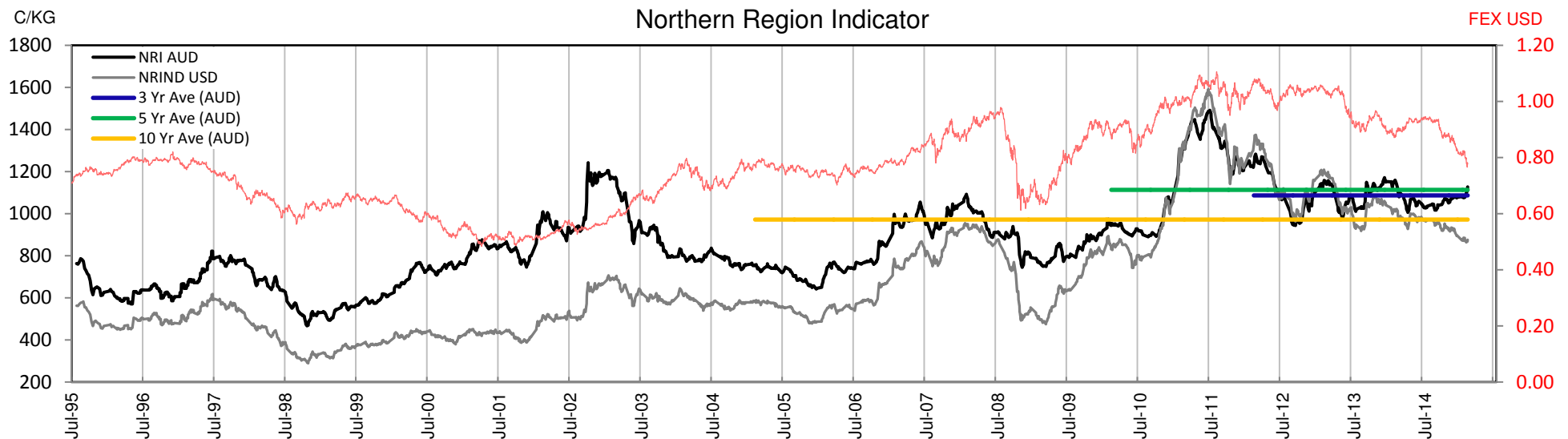
Despite the fluctuating exchange rate and the larger offering of 45,398 bales, demand was strong this week resulting in healthy rises across all micron categories as well as a high clearance rate of 96.2%.

Wooltrade sales over the weekend and throughout the week were an excellent indication that demand for merino fleece had improved. By the close of trade on Thursday, merino MPG's had all gained between 30 and 50 cents, and while there remains a massive price disparity between different styles & types, buyer interest was not limited to the better specified types, but rather it was more wide spread than in recent weeks, resulting in improvements across the board, including some of the lower style types (those that had been left on the shelf over the past few weeks).

Merino Skirtings gained 10 to 20 cents, while the Merino Cardings Indicator closed at a record high of 888. The Crossbred fleece indicators also added another 20-30 cents, to their already historic highs.

The forward market also saw renewed interest after a month of inactivity, with 60,000 kilos trading on Riemann. 21 microns traded out as far as January 2016, at up to 1157 c/kg.

With a estimated offering of 51,888 bales, next weeks sale is slightly larger than originally forecast.





**Table 2: Three Year Decile Table, since: 1/02/2012**

Decile	%	16	16.5	17	17.5	18	18.5	19	19.5	20	21	22	23	24	25	26	28	30	32	MC
1	10%	1400	1340	1290	1245	1194	1157	1121	1093	1055	1040	1015	987	888	781	693	518	462	414	601
2	20%	1495	1400	1310	1280	1219	1188	1159	1133	1108	1101	1085	1058	989	858	756	584	543	468	650
3	30%	1570	1440	1345	1300	1254	1224	1191	1156	1138	1131	1114	1081	1015	880	777	615	565	488	702
4	40%	1620	1480	1380	1330	1280	1251	1215	1183	1163	1151	1136	1116	1041	891	794	631	581	497	731
5	50%	1690	1525	1415	1370	1318	1290	1262	1221	1196	1180	1163	1135	1055	902	808	645	594	518	748
6	60%	1800	1605	1470	1412	1368	1335	1301	1271	1235	1219	1200	1166	1067	913	818	656	617	550	774
7	70%	2000	1860	1684	1573	1502	1450	1374	1331	1270	1252	1221	1191	1084	924	829	668	629	560	794
8	80%	2150	1950	1781	1680	1590	1505	1462	1404	1349	1308	1257	1220	1100	952	850	677	635	573	811
9	90%	2700	2516	2396	2218	2019	1815	1619	1474	1392	1342	1302	1256	1132	984	876	691	651	598	825
10	100%	2800	2680	2530	2360	2193	1963	1776	1670	1588	1522	1461	1347	1213	1049	939	809	765	678	888
MPG		1510	1480	1470	1445	1371	1324	1247	1205	1186	1177	1167	1157	1100	962	870	809	765	678	888
3 Yr Percentile		22%	41%	60%	63%	60%	57%	46%	47%	47%	49%	51%	58%	80%	83%	87%	100%	100%	100%	100%

**Table 3: Ten Year Decile Table, sinc 1/02/2005**

Decile	%	16	16.5	17	17.5	18	18.5	19	19.5	20	21	22	23	24	25	26	28	30	32	MC
1	10%	1420	1340	1215	1150	1038	993	926	849	785	735	710	692	670	607	559	444	376	325	414
2	20%	1500	1370	1250	1185	1093	1032	959	887	825	760	734	718	690	638	578	456	397	348	443
3	30%	1540	1400	1280	1220	1159	1104	1038	962	896	856	834	813	763	656	592	467	409	358	498
4	40%	1570	1420	1310	1265	1195	1149	1086	1000	944	920	902	879	817	684	607	474	424	379	546
5	50%	1600	1460	1345	1305	1237	1189	1128	1082	1023	978	939	905	831	708	628	484	433	395	592
6	60%	1650	1500	1390	1336	1275	1242	1175	1137	1093	1051	1014	970	878	767	685	522	455	410	630
7	70%	1700	1550	1440	1400	1347	1286	1222	1174	1144	1133	1119	1088	1020	882	780	619	568	489	705
8	80%	1810	1700	1550	1480	1407	1334	1286	1248	1214	1197	1178	1140	1060	907	810	648	604	545	754
9	90%	2100	1930	1730	1650	1564	1491	1437	1399	1333	1293	1248	1210	1096	939	841	674	634	569	808
10	100%	2800	2680	2530	2360	2193	1963	1776	1670	1588	1522	1461	1347	1213	1049	939	809	765	678	888
MPG		1510	1480	1470	1445	1371	1324	1247	1205	1186	1177	1167	1157	1100	962	870	809	765	678	888
10 Yr Percentile		24%	56%	74%	76%	73%	78%	74%	75%	77%	78%	78%	81%	91%	93%	94%	100%	100%	100%	100%

**Decile Tables are a useful tool for working out price targets.**

**Percentiles are a more accurate guide to where the market is currently trading (The higher the percentile, the stronger the market).**

**Definitions:**

\* A Percentile, is a value on a scale of one hundred that indicates the percent of a distribution that is equal to or below it. In general a percentile between 25% and 75% is considered normal, a percentile below 25% is considered below normal and a percentile above 75% is considered above normal.

Three and ten year percentiles shown on the bottom line of table 2 & 3 (above) and in table 1 (on page 1), detail the amount of time during the past 3 & 10 years where the market has traded either at or below its current price.

\* Deciles are a method of sorting ranked data into 10 equal groups. The data may be ranked from largest to smallest or vice versa.

The above Decile tables sort price Percentiles into 10 equal groups (in ascending order), with table 2 ranking the previous 3 years prices, while table 3 ranks prices over the previous 10 year

**Example:** In Table 2, a Decile Rank of 6 for 19 microns, shows 19 microns have traded at or below 1301 for 60% of the time, over the past three years.

In Table 3, a Decile Rank of 6 for 19 microns, shows 19 microns have traded at or below 1175 for 60% of the time, over the past ten years.



**Table 4: Riemann Forwards, latest trades as at: Last Date**

**Any highlighted in yellow are recent trades, trading since: Friday, 30 January 2015**

CONTRACT MICRON		18.5um	19um	19.5um	21um	22um	23um	28um	30um
CONTRACT MONTH	Feb-2015				27/11/14 <b>1170</b>			4/12/14 <b>710</b>	4/12/14 <b>670</b>
	Mar-2015							5/12/14 <b>720</b>	5/12/14 <b>680</b>
	Apr-2015		20/11/14 <b>1190</b>		7/11/14 <b>1160</b>			24/12/14 <b>720</b>	10/12/14 <b>665</b>
	May-2015				19/11/14 <b>1150</b>				10/12/14 <b>665</b>
	Jun-2015								10/12/14 <b>665</b>
	Jul-2015								
	Aug-2015				3/02/15 <b>1145</b>			3/02/15 <b>720</b>	
	Sep-2015				5/02/15 <b>1155</b>				
	Oct-2015				3/12/14 <b>1135</b>				
	Nov-2015				5/02/15 <b>1150</b>				
	Dec-2015				4/02/15 <b>1150</b>				
	Jan-2016				5/02/15 <b>1157</b>				
	Feb-2016								
	Mar-2016				8/12/14 <b>1140</b>				
	Apr-2016								
	May-2016								
	Jun-2016								
	Jul-2016								
	Aug-2016								
	Sep-2016								
	Oct-2016								
	Nov-2016								
	Dec-2016								

Explanatory Notes: Prices quoted reflect the most recent trades, at time of print.

Disclaimer: While all due care has been taken in the preparation of this document, no warranty is made as to its accuracy, reliability or completeness. To the extent permitted by law neither Jemalong or their sources including subsidiaries and staff, accept liability to any person for loss or damage arising from the use of this information.



**Table 5: National Market Share**

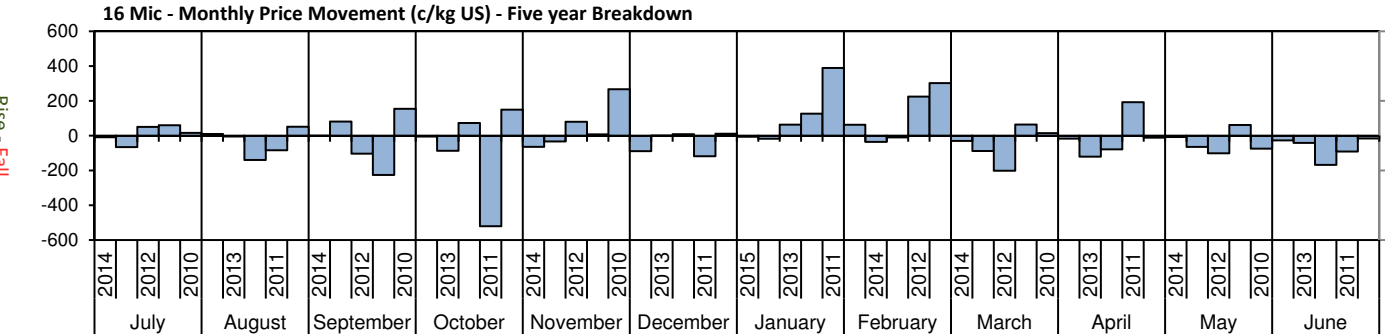
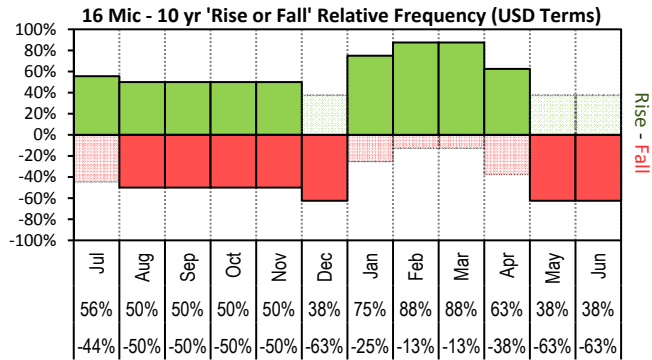
	Rank	Current Selling Week Week 32			Previous Selling Week Week 31			Last Season 2013-14			2 Years Ago 2012-13			3 Years Ago 2011-12			5 Years Ago 2009-10			10 Years Ago 2004-05		
		Buyer	Bales	MS%	Buyer	Bales	MS%	Buyer	Bales	MS%	Buyer	Bales	MS%	Buyer	Bales	MS%	Buyer	Bales	MS%	Buyer	Bales	MS%
Top 10, Auction Buyers	1	TECM	6,324	14%	TECM	6,089	17%	TECM	205,136	13%	TECM	179,176	10%	VTRA	229,207	14%	VTRA	187,529	11%	ITOS	197,278	9%
	2	FOXN	4,285	10%	FOXN	3,388	10%	FOXN	134,581	8%	VTRA	163,810	9%	TECM	153,616	9%	TECM	170,705	10%	BWEA	183,123	8%
	3	LEMM	3,433	8%	AMEM	2,612	7%	CTXS	122,964	8%	FOXN	143,826	8%	FOXN	136,698	8%	QCTB	124,619	7%	RWRS	158,390	7%
	4	AMEM	2,948	7%	KATS	2,207	6%	AMEM	111,263	7%	LEMM	126,564	7%	QCTB	112,745	7%	FOXN	120,964	7%	PLEX	126,856	6%
	5	KATS	2,475	6%	TIAM	2,038	6%	LEMM	109,224	7%	QCTB	98,756	6%	WIEM	100,817	6%	KATS	104,262	6%	MODM	112,956	5%
	6	PMWF	2,444	6%	LEMM	1,636	5%	TIAM	105,736	7%	PMWF	96,935	6%	LEMM	88,348	5%	LEMM	93,672	5%	TECM	109,505	5%
	7	MODM	2,345	5%	PMWF	1,591	5%	QCTB	88,700	5%	MODM	84,363	5%	MODM	74,646	4%	WIEM	93,529	5%	ADSS	101,474	4%
	8	TIAM	2,279	5%	CTXS	1,265	4%	MODM	79,977	5%	CTXS	82,166	5%	CTXS	69,266	4%	RWRS	88,732	5%	PMWF	97,867	4%
	9	CTXS	2,123	5%	ZLIM	1,177	3%	PMWF	77,875	5%	AMEM	77,849	4%	PMWF	64,659	4%	PMWF	85,981	5%	GSAS	97,754	4%
	10	GSAS	1,258	3%	DAWS	1,130	3%	GSAS	54,462	3%	KATS	65,782	4%	GSAS	58,233	3%	MODM	65,991	4%	FOXN	97,298	4%
MFLC TOP 5	1	TECM	3,691	15%	TECM	2,801	16%	TECM	106,291	12%	VTRA	118,432	12%	VTRA	171,425	19%	VTRA	161,860	16%	ITOS	165,880	12%
	2	LEMM	2,511	10%	FOXN	1,769	10%	CTXS	87,889	10%	LEMM	110,118	11%	QCTB	86,901	10%	QCTB	108,716	11%	BWEA	123,477	9%
	3	PMWF	2,206	9%	PMWF	1,306	7%	LEMM	82,374	9%	PMWF	93,136	10%	TECM	76,083	8%	PMWF	79,407	8%	RWRS	92,731	7%
	4	FOXN	2,096	9%	TIAM	1,249	7%	FOXN	80,423	9%	TECM	89,286	9%	LEMM	68,961	8%	LEMM	72,585	7%	PMWF	91,549	7%
	5	CTXS	1,885	8%	ZLIM	1,143	7%	PMWF	69,890	8%	QCTB	71,715	7%	PMWF	60,070	7%	TECM	72,153	7%	ADSS	81,634	6%
MSKT TOP 5	1	AMEM	1,078	19%	AMEM	965	21%	TIAM	47,607	19%	MODM	37,284	14%	WIEM	43,156	16%	WIEM	38,838	14%	PLEX	59,898	16%
	2	TECM	812	14%	TIAM	747	16%	TECM	31,474	12%	TECM	34,301	13%	MODM	30,285	11%	MODM	35,564	12%	MODM	48,703	13%
	3	TIAM	759	13%	TECM	715	15%	AMEM	29,775	12%	WIEM	27,916	10%	TECM	25,264	9%	TECM	27,266	10%	GSAS	44,078	12%
	4	MODM	667	12%	MODM	406	9%	MODM	23,791	9%	TIAM	24,196	9%	PLEX	21,990	8%	WCWF	16,963	6%	BWEA	34,546	9%
	5	LEMM	368	6%	WCWF	210	5%	GSAS	13,843	5%	AMEM	23,012	8%	GSAS	16,284	6%	RWRS	16,541	6%	RWRS	29,257	8%
XB TOP 5	1	KATS	2,284	28%	KATS	1,873	24%	TECM	40,364	15%	FOXN	39,356	14%	FOXN	41,689	15%	TECM	46,985	20%	FOXN	39,839	19%
	2	FOXN	1,210	15%	TECM	1,833	24%	CTXS	34,779	13%	TECM	30,323	11%	VTRA	31,427	12%	FOXN	46,090	20%	TECM	21,724	10%
	3	TECM	1,056	13%	FOXN	1,086	14%	FOXN	24,218	9%	VTRA	27,832	10%	TECM	31,094	11%	MODM	13,021	6%	BWEA	19,820	9%
	4	MODM	661	8%	AMEM	369	5%	MODM	21,512	8%	KATS	26,057	9%	QCTB	22,610	8%	QCTB	12,973	6%	MOPS	15,511	7%
	5	UWCM	370	5%	MAFM	261	3%	AMEM	20,336	7%	CTXS	25,631	9%	CTXS	19,985	7%	MOPS	12,341	5%	MODM	15,479	7%
ODDS TOP 5	1	MCHA	836	14%	TECM	740	15%	MCHA	36,085	17%	MCHA	35,985	16%	FOXN	34,603	15%	MCHA	30,629	14%	MCHA	48,293	18%
	2	TECM	765	13%	MCHA	555	11%	TECM	27,007	13%	FOXN	28,185	12%	MCHA	30,689	13%	RWRS	24,675	11%	FOXN	34,078	12%
	3	FOXN	691	12%	FOXN	395	8%	VWPM	22,432	11%	TECM	25,266	11%	VWPM	22,219	10%	TECM	24,301	11%	RWRS	27,833	10%
	4	VWPM	443	8%	VWPM	394	8%	FOXN	18,811	9%	VWPM	20,692	9%	VTRA	21,495	9%	VWPM	19,198	9%	MAFM	22,270	8%
	5	SNWF	432	7%	SNWF	354	7%	RWRS	13,524	6%	VTRA	13,022	6%	TECM	21,175	9%	FOXN	18,736	8%	DAWS	16,861	6%
Auction Totals		<u>Offered</u>	<u>Sold</u>		<u>Offered</u>	<u>Sold</u>		<u>Bales Sold</u>	<u>\$/Bale</u>		<u>Bales Sold</u>	<u>\$/Bale</u>		<u>Bales Sold</u>	<u>\$/Bale</u>		<u>Bales Sold</u>	<u>\$/Bale</u>		<u>Bales Sold</u>	<u>\$/Bale</u>	
		45,398	43,680		37,415	34,921		1,625,115	\$1,509		1,742,881	\$1,418		1,683,024	\$1,599		1,735,172	\$1,159		2,264,258	\$1,098	
		<u>Passed-In</u>	<u>PI%</u>		<u>Passed-In</u>	<u>PI%</u>		<u>Export Value</u>			<u>Export Value</u>			<u>Export Value</u>			<u>Export Value</u>			<u>Export Value</u>		
		1,718	3.8%		2,494	6.7%		\$2,453,067,610			\$2,470,844,153			\$2,691,010,531			\$2,011,128,450			\$2,487,197,893		



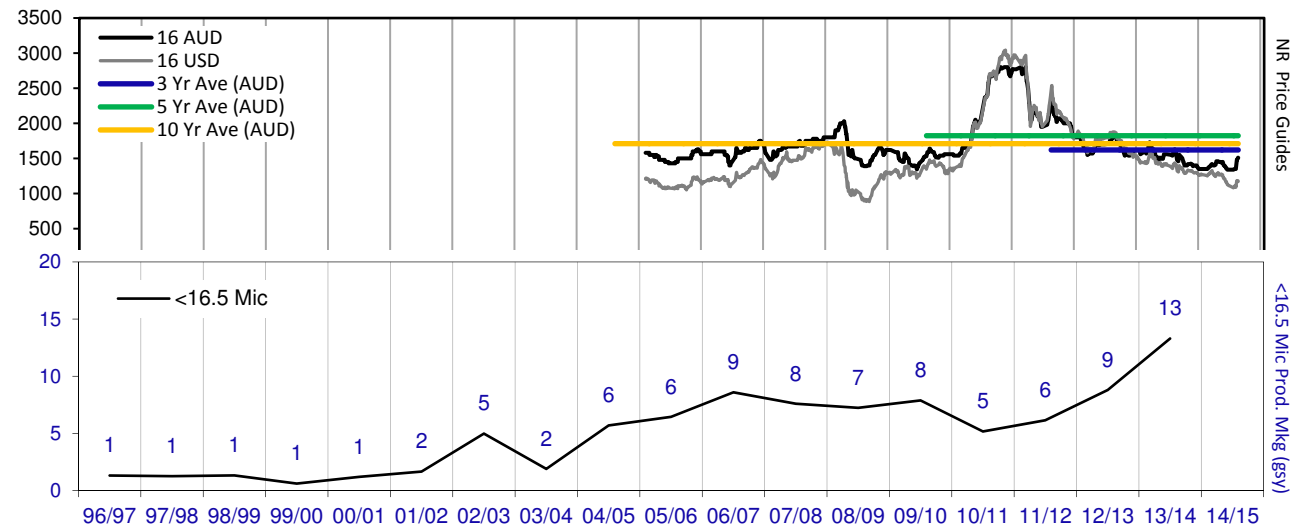
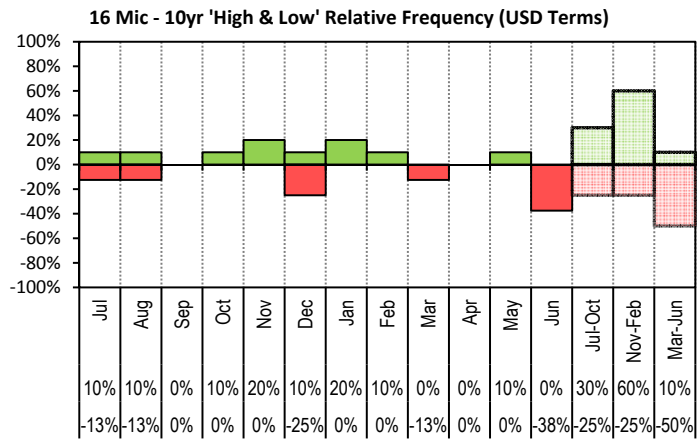
**Table 6: NSW Production Statistics**

MAX		MIN	MAX GAIN	MAX REDUCTION													
2013-14																	
Statistical Devision, Area Code & Towns					Auction Bales (FH)	Micron	+/- YoY	Vmb %	+/- YoY	Yield % Sch Dry	+/- YoY	Length mm	+/- YoY	Strength Nkt	+/- YoY	Ave Price c/kg	
Northern	N02	Tenterfield, Glen Innes			9,043	19.3	-0.2	2.0	0.2	71.6	-1.1	80	-0.2	40	-1.1	814	
	N03	Guyra			35,036	18.5	-0.4	1.8	0.0	72.1	-1.7	81	-0.5	40	-2.4	907	
	N04	Inverell			3,636	18.1	-1.0	3.3	-0.1	69.5	-0.1	82	-0.5	37	-1.3	783	
	N05	Armidale			2,056	19.8	0.0	4.2	0.3	67.3	-2.0	85	2.4	35	-2.7	696	
	N06	Tamworth, Gunnedah, Quirindi			6,082	20.4	-0.1	3.4	-0.6	67.2	-1.3	84	0.0	36	-1.6	711	
	N07	Moree			5,368	19.5	-0.5	3.2	-1.0	63.7	-0.8	86	-1.9	36	-0.2	643	
	N08	Narrabri			3,130	19.2	-0.7	2.5	-1.1	66.0	-1.4	86	-1.9	36	-3.1	680	
North Western & Far West	N09	Cobar, Bourke, Wanaaring			1,040	19.7	-0.8	3.8	-0.5	60.0	-0.7	85	-2.8	36	-0.6	628	
	N12	Walgett			7,303	19.6	-0.3	3.1	-1.1	62.5	-1.6	84	-2.3	36	-1.3	654	
	N13	Nyngan			18,168	20.3	-0.2	5.1	0.1	61.7	-2.0	88	0.3	37	-0.1	612	
	N14	Dubbo, Narromine			22,210	21.2	-0.4	3.7	-0.6	62.0	-1.1	86	0.5	35	-1.2	574	
	N16	Dunedoo			6,111	19.6	-0.4	2.5	-0.9	67.0	-0.8	88	0.5	35	0.3	683	
	N17	Mudgee, Wellington, Gulgong			21,223	19.6	-0.1	2.2	-1.2	68.3	0.0	84	0.8	38	-0.3	747	
	N33	Coonabarabran			3,028	20.4	-0.4	3.6	-1.0	65.8	-1.1	85	0.5	35	0.6	634	
	N34	Coonamble			6,854	20.1	-0.3	3.8	-0.6	61.2	-2.2	85	-1.5	36	0.8	633	
	N36	Gilgandra, Gulargambone			6,306	21.2	-0.4	3.6	-0.3	63.0	-2.0	86	-0.5	35	-0.4	601	
	N40	Brewarrina			4,294	19.3	-0.8	2.0	-0.3	65.4	-1.2	81	-5.0	39	0.3	711	
Central West	N10	Wilcannia, Broken Hill			22,079	20.6	-0.7	2.3	-0.5	59.7	-1.4	87	-2.3	36	-1.7	626	
	N15	Forbes, Parkes, Cowra			50,604	21.7	0.1	2.7	-0.6	63.6	-0.4	88	1.4	35	-1.8	592	
	N18	Lithgow, Oberon			2,900	20.6	-0.1	1.8	-1.5	69.2	1.2	83	0.1	38	0.1	717	
	N19	Orange, Bathurst			51,340	22.0	-0.1	1.4	-0.8	68.9	-0.5	85	0.8	37	-1.3	670	
	N25	West Wyalong			24,469	20.6	-0.4	2.6	-0.3	62.2	-1.2	88	-0.7	35	-1.3	622	
	N35	Condobolin, Lake Cargelligo			10,158	20.6	-0.4	4.5	-0.9	60.5	0.4	86	-0.8	36	-0.3	590	
	N26	Cootamundra, Temora			25,927	21.7	-0.4	1.9	-0.3	63.1	-1.0	86	0.3	34	-0.7	585	
	N27	Adelong, Gundagai			10,395	21.4	-0.3	1.6	-1.1	67.6	-0.5	88	0.2	34	-1.7	640	
	N29	Wagga, Narrandera			32,025	21.9	-0.8	1.6	0.0	64.4	-1.8	88	-2.1	3	-33.2	603	
	N37	Griffith, Hillston			11,341	21.4	-0.6	4.1	0.1	61.2	0.0	85	0.9	38	-2.8	604	
	N39	Hay, Coleambally			16,531	20.4	-0.9	3.5	0.0	62.3	-1.7	88	-2.6	36	-3.4	652	
Murray	N11	Wentworth, Balranald			15,035	20.7	-1.0	4.0	-0.8	60.1	-0.8	89	-2.4	35	-2.1	626	
	N28	Albury, Corowa, Holbrook			27,382	21.5	-0.4	1.4	-0.1	66.1	-0.9	87	-2.3	34	-3.5	634	
	N31	Deniliquin			19,849	20.7	-0.6	2.4	-0.1	64.7	-1.0	84	-3.8	33	-6.4	658	
	N38	Finley, Berrigan, Jerilderie			8,648	20.4	-0.5	2.6	0.1	63.8	-1.3	85	-3.0	35	-3.9	644	
South Eastern	N23	Goulburn, Young, Yass			86,997	19.7	-0.5	1.3	-0.4	68.4	-1.0	85	-1.1	36	-1.8	738	
	N24	Monaro (Cooma, Bombala)			34,714	19.8	-0.4	1.5	-0.4	69.6	0.1	89	-0.6	36	-0.7	698	
	N32	A.C.T.			174	20.1	-0.3	3.9	0.8	59.2	-2.6	88	-1.4	31	0.1	568	
	N43	South Coast (Bega)			418	18.9	-0.2	0.8	0.0	73.0	-1.3	87	2.5	39	-3.6	840	
NSW	AWEX Sale Statistics 13-14				648,006	20.6	-0.4	2.3	-0.4	65.5	-0.9	86	-0.8	36	-1.8	677	
AWTA Mthly Key Test Data					Bales Tested	+/- YoY	Micron	+/- YoY	VMB	+/- YoY	Yld	+/- YoY	Lth	+/- YoY	Nkt	+/- YoY	POBM +/-
AUSTRALIA	Current	January	151,294	-15,647	21.9	0.3	1.8	0.1	65.9	-0.7	86	0.3	34	2.4	47	1.5	
	Season	Y.T.D	1,217,143	-14,558	21.1	0.2	1.7	0.0	65.9	0.1	89	1.0	34	1.0	53	3.0	
	Previous	2013-14	1,231,701	-36935.0	20.9	-0.4	1.7	-0.4	65.8	-0.4	88	80.0	33	-2.0	50	2.0	
	Seasons	2012-13	1,268,636	50658.0	21.3	-0.2	2.1	-0.3	66.2	0.0	8	-80.0	35	1.0	48	2.0	
	Y.T.D.	2011-12	1,217,978	-3,420	21.5	0.1	2.4	0.4	66.2	1.0	88	-0.9	34	1.6	50	-1.5	

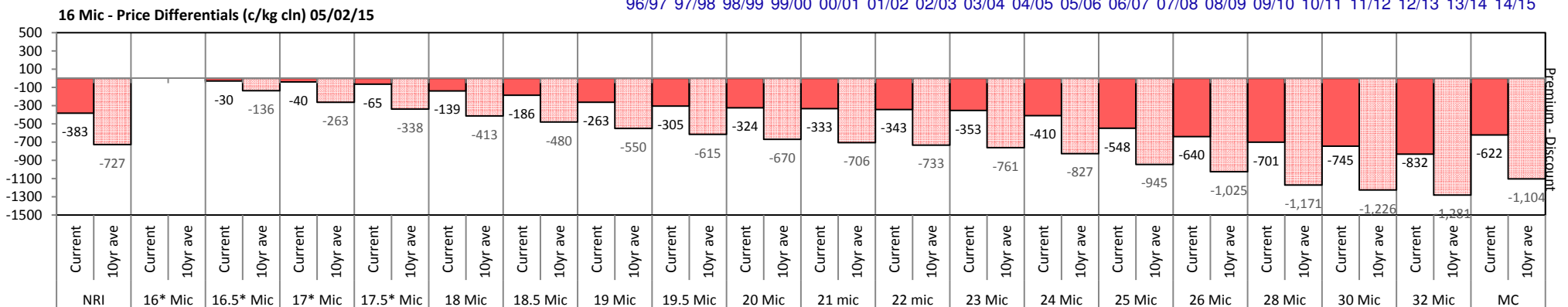


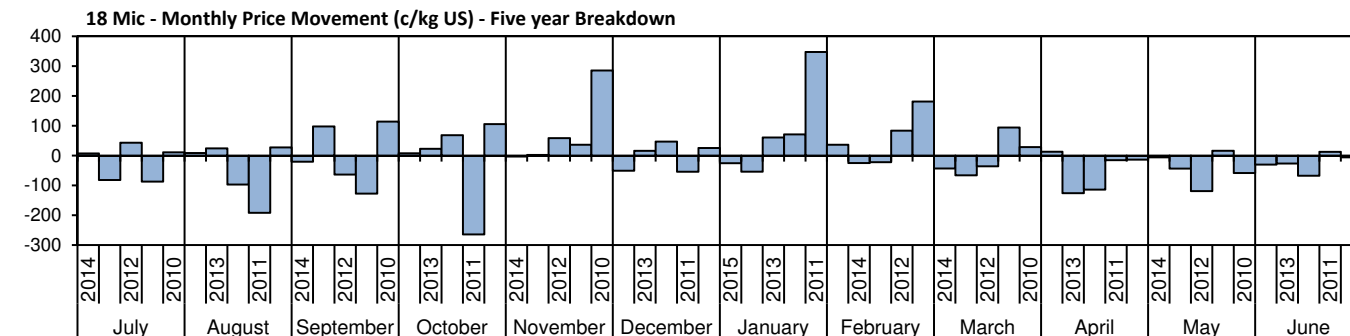
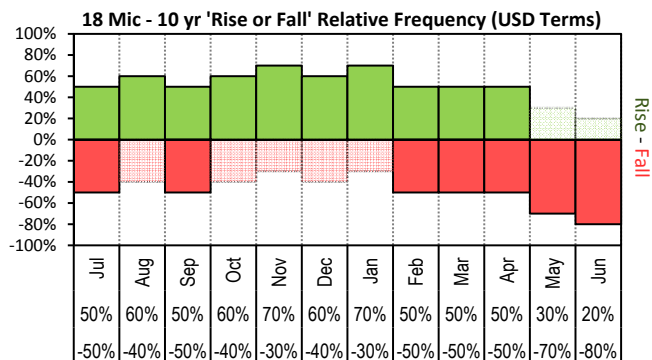


The above 'Rise or Fall' graph, shows how often the market has risen or fallen in a given month over the past 10 years, it does not show the extent of the movement only the frequency of direction. The 'Monthly Price Movement' graph shows the extent of movement for each month, for the past 5 years.

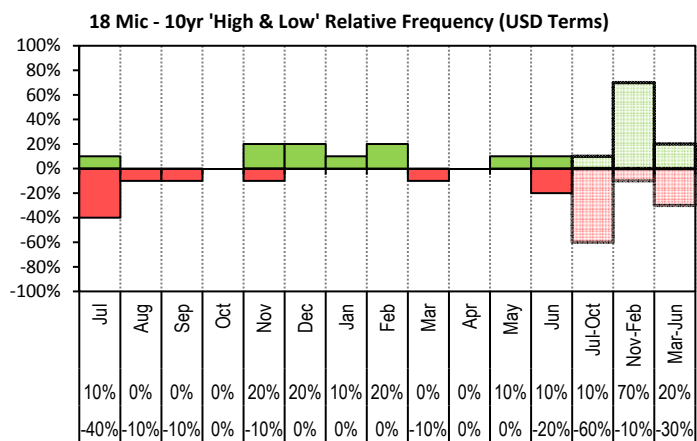


The above graph, shows how often the '12 month high & low' have been achieved for a given month over the past 10 years. It is not a measure of probability.

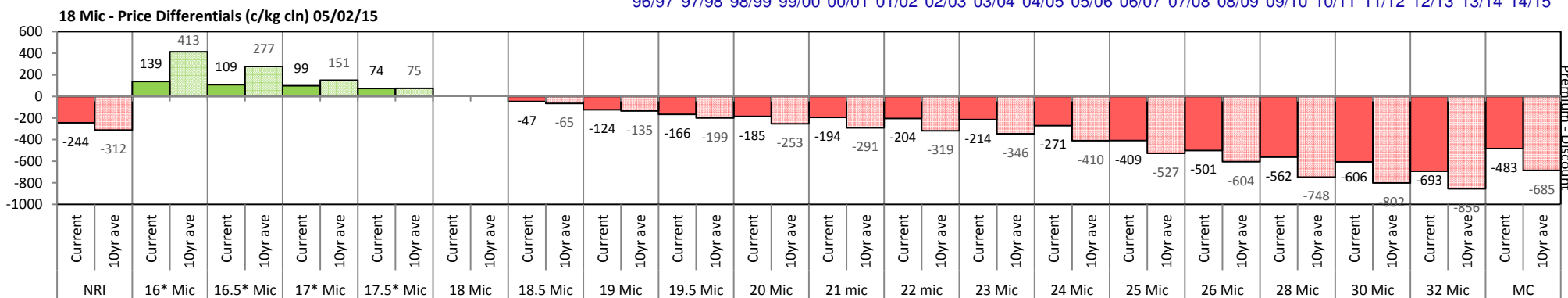
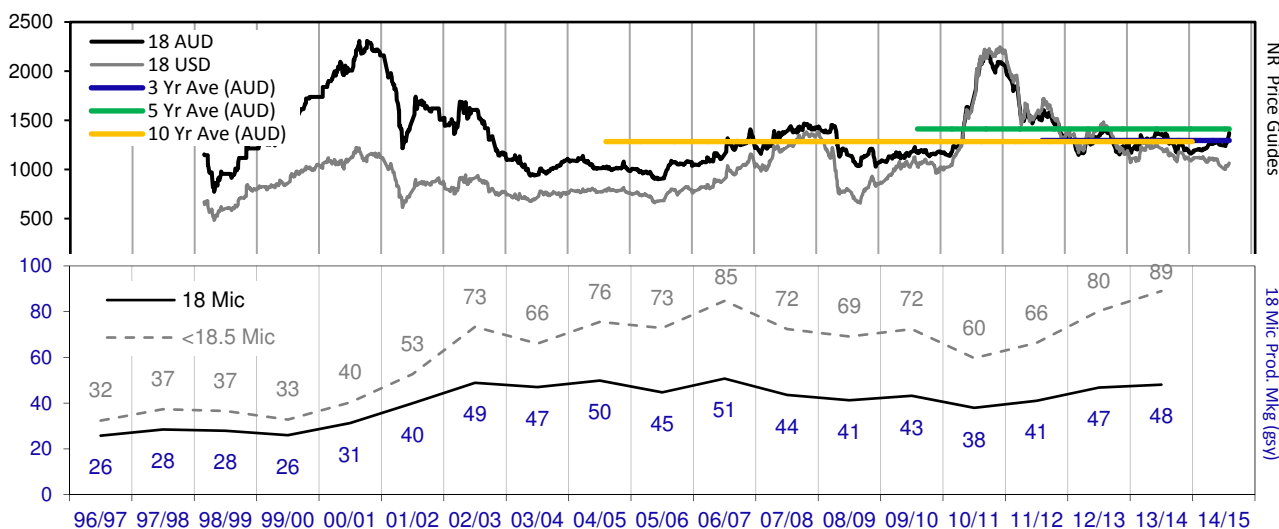




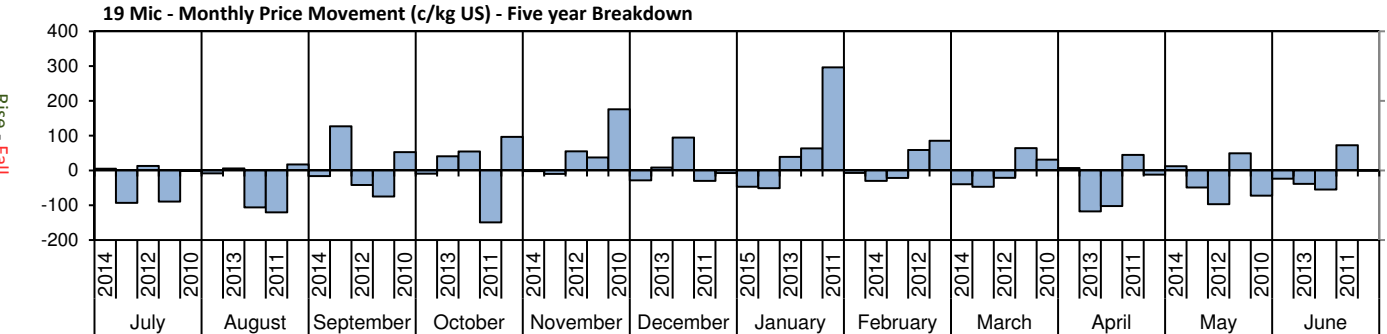
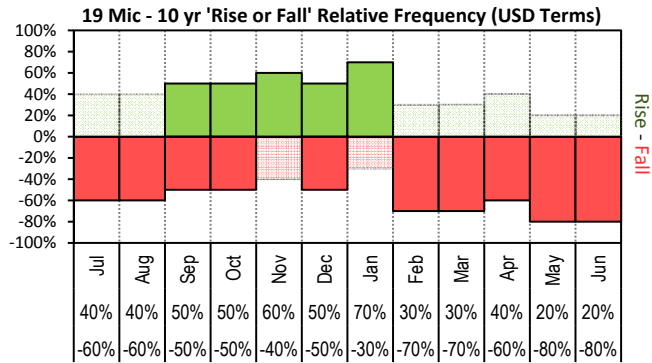
The above 'Rise or Fall' graph, shows how often the market has risen or fallen in a given month over the past 10 years, it does not show the extent of the movement only the frequency of direction. The 'Monthly Price Movement' graph shows the extent of movement for each month, for the past 5 years.



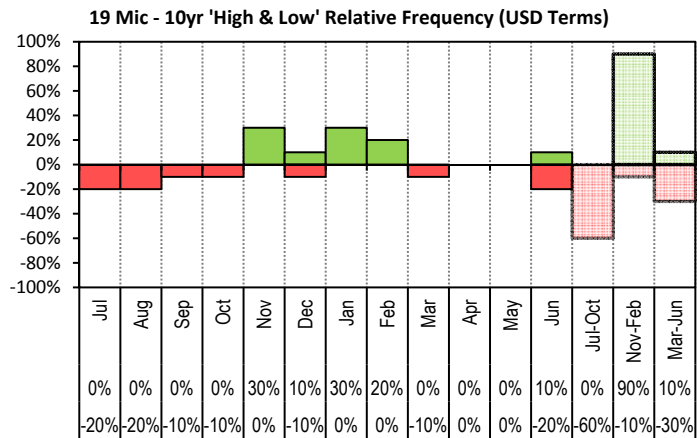
The above graph, shows how often the '12 month high & low' have been achieved for a given month over the past 10 years. It is not a measure of probability.



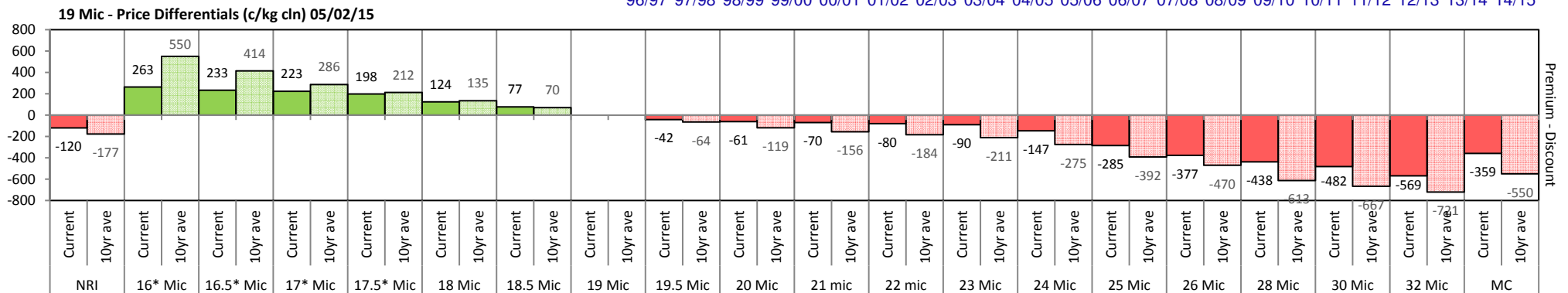
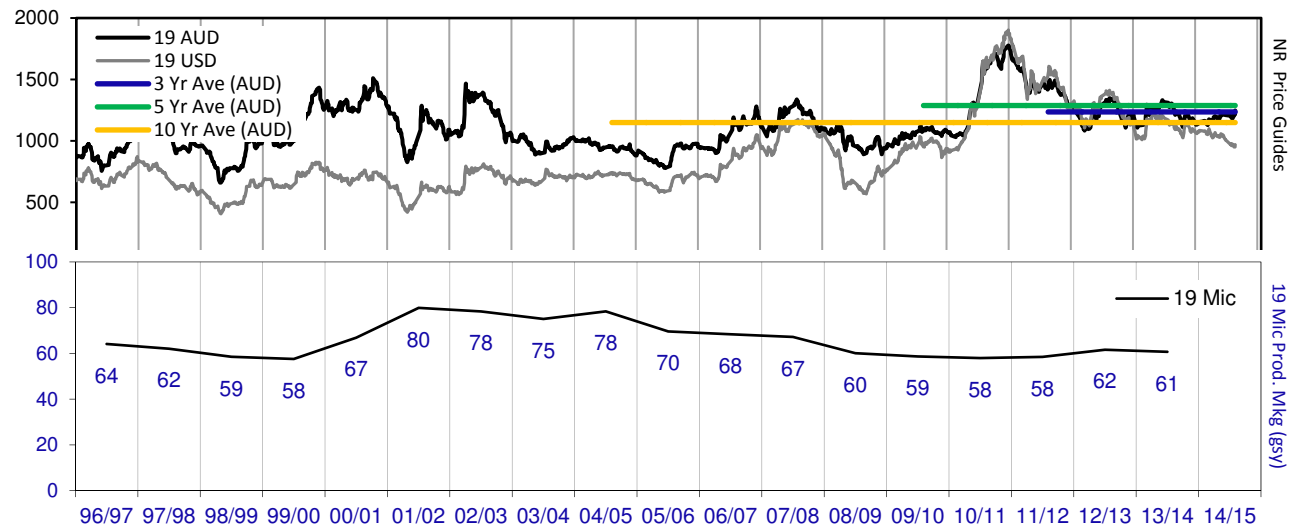


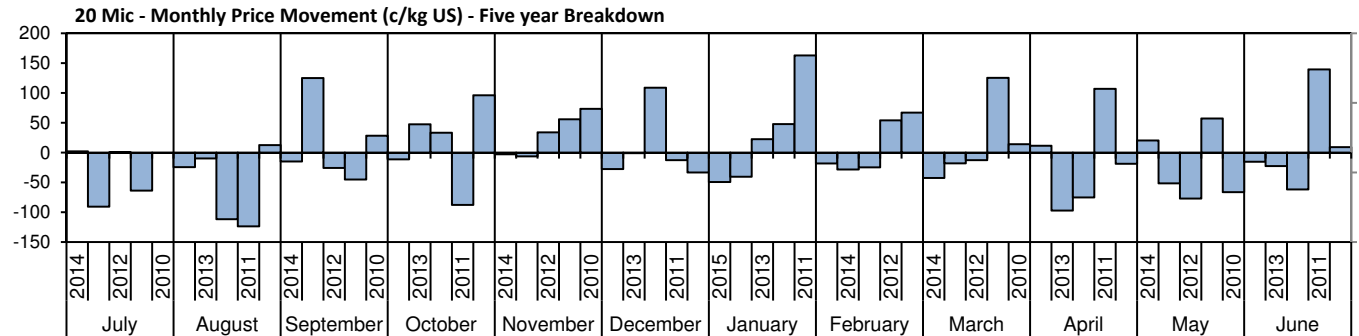
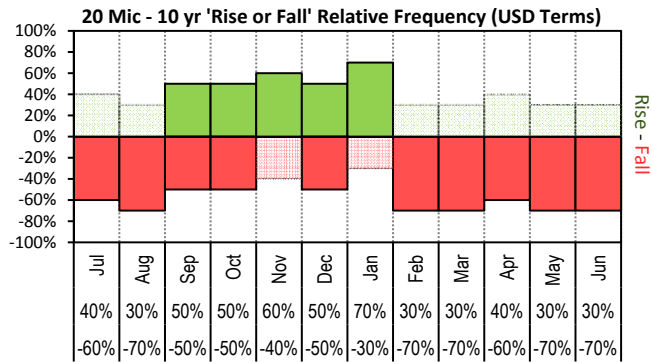


The above 'Rise or Fall' graph, shows how often the market has risen or fallen in a given month over the past 10 years, it does not show the extent of the movement only the frequency of direction. The 'Monthly Price Movement' graph shows the extent of movement for each month, for the past 5 years.

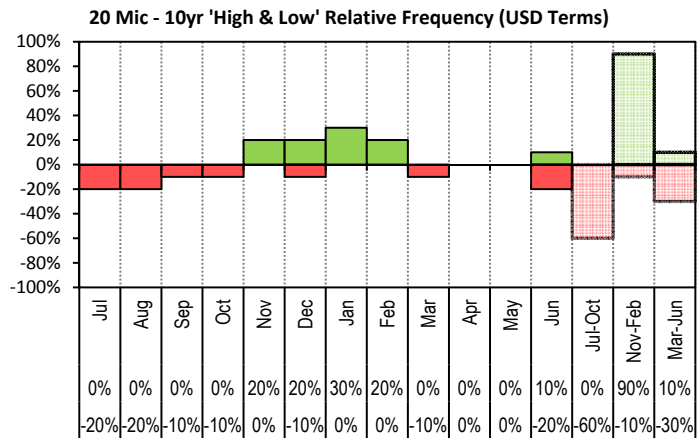


The above graph, shows how often the '12 month high & low' have been achieved for a given month over the past 10 years. It is not a measure of probability.

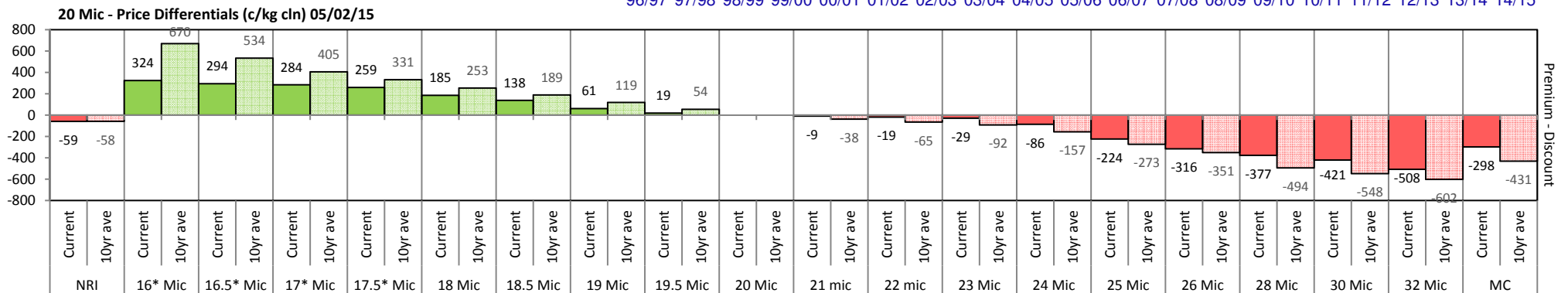
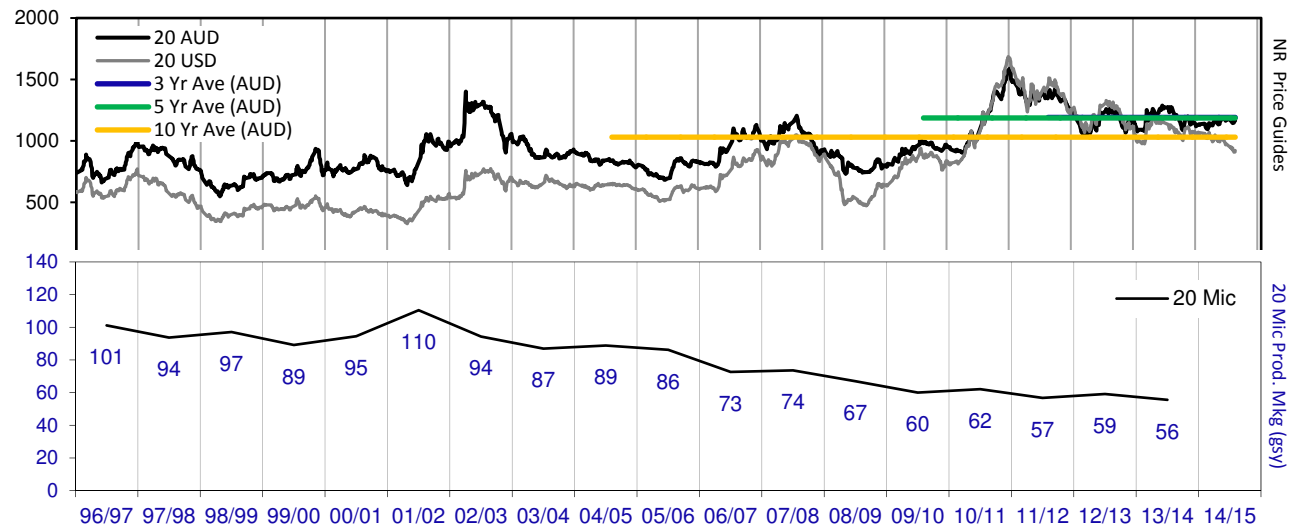


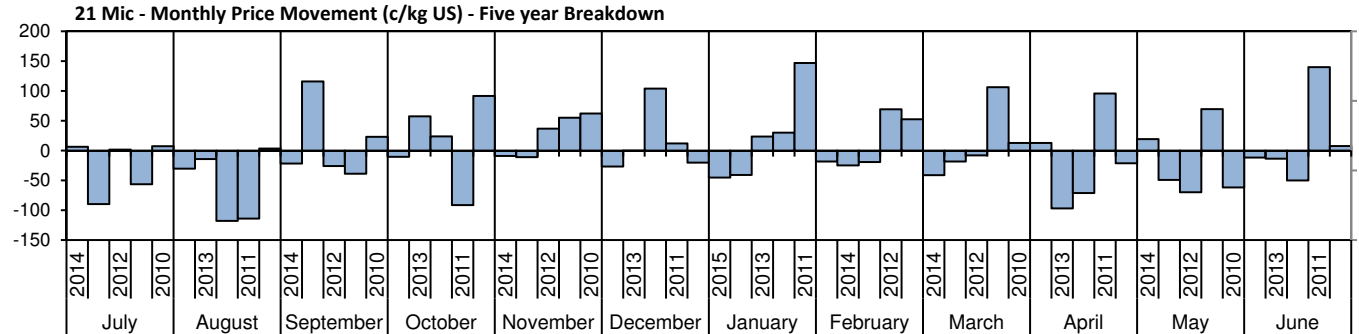
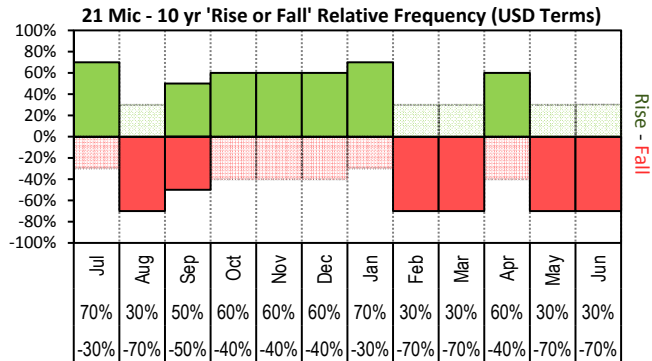


The above 'Rise or Fall' graph, shows how often the market has risen or fallen in a given month over the past 10 years, it does not show the extent of the movement only the frequency of direction. The 'Monthly Price Movement' graph shows the extent of movement for each month, for the past 5 years.

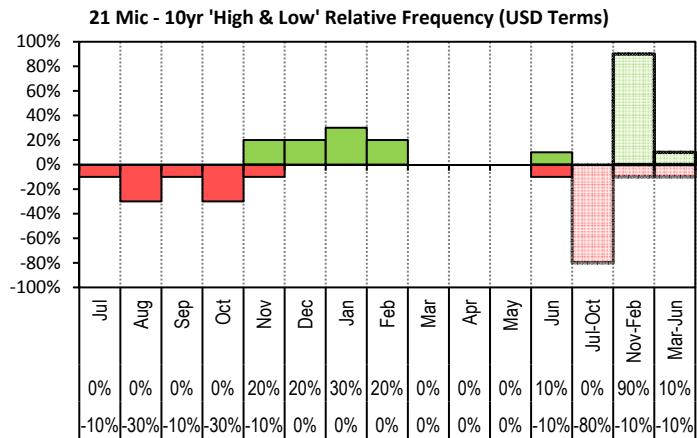


The above graph, shows how often the '12 month high & low' have been achieved for a given month over the past 10 years. It is not a measure of probability.

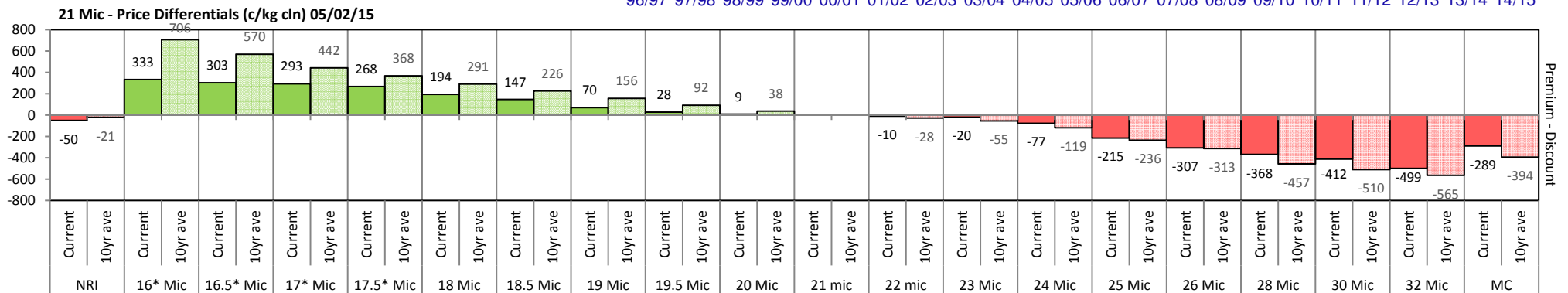
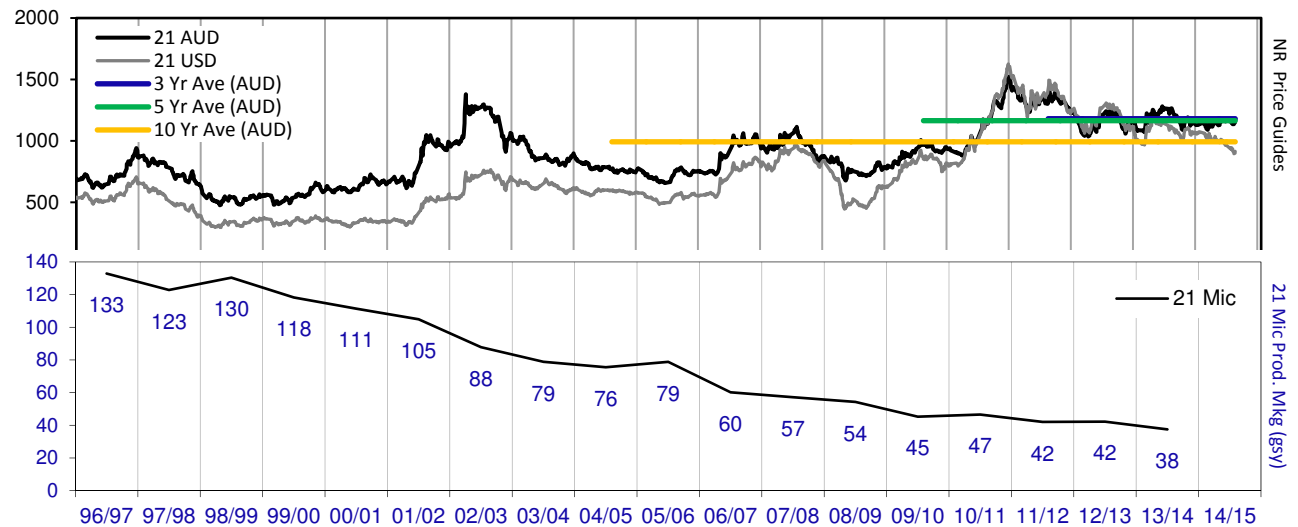


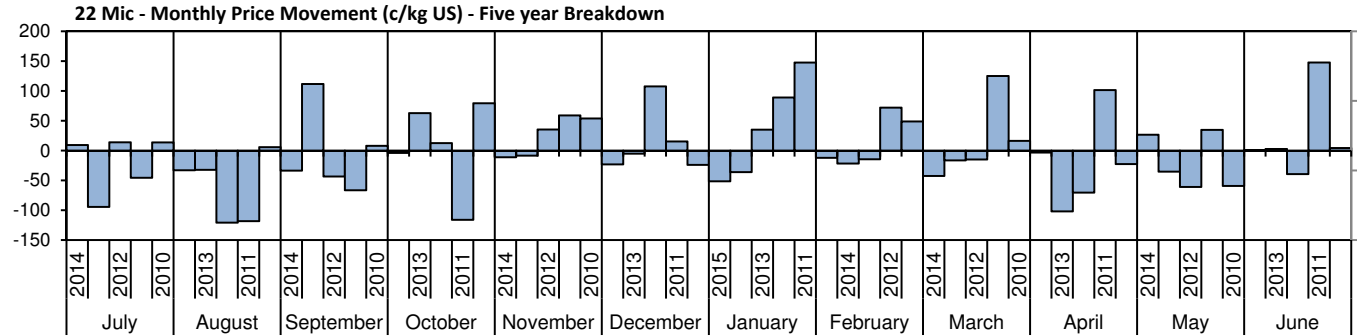
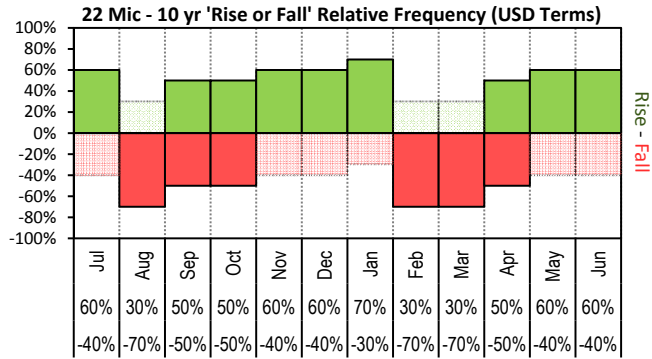


The above 'Rise or Fall' graph, shows how often the market has risen or fallen in a given month over the past 10 years, it does not show the extent of the movement only the frequency of direction. The 'Monthly Price Movement' graph shows the extent of movement for each month, for the past 5 years.

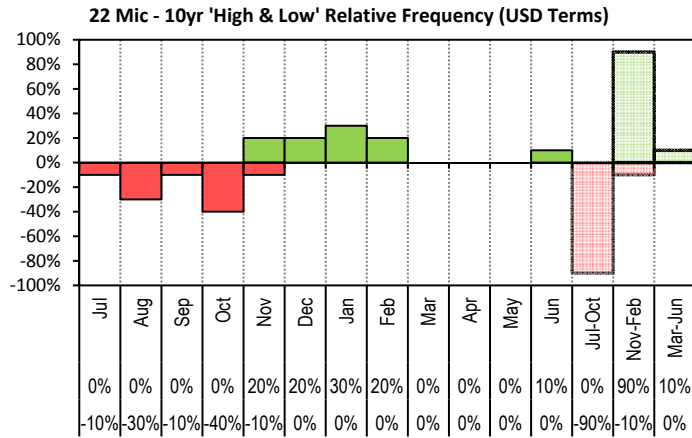


The above graph, shows how often the '12 month high & low' have been achieved for a given month over the past 10 years. It is not a measure of probability.

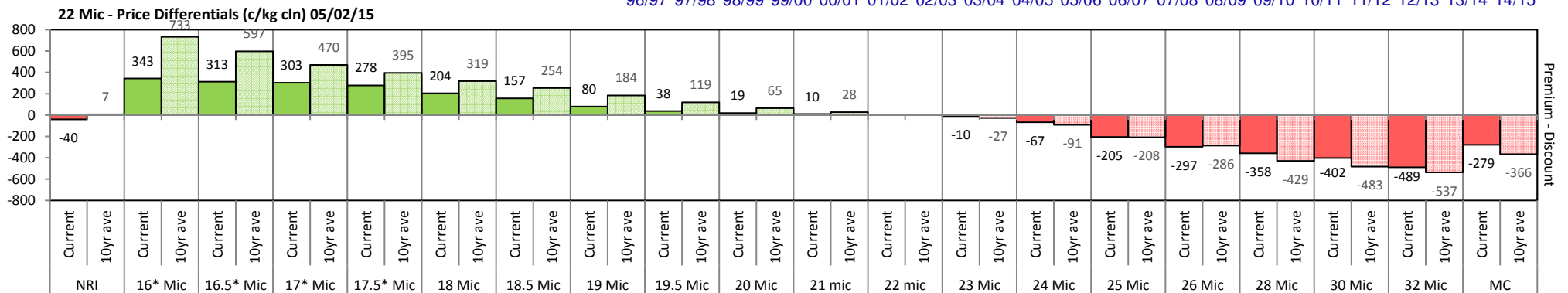
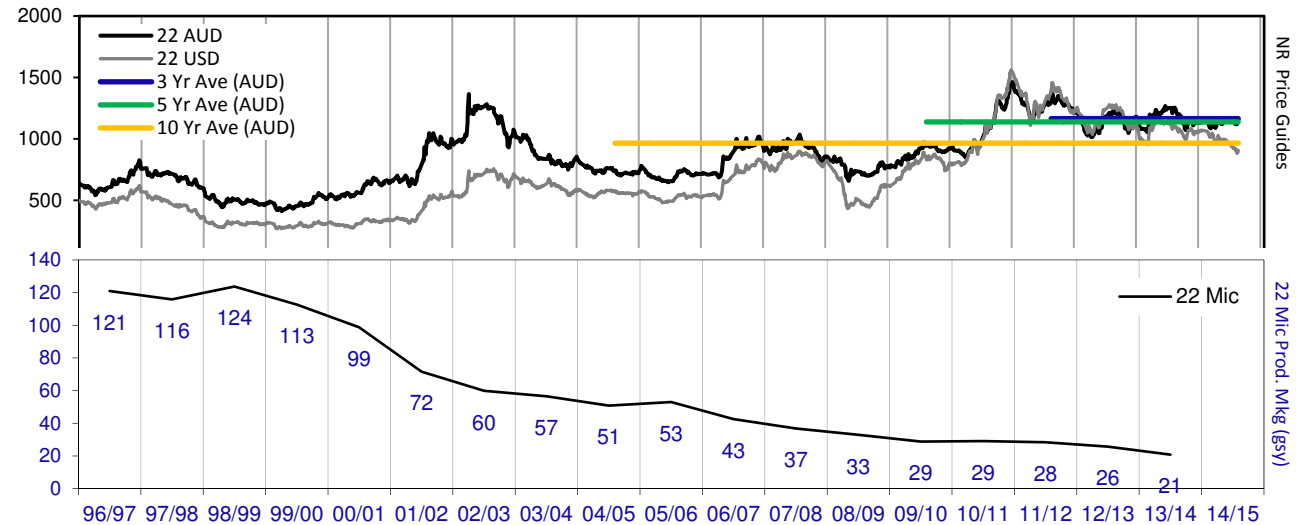


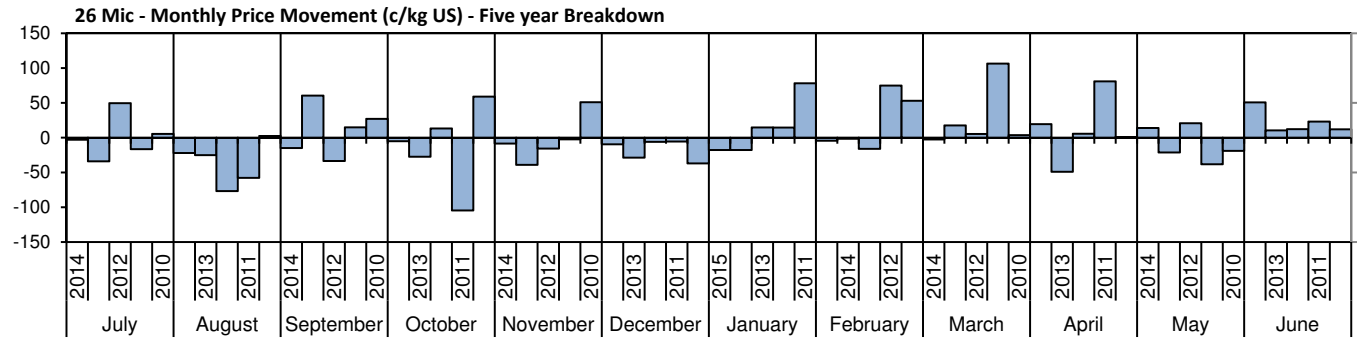
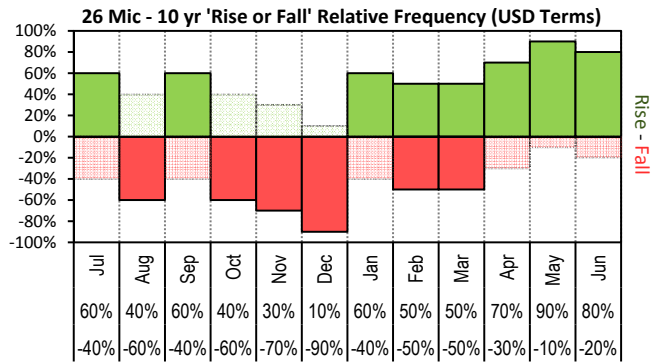


The above 'Rise or Fall' graph, shows how often the market has risen or fallen in a given month over the past 10 years, it does not show the extent of the movement only the frequency of direction. The 'Monthly Price Movement' graph shows the extent of movement for each month, for the past 5 years.

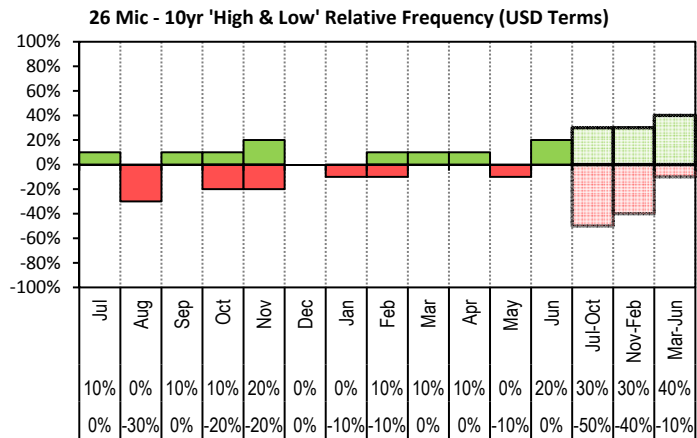


The above graph, shows how often the '12 month high & low' have been achieved for a given month over the past 10 years. It is not a measure of probability.

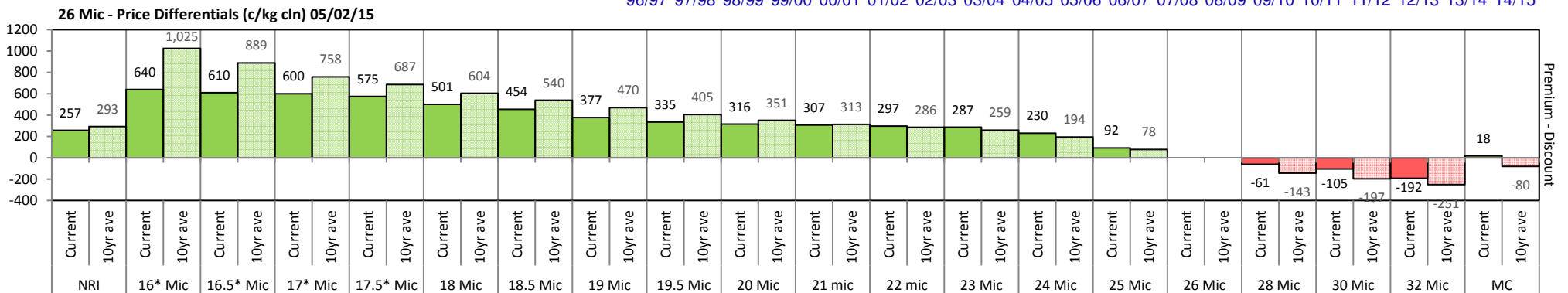
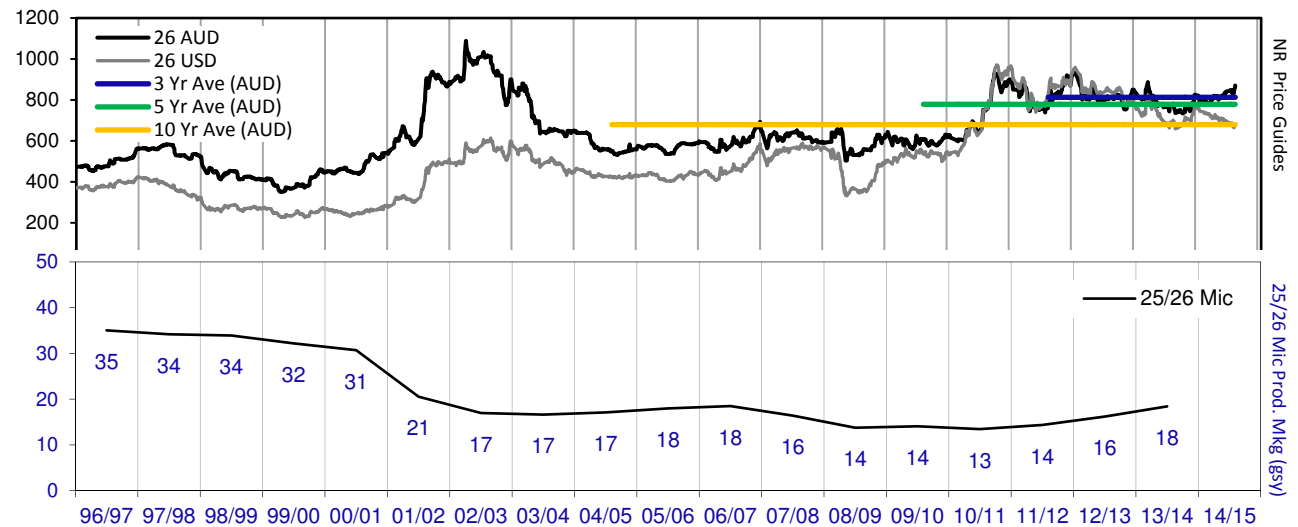


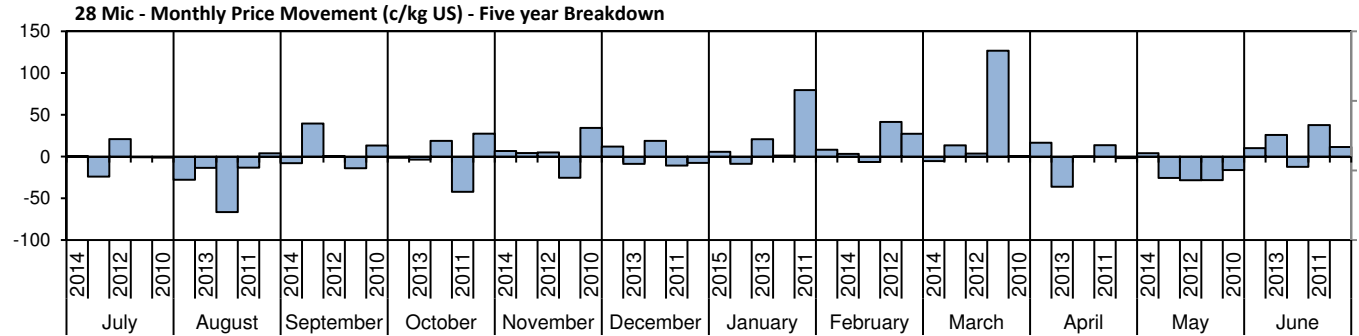
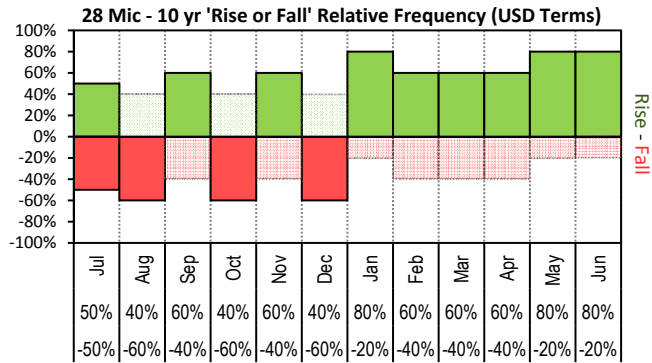


The above 'Rise or Fall' graph, shows how often the market has risen or fallen in a given month over the past 10 years, it does not show the extent of the movement only the frequency of direction. The 'Monthly Price Movement' graph shows the extent of movement for each month, for the past 5 years.

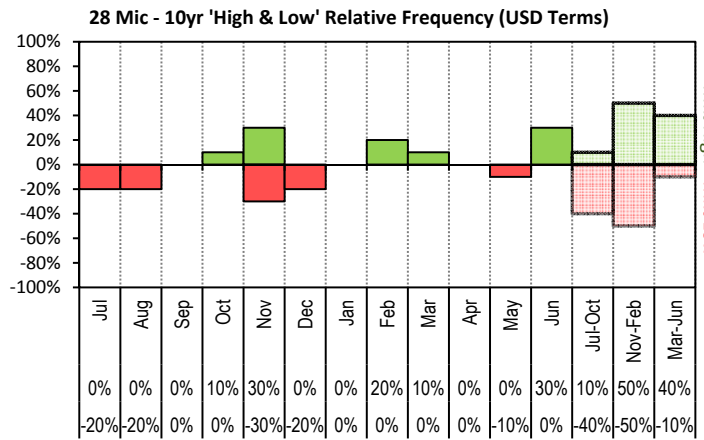


The above graph, shows how often the '12 month high & low' have been achieved for a given month over the past 10 years. It is not a measure of probability.

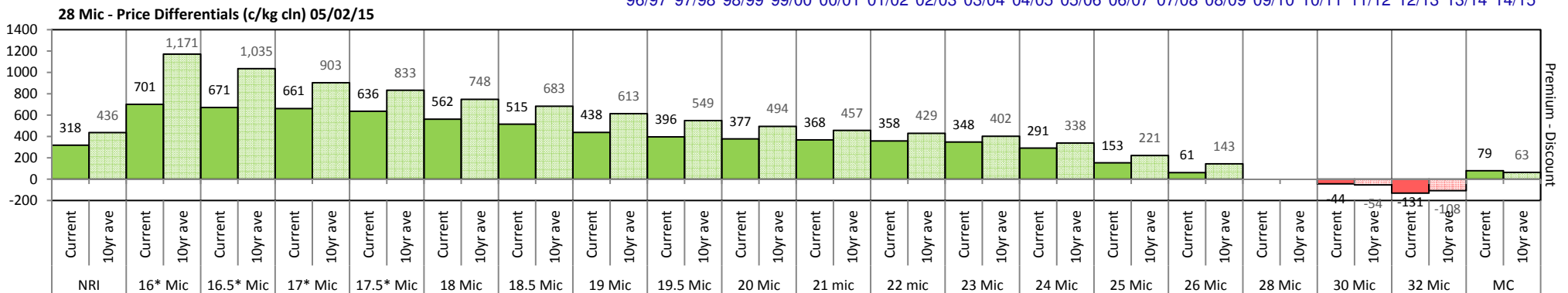
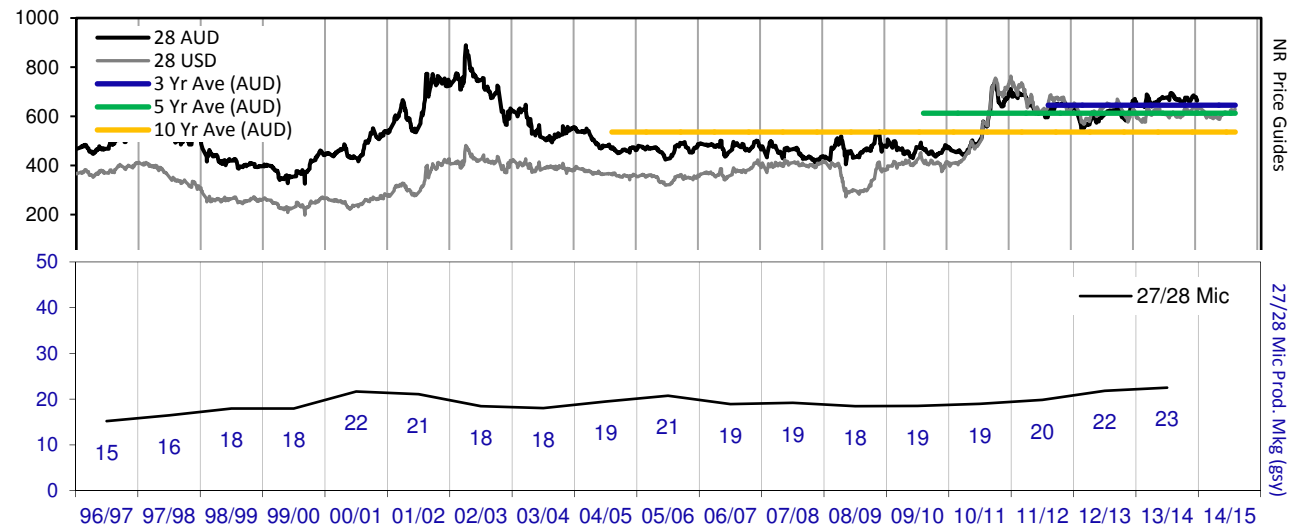




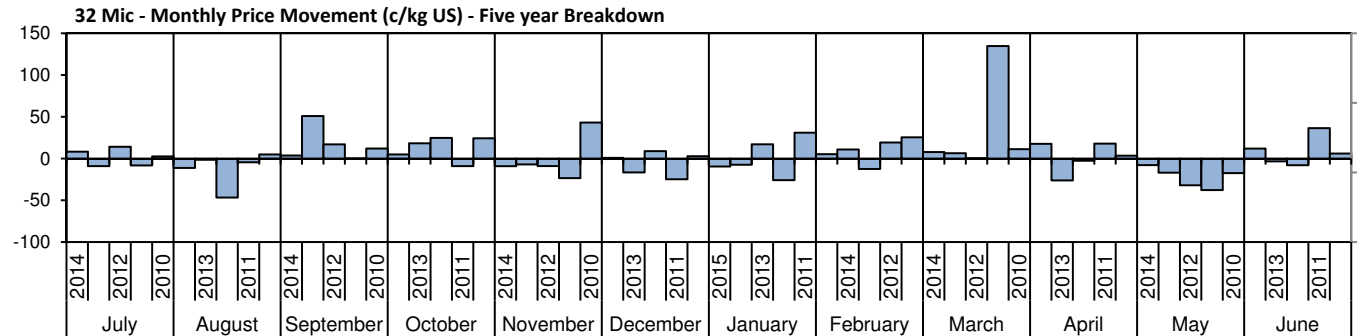
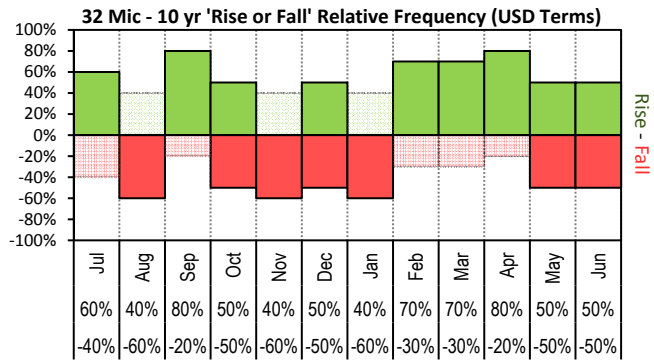
The above 'Rise or Fall' graph, shows how often the market has risen or fallen in a given month over the past 10 years, it does not show the extent of the movement only the frequency of direction. The 'Monthly Price Movement' graph shows the extent of movement for each month, for the past 5 years.



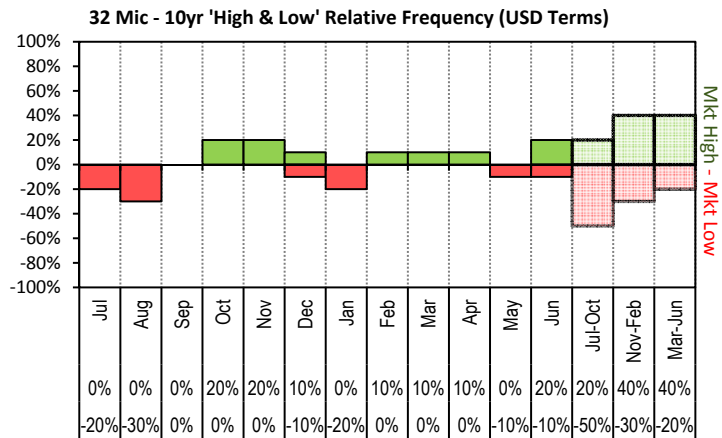
The above graph, shows how often the '12 month high & low' have been achieved for a given month over the past 10 years. It is not a measure of probability.



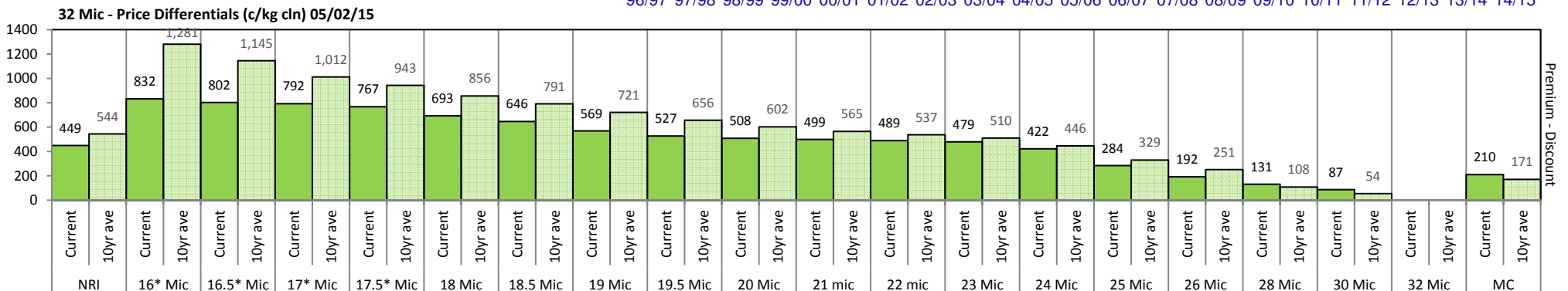
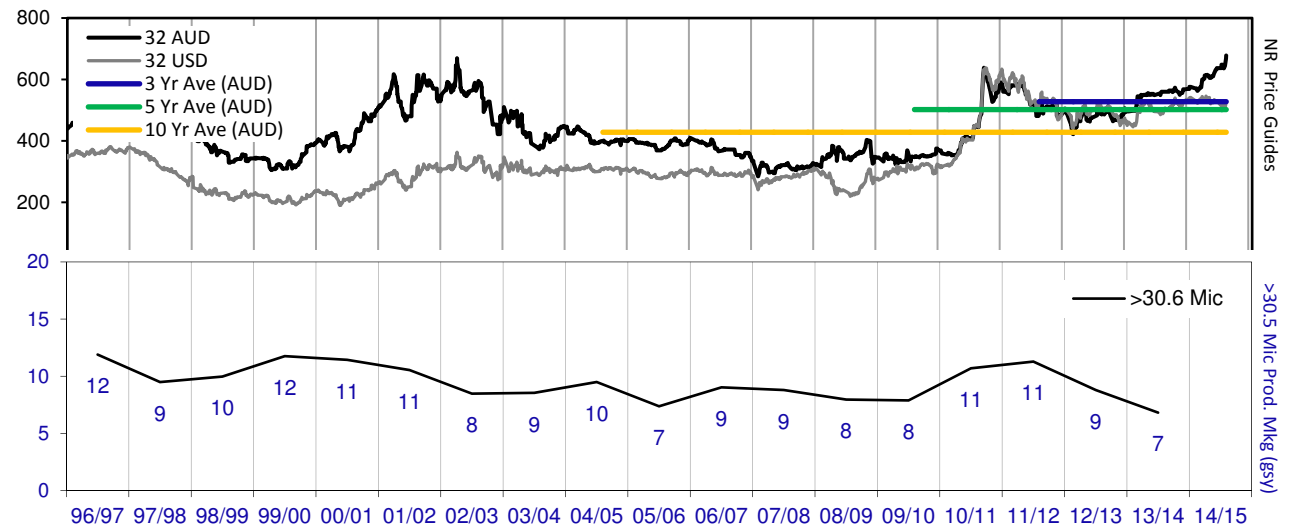


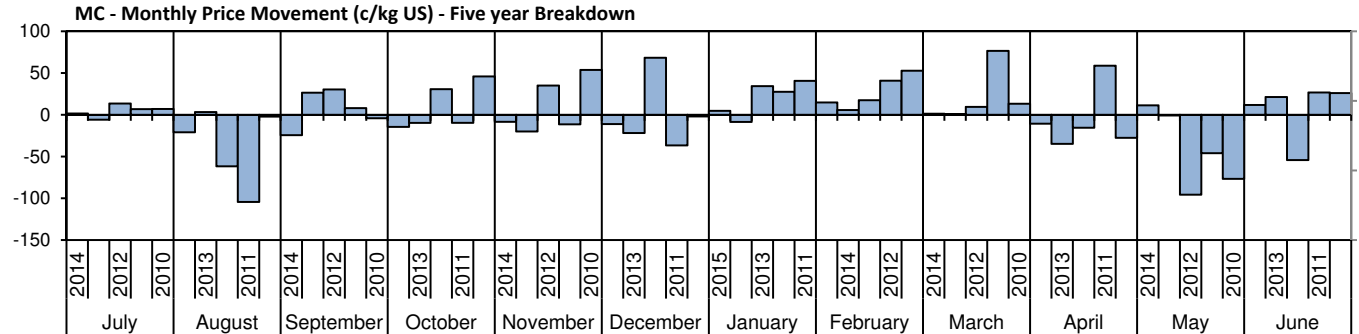
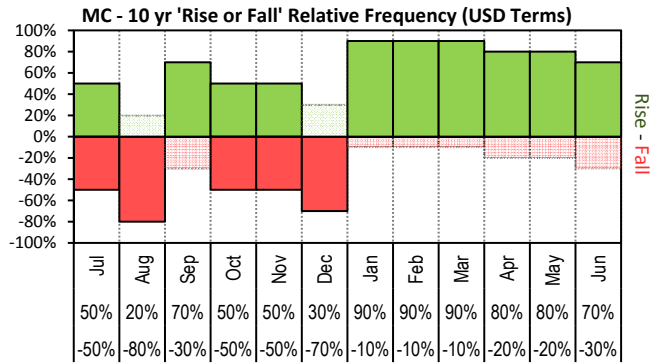


The above 'Rise or Fall' graph, shows how often the market has risen or fallen in a given month over the past 10 years, it does not show the extent of the movement only the frequency of direction. The 'Monthly Price Movement' graph shows the extent of movement for each month, for the past 5 years.

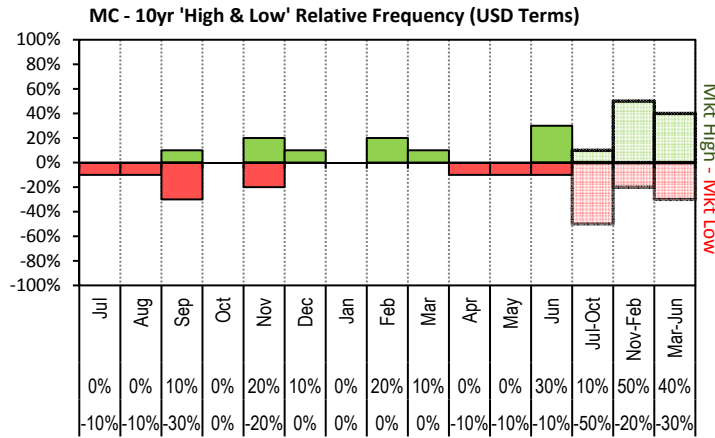


The above graph, shows how often the '12 month high & low' have been achieved for a given month over the past 10 years. It is not a measure of probability.

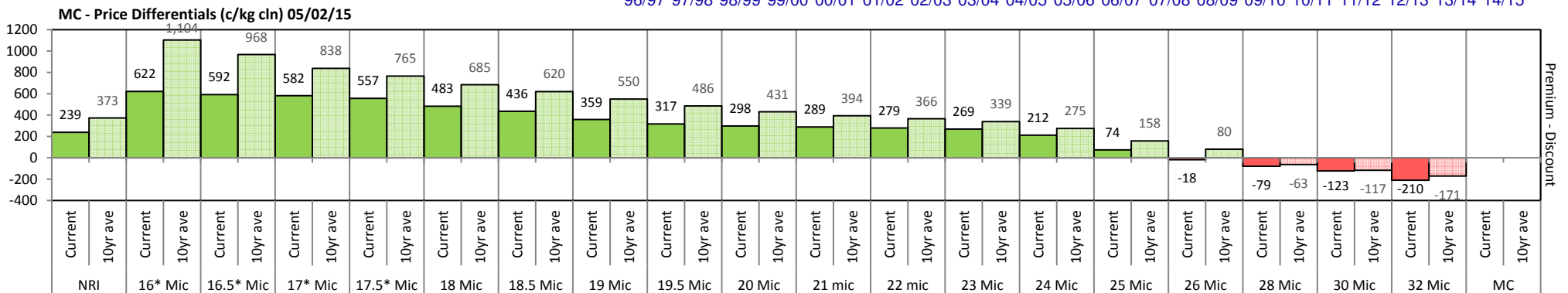
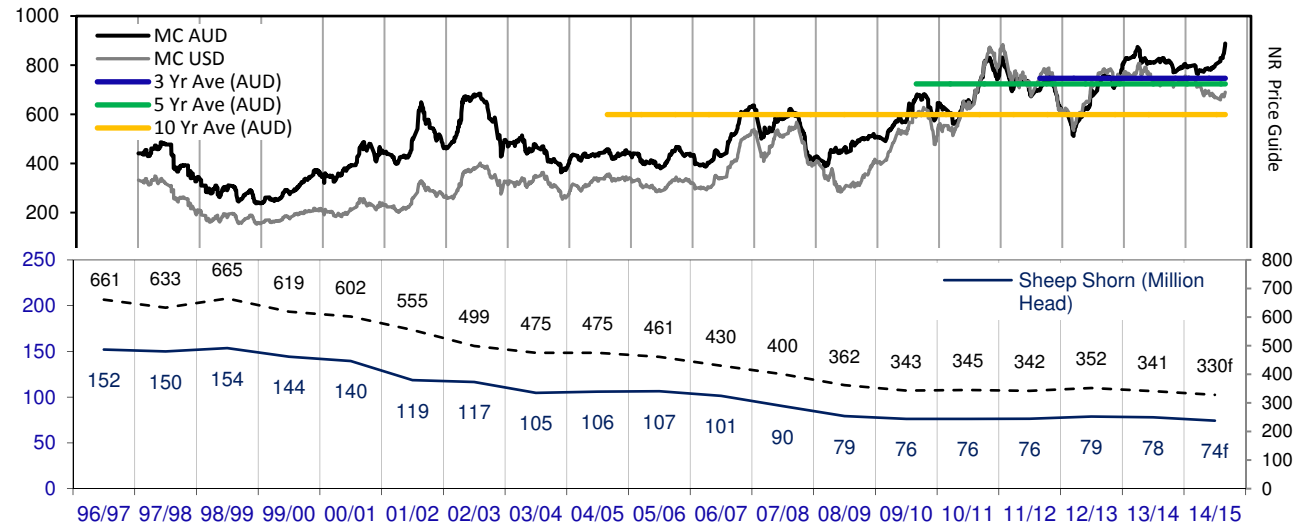




The above 'Rise or Fall' graph, shows how often the market has risen or fallen in a given month over the past 10 years, it does not show the extent of the movement only the frequency of direction. The 'Monthly Price Movement' graph shows the extent of movement for each month, for the past 5 years.

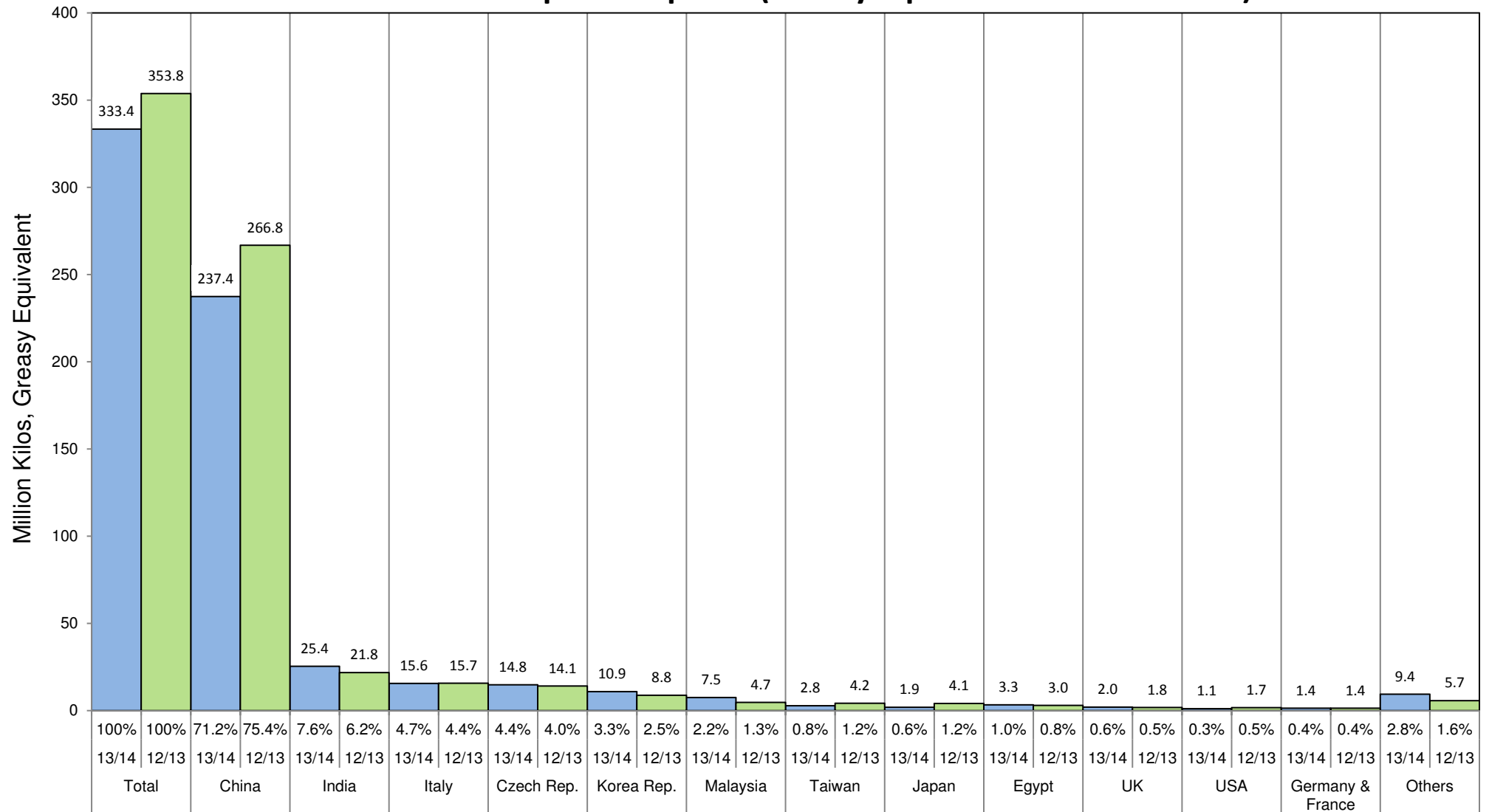


The above graph, shows how often the '12 month high & low' have been achieved for a given month over the past 10 years. It is not a measure of probability.





## Two Year Export Snapshot (Greasy Equivalent - Million Kilos)





**Table 7: Returns pr head for skirted fleece wool.**

Skirted FLC Weight		Micron																	
9 Kg		16	16.5	17	17.5	18	18.5	19	19.5	20	21	22	23	24	25	26	28	30	32
Yield (Sch Dry)	25% Current	\$34	\$33	\$33	\$33	\$31	\$30	\$28	\$27	\$27	\$26	\$26	\$26	\$25	\$22	\$20	\$18	\$17	\$15
	10yr ave.	\$38	\$35	\$32	\$31	\$29	\$27	\$26	\$24	\$23	\$22	\$22	\$21	\$20	\$17	\$15	\$12	\$11	\$10
	30% Current	\$41	\$40	\$40	\$39	\$37	\$36	\$34	\$33	\$32	\$32	\$32	\$31	\$30	\$26	\$23	\$22	\$21	\$18
	10yr ave.	\$46	\$42	\$39	\$37	\$35	\$33	\$31	\$29	\$28	\$27	\$26	\$25	\$24	\$20	\$18	\$14	\$13	\$12
	35% Current	\$48	\$47	\$46	\$46	\$43	\$42	\$39	\$38	\$37	\$37	\$37	\$36	\$35	\$30	\$27	\$25	\$24	\$21
	10yr ave.	\$54	\$50	\$45	\$43	\$40	\$38	\$36	\$34	\$32	\$31	\$30	\$30	\$28	\$24	\$21	\$17	\$15	\$13
	40% Current	\$54	\$53	\$53	\$52	\$49	\$48	\$45	\$43	\$43	\$42	\$42	\$42	\$40	\$35	\$31	\$29	\$28	\$24
	10yr ave.	\$62	\$57	\$52	\$49	\$46	\$44	\$41	\$39	\$37	\$36	\$35	\$34	\$31	\$27	\$24	\$19	\$17	\$15
	45% Current	\$61	\$60	\$60	\$59	\$56	\$54	\$51	\$49	\$48	\$48	\$47	\$47	\$45	\$39	\$35	\$33	\$31	\$27
	10yr ave.	\$69	\$64	\$58	\$56	\$52	\$49	\$47	\$44	\$42	\$40	\$39	\$38	\$35	\$31	\$27	\$22	\$20	\$17
	50% Current	\$68	\$67	\$66	\$65	\$62	\$60	\$56	\$54	\$53	\$53	\$53	\$52	\$50	\$43	\$39	\$36	\$34	\$31
	10yr ave.	\$77	\$71	\$65	\$62	\$58	\$55	\$52	\$49	\$46	\$45	\$43	\$42	\$39	\$34	\$31	\$24	\$22	\$19
	55% Current	\$75	\$73	\$73	\$72	\$68	\$66	\$62	\$60	\$59	\$58	\$58	\$57	\$54	\$48	\$43	\$40	\$38	\$34
	10yr ave.	\$85	\$78	\$71	\$68	\$64	\$60	\$57	\$54	\$51	\$49	\$48	\$46	\$43	\$37	\$34	\$27	\$24	\$21
	60% Current	\$82	\$80	\$79	\$78	\$74	\$71	\$67	\$65	\$64	\$64	\$63	\$62	\$59	\$52	\$47	\$44	\$41	\$37
	10yr ave.	\$92	\$85	\$78	\$74	\$69	\$66	\$62	\$59	\$56	\$54	\$52	\$51	\$47	\$41	\$37	\$29	\$26	\$23
	65% Current	\$88	\$87	\$86	\$85	\$80	\$77	\$73	\$70	\$69	\$69	\$68	\$68	\$64	\$56	\$51	\$47	\$45	\$40
	10yr ave.	\$100	\$92	\$84	\$80	\$75	\$71	\$67	\$63	\$60	\$58	\$56	\$55	\$51	\$44	\$40	\$31	\$28	\$25
	70% Current	\$95	\$93	\$93	\$91	\$86	\$83	\$79	\$76	\$75	\$74	\$74	\$73	\$69	\$61	\$55	\$51	\$48	\$43
	10yr ave.	\$108	\$99	\$91	\$86	\$81	\$77	\$72	\$68	\$65	\$63	\$61	\$59	\$55	\$48	\$43	\$34	\$30	\$27
	75% Current	\$102	\$100	\$99	\$98	\$93	\$89	\$84	\$81	\$80	\$79	\$79	\$78	\$74	\$65	\$59	\$55	\$52	\$46
	10yr ave.	\$115	\$106	\$97	\$93	\$87	\$82	\$78	\$73	\$70	\$67	\$65	\$63	\$59	\$51	\$46	\$36	\$33	\$29
	80% Current	\$109	\$107	\$106	\$104	\$99	\$95	\$90	\$87	\$85	\$85	\$84	\$83	\$79	\$69	\$63	\$58	\$55	\$49
	10yr ave.	\$123	\$113	\$104	\$99	\$92	\$88	\$83	\$78	\$74	\$71	\$69	\$68	\$63	\$55	\$49	\$39	\$35	\$31
	85% Current	\$116	\$113	\$112	\$111	\$105	\$101	\$95	\$92	\$91	\$90	\$89	\$89	\$84	\$74	\$67	\$62	\$59	\$52
	10yr ave.	\$131	\$120	\$110	\$105	\$98	\$93	\$88	\$83	\$79	\$76	\$74	\$72	\$67	\$58	\$52	\$41	\$37	\$33

The above shows estimated returns per head for skirted fleece wool. These figures do not take into account the value of skirtings and oddments and do not take into account discounts that may apply for faults under individual circumstances. These figures are based on a market index of 100% and should be used as a guide only. Returns over \$30 / head for fleece wool are highlighted.



**Table 8: Returns pr head for skirted fleece wool.**

Skirted FLC Weight		Micron																	
8 Kg		16	16.5	17	17.5	18	18.5	19	19.5	20	21	22	23	24	25	26	28	30	32
Yield (Sch Dry)	25% Current	\$30	\$30	\$29	\$29	\$27	\$26	\$25	\$24	\$24	\$24	\$23	\$23	\$22	\$19	\$17	\$16	\$15	\$14
	10yr ave.	\$34	\$31	\$29	\$27	\$26	\$24	\$23	\$22	\$21	\$20	\$19	\$19	\$17	\$15	\$14	\$11	\$10	\$9
	30% Current	\$36	\$36	\$35	\$35	\$33	\$32	\$30	\$29	\$28	\$28	\$28	\$28	\$26	\$23	\$21	\$19	\$18	\$16
	10yr ave.	\$41	\$38	\$35	\$33	\$31	\$29	\$28	\$26	\$25	\$24	\$23	\$23	\$21	\$18	\$16	\$13	\$12	\$10
	35% Current	\$42	\$41	\$41	\$40	\$38	\$37	\$35	\$34	\$33	\$33	\$33	\$32	\$31	\$27	\$24	\$23	\$21	\$19
	10yr ave.	\$48	\$44	\$40	\$38	\$36	\$34	\$32	\$30	\$29	\$28	\$27	\$26	\$24	\$21	\$19	\$15	\$13	\$12
	40% Current	\$48	\$47	\$47	\$46	\$44	\$42	\$40	\$39	\$38	\$38	\$37	\$37	\$35	\$31	\$28	\$26	\$24	\$22
	10yr ave.	\$55	\$50	\$46	\$44	\$41	\$39	\$37	\$35	\$33	\$32	\$31	\$30	\$28	\$24	\$22	\$17	\$15	\$14
	45% Current	\$54	\$53	\$53	\$52	\$49	\$48	\$45	\$43	\$43	\$42	\$42	\$42	\$40	\$35	\$31	\$29	\$28	\$24
	10yr ave.	\$62	\$57	\$52	\$49	\$46	\$44	\$41	\$39	\$37	\$36	\$35	\$34	\$31	\$27	\$24	\$19	\$17	\$15
	50% Current	\$60	\$59	\$59	\$58	\$55	\$53	\$50	\$48	\$47	\$47	\$47	\$46	\$44	\$38	\$35	\$32	\$31	\$27
	10yr ave.	\$68	\$63	\$58	\$55	\$51	\$49	\$46	\$43	\$41	\$40	\$39	\$38	\$35	\$30	\$27	\$21	\$19	\$17
	55% Current	\$66	\$65	\$65	\$64	\$60	\$58	\$55	\$53	\$52	\$52	\$51	\$51	\$48	\$42	\$38	\$36	\$34	\$30
	10yr ave.	\$75	\$69	\$63	\$60	\$56	\$54	\$51	\$48	\$45	\$44	\$42	\$41	\$38	\$33	\$30	\$24	\$21	\$19
	60% Current	\$72	\$71	\$71	\$69	\$66	\$64	\$60	\$58	\$57	\$56	\$56	\$56	\$53	\$46	\$42	\$39	\$37	\$33
	10yr ave.	\$82	\$76	\$69	\$66	\$62	\$59	\$55	\$52	\$49	\$48	\$46	\$45	\$42	\$36	\$33	\$26	\$23	\$21
	65% Current	\$79	\$77	\$76	\$75	\$71	\$69	\$65	\$63	\$62	\$61	\$61	\$60	\$57	\$50	\$45	\$42	\$40	\$35
	10yr ave.	\$89	\$82	\$75	\$71	\$67	\$63	\$60	\$56	\$54	\$52	\$50	\$49	\$45	\$39	\$35	\$28	\$25	\$22
	70% Current	\$85	\$83	\$82	\$81	\$77	\$74	\$70	\$67	\$66	\$66	\$65	\$65	\$62	\$54	\$49	\$45	\$43	\$38
	10yr ave.	\$96	\$88	\$81	\$77	\$72	\$68	\$64	\$61	\$58	\$56	\$54	\$53	\$49	\$42	\$38	\$30	\$27	\$24
	75% Current	\$91	\$89	\$88	\$87	\$82	\$79	\$75	\$72	\$71	\$71	\$70	\$69	\$66	\$58	\$52	\$49	\$46	\$41
	10yr ave.	\$103	\$94	\$86	\$82	\$77	\$73	\$69	\$65	\$62	\$60	\$58	\$56	\$52	\$45	\$41	\$32	\$29	\$26
	80% Current	\$97	\$95	\$94	\$92	\$88	\$85	\$80	\$77	\$76	\$75	\$75	\$74	\$70	\$62	\$56	\$52	\$49	\$43
	10yr ave.	\$109	\$101	\$92	\$88	\$82	\$78	\$74	\$69	\$66	\$64	\$62	\$60	\$56	\$48	\$43	\$34	\$31	\$27
	85% Current	\$103	\$101	\$100	\$98	\$93	\$90	\$85	\$82	\$81	\$80	\$79	\$79	\$75	\$65	\$59	\$55	\$52	\$46
	10yr ave.	\$116	\$107	\$98	\$93	\$87	\$83	\$78	\$74	\$70	\$68	\$66	\$64	\$59	\$51	\$46	\$36	\$33	\$29

The above shows estimated returns per head for skirted fleece wool. These figures do not take into account the value of skirtings and oddments and do not take into account discounts that may apply for faults under individual circumstances. These figures are based on a market index of 100% and should be used as a guide only. Returns over \$30 / head for fleece wool are highlighted.



**Table 9: Returns pr head for skirted fleece wool.**

Skirted FLC Weight		Micron																	
7 Kg		16	16.5	17	17.5	18	18.5	19	19.5	20	21	22	23	24	25	26	28	30	32
Yield (Sch Dry)	25% Current	\$26	\$26	\$26	\$25	\$24	\$23	\$22	\$21	\$21	\$21	\$20	\$20	\$19	\$17	\$15	\$14	\$13	\$12
	10yr ave.	\$30	\$28	\$25	\$24	\$22	\$21	\$20	\$19	\$18	\$17	\$17	\$16	\$15	\$13	\$12	\$9	\$8	\$7
	30% Current	\$32	\$31	\$31	\$30	\$29	\$28	\$26	\$25	\$25	\$25	\$25	\$24	\$23	\$20	\$18	\$17	\$16	\$14
	10yr ave.	\$36	\$33	\$30	\$29	\$27	\$26	\$24	\$23	\$22	\$21	\$20	\$20	\$18	\$16	\$14	\$11	\$10	\$9
	35% Current	\$37	\$36	\$36	\$35	\$34	\$32	\$31	\$30	\$29	\$29	\$29	\$28	\$27	\$24	\$21	\$20	\$19	\$17
	10yr ave.	\$42	\$39	\$35	\$34	\$31	\$30	\$28	\$27	\$25	\$24	\$24	\$23	\$21	\$19	\$17	\$13	\$12	\$10
	40% Current	\$42	\$41	\$41	\$40	\$38	\$37	\$35	\$34	\$33	\$33	\$33	\$32	\$31	\$27	\$24	\$23	\$21	\$19
	10yr ave.	\$48	\$44	\$40	\$38	\$36	\$34	\$32	\$30	\$29	\$28	\$27	\$26	\$24	\$21	\$19	\$15	\$13	\$12
	45% Current	\$48	\$47	\$46	\$46	\$43	\$42	\$39	\$38	\$37	\$37	\$37	\$36	\$35	\$30	\$27	\$25	\$24	\$21
	10yr ave.	\$54	\$50	\$45	\$43	\$40	\$38	\$36	\$34	\$32	\$31	\$30	\$30	\$28	\$24	\$21	\$17	\$15	\$13
	50% Current	\$53	\$52	\$51	\$51	\$48	\$46	\$44	\$42	\$42	\$41	\$41	\$40	\$39	\$34	\$30	\$28	\$27	\$24
	10yr ave.	\$60	\$55	\$50	\$48	\$45	\$43	\$40	\$38	\$36	\$35	\$34	\$33	\$31	\$26	\$24	\$19	\$17	\$15
	55% Current	\$58	\$57	\$57	\$56	\$53	\$51	\$48	\$46	\$46	\$45	\$45	\$45	\$42	\$37	\$33	\$31	\$29	\$26
	10yr ave.	\$66	\$61	\$55	\$53	\$49	\$47	\$44	\$42	\$40	\$38	\$37	\$36	\$34	\$29	\$26	\$21	\$19	\$16
	60% Current	\$63	\$62	\$62	\$61	\$58	\$56	\$52	\$51	\$50	\$49	\$49	\$49	\$46	\$40	\$37	\$34	\$32	\$28
	10yr ave.	\$72	\$66	\$60	\$58	\$54	\$51	\$48	\$46	\$43	\$42	\$41	\$39	\$37	\$32	\$29	\$23	\$20	\$18
	65% Current	\$69	\$67	\$67	\$66	\$62	\$60	\$57	\$55	\$54	\$54	\$53	\$53	\$50	\$44	\$40	\$37	\$35	\$31
	10yr ave.	\$78	\$72	\$66	\$62	\$58	\$55	\$52	\$49	\$47	\$45	\$44	\$43	\$40	\$34	\$31	\$24	\$22	\$19
	70% Current	\$74	\$73	\$72	\$71	\$67	\$65	\$61	\$59	\$58	\$58	\$57	\$57	\$54	\$47	\$43	\$40	\$37	\$33
	10yr ave.	\$84	\$77	\$71	\$67	\$63	\$60	\$56	\$53	\$50	\$49	\$47	\$46	\$43	\$37	\$33	\$26	\$24	\$21
	75% Current	\$79	\$78	\$77	\$76	\$72	\$70	\$65	\$63	\$62	\$62	\$61	\$61	\$58	\$51	\$46	\$42	\$40	\$36
	10yr ave.	\$90	\$83	\$76	\$72	\$67	\$64	\$60	\$57	\$54	\$52	\$51	\$49	\$46	\$40	\$36	\$28	\$25	\$22
	80% Current	\$85	\$83	\$82	\$81	\$77	\$74	\$70	\$67	\$66	\$66	\$65	\$65	\$62	\$54	\$49	\$45	\$43	\$38
	10yr ave.	\$96	\$88	\$81	\$77	\$72	\$68	\$64	\$61	\$58	\$56	\$54	\$53	\$49	\$42	\$38	\$30	\$27	\$24
	85% Current	\$90	\$88	\$87	\$86	\$82	\$79	\$74	\$72	\$71	\$70	\$69	\$69	\$65	\$57	\$52	\$48	\$46	\$40
	10yr ave.	\$102	\$94	\$86	\$82	\$76	\$73	\$68	\$65	\$61	\$59	\$57	\$56	\$52	\$45	\$40	\$32	\$29	\$25

The above shows estimated returns per head for skirted fleece wool. These figures do not take into account the value of skirtings and oddments and do not take into account discounts that may apply for faults under individual circumstances. These figures are based on a market index of 100% and should be used as a guide only. Returns over \$30 / head for fleece wool are highlighted.





**Table 10: Returns pr head for skirted fleece wool.**

Skirted FLC Weight  6 Kg			Micron																	
			16	16.5	17	17.5	18	18.5	19	19.5	20	21	22	23	24	25	26	28	30	32
Yield (Sch Dry)	25%	Current	\$23	\$22	\$22	\$22	\$21	\$20	\$19	\$18	\$18	\$18	\$18	\$17	\$17	\$14	\$13	\$12	\$11	\$10
		10yr ave.	\$26	\$24	\$22	\$21	\$19	\$18	\$17	\$16	\$15	\$15	\$14	\$14	\$13	\$11	\$10	\$8	\$7	\$6
	30%	Current	\$27	\$27	\$26	\$26	\$25	\$24	\$22	\$22	\$21	\$21	\$21	\$21	\$20	\$17	\$16	\$15	\$14	\$12
		10yr ave.	\$31	\$28	\$26	\$25	\$23	\$22	\$21	\$20	\$19	\$18	\$17	\$17	\$16	\$14	\$12	\$10	\$9	\$8
	35%	Current	\$32	\$31	\$31	\$30	\$29	\$28	\$26	\$25	\$25	\$25	\$25	\$24	\$23	\$20	\$18	\$17	\$16	\$14
		10yr ave.	\$36	\$33	\$30	\$29	\$27	\$26	\$24	\$23	\$22	\$21	\$20	\$20	\$18	\$16	\$14	\$11	\$10	\$9
	40%	Current	\$36	\$36	\$35	\$35	\$33	\$32	\$30	\$29	\$28	\$28	\$28	\$28	\$26	\$23	\$21	\$19	\$18	\$16
		10yr ave.	\$41	\$38	\$35	\$33	\$31	\$29	\$28	\$26	\$25	\$24	\$23	\$23	\$21	\$18	\$16	\$13	\$12	\$10
	45%	Current	\$41	\$40	\$40	\$39	\$37	\$36	\$34	\$33	\$32	\$32	\$32	\$31	\$30	\$26	\$23	\$22	\$21	\$18
		10yr ave.	\$46	\$42	\$39	\$37	\$35	\$33	\$31	\$29	\$28	\$27	\$26	\$25	\$24	\$20	\$18	\$14	\$13	\$12
	50%	Current	\$45	\$44	\$44	\$43	\$41	\$40	\$37	\$36	\$36	\$35	\$35	\$35	\$33	\$29	\$26	\$24	\$23	\$20
		10yr ave.	\$51	\$47	\$43	\$41	\$39	\$37	\$34	\$33	\$31	\$30	\$29	\$28	\$26	\$23	\$20	\$16	\$14	\$13
	55%	Current	\$50	\$49	\$49	\$48	\$45	\$44	\$41	\$40	\$39	\$39	\$39	\$38	\$36	\$32	\$29	\$27	\$25	\$22
		10yr ave.	\$56	\$52	\$48	\$45	\$42	\$40	\$38	\$36	\$34	\$33	\$32	\$31	\$29	\$25	\$22	\$18	\$16	\$14
	60%	Current	\$54	\$53	\$53	\$52	\$49	\$48	\$45	\$43	\$43	\$42	\$42	\$42	\$40	\$35	\$31	\$29	\$28	\$24
		10yr ave.	\$62	\$57	\$52	\$49	\$46	\$44	\$41	\$39	\$37	\$36	\$35	\$34	\$31	\$27	\$24	\$19	\$17	\$15
	65%	Current	\$59	\$58	\$57	\$56	\$53	\$52	\$49	\$47	\$46	\$46	\$46	\$45	\$43	\$38	\$34	\$32	\$30	\$26
		10yr ave.	\$67	\$61	\$56	\$54	\$50	\$48	\$45	\$42	\$40	\$39	\$38	\$37	\$34	\$30	\$26	\$21	\$19	\$17
	70%	Current	\$63	\$62	\$62	\$61	\$58	\$56	\$52	\$51	\$50	\$49	\$49	\$49	\$46	\$40	\$37	\$34	\$32	\$28
		10yr ave.	\$72	\$66	\$60	\$58	\$54	\$51	\$48	\$46	\$43	\$42	\$41	\$39	\$37	\$32	\$29	\$23	\$20	\$18
	75%	Current	\$68	\$67	\$66	\$65	\$62	\$60	\$56	\$54	\$53	\$53	\$53	\$52	\$50	\$43	\$39	\$36	\$34	\$31
		10yr ave.	\$77	\$71	\$65	\$62	\$58	\$55	\$52	\$49	\$46	\$45	\$43	\$42	\$39	\$34	\$31	\$24	\$22	\$19
	80%	Current	\$72	\$71	\$71	\$69	\$66	\$64	\$60	\$58	\$57	\$56	\$56	\$56	\$53	\$46	\$42	\$39	\$37	\$33
		10yr ave.	\$82	\$76	\$69	\$66	\$62	\$59	\$55	\$52	\$49	\$48	\$46	\$45	\$42	\$36	\$33	\$26	\$23	\$21
	85%	Current	\$77	\$75	\$75	\$74	\$70	\$68	\$64	\$61	\$60	\$60	\$60	\$59	\$56	\$49	\$44	\$41	\$39	\$35
		10yr ave.	\$87	\$80	\$73	\$70	\$65	\$62	\$59	\$55	\$53	\$51	\$49	\$48	\$45	\$39	\$35	\$27	\$25	\$22

The above shows estimated returns per head for skirted fleece wool. These figures do not take into account the value of skirtings and oddments and do not take into account discounts that may apply for faults under individual circumstances. These figures are based on a market index of 100% and should be used as a guide only. Returns over \$30 / head for fleece wool are highlighted.



**Table 11: Returns pr head for skirted fleece wool.**

Skirted FLC Weight <b>5 Kg</b>		Micron																	
		16	16.5	17	17.5	18	18.5	19	19.5	20	21	22	23	24	25	26	28	30	32
Yield (Sch Dry)	25% Current	\$19	\$19	\$18	\$18	\$17	\$17	\$16	\$15	\$15	\$15	\$15	\$14	\$14	\$12	\$11	\$10	\$10	\$8
	10yr ave.	\$21	\$20	\$18	\$17	\$16	\$15	\$14	\$14	\$13	\$12	\$12	\$12	\$11	\$9	\$8	\$7	\$6	\$5
	30% Current	\$23	\$22	\$22	\$22	\$21	\$20	\$19	\$18	\$18	\$18	\$18	\$17	\$17	\$14	\$13	\$12	\$11	\$10
	10yr ave.	\$26	\$24	\$22	\$21	\$19	\$18	\$17	\$16	\$15	\$15	\$14	\$14	\$13	\$11	\$10	\$8	\$7	\$6
	35% Current	\$26	\$26	\$26	\$25	\$24	\$23	\$22	\$21	\$21	\$21	\$20	\$20	\$19	\$17	\$15	\$14	\$13	\$12
	10yr ave.	\$30	\$28	\$25	\$24	\$22	\$21	\$20	\$19	\$18	\$17	\$17	\$16	\$15	\$13	\$12	\$9	\$8	\$7
	40% Current	\$30	\$30	\$29	\$29	\$27	\$26	\$25	\$24	\$24	\$24	\$23	\$23	\$22	\$19	\$17	\$16	\$15	\$14
	10yr ave.	\$34	\$31	\$29	\$27	\$26	\$24	\$23	\$22	\$21	\$20	\$19	\$19	\$17	\$15	\$14	\$11	\$10	\$9
	45% Current	\$34	\$33	\$33	\$33	\$31	\$30	\$28	\$27	\$27	\$26	\$26	\$26	\$25	\$22	\$20	\$18	\$17	\$15
	10yr ave.	\$38	\$35	\$32	\$31	\$29	\$27	\$26	\$24	\$23	\$22	\$22	\$21	\$20	\$17	\$15	\$12	\$11	\$10
	50% Current	\$38	\$37	\$37	\$36	\$34	\$33	\$31	\$30	\$30	\$29	\$29	\$29	\$28	\$24	\$22	\$20	\$19	\$17
	10yr ave.	\$43	\$39	\$36	\$34	\$32	\$30	\$29	\$27	\$26	\$25	\$24	\$23	\$22	\$19	\$17	\$13	\$12	\$11
	55% Current	\$42	\$41	\$40	\$40	\$38	\$36	\$34	\$33	\$33	\$32	\$32	\$32	\$30	\$26	\$24	\$22	\$21	\$19
	10yr ave.	\$47	\$43	\$40	\$38	\$35	\$34	\$32	\$30	\$28	\$27	\$27	\$26	\$24	\$21	\$19	\$15	\$13	\$12
	60% Current	\$45	\$44	\$44	\$43	\$41	\$40	\$37	\$36	\$36	\$35	\$35	\$35	\$33	\$29	\$26	\$24	\$23	\$20
	10yr ave.	\$51	\$47	\$43	\$41	\$39	\$37	\$34	\$33	\$31	\$30	\$29	\$28	\$26	\$23	\$20	\$16	\$14	\$13
	65% Current	\$49	\$48	\$48	\$47	\$45	\$43	\$41	\$39	\$39	\$38	\$38	\$38	\$36	\$31	\$28	\$26	\$25	\$22
	10yr ave.	\$56	\$51	\$47	\$45	\$42	\$40	\$37	\$35	\$33	\$32	\$31	\$30	\$28	\$25	\$22	\$17	\$16	\$14
	70% Current	\$53	\$52	\$51	\$51	\$48	\$46	\$44	\$42	\$42	\$41	\$41	\$40	\$39	\$34	\$30	\$28	\$27	\$24
	10yr ave.	\$60	\$55	\$50	\$48	\$45	\$43	\$40	\$38	\$36	\$35	\$34	\$33	\$31	\$26	\$24	\$19	\$17	\$15
	75% Current	\$57	\$56	\$55	\$54	\$51	\$50	\$47	\$45	\$44	\$44	\$44	\$43	\$41	\$36	\$33	\$30	\$29	\$25
	10yr ave.	\$64	\$59	\$54	\$51	\$48	\$46	\$43	\$41	\$39	\$37	\$36	\$35	\$33	\$28	\$25	\$20	\$18	\$16
	80% Current	\$60	\$59	\$59	\$58	\$55	\$53	\$50	\$48	\$47	\$47	\$47	\$46	\$44	\$38	\$35	\$32	\$31	\$27
	10yr ave.	\$68	\$63	\$58	\$55	\$51	\$49	\$46	\$43	\$41	\$40	\$39	\$38	\$35	\$30	\$27	\$21	\$19	\$17
	85% Current	\$64	\$63	\$62	\$61	\$58	\$56	\$53	\$51	\$50	\$50	\$50	\$49	\$47	\$41	\$37	\$34	\$33	\$29
	10yr ave.	\$73	\$67	\$61	\$58	\$55	\$52	\$49	\$46	\$44	\$42	\$41	\$40	\$37	\$32	\$29	\$23	\$20	\$18

The above shows estimated returns per head for skirted fleece wool. These figures do not take into account the value of skirtings and oddments and do not take into account discounts that may apply for faults under individual circumstances. These figures are based on a market index of 100% and should be used as a guide only. Returns over \$30 / head for fleece wool are highlighted.



**Table 12: Returns pr head for skirted fleece wool.**

Skirted FLC Weight <div>4 Kg</div>			Micron																	
			16	16.5	17	17.5	18	18.5	19	19.5	20	21	22	23	24	25	26	28	30	32
Yield (Sch Dry)	25%	Current	\$15	\$15	\$15	\$14	\$14	\$13	\$12	\$12	\$12	\$12	\$12	\$12	\$11	\$10	\$9	\$8	\$8	\$7
		10yr ave.	\$17	\$16	\$14	\$14	\$13	\$12	\$11	\$11	\$10	\$10	\$10	\$9	\$9	\$8	\$7	\$5	\$5	\$4
	30%	Current	\$18	\$18	\$18	\$17	\$16	\$16	\$15	\$14	\$14	\$14	\$14	\$14	\$13	\$12	\$10	\$10	\$9	\$8
		10yr ave.	\$21	\$19	\$17	\$16	\$15	\$15	\$14	\$13	\$12	\$12	\$12	\$11	\$10	\$9	\$8	\$6	\$6	\$5
	35%	Current	\$21	\$21	\$21	\$20	\$19	\$19	\$17	\$17	\$17	\$16	\$16	\$16	\$15	\$13	\$12	\$11	\$11	\$9
		10yr ave.	\$24	\$22	\$20	\$19	\$18	\$17	\$16	\$15	\$14	\$14	\$14	\$13	\$12	\$11	\$10	\$8	\$7	\$6
	40%	Current	\$24	\$24	\$24	\$23	\$22	\$21	\$20	\$19	\$19	\$19	\$19	\$19	\$18	\$15	\$14	\$13	\$12	\$11
		10yr ave.	\$27	\$25	\$23	\$22	\$21	\$20	\$18	\$17	\$16	\$16	\$15	\$15	\$14	\$12	\$11	\$9	\$8	\$7
	45%	Current	\$27	\$27	\$26	\$26	\$25	\$24	\$22	\$22	\$21	\$21	\$21	\$21	\$20	\$17	\$16	\$15	\$14	\$12
		10yr ave.	\$31	\$28	\$26	\$25	\$23	\$22	\$21	\$20	\$19	\$18	\$17	\$17	\$16	\$14	\$12	\$10	\$9	\$8
	50%	Current	\$30	\$30	\$29	\$29	\$27	\$26	\$25	\$24	\$24	\$24	\$23	\$23	\$22	\$19	\$17	\$16	\$15	\$14
		10yr ave.	\$34	\$31	\$29	\$27	\$26	\$24	\$23	\$22	\$21	\$20	\$19	\$19	\$17	\$15	\$14	\$11	\$10	\$9
	55%	Current	\$33	\$33	\$32	\$32	\$30	\$29	\$27	\$27	\$26	\$26	\$26	\$25	\$24	\$21	\$19	\$18	\$17	\$15
		10yr ave.	\$38	\$35	\$32	\$30	\$28	\$27	\$25	\$24	\$23	\$22	\$21	\$21	\$19	\$17	\$15	\$12	\$11	\$9
	60%	Current	\$36	\$36	\$35	\$35	\$33	\$32	\$30	\$29	\$28	\$28	\$28	\$28	\$26	\$23	\$21	\$19	\$18	\$16
		10yr ave.	\$41	\$38	\$35	\$33	\$31	\$29	\$28	\$26	\$25	\$24	\$23	\$23	\$21	\$18	\$16	\$13	\$12	\$10
65%	Current	\$39	\$38	\$38	\$38	\$36	\$34	\$32	\$31	\$31	\$31	\$30	\$30	\$29	\$25	\$23	\$21	\$20	\$18	
	10yr ave.	\$44	\$41	\$37	\$36	\$33	\$32	\$30	\$28	\$27	\$26	\$25	\$24	\$23	\$20	\$18	\$14	\$13	\$11	
70%	Current	\$42	\$41	\$41	\$40	\$38	\$37	\$35	\$34	\$33	\$33	\$33	\$32	\$31	\$27	\$24	\$23	\$21	\$19	
	10yr ave.	\$48	\$44	\$40	\$38	\$36	\$34	\$32	\$30	\$29	\$28	\$27	\$26	\$24	\$21	\$19	\$15	\$13	\$12	
75%	Current	\$45	\$44	\$44	\$43	\$41	\$40	\$37	\$36	\$36	\$35	\$35	\$35	\$33	\$29	\$26	\$24	\$23	\$20	
	10yr ave.	\$51	\$47	\$43	\$41	\$39	\$37	\$34	\$33	\$31	\$30	\$29	\$28	\$26	\$23	\$20	\$16	\$14	\$13	
80%	Current	\$48	\$47	\$47	\$46	\$44	\$42	\$40	\$39	\$38	\$38	\$37	\$37	\$35	\$31	\$28	\$26	\$24	\$22	
	10yr ave.	\$55	\$50	\$46	\$44	\$41	\$39	\$37	\$35	\$33	\$32	\$31	\$30	\$28	\$24	\$22	\$17	\$15	\$14	
85%	Current	\$51	\$50	\$50	\$49	\$47	\$45	\$42	\$41	\$40	\$40	\$40	\$39	\$37	\$33	\$30	\$28	\$26	\$23	
	10yr ave.	\$58	\$54	\$49	\$47	\$44	\$41	\$39	\$37	\$35	\$34	\$33	\$32	\$30	\$26	\$23	\$18	\$16	\$15	

The above shows estimated returns per head for skirted fleece wool. These figures do not take into account the value of skirtings and oddments and do not take into account discounts that may apply for faults under individual circumstances. These figures are based on a market index of 100% and should be used as a guide only. Returns over \$30 / head for fleece wool are highlighted.



**Table 13: Returns pr head for skirted fleece wool.**

Skirted FLC Weight <b>3 Kg</b>		Micron																	
		16	16.5	17	17.5	18	18.5	19	19.5	20	21	22	23	24	25	26	28	30	32
Yield (Sch Dry)	25% Current	\$11	\$11	\$11	\$11	\$10	\$10	\$9	\$9	\$9	\$9	\$9	\$9	\$8	\$7	\$7	\$6	\$6	\$5
	10yr ave.	\$13	\$12	\$11	\$10	\$10	\$9	\$9	\$8	\$8	\$7	\$7	\$7	\$7	\$6	\$5	\$4	\$4	\$3
	30% Current	\$14	\$13	\$13	\$13	\$12	\$12	\$11	\$11	\$11	\$11	\$11	\$10	\$10	\$9	\$8	\$7	\$7	\$6
	10yr ave.	\$15	\$14	\$13	\$12	\$12	\$11	\$10	\$10	\$9	\$9	\$9	\$8	\$8	\$7	\$6	\$5	\$4	\$4
	35% Current	\$16	\$16	\$15	\$15	\$14	\$14	\$13	\$13	\$12	\$12	\$12	\$12	\$12	\$10	\$9	\$8	\$8	\$7
	10yr ave.	\$18	\$17	\$15	\$14	\$13	\$13	\$12	\$11	\$11	\$10	\$10	\$10	\$9	\$8	\$7	\$6	\$5	\$4
	40% Current	\$18	\$18	\$18	\$17	\$16	\$16	\$15	\$14	\$14	\$14	\$14	\$14	\$13	\$12	\$10	\$10	\$9	\$8
	10yr ave.	\$21	\$19	\$17	\$16	\$15	\$15	\$14	\$13	\$12	\$12	\$12	\$11	\$10	\$9	\$8	\$6	\$6	\$5
	45% Current	\$20	\$20	\$20	\$20	\$19	\$18	\$17	\$16	\$16	\$16	\$16	\$16	\$15	\$13	\$12	\$11	\$10	\$9
	10yr ave.	\$23	\$21	\$19	\$19	\$17	\$16	\$16	\$15	\$14	\$13	\$13	\$13	\$12	\$10	\$9	\$7	\$7	\$6
	50% Current	\$23	\$22	\$22	\$22	\$21	\$20	\$19	\$18	\$18	\$18	\$18	\$17	\$17	\$14	\$13	\$12	\$11	\$10
	10yr ave.	\$26	\$24	\$22	\$21	\$19	\$18	\$17	\$16	\$15	\$15	\$14	\$14	\$13	\$11	\$10	\$8	\$7	\$6
	55% Current	\$25	\$24	\$24	\$24	\$23	\$22	\$21	\$20	\$20	\$19	\$19	\$19	\$18	\$16	\$14	\$13	\$13	\$11
	10yr ave.	\$28	\$26	\$24	\$23	\$21	\$20	\$19	\$18	\$17	\$16	\$16	\$15	\$14	\$12	\$11	\$9	\$8	\$7
	60% Current	\$27	\$27	\$26	\$26	\$25	\$24	\$22	\$22	\$21	\$21	\$21	\$21	\$20	\$17	\$16	\$15	\$14	\$12
	10yr ave.	\$31	\$28	\$26	\$25	\$23	\$22	\$21	\$20	\$19	\$18	\$17	\$17	\$16	\$14	\$12	\$10	\$9	\$8
	65% Current	\$29	\$29	\$29	\$28	\$27	\$26	\$24	\$23	\$23	\$23	\$23	\$23	\$21	\$19	\$17	\$16	\$15	\$13
	10yr ave.	\$33	\$31	\$28	\$27	\$25	\$24	\$22	\$21	\$20	\$19	\$19	\$18	\$17	\$15	\$13	\$10	\$9	\$8
	70% Current	\$32	\$31	\$31	\$30	\$29	\$28	\$26	\$25	\$25	\$25	\$25	\$24	\$23	\$20	\$18	\$17	\$16	\$14
	10yr ave.	\$36	\$33	\$30	\$29	\$27	\$26	\$24	\$23	\$22	\$21	\$20	\$20	\$18	\$16	\$14	\$11	\$10	\$9
	75% Current	\$34	\$33	\$33	\$33	\$31	\$30	\$28	\$27	\$27	\$26	\$26	\$26	\$25	\$22	\$20	\$18	\$17	\$15
	10yr ave.	\$38	\$35	\$32	\$31	\$29	\$27	\$26	\$24	\$23	\$22	\$22	\$21	\$20	\$17	\$15	\$12	\$11	\$10
	80% Current	\$36	\$36	\$35	\$35	\$33	\$32	\$30	\$29	\$28	\$28	\$28	\$28	\$26	\$23	\$21	\$19	\$18	\$16
	10yr ave.	\$41	\$38	\$35	\$33	\$31	\$29	\$28	\$26	\$25	\$24	\$23	\$23	\$21	\$18	\$16	\$13	\$12	\$10
	85% Current	\$39	\$38	\$37	\$37	\$35	\$34	\$32	\$31	\$30	\$30	\$30	\$30	\$28	\$25	\$22	\$21	\$20	\$17
	10yr ave.	\$44	\$40	\$37	\$35	\$33	\$31	\$29	\$28	\$26	\$25	\$25	\$24	\$22	\$19	\$17	\$14	\$12	\$11

The above shows estimated returns per head for skirted fleece wool. These figures do not take into account the value of skirtings and oddments and do not take into account discounts that may apply for faults under individual circumstances. These figures are based on a market index of 100% and should be used as a guide only. Returns over \$30 / head for fleece wool are highlighted.



**Table 14: Returns pr head for skirted fleece wool.**

Skirted FLC Weight <b>2 Kg</b>		Micron																	
		16	16.5	17	17.5	18	18.5	19	19.5	20	21	22	23	24	25	26	28	30	32
Yield (Sch Dry)	25% Current	\$8	\$7	\$7	\$7	\$7	\$7	\$6	\$6	\$6	\$6	\$6	\$6	\$6	\$5	\$4	\$4	\$4	\$3
	10yr ave.	\$9	\$8	\$7	\$7	\$6	\$6	\$6	\$5	\$5	\$5	\$5	\$5	\$4	\$4	\$3	\$3	\$2	\$2
	30% Current	\$9	\$9	\$9	\$9	\$8	\$8	\$7	\$7	\$7	\$7	\$7	\$7	\$7	\$6	\$5	\$5	\$5	\$4
	10yr ave.	\$10	\$9	\$9	\$8	\$8	\$7	\$7	\$7	\$6	\$6	\$6	\$6	\$5	\$5	\$4	\$3	\$3	\$3
	35% Current	\$11	\$10	\$10	\$10	\$10	\$9	\$9	\$8	\$8	\$8	\$8	\$8	\$8	\$7	\$6	\$6	\$5	\$5
	10yr ave.	\$12	\$11	\$10	\$10	\$9	\$9	\$8	\$8	\$7	\$7	\$7	\$7	\$6	\$5	\$5	\$4	\$3	\$3
	40% Current	\$12	\$12	\$12	\$12	\$11	\$11	\$10	\$10	\$9	\$9	\$9	\$9	\$9	\$8	\$7	\$6	\$6	\$5
	10yr ave.	\$14	\$13	\$12	\$11	\$10	\$10	\$9	\$9	\$8	\$8	\$8	\$8	\$7	\$6	\$5	\$4	\$4	\$3
	45% Current	\$14	\$13	\$13	\$13	\$12	\$12	\$11	\$11	\$11	\$11	\$11	\$10	\$10	\$9	\$8	\$7	\$7	\$6
	10yr ave.	\$15	\$14	\$13	\$12	\$12	\$11	\$10	\$10	\$9	\$9	\$9	\$8	\$8	\$7	\$6	\$5	\$4	\$4
	50% Current	\$15	\$15	\$15	\$14	\$14	\$13	\$12	\$12	\$12	\$12	\$12	\$12	\$11	\$10	\$9	\$8	\$8	\$7
	10yr ave.	\$17	\$16	\$14	\$14	\$13	\$12	\$11	\$11	\$10	\$10	\$10	\$9	\$9	\$8	\$7	\$5	\$5	\$4
	55% Current	\$17	\$16	\$16	\$16	\$15	\$15	\$14	\$13	\$13	\$13	\$13	\$13	\$12	\$11	\$10	\$9	\$8	\$7
	10yr ave.	\$19	\$17	\$16	\$15	\$14	\$13	\$13	\$12	\$11	\$11	\$11	\$10	\$10	\$8	\$7	\$6	\$5	\$5
	60% Current	\$18	\$18	\$18	\$17	\$16	\$16	\$15	\$14	\$14	\$14	\$14	\$14	\$13	\$12	\$10	\$10	\$9	\$8
	10yr ave.	\$21	\$19	\$17	\$16	\$15	\$15	\$14	\$13	\$12	\$12	\$12	\$11	\$10	\$9	\$8	\$6	\$6	\$5
	65% Current	\$20	\$19	\$19	\$19	\$18	\$17	\$16	\$16	\$15	\$15	\$15	\$15	\$14	\$13	\$11	\$11	\$10	\$9
	10yr ave.	\$22	\$20	\$19	\$18	\$17	\$16	\$15	\$14	\$13	\$13	\$13	\$12	\$11	\$10	\$9	\$7	\$6	\$6
	70% Current	\$21	\$21	\$21	\$20	\$19	\$19	\$17	\$17	\$17	\$16	\$16	\$16	\$15	\$13	\$12	\$11	\$11	\$9
	10yr ave.	\$24	\$22	\$20	\$19	\$18	\$17	\$16	\$15	\$14	\$14	\$14	\$13	\$12	\$11	\$10	\$8	\$7	\$6
	75% Current	\$23	\$22	\$22	\$22	\$21	\$20	\$19	\$18	\$18	\$18	\$18	\$17	\$17	\$14	\$13	\$12	\$11	\$10
	10yr ave.	\$26	\$24	\$22	\$21	\$19	\$18	\$17	\$16	\$15	\$15	\$14	\$14	\$13	\$11	\$10	\$8	\$7	\$6
	80% Current	\$24	\$24	\$24	\$23	\$22	\$21	\$20	\$19	\$19	\$19	\$19	\$19	\$18	\$15	\$14	\$13	\$12	\$11
	10yr ave.	\$27	\$25	\$23	\$22	\$21	\$20	\$18	\$17	\$16	\$16	\$15	\$15	\$14	\$12	\$11	\$9	\$8	\$7
	85% Current	\$26	\$25	\$25	\$25	\$23	\$23	\$21	\$20	\$20	\$20	\$20	\$20	\$19	\$16	\$15	\$14	\$13	\$12
	10yr ave.	\$29	\$27	\$24	\$23	\$22	\$21	\$20	\$18	\$18	\$17	\$16	\$16	\$15	\$13	\$12	\$9	\$8	\$7

The above shows estimated returns per head for skirted fleece wool. These figures do not take into account the value of skirtings and oddments and do not take into account discounts that may apply for faults under individual circumstances. These figures are based on a market index of 100% and should be used as a guide only. Returns over \$30 / head for fleece wool are highlighted.