



Table 1: Northern Region Micron Price Guides

WEEK 36			12 MONTH COMPARISONS								3 YEAR COMPARISONS						*10 YEAR COMPARISONS					
Mic.	5/03/2015	26/02/2015	5/03/2014	Now		Now		Now				Now		Percentile	* 16-17.5um since Aug 05			Now		Percentile		
Price	Current	Weekly	This time	compared	12 Month	compared	12 Month	compared				compared					*10 year	compared				
Guides	Price	Change	Last Year	to Last Year	Low	to Low	High	to High	Low	High	Average	to 3yr ave		Low	High	Average	to *10yr ave					
NRI	1105	-6 -0.5%	1086	+19 2%	1006	+99 10%	1128	-23 -2%	898	1491	1082	+23 2%	50%	657	1491	976	+129 13%	78%				
16*	1480	-10 -0.7%	1520	-40 -3%	1340	+140 10%	1520	-40 -3%	1340	2800	1599	-119 -7%	20%	1350	2800	1709	-229 -13%	19%				
16.5*	1400	-20 -1.4%	1400	0 0%	1300	+100 8%	1480	-80 -5%	1300	2680	1484	-84 -6%	22%	1280	2680	1573	-173 -11%	31%				
17*	1380	-30 -2.2%	1345	+35 3%	1245	+135 11%	1470	-90 -6%	1250	2530	1383	-3 0%	39%	1106	2530	1441	-61 -4%	57%				
17.5*	1360	-20 -1.5%	1330	+30 2%	1190	+170 14%	1445	-85 -6%	1200	2360	1338	+22 2%	48%	1020	2360	1373	-13 -1%	64%				
18	1290	-10 -0.8%	1275	+15 1%	1161	+129 11%	1371	-81 -6%	1162	2193	1286	+4 0%	42%	914	2193	1287	+3 0%	62%				
18.5	1245	-10 -0.8%	1248	-3 0%	1137	+108 9%	1324	-79 -6%	1130	1963	1255	-10 -1%	35%	843	1963	1222	+23 2%	60%				
19	1194	-8 -0.7%	1219	-25 -2%	1113	+81 7%	1247	-53 -4%	1051	1776	1228	-34 -3%	30%	803	1776	1152	+42 4%	63%				
19.5	1175	-3 -0.3%	1205	-30 -2%	1093	+82 8%	1205	-30 -2%	960	1670	1203	-28 -2%	36%	749	1670	1088	+87 8%	69%				
20	1159	-6 -0.5%	1188	-29 -2%	1088	+71 7%	1199	-40 -3%	910	1588	1184	-25 -2%	37%	700	1588	1034	+125 12%	72%				
21	1158	-5 -0.4%	1186	-28 -2%	1089	+69 6%	1191	-33 -3%	887	1522	1175	-17 -1%	42%	668	1522	997	+161 16%	74%				
22	1152	-7 -0.6%	1182	-30 -3%	1072	+80 7%	1182	-30 -3%	861	1461	1159	-7 -1%	46%	658	1461	969	+183 19%	76%				
23	1143	-5 -0.4%	1171	-28 -2%	1040	+103 10%	1171	-28 -2%	834	1347	1143	0 0%	53%	651	1347	942	+201 21%	79%				
24	1075	-37 -3.4%	1069	+6 1%	983	+92 9%	1112	-37 -3%	786	1213	1064	+11 1%	63%	638	1213	878	+197 22%	83%				
25	990	-3 -0.3%	841	+149 18%	799	+191 24%	993	-3 0%	702	1049	912	+78 9%	90%	566	1049	761	+229 30%	95%				
26	904	+5 0.6%	740	+164 22%	734	+170 23%	901	+3 0%	603	939	815	+89 11%	94%	532	939	683	+221 32%	97%				
28	816	-4 -0.5%	666	+150 23%	639	+177 28%	823	-7 -1%	445	823	651	+165 25%	99%	424	823	539	+277 51%	99%				
30	778	-7 -0.9%	630	+148 23%	615	+163 27%	785	-7 -1%	393	785	611	+167 27%	99%	343	785	485	+293 60%	99%				
32	693	+2 0.3%	560	+133 24%	550	+143 26%	696	-3 0%	354	696	533	+160 30%	99%	297	696	431	+262 61%	99%				
MC	909	-6 -0.7%	819	+90 11%	764	+145 19%	923	-14 -2%	535	923	752	+157 21%	98%	390	923	603	+306 51%	99%				
AU BALES OFFERED		42,488	* Due to the irregular market quoting for some fine wool categories, figures shown relating to micron categories below 18 micron are an estimate based on the																			
AU BALES SOLD		39,182	AWEX Premium & Discounts Report & other available information.																			
AU PASSED-IN%		7.8%	* For any category, where there is insufficient quantity offered to enable AWEX to quote, a quote will be provided based on the best available information.																			
AUD/USD		0.78084	* 10 Year data is not available for 16 to 17.5 microns, therefore 10 year statistics for those micron categories only date back as far as August 2005.																			

Source: Australian Wool Exchange, Australian Wool Innovation, Riemann, x-rates.com, Reserve Bank of Australia, Australian Wool Testing Authority.

Disclaimer: Jemalong Wool Pty Ltd make no representations about the content and suitability of the information contained in this report. Specifically, Jemalong Wool does not warrant, guarantee or make any representations regarding the correctness, accuracy, reliability, currency, or any other aspect regarding characteristics or use of information presented in these materials. The user accepts sole responsibility and risk associated with the use and results of these materials, irrespective of the purpose of which such use or results are applied. In no event shall Jemalong Wool be liable for any loss or damages (including without limitation special, or consequential damages), where in an action of contract, negligence, or tort, arising out of or in connection with the use of performance of these materials.



MARKET COMMENTARY

On a slightly smaller offering than originally forecast, the market eased 6 cents in the Northern Region, to close at 1105.

Wednesday deviated from recent patterns when lower spec types outperformed the better types. As a result the price bands within various microns tended to compress, narrowing the gap between the top-tier types and those which typically get heavily discounted. Muddying the price signals on that day was a mark-down in values in Fremantle; most of the fleece sector in that region was discounted by 15 to 20 cents despite the relatively stable market on the east coast.

Thursday was more consistent with price movements heading marginally lower in all three regions. It was a reversal in the pattern from the previous day with the lower types losing the most ground and re-establishing a larger price differential. Fremantle again deviated from the other markets, closing out the week on a firm note late in the day.

Merino Skirtings had an uneventful week and closed at similar rates to the previous sale. Crossbreds also had only minor changes; the mid-range of 28 to 30-microns eased 5 cents whilst other microns generally closed on a firm basis. Merino Cardings were also on a similar footing to the previous sale.

Looking ahead volumes are forecast to settle to around 45,000 bales each week over the period leading up to the Easter recess in early April. Sentiment amongst the trade is generally positive for this time of year, with forecasts ranging from a sideways market in coming weeks to an improved merino fleece market, with no one forecasting any significant downside.

Source: AWEX

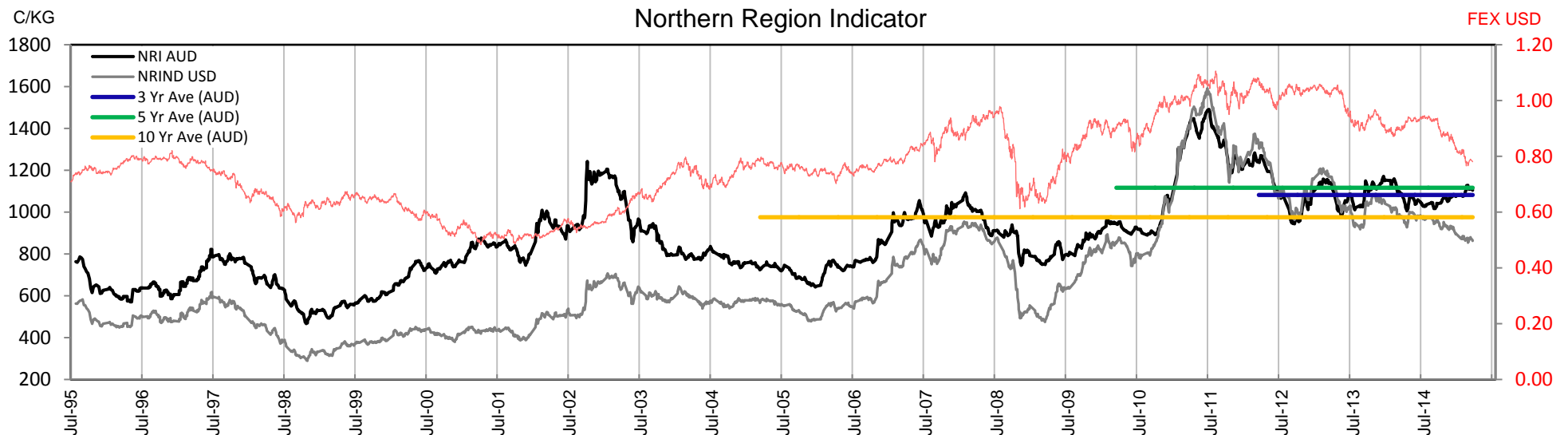




Table 2: Three Year Decile Table, since: 1/03/2012

Decile	%	16	16.5	17	17.5	18	18.5	19	19.5	20	21	22	23	24	25	26	28	30	32	MC
1	10%	1400	1340	1290	1249	1196	1160	1126	1096	1063	1051	1037	1010	946	810	738	552	503	434	604
2	20%	1480	1400	1318	1280	1224	1189	1161	1135	1116	1106	1086	1060	990	858	758	590	544	469	651
3	30%	1560	1434	1350	1310	1258	1229	1194	1160	1140	1133	1119	1089	1020	882	780	619	568	489	706
4	40%	1620	1480	1386	1330	1283	1253	1215	1182	1164	1155	1138	1120	1043	891	796	635	581	498	733
5	50%	1690	1520	1415	1380	1318	1290	1260	1219	1192	1177	1163	1137	1058	904	808	646	596	527	750
6	60%	1800	1604	1469	1410	1367	1335	1296	1271	1233	1218	1199	1165	1069	914	819	658	621	553	778
7	70%	2000	1856	1680	1565	1500	1443	1374	1324	1269	1251	1221	1190	1088	925	832	670	630	564	796
8	80%	2150	1944	1780	1674	1590	1504	1457	1403	1348	1307	1256	1219	1101	955	851	678	638	576	812
9	90%	2700	2512	2392	2206	2018	1814	1618	1473	1391	1341	1301	1255	1132	990	883	696	654	605	828
10	100%	2800	2680	2530	2360	2193	1963	1776	1670	1588	1522	1461	1347	1213	1049	939	823	785	696	923
MPG		1480	1400	1380	1360	1290	1245	1194	1175	1159	1158	1152	1143	1075	990	904	816	778	693	909
3 Yr Percentile		20%	22%	39%	48%	42%	35%	30%	36%	37%	42%	46%	53%	63%	90%	94%	99%	99%	99%	98%

Table 3: Ten Year Decile Table, sinc 1/03/2005

Decile	%	16	16.5	17	17.5	18	18.5	19	19.5	20	21	22	23	24	25	26	28	30	32	MC
1	10%	1420	1340	1215	1150	1043	996	929	849	785	735	710	694	671	609	560	444	376	325	414
2	20%	1495	1370	1255	1190	1105	1034	962	890	826	761	735	720	693	638	578	457	397	348	444
3	30%	1540	1400	1280	1220	1161	1108	1043	964	902	860	838	816	765	657	593	467	410	358	501
4	40%	1570	1420	1315	1270	1196	1151	1089	1003	950	927	904	881	818	684	609	475	425	380	553
5	50%	1600	1460	1350	1305	1238	1190	1131	1085	1032	980	942	907	835	710	630	484	433	395	596
6	60%	1650	1490	1392	1340	1279	1244	1181	1138	1097	1060	1018	985	902	781	693	536	475	414	634
7	70%	1700	1550	1440	1400	1347	1287	1223	1177	1147	1136	1123	1100	1025	884	784	623	574	491	715
8	80%	1800	1700	1550	1480	1407	1334	1286	1248	1213	1197	1178	1146	1062	909	814	650	612	549	758
9	90%	2100	1930	1730	1640	1564	1491	1437	1398	1333	1293	1248	1210	1097	947	848	676	635	572	810
10	100%	2800	2680	2530	2360	2193	1963	1776	1670	1588	1522	1461	1347	1213	1049	939	823	785	696	923
MPG		1480	1400	1380	1360	1290	1245	1194	1175	1159	1158	1152	1143	1075	990	904	816	778	693	909
10 Yr Percentile		19%	31%	57%	64%	62%	60%	63%	69%	72%	74%	76%	79%	83%	95%	97%	99%	99%	99%	99%

Definitions:

* A Percentile, is a value on a scale of one hundred that indicates the percent of a distribution that is equal to or below it. In general a percentile between 25% and 75% is considered normal, a percentile below 25% is considered below normal and a percentile above 75% is considered above normal.

Three and ten year percentiles shown on the bottom line of table 2 & 3 (above) and in table 1 (on page 1), detail the amount of time during the past 3 & 10 years where the market has traded either at or below its current price.

* Deciles are a method of sorting ranked data into 10 equal groups. The data may be ranked from largest to smallest or vice versa.

The above Decile tables sort price Percentiles into 10 equal groups (in ascending order), with table 2 ranking the previous 3 years prices, while table 3 ranks prices over the previous 10 years

Example: In Table 2, a Decile Rank of 6 for 19 microns, shows 19 microns have traded at or below 1296 for 60% of the time, over the past three years.

In Table 3, a Decile Rank of 6 for 19 microns, shows 19 microns have traded at or below 1181 for 60% of the time, over the past ten years.



Table 4: Riemann Forwards, latest trades as at: Last Date

Any highlighted in yellow are recent trades, trading since: Friday, 27 February 2015

CONTRACT MICRON		18.5um	19um	19.5um	21um	22um	23um	28um	30um
CONTRACT MONTH	Mar-2015							5/12/14 720	5/12/14 680
	Apr-2015		20/11/14 1190		6/02/15 1160			24/12/14 720	10/12/14 665
	May-2015				2/03/15 1150				10/12/14 665
	Jun-2015								10/12/14 665
	Jul-2015								
	Aug-2015				3/02/15 1145			3/02/15 720	
	Sep-2015				5/02/15 1155				
	Oct-2015				3/12/14 1135				
	Nov-2015				5/02/15 1150				
	Dec-2015				4/02/15 1150				
	Jan-2016				5/02/15 1157				
	Feb-2016								
	Mar-2016				8/12/14 1140				
	Apr-2016								
	May-2016								
	Jun-2016								
	Jul-2016								
	Aug-2016								
	Sep-2016								
	Oct-2016								
	Nov-2016								
	Dec-2016								
	Jan-2017								

Explanatory Notes: Prices quoted reflect the most recent trades, at time of print.

Disclaimer: While all due care has been taken in the preparation of this document, no warranty is made as to its accuracy, reliability or completeness. To the extent permitted by law neither Jemalong or their sources including subsidiaries and staff, accept liability to any person for loss or damage arising from the use of this information.



Table 5: National Market Share

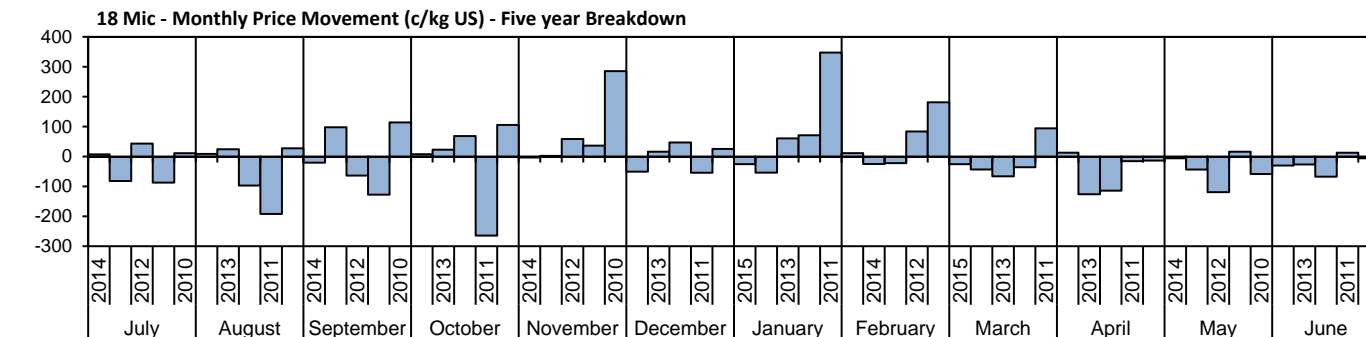
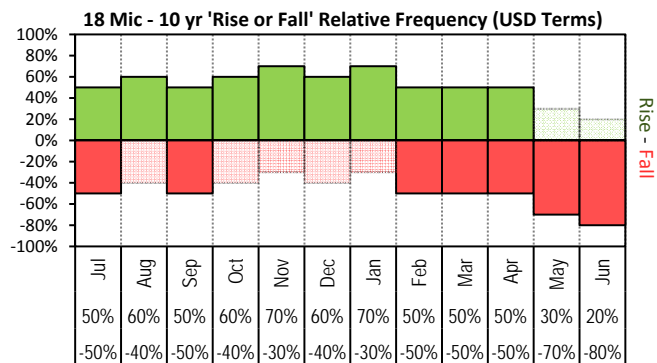
	Rank	Current Selling Week Week 36			Previous Selling Week Week 35			Last Season 2013-14			2 Years Ago 2012-13			3 Years Ago 2011-12			5 Years Ago 2009-10			10 Years Ago 2004-05		
		Buyer	Bales	MS%	Buyer	Bales	MS%	Buyer	Bales	MS%	Buyer	Bales	MS%	Buyer	Bales	MS%	Buyer	Bales	MS%	Buyer	Bales	MS%
Top 10, Auction Buyers	1	TECM	4,970	13%	TECM	6,130	14%	TECM	205,136	13%	TECM	179,176	10%	VTRA	229,207	14%	VTRA	187,529	11%	ITOS	197,278	9%
	2	CTXS	4,310	11%	CTXS	6,120	14%	FOXM	134,581	8%	VTRA	163,810	9%	TECM	153,616	9%	TECM	170,705	10%	BWEA	183,123	8%
	3	FOXM	4,164	11%	TIAM	3,030	7%	CTXS	122,964	8%	FOXM	143,826	8%	FOXM	136,698	8%	QCTB	124,619	7%	RWRS	158,390	7%
	4	PMWF	2,401	6%	FOXM	2,797	7%	AMEM	111,263	7%	LEMM	126,564	7%	QCTB	112,745	7%	FOXM	120,964	7%	PLEX	126,856	6%
	5	TIAM	2,174	6%	AMEM	2,406	6%	LEMM	109,224	7%	QCTB	98,756	6%	WIEM	100,817	6%	KATS	104,262	6%	MODM	112,956	5%
	6	KATS	2,164	6%	KATS	2,195	5%	TIAM	105,736	7%	PMWF	96,935	6%	LEMM	88,348	5%	LEMM	93,672	5%	TECM	109,505	5%
	7	LEMM	2,161	6%	PMWF	2,009	5%	QCTB	88,700	5%	MODM	84,363	5%	MODM	74,646	4%	WIEM	93,529	5%	ADSS	101,474	4%
	8	AMEM	1,885	5%	GSAS	1,738	4%	MODM	79,977	5%	CTXS	82,166	5%	CTXS	69,266	4%	RWRS	88,732	5%	PMWF	97,867	4%
	9	GSAS	1,445	4%	MCHA	1,667	4%	PMWF	77,875	5%	AMEM	77,849	4%	PMWF	64,659	4%	PMWF	85,981	5%	GSAS	97,754	4%
	10	#N/A	#N/A	#N/A	MODM	1,612	4%	GSAS	54,462	3%	KATS	65,782	4%	GSAS	58,233	3%	MODM	65,991	4%	FOXM	97,298	4%
MFLC TOP 5	1	CTXS	3,385	16%	CTXS	4,328	19%	TECM	106,291	12%	VTRA	118,432	12%	VTRA	171,425	19%	VTRA	161,860	16%	ITOS	165,880	12%
	2	TECM	2,691	13%	TECM	3,100	14%	CTXS	87,889	10%	LEMM	110,118	11%	QCTB	86,901	10%	QCTB	108,716	11%	BWEA	123,477	9%
	3	FOXM	2,119	10%	TIAM	2,047	9%	LEMM	82,374	9%	PMWF	93,136	10%	TECM	76,083	8%	PMWF	79,407	8%	RWRS	92,731	7%
	4	PMWF	2,093	10%	PMWF	1,662	7%	FOXM	80,423	9%	TECM	89,286	9%	LEMM	68,961	8%	LEMM	72,585	7%	PMWF	91,549	7%
	5	LEMM	1,552	7%	FOXM	1,591	7%	PMWF	69,890	8%	QCTB	71,715	7%	PMWF	60,070	7%	TECM	72,153	7%	ADSS	81,634	6%
MSKT TOP 5	1	TECM	998	17%	TECM	1,157	20%	TIAM	47,607	19%	MODM	37,284	14%	WIEM	43,156	16%	WIEM	38,838	14%	PLEX	59,898	16%
	2	TIAM	867	15%	AMEM	1,155	20%	TECM	31,474	12%	TECM	34,301	13%	MODM	30,285	11%	MODM	35,564	12%	MODM	48,703	13%
	3	AMEM	773	13%	TIAM	931	16%	AMEM	29,775	12%	WIEM	27,916	10%	TECM	25,264	9%	TECM	27,266	10%	GSAS	44,078	12%
	4	FOXM	407	7%	MODM	292	5%	MODM	23,791	9%	TIAM	24,196	9%	PLEX	21,990	8%	WCWF	16,963	6%	BWEA	34,546	9%
	5	LEMM	328	6%	VWPM	235	4%	GSAS	13,843	5%	AMEM	23,012	8%	GSAS	16,284	6%	RWRS	16,541	6%	RWRS	29,257	8%
XB TOP 5	1	KATS	1,875	26%	KATS	2,132	24%	TECM	40,364	15%	FOXM	39,356	14%	FOXM	41,689	15%	TECM	46,985	20%	FOXM	39,839	19%
	2	FOXM	1,181	17%	CTXS	1,792	20%	CTXS	34,779	13%	TECM	30,323	11%	VTRA	31,427	12%	FOXM	46,090	20%	TECM	21,724	10%
	3	CTXS	802	11%	TECM	987	11%	FOXM	24,218	9%	VTRA	27,832	10%	TECM	31,094	11%	MODM	13,021	6%	BWEA	19,820	9%
	4	TECM	667	9%	FOXM	783	9%	MODM	21,512	8%	KATS	26,057	9%	QCTB	22,610	8%	QCTB	12,973	6%	MOPS	15,511	7%
	5	MODM	578	8%	MODM	588	7%	AMEM	20,336	7%	CTXS	25,631	9%	CTXS	19,985	7%	MOPS	12,341	5%	MODM	15,479	7%
ODDS TOP 5	1	MCHA	664	13%	TECM	886	16%	MCHA	36,085	17%	MCHA	35,985	16%	FOXM	34,603	15%	MCHA	30,629	14%	MCHA	48,293	18%
	2	TECM	614	12%	MCHA	866	15%	TECM	27,007	13%	FOXM	28,185	12%	MCHA	30,689	13%	RWRS	24,675	11%	FOXM	34,078	12%
	3	VWPM	545	11%	VWPM	593	11%	VWPM	22,432	11%	TECM	25,266	11%	VWPM	22,219	10%	TECM	24,301	11%	RWRS	27,833	10%
	4	FOXM	457	9%	SENM	527	9%	FOXM	18,811	9%	VWPM	20,692	9%	VTRA	21,495	9%	VWPM	19,198	9%	MAFM	22,270	8%
	5	MAFM	349	7%	UWCM	335	6%	RWRS	13,524	6%	VTRA	13,022	6%	TECM	21,175	9%	FOXM	18,736	8%	DAWS	16,861	6%
Auction Totals		<u>Offered</u>	<u>Sold</u>		<u>Offered</u>	<u>Sold</u>		<u>Bales Sold</u>	<u>\$/Bale</u>		<u>Bales Sold</u>	<u>\$/Bale</u>		<u>Bales Sold</u>	<u>\$/Bale</u>		<u>Bales Sold</u>	<u>\$/Bale</u>		<u>Bales Sold</u>	<u>\$/Bale</u>	
		42,488	39,182		46,727	42,737		1,625,115	\$1,509		1,742,881	\$1,418		1,683,024	\$1,599		1,735,172	\$1,159		2,264,258	\$1,098	
		<u>Passed-In</u>	<u>PI%</u>		<u>Passed-In</u>	<u>PI%</u>		<u>Export Value</u>			<u>Export Value</u>			<u>Export Value</u>			<u>Export Value</u>			<u>Export Value</u>		
		3,306	7.8%		3,990	8.5%		\$2,453,067,610			\$2,470,844,153			\$2,691,010,531			\$2,011,128,450			\$2,487,197,893		



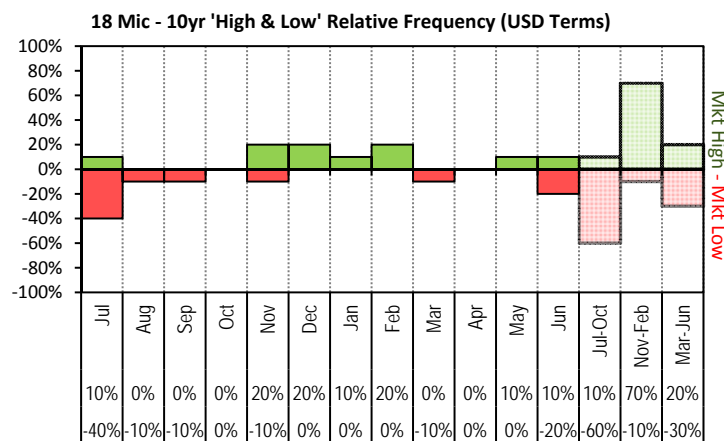
Table 6: NSW Production Statistics

MAX		MIN		MAX GAIN		MAX REDUCTION											
2013-14																	
Statistical Devision, Area Code & Towns			Auction Bales (FH)	Micron	+/- YoY	Vmb %	+/- YoY	Yield % Sch Dry	+/- YoY	Length mm	+/- YoY	Strength Nkt	+/- YoY	Ave Price c/kg			
Northern	N02	Tenterfield, Glen Innes	9,043	19.3	-0.2	2.0	0.2	71.6	-1.1	80	-0.2	40	-1.1	814			
	N03	Guyra	35,036	18.5	-0.4	1.8	0.0	72.1	-1.7	81	-0.5	40	-2.4	907			
	N04	Inverell	3,636	18.1	-1.0	3.3	-0.1	69.5	-0.1	82	-0.5	37	-1.3	783			
	N05	Armidale	2,056	19.8	0.0	4.2	0.3	67.3	-2.0	85	2.4	35	-2.7	696			
	N06	Tamworth, Gunnedah, Quirindi	6,082	20.4	-0.1	3.4	-0.6	67.2	-1.3	84	0.0	36	-1.6	711			
	N07	Moree	5,368	19.5	-0.5	3.2	-1.0	63.7	-0.8	86	-1.9	36	-0.2	643			
	N08	Narrabri	3,130	19.2	-0.7	2.5	-1.1	66.0	-1.4	86	-1.9	36	-3.1	680			
North Western & Far West	N09	Cobar, Bourke, Wanaaring	1,040	19.7	-0.8	3.8	-0.5	60.0	-0.7	85	-2.8	36	-0.6	628			
	N12	Walgett	7,303	19.6	-0.3	3.1	-1.1	62.5	-1.6	84	-2.3	36	-1.3	654			
	N13	Nyngan	18,168	20.3	-0.2	5.1	0.1	61.7	-2.0	88	0.3	37	-0.1	612			
	N14	Dubbo, Narromine	22,210	21.2	-0.4	3.7	-0.6	62.0	-1.1	86	0.5	35	-1.2	574			
	N16	Dunedoo	6,111	19.6	-0.4	2.5	-0.9	67.0	-0.8	88	0.5	35	0.3	683			
	N17	Mudgee, Wellington, Gulgong	21,223	19.6	-0.1	2.2	-1.2	68.3	0.0	84	0.8	38	-0.3	747			
	N33	Coonabarabran	3,028	20.4	-0.4	3.6	-1.0	65.8	-1.1	85	0.5	35	0.6	634			
	N34	Coonamble	6,854	20.1	-0.3	3.8	-0.6	61.2	-2.2	85	-1.5	36	0.8	633			
	N36	Gilgandra, Gulargambone	6,306	21.2	-0.4	3.6	-0.3	63.0	-2.0	86	-0.5	35	-0.4	601			
	N40	Brewarrina	4,294	19.3	-0.8	2.0	-0.3	65.4	-1.2	81	-5.0	39	0.3	711			
	N10	Wilcannia, Broken Hill	22,079	20.6	-0.7	2.3	-0.5	59.7	-1.4	87	-2.3	36	-1.7	626			
Central West	N15	Forbes, Parkes, Cowra	50,604	21.7	0.1	2.7	-0.6	63.6	-0.4	88	1.4	35	-1.8	592			
	N18	Lithgow, Oberon	2,900	20.6	-0.1	1.8	-1.5	69.2	1.2	83	0.1	38	0.1	717			
	N19	Orange, Bathurst	51,340	22.0	-0.1	1.4	-0.8	68.9	-0.5	85	0.8	37	-1.3	670			
	N25	West Wyalong	24,469	20.6	-0.4	2.6	-0.3	62.2	-1.2	88	-0.7	35	-1.3	622			
	N35	Condobolin, Lake Cargelligo	10,158	20.6	-0.4	4.5	-0.9	60.5	0.4	86	-0.8	36	-0.3	590			
Murrumbidgee	N26	Cootamundra, Temora	25,927	21.7	-0.4	1.9	-0.3	63.1	-1.0	86	0.3	34	-0.7	585			
	N27	Adelong, Gundagai	10,395	21.4	-0.3	1.6	-1.1	67.6	-0.5	88	0.2	34	-1.7	640			
	N29	Wagga, Narrandera	32,025	21.9	-0.8	1.6	0.0	64.4	-1.8	88	-2.1	3	-33.2	603			
	N37	Griffith, Hillston	11,341	21.4	-0.6	4.1	0.1	61.2	0.0	85	0.9	38	-2.8	604			
	N39	Hay, Coleambally	16,531	20.4	-0.9	3.5	0.0	62.3	-1.7	88	-2.6	36	-3.4	652			
Murray	N11	Wentworth, Balranald	15,035	20.7	-1.0	4.0	-0.8	60.1	-0.8	89	-2.4	35	-2.1	626			
	N28	Albury, Corowa, Holbrook	27,382	21.5	-0.4	1.4	-0.1	66.1	-0.9	87	-2.3	34	-3.5	634			
	N31	Deniliquin	19,849	20.7	-0.6	2.4	-0.1	64.7	-1.0	84	-3.8	33	-6.4	658			
	N38	Finley, Berrigan, Jerilderie	8,648	20.4	-0.5	2.6	0.1	63.8	-1.3	85	-3.0	35	-3.9	644			
South Eastern	N23	Goulburn, Young, Yass	86,997	19.7	-0.5	1.3	-0.4	68.4	-1.0	85	-1.1	36	-1.8	738			
	N24	Monaro (Cooma, Bombala)	34,714	19.8	-0.4	1.5	-0.4	69.6	0.1	89	-0.6	36	-0.7	698			
	N32	A.C.T.	174	20.1	-0.3	3.9	0.8	59.2	-2.6	88	-1.4	31	0.1	568			
	N43	South Coast (Bega)	418	18.9	-0.2	0.8	0.0	73.0	-1.3	87	2.5	39	-3.6	840			
NSW	AWEX Sale Statistics 13-14		648,006	20.6	-0.4	2.3	-0.4	65.5	-0.9	86	-0.8	36	-1.8	677			

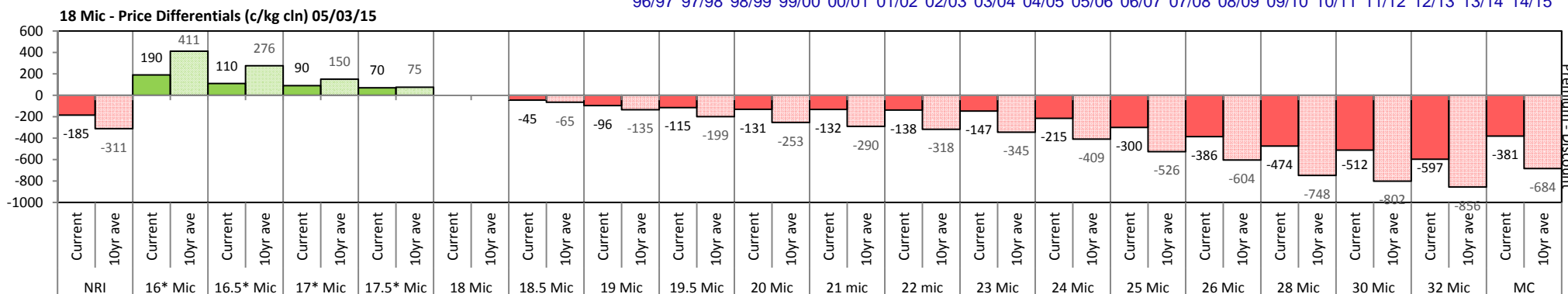
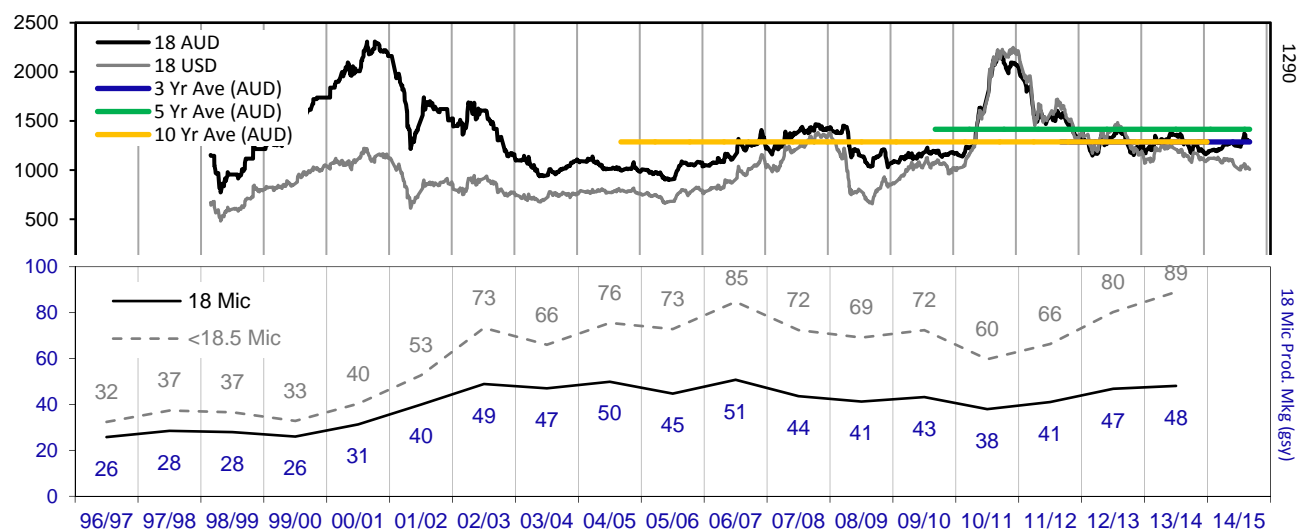
AWTA Mthly Key Test Data			Bales Tested	+/- YoY	Micron	+/- YoY	VMB	+/- YoY	Yld	+/- YoY	Lth	+/- YoY	Nkt	+/- YoY	POBM +/-
AUSTRALIA	Current	February	179,054	727	21.5	0.0	1.9	-0.2	64.7	-0.1	86	0.7	34	1.7	44 0.1
	Season	Y.T.D	1,396,197	-13,831	21.1	0.2	1.8	0.0	65.7	0.0	89	2.0	34	1.0	52 3.0
	Previous	2013-14	1,410,028	-57007.0	20.9	-0.4	1.8	-0.3	65.7	-0.3	87	-1.0	33	-1.0	49 0.0
	Seasons	2012-13	1,467,035	61450.0	21.3	-0.3	2.1	-0.3	66.0	-0.1	88	0.0	34	0.0	49 1.0
	Y.T.D.	2011-12	1,405,585	-4,873	21.6	0.1	2.4	0.4	66.1	0.8	88	-0.9	34	1.5	50 -1.2

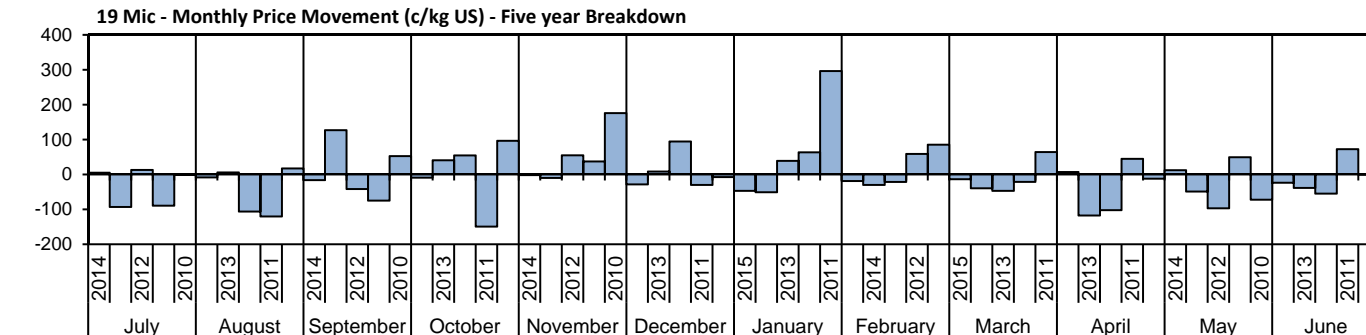
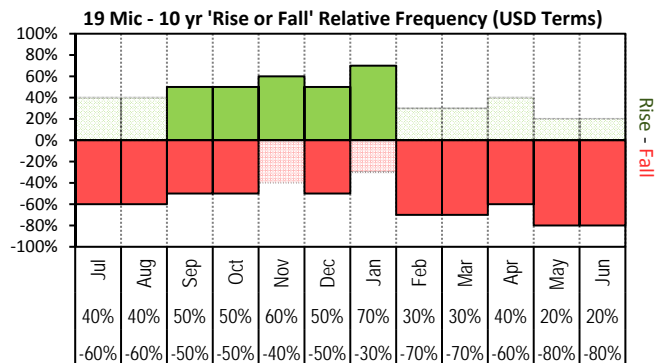


The above 'Rise or Fall' graph, shows how often the market has risen or fallen in a given month over the past 10 years, it does not show the extent of the movement only the frequency of direction. The 'Monthly Price Movement' graph shows the extent of movement for each month, for the past 5 years.

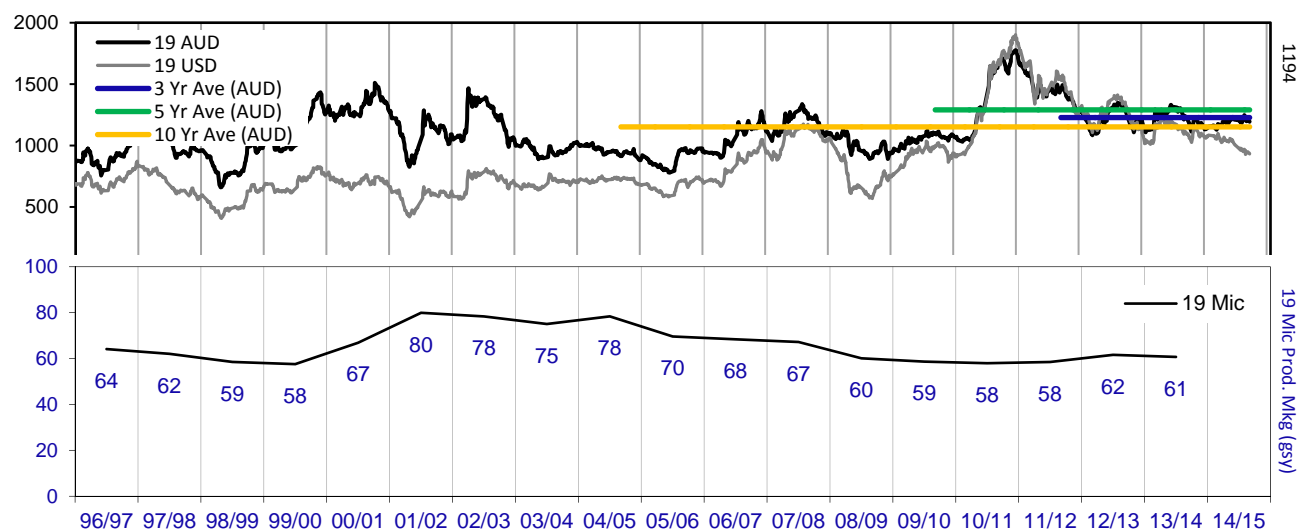
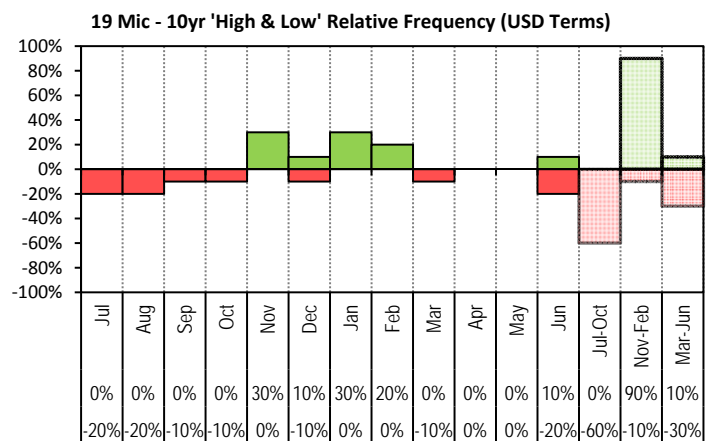


The above graph, shows how often the '12 month high & low' have been achieved for a given month over the past 10 years. It is not a measure of probability.

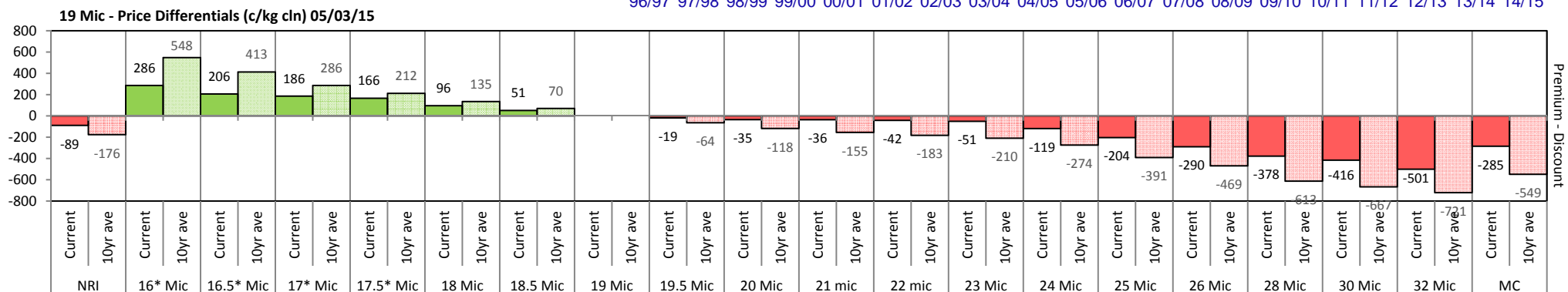


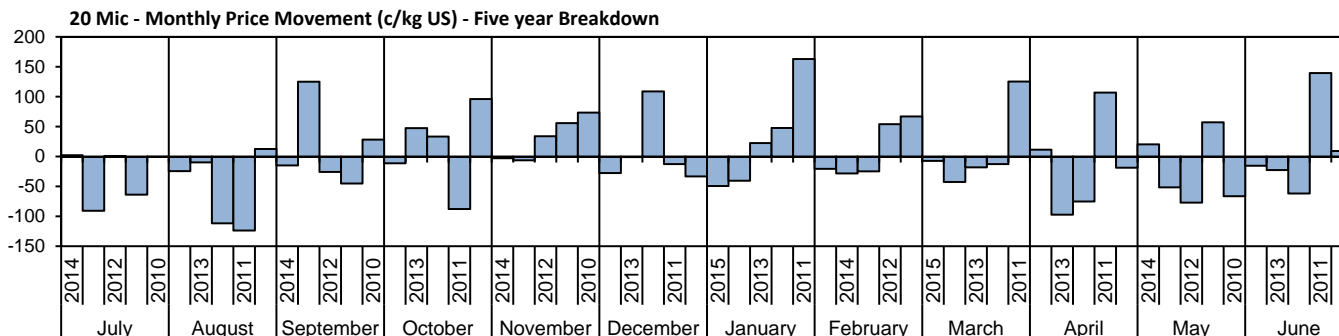
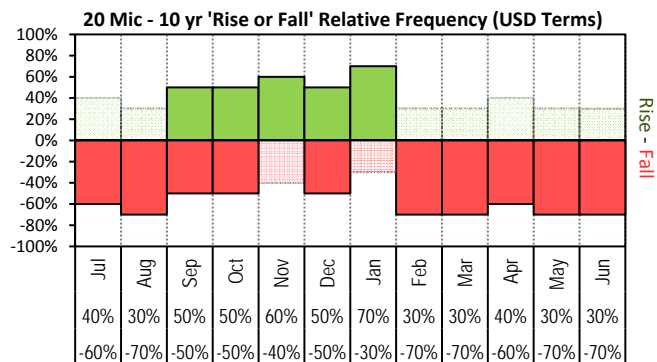


The above 'Rise or Fall' graph, shows how often the market has risen or fallen in a given month over the past 10 years, it does not show the extent of the movement only the frequency of direction. The 'Monthly Price Movement' graph shows the extent of movement for each month, for the past 5 years.

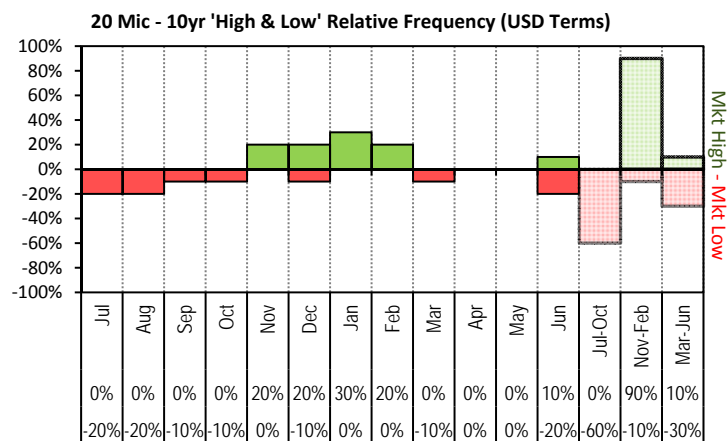


The above graph, shows how often the '12 month high & low' have been achieved for a given month over the past 10 years. It is not a measure of probability.

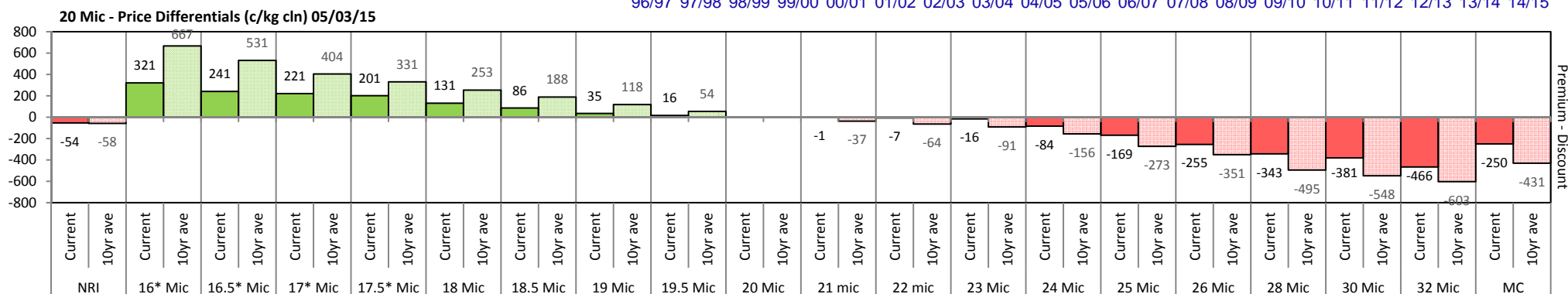
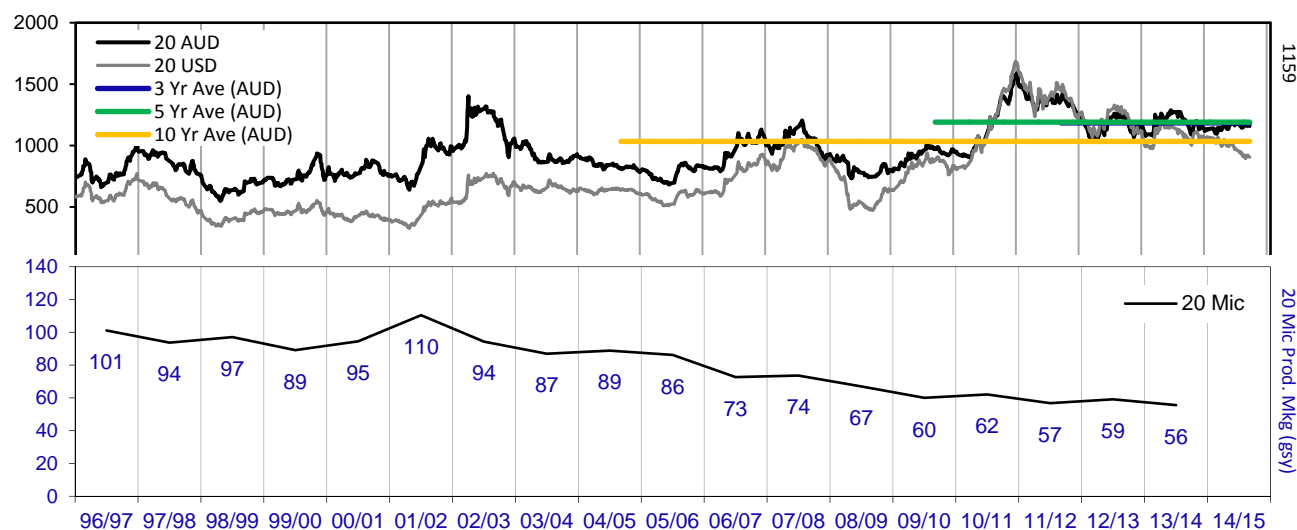


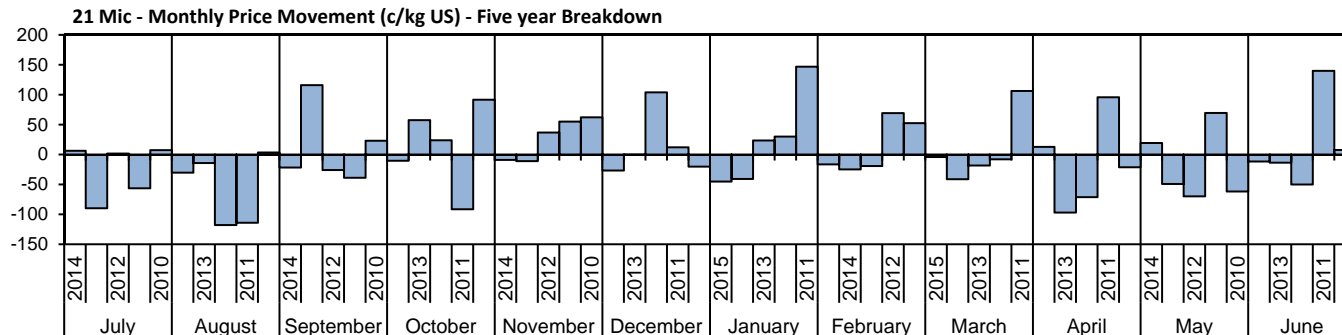
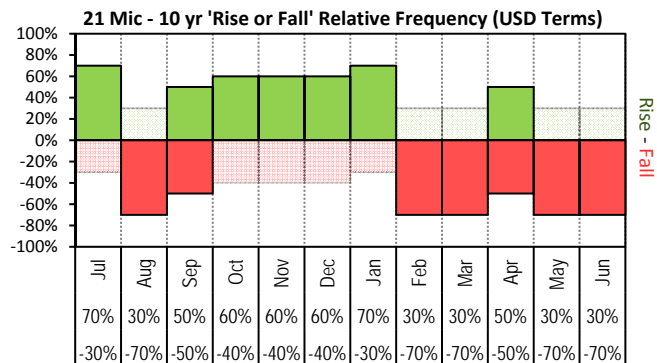


The above 'Rise or Fall' graph, shows how often the market has risen or fallen in a given month over the past 10 years, it does not show the extent of the movement only the frequency of direction. The 'Monthly Price Movement' graph shows the extent of movement for each month, for the past 5 years.

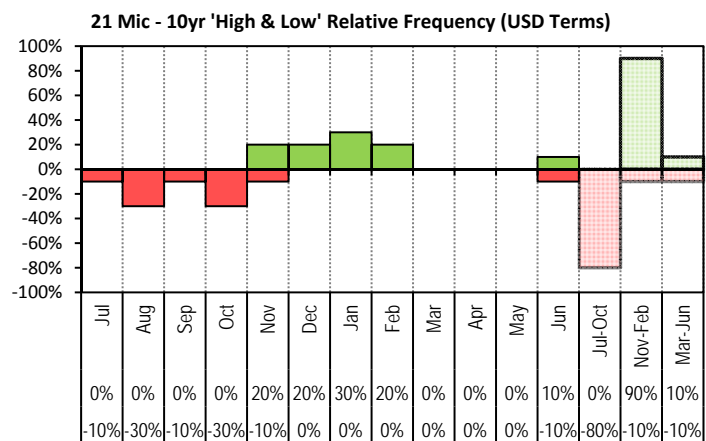


The above graph, shows how often the '12 month high & low' have been achieved for a given month over the past 10 years. It is not a measure of probability.

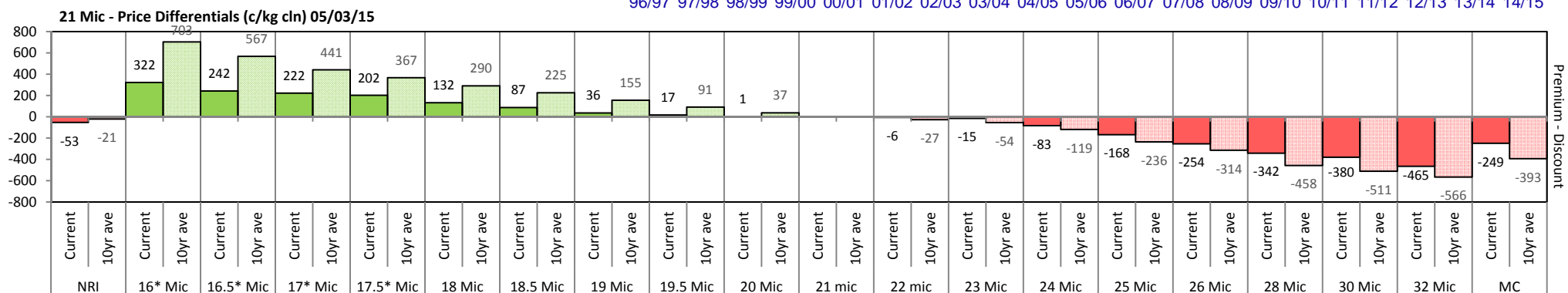
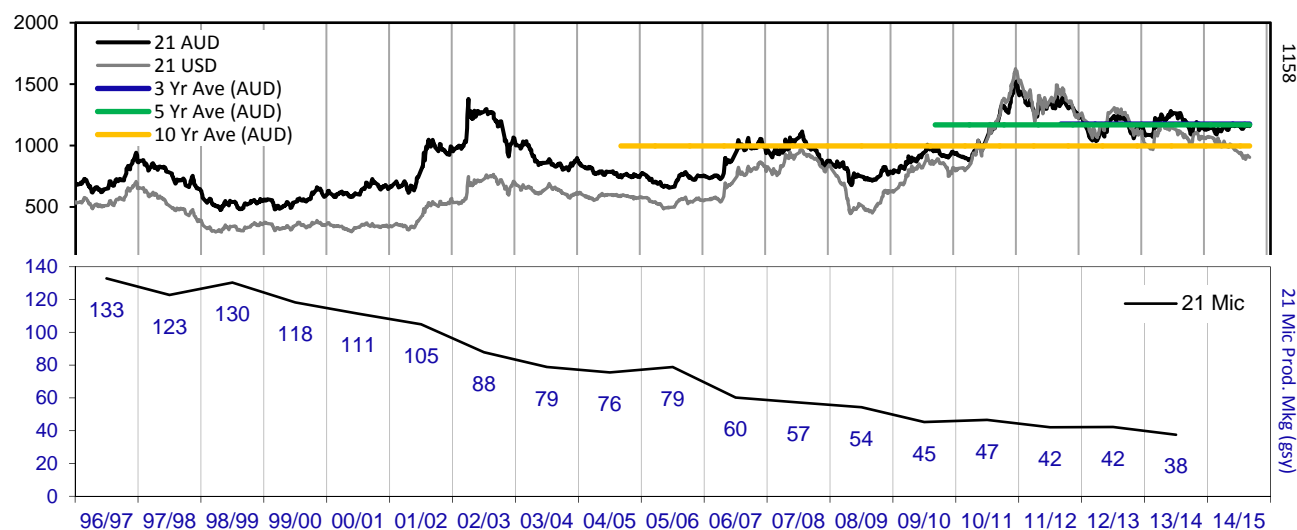


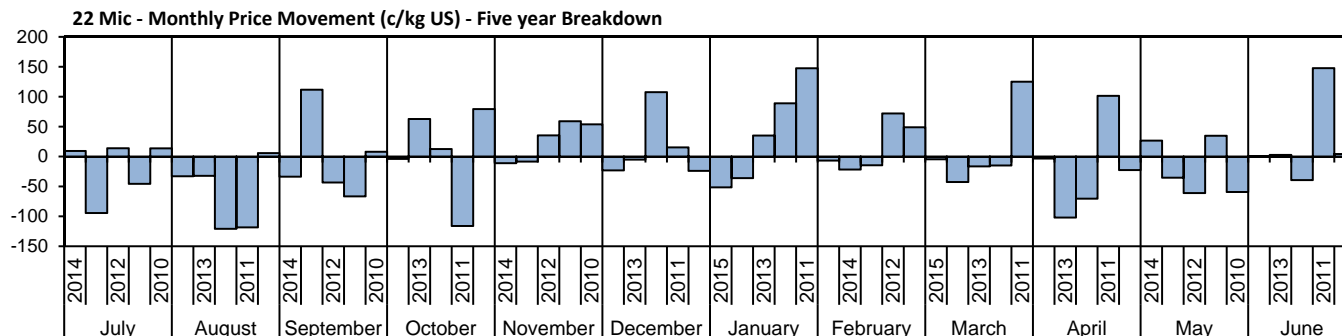
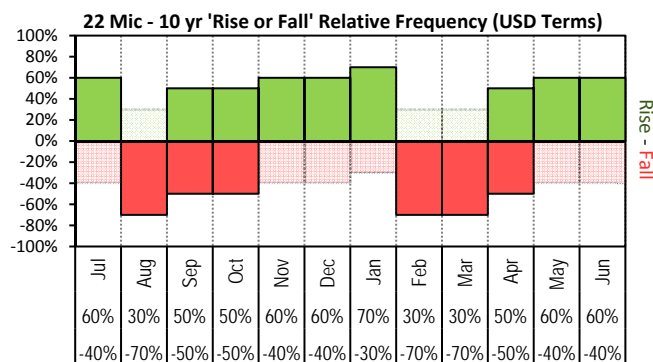


The above 'Rise or Fall' graph, shows how often the market has risen or fallen in a given month over the past 10 years, it does not show the extent of the movement only the frequency of direction. The 'Monthly Price Movement' graph shows the extent of movement for each month, for the past 5 years.

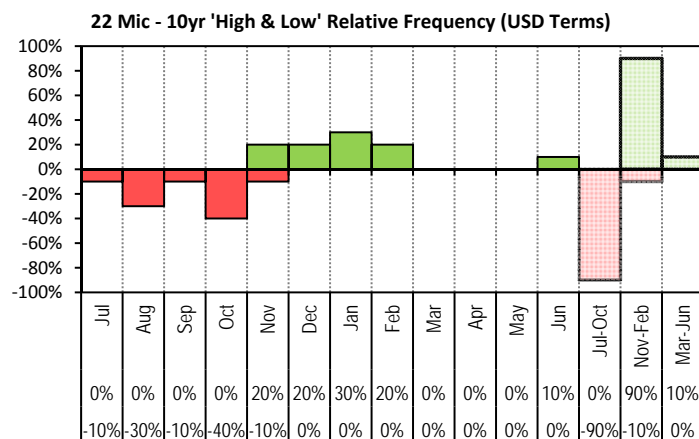


The above graph, shows how often the '12 month high & low' have been achieved for a given month over the past 10 years. It is not a measure of probability.

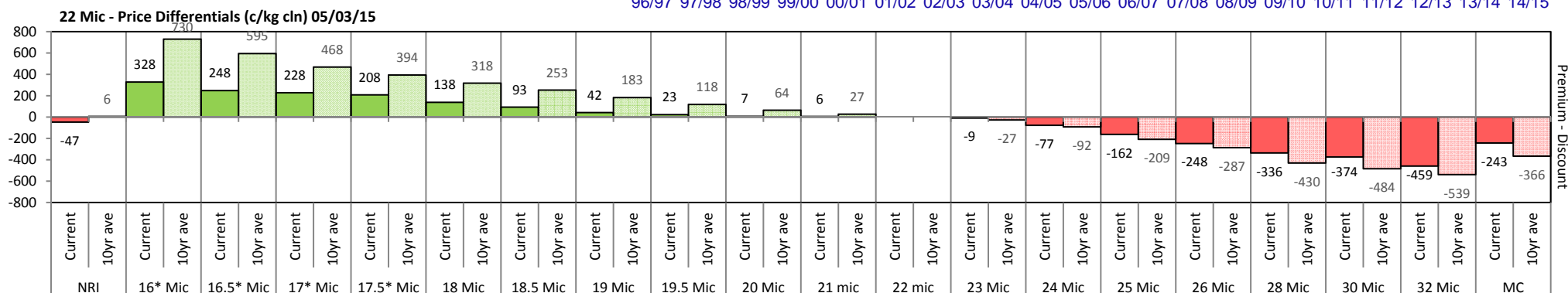
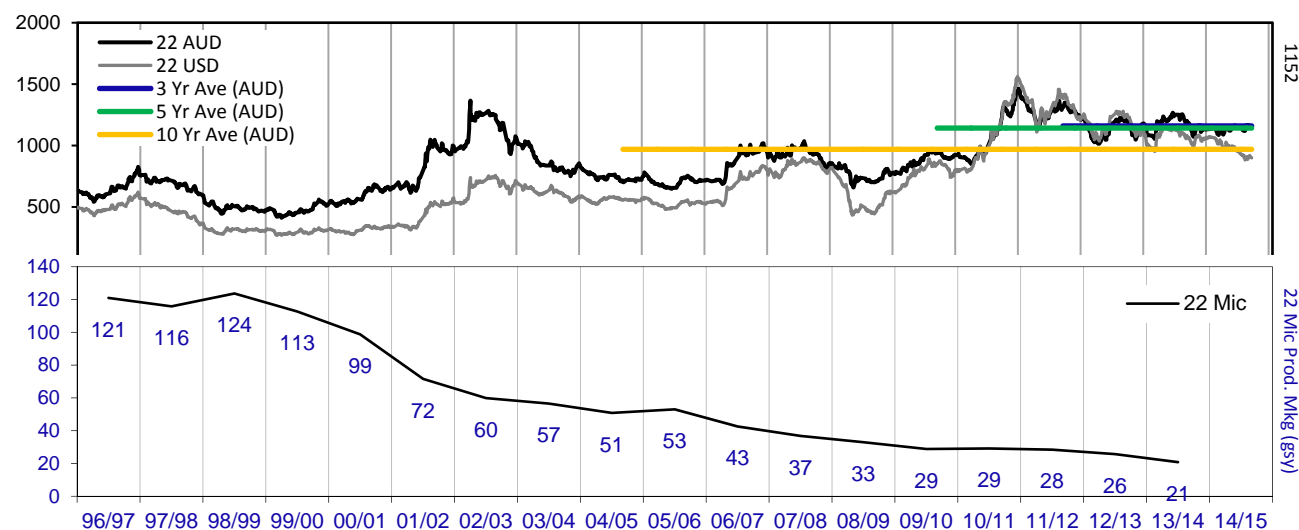


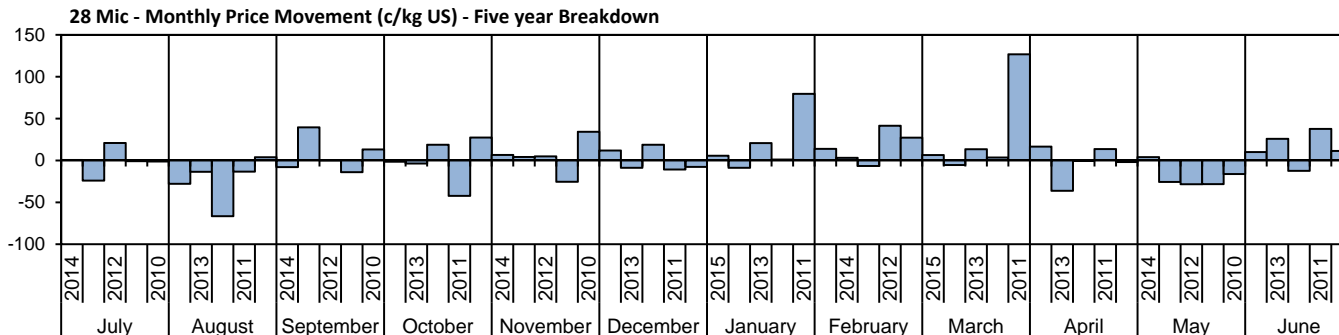
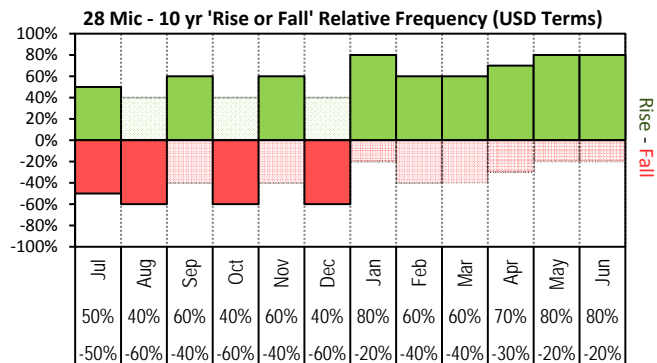


The above 'Rise or Fall' graph, shows how often the market has risen or fallen in a given month over the past 10 years, it does not show the extent of the movement only the frequency of direction. The 'Monthly Price Movement' graph shows the extent of movement for each month, for the past 5 years.

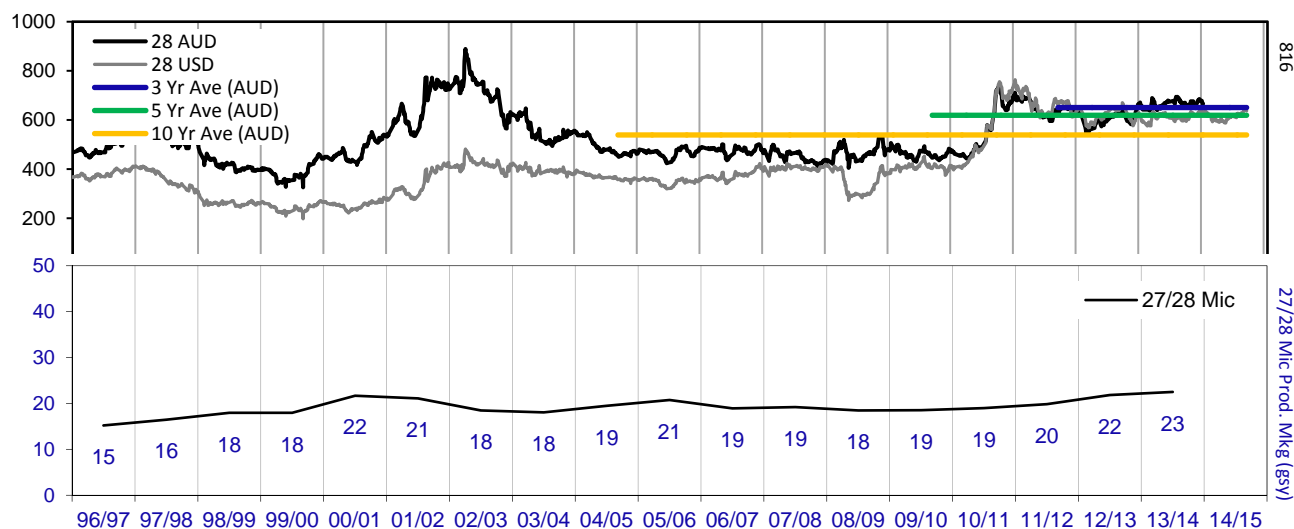
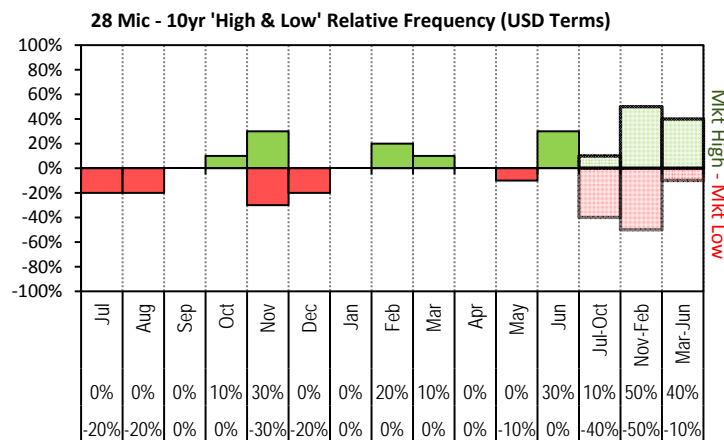


The above graph, shows how often the '12 month high & low' have been achieved for a given month over the past 10 years. It is not a measure of probability.

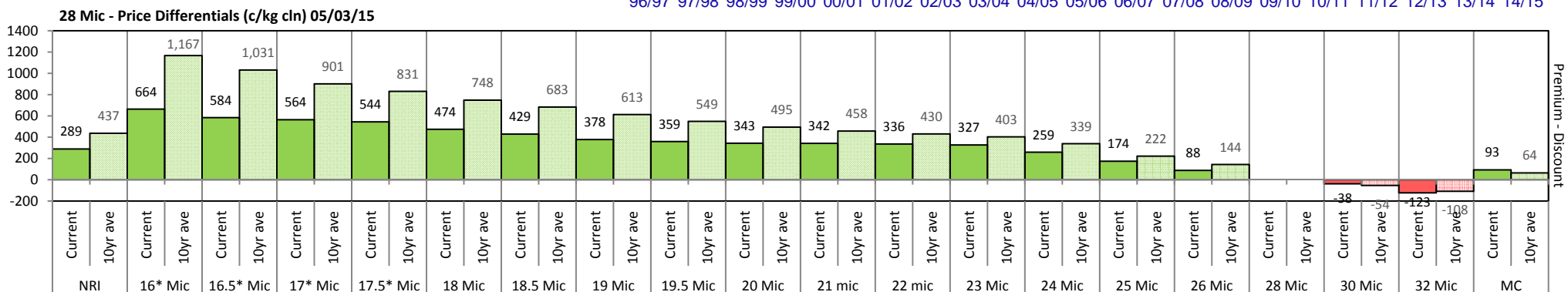


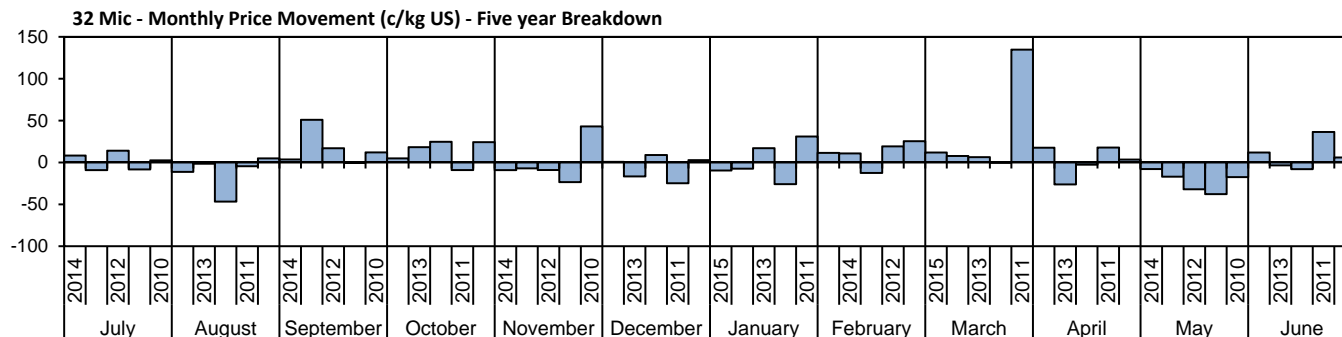
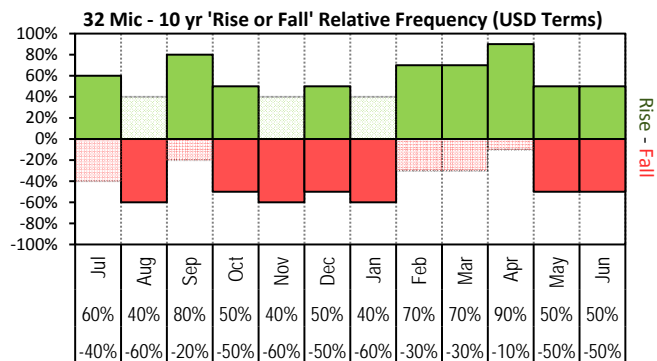


The above 'Rise or Fall' graph, shows how often the market has risen or fallen in a given month over the past 10 years, it does not show the extent of the movement only the frequency of direction. The 'Monthly Price Movement' graph shows the extent of movement for each month, for the past 5 years.

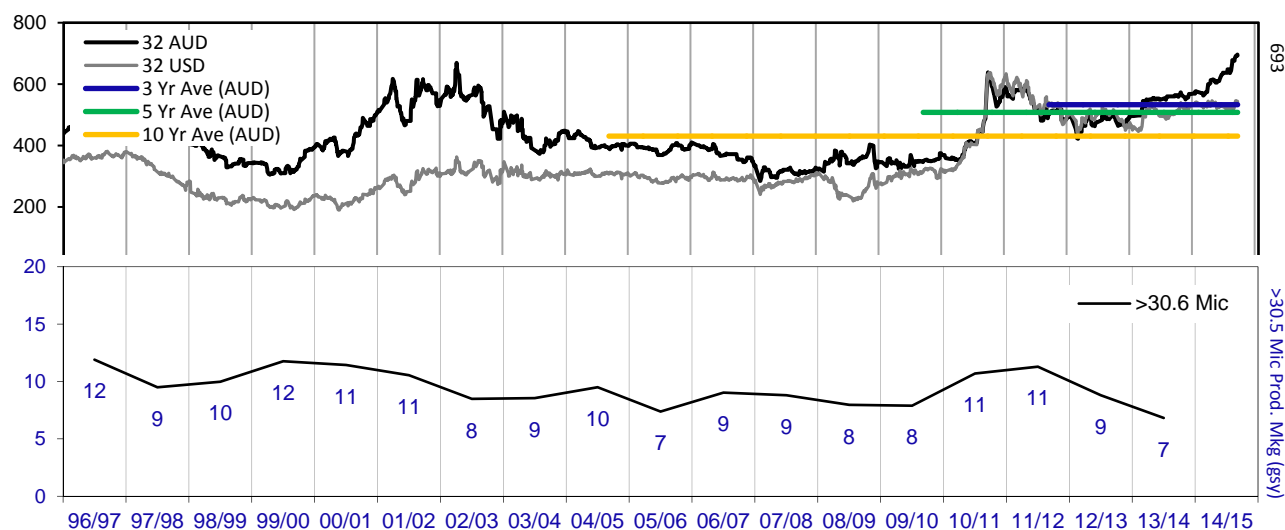
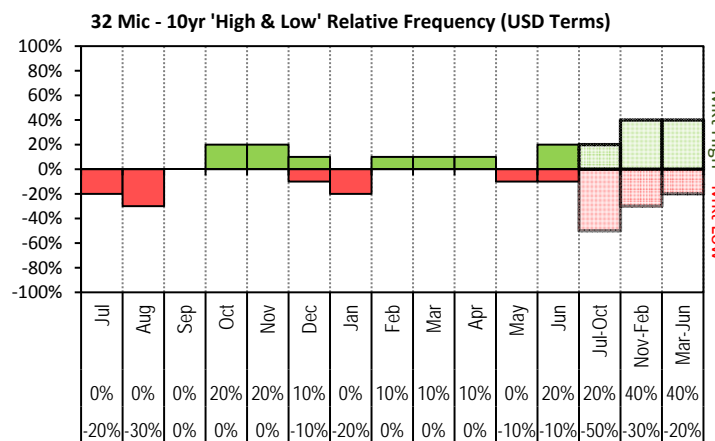


The above graph, shows how often the '12 month high & low' have been achieved for a given month over the past 10 years. It is not a measure of probability.

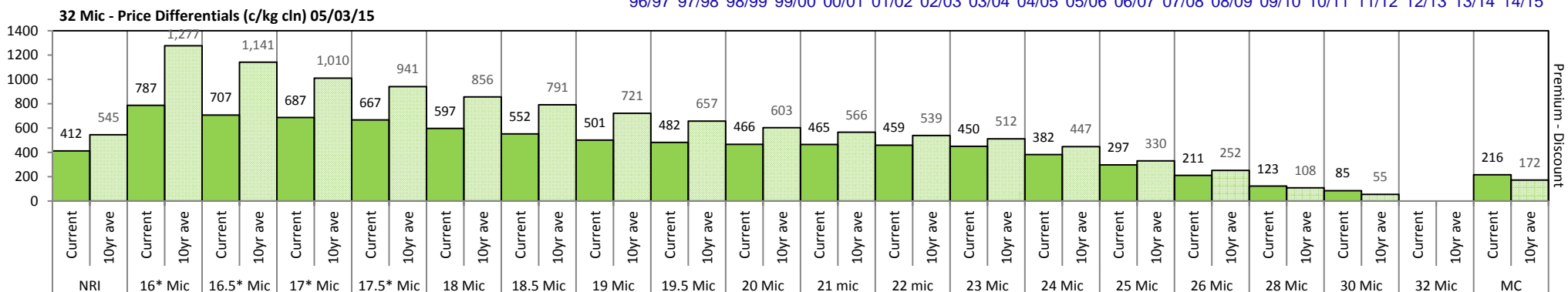


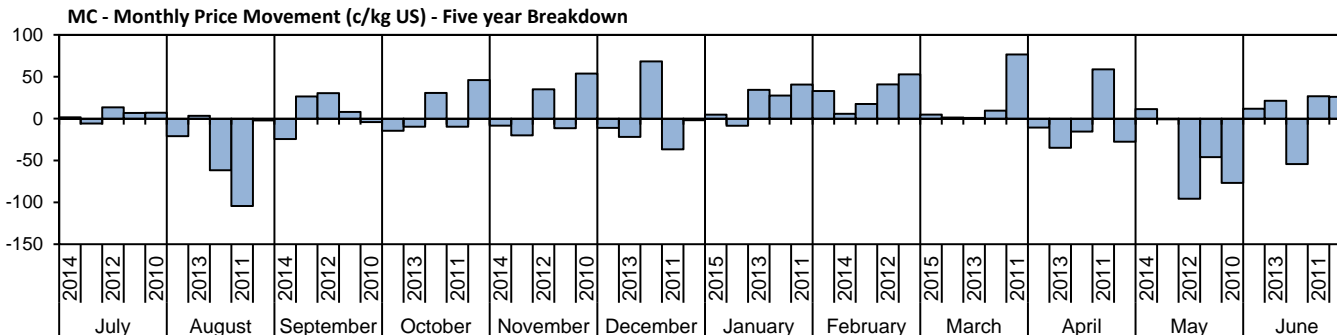
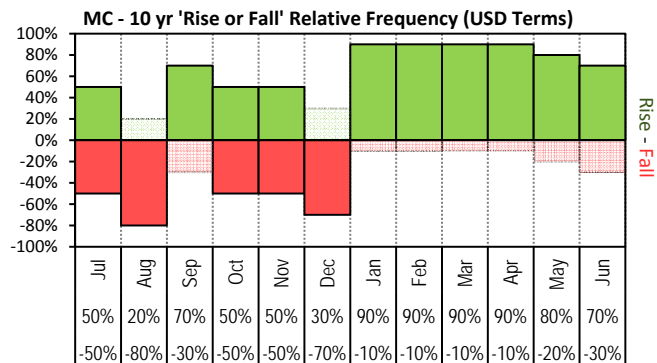


The above 'Rise or Fall' graph, shows how often the market has risen or fallen in a given month over the past 10 years, it does not show the extent of the movement only the frequency of direction. The 'Monthly Price Movement' graph shows the extent of movement for each month, for the past 5 years.

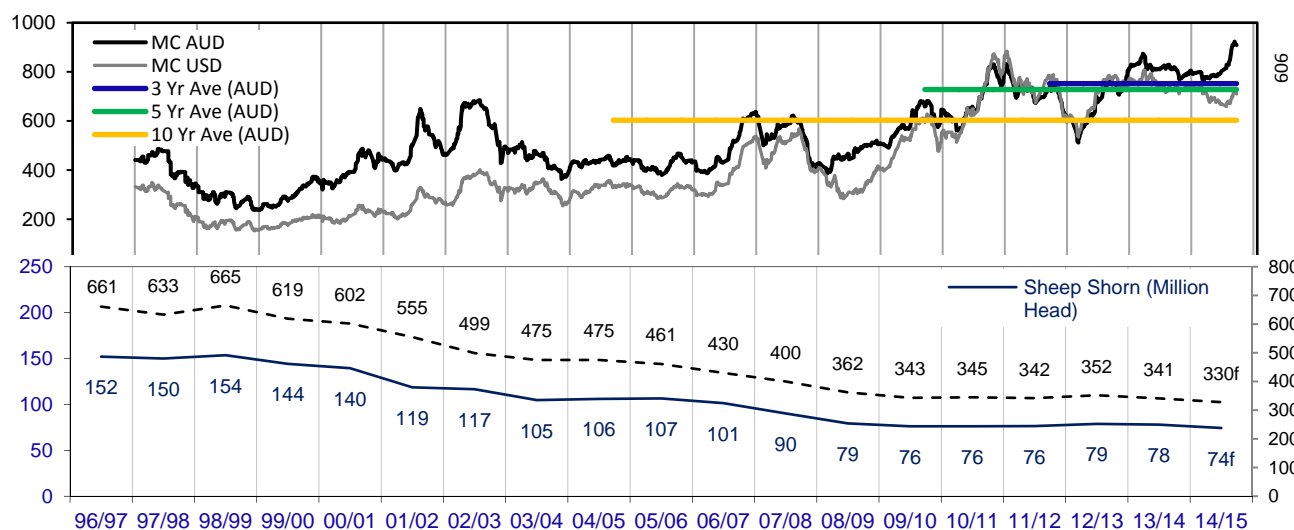
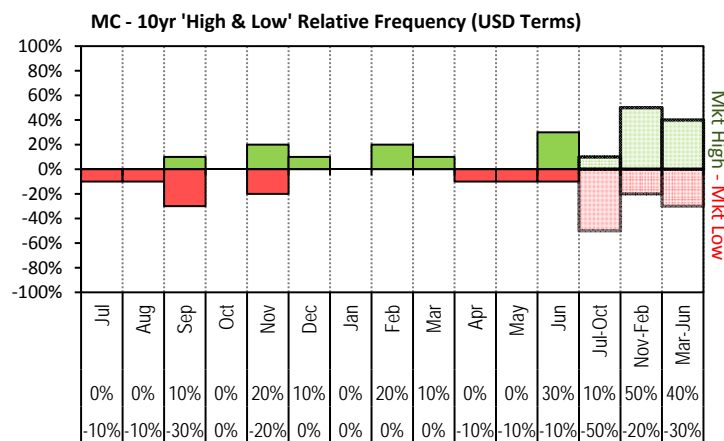


The above graph, shows how often the '12 month high & low' have been achieved for a given month over the past 10 years. It is not a measure of probability.

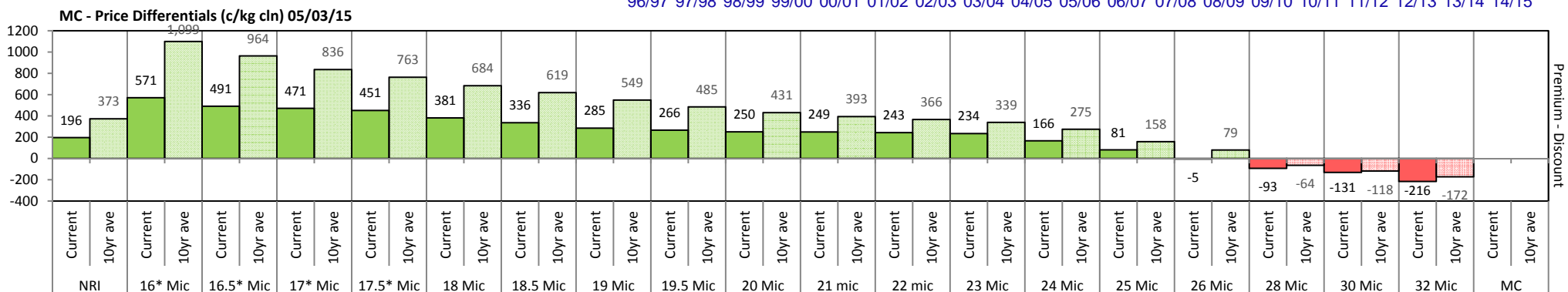




The above 'Rise or Fall' graph, shows how often the market has risen or fallen in a given month over the past 10 years, it does not show the extent of the movement only the frequency of direction. The 'Monthly Price Movement' graph shows the extent of movement for each month, for the past 5 years.



The above graph, shows how often the '12 month high & low' have been achieved for a given month over the past 10 years. It is not a measure of probability.





Two Year Export Snapshot (Greasy Equivalent - Million Kilos)

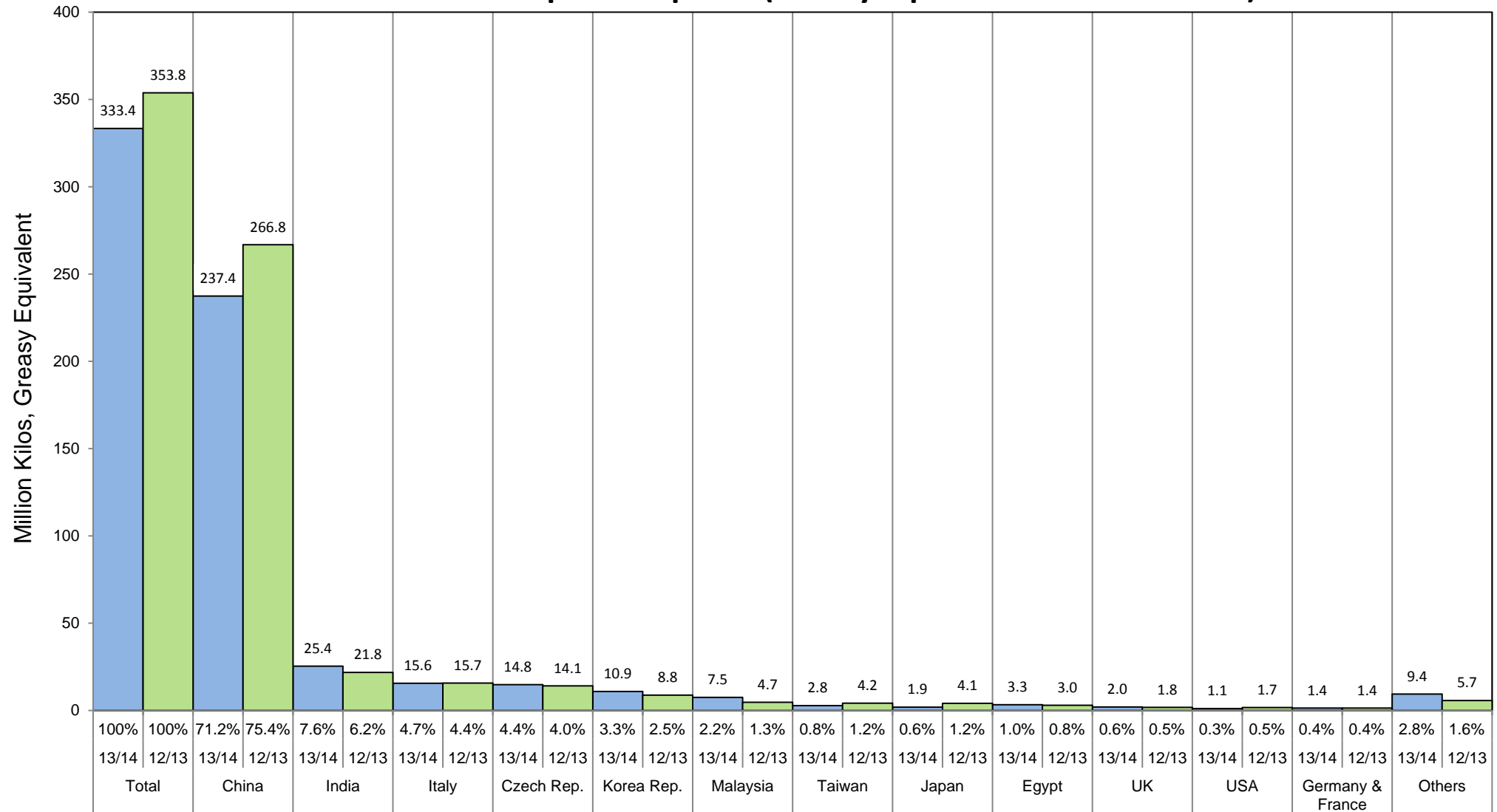




Table 7: Returns pr head for skirted fleece wool.

Skirted FLC Weight		Micron																	
9 Kg		16	16.5	17	17.5	18	18.5	19	19.5	20	21	22	23	24	25	26	28	30	32
Yield (Sch Dry)	25% Current	\$33	\$32	\$31	\$31	\$29	\$28	\$27	\$26	\$26	\$26	\$26	\$26	\$24	\$22	\$20	\$18	\$18	\$16
	10yr ave.	\$38	\$35	\$32	\$31	\$29	\$27	\$26	\$24	\$23	\$22	\$22	\$21	\$20	\$17	\$15	\$12	\$11	\$10
	30% Current	\$40	\$38	\$37	\$37	\$35	\$34	\$32	\$32	\$31	\$31	\$31	\$31	\$29	\$27	\$24	\$22	\$21	\$19
	10yr ave.	\$46	\$42	\$39	\$37	\$35	\$33	\$31	\$29	\$28	\$27	\$26	\$25	\$24	\$21	\$18	\$15	\$13	\$12
	35% Current	\$47	\$44	\$43	\$43	\$41	\$39	\$38	\$37	\$37	\$36	\$36	\$36	\$34	\$31	\$28	\$26	\$25	\$22
	10yr ave.	\$54	\$50	\$45	\$43	\$41	\$38	\$36	\$34	\$33	\$31	\$31	\$30	\$28	\$24	\$22	\$17	\$15	\$14
	40% Current	\$53	\$50	\$50	\$49	\$46	\$45	\$43	\$42	\$42	\$42	\$41	\$41	\$39	\$36	\$33	\$29	\$28	\$25
	10yr ave.	\$62	\$57	\$52	\$49	\$46	\$44	\$41	\$39	\$37	\$36	\$35	\$34	\$32	\$27	\$25	\$19	\$17	\$16
	45% Current	\$60	\$57	\$56	\$55	\$52	\$50	\$48	\$48	\$47	\$47	\$47	\$46	\$44	\$40	\$37	\$33	\$32	\$28
	10yr ave.	\$69	\$64	\$58	\$56	\$52	\$49	\$47	\$44	\$42	\$40	\$39	\$38	\$36	\$31	\$28	\$22	\$20	\$17
	50% Current	\$67	\$63	\$62	\$61	\$58	\$56	\$54	\$53	\$52	\$52	\$52	\$51	\$48	\$45	\$41	\$37	\$35	\$31
	10yr ave.	\$77	\$71	\$65	\$62	\$58	\$55	\$52	\$49	\$47	\$45	\$44	\$42	\$40	\$34	\$31	\$24	\$22	\$19
	55% Current	\$73	\$69	\$68	\$67	\$64	\$62	\$59	\$58	\$57	\$57	\$57	\$57	\$53	\$49	\$45	\$40	\$39	\$34
	10yr ave.	\$85	\$78	\$71	\$68	\$64	\$60	\$57	\$54	\$51	\$49	\$48	\$47	\$43	\$38	\$34	\$27	\$24	\$21
	60% Current	\$80	\$76	\$75	\$73	\$70	\$67	\$64	\$63	\$63	\$63	\$62	\$62	\$58	\$53	\$49	\$44	\$42	\$37
	10yr ave.	\$92	\$85	\$78	\$74	\$69	\$66	\$62	\$59	\$56	\$54	\$52	\$51	\$47	\$41	\$37	\$29	\$26	\$23
	65% Current	\$87	\$82	\$81	\$80	\$75	\$73	\$70	\$69	\$68	\$68	\$67	\$67	\$63	\$58	\$53	\$48	\$46	\$41
	10yr ave.	\$100	\$92	\$84	\$80	\$75	\$71	\$67	\$64	\$60	\$58	\$57	\$55	\$51	\$45	\$40	\$32	\$28	\$25
	70% Current	\$93	\$88	\$87	\$86	\$81	\$78	\$75	\$74	\$73	\$73	\$73	\$72	\$68	\$62	\$57	\$51	\$49	\$44
	10yr ave.	\$108	\$99	\$91	\$86	\$81	\$77	\$73	\$69	\$65	\$63	\$61	\$59	\$55	\$48	\$43	\$34	\$31	\$27
	75% Current	\$100	\$95	\$93	\$92	\$87	\$84	\$81	\$79	\$78	\$78	\$78	\$77	\$73	\$67	\$61	\$55	\$53	\$47
	10yr ave.	\$115	\$106	\$97	\$93	\$87	\$82	\$78	\$73	\$70	\$67	\$65	\$64	\$59	\$51	\$46	\$36	\$33	\$29
	80% Current	\$107	\$101	\$99	\$98	\$93	\$90	\$86	\$85	\$83	\$83	\$83	\$82	\$77	\$71	\$65	\$59	\$56	\$50
	10yr ave.	\$123	\$113	\$104	\$99	\$93	\$88	\$83	\$78	\$74	\$72	\$70	\$68	\$63	\$55	\$49	\$39	\$35	\$31
	85% Current	\$113	\$107	\$106	\$104	\$99	\$95	\$91	\$90	\$89	\$89	\$88	\$87	\$82	\$76	\$69	\$62	\$60	\$53
	10yr ave.	\$131	\$120	\$110	\$105	\$98	\$93	\$88	\$83	\$79	\$76	\$74	\$72	\$67	\$58	\$52	\$41	\$37	\$33

The above shows estimated returns per head for skirted fleece wool. These figures do not take into account the value of skirtings and oddments and do not take into account discounts that may apply for faults under individual circumstances. These figures are based on a market index of 100% and should be used as a guide only. Returns over \$30 / head for fleece wool are highlighted.



Table 8: Returns pr head for skirted fleece wool.

Skirted FLC Weight			Micron																	
			16	16.5	17	17.5	18	18.5	19	19.5	20	21	22	23	24	25	26	28	30	32
Yield (Sch Dry)	8 Kg																			
	25%	Current	\$30	\$28	\$28	\$27	\$26	\$25	\$24	\$24	\$23	\$23	\$23	\$23	\$22	\$20	\$18	\$16	\$16	\$14
		10yr ave.	\$34	\$31	\$29	\$27	\$26	\$24	\$23	\$22	\$21	\$20	\$19	\$19	\$18	\$15	\$14	\$11	\$10	\$9
	30%	Current	\$36	\$34	\$33	\$33	\$31	\$30	\$29	\$28	\$28	\$28	\$28	\$27	\$26	\$24	\$22	\$20	\$19	\$17
		10yr ave.	\$41	\$38	\$35	\$33	\$31	\$29	\$28	\$26	\$25	\$24	\$23	\$23	\$21	\$18	\$16	\$13	\$12	\$10
	35%	Current	\$41	\$39	\$39	\$38	\$36	\$35	\$33	\$33	\$32	\$32	\$32	\$32	\$30	\$28	\$25	\$23	\$22	\$19
		10yr ave.	\$48	\$44	\$40	\$38	\$36	\$34	\$32	\$30	\$29	\$28	\$27	\$26	\$25	\$21	\$19	\$15	\$14	\$12
	40%	Current	\$47	\$45	\$44	\$44	\$41	\$40	\$38	\$38	\$37	\$37	\$37	\$37	\$34	\$32	\$29	\$26	\$25	\$22
		10yr ave.	\$55	\$50	\$46	\$44	\$41	\$39	\$37	\$35	\$33	\$32	\$31	\$30	\$28	\$24	\$22	\$17	\$16	\$14
	45%	Current	\$53	\$50	\$50	\$49	\$46	\$45	\$43	\$42	\$42	\$42	\$41	\$41	\$39	\$36	\$33	\$29	\$28	\$25
		10yr ave.	\$62	\$57	\$52	\$49	\$46	\$44	\$41	\$39	\$37	\$36	\$35	\$34	\$32	\$27	\$25	\$19	\$17	\$16
	50%	Current	\$59	\$56	\$55	\$54	\$52	\$50	\$48	\$47	\$46	\$46	\$46	\$46	\$43	\$40	\$36	\$33	\$31	\$28
		10yr ave.	\$68	\$63	\$58	\$55	\$51	\$49	\$46	\$44	\$41	\$40	\$39	\$38	\$35	\$30	\$27	\$22	\$19	\$17
	55%	Current	\$65	\$62	\$61	\$60	\$57	\$55	\$53	\$52	\$51	\$51	\$51	\$50	\$47	\$44	\$40	\$36	\$34	\$30
		10yr ave.	\$75	\$69	\$63	\$60	\$57	\$54	\$51	\$48	\$45	\$44	\$43	\$41	\$39	\$33	\$30	\$24	\$21	\$19
	60%	Current	\$71	\$67	\$66	\$65	\$62	\$60	\$57	\$56	\$56	\$56	\$55	\$55	\$52	\$48	\$43	\$39	\$37	\$33
		10yr ave.	\$82	\$76	\$69	\$66	\$62	\$59	\$55	\$52	\$50	\$48	\$47	\$45	\$42	\$37	\$33	\$26	\$23	\$21
	65%	Current	\$77	\$73	\$72	\$71	\$67	\$65	\$62	\$61	\$60	\$60	\$60	\$59	\$56	\$51	\$47	\$42	\$40	\$36
		10yr ave.	\$89	\$82	\$75	\$71	\$67	\$64	\$60	\$57	\$54	\$52	\$50	\$49	\$46	\$40	\$36	\$28	\$25	\$22
	70%	Current	\$83	\$78	\$77	\$76	\$72	\$70	\$67	\$66	\$65	\$65	\$65	\$64	\$60	\$55	\$51	\$46	\$44	\$39
		10yr ave.	\$96	\$88	\$81	\$77	\$72	\$68	\$65	\$61	\$58	\$56	\$54	\$53	\$49	\$43	\$38	\$30	\$27	\$24
	75%	Current	\$89	\$84	\$83	\$82	\$77	\$75	\$72	\$71	\$70	\$69	\$69	\$69	\$65	\$59	\$54	\$49	\$47	\$42
		10yr ave.	\$103	\$94	\$86	\$82	\$77	\$73	\$69	\$65	\$62	\$60	\$58	\$57	\$53	\$46	\$41	\$32	\$29	\$26
	80%	Current	\$95	\$90	\$88	\$87	\$83	\$80	\$76	\$75	\$74	\$74	\$74	\$73	\$69	\$63	\$58	\$52	\$50	\$44
		10yr ave.	\$109	\$101	\$92	\$88	\$82	\$78	\$74	\$70	\$66	\$64	\$62	\$60	\$56	\$49	\$44	\$34	\$31	\$28
	85%	Current	\$101	\$95	\$94	\$92	\$88	\$85	\$81	\$80	\$79	\$79	\$78	\$78	\$73	\$67	\$61	\$55	\$53	\$47
10yr ave.		\$116	\$107	\$98	\$93	\$88	\$83	\$78	\$74	\$70	\$68	\$66	\$64	\$60	\$52	\$46	\$37	\$33	\$29	

The above shows estimated returns per head for skirted fleece wool. These figures do not take into account the value of skirtings and oddments and do not take into account discounts that may apply for faults under individual circumstances. These figures are based on a market index of 100% and should be used as a guide only. Returns over \$30 / head for fleece wool are highlighted.



Table 9: Returns pr head for skirted fleece wool.

Skirted FLC Weight		Micron																	
7 Kg		16	16.5	17	17.5	18	18.5	19	19.5	20	21	22	23	24	25	26	28	30	32
Yield (Sch Dry)	25% Current	\$26	\$25	\$24	\$24	\$23	\$22	\$21	\$21	\$20	\$20	\$20	\$20	\$19	\$17	\$16	\$14	\$14	\$12
	10yr ave.	\$30	\$28	\$25	\$24	\$23	\$21	\$20	\$19	\$18	\$17	\$17	\$16	\$15	\$13	\$12	\$9	\$8	\$8
	30% Current	\$31	\$29	\$29	\$29	\$27	\$26	\$25	\$25	\$24	\$24	\$24	\$24	\$23	\$21	\$19	\$17	\$16	\$15
	10yr ave.	\$36	\$33	\$30	\$29	\$27	\$26	\$24	\$23	\$22	\$21	\$20	\$20	\$18	\$16	\$14	\$11	\$10	\$9
	35% Current	\$36	\$34	\$34	\$33	\$32	\$31	\$29	\$29	\$28	\$28	\$28	\$28	\$26	\$24	\$22	\$20	\$19	\$17
	10yr ave.	\$42	\$39	\$35	\$34	\$32	\$30	\$28	\$27	\$25	\$24	\$24	\$23	\$22	\$19	\$17	\$13	\$12	\$11
	40% Current	\$41	\$39	\$39	\$38	\$36	\$35	\$33	\$33	\$32	\$32	\$32	\$32	\$30	\$28	\$25	\$23	\$22	\$19
	10yr ave.	\$48	\$44	\$40	\$38	\$36	\$34	\$32	\$30	\$29	\$28	\$27	\$26	\$25	\$21	\$19	\$15	\$14	\$12
	45% Current	\$47	\$44	\$43	\$43	\$41	\$39	\$38	\$37	\$37	\$36	\$36	\$36	\$34	\$31	\$28	\$26	\$25	\$22
	10yr ave.	\$54	\$50	\$45	\$43	\$41	\$38	\$36	\$34	\$33	\$31	\$31	\$30	\$28	\$24	\$22	\$17	\$15	\$14
	50% Current	\$52	\$49	\$48	\$48	\$45	\$44	\$42	\$41	\$41	\$41	\$40	\$40	\$38	\$35	\$32	\$29	\$27	\$24
	10yr ave.	\$60	\$55	\$50	\$48	\$45	\$43	\$40	\$38	\$36	\$35	\$34	\$33	\$31	\$27	\$24	\$19	\$17	\$15
	55% Current	\$57	\$54	\$53	\$52	\$50	\$48	\$46	\$45	\$45	\$45	\$44	\$44	\$41	\$38	\$35	\$31	\$30	\$27
	10yr ave.	\$66	\$61	\$55	\$53	\$50	\$47	\$44	\$42	\$40	\$38	\$37	\$36	\$34	\$29	\$26	\$21	\$19	\$17
	60% Current	\$62	\$59	\$58	\$57	\$54	\$52	\$50	\$49	\$49	\$49	\$48	\$48	\$45	\$42	\$38	\$34	\$33	\$29
	10yr ave.	\$72	\$66	\$61	\$58	\$54	\$51	\$48	\$46	\$43	\$42	\$41	\$40	\$37	\$32	\$29	\$23	\$20	\$18
	65% Current	\$67	\$64	\$63	\$62	\$59	\$57	\$54	\$53	\$53	\$53	\$52	\$52	\$49	\$45	\$41	\$37	\$35	\$32
	10yr ave.	\$78	\$72	\$66	\$62	\$59	\$56	\$52	\$50	\$47	\$45	\$44	\$43	\$40	\$35	\$31	\$25	\$22	\$20
	70% Current	\$73	\$69	\$68	\$67	\$63	\$61	\$59	\$58	\$57	\$57	\$56	\$56	\$53	\$49	\$44	\$40	\$38	\$34
	10yr ave.	\$84	\$77	\$71	\$67	\$63	\$60	\$56	\$53	\$51	\$49	\$47	\$46	\$43	\$37	\$33	\$26	\$24	\$21
	75% Current	\$78	\$74	\$72	\$71	\$68	\$65	\$63	\$62	\$61	\$61	\$60	\$60	\$56	\$52	\$47	\$43	\$41	\$36
	10yr ave.	\$90	\$83	\$76	\$72	\$68	\$64	\$60	\$57	\$54	\$52	\$51	\$49	\$46	\$40	\$36	\$28	\$25	\$23
	80% Current	\$83	\$78	\$77	\$76	\$72	\$70	\$67	\$66	\$65	\$65	\$65	\$64	\$60	\$55	\$51	\$46	\$44	\$39
	10yr ave.	\$96	\$88	\$81	\$77	\$72	\$68	\$65	\$61	\$58	\$56	\$54	\$53	\$49	\$43	\$38	\$30	\$27	\$24
	85% Current	\$88	\$83	\$82	\$81	\$77	\$74	\$71	\$70	\$69	\$69	\$69	\$68	\$64	\$59	\$54	\$49	\$46	\$41
	10yr ave.	\$102	\$94	\$86	\$82	\$77	\$73	\$69	\$65	\$62	\$59	\$58	\$56	\$52	\$45	\$41	\$32	\$29	\$26

The above shows estimated returns per head for skirted fleece wool. These figures do not take into account the value of skirtings and oddments and do not take into account discounts that may apply for faults under individual circumstances. These figures are based on a market index of 100% and should be used as a guide only. Returns over \$30 / head for fleece wool are highlighted.



Table 10: Returns pr head for skirted fleece wool.

Skirted FLC Weight			Micron																	
			16	16.5	17	17.5	18	18.5	19	19.5	20	21	22	23	24	25	26	28	30	32
Yield (Sch Dry)	6 Kg																			
	25%	Current	\$22	\$21	\$21	\$20	\$19	\$19	\$18	\$18	\$17	\$17	\$17	\$17	\$16	\$15	\$14	\$12	\$12	\$10
		10yr ave.	\$26	\$24	\$22	\$21	\$19	\$18	\$17	\$16	\$16	\$15	\$15	\$14	\$13	\$11	\$10	\$8	\$7	\$6
	30%	Current	\$27	\$25	\$25	\$24	\$23	\$22	\$21	\$21	\$21	\$21	\$21	\$21	\$19	\$18	\$16	\$15	\$14	\$12
		10yr ave.	\$31	\$28	\$26	\$25	\$23	\$22	\$21	\$20	\$19	\$18	\$17	\$17	\$16	\$14	\$12	\$10	\$9	\$8
	35%	Current	\$31	\$29	\$29	\$29	\$27	\$26	\$25	\$25	\$24	\$24	\$24	\$24	\$23	\$21	\$19	\$17	\$16	\$15
		10yr ave.	\$36	\$33	\$30	\$29	\$27	\$26	\$24	\$23	\$22	\$21	\$20	\$20	\$18	\$16	\$14	\$11	\$10	\$9
	40%	Current	\$36	\$34	\$33	\$33	\$31	\$30	\$29	\$28	\$28	\$28	\$28	\$27	\$26	\$24	\$22	\$20	\$19	\$17
		10yr ave.	\$41	\$38	\$35	\$33	\$31	\$29	\$28	\$26	\$25	\$24	\$23	\$23	\$21	\$18	\$16	\$13	\$12	\$10
	45%	Current	\$40	\$38	\$37	\$37	\$35	\$34	\$32	\$32	\$31	\$31	\$31	\$31	\$29	\$27	\$24	\$22	\$21	\$19
		10yr ave.	\$46	\$42	\$39	\$37	\$35	\$33	\$31	\$29	\$28	\$27	\$26	\$25	\$24	\$21	\$18	\$15	\$13	\$12
	50%	Current	\$44	\$42	\$41	\$41	\$39	\$37	\$36	\$35	\$35	\$35	\$35	\$34	\$32	\$30	\$27	\$24	\$23	\$21
		10yr ave.	\$51	\$47	\$43	\$41	\$39	\$37	\$35	\$33	\$31	\$30	\$29	\$28	\$26	\$23	\$20	\$16	\$15	\$13
	55%	Current	\$49	\$46	\$46	\$45	\$43	\$41	\$39	\$39	\$38	\$38	\$38	\$38	\$35	\$33	\$30	\$27	\$26	\$23
		10yr ave.	\$56	\$52	\$48	\$45	\$42	\$40	\$38	\$36	\$34	\$33	\$32	\$31	\$29	\$25	\$23	\$18	\$16	\$14
	60%	Current	\$53	\$50	\$50	\$49	\$46	\$45	\$43	\$42	\$42	\$42	\$41	\$41	\$39	\$36	\$33	\$29	\$28	\$25
		10yr ave.	\$62	\$57	\$52	\$49	\$46	\$44	\$41	\$39	\$37	\$36	\$35	\$34	\$32	\$27	\$25	\$19	\$17	\$16
	65%	Current	\$58	\$55	\$54	\$53	\$50	\$49	\$47	\$46	\$45	\$45	\$45	\$45	\$42	\$39	\$35	\$32	\$30	\$27
		10yr ave.	\$67	\$61	\$56	\$54	\$50	\$48	\$45	\$42	\$40	\$39	\$38	\$37	\$34	\$30	\$27	\$21	\$19	\$17
	70%	Current	\$62	\$59	\$58	\$57	\$54	\$52	\$50	\$49	\$49	\$49	\$48	\$48	\$45	\$42	\$38	\$34	\$33	\$29
		10yr ave.	\$72	\$66	\$61	\$58	\$54	\$51	\$48	\$46	\$43	\$42	\$41	\$40	\$37	\$32	\$29	\$23	\$20	\$18
	75%	Current	\$67	\$63	\$62	\$61	\$58	\$56	\$54	\$53	\$52	\$52	\$52	\$51	\$48	\$45	\$41	\$37	\$35	\$31
		10yr ave.	\$77	\$71	\$65	\$62	\$58	\$55	\$52	\$49	\$47	\$45	\$44	\$42	\$40	\$34	\$31	\$24	\$22	\$19
	80%	Current	\$71	\$67	\$66	\$65	\$62	\$60	\$57	\$56	\$56	\$56	\$55	\$55	\$52	\$48	\$43	\$39	\$37	\$33
		10yr ave.	\$82	\$76	\$69	\$66	\$62	\$59	\$55	\$52	\$50	\$48	\$47	\$45	\$42	\$37	\$33	\$26	\$23	\$21
	85%	Current	\$75	\$71	\$70	\$69	\$66	\$63	\$61	\$60	\$59	\$59	\$59	\$58	\$55	\$50	\$46	\$42	\$40	\$35
	10yr ave.	\$87	\$80	\$73	\$70	\$66	\$62	\$59	\$55	\$53	\$51	\$49	\$48	\$45	\$39	\$35	\$27	\$25	\$22	

The above shows estimated returns per head for skirted fleece wool. These figures do not take into account the value of skirtings and oddments and do not take into account discounts that may apply for faults under individual circumstances. These figures are based on a market index of 100% and should be used as a guide only. Returns over \$30 / head for fleece wool are highlighted.



Table 11: Returns pr head for skirted fleece wool.

Skirted FLC Weight 5 Kg			Micron																	
			16	16.5	17	17.5	18	18.5	19	19.5	20	21	22	23	24	25	26	28	30	32
Yield (Sch Dry)	25%	Current	\$19	\$18	\$17	\$17	\$16	\$16	\$15	\$15	\$14	\$14	\$14	\$14	\$13	\$12	\$11	\$10	\$10	\$9
		10yr ave.	\$21	\$20	\$18	\$17	\$16	\$15	\$14	\$14	\$13	\$12	\$12	\$12	\$12	\$11	\$10	\$9	\$7	\$6
	30%	Current	\$22	\$21	\$21	\$20	\$19	\$19	\$18	\$18	\$17	\$17	\$17	\$17	\$16	\$15	\$14	\$12	\$12	\$10
		10yr ave.	\$26	\$24	\$22	\$21	\$19	\$18	\$17	\$16	\$16	\$15	\$15	\$14	\$13	\$11	\$10	\$8	\$7	\$6
	35%	Current	\$26	\$25	\$24	\$24	\$23	\$22	\$21	\$21	\$20	\$20	\$20	\$20	\$19	\$17	\$16	\$14	\$14	\$12
		10yr ave.	\$30	\$28	\$25	\$24	\$23	\$21	\$20	\$19	\$18	\$17	\$17	\$16	\$15	\$13	\$12	\$9	\$8	\$8
	40%	Current	\$30	\$28	\$28	\$27	\$26	\$25	\$24	\$24	\$23	\$23	\$23	\$23	\$22	\$20	\$18	\$16	\$16	\$14
		10yr ave.	\$34	\$31	\$29	\$27	\$26	\$24	\$23	\$22	\$21	\$20	\$19	\$19	\$18	\$15	\$14	\$11	\$10	\$9
	45%	Current	\$33	\$32	\$31	\$31	\$29	\$28	\$27	\$26	\$26	\$26	\$26	\$26	\$24	\$22	\$20	\$18	\$18	\$16
		10yr ave.	\$38	\$35	\$32	\$31	\$29	\$27	\$26	\$24	\$23	\$22	\$22	\$21	\$20	\$17	\$15	\$12	\$11	\$10
	50%	Current	\$37	\$35	\$35	\$34	\$32	\$31	\$30	\$29	\$29	\$29	\$29	\$29	\$27	\$25	\$23	\$20	\$19	\$17
		10yr ave.	\$43	\$39	\$36	\$34	\$32	\$31	\$29	\$27	\$26	\$25	\$24	\$24	\$22	\$19	\$17	\$13	\$12	\$11
	55%	Current	\$41	\$39	\$38	\$37	\$35	\$34	\$33	\$32	\$32	\$32	\$32	\$31	\$30	\$27	\$25	\$22	\$21	\$19
		10yr ave.	\$47	\$43	\$40	\$38	\$35	\$34	\$32	\$30	\$28	\$27	\$27	\$26	\$24	\$21	\$19	\$15	\$13	\$12
	60%	Current	\$44	\$42	\$41	\$41	\$39	\$37	\$36	\$35	\$35	\$35	\$35	\$34	\$32	\$30	\$27	\$24	\$23	\$21
		10yr ave.	\$51	\$47	\$43	\$41	\$39	\$37	\$35	\$33	\$31	\$30	\$29	\$28	\$26	\$23	\$20	\$16	\$15	\$13
	65%	Current	\$48	\$46	\$45	\$44	\$42	\$40	\$39	\$38	\$38	\$38	\$37	\$37	\$35	\$32	\$29	\$27	\$25	\$23
		10yr ave.	\$56	\$51	\$47	\$45	\$42	\$40	\$37	\$35	\$34	\$32	\$31	\$31	\$29	\$25	\$22	\$18	\$16	\$14
	70%	Current	\$52	\$49	\$48	\$48	\$45	\$44	\$42	\$41	\$41	\$41	\$40	\$40	\$38	\$35	\$32	\$29	\$27	\$24
		10yr ave.	\$60	\$55	\$50	\$48	\$45	\$43	\$40	\$38	\$36	\$35	\$34	\$33	\$31	\$27	\$24	\$19	\$17	\$15
75%	Current	\$56	\$53	\$52	\$51	\$48	\$47	\$45	\$44	\$43	\$43	\$43	\$43	\$40	\$37	\$34	\$31	\$29	\$26	
	10yr ave.	\$64	\$59	\$54	\$51	\$48	\$46	\$43	\$41	\$39	\$37	\$36	\$35	\$33	\$29	\$26	\$20	\$18	\$16	
80%	Current	\$59	\$56	\$55	\$54	\$52	\$50	\$48	\$47	\$46	\$46	\$46	\$46	\$43	\$40	\$36	\$33	\$31	\$28	
	10yr ave.	\$68	\$63	\$58	\$55	\$51	\$49	\$46	\$44	\$41	\$40	\$39	\$38	\$35	\$30	\$27	\$22	\$19	\$17	
85%	Current	\$63	\$60	\$59	\$58	\$55	\$53	\$51	\$50	\$49	\$49	\$49	\$49	\$46	\$42	\$38	\$35	\$33	\$29	
	10yr ave.	\$73	\$67	\$61	\$58	\$55	\$52	\$49	\$46	\$44	\$42	\$41	\$40	\$37	\$32	\$29	\$23	\$21	\$18	

The above shows estimated returns per head for skirted fleece wool. These figures do not take into account the value of skirtings and oddments and do not take into account discounts that may apply for faults under individual circumstances. These figures are based on a market index of 100% and should be used as a guide only. Returns over \$30 / head for fleece wool are highlighted.



Table 12: Returns pr head for skirted fleece wool.

Skirted FLC Weight		Micron																	
4 Kg		16	16.5	17	17.5	18	18.5	19	19.5	20	21	22	23	24	25	26	28	30	32
Yield (Sch Dry)	25% Current	\$15	\$14	\$14	\$14	\$13	\$12	\$12	\$12	\$12	\$12	\$12	\$11	\$11	\$10	\$9	\$8	\$8	\$7
	10yr ave.	\$17	\$16	\$14	\$14	\$13	\$12	\$12	\$11	\$10	\$10	\$10	\$9	\$9	\$8	\$7	\$5	\$5	\$4
	30% Current	\$18	\$17	\$17	\$16	\$15	\$15	\$14	\$14	\$14	\$14	\$14	\$14	\$13	\$12	\$11	\$10	\$9	\$8
	10yr ave.	\$21	\$19	\$17	\$16	\$15	\$15	\$14	\$13	\$12	\$12	\$12	\$11	\$11	\$9	\$8	\$6	\$6	\$5
	35% Current	\$21	\$20	\$19	\$19	\$18	\$17	\$17	\$16	\$16	\$16	\$16	\$16	\$15	\$14	\$13	\$11	\$11	\$10
	10yr ave.	\$24	\$22	\$20	\$19	\$18	\$17	\$16	\$15	\$14	\$14	\$14	\$13	\$12	\$11	\$10	\$8	\$7	\$6
	40% Current	\$24	\$22	\$22	\$22	\$21	\$20	\$19	\$19	\$19	\$19	\$18	\$18	\$17	\$16	\$14	\$13	\$12	\$11
	10yr ave.	\$27	\$25	\$23	\$22	\$21	\$20	\$18	\$17	\$17	\$16	\$16	\$15	\$14	\$12	\$11	\$9	\$8	\$7
	45% Current	\$27	\$25	\$25	\$24	\$23	\$22	\$21	\$21	\$21	\$21	\$21	\$21	\$19	\$18	\$16	\$15	\$14	\$12
	10yr ave.	\$31	\$28	\$26	\$25	\$23	\$22	\$21	\$20	\$19	\$18	\$17	\$17	\$16	\$14	\$12	\$10	\$9	\$8
	50% Current	\$30	\$28	\$28	\$27	\$26	\$25	\$24	\$24	\$23	\$23	\$23	\$23	\$22	\$20	\$18	\$16	\$16	\$14
	10yr ave.	\$34	\$31	\$29	\$27	\$26	\$24	\$23	\$22	\$21	\$20	\$19	\$19	\$18	\$15	\$14	\$11	\$10	\$9
	55% Current	\$33	\$31	\$30	\$30	\$28	\$27	\$26	\$26	\$25	\$25	\$25	\$25	\$24	\$22	\$20	\$18	\$17	\$15
	10yr ave.	\$38	\$35	\$32	\$30	\$28	\$27	\$25	\$24	\$23	\$22	\$21	\$21	\$19	\$17	\$15	\$12	\$11	\$9
	60% Current	\$36	\$34	\$33	\$33	\$31	\$30	\$29	\$28	\$28	\$28	\$28	\$27	\$26	\$24	\$22	\$20	\$19	\$17
	10yr ave.	\$41	\$38	\$35	\$33	\$31	\$29	\$28	\$26	\$25	\$24	\$23	\$23	\$21	\$18	\$16	\$13	\$12	\$10
	65% Current	\$38	\$36	\$36	\$35	\$34	\$32	\$31	\$31	\$30	\$30	\$30	\$30	\$28	\$26	\$24	\$21	\$20	\$18
	10yr ave.	\$44	\$41	\$37	\$36	\$33	\$32	\$30	\$28	\$27	\$26	\$25	\$24	\$23	\$20	\$18	\$14	\$13	\$11
	70% Current	\$41	\$39	\$39	\$38	\$36	\$35	\$33	\$33	\$32	\$32	\$32	\$32	\$30	\$28	\$25	\$23	\$22	\$19
	10yr ave.	\$48	\$44	\$40	\$38	\$36	\$34	\$32	\$30	\$29	\$28	\$27	\$26	\$25	\$21	\$19	\$15	\$14	\$12
	75% Current	\$44	\$42	\$41	\$41	\$39	\$37	\$36	\$35	\$35	\$35	\$35	\$34	\$32	\$30	\$27	\$24	\$23	\$21
	10yr ave.	\$51	\$47	\$43	\$41	\$39	\$37	\$35	\$33	\$31	\$30	\$29	\$28	\$26	\$23	\$20	\$16	\$15	\$13
	80% Current	\$47	\$45	\$44	\$44	\$41	\$40	\$38	\$38	\$37	\$37	\$37	\$37	\$34	\$32	\$29	\$26	\$25	\$22
	10yr ave.	\$55	\$50	\$46	\$44	\$41	\$39	\$37	\$35	\$33	\$32	\$31	\$30	\$28	\$24	\$22	\$17	\$16	\$14
	85% Current	\$50	\$48	\$47	\$46	\$44	\$42	\$41	\$40	\$39	\$39	\$39	\$39	\$37	\$34	\$31	\$28	\$26	\$24
	10yr ave.	\$58	\$53	\$49	\$47	\$44	\$42	\$39	\$37	\$35	\$34	\$33	\$32	\$30	\$26	\$23	\$18	\$16	\$15

The above shows estimated returns per head for skirted fleece wool. These figures do not take into account the value of skirtings and oddments and do not take into account discounts that may apply for faults under individual circumstances. These figures are based on a market index of 100% and should be used as a guide only. Returns over \$30 / head for fleece wool are highlighted.



Table 13: Returns pr head for skirted fleece wool.

Skirted FLC Weight		Micron																	
3 Kg		16	16.5	17	17.5	18	18.5	19	19.5	20	21	22	23	24	25	26	28	30	32
Yield (Sch Dry)	25% Current	\$11	\$11	\$10	\$10	\$10	\$9	\$9	\$9	\$9	\$9	\$9	\$9	\$8	\$7	\$7	\$6	\$6	\$5
	10yr ave.	\$13	\$12	\$11	\$10	\$10	\$9	\$9	\$8	\$8	\$7	\$7	\$7	\$7	\$6	\$5	\$4	\$4	\$3
	30% Current	\$13	\$13	\$12	\$12	\$12	\$11	\$11	\$11	\$10	\$10	\$10	\$10	\$10	\$9	\$8	\$7	\$7	\$6
	10yr ave.	\$15	\$14	\$13	\$12	\$12	\$11	\$10	\$10	\$9	\$9	\$9	\$8	\$8	\$7	\$6	\$5	\$4	\$4
	35% Current	\$16	\$15	\$14	\$14	\$14	\$13	\$13	\$12	\$12	\$12	\$12	\$12	\$11	\$10	\$9	\$9	\$8	\$7
	10yr ave.	\$18	\$17	\$15	\$14	\$14	\$13	\$12	\$11	\$11	\$10	\$10	\$10	\$9	\$8	\$7	\$6	\$5	\$5
	40% Current	\$18	\$17	\$17	\$16	\$15	\$15	\$14	\$14	\$14	\$14	\$14	\$14	\$13	\$12	\$11	\$10	\$9	\$8
	10yr ave.	\$21	\$19	\$17	\$16	\$15	\$15	\$14	\$13	\$12	\$12	\$12	\$11	\$11	\$9	\$8	\$6	\$6	\$5
	45% Current	\$20	\$19	\$19	\$18	\$17	\$17	\$16	\$16	\$16	\$16	\$16	\$15	\$15	\$13	\$12	\$11	\$11	\$9
	10yr ave.	\$23	\$21	\$19	\$19	\$17	\$16	\$16	\$15	\$14	\$13	\$13	\$13	\$12	\$10	\$9	\$7	\$7	\$6
	50% Current	\$22	\$21	\$21	\$20	\$19	\$19	\$18	\$18	\$17	\$17	\$17	\$17	\$16	\$15	\$14	\$12	\$12	\$10
	10yr ave.	\$26	\$24	\$22	\$21	\$19	\$18	\$17	\$16	\$16	\$15	\$15	\$14	\$13	\$11	\$10	\$8	\$7	\$6
	55% Current	\$24	\$23	\$23	\$22	\$21	\$21	\$20	\$19	\$19	\$19	\$19	\$19	\$18	\$16	\$15	\$13	\$13	\$11
	10yr ave.	\$28	\$26	\$24	\$23	\$21	\$20	\$19	\$18	\$17	\$16	\$16	\$16	\$14	\$13	\$11	\$9	\$8	\$7
	60% Current	\$27	\$25	\$25	\$24	\$23	\$22	\$21	\$21	\$21	\$21	\$21	\$21	\$19	\$18	\$16	\$15	\$14	\$12
	10yr ave.	\$31	\$28	\$26	\$25	\$23	\$22	\$21	\$20	\$19	\$18	\$17	\$17	\$16	\$14	\$12	\$10	\$9	\$8
	65% Current	\$29	\$27	\$27	\$27	\$25	\$24	\$23	\$23	\$23	\$23	\$22	\$22	\$21	\$19	\$18	\$16	\$15	\$14
	10yr ave.	\$33	\$31	\$28	\$27	\$25	\$24	\$22	\$21	\$20	\$19	\$19	\$18	\$17	\$15	\$13	\$11	\$9	\$8
	70% Current	\$31	\$29	\$29	\$29	\$27	\$26	\$25	\$25	\$24	\$24	\$24	\$24	\$23	\$21	\$19	\$17	\$16	\$15
	10yr ave.	\$36	\$33	\$30	\$29	\$27	\$26	\$24	\$23	\$22	\$21	\$20	\$20	\$18	\$16	\$14	\$11	\$10	\$9
	75% Current	\$33	\$32	\$31	\$31	\$29	\$28	\$27	\$26	\$26	\$26	\$26	\$26	\$24	\$22	\$20	\$18	\$18	\$16
	10yr ave.	\$38	\$35	\$32	\$31	\$29	\$27	\$26	\$24	\$23	\$22	\$22	\$21	\$20	\$17	\$15	\$12	\$11	\$10
	80% Current	\$36	\$34	\$33	\$33	\$31	\$30	\$29	\$28	\$28	\$28	\$28	\$27	\$26	\$24	\$22	\$20	\$19	\$17
	10yr ave.	\$41	\$38	\$35	\$33	\$31	\$29	\$28	\$26	\$25	\$24	\$23	\$23	\$21	\$18	\$16	\$13	\$12	\$10
	85% Current	\$38	\$36	\$35	\$35	\$33	\$32	\$30	\$30	\$30	\$30	\$29	\$29	\$27	\$25	\$23	\$21	\$20	\$18
	10yr ave.	\$44	\$40	\$37	\$35	\$33	\$31	\$29	\$28	\$26	\$25	\$25	\$24	\$22	\$19	\$17	\$14	\$12	\$11

The above shows estimated returns per head for skirted fleece wool. These figures do not take into account the value of skirtings and oddments and do not take into account discounts that may apply for faults under individual circumstances. These figures are based on a market index of 100% and should be used as a guide only. Returns over \$30 / head for fleece wool are highlighted.



Table 14: Returns pr head for skirted fleece wool.

Skirted FLC Weight		Micron																	
2 Kg		16	16.5	17	17.5	18	18.5	19	19.5	20	21	22	23	24	25	26	28	30	32
Yield (Sch Dry)	25% Current	\$7	\$7	\$7	\$7	\$6	\$6	\$6	\$6	\$6	\$6	\$6	\$6	\$5	\$5	\$5	\$4	\$4	\$3
	10yr ave.	\$9	\$8	\$7	\$7	\$6	\$6	\$6	\$5	\$5	\$5	\$5	\$5	\$4	\$4	\$3	\$3	\$2	\$2
	30% Current	\$9	\$8	\$8	\$8	\$8	\$7	\$7	\$7	\$7	\$7	\$7	\$7	\$6	\$6	\$5	\$5	\$5	\$4
	10yr ave.	\$10	\$9	\$9	\$8	\$8	\$7	\$7	\$7	\$6	\$6	\$6	\$6	\$5	\$5	\$4	\$3	\$3	\$3
	35% Current	\$10	\$10	\$10	\$10	\$9	\$9	\$8	\$8	\$8	\$8	\$8	\$8	\$8	\$7	\$6	\$6	\$5	\$5
	10yr ave.	\$12	\$11	\$10	\$10	\$9	\$9	\$8	\$8	\$7	\$7	\$7	\$7	\$6	\$5	\$5	\$4	\$3	\$3
	40% Current	\$12	\$11	\$11	\$11	\$10	\$10	\$10	\$9	\$9	\$9	\$9	\$9	\$9	\$8	\$7	\$7	\$6	\$6
	10yr ave.	\$14	\$13	\$12	\$11	\$10	\$10	\$9	\$9	\$8	\$8	\$8	\$8	\$7	\$6	\$5	\$4	\$4	\$3
	45% Current	\$13	\$13	\$12	\$12	\$12	\$11	\$11	\$11	\$10	\$10	\$10	\$10	\$10	\$9	\$8	\$7	\$7	\$6
	10yr ave.	\$15	\$14	\$13	\$12	\$12	\$11	\$10	\$10	\$9	\$9	\$9	\$8	\$8	\$7	\$6	\$5	\$4	\$4
	50% Current	\$15	\$14	\$14	\$14	\$13	\$12	\$12	\$12	\$12	\$12	\$12	\$11	\$11	\$10	\$9	\$8	\$8	\$7
	10yr ave.	\$17	\$16	\$14	\$14	\$13	\$12	\$12	\$11	\$10	\$10	\$10	\$9	\$9	\$8	\$7	\$5	\$5	\$4
	55% Current	\$16	\$15	\$15	\$15	\$14	\$14	\$13	\$13	\$13	\$13	\$13	\$13	\$12	\$11	\$10	\$9	\$9	\$8
	10yr ave.	\$19	\$17	\$16	\$15	\$14	\$13	\$13	\$12	\$11	\$11	\$11	\$10	\$10	\$8	\$8	\$6	\$5	\$5
	60% Current	\$18	\$17	\$17	\$16	\$15	\$15	\$14	\$14	\$14	\$14	\$14	\$14	\$13	\$12	\$11	\$10	\$9	\$8
	10yr ave.	\$21	\$19	\$17	\$16	\$15	\$15	\$14	\$13	\$12	\$12	\$12	\$11	\$11	\$9	\$8	\$6	\$6	\$5
	65% Current	\$19	\$18	\$18	\$18	\$17	\$16	\$16	\$15	\$15	\$15	\$15	\$15	\$14	\$13	\$12	\$11	\$10	\$9
	10yr ave.	\$22	\$20	\$19	\$18	\$17	\$16	\$15	\$14	\$13	\$13	\$13	\$12	\$11	\$10	\$9	\$7	\$6	\$6
	70% Current	\$21	\$20	\$19	\$19	\$18	\$17	\$17	\$16	\$16	\$16	\$16	\$16	\$15	\$14	\$13	\$11	\$11	\$10
	10yr ave.	\$24	\$22	\$20	\$19	\$18	\$17	\$16	\$15	\$14	\$14	\$14	\$13	\$12	\$11	\$10	\$8	\$7	\$6
	75% Current	\$22	\$21	\$21	\$20	\$19	\$19	\$18	\$18	\$17	\$17	\$17	\$17	\$16	\$15	\$14	\$12	\$12	\$10
	10yr ave.	\$26	\$24	\$22	\$21	\$19	\$18	\$17	\$16	\$16	\$15	\$15	\$14	\$13	\$11	\$10	\$8	\$7	\$6
	80% Current	\$24	\$22	\$22	\$22	\$21	\$20	\$19	\$19	\$19	\$19	\$18	\$18	\$17	\$16	\$14	\$13	\$12	\$11
	10yr ave.	\$27	\$25	\$23	\$22	\$21	\$20	\$18	\$17	\$17	\$16	\$16	\$15	\$14	\$12	\$11	\$9	\$8	\$7
	85% Current	\$25	\$24	\$23	\$23	\$22	\$21	\$20	\$20	\$20	\$20	\$20	\$19	\$18	\$17	\$15	\$14	\$13	\$12
	10yr ave.	\$29	\$27	\$24	\$23	\$22	\$21	\$20	\$18	\$18	\$17	\$16	\$16	\$15	\$13	\$12	\$9	\$8	\$7

The above shows estimated returns per head for skirted fleece wool. These figures do not take into account the value of skirtings and oddments and do not take into account discounts that may apply for faults under individual circumstances. These figures are based on a market index of 100% and should be used as a guide only. Returns over \$30 / head for fleece wool are highlighted.