



JEMALONG WOOL BULLETIN

(week ending 5/05/2011)

Table 1: Northern Region Micron Price Guides

CURRENT MARKET					PERCENTILES		AVERAGES					12 MONTH COMPARISONS								TRADING RANGE		
Mic.	5/05/2011	20/04/2011		Now			Now	4/05/2010	Now	Now	Now	Now	Now	Now	Clean c/kg							
Price	Current	Weekly																				
Guides	Price	Change			3 year	compared	10 year	compared	Last Year	to Last Year	12 Month	compared	12 Month	compared	12 Mth	3	10					
					Average	to 3yr ave	Average	to 10yr ave			Low	to Low	High	to High	Year	Year	Year					
NRI	1369	-19 -1.4%	94%	98%	946	+423 45%	893	+476 53%	905	+464 51%	890	+479 54%	1447	-78 -5%	557	698	789					
16*	2800	+20 0.7%	100%		1766	+1034 59%			1540	+1260 82%	1540	+1260 82%	2800	0 0%	1260	1415						
16.5*	2630	+30 1.1%	97%		1624	+1006 62%			1400	+1230 88%	1395	+1235 89%	2670	-40 -1%	1275	1421						
17*	2415	-55 -2.3%	93%	96%	1497	+918 61%	1420	+995 70%	1255	+1160 92%	1230	+1185 96%	2530	-115 -5%	1300	1363	1559					
17.5*	2230	-40 -1.8%	92%		1414	+816 58%			1185	+1045 88%	1185	+1045 88%	2360	-130 -6%	1175	1278						
18	2026	-12 -0.6%	91%	96%	1336	+690 52%	1276	+750 59%	1157	+869 75%	1138	+888 78%	2193	-167 -8%	1055	1158	1304					
18.5	1815	-19 -1.0%	90%		1244	+571 46%			1102	+713 65%	1110	+705 64%	1963	-148 -8%	853	992						
19	1629	+12 0.7%	92%	98%	1128	+501 44%	1076	+553 51%	1067	+562 53%	1031	+598 58%	1708	-79 -5%	677	814	904					
19.5	1492	+22 1.5%	96%		1024	+468 46%			991	+501 51%	952	+540 57%	1529	-37 -2%	577	715						
20	1358	-12 -0.9%	96%	98%	943	+415 44%	934	+424 45%	935	+423 45%	904	+454 50%	1402	-44 -3%	498	663	718					
21	1286	+2 0.2%	96%	98%	909	+377 41%	893	+393 44%	916	+370 40%	878	+408 46%	1324	-38 -3%	446	638	734					
22	1246	-9 -0.7%	96%	95%	887	+359 40%	870	+376 43%	898	+348 39%	847	+399 47%	1313	-67 -5%	466	639	724					
23	1191	-29 -2.4%	96%	94%	862	+329 38%	848	+343 40%	882	+309 35%	827	+364 44%	1291	-100 -8%	464	628	705					
24	1002	-75 -7.5%	92%	89%	808	+194 24%	808	+194 24%	821	+181 22%	780	+222 28%	1170	-168 -14%	390	523	669					
25	895	-63 -7.0%	93%	81%	699	+196 28%	724	+171 24%	664	+231 35%	695	+200 29%	1048	-153 -15%	353	483	631					
26	837	-51 -6.1%	95%	82%	630	+207 33%	663	+174 26%	585	+252 43%	598	+239 40%	928	-91 -10%	330	424	557					
28	640	-19 -3.0%	94%	83%	488	+152 31%	527	+113 21%	447	+193 43%	443	+197 44%	734	-94 -13%	291	308	465					
30	576	-16 -2.8%	94%	83%	429	+147 34%	460	+116 25%	389	+187 48%	389	+187 48%	670	-94 -14%	281	316	385					
32	527	-44 -8.3%	95%	81%	377	+150 40%	416	+111 27%	350	+177 51%	353	+174 49%	638	-111 -17%	285	321	372					
MC	781	-36 -4.6%	95%	98%	574	+207 36%	513	+268 52%	621	+160 26%	561	+220 39%	830	-49 -6%	269	438	450					

Note:

* Due to the irregular market quoting for some fine wool categories, figures shown relating to micron categories below 18 micron are an estimate based on the AWEX Premium & Discounts Report & other available information.

* For any category, where there is insufficient quantity offered to enable AWEX to quote, a quote will be provided based on the best available information.

* 10 Year data is not available for some micron categories, which may result in blank spaces in the table above.

Definitions:

* A Percentile, is a value on a scale of one hundred that indicates the percent of a distribution that is equal to or below it. In general a percentile between 25% and 75% is considered normal, a percentile below 25% is considered below normal and a percentile above 75% is considered above normal.

Three and ten year percentiles shown in the table above, detail the period of time during the past 3 & 10 years that the market has traded either at or below its current price.

The higher the percentile, the stronger the market.

Source: Australian Wool Exchange, Australian Wool Innovation, Sydney Futures Exchange, x-rates.com

Disclaimer: While all due care has been taken in the preparation of this document, no warranty is made as to its accuracy, reliability or completeness. To the extent permitted by law neither Jemalong or their sources including subsidiaries and staff, accept liability to any person for loss or damage arising from the use of this information.



MARKET COMMENTARY

One Australian Dollar = \$ 1.07 US, as of 5/05/2011

NORTHERN REGION –Sale Week 44/10 (49,952 bales offered nationally)

On Wednesday - After a weeks recess for Easter the market come under pressure, following new highs set for the AUD (at around 1.095 US, just a few days prior). Medium to broader microns retreated 20-30 cents while the fine microns were around 50 cents cheaper on a limited offering. In the skirtings buyers were met with strong seller resistance with 33.8% Passed-In, better types eased 30 cents while the higher Vm types lacked support and fell 50-80 cents, lots containing Cot, Jwl & Col continued to be heavily discounted. All oddment categories (LKS, CRT & STN) lost 30-40 cents, while crossbreds were back 15-20 cents on a small offering consisting predominantly of poorly skirted and/or colour lots.

On Thursday - The marked did a back flip with buyer support returning, resulting in increases across all microns. 19.5 micron and finer were generally 40 cents dearer, 20-21.5 microns gained 20 while 22 microns rose 10 cents with the FNF types gaining even more. Merino skirtings also found some increased buyer interest, however it was limited to the better length types with <5% Vm, which rose 10-20 cents. All oddment categories remained unchanged, and a small offering in the crossbreds also left the 27 to 30 micron range generally unchanged.

Northern Region Indicator (Monthly Averages)

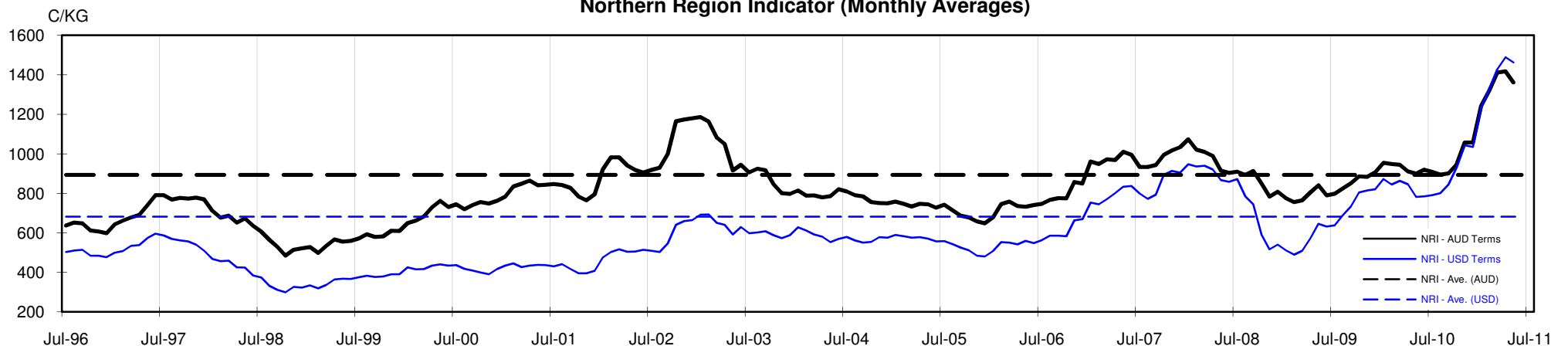




Table 4: 19 micron SFE

Thursday, 5 May 2011

Delivery Mth	Jun-11	Aug-11	Oct-11	Dec-11	Feb-11	Apr-12	Jun-12	Aug-12	Oct-12
19 Micron SFE	1607	1537	1495	1460	1428	1400	1370	1342	1342
Average	1204	1213	1220	1246	1113	1316	1381	1381	1313
Maximum	1670	1637	1595	1560	1605	1458	1450	1450	1342
Minimum	1034	1034	1034	1034	983	1106	1210	1285	1285

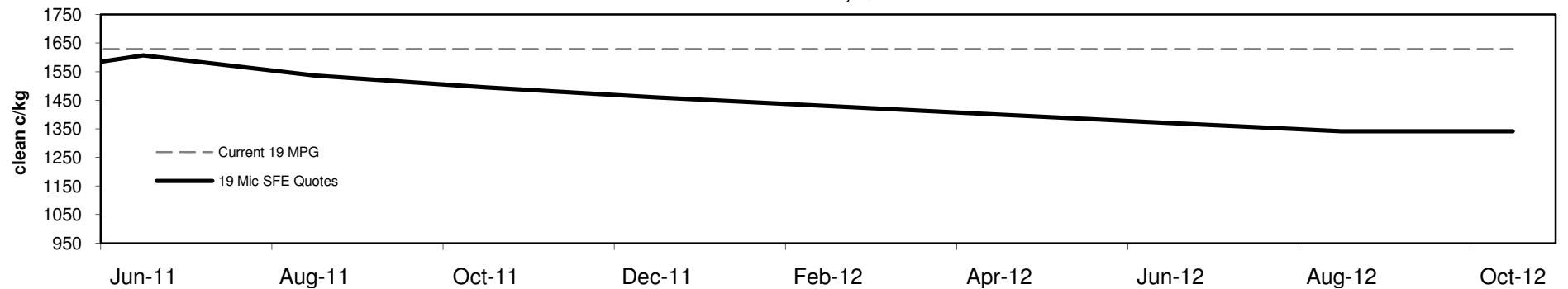
Table 5: 19 micron SFE, as a percentile of the 19 micron MPG

3 Year Percentile	91%	89%	88%	88%	88%	88%	88%	88%	88%
10 Year Percentile	97%	97%	96%	96%	96%	96%	95%	93%	93%

Table 6: 19 micron SFE, compared to MPG

Current 19 MPG	-22	-1%	-92	-6%	-134	-8%	-169	-10%	-201	-12%	-229	-14%	-259	-16%	-287	-18%	-287	-18%
19 MPG, 1 Year Average	+271	20%	+201	15%	+159	12%	+124	9%	+92	7%	+64	5%	+34	3%	+6	0%	+6	0%
19 MPG, 3 Year Average	+479	42%	+409	36%	+367	33%	+332	29%	+300	27%	+272	24%	+242	21%	+214	19%	+214	19%
19 MPG, 10 Year Average	+531	49%	+461	43%	+419	39%	+384	36%	+352	33%	+324	30%	+294	27%	+266	25%	+266	25%

19 MICRON SFE, QUOTES



19 Micron SFE, Front month movement

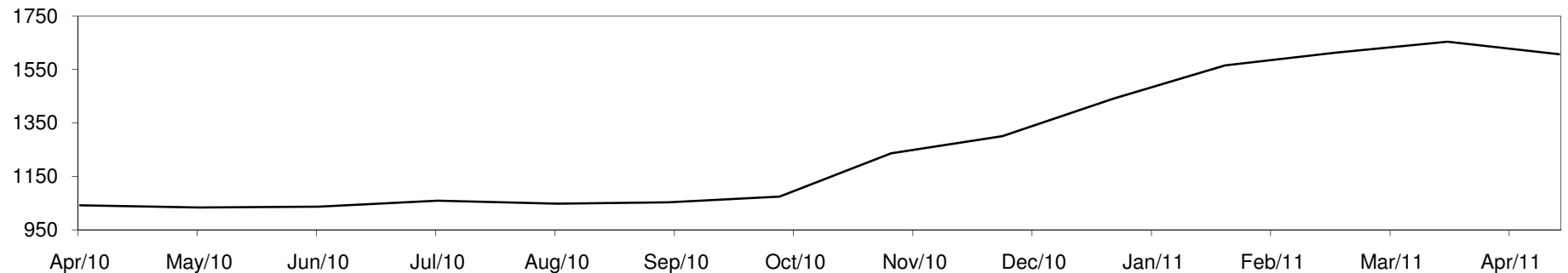




Table 7: 21 micron SFE

Thursday, 5 May 2011

Delivery Mth	Jun-11	Aug-11	Oct-11	Dec-11	Feb-11	Apr-12	Jun-12	Aug-12	Oct-12
21 Micron SFE	1277	1263	1203	1157	1128	1060	1092	1090	1060
Average	1008	1003	997	998	962	1052	1050	1068	1059
Maximum	1327	1287	1240	1200	1263	1149	1093	1093	1068
Minimum	890	880	880	880	860	934	990	1048	1048

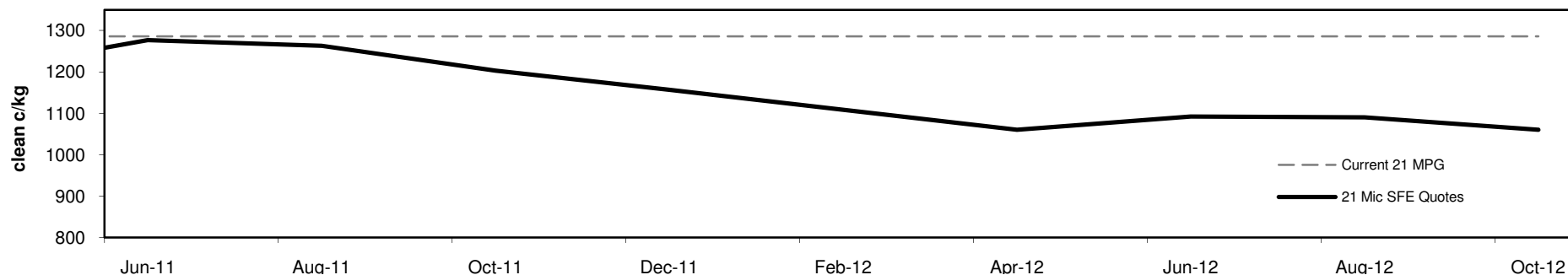
Table 8: 21 micron SFE, as a percentile of the 21 micron MPG

3 Year Percentile	96%	95%	94%	91%	90%	88%	88%	88%	88%
10 Year Percentile	97%	95%	93%	91%	91%	89%	90%	90%	89%

Table 9: 21 micron SFE, compared to MPG

Current 21 MPG	-9	-1%	-23	-2%	-83	-6%	-129	-10%	-158	-12%	-226	-18%	-194	-15%	-196	-15%	-226	-18%
21 MPG, 1 Year Average	+218	21%	+204	19%	+144	14%	+98	9%	+69	7%	+1	0%	+33	3%	+31	3%	+1	0%
21 MPG, 3 Year Average	+368	40%	+354	39%	+294	32%	+248	27%	+219	24%	+151	17%	+183	20%	+181	20%	+151	17%
21 MPG, 10 Year Average	+384	43%	+370	41%	+310	35%	+264	30%	+235	26%	+167	19%	+199	22%	+197	22%	+167	19%

21 MICRON SFE, QUOTES



21 Micron SFE, Front month movement

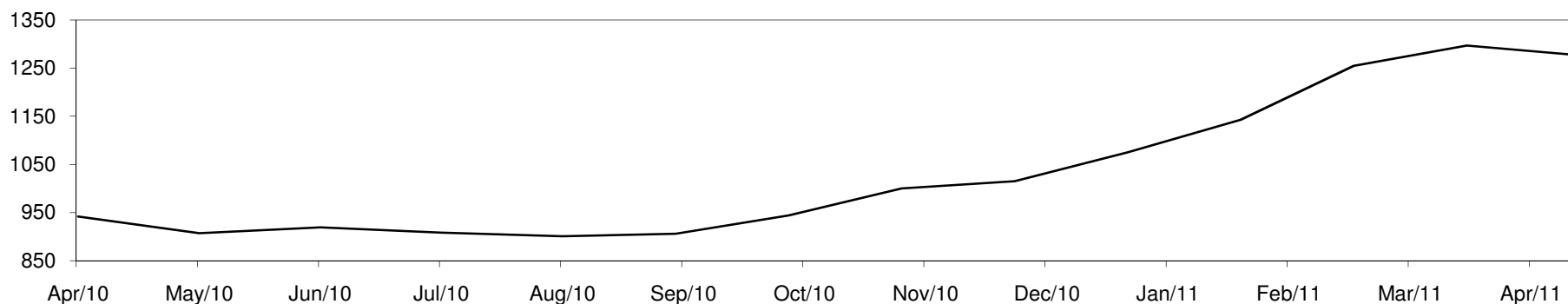




Table 10: 23 micron SFE

Thursday, 5 May 2011

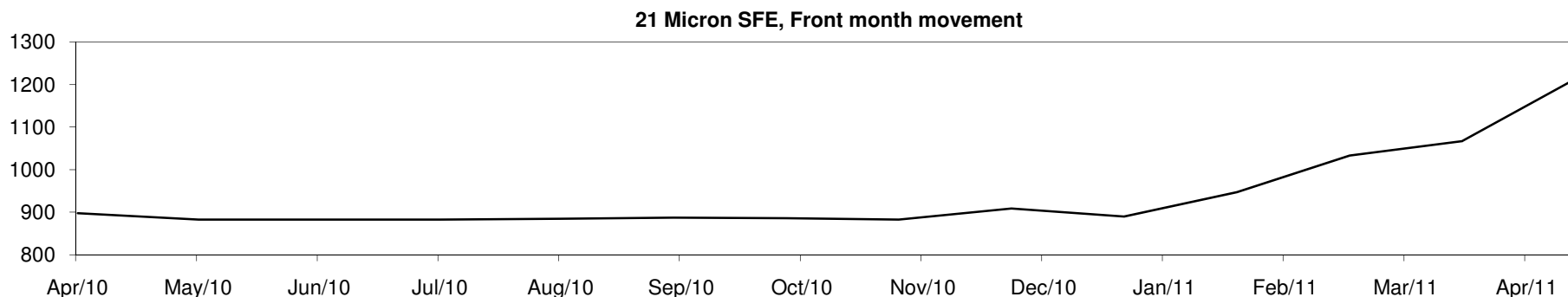
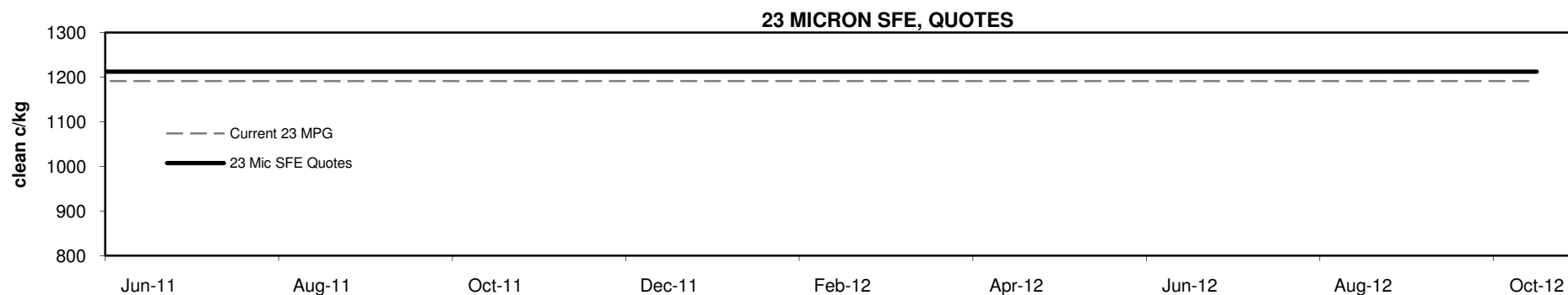
Delivery Mth	Jun-11	Aug-11	Oct-11	Dec-11	Feb-11	Apr-12	Jun-12	Aug-12	Oct-12
23 Micron SFE	1212	1212	1212	1212	1212	1212	1212	1212	1212
Average	913	921	920	928	870	959	991	1060	1212
Maximum	1212	1212	1212	1212	1212	1212	1212	1212	1212
Minimum	803	883	883	883	760	883	890	1033	1212

Table 11: 23 micron SFE, as a percentile of the 23 micron MPG

3 Year Percentile	96%	96%	96%	96%	96%	96%	96%	96%	96%
10 Year Percentile	95%	95%	95%	95%	95%	95%	95%	95%	95%

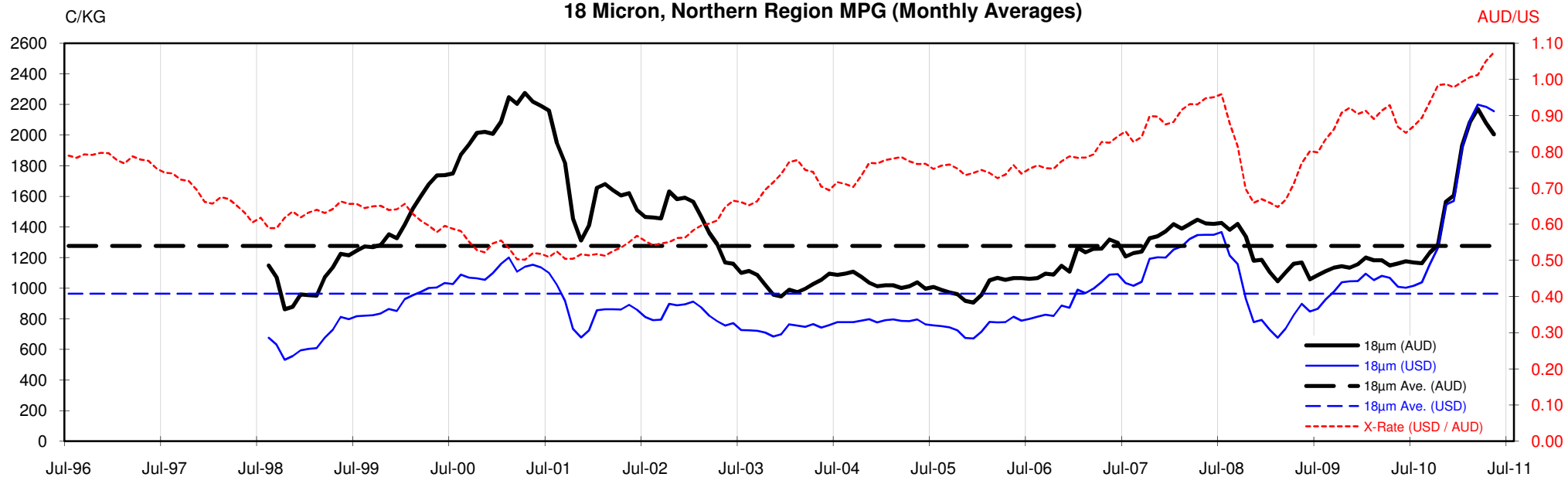
Table 12: 23 micron SFE, compared to MPG

Current 23 MPG	+21	2%	+21	2%	+21	2%	+21	2%	+21	2%	+21	2%	+21	2%	+21	2%	+21	2%
23 MPG, 1 Year Average	+221	22%	+221	22%	+221	22%	+221	22%	+221	22%	+221	22%	+221	22%	+221	22%	+221	22%
23 MPG, 3 Year Average	+350	41%	+350	41%	+350	41%	+350	41%	+350	41%	+350	41%	+350	41%	+350	41%	+350	41%
23 MPG, 10 Year Average	+364	43%	+364	43%	+364	43%	+364	43%	+364	43%	+364	43%	+364	43%	+364	43%	+364	43%

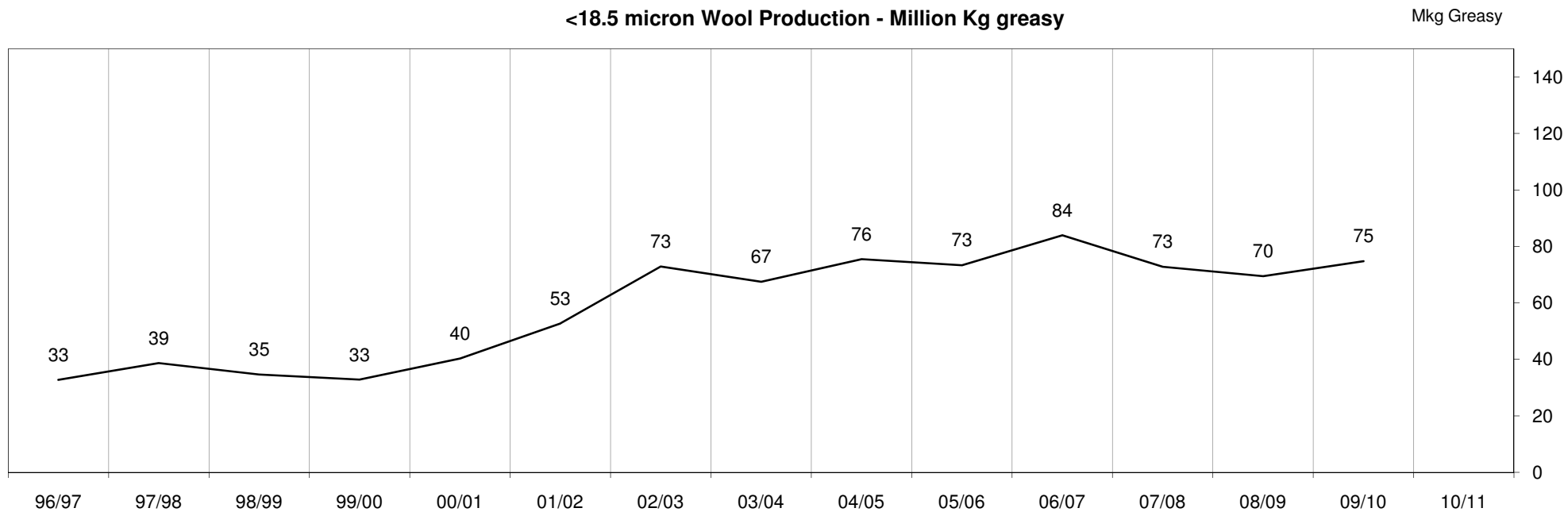


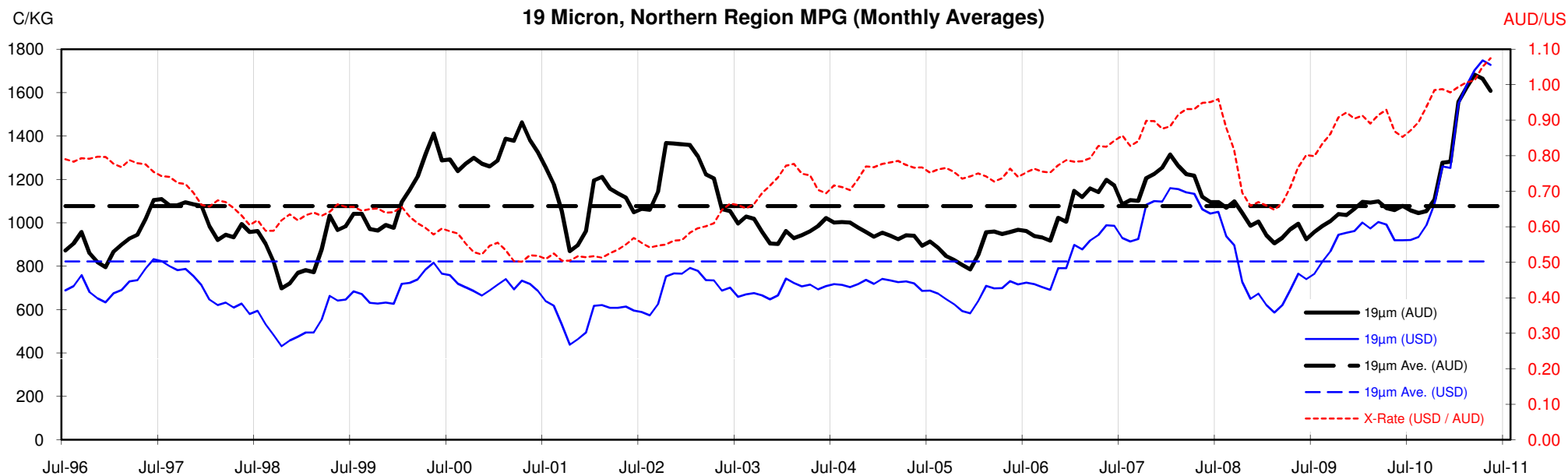


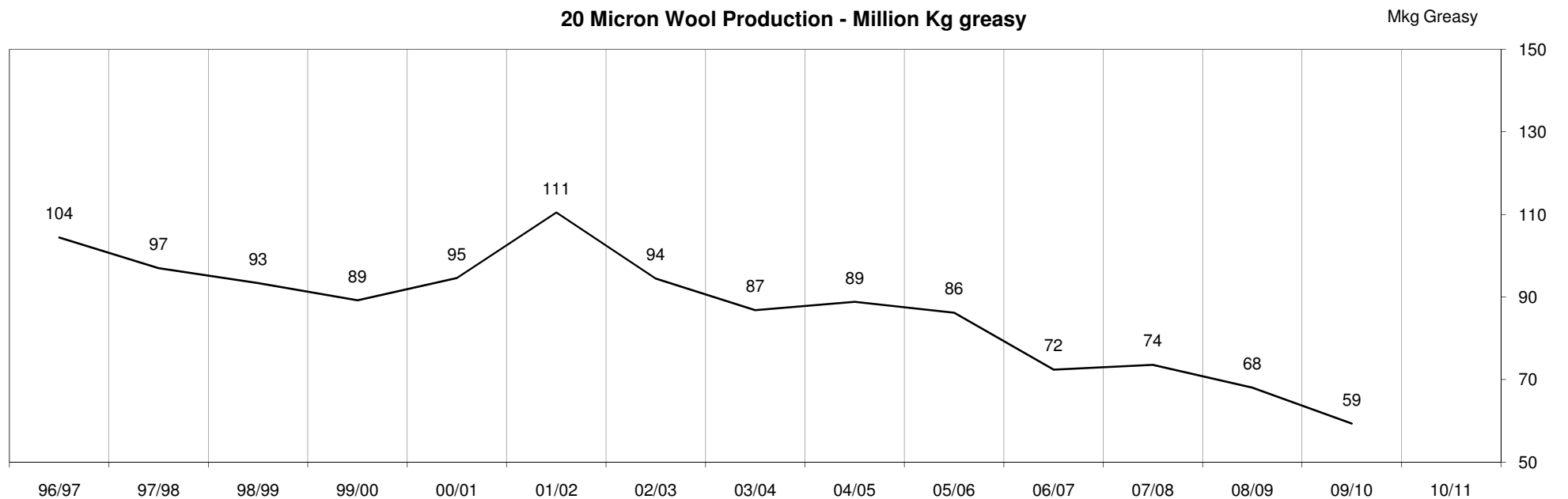
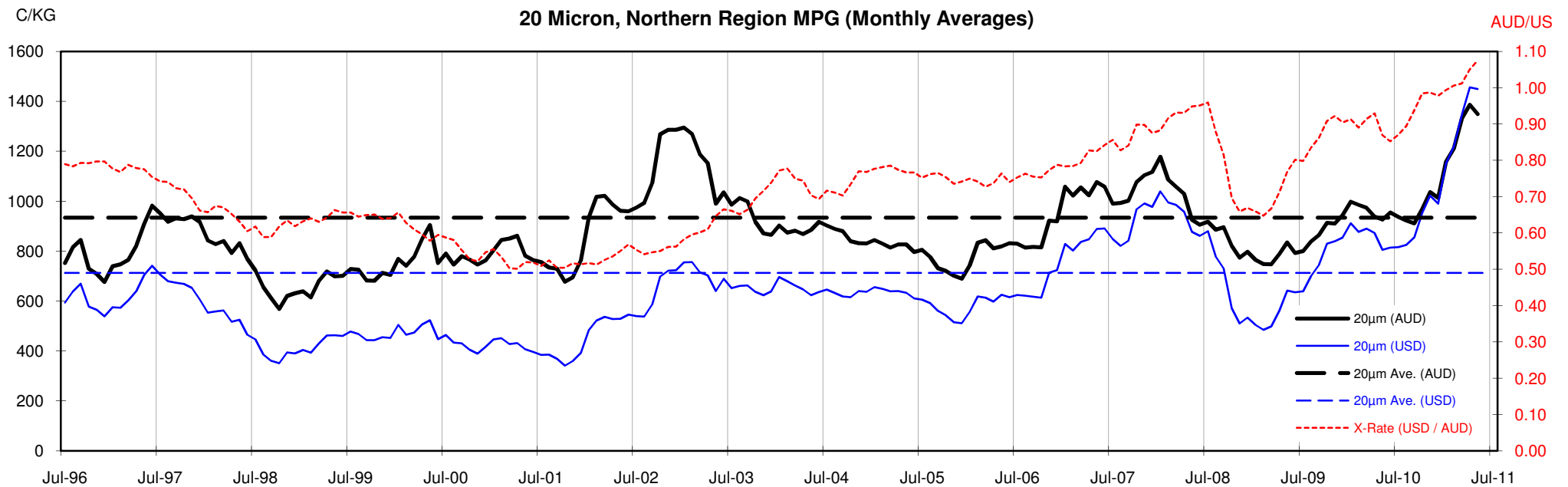
18 Micron, Northern Region MPG (Monthly Averages)

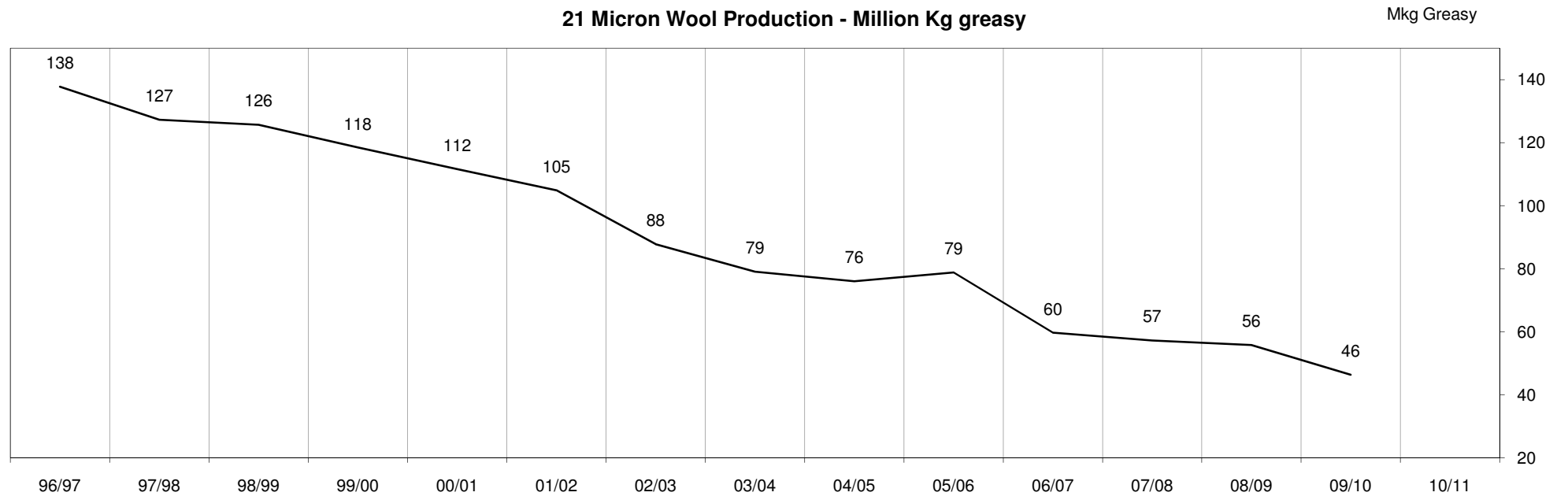
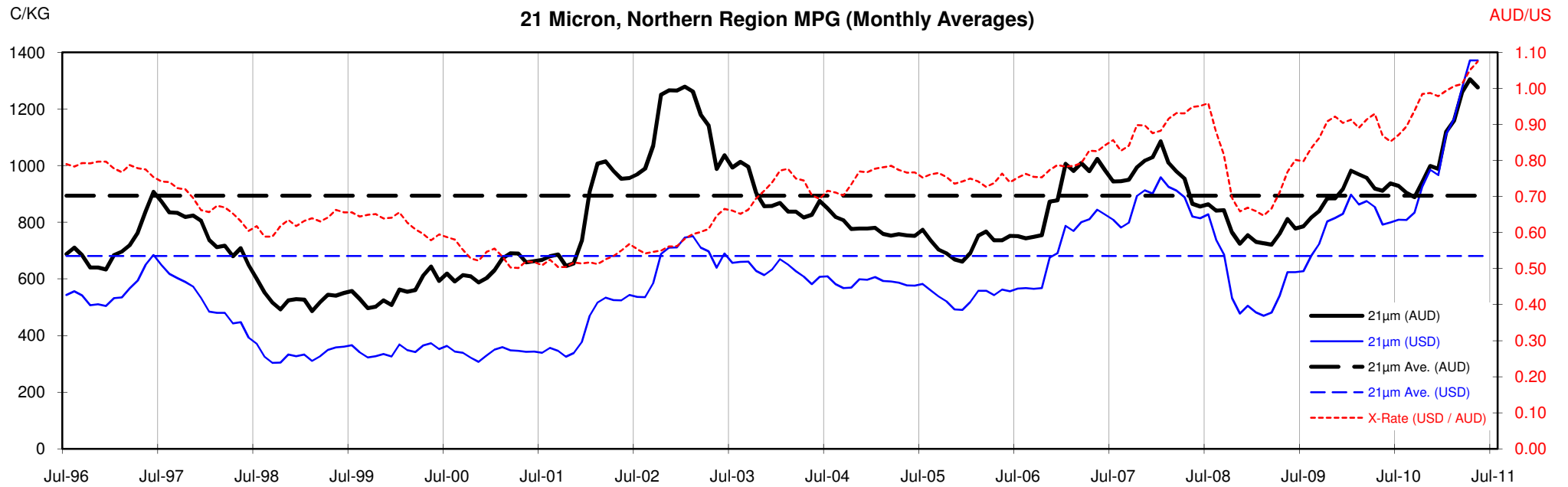


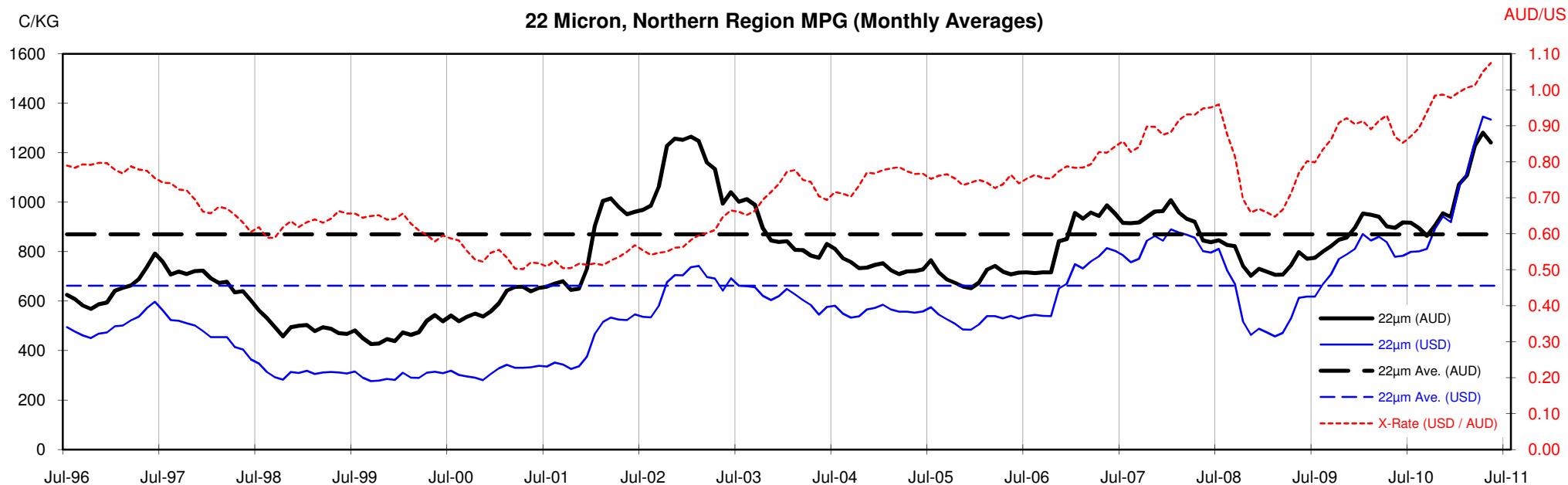
<18.5 micron Wool Production - Million Kg greasy

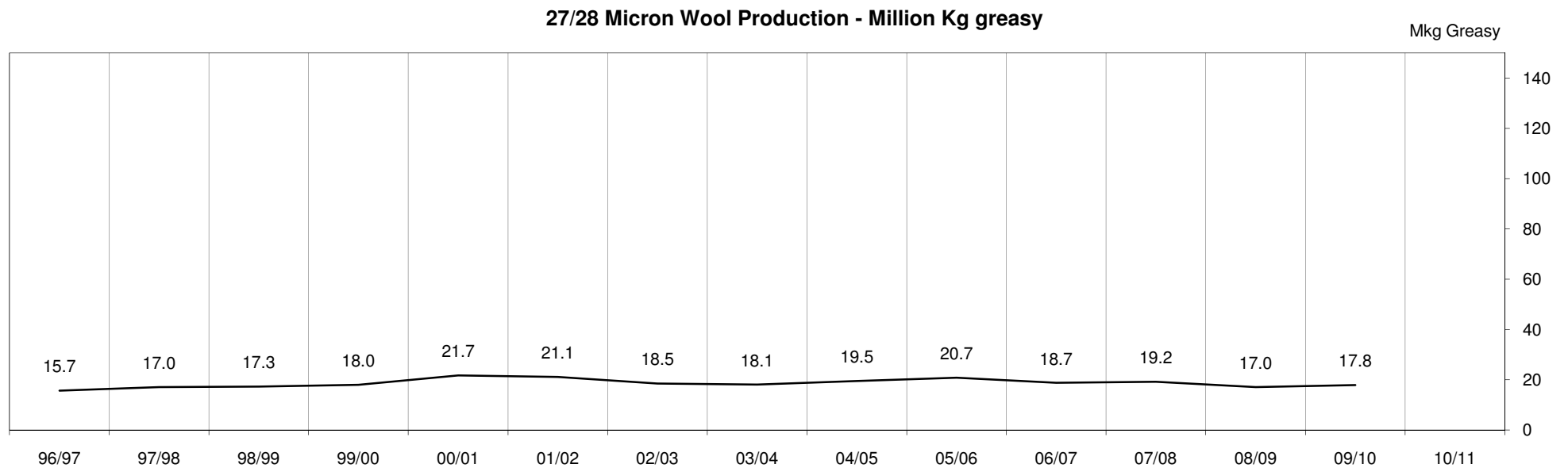
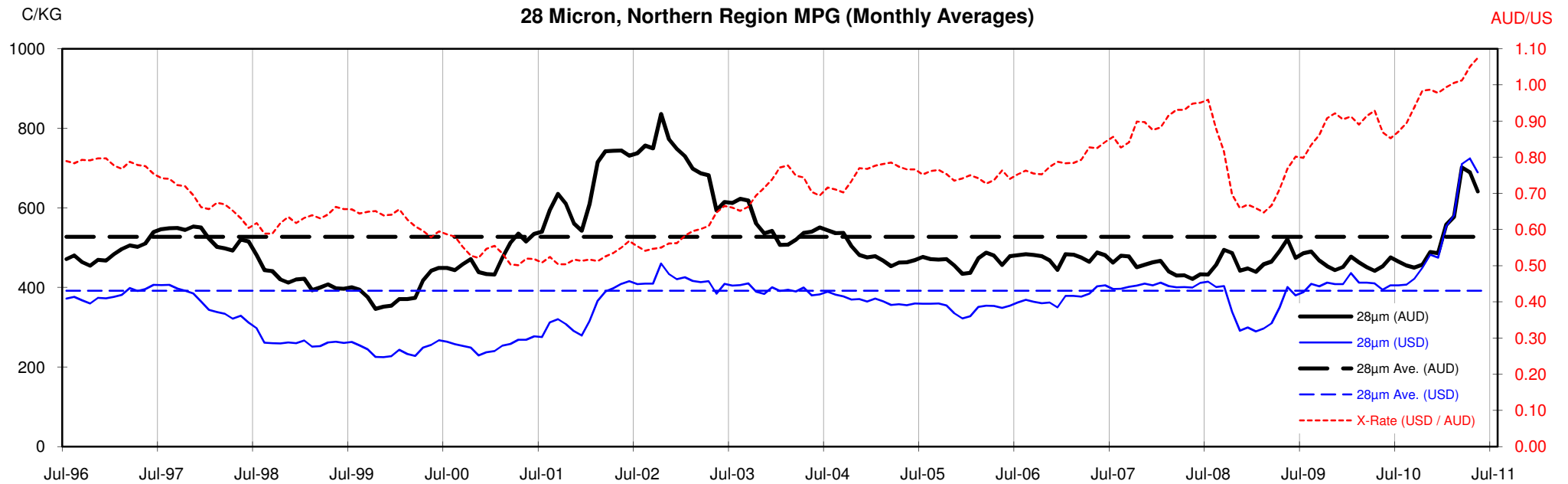












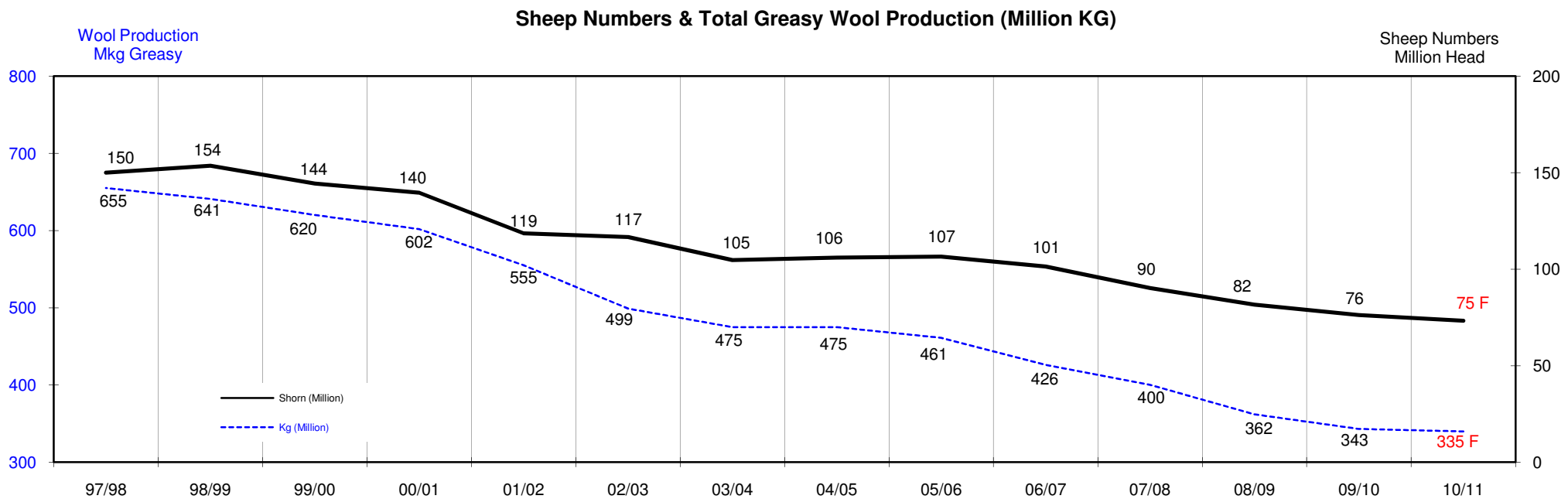
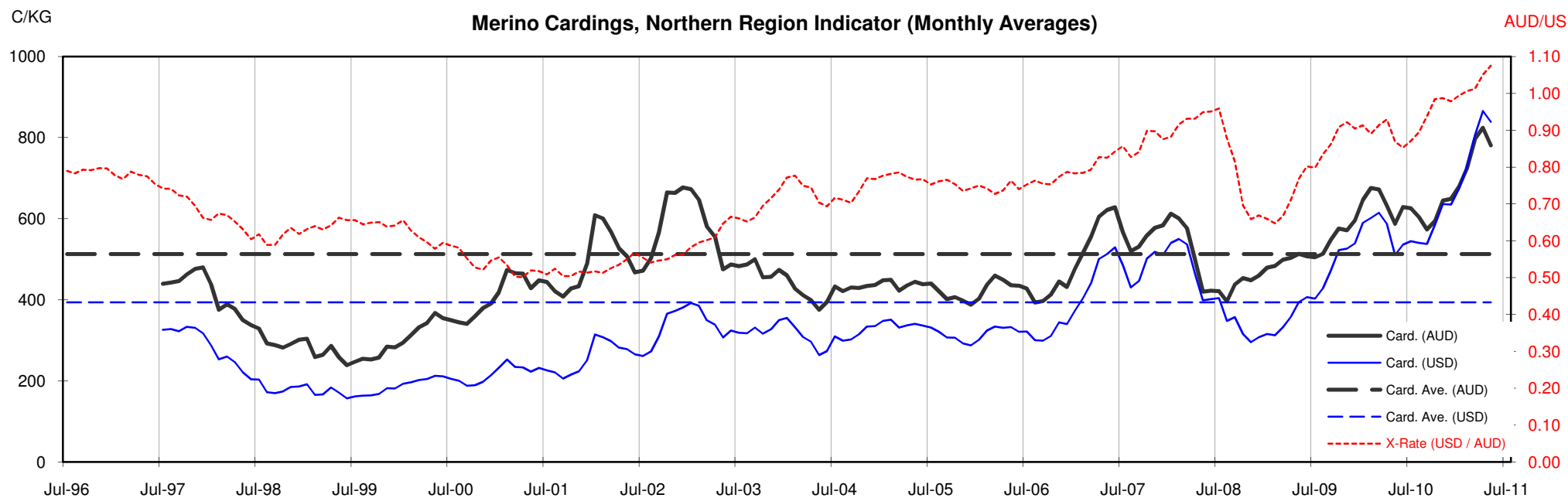




Table 13: Returns pr head for skirted fleece wool.

Skirted FLC Weight		Micron																	
9 Kg		16	16.5	17	17.5	18	18.5	19	19.5	20	21	22	23	24	25	26	28	30	32
Yield (Sch Dry)	25% Current	\$63	\$59	\$54	\$50	\$46	\$41	\$37	\$34	\$31	\$29	\$28	\$27	\$23	\$20	\$19	\$14	\$13	\$12
	10yr ave.			\$32		\$29		\$24		\$21	\$20	\$20	\$19	\$18	\$16	\$15	\$12	\$10	\$9
	30% Current	\$76	\$71	\$65	\$60	\$55	\$49	\$44	\$40	\$37	\$35	\$34	\$32	\$27	\$24	\$23	\$17	\$16	\$14
	10yr ave.			\$38		\$34		\$29		\$25	\$24	\$23	\$23	\$22	\$20	\$18	\$14	\$12	\$11
	35% Current	\$88	\$83	\$76	\$70	\$64	\$57	\$51	\$47	\$43	\$41	\$39	\$38	\$32	\$28	\$26	\$20	\$18	\$17
	10yr ave.			\$45		\$40		\$34		\$29	\$28	\$27	\$27	\$25	\$23	\$21	\$17	\$14	\$13
	40% Current	\$101	\$95	\$87	\$80	\$73	\$65	\$59	\$54	\$49	\$46	\$45	\$43	\$36	\$32	\$30	\$23	\$21	\$19
	10yr ave.			\$51		\$46		\$39		\$34	\$32	\$31	\$31	\$29	\$26	\$24	\$19	\$17	\$15
	45% Current	\$113	\$107	\$98	\$90	\$82	\$74	\$66	\$60	\$55	\$52	\$50	\$48	\$41	\$36	\$34	\$26	\$23	\$21
	10yr ave.			\$58		\$52		\$44		\$38	\$36	\$35	\$34	\$33	\$29	\$27	\$21	\$19	\$17
	50% Current	\$126	\$118	\$109	\$100	\$91	\$82	\$73	\$67	\$61	\$58	\$56	\$54	\$45	\$40	\$38	\$29	\$26	\$24
	10yr ave.			\$64		\$57		\$48		\$42	\$40	\$39	\$38	\$36	\$33	\$30	\$24	\$21	\$19
	55% Current	\$139	\$130	\$120	\$110	\$100	\$90	\$81	\$74	\$67	\$64	\$62	\$59	\$50	\$44	\$41	\$32	\$29	\$26
	10yr ave.			\$70		\$63		\$53		\$46	\$44	\$43	\$42	\$40	\$36	\$33	\$26	\$23	\$21
	60% Current	\$151	\$142	\$130	\$120	\$109	\$98	\$88	\$81	\$73	\$69	\$67	\$64	\$54	\$48	\$45	\$35	\$31	\$28
	10yr ave.			\$77		\$69		\$58		\$50	\$48	\$47	\$46	\$44	\$39	\$36	\$28	\$25	\$22
	65% Current	\$164	\$154	\$141	\$130	\$119	\$106	\$95	\$87	\$79	\$75	\$73	\$70	\$59	\$52	\$49	\$37	\$34	\$31
	10yr ave.			\$83		\$75		\$63		\$55	\$52	\$51	\$50	\$47	\$42	\$39	\$31	\$27	\$24
	70% Current	\$176	\$166	\$152	\$140	\$128	\$114	\$103	\$94	\$86	\$81	\$78	\$75	\$63	\$56	\$53	\$40	\$36	\$33
	10yr ave.			\$89		\$80		\$68		\$59	\$56	\$55	\$53	\$51	\$46	\$42	\$33	\$29	\$26
	75% Current	\$189	\$178	\$163	\$151	\$137	\$123	\$110	\$101	\$92	\$87	\$84	\$80	\$68	\$60	\$56	\$43	\$39	\$36
	10yr ave.			\$96		\$86		\$73		\$63	\$60	\$59	\$57	\$55	\$49	\$45	\$36	\$31	\$28
	80% Current	\$202	\$189	\$174	\$161	\$146	\$131	\$117	\$107	\$98	\$93	\$90	\$86	\$72	\$64	\$60	\$46	\$41	\$38
	10yr ave.			\$102		\$92		\$77		\$67	\$64	\$63	\$61	\$58	\$52	\$48	\$38	\$33	\$30
	85% Current	\$214	\$201	\$185	\$171	\$155	\$139	\$125	\$114	\$104	\$98	\$95	\$91	\$77	\$68	\$64	\$49	\$44	\$40
	10yr ave.			\$109		\$98		\$82		\$71	\$68	\$67	\$65	\$62	\$55	\$51	\$40	\$35	\$32

The above shows estimated returns per head for skirted fleece wool. These figures do not take into account the value of skirtings and oddments and do not take into account discounts that may apply for faults under individual circumstances. These figures are based on a market index of 100% and should be used as a guide only. Returns over \$30 / head for fleece wool are highlighted.

Source: Australian Wool Exchange, Australian Wool Innovation, Sydney Futures Exchange, x-rates.com

Disclaimer: While all due care has been taken in the preparation of this document, no warranty is made as to its accuracy, reliability or completeness. To the extent permitted by law neither Jemalong or their sources including subsidiaries and staff, accept liability to any person for loss or damage arising from the use of this information.



Table 14: Returns pr head for skirted fleece wool.

Skirted FLC Weight 8 Kg			Micron																	
			16	16.5	17	17.5	18	18.5	19	19.5	20	21	22	23	24	25	26	28	30	32
Yield (Sch Dry)	25%	Current	\$56	\$53	\$48	\$45	\$41	\$36	\$33	\$30	\$27	\$26	\$25	\$24	\$20	\$18	\$17	\$13	\$12	\$11
		10yr ave.			\$28		\$26		\$22		\$19	\$18	\$17	\$17	\$16	\$14	\$13	\$11	\$9	\$8
	30%	Current	\$67	\$63	\$58	\$54	\$49	\$44	\$39	\$36	\$33	\$31	\$30	\$29	\$24	\$21	\$20	\$15	\$14	\$13
		10yr ave.			\$34		\$31		\$26		\$22	\$21	\$21	\$20	\$19	\$17	\$16	\$13	\$11	\$10
	35%	Current	\$78	\$74	\$68	\$62	\$57	\$51	\$46	\$42	\$38	\$36	\$35	\$33	\$28	\$25	\$23	\$18	\$16	\$15
		10yr ave.			\$40		\$36		\$30		\$26	\$25	\$24	\$24	\$23	\$20	\$19	\$15	\$13	\$12
	40%	Current	\$90	\$84	\$77	\$71	\$65	\$58	\$52	\$48	\$43	\$41	\$40	\$38	\$32	\$29	\$27	\$20	\$18	\$17
		10yr ave.			\$45		\$41		\$34		\$30	\$29	\$28	\$27	\$26	\$23	\$21	\$17	\$15	\$13
	45%	Current	\$101	\$95	\$87	\$80	\$73	\$65	\$59	\$54	\$49	\$46	\$45	\$43	\$36	\$32	\$30	\$23	\$21	\$19
		10yr ave.			\$51		\$46		\$39		\$34	\$32	\$31	\$31	\$29	\$26	\$24	\$19	\$17	\$15
	50%	Current	\$112	\$105	\$97	\$89	\$81	\$73	\$65	\$60	\$54	\$51	\$50	\$48	\$40	\$36	\$33	\$26	\$23	\$21
		10yr ave.			\$57		\$51		\$43		\$37	\$36	\$35	\$34	\$32	\$29	\$27	\$21	\$18	\$17
	55%	Current	\$123	\$116	\$106	\$98	\$89	\$80	\$72	\$66	\$60	\$57	\$55	\$52	\$44	\$39	\$37	\$28	\$25	\$23
		10yr ave.			\$62		\$56		\$47		\$41	\$39	\$38	\$37	\$36	\$32	\$29	\$23	\$20	\$18
60%	Current	\$134	\$126	\$116	\$107	\$97	\$87	\$78	\$72	\$65	\$62	\$60	\$57	\$48	\$43	\$40	\$31	\$28	\$25	
	10yr ave.			\$68		\$61		\$52		\$45	\$43	\$42	\$41	\$39	\$35	\$32	\$25	\$22	\$20	
65%	Current	\$146	\$137	\$126	\$116	\$105	\$94	\$85	\$78	\$71	\$67	\$65	\$62	\$52	\$47	\$44	\$33	\$30	\$27	
	10yr ave.			\$74		\$66		\$56		\$49	\$46	\$45	\$44	\$42	\$38	\$34	\$27	\$24	\$22	
70%	Current	\$157	\$147	\$135	\$125	\$113	\$102	\$91	\$84	\$76	\$72	\$70	\$67	\$56	\$50	\$47	\$36	\$32	\$30	
	10yr ave.			\$80		\$71		\$60		\$52	\$50	\$49	\$47	\$45	\$41	\$37	\$30	\$26	\$23	
75%	Current	\$168	\$158	\$145	\$134	\$122	\$109	\$98	\$90	\$81	\$77	\$75	\$71	\$60	\$54	\$50	\$38	\$35	\$32	
	10yr ave.			\$85		\$77		\$65		\$56	\$54	\$52	\$51	\$48	\$43	\$40	\$32	\$28	\$25	
80%	Current	\$179	\$168	\$155	\$143	\$130	\$116	\$104	\$95	\$87	\$82	\$80	\$76	\$64	\$57	\$54	\$41	\$37	\$34	
	10yr ave.			\$91		\$82		\$69		\$60	\$57	\$56	\$54	\$52	\$46	\$42	\$34	\$29	\$27	
85%	Current	\$190	\$179	\$164	\$152	\$138	\$123	\$111	\$101	\$92	\$87	\$85	\$81	\$68	\$61	\$57	\$44	\$39	\$36	
	10yr ave.			\$97		\$87		\$73		\$64	\$61	\$59	\$58	\$55	\$49	\$45	\$36	\$31	\$28	

The above shows estimated returns per head for skirted fleece wool. These figures do not take into account the value of skirtings and oddments and do not take into account discounts that may apply for faults under individual circumstances. These figures are based on a market index of 100% and should be used as a guide only. Returns over \$30 / head for fleece wool are highlighted.

Source: Australian Wool Exchange, Australian Wool Innovation, Sydney Futures Exchange, x-rates.com

Disclaimer: While all due care has been taken in the preparation of this document, no warranty is made as to its accuracy, reliability or completeness. To the extent permitted by law neither Jemalong or their sources including subsidiaries and staff, accept liability to any person for loss or damage arising from the use of this information.



Table 15: Returns pr head for skirted fleece wool.

Skirted FLC Weight		Micron																		
		16	16.5	17	17.5	18	18.5	19	19.5	20	21	22	23	24	25	26	28	30	32	
Yield (Sch Dry)	25%	Current	\$49	\$46	\$42	\$39	\$35	\$32	\$29	\$26	\$24	\$23	\$22	\$21	\$18	\$16	\$15	\$11	\$10	\$9
	10yr ave.			\$25		\$22		\$19		\$16	\$16	\$15	\$15	\$14	\$13	\$12	\$9	\$8	\$7	
	30%	Current	\$59	\$55	\$51	\$47	\$43	\$38	\$34	\$31	\$29	\$27	\$26	\$25	\$21	\$19	\$18	\$13	\$12	\$11
	10yr ave.			\$30		\$27		\$23		\$20	\$19	\$18	\$18	\$17	\$15	\$14	\$11	\$10	\$9	
	35%	Current	\$69	\$64	\$59	\$55	\$50	\$44	\$40	\$37	\$33	\$32	\$31	\$29	\$25	\$22	\$21	\$16	\$14	\$13
	10yr ave.			\$35		\$31		\$26		\$23	\$22	\$21	\$21	\$20	\$18	\$16	\$13	\$11	\$10	
	40%	Current	\$78	\$74	\$68	\$62	\$57	\$51	\$46	\$42	\$38	\$36	\$35	\$33	\$28	\$25	\$23	\$18	\$16	\$15
	10yr ave.			\$40		\$36		\$30		\$26	\$25	\$24	\$24	\$23	\$20	\$19	\$15	\$13	\$12	
	45%	Current	\$88	\$83	\$76	\$70	\$64	\$57	\$51	\$47	\$43	\$41	\$39	\$38	\$32	\$28	\$26	\$20	\$18	\$17
	10yr ave.			\$45		\$40		\$34		\$29	\$28	\$27	\$27	\$25	\$23	\$21	\$17	\$14	\$13	
	50%	Current	\$98	\$92	\$85	\$78	\$71	\$64	\$57	\$52	\$48	\$45	\$44	\$42	\$35	\$31	\$29	\$22	\$20	\$18
	10yr ave.			\$50		\$45		\$38		\$33	\$31	\$30	\$30	\$28	\$25	\$23	\$18	\$16	\$15	
	55%	Current	\$108	\$101	\$93	\$86	\$78	\$70	\$63	\$57	\$52	\$50	\$48	\$46	\$39	\$34	\$32	\$25	\$22	\$20
	10yr ave.			\$55		\$49		\$41		\$36	\$34	\$33	\$33	\$31	\$28	\$26	\$20	\$18	\$16	
60%	Current	\$118	\$110	\$101	\$94	\$85	\$76	\$68	\$63	\$57	\$54	\$52	\$50	\$42	\$38	\$35	\$27	\$24	\$22	
10yr ave.			\$60		\$54		\$45		\$39	\$38	\$37	\$36	\$34	\$30	\$28	\$22	\$19	\$17		
65%	Current	\$127	\$120	\$110	\$101	\$92	\$83	\$74	\$68	\$62	\$59	\$57	\$54	\$46	\$41	\$38	\$29	\$26	\$24	
10yr ave.			\$65		\$58		\$49		\$42	\$41	\$40	\$39	\$37	\$33	\$30	\$24	\$21	\$19		
70%	Current	\$137	\$129	\$118	\$109	\$99	\$89	\$80	\$73	\$67	\$63	\$61	\$58	\$49	\$44	\$41	\$31	\$28	\$26	
10yr ave.			\$70		\$63		\$53		\$46	\$44	\$43	\$42	\$40	\$35	\$32	\$26	\$23	\$20		
75%	Current	\$147	\$138	\$127	\$117	\$106	\$95	\$86	\$78	\$71	\$68	\$65	\$63	\$53	\$47	\$44	\$34	\$30	\$28	
10yr ave.			\$75		\$67		\$56		\$49	\$47	\$46	\$45	\$42	\$38	\$35	\$28	\$24	\$22		
80%	Current	\$157	\$147	\$135	\$125	\$113	\$102	\$91	\$84	\$76	\$72	\$70	\$67	\$56	\$50	\$47	\$36	\$32	\$30	
10yr ave.			\$80		\$71		\$60		\$52	\$50	\$49	\$47	\$45	\$41	\$37	\$30	\$26	\$23		
85%	Current	\$167	\$156	\$144	\$133	\$121	\$108	\$97	\$89	\$81	\$77	\$74	\$71	\$60	\$53	\$50	\$38	\$34	\$31	
10yr ave.			\$84		\$76		\$64		\$56	\$53	\$52	\$50	\$48	\$43	\$39	\$31	\$27	\$25		

The above shows estimated returns per head for skirted fleece wool. These figures do not take into account the value of skirtings and oddments and do not take into account discounts that may apply for faults under individual circumstances. These figures are based on a market index of 100% and should be used as a guide only. Returns over \$30 / head for fleece wool are highlighted.

Source: Australian Wool Exchange, Australian Wool Innovation, Sydney Futures Exchange, x-rates.com

Disclaimer: While all due care has been taken in the preparation of this document, no warranty is made as to its accuracy, reliability or completeness. To the extent permitted by law neither Jemalong or their sources including subsidiaries and staff, accept liability to any person for loss or damage arising from the use of this information.



Table 16: Returns pr head for skirted fleece wool.

Skirted FLC Weight		Micron																	
6 Kg		16	16.5	17	17.5	18	18.5	19	19.5	20	21	22	23	24	25	26	28	30	32
Yield (Sch Dry)	25% Current	\$42	\$39	\$36	\$33	\$30	\$27	\$24	\$22	\$20	\$19	\$19	\$18	\$15	\$13	\$13	\$10	\$9	\$8
	10yr ave.			\$21		\$19		\$16		\$14	\$13	\$13	\$13	\$12	\$11	\$10	\$8	\$7	\$6
	30% Current	\$50	\$47	\$43	\$40	\$36	\$33	\$29	\$27	\$24	\$23	\$22	\$21	\$18	\$16	\$15	\$12	\$10	\$9
	10yr ave.			\$26		\$23		\$19		\$17	\$16	\$16	\$15	\$15	\$13	\$12	\$9	\$8	\$7
	35% Current	\$59	\$55	\$51	\$47	\$43	\$38	\$34	\$31	\$29	\$27	\$26	\$25	\$21	\$19	\$18	\$13	\$12	\$11
	10yr ave.			\$30		\$27		\$23		\$20	\$19	\$18	\$18	\$17	\$15	\$14	\$11	\$10	\$9
	40% Current	\$67	\$63	\$58	\$54	\$49	\$44	\$39	\$36	\$33	\$31	\$30	\$29	\$24	\$21	\$20	\$15	\$14	\$13
	10yr ave.			\$34		\$31		\$26		\$22	\$21	\$21	\$20	\$19	\$17	\$16	\$13	\$11	\$10
	45% Current	\$76	\$71	\$65	\$60	\$55	\$49	\$44	\$40	\$37	\$35	\$34	\$32	\$27	\$24	\$23	\$17	\$16	\$14
	10yr ave.			\$38		\$34		\$29		\$25	\$24	\$23	\$23	\$22	\$20	\$18	\$14	\$12	\$11
	50% Current	\$84	\$79	\$72	\$67	\$61	\$54	\$49	\$45	\$41	\$39	\$37	\$36	\$30	\$27	\$25	\$19	\$17	\$16
	10yr ave.			\$43		\$38		\$32		\$28	\$27	\$26	\$25	\$24	\$22	\$20	\$16	\$14	\$12
	55% Current	\$92	\$87	\$80	\$74	\$67	\$60	\$54	\$49	\$45	\$42	\$41	\$39	\$33	\$30	\$28	\$21	\$19	\$17
	10yr ave.			\$47		\$42		\$36		\$31	\$29	\$29	\$28	\$27	\$24	\$22	\$17	\$15	\$14
	60% Current	\$101	\$95	\$87	\$80	\$73	\$65	\$59	\$54	\$49	\$46	\$45	\$43	\$36	\$32	\$30	\$23	\$21	\$19
	10yr ave.			\$51		\$46		\$39		\$34	\$32	\$31	\$31	\$29	\$26	\$24	\$19	\$17	\$15
	65% Current	\$109	\$103	\$94	\$87	\$79	\$71	\$64	\$58	\$53	\$50	\$49	\$46	\$39	\$35	\$33	\$25	\$22	\$21
	10yr ave.			\$55		\$50		\$42		\$36	\$35	\$34	\$33	\$32	\$28	\$26	\$21	\$18	\$16
	70% Current	\$118	\$110	\$101	\$94	\$85	\$76	\$68	\$63	\$57	\$54	\$52	\$50	\$42	\$38	\$35	\$27	\$24	\$22
	10yr ave.			\$60		\$54		\$45		\$39	\$38	\$37	\$36	\$34	\$30	\$28	\$22	\$19	\$17
	75% Current	\$126	\$118	\$109	\$100	\$91	\$82	\$73	\$67	\$61	\$58	\$56	\$54	\$45	\$40	\$38	\$29	\$26	\$24
	10yr ave.			\$64		\$57		\$48		\$42	\$40	\$39	\$38	\$36	\$33	\$30	\$24	\$21	\$19
	80% Current	\$134	\$126	\$116	\$107	\$97	\$87	\$78	\$72	\$65	\$62	\$60	\$57	\$48	\$43	\$40	\$31	\$28	\$25
	10yr ave.			\$68		\$61		\$52		\$45	\$43	\$42	\$41	\$39	\$35	\$32	\$25	\$22	\$20
	85% Current	\$143	\$134	\$123	\$114	\$103	\$93	\$83	\$76	\$69	\$66	\$64	\$61	\$51	\$46	\$43	\$33	\$29	\$27
	10yr ave.			\$72		\$65		\$55		\$48	\$46	\$44	\$43	\$41	\$37	\$34	\$27	\$23	\$21

The above shows estimated returns per head for skirted fleece wool. These figures do not take into account the value of skirtings and oddments and do not take into account discounts that may apply for faults under individual circumstances. These figures are based on a market index of 100% and should be used as a guide only. Returns over \$30 / head for fleece wool are highlighted.

Source: Australian Wool Exchange, Australian Wool Innovation, Sydney Futures Exchange, x-rates.com

Disclaimer: While all due care has been taken in the preparation of this document, no warranty is made as to its accuracy, reliability or completeness. To the extent permitted by law neither Jemalong or their sources including subsidiaries and staff, accept liability to any person for loss or damage arising from the use of this information.



Table 17: Returns pr head for skirted fleece wool.

Skirted FLC Weight		Micron																		
		16	16.5	17	17.5	18	18.5	19	19.5	20	21	22	23	24	25	26	28	30	32	
Yield (Sch Dry)	25%	Current	\$35	\$33	\$30	\$28	\$25	\$23	\$20	\$19	\$17	\$16	\$16	\$15	\$13	\$11	\$10	\$8	\$7	\$7
	10yr ave.			\$18		\$16		\$13		\$12	\$11	\$11	\$11	\$10	\$9	\$8	\$7	\$6	\$5	
	30%	Current	\$42	\$39	\$36	\$33	\$30	\$27	\$24	\$22	\$20	\$19	\$19	\$18	\$15	\$13	\$13	\$10	\$9	\$8
	10yr ave.			\$21		\$19		\$16		\$14	\$13	\$13	\$13	\$12	\$11	\$10	\$8	\$7	\$6	
	35%	Current	\$49	\$46	\$42	\$39	\$35	\$32	\$29	\$26	\$24	\$23	\$22	\$21	\$18	\$16	\$15	\$11	\$10	\$9
	10yr ave.			\$25		\$22		\$19		\$16	\$16	\$15	\$15	\$14	\$13	\$12	\$9	\$8	\$7	
	40%	Current	\$56	\$53	\$48	\$45	\$41	\$36	\$33	\$30	\$27	\$26	\$25	\$24	\$20	\$18	\$17	\$13	\$12	\$11
	10yr ave.			\$28		\$26		\$22		\$19	\$18	\$17	\$17	\$16	\$14	\$13	\$11	\$9	\$8	
	45%	Current	\$63	\$59	\$54	\$50	\$46	\$41	\$37	\$34	\$31	\$29	\$28	\$27	\$23	\$20	\$19	\$14	\$13	\$12
	10yr ave.			\$32		\$29		\$24		\$21	\$20	\$20	\$19	\$18	\$16	\$15	\$12	\$10	\$9	
	50%	Current	\$70	\$66	\$60	\$56	\$51	\$45	\$41	\$37	\$34	\$32	\$31	\$30	\$25	\$22	\$21	\$16	\$14	\$13
	10yr ave.			\$36		\$32		\$27		\$23	\$22	\$22	\$21	\$20	\$18	\$17	\$13	\$12	\$10	
	55%	Current	\$77	\$72	\$66	\$61	\$56	\$50	\$45	\$41	\$37	\$35	\$34	\$33	\$28	\$25	\$23	\$18	\$16	\$14
	10yr ave.			\$39		\$35		\$30		\$26	\$25	\$24	\$23	\$22	\$20	\$18	\$14	\$13	\$11	
60%	Current	\$84	\$79	\$72	\$67	\$61	\$54	\$49	\$45	\$41	\$39	\$37	\$36	\$30	\$27	\$25	\$19	\$17	\$16	
10yr ave.			\$43		\$38		\$32		\$28	\$27	\$26	\$25	\$24	\$22	\$20	\$16	\$14	\$12		
65%	Current	\$91	\$85	\$78	\$72	\$66	\$59	\$53	\$48	\$44	\$42	\$40	\$39	\$33	\$29	\$27	\$21	\$19	\$17	
10yr ave.			\$46		\$41		\$35		\$30	\$29	\$28	\$28	\$26	\$24	\$22	\$17	\$15	\$14		
70%	Current	\$98	\$92	\$85	\$78	\$71	\$64	\$57	\$52	\$48	\$45	\$44	\$42	\$35	\$31	\$29	\$22	\$20	\$18	
10yr ave.			\$50		\$45		\$38		\$33	\$31	\$30	\$30	\$28	\$25	\$23	\$18	\$16	\$15		
75%	Current	\$105	\$99	\$91	\$84	\$76	\$68	\$61	\$56	\$51	\$48	\$47	\$45	\$38	\$34	\$31	\$24	\$22	\$20	
10yr ave.			\$53		\$48		\$40		\$35	\$33	\$33	\$32	\$30	\$27	\$25	\$20	\$17	\$16		
80%	Current	\$112	\$105	\$97	\$89	\$81	\$73	\$65	\$60	\$54	\$51	\$50	\$48	\$40	\$36	\$33	\$26	\$23	\$21	
10yr ave.			\$57		\$51		\$43		\$37	\$36	\$35	\$34	\$32	\$29	\$27	\$21	\$18	\$17		
85%	Current	\$119	\$112	\$103	\$95	\$86	\$77	\$69	\$63	\$58	\$55	\$53	\$51	\$43	\$38	\$36	\$27	\$24	\$22	
10yr ave.			\$60		\$54		\$46		\$40	\$38	\$37	\$36	\$34	\$31	\$28	\$22	\$20	\$18		

The above shows estimated returns per head for skirted fleece wool. These figures do not take into account the value of skirtings and oddments and do not take into account discounts that may apply for faults under individual circumstances. These figures are based on a market index of 100% and should be used as a guide only. Returns over \$30 / head for fleece wool are highlighted.

Source: Australian Wool Exchange, Australian Wool Innovation, Sydney Futures Exchange, x-rates.com

Disclaimer: While all due care has been taken in the preparation of this document, no warranty is made as to its accuracy, reliability or completeness. To the extent permitted by law neither Jemalong or their sources including subsidiaries and staff, accept liability to any person for loss or damage arising from the use of this information.



Table 18: Returns pr head for skirted fleece wool.

Skirted FLC Weight		Micron																	
4 Kg		16	16.5	17	17.5	18	18.5	19	19.5	20	21	22	23	24	25	26	28	30	32
Yield (Sch Dry)	25% Current	\$28	\$26	\$24	\$22	\$20	\$18	\$16	\$15	\$14	\$13	\$12	\$12	\$10	\$9	\$8	\$6	\$6	\$5
	10yr ave.			\$14		\$13		\$11		\$9	\$9	\$9	\$8	\$8	\$7	\$7	\$5	\$5	\$4
	30% Current	\$34	\$32	\$29	\$27	\$24	\$22	\$20	\$18	\$16	\$15	\$15	\$14	\$12	\$11	\$10	\$8	\$7	\$6
	10yr ave.			\$17		\$15		\$13		\$11	\$11	\$10	\$10	\$10	\$9	\$8	\$6	\$6	\$5
	35% Current	\$39	\$37	\$34	\$31	\$28	\$25	\$23	\$21	\$19	\$18	\$17	\$17	\$14	\$13	\$12	\$9	\$8	\$7
	10yr ave.			\$20		\$18		\$15		\$13	\$13	\$12	\$12	\$11	\$10	\$9	\$7	\$6	\$6
	40% Current	\$45	\$42	\$39	\$36	\$32	\$29	\$26	\$24	\$22	\$21	\$20	\$19	\$16	\$14	\$13	\$10	\$9	\$8
	10yr ave.			\$23		\$20		\$17		\$15	\$14	\$14	\$14	\$13	\$12	\$11	\$8	\$7	\$7
	45% Current	\$50	\$47	\$43	\$40	\$36	\$33	\$29	\$27	\$24	\$23	\$22	\$21	\$18	\$16	\$15	\$12	\$10	\$9
	10yr ave.			\$26		\$23		\$19		\$17	\$16	\$16	\$15	\$15	\$13	\$12	\$9	\$8	\$7
	50% Current	\$56	\$53	\$48	\$45	\$41	\$36	\$33	\$30	\$27	\$26	\$25	\$24	\$20	\$18	\$17	\$13	\$12	\$11
	10yr ave.			\$28		\$26		\$22		\$19	\$18	\$17	\$17	\$16	\$14	\$13	\$11	\$9	\$8
	55% Current	\$62	\$58	\$53	\$49	\$45	\$40	\$36	\$33	\$30	\$28	\$27	\$26	\$22	\$20	\$18	\$14	\$13	\$12
	10yr ave.			\$31		\$28		\$24		\$21	\$20	\$19	\$19	\$18	\$16	\$15	\$12	\$10	\$9
	60% Current	\$67	\$63	\$58	\$54	\$49	\$44	\$39	\$36	\$33	\$31	\$30	\$29	\$24	\$21	\$20	\$15	\$14	\$13
	10yr ave.			\$34		\$31		\$26		\$22	\$21	\$21	\$20	\$19	\$17	\$16	\$13	\$11	\$10
	65% Current	\$73	\$68	\$63	\$58	\$53	\$47	\$42	\$39	\$35	\$33	\$32	\$31	\$26	\$23	\$22	\$17	\$15	\$14
	10yr ave.			\$37		\$33		\$28		\$24	\$23	\$23	\$22	\$21	\$19	\$17	\$14	\$12	\$11
	70% Current	\$78	\$74	\$68	\$62	\$57	\$51	\$46	\$42	\$38	\$36	\$35	\$33	\$28	\$25	\$23	\$18	\$16	\$15
	10yr ave.			\$40		\$36		\$30		\$26	\$25	\$24	\$24	\$23	\$20	\$19	\$15	\$13	\$12
	75% Current	\$84	\$79	\$72	\$67	\$61	\$54	\$49	\$45	\$41	\$39	\$37	\$36	\$30	\$27	\$25	\$19	\$17	\$16
	10yr ave.			\$43		\$38		\$32		\$28	\$27	\$26	\$25	\$24	\$22	\$20	\$16	\$14	\$12
	80% Current	\$90	\$84	\$77	\$71	\$65	\$58	\$52	\$48	\$43	\$41	\$40	\$38	\$32	\$29	\$27	\$20	\$18	\$17
	10yr ave.			\$45		\$41		\$34		\$30	\$29	\$28	\$27	\$26	\$23	\$21	\$17	\$15	\$13
	85% Current	\$95	\$89	\$82	\$76	\$69	\$62	\$55	\$51	\$46	\$44	\$42	\$40	\$34	\$30	\$28	\$22	\$20	\$18
	10yr ave.			\$48		\$43		\$37		\$32	\$30	\$30	\$29	\$27	\$25	\$23	\$18	\$16	\$14

The above shows estimated returns per head for skirted fleece wool. These figures do not take into account the value of skirtings and oddments and do not take into account discounts that may apply for faults under individual circumstances. These figures are based on a market index of 100% and should be used as a guide only. Returns over \$30 / head for fleece wool are highlighted.

Source: Australian Wool Exchange, Australian Wool Innovation, Sydney Futures Exchange, x-rates.com

Disclaimer: While all due care has been taken in the preparation of this document, no warranty is made as to its accuracy, reliability or completeness. To the extent permitted by law neither Jemalong or their sources including subsidiaries and staff, accept liability to any person for loss or damage arising from the use of this information.



Table 19: Returns pr head for skirted fleece wool.

Skirted FLC Weight		Micron																	
3 Kg		16	16.5	17	17.5	18	18.5	19	19.5	20	21	22	23	24	25	26	28	30	32
Yield (Sch Dry)	25% Current	\$21	\$20	\$18	\$17	\$15	\$14	\$12	\$11	\$10	\$10	\$9	\$9	\$8	\$7	\$6	\$5	\$4	\$4
	10yr ave.			\$11		\$10		\$8		\$7	\$7	\$7	\$6	\$6	\$5	\$5	\$4	\$3	\$3
	30% Current	\$25	\$24	\$22	\$20	\$18	\$16	\$15	\$13	\$12	\$12	\$11	\$11	\$9	\$8	\$8	\$6	\$5	\$5
	10yr ave.			\$13		\$11		\$10		\$8	\$8	\$8	\$8	\$7	\$7	\$6	\$5	\$4	\$4
	35% Current	\$29	\$28	\$25	\$23	\$21	\$19	\$17	\$16	\$14	\$14	\$13	\$13	\$11	\$9	\$9	\$7	\$6	\$6
	10yr ave.			\$15		\$13		\$11		\$10	\$9	\$9	\$9	\$8	\$8	\$7	\$6	\$5	\$4
	40% Current	\$34	\$32	\$29	\$27	\$24	\$22	\$20	\$18	\$16	\$15	\$15	\$14	\$12	\$11	\$10	\$8	\$7	\$6
	10yr ave.			\$17		\$15		\$13		\$11	\$11	\$10	\$10	\$10	\$9	\$8	\$6	\$6	\$5
	45% Current	\$38	\$36	\$33	\$30	\$27	\$25	\$22	\$20	\$18	\$17	\$17	\$16	\$14	\$12	\$11	\$9	\$8	\$7
	10yr ave.			\$19		\$17		\$15		\$13	\$12	\$12	\$11	\$11	\$10	\$9	\$7	\$6	\$6
	50% Current	\$42	\$39	\$36	\$33	\$30	\$27	\$24	\$22	\$20	\$19	\$19	\$18	\$15	\$13	\$13	\$10	\$9	\$8
	10yr ave.			\$21		\$19		\$16		\$14	\$13	\$13	\$13	\$12	\$11	\$10	\$8	\$7	\$6
	55% Current	\$46	\$43	\$40	\$37	\$33	\$30	\$27	\$25	\$22	\$21	\$21	\$20	\$17	\$15	\$14	\$11	\$10	\$9
	10yr ave.			\$23		\$21		\$18		\$15	\$15	\$14	\$14	\$13	\$12	\$11	\$9	\$8	\$7
	60% Current	\$50	\$47	\$43	\$40	\$36	\$33	\$29	\$27	\$24	\$23	\$22	\$21	\$18	\$16	\$15	\$12	\$10	\$9
	10yr ave.			\$26		\$23		\$19		\$17	\$16	\$16	\$15	\$15	\$13	\$12	\$9	\$8	\$7
	65% Current	\$55	\$51	\$47	\$43	\$40	\$35	\$32	\$29	\$26	\$25	\$24	\$23	\$20	\$17	\$16	\$12	\$11	\$10
	10yr ave.			\$28		\$25		\$21		\$18	\$17	\$17	\$17	\$16	\$14	\$13	\$10	\$9	\$8
	70% Current	\$59	\$55	\$51	\$47	\$43	\$38	\$34	\$31	\$29	\$27	\$26	\$25	\$21	\$19	\$18	\$13	\$12	\$11
	10yr ave.			\$30		\$27		\$23		\$20	\$19	\$18	\$18	\$17	\$15	\$14	\$11	\$10	\$9
	75% Current	\$63	\$59	\$54	\$50	\$46	\$41	\$37	\$34	\$31	\$29	\$28	\$27	\$23	\$20	\$19	\$14	\$13	\$12
	10yr ave.			\$32		\$29		\$24		\$21	\$20	\$20	\$19	\$18	\$16	\$15	\$12	\$10	\$9
	80% Current	\$67	\$63	\$58	\$54	\$49	\$44	\$39	\$36	\$33	\$31	\$30	\$29	\$24	\$21	\$20	\$15	\$14	\$13
	10yr ave.			\$34		\$31		\$26		\$22	\$21	\$21	\$20	\$19	\$17	\$16	\$13	\$11	\$10
	85% Current	\$71	\$67	\$62	\$57	\$52	\$46	\$42	\$38	\$35	\$33	\$32	\$30	\$26	\$23	\$21	\$16	\$15	\$13
	10yr ave.			\$36		\$33		\$27		\$24	\$23	\$22	\$22	\$21	\$18	\$17	\$13	\$12	\$11

The above shows estimated returns per head for skirted fleece wool. These figures do not take into account the value of skirtings and oddments and do not take into account discounts that may apply for faults under individual circumstances. These figures are based on a market index of 100% and should be used as a guide only. Returns over \$30 / head for fleece wool are highlighted.

Source: Australian Wool Exchange, Australian Wool Innovation, Sydney Futures Exchange, x-rates.com

Disclaimer: While all due care has been taken in the preparation of this document, no warranty is made as to its accuracy, reliability or completeness. To the extent permitted by law neither Jemalong or their sources including subsidiaries and staff, accept liability to any person for loss or damage arising from the use of this information.



Table 20: Returns pr head for skirted fleece wool.

Skirted FLC Weight		Micron																	
2 Kg		16	16.5	17	17.5	18	18.5	19	19.5	20	21	22	23	24	25	26	28	30	32
Yield (Sch Dry)	25% Current	\$14	\$13	\$12	\$11	\$10	\$9	\$8	\$7	\$7	\$6	\$6	\$6	\$5	\$4	\$4	\$3	\$3	\$3
	10yr ave.			\$7		\$6		\$5		\$5	\$4	\$4	\$4	\$4	\$4	\$3	\$3	\$2	\$2
	30% Current	\$17	\$16	\$14	\$13	\$12	\$11	\$10	\$9	\$8	\$8	\$7	\$7	\$6	\$5	\$5	\$4	\$3	\$3
	10yr ave.			\$9		\$8		\$6		\$6	\$5	\$5	\$5	\$5	\$4	\$4	\$3	\$3	\$2
	35% Current	\$20	\$18	\$17	\$16	\$14	\$13	\$11	\$10	\$10	\$9	\$9	\$8	\$7	\$6	\$6	\$4	\$4	\$4
	10yr ave.			\$10		\$9		\$8		\$7	\$6	\$6	\$6	\$6	\$5	\$5	\$4	\$3	\$3
	40% Current	\$22	\$21	\$19	\$18	\$16	\$15	\$13	\$12	\$11	\$10	\$10	\$10	\$8	\$7	\$7	\$5	\$5	\$4
	10yr ave.			\$11		\$10		\$9		\$7	\$7	\$7	\$7	\$6	\$6	\$5	\$4	\$4	\$3
	45% Current	\$25	\$24	\$22	\$20	\$18	\$16	\$15	\$13	\$12	\$12	\$11	\$11	\$9	\$8	\$8	\$6	\$5	\$5
	10yr ave.			\$13		\$11		\$10		\$8	\$8	\$8	\$8	\$7	\$7	\$6	\$5	\$4	\$4
	50% Current	\$28	\$26	\$24	\$22	\$20	\$18	\$16	\$15	\$14	\$13	\$12	\$12	\$10	\$9	\$8	\$6	\$6	\$5
	10yr ave.			\$14		\$13		\$11		\$9	\$9	\$9	\$8	\$8	\$7	\$7	\$5	\$5	\$4
	55% Current	\$31	\$29	\$27	\$25	\$22	\$20	\$18	\$16	\$15	\$14	\$14	\$13	\$11	\$10	\$9	\$7	\$6	\$6
	10yr ave.			\$16		\$14		\$12		\$10	\$10	\$10	\$9	\$9	\$8	\$7	\$6	\$5	\$5
	60% Current	\$34	\$32	\$29	\$27	\$24	\$22	\$20	\$18	\$16	\$15	\$15	\$14	\$12	\$11	\$10	\$8	\$7	\$6
	10yr ave.			\$17		\$15		\$13		\$11	\$11	\$10	\$10	\$10	\$9	\$8	\$6	\$6	\$5
	65% Current	\$36	\$34	\$31	\$29	\$26	\$24	\$21	\$19	\$18	\$17	\$16	\$15	\$13	\$12	\$11	\$8	\$7	\$7
	10yr ave.			\$18		\$17		\$14		\$12	\$12	\$11	\$11	\$11	\$9	\$9	\$7	\$6	\$5
	70% Current	\$39	\$37	\$34	\$31	\$28	\$25	\$23	\$21	\$19	\$18	\$17	\$17	\$14	\$13	\$12	\$9	\$8	\$7
	10yr ave.			\$20		\$18		\$15		\$13	\$13	\$12	\$12	\$11	\$10	\$9	\$7	\$6	\$6
	75% Current	\$42	\$39	\$36	\$33	\$30	\$27	\$24	\$22	\$20	\$19	\$19	\$18	\$15	\$13	\$13	\$10	\$9	\$8
	10yr ave.			\$21		\$19		\$16		\$14	\$13	\$13	\$13	\$12	\$11	\$10	\$8	\$7	\$6
	80% Current	\$45	\$42	\$39	\$36	\$32	\$29	\$26	\$24	\$22	\$21	\$20	\$19	\$16	\$14	\$13	\$10	\$9	\$8
	10yr ave.			\$23		\$20		\$17		\$15	\$14	\$14	\$14	\$13	\$12	\$11	\$8	\$7	\$7
	85% Current	\$48	\$45	\$41	\$38	\$34	\$31	\$28	\$25	\$23	\$22	\$21	\$20	\$17	\$15	\$14	\$11	\$10	\$9
	10yr ave.			\$24		\$22		\$18		\$16	\$15	\$15	\$14	\$14	\$12	\$11	\$9	\$8	\$7

The above shows estimated returns per head for skirted fleece wool. These figures do not take into account the value of skirtings and oddments and do not take into account discounts that may apply for faults under individual circumstances. These figures are based on a market index of 100% and should be used as a guide only. Returns over \$30 / head for fleece wool are highlighted.

Source: Australian Wool Exchange, Australian Wool Innovation, Sydney Futures Exchange, x-rates.com

Disclaimer: While all due care has been taken in the preparation of this document, no warranty is made as to its accuracy, reliability or completeness. To the extent permitted by law neither Jemalong or their sources including subsidiaries and staff, accept liability to any person for loss or damage arising from the use of this information.