



# JEMALONG WOOL BULLETIN

(week ending 4/09/2013)

Page 1/21

**Table 1: Northern Region Micron Price Guides**

WEEK 10			12 MONTH COMPARISONS								3 YEAR COMPARISONS					*10 YEAR COMPARISONS				
Mic.	4/09/2013	29/08/2013	4/09/2012	Now		Now		Now				Now		Percentile		* 16-17.5um since Aug 05	Now			Percentile
Price	Current	Weekly	This time	compared		12 Month	compared	12 Month	compared			compared				*10 year	compared			
Guides	Price	Change	Last Year	to Last Year		Low	to Low	High	to High	Low	High	Average	to 3yr ave		Low	High	Average	to *10yr ave		
NRI	1149	+67 5.8%	947	+202 21%		944	+205 22%	1158	-9 -1%	934	1491	1163	-14 -1%	50%	657	1491	930	+219 24%		86%
16*	1730	+50 2.9%	1550	+180 12%		1540	+190 12%	1810	-80 -4%	1540	2800	2037	-307 -15%	31%	1390	2800	1751	-21 -1%		66%
16.5*	1595	+35 2.2%	1390	+205 15%		1390	+205 15%	1660	-65 -4%	1400	2680	1875	-280 -15%	36%	1280	2680	1605	-10 -1%		68%
17*	1470	+60 4.1%	1290	+180 14%		1250	+220 18%	1530	-60 -4%	1285	2530	1718	-248 -14%	39%	1100	2530	1442	+28 2%		72%
17.5*	1400	+70 5.0%	1230	+170 14%		1200	+200 17%	1465	-65 -4%	1230	2360	1616	-216 -13%	36%	1020	2360	1382	+18 1%		67%
18	1349	+64 4.7%	1159	+190 16%		1148	+201 18%	1416	-67 -5%	1158	2193	1525	-176 -12%	36%	916	2193	1247	+102 8%		72%
18.5	1315	+81 6.2%	1125	+190 17%		1116	+199 18%	1378	-63 -5%	1125	1963	1441	-126 -9%	38%	843	1963	1181	+134 11%		78%
19	1294	+94 7.3%	1097	+197 18%		1084	+210 19%	1348	-54 -4%	1086	1776	1362	-68 -5%	41%	803	1776	1112	+182 16%		83%
19.5	1280	+103 8.0%	1068	+212 20%		1058	+222 21%	1310	-30 -2%	1002	1670	1292	-12 -1%	45%	749	1670	1046	+234 22%		85%
20	1251	+92 7.4%	1055	+196 19%		1047	+204 19%	1270	-19 -1%	962	1588	1234	+17 1%	53%	700	1588	988	+263 27%		87%
21	1224	+70 5.7%	1053	+171 16%		1036	+188 18%	1252	-28 -2%	942	1522	1204	+20 2%	48%	668	1522	945	+279 30%		85%
22	1198	+60 5.0%	1040	+158 15%		1015	+183 18%	1234	-36 -3%	905	1461	1169	+29 2%	49%	659	1461	915	+283 31%		86%
23	1195	+69 5.8%	1021	+174 17%		1002	+193 19%	1213	-18 -1%	872	1347	1124	+71 6%	67%	651	1347	886	+309 35%		90%
24	1140	+50 4.4%	966	+174 18%		940	+200 21%	1103	+37 3%	803	1213	1028	+112 11%	88%	638	1213	828	+312 38%		96%
25	954	+30 3.1%	899	+55 6%		840	+114 14%	937	+17 2%	738	1049	903	+51 6%	72%	566	1049	729	+225 31%		92%
26	865	+15 1.7%	831	+34 4%		753	+112 15%	857	+8 1%	634	939	804	+61 8%	79%	532	939	661	+204 31%		94%
28	689	+31 4.5%	558	+131 23%		558	+131 23%	671	+18 3%	450	734	611	+78 13%	92%	424	734	517	+172 33%		97%
30	650	+18 2.8%	546	+104 19%		526	+124 24%	632	+18 3%	398	670	560	+90 16%	97%	343	670	459	+191 42%		99%
32	545	+28 5.1%	440	+105 24%		440	+105 24%	517	+28 5%	356	638	495	+50 10%	75%	297	638	408	+137 34%		93%
MC	874	+13 1.5%	549	+325 59%		549	+325 59%	861	+13 2%	532	861	704	+170 24%	100%	380	861	546	+328 60%		100%
BALES OFFERED		36,723	* Due to the irregular market quoting for some fine wool categories, figures shown relating to micron categories below 18 micron are an estimate based on the																	
BALES SOLD		36,149	AWEX Premium & Discounts Report & other available information.																	
PASSED-IN%		1.6%	* For any category, where there is insufficient quantity offered to enable AWEX to quote, a quote will be provided based on the best available information.																	
AUD/USD		0.90991	* 10 Year data is not available for 16 to 17.5 microns, therefore 10 year statistics for those micron categories only date back as far as August 2005.																	

Source: Australian Wool Exchange, Australian Wool Innovation, Riemann, x-rates.com, Reserve Bank of Australia, Australian Wool Testing Authority.

Disclaimer: Jemalong Wool Pty Ltd make no representations about the content and suitability of the information contained in this report. Specifically, Jemalong Wool does not warrant, guarantee or make any representations regarding the correctness, accuracy, reliability, currency, or any other aspect regarding characteristics or use of information presented in these materials. The user accepts sole responsibility and risk associated with the use and results of these materials, irrespective of the purpose of which such use or results are applied. In no event shall Jemalong Wool be liable for any loss or damages (including without limitation special, or consequential damages), where in an action of contract, negligence,



## MARKET COMMENTARY

This weeks (Tue/Wed) market continued to surge ahead, with the NRI gaining a further 67 cents to close at 1149 (the highest it has been since February). 36,723 bales were offered nationally with a 98.4% clearance rate.

In the past two weeks we have seen renewed interest from China drive the market skyward. Given the gloomy conditions of recent months and with past history suggesting the likely hood of a softer market in August and September, the sharp rise has caught most by surprise.

Tuesdays market jumped swiftly, however prices continued to rise though out Wednesday sale, albeit at a steadier rate. Merino fleece categories were 50-100 cents dearer for the week; with the strongest buying pressure in the medium micron ranges (19.5 microns have gained 178 cents in the past fortnight). Skirtings have not been left behind, with intense buying on Tuesday lifting prices by up to 80 cents, followed by a further 20 cents on Wednesday. Oddments were 5-10 cents dearer on both days and the crossbreds were generally 15-30 cents dearer for the week.

The forward market also remained hot this week with growers taking advantage of the price rise, while buyers took some cover. 203,500kg (~1628 bales) traded on Riemann out to May 2014, for 18.5 to 23 microns, with 21 microns the most popular trade.

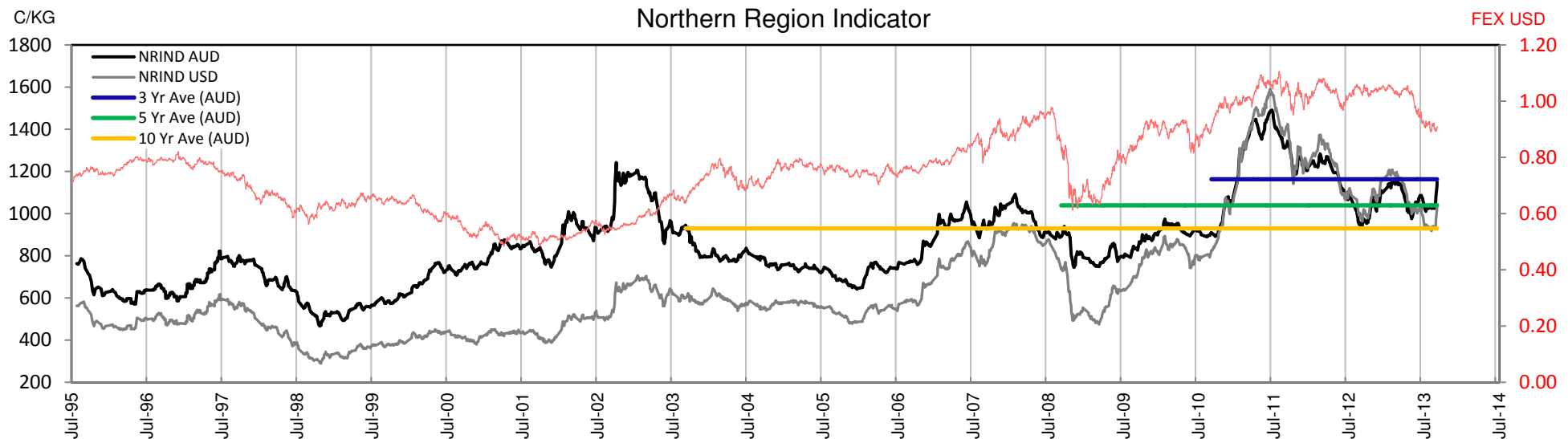




Table 2: Three Year Decile Table, since: 1/09/2010

Decile %	16	16.5	17	17.5	18	18.5	19	19.5	20	21	22	23	24	25	26	28	30	32	MC
1 10%	1600	1440	1310	1265	1199	1163	1125	1096	1055	1043	1023	1004	943	813	740	550	501	423	599
2 20%	1650	1500	1360	1300	1251	1217	1181	1136	1091	1088	1069	1046	979	871	760	579	531	466	628
3 30%	1708	1560	1420	1350	1314	1279	1239	1173	1141	1128	1099	1073	996	890	790	596	550	479	676
4 40%	1800	1615	1477	1410	1370	1334	1292	1256	1203	1176	1157	1108	1020	898	805	616	565	488	702
5 50%	2000	1830	1620	1540	1466	1409	1336	1295	1246	1229	1199	1151	1043	906	816	626	579	493	726
6 60%	2050	1890	1708	1600	1535	1472	1417	1369	1304	1263	1220	1184	1064	916	828	638	583	500	734
7 70%	2150	1950	1785	1680	1595	1509	1467	1405	1352	1308	1258	1201	1089	943	846	645	593	518	748
8 80%	2656	2450	2274	2050	1848	1691	1583	1449	1381	1332	1288	1237	1112	971	867	659	612	560	758
9 90%	2750	2608	2420	2270	2075	1868	1664	1500	1409	1363	1321	1272	1147	1001	894	688	628	582	816
10 100%	2800	2680	2530	2360	2193	1963	1776	1670	1588	1522	1461	1347	1213	1049	939	734	670	638	861
MPG	1730	1595	1470	1400	1349	1315	1294	1280	1251	1224	1198	1195	1140	954	865	689	650	545	874
3 Yr Percentile	31%	36%	39%	36%	36%	38%	41%	45%	53%	48%	49%	67%	88%	72%	79%	92%	97%	75%	100%

Table 3: Ten Year Decile Table, sinc 1/09/2003

Decile %	16	16.5	17	17.5	18	18.5	19	19.5	20	21	22	23	24	25	26	28	30	32	MC
1 10%	1480	1346	1186	1140	999	962	914	850	788	737	710	691	667	596	556	445	377	326	408
2 20%	1530	1396	1235	1175	1043	1000	940	879	823	760	729	705	678	627	572	457	398	349	430
3 30%	1560	1415	1260	1200	1082	1032	970	910	852	801	774	749	708	644	588	467	410	361	442
4 40%	1600	1450	1300	1250	1134	1071	1010	951	890	851	826	805	758	661	601	474	425	380	460
5 50%	1620	1480	1340	1300	1180	1131	1063	982	924	893	864	841	798	684	618	483	432	394	516
6 60%	1670	1510	1400	1350	1232	1177	1106	1039	986	956	924	894	827	704	639	498	439	403	573
7 70%	1750	1600	1445	1420	1320	1254	1170	1111	1067	1005	962	928	857	741	659	537	470	427	616
8 80%	1950	1780	1570	1510	1403	1324	1264	1191	1142	1117	1089	1068	993	886	790	593	545	473	677
9 90%	2150	1950	1770	1680	1556	1485	1433	1387	1328	1285	1233	1189	1072	924	832	641	586	508	741
10 100%	2800	2680	2530	2360	2193	1963	1776	1670	1588	1522	1461	1347	1213	1049	939	734	670	638	861
MPG	1730	1595	1470	1400	1349	1315	1294	1280	1251	1224	1198	1195	1140	954	865	689	650	545	874
3 Yr Percentile	31%	36%	39%	36%	36%	38%	41%	45%	53%	48%	49%	67%	88%	72%	79%	92%	97%	75%	100%

**Decile Tables are a useful tool for working out price targets.**

**Percentiles are a more accurate guide to where the market is currently trading (The higher the percentile, the stronger the market).**

#### Definitions:

\* A Percentile, is a value on a scale of one hundred that indicates the percent of a distribution that is equal to or below it. In general a percentile between 25% and 75% is considered normal, a percentile below 25% is considered below normal and a percentile above 75% is considered above normal.

Three and ten year percentiles shown on the bottom line of table 2 & 3 (above) and in table 1 (on page 1), detail the amount of time during the past 3 & 10 years where the market has traded either at or below its current price.

\* Deciles are a method of sorting ranked data into 10 equal groups. The data may be ranked from largest to smallest or vice versa.

The above Decile tables sort price Percentiles into 10 equal groups (in ascending order), with table 2 ranking the previous 3 years prices, while table 3 ranks prices over the previous 10 year

**Example:** In Table 2, a Decile Rank of 6 for 19 microns, shows 19 microns have traded at or below 1417 for 60% of the time, over the past three years.

In Table 3, a Decile Rank of 6 for 19 microns, shows 19 microns have traded at or below 1106 for 60% of the time, over the past ten years.



# JEMALONG WOOL BULLETIN

(week ending 4/09/2013)

Table 4: Riemann Forwards, latest trades as at: Wednesday 4/9/2013 17:20

Any highlighted in yellow are recent trades, trading since: Friday, 30 August 2013

CONTRACT MICRON		18.5um	19um	19.5um	21um	22um	23um	28um	30um
CONTRACT MONTH	Sep-2013		28/08/13 1160	29/08/13 1180	4/09/13 1210	30/08/13 1130	29/08/13 1110		
	Oct-2013		3/09/13 1230	4/09/13 1240	4/09/13 1205	5/03/13 1150	3/09/13 1150		
	Nov-2013		5/03/13 1310		3/09/13 1200				12/06/13 550
	Dec-2013		30/01/13 1320		4/09/13 1180	29/01/13 1150			
	Jan-2014		30/01/13 1280		12/06/13 1135			29/08/13 630	
	Feb-2014		18/12/12 1250		30/08/13 1150				
	Mar-2014				30/08/13 1150				
	Apr-2014				3/09/13 1150				
	May-2014				3/09/13 1160				
	Jun-2014				3/09/13 1150				
	Jul-2014								
	Aug-2014								
	Sep-2014								
	Oct-2014				12/04/13 1050				
	Nov-2014								
	Dec-2014								
	Jan-2015								
	Feb-2015								
	Mar-2015								
	Apr-2015								
	May-2015								
	Jun-2015								
	Jul-2015								

Explanatory Notes: Prices quoted reflect the most recent trades, at time of print.

Disclaimer: While all due care has been taken in the preparation of this document, no warranty is made as to its accuracy, reliability or completeness. To the extent permitted by law neither Jemalong or their sources including subsidiaries and staff, accept liability to any person for loss or damage arising from the use of this information.



# JEMALONG WOOL BULLETIN

(week ending 4/09/2013)

Table 5: National Market Share

	Rank	Current Selling Week Week 10			Previous Selling Week Week 9			Last Season 2012-13			2 Years Ago 2011-12			3 Years Ago 2010-11			5 Years Ago 2008-09			10 Years Ago 2003-04		
		Buyer	Bales	MS%	Buyer	Bales	MS%	Buyer	Bales	MS%	Buyer	Bales	MS%	Buyer	Bales	MS%	Buyer	Bales	MS%	Buyer	Bales	MS%
Top 10, Auction Buyers	1	TECM	5,351	15%	TECM	4,602	12%	TECM	179,176	10%	VTRA	229,207	14%	VTRA	209,391	12%	TECM	207,010	12%	ITOS	235,726	11%
	2	LEMM	4,713	13%	QCTB	3,781	10%	VTRA	163,810	9%	TECM	153,616	9%	TECM	179,439	10%	FOXM	127,295	7%	BWEA	158,769	7%
	3	FOXM	2,453	7%	LEMM	3,301	9%	FOXM	143,826	8%	FOXM	136,698	8%	FOXM	142,143	8%	ABB	120,742	7%	PLEX	151,168	7%
	4	QCTB	2,453	7%	CTXS	2,805	7%	LEMM	126,564	7%	QCTB	112,745	7%	QCTB	120,699	7%	WIEM	111,432	6%	LEMM	127,649	6%
	5	CTXS	2,135	6%	AMEM	2,587	7%	QCTB	98,756	6%	WIEM	100,817	6%	WIEM	99,585	6%	LEMM	103,040	6%	RWRS	126,145	6%
	6	AMEM	1,968	5%	PMWF	2,539	7%	PMWF	96,935	6%	LEMM	88,348	5%	LEMM	85,346	5%	KATS	99,613	6%	MODM	121,461	6%
	7	MODM	1,795	5%	DONS	1,988	5%	MODM	84,363	5%	MODM	74,646	4%	MODM	81,981	5%	PMWF	80,995	5%	ADSS	120,262	6%
	8	PMWF	1,690	5%	MODM	1,633	4%	CTXS	82,166	5%	CTXS	69,266	4%	PMWF	77,588	4%	RWRS	63,736	4%	FOXM	84,578	4%
	9	TIAM	1,609	4%	FOXM	1,518	4%	AMEM	77,849	4%	PMWF	64,659	4%	CTXS	75,127	4%	BWEA	61,930	4%	GSAS	83,137	4%
	10	MCHA	1,358	4%	TIAM	1,469	4%	KATS	65,782	4%	GSAS	58,233	3%	KATS	67,867	4%	PLEX	60,943	3%	TECM	80,168	4%
MFLC TOP 5	1	LEMM	3,978	18%	QCTB	3,180	13%	VTRA	118,432	12%	VTRA	171,425	19%	VTRA	169,191	17%	ABB	103,759	10%	ITOS	195,318	15%
	2	TECM	3,134	14%	LEMM	2,549	10%	LEMM	110,118	11%	QCTB	86,901	10%	QCTB	98,673	10%	TECM	87,221	9%	ADSS	107,535	8%
	3	QCTB	1,985	9%	TECM	2,515	10%	PMWF	93,136	10%	TECM	76,083	8%	TECM	79,395	8%	LEMM	84,758	8%	BWEA	95,591	7%
	4	CTXS	1,946	9%	CTXS	2,484	10%	TECM	89,286	9%	LEMM	68,961	8%	PMWF	71,718	7%	PMWF	76,778	8%	LEMM	90,541	7%
	5	FOXM	1,554	7%	PMWF	2,403	10%	QCTB	71,715	7%	PMWF	60,070	7%	LEMM	70,280	7%	KATS	76,726	8%	RWRS	82,647	6%
MSKT TOP 5	1	TECM	1,133	19%	TECM	1,185	18%	MODM	37,284	14%	WIEM	43,156	16%	MODM	39,745	14%	PLEX	37,871	13%	PLEX	63,186	17%
	2	LEMM	522	9%	AMEM	829	13%	TECM	34,301	13%	MODM	30,285	11%	WIEM	36,566	13%	WIEM	33,859	12%	MODM	47,008	13%
	3	AMEM	519	9%	LEMM	612	9%	WIEM	27,916	10%	TECM	25,264	9%	TECM	28,858	10%	MODM	28,540	10%	GSAS	36,194	10%
	4	TIAM	501	8%	GSAS	507	8%	TIAM	24,196	9%	PLEX	21,990	8%	PLEX	23,282	8%	FOXM	18,936	7%	BWEA	32,347	9%
	5	WCWF	474	8%	WCWF	444	7%	AMEM	23,012	8%	GSAS	16,284	6%	FOXM	16,098	6%	GSAS	18,523	6%	LEMM	28,595	8%
XBFS TOP 5	1	TECM	676	17%	TECM	583	14%	FOXM	39,356	14%	FOXM	41,689	15%	FOXM	48,708	19%	TECM	87,455	38%	BWEA	26,673	14%
	2	AMEM	381	10%	AMEM	459	11%	TECM	30,323	11%	VTRA	31,427	12%	TECM	43,133	17%	FOXM	42,053	18%	FOXM	25,096	13%
	3	KATS	332	9%	QCTB	410	10%	VTRA	27,832	10%	TECM	31,094	11%	VTRA	20,904	8%	KATS	13,002	6%	TECM	20,352	11%
	4	QCTB	308	8%	MODM	364	9%	KATS	26,057	9%	QCTB	22,610	8%	MODM	20,556	8%	WCWF	11,989	5%	ITOS	15,082	8%
	5	MOPS	307	8%	CTXS	321	8%	CTXS	25,631	9%	CTXS	19,985	7%	CTXS	16,667	7%	MOPS	11,051	5%	MODM	12,658	7%
ODDS TOP 5	1	MCHA	1,040	23%	MCHA	1,061	29%	MCHA	35,985	16%	FOXM	34,603	15%	MCHA	30,570	13%	MCHA	36,454	17%	MCHA	50,531	20%
	2	RWRS	492	11%	VWPM	443	12%	FOXM	28,185	12%	MCHA	30,689	13%	TECM	28,053	12%	FOXM	24,114	11%	FOXM	37,097	15%
	3	VWPM	442	10%	RWRS	394	11%	TECM	25,266	11%	VWPM	22,219	10%	FOXM	27,422	12%	MAFM	18,568	8%	MAFM	20,235	8%
	4	TECM	408	9%	TECM	319	9%	VWPM	20,692	9%	VTRA	21,495	9%	VWPM	22,267	10%	TECM	17,571	8%	RWRS	11,904	5%
	5	FOXM	361	8%	FOXM	239	6%	VTRA	13,022	6%	TECM	21,175	9%	RWRS	15,878	7%	RWRS	16,248	7%	ITOS	9,637	4%
Totals		<u>Offered</u>	<u>Sold</u>		<u>Offered</u>	<u>Sold</u>		<u>Auction Bales Sold</u>			<u>Auction Bales Sold</u>			<u>Auction Bales Sold</u>			<u>Auction Bales Sold</u>			<u>Auction Bales Sold</u>		
		36,723	36,149		39,321	38,584		1,742,881			1,683,024			1,786,249			1,755,070			2,130,684		
		<u>Passed-In</u>	<u>PI%</u>		<u>Passed-In</u>	<u>PI%</u>		<u>Export Value</u>			<u>Export Value</u>			<u>Export Value</u>			<u>Export Value</u>			<u>Export Value</u>		
		574	1.6%		737	1.9%		\$2,272,770,228			\$2,691,010,531			\$2,619,977,188			\$2,008,440,340			\$2,487,625,451		



# JEMALONG WOOL BULLETIN

(week ending 4/09/2013)

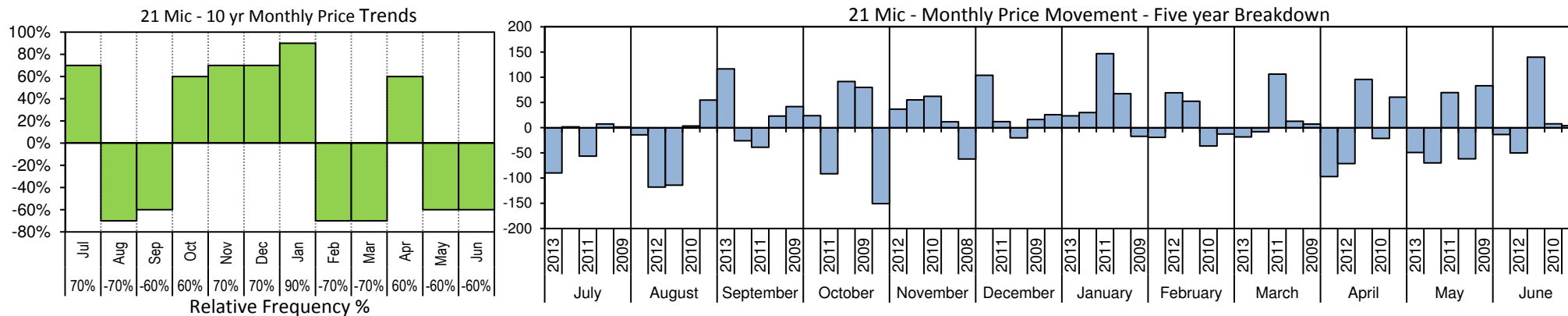
Table 6: NSW Production Statistics

2012-13		Auction		+/-		+/-	Yield %	+/-	Length	+/-	Strength	+/-	Ave Price
Statistical Devision, Area Code & Towns		Bales (FH)	Micron	YoY	Vmb %	YoY	Sch Dry	YoY	mm	YoY	Nkt	YoY	c/kg
Northern	N02 Tenterfield, Glen Innes	9,672	19.5	-0.6	1.8	-0.7	72.7	1.6	81	-0.7	41	0.4	829
	N03 Guyra	36,328	18.9	-0.1	1.8	-0.5	73.7	1.5	81	-0.9	42	1.0	948
	N04 Inverell	4,372	19.1	0.2	3.4	-1.3	69.7	0.7	83	-1.6	38	-0.6	759
	N05 Armidale	1,984	19.9	0.1	3.9	-0.7	69.4	1.5	82	-1.2	38	-0.5	710
	N06 Tamworth, Gunnedah, Quirindi	6,492	20.5	0.1	4.0	-0.7	68.5	1.1	84	-0.2	38	-0.7	708
	N07 Moree	6,363	20.0	-0.1	4.2	-1.2	64.5	0.7	87	-1.9	36	0.8	619
	N08 Narrabri	3,263	19.9	0.1	3.6	-1.3	67.3	2.0	88	-0.2	39	1.9	621
North Western & Far West	N09 Cobar, Bourke, Wanaaring	12,329	20.5	-0.2	4.3	-0.8	60.7	0.0	88	0.2	37	0.2	591
	N12 Walgett	8,512	19.9	-0.3	4.3	-1.8	64.1	1.8	86	0.1	37	1.8	616
	N13 Nyngan	18,905	20.5	-0.1	4.9	-2.0	63.7	2.3	88	0.0	37	1.1	597
	N14 Dubbo, Narromine	21,765	21.6	0.0	4.3	-1.0	63.1	1.1	85	0.0	36	0.4	539
	N16 Dunedoo	6,893	20.0	0.0	3.4	-0.2	67.8	-0.6	88	-0.4	34	0.2	678
	N17 Mudgee, Wellington, Gulgong	20,969	19.7	-0.1	3.4	-0.3	68.3	0.4	83	0.2	38	0.7	728
	N33 Coonabarabran	3,677	20.9	0.1	4.6	0.1	67.0	0.4	85	1.7	34	-1.6	611
	N34 Coonamble	8,142	20.4	-0.1	4.4	-2.4	63.4	1.5	87	2.7	35	0.9	605
	N36 Gilgandra, Gulargambone	6,030	21.5	-0.1	3.9	-0.7	65.0	0.3	86	-0.3	36	0.3	580
	N40 Brewarrina	7,487	20.2	0.0	2.3	-0.9	66.6	1.8	86	-1.7	39	4.0	688
	N10 Wilcannia, Broken Hill	25,295	21.3	-0.5	2.8	-0.9	61.1	-0.2	89	-1.4	37	1.1	595
Central West	N15 Forbes, Parkes, Cowra	47,591	21.5	0.0	3.3	-0.8	64.1	0.6	86	-0.2	36	0.1	570
	N18 Lithgow, Oberon	3,402	20.7	-0.2	3.3	-0.3	68.0	0.0	83	1.1	38	0.3	672
	N19 Orange, Bathurst	50,922	22.1	-0.2	2.3	-0.5	69.4	1.0	85	0.3	38	1.4	646
	N25 West Wyalong	25,261	21.0	-0.3	2.9	-0.6	63.4	-0.6	89	-0.5	36	0.8	592
	N35 Condobolin, Lake Cargelligo	10,701	21.0	-0.3	5.3	-1.1	60.1	-9.8	86	0.2	36	-0.8	535
Murrumbidgee	N26 Cootamundra, Temora	26,106	22.1	-0.1	2.1	-0.5	64.1	-0.3	86	-0.8	35	0.6	568
	N27 Adelong, Gundagai	10,213	21.6	-0.5	2.7	-1.0	68.1	0.4	88	0.6	36	0.2	616
	N29 Wagga, Narrandera	32,841	22.7	-0.1	1.6	-0.6	66.2	-0.9	90	0.3	36	1.3	572
	N37 Griffith, Hillston	12,036	22.0	-0.2	4.1	-0.9	61.1	-1.3	84	-2.2	40	1.3	545
	N39 Hay, Coleambally	17,044	21.3	-0.1	3.4	-1.9	64.0	0.1	90	2.4	39	-0.9	614
Murray	N11 Wentworth, Balranald	17,328	21.7	-0.3	4.8	-2.0	60.9	0.9	92	1.5	38	0.3	555
	N28 Albury, Corowa, Holbrook	28,883	21.9	-0.3	1.5	-0.3	67.0	-0.6	89	-0.1	37	1.8	613
	N31 Deniliquin	23,340	21.3	-0.1	2.5	-1.1	65.7	-0.1	88	0.4	39	1.2	622
	N38 Finley, Berrigan, Jerilderie	9,124	21.0	-0.3	2.5	-0.9	65.2	-0.3	88	-1.5	39	1.1	630
South Eastern	N23 Goulburn, Young, Yass	94,784	20.1	-0.1	1.7	-0.7	69.5	0.7	86	0.3	38	1.7	714
	N24 Monaro (Cooma, Bombala)	37,228	20.3	-0.2	1.9	-0.5	69.6	1.5	90	0.5	37	1.5	666
	N32 A.C.T.	183	20.4	0.7	3.1	-1.6	61.7	-2.5	89	9.0	31	-3.0	594
	N43 South Coast (Bega)	409	19.2	0.3	0.8	-1.8	74.3	3.9	84	3.3	42	2.9	862
NSW	AWEX Sale Statistics 12-13	685,519	21.0	-0.1	2.8	-0.8	66.4	0.6	87	0.1	38	1.0	658

AWTA Monthly Key Test Data		Bales Tested	Micron	+/- MoM	VMB	+/- MoM	Yld	+/- MoM	Lth	+/- MoM	Nkt	+/- MoM	POBM +/-
NSW	Aug-2013	53,755	20.1	-1.0	4.8	-1.0	64.6	-0.5	86	-1.1	38	-0.1	52 9.8
Australia	Aug-2013	153,490	20.4	-0.8	2.1	-0.6	64.4	-0.7	88	1.0	35	-0.5	49 4.9

MAX MIN Max Gain Max Reduction





The above 'Monthly Price Trend' graph, shows the estimated probability of a price rise or fall in a given month (based on 10 year statistics), it does not show the extent of the movement only the probability of direction. The 'Monthly Price Movement' graph shows the extent of movement for each month, for the previous 5 years.

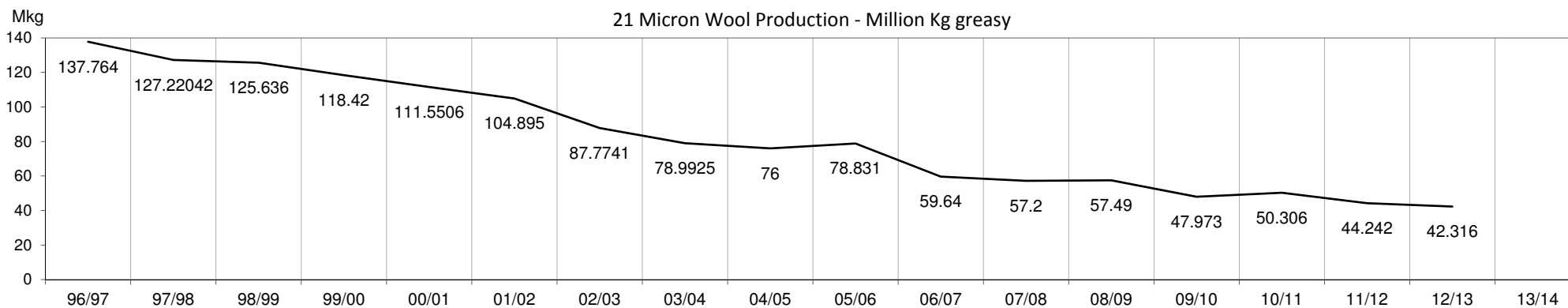
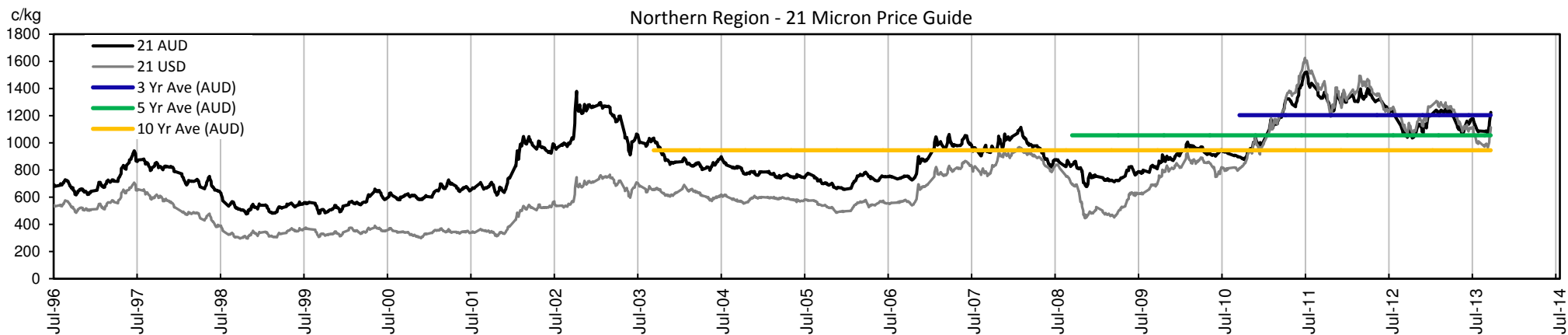




Table 7: Returns pr head for skirted fleece wool.

Skirted FLC Weight 9 Kg		Micron																	
		16	16.5	17	17.5	18	18.5	19	19.5	20	21	22	23	24	25	26	28	30	32
Yield (Sch Dry)	25% Current	\$34	\$32	\$30	\$29	\$27	\$25	\$23	\$21	\$18	\$17	\$16	\$16	\$16	\$13	\$13	\$10	\$10	\$8
	10yr ave.	\$39	\$36	\$32	\$31	\$28	\$27	\$25	\$24	\$22	\$21	\$21	\$20	\$19	\$16	\$15	\$12	\$10	\$9
	30% Current	\$41	\$38	\$36	\$35	\$32	\$30	\$28	\$25	\$22	\$20	\$20	\$19	\$19	\$16	\$15	\$12	\$12	\$10
	10yr ave.	\$47	\$43	\$39	\$37	\$34	\$32	\$30	\$28	\$27	\$26	\$25	\$24	\$22	\$20	\$18	\$14	\$12	\$11
	35% Current	\$48	\$44	\$42	\$40	\$38	\$35	\$33	\$30	\$25	\$24	\$23	\$23	\$22	\$18	\$18	\$14	\$13	\$12
	10yr ave.	\$55	\$51	\$45	\$44	\$39	\$37	\$35	\$33	\$31	\$30	\$29	\$28	\$26	\$23	\$21	\$16	\$14	\$13
	40% Current	\$55	\$50	\$48	\$46	\$43	\$40	\$37	\$34	\$29	\$27	\$26	\$26	\$25	\$21	\$20	\$17	\$15	\$13
	10yr ave.	\$63	\$58	\$52	\$50	\$45	\$43	\$40	\$38	\$36	\$34	\$33	\$32	\$30	\$26	\$24	\$19	\$17	\$15
	45% Current	\$62	\$57	\$53	\$52	\$48	\$45	\$42	\$38	\$33	\$31	\$30	\$29	\$28	\$24	\$23	\$19	\$17	\$15
	10yr ave.	\$71	\$65	\$58	\$56	\$51	\$48	\$45	\$42	\$40	\$38	\$37	\$36	\$34	\$30	\$27	\$21	\$19	\$17
	50% Current	\$68	\$63	\$59	\$58	\$54	\$50	\$47	\$42	\$36	\$34	\$33	\$32	\$31	\$26	\$25	\$21	\$19	\$17
	10yr ave.	\$79	\$72	\$65	\$62	\$56	\$53	\$50	\$47	\$44	\$43	\$41	\$40	\$37	\$33	\$30	\$23	\$21	\$18
	55% Current	\$75	\$69	\$65	\$63	\$59	\$55	\$51	\$47	\$40	\$38	\$36	\$36	\$34	\$29	\$28	\$23	\$21	\$18
	10yr ave.	\$87	\$79	\$71	\$68	\$62	\$58	\$55	\$52	\$49	\$47	\$45	\$44	\$41	\$36	\$33	\$26	\$23	\$20
	60% Current	\$82	\$76	\$71	\$69	\$64	\$60	\$56	\$51	\$44	\$41	\$39	\$39	\$37	\$31	\$30	\$25	\$23	\$20
	10yr ave.	\$95	\$87	\$78	\$75	\$67	\$64	\$60	\$56	\$53	\$51	\$49	\$48	\$45	\$39	\$36	\$28	\$25	\$22
	65% Current	\$89	\$82	\$77	\$75	\$70	\$65	\$61	\$55	\$47	\$44	\$43	\$42	\$41	\$34	\$33	\$27	\$25	\$22
	10yr ave.	\$102	\$94	\$84	\$81	\$73	\$69	\$65	\$61	\$58	\$55	\$54	\$52	\$48	\$43	\$39	\$30	\$27	\$24
	70% Current	\$96	\$88	\$83	\$81	\$75	\$70	\$65	\$59	\$51	\$48	\$46	\$45	\$44	\$37	\$35	\$29	\$27	\$23
	10yr ave.	\$110	\$101	\$91	\$87	\$79	\$74	\$70	\$66	\$62	\$60	\$58	\$56	\$52	\$46	\$42	\$33	\$29	\$26
	75% Current	\$103	\$95	\$89	\$86	\$81	\$75	\$70	\$64	\$55	\$51	\$49	\$49	\$47	\$39	\$38	\$31	\$29	\$25
	10yr ave.	\$118	\$108	\$97	\$93	\$84	\$80	\$75	\$71	\$67	\$64	\$62	\$60	\$56	\$49	\$45	\$35	\$31	\$28
	80% Current	\$109	\$101	\$95	\$92	\$86	\$80	\$75	\$68	\$58	\$55	\$52	\$52	\$50	\$42	\$40	\$33	\$31	\$27
	10yr ave.	\$126	\$116	\$104	\$100	\$90	\$85	\$80	\$75	\$71	\$68	\$66	\$64	\$60	\$52	\$48	\$37	\$33	\$29
	85% Current	\$116	\$107	\$101	\$98	\$91	\$85	\$79	\$72	\$62	\$58	\$56	\$55	\$53	\$45	\$43	\$35	\$33	\$28
	10yr ave.	\$134	\$123	\$110	\$106	\$95	\$90	\$85	\$80	\$76	\$72	\$70	\$68	\$63	\$56	\$51	\$40	\$35	\$31

The above shows estimated returns per head for skirted fleece wool. These figures do not take into account the value of skirtings and oddments and do not take into account discounts that may apply for faults under individual circumstances. These figures are based on a market index of 100% and should be used as a guide only. Returns over \$30 / head for fleece wool are highlighted.





Table 8: Returns pr head for skirted fleece wool.

Skirted FLC Weight 8 Kg		Micron																	
		16	16.5	17	17.5	18	18.5	19	19.5	20	21	22	23	24	25	26	28	30	32
Yield (Sch Dry)	25% Current	\$30	\$28	\$26	\$26	\$24	\$22	\$21	\$19	\$16	\$15	\$15	\$14	\$14	\$12	\$11	\$9	\$9	\$7
	10yr ave.	\$35	\$32	\$29	\$28	\$25	\$24	\$22	\$21	\$20	\$19	\$18	\$18	\$17	\$15	\$13	\$10	\$9	\$8
	30% Current	\$36	\$34	\$32	\$31	\$29	\$27	\$25	\$23	\$19	\$18	\$17	\$17	\$17	\$14	\$13	\$11	\$10	\$9
	10yr ave.	\$42	\$39	\$35	\$33	\$30	\$28	\$27	\$25	\$24	\$23	\$22	\$21	\$20	\$17	\$16	\$12	\$11	\$10
	35% Current	\$43	\$39	\$37	\$36	\$33	\$31	\$29	\$26	\$23	\$21	\$20	\$20	\$19	\$16	\$16	\$13	\$12	\$10
	10yr ave.	\$49	\$45	\$40	\$39	\$35	\$33	\$31	\$29	\$28	\$26	\$26	\$25	\$23	\$20	\$19	\$14	\$13	\$11
	40% Current	\$49	\$45	\$42	\$41	\$38	\$36	\$33	\$30	\$26	\$24	\$23	\$23	\$22	\$19	\$18	\$15	\$14	\$12
	10yr ave.	\$56	\$51	\$46	\$44	\$40	\$38	\$36	\$33	\$32	\$30	\$29	\$28	\$26	\$23	\$21	\$17	\$15	\$13
	45% Current	\$55	\$50	\$48	\$46	\$43	\$40	\$37	\$34	\$29	\$27	\$26	\$26	\$25	\$21	\$20	\$17	\$15	\$13
	10yr ave.	\$63	\$58	\$52	\$50	\$45	\$43	\$40	\$38	\$36	\$34	\$33	\$32	\$30	\$26	\$24	\$19	\$17	\$15
	50% Current	\$61	\$56	\$53	\$51	\$48	\$45	\$42	\$38	\$32	\$30	\$29	\$29	\$28	\$23	\$22	\$18	\$17	\$15
	10yr ave.	\$70	\$64	\$58	\$55	\$50	\$47	\$44	\$42	\$40	\$38	\$37	\$35	\$33	\$29	\$26	\$21	\$18	\$16
	55% Current	\$67	\$62	\$58	\$56	\$53	\$49	\$46	\$41	\$36	\$33	\$32	\$32	\$31	\$26	\$25	\$20	\$19	\$16
	10yr ave.	\$77	\$71	\$63	\$61	\$55	\$52	\$49	\$46	\$43	\$42	\$40	\$39	\$36	\$32	\$29	\$23	\$20	\$18
	60% Current	\$73	\$67	\$63	\$61	\$57	\$54	\$50	\$45	\$39	\$36	\$35	\$35	\$33	\$28	\$27	\$22	\$20	\$18
	10yr ave.	\$84	\$77	\$69	\$66	\$60	\$57	\$53	\$50	\$47	\$45	\$44	\$43	\$40	\$35	\$32	\$25	\$22	\$20
	65% Current	\$79	\$73	\$69	\$67	\$62	\$58	\$54	\$49	\$42	\$39	\$38	\$38	\$36	\$30	\$29	\$24	\$22	\$19
	10yr ave.	\$91	\$83	\$75	\$72	\$65	\$61	\$58	\$54	\$51	\$49	\$48	\$46	\$43	\$38	\$34	\$27	\$24	\$21
	70% Current	\$85	\$78	\$74	\$72	\$67	\$62	\$58	\$53	\$45	\$43	\$41	\$40	\$39	\$33	\$31	\$26	\$24	\$21
	10yr ave.	\$98	\$90	\$81	\$77	\$70	\$66	\$62	\$59	\$55	\$53	\$51	\$50	\$46	\$41	\$37	\$29	\$26	\$23
	75% Current	\$91	\$84	\$79	\$77	\$72	\$67	\$62	\$57	\$48	\$46	\$44	\$43	\$42	\$35	\$34	\$28	\$26	\$22
	10yr ave.	\$105	\$96	\$87	\$83	\$75	\$71	\$67	\$63	\$59	\$57	\$55	\$53	\$50	\$44	\$40	\$31	\$28	\$24
	80% Current	\$97	\$90	\$84	\$82	\$76	\$71	\$66	\$60	\$52	\$49	\$47	\$46	\$44	\$37	\$36	\$29	\$27	\$24
	10yr ave.	\$112	\$103	\$92	\$88	\$80	\$76	\$71	\$67	\$63	\$60	\$59	\$57	\$53	\$47	\$42	\$33	\$29	\$26
	85% Current	\$103	\$95	\$90	\$87	\$81	\$76	\$71	\$64	\$55	\$52	\$50	\$49	\$47	\$40	\$38	\$31	\$29	\$25
	10yr ave.	\$119	\$109	\$98	\$94	\$85	\$80	\$76	\$71	\$67	\$64	\$62	\$60	\$56	\$50	\$45	\$35	\$31	\$28

The above shows estimated returns per head for skirted fleece wool. These figures do not take into account the value of skirtings and oddments and do not take into account discounts that may apply for faults under individual circumstances. These figures are based on a market index of 100% and should be used as a guide only. Returns over \$30 / head for fleece wool are highlighted.



Table 9: Returns pr head for skirted fleece wool.

Skirted FLC Weight		Micron																	
7 Kg		16	16.5	17	17.5	18	18.5	19	19.5	20	21	22	23	24	25	26	28	30	32
Yield (Sch Dry)	25% Current	\$27	\$25	\$23	\$22	\$21	\$20	\$18	\$16	\$14	\$13	\$13	\$13	\$12	\$10	\$10	\$8	\$7	\$6
	10yr ave.	\$31	\$28	\$25	\$24	\$22	\$21	\$19	\$18	\$17	\$17	\$16	\$16	\$14	\$13	\$12	\$9	\$8	\$7
	30% Current	\$32	\$29	\$28	\$27	\$25	\$23	\$22	\$20	\$17	\$16	\$15	\$15	\$15	\$12	\$12	\$10	\$9	\$8
	10yr ave.	\$37	\$34	\$30	\$29	\$26	\$25	\$23	\$22	\$21	\$20	\$19	\$19	\$17	\$15	\$14	\$11	\$10	\$9
	35% Current	\$37	\$34	\$32	\$31	\$29	\$27	\$25	\$23	\$20	\$19	\$18	\$18	\$17	\$14	\$14	\$11	\$10	\$9
	10yr ave.	\$43	\$39	\$35	\$34	\$31	\$29	\$27	\$26	\$24	\$23	\$22	\$22	\$20	\$18	\$16	\$13	\$11	\$10
	40% Current	\$43	\$39	\$37	\$36	\$33	\$31	\$29	\$26	\$23	\$21	\$20	\$20	\$19	\$16	\$16	\$13	\$12	\$10
	10yr ave.	\$49	\$45	\$40	\$39	\$35	\$33	\$31	\$29	\$28	\$26	\$26	\$25	\$23	\$20	\$19	\$14	\$13	\$11
	45% Current	\$48	\$44	\$42	\$40	\$38	\$35	\$33	\$30	\$25	\$24	\$23	\$23	\$22	\$18	\$18	\$14	\$13	\$12
	10yr ave.	\$55	\$51	\$45	\$44	\$39	\$37	\$35	\$33	\$31	\$30	\$29	\$28	\$26	\$23	\$21	\$16	\$14	\$13
	50% Current	\$53	\$49	\$46	\$45	\$42	\$39	\$36	\$33	\$28	\$27	\$26	\$25	\$24	\$20	\$20	\$16	\$15	\$13
	10yr ave.	\$61	\$56	\$50	\$48	\$44	\$41	\$39	\$37	\$35	\$33	\$32	\$31	\$29	\$26	\$23	\$18	\$16	\$14
	55% Current	\$59	\$54	\$51	\$49	\$46	\$43	\$40	\$36	\$31	\$29	\$28	\$28	\$27	\$22	\$22	\$18	\$16	\$14
	10yr ave.	\$67	\$62	\$56	\$53	\$48	\$45	\$43	\$40	\$38	\$36	\$35	\$34	\$32	\$28	\$25	\$20	\$18	\$16
	60% Current	\$64	\$59	\$55	\$54	\$50	\$47	\$44	\$40	\$34	\$32	\$31	\$30	\$29	\$24	\$24	\$19	\$18	\$15
	10yr ave.	\$74	\$67	\$61	\$58	\$52	\$50	\$47	\$44	\$41	\$40	\$38	\$37	\$35	\$31	\$28	\$22	\$19	\$17
	65% Current	\$69	\$64	\$60	\$58	\$54	\$51	\$47	\$43	\$37	\$35	\$33	\$33	\$32	\$26	\$26	\$21	\$19	\$17
	10yr ave.	\$80	\$73	\$66	\$63	\$57	\$54	\$51	\$48	\$45	\$43	\$42	\$40	\$38	\$33	\$30	\$24	\$21	\$19
	70% Current	\$74	\$69	\$65	\$63	\$59	\$55	\$51	\$46	\$40	\$37	\$36	\$35	\$34	\$29	\$28	\$22	\$21	\$18
	10yr ave.	\$86	\$79	\$71	\$68	\$61	\$58	\$54	\$51	\$48	\$46	\$45	\$43	\$41	\$36	\$32	\$25	\$22	\$20
	75% Current	\$80	\$74	\$69	\$67	\$63	\$59	\$54	\$49	\$42	\$40	\$38	\$38	\$36	\$31	\$30	\$24	\$22	\$19
	10yr ave.	\$92	\$84	\$76	\$73	\$65	\$62	\$58	\$55	\$52	\$50	\$48	\$47	\$43	\$38	\$35	\$27	\$24	\$21
	80% Current	\$85	\$78	\$74	\$72	\$67	\$62	\$58	\$53	\$45	\$43	\$41	\$40	\$39	\$33	\$31	\$26	\$24	\$21
	10yr ave.	\$98	\$90	\$81	\$77	\$70	\$66	\$62	\$59	\$55	\$53	\$51	\$50	\$46	\$41	\$37	\$29	\$26	\$23
	85% Current	\$90	\$83	\$79	\$76	\$71	\$66	\$62	\$56	\$48	\$45	\$43	\$43	\$41	\$35	\$33	\$27	\$25	\$22
	10yr ave.	\$104	\$95	\$86	\$82	\$74	\$70	\$66	\$62	\$59	\$56	\$54	\$53	\$49	\$43	\$39	\$31	\$27	\$24

The above shows estimated returns per head for skirted fleece wool. These figures do not take into account the value of skirtings and oddments and do not take into account discounts that may apply for faults under individual circumstances. These figures are based on a market index of 100% and should be used as a guide only. Returns over \$30 / head for fleece wool are highlighted.



Table 10: Returns pr head for skirted fleece wool.

Skirted FLC Weight		Micron																	
6 Kg		16	16.5	17	17.5	18	18.5	19	19.5	20	21	22	23	24	25	26	28	30	32
Yield (Sch Dry)	25% Current	\$23	\$21	\$20	\$19	\$18	\$17	\$16	\$14	\$12	\$11	\$11	\$11	\$10	\$9	\$8	\$7	\$6	\$6
	10yr ave.	\$26	\$24	\$22	\$21	\$19	\$18	\$17	\$16	\$15	\$14	\$14	\$13	\$12	\$11	\$10	\$8	\$7	\$6
	30% Current	\$27	\$25	\$24	\$23	\$21	\$20	\$19	\$17	\$15	\$14	\$13	\$13	\$12	\$10	\$10	\$8	\$8	\$7
	10yr ave.	\$32	\$29	\$26	\$25	\$22	\$21	\$20	\$19	\$18	\$17	\$16	\$16	\$15	\$13	\$12	\$9	\$8	\$7
	35% Current	\$32	\$29	\$28	\$27	\$25	\$23	\$22	\$20	\$17	\$16	\$15	\$15	\$15	\$12	\$12	\$10	\$9	\$8
	10yr ave.	\$37	\$34	\$30	\$29	\$26	\$25	\$23	\$22	\$21	\$20	\$19	\$19	\$17	\$15	\$14	\$11	\$10	\$9
	40% Current	\$36	\$34	\$32	\$31	\$29	\$27	\$25	\$23	\$19	\$18	\$17	\$17	\$17	\$14	\$13	\$11	\$10	\$9
	10yr ave.	\$42	\$39	\$35	\$33	\$30	\$28	\$27	\$25	\$24	\$23	\$22	\$21	\$20	\$17	\$16	\$12	\$11	\$10
	45% Current	\$41	\$38	\$36	\$35	\$32	\$30	\$28	\$25	\$22	\$20	\$20	\$19	\$19	\$16	\$15	\$12	\$12	\$10
	10yr ave.	\$47	\$43	\$39	\$37	\$34	\$32	\$30	\$28	\$27	\$26	\$25	\$24	\$22	\$20	\$18	\$14	\$12	\$11
	50% Current	\$46	\$42	\$40	\$38	\$36	\$33	\$31	\$28	\$24	\$23	\$22	\$22	\$21	\$17	\$17	\$14	\$13	\$11
	10yr ave.	\$53	\$48	\$43	\$41	\$37	\$35	\$33	\$31	\$30	\$28	\$27	\$27	\$25	\$22	\$20	\$16	\$14	\$12
	55% Current	\$50	\$46	\$44	\$42	\$39	\$37	\$34	\$31	\$27	\$25	\$24	\$24	\$23	\$19	\$19	\$15	\$14	\$12
	10yr ave.	\$58	\$53	\$48	\$46	\$41	\$39	\$37	\$35	\$33	\$31	\$30	\$29	\$27	\$24	\$22	\$17	\$15	\$13
	60% Current	\$55	\$50	\$48	\$46	\$43	\$40	\$37	\$34	\$29	\$27	\$26	\$26	\$25	\$21	\$20	\$17	\$15	\$13
	10yr ave.	\$63	\$58	\$52	\$50	\$45	\$43	\$40	\$38	\$36	\$34	\$33	\$32	\$30	\$26	\$24	\$19	\$17	\$15
	65% Current	\$59	\$55	\$51	\$50	\$47	\$43	\$40	\$37	\$32	\$30	\$28	\$28	\$27	\$23	\$22	\$18	\$17	\$14
	10yr ave.	\$68	\$63	\$56	\$54	\$49	\$46	\$43	\$41	\$39	\$37	\$36	\$35	\$32	\$28	\$26	\$20	\$18	\$16
	70% Current	\$64	\$59	\$55	\$54	\$50	\$47	\$44	\$40	\$34	\$32	\$31	\$30	\$29	\$24	\$24	\$19	\$18	\$15
	10yr ave.	\$74	\$67	\$61	\$58	\$52	\$50	\$47	\$44	\$41	\$40	\$38	\$37	\$35	\$31	\$28	\$22	\$19	\$17
	75% Current	\$68	\$63	\$59	\$58	\$54	\$50	\$47	\$42	\$36	\$34	\$33	\$32	\$31	\$26	\$25	\$21	\$19	\$17
	10yr ave.	\$79	\$72	\$65	\$62	\$56	\$53	\$50	\$47	\$44	\$43	\$41	\$40	\$37	\$33	\$30	\$23	\$21	\$18
	80% Current	\$73	\$67	\$63	\$61	\$57	\$54	\$50	\$45	\$39	\$36	\$35	\$35	\$33	\$28	\$27	\$22	\$20	\$18
	10yr ave.	\$84	\$77	\$69	\$66	\$60	\$57	\$53	\$50	\$47	\$45	\$44	\$43	\$40	\$35	\$32	\$25	\$22	\$20
	85% Current	\$78	\$71	\$67	\$65	\$61	\$57	\$53	\$48	\$41	\$39	\$37	\$37	\$35	\$30	\$29	\$23	\$22	\$19
	10yr ave.	\$89	\$82	\$74	\$70	\$64	\$60	\$57	\$53	\$50	\$48	\$47	\$45	\$42	\$37	\$34	\$26	\$23	\$21

The above shows estimated returns per head for skirted fleece wool. These figures do not take into account the value of skirtings and oddments and do not take into account discounts that may apply for faults under individual circumstances. These figures are based on a market index of 100% and should be used as a guide only. Returns over \$30 / head for fleece wool are highlighted.



Table 11: Returns pr head for skirted fleece wool.

Skirted FLC Weight		Micron																	
5 Kg		16	16.5	17	17.5	18	18.5	19	19.5	20	21	22	23	24	25	26	28	30	32
Yield (Sch Dry)	25% Current	\$19	\$18	\$17	\$16	\$15	\$14	\$13	\$12	\$10	\$9	\$9	\$9	\$9	\$7	\$7	\$6	\$5	\$5
	10yr ave.	\$22	\$20	\$18	\$17	\$16	\$15	\$14	\$13	\$12	\$12	\$11	\$11	\$10	\$9	\$8	\$6	\$6	\$5
	30% Current	\$23	\$21	\$20	\$19	\$18	\$17	\$16	\$14	\$12	\$11	\$11	\$11	\$10	\$9	\$8	\$7	\$6	\$6
	10yr ave.	\$26	\$24	\$22	\$21	\$19	\$18	\$17	\$16	\$15	\$14	\$14	\$13	\$12	\$11	\$10	\$8	\$7	\$6
	35% Current	\$27	\$25	\$23	\$22	\$21	\$20	\$18	\$16	\$14	\$13	\$13	\$13	\$12	\$10	\$10	\$8	\$7	\$6
	10yr ave.	\$31	\$28	\$25	\$24	\$22	\$21	\$19	\$18	\$17	\$17	\$16	\$16	\$14	\$13	\$12	\$9	\$8	\$7
	40% Current	\$30	\$28	\$26	\$26	\$24	\$22	\$21	\$19	\$16	\$15	\$15	\$14	\$14	\$12	\$11	\$9	\$9	\$7
	10yr ave.	\$35	\$32	\$29	\$28	\$25	\$24	\$22	\$21	\$20	\$19	\$18	\$18	\$17	\$15	\$13	\$10	\$9	\$8
	45% Current	\$34	\$32	\$30	\$29	\$27	\$25	\$23	\$21	\$18	\$17	\$16	\$16	\$16	\$13	\$13	\$10	\$10	\$8
	10yr ave.	\$39	\$36	\$32	\$31	\$28	\$27	\$25	\$24	\$22	\$21	\$21	\$20	\$19	\$16	\$15	\$12	\$10	\$9
	50% Current	\$38	\$35	\$33	\$32	\$30	\$28	\$26	\$24	\$20	\$19	\$18	\$18	\$17	\$15	\$14	\$11	\$11	\$9
	10yr ave.	\$44	\$40	\$36	\$35	\$31	\$30	\$28	\$26	\$25	\$24	\$23	\$22	\$21	\$18	\$17	\$13	\$11	\$10
	55% Current	\$42	\$39	\$36	\$35	\$33	\$31	\$29	\$26	\$22	\$21	\$20	\$20	\$19	\$16	\$15	\$13	\$12	\$10
	10yr ave.	\$48	\$44	\$40	\$38	\$34	\$32	\$31	\$29	\$27	\$26	\$25	\$24	\$23	\$20	\$18	\$14	\$13	\$11
	60% Current	\$46	\$42	\$40	\$38	\$36	\$33	\$31	\$28	\$24	\$23	\$22	\$22	\$21	\$17	\$17	\$14	\$13	\$11
	10yr ave.	\$53	\$48	\$43	\$41	\$37	\$35	\$33	\$31	\$30	\$28	\$27	\$27	\$25	\$22	\$20	\$16	\$14	\$12
	65% Current	\$49	\$46	\$43	\$42	\$39	\$36	\$34	\$31	\$26	\$25	\$24	\$23	\$23	\$19	\$18	\$15	\$14	\$12
	10yr ave.	\$57	\$52	\$47	\$45	\$41	\$38	\$36	\$34	\$32	\$31	\$30	\$29	\$27	\$24	\$21	\$17	\$15	\$13
	70% Current	\$53	\$49	\$46	\$45	\$42	\$39	\$36	\$33	\$28	\$27	\$26	\$25	\$24	\$20	\$20	\$16	\$15	\$13
	10yr ave.	\$61	\$56	\$50	\$48	\$44	\$41	\$39	\$37	\$35	\$33	\$32	\$31	\$29	\$26	\$23	\$18	\$16	\$14
	75% Current	\$57	\$53	\$50	\$48	\$45	\$42	\$39	\$35	\$30	\$28	\$27	\$27	\$26	\$22	\$21	\$17	\$16	\$14
	10yr ave.	\$66	\$60	\$54	\$52	\$47	\$44	\$42	\$39	\$37	\$35	\$34	\$33	\$31	\$27	\$25	\$19	\$17	\$15
	80% Current	\$61	\$56	\$53	\$51	\$48	\$45	\$42	\$38	\$32	\$30	\$29	\$29	\$28	\$23	\$22	\$18	\$17	\$15
	10yr ave.	\$70	\$64	\$58	\$55	\$50	\$47	\$44	\$42	\$40	\$38	\$37	\$35	\$33	\$29	\$26	\$21	\$18	\$16
	85% Current	\$65	\$60	\$56	\$54	\$51	\$47	\$44	\$40	\$34	\$32	\$31	\$31	\$29	\$25	\$24	\$20	\$18	\$16
	10yr ave.	\$74	\$68	\$61	\$59	\$53	\$50	\$47	\$44	\$42	\$40	\$39	\$38	\$35	\$31	\$28	\$22	\$20	\$17

The above shows estimated returns per head for skirted fleece wool. These figures do not take into account the value of skirtings and oddments and do not take into account discounts that may apply for faults under individual circumstances. These figures are based on a market index of 100% and should be used as a guide only. Returns over \$30 / head for fleece wool are highlighted.



Table 12: Returns pr head for skirted fleece wool.

Skirted FLC Weight		Micron																	
4 Kg		16	16.5	17	17.5	18	18.5	19	19.5	20	21	22	23	24	25	26	28	30	32
Yield (Sch Dry)	25% Current	\$15	\$14	\$13	\$13	\$12	\$11	\$10	\$9	\$8	\$8	\$7	\$7	\$7	\$6	\$6	\$5	\$4	\$4
	10yr ave.	\$18	\$16	\$14	\$14	\$12	\$12	\$11	\$10	\$10	\$9	\$9	\$9	\$8	\$7	\$7	\$5	\$5	\$4
	30% Current	\$18	\$17	\$16	\$15	\$14	\$13	\$12	\$11	\$10	\$9	\$9	\$9	\$8	\$7	\$7	\$6	\$5	\$4
	10yr ave.	\$21	\$19	\$17	\$17	\$15	\$14	\$13	\$13	\$12	\$11	\$11	\$11	\$10	\$9	\$8	\$6	\$6	\$5
	35% Current	\$21	\$20	\$18	\$18	\$17	\$16	\$15	\$13	\$11	\$11	\$10	\$10	\$10	\$8	\$8	\$6	\$6	\$5
	10yr ave.	\$25	\$22	\$20	\$19	\$17	\$17	\$16	\$15	\$14	\$13	\$13	\$12	\$12	\$10	\$9	\$7	\$6	\$6
	40% Current	\$24	\$22	\$21	\$20	\$19	\$18	\$17	\$15	\$13	\$12	\$12	\$12	\$11	\$9	\$9	\$7	\$7	\$6
	10yr ave.	\$28	\$26	\$23	\$22	\$20	\$19	\$18	\$17	\$16	\$15	\$15	\$14	\$13	\$12	\$11	\$8	\$7	\$7
	45% Current	\$27	\$25	\$24	\$23	\$21	\$20	\$19	\$17	\$15	\$14	\$13	\$13	\$12	\$10	\$10	\$8	\$8	\$7
	10yr ave.	\$32	\$29	\$26	\$25	\$22	\$21	\$20	\$19	\$18	\$17	\$16	\$16	\$15	\$13	\$12	\$9	\$8	\$7
	50% Current	\$30	\$28	\$26	\$26	\$24	\$22	\$21	\$19	\$16	\$15	\$15	\$14	\$14	\$12	\$11	\$9	\$9	\$7
	10yr ave.	\$35	\$32	\$29	\$28	\$25	\$24	\$22	\$21	\$20	\$19	\$18	\$18	\$17	\$15	\$13	\$10	\$9	\$8
	55% Current	\$33	\$31	\$29	\$28	\$26	\$25	\$23	\$21	\$18	\$17	\$16	\$16	\$15	\$13	\$12	\$10	\$9	\$8
	10yr ave.	\$39	\$35	\$32	\$30	\$27	\$26	\$24	\$23	\$22	\$21	\$20	\$19	\$18	\$16	\$15	\$11	\$10	\$9
	60% Current	\$36	\$34	\$32	\$31	\$29	\$27	\$25	\$23	\$19	\$18	\$17	\$17	\$17	\$14	\$13	\$11	\$10	\$9
	10yr ave.	\$42	\$39	\$35	\$33	\$30	\$28	\$27	\$25	\$24	\$23	\$22	\$21	\$20	\$17	\$16	\$12	\$11	\$10
	65% Current	\$40	\$36	\$34	\$33	\$31	\$29	\$27	\$24	\$21	\$20	\$19	\$19	\$18	\$15	\$15	\$12	\$11	\$10
	10yr ave.	\$46	\$42	\$37	\$36	\$32	\$31	\$29	\$27	\$26	\$25	\$24	\$23	\$22	\$19	\$17	\$13	\$12	\$11
	70% Current	\$43	\$39	\$37	\$36	\$33	\$31	\$29	\$26	\$23	\$21	\$20	\$20	\$19	\$16	\$16	\$13	\$12	\$10
	10yr ave.	\$49	\$45	\$40	\$39	\$35	\$33	\$31	\$29	\$28	\$26	\$26	\$25	\$23	\$20	\$19	\$14	\$13	\$11
	75% Current	\$46	\$42	\$40	\$38	\$36	\$33	\$31	\$28	\$24	\$23	\$22	\$22	\$21	\$17	\$17	\$14	\$13	\$11
	10yr ave.	\$53	\$48	\$43	\$41	\$37	\$35	\$33	\$31	\$30	\$28	\$27	\$27	\$25	\$22	\$20	\$16	\$14	\$12
	80% Current	\$49	\$45	\$42	\$41	\$38	\$36	\$33	\$30	\$26	\$24	\$23	\$23	\$22	\$19	\$18	\$15	\$14	\$12
	10yr ave.	\$56	\$51	\$46	\$44	\$40	\$38	\$36	\$33	\$32	\$30	\$29	\$28	\$26	\$23	\$21	\$17	\$15	\$13
	85% Current	\$52	\$48	\$45	\$44	\$41	\$38	\$35	\$32	\$27	\$26	\$25	\$25	\$24	\$20	\$19	\$16	\$14	\$13
	10yr ave.	\$60	\$55	\$49	\$47	\$42	\$40	\$38	\$36	\$34	\$32	\$31	\$30	\$28	\$25	\$22	\$18	\$16	\$14

The above shows estimated returns per head for skirted fleece wool. These figures do not take into account the value of skirtings and oddments and do not take into account discounts that may apply for faults under individual circumstances. These figures are based on a market index of 100% and should be used as a guide only. Returns over \$30 / head for fleece wool are highlighted.



Table 13: Returns pr head for skirted fleece wool.

Skirted FLC Weight <b>3 Kg</b>		Micron																	
		16	16.5	17	17.5	18	18.5	19	19.5	20	21	22	23	24	25	26	28	30	32
Yield (Sch Dry)	25% Current	\$11	\$11	\$10	\$10	\$9	\$8	\$8	\$7	\$6	\$6	\$5	\$5	\$5	\$4	\$4	\$3	\$3	\$3
	10yr ave.	\$13	\$12	\$11	\$10	\$9	\$9	\$8	\$8	\$7	\$7	\$7	\$7	\$6	\$5	\$5	\$4	\$3	\$3
	30% Current	\$14	\$13	\$12	\$12	\$11	\$10	\$9	\$8	\$7	\$7	\$7	\$6	\$6	\$5	\$5	\$4	\$4	\$3
	10yr ave.	\$16	\$14	\$13	\$12	\$11	\$11	\$10	\$9	\$9	\$9	\$8	\$8	\$7	\$7	\$6	\$5	\$4	\$4
	35% Current	\$16	\$15	\$14	\$13	\$13	\$12	\$11	\$10	\$8	\$8	\$8	\$8	\$7	\$6	\$6	\$5	\$4	\$4
	10yr ave.	\$18	\$17	\$15	\$15	\$13	\$12	\$12	\$11	\$10	\$10	\$10	\$9	\$9	\$8	\$7	\$5	\$5	\$4
	40% Current	\$18	\$17	\$16	\$15	\$14	\$13	\$12	\$11	\$10	\$9	\$9	\$9	\$8	\$7	\$7	\$6	\$5	\$4
	10yr ave.	\$21	\$19	\$17	\$17	\$15	\$14	\$13	\$13	\$12	\$11	\$11	\$11	\$10	\$9	\$8	\$6	\$6	\$5
	45% Current	\$21	\$19	\$18	\$17	\$16	\$15	\$14	\$13	\$11	\$10	\$10	\$10	\$9	\$8	\$8	\$6	\$6	\$5
	10yr ave.	\$24	\$22	\$19	\$19	\$17	\$16	\$15	\$14	\$13	\$13	\$12	\$12	\$11	\$10	\$9	\$7	\$6	\$6
	50% Current	\$23	\$21	\$20	\$19	\$18	\$17	\$16	\$14	\$12	\$11	\$11	\$11	\$10	\$9	\$8	\$7	\$6	\$6
	10yr ave.	\$26	\$24	\$22	\$21	\$19	\$18	\$17	\$16	\$15	\$14	\$14	\$13	\$12	\$11	\$10	\$8	\$7	\$6
	55% Current	\$25	\$23	\$22	\$21	\$20	\$18	\$17	\$16	\$13	\$13	\$12	\$12	\$11	\$10	\$9	\$8	\$7	\$6
	10yr ave.	\$29	\$26	\$24	\$23	\$21	\$19	\$18	\$17	\$16	\$16	\$15	\$15	\$14	\$12	\$11	\$9	\$8	\$7
	60% Current	\$27	\$25	\$24	\$23	\$21	\$20	\$19	\$17	\$15	\$14	\$13	\$13	\$12	\$10	\$10	\$8	\$8	\$7
	10yr ave.	\$32	\$29	\$26	\$25	\$22	\$21	\$20	\$19	\$18	\$17	\$16	\$16	\$15	\$13	\$12	\$9	\$8	\$7
	65% Current	\$30	\$27	\$26	\$25	\$23	\$22	\$20	\$18	\$16	\$15	\$14	\$14	\$14	\$11	\$11	\$9	\$8	\$7
	10yr ave.	\$34	\$31	\$28	\$27	\$24	\$23	\$22	\$20	\$19	\$18	\$18	\$17	\$16	\$14	\$13	\$10	\$9	\$8
	70% Current	\$32	\$29	\$28	\$27	\$25	\$23	\$22	\$20	\$17	\$16	\$15	\$15	\$15	\$12	\$12	\$10	\$9	\$8
	10yr ave.	\$37	\$34	\$30	\$29	\$26	\$25	\$23	\$22	\$21	\$20	\$19	\$19	\$17	\$15	\$14	\$11	\$10	\$9
	75% Current	\$34	\$32	\$30	\$29	\$27	\$25	\$23	\$21	\$18	\$17	\$16	\$16	\$16	\$13	\$13	\$10	\$10	\$8
	10yr ave.	\$39	\$36	\$32	\$31	\$28	\$27	\$25	\$24	\$22	\$21	\$21	\$20	\$19	\$16	\$15	\$12	\$10	\$9
	80% Current	\$36	\$34	\$32	\$31	\$29	\$27	\$25	\$23	\$19	\$18	\$17	\$17	\$17	\$14	\$13	\$11	\$10	\$9
	10yr ave.	\$42	\$39	\$35	\$33	\$30	\$28	\$27	\$25	\$24	\$23	\$22	\$21	\$20	\$17	\$16	\$12	\$11	\$10
	85% Current	\$39	\$36	\$34	\$33	\$30	\$28	\$26	\$24	\$21	\$19	\$19	\$18	\$18	\$15	\$14	\$12	\$11	\$9
	10yr ave.	\$45	\$41	\$37	\$35	\$32	\$30	\$28	\$27	\$25	\$24	\$23	\$23	\$21	\$19	\$17	\$13	\$12	\$10

The above shows estimated returns per head for skirted fleece wool. These figures do not take into account the value of skirtings and oddments and do not take into account discounts that may apply for faults under individual circumstances. These figures are based on a market index of 100% and should be used as a guide only. Returns over \$30 / head for fleece wool are highlighted.





Table 14: Returns pr head for skirted fleece wool.

Skirted FLC Weight		Micron																	
2 Kg		16	16.5	17	17.5	18	18.5	19	19.5	20	21	22	23	24	25	26	28	30	32
Yield (Sch Dry)	25% Current	\$8	\$7	\$7	\$6	\$6	\$6	\$5	\$5	\$4	\$4	\$4	\$4	\$3	\$3	\$3	\$2	\$2	\$2
	10yr ave.	\$9	\$8	\$7	\$7	\$6	\$6	\$6	\$5	\$5	\$5	\$5	\$4	\$4	\$4	\$3	\$3	\$2	\$2
	30% Current	\$9	\$8	\$8	\$8	\$7	\$7	\$6	\$6	\$5	\$5	\$4	\$4	\$4	\$3	\$3	\$3	\$3	\$2
	10yr ave.	\$11	\$10	\$9	\$8	\$7	\$7	\$7	\$6	\$6	\$6	\$5	\$5	\$5	\$4	\$4	\$3	\$3	\$2
	35% Current	\$11	\$10	\$9	\$9	\$8	\$8	\$7	\$7	\$6	\$5	\$5	\$5	\$5	\$4	\$4	\$3	\$3	\$3
	10yr ave.	\$12	\$11	\$10	\$10	\$9	\$8	\$8	\$7	\$7	\$7	\$6	\$6	\$6	\$5	\$5	\$4	\$3	\$3
	40% Current	\$12	\$11	\$11	\$10	\$10	\$9	\$8	\$8	\$6	\$6	\$6	\$6	\$6	\$5	\$4	\$4	\$3	\$3
	10yr ave.	\$14	\$13	\$12	\$11	\$10	\$9	\$9	\$8	\$8	\$8	\$7	\$7	\$7	\$6	\$5	\$4	\$4	\$3
	45% Current	\$14	\$13	\$12	\$12	\$11	\$10	\$9	\$8	\$7	\$7	\$7	\$6	\$6	\$5	\$5	\$4	\$4	\$3
	10yr ave.	\$16	\$14	\$13	\$12	\$11	\$11	\$10	\$9	\$9	\$9	\$8	\$8	\$7	\$7	\$6	\$5	\$4	\$4
	50% Current	\$15	\$14	\$13	\$13	\$12	\$11	\$10	\$9	\$8	\$8	\$7	\$7	\$7	\$6	\$6	\$5	\$4	\$4
	10yr ave.	\$18	\$16	\$14	\$14	\$12	\$12	\$11	\$10	\$10	\$9	\$9	\$9	\$8	\$7	\$7	\$5	\$5	\$4
	55% Current	\$17	\$15	\$15	\$14	\$13	\$12	\$11	\$10	\$9	\$8	\$8	\$8	\$8	\$6	\$6	\$5	\$5	\$4
	10yr ave.	\$19	\$18	\$16	\$15	\$14	\$13	\$12	\$12	\$11	\$10	\$10	\$10	\$9	\$8	\$7	\$6	\$5	\$4
	60% Current	\$18	\$17	\$16	\$15	\$14	\$13	\$12	\$11	\$10	\$9	\$9	\$9	\$8	\$7	\$7	\$6	\$5	\$4
	10yr ave.	\$21	\$19	\$17	\$17	\$15	\$14	\$13	\$13	\$12	\$11	\$11	\$11	\$10	\$9	\$8	\$6	\$6	\$5
	65% Current	\$20	\$18	\$17	\$17	\$16	\$14	\$13	\$12	\$11	\$10	\$9	\$9	\$9	\$8	\$7	\$6	\$6	\$5
	10yr ave.	\$23	\$21	\$19	\$18	\$16	\$15	\$14	\$14	\$13	\$12	\$12	\$12	\$11	\$9	\$9	\$7	\$6	\$5
	70% Current	\$21	\$20	\$18	\$18	\$17	\$16	\$15	\$13	\$11	\$11	\$10	\$10	\$10	\$8	\$8	\$6	\$6	\$5
	10yr ave.	\$25	\$22	\$20	\$19	\$17	\$17	\$16	\$15	\$14	\$13	\$13	\$12	\$12	\$10	\$9	\$7	\$6	\$6
	75% Current	\$23	\$21	\$20	\$19	\$18	\$17	\$16	\$14	\$12	\$11	\$11	\$11	\$10	\$9	\$8	\$7	\$6	\$6
	10yr ave.	\$26	\$24	\$22	\$21	\$19	\$18	\$17	\$16	\$15	\$14	\$14	\$13	\$12	\$11	\$10	\$8	\$7	\$6
	80% Current	\$24	\$22	\$21	\$20	\$19	\$18	\$17	\$15	\$13	\$12	\$12	\$12	\$11	\$9	\$9	\$7	\$7	\$6
	10yr ave.	\$28	\$26	\$23	\$22	\$20	\$19	\$18	\$17	\$16	\$15	\$15	\$14	\$13	\$12	\$11	\$8	\$7	\$7
	85% Current	\$26	\$24	\$22	\$22	\$20	\$19	\$18	\$16	\$14	\$13	\$12	\$12	\$12	\$10	\$10	\$8	\$7	\$6
	10yr ave.	\$30	\$27	\$25	\$23	\$21	\$20	\$19	\$18	\$17	\$16	\$16	\$15	\$14	\$12	\$11	\$9	\$8	\$7

The above shows estimated returns per head for skirted fleece wool. These figures do not take into account the value of skirtings and oddments and do not take into account discounts that may apply for faults under individual circumstances. These figures are based on a market index of 100% and should be used as a guide only. Returns over \$30 / head for fleece wool are highlighted.