



Table 1: Northern Region Micron Price Guides

WEEK 45			12 MONTH COMPARISONS								3 YEAR COMPARISONS					10 YEAR COMPARISONS						
5/05/2021		27/04/2021	5/05/2020		Now	Now		Now				Now		Percentile			Now		Percentile			
Current	Weekly	This time	compared	12 Month	compared	12 Month	compared	Low	High	Average	to 3yr ave	Low	High		Average	to 10yr ave						
MPG	Price	Change	Last Year	to Last Year	Low	to Low	High	to High	Low	High	Average	to 3yr ave	Low	High	Average	to 10yr ave						
NRI	1393	-28 -2.0%	1259	+134 11%	919	+474 52%	1421	-28 -2%	919	2163	1621	-228 -14%	35%	955	2163	1378	+15 1%	65%				
15*	3010	+20 0.7%	2285	+725 32%	1945	+1065 55%	3080	-70 -2%	1945	3550	2657	+353 13%	88%	1482	3700	~2284	+726 32%	87%				
15.5*	2790	0	2190	+600 27%	1800	+990 55%	2790	0 0%	1800	3450	2536	+254 10%	86%	1374	3450	~2117	+673 32%	87%				
16*	2660	+10 0.4%	2005	+655 33%	1650	+1010 61%	2660	0 0%	1650	3300	2403	+257 11%	79%	1310	3300	2018	+642 32%	87%				
16.5	2434	-23 -0.9%	1788	+646 36%	1482	+952 64%	2457	-23 -1%	1482	3187	2294	+140 6%	65%	1279	3187	1921	+513 27%	81%				
17	2268	-36 -1.6%	1697	+571 34%	1382	+886 64%	2304	-36 -2%	1382	3008	2197	+71 3%	61%	1229	3008	1830	+438 24%	78%				
17.5	2100	-42 -2.0%	1581	+519 33%	1291	+809 63%	2142	-42 -2%	1291	2845	2104	-4 0%	57%	1196	2845	1767	+333 19%	73%				
18	1913	-35 -1.8%	1518	+395 26%	1172	+741 63%	1948	-35 -2%	1172	2708	2009	-96 -5%	49%	1168	2708	1698	+215 13%	70%				
18.5	1747	-40 -2.2%	1479	+268 18%	1062	+685 65%	1787	-40 -2%	1062	2591	1923	-176 -9%	38%	1132	2591	1632	+115 7%	67%				
19	1597	-40 -2.4%	1414	+183 13%	995	+602 61%	1637	-40 -2%	995	2465	1848	-251 -14%	35%	1096	2465	1568	+29 2%	65%				
19.5	1472	-25 -1.7%	1378	+94 7%	949	+523 55%	1509	-37 -2%	949	2404	1805	-333 -18%	30%	1058	2404	1521	-49 -3%	57%				
20	1344	-21 -1.5%	1362	-18 -1%	910	+434 48%	1410	-66 -5%	910	2391	1772	-428 -24%	26%	1049	2391	1481	-137 -9%	45%				
21	1277	0	1362	-85 -6%	898	+379 42%	1307	-30 -2%	898	2368	1743	-466 -27%	27%	1029	2368	1449	-172 -12%	40%				
22	1233	0	1355	-122 -9%	863	+370 43%	1296	-63 -5%	863	2342	1722	-489 -28%	25%	1009	2342	1421	-188 -13%	37%				
23	1104	-9 -0.8%	1259	-155 -12%	814	+290 36%	1198	-94 -8%	814	2316	1653	-549 -33%	10%	962	2316	1377	-273 -20%	12%				
24	967	-18 -1.8%	1150	-183 -16%	750	+217 29%	1115	-148 -13%	750	2114	1496	-529 -35%	10%	900	2114	1265	-298 -24%	5%				
25	847	-27 -3.1%	905	-58 -6%	552	+295 53%	914	-67 -7%	552	1801	1249	-402 -32%	17%	704	1801	1088	-241 -22%	7%				
26	763	-36 -4.5%	835	-72 -9%	526	+237 45%	883	-120 -14%	526	1545	1117	-354 -32%	12%	677	1545	980	-217 -22%	9%				
28	499	-29 -5.5%	661	-162 -25%	396	+103 26%	663	-164 -25%	396	1318	814	-315 -39%	10%	460	1318	747	-248 -33%	3%				
30	398	-17 -4.1%	478	-80 -17%	319	+79 25%	533	-135 -25%	319	998	642	-244 -38%	10%	374	998	638	-240 -38%	2%				
32	253	-25 -9.0%	271	-18 -7%	190	+63 33%	339	-86 -25%	190	659	414	-161 -39%	9%	241	762	501	-248 -50%	2%				
MC	901	-17 -1.9%	840	+61 7%	621	+280 45%	921	-20 -2%	621	1563	1041	-140 -13%	36%	558	1563	959	-58 -6%	47%				
AU BALES OFFERED		47,558	* 16.5 is the lowest Micron Price Guide (MPG) published by The Australian Wool Exchange (AWEX). Therefore MPG's below 16.5 micron are an estimate based on the best available information at the time of publication. Likewise, for any category where there is insufficient quantity offered to enable AWEX to quote, a quote will also be provided.																			
AU BALES SOLD		40,303	* Recording of 15 & 15.5 micron commenced in October 2017, and as a result some historic data is not yet available for those MPG's. Where historic data is not available an estimate based on '16 micron statistics' and incorporating the existing 15 & 15.5 micron data, will be provided as a guide.																			
AU PASSED-IN%		15.3%																				
AUD/USD		0.7725 -0.3%																				

Source: Australian Wool Exchange, Australian Wool Innovation, Riemann, x-rates.com, Reserve Bank of Australia, Australian Wool Testing Authority, Australian Bureau Statistics (ABS), Woolmark.

Disclaimer: Jemalong Wool Pty Ltd make no representations about the content and suitability of the information contained in this report. Specifically, Jemalong Wool does not warrant, guarantee or make any representations regarding the correctness, accuracy, reliability, currency, or any other aspect regarding characteristics or use of information presented in these materials. The user accepts sole responsibility and risk associated with the use and results of these materials, irrespective of the purpose of which such use or results are applied. In no event shall Jemalong Wool be liable for any loss or damages arising out of or in connection with the use of these materials.

Copyright © Jemalong Wool Pty Ltd, 2006-2021. Apart from any use permitted under the Copyright Act 1968, no part may be copied or reproduced by any process nor stored electronically without the written permission of Jemalong Wool Pty Ltd. This report has been compiled by Jemalong Wool Pty Ltd for internal use and for the benefit of Jemalong Wool clients. You should only read this report if you are authorised to do so, if you are not authorised then you must destroy all electronic and paper copies immediately. Under no circumstance are you permitted to forward this report to a third-party.



MARKET COMMENTARY Source: AWEX

The upward trend came to a halt at this week's auctions. Tuesday's market provided mixed results, some better style wool, particularly Non-Mulesed lots and those with favourable AM results, attracted solid buyer support and recorded very little change. However, the lesser style and lower spec wools did not receive the same level of support and were highly irregular trending lower. On Wednesday prices continued to fall throughout the sale, and by the close of business the Fremantle MPGs were generally 10-20 cents lower than the eastern states.

The Northern Region Indicators lost 20-40 cents for the week, and as a result the NRI closed 28 cents lower at 1393. The crossbred sector recorded similar movements to the merino, however in percentage terms the losses were much greater, with 26-30 micron falling by 4.5-5.5%, while 32 microns suffered a 9% loss. The price reductions across the country was met with seller resistance, pushing the national passed in rate up to 15.3%, compared to 6.4% a week earlier.

48,245 bales are currently forecast for sale next week.

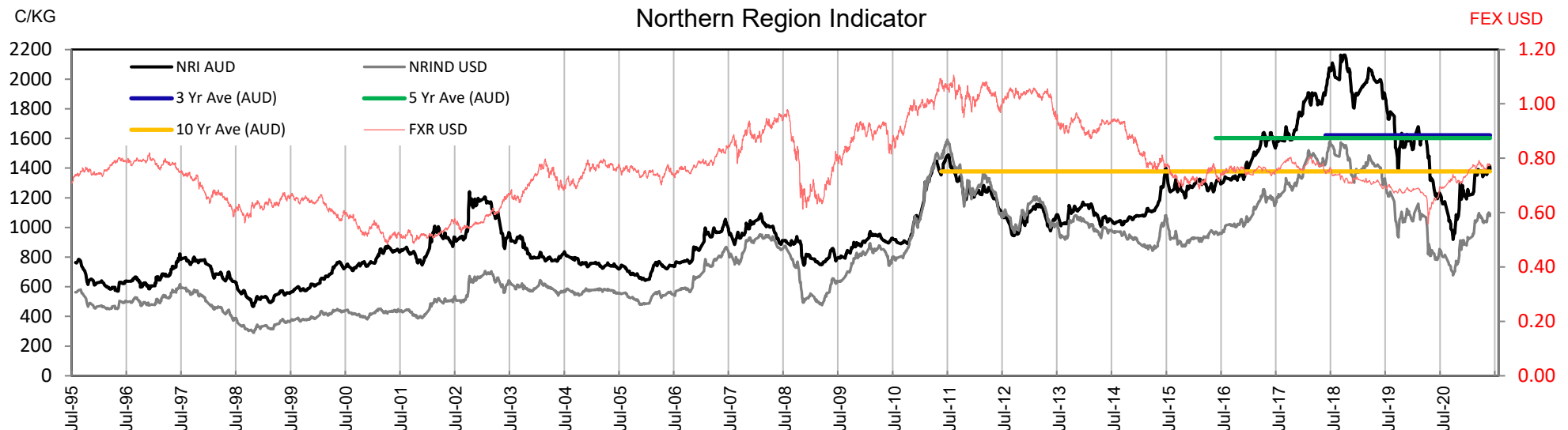




Table 2: Three Year Decile Table, since: 1/05/2018

Decile	%	16	16.5	17	17.5	18	18.5	19	19.5	20	21	22	23	24	25	26	28	30	32	MC
1	10%	1865	1730	1625	1527	1446	1370	1297	1245	1215	1176	1142	1103	967	825	731	494	398	256	741
2	20%	2015	1935	1814	1713	1584	1481	1396	1346	1296	1243	1196	1124	988	855	780	523	428	270	814
3	30%	2115	1995	1908	1863	1781	1672	1569	1471	1365	1291	1254	1161	1079	874	817	602	476	284	881
4	40%	2175	2075	2005	1944	1850	1763	1680	1673	1658	1645	1626	1562	1443	1206	1100	795	649	408	944
5	50%	2290	2192	2117	1980	1915	1850	1792	1779	1763	1753	1730	1644	1514	1283	1156	855	680	439	1014
6	60%	2460	2310	2217	2127	2095	2039	2002	1993	1988	1980	1970	1857	1699	1363	1205	899	703	460	1061
7	70%	2600	2534	2487	2440	2375	2305	2225	2197	2177	2156	2126	2010	1814	1505	1327	934	723	470	1109
8	80%	2665	2598	2555	2501	2435	2361	2300	2281	2261	2243	2223	2192	1894	1587	1414	1020	776	507	1183
9	90%	3110	3026	2849	2687	2525	2425	2355	2320	2296	2277	2261	2212	2010	1690	1479	1120	923	598	1452
10	100%	3300	3187	3008	2845	2708	2591	2465	2404	2391	2368	2342	2316	2114	1801	1545	1318	998	659	1563
MPG		2660	2434	2268	2100	1913	1747	1597	1472	1344	1277	1233	1104	967	847	763	499	398	253	901
3 Yr Percentile		79%	65%	61%	57%	49%	38%	35%	30%	26%	27%	25%	10%	10%	17%	12%	10%	10%	9%	36%

Table 3: Ten Year Decile Table, since: 1/05/2011

Decile	%	16	16.5	17	17.5	18	18.5	19	19.5	20	21	22	23	24	25	26	28	30	32	MC
1	10%	1430	1370	1298	1271	1230	1195	1169	1145	1131	1127	1107	1081	990	856	764	579	501	315	702
2	20%	1543	1459	1368	1326	1293	1260	1215	1193	1179	1164	1152	1124	1045	886	795	625	554	414	747
3	30%	1590	1526	1458	1412	1372	1334	1302	1273	1243	1226	1199	1151	1070	911	818	652	580	449	794
4	40%	1675	1586	1544	1513	1473	1436	1389	1352	1319	1277	1247	1199	1099	946	848	674	597	470	828
5	50%	1875	1758	1638	1589	1542	1492	1449	1413	1365	1333	1301	1267	1170	1038	930	718	628	495	930
6	60%	2083	1987	1810	1740	1630	1583	1532	1477	1426	1399	1371	1340	1239	1113	1021	773	646	530	1060
7	70%	2250	2201	2090	1988	1901	1827	1760	1672	1587	1493	1451	1405	1335	1183	1092	825	685	564	1094
8	80%	2475	2409	2288	2228	2158	2046	1899	1798	1763	1729	1703	1624	1490	1252	1143	873	722	598	1151
9	90%	2710	2658	2568	2503	2389	2270	2189	2163	2147	2129	2110	1962	1811	1505	1321	945	809	659	1278
10	100%	3300	3187	3008	2845	2708	2591	2465	2404	2391	2368	2342	2316	2114	1801	1545	1318	998	762	1563
MPG		2660	2434	2268	2100	1913	1747	1597	1472	1344	1277	1233	1104	967	847	763	499	398	253	901
10 Yr Percentile		87%	81%	78%	73%	70%	67%	65%	57%	45%	40%	37%	12%	5%	7%	9%	3%	2%	2%	47%

Definitions:

* A Percentile, is a value on a scale of one hundred that indicates the percent of a distribution that is equal to or below it. In general a percentile between 25% and 75% is considered normal, a percentile below 25% is considered below normal and a percentile above 75% is considered above normal.

Three and ten year percentiles shown on the bottom line of table 2 & 3 (above) and in table 1 (on page 1), detail the amount of time during the past 3 & 10 years where the market has traded either at or below its current price.

* Deciles are a method of sorting ranked data into 10 equal groups. The data may be ranked from largest to smallest or vice versa.

The above Decile tables sort price Percentiles into 10 equal groups (in ascending order), with table 2 ranking the previous 3 years prices, while table 3 ranks prices over the previous 10 years.

Example: In Table 2, a Decile Rank of 6 for 19 microns, shows 19 microns have traded at or below 2002 for 60% of the time, over the past three years.

In Table 3, a Decile Rank of 6 for 19 microns, shows 19 microns have traded at or below 1532 for 60% of the time, over the past ten years.



Table 4: Riemann Forwards, as at: 5/05/21

Any highlighted in yellow are recent trades, trading since: Thursday, 29 April 2021

MICRON (Total Traded = 113)		18um (6 Traded)	18.5um (1 Traded)	19um (86 Traded)	19.5um (0 Traded)	21um (20 Traded)	22um (0 Traded)	23um (0 Traded)	28um (0 Traded)	30um (0 Traded)
FORWARD CONTRACT MONTH	May-2021 (38)	13/01/21 1635 (1)	3/05/21 1780 (1)	30/04/21 1640 (30)		21/04/21 1300 (6)				
	Jun-2021 (10)	21/04/21 1955 (1)		29/04/21 1640 (9)						
	Jul-2021 (2)			27/04/21 1590 (2)						
	Aug-2021 (4)			5/05/21 1630 (4)						
	Sep-2021 (12)			4/05/21 1650 (10)		17/02/21 1305 (2)				
	Oct-2021 (13)	28/04/21 1955 (1)		16/03/21 1580 (9)		17/02/21 1305 (3)				
	Nov-2021 (8)			7/04/21 1600 (6)		1/02/21 1280 (2)				
	Dec-2021 (7)	29/04/21 1950 (3)		12/03/21 1600 (3)		16/03/21 1300 (1)				
	Jan-2022 (6)			6/05/21 1630 (4)		2/02/21 1280 (2)				
	Feb-2022 (1)			14/04/21 1610 (1)						
	Mar-2022 (1)					29/04/21 1300 (1)				
	Apr-2022 (3)			3/05/21 1650 (2)		29/04/21 1300 (1)				
	May-2022 (1)					29/04/21 1300 (1)				
	Jun-2022 (1)					29/04/21 1300 (1)				
	Jul-2022									
	Aug-2022 (1)			3/05/21 1650 (1)						
	Sep-2022 (3)			5/05/21 1630 (3)						
	Oct-2022 (2)			3/05/21 1650 (2)						
	Nov-2022									
	Dec-2022									
	Jan-2023									
	Feb-2023									
	Mar-2023									

Explanatory Notes: Prices quoted reflect the most recent trades, at time of print.

Disclaimer: While all due care has been taken in the preparation of this document, no warranty is made as to its accuracy, reliability or completeness. To the extent permitted by law neither Jemalong or their sources including subsidiaries and staff, accept liability to any person for loss or damage arising from the use of this information.



Table 6: National Market Share

		Current Selling Week Week 45			Previous Selling Week Week 44			Last Season 2019-20			2 Years Ago 2018-19			3 Years Ago 2017-18			5 Years Ago 2015-16			10 Years Ago 2010-11		
	Rank	Buyer	Bales	MS%	Buyer	Bales	MS%	Buyer	Bales	MS%	Buyer	Bales	MS%	Buyer	Bales	MS%	Buyer	Bales	MS%	Buyer	Bales	MS%
Top 10, Auction Buyers	1	TECM	5,146	13%	TECM	7,664	17%	TECM	176,746	15%	TECM	183,590	12%	TECM	242,275	14%	TECM	223,011	13%	VTRA	209,391	12%
	2	EWES	3,977	10%	EWES	3,970	9%	EWES	111,152	9%	FOXN	137,101	9%	FOXN	199,258	11%	CTXS	158,343	10%	TECM	179,439	10%
	3	TIAM	3,952	10%	TIAM	3,553	8%	FOXN	111,069	9%	TIAM	125,963	8%	KATS	140,688	8%	FOXN	151,685	9%	FOXN	142,143	8%
	4	FOXN	2,349	6%	AMEM	3,090	7%	TIAM	99,632	8%	SETS	117,207	8%	SETS	128,533	7%	LEMM	124,422	8%	QCTB	120,699	7%
	5	LEMM	2,245	6%	FOXN	2,995	7%	AMEM	95,222	8%	AMEM	112,113	8%	AMEM	127,831	7%	TIAM	105,610	6%	WIEM	99,585	6%
	6	MODM	2,139	5%	PMWF	2,422	5%	PMWF	75,805	6%	EWES	94,720	6%	TIAM	121,875	7%	AMEM	104,017	6%	LEMM	85,346	5%
	7	AMEM	2,121	5%	UWCM	2,345	5%	UWCM	60,137	5%	KATS	85,234	6%	PMWF	99,301	6%	GWEA	91,407	6%	MODM	81,981	5%
	8	MEWS	1,860	5%	LEMM	2,306	5%	KATS	50,277	4%	PMWF	80,474	5%	LEMM	93,130	5%	MODM	83,453	5%	PMWF	77,588	4%
	9	SMAM	1,749	4%	MODM	2,067	5%	MCHA	49,296	4%	UWCM	65,978	4%	MODM	91,985	5%	PMWF	82,132	5%	CTXS	75,127	4%
	10	UWCM	1,680	4%	PEAM	1,665	4%	SETS	45,008	4%	MCHA	63,262	4%	EWES	76,486	4%	MCHA	64,453	4%	KATS	67,867	4%
MFLC TOP 5	1	TIAM	3,133	14%	TECM	4,672	18%	TECM	99,605	15%	SETS	109,434	13%	TECM	137,666	14%	CTXS	124,326	13%	VTRA	169,191	17%
	2	TECM	2,336	10%	TIAM	2,772	11%	TIAM	72,376	11%	TECM	99,231	12%	SETS	124,030	12%	TECM	112,996	12%	QCTB	98,673	10%
	3	EWES	1,990	9%	PMWF	2,371	9%	PMWF	72,234	11%	TIAM	80,594	10%	FOXN	94,279	9%	LEMM	91,475	10%	TECM	79,395	8%
	4	MEWS	1,860	8%	EWES	2,252	9%	FOXN	61,961	9%	PMWF	72,193	9%	PMWF	87,751	9%	FOXN	84,992	9%	PMWF	71,718	7%
	5	LEMM	1,769	8%	FOXN	2,064	8%	EWES	51,367	8%	FOXN	65,851	8%	KATS	79,682	8%	PMWF	77,550	8%	LEMM	70,280	7%
MSKT TOP 5	1	TECM	1,266	18%	TECM	1,312	19%	TECM	33,722	19%	AMEM	35,047	17%	TECM	44,522	17%	TIAM	41,055	17%	MODM	39,745	14%
	2	EWES	976	14%	UWCM	914	13%	EWES	23,530	13%	TECM	32,363	15%	AMEM	33,464	13%	TECM	39,290	16%	WIEM	36,566	13%
	3	TIAM	705	10%	EWES	854	12%	AMEM	21,309	12%	TIAM	30,903	15%	TIAM	31,171	12%	AMEM	29,982	12%	TECM	28,858	10%
	4	WCWF	603	9%	AMEM	649	9%	TIAM	20,170	11%	EWES	26,210	12%	EWES	23,428	9%	MODM	26,227	11%	PLEX	23,282	8%
	5	UWCM	590	9%	TIAM	625	9%	UWCM	17,510	10%	MODM	16,112	8%	FOXN	21,855	8%	FOXN	18,153	7%	FOXN	16,098	6%
XB TOP 5	1	PEAM	1,295	21%	PEAM	1,181	20%	TECM	27,953	14%	TECM	35,843	14%	FOXN	51,685	17%	TECM	46,757	17%	FOXN	48,708	19%
	2	TECM	1,018	16%	TECM	1,114	18%	PEAM	23,607	12%	FOXN	35,810	14%	KATS	44,672	15%	KATS	27,734	10%	TECM	43,133	17%
	3	EWES	621	10%	MODM	749	12%	FOXN	22,019	11%	EWES	20,980	8%	TECM	38,877	13%	FOXN	27,096	10%	VTRA	20,904	8%
	4	MODM	502	8%	AMEM	561	9%	EWES	20,353	10%	MODM	19,069	7%	MODM	25,884	8%	CTXS	22,768	8%	MODM	20,556	8%
	5	AMEM	494	8%	EWES	486	8%	AMEM	20,039	10%	AMEM	17,248	7%	EWES	24,241	8%	MODM	21,130	8%	CTXS	16,667	7%
ODDS TOP 5	1	MCHA	691	15%	UWCM	643	13%	MCHA	27,873	18%	MCHA	37,911	21%	MCHA	40,241	19%	MCHA	39,964	20%	MCHA	30,570	13%
	2	TECM	526	12%	TECM	566	11%	FOXN	18,687	12%	VWPM	26,672	15%	FOXN	31,439	15%	VWPM	30,258	15%	TECM	28,053	12%
	3	VWPM	442	10%	FOXN	521	11%	EWES	15,902	10%	FOXN	26,591	15%	VWPM	27,805	13%	TECM	23,968	12%	FOXN	27,422	12%
	4	EWES	390	9%	MCHA	516	10%	VWPM	15,673	10%	EWES	16,659	9%	TECM	21,210	10%	FOXN	21,444	11%	VWPM	22,267	10%
	5	SNWF	377	8%	EWES	378	8%	TECM	15,466	10%	TECM	16,153	9%	EWES	18,809	9%	GWEA	10,802	5%	RWRS	15,878	7%
Auction Totals		<u>Bales Sold</u>	<u>\$/Bale</u>		<u>Bales Sold</u>	<u>\$/Bale</u>		<u>Bales Sold</u>	<u>\$/Bale</u>		<u>Bales Sold</u>	<u>\$/Bale</u>		<u>Bales Sold</u>	<u>\$/Bale</u>		<u>Bales Sold</u>	<u>\$/Bale</u>		<u>Bales Sold</u>	<u>\$/Bale</u>	
		40,303	\$ 1,523		44,396	\$ 1,548		1,207,629	\$1,633		1,477,234	\$2,161		1,780,609	\$1,929		1,652,727	\$1,424		1,789,551	\$1,218	
		<u>Auction Value</u>			<u>Auction Value</u>			<u>Auction Value</u>			<u>Auction Value</u>			<u>Auction Value</u>			<u>Auction Value</u>			<u>Auction Value</u>		
		\$61,400,000			\$68,720,000			\$1,972,385,159			\$3,192,210,000			\$3,434,719,951			\$2,354,185,590			\$2,180,128,771		



Table 7: NSW Production Statistics

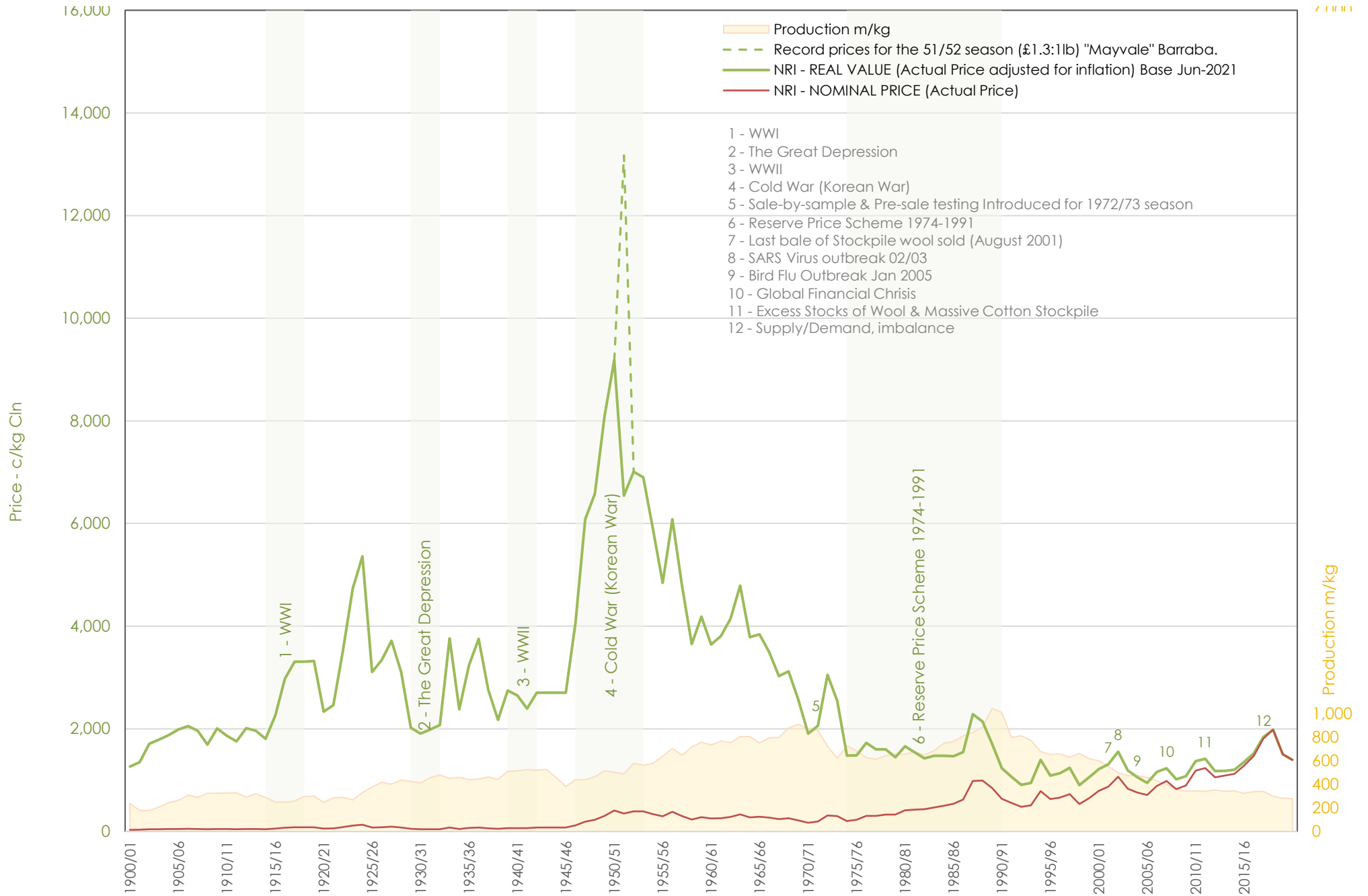
MAX			MIN		MAX GAIN		MAX REDUCTION									
2019-20																
Statistical Devision, Area Code & Towns				Auction Bales (FH)	Micron	+/- YoY	Vmb %	+/- YoY	Yield % Sch Dry	+/- YoY	Length mm	+/- YoY	Strength Nkt	+/- YoY	Ave Price c/kg	
Northern	N02	Tenterfield, Glen Innes		4,352	18.2	-0.8	1.1	-0.3	67.8	-2.4	79	-0.3	39	-1.6	1156	
	N03	Guyra		28,084	19.5	0.0	1.6	0.1	63.5	-4.1	80	2.0	35	-3.1	996	
	N04	Inverell		3,134	18.4	0.1	2.2	-0.4	64.7	-3.5	80	0.1	35	-0.5	1033	
	N05	Armidale		770	20.0	-0.7	2.9	-0.6	64.6	-2.2	80	-2.0	39	3.2	948	
	N06	Tamworth, Gunnedah, Quirindi		3,624	19.1	-0.4	2.7	-0.5	64.2	-1.0	84	5.2	37	-0.8	977	
	N07	Moree		2,367	18.8	-0.4	2.4	-1.2	57.5	-2.2	78	-0.1	33	-4.3	791	
	N08	Narrabri		1,373	18.8	-0.1	2.3	-0.7	58.0	-3.3	80	1.3	36	-1.2	873	
	North Western & Far West	N09	Cobar, Bourke, Wanaaring		3,875	19.5	0.6	3.8	-1.2	53.9	-1.9	83	1.4	34	-0.6	761
N12		Walgett		4,381	18.9	0.1	3.3	-1.8	55.1	-0.5	79	-2.0	36	0.2	840	
N13		Nyngan		8,659	18.9	-0.5	5.0	-1.7	54.5	-2.1	80	-0.2	35	-1.3	773	
N14		Dubbo, Narromine		12,563	20.4	-0.4	3.5	-1.5	55.8	-1.6	83	1.9	34	0.3	718	
N16		Dunedoo		5,224	19.8	-0.3	2.5	-1.0	60.1	-1.7	84	0.3	34	1.4	854	
N17		Mudgee, Wellington, Gulgong		15,960	19.3	0.3	2.1	-0.6	61.5	-2.2	82	3.5	36	0.4	923	
N33		Coonabarabran		2,263	20.0	0.3	2.7	-2.0	58.3	-2.1	85	2.3	32	0.5	790	
N34		Coonamble		4,786	19.8	0.5	3.8	-1.9	53.7	-1.3	84	3.7	34	-0.8	734	
N36		Gilgandra, Gulargambone		3,156	20.8	0.4	2.6	-1.1	57.2	-1.4	86	1.6	32	-0.8	740	
N40		Brewarrina		3,328	19.0	-0.4	3.2	-0.2	55.7	-4.6	82	-0.6	35	-5.6	820	
N10	Wilcannia, Broken Hill		7,042	20.0	0.4	2.5	-1.4	54.7	-1.9	86	4.8	36	-2.7	786		
Central West	N15	Forbes, Parkes, Cowra		24,577	19.9	0.0	1.9	-0.8	56.7	-2.7	82	1.1	36	1.4	782	
	N18	Lithgow, Oberon		2,531	21.6	0.8	1.6	-0.6	67.3	0.7	88	6.3	38	-0.2	875	
	N19	Orange, Bathurst		36,056	21.3	0.2	1.6	-0.4	62.7	-1.6	87	4.8	36	1.1	852	
	N25	West Wyalong		17,173	19.6	-0.1	1.6	-0.7	54.9	-3.3	86	2.0	34	0.0	783	
	N35	Condobolin, Lake Cargelligo		6,202	19.7	-0.1	4.0	-0.8	53.7	-2.5	82	2.1	36	0.2	723	
Murrumbidgee	N26	Cootamundra, Temora		21,946	21.0	0.0	1.1	-0.6	57.6	-1.8	87	4.4	34	1.0	729	
	N27	Adelong, Gundagai		10,380	20.7	-0.2	1.3	-0.3	62.8	-1.7	88	5.0	33	0.7	837	
	N29	Wagga, Narrandera		27,088	21.4	0.2	1.1	-0.4	60.2	-0.9	86	3.6	33	-0.2	760	
	N37	Griffith, Hillston		9,481	21.1	0.4	3.3	-1.9	57.9	-0.5	83	2.5	38	-2.7	764	
	N39	Hay, Coleambally		12,096	20.1	0.4	3.1	-2.6	59.3	-1.3	86	3.8	38	-1.4	849	
Murray	N11	Wentworth, Balranald		5,574	20.6	0.4	5.0	-1.7	54.4	-1.2	88	3.1	36	-3.0	785	
	N28	Albury, Corowa, Holbrook		24,964	21.1	0.4	1.1	-0.4	61.4	-1.6	86	2.7	33	-0.8	800	
	N31	Deniliquin		19,387	20.4	0.1	2.0	-1.1	63.2	-0.6	84	1.8	36	-1.8	891	
	N38	Finley, Berrigan, Jerilderie		7,532	20.1	0.3	2.0	-0.7	60.9	-1.6	85	3.9	36	-1.6	842	
South Eastern	N23	Goulburn, Young, Yass		76,824	19.7	0.3	1.1	-0.4	61.8	-3.2	88	3.8	35	-0.2	913	
	N24	Monaro (Cooma, Bombala)		24,535	19.2	0.2	1.0	-0.6	66.5	-0.8	94	5.2	35	1.4	1011	
	N32	A.C.T.		28	19.7	1.8	0.9	-0.8	60.9	-1.2	78	-4.0	38	8.6	921	
	N43	South Coast (Bega)		392	18.6	-0.2	0.6	-0.1	72.9	0.1	90	4.0	40	-1.5	1279	
NSW	AWEX Sale Statistics 19-20			458,846	20.2	0.1	1.9	-0.9	60.3	-1.8	85	3.1	35	-0.5	854	

AWTA Mthly Key Test Data			Bales Tested	+/- YoY	Micron	+/- YoY	VMB	+/- YoY	Yld	+/- YoY	Lth	+/- YoY	Nkt	+/- YoY	POBM +/-
AUSTRALIA	Current Season	April	165,708	27,007	20.7	0.3	2.7	0.9	62.4	2.6	86	3.1	33	0.2	44 1.0
		Y.T.D	1,475,448	10,553	20.8	0.3	2.0	0.3	64.0	1.6	89	3.0	34	2.0	49 2.0
	Previous Seasons	2019-20	1,464,895	-96206	20.5	-0.1	1.7	-0.4	62.4	-1.0	86	2.0	32	-1.0	47 0.0
		2018-19	1,561,101	-179992	20.6	-0.5	2.1	-0.3	63.4	-1.6	84	-2.0	33	-1.0	47 4.0
		Y.T.D.	1,741,093	22,707	21.1	0.1	2.4	0.3	65.0	-0.5	86	-2.0	34	0.2	51 2.1



JEMALONG WOOL BULLETIN

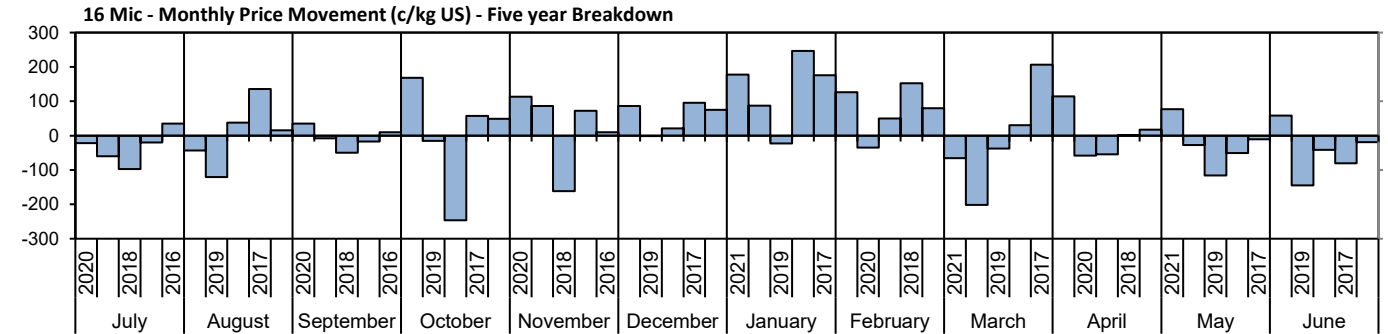
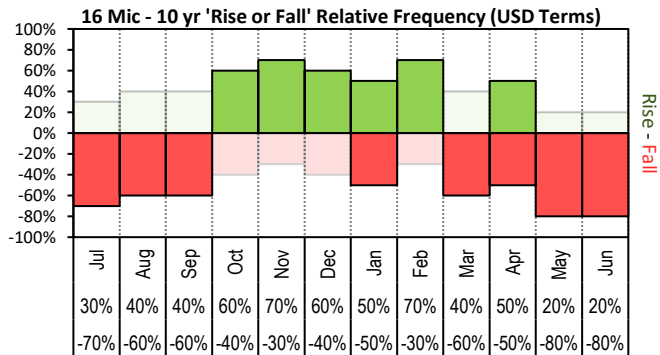
(week ending 7/05/2021)



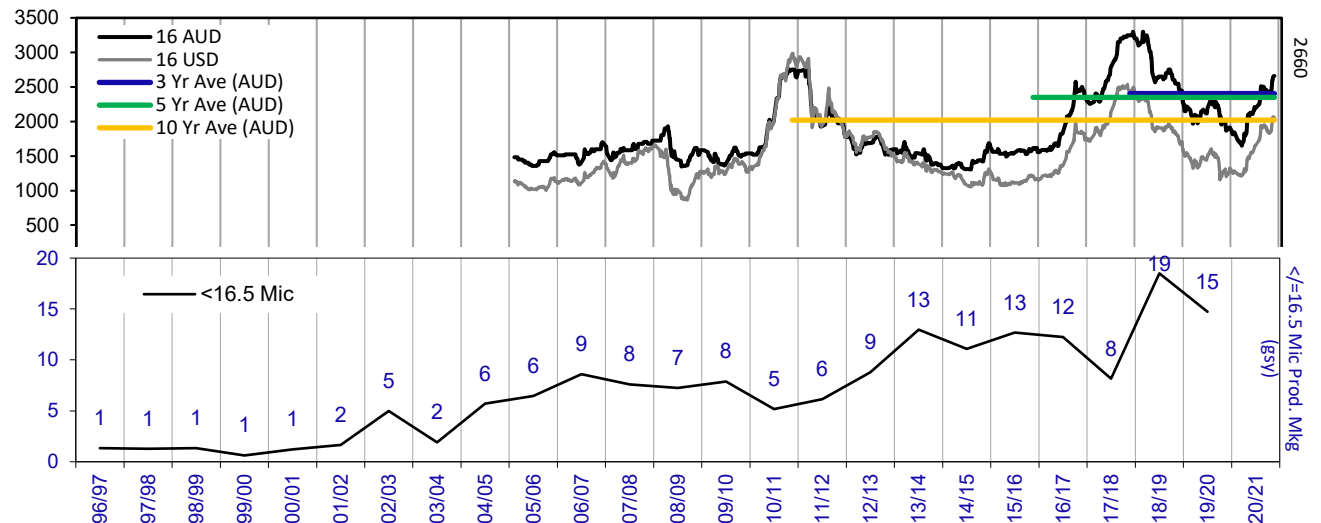
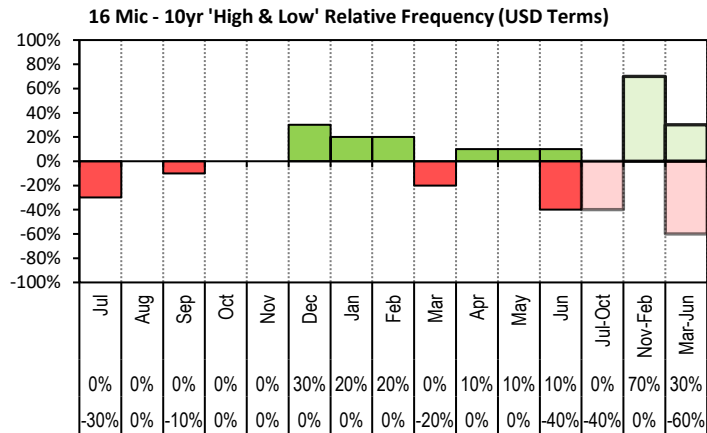


JEMALONG WOOL BULLETIN

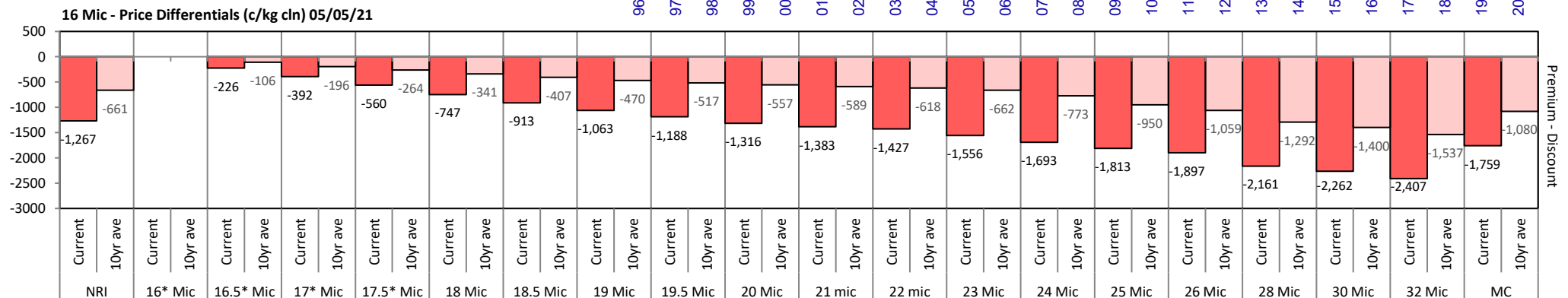
(week ending 7/05/2021)



The above 'Rise or Fall' graph, shows how often the market has risen or fallen in a given month over the past 10 years, it does not show the extent of the movement only the frequency of direction. The 'Monthly Price Movement' graph shows the extent of movement for each month, for the past 5 years.



The above graph, shows how often the '12 month high & low' have been achieved for a

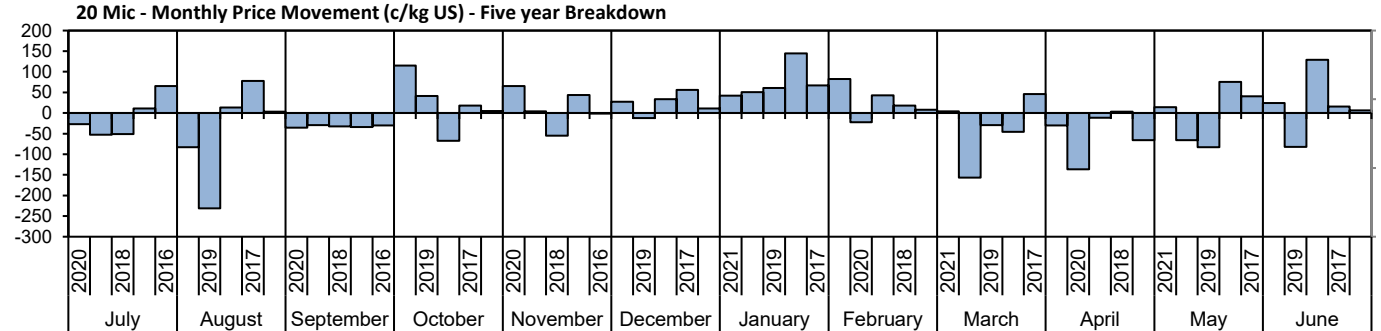
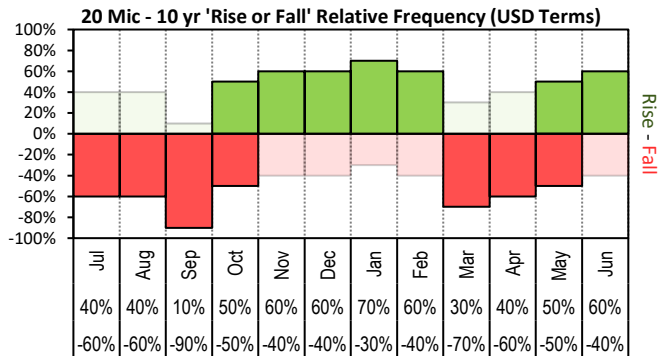




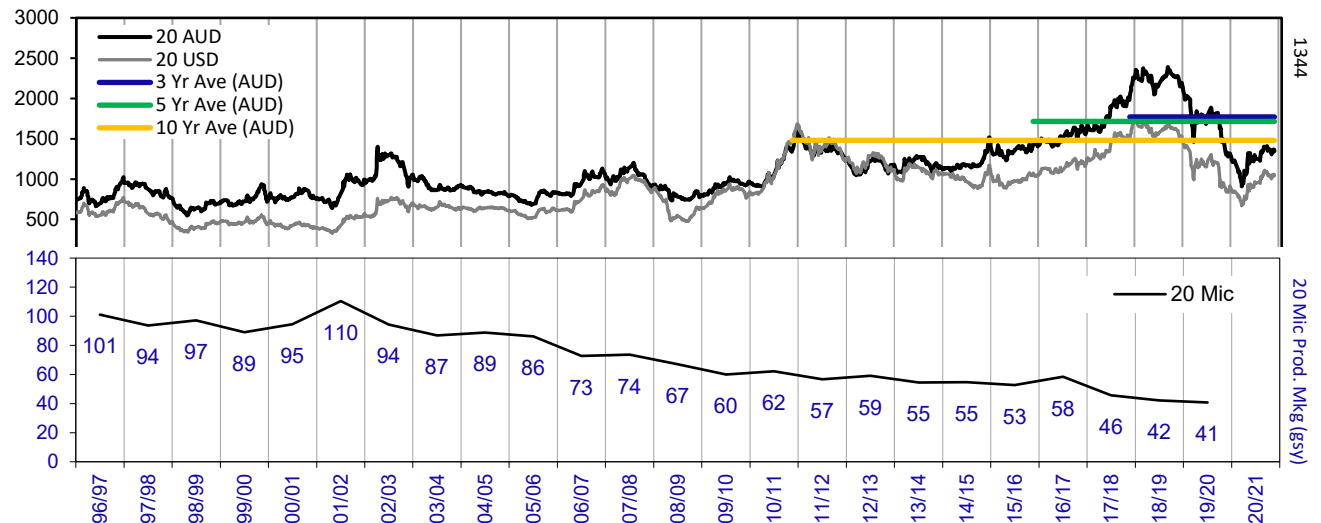
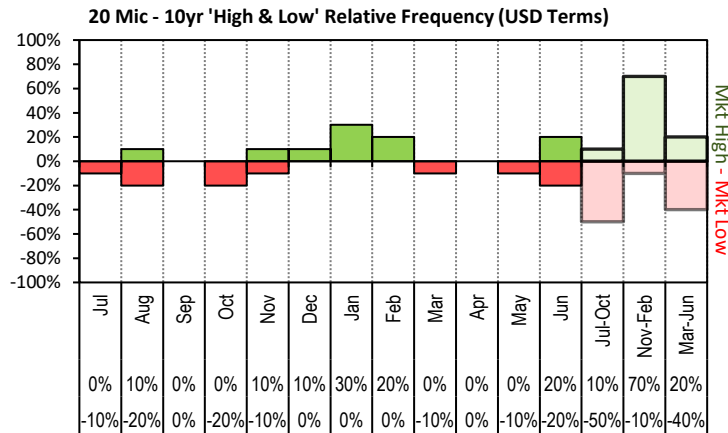
JEMALONG WOOL BULLETIN

(week ending 7/05/2021)

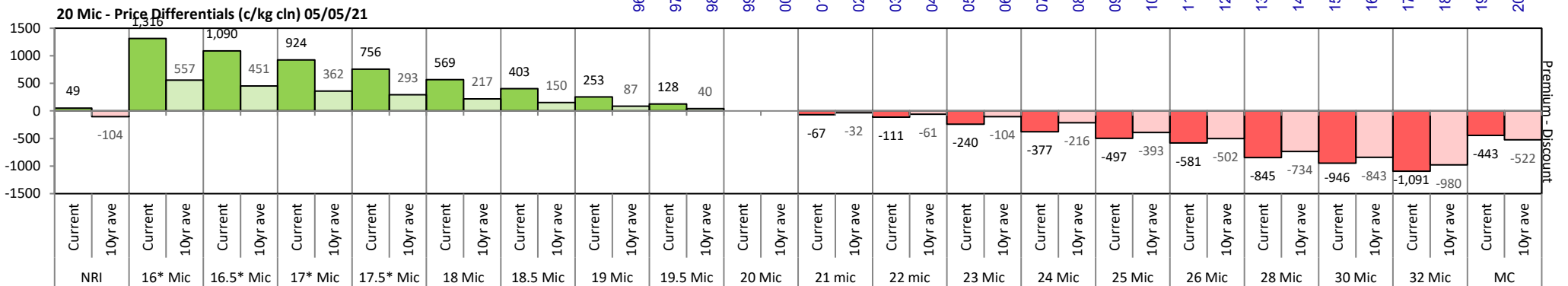
Page 11/26



The above 'Rise or Fall' graph, shows how often the market has risen or fallen in a given month over the past 10 years, it does not show the extent of the movement only the frequency of direction. The 'Monthly Price Movement' graph shows the extent of movement for each month, for the past 5 years.



The above graph, shows how often the '12 month high & low' have been achieved for a given month over the past 10 years. It is not a measure of probability.

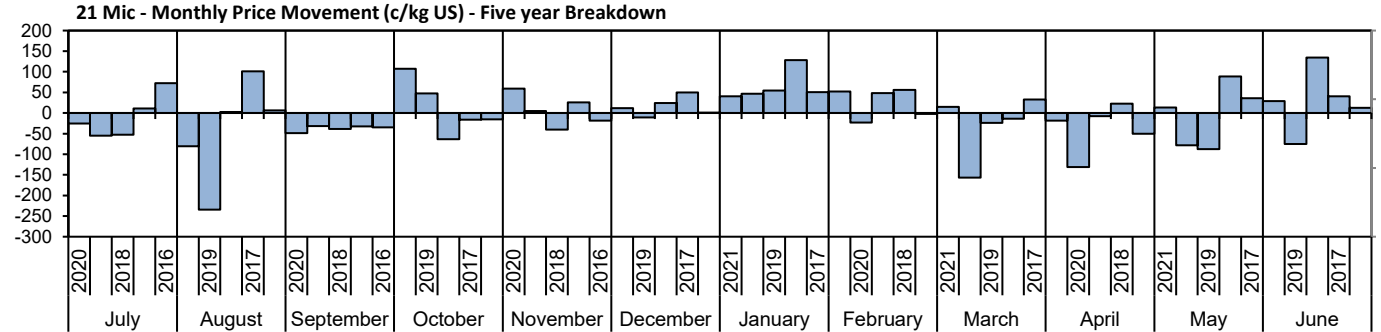
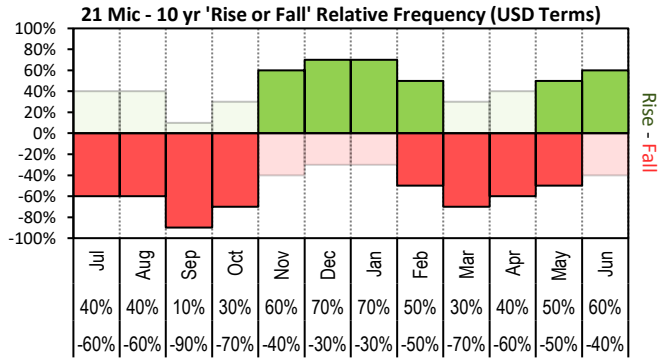




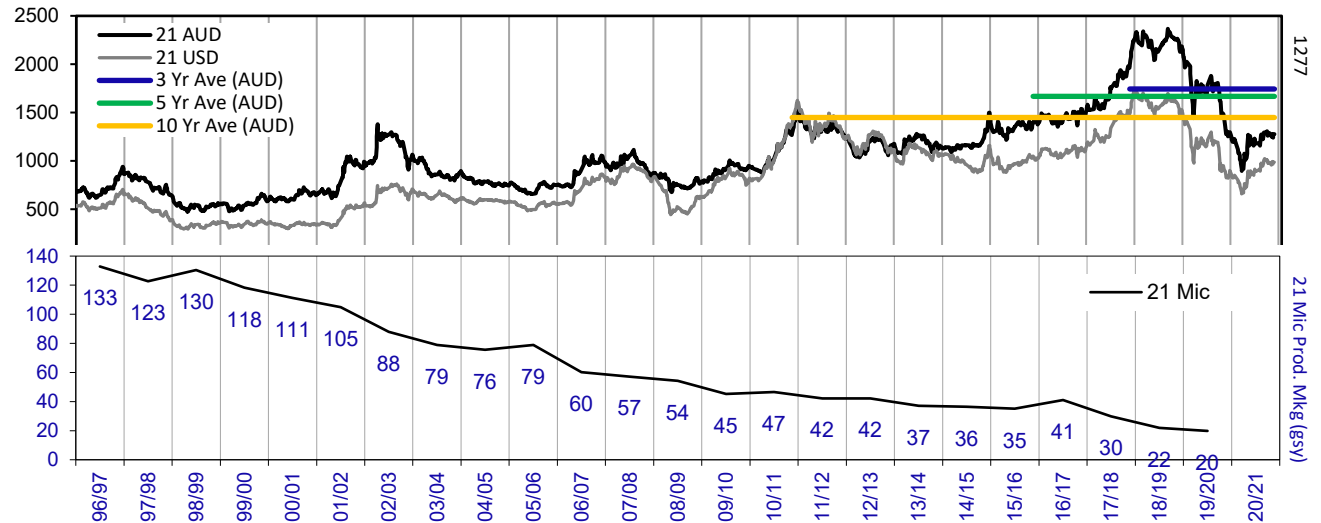
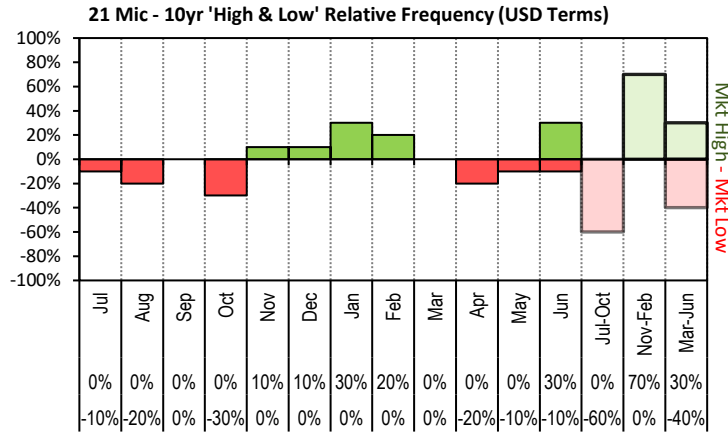
JEMALONG WOOL BULLETIN

(week ending 7/05/2021)

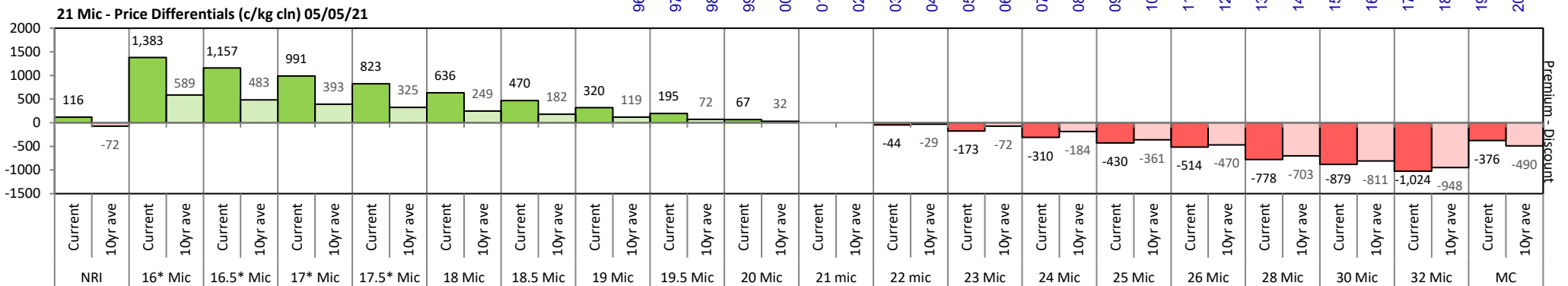
Page 12/26



The above 'Rise or Fall' graph, shows how often the market has risen or fallen in a given month over the past 10 years, it does not show the extent of the movement only the frequency of direction. The 'Monthly Price Movement' graph shows the extent of movement for each month, for the past 5 years.



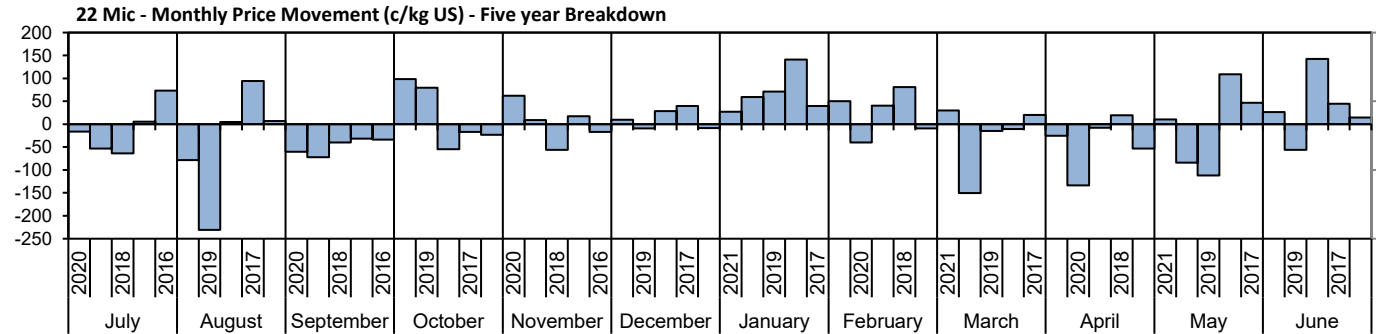
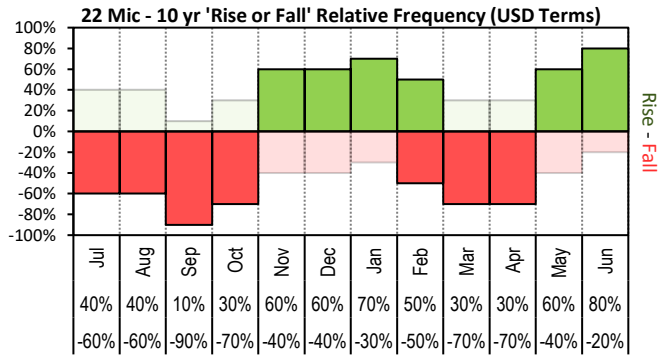
The above graph, shows how often the '12 month high & low' have been achieved for a given month over the past 10 years. It is not a measure of probability.



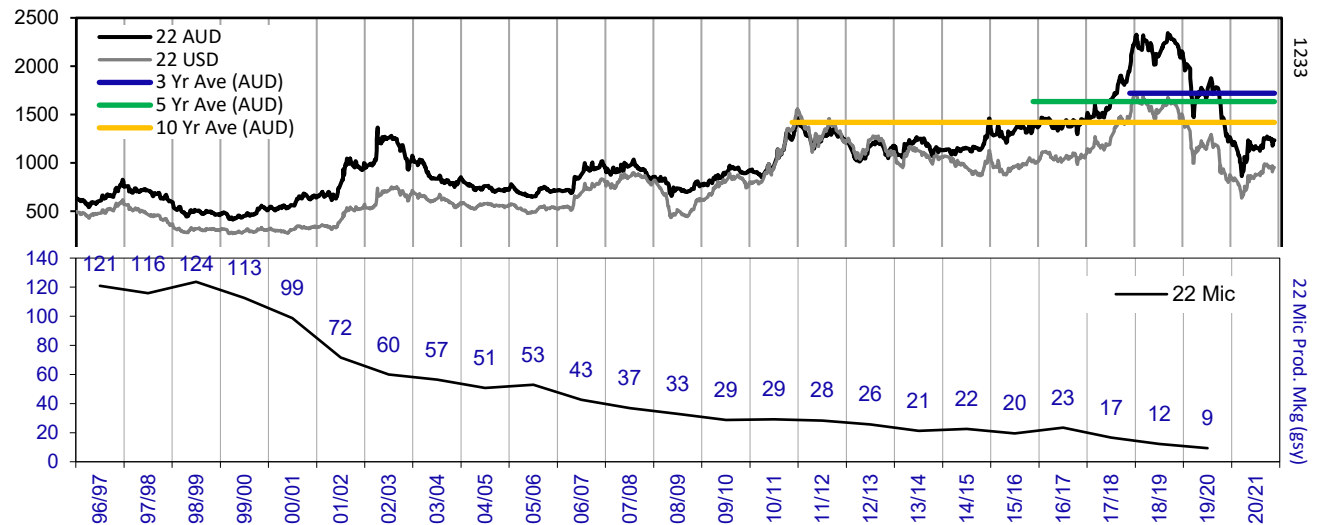
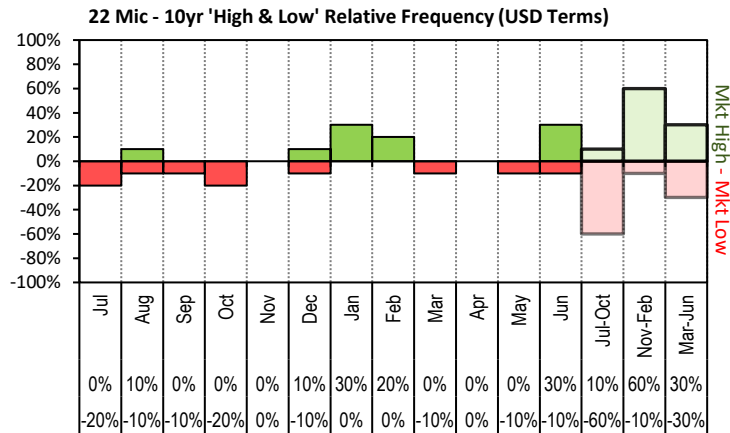


JEMALONG WOOL BULLETIN

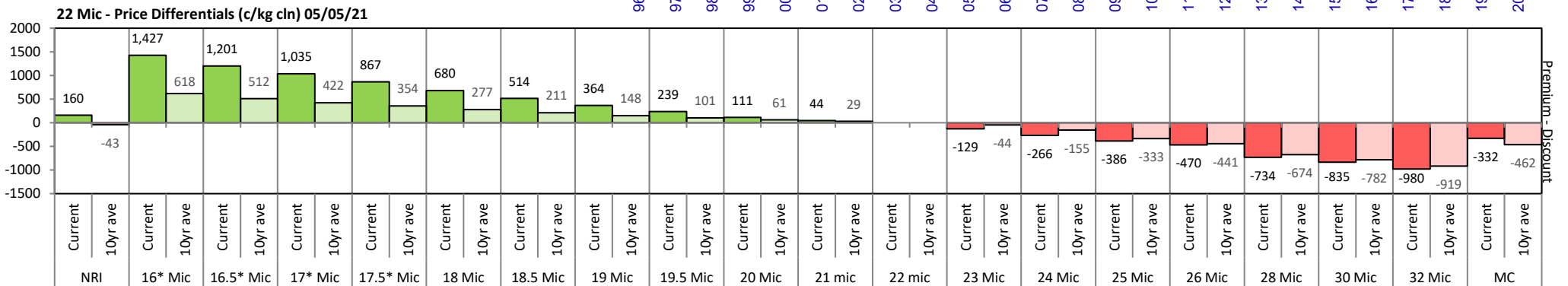
(week ending 7/05/2021)



The above 'Rise or Fall' graph, shows how often the market has risen or fallen in a given month over the past 10 years, it does not show the extent of the movement only the frequency of direction. The 'Monthly Price Movement' graph shows the extent of movement for each month, for the past 5 years.



The above graph, shows how often the '12 month high & low' have been achieved for a given month over the past 10 years. It is not a measure of probability.

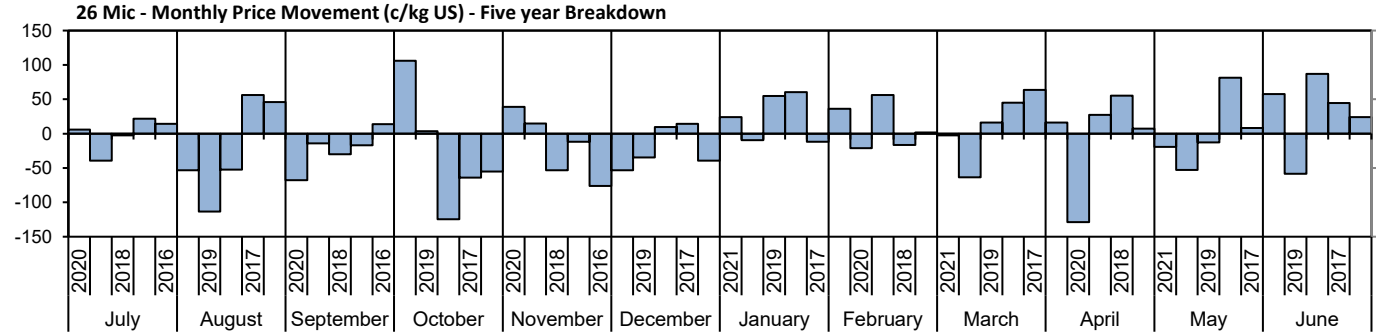
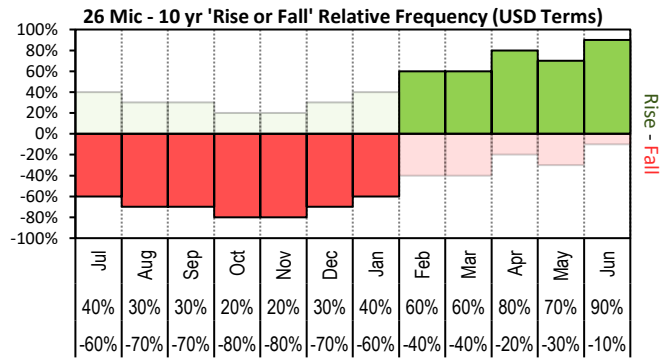




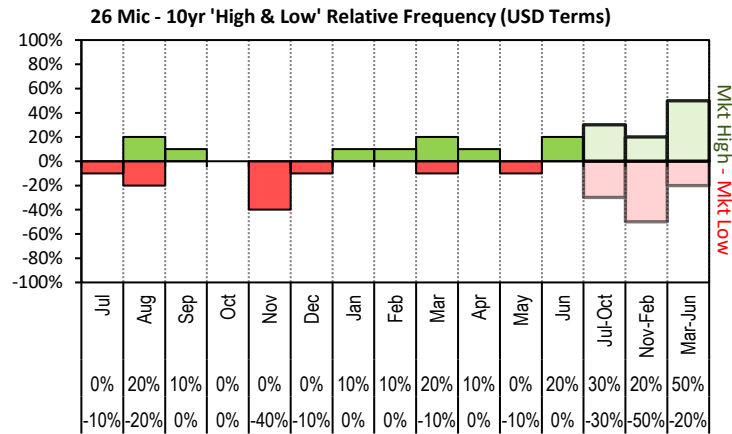
JEMALONG WOOL BULLETIN

(week ending 7/05/2021)

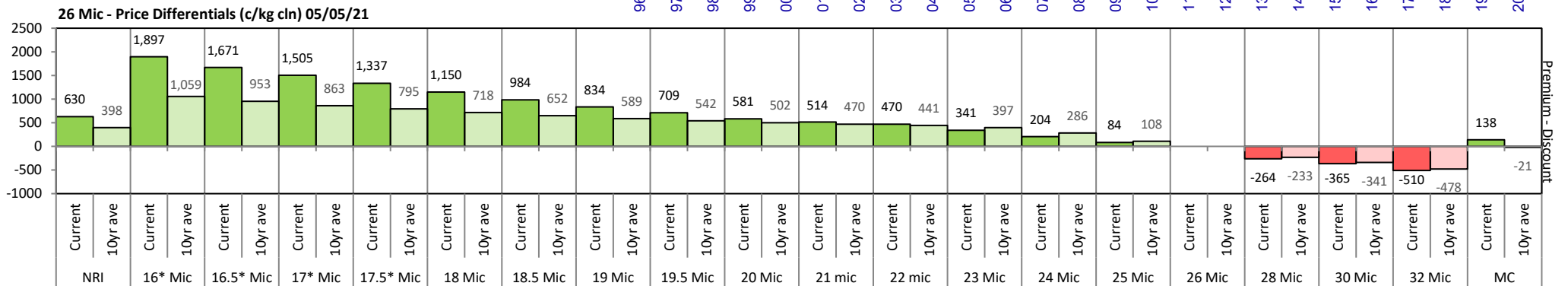
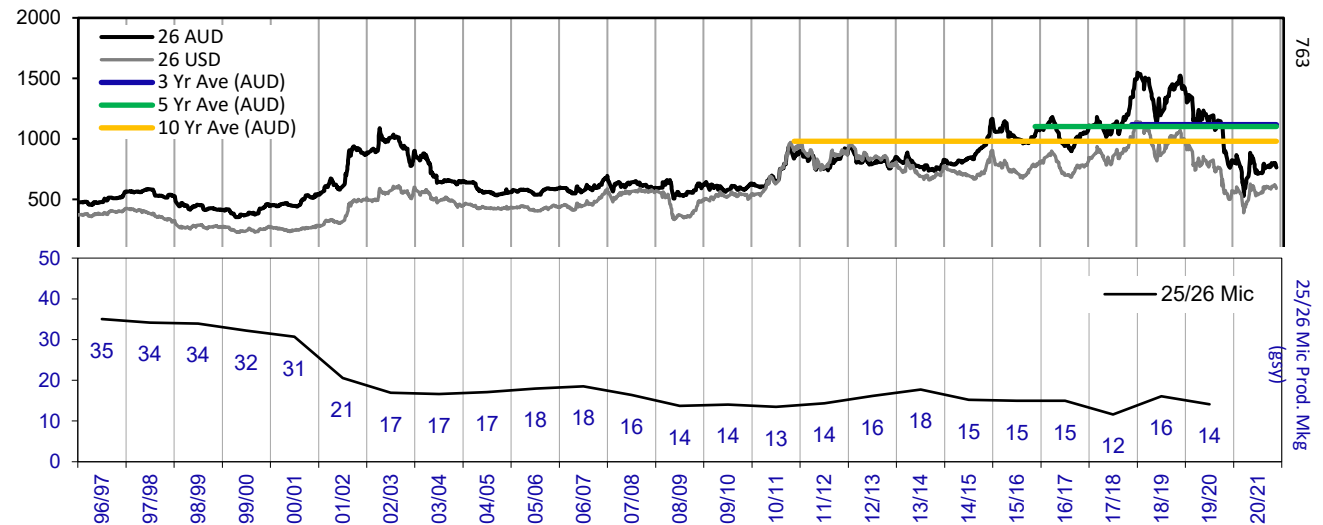
Page 14/26



The above 'Rise or Fall' graph, shows how often the market has risen or fallen in a given month over the past 10 years, it does not show the extent of the movement only the frequency of direction. The 'Monthly Price Movement' graph shows the extent of movement for each month, for the past 5 years.



The above graph, shows how often the '12 month high & low' have been achieved for a given month over the past 10 years. It is not a measure of probability.

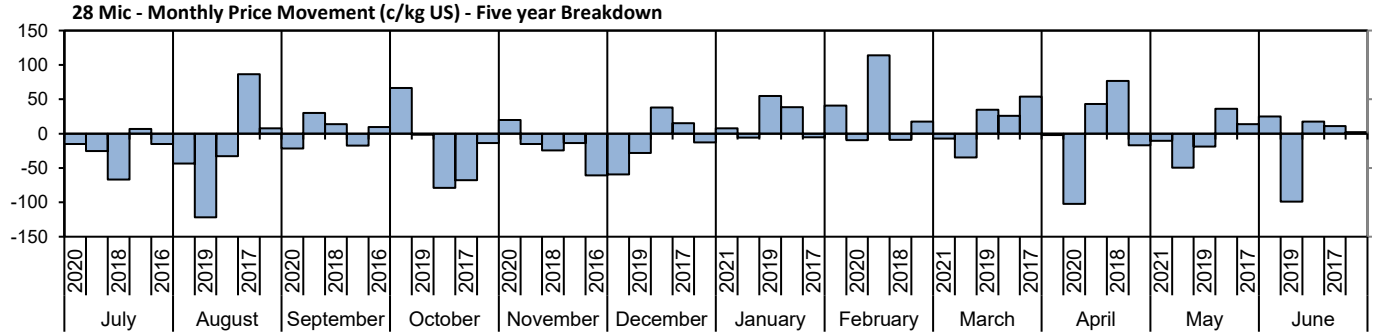
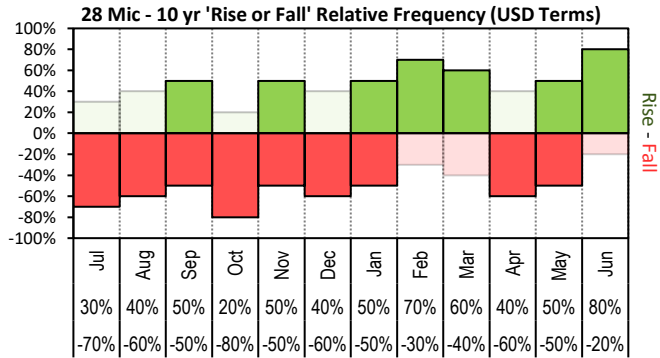




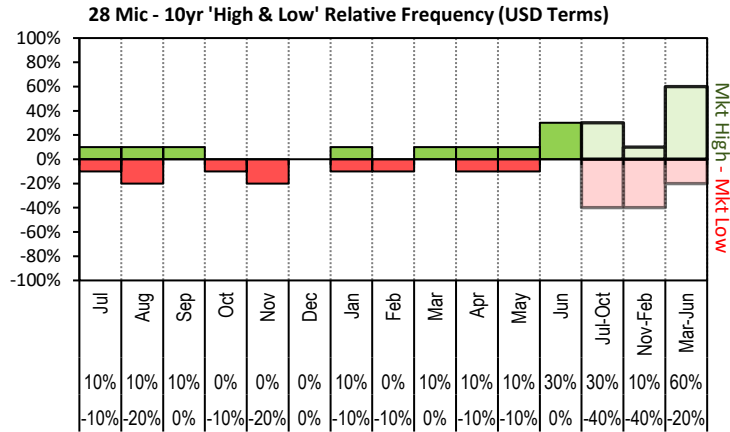
JEMALONG WOOL BULLETIN

(week ending 7/05/2021)

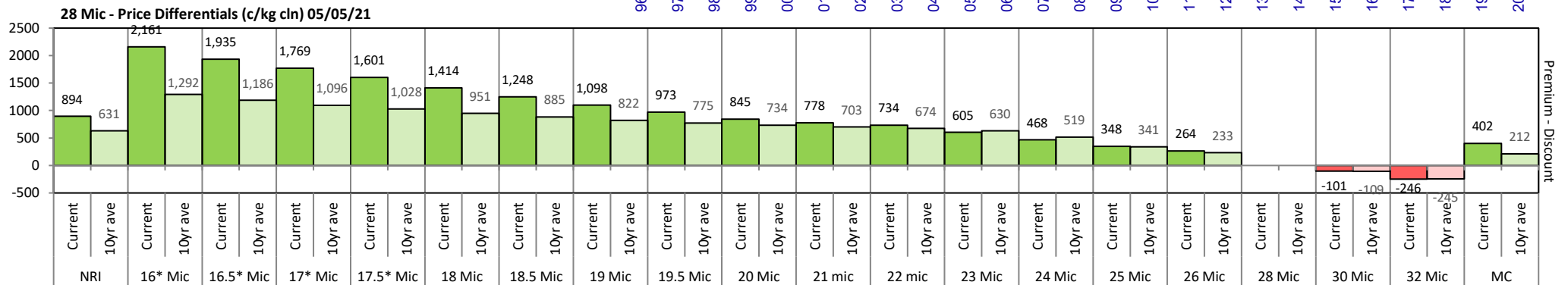
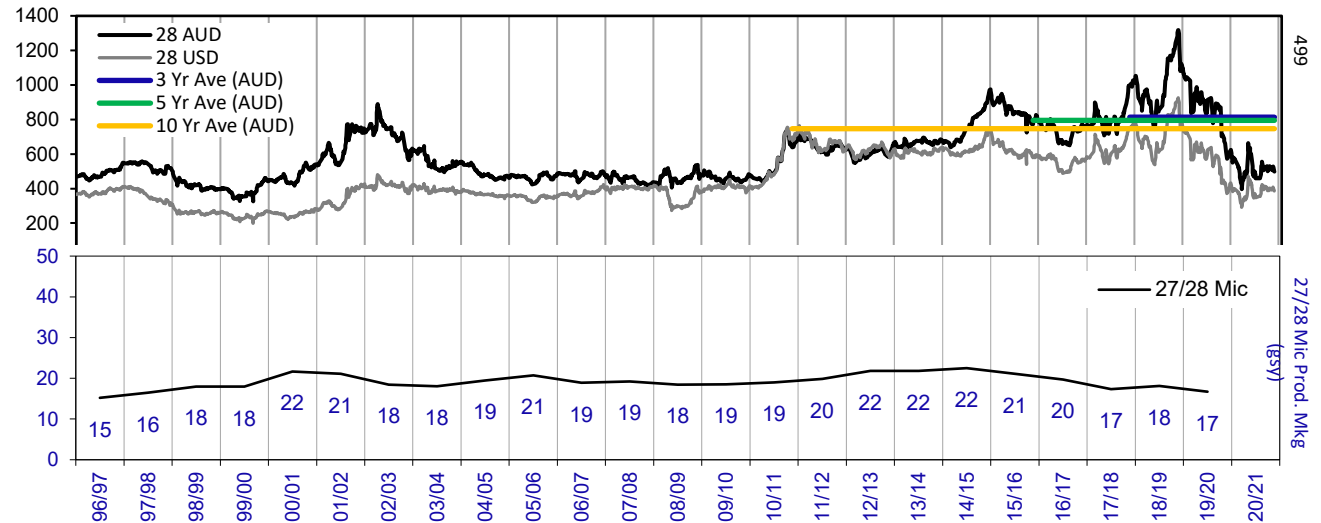
Page 15/26



The above 'Rise or Fall' graph, shows how often the market has risen or fallen in a given month over the past 10 years, it does not show the extent of the movement only the frequency of direction. The 'Monthly Price Movement' graph shows the extent of movement for each month, for the past 5 years.



The above graph, shows how often the '12 month high & low' have been achieved for a given month over the past 10 years. It is not a measure of probability.

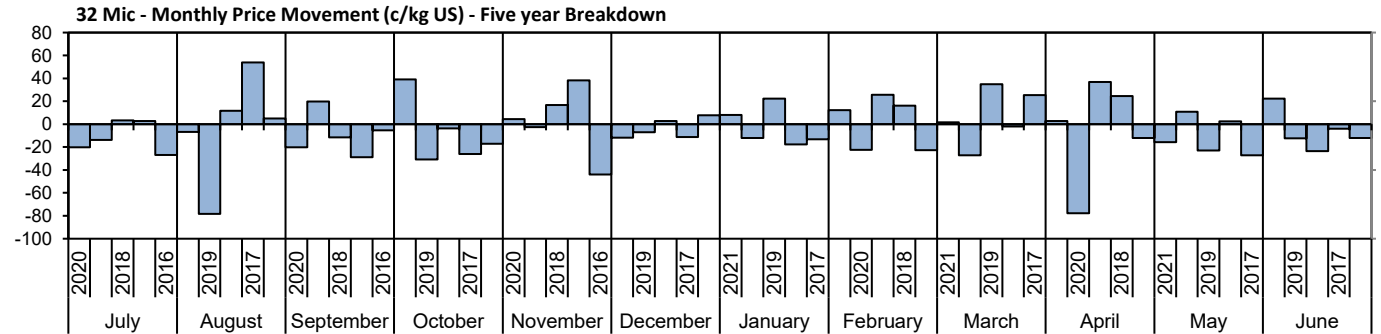
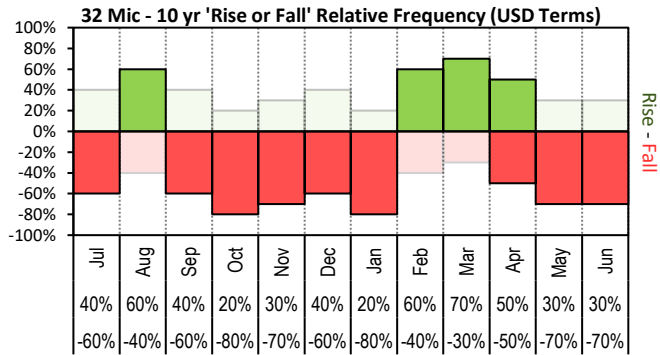




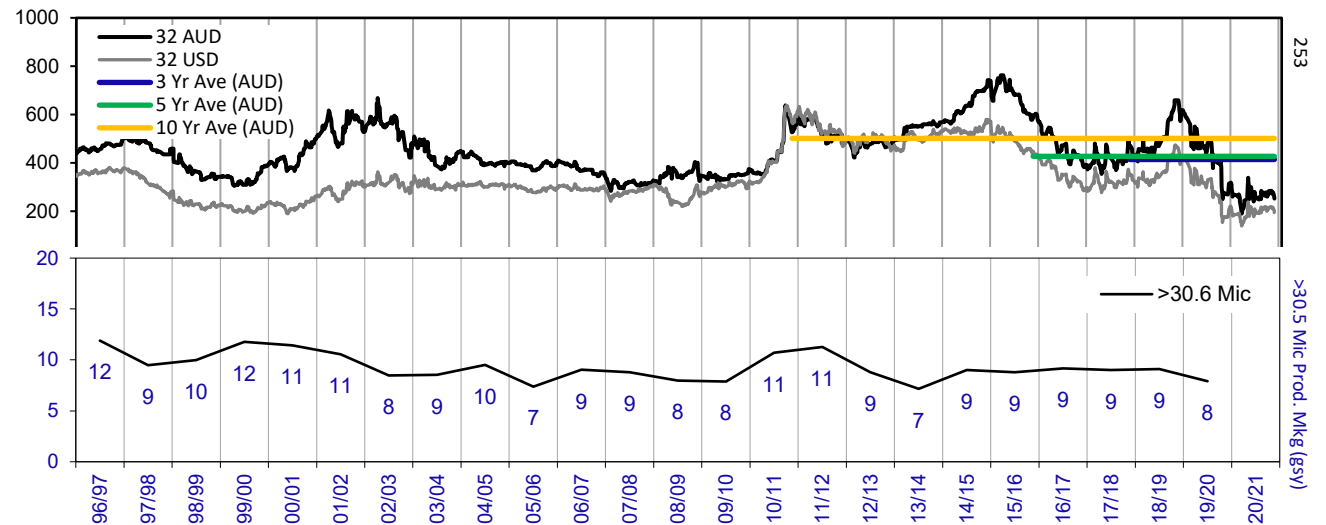
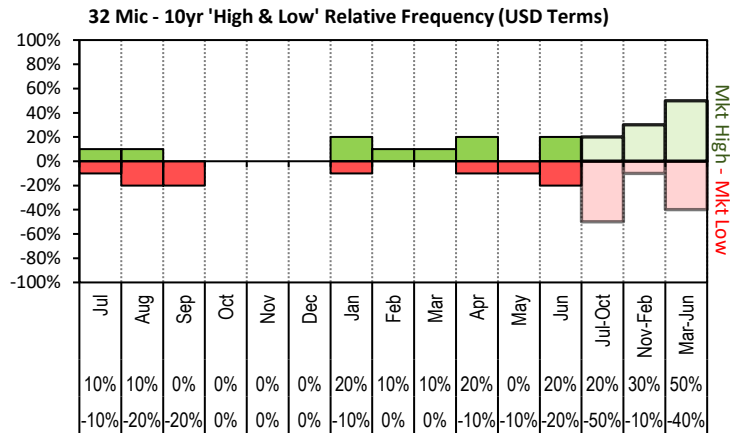
JEMALONG WOOL BULLETIN

(week ending 7/05/2021)

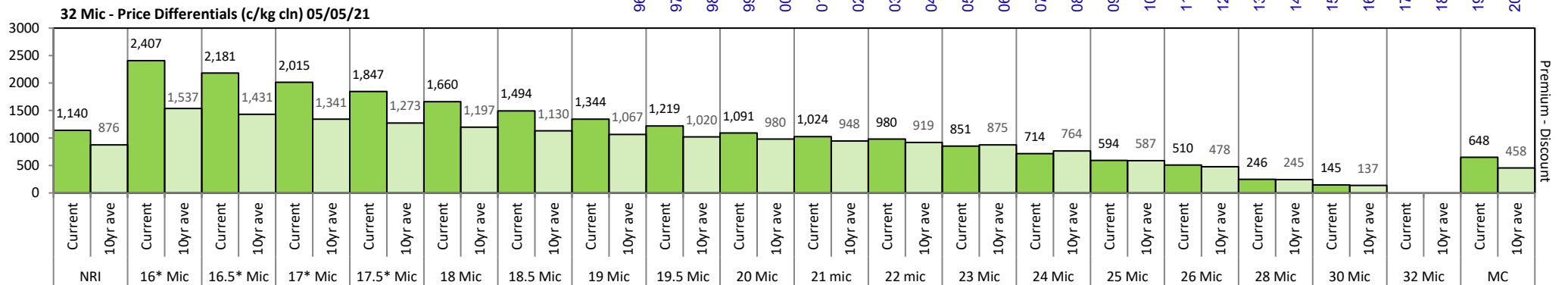
Page 16/26



The above 'Rise or Fall' graph, shows how often the market has risen or fallen in a given month over the past 10 years, it does not show the extent of the movement only the frequency of direction. The 'Monthly Price Movement' graph shows the extent of movement for each month, for the past 5 years.



The above graph, shows how often the '12 month high & low' have been achieved for a given month over the past 10 years. It is not a measure of probability.

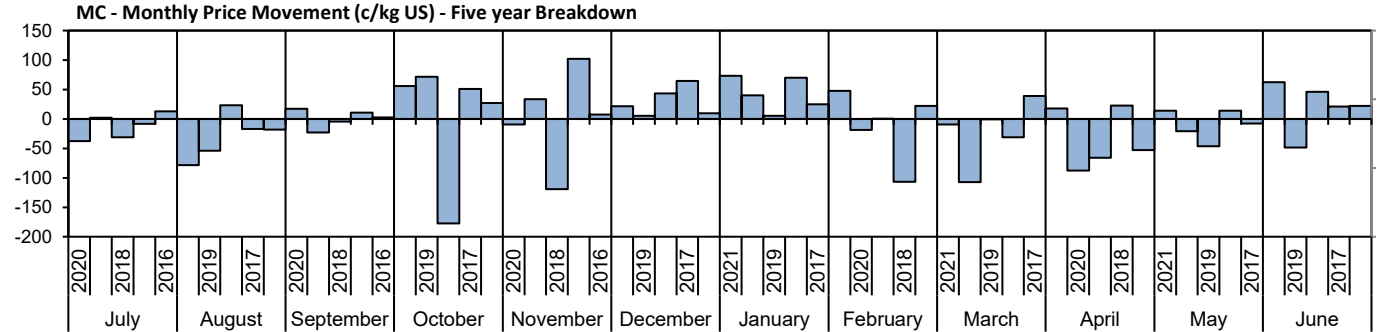
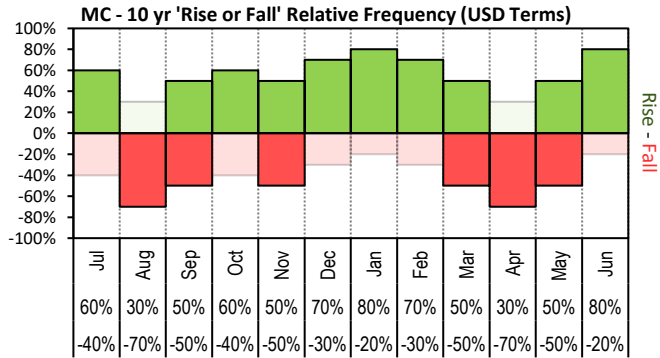




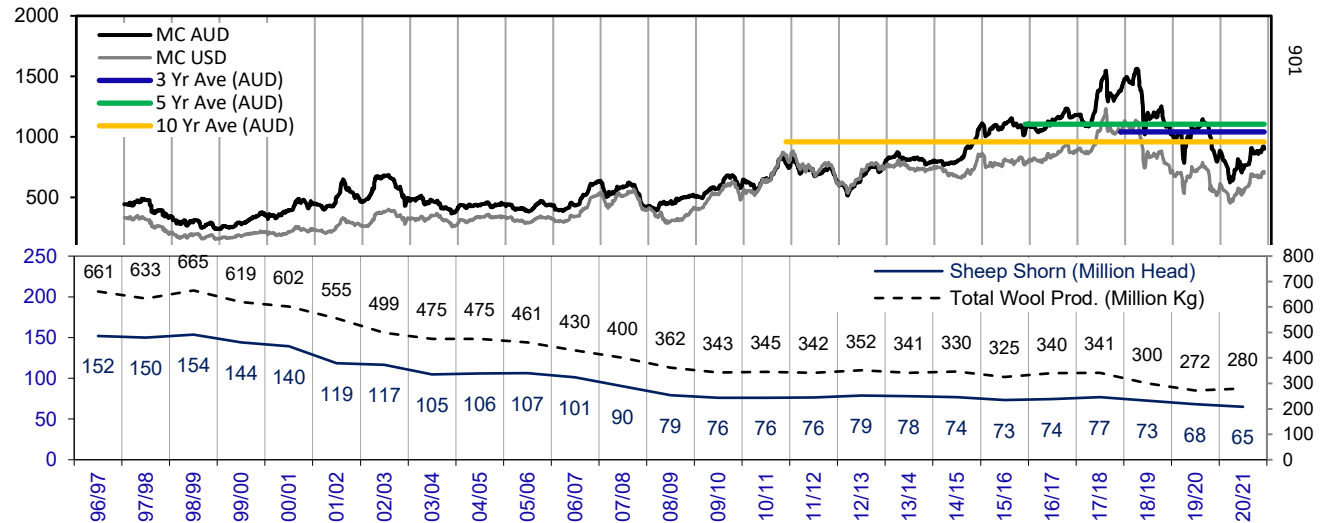
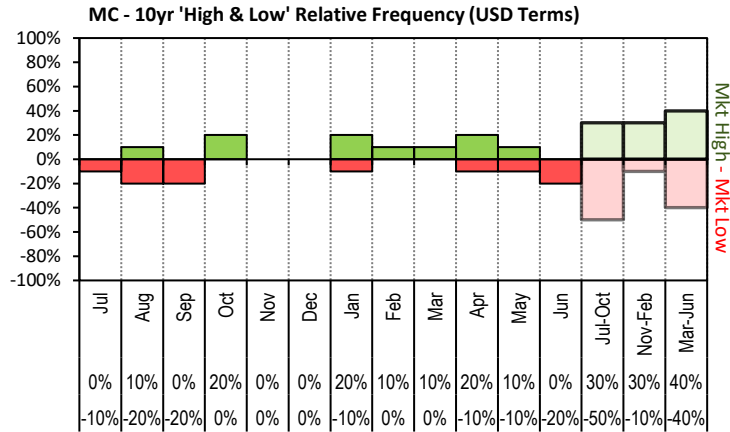
JEMALONG WOOL BULLETIN

(week ending 7/05/2021)

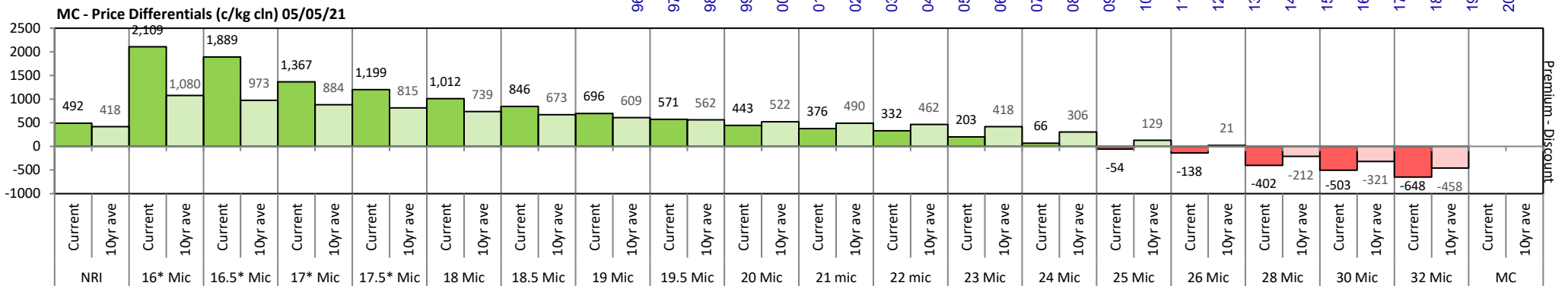
Page 17/26



The above 'Rise or Fall' graph, shows how often the market has risen or fallen in a given month over the past 10 years, it does not show the extent of the movement only the frequency of direction. The 'Monthly Price Movement' graph shows the extent of movement for each month, for the past 5 years.

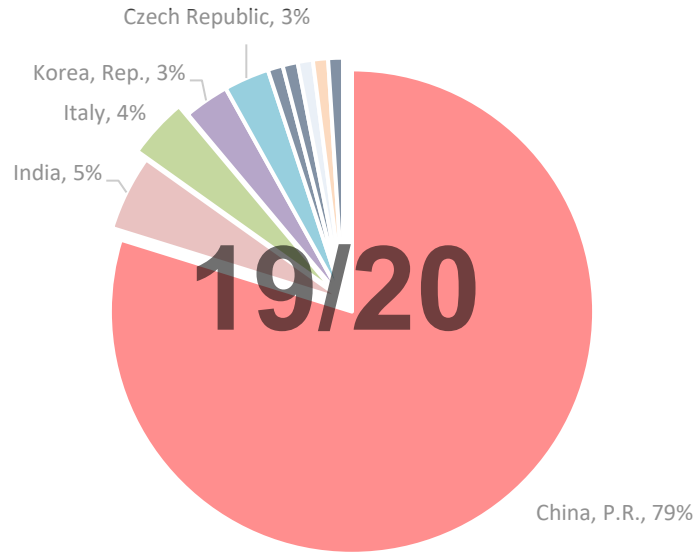


The above graph, shows how often the '12 month high & low' have been achieved for a given month over the past 10 years. It is not a measure of probability.

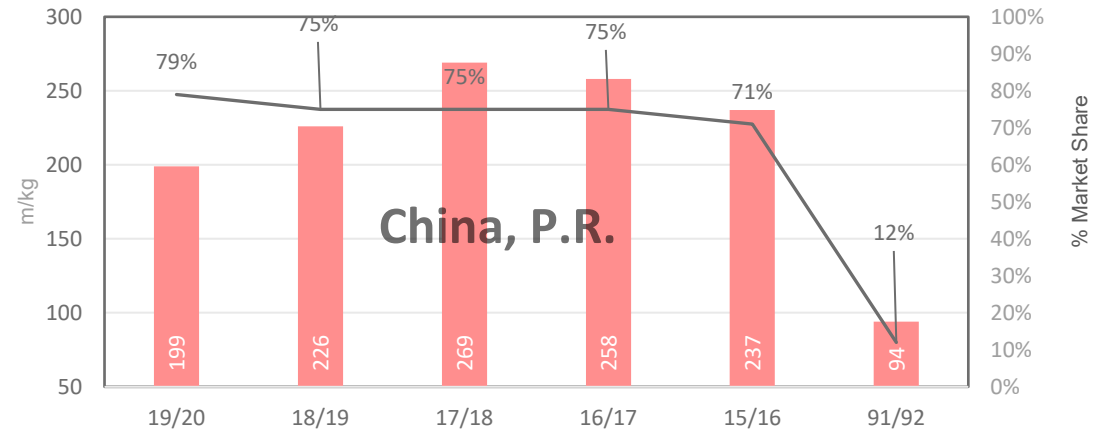




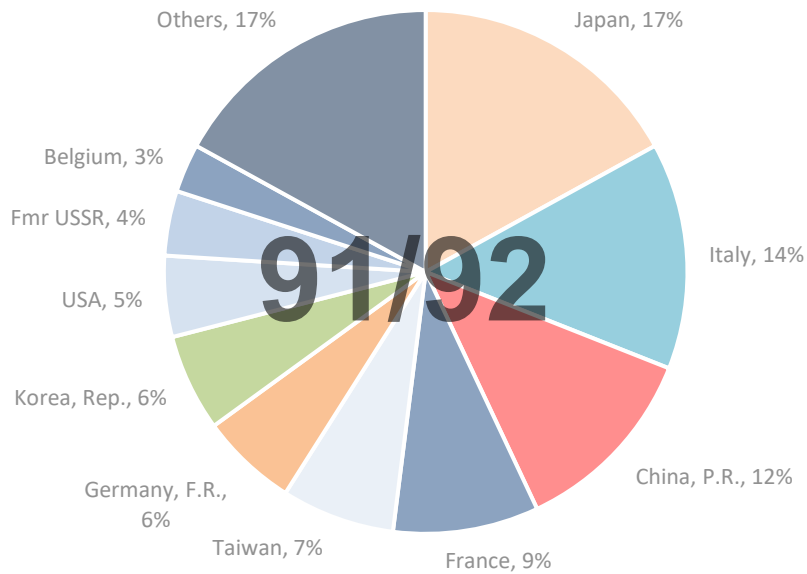
19/20 - Export Snap Shot (254.11 m/kg greasy equivalent)



China, P.R. (Largest Market Share)



91/92 - Export Snap Shot (784.7 m/kg greasy equivalent)



Seasonal Change m/kg

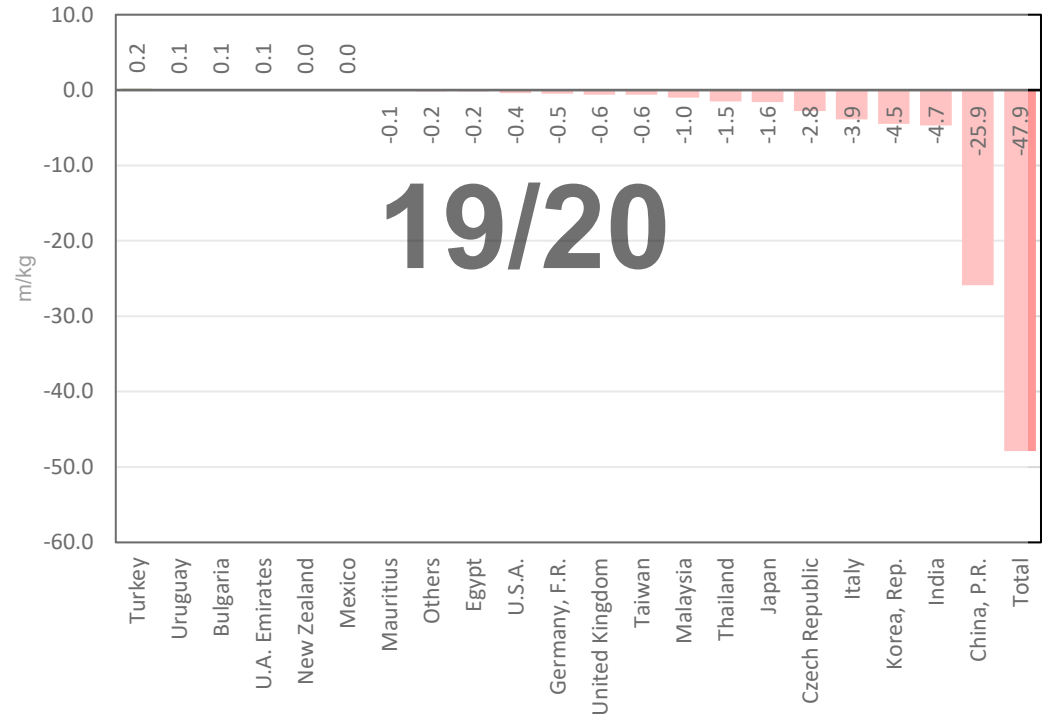




Table 8: Returns pr head for skirted fleece wool.

Skirted FLC Weight		Micron																	
9 Kg		16	16.5	17	17.5	18	18.5	19	19.5	20	21	22	23	24	25	26	28	30	32
Yield (Sch Dry)	25% Current	\$60	\$55	\$51	\$47	\$43	\$39	\$36	\$33	\$30	\$29	\$28	\$25	\$22	\$19	\$17	\$11	\$9	\$6
	10yr ave.	\$45	\$43	\$41	\$40	\$38	\$37	\$35	\$34	\$33	\$33	\$32	\$31	\$28	\$24	\$22	\$17	\$14	\$11
	30% Current	\$72	\$66	\$61	\$57	\$52	\$47	\$43	\$40	\$36	\$34	\$33	\$30	\$26	\$23	\$21	\$13	\$11	\$7
	10yr ave.	\$54	\$52	\$49	\$48	\$46	\$44	\$42	\$41	\$40	\$39	\$38	\$37	\$34	\$29	\$26	\$20	\$17	\$14
	35% Current	\$84	\$77	\$71	\$66	\$60	\$55	\$50	\$46	\$42	\$40	\$39	\$35	\$30	\$27	\$24	\$16	\$13	\$8
	10yr ave.	\$64	\$61	\$58	\$56	\$53	\$51	\$49	\$48	\$47	\$46	\$45	\$43	\$40	\$34	\$31	\$24	\$20	\$16
	40% Current	\$96	\$88	\$82	\$76	\$69	\$63	\$57	\$53	\$48	\$46	\$44	\$40	\$35	\$30	\$27	\$18	\$14	\$9
	10yr ave.	\$73	\$69	\$66	\$64	\$61	\$59	\$56	\$55	\$53	\$52	\$51	\$50	\$46	\$39	\$35	\$27	\$23	\$18
	45% Current	\$108	\$99	\$92	\$85	\$77	\$71	\$65	\$60	\$54	\$52	\$50	\$45	\$39	\$34	\$31	\$20	\$16	\$10
	10yr ave.	\$82	\$78	\$74	\$72	\$69	\$66	\$64	\$62	\$60	\$59	\$58	\$56	\$51	\$44	\$40	\$30	\$26	\$20
	50% Current	\$120	\$110	\$102	\$95	\$86	\$79	\$72	\$66	\$60	\$57	\$55	\$50	\$44	\$38	\$34	\$22	\$18	\$11
	10yr ave.	\$91	\$86	\$82	\$80	\$76	\$73	\$71	\$68	\$67	\$65	\$64	\$62	\$57	\$49	\$44	\$34	\$29	\$23
	55% Current	\$132	\$120	\$112	\$104	\$95	\$86	\$79	\$73	\$67	\$63	\$61	\$55	\$48	\$42	\$38	\$25	\$20	\$13
	10yr ave.	\$100	\$95	\$91	\$87	\$84	\$81	\$78	\$75	\$73	\$72	\$70	\$68	\$63	\$54	\$49	\$37	\$32	\$25
	60% Current	\$144	\$131	\$122	\$113	\$103	\$94	\$86	\$79	\$73	\$69	\$67	\$60	\$52	\$46	\$41	\$27	\$21	\$14
	10yr ave.	\$109	\$104	\$99	\$95	\$92	\$88	\$85	\$82	\$80	\$78	\$77	\$74	\$68	\$59	\$53	\$40	\$34	\$27
	65% Current	\$156	\$142	\$133	\$123	\$112	\$102	\$93	\$86	\$79	\$75	\$72	\$65	\$57	\$50	\$45	\$29	\$23	\$15
	10yr ave.	\$118	\$112	\$107	\$103	\$99	\$95	\$92	\$89	\$87	\$85	\$83	\$81	\$74	\$64	\$57	\$44	\$37	\$29
	70% Current	\$168	\$153	\$143	\$132	\$121	\$110	\$101	\$93	\$85	\$80	\$78	\$70	\$61	\$53	\$48	\$31	\$25	\$16
	10yr ave.	\$127	\$121	\$115	\$111	\$107	\$103	\$99	\$96	\$93	\$91	\$90	\$87	\$80	\$69	\$62	\$47	\$40	\$32
	75% Current	\$180	\$164	\$153	\$142	\$129	\$118	\$108	\$99	\$91	\$86	\$83	\$75	\$65	\$57	\$52	\$34	\$27	\$17
	10yr ave.	\$136	\$130	\$124	\$119	\$115	\$110	\$106	\$103	\$100	\$98	\$96	\$93	\$85	\$73	\$66	\$50	\$43	\$34
	80% Current	\$192	\$175	\$163	\$151	\$138	\$126	\$115	\$106	\$97	\$92	\$89	\$79	\$70	\$61	\$55	\$36	\$29	\$18
	10yr ave.	\$145	\$138	\$132	\$127	\$122	\$118	\$113	\$110	\$107	\$104	\$102	\$99	\$91	\$78	\$71	\$54	\$46	\$36
	85% Current	\$203	\$186	\$174	\$161	\$146	\$134	\$122	\$113	\$103	\$98	\$94	\$84	\$74	\$65	\$58	\$38	\$30	\$19
	10yr ave.	\$154	\$147	\$140	\$135	\$130	\$125	\$120	\$116	\$113	\$111	\$109	\$105	\$97	\$83	\$75	\$57	\$49	\$38

The above shows estimated returns per head for skirted fleece wool. These figures do not take into account the value of skirtings and oddments and do not take into account discounts that may apply for faults under individual circumstances. These figures are based on a market index of 100% and should be used as a guide only. Returns over \$30 / head for fleece wool are highlighted.



Table 9: Returns pr head for skirted fleece wool.

Skirted FLC Weight		Micron																	
8 Kg		16	16.5	17	17.5	18	18.5	19	19.5	20	21	22	23	24	25	26	28	30	32
Yield (Sch Dry)	25% Current	\$53	\$49	\$45	\$42	\$38	\$35	\$32	\$29	\$27	\$26	\$25	\$22	\$19	\$17	\$15	\$10	\$8	\$5
	10yr ave.	\$40	\$38	\$37	\$35	\$34	\$33	\$31	\$30	\$30	\$29	\$28	\$28	\$25	\$22	\$20	\$15	\$13	\$10
	30% Current	\$64	\$58	\$54	\$50	\$46	\$42	\$38	\$35	\$32	\$31	\$30	\$26	\$23	\$20	\$18	\$12	\$10	\$6
	10yr ave.	\$48	\$46	\$44	\$42	\$41	\$39	\$38	\$37	\$36	\$35	\$34	\$33	\$30	\$26	\$24	\$18	\$15	\$12
	35% Current	\$74	\$68	\$64	\$59	\$54	\$49	\$45	\$41	\$38	\$36	\$35	\$31	\$27	\$24	\$21	\$14	\$11	\$7
	10yr ave.	\$57	\$54	\$51	\$49	\$48	\$46	\$44	\$43	\$41	\$41	\$40	\$39	\$35	\$30	\$27	\$21	\$18	\$14
	40% Current	\$85	\$78	\$73	\$67	\$61	\$56	\$51	\$47	\$43	\$41	\$39	\$35	\$31	\$27	\$24	\$16	\$13	\$8
	10yr ave.	\$65	\$61	\$59	\$57	\$54	\$52	\$50	\$49	\$47	\$46	\$45	\$44	\$40	\$35	\$31	\$24	\$20	\$16
	45% Current	\$96	\$88	\$82	\$76	\$69	\$63	\$57	\$53	\$48	\$46	\$44	\$40	\$35	\$30	\$27	\$18	\$14	\$9
	10yr ave.	\$73	\$69	\$66	\$64	\$61	\$59	\$56	\$55	\$53	\$52	\$51	\$50	\$46	\$39	\$35	\$27	\$23	\$18
	50% Current	\$106	\$97	\$91	\$84	\$77	\$70	\$64	\$59	\$54	\$51	\$49	\$44	\$39	\$34	\$31	\$20	\$16	\$10
	10yr ave.	\$81	\$77	\$73	\$71	\$68	\$65	\$63	\$61	\$59	\$58	\$57	\$55	\$51	\$44	\$39	\$30	\$26	\$20
	55% Current	\$117	\$107	\$100	\$92	\$84	\$77	\$70	\$65	\$59	\$56	\$54	\$49	\$43	\$37	\$34	\$22	\$18	\$11
	10yr ave.	\$89	\$85	\$81	\$78	\$75	\$72	\$69	\$67	\$65	\$64	\$63	\$61	\$56	\$48	\$43	\$33	\$28	\$22
	60% Current	\$128	\$117	\$109	\$101	\$92	\$84	\$77	\$71	\$65	\$61	\$59	\$53	\$46	\$41	\$37	\$24	\$19	\$12
	10yr ave.	\$97	\$92	\$88	\$85	\$82	\$78	\$75	\$73	\$71	\$70	\$68	\$66	\$61	\$52	\$47	\$36	\$31	\$24
	65% Current	\$138	\$127	\$118	\$109	\$99	\$91	\$83	\$77	\$70	\$66	\$64	\$57	\$50	\$44	\$40	\$26	\$21	\$13
	10yr ave.	\$105	\$100	\$95	\$92	\$88	\$85	\$82	\$79	\$77	\$75	\$74	\$72	\$66	\$57	\$51	\$39	\$33	\$26
	70% Current	\$149	\$136	\$127	\$118	\$107	\$98	\$89	\$82	\$75	\$72	\$69	\$62	\$54	\$47	\$43	\$28	\$22	\$14
	10yr ave.	\$113	\$108	\$102	\$99	\$95	\$91	\$88	\$85	\$83	\$81	\$80	\$77	\$71	\$61	\$55	\$42	\$36	\$28
	75% Current	\$160	\$146	\$136	\$126	\$115	\$105	\$96	\$88	\$81	\$77	\$74	\$66	\$58	\$51	\$46	\$30	\$24	\$15
	10yr ave.	\$121	\$115	\$110	\$106	\$102	\$98	\$94	\$91	\$89	\$87	\$85	\$83	\$76	\$65	\$59	\$45	\$38	\$30
	80% Current	\$170	\$156	\$145	\$134	\$122	\$112	\$102	\$94	\$86	\$82	\$79	\$71	\$62	\$54	\$49	\$32	\$25	\$16
	10yr ave.	\$129	\$123	\$117	\$113	\$109	\$104	\$100	\$97	\$95	\$93	\$91	\$88	\$81	\$70	\$63	\$48	\$41	\$32
	85% Current	\$181	\$166	\$154	\$143	\$130	\$119	\$109	\$100	\$91	\$87	\$84	\$75	\$66	\$58	\$52	\$34	\$27	\$17
	10yr ave.	\$137	\$131	\$124	\$120	\$115	\$111	\$107	\$103	\$101	\$99	\$97	\$94	\$86	\$74	\$67	\$51	\$43	\$34

The above shows estimated returns per head for skirted fleece wool. These figures do not take into account the value of skirtings and oddments and do not take into account discounts that may apply for faults under individual circumstances. These figures are based on a market index of 100% and should be used as a guide only. Returns over \$30 / head for fleece wool are highlighted.



Table 10: Returns pr head for skirted fleece wool.

Skirted FLC Weight		Micron																	
7 Kg		16	16.5	17	17.5	18	18.5	19	19.5	20	21	22	23	24	25	26	28	30	32
Yield (Sch Dry)	25% Current	\$47	\$43	\$40	\$37	\$33	\$31	\$28	\$26	\$24	\$22	\$22	\$19	\$17	\$15	\$13	\$9	\$7	\$4
	10yr ave.	\$35	\$34	\$32	\$31	\$30	\$29	\$27	\$27	\$26	\$25	\$25	\$24	\$22	\$19	\$17	\$13	\$11	\$9
	30% Current	\$56	\$51	\$48	\$44	\$40	\$37	\$34	\$31	\$28	\$27	\$26	\$23	\$20	\$18	\$16	\$10	\$8	\$5
	10yr ave.	\$42	\$40	\$38	\$37	\$36	\$34	\$33	\$32	\$31	\$30	\$30	\$29	\$27	\$23	\$21	\$16	\$13	\$11
	35% Current	\$65	\$60	\$56	\$51	\$47	\$43	\$39	\$36	\$33	\$31	\$30	\$27	\$24	\$21	\$19	\$12	\$10	\$6
	10yr ave.	\$49	\$47	\$45	\$43	\$42	\$40	\$38	\$37	\$36	\$36	\$35	\$34	\$31	\$27	\$24	\$18	\$16	\$12
	40% Current	\$74	\$68	\$64	\$59	\$54	\$49	\$45	\$41	\$38	\$36	\$35	\$31	\$27	\$24	\$21	\$14	\$11	\$7
	10yr ave.	\$57	\$54	\$51	\$49	\$48	\$46	\$44	\$43	\$41	\$41	\$40	\$39	\$35	\$30	\$27	\$21	\$18	\$14
	45% Current	\$84	\$77	\$71	\$66	\$60	\$55	\$50	\$46	\$42	\$40	\$39	\$35	\$30	\$27	\$24	\$16	\$13	\$8
	10yr ave.	\$64	\$61	\$58	\$56	\$53	\$51	\$49	\$48	\$47	\$46	\$45	\$43	\$40	\$34	\$31	\$24	\$20	\$16
	50% Current	\$93	\$85	\$79	\$74	\$67	\$61	\$56	\$52	\$47	\$45	\$43	\$39	\$34	\$30	\$27	\$17	\$14	\$9
	10yr ave.	\$71	\$67	\$64	\$62	\$59	\$57	\$55	\$53	\$52	\$51	\$50	\$48	\$44	\$38	\$34	\$26	\$22	\$18
	55% Current	\$102	\$94	\$87	\$81	\$74	\$67	\$61	\$57	\$52	\$49	\$47	\$43	\$37	\$33	\$29	\$19	\$15	\$10
	10yr ave.	\$78	\$74	\$70	\$68	\$65	\$63	\$60	\$59	\$57	\$56	\$55	\$53	\$49	\$42	\$38	\$29	\$25	\$19
	60% Current	\$112	\$102	\$95	\$88	\$80	\$73	\$67	\$62	\$56	\$54	\$52	\$46	\$41	\$36	\$32	\$21	\$17	\$11
	10yr ave.	\$85	\$81	\$77	\$74	\$71	\$69	\$66	\$64	\$62	\$61	\$60	\$58	\$53	\$46	\$41	\$31	\$27	\$21
	65% Current	\$121	\$111	\$103	\$96	\$87	\$79	\$73	\$67	\$61	\$58	\$56	\$50	\$44	\$39	\$35	\$23	\$18	\$12
	10yr ave.	\$92	\$87	\$83	\$80	\$77	\$74	\$71	\$69	\$67	\$66	\$65	\$63	\$58	\$50	\$45	\$34	\$29	\$23
	70% Current	\$130	\$119	\$111	\$103	\$94	\$86	\$78	\$72	\$66	\$63	\$60	\$54	\$47	\$42	\$37	\$24	\$20	\$12
	10yr ave.	\$99	\$94	\$90	\$87	\$83	\$80	\$77	\$75	\$73	\$71	\$70	\$67	\$62	\$53	\$48	\$37	\$31	\$25
	75% Current	\$140	\$128	\$119	\$110	\$100	\$92	\$84	\$77	\$71	\$67	\$65	\$58	\$51	\$44	\$40	\$26	\$21	\$13
	10yr ave.	\$106	\$101	\$96	\$93	\$89	\$86	\$82	\$80	\$78	\$76	\$75	\$72	\$66	\$57	\$51	\$39	\$33	\$26
	80% Current	\$149	\$136	\$127	\$118	\$107	\$98	\$89	\$82	\$75	\$72	\$69	\$62	\$54	\$47	\$43	\$28	\$22	\$14
	10yr ave.	\$113	\$108	\$102	\$99	\$95	\$91	\$88	\$85	\$83	\$81	\$80	\$77	\$71	\$61	\$55	\$42	\$36	\$28
	85% Current	\$158	\$145	\$135	\$125	\$114	\$104	\$95	\$88	\$80	\$76	\$73	\$66	\$58	\$50	\$45	\$30	\$24	\$15
	10yr ave.	\$120	\$114	\$109	\$105	\$101	\$97	\$93	\$90	\$88	\$86	\$85	\$82	\$75	\$65	\$58	\$44	\$38	\$30

The above shows estimated returns per head for skirted fleece wool. These figures do not take into account the value of skirtings and oddments and do not take into account discounts that may apply for faults under individual circumstances. These figures are based on a market index of 100% and should be used as a guide only. Returns over \$30 / head for fleece wool are highlighted.



Table 11: Returns pr head for skirted fleece wool.

Skirted FLC Weight		Micron																	
6 Kg		16	16.5	17	17.5	18	18.5	19	19.5	20	21	22	23	24	25	26	28	30	32
Yield (Sch Dry)	25% Current	\$40	\$37	\$34	\$32	\$29	\$26	\$24	\$22	\$20	\$19	\$18	\$17	\$15	\$13	\$11	\$7	\$6	\$4
	10yr ave.	\$30	\$29	\$27	\$27	\$25	\$24	\$24	\$23	\$22	\$22	\$21	\$21	\$19	\$16	\$15	\$11	\$10	\$8
	30% Current	\$48	\$44	\$41	\$38	\$34	\$31	\$29	\$26	\$24	\$23	\$22	\$20	\$17	\$15	\$14	\$9	\$7	\$5
	10yr ave.	\$36	\$35	\$33	\$32	\$31	\$29	\$28	\$27	\$27	\$26	\$26	\$25	\$23	\$20	\$18	\$13	\$11	\$9
	35% Current	\$56	\$51	\$48	\$44	\$40	\$37	\$34	\$31	\$28	\$27	\$26	\$23	\$20	\$18	\$16	\$10	\$8	\$5
	10yr ave.	\$42	\$40	\$38	\$37	\$36	\$34	\$33	\$32	\$31	\$30	\$30	\$29	\$27	\$23	\$21	\$16	\$13	\$11
	40% Current	\$64	\$58	\$54	\$50	\$46	\$42	\$38	\$35	\$32	\$31	\$30	\$26	\$23	\$20	\$18	\$12	\$10	\$6
	10yr ave.	\$48	\$46	\$44	\$42	\$41	\$39	\$38	\$37	\$36	\$35	\$34	\$33	\$30	\$26	\$24	\$18	\$15	\$12
	45% Current	\$72	\$66	\$61	\$57	\$52	\$47	\$43	\$40	\$36	\$34	\$33	\$30	\$26	\$23	\$21	\$13	\$11	\$7
	10yr ave.	\$54	\$52	\$49	\$48	\$46	\$44	\$42	\$41	\$40	\$39	\$38	\$37	\$34	\$29	\$26	\$20	\$17	\$14
	50% Current	\$80	\$73	\$68	\$63	\$57	\$52	\$48	\$44	\$40	\$38	\$37	\$33	\$29	\$25	\$23	\$15	\$12	\$8
	10yr ave.	\$61	\$58	\$55	\$53	\$51	\$49	\$47	\$46	\$44	\$43	\$43	\$41	\$38	\$33	\$29	\$22	\$19	\$15
	55% Current	\$88	\$80	\$75	\$69	\$63	\$58	\$53	\$49	\$44	\$42	\$41	\$36	\$32	\$28	\$25	\$16	\$13	\$8
	10yr ave.	\$67	\$63	\$60	\$58	\$56	\$54	\$52	\$50	\$49	\$48	\$47	\$45	\$42	\$36	\$32	\$25	\$21	\$17
	60% Current	\$96	\$88	\$82	\$76	\$69	\$63	\$57	\$53	\$48	\$46	\$44	\$40	\$35	\$30	\$27	\$18	\$14	\$9
	10yr ave.	\$73	\$69	\$66	\$64	\$61	\$59	\$56	\$55	\$53	\$52	\$51	\$50	\$46	\$39	\$35	\$27	\$23	\$18
	65% Current	\$104	\$95	\$88	\$82	\$75	\$68	\$62	\$57	\$52	\$50	\$48	\$43	\$38	\$33	\$30	\$19	\$16	\$10
	10yr ave.	\$79	\$75	\$71	\$69	\$66	\$64	\$61	\$59	\$58	\$57	\$55	\$54	\$49	\$42	\$38	\$29	\$25	\$20
	70% Current	\$112	\$102	\$95	\$88	\$80	\$73	\$67	\$62	\$56	\$54	\$52	\$46	\$41	\$36	\$32	\$21	\$17	\$11
	10yr ave.	\$85	\$81	\$77	\$74	\$71	\$69	\$66	\$64	\$62	\$61	\$60	\$58	\$53	\$46	\$41	\$31	\$27	\$21
	75% Current	\$120	\$110	\$102	\$95	\$86	\$79	\$72	\$66	\$60	\$57	\$55	\$50	\$44	\$38	\$34	\$22	\$18	\$11
	10yr ave.	\$91	\$86	\$82	\$80	\$76	\$73	\$71	\$68	\$67	\$65	\$64	\$62	\$57	\$49	\$44	\$34	\$29	\$23
	80% Current	\$128	\$117	\$109	\$101	\$92	\$84	\$77	\$71	\$65	\$61	\$59	\$53	\$46	\$41	\$37	\$24	\$19	\$12
	10yr ave.	\$97	\$92	\$88	\$85	\$82	\$78	\$75	\$73	\$71	\$70	\$68	\$66	\$61	\$52	\$47	\$36	\$31	\$24
	85% Current	\$136	\$124	\$116	\$107	\$98	\$89	\$81	\$75	\$69	\$65	\$63	\$56	\$49	\$43	\$39	\$25	\$20	\$13
	10yr ave.	\$103	\$98	\$93	\$90	\$87	\$83	\$80	\$78	\$76	\$74	\$72	\$70	\$65	\$55	\$50	\$38	\$33	\$26

The above shows estimated returns per head for skirted fleece wool. These figures do not take into account the value of skirtings and oddments and do not take into account discounts that may apply for faults under individual circumstances. These figures are based on a market index of 100% and should be used as a guide only. Returns over \$30 / head for fleece wool are highlighted.



Table 12: Returns pr head for skirted fleece wool.

Skirted FLC Weight		Micron																	
5 Kg		16	16.5	17	17.5	18	18.5	19	19.5	20	21	22	23	24	25	26	28	30	32
Yield (Sch Dry)	25% Current	\$33	\$30	\$28	\$26	\$24	\$22	\$20	\$18	\$17	\$16	\$15	\$14	\$12	\$11	\$10	\$6	\$5	\$3
	10yr ave.	\$25	\$24	\$23	\$22	\$21	\$20	\$20	\$19	\$19	\$18	\$18	\$17	\$16	\$14	\$12	\$9	\$8	\$6
	30% Current	\$40	\$37	\$34	\$32	\$29	\$26	\$24	\$22	\$20	\$19	\$18	\$17	\$15	\$13	\$11	\$7	\$6	\$4
	10yr ave.	\$30	\$29	\$27	\$27	\$25	\$24	\$24	\$23	\$22	\$22	\$21	\$21	\$19	\$16	\$15	\$11	\$10	\$8
	35% Current	\$47	\$43	\$40	\$37	\$33	\$31	\$28	\$26	\$24	\$22	\$22	\$19	\$17	\$15	\$13	\$9	\$7	\$4
	10yr ave.	\$35	\$34	\$32	\$31	\$30	\$29	\$27	\$27	\$26	\$25	\$25	\$24	\$22	\$19	\$17	\$13	\$11	\$9
	40% Current	\$53	\$49	\$45	\$42	\$38	\$35	\$32	\$29	\$27	\$26	\$25	\$22	\$19	\$17	\$15	\$10	\$8	\$5
	10yr ave.	\$40	\$38	\$37	\$35	\$34	\$33	\$31	\$30	\$30	\$29	\$28	\$28	\$25	\$22	\$20	\$15	\$13	\$10
	45% Current	\$60	\$55	\$51	\$47	\$43	\$39	\$36	\$33	\$30	\$29	\$28	\$25	\$22	\$19	\$17	\$11	\$9	\$6
	10yr ave.	\$45	\$43	\$41	\$40	\$38	\$37	\$35	\$34	\$33	\$33	\$32	\$31	\$28	\$24	\$22	\$17	\$14	\$11
	50% Current	\$67	\$61	\$57	\$53	\$48	\$44	\$40	\$37	\$34	\$32	\$31	\$28	\$24	\$21	\$19	\$12	\$10	\$6
	10yr ave.	\$50	\$48	\$46	\$44	\$42	\$41	\$39	\$38	\$37	\$36	\$36	\$34	\$32	\$27	\$25	\$19	\$16	\$13
	55% Current	\$73	\$67	\$62	\$58	\$53	\$48	\$44	\$40	\$37	\$35	\$34	\$30	\$27	\$23	\$21	\$14	\$11	\$7
	10yr ave.	\$55	\$53	\$50	\$49	\$47	\$45	\$43	\$42	\$41	\$40	\$39	\$38	\$35	\$30	\$27	\$21	\$18	\$14
	60% Current	\$80	\$73	\$68	\$63	\$57	\$52	\$48	\$44	\$40	\$38	\$37	\$33	\$29	\$25	\$23	\$15	\$12	\$8
	10yr ave.	\$61	\$58	\$55	\$53	\$51	\$49	\$47	\$46	\$44	\$43	\$43	\$41	\$38	\$33	\$29	\$22	\$19	\$15
	65% Current	\$86	\$79	\$74	\$68	\$62	\$57	\$52	\$48	\$44	\$42	\$40	\$36	\$31	\$28	\$25	\$16	\$13	\$8
	10yr ave.	\$66	\$62	\$59	\$57	\$55	\$53	\$51	\$49	\$48	\$47	\$46	\$45	\$41	\$35	\$32	\$24	\$21	\$16
	70% Current	\$93	\$85	\$79	\$74	\$67	\$61	\$56	\$52	\$47	\$45	\$43	\$39	\$34	\$30	\$27	\$17	\$14	\$9
	10yr ave.	\$71	\$67	\$64	\$62	\$59	\$57	\$55	\$53	\$52	\$51	\$50	\$48	\$44	\$38	\$34	\$26	\$22	\$18
	75% Current	\$100	\$91	\$85	\$79	\$72	\$66	\$60	\$55	\$50	\$48	\$46	\$41	\$36	\$32	\$29	\$19	\$15	\$9
	10yr ave.	\$76	\$72	\$69	\$66	\$64	\$61	\$59	\$57	\$56	\$54	\$53	\$52	\$47	\$41	\$37	\$28	\$24	\$19
	80% Current	\$106	\$97	\$91	\$84	\$77	\$70	\$64	\$59	\$54	\$51	\$49	\$44	\$39	\$34	\$31	\$20	\$16	\$10
	10yr ave.	\$81	\$77	\$73	\$71	\$68	\$65	\$63	\$61	\$59	\$58	\$57	\$55	\$51	\$44	\$39	\$30	\$26	\$20
	85% Current	\$113	\$103	\$96	\$89	\$81	\$74	\$68	\$63	\$57	\$54	\$52	\$47	\$41	\$36	\$32	\$21	\$17	\$11
	10yr ave.	\$86	\$82	\$78	\$75	\$72	\$69	\$67	\$65	\$63	\$62	\$60	\$59	\$54	\$46	\$42	\$32	\$27	\$21

The above shows estimated returns per head for skirted fleece wool. These figures do not take into account the value of skirtings and oddments and do not take into account discounts that may apply for faults under individual circumstances. These figures are based on a market index of 100% and should be used as a guide only. Returns over \$30 / head for fleece wool are highlighted.



Table 13: Returns pr head for skirted fleece wool.

Skirted FLC Weight		Micron																	
4 Kg		16	16.5	17	17.5	18	18.5	19	19.5	20	21	22	23	24	25	26	28	30	32
Yield (Sch Dry)	25% Current	\$27	\$24	\$23	\$21	\$19	\$17	\$16	\$15	\$13	\$13	\$12	\$11	\$10	\$8	\$8	\$5	\$4	\$3
	10yr ave.	\$20	\$19	\$18	\$18	\$17	\$16	\$16	\$15	\$15	\$14	\$14	\$14	\$13	\$11	\$10	\$7	\$6	\$5
	30% Current	\$32	\$29	\$27	\$25	\$23	\$21	\$19	\$18	\$16	\$15	\$15	\$13	\$12	\$10	\$9	\$6	\$5	\$3
	10yr ave.	\$24	\$23	\$22	\$21	\$20	\$20	\$19	\$18	\$18	\$17	\$17	\$17	\$15	\$13	\$12	\$9	\$8	\$6
	35% Current	\$37	\$34	\$32	\$29	\$27	\$24	\$22	\$21	\$19	\$18	\$17	\$15	\$14	\$12	\$11	\$7	\$6	\$4
	10yr ave.	\$28	\$27	\$26	\$25	\$24	\$23	\$22	\$21	\$21	\$20	\$20	\$19	\$18	\$15	\$14	\$10	\$9	\$7
	40% Current	\$43	\$39	\$36	\$34	\$31	\$28	\$26	\$24	\$22	\$20	\$20	\$18	\$15	\$14	\$12	\$8	\$6	\$4
	10yr ave.	\$32	\$31	\$29	\$28	\$27	\$26	\$25	\$24	\$24	\$23	\$23	\$22	\$20	\$17	\$16	\$12	\$10	\$8
	45% Current	\$48	\$44	\$41	\$38	\$34	\$31	\$29	\$26	\$24	\$23	\$22	\$20	\$17	\$15	\$14	\$9	\$7	\$5
	10yr ave.	\$36	\$35	\$33	\$32	\$31	\$29	\$28	\$27	\$27	\$26	\$26	\$25	\$23	\$20	\$18	\$13	\$11	\$9
	50% Current	\$53	\$49	\$45	\$42	\$38	\$35	\$32	\$29	\$27	\$26	\$25	\$22	\$19	\$17	\$15	\$10	\$8	\$5
	10yr ave.	\$40	\$38	\$37	\$35	\$34	\$33	\$31	\$30	\$30	\$29	\$28	\$28	\$25	\$22	\$20	\$15	\$13	\$10
	55% Current	\$59	\$54	\$50	\$46	\$42	\$38	\$35	\$32	\$30	\$28	\$27	\$24	\$21	\$19	\$17	\$11	\$9	\$6
	10yr ave.	\$44	\$42	\$40	\$39	\$37	\$36	\$34	\$33	\$33	\$32	\$31	\$30	\$28	\$24	\$22	\$16	\$14	\$11
	60% Current	\$64	\$58	\$54	\$50	\$46	\$42	\$38	\$35	\$32	\$31	\$30	\$26	\$23	\$20	\$18	\$12	\$10	\$6
	10yr ave.	\$48	\$46	\$44	\$42	\$41	\$39	\$38	\$37	\$36	\$35	\$34	\$33	\$30	\$26	\$24	\$18	\$15	\$12
	65% Current	\$69	\$63	\$59	\$55	\$50	\$45	\$42	\$38	\$35	\$33	\$32	\$29	\$25	\$22	\$20	\$13	\$10	\$7
	10yr ave.	\$52	\$50	\$48	\$46	\$44	\$42	\$41	\$40	\$39	\$38	\$37	\$36	\$33	\$28	\$25	\$19	\$17	\$13
	70% Current	\$74	\$68	\$64	\$59	\$54	\$49	\$45	\$41	\$38	\$36	\$35	\$31	\$27	\$24	\$21	\$14	\$11	\$7
	10yr ave.	\$57	\$54	\$51	\$49	\$48	\$46	\$44	\$43	\$41	\$40	\$39	\$39	\$35	\$30	\$27	\$21	\$18	\$14
	75% Current	\$80	\$73	\$68	\$63	\$57	\$52	\$48	\$44	\$40	\$38	\$37	\$33	\$29	\$25	\$23	\$15	\$12	\$8
	10yr ave.	\$61	\$58	\$55	\$53	\$51	\$49	\$47	\$46	\$44	\$43	\$43	\$41	\$38	\$33	\$29	\$22	\$19	\$15
	80% Current	\$85	\$78	\$73	\$67	\$61	\$56	\$51	\$47	\$43	\$41	\$39	\$35	\$31	\$27	\$24	\$16	\$13	\$8
	10yr ave.	\$65	\$61	\$59	\$57	\$54	\$52	\$50	\$49	\$47	\$46	\$45	\$44	\$40	\$35	\$31	\$24	\$20	\$16
	85% Current	\$90	\$83	\$77	\$71	\$65	\$59	\$54	\$50	\$46	\$43	\$42	\$38	\$33	\$29	\$26	\$17	\$14	\$9
	10yr ave.	\$69	\$65	\$62	\$60	\$58	\$55	\$53	\$52	\$50	\$49	\$48	\$47	\$43	\$37	\$33	\$25	\$22	\$17

The above shows estimated returns per head for skirted fleece wool. These figures do not take into account the value of skirtings and oddments and do not take into account discounts that may apply for faults under individual circumstances. These figures are based on a market index of 100% and should be used as a guide only. Returns over \$30 / head for fleece wool are highlighted.



Table 14: Returns pr head for skirted fleece wool.

Skirted FLC Weight		Micron																	
3 Kg		16	16.5	17	17.5	18	18.5	19	19.5	20	21	22	23	24	25	26	28	30	32
Yield (Sch Dry)	25% Current	\$20	\$18	\$17	\$16	\$14	\$13	\$12	\$11	\$10	\$10	\$9	\$8	\$7	\$6	\$6	\$4	\$3	\$2
	10yr ave.	\$15	\$14	\$14	\$13	\$13	\$12	\$12	\$11	\$11	\$11	\$11	\$10	\$9	\$8	\$7	\$6	\$5	\$4
	30% Current	\$24	\$22	\$20	\$19	\$17	\$16	\$14	\$13	\$12	\$11	\$11	\$10	\$9	\$8	\$7	\$4	\$4	\$2
	10yr ave.	\$18	\$17	\$16	\$16	\$15	\$15	\$14	\$14	\$13	\$13	\$13	\$12	\$11	\$10	\$9	\$7	\$6	\$5
	35% Current	\$28	\$26	\$24	\$22	\$20	\$18	\$17	\$15	\$14	\$13	\$13	\$12	\$10	\$9	\$8	\$5	\$4	\$3
	10yr ave.	\$21	\$20	\$19	\$19	\$18	\$17	\$16	\$16	\$16	\$15	\$15	\$14	\$13	\$11	\$10	\$8	\$7	\$5
	40% Current	\$32	\$29	\$27	\$25	\$23	\$21	\$19	\$18	\$16	\$15	\$15	\$13	\$12	\$10	\$9	\$6	\$5	\$3
	10yr ave.	\$24	\$23	\$22	\$21	\$20	\$20	\$19	\$18	\$18	\$17	\$17	\$17	\$15	\$13	\$12	\$9	\$8	\$6
	45% Current	\$36	\$33	\$31	\$28	\$26	\$24	\$22	\$20	\$18	\$17	\$17	\$15	\$13	\$11	\$10	\$7	\$5	\$3
	10yr ave.	\$27	\$26	\$25	\$24	\$23	\$22	\$21	\$21	\$20	\$20	\$19	\$19	\$17	\$15	\$13	\$10	\$9	\$7
	50% Current	\$40	\$37	\$34	\$32	\$29	\$26	\$24	\$22	\$20	\$19	\$18	\$17	\$15	\$13	\$11	\$7	\$6	\$4
	10yr ave.	\$30	\$29	\$27	\$27	\$25	\$24	\$24	\$23	\$22	\$22	\$21	\$21	\$19	\$16	\$15	\$11	\$10	\$8
	55% Current	\$44	\$40	\$37	\$35	\$32	\$29	\$26	\$24	\$22	\$21	\$20	\$18	\$16	\$14	\$13	\$8	\$7	\$4
	10yr ave.	\$33	\$32	\$30	\$29	\$28	\$27	\$26	\$25	\$24	\$24	\$23	\$23	\$21	\$18	\$16	\$12	\$11	\$8
	60% Current	\$48	\$44	\$41	\$38	\$34	\$31	\$29	\$26	\$24	\$23	\$22	\$20	\$17	\$15	\$14	\$9	\$7	\$5
	10yr ave.	\$36	\$35	\$33	\$32	\$31	\$29	\$28	\$27	\$27	\$26	\$26	\$25	\$23	\$20	\$18	\$13	\$11	\$9
	65% Current	\$52	\$47	\$44	\$41	\$37	\$34	\$31	\$29	\$26	\$25	\$24	\$22	\$19	\$17	\$15	\$10	\$8	\$5
	10yr ave.	\$39	\$37	\$36	\$34	\$33	\$32	\$31	\$30	\$29	\$28	\$28	\$27	\$25	\$21	\$19	\$15	\$12	\$10
	70% Current	\$56	\$51	\$48	\$44	\$40	\$37	\$34	\$31	\$28	\$27	\$26	\$23	\$20	\$18	\$16	\$10	\$8	\$5
	10yr ave.	\$42	\$40	\$38	\$37	\$36	\$34	\$33	\$32	\$31	\$30	\$30	\$29	\$27	\$23	\$21	\$16	\$13	\$11
	75% Current	\$60	\$55	\$51	\$47	\$43	\$39	\$36	\$33	\$30	\$29	\$28	\$25	\$22	\$19	\$17	\$11	\$9	\$6
	10yr ave.	\$45	\$43	\$41	\$40	\$38	\$37	\$35	\$34	\$33	\$33	\$32	\$31	\$28	\$24	\$22	\$17	\$14	\$11
	80% Current	\$64	\$58	\$54	\$50	\$46	\$42	\$38	\$35	\$32	\$31	\$30	\$26	\$23	\$20	\$18	\$12	\$10	\$6
	10yr ave.	\$48	\$46	\$44	\$42	\$41	\$39	\$38	\$37	\$36	\$35	\$34	\$33	\$30	\$26	\$24	\$18	\$15	\$12
	85% Current	\$68	\$62	\$58	\$54	\$49	\$45	\$41	\$38	\$34	\$33	\$31	\$28	\$25	\$22	\$19	\$13	\$10	\$6
	10yr ave.	\$51	\$49	\$47	\$45	\$43	\$42	\$40	\$39	\$38	\$37	\$36	\$35	\$32	\$28	\$25	\$19	\$16	\$13

The above shows estimated returns per head for skirted fleece wool. These figures do not take into account the value of skirtings and oddments and do not take into account discounts that may apply for faults under individual circumstances. These figures are based on a market index of 100% and should be used as a guide only. Returns over \$30 / head for fleece wool are highlighted.



Table 15: Returns pr head for skirted fleece wool.

Skirted FLC Weight		Micron																	
2 Kg		16	16.5	17	17.5	18	18.5	19	19.5	20	21	22	23	24	25	26	28	30	32
Yield (Sch Dry)	25% Current	\$13	\$12	\$11	\$11	\$10	\$9	\$8	\$7	\$7	\$6	\$6	\$6	\$5	\$4	\$4	\$2	\$2	\$1
	10yr ave.	\$10	\$10	\$9	\$9	\$8	\$8	\$8	\$8	\$7	\$7	\$7	\$7	\$6	\$5	\$5	\$4	\$3	\$3
	30% Current	\$16	\$15	\$14	\$13	\$11	\$10	\$10	\$9	\$8	\$8	\$7	\$7	\$6	\$5	\$5	\$3	\$2	\$2
	10yr ave.	\$12	\$12	\$11	\$11	\$10	\$10	\$9	\$9	\$9	\$9	\$9	\$8	\$8	\$7	\$6	\$4	\$4	\$3
	35% Current	\$19	\$17	\$16	\$15	\$13	\$12	\$11	\$10	\$9	\$9	\$9	\$8	\$7	\$6	\$5	\$3	\$3	\$2
	10yr ave.	\$14	\$13	\$13	\$12	\$12	\$11	\$11	\$11	\$10	\$10	\$10	\$10	\$9	\$8	\$7	\$5	\$4	\$4
	40% Current	\$21	\$19	\$18	\$17	\$15	\$14	\$13	\$12	\$11	\$10	\$10	\$9	\$8	\$7	\$6	\$4	\$3	\$2
	10yr ave.	\$16	\$15	\$15	\$14	\$14	\$13	\$13	\$12	\$12	\$12	\$11	\$11	\$10	\$9	\$8	\$6	\$5	\$4
	45% Current	\$24	\$22	\$20	\$19	\$17	\$16	\$14	\$13	\$12	\$11	\$11	\$10	\$9	\$8	\$7	\$4	\$4	\$2
	10yr ave.	\$18	\$17	\$16	\$16	\$15	\$15	\$14	\$14	\$13	\$13	\$13	\$12	\$11	\$10	\$9	\$7	\$6	\$5
	50% Current	\$27	\$24	\$23	\$21	\$19	\$17	\$16	\$15	\$13	\$13	\$12	\$11	\$10	\$8	\$8	\$5	\$4	\$3
	10yr ave.	\$20	\$19	\$18	\$18	\$17	\$16	\$16	\$15	\$15	\$14	\$14	\$14	\$13	\$11	\$10	\$7	\$6	\$5
	55% Current	\$29	\$27	\$25	\$23	\$21	\$19	\$18	\$16	\$15	\$14	\$14	\$12	\$11	\$9	\$8	\$5	\$4	\$3
	10yr ave.	\$22	\$21	\$20	\$19	\$19	\$18	\$17	\$17	\$16	\$16	\$16	\$15	\$14	\$12	\$11	\$8	\$7	\$6
	60% Current	\$32	\$29	\$27	\$25	\$23	\$21	\$19	\$18	\$16	\$15	\$15	\$13	\$12	\$10	\$9	\$6	\$5	\$3
	10yr ave.	\$24	\$23	\$22	\$21	\$20	\$20	\$19	\$18	\$18	\$17	\$17	\$17	\$15	\$13	\$12	\$9	\$8	\$6
	65% Current	\$35	\$32	\$29	\$27	\$25	\$23	\$21	\$19	\$17	\$17	\$16	\$14	\$13	\$11	\$10	\$6	\$5	\$3
	10yr ave.	\$26	\$25	\$24	\$23	\$22	\$21	\$20	\$20	\$19	\$19	\$18	\$18	\$16	\$14	\$13	\$10	\$8	\$7
	70% Current	\$37	\$34	\$32	\$29	\$27	\$24	\$22	\$21	\$19	\$18	\$17	\$15	\$14	\$12	\$11	\$7	\$6	\$4
	10yr ave.	\$28	\$27	\$26	\$25	\$24	\$23	\$22	\$21	\$21	\$20	\$20	\$19	\$18	\$15	\$14	\$10	\$9	\$7
	75% Current	\$40	\$37	\$34	\$32	\$29	\$26	\$24	\$22	\$20	\$19	\$18	\$17	\$15	\$13	\$11	\$7	\$6	\$4
	10yr ave.	\$30	\$29	\$27	\$27	\$25	\$24	\$24	\$23	\$22	\$22	\$21	\$21	\$19	\$16	\$15	\$11	\$10	\$8
	80% Current	\$43	\$39	\$36	\$34	\$31	\$28	\$26	\$24	\$22	\$20	\$20	\$18	\$15	\$14	\$12	\$8	\$6	\$4
	10yr ave.	\$32	\$31	\$29	\$28	\$27	\$26	\$25	\$24	\$24	\$23	\$23	\$22	\$20	\$17	\$16	\$12	\$10	\$8
	85% Current	\$45	\$41	\$39	\$36	\$33	\$30	\$27	\$25	\$23	\$22	\$21	\$19	\$16	\$14	\$13	\$8	\$7	\$4
	10yr ave.	\$34	\$33	\$31	\$30	\$29	\$28	\$27	\$26	\$25	\$25	\$24	\$23	\$22	\$18	\$17	\$13	\$11	\$9

The above shows estimated returns per head for skirted fleece wool. These figures do not take into account the value of skirtings and oddments and do not take into account discounts that may apply for faults under individual circumstances. These figures are based on a market index of 100% and should be used as a guide only. Returns over \$30 / head for fleece wool are highlighted.