



# JEMALONG WOOL BULLETIN

(week ending 6/10/2011)

**Table 1: Northern Region Micron Price Guides**

CURRENT MARKET			12 MONTH COMPARISONS								3 YEAR COMPARISONS					Percentile	10 YEAR COMPARISONS					Percentile
Mic. Price Guides	6/10/2011 Current Price	29/09/2011 Weekly Change	6/10/2010 This time Last Year	Now compared to Last Year	12 Month Low	Now compared to Low	12 Month High	Now compared to High	Low	High	Average	Now compared to 3yr ave	Low	High	10 year Average		Now compared to 10yr ave					
NRI	1198	-40 -3.3%	911	+287 32%	911	+287 32%	1491	-293 -20%	749	1491	1009	+189 19%	75%	657	1491	915	+283 31%	92%				
16*	2050	-250 -12.2%	1670	+380 23%	1670	+380 23%	2800	-750 -27%	1385	2800	1865	+185 10%	74%									
16.5*	1910	-190 -9.9%	1500	+410 27%	1500	+410 27%	2680	-770 -29%	1247	2680	1719	+191 11%	74%									
17*	1730	-220 -12.7%	1390	+340 24%	1390	+340 24%	2530	-800 -32%	1166	2530	1587	+143 9%	70%	1100	2530	1439	+291 20%	87%				
17.5*	1600	-150 -9.4%	1300	+300 23%	1300	+300 23%	2360	-760 -32%	1081	2360	1489	+111 7%	69%									
18	1533	-33 -2.2%	1237	+296 24%	1237	+296 24%	2193	-660 -30%	1035	2193	1398	+135 10%	70%	916	2193	1274	+259 20%	83%				
18.5	1472	-19 -1.3%	1163	+309 27%	1163	+309 27%	1963	-491 -25%	971	1963	1304	+168 13%	71%	843	1963							
19	1413	-24 -1.7%	1058	+355 34%	1058	+355 34%	1776	-363 -20%	894	1776	1201	+212 18%	74%	803	1776	1096	+317 29%	93%				
19.5	1357	-21 -1.5%	973	+384 39%	973	+384 39%	1670	-313 -19%	814	1670	1099	+258 23%	76%	749	1670							
20	1295	-25 -1.9%	931	+364 39%	931	+364 39%	1588	-293 -18%	739	1588	1019	+276 27%	80%	695	1588	964	+331 34%	93%				
21	1250	-31 -2.5%	914	+336 37%	914	+336 37%	1522	-272 -18%	692	1522	986	+264 27%	81%	660	1522	923	+327 35%	91%				
22	1163	-46 -4.0%	885	+278 31%	885	+278 31%	1461	-298 -20%	680	1461	957	+206 22%	80%	655	1461	897	+266 30%	88%				
23	1060	0	849	+211 25%	849	+211 25%	1324	-264 -20%	663	1324	918	+142 15%	79%	644	1340	871	+189 22%	87%				
24	996	0	787	+209 27%	787	+209 27%	1170	-174 -15%	647	1170	847	+149 18%	78%	637	1299	825	+171 21%	84%				
25	923	-20 -2.2%	716	+207 29%	716	+207 29%	1048	-125 -12%	565	1048	736	+187 25%	85%	567	1198	737	+186 25%	81%				
26	818	-39 -4.8%	613	+205 33%	613	+205 33%	928	-110 -12%	504	928	665	+153 23%	81%	532	1088	674	+144 21%	77%				
28	665	-11 -1.7%	449	+216 48%	449	+216 48%	734	-69 -9%	431	734	519	+146 28%	84%	424	889	532	+133 25%	81%				
30	624	+1 0.2%	390	+234 60%	390	+234 60%	670	-46 -7%	377	670	463	+161 35%	89%	344	729	463	+161 35%	90%				
32	585	0	354	+231 65%	354	+231 65%	638	-53 -8%	326	638	411	+174 42%	94%	297	669	418	+167 40%	94%				
MC	743	+8 1.1%	569	+174 31%	569	+174 31%	831	-88 -11%	444	831	620	+123 20%	84%	380	831	526	+217 41%	95%				

**Note:**

\* Due to the irregular market quoting for some fine wool categories, figures shown relating to micron categories below 18 micron are an estimate based on the AWEX Premium & Discounts Report & other available information.

\* For any category, where there is insufficient quantity offered to enable AWEX to quote, a quote will be provided based on the best available information.

\* 10 Year data is not available for some micron categories, which may result in blank spaces in the table above.

**Definitions:**

\* A Percentile, is a value on a scale of one hundred that indicates the percent of a distribution that is equal to or below it. In general a percentile between 25% and 75% is considered normal, a percentile below 25% is considered below normal and a percentile above 75% is considered above normal.

Three and ten year percentiles shown in the table above, detail the period of time during the past 3 & 10 years that the market has traded either at or below its current price.

The higher the percentile, the stronger the market.

Source: Australian Wool Exchange, Australian Wool Innovation, Sydney Futures Exchange, x-rates.com

Disclaimer: While all due care has been taken in the preparation of this document, no warranty is made as to its accuracy, reliability or completeness. To the extent permitted by law neither Jemalong or their sources including subsidiaries and staff, accept liability to any person for loss or damage arising from the use of this information.



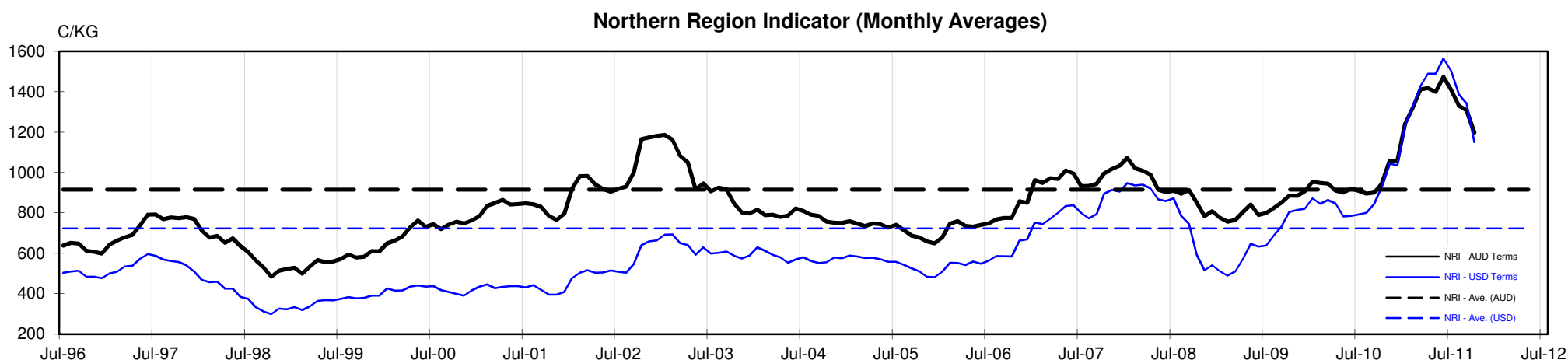
## MARKET COMMENTARY

One Australian Dollar = \$ 0.96 US, as of 6/10/2011

### NORTHERN REGION –Sale Week 14/11 (43,823 bales offered nationally)

On Wednesday - Merino fleece, 19.5 to 21 microns opened 15 cents lower and remained at that level until the close. 22 microns closed 20 cents cheaper on a limited selection, however it was the finer microns that posted significant reductions, with 18 to 19 microns falling 30-50 cents while 17.5 micron and finer suffered 150 cent losses. Merino skirtings, 19 micron and broader with 3-5% Vm fell 20 cents while 18 microns and finer fell 30-40 cents, with the burrier lots least affected. In the oddments, fine locks (<18um) fell 20, while others remained unchanged. Crutchings & Stains also finished generally unchanged. Crossbreds on a small offering closed a little easier with 27-29 microns up to 10 cents cheaper, while 30 micron and broader remained unchanged. 8.3% PI

On Thursday - A very solid market had 20 to 22 microns fully firm with 18 to 19.5 microns finding support to lift by 10 cents. The finer end of the market still struggled and continued to ease a further 20-30 cents. All skirtings descriptions remained fully firm despite some discounting for cot & colour, with the better length and lower Vm lots tending in buyers favour. In the oddments, 18 micron locks found favour gaining 20 cents, while the rest remained firm. Crutchings & stains closed unchanged. Crossbreds also remained steady, retaining their previous levels for 27 to 30 microns. 14.2% PI





**Table 4: 19 micron SFE**

Wednesday, 5 October 2011

Delivery Mth	Oct-11	Dec-11	Feb-11	Apr-12	Jun-12	Aug-12	Oct-12	Dec-12	Feb-12
19 Micron SFE	1465	1415	1365	1345	1315	1305	1305	1265	1265
Average	1318	1337	1113	1378	1408	1397	1398	1398	1360
Maximum	1707	1677	1605	1622	1612	1525	1525	1525	1652
Minimum	1034	1034	983	1106	1210	1285	1285	1285	1053

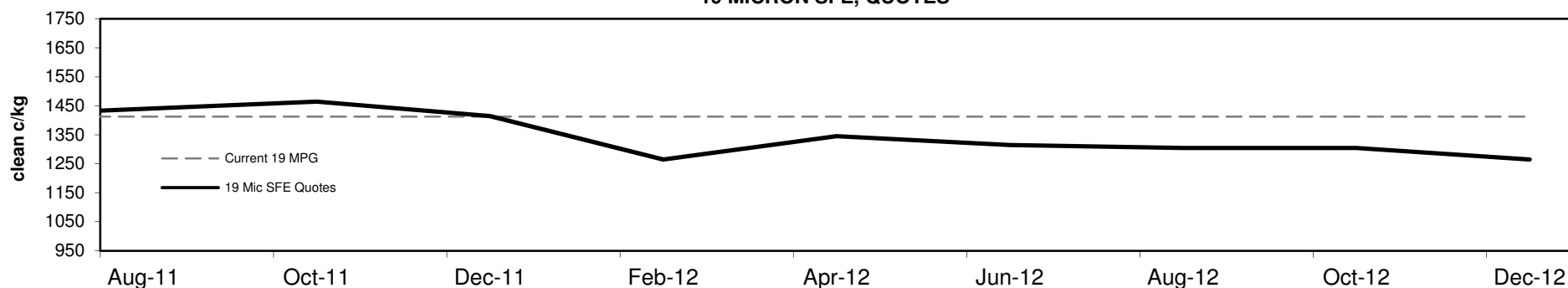
**Table 5: 19 micron SFE, as a percentile of the 19 micron MPG**

3 Year Percentile	75%	74%	74%	74%	74%	73%	73%	70%	70%
10 Year Percentile	93%	93%	91%	90%	88%	87%	87%	85%	85%

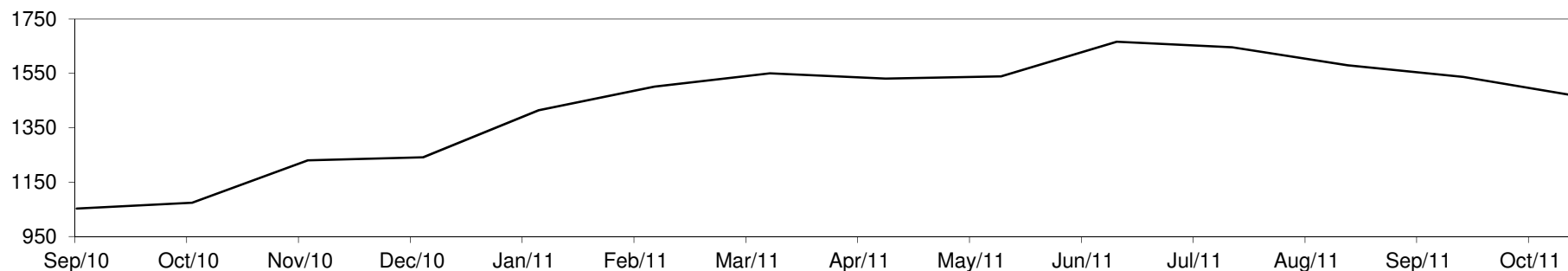
**Table 6: 19 micron SFE, compared to MPG**

SFE - MPG	+52	4%	+2	0%	-48	-3%	-68	-5%	-98	-7%	-108	-8%	-108	-8%	-148	-10%	-148	-10%
SFE - MPG, 1 year Ave.	-95	-6%	-145	-9%	-195	-13%	-215	-14%	-245	-16%	-255	-16%	-255	-16%	-295	-19%	-295	-19%
SFE - MPG, 3 year Ave.	+264	22%	+214	18%	+164	14%	+144	12%	+114	9%	+104	9%	+104	9%	+64	5%	+64	5%
SFE - MPG, 10 year Ave.	+369	34%	+319	29%	+269	25%	+249	23%	+219	20%	+209	19%	+209	19%	+169	15%	+169	15%

**19 MICRON SFE, QUOTES**



**19 Micron SFE, Front month movement**





**Table 7: 21 micron SFE**

Wednesday, 5 October 2011

Delivery Mth	Oct-11	Dec-11	Feb-11	Apr-12	Jun-12	Aug-12	Oct-12	Dec-12	Feb-12
21 Micron SFE	1285	1268	1240	1195	1166	1055	1123	1090	1055
Average	1091	1095	962	1121	1116	1130	1151	1151	1103
Maximum	1434	1411	1343	1303	1326	1316	1283	1283	1393
Minimum	880	880	860	934	990	1046	1013	1013	880

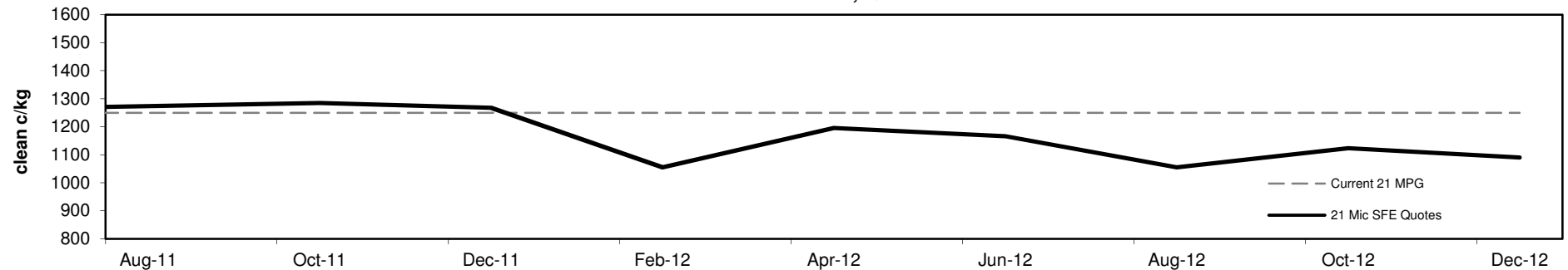
**Table 8: 21 micron SFE, as a percentile of the 21 micron MPG**

3 Year Percentile	83%	82%	80%	80%	78%	74%	76%	74%	74%
10 Year Percentile	95%	92%	90%	89%	88%	85%	87%	86%	85%

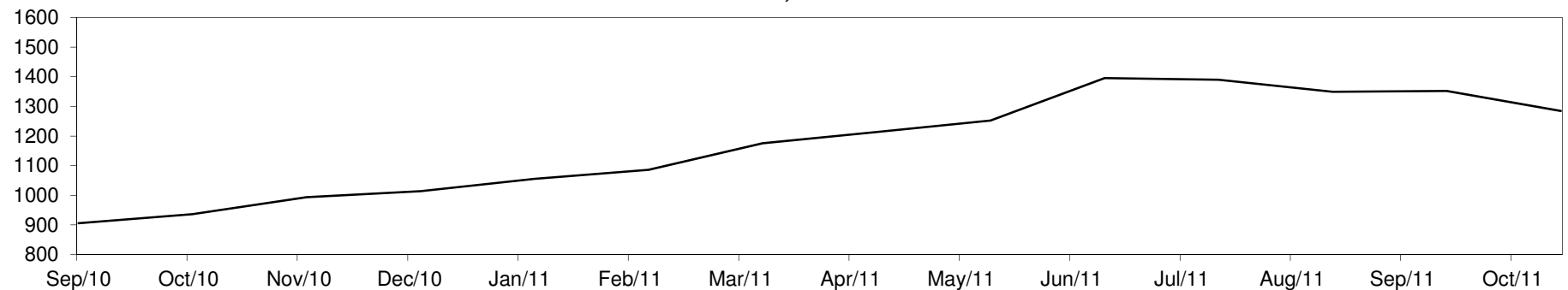
**Table 9: 21 micron SFE, compared to MPG**

SFE - MPG	+35	3%	+18	1%	-10	-1%	-55	-4%	-84	-7%	-195	-16%	-127	-10%	-160	-13%	-195	-16%
SFE - MPG, 1 year Ave.	+34	3%	+17	1%	-11	-1%	-56	-4%	-85	-7%	-196	-16%	-128	-10%	-161	-13%	-196	-16%
SFE - MPG, 3 year Ave.	+299	30%	+282	29%	+254	26%	+209	21%	+180	18%	+69	7%	+137	14%	+104	11%	+69	7%
SFE - MPG, 10 year Ave.	+362	39%	+345	37%	+317	34%	+272	29%	+243	26%	+132	14%	+200	22%	+167	18%	+132	14%

**21 MICRON SFE, QUOTES**



**21 Micron SFE, Front month movement**





**Table 10: 23 micron SFE**

Wednesday, 5 October 2011

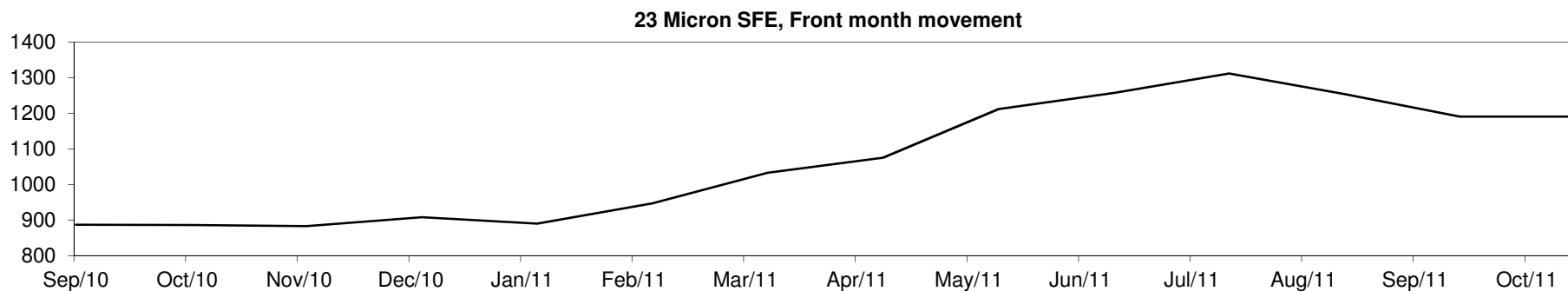
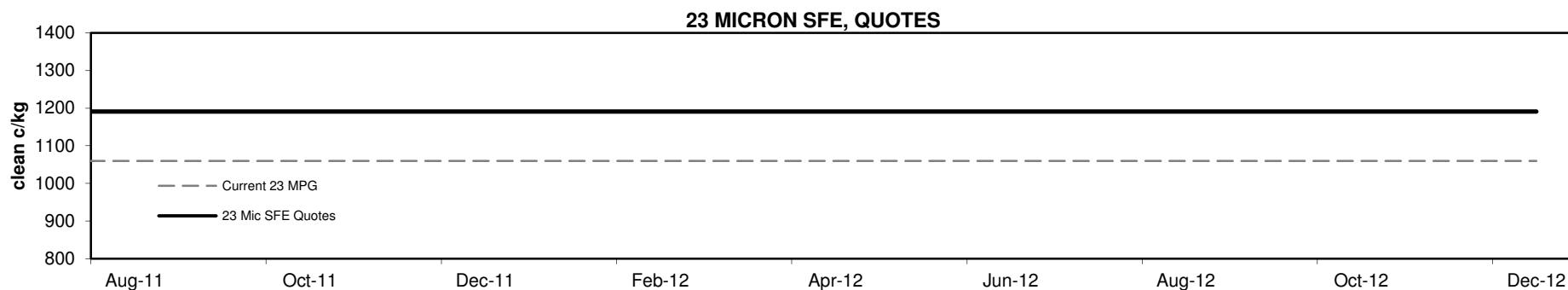
Delivery Mth	Oct-11	Dec-11	Feb-11	Apr-12	Jun-12	Aug-12	Oct-12	Dec-12	Feb-12
23 Micron SFE	1191	1191	1191	1191	1191	1191	1191	1191	1191
Average	1005	1023	870	1079	1120	1179	1234	1234	1046
Maximum	1312	1312	1191	1312	1312	1312	1312	1312	1312
Minimum	883	883	760	883	890	1033	1191	1191	883

**Table 11: 23 micron SFE, as a percentile of the 23 micron MPG**

3 Year Percentile	87%	87%	87%	87%	87%	87%	87%	87%	87%
10 Year Percentile	91%	91%	91%	91%	91%	91%	91%	91%	91%

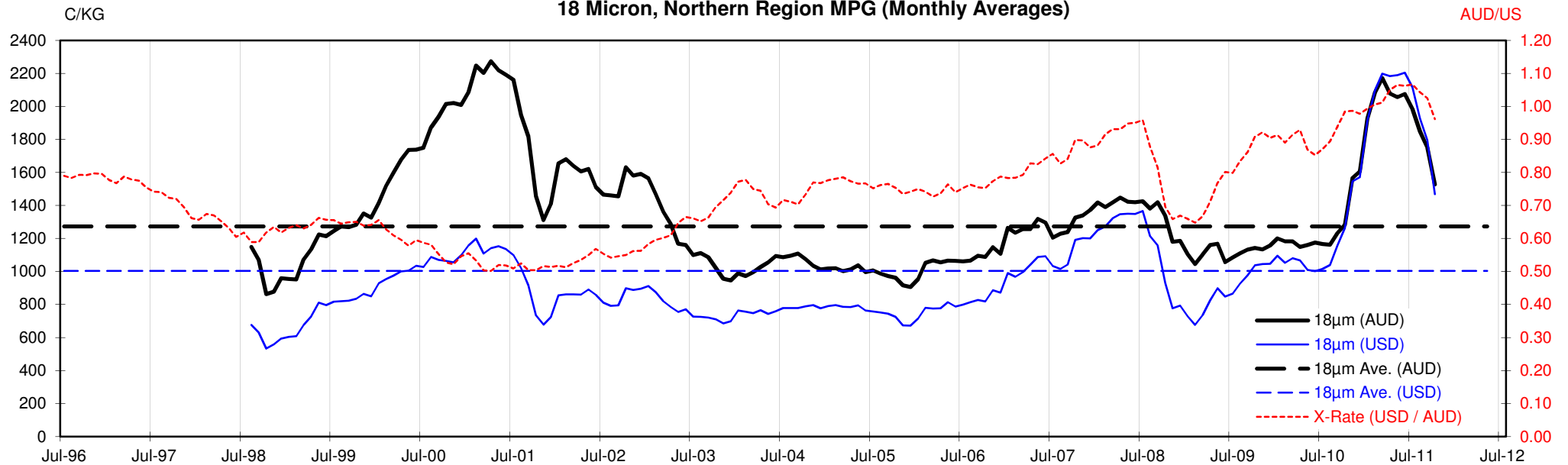
**Table 12: 23 micron SFE, compared to MPG**

SFE - MPG	+131	12%	+131	12%	+131	12%	+131	12%	+131	12%	+131	12%	+131	12%	+131	12%	+131	12%
SFE - MPG, 1 year Ave.	+66	6%	+66	6%	+66	6%	+66	6%	+66	6%	+66	6%	+66	6%	+66	6%	+66	6%
SFE - MPG, 3 year Ave.	+273	30%	+273	30%	+273	30%	+273	30%	+273	30%	+273	30%	+273	30%	+273	30%	+273	30%
SFE - MPG, 10 year Ave.	+320	37%	+320	37%	+320	37%	+320	37%	+320	37%	+320	37%	+320	37%	+320	37%	+320	37%



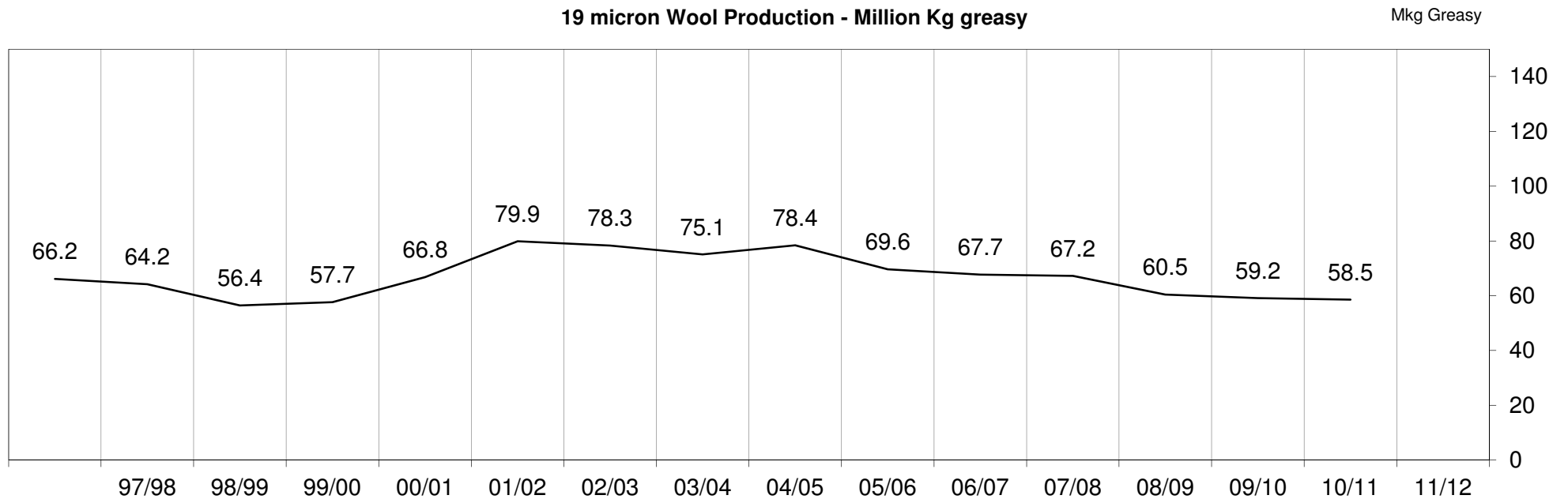
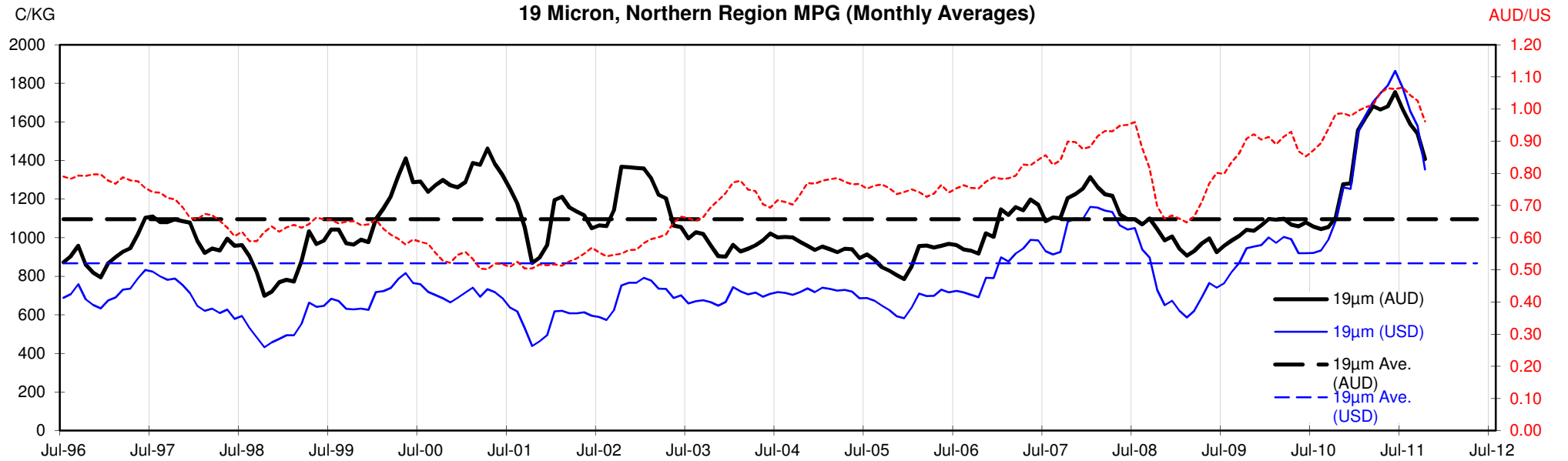


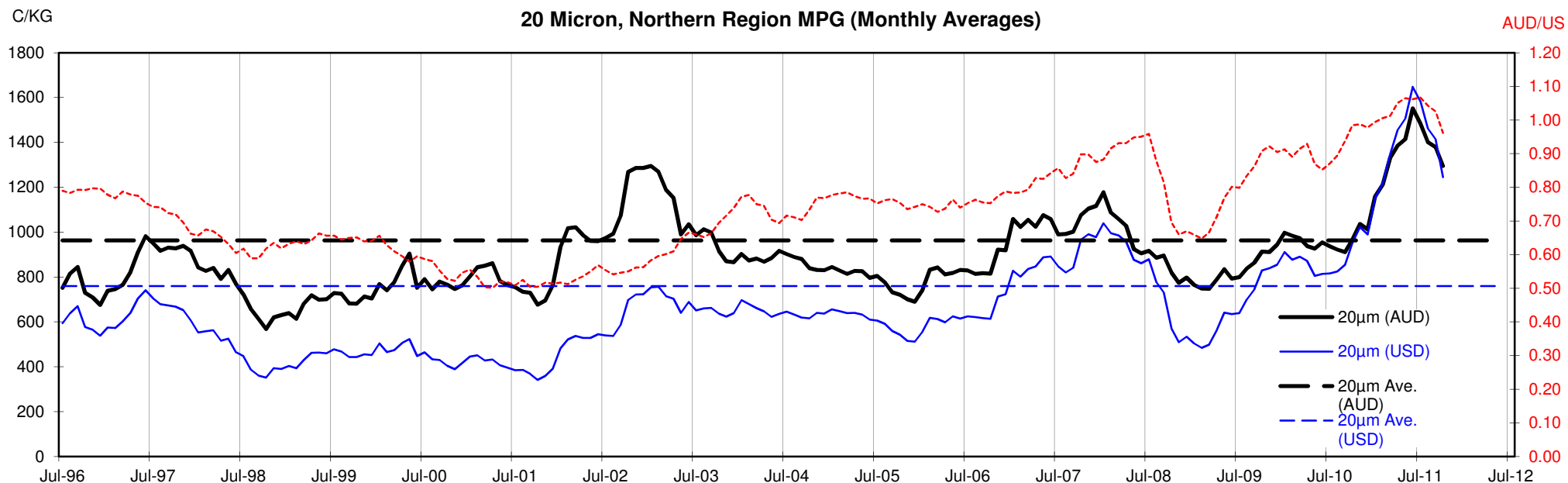
18 Micron, Northern Region MPG (Monthly Averages)

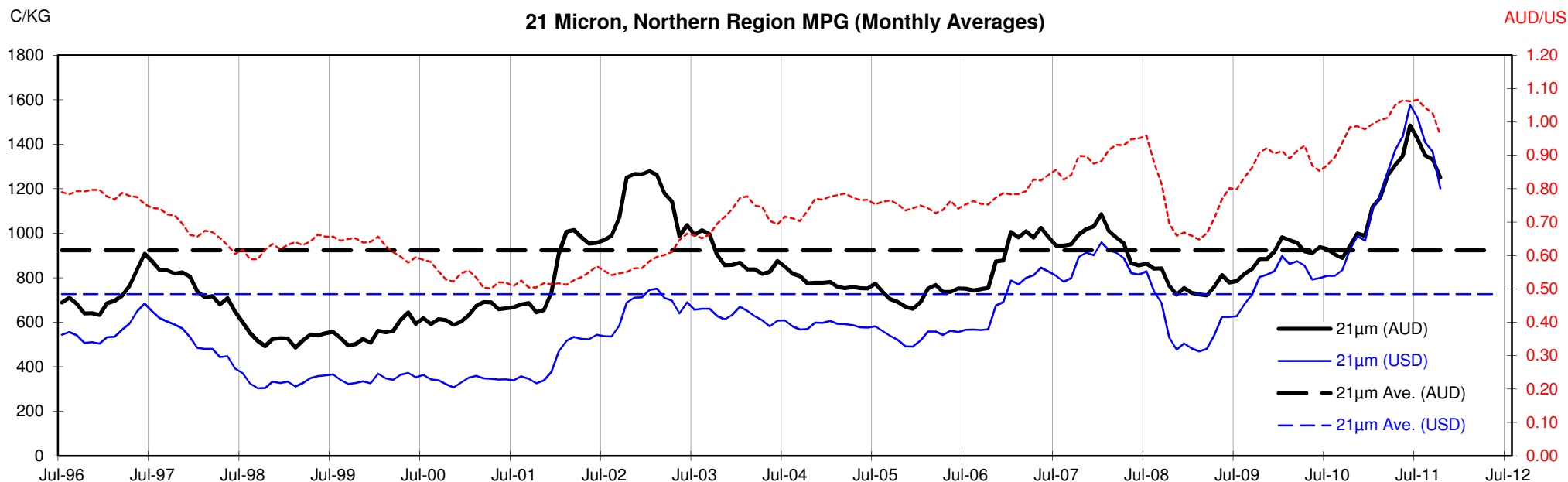


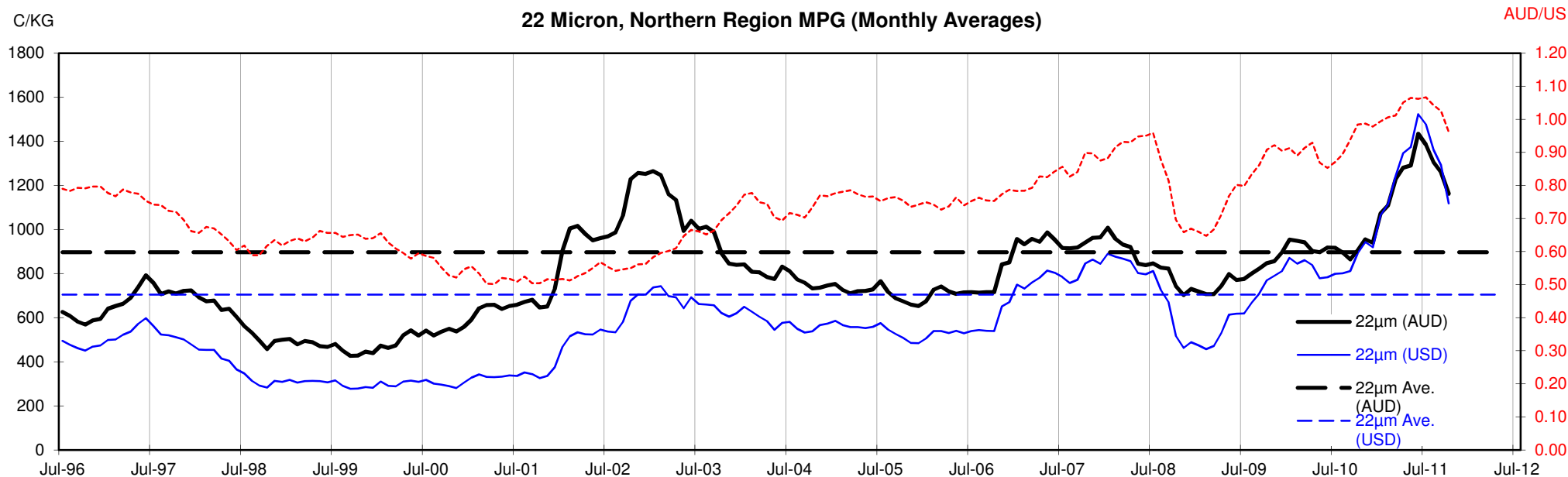
<18.5 micron Wool Production - Million Kg greasy

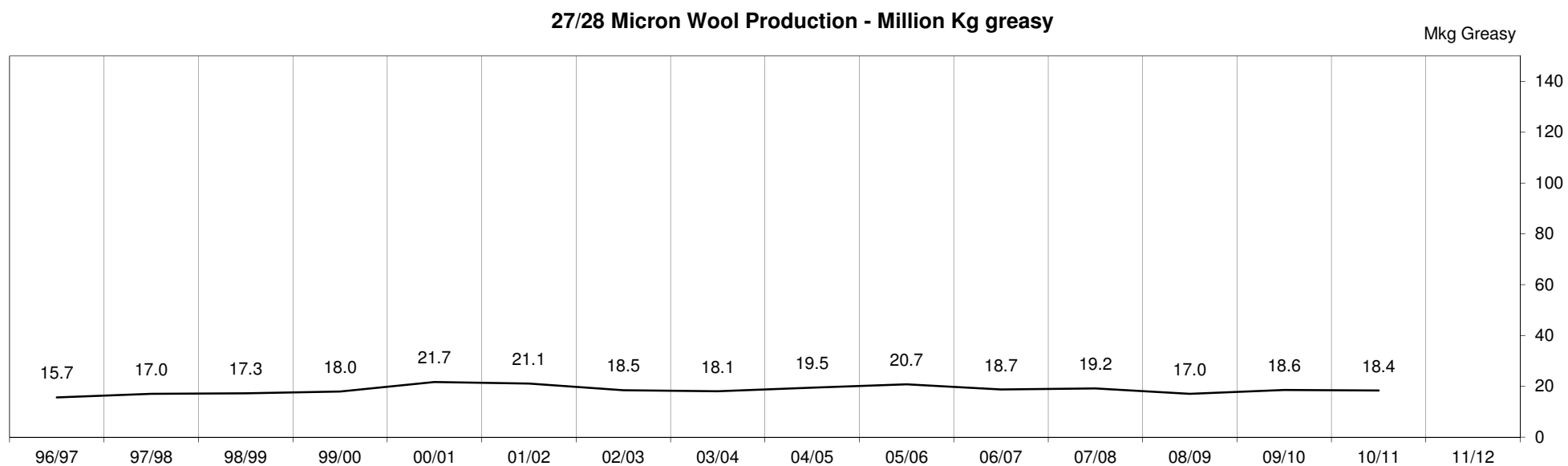
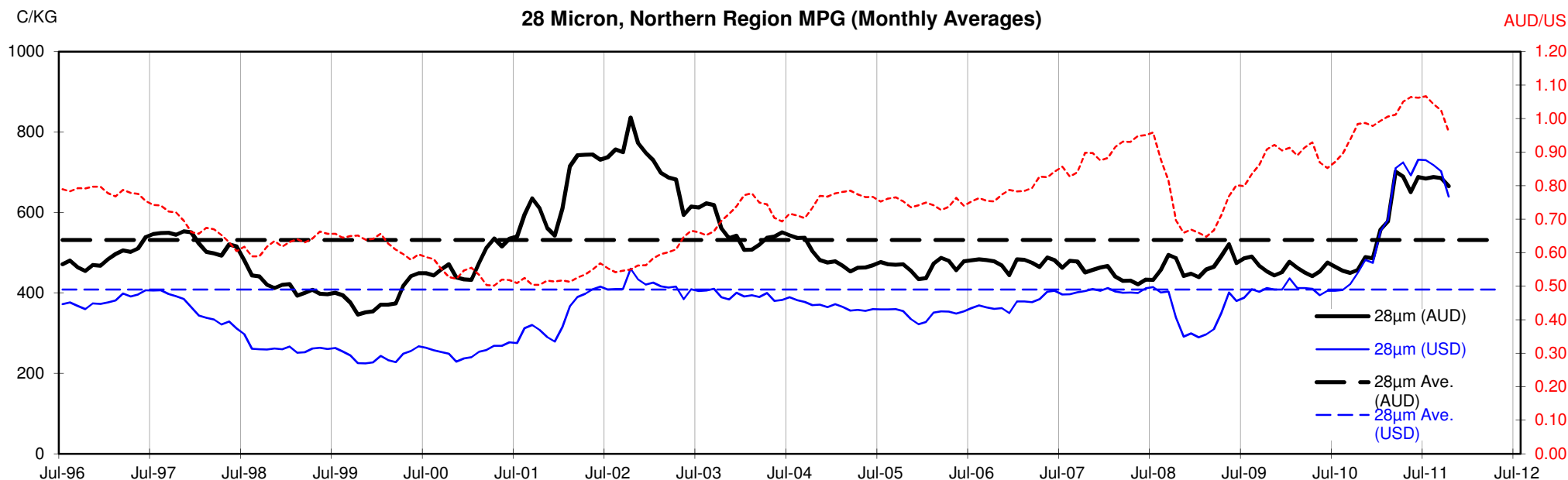












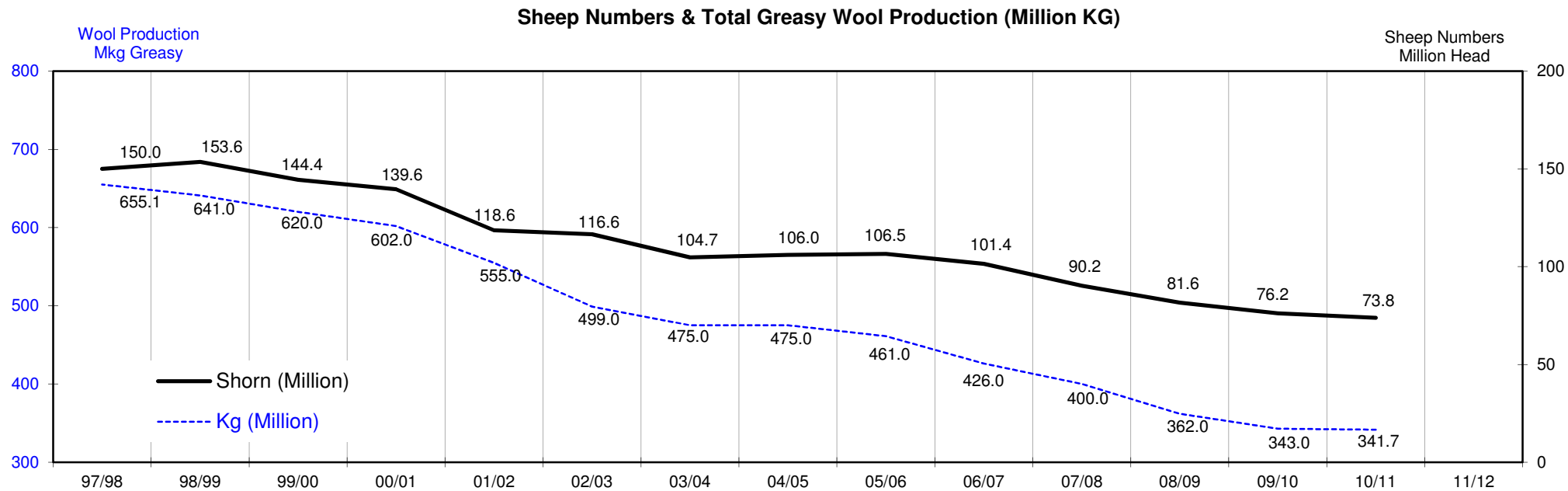
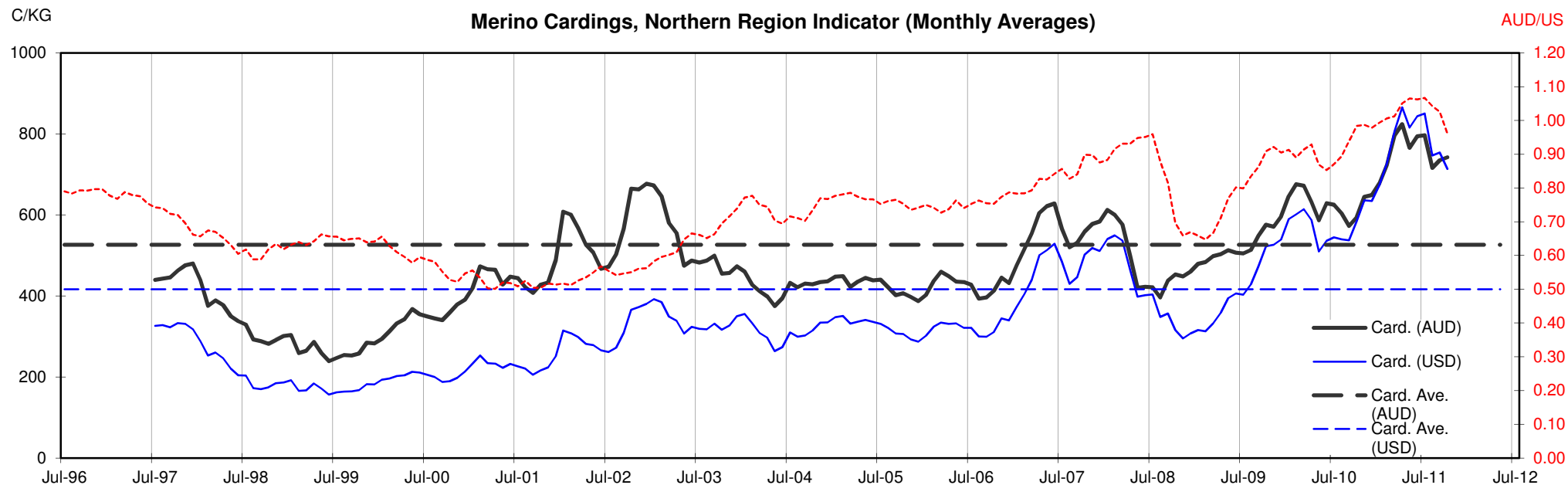




Table 13: Returns pr head for skirted fleece wool.

Skirted FLC Weight		Micron																	
9 Kg		16	16.5	17	17.5	18	18.5	19	19.5	20	21	22	23	24	25	26	28	30	32
Yield (Sch Dry)	25% Current	\$46	\$43	\$39	\$36	\$34	\$33	\$32	\$31	\$29	\$28	\$26	\$24	\$22	\$21	\$18	\$15	\$14	\$13
	10yr ave.			\$32		\$29		\$25		\$22	\$21	\$20	\$20	\$19	\$17	\$15	\$12	\$10	\$9
	30% Current	\$55	\$52	\$47	\$43	\$41	\$40	\$38	\$37	\$35	\$34	\$31	\$29	\$27	\$25	\$22	\$18	\$17	\$16
	10yr ave.			\$39		\$34		\$30		\$26	\$25	\$24	\$24	\$22	\$20	\$18	\$14	\$13	\$11
	35% Current	\$65	\$60	\$54	\$50	\$48	\$46	\$45	\$43	\$41	\$39	\$37	\$33	\$31	\$29	\$26	\$21	\$20	\$18
	10yr ave.			\$45		\$40		\$35		\$30	\$29	\$28	\$27	\$26	\$23	\$21	\$17	\$15	\$13
	40% Current	\$74	\$69	\$62	\$58	\$55	\$53	\$51	\$49	\$47	\$45	\$42	\$38	\$36	\$33	\$29	\$24	\$22	\$21
	10yr ave.			\$52		\$46		\$39		\$35	\$33	\$32	\$31	\$30	\$27	\$24	\$19	\$17	\$15
	45% Current	\$83	\$77	\$70	\$65	\$62	\$60	\$57	\$55	\$52	\$51	\$47	\$43	\$40	\$37	\$33	\$27	\$25	\$24
	10yr ave.			\$58		\$52		\$44		\$39	\$37	\$36	\$35	\$33	\$30	\$27	\$22	\$19	\$17
	50% Current	\$92	\$86	\$78	\$72	\$69	\$66	\$64	\$61	\$58	\$56	\$52	\$48	\$45	\$42	\$37	\$30	\$28	\$26
	10yr ave.			\$65		\$57		\$49		\$43	\$42	\$40	\$39	\$37	\$33	\$30	\$24	\$21	\$19
	55% Current	\$101	\$95	\$86	\$79	\$76	\$73	\$70	\$67	\$64	\$62	\$58	\$52	\$49	\$46	\$40	\$33	\$31	\$29
	10yr ave.			\$71		\$63		\$54		\$48	\$46	\$44	\$43	\$41	\$36	\$33	\$26	\$23	\$21
	60% Current	\$111	\$103	\$93	\$86	\$83	\$79	\$76	\$73	\$70	\$68	\$63	\$57	\$54	\$50	\$44	\$36	\$34	\$32
	10yr ave.			\$78		\$69		\$59		\$52	\$50	\$48	\$47	\$45	\$40	\$36	\$29	\$25	\$23
	65% Current	\$120	\$112	\$101	\$94	\$90	\$86	\$83	\$79	\$76	\$73	\$68	\$62	\$58	\$54	\$48	\$39	\$37	\$34
	10yr ave.			\$84		\$75		\$64		\$56	\$54	\$52	\$51	\$48	\$43	\$39	\$31	\$27	\$24
	70% Current	\$129	\$120	\$109	\$101	\$97	\$93	\$89	\$85	\$82	\$79	\$73	\$67	\$63	\$58	\$52	\$42	\$39	\$37
	10yr ave.			\$91		\$80		\$69		\$61	\$58	\$57	\$55	\$52	\$46	\$42	\$34	\$29	\$26
	75% Current	\$138	\$129	\$117	\$108	\$103	\$99	\$95	\$92	\$87	\$84	\$79	\$72	\$67	\$62	\$55	\$45	\$42	\$39
	10yr ave.			\$97		\$86		\$74		\$65	\$62	\$61	\$59	\$56	\$50	\$45	\$36	\$31	\$28
	80% Current	\$148	\$138	\$125	\$115	\$110	\$106	\$102	\$98	\$93	\$90	\$84	\$76	\$72	\$66	\$59	\$48	\$45	\$42
	10yr ave.			\$104		\$92		\$79		\$69	\$66	\$65	\$63	\$59	\$53	\$49	\$38	\$33	\$30
	85% Current	\$157	\$146	\$132	\$122	\$117	\$113	\$108	\$104	\$99	\$96	\$89	\$81	\$76	\$71	\$63	\$51	\$48	\$45
	10yr ave.			\$110		\$97		\$84		\$74	\$71	\$69	\$67	\$63	\$56	\$52	\$41	\$35	\$32

The above shows estimated returns per head for skirted fleece wool. These figures do not take into account the value of skirtings and oddments and do not take into account discounts that may apply for faults under individual circumstances. These figures are based on a market index of 100% and should be used as a guide only. Returns over \$30 / head for fleece wool are highlighted.

Source: Australian Wool Exchange, Australian Wool Innovation, Sydney Futures Exchange, x-rates.com

Disclaimer: While all due care has been taken in the preparation of this document, no warranty is made as to its accuracy, reliability or completeness. To the extent permitted by law neither Jemalong or their sources including subsidiaries and staff, accept liability to any person for loss or damage arising from the use of this information.



Table 14: Returns pr head for skirted fleece wool.

Skirted FLC Weight		Micron																	
8 Kg		16	16.5	17	17.5	18	18.5	19	19.5	20	21	22	23	24	25	26	28	30	32
Yield (Sch Dry)	25% Current	\$41	\$38	\$35	\$32	\$31	\$29	\$28	\$27	\$26	\$25	\$23	\$21	\$20	\$18	\$16	\$13	\$12	\$12
	10yr ave.			\$29		\$25		\$22		\$19	\$18	\$18	\$17	\$17	\$15	\$13	\$11	\$9	\$8
	30% Current	\$49	\$46	\$42	\$38	\$37	\$35	\$34	\$33	\$31	\$30	\$28	\$25	\$24	\$22	\$20	\$16	\$15	\$14
	10yr ave.			\$35		\$31		\$26		\$23	\$22	\$22	\$21	\$20	\$18	\$16	\$13	\$11	\$10
	35% Current	\$57	\$53	\$48	\$45	\$43	\$41	\$40	\$38	\$36	\$35	\$33	\$30	\$28	\$26	\$23	\$19	\$17	\$16
	10yr ave.			\$40		\$36		\$31		\$27	\$26	\$25	\$24	\$23	\$21	\$19	\$15	\$13	\$12
	40% Current	\$66	\$61	\$55	\$51	\$49	\$47	\$45	\$43	\$41	\$40	\$37	\$34	\$32	\$30	\$26	\$21	\$20	\$19
	10yr ave.			\$46		\$41		\$35		\$31	\$30	\$29	\$28	\$26	\$24	\$22	\$17	\$15	\$13
	45% Current	\$74	\$69	\$62	\$58	\$55	\$53	\$51	\$49	\$47	\$45	\$42	\$38	\$36	\$33	\$29	\$24	\$22	\$21
	10yr ave.			\$52		\$46		\$39		\$35	\$33	\$32	\$31	\$30	\$27	\$24	\$19	\$17	\$15
	50% Current	\$82	\$76	\$69	\$64	\$61	\$59	\$57	\$54	\$52	\$50	\$47	\$42	\$40	\$37	\$33	\$27	\$25	\$23
	10yr ave.			\$58		\$51		\$44		\$39	\$37	\$36	\$35	\$33	\$29	\$27	\$21	\$19	\$17
	55% Current	\$90	\$84	\$76	\$70	\$67	\$65	\$62	\$60	\$57	\$55	\$51	\$47	\$44	\$41	\$36	\$29	\$27	\$26
	10yr ave.			\$63		\$56		\$48		\$42	\$41	\$39	\$38	\$36	\$32	\$30	\$23	\$20	\$18
	60% Current	\$98	\$92	\$83	\$77	\$74	\$71	\$68	\$65	\$62	\$60	\$56	\$51	\$48	\$44	\$39	\$32	\$30	\$28
	10yr ave.			\$69		\$61		\$53		\$46	\$44	\$43	\$42	\$40	\$35	\$32	\$26	\$22	\$20
	65% Current	\$107	\$99	\$90	\$83	\$80	\$77	\$73	\$71	\$67	\$65	\$60	\$55	\$52	\$48	\$43	\$35	\$32	\$30
	10yr ave.			\$75		\$66		\$57		\$50	\$48	\$47	\$45	\$43	\$38	\$35	\$28	\$24	\$22
	70% Current	\$115	\$107	\$97	\$90	\$86	\$82	\$79	\$76	\$73	\$70	\$65	\$59	\$56	\$52	\$46	\$37	\$35	\$33
	10yr ave.			\$81		\$71		\$61		\$54	\$52	\$50	\$49	\$46	\$41	\$38	\$30	\$26	\$23
	75% Current	\$123	\$115	\$104	\$96	\$92	\$88	\$85	\$81	\$78	\$75	\$70	\$64	\$60	\$55	\$49	\$40	\$37	\$35
	10yr ave.			\$86		\$76		\$66		\$58	\$55	\$54	\$52	\$50	\$44	\$40	\$32	\$28	\$25
	80% Current	\$131	\$122	\$111	\$102	\$98	\$94	\$90	\$87	\$83	\$80	\$74	\$68	\$64	\$59	\$52	\$43	\$40	\$37
	10yr ave.			\$92		\$82		\$70		\$62	\$59	\$57	\$56	\$53	\$47	\$43	\$34	\$30	\$27
	85% Current	\$139	\$130	\$118	\$109	\$104	\$100	\$96	\$92	\$88	\$85	\$79	\$72	\$68	\$63	\$56	\$45	\$42	\$40
	10yr ave.			\$98		\$87		\$75		\$66	\$63	\$61	\$59	\$56	\$50	\$46	\$36	\$31	\$28

The above shows estimated returns per head for skirted fleece wool. These figures do not take into account the value of skirtings and oddments and do not take into account discounts that may apply for faults under individual circumstances. These figures are based on a market index of 100% and should be used as a guide only. Returns over \$30 / head for fleece wool are highlighted.

Source: Australian Wool Exchange, Australian Wool Innovation, Sydney Futures Exchange, x-rates.com

Disclaimer: While all due care has been taken in the preparation of this document, no warranty is made as to its accuracy, reliability or completeness. To the extent permitted by law neither Jemalong or their sources including subsidiaries and staff, accept liability to any person for loss or damage arising from the use of this information.



Table 15: Returns pr head for skirted fleece wool.

Skirted FLC Weight		Micron																	
7 Kg		16	16.5	17	17.5	18	18.5	19	19.5	20	21	22	23	24	25	26	28	30	32
Yield (Sch Dry)	25% Current	\$36	\$33	\$30	\$28	\$27	\$26	\$25	\$24	\$23	\$22	\$20	\$19	\$17	\$16	\$14	\$12	\$11	\$10
	10yr ave.			\$25		\$22		\$19		\$17	\$16	\$16	\$15	\$14	\$13	\$12	\$9	\$8	\$7
	30% Current	\$43	\$40	\$36	\$34	\$32	\$31	\$30	\$28	\$27	\$26	\$24	\$22	\$21	\$19	\$17	\$14	\$13	\$12
	10yr ave.			\$30		\$27		\$23		\$20	\$19	\$19	\$18	\$17	\$15	\$14	\$11	\$10	\$9
	35% Current	\$50	\$47	\$42	\$39	\$38	\$36	\$35	\$33	\$32	\$31	\$28	\$26	\$24	\$23	\$20	\$16	\$15	\$14
	10yr ave.			\$35		\$31		\$27		\$24	\$23	\$22	\$21	\$20	\$18	\$17	\$13	\$11	\$10
	40% Current	\$57	\$53	\$48	\$45	\$43	\$41	\$40	\$38	\$36	\$35	\$33	\$30	\$28	\$26	\$23	\$19	\$17	\$16
	10yr ave.			\$40		\$36		\$31		\$27	\$26	\$25	\$24	\$23	\$21	\$19	\$15	\$13	\$12
	45% Current	\$65	\$60	\$54	\$50	\$48	\$46	\$45	\$43	\$41	\$39	\$37	\$33	\$31	\$29	\$26	\$21	\$20	\$18
	10yr ave.			\$45		\$40		\$35		\$30	\$29	\$28	\$27	\$26	\$23	\$21	\$17	\$15	\$13
	50% Current	\$72	\$67	\$61	\$56	\$54	\$52	\$49	\$47	\$45	\$44	\$41	\$37	\$35	\$32	\$29	\$23	\$22	\$20
	10yr ave.			\$50		\$45		\$38		\$34	\$32	\$31	\$30	\$29	\$26	\$24	\$19	\$16	\$15
	55% Current	\$79	\$74	\$67	\$62	\$59	\$57	\$54	\$52	\$50	\$48	\$45	\$41	\$38	\$36	\$31	\$26	\$24	\$23
	10yr ave.			\$55		\$49		\$42		\$37	\$36	\$35	\$34	\$32	\$28	\$26	\$20	\$18	\$16
	60% Current	\$86	\$80	\$73	\$67	\$64	\$62	\$59	\$57	\$54	\$53	\$49	\$45	\$42	\$39	\$34	\$28	\$26	\$25
	10yr ave.			\$60		\$54		\$46		\$40	\$39	\$38	\$37	\$35	\$31	\$28	\$22	\$19	\$18
	65% Current	\$93	\$87	\$79	\$73	\$70	\$67	\$64	\$62	\$59	\$57	\$53	\$48	\$45	\$42	\$37	\$30	\$28	\$27
	10yr ave.			\$65		\$58		\$50		\$44	\$42	\$41	\$40	\$38	\$34	\$31	\$24	\$21	\$19
	70% Current	\$100	\$94	\$85	\$78	\$75	\$72	\$69	\$66	\$63	\$61	\$57	\$52	\$49	\$45	\$40	\$33	\$31	\$29
	10yr ave.			\$71		\$62		\$54		\$47	\$45	\$44	\$43	\$40	\$36	\$33	\$26	\$23	\$20
	75% Current	\$108	\$100	\$91	\$84	\$80	\$77	\$74	\$71	\$68	\$66	\$61	\$56	\$52	\$48	\$43	\$35	\$33	\$31
	10yr ave.			\$76		\$67		\$58		\$51	\$48	\$47	\$46	\$43	\$39	\$35	\$28	\$24	\$22
	80% Current	\$115	\$107	\$97	\$90	\$86	\$82	\$79	\$76	\$73	\$70	\$65	\$59	\$56	\$52	\$46	\$37	\$35	\$33
	10yr ave.			\$81		\$71		\$61		\$54	\$52	\$50	\$49	\$46	\$41	\$38	\$30	\$26	\$23
	85% Current	\$122	\$114	\$103	\$95	\$91	\$88	\$84	\$81	\$77	\$74	\$69	\$63	\$59	\$55	\$49	\$40	\$37	\$35
	10yr ave.			\$86		\$76		\$65		\$57	\$55	\$53	\$52	\$49	\$44	\$40	\$32	\$28	\$25

The above shows estimated returns per head for skirted fleece wool. These figures do not take into account the value of skirtings and oddments and do not take into account discounts that may apply for faults under individual circumstances. These figures are based on a market index of 100% and should be used as a guide only. Returns over \$30 / head for fleece wool are highlighted.

Source: Australian Wool Exchange, Australian Wool Innovation, Sydney Futures Exchange, x-rates.com

Disclaimer: While all due care has been taken in the preparation of this document, no warranty is made as to its accuracy, reliability or completeness. To the extent permitted by law neither Jemalong or their sources including subsidiaries and staff, accept liability to any person for loss or damage arising from the use of this information.



Table 16: Returns pr head for skirted fleece wool.

Skirted FLC Weight		Micron																	
6 Kg		16	16.5	17	17.5	18	18.5	19	19.5	20	21	22	23	24	25	26	28	30	32
Yield (Sch Dry)	25% Current	\$31	\$29	\$26	\$24	\$23	\$22	\$21	\$20	\$19	\$19	\$17	\$16	\$15	\$14	\$12	\$10	\$9	\$9
	10yr ave.			\$22		\$19		\$16		\$14	\$14	\$13	\$13	\$12	\$11	\$10	\$8	\$7	\$6
	30% Current	\$37	\$34	\$31	\$29	\$28	\$26	\$25	\$24	\$23	\$23	\$21	\$19	\$18	\$17	\$15	\$12	\$11	\$11
	10yr ave.			\$26		\$23		\$20		\$17	\$17	\$16	\$16	\$15	\$13	\$12	\$10	\$8	\$8
	35% Current	\$43	\$40	\$36	\$34	\$32	\$31	\$30	\$28	\$27	\$26	\$24	\$22	\$21	\$19	\$17	\$14	\$13	\$12
	10yr ave.			\$30		\$27		\$23		\$20	\$19	\$19	\$18	\$17	\$15	\$14	\$11	\$10	\$9
	40% Current	\$49	\$46	\$42	\$38	\$37	\$35	\$34	\$33	\$31	\$30	\$28	\$25	\$24	\$22	\$20	\$16	\$15	\$14
	10yr ave.			\$35		\$31		\$26		\$23	\$22	\$22	\$21	\$20	\$18	\$16	\$13	\$11	\$10
	45% Current	\$55	\$52	\$47	\$43	\$41	\$40	\$38	\$37	\$35	\$34	\$31	\$29	\$27	\$25	\$22	\$18	\$17	\$16
	10yr ave.			\$39		\$34		\$30		\$26	\$25	\$24	\$24	\$22	\$20	\$18	\$14	\$13	\$11
	50% Current	\$62	\$57	\$52	\$48	\$46	\$44	\$42	\$41	\$39	\$38	\$35	\$32	\$30	\$28	\$25	\$20	\$19	\$18
	10yr ave.			\$43		\$38		\$33		\$29	\$28	\$27	\$26	\$25	\$22	\$20	\$16	\$14	\$13
	55% Current	\$68	\$63	\$57	\$53	\$51	\$49	\$47	\$45	\$43	\$41	\$38	\$35	\$33	\$30	\$27	\$22	\$21	\$19
	10yr ave.			\$47		\$42		\$36		\$32	\$30	\$30	\$29	\$27	\$24	\$22	\$18	\$15	\$14
	60% Current	\$74	\$69	\$62	\$58	\$55	\$53	\$51	\$49	\$47	\$45	\$42	\$38	\$36	\$33	\$29	\$24	\$22	\$21
	10yr ave.			\$52		\$46		\$39		\$35	\$33	\$32	\$31	\$30	\$27	\$24	\$19	\$17	\$15
	65% Current	\$80	\$74	\$67	\$62	\$60	\$57	\$55	\$53	\$51	\$49	\$45	\$41	\$39	\$36	\$32	\$26	\$24	\$23
	10yr ave.			\$56		\$50		\$43		\$38	\$36	\$35	\$34	\$32	\$29	\$26	\$21	\$18	\$16
	70% Current	\$86	\$80	\$73	\$67	\$64	\$62	\$59	\$57	\$54	\$53	\$49	\$45	\$42	\$39	\$34	\$28	\$26	\$25
	10yr ave.			\$60		\$54		\$46		\$40	\$39	\$38	\$37	\$35	\$31	\$28	\$22	\$19	\$18
	75% Current	\$92	\$86	\$78	\$72	\$69	\$66	\$64	\$61	\$58	\$56	\$52	\$48	\$45	\$42	\$37	\$30	\$28	\$26
	10yr ave.			\$65		\$57		\$49		\$43	\$42	\$40	\$39	\$37	\$33	\$30	\$24	\$21	\$19
	80% Current	\$98	\$92	\$83	\$77	\$74	\$71	\$68	\$65	\$62	\$60	\$56	\$51	\$48	\$44	\$39	\$32	\$30	\$28
	10yr ave.			\$69		\$61		\$53		\$46	\$44	\$43	\$42	\$40	\$35	\$32	\$26	\$22	\$20
	85% Current	\$105	\$97	\$88	\$82	\$78	\$75	\$72	\$69	\$66	\$64	\$59	\$54	\$51	\$47	\$42	\$34	\$32	\$30
	10yr ave.			\$73		\$65		\$56		\$49	\$47	\$46	\$44	\$42	\$38	\$34	\$27	\$24	\$21

The above shows estimated returns per head for skirted fleece wool. These figures do not take into account the value of skirtings and oddments and do not take into account discounts that may apply for faults under individual circumstances. These figures are based on a market index of 100% and should be used as a guide only. Returns over \$30 / head for fleece wool are highlighted.

Source: Australian Wool Exchange, Australian Wool Innovation, Sydney Futures Exchange, x-rates.com

Disclaimer: While all due care has been taken in the preparation of this document, no warranty is made as to its accuracy, reliability or completeness. To the extent permitted by law neither Jemalong or their sources including subsidiaries and staff, accept liability to any person for loss or damage arising from the use of this information.



Table 17: Returns pr head for skirted fleece wool.

Skirted FLC Weight		Micron																	
5 Kg		16	16.5	17	17.5	18	18.5	19	19.5	20	21	22	23	24	25	26	28	30	32
Yield (Sch Dry)	25% Current	\$26	\$24	\$22	\$20	\$19	\$18	\$18	\$17	\$16	\$16	\$15	\$13	\$12	\$12	\$10	\$8	\$8	\$7
	10yr ave.			\$18		\$16		\$14		\$12	\$12	\$11	\$11	\$10	\$9	\$8	\$7	\$6	\$5
	30% Current	\$31	\$29	\$26	\$24	\$23	\$22	\$21	\$20	\$19	\$19	\$17	\$16	\$15	\$14	\$12	\$10	\$9	\$9
	10yr ave.			\$22		\$19		\$16		\$14	\$14	\$13	\$13	\$12	\$11	\$10	\$8	\$7	\$6
	35% Current	\$36	\$33	\$30	\$28	\$27	\$26	\$25	\$24	\$23	\$22	\$20	\$19	\$17	\$16	\$14	\$12	\$11	\$10
	10yr ave.			\$25		\$22		\$19		\$17	\$16	\$16	\$15	\$14	\$13	\$12	\$9	\$8	\$7
	40% Current	\$41	\$38	\$35	\$32	\$31	\$29	\$28	\$27	\$26	\$25	\$23	\$21	\$20	\$18	\$16	\$13	\$12	\$12
	10yr ave.			\$29		\$25		\$22		\$19	\$18	\$18	\$17	\$17	\$15	\$13	\$11	\$9	\$8
	45% Current	\$46	\$43	\$39	\$36	\$34	\$33	\$32	\$31	\$29	\$28	\$26	\$24	\$22	\$21	\$18	\$15	\$14	\$13
	10yr ave.			\$32		\$29		\$25		\$22	\$21	\$20	\$20	\$19	\$17	\$15	\$12	\$10	\$9
	50% Current	\$51	\$48	\$43	\$40	\$38	\$37	\$35	\$34	\$32	\$31	\$29	\$27	\$25	\$23	\$20	\$17	\$16	\$15
	10yr ave.			\$36		\$32		\$27		\$24	\$23	\$22	\$22	\$21	\$18	\$17	\$13	\$12	\$10
	55% Current	\$56	\$53	\$48	\$44	\$42	\$40	\$39	\$37	\$36	\$34	\$32	\$29	\$27	\$25	\$22	\$18	\$17	\$16
	10yr ave.			\$40		\$35		\$30		\$27	\$25	\$25	\$24	\$23	\$20	\$19	\$15	\$13	\$11
	60% Current	\$62	\$57	\$52	\$48	\$46	\$44	\$42	\$41	\$39	\$38	\$35	\$32	\$30	\$28	\$25	\$20	\$19	\$18
	10yr ave.			\$43		\$38		\$33		\$29	\$28	\$27	\$26	\$25	\$22	\$20	\$16	\$14	\$13
	65% Current	\$67	\$62	\$56	\$52	\$50	\$48	\$46	\$44	\$42	\$41	\$38	\$34	\$32	\$30	\$27	\$22	\$20	\$19
	10yr ave.			\$47		\$41		\$36		\$31	\$30	\$29	\$28	\$27	\$24	\$22	\$17	\$15	\$14
	70% Current	\$72	\$67	\$61	\$56	\$54	\$52	\$49	\$47	\$45	\$44	\$41	\$37	\$35	\$32	\$29	\$23	\$22	\$20
	10yr ave.			\$50		\$45		\$38		\$34	\$32	\$31	\$30	\$29	\$26	\$24	\$19	\$16	\$15
	75% Current	\$77	\$72	\$65	\$60	\$57	\$55	\$53	\$51	\$49	\$47	\$44	\$40	\$37	\$35	\$31	\$25	\$23	\$22
	10yr ave.			\$54		\$48		\$41		\$36	\$35	\$34	\$33	\$31	\$28	\$25	\$20	\$17	\$16
	80% Current	\$82	\$76	\$69	\$64	\$61	\$59	\$57	\$54	\$52	\$50	\$47	\$42	\$40	\$37	\$33	\$27	\$25	\$23
	10yr ave.			\$58		\$51		\$44		\$39	\$37	\$36	\$35	\$33	\$29	\$27	\$21	\$19	\$17
	85% Current	\$87	\$81	\$74	\$68	\$65	\$63	\$60	\$58	\$55	\$53	\$49	\$45	\$42	\$39	\$35	\$28	\$27	\$25
	10yr ave.			\$61		\$54		\$47		\$41	\$39	\$38	\$37	\$35	\$31	\$29	\$23	\$20	\$18

The above shows estimated returns per head for skirted fleece wool. These figures do not take into account the value of skirtings and oddments and do not take into account discounts that may apply for faults under individual circumstances. These figures are based on a market index of 100% and should be used as a guide only. Returns over \$30 / head for fleece wool are highlighted.

Source: Australian Wool Exchange, Australian Wool Innovation, Sydney Futures Exchange, x-rates.com

Disclaimer: While all due care has been taken in the preparation of this document, no warranty is made as to its accuracy, reliability or completeness. To the extent permitted by law neither Jemalong or their sources including subsidiaries and staff, accept liability to any person for loss or damage arising from the use of this information.



Table 18: Returns pr head for skirted fleece wool.

Skirted FLC Weight		Micron																	
4 Kg		16	16.5	17	17.5	18	18.5	19	19.5	20	21	22	23	24	25	26	28	30	32
Yield (Sch Dry)	25% Current	\$21	\$19	\$17	\$16	\$15	\$15	\$14	\$14	\$13	\$13	\$12	\$11	\$10	\$9	\$8	\$7	\$6	\$6
	10yr ave.			\$14		\$13		\$11		\$10	\$9	\$9	\$9	\$8	\$7	\$7	\$5	\$5	\$4
	30% Current	\$25	\$23	\$21	\$19	\$18	\$18	\$17	\$16	\$16	\$15	\$14	\$13	\$12	\$11	\$10	\$8	\$7	\$7
	10yr ave.			\$17		\$15		\$13		\$12	\$11	\$11	\$10	\$10	\$9	\$8	\$6	\$6	\$5
	35% Current	\$29	\$27	\$24	\$22	\$21	\$21	\$20	\$19	\$18	\$18	\$16	\$15	\$14	\$13	\$11	\$9	\$9	\$8
	10yr ave.			\$20		\$18		\$15		\$13	\$13	\$13	\$12	\$12	\$10	\$9	\$7	\$6	\$6
	40% Current	\$33	\$31	\$28	\$26	\$25	\$24	\$23	\$22	\$21	\$20	\$19	\$17	\$16	\$15	\$13	\$11	\$10	\$9
	10yr ave.			\$23		\$20		\$18		\$15	\$15	\$14	\$14	\$13	\$12	\$11	\$9	\$7	\$7
	45% Current	\$37	\$34	\$31	\$29	\$28	\$26	\$25	\$24	\$23	\$23	\$21	\$19	\$18	\$17	\$15	\$12	\$11	\$11
	10yr ave.			\$26		\$23		\$20		\$17	\$17	\$16	\$16	\$15	\$13	\$12	\$10	\$8	\$8
	50% Current	\$41	\$38	\$35	\$32	\$31	\$29	\$28	\$27	\$26	\$25	\$23	\$21	\$20	\$18	\$16	\$13	\$12	\$12
	10yr ave.			\$29		\$25		\$22		\$19	\$18	\$18	\$17	\$17	\$15	\$13	\$11	\$9	\$8
	55% Current	\$45	\$42	\$38	\$35	\$34	\$32	\$31	\$30	\$28	\$28	\$26	\$23	\$22	\$20	\$18	\$15	\$14	\$13
	10yr ave.			\$32		\$28		\$24		\$21	\$20	\$20	\$19	\$18	\$16	\$15	\$12	\$10	\$9
	60% Current	\$49	\$46	\$42	\$38	\$37	\$35	\$34	\$33	\$31	\$30	\$28	\$25	\$24	\$22	\$20	\$16	\$15	\$14
	10yr ave.			\$35		\$31		\$26		\$23	\$22	\$22	\$21	\$20	\$18	\$16	\$13	\$11	\$10
	65% Current	\$53	\$50	\$45	\$42	\$40	\$38	\$37	\$35	\$34	\$33	\$30	\$28	\$26	\$24	\$21	\$17	\$16	\$15
	10yr ave.			\$37		\$33		\$28		\$25	\$24	\$23	\$23	\$21	\$19	\$18	\$14	\$12	\$11
	70% Current	\$57	\$53	\$48	\$45	\$43	\$41	\$40	\$38	\$36	\$35	\$33	\$30	\$28	\$26	\$23	\$19	\$17	\$16
	10yr ave.			\$40		\$36		\$31		\$27	\$26	\$25	\$24	\$23	\$21	\$19	\$15	\$13	\$12
	75% Current	\$62	\$57	\$52	\$48	\$46	\$44	\$42	\$41	\$39	\$38	\$35	\$32	\$30	\$28	\$25	\$20	\$19	\$18
	10yr ave.			\$43		\$38		\$33		\$29	\$28	\$27	\$26	\$25	\$22	\$20	\$16	\$14	\$13
	80% Current	\$66	\$61	\$55	\$51	\$49	\$47	\$45	\$43	\$41	\$40	\$37	\$34	\$32	\$30	\$26	\$21	\$20	\$19
	10yr ave.			\$46		\$41		\$35		\$31	\$30	\$29	\$28	\$26	\$24	\$22	\$17	\$15	\$13
	85% Current	\$70	\$65	\$59	\$54	\$52	\$50	\$48	\$46	\$44	\$43	\$40	\$36	\$34	\$31	\$28	\$23	\$21	\$20
	10yr ave.			\$49		\$43		\$37		\$33	\$31	\$30	\$30	\$28	\$25	\$23	\$18	\$16	\$14

The above shows estimated returns per head for skirted fleece wool. These figures do not take into account the value of skirtings and oddments and do not take into account discounts that may apply for faults under individual circumstances. These figures are based on a market index of 100% and should be used as a guide only. Returns over \$30 / head for fleece wool are highlighted.

Source: Australian Wool Exchange, Australian Wool Innovation, Sydney Futures Exchange, x-rates.com

Disclaimer: While all due care has been taken in the preparation of this document, no warranty is made as to its accuracy, reliability or completeness. To the extent permitted by law neither Jemalong or their sources including subsidiaries and staff, accept liability to any person for loss or damage arising from the use of this information.



Table 19: Returns pr head for skirted fleece wool.

Skirted FLC Weight		Micron																	
3 Kg		16	16.5	17	17.5	18	18.5	19	19.5	20	21	22	23	24	25	26	28	30	32
Yield (Sch Dry)	25% Current	\$15	\$14	\$13	\$12	\$11	\$11	\$11	\$10	\$10	\$9	\$9	\$8	\$7	\$7	\$6	\$5	\$5	\$4
	10yr ave.			\$11		\$10		\$8		\$7	\$7	\$7	\$7	\$6	\$6	\$5	\$4	\$3	\$3
	30% Current	\$18	\$17	\$16	\$14	\$14	\$13	\$13	\$12	\$12	\$11	\$10	\$10	\$9	\$8	\$7	\$6	\$6	\$5
	10yr ave.			\$13		\$11		\$10		\$9	\$8	\$8	\$8	\$7	\$7	\$6	\$5	\$4	\$4
	35% Current	\$22	\$20	\$18	\$17	\$16	\$15	\$15	\$14	\$14	\$13	\$12	\$11	\$10	\$10	\$9	\$7	\$7	\$6
	10yr ave.			\$15		\$13		\$12		\$10	\$10	\$9	\$9	\$9	\$8	\$7	\$6	\$5	\$4
	40% Current	\$25	\$23	\$21	\$19	\$18	\$18	\$17	\$16	\$16	\$15	\$14	\$13	\$12	\$11	\$10	\$8	\$7	\$7
	10yr ave.			\$17		\$15		\$13		\$12	\$11	\$11	\$10	\$10	\$9	\$8	\$6	\$6	\$5
	45% Current	\$28	\$26	\$23	\$22	\$21	\$20	\$19	\$18	\$17	\$17	\$16	\$14	\$13	\$12	\$11	\$9	\$8	\$8
	10yr ave.			\$19		\$17		\$15		\$13	\$12	\$12	\$12	\$11	\$10	\$9	\$7	\$6	\$6
	50% Current	\$31	\$29	\$26	\$24	\$23	\$22	\$21	\$20	\$19	\$19	\$17	\$16	\$15	\$14	\$12	\$10	\$9	\$9
	10yr ave.			\$22		\$19		\$16		\$14	\$14	\$13	\$13	\$12	\$11	\$10	\$8	\$7	\$6
	55% Current	\$34	\$32	\$29	\$26	\$25	\$24	\$23	\$22	\$21	\$21	\$19	\$17	\$16	\$15	\$13	\$11	\$10	\$10
	10yr ave.			\$24		\$21		\$18		\$16	\$15	\$15	\$14	\$14	\$12	\$11	\$9	\$8	\$7
	60% Current	\$37	\$34	\$31	\$29	\$28	\$26	\$25	\$24	\$23	\$23	\$21	\$19	\$18	\$17	\$15	\$12	\$11	\$11
	10yr ave.			\$26		\$23		\$20		\$17	\$17	\$16	\$16	\$15	\$13	\$12	\$10	\$8	\$8
	65% Current	\$40	\$37	\$34	\$31	\$30	\$29	\$28	\$26	\$25	\$24	\$23	\$21	\$19	\$18	\$16	\$13	\$12	\$11
	10yr ave.			\$28		\$25		\$21		\$19	\$18	\$17	\$17	\$16	\$14	\$13	\$10	\$9	\$8
	70% Current	\$43	\$40	\$36	\$34	\$32	\$31	\$30	\$28	\$27	\$26	\$24	\$22	\$21	\$19	\$17	\$14	\$13	\$12
	10yr ave.			\$30		\$27		\$23		\$20	\$19	\$19	\$18	\$17	\$15	\$14	\$11	\$10	\$9
	75% Current	\$46	\$43	\$39	\$36	\$34	\$33	\$32	\$31	\$29	\$28	\$26	\$24	\$22	\$21	\$18	\$15	\$14	\$13
	10yr ave.			\$32		\$29		\$25		\$22	\$21	\$20	\$20	\$19	\$17	\$15	\$12	\$10	\$9
	80% Current	\$49	\$46	\$42	\$38	\$37	\$35	\$34	\$33	\$31	\$30	\$28	\$25	\$24	\$22	\$20	\$16	\$15	\$14
	10yr ave.			\$35		\$31		\$26		\$23	\$22	\$22	\$21	\$20	\$18	\$16	\$13	\$11	\$10
	85% Current	\$52	\$49	\$44	\$41	\$39	\$38	\$36	\$35	\$33	\$32	\$30	\$27	\$25	\$24	\$21	\$17	\$16	\$15
	10yr ave.			\$37		\$32		\$28		\$25	\$24	\$23	\$22	\$21	\$19	\$17	\$14	\$12	\$11

The above shows estimated returns per head for skirted fleece wool. These figures do not take into account the value of skirtings and oddments and do not take into account discounts that may apply for faults under individual circumstances. These figures are based on a market index of 100% and should be used as a guide only. Returns over \$30 / head for fleece wool are highlighted.

Source: Australian Wool Exchange, Australian Wool Innovation, Sydney Futures Exchange, x-rates.com

Disclaimer: While all due care has been taken in the preparation of this document, no warranty is made as to its accuracy, reliability or completeness. To the extent permitted by law neither Jemalong or their sources including subsidiaries and staff, accept liability to any person for loss or damage arising from the use of this information.



Table 20: Returns pr head for skirted fleece wool.

Skirted FLC Weight 2 Kg		Micron																	
		16	16.5	17	17.5	18	18.5	19	19.5	20	21	22	23	24	25	26	28	30	32
Yield (Sch Dry)	25% Current	\$10	\$10	\$9	\$8	\$8	\$7	\$7	\$7	\$6	\$6	\$6	\$5	\$5	\$5	\$4	\$3	\$3	\$3
	10yr ave.			\$7		\$6		\$5		\$5	\$5	\$4	\$4	\$4	\$4	\$3	\$3	\$2	\$2
	30% Current	\$12	\$11	\$10	\$10	\$9	\$9	\$8	\$8	\$8	\$8	\$7	\$6	\$6	\$6	\$5	\$4	\$4	\$4
	10yr ave.			\$9		\$8		\$7		\$6	\$6	\$5	\$5	\$5	\$4	\$4	\$3	\$3	\$3
	35% Current	\$14	\$13	\$12	\$11	\$11	\$10	\$10	\$9	\$9	\$9	\$8	\$7	\$7	\$6	\$6	\$5	\$4	\$4
	10yr ave.			\$10		\$9		\$8		\$7	\$6	\$6	\$6	\$6	\$5	\$5	\$4	\$3	\$3
	40% Current	\$16	\$15	\$14	\$13	\$12	\$12	\$11	\$11	\$10	\$10	\$9	\$8	\$8	\$7	\$7	\$5	\$5	\$5
	10yr ave.			\$12		\$10		\$9		\$8	\$7	\$7	\$7	\$7	\$6	\$5	\$4	\$4	\$3
	45% Current	\$18	\$17	\$16	\$14	\$14	\$13	\$13	\$12	\$12	\$11	\$10	\$10	\$9	\$8	\$7	\$6	\$6	\$5
	10yr ave.			\$13		\$11		\$10		\$9	\$8	\$8	\$8	\$7	\$7	\$6	\$5	\$4	\$4
	50% Current	\$21	\$19	\$17	\$16	\$15	\$15	\$14	\$14	\$13	\$13	\$12	\$11	\$10	\$9	\$8	\$7	\$6	\$6
	10yr ave.			\$14		\$13		\$11		\$10	\$9	\$9	\$9	\$8	\$7	\$7	\$5	\$5	\$4
	55% Current	\$23	\$21	\$19	\$18	\$17	\$16	\$16	\$15	\$14	\$14	\$13	\$12	\$11	\$10	\$9	\$7	\$7	\$6
	10yr ave.			\$16		\$14		\$12		\$11	\$10	\$10	\$10	\$9	\$8	\$7	\$6	\$5	\$5
	60% Current	\$25	\$23	\$21	\$19	\$18	\$18	\$17	\$16	\$16	\$15	\$14	\$13	\$12	\$11	\$10	\$8	\$7	\$7
	10yr ave.			\$17		\$15		\$13		\$12	\$11	\$11	\$10	\$10	\$9	\$8	\$6	\$6	\$5
	65% Current	\$27	\$25	\$22	\$21	\$20	\$19	\$18	\$18	\$17	\$16	\$15	\$14	\$13	\$12	\$11	\$9	\$8	\$8
	10yr ave.			\$19		\$17		\$14		\$13	\$12	\$12	\$11	\$11	\$10	\$9	\$7	\$6	\$5
	70% Current	\$29	\$27	\$24	\$22	\$21	\$21	\$20	\$19	\$18	\$18	\$16	\$15	\$14	\$13	\$11	\$9	\$9	\$8
	10yr ave.			\$20		\$18		\$15		\$13	\$13	\$13	\$12	\$12	\$10	\$9	\$7	\$6	\$6
	75% Current	\$31	\$29	\$26	\$24	\$23	\$22	\$21	\$20	\$19	\$19	\$17	\$16	\$15	\$14	\$12	\$10	\$9	\$9
	10yr ave.			\$22		\$19		\$16		\$14	\$14	\$13	\$13	\$12	\$11	\$10	\$8	\$7	\$6
	80% Current	\$33	\$31	\$28	\$26	\$25	\$24	\$23	\$22	\$21	\$20	\$19	\$17	\$16	\$15	\$13	\$11	\$10	\$9
	10yr ave.			\$23		\$20		\$18		\$15	\$15	\$14	\$14	\$13	\$12	\$11	\$9	\$7	\$7
	85% Current	\$35	\$32	\$29	\$27	\$26	\$25	\$24	\$23	\$22	\$21	\$20	\$18	\$17	\$16	\$14	\$11	\$11	\$10
	10yr ave.			\$24		\$22		\$19		\$16	\$16	\$15	\$15	\$14	\$13	\$11	\$9	\$8	\$7

The above shows estimated returns per head for skirted fleece wool. These figures do not take into account the value of skirtings and oddments and do not take into account discounts that may apply for faults under individual circumstances. These figures are based on a market index of 100% and should be used as a guide only. Returns over \$30 / head for fleece wool are highlighted.

Source: Australian Wool Exchange, Australian Wool Innovation, Sydney Futures Exchange, x-rates.com

Disclaimer: While all due care has been taken in the preparation of this document, no warranty is made as to its accuracy, reliability or completeness. To the extent permitted by law neither Jemalong or their sources including subsidiaries and staff, accept liability to any person for loss or damage arising from the use of this information.