



# JEMALONG WOOL BULLETIN

(week ending 7/03/2013)

**Table 1: Northern Region Micron Price Guides**

CURRENT MARKET				12 MONTH COMPARISONS								3 YEAR COMPARISONS					*10 YEAR COMPARISONS					
Mic.	7/03/2013	28/02/2013		7/03/2012	Now		Now		Now				Now			* 16-17.5um since Aug 05		Now				
Price	Current	Weekly		This time	compared		compared		compared				compared			*10 year		compared				
Guides	Price	Change		Last Year	to Last Year		to Low		to High		Low	High	Average	to 3yr ave	Percentile	Low	High	Average	to *10yr ave	Percentile		
NRI	1141	+4 0.4%		1237	-96 -8%		944	+197 21%	1270	-129 -10%	894	1491	1146	-5 0%	48%	657	1491	934	+207 22%	86%		
16*	1740	0		2020	-280 -14%		1550	+190 12%	2100	-360 -17%	1540	2800	2029	-289 -14%	33%	1390	2800	1801	-61 -3%	65%		
16.5*	1570	-20 -1.3%		1880	-310 -16%		1390	+180 13%	1940	-370 -19%	1395	2680	1868	-298 -16%	31%	1272	2680	1654	-84 -5%	64%		
17*	1445	0		1670	-225 -13%		1290	+155 12%	1750	-305 -17%	1230	2530	1708	-263 -15%	36%	1100	2530	1429	+16 1%	68%		
17.5*	1405	0		1580	-175 -11%		1230	+175 14%	1650	-245 -15%	1185	2360	1607	-202 -13%	39%	1020	2360	1435	-30 -2%	66%		
18	1369	+1 0.1%		1536	-167 -11%		1148	+221 19%	1580	-211 -13%	1145	2193	1518	-149 -10%	39%	916	2193	1254	+115 9%	74%		
18.5	1338	+5 0.4%		1476	-138 -9%		1116	+222 20%	1532	-194 -13%	1096	1963	1433	-95 -7%	41%	843	1963	1187	+151 13%	82%		
19	1318	+16 1.2%		1452	-134 -9%		1084	+234 22%	1492	-174 -12%	1044	1776	1350	-32 -2%	46%	803	1776	1116	+202 18%	85%		
19.5	1288	+13 1.0%		1414	-126 -9%		1057	+231 22%	1458	-170 -12%	956	1670	1272	+16 1%	47%	749	1670	1050	+238 23%	85%		
20	1255	+29 2.3%		1370	-115 -8%		1047	+208 20%	1423	-168 -12%	909	1588	1210	+45 4%	54%	700	1588	992	+263 27%	87%		
21	1237	+19 1.5%		1341	-104 -8%		1036	+201 19%	1400	-163 -12%	886	1522	1179	+58 5%	55%	668	1522	950	+287 30%	87%		
22	1220	+24 2.0%		1312	-92 -7%		1015	+205 20%	1349	-129 -10%	860	1461	1144	+76 7%	60%	659	1461	921	+299 32%	89%		
23	1191	+6 0.5%		1264	-73 -6%		1002	+189 19%	1285	-94 -7%	833	1347	1098	+93 8%	67%	651	1347	891	+300 34%	91%		
24	1101	+12 1.1%		1213	-112 -9%		940	+161 17%	1213	-112 -9%	780	1213	1002	+99 10%	78%	638	1213	833	+268 32%	93%		
25	924	+15 1.6%		967	-43 -4%		852	+72 8%	1049	-125 -12%	660	1049	876	+48 5%	66%	566	1067	734	+190 26%	87%		
26	823	+17 2.1%		816	+7 1%		786	+37 5%	939	-116 -12%	580	939	777	+46 6%	62%	532	970	665	+158 24%	85%		
28	637	+11 1.7%		625	+12 2%		550	+87 16%	659	-22 -3%	442	734	588	+49 8%	67%	424	734	518	+119 23%	90%		
30	605	+24 4.0%		565	+40 7%		506	+99 20%	605	0 0%	387	670	536	+69 13%	80%	343	670	457	+148 32%	94%		
32	496	+4 0.8%		503	-7 -1%		422	+74 18%	519	-23 -4%	350	638	478	+18 4%	59%	297	638	408	+88 22%	87%		
MC	748	-10 -1.3%		730	+18 2%		512	+236 46%	758	-10 -1%	532	831	682	+66 10%	82%	380	831	541	+207 38%	95%		

**Note:**

\* Due to the irregular market quoting for some fine wool categories, figures shown relating to micron categories below 18 micron are an estimate based on the AWEX Premium & Discounts Report & other available information.

\* For any category, where there is insufficient quantity offered to enable AWEX to quote, a quote will be provided based on the best available information.

\* 10 Year data is not available for some micron categories, which may result in blank spaces in the table above.

**Definitions:**

\* A Percentile, is a value on a scale of one hundred that indicates the percent of a distribution that is equal to or below it. In general a percentile between 25% and 75% is considered normal, a percentile below 25% is considered below normal and a percentile above 75% is considered above normal.

Three and ten year percentiles shown in the table above, detail the period of time during the past 3 & 10 years that the market has traded either at or below its current price.

The higher the percentile, the stronger the market.

Source: Australian Wool Exchange, Australian Wool Innovation, Riemann, x-rates.com

Disclaimer: Jemalong Wool Pty Ltd make no representations about the content and suitability of the information contained in this report. Specifically, Jemalong Wool does not warrant, guarantee or make any representations regarding the correctness, accuracy, reliability, currency, or any other aspect regarding characteristics or use of information presented in these materials. The user accepts sole responsibility and risk associated with the use and results of these materials, irrespective of the purpose of which such use or results are applied. In no event shall Jemalong Wool be liable for any loss or damages (including without limitation special, or consequential damages), where in an action of contract, negligence, or tort, arising out of or in connection with the use of performance of these materials.



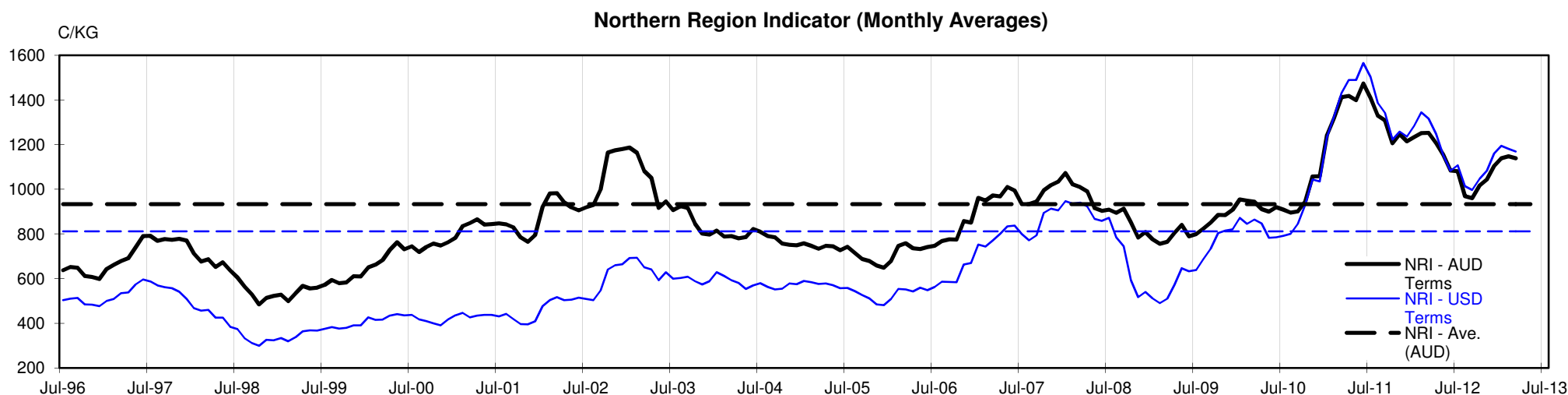
MARKET COMMENTARY

One Australian Dollar = 1.024948 US as of: 7/03/2013

NORTHERN REGION –Sale Week 36/12 (56,508 bales offered nationally)

Wednesdays well supported market had the medium to broader microns 10-15 cents dearer, with 21 microns less affected. 17.5 to 18.5 microns closed close to their previous levels while 17 microns and finer eased (on the back of a very stylish Newcastle sale). All merino skirtings lost around 20 cents, with lower Vm types 20-30 cents cheaper and higher Vm types 10-15 cents cheaper. Both washing and carbo locks eased 10 cents for 19 micron and broader, while the finer microns finished 20 cents lower. Stains were 10 cents cheaper while crutchings were generally unchanged. Crossbreds gained 10-20 cents for 26 to 27 microns while 28 microns and broader were up to 10 cents dearer. 4.8%PI

Thursdays market was the 2nd largest daily offering this season. Fine microns remained generally unchanged with 18 to 19 microns 5 cents dearer, while 20 microns and broader were 10 to 15 cents dearer. All merino skirtings remained unchanged, with the finer microns tending in buyers favour and the broader microns tending in sellers favour. Fine locks closed in sellers favour, others were fully firm. Crutchings also eased by 10 cents while stains were unchanged. 27 micron crossbreds eased 10 cents while 28 to 30 microns lifted 10 cents. 3.4% PI.





# JEMALONG WOOL BULLETIN

(week ending 7/03/2013)

**Table 2: Riemann Forwards, Last Trade as at: Wednesday 6/3/2013 14:07** Any highlighted in yellow are recent trades. Trading since Friday, 1 March 2013

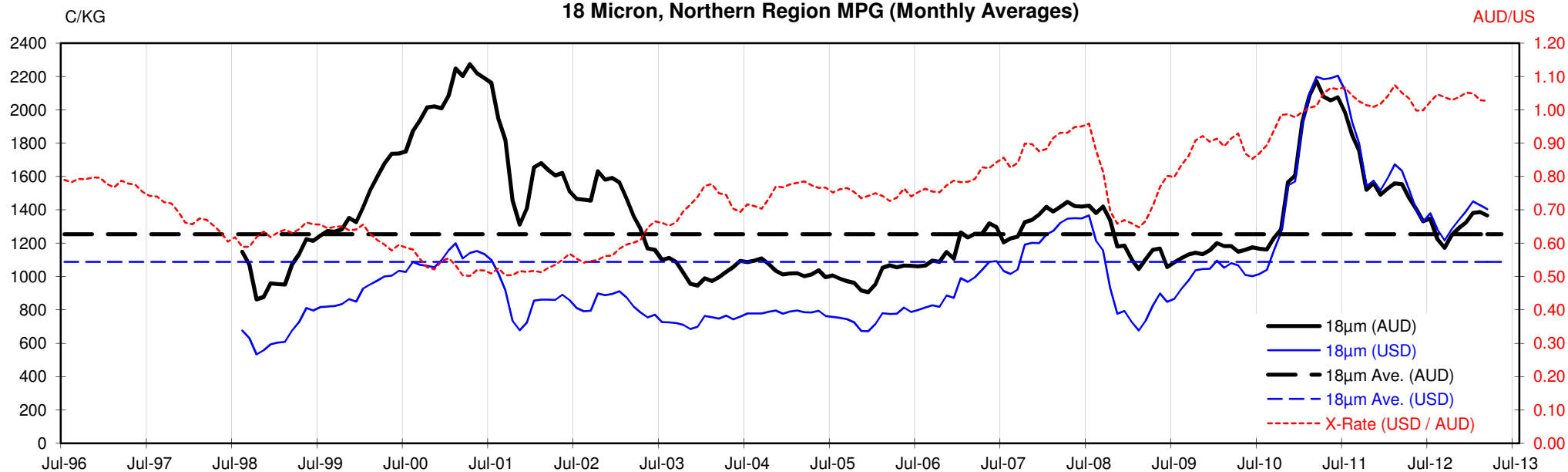
CONTRACT MICRON		18um	19um	20um	21um	22um	23um	28um	30um
CONTRACT MONTH	Mar-2013		13/02/13 1300	29/11/12 1180	13/02/13 1205			11/10/12 555	
	Apr-2013		6/03/13 1320	26/10/12 1185	6/03/13 1230				
	May-2013			9/01/13 1250	20/02/13 1220				
	Jun-2013		15/11/12 1215		20/02/13 1220				
	Jul-2013		14/02/13 1315	5/03/13 1205	26/02/13 1200				
	Aug-2013		14/02/13 1300		19/02/13 1215				
	Sep-2013		10/12/12 1300		1/02/13 1215				
	Oct-2013		18/01/13 1260		6/03/13 1190	5/03/13 1150	29/01/13 1120		
	Nov-2013		5/03/13 1310		19/02/13 1200				
	Dec-2013		30/01/13 1320		6/03/13 1175	29/01/13 1150			
	Jan-2014		30/01/13 1280						
	Feb-2014		18/12/12 1250		30/01/13 1180				
	Mar-2014								
	Apr-2014								
	May-2014								
	Jun-2014								
	Jul-2014								
	Aug-2014								
	Sep-2014								
	Oct-2014								
	Nov-2014								
	Dec-2014								
	Jan-2015								

Explanatory Notes: Prices quoted reflect the most recent trades, at time of print.

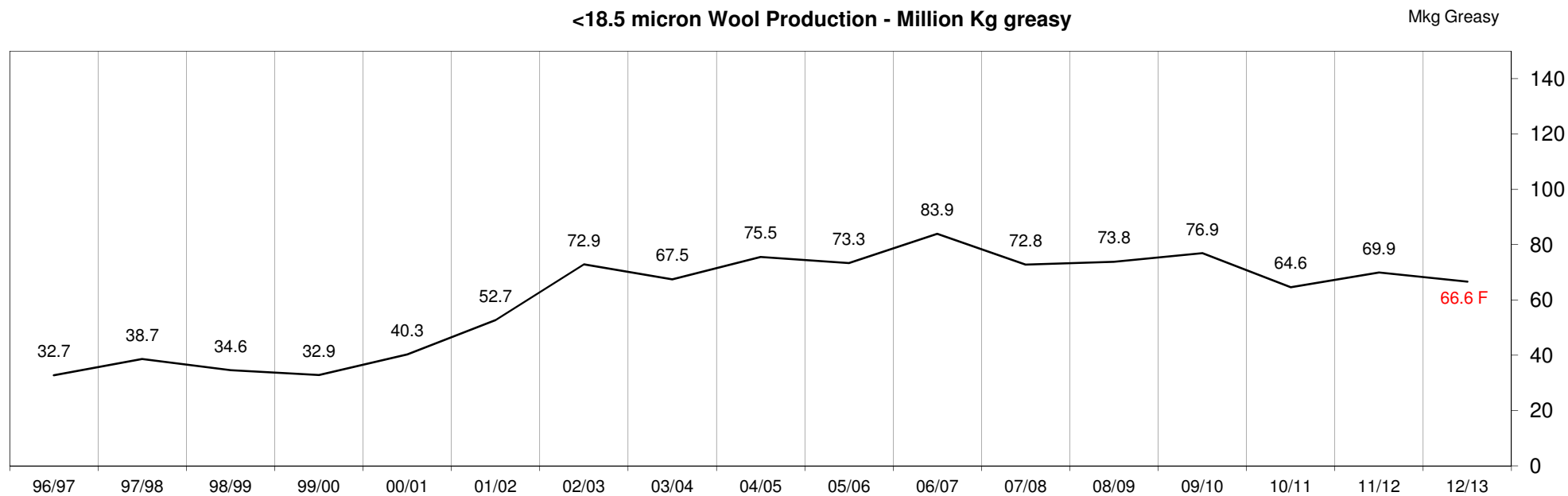
Disclaimer: While all due care has been taken in the preparation of this document, no warranty is made as to its accuracy, reliability or completeness. To the extent permitted by law neither Jemalong or their sources including subsidiaries and staff, accept liability to any person for loss or damage arising from the use of this information.

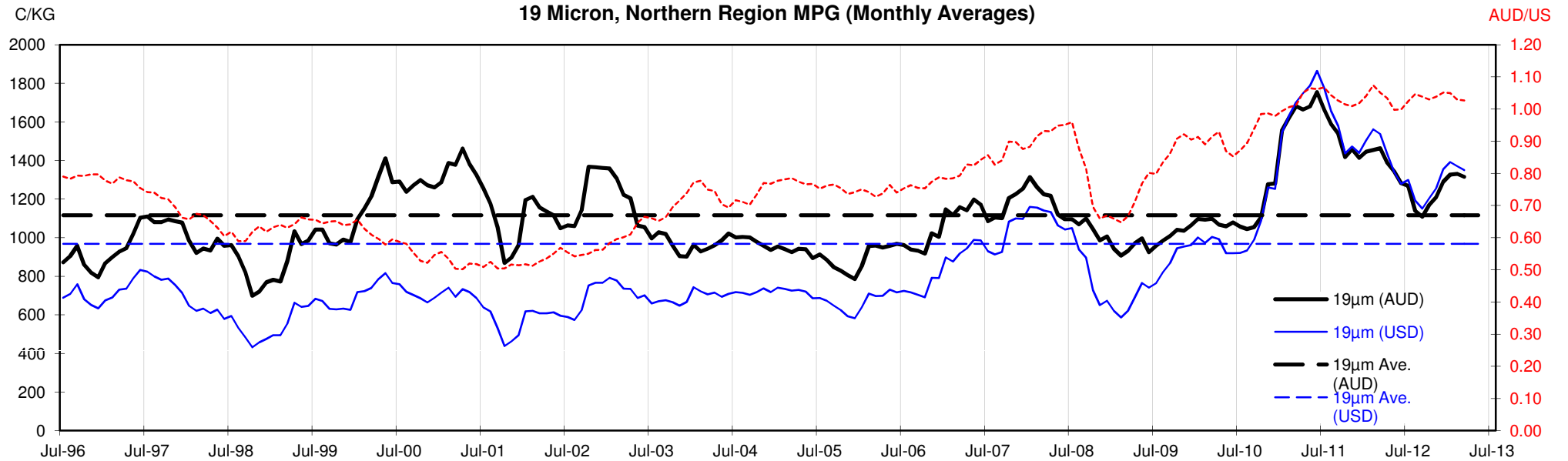


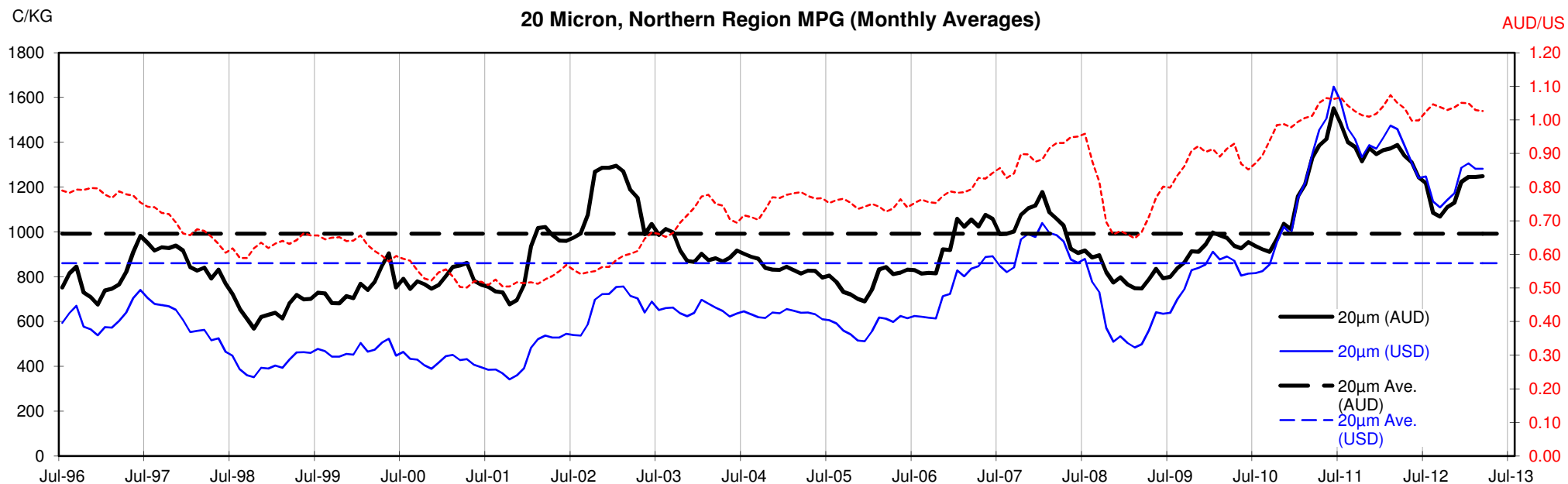
18 Micron, Northern Region MPG (Monthly Averages)

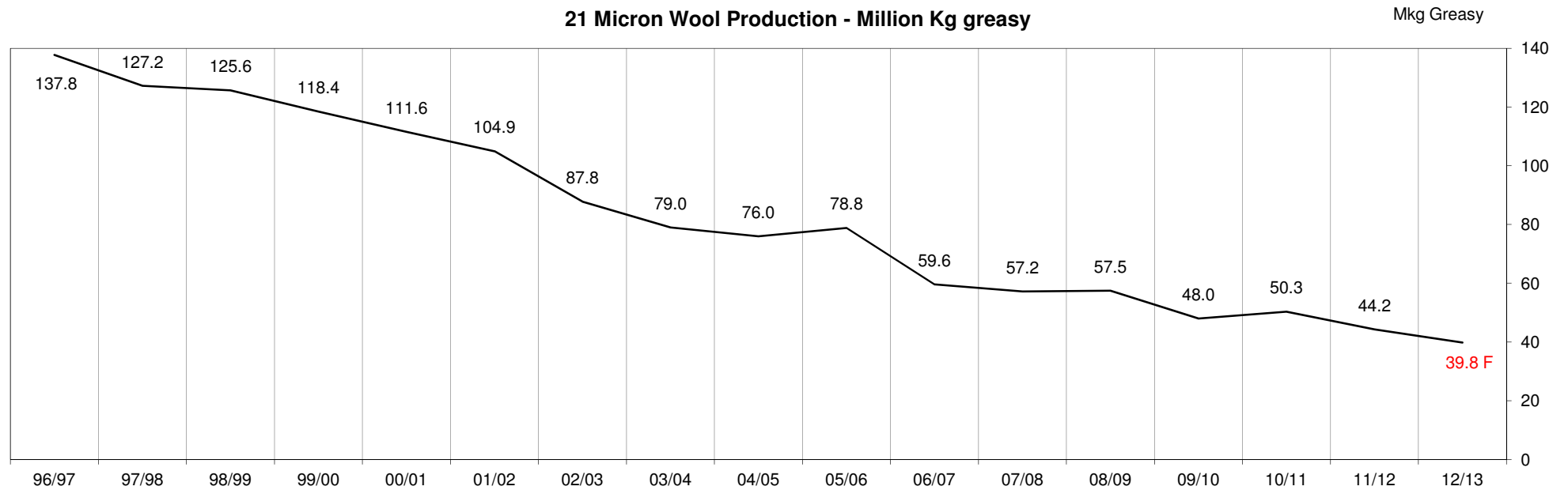
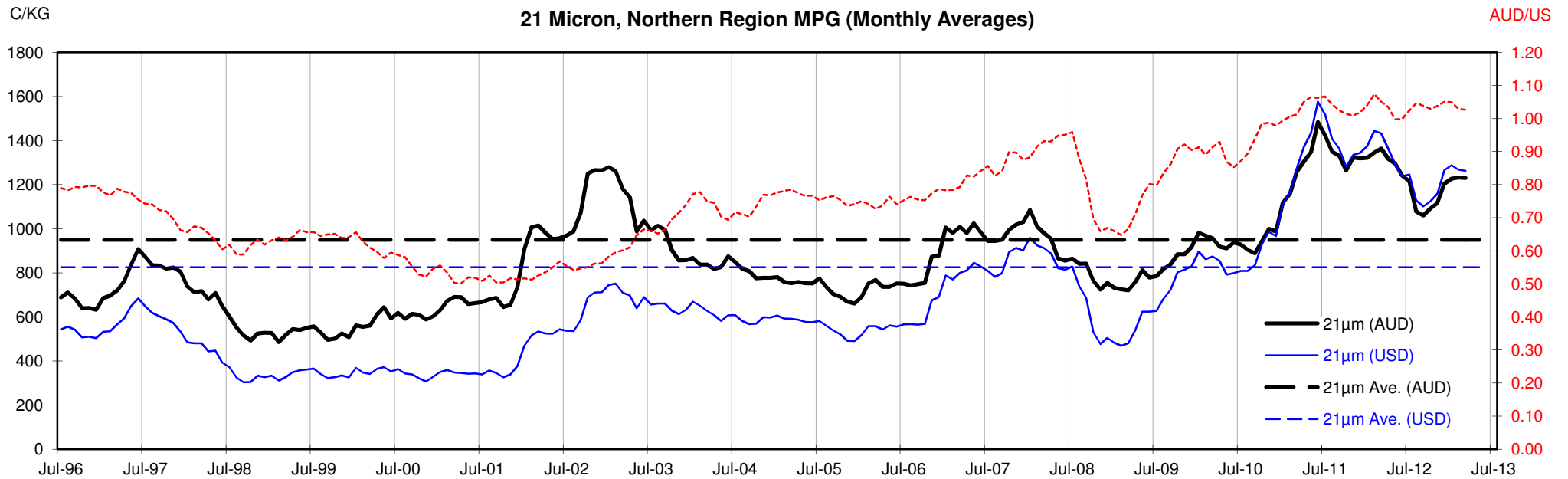


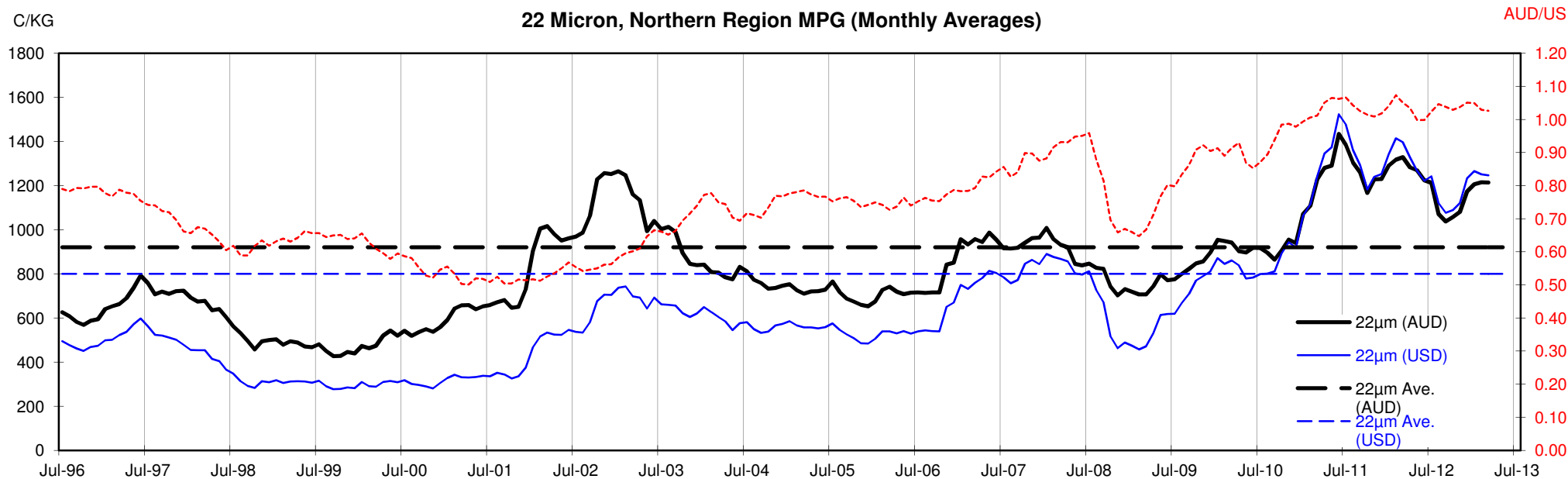
<18.5 micron Wool Production - Million Kg greasy



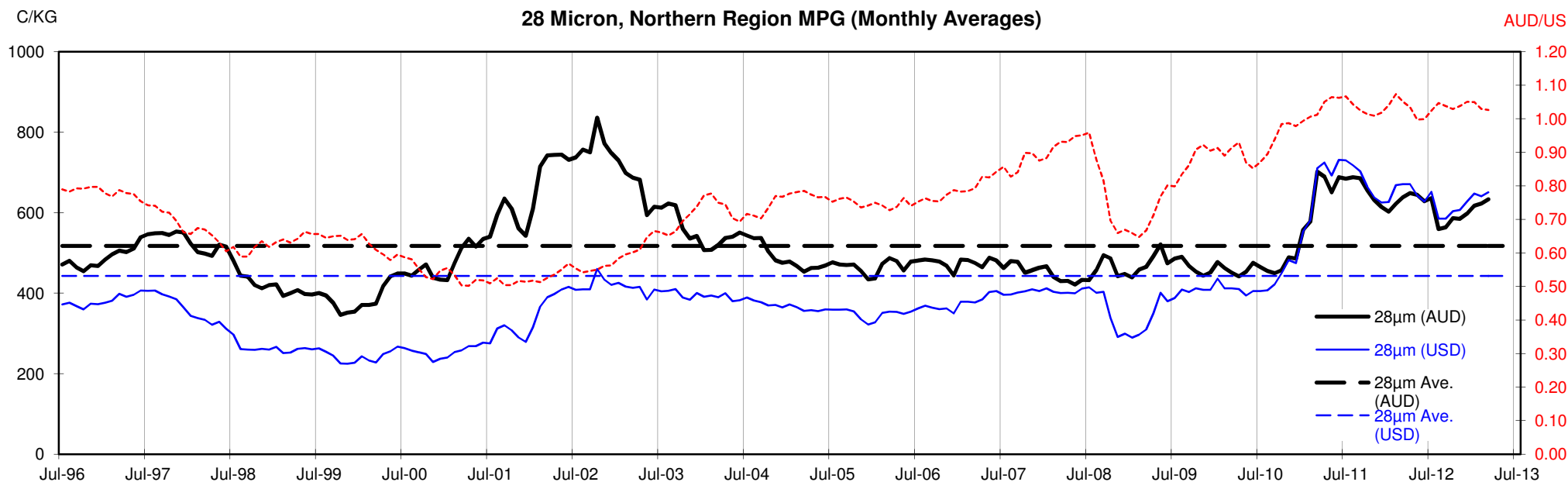












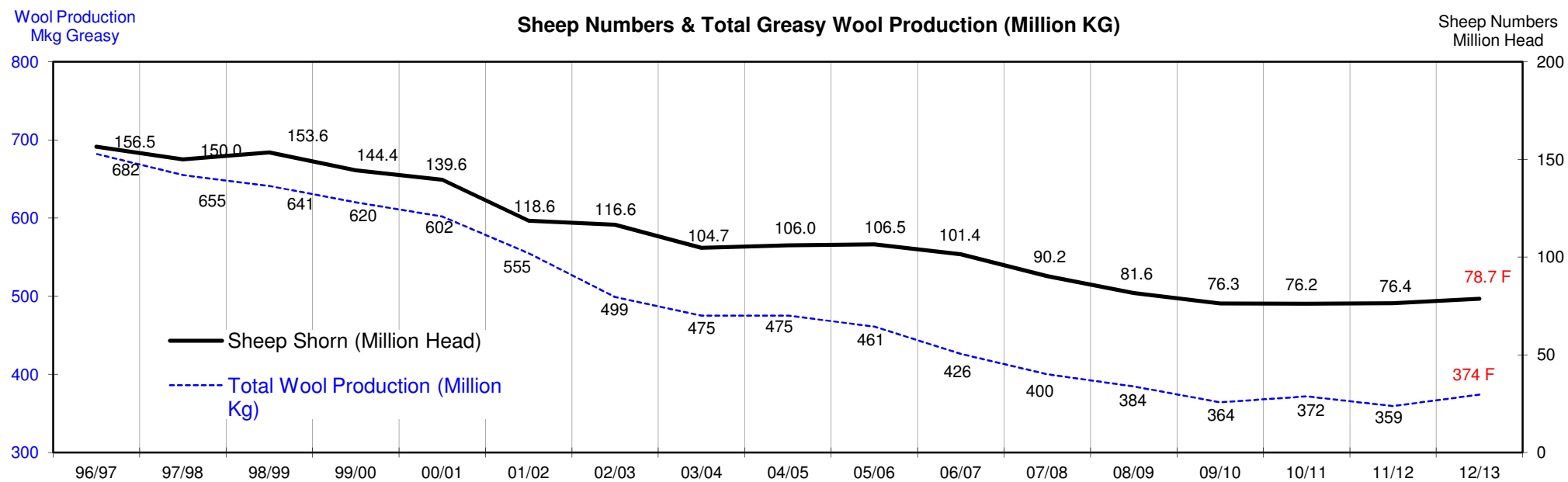
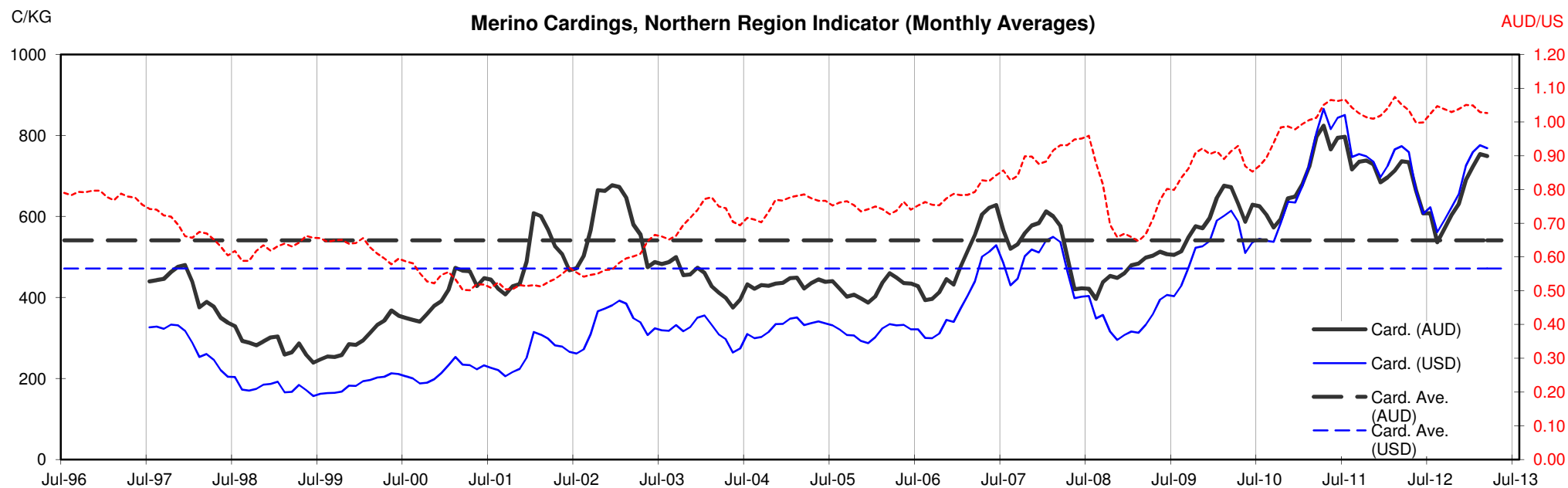




Table 13: Returns pr head for skirted fleece wool.

Skirted FLC Weight		Micron																	
9 Kg		16	16.5	17	17.5	18	18.5	19	19.5	20	21	22	23	24	25	26	28	30	32
Yield (Sch Dry)	25% Current	\$39	\$35	\$33	\$32	\$31	\$30	\$30	\$29	\$28	\$28	\$27	\$27	\$25	\$21	\$19	\$14	\$14	\$11
	10yr ave.	\$41	\$37	\$32	\$32	\$28	\$27	\$25	\$24	\$22	\$21	\$21	\$20	\$19	\$17	\$15	\$12	\$10	\$9
	30% Current	\$47	\$42	\$39	\$38	\$37	\$36	\$36	\$35	\$34	\$33	\$33	\$32	\$30	\$25	\$22	\$17	\$16	\$13
	10yr ave.	\$49	\$45	\$39	\$39	\$34	\$32	\$30	\$28	\$27	\$26	\$25	\$24	\$22	\$20	\$18	\$14	\$12	\$11
	35% Current	\$55	\$49	\$46	\$44	\$43	\$42	\$42	\$41	\$40	\$39	\$38	\$38	\$35	\$29	\$26	\$20	\$19	\$16
	10yr ave.	\$57	\$52	\$45	\$45	\$40	\$37	\$35	\$33	\$31	\$30	\$29	\$28	\$26	\$23	\$21	\$16	\$14	\$13
	40% Current	\$63	\$57	\$52	\$51	\$49	\$48	\$47	\$46	\$45	\$45	\$44	\$43	\$40	\$33	\$30	\$23	\$22	\$18
	10yr ave.	\$65	\$60	\$51	\$52	\$45	\$43	\$40	\$38	\$36	\$34	\$33	\$32	\$30	\$26	\$24	\$19	\$16	\$15
	45% Current	\$70	\$64	\$59	\$57	\$55	\$54	\$53	\$52	\$51	\$50	\$49	\$48	\$45	\$37	\$33	\$26	\$25	\$20
	10yr ave.	\$73	\$67	\$58	\$58	\$51	\$48	\$45	\$43	\$40	\$38	\$37	\$36	\$34	\$30	\$27	\$21	\$19	\$17
	50% Current	\$78	\$71	\$65	\$63	\$62	\$60	\$59	\$58	\$56	\$56	\$55	\$54	\$50	\$42	\$37	\$29	\$27	\$22
	10yr ave.	\$81	\$74	\$64	\$65	\$56	\$53	\$50	\$47	\$45	\$43	\$41	\$40	\$37	\$33	\$30	\$23	\$21	\$18
	55% Current	\$86	\$78	\$72	\$70	\$68	\$66	\$65	\$64	\$62	\$61	\$60	\$59	\$54	\$46	\$41	\$32	\$30	\$25
	10yr ave.	\$89	\$82	\$71	\$71	\$62	\$59	\$55	\$52	\$49	\$47	\$46	\$44	\$41	\$36	\$33	\$26	\$23	\$20
	60% Current	\$94	\$85	\$78	\$76	\$74	\$72	\$71	\$70	\$68	\$67	\$66	\$64	\$59	\$50	\$44	\$34	\$33	\$27
	10yr ave.	\$97	\$89	\$77	\$77	\$68	\$64	\$60	\$57	\$54	\$51	\$50	\$48	\$45	\$40	\$36	\$28	\$25	\$22
	65% Current	\$102	\$92	\$85	\$82	\$80	\$78	\$77	\$75	\$73	\$72	\$71	\$70	\$64	\$54	\$48	\$37	\$35	\$29
	10yr ave.	\$105	\$97	\$84	\$84	\$73	\$69	\$65	\$61	\$58	\$56	\$54	\$52	\$49	\$43	\$39	\$30	\$27	\$24
	70% Current	\$110	\$99	\$91	\$89	\$86	\$84	\$83	\$81	\$79	\$78	\$77	\$75	\$69	\$58	\$52	\$40	\$38	\$31
	10yr ave.	\$113	\$104	\$90	\$90	\$79	\$75	\$70	\$66	\$62	\$60	\$58	\$56	\$52	\$46	\$42	\$33	\$29	\$26
	75% Current	\$117	\$106	\$98	\$95	\$92	\$90	\$89	\$87	\$85	\$83	\$82	\$80	\$74	\$62	\$56	\$43	\$41	\$33
	10yr ave.	\$122	\$112	\$96	\$97	\$85	\$80	\$75	\$71	\$67	\$64	\$62	\$60	\$56	\$50	\$45	\$35	\$31	\$28
	80% Current	\$125	\$113	\$104	\$101	\$99	\$96	\$95	\$93	\$90	\$89	\$88	\$86	\$79	\$67	\$59	\$46	\$44	\$36
	10yr ave.	\$130	\$119	\$103	\$103	\$90	\$85	\$80	\$76	\$71	\$68	\$66	\$64	\$60	\$53	\$48	\$37	\$33	\$29
	85% Current	\$133	\$120	\$111	\$107	\$105	\$102	\$101	\$99	\$96	\$95	\$93	\$91	\$84	\$71	\$63	\$49	\$46	\$38
	10yr ave.	\$138	\$127	\$109	\$110	\$96	\$91	\$85	\$80	\$76	\$73	\$70	\$68	\$64	\$56	\$51	\$40	\$35	\$31

The above shows estimated returns per head for skirted fleece wool. These figures do not take into account the value of skirtings and oddments and do not take into account discounts that may apply for faults under individual circumstances. These figures are based on a market index of 100% and should be used as a guide only. Returns over \$30 / head for fleece wool are highlighted.

Source: Australian Wool Exchange, Australian Wool Innovation, Sydney Futures Exchange, x-rates.com

Disclaimer: While all due care has been taken in the preparation of this document, no warranty is made as to its accuracy, reliability or completeness. To the extent permitted by law neither Jemalong or their sources including subsidiaries and staff, accept liability to any person for loss or damage arising from the use of this information.



Table 14: Returns pr head for skirted fleece wool.

Skirted FLC Weight			Micron																	
			16	16.5	17	17.5	18	18.5	19	19.5	20	21	22	23	24	25	26	28	30	32
Yield (Sch Dry)	25%	Current	\$35	\$31	\$29	\$28	\$27	\$27	\$26	\$26	\$25	\$25	\$24	\$24	\$22	\$18	\$16	\$13	\$12	\$10
		10yr ave.	\$36	\$33	\$29	\$29	\$25	\$24	\$22	\$21	\$20	\$19	\$18	\$18	\$17	\$15	\$13	\$10	\$9	\$8
	30%	Current	\$42	\$38	\$35	\$34	\$33	\$32	\$32	\$31	\$30	\$30	\$29	\$29	\$26	\$22	\$20	\$15	\$15	\$12
		10yr ave.	\$43	\$40	\$34	\$34	\$30	\$28	\$27	\$25	\$24	\$23	\$22	\$21	\$20	\$18	\$16	\$12	\$11	\$10
	35%	Current	\$49	\$44	\$40	\$39	\$38	\$37	\$37	\$36	\$35	\$35	\$34	\$33	\$31	\$26	\$23	\$18	\$17	\$14
		10yr ave.	\$50	\$46	\$40	\$40	\$35	\$33	\$31	\$29	\$28	\$27	\$26	\$25	\$23	\$21	\$19	\$15	\$13	\$11
	40%	Current	\$56	\$50	\$46	\$45	\$44	\$43	\$42	\$41	\$40	\$40	\$39	\$38	\$35	\$30	\$26	\$20	\$19	\$16
		10yr ave.	\$58	\$53	\$46	\$46	\$40	\$38	\$36	\$34	\$32	\$30	\$29	\$29	\$27	\$23	\$21	\$17	\$15	\$13
	45%	Current	\$63	\$57	\$52	\$51	\$49	\$48	\$47	\$46	\$45	\$45	\$44	\$43	\$40	\$33	\$30	\$23	\$22	\$18
		10yr ave.	\$65	\$60	\$51	\$52	\$45	\$43	\$40	\$38	\$36	\$34	\$33	\$32	\$30	\$26	\$24	\$19	\$16	\$15
	50%	Current	\$70	\$63	\$58	\$56	\$55	\$54	\$53	\$52	\$50	\$49	\$49	\$48	\$44	\$37	\$33	\$25	\$24	\$20
		10yr ave.	\$72	\$66	\$57	\$57	\$50	\$47	\$45	\$42	\$40	\$38	\$37	\$36	\$33	\$29	\$27	\$21	\$18	\$16
	55%	Current	\$77	\$69	\$64	\$62	\$60	\$59	\$58	\$57	\$55	\$54	\$54	\$52	\$48	\$41	\$36	\$28	\$27	\$22
		10yr ave.	\$79	\$73	\$63	\$63	\$55	\$52	\$49	\$46	\$44	\$42	\$41	\$39	\$37	\$32	\$29	\$23	\$20	\$18
	60%	Current	\$84	\$75	\$69	\$67	\$66	\$64	\$63	\$62	\$60	\$59	\$59	\$57	\$53	\$44	\$40	\$31	\$29	\$24
		10yr ave.	\$86	\$79	\$69	\$69	\$60	\$57	\$54	\$50	\$48	\$46	\$44	\$43	\$40	\$35	\$32	\$25	\$22	\$20
	65%	Current	\$90	\$82	\$75	\$73	\$71	\$70	\$69	\$67	\$65	\$64	\$63	\$62	\$57	\$48	\$43	\$33	\$31	\$26
		10yr ave.	\$94	\$86	\$74	\$75	\$65	\$62	\$58	\$55	\$52	\$49	\$48	\$46	\$43	\$38	\$35	\$27	\$24	\$21
	70%	Current	\$97	\$88	\$81	\$79	\$77	\$75	\$74	\$72	\$70	\$69	\$68	\$67	\$62	\$52	\$46	\$36	\$34	\$28
		10yr ave.	\$101	\$93	\$80	\$80	\$70	\$66	\$62	\$59	\$56	\$53	\$52	\$50	\$47	\$41	\$37	\$29	\$26	\$23
75%	Current	\$104	\$94	\$87	\$84	\$82	\$80	\$79	\$77	\$75	\$74	\$73	\$71	\$66	\$55	\$49	\$38	\$36	\$30	
	10yr ave.	\$108	\$99	\$86	\$86	\$75	\$71	\$67	\$63	\$60	\$57	\$55	\$53	\$50	\$44	\$40	\$31	\$27	\$24	
80%	Current	\$111	\$100	\$92	\$90	\$88	\$86	\$84	\$82	\$80	\$79	\$78	\$76	\$70	\$59	\$53	\$41	\$39	\$32	
	10yr ave.	\$115	\$106	\$91	\$92	\$80	\$76	\$71	\$67	\$63	\$61	\$59	\$57	\$53	\$47	\$43	\$33	\$29	\$26	
85%	Current	\$118	\$107	\$98	\$96	\$93	\$91	\$90	\$88	\$85	\$84	\$83	\$81	\$75	\$63	\$56	\$43	\$41	\$34	
	10yr ave.	\$122	\$112	\$97	\$98	\$85	\$81	\$76	\$71	\$67	\$65	\$63	\$61	\$57	\$50	\$45	\$35	\$31	\$28	

The above shows estimated returns per head for skirted fleece wool. These figures do not take into account the value of skirtings and oddments and do not take into account discounts that may apply for faults under individual circumstances. These figures are based on a market index of 100% and should be used as a guide only. Returns over \$30 / head for fleece wool are highlighted.

Source: Australian Wool Exchange, Australian Wool Innovation, Sydney Futures Exchange, x-rates.com

Disclaimer: While all due care has been taken in the preparation of this document, no warranty is made as to its accuracy, reliability or completeness. To the extent permitted by law neither Jemalong or their sources including subsidiaries and staff, accept liability to any person for loss or damage arising from the use of this information.



Table 15: Returns pr head for skirted fleece wool.

Skirted FLC Weight 7 Kg		Micron																	
		16	16.5	17	17.5	18	18.5	19	19.5	20	21	22	23	24	25	26	28	30	32
Yield (Sch Dry)	25% Current	\$30	\$27	\$25	\$25	\$24	\$23	\$23	\$23	\$22	\$22	\$21	\$21	\$19	\$16	\$14	\$11	\$11	\$9
	10yr ave.	\$32	\$29	\$25	\$25	\$22	\$21	\$20	\$18	\$17	\$17	\$16	\$16	\$15	\$13	\$12	\$9	\$8	\$7
	30% Current	\$37	\$33	\$30	\$30	\$29	\$28	\$28	\$27	\$26	\$26	\$26	\$25	\$23	\$19	\$17	\$13	\$13	\$10
	10yr ave.	\$38	\$35	\$30	\$30	\$26	\$25	\$23	\$22	\$21	\$20	\$19	\$19	\$17	\$15	\$14	\$11	\$10	\$9
	35% Current	\$43	\$38	\$35	\$34	\$34	\$33	\$32	\$32	\$31	\$30	\$30	\$29	\$27	\$23	\$20	\$16	\$15	\$12
	10yr ave.	\$44	\$41	\$35	\$35	\$31	\$29	\$27	\$26	\$24	\$23	\$23	\$22	\$20	\$18	\$16	\$13	\$11	\$10
	40% Current	\$49	\$44	\$40	\$39	\$38	\$37	\$37	\$36	\$35	\$35	\$34	\$33	\$31	\$26	\$23	\$18	\$17	\$14
	10yr ave.	\$50	\$46	\$40	\$40	\$35	\$33	\$31	\$29	\$28	\$27	\$26	\$25	\$23	\$21	\$19	\$15	\$13	\$11
	45% Current	\$55	\$49	\$46	\$44	\$43	\$42	\$42	\$41	\$40	\$39	\$38	\$38	\$35	\$29	\$26	\$20	\$19	\$16
	10yr ave.	\$57	\$52	\$45	\$45	\$40	\$37	\$35	\$33	\$31	\$30	\$29	\$28	\$26	\$23	\$21	\$16	\$14	\$13
	50% Current	\$61	\$55	\$51	\$49	\$48	\$47	\$46	\$45	\$44	\$43	\$43	\$42	\$39	\$32	\$29	\$22	\$21	\$17
	10yr ave.	\$63	\$58	\$50	\$50	\$44	\$42	\$39	\$37	\$35	\$33	\$32	\$31	\$29	\$26	\$23	\$18	\$16	\$14
	55% Current	\$67	\$60	\$56	\$54	\$53	\$52	\$51	\$50	\$48	\$48	\$47	\$46	\$42	\$36	\$32	\$25	\$23	\$19
	10yr ave.	\$69	\$64	\$55	\$55	\$48	\$46	\$43	\$40	\$38	\$37	\$35	\$34	\$32	\$28	\$26	\$20	\$18	\$16
	60% Current	\$73	\$66	\$61	\$59	\$57	\$56	\$55	\$54	\$53	\$52	\$51	\$50	\$46	\$39	\$35	\$27	\$25	\$21
	10yr ave.	\$76	\$69	\$60	\$60	\$53	\$50	\$47	\$44	\$42	\$40	\$39	\$37	\$35	\$31	\$28	\$22	\$19	\$17
	65% Current	\$79	\$71	\$66	\$64	\$62	\$61	\$60	\$59	\$57	\$56	\$56	\$54	\$50	\$42	\$37	\$29	\$28	\$23
	10yr ave.	\$82	\$75	\$65	\$65	\$57	\$54	\$51	\$48	\$45	\$43	\$42	\$41	\$38	\$33	\$30	\$24	\$21	\$19
	70% Current	\$85	\$77	\$71	\$69	\$67	\$66	\$65	\$63	\$61	\$61	\$60	\$58	\$54	\$45	\$40	\$31	\$30	\$24
	10yr ave.	\$88	\$81	\$70	\$70	\$61	\$58	\$55	\$51	\$49	\$47	\$45	\$44	\$41	\$36	\$33	\$25	\$22	\$20
	75% Current	\$91	\$82	\$76	\$74	\$72	\$70	\$69	\$68	\$66	\$65	\$64	\$63	\$58	\$49	\$43	\$33	\$32	\$26
	10yr ave.	\$95	\$87	\$75	\$75	\$66	\$62	\$59	\$55	\$52	\$50	\$48	\$47	\$44	\$39	\$35	\$27	\$24	\$21
	80% Current	\$97	\$88	\$81	\$79	\$77	\$75	\$74	\$72	\$70	\$69	\$68	\$67	\$62	\$52	\$46	\$36	\$34	\$28
	10yr ave.	\$101	\$93	\$80	\$80	\$70	\$66	\$62	\$59	\$56	\$53	\$52	\$50	\$47	\$41	\$37	\$29	\$26	\$23
	85% Current	\$104	\$93	\$86	\$84	\$81	\$80	\$78	\$77	\$75	\$74	\$73	\$71	\$66	\$55	\$49	\$38	\$36	\$30
	10yr ave.	\$107	\$98	\$85	\$85	\$75	\$71	\$66	\$62	\$59	\$57	\$55	\$53	\$50	\$44	\$40	\$31	\$27	\$24

The above shows estimated returns per head for skirted fleece wool. These figures do not take into account the value of skirtings and oddments and do not take into account discounts that may apply for faults under individual circumstances. These figures are based on a market index of 100% and should be used as a guide only. Returns over \$30 / head for fleece wool are highlighted.

Source: Australian Wool Exchange, Australian Wool Innovation, Sydney Futures Exchange, x-rates.com

Disclaimer: While all due care has been taken in the preparation of this document, no warranty is made as to its accuracy, reliability or completeness. To the extent permitted by law neither Jemalong or their sources including subsidiaries and staff, accept liability to any person for loss or damage arising from the use of this information.



Table 16: Returns pr head for skirted fleece wool.

Skirted FLC Weight			Micron																	
6 Kg			16	16.5	17	17.5	18	18.5	19	19.5	20	21	22	23	24	25	26	28	30	32
Yield (Sch Dry)	25%	Current	\$26	\$24	\$22	\$21	\$21	\$20	\$20	\$19	\$19	\$19	\$18	\$18	\$17	\$14	\$12	\$10	\$9	\$7
		10yr ave.	\$27	\$25	\$21	\$22	\$19	\$18	\$17	\$16	\$15	\$14	\$14	\$13	\$12	\$11	\$10	\$8	\$7	\$6
	30%	Current	\$31	\$28	\$26	\$25	\$25	\$24	\$24	\$23	\$23	\$22	\$22	\$21	\$20	\$17	\$15	\$11	\$11	\$9
		10yr ave.	\$32	\$30	\$26	\$26	\$23	\$21	\$20	\$19	\$18	\$17	\$17	\$16	\$15	\$13	\$12	\$9	\$8	\$7
	35%	Current	\$37	\$33	\$30	\$30	\$29	\$28	\$28	\$27	\$26	\$26	\$26	\$25	\$23	\$19	\$17	\$13	\$13	\$10
		10yr ave.	\$38	\$35	\$30	\$30	\$26	\$25	\$23	\$22	\$21	\$20	\$19	\$19	\$17	\$15	\$14	\$11	\$10	\$9
	40%	Current	\$42	\$38	\$35	\$34	\$33	\$32	\$32	\$31	\$30	\$30	\$29	\$29	\$26	\$22	\$20	\$15	\$15	\$12
		10yr ave.	\$43	\$40	\$34	\$34	\$30	\$28	\$27	\$25	\$24	\$23	\$22	\$21	\$20	\$18	\$16	\$12	\$11	\$10
	45%	Current	\$47	\$42	\$39	\$38	\$37	\$36	\$36	\$35	\$34	\$33	\$33	\$32	\$30	\$25	\$22	\$17	\$16	\$13
		10yr ave.	\$49	\$45	\$39	\$39	\$34	\$32	\$30	\$28	\$27	\$26	\$25	\$24	\$22	\$20	\$18	\$14	\$12	\$11
	50%	Current	\$52	\$47	\$43	\$42	\$41	\$40	\$40	\$39	\$38	\$37	\$37	\$36	\$33	\$28	\$25	\$19	\$18	\$15
		10yr ave.	\$54	\$50	\$43	\$43	\$38	\$36	\$33	\$32	\$30	\$29	\$28	\$27	\$25	\$22	\$20	\$16	\$14	\$12
	55%	Current	\$57	\$52	\$48	\$46	\$45	\$44	\$43	\$43	\$41	\$41	\$40	\$39	\$36	\$30	\$27	\$21	\$20	\$16
		10yr ave.	\$59	\$55	\$47	\$47	\$41	\$39	\$37	\$35	\$33	\$31	\$30	\$29	\$27	\$24	\$22	\$17	\$15	\$13
	60%	Current	\$63	\$57	\$52	\$51	\$49	\$48	\$47	\$46	\$45	\$45	\$44	\$43	\$40	\$33	\$30	\$23	\$22	\$18
		10yr ave.	\$65	\$60	\$51	\$52	\$45	\$43	\$40	\$38	\$36	\$34	\$33	\$32	\$30	\$26	\$24	\$19	\$16	\$15
	65%	Current	\$68	\$61	\$56	\$55	\$53	\$52	\$51	\$50	\$49	\$48	\$48	\$46	\$43	\$36	\$32	\$25	\$24	\$19
		10yr ave.	\$70	\$65	\$56	\$56	\$49	\$46	\$44	\$41	\$39	\$37	\$36	\$35	\$32	\$29	\$26	\$20	\$18	\$16
	70%	Current	\$73	\$66	\$61	\$59	\$57	\$56	\$55	\$54	\$53	\$52	\$51	\$50	\$46	\$39	\$35	\$27	\$25	\$21
		10yr ave.	\$76	\$69	\$60	\$60	\$53	\$50	\$47	\$44	\$42	\$40	\$39	\$37	\$35	\$31	\$28	\$22	\$19	\$17
	75%	Current	\$78	\$71	\$65	\$63	\$62	\$60	\$59	\$58	\$56	\$56	\$55	\$54	\$50	\$42	\$37	\$29	\$27	\$22
		10yr ave.	\$81	\$74	\$64	\$65	\$56	\$53	\$50	\$47	\$45	\$43	\$41	\$40	\$37	\$33	\$30	\$23	\$21	\$18
	80%	Current	\$84	\$75	\$69	\$67	\$66	\$64	\$63	\$62	\$60	\$59	\$59	\$57	\$53	\$44	\$40	\$31	\$29	\$24
		10yr ave.	\$86	\$79	\$69	\$69	\$60	\$57	\$54	\$50	\$48	\$46	\$44	\$43	\$40	\$35	\$32	\$25	\$22	\$20
	85%	Current	\$89	\$80	\$74	\$72	\$70	\$68	\$67	\$66	\$64	\$63	\$62	\$61	\$56	\$47	\$42	\$32	\$31	\$25
		10yr ave.	\$92	\$84	\$73	\$73	\$64	\$61	\$57	\$54	\$51	\$48	\$47	\$45	\$42	\$37	\$34	\$26	\$23	\$21

The above shows estimated returns per head for skirted fleece wool. These figures do not take into account the value of skirtings and oddments and do not take into account discounts that may apply for faults under individual circumstances. These figures are based on a market index of 100% and should be used as a guide only. Returns over \$30 / head for fleece wool are highlighted.

Source: Australian Wool Exchange, Australian Wool Innovation, Sydney Futures Exchange, x-rates.com

Disclaimer: While all due care has been taken in the preparation of this document, no warranty is made as to its accuracy, reliability or completeness. To the extent permitted by law neither Jemalong or their sources including subsidiaries and staff, accept liability to any person for loss or damage arising from the use of this information.



Table 17: Returns pr head for skirted fleece wool.

Skirted FLC Weight			Micron																	
			16	16.5	17	17.5	18	18.5	19	19.5	20	21	22	23	24	25	26	28	30	32
Yield (Sch Dry)	25%	Current	\$22	\$20	\$18	\$18	\$17	\$17	\$16	\$16	\$16	\$15	\$15	\$15	\$14	\$12	\$10	\$8	\$8	\$6
		10yr ave.	\$23	\$21	\$18	\$18	\$16	\$15	\$14	\$13	\$12	\$12	\$12	\$11	\$10	\$9	\$8	\$6	\$6	\$5
	30%	Current	\$26	\$24	\$22	\$21	\$21	\$20	\$20	\$19	\$19	\$19	\$18	\$18	\$17	\$14	\$12	\$10	\$9	\$7
		10yr ave.	\$27	\$25	\$21	\$22	\$19	\$18	\$17	\$16	\$15	\$14	\$14	\$13	\$12	\$11	\$10	\$8	\$7	\$6
	35%	Current	\$30	\$27	\$25	\$25	\$24	\$23	\$23	\$23	\$22	\$22	\$21	\$21	\$19	\$16	\$14	\$11	\$11	\$9
		10yr ave.	\$32	\$29	\$25	\$25	\$22	\$21	\$20	\$18	\$17	\$17	\$16	\$16	\$15	\$13	\$12	\$9	\$8	\$7
	40%	Current	\$35	\$31	\$29	\$28	\$27	\$27	\$26	\$26	\$25	\$25	\$24	\$24	\$22	\$18	\$16	\$13	\$12	\$10
		10yr ave.	\$36	\$33	\$29	\$29	\$25	\$24	\$22	\$21	\$20	\$19	\$18	\$18	\$17	\$15	\$13	\$10	\$9	\$8
	45%	Current	\$39	\$35	\$33	\$32	\$31	\$30	\$30	\$29	\$28	\$28	\$27	\$27	\$25	\$21	\$19	\$14	\$14	\$11
		10yr ave.	\$41	\$37	\$32	\$32	\$28	\$27	\$25	\$24	\$22	\$21	\$21	\$20	\$19	\$17	\$15	\$12	\$10	\$9
	50%	Current	\$44	\$39	\$36	\$35	\$34	\$33	\$33	\$32	\$31	\$31	\$31	\$30	\$28	\$23	\$21	\$16	\$15	\$12
		10yr ave.	\$45	\$41	\$36	\$36	\$31	\$30	\$28	\$26	\$25	\$24	\$23	\$22	\$21	\$18	\$17	\$13	\$11	\$10
	55%	Current	\$48	\$43	\$40	\$39	\$38	\$37	\$36	\$35	\$35	\$34	\$34	\$33	\$30	\$25	\$23	\$18	\$17	\$14
		10yr ave.	\$50	\$45	\$39	\$39	\$34	\$33	\$31	\$29	\$27	\$26	\$25	\$25	\$23	\$20	\$18	\$14	\$13	\$11
	60%	Current	\$52	\$47	\$43	\$42	\$41	\$40	\$40	\$39	\$38	\$37	\$37	\$36	\$33	\$28	\$25	\$19	\$18	\$15
		10yr ave.	\$54	\$50	\$43	\$43	\$38	\$36	\$33	\$32	\$30	\$29	\$28	\$27	\$25	\$22	\$20	\$16	\$14	\$12
	65%	Current	\$57	\$51	\$47	\$46	\$44	\$43	\$43	\$42	\$41	\$40	\$40	\$39	\$36	\$30	\$27	\$21	\$20	\$16
		10yr ave.	\$59	\$54	\$46	\$47	\$41	\$39	\$36	\$34	\$32	\$31	\$30	\$29	\$27	\$24	\$22	\$17	\$15	\$13
	70%	Current	\$61	\$55	\$51	\$49	\$48	\$47	\$46	\$45	\$44	\$43	\$43	\$42	\$39	\$32	\$29	\$22	\$21	\$17
		10yr ave.	\$63	\$58	\$50	\$50	\$44	\$42	\$39	\$37	\$35	\$33	\$32	\$31	\$29	\$26	\$23	\$18	\$16	\$14
	75%	Current	\$65	\$59	\$54	\$53	\$51	\$50	\$49	\$48	\$47	\$46	\$46	\$45	\$41	\$35	\$31	\$24	\$23	\$19
		10yr ave.	\$68	\$62	\$54	\$54	\$47	\$45	\$42	\$39	\$37	\$36	\$35	\$33	\$31	\$28	\$25	\$19	\$17	\$15
	80%	Current	\$70	\$63	\$58	\$56	\$55	\$54	\$53	\$52	\$50	\$49	\$49	\$48	\$44	\$37	\$33	\$25	\$24	\$20
		10yr ave.	\$72	\$66	\$57	\$57	\$50	\$47	\$45	\$42	\$40	\$38	\$37	\$36	\$33	\$29	\$27	\$21	\$18	\$16
	85%	Current	\$74	\$67	\$61	\$60	\$58	\$57	\$56	\$55	\$53	\$53	\$52	\$51	\$47	\$39	\$35	\$27	\$26	\$21
		10yr ave.	\$77	\$70	\$61	\$61	\$53	\$50	\$47	\$45	\$42	\$40	\$39	\$38	\$35	\$31	\$28	\$22	\$19	\$17

The above shows estimated returns per head for skirted fleece wool. These figures do not take into account the value of skirtings and oddments and do not take into account discounts that may apply for faults under individual circumstances. These figures are based on a market index of 100% and should be used as a guide only. Returns over \$30 / head for fleece wool are highlighted.

Source: Australian Wool Exchange, Australian Wool Innovation, Sydney Futures Exchange, x-rates.com

Disclaimer: While all due care has been taken in the preparation of this document, no warranty is made as to its accuracy, reliability or completeness. To the extent permitted by law neither Jemalong or their sources including subsidiaries and staff, accept liability to any person for loss or damage arising from the use of this information.





Table 18: Returns pr head for skirted fleece wool.

Skirted FLC Weight		Micron																	
4 Kg		16	16.5	17	17.5	18	18.5	19	19.5	20	21	22	23	24	25	26	28	30	32
Yield (Sch Dry)	25% Current	\$17	\$16	\$14	\$14	\$14	\$13	\$13	\$13	\$13	\$12	\$12	\$12	\$11	\$9	\$8	\$6	\$6	\$5
	10yr ave.	\$18	\$17	\$14	\$14	\$13	\$12	\$11	\$11	\$10	\$10	\$9	\$9	\$8	\$7	\$7	\$5	\$5	\$4
	30% Current	\$21	\$19	\$17	\$17	\$16	\$16	\$16	\$15	\$15	\$15	\$15	\$14	\$13	\$11	\$10	\$8	\$7	\$6
	10yr ave.	\$22	\$20	\$17	\$17	\$15	\$14	\$13	\$13	\$12	\$11	\$11	\$11	\$10	\$9	\$8	\$6	\$5	\$5
	35% Current	\$24	\$22	\$20	\$20	\$19	\$19	\$18	\$18	\$18	\$17	\$17	\$17	\$15	\$13	\$12	\$9	\$8	\$7
	10yr ave.	\$25	\$23	\$20	\$20	\$18	\$17	\$16	\$15	\$14	\$13	\$13	\$12	\$12	\$10	\$9	\$7	\$6	\$6
	40% Current	\$28	\$25	\$23	\$22	\$22	\$21	\$21	\$21	\$20	\$20	\$20	\$19	\$18	\$15	\$13	\$10	\$10	\$8
	10yr ave.	\$29	\$26	\$23	\$23	\$20	\$19	\$18	\$17	\$16	\$15	\$15	\$14	\$13	\$12	\$11	\$8	\$7	\$7
	45% Current	\$31	\$28	\$26	\$25	\$25	\$24	\$24	\$23	\$23	\$22	\$22	\$21	\$20	\$17	\$15	\$11	\$11	\$9
	10yr ave.	\$32	\$30	\$26	\$26	\$23	\$21	\$20	\$19	\$18	\$17	\$17	\$16	\$15	\$13	\$12	\$9	\$8	\$7
	50% Current	\$35	\$31	\$29	\$28	\$27	\$27	\$26	\$26	\$25	\$25	\$24	\$24	\$22	\$18	\$16	\$13	\$12	\$10
	10yr ave.	\$36	\$33	\$29	\$29	\$25	\$24	\$22	\$21	\$20	\$19	\$18	\$18	\$17	\$15	\$13	\$10	\$9	\$8
	55% Current	\$38	\$35	\$32	\$31	\$30	\$29	\$29	\$28	\$28	\$27	\$27	\$26	\$24	\$20	\$18	\$14	\$13	\$11
	10yr ave.	\$40	\$36	\$31	\$32	\$28	\$26	\$25	\$23	\$22	\$21	\$20	\$20	\$18	\$16	\$15	\$11	\$10	\$9
	60% Current	\$42	\$38	\$35	\$34	\$33	\$32	\$32	\$31	\$30	\$30	\$29	\$29	\$26	\$22	\$20	\$15	\$15	\$12
	10yr ave.	\$43	\$40	\$34	\$34	\$30	\$28	\$27	\$25	\$24	\$23	\$22	\$21	\$20	\$18	\$16	\$12	\$11	\$10
	65% Current	\$45	\$41	\$38	\$37	\$36	\$35	\$34	\$33	\$33	\$32	\$32	\$31	\$29	\$24	\$21	\$17	\$16	\$13
	10yr ave.	\$47	\$43	\$37	\$37	\$33	\$31	\$29	\$27	\$26	\$25	\$24	\$23	\$22	\$19	\$17	\$13	\$12	\$11
	70% Current	\$49	\$44	\$40	\$39	\$38	\$37	\$37	\$36	\$35	\$35	\$34	\$33	\$31	\$26	\$23	\$18	\$17	\$14
	10yr ave.	\$50	\$46	\$40	\$40	\$35	\$33	\$31	\$29	\$28	\$27	\$26	\$25	\$23	\$21	\$19	\$15	\$13	\$11
	75% Current	\$52	\$47	\$43	\$42	\$41	\$40	\$40	\$39	\$38	\$37	\$37	\$36	\$33	\$28	\$25	\$19	\$18	\$15
	10yr ave.	\$54	\$50	\$43	\$43	\$38	\$36	\$33	\$32	\$30	\$29	\$28	\$27	\$25	\$22	\$20	\$16	\$14	\$12
	80% Current	\$56	\$50	\$46	\$45	\$44	\$43	\$42	\$41	\$40	\$40	\$39	\$38	\$35	\$30	\$26	\$20	\$19	\$16
	10yr ave.	\$58	\$53	\$46	\$46	\$40	\$38	\$36	\$34	\$32	\$30	\$29	\$29	\$27	\$23	\$21	\$17	\$15	\$13
	85% Current	\$59	\$53	\$49	\$48	\$47	\$45	\$45	\$44	\$43	\$42	\$41	\$40	\$37	\$31	\$28	\$22	\$21	\$17
	10yr ave.	\$61	\$56	\$49	\$49	\$43	\$40	\$38	\$36	\$34	\$32	\$31	\$30	\$28	\$25	\$23	\$18	\$16	\$14

The above shows estimated returns per head for skirted fleece wool. These figures do not take into account the value of skirtings and oddments and do not take into account discounts that may apply for faults under individual circumstances. These figures are based on a market index of 100% and should be used as a guide only. Returns over \$30 / head for fleece wool are highlighted.

Source: Australian Wool Exchange, Australian Wool Innovation, Sydney Futures Exchange, x-rates.com

Disclaimer: While all due care has been taken in the preparation of this document, no warranty is made as to its accuracy, reliability or completeness. To the extent permitted by law neither Jemalong or their sources including subsidiaries and staff, accept liability to any person for loss or damage arising from the use of this information.





Table 19: Returns pr head for skirted fleece wool.

Skirted FLC Weight		Micron																	
3 Kg		16	16.5	17	17.5	18	18.5	19	19.5	20	21	22	23	24	25	26	28	30	32
Yield (Sch Dry)	25% Current	\$13	\$12	\$11	\$11	\$10	\$10	\$10	\$10	\$9	\$9	\$9	\$9	\$8	\$7	\$6	\$5	\$5	\$4
	10yr ave.	\$14	\$12	\$11	\$11	\$9	\$9	\$8	\$8	\$7	\$7	\$7	\$7	\$6	\$6	\$5	\$4	\$3	\$3
	30% Current	\$16	\$14	\$13	\$13	\$12	\$12	\$12	\$12	\$11	\$11	\$11	\$11	\$10	\$8	\$7	\$6	\$5	\$4
	10yr ave.	\$16	\$15	\$13	\$13	\$11	\$11	\$10	\$9	\$9	\$9	\$8	\$8	\$7	\$7	\$6	\$5	\$4	\$4
	35% Current	\$18	\$16	\$15	\$15	\$14	\$14	\$14	\$14	\$13	\$13	\$13	\$13	\$12	\$10	\$9	\$7	\$6	\$5
	10yr ave.	\$19	\$17	\$15	\$15	\$13	\$12	\$12	\$11	\$10	\$10	\$10	\$9	\$9	\$8	\$7	\$5	\$5	\$4
	40% Current	\$21	\$19	\$17	\$17	\$16	\$16	\$16	\$15	\$15	\$15	\$15	\$14	\$13	\$11	\$10	\$8	\$7	\$6
	10yr ave.	\$22	\$20	\$17	\$17	\$15	\$14	\$13	\$13	\$12	\$11	\$11	\$11	\$10	\$9	\$8	\$6	\$5	\$5
	45% Current	\$23	\$21	\$20	\$19	\$18	\$18	\$18	\$17	\$17	\$17	\$16	\$16	\$15	\$12	\$11	\$9	\$8	\$7
	10yr ave.	\$24	\$22	\$19	\$19	\$17	\$16	\$15	\$14	\$13	\$13	\$12	\$12	\$11	\$10	\$9	\$7	\$6	\$6
	50% Current	\$26	\$24	\$22	\$21	\$21	\$20	\$20	\$19	\$19	\$19	\$18	\$18	\$17	\$14	\$12	\$10	\$9	\$7
	10yr ave.	\$27	\$25	\$21	\$22	\$19	\$18	\$17	\$16	\$15	\$14	\$14	\$13	\$12	\$11	\$10	\$8	\$7	\$6
	55% Current	\$29	\$26	\$24	\$23	\$23	\$22	\$22	\$21	\$21	\$20	\$20	\$20	\$18	\$15	\$14	\$11	\$10	\$8
	10yr ave.	\$30	\$27	\$24	\$24	\$21	\$20	\$18	\$17	\$16	\$16	\$15	\$15	\$14	\$12	\$11	\$9	\$8	\$7
	60% Current	\$31	\$28	\$26	\$25	\$25	\$24	\$24	\$23	\$23	\$22	\$22	\$21	\$20	\$17	\$15	\$11	\$11	\$9
	10yr ave.	\$32	\$30	\$26	\$26	\$23	\$21	\$20	\$19	\$18	\$17	\$17	\$16	\$15	\$13	\$12	\$9	\$8	\$7
	65% Current	\$34	\$31	\$28	\$27	\$27	\$26	\$26	\$25	\$24	\$24	\$24	\$23	\$21	\$18	\$16	\$12	\$12	\$10
	10yr ave.	\$35	\$32	\$28	\$28	\$24	\$23	\$22	\$20	\$19	\$19	\$18	\$17	\$16	\$14	\$13	\$10	\$9	\$8
	70% Current	\$37	\$33	\$30	\$30	\$29	\$28	\$28	\$27	\$26	\$26	\$26	\$25	\$23	\$19	\$17	\$13	\$13	\$10
	10yr ave.	\$38	\$35	\$30	\$30	\$26	\$25	\$23	\$22	\$21	\$20	\$19	\$19	\$17	\$15	\$14	\$11	\$10	\$9
	75% Current	\$39	\$35	\$33	\$32	\$31	\$30	\$30	\$29	\$28	\$28	\$27	\$27	\$25	\$21	\$19	\$14	\$14	\$11
	10yr ave.	\$41	\$37	\$32	\$32	\$28	\$27	\$25	\$24	\$22	\$21	\$21	\$20	\$19	\$17	\$15	\$12	\$10	\$9
	80% Current	\$42	\$38	\$35	\$34	\$33	\$32	\$32	\$31	\$30	\$30	\$29	\$29	\$26	\$22	\$20	\$15	\$15	\$12
	10yr ave.	\$43	\$40	\$34	\$34	\$30	\$28	\$27	\$25	\$24	\$23	\$22	\$21	\$20	\$18	\$16	\$12	\$11	\$10
	85% Current	\$44	\$40	\$37	\$36	\$35	\$34	\$34	\$33	\$32	\$32	\$31	\$30	\$28	\$24	\$21	\$16	\$15	\$13
	10yr ave.	\$46	\$42	\$36	\$37	\$32	\$30	\$28	\$27	\$25	\$24	\$23	\$23	\$21	\$19	\$17	\$13	\$12	\$10

The above shows estimated returns per head for skirted fleece wool. These figures do not take into account the value of skirtings and oddments and do not take into account discounts that may apply for faults under individual circumstances. These figures are based on a market index of 100% and should be used as a guide only. Returns over \$30 / head for fleece wool are highlighted.

Source: Australian Wool Exchange, Australian Wool Innovation, Sydney Futures Exchange, x-rates.com

Disclaimer: While all due care has been taken in the preparation of this document, no warranty is made as to its accuracy, reliability or completeness. To the extent permitted by law neither Jemalong or their sources including subsidiaries and staff, accept liability to any person for loss or damage arising from the use of this information.



Table 20: Returns pr head for skirted fleece wool.

Skirted FLC Weight		Micron																	
2 Kg		16	16.5	17	17.5	18	18.5	19	19.5	20	21	22	23	24	25	26	28	30	32
Yield (Sch Dry)	25% Current	\$9	\$8	\$7	\$7	\$7	\$7	\$7	\$6	\$6	\$6	\$6	\$6	\$6	\$5	\$4	\$3	\$3	\$2
	10yr ave.	\$9	\$8	\$7	\$7	\$6	\$6	\$6	\$5	\$5	\$5	\$5	\$4	\$4	\$4	\$3	\$3	\$2	\$2
	30% Current	\$10	\$9	\$9	\$8	\$8	\$8	\$8	\$8	\$8	\$7	\$7	\$7	\$7	\$6	\$5	\$4	\$4	\$3
	10yr ave.	\$11	\$10	\$9	\$9	\$8	\$7	\$7	\$6	\$6	\$6	\$6	\$5	\$5	\$4	\$4	\$3	\$3	\$2
	35% Current	\$12	\$11	\$10	\$10	\$10	\$9	\$9	\$9	\$9	\$9	\$9	\$8	\$8	\$6	\$6	\$4	\$4	\$3
	10yr ave.	\$13	\$12	\$10	\$10	\$9	\$8	\$8	\$7	\$7	\$7	\$6	\$6	\$6	\$5	\$5	\$4	\$3	\$3
	40% Current	\$14	\$13	\$12	\$11	\$11	\$11	\$11	\$10	\$10	\$10	\$10	\$10	\$9	\$7	\$7	\$5	\$5	\$4
	10yr ave.	\$14	\$13	\$11	\$11	\$10	\$9	\$9	\$8	\$8	\$8	\$7	\$7	\$7	\$6	\$5	\$4	\$4	\$3
	45% Current	\$16	\$14	\$13	\$13	\$12	\$12	\$12	\$12	\$11	\$11	\$11	\$11	\$10	\$8	\$7	\$6	\$5	\$4
	10yr ave.	\$16	\$15	\$13	\$13	\$11	\$11	\$10	\$9	\$9	\$9	\$8	\$8	\$7	\$7	\$6	\$5	\$4	\$4
	50% Current	\$17	\$16	\$14	\$14	\$14	\$13	\$13	\$13	\$13	\$12	\$12	\$12	\$11	\$9	\$8	\$6	\$6	\$5
	10yr ave.	\$18	\$17	\$14	\$14	\$13	\$12	\$11	\$11	\$10	\$10	\$9	\$9	\$8	\$7	\$7	\$5	\$5	\$4
	55% Current	\$19	\$17	\$16	\$15	\$15	\$15	\$14	\$14	\$14	\$14	\$13	\$13	\$12	\$10	\$9	\$7	\$7	\$5
	10yr ave.	\$20	\$18	\$16	\$16	\$14	\$13	\$12	\$12	\$11	\$10	\$10	\$10	\$9	\$8	\$7	\$6	\$5	\$4
	60% Current	\$21	\$19	\$17	\$17	\$16	\$16	\$16	\$15	\$15	\$15	\$15	\$14	\$13	\$11	\$10	\$8	\$7	\$6
	10yr ave.	\$22	\$20	\$17	\$17	\$15	\$14	\$13	\$13	\$12	\$11	\$11	\$11	\$10	\$9	\$8	\$6	\$5	\$5
	65% Current	\$23	\$20	\$19	\$18	\$18	\$17	\$17	\$17	\$16	\$16	\$16	\$15	\$14	\$12	\$11	\$8	\$8	\$6
	10yr ave.	\$23	\$22	\$19	\$19	\$16	\$15	\$15	\$14	\$13	\$12	\$12	\$12	\$11	\$10	\$9	\$7	\$6	\$5
	70% Current	\$24	\$22	\$20	\$20	\$19	\$19	\$18	\$18	\$18	\$17	\$17	\$17	\$15	\$13	\$12	\$9	\$8	\$7
	10yr ave.	\$25	\$23	\$20	\$20	\$18	\$17	\$16	\$15	\$14	\$13	\$13	\$12	\$12	\$10	\$9	\$7	\$6	\$6
	75% Current	\$26	\$24	\$22	\$21	\$21	\$20	\$20	\$19	\$19	\$19	\$18	\$18	\$17	\$14	\$12	\$10	\$9	\$7
	10yr ave.	\$27	\$25	\$21	\$22	\$19	\$18	\$17	\$16	\$15	\$14	\$14	\$13	\$12	\$11	\$10	\$8	\$7	\$6
	80% Current	\$28	\$25	\$23	\$22	\$22	\$21	\$21	\$21	\$20	\$20	\$20	\$19	\$18	\$15	\$13	\$10	\$10	\$8
	10yr ave.	\$29	\$26	\$23	\$23	\$20	\$19	\$18	\$17	\$16	\$15	\$15	\$14	\$13	\$12	\$11	\$8	\$7	\$7
	85% Current	\$30	\$27	\$25	\$24	\$23	\$23	\$22	\$22	\$21	\$21	\$21	\$20	\$19	\$16	\$14	\$11	\$10	\$8
	10yr ave.	\$31	\$28	\$24	\$24	\$21	\$20	\$19	\$18	\$17	\$16	\$16	\$15	\$14	\$12	\$11	\$9	\$8	\$7

The above shows estimated returns per head for skirted fleece wool. These figures do not take into account the value of skirtings and oddments and do not take into account discounts that may apply for faults under individual circumstances. These figures are based on a market index of 100% and should be used as a guide only. Returns over \$30 / head for fleece wool are highlighted.

Source: Australian Wool Exchange, Australian Wool Innovation, Sydney Futures Exchange, x-rates.com

Disclaimer: While all due care has been taken in the preparation of this document, no warranty is made as to its accuracy, reliability or completeness. To the extent permitted by law neither Jemalong or their sources including subsidiaries and staff, accept liability to any person for loss or damage arising from the use of this information.