



JEMALONG WOOL BULLETIN

(week ending 7/07/2011)

Table 1: Northern Region Micron Price Guides

CURRENT MARKET			12 MONTH COMPARISONS								3 YEAR COMPARISONS						Percentile	10 YEAR COMPARISONS					Percentile
Mic. Price Guides	7/07/2011 Current Price	30/06/2011 Weekly Change	6/07/2010 This time Last Year	Now compared to Last Year	Now 12 Month Low	Now compared to Low	Now 12 Month High	Now compared to High	Low	High	Average	Now compared to 3yr ave	Low	High	10 year Average	Now compared to 10yr ave							
NRI	1409	-46 -3.3%	917	+492 54%	890	+519 58%	1491	-82 -5%	749	1491	977	+432 44%	91%	658	1491	904	+505 56%	97%					
16*	2770	0	1560	+1210 78%	1540	+1230 80%	2800	-30 -1%	1385	2800	1819	+951 52%	95%										
16.5*	2680	0	1415	+1265 89%	1395	+1285 92%	2680	0 0%	1253	2680	1676	+1004 60%	100%										
17*	2430	+30 1.2%	1250	+1180 94%	1230	+1200 98%	2530	-100 -4%	1170	2530	1544	+886 57%	94%	1100	2659	1440	+990 69%	97%					
17.5*	2200	-50 -2.3%	1200	+1000 83%	1185	+1015 86%	2360	-160 -7%	1085	2360	1457	+743 51%	85%										
18	1996	-66 -3.3%	1170	+826 71%	1138	+858 75%	2193	-197 -9%	1035	2193	1371	+625 46%	84%	916	2193	1274	+722 57%	95%					
18.5	1803	-35 -1.9%	1131	+672 59%	1110	+693 62%	1963	-160 -8%	971	1963	1276	+527 41%	84%	843	1963								
19	1666	-43 -2.6%	1066	+600 56%	1031	+635 62%	1776	-110 -6%	894	1776	1164	+502 43%	91%	804	1776	1084	+582 54%	97%					
19.5	1560	-31 -2.0%	982	+578 59%	952	+608 64%	1670	-110 -7%	814	1670	1060	+500 47%	95%	749	1670								
20	1484	-21 -1.4%	950	+534 56%	904	+580 64%	1588	-104 -7%	740	1588	978	+506 52%	96%	684	1588	947	+537 57%	98%					
21	1423	-15 -1.1%	932	+491 53%	878	+545 62%	1522	-99 -7%	687	1522	944	+479 51%	96%	645	1522	907	+516 57%	99%					
22	1386	-29 -2.1%	923	+463 50%	847	+539 64%	1461	-75 -5%	675	1461	920	+466 51%	97%	643	1461	883	+503 57%	99%					
23	1282	-16 -1.2%	898	+384 43%	827	+455 55%	1324	-42 -3%	663	1324	889	+393 44%	96%	642	1340	859	+423 49%	98%					
24	1085	-11 -1.0%	846	+239 28%	780	+305 39%	1170	-85 -7%	647	1170	826	+259 31%	94%	637	1299	816	+269 33%	92%					
25	971	-13 -1.3%	705	+266 38%	695	+276 40%	1048	-77 -7%	566	1048	718	+253 35%	94%	567	1198	731	+240 33%	90%					
26	885	-15 -1.7%	624	+261 42%	598	+287 48%	928	-43 -5%	504	928	647	+238 37%	93%	532	1088	669	+216 32%	86%					
28	680	-31 -4.6%	475	+205 43%	443	+237 53%	734	-54 -7%	427	734	502	+178 35%	93%	424	889	530	+150 28%	85%					
30	618	-30 -4.9%	416	+202 49%	389	+229 59%	670	-52 -8%	373	670	444	+174 39%	93%	344	729	462	+156 34%	89%					
32	560	-30 -5.4%	369	+191 52%	353	+207 59%	638	-78 -12%	325	638	392	+168 43%	92%	297	669	417	+143 34%	86%					
MC	797	-26 -3.3%	636	+161 25%	561	+236 42%	831	-34 -4%	392	831	594	+203 34%	93%	380	831	519	+278 54%	98%					

Note:

* Due to the irregular market quoting for some fine wool categories, figures shown relating to micron categories below 18 micron are an estimate based on the AWEX Premium & Discounts Report & other available information.

* For any category, where there is insufficient quantity offered to enable AWEX to quote, a quote will be provided based on the best available information.

* 10 Year data is not available for some micron categories, which may result in blank spaces in the table above.

Definitions:

* A Percentile, is a value on a scale of one hundred that indicates the percent of a distribution that is equal to or below it. In general a percentile between 25% and 75% is considered normal, a percentile below 25% is considered below normal and a percentile above 75% is considered above normal.

Three and ten year percentiles shown in the table above, detail the period of time during the past 3 & 10 years that the market has traded either at or below its current price.

The higher the percentile, the stronger the market.

Source: Australian Wool Exchange, Australian Wool Innovation, Sydney Futures Exchange, x-rates.com

Disclaimer: While all due care has been taken in the preparation of this document, no warranty is made as to its accuracy, reliability or completeness. To the extent permitted by law neither Jemalong or their sources including subsidiaries and staff, accept liability to any person for loss or damage arising from the use of this information.



MARKET COMMENTARY

One Australian Dollar = \$ 1.07 US, as of 7/07/2011

NORTHERN REGION –Sale Week 1/11 (39,987 bales offered nationally)

On Wednesday - On an increased volume, most microns retreated 1.5%-2.5%, however the passed-in rate of 9.6% showed a willingness to sell at these levels. 19.5 to 22 microns started off slow but found improved support ending the day 25-30 cents cheaper. 19 microns closed 40 cents cheaper while 17.5 to 18.5 micron had strong interest for the better style and strength types, with the lower Nkt and faultier types dragging the indicators back 25-45 cents. An increased selection for 17 micron and finer, had this end of the market posting some gains. All skirtings were generally in line with the fleece market, lower Vm types (<5%) lost 30 cents, while the burrier lots were most affected, losing 50 cents. An increased offering in the crossbreds gave a clearer market signal, with 26-27 microns 30 cents cheaper, 28-30 microns 25 cents cheaper and 32 microns 20 cents cheaper.

On Thursday - Buyer support returned, with 19 to 22 microns generally unchanged, with the exception of 19.5 which eased slightly and 21 which improved by 15 cents. 17.5 to 18.5 continued to slip on the back of a lack lustre offering which is reflected in the indicator where as the limited number of 17 microns edged higher. Merino skirtings opened firm and generally remained unchanged through out the day despite some irregularity in the shorter length burrier lots which buyers discounted along with colour & cot. Locks found support after a soft start to close par to buyers favour. Crutchings were also only slightly easier, while a mostly heavy burry offering of stains remained nominally unchanged. The finer crossbred market gained some ground however the 27 to 32 micron area continued to ease, closing 5 to 10 cents lower.

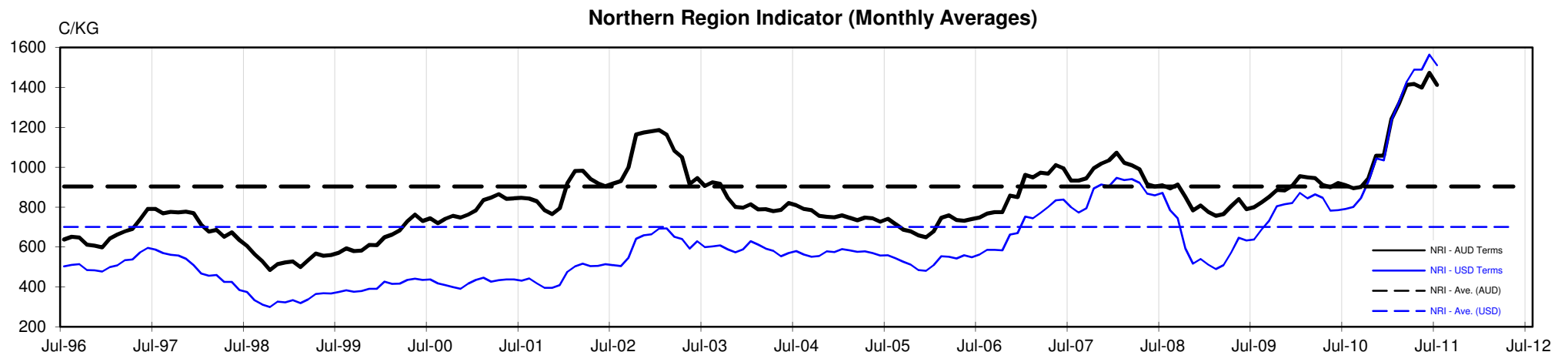




Table 4: 19 micron SFE

Wednesday, 6 July 2011

Delivery Mth	Aug-11	Oct-11	Dec-11	Feb-11	Apr-12	Jun-12	Aug-12	Oct-12	Dec-12
19 Micron SFE	1695	1640	1590	1540	1490	1460	1400	1400	1400
Average	1272	1279	1304	1114	1366	1415	1406	1416	1416
Maximum	1737	1707	1677	1640	1622	1612	1525	1525	1525
Minimum	1034	1034	1034	983	1106	1210	1285	1285	1285

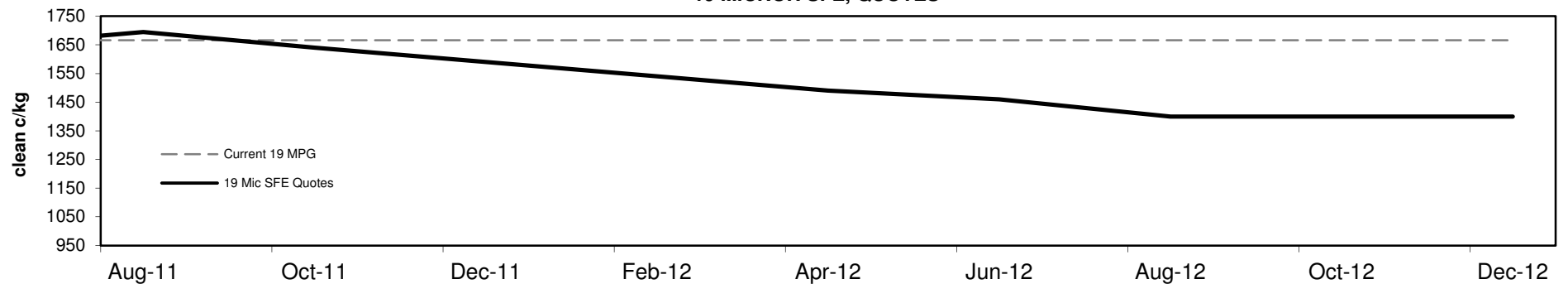
Table 5: 19 micron SFE, as a percentile of the 19 micron MPG

3 Year Percentile	93%	88%	85%	83%	83%	83%	82%	82%	82%
10 Year Percentile	98%	96%	95%	95%	95%	95%	94%	94%	94%

Table 6: 19 micron SFE, compared to MPG

SFE - MPG	+29	2%	-26	-2%	-76	-5%	-126	-8%	-176	-11%	-206	-12%	-266	-16%	-266	-16%	-266	-16%
SFE - MPG, 1 year Ave.	+246	17%	+191	13%	+141	10%	+91	6%	+41	3%	+11	1%	-49	-3%	-49	-3%	-49	-3%
SFE - MPG, 3 year Ave.	+531	46%	+476	41%	+426	37%	+376	32%	+326	28%	+296	25%	+236	20%	+236	20%	+236	20%
SFE - MPG, 10 year Ave.	+611	56%	+556	51%	+506	47%	+456	42%	+406	37%	+376	35%	+316	29%	+316	29%	+316	29%

19 MICRON SFE, QUOTES



19 Micron SFE, Front month movement

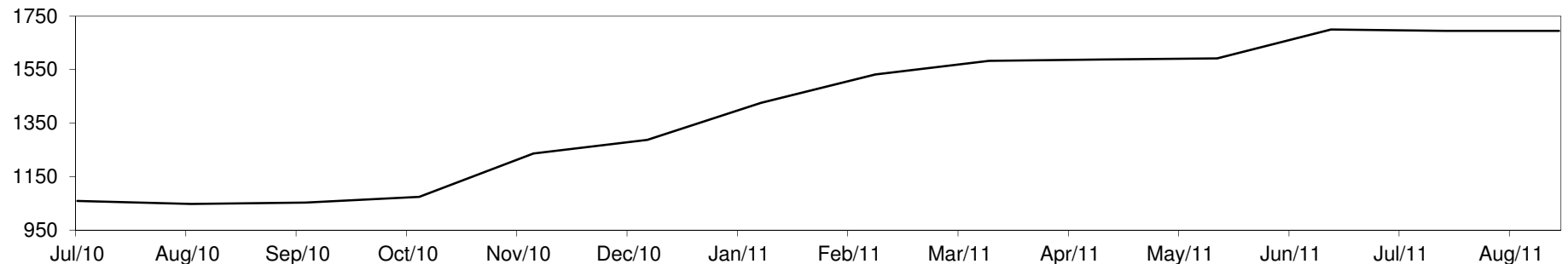




Table 7: 21 micron SFE

Wednesday, 6 July 2011

Delivery Mth	Aug-11	Oct-11	Dec-11	Feb-11	Apr-12	Jun-12	Aug-12	Oct-12	Dec-12
21 Micron SFE	1475	1393	1348	1300	1255	1140	1215	1182	1140
Average	1058	1048	1053	962	1087	1096	1130	1148	1148
Maximum	1515	1434	1411	1393	1303	1326	1316	1283	1283
Minimum	880	880	880	860	934	990	1046	1013	1013

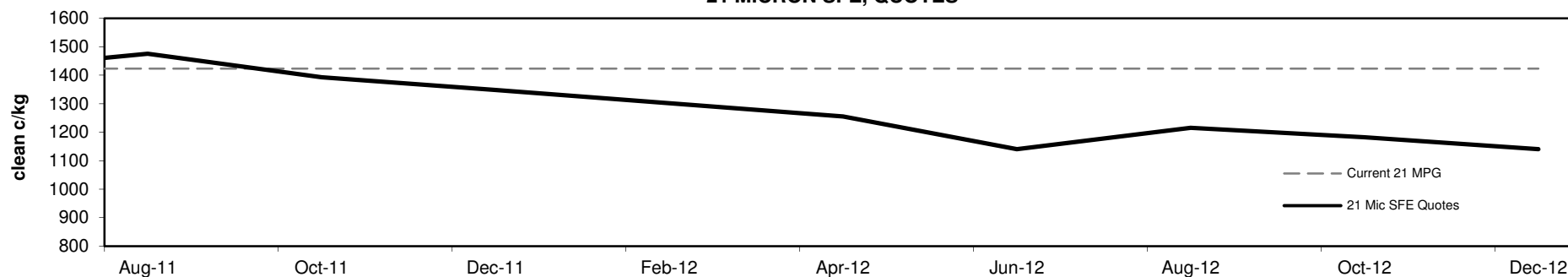
Table 8: 21 micron SFE, as a percentile of the 21 micron MPG

3 Year Percentile	97%	95%	95%	91%	89%	85%	88%	87%	85%
10 Year Percentile	99%	98%	98%	97%	93%	89%	91%	90%	89%

Table 9: 21 micron SFE, compared to MPG

SFE - MPG	+52	4%	-30	-2%	-75	-5%	-123	-9%	-168	-12%	-283	-20%	-208	-15%	-241	-17%	-283	-20%
SFE - MPG, 1 year Ave.	+324	28%	+242	21%	+197	17%	+149	13%	+104	9%	-11	-1%	+64	6%	+31	3%	-11	-1%
SFE - MPG, 3 year Ave.	+531	56%	+449	48%	+404	43%	+356	38%	+311	33%	+196	21%	+271	29%	+238	25%	+196	21%
SFE - MPG, 10 year Ave.	+568	63%	+486	54%	+441	49%	+393	43%	+348	38%	+233	26%	+308	34%	+275	30%	+233	26%

21 MICRON SFE, QUOTES



21 Micron SFE, Front month movement

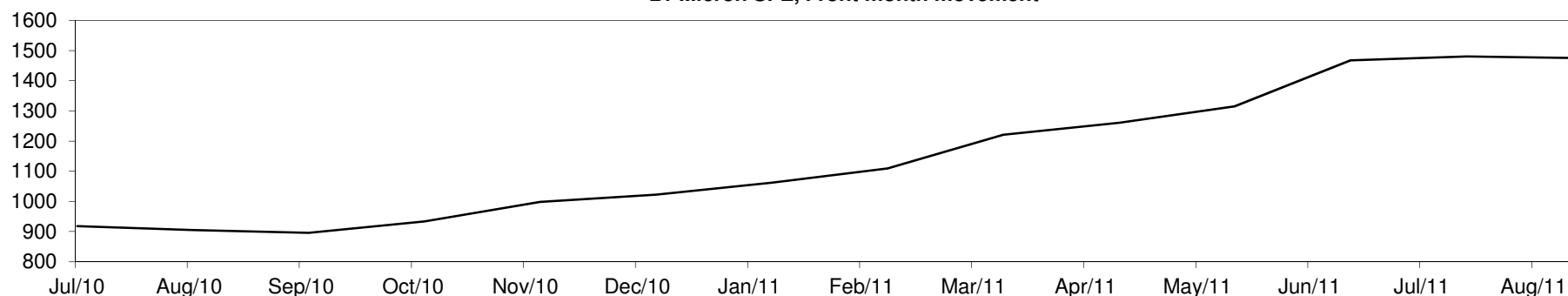




Table 10: 23 micron SFE

Wednesday, 6 July 2011

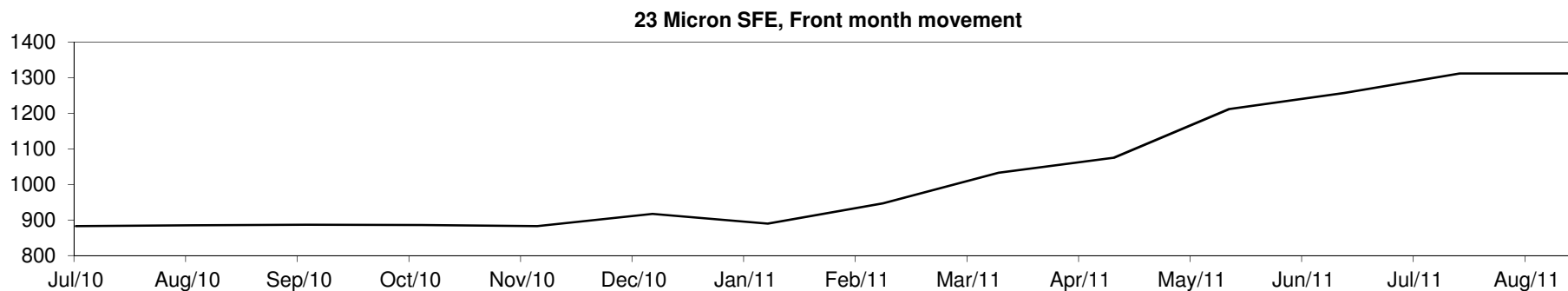
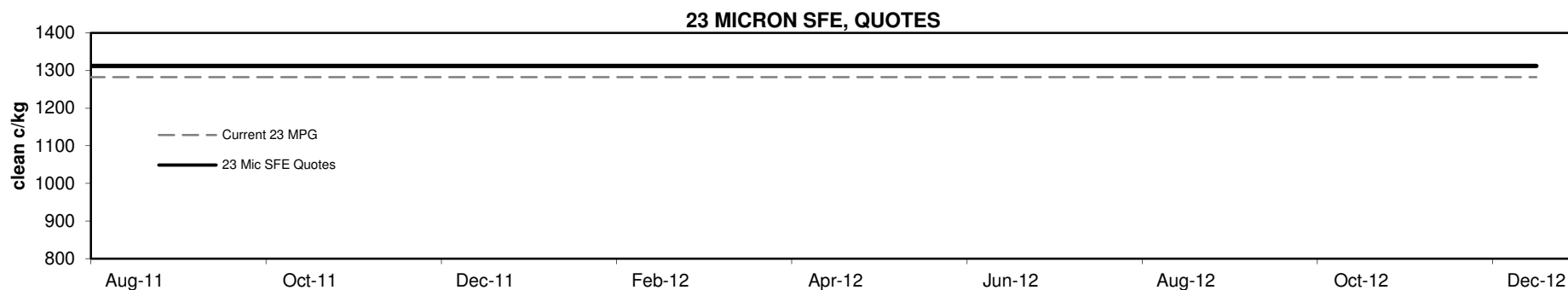
Delivery Mth	Aug-11	Oct-11	Dec-11	Feb-11	Apr-12	Jun-12	Aug-12	Oct-12	Dec-12
23 Micron SFE	1312	1312	1312	1312	1312	1312	1312	1312	1312
Average	964	969	984	870	1036	1079	1152	1241	1241
Maximum	1312	1312	1312	1312	1312	1312	1312	1312	1312
Minimum	883	883	883	760	883	890	1033	1212	1212

Table 11: 23 micron SFE, as a percentile of the 23 micron MPG

3 Year Percentile	98%	98%	98%	98%	98%	98%	98%	98%	98%
10 Year Percentile	99%	99%	99%	99%	99%	99%	99%	99%	99%

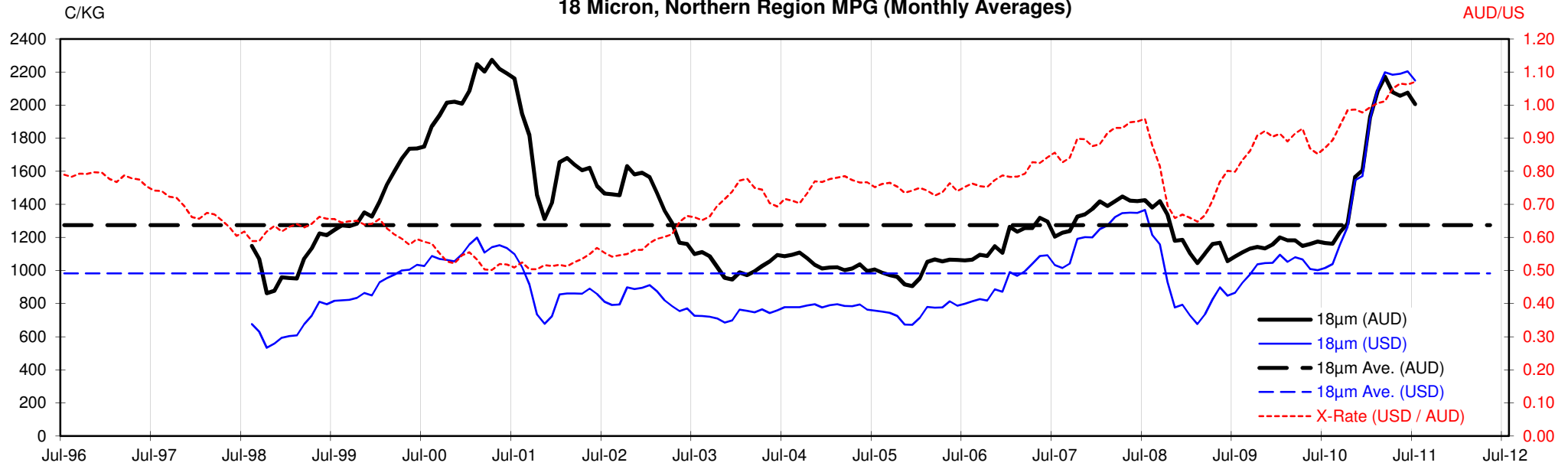
Table 12: 23 micron SFE, compared to MPG

SFE - MPG	+30	2%	+30	2%	+30	2%	+30	2%	+30	2%	+30	2%	+30	2%	+30	2%	+30	2%
SFE - MPG, 1 year Ave.	+252	24%	+252	24%	+252	24%	+252	24%	+252	24%	+252	24%	+252	24%	+252	24%	+252	24%
SFE - MPG, 3 year Ave.	+423	48%	+423	48%	+423	48%	+423	48%	+423	48%	+423	48%	+423	48%	+423	48%	+423	48%
SFE - MPG, 10 year Ave.	+453	53%	+453	53%	+453	53%	+453	53%	+453	53%	+453	53%	+453	53%	+453	53%	+453	53%

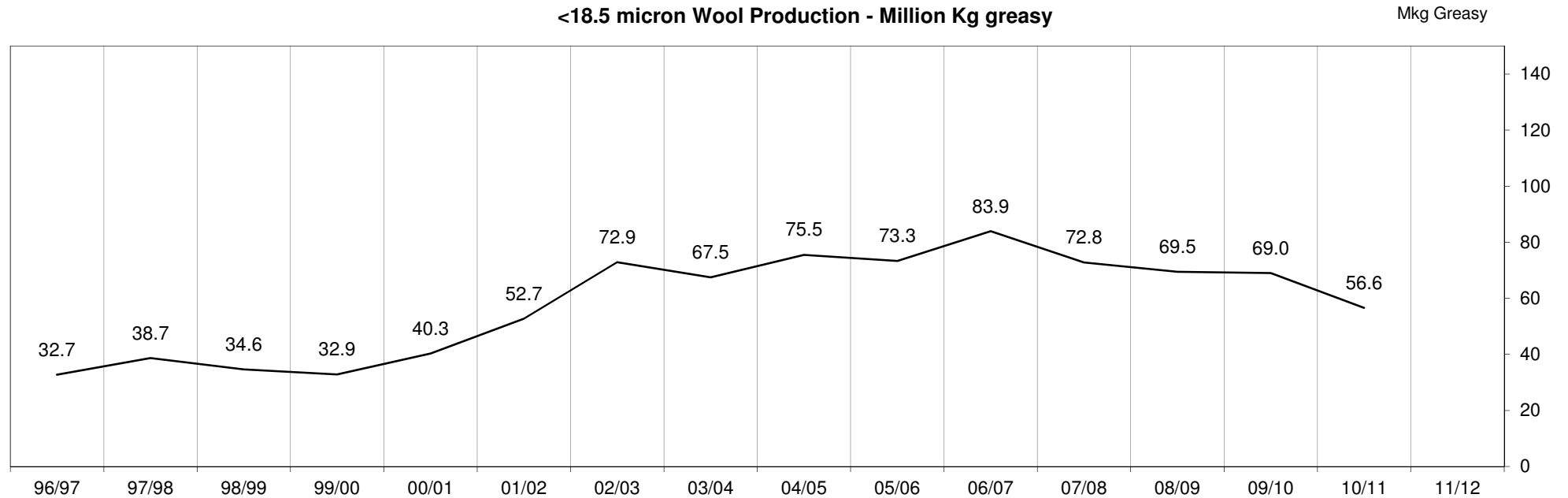


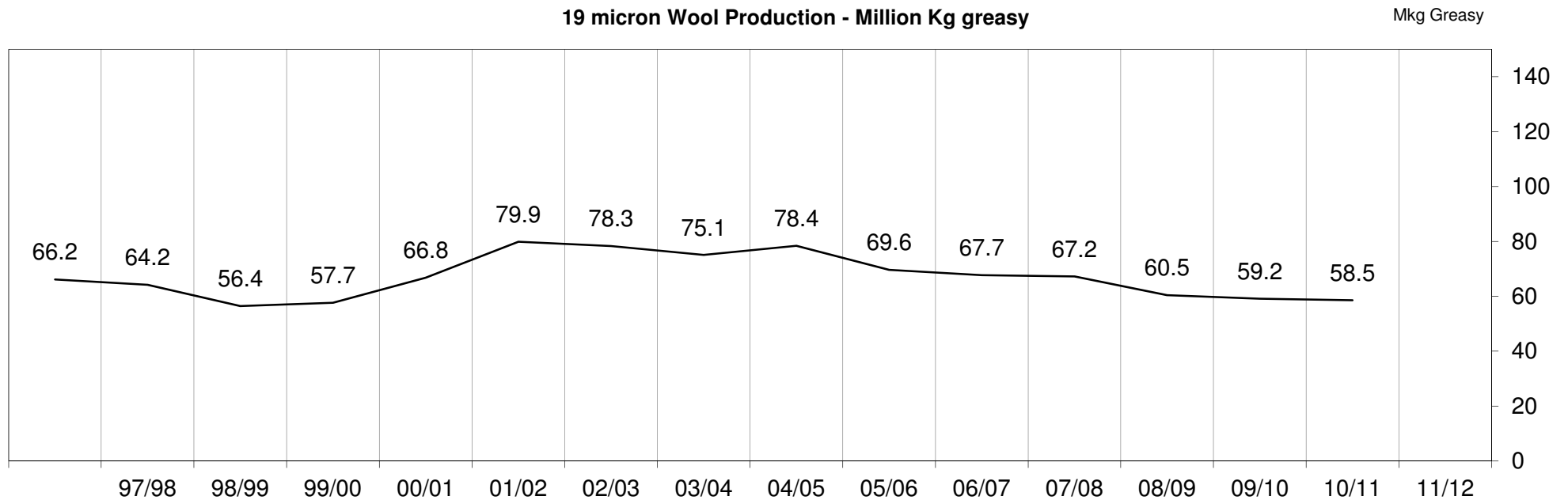
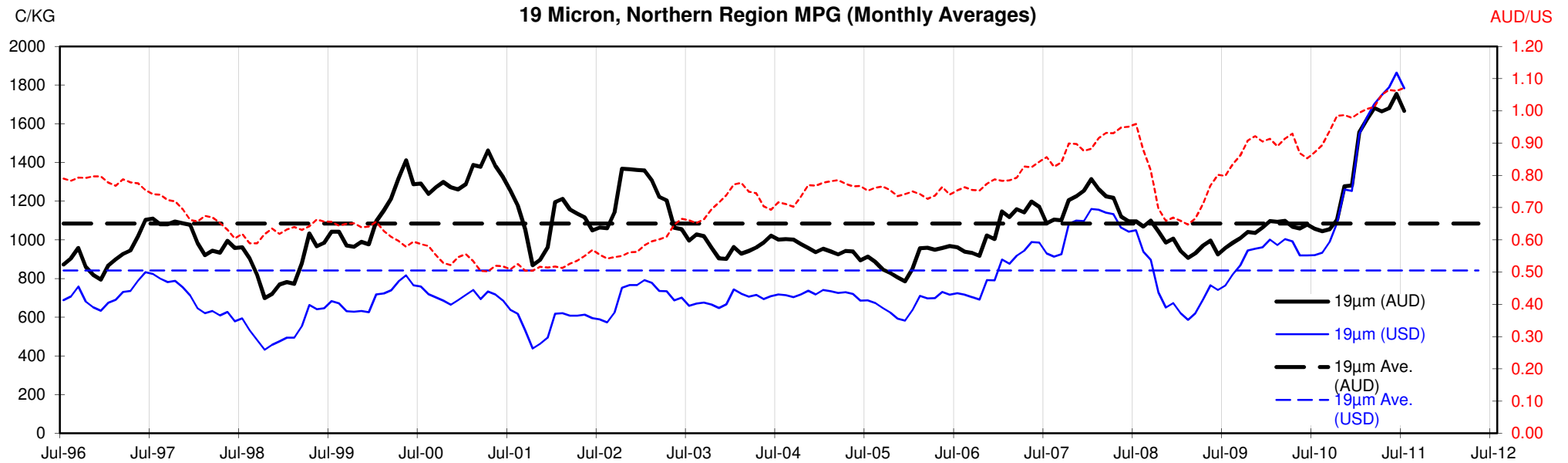


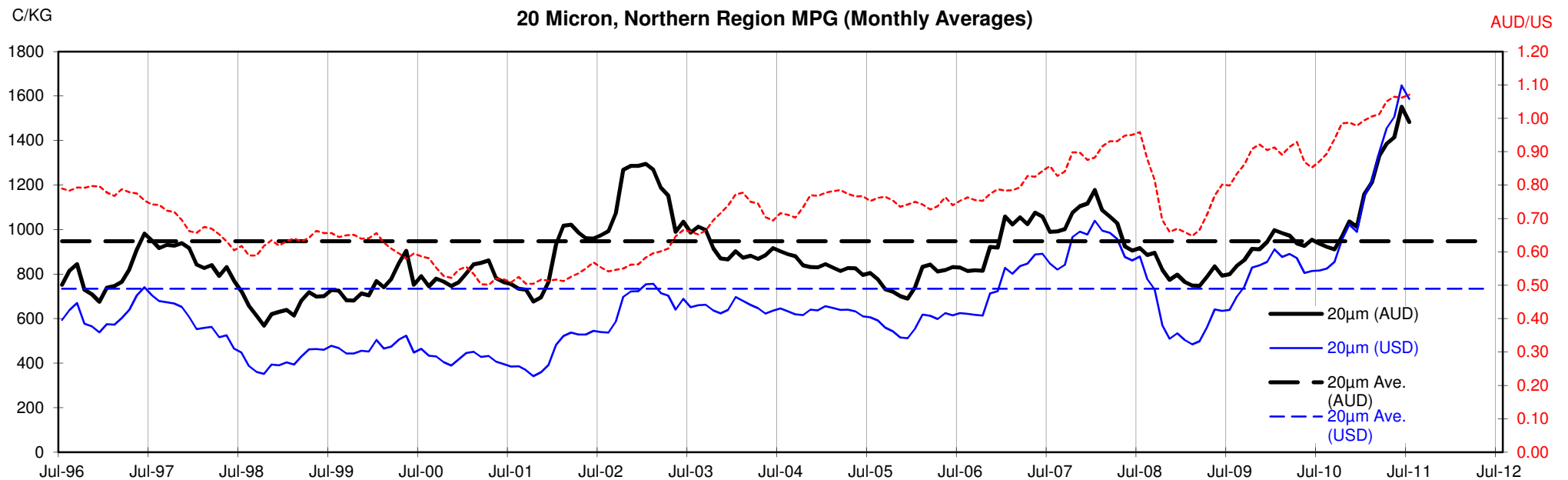
18 Micron, Northern Region MPG (Monthly Averages)

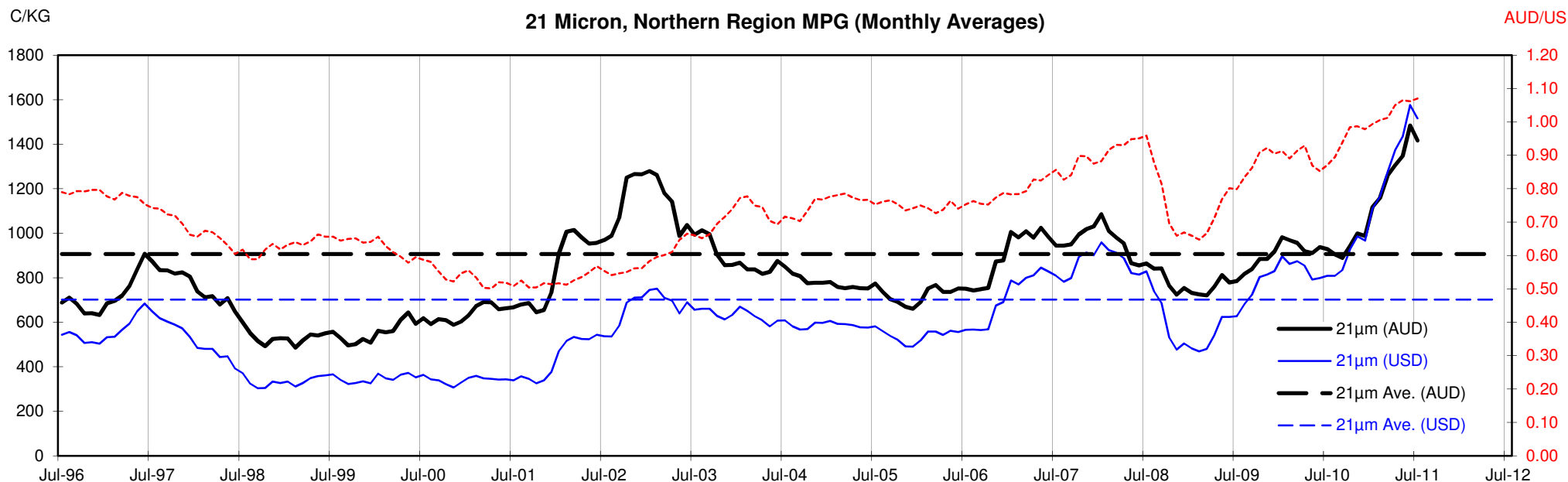


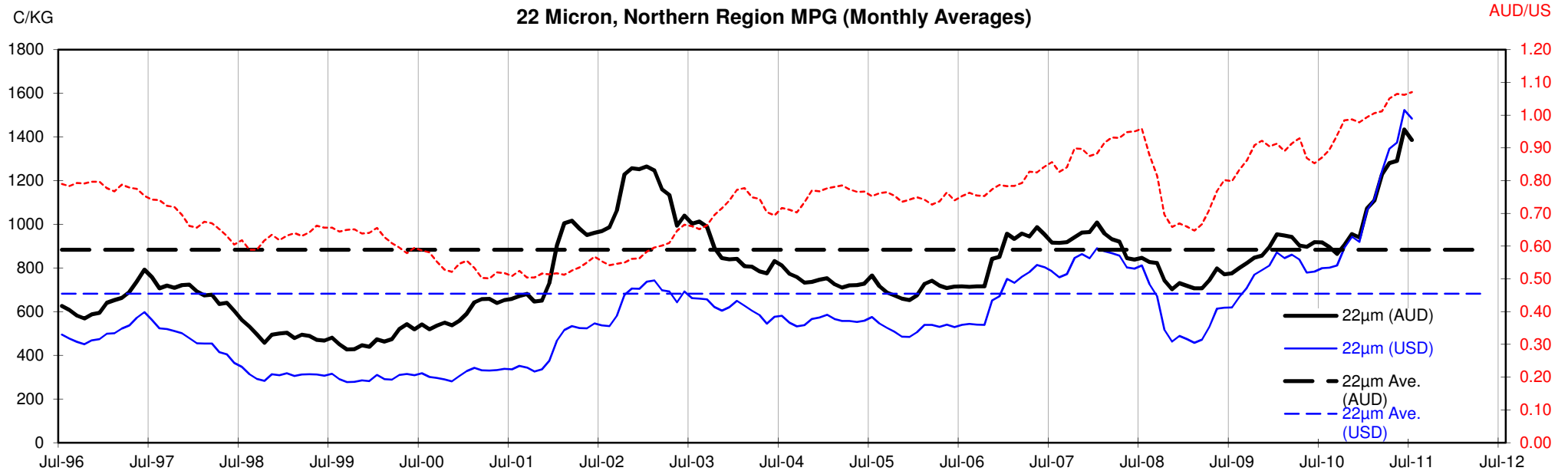
<18.5 micron Wool Production - Million Kg greasy

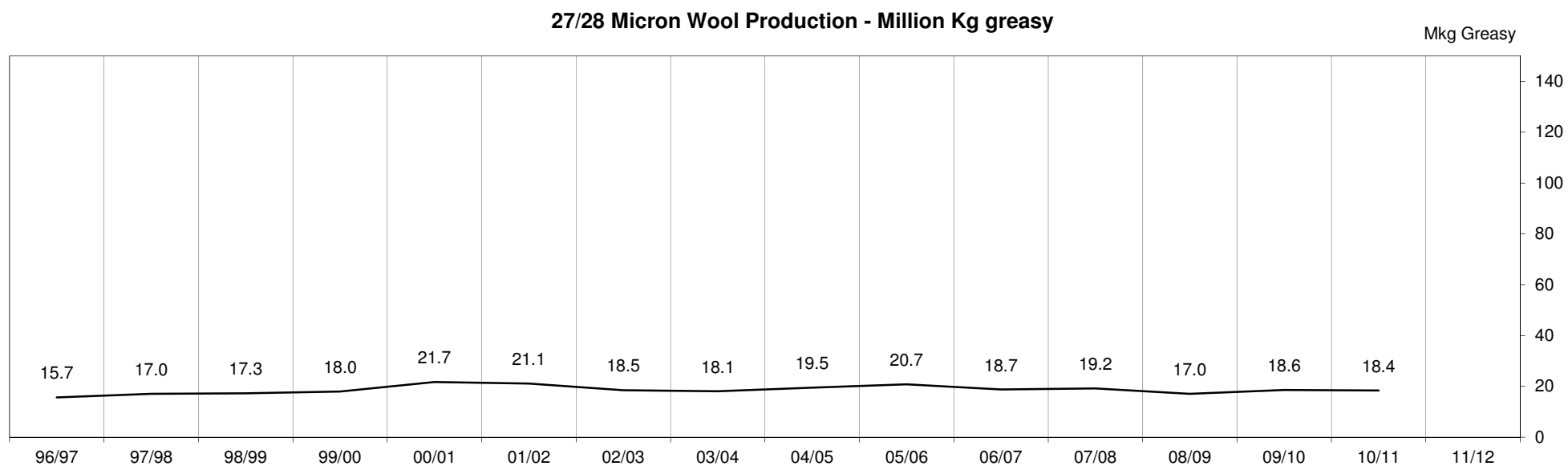
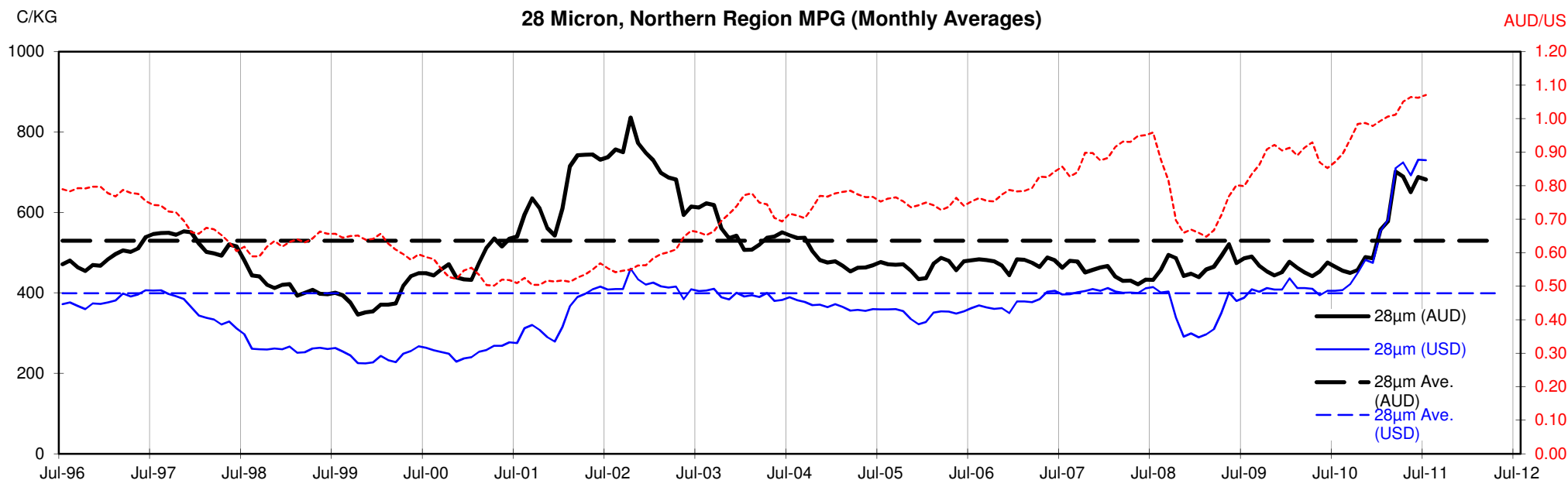












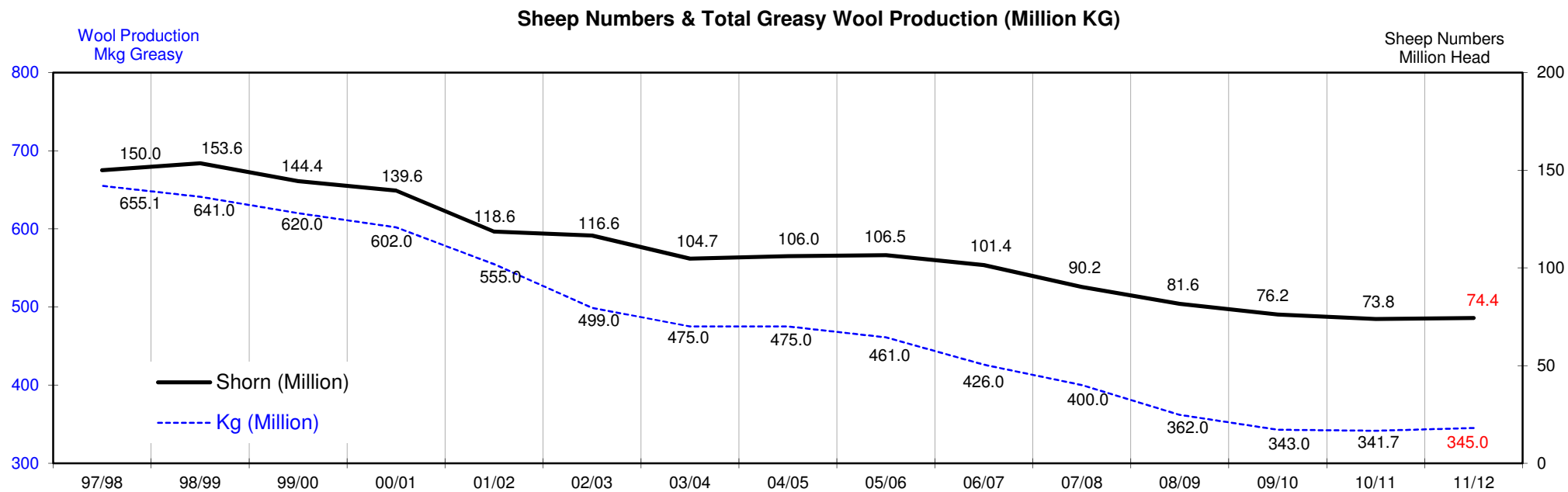
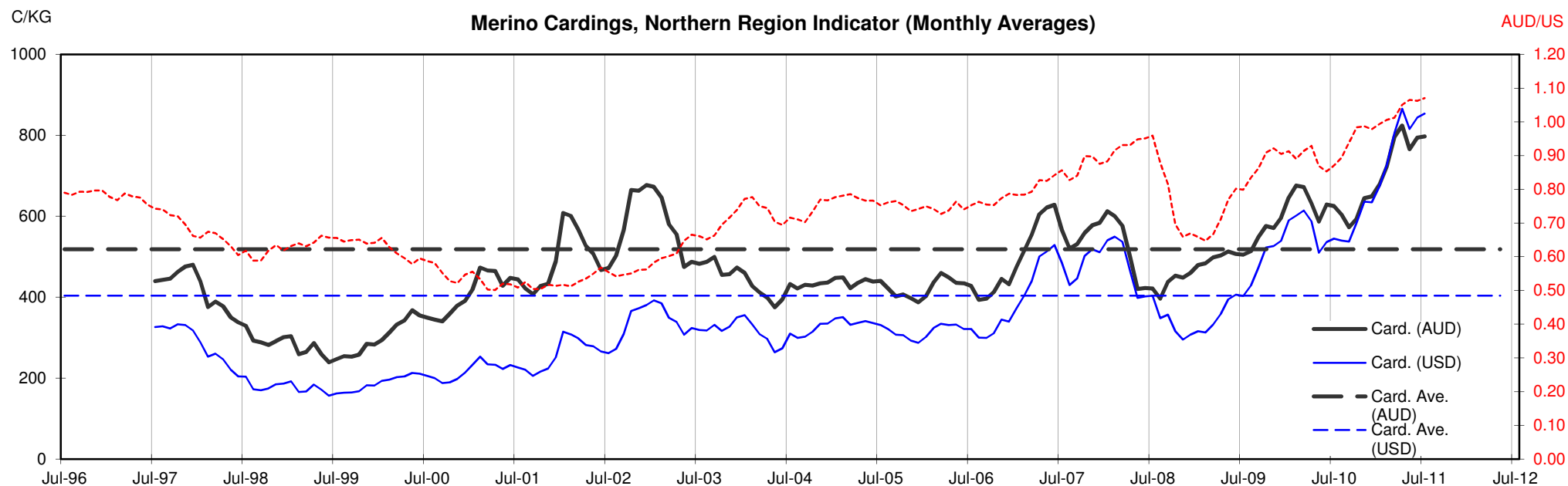




Table 13: Returns pr head for skirted fleece wool.

Skirted FLC Weight		Micron																	
9 Kg		16	16.5	17	17.5	18	18.5	19	19.5	20	21	22	23	24	25	26	28	30	32
Yield (Sch Dry)	25% Current	\$62	\$60	\$55	\$50	\$45	\$41	\$37	\$35	\$33	\$32	\$31	\$29	\$24	\$22	\$20	\$15	\$14	\$13
	10yr ave.			\$32		\$29		\$24		\$21	\$20	\$20	\$19	\$18	\$16	\$15	\$12	\$10	\$9
	30% Current	\$75	\$72	\$66	\$59	\$54	\$49	\$45	\$42	\$40	\$38	\$37	\$35	\$29	\$26	\$24	\$18	\$17	\$15
	10yr ave.			\$39		\$34		\$29		\$26	\$24	\$24	\$23	\$22	\$20	\$18	\$14	\$12	\$11
	35% Current	\$87	\$84	\$77	\$69	\$63	\$57	\$52	\$49	\$47	\$45	\$44	\$40	\$34	\$31	\$28	\$21	\$19	\$18
	10yr ave.			\$45		\$40		\$34		\$30	\$29	\$28	\$27	\$26	\$23	\$21	\$17	\$15	\$13
	40% Current	\$100	\$96	\$87	\$79	\$72	\$65	\$60	\$56	\$53	\$51	\$50	\$46	\$39	\$35	\$32	\$24	\$22	\$20
	10yr ave.			\$52		\$46		\$39		\$34	\$33	\$32	\$31	\$29	\$26	\$24	\$19	\$17	\$15
	45% Current	\$112	\$109	\$98	\$89	\$81	\$73	\$67	\$63	\$60	\$58	\$56	\$52	\$44	\$39	\$36	\$28	\$25	\$23
	10yr ave.			\$58		\$52		\$44		\$38	\$37	\$36	\$35	\$33	\$30	\$27	\$21	\$19	\$17
	50% Current	\$125	\$121	\$109	\$99	\$90	\$81	\$75	\$70	\$67	\$64	\$62	\$58	\$49	\$44	\$40	\$31	\$28	\$25
	10yr ave.			\$65		\$57		\$49		\$43	\$41	\$40	\$39	\$37	\$33	\$30	\$24	\$21	\$19
	55% Current	\$137	\$133	\$120	\$109	\$99	\$89	\$82	\$77	\$73	\$70	\$69	\$63	\$54	\$48	\$44	\$34	\$31	\$28
	10yr ave.			\$71		\$63		\$54		\$47	\$45	\$44	\$43	\$40	\$36	\$33	\$26	\$23	\$21
	60% Current	\$150	\$145	\$131	\$119	\$108	\$97	\$90	\$84	\$80	\$77	\$75	\$69	\$59	\$52	\$48	\$37	\$33	\$30
	10yr ave.			\$78		\$69		\$59		\$51	\$49	\$48	\$46	\$44	\$39	\$36	\$29	\$25	\$23
	65% Current	\$162	\$157	\$142	\$129	\$117	\$105	\$97	\$91	\$87	\$83	\$81	\$75	\$63	\$57	\$52	\$40	\$36	\$33
	10yr ave.			\$84		\$75		\$63		\$55	\$53	\$52	\$50	\$48	\$43	\$39	\$31	\$27	\$24
	70% Current	\$175	\$169	\$153	\$139	\$126	\$114	\$105	\$98	\$93	\$90	\$87	\$81	\$68	\$61	\$56	\$43	\$39	\$35
	10yr ave.			\$91		\$80		\$68		\$60	\$57	\$56	\$54	\$51	\$46	\$42	\$33	\$29	\$26
	75% Current	\$187	\$181	\$164	\$149	\$135	\$122	\$112	\$105	\$100	\$96	\$94	\$87	\$73	\$66	\$60	\$46	\$42	\$38
	10yr ave.			\$97		\$86		\$73		\$64	\$61	\$60	\$58	\$55	\$49	\$45	\$36	\$31	\$28
	80% Current	\$199	\$193	\$175	\$158	\$144	\$130	\$120	\$112	\$107	\$102	\$100	\$92	\$78	\$70	\$64	\$49	\$44	\$40
	10yr ave.			\$104		\$92		\$78		\$68	\$65	\$64	\$62	\$59	\$53	\$48	\$38	\$33	\$30
	85% Current	\$212	\$205	\$186	\$168	\$153	\$138	\$127	\$119	\$114	\$109	\$106	\$98	\$83	\$74	\$68	\$52	\$47	\$43
	10yr ave.			\$110		\$97		\$83		\$72	\$69	\$68	\$66	\$62	\$56	\$51	\$41	\$35	\$32

The above shows estimated returns per head for skirted fleece wool. These figures do not take into account the value of skirtings and oddments and do not take into account discounts that may apply for faults under individual circumstances. These figures are based on a market index of 100% and should be used as a guide only. Returns over \$30 / head for fleece wool are highlighted.

Source: Australian Wool Exchange, Australian Wool Innovation, Sydney Futures Exchange, x-rates.com

Disclaimer: While all due care has been taken in the preparation of this document, no warranty is made as to its accuracy, reliability or completeness. To the extent permitted by law neither Jemalong or their sources including subsidiaries and staff, accept liability to any person for loss or damage arising from the use of this information.



Table 14: Returns pr head for skirted fleece wool.

Skirted FLC Weight		Micron																	
8 Kg		16	16.5	17	17.5	18	18.5	19	19.5	20	21	22	23	24	25	26	28	30	32
Yield (Sch Dry)	25% Current	\$55	\$54	\$49	\$44	\$40	\$36	\$33	\$31	\$30	\$28	\$28	\$26	\$22	\$19	\$18	\$14	\$12	\$11
	10yr ave.			\$29		\$25		\$22		\$19	\$18	\$18	\$17	\$16	\$15	\$13	\$11	\$9	\$8
	30% Current	\$66	\$64	\$58	\$53	\$48	\$43	\$40	\$37	\$36	\$34	\$33	\$31	\$26	\$23	\$21	\$16	\$15	\$13
	10yr ave.			\$35		\$31		\$26		\$23	\$22	\$21	\$21	\$20	\$18	\$16	\$13	\$11	\$10
	35% Current	\$78	\$75	\$68	\$62	\$56	\$50	\$47	\$44	\$42	\$40	\$39	\$36	\$30	\$27	\$25	\$19	\$17	\$16
	10yr ave.			\$40		\$36		\$30		\$27	\$25	\$25	\$24	\$23	\$20	\$19	\$15	\$13	\$12
	40% Current	\$89	\$86	\$78	\$70	\$64	\$58	\$53	\$50	\$47	\$46	\$44	\$41	\$35	\$31	\$28	\$22	\$20	\$18
	10yr ave.			\$46		\$41		\$35		\$30	\$29	\$28	\$27	\$26	\$23	\$21	\$17	\$15	\$13
	45% Current	\$100	\$96	\$87	\$79	\$72	\$65	\$60	\$56	\$53	\$51	\$50	\$46	\$39	\$35	\$32	\$24	\$22	\$20
	10yr ave.			\$52		\$46		\$39		\$34	\$33	\$32	\$31	\$29	\$26	\$24	\$19	\$17	\$15
	50% Current	\$111	\$107	\$97	\$88	\$80	\$72	\$67	\$62	\$59	\$57	\$55	\$51	\$43	\$39	\$35	\$27	\$25	\$22
	10yr ave.			\$58		\$51		\$43		\$38	\$36	\$35	\$34	\$33	\$29	\$27	\$21	\$18	\$17
	55% Current	\$122	\$118	\$107	\$97	\$88	\$79	\$73	\$69	\$65	\$63	\$61	\$56	\$48	\$43	\$39	\$30	\$27	\$25
	10yr ave.			\$63		\$56		\$48		\$42	\$40	\$39	\$38	\$36	\$32	\$29	\$23	\$20	\$18
	60% Current	\$133	\$129	\$117	\$106	\$96	\$87	\$80	\$75	\$71	\$68	\$67	\$62	\$52	\$47	\$42	\$33	\$30	\$27
	10yr ave.			\$69		\$61		\$52		\$45	\$44	\$42	\$41	\$39	\$35	\$32	\$25	\$22	\$20
	65% Current	\$144	\$139	\$126	\$114	\$104	\$94	\$87	\$81	\$77	\$74	\$72	\$67	\$56	\$50	\$46	\$35	\$32	\$29
	10yr ave.			\$75		\$66		\$56		\$49	\$47	\$46	\$45	\$42	\$38	\$35	\$28	\$24	\$22
	70% Current	\$155	\$150	\$136	\$123	\$112	\$101	\$93	\$87	\$83	\$80	\$78	\$72	\$61	\$54	\$50	\$38	\$35	\$31
	10yr ave.			\$81		\$71		\$61		\$53	\$51	\$49	\$48	\$46	\$41	\$37	\$30	\$26	\$23
	75% Current	\$166	\$161	\$146	\$132	\$120	\$108	\$100	\$94	\$89	\$85	\$83	\$77	\$65	\$58	\$53	\$41	\$37	\$34
	10yr ave.			\$86		\$76		\$65		\$57	\$54	\$53	\$52	\$49	\$44	\$40	\$32	\$28	\$25
	80% Current	\$177	\$172	\$156	\$141	\$128	\$115	\$107	\$100	\$95	\$91	\$89	\$82	\$69	\$62	\$57	\$44	\$40	\$36
	10yr ave.			\$92		\$82		\$69		\$61	\$58	\$57	\$55	\$52	\$47	\$43	\$34	\$30	\$27
	85% Current	\$188	\$182	\$165	\$150	\$136	\$123	\$113	\$106	\$101	\$97	\$94	\$87	\$74	\$66	\$60	\$46	\$42	\$38
	10yr ave.			\$98		\$87		\$74		\$64	\$62	\$60	\$58	\$55	\$50	\$45	\$36	\$31	\$28

The above shows estimated returns per head for skirted fleece wool. These figures do not take into account the value of skirtings and oddments and do not take into account discounts that may apply for faults under individual circumstances. These figures are based on a market index of 100% and should be used as a guide only. Returns over \$30 / head for fleece wool are highlighted.

Source: Australian Wool Exchange, Australian Wool Innovation, Sydney Futures Exchange, x-rates.com

Disclaimer: While all due care has been taken in the preparation of this document, no warranty is made as to its accuracy, reliability or completeness. To the extent permitted by law neither Jemalong or their sources including subsidiaries and staff, accept liability to any person for loss or damage arising from the use of this information.



Table 15: Returns pr head for skirted fleece wool.

Skirted FLC Weight		Micron																	
7 Kg		16	16.5	17	17.5	18	18.5	19	19.5	20	21	22	23	24	25	26	28	30	32
Yield (Sch Dry)	25% Current	\$48	\$47	\$43	\$39	\$35	\$32	\$29	\$27	\$26	\$25	\$24	\$22	\$19	\$17	\$15	\$12	\$11	\$10
	10yr ave.			\$25		\$22		\$19		\$17	\$16	\$15	\$15	\$14	\$13	\$12	\$9	\$8	\$7
	30% Current	\$58	\$56	\$51	\$46	\$42	\$38	\$35	\$33	\$31	\$30	\$29	\$27	\$23	\$20	\$19	\$14	\$13	\$12
	10yr ave.			\$30		\$27		\$23		\$20	\$19	\$19	\$18	\$17	\$15	\$14	\$11	\$10	\$9
	35% Current	\$68	\$66	\$60	\$54	\$49	\$44	\$41	\$38	\$36	\$35	\$34	\$31	\$27	\$24	\$22	\$17	\$15	\$14
	10yr ave.			\$35		\$31		\$27		\$23	\$22	\$22	\$21	\$20	\$18	\$16	\$13	\$11	\$10
	40% Current	\$78	\$75	\$68	\$62	\$56	\$50	\$47	\$44	\$42	\$40	\$39	\$36	\$30	\$27	\$25	\$19	\$17	\$16
	10yr ave.			\$40		\$36		\$30		\$27	\$25	\$25	\$24	\$23	\$20	\$19	\$15	\$13	\$12
	45% Current	\$87	\$84	\$77	\$69	\$63	\$57	\$52	\$49	\$47	\$45	\$44	\$40	\$34	\$31	\$28	\$21	\$19	\$18
	10yr ave.			\$45		\$40		\$34		\$30	\$29	\$28	\$27	\$26	\$23	\$21	\$17	\$15	\$13
	50% Current	\$97	\$94	\$85	\$77	\$70	\$63	\$58	\$55	\$52	\$50	\$49	\$45	\$38	\$34	\$31	\$24	\$22	\$20
	10yr ave.			\$50		\$45		\$38		\$33	\$32	\$31	\$30	\$29	\$26	\$23	\$19	\$16	\$15
	55% Current	\$107	\$103	\$94	\$85	\$77	\$69	\$64	\$60	\$57	\$55	\$53	\$49	\$42	\$37	\$34	\$26	\$24	\$22
	10yr ave.			\$55		\$49		\$42		\$36	\$35	\$34	\$33	\$31	\$28	\$26	\$20	\$18	\$16
	60% Current	\$116	\$113	\$102	\$92	\$84	\$76	\$70	\$66	\$62	\$60	\$58	\$54	\$46	\$41	\$37	\$29	\$26	\$24
	10yr ave.			\$60		\$54		\$46		\$40	\$38	\$37	\$36	\$34	\$31	\$28	\$22	\$19	\$18
	65% Current	\$126	\$122	\$111	\$100	\$91	\$82	\$76	\$71	\$68	\$65	\$63	\$58	\$49	\$44	\$40	\$31	\$28	\$25
	10yr ave.			\$66		\$58		\$49		\$43	\$41	\$40	\$39	\$37	\$33	\$30	\$24	\$21	\$19
	70% Current	\$136	\$131	\$119	\$108	\$98	\$88	\$82	\$76	\$73	\$70	\$68	\$63	\$53	\$48	\$43	\$33	\$30	\$27
	10yr ave.			\$71		\$62		\$53		\$46	\$44	\$43	\$42	\$40	\$36	\$33	\$26	\$23	\$20
	75% Current	\$145	\$141	\$128	\$116	\$105	\$95	\$87	\$82	\$78	\$75	\$73	\$67	\$57	\$51	\$46	\$36	\$32	\$29
	10yr ave.			\$76		\$67		\$57		\$50	\$48	\$46	\$45	\$43	\$38	\$35	\$28	\$24	\$22
	80% Current	\$155	\$150	\$136	\$123	\$112	\$101	\$93	\$87	\$83	\$80	\$78	\$72	\$61	\$54	\$50	\$38	\$35	\$31
	10yr ave.			\$81		\$71		\$61		\$53	\$51	\$49	\$48	\$46	\$41	\$37	\$30	\$26	\$23
	85% Current	\$165	\$159	\$145	\$131	\$119	\$107	\$99	\$93	\$88	\$85	\$82	\$76	\$65	\$58	\$53	\$40	\$37	\$33
	10yr ave.			\$86		\$76		\$64		\$56	\$54	\$53	\$51	\$49	\$43	\$40	\$32	\$27	\$25

The above shows estimated returns per head for skirted fleece wool. These figures do not take into account the value of skirtings and oddments and do not take into account discounts that may apply for faults under individual circumstances. These figures are based on a market index of 100% and should be used as a guide only. Returns over \$30 / head for fleece wool are highlighted.

Source: Australian Wool Exchange, Australian Wool Innovation, Sydney Futures Exchange, x-rates.com

Disclaimer: While all due care has been taken in the preparation of this document, no warranty is made as to its accuracy, reliability or completeness. To the extent permitted by law neither Jemalong or their sources including subsidiaries and staff, accept liability to any person for loss or damage arising from the use of this information.



Table 16: Returns pr head for skirted fleece wool.

Skirted FLC Weight		Micron																	
6 Kg		16	16.5	17	17.5	18	18.5	19	19.5	20	21	22	23	24	25	26	28	30	32
Yield (Sch Dry)	25% Current	\$42	\$40	\$36	\$33	\$30	\$27	\$25	\$23	\$22	\$21	\$21	\$19	\$16	\$15	\$13	\$10	\$9	\$8
	10yr ave.			\$22		\$19		\$16		\$14	\$14	\$13	\$13	\$12	\$11	\$10	\$8	\$7	\$6
	30% Current	\$50	\$48	\$44	\$40	\$36	\$32	\$30	\$28	\$27	\$26	\$25	\$23	\$20	\$17	\$16	\$12	\$11	\$10
	10yr ave.			\$26		\$23		\$20		\$17	\$16	\$16	\$15	\$15	\$13	\$12	\$10	\$8	\$8
	35% Current	\$58	\$56	\$51	\$46	\$42	\$38	\$35	\$33	\$31	\$30	\$29	\$27	\$23	\$20	\$19	\$14	\$13	\$12
	10yr ave.			\$30		\$27		\$23		\$20	\$19	\$19	\$18	\$17	\$15	\$14	\$11	\$10	\$9
	40% Current	\$66	\$64	\$58	\$53	\$48	\$43	\$40	\$37	\$36	\$34	\$33	\$31	\$26	\$23	\$21	\$16	\$15	\$13
	10yr ave.			\$35		\$31		\$26		\$23	\$22	\$21	\$21	\$20	\$18	\$16	\$13	\$11	\$10
	45% Current	\$75	\$72	\$66	\$59	\$54	\$49	\$45	\$42	\$40	\$38	\$37	\$35	\$29	\$26	\$24	\$18	\$17	\$15
	10yr ave.			\$39		\$34		\$29		\$26	\$24	\$24	\$23	\$22	\$20	\$18	\$14	\$12	\$11
	50% Current	\$83	\$80	\$73	\$66	\$60	\$54	\$50	\$47	\$45	\$43	\$42	\$38	\$33	\$29	\$27	\$20	\$19	\$17
	10yr ave.			\$43		\$38		\$33		\$28	\$27	\$26	\$26	\$24	\$22	\$20	\$16	\$14	\$13
	55% Current	\$91	\$88	\$80	\$73	\$66	\$59	\$55	\$51	\$49	\$47	\$46	\$42	\$36	\$32	\$29	\$22	\$20	\$18
	10yr ave.			\$48		\$42		\$36		\$31	\$30	\$29	\$28	\$27	\$24	\$22	\$17	\$15	\$14
	60% Current	\$100	\$96	\$87	\$79	\$72	\$65	\$60	\$56	\$53	\$51	\$50	\$46	\$39	\$35	\$32	\$24	\$22	\$20
	10yr ave.			\$52		\$46		\$39		\$34	\$33	\$32	\$31	\$29	\$26	\$24	\$19	\$17	\$15
	65% Current	\$108	\$105	\$95	\$86	\$78	\$70	\$65	\$61	\$58	\$55	\$54	\$50	\$42	\$38	\$35	\$27	\$24	\$22
	10yr ave.			\$56		\$50		\$42		\$37	\$35	\$34	\$34	\$32	\$29	\$26	\$21	\$18	\$16
	70% Current	\$116	\$113	\$102	\$92	\$84	\$76	\$70	\$66	\$62	\$60	\$58	\$54	\$46	\$41	\$37	\$29	\$26	\$24
	10yr ave.			\$60		\$54		\$46		\$40	\$38	\$37	\$36	\$34	\$31	\$28	\$22	\$19	\$18
	75% Current	\$125	\$121	\$109	\$99	\$90	\$81	\$75	\$70	\$67	\$64	\$62	\$58	\$49	\$44	\$40	\$31	\$28	\$25
	10yr ave.			\$65		\$57		\$49		\$43	\$41	\$40	\$39	\$37	\$33	\$30	\$24	\$21	\$19
	80% Current	\$133	\$129	\$117	\$106	\$96	\$87	\$80	\$75	\$71	\$68	\$67	\$62	\$52	\$47	\$42	\$33	\$30	\$27
	10yr ave.			\$69		\$61		\$52		\$45	\$44	\$42	\$41	\$39	\$35	\$32	\$25	\$22	\$20
	85% Current	\$141	\$137	\$124	\$112	\$102	\$92	\$85	\$80	\$76	\$73	\$71	\$65	\$55	\$50	\$45	\$35	\$32	\$29
	10yr ave.			\$73		\$65		\$55		\$48	\$46	\$45	\$44	\$42	\$37	\$34	\$27	\$24	\$21

The above shows estimated returns per head for skirted fleece wool. These figures do not take into account the value of skirtings and oddments and do not take into account discounts that may apply for faults under individual circumstances. These figures are based on a market index of 100% and should be used as a guide only. Returns over \$30 / head for fleece wool are highlighted.

Source: Australian Wool Exchange, Australian Wool Innovation, Sydney Futures Exchange, x-rates.com

Disclaimer: While all due care has been taken in the preparation of this document, no warranty is made as to its accuracy, reliability or completeness. To the extent permitted by law neither Jemalong or their sources including subsidiaries and staff, accept liability to any person for loss or damage arising from the use of this information.



Table 17: Returns pr head for skirted fleece wool.

Skirted FLC Weight		Micron																	
5 Kg		16	16.5	17	17.5	18	18.5	19	19.5	20	21	22	23	24	25	26	28	30	32
Yield (Sch Dry)	25% Current	\$35	\$34	\$30	\$28	\$25	\$23	\$21	\$20	\$19	\$18	\$17	\$16	\$14	\$12	\$11	\$9	\$8	\$7
	10yr ave.			\$18		\$16		\$14		\$12	\$11	\$11	\$11	\$10	\$9	\$8	\$7	\$6	\$5
	30% Current	\$42	\$40	\$36	\$33	\$30	\$27	\$25	\$23	\$22	\$21	\$21	\$19	\$16	\$15	\$13	\$10	\$9	\$8
	10yr ave.			\$22		\$19		\$16		\$14	\$14	\$13	\$13	\$12	\$11	\$10	\$8	\$7	\$6
	35% Current	\$48	\$47	\$43	\$39	\$35	\$32	\$29	\$27	\$26	\$25	\$24	\$22	\$19	\$17	\$15	\$12	\$11	\$10
	10yr ave.			\$25		\$22		\$19		\$17	\$16	\$15	\$15	\$14	\$13	\$12	\$9	\$8	\$7
	40% Current	\$55	\$54	\$49	\$44	\$40	\$36	\$33	\$31	\$30	\$28	\$28	\$26	\$22	\$19	\$18	\$14	\$12	\$11
	10yr ave.			\$29		\$25		\$22		\$19	\$18	\$18	\$17	\$16	\$15	\$13	\$11	\$9	\$8
	45% Current	\$62	\$60	\$55	\$50	\$45	\$41	\$37	\$35	\$33	\$32	\$31	\$29	\$24	\$22	\$20	\$15	\$14	\$13
	10yr ave.			\$32		\$29		\$24		\$21	\$20	\$20	\$19	\$18	\$16	\$15	\$12	\$10	\$9
	50% Current	\$69	\$67	\$61	\$55	\$50	\$45	\$42	\$39	\$37	\$36	\$35	\$32	\$27	\$24	\$22	\$17	\$15	\$14
	10yr ave.			\$36		\$32		\$27		\$24	\$23	\$22	\$21	\$20	\$18	\$17	\$13	\$12	\$10
	55% Current	\$76	\$74	\$67	\$61	\$55	\$50	\$46	\$43	\$41	\$39	\$38	\$35	\$30	\$27	\$24	\$19	\$17	\$15
	10yr ave.			\$40		\$35		\$30		\$26	\$25	\$24	\$24	\$22	\$20	\$18	\$15	\$13	\$11
	60% Current	\$83	\$80	\$73	\$66	\$60	\$54	\$50	\$47	\$45	\$43	\$42	\$38	\$33	\$29	\$27	\$20	\$19	\$17
	10yr ave.			\$43		\$38		\$33		\$28	\$27	\$26	\$26	\$24	\$22	\$20	\$16	\$14	\$13
	65% Current	\$90	\$87	\$79	\$72	\$65	\$59	\$54	\$51	\$48	\$46	\$45	\$42	\$35	\$32	\$29	\$22	\$20	\$18
	10yr ave.			\$47		\$41		\$35		\$31	\$29	\$29	\$28	\$27	\$24	\$22	\$17	\$15	\$14
	70% Current	\$97	\$94	\$85	\$77	\$70	\$63	\$58	\$55	\$52	\$50	\$49	\$45	\$38	\$34	\$31	\$24	\$22	\$20
	10yr ave.			\$50		\$45		\$38		\$33	\$32	\$31	\$30	\$29	\$26	\$23	\$19	\$16	\$15
	75% Current	\$104	\$101	\$91	\$83	\$75	\$68	\$62	\$59	\$56	\$53	\$52	\$48	\$41	\$36	\$33	\$26	\$23	\$21
	10yr ave.			\$54		\$48		\$41		\$36	\$34	\$33	\$32	\$31	\$27	\$25	\$20	\$17	\$16
	80% Current	\$111	\$107	\$97	\$88	\$80	\$72	\$67	\$62	\$59	\$57	\$55	\$51	\$43	\$39	\$35	\$27	\$25	\$22
	10yr ave.			\$58		\$51		\$43		\$38	\$36	\$35	\$34	\$33	\$29	\$27	\$21	\$18	\$17
	85% Current	\$118	\$114	\$103	\$94	\$85	\$77	\$71	\$66	\$63	\$60	\$59	\$54	\$46	\$41	\$38	\$29	\$26	\$24
	10yr ave.			\$61		\$54		\$46		\$40	\$39	\$38	\$37	\$35	\$31	\$28	\$23	\$20	\$18

The above shows estimated returns per head for skirted fleece wool. These figures do not take into account the value of skirtings and oddments and do not take into account discounts that may apply for faults under individual circumstances. These figures are based on a market index of 100% and should be used as a guide only. Returns over \$30 / head for fleece wool are highlighted.

Source: Australian Wool Exchange, Australian Wool Innovation, Sydney Futures Exchange, x-rates.com

Disclaimer: While all due care has been taken in the preparation of this document, no warranty is made as to its accuracy, reliability or completeness. To the extent permitted by law neither Jemalong or their sources including subsidiaries and staff, accept liability to any person for loss or damage arising from the use of this information.



Table 18: Returns pr head for skirted fleece wool.

Skirted FLC Weight		Micron																	
4 Kg		16	16.5	17	17.5	18	18.5	19	19.5	20	21	22	23	24	25	26	28	30	32
Yield (Sch Dry)	25% Current	\$28	\$27	\$24	\$22	\$20	\$18	\$17	\$16	\$15	\$14	\$14	\$13	\$11	\$10	\$9	\$7	\$6	\$6
	10yr ave.			\$14		\$13		\$11		\$9	\$9	\$9	\$9	\$8	\$7	\$7	\$5	\$5	\$4
	30% Current	\$33	\$32	\$29	\$26	\$24	\$22	\$20	\$19	\$18	\$17	\$17	\$15	\$13	\$12	\$11	\$8	\$7	\$7
	10yr ave.			\$17		\$15		\$13		\$11	\$11	\$11	\$10	\$10	\$9	\$8	\$6	\$6	\$5
	35% Current	\$39	\$38	\$34	\$31	\$28	\$25	\$23	\$22	\$21	\$20	\$19	\$18	\$15	\$14	\$12	\$10	\$9	\$8
	10yr ave.			\$20		\$18		\$15		\$13	\$13	\$12	\$12	\$11	\$10	\$9	\$7	\$6	\$6
	40% Current	\$44	\$43	\$39	\$35	\$32	\$29	\$27	\$25	\$24	\$23	\$22	\$21	\$17	\$16	\$14	\$11	\$10	\$9
	10yr ave.			\$23		\$20		\$17		\$15	\$15	\$14	\$14	\$13	\$12	\$11	\$8	\$7	\$7
	45% Current	\$50	\$48	\$44	\$40	\$36	\$32	\$30	\$28	\$27	\$26	\$25	\$23	\$20	\$17	\$16	\$12	\$11	\$10
	10yr ave.			\$26		\$23		\$20		\$17	\$16	\$16	\$15	\$15	\$13	\$12	\$10	\$8	\$8
	50% Current	\$55	\$54	\$49	\$44	\$40	\$36	\$33	\$31	\$30	\$28	\$28	\$26	\$22	\$19	\$18	\$14	\$12	\$11
	10yr ave.			\$29		\$25		\$22		\$19	\$18	\$18	\$17	\$16	\$15	\$13	\$11	\$9	\$8
	55% Current	\$61	\$59	\$53	\$48	\$44	\$40	\$37	\$34	\$33	\$31	\$30	\$28	\$24	\$21	\$19	\$15	\$14	\$12
	10yr ave.			\$32		\$28		\$24		\$21	\$20	\$19	\$19	\$18	\$16	\$15	\$12	\$10	\$9
	60% Current	\$66	\$64	\$58	\$53	\$48	\$43	\$40	\$37	\$36	\$34	\$33	\$31	\$26	\$23	\$21	\$16	\$15	\$13
	10yr ave.			\$35		\$31		\$26		\$23	\$22	\$21	\$21	\$20	\$18	\$16	\$13	\$11	\$10
	65% Current	\$72	\$70	\$63	\$57	\$52	\$47	\$43	\$41	\$39	\$37	\$36	\$33	\$28	\$25	\$23	\$18	\$16	\$15
	10yr ave.			\$37		\$33		\$28		\$25	\$24	\$23	\$22	\$21	\$19	\$17	\$14	\$12	\$11
	70% Current	\$78	\$75	\$68	\$62	\$56	\$50	\$47	\$44	\$42	\$40	\$39	\$36	\$30	\$27	\$25	\$19	\$17	\$16
	10yr ave.			\$40		\$36		\$30		\$27	\$25	\$25	\$24	\$23	\$20	\$19	\$15	\$13	\$12
	75% Current	\$83	\$80	\$73	\$66	\$60	\$54	\$50	\$47	\$45	\$43	\$42	\$38	\$33	\$29	\$27	\$20	\$19	\$17
	10yr ave.			\$43		\$38		\$33		\$28	\$27	\$26	\$26	\$24	\$22	\$20	\$16	\$14	\$13
	80% Current	\$89	\$86	\$78	\$70	\$64	\$58	\$53	\$50	\$47	\$46	\$44	\$41	\$35	\$31	\$28	\$22	\$20	\$18
	10yr ave.			\$46		\$41		\$35		\$30	\$29	\$28	\$27	\$26	\$23	\$21	\$17	\$15	\$13
	85% Current	\$94	\$91	\$83	\$75	\$68	\$61	\$57	\$53	\$50	\$48	\$47	\$44	\$37	\$33	\$30	\$23	\$21	\$19
	10yr ave.			\$49		\$43		\$37		\$32	\$31	\$30	\$29	\$28	\$25	\$23	\$18	\$16	\$14

The above shows estimated returns per head for skirted fleece wool. These figures do not take into account the value of skirtings and oddments and do not take into account discounts that may apply for faults under individual circumstances. These figures are based on a market index of 100% and should be used as a guide only. Returns over \$30 / head for fleece wool are highlighted.

Source: Australian Wool Exchange, Australian Wool Innovation, Sydney Futures Exchange, x-rates.com

Disclaimer: While all due care has been taken in the preparation of this document, no warranty is made as to its accuracy, reliability or completeness. To the extent permitted by law neither Jemalong or their sources including subsidiaries and staff, accept liability to any person for loss or damage arising from the use of this information.



Table 19: Returns pr head for skirted fleece wool.

Skirted FLC Weight 3 Kg		Micron																	
		16	16.5	17	17.5	18	18.5	19	19.5	20	21	22	23	24	25	26	28	30	32
Yield (Sch Dry)	25% Current	\$21	\$20	\$18	\$17	\$15	\$14	\$12	\$12	\$11	\$11	\$10	\$10	\$8	\$7	\$7	\$5	\$5	\$4
	10yr ave.			\$11		\$10		\$8		\$7	\$7	\$7	\$6	\$6	\$5	\$5	\$4	\$3	\$3
	30% Current	\$25	\$24	\$22	\$20	\$18	\$16	\$15	\$14	\$13	\$13	\$12	\$12	\$10	\$9	\$8	\$6	\$6	\$5
	10yr ave.			\$13		\$11		\$10		\$9	\$8	\$8	\$8	\$7	\$7	\$6	\$5	\$4	\$4
	35% Current	\$29	\$28	\$26	\$23	\$21	\$19	\$17	\$16	\$16	\$15	\$15	\$13	\$11	\$10	\$9	\$7	\$6	\$6
	10yr ave.			\$15		\$13		\$11		\$10	\$10	\$9	\$9	\$9	\$8	\$7	\$6	\$5	\$4
	40% Current	\$33	\$32	\$29	\$26	\$24	\$22	\$20	\$19	\$18	\$17	\$17	\$15	\$13	\$12	\$11	\$8	\$7	\$7
	10yr ave.			\$17		\$15		\$13		\$11	\$11	\$11	\$10	\$10	\$9	\$8	\$6	\$6	\$5
	45% Current	\$37	\$36	\$33	\$30	\$27	\$24	\$22	\$21	\$20	\$19	\$19	\$17	\$15	\$13	\$12	\$9	\$8	\$8
	10yr ave.			\$19		\$17		\$15		\$13	\$12	\$12	\$12	\$11	\$10	\$9	\$7	\$6	\$6
	50% Current	\$42	\$40	\$36	\$33	\$30	\$27	\$25	\$23	\$22	\$21	\$21	\$19	\$16	\$15	\$13	\$10	\$9	\$8
	10yr ave.			\$22		\$19		\$16		\$14	\$14	\$13	\$13	\$12	\$11	\$10	\$8	\$7	\$6
	55% Current	\$46	\$44	\$40	\$36	\$33	\$30	\$27	\$26	\$24	\$23	\$23	\$21	\$18	\$16	\$15	\$11	\$10	\$9
	10yr ave.			\$24		\$21		\$18		\$16	\$15	\$15	\$14	\$13	\$12	\$11	\$9	\$8	\$7
	60% Current	\$50	\$48	\$44	\$40	\$36	\$32	\$30	\$28	\$27	\$26	\$25	\$23	\$20	\$17	\$16	\$12	\$11	\$10
	10yr ave.			\$26		\$23		\$20		\$17	\$16	\$16	\$15	\$15	\$13	\$12	\$10	\$8	\$8
	65% Current	\$54	\$52	\$47	\$43	\$39	\$35	\$32	\$30	\$29	\$28	\$27	\$25	\$21	\$19	\$17	\$13	\$12	\$11
	10yr ave.			\$28		\$25		\$21		\$18	\$18	\$17	\$17	\$16	\$14	\$13	\$10	\$9	\$8
	70% Current	\$58	\$56	\$51	\$46	\$42	\$38	\$35	\$33	\$31	\$30	\$29	\$27	\$23	\$20	\$19	\$14	\$13	\$12
	10yr ave.			\$30		\$27		\$23		\$20	\$19	\$19	\$18	\$17	\$15	\$14	\$11	\$10	\$9
	75% Current	\$62	\$60	\$55	\$50	\$45	\$41	\$37	\$35	\$33	\$32	\$31	\$29	\$24	\$22	\$20	\$15	\$14	\$13
	10yr ave.			\$32		\$29		\$24		\$21	\$20	\$20	\$19	\$18	\$16	\$15	\$12	\$10	\$9
	80% Current	\$66	\$64	\$58	\$53	\$48	\$43	\$40	\$37	\$36	\$34	\$33	\$31	\$26	\$23	\$21	\$16	\$15	\$13
	10yr ave.			\$35		\$31		\$26		\$23	\$22	\$21	\$21	\$20	\$18	\$16	\$13	\$11	\$10
	85% Current	\$71	\$68	\$62	\$56	\$51	\$46	\$42	\$40	\$38	\$36	\$35	\$33	\$28	\$25	\$23	\$17	\$16	\$14
	10yr ave.			\$37		\$32		\$28		\$24	\$23	\$23	\$22	\$21	\$19	\$17	\$14	\$12	\$11

The above shows estimated returns per head for skirted fleece wool. These figures do not take into account the value of skirtings and oddments and do not take into account discounts that may apply for faults under individual circumstances. These figures are based on a market index of 100% and should be used as a guide only. Returns over \$30 / head for fleece wool are highlighted.

Source: Australian Wool Exchange, Australian Wool Innovation, Sydney Futures Exchange, x-rates.com

Disclaimer: While all due care has been taken in the preparation of this document, no warranty is made as to its accuracy, reliability or completeness. To the extent permitted by law neither Jemalong or their sources including subsidiaries and staff, accept liability to any person for loss or damage arising from the use of this information.



Table 20: Returns pr head for skirted fleece wool.

Skirted FLC Weight 2 Kg		Micron																	
		16	16.5	17	17.5	18	18.5	19	19.5	20	21	22	23	24	25	26	28	30	32
Yield (Sch Dry)	25% Current	\$14	\$13	\$12	\$11	\$10	\$9	\$8	\$8	\$7	\$7	\$7	\$6	\$5	\$5	\$4	\$3	\$3	\$3
	10yr ave.			\$7		\$6		\$5		\$5	\$5	\$4	\$4	\$4	\$4	\$3	\$3	\$2	\$2
	30% Current	\$17	\$16	\$15	\$13	\$12	\$11	\$10	\$9	\$9	\$9	\$8	\$8	\$7	\$6	\$5	\$4	\$4	\$3
	10yr ave.			\$9		\$8		\$7		\$6	\$5	\$5	\$5	\$5	\$4	\$4	\$3	\$3	\$3
	35% Current	\$19	\$19	\$17	\$15	\$14	\$13	\$12	\$11	\$10	\$10	\$10	\$9	\$8	\$7	\$6	\$5	\$4	\$4
	10yr ave.			\$10		\$9		\$8		\$7	\$6	\$6	\$6	\$6	\$5	\$5	\$4	\$3	\$3
	40% Current	\$22	\$21	\$19	\$18	\$16	\$14	\$13	\$12	\$12	\$11	\$11	\$10	\$9	\$8	\$7	\$5	\$5	\$4
	10yr ave.			\$12		\$10		\$9		\$8	\$7	\$7	\$7	\$7	\$6	\$5	\$4	\$4	\$3
	45% Current	\$25	\$24	\$22	\$20	\$18	\$16	\$15	\$14	\$13	\$13	\$12	\$12	\$10	\$9	\$8	\$6	\$6	\$5
	10yr ave.			\$13		\$11		\$10		\$9	\$8	\$8	\$8	\$7	\$7	\$6	\$5	\$4	\$4
	50% Current	\$28	\$27	\$24	\$22	\$20	\$18	\$17	\$16	\$15	\$14	\$14	\$13	\$11	\$10	\$9	\$7	\$6	\$6
	10yr ave.			\$14		\$13		\$11		\$9	\$9	\$9	\$9	\$8	\$7	\$7	\$5	\$5	\$4
	55% Current	\$30	\$29	\$27	\$24	\$22	\$20	\$18	\$17	\$16	\$16	\$15	\$14	\$12	\$11	\$10	\$7	\$7	\$6
	10yr ave.			\$16		\$14		\$12		\$10	\$10	\$10	\$9	\$9	\$8	\$7	\$6	\$5	\$5
	60% Current	\$33	\$32	\$29	\$26	\$24	\$22	\$20	\$19	\$18	\$17	\$17	\$15	\$13	\$12	\$11	\$8	\$7	\$7
	10yr ave.			\$17		\$15		\$13		\$11	\$11	\$11	\$10	\$10	\$9	\$8	\$6	\$6	\$5
	65% Current	\$36	\$35	\$32	\$29	\$26	\$23	\$22	\$20	\$19	\$18	\$18	\$17	\$14	\$13	\$12	\$9	\$8	\$7
	10yr ave.			\$19		\$17		\$14		\$12	\$12	\$11	\$11	\$11	\$10	\$9	\$7	\$6	\$5
	70% Current	\$39	\$38	\$34	\$31	\$28	\$25	\$23	\$22	\$21	\$20	\$19	\$18	\$15	\$14	\$12	\$10	\$9	\$8
	10yr ave.			\$20		\$18		\$15		\$13	\$13	\$12	\$12	\$11	\$10	\$9	\$7	\$6	\$6
	75% Current	\$42	\$40	\$36	\$33	\$30	\$27	\$25	\$23	\$22	\$21	\$21	\$19	\$16	\$15	\$13	\$10	\$9	\$8
	10yr ave.			\$22		\$19		\$16		\$14	\$14	\$13	\$13	\$12	\$11	\$10	\$8	\$7	\$6
	80% Current	\$44	\$43	\$39	\$35	\$32	\$29	\$27	\$25	\$24	\$23	\$22	\$21	\$17	\$16	\$14	\$11	\$10	\$9
	10yr ave.			\$23		\$20		\$17		\$15	\$15	\$14	\$14	\$13	\$12	\$11	\$8	\$7	\$7
	85% Current	\$47	\$46	\$41	\$37	\$34	\$31	\$28	\$27	\$25	\$24	\$24	\$22	\$18	\$17	\$15	\$12	\$11	\$10
	10yr ave.			\$24		\$22		\$18		\$16	\$15	\$15	\$15	\$14	\$12	\$11	\$9	\$8	\$7

The above shows estimated returns per head for skirted fleece wool. These figures do not take into account the value of skirtings and oddments and do not take into account discounts that may apply for faults under individual circumstances. These figures are based on a market index of 100% and should be used as a guide only. Returns over \$30 / head for fleece wool are highlighted.

Source: Australian Wool Exchange, Australian Wool Innovation, Sydney Futures Exchange, x-rates.com

Disclaimer: While all due care has been taken in the preparation of this document, no warranty is made as to its accuracy, reliability or completeness. To the extent permitted by law neither Jemalong or their sources including subsidiaries and staff, accept liability to any person for loss or damage arising from the use of this information.