



Table 1: Northern Region Micron Price Guides

WEEK 01				12 MONTH COMPARISONS								3 YEAR COMPARISONS					10 YEAR COMPARISONS					
Mic.	7/07/2016	30/06/2016		8/07/2015	Now		Now		Now													
Price	Current	Weekly		This time	compared		compared		compared													
Guides	Price	Change		Last Year	to Last Year		to Low		to High		Low	High	Average	to 3yr ave	Percentile		Low	High	Average	to 10yr ave	Percentile	
NRI	1341	+24 1.8%		1239	+102 8%		1198	+143 12%	1335	+6 0%	1005	1399	1165	+176 15%	97%	755	1491	1051	+290 28%	94%		
16*	1605	+5 0.3%		1600	+5 0%		1473	+132 9%	1650	-45 -3%	1340	1730	1526	+79 5%	76%	1350	2800	1714	-109 -6%	49%		
16.5*	1595	+20 1.3%		1580	+15 1%		1457	+138 9%	1625	-30 -2%	1300	1660	1467	+128 9%	89%	1290	2680	1590	+5 0%	70%		
17*	1590	+30 1.9%		1545	+45 3%		1378	+212 15%	1620	-30 -2%	1245	1640	1427	+163 11%	92%	1190	2530	1484	+106 7%	81%		
17.5*	1580	+25 1.6%		1535	+45 3%		1337	+243 18%	1600	-20 -1%	1200	1620	1403	+177 13%	95%	1130	2360	1419	+161 11%	86%		
18	1554	+38 2.5%		1430	+124 9%		1401	+153 11%	1558	-4 0%	1163	1607	1356	+198 15%	96%	1044	2193	1351	+203 15%	88%		
18.5	1535	+39 2.6%		1384	+151 11%		1358	+177 13%	1535	0 0%	1134	1579	1328	+207 16%	98%	986	1963	1289	+246 19%	91%		
19	1516	+35 2.4%		1343	+173 13%		1286	+230 18%	1511	+5 0%	1113	1553	1293	+223 17%	98%	902	1776	1220	+296 24%	92%		
19.5	1508	+36 2.4%		1320	+188 14%		1249	+259 21%	1495	+13 1%	1093	1529	1269	+239 19%	99%	821	1670	1160	+348 30%	97%		
20	1503	+41 2.8%		1303	+200 15%		1229	+274 22%	1485	+18 1%	1080	1517	1252	+251 20%	99%	746	1588	1110	+393 35%	98%		
21	1492	+43 3.0%		1298	+194 15%		1216	+276 23%	1471	+21 1%	1076	1500	1241	+251 20%	99%	714	1522	1079	+413 38%	99%		
22	1469	+41 2.9%		1285	+184 14%		1207	+262 22%	1449	+20 1%	1060	1469	1226	+243 20%	100%	692	1469	1052	+417 40%	100%		
23	1456	+63 4.5%		1268	+188 15%		1195	+261 22%	1433	+23 2%	1046	1456	1210	+246 20%	100%	675	1456	1023	+433 42%	100%		
24	1357	+83 6.5%		1168	+189 16%		1156	+201 17%	1357	0 0%	973	1357	1128	+229 20%	100%	647	1357	949	+408 43%	100%		
25	1168	-33 -2.7%		1113	+55 5%		1051	+117 11%	1201	-33 -3%	811	1245	994	+174 18%	89%	567	1245	826	+342 41%	96%		
26	1072	-25 -2.3%		1060	+12 1%		960	+112 12%	1145	-73 -6%	738	1165	906	+166 18%	87%	532	1165	744	+328 44%	96%		
28	755	-24 -3.1%		884	-129 -15%		724	+31 4%	948	-193 -20%	583	974	761	-6 -1%	52%	424	974	590	+165 28%	85%		
30	650	-28 -4.1%		791	-141 -18%		668	-18 -3%	897	-247 -28%	543	897	710	-60 -8%	43%	343	897	532	+118 22%	81%		
32	531	-30 -5.3%		656	-125 -19%		551	-20 -4%	762	-231 -30%	468	762	620	-89 -14%	11%	297	762	467	+64 14%	65%		
MC	1088	+4 0.4%		1004	+84 8%		1004	+84 8%	1152	-64 -6%	742	1152	928	+160 17%	83%	392	1152	688	+400 58%	95%		
AU BALES OFFERED	39,152			* Due to the irregular market quoting for some fine wool categories, figures shown relating to micron categories below 18 micron are an estimate based on the AWEX Premium & Discounts Report & other available information.																		
AU BALES SOLD	37,663																					
AU PASSED-IN%	3.8%			* For any category, where there is insufficient quantity offered to enable AWEX to quote, a quote will be provided based on the best available information.																		
AUD/USD	0.75210																					

Source: Australian Wool Exchange, Australian Wool Innovation, Riemann, x-rates.com, Reserve Bank of Australia, Australian Wool Testing Authority.

Disclaimer: Jemalong Wool Pty Ltd make no representations about the content and suitability of the information contained in this report. Specifically, Jemalong Wool does not warrant, guarantee or make any representations regarding the correctness, accuracy, reliability, currency, or any other aspect regarding characteristics or use of information presented in these materials. The user accepts sole responsibility and risk associated with the use and results of these materials, irrespective of the purpose of which such use or results are applied. In no event shall Jemalong Wool be liable for any loss or damages (including without limitation special, or consequential damages), where in an action of contract, negligence, or tort, arising out of or in connection with the use of performance of these materials.



MARKET COMMENTARY

It was an enthusiastic start to the 2016/17 wool selling season with the AWEX Northern Region Indicator rising 26 cents for the sale, making it the best start to a season in 11 years. The increase comes on the back of rises during the preceding auctions, extending the rally to 4 weeks and pushing the NRI to a 12-month high.

The broader merino microns continued to be the focus and largely carried the market higher this week. Previously the momentum was reasonably steady but it quickly accelerated at this series. The progressive rises over the two days resulted in 21-microns jumping almost 50 cents clean for the sale and are now approaching 1500 cents clean (21-microns briefly hit 1500 cents in June 2015 but the most notable recent encounter at this level was in 2011 and the record for any 21 indicator is 1682 cents back in 1988). The superfine sector was more variable during the sale; lower spec types advanced more slowly while stylish/40nkt types found renewed support on the final day and their rises were in line with the broader categories. The strength for Merino types was despite an almost 1 cent jump in the Australian dollar, magnifying the rises in US dollar terms.

In contrast to the healthy Merino market Crossbreds continued to track lower, falling 20 to 30 cents for the sale. Merino Skirtings firmed slightly for the week, as did the Merino Carding Indicators which made modest improvements totalling a few cents for each region.

Just under 40,000 bales were offered this week and a similar amount is expected next week, in the final sale before the annual three week recess.

Source: AWEX

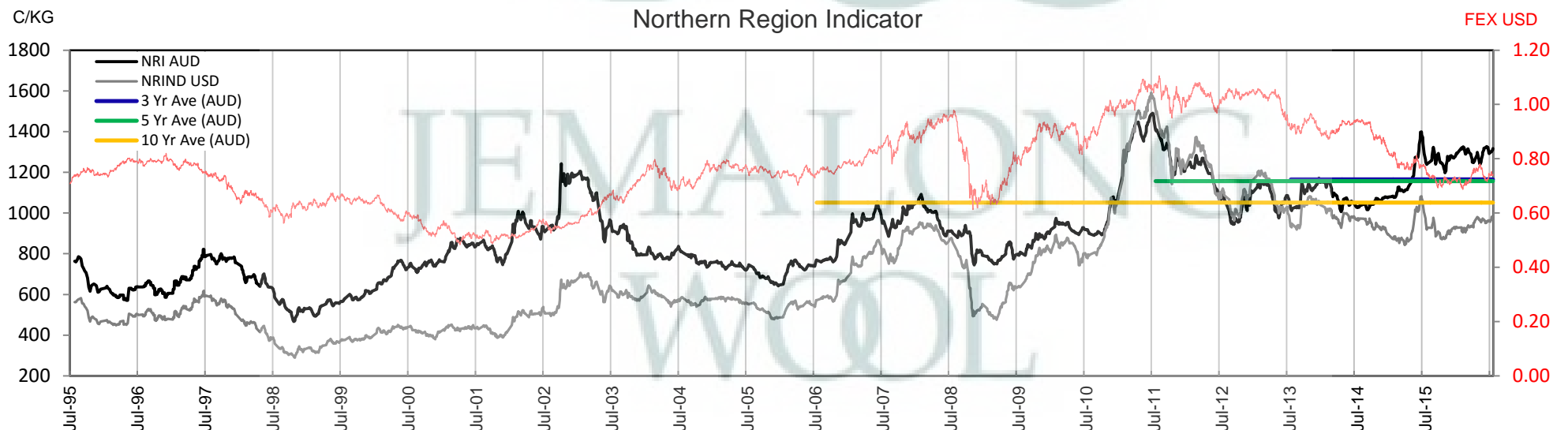




Table 2: Three Year Decile Table, since: 1/07/2013

Decile	%	16	16.5	17	17.5	18	18.5	19	19.5	20	21	22	23	24	25	26	28	30	32	MC
1	10%	1390	1323	1280	1247	1199	1171	1148	1133	1126	1122	1106	1100	1040	854	763	647	615	517	781
2	20%	1420	1365	1310	1285	1226	1200	1177	1157	1144	1138	1132	1121	1055	882	786	660	629	551	794
3	30%	1480	1400	1340	1310	1260	1235	1201	1177	1164	1157	1142	1131	1065	908	804	670	635	560	810
4	40%	1520	1430	1360	1330	1283	1255	1214	1192	1179	1166	1158	1146	1079	917	820	678	646	569	819
5	50%	1560	1470	1395	1370	1308	1279	1258	1236	1218	1211	1196	1187	1095	934	846	713	669	599	837
6	60%	1580	1500	1440	1400	1360	1334	1302	1282	1260	1251	1236	1218	1111	998	930	791	703	613	940
7	70%	1600	1540	1510	1490	1443	1417	1378	1345	1322	1306	1285	1268	1176	1069	993	826	761	658	1065
8	80%	1620	1560	1545	1530	1483	1456	1407	1375	1353	1347	1323	1312	1200	1113	1028	844	794	698	1084
9	90%	1637	1604	1584	1567	1521	1493	1462	1432	1409	1398	1377	1354	1242	1169	1085	896	831	714	1097
10	100%	1730	1660	1640	1620	1607	1579	1553	1529	1517	1500	1469	1456	1357	1245	1165	974	897	762	1152
MPG		1605	1595	1590	1580	1554	1535	1516	1508	1503	1492	1469	1456	1357	1168	1072	755	650	531	1088
3 Yr Percentile		76%	89%	92%	95%	96%	98%	98%	99%	99%	99%	100%	100%	100%	89%	87%	52%	43%	11%	83%

Table 3: Ten Year Decile Table, since: 1/07/2006

Decile	%	16	16.5	17	17.5	18	18.5	19	19.5	20	21	22	23	24	25	26	28	30	32	MC
1	10%	1420	1340	1255	1190	1131	1063	988	900	823	787	775	758	732	634	577	446	376	325	450
2	20%	1510	1400	1290	1225	1172	1128	1059	974	917	880	854	832	782	660	598	462	398	348	512
3	30%	1560	1420	1320	1280	1208	1161	1099	1032	982	947	919	891	823	696	614	475	412	358	570
4	40%	1590	1450	1360	1310	1253	1205	1142	1097	1054	995	953	921	848	719	638	487	430	386	607
5	50%	1610	1490	1400	1350	1293	1253	1194	1148	1116	1090	1069	1046	980	849	751	579	531	466	656
6	60%	1650	1530	1440	1400	1358	1294	1236	1186	1164	1150	1135	1115	1040	891	793	631	581	496	730
7	70%	1700	1595	1520	1480	1419	1342	1294	1263	1229	1214	1194	1157	1071	915	820	659	623	553	781
8	80%	1800	1700	1580	1545	1484	1446	1398	1361	1320	1293	1253	1216	1101	967	863	684	643	578	816
9	90%	2100	1914	1730	1626	1570	1519	1476	1432	1381	1348	1316	1283	1176	1065	976	820	730	643	1046
10	100%	2800	2680	2530	2360	2193	1963	1776	1670	1588	1522	1469	1456	1357	1245	1165	974	897	762	1152
MPG		1605	1595	1590	1580	1554	1535	1516	1508	1503	1492	1469	1456	1357	1168	1072	755	650	531	1088
10 Yr Percentile		49%	70%	81%	86%	88%	91%	92%	97%	98%	99%	100%	100%	100%	96%	96%	85%	81%	65%	95%

Definitions:

* A Percentile, is a value on a scale of one hundred that indicates the percent of a distribution that is equal to or below it. In general a percentile between 25% and 75% is considered normal, a percentile below 25% is considered below normal and a percentile above 75% is considered above normal.

Three and ten year percentiles shown on the bottom line of table 2 & 3 (above) and in table 1 (on page 1), detail the amount of time during the past 3 & 10 years where the market has traded either at or below its current price.

* Deciles are a method of sorting ranked data into 10 equal groups. The data may be ranked from largest to smallest or vice versa.

The above Decile tables sort price Percentiles into 10 equal groups (in ascending order), with table 2 ranking the previous 3 years prices, while table 3 ranks prices over the previous 10 years.

Example: In Table 2, a Decile Rank of 6 for 19 microns, shows 19 microns have traded at or below 1302 for 60% of the time, over the past three years.

In Table 3, a Decile Rank of 6 for 19 microns, shows 19 microns have traded at or below 1236 for 60% of the time, over the past ten years.



Table 4: Riemann Forwards, latest trades as at: Last Date

Any highlighted in yellow are recent trades, trading since: Friday, 1 July 2016

CONTRACT MICRON	18.5um	19um	19.5um	21um	22um	23um	28um	30um
Jul-2016	13/03/16 1410	19/05/16 1450		15/06/16 1400				
Aug-2016				6/07/16 1450				
Sep-2016		6/07/16 1460		7/07/16 1385		24/05/16 1320		
Oct-2016		7/07/16 1450		6/07/16 1350				
Nov-2016		6/07/16 1435		7/07/16 1350				
Dec-2016		6/04/16 1400		11/05/16 1325				
Jan-2017		7/07/16 1450		16/07/15 1250				24/03/16 655
Feb-2017	14/12/15 1430			20/01/16 1300				
Mar-2017	24/05/16 1460	19/05/16 1420						
Apr-2017		6/07/16 1435		24/06/16 1300				
May-2017								
Jun-2017				5/04/16 1300				
Jul-2017								
Aug-2017								
Sep-2017								
Oct-2017								
Nov-2017								
Dec-2017								
Jan-2018								
Feb-2018								
Mar-2018								
Apr-2018								
May-2018								

Explanatory Notes: Prices quoted reflect the most recent trades, at time of print.

Disclaimer: While all due care has been taken in the preparation of this document, no warranty is made as to its accuracy, reliability or completeness. To the extent permitted by law neither Jemalong or their sources including subsidiaries and staff, accept liability to any person for loss or damage arising from the use of this information.



Table 5: National Market Share

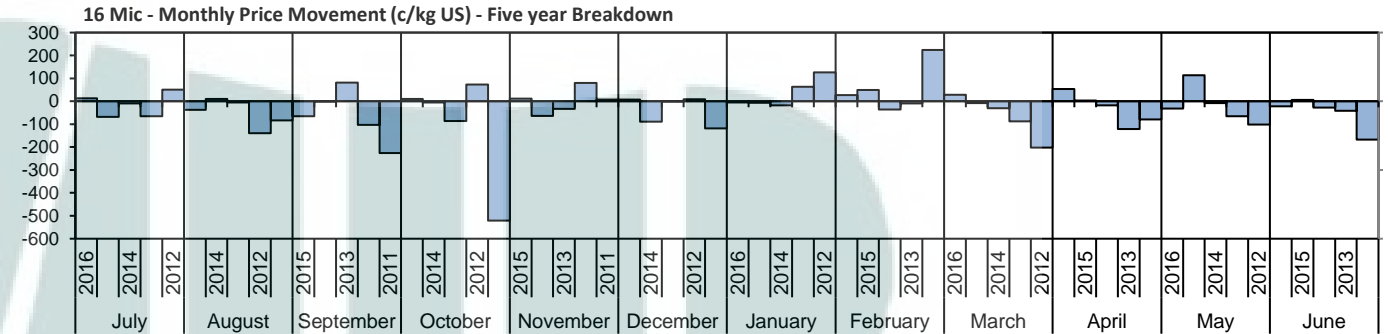
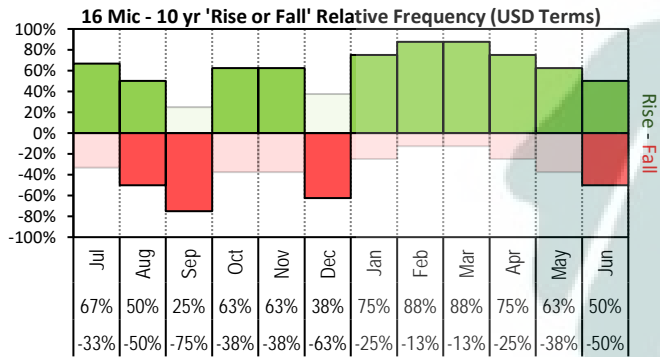
	Rank	Current Selling Week Week 01			Previous Selling Week Week 53			Last Season 2015-16			2 Years Ago 2014-15			3 Years Ago 2013-14			5 Years Ago 2011-12			10 Years Ago 2006-07		
		Buyer	Bales	MS%	Buyer	Bales	MS%	Buyer	Bales	MS%	Buyer	Bales	MS%	Buyer	Bales	MS%	Buyer	Bales	MS%	Buyer	Bales	MS%
Top 10, Auction Buyers	1	TECM	6,421	17%	TECM	4,070	15%	TECM	223,011	13%	TECM	248,371	14%	TECM	205,136	13%	VTRA	229,207	14%	FOXM	249,983	11%
	2	CTXS	4,303	11%	AMEM	3,000	11%	CTXS	158,343	10%	FOXM	173,810	10%	FOXM	134,581	8%	TECM	153,616	9%	RWRS	178,250	8%
	3	LEMM	3,223	9%	FOXM	2,551	10%	FOXM	151,685	9%	CTXS	167,211	9%	CTXS	122,964	8%	FOXM	136,698	8%	ITOS	175,581	8%
	4	PMWF	3,050	8%	LEMM	2,537	9%	LEMM	124,422	8%	AMEM	122,220	7%	AMEM	111,263	7%	QCTB	112,745	7%	TECM	171,228	8%
	5	FOXM	2,864	8%	PMWF	2,207	8%	TIAM	105,610	6%	LEMM	117,153	7%	LEMM	109,224	7%	WIEM	100,817	6%	BWEA	133,637	6%
	6	AMEM	2,776	7%	MODM	1,452	5%	AMEM	104,017	6%	TIAM	113,797	6%	TIAM	105,736	7%	LEMM	88,348	5%	MODM	118,319	5%
	7	KATS	2,555	7%	KATS	1,412	5%	GWEA	91,407	6%	PMWF	96,998	5%	QCTB	88,700	5%	MODM	74,646	4%	KATS	113,056	5%
	8	MODM	1,583	4%	TIAM	1,198	4%	MODM	83,453	5%	MODM	84,256	5%	MODM	79,977	5%	CTXS	69,266	4%	PLEX	95,625	4%
	9	TIAM	1,280	3%	MCHA	847	3%	PMWF	82,132	5%	KATS	74,875	4%	PMWF	77,875	5%	PMWF	64,659	4%	WIEM	84,673	4%
	10	MCHA	1,238	3%	CTXS	782	3%	MCHA	64,453	4%	GSAS	64,436	4%	GSAS	54,462	3%	GSAS	58,233	3%	GSAS	76,753	3%
MFLC TOP 5	1	CTXS	4,255	17%	TECM	2,457	15%	CTXS	124,326	13%	TECM	139,806	14%	TECM	106,291	12%	VTRA	171,425	19%	ITOS	133,395	10%
	2	TECM	3,998	16%	PMWF	2,157	13%	TECM	112,996	12%	CTXS	130,004	13%	CTXS	87,889	10%	QCTB	86,901	10%	RWRS	120,652	9%
	3	PMWF	2,891	12%	AMEM	1,758	11%	LEMM	91,475	10%	FOXM	103,547	10%	LEMM	82,374	9%	TECM	76,083	8%	BWEA	105,950	8%
	4	KATS	2,499	10%	FOXM	1,658	10%	FOXM	84,992	9%	PMWF	90,101	9%	FOXM	80,423	9%	LEMM	68,961	8%	TECM	101,353	7%
	5	LEMM	1,783	7%	LEMM	1,532	9%	PMWF	77,550	8%	LEMM	79,881	8%	PMWF	69,890	8%	PMWF	60,070	7%	KATS	98,166	7%
MSKT TOP 5	1	TECM	953	18%	AMEM	691	19%	TIAM	41,055	17%	TIAM	49,870	18%	TIAM	47,607	19%	WIEM	43,156	16%	FOXM	162,877	45%
	2	AMEM	680	13%	TECM	606	16%	TECM	39,290	16%	AMEM	43,367	16%	TECM	31,474	12%	MODM	30,285	11%	MODM	55,531	15%
	3	MODM	509	10%	FOXM	404	11%	AMEM	29,982	12%	TECM	39,495	14%	AMEM	29,775	12%	TECM	25,264	9%	PLEX	52,442	14%
	4	FOXM	435	8%	MODM	291	8%	MODM	26,227	11%	MODM	23,165	8%	MODM	23,791	9%	PLEX	21,990	8%	GSAS	33,832	9%
	5	LEMM	379	7%	TIAM	259	7%	FOXM	18,153	7%	FOXM	17,015	6%	GSAS	13,843	5%	GSAS	16,284	6%	RWRS	29,608	8%
XB TOP 5	1	LEMM	948	20%	LEMM	787	20%	TECM	46,757	17%	KATS	65,119	22%	TECM	40,364	15%	FOXM	41,689	15%	FOXM	41,774	17%
	2	TECM	874	19%	MODM	601	15%	KATS	27,734	10%	TECM	40,231	14%	CTXS	34,779	13%	VTRA	31,427	12%	TECM	38,676	16%
	3	FOXM	520	11%	AMEM	450	11%	FOXM	27,096	10%	CTXS	35,691	12%	FOXM	24,218	9%	TECM	31,094	11%	MODM	22,743	9%
	4	AMEM	501	11%	TECM	420	11%	CTXS	22,768	8%	FOXM	34,007	12%	MODM	21,512	8%	QCTB	22,610	8%	MOPS	18,222	7%
	5	UWCM	389	8%	FOXM	309	8%	MODM	21,130	8%	AMEM	15,044	5%	AMEM	20,336	7%	CTXS	19,985	7%	MAFM	12,864	5%
ODDS TOP 5	1	MCHA	767	23%	TECM	587	20%	MCHA	39,964	20%	MCHA	38,934	18%	MCHA	36,085	17%	FOXM	34,603	15%	MCHA	36,030	13%
	2	TECM	596	18%	MCHA	500	17%	VWPM	30,258	15%	TECM	28,839	13%	TECM	27,007	13%	MCHA	30,689	13%	FOXM	30,367	11%
	3	VWPM	272	8%	VWPM	360	12%	TECM	23,968	12%	FOXM	19,241	9%	VWPM	22,432	11%	VWPM	22,219	10%	RWRS	26,036	9%
	4	UWCM	197	6%	WCWF	188	6%	FOXM	21,444	11%	LEMM	12,309	6%	FOXM	18,811	9%	VTRA	21,495	9%	DAWS	25,129	9%
	5	SNWF	195	6%	FOXM	180	6%	GWEA	10,802	5%	MAFM	11,640	5%	RWRS	13,524	6%	TECM	21,175	9%	MAFM	21,039	7%
Auction Totals		<u>Offered</u>	<u>Sold</u>		<u>Offered</u>	<u>Sold</u>		<u>Bales Sold</u>	<u>\$/Bale</u>		<u>Bales Sold</u>	<u>\$/Bale</u>		<u>Bales Sold</u>	<u>\$/Bale</u>		<u>Bales Sold</u>	<u>\$/Bale</u>		<u>Bales Sold</u>	<u>\$/Bale</u>	
		39,152	37,663		28,865	26,776		0			1,800,549	\$1,545		1,625,113	\$1,509		1,683,163	\$1,599		2,270,874	\$1,193	
		<u>Passed-In</u>	<u>PI%</u>		<u>Passed-In</u>	<u>PI%</u>		<u>Export Value</u>			<u>Export Value</u>			<u>Export Value</u>			<u>Export Value</u>			<u>Export Value</u>		
		1,489	3.8%		2,089	7.2%		TBA			\$2,781,914,309			\$2,452,791,892			\$2,691,010,531			\$2,709,269,973		



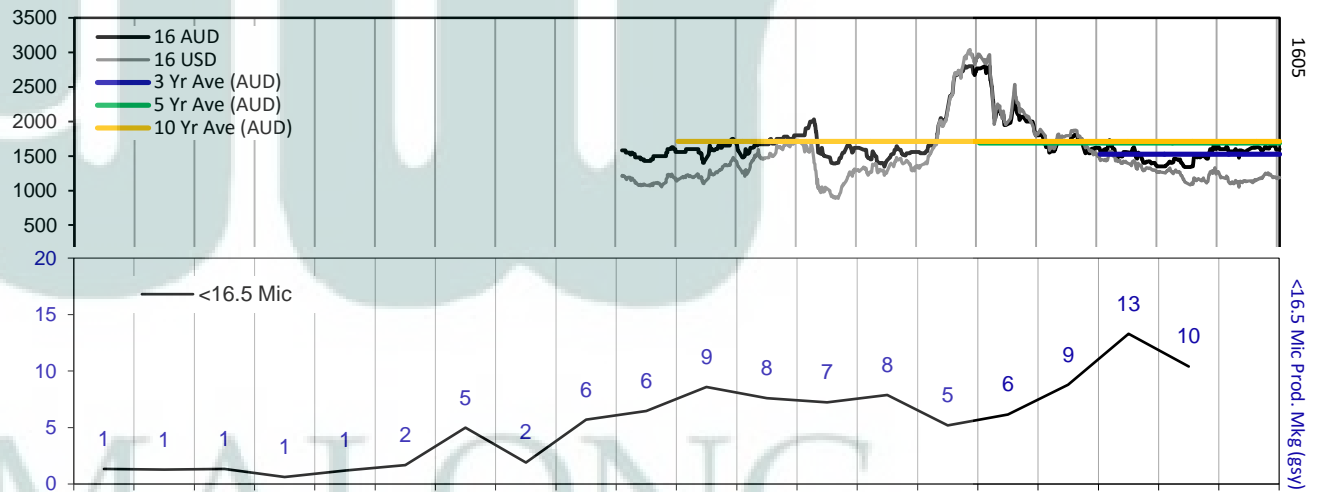
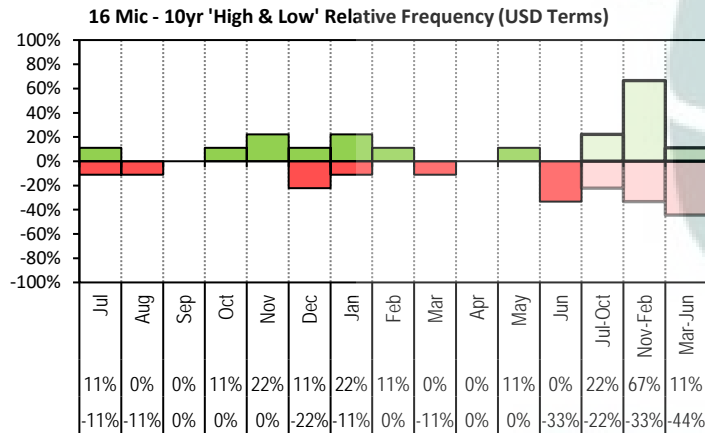
Table 6: NSW Production Statistics

2015-16			Auction		+/-		+/-	Yield %	+/-	Length	+/-	Strength	+/-	Ave Price
Statistical Devision, Area Code & Towns			Bales (FH)	Micron	YoY	Vmb %	YoY	Sch Dry	YoY	mm	YoY	Nkt	YoY	c/kg
Northern	N02	Tenterfield, Glen Innes	T.B.A	T.B.A		T.B.A		T.B.A		T.B.A		T.B.A		T.B.A
	N03	Guyra	T.B.A	T.B.A		T.B.A		T.B.A		T.B.A		T.B.A		T.B.A
	N04	Inverell	T.B.A	T.B.A		T.B.A		T.B.A		T.B.A		T.B.A		T.B.A
	N05	Armidale	T.B.A	T.B.A		T.B.A		T.B.A		T.B.A		T.B.A		T.B.A
	N06	Tamworth, Gunnedah, Quirindi	T.B.A	T.B.A		T.B.A		T.B.A		T.B.A		T.B.A		T.B.A
	N07	Moree	T.B.A	T.B.A		T.B.A		T.B.A		T.B.A		T.B.A		T.B.A
	N08	Narrabri	T.B.A	T.B.A		T.B.A		T.B.A		T.B.A		T.B.A		T.B.A
North Western & Far West	N09	Cobar, Bourke, Wanaaring	T.B.A	T.B.A		T.B.A		T.B.A		T.B.A		T.B.A		T.B.A
	N12	Walgett	T.B.A	T.B.A		T.B.A		T.B.A		T.B.A		T.B.A		T.B.A
	N13	Nyngan	T.B.A	T.B.A		T.B.A		T.B.A		T.B.A		T.B.A		T.B.A
	N14	Dubbo, Narromine	T.B.A	T.B.A		T.B.A		T.B.A		T.B.A		T.B.A		T.B.A
	N16	Dunedoo	T.B.A	T.B.A		T.B.A		T.B.A		T.B.A		T.B.A		T.B.A
	N17	Mudgee, Wellington, Gulgong	T.B.A	T.B.A		T.B.A		T.B.A		T.B.A		T.B.A		T.B.A
	N33	Coonabarabran	T.B.A	T.B.A		T.B.A		T.B.A		T.B.A		T.B.A		T.B.A
	N34	Coonamble	T.B.A	T.B.A		T.B.A		T.B.A		T.B.A		T.B.A		T.B.A
	N36	Gilgandra, Gulargambone	T.B.A	T.B.A		T.B.A		T.B.A		T.B.A		T.B.A		T.B.A
	N40	Brewarrina	T.B.A	T.B.A		T.B.A		T.B.A		T.B.A		T.B.A		T.B.A
	N10	Wilcannia, Broken Hill	T.B.A	T.B.A		T.B.A		T.B.A		T.B.A		T.B.A		T.B.A
Central West	N15	Forbes, Parkes, Cowra	T.B.A	T.B.A		T.B.A		T.B.A		T.B.A		T.B.A		T.B.A
	N18	Lithgow, Oberon	T.B.A	T.B.A		T.B.A		T.B.A		T.B.A		T.B.A		T.B.A
	N19	Orange, Bathurst	T.B.A	T.B.A		T.B.A		T.B.A		T.B.A		T.B.A		T.B.A
	N25	West Wyalong	T.B.A	T.B.A		T.B.A		T.B.A		T.B.A		T.B.A		T.B.A
	N35	Condobolin, Lake Cargelligo	T.B.A	T.B.A		T.B.A		T.B.A		T.B.A		T.B.A		T.B.A
Murrumbidgee	N26	Cootamundra, Temora	T.B.A	T.B.A		T.B.A		T.B.A		T.B.A		T.B.A		T.B.A
	N27	Adelong, Gundagai	T.B.A	T.B.A		T.B.A		T.B.A		T.B.A		T.B.A		T.B.A
	N29	Wagga, Narrandera	T.B.A	T.B.A		T.B.A		T.B.A		T.B.A		T.B.A		T.B.A
	N37	Griffith, Hillston	T.B.A	T.B.A		T.B.A		T.B.A		T.B.A		T.B.A		T.B.A
	N39	Hay, Coleambally	T.B.A	T.B.A		T.B.A		T.B.A		T.B.A		T.B.A		T.B.A
Murray	N11	Wentworth, Balranald	T.B.A	T.B.A		T.B.A		T.B.A		T.B.A		T.B.A		T.B.A
	N28	Albury, Corowa, Holbrook	T.B.A	T.B.A		T.B.A		T.B.A		T.B.A		T.B.A		T.B.A
	N31	Deniliquin	T.B.A	T.B.A		T.B.A		T.B.A		T.B.A		T.B.A		T.B.A
	N38	Finley, Berrigan, Jerilderie	T.B.A	T.B.A		T.B.A		T.B.A		T.B.A		T.B.A		T.B.A
South Eastern	N23	Goulburn, Young, Yass	T.B.A	T.B.A		T.B.A		T.B.A		T.B.A		T.B.A		T.B.A
	N24	Monaro (Cooma, Bombala)	T.B.A	T.B.A		T.B.A		T.B.A		T.B.A		T.B.A		T.B.A
	N32	A.C.T.	T.B.A	T.B.A		T.B.A		T.B.A		T.B.A		T.B.A		T.B.A
	N43	South Coast (Bega)	T.B.A	T.B.A		T.B.A		T.B.A		T.B.A		T.B.A		T.B.A
NSW	AWEX Sale Statistics 15-16		T.B.A	T.B.A		T.B.A		T.B.A		T.B.A		T.B.A		T.B.A

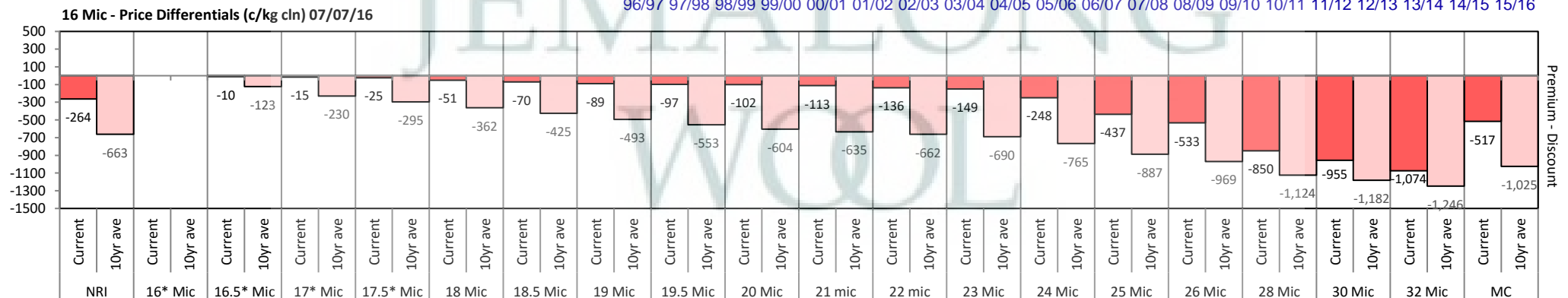
AWTA Mthly Key Test Data			Bales Tested	+/- YoY	Micron	+/- YoY	VMB	+/- YoY	Yld	+/- YoY	Lth	+/- YoY	Nkt	+/- YoY	POBM +/-
AUSTRALIA	Current	June	114,214	-32,324	20.7	0.0	2.6	0.5	62.8	-1.0	85	-0.5	36	-0.7	49 -1.0
	Season	Y.T.D	1,911,741	-149,478	21.0	0.0	2.0	0.1	64.4	-0.5	87	-1.0	34	0.0	50 0.0
	Previous	2014-15	2,061,219	56025	21.0	0.1	1.9	-0.1	64.9	0.0	88	1.0	34	1.0	50 2.0
	Seasons	2013-14	2,005,194	-96955	20.9	-0.3	2.0	-0.2	64.9	-0.2	87	0.0	33	-1.0	48 1.0
	Y.T.D.	2012-13	2,102,149	54,295	21.2	-0.3	2.2	0.2	65.1	-0.4	87	-0.3	34	0.3	49 -1.1

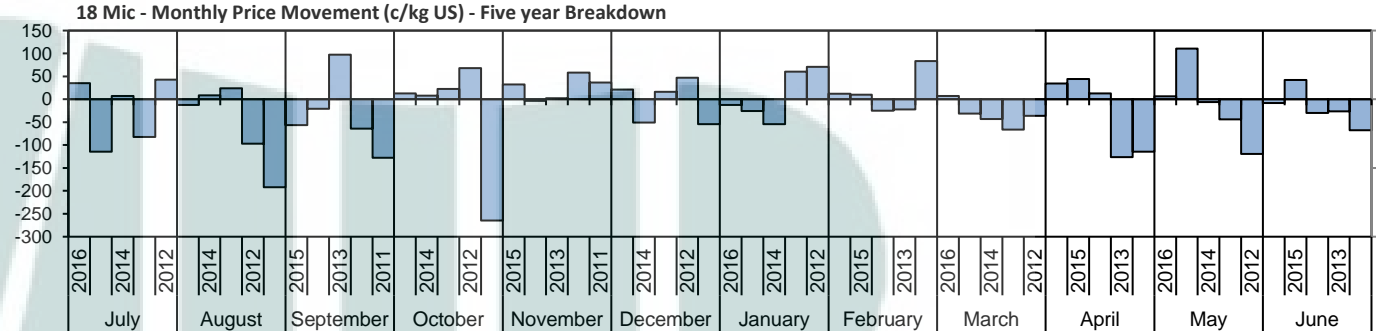
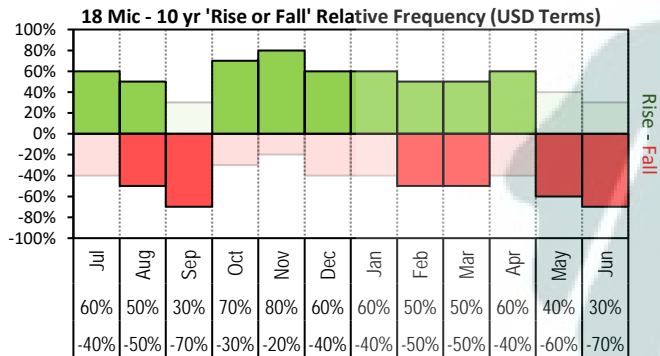


The above 'Rise or Fall' graph, shows how often the market has risen or fallen in a given month over the past 10 years, it does not show the extent of the movement only the frequency of direction. The 'Monthly Price Movement' graph shows the extent of movement for each month, for the past 5 years.

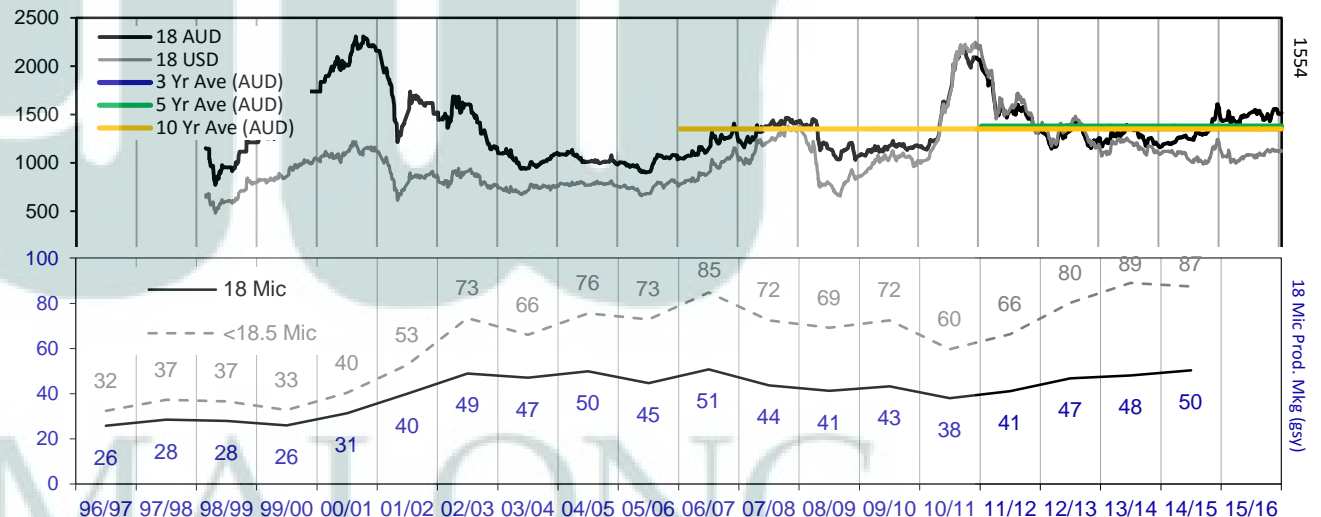
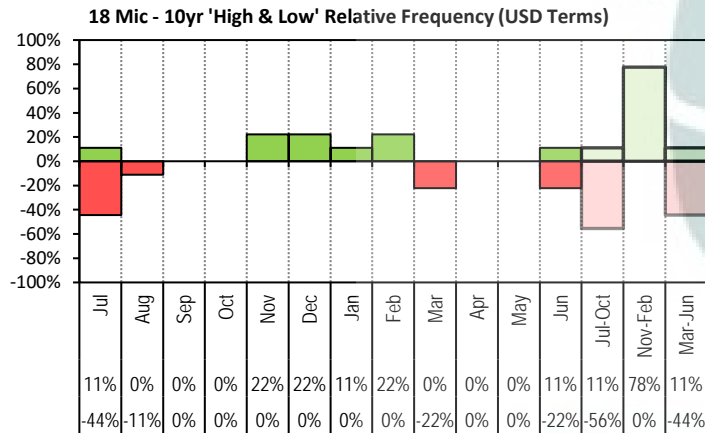


The above graph, shows how often the '12 month high & low' have been achieved for a

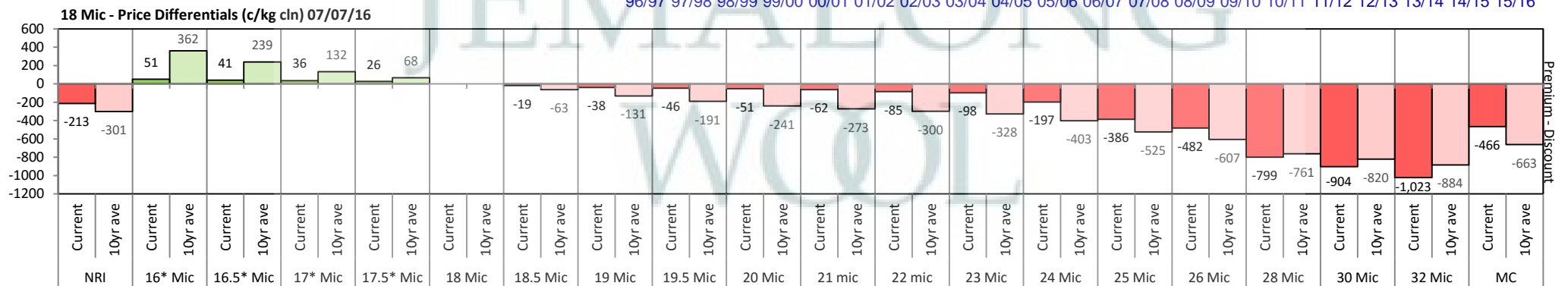


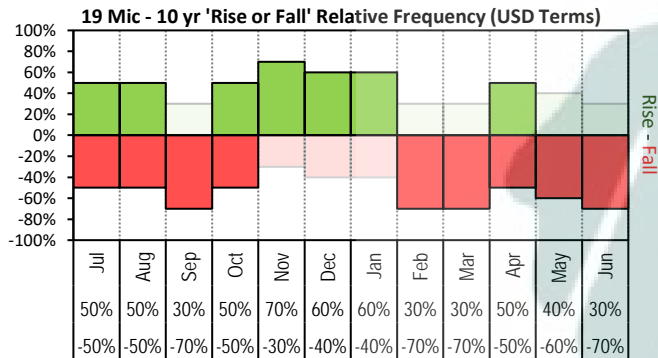


The above 'Rise or Fall' graph, shows how often the market has risen or fallen in a given month over the past 10 years, it does not show the extent of the movement only the frequency of direction. The 'Monthly Price Movement' graph shows the extent of movement for each month, for the past 5 years.

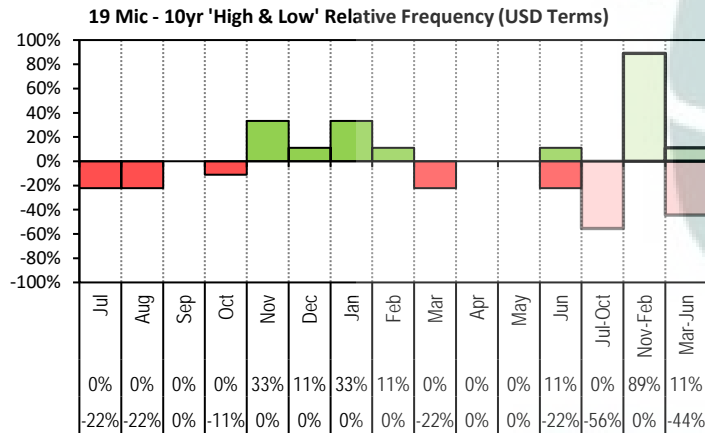
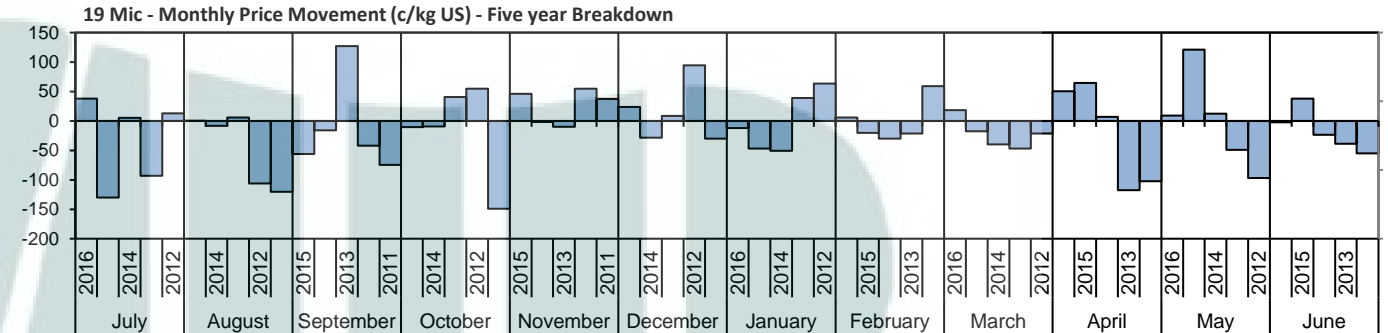


The above graph, shows how often the '12 month high & low' have been achieved for a given month over the past 10 years. It is not a measure of probability.

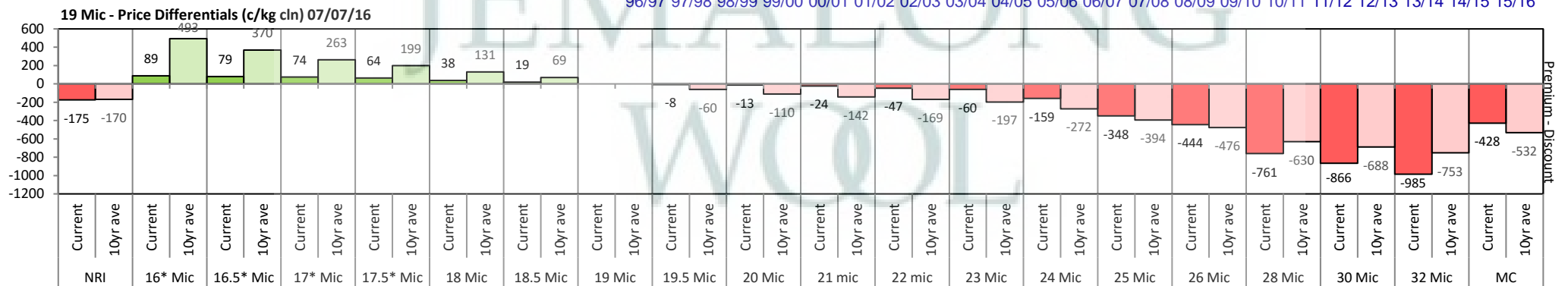
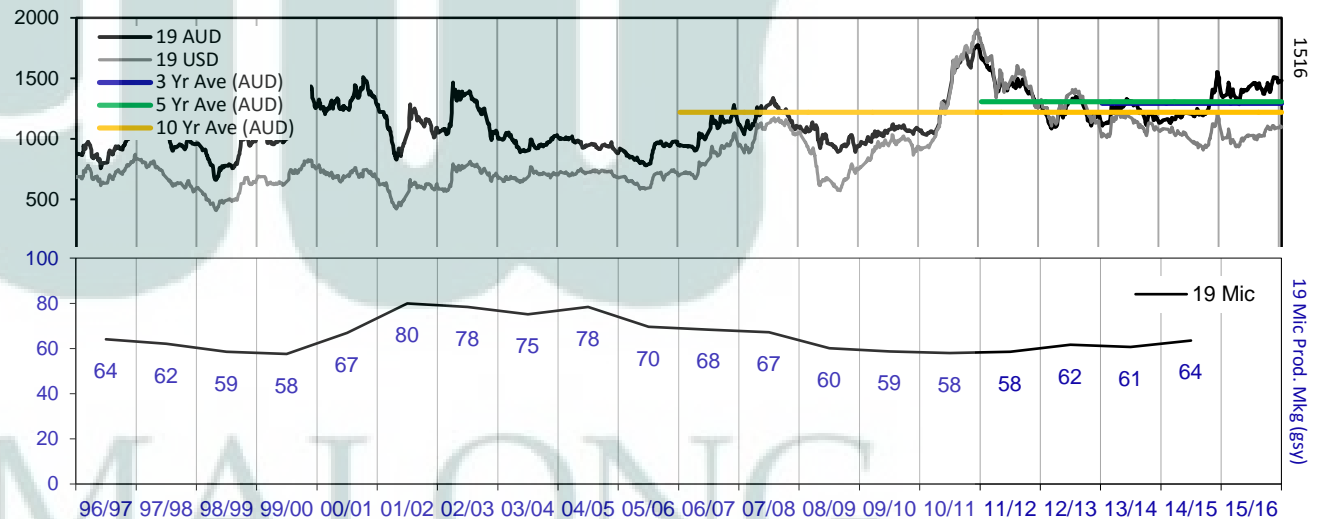


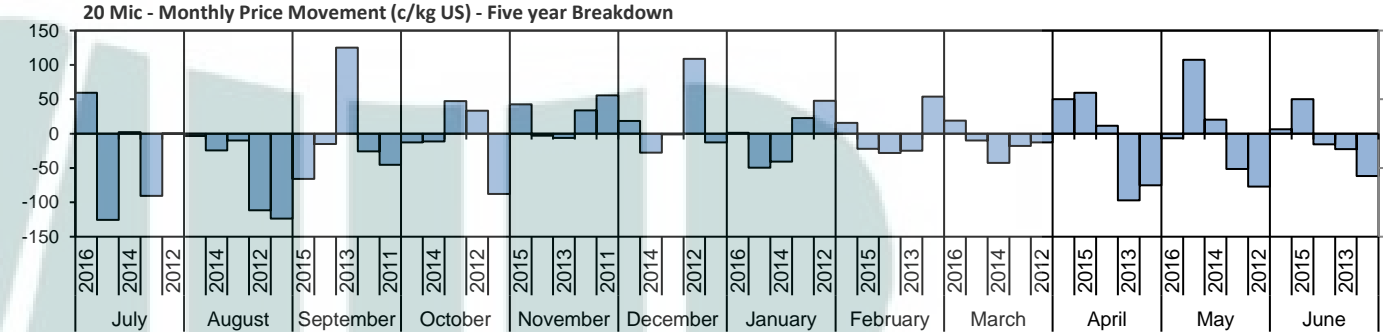
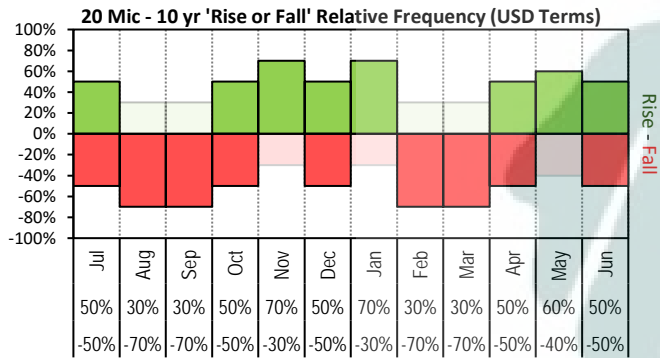


The above '**Rise or Fall**' graph, shows how often the market has risen or fallen in a given month over the past 10 years, it does not show the extent of the movement only the frequency of direction. The '**Monthly Price Movement**' graph shows the extent of movement for each month, for the past 5 years.

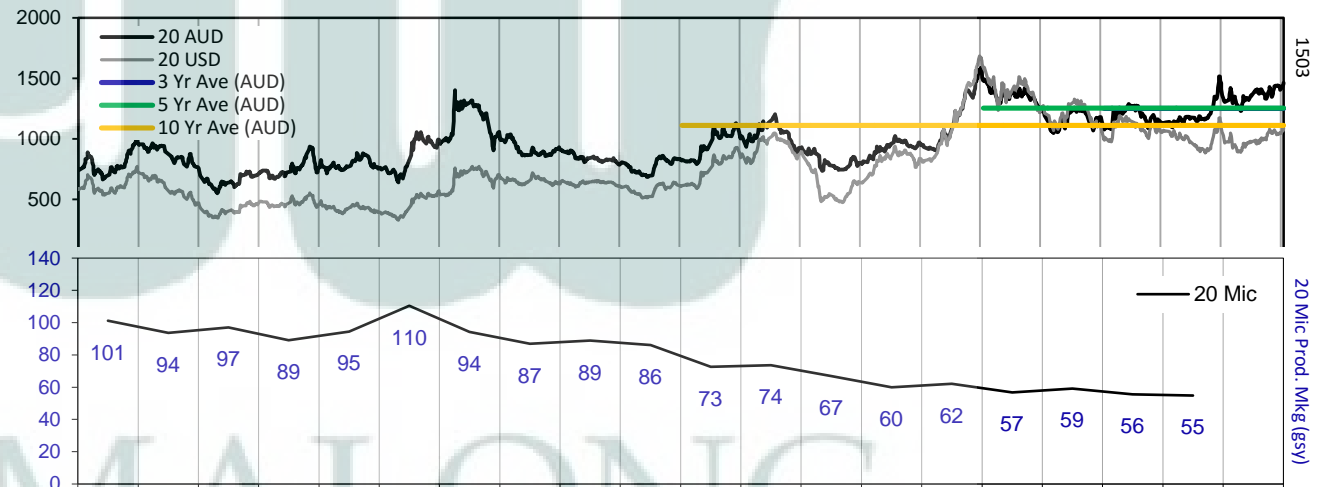
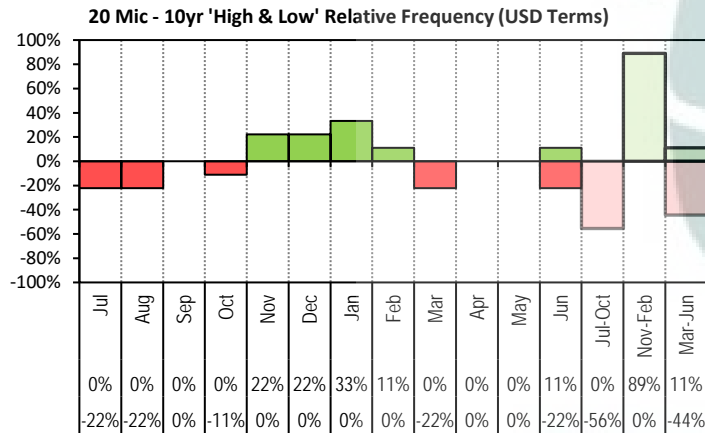


The above graph, shows how often the '12 month high & low' have been achieved for a given month over the past 10 years. It is not a measure of probability.

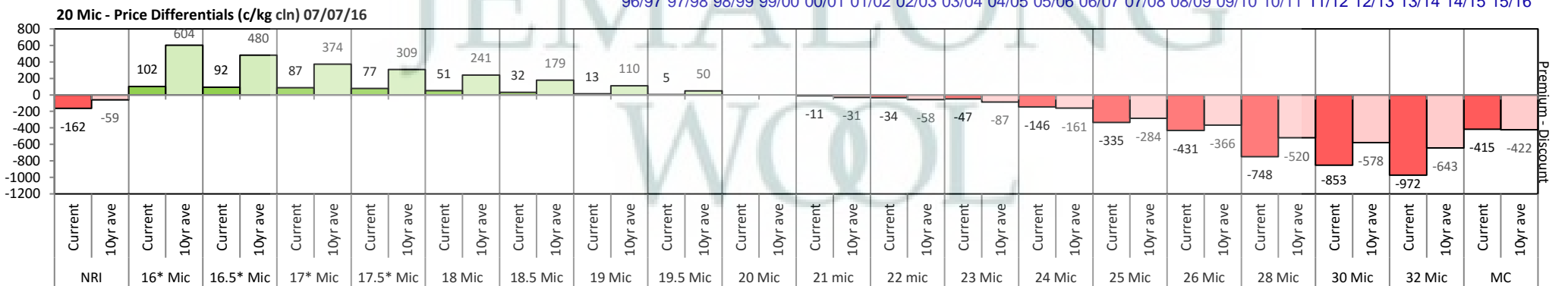


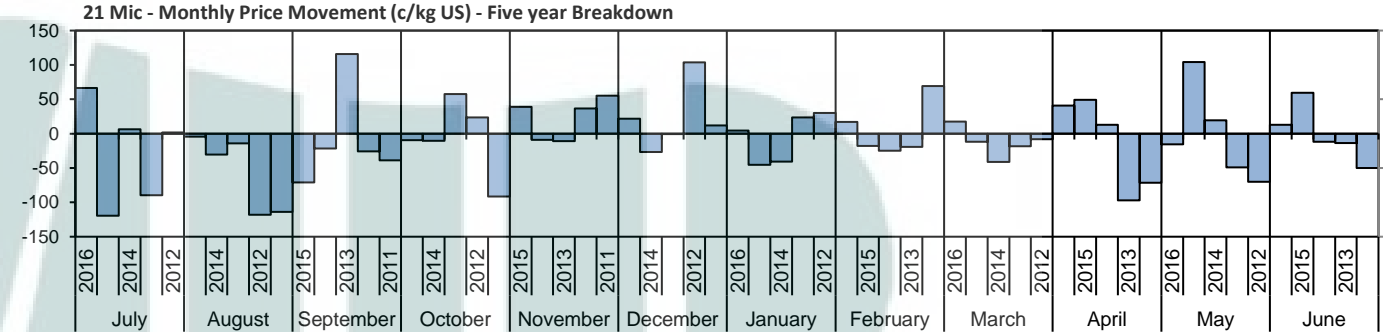
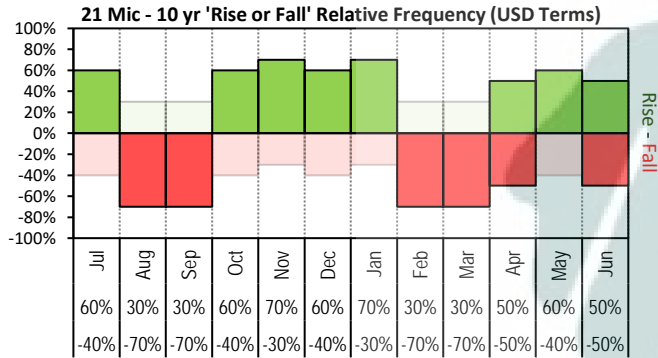


The above 'Rise or Fall' graph, shows how often the market has risen or fallen in a given month over the past 10 years, it does not show the extent of the movement only the frequency of direction. The 'Monthly Price Movement' graph shows the extent of movement for each month, for the past 5 years.

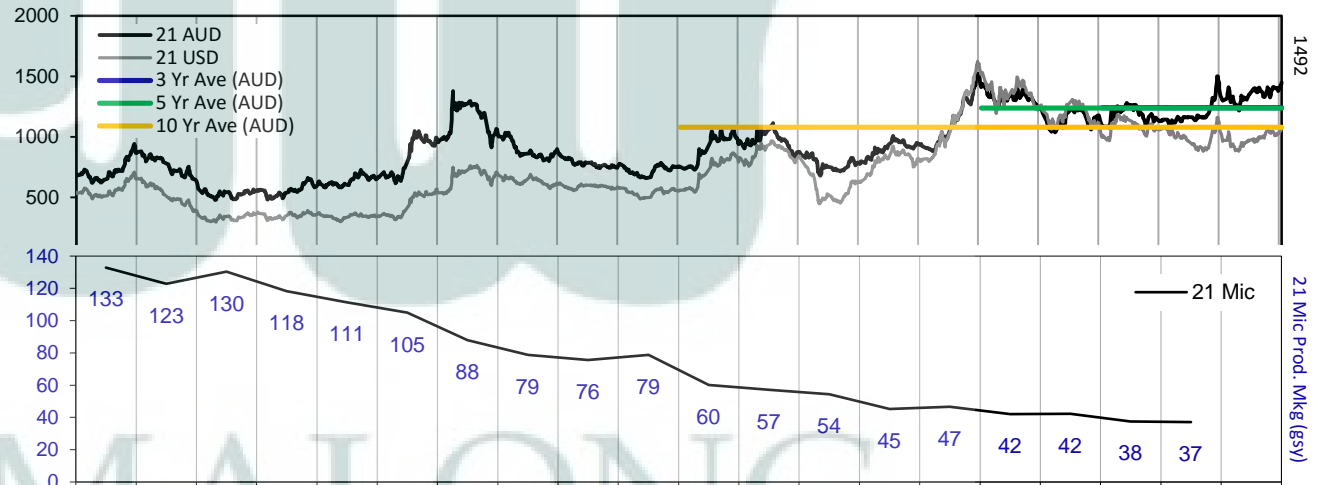
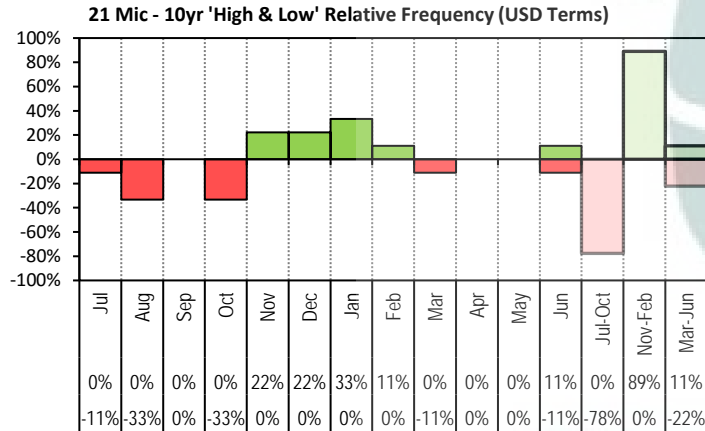


The above graph, shows how often the '12 month high & low' have been achieved for a given month over the past 10 years. It is not a measure of probability.

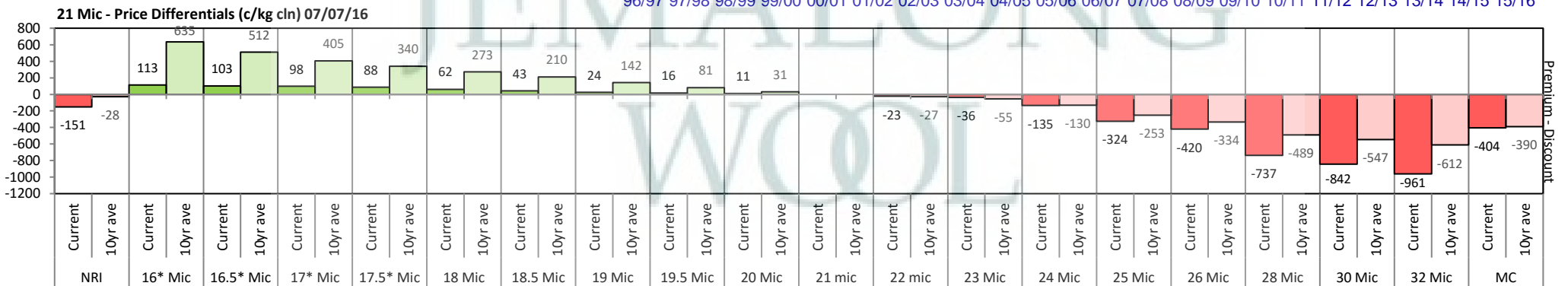


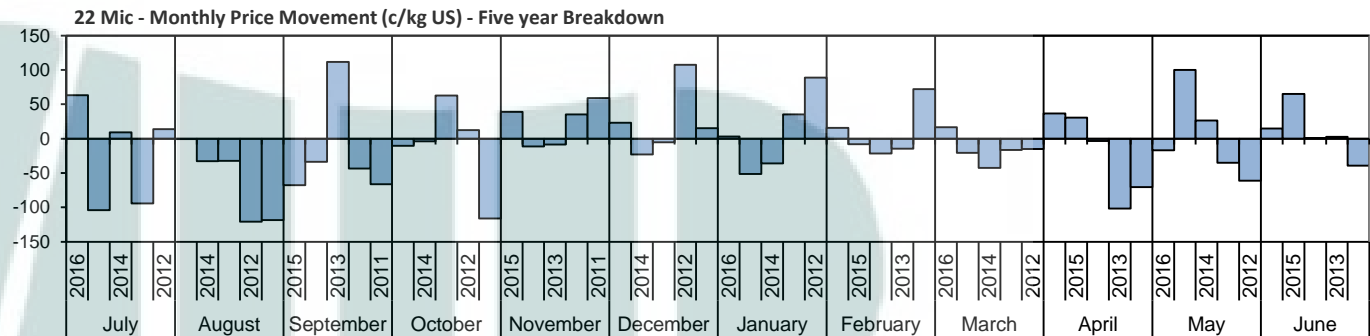
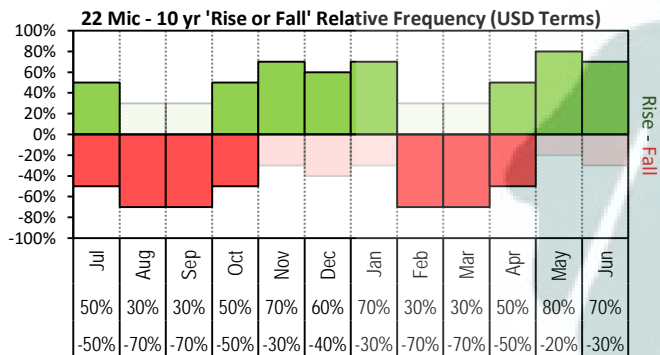


The above 'Rise or Fall' graph, shows how often the market has risen or fallen in a given month over the past 10 years, it does not show the extent of the movement only the frequency of direction. The 'Monthly Price Movement' graph shows the extent of movement for each month, for the past 5 years.

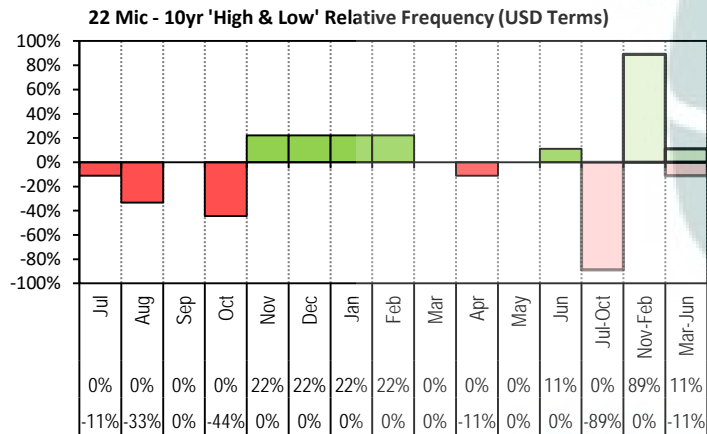


The above graph, shows how often the '12 month high & low' have been achieved for a given month over the past 10 years. It is not a measure of probability.

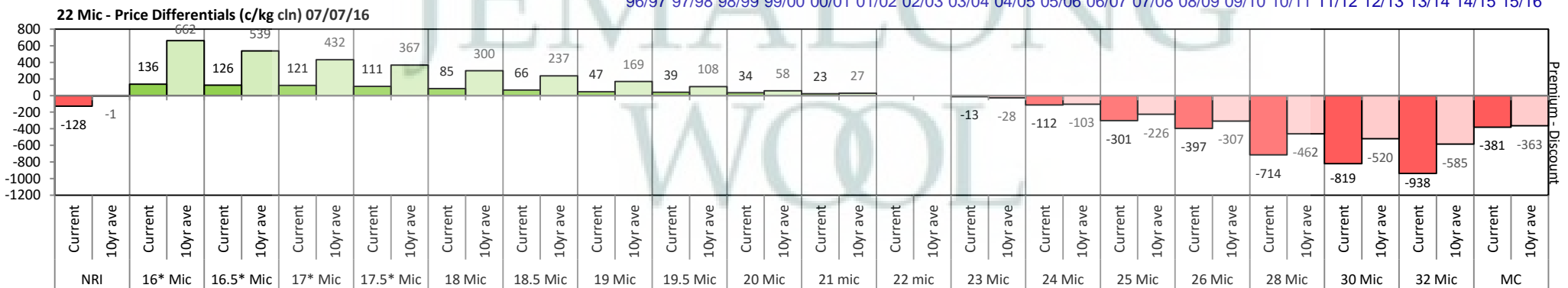
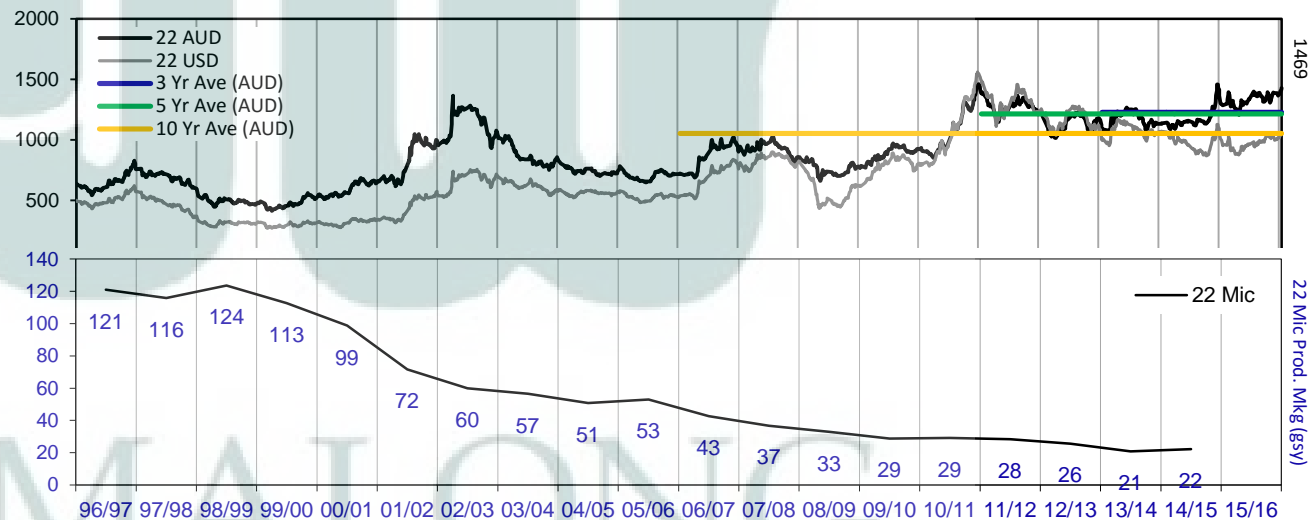


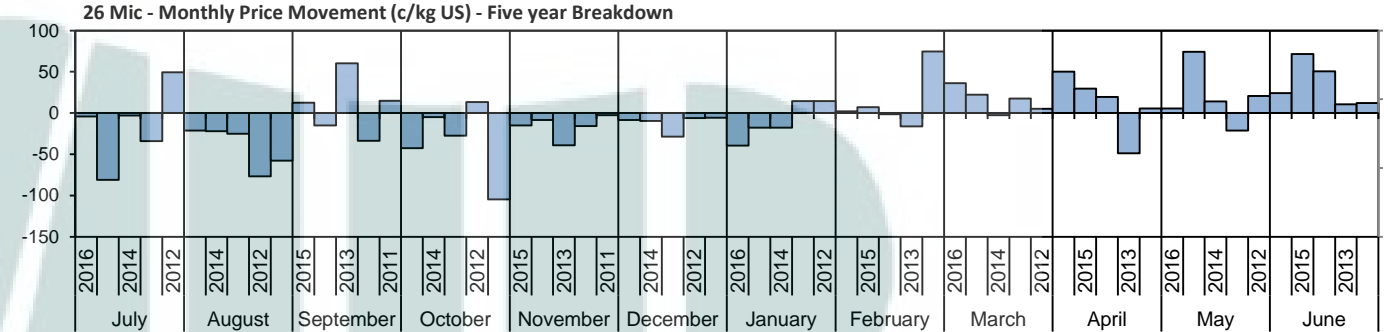
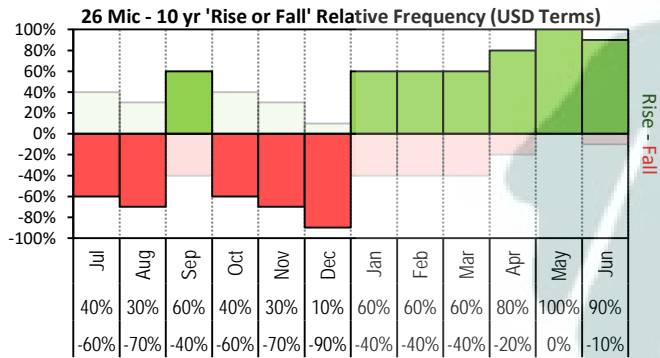


The above 'Rise or Fall' graph, shows how often the market has risen or fallen in a given month over the past 10 years, it does not show the extent of the movement only the frequency of direction. The 'Monthly Price Movement' graph shows the extent of movement for each month, for the past 5 years.

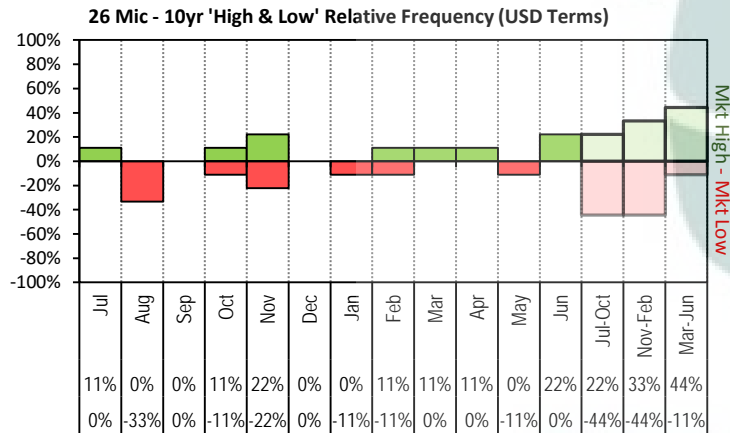


The above graph, shows how often the '12 month high & low' have been achieved for a given month over the past 10 years. It is not a measure of probability.

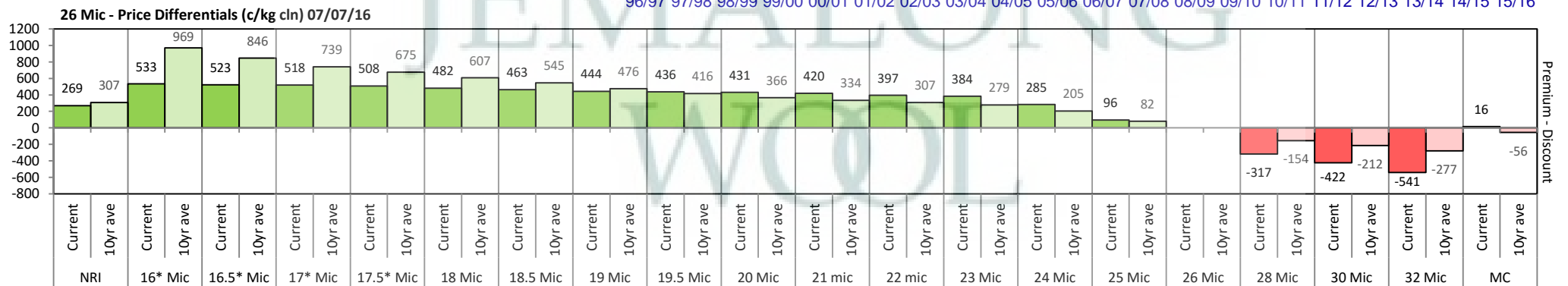
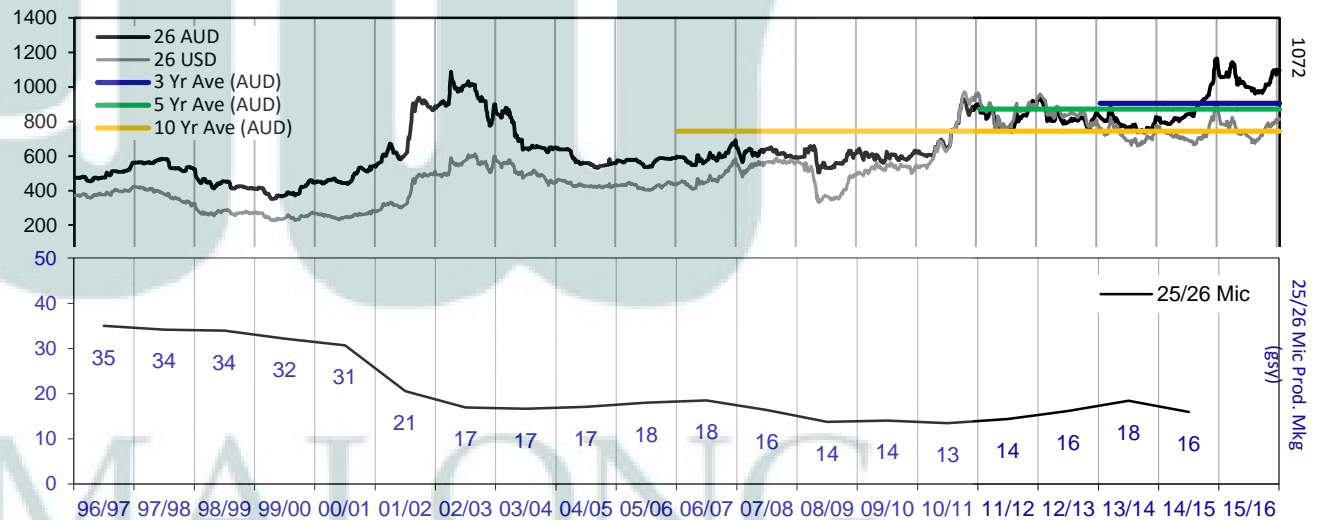


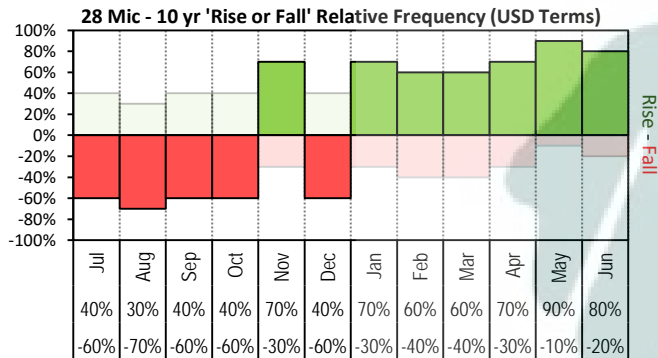


The above 'Rise or Fall' graph, shows how often the market has risen or fallen in a given month over the past 10 years, it does not show the extent of the movement only the frequency of direction. The 'Monthly Price Movement' graph shows the extent of movement for each month, for the past 5 years.

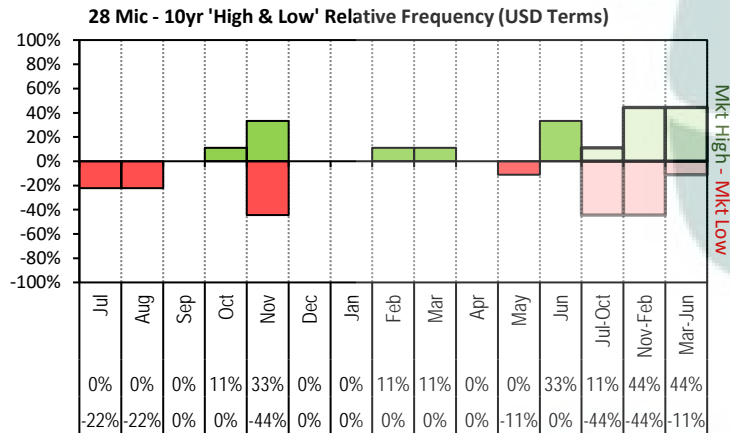
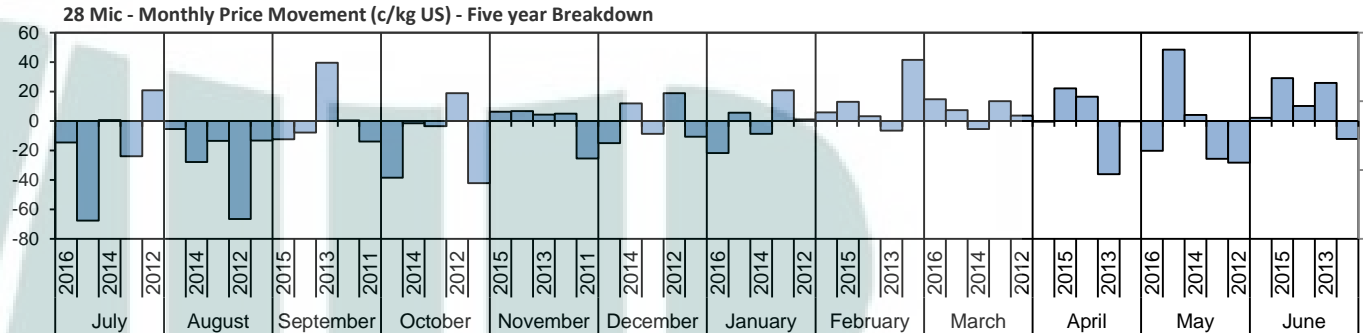


The above graph, shows how often the '12 month high & low' have been achieved for a given month over the past 10 years. It is not a measure of probability.

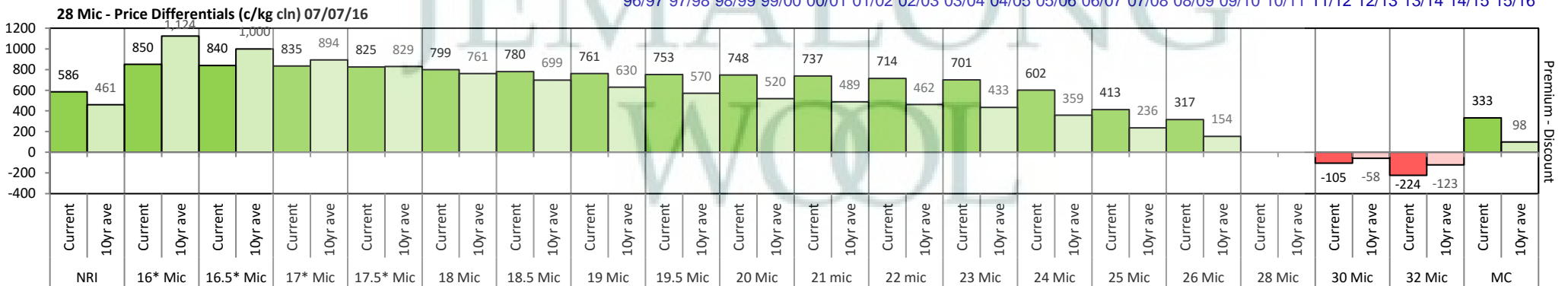
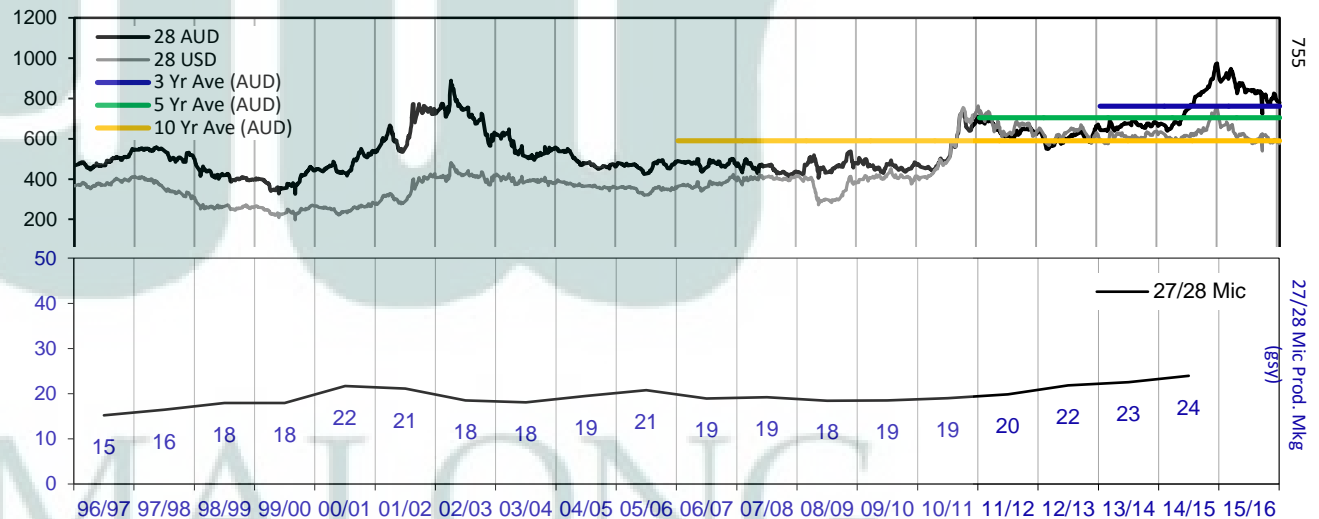


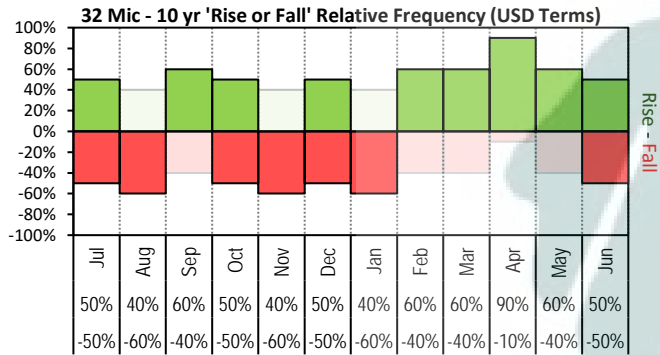


The above 'Rise or Fall' graph, shows how often the market has risen or fallen in a given month over the past 10 years, it does not show the extent of the movement only the frequency of direction. The 'Monthly Price Movement' graph shows the extent of movement for each month, for the past 5 years.

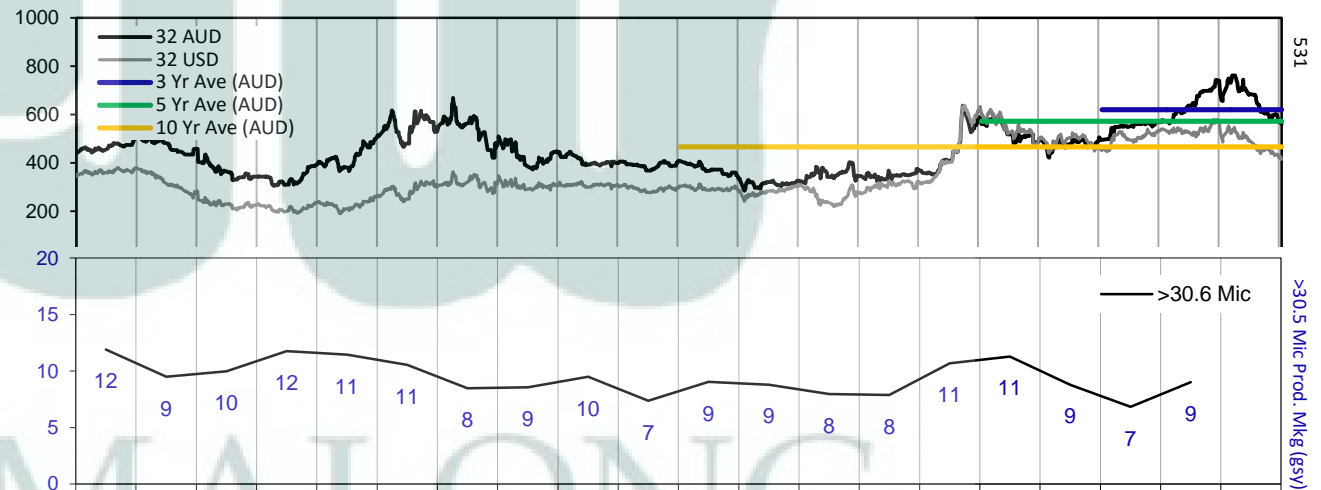
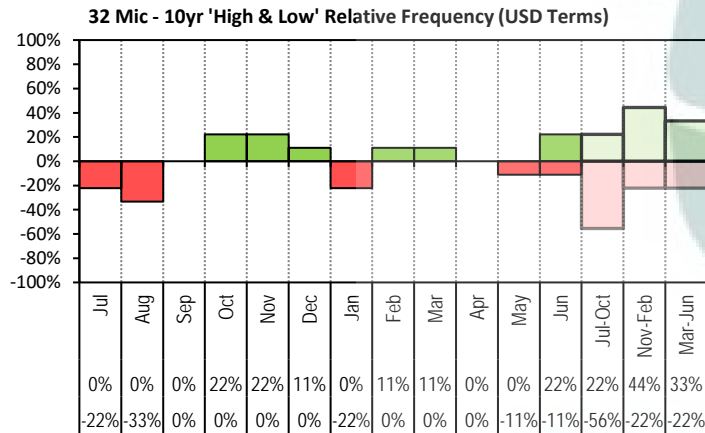


The above graph, shows how often the '12 month high & low' have been achieved for a given month over the past 10 years. It is not a measure of probability.

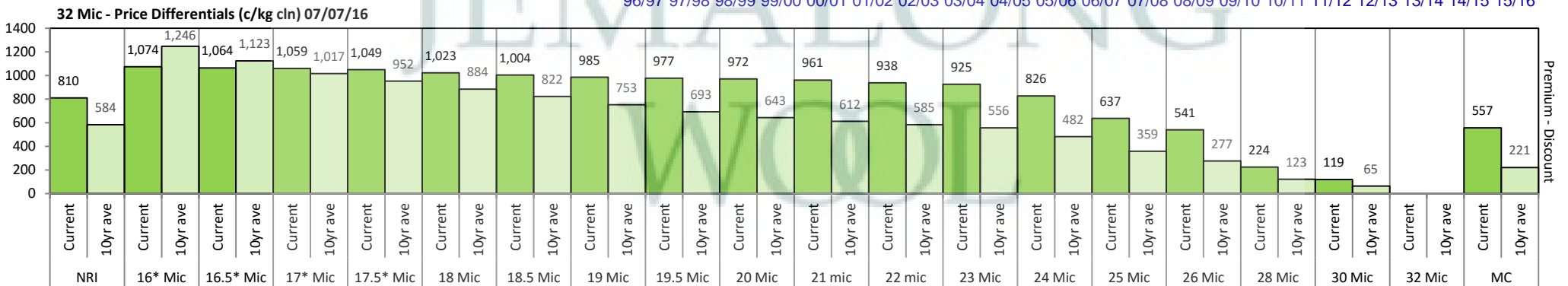


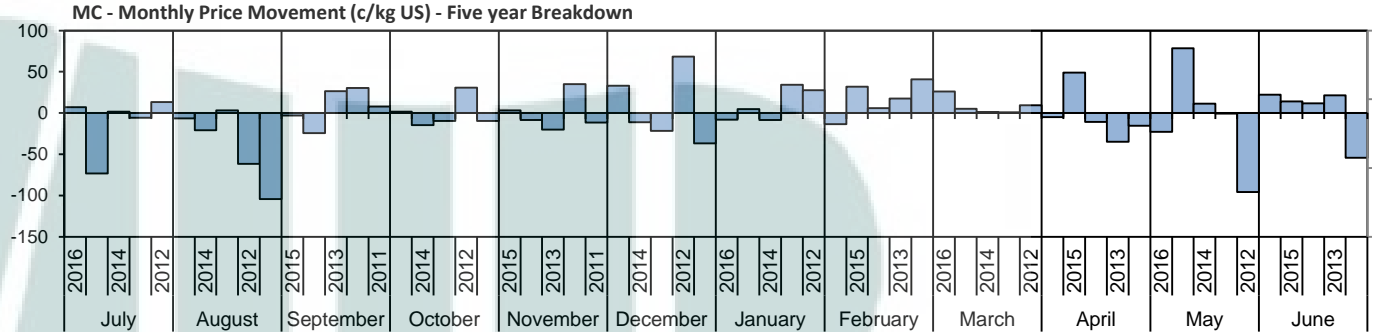
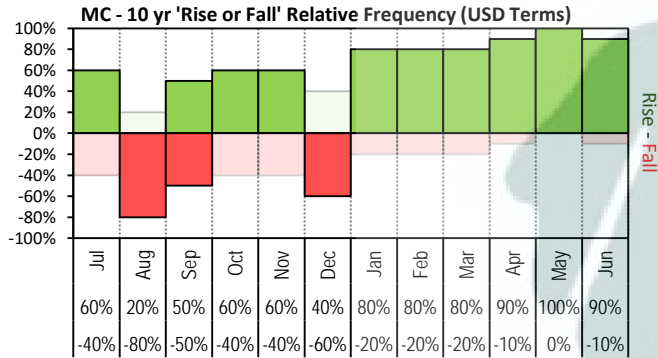


The above 'Rise or Fall' graph, shows how often the market has risen or fallen in a given month over the past 10 years, it does not show the extent of the movement only the frequency of direction. The 'Monthly Price Movement' graph shows the extent of movement for each month, for the past 5 years.

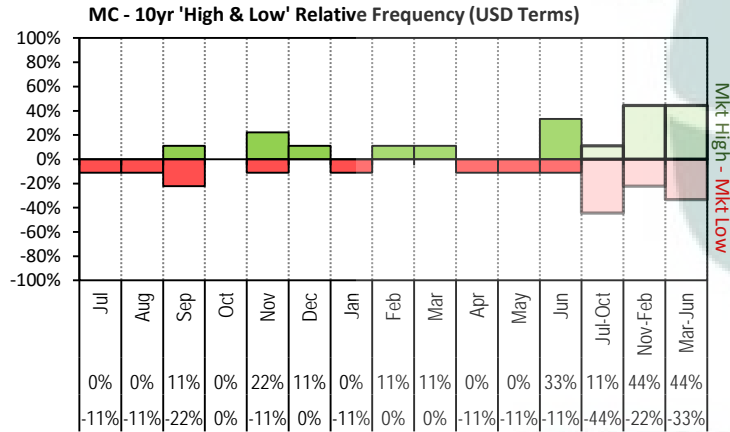


The above graph, shows how often the '12 month high & low' have been achieved for a given month over the past 10 years. It is not a measure of probability.

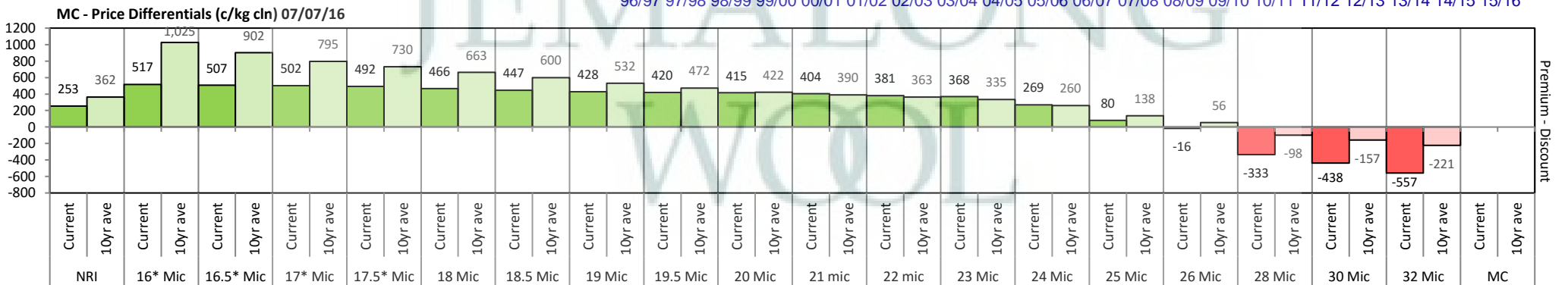
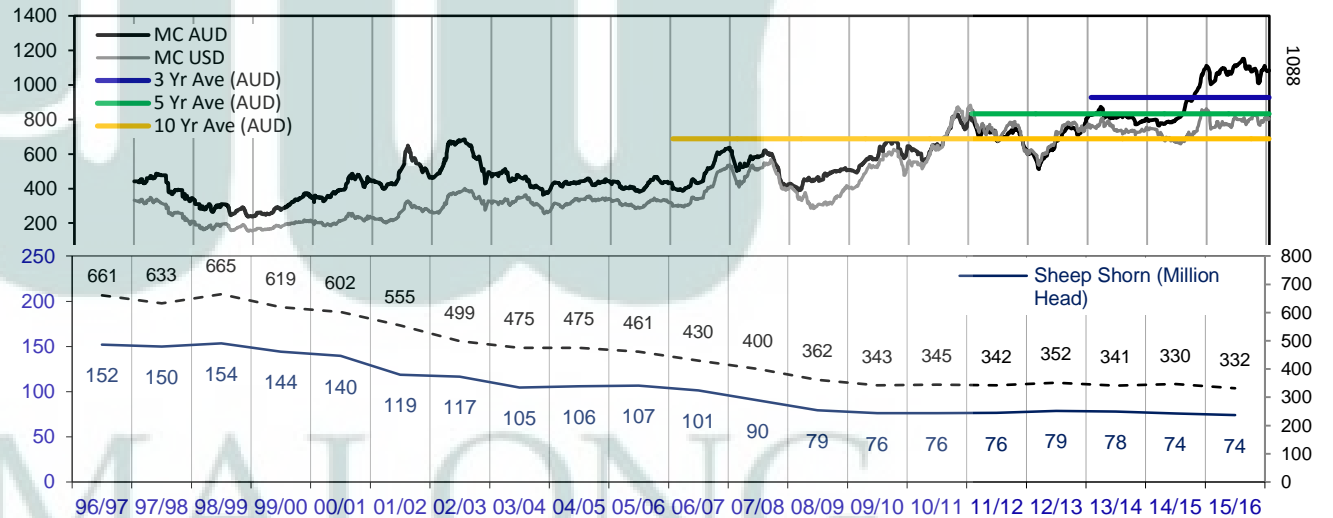




The above 'Rise or Fall' graph, shows how often the market has risen or fallen in a given month over the past 10 years, it does not show the extent of the movement only the frequency of direction. The 'Monthly Price Movement' graph shows the extent of movement for each month, for the past 5 years.



The above graph, shows how often the '12 month high & low' have been achieved for a given month over the past 10 years. It is not a measure of probability.





Two Year Export Snapshot (Greasy Equivalent - Million Kilos)

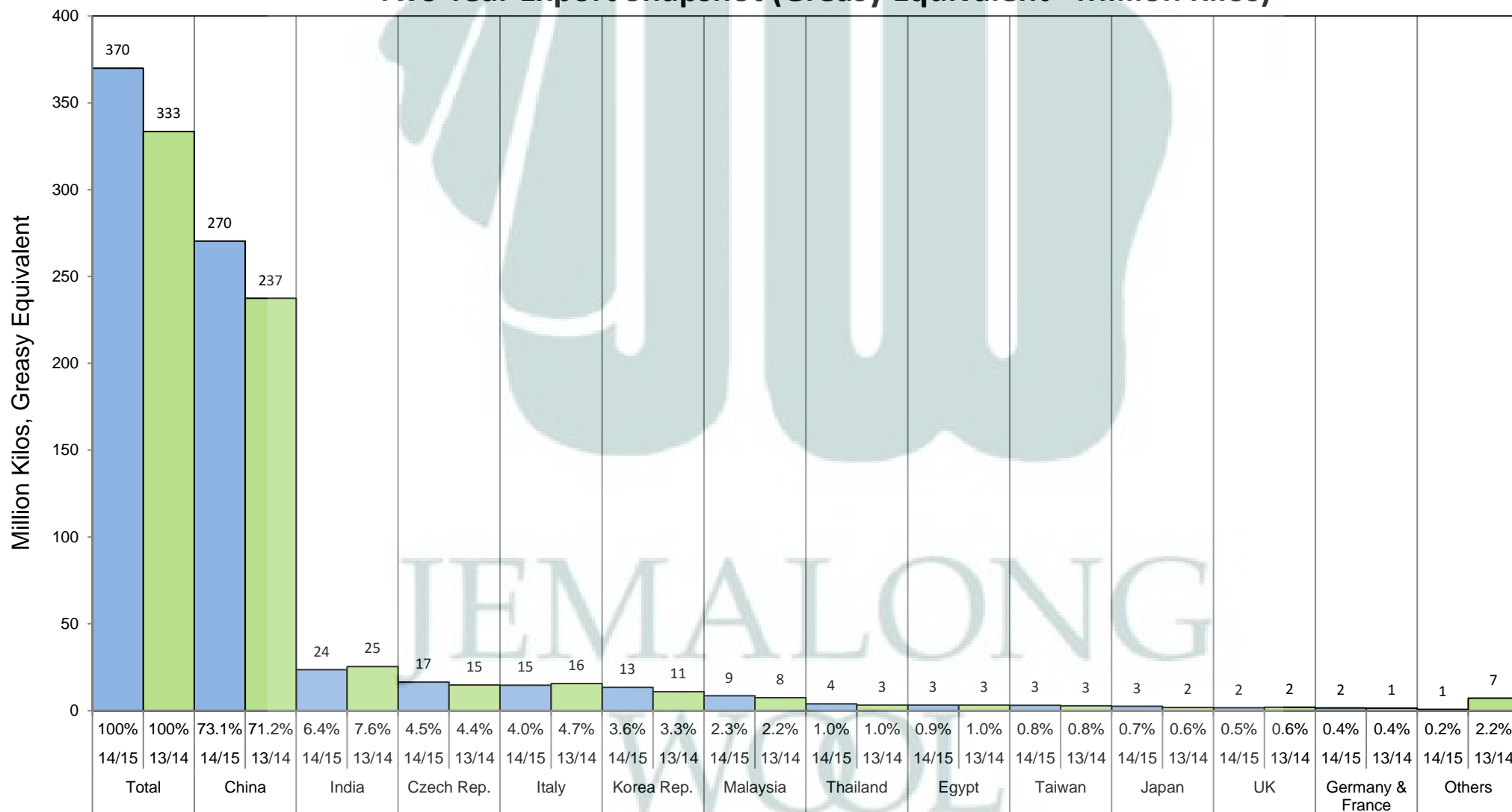




Table 7: Returns pr head for skirted fleece wool.

Skirted FLC Weight		Micron																	
9 Kg		16	16.5	17	17.5	18	18.5	19	19.5	20	21	22	23	24	25	26	28	30	32
Yield (Sch Dry)	25% Current	\$36	\$36	\$36	\$36	\$35	\$35	\$34	\$34	\$34	\$34	\$33	\$33	\$31	\$26	\$24	\$17	\$15	\$12
	10yr ave.	\$39	\$36	\$33	\$32	\$30	\$29	\$27	\$26	\$25	\$24	\$24	\$23	\$21	\$19	\$17	\$13	\$12	\$11
	30% Current	\$43	\$43	\$43	\$43	\$42	\$41	\$41	\$41	\$41	\$40	\$40	\$39	\$37	\$32	\$29	\$20	\$18	\$14
	10yr ave.	\$46	\$43	\$40	\$38	\$36	\$35	\$33	\$31	\$30	\$29	\$28	\$28	\$26	\$22	\$20	\$16	\$14	\$13
	35% Current	\$51	\$50	\$50	\$50	\$49	\$48	\$48	\$48	\$47	\$47	\$46	\$46	\$43	\$37	\$34	\$24	\$20	\$17
	10yr ave.	\$54	\$50	\$47	\$45	\$43	\$41	\$38	\$37	\$35	\$34	\$33	\$32	\$30	\$26	\$23	\$19	\$17	\$15
	40% Current	\$58	\$57	\$57	\$57	\$56	\$55	\$55	\$54	\$54	\$54	\$53	\$52	\$49	\$42	\$39	\$27	\$23	\$19
	10yr ave.	\$62	\$57	\$53	\$51	\$49	\$46	\$44	\$42	\$40	\$39	\$38	\$37	\$34	\$30	\$27	\$21	\$19	\$17
	45% Current	\$65	\$65	\$64	\$64	\$63	\$62	\$61	\$61	\$61	\$60	\$59	\$59	\$55	\$47	\$43	\$31	\$26	\$22
	10yr ave.	\$69	\$64	\$60	\$57	\$55	\$52	\$49	\$47	\$45	\$44	\$43	\$41	\$38	\$33	\$30	\$24	\$22	\$19
	50% Current	\$72	\$72	\$72	\$71	\$70	\$69	\$68	\$68	\$68	\$67	\$66	\$66	\$61	\$53	\$48	\$34	\$29	\$24
	10yr ave.	\$77	\$72	\$67	\$64	\$61	\$58	\$55	\$52	\$50	\$49	\$47	\$46	\$43	\$37	\$33	\$27	\$24	\$21
	55% Current	\$79	\$79	\$79	\$78	\$77	\$76	\$75	\$75	\$74	\$74	\$73	\$72	\$67	\$58	\$53	\$37	\$32	\$26
	10yr ave.	\$85	\$79	\$73	\$70	\$67	\$64	\$60	\$57	\$55	\$53	\$52	\$51	\$47	\$41	\$37	\$29	\$26	\$23
	60% Current	\$87	\$86	\$86	\$85	\$84	\$83	\$82	\$81	\$81	\$81	\$79	\$79	\$73	\$63	\$58	\$41	\$35	\$29
	10yr ave.	\$93	\$86	\$80	\$77	\$73	\$70	\$66	\$63	\$60	\$58	\$57	\$55	\$51	\$45	\$40	\$32	\$29	\$25
	65% Current	\$94	\$93	\$93	\$92	\$91	\$90	\$89	\$88	\$88	\$87	\$86	\$85	\$79	\$68	\$63	\$44	\$38	\$31
	10yr ave.	\$100	\$93	\$87	\$83	\$79	\$75	\$71	\$68	\$65	\$63	\$62	\$60	\$56	\$48	\$44	\$35	\$31	\$27
	70% Current	\$101	\$100	\$100	\$100	\$98	\$97	\$96	\$95	\$95	\$94	\$93	\$92	\$85	\$74	\$68	\$48	\$41	\$33
	10yr ave.	\$108	\$100	\$93	\$89	\$85	\$81	\$77	\$73	\$70	\$68	\$66	\$64	\$60	\$52	\$47	\$37	\$34	\$29
	75% Current	\$108	\$108	\$107	\$107	\$105	\$104	\$102	\$102	\$101	\$101	\$99	\$98	\$92	\$79	\$72	\$51	\$44	\$36
	10yr ave.	\$116	\$107	\$100	\$96	\$91	\$87	\$82	\$78	\$75	\$73	\$71	\$69	\$64	\$56	\$50	\$40	\$36	\$32
	80% Current	\$116	\$115	\$114	\$114	\$112	\$111	\$109	\$109	\$108	\$107	\$106	\$105	\$98	\$84	\$77	\$54	\$47	\$38
	10yr ave.	\$123	\$114	\$107	\$102	\$97	\$93	\$88	\$84	\$80	\$78	\$76	\$74	\$68	\$59	\$54	\$42	\$38	\$34
	85% Current	\$123	\$122	\$122	\$121	\$119	\$117	\$116	\$115	\$115	\$114	\$112	\$111	\$104	\$89	\$82	\$58	\$50	\$41
	10yr ave.	\$131	\$122	\$114	\$109	\$103	\$99	\$93	\$89	\$85	\$83	\$80	\$78	\$73	\$63	\$57	\$45	\$41	\$36

The above shows estimated returns per head for skirted fleece wool. These figures do not take into account the value of skirtings and oddments and do not take into account discounts that may apply for faults under individual circumstances. These figures are based on a market index of 100% and should be used as a guide only. Returns over \$30 / head for fleece wool are highlighted.



Table 8: Returns pr head for skirted fleece wool.

Skirted FLC Weight		Micron																	
8 Kg		16	16.5	17	17.5	18	18.5	19	19.5	20	21	22	23	24	25	26	28	30	32
Yield (Sch Dry)	25% Current	\$32	\$32	\$32	\$32	\$31	\$31	\$30	\$30	\$30	\$30	\$29	\$29	\$27	\$23	\$21	\$15	\$13	\$11
	10yr ave.	\$34	\$32	\$30	\$28	\$27	\$26	\$24	\$23	\$22	\$22	\$21	\$20	\$19	\$17	\$15	\$12	\$11	\$9
	30% Current	\$39	\$38	\$38	\$38	\$37	\$37	\$36	\$36	\$36	\$36	\$35	\$35	\$33	\$28	\$26	\$18	\$16	\$13
	10yr ave.	\$41	\$38	\$36	\$34	\$32	\$31	\$29	\$28	\$27	\$26	\$25	\$25	\$23	\$20	\$18	\$14	\$13	\$11
	35% Current	\$45	\$45	\$45	\$44	\$44	\$43	\$42	\$42	\$42	\$42	\$41	\$41	\$38	\$33	\$30	\$21	\$18	\$15
	10yr ave.	\$48	\$45	\$42	\$40	\$38	\$36	\$34	\$32	\$31	\$30	\$29	\$29	\$27	\$23	\$21	\$17	\$15	\$13
	40% Current	\$51	\$51	\$51	\$51	\$50	\$49	\$49	\$48	\$48	\$48	\$47	\$47	\$43	\$37	\$34	\$24	\$21	\$17
	10yr ave.	\$55	\$51	\$47	\$45	\$43	\$41	\$39	\$37	\$36	\$35	\$34	\$33	\$30	\$26	\$24	\$19	\$17	\$15
	45% Current	\$58	\$57	\$57	\$57	\$56	\$55	\$55	\$54	\$54	\$54	\$53	\$52	\$49	\$42	\$39	\$27	\$23	\$19
	10yr ave.	\$62	\$57	\$53	\$51	\$49	\$46	\$44	\$42	\$40	\$39	\$38	\$37	\$34	\$30	\$27	\$21	\$19	\$17
	50% Current	\$64	\$64	\$64	\$63	\$62	\$61	\$61	\$60	\$60	\$60	\$59	\$58	\$54	\$47	\$43	\$30	\$26	\$21
	10yr ave.	\$69	\$64	\$59	\$57	\$54	\$52	\$49	\$46	\$44	\$43	\$42	\$41	\$38	\$33	\$30	\$24	\$21	\$19
	55% Current	\$71	\$70	\$70	\$70	\$68	\$68	\$67	\$66	\$66	\$66	\$65	\$64	\$60	\$51	\$47	\$33	\$29	\$23
	10yr ave.	\$75	\$70	\$65	\$62	\$59	\$57	\$54	\$51	\$49	\$47	\$46	\$45	\$42	\$36	\$33	\$26	\$23	\$21
	60% Current	\$77	\$77	\$76	\$76	\$75	\$74	\$73	\$72	\$72	\$72	\$71	\$70	\$65	\$56	\$51	\$36	\$31	\$25
	10yr ave.	\$82	\$76	\$71	\$68	\$65	\$62	\$59	\$56	\$53	\$52	\$50	\$49	\$46	\$40	\$36	\$28	\$26	\$22
	65% Current	\$83	\$83	\$83	\$82	\$81	\$80	\$79	\$78	\$78	\$78	\$76	\$76	\$71	\$61	\$56	\$39	\$34	\$28
	10yr ave.	\$89	\$83	\$77	\$74	\$70	\$67	\$63	\$60	\$58	\$56	\$55	\$53	\$49	\$43	\$39	\$31	\$28	\$24
	70% Current	\$90	\$89	\$89	\$88	\$87	\$86	\$85	\$84	\$84	\$84	\$82	\$82	\$76	\$65	\$60	\$42	\$36	\$30
	10yr ave.	\$96	\$89	\$83	\$79	\$76	\$72	\$68	\$65	\$62	\$60	\$59	\$57	\$53	\$46	\$42	\$33	\$30	\$26
	75% Current	\$96	\$96	\$95	\$95	\$93	\$92	\$91	\$90	\$90	\$90	\$88	\$87	\$81	\$70	\$64	\$45	\$39	\$32
	10yr ave.	\$103	\$95	\$89	\$85	\$81	\$77	\$73	\$70	\$67	\$65	\$63	\$61	\$57	\$50	\$45	\$35	\$32	\$28
	80% Current	\$103	\$102	\$102	\$101	\$99	\$98	\$97	\$97	\$96	\$95	\$94	\$93	\$87	\$75	\$69	\$48	\$42	\$34
	10yr ave.	\$110	\$102	\$95	\$91	\$86	\$82	\$78	\$74	\$71	\$69	\$67	\$65	\$61	\$53	\$48	\$38	\$34	\$30
	85% Current	\$109	\$108	\$108	\$107	\$106	\$104	\$103	\$103	\$102	\$101	\$100	\$99	\$92	\$79	\$73	\$51	\$44	\$36
	10yr ave.	\$117	\$108	\$101	\$96	\$92	\$88	\$83	\$79	\$75	\$73	\$72	\$70	\$65	\$56	\$51	\$40	\$36	\$32

The above shows estimated returns per head for skirted fleece wool. These figures do not take into account the value of skirtings and oddments and do not take into account discounts that may apply for faults under individual circumstances. These figures are based on a market index of 100% and should be used as a guide only. Returns over \$30 / head for fleece wool are highlighted.



Table 9: Returns pr head for skirted fleece wool.

Skirted FLC Weight		Micron																	
7 Kg		16	16.5	17	17.5	18	18.5	19	19.5	20	21	22	23	24	25	26	28	30	32
Yield (Sch Dry)	25% Current	\$28	\$28	\$28	\$28	\$27	\$27	\$27	\$26	\$26	\$26	\$26	\$25	\$24	\$20	\$19	\$13	\$11	\$9
	10yr ave.	\$30	\$28	\$26	\$25	\$24	\$23	\$21	\$20	\$19	\$19	\$18	\$18	\$17	\$14	\$13	\$10	\$9	\$8
	30% Current	\$34	\$33	\$33	\$33	\$33	\$32	\$32	\$32	\$32	\$31	\$31	\$31	\$28	\$25	\$23	\$16	\$14	\$11
	10yr ave.	\$36	\$33	\$31	\$30	\$28	\$27	\$26	\$24	\$23	\$23	\$22	\$21	\$20	\$17	\$16	\$12	\$11	\$10
	35% Current	\$39	\$39	\$39	\$39	\$38	\$38	\$37	\$37	\$37	\$37	\$36	\$36	\$33	\$29	\$26	\$18	\$16	\$13
	10yr ave.	\$42	\$39	\$36	\$35	\$33	\$32	\$30	\$28	\$27	\$26	\$26	\$25	\$23	\$20	\$18	\$14	\$13	\$11
	40% Current	\$45	\$45	\$45	\$44	\$44	\$43	\$42	\$42	\$42	\$42	\$41	\$41	\$38	\$33	\$30	\$21	\$18	\$15
	10yr ave.	\$48	\$45	\$42	\$40	\$38	\$36	\$34	\$32	\$31	\$30	\$29	\$29	\$27	\$23	\$21	\$17	\$15	\$13
	45% Current	\$51	\$50	\$50	\$50	\$49	\$48	\$48	\$48	\$47	\$47	\$46	\$46	\$43	\$37	\$34	\$24	\$20	\$17
	10yr ave.	\$54	\$50	\$47	\$45	\$43	\$41	\$38	\$37	\$35	\$34	\$33	\$32	\$30	\$26	\$23	\$19	\$17	\$15
	50% Current	\$56	\$56	\$56	\$55	\$54	\$54	\$53	\$53	\$53	\$52	\$51	\$51	\$47	\$41	\$38	\$26	\$23	\$19
	10yr ave.	\$60	\$56	\$52	\$50	\$47	\$45	\$43	\$41	\$39	\$38	\$37	\$36	\$33	\$29	\$26	\$21	\$19	\$16
	55% Current	\$62	\$61	\$61	\$61	\$60	\$59	\$58	\$58	\$58	\$57	\$57	\$56	\$52	\$45	\$41	\$29	\$25	\$20
	10yr ave.	\$66	\$61	\$57	\$55	\$52	\$50	\$47	\$45	\$43	\$42	\$41	\$39	\$37	\$32	\$29	\$23	\$20	\$18
	60% Current	\$67	\$67	\$67	\$66	\$65	\$64	\$64	\$63	\$63	\$63	\$62	\$61	\$57	\$49	\$45	\$32	\$27	\$22
	10yr ave.	\$72	\$67	\$62	\$60	\$57	\$54	\$51	\$49	\$47	\$45	\$44	\$43	\$40	\$35	\$31	\$25	\$22	\$20
	65% Current	\$73	\$73	\$72	\$72	\$71	\$70	\$69	\$69	\$68	\$68	\$67	\$66	\$62	\$53	\$49	\$34	\$30	\$24
	10yr ave.	\$78	\$72	\$68	\$65	\$61	\$59	\$56	\$53	\$51	\$49	\$48	\$47	\$43	\$38	\$34	\$27	\$24	\$21
	70% Current	\$79	\$78	\$78	\$77	\$76	\$75	\$74	\$74	\$74	\$73	\$72	\$71	\$66	\$57	\$53	\$37	\$32	\$26
	10yr ave.	\$84	\$78	\$73	\$70	\$66	\$63	\$60	\$57	\$54	\$53	\$52	\$50	\$47	\$40	\$36	\$29	\$26	\$23
	75% Current	\$84	\$84	\$83	\$83	\$82	\$81	\$80	\$79	\$79	\$78	\$77	\$76	\$71	\$61	\$56	\$40	\$34	\$28
	10yr ave.	\$90	\$83	\$78	\$74	\$71	\$68	\$64	\$61	\$58	\$57	\$55	\$54	\$50	\$43	\$39	\$31	\$28	\$25
	80% Current	\$90	\$89	\$89	\$88	\$87	\$86	\$85	\$84	\$84	\$84	\$82	\$82	\$76	\$65	\$60	\$42	\$36	\$30
	10yr ave.	\$96	\$89	\$83	\$79	\$76	\$72	\$68	\$65	\$62	\$60	\$59	\$57	\$53	\$46	\$42	\$33	\$30	\$26
	85% Current	\$95	\$95	\$95	\$94	\$92	\$91	\$90	\$90	\$89	\$89	\$87	\$87	\$81	\$69	\$64	\$45	\$39	\$32
	10yr ave.	\$102	\$95	\$88	\$84	\$80	\$77	\$73	\$69	\$66	\$64	\$63	\$61	\$56	\$49	\$44	\$35	\$32	\$28

The above shows estimated returns per head for skirted fleece wool. These figures do not take into account the value of skirtings and oddments and do not take into account discounts that may apply for faults under individual circumstances. These figures are based on a market index of 100% and should be used as a guide only. Returns over \$30 / head for fleece wool are highlighted.



Table 10: Returns pr head for skirted fleece wool.

Skirted FLC Weight			Micron																	
			6 Kg		16	16.5	17	17.5	18	18.5	19	19.5	20	21	22	23	24	25	26	28
Yield (Sch Dry)	25%	Current	\$24	\$24	\$24	\$24	\$23	\$23	\$23	\$23	\$23	\$22	\$22	\$22	\$20	\$18	\$16	\$11	\$10	\$8
		10yr ave.	\$26	\$24	\$22	\$21	\$20	\$19	\$18	\$17	\$17	\$16	\$16	\$15	\$14	\$12	\$11	\$9	\$8	\$7
	30%	Current	\$29	\$29	\$29	\$28	\$28	\$28	\$27	\$27	\$27	\$27	\$26	\$26	\$24	\$21	\$19	\$14	\$12	\$10
		10yr ave.	\$31	\$29	\$27	\$26	\$24	\$23	\$22	\$21	\$20	\$19	\$19	\$18	\$17	\$15	\$13	\$11	\$10	\$8
	35%	Current	\$34	\$33	\$33	\$33	\$33	\$32	\$32	\$32	\$32	\$31	\$31	\$31	\$28	\$25	\$23	\$16	\$14	\$11
		10yr ave.	\$36	\$33	\$31	\$30	\$28	\$27	\$26	\$24	\$23	\$23	\$22	\$21	\$20	\$17	\$16	\$12	\$11	\$10
	40%	Current	\$39	\$38	\$38	\$38	\$37	\$37	\$36	\$36	\$36	\$36	\$35	\$35	\$33	\$28	\$26	\$18	\$16	\$13
		10yr ave.	\$41	\$38	\$36	\$34	\$32	\$31	\$29	\$28	\$27	\$26	\$25	\$25	\$23	\$20	\$18	\$14	\$13	\$11
	45%	Current	\$43	\$43	\$43	\$43	\$42	\$41	\$41	\$41	\$41	\$40	\$40	\$39	\$37	\$32	\$29	\$20	\$18	\$14
		10yr ave.	\$46	\$43	\$40	\$38	\$36	\$35	\$33	\$31	\$30	\$29	\$28	\$28	\$26	\$22	\$20	\$16	\$14	\$13
	50%	Current	\$48	\$48	\$48	\$47	\$47	\$46	\$45	\$45	\$45	\$45	\$44	\$44	\$41	\$35	\$32	\$23	\$20	\$16
		10yr ave.	\$51	\$48	\$45	\$43	\$41	\$39	\$37	\$35	\$33	\$32	\$32	\$31	\$28	\$25	\$22	\$18	\$16	\$14
	55%	Current	\$53	\$53	\$52	\$52	\$51	\$51	\$50	\$50	\$50	\$49	\$48	\$48	\$45	\$39	\$35	\$25	\$21	\$18
		10yr ave.	\$57	\$52	\$49	\$47	\$45	\$43	\$40	\$38	\$37	\$36	\$35	\$34	\$31	\$27	\$25	\$19	\$18	\$15
	60%	Current	\$58	\$57	\$57	\$57	\$56	\$55	\$55	\$54	\$54	\$54	\$53	\$52	\$49	\$42	\$39	\$27	\$23	\$19
		10yr ave.	\$62	\$57	\$53	\$51	\$49	\$46	\$44	\$42	\$40	\$39	\$38	\$37	\$34	\$30	\$27	\$21	\$19	\$17
65%	Current	\$63	\$62	\$62	\$62	\$61	\$60	\$59	\$59	\$59	\$58	\$57	\$57	\$53	\$46	\$42	\$29	\$25	\$21	
	10yr ave.	\$67	\$62	\$58	\$55	\$53	\$50	\$48	\$45	\$43	\$42	\$41	\$40	\$37	\$32	\$29	\$23	\$21	\$18	
70%	Current	\$67	\$67	\$67	\$66	\$65	\$64	\$64	\$63	\$63	\$63	\$62	\$61	\$57	\$49	\$45	\$32	\$27	\$22	
	10yr ave.	\$72	\$67	\$62	\$60	\$57	\$54	\$51	\$49	\$47	\$45	\$44	\$43	\$40	\$35	\$31	\$25	\$22	\$20	
75%	Current	\$72	\$72	\$72	\$71	\$70	\$69	\$68	\$68	\$68	\$67	\$66	\$66	\$61	\$53	\$48	\$34	\$29	\$24	
	10yr ave.	\$77	\$72	\$67	\$64	\$61	\$58	\$55	\$52	\$50	\$49	\$47	\$46	\$43	\$37	\$33	\$27	\$24	\$21	
80%	Current	\$77	\$77	\$76	\$76	\$75	\$74	\$73	\$72	\$72	\$72	\$71	\$70	\$65	\$56	\$51	\$36	\$31	\$25	
	10yr ave.	\$82	\$76	\$71	\$68	\$65	\$62	\$59	\$56	\$53	\$52	\$50	\$49	\$46	\$40	\$36	\$28	\$26	\$22	
85%	Current	\$82	\$81	\$81	\$81	\$79	\$78	\$77	\$77	\$77	\$76	\$75	\$74	\$69	\$60	\$55	\$39	\$33	\$27	
	10yr ave.	\$87	\$81	\$76	\$72	\$69	\$66	\$62	\$59	\$57	\$55	\$54	\$52	\$48	\$42	\$38	\$30	\$27	\$24	

The above shows estimated returns per head for skirted fleece wool. These figures do not take into account the value of skirtings and oddments and do not take into account discounts that may apply for faults under individual circumstances. These figures are based on a market index of 100% and should be used as a guide only. Returns over \$30 / head for fleece wool are highlighted.



Table 11: Returns pr head for skirted fleece wool.

Skirted FLC Weight		Micron																	
5 Kg		16	16.5	17	17.5	18	18.5	19	19.5	20	21	22	23	24	25	26	28	30	32
Yield (Sch Dry)	25% Current	\$20	\$20	\$20	\$20	\$19	\$19	\$19	\$19	\$19	\$19	\$18	\$18	\$17	\$15	\$13	\$9	\$8	\$7
	10yr ave.	\$21	\$20	\$19	\$18	\$17	\$16	\$15	\$15	\$14	\$13	\$13	\$13	\$12	\$10	\$9	\$7	\$7	\$6
	30% Current	\$24	\$24	\$24	\$24	\$23	\$23	\$23	\$23	\$23	\$22	\$22	\$22	\$20	\$18	\$16	\$11	\$10	\$8
	10yr ave.	\$26	\$24	\$22	\$21	\$20	\$19	\$18	\$17	\$17	\$16	\$16	\$15	\$14	\$12	\$11	\$9	\$8	\$7
	35% Current	\$28	\$28	\$28	\$28	\$27	\$27	\$27	\$26	\$26	\$26	\$26	\$25	\$24	\$20	\$19	\$13	\$11	\$9
	10yr ave.	\$30	\$28	\$26	\$25	\$24	\$23	\$21	\$20	\$19	\$19	\$18	\$18	\$17	\$14	\$13	\$10	\$9	\$8
	40% Current	\$32	\$32	\$32	\$32	\$31	\$31	\$30	\$30	\$30	\$30	\$29	\$29	\$27	\$23	\$21	\$15	\$13	\$11
	10yr ave.	\$34	\$32	\$30	\$28	\$27	\$26	\$24	\$23	\$22	\$22	\$21	\$20	\$19	\$17	\$15	\$12	\$11	\$9
	45% Current	\$36	\$36	\$36	\$36	\$35	\$35	\$34	\$34	\$34	\$34	\$33	\$33	\$31	\$26	\$24	\$17	\$15	\$12
	10yr ave.	\$39	\$36	\$33	\$32	\$30	\$29	\$27	\$26	\$25	\$24	\$24	\$23	\$21	\$19	\$17	\$13	\$12	\$11
	50% Current	\$40	\$40	\$40	\$40	\$39	\$38	\$38	\$38	\$38	\$37	\$37	\$36	\$34	\$29	\$27	\$19	\$16	\$13
	10yr ave.	\$43	\$40	\$37	\$35	\$34	\$32	\$31	\$29	\$28	\$27	\$26	\$26	\$24	\$21	\$19	\$15	\$13	\$12
	55% Current	\$44	\$44	\$44	\$43	\$43	\$42	\$42	\$41	\$41	\$41	\$40	\$40	\$37	\$32	\$29	\$21	\$18	\$15
	10yr ave.	\$47	\$44	\$41	\$39	\$37	\$35	\$34	\$32	\$31	\$30	\$29	\$28	\$26	\$23	\$20	\$16	\$15	\$13
	60% Current	\$48	\$48	\$48	\$47	\$47	\$46	\$45	\$45	\$45	\$45	\$44	\$44	\$41	\$35	\$32	\$23	\$20	\$16
	10yr ave.	\$51	\$48	\$45	\$43	\$41	\$39	\$37	\$35	\$33	\$32	\$32	\$31	\$28	\$25	\$22	\$18	\$16	\$14
	65% Current	\$52	\$52	\$52	\$51	\$51	\$50	\$49	\$49	\$49	\$48	\$48	\$47	\$44	\$38	\$35	\$25	\$21	\$17
	10yr ave.	\$56	\$52	\$48	\$46	\$44	\$42	\$40	\$38	\$36	\$35	\$34	\$33	\$31	\$27	\$24	\$19	\$17	\$15
	70% Current	\$56	\$56	\$56	\$55	\$54	\$54	\$53	\$53	\$53	\$52	\$51	\$51	\$47	\$41	\$38	\$26	\$23	\$19
	10yr ave.	\$60	\$56	\$52	\$50	\$47	\$45	\$43	\$41	\$39	\$38	\$37	\$36	\$33	\$29	\$26	\$21	\$19	\$16
	75% Current	\$60	\$60	\$60	\$59	\$58	\$58	\$57	\$57	\$56	\$56	\$55	\$55	\$51	\$44	\$40	\$28	\$24	\$20
	10yr ave.	\$64	\$60	\$56	\$53	\$51	\$48	\$46	\$44	\$42	\$40	\$39	\$38	\$36	\$31	\$28	\$22	\$20	\$18
	80% Current	\$64	\$64	\$64	\$63	\$62	\$61	\$61	\$60	\$60	\$60	\$59	\$58	\$54	\$47	\$43	\$30	\$26	\$21
	10yr ave.	\$69	\$64	\$59	\$57	\$54	\$52	\$49	\$46	\$44	\$43	\$42	\$41	\$38	\$33	\$30	\$24	\$21	\$19
	85% Current	\$68	\$68	\$68	\$67	\$66	\$65	\$64	\$64	\$64	\$63	\$62	\$62	\$58	\$50	\$46	\$32	\$28	\$23
	10yr ave.	\$73	\$68	\$63	\$60	\$57	\$55	\$52	\$49	\$47	\$46	\$45	\$43	\$40	\$35	\$32	\$25	\$23	\$20

The above shows estimated returns per head for skirted fleece wool. These figures do not take into account the value of skirtings and oddments and do not take into account discounts that may apply for faults under individual circumstances. These figures are based on a market index of 100% and should be used as a guide only. Returns over \$30 / head for fleece wool are highlighted.



Table 12: Returns pr head for skirted fleece wool.

Skirted FLC Weight		Micron																	
4 Kg		16	16.5	17	17.5	18	18.5	19	19.5	20	21	22	23	24	25	26	28	30	32
Yield (Sch Dry)	25% Current	\$16	\$16	\$16	\$16	\$16	\$15	\$15	\$15	\$15	\$15	\$15	\$15	\$14	\$12	\$11	\$8	\$7	\$5
	10yr ave.	\$17	\$16	\$15	\$14	\$14	\$13	\$12	\$12	\$11	\$11	\$11	\$10	\$9	\$8	\$7	\$6	\$5	\$5
	30% Current	\$19	\$19	\$19	\$19	\$19	\$18	\$18	\$18	\$18	\$18	\$18	\$17	\$16	\$14	\$13	\$9	\$8	\$6
	10yr ave.	\$21	\$19	\$18	\$17	\$16	\$15	\$15	\$14	\$13	\$13	\$13	\$12	\$11	\$10	\$9	\$7	\$6	\$6
	35% Current	\$22	\$22	\$22	\$22	\$22	\$21	\$21	\$21	\$21	\$21	\$21	\$20	\$19	\$16	\$15	\$11	\$9	\$7
	10yr ave.	\$24	\$22	\$21	\$20	\$19	\$18	\$17	\$16	\$16	\$15	\$15	\$14	\$13	\$12	\$10	\$8	\$7	\$7
	40% Current	\$26	\$26	\$25	\$25	\$25	\$25	\$24	\$24	\$24	\$24	\$24	\$23	\$22	\$19	\$17	\$12	\$10	\$8
	10yr ave.	\$27	\$25	\$24	\$23	\$22	\$21	\$20	\$19	\$18	\$17	\$17	\$16	\$15	\$13	\$12	\$9	\$9	\$7
	45% Current	\$29	\$29	\$29	\$28	\$28	\$28	\$27	\$27	\$27	\$27	\$26	\$26	\$24	\$21	\$19	\$14	\$12	\$10
	10yr ave.	\$31	\$29	\$27	\$26	\$24	\$23	\$22	\$21	\$20	\$19	\$19	\$18	\$17	\$15	\$13	\$11	\$10	\$8
	50% Current	\$32	\$32	\$32	\$32	\$31	\$31	\$30	\$30	\$30	\$30	\$29	\$29	\$27	\$23	\$21	\$15	\$13	\$11
	10yr ave.	\$34	\$32	\$30	\$28	\$27	\$26	\$24	\$23	\$22	\$22	\$21	\$20	\$19	\$17	\$15	\$12	\$11	\$9
	55% Current	\$35	\$35	\$35	\$35	\$34	\$34	\$33	\$33	\$33	\$33	\$32	\$32	\$30	\$26	\$24	\$17	\$14	\$12
	10yr ave.	\$38	\$35	\$33	\$31	\$30	\$28	\$27	\$26	\$24	\$24	\$23	\$23	\$21	\$18	\$16	\$13	\$12	\$10
	60% Current	\$39	\$38	\$38	\$38	\$37	\$37	\$36	\$36	\$36	\$36	\$35	\$35	\$33	\$28	\$26	\$18	\$16	\$13
	10yr ave.	\$41	\$38	\$36	\$34	\$32	\$31	\$29	\$28	\$27	\$26	\$25	\$25	\$23	\$20	\$18	\$14	\$13	\$11
	65% Current	\$42	\$41	\$41	\$41	\$40	\$40	\$39	\$39	\$39	\$39	\$38	\$38	\$35	\$30	\$28	\$20	\$17	\$14
	10yr ave.	\$45	\$41	\$39	\$37	\$35	\$34	\$32	\$30	\$29	\$28	\$27	\$27	\$25	\$21	\$19	\$15	\$14	\$12
	70% Current	\$45	\$45	\$45	\$44	\$44	\$43	\$42	\$42	\$42	\$42	\$41	\$41	\$38	\$33	\$30	\$21	\$18	\$15
	10yr ave.	\$48	\$45	\$42	\$40	\$38	\$36	\$34	\$32	\$31	\$30	\$29	\$29	\$27	\$23	\$21	\$17	\$15	\$13
	75% Current	\$48	\$48	\$48	\$47	\$47	\$46	\$45	\$45	\$45	\$44	\$44	\$44	\$41	\$35	\$32	\$23	\$20	\$16
	10yr ave.	\$51	\$48	\$45	\$43	\$41	\$39	\$37	\$35	\$33	\$32	\$32	\$31	\$28	\$25	\$22	\$18	\$16	\$14
	80% Current	\$51	\$51	\$51	\$51	\$50	\$49	\$49	\$48	\$48	\$48	\$47	\$47	\$43	\$37	\$34	\$24	\$21	\$17
	10yr ave.	\$55	\$51	\$47	\$45	\$43	\$41	\$39	\$37	\$36	\$35	\$34	\$33	\$30	\$26	\$24	\$19	\$17	\$15
	85% Current	\$55	\$54	\$54	\$54	\$53	\$52	\$52	\$51	\$51	\$51	\$50	\$50	\$46	\$40	\$36	\$26	\$22	\$18
	10yr ave.	\$58	\$54	\$50	\$48	\$46	\$44	\$41	\$39	\$38	\$37	\$36	\$35	\$32	\$28	\$25	\$20	\$18	\$16

The above shows estimated returns per head for skirted fleece wool. These figures do not take into account the value of skirtings and oddments and do not take into account discounts that may apply for faults under individual circumstances. These figures are based on a market index of 100% and should be used as a guide only. Returns over \$30 / head for fleece wool are highlighted.



Table 13: Returns pr head for skirted fleece wool.

Skirted FLC Weight		Micron																	
3 Kg		16	16.5	17	17.5	18	18.5	19	19.5	20	21	22	23	24	25	26	28	30	32
Yield (Sch Dry)	25% Current	\$12	\$12	\$12	\$12	\$12	\$12	\$11	\$11	\$11	\$11	\$11	\$11	\$10	\$9	\$8	\$6	\$5	\$4
	10yr ave.	\$13	\$12	\$11	\$11	\$10	\$10	\$9	\$9	\$8	\$8	\$8	\$8	\$7	\$6	\$6	\$4	\$4	\$4
	30% Current	\$14	\$14	\$14	\$14	\$14	\$14	\$14	\$14	\$14	\$13	\$13	\$13	\$12	\$11	\$10	\$7	\$6	\$5
	10yr ave.	\$15	\$14	\$13	\$13	\$12	\$12	\$11	\$10	\$10	\$10	\$9	\$9	\$9	\$7	\$7	\$5	\$5	\$4
	35% Current	\$17	\$17	\$17	\$17	\$16	\$16	\$16	\$16	\$16	\$16	\$15	\$15	\$14	\$12	\$11	\$8	\$7	\$6
	10yr ave.	\$18	\$17	\$16	\$15	\$14	\$14	\$13	\$12	\$12	\$11	\$11	\$11	\$10	\$9	\$8	\$6	\$6	\$5
	40% Current	\$19	\$19	\$19	\$19	\$19	\$18	\$18	\$18	\$18	\$18	\$18	\$17	\$16	\$14	\$13	\$9	\$8	\$6
	10yr ave.	\$21	\$19	\$18	\$17	\$16	\$15	\$15	\$14	\$13	\$13	\$13	\$12	\$11	\$10	\$9	\$7	\$6	\$6
	45% Current	\$22	\$22	\$21	\$21	\$21	\$21	\$20	\$20	\$20	\$20	\$20	\$20	\$18	\$16	\$14	\$10	\$9	\$7
	10yr ave.	\$23	\$21	\$20	\$19	\$18	\$17	\$16	\$16	\$15	\$15	\$14	\$14	\$13	\$11	\$10	\$8	\$7	\$6
	50% Current	\$24	\$24	\$24	\$24	\$23	\$23	\$23	\$23	\$23	\$22	\$22	\$22	\$20	\$18	\$16	\$11	\$10	\$8
	10yr ave.	\$26	\$24	\$22	\$21	\$20	\$19	\$18	\$17	\$17	\$16	\$16	\$15	\$14	\$12	\$11	\$9	\$8	\$7
	55% Current	\$26	\$26	\$26	\$26	\$26	\$25	\$25	\$25	\$25	\$25	\$24	\$24	\$22	\$19	\$18	\$12	\$11	\$9
	10yr ave.	\$28	\$26	\$24	\$23	\$22	\$21	\$20	\$19	\$18	\$18	\$17	\$17	\$16	\$14	\$12	\$10	\$9	\$8
	60% Current	\$29	\$29	\$29	\$28	\$28	\$28	\$27	\$27	\$27	\$27	\$26	\$26	\$24	\$21	\$19	\$14	\$12	\$10
	10yr ave.	\$31	\$29	\$27	\$26	\$24	\$23	\$22	\$21	\$20	\$19	\$19	\$18	\$17	\$15	\$13	\$11	\$10	\$8
	65% Current	\$31	\$31	\$31	\$31	\$30	\$30	\$30	\$29	\$29	\$29	\$29	\$28	\$26	\$23	\$21	\$15	\$13	\$10
	10yr ave.	\$33	\$31	\$29	\$28	\$26	\$25	\$24	\$23	\$22	\$21	\$21	\$20	\$19	\$16	\$15	\$12	\$10	\$9
	70% Current	\$34	\$33	\$33	\$33	\$33	\$32	\$32	\$32	\$32	\$31	\$31	\$31	\$28	\$25	\$23	\$16	\$14	\$11
	10yr ave.	\$36	\$33	\$31	\$30	\$28	\$27	\$26	\$24	\$23	\$23	\$22	\$21	\$20	\$17	\$16	\$12	\$11	\$10
	75% Current	\$36	\$36	\$36	\$36	\$35	\$35	\$34	\$34	\$34	\$34	\$33	\$33	\$31	\$26	\$24	\$17	\$15	\$12
	10yr ave.	\$39	\$36	\$33	\$32	\$30	\$29	\$27	\$26	\$25	\$24	\$24	\$23	\$21	\$19	\$17	\$13	\$12	\$11
	80% Current	\$39	\$38	\$38	\$38	\$37	\$37	\$36	\$36	\$36	\$36	\$35	\$35	\$33	\$28	\$26	\$18	\$16	\$13
	10yr ave.	\$41	\$38	\$36	\$34	\$32	\$31	\$29	\$28	\$27	\$26	\$25	\$25	\$23	\$20	\$18	\$14	\$13	\$11
	85% Current	\$41	\$41	\$41	\$40	\$40	\$39	\$39	\$38	\$38	\$38	\$37	\$37	\$35	\$30	\$27	\$19	\$17	\$14
	10yr ave.	\$44	\$41	\$38	\$36	\$34	\$33	\$31	\$30	\$28	\$28	\$27	\$26	\$24	\$21	\$19	\$15	\$14	\$12

The above shows estimated returns per head for skirted fleece wool. These figures do not take into account the value of skirtings and oddments and do not take into account discounts that may apply for faults under individual circumstances. These figures are based on a market index of 100% and should be used as a guide only. Returns over \$30 / head for fleece wool are highlighted.



Table 14: Returns pr head for skirted fleece wool.

Skirted FLC Weight		Micron																	
2 Kg		16	16.5	17	17.5	18	18.5	19	19.5	20	21	22	23	24	25	26	28	30	32
Yield (Sch Dry)	25% Current	\$8	\$8	\$8	\$8	\$8	\$8	\$8	\$8	\$8	\$7	\$7	\$7	\$7	\$6	\$5	\$4	\$3	\$3
	10yr ave.	\$9	\$8	\$7	\$7	\$7	\$6	\$6	\$6	\$6	\$5	\$5	\$5	\$5	\$4	\$4	\$3	\$3	\$2
	30% Current	\$10	\$10	\$10	\$9	\$9	\$9	\$9	\$9	\$9	\$9	\$9	\$9	\$8	\$7	\$6	\$5	\$4	\$3
	10yr ave.	\$10	\$10	\$9	\$9	\$8	\$8	\$7	\$7	\$7	\$6	\$6	\$6	\$6	\$5	\$4	\$4	\$3	\$3
	35% Current	\$11	\$11	\$11	\$11	\$11	\$11	\$11	\$11	\$11	\$10	\$10	\$10	\$9	\$8	\$8	\$5	\$5	\$4
	10yr ave.	\$12	\$11	\$10	\$10	\$9	\$9	\$9	\$8	\$8	\$8	\$7	\$7	\$7	\$6	\$5	\$4	\$4	\$3
	40% Current	\$13	\$13	\$13	\$13	\$12	\$12	\$12	\$12	\$12	\$12	\$12	\$12	\$11	\$9	\$9	\$6	\$5	\$4
	10yr ave.	\$14	\$13	\$12	\$11	\$11	\$10	\$10	\$9	\$9	\$9	\$8	\$8	\$8	\$7	\$6	\$5	\$4	\$4
	45% Current	\$14	\$14	\$14	\$14	\$14	\$14	\$14	\$14	\$14	\$13	\$13	\$13	\$12	\$11	\$10	\$7	\$6	\$5
	10yr ave.	\$15	\$14	\$13	\$13	\$12	\$12	\$11	\$10	\$10	\$10	\$9	\$9	\$9	\$7	\$7	\$5	\$5	\$4
	50% Current	\$16	\$16	\$16	\$16	\$16	\$15	\$15	\$15	\$15	\$15	\$15	\$15	\$14	\$12	\$11	\$8	\$7	\$5
	10yr ave.	\$17	\$16	\$15	\$14	\$14	\$13	\$12	\$12	\$11	\$11	\$11	\$10	\$9	\$8	\$7	\$6	\$5	\$5
	55% Current	\$18	\$18	\$17	\$17	\$17	\$17	\$17	\$17	\$17	\$16	\$16	\$16	\$15	\$13	\$12	\$8	\$7	\$6
	10yr ave.	\$19	\$17	\$16	\$16	\$15	\$14	\$13	\$13	\$12	\$12	\$12	\$11	\$10	\$9	\$8	\$6	\$6	\$5
	60% Current	\$19	\$19	\$19	\$19	\$19	\$18	\$18	\$18	\$18	\$18	\$18	\$17	\$16	\$14	\$13	\$9	\$8	\$6
	10yr ave.	\$21	\$19	\$18	\$17	\$16	\$15	\$15	\$14	\$13	\$13	\$13	\$12	\$11	\$10	\$9	\$7	\$6	\$6
	65% Current	\$21	\$21	\$21	\$21	\$20	\$20	\$20	\$20	\$20	\$19	\$19	\$19	\$18	\$15	\$14	\$10	\$8	\$7
	10yr ave.	\$22	\$21	\$19	\$18	\$18	\$17	\$16	\$15	\$14	\$14	\$14	\$13	\$12	\$11	\$10	\$8	\$7	\$6
	70% Current	\$22	\$22	\$22	\$22	\$22	\$21	\$21	\$21	\$21	\$21	\$21	\$20	\$19	\$16	\$15	\$11	\$9	\$7
	10yr ave.	\$24	\$22	\$21	\$20	\$19	\$18	\$17	\$16	\$16	\$15	\$15	\$14	\$13	\$12	\$10	\$8	\$7	\$7
	75% Current	\$24	\$24	\$24	\$24	\$23	\$23	\$23	\$23	\$23	\$22	\$22	\$22	\$20	\$18	\$16	\$11	\$10	\$8
	10yr ave.	\$26	\$24	\$22	\$21	\$20	\$19	\$18	\$17	\$17	\$16	\$16	\$15	\$14	\$12	\$11	\$9	\$8	\$7
	80% Current	\$26	\$26	\$25	\$25	\$25	\$25	\$24	\$24	\$24	\$24	\$24	\$23	\$22	\$19	\$17	\$12	\$10	\$8
	10yr ave.	\$27	\$25	\$24	\$23	\$22	\$21	\$20	\$19	\$18	\$17	\$17	\$16	\$15	\$13	\$12	\$9	\$9	\$7
	85% Current	\$27	\$27	\$27	\$27	\$26	\$26	\$26	\$26	\$26	\$25	\$25	\$25	\$23	\$20	\$18	\$13	\$11	\$9
	10yr ave.	\$29	\$27	\$25	\$24	\$23	\$22	\$21	\$20	\$19	\$18	\$18	\$17	\$16	\$14	\$13	\$10	\$9	\$8

The above shows estimated returns per head for skirted fleece wool. These figures do not take into account the value of skirtings and oddments and do not take into account discounts that may apply for faults under individual circumstances. These figures are based on a market index of 100% and should be used as a guide only. Returns over \$30 / head for fleece wool are highlighted.