



Table 1: Northern Region Micron Price Guides

CURRENT MARKET				PERCENTILES		AVERAGES						12 MONTH COMPARISONS								TRADING RANGE			
Mic. Price Guides	7/10/2010 Current Price	30/09/2010 Weekly Change				Now		Now		6/10/2009		Now		Now		Now		Clean c/kg					
				3yr	10yr	<u>3 year</u> Average	compared to 3yr ave		<u>10 year</u> Average	compared to 10yr ave		This time Last Year	compared to Last Year		12 Month Low	compared to Low		12 Month High	compared to High		12 Mth	3 Year	10 Year
NRI	921	+22	2.4%	69%	69%	895	+26	3%	867	+54	6%	900	+21	2%	872	+49	6%	974	-53	-5%	102	343	584
16*	1670	0		70%		1617	+53	3%				1570	+100	6%	1345	+325	24%	1670	0	0%	325	645	
16.5*	1500	0		68%		1476	+24	2%				1350	+150	11%	1260	+240	19%	1540	-40	-3%	280	548	
17*	1390	0		61%	72%	1355	+35	3%	1420	-30	-2%	1255	+135	11%	1175	+215	18%	1400	-10	-1%	225	501	1850
17.5*	1300	+15	1.2%	63%		1291	+9	1%				1215	+85	7%	1155	+145	13%	1300	0	0%	145	496	
18	1237	0		64%	57%	1233	+4	0%	1289	-52	-4%	1175	+62	5%	1116	+121	11%	1238	-1	0%	122	432	1392
18.5	1168	+11	0.9%	65%		1161	+7	1%				1135	+33	3%	1073	+95	9%	1183	-15	-1%	110	425	
19	1077	+26	2.4%	59%	59%	1069	+8	1%	1066	+11	1%	1064	+13	1%	1021	+56	5%	1120	-43	-4%	99	443	706
19.5	984	+25	2.5%	55%		984	0	0%				1002	-18	-2%	952	+32	3%	1067	-83	-8%	115	457	
20	949	+39	4.1%	69%	66%	915	+34	4%	910	+39	4%	936	+13	1%	893	+56	6%	1023	-74	-7%	130	465	717
21	927	+40	4.3%	70%	66%	877	+50	6%	863	+64	7%	912	+15	2%	870	+57	7%	1006	-79	-8%	136	427	786
22	892	+31	3.5%	62%	63%	852	+40	5%	840	+52	6%	863	+29	3%	846	+46	5%	971	-79	-8%	125	361	822
23	856	+23	2.7%	60%	61%	829	+27	3%	820	+36	4%	840	+16	2%	816	+40	5%	940	-84	-9%	124	311	826
24	787	+7	0.9%	53%	58%	782	+5	1%	784	+3	0%	804	-17	-2%	760	+27	4%	881	-94	-11%	121	257	800
25	720	+16	2.2%	94%	75%	668	+52	8%	704	+16	2%	724	-4	-1%	650	+70	11%	720	0	0%	70	188	725
26	623	+20	3.2%	77%	60%	599	+24	4%	646	-23	-4%	611	+12	2%	560	+63	11%	630	-7	-1%	70	155	641
28	449	+5	1.1%	36%	15%	459	-10	-2%	521	-72	-14%	470	-21	-4%	430	+19	4%	493	-44	-9%	63	119	465
30	391	+2	0.5%	42%	16%	395	-4	-1%	455	-64	-14%	409	-18	-4%	374	+17	5%	434	-43	-10%	60	136	384
32	356	+2	0.6%	75%	25%	344	+12	3%	412	-56	-14%	352	+4	1%	331	+25	8%	375	-19	-5%	44	108	372
MC	571	0		61%	78%	539	+32	6%	495	+76	15%	568	+3	1%	561	+10	2%	681	-110	-16%	120	289	308

**Note:**

- \* Due to the irregular market quoting for some fine wool categories, figures shown relating to micron categories below 18 micron are an estimate based on the AWEX Premium & Discounts Report & other available information.
- \* For any category, where there is insufficient quantity offered to enable AWEX to quote, a quote will be provided based on the best available information.
- \* 10 Year data is not available for some micron categories, which may result in blank spaces in the table above.

**Definitions:**

- \* A Percentile, is a value on a scale of one hundred that indicates the percent of a distribution that is equal to or below it. In general a percentile between 25% and 75% is considered normal, a percentile below 25% is considered below normal and a percentile above 75% is considered above normal.

Three and ten year percentiles shown in the table above, detail the period of time during the past 3 & 10 years that the market has traded either at or below its current price.

The higher the percentile, the stronger the market.

Source: Australian Wool Exchange, Australian Wool Innovation, Sydney Futures Exchange, x-rates.com

Disclaimer: While all due care has been taken in the preparation of this document, no warranty is made as to its accuracy, reliability or completeness. To the extent permitted by law neither Jemalong or their sources including subsidiaries and staff, accept liability to any person for loss or damage arising from the use of this information.



## MARKET COMMENTARY

Australian Dollar 98.81 cents US as of 7/10/2010

### NORTHERN REGION – Sale Week 14/10 (45,980 bales offered nationally)

#### Merino Fleece:

**On Wednesday** – Buyers pushed the market higher with good wide spread competition. 20 to 22 microns were generally 25 cents dearer, while the medium range finished 10-15 cents dearer. The fine end remained firm with lower style & Nkt lots gaining some ground.

**On Thursday** – In the face of a higher AUD, the market lifted again. Medium to broad microns increased a further 15 cents while the fine end maintained its previous levels.

#### Merino Skirting's:

**On Wednesday** – Skirting's firmed as the sale progressed, with 19 microns containing less than 6% Vm most affected, ending the day 10-15 cents dearer.

**On Thursday** – A very strong market, had buyers pushing most descriptions 20 to 30 cents higher, with the better length lots most affected.

#### Oddments:

**On Wednesday** – Washing locks eased by 10 cents while carbo types were mixed with 19 microns easing while 20 microns gained a few cents.

**On Thursday** – Crutching's and Locks ended the day fully firm while stains gained 10 cents.

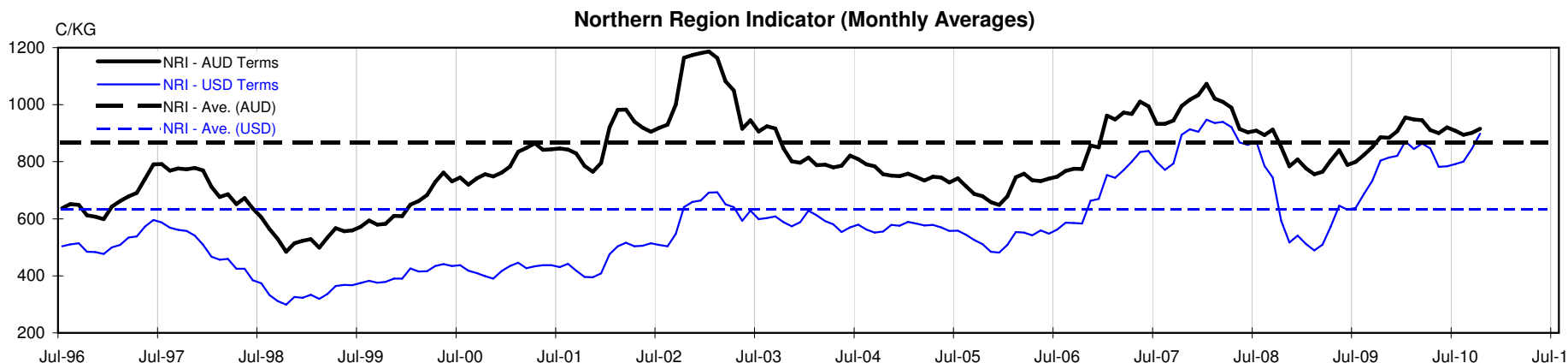
#### Crossbreds:

**On Wednesday** – Good support prevailed on an excellent selection, with most microns closing very firm to 5 cents dearer.

**On Thursday** – Most microns continued to remain very firm to sellers favour with the fine end 5-10 cents dearer.

39,936 Bales are rostered for next week, Jemalong are selling on Wednesday 13<sup>th</sup> October.

Source AWEX





**Table 4: 19 micron SFE**

Wednesday, 6 October 2010

Delivery Mth	Oct-10	Dec-10	Feb-11	Apr-11	Jun-11	Aug-11	Oct-11	Dec-11	Feb-12
19 Micron SFE	1053	1053	1053	1053	1053	1053	1053	1053	1053
Average	1019	1032	1040	1047	1051	1053	1050	1045	1052
Maximum	1088	1088	1088	1088	1088	1088	1080	1065	1065
Minimum	884	905	936	983	1025	1034	1034	1034	1034

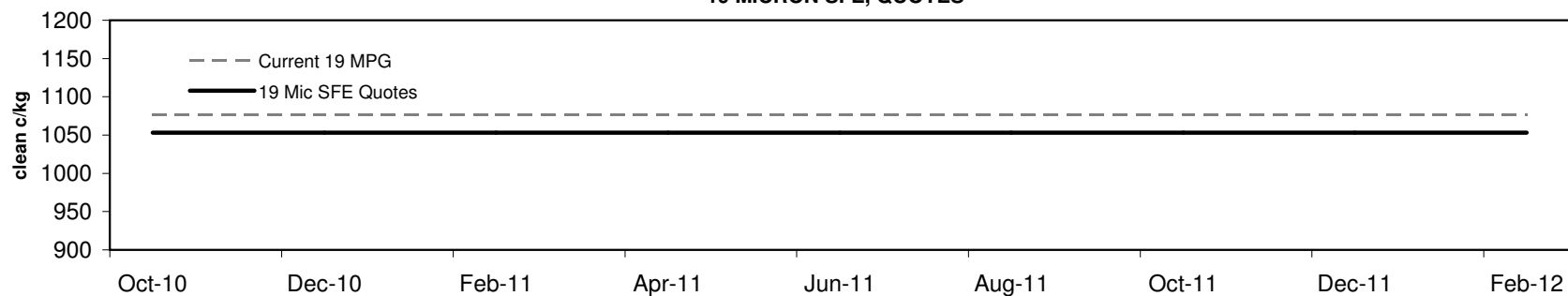
**Table 5: 19 micron SFE, as a percentile of the 19 micron MPG**

3 Year Percentile	43%	43%	43%	43%	43%	43%	43%	43%	43%
10 Year Percentile	53%	53%	53%	53%	53%	53%	53%	53%	53%

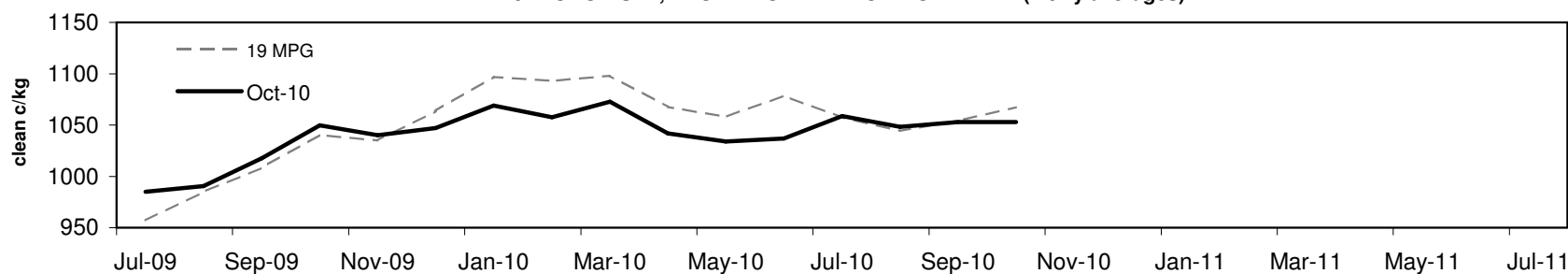
**Table 6: 19 micron SFE, compared to MPG**

Current 19 MPG	-24	-2%	-24	-2%	-24	-2%	-24	-2%	-24	-2%	-24	-2%	-24	-2%	-24	-2%	-24	-2%
19 MPG, 1 Year Average	-15	-1%	-15	-1%	-15	-1%	-15	-1%	-15	-1%	-15	-1%	-15	-1%	-15	-1%	-15	-1%
19 MPG, 3 Year Average	-16	-1%	-16	-1%	-16	-1%	-16	-1%	-16	-1%	-16	-1%	-16	-1%	-16	-1%	-16	-1%
19 MPG, 10 Year Average	-13	-1%	-13	-1%	-13	-1%	-13	-1%	-13	-1%	-13	-1%	-13	-1%	-13	-1%	-13	-1%

**19 MICRON SFE, QUOTES**



**19 MICRON SFE, FRONT MONTH PRICE MOVEMENT (mthly averages)**





**Table 7: 21 micron SFE**

Wednesday, 6 October 2010

Delivery Mth	Oct-10	Dec-10	Feb-11	Apr-11	Jun-11	Aug-11	Oct-11	Dec-11	Feb-12
21 Micron SFE	941	940	938	928	938	925	935	925	925
Average	900	913	924	931	935	935	925	911	904
Maximum	1003	1013	1004	1004	1004	1004	992	951	925
Minimum	742	780	818	860	891	890	880	880	880

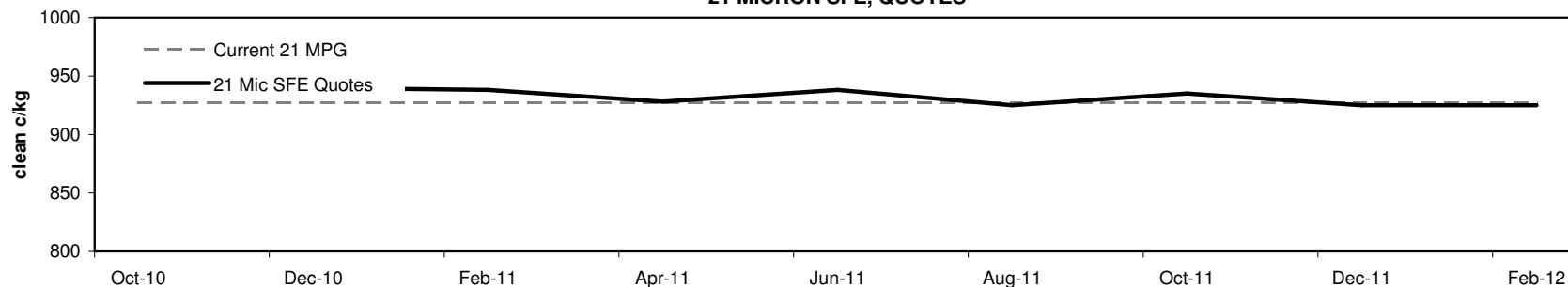
**Table 8: 21 micron SFE, as a percentile of the 21 micron MPG**

3 Year Percentile	74%	74%	73%	70%	73%	68%	73%	68%	68%
10 Year Percentile	68%	68%	68%	66%	68%	65%	67%	65%	65%

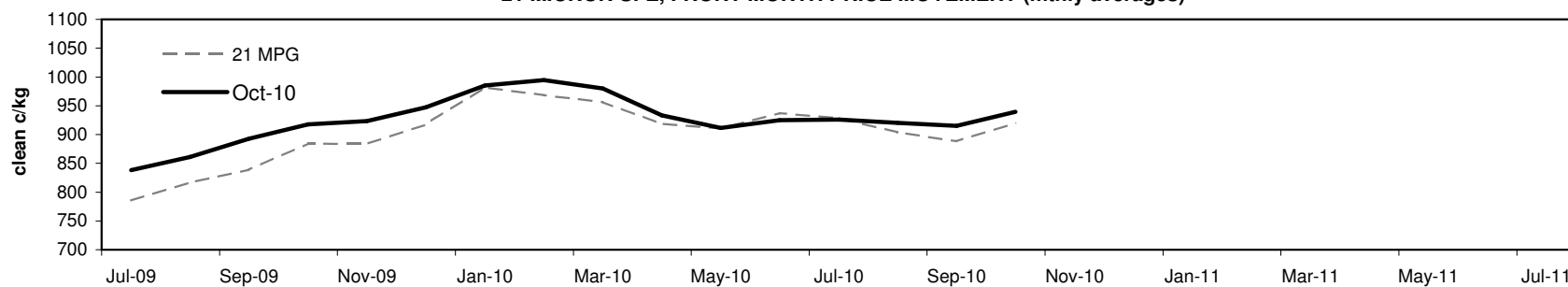
**Table 9: 21 micron SFE, compared to MPG**

Current 21 MPG	+14	2%	+13	1%	+11	1%	+1	0%	+11	1%	-2	0%	+8	1%	-2	0%	-2	0%
21 MPG, 1 Year Average	+14	2%	+13	1%	+11	1%	+1	0%	+11	1%	-2	0%	+8	1%	-2	0%	-2	0%
21 MPG, 3 Year Average	+64	7%	+63	7%	+61	7%	+51	6%	+61	7%	+48	5%	+58	7%	+48	5%	+48	5%
21 MPG, 10 Year Average	+78	9%	+77	9%	+75	9%	+65	8%	+75	9%	+62	7%	+72	8%	+62	7%	+62	7%

**21 MICRON SFE, QUOTES**



**21 MICRON SFE, FRONT MONTH PRICE MOVEMENT (mthly averages)**





**Table 10: 23 micron SFE**

Wednesday, 6 October 2010

Delivery Mth	Oct-10	Dec-10	Feb-11	Apr-11	Jun-11	Aug-11	Oct-11	Dec-11	Feb-12
23 Micron SFE	887	887	887	887	887	887	887	887	887
Average	819	838	851	861	871	886	894	884	885
Maximum	927	927	927	927	927	927	927	887	887
Minimum	690	716	760	760	803	803	883	883	883

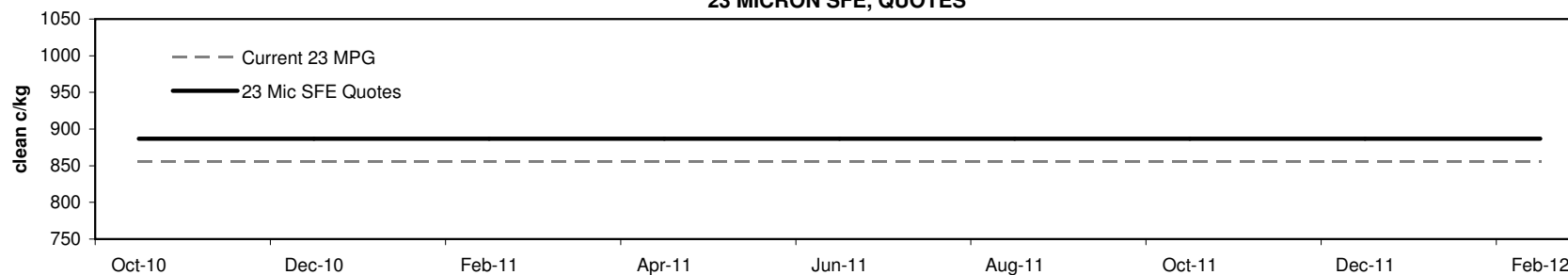
**Table 11: 23 micron SFE, as a percentile of the 23 micron MPG**

3 Year Percentile	71%	71%	71%	71%	71%	71%	71%	71%	71%
10 Year Percentile	66%	66%	66%	66%	66%	66%	66%	66%	66%

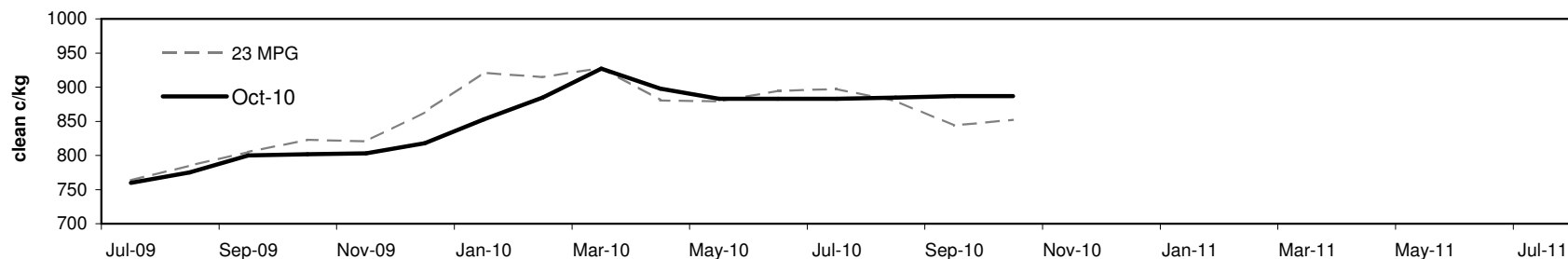
**Table 12: 23 micron SFE, compared to MPG**

Current 19 MPG	+31	4%	+31	4%	+31	4%	+31	4%	+31	4%	+31	4%	+31	4%	+31	4%	+31	4%
23 MPG, 1 Year Average	+5	1%	+5	1%	+5	1%	+5	1%	+5	1%	+5	1%	+5	1%	+5	1%	+5	1%
23 MPG, 3 Year Average	+58	7%	+58	7%	+58	7%	+58	7%	+58	7%	+58	7%	+58	7%	+58	7%	+58	7%
23 MPG, 10 Year Average	+67	8%	+67	8%	+67	8%	+67	8%	+67	8%	+67	8%	+67	8%	+67	8%	+67	8%

**23 MICRON SFE, QUOTES**

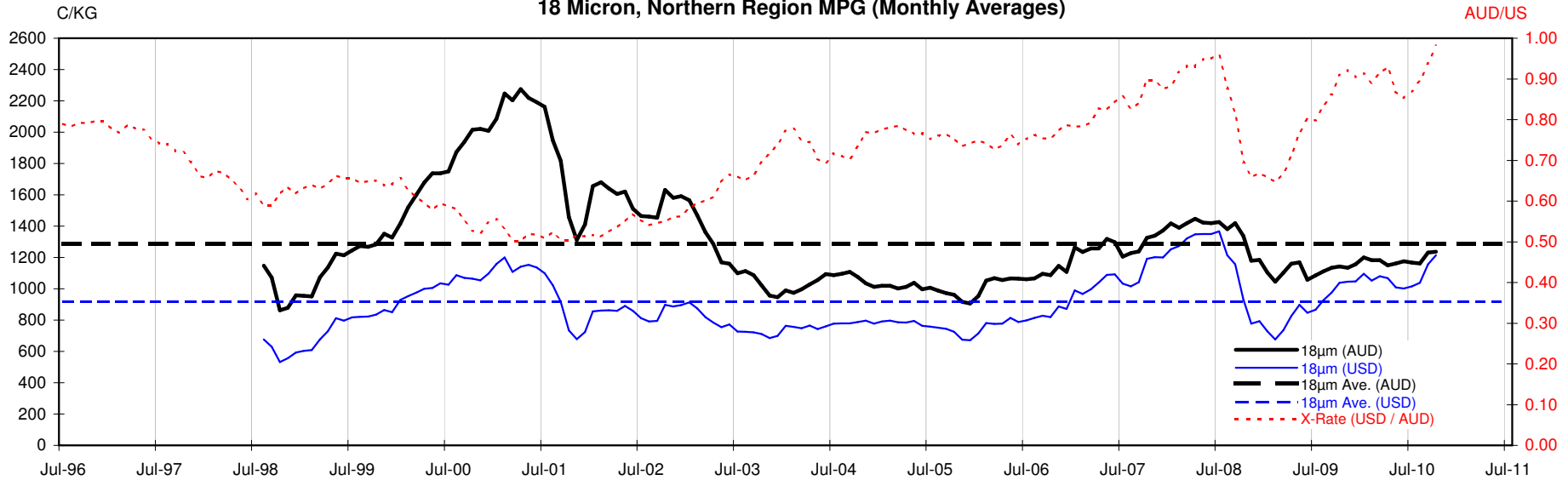


**23 MICRON SFE, FRONT MONTH PRICE MOVEMENT (mthly averages)**



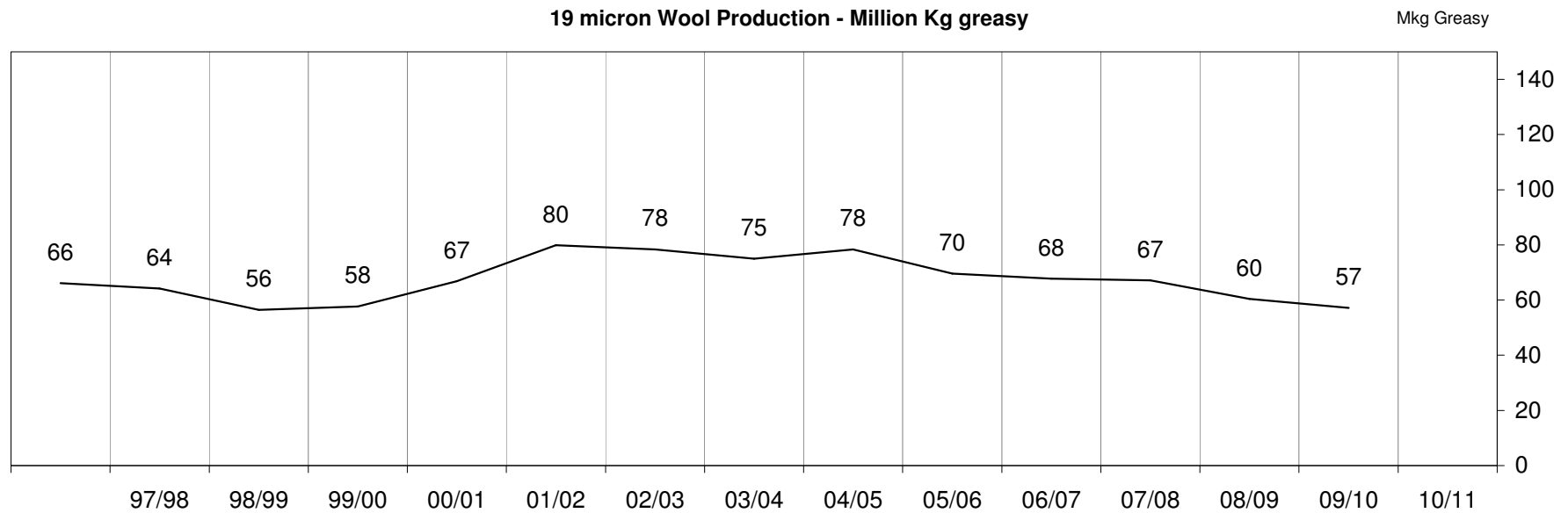
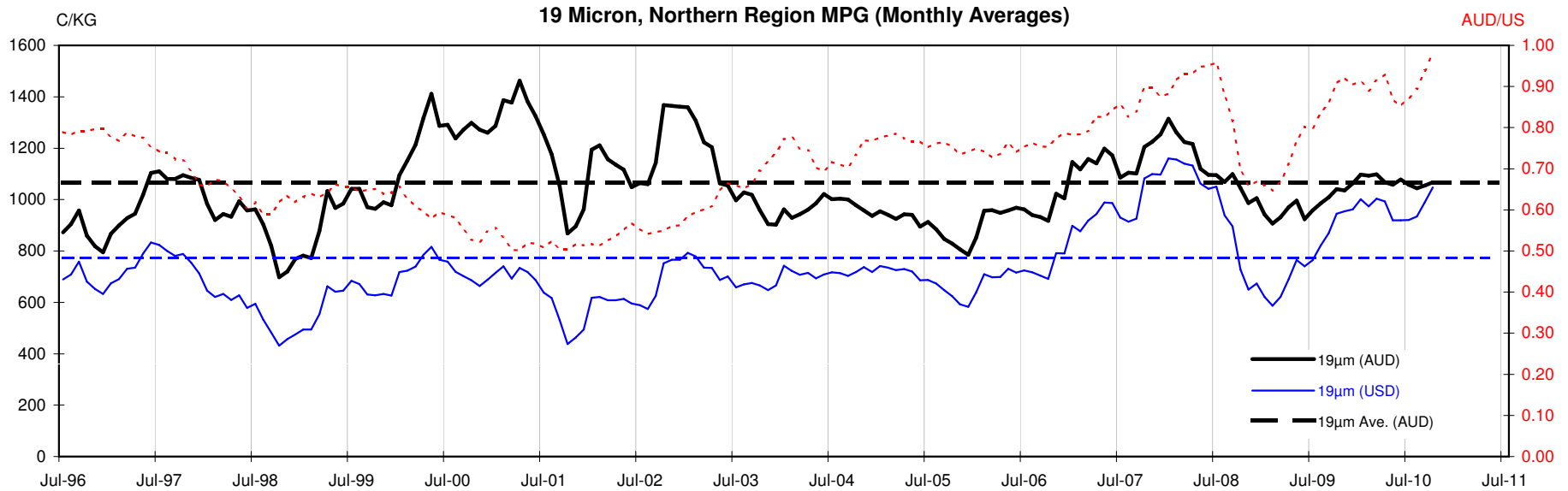


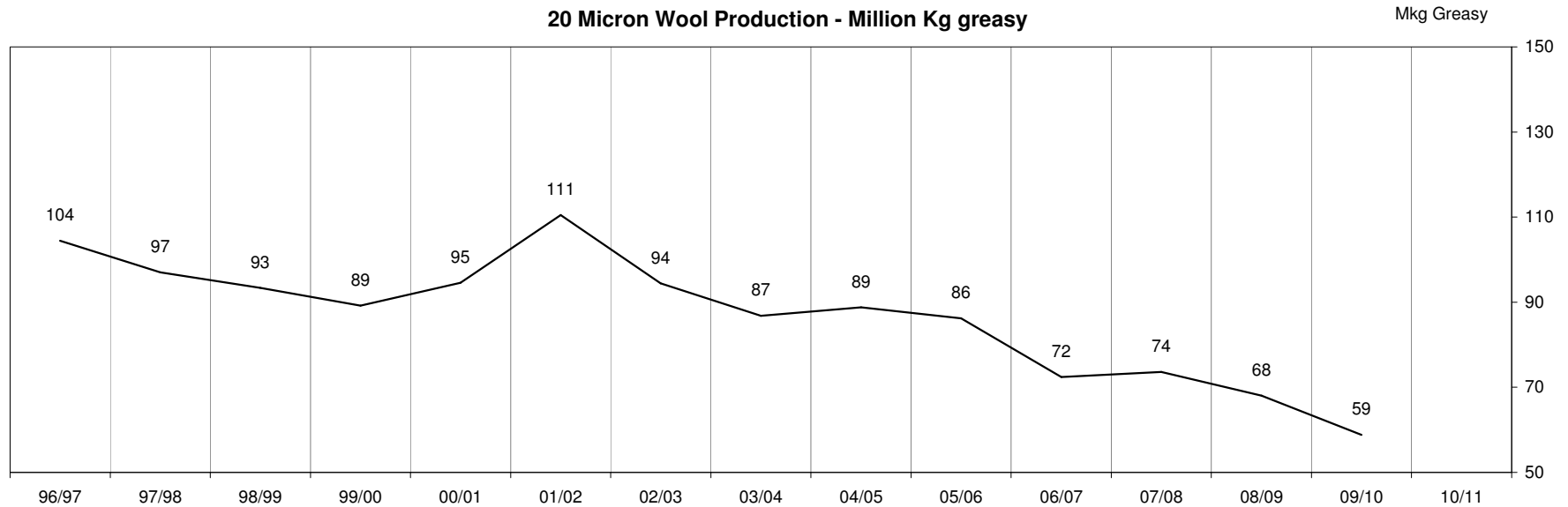
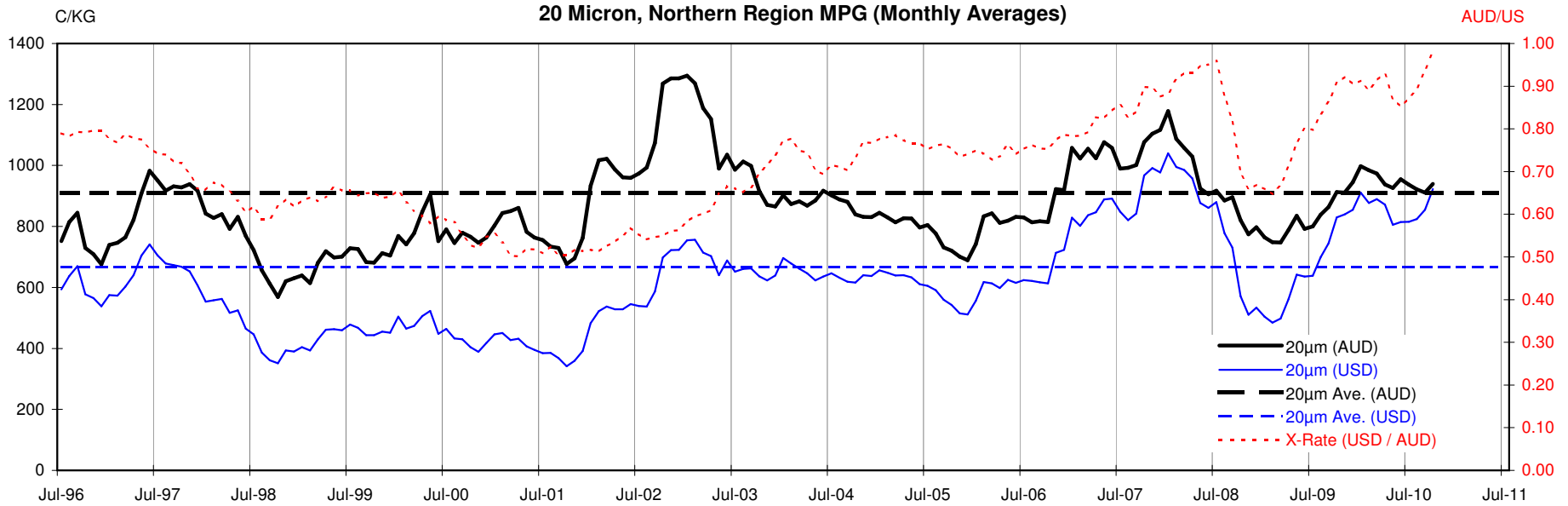
18 Micron, Northern Region MPG (Monthly Averages)



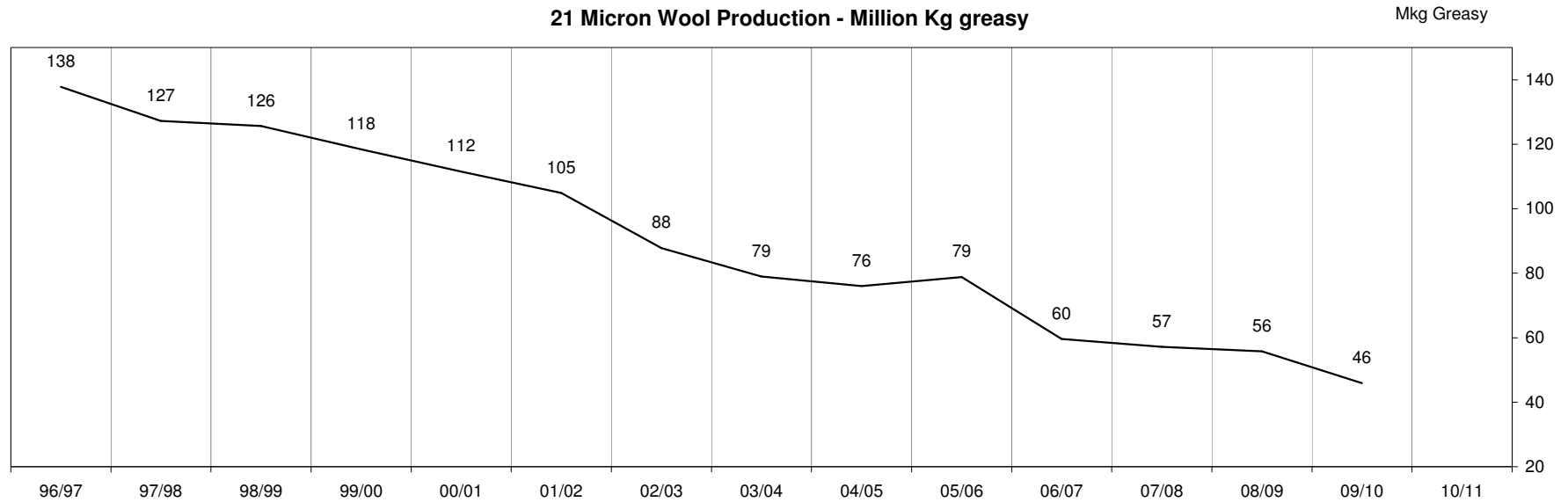
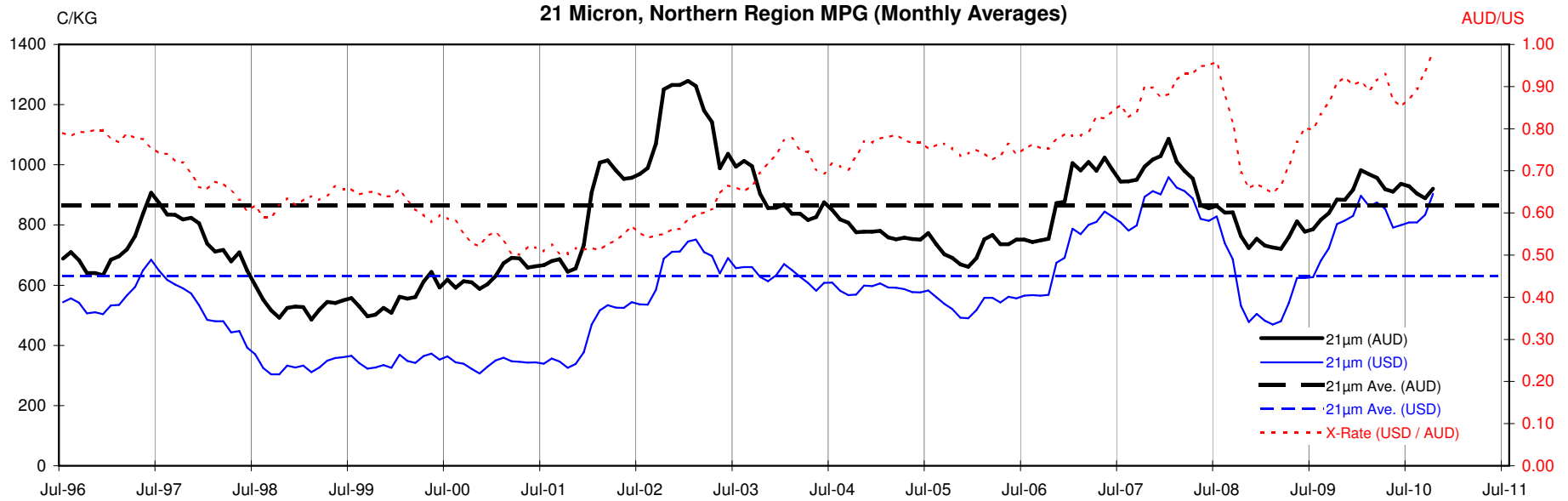
<18.5 micron Wool Production - Million Kg greasy

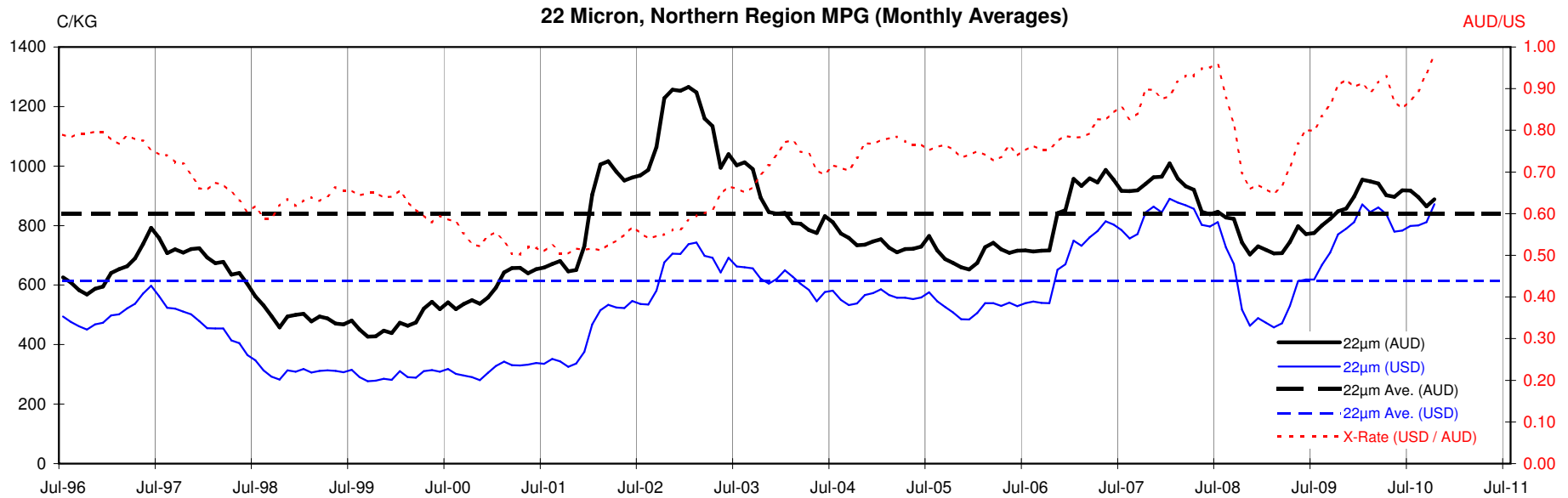


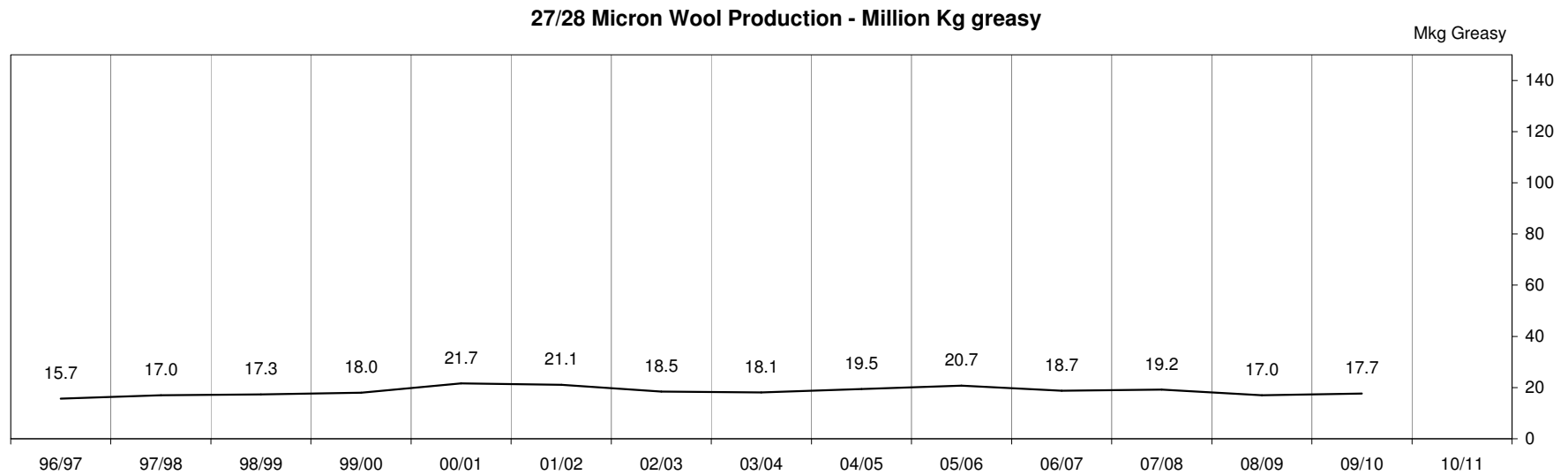
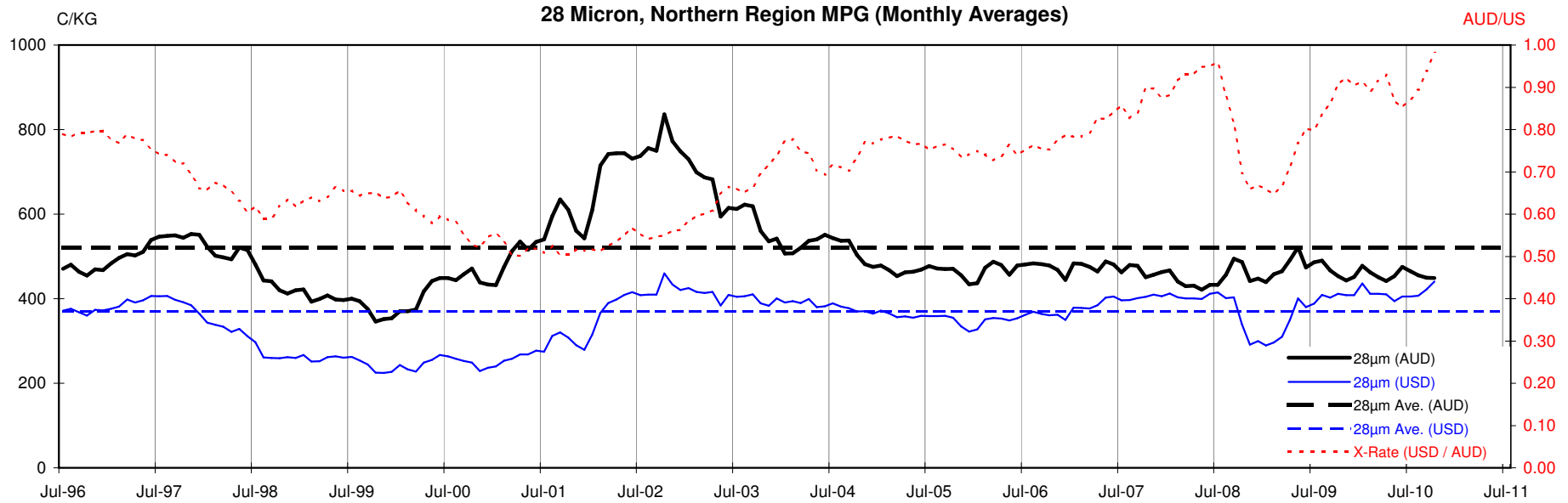












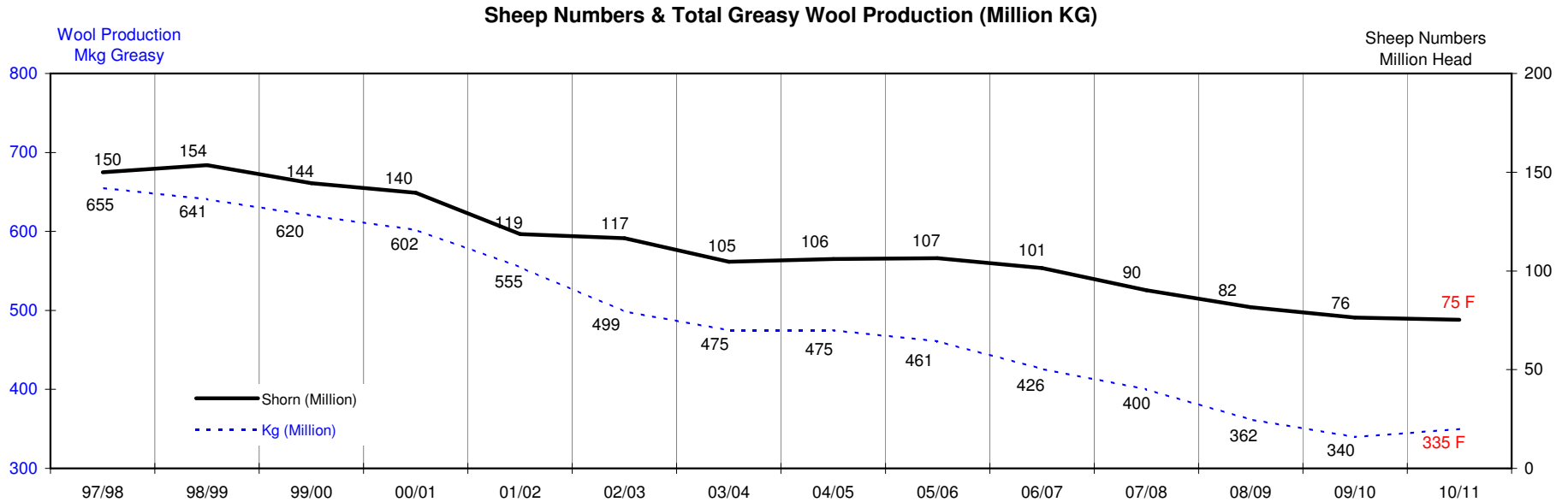
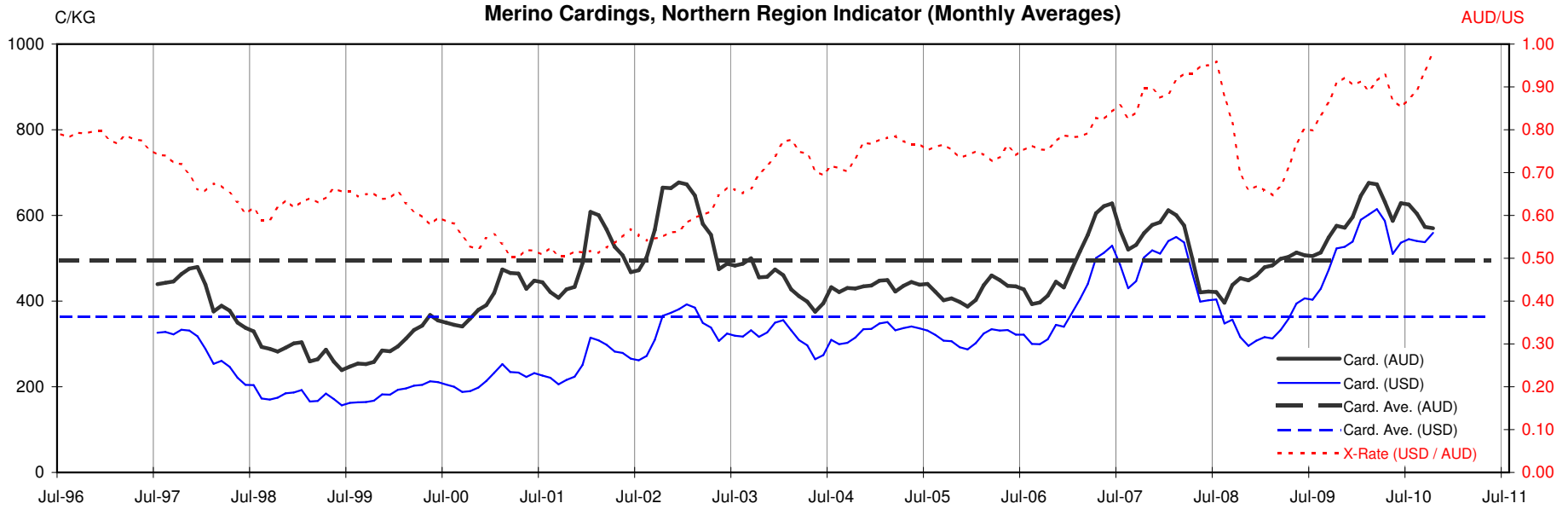




Table 13: Returns pr head for skirted fleece wool.

Skirted FLC Weight  9 Kg			Micron																	
			16	16.5	17	17.5	18	18.5	19	19.5	20	21	22	23	24	25	26	28	30	32
Yield (Sch Dry)	25%	Current	\$38	\$34	\$31	\$29	\$28	\$26	\$24	\$22	\$21	\$21	\$20	\$19	\$18	\$16	\$14	\$10	\$9	\$8
		10yr ave.			\$32		\$29		\$24		\$20	\$19	\$19	\$18	\$18	\$16	\$15	\$12	\$10	\$9
	30%	Current	\$45	\$41	\$38	\$35	\$33	\$32	\$29	\$27	\$26	\$25	\$24	\$23	\$21	\$19	\$17	\$12	\$11	\$10
		10yr ave.			\$38		\$35		\$29		\$25	\$23	\$23	\$22	\$21	\$19	\$17	\$14	\$12	\$11
	35%	Current	\$53	\$47	\$44	\$41	\$39	\$37	\$34	\$31	\$30	\$29	\$28	\$27	\$25	\$23	\$20	\$14	\$12	\$11
		10yr ave.			\$45		\$41		\$34		\$29	\$27	\$26	\$26	\$25	\$22	\$20	\$16	\$14	\$13
	40%	Current	\$60	\$54	\$50	\$47	\$45	\$42	\$39	\$35	\$34	\$33	\$32	\$31	\$28	\$26	\$22	\$16	\$14	\$13
		10yr ave.			\$51		\$46		\$38		\$33	\$31	\$30	\$30	\$28	\$25	\$23	\$19	\$16	\$15
	45%	Current	\$68	\$61	\$56	\$53	\$50	\$47	\$44	\$40	\$38	\$38	\$36	\$35	\$32	\$29	\$25	\$18	\$16	\$14
		10yr ave.			\$58		\$52		\$43		\$37	\$35	\$34	\$33	\$32	\$29	\$26	\$21	\$18	\$17
	50%	Current	\$75	\$68	\$63	\$59	\$56	\$53	\$48	\$44	\$43	\$42	\$40	\$39	\$35	\$32	\$28	\$20	\$18	\$16
		10yr ave.			\$64		\$58		\$48		\$41	\$39	\$38	\$37	\$35	\$32	\$29	\$23	\$20	\$19
	55%	Current	\$83	\$74	\$69	\$64	\$61	\$58	\$53	\$49	\$47	\$46	\$44	\$42	\$39	\$36	\$31	\$22	\$19	\$18
		10yr ave.			\$70		\$64		\$53		\$45	\$43	\$42	\$41	\$39	\$35	\$32	\$26	\$23	\$20
	60%	Current	\$90	\$81	\$75	\$70	\$67	\$63	\$58	\$53	\$51	\$50	\$48	\$46	\$42	\$39	\$34	\$24	\$21	\$19
		10yr ave.			\$77		\$70		\$58		\$49	\$47	\$45	\$44	\$42	\$38	\$35	\$28	\$25	\$22
65%	Current	\$98	\$88	\$81	\$76	\$72	\$68	\$63	\$58	\$56	\$54	\$52	\$50	\$46	\$42	\$36	\$26	\$23	\$21	
	10yr ave.			\$83		\$75		\$62		\$53	\$50	\$49	\$48	\$46	\$41	\$38	\$30	\$27	\$24	
70%	Current	\$105	\$95	\$88	\$82	\$78	\$74	\$68	\$62	\$60	\$58	\$56	\$54	\$50	\$45	\$39	\$28	\$25	\$22	
	10yr ave.			\$89		\$81		\$67		\$57	\$54	\$53	\$52	\$49	\$44	\$41	\$33	\$29	\$26	
75%	Current	\$113	\$101	\$94	\$88	\$83	\$79	\$73	\$66	\$64	\$63	\$60	\$58	\$53	\$49	\$42	\$30	\$26	\$24	
	10yr ave.			\$96		\$87		\$72		\$61	\$58	\$57	\$55	\$53	\$48	\$44	\$35	\$31	\$28	
80%	Current	\$120	\$108	\$100	\$94	\$89	\$84	\$78	\$71	\$68	\$67	\$64	\$62	\$57	\$52	\$45	\$32	\$28	\$26	
	10yr ave.			\$102		\$93		\$77		\$66	\$62	\$60	\$59	\$56	\$51	\$47	\$38	\$33	\$30	
85%	Current	\$128	\$115	\$106	\$99	\$95	\$89	\$82	\$75	\$73	\$71	\$68	\$65	\$60	\$55	\$48	\$34	\$30	\$27	
	10yr ave.			\$109		\$99		\$82		\$70	\$66	\$64	\$63	\$60	\$54	\$49	\$40	\$35	\$32	

The above shows estimated returns per head for skirted fleece wool. These figures do not take into account the value of skirtings and oddments and do not take into account discounts that may apply for faults under individual circumstances. These figures are based on a market index of 100% and should be used as a guide only. Returns over \$30 / head for fleece wool are highlighted.

Source: Australian Wool Exchange, Australian Wool Innovation, Sydney Futures Exchange, x-rates.com

Disclaimer: While all due care has been taken in the preparation of this document, no warranty is made as to its accuracy, reliability or completeness. To the extent permitted by law neither Jemalong or their sources including subsidiaries and staff, accept liability to any person for loss or damage arising from the use of this information.



Table 14: Returns pr head for skirted fleece wool.

Skirted FLC Weight  8 Kg			Micron																	
			16	16.5	17	17.5	18	18.5	19	19.5	20	21	22	23	24	25	26	28	30	32
Yield (Sch Dry)	25%	Current	\$38	\$34	\$31	\$29	\$28	\$26	\$24	\$22	\$21	\$21	\$20	\$19	\$18	\$16	\$14	\$10	\$9	\$8
		10yr ave.			\$32		\$29		\$24		\$20	\$19	\$19	\$18	\$18	\$16	\$15	\$12	\$10	\$9
	30%	Current	\$45	\$41	\$38	\$35	\$33	\$32	\$29	\$27	\$26	\$25	\$24	\$23	\$21	\$19	\$17	\$12	\$11	\$10
		10yr ave.			\$38		\$35		\$29		\$25	\$23	\$23	\$22	\$21	\$19	\$17	\$14	\$12	\$11
	35%	Current	\$53	\$47	\$44	\$41	\$39	\$37	\$34	\$31	\$30	\$29	\$28	\$27	\$25	\$23	\$20	\$14	\$12	\$11
		10yr ave.			\$45		\$41		\$34		\$29	\$27	\$26	\$26	\$25	\$22	\$20	\$16	\$14	\$13
	40%	Current	\$60	\$54	\$50	\$47	\$45	\$42	\$39	\$35	\$34	\$33	\$32	\$31	\$28	\$26	\$22	\$16	\$14	\$13
		10yr ave.			\$51		\$46		\$38		\$33	\$31	\$30	\$30	\$28	\$25	\$23	\$19	\$16	\$15
	45%	Current	\$68	\$61	\$56	\$53	\$50	\$47	\$44	\$40	\$38	\$38	\$36	\$35	\$32	\$29	\$25	\$18	\$16	\$14
		10yr ave.			\$58		\$52		\$43		\$37	\$35	\$34	\$33	\$32	\$29	\$26	\$21	\$18	\$17
	50%	Current	\$75	\$68	\$63	\$59	\$56	\$53	\$48	\$44	\$43	\$42	\$40	\$39	\$35	\$32	\$28	\$20	\$18	\$16
		10yr ave.			\$64		\$58		\$48		\$41	\$39	\$38	\$37	\$35	\$32	\$29	\$23	\$20	\$19
	55%	Current	\$83	\$74	\$69	\$64	\$61	\$58	\$53	\$49	\$47	\$46	\$44	\$42	\$39	\$36	\$31	\$22	\$19	\$18
		10yr ave.			\$70		\$64		\$53		\$45	\$43	\$42	\$41	\$39	\$35	\$32	\$26	\$23	\$20
	60%	Current	\$90	\$81	\$75	\$70	\$67	\$63	\$58	\$53	\$51	\$50	\$48	\$46	\$42	\$39	\$34	\$24	\$21	\$19
		10yr ave.			\$77		\$70		\$58		\$49	\$47	\$45	\$44	\$42	\$38	\$35	\$28	\$25	\$22
65%	Current	\$98	\$88	\$81	\$76	\$72	\$68	\$63	\$58	\$56	\$54	\$52	\$50	\$46	\$42	\$36	\$26	\$23	\$21	
	10yr ave.			\$83		\$75		\$62		\$53	\$50	\$49	\$48	\$46	\$41	\$38	\$30	\$27	\$24	
70%	Current	\$105	\$95	\$88	\$82	\$78	\$74	\$68	\$62	\$60	\$58	\$56	\$54	\$50	\$45	\$39	\$28	\$25	\$22	
	10yr ave.			\$89		\$81		\$67		\$57	\$54	\$53	\$52	\$49	\$44	\$41	\$33	\$29	\$26	
75%	Current	\$113	\$101	\$94	\$88	\$83	\$79	\$73	\$66	\$64	\$63	\$60	\$58	\$53	\$49	\$42	\$30	\$26	\$24	
	10yr ave.			\$96		\$87		\$72		\$61	\$58	\$57	\$55	\$53	\$48	\$44	\$35	\$31	\$28	
80%	Current	\$120	\$108	\$100	\$94	\$89	\$84	\$78	\$71	\$68	\$67	\$64	\$62	\$57	\$52	\$45	\$32	\$28	\$26	
	10yr ave.			\$102		\$93		\$77		\$66	\$62	\$60	\$59	\$56	\$51	\$47	\$38	\$33	\$30	
85%	Current	\$128	\$115	\$106	\$99	\$95	\$89	\$82	\$75	\$73	\$71	\$68	\$65	\$60	\$55	\$48	\$34	\$30	\$27	
	10yr ave.			\$109		\$99		\$82		\$70	\$66	\$64	\$63	\$60	\$54	\$49	\$40	\$35	\$32	

The above shows estimated returns per head for skirted fleece wool. These figures do not take into account the value of skirtings and oddments and do not take into account discounts that may apply for faults under individual circumstances. These figures are based on a market index of 100% and should be used as a guide only. Returns over \$30 / head for fleece wool are highlighted.

Source: Australian Wool Exchange, Australian Wool Innovation, Sydney Futures Exchange, x-rates.com

Disclaimer: While all due care has been taken in the preparation of this document, no warranty is made as to its accuracy, reliability or completeness. To the extent permitted by law neither Jemalong or their sources including subsidiaries and staff, accept liability to any person for loss or damage arising from the use of this information.



Table 15: Returns pr head for skirted fleece wool.

Skirted FLC Weight  7 Kg			Micron																	
			16	16.5	17	17.5	18	18.5	19	19.5	20	21	22	23	24	25	26	28	30	32
Yield (Sch Dry)	25%	Current	\$38	\$34	\$31	\$29	\$28	\$26	\$24	\$22	\$21	\$21	\$20	\$19	\$18	\$16	\$14	\$10	\$9	\$8
		10yr ave.			\$32		\$29		\$24		\$20	\$19	\$19	\$18	\$18	\$16	\$15	\$12	\$10	\$9
	30%	Current	\$45	\$41	\$38	\$35	\$33	\$32	\$29	\$27	\$26	\$25	\$24	\$23	\$21	\$19	\$17	\$12	\$11	\$10
		10yr ave.			\$38		\$35		\$29		\$25	\$23	\$23	\$22	\$21	\$19	\$17	\$14	\$12	\$11
	35%	Current	\$53	\$47	\$44	\$41	\$39	\$37	\$34	\$31	\$30	\$29	\$28	\$27	\$25	\$23	\$20	\$14	\$12	\$11
		10yr ave.			\$45		\$41		\$34		\$29	\$27	\$26	\$26	\$25	\$22	\$20	\$16	\$14	\$13
	40%	Current	\$60	\$54	\$50	\$47	\$45	\$42	\$39	\$35	\$34	\$33	\$32	\$31	\$28	\$26	\$22	\$16	\$14	\$13
		10yr ave.			\$51		\$46		\$38		\$33	\$31	\$30	\$30	\$28	\$25	\$23	\$19	\$16	\$15
	45%	Current	\$68	\$61	\$56	\$53	\$50	\$47	\$44	\$40	\$38	\$38	\$36	\$35	\$32	\$29	\$25	\$18	\$16	\$14
		10yr ave.			\$58		\$52		\$43		\$37	\$35	\$34	\$33	\$32	\$29	\$26	\$21	\$18	\$17
	50%	Current	\$75	\$68	\$63	\$59	\$56	\$53	\$48	\$44	\$43	\$42	\$40	\$39	\$35	\$32	\$28	\$20	\$18	\$16
		10yr ave.			\$64		\$58		\$48		\$41	\$39	\$38	\$37	\$35	\$32	\$29	\$23	\$20	\$19
	55%	Current	\$83	\$74	\$69	\$64	\$61	\$58	\$53	\$49	\$47	\$46	\$44	\$42	\$39	\$36	\$31	\$22	\$19	\$18
		10yr ave.			\$70		\$64		\$53		\$45	\$43	\$42	\$41	\$39	\$35	\$32	\$26	\$23	\$20
	60%	Current	\$90	\$81	\$75	\$70	\$67	\$63	\$58	\$53	\$51	\$50	\$48	\$46	\$42	\$39	\$34	\$24	\$21	\$19
		10yr ave.			\$77		\$70		\$58		\$49	\$47	\$45	\$44	\$42	\$38	\$35	\$28	\$25	\$22
65%	Current	\$98	\$88	\$81	\$76	\$72	\$68	\$63	\$58	\$56	\$54	\$52	\$50	\$46	\$42	\$36	\$26	\$23	\$21	
	10yr ave.			\$83		\$75		\$62		\$53	\$50	\$49	\$48	\$46	\$41	\$38	\$30	\$27	\$24	
70%	Current	\$105	\$95	\$88	\$82	\$78	\$74	\$68	\$62	\$60	\$58	\$56	\$54	\$50	\$45	\$39	\$28	\$25	\$22	
	10yr ave.			\$89		\$81		\$67		\$57	\$54	\$53	\$52	\$49	\$44	\$41	\$33	\$29	\$26	
75%	Current	\$113	\$101	\$94	\$88	\$83	\$79	\$73	\$66	\$64	\$63	\$60	\$58	\$53	\$49	\$42	\$30	\$26	\$24	
	10yr ave.			\$96		\$87		\$72		\$61	\$58	\$57	\$55	\$53	\$48	\$44	\$35	\$31	\$28	
80%	Current	\$120	\$108	\$100	\$94	\$89	\$84	\$78	\$71	\$68	\$67	\$64	\$62	\$57	\$52	\$45	\$32	\$28	\$26	
	10yr ave.			\$102		\$93		\$77		\$66	\$62	\$60	\$59	\$56	\$51	\$47	\$38	\$33	\$30	
85%	Current	\$128	\$115	\$106	\$99	\$95	\$89	\$82	\$75	\$73	\$71	\$68	\$65	\$60	\$55	\$48	\$34	\$30	\$27	
	10yr ave.			\$109		\$99		\$82		\$70	\$66	\$64	\$63	\$60	\$54	\$49	\$40	\$35	\$32	

The above shows estimated returns per head for skirted fleece wool. These figures do not take into account the value of skirtings and oddments and do not take into account discounts that may apply for faults under individual circumstances. These figures are based on a market index of 100% and should be used as a guide only. Returns over \$30 / head for fleece wool are highlighted.

Source: Australian Wool Exchange, Australian Wool Innovation, Sydney Futures Exchange, x-rates.com

Disclaimer: While all due care has been taken in the preparation of this document, no warranty is made as to its accuracy, reliability or completeness. To the extent permitted by law neither Jemalong or their sources including subsidiaries and staff, accept liability to any person for loss or damage arising from the use of this information.



Table 16: Returns pr head for skirted fleece wool.

Skirted FLC Weight  6 Kg			Micron																	
			16	16.5	17	17.5	18	18.5	19	19.5	20	21	22	23	24	25	26	28	30	32
Yield (Sch Dry)	25%	Current	\$38	\$34	\$31	\$29	\$28	\$26	\$24	\$22	\$21	\$21	\$20	\$19	\$18	\$16	\$14	\$10	\$9	\$8
		10yr ave.			\$32		\$29		\$24		\$20	\$19	\$19	\$18	\$18	\$16	\$15	\$12	\$10	\$9
	30%	Current	\$45	\$41	\$38	\$35	\$33	\$32	\$29	\$27	\$26	\$25	\$24	\$23	\$21	\$19	\$17	\$12	\$11	\$10
		10yr ave.			\$38		\$35		\$29		\$25	\$23	\$23	\$22	\$21	\$19	\$17	\$14	\$12	\$11
	35%	Current	\$53	\$47	\$44	\$41	\$39	\$37	\$34	\$31	\$30	\$29	\$28	\$27	\$25	\$23	\$20	\$14	\$12	\$11
		10yr ave.			\$45		\$41		\$34		\$29	\$27	\$26	\$26	\$25	\$22	\$20	\$16	\$14	\$13
	40%	Current	\$60	\$54	\$50	\$47	\$45	\$42	\$39	\$35	\$34	\$33	\$32	\$31	\$28	\$26	\$22	\$16	\$14	\$13
		10yr ave.			\$51		\$46		\$38		\$33	\$31	\$30	\$30	\$28	\$25	\$23	\$19	\$16	\$15
	45%	Current	\$68	\$61	\$56	\$53	\$50	\$47	\$44	\$40	\$38	\$38	\$36	\$35	\$32	\$29	\$25	\$18	\$16	\$14
		10yr ave.			\$58		\$52		\$43		\$37	\$35	\$34	\$33	\$32	\$29	\$26	\$21	\$18	\$17
	50%	Current	\$75	\$68	\$63	\$59	\$56	\$53	\$48	\$44	\$43	\$42	\$40	\$39	\$35	\$32	\$28	\$20	\$18	\$16
		10yr ave.			\$64		\$58		\$48		\$41	\$39	\$38	\$37	\$35	\$32	\$29	\$23	\$20	\$19
	55%	Current	\$83	\$74	\$69	\$64	\$61	\$58	\$53	\$49	\$47	\$46	\$44	\$42	\$39	\$36	\$31	\$22	\$19	\$18
		10yr ave.			\$70		\$64		\$53		\$45	\$43	\$42	\$41	\$39	\$35	\$32	\$26	\$23	\$20
	60%	Current	\$90	\$81	\$75	\$70	\$67	\$63	\$58	\$53	\$51	\$50	\$48	\$46	\$42	\$39	\$34	\$24	\$21	\$19
		10yr ave.			\$77		\$70		\$58		\$49	\$47	\$45	\$44	\$42	\$38	\$35	\$28	\$25	\$22
65%	Current	\$98	\$88	\$81	\$76	\$72	\$68	\$63	\$58	\$56	\$54	\$52	\$50	\$46	\$42	\$36	\$26	\$23	\$21	
	10yr ave.			\$83		\$75		\$62		\$53	\$50	\$49	\$48	\$46	\$41	\$38	\$30	\$27	\$24	
70%	Current	\$105	\$95	\$88	\$82	\$78	\$74	\$68	\$62	\$60	\$58	\$56	\$54	\$50	\$45	\$39	\$28	\$25	\$22	
	10yr ave.			\$89		\$81		\$67		\$57	\$54	\$53	\$52	\$49	\$44	\$41	\$33	\$29	\$26	
75%	Current	\$113	\$101	\$94	\$88	\$83	\$79	\$73	\$66	\$64	\$63	\$60	\$58	\$53	\$49	\$42	\$30	\$26	\$24	
	10yr ave.			\$96		\$87		\$72		\$61	\$58	\$57	\$55	\$53	\$48	\$44	\$35	\$31	\$28	
80%	Current	\$120	\$108	\$100	\$94	\$89	\$84	\$78	\$71	\$68	\$67	\$64	\$62	\$57	\$52	\$45	\$32	\$28	\$26	
	10yr ave.			\$102		\$93		\$77		\$66	\$62	\$60	\$59	\$56	\$51	\$47	\$38	\$33	\$30	
85%	Current	\$128	\$115	\$106	\$99	\$95	\$89	\$82	\$75	\$73	\$71	\$68	\$65	\$60	\$55	\$48	\$34	\$30	\$27	
	10yr ave.			\$109		\$99		\$82		\$70	\$66	\$64	\$63	\$60	\$54	\$49	\$40	\$35	\$32	

The above shows estimated returns per head for skirted fleece wool. These figures do not take into account the value of skirtings and oddments and do not take into account discounts that may apply for faults under individual circumstances. These figures are based on a market index of 100% and should be used as a guide only. Returns over \$30 / head for fleece wool are highlighted.

Source: Australian Wool Exchange, Australian Wool Innovation, Sydney Futures Exchange, x-rates.com

Disclaimer: While all due care has been taken in the preparation of this document, no warranty is made as to its accuracy, reliability or completeness. To the extent permitted by law neither Jemalong or their sources including subsidiaries and staff, accept liability to any person for loss or damage arising from the use of this information.





Table 17: Returns pr head for skirted fleece wool.

Skirted FLC Weight  5 Kg			Micron																	
			16	16.5	17	17.5	18	18.5	19	19.5	20	21	22	23	24	25	26	28	30	32
Yield (Sch Dry)	25%	Current	\$38	\$34	\$31	\$29	\$28	\$26	\$24	\$22	\$21	\$21	\$20	\$19	\$18	\$16	\$14	\$10	\$9	\$8
		10yr ave.			\$32		\$29		\$24		\$20	\$19	\$19	\$18	\$18	\$16	\$15	\$12	\$10	\$9
	30%	Current	\$45	\$41	\$38	\$35	\$33	\$32	\$29	\$27	\$26	\$25	\$24	\$23	\$21	\$19	\$17	\$12	\$11	\$10
		10yr ave.			\$38		\$35		\$29		\$25	\$23	\$23	\$22	\$21	\$19	\$17	\$14	\$12	\$11
	35%	Current	\$53	\$47	\$44	\$41	\$39	\$37	\$34	\$31	\$30	\$29	\$28	\$27	\$25	\$23	\$20	\$14	\$12	\$11
		10yr ave.			\$45		\$41		\$34		\$29	\$27	\$26	\$26	\$25	\$22	\$20	\$16	\$14	\$13
	40%	Current	\$60	\$54	\$50	\$47	\$45	\$42	\$39	\$35	\$34	\$33	\$32	\$31	\$28	\$26	\$22	\$16	\$14	\$13
		10yr ave.			\$51		\$46		\$38		\$33	\$31	\$30	\$30	\$28	\$25	\$23	\$19	\$16	\$15
	45%	Current	\$68	\$61	\$56	\$53	\$50	\$47	\$44	\$40	\$38	\$38	\$36	\$35	\$32	\$29	\$25	\$18	\$16	\$14
		10yr ave.			\$58		\$52		\$43		\$37	\$35	\$34	\$33	\$32	\$29	\$26	\$21	\$18	\$17
	50%	Current	\$75	\$68	\$63	\$59	\$56	\$53	\$48	\$44	\$43	\$42	\$40	\$39	\$35	\$32	\$28	\$20	\$18	\$16
		10yr ave.			\$64		\$58		\$48		\$41	\$39	\$38	\$37	\$35	\$32	\$29	\$23	\$20	\$19
	55%	Current	\$83	\$74	\$69	\$64	\$61	\$58	\$53	\$49	\$47	\$46	\$44	\$42	\$39	\$36	\$31	\$22	\$19	\$18
		10yr ave.			\$70		\$64		\$53		\$45	\$43	\$42	\$41	\$39	\$35	\$32	\$26	\$23	\$20
	60%	Current	\$90	\$81	\$75	\$70	\$67	\$63	\$58	\$53	\$51	\$50	\$48	\$46	\$42	\$39	\$34	\$24	\$21	\$19
		10yr ave.			\$77		\$70		\$58		\$49	\$47	\$45	\$44	\$42	\$38	\$35	\$28	\$25	\$22
65%	Current	\$98	\$88	\$81	\$76	\$72	\$68	\$63	\$58	\$56	\$54	\$52	\$50	\$46	\$42	\$36	\$26	\$23	\$21	
	10yr ave.			\$83		\$75		\$62		\$53	\$50	\$49	\$48	\$46	\$41	\$38	\$30	\$27	\$24	
70%	Current	\$105	\$95	\$88	\$82	\$78	\$74	\$68	\$62	\$60	\$58	\$56	\$54	\$50	\$45	\$39	\$28	\$25	\$22	
	10yr ave.			\$89		\$81		\$67		\$57	\$54	\$53	\$52	\$49	\$44	\$41	\$33	\$29	\$26	
75%	Current	\$113	\$101	\$94	\$88	\$83	\$79	\$73	\$66	\$64	\$63	\$60	\$58	\$53	\$49	\$42	\$30	\$26	\$24	
	10yr ave.			\$96		\$87		\$72		\$61	\$58	\$57	\$55	\$53	\$48	\$44	\$35	\$31	\$28	
80%	Current	\$120	\$108	\$100	\$94	\$89	\$84	\$78	\$71	\$68	\$67	\$64	\$62	\$57	\$52	\$45	\$32	\$28	\$26	
	10yr ave.			\$102		\$93		\$77		\$66	\$62	\$60	\$59	\$56	\$51	\$47	\$38	\$33	\$30	
85%	Current	\$128	\$115	\$106	\$99	\$95	\$89	\$82	\$75	\$73	\$71	\$68	\$65	\$60	\$55	\$48	\$34	\$30	\$27	
	10yr ave.			\$109		\$99		\$82		\$70	\$66	\$64	\$63	\$60	\$54	\$49	\$40	\$35	\$32	

The above shows estimated returns per head for skirted fleece wool. These figures do not take into account the value of skirtings and oddments and do not take into account discounts that may apply for faults under individual circumstances. These figures are based on a market index of 100% and should be used as a guide only. Returns over \$30 / head for fleece wool are highlighted.

Source: Australian Wool Exchange, Australian Wool Innovation, Sydney Futures Exchange, x-rates.com

Disclaimer: While all due care has been taken in the preparation of this document, no warranty is made as to its accuracy, reliability or completeness. To the extent permitted by law neither Jemalong or their sources including subsidiaries and staff, accept liability to any person for loss or damage arising from the use of this information.



Table 18: Returns pr head for skirted fleece wool.

Skirted FLC Weight  4 Kg			Micron																	
			16	16.5	17	17.5	18	18.5	19	19.5	20	21	22	23	24	25	26	28	30	32
Yield (Sch Dry)	25%	Current	\$38	\$34	\$31	\$29	\$28	\$26	\$24	\$22	\$21	\$21	\$20	\$19	\$18	\$16	\$14	\$10	\$9	\$8
		10yr ave.			\$32		\$29		\$24		\$20	\$19	\$19	\$18	\$18	\$16	\$15	\$12	\$10	\$9
	30%	Current	\$45	\$41	\$38	\$35	\$33	\$32	\$29	\$27	\$26	\$25	\$24	\$23	\$21	\$19	\$17	\$12	\$11	\$10
		10yr ave.			\$38		\$35		\$29		\$25	\$23	\$23	\$22	\$21	\$19	\$17	\$14	\$12	\$11
	35%	Current	\$53	\$47	\$44	\$41	\$39	\$37	\$34	\$31	\$30	\$29	\$28	\$27	\$25	\$23	\$20	\$14	\$12	\$11
		10yr ave.			\$45		\$41		\$34		\$29	\$27	\$26	\$26	\$25	\$22	\$20	\$16	\$14	\$13
	40%	Current	\$60	\$54	\$50	\$47	\$45	\$42	\$39	\$35	\$34	\$33	\$32	\$31	\$28	\$26	\$22	\$16	\$14	\$13
		10yr ave.			\$51		\$46		\$38		\$33	\$31	\$30	\$30	\$28	\$25	\$23	\$19	\$16	\$15
	45%	Current	\$68	\$61	\$56	\$53	\$50	\$47	\$44	\$40	\$38	\$38	\$36	\$35	\$32	\$29	\$25	\$18	\$16	\$14
		10yr ave.			\$58		\$52		\$43		\$37	\$35	\$34	\$33	\$32	\$29	\$26	\$21	\$18	\$17
	50%	Current	\$75	\$68	\$63	\$59	\$56	\$53	\$48	\$44	\$43	\$42	\$40	\$39	\$35	\$32	\$28	\$20	\$18	\$16
		10yr ave.			\$64		\$58		\$48		\$41	\$39	\$38	\$37	\$35	\$32	\$29	\$23	\$20	\$19
	55%	Current	\$83	\$74	\$69	\$64	\$61	\$58	\$53	\$49	\$47	\$46	\$44	\$42	\$39	\$36	\$31	\$22	\$19	\$18
		10yr ave.			\$70		\$64		\$53		\$45	\$43	\$42	\$41	\$39	\$35	\$32	\$26	\$23	\$20
	60%	Current	\$90	\$81	\$75	\$70	\$67	\$63	\$58	\$53	\$51	\$50	\$48	\$46	\$42	\$39	\$34	\$24	\$21	\$19
		10yr ave.			\$77		\$70		\$58		\$49	\$47	\$45	\$44	\$42	\$38	\$35	\$28	\$25	\$22
65%	Current	\$98	\$88	\$81	\$76	\$72	\$68	\$63	\$58	\$56	\$54	\$52	\$50	\$46	\$42	\$36	\$26	\$23	\$21	
	10yr ave.			\$83		\$75		\$62		\$53	\$50	\$49	\$48	\$46	\$41	\$38	\$30	\$27	\$24	
70%	Current	\$105	\$95	\$88	\$82	\$78	\$74	\$68	\$62	\$60	\$58	\$56	\$54	\$50	\$45	\$39	\$28	\$25	\$22	
	10yr ave.			\$89		\$81		\$67		\$57	\$54	\$53	\$52	\$49	\$44	\$41	\$33	\$29	\$26	
75%	Current	\$113	\$101	\$94	\$88	\$83	\$79	\$73	\$66	\$64	\$63	\$60	\$58	\$53	\$49	\$42	\$30	\$26	\$24	
	10yr ave.			\$96		\$87		\$72		\$61	\$58	\$57	\$55	\$53	\$48	\$44	\$35	\$31	\$28	
80%	Current	\$120	\$108	\$100	\$94	\$89	\$84	\$78	\$71	\$68	\$67	\$64	\$62	\$57	\$52	\$45	\$32	\$28	\$26	
	10yr ave.			\$102		\$93		\$77		\$66	\$62	\$60	\$59	\$56	\$51	\$47	\$38	\$33	\$30	
85%	Current	\$128	\$115	\$106	\$99	\$95	\$89	\$82	\$75	\$73	\$71	\$68	\$65	\$60	\$55	\$48	\$34	\$30	\$27	
	10yr ave.			\$109		\$99		\$82		\$70	\$66	\$64	\$63	\$60	\$54	\$49	\$40	\$35	\$32	

The above shows estimated returns per head for skirted fleece wool. These figures do not take into account the value of skirtings and oddments and do not take into account discounts that may apply for faults under individual circumstances. These figures are based on a market index of 100% and should be used as a guide only. Returns over \$30 / head for fleece wool are highlighted.

Source: Australian Wool Exchange, Australian Wool Innovation, Sydney Futures Exchange, x-rates.com

Disclaimer: While all due care has been taken in the preparation of this document, no warranty is made as to its accuracy, reliability or completeness. To the extent permitted by law neither Jemalong or their sources including subsidiaries and staff, accept liability to any person for loss or damage arising from the use of this information.



Table 19: Returns pr head for skirted fleece wool.

Skirted FLC Weight		Micron																	
3 Kg		16	16.5	17	17.5	18	18.5	19	19.5	20	21	22	23	24	25	26	28	30	32
Yield (Sch Dry)	25% Current	\$38	\$34	\$31	\$29	\$28	\$26	\$24	\$22	\$21	\$21	\$20	\$19	\$18	\$16	\$14	\$10	\$9	\$8
	10yr ave.			\$32		\$29		\$24		\$20	\$19	\$19	\$18	\$18	\$16	\$15	\$12	\$10	\$9
	30% Current	\$45	\$41	\$38	\$35	\$33	\$32	\$29	\$27	\$26	\$25	\$24	\$23	\$21	\$19	\$17	\$12	\$11	\$10
	10yr ave.			\$38		\$35		\$29		\$25	\$23	\$23	\$22	\$21	\$19	\$17	\$14	\$12	\$11
	35% Current	\$53	\$47	\$44	\$41	\$39	\$37	\$34	\$31	\$30	\$29	\$28	\$27	\$25	\$23	\$20	\$14	\$12	\$11
	10yr ave.			\$45		\$41		\$34		\$29	\$27	\$26	\$26	\$25	\$22	\$20	\$16	\$14	\$13
	40% Current	\$60	\$54	\$50	\$47	\$45	\$42	\$39	\$35	\$34	\$33	\$32	\$31	\$28	\$26	\$22	\$16	\$14	\$13
	10yr ave.			\$51		\$46		\$38		\$33	\$31	\$30	\$30	\$28	\$25	\$23	\$19	\$16	\$15
	45% Current	\$68	\$61	\$56	\$53	\$50	\$47	\$44	\$40	\$38	\$38	\$36	\$35	\$32	\$29	\$25	\$18	\$16	\$14
	10yr ave.			\$58		\$52		\$43		\$37	\$35	\$34	\$33	\$32	\$29	\$26	\$21	\$18	\$17
	50% Current	\$75	\$68	\$63	\$59	\$56	\$53	\$48	\$44	\$43	\$42	\$40	\$39	\$35	\$32	\$28	\$20	\$18	\$16
	10yr ave.			\$64		\$58		\$48		\$41	\$39	\$38	\$37	\$35	\$32	\$29	\$23	\$20	\$19
	55% Current	\$83	\$74	\$69	\$64	\$61	\$58	\$53	\$49	\$47	\$46	\$44	\$42	\$39	\$36	\$31	\$22	\$19	\$18
	10yr ave.			\$70		\$64		\$53		\$45	\$43	\$42	\$41	\$39	\$35	\$32	\$26	\$23	\$20
	60% Current	\$90	\$81	\$75	\$70	\$67	\$63	\$58	\$53	\$51	\$50	\$48	\$46	\$42	\$39	\$34	\$24	\$21	\$19
	10yr ave.			\$77		\$70		\$58		\$49	\$47	\$45	\$44	\$42	\$38	\$35	\$28	\$25	\$22
	65% Current	\$98	\$88	\$81	\$76	\$72	\$68	\$63	\$58	\$56	\$54	\$52	\$50	\$46	\$42	\$36	\$26	\$23	\$21
	10yr ave.			\$83		\$75		\$62		\$53	\$50	\$49	\$48	\$46	\$41	\$38	\$30	\$27	\$24
	70% Current	\$105	\$95	\$88	\$82	\$78	\$74	\$68	\$62	\$60	\$58	\$56	\$54	\$50	\$45	\$39	\$28	\$25	\$22
	10yr ave.			\$89		\$81		\$67		\$57	\$54	\$53	\$52	\$49	\$44	\$41	\$33	\$29	\$26
	75% Current	\$113	\$101	\$94	\$88	\$83	\$79	\$73	\$66	\$64	\$63	\$60	\$58	\$53	\$49	\$42	\$30	\$26	\$24
	10yr ave.			\$96		\$87		\$72		\$61	\$58	\$57	\$55	\$53	\$48	\$44	\$35	\$31	\$28
	80% Current	\$120	\$108	\$100	\$94	\$89	\$84	\$78	\$71	\$68	\$67	\$64	\$62	\$57	\$52	\$45	\$32	\$28	\$26
	10yr ave.			\$102		\$93		\$77		\$66	\$62	\$60	\$59	\$56	\$51	\$47	\$38	\$33	\$30
	85% Current	\$128	\$115	\$106	\$99	\$95	\$89	\$82	\$75	\$73	\$71	\$68	\$65	\$60	\$55	\$48	\$34	\$30	\$27
	10yr ave.			\$109		\$99		\$82		\$70	\$66	\$64	\$63	\$60	\$54	\$49	\$40	\$35	\$32

The above shows estimated returns per head for skirted fleece wool. These figures do not take into account the value of skirtings and oddments and do not take into account discounts that may apply for faults under individual circumstances. These figures are based on a market index of 100% and should be used as a guide only. Returns over \$30 / head for fleece wool are highlighted.

Source: Australian Wool Exchange, Australian Wool Innovation, Sydney Futures Exchange, x-rates.com

Disclaimer: While all due care has been taken in the preparation of this document, no warranty is made as to its accuracy, reliability or completeness. To the extent permitted by law neither Jemalong or their sources including subsidiaries and staff, accept liability to any person for loss or damage arising from the use of this information.



Table 20: Returns pr head for skirted fleece wool.

Skirted FLC Weight		Micron																	
2 Kg		16	16.5	17	17.5	18	18.5	19	19.5	20	21	22	23	24	25	26	28	30	32
Yield (Sch Dry)	25% Current	\$38	\$34	\$31	\$29	\$28	\$26	\$24	\$22	\$21	\$21	\$20	\$19	\$18	\$16	\$14	\$10	\$9	\$8
	10yr ave.			\$32		\$29		\$24		\$20	\$19	\$19	\$18	\$18	\$16	\$15	\$12	\$10	\$9
	30% Current	\$45	\$41	\$38	\$35	\$33	\$32	\$29	\$27	\$26	\$25	\$24	\$23	\$21	\$19	\$17	\$12	\$11	\$10
	10yr ave.			\$38		\$35		\$29		\$25	\$23	\$23	\$22	\$21	\$19	\$17	\$14	\$12	\$11
	35% Current	\$53	\$47	\$44	\$41	\$39	\$37	\$34	\$31	\$30	\$29	\$28	\$27	\$25	\$23	\$20	\$14	\$12	\$11
	10yr ave.			\$45		\$41		\$34		\$29	\$27	\$26	\$26	\$25	\$22	\$20	\$16	\$14	\$13
	40% Current	\$60	\$54	\$50	\$47	\$45	\$42	\$39	\$35	\$34	\$33	\$32	\$31	\$28	\$26	\$22	\$16	\$14	\$13
	10yr ave.			\$51		\$46		\$38		\$33	\$31	\$30	\$30	\$28	\$25	\$23	\$19	\$16	\$15
	45% Current	\$68	\$61	\$56	\$53	\$50	\$47	\$44	\$40	\$38	\$38	\$36	\$35	\$32	\$29	\$25	\$18	\$16	\$14
	10yr ave.			\$58		\$52		\$43		\$37	\$35	\$34	\$33	\$32	\$29	\$26	\$21	\$18	\$17
	50% Current	\$75	\$68	\$63	\$59	\$56	\$53	\$48	\$44	\$43	\$42	\$40	\$39	\$35	\$32	\$28	\$20	\$18	\$16
	10yr ave.			\$64		\$58		\$48		\$41	\$39	\$38	\$37	\$35	\$32	\$29	\$23	\$20	\$19
	55% Current	\$83	\$74	\$69	\$64	\$61	\$58	\$53	\$49	\$47	\$46	\$44	\$42	\$39	\$36	\$31	\$22	\$19	\$18
	10yr ave.			\$70		\$64		\$53		\$45	\$43	\$42	\$41	\$39	\$35	\$32	\$26	\$23	\$20
	60% Current	\$90	\$81	\$75	\$70	\$67	\$63	\$58	\$53	\$51	\$50	\$48	\$46	\$42	\$39	\$34	\$24	\$21	\$19
	10yr ave.			\$77		\$70		\$58		\$49	\$47	\$45	\$44	\$42	\$38	\$35	\$28	\$25	\$22
	65% Current	\$98	\$88	\$81	\$76	\$72	\$68	\$63	\$58	\$56	\$54	\$52	\$50	\$46	\$42	\$36	\$26	\$23	\$21
	10yr ave.			\$83		\$75		\$62		\$53	\$50	\$49	\$48	\$46	\$41	\$38	\$30	\$27	\$24
	70% Current	\$105	\$95	\$88	\$82	\$78	\$74	\$68	\$62	\$60	\$58	\$56	\$54	\$50	\$45	\$39	\$28	\$25	\$22
	10yr ave.			\$89		\$81		\$67		\$57	\$54	\$53	\$52	\$49	\$44	\$41	\$33	\$29	\$26
	75% Current	\$113	\$101	\$94	\$88	\$83	\$79	\$73	\$66	\$64	\$63	\$60	\$58	\$53	\$49	\$42	\$30	\$26	\$24
	10yr ave.			\$96		\$87		\$72		\$61	\$58	\$57	\$55	\$53	\$48	\$44	\$35	\$31	\$28
	80% Current	\$120	\$108	\$100	\$94	\$89	\$84	\$78	\$71	\$68	\$67	\$64	\$62	\$57	\$52	\$45	\$32	\$28	\$26
	10yr ave.			\$102		\$93		\$77		\$66	\$62	\$60	\$59	\$56	\$51	\$47	\$38	\$33	\$30
	85% Current	\$128	\$115	\$106	\$99	\$95	\$89	\$82	\$75	\$73	\$71	\$68	\$65	\$60	\$55	\$48	\$34	\$30	\$27
	10yr ave.			\$109		\$99		\$82		\$70	\$66	\$64	\$63	\$60	\$54	\$49	\$40	\$35	\$32

The above shows estimated returns per head for skirted fleece wool. These figures do not take into account the value of skirtings and oddments and do not take into account discounts that may apply for faults under individual circumstances. These figures are based on a market index of 100% and should be used as a guide only. Returns over \$30 / head for fleece wool are highlighted.

Source: Australian Wool Exchange, Australian Wool Innovation, Sydney Futures Exchange, x-rates.com

Disclaimer: While all due care has been taken in the preparation of this document, no warranty is made as to its accuracy, reliability or completeness. To the extent permitted by law neither Jemalong or their sources including subsidiaries and staff, accept liability to any person for loss or damage arising from the use of this information.