



# JEMALONG WOOL BULLETIN

(week ending 8/03/2012)

**Table 1: Northern Region Micron Price Guides**

CURRENT MARKET				12 MONTH COMPARISONS								3 YEAR COMPARISONS						Percentile	10 YEAR COMPARISONS						Percentile
Mic. Price Guides	8/03/2012 Current Price	1/03/2012 Weekly Change	9/03/2011 This time Last Year	Now compared to Last Year	12 Month Low	Now compared to Low	12 Month High	Now compared to High	Low	High	Average	Now compared to 3yr ave	Low	High	10 year Average	Now compared to 10yr ave									
NRI	1245	-1 -0.1%	1405	-160 -11%	1188	+57 5%	1491	-246 -16%	784	1491	1073	+172 16%	69%	657	1491	930	+315 34%	91%							
16*	2020	-80 -4.0%	2700	-680 -25%	1950	+70 4%	2800	-780 -28%	1385	2800	1952	+68 3%	60%												
16.5*	1880	-55 -2.9%	2620	-740 -28%	1800	+80 4%	2680	-800 -30%	1280	2680	1795	+85 5%	62%												
17*	1670	-60 -3.6%	2530	-860 -34%	1620	+50 3%	2530	-860 -34%	1180	2530	1648	+22 1%	56%	1100	2530	1452	+218 15%	82%							
17.5*	1580	-45 -2.8%	2360	-780 -33%	1530	+50 3%	2360	-780 -33%	1130	2360	1546	+34 2%	60%												
18	1545	-20 -1.3%	2193	-648 -30%	1469	+76 5%	2193	-648 -30%	1060	2193	1456	+89 6%	64%	916	2193	1273	+272 21%	84%							
18.5	1489	-13 -0.9%	1960	-471 -24%	1431	+58 4%	1960	-471 -24%	995	1963	1366	+123 9%	66%												
19	1467	+20 1.4%	1687	-220 -13%	1391	+76 5%	1776	-309 -17%	931	1776	1269	+198 16%	71%	803	1776	1111	+356 32%	92%							
19.5	1425	+16 1.1%	1471	-46 -3%	1344	+81 6%	1670	-245 -15%	842	1670	1177	+248 21%	76%												
20	1386	+22 1.6%	1306	+80 6%	1247	+139 11%	1588	-202 -13%	766	1588	1103	+283 26%	84%	700	1588	984	+402 41%	95%							
21	1364	+30 2.2%	1225	+139 11%	1188	+176 15%	1522	-158 -10%	743	1522	1069	+295 28%	91%	668	1522	943	+421 45%	97%							
22	1318	+5 0.4%	1183	+135 11%	1134	+184 16%	1461	-143 -10%	730	1461	1035	+283 27%	91%	659	1461	915	+403 44%	97%							
23	1277	-8 -0.6%	1141	+136 12%	1048	+229 22%	1347	-70 -5%	716	1347	990	+287 29%	92%	652	1347	886	+391 44%	97%							
24	1209	+3 0.2%	1060	+149 14%	983	+226 23%	1213	-4 0%	700	1207	909	+300 33%	100%	638	1299	836	+373 45%	97%							
25	967	-33 -3.4%	965	+2 0%	870	+97 11%	1048	-81 -8%	576	1048	784	+183 23%	89%	567	1198	742	+225 30%	89%							
26	825	+24 2.9%	858	-33 -4%	739	+86 12%	928	-103 -11%	564	928	696	+129 19%	80%	532	1088	676	+149 22%	79%							
28	625	-2 -0.3%	705	-80 -11%	596	+29 5%	734	-109 -15%	435	734	542	+83 15%	72%	424	889	531	+94 18%	79%							
30	565	-4 -0.7%	653	-88 -13%	524	+41 8%	670	-105 -16%	378	670	484	+81 17%	71%	344	729	463	+102 22%	80%							
32	503	+1 0.2%	589	-86 -15%	481	+22 5%	638	-135 -21%	326	638	433	+70 16%	69%	297	669	417	+86 21%	79%							
MC	731	+5 0.7%	804	-73 -9%	673	+58 9%	831	-100 -12%	499	831	652	+79 12%	77%	380	831	534	+197 37%	93%							

**Note:**

\* Due to the irregular market quoting for some fine wool categories, figures shown relating to micron categories below 18 micron are an estimate based on the AWEX Premium & Discounts Report & other available information.

\* For any category, where there is insufficient quantity offered to enable AWEX to quote, a quote will be provided based on the best available information.

\* 10 Year data is not available for some micron categories, which may result in blank spaces in the table above.

**Definitions:**

\* A Percentile, is a value on a scale of one hundred that indicates the percent of a distribution that is equal to or below it. In general a percentile between 25% and 75% is considered normal, a percentile below 25% is considered below normal and a percentile above 75% is considered above normal.

Three and ten year percentiles shown in the table above, detail the period of time during the past 3 & 10 years that the market has traded either at or below its current price.

The higher the percentile, the stronger the market.

**Source:** Australian Wool Exchange, Australian Wool Innovation, Sydney Futures Exchange, x-rates.com

**Disclaimer:** While all due care has been taken in the preparation of this document, no warranty is made as to its accuracy, reliability or completeness. To the extent permitted by law neither Jemalong or their sources including subsidiaries and staff, accept liability to any person for loss or damage arising from the use of this information.



## MARKET COMMENTARY

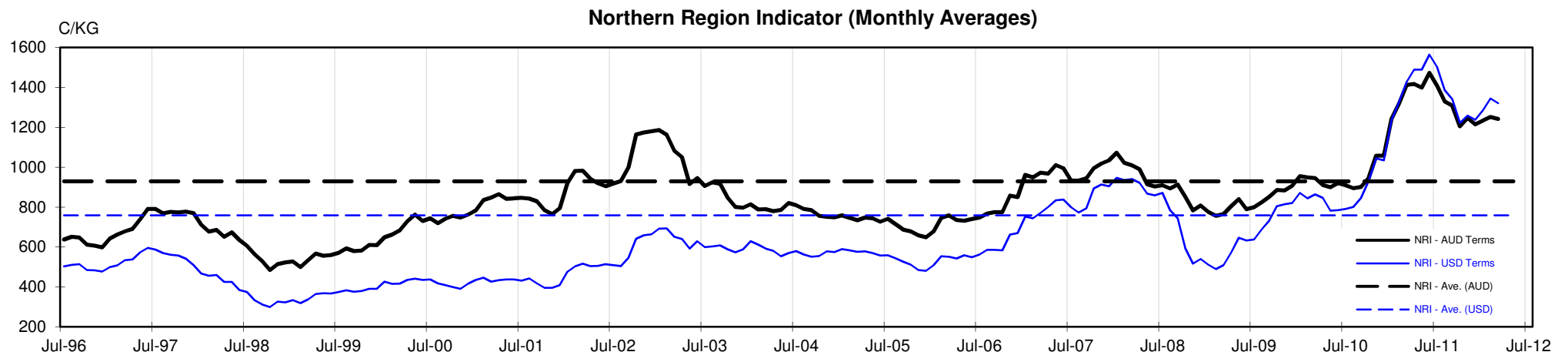
One Australian Dollar = \$ 1.06 US, as of 8/03/2012

### NORTHERN REGION –Sale Week 36/11 (51,431 bales offered nationally)

Tuesdays market had the finer microns lose 20-30 cents (off their MPG's) while the medium to broader microns gained up to 14 cents. This was in contrast to the South, where the market was generally 5-10 cents cheaper across the board. The difference in movement between the two centres can be attributed to a correction in the North, after last weeks Newcastle offering. Merino skirtings were generally 20 cents cheaper with the lower Vm types most affected, on an offering consisting predominantly of 19.5 micron and finer. All merino oddments were strong, with locks gaining 15-20 cents, stains also gained 15, while crutchings were part to 5 cents dearer. On an increased volume (after last weeks limited offering) crossbreds remained generally unchanged for 27-30 microns. 8.0% PI

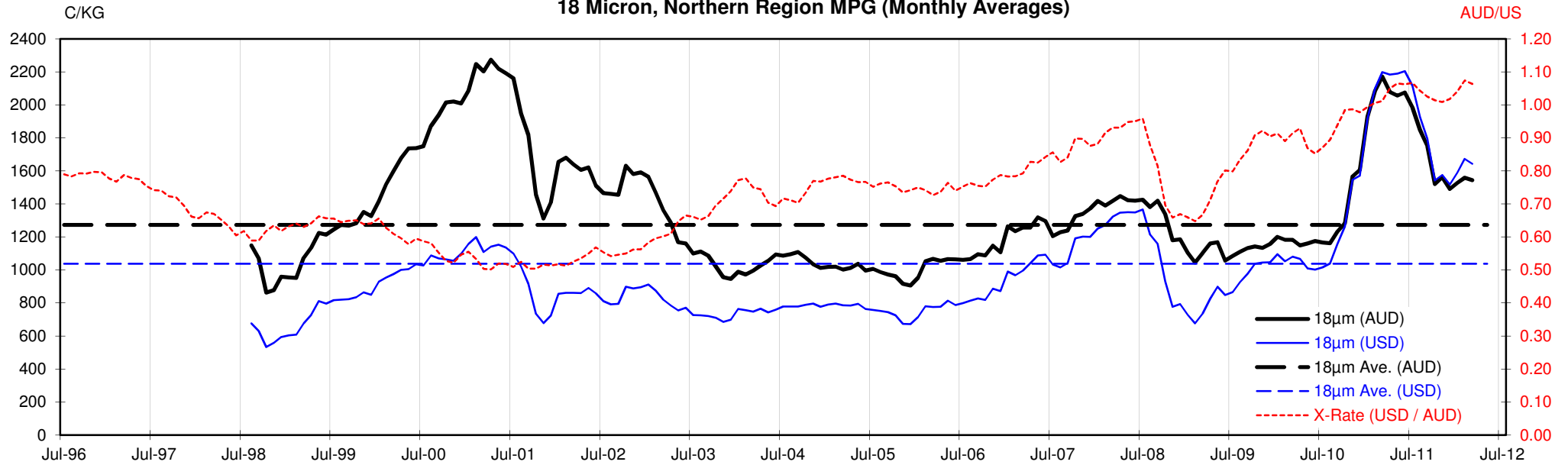
Wednesdays market saw only minor movements in the north & south. In the North, solid support for the better strength lots left 18 to 19 microns in sellers favour, while 20 to 21 microns eased as buyers discounted the higher mid break lots. Higher Vm skirtings (>5%) struggled throughout the day to close generally 5-10 cents cheaper, with buyers discounting the off types containing cot & colour. In the oddments, locks & crutchings remained unchanged, while broader micron stains were 20 cents cheaper when compared to the last Sydney sale on 22nd Feb. The crossbred offering consisted predominantly of 27 to 30 microns, which closed just off the pace by 3-5 cents. 13.4% PI.

Thursdays market was one of the lowest volume merino fleece offerings this season forcing the market up across most micron categories. 18.5 to 21 microns gained 15 to 20 cents with 21 microns the most affected, on the back of a limited selection. There were few fine lots on offer, however those that were offered also showed signs of improvement. The skirting market was generally unchanged on a small offering as were locks, crutchings & stains. 27 to 30 micron crossbred were unquotable on a limited offering of predominantly "D" certs. 7.6% PI

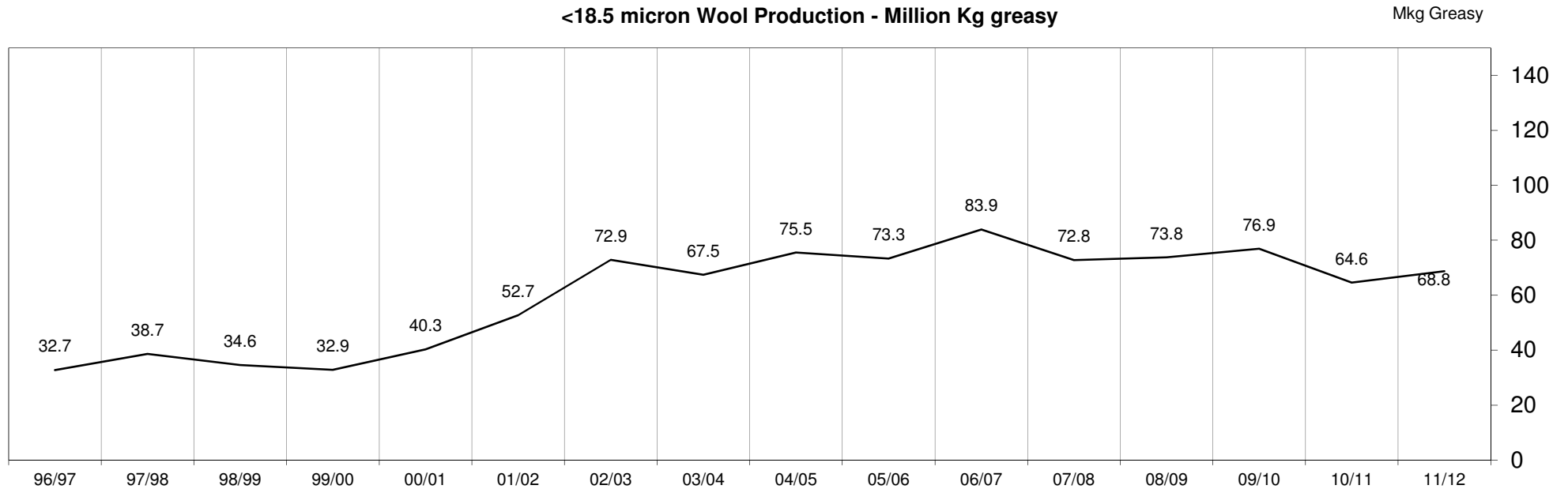


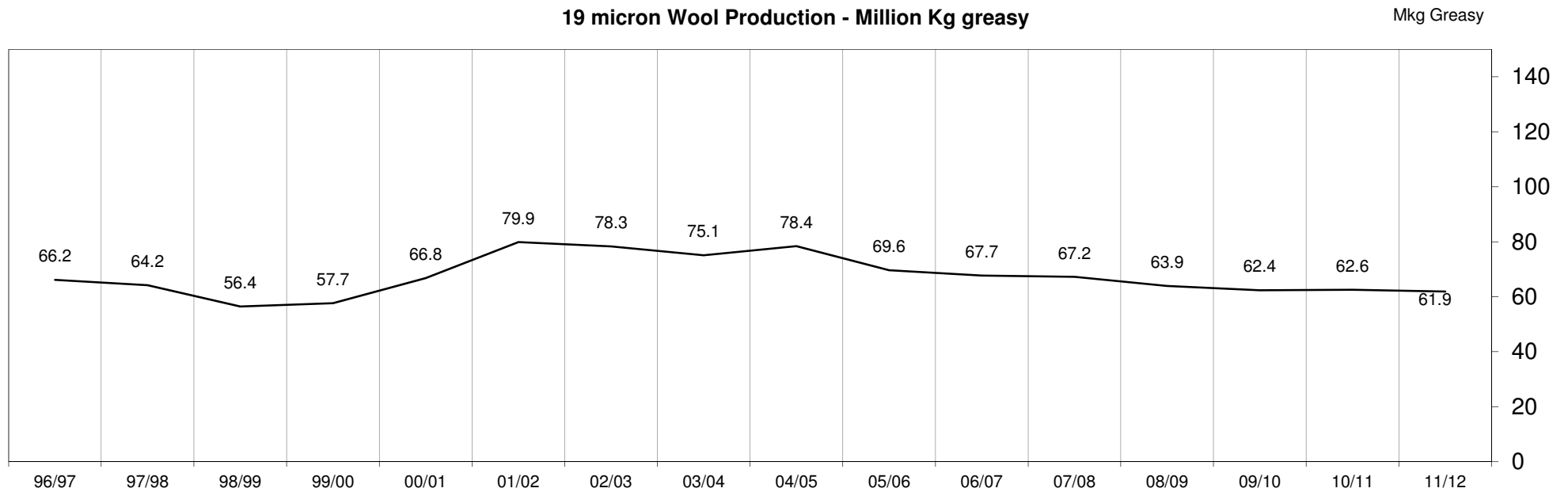
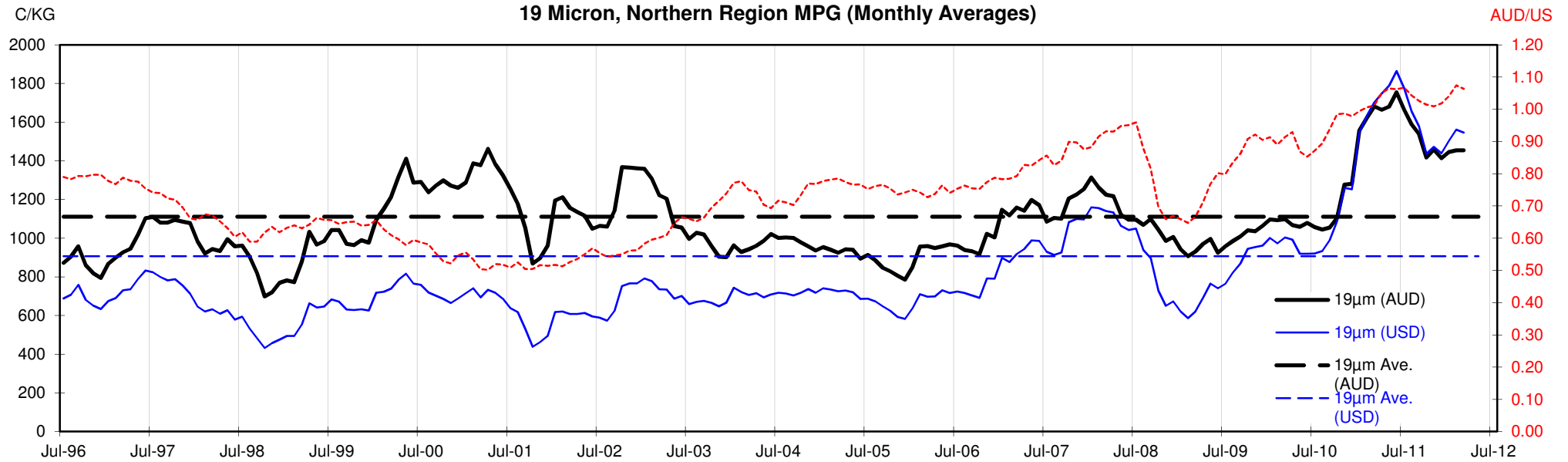


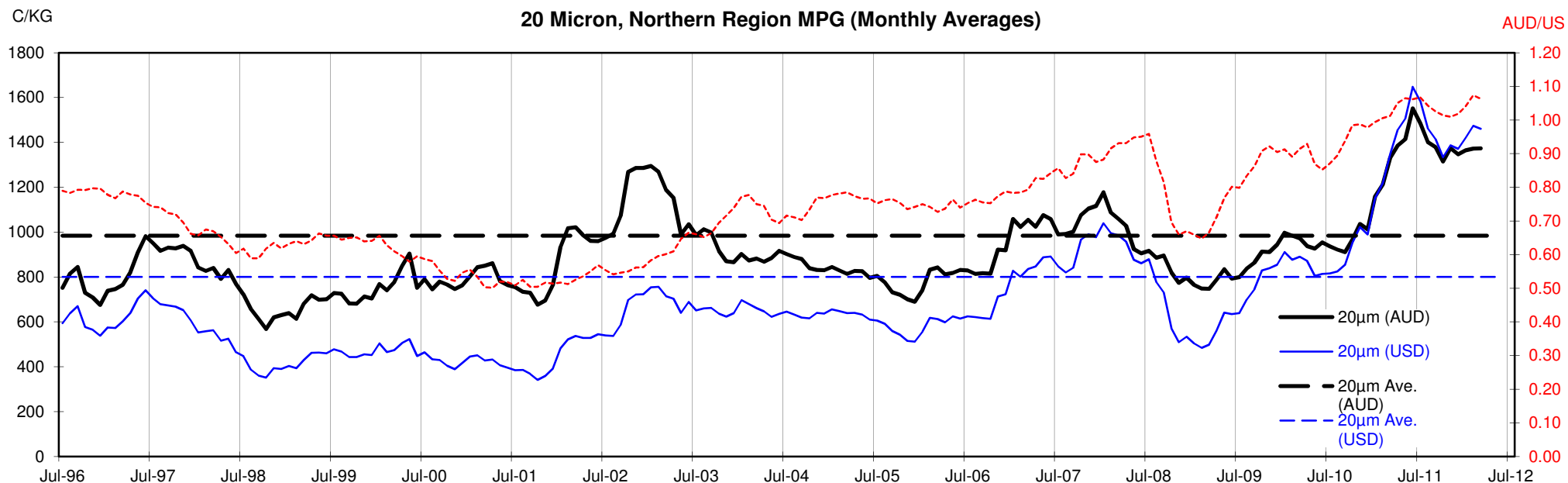
18 Micron, Northern Region MPG (Monthly Averages)

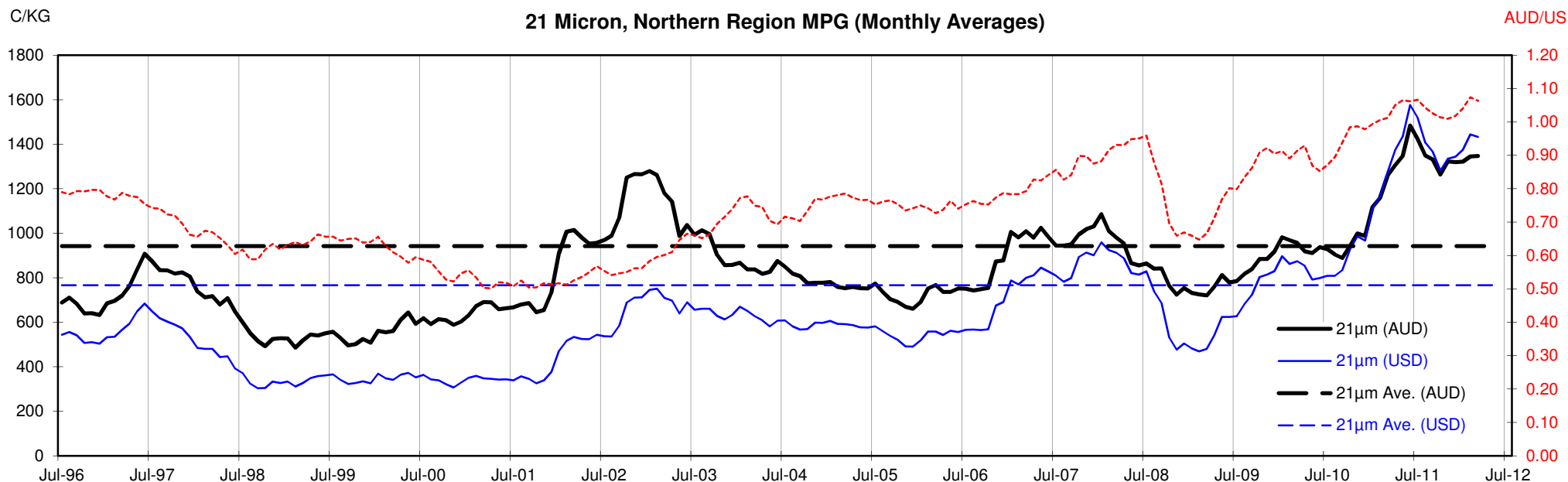


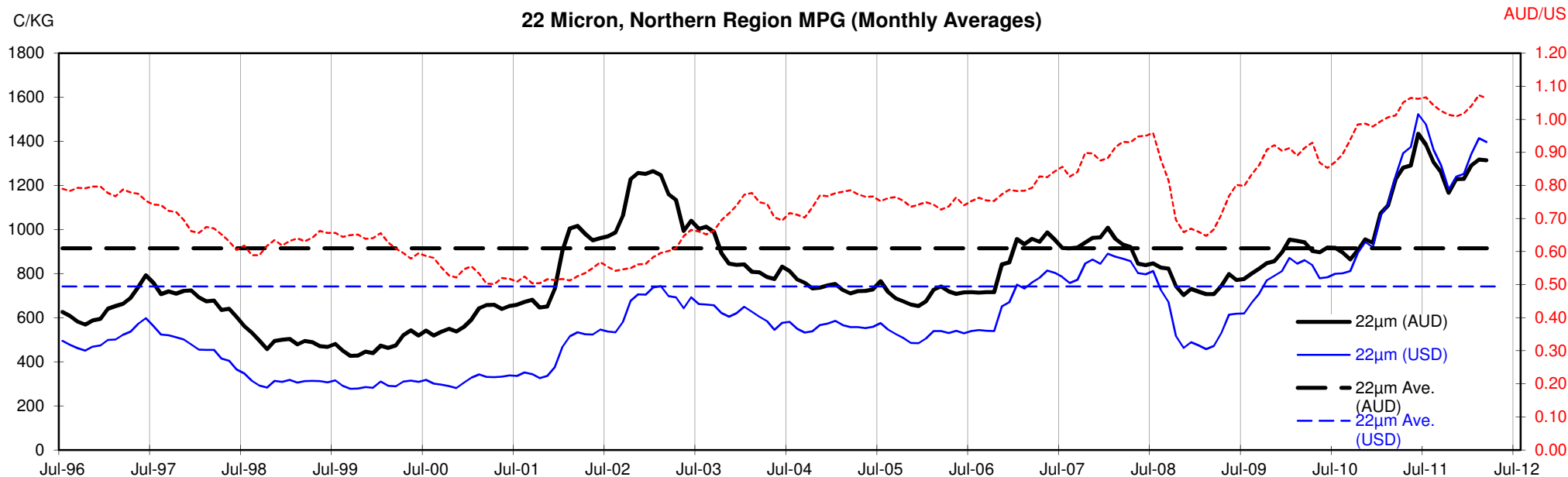
<18.5 micron Wool Production - Million Kg greasy

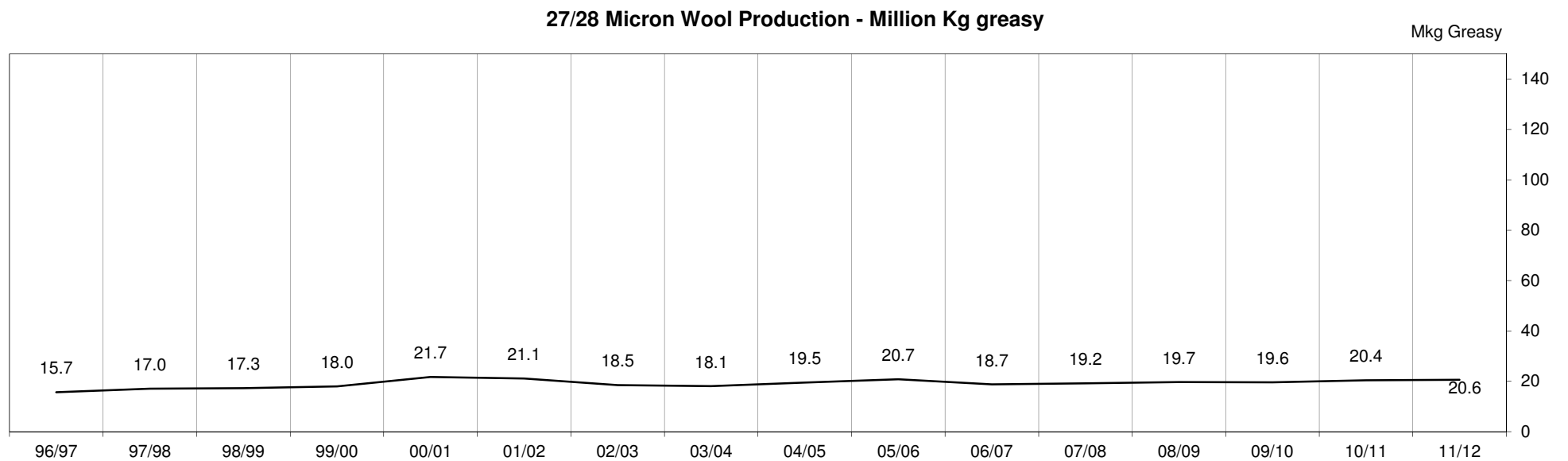
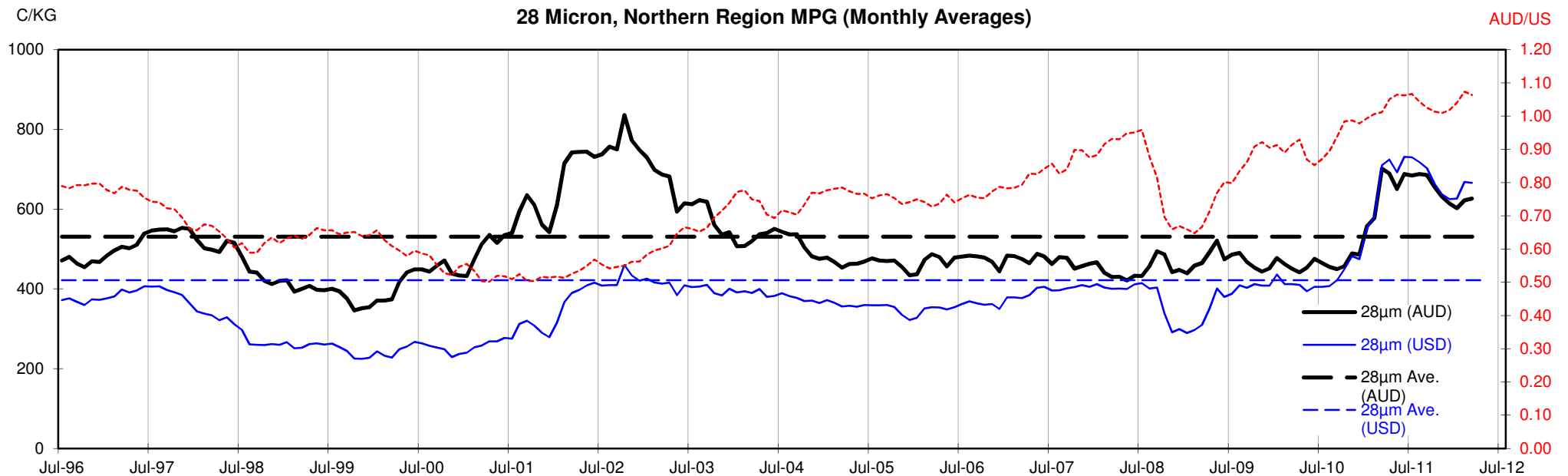














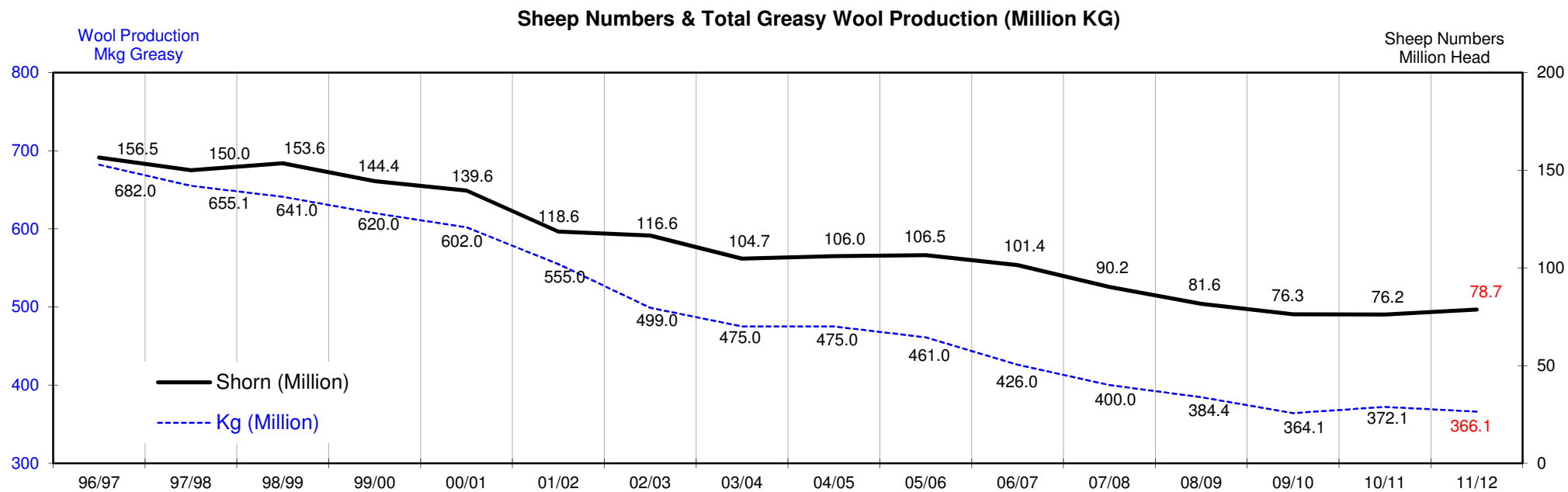
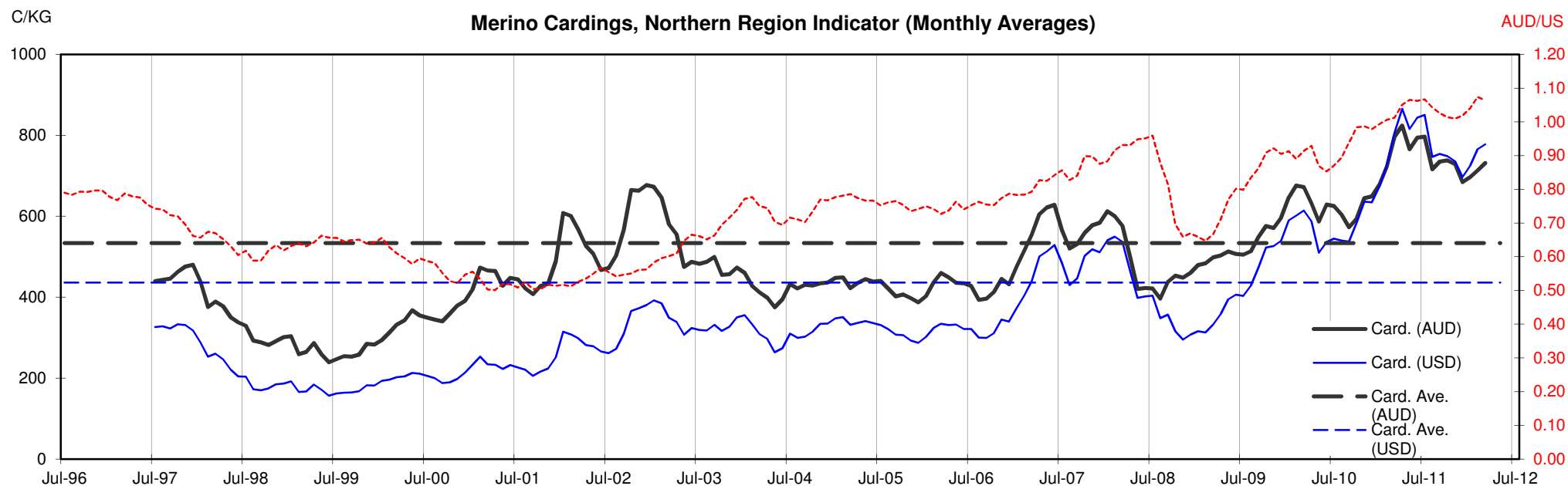




Table 13: Returns pr head for skirted fleece wool.

Skirted FLC Weight		Micron																	
9 Kg		16	16.5	17	17.5	18	18.5	19	19.5	20	21	22	23	24	25	26	28	30	32
Yield (Sch Dry)	25% Current	\$45	\$42	\$38	\$36	\$35	\$34	\$33	\$32	\$31	\$31	\$30	\$29	\$27	\$22	\$19	\$14	\$13	\$11
	10yr ave.			\$33		\$29		\$25		\$22	\$21	\$21	\$20	\$19	\$17	\$15	\$12	\$10	\$9
	30% Current	\$55	\$51	\$45	\$43	\$42	\$40	\$40	\$38	\$37	\$37	\$36	\$34	\$33	\$26	\$22	\$17	\$15	\$14
	10yr ave.			\$39		\$34		\$30		\$27	\$25	\$25	\$24	\$23	\$20	\$18	\$14	\$13	\$11
	35% Current	\$64	\$59	\$53	\$50	\$49	\$47	\$46	\$45	\$44	\$43	\$42	\$40	\$38	\$30	\$26	\$20	\$18	\$16
	10yr ave.			\$46		\$40		\$35		\$31	\$30	\$29	\$28	\$26	\$23	\$21	\$17	\$15	\$13
	40% Current	\$73	\$68	\$60	\$57	\$56	\$54	\$53	\$51	\$50	\$49	\$47	\$46	\$44	\$35	\$30	\$23	\$20	\$18
	10yr ave.			\$52		\$46		\$40		\$35	\$34	\$33	\$32	\$30	\$27	\$24	\$19	\$17	\$15
	45% Current	\$82	\$76	\$68	\$64	\$63	\$60	\$59	\$58	\$56	\$55	\$53	\$52	\$49	\$39	\$33	\$25	\$23	\$20
	10yr ave.			\$59		\$52		\$45		\$40	\$38	\$37	\$36	\$34	\$30	\$27	\$22	\$19	\$17
	50% Current	\$91	\$85	\$75	\$71	\$70	\$67	\$66	\$64	\$62	\$61	\$59	\$57	\$54	\$44	\$37	\$28	\$25	\$23
	10yr ave.			\$65		\$57		\$50		\$44	\$42	\$41	\$40	\$38	\$33	\$30	\$24	\$21	\$19
	55% Current	\$100	\$93	\$83	\$78	\$76	\$74	\$73	\$71	\$69	\$68	\$65	\$63	\$60	\$48	\$41	\$31	\$28	\$25
	10yr ave.			\$72		\$63		\$55		\$49	\$47	\$45	\$44	\$41	\$37	\$33	\$26	\$23	\$21
	60% Current	\$109	\$102	\$90	\$85	\$83	\$80	\$79	\$77	\$75	\$74	\$71	\$69	\$65	\$52	\$45	\$34	\$31	\$27
	10yr ave.			\$78		\$69		\$60		\$53	\$51	\$49	\$48	\$45	\$40	\$37	\$29	\$25	\$23
	65% Current	\$118	\$110	\$98	\$92	\$90	\$87	\$86	\$83	\$81	\$80	\$77	\$75	\$71	\$57	\$48	\$37	\$33	\$29
	10yr ave.			\$85		\$74		\$65		\$58	\$55	\$54	\$52	\$49	\$43	\$40	\$31	\$27	\$24
	70% Current	\$127	\$118	\$105	\$100	\$97	\$94	\$92	\$90	\$87	\$86	\$83	\$80	\$76	\$61	\$52	\$39	\$36	\$32
	10yr ave.			\$91		\$80		\$70		\$62	\$59	\$58	\$56	\$53	\$47	\$43	\$33	\$29	\$26
	75% Current	\$136	\$127	\$113	\$107	\$104	\$101	\$99	\$96	\$94	\$92	\$89	\$86	\$82	\$65	\$56	\$42	\$38	\$34
	10yr ave.			\$98		\$86		\$75		\$66	\$64	\$62	\$60	\$56	\$50	\$46	\$36	\$31	\$28
	80% Current	\$145	\$135	\$120	\$114	\$111	\$107	\$106	\$103	\$100	\$98	\$95	\$92	\$87	\$70	\$59	\$45	\$41	\$36
	10yr ave.			\$105		\$92		\$80		\$71	\$68	\$66	\$64	\$60	\$53	\$49	\$38	\$33	\$30
	85% Current	\$155	\$144	\$128	\$121	\$118	\$114	\$112	\$109	\$106	\$104	\$101	\$98	\$92	\$74	\$63	\$48	\$43	\$38
	10yr ave.			\$111		\$97		\$85		\$75	\$72	\$70	\$68	\$64	\$57	\$52	\$41	\$35	\$32

The above shows estimated returns per head for skirted fleece wool. These figures do not take into account the value of skirtings and oddments and do not take into account discounts that may apply for faults under individual circumstances. These figures are based on a market index of 100% and should be used as a guide only. Returns over \$30 / head for fleece wool are highlighted.

Source: Australian Wool Exchange, Australian Wool Innovation, Sydney Futures Exchange, x-rates.com

Disclaimer: While all due care has been taken in the preparation of this document, no warranty is made as to its accuracy, reliability or completeness. To the extent permitted by law neither Jemalong or their sources including subsidiaries and staff, accept liability to any person for loss or damage arising from the use of this information.



Table 14: Returns pr head for skirted fleece wool.

Skirted FLC Weight		Micron																	
8 Kg		16	16.5	17	17.5	18	18.5	19	19.5	20	21	22	23	24	25	26	28	30	32
Yield (Sch Dry)	25% Current	\$40	\$38	\$33	\$32	\$31	\$30	\$29	\$29	\$28	\$27	\$26	\$26	\$24	\$19	\$17	\$13	\$11	\$10
	10yr ave.			\$29		\$25		\$22		\$20	\$19	\$18	\$18	\$17	\$15	\$14	\$11	\$9	\$8
	30% Current	\$48	\$45	\$40	\$38	\$37	\$36	\$35	\$34	\$33	\$33	\$32	\$31	\$29	\$23	\$20	\$15	\$14	\$12
	10yr ave.			\$35		\$31		\$27		\$24	\$23	\$22	\$21	\$20	\$18	\$16	\$13	\$11	\$10
	35% Current	\$57	\$53	\$47	\$44	\$43	\$42	\$41	\$40	\$39	\$38	\$37	\$36	\$34	\$27	\$23	\$18	\$16	\$14
	10yr ave.			\$41		\$36		\$31		\$28	\$26	\$26	\$25	\$23	\$21	\$19	\$15	\$13	\$12
	40% Current	\$65	\$60	\$53	\$51	\$49	\$48	\$47	\$46	\$44	\$44	\$42	\$41	\$39	\$31	\$26	\$20	\$18	\$16
	10yr ave.			\$46		\$41		\$36		\$31	\$30	\$29	\$28	\$27	\$24	\$22	\$17	\$15	\$13
	45% Current	\$73	\$68	\$60	\$57	\$56	\$54	\$53	\$51	\$50	\$49	\$47	\$46	\$44	\$35	\$30	\$23	\$20	\$18
	10yr ave.			\$52		\$46		\$40		\$35	\$34	\$33	\$32	\$30	\$27	\$24	\$19	\$17	\$15
	50% Current	\$81	\$75	\$67	\$63	\$62	\$60	\$59	\$57	\$55	\$55	\$53	\$51	\$48	\$39	\$33	\$25	\$23	\$20
	10yr ave.			\$58		\$51		\$44		\$39	\$38	\$37	\$35	\$33	\$30	\$27	\$21	\$19	\$17
	55% Current	\$89	\$83	\$73	\$70	\$68	\$66	\$65	\$63	\$61	\$60	\$58	\$56	\$53	\$43	\$36	\$28	\$25	\$22
	10yr ave.			\$64		\$56		\$49		\$43	\$41	\$40	\$39	\$37	\$33	\$30	\$23	\$20	\$18
	60% Current	\$97	\$90	\$80	\$76	\$74	\$71	\$70	\$68	\$67	\$65	\$63	\$61	\$58	\$46	\$40	\$30	\$27	\$24
	10yr ave.			\$70		\$61		\$53		\$47	\$45	\$44	\$43	\$40	\$36	\$32	\$25	\$22	\$20
	65% Current	\$105	\$98	\$87	\$82	\$80	\$77	\$76	\$74	\$72	\$71	\$69	\$66	\$63	\$50	\$43	\$33	\$29	\$26
	10yr ave.			\$76		\$66		\$58		\$51	\$49	\$48	\$46	\$43	\$39	\$35	\$28	\$24	\$22
	70% Current	\$113	\$105	\$94	\$88	\$87	\$83	\$82	\$80	\$78	\$76	\$74	\$72	\$68	\$54	\$46	\$35	\$32	\$28
	10yr ave.			\$81		\$71		\$62		\$55	\$53	\$51	\$50	\$47	\$42	\$38	\$30	\$26	\$23
	75% Current	\$121	\$113	\$100	\$95	\$93	\$89	\$88	\$86	\$83	\$82	\$79	\$77	\$73	\$58	\$50	\$38	\$34	\$30
	10yr ave.			\$87		\$76		\$67		\$59	\$57	\$55	\$53	\$50	\$45	\$41	\$32	\$28	\$25
	80% Current	\$129	\$120	\$107	\$101	\$99	\$95	\$94	\$91	\$89	\$87	\$84	\$82	\$77	\$62	\$53	\$40	\$36	\$32
	10yr ave.			\$93		\$81		\$71		\$63	\$60	\$59	\$57	\$54	\$47	\$43	\$34	\$30	\$27
	85% Current	\$137	\$128	\$114	\$107	\$105	\$101	\$100	\$97	\$94	\$93	\$90	\$87	\$82	\$66	\$56	\$43	\$38	\$34
	10yr ave.			\$99		\$87		\$76		\$67	\$64	\$62	\$60	\$57	\$50	\$46	\$36	\$31	\$28

The above shows estimated returns per head for skirted fleece wool. These figures do not take into account the value of skirtings and oddments and do not take into account discounts that may apply for faults under individual circumstances. These figures are based on a market index of 100% and should be used as a guide only. Returns over \$30 / head for fleece wool are highlighted.

Source: Australian Wool Exchange, Australian Wool Innovation, Sydney Futures Exchange, x-rates.com

Disclaimer: While all due care has been taken in the preparation of this document, no warranty is made as to its accuracy, reliability or completeness. To the extent permitted by law neither Jemalong or their sources including subsidiaries and staff, accept liability to any person for loss or damage arising from the use of this information.



Table 15: Returns pr head for skirted fleece wool.

Skirted FLC Weight		Micron																	
7 Kg		16	16.5	17	17.5	18	18.5	19	19.5	20	21	22	23	24	25	26	28	30	32
Yield (Sch Dry)	25% Current	\$35	\$33	\$29	\$28	\$27	\$26	\$26	\$25	\$24	\$24	\$23	\$22	\$21	\$17	\$14	\$11	\$10	\$9
	10yr ave.			\$25		\$22		\$19		\$17	\$17	\$16	\$16	\$15	\$13	\$12	\$9	\$8	\$7
	30% Current	\$42	\$39	\$35	\$33	\$32	\$31	\$31	\$30	\$29	\$29	\$28	\$27	\$25	\$20	\$17	\$13	\$12	\$11
	10yr ave.			\$30		\$27		\$23		\$21	\$20	\$19	\$19	\$18	\$16	\$14	\$11	\$10	\$9
	35% Current	\$49	\$46	\$41	\$39	\$38	\$36	\$36	\$35	\$34	\$33	\$32	\$31	\$30	\$24	\$20	\$15	\$14	\$12
	10yr ave.			\$36		\$31		\$27		\$24	\$23	\$22	\$22	\$20	\$18	\$17	\$13	\$11	\$10
	40% Current	\$57	\$53	\$47	\$44	\$43	\$42	\$41	\$40	\$39	\$38	\$37	\$36	\$34	\$27	\$23	\$18	\$16	\$14
	10yr ave.			\$41		\$36		\$31		\$28	\$26	\$26	\$25	\$23	\$21	\$19	\$15	\$13	\$12
	45% Current	\$64	\$59	\$53	\$50	\$49	\$47	\$46	\$45	\$44	\$43	\$42	\$40	\$38	\$30	\$26	\$20	\$18	\$16
	10yr ave.			\$46		\$40		\$35		\$31	\$30	\$29	\$28	\$26	\$23	\$21	\$17	\$15	\$13
	50% Current	\$71	\$66	\$58	\$55	\$54	\$52	\$51	\$50	\$49	\$48	\$46	\$45	\$42	\$34	\$29	\$22	\$20	\$18
	10yr ave.			\$51		\$45		\$39		\$34	\$33	\$32	\$31	\$29	\$26	\$24	\$19	\$16	\$15
	55% Current	\$78	\$72	\$64	\$61	\$59	\$57	\$56	\$55	\$53	\$53	\$51	\$49	\$47	\$37	\$32	\$24	\$22	\$19
	10yr ave.			\$56		\$49		\$43		\$38	\$36	\$35	\$34	\$32	\$29	\$26	\$20	\$18	\$16
	60% Current	\$85	\$79	\$70	\$66	\$65	\$63	\$62	\$60	\$58	\$57	\$55	\$54	\$51	\$41	\$35	\$26	\$24	\$21
	10yr ave.			\$61		\$53		\$47		\$41	\$40	\$38	\$37	\$35	\$31	\$28	\$22	\$19	\$18
	65% Current	\$92	\$86	\$76	\$72	\$70	\$68	\$67	\$65	\$63	\$62	\$60	\$58	\$55	\$44	\$38	\$28	\$26	\$23
	10yr ave.			\$66		\$58		\$51		\$45	\$43	\$42	\$40	\$38	\$34	\$31	\$24	\$21	\$19
	70% Current	\$99	\$92	\$82	\$77	\$76	\$73	\$72	\$70	\$68	\$67	\$65	\$63	\$59	\$47	\$40	\$31	\$28	\$25
	10yr ave.			\$71		\$62		\$54		\$48	\$46	\$45	\$43	\$41	\$36	\$33	\$26	\$23	\$20
	75% Current	\$106	\$99	\$88	\$83	\$81	\$78	\$77	\$75	\$73	\$72	\$69	\$67	\$63	\$51	\$43	\$33	\$30	\$26
	10yr ave.			\$76		\$67		\$58		\$52	\$50	\$48	\$47	\$44	\$39	\$35	\$28	\$24	\$22
	80% Current	\$113	\$105	\$94	\$88	\$87	\$83	\$82	\$80	\$78	\$76	\$74	\$72	\$68	\$54	\$46	\$35	\$32	\$28
	10yr ave.			\$81		\$71		\$62		\$55	\$53	\$51	\$50	\$47	\$42	\$38	\$30	\$26	\$23
	85% Current	\$120	\$112	\$99	\$94	\$92	\$89	\$87	\$85	\$82	\$81	\$78	\$76	\$72	\$58	\$49	\$37	\$34	\$30
	10yr ave.			\$86		\$76		\$66		\$59	\$56	\$54	\$53	\$50	\$44	\$40	\$32	\$28	\$25

The above shows estimated returns per head for skirted fleece wool. These figures do not take into account the value of skirtings and oddments and do not take into account discounts that may apply for faults under individual circumstances. These figures are based on a market index of 100% and should be used as a guide only. Returns over \$30 / head for fleece wool are highlighted.

Source: Australian Wool Exchange, Australian Wool Innovation, Sydney Futures Exchange, x-rates.com

Disclaimer: While all due care has been taken in the preparation of this document, no warranty is made as to its accuracy, reliability or completeness. To the extent permitted by law neither Jemalong or their sources including subsidiaries and staff, accept liability to any person for loss or damage arising from the use of this information.



Table 16: Returns pr head for skirted fleece wool.

Skirted FLC Weight		Micron																	
6 Kg		16	16.5	17	17.5	18	18.5	19	19.5	20	21	22	23	24	25	26	28	30	32
Yield (Sch Dry)	25% Current	\$30	\$28	\$25	\$24	\$23	\$22	\$22	\$21	\$21	\$20	\$20	\$19	\$18	\$15	\$12	\$9	\$8	\$8
	10yr ave.			\$22		\$19		\$17		\$15	\$14	\$14	\$13	\$13	\$11	\$10	\$8	\$7	\$6
	30% Current	\$36	\$34	\$30	\$28	\$28	\$27	\$26	\$26	\$25	\$25	\$24	\$23	\$22	\$17	\$15	\$11	\$10	\$9
	10yr ave.			\$26		\$23		\$20		\$18	\$17	\$16	\$16	\$15	\$13	\$12	\$10	\$8	\$8
	35% Current	\$42	\$39	\$35	\$33	\$32	\$31	\$31	\$30	\$29	\$29	\$28	\$27	\$25	\$20	\$17	\$13	\$12	\$11
	10yr ave.			\$30		\$27		\$23		\$21	\$20	\$19	\$19	\$18	\$16	\$14	\$11	\$10	\$9
	40% Current	\$48	\$45	\$40	\$38	\$37	\$36	\$35	\$34	\$33	\$33	\$32	\$31	\$29	\$23	\$20	\$15	\$14	\$12
	10yr ave.			\$35		\$31		\$27		\$24	\$23	\$22	\$21	\$20	\$18	\$16	\$13	\$11	\$10
	45% Current	\$55	\$51	\$45	\$43	\$42	\$40	\$40	\$38	\$37	\$37	\$36	\$34	\$33	\$26	\$22	\$17	\$15	\$14
	10yr ave.			\$39		\$34		\$30		\$27	\$25	\$25	\$24	\$23	\$20	\$18	\$14	\$13	\$11
	50% Current	\$61	\$56	\$50	\$47	\$46	\$45	\$44	\$43	\$42	\$41	\$40	\$38	\$36	\$29	\$25	\$19	\$17	\$15
	10yr ave.			\$44		\$38		\$33		\$30	\$28	\$27	\$27	\$25	\$22	\$20	\$16	\$14	\$13
	55% Current	\$67	\$62	\$55	\$52	\$51	\$49	\$48	\$47	\$46	\$45	\$43	\$42	\$40	\$32	\$27	\$21	\$19	\$17
	10yr ave.			\$48		\$42		\$37		\$32	\$31	\$30	\$29	\$28	\$24	\$22	\$18	\$15	\$14
	60% Current	\$73	\$68	\$60	\$57	\$56	\$54	\$53	\$51	\$50	\$49	\$47	\$46	\$44	\$35	\$30	\$23	\$20	\$18
	10yr ave.			\$52		\$46		\$40		\$35	\$34	\$33	\$32	\$30	\$27	\$24	\$19	\$17	\$15
	65% Current	\$79	\$73	\$65	\$62	\$60	\$58	\$57	\$56	\$54	\$53	\$51	\$50	\$47	\$38	\$32	\$24	\$22	\$20
	10yr ave.			\$57		\$50		\$43		\$38	\$37	\$36	\$35	\$33	\$29	\$26	\$21	\$18	\$16
	70% Current	\$85	\$79	\$70	\$66	\$65	\$63	\$62	\$60	\$58	\$57	\$55	\$54	\$51	\$41	\$35	\$26	\$24	\$21
	10yr ave.			\$61		\$53		\$47		\$41	\$40	\$38	\$37	\$35	\$31	\$28	\$22	\$19	\$18
	75% Current	\$91	\$85	\$75	\$71	\$70	\$67	\$66	\$64	\$62	\$61	\$59	\$57	\$54	\$44	\$37	\$28	\$25	\$23
	10yr ave.			\$65		\$57		\$50		\$44	\$42	\$41	\$40	\$38	\$33	\$30	\$24	\$21	\$19
	80% Current	\$97	\$90	\$80	\$76	\$74	\$71	\$70	\$68	\$67	\$65	\$63	\$61	\$58	\$46	\$40	\$30	\$27	\$24
	10yr ave.			\$70		\$61		\$53		\$47	\$45	\$44	\$43	\$40	\$36	\$32	\$25	\$22	\$20
	85% Current	\$103	\$96	\$85	\$81	\$79	\$76	\$75	\$73	\$71	\$70	\$67	\$65	\$62	\$49	\$42	\$32	\$29	\$26
	10yr ave.			\$74		\$65		\$57		\$50	\$48	\$47	\$45	\$43	\$38	\$34	\$27	\$24	\$21

The above shows estimated returns per head for skirted fleece wool. These figures do not take into account the value of skirtings and oddments and do not take into account discounts that may apply for faults under individual circumstances. These figures are based on a market index of 100% and should be used as a guide only. Returns over \$30 / head for fleece wool are highlighted.

Source: Australian Wool Exchange, Australian Wool Innovation, Sydney Futures Exchange, x-rates.com

Disclaimer: While all due care has been taken in the preparation of this document, no warranty is made as to its accuracy, reliability or completeness. To the extent permitted by law neither Jemalong or their sources including subsidiaries and staff, accept liability to any person for loss or damage arising from the use of this information.



Table 17: Returns pr head for skirted fleece wool.

Skirted FLC Weight		Micron																	
5 Kg		16	16.5	17	17.5	18	18.5	19	19.5	20	21	22	23	24	25	26	28	30	32
Yield (Sch Dry)	25% Current	\$25	\$24	\$21	\$20	\$19	\$19	\$18	\$18	\$17	\$17	\$16	\$16	\$15	\$12	\$10	\$8	\$7	\$6
	10yr ave.			\$18		\$16		\$14		\$12	\$12	\$11	\$11	\$10	\$9	\$8	\$7	\$6	\$5
	30% Current	\$30	\$28	\$25	\$24	\$23	\$22	\$22	\$21	\$21	\$20	\$20	\$19	\$18	\$15	\$12	\$9	\$8	\$8
	10yr ave.			\$22		\$19		\$17		\$15	\$14	\$14	\$13	\$13	\$11	\$10	\$8	\$7	\$6
	35% Current	\$35	\$33	\$29	\$28	\$27	\$26	\$26	\$25	\$24	\$24	\$23	\$22	\$21	\$17	\$14	\$11	\$10	\$9
	10yr ave.			\$25		\$22		\$19		\$17	\$17	\$16	\$16	\$15	\$13	\$12	\$9	\$8	\$7
	40% Current	\$40	\$38	\$33	\$32	\$31	\$30	\$29	\$29	\$28	\$27	\$26	\$26	\$24	\$19	\$17	\$13	\$11	\$10
	10yr ave.			\$29		\$25		\$22		\$20	\$19	\$18	\$18	\$17	\$15	\$14	\$11	\$9	\$8
	45% Current	\$45	\$42	\$38	\$36	\$35	\$34	\$33	\$32	\$31	\$31	\$30	\$29	\$27	\$22	\$19	\$14	\$13	\$11
	10yr ave.			\$33		\$29		\$25		\$22	\$21	\$21	\$20	\$19	\$17	\$15	\$12	\$10	\$9
	50% Current	\$51	\$47	\$42	\$40	\$39	\$37	\$37	\$36	\$35	\$34	\$33	\$32	\$30	\$24	\$21	\$16	\$14	\$13
	10yr ave.			\$36		\$32		\$28		\$25	\$24	\$23	\$22	\$21	\$19	\$17	\$13	\$12	\$10
	55% Current	\$56	\$52	\$46	\$43	\$42	\$41	\$40	\$39	\$38	\$38	\$36	\$35	\$33	\$27	\$23	\$17	\$16	\$14
	10yr ave.			\$40		\$35		\$31		\$27	\$26	\$25	\$24	\$23	\$20	\$19	\$15	\$13	\$11
	60% Current	\$61	\$56	\$50	\$47	\$46	\$45	\$44	\$43	\$42	\$41	\$40	\$38	\$36	\$29	\$25	\$19	\$17	\$15
	10yr ave.			\$44		\$38		\$33		\$30	\$28	\$27	\$27	\$25	\$22	\$20	\$16	\$14	\$13
	65% Current	\$66	\$61	\$54	\$51	\$50	\$48	\$48	\$46	\$45	\$44	\$43	\$42	\$39	\$31	\$27	\$20	\$18	\$16
	10yr ave.			\$47		\$41		\$36		\$32	\$31	\$30	\$29	\$27	\$24	\$22	\$17	\$15	\$14
	70% Current	\$71	\$66	\$58	\$55	\$54	\$52	\$51	\$50	\$49	\$48	\$46	\$45	\$42	\$34	\$29	\$22	\$20	\$18
	10yr ave.			\$51		\$45		\$39		\$34	\$33	\$32	\$31	\$29	\$26	\$24	\$19	\$16	\$15
	75% Current	\$76	\$71	\$63	\$59	\$58	\$56	\$55	\$53	\$52	\$51	\$49	\$48	\$45	\$36	\$31	\$23	\$21	\$19
	10yr ave.			\$54		\$48		\$42		\$37	\$35	\$34	\$33	\$31	\$28	\$25	\$20	\$17	\$16
	80% Current	\$81	\$75	\$67	\$63	\$62	\$60	\$59	\$57	\$55	\$55	\$53	\$51	\$48	\$39	\$33	\$25	\$23	\$20
	10yr ave.			\$58		\$51		\$44		\$39	\$38	\$37	\$35	\$33	\$30	\$27	\$21	\$19	\$17
	85% Current	\$86	\$80	\$71	\$67	\$66	\$63	\$62	\$61	\$59	\$58	\$56	\$54	\$51	\$41	\$35	\$27	\$24	\$21
	10yr ave.			\$62		\$54		\$47		\$42	\$40	\$39	\$38	\$36	\$32	\$29	\$23	\$20	\$18

The above shows estimated returns per head for skirted fleece wool. These figures do not take into account the value of skirtings and oddments and do not take into account discounts that may apply for faults under individual circumstances. These figures are based on a market index of 100% and should be used as a guide only. Returns over \$30 / head for fleece wool are highlighted.

Source: Australian Wool Exchange, Australian Wool Innovation, Sydney Futures Exchange, x-rates.com

Disclaimer: While all due care has been taken in the preparation of this document, no warranty is made as to its accuracy, reliability or completeness. To the extent permitted by law neither Jemalong or their sources including subsidiaries and staff, accept liability to any person for loss or damage arising from the use of this information.



Table 18: Returns pr head for skirted fleece wool.

Skirted FLC Weight		Micron																	
4 Kg		16	16.5	17	17.5	18	18.5	19	19.5	20	21	22	23	24	25	26	28	30	32
Yield (Sch Dry)	25% Current	\$20	\$19	\$17	\$16	\$15	\$15	\$15	\$14	\$14	\$14	\$13	\$13	\$12	\$10	\$8	\$6	\$6	\$5
	10yr ave.			\$15		\$13		\$11		\$10	\$9	\$9	\$9	\$8	\$7	\$7	\$5	\$5	\$4
	30% Current	\$24	\$23	\$20	\$19	\$19	\$18	\$18	\$17	\$17	\$16	\$16	\$15	\$15	\$12	\$10	\$8	\$7	\$6
	10yr ave.			\$17		\$15		\$13		\$12	\$11	\$11	\$11	\$10	\$9	\$8	\$6	\$6	\$5
	35% Current	\$28	\$26	\$23	\$22	\$22	\$21	\$21	\$20	\$19	\$19	\$18	\$18	\$17	\$14	\$12	\$9	\$8	\$7
	10yr ave.			\$20		\$18		\$16		\$14	\$13	\$13	\$12	\$12	\$10	\$9	\$7	\$6	\$6
	40% Current	\$32	\$30	\$27	\$25	\$25	\$24	\$23	\$23	\$22	\$22	\$21	\$20	\$19	\$15	\$13	\$10	\$9	\$8
	10yr ave.			\$23		\$20		\$18		\$16	\$15	\$15	\$14	\$13	\$12	\$11	\$8	\$7	\$7
	45% Current	\$36	\$34	\$30	\$28	\$28	\$27	\$26	\$26	\$25	\$25	\$24	\$23	\$22	\$17	\$15	\$11	\$10	\$9
	10yr ave.			\$26		\$23		\$20		\$18	\$17	\$16	\$16	\$15	\$13	\$12	\$10	\$8	\$8
	50% Current	\$40	\$38	\$33	\$32	\$31	\$30	\$29	\$29	\$28	\$27	\$26	\$26	\$24	\$19	\$17	\$13	\$11	\$10
	10yr ave.			\$29		\$25		\$22		\$20	\$19	\$18	\$18	\$17	\$15	\$14	\$11	\$9	\$8
	55% Current	\$44	\$41	\$37	\$35	\$34	\$33	\$32	\$31	\$30	\$30	\$29	\$28	\$27	\$21	\$18	\$14	\$12	\$11
	10yr ave.			\$32		\$28		\$24		\$22	\$21	\$20	\$19	\$18	\$16	\$15	\$12	\$10	\$9
	60% Current	\$48	\$45	\$40	\$38	\$37	\$36	\$35	\$34	\$33	\$33	\$32	\$31	\$29	\$23	\$20	\$15	\$14	\$12
	10yr ave.			\$35		\$31		\$27		\$24	\$23	\$22	\$21	\$20	\$18	\$16	\$13	\$11	\$10
	65% Current	\$53	\$49	\$43	\$41	\$40	\$39	\$38	\$37	\$36	\$35	\$34	\$33	\$31	\$25	\$21	\$16	\$15	\$13
	10yr ave.			\$38		\$33		\$29		\$26	\$25	\$24	\$23	\$22	\$19	\$18	\$14	\$12	\$11
	70% Current	\$57	\$53	\$47	\$44	\$43	\$42	\$41	\$40	\$39	\$38	\$37	\$36	\$34	\$27	\$23	\$18	\$16	\$14
	10yr ave.			\$41		\$36		\$31		\$28	\$26	\$26	\$25	\$23	\$21	\$19	\$15	\$13	\$12
	75% Current	\$61	\$56	\$50	\$47	\$46	\$45	\$44	\$43	\$42	\$41	\$40	\$38	\$36	\$29	\$25	\$19	\$17	\$15
	10yr ave.			\$44		\$38		\$33		\$30	\$28	\$27	\$27	\$25	\$22	\$20	\$16	\$14	\$13
	80% Current	\$65	\$60	\$53	\$51	\$49	\$48	\$47	\$46	\$44	\$44	\$42	\$41	\$39	\$31	\$26	\$20	\$18	\$16
	10yr ave.			\$46		\$41		\$36		\$31	\$30	\$29	\$28	\$27	\$24	\$22	\$17	\$15	\$13
	85% Current	\$69	\$64	\$57	\$54	\$53	\$51	\$50	\$48	\$47	\$46	\$45	\$43	\$41	\$33	\$28	\$21	\$19	\$17
	10yr ave.			\$49		\$43		\$38		\$33	\$32	\$31	\$30	\$28	\$25	\$23	\$18	\$16	\$14

The above shows estimated returns per head for skirted fleece wool. These figures do not take into account the value of skirtings and oddments and do not take into account discounts that may apply for faults under individual circumstances. These figures are based on a market index of 100% and should be used as a guide only. Returns over \$30 / head for fleece wool are highlighted.

Source: Australian Wool Exchange, Australian Wool Innovation, Sydney Futures Exchange, x-rates.com

Disclaimer: While all due care has been taken in the preparation of this document, no warranty is made as to its accuracy, reliability or completeness. To the extent permitted by law neither Jemalong or their sources including subsidiaries and staff, accept liability to any person for loss or damage arising from the use of this information.





Table 19: Returns pr head for skirted fleece wool.

Skirted FLC Weight		Micron																	
3 Kg		16	16.5	17	17.5	18	18.5	19	19.5	20	21	22	23	24	25	26	28	30	32
Yield (Sch Dry)	25% Current	\$15	\$14	\$13	\$12	\$12	\$11	\$11	\$11	\$10	\$10	\$10	\$10	\$9	\$7	\$6	\$5	\$4	\$4
	10yr ave.			\$11		\$10		\$8		\$7	\$7	\$7	\$7	\$6	\$6	\$5	\$4	\$3	\$3
	30% Current	\$18	\$17	\$15	\$14	\$14	\$13	\$13	\$13	\$12	\$12	\$12	\$11	\$11	\$9	\$7	\$6	\$5	\$5
	10yr ave.			\$13		\$11		\$10		\$9	\$8	\$8	\$8	\$8	\$7	\$6	\$5	\$4	\$4
	35% Current	\$21	\$20	\$18	\$17	\$16	\$16	\$15	\$15	\$15	\$14	\$14	\$13	\$13	\$10	\$9	\$7	\$6	\$5
	10yr ave.			\$15		\$13		\$12		\$10	\$10	\$10	\$9	\$9	\$8	\$7	\$6	\$5	\$4
	40% Current	\$24	\$23	\$20	\$19	\$19	\$18	\$18	\$17	\$17	\$16	\$16	\$15	\$15	\$12	\$10	\$8	\$7	\$6
	10yr ave.			\$17		\$15		\$13		\$12	\$11	\$11	\$11	\$10	\$9	\$8	\$6	\$6	\$5
	45% Current	\$27	\$25	\$23	\$21	\$21	\$20	\$20	\$19	\$19	\$18	\$18	\$17	\$16	\$13	\$11	\$8	\$8	\$7
	10yr ave.			\$20		\$17		\$15		\$13	\$13	\$12	\$12	\$11	\$10	\$9	\$7	\$6	\$6
	50% Current	\$30	\$28	\$25	\$24	\$23	\$22	\$22	\$21	\$21	\$20	\$20	\$19	\$18	\$15	\$12	\$9	\$8	\$8
	10yr ave.			\$22		\$19		\$17		\$15	\$14	\$14	\$13	\$13	\$11	\$10	\$8	\$7	\$6
	55% Current	\$33	\$31	\$28	\$26	\$25	\$25	\$24	\$24	\$23	\$23	\$22	\$21	\$20	\$16	\$14	\$10	\$9	\$8
	10yr ave.			\$24		\$21		\$18		\$16	\$16	\$15	\$15	\$14	\$12	\$11	\$9	\$8	\$7
	60% Current	\$36	\$34	\$30	\$28	\$28	\$27	\$26	\$26	\$25	\$25	\$24	\$23	\$22	\$17	\$15	\$11	\$10	\$9
	10yr ave.			\$26		\$23		\$20		\$18	\$17	\$16	\$16	\$15	\$13	\$12	\$10	\$8	\$8
	65% Current	\$39	\$37	\$33	\$31	\$30	\$29	\$29	\$28	\$27	\$27	\$26	\$25	\$24	\$19	\$16	\$12	\$11	\$10
	10yr ave.			\$28		\$25		\$22		\$19	\$18	\$18	\$17	\$16	\$14	\$13	\$10	\$9	\$8
	70% Current	\$42	\$39	\$35	\$33	\$32	\$31	\$31	\$30	\$29	\$29	\$28	\$27	\$25	\$20	\$17	\$13	\$12	\$11
	10yr ave.			\$30		\$27		\$23		\$21	\$20	\$19	\$19	\$18	\$16	\$14	\$11	\$10	\$9
	75% Current	\$45	\$42	\$38	\$36	\$35	\$34	\$33	\$32	\$31	\$31	\$30	\$29	\$27	\$22	\$19	\$14	\$13	\$11
	10yr ave.			\$33		\$29		\$25		\$22	\$21	\$21	\$20	\$19	\$17	\$15	\$12	\$10	\$9
	80% Current	\$48	\$45	\$40	\$38	\$37	\$36	\$35	\$34	\$33	\$33	\$32	\$31	\$29	\$23	\$20	\$15	\$14	\$12
	10yr ave.			\$35		\$31		\$27		\$24	\$23	\$22	\$21	\$20	\$18	\$16	\$13	\$11	\$10
	85% Current	\$52	\$48	\$43	\$40	\$39	\$38	\$37	\$36	\$35	\$35	\$34	\$33	\$31	\$25	\$21	\$16	\$14	\$13
	10yr ave.			\$37		\$32		\$28		\$25	\$24	\$23	\$23	\$21	\$19	\$17	\$14	\$12	\$11

The above shows estimated returns per head for skirted fleece wool. These figures do not take into account the value of skirtings and oddments and do not take into account discounts that may apply for faults under individual circumstances. These figures are based on a market index of 100% and should be used as a guide only. Returns over \$30 / head for fleece wool are highlighted.

Source: Australian Wool Exchange, Australian Wool Innovation, Sydney Futures Exchange, x-rates.com

Disclaimer: While all due care has been taken in the preparation of this document, no warranty is made as to its accuracy, reliability or completeness. To the extent permitted by law neither Jemalong or their sources including subsidiaries and staff, accept liability to any person for loss or damage arising from the use of this information.





Table 20: Returns pr head for skirted fleece wool.

Skirted FLC Weight		Micron																	
2 Kg		16	16.5	17	17.5	18	18.5	19	19.5	20	21	22	23	24	25	26	28	30	32
Yield (Sch Dry)	25% Current	\$10	\$9	\$8	\$8	\$8	\$7	\$7	\$7	\$7	\$7	\$7	\$6	\$6	\$5	\$4	\$3	\$3	\$3
	10yr ave.			\$7		\$6		\$6		\$5	\$5	\$5	\$4	\$4	\$4	\$3	\$3	\$2	\$2
	30% Current	\$12	\$11	\$10	\$9	\$9	\$9	\$9	\$9	\$8	\$8	\$8	\$8	\$7	\$6	\$5	\$4	\$3	\$3
	10yr ave.			\$9		\$8		\$7		\$6	\$6	\$5	\$5	\$5	\$4	\$4	\$3	\$3	\$3
	35% Current	\$14	\$13	\$12	\$11	\$11	\$10	\$10	\$10	\$10	\$10	\$9	\$9	\$8	\$7	\$6	\$4	\$4	\$4
	10yr ave.			\$10		\$9		\$8		\$7	\$7	\$6	\$6	\$6	\$5	\$5	\$4	\$3	\$3
	40% Current	\$16	\$15	\$13	\$13	\$12	\$12	\$12	\$11	\$11	\$11	\$11	\$10	\$10	\$8	\$7	\$5	\$5	\$4
	10yr ave.			\$12		\$10		\$9		\$8	\$8	\$7	\$7	\$7	\$6	\$5	\$4	\$4	\$3
	45% Current	\$18	\$17	\$15	\$14	\$14	\$13	\$13	\$13	\$12	\$12	\$12	\$11	\$11	\$9	\$7	\$6	\$5	\$5
	10yr ave.			\$13		\$11		\$10		\$9	\$8	\$8	\$8	\$8	\$7	\$6	\$5	\$4	\$4
	50% Current	\$20	\$19	\$17	\$16	\$15	\$15	\$15	\$14	\$14	\$14	\$13	\$13	\$12	\$10	\$8	\$6	\$6	\$5
	10yr ave.			\$15		\$13		\$11		\$10	\$9	\$9	\$9	\$8	\$7	\$7	\$5	\$5	\$4
	55% Current	\$22	\$21	\$18	\$17	\$17	\$16	\$16	\$16	\$15	\$15	\$14	\$14	\$13	\$11	\$9	\$7	\$6	\$6
	10yr ave.			\$16		\$14		\$12		\$11	\$10	\$10	\$10	\$9	\$8	\$7	\$6	\$5	\$5
	60% Current	\$24	\$23	\$20	\$19	\$19	\$18	\$18	\$17	\$17	\$16	\$16	\$15	\$15	\$12	\$10	\$8	\$7	\$6
	10yr ave.			\$17		\$15		\$13		\$12	\$11	\$11	\$11	\$10	\$9	\$8	\$6	\$6	\$5
	65% Current	\$26	\$24	\$22	\$21	\$20	\$19	\$19	\$19	\$18	\$18	\$17	\$17	\$16	\$13	\$11	\$8	\$7	\$7
	10yr ave.			\$19		\$17		\$14		\$13	\$12	\$12	\$12	\$11	\$10	\$9	\$7	\$6	\$5
	70% Current	\$28	\$26	\$23	\$22	\$22	\$21	\$21	\$20	\$19	\$19	\$18	\$18	\$17	\$14	\$12	\$9	\$8	\$7
	10yr ave.			\$20		\$18		\$16		\$14	\$13	\$13	\$12	\$12	\$10	\$9	\$7	\$6	\$6
	75% Current	\$30	\$28	\$25	\$24	\$23	\$22	\$22	\$21	\$21	\$20	\$20	\$19	\$18	\$15	\$12	\$9	\$8	\$8
	10yr ave.			\$22		\$19		\$17		\$15	\$14	\$14	\$13	\$13	\$11	\$10	\$8	\$7	\$6
	80% Current	\$32	\$30	\$27	\$25	\$25	\$24	\$23	\$23	\$22	\$22	\$21	\$20	\$19	\$15	\$13	\$10	\$9	\$8
	10yr ave.			\$23		\$20		\$18		\$16	\$15	\$15	\$14	\$13	\$12	\$11	\$8	\$7	\$7
	85% Current	\$34	\$32	\$28	\$27	\$26	\$25	\$25	\$24	\$24	\$23	\$22	\$22	\$21	\$16	\$14	\$11	\$10	\$9
	10yr ave.			\$25		\$22		\$19		\$17	\$16	\$16	\$15	\$14	\$13	\$11	\$9	\$8	\$7

The above shows estimated returns per head for skirted fleece wool. These figures do not take into account the value of skirtings and oddments and do not take into account discounts that may apply for faults under individual circumstances. These figures are based on a market index of 100% and should be used as a guide only. Returns over \$30 / head for fleece wool are highlighted.

Source: Australian Wool Exchange, Australian Wool Innovation, Sydney Futures Exchange, x-rates.com

Disclaimer: While all due care has been taken in the preparation of this document, no warranty is made as to its accuracy, reliability or completeness. To the extent permitted by law neither Jemalong or their sources including subsidiaries and staff, accept liability to any person for loss or damage arising from the use of this information.



# JEMALONG WOOL BULLETIN

(week ending 8/03/2012)

**Table 1: Northern Region Micron Price Guides**

CURRENT MARKET				12 MONTH COMPARISONS								3 YEAR COMPARISONS						Percentile	10 YEAR COMPARISONS						Percentile
Mic. Price Guides	8/03/2012 Current Price	1/03/2012 Weekly Change		9/03/2011 This time Last Year	Now compared to Last Year		Now 12 Month Low		Now compared to Low		Now 12 Month High		Now compared to High		Low	High	Average		Now compared to 3yr ave		Low	High	10_year Average	Now compared to 10yr ave	
NRI	1245	-1	-0.1%	1405	-160	-11%	1188	+57	5%	1491	-246	-16%	784	1491	1073	+172	16%	69%	657	1491	930	+315	34%	91%	
16*	2020	-80	-4.0%	2700	-680	-25%	1950	+70	4%	2800	-780	-28%	1385	2800	1952	+68	3%	60%							
16.5*	1880	-55	-2.9%	2620	-740	-28%	1800	+80	4%	2680	-800	-30%	1280	2680	1795	+85	5%	62%							
17*	1670	-60	-3.6%	2530	-860	-34%	1620	+50	3%	2530	-860	-34%	1180	2530	1648	+22	1%	56%	1100	2530	1452	+218	15%	82%	
17.5*	1580	-45	-2.8%	2360	-780	-33%	1530	+50	3%	2360	-780	-33%	1130	2360	1546	+34	2%	60%							
18	1545	-20	-1.3%	2193	-648	-30%	1469	+76	5%	2193	-648	-30%	1060	2193	1456	+89	6%	64%	916	2193	1273	+272	21%	84%	
18.5	1489	-13	-0.9%	1960	-471	-24%	1431	+58	4%	1960	-471	-24%	995	1963	1366	+123	9%	66%							
19	1467	+20	1.4%	1687	-220	-13%	1391	+76	5%	1776	-309	-17%	931	1776	1269	+198	16%	71%	803	1776	1111	+356	32%	92%	
19.5	1425	+16	1.1%	1471	-46	-3%	1344	+81	6%	1670	-245	-15%	842	1670	1177	+248	21%	76%							
20	1386	+22	1.6%	1306	+80	6%	1247	+139	11%	1588	-202	-13%	766	1588	1103	+283	26%	84%	700	1588	984	+402	41%	95%	
21	1364	+30	2.2%	1225	+139	11%	1188	+176	15%	1522	-158	-10%	743	1522	1069	+295	28%	91%	668	1522	943	+421	45%	97%	
22	1318	+5	0.4%	1183	+135	11%	1134	+184	16%	1461	-143	-10%	730	1461	1035	+283	27%	91%	659	1461	915	+403	44%	97%	
23	1277	-8	-0.6%	1141	+136	12%	1048	+229	22%	1347	-70	-5%	716	1347	990	+287	29%	92%	652	1347	886	+391	44%	97%	
24	1209	+3	0.2%	1060	+149	14%	983	+226	23%	1213	-4	0%	700	1207	909	+300	33%	100%	638	1299	836	+373	45%	97%	
25	967	-33	-3.4%	965	+2	0%	870	+97	11%	1048	-81	-8%	576	1048	784	+183	23%	89%	567	1198	742	+225	30%	89%	
26	825	+24	2.9%	858	-33	-4%	739	+86	12%	928	-103	-11%	564	928	696	+129	19%	80%	532	1088	676	+149	22%	79%	
28	625	-2	-0.3%	705	-80	-11%	596	+29	5%	734	-109	-15%	435	734	542	+83	15%	72%	424	889	531	+94	18%	79%	
30	565	-4	-0.7%	653	-88	-13%	524	+41	8%	670	-105	-16%	378	670	484	+81	17%	71%	344	729	463	+102	22%	80%	
32	503	+1	0.2%	589	-86	-15%	481	+22	5%	638	-135	-21%	326	638	433	+70	16%	69%	297	669	417	+86	21%	79%	
MC	731	+5	0.7%	804	-73	-9%	673	+58	9%	831	-100	-12%	499	831	652	+79	12%	77%	380	831	534	+197	37%	93%	

**Note:**

\* Due to the irregular market quoting for some fine wool categories, figures shown relating to micron categories below 18 micron are an estimate based on the AWEX Premium & Discounts Report & other available information.

\* For any category, where there is insufficient quantity offered to enable AWEX to quote, a quote will be provided based on the best available information.

\* 10 Year data is not available for some micron categories, which may result in blank spaces in the table above.

**Definitions:**

\* A Percentile, is a value on a scale of one hundred that indicates the percent of a distribution that is equal to or below it. In general a percentile between 25% and 75% is considered normal, a percentile below 25% is considered below normal and a percentile above 75% is considered above normal.

Three and ten year percentiles shown in the table above, detail the period of time during the past 3 & 10 years that the market has traded either at or below its current price.

The higher the percentile, the stronger the market.

**Source:** Australian Wool Exchange, Australian Wool Innovation, Sydney Futures Exchange, x-rates.com

**Disclaimer:** While all due care has been taken in the preparation of this document, no warranty is made as to its accuracy, reliability or completeness. To the extent permitted by law neither Jemalong or their sources including subsidiaries and staff, accept liability to any person for loss or damage arising from the use of this information.



## MARKET COMMENTARY

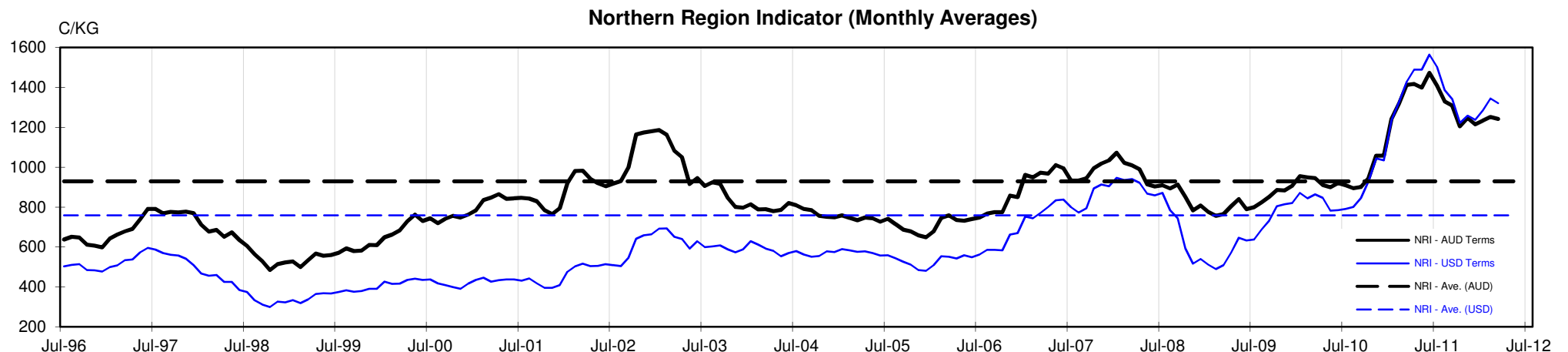
One Australian Dollar = \$ 1.06 US, as of 8/03/2012

### NORTHERN REGION –Sale Week 36/11 (51,431 bales offered nationally)

Tuesdays market had the finer microns lose 20-30 cents (off their MPG's) while the medium to broader microns gained up to 14 cents. This was in contrast to the South, where the market was generally 5-10 cents cheaper across the board. The difference in movement between the two centres can be attributed to a correction in the North, after last weeks Newcastle offering. Merino skirtings were generally 20 cents cheaper with the lower Vm types most affected, on an offering consisting predominantly of 19.5 micron and finer. All merino oddments were strong, with locks gaining 15-20 cents, stains also gained 15, while crutchings were part to 5 cents dearer. On an increased volume (after last weeks limited offering) crossbreds remained generally unchanged for 27-30 microns. 8.0% PI

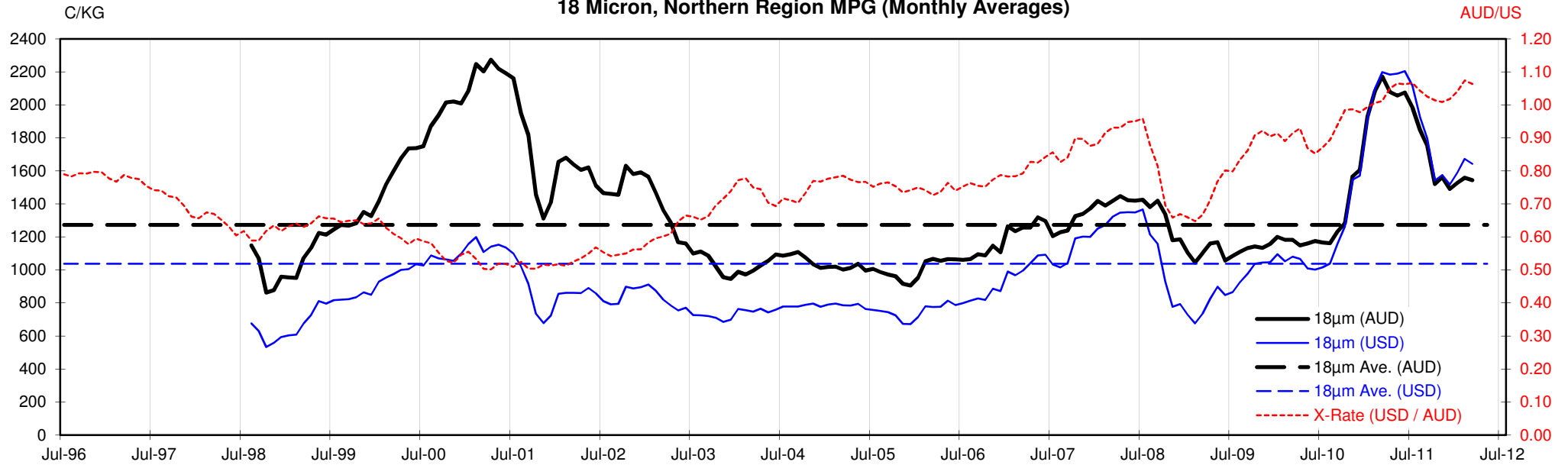
Wednesdays market saw only minor movements in the north & south. In the North, solid support for the better strength lots left 18 to 19 microns in sellers favour, while 20 to 21 microns eased as buyers discounted the higher mid break lots. Higher Vm skirtings (>5%) struggled throughout the day to close generally 5-10 cents cheaper, with buyers discounting the off types containing cot & colour. In the oddments, locks & crutchings remained unchanged, while broader micron stains were 20 cents cheaper when compared to the last Sydney sale on 22nd Feb. The crossbred offering consisted predominantly of 27 to 30 microns, which closed just off the pace by 3-5 cents. 13.4% PI.

Thursdays market was one of the lowest volume merino fleece offerings this season forcing the market up across most micron categories. 18.5 to 21 microns gained 15 to 20 cents with 21 microns the most affected, on the back of a limited selection. There were few fine lots on offer, however those that were offered also showed signs of improvement. The skirting market was generally unchanged on a small offering as were locks, crutchings & stains. 27 to 30 micron crossbred were unquotable on a limited offering of predominantly "D" certs. 7.6% PI

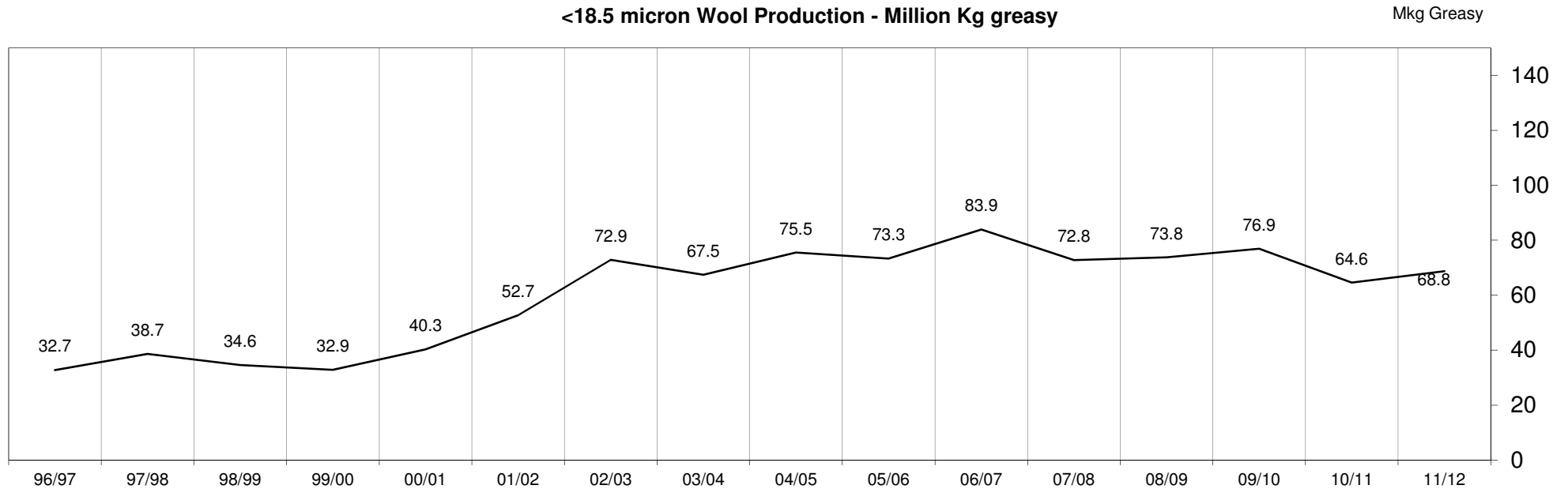


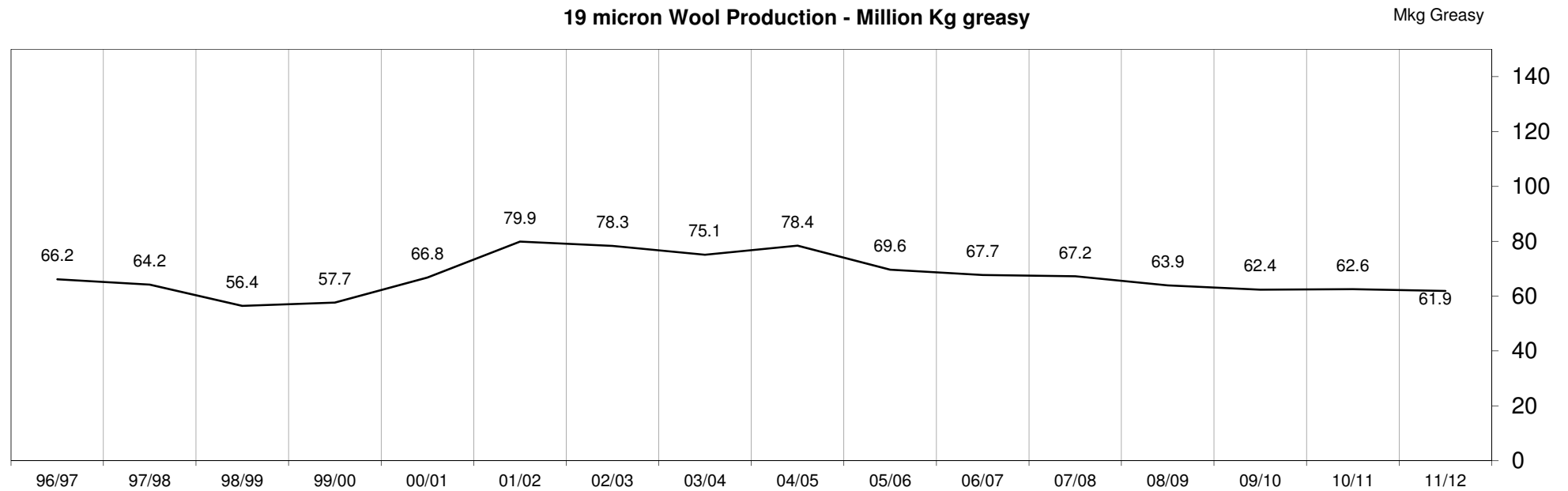
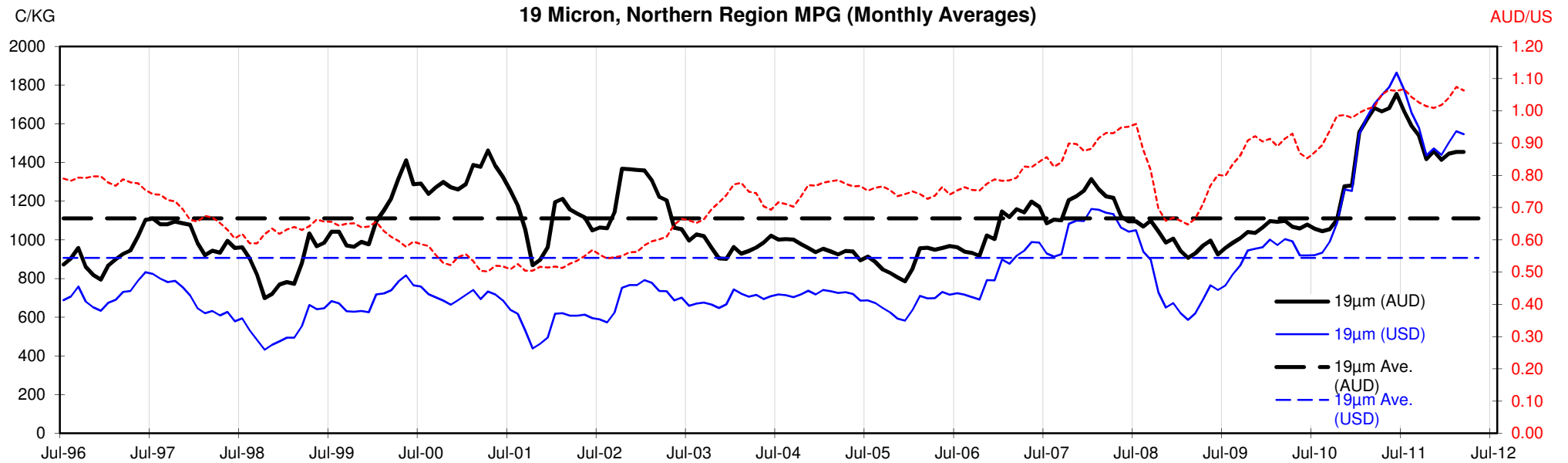


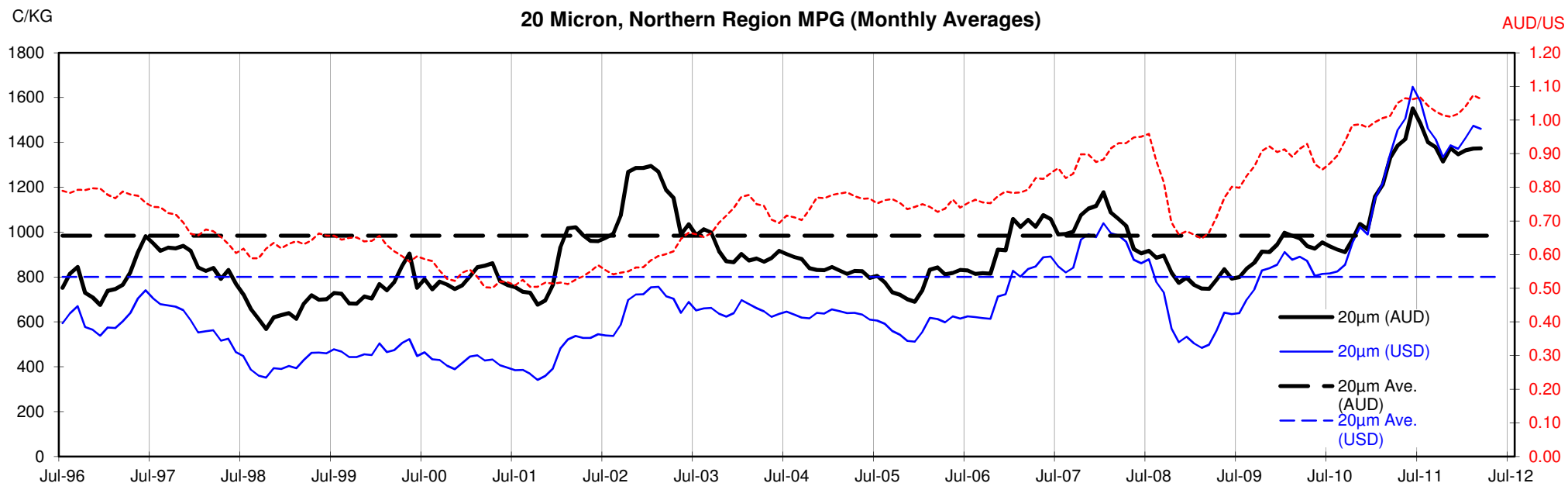
18 Micron, Northern Region MPG (Monthly Averages)

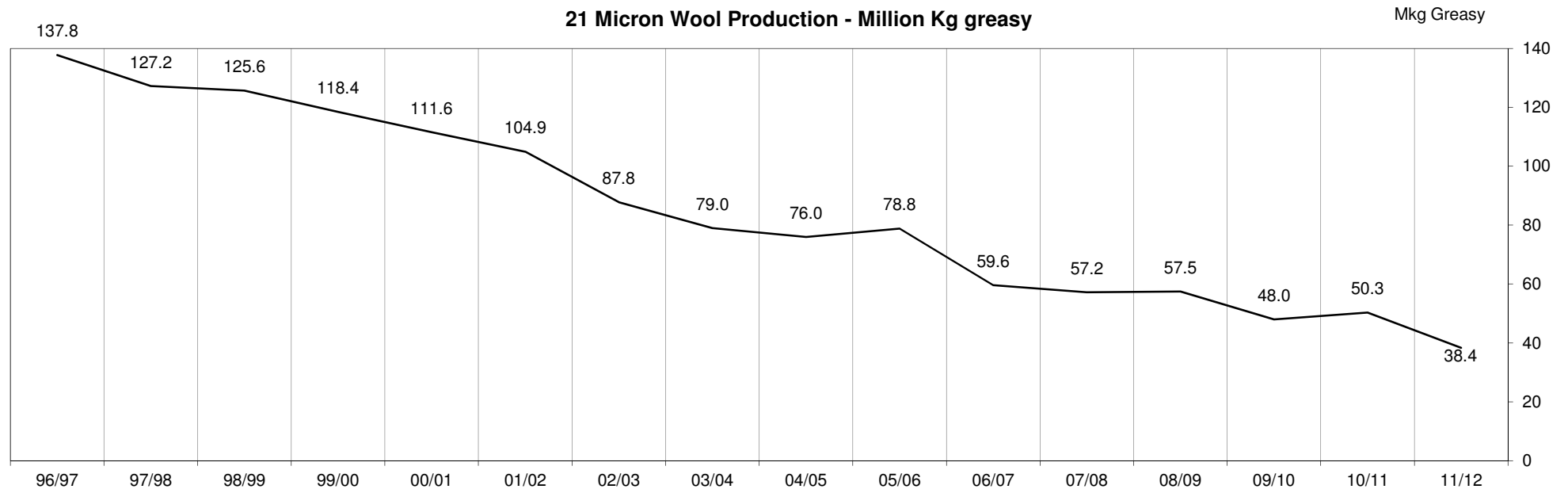
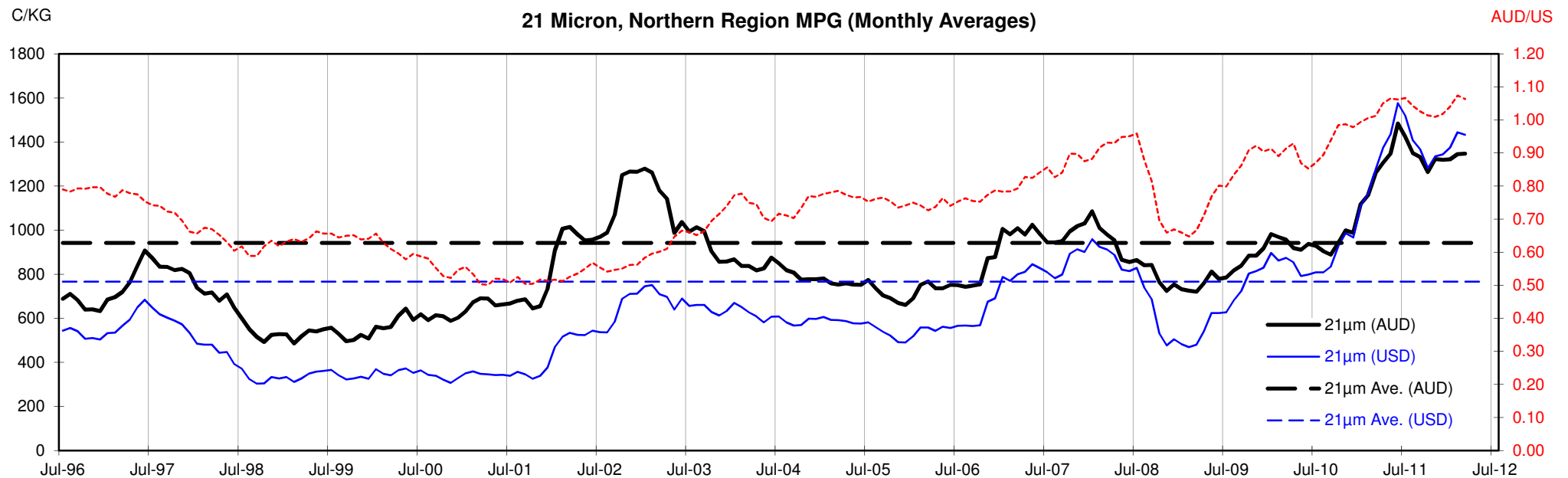


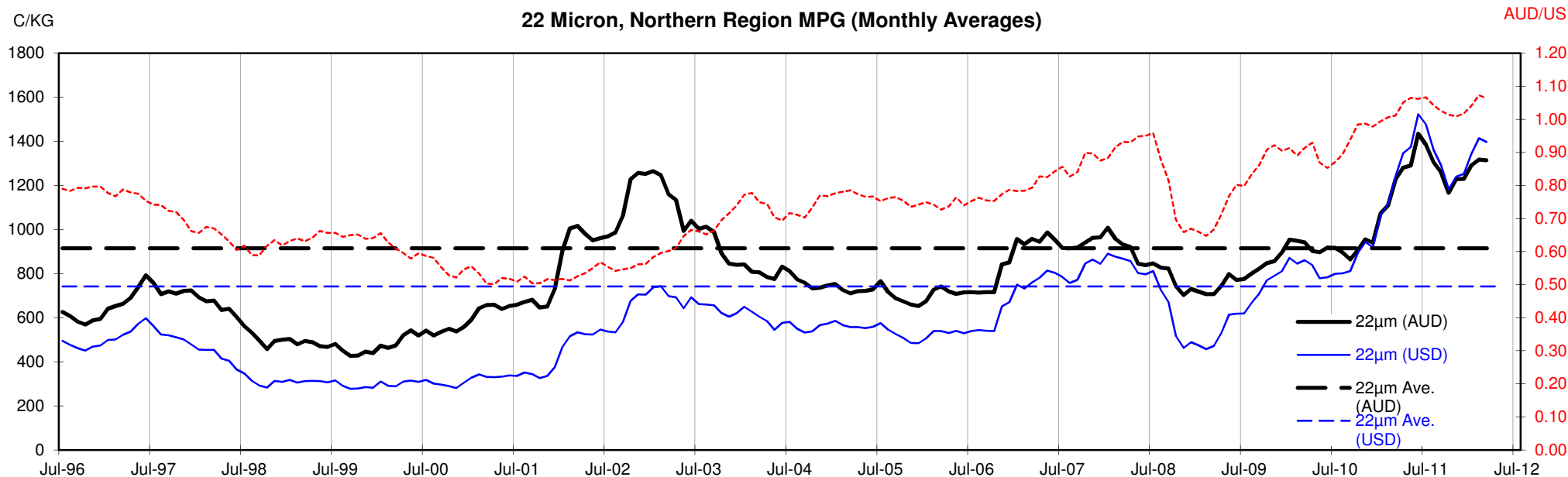
<18.5 micron Wool Production - Million Kg greasy



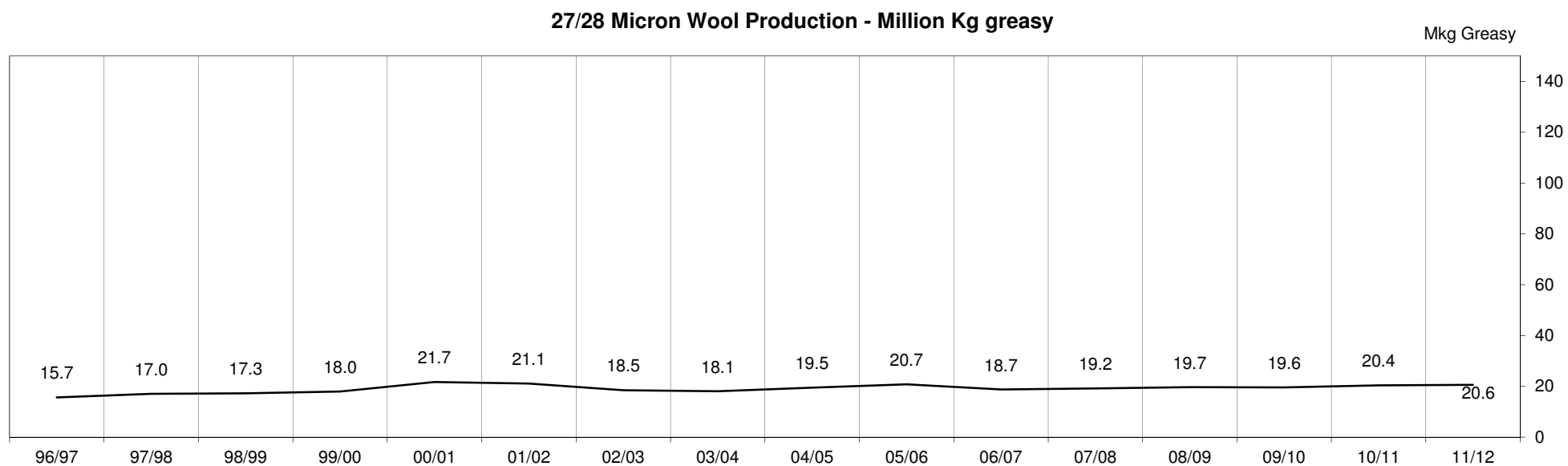
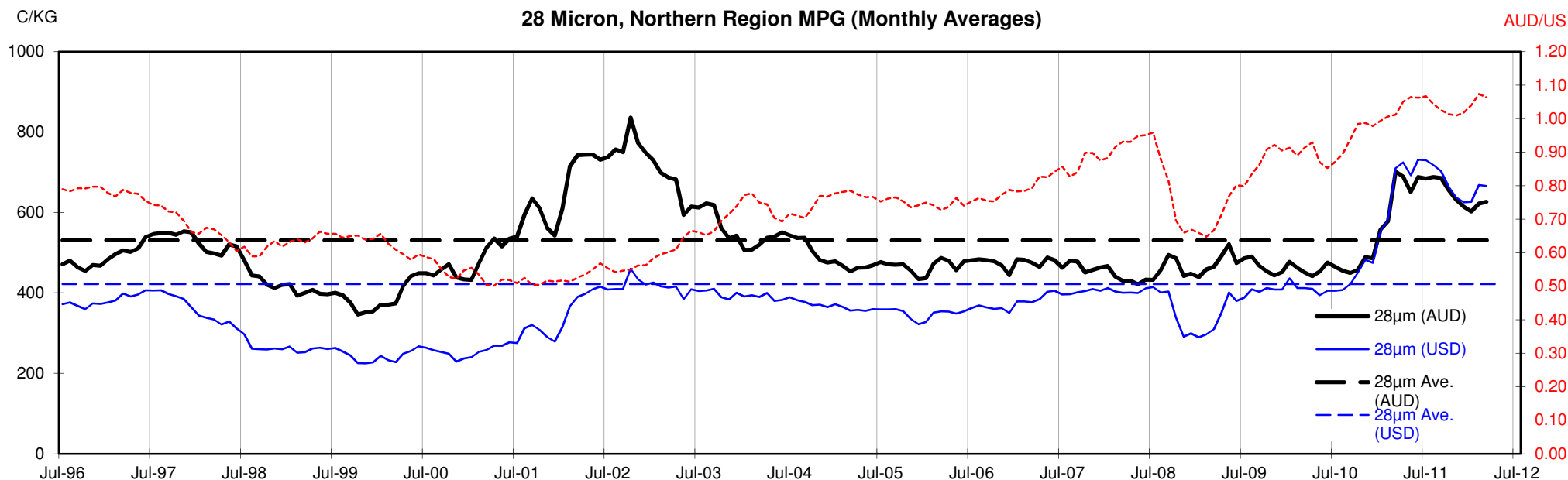












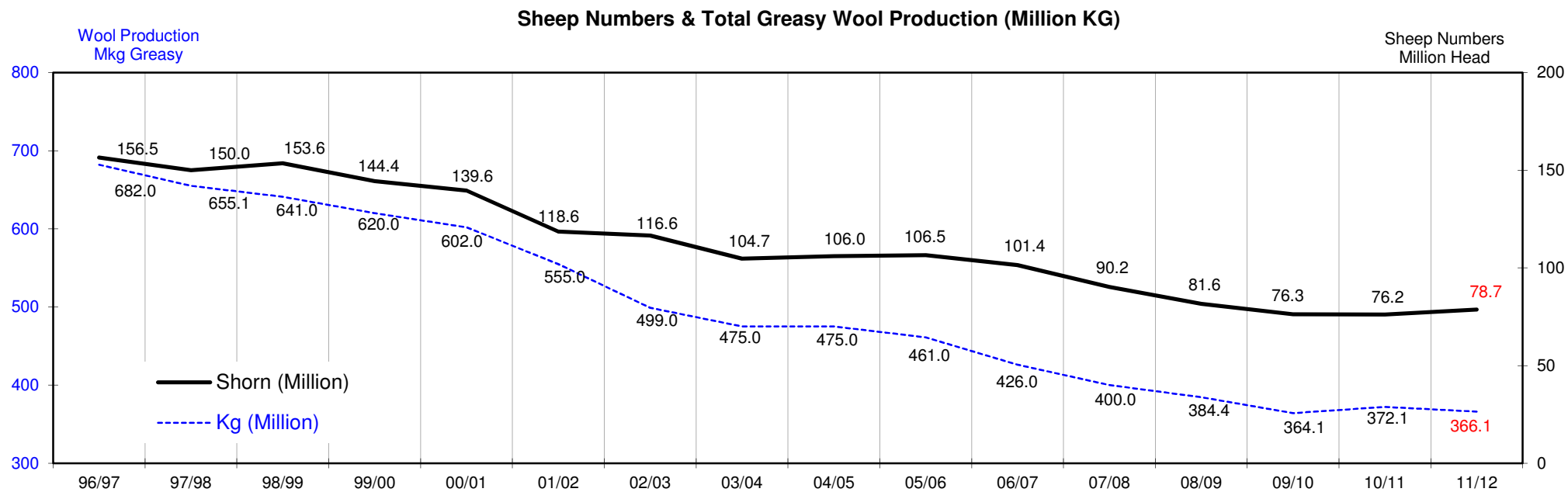
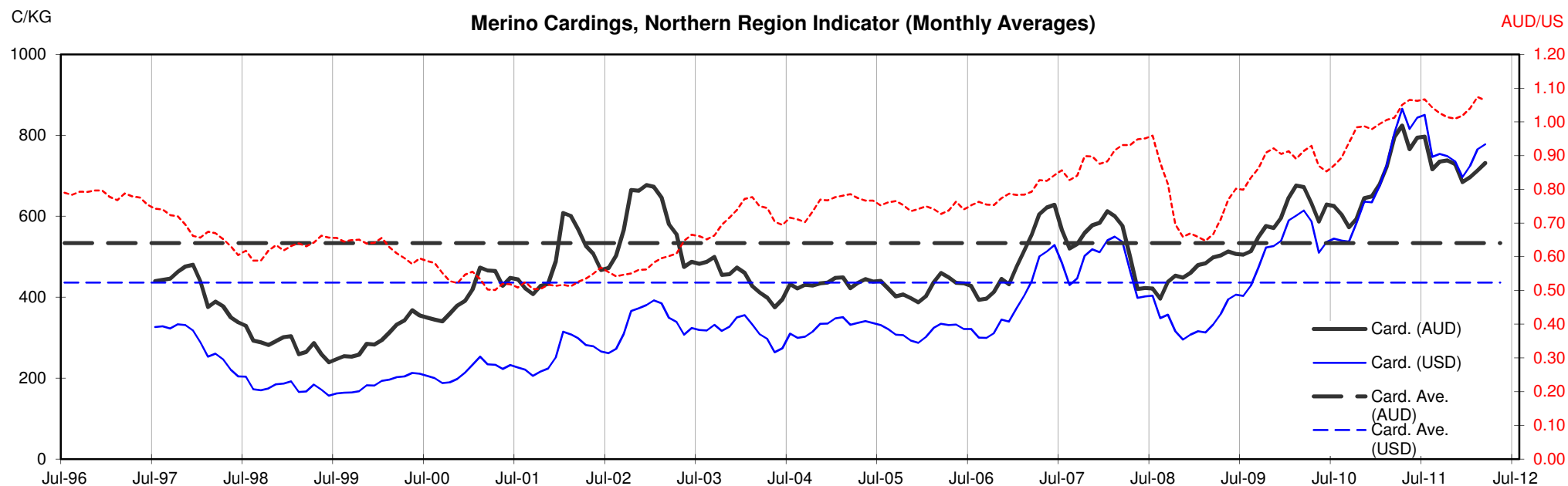




Table 13: Returns pr head for skirted fleece wool.

Skirted FLC Weight		Micron																	
9 Kg		16	16.5	17	17.5	18	18.5	19	19.5	20	21	22	23	24	25	26	28	30	32
Yield (Sch Dry)	25% Current	\$45	\$42	\$38	\$36	\$35	\$34	\$33	\$32	\$31	\$31	\$30	\$29	\$27	\$22	\$19	\$14	\$13	\$11
	10yr ave.			\$33		\$29		\$25		\$22	\$21	\$21	\$20	\$19	\$17	\$15	\$12	\$10	\$9
	30% Current	\$55	\$51	\$45	\$43	\$42	\$40	\$40	\$38	\$37	\$37	\$36	\$34	\$33	\$26	\$22	\$17	\$15	\$14
	10yr ave.			\$39		\$34		\$30		\$27	\$25	\$25	\$24	\$23	\$20	\$18	\$14	\$13	\$11
	35% Current	\$64	\$59	\$53	\$50	\$49	\$47	\$46	\$45	\$44	\$43	\$42	\$40	\$38	\$30	\$26	\$20	\$18	\$16
	10yr ave.			\$46		\$40		\$35		\$31	\$30	\$29	\$28	\$26	\$23	\$21	\$17	\$15	\$13
	40% Current	\$73	\$68	\$60	\$57	\$56	\$54	\$53	\$51	\$50	\$49	\$47	\$46	\$44	\$35	\$30	\$23	\$20	\$18
	10yr ave.			\$52		\$46		\$40		\$35	\$34	\$33	\$32	\$30	\$27	\$24	\$19	\$17	\$15
	45% Current	\$82	\$76	\$68	\$64	\$63	\$60	\$59	\$58	\$56	\$55	\$53	\$52	\$49	\$39	\$33	\$25	\$23	\$20
	10yr ave.			\$59		\$52		\$45		\$40	\$38	\$37	\$36	\$34	\$30	\$27	\$22	\$19	\$17
	50% Current	\$91	\$85	\$75	\$71	\$70	\$67	\$66	\$64	\$62	\$61	\$59	\$57	\$54	\$44	\$37	\$28	\$25	\$23
	10yr ave.			\$65		\$57		\$50		\$44	\$42	\$41	\$40	\$38	\$33	\$30	\$24	\$21	\$19
	55% Current	\$100	\$93	\$83	\$78	\$76	\$74	\$73	\$71	\$69	\$68	\$65	\$63	\$60	\$48	\$41	\$31	\$28	\$25
	10yr ave.			\$72		\$63		\$55		\$49	\$47	\$45	\$44	\$41	\$37	\$33	\$26	\$23	\$21
	60% Current	\$109	\$102	\$90	\$85	\$83	\$80	\$79	\$77	\$75	\$74	\$71	\$69	\$65	\$52	\$45	\$34	\$31	\$27
	10yr ave.			\$78		\$69		\$60		\$53	\$51	\$49	\$48	\$45	\$40	\$37	\$29	\$25	\$23
	65% Current	\$118	\$110	\$98	\$92	\$90	\$87	\$86	\$83	\$81	\$80	\$77	\$75	\$71	\$57	\$48	\$37	\$33	\$29
	10yr ave.			\$85		\$74		\$65		\$58	\$55	\$54	\$52	\$49	\$43	\$40	\$31	\$27	\$24
	70% Current	\$127	\$118	\$105	\$100	\$97	\$94	\$92	\$90	\$87	\$86	\$83	\$80	\$76	\$61	\$52	\$39	\$36	\$32
	10yr ave.			\$91		\$80		\$70		\$62	\$59	\$58	\$56	\$53	\$47	\$43	\$33	\$29	\$26
	75% Current	\$136	\$127	\$113	\$107	\$104	\$101	\$99	\$96	\$94	\$92	\$89	\$86	\$82	\$65	\$56	\$42	\$38	\$34
	10yr ave.			\$98		\$86		\$75		\$66	\$64	\$62	\$60	\$56	\$50	\$46	\$36	\$31	\$28
	80% Current	\$145	\$135	\$120	\$114	\$111	\$107	\$106	\$103	\$100	\$98	\$95	\$92	\$87	\$70	\$59	\$45	\$41	\$36
	10yr ave.			\$105		\$92		\$80		\$71	\$68	\$66	\$64	\$60	\$53	\$49	\$38	\$33	\$30
	85% Current	\$155	\$144	\$128	\$121	\$118	\$114	\$112	\$109	\$106	\$104	\$101	\$98	\$92	\$74	\$63	\$48	\$43	\$38
	10yr ave.			\$111		\$97		\$85		\$75	\$72	\$70	\$68	\$64	\$57	\$52	\$41	\$35	\$32

The above shows estimated returns per head for skirted fleece wool. These figures do not take into account the value of skirtings and oddments and do not take into account discounts that may apply for faults under individual circumstances. These figures are based on a market index of 100% and should be used as a guide only. Returns over \$30 / head for fleece wool are highlighted.

Source: Australian Wool Exchange, Australian Wool Innovation, Sydney Futures Exchange, x-rates.com

Disclaimer: While all due care has been taken in the preparation of this document, no warranty is made as to its accuracy, reliability or completeness. To the extent permitted by law neither Jemalong or their sources including subsidiaries and staff, accept liability to any person for loss or damage arising from the use of this information.



Table 14: Returns pr head for skirted fleece wool.

Skirted FLC Weight		Micron																	
8 Kg		16	16.5	17	17.5	18	18.5	19	19.5	20	21	22	23	24	25	26	28	30	32
Yield (Sch Dry)	25% Current	\$40	\$38	\$33	\$32	\$31	\$30	\$29	\$29	\$28	\$27	\$26	\$26	\$24	\$19	\$17	\$13	\$11	\$10
	10yr ave.			\$29		\$25		\$22		\$20	\$19	\$18	\$18	\$17	\$15	\$14	\$11	\$9	\$8
	30% Current	\$48	\$45	\$40	\$38	\$37	\$36	\$35	\$34	\$33	\$33	\$32	\$31	\$29	\$23	\$20	\$15	\$14	\$12
	10yr ave.			\$35		\$31		\$27		\$24	\$23	\$22	\$21	\$20	\$18	\$16	\$13	\$11	\$10
	35% Current	\$57	\$53	\$47	\$44	\$43	\$42	\$41	\$40	\$39	\$38	\$37	\$36	\$34	\$27	\$23	\$18	\$16	\$14
	10yr ave.			\$41		\$36		\$31		\$28	\$26	\$26	\$25	\$23	\$21	\$19	\$15	\$13	\$12
	40% Current	\$65	\$60	\$53	\$51	\$49	\$48	\$47	\$46	\$44	\$44	\$42	\$41	\$39	\$31	\$26	\$20	\$18	\$16
	10yr ave.			\$46		\$41		\$36		\$31	\$30	\$29	\$28	\$27	\$24	\$22	\$17	\$15	\$13
	45% Current	\$73	\$68	\$60	\$57	\$56	\$54	\$53	\$51	\$50	\$49	\$47	\$46	\$44	\$35	\$30	\$23	\$20	\$18
	10yr ave.			\$52		\$46		\$40		\$35	\$34	\$33	\$32	\$30	\$27	\$24	\$19	\$17	\$15
	50% Current	\$81	\$75	\$67	\$63	\$62	\$60	\$59	\$57	\$55	\$55	\$53	\$51	\$48	\$39	\$33	\$25	\$23	\$20
	10yr ave.			\$58		\$51		\$44		\$39	\$38	\$37	\$35	\$33	\$30	\$27	\$21	\$19	\$17
	55% Current	\$89	\$83	\$73	\$70	\$68	\$66	\$65	\$63	\$61	\$60	\$58	\$56	\$53	\$43	\$36	\$28	\$25	\$22
	10yr ave.			\$64		\$56		\$49		\$43	\$41	\$40	\$39	\$37	\$33	\$30	\$23	\$20	\$18
	60% Current	\$97	\$90	\$80	\$76	\$74	\$71	\$70	\$68	\$67	\$65	\$63	\$61	\$58	\$46	\$40	\$30	\$27	\$24
	10yr ave.			\$70		\$61		\$53		\$47	\$45	\$44	\$43	\$40	\$36	\$32	\$25	\$22	\$20
	65% Current	\$105	\$98	\$87	\$82	\$80	\$77	\$76	\$74	\$72	\$71	\$69	\$66	\$63	\$50	\$43	\$33	\$29	\$26
	10yr ave.			\$76		\$66		\$58		\$51	\$49	\$48	\$46	\$43	\$39	\$35	\$28	\$24	\$22
	70% Current	\$113	\$105	\$94	\$88	\$87	\$83	\$82	\$80	\$78	\$76	\$74	\$72	\$68	\$54	\$46	\$35	\$32	\$28
	10yr ave.			\$81		\$71		\$62		\$55	\$53	\$51	\$50	\$47	\$42	\$38	\$30	\$26	\$23
	75% Current	\$121	\$113	\$100	\$95	\$93	\$89	\$88	\$86	\$83	\$82	\$79	\$77	\$73	\$58	\$50	\$38	\$34	\$30
	10yr ave.			\$87		\$76		\$67		\$59	\$57	\$55	\$53	\$50	\$45	\$41	\$32	\$28	\$25
	80% Current	\$129	\$120	\$107	\$101	\$99	\$95	\$94	\$91	\$89	\$87	\$84	\$82	\$77	\$62	\$53	\$40	\$36	\$32
	10yr ave.			\$93		\$81		\$71		\$63	\$60	\$59	\$57	\$54	\$47	\$43	\$34	\$30	\$27
	85% Current	\$137	\$128	\$114	\$107	\$105	\$101	\$100	\$97	\$94	\$93	\$90	\$87	\$82	\$66	\$56	\$43	\$38	\$34
	10yr ave.			\$99		\$87		\$76		\$67	\$64	\$62	\$60	\$57	\$50	\$46	\$36	\$31	\$28

The above shows estimated returns per head for skirted fleece wool. These figures do not take into account the value of skirtings and oddments and do not take into account discounts that may apply for faults under individual circumstances. These figures are based on a market index of 100% and should be used as a guide only. Returns over \$30 / head for fleece wool are highlighted.

Source: Australian Wool Exchange, Australian Wool Innovation, Sydney Futures Exchange, x-rates.com

Disclaimer: While all due care has been taken in the preparation of this document, no warranty is made as to its accuracy, reliability or completeness. To the extent permitted by law neither Jemalong or their sources including subsidiaries and staff, accept liability to any person for loss or damage arising from the use of this information.



Table 15: Returns pr head for skirted fleece wool.

Skirted FLC Weight		Micron																	
7 Kg		16	16.5	17	17.5	18	18.5	19	19.5	20	21	22	23	24	25	26	28	30	32
Yield (Sch Dry)	25% Current	\$35	\$33	\$29	\$28	\$27	\$26	\$26	\$25	\$24	\$24	\$23	\$22	\$21	\$17	\$14	\$11	\$10	\$9
	10yr ave.			\$25		\$22		\$19		\$17	\$17	\$16	\$16	\$15	\$13	\$12	\$9	\$8	\$7
	30% Current	\$42	\$39	\$35	\$33	\$32	\$31	\$31	\$30	\$29	\$29	\$28	\$27	\$25	\$20	\$17	\$13	\$12	\$11
	10yr ave.			\$30		\$27		\$23		\$21	\$20	\$19	\$19	\$18	\$16	\$14	\$11	\$10	\$9
	35% Current	\$49	\$46	\$41	\$39	\$38	\$36	\$36	\$35	\$34	\$33	\$32	\$31	\$30	\$24	\$20	\$15	\$14	\$12
	10yr ave.			\$36		\$31		\$27		\$24	\$23	\$22	\$22	\$20	\$18	\$17	\$13	\$11	\$10
	40% Current	\$57	\$53	\$47	\$44	\$43	\$42	\$41	\$40	\$39	\$38	\$37	\$36	\$34	\$27	\$23	\$18	\$16	\$14
	10yr ave.			\$41		\$36		\$31		\$28	\$26	\$26	\$25	\$23	\$21	\$19	\$15	\$13	\$12
	45% Current	\$64	\$59	\$53	\$50	\$49	\$47	\$46	\$45	\$44	\$43	\$42	\$40	\$38	\$30	\$26	\$20	\$18	\$16
	10yr ave.			\$46		\$40		\$35		\$31	\$30	\$29	\$28	\$26	\$23	\$21	\$17	\$15	\$13
	50% Current	\$71	\$66	\$58	\$55	\$54	\$52	\$51	\$50	\$49	\$48	\$46	\$45	\$42	\$34	\$29	\$22	\$20	\$18
	10yr ave.			\$51		\$45		\$39		\$34	\$33	\$32	\$31	\$29	\$26	\$24	\$19	\$16	\$15
	55% Current	\$78	\$72	\$64	\$61	\$59	\$57	\$56	\$55	\$53	\$53	\$51	\$49	\$47	\$37	\$32	\$24	\$22	\$19
	10yr ave.			\$56		\$49		\$43		\$38	\$36	\$35	\$34	\$32	\$29	\$26	\$20	\$18	\$16
	60% Current	\$85	\$79	\$70	\$66	\$65	\$63	\$62	\$60	\$58	\$57	\$55	\$54	\$51	\$41	\$35	\$26	\$24	\$21
	10yr ave.			\$61		\$53		\$47		\$41	\$40	\$38	\$37	\$35	\$31	\$28	\$22	\$19	\$18
	65% Current	\$92	\$86	\$76	\$72	\$70	\$68	\$67	\$65	\$63	\$62	\$60	\$58	\$55	\$44	\$38	\$28	\$26	\$23
	10yr ave.			\$66		\$58		\$51		\$45	\$43	\$42	\$40	\$38	\$34	\$31	\$24	\$21	\$19
	70% Current	\$99	\$92	\$82	\$77	\$76	\$73	\$72	\$70	\$68	\$67	\$65	\$63	\$59	\$47	\$40	\$31	\$28	\$25
	10yr ave.			\$71		\$62		\$54		\$48	\$46	\$45	\$43	\$41	\$36	\$33	\$26	\$23	\$20
	75% Current	\$106	\$99	\$88	\$83	\$81	\$78	\$77	\$75	\$73	\$72	\$69	\$67	\$63	\$51	\$43	\$33	\$30	\$26
	10yr ave.			\$76		\$67		\$58		\$52	\$50	\$48	\$47	\$44	\$39	\$35	\$28	\$24	\$22
	80% Current	\$113	\$105	\$94	\$88	\$87	\$83	\$82	\$80	\$78	\$76	\$74	\$72	\$68	\$54	\$46	\$35	\$32	\$28
	10yr ave.			\$81		\$71		\$62		\$55	\$53	\$51	\$50	\$47	\$42	\$38	\$30	\$26	\$23
	85% Current	\$120	\$112	\$99	\$94	\$92	\$89	\$87	\$85	\$82	\$81	\$78	\$76	\$72	\$58	\$49	\$37	\$34	\$30
	10yr ave.			\$86		\$76		\$66		\$59	\$56	\$54	\$53	\$50	\$44	\$40	\$32	\$28	\$25

The above shows estimated returns per head for skirted fleece wool. These figures do not take into account the value of skirtings and oddments and do not take into account discounts that may apply for faults under individual circumstances. These figures are based on a market index of 100% and should be used as a guide only. Returns over \$30 / head for fleece wool are highlighted.

Source: Australian Wool Exchange, Australian Wool Innovation, Sydney Futures Exchange, x-rates.com

Disclaimer: While all due care has been taken in the preparation of this document, no warranty is made as to its accuracy, reliability or completeness. To the extent permitted by law neither Jemalong or their sources including subsidiaries and staff, accept liability to any person for loss or damage arising from the use of this information.



Table 16: Returns pr head for skirted fleece wool.

Skirted FLC Weight		Micron																	
6 Kg		16	16.5	17	17.5	18	18.5	19	19.5	20	21	22	23	24	25	26	28	30	32
Yield (Sch Dry)	25% Current	\$30	\$28	\$25	\$24	\$23	\$22	\$22	\$21	\$21	\$20	\$20	\$19	\$18	\$15	\$12	\$9	\$8	\$8
	10yr ave.			\$22		\$19		\$17		\$15	\$14	\$14	\$13	\$13	\$11	\$10	\$8	\$7	\$6
	30% Current	\$36	\$34	\$30	\$28	\$28	\$27	\$26	\$26	\$25	\$25	\$24	\$23	\$22	\$17	\$15	\$11	\$10	\$9
	10yr ave.			\$26		\$23		\$20		\$18	\$17	\$16	\$16	\$15	\$13	\$12	\$10	\$8	\$8
	35% Current	\$42	\$39	\$35	\$33	\$32	\$31	\$31	\$30	\$29	\$29	\$28	\$27	\$25	\$20	\$17	\$13	\$12	\$11
	10yr ave.			\$30		\$27		\$23		\$21	\$20	\$19	\$19	\$18	\$16	\$14	\$11	\$10	\$9
	40% Current	\$48	\$45	\$40	\$38	\$37	\$36	\$35	\$34	\$33	\$33	\$32	\$31	\$29	\$23	\$20	\$15	\$14	\$12
	10yr ave.			\$35		\$31		\$27		\$24	\$23	\$22	\$21	\$20	\$18	\$16	\$13	\$11	\$10
	45% Current	\$55	\$51	\$45	\$43	\$42	\$40	\$40	\$38	\$37	\$37	\$36	\$34	\$33	\$26	\$22	\$17	\$15	\$14
	10yr ave.			\$39		\$34		\$30		\$27	\$25	\$25	\$24	\$23	\$20	\$18	\$14	\$13	\$11
	50% Current	\$61	\$56	\$50	\$47	\$46	\$45	\$44	\$43	\$42	\$41	\$40	\$38	\$36	\$29	\$25	\$19	\$17	\$15
	10yr ave.			\$44		\$38		\$33		\$30	\$28	\$27	\$27	\$25	\$22	\$20	\$16	\$14	\$13
	55% Current	\$67	\$62	\$55	\$52	\$51	\$49	\$48	\$47	\$46	\$45	\$43	\$42	\$40	\$32	\$27	\$21	\$19	\$17
	10yr ave.			\$48		\$42		\$37		\$32	\$31	\$30	\$29	\$28	\$24	\$22	\$18	\$15	\$14
	60% Current	\$73	\$68	\$60	\$57	\$56	\$54	\$53	\$51	\$50	\$49	\$47	\$46	\$44	\$35	\$30	\$23	\$20	\$18
	10yr ave.			\$52		\$46		\$40		\$35	\$34	\$33	\$32	\$30	\$27	\$24	\$19	\$17	\$15
	65% Current	\$79	\$73	\$65	\$62	\$60	\$58	\$57	\$56	\$54	\$53	\$51	\$50	\$47	\$38	\$32	\$24	\$22	\$20
	10yr ave.			\$57		\$50		\$43		\$38	\$37	\$36	\$35	\$33	\$29	\$26	\$21	\$18	\$16
	70% Current	\$85	\$79	\$70	\$66	\$65	\$63	\$62	\$60	\$58	\$57	\$55	\$54	\$51	\$41	\$35	\$26	\$24	\$21
	10yr ave.			\$61		\$53		\$47		\$41	\$40	\$38	\$37	\$35	\$31	\$28	\$22	\$19	\$18
	75% Current	\$91	\$85	\$75	\$71	\$70	\$67	\$66	\$64	\$62	\$61	\$59	\$57	\$54	\$44	\$37	\$28	\$25	\$23
	10yr ave.			\$65		\$57		\$50		\$44	\$42	\$41	\$40	\$38	\$33	\$30	\$24	\$21	\$19
	80% Current	\$97	\$90	\$80	\$76	\$74	\$71	\$70	\$68	\$67	\$65	\$63	\$61	\$58	\$46	\$40	\$30	\$27	\$24
	10yr ave.			\$70		\$61		\$53		\$47	\$45	\$44	\$43	\$40	\$36	\$32	\$25	\$22	\$20
	85% Current	\$103	\$96	\$85	\$81	\$79	\$76	\$75	\$73	\$71	\$70	\$67	\$65	\$62	\$49	\$42	\$32	\$29	\$26
	10yr ave.			\$74		\$65		\$57		\$50	\$48	\$47	\$45	\$43	\$38	\$34	\$27	\$24	\$21

The above shows estimated returns per head for skirted fleece wool. These figures do not take into account the value of skirtings and oddments and do not take into account discounts that may apply for faults under individual circumstances. These figures are based on a market index of 100% and should be used as a guide only. Returns over \$30 / head for fleece wool are highlighted.

Source: Australian Wool Exchange, Australian Wool Innovation, Sydney Futures Exchange, x-rates.com

Disclaimer: While all due care has been taken in the preparation of this document, no warranty is made as to its accuracy, reliability or completeness. To the extent permitted by law neither Jemalong or their sources including subsidiaries and staff, accept liability to any person for loss or damage arising from the use of this information.



Table 17: Returns pr head for skirted fleece wool.

Skirted FLC Weight		Micron																	
5 Kg		16	16.5	17	17.5	18	18.5	19	19.5	20	21	22	23	24	25	26	28	30	32
Yield (Sch Dry)	25% Current	\$25	\$24	\$21	\$20	\$19	\$19	\$18	\$18	\$17	\$17	\$16	\$16	\$15	\$12	\$10	\$8	\$7	\$6
	10yr ave.			\$18		\$16		\$14		\$12	\$12	\$11	\$11	\$10	\$9	\$8	\$7	\$6	\$5
	30% Current	\$30	\$28	\$25	\$24	\$23	\$22	\$22	\$21	\$21	\$20	\$20	\$19	\$18	\$15	\$12	\$9	\$8	\$8
	10yr ave.			\$22		\$19		\$17		\$15	\$14	\$14	\$13	\$13	\$11	\$10	\$8	\$7	\$6
	35% Current	\$35	\$33	\$29	\$28	\$27	\$26	\$26	\$25	\$24	\$24	\$23	\$22	\$21	\$17	\$14	\$11	\$10	\$9
	10yr ave.			\$25		\$22		\$19		\$17	\$17	\$16	\$16	\$15	\$13	\$12	\$9	\$8	\$7
	40% Current	\$40	\$38	\$33	\$32	\$31	\$30	\$29	\$29	\$28	\$27	\$26	\$26	\$24	\$19	\$17	\$13	\$11	\$10
	10yr ave.			\$29		\$25		\$22		\$20	\$19	\$18	\$18	\$17	\$15	\$14	\$11	\$9	\$8
	45% Current	\$45	\$42	\$38	\$36	\$35	\$34	\$33	\$32	\$31	\$31	\$30	\$29	\$27	\$22	\$19	\$14	\$13	\$11
	10yr ave.			\$33		\$29		\$25		\$22	\$21	\$21	\$20	\$19	\$17	\$15	\$12	\$10	\$9
	50% Current	\$51	\$47	\$42	\$40	\$39	\$37	\$37	\$36	\$35	\$34	\$33	\$32	\$30	\$24	\$21	\$16	\$14	\$13
	10yr ave.			\$36		\$32		\$28		\$25	\$24	\$23	\$22	\$21	\$19	\$17	\$13	\$12	\$10
	55% Current	\$56	\$52	\$46	\$43	\$42	\$41	\$40	\$39	\$38	\$38	\$36	\$35	\$33	\$27	\$23	\$17	\$16	\$14
	10yr ave.			\$40		\$35		\$31		\$27	\$26	\$25	\$24	\$23	\$20	\$19	\$15	\$13	\$11
	60% Current	\$61	\$56	\$50	\$47	\$46	\$45	\$44	\$43	\$42	\$41	\$40	\$38	\$36	\$29	\$25	\$19	\$17	\$15
	10yr ave.			\$44		\$38		\$33		\$30	\$28	\$27	\$27	\$25	\$22	\$20	\$16	\$14	\$13
	65% Current	\$66	\$61	\$54	\$51	\$50	\$48	\$48	\$46	\$45	\$44	\$43	\$42	\$39	\$31	\$27	\$20	\$18	\$16
	10yr ave.			\$47		\$41		\$36		\$32	\$31	\$30	\$29	\$27	\$24	\$22	\$17	\$15	\$14
	70% Current	\$71	\$66	\$58	\$55	\$54	\$52	\$51	\$50	\$49	\$48	\$46	\$45	\$42	\$34	\$29	\$22	\$20	\$18
	10yr ave.			\$51		\$45		\$39		\$34	\$33	\$32	\$31	\$29	\$26	\$24	\$19	\$16	\$15
	75% Current	\$76	\$71	\$63	\$59	\$58	\$56	\$55	\$53	\$52	\$51	\$49	\$48	\$45	\$36	\$31	\$23	\$21	\$19
	10yr ave.			\$54		\$48		\$42		\$37	\$35	\$34	\$33	\$31	\$28	\$25	\$20	\$17	\$16
	80% Current	\$81	\$75	\$67	\$63	\$62	\$60	\$59	\$57	\$55	\$55	\$53	\$51	\$48	\$39	\$33	\$25	\$23	\$20
	10yr ave.			\$58		\$51		\$44		\$39	\$38	\$37	\$35	\$33	\$30	\$27	\$21	\$19	\$17
	85% Current	\$86	\$80	\$71	\$67	\$66	\$63	\$62	\$61	\$59	\$58	\$56	\$54	\$51	\$41	\$35	\$27	\$24	\$21
	10yr ave.			\$62		\$54		\$47		\$42	\$40	\$39	\$38	\$36	\$32	\$29	\$23	\$20	\$18

The above shows estimated returns per head for skirted fleece wool. These figures do not take into account the value of skirtings and oddments and do not take into account discounts that may apply for faults under individual circumstances. These figures are based on a market index of 100% and should be used as a guide only. Returns over \$30 / head for fleece wool are highlighted.

Source: Australian Wool Exchange, Australian Wool Innovation, Sydney Futures Exchange, x-rates.com

Disclaimer: While all due care has been taken in the preparation of this document, no warranty is made as to its accuracy, reliability or completeness. To the extent permitted by law neither Jemalong or their sources including subsidiaries and staff, accept liability to any person for loss or damage arising from the use of this information.





Table 18: Returns pr head for skirted fleece wool.

Skirted FLC Weight 4 Kg		Micron																	
		16	16.5	17	17.5	18	18.5	19	19.5	20	21	22	23	24	25	26	28	30	32
Yield (Sch Dry)	25% Current	\$20	\$19	\$17	\$16	\$15	\$15	\$15	\$14	\$14	\$14	\$13	\$13	\$12	\$10	\$8	\$6	\$6	\$5
	10yr ave.			\$15		\$13		\$11		\$10	\$9	\$9	\$9	\$8	\$7	\$7	\$5	\$5	\$4
	30% Current	\$24	\$23	\$20	\$19	\$19	\$18	\$18	\$17	\$17	\$16	\$16	\$15	\$15	\$12	\$10	\$8	\$7	\$6
	10yr ave.			\$17		\$15		\$13		\$12	\$11	\$11	\$11	\$10	\$9	\$8	\$6	\$6	\$5
	35% Current	\$28	\$26	\$23	\$22	\$22	\$21	\$21	\$20	\$19	\$19	\$18	\$18	\$17	\$14	\$12	\$9	\$8	\$7
	10yr ave.			\$20		\$18		\$16		\$14	\$13	\$13	\$12	\$12	\$10	\$9	\$7	\$6	\$6
	40% Current	\$32	\$30	\$27	\$25	\$25	\$24	\$23	\$23	\$22	\$22	\$21	\$20	\$19	\$15	\$13	\$10	\$9	\$8
	10yr ave.			\$23		\$20		\$18		\$16	\$15	\$15	\$14	\$13	\$12	\$11	\$8	\$7	\$7
	45% Current	\$36	\$34	\$30	\$28	\$28	\$27	\$26	\$26	\$25	\$25	\$24	\$23	\$22	\$17	\$15	\$11	\$10	\$9
	10yr ave.			\$26		\$23		\$20		\$18	\$17	\$16	\$16	\$15	\$13	\$12	\$10	\$8	\$8
	50% Current	\$40	\$38	\$33	\$32	\$31	\$30	\$29	\$29	\$28	\$27	\$26	\$26	\$24	\$19	\$17	\$13	\$11	\$10
	10yr ave.			\$29		\$25		\$22		\$20	\$19	\$18	\$18	\$17	\$15	\$14	\$11	\$9	\$8
	55% Current	\$44	\$41	\$37	\$35	\$34	\$33	\$32	\$31	\$30	\$30	\$29	\$28	\$27	\$21	\$18	\$14	\$12	\$11
	10yr ave.			\$32		\$28		\$24		\$22	\$21	\$20	\$19	\$18	\$16	\$15	\$12	\$10	\$9
	60% Current	\$48	\$45	\$40	\$38	\$37	\$36	\$35	\$34	\$33	\$33	\$32	\$31	\$29	\$23	\$20	\$15	\$14	\$12
	10yr ave.			\$35		\$31		\$27		\$24	\$23	\$22	\$21	\$20	\$18	\$16	\$13	\$11	\$10
	65% Current	\$53	\$49	\$43	\$41	\$40	\$39	\$38	\$37	\$36	\$35	\$34	\$33	\$31	\$25	\$21	\$16	\$15	\$13
	10yr ave.			\$38		\$33		\$29		\$26	\$25	\$24	\$23	\$22	\$19	\$18	\$14	\$12	\$11
	70% Current	\$57	\$53	\$47	\$44	\$43	\$42	\$41	\$40	\$39	\$38	\$37	\$36	\$34	\$27	\$23	\$18	\$16	\$14
	10yr ave.			\$41		\$36		\$31		\$28	\$26	\$26	\$25	\$23	\$21	\$19	\$15	\$13	\$12
	75% Current	\$61	\$56	\$50	\$47	\$46	\$45	\$44	\$43	\$42	\$41	\$40	\$38	\$36	\$29	\$25	\$19	\$17	\$15
	10yr ave.			\$44		\$38		\$33		\$30	\$28	\$27	\$27	\$25	\$22	\$20	\$16	\$14	\$13
	80% Current	\$65	\$60	\$53	\$51	\$49	\$48	\$47	\$46	\$44	\$44	\$42	\$41	\$39	\$31	\$26	\$20	\$18	\$16
	10yr ave.			\$46		\$41		\$36		\$31	\$30	\$29	\$28	\$27	\$24	\$22	\$17	\$15	\$13
	85% Current	\$69	\$64	\$57	\$54	\$53	\$51	\$50	\$48	\$47	\$46	\$45	\$43	\$41	\$33	\$28	\$21	\$19	\$17
	10yr ave.			\$49		\$43		\$38		\$33	\$32	\$31	\$30	\$28	\$25	\$23	\$18	\$16	\$14

The above shows estimated returns per head for skirted fleece wool. These figures do not take into account the value of skirtings and oddments and do not take into account discounts that may apply for faults under individual circumstances. These figures are based on a market index of 100% and should be used as a guide only. Returns over \$30 / head for fleece wool are highlighted.

Source: Australian Wool Exchange, Australian Wool Innovation, Sydney Futures Exchange, x-rates.com

Disclaimer: While all due care has been taken in the preparation of this document, no warranty is made as to its accuracy, reliability or completeness. To the extent permitted by law neither Jemalong or their sources including subsidiaries and staff, accept liability to any person for loss or damage arising from the use of this information.





Table 19: Returns pr head for skirted fleece wool.

Skirted FLC Weight		Micron																	
3 Kg		16	16.5	17	17.5	18	18.5	19	19.5	20	21	22	23	24	25	26	28	30	32
Yield (Sch Dry)	25% Current	\$15	\$14	\$13	\$12	\$12	\$11	\$11	\$11	\$10	\$10	\$10	\$10	\$9	\$7	\$6	\$5	\$4	\$4
	10yr ave.			\$11		\$10		\$8		\$7	\$7	\$7	\$7	\$6	\$6	\$5	\$4	\$3	\$3
	30% Current	\$18	\$17	\$15	\$14	\$14	\$13	\$13	\$13	\$12	\$12	\$12	\$11	\$11	\$9	\$7	\$6	\$5	\$5
	10yr ave.			\$13		\$11		\$10		\$9	\$8	\$8	\$8	\$8	\$7	\$6	\$5	\$4	\$4
	35% Current	\$21	\$20	\$18	\$17	\$16	\$16	\$15	\$15	\$15	\$14	\$14	\$13	\$13	\$10	\$9	\$7	\$6	\$5
	10yr ave.			\$15		\$13		\$12		\$10	\$10	\$10	\$9	\$9	\$8	\$7	\$6	\$5	\$4
	40% Current	\$24	\$23	\$20	\$19	\$19	\$18	\$18	\$17	\$17	\$16	\$16	\$15	\$15	\$12	\$10	\$8	\$7	\$6
	10yr ave.			\$17		\$15		\$13		\$12	\$11	\$11	\$11	\$10	\$9	\$8	\$6	\$6	\$5
	45% Current	\$27	\$25	\$23	\$21	\$21	\$20	\$20	\$19	\$19	\$18	\$18	\$17	\$16	\$13	\$11	\$8	\$8	\$7
	10yr ave.			\$20		\$17		\$15		\$13	\$13	\$12	\$12	\$11	\$10	\$9	\$7	\$6	\$6
	50% Current	\$30	\$28	\$25	\$24	\$23	\$22	\$22	\$21	\$21	\$20	\$20	\$19	\$18	\$15	\$12	\$9	\$8	\$8
	10yr ave.			\$22		\$19		\$17		\$15	\$14	\$14	\$13	\$13	\$11	\$10	\$8	\$7	\$6
	55% Current	\$33	\$31	\$28	\$26	\$25	\$25	\$24	\$24	\$23	\$23	\$22	\$21	\$20	\$16	\$14	\$10	\$9	\$8
	10yr ave.			\$24		\$21		\$18		\$16	\$16	\$15	\$15	\$14	\$12	\$11	\$9	\$8	\$7
	60% Current	\$36	\$34	\$30	\$28	\$28	\$27	\$26	\$26	\$25	\$25	\$24	\$23	\$22	\$17	\$15	\$11	\$10	\$9
	10yr ave.			\$26		\$23		\$20		\$18	\$17	\$16	\$16	\$15	\$13	\$12	\$10	\$8	\$8
	65% Current	\$39	\$37	\$33	\$31	\$30	\$29	\$29	\$28	\$27	\$27	\$26	\$25	\$24	\$19	\$16	\$12	\$11	\$10
	10yr ave.			\$28		\$25		\$22		\$19	\$18	\$18	\$17	\$16	\$14	\$13	\$10	\$9	\$8
	70% Current	\$42	\$39	\$35	\$33	\$32	\$31	\$31	\$30	\$29	\$29	\$28	\$27	\$25	\$20	\$17	\$13	\$12	\$11
	10yr ave.			\$30		\$27		\$23		\$21	\$20	\$19	\$19	\$18	\$16	\$14	\$11	\$10	\$9
	75% Current	\$45	\$42	\$38	\$36	\$35	\$34	\$33	\$32	\$31	\$31	\$30	\$29	\$27	\$22	\$19	\$14	\$13	\$11
	10yr ave.			\$33		\$29		\$25		\$22	\$21	\$21	\$20	\$19	\$17	\$15	\$12	\$10	\$9
	80% Current	\$48	\$45	\$40	\$38	\$37	\$36	\$35	\$34	\$33	\$33	\$32	\$31	\$29	\$23	\$20	\$15	\$14	\$12
	10yr ave.			\$35		\$31		\$27		\$24	\$23	\$22	\$21	\$20	\$18	\$16	\$13	\$11	\$10
	85% Current	\$52	\$48	\$43	\$40	\$39	\$38	\$37	\$36	\$35	\$35	\$34	\$33	\$31	\$25	\$21	\$16	\$14	\$13
	10yr ave.			\$37		\$32		\$28		\$25	\$24	\$23	\$23	\$21	\$19	\$17	\$14	\$12	\$11

The above shows estimated returns per head for skirted fleece wool. These figures do not take into account the value of skirtings and oddments and do not take into account discounts that may apply for faults under individual circumstances. These figures are based on a market index of 100% and should be used as a guide only. Returns over \$30 / head for fleece wool are highlighted.

Source: Australian Wool Exchange, Australian Wool Innovation, Sydney Futures Exchange, x-rates.com

Disclaimer: While all due care has been taken in the preparation of this document, no warranty is made as to its accuracy, reliability or completeness. To the extent permitted by law neither Jemalong or their sources including subsidiaries and staff, accept liability to any person for loss or damage arising from the use of this information.



Table 20: Returns pr head for skirted fleece wool.

Skirted FLC Weight		Micron																	
2 Kg		16	16.5	17	17.5	18	18.5	19	19.5	20	21	22	23	24	25	26	28	30	32
Yield (Sch Dry)	25% Current	\$10	\$9	\$8	\$8	\$8	\$7	\$7	\$7	\$7	\$7	\$7	\$6	\$6	\$5	\$4	\$3	\$3	\$3
	10yr ave.			\$7		\$6		\$6		\$5	\$5	\$5	\$4	\$4	\$4	\$3	\$3	\$2	\$2
	30% Current	\$12	\$11	\$10	\$9	\$9	\$9	\$9	\$9	\$8	\$8	\$8	\$8	\$7	\$6	\$5	\$4	\$3	\$3
	10yr ave.			\$9		\$8		\$7		\$6	\$6	\$5	\$5	\$5	\$4	\$4	\$3	\$3	\$3
	35% Current	\$14	\$13	\$12	\$11	\$11	\$10	\$10	\$10	\$10	\$10	\$9	\$9	\$8	\$7	\$6	\$4	\$4	\$4
	10yr ave.			\$10		\$9		\$8		\$7	\$7	\$6	\$6	\$6	\$5	\$5	\$4	\$3	\$3
	40% Current	\$16	\$15	\$13	\$13	\$12	\$12	\$12	\$11	\$11	\$11	\$11	\$10	\$10	\$8	\$7	\$5	\$5	\$4
	10yr ave.			\$12		\$10		\$9		\$8	\$8	\$7	\$7	\$7	\$6	\$5	\$4	\$4	\$3
	45% Current	\$18	\$17	\$15	\$14	\$14	\$13	\$13	\$13	\$12	\$12	\$12	\$11	\$11	\$9	\$7	\$6	\$5	\$5
	10yr ave.			\$13		\$11		\$10		\$9	\$8	\$8	\$8	\$8	\$7	\$6	\$5	\$4	\$4
	50% Current	\$20	\$19	\$17	\$16	\$15	\$15	\$15	\$14	\$14	\$14	\$13	\$13	\$12	\$10	\$8	\$6	\$6	\$5
	10yr ave.			\$15		\$13		\$11		\$10	\$9	\$9	\$9	\$8	\$7	\$7	\$5	\$5	\$4
	55% Current	\$22	\$21	\$18	\$17	\$17	\$16	\$16	\$16	\$15	\$15	\$14	\$14	\$13	\$11	\$9	\$7	\$6	\$6
	10yr ave.			\$16		\$14		\$12		\$11	\$10	\$10	\$10	\$9	\$8	\$7	\$6	\$5	\$5
	60% Current	\$24	\$23	\$20	\$19	\$19	\$18	\$18	\$17	\$17	\$16	\$16	\$15	\$15	\$12	\$10	\$8	\$7	\$6
	10yr ave.			\$17		\$15		\$13		\$12	\$11	\$11	\$11	\$10	\$9	\$8	\$6	\$6	\$5
	65% Current	\$26	\$24	\$22	\$21	\$20	\$19	\$19	\$19	\$18	\$18	\$17	\$17	\$16	\$13	\$11	\$8	\$7	\$7
	10yr ave.			\$19		\$17		\$14		\$13	\$12	\$12	\$12	\$11	\$10	\$9	\$7	\$6	\$5
	70% Current	\$28	\$26	\$23	\$22	\$22	\$21	\$21	\$20	\$19	\$19	\$18	\$18	\$17	\$14	\$12	\$9	\$8	\$7
	10yr ave.			\$20		\$18		\$16		\$14	\$13	\$13	\$12	\$12	\$10	\$9	\$7	\$6	\$6
	75% Current	\$30	\$28	\$25	\$24	\$23	\$22	\$22	\$21	\$21	\$20	\$20	\$19	\$18	\$15	\$12	\$9	\$8	\$8
	10yr ave.			\$22		\$19		\$17		\$15	\$14	\$14	\$13	\$13	\$11	\$10	\$8	\$7	\$6
	80% Current	\$32	\$30	\$27	\$25	\$25	\$24	\$23	\$23	\$22	\$22	\$21	\$20	\$19	\$15	\$13	\$10	\$9	\$8
	10yr ave.			\$23		\$20		\$18		\$16	\$15	\$15	\$14	\$13	\$12	\$11	\$8	\$7	\$7
	85% Current	\$34	\$32	\$28	\$27	\$26	\$25	\$25	\$24	\$24	\$23	\$22	\$22	\$21	\$16	\$14	\$11	\$10	\$9
	10yr ave.			\$25		\$22		\$19		\$17	\$16	\$16	\$15	\$14	\$13	\$11	\$9	\$8	\$7

The above shows estimated returns per head for skirted fleece wool. These figures do not take into account the value of skirtings and oddments and do not take into account discounts that may apply for faults under individual circumstances. These figures are based on a market index of 100% and should be used as a guide only. Returns over \$30 / head for fleece wool are highlighted.

Source: Australian Wool Exchange, Australian Wool Innovation, Sydney Futures Exchange, x-rates.com

Disclaimer: While all due care has been taken in the preparation of this document, no warranty is made as to its accuracy, reliability or completeness. To the extent permitted by law neither Jemalong or their sources including subsidiaries and staff, accept liability to any person for loss or damage arising from the use of this information.