



# JEMALONG WOOL BULLETIN

(week ending 8/09/2011)

**Table 1: Northern Region Micron Price Guides**

CURRENT MARKET				12 MONTH COMPARISONS								3 YEAR COMPARISONS						10 YEAR COMPARISONS					
Mic. Price Guides	8/09/2011 Current Price	1/09/2011 Weekly Change		7/09/2010 This time Last Year	Now compared to Last Year		12 Month Low	Now compared to Low		12 Month High	Now compared to High		Low	High	Average	Now compared to 3yr ave	Percentile	Low	High		10 year Average	Now compared to 10yr ave	Percentile
NRI	1344	+25 1.9%		906	+438 48%		911	+433 48%		1491	-147 -10%		749	1491	1000	+344 34%	84%	658	1491		912	+432 47%	95%
16*	2800	+50 1.8%		1650	+1150 70%		1670	+1130 68%		2800	0 0%		1385	2800	1867	+933 50%	100%						
16.5*	2510	+10 0.4%		1540	+970 63%		1500	+1010 67%		2680	-170 -6%		1248	2680	1717	+793 46%	84%						
17*	2330	+10 0.4%		1390	+940 68%		1390	+940 68%		2530	-200 -8%		1166	2530	1585	+745 47%	83%	1100	2659		1445	+885 61%	92%
17.5*	2080	+30 1.4%		1280	+800 63%		1300	+780 60%		2360	-280 -12%		1081	2360	1487	+593 40%	81%						
18	1848	+21 1.1%		1237	+611 49%		1237	+611 49%		2193	-345 -16%		1035	2193	1396	+452 32%	80%	916	2193		1274	+574 45%	94%
18.5	1687	+37 2.2%		1166	+521 45%		1163	+524 45%		1963	-276 -14%		971	1963	1299	+388 30%	80%	843	1963				
19	1594	+27 1.7%		1059	+535 51%		1058	+536 51%		1776	-182 -10%		894	1776	1192	+402 34%	83%	804	1776		1092	+502 46%	95%
19.5	1498	+24 1.6%		969	+529 55%		973	+525 54%		1670	-172 -10%		814	1670	1088	+410 38%	89%	749	1670				
20	1429	+47 3.3%		916	+513 56%		931	+498 53%		1588	-159 -10%		739	1588	1007	+422 42%	93%	684	1588		959	+470 49%	98%
21	1372	+34 2.5%		894	+478 53%		914	+458 50%		1522	-150 -10%		686	1522	973	+399 41%	93%	645	1522		918	+454 49%	98%
22	1296	+20 1.5%		879	+417 47%		885	+411 46%		1461	-165 -11%		673	1461	946	+350 37%	90%	643	1461		893	+403 45%	97%
23	1180	+5 0.4%		859	+321 37%		849	+331 39%		1324	-144 -11%		663	1324	910	+270 30%	86%	642	1340		868	+312 36%	91%
24	1046	+31 3.0%		812	+234 29%		787	+259 33%		1170	-124 -11%		647	1170	840	+206 25%	88%	637	1299		822	+224 27%	90%
25	925	+39 4.2%		702	+223 32%		716	+209 29%		1048	-123 -12%		565	1048	728	+197 27%	88%	567	1198		735	+190 26%	82%
26	857	+29 3.4%		606	+251 41%		613	+244 40%		928	-71 -8%		504	928	658	+199 30%	89%	532	1088		673	+184 27%	81%
28	688	0		456	+232 51%		449	+239 53%		734	-46 -6%		431	734	514	+174 34%	92%	424	889		531	+157 30%	85%
30	634	+2 0.3%		398	+236 59%		390	+244 63%		670	-36 -5%		377	670	458	+176 38%	94%	344	729		463	+171 37%	94%
32	580	-1 -0.2%		357	+223 62%		354	+226 64%		638	-58 -9%		326	638	404	+176 44%	93%	297	669		417	+163 39%	92%
MC	731	+26 3.6%		570	+161 28%		569	+162 28%		831	-100 -12%		444	831	611	+120 20%	84%	380	831		524	+207 40%	95%

**Note:**

\* Due to the irregular market quoting for some fine wool categories, figures shown relating to micron categories below 18 micron are an estimate based on the AWEX Premium & Discounts Report & other available information.

\* For any category, where there is insufficient quantity offered to enable AWEX to quote, a quote will be provided based on the best available information.

\* 10 Year data is not available for some micron categories, which may result in blank spaces in the table above.

**Definitions:**

\* A Percentile, is a value on a scale of one hundred that indicates the percent of a distribution that is equal to or below it. In general a percentile between 25% and 75% is considered normal, a percentile below 25% is considered below normal and a percentile above 75% is considered above normal.

Three and ten year percentiles shown in the table above, detail the period of time during the past 3 & 10 years that the market has traded either at or below its current price.

The higher the percentile, the stronger the market.

Source: Australian Wool Exchange, Australian Wool Innovation, Sydney Futures Exchange, x-rates.com

Disclaimer: While all due care has been taken in the preparation of this document, no warranty is made as to its accuracy, reliability or completeness. To the extent permitted by law neither Jemalong or their sources including subsidiaries and staff, accept liability to any person for loss or damage arising from the use of this information.



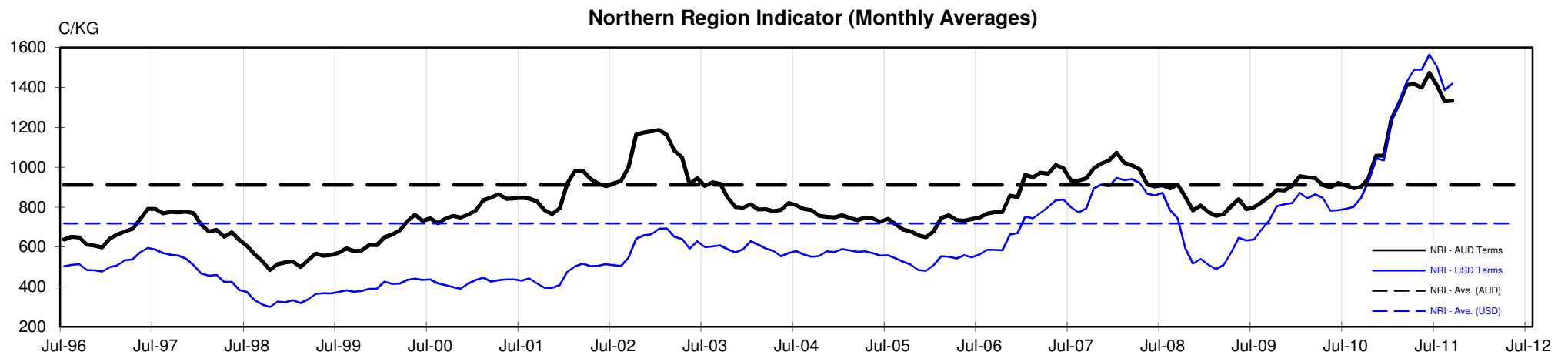
**MARKET COMMENTARY**

**One Australian Dollar = \$ 1.06 US, as of 8/09/2011**

**NORTHERN REGION –Sale Week 10/11 (38,076 bales offered nationally)**

On Wednesday - Wide spread competition delivered a strong market, with 18.5 to 21.5 micron gaining around 20-30 cents, with the lower style & strength LB fault types most affected. Fine microns on a small offering allowed limited movement but once again it was the 2% Vm lots attracting the most interest. Merino skirtings were in line with the fleece market, also gaining up to 30 cents for most microns (<5% VM), the odd best length 8% VM lot also lifted by up to 20 cents. Locks posted gains of around 20 cents, crutchings were up 10 and stains were irregular but generally closed 20 cents higher. A limited offering of crossbreds had 27-30 microns unchanged. Passed In rate = 4.1%

On Thursday - Good wide spread competition had the market firm to slightly dearer. 20 to 22 microns improved 10-15 cents while 19 microns were only just in sellers favour and the fine end on a mostly LB fault offering remained unchanged. Merino skirtings were 20 cents dearer for the 8-10% Vm types, leaving the <5% types tending in sellers favour. Locks and crutchings gained 10 cents while stains were 15-20 cents dearer. Another small offering of crossbreds maintained a solid market with out any quotable change for 27-30 microns. Passed In rate = 4.0%





**Table 4: 19 micron SFE**

Wednesday, 7 September 2011

Delivery Mth	Oct-11	Dec-11	Feb-11	Apr-12	Jun-12	Aug-12	Oct-12	Dec-12	Feb-12
19 Micron SFE	1532	1482	1432	1382	1352	1342	1342	1302	1302
Average	1305	1327	1113	1375	1412	1401	1405	1405	1354
Maximum	1707	1677	1605	1622	1612	1525	1525	1525	1652
Minimum	1034	1034	983	1106	1210	1285	1285	1285	1053

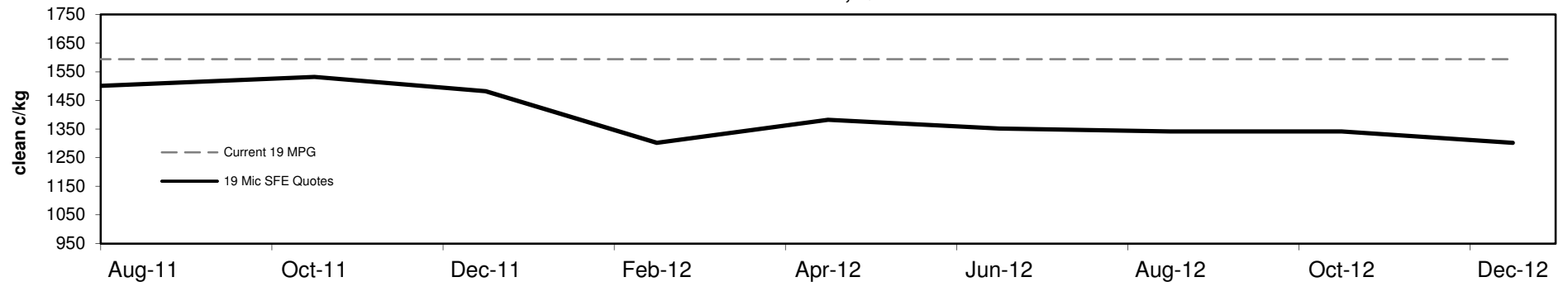
**Table 5: 19 micron SFE, as a percentile of the 19 micron MPG**

3 Year Percentile	78%	78%	78%	78%	78%	78%	78%	76%	76%
10 Year Percentile	94%	94%	94%	92%	91%	91%	91%	88%	88%

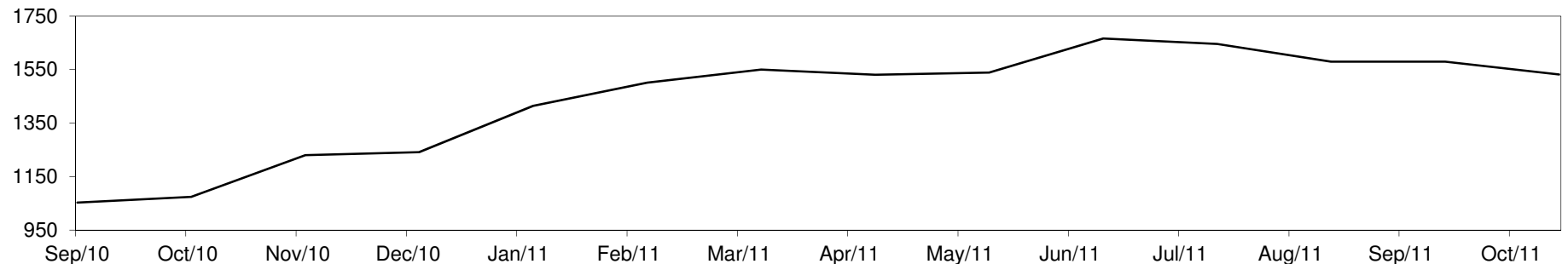
**Table 6: 19 micron SFE, compared to MPG**

SFE - MPG	-62	-4%	-112	-7%	-162	-10%	-212	-13%	-242	-15%	-252	-16%	-252	-16%	-292	-18%	-292	-18%
SFE - MPG, 1 year Ave.	-6	0%	-56	-4%	-106	-7%	-156	-10%	-186	-12%	-196	-13%	-196	-13%	-236	-15%	-236	-15%
SFE - MPG, 3 year Ave.	+340	29%	+290	24%	+240	20%	+190	16%	+160	13%	+150	13%	+150	13%	+110	9%	+110	9%
SFE - MPG, 10 year Ave.	+440	40%	+390	36%	+340	31%	+290	27%	+260	24%	+250	23%	+250	23%	+210	19%	+210	19%

**19 MICRON SFE, QUOTES**



**19 Micron SFE, Front month movement**





**Table 7: 21 micron SFE**

Wednesday, 7 September 2011

Delivery Mth	Oct-11	Dec-11	Feb-11	Apr-12	Jun-12	Aug-12	Oct-12	Dec-12	Feb-12
21 Micron SFE	1373	1343	1300	1255	1226	1151	1184	1151	1151
Average	1076	1081	962	1111	1107	1137	1151	1151	1089
Maximum	1434	1411	1343	1303	1326	1316	1283	1283	1393
Minimum	880	880	860	934	990	1046	1013	1013	880

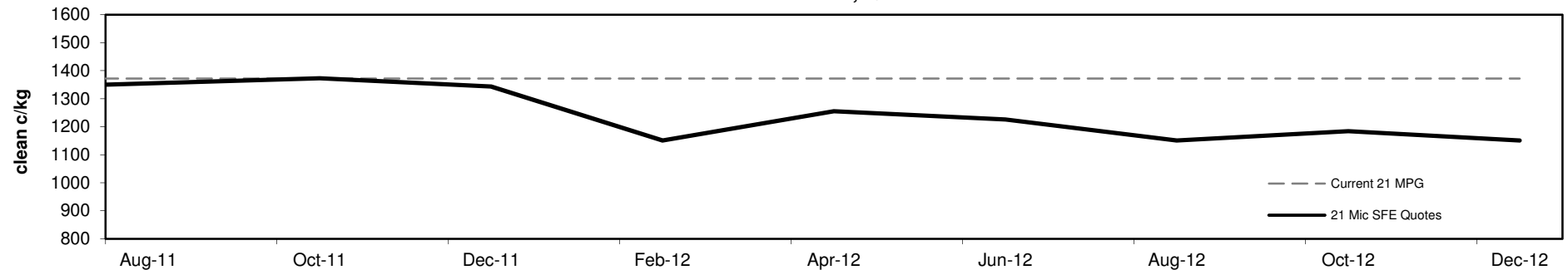
**Table 8: 21 micron SFE, as a percentile of the 21 micron MPG**

3 Year Percentile	93%	92%	87%	85%	84%	81%	82%	81%	81%
10 Year Percentile	98%	97%	96%	92%	91%	88%	89%	88%	88%

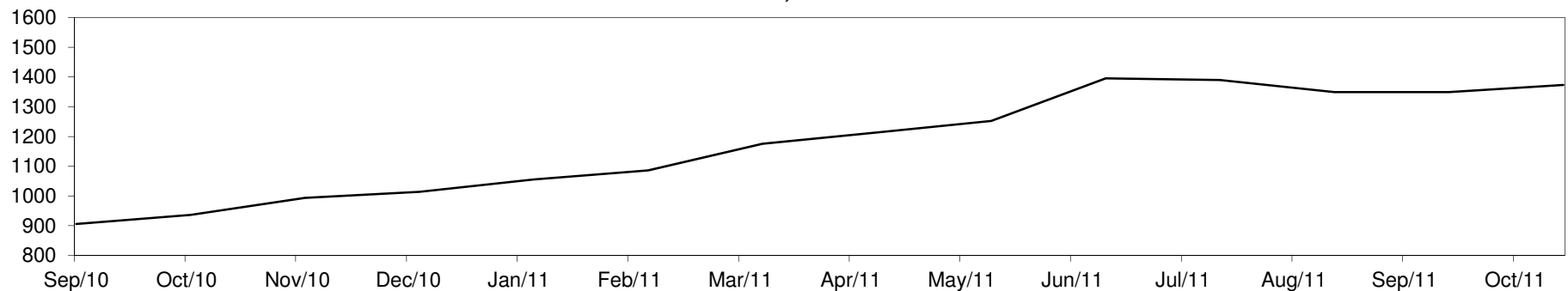
**Table 9: 21 micron SFE, compared to MPG**

SFE - MPG	+1	0%	-29	-2%	-72	-5%	-117	-9%	-146	-11%	-221	-16%	-188	-14%	-221	-16%	-221	-16%
SFE - MPG, 1 year Ave.	+145	12%	+115	9%	+72	6%	+27	2%	-2	0%	-77	-6%	-44	-4%	-77	-6%	-77	-6%
SFE - MPG, 3 year Ave.	+400	41%	+370	38%	+327	34%	+282	29%	+253	26%	+178	18%	+211	22%	+178	18%	+178	18%
SFE - MPG, 10 year Ave.	+455	50%	+425	46%	+382	42%	+337	37%	+308	34%	+233	25%	+266	29%	+233	25%	+233	25%

**21 MICRON SFE, QUOTES**



**21 Micron SFE, Front month movement**





**Table 10: 23 micron SFE**

Wednesday, 7 September 2011

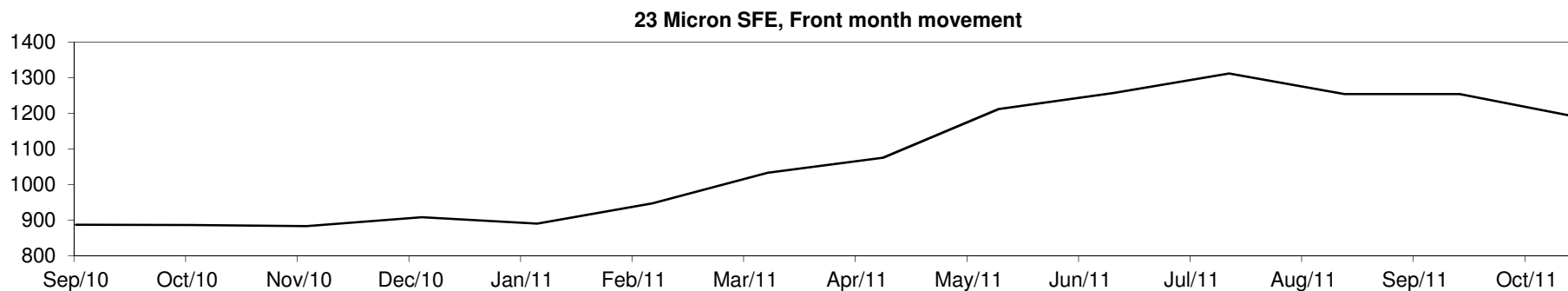
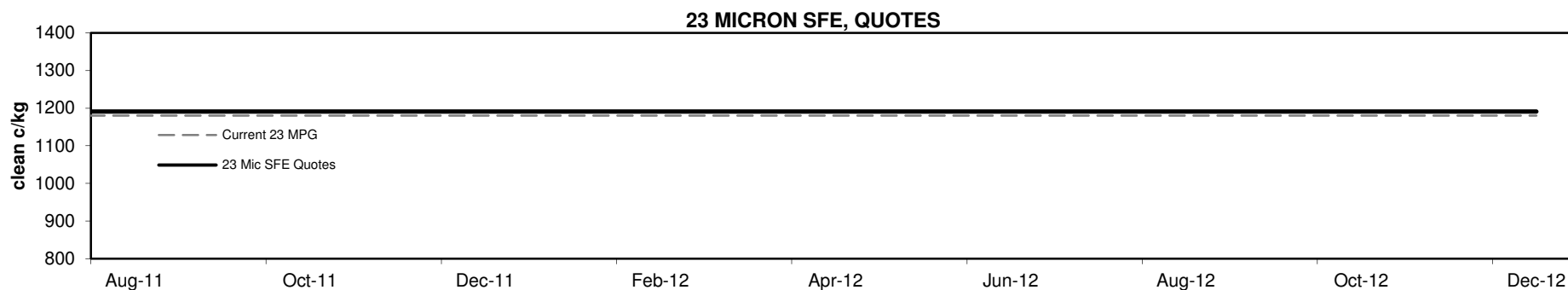
Delivery Mth	Oct-11	Dec-11	Feb-11	Apr-12	Jun-12	Aug-12	Oct-12	Dec-12	Feb-12
23 Micron SFE	1191	1191	1191	1191	1191	1191	1191	1191	1191
Average	994	1011	870	1068	1111	1176	1245	1245	1035
Maximum	1312	1312	1191	1312	1312	1312	1312	1312	1312
Minimum	883	883	760	883	890	1033	1191	1191	883

**Table 11: 23 micron SFE, as a percentile of the 23 micron MPG**

3 Year Percentile	87%	87%	87%	87%	87%	87%	87%	87%	87%
10 Year Percentile	91%	91%	91%	91%	91%	91%	91%	91%	91%

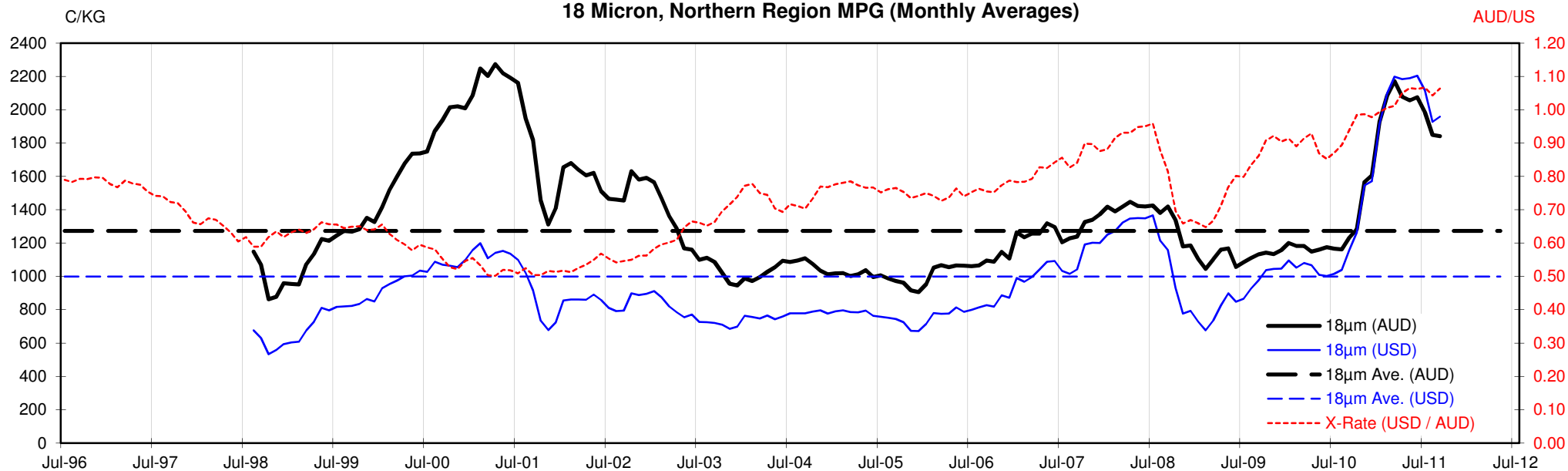
**Table 12: 23 micron SFE, compared to MPG**

SFE - MPG	+11	1%	+11	1%	+11	1%	+11	1%	+11	1%	+11	1%	+11	1%	+11	1%	+11	1%
SFE - MPG, 1 year Ave.	+78	7%	+78	7%	+78	7%	+78	7%	+78	7%	+78	7%	+78	7%	+78	7%	+78	7%
SFE - MPG, 3 year Ave.	+281	31%	+281	31%	+281	31%	+281	31%	+281	31%	+281	31%	+281	31%	+281	31%	+281	31%
SFE - MPG, 10 year Ave.	+323	37%	+323	37%	+323	37%	+323	37%	+323	37%	+323	37%	+323	37%	+323	37%	+323	37%

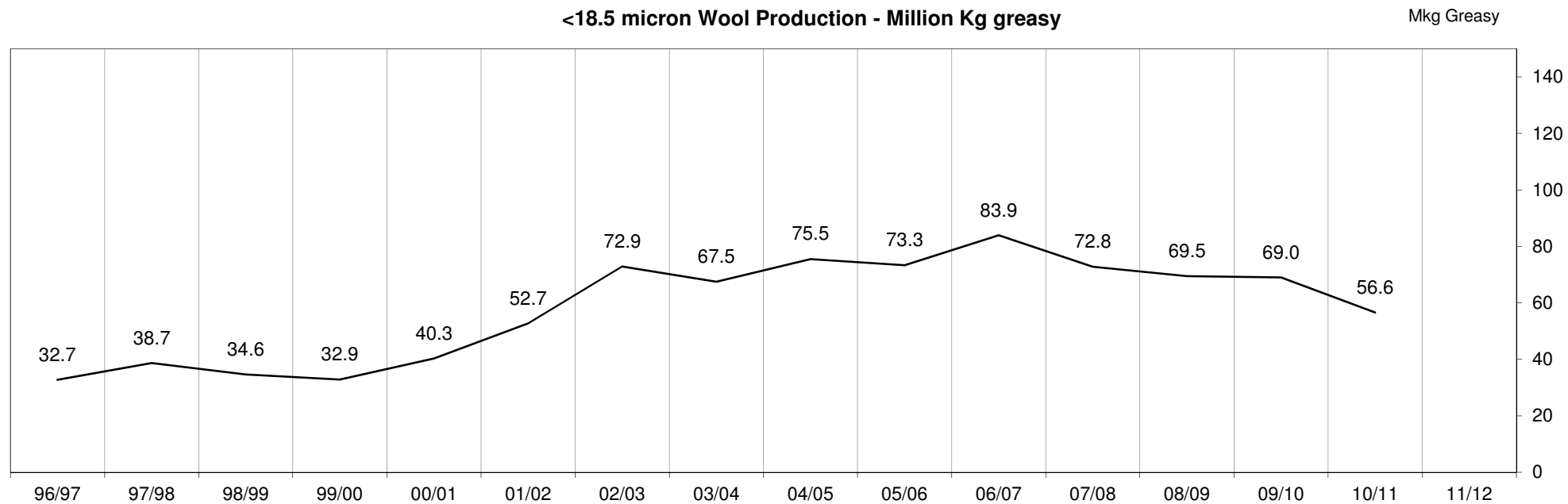


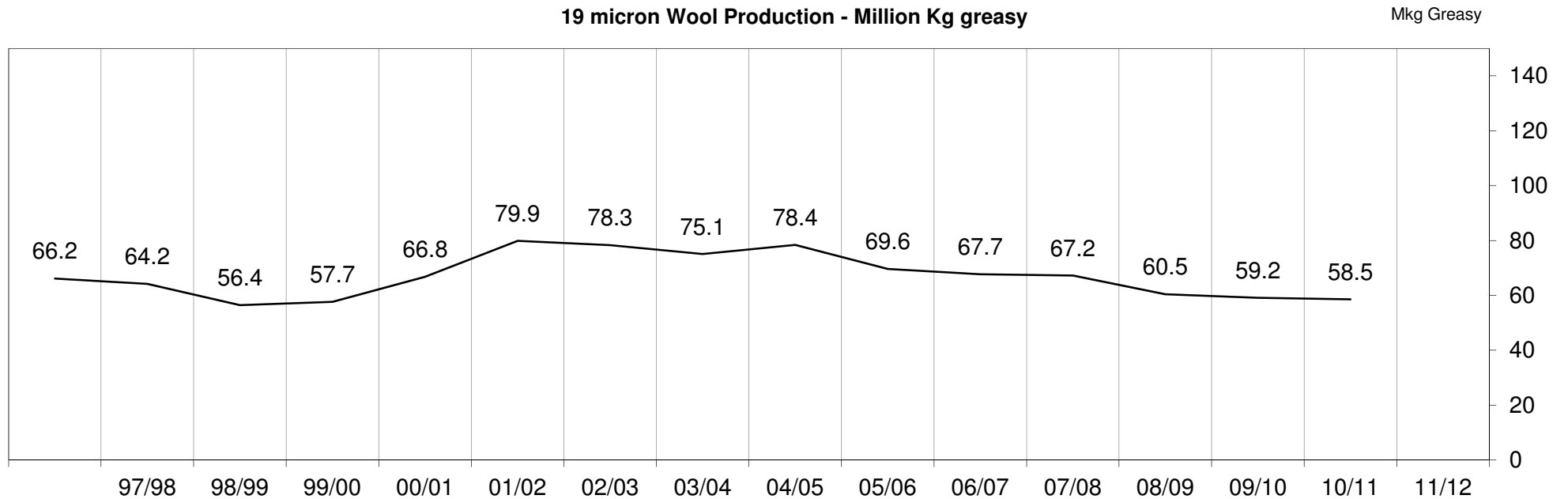
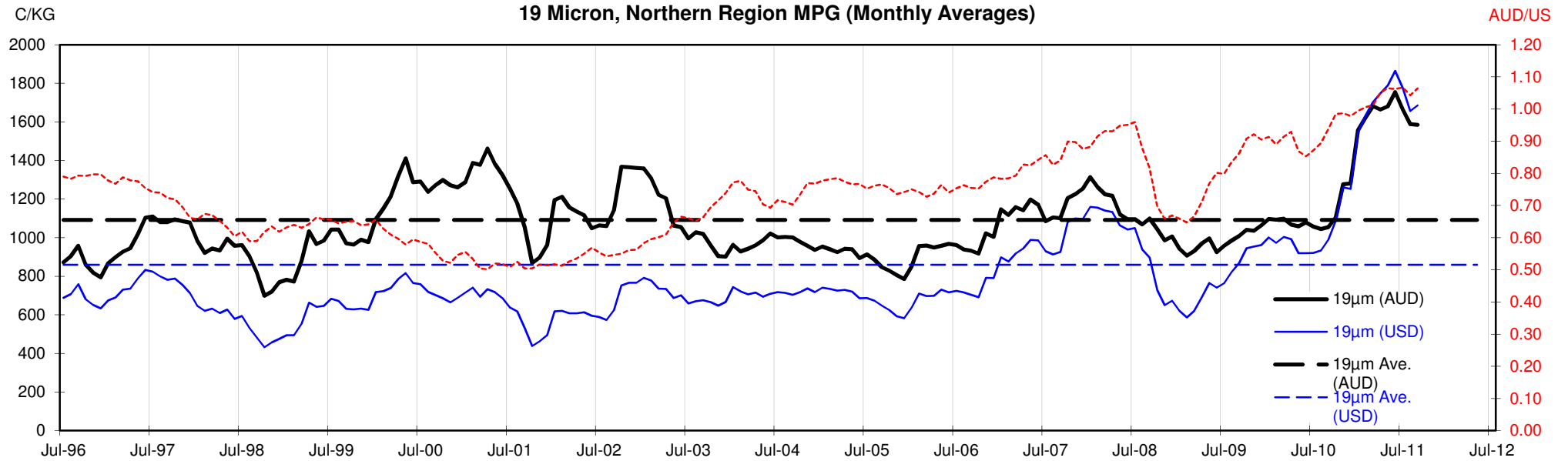


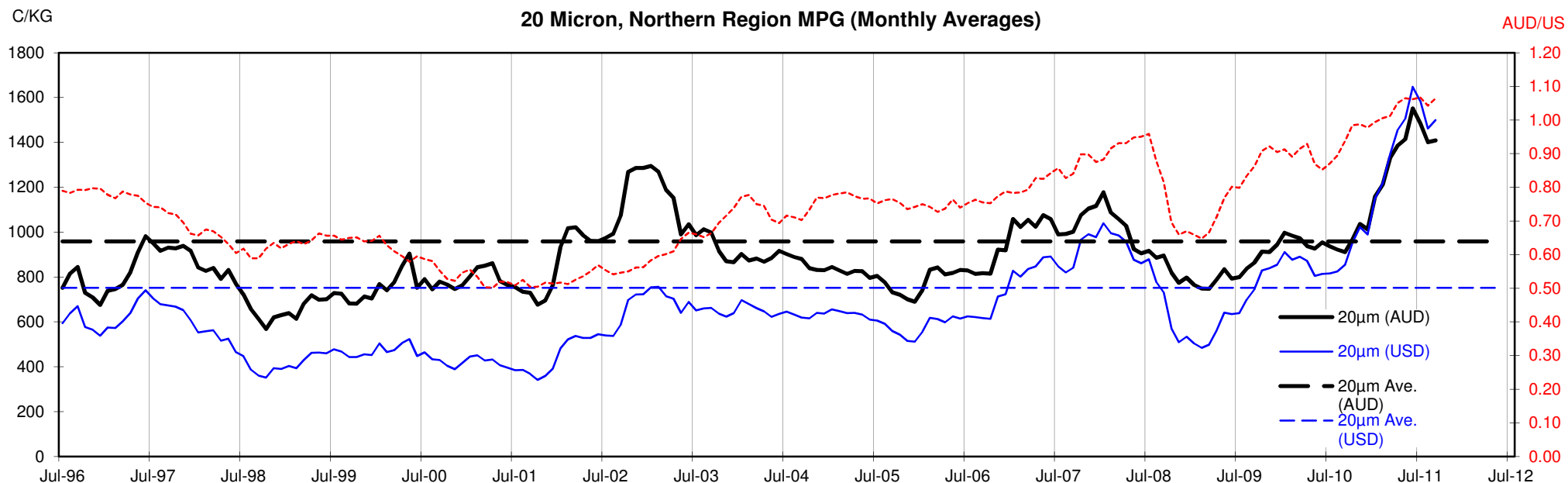
### 18 Micron, Northern Region MPG (Monthly Averages)



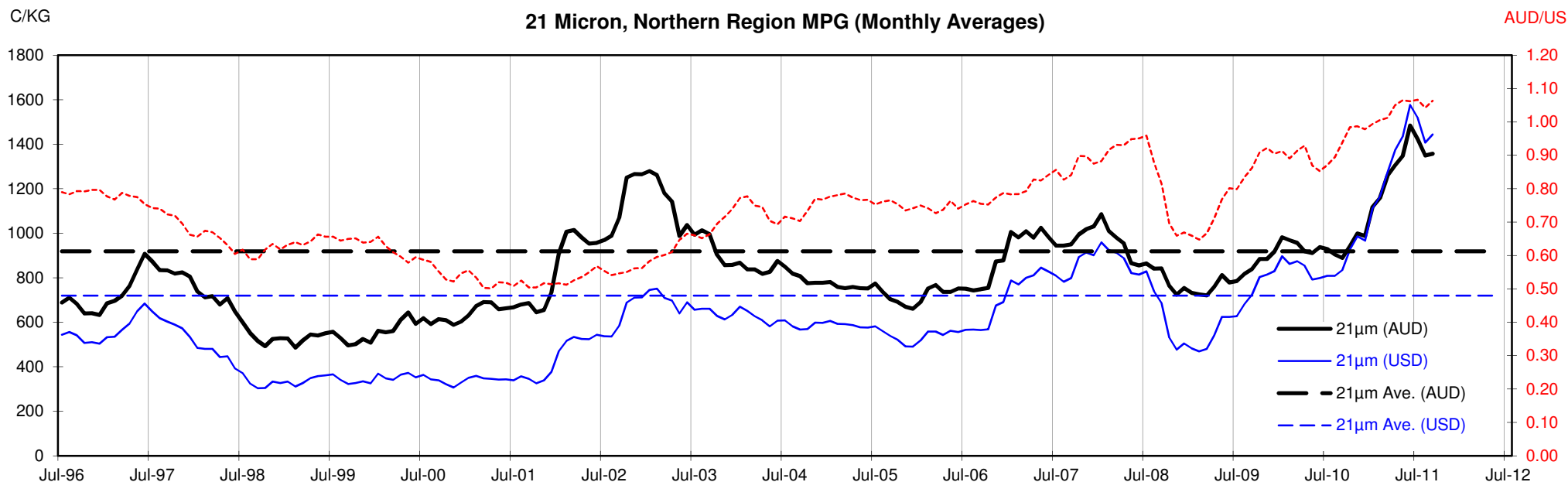
### <18.5 micron Wool Production - Million Kg greasy

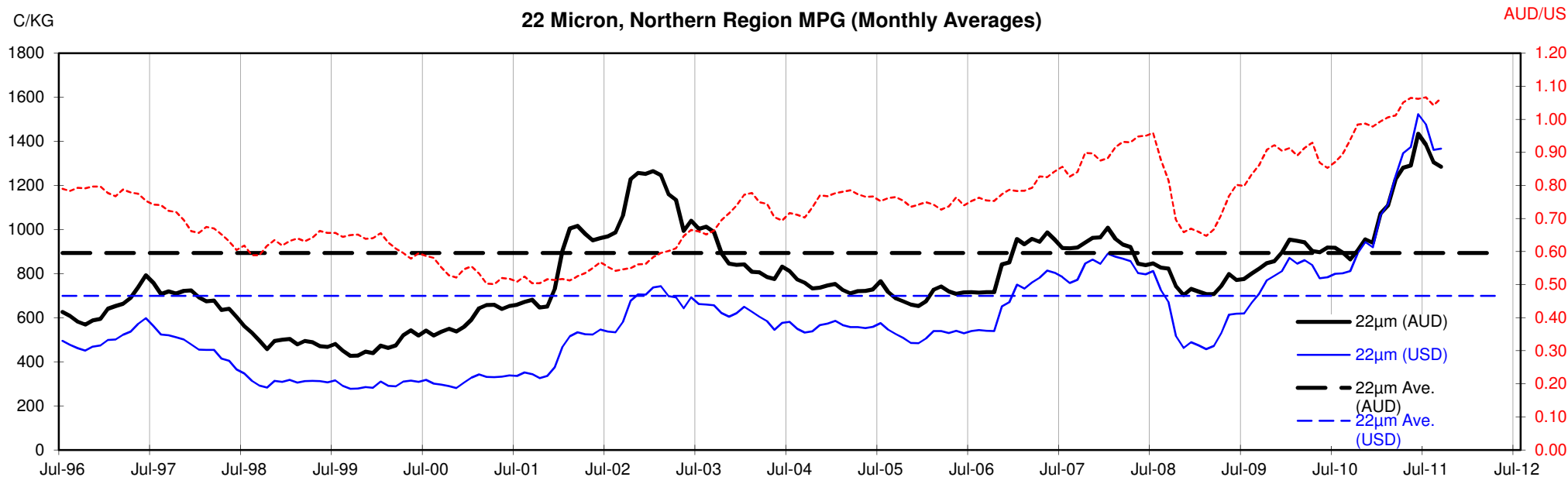


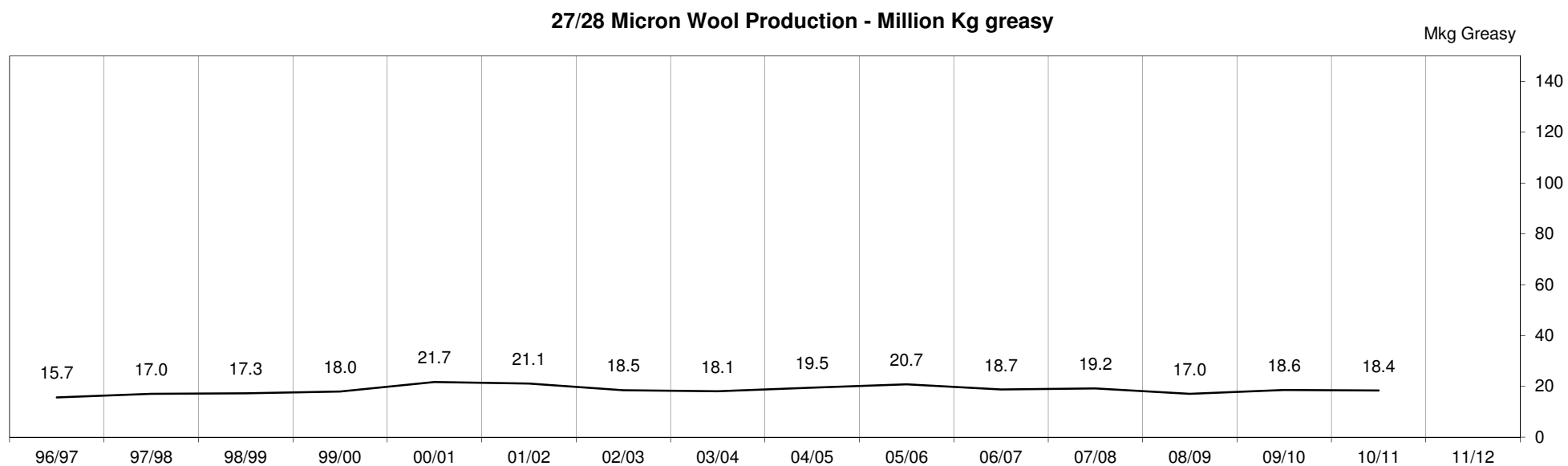
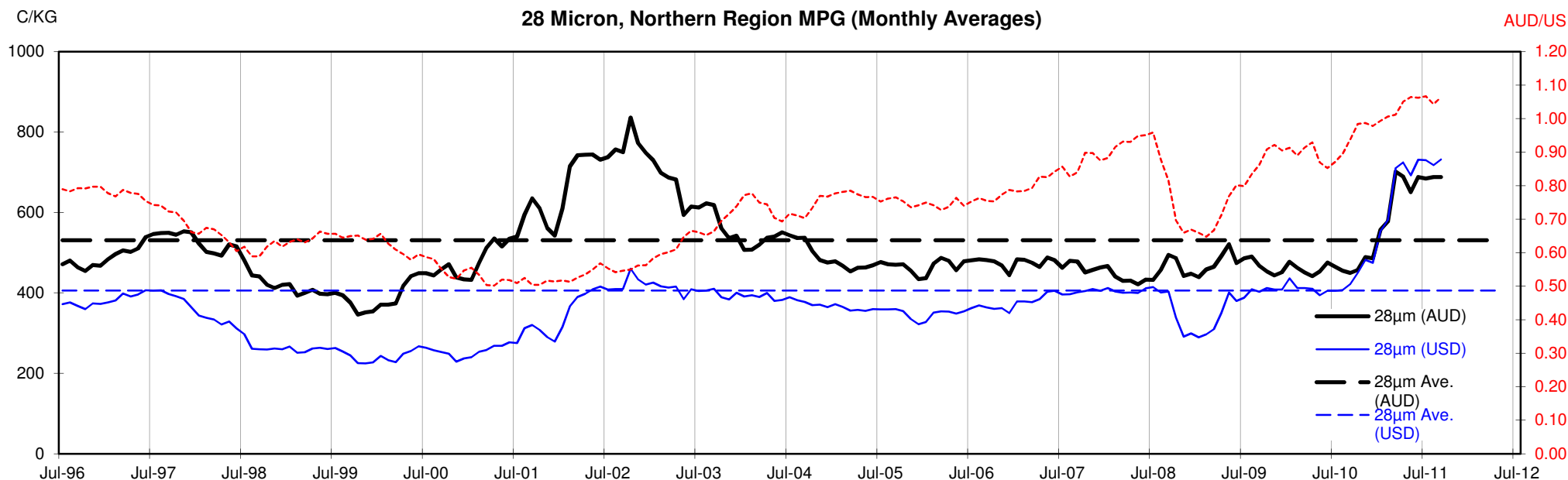












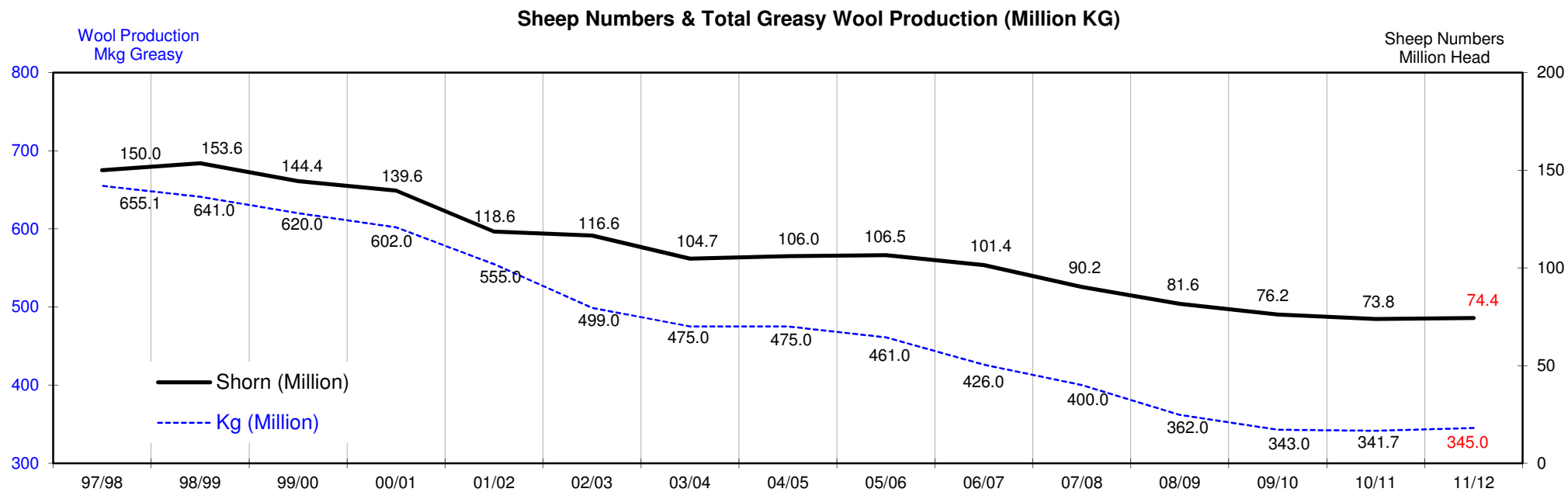
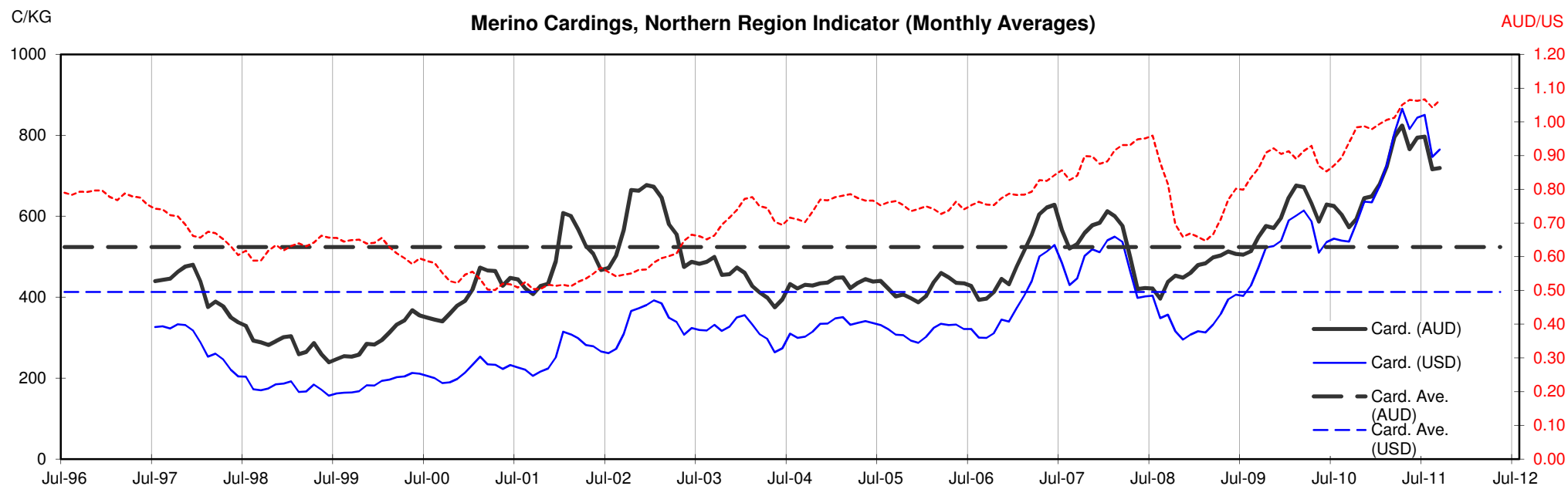




Table 13: Returns pr head for skirted fleece wool.

Skirted FLC Weight		Micron																	
9 Kg		16	16.5	17	17.5	18	18.5	19	19.5	20	21	22	23	24	25	26	28	30	32
Yield (Sch Dry)	25% Current	\$63	\$56	\$52	\$47	\$42	\$38	\$36	\$34	\$32	\$31	\$29	\$27	\$24	\$21	\$19	\$15	\$14	\$13
	10yr ave.			\$33		\$29		\$25		\$22	\$21	\$20	\$20	\$18	\$17	\$15	\$12	\$10	\$9
	30% Current	\$76	\$68	\$63	\$56	\$50	\$46	\$43	\$40	\$39	\$37	\$35	\$32	\$28	\$25	\$23	\$19	\$17	\$16
	10yr ave.			\$39		\$34		\$29		\$26	\$25	\$24	\$23	\$22	\$20	\$18	\$14	\$13	\$11
	35% Current	\$88	\$79	\$73	\$66	\$58	\$53	\$50	\$47	\$45	\$43	\$41	\$37	\$33	\$29	\$27	\$22	\$20	\$18
	10yr ave.			\$46		\$40		\$34		\$30	\$29	\$28	\$27	\$26	\$23	\$21	\$17	\$15	\$13
	40% Current	\$101	\$90	\$84	\$75	\$67	\$61	\$57	\$54	\$51	\$49	\$47	\$42	\$38	\$33	\$31	\$25	\$23	\$21
	10yr ave.			\$52		\$46		\$39		\$35	\$33	\$32	\$31	\$30	\$26	\$24	\$19	\$17	\$15
	45% Current	\$113	\$102	\$94	\$84	\$75	\$68	\$65	\$61	\$58	\$56	\$52	\$48	\$42	\$37	\$35	\$28	\$26	\$23
	10yr ave.			\$59		\$52		\$44		\$39	\$37	\$36	\$35	\$33	\$30	\$27	\$22	\$19	\$17
	50% Current	\$126	\$113	\$105	\$94	\$83	\$76	\$72	\$67	\$64	\$62	\$58	\$53	\$47	\$42	\$39	\$31	\$29	\$26
	10yr ave.			\$65		\$57		\$49		\$43	\$41	\$40	\$39	\$37	\$33	\$30	\$24	\$21	\$19
	55% Current	\$139	\$124	\$115	\$103	\$91	\$84	\$79	\$74	\$71	\$68	\$64	\$58	\$52	\$46	\$42	\$34	\$31	\$29
	10yr ave.			\$72		\$63		\$54		\$47	\$45	\$44	\$43	\$41	\$36	\$33	\$26	\$23	\$21
	60% Current	\$151	\$136	\$126	\$112	\$100	\$91	\$86	\$81	\$77	\$74	\$70	\$64	\$56	\$50	\$46	\$37	\$34	\$31
	10yr ave.			\$78		\$69		\$59		\$52	\$50	\$48	\$47	\$44	\$40	\$36	\$29	\$25	\$23
	65% Current	\$164	\$147	\$136	\$122	\$108	\$99	\$93	\$88	\$84	\$80	\$76	\$69	\$61	\$54	\$50	\$40	\$37	\$34
	10yr ave.			\$85		\$75		\$64		\$56	\$54	\$52	\$51	\$48	\$43	\$39	\$31	\$27	\$24
	70% Current	\$176	\$158	\$147	\$131	\$116	\$106	\$100	\$94	\$90	\$86	\$82	\$74	\$66	\$58	\$54	\$43	\$40	\$37
	10yr ave.			\$91		\$80		\$69		\$60	\$58	\$56	\$55	\$52	\$46	\$42	\$33	\$29	\$26
	75% Current	\$189	\$169	\$157	\$140	\$125	\$114	\$108	\$101	\$96	\$93	\$87	\$80	\$71	\$62	\$58	\$46	\$43	\$39
	10yr ave.			\$98		\$86		\$74		\$65	\$62	\$60	\$59	\$55	\$50	\$45	\$36	\$31	\$28
	80% Current	\$202	\$181	\$168	\$150	\$133	\$121	\$115	\$108	\$103	\$99	\$93	\$85	\$75	\$67	\$62	\$50	\$46	\$42
	10yr ave.			\$104		\$92		\$79		\$69	\$66	\$64	\$62	\$59	\$53	\$48	\$38	\$33	\$30
	85% Current	\$214	\$192	\$178	\$159	\$141	\$129	\$122	\$115	\$109	\$105	\$99	\$90	\$80	\$71	\$66	\$53	\$49	\$44
	10yr ave.			\$111		\$97		\$84		\$73	\$70	\$68	\$66	\$63	\$56	\$51	\$41	\$35	\$32

The above shows estimated returns per head for skirted fleece wool. These figures do not take into account the value of skirtings and oddments and do not take into account discounts that may apply for faults under individual circumstances. These figures are based on a market index of 100% and should be used as a guide only. Returns over \$30 / head for fleece wool are highlighted.

Source: Australian Wool Exchange, Australian Wool Innovation, Sydney Futures Exchange, x-rates.com

Disclaimer: While all due care has been taken in the preparation of this document, no warranty is made as to its accuracy, reliability or completeness. To the extent permitted by law neither Jemalong or their sources including subsidiaries and staff, accept liability to any person for loss or damage arising from the use of this information.



Table 14: Returns pr head for skirted fleece wool.

Skirted FLC Weight		Micron																	
8 Kg		16	16.5	17	17.5	18	18.5	19	19.5	20	21	22	23	24	25	26	28	30	32
Yield (Sch Dry)	25% Current	\$56	\$50	\$47	\$42	\$37	\$34	\$32	\$30	\$29	\$27	\$26	\$24	\$21	\$19	\$17	\$14	\$13	\$12
	10yr ave.			\$29		\$25		\$22		\$19	\$18	\$18	\$17	\$16	\$15	\$13	\$11	\$9	\$8
	30% Current	\$67	\$60	\$56	\$50	\$44	\$40	\$38	\$36	\$34	\$33	\$31	\$28	\$25	\$22	\$21	\$17	\$15	\$14
	10yr ave.			\$35		\$31		\$26		\$23	\$22	\$21	\$21	\$20	\$18	\$16	\$13	\$11	\$10
	35% Current	\$78	\$70	\$65	\$58	\$52	\$47	\$45	\$42	\$40	\$38	\$36	\$33	\$29	\$26	\$24	\$19	\$18	\$16
	10yr ave.			\$40		\$36		\$31		\$27	\$26	\$25	\$24	\$23	\$21	\$19	\$15	\$13	\$12
	40% Current	\$90	\$80	\$75	\$67	\$59	\$54	\$51	\$48	\$46	\$44	\$41	\$38	\$33	\$30	\$27	\$22	\$20	\$19
	10yr ave.			\$46		\$41		\$35		\$31	\$29	\$29	\$28	\$26	\$24	\$22	\$17	\$15	\$13
	45% Current	\$101	\$90	\$84	\$75	\$67	\$61	\$57	\$54	\$51	\$49	\$47	\$42	\$38	\$33	\$31	\$25	\$23	\$21
	10yr ave.			\$52		\$46		\$39		\$35	\$33	\$32	\$31	\$30	\$26	\$24	\$19	\$17	\$15
	50% Current	\$112	\$100	\$93	\$83	\$74	\$67	\$64	\$60	\$57	\$55	\$52	\$47	\$42	\$37	\$34	\$28	\$25	\$23
	10yr ave.			\$58		\$51		\$44		\$38	\$37	\$36	\$35	\$33	\$29	\$27	\$21	\$19	\$17
	55% Current	\$123	\$110	\$103	\$92	\$81	\$74	\$70	\$66	\$63	\$60	\$57	\$52	\$46	\$41	\$38	\$30	\$28	\$26
	10yr ave.			\$64		\$56		\$48		\$42	\$40	\$39	\$38	\$36	\$32	\$30	\$23	\$20	\$18
	60% Current	\$134	\$120	\$112	\$100	\$89	\$81	\$77	\$72	\$69	\$66	\$62	\$57	\$50	\$44	\$41	\$33	\$30	\$28
	10yr ave.			\$69		\$61		\$52		\$46	\$44	\$43	\$42	\$39	\$35	\$32	\$25	\$22	\$20
	65% Current	\$146	\$131	\$121	\$108	\$96	\$88	\$83	\$78	\$74	\$71	\$67	\$61	\$54	\$48	\$45	\$36	\$33	\$30
	10yr ave.			\$75		\$66		\$57		\$50	\$48	\$46	\$45	\$43	\$38	\$35	\$28	\$24	\$22
	70% Current	\$157	\$141	\$130	\$116	\$103	\$94	\$89	\$84	\$80	\$77	\$73	\$66	\$59	\$52	\$48	\$39	\$36	\$32
	10yr ave.			\$81		\$71		\$61		\$54	\$51	\$50	\$49	\$46	\$41	\$38	\$30	\$26	\$23
	75% Current	\$168	\$151	\$140	\$125	\$111	\$101	\$96	\$90	\$86	\$82	\$78	\$71	\$63	\$56	\$51	\$41	\$38	\$35
	10yr ave.			\$87		\$76		\$66		\$58	\$55	\$54	\$52	\$49	\$44	\$40	\$32	\$28	\$25
	80% Current	\$179	\$161	\$149	\$133	\$118	\$108	\$102	\$96	\$91	\$88	\$83	\$76	\$67	\$59	\$55	\$44	\$41	\$37
	10yr ave.			\$92		\$82		\$70		\$61	\$59	\$57	\$56	\$53	\$47	\$43	\$34	\$30	\$27
	85% Current	\$190	\$171	\$158	\$141	\$126	\$115	\$108	\$102	\$97	\$93	\$88	\$80	\$71	\$63	\$58	\$47	\$43	\$39
	10yr ave.			\$98		\$87		\$74		\$65	\$62	\$61	\$59	\$56	\$50	\$46	\$36	\$31	\$28

The above shows estimated returns per head for skirted fleece wool. These figures do not take into account the value of skirtings and oddments and do not take into account discounts that may apply for faults under individual circumstances. These figures are based on a market index of 100% and should be used as a guide only. Returns over \$30 / head for fleece wool are highlighted.

Source: Australian Wool Exchange, Australian Wool Innovation, Sydney Futures Exchange, x-rates.com

Disclaimer: While all due care has been taken in the preparation of this document, no warranty is made as to its accuracy, reliability or completeness. To the extent permitted by law neither Jemalong or their sources including subsidiaries and staff, accept liability to any person for loss or damage arising from the use of this information.



Table 15: Returns pr head for skirted fleece wool.

Skirted FLC Weight		Micron																	
7 Kg		16	16.5	17	17.5	18	18.5	19	19.5	20	21	22	23	24	25	26	28	30	32
Yield (Sch Dry)	25% Current	\$49	\$44	\$41	\$36	\$32	\$30	\$28	\$26	\$25	\$24	\$23	\$21	\$18	\$16	\$15	\$12	\$11	\$10
	10yr ave.			\$25		\$22		\$19		\$17	\$16	\$16	\$15	\$14	\$13	\$12	\$9	\$8	\$7
	30% Current	\$59	\$53	\$49	\$44	\$39	\$35	\$33	\$31	\$30	\$29	\$27	\$25	\$22	\$19	\$18	\$14	\$13	\$12
	10yr ave.			\$30		\$27		\$23		\$20	\$19	\$19	\$18	\$17	\$15	\$14	\$11	\$10	\$9
	35% Current	\$69	\$61	\$57	\$51	\$45	\$41	\$39	\$37	\$35	\$34	\$32	\$29	\$26	\$23	\$21	\$17	\$16	\$14
	10yr ave.			\$35		\$31		\$27		\$23	\$22	\$22	\$21	\$20	\$18	\$16	\$13	\$11	\$10
	40% Current	\$78	\$70	\$65	\$58	\$52	\$47	\$45	\$42	\$40	\$38	\$36	\$33	\$29	\$26	\$24	\$19	\$18	\$16
	10yr ave.			\$40		\$36		\$31		\$27	\$26	\$25	\$24	\$23	\$21	\$19	\$15	\$13	\$12
	45% Current	\$88	\$79	\$73	\$66	\$58	\$53	\$50	\$47	\$45	\$43	\$41	\$37	\$33	\$29	\$27	\$22	\$20	\$18
	10yr ave.			\$46		\$40		\$34		\$30	\$29	\$28	\$27	\$26	\$23	\$21	\$17	\$15	\$13
	50% Current	\$98	\$88	\$82	\$73	\$65	\$59	\$56	\$52	\$50	\$48	\$45	\$41	\$37	\$32	\$30	\$24	\$22	\$20
	10yr ave.			\$51		\$45		\$38		\$34	\$32	\$31	\$30	\$29	\$26	\$24	\$19	\$16	\$15
	55% Current	\$108	\$97	\$90	\$80	\$71	\$65	\$61	\$58	\$55	\$53	\$50	\$45	\$40	\$36	\$33	\$26	\$24	\$22
	10yr ave.			\$56		\$49		\$42		\$37	\$35	\$34	\$33	\$32	\$28	\$26	\$20	\$18	\$16
	60% Current	\$118	\$105	\$98	\$87	\$78	\$71	\$67	\$63	\$60	\$58	\$54	\$50	\$44	\$39	\$36	\$29	\$27	\$24
	10yr ave.			\$61		\$54		\$46		\$40	\$39	\$38	\$36	\$35	\$31	\$28	\$22	\$19	\$18
	65% Current	\$127	\$114	\$106	\$95	\$84	\$77	\$73	\$68	\$65	\$62	\$59	\$54	\$48	\$42	\$39	\$31	\$29	\$26
	10yr ave.			\$66		\$58		\$50		\$44	\$42	\$41	\$39	\$37	\$33	\$31	\$24	\$21	\$19
	70% Current	\$137	\$123	\$114	\$102	\$91	\$83	\$78	\$73	\$70	\$67	\$64	\$58	\$51	\$45	\$42	\$34	\$31	\$28
	10yr ave.			\$71		\$62		\$54		\$47	\$45	\$44	\$43	\$40	\$36	\$33	\$26	\$23	\$20
	75% Current	\$147	\$132	\$122	\$109	\$97	\$89	\$84	\$79	\$75	\$72	\$68	\$62	\$55	\$49	\$45	\$36	\$33	\$30
	10yr ave.			\$76		\$67		\$57		\$50	\$48	\$47	\$46	\$43	\$39	\$35	\$28	\$24	\$22
	80% Current	\$157	\$141	\$130	\$116	\$103	\$94	\$89	\$84	\$80	\$77	\$73	\$66	\$59	\$52	\$48	\$39	\$36	\$32
	10yr ave.			\$81		\$71		\$61		\$54	\$51	\$50	\$49	\$46	\$41	\$38	\$30	\$26	\$23
	85% Current	\$167	\$149	\$139	\$124	\$110	\$100	\$95	\$89	\$85	\$82	\$77	\$70	\$62	\$55	\$51	\$41	\$38	\$35
	10yr ave.			\$86		\$76		\$65		\$57	\$55	\$53	\$52	\$49	\$44	\$40	\$32	\$28	\$25

The above shows estimated returns per head for skirted fleece wool. These figures do not take into account the value of skirtings and oddments and do not take into account discounts that may apply for faults under individual circumstances. These figures are based on a market index of 100% and should be used as a guide only. Returns over \$30 / head for fleece wool are highlighted.

Source: Australian Wool Exchange, Australian Wool Innovation, Sydney Futures Exchange, x-rates.com

Disclaimer: While all due care has been taken in the preparation of this document, no warranty is made as to its accuracy, reliability or completeness. To the extent permitted by law neither Jemalong or their sources including subsidiaries and staff, accept liability to any person for loss or damage arising from the use of this information.



Table 16: Returns pr head for skirted fleece wool.

Skirted FLC Weight		Micron																	
6 Kg		16	16.5	17	17.5	18	18.5	19	19.5	20	21	22	23	24	25	26	28	30	32
Yield (Sch Dry)	25% Current	\$42	\$38	\$35	\$31	\$28	\$25	\$24	\$22	\$21	\$21	\$19	\$18	\$16	\$14	\$13	\$10	\$10	\$9
	10yr ave.			\$22	\$19	\$16			\$14	\$14	\$13	\$13	\$12	\$11	\$10	\$8	\$7	\$6	
	30% Current	\$50	\$45	\$42	\$37	\$33	\$30	\$29	\$27	\$26	\$25	\$23	\$21	\$19	\$17	\$15	\$12	\$11	\$10
	10yr ave.			\$26	\$23	\$20			\$17	\$17	\$16	\$16	\$15	\$13	\$12	\$10	\$8	\$8	
	35% Current	\$59	\$53	\$49	\$44	\$39	\$35	\$33	\$31	\$30	\$29	\$27	\$25	\$22	\$19	\$18	\$14	\$13	\$12
	10yr ave.			\$30	\$27	\$23			\$20	\$19	\$19	\$18	\$17	\$15	\$14	\$11	\$10	\$9	
	40% Current	\$67	\$60	\$56	\$50	\$44	\$40	\$38	\$36	\$34	\$33	\$31	\$28	\$25	\$22	\$21	\$17	\$15	\$14
	10yr ave.			\$35	\$31	\$26			\$23	\$22	\$21	\$21	\$20	\$18	\$16	\$13	\$11	\$10	
	45% Current	\$76	\$68	\$63	\$56	\$50	\$46	\$43	\$40	\$39	\$37	\$35	\$32	\$28	\$25	\$23	\$19	\$17	\$16
	10yr ave.			\$39	\$34	\$29			\$26	\$25	\$24	\$23	\$22	\$20	\$18	\$14	\$13	\$11	
	50% Current	\$84	\$75	\$70	\$62	\$55	\$51	\$48	\$45	\$43	\$41	\$39	\$35	\$31	\$28	\$26	\$21	\$19	\$17
	10yr ave.			\$43	\$38	\$33			\$29	\$28	\$27	\$26	\$25	\$22	\$20	\$16	\$14	\$13	
	55% Current	\$92	\$83	\$77	\$69	\$61	\$56	\$53	\$49	\$47	\$45	\$43	\$39	\$35	\$31	\$28	\$23	\$21	\$19
	10yr ave.			\$48	\$42	\$36			\$32	\$30	\$29	\$29	\$27	\$24	\$22	\$18	\$15	\$14	
	60% Current	\$101	\$90	\$84	\$75	\$67	\$61	\$57	\$54	\$51	\$49	\$47	\$42	\$38	\$33	\$31	\$25	\$23	\$21
	10yr ave.			\$52	\$46	\$39			\$35	\$33	\$32	\$31	\$30	\$26	\$24	\$19	\$17	\$15	
	65% Current	\$109	\$98	\$91	\$81	\$72	\$66	\$62	\$58	\$56	\$54	\$51	\$46	\$41	\$36	\$33	\$27	\$25	\$23
	10yr ave.			\$56	\$50	\$43			\$37	\$36	\$35	\$34	\$32	\$29	\$26	\$21	\$18	\$16	
	70% Current	\$118	\$105	\$98	\$87	\$78	\$71	\$67	\$63	\$60	\$58	\$54	\$50	\$44	\$39	\$36	\$29	\$27	\$24
	10yr ave.			\$61	\$54	\$46			\$40	\$39	\$38	\$36	\$35	\$31	\$28	\$22	\$19	\$18	
	75% Current	\$126	\$113	\$105	\$94	\$83	\$76	\$72	\$67	\$64	\$62	\$58	\$53	\$47	\$42	\$39	\$31	\$29	\$26
	10yr ave.			\$65	\$57	\$49			\$43	\$41	\$40	\$39	\$37	\$33	\$30	\$24	\$21	\$19	
	80% Current	\$134	\$120	\$112	\$100	\$89	\$81	\$77	\$72	\$69	\$66	\$62	\$57	\$50	\$44	\$41	\$33	\$30	\$28
	10yr ave.			\$69	\$61	\$52			\$46	\$44	\$43	\$42	\$39	\$35	\$32	\$25	\$22	\$20	
	85% Current	\$143	\$128	\$119	\$106	\$94	\$86	\$81	\$76	\$73	\$70	\$66	\$60	\$53	\$47	\$44	\$35	\$32	\$30
	10yr ave.			\$74	\$65	\$56			\$49	\$47	\$46	\$44	\$42	\$37	\$34	\$27	\$24	\$21	

The above shows estimated returns per head for skirted fleece wool. These figures do not take into account the value of skirtings and oddments and do not take into account discounts that may apply for faults under individual circumstances. These figures are based on a market index of 100% and should be used as a guide only. Returns over \$30 / head for fleece wool are highlighted.

Source: Australian Wool Exchange, Australian Wool Innovation, Sydney Futures Exchange, x-rates.com

Disclaimer: While all due care has been taken in the preparation of this document, no warranty is made as to its accuracy, reliability or completeness. To the extent permitted by law neither Jemalong or their sources including subsidiaries and staff, accept liability to any person for loss or damage arising from the use of this information.





Table 17: Returns pr head for skirted fleece wool.

Skirted FLC Weight		Micron																	
5 Kg		16	16.5	17	17.5	18	18.5	19	19.5	20	21	22	23	24	25	26	28	30	32
Yield (Sch Dry)	25% Current	\$35	\$31	\$29	\$26	\$23	\$21	\$20	\$19	\$18	\$17	\$16	\$15	\$13	\$12	\$11	\$9	\$8	\$7
	10yr ave.			\$18		\$16		\$14		\$12	\$11	\$11	\$11	\$10	\$9	\$8	\$7	\$6	\$5
	30% Current	\$42	\$38	\$35	\$31	\$28	\$25	\$24	\$22	\$21	\$21	\$19	\$18	\$16	\$14	\$13	\$10	\$10	\$9
	10yr ave.			\$22		\$19		\$16		\$14	\$14	\$13	\$13	\$12	\$11	\$10	\$8	\$7	\$6
	35% Current	\$49	\$44	\$41	\$36	\$32	\$30	\$28	\$26	\$25	\$24	\$23	\$21	\$18	\$16	\$15	\$12	\$11	\$10
	10yr ave.			\$25		\$22		\$19		\$17	\$16	\$16	\$15	\$14	\$13	\$12	\$9	\$8	\$7
	40% Current	\$56	\$50	\$47	\$42	\$37	\$34	\$32	\$30	\$29	\$27	\$26	\$24	\$21	\$19	\$17	\$14	\$13	\$12
	10yr ave.			\$29		\$25		\$22		\$19	\$18	\$18	\$17	\$16	\$15	\$13	\$11	\$9	\$8
	45% Current	\$63	\$56	\$52	\$47	\$42	\$38	\$36	\$34	\$32	\$31	\$29	\$27	\$24	\$21	\$19	\$15	\$14	\$13
	10yr ave.			\$33		\$29		\$25		\$22	\$21	\$20	\$20	\$18	\$17	\$15	\$12	\$10	\$9
	50% Current	\$70	\$63	\$58	\$52	\$46	\$42	\$40	\$37	\$36	\$34	\$32	\$30	\$26	\$23	\$21	\$17	\$16	\$15
	10yr ave.			\$36		\$32		\$27		\$24	\$23	\$22	\$22	\$21	\$18	\$17	\$13	\$12	\$10
	55% Current	\$77	\$69	\$64	\$57	\$51	\$46	\$44	\$41	\$39	\$38	\$36	\$32	\$29	\$25	\$24	\$19	\$17	\$16
	10yr ave.			\$40		\$35		\$30		\$26	\$25	\$25	\$24	\$23	\$20	\$19	\$15	\$13	\$11
	60% Current	\$84	\$75	\$70	\$62	\$55	\$51	\$48	\$45	\$43	\$41	\$39	\$35	\$31	\$28	\$26	\$21	\$19	\$17
	10yr ave.			\$43		\$38		\$33		\$29	\$28	\$27	\$26	\$25	\$22	\$20	\$16	\$14	\$13
	65% Current	\$91	\$82	\$76	\$68	\$60	\$55	\$52	\$49	\$46	\$45	\$42	\$38	\$34	\$30	\$28	\$22	\$21	\$19
	10yr ave.			\$47		\$41		\$35		\$31	\$30	\$29	\$28	\$27	\$24	\$22	\$17	\$15	\$14
	70% Current	\$98	\$88	\$82	\$73	\$65	\$59	\$56	\$52	\$50	\$48	\$45	\$41	\$37	\$32	\$30	\$24	\$22	\$20
	10yr ave.			\$51		\$45		\$38		\$34	\$32	\$31	\$30	\$29	\$26	\$24	\$19	\$16	\$15
	75% Current	\$105	\$94	\$87	\$78	\$69	\$63	\$60	\$56	\$54	\$51	\$49	\$44	\$39	\$35	\$32	\$26	\$24	\$22
	10yr ave.			\$54		\$48		\$41		\$36	\$34	\$33	\$33	\$31	\$28	\$25	\$20	\$17	\$16
	80% Current	\$112	\$100	\$93	\$83	\$74	\$67	\$64	\$60	\$57	\$55	\$52	\$47	\$42	\$37	\$34	\$28	\$25	\$23
	10yr ave.			\$58		\$51		\$44		\$38	\$37	\$36	\$35	\$33	\$29	\$27	\$21	\$19	\$17
	85% Current	\$119	\$107	\$99	\$88	\$79	\$72	\$68	\$64	\$61	\$58	\$55	\$50	\$44	\$39	\$36	\$29	\$27	\$25
	10yr ave.			\$61		\$54		\$46		\$41	\$39	\$38	\$37	\$35	\$31	\$29	\$23	\$20	\$18

The above shows estimated returns per head for skirted fleece wool. These figures do not take into account the value of skirtings and oddments and do not take into account discounts that may apply for faults under individual circumstances. These figures are based on a market index of 100% and should be used as a guide only. Returns over \$30 / head for fleece wool are highlighted.

Source: Australian Wool Exchange, Australian Wool Innovation, Sydney Futures Exchange, x-rates.com

Disclaimer: While all due care has been taken in the preparation of this document, no warranty is made as to its accuracy, reliability or completeness. To the extent permitted by law neither Jemalong or their sources including subsidiaries and staff, accept liability to any person for loss or damage arising from the use of this information.



Table 18: Returns pr head for skirted fleece wool.

Skirted FLC Weight		Micron																	
4 Kg		16	16.5	17	17.5	18	18.5	19	19.5	20	21	22	23	24	25	26	28	30	32
Yield (Sch Dry)	25% Current	\$28	\$25	\$23	\$21	\$18	\$17	\$16	\$15	\$14	\$14	\$13	\$12	\$10	\$9	\$9	\$7	\$6	\$6
	10yr ave.			\$14		\$13		\$11		\$10	\$9	\$9	\$9	\$8	\$7	\$7	\$5	\$5	\$4
	30% Current	\$34	\$30	\$28	\$25	\$22	\$20	\$19	\$18	\$17	\$16	\$16	\$14	\$13	\$11	\$10	\$8	\$8	\$7
	10yr ave.			\$17		\$15		\$13		\$12	\$11	\$11	\$10	\$10	\$9	\$8	\$6	\$6	\$5
	35% Current	\$39	\$35	\$33	\$29	\$26	\$24	\$22	\$21	\$20	\$19	\$18	\$17	\$15	\$13	\$12	\$10	\$9	\$8
	10yr ave.			\$20		\$18		\$15		\$13	\$13	\$13	\$12	\$12	\$10	\$9	\$7	\$6	\$6
	40% Current	\$45	\$40	\$37	\$33	\$30	\$27	\$26	\$24	\$23	\$22	\$21	\$19	\$17	\$15	\$14	\$11	\$10	\$9
	10yr ave.			\$23		\$20		\$17		\$15	\$15	\$14	\$14	\$13	\$12	\$11	\$8	\$7	\$7
	45% Current	\$50	\$45	\$42	\$37	\$33	\$30	\$29	\$27	\$26	\$25	\$23	\$21	\$19	\$17	\$15	\$12	\$11	\$10
	10yr ave.			\$26		\$23		\$20		\$17	\$17	\$16	\$16	\$15	\$13	\$12	\$10	\$8	\$8
	50% Current	\$56	\$50	\$47	\$42	\$37	\$34	\$32	\$30	\$29	\$27	\$26	\$24	\$21	\$19	\$17	\$14	\$13	\$12
	10yr ave.			\$29		\$25		\$22		\$19	\$18	\$18	\$17	\$16	\$15	\$13	\$11	\$9	\$8
	55% Current	\$62	\$55	\$51	\$46	\$41	\$37	\$35	\$33	\$31	\$30	\$29	\$26	\$23	\$20	\$19	\$15	\$14	\$13
	10yr ave.			\$32		\$28		\$24		\$21	\$20	\$20	\$19	\$18	\$16	\$15	\$12	\$10	\$9
	60% Current	\$67	\$60	\$56	\$50	\$44	\$40	\$38	\$36	\$34	\$33	\$31	\$28	\$25	\$22	\$21	\$17	\$15	\$14
	10yr ave.			\$35		\$31		\$26		\$23	\$22	\$21	\$21	\$20	\$18	\$16	\$13	\$11	\$10
	65% Current	\$73	\$65	\$61	\$54	\$48	\$44	\$41	\$39	\$37	\$36	\$34	\$31	\$27	\$24	\$22	\$18	\$16	\$15
	10yr ave.			\$38		\$33		\$28		\$25	\$24	\$23	\$23	\$21	\$19	\$17	\$14	\$12	\$11
	70% Current	\$78	\$70	\$65	\$58	\$52	\$47	\$45	\$42	\$40	\$38	\$36	\$33	\$29	\$26	\$24	\$19	\$18	\$16
	10yr ave.			\$40		\$36		\$31		\$27	\$26	\$25	\$24	\$23	\$21	\$19	\$15	\$13	\$12
	75% Current	\$84	\$75	\$70	\$62	\$55	\$51	\$48	\$45	\$43	\$41	\$39	\$35	\$31	\$28	\$26	\$21	\$19	\$17
	10yr ave.			\$43		\$38		\$33		\$29	\$28	\$27	\$26	\$25	\$22	\$20	\$16	\$14	\$13
	80% Current	\$90	\$80	\$75	\$67	\$59	\$54	\$51	\$48	\$46	\$44	\$41	\$38	\$33	\$30	\$27	\$22	\$20	\$19
	10yr ave.			\$46		\$41		\$35		\$31	\$29	\$29	\$28	\$26	\$24	\$22	\$17	\$15	\$13
	85% Current	\$95	\$85	\$79	\$71	\$63	\$57	\$54	\$51	\$49	\$47	\$44	\$40	\$36	\$31	\$29	\$23	\$22	\$20
	10yr ave.			\$49		\$43		\$37		\$33	\$31	\$30	\$30	\$28	\$25	\$23	\$18	\$16	\$14

The above shows estimated returns per head for skirted fleece wool. These figures do not take into account the value of skirtings and oddments and do not take into account discounts that may apply for faults under individual circumstances. These figures are based on a market index of 100% and should be used as a guide only. Returns over \$30 / head for fleece wool are highlighted.

Source: Australian Wool Exchange, Australian Wool Innovation, Sydney Futures Exchange, x-rates.com

Disclaimer: While all due care has been taken in the preparation of this document, no warranty is made as to its accuracy, reliability or completeness. To the extent permitted by law neither Jemalong or their sources including subsidiaries and staff, accept liability to any person for loss or damage arising from the use of this information.



Table 19: Returns pr head for skirted fleece wool.

Skirted FLC Weight		Micron																	
3 Kg		16	16.5	17	17.5	18	18.5	19	19.5	20	21	22	23	24	25	26	28	30	32
Yield (Sch Dry)	25% Current	\$21	\$19	\$17	\$16	\$14	\$13	\$12	\$11	\$11	\$10	\$10	\$9	\$8	\$7	\$6	\$5	\$5	\$4
	10yr ave.			\$11		\$10		\$8		\$7	\$7	\$7	\$7	\$6	\$6	\$5	\$4	\$3	\$3
	30% Current	\$25	\$23	\$21	\$19	\$17	\$15	\$14	\$13	\$13	\$12	\$12	\$11	\$9	\$8	\$8	\$6	\$6	\$5
	10yr ave.			\$13		\$11		\$10		\$9	\$8	\$8	\$8	\$7	\$7	\$6	\$5	\$4	\$4
	35% Current	\$29	\$26	\$24	\$22	\$19	\$18	\$17	\$16	\$15	\$14	\$14	\$12	\$11	\$10	\$9	\$7	\$7	\$6
	10yr ave.			\$15		\$13		\$11		\$10	\$10	\$9	\$9	\$9	\$8	\$7	\$6	\$5	\$4
	40% Current	\$34	\$30	\$28	\$25	\$22	\$20	\$19	\$18	\$17	\$16	\$16	\$14	\$13	\$11	\$10	\$8	\$8	\$7
	10yr ave.			\$17		\$15		\$13		\$12	\$11	\$11	\$10	\$10	\$9	\$8	\$6	\$6	\$5
	45% Current	\$38	\$34	\$31	\$28	\$25	\$23	\$22	\$20	\$19	\$19	\$17	\$16	\$14	\$12	\$12	\$9	\$9	\$8
	10yr ave.			\$20		\$17		\$15		\$13	\$12	\$12	\$12	\$11	\$10	\$9	\$7	\$6	\$6
	50% Current	\$42	\$38	\$35	\$31	\$28	\$25	\$24	\$22	\$21	\$21	\$19	\$18	\$16	\$14	\$13	\$10	\$10	\$9
	10yr ave.			\$22		\$19		\$16		\$14	\$14	\$13	\$13	\$12	\$11	\$10	\$8	\$7	\$6
	55% Current	\$46	\$41	\$38	\$34	\$30	\$28	\$26	\$25	\$24	\$23	\$21	\$19	\$17	\$15	\$14	\$11	\$10	\$10
	10yr ave.			\$24		\$21		\$18		\$16	\$15	\$15	\$14	\$14	\$12	\$11	\$9	\$8	\$7
	60% Current	\$50	\$45	\$42	\$37	\$33	\$30	\$29	\$27	\$26	\$25	\$23	\$21	\$19	\$17	\$15	\$12	\$11	\$10
	10yr ave.			\$26		\$23		\$20		\$17	\$17	\$16	\$16	\$15	\$13	\$12	\$10	\$8	\$8
	65% Current	\$55	\$49	\$45	\$41	\$36	\$33	\$31	\$29	\$28	\$27	\$25	\$23	\$20	\$18	\$17	\$13	\$12	\$11
	10yr ave.			\$28		\$25		\$21		\$19	\$18	\$17	\$17	\$16	\$14	\$13	\$10	\$9	\$8
	70% Current	\$59	\$53	\$49	\$44	\$39	\$35	\$33	\$31	\$30	\$29	\$27	\$25	\$22	\$19	\$18	\$14	\$13	\$12
	10yr ave.			\$30		\$27		\$23		\$20	\$19	\$19	\$18	\$17	\$15	\$14	\$11	\$10	\$9
	75% Current	\$63	\$56	\$52	\$47	\$42	\$38	\$36	\$34	\$32	\$31	\$29	\$27	\$24	\$21	\$19	\$15	\$14	\$13
	10yr ave.			\$33		\$29		\$25		\$22	\$21	\$20	\$20	\$18	\$17	\$15	\$12	\$10	\$9
	80% Current	\$67	\$60	\$56	\$50	\$44	\$40	\$38	\$36	\$34	\$33	\$31	\$28	\$25	\$22	\$21	\$17	\$15	\$14
	10yr ave.			\$35		\$31		\$26		\$23	\$22	\$21	\$21	\$20	\$18	\$16	\$13	\$11	\$10
	85% Current	\$71	\$64	\$59	\$53	\$47	\$43	\$41	\$38	\$36	\$35	\$33	\$30	\$27	\$24	\$22	\$18	\$16	\$15
	10yr ave.			\$37		\$32		\$28		\$24	\$23	\$23	\$22	\$21	\$19	\$17	\$14	\$12	\$11

The above shows estimated returns per head for skirted fleece wool. These figures do not take into account the value of skirtings and oddments and do not take into account discounts that may apply for faults under individual circumstances. These figures are based on a market index of 100% and should be used as a guide only. Returns over \$30 / head for fleece wool are highlighted.

Source: Australian Wool Exchange, Australian Wool Innovation, Sydney Futures Exchange, x-rates.com

Disclaimer: While all due care has been taken in the preparation of this document, no warranty is made as to its accuracy, reliability or completeness. To the extent permitted by law neither Jemalong or their sources including subsidiaries and staff, accept liability to any person for loss or damage arising from the use of this information.



Table 20: Returns pr head for skirted fleece wool.

Skirted FLC Weight		Micron																	
2 Kg		16	16.5	17	17.5	18	18.5	19	19.5	20	21	22	23	24	25	26	28	30	32
Yield (Sch Dry)	25% Current	\$14	\$13	\$12	\$10	\$9	\$8	\$8	\$7	\$7	\$7	\$6	\$6	\$5	\$5	\$4	\$3	\$3	\$3
	10yr ave.			\$7		\$6		\$5		\$5	\$5	\$4	\$4	\$4	\$4	\$3	\$3	\$2	\$2
	30% Current	\$17	\$15	\$14	\$12	\$11	\$10	\$10	\$9	\$9	\$8	\$8	\$7	\$6	\$6	\$5	\$4	\$4	\$3
	10yr ave.			\$9		\$8		\$7		\$6	\$6	\$5	\$5	\$5	\$4	\$4	\$3	\$3	\$3
	35% Current	\$20	\$18	\$16	\$15	\$13	\$12	\$11	\$10	\$10	\$10	\$9	\$8	\$7	\$6	\$6	\$5	\$4	\$4
	10yr ave.			\$10		\$9		\$8		\$7	\$6	\$6	\$6	\$6	\$5	\$5	\$4	\$3	\$3
	40% Current	\$22	\$20	\$19	\$17	\$15	\$13	\$13	\$12	\$11	\$11	\$10	\$9	\$8	\$7	\$7	\$6	\$5	\$5
	10yr ave.			\$12		\$10		\$9		\$8	\$7	\$7	\$7	\$7	\$6	\$5	\$4	\$4	\$3
	45% Current	\$25	\$23	\$21	\$19	\$17	\$15	\$14	\$13	\$13	\$12	\$12	\$11	\$9	\$8	\$8	\$6	\$6	\$5
	10yr ave.			\$13		\$11		\$10		\$9	\$8	\$8	\$8	\$7	\$7	\$6	\$5	\$4	\$4
	50% Current	\$28	\$25	\$23	\$21	\$18	\$17	\$16	\$15	\$14	\$14	\$13	\$12	\$10	\$9	\$9	\$7	\$6	\$6
	10yr ave.			\$14		\$13		\$11		\$10	\$9	\$9	\$9	\$8	\$7	\$7	\$5	\$5	\$4
	55% Current	\$31	\$28	\$26	\$23	\$20	\$19	\$18	\$16	\$16	\$15	\$14	\$13	\$12	\$10	\$9	\$8	\$7	\$6
	10yr ave.			\$16		\$14		\$12		\$11	\$10	\$10	\$10	\$9	\$8	\$7	\$6	\$5	\$5
	60% Current	\$34	\$30	\$28	\$25	\$22	\$20	\$19	\$18	\$17	\$16	\$16	\$14	\$13	\$11	\$10	\$8	\$8	\$7
	10yr ave.			\$17		\$15		\$13		\$12	\$11	\$11	\$10	\$10	\$9	\$8	\$6	\$6	\$5
	65% Current	\$36	\$33	\$30	\$27	\$24	\$22	\$21	\$19	\$19	\$18	\$17	\$15	\$14	\$12	\$11	\$9	\$8	\$8
	10yr ave.			\$19		\$17		\$14		\$12	\$12	\$12	\$11	\$11	\$10	\$9	\$7	\$6	\$5
	70% Current	\$39	\$35	\$33	\$29	\$26	\$24	\$22	\$21	\$20	\$19	\$18	\$17	\$15	\$13	\$12	\$10	\$9	\$8
	10yr ave.			\$20		\$18		\$15		\$13	\$13	\$13	\$12	\$12	\$10	\$9	\$7	\$6	\$6
	75% Current	\$42	\$38	\$35	\$31	\$28	\$25	\$24	\$22	\$21	\$21	\$19	\$18	\$16	\$14	\$13	\$10	\$10	\$9
	10yr ave.			\$22		\$19		\$16		\$14	\$14	\$13	\$13	\$12	\$11	\$10	\$8	\$7	\$6
	80% Current	\$45	\$40	\$37	\$33	\$30	\$27	\$26	\$24	\$23	\$22	\$21	\$19	\$17	\$15	\$14	\$11	\$10	\$9
	10yr ave.			\$23		\$20		\$17		\$15	\$15	\$14	\$14	\$13	\$12	\$11	\$8	\$7	\$7
	85% Current	\$48	\$43	\$40	\$35	\$31	\$29	\$27	\$25	\$24	\$23	\$22	\$20	\$18	\$16	\$15	\$12	\$11	\$10
	10yr ave.			\$25		\$22		\$19		\$16	\$16	\$15	\$15	\$14	\$12	\$11	\$9	\$8	\$7

The above shows estimated returns per head for skirted fleece wool. These figures do not take into account the value of skirtings and oddments and do not take into account discounts that may apply for faults under individual circumstances. These figures are based on a market index of 100% and should be used as a guide only. Returns over \$30 / head for fleece wool are highlighted.

Source: Australian Wool Exchange, Australian Wool Innovation, Sydney Futures Exchange, x-rates.com

Disclaimer: While all due care has been taken in the preparation of this document, no warranty is made as to its accuracy, reliability or completeness. To the extent permitted by law neither Jemalong or their sources including subsidiaries and staff, accept liability to any person for loss or damage arising from the use of this information.