



JEMALONG WOOL BULLETIN

(week ending 10/02/2011)

Table 1: Northern Region Micron Price Guides

CURRENT MARKET				PERCENTILES		AVERAGES						12 MONTH COMPARISONS								TRADING RANGE		
Mic.	10/02/2011	3/02/2011	Now			Now			9/02/2010		Now		Now		Now		Clean c/kg					
Price	Current	Weekly	3yr	10yr	3 year	compared	10 year	compared	This time	compared	12 Month	compared	12 Month	compared	12	3	10					
Guides	Price	Change			Average	to 3yr ave	Average	to 10yr ave	Last Year	to Last Year	Low	to Low	High	to High	Mth	Year	Year					
NRI	1308	-5 -0.4%	99%	99%	910	+398 44%	880	+428 49%	944	+364 39%	890	+418 47%	1324	-16 -1%	434	575	666					
16*	2670	+100 3.7%	100%		1681	+989 59%			1530	+1140 75%	1510	+1160 77%	2670	0 0%	1160	1285						
16.5*	2500	0	100%		1547	+953 62%			1410	+1090 77%	1395	+1105 79%	2500	0 0%	1105	1249						
17*	2420	+50 2.1%	100%	99%	1420	+1000 70%	1400	+1020 73%	1245	+1175 94%	1230	+1190 97%	2420	0 0%	1190	1252	1656					
17.5*	2290	+30 1.3%	100%		1348	+942 70%			1190	+1100 92%	1175	+1115 95%	2290	0 0%	1115	1207						
18	2072	-5 -0.2%	99%	95%	1281	+791 62%	1280	+792 62%	1169	+903 77%	1134	+938 83%	2124	-52 -2%	990	1089	1392					
18.5	1896	-45 -2.4%	99%		1199	+697 58%			1140	+756 66%	1088	+808 74%	1963	-67 -3%	875	992						
19	1589	-49 -3.1%	98%	99%	1089	+500 46%	1070	+519 49%	1082	+507 47%	1031	+558 54%	1658	-69 -4%	627	764	854					
19.5	1371	-29 -2.1%	98%		991	+380 38%			1033	+338 33%	952	+419 44%	1409	-38 -3%	457	595						
20	1192	-11 -0.9%	98%	93%	913	+279 31%	921	+271 29%	981	+211 22%	904	+288 32%	1230	-38 -3%	326	491	717					
21	1137	-25 -2.2%	98%	93%	880	+257 29%	878	+259 29%	968	+169 17%	878	+259 29%	1175	-38 -3%	297	488	737					
22	1087	-23 -2.1%	98%	93%	857	+230 27%	855	+232 27%	942	+145 15%	847	+240 28%	1141	-54 -5%	294	467	733					
23	1038	-9 -0.9%	98%	92%	834	+204 24%	834	+204 24%	910	+128 14%	827	+211 26%	1070	-32 -3%	243	407	720					
24	988	0	100%	89%	786	+202 26%	797	+191 24%	850	+138 16%	780	+208 27%	988	0 0%	208	341	699					
25	845	0	100%	81%	677	+168 25%	715	+130 18%	681	+164 24%	660	+185 28%	845	0 0%	185	279	638					
26	760	+12 1.6%	100%	81%	608	+152 25%	654	+106 16%	607	+153 25%	576	+184 32%	760	0 0%	184	256	579					
28	558	-9 -1.6%	97%	75%	467	+91 19%	523	+35 7%	469	+89 19%	436	+122 28%	579	-21 -4%	143	160	465					
30	500	-3 -0.6%	97%	74%	407	+93 23%	457	+43 9%	399	+101 25%	382	+118 31%	509	-9 -2%	127	162	385					
32	445	-3 -0.7%	97%	70%	356	+89 25%	413	+32 8%	347	+98 28%	346	+99 29%	449	-4 -1%	103	143	372					
MC	721	+21 2.9%	100%	100%	549	+172 31%	504	+217 43%	673	+48 7%	561	+160 29%	721	0 0%	160	329	341					

Note:

* Due to the irregular market quoting for some fine wool categories, figures shown relating to micron categories below 18 micron are an estimate based on the AWEX Premium & Discounts Report & other available information.

* For any category, where there is insufficient quantity offered to enable AWEX to quote, a quote will be provided based on the best available information.

* 10 Year data is not available for some micron categories, which may result in blank spaces in the table above.

Definitions:

* A Percentile, is a value on a scale of one hundred that indicates the percent of a distribution that is equal to or below it. In general a percentile between 25% and 75% is considered normal, a percentile below 25% is considered below normal and a percentile above 75% is considered above normal.

Three and ten year percentiles shown in the table above, detail the period of time during the past 3 & 10 years that the market has traded either at or below its current price.

The higher the percentile, the stronger the market.

Source: Australian Wool Exchange, Australian Wool Innovation, Sydney Futures Exchange, x-rates.com

Disclaimer: While all due care has been taken in the preparation of this document, no warranty is made as to its accuracy, reliability or completeness. To the extent permitted by law neither Jemalong or their sources including subsidiaries and staff, accept liability to any person for loss or damage arising from the use of this information.



MARKET COMMENTARY

One Australian Dollar = \$ 1.01 US, as of 10/02/2011

NORTHERN REGION –Sale Week 32/10 (45,538 bales offered nationally)

On Wednesday - After a strong start, 20 micron and broader came off the pace towards the end of trading, closing at similar levels to last week. 19.5 microns improved by 10 cents while 19 and finer gained 20 to 40 cents. Fine merino skirtings were in line with the fleece market, gaining 30 to 40 cents, while 19 microns and broader were firm to slightly dearer. All oddment categories were well supported, with locks 10 cents dearer while crutchings and stains closed 20 cents higher. 27 to 30 micron crossbreds remained unchanged.

On Thursday - A limited offering of fine and ultra fine spinner lots attracted good buyer support, while the rest of the market retreated. 18 to 19.5 microns contracted 40 to 70 cents with the lower style and strength lots most affected, where as 20 microns and broader were generally 15-25 cents cheaper. Strong support had all fine skirtings 30-50 cents dearer. Locks, crutchings & stains all closed par to 5 cents dearer, while 27 to 30 micron crossbreds eased 5-10 cents.

Northern Region Indicator (Monthly Averages)

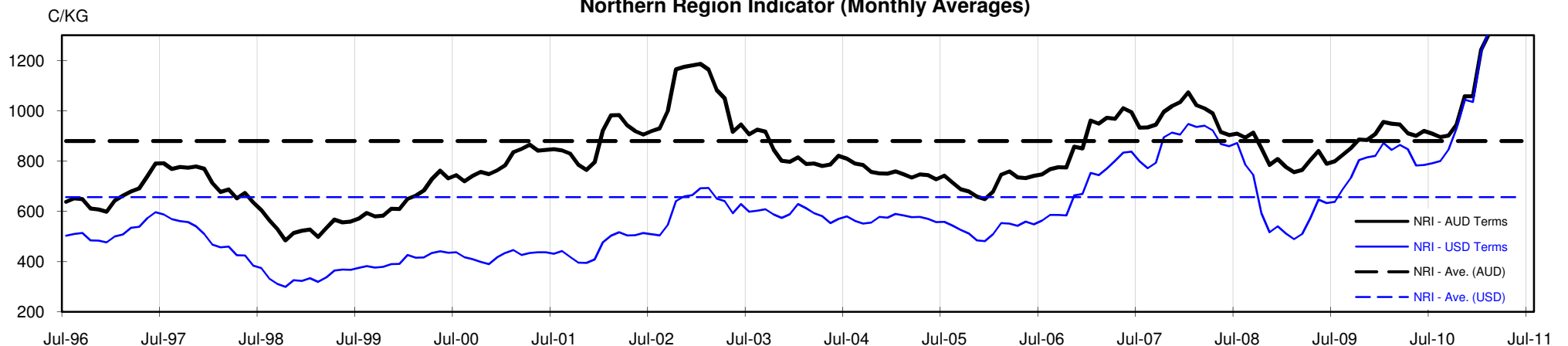




Table 4: 19 micron SFE

Wednesday, 9 February 2011

Delivery Mth	Feb-11	Apr-11	Jun-11	Aug-11	Oct-11	Dec-11	Feb-12	Apr-12	Jun-12
19 Micron SFE	1600	1600	1590	1562	1525	1505	1493	1423	1423
Average	1059	1100	1113	1122	1128	1134	1155	1190	1242
Maximum	1600	1605	1600	1590	1562	1538	1532	1520	1450
Minimum	936	983	1025	1034	1034	1034	1034	1053	1106

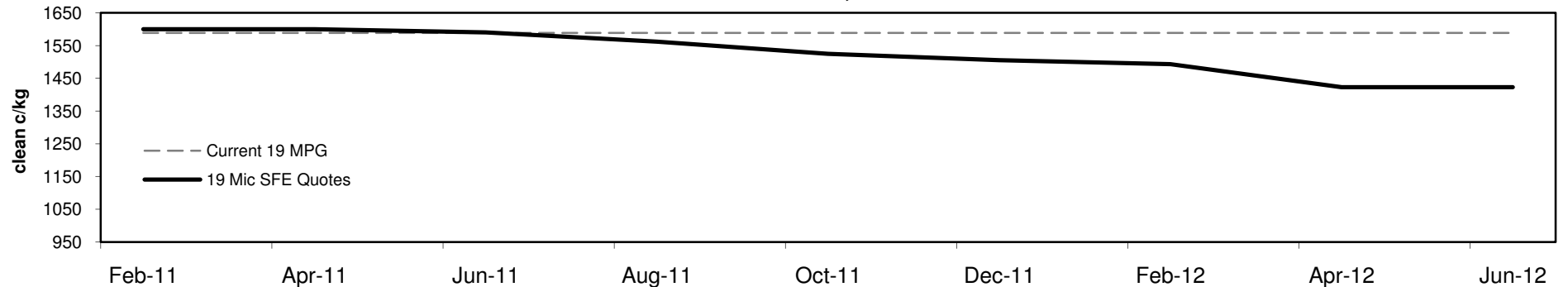
Table 5: 19 micron SFE, as a percentile of the 19 micron MPG

3 Year Percentile	98%	98%	98%	98%	97%	96%	96%	96%	96%
10 Year Percentile	99%	99%	99%	99%	99%	99%	99%	98%	98%

Table 6: 19 micron SFE, compared to MPG

Current 19 MPG	+11	1%	+11	1%	+1	0%	-27	-2%	-64	-4%	-84	-5%	-96	-6%	-166	-10%	-166	-10%
19 MPG, 1 Year Average	+408	34%	+408	34%	+398	33%	+370	31%	+333	28%	+313	26%	+301	25%	+231	19%	+231	19%
19 MPG, 3 Year Average	+511	47%	+511	47%	+501	46%	+473	43%	+436	40%	+416	38%	+404	37%	+334	31%	+334	31%
19 MPG, 10 Year Average	+530	50%	+530	50%	+520	49%	+492	46%	+455	43%	+435	41%	+423	40%	+353	33%	+353	33%

19 MICRON SFE, QUOTES



19 Micron SFE, Front month movement

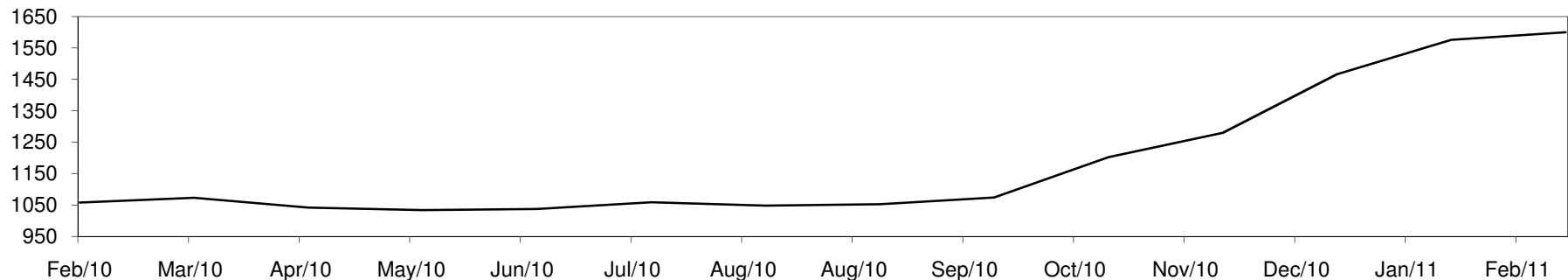




Table 7: 21 micron SFE

Wednesday, 9 February 2011

Delivery Mth	Feb-11	Apr-11	Jun-11	Aug-11	Oct-11	Dec-11	Feb-12	Apr-12	Jun-12
21 Micron SFE	1165	1162	1152	1119	1088	1037	1065	1058	1037
Average	933	956	960	960	954	949	949	970	1013
Maximum	1165	1220	1193	1160	1133	1115	1065	1080	1080
Minimum	818	860	891	890	880	880	880	880	934

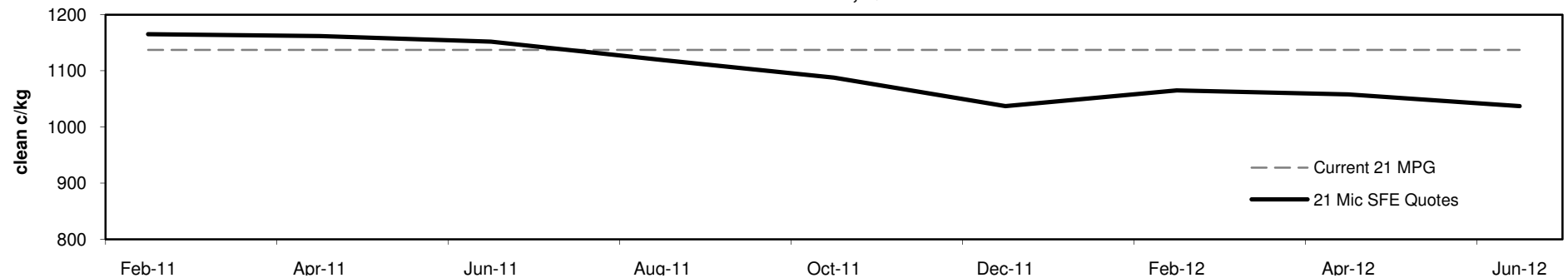
Table 8: 21 micron SFE, as a percentile of the 21 micron MPG

3 Year Percentile	99%	99%	99%	98%	96%	96%	96%	96%	96%
10 Year Percentile	94%	94%	93%	93%	92%	89%	92%	91%	89%

Table 9: 21 micron SFE, compared to MPG

Current 21 MPG	+28	2%	+25	2%	+15	1%	-18	-2%	-49	-4%	-100	-9%	-72	-6%	-79	-7%	-100	-9%
21 MPG, 1 Year Average	+195	20%	+192	20%	+182	19%	+149	15%	+118	12%	+67	7%	+95	10%	+88	9%	+67	7%
21 MPG, 3 Year Average	+285	32%	+282	32%	+272	31%	+239	27%	+208	24%	+157	18%	+185	21%	+178	20%	+157	18%
21 MPG, 10 Year Average	+287	33%	+284	32%	+274	31%	+241	27%	+210	24%	+159	18%	+187	21%	+180	20%	+159	18%

21 MICRON SFE, QUOTES



21 Micron SFE, Front month movement

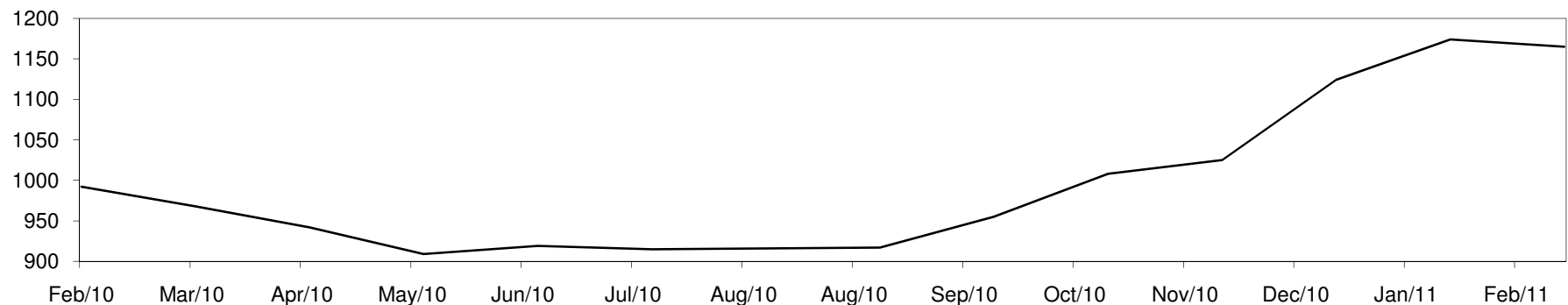




Table 10: 23 micron SFE

Wednesday, 9 February 2011

Delivery Mth	Feb-11	Apr-11	Jun-11	Aug-11	Oct-11	Dec-11	Feb-12	Apr-12	Jun-12
23 Micron SFE	890	890	890	890	890	890	890	890	890
Average	856	867	875	886	891	885	885	886	886
Maximum	927	927	927	927	927	890	890	890	890
Minimum	760	760	803	803	883	883	883	883	883

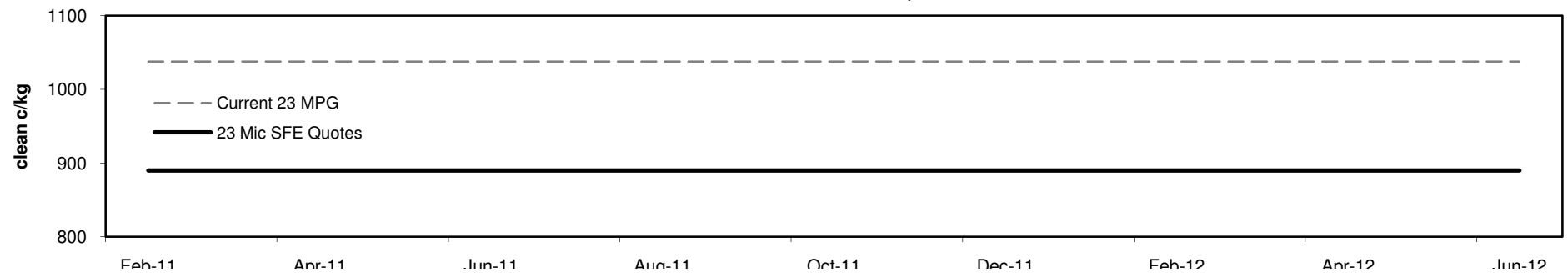
Table 11: 23 micron SFE, as a percentile of the 23 micron MPG

3 Year Percentile	73%	73%	73%	73%	73%	73%	73%	73%	73%
10 Year Percentile	64%	64%	64%	64%	64%	64%	64%	64%	64%

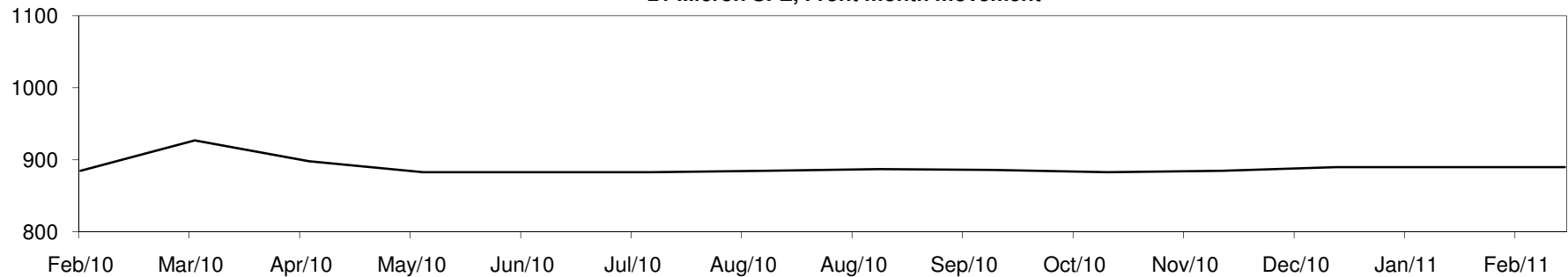
Table 12: 23 micron SFE, compared to MPG

Current 19 MPG	-148	-14%	-148	-14%	-148	-14%	-148	####	-148	-14%	-148	-14%	-148	-14%	-148	-14%	-148	-14%
23 MPG, 1 Year Average	-22	-2%	-22	-2%	-22	-2%	-22	-2%	-22	-2%	-22	-2%	-22	-2%	-22	-2%	-22	-2%
23 MPG, 3 Year Average	+56	7%	+56	7%	+56	7%	+56	7%	+56	7%	+56	7%	+56	7%	+56	7%	+56	7%
23 MPG, 10 Year Average	+56	7%	+56	7%	+56	7%	+56	7%	+56	7%	+56	7%	+56	7%	+56	7%	+56	7%

23 MICRON SFE, QUOTES

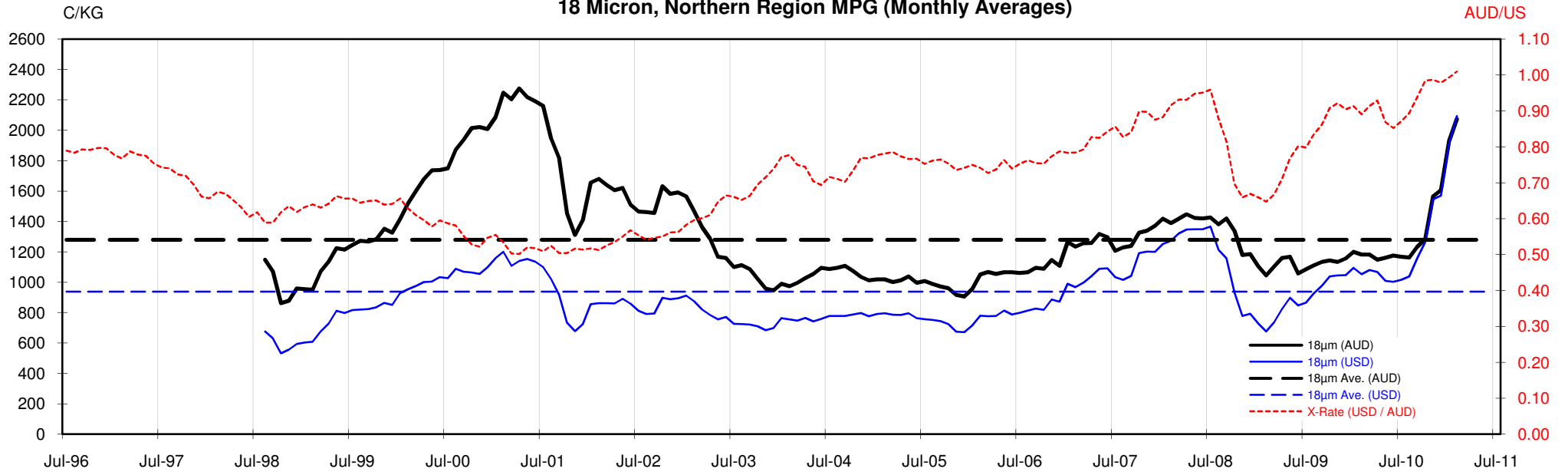


21 Micron SFE, Front month movement

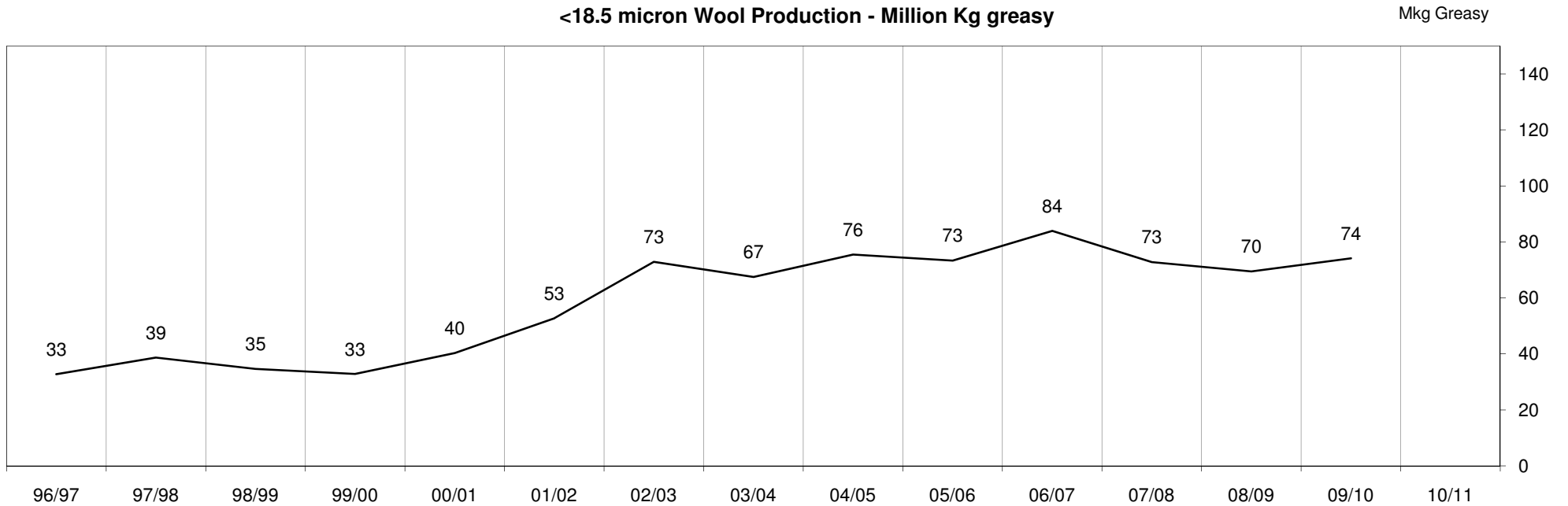


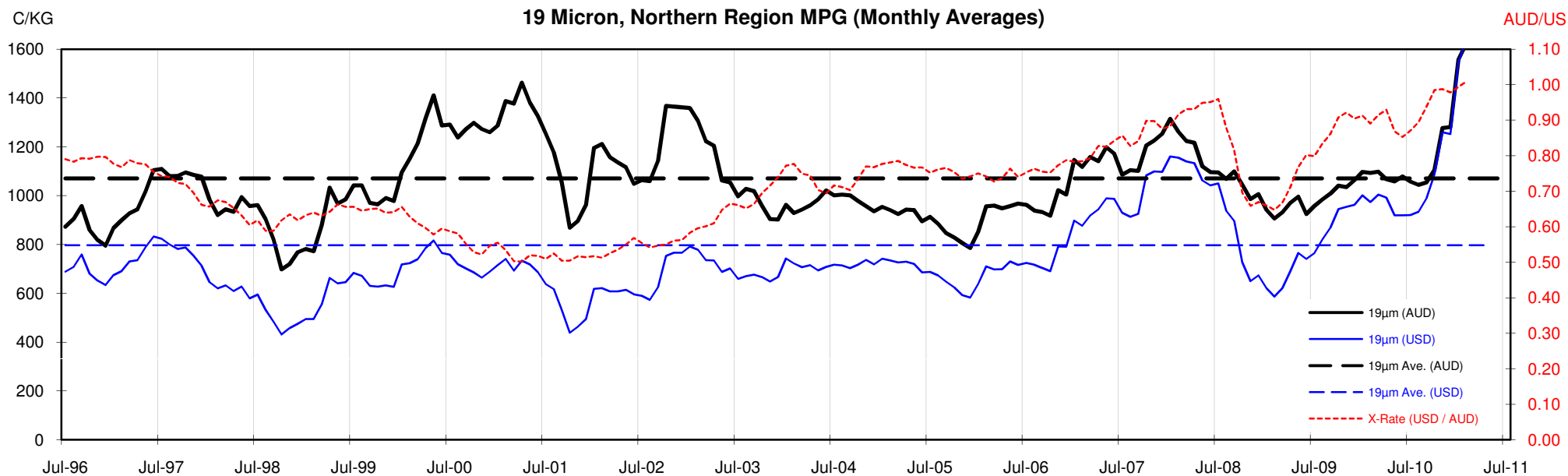


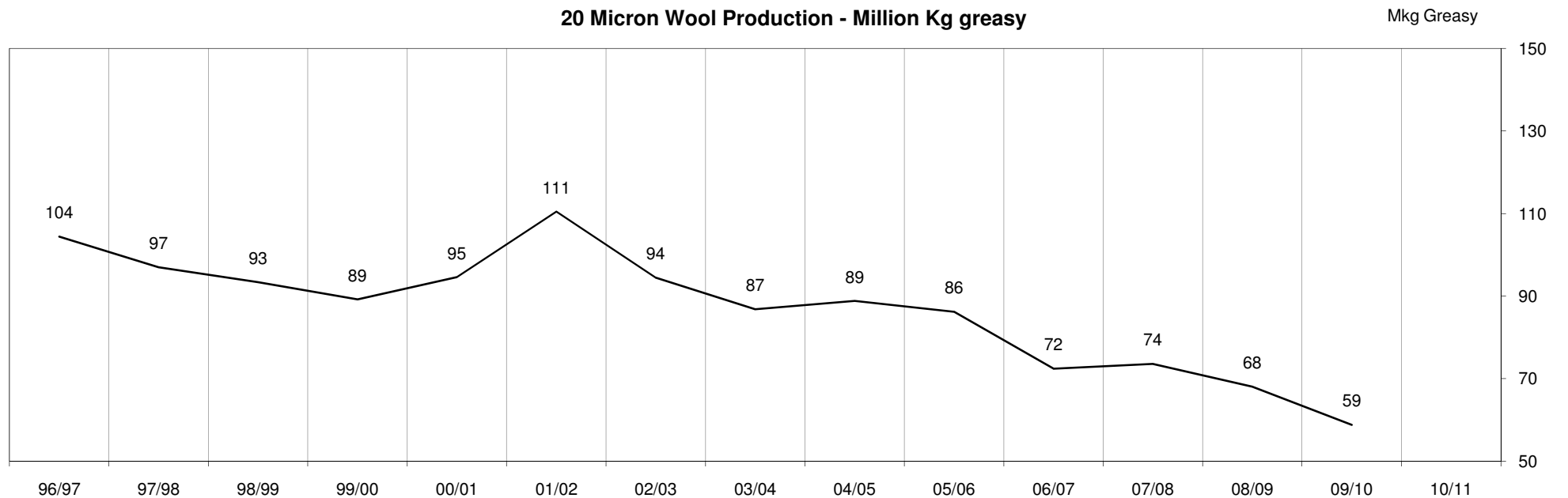
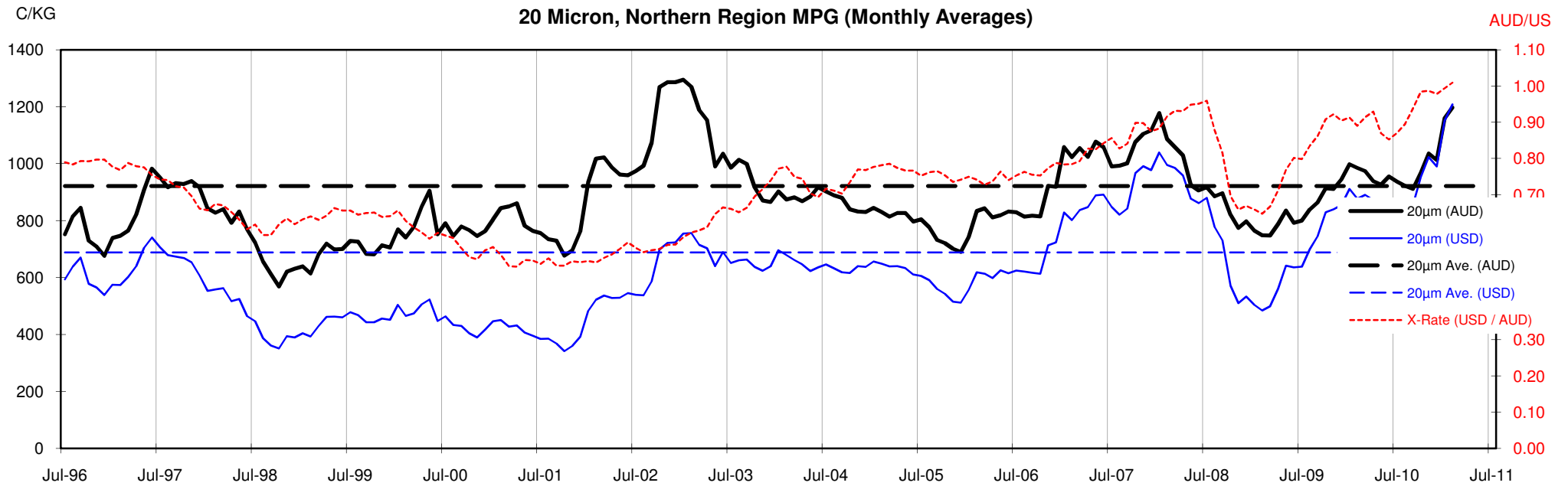
18 Micron, Northern Region MPG (Monthly Averages)

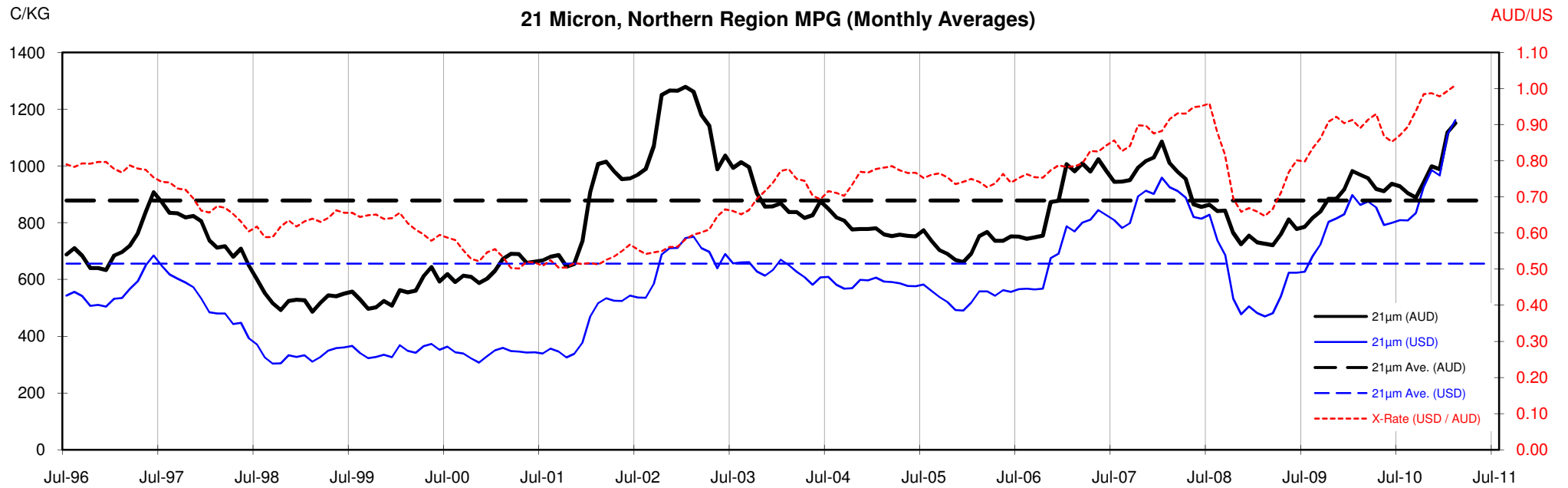


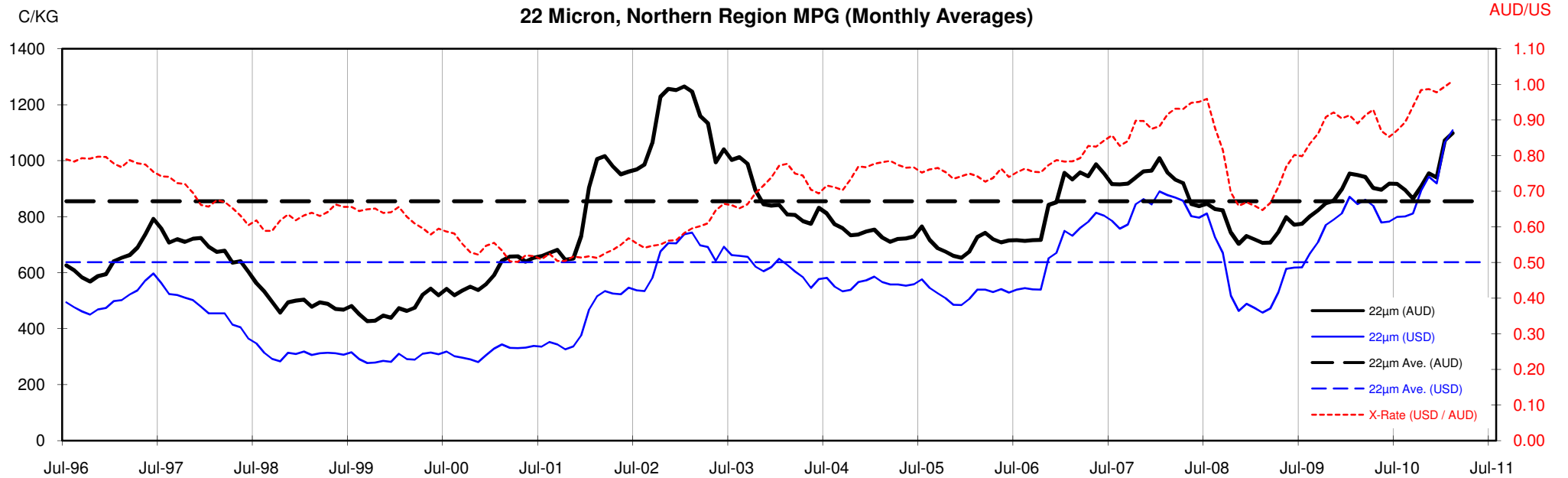
<18.5 micron Wool Production - Million Kg greasy

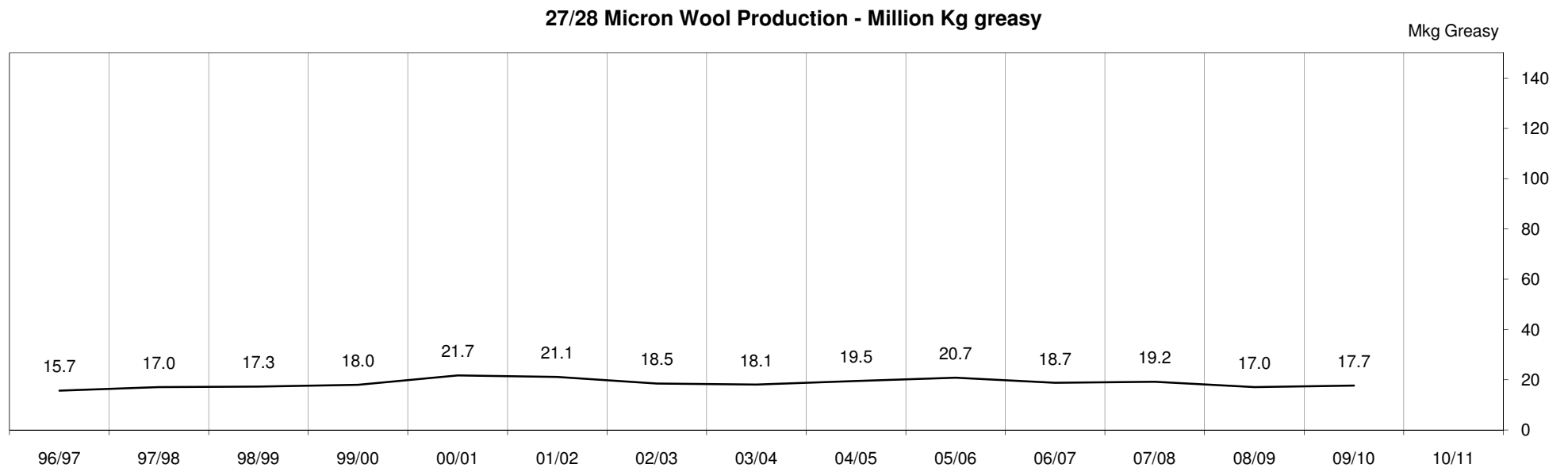
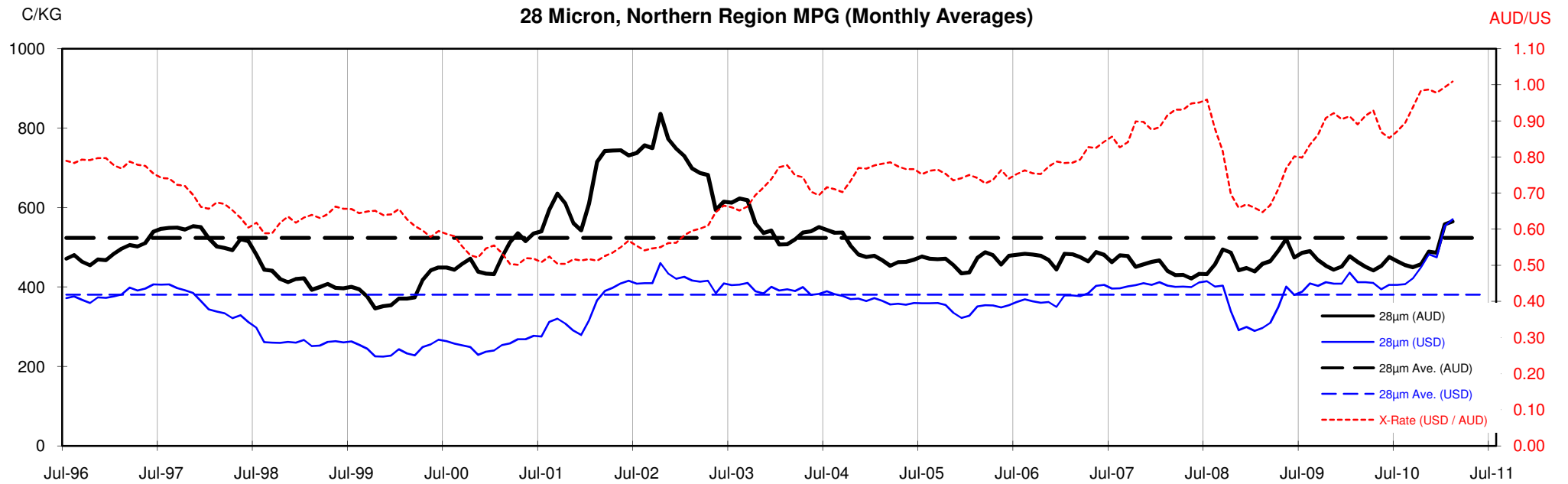












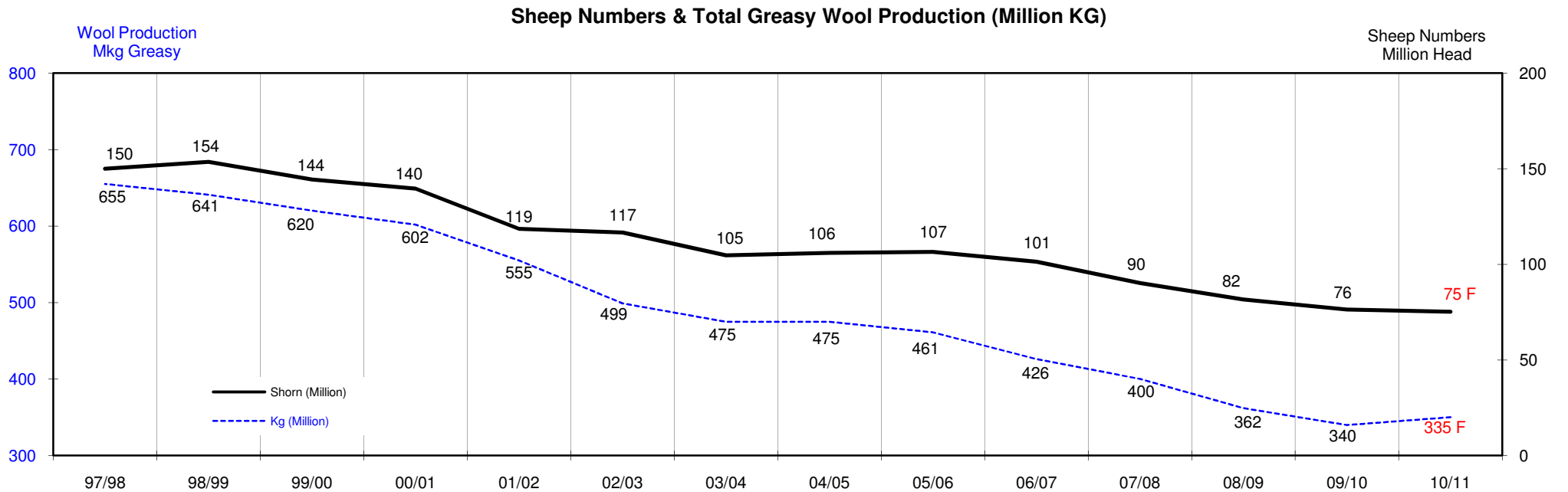
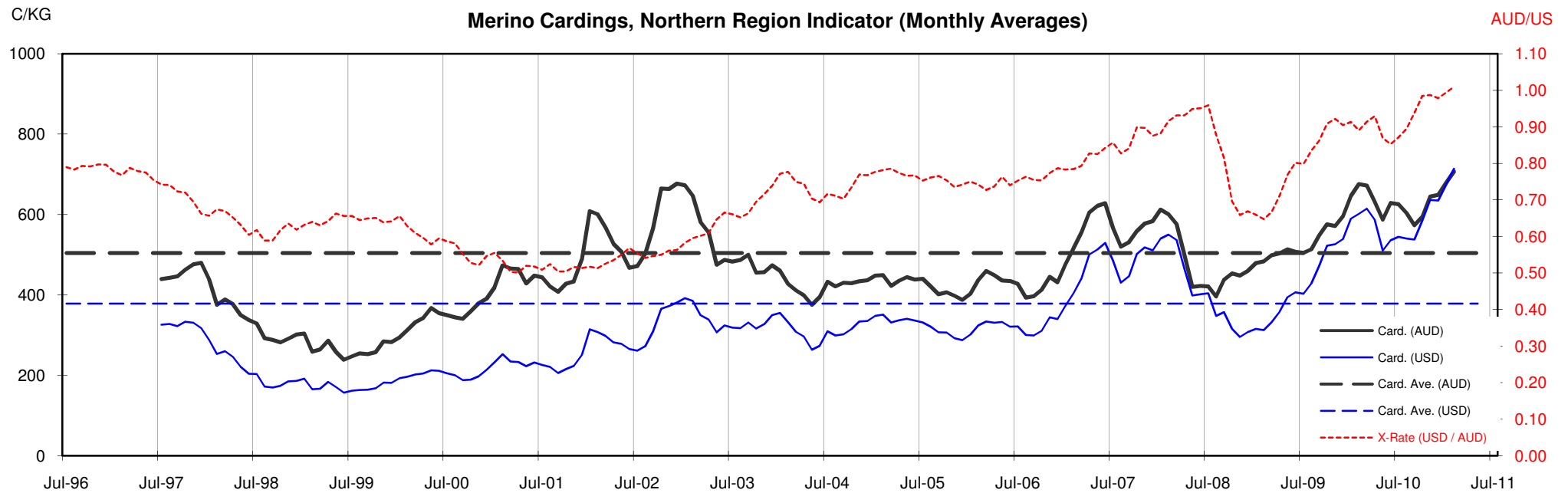




Table 13: Returns pr head for skirted fleece wool.

Skirted FLC Weight		Micron																	
9 Kg		16	16.5	17	17.5	18	18.5	19	19.5	20	21	22	23	24	25	26	28	30	32
Yield (Sch Dry)	25% Current	\$60	\$56	\$54	\$52	\$47	\$43	\$36	\$31	\$27	\$26	\$24	\$23	\$22	\$19	\$17	\$13	\$11	\$10
	10yr ave.			\$32		\$29		\$24		\$21	\$20	\$19	\$19	\$18	\$16	\$15	\$12	\$10	\$9
	30% Current	\$72	\$68	\$65	\$62	\$56	\$51	\$43	\$37	\$32	\$31	\$29	\$28	\$27	\$23	\$21	\$15	\$14	\$12
	10yr ave.			\$38		\$35		\$29		\$25	\$24	\$23	\$23	\$22	\$19	\$18	\$14	\$12	\$11
	35% Current	\$84	\$79	\$76	\$72	\$65	\$60	\$50	\$43	\$38	\$36	\$34	\$33	\$31	\$27	\$24	\$18	\$16	\$14
	10yr ave.			\$44		\$40		\$34		\$29	\$28	\$27	\$26	\$25	\$23	\$21	\$16	\$14	\$13
	40% Current	\$96	\$90	\$87	\$82	\$75	\$68	\$57	\$49	\$43	\$41	\$39	\$37	\$36	\$30	\$27	\$20	\$18	\$16
	10yr ave.			\$50		\$46		\$39		\$33	\$32	\$31	\$30	\$29	\$26	\$24	\$19	\$16	\$15
	45% Current	\$108	\$101	\$98	\$93	\$84	\$77	\$64	\$56	\$48	\$46	\$44	\$42	\$40	\$34	\$31	\$23	\$20	\$18
	10yr ave.			\$57		\$52		\$43		\$37	\$36	\$35	\$34	\$32	\$29	\$26	\$21	\$19	\$17
	50% Current	\$120	\$113	\$109	\$103	\$93	\$85	\$72	\$62	\$54	\$51	\$49	\$47	\$44	\$38	\$34	\$25	\$23	\$20
	10yr ave.			\$63		\$58		\$48		\$41	\$40	\$38	\$38	\$36	\$32	\$29	\$24	\$21	\$19
	55% Current	\$132	\$124	\$120	\$113	\$103	\$94	\$79	\$68	\$59	\$56	\$54	\$51	\$49	\$42	\$38	\$28	\$25	\$22
	10yr ave.			\$69		\$63		\$53		\$46	\$43	\$42	\$41	\$39	\$35	\$32	\$26	\$23	\$20
	60% Current	\$144	\$135	\$131	\$124	\$112	\$102	\$86	\$74	\$64	\$61	\$59	\$56	\$53	\$46	\$41	\$30	\$27	\$24
	10yr ave.			\$76		\$69		\$58		\$50	\$47	\$46	\$45	\$43	\$39	\$35	\$28	\$25	\$22
	65% Current	\$156	\$146	\$142	\$134	\$121	\$111	\$93	\$80	\$70	\$67	\$64	\$61	\$58	\$49	\$44	\$33	\$29	\$26
	10yr ave.			\$82		\$75		\$63		\$54	\$51	\$50	\$49	\$47	\$42	\$38	\$31	\$27	\$24
	70% Current	\$168	\$158	\$152	\$144	\$131	\$119	\$100	\$86	\$75	\$72	\$68	\$65	\$62	\$53	\$48	\$35	\$32	\$28
	10yr ave.			\$88		\$81		\$67		\$58	\$55	\$54	\$53	\$50	\$45	\$41	\$33	\$29	\$26
	75% Current	\$180	\$169	\$163	\$155	\$140	\$128	\$107	\$93	\$80	\$77	\$73	\$70	\$67	\$57	\$51	\$38	\$34	\$30
	10yr ave.			\$95		\$86		\$72		\$62	\$59	\$58	\$56	\$54	\$48	\$44	\$35	\$31	\$28
	80% Current	\$192	\$180	\$174	\$165	\$149	\$137	\$114	\$99	\$86	\$82	\$78	\$75	\$71	\$61	\$55	\$40	\$36	\$32
	10yr ave.			\$101		\$92		\$77		\$66	\$63	\$62	\$60	\$57	\$51	\$47	\$38	\$33	\$30
	85% Current	\$204	\$191	\$185	\$175	\$159	\$145	\$122	\$105	\$91	\$87	\$83	\$79	\$76	\$65	\$58	\$43	\$38	\$34
	10yr ave.			\$107		\$98		\$82		\$70	\$67	\$65	\$64	\$61	\$55	\$50	\$40	\$35	\$32

The above shows estimated returns per head for skirted fleece wool. These figures do not take into account the value of skirtings and oddments and do not take into account discounts that may apply for faults under individual circumstances. These figures are based on a market index of 100% and should be used as a guide only. Returns over \$30 / head for fleece wool are highlighted.

Source: Australian Wool Exchange, Australian Wool Innovation, Sydney Futures Exchange, x-rates.com

Disclaimer: While all due care has been taken in the preparation of this document, no warranty is made as to its accuracy, reliability or completeness. To the extent permitted by law neither Jemalong or their sources including subsidiaries and staff, accept liability to any person for loss or damage arising from the use of this information.



Table 14: Returns pr head for skirted fleece wool.

Skirted FLC Weight 8 Kg			Micron																	
			16	16.5	17	17.5	18	18.5	19	19.5	20	21	22	23	24	25	26	28	30	32
Yield (Sch Dry)	25%	Current	\$53	\$50	\$48	\$46	\$41	\$38	\$32	\$27	\$24	\$23	\$22	\$21	\$20	\$17	\$15	\$11	\$10	\$9
		10yr ave.			\$28		\$26		\$21		\$18	\$18	\$17	\$17	\$16	\$14	\$13	\$10	\$9	\$8
	30%	Current	\$64	\$60	\$58	\$55	\$50	\$46	\$38	\$33	\$29	\$27	\$26	\$25	\$24	\$20	\$18	\$13	\$12	\$11
		10yr ave.			\$34		\$31		\$26		\$22	\$21	\$21	\$20	\$19	\$17	\$16	\$13	\$11	\$10
	35%	Current	\$75	\$70	\$68	\$64	\$58	\$53	\$44	\$38	\$33	\$32	\$30	\$29	\$28	\$24	\$21	\$16	\$14	\$12
		10yr ave.			\$39		\$36		\$30		\$26	\$25	\$24	\$23	\$22	\$20	\$18	\$15	\$13	\$12
	40%	Current	\$85	\$80	\$77	\$73	\$66	\$61	\$51	\$44	\$38	\$36	\$35	\$33	\$32	\$27	\$24	\$18	\$16	\$14
		10yr ave.			\$45		\$41		\$34		\$29	\$28	\$27	\$27	\$26	\$23	\$21	\$17	\$15	\$13
	45%	Current	\$96	\$90	\$87	\$82	\$75	\$68	\$57	\$49	\$43	\$41	\$39	\$37	\$36	\$30	\$27	\$20	\$18	\$16
		10yr ave.			\$50		\$46		\$39		\$33	\$32	\$31	\$30	\$29	\$26	\$24	\$19	\$16	\$15
	50%	Current	\$107	\$100	\$97	\$92	\$83	\$76	\$64	\$55	\$48	\$45	\$43	\$42	\$40	\$34	\$30	\$22	\$20	\$18
		10yr ave.			\$56		\$51		\$43		\$37	\$35	\$34	\$33	\$32	\$29	\$26	\$21	\$18	\$17
	55%	Current	\$117	\$110	\$106	\$101	\$91	\$83	\$70	\$60	\$52	\$50	\$48	\$46	\$43	\$37	\$33	\$25	\$22	\$20
		10yr ave.			\$62		\$56		\$47		\$41	\$39	\$38	\$37	\$35	\$31	\$29	\$23	\$20	\$18
60%	Current	\$128	\$120	\$116	\$110	\$99	\$91	\$76	\$66	\$57	\$55	\$52	\$50	\$47	\$41	\$36	\$27	\$24	\$21	
	10yr ave.			\$67		\$61		\$51		\$44	\$42	\$41	\$40	\$38	\$34	\$31	\$25	\$22	\$20	
65%	Current	\$139	\$130	\$126	\$119	\$108	\$99	\$83	\$71	\$62	\$59	\$57	\$54	\$51	\$44	\$40	\$29	\$26	\$23	
	10yr ave.			\$73		\$67		\$56		\$48	\$46	\$44	\$43	\$41	\$37	\$34	\$27	\$24	\$21	
70%	Current	\$150	\$140	\$136	\$128	\$116	\$106	\$89	\$77	\$67	\$64	\$61	\$58	\$55	\$47	\$43	\$31	\$28	\$25	
	10yr ave.			\$78		\$72		\$60		\$52	\$49	\$48	\$47	\$45	\$40	\$37	\$29	\$26	\$23	
75%	Current	\$160	\$150	\$145	\$137	\$124	\$114	\$95	\$82	\$72	\$68	\$65	\$62	\$59	\$51	\$46	\$33	\$30	\$27	
	10yr ave.			\$84		\$77		\$64		\$55	\$53	\$51	\$50	\$48	\$43	\$39	\$31	\$27	\$25	
80%	Current	\$171	\$160	\$155	\$147	\$133	\$121	\$102	\$88	\$76	\$73	\$70	\$66	\$63	\$54	\$49	\$36	\$32	\$28	
	10yr ave.			\$90		\$82		\$68		\$59	\$56	\$55	\$53	\$51	\$46	\$42	\$33	\$29	\$26	
85%	Current	\$182	\$170	\$165	\$156	\$141	\$129	\$108	\$93	\$81	\$77	\$74	\$71	\$67	\$57	\$52	\$38	\$34	\$30	
	10yr ave.			\$95		\$87		\$73		\$63	\$60	\$58	\$57	\$54	\$49	\$44	\$36	\$31	\$28	

The above shows estimated returns per head for skirted fleece wool. These figures do not take into account the value of skirtings and oddments and do not take into account discounts that may apply for faults under individual circumstances. These figures are based on a market index of 100% and should be used as a guide only. Returns over \$30 / head for fleece wool are highlighted.

Source: Australian Wool Exchange, Australian Wool Innovation, Sydney Futures Exchange, x-rates.com

Disclaimer: While all due care has been taken in the preparation of this document, no warranty is made as to its accuracy, reliability or completeness. To the extent permitted by law neither Jemalong or their sources including subsidiaries and staff, accept liability to any person for loss or damage arising from the use of this information.



Table 15: Returns pr head for skirted fleece wool.

Skirted FLC Weight		Micron																	
7 Kg		16	16.5	17	17.5	18	18.5	19	19.5	20	21	22	23	24	25	26	28	30	32
Yield (Sch Dry)	25% Current	\$47	\$44	\$42	\$40	\$36	\$33	\$28	\$24	\$21	\$20	\$19	\$18	\$17	\$15	\$13	\$10	\$9	\$8
	10yr ave.			\$25		\$22		\$19		\$16	\$15	\$15	\$15	\$14	\$13	\$11	\$9	\$8	\$7
	30% Current	\$56	\$53	\$51	\$48	\$44	\$40	\$33	\$29	\$25	\$24	\$23	\$22	\$21	\$18	\$16	\$12	\$11	\$9
	10yr ave.			\$29		\$27		\$22		\$19	\$18	\$18	\$18	\$17	\$15	\$14	\$11	\$10	\$9
	35% Current	\$65	\$61	\$59	\$56	\$51	\$46	\$39	\$34	\$29	\$28	\$27	\$25	\$24	\$21	\$19	\$14	\$12	\$11
	10yr ave.			\$34		\$31		\$26		\$23	\$22	\$21	\$20	\$20	\$18	\$16	\$13	\$11	\$10
	40% Current	\$75	\$70	\$68	\$64	\$58	\$53	\$44	\$38	\$33	\$32	\$30	\$29	\$28	\$24	\$21	\$16	\$14	\$12
	10yr ave.			\$39		\$36		\$30		\$26	\$25	\$24	\$23	\$22	\$20	\$18	\$15	\$13	\$12
	45% Current	\$84	\$79	\$76	\$72	\$65	\$60	\$50	\$43	\$38	\$36	\$34	\$33	\$31	\$27	\$24	\$18	\$16	\$14
	10yr ave.			\$44		\$40		\$34		\$29	\$28	\$27	\$26	\$25	\$23	\$21	\$16	\$14	\$13
	50% Current	\$93	\$88	\$85	\$80	\$73	\$66	\$56	\$48	\$42	\$40	\$38	\$36	\$35	\$30	\$27	\$20	\$18	\$16
	10yr ave.			\$49		\$45		\$37		\$32	\$31	\$30	\$29	\$28	\$25	\$23	\$18	\$16	\$14
	55% Current	\$103	\$96	\$93	\$88	\$80	\$73	\$61	\$53	\$46	\$44	\$42	\$40	\$38	\$33	\$29	\$21	\$19	\$17
	10yr ave.			\$54		\$49		\$41		\$35	\$34	\$33	\$32	\$31	\$28	\$25	\$20	\$18	\$16
	60% Current	\$112	\$105	\$102	\$96	\$87	\$80	\$67	\$58	\$50	\$48	\$46	\$44	\$41	\$35	\$32	\$23	\$21	\$19
	10yr ave.			\$59		\$54		\$45		\$39	\$37	\$36	\$35	\$33	\$30	\$27	\$22	\$19	\$17
	65% Current	\$121	\$114	\$110	\$104	\$94	\$86	\$72	\$62	\$54	\$52	\$49	\$47	\$45	\$38	\$35	\$25	\$23	\$20
	10yr ave.			\$64		\$58		\$49		\$42	\$40	\$39	\$38	\$36	\$33	\$30	\$24	\$21	\$19
	70% Current	\$131	\$123	\$119	\$112	\$102	\$93	\$78	\$67	\$58	\$56	\$53	\$51	\$48	\$41	\$37	\$27	\$25	\$22
	10yr ave.			\$69		\$63		\$52		\$45	\$43	\$42	\$41	\$39	\$35	\$32	\$26	\$22	\$20
	75% Current	\$140	\$131	\$127	\$120	\$109	\$100	\$83	\$72	\$63	\$60	\$57	\$54	\$52	\$44	\$40	\$29	\$26	\$23
	10yr ave.			\$74		\$67		\$56		\$48	\$46	\$45	\$44	\$42	\$38	\$34	\$27	\$24	\$22
	80% Current	\$150	\$140	\$136	\$128	\$116	\$106	\$89	\$77	\$67	\$64	\$61	\$58	\$55	\$47	\$43	\$31	\$28	\$25
	10yr ave.			\$78		\$72		\$60		\$52	\$49	\$48	\$47	\$45	\$40	\$37	\$29	\$26	\$23
	85% Current	\$159	\$149	\$144	\$136	\$123	\$113	\$95	\$82	\$71	\$68	\$65	\$62	\$59	\$50	\$45	\$33	\$30	\$26
	10yr ave.			\$83		\$76		\$64		\$55	\$52	\$51	\$50	\$47	\$43	\$39	\$31	\$27	\$25

The above shows estimated returns per head for skirted fleece wool. These figures do not take into account the value of skirtings and oddments and do not take into account discounts that may apply for faults under individual circumstances. These figures are based on a market index of 100% and should be used as a guide only. Returns over \$30 / head for fleece wool are highlighted.

Source: Australian Wool Exchange, Australian Wool Innovation, Sydney Futures Exchange, x-rates.com

Disclaimer: While all due care has been taken in the preparation of this document, no warranty is made as to its accuracy, reliability or completeness. To the extent permitted by law neither Jemalong or their sources including subsidiaries and staff, accept liability to any person for loss or damage arising from the use of this information.



Table 16: Returns pr head for skirted fleece wool.

Skirted FLC Weight			Micron																	
			16	16.5	17	17.5	18	18.5	19	19.5	20	21	22	23	24	25	26	28	30	32
Yield (Sch Dry)	25%	Current	\$40	\$38	\$36	\$34	\$31	\$28	\$24	\$21	\$18	\$17	\$16	\$16	\$15	\$13	\$11	\$8	\$8	\$7
		10yr ave.			\$21		\$19		\$16		\$14	\$13	\$13	\$13	\$12	\$11	\$10	\$8	\$7	\$6
	30%	Current	\$48	\$45	\$44	\$41	\$37	\$34	\$29	\$25	\$21	\$20	\$20	\$19	\$18	\$15	\$14	\$10	\$9	\$8
		10yr ave.			\$25		\$23		\$19		\$17	\$16	\$15	\$15	\$14	\$13	\$12	\$9	\$8	\$7
	35%	Current	\$56	\$53	\$51	\$48	\$44	\$40	\$33	\$29	\$25	\$24	\$23	\$22	\$21	\$18	\$16	\$12	\$11	\$9
		10yr ave.			\$29		\$27		\$22		\$19	\$18	\$18	\$18	\$17	\$15	\$14	\$11	\$10	\$9
	40%	Current	\$64	\$60	\$58	\$55	\$50	\$46	\$38	\$33	\$29	\$27	\$26	\$25	\$24	\$20	\$18	\$13	\$12	\$11
		10yr ave.			\$34		\$31		\$26		\$22	\$21	\$21	\$20	\$19	\$17	\$16	\$13	\$11	\$10
	45%	Current	\$72	\$68	\$65	\$62	\$56	\$51	\$43	\$37	\$32	\$31	\$29	\$28	\$27	\$23	\$21	\$15	\$14	\$12
		10yr ave.			\$38		\$35		\$29		\$25	\$24	\$23	\$23	\$22	\$19	\$18	\$14	\$12	\$11
	50%	Current	\$80	\$75	\$73	\$69	\$62	\$57	\$48	\$41	\$36	\$34	\$33	\$31	\$30	\$25	\$23	\$17	\$15	\$13
		10yr ave.			\$42		\$38		\$32		\$28	\$26	\$26	\$25	\$24	\$21	\$20	\$16	\$14	\$12
	55%	Current	\$88	\$83	\$80	\$76	\$68	\$63	\$52	\$45	\$39	\$38	\$36	\$34	\$33	\$28	\$25	\$18	\$17	\$15
		10yr ave.			\$46		\$42		\$35		\$30	\$29	\$28	\$28	\$26	\$24	\$22	\$17	\$15	\$14
60%	Current	\$96	\$90	\$87	\$82	\$75	\$68	\$57	\$49	\$43	\$41	\$39	\$37	\$36	\$30	\$27	\$20	\$18	\$16	
	10yr ave.			\$50		\$46		\$39		\$33	\$32	\$31	\$30	\$29	\$26	\$24	\$19	\$16	\$15	
65%	Current	\$104	\$98	\$94	\$89	\$81	\$74	\$62	\$53	\$46	\$44	\$42	\$40	\$39	\$33	\$30	\$22	\$20	\$17	
	10yr ave.			\$55		\$50		\$42		\$36	\$34	\$33	\$33	\$31	\$28	\$26	\$20	\$18	\$16	
70%	Current	\$112	\$105	\$102	\$96	\$87	\$80	\$67	\$58	\$50	\$48	\$46	\$44	\$41	\$35	\$32	\$23	\$21	\$19	
	10yr ave.			\$59		\$54		\$45		\$39	\$37	\$36	\$35	\$33	\$30	\$27	\$22	\$19	\$17	
75%	Current	\$120	\$113	\$109	\$103	\$93	\$85	\$72	\$62	\$54	\$51	\$49	\$47	\$44	\$38	\$34	\$25	\$23	\$20	
	10yr ave.			\$63		\$58		\$48		\$41	\$40	\$38	\$38	\$36	\$32	\$29	\$24	\$21	\$19	
80%	Current	\$128	\$120	\$116	\$110	\$99	\$91	\$76	\$66	\$57	\$55	\$52	\$50	\$47	\$41	\$36	\$27	\$24	\$21	
	10yr ave.			\$67		\$61		\$51		\$44	\$42	\$41	\$40	\$38	\$34	\$31	\$25	\$22	\$20	
85%	Current	\$136	\$128	\$123	\$117	\$106	\$97	\$81	\$70	\$61	\$58	\$55	\$53	\$50	\$43	\$39	\$28	\$26	\$23	
	10yr ave.			\$71		\$65		\$55		\$47	\$45	\$44	\$43	\$41	\$36	\$33	\$27	\$23	\$21	

The above shows estimated returns per head for skirted fleece wool. These figures do not take into account the value of skirtings and oddments and do not take into account discounts that may apply for faults under individual circumstances. These figures are based on a market index of 100% and should be used as a guide only. Returns over \$30 / head for fleece wool are highlighted.

Source: Australian Wool Exchange, Australian Wool Innovation, Sydney Futures Exchange, x-rates.com

Disclaimer: While all due care has been taken in the preparation of this document, no warranty is made as to its accuracy, reliability or completeness. To the extent permitted by law neither Jemalong or their sources including subsidiaries and staff, accept liability to any person for loss or damage arising from the use of this information.



Table 17: Returns pr head for skirted fleece wool.

Skirted FLC Weight		Micron																	
5 Kg		16	16.5	17	17.5	18	18.5	19	19.5	20	21	22	23	24	25	26	28	30	32
Yield (Sch Dry)	25% Current	\$33	\$31	\$30	\$29	\$26	\$24	\$20	\$17	\$15	\$14	\$14	\$13	\$12	\$11	\$10	\$7	\$6	\$6
	10yr ave.			\$18		\$16		\$13		\$12	\$11	\$11	\$10	\$10	\$9	\$8	\$7	\$6	\$5
	30% Current	\$40	\$38	\$36	\$34	\$31	\$28	\$24	\$21	\$18	\$17	\$16	\$16	\$15	\$13	\$11	\$8	\$8	\$7
	10yr ave.			\$21		\$19		\$16		\$14	\$13	\$13	\$13	\$12	\$11	\$10	\$8	\$7	\$6
	35% Current	\$47	\$44	\$42	\$40	\$36	\$33	\$28	\$24	\$21	\$20	\$19	\$18	\$17	\$15	\$13	\$10	\$9	\$8
	10yr ave.			\$25		\$22		\$19		\$16	\$15	\$15	\$15	\$14	\$13	\$11	\$9	\$8	\$7
	40% Current	\$53	\$50	\$48	\$46	\$41	\$38	\$32	\$27	\$24	\$23	\$22	\$21	\$20	\$17	\$15	\$11	\$10	\$9
	10yr ave.			\$28		\$26		\$21		\$18	\$18	\$17	\$17	\$16	\$14	\$13	\$10	\$9	\$8
	45% Current	\$60	\$56	\$54	\$52	\$47	\$43	\$36	\$31	\$27	\$26	\$24	\$23	\$22	\$19	\$17	\$13	\$11	\$10
	10yr ave.			\$32		\$29		\$24		\$21	\$20	\$19	\$19	\$18	\$16	\$15	\$12	\$10	\$9
	50% Current	\$67	\$63	\$61	\$57	\$52	\$47	\$40	\$34	\$30	\$28	\$27	\$26	\$25	\$21	\$19	\$14	\$13	\$11
	10yr ave.			\$35		\$32		\$27		\$23	\$22	\$21	\$21	\$20	\$18	\$16	\$13	\$11	\$10
	55% Current	\$73	\$69	\$67	\$63	\$57	\$52	\$44	\$38	\$33	\$31	\$30	\$29	\$27	\$23	\$21	\$15	\$14	\$12
	10yr ave.			\$39		\$35		\$29		\$25	\$24	\$24	\$23	\$22	\$20	\$18	\$14	\$13	\$11
	60% Current	\$80	\$75	\$73	\$69	\$62	\$57	\$48	\$41	\$36	\$34	\$33	\$31	\$30	\$25	\$23	\$17	\$15	\$13
	10yr ave.			\$42		\$38		\$32		\$28	\$26	\$26	\$25	\$24	\$21	\$20	\$16	\$14	\$12
	65% Current	\$87	\$81	\$79	\$74	\$67	\$62	\$52	\$45	\$39	\$37	\$35	\$34	\$32	\$27	\$25	\$18	\$16	\$14
	10yr ave.			\$46		\$42		\$35		\$30	\$29	\$28	\$27	\$26	\$23	\$21	\$17	\$15	\$13
	70% Current	\$93	\$88	\$85	\$80	\$73	\$66	\$56	\$48	\$42	\$40	\$38	\$36	\$35	\$30	\$27	\$20	\$18	\$16
	10yr ave.			\$49		\$45		\$37		\$32	\$31	\$30	\$29	\$28	\$25	\$23	\$18	\$16	\$14
	75% Current	\$100	\$94	\$91	\$86	\$78	\$71	\$60	\$51	\$45	\$43	\$41	\$39	\$37	\$32	\$29	\$21	\$19	\$17
	10yr ave.			\$53		\$48		\$40		\$35	\$33	\$32	\$31	\$30	\$27	\$25	\$20	\$17	\$15
	80% Current	\$107	\$100	\$97	\$92	\$83	\$76	\$64	\$55	\$48	\$45	\$43	\$42	\$40	\$34	\$30	\$22	\$20	\$18
	10yr ave.			\$56		\$51		\$43		\$37	\$35	\$34	\$33	\$32	\$29	\$26	\$21	\$18	\$17
	85% Current	\$113	\$106	\$103	\$97	\$88	\$81	\$68	\$58	\$51	\$48	\$46	\$44	\$42	\$36	\$32	\$24	\$21	\$19
	10yr ave.			\$60		\$54		\$45		\$39	\$37	\$36	\$35	\$34	\$30	\$28	\$22	\$19	\$18

The above shows estimated returns per head for skirted fleece wool. These figures do not take into account the value of skirtings and oddments and do not take into account discounts that may apply for faults under individual circumstances. These figures are based on a market index of 100% and should be used as a guide only. Returns over \$30 / head for fleece wool are highlighted.

Source: Australian Wool Exchange, Australian Wool Innovation, Sydney Futures Exchange, x-rates.com

Disclaimer: While all due care has been taken in the preparation of this document, no warranty is made as to its accuracy, reliability or completeness. To the extent permitted by law neither Jemalong or their sources including subsidiaries and staff, accept liability to any person for loss or damage arising from the use of this information.



Table 18: Returns pr head for skirted fleece wool.

Skirted FLC Weight		Micron																	
4 Kg		16	16.5	17	17.5	18	18.5	19	19.5	20	21	22	23	24	25	26	28	30	32
Yield (Sch Dry)	25% Current	\$27	\$25	\$24	\$23	\$21	\$19	\$16	\$14	\$12	\$11	\$11	\$10	\$10	\$8	\$8	\$6	\$5	\$4
	10yr ave.			\$14	\$13	\$13		\$11		\$9	\$9	\$9	\$8	\$8	\$7	\$7	\$5	\$5	\$4
	30% Current	\$32	\$30	\$29	\$27	\$25	\$23	\$19	\$16	\$14	\$14	\$13	\$12	\$12	\$10	\$9	\$7	\$6	\$5
	10yr ave.			\$17		\$15		\$13		\$11	\$11	\$10	\$10	\$10	\$9	\$8	\$6	\$5	\$5
	35% Current	\$37	\$35	\$34	\$32	\$29	\$27	\$22	\$19	\$17	\$16	\$15	\$15	\$14	\$12	\$11	\$8	\$7	\$6
	10yr ave.			\$20		\$18		\$15		\$13	\$12	\$12	\$12	\$11	\$10	\$9	\$7	\$6	\$6
	40% Current	\$43	\$40	\$39	\$37	\$33	\$30	\$25	\$22	\$19	\$18	\$17	\$17	\$16	\$14	\$12	\$9	\$8	\$7
	10yr ave.			\$22		\$20		\$17		\$15	\$14	\$14	\$13	\$13	\$11	\$10	\$8	\$7	\$7
	45% Current	\$48	\$45	\$44	\$41	\$37	\$34	\$29	\$25	\$21	\$20	\$20	\$19	\$18	\$15	\$14	\$10	\$9	\$8
	10yr ave.			\$25		\$23		\$19		\$17	\$16	\$15	\$15	\$14	\$13	\$12	\$9	\$8	\$7
	50% Current	\$53	\$50	\$48	\$46	\$41	\$38	\$32	\$27	\$24	\$23	\$22	\$21	\$20	\$17	\$15	\$11	\$10	\$9
	10yr ave.			\$28		\$26		\$21		\$18	\$18	\$17	\$17	\$16	\$14	\$13	\$10	\$9	\$8
	55% Current	\$59	\$55	\$53	\$50	\$46	\$42	\$35	\$30	\$26	\$25	\$24	\$23	\$22	\$19	\$17	\$12	\$11	\$10
	10yr ave.			\$31		\$28		\$24		\$20	\$19	\$19	\$18	\$18	\$16	\$14	\$12	\$10	\$9
	60% Current	\$64	\$60	\$58	\$55	\$50	\$46	\$38	\$33	\$29	\$27	\$26	\$25	\$24	\$20	\$18	\$13	\$12	\$11
	10yr ave.			\$34		\$31		\$26		\$22	\$21	\$21	\$20	\$19	\$17	\$16	\$13	\$11	\$10
	65% Current	\$69	\$65	\$63	\$60	\$54	\$49	\$41	\$36	\$31	\$30	\$28	\$27	\$26	\$22	\$20	\$15	\$13	\$12
	10yr ave.			\$36		\$33		\$28		\$24	\$23	\$22	\$22	\$21	\$19	\$17	\$14	\$12	\$11
	70% Current	\$75	\$70	\$68	\$64	\$58	\$53	\$44	\$38	\$33	\$32	\$30	\$29	\$28	\$24	\$21	\$16	\$14	\$12
	10yr ave.			\$39		\$36		\$30		\$26	\$25	\$24	\$23	\$22	\$20	\$18	\$15	\$13	\$12
	75% Current	\$80	\$75	\$73	\$69	\$62	\$57	\$48	\$41	\$36	\$34	\$33	\$31	\$30	\$25	\$23	\$17	\$15	\$13
	10yr ave.			\$42		\$38		\$32		\$28	\$26	\$26	\$25	\$24	\$21	\$20	\$16	\$14	\$12
	80% Current	\$85	\$80	\$77	\$73	\$66	\$61	\$51	\$44	\$38	\$36	\$35	\$33	\$32	\$27	\$24	\$18	\$16	\$14
	10yr ave.			\$45		\$41		\$34		\$29	\$28	\$27	\$27	\$26	\$23	\$21	\$17	\$15	\$13
	85% Current	\$91	\$85	\$82	\$78	\$70	\$64	\$54	\$47	\$41	\$39	\$37	\$35	\$34	\$29	\$26	\$19	\$17	\$15
	10yr ave.			\$48		\$44		\$36		\$31	\$30	\$29	\$28	\$27	\$24	\$22	\$18	\$16	\$14

The above shows estimated returns per head for skirted fleece wool. These figures do not take into account the value of skirtings and oddments and do not take into account discounts that may apply for faults under individual circumstances. These figures are based on a market index of 100% and should be used as a guide only. Returns over \$30 / head for fleece wool are highlighted.

Source: Australian Wool Exchange, Australian Wool Innovation, Sydney Futures Exchange, x-rates.com

Disclaimer: While all due care has been taken in the preparation of this document, no warranty is made as to its accuracy, reliability or completeness. To the extent permitted by law neither Jemalong or their sources including subsidiaries and staff, accept liability to any person for loss or damage arising from the use of this information.



Table 19: Returns pr head for skirted fleece wool.

Skirted FLC Weight		Micron																	
3 Kg		16	16.5	17	17.5	18	18.5	19	19.5	20	21	22	23	24	25	26	28	30	32
Yield (Sch Dry)	25% Current	\$20	\$19	\$18	\$17	\$16	\$14	\$12	\$10	\$9	\$9	\$8	\$8	\$7	\$6	\$6	\$4	\$4	\$3
	10yr ave.			\$11		\$10		\$8		\$7	\$7	\$6	\$6	\$6	\$5	\$5	\$4	\$3	\$3
	30% Current	\$24	\$23	\$22	\$21	\$19	\$17	\$14	\$12	\$11	\$10	\$10	\$9	\$9	\$8	\$7	\$5	\$5	\$4
	10yr ave.			\$13		\$12		\$10		\$8	\$8	\$8	\$8	\$7	\$6	\$6	\$5	\$4	\$4
	35% Current	\$28	\$26	\$25	\$24	\$22	\$20	\$17	\$14	\$13	\$12	\$11	\$11	\$10	\$9	\$8	\$6	\$5	\$5
	10yr ave.			\$15		\$13		\$11		\$10	\$9	\$9	\$9	\$8	\$8	\$7	\$5	\$5	\$4
	40% Current	\$32	\$30	\$29	\$27	\$25	\$23	\$19	\$16	\$14	\$14	\$13	\$12	\$12	\$10	\$9	\$7	\$6	\$5
	10yr ave.			\$17		\$15		\$13		\$11	\$11	\$10	\$10	\$10	\$9	\$8	\$6	\$5	\$5
	45% Current	\$36	\$34	\$33	\$31	\$28	\$26	\$21	\$19	\$16	\$15	\$15	\$14	\$13	\$11	\$10	\$8	\$7	\$6
	10yr ave.			\$19		\$17		\$14		\$12	\$12	\$12	\$11	\$11	\$10	\$9	\$7	\$6	\$6
	50% Current	\$40	\$38	\$36	\$34	\$31	\$28	\$24	\$21	\$18	\$17	\$16	\$16	\$15	\$13	\$11	\$8	\$8	\$7
	10yr ave.			\$21		\$19		\$16		\$14	\$13	\$13	\$13	\$12	\$11	\$10	\$8	\$7	\$6
	55% Current	\$44	\$41	\$40	\$38	\$34	\$31	\$26	\$23	\$20	\$19	\$18	\$17	\$16	\$14	\$13	\$9	\$8	\$7
	10yr ave.			\$23		\$21		\$18		\$15	\$14	\$14	\$14	\$13	\$12	\$11	\$9	\$8	\$7
	60% Current	\$48	\$45	\$44	\$41	\$37	\$34	\$29	\$25	\$21	\$20	\$20	\$19	\$18	\$15	\$14	\$10	\$9	\$8
	10yr ave.			\$25		\$23		\$19		\$17	\$16	\$15	\$15	\$14	\$13	\$12	\$9	\$8	\$7
	65% Current	\$52	\$49	\$47	\$45	\$40	\$37	\$31	\$27	\$23	\$22	\$21	\$20	\$19	\$16	\$15	\$11	\$10	\$9
	10yr ave.			\$27		\$25		\$21		\$18	\$17	\$17	\$16	\$16	\$14	\$13	\$10	\$9	\$8
	70% Current	\$56	\$53	\$51	\$48	\$44	\$40	\$33	\$29	\$25	\$24	\$23	\$22	\$21	\$18	\$16	\$12	\$11	\$9
	10yr ave.			\$29		\$27		\$22		\$19	\$18	\$18	\$18	\$17	\$15	\$14	\$11	\$10	\$9
	75% Current	\$60	\$56	\$54	\$52	\$47	\$43	\$36	\$31	\$27	\$26	\$24	\$23	\$22	\$19	\$17	\$13	\$11	\$10
	10yr ave.			\$32		\$29		\$24		\$21	\$20	\$19	\$19	\$18	\$16	\$15	\$12	\$10	\$9
	80% Current	\$64	\$60	\$58	\$55	\$50	\$46	\$38	\$33	\$29	\$27	\$26	\$25	\$24	\$20	\$18	\$13	\$12	\$11
	10yr ave.			\$34		\$31		\$26		\$22	\$21	\$21	\$20	\$19	\$17	\$16	\$13	\$11	\$10
	85% Current	\$68	\$64	\$62	\$58	\$53	\$48	\$41	\$35	\$30	\$29	\$28	\$26	\$25	\$22	\$19	\$14	\$13	\$11
	10yr ave.			\$36		\$33		\$27		\$23	\$22	\$22	\$21	\$20	\$18	\$17	\$13	\$12	\$11

The above shows estimated returns per head for skirted fleece wool. These figures do not take into account the value of skirtings and oddments and do not take into account discounts that may apply for faults under individual circumstances. These figures are based on a market index of 100% and should be used as a guide only. Returns over \$30 / head for fleece wool are highlighted.

Source: Australian Wool Exchange, Australian Wool Innovation, Sydney Futures Exchange, x-rates.com

Disclaimer: While all due care has been taken in the preparation of this document, no warranty is made as to its accuracy, reliability or completeness. To the extent permitted by law neither Jemalong or their sources including subsidiaries and staff, accept liability to any person for loss or damage arising from the use of this information.



Table 20: Returns pr head for skirted fleece wool.

Skirted FLC Weight		Micron																	
2 Kg		16	16.5	17	17.5	18	18.5	19	19.5	20	21	22	23	24	25	26	28	30	32
Yield (Sch Dry)	25% Current	\$13	\$13	\$12	\$11	\$10	\$9	\$8	\$7	\$6	\$6	\$5	\$5	\$5	\$4	\$4	\$3	\$3	\$2
	10yr ave.			\$7		\$6		\$5		\$5	\$4	\$4	\$4	\$4	\$4	\$3	\$3	\$2	\$2
	30% Current	\$16	\$15	\$15	\$14	\$12	\$11	\$10	\$8	\$7	\$7	\$7	\$6	\$6	\$5	\$5	\$3	\$3	\$3
	10yr ave.			\$8		\$8		\$6		\$6	\$5	\$5	\$5	\$5	\$4	\$4	\$3	\$3	\$2
	35% Current	\$19	\$18	\$17	\$16	\$15	\$13	\$11	\$10	\$8	\$8	\$8	\$7	\$7	\$6	\$5	\$4	\$4	\$3
	10yr ave.			\$10		\$9		\$7		\$6	\$6	\$6	\$6	\$6	\$5	\$5	\$4	\$3	\$3
	40% Current	\$21	\$20	\$19	\$18	\$17	\$15	\$13	\$11	\$10	\$9	\$9	\$8	\$8	\$7	\$6	\$4	\$4	\$4
	10yr ave.			\$11		\$10		\$9		\$7	\$7	\$7	\$7	\$6	\$6	\$5	\$4	\$4	\$3
	45% Current	\$24	\$23	\$22	\$21	\$19	\$17	\$14	\$12	\$11	\$10	\$10	\$9	\$9	\$8	\$7	\$5	\$5	\$4
	10yr ave.			\$13		\$12		\$10		\$8	\$8	\$8	\$8	\$7	\$6	\$6	\$5	\$4	\$4
	50% Current	\$27	\$25	\$24	\$23	\$21	\$19	\$16	\$14	\$12	\$11	\$11	\$10	\$10	\$8	\$8	\$6	\$5	\$4
	10yr ave.			\$14		\$13		\$11		\$9	\$9	\$9	\$8	\$8	\$7	\$7	\$5	\$5	\$4
	55% Current	\$29	\$28	\$27	\$25	\$23	\$21	\$17	\$15	\$13	\$13	\$12	\$11	\$11	\$9	\$8	\$6	\$6	\$5
	10yr ave.			\$15		\$14		\$12		\$10	\$10	\$9	\$9	\$9	\$8	\$7	\$6	\$5	\$5
	60% Current	\$32	\$30	\$29	\$27	\$25	\$23	\$19	\$16	\$14	\$14	\$13	\$12	\$12	\$10	\$9	\$7	\$6	\$5
	10yr ave.			\$17		\$15		\$13		\$11	\$11	\$10	\$10	\$10	\$9	\$8	\$6	\$5	\$5
	65% Current	\$35	\$33	\$31	\$30	\$27	\$25	\$21	\$18	\$15	\$15	\$14	\$13	\$13	\$11	\$10	\$7	\$7	\$6
	10yr ave.			\$18		\$17		\$14		\$12	\$11	\$11	\$11	\$10	\$9	\$9	\$7	\$6	\$5
	70% Current	\$37	\$35	\$34	\$32	\$29	\$27	\$22	\$19	\$17	\$16	\$15	\$15	\$14	\$12	\$11	\$8	\$7	\$6
	10yr ave.			\$20		\$18		\$15		\$13	\$12	\$12	\$12	\$11	\$10	\$9	\$7	\$6	\$6
	75% Current	\$40	\$38	\$36	\$34	\$31	\$28	\$24	\$21	\$18	\$17	\$16	\$16	\$15	\$13	\$11	\$8	\$8	\$7
	10yr ave.			\$21		\$19		\$16		\$14	\$13	\$13	\$13	\$12	\$11	\$10	\$8	\$7	\$6
	80% Current	\$43	\$40	\$39	\$37	\$33	\$30	\$25	\$22	\$19	\$18	\$17	\$17	\$16	\$14	\$12	\$9	\$8	\$7
	10yr ave.			\$22		\$20		\$17		\$15	\$14	\$14	\$13	\$13	\$11	\$10	\$8	\$7	\$7
	85% Current	\$45	\$43	\$41	\$39	\$35	\$32	\$27	\$23	\$20	\$19	\$18	\$18	\$17	\$14	\$13	\$9	\$9	\$8
	10yr ave.			\$24		\$22		\$18		\$16	\$15	\$15	\$14	\$14	\$12	\$11	\$9	\$8	\$7

The above shows estimated returns per head for skirted fleece wool. These figures do not take into account the value of skirtings and oddments and do not take into account discounts that may apply for faults under individual circumstances. These figures are based on a market index of 100% and should be used as a guide only. Returns over \$30 / head for fleece wool are highlighted.

Source: Australian Wool Exchange, Australian Wool Innovation, Sydney Futures Exchange, x-rates.com

Disclaimer: While all due care has been taken in the preparation of this document, no warranty is made as to its accuracy, reliability or completeness. To the extent permitted by law neither Jemalong or their sources including subsidiaries and staff, accept liability to any person for loss or damage arising from the use of this information.