



Table 1: Northern Region Micron Price Guides

WEEK 32				12 MONTH COMPARISONS								3 YEAR COMPARISONS						10 YEAR COMPARISONS					
Mic.	9/02/2017	2/02/2017		10/02/2016	Now		Now		Now					Now									
Price	Current	Weekly		This time	compared		12 Month	compared	12 Month	compared				compared									
Guides	Price	Change		Last Year	to Last Year		Low	to Low	High	to High		Low	High	Average	to 3yr ave	Percentile		Low	High	Average	to 10yr ave	Percentile	
NRI	1518	+19 1.3%		1298	+220 17%		1239	+279 23%	1509	+9 1%		1017	1518	1216	+302 25%	100%		755	1518	1083	+435 40%	100%	
16*	2150	+50 2.4%		1630	+520 32%		1580	+570 36%	2150	0 0%		1340	2150	1559	+591 38%	100%		1350	2800	1726	+424 25%	91%	
16.5	2089	+29 1.4%		1576	+513 33%		1510	+579 38%	2072	+17 1%		1275	2089	1491	+598 40%	100%		1266	2680	1549	+540 35%	95%	
17	2080	+42 2.1%		1569	+511 33%		1481	+599 40%	2065	+15 1%		1222	2080	1463	+617 42%	100%		1179	2525	1483	+597 40%	93%	
17.5	2050	+47 2.3%		1559	+491 31%		1456	+594 41%	2036	+14 1%		1187	2050	1447	+603 42%	100%		1115	2370	1434	+616 43%	94%	
18	2002	+31 1.6%		1528	+474 31%		1431	+571 40%	2002	0 0%		1169	2002	1425	+577 40%	100%		1043	2193	1383	+619 45%	95%	
18.5	1918	+42 2.2%		1498	+420 28%		1415	+503 36%	1907	+11 1%		1143	1918	1396	+522 37%	100%		986	1963	1322	+596 45%	98%	
19	1795	+43 2.5%		1435	+360 25%		1371	+424 31%	1786	+9 1%		1131	1795	1355	+440 32%	100%		910	1795	1254	+541 43%	100%	
19.5	1669	+23 1.4%		1400	+269 19%		1344	+325 24%	1679	-10 -1%		1100	1679	1326	+343 26%	99%		821	1679	1194	+475 40%	99%	
20	1562	+13 0.8%		1381	+181 13%		1331	+231 17%	1596	-34 -2%		1098	1596	1302	+260 20%	98%		745	1596	1144	+418 37%	99%	
21	1449	+11 0.8%		1379	+70 5%		1325	+124 9%	1495	-46 -3%		1094	1500	1285	+164 13%	91%		713	1522	1113	+336 30%	96%	
22	1398	+21 1.5%		1366	+32 2%		1306	+92 7%	1469	-71 -5%		1086	1469	1267	+131 10%	88%		699	1469	1087	+311 29%	95%	
23	1333	+20 1.5%		1344	-11 -1%		1285	+48 4%	1458	-125 -9%		1061	1458	1246	+87 7%	69%		688	1458	1058	+275 26%	91%	
24	1237	+19 1.6%		1191	+46 4%		1162	+75 6%	1382	-145 -10%		1006	1382	1168	+69 6%	71%		663	1382	982	+255 26%	92%	
25	1040	+17 1.7%		1063	-23 -2%		1023	+17 2%	1271	-231 -18%		819	1271	1041	-1 0%	42%		567	1271	856	+184 21%	82%	
26	909	+6 0.7%		972	-63 -6%		896	+13 1%	1180	-271 -23%		739	1180	952	-43 -5%	35%		531	1180	771	+138 18%	80%	
28	667	+12 1.8%		826	-159 -19%		651	+16 2%	838	-171 -20%		646	974	773	-106 -14%	14%		424	974	604	+63 10%	68%	
30	531	-13 -2.4%		743	-212 -29%		533	-2 0%	743	-212 -29%		545	897	705	-174 -25%	0%		343	897	542	-11 -2%	43%	
32	395	-3 -0.8%		640	-245 -38%		396	-1 0%	640	-245 -38%		404	762	610	-215 -35%	0%		297	762	473	-78 -16%	38%	
MC	1162	+4 0.3%		1092	+70 6%		1010	+152 15%	1165	-3 0%		769	1165	979	+183 19%	98%		404	1165	727	+435 60%	99%	
AU BALES OFFERED		44,484	* The Australian Wool Exchange (AWEX) do not provide a 16 micron quote. Therefore the figure shown is an estimate based on 42 nkt types.																				
AU BALES SOLD		41,484	* For any category, where there is insufficient quantity offered to enable AWEX to quote, a quote will be provided based on the best available information.																				
AU PASSED-IN%		6.7%																					
AUD/USD		0.76250																					

Source: Australian Wool Exchange, Australian Wool Innovation, Riemann, x-rates.com, Reserve Bank of Australia, Australian Wool Testing Authority.

Disclaimer: Jemalong Wool Pty Ltd make no representations about the content and suitability of the information contained in this report. Specifically, Jemalong Wool does not warrant, guarantee or make any representations regarding the correctness, accuracy, reliability, currency, or any other aspect regarding characteristics or use of information presented in these materials. The user accepts sole responsibility and risk associated with the use and results of these materials, irrespective of the purpose of which such use or results are applied. In no event shall Jemalong Wool be liable for any loss or damages (including without limitation special, or consequential damages), where in an action of contract, negligence, or tort, arising out of or in connection with the use of performance of these materials.



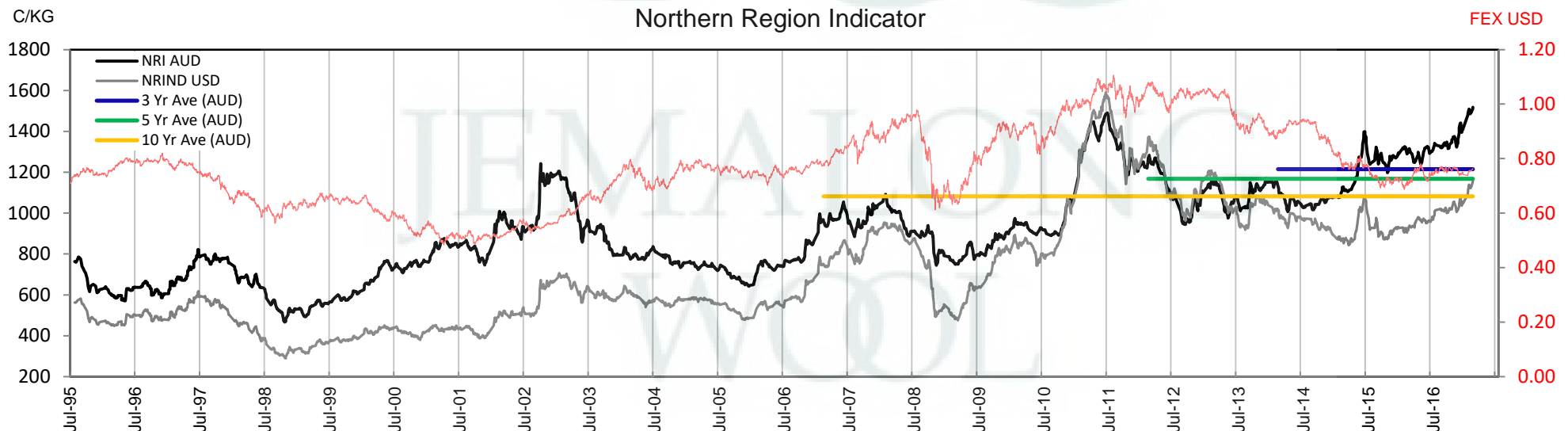
## MARKET COMMENTARY

Week 32 was a designated superfine sale in Sydney and superfine types clearly lead the way. Nearly 45,000 bales were on offer and from the outset buyer focus was on micron. Generally 19.5 and finer were 25 to 50 cents dearer with some better style 17.5 and finer types recording lifts of over 80 cents, pushing the NRI 19 cents to 1518 cents. 20 micron and coarser also performed well but buyers were more selective, focusing on the high strength low cvh lots. The large rise in the finer microns has helped push the micron price differential out further, the difference now between an 18.0 and a 21.0 micron is out to over 500 cents.

A stylish selection helped the crossbred market reverse its recent trend to record gains this week. Price rises were predominantly in the 25 to 28 micron range with general increases of between 5 and 15 cents, 30.0 micron and coarser struggled to achieve the same support and were slightly cheaper for the week. The skirting market followed a very similar pattern to the fleece, buyers chased micron and some better style 17.0 micron and finer skirtings were extreme and in many cases over 100 cents dearer for the week. Generally prices for 19.5 micron and finer were 30 to 50 cents above those achieved at the previous sale, with the better style / spec lots enjoying the largest gains. The oddment market had modest gains for the week with carding indicators gaining an average of 5 cents, a limited selection of washing lambs (<0.3) however were highly sought after and experienced gains of 30 to 50 cents, with again the finer microns posting the largest movements.

The market gains have enticed more sellers to the market, increasing the national quantity to over 47,500 bales for next week.

Source: AWEX





**Table 2: Three Year Decile Table, since: 1/02/2014**

Decile	%	16	16.5	17	17.5	18	18.5	19	19.5	20	21	22	23	24	25	26	28	30	32	MC
1	10%	1380	1293	1254	1234	1206	1188	1161	1145	1136	1133	1122	1109	1047	875	787	661	601	498	785
2	20%	1410	1322	1288	1270	1257	1230	1193	1171	1156	1151	1136	1125	1060	915	818	672	629	555	796
3	30%	1474	1355	1332	1315	1291	1254	1210	1185	1174	1163	1152	1137	1077	947	848	683	639	568	849
4	40%	1540	1468	1437	1413	1404	1366	1303	1272	1252	1235	1209	1203	1134	1023	930	750	658	578	1005
5	50%	1580	1521	1495	1479	1448	1422	1387	1361	1331	1315	1298	1275	1183	1066	976	777	684	604	1059
6	60%	1600	1541	1515	1503	1486	1457	1409	1379	1359	1348	1333	1313	1201	1090	1013	810	720	630	1074
7	70%	1620	1576	1552	1543	1522	1493	1462	1432	1406	1390	1366	1335	1233	1122	1045	831	778	678	1088
8	80%	1645	1597	1583	1574	1553	1526	1501	1475	1438	1404	1386	1355	1259	1169	1084	854	800	698	1097
9	90%	1684	1657	1636	1632	1615	1593	1551	1505	1478	1446	1412	1375	1319	1198	1123	897	836	726	1118
10	100%	2150	2089	2080	2050	2002	1918	1795	1679	1596	1500	1469	1458	1382	1271	1180	974	897	762	1165
MPG		2150	2089	2080	2050	2002	1918	1795	1669	1562	1449	1398	1333	1237	1040	909	667	531	395	1162
3 Yr Percentile		100%	100%	100%	100%	100%	100%	100%	99%	98%	91%	88%	69%	71%	42%	35%	14%	0%	0%	98%

**Table 3: Ten Year Decile Table, since: 1/02/2007**

Decile	%	16	16.5	17	17.5	18	18.5	19	19.5	20	21	22	23	24	25	26	28	30	32	MC
1	10%	1428	1309	1244	1193	1155	1101	1032	954	871	825	810	794	763	658	591	447	376	324	499
2	20%	1515	1375	1279	1234	1193	1148	1083	997	937	914	898	876	808	685	609	463	398	348	559
3	30%	1560	1405	1312	1277	1233	1188	1126	1081	1023	975	939	905	834	710	630	477	415	358	596
4	40%	1600	1458	1363	1318	1275	1243	1177	1137	1095	1053	1016	977	893	774	686	528	464	410	631
5	50%	1620	1493	1397	1367	1334	1280	1216	1174	1145	1133	1120	1090	1020	882	780	621	561	481	707
6	60%	1650	1526	1457	1437	1390	1322	1273	1233	1199	1180	1163	1137	1060	907	810	648	592	508	753
7	70%	1735	1572	1523	1493	1452	1408	1346	1309	1269	1251	1221	1194	1093	936	838	671	626	556	805
8	80%	1850	1614	1605	1568	1530	1484	1436	1400	1353	1323	1289	1251	1141	1003	909	703	648	580	861
9	90%	2100	1890	1779	1695	1632	1591	1545	1476	1415	1393	1366	1324	1219	1100	1018	822	743	644	1081
10	100%	2800	2680	2525	2370	2193	1963	1795	1679	1596	1522	1469	1458	1382	1271	1180	974	897	762	1165
MPG		2150	2089	2080	2050	2002	1918	1795	1669	1562	1449	1398	1333	1237	1040	909	667	531	395	1162
10 Yr Percentile		91%	95%	93%	94%	95%	98%	100%	99%	99%	96%	95%	91%	92%	82%	80%	68%	43%	38%	99%

**Definitions:**

\* A Percentile, is a value on a scale of one hundred that indicates the percent of a distribution that is equal to or below it. In general a percentile between 25% and 75% is considered normal, a percentile below 25% is considered below normal and a percentile above 75% is considered above normal.

Three and ten year percentiles shown on the bottom line of table 2 & 3 (above) and in table 1 (on page 1), detail the amount of time during the past 3 & 10 years where the market has traded either at or below its current price.

\* Deciles are a method of sorting ranked data into 10 equal groups. The data may be ranked from largest to smallest or vice versa.

The above Decile tables sort price Percentiles into 10 equal groups (in ascending order), with table 2 ranking the previous 3 years prices, while table 3 ranks prices over the previous 10 years.

**Example:** In Table 2, a Decile Rank of 6 for 19 microns, shows 19 microns have traded at or below 1409 for 60% of the time, over the past three years.

In Table 3, a Decile Rank of 6 for 19 microns, shows 19 microns have traded at or below 1273 for 60% of the time, over the past ten years.



Table 4: Riemann Forwards, as at: 9/02/17

Any highlighted in yellow are recent trades, trading since: Friday, 3 February 2017

CONTRACT MICRON		18.5um	19um	19.5um	21um	22um	23um	28um	30um
FORWARD CONTRACT MONTH	Feb-2017	14/12/15 1430	10/01/17 1635	9/12/16 1560	13/01/17 1450				18/08/16 640
	Mar-2017	11/01/17 1720	9/02/17 1750	1/12/16 1555	18/01/17 1430			24/01/17 650	
	Apr-2017		9/02/17 1710		25/01/17 1402			8/02/17 660	
	May-2017		30/01/17 1660		30/01/17 1390				
	Jun-2017		2/02/17 1680		12/01/17 1420			24/01/17 650	
	Jul-2017				30/11/16 1360				
	Aug-2017		25/01/17 1625		25/01/17 1350				
	Sep-2017		9/02/17 1640						
	Oct-2017		25/01/17 1620						
	Nov-2017				11/01/17 1350				
	Dec-2017								
	Jan-2018		11/01/17 1575						
	Feb-2018								
	Mar-2018		11/01/17 1550						
	Apr-2018								
	May-2018								
	Jun-2018								
	Jul-2018								
	Aug-2018								
	Sep-2018		18/01/17 1520						
	Oct-2018								
	Nov-2018								
	Dec-2018								

**Explanatory Notes:** Prices quoted reflect the most recent trades, at time of print.

**Disclaimer:** While all due care has been taken in the preparation of this document, no warranty is made as to its accuracy, reliability or completeness. To the extent permitted by law neither Jemalong or their sources including subsidiaries and staff, accept liability to any person for loss or damage arising from the use of this information.



Table 5: Riemann Options, as at:

9/02/17

Any highlighted in yellow are recent trades, trading since: Friday, 3 February 2017

CONTRACT MICRON		18.5um	19um	19.5um	21um	22um	23um	28um	30um
OPTIONS CONTRACT MONTH	Feb-2017	Date Traded	23/01/17						
		Strike / Premium	1700 / 35						
	Mar-2017	Date Traded	23/01/17		18/01/17				
		Strike / Premium	1700 / 35		1440 / 35				
	Apr-2017	Date Traded	16/12/16	7/12/16	1/12/16				
		Strike / Premium	1600 / 37	1540 / 33	1400 / 30				
	May-2017	Date Traded							
		Strike / Premium							
	Jun-2017	Date Traded							
		Strike / Premium							
	Jul-2017	Date Traded			29/11/16				
		Strike / Premium			1350 / 30				
	Aug-2017	Date Traded		30/11/16					
		Strike / Premium		1500 / 35					
	Sep-2017	Date Traded		19/12/16					
		Strike / Premium		1500 / 40					
	Oct-2017	Date Traded							
		Strike / Premium							
	Nov-2017	Date Traded							
		Strike / Premium							
	Dec-2017	Date Traded							
		Strike / Premium							
	Jan-2018	Date Traded							
		Strike / Premium							
	Feb-2018	Date Traded							
		Strike / Premium							
	Mar-2018	Date Traded							
		Strike / Premium							
	Apr-2018	Date Traded							
		Strike / Premium							
	May-2018	Date Traded							
		Strike / Premium							
	Jun-2018	Date Traded							
		Strike / Premium							
	Jul-2018	Date Traded							
		Strike / Premium							
	Aug-2018	Date Traded							
		Strike / Premium							
	Sep-2018	Date Traded							
		Strike / Premium							
	Oct-2018	Date Traded							
		Strike / Premium							
	Nov-2018	Date Traded							
		Strike / Premium							
	Dec-2018	Date Traded							
		Strike / Premium							

**Explanatory Notes:** Prices quoted reflect the most recent trades, at time of print.

**Disclaimer:** While all due care has been taken in the preparation of this document, no warranty is made as to its accuracy, reliability or completeness. To the extent permitted by law neither Jemalong or their sources including subsidiaries and staff, accept liability to any person for loss or damage arising from the use of this information.





**Table 6: National Market Share**

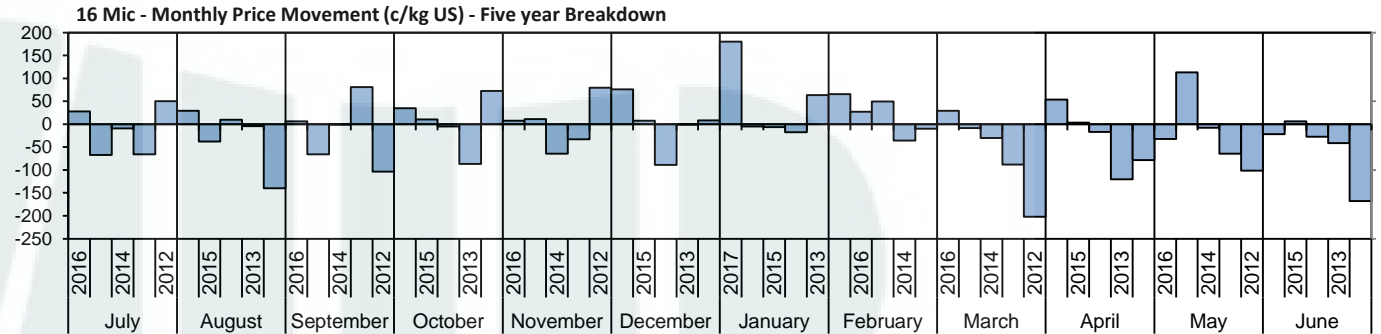
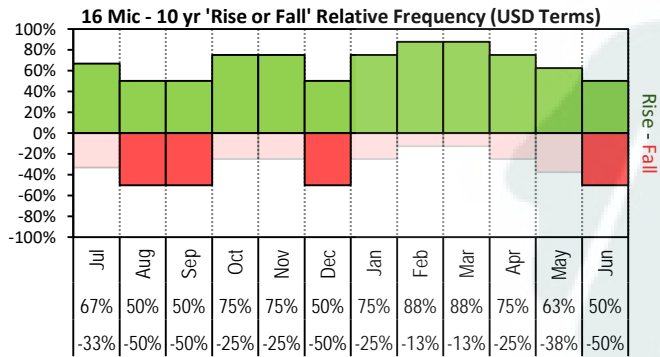
	Rank	Current Selling Week Week 32			Previous Selling Week Week 31			Last Season 2015-16			2 Years Ago 2014-15			3 Years Ago 2013-14			5 Years Ago 2011-12			10 Years Ago 2006-07		
		Buyer	Bales	MS%	Buyer	Bales	MS%	Buyer	Bales	MS%	Buyer	Bales	MS%	Buyer	Bales	MS%	Buyer	Bales	MS%	Buyer	Bales	MS%
Top 10, Auction Buyers	1	TECM	6,669	16%	TECM	6,106	17%	TECM	223,011	13%	TECM	248,371	14%	TECM	205,136	13%	VTRA	229,207	14%	FOXN	249,983	11%
	2	FOXN	4,315	10%	FOXN	3,544	10%	CTXS	158,343	10%	FOXN	173,810	10%	FOXN	134,581	8%	TECM	153,616	9%	RWRS	178,250	8%
	3	TIAM	3,209	8%	LEMM	3,290	9%	FOXN	151,685	9%	CTXS	167,211	9%	CTXS	122,964	8%	FOXN	136,698	8%	ITOS	175,581	8%
	4	AMEM	3,035	7%	AMEM	2,798	8%	LEMM	124,422	8%	AMEM	122,220	7%	AMEM	111,263	7%	QCTB	112,745	7%	TECM	171,228	8%
	5	PMWF	2,914	7%	MODM	2,563	7%	TIAM	105,610	6%	LEMM	117,153	7%	LEMM	109,224	7%	WIEM	100,817	6%	BWEA	133,637	6%
	6	MODM	2,680	6%	CTXS	2,548	7%	AMEM	104,017	6%	TIAM	113,797	6%	TIAM	105,736	7%	LEMM	88,348	5%	MODM	118,319	5%
	7	LEMM	2,318	6%	MCHA	1,862	5%	GWEA	91,407	6%	PMWF	96,998	5%	QCTB	88,700	5%	MODM	74,646	4%	KATS	113,056	5%
	8	MCHA	2,123	5%	KATS	1,539	4%	MODM	83,453	5%	MODM	84,256	5%	MODM	79,977	5%	CTXS	69,266	4%	PLEX	95,625	4%
	9	KATS	1,854	4%	TIAM	1,458	4%	PMWF	82,132	5%	KATS	74,875	4%	PMWF	77,875	5%	PMWF	64,659	4%	WIEM	84,673	4%
	10	CTXS	1,836	4%	PMWF	1,426	4%	MCHA	64,453	4%	GSAS	64,436	4%	GSAS	54,462	3%	GSAS	58,233	3%	GSAS	76,753	3%
MFLC TOP 5	1	TECM	3,047	13%	TECM	2,744	14%	CTXS	124,326	13%	TECM	139,806	14%	TECM	106,291	12%	VTRA	171,425	19%	ITOS	133,395	10%
	2	PMWF	2,704	12%	CTXS	2,480	13%	TECM	112,996	12%	CTXS	130,004	13%	CTXS	87,889	10%	QCTB	86,901	10%	RWRS	120,652	9%
	3	LEMM	2,144	9%	LEMM	2,195	12%	LEMM	91,475	10%	FOXN	103,547	10%	LEMM	82,374	9%	TECM	76,083	8%	BWEA	105,950	8%
	4	CTXS	1,820	8%	AMEM	1,634	9%	FOXN	84,992	9%	PMWF	90,101	9%	FOXN	80,423	9%	LEMM	68,961	8%	TECM	101,353	7%
	5	KATS	1,813	8%	FOXN	1,508	8%	PMWF	77,550	8%	LEMM	79,881	8%	PMWF	69,890	8%	PMWF	60,070	7%	KATS	98,166	7%
MSKT TOP 5	1	TECM	1,040	18%	TECM	922	18%	TIAM	41,055	17%	TIAM	49,870	18%	TIAM	47,607	19%	WIEM	43,156	16%	FOXN	162,877	45%
	2	TIAM	968	16%	MODM	710	14%	TECM	39,290	16%	AMEM	43,367	16%	TECM	31,474	12%	MODM	30,285	11%	MODM	55,531	15%
	3	AMEM	743	13%	AMEM	686	13%	AMEM	29,982	12%	TECM	39,495	14%	AMEM	29,775	12%	TECM	25,264	9%	PLEX	52,442	14%
	4	MODM	621	11%	FOXN	406	8%	MODM	26,227	11%	MODM	23,165	8%	MODM	23,791	9%	PLEX	21,990	8%	GSAS	33,832	9%
	5	FOXN	582	10%	MCHA	385	7%	FOXN	18,153	7%	FOXN	17,015	6%	GSAS	13,843	5%	GSAS	16,284	6%	RWRS	29,608	8%
XB TOP 5	1	TECM	1,904	27%	TECM	1,562	21%	TECM	46,757	17%	KATS	65,119	22%	TECM	40,364	15%	FOXN	41,689	15%	FOXN	41,774	17%
	2	FOXN	1,204	17%	KATS	1,264	17%	KATS	27,734	10%	TECM	40,231	14%	CTXS	34,779	13%	VTRA	31,427	12%	TECM	38,676	16%
	3	KATS	813	11%	FOXN	933	13%	FOXN	27,096	10%	CTXS	35,691	12%	FOXN	24,218	9%	TECM	31,094	11%	MODM	22,743	9%
	4	MCHA	402	6%	MODM	703	10%	CTXS	22,768	8%	FOXN	34,007	12%	MODM	21,512	8%	QCTB	22,610	8%	MOPS	18,222	7%
	5	TIAM	389	5%	LEMM	646	9%	MODM	21,130	8%	AMEM	15,044	5%	AMEM	20,336	7%	CTXS	19,985	7%	MAFM	12,864	5%
ODDS TOP 5	1	FOXN	1,048	21%	MCHA	1,061	20%	MCHA	39,964	20%	MCHA	38,934	18%	MCHA	36,085	17%	FOXN	34,603	15%	MCHA	36,030	13%
	2	MCHA	961	19%	TECM	878	17%	VWPM	30,258	15%	TECM	28,839	13%	TECM	27,007	13%	MCHA	30,689	13%	FOXN	30,367	11%
	3	TECM	678	13%	FOXN	697	13%	TECM	23,968	12%	FOXN	19,241	9%	VWPM	22,432	11%	VWPM	22,219	10%	RWRS	26,036	9%
	4	VWPM	536	11%	VWPM	468	9%	FOXN	21,444	11%	LEMM	12,309	6%	FOXN	18,811	9%	VTRA	21,495	9%	DAWS	25,129	9%
	5	SNWF	309	6%	SNWF	342	7%	GWEA	10,802	5%	MAFM	11,640	5%	RWRS	13,524	6%	TECM	21,175	9%	MAFM	21,039	7%
Auction Totals		<u>Offered</u>	<u>Sold</u>		<u>Offered</u>	<u>Sold</u>		<u>Bales Sold</u>	<u>\$/Bale</u>		<u>Bales Sold</u>	<u>\$/Bale</u>		<u>Bales Sold</u>	<u>\$/Bale</u>		<u>Bales Sold</u>	<u>\$/Bale</u>		<u>Bales Sold</u>	<u>\$/Bale</u>	
		44,484	41,484		40,188	36,842		1,652,727	\$1,596		1,800,549	\$1,543		1,625,113	\$1,509		1,683,163	\$1,599		2,270,874	\$1,193	
		<u>Passed-In</u>	<u>PI%</u>		<u>Passed-In</u>	<u>PI%</u>		<u>Export Value</u>			<u>Export Value</u>			<u>Export Value</u>			<u>Export Value</u>			<u>Export Value</u>		
		3,000	6.7%		3,346	8.3%		\$2,637,299,254			\$2,778,797,527			\$2,452,791,892			\$2,691,010,531			\$2,709,269,973		



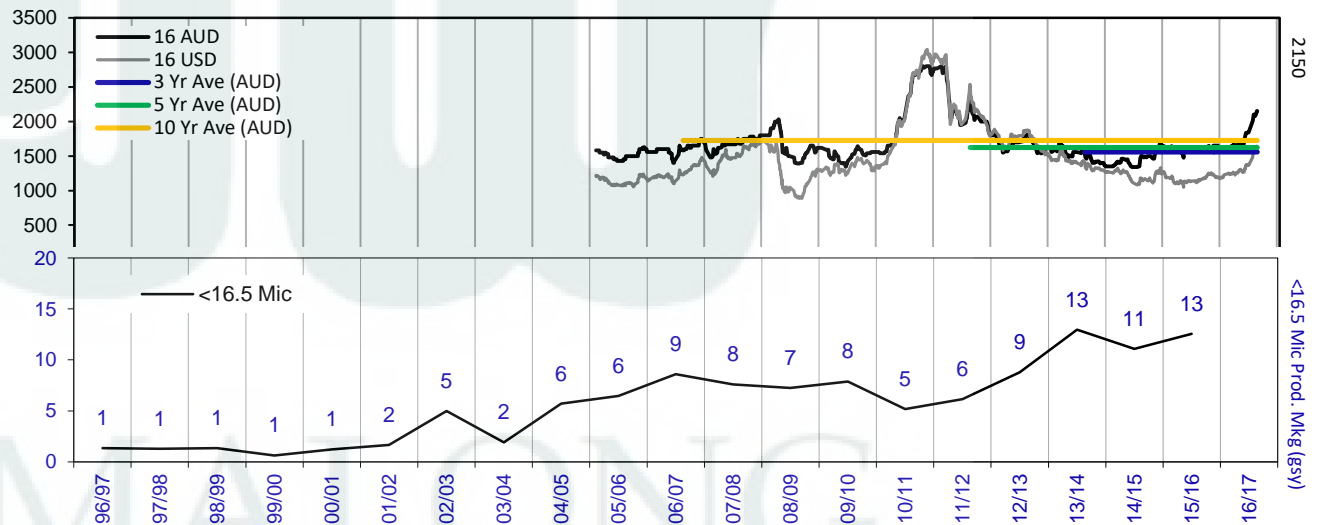
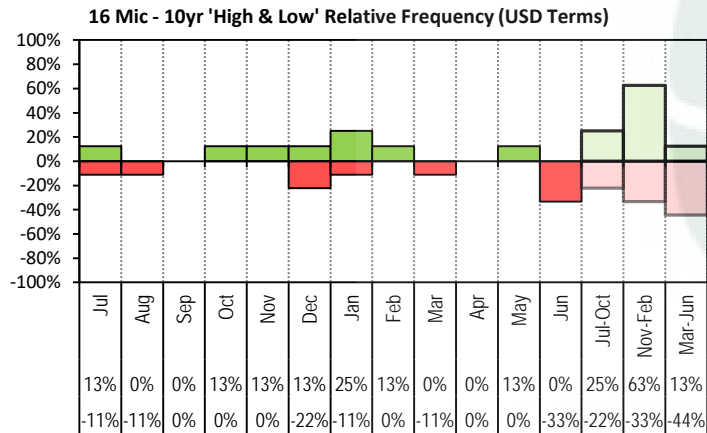
Table 7: NSW Production Statistics

MAX			MIN		MAX GAIN		MAX REDUCTION								
2015-16															
Statistical Devision, Area Code & Towns				Auction Bales (FH)	Micron	+/- YoY	Vmb %	+/- YoY	Yield % Sch Dry	+/- YoY	Length mm	+/- YoY	Strength Nkt	+/- YoY	Ave Price c/kg
Northern	N02	Tenterfield, Glen Innes		8,045	19.3	0.1	2.4	1.4	70.7	-0.1	83	0.3	40	-2.7	897
	N03	Guyra		44,672	20.0	1.4	2.0	1.1	68.9	-2.9	83	-1.0	38	-1.1	888
	N04	Inverell		3,888	18.7	0.5	3.6	1.5	68.6	-1.7	87	1.9	39	0.0	860
	N05	Armidale		1,594	20.4	0.2	3.6	0.6	67.6	-0.5	88	0.4	36	-2.0	810
	N06	Tamworth, Gunnedah, Quirindi		5,407	20.3	0.1	3.6	0.8	66.5	-1.4	85	-0.8	37	-1.9	820
	N07	Moree		5,308	20.0	0.1	4.8	1.7	61.4	-1.3	91	1.9	37	1.6	725
	N08	Narrabri		3,067	19.8	0.4	3.0	0.7	63.4	-1.0	93	4.2	35	-1.5	770
North Western & Far West	N09	Cobar, Bourke, Wanaaring		9,453	19.9	0.1	4.5	1.1	58.5	-1.6	87	-0.3	36	2.4	721
	N12	Walgett		7,316	19.6	0.4	4.7	1.6	59.0	-1.8	86	-0.4	36	3.0	720
	N13	Nyngan		21,891	20.4	-0.1	7.5	1.3	58.4	-1.9	89	-1.2	37	0.0	664
	N14	Dubbo, Narromine		23,434	21.2	-0.1	4.1	0.0	61.6	0.0	87	-0.6	35	-1.1	683
	N16	Dunedoo		7,050	20.4	0.4	2.8	0.2	65.9	0.1	88	-3.1	36	-0.9	778
	N17	Mudgee, Wellington, Gulgong		23,430	19.9	0.0	2.3	0.0	67.5	-0.1	85	-2.5	38	-0.4	831
	N33	Coonabarabran		3,767	20.9	0.0	4.4	-0.2	64.9	0.8	88	-0.2	37	2.7	737
	N34	Coonamble		7,498	20.4	0.4	7.8	2.1	57.1	-2.2	88	0.4	36	0.3	661
	N36	Gilgandra, Gulargambone		7,050	21.2	0.1	4.8	0.3	62.1	0.0	91	3.3	36	0.4	692
	N40	Brewarrina		5,732	20.3	0.8	4.5	2.4	60.7	-3.0	87	1.0	39	1.6	741
N10	Wilcannia, Broken Hill		24,252	20.8	-0.3	3.1	0.4	60.0	-0.5	90	0.0	35	1.3	739	
Central West	N15	Forbes, Parkes, Cowra		41,298	21.0	-0.2	3.2	0.2	63.3	-0.5	88	-1.9	36	-0.7	724
	N18	Lithgow, Oberon		2,236	20.7	-0.1	1.5	0.2	70.7	0.4	87	1.1	40	2.5	851
	N19	Orange, Bathurst		55,995	22.1	0.0	1.7	0.1	68.0	-0.2	87	-1.4	37	0.3	774
	N25	West Wyalong		24,178	20.5	-0.3	2.5	0.3	62.7	-0.4	90	-1.5	35	-1.2	742
	N35	Condobolin, Lake Cargelligo		10,973	20.5	-0.3	5.2	0.3	59.3	-0.8	86	-3.4	37	0.5	675
Murrumbidgee	N26	Cootamundra, Temora		26,420	21.7	0.0	1.9	0.3	63.1	-0.6	87	-2.0	35	-1.2	702
	N27	Adelong, Gundagai		12,664	21.8	0.0	1.5	0.2	67.9	-0.2	89	-0.8	34	-0.8	763
	N29	Wagga, Narrandera		30,588	21.9	-0.1	1.5	0.1	65.1	0.6	89	-0.6	34	-1.7	722
	N37	Griffith, Hillston		11,050	21.0	-0.6	4.2	0.4	61.0	-1.0	82	-4.3	37	-1.5	714
	N39	Hay, Coleambally		17,031	20.3	-0.4	3.2	0.3	63.0	-0.9	90	-1.8	35	-4.1	770
Murray	N11	Wentworth, Balranald		13,325	20.9	-0.6	4.2	0.0	60.5	-0.3	90	-1.9	34	-2.7	726
	N28	Albury, Corowa, Holbrook		27,364	21.7	0.2	1.4	0.1	66.1	-0.8	87	-0.9	34	-1.9	755
	N31	Deniliquin		23,568	20.8	-0.5	2.7	0.6	65.2	-1.0	89	-2.0	35	-4.6	772
	N38	Finley, Berrigan, Jerilderie		8,821	20.5	-0.3	2.5	0.4	64.9	-0.9	85	-2.7	36	-4.3	783
South Eastern	N23	Goulburn, Young, Yass		93,576	19.8	-0.3	1.6	0.4	67.8	-0.5	87	-2.6	36	0.7	840
	N24	Monaro (Cooma, Bombala)		31,367	19.7	0.0	1.4	0.1	70.9	0.6	91	-2.3	37	-1.1	875
	N32	A.C.T.		171	21.1	-0.3	3.9	0.6	57.5	-1.8	100	14.3	30	-1.7	643
	N43	South Coast (Bega)		407	18.9	-0.3	0.8	-0.3	74.4	1.1	89	-0.4	42	-3.0	1007
NSW	AWEX Sale Statistics 15-16			668,543	20.7	-0.1	2.7	0.4	65.0	-0.6	88	-1.5	36	-0.7	776

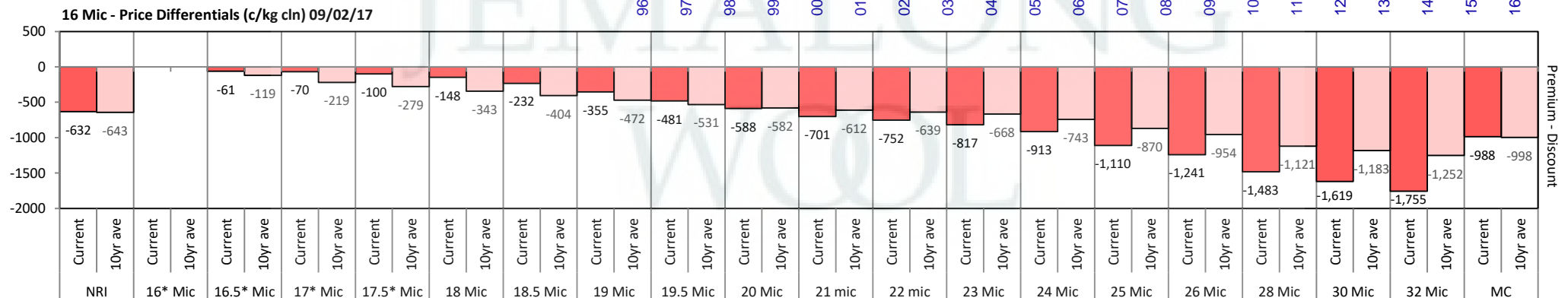
AWTA Mthly Key Test Data			Bales Tested	+/- YoY	Micron	+/- YoY	VMB	+/- YoY	Yld	+/- YoY	Lth	+/- YoY	Nkt	+/- YoY	POBM +/-
AUSTRALIA	Current	January	150,546	12,767	21.8	-0.1	2.1	0.2	66.7	1.2	87	1.4	33	0.0	50 -0.9
	Season	Y.T.D	1,162,427	26,525	21.0	0.0	1.8	0.1	66.0	0.5	90	1.0	34	0.0	50 -1.0
	Previous	2015-16	1,135,902	-81241	21.0	-0.1	1.7	0.0	65.5	-0.4	89	0.0	34	0.0	51 -2.0
	Seasons	2014-15	1,217,143	-14558	21.1	0.2	1.7	0.0	65.9	0.1	89	1.0	34	1.0	53 -3.0
	Y.T.D.	2013-14	1,231,701	-36,935	20.9	-0.4	1.7	-0.4	65.8	-0.4	88	79.3	33	-1.7	50 1.2



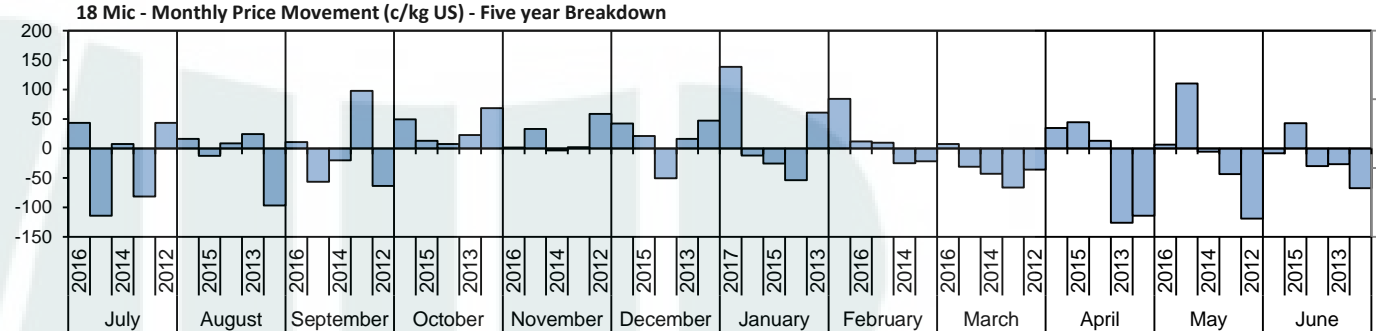
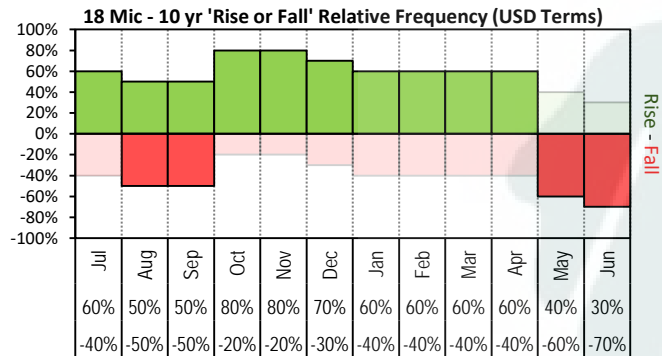
The above 'Rise or Fall' graph, shows how often the market has risen or fallen in a given month over the past 10 years, it does not show the extent of the movement only the frequency of direction. The 'Monthly Price Movement' graph shows the extent of movement for each month, for the past 5 years.



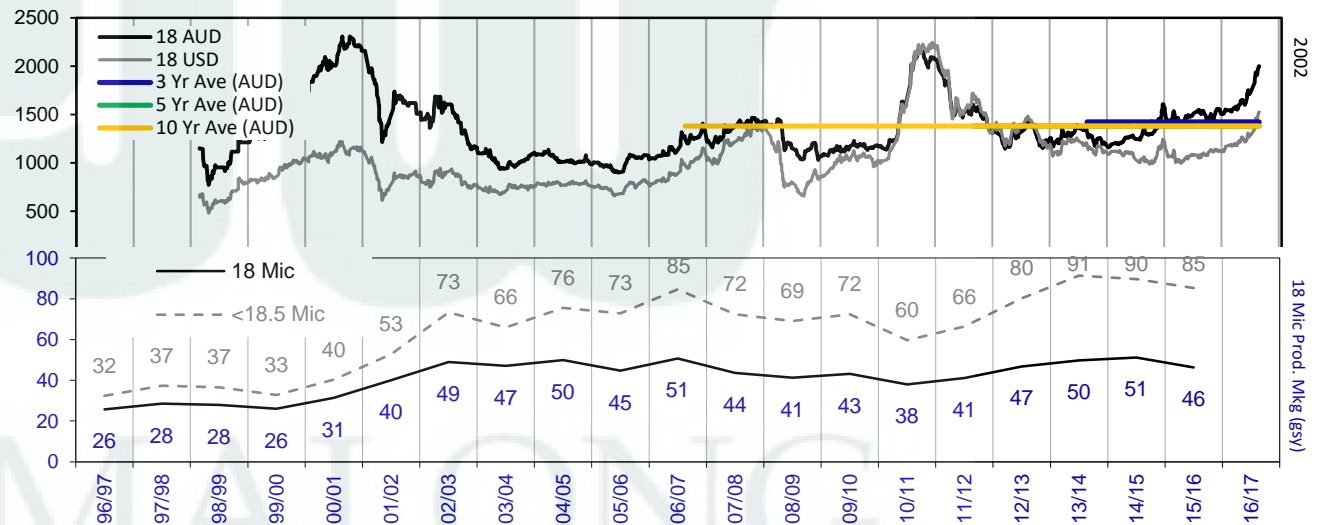
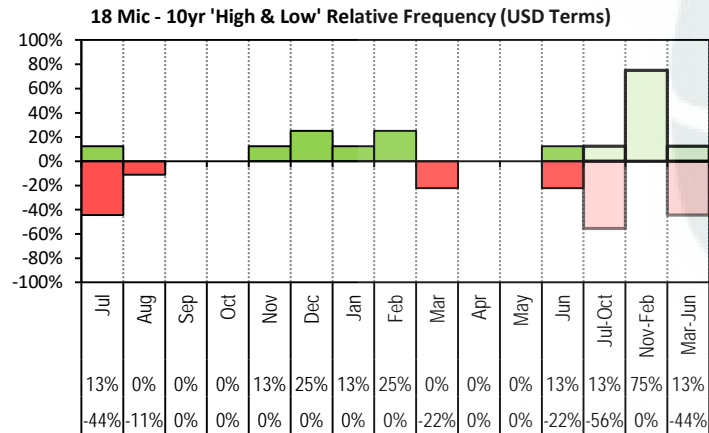
The above graph, shows how often the '12 month high & low' have been achieved for a



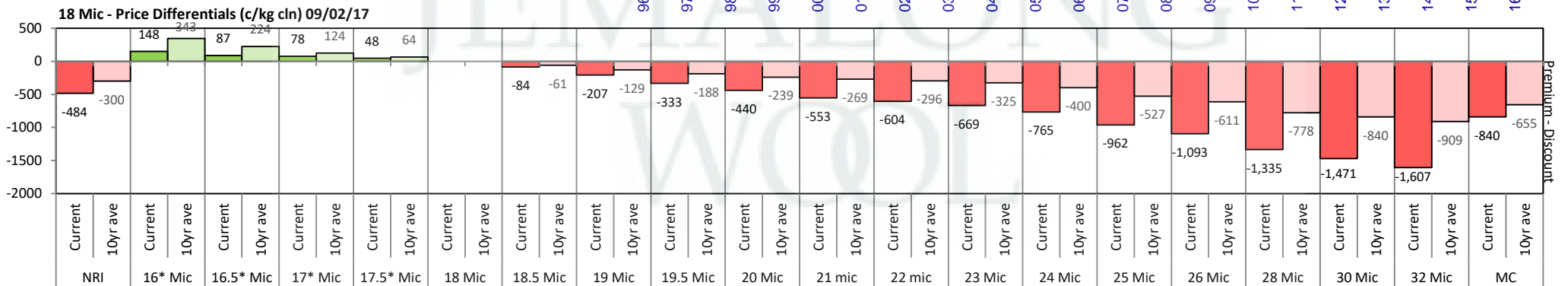




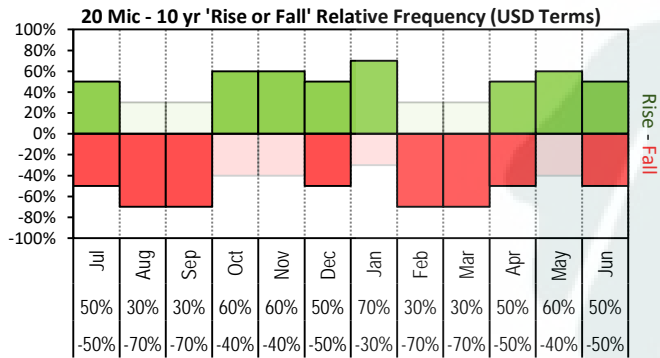
The above 'Rise or Fall' graph, shows how often the market has risen or fallen in a given month over the past 10 years, it does not show the extent of the movement only the frequency of direction. The 'Monthly Price Movement' graph shows the extent of movement for each month, for the past 5 years.



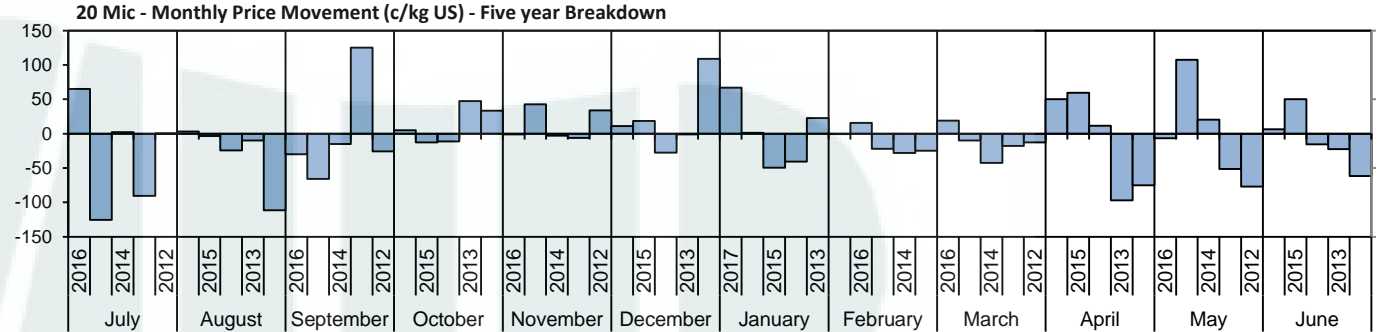
The above graph, shows how often the '12 month high & low' have been achieved for a given month over the past 10 years. It is not a measure of probability.

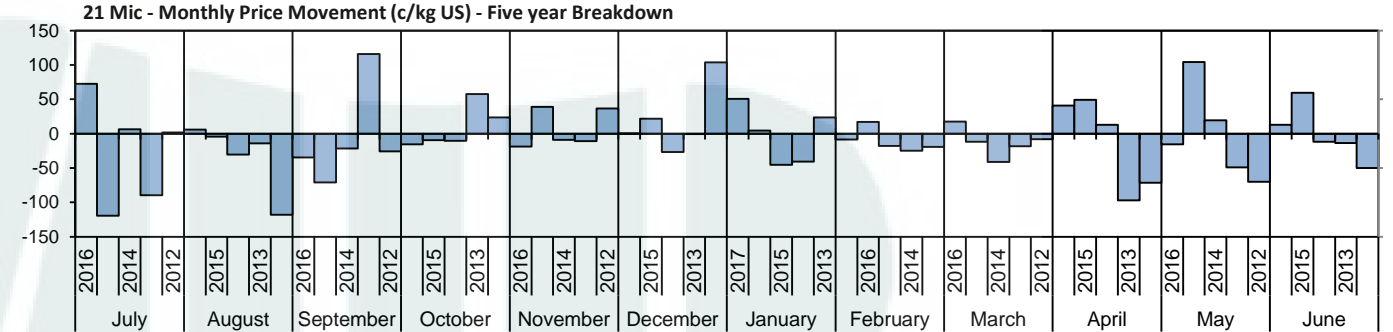
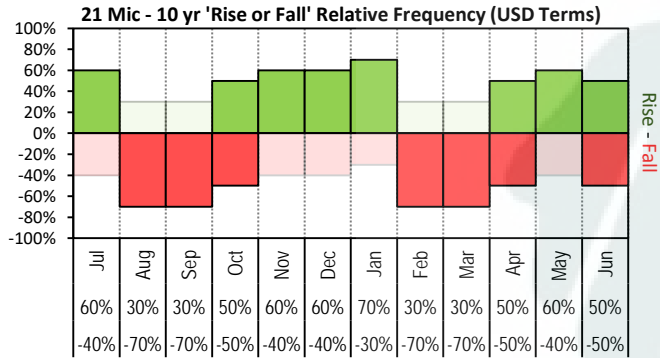


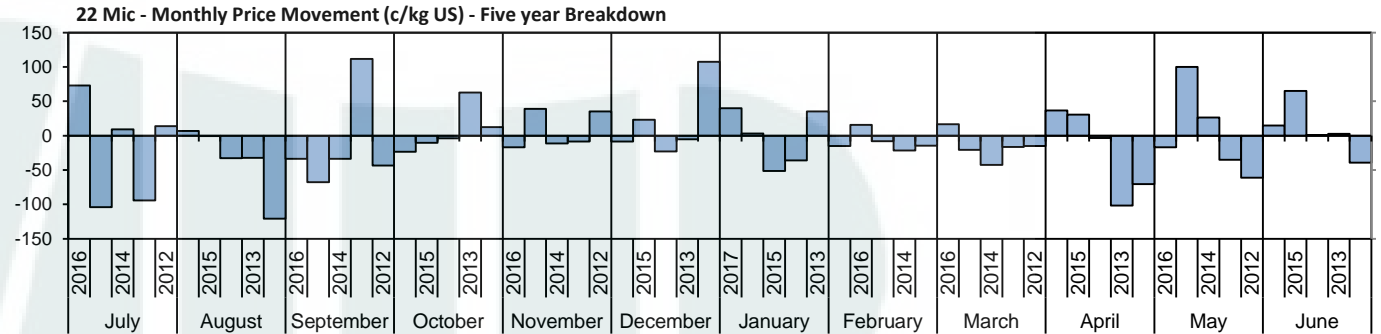
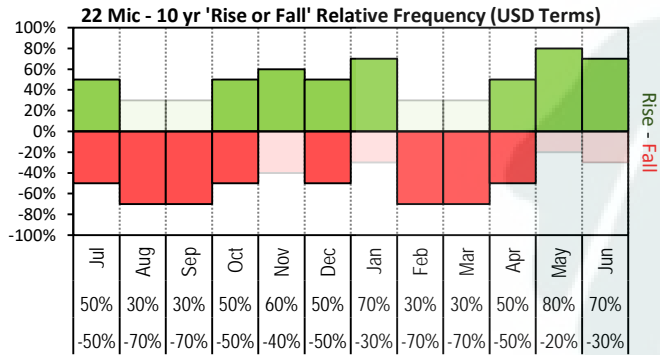




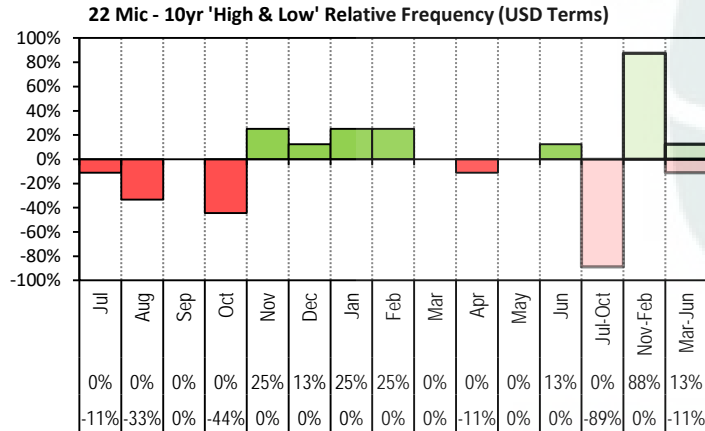
The above 'Rise or Fall' graph, shows how often the market has risen or fallen in a given month over the past 10 years, it does not show the extent of the movement only the frequency of direction. The 'Monthly Price Movement' graph shows the extent of movement for each month, for the past 5 years.



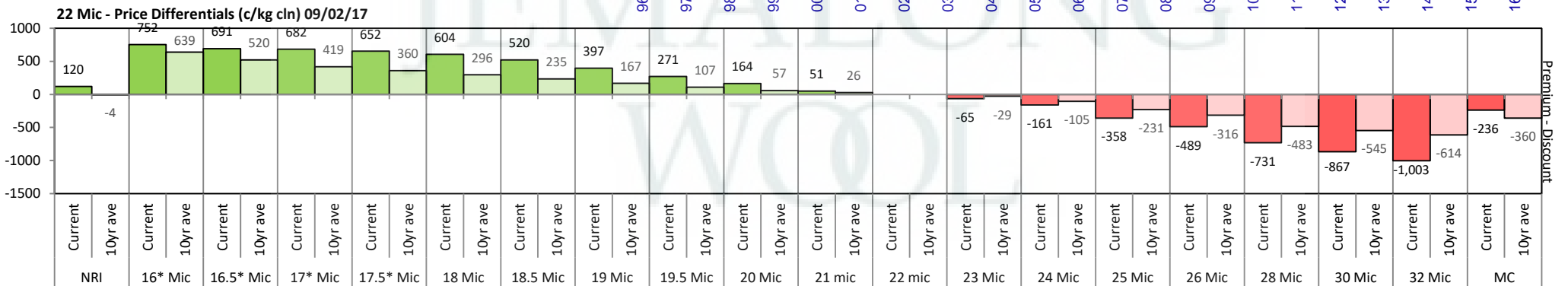
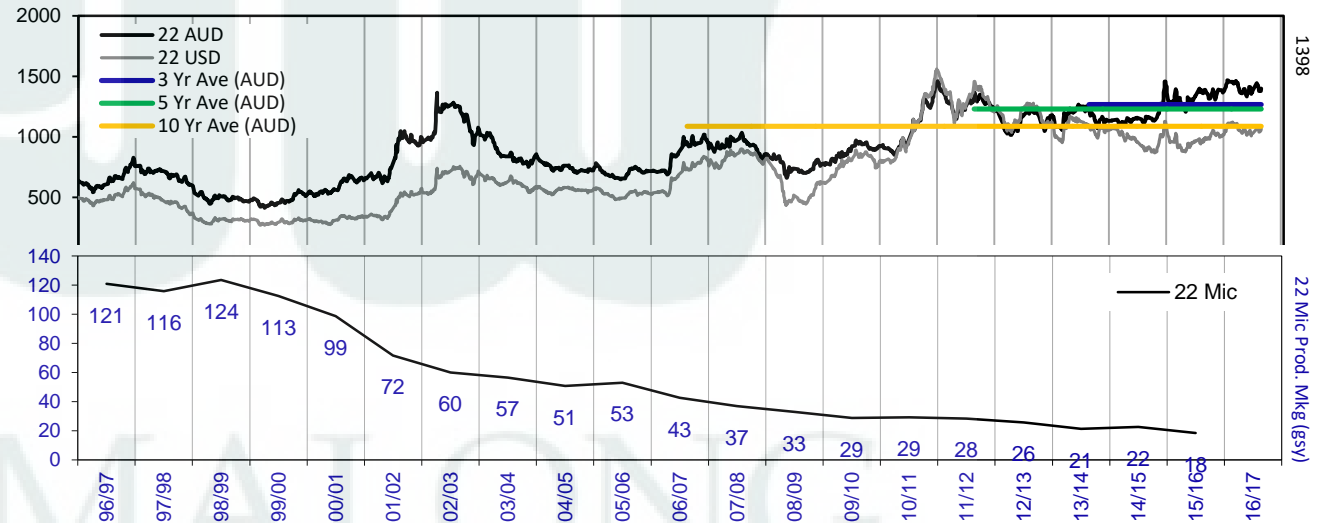




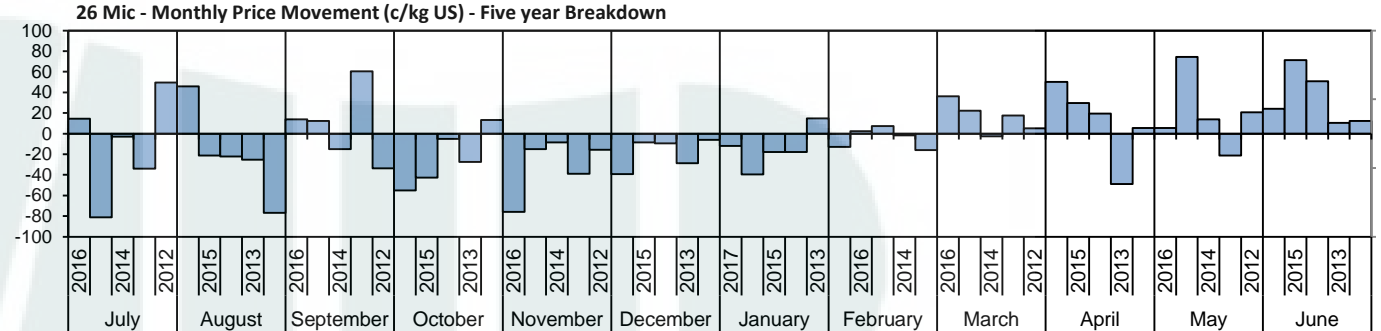
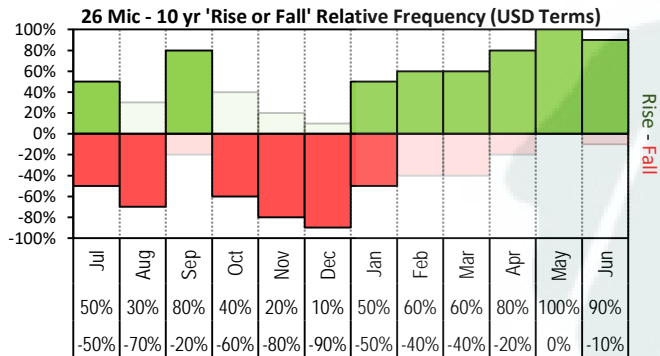
The above 'Rise or Fall' graph, shows how often the market has risen or fallen in a given month over the past 10 years, it does not show the extent of the movement only the frequency of direction. The 'Monthly Price Movement' graph shows the extent of movement for each month, for the past 5 years.



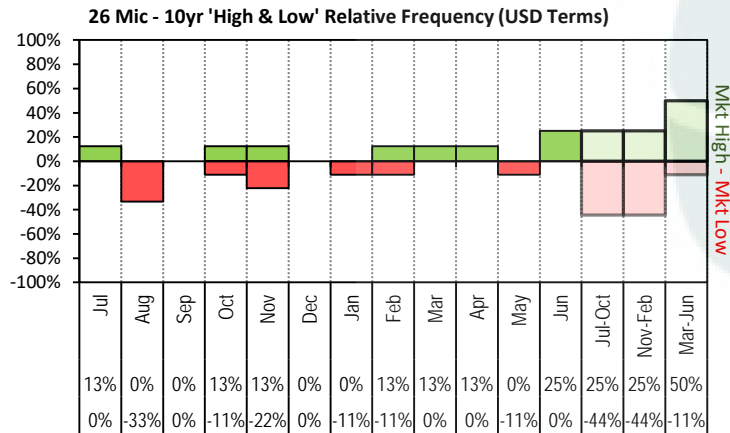
The above graph, shows how often the '12 month high & low' have been achieved for a given month over the past 10 years. It is not a measure of probability.



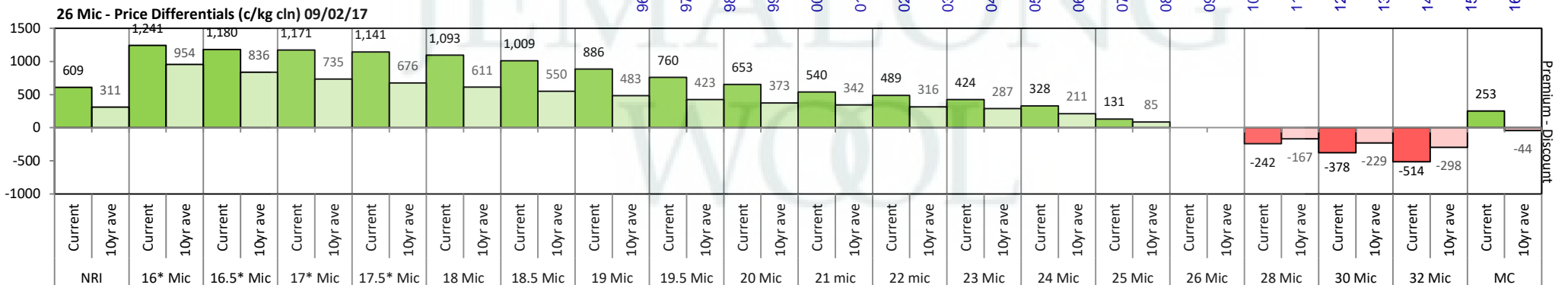


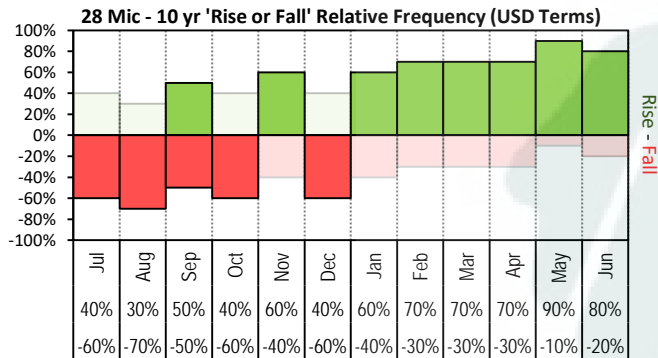


The above 'Rise or Fall' graph, shows how often the market has risen or fallen in a given month over the past 10 years, it does not show the extent of the movement only the frequency of direction. The 'Monthly Price Movement' graph shows the extent of movement for each month, for the past 5 years.

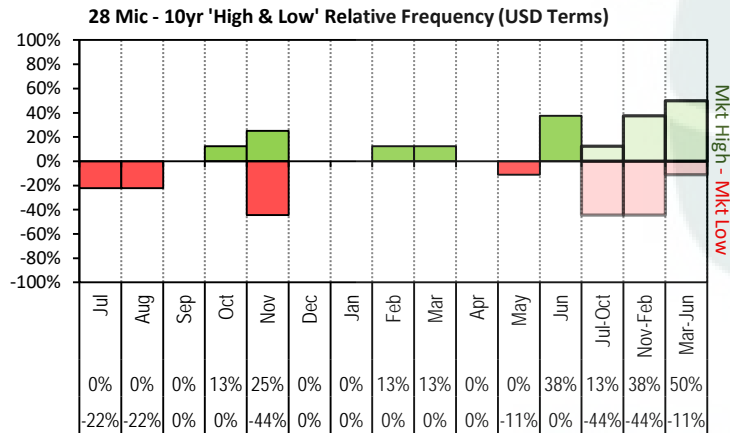
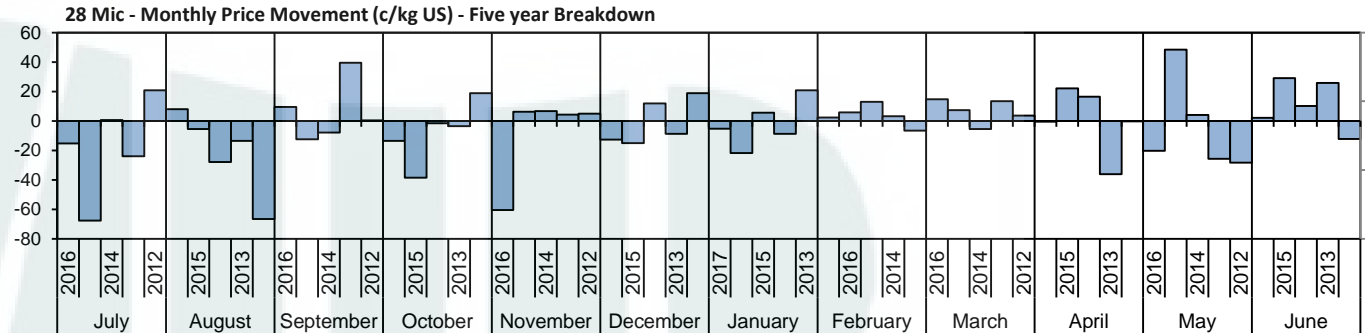


The above graph, shows how often the '12 month high & low' have been achieved for a given month over the past 10 years. It is not a measure of probability.

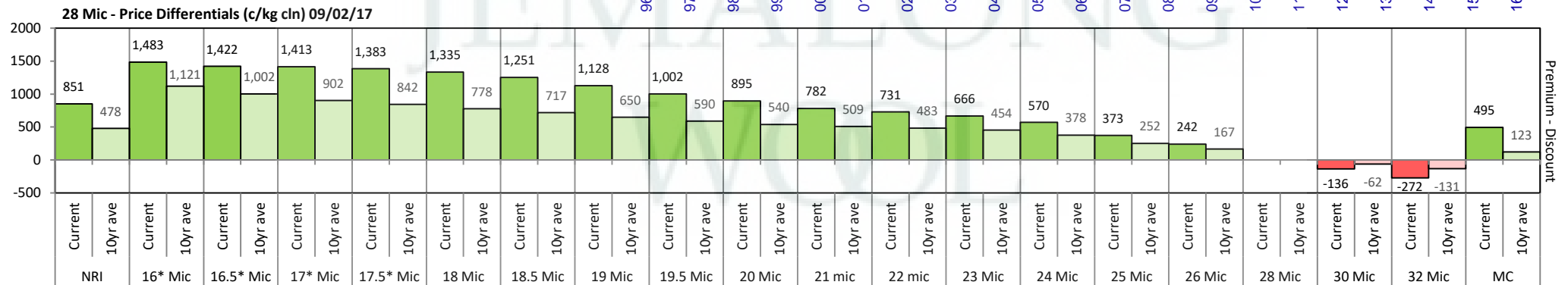
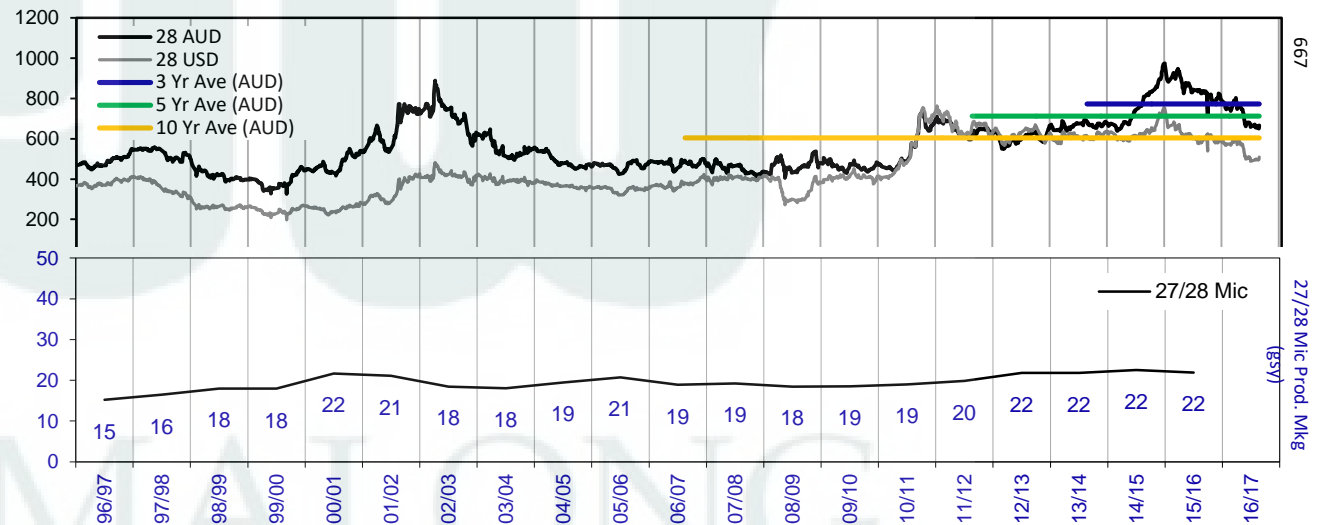


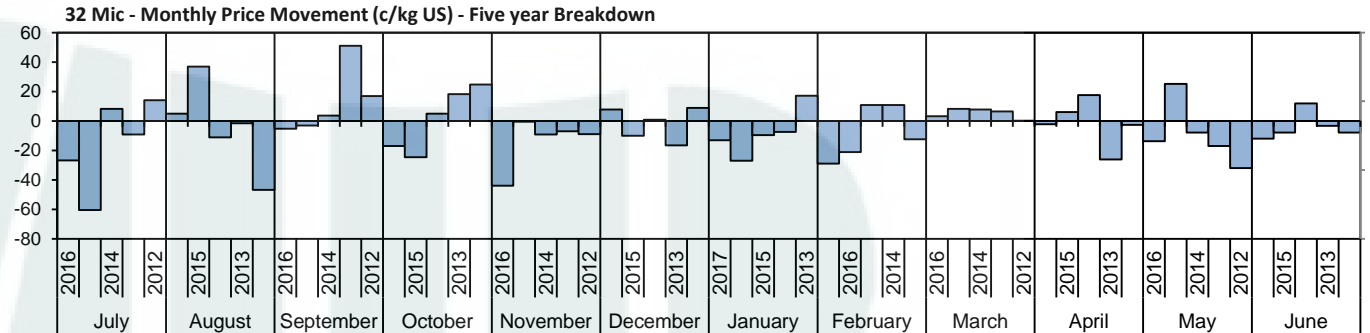
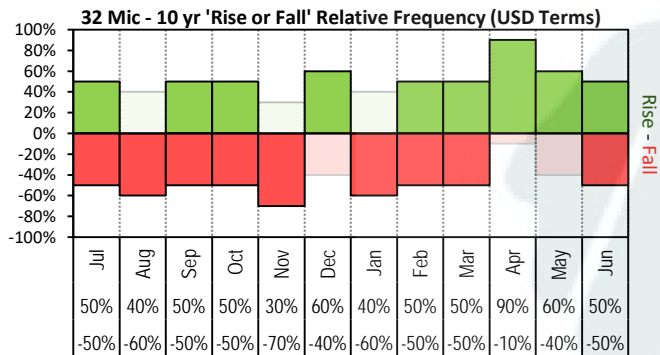


The above '**Rise or Fall**' graph, shows how often the market has risen or fallen in a given month over the past 10 years, it does not show the extent of the movement only the frequency of direction. The '**Monthly Price Movement**' graph shows the extent of movement for each month, for the past 5 years.

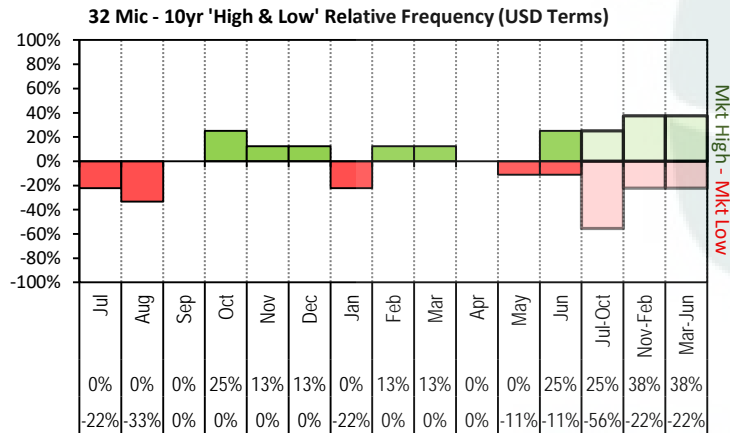


The above graph, shows how often the '12 month high & low' have been achieved for a given month over the past 10 years. It is not a measure of probability.

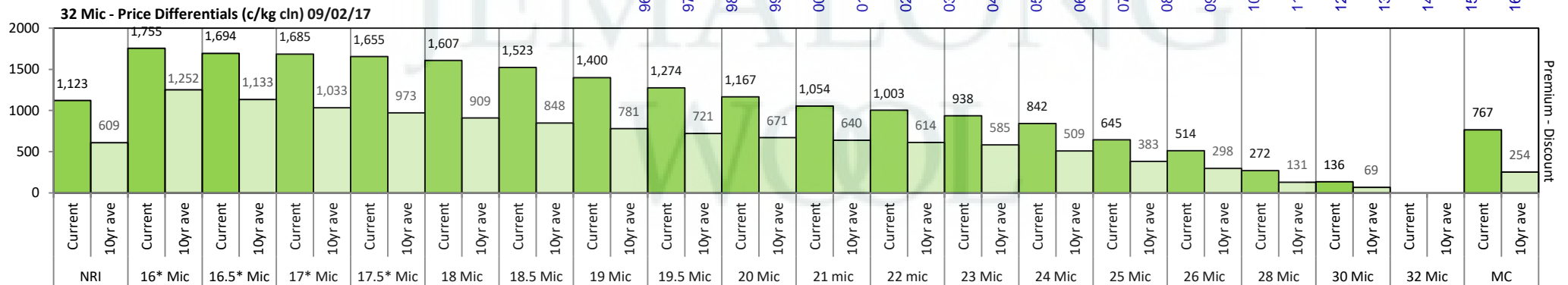
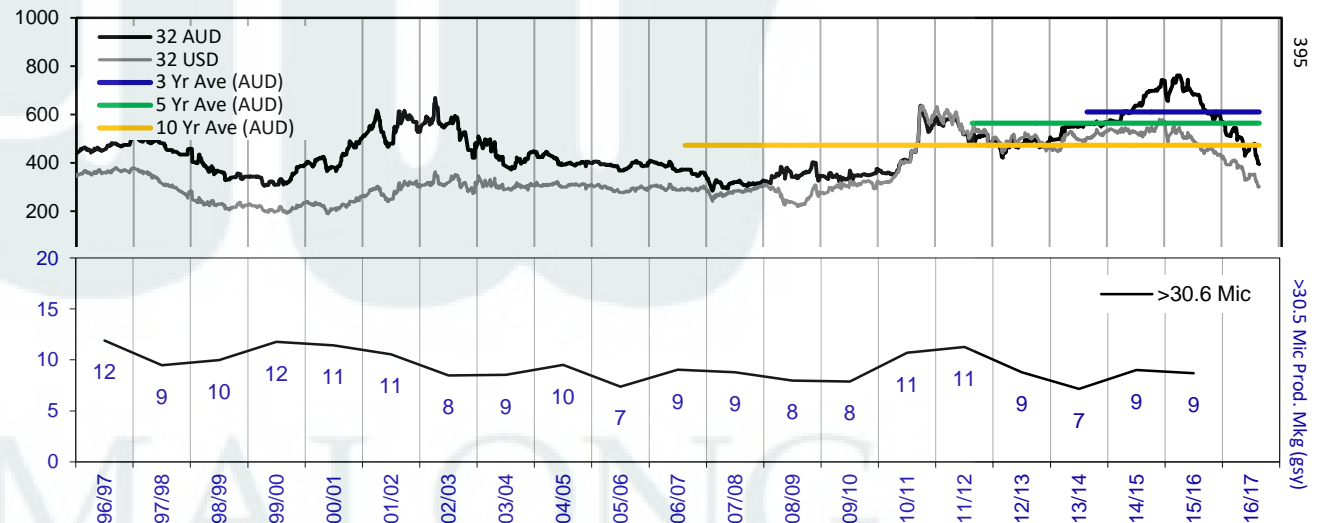


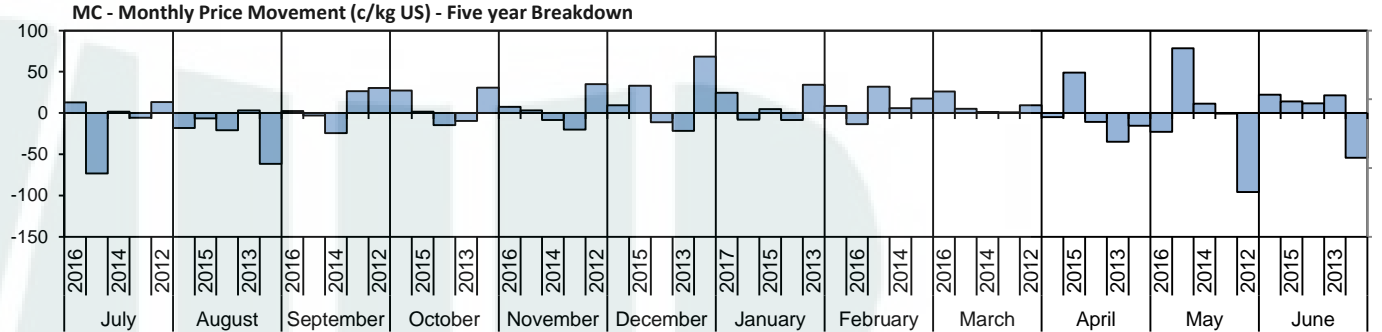
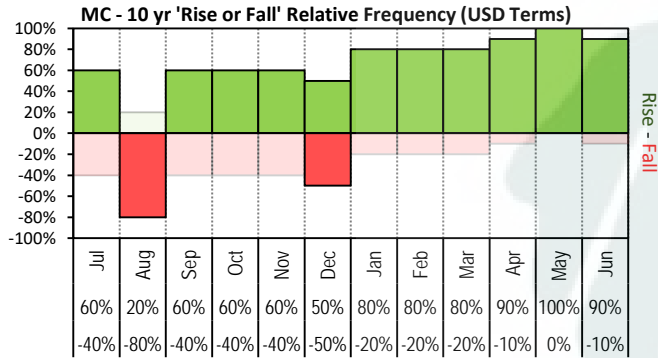


The above 'Rise or Fall' graph, shows how often the market has risen or fallen in a given month over the past 10 years, it does not show the extent of the movement only the frequency of direction. The 'Monthly Price Movement' graph shows the extent of movement for each month, for the past 5 years.

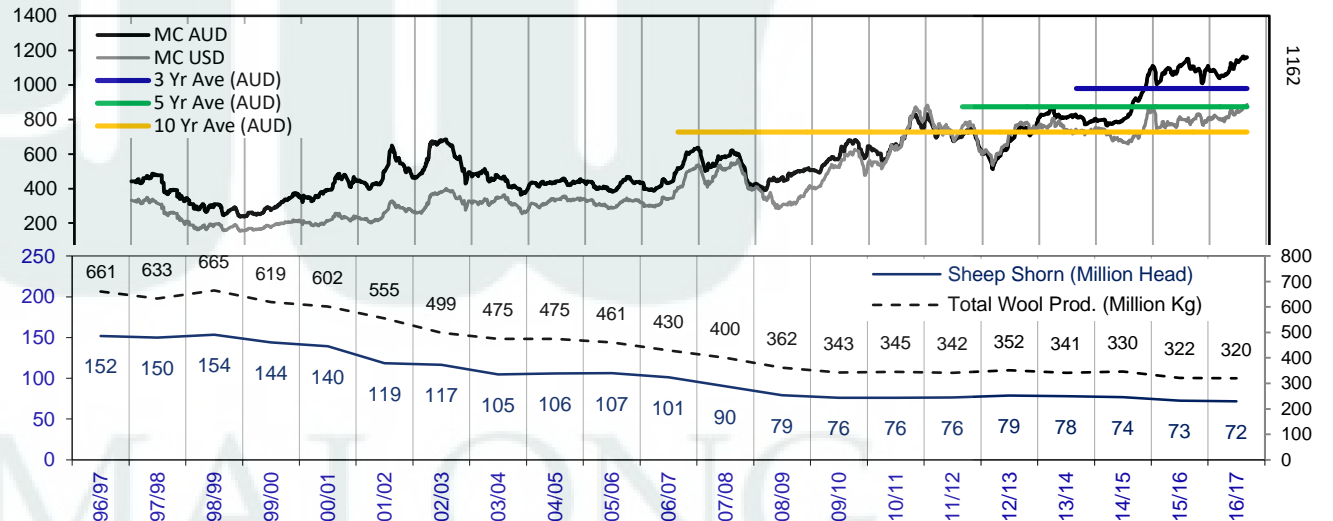
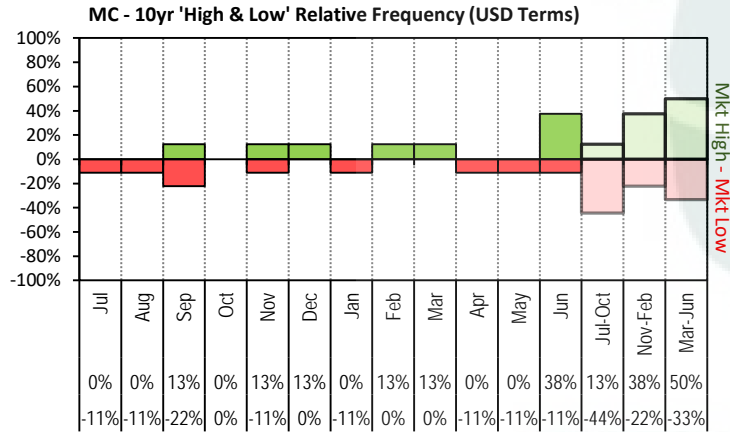


The above graph, shows how often the '12 month high & low' have been achieved for a given month over the past 10 years. It is not a measure of probability.

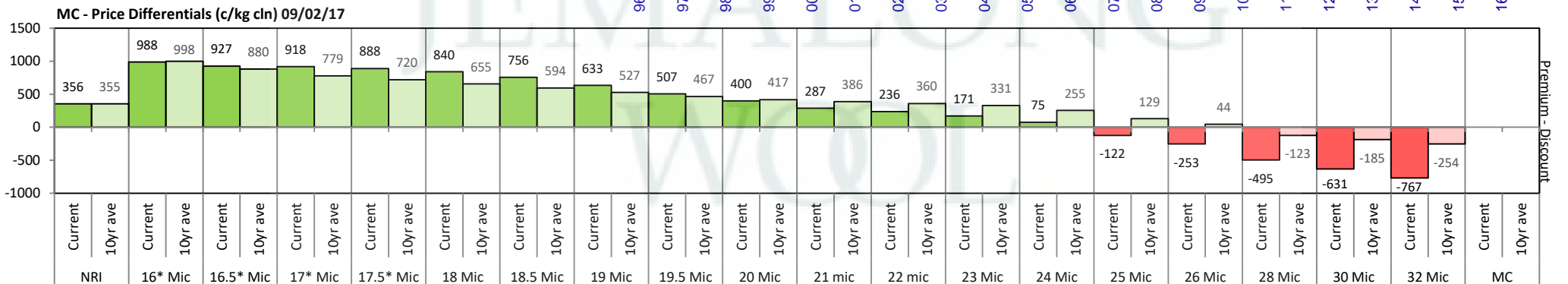




The above 'Rise or Fall' graph, shows how often the market has risen or fallen in a given month over the past 10 years, it does not show the extent of the movement only the frequency of direction. The 'Monthly Price Movement' graph shows the extent of movement for each month, for the past 5 years.

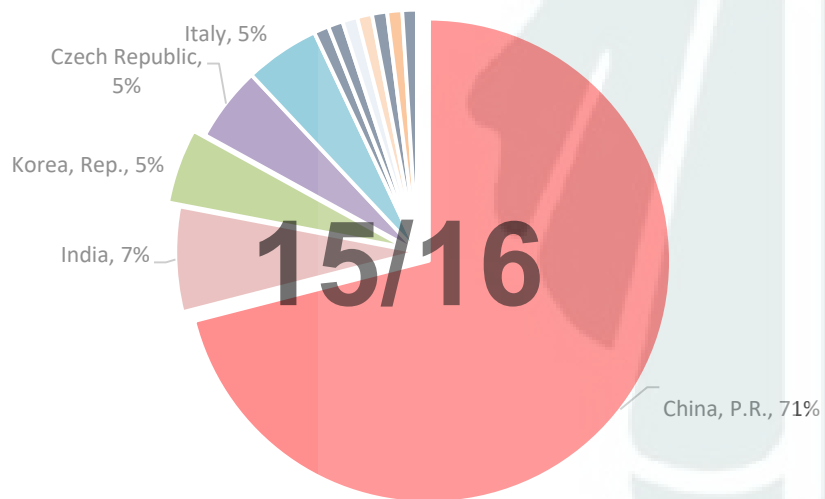


The above graph, shows how often the '12 month high & low' have been achieved for a given month over the past 10 years. It is not a measure of probability.

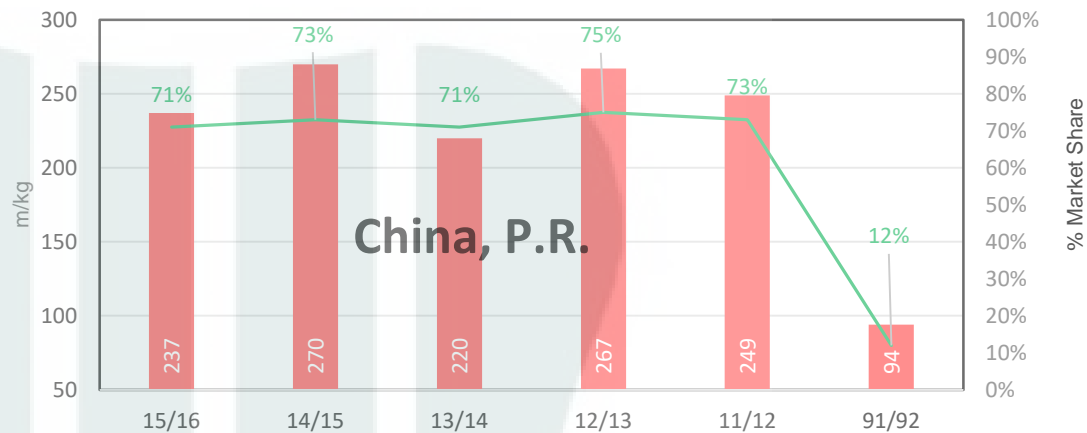




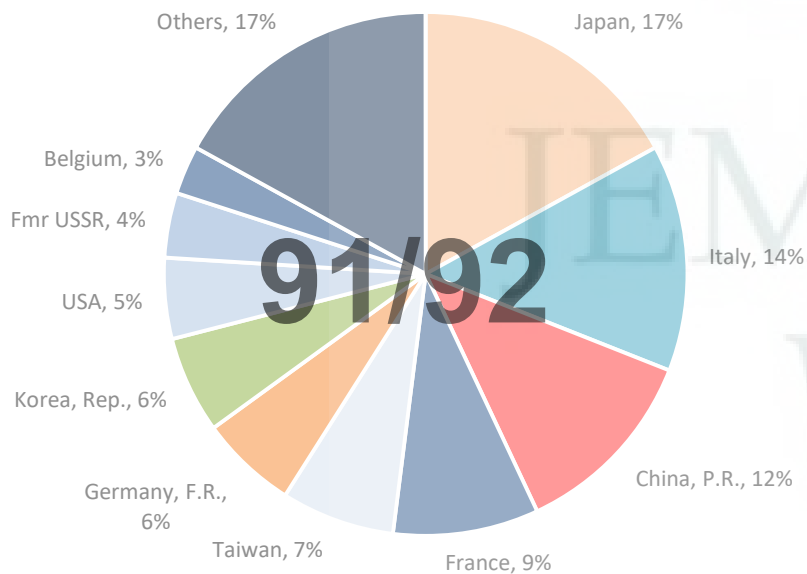
15/16 - Export Snap Shot (334.71 m/kg greasy equivalent)



China, P.R. (Largest Market Share)



91/92 - Export Snap Shot (784.7 m/kg greasy equivalent)



Change m/kg

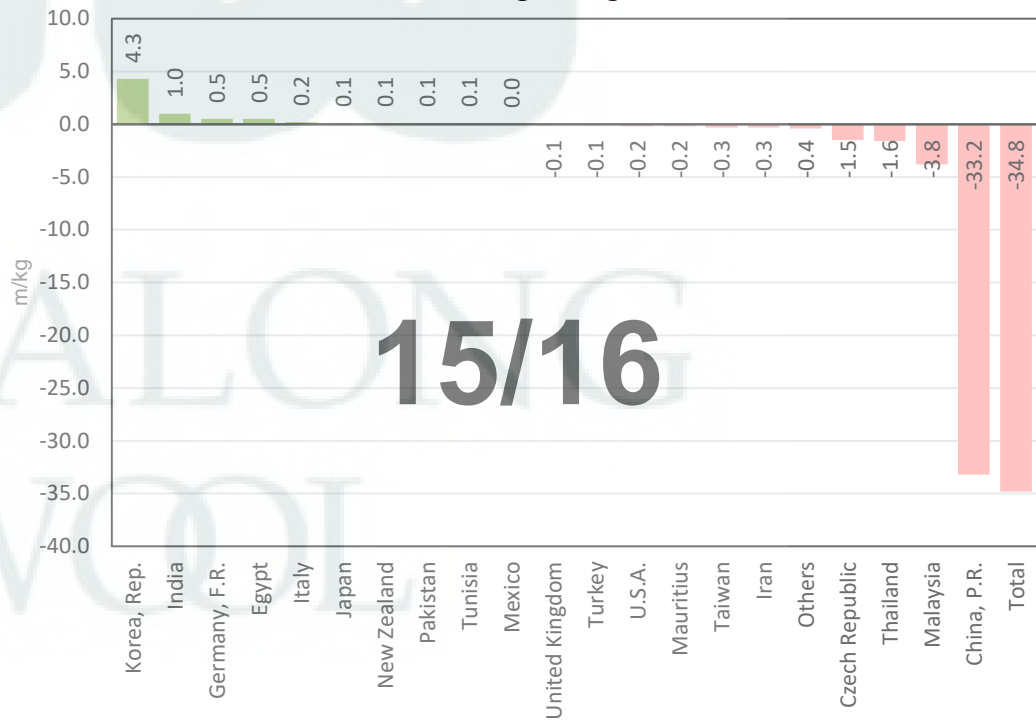






Table 8: Returns pr head for skirted fleece wool.

Skirted FLC Weight		Micron																	
9 Kg		16	16.5	17	17.5	18	18.5	19	19.5	20	21	22	23	24	25	26	28	30	32
Yield (Sch Dry)	25% Current	\$48	\$47	\$47	\$46	\$45	\$43	\$40	\$38	\$35	\$33	\$31	\$30	\$28	\$23	\$20	\$15	\$12	\$9
	10yr ave.	\$39	\$35	\$33	\$32	\$31	\$30	\$28	\$27	\$26	\$25	\$24	\$24	\$22	\$19	\$17	\$14	\$12	\$11
	30% Current	\$58	\$56	\$56	\$55	\$54	\$52	\$48	\$45	\$42	\$39	\$38	\$36	\$33	\$28	\$25	\$18	\$14	\$11
	10yr ave.	\$47	\$42	\$40	\$39	\$37	\$36	\$34	\$32	\$31	\$30	\$29	\$29	\$27	\$23	\$21	\$16	\$15	\$13
	35% Current	\$68	\$66	\$66	\$65	\$63	\$60	\$57	\$53	\$49	\$46	\$44	\$42	\$39	\$33	\$29	\$21	\$17	\$12
	10yr ave.	\$54	\$49	\$47	\$45	\$44	\$42	\$40	\$38	\$36	\$35	\$34	\$33	\$31	\$27	\$24	\$19	\$17	\$15
	40% Current	\$77	\$75	\$75	\$74	\$72	\$69	\$65	\$60	\$56	\$52	\$50	\$48	\$45	\$37	\$33	\$24	\$19	\$14
	10yr ave.	\$62	\$56	\$53	\$52	\$50	\$48	\$45	\$43	\$41	\$40	\$39	\$38	\$35	\$31	\$28	\$22	\$20	\$17
	45% Current	\$87	\$85	\$84	\$83	\$81	\$78	\$73	\$68	\$63	\$59	\$57	\$54	\$50	\$42	\$37	\$27	\$22	\$16
	10yr ave.	\$70	\$63	\$60	\$58	\$56	\$54	\$51	\$48	\$46	\$45	\$44	\$43	\$40	\$35	\$31	\$24	\$22	\$19
	50% Current	\$97	\$94	\$94	\$92	\$90	\$86	\$81	\$75	\$70	\$65	\$63	\$60	\$56	\$47	\$41	\$30	\$24	\$18
	10yr ave.	\$78	\$70	\$67	\$65	\$62	\$59	\$56	\$54	\$51	\$50	\$49	\$48	\$44	\$39	\$35	\$27	\$24	\$21
	55% Current	\$106	\$103	\$103	\$101	\$99	\$95	\$89	\$83	\$77	\$72	\$69	\$66	\$61	\$51	\$45	\$33	\$26	\$20
	10yr ave.	\$85	\$77	\$73	\$71	\$68	\$65	\$62	\$59	\$57	\$55	\$54	\$52	\$49	\$42	\$38	\$30	\$27	\$23
	60% Current	\$116	\$113	\$112	\$111	\$108	\$104	\$97	\$90	\$84	\$78	\$75	\$72	\$67	\$56	\$49	\$36	\$29	\$21
	10yr ave.	\$93	\$84	\$80	\$77	\$75	\$71	\$68	\$64	\$62	\$60	\$59	\$57	\$53	\$46	\$42	\$33	\$29	\$26
	65% Current	\$126	\$122	\$122	\$120	\$117	\$112	\$105	\$98	\$91	\$85	\$82	\$78	\$72	\$61	\$53	\$39	\$31	\$23
	10yr ave.	\$101	\$91	\$87	\$84	\$81	\$77	\$73	\$70	\$67	\$65	\$64	\$62	\$57	\$50	\$45	\$35	\$32	\$28
	70% Current	\$135	\$132	\$131	\$129	\$126	\$121	\$113	\$105	\$98	\$91	\$88	\$84	\$78	\$66	\$57	\$42	\$33	\$25
	10yr ave.	\$109	\$98	\$93	\$90	\$87	\$83	\$79	\$75	\$72	\$70	\$68	\$67	\$62	\$54	\$49	\$38	\$34	\$30
	75% Current	\$145	\$141	\$140	\$138	\$135	\$129	\$121	\$113	\$105	\$98	\$94	\$90	\$83	\$70	\$61	\$45	\$36	\$27
	10yr ave.	\$117	\$105	\$100	\$97	\$93	\$89	\$85	\$81	\$77	\$75	\$73	\$71	\$66	\$58	\$52	\$41	\$37	\$32
	80% Current	\$155	\$150	\$150	\$148	\$144	\$138	\$129	\$120	\$112	\$104	\$101	\$96	\$89	\$75	\$65	\$48	\$38	\$28
	10yr ave.	\$124	\$112	\$107	\$103	\$100	\$95	\$90	\$86	\$82	\$80	\$78	\$76	\$71	\$62	\$56	\$43	\$39	\$34
	85% Current	\$164	\$160	\$159	\$157	\$153	\$147	\$137	\$128	\$119	\$111	\$107	\$102	\$95	\$80	\$70	\$51	\$41	\$30
	10yr ave.	\$132	\$118	\$113	\$110	\$106	\$101	\$96	\$91	\$88	\$85	\$83	\$81	\$75	\$65	\$59	\$46	\$41	\$36

The above shows estimated returns per head for skirted fleece wool. These figures do not take into account the value of skirtings and oddments and do not take into account discounts that may apply for faults under individual circumstances. These figures are based on a market index of 100% and should be used as a guide only. Returns over \$30 / head for fleece wool are highlighted.



Table 9: Returns pr head for skirted fleece wool.

Skirted FLC Weight		Micron																	
8 Kg		16	16.5	17	17.5	18	18.5	19	19.5	20	21	22	23	24	25	26	28	30	32
Yield (Sch Dry)	25% Current	\$43	\$42	\$42	\$41	\$40	\$38	\$36	\$33	\$31	\$29	\$28	\$27	\$25	\$21	\$18	\$13	\$11	\$8
	10yr ave.	\$35	\$31	\$30	\$29	\$28	\$26	\$25	\$24	\$23	\$22	\$22	\$21	\$20	\$17	\$15	\$12	\$11	\$9
	30% Current	\$52	\$50	\$50	\$49	\$48	\$46	\$43	\$40	\$37	\$35	\$34	\$32	\$30	\$25	\$22	\$16	\$13	\$9
	10yr ave.	\$41	\$37	\$36	\$34	\$33	\$32	\$30	\$29	\$27	\$27	\$26	\$25	\$24	\$21	\$19	\$14	\$13	\$11
	35% Current	\$60	\$58	\$58	\$57	\$56	\$54	\$50	\$47	\$44	\$41	\$39	\$37	\$35	\$29	\$25	\$19	\$15	\$11
	10yr ave.	\$48	\$43	\$42	\$40	\$39	\$37	\$35	\$33	\$32	\$31	\$30	\$30	\$27	\$24	\$22	\$17	\$15	\$13
	40% Current	\$69	\$67	\$67	\$66	\$64	\$61	\$57	\$53	\$50	\$46	\$45	\$43	\$40	\$33	\$29	\$21	\$17	\$13
	10yr ave.	\$55	\$50	\$47	\$46	\$44	\$42	\$40	\$38	\$37	\$36	\$35	\$34	\$31	\$27	\$25	\$19	\$17	\$15
	45% Current	\$77	\$75	\$75	\$74	\$72	\$69	\$65	\$60	\$56	\$52	\$50	\$48	\$45	\$37	\$33	\$24	\$19	\$14
	10yr ave.	\$62	\$56	\$53	\$52	\$50	\$48	\$45	\$43	\$41	\$40	\$39	\$38	\$35	\$31	\$28	\$22	\$20	\$17
	50% Current	\$86	\$84	\$83	\$82	\$80	\$77	\$72	\$67	\$62	\$58	\$56	\$53	\$49	\$42	\$36	\$27	\$21	\$16
	10yr ave.	\$69	\$62	\$59	\$57	\$55	\$53	\$50	\$48	\$46	\$45	\$43	\$42	\$39	\$34	\$31	\$24	\$22	\$19
	55% Current	\$95	\$92	\$92	\$90	\$88	\$84	\$79	\$73	\$69	\$64	\$62	\$59	\$54	\$46	\$40	\$29	\$23	\$17
	10yr ave.	\$76	\$68	\$65	\$63	\$61	\$58	\$55	\$53	\$50	\$49	\$48	\$47	\$43	\$38	\$34	\$27	\$24	\$21
	60% Current	\$103	\$100	\$100	\$98	\$96	\$92	\$86	\$80	\$75	\$70	\$67	\$64	\$59	\$50	\$44	\$32	\$25	\$19
	10yr ave.	\$83	\$74	\$71	\$69	\$66	\$63	\$60	\$57	\$55	\$53	\$52	\$51	\$47	\$41	\$37	\$29	\$26	\$23
	65% Current	\$112	\$109	\$108	\$107	\$104	\$100	\$93	\$87	\$81	\$75	\$73	\$69	\$64	\$54	\$47	\$35	\$28	\$21
	10yr ave.	\$90	\$81	\$77	\$75	\$72	\$69	\$65	\$62	\$59	\$58	\$57	\$55	\$51	\$45	\$40	\$31	\$28	\$25
	70% Current	\$120	\$117	\$116	\$115	\$112	\$107	\$101	\$93	\$87	\$81	\$78	\$75	\$69	\$58	\$51	\$37	\$30	\$22
	10yr ave.	\$97	\$87	\$83	\$80	\$77	\$74	\$70	\$67	\$64	\$62	\$61	\$59	\$55	\$48	\$43	\$34	\$30	\$26
	75% Current	\$129	\$125	\$125	\$123	\$120	\$115	\$108	\$100	\$94	\$87	\$84	\$80	\$74	\$62	\$55	\$40	\$32	\$24
	10yr ave.	\$104	\$93	\$89	\$86	\$83	\$79	\$75	\$72	\$69	\$67	\$65	\$63	\$59	\$51	\$46	\$36	\$33	\$28
	80% Current	\$138	\$134	\$133	\$131	\$128	\$123	\$115	\$107	\$100	\$93	\$89	\$85	\$79	\$67	\$58	\$43	\$34	\$25
	10yr ave.	\$110	\$99	\$95	\$92	\$89	\$85	\$80	\$76	\$73	\$71	\$70	\$68	\$63	\$55	\$49	\$39	\$35	\$30
	85% Current	\$146	\$142	\$141	\$139	\$136	\$130	\$122	\$113	\$106	\$99	\$95	\$91	\$84	\$71	\$62	\$45	\$36	\$27
	10yr ave.	\$117	\$105	\$101	\$98	\$94	\$90	\$85	\$81	\$78	\$76	\$74	\$72	\$67	\$58	\$52	\$41	\$37	\$32

The above shows estimated returns per head for skirted fleece wool. These figures do not take into account the value of skirtings and oddments and do not take into account discounts that may apply for faults under individual circumstances. These figures are based on a market index of 100% and should be used as a guide only. Returns over \$30 / head for fleece wool are highlighted.



Table 10: Returns pr head for skirted fleece wool.

Skirted FLC Weight		Micron																	
7 Kg		16	16.5	17	17.5	18	18.5	19	19.5	20	21	22	23	24	25	26	28	30	32
Yield (Sch Dry)	25% Current	\$38	\$37	\$36	\$36	\$35	\$34	\$31	\$29	\$27	\$25	\$24	\$23	\$22	\$18	\$16	\$12	\$9	\$7
	10yr ave.	\$30	\$27	\$26	\$25	\$24	\$23	\$22	\$21	\$20	\$19	\$19	\$19	\$17	\$15	\$13	\$11	\$9	\$8
	30% Current	\$45	\$44	\$44	\$43	\$42	\$40	\$38	\$35	\$33	\$30	\$29	\$28	\$26	\$22	\$19	\$14	\$11	\$8
	10yr ave.	\$36	\$33	\$31	\$30	\$29	\$28	\$26	\$25	\$24	\$23	\$23	\$22	\$21	\$18	\$16	\$13	\$11	\$10
	35% Current	\$53	\$51	\$51	\$50	\$49	\$47	\$44	\$41	\$38	\$36	\$34	\$33	\$30	\$25	\$22	\$16	\$13	\$10
	10yr ave.	\$42	\$38	\$36	\$35	\$34	\$32	\$31	\$29	\$28	\$27	\$27	\$26	\$24	\$21	\$19	\$15	\$13	\$12
	40% Current	\$60	\$58	\$58	\$57	\$56	\$54	\$50	\$47	\$44	\$41	\$39	\$37	\$35	\$29	\$25	\$19	\$15	\$11
	10yr ave.	\$48	\$43	\$42	\$40	\$39	\$37	\$35	\$33	\$32	\$31	\$30	\$30	\$27	\$24	\$22	\$17	\$15	\$13
	45% Current	\$68	\$66	\$66	\$65	\$63	\$60	\$57	\$53	\$49	\$46	\$44	\$42	\$39	\$33	\$29	\$21	\$17	\$12
	10yr ave.	\$54	\$49	\$47	\$45	\$44	\$42	\$40	\$38	\$36	\$35	\$34	\$33	\$31	\$27	\$24	\$19	\$17	\$15
	50% Current	\$75	\$73	\$73	\$72	\$70	\$67	\$63	\$58	\$55	\$51	\$49	\$47	\$43	\$36	\$32	\$23	\$19	\$14
	10yr ave.	\$60	\$54	\$52	\$50	\$48	\$46	\$44	\$42	\$40	\$39	\$38	\$37	\$34	\$30	\$27	\$21	\$19	\$17
	55% Current	\$83	\$80	\$80	\$79	\$77	\$74	\$69	\$64	\$60	\$56	\$54	\$51	\$48	\$40	\$35	\$26	\$20	\$15
	10yr ave.	\$66	\$60	\$57	\$55	\$53	\$51	\$48	\$46	\$44	\$43	\$42	\$41	\$38	\$33	\$30	\$23	\$21	\$18
	60% Current	\$90	\$88	\$87	\$86	\$84	\$81	\$75	\$70	\$66	\$61	\$59	\$56	\$52	\$44	\$38	\$28	\$22	\$17
	10yr ave.	\$72	\$65	\$62	\$60	\$58	\$56	\$53	\$50	\$48	\$47	\$46	\$44	\$41	\$36	\$32	\$25	\$23	\$20
	65% Current	\$98	\$95	\$95	\$93	\$91	\$87	\$82	\$76	\$71	\$66	\$64	\$61	\$56	\$47	\$41	\$30	\$24	\$18
	10yr ave.	\$79	\$70	\$67	\$65	\$63	\$60	\$57	\$54	\$52	\$51	\$49	\$48	\$45	\$39	\$35	\$27	\$25	\$22
	70% Current	\$105	\$102	\$102	\$100	\$98	\$94	\$88	\$82	\$77	\$71	\$69	\$65	\$61	\$51	\$45	\$33	\$26	\$19
	10yr ave.	\$85	\$76	\$73	\$70	\$68	\$65	\$61	\$59	\$56	\$55	\$53	\$52	\$48	\$42	\$38	\$30	\$27	\$23
	75% Current	\$113	\$110	\$109	\$108	\$105	\$101	\$94	\$88	\$82	\$76	\$73	\$70	\$65	\$55	\$48	\$35	\$28	\$21
	10yr ave.	\$91	\$81	\$78	\$75	\$73	\$69	\$66	\$63	\$60	\$58	\$57	\$56	\$52	\$45	\$40	\$32	\$28	\$25
	80% Current	\$120	\$117	\$116	\$115	\$112	\$107	\$101	\$93	\$87	\$81	\$78	\$75	\$69	\$58	\$51	\$37	\$30	\$22
	10yr ave.	\$97	\$87	\$83	\$80	\$77	\$74	\$70	\$67	\$64	\$62	\$61	\$59	\$55	\$48	\$43	\$34	\$30	\$26
	85% Current	\$128	\$124	\$124	\$122	\$119	\$114	\$107	\$99	\$93	\$86	\$83	\$79	\$74	\$62	\$54	\$40	\$32	\$24
	10yr ave.	\$103	\$92	\$88	\$85	\$82	\$79	\$75	\$71	\$68	\$66	\$65	\$63	\$58	\$51	\$46	\$36	\$32	\$28

The above shows estimated returns per head for skirted fleece wool. These figures do not take into account the value of skirtings and oddments and do not take into account discounts that may apply for faults under individual circumstances. These figures are based on a market index of 100% and should be used as a guide only. Returns over \$30 / head for fleece wool are highlighted.



Table 11: Returns pr head for skirted fleece wool.

Skirted FLC Weight		Micron																	
6 Kg		16	16.5	17	17.5	18	18.5	19	19.5	20	21	22	23	24	25	26	28	30	32
Yield (Sch Dry)	25% Current	\$32	\$31	\$31	\$31	\$30	\$29	\$27	\$25	\$23	\$22	\$21	\$20	\$19	\$16	\$14	\$10	\$8	\$6
	10yr ave.	\$26	\$23	\$22	\$22	\$21	\$20	\$19	\$18	\$17	\$17	\$16	\$16	\$15	\$13	\$12	\$9	\$8	\$7
	30% Current	\$39	\$38	\$37	\$37	\$36	\$35	\$32	\$30	\$28	\$26	\$25	\$24	\$22	\$19	\$16	\$12	\$10	\$7
	10yr ave.	\$31	\$28	\$27	\$26	\$25	\$24	\$23	\$21	\$21	\$20	\$20	\$19	\$18	\$15	\$14	\$11	\$10	\$9
	35% Current	\$45	\$44	\$44	\$43	\$42	\$40	\$38	\$35	\$33	\$30	\$29	\$28	\$26	\$22	\$19	\$14	\$11	\$8
	10yr ave.	\$36	\$33	\$31	\$30	\$29	\$28	\$26	\$25	\$24	\$23	\$23	\$22	\$21	\$18	\$16	\$13	\$11	\$10
	40% Current	\$52	\$50	\$50	\$49	\$48	\$46	\$43	\$40	\$37	\$35	\$34	\$32	\$30	\$25	\$22	\$16	\$13	\$9
	10yr ave.	\$41	\$37	\$36	\$34	\$33	\$32	\$30	\$29	\$27	\$27	\$26	\$25	\$24	\$21	\$19	\$14	\$13	\$11
	45% Current	\$58	\$56	\$56	\$55	\$54	\$52	\$48	\$45	\$42	\$39	\$38	\$36	\$33	\$28	\$25	\$18	\$14	\$11
	10yr ave.	\$47	\$42	\$40	\$39	\$37	\$36	\$34	\$32	\$31	\$30	\$29	\$29	\$27	\$23	\$21	\$16	\$15	\$13
	50% Current	\$65	\$63	\$62	\$62	\$60	\$58	\$54	\$50	\$47	\$43	\$42	\$40	\$37	\$31	\$27	\$20	\$16	\$12
	10yr ave.	\$52	\$46	\$44	\$43	\$41	\$40	\$38	\$36	\$34	\$33	\$33	\$32	\$29	\$26	\$23	\$18	\$16	\$14
	55% Current	\$71	\$69	\$69	\$68	\$66	\$63	\$59	\$55	\$52	\$48	\$46	\$44	\$41	\$34	\$30	\$22	\$18	\$13
	10yr ave.	\$57	\$51	\$49	\$47	\$46	\$44	\$41	\$39	\$38	\$37	\$36	\$35	\$32	\$28	\$25	\$20	\$18	\$16
	60% Current	\$77	\$75	\$75	\$74	\$72	\$69	\$65	\$60	\$56	\$52	\$50	\$48	\$45	\$37	\$33	\$24	\$19	\$14
	10yr ave.	\$62	\$56	\$53	\$52	\$50	\$48	\$45	\$43	\$41	\$40	\$39	\$38	\$35	\$31	\$28	\$22	\$20	\$17
	65% Current	\$84	\$81	\$81	\$80	\$78	\$75	\$70	\$65	\$61	\$57	\$55	\$52	\$48	\$41	\$35	\$26	\$21	\$15
	10yr ave.	\$67	\$60	\$58	\$56	\$54	\$52	\$49	\$47	\$45	\$43	\$42	\$41	\$38	\$33	\$30	\$24	\$21	\$18
	70% Current	\$90	\$88	\$87	\$86	\$84	\$81	\$75	\$70	\$66	\$61	\$59	\$56	\$52	\$44	\$38	\$28	\$22	\$17
	10yr ave.	\$72	\$65	\$62	\$60	\$58	\$56	\$53	\$50	\$48	\$47	\$46	\$44	\$41	\$36	\$32	\$25	\$23	\$20
	75% Current	\$97	\$94	\$94	\$92	\$90	\$86	\$81	\$75	\$70	\$65	\$63	\$60	\$56	\$47	\$41	\$30	\$24	\$18
	10yr ave.	\$78	\$70	\$67	\$65	\$62	\$59	\$56	\$54	\$51	\$50	\$49	\$48	\$44	\$39	\$35	\$27	\$24	\$21
	80% Current	\$103	\$100	\$100	\$98	\$96	\$92	\$86	\$80	\$75	\$70	\$67	\$64	\$59	\$50	\$44	\$32	\$25	\$19
	10yr ave.	\$83	\$74	\$71	\$69	\$66	\$63	\$60	\$57	\$55	\$53	\$52	\$51	\$47	\$41	\$37	\$29	\$26	\$23
	85% Current	\$110	\$107	\$106	\$105	\$102	\$98	\$92	\$85	\$80	\$74	\$71	\$68	\$63	\$53	\$46	\$34	\$27	\$20
	10yr ave.	\$88	\$79	\$76	\$73	\$71	\$67	\$64	\$61	\$58	\$57	\$55	\$54	\$50	\$44	\$39	\$31	\$28	\$24

The above shows estimated returns per head for skirted fleece wool. These figures do not take into account the value of skirtings and oddments and do not take into account discounts that may apply for faults under individual circumstances. These figures are based on a market index of 100% and should be used as a guide only. Returns over \$30 / head for fleece wool are highlighted.





Table 12: Returns pr head for skirted fleece wool.

Skirted FLC Weight		Micron																	
5 Kg		16	16.5	17	17.5	18	18.5	19	19.5	20	21	22	23	24	25	26	28	30	32
Yield (Sch Dry)	25% Current	\$27	\$26	\$26	\$26	\$25	\$24	\$22	\$21	\$20	\$18	\$17	\$17	\$15	\$13	\$11	\$8	\$7	\$5
	10yr ave.	\$22	\$19	\$19	\$18	\$17	\$17	\$16	\$15	\$14	\$14	\$14	\$13	\$12	\$11	\$10	\$8	\$7	\$6
	30% Current	\$32	\$31	\$31	\$31	\$30	\$29	\$27	\$25	\$23	\$22	\$21	\$20	\$19	\$16	\$14	\$10	\$8	\$6
	10yr ave.	\$26	\$23	\$22	\$22	\$21	\$20	\$19	\$18	\$17	\$17	\$16	\$16	\$15	\$13	\$12	\$9	\$8	\$7
	35% Current	\$38	\$37	\$36	\$36	\$35	\$34	\$31	\$29	\$27	\$25	\$24	\$23	\$22	\$18	\$16	\$12	\$9	\$7
	10yr ave.	\$30	\$27	\$26	\$25	\$24	\$23	\$22	\$21	\$20	\$19	\$19	\$19	\$17	\$15	\$13	\$11	\$9	\$8
	40% Current	\$43	\$42	\$42	\$41	\$40	\$38	\$36	\$33	\$31	\$29	\$28	\$27	\$25	\$21	\$18	\$13	\$11	\$8
	10yr ave.	\$35	\$31	\$30	\$29	\$28	\$26	\$25	\$24	\$23	\$22	\$22	\$21	\$20	\$17	\$15	\$12	\$11	\$9
	45% Current	\$48	\$47	\$47	\$46	\$45	\$43	\$40	\$38	\$35	\$33	\$31	\$30	\$28	\$23	\$20	\$15	\$12	\$9
	10yr ave.	\$39	\$35	\$33	\$32	\$31	\$30	\$28	\$27	\$26	\$25	\$24	\$24	\$22	\$19	\$17	\$14	\$12	\$11
	50% Current	\$54	\$52	\$52	\$51	\$50	\$48	\$45	\$42	\$39	\$36	\$35	\$33	\$31	\$26	\$23	\$17	\$13	\$10
	10yr ave.	\$43	\$39	\$37	\$36	\$35	\$33	\$31	\$30	\$29	\$28	\$27	\$26	\$25	\$21	\$19	\$15	\$14	\$12
	55% Current	\$59	\$57	\$57	\$56	\$55	\$53	\$49	\$46	\$43	\$40	\$38	\$37	\$34	\$29	\$25	\$18	\$15	\$11
	10yr ave.	\$47	\$43	\$41	\$39	\$38	\$36	\$34	\$33	\$31	\$31	\$30	\$29	\$27	\$24	\$21	\$17	\$15	\$13
	60% Current	\$65	\$63	\$62	\$62	\$60	\$58	\$54	\$50	\$47	\$43	\$42	\$40	\$37	\$31	\$27	\$20	\$16	\$12
	10yr ave.	\$52	\$46	\$44	\$43	\$41	\$40	\$38	\$36	\$34	\$33	\$33	\$32	\$29	\$26	\$23	\$18	\$16	\$14
	65% Current	\$70	\$68	\$68	\$67	\$65	\$62	\$58	\$54	\$51	\$47	\$45	\$43	\$40	\$34	\$30	\$22	\$17	\$13
	10yr ave.	\$56	\$50	\$48	\$47	\$45	\$43	\$41	\$39	\$37	\$36	\$35	\$34	\$32	\$28	\$25	\$20	\$18	\$15
	70% Current	\$75	\$73	\$73	\$72	\$70	\$67	\$63	\$58	\$55	\$51	\$49	\$47	\$43	\$36	\$32	\$23	\$19	\$14
	10yr ave.	\$60	\$54	\$52	\$50	\$48	\$46	\$44	\$42	\$40	\$39	\$38	\$37	\$34	\$30	\$27	\$21	\$19	\$17
	75% Current	\$81	\$78	\$78	\$77	\$75	\$72	\$67	\$63	\$59	\$54	\$52	\$50	\$46	\$39	\$34	\$25	\$20	\$15
	10yr ave.	\$65	\$58	\$56	\$54	\$52	\$50	\$47	\$45	\$43	\$42	\$41	\$40	\$37	\$32	\$29	\$23	\$20	\$18
	80% Current	\$86	\$84	\$83	\$82	\$80	\$77	\$72	\$67	\$62	\$58	\$56	\$53	\$49	\$42	\$36	\$27	\$21	\$16
	10yr ave.	\$69	\$62	\$59	\$57	\$55	\$53	\$50	\$48	\$46	\$45	\$43	\$42	\$39	\$34	\$31	\$24	\$22	\$19
	85% Current	\$91	\$89	\$88	\$87	\$85	\$82	\$76	\$71	\$66	\$62	\$59	\$57	\$53	\$44	\$39	\$28	\$23	\$17
	10yr ave.	\$73	\$66	\$63	\$61	\$59	\$56	\$53	\$51	\$49	\$47	\$46	\$45	\$42	\$36	\$33	\$26	\$23	\$20

The above shows estimated returns per head for skirted fleece wool. These figures do not take into account the value of skirtings and oddments and do not take into account discounts that may apply for faults under individual circumstances. These figures are based on a market index of 100% and should be used as a guide only. Returns over \$30 / head for fleece wool are highlighted.





Table 13: Returns pr head for skirted fleece wool.

Skirted FLC Weight		Micron																	
4 Kg		16	16.5	17	17.5	18	18.5	19	19.5	20	21	22	23	24	25	26	28	30	32
Yield (Sch Dry)	25% Current	\$22	\$21	\$21	\$21	\$20	\$19	\$18	\$17	\$16	\$14	\$14	\$13	\$12	\$10	\$9	\$7	\$5	\$4
	10yr ave.	\$17	\$15	\$15	\$14	\$14	\$13	\$13	\$12	\$11	\$11	\$11	\$11	\$10	\$9	\$8	\$6	\$5	\$5
	30% Current	\$26	\$25	\$25	\$25	\$24	\$23	\$22	\$20	\$19	\$17	\$17	\$16	\$15	\$12	\$11	\$8	\$6	\$5
	10yr ave.	\$21	\$19	\$18	\$17	\$17	\$16	\$15	\$14	\$14	\$13	\$13	\$13	\$12	\$10	\$9	\$7	\$7	\$6
	35% Current	\$30	\$29	\$29	\$29	\$28	\$27	\$25	\$23	\$22	\$20	\$20	\$19	\$17	\$15	\$13	\$9	\$7	\$6
	10yr ave.	\$24	\$22	\$21	\$20	\$19	\$19	\$18	\$17	\$16	\$16	\$15	\$15	\$14	\$12	\$11	\$8	\$8	\$7
	40% Current	\$34	\$33	\$33	\$33	\$32	\$31	\$29	\$27	\$25	\$23	\$22	\$21	\$20	\$17	\$15	\$11	\$8	\$6
	10yr ave.	\$28	\$25	\$24	\$23	\$22	\$21	\$20	\$19	\$18	\$18	\$17	\$17	\$16	\$14	\$12	\$10	\$9	\$8
	45% Current	\$39	\$38	\$37	\$37	\$36	\$35	\$32	\$30	\$28	\$26	\$25	\$24	\$22	\$19	\$16	\$12	\$10	\$7
	10yr ave.	\$31	\$28	\$27	\$26	\$25	\$24	\$23	\$21	\$21	\$20	\$20	\$19	\$18	\$15	\$14	\$11	\$10	\$9
	50% Current	\$43	\$42	\$42	\$41	\$40	\$38	\$36	\$33	\$31	\$29	\$28	\$27	\$25	\$21	\$18	\$13	\$11	\$8
	10yr ave.	\$35	\$31	\$30	\$29	\$28	\$26	\$25	\$24	\$23	\$22	\$22	\$21	\$20	\$17	\$15	\$12	\$11	\$9
	55% Current	\$47	\$46	\$46	\$45	\$44	\$42	\$39	\$37	\$34	\$32	\$31	\$29	\$27	\$23	\$20	\$15	\$12	\$9
	10yr ave.	\$38	\$34	\$33	\$32	\$30	\$29	\$28	\$26	\$25	\$24	\$24	\$23	\$22	\$19	\$17	\$13	\$12	\$10
	60% Current	\$52	\$50	\$50	\$49	\$48	\$46	\$43	\$40	\$37	\$35	\$34	\$32	\$30	\$25	\$22	\$16	\$13	\$9
	10yr ave.	\$41	\$37	\$36	\$34	\$33	\$32	\$30	\$29	\$27	\$27	\$26	\$25	\$24	\$21	\$19	\$14	\$13	\$11
	65% Current	\$56	\$54	\$54	\$53	\$52	\$50	\$47	\$43	\$41	\$38	\$36	\$35	\$32	\$27	\$24	\$17	\$14	\$10
	10yr ave.	\$45	\$40	\$39	\$37	\$36	\$34	\$33	\$31	\$30	\$29	\$28	\$28	\$26	\$22	\$20	\$16	\$14	\$12
	70% Current	\$60	\$58	\$58	\$57	\$56	\$54	\$50	\$47	\$44	\$41	\$39	\$37	\$35	\$29	\$25	\$19	\$15	\$11
	10yr ave.	\$48	\$43	\$42	\$40	\$39	\$37	\$35	\$33	\$32	\$31	\$30	\$30	\$27	\$24	\$22	\$17	\$15	\$13
	75% Current	\$65	\$63	\$62	\$62	\$60	\$58	\$54	\$50	\$47	\$43	\$42	\$40	\$37	\$31	\$27	\$20	\$16	\$12
	10yr ave.	\$52	\$46	\$44	\$43	\$41	\$40	\$38	\$36	\$34	\$33	\$33	\$32	\$29	\$26	\$23	\$18	\$16	\$14
	80% Current	\$69	\$67	\$67	\$66	\$64	\$61	\$57	\$53	\$50	\$46	\$45	\$43	\$40	\$33	\$29	\$21	\$17	\$13
	10yr ave.	\$55	\$50	\$47	\$46	\$44	\$42	\$40	\$38	\$37	\$36	\$35	\$34	\$31	\$27	\$25	\$19	\$17	\$15
	85% Current	\$73	\$71	\$71	\$70	\$68	\$65	\$61	\$57	\$53	\$49	\$48	\$45	\$42	\$35	\$31	\$23	\$18	\$13
	10yr ave.	\$59	\$53	\$50	\$49	\$47	\$45	\$43	\$41	\$39	\$38	\$37	\$36	\$33	\$29	\$26	\$21	\$18	\$16

The above shows estimated returns per head for skirted fleece wool. These figures do not take into account the value of skirtings and oddments and do not take into account discounts that may apply for faults under individual circumstances. These figures are based on a market index of 100% and should be used as a guide only. Returns over \$30 / head for fleece wool are highlighted.



Table 14: Returns pr head for skirted fleece wool.

Skirted FLC Weight		Micron																	
3 Kg		16	16.5	17	17.5	18	18.5	19	19.5	20	21	22	23	24	25	26	28	30	32
Yield (Sch Dry)	25% Current	\$16	\$16	\$16	\$15	\$15	\$14	\$13	\$13	\$12	\$11	\$10	\$10	\$9	\$8	\$7	\$5	\$4	\$3
	10yr ave.	\$13	\$12	\$11	\$11	\$10	\$10	\$9	\$9	\$9	\$8	\$8	\$8	\$7	\$6	\$6	\$5	\$4	\$4
	30% Current	\$19	\$19	\$19	\$18	\$18	\$17	\$16	\$15	\$14	\$13	\$13	\$12	\$11	\$9	\$8	\$6	\$5	\$4
	10yr ave.	\$16	\$14	\$13	\$13	\$12	\$12	\$11	\$11	\$10	\$10	\$10	\$10	\$9	\$8	\$7	\$5	\$5	\$4
	35% Current	\$23	\$22	\$22	\$22	\$21	\$20	\$19	\$18	\$16	\$15	\$15	\$14	\$13	\$11	\$10	\$7	\$6	\$4
	10yr ave.	\$18	\$16	\$16	\$15	\$15	\$14	\$13	\$13	\$12	\$12	\$11	\$11	\$10	\$9	\$8	\$6	\$6	\$5
	40% Current	\$26	\$25	\$25	\$25	\$24	\$23	\$22	\$20	\$19	\$17	\$17	\$16	\$15	\$12	\$11	\$8	\$6	\$5
	10yr ave.	\$21	\$19	\$18	\$17	\$17	\$16	\$15	\$14	\$14	\$13	\$13	\$13	\$12	\$10	\$9	\$7	\$7	\$6
	45% Current	\$29	\$28	\$28	\$28	\$27	\$26	\$24	\$23	\$21	\$20	\$19	\$18	\$17	\$14	\$12	\$9	\$7	\$5
	10yr ave.	\$23	\$21	\$20	\$19	\$19	\$18	\$17	\$16	\$15	\$15	\$15	\$14	\$13	\$12	\$10	\$8	\$7	\$6
	50% Current	\$32	\$31	\$31	\$31	\$30	\$29	\$27	\$25	\$23	\$22	\$21	\$20	\$19	\$16	\$14	\$10	\$8	\$6
	10yr ave.	\$26	\$23	\$22	\$22	\$21	\$20	\$19	\$18	\$17	\$17	\$16	\$16	\$15	\$13	\$12	\$9	\$8	\$7
	55% Current	\$35	\$34	\$34	\$34	\$33	\$32	\$30	\$28	\$26	\$24	\$23	\$22	\$20	\$17	\$15	\$11	\$9	\$7
	10yr ave.	\$28	\$26	\$24	\$24	\$23	\$22	\$21	\$20	\$19	\$18	\$18	\$17	\$16	\$14	\$13	\$10	\$9	\$8
	60% Current	\$39	\$38	\$37	\$37	\$36	\$35	\$32	\$30	\$28	\$26	\$25	\$24	\$22	\$19	\$16	\$12	\$10	\$7
	10yr ave.	\$31	\$28	\$27	\$26	\$25	\$24	\$23	\$21	\$21	\$20	\$20	\$19	\$18	\$15	\$14	\$11	\$10	\$9
	65% Current	\$42	\$41	\$41	\$40	\$39	\$37	\$35	\$33	\$30	\$28	\$27	\$26	\$24	\$20	\$18	\$13	\$10	\$8
	10yr ave.	\$34	\$30	\$29	\$28	\$27	\$26	\$24	\$23	\$22	\$22	\$21	\$21	\$19	\$17	\$15	\$12	\$11	\$9
	70% Current	\$45	\$44	\$44	\$43	\$42	\$40	\$38	\$35	\$33	\$30	\$29	\$28	\$26	\$22	\$19	\$14	\$11	\$8
	10yr ave.	\$36	\$33	\$31	\$30	\$29	\$28	\$26	\$25	\$24	\$23	\$23	\$22	\$21	\$18	\$16	\$13	\$11	\$10
	75% Current	\$48	\$47	\$47	\$46	\$45	\$43	\$40	\$38	\$35	\$33	\$31	\$30	\$28	\$23	\$20	\$15	\$12	\$9
	10yr ave.	\$39	\$35	\$33	\$32	\$31	\$30	\$28	\$27	\$26	\$25	\$24	\$24	\$22	\$19	\$17	\$14	\$12	\$11
	80% Current	\$52	\$50	\$50	\$49	\$48	\$46	\$43	\$40	\$37	\$35	\$34	\$32	\$30	\$25	\$22	\$16	\$13	\$9
	10yr ave.	\$41	\$37	\$36	\$34	\$33	\$32	\$30	\$29	\$27	\$27	\$26	\$25	\$24	\$21	\$19	\$14	\$13	\$11
	85% Current	\$55	\$53	\$53	\$52	\$51	\$49	\$46	\$43	\$40	\$37	\$36	\$34	\$32	\$27	\$23	\$17	\$14	\$10
	10yr ave.	\$44	\$39	\$38	\$37	\$35	\$34	\$32	\$30	\$29	\$28	\$28	\$27	\$25	\$22	\$20	\$15	\$14	\$12

The above shows estimated returns per head for skirted fleece wool. These figures do not take into account the value of skirtings and oddments and do not take into account discounts that may apply for faults under individual circumstances. These figures are based on a market index of 100% and should be used as a guide only. Returns over \$30 / head for fleece wool are highlighted.



Table 15: Returns pr head for skirted fleece wool.

Skirted FLC Weight		Micron																	
2 Kg		16	16.5	17	17.5	18	18.5	19	19.5	20	21	22	23	24	25	26	28	30	32
Yield (Sch Dry)	25% Current	\$11	\$10	\$10	\$10	\$10	\$10	\$9	\$8	\$8	\$7	\$7	\$7	\$6	\$5	\$5	\$3	\$3	\$2
	10yr ave.	\$9	\$8	\$7	\$7	\$7	\$7	\$6	\$6	\$6	\$6	\$5	\$5	\$5	\$4	\$4	\$3	\$3	\$2
	30% Current	\$13	\$13	\$12	\$12	\$12	\$12	\$11	\$10	\$9	\$9	\$8	\$8	\$7	\$6	\$5	\$4	\$3	\$2
	10yr ave.	\$10	\$9	\$9	\$9	\$8	\$8	\$8	\$7	\$7	\$7	\$7	\$6	\$6	\$5	\$5	\$4	\$3	\$3
	35% Current	\$15	\$15	\$15	\$14	\$14	\$13	\$13	\$12	\$11	\$10	\$10	\$9	\$9	\$7	\$6	\$5	\$4	\$3
	10yr ave.	\$12	\$11	\$10	\$10	\$10	\$9	\$9	\$8	\$8	\$8	\$8	\$7	\$7	\$6	\$5	\$4	\$4	\$3
	40% Current	\$17	\$17	\$17	\$16	\$16	\$15	\$14	\$13	\$12	\$12	\$11	\$11	\$10	\$8	\$7	\$5	\$4	\$3
	10yr ave.	\$14	\$12	\$12	\$11	\$11	\$11	\$10	\$10	\$9	\$9	\$9	\$8	\$8	\$7	\$6	\$5	\$4	\$4
	45% Current	\$19	\$19	\$19	\$18	\$18	\$17	\$16	\$15	\$14	\$13	\$13	\$12	\$11	\$9	\$8	\$6	\$5	\$4
	10yr ave.	\$16	\$14	\$13	\$13	\$12	\$12	\$11	\$11	\$10	\$10	\$10	\$10	\$9	\$8	\$7	\$5	\$5	\$4
	50% Current	\$22	\$21	\$21	\$21	\$20	\$19	\$18	\$17	\$16	\$14	\$14	\$13	\$12	\$10	\$9	\$7	\$5	\$4
	10yr ave.	\$17	\$15	\$15	\$14	\$14	\$13	\$13	\$12	\$11	\$11	\$11	\$11	\$10	\$9	\$8	\$6	\$5	\$5
	55% Current	\$24	\$23	\$23	\$23	\$22	\$21	\$20	\$18	\$17	\$16	\$15	\$15	\$14	\$11	\$10	\$7	\$6	\$4
	10yr ave.	\$19	\$17	\$16	\$16	\$15	\$15	\$14	\$13	\$13	\$12	\$12	\$12	\$11	\$9	\$8	\$7	\$6	\$5
	60% Current	\$26	\$25	\$25	\$25	\$24	\$23	\$22	\$20	\$19	\$17	\$17	\$16	\$15	\$12	\$11	\$8	\$6	\$5
	10yr ave.	\$21	\$19	\$18	\$17	\$17	\$16	\$15	\$14	\$14	\$13	\$13	\$13	\$12	\$10	\$9	\$7	\$7	\$6
	65% Current	\$28	\$27	\$27	\$27	\$26	\$25	\$23	\$22	\$20	\$19	\$18	\$17	\$16	\$14	\$12	\$9	\$7	\$5
	10yr ave.	\$22	\$20	\$19	\$19	\$18	\$17	\$16	\$16	\$15	\$14	\$14	\$14	\$13	\$11	\$10	\$8	\$7	\$6
	70% Current	\$30	\$29	\$29	\$29	\$28	\$27	\$25	\$23	\$22	\$20	\$20	\$19	\$17	\$15	\$13	\$9	\$7	\$6
	10yr ave.	\$24	\$22	\$21	\$20	\$19	\$19	\$18	\$17	\$16	\$16	\$15	\$15	\$14	\$12	\$11	\$8	\$8	\$7
	75% Current	\$32	\$31	\$31	\$31	\$30	\$29	\$27	\$25	\$23	\$22	\$21	\$20	\$19	\$16	\$14	\$10	\$8	\$6
	10yr ave.	\$26	\$23	\$22	\$22	\$21	\$20	\$19	\$18	\$17	\$17	\$16	\$16	\$15	\$13	\$12	\$9	\$8	\$7
	80% Current	\$34	\$33	\$33	\$33	\$32	\$31	\$29	\$27	\$25	\$23	\$22	\$21	\$20	\$17	\$15	\$11	\$8	\$6
	10yr ave.	\$28	\$25	\$24	\$23	\$22	\$21	\$20	\$19	\$18	\$18	\$17	\$17	\$16	\$14	\$12	\$10	\$9	\$8
	85% Current	\$37	\$36	\$35	\$35	\$34	\$33	\$31	\$28	\$27	\$25	\$24	\$23	\$21	\$18	\$15	\$11	\$9	\$7
	10yr ave.	\$29	\$26	\$25	\$24	\$24	\$22	\$21	\$20	\$19	\$19	\$18	\$18	\$17	\$15	\$13	\$10	\$9	\$8

The above shows estimated returns per head for skirted fleece wool. These figures do not take into account the value of skirtings and oddments and do not take into account discounts that may apply for faults under individual circumstances. These figures are based on a market index of 100% and should be used as a guide only. Returns over \$30 / head for fleece wool are highlighted.