



Table 1: Northern Region Micron Price Guides

WEEK 45			12 MONTH COMPARISONS								3 YEAR COMPARISONS					10 YEAR COMPARISONS				
8/05/2024		1/05/2024	9/05/2023	Now		Now		Now				Now		Percentile			Now		Percentile	
Current	Weekly	This time	compared	12 Month	compared	12 Month	compared	Low	High	Average	compared	Low	High		Average	compared				
MPG	Price	Change	Last Year	to Last Year	Low	to Low	High	to High	Low	High	Average	to 3yr ave		Low	High	Average	to 10yr ave			
NRI	1174	-12 -1.0%	1365	-191 -14%	1156	+18 2%	1365	-191 -14%	1156	1568	1362	-188 -14%	5%	742	2163	1445	-271 -19%	46%		
15*	2475	0	2975	-500 -17%	2450	+25 1%	2975	-500 -17%	2450	3750	3080	-605 -20%	36%	1715	3750	2900	-425 -15%	54%		
15.5*	2275	0	2800	-525 -19%	2225	+50 2%	2800	-525 -19%	2225	3450	2841	-566 -20%	28%	1577	3450	2665	-390 -15%	54%		
16*	1912	0	2550	-638 -25%	1900	+12 1%	2550	-638 -25%	1900	3250	2571	-659 -26%	2%	1325	3300	2240	-328 -15%	54%		
16.5	1767	-22 -1.2%	2388	-621 -26%	1755	+12 1%	2388	-621 -26%	1755	2952	2402	-635 -26%	0%	1276	3187	2142	-375 -18%	49%		
17	1665	-43 -2.5%	2220	-555 -25%	1650	+15 1%	2220	-555 -25%	1650	2749	2232	-567 -25%	0%	1192	3008	2039	-374 -18%	53%		
17.5	1571	-42 -2.6%	1998	-427 -21%	1567	+4 0%	1998	-427 -21%	1567	2514	2056	-485 -24%	0%	1116	2845	1943	-372 -19%	51%		
18	1492	-24 -1.6%	1867	-375 -20%	1492	0 0%	1867	-375 -20%	1494	2246	1878	-386 -21%		1047	2708	1840	-348 -19%	49%		
18.5	1439	-13 -0.9%	1749	-310 -18%	1424	+15 1%	1749	-310 -18%	1424	2042	1726	-287 -17%	1%	999	2591	1743	-304 -17%	49%		
19	1382	-29 -2.1%	1650	-268 -16%	1382	0 0%	1650	-268 -16%	1385	1830	1594	-212 -13%		917	2465	1652	-270 -16%	48%		
19.5	1360	-12 -0.9%	1585	-225 -14%	1334	+26 2%	1585	-225 -14%	1334	1675	1489	-129 -9%	7%	835	2404	1585	-225 -14%	51%		
20	1333	-8 -0.6%	1515	-182 -12%	1291	+42 3%	1515	-182 -12%	1291	1586	1399	-66 -5%	15%	749	2391	1528	-195 -13%	54%		
21	1308	0	1465	-157 -11%	1242	+66 5%	1465	-157 -11%	1224	1529	1332	-24 -2%	39%	722	2368	1482	-174 -12%	60%		
22	1306	-8 -0.6%	1431	-125 -9%	1200	+106 9%	1431	-125 -9%	1190	1465	1288	+18 1%	64%	702	2342	1449	-143 -10%	67%		
23	1101	-9 -0.8%	1131	-30 -3%	960	+141 15%	1131	-30 -3%	960	1268	1107	-6 -1%	43%	682	2316	1362	-261 -19%	42%		
24	870	-10 -1.1%	886	-16 -2%	766	+104 14%	937	-67 -7%	766	1060	919	-49 -5%	24%	662	2114	1224	-354 -29%	31%		
25	689	-10 -1.4%	721	-32 -4%	650	+39 6%	780	-91 -12%	650	924	790	-101 -13%	12%	569	1801	1052	-363 -35%	19%		
26	505	-30 -5.6%	465	+40 9%	465	+40 9%	611	-106 -17%	465	806	623	-118 -19%	12%	465	1545	923	-418 -45%	2%		
28	355	0	335	+20 6%	290	+65 22%	408	-53 -13%	290	530	380	-25 -7%	41%	320	1318	670	-315 -47%	6%		
30	330	-6 -1.8%	307	+23 7%	255	+75 29%	370	-40 -11%	255	421	333	-3 -1%	51%	288	998	560	-230 -41%	8%		
32	288	-2 -0.7%	250	+38 15%	227	+61 27%	320	-32 -10%	210	320	256	+32 13%	84%	215	762	421	-133 -32%	18%		
MC	718	-5 -0.7%	821	-103 -13%	689	+29 4%	821	-103 -13%	689	1011	844	-126 -15%	19%	394	1563	995	-277 -28%	38%		
AU BALES OFFERED		38,476	* 16.5 is the lowest Micron Price Guide (MPG) published by The Australian Wool Exchange (AWEX). Therefore MPG's below 16.5 micron are an estimate based on the best available information at the time of publication. Likewise, for any category where there is insufficient quantity offered to enable AWEX to quote, a quote will also be provided.																	
AU BALES SOLD		34,854																		
AU PASSED-IN%		9.4%	* Recording of 15 & 15.5 micron commenced in October 2017, and as a result some historic data is not yet available for those MPG's. Where historic data is not available an estimate based on '16 micron statistics' and incorporating the existing 15 & 15.5 micron data, will be provided as a guide.																	
AUD/USD		0.6579 1.5%																		

Source: Australian Wool Exchange, Australian Wool Innovation, Riemann, x-rates.com, Reserve Bank of Australia, Australian Wool Testing Authority, Australian Bureau Statistics (ABS), Woolmark.

Disclaimer: Jemalong Wool Pty Ltd make no representations about the content and suitability of the information contained in this report. Specifically, Jemalong Wool does not warrant, guarantee or make any representations regarding the correctness, accuracy, reliability, currency, or any other aspect regarding characteristics or use of information presented in these materials. The user accepts sole responsibility and risk associated with the use and results of these materials, irrespective of the purpose of which such use or results are applied. In no event shall Jemalong Wool be liable for any loss or damages arising out of or in connection with the use of these materials.

Copyright © Jemalong Wool Pty Ltd, 2006-2024. Apart from any use permitted under the Copyright Act 1968, no part may be copied or reproduced by any process nor stored electronically without the written permission of Jemalong Wool Pty Ltd. This report has been compiled by Jemalong Wool Pty Ltd for internal use and for the benefit of Jemalong Wool clients. You should only read this report if you are authorised to do so, if you are not authorised then you must destroy all electronic and paper copies immediately. Under no circumstance are you permitted to forward this report to a third-party.

MARKET COMMENTARY Source: AWEX

This week's market (heavily influenced by currency movement) was unable to maintain the positive tone evident at the end of the previous series. The AUD climbed above 66 US cents before the sale commenced, resulting in losses from the opening hammer. By the end of the first selling day merino MPG's had fallen by 2-46 cents across the three selling centres, and with downward pressure in other sectors, the EMI lost 14 cents for the day.

Day two saw the market settle somewhat, again heavily influenced by currency, which saw the AUD ease before the commencement of the sale. Merino fleece MPG's ranged between 33 and +11 cents. The EMI shed a further 4 cents, closing the week at 1,134 (down 18 cents for the series).

Next week's offering is again expected to be below 40,000 bales. There are currently 39.420 bales on offer.

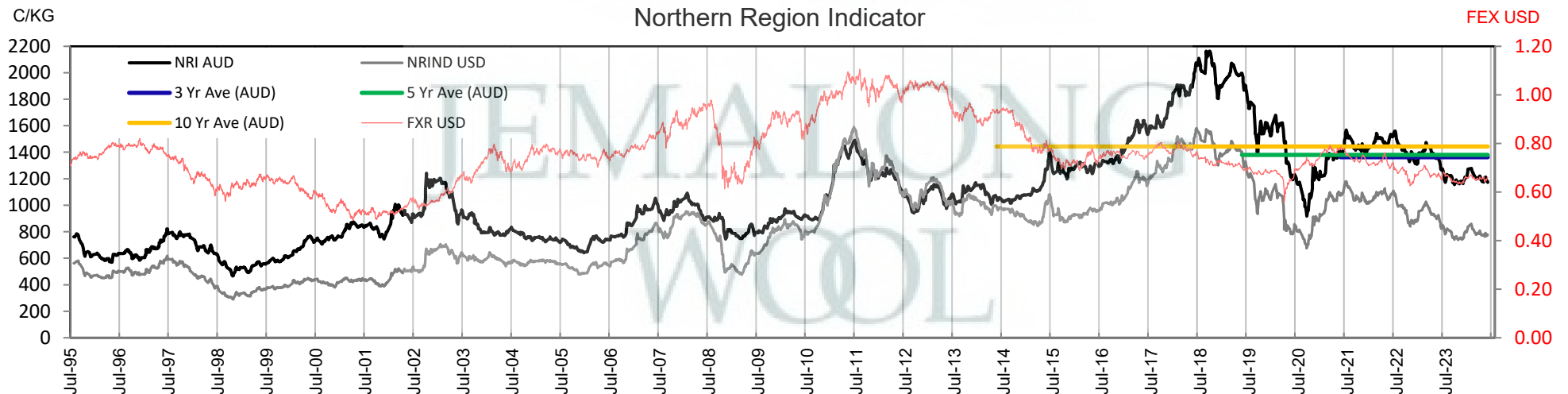




Table 2: Three Year Decile Table, since: 1/05/2021

Decile	%	16	16.5	17	17.5	18	18.5	19	19.5	20	21	22	23	24	25	26	28	30	32	MC
1	10%	1975	1875	1736	1626	1542	1469	1412	1372	1323	1275	1206	1020	808	684	489	328	295	220	701
2	20%	2050	1952	1804	1700	1597	1509	1448	1395	1338	1282	1229	1066	867	711	522	340	305	235	722
3	30%	2400	2268	2067	1903	1780	1635	1524	1445	1357	1295	1248	1085	882	751	551	348	317	240	752
4	40%	2550	2362	2227	2038	1867	1712	1597	1480	1369	1310	1265	1100	909	780	580	353	325	246	860
5	50%	2625	2449	2307	2127	1950	1784	1625	1497	1385	1315	1278	1108	937	801	632	370	330	250	871
6	60%	2785	2597	2394	2197	2003	1822	1656	1519	1402	1323	1300	1122	950	831	672	390	340	255	884
7	70%	2875	2651	2445	2250	2032	1854	1680	1542	1427	1343	1315	1137	961	844	699	408	345	269	902
8	80%	2976	2798	2595	2335	2090	1883	1702	1561	1456	1380	1336	1153	976	864	728	418	357	284	929
9	90%	3062	2852	2638	2395	2145	1929	1737	1591	1510	1431	1382	1172	1000	885	759	458	375	300	964
10	100%	3250	2952	2749	2514	2246	2042	1830	1675	1586	1529	1465	1268	1060	924	806	530	421	320	1011
MPG		1912	1767	1665	1571	1492	1439	1382	1360	1333	1308	1306	1101	870	689	505	355	330	288	718
3 Yr Percentile		2%	0%	0%	0%	#N/A	1%	#N/A	7%	15%	39%	64%	43%	24%	12%	12%	41%	51%	84%	19%

Table 3: Ten Year Decile Table, since: 1/05/2014

Decile	%	16	16.5	17	17.5	18	18.5	19	19.5	20	21	22	23	24	25	26	28	30	32	MC
1	10%	1450	1375	1260	1202	1156	1099	1032	958	888	847	828	809	762	654	564	393	340	250	490
2	20%	1530	1440	1310	1275	1212	1170	1108	1047	991	961	925	894	820	690	598	446	373	298	579
3	30%	1575	1501	1383	1336	1287	1249	1189	1144	1107	1077	1049	992	863	728	626	467	400	339	651
4	40%	1625	1576	1478	1454	1389	1318	1268	1221	1189	1173	1152	1089	954	828	694	485	423	362	729
5	50%	1775	1787	1592	1551	1495	1446	1391	1351	1303	1260	1220	1126	1002	871	769	579	505	398	788
6	60%	2025	1978	1775	1674	1582	1519	1468	1420	1358	1308	1268	1163	1063	907	814	648	576	448	858
7	70%	2255	2271	2108	1986	1851	1723	1608	1493	1405	1350	1318	1238	1119	984	883	686	617	491	927
8	80%	2575	2508	2338	2201	2043	1869	1712	1588	1500	1444	1398	1350	1252	1129	1043	784	655	552	1067
9	90%	2855	2736	2536	2392	2203	2070	1924	1823	1776	1753	1719	1638	1504	1264	1150	881	730	603	1160
10	100%	3300	3187	3008	2845	2708	2591	2465	2404	2391	2368	2342	2316	2114	1801	1545	1318	998	762	1563
MPG		1912	1767	1665	1571	1492	1439	1382	1360	1333	1308	1306	1101	870	689	505	355	330	288	718
10 Yr Percentile		54%	49%	53%	51%	49%	49%	48%	51%	54%	60%	67%	42%	31%	19%	2%	6%	8%	18%	38%

Definitions:

- * A Percentile, is a value on a scale of one hundred that indicates the percent of a distribution that is equal to or below it. In general a percentile between 25% and 75% is considered normal, a percentile below 25% is considered below normal and a percentile above 75% is considered above normal.
Three and ten year percentiles shown on the bottom line of table 2 & 3 (above) and in table 1 (on page 1), detail the amount of time during the past 3 & 10 years where the market has traded either at or below its current price.
 - * Deciles are a method of sorting ranked data into 10 equal groups. The data may be ranked from largest to smallest or vice versa.
The above Decile tables sort price Percentiles into 10 equal groups (in ascending order), with table 2 ranking the previous 3 years prices, while table 3 ranks prices over the previous 10 years
- Example:** In Table 2, a Decile Rank of 6 for 19 microns, shows 19 microns have traded at or below 1656 for 60% of the time, over the past three years.
In Table 3, a Decile Rank of 6 for 19 microns, shows 19 microns have traded at or below 1468 for 60% of the time, over the past ten years.



Table 4: Riemann Forwards, as at: 8/05/24

Any highlighted in yellow are recent trades, trading since: Thursday, 2 May 2024

MICRON (Total Traded = 45)		18um (0 Traded)	18.5um (0 Traded)	19um (31 Traded)	19.5um (7 Traded)	21um (7 Traded)	22um (0 Traded)	23um (0 Traded)	28um (0 Traded)	30um (0 Traded)
FORWARD CONTRACT MONTH	May-2024 (13)			23/04/24 1455 (2)	23/04/24 1425 (6)	23/04/24 1355 (5)				
	Jun-2024 (6)			16/04/24 1445 (5)		16/04/24 1335 (1)				
	Jul-2024 (6)			11/04/24 1455 (6)						
	Aug-2024 (3)			28/08/23 1480 (3)						
	Sep-2024 (5)			25/08/23 1480 (4)		31/01/23 1400 (1)				
	Oct-2024 (1)			28/08/23 1480 (1)						
	Nov-2024 (1)			28/08/23 1480 (1)						
	Dec-2024 (1)			28/08/23 1480 (1)						
	Jan-2025 (2)			14/12/23 1505 (2)						
	Feb-2025 (1)			27/09/23 1470 (1)						
	Mar-2025 (2)			27/03/24 1470 (1)	15/03/24 1500 (1)					
	Apr-2025 (1)			8/04/24 1470 (1)						
	May-2025 (1)			8/04/24 1470 (1)						
	Jun-2025									
	Jul-2025 (1)			8/04/24 1470 (1)						
	Aug-2025									
	Sep-2025 (1)			31/01/23 1670 (1)						
	Oct-2025									
	Nov-2025									
	Dec-2025									
	Jan-2026									
	Feb-2026									
	Mar-2026									

Explanatory Notes: Prices quoted reflect the most recent trades, at time of print.

Disclaimer: While all due care has been taken in the preparation of this document, no warranty is made as to its accuracy, reliability or completeness. To the extent permitted by law neither Jemalong or their sources including subsidiaries and staff, accept liability to any person for loss or damage arising from the use of this information.



Table 6: National Market Share

	Rank	Current Selling Week Week 45			Previous Selling Week Week 44			Last Season 2022-23			2 Years Ago 2021-22			3 Years Ago 2020-21			5 Years Ago 2018-19			10 Years Ago 2013-14		
		Buyer	Bales	MS%	Buyer	Bales	MS%	Buyer	Bales	MS%	Buyer	Bales	MS%	Buyer	Bales	MS%	Buyer	Bales	MS%	Buyer	Bales	MS%
Top 10, Auction Buyers	1	EWES	5,070	15%	TECM	5,046	14%	TECM	236,574	15%	TECM	249,539	16%	TECM	228,018	15%	TECM	183,590	12%	TECM	205,136	13%
	2	TECM	4,561	13%	EWES	4,359	12%	EWES	184,465	11%	EWES	149,341	9%	EWES	159,908	10%	FOXN	137,101	9%	FOXN	134,581	8%
	3	TIAM	3,736	11%	TIAM	4,291	12%	TIAM	165,940	10%	TIAM	141,971	9%	FOXN	129,251	8%	TIAM	125,963	8%	CTXS	122,964	8%
	4	PMWF	2,961	8%	FOXN	3,127	9%	FOXN	114,903	7%	FOXN	124,824	8%	TIAM	121,176	8%	SETS	117,207	8%	AMEM	111,263	7%
	5	UWCM	2,321	7%	PMWF	2,983	8%	AMEM	94,128	6%	PMWF	103,975	6%	UWCM	100,677	6%	AMEM	112,113	8%	LEMM	109,224	7%
	6	SMAM	2,131	6%	PEAM	2,471	7%	PMWF	92,939	6%	AMEM	94,736	6%	LEMM	98,471	6%	EWES	94,720	6%	TIAM	105,736	7%
	7	FOXN	1,852	5%	AMEM	2,318	6%	UWCM	81,113	5%	SMAM	77,361	5%	AMEM	90,244	6%	KATS	85,234	6%	QCTB	88,700	5%
	8	AMEM	1,792	5%	SMAM	2,105	6%	SMAM	81,046	5%	UWCM	72,834	5%	PMWF	84,389	5%	PMWF	80,474	5%	MODM	79,977	5%
	9	PEAM	1,589	5%	UWCM	1,732	5%	PEAM	76,571	5%	MODM	65,816	4%	MODM	70,426	4%	UWCM	65,978	4%	PMWF	77,875	5%
	10	MEWS	1,528	4%	MEWS	1,227	3%	MEWS	64,650	4%	MCHA	65,536	4%	KATS	63,487	4%	MCHA	63,262	4%	GSAS	54,462	3%
MFLC TOP 5	1	EWES	3,109	15%	TECM	3,312	17%	TECM	128,047	15%	TECM	142,007	16%	TECM	131,264	15%	SETS	109,434	13%	TECM	106,291	12%
	2	TIAM	2,901	14%	TIAM	3,138	16%	TIAM	115,988	14%	TIAM	111,323	13%	TIAM	93,870	10%	TECM	99,231	12%	CTXS	87,889	10%
	3	PMWF	2,803	14%	PMWF	2,843	14%	EWES	93,911	11%	PMWF	100,286	11%	EWES	83,559	9%	TIAM	80,594	10%	LEMM	82,374	9%
	4	TECM	2,695	13%	EWES	2,286	11%	PMWF	87,904	10%	EWES	71,533	8%	LEMM	81,281	9%	PMWF	72,193	9%	FOXN	80,423	9%
	5	SMAM	1,689	8%	FOXN	1,658	8%	MEWS	63,681	7%	FOXN	57,425	6%	PMWF	80,872	9%	FOXN	65,851	8%	PMWF	69,890	8%
MSKT TOP 5	1	EWES	1,298	24%	EWES	1,175	21%	EWES	46,781	18%	TECM	49,174	20%	TECM	42,521	18%	AMEM	35,047	17%	TIAM	47,607	19%
	2	TECM	765	14%	TIAM	730	13%	TECM	45,453	17%	EWES	37,117	15%	UWCM	34,928	14%	TECM	32,363	15%	TECM	31,474	12%
	3	TIAM	699	13%	AMEM	628	11%	TIAM	36,973	14%	TIAM	25,176	10%	EWES	34,884	14%	TIAM	30,903	15%	AMEM	29,775	12%
	4	AMEM	448	8%	TECM	600	11%	SMAM	18,671	7%	AMEM	22,149	9%	WCWF	21,915	9%	EWES	26,210	12%	MODM	23,791	9%
	5	SMAM	365	7%	FOXN	587	11%	FOXN	17,752	7%	SMAM	16,956	7%	TIAM	18,193	8%	MODM	16,112	8%	GSAS	13,843	5%
XB TOP 5	1	PEAM	761	15%	PEAM	1,442	23%	PEAM	54,447	1600%	PEAM	41,337	1500%	MODM	34,090	900%	TECM	35,843	200%	TECM	40,364	200%
	2	TECM	736	15%	TECM	768	13%	TECM	41,194	200%	TECM	39,558	100%	TECM	33,794	100%	FOXN	35,810	800%	CTXS	34,779	2000%
	3	MODM	603	12%	KATS	638	10%	MODM	28,282	1100%	MODM	29,690	900%	PEAM	30,636	1200%	EWES	20,980	400%	FOXN	24,218	700%
	4	KATS	455	9%	EWES	502	8%	EWES	25,981	100%	FOXN	27,002	600%	EWES	22,525	300%	MODM	19,069	500%	MODM	21,512	400%
	5	UWCM	416	8%	UWCM	393	6%	UWCM	23,318	700%	EWES	22,497	200%	UWCM	18,968	200%	AMEM	17,248	100%	AMEM	20,336	300%
ODDS TOP 5	1	UWCM	840	23%	FOXN	690	16%	MCHA	29,569	16%	FOXN	24,503	13%	FOXN	25,868	13%	MCHA	37,911	21%	MCHA	36,085	17%
	2	TECM	365	10%	UWCM	530	13%	UWCM	29,451	16%	MCHA	24,204	13%	MCHA	23,579	12%	VWPM	26,672	15%	TECM	27,007	13%
	3	FOXN	316	9%	EWES	396	9%	TECM	21,880	12%	UWCM	23,550	12%	UWCM	21,008	11%	FOXN	26,591	15%	VWPM	22,432	11%
	4	MCHA	278	7%	TECM	366	9%	EWES	17,792	9%	TECM	18,800	10%	TECM	20,439	11%	EWES	16,659	9%	FOXN	18,811	9%
	5	EWES	271	7%	VWPM	319	8%	FOXN	16,585	9%	VWPM	18,708	10%	EWES	18,940	10%	TECM	16,153	9%	RWRS	13,524	6%
Auction Totals		<u>Bales Sold</u>	<u>\$/Bale</u>		<u>Bales Sold</u>	<u>\$/Bale</u>		<u>Bales Sold</u>	<u>\$/Bale</u>		<u>Bales Sold</u>	<u>\$/Bale</u>		<u>Bales Sold</u>	<u>\$/Bale</u>		<u>Bales Sold</u>	<u>\$/Bale</u>		<u>Bales Sold</u>	<u>\$/Bale</u>	
		34,854	\$ 1,340		35,811	\$ 1,334		1,607,799	\$1,503		1,606,540	\$1,590		1,558,820	\$1,455		1,477,234	\$2,161		1,625,113	\$1,208	
		<u>Auction Value</u>			<u>Auction Value</u>		<u>Auction Value</u>		<u>Auction Value</u>		<u>Auction Value</u>		<u>Auction Value</u>		<u>Auction Value</u>		<u>Auction Value</u>		<u>Auction Value</u>		<u>Auction Value</u>	
		\$46,710,000			\$47,770,000		\$2,416,900,000		\$2,554,240,000		\$2,267,750,000		\$3,192,210,000		\$1,963,374,355							

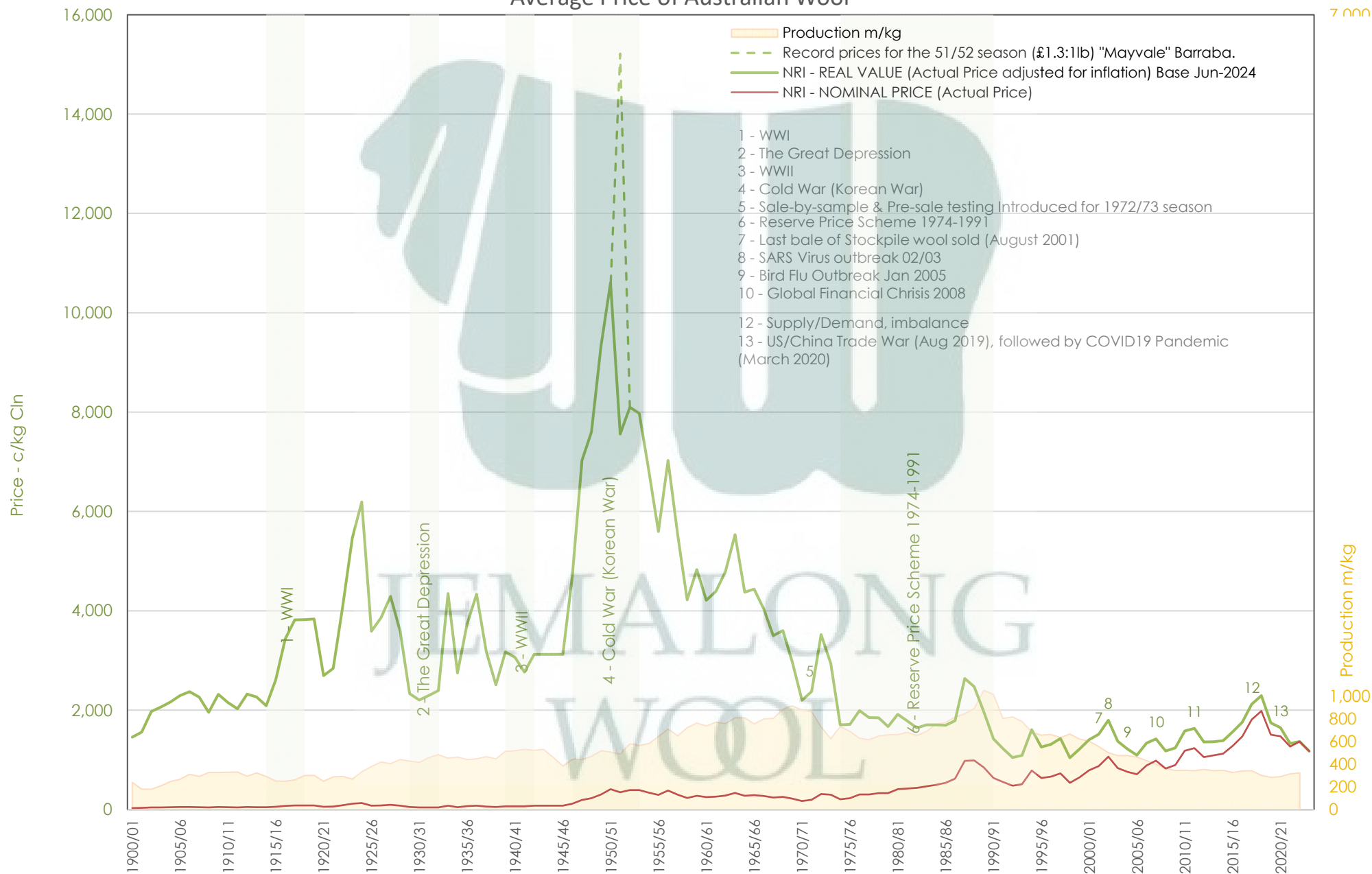


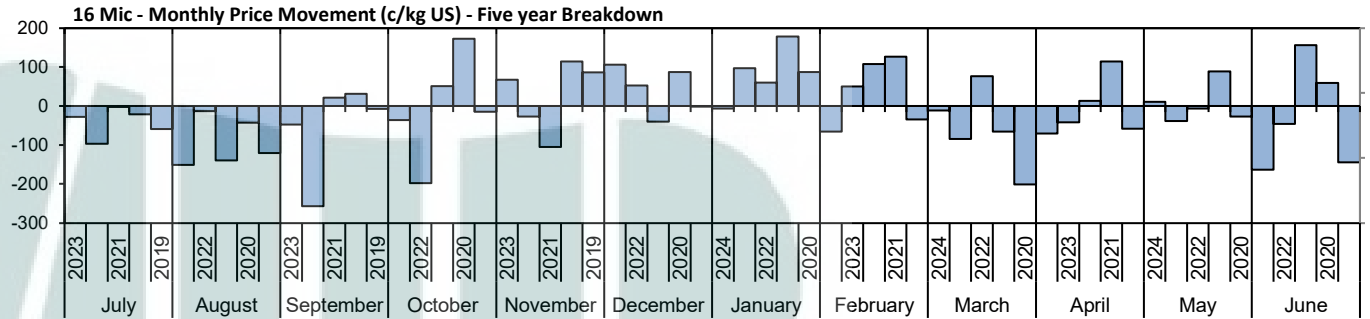
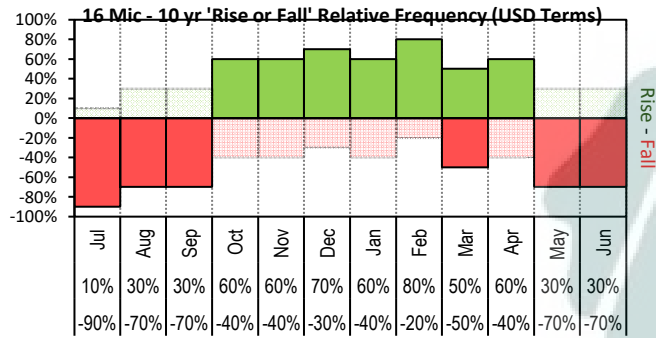
Table 7: NSW Production Statistics

MAX			MIN		MAX GAIN		MAX REDUCTION												
2022-23																			
Statistical Devision, Area Code & Towns								Auction Bales (FH)	Micron	+/- YoY	Vmb %	+/- YoY	Yield % Sch Dry	+/- YoY	Length mm	+/- YoY	Strength Nkt	+/- YoY	Ave Price c/kg
Northern	N02	Tenterfield, Glen Innes						5,588	19.0	0.2	2.0	-0.2	72.5	1.6	83	-1.4	40	0.3	1270
	N03	Guyra						41,286	21.2	0.3	2.2	-0.2	68.5	2.0	83	0.0	39	0.6	1079
	N04	Inverell						3,572	18.8	-0.5	4.3	-0.3	67.9	1.7	82	-1.0	38	-0.2	966
	N05	Armidale						801	20.7	0.3	4.4	0.1	67.8	0.4	81	-0.1	38	-2.7	740
	N06	Tamworth, Gunnedah, Quirindi						4,918	20.2	0.3	4.6	-0.3	67.3	1.6	83	-1.7	38	0.9	917
	N07	Moree						4,107	19.5	-0.3	5.9	1.2	63.1	0.0	86	0.6	41	0.6	744
	N08	Narrabri						2,877	19.6	0.2	5.5	1.8	64.8	-0.7	81	-0.7	42	-0.6	817
	N09	Cobar, Bourke, Wanaaring						8,119	20.0	0.1	5.3	1.0	58.9	-0.1	90	2.7	38	-1.1	707
North Western & Far West	N12	Walgett						8,287	19.7	0.0	5.4	1.6	62.4	0.9	87	-1.6	40	0.5	745
	N13	Nyngan						17,679	19.9	-0.2	6.8	0.0	60.6	2.0	88	0.0	38	-0.8	704
	N14	Dubbo, Narromine						17,642	20.9	-0.1	4.6	-0.8	64.5	3.6	84	0.4	38	-0.2	707
	N16	Dunedoo						6,683	19.9	-0.9	4.3	-0.6	67.4	2.2	82	-3.4	39	3.0	863
	N17	Mudgee, Wellington, Gulgong						20,219	19.5	-0.2	3.5	-0.5	69.1	2.6	82	0.1	39	0.8	1035
	N33	Coonabarabran						3,121	19.9	-0.5	5.3	-0.8	66.4	2.5	85	-2.0	37	-0.9	812
	N34	Coonamble						7,225	20.4	-0.3	5.2	0.0	64.5	1.1	86	0.0	38	-1.7	739
	N36	Gilgandra, Gulargambone						4,950	20.8	-0.4	4.5	0.0	65.8	2.5	88	-0.8	39	0.0	757
	N40	Brewarrina						7,427	19.9	-0.3	4.9	1.4	61.8	0.6	91	-0.4	40	0.1	735
	N10	Wilcannia, Broken Hill						21,122	20.8	0.2	4.0	0.7	57.4	0.5	93	3.1	38	-0.5	642
Central West	N15	Forbes, Parkes, Cowra						36,813	20.6	0.0	3.4	-0.4	66.3	2.6	87	0.0	37	-0.2	771
	N18	Lithgow, Oberon						2,186	20.8	-1.7	1.9	-0.2	71.9	1.0	88	0.9	39	1.1	1088
	N19	Orange, Bathurst						49,012	21.9	0.1	2.5	-0.2	70.0	1.9	85	0.0	38	0.4	828
	N25	West Wyalong						20,045	19.9	-0.1	3.3	-0.2	64.5	1.9	89	-0.3	37	-0.1	812
	N35	Condobolin, Lake Cargelligo						7,435	20.5	0.1	5.3	-1.0	62.3	3.8	87	3.4	38	-1.2	674
Murrumbidgee	N26	Cootamundra, Temora						26,083	21.3	-0.3	2.0	-0.1	66.7	1.5	90	2.3	36	-0.2	749
	N27	Adelong, Gundagai						15,003	21.4	0.0	2.1	-0.7	69.4	1.8	90	0.7	36	0.9	800
	N29	Wagga, Narrandera						36,302	21.8	0.0	2.2	0.0	66.6	1.9	87	0.0	37	0.9	716
	N37	Griffith, Hillston						12,918	21.3	-0.1	5.0	-0.5	62.1	1.6	87	2.9	39	-1.8	641
	N39	Hay, Coleambally						18,475	20.3	0.3	5.3	0.0	62.7	1.6	88	4.0	41	-0.2	740
Murray	N11	Wentworth, Balranald						12,682	21.2	0.4	5.0	-0.4	59.7	1.8	97	5.6	38	0.0	638
	N28	Albury, Corowa, Holbrook						31,836	21.6	0.2	1.6	0.2	68.6	1.4	89	0.9	36	-0.1	802
	N31	Deniliquin						26,172	20.8	0.2	4.0	0.1	65.4	1.8	91	2.8	38	2.1	752
	N38	Finley, Berrigan, Jerilderie						10,469	20.2	0.0	3.6	0.3	65.1	1.6	87	1.5	39	-1.2	788
South Eastern	N23	Goulburn, Young, Yass						102,043	20.1	-0.2	2.1	0.0	70.3	1.5	88	-1.9	37	1.2	976
	N24	Monaro (Cooma, Bombala)						32,937	19.7	0.0	1.8	-0.2	70.8	1.6	92	-2.1	34	-0.4	972
	N32	A.C.T.						115	17.9	0.4	1.7	-0.7	73.9	4.4	87	-15.1	38	4.4	1334
	N43	South Coast (Bega)						436	18.9	-0.6	0.9	0.0	75.9	0.6	92	0.4	39	-3.8	1257
NSW		AWEX Sale Statistics 22-23						684,947	20.8	0.0	3.1	-0.1	66.9	1.7	88	0.7	38	0.2	857
AWTA Mthly Key Test Data			Bales Tested	+/- YoY	Micron	+/- YoY	VMB	+/- YoY	Yld	+/- YoY	Lth	+/- YoY	Nkt	+/- YoY	POBM +/-				
AUSTRALIA	Current Season	April	176,234	37,792	20.7	0.3	2.2	-0.6	63.6	-1.2	85	-1.9	35	-1.4	49 2.3				
		Y.T.D	1,594,983	-5,078	20.8	0.0	2.2	-0.1	65.5	-0.7	87	-2.0	35	1.0	50 2.0				
	Previous Seasons	2022-23	1,600,061	19652	20.8	-0.1	2.3	0.0	66.2	1.1	89	1.0	34	-1.0	48 -1.0				
		2021-22	1,580,409	104961	20.9	0.1	2.3	0.3	65.1	1.1	88	-1.0	35	1.0	49 0.0				
		Y.T.D.	2020-21	1,475,448	10,553	20.8	0.3	2.0	0.3	64.0	1.6	89	2.9	34	1.4	49 1.9			

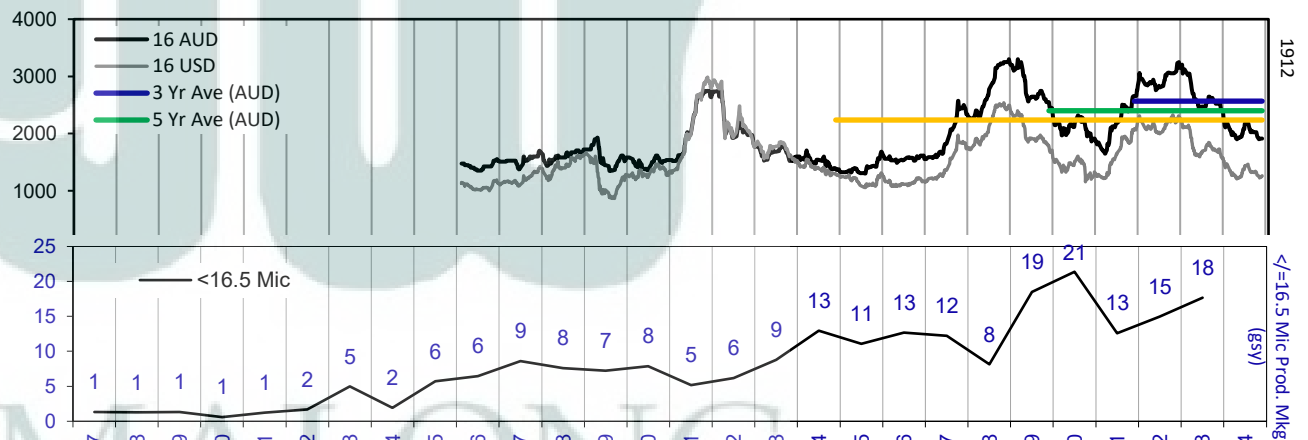
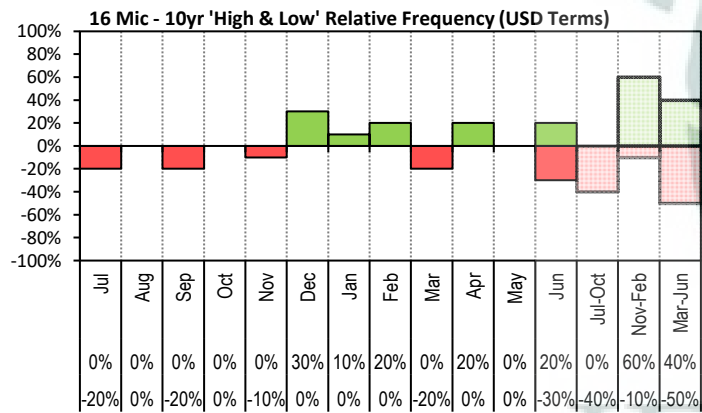


Average Price of Australian Wool

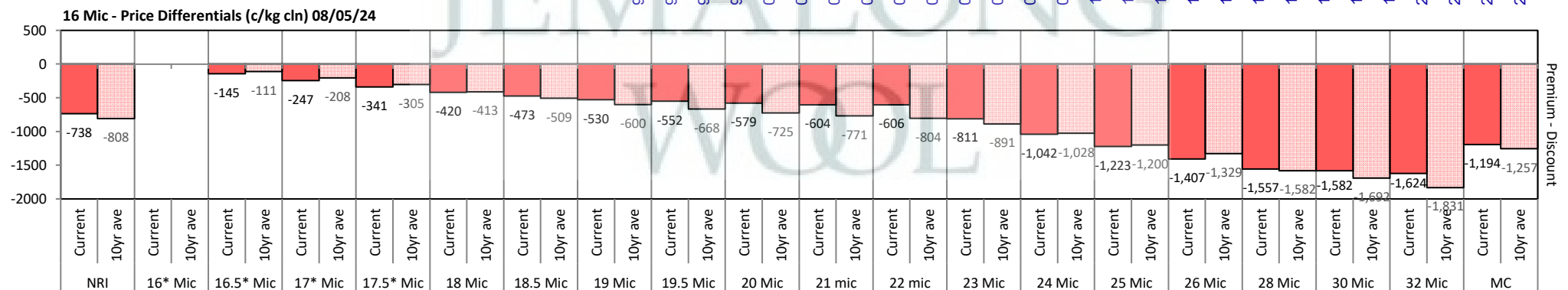


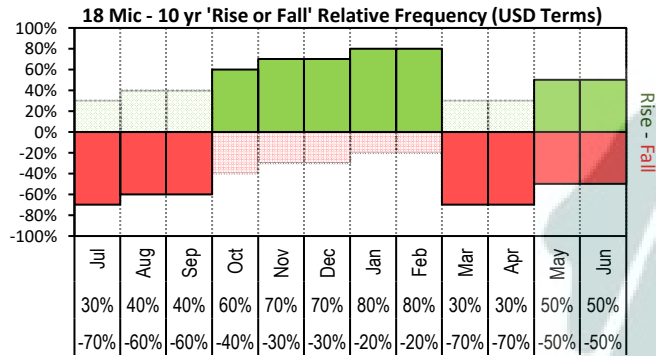


The above 'Rise or Fall' graph, shows how often the market has risen or fallen in a given month over the past 10 years, it does not show the extent of the movement only the frequency of direction. The 'Monthly Price Movement' graph shows the extent of movement for each month, for the past 5 years.

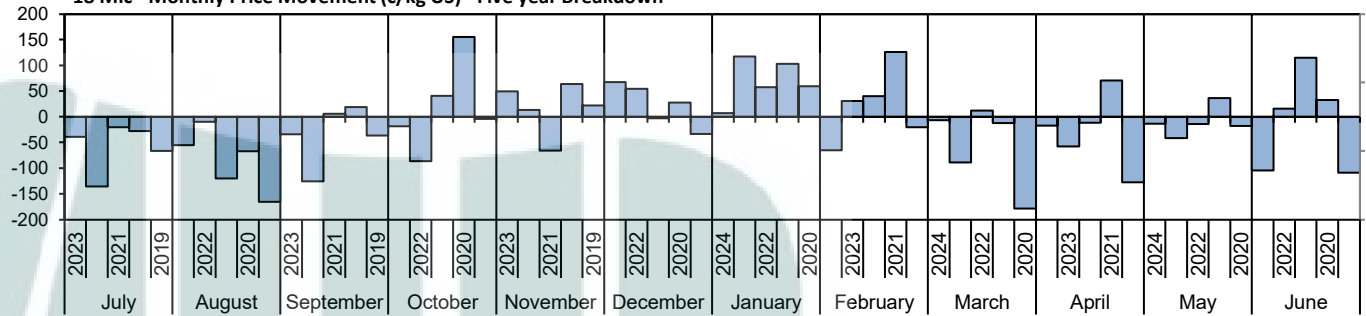


The above graph, shows how often the '12 month high & low' have been achieved for a

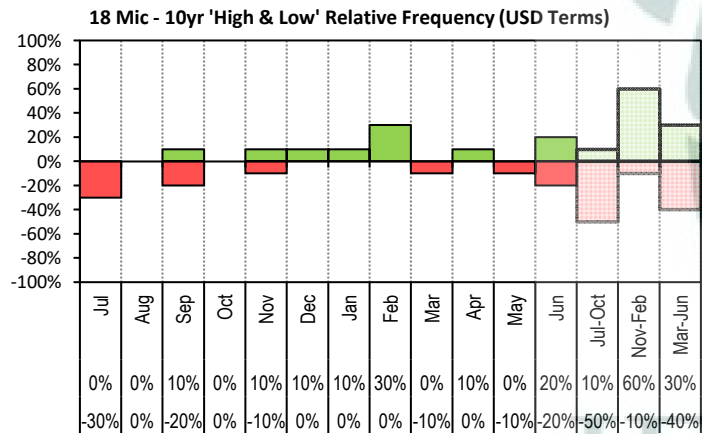




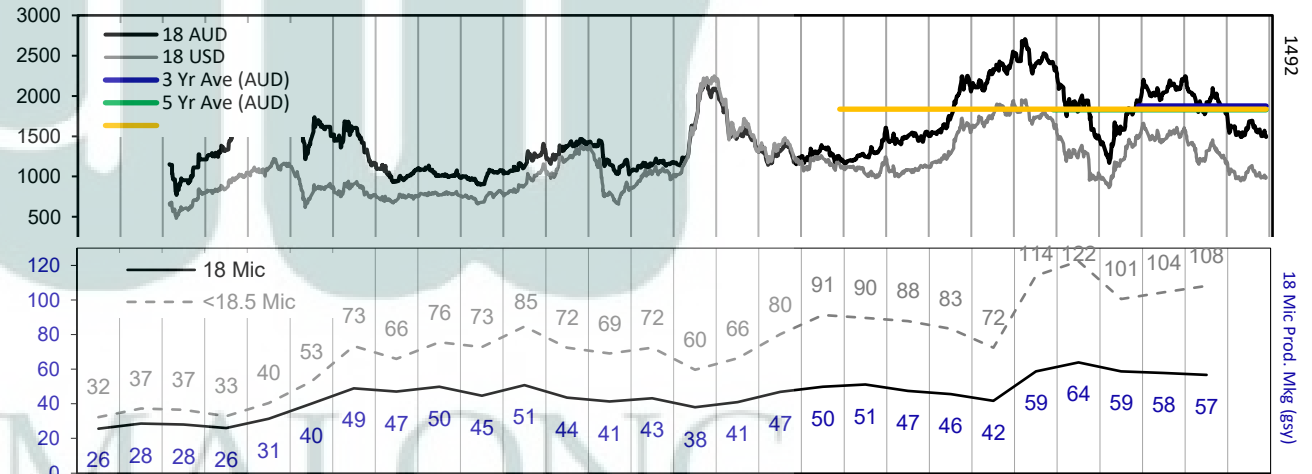
18 Mic - Monthly Price Movement (c/kg US) - Five year Breakdown



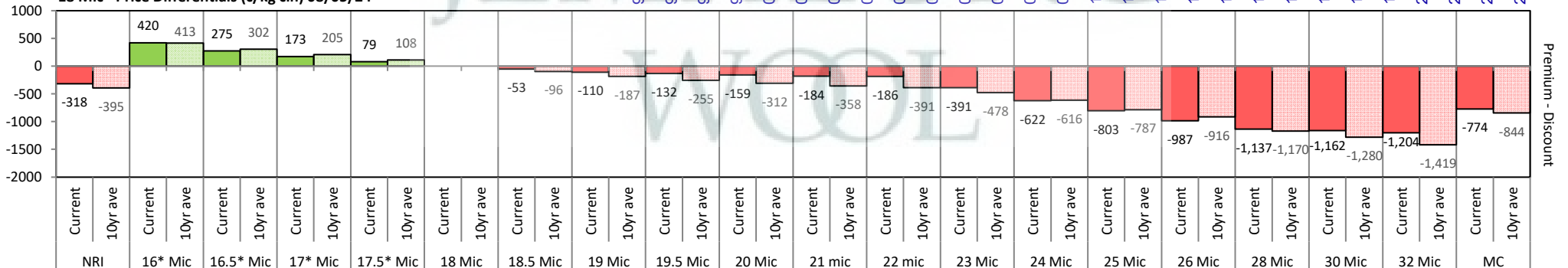
risen or fallen in a given month over the past 10 years, it does not show the extent of the movement only the frequency of direction. The '**Monthly Price Movement**' graph shows the extent of movement for each month, for the past 5 years.

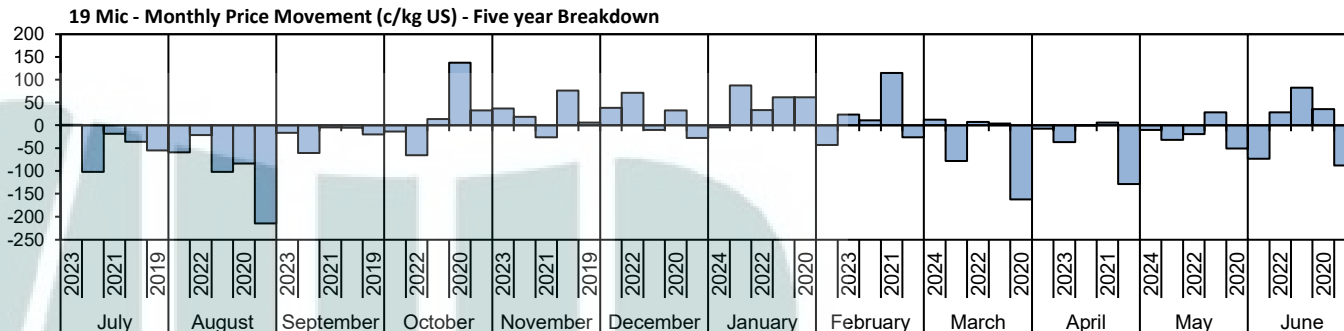
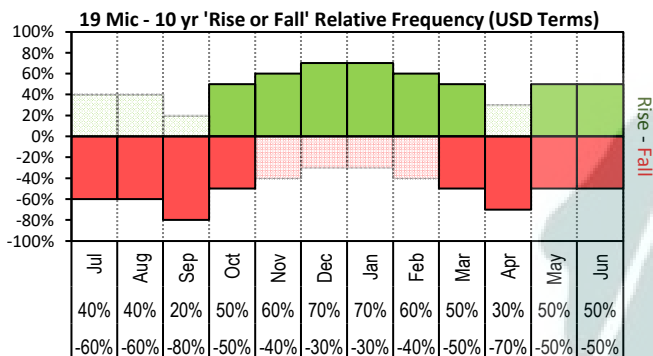


The above graph, shows how often the '12 month high & low' have been achieved for a given month over the past 10 years. It is not a measure of probability.

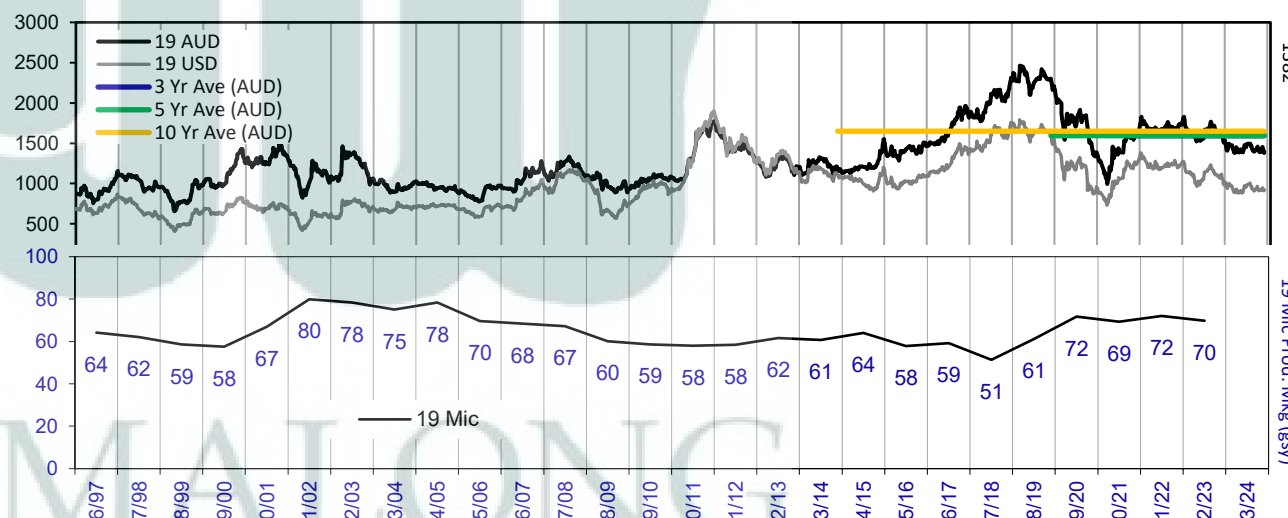
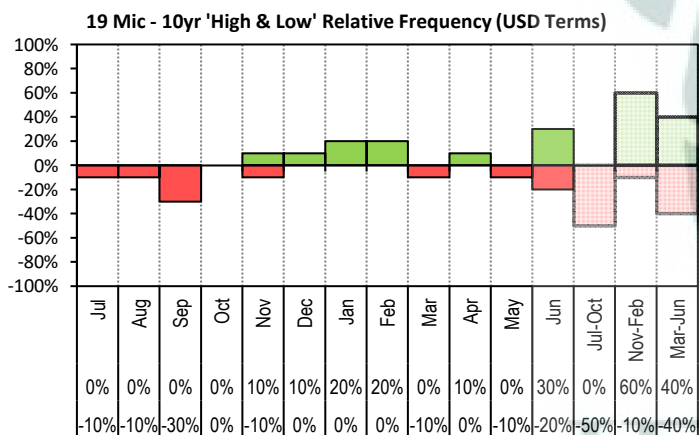


18 Mic - Price Differentials (c/kg cln) 08/05/24

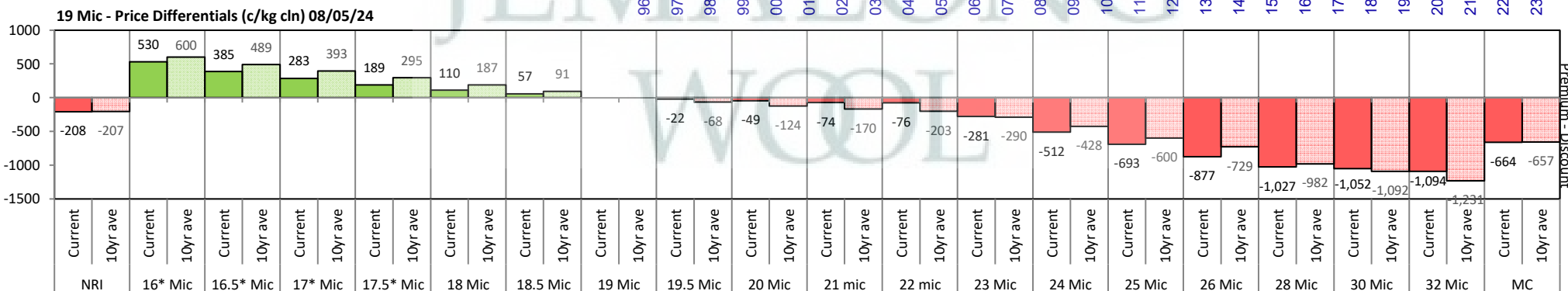


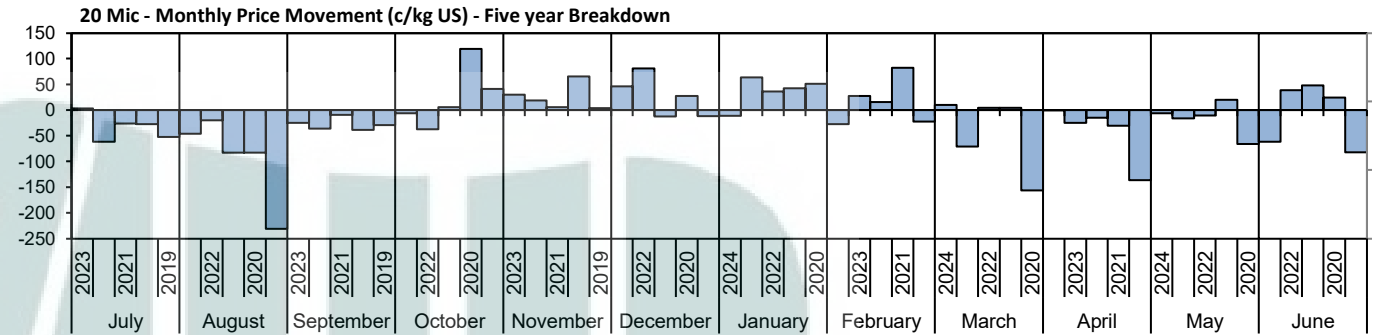
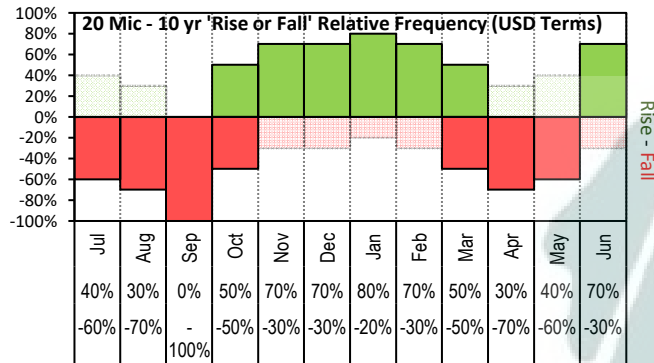


The above 'Rise or Fall' graph, shows how often the market has risen or fallen in a given month over the past 10 years, it does not show the extent of the movement only the frequency of direction. The 'Monthly Price Movement' graph shows the extent of movement for each month, for the past 5 years.

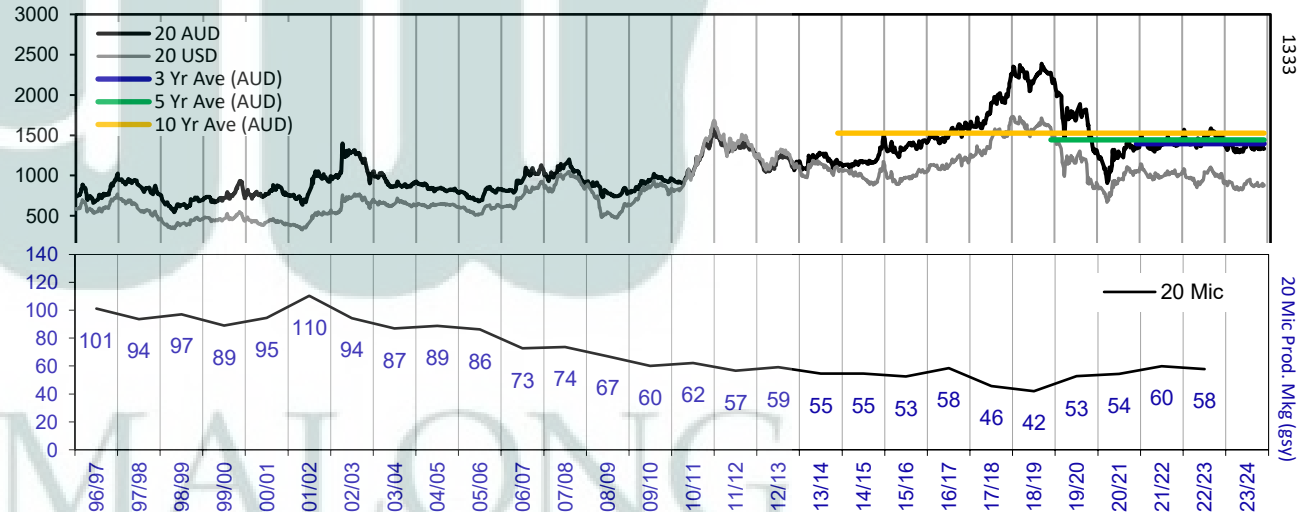
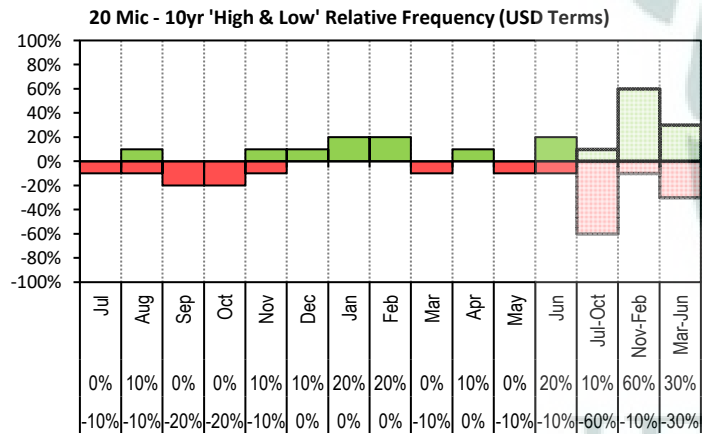


The above graph, shows how often the '12 month high & low' have been achieved for a given month over the past 10 years. It is not a measure of probability.

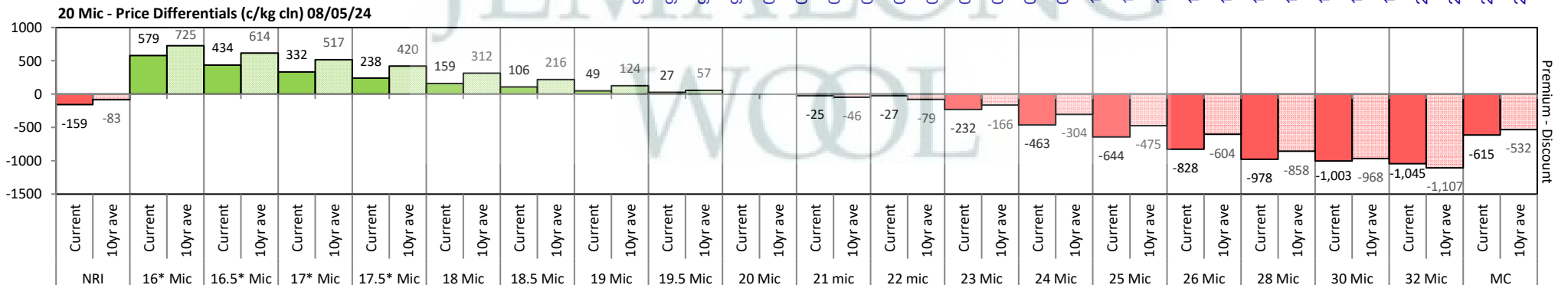


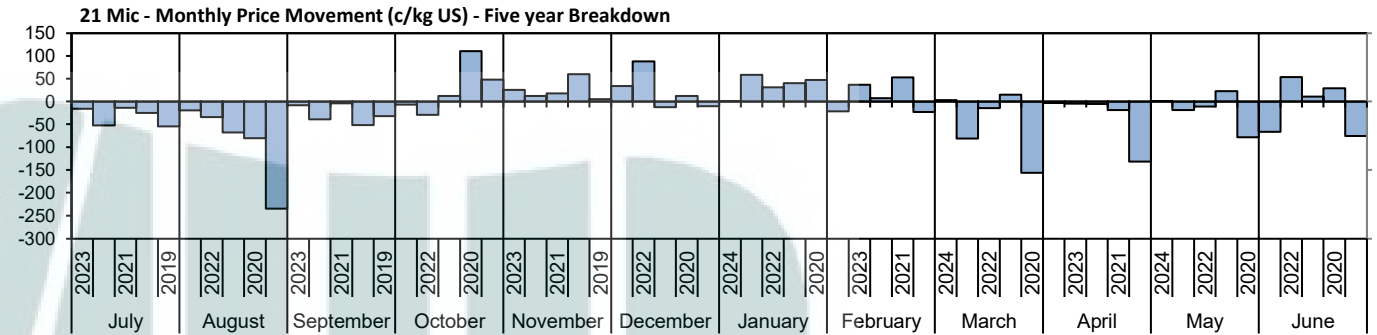
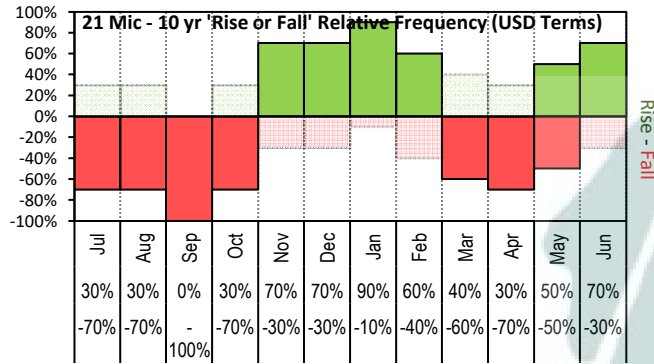


The above 'Rise or Fall' graph, shows how often the market has risen or fallen in a given month over the past 10 years, it does not show the extent of the movement only the frequency of direction. The 'Monthly Price Movement' graph shows the extent of movement for each month, for the past 5 years.

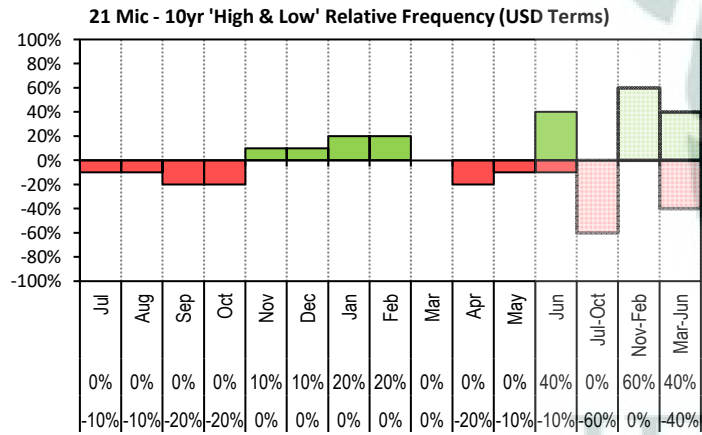


The above graph, shows how often the '12 month high & low' have been achieved for a given month over the past 10 years. It is not a measure of probability.

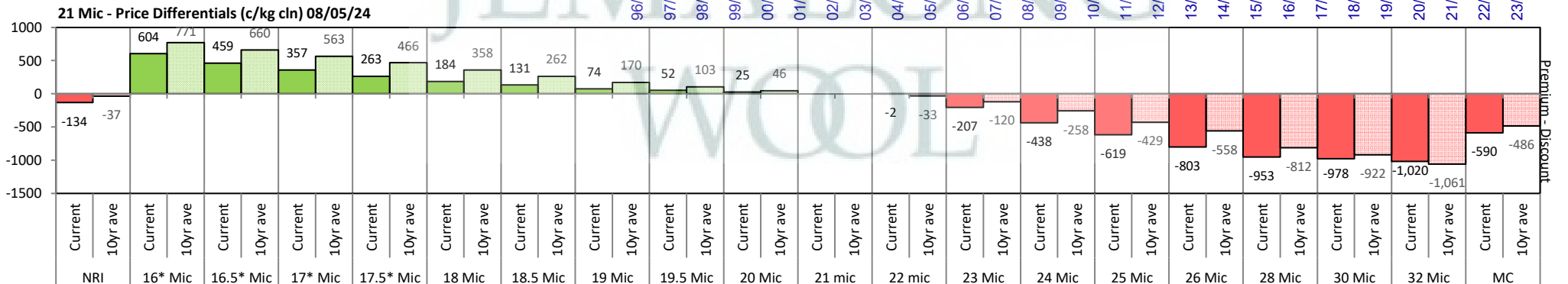
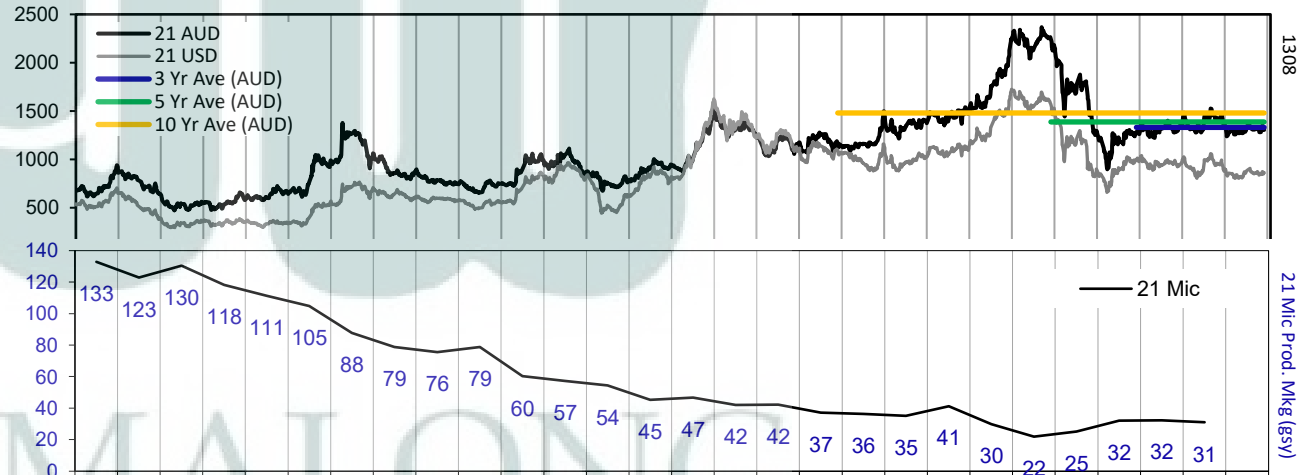


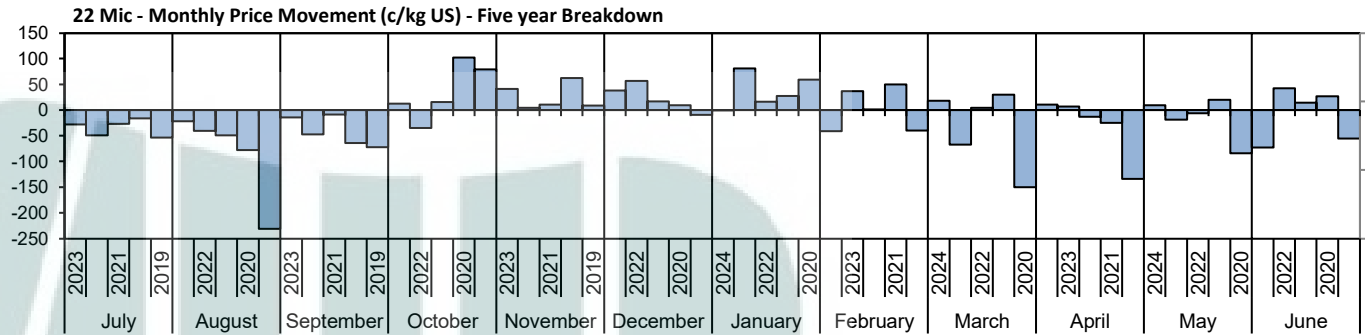
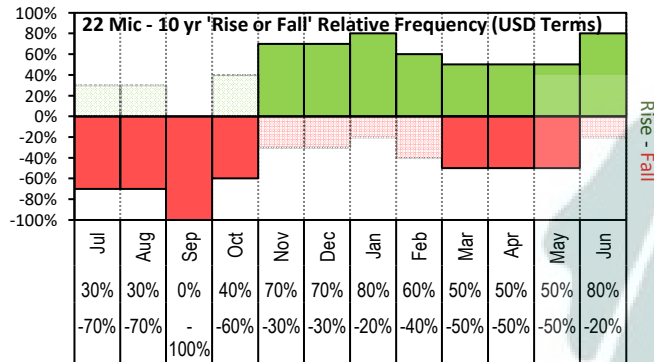


The above 'Rise or Fall' graph, shows how often the market has risen or fallen in a given month over the past 10 years, it does not show the extent of the movement only the frequency of direction. The 'Monthly Price Movement' graph shows the extent of movement for each month, for the past 5 years.

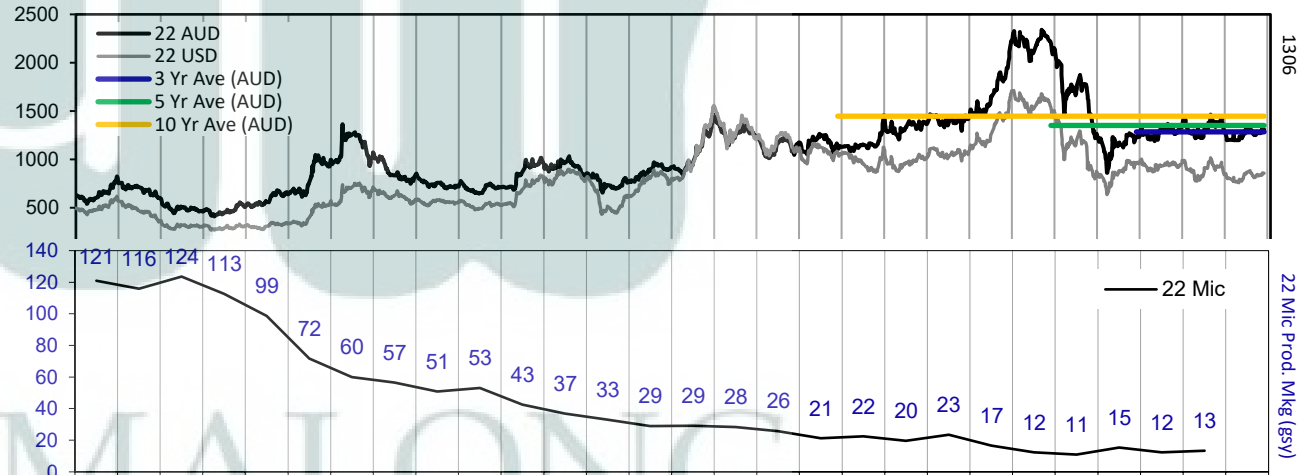
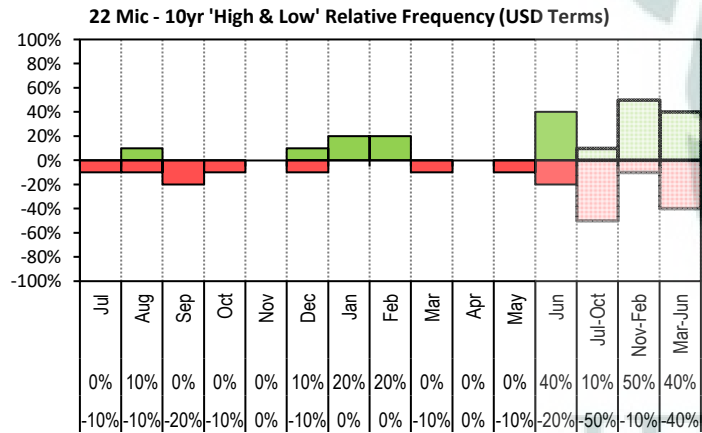


The above graph, shows how often the '12 month high & low' have been achieved for a given month over the past 10 years. It is not a measure of probability.

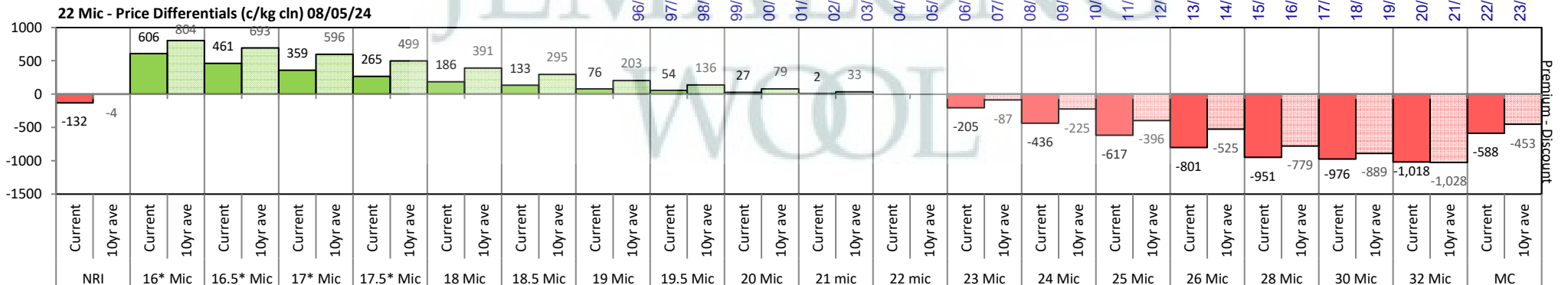


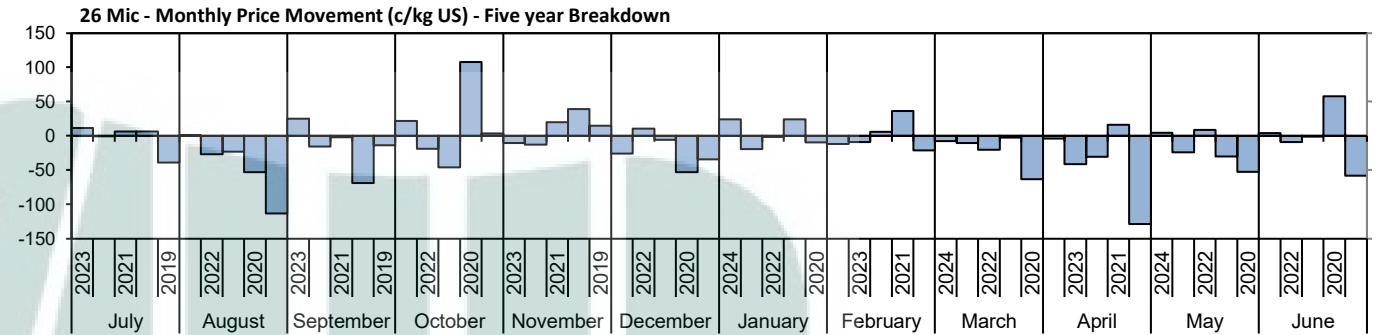
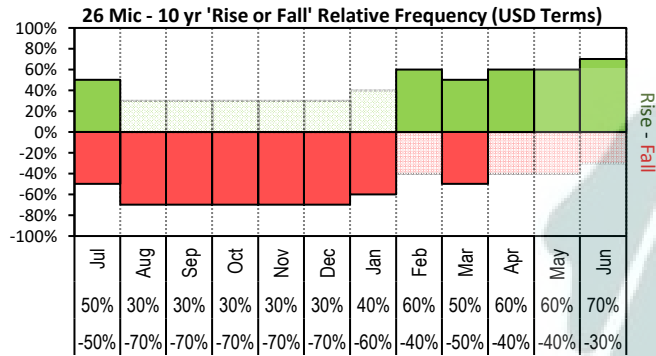


The above 'Rise or Fall' graph, shows how often the market has risen or fallen in a given month over the past 10 years, it does not show the extent of the movement only the frequency of direction. The 'Monthly Price Movement' graph shows the extent of movement for each month, for the past 5 years.

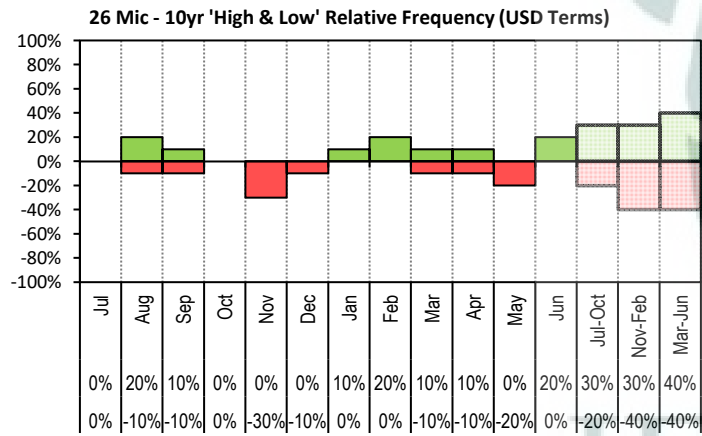


The above graph, shows how often the '12 month high & low' have been achieved for a given month over the past 10 years. It is not a measure of probability.

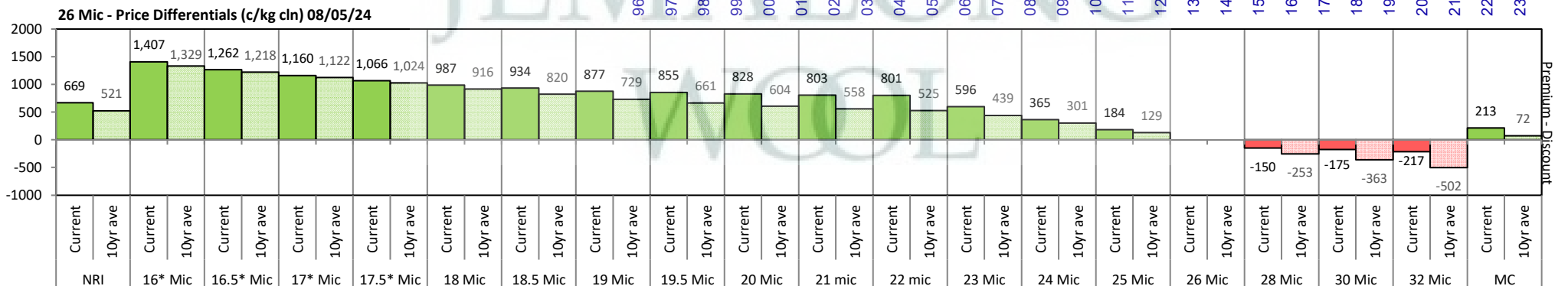
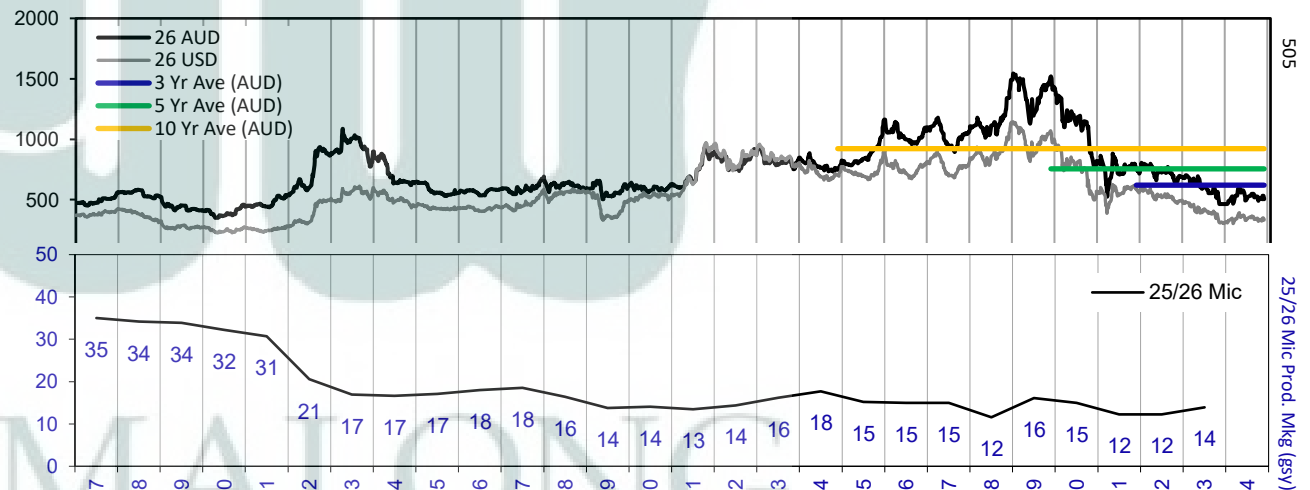


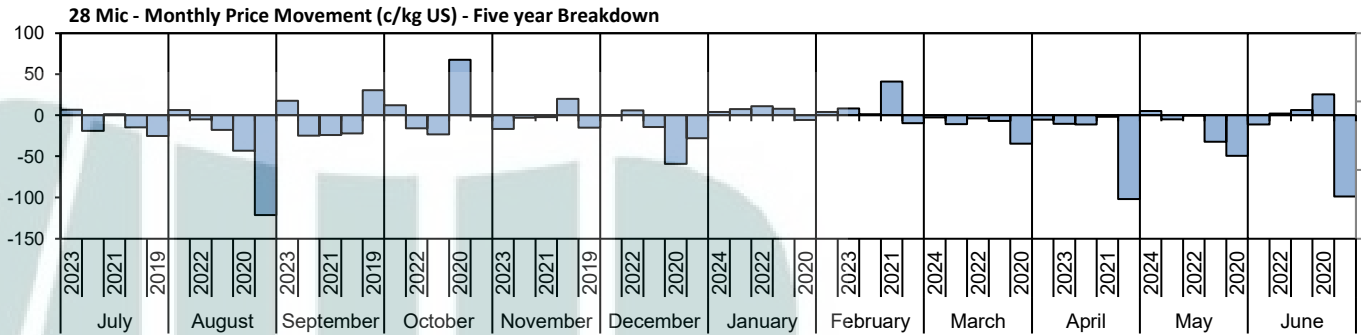
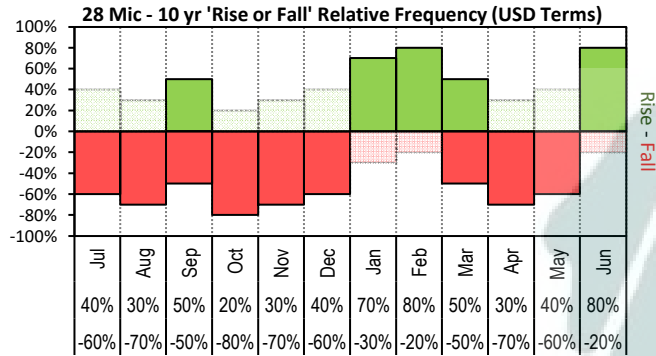


The above 'Rise or Fall' graph, shows how often the market has risen or fallen in a given month over the past 10 years, it does not show the extent of the movement only the frequency of direction. The 'Monthly Price Movement' graph shows the extent of movement for each month, for the past 5 years.

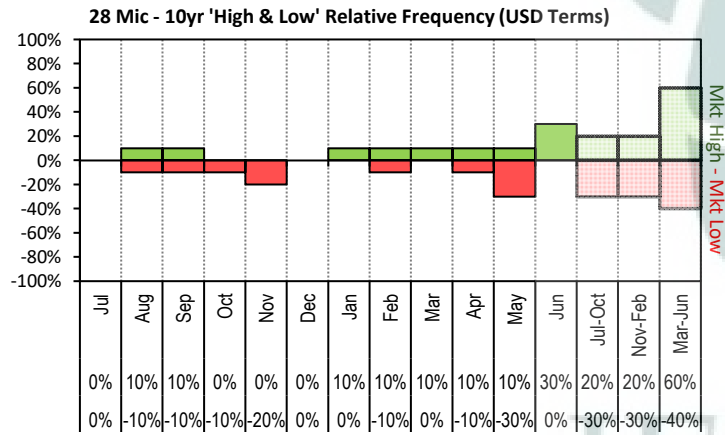


The above graph, shows how often the '12 month high & low' have been achieved for a given month over the past 10 years. It is not a measure of probability.

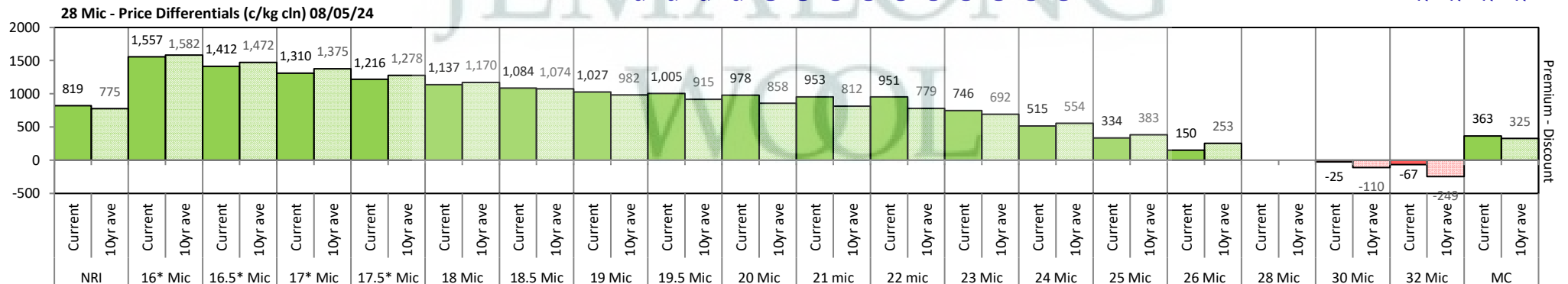
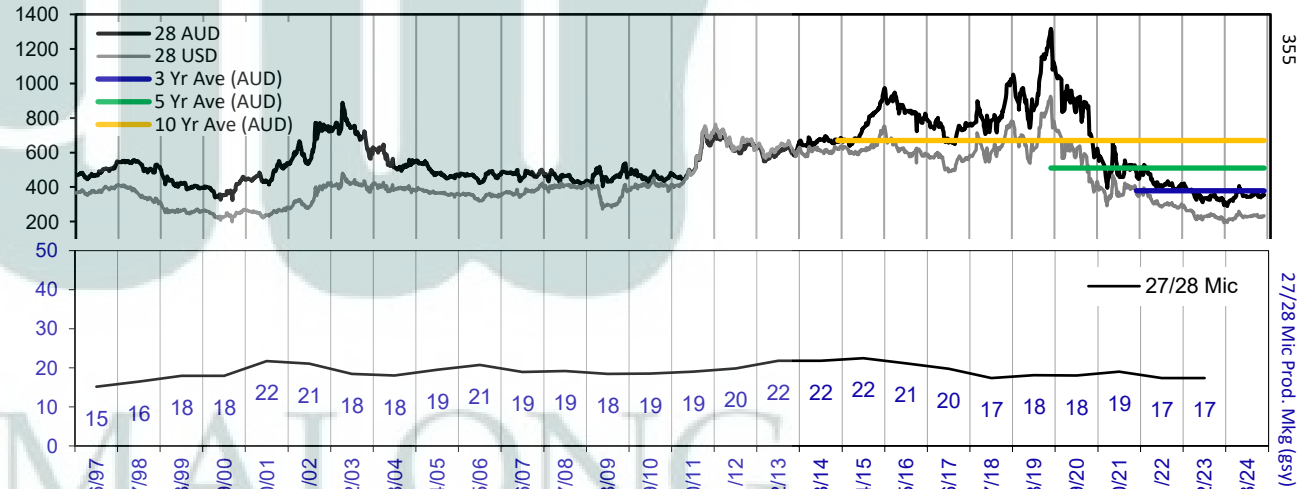


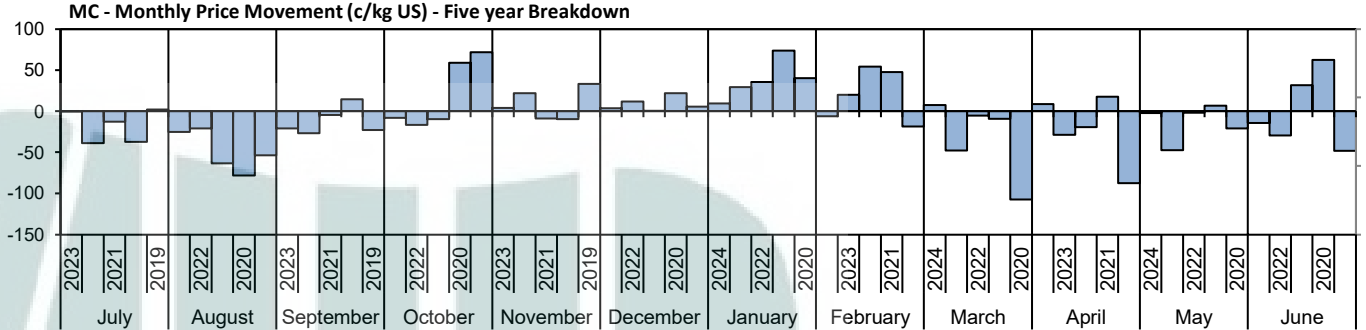
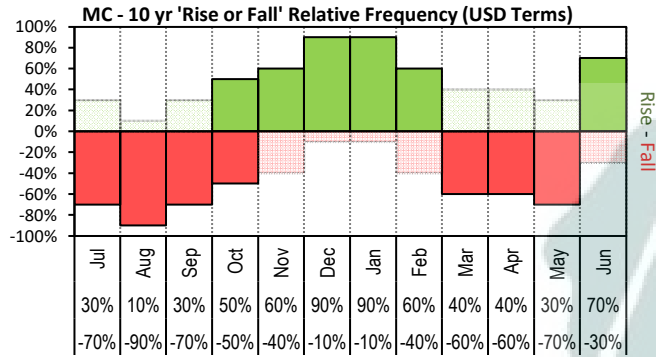


The above 'Rise or Fall' graph, shows how often the market has risen or fallen in a given month over the past 10 years, it does not show the extent of the movement only the frequency of direction. The 'Monthly Price Movement' graph shows the extent of movement for each month, for the past 5 years.

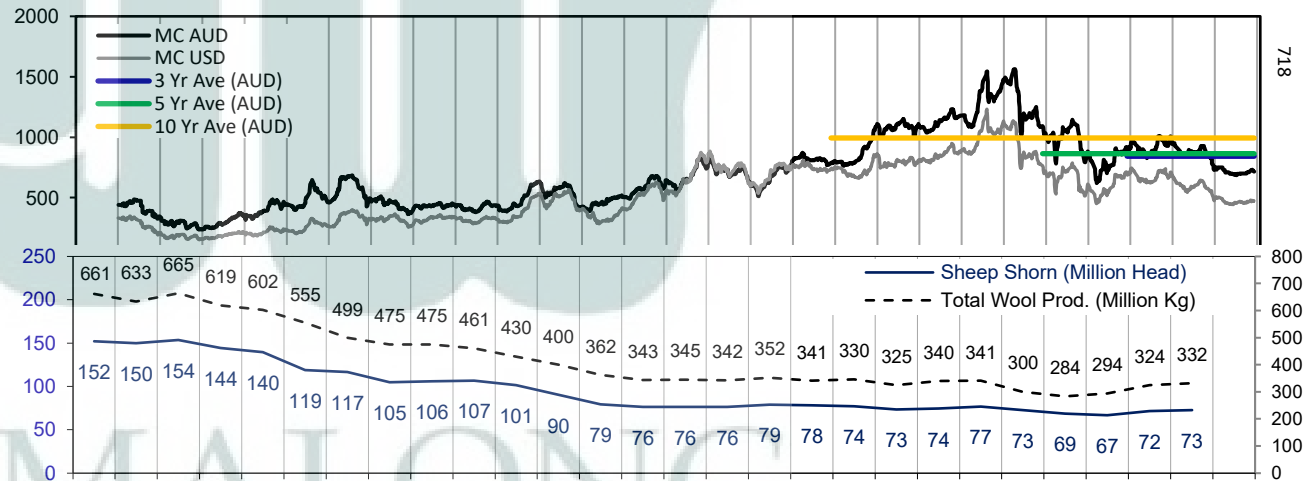
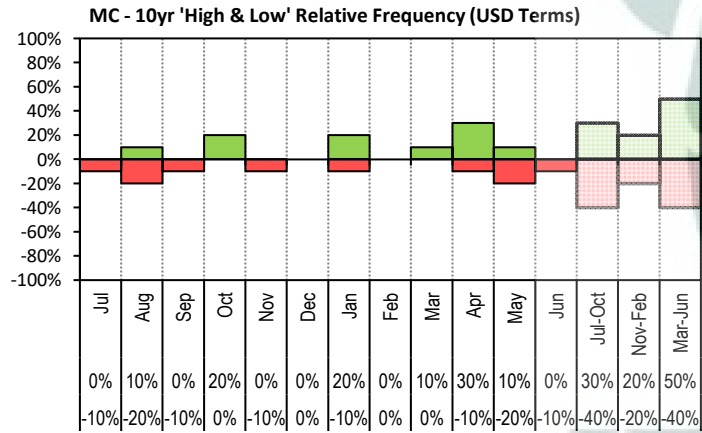


The above graph, shows how often the '12 month high & low' have been achieved for a given month over the past 10 years. It is not a measure of probability.

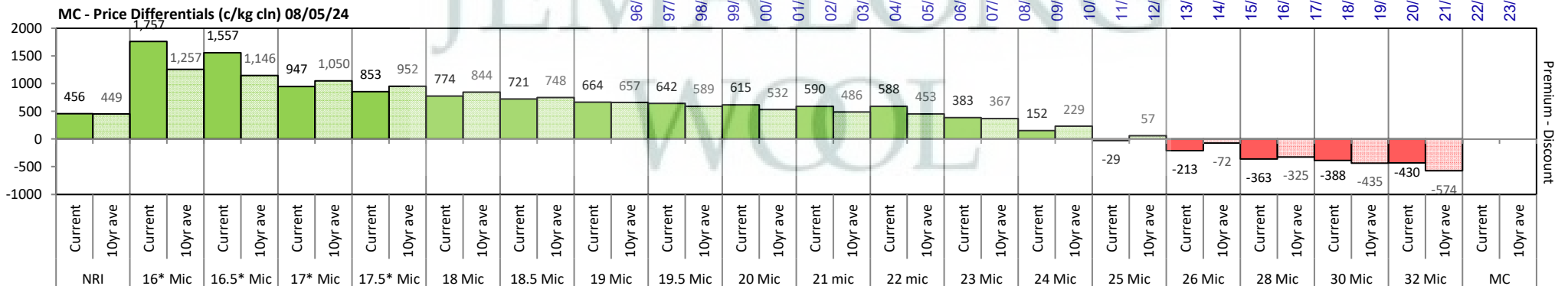




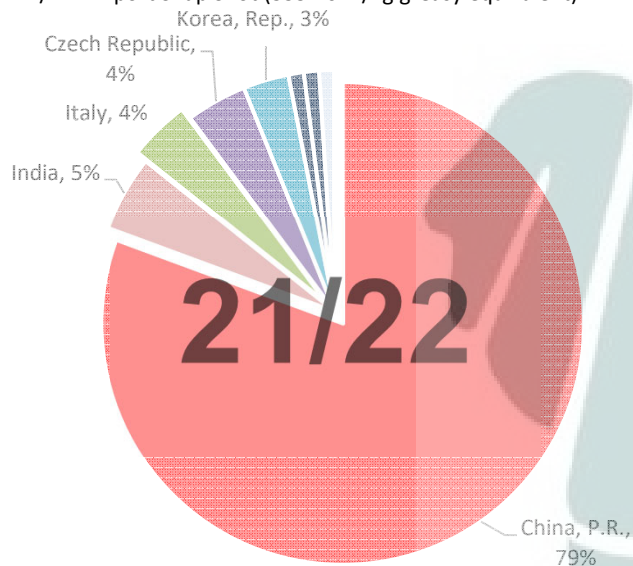
The above 'Rise or Fall' graph, shows how often the market has risen or fallen in a given month over the past 10 years, it does not show the extent of the movement only the frequency of direction. The 'Monthly Price Movement' graph shows the extent of movement for each month, for the past 5 years.



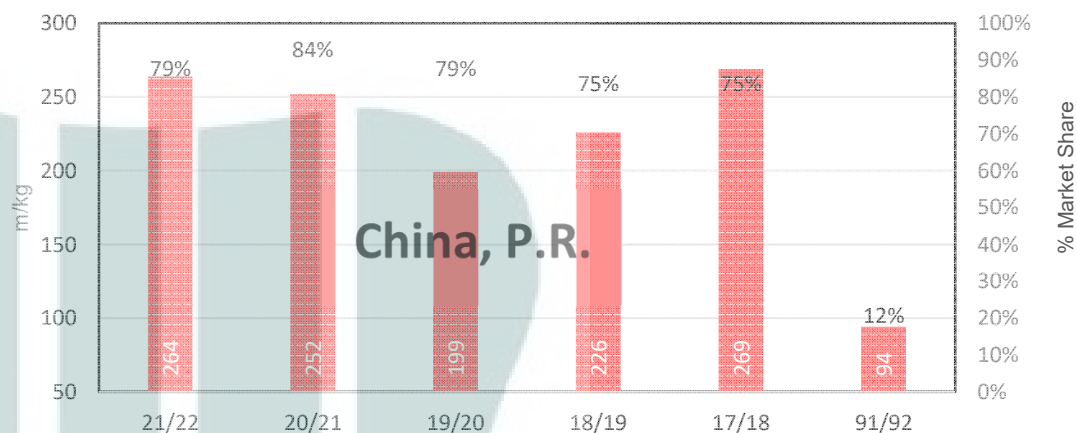
The above graph, shows how often the '12 month high & low' have been achieved for a given month over the past 10 years. It is not a measure of probability.



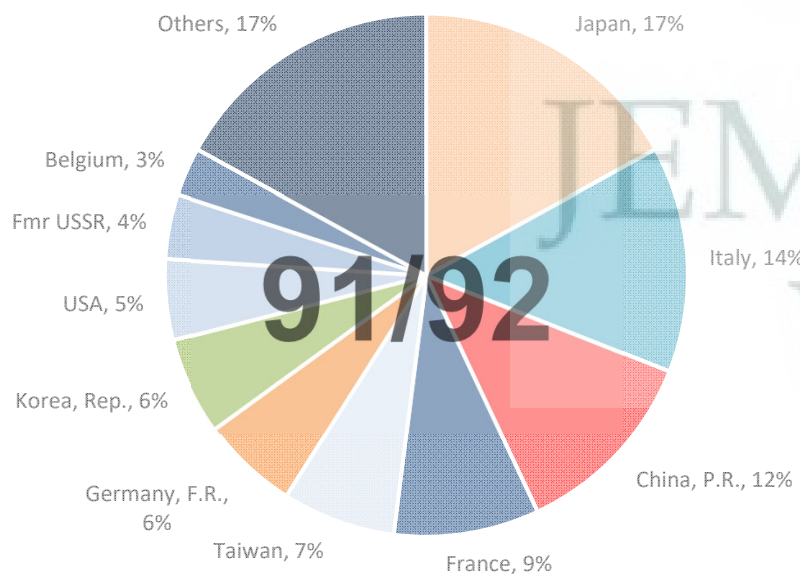
21/22 - Export Snap Shot (335.46 m/kg greasy equivalent)



China, P.R. (Largest Market Share)



91/92 - Export Snap Shot (784.7 m/kg greasy equivalent)



Seasonal Change m/kg





Table 8: Returns pr head for skirted fleece wool.

Skirted FLC Weight 9 Kg			Micron																	
			16	16.5	17	17.5	18	18.5	19	19.5	20	21	22	23	24	25	26	28	30	32
Yield (Sch Dry)	25%	Current	\$43	\$40	\$37	\$35	\$34	\$32	\$31	\$31	\$30	\$29	\$29	\$25	\$20	\$16	\$11	\$8	\$7	\$6
		10yr ave.	\$50	\$48	\$46	\$44	\$41	\$39	\$37	\$36	\$34	\$33	\$33	\$31	\$28	\$24	\$21	\$15	\$13	\$9
	30%	Current	\$52	\$48	\$45	\$42	\$40	\$39	\$37	\$37	\$36	\$35	\$35	\$30	\$23	\$19	\$14	\$10	\$9	\$8
		10yr ave.	\$60	\$58	\$55	\$52	\$50	\$47	\$45	\$43	\$41	\$40	\$39	\$37	\$33	\$28	\$25	\$18	\$15	\$11
	35%	Current	\$60	\$56	\$52	\$49	\$47	\$45	\$44	\$43	\$42	\$41	\$41	\$35	\$27	\$22	\$16	\$11	\$10	\$9
		10yr ave.	\$71	\$67	\$64	\$61	\$58	\$55	\$52	\$50	\$48	\$47	\$46	\$43	\$39	\$33	\$29	\$21	\$18	\$13
	40%	Current	\$69	\$64	\$60	\$57	\$54	\$52	\$50	\$49	\$48	\$47	\$47	\$40	\$31	\$25	\$18	\$13	\$12	\$10
		10yr ave.	\$81	\$77	\$73	\$70	\$66	\$63	\$59	\$57	\$55	\$53	\$52	\$49	\$44	\$38	\$33	\$24	\$20	\$15
	45%	Current	\$77	\$72	\$67	\$64	\$60	\$58	\$56	\$55	\$54	\$53	\$53	\$45	\$35	\$28	\$20	\$14	\$13	\$12
		10yr ave.	\$91	\$87	\$83	\$79	\$75	\$71	\$67	\$64	\$62	\$60	\$59	\$55	\$50	\$43	\$37	\$27	\$23	\$17
	50%	Current	\$86	\$80	\$75	\$71	\$67	\$65	\$62	\$61	\$60	\$59	\$59	\$50	\$39	\$31	\$23	\$16	\$15	\$13
		10yr ave.	\$101	\$96	\$92	\$87	\$83	\$78	\$74	\$71	\$69	\$67	\$65	\$61	\$55	\$47	\$42	\$30	\$25	\$19
	55%	Current	\$95	\$87	\$82	\$78	\$74	\$71	\$68	\$67	\$66	\$65	\$65	\$54	\$43	\$34	\$25	\$18	\$16	\$14
		10yr ave.	\$111	\$106	\$101	\$96	\$91	\$86	\$82	\$78	\$76	\$73	\$72	\$67	\$61	\$52	\$46	\$33	\$28	\$21
	60%	Current	\$103	\$95	\$90	\$85	\$81	\$78	\$75	\$73	\$72	\$71	\$71	\$59	\$47	\$37	\$27	\$19	\$18	\$16
		10yr ave.	\$121	\$116	\$110	\$105	\$99	\$94	\$89	\$86	\$83	\$80	\$78	\$74	\$66	\$57	\$50	\$36	\$30	\$23
	65%	Current	\$112	\$103	\$97	\$92	\$87	\$84	\$81	\$80	\$78	\$77	\$76	\$64	\$51	\$40	\$30	\$21	\$19	\$17
		10yr ave.	\$131	\$125	\$119	\$114	\$108	\$102	\$97	\$93	\$89	\$87	\$85	\$80	\$72	\$62	\$54	\$39	\$33	\$25
	70%	Current	\$120	\$111	\$105	\$99	\$94	\$91	\$87	\$86	\$84	\$82	\$82	\$69	\$55	\$43	\$32	\$22	\$21	\$18
		10yr ave.	\$141	\$135	\$128	\$122	\$116	\$110	\$104	\$100	\$96	\$93	\$91	\$86	\$77	\$66	\$58	\$42	\$35	\$27
	75%	Current	\$129	\$119	\$112	\$106	\$101	\$97	\$93	\$92	\$90	\$88	\$88	\$74	\$59	\$47	\$34	\$24	\$22	\$19
		10yr ave.	\$151	\$145	\$138	\$131	\$124	\$118	\$112	\$107	\$103	\$100	\$98	\$92	\$83	\$71	\$62	\$45	\$38	\$28
	80%	Current	\$138	\$127	\$120	\$113	\$107	\$104	\$100	\$98	\$96	\$94	\$94	\$79	\$63	\$50	\$36	\$26	\$24	\$21
		10yr ave.	\$161	\$154	\$147	\$140	\$132	\$125	\$119	\$114	\$110	\$107	\$104	\$98	\$88	\$76	\$66	\$48	\$40	\$30
	85%	Current	\$146	\$135	\$127	\$120	\$114	\$110	\$106	\$104	\$102	\$100	\$100	\$84	\$67	\$53	\$39	\$27	\$25	\$22
		10yr ave.	\$171	\$164	\$156	\$149	\$141	\$133	\$126	\$121	\$117	\$113	\$111	\$104	\$94	\$80	\$71	\$51	\$43	\$32

The above shows estimated returns per head for skirted fleece wool. These figures do not take into account the value of skirtings and oddments and do not take into account discounts that may apply for faults under individual circumstances. These figures are based on a market index of 100% and should be used as a guide only. Returns over \$30 / head for fleece wool are highlighted.

Table 9: Returns pr head for skirted fleece wool.

Skirted FLC Weight		Micron																	
8 Kg		16	16.5	17	17.5	18	18.5	19	19.5	20	21	22	23	24	25	26	28	30	32
Yield (Sch Dry)	25% Current	\$38	\$35	\$33	\$31	\$30	\$29	\$28	\$27	\$27	\$26	\$26	\$22	\$17	\$14	\$10	\$7	\$7	\$6
	10yr ave.	\$45	\$43	\$41	\$39	\$37	\$35	\$33	\$32	\$31	\$30	\$29	\$27	\$24	\$21	\$18	\$13	\$11	\$8
	30% Current	\$46	\$42	\$40	\$38	\$36	\$35	\$33	\$33	\$32	\$31	\$31	\$26	\$21	\$17	\$12	\$9	\$8	\$7
	10yr ave.	\$54	\$51	\$49	\$47	\$44	\$42	\$40	\$38	\$37	\$36	\$35	\$33	\$29	\$25	\$22	\$16	\$13	\$10
	35% Current	\$54	\$49	\$47	\$44	\$42	\$40	\$39	\$38	\$37	\$37	\$37	\$31	\$24	\$19	\$14	\$10	\$9	\$8
	10yr ave.	\$63	\$60	\$57	\$54	\$52	\$49	\$46	\$44	\$43	\$41	\$41	\$38	\$34	\$29	\$26	\$19	\$16	\$12
	40% Current	\$61	\$57	\$53	\$50	\$48	\$46	\$44	\$44	\$43	\$42	\$42	\$35	\$28	\$22	\$16	\$11	\$11	\$9
	10yr ave.	\$72	\$69	\$65	\$62	\$59	\$56	\$53	\$51	\$49	\$47	\$46	\$44	\$39	\$34	\$30	\$21	\$18	\$13
	45% Current	\$69	\$64	\$60	\$57	\$54	\$52	\$50	\$49	\$48	\$47	\$47	\$40	\$31	\$25	\$18	\$13	\$12	\$10
	10yr ave.	\$81	\$77	\$73	\$70	\$66	\$63	\$59	\$57	\$55	\$53	\$52	\$49	\$44	\$38	\$33	\$24	\$20	\$15
	50% Current	\$76	\$71	\$67	\$63	\$60	\$58	\$55	\$54	\$53	\$52	\$52	\$44	\$35	\$28	\$20	\$14	\$13	\$12
	10yr ave.	\$90	\$86	\$82	\$78	\$74	\$70	\$66	\$63	\$61	\$59	\$58	\$54	\$49	\$42	\$37	\$27	\$22	\$17
	55% Current	\$84	\$78	\$73	\$69	\$66	\$63	\$61	\$60	\$59	\$58	\$57	\$48	\$38	\$30	\$22	\$16	\$15	\$13
	10yr ave.	\$99	\$94	\$90	\$85	\$81	\$77	\$73	\$70	\$67	\$65	\$64	\$60	\$54	\$46	\$41	\$29	\$25	\$19
	60% Current	\$92	\$85	\$80	\$75	\$72	\$69	\$66	\$65	\$64	\$63	\$63	\$53	\$42	\$33	\$24	\$17	\$16	\$14
	10yr ave.	\$108	\$103	\$98	\$93	\$88	\$84	\$79	\$76	\$73	\$71	\$70	\$65	\$59	\$50	\$44	\$32	\$27	\$20
	65% Current	\$99	\$92	\$87	\$82	\$78	\$75	\$72	\$71	\$69	\$68	\$68	\$57	\$45	\$36	\$26	\$18	\$17	\$15
	10yr ave.	\$116	\$111	\$106	\$101	\$96	\$91	\$86	\$82	\$79	\$77	\$75	\$71	\$64	\$55	\$48	\$35	\$29	\$22
	70% Current	\$107	\$99	\$93	\$88	\$84	\$81	\$77	\$76	\$75	\$73	\$73	\$62	\$49	\$39	\$28	\$20	\$18	\$16
	10yr ave.	\$125	\$120	\$114	\$109	\$103	\$98	\$93	\$89	\$86	\$83	\$81	\$76	\$69	\$59	\$52	\$38	\$31	\$24
	75% Current	\$115	\$106	\$100	\$94	\$90	\$86	\$83	\$82	\$80	\$78	\$78	\$66	\$52	\$41	\$30	\$21	\$20	\$17
	10yr ave.	\$134	\$129	\$122	\$117	\$110	\$105	\$99	\$95	\$92	\$89	\$87	\$82	\$73	\$63	\$55	\$40	\$34	\$25
	80% Current	\$122	\$113	\$107	\$101	\$95	\$92	\$88	\$87	\$85	\$84	\$84	\$70	\$56	\$44	\$32	\$23	\$21	\$18
	10yr ave.	\$143	\$137	\$130	\$124	\$118	\$112	\$106	\$101	\$98	\$95	\$93	\$87	\$78	\$67	\$59	\$43	\$36	\$27
	85% Current	\$130	\$120	\$113	\$107	\$101	\$98	\$94	\$92	\$91	\$89	\$89	\$75	\$59	\$47	\$34	\$24	\$22	\$20
	10yr ave.	\$152	\$146	\$139	\$132	\$125	\$119	\$112	\$108	\$104	\$101	\$99	\$93	\$83	\$72	\$63	\$46	\$38	\$29

The above shows estimated returns per head for skirted fleece wool. These figures do not take into account the value of skirtings and oddments and do not take into account discounts that may apply for faults under individual circumstances. These figures are based on a market index of 100% and should be used as a guide only. Returns over \$30 / head for fleece wool are highlighted.

Table 10: Returns pr head for skirted fleece wool.

Skirted FLC Weight		Micron																	
7 Kg		16	16.5	17	17.5	18	18.5	19	19.5	20	21	22	23	24	25	26	28	30	32
Yield (Sch Dry)	25% Current	\$33	\$31	\$29	\$27	\$26	\$25	\$24	\$24	\$23	\$23	\$23	\$19	\$15	\$12	\$9	\$6	\$6	\$5
	10yr ave.	\$39	\$37	\$36	\$34	\$32	\$31	\$29	\$28	\$27	\$26	\$25	\$24	\$21	\$18	\$16	\$12	\$10	\$7
	30% Current	\$40	\$37	\$35	\$33	\$31	\$30	\$29	\$29	\$28	\$27	\$27	\$23	\$18	\$14	\$11	\$7	\$7	\$6
	10yr ave.	\$47	\$45	\$43	\$41	\$39	\$37	\$35	\$33	\$32	\$31	\$30	\$29	\$26	\$22	\$19	\$14	\$12	\$9
	35% Current	\$47	\$43	\$41	\$38	\$37	\$35	\$34	\$33	\$33	\$32	\$32	\$27	\$21	\$17	\$12	\$9	\$8	\$7
	10yr ave.	\$55	\$52	\$50	\$48	\$45	\$43	\$40	\$39	\$37	\$36	\$36	\$33	\$30	\$26	\$23	\$16	\$14	\$10
	40% Current	\$54	\$49	\$47	\$44	\$42	\$40	\$39	\$38	\$37	\$37	\$37	\$31	\$24	\$19	\$14	\$10	\$9	\$8
	10yr ave.	\$63	\$60	\$57	\$54	\$52	\$49	\$46	\$44	\$43	\$41	\$41	\$38	\$34	\$29	\$26	\$19	\$16	\$12
	45% Current	\$60	\$56	\$52	\$49	\$47	\$45	\$44	\$43	\$42	\$41	\$41	\$35	\$27	\$22	\$16	\$11	\$10	\$9
	10yr ave.	\$71	\$67	\$64	\$61	\$58	\$55	\$52	\$50	\$48	\$47	\$46	\$43	\$39	\$33	\$29	\$21	\$18	\$13
	50% Current	\$67	\$62	\$58	\$55	\$52	\$50	\$48	\$48	\$47	\$46	\$46	\$39	\$30	\$24	\$18	\$12	\$12	\$10
	10yr ave.	\$78	\$75	\$71	\$68	\$64	\$61	\$58	\$55	\$53	\$52	\$51	\$48	\$43	\$37	\$32	\$23	\$20	\$15
	55% Current	\$74	\$68	\$64	\$60	\$57	\$55	\$53	\$52	\$51	\$50	\$50	\$42	\$33	\$27	\$19	\$14	\$13	\$11
	10yr ave.	\$86	\$82	\$79	\$75	\$71	\$67	\$64	\$61	\$59	\$57	\$56	\$52	\$47	\$41	\$36	\$26	\$22	\$16
	60% Current	\$80	\$74	\$70	\$66	\$63	\$60	\$58	\$57	\$56	\$55	\$55	\$46	\$37	\$29	\$21	\$15	\$14	\$12
	10yr ave.	\$94	\$90	\$86	\$82	\$77	\$73	\$69	\$67	\$64	\$62	\$61	\$57	\$51	\$44	\$39	\$28	\$24	\$18
	65% Current	\$87	\$80	\$76	\$71	\$68	\$65	\$63	\$62	\$61	\$60	\$59	\$50	\$40	\$31	\$23	\$16	\$15	\$13
	10yr ave.	\$102	\$97	\$93	\$88	\$84	\$79	\$75	\$72	\$70	\$67	\$66	\$62	\$56	\$48	\$42	\$30	\$25	\$19
	70% Current	\$94	\$87	\$82	\$77	\$73	\$71	\$68	\$67	\$65	\$64	\$64	\$54	\$43	\$34	\$25	\$17	\$16	\$14
	10yr ave.	\$110	\$105	\$100	\$95	\$90	\$85	\$81	\$78	\$75	\$73	\$71	\$67	\$60	\$52	\$45	\$33	\$27	\$21
	75% Current	\$100	\$93	\$87	\$82	\$78	\$76	\$73	\$71	\$70	\$69	\$69	\$58	\$46	\$36	\$27	\$19	\$17	\$15
	10yr ave.	\$118	\$112	\$107	\$102	\$97	\$92	\$87	\$83	\$80	\$78	\$76	\$72	\$64	\$55	\$48	\$35	\$29	\$22
	80% Current	\$107	\$99	\$93	\$88	\$84	\$81	\$77	\$76	\$75	\$73	\$73	\$62	\$49	\$39	\$28	\$20	\$18	\$16
	10yr ave.	\$125	\$120	\$114	\$109	\$103	\$98	\$93	\$89	\$86	\$83	\$81	\$76	\$69	\$59	\$52	\$38	\$31	\$24
	85% Current	\$114	\$105	\$99	\$93	\$89	\$86	\$82	\$81	\$79	\$78	\$78	\$66	\$52	\$41	\$30	\$21	\$20	\$17
	10yr ave.	\$133	\$127	\$121	\$116	\$109	\$104	\$98	\$94	\$91	\$88	\$86	\$81	\$73	\$63	\$55	\$40	\$33	\$25

The above shows estimated returns per head for skirted fleece wool. These figures do not take into account the value of skirtings and oddments and do not take into account discounts that may apply for faults under individual circumstances. These figures are based on a market index of 100% and should be used as a guide only. Returns over \$30 / head for fleece wool are highlighted.

Table 11: Returns pr head for skirted fleece wool.

Skirted FLC Weight 6 Kg			Micron																	
			16	16.5	17	17.5	18	18.5	19	19.5	20	21	22	23	24	25	26	28	30	32
Yield (Sch Dry)	25%	Current	\$29	\$27	\$25	\$24	\$22	\$22	\$21	\$20	\$20	\$20	\$20	\$17	\$13	\$10	\$8	\$5	\$5	\$4
		10yr ave.	\$34	\$32	\$31	\$29	\$28	\$26	\$25	\$24	\$23	\$22	\$22	\$20	\$18	\$16	\$14	\$10	\$8	\$6
	30%	Current	\$34	\$32	\$30	\$28	\$27	\$26	\$25	\$24	\$24	\$24	\$24	\$20	\$16	\$12	\$9	\$6	\$6	\$5
		10yr ave.	\$40	\$39	\$37	\$35	\$33	\$31	\$30	\$29	\$28	\$27	\$26	\$25	\$22	\$19	\$17	\$12	\$10	\$8
	35%	Current	\$40	\$37	\$35	\$33	\$31	\$30	\$29	\$29	\$28	\$27	\$27	\$23	\$18	\$14	\$11	\$7	\$7	\$6
		10yr ave.	\$47	\$45	\$43	\$41	\$39	\$37	\$35	\$33	\$32	\$31	\$30	\$29	\$26	\$22	\$19	\$14	\$12	\$9
	40%	Current	\$46	\$42	\$40	\$38	\$36	\$35	\$33	\$33	\$32	\$31	\$31	\$26	\$21	\$17	\$12	\$9	\$8	\$7
		10yr ave.	\$54	\$51	\$49	\$47	\$44	\$42	\$40	\$38	\$37	\$36	\$35	\$33	\$29	\$25	\$22	\$16	\$13	\$10
	45%	Current	\$52	\$48	\$45	\$42	\$40	\$39	\$37	\$37	\$36	\$35	\$35	\$30	\$23	\$19	\$14	\$10	\$9	\$8
		10yr ave.	\$60	\$58	\$55	\$52	\$50	\$47	\$45	\$43	\$41	\$40	\$39	\$37	\$33	\$28	\$25	\$18	\$15	\$11
	50%	Current	\$57	\$53	\$50	\$47	\$45	\$43	\$41	\$41	\$40	\$39	\$39	\$33	\$26	\$21	\$15	\$11	\$10	\$9
		10yr ave.	\$67	\$64	\$61	\$58	\$55	\$52	\$50	\$48	\$46	\$44	\$43	\$41	\$37	\$32	\$28	\$20	\$17	\$13
	55%	Current	\$63	\$58	\$55	\$52	\$49	\$47	\$46	\$45	\$44	\$43	\$43	\$36	\$29	\$23	\$17	\$12	\$11	\$10
		10yr ave.	\$74	\$71	\$67	\$64	\$61	\$58	\$55	\$52	\$50	\$49	\$48	\$45	\$40	\$35	\$30	\$22	\$18	\$14
	60%	Current	\$69	\$64	\$60	\$57	\$54	\$52	\$50	\$49	\$48	\$47	\$47	\$40	\$31	\$25	\$18	\$13	\$12	\$10
		10yr ave.	\$81	\$77	\$73	\$70	\$66	\$63	\$59	\$57	\$55	\$53	\$52	\$49	\$44	\$38	\$33	\$24	\$20	\$15
65%	Current	\$75	\$69	\$65	\$61	\$58	\$56	\$54	\$53	\$52	\$51	\$51	\$43	\$34	\$27	\$20	\$14	\$13	\$11	
	10yr ave.	\$87	\$84	\$80	\$76	\$72	\$68	\$64	\$62	\$60	\$58	\$57	\$53	\$48	\$41	\$36	\$26	\$22	\$16	
70%	Current	\$80	\$74	\$70	\$66	\$63	\$60	\$58	\$57	\$56	\$55	\$55	\$46	\$37	\$29	\$21	\$15	\$14	\$12	
	10yr ave.	\$94	\$90	\$86	\$82	\$77	\$73	\$69	\$67	\$64	\$62	\$61	\$57	\$51	\$44	\$39	\$28	\$24	\$18	
75%	Current	\$86	\$80	\$75	\$71	\$67	\$65	\$62	\$61	\$60	\$59	\$59	\$50	\$39	\$31	\$23	\$16	\$15	\$13	
	10yr ave.	\$101	\$96	\$92	\$87	\$83	\$78	\$74	\$71	\$69	\$67	\$65	\$61	\$55	\$47	\$42	\$30	\$25	\$19	
80%	Current	\$92	\$85	\$80	\$75	\$72	\$69	\$66	\$65	\$64	\$63	\$63	\$53	\$42	\$33	\$24	\$17	\$16	\$14	
	10yr ave.	\$108	\$103	\$98	\$93	\$88	\$84	\$79	\$76	\$73	\$71	\$70	\$65	\$59	\$50	\$44	\$32	\$27	\$20	
85%	Current	\$98	\$90	\$85	\$80	\$76	\$73	\$70	\$69	\$68	\$67	\$67	\$56	\$44	\$35	\$26	\$18	\$17	\$15	
	10yr ave.	\$114	\$109	\$104	\$99	\$94	\$89	\$84	\$81	\$78	\$76	\$74	\$69	\$62	\$54	\$47	\$34	\$29	\$21	

The above shows estimated returns per head for skirted fleece wool. These figures do not take into account the value of skirtings and oddments and do not take into account discounts that may apply for faults under individual circumstances. These figures are based on a market index of 100% and should be used as a guide only. Returns over \$30 / head for fleece wool are highlighted.

Table 12: Returns pr head for skirted fleece wool.

Skirted FLC Weight		Micron																	
5 Kg		16	16.5	17	17.5	18	18.5	19	19.5	20	21	22	23	24	25	26	28	30	32
Yield (Sch Dry)	25% Current	\$24	\$22	\$21	\$20	\$19	\$18	\$17	\$17	\$17	\$16	\$16	\$14	\$11	\$9	\$6	\$4	\$4	\$4
	10yr ave.	\$28	\$27	\$25	\$24	\$23	\$22	\$21	\$20	\$19	\$19	\$18	\$17	\$15	\$13	\$12	\$8	\$7	\$5
	30% Current	\$29	\$27	\$25	\$24	\$22	\$22	\$21	\$20	\$20	\$20	\$20	\$17	\$13	\$10	\$8	\$5	\$5	\$4
	10yr ave.	\$34	\$32	\$31	\$29	\$28	\$26	\$25	\$24	\$23	\$22	\$22	\$20	\$18	\$16	\$14	\$10	\$8	\$6
	35% Current	\$33	\$31	\$29	\$27	\$26	\$25	\$24	\$24	\$23	\$23	\$23	\$19	\$15	\$12	\$9	\$6	\$6	\$5
	10yr ave.	\$39	\$37	\$36	\$34	\$32	\$31	\$29	\$28	\$27	\$26	\$25	\$24	\$21	\$18	\$16	\$12	\$10	\$7
	40% Current	\$38	\$35	\$33	\$31	\$30	\$29	\$28	\$27	\$27	\$26	\$26	\$22	\$17	\$14	\$10	\$7	\$7	\$6
	10yr ave.	\$45	\$43	\$41	\$39	\$37	\$35	\$33	\$32	\$31	\$30	\$29	\$27	\$24	\$21	\$18	\$13	\$11	\$8
	45% Current	\$43	\$40	\$37	\$35	\$34	\$32	\$31	\$31	\$30	\$29	\$29	\$25	\$20	\$16	\$11	\$8	\$7	\$6
	10yr ave.	\$50	\$48	\$46	\$44	\$41	\$39	\$37	\$36	\$34	\$33	\$33	\$31	\$28	\$24	\$21	\$15	\$13	\$9
	50% Current	\$48	\$44	\$42	\$39	\$37	\$36	\$35	\$34	\$33	\$33	\$33	\$28	\$22	\$17	\$13	\$9	\$8	\$7
	10yr ave.	\$56	\$54	\$51	\$49	\$46	\$44	\$41	\$40	\$38	\$37	\$36	\$34	\$31	\$26	\$23	\$17	\$14	\$11
	55% Current	\$53	\$49	\$46	\$43	\$41	\$40	\$38	\$37	\$37	\$36	\$36	\$30	\$24	\$19	\$14	\$10	\$9	\$8
	10yr ave.	\$62	\$59	\$56	\$53	\$51	\$48	\$45	\$44	\$42	\$41	\$40	\$37	\$34	\$29	\$25	\$18	\$15	\$12
	60% Current	\$57	\$53	\$50	\$47	\$45	\$43	\$41	\$41	\$40	\$39	\$39	\$33	\$26	\$21	\$15	\$11	\$10	\$9
	10yr ave.	\$67	\$64	\$61	\$58	\$55	\$52	\$50	\$48	\$46	\$44	\$43	\$41	\$37	\$32	\$28	\$20	\$17	\$13
	65% Current	\$62	\$57	\$54	\$51	\$48	\$47	\$45	\$44	\$43	\$43	\$42	\$36	\$28	\$22	\$16	\$12	\$11	\$9
	10yr ave.	\$73	\$70	\$66	\$63	\$60	\$57	\$54	\$52	\$50	\$48	\$47	\$44	\$40	\$34	\$30	\$22	\$18	\$14
	70% Current	\$67	\$62	\$58	\$55	\$52	\$50	\$48	\$48	\$47	\$46	\$46	\$39	\$30	\$24	\$18	\$12	\$12	\$10
	10yr ave.	\$78	\$75	\$71	\$68	\$64	\$61	\$58	\$55	\$53	\$52	\$51	\$48	\$43	\$37	\$32	\$23	\$20	\$15
	75% Current	\$72	\$66	\$62	\$59	\$56	\$54	\$52	\$51	\$50	\$49	\$49	\$41	\$33	\$26	\$19	\$13	\$12	\$11
	10yr ave.	\$84	\$80	\$76	\$73	\$69	\$65	\$62	\$59	\$57	\$56	\$54	\$51	\$46	\$39	\$35	\$25	\$21	\$16
	80% Current	\$76	\$71	\$67	\$63	\$60	\$58	\$55	\$54	\$53	\$52	\$52	\$44	\$35	\$28	\$20	\$14	\$13	\$12
	10yr ave.	\$90	\$86	\$82	\$78	\$74	\$70	\$66	\$63	\$61	\$59	\$58	\$54	\$49	\$42	\$37	\$27	\$22	\$17
	85% Current	\$81	\$75	\$71	\$67	\$63	\$61	\$59	\$58	\$57	\$56	\$56	\$47	\$37	\$29	\$21	\$15	\$14	\$12
	10yr ave.	\$95	\$91	\$87	\$83	\$78	\$74	\$70	\$67	\$65	\$63	\$62	\$58	\$52	\$45	\$39	\$28	\$24	\$18

The above shows estimated returns per head for skirted fleece wool. These figures do not take into account the value of skirtings and oddments and do not take into account discounts that may apply for faults under individual circumstances. These figures are based on a market index of 100% and should be used as a guide only. Returns over \$30 / head for fleece wool are highlighted.

Table 13: Returns pr head for skirted fleece wool.

Skirted FLC Weight 4 Kg		Micron																	
		16	16.5	17	17.5	18	18.5	19	19.5	20	21	22	23	24	25	26	28	30	32
Yield (Sch Dry)	25% Current	\$19	\$18	\$17	\$16	\$15	\$14	\$14	\$14	\$13	\$13	\$13	\$11	\$9	\$7	\$5	\$4	\$3	\$3
	10yr ave.	\$22	\$21	\$20	\$19	\$18	\$17	\$17	\$16	\$15	\$15	\$14	\$14	\$12	\$11	\$9	\$7	\$6	\$4
	30% Current	\$23	\$21	\$20	\$19	\$18	\$17	\$17	\$16	\$16	\$16	\$16	\$13	\$10	\$8	\$6	\$4	\$4	\$3
	10yr ave.	\$27	\$26	\$24	\$23	\$22	\$21	\$20	\$19	\$18	\$18	\$17	\$16	\$15	\$13	\$11	\$8	\$7	\$5
	35% Current	\$27	\$25	\$23	\$22	\$21	\$20	\$19	\$19	\$19	\$18	\$18	\$15	\$12	\$10	\$7	\$5	\$5	\$4
	10yr ave.	\$31	\$30	\$29	\$27	\$26	\$24	\$23	\$22	\$21	\$21	\$20	\$19	\$17	\$15	\$13	\$9	\$8	\$6
	40% Current	\$31	\$28	\$27	\$25	\$24	\$23	\$22	\$22	\$21	\$21	\$21	\$18	\$14	\$11	\$8	\$6	\$5	\$5
	10yr ave.	\$36	\$34	\$33	\$31	\$29	\$28	\$26	\$25	\$24	\$24	\$23	\$22	\$20	\$17	\$15	\$11	\$9	\$7
	45% Current	\$34	\$32	\$30	\$28	\$27	\$26	\$25	\$24	\$24	\$24	\$24	\$20	\$16	\$12	\$9	\$6	\$6	\$5
	10yr ave.	\$40	\$39	\$37	\$35	\$33	\$31	\$30	\$29	\$28	\$27	\$26	\$25	\$22	\$19	\$17	\$12	\$10	\$8
	50% Current	\$38	\$35	\$33	\$31	\$30	\$29	\$28	\$27	\$27	\$26	\$26	\$22	\$17	\$14	\$10	\$7	\$7	\$6
	10yr ave.	\$45	\$43	\$41	\$39	\$37	\$35	\$33	\$32	\$31	\$30	\$29	\$27	\$24	\$21	\$18	\$13	\$11	\$8
	55% Current	\$42	\$39	\$37	\$35	\$33	\$32	\$30	\$30	\$29	\$29	\$29	\$24	\$19	\$15	\$11	\$8	\$7	\$6
	10yr ave.	\$49	\$47	\$45	\$43	\$40	\$38	\$36	\$35	\$34	\$33	\$32	\$30	\$27	\$23	\$20	\$15	\$12	\$9
	60% Current	\$46	\$42	\$40	\$38	\$36	\$35	\$33	\$33	\$32	\$31	\$31	\$26	\$21	\$17	\$12	\$9	\$8	\$7
	10yr ave.	\$54	\$51	\$49	\$47	\$44	\$42	\$40	\$38	\$37	\$36	\$35	\$33	\$29	\$25	\$22	\$16	\$13	\$10
	65% Current	\$50	\$46	\$43	\$41	\$39	\$37	\$36	\$35	\$35	\$34	\$34	\$29	\$23	\$18	\$13	\$9	\$9	\$7
	10yr ave.	\$58	\$56	\$53	\$51	\$48	\$45	\$43	\$41	\$40	\$39	\$38	\$35	\$32	\$27	\$24	\$17	\$15	\$11
	70% Current	\$54	\$49	\$47	\$44	\$42	\$40	\$39	\$38	\$37	\$37	\$37	\$31	\$24	\$19	\$14	\$10	\$9	\$8
	10yr ave.	\$63	\$60	\$57	\$54	\$52	\$49	\$46	\$44	\$43	\$41	\$41	\$38	\$34	\$29	\$26	\$19	\$16	\$12
	75% Current	\$57	\$53	\$50	\$47	\$45	\$43	\$41	\$41	\$40	\$39	\$39	\$33	\$26	\$21	\$15	\$11	\$10	\$9
	10yr ave.	\$67	\$64	\$61	\$58	\$55	\$52	\$50	\$48	\$46	\$44	\$43	\$41	\$37	\$32	\$28	\$20	\$17	\$13
	80% Current	\$61	\$57	\$53	\$50	\$48	\$46	\$44	\$44	\$43	\$42	\$42	\$35	\$28	\$22	\$16	\$11	\$11	\$9
	10yr ave.	\$72	\$69	\$65	\$62	\$59	\$56	\$53	\$51	\$49	\$47	\$46	\$44	\$39	\$34	\$30	\$21	\$18	\$13
	85% Current	\$65	\$60	\$57	\$53	\$51	\$49	\$47	\$46	\$45	\$44	\$44	\$37	\$30	\$23	\$17	\$12	\$11	\$10
	10yr ave.	\$76	\$73	\$69	\$66	\$63	\$59	\$56	\$54	\$52	\$50	\$49	\$46	\$42	\$36	\$31	\$23	\$19	\$14

The above shows estimated returns per head for skirted fleece wool. These figures do not take into account the value of skirtings and oddments and do not take into account discounts that may apply for faults under individual circumstances. These figures are based on a market index of 100% and should be used as a guide only. Returns over \$30 / head for fleece wool are highlighted.

Table 14: Returns pr head for skirted fleece wool.

Skirted FLC Weight		Micron																	
3 Kg		16	16.5	17	17.5	18	18.5	19	19.5	20	21	22	23	24	25	26	28	30	32
Yield (Sch Dry)	25% Current	\$14	\$13	\$12	\$12	\$11	\$11	\$10	\$10	\$10	\$10	\$10	\$8	\$7	\$5	\$4	\$3	\$2	\$2
	10yr ave.	\$17	\$16	\$15	\$15	\$14	\$13	\$12	\$12	\$11	\$11	\$11	\$10	\$9	\$8	\$7	\$5	\$4	\$3
	30% Current	\$17	\$16	\$15	\$14	\$13	\$13	\$12	\$12	\$12	\$12	\$12	\$10	\$8	\$6	\$5	\$3	\$3	\$3
	10yr ave.	\$20	\$19	\$18	\$17	\$17	\$16	\$15	\$14	\$14	\$13	\$13	\$12	\$11	\$9	\$8	\$6	\$5	\$4
	35% Current	\$20	\$19	\$17	\$16	\$16	\$15	\$15	\$14	\$14	\$14	\$14	\$12	\$9	\$7	\$5	\$4	\$3	\$3
	10yr ave.	\$24	\$22	\$21	\$20	\$19	\$18	\$17	\$17	\$16	\$16	\$15	\$14	\$13	\$11	\$10	\$7	\$6	\$4
	40% Current	\$23	\$21	\$20	\$19	\$18	\$17	\$17	\$16	\$16	\$16	\$16	\$13	\$10	\$8	\$6	\$4	\$4	\$3
	10yr ave.	\$27	\$26	\$24	\$23	\$22	\$21	\$20	\$19	\$18	\$18	\$17	\$16	\$15	\$13	\$11	\$8	\$7	\$5
	45% Current	\$26	\$24	\$22	\$21	\$20	\$19	\$19	\$18	\$18	\$18	\$18	\$15	\$12	\$9	\$7	\$5	\$4	\$4
	10yr ave.	\$30	\$29	\$28	\$26	\$25	\$24	\$22	\$21	\$21	\$20	\$20	\$18	\$17	\$14	\$12	\$9	\$8	\$6
	50% Current	\$29	\$27	\$25	\$24	\$22	\$22	\$21	\$20	\$20	\$20	\$20	\$17	\$13	\$10	\$8	\$5	\$5	\$4
	10yr ave.	\$34	\$32	\$31	\$29	\$28	\$26	\$25	\$24	\$23	\$22	\$22	\$20	\$18	\$16	\$14	\$10	\$8	\$6
	55% Current	\$32	\$29	\$27	\$26	\$25	\$24	\$23	\$22	\$22	\$22	\$22	\$18	\$14	\$11	\$8	\$6	\$5	\$5
	10yr ave.	\$37	\$35	\$34	\$32	\$30	\$29	\$27	\$26	\$25	\$24	\$24	\$22	\$20	\$17	\$15	\$11	\$9	\$7
	60% Current	\$34	\$32	\$30	\$28	\$27	\$26	\$25	\$24	\$24	\$24	\$24	\$20	\$16	\$12	\$9	\$6	\$6	\$5
	10yr ave.	\$40	\$39	\$37	\$35	\$33	\$31	\$30	\$29	\$28	\$27	\$26	\$25	\$22	\$19	\$17	\$12	\$10	\$8
	65% Current	\$37	\$34	\$32	\$31	\$29	\$28	\$27	\$27	\$26	\$26	\$25	\$21	\$17	\$13	\$10	\$7	\$6	\$6
	10yr ave.	\$44	\$42	\$40	\$38	\$36	\$34	\$32	\$31	\$30	\$29	\$28	\$27	\$24	\$21	\$18	\$13	\$11	\$8
	70% Current	\$40	\$37	\$35	\$33	\$31	\$30	\$29	\$29	\$28	\$27	\$27	\$23	\$18	\$14	\$11	\$7	\$7	\$6
	10yr ave.	\$47	\$45	\$43	\$41	\$39	\$37	\$35	\$33	\$32	\$31	\$30	\$29	\$26	\$22	\$19	\$14	\$12	\$9
	75% Current	\$43	\$40	\$37	\$35	\$34	\$32	\$31	\$31	\$30	\$29	\$29	\$25	\$20	\$16	\$11	\$8	\$7	\$6
	10yr ave.	\$50	\$48	\$46	\$44	\$41	\$39	\$37	\$36	\$34	\$33	\$33	\$31	\$28	\$24	\$21	\$15	\$13	\$9
	80% Current	\$46	\$42	\$40	\$38	\$36	\$35	\$33	\$33	\$32	\$31	\$31	\$26	\$21	\$17	\$12	\$9	\$8	\$7
	10yr ave.	\$54	\$51	\$49	\$47	\$44	\$42	\$40	\$38	\$37	\$36	\$35	\$33	\$29	\$25	\$22	\$16	\$13	\$10
	85% Current	\$49	\$45	\$42	\$40	\$38	\$37	\$35	\$35	\$34	\$33	\$33	\$28	\$22	\$18	\$13	\$9	\$8	\$7
	10yr ave.	\$57	\$55	\$52	\$50	\$47	\$44	\$42	\$40	\$39	\$38	\$37	\$35	\$31	\$27	\$24	\$17	\$14	\$11

The above shows estimated returns per head for skirted fleece wool. These figures do not take into account the value of skirtings and oddments and do not take into account discounts that may apply for faults under individual circumstances. These figures are based on a market index of 100% and should be used as a guide only. Returns over \$30 / head for fleece wool are highlighted.

Table 15: Returns pr head for skirted fleece wool.

Skirted FLC Weight		Micron																	
2 Kg		16	16.5	17	17.5	18	18.5	19	19.5	20	21	22	23	24	25	26	28	30	32
Yield (Sch Dry)	25% Current	\$10	\$9	\$8	\$8	\$7	\$7	\$7	\$7	\$7	\$7	\$7	\$6	\$4	\$3	\$3	\$2	\$2	\$1
	10yr ave.	\$11	\$11	\$10	\$10	\$9	\$9	\$8	\$8	\$8	\$7	\$7	\$7	\$6	\$5	\$5	\$3	\$3	\$2
	30% Current	\$11	\$11	\$10	\$9	\$9	\$9	\$8	\$8	\$8	\$8	\$8	\$7	\$5	\$4	\$3	\$2	\$2	\$2
	10yr ave.	\$13	\$13	\$12	\$12	\$11	\$10	\$10	\$10	\$9	\$9	\$9	\$8	\$7	\$6	\$6	\$4	\$3	\$3
	35% Current	\$13	\$12	\$12	\$11	\$10	\$10	\$10	\$10	\$9	\$9	\$9	\$8	\$6	\$5	\$4	\$2	\$2	\$2
	10yr ave.	\$16	\$15	\$14	\$14	\$13	\$12	\$12	\$11	\$11	\$10	\$10	\$10	\$9	\$7	\$6	\$5	\$4	\$3
	40% Current	\$15	\$14	\$13	\$13	\$12	\$12	\$11	\$11	\$11	\$10	\$10	\$9	\$7	\$6	\$4	\$3	\$3	\$2
	10yr ave.	\$18	\$17	\$16	\$16	\$15	\$14	\$13	\$13	\$12	\$12	\$12	\$11	\$10	\$8	\$7	\$5	\$4	\$3
	45% Current	\$17	\$16	\$15	\$14	\$13	\$13	\$12	\$12	\$12	\$12	\$12	\$10	\$8	\$6	\$5	\$3	\$3	\$3
	10yr ave.	\$20	\$19	\$18	\$17	\$17	\$16	\$15	\$14	\$14	\$13	\$13	\$12	\$11	\$9	\$8	\$6	\$5	\$4
	50% Current	\$19	\$18	\$17	\$16	\$15	\$14	\$14	\$14	\$13	\$13	\$13	\$11	\$9	\$7	\$5	\$4	\$3	\$3
	10yr ave.	\$22	\$21	\$20	\$19	\$18	\$17	\$17	\$16	\$15	\$15	\$14	\$14	\$12	\$11	\$9	\$7	\$6	\$4
	55% Current	\$21	\$19	\$18	\$17	\$16	\$16	\$15	\$15	\$15	\$14	\$14	\$12	\$10	\$8	\$6	\$4	\$4	\$3
	10yr ave.	\$25	\$24	\$22	\$21	\$20	\$19	\$18	\$17	\$17	\$16	\$16	\$15	\$13	\$12	\$10	\$7	\$6	\$5
	60% Current	\$23	\$21	\$20	\$19	\$18	\$17	\$17	\$16	\$16	\$16	\$16	\$13	\$10	\$8	\$6	\$4	\$4	\$3
	10yr ave.	\$27	\$26	\$24	\$23	\$22	\$21	\$20	\$19	\$18	\$18	\$17	\$16	\$15	\$13	\$11	\$8	\$7	\$5
	65% Current	\$25	\$23	\$22	\$20	\$19	\$19	\$18	\$18	\$17	\$17	\$17	\$14	\$11	\$9	\$7	\$5	\$4	\$4
	10yr ave.	\$29	\$28	\$27	\$25	\$24	\$23	\$21	\$21	\$20	\$19	\$19	\$18	\$16	\$14	\$12	\$9	\$7	\$5
	70% Current	\$27	\$25	\$23	\$22	\$21	\$20	\$19	\$19	\$19	\$18	\$18	\$15	\$12	\$10	\$7	\$5	\$5	\$4
	10yr ave.	\$31	\$30	\$29	\$27	\$26	\$24	\$23	\$22	\$21	\$21	\$20	\$19	\$17	\$15	\$13	\$9	\$8	\$6
	75% Current	\$29	\$27	\$25	\$24	\$22	\$22	\$21	\$20	\$20	\$20	\$20	\$17	\$13	\$10	\$8	\$5	\$5	\$4
	10yr ave.	\$34	\$32	\$31	\$29	\$28	\$26	\$25	\$24	\$23	\$22	\$22	\$20	\$18	\$16	\$14	\$10	\$8	\$6
	80% Current	\$31	\$28	\$27	\$25	\$24	\$23	\$22	\$22	\$21	\$21	\$21	\$18	\$14	\$11	\$8	\$6	\$5	\$5
	10yr ave.	\$36	\$34	\$33	\$31	\$29	\$28	\$26	\$25	\$24	\$24	\$23	\$22	\$20	\$17	\$15	\$11	\$9	\$7
	85% Current	\$33	\$30	\$28	\$27	\$25	\$24	\$23	\$23	\$23	\$22	\$22	\$19	\$15	\$12	\$9	\$6	\$6	\$5
	10yr ave.	\$38	\$36	\$35	\$33	\$31	\$30	\$28	\$27	\$26	\$25	\$25	\$23	\$21	\$18	\$16	\$11	\$10	\$7

The above shows estimated returns per head for skirted fleece wool. These figures do not take into account the value of skirtings and oddments and do not take into account discounts that may apply for faults under individual circumstances. These figures are based on a market index of 100% and should be used as a guide only. Returns over \$30 / head for fleece wool are highlighted.