



# JEMALONG WOOL BULLETIN

(week ending 9/06/2011)

**Table 1: Northern Region Micron Price Guides**

CURRENT MARKET				12 MONTH COMPARISONS								3 YEAR COMPARISONS					10 YEAR COMPARISONS					
Mic.	9/06/2011	2/06/2011		8/06/2010	Now		Now	12 Month	Now			Low	High	Average	Now	Percentile	Low	High	10 year	Now		Percentile
Guides	Price	Weekly	Change	This time	compared		compared	Low	to Low	High	to High	Low	High	Average	to 3yr ave		Low	High	Average	to 10yr ave		
NRI	1475	+19	1.3%	913	+562	62%		890	+585	66%		1475	0	0%		100%	658	1475	899	+576	64%	100%
16*	2670	-30	-1.1%	1560	+1110	71%		1540	+1130	73%		2800	-130	-5%		89%						
16.5*	2520	-30	-1.2%	1415	+1105	78%		1395	+1125	81%		2670	-150	-6%		89%						
17*	2400	-30	-1.3%	1270	+1130	89%		1230	+1170	95%		2530	-130	-5%		89%	1100	2659	1430	+970	68%	95%
17.5*	2260	-30	-1.3%	1210	+1050	87%		1185	+1075	91%		2360	-100	-4%		91%						
18	2078	-13	-0.6%	1180	+898	76%		1138	+940	83%		2193	-115	-5%		91%	916	2193	1276	+802	63%	97%
18.5	1877	-17	-0.9%	1136	+741	65%		1110	+767	69%		1963	-86	-4%		91%	843	1963				
19	1767	+8	0.5%	1078	+689	64%		1031	+736	71%		1767	0	0%		100%	804	1767	1081	+686	63%	100%
19.5	1667	+34	2.0%	993	+674	68%		952	+715	75%		1667	0	0%		100%	749	1667				
20	1568	+50	3.2%	941	+627	67%		904	+664	73%		1568	0	0%		100%	684	1568	941	+627	67%	100%
21	1498	+54	3.6%	927	+571	62%		878	+620	71%		1498	0	0%		100%	645	1498	901	+597	66%	100%
22	1446	+60	4.1%	904	+542	60%		847	+599	71%		1446	0	0%		100%	643	1446	877	+569	65%	100%
23	1314	+46	3.5%	886	+428	48%		827	+487	59%		1314	0	0%		100%	640	1340	854	+460	54%	99%
24	1093	+21	1.9%	834	+259	31%		780	+313	40%		1170	-77	-7%		96%	635	1299	812	+281	35%	93%
25	970	+14	1.4%	706	+264	37%		695	+275	40%		1048	-78	-7%		96%	567	1198	728	+242	33%	91%
26	875	+8	0.9%	614	+261	43%		598	+277	46%		928	-53	-6%		95%	532	1088	666	+209	31%	85%
28	672	+1	0.1%	468	+204	44%		443	+229	52%		734	-62	-8%		95%	424	889	529	+143	27%	85%
30	611	-5	-0.8%	424	+187	44%		389	+222	57%		670	-59	-9%		94%	344	729	461	+150	33%	89%
32	560	+2	0.4%	356	+204	57%		353	+207	59%		638	-78	-12%		95%	297	669	417	+143	34%	87%
MC	770	+23	3.0%	598	+172	29%		561	+209	37%		830	-60	-7%		93%	380	830	515	+255	50%	98%

**Note:**

\* Due to the irregular market quoting for some fine wool categories, figures shown relating to micron categories below 18 micron are an estimate based on the AWEX Premium & Discounts Report & other available information.

\* For any category, where there is insufficient quantity offered to enable AWEX to quote, a quote will be provided based on the best available information.

\* 10 Year data is not available for some micron categories, which may result in blank spaces in the table above.

**Definitions:**

\* A Percentile, is a value on a scale of one hundred that indicates the percent of a distribution that is equal to or below it. In general a percentile between 25% and 75% is considered normal, a percentile below 25% is considered below normal and a percentile above 75% is considered above normal.

Three and ten year percentiles shown in the table above, detail the period of time during the past 3 & 10 years that the market has traded either at or below its current price.

The higher the percentile, the stronger the market.

Source: Australian Wool Exchange, Australian Wool Innovation, Sydney Futures Exchange, x-rates.com

Disclaimer: While all due care has been taken in the preparation of this document, no warranty is made as to its accuracy, reliability or completeness. To the extent permitted by law neither Jemalong or their sources including subsidiaries and staff, accept liability to any person for loss or damage arising from the use of this information.



## MARKET COMMENTARY

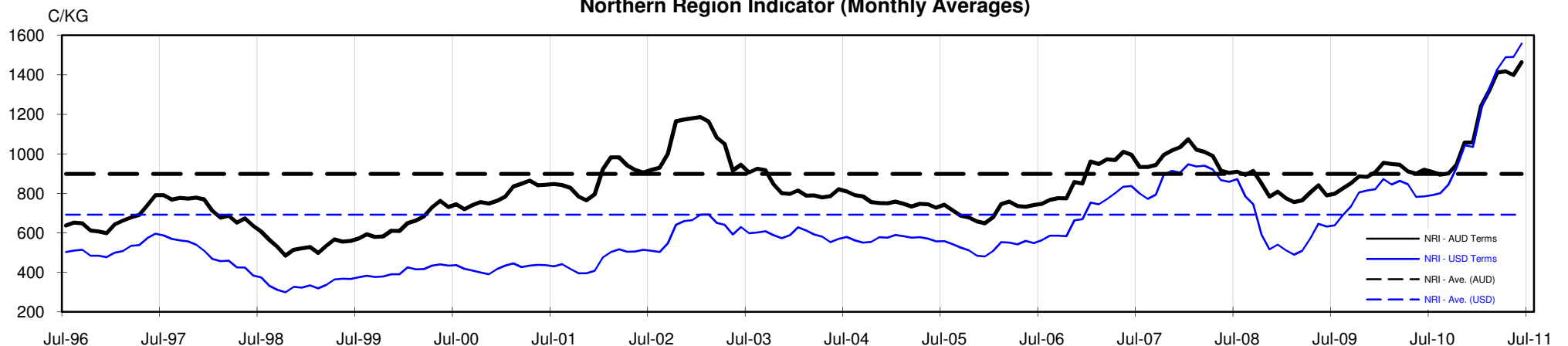
One Australian Dollar = \$ 1.06 US, as of 9/06/2011

### NORTHERN REGION –Sale Week 49/10 (22,686 bales offered nationally)

On Wednesday - The market continued to gain momentum as the sale progressed, by the close of trade 19 to 20 microns had lifted 30-40 cents, while 21 and 22 micron rose by 50-60 cents (with the odd 21 micron lot breaching 1500 clean). 19 micron were a little dearer while 18.5 and finer were irregular. Skirtings remained fully firm throughh out the day for 5% Vm and less, with the better length lots tending dearer. The burrier types 6% Vm ended the day 10-20 cents lower on the back of a predominantly cot & col selection. Oddments were well supported with locks gaining 15 cents while crutchings & stains closed in sellers favour. Crossbreds remained generally unchanged on a small selection consisting of mostly bulk class & unclassified lots (B & D certs).

On Thursday - The market remain generally positive, with medium microns remaining fully firm, 20 to 21.5 microns added another 10 cents, while the finer range was irregular, with a softer tone being felt (particularly for the higher Vm lots which were most affected). On the back of a limited selection, all skirtings remained fully firm. In the oddments, all categories gained ground with <19 micron LKS & CRT gaining 20 cents, while 20 micron and broader were 10 cents dearer, as were stains. Crossbreds were unquotable on a very limited offering.

Northern Region Indicator (Monthly Averages)





**Table 4: 19 micron SFE**

Wednesday, 8 June 2011

Delivery Mth	Jun-11	Aug-11	Oct-11	Dec-11	Feb-11	Apr-12	Jun-12	Aug-12	Oct-12
19 Micron SFE	1735	1670	1640	1616	1591	1561	1551	1495	1495
Average	1239	1245	1251	1277	1114	1342	1394	1392	1391
Maximum	1735	1670	1640	1616	1670	1561	1551	1495	1495
Minimum	1034	1034	1034	1034	983	1106	1210	1285	1285

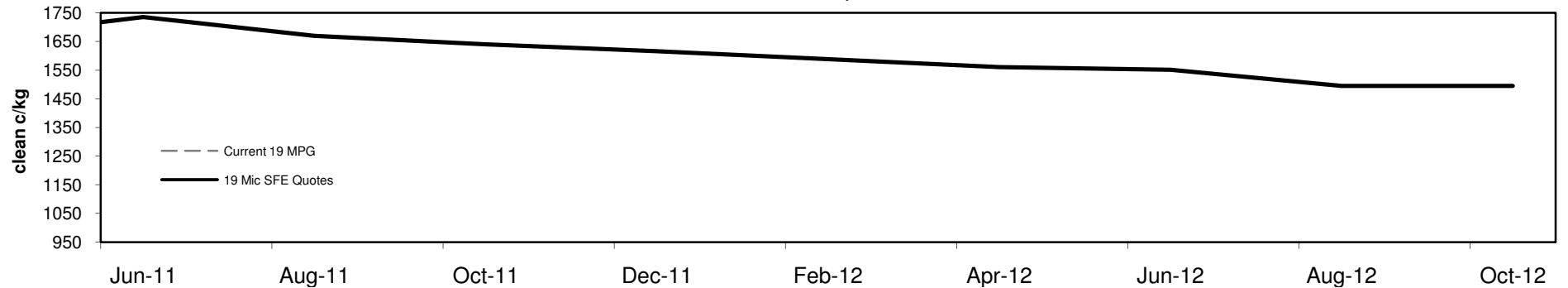
**Table 5: 19 micron SFE, as a percentile of the 19 micron MPG**

3 Year Percentile	97%	93%	90%	88%	87%	86%	86%	85%	85%
10 Year Percentile	99%	98%	97%	96%	96%	96%	96%	96%	96%

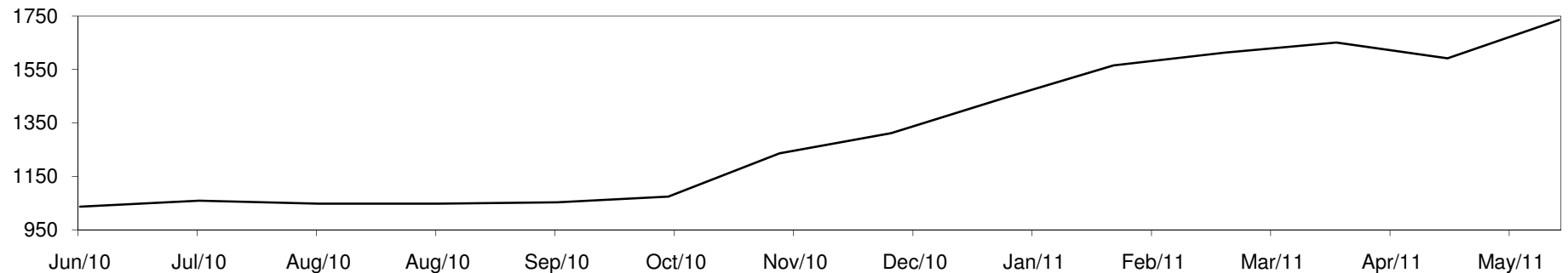
**Table 6: 19 micron SFE, compared to MPG**

SFE - MPG	-32	-2%	-97	-5%	-127	-7%	-151	-9%	-176	-10%	-206	-12%	-216	-12%	-272	-15%	-272	-15%
SFE - MPG, 1 year Ave.	+336	24%	+271	19%	+241	17%	+217	16%	+192	14%	+162	12%	+152	11%	+96	7%	+96	7%
SFE - MPG, 3 year Ave.	+587	51%	+522	45%	+492	43%	+468	41%	+443	39%	+413	36%	+403	35%	+347	30%	+347	30%
SFE - MPG, 10 year Ave.	+654	61%	+589	55%	+559	52%	+535	50%	+510	47%	+480	44%	+470	43%	+414	38%	+414	38%

**19 MICRON SFE, QUOTES**



**19 Micron SFE, Front month movement**





**Table 7: 21 micron SFE**

Wednesday, 8 June 2011

Delivery Mth	Jun-11	Aug-11	Oct-11	Dec-11	Feb-11	Apr-12	Jun-12	Aug-12	Oct-12
21 Micron SFE	1571	1439	1388	1337	1319	1209	1252	1242	1209
Average	1036	1031	1023	1026	962	1063	1074	1095	1101
Maximum	1571	1440	1388	1337	1439	1209	1252	1242	1209
Minimum	890	880	880	880	860	934	990	1046	1013

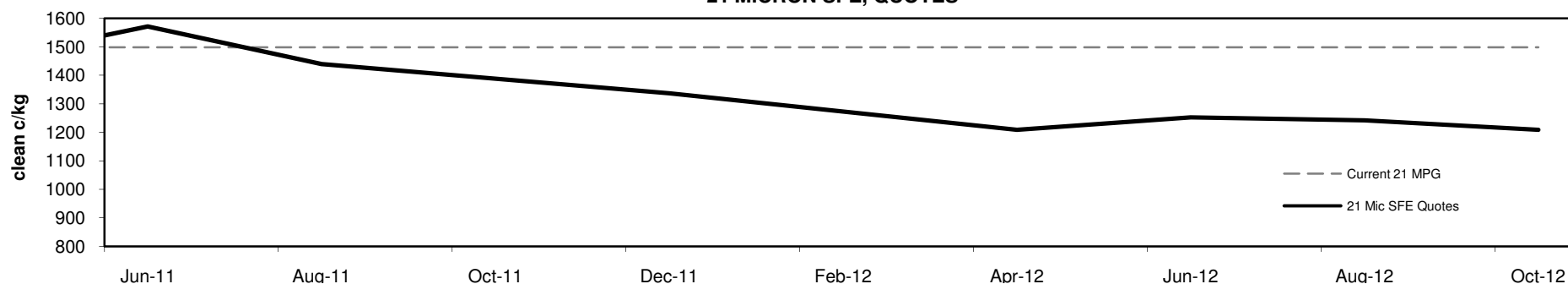
**Table 8: 21 micron SFE, as a percentile of the 21 micron MPG**

3 Year Percentile	100%	99%	97%	97%	95%	91%	91%	91%	91%
10 Year Percentile	100%	99%	99%	99%	98%	92%	94%	93%	92%

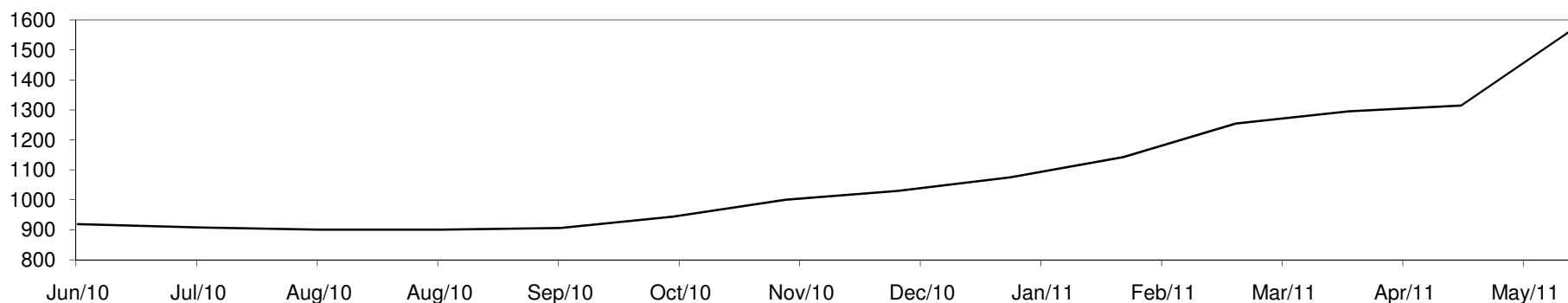
**Table 9: 21 micron SFE, compared to MPG**

SFE - MPG	+73	5%	-59	-4%	-110	-7%	-161	-11%	-179	-12%	-289	-19%	-246	-16%	-256	-17%	-289	-19%
SFE - MPG, 1 year Ave.	+463	42%	+331	30%	+280	25%	+229	21%	+211	19%	+101	9%	+144	13%	+134	12%	+101	9%
SFE - MPG, 3 year Ave.	+643	69%	+511	55%	+460	50%	+409	44%	+391	42%	+281	30%	+324	35%	+314	34%	+281	30%
SFE - MPG, 10 year Ave.	+670	74%	+538	60%	+487	54%	+436	48%	+418	46%	+308	34%	+351	39%	+341	38%	+308	34%

**21 MICRON SFE, QUOTES**



**21 Micron SFE, Front month movement**





**Table 10: 23 micron SFE**

Wednesday, 8 June 2011

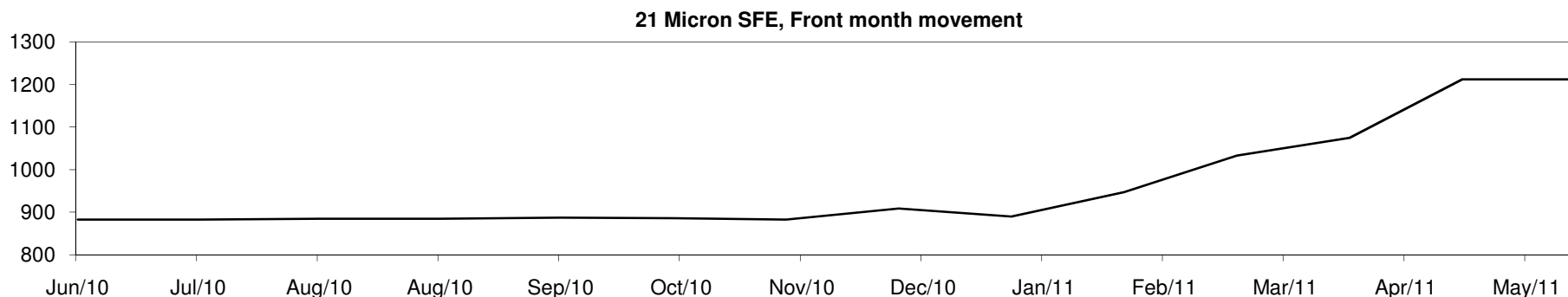
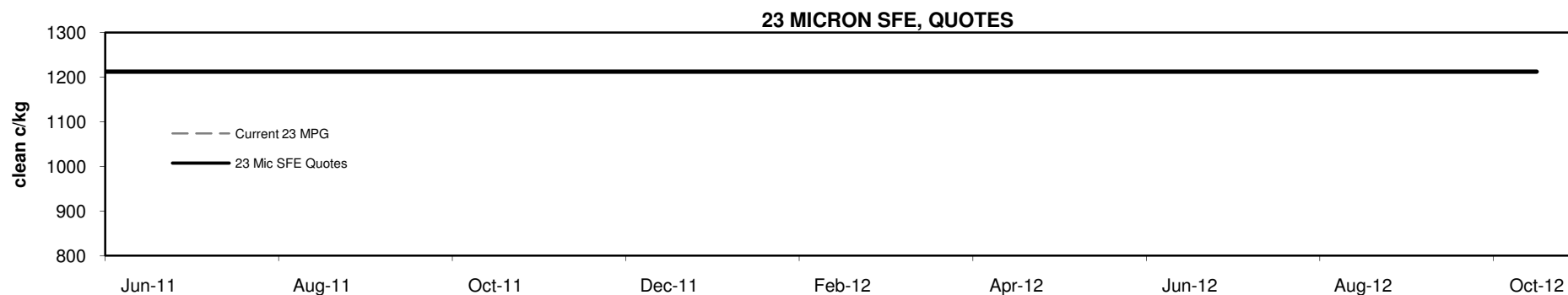
Delivery Mth	Jun-11	Aug-11	Oct-11	Dec-11	Feb-11	Apr-12	Jun-12	Aug-12	Oct-12
23 Micron SFE	1212	1212	1212	1212	1212	1212	1212	1212	1212
Average	934	944	946	958	870	1002	1041	1114	1212
Maximum	1212	1212	1212	1212	1212	1212	1212	1212	1212
Minimum	803	883	883	883	760	883	890	1033	1212

**Table 11: 23 micron SFE, as a percentile of the 23 micron MPG**

3 Year Percentile	93%	93%	93%	93%	93%	93%	93%	93%	93%
10 Year Percentile	94%	94%	94%	94%	94%	94%	94%	94%	94%

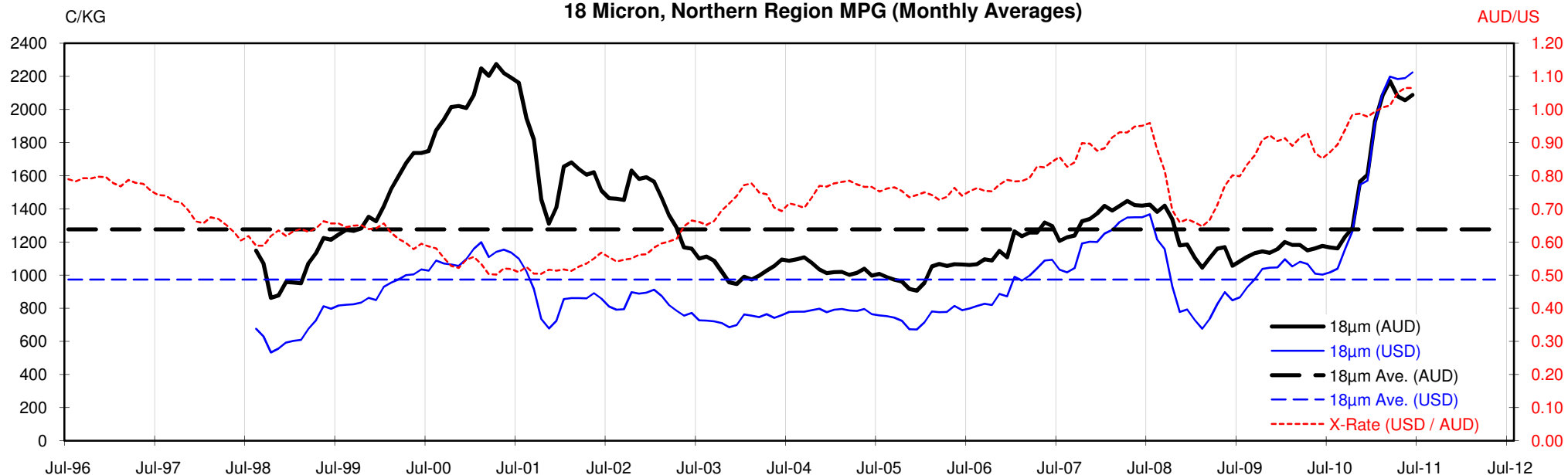
**Table 12: 23 micron SFE, compared to MPG**

SFE - MPG	-102	-8%	-102	-8%	-102	-8%	-102	-8%	-102	-8%	-102	-8%	-102	-8%	-102	-8%	-102	-8%
SFE - MPG, 1 year Ave.	+185	18%	+185	18%	+185	18%	+185	18%	+185	18%	+185	18%	+185	18%	+185	18%	+185	18%
SFE - MPG, 3 year Ave.	+336	38%	+336	38%	+336	38%	+336	38%	+336	38%	+336	38%	+336	38%	+336	38%	+336	38%
SFE - MPG, 10 year Ave.	+358	42%	+358	42%	+358	42%	+358	42%	+358	42%	+358	42%	+358	42%	+358	42%	+358	42%

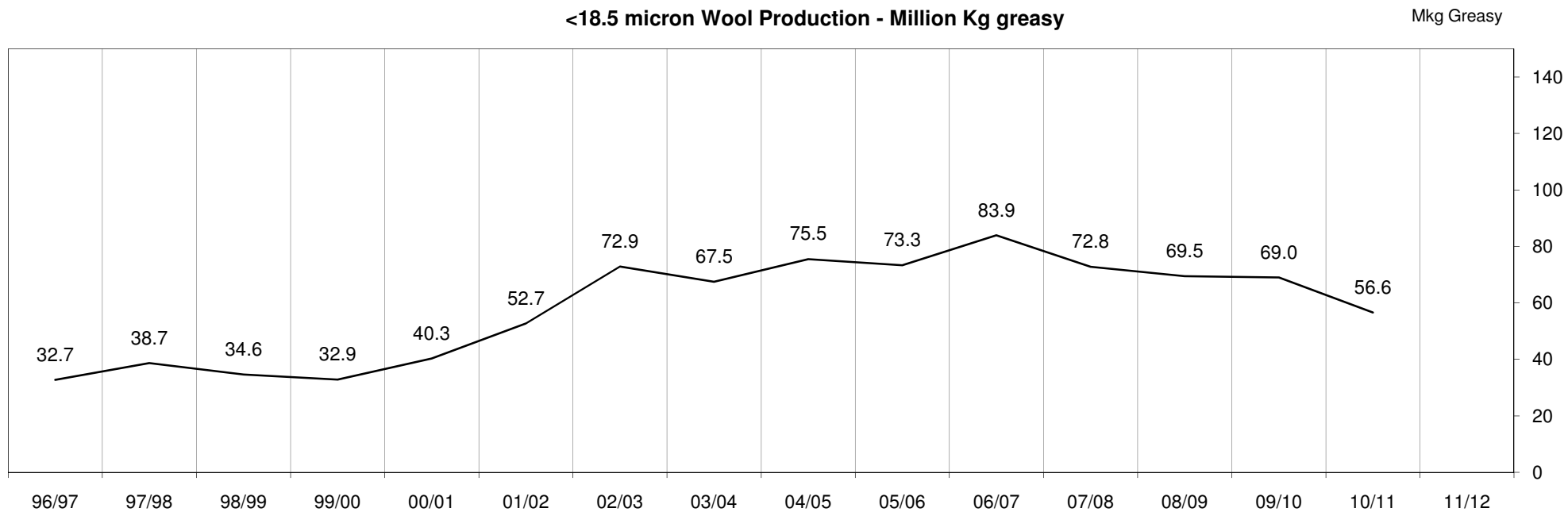


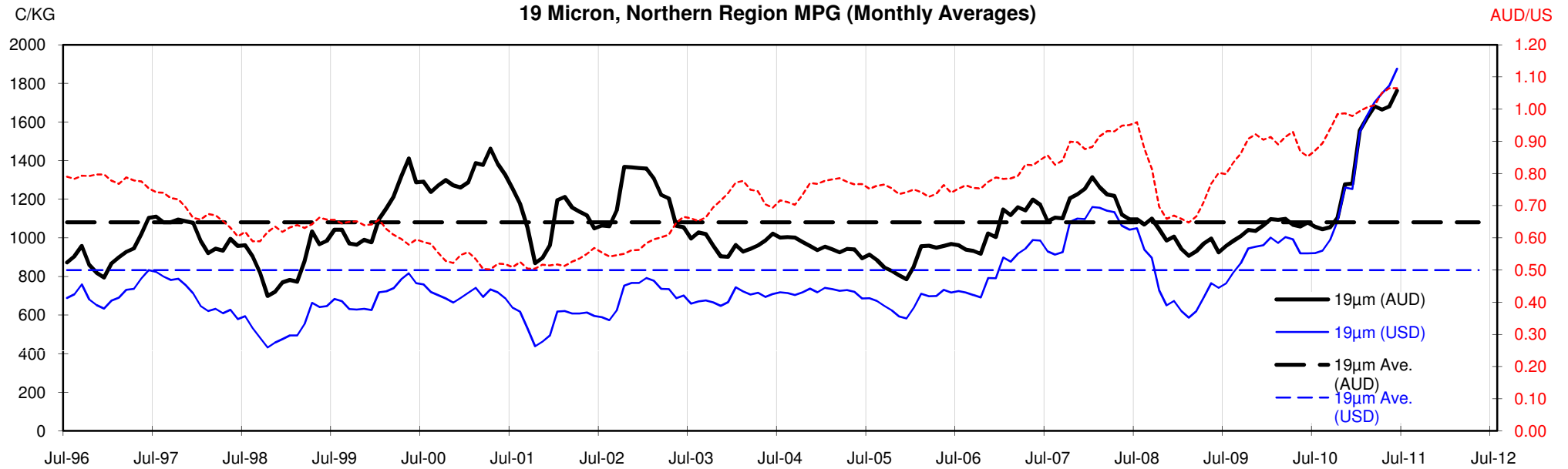


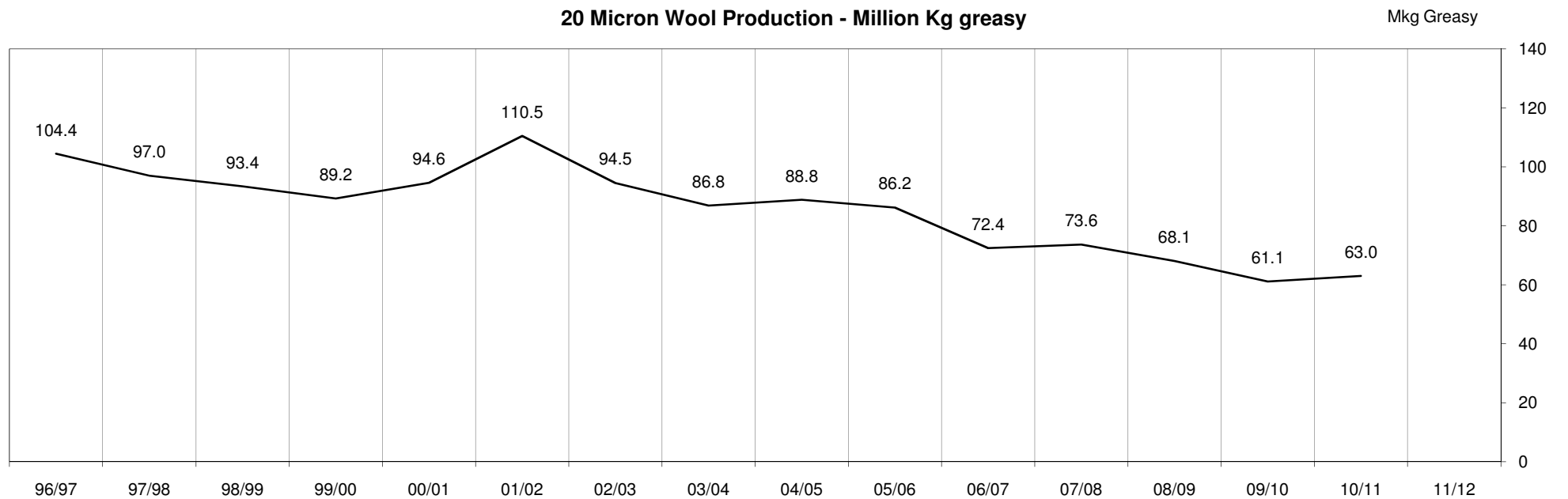
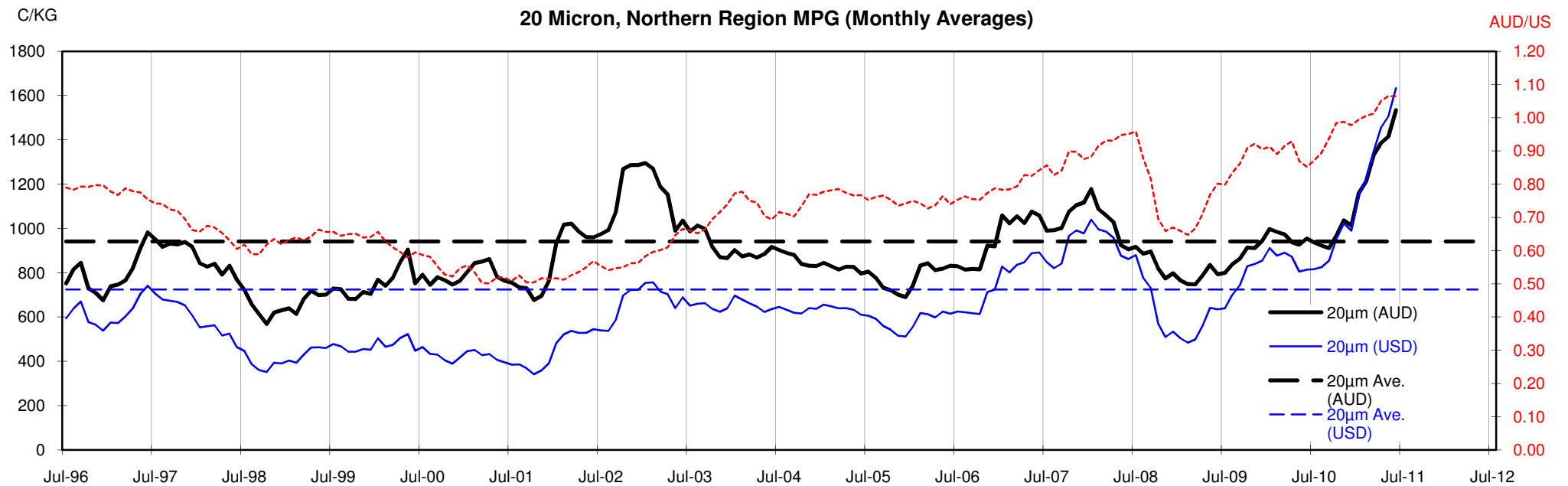
### 18 Micron, Northern Region MPG (Monthly Averages)



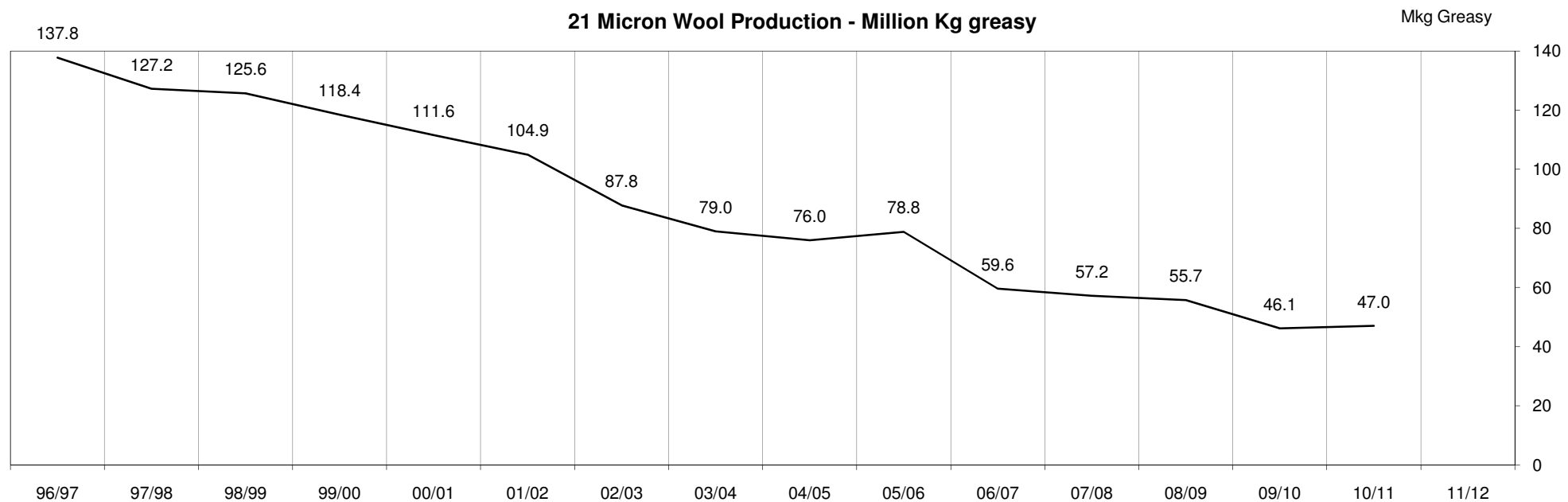
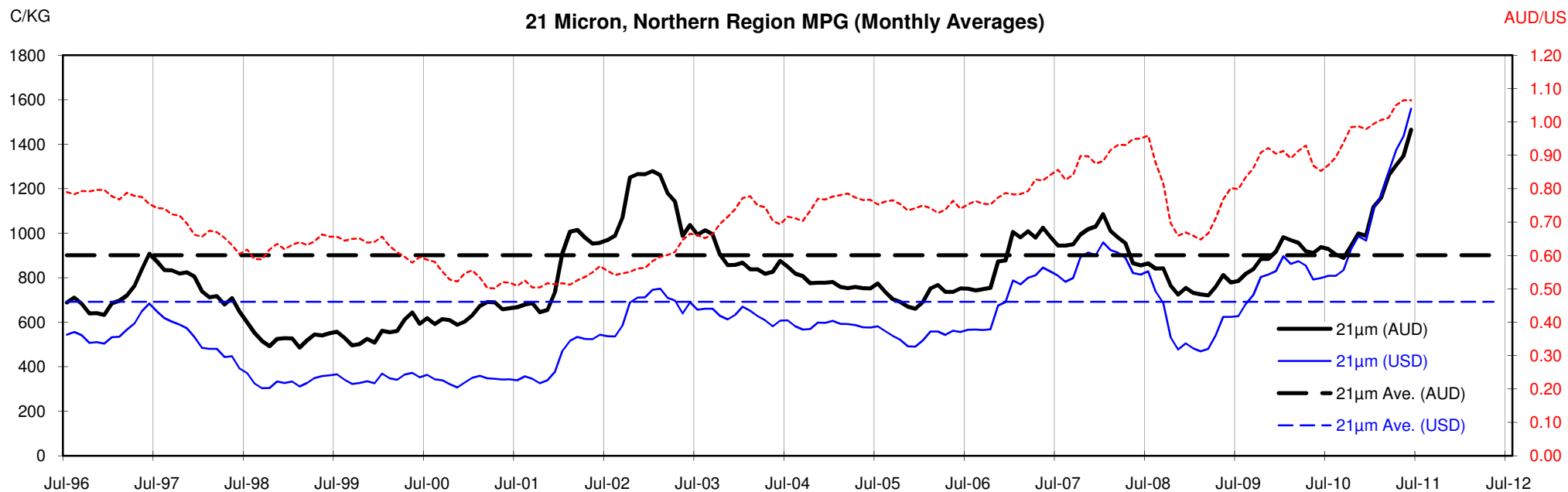
### <18.5 micron Wool Production - Million Kg greasy





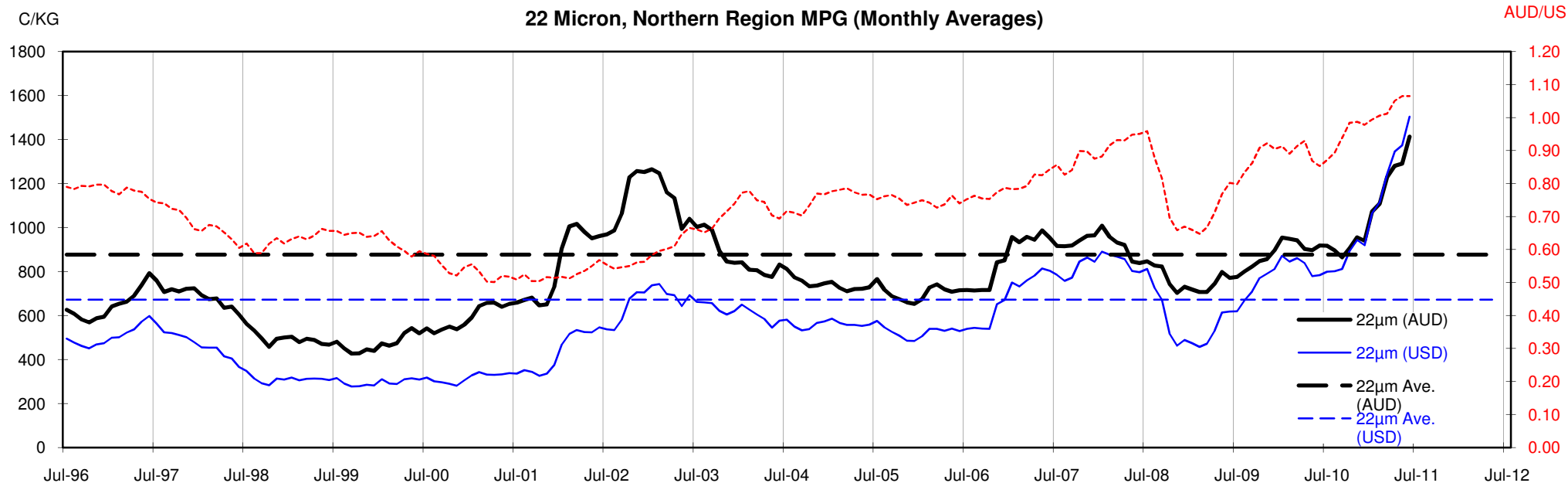




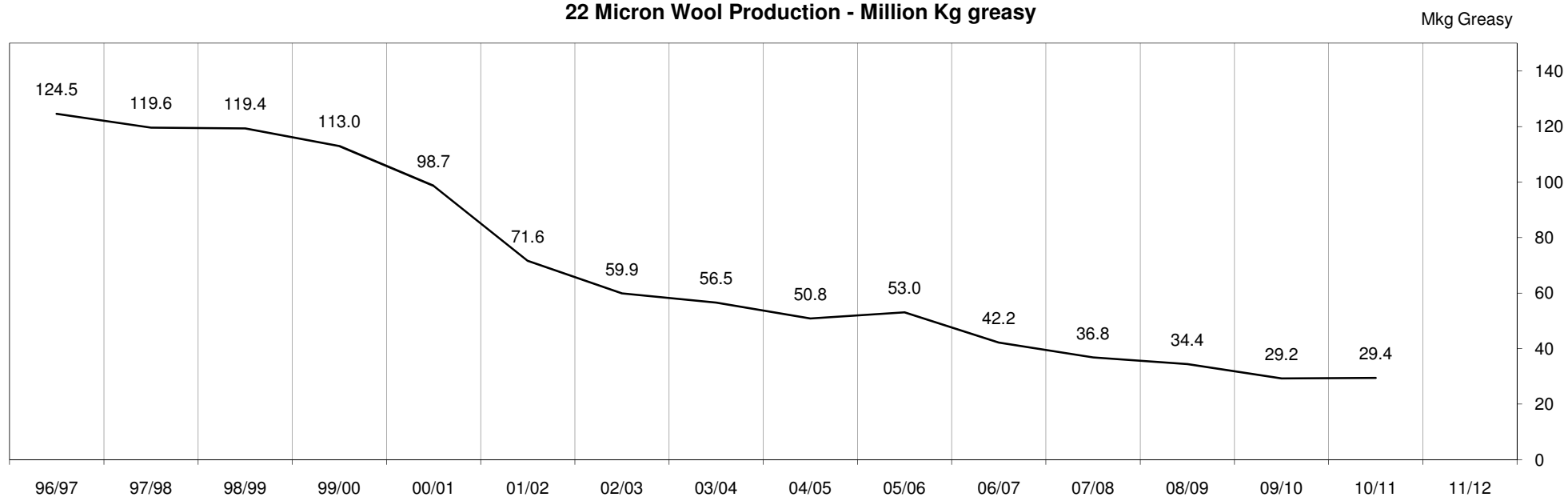


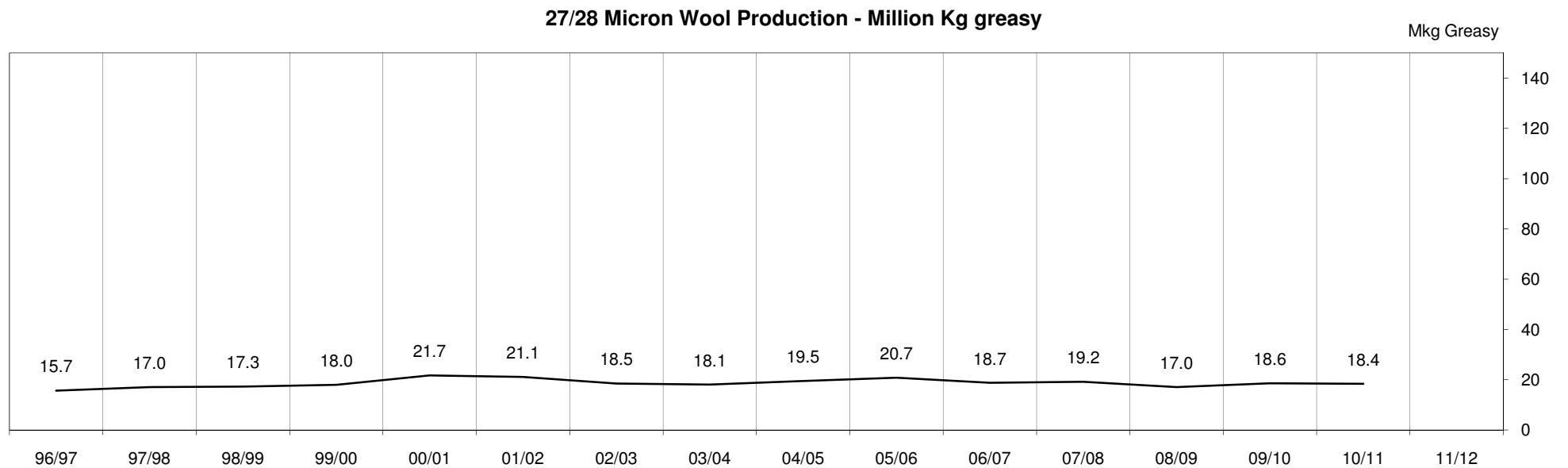
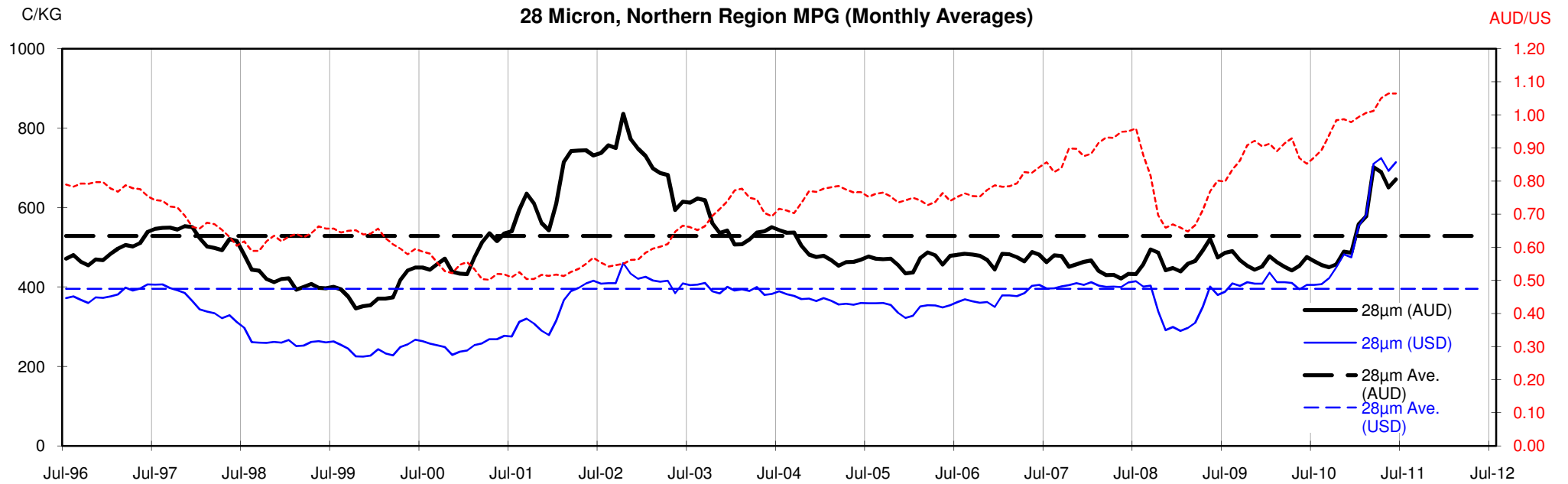


22 Micron, Northern Region MPG (Monthly Averages)



22 Micron Wool Production - Million Kg greasy





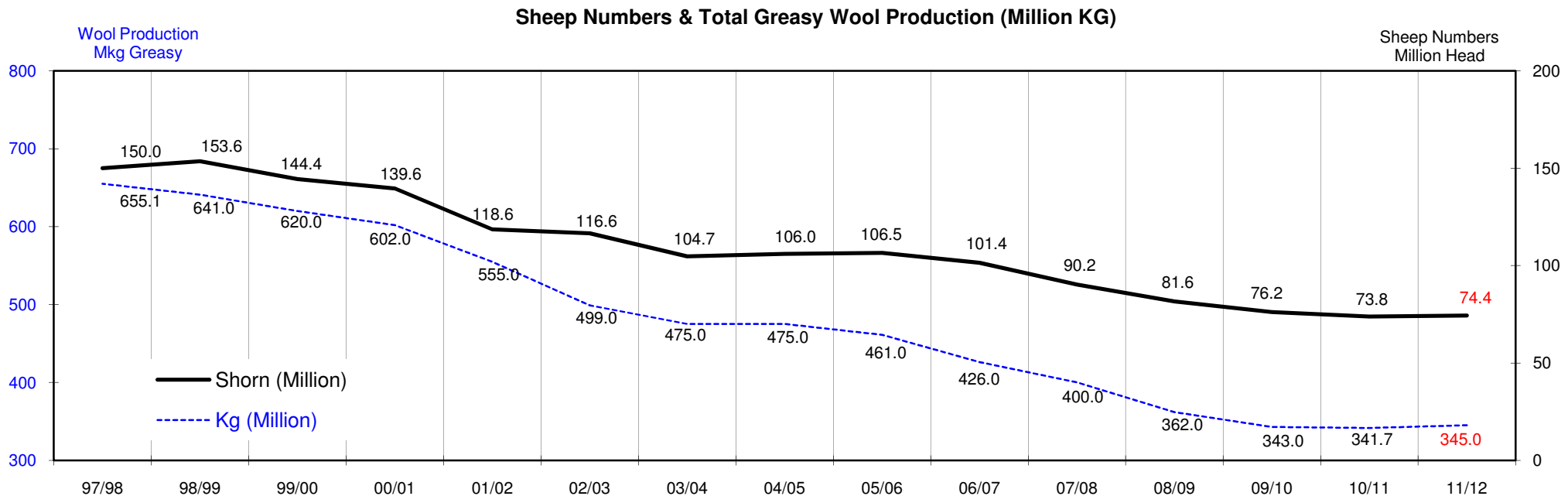
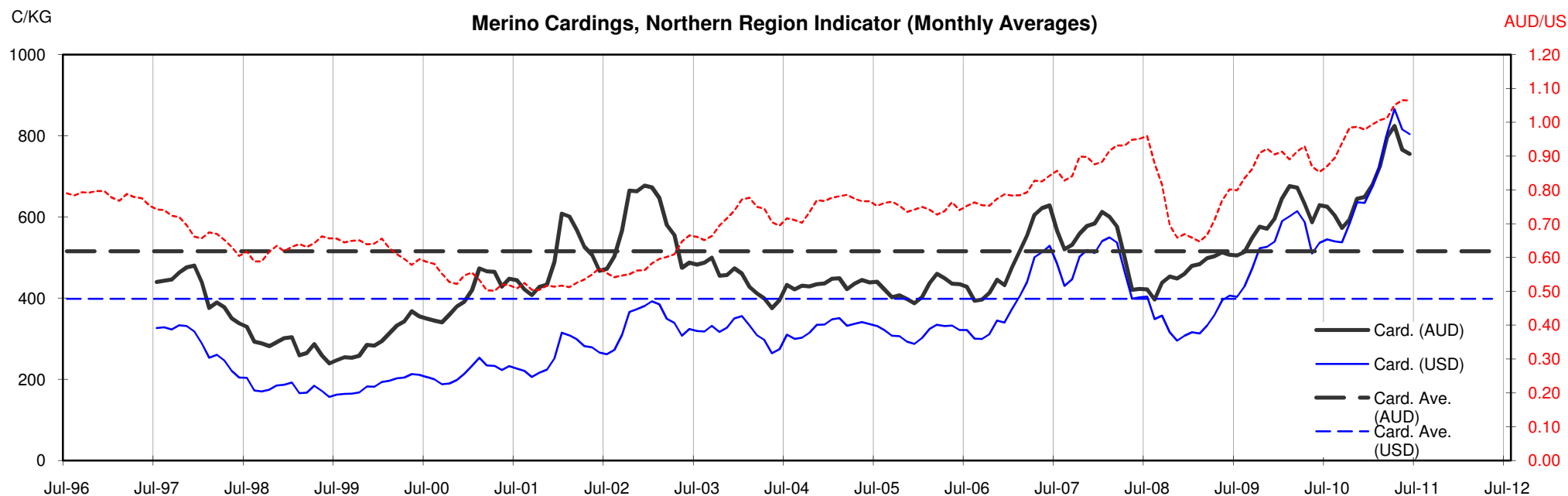




Table 13: Returns pr head for skirted fleece wool.

Skirted FLC Weight			Micron																	
9 Kg			16	16.5	17	17.5	18	18.5	19	19.5	20	21	22	23	24	25	26	28	30	32
Yield (Sch Dry)	25%	Current	\$60	\$57	\$54	\$51	\$47	\$42	\$40	\$38	\$35	\$34	\$33	\$30	\$25	\$22	\$20	\$15	\$14	\$13
		10yr ave.			\$32		\$29		\$24		\$21	\$20	\$20	\$19	\$18	\$16	\$15	\$12	\$10	\$9
	30%	Current	\$72	\$68	\$65	\$61	\$56	\$51	\$48	\$45	\$42	\$40	\$39	\$35	\$30	\$26	\$24	\$18	\$16	\$15
		10yr ave.			\$39		\$34		\$29		\$25	\$24	\$24	\$23	\$22	\$20	\$18	\$14	\$12	\$11
	35%	Current	\$84	\$79	\$76	\$71	\$65	\$59	\$56	\$53	\$49	\$47	\$46	\$41	\$34	\$31	\$28	\$21	\$19	\$18
		10yr ave.			\$45		\$40		\$34		\$30	\$28	\$28	\$27	\$26	\$23	\$21	\$17	\$15	\$13
	40%	Current	\$96	\$91	\$86	\$81	\$75	\$68	\$64	\$60	\$56	\$54	\$52	\$47	\$39	\$35	\$32	\$24	\$22	\$20
		10yr ave.			\$51		\$46		\$39		\$34	\$32	\$32	\$31	\$29	\$26	\$24	\$19	\$17	\$15
	45%	Current	\$108	\$102	\$97	\$92	\$84	\$76	\$72	\$68	\$64	\$61	\$59	\$53	\$44	\$39	\$35	\$27	\$25	\$23
		10yr ave.			\$58		\$52		\$44		\$38	\$36	\$36	\$35	\$33	\$29	\$27	\$21	\$19	\$17
	50%	Current	\$120	\$113	\$108	\$102	\$94	\$84	\$80	\$75	\$71	\$67	\$65	\$59	\$49	\$44	\$39	\$30	\$27	\$25
		10yr ave.			\$64		\$57		\$49		\$42	\$41	\$39	\$38	\$37	\$33	\$30	\$24	\$21	\$19
	55%	Current	\$132	\$125	\$119	\$112	\$103	\$93	\$87	\$83	\$78	\$74	\$72	\$65	\$54	\$48	\$43	\$33	\$30	\$28
		10yr ave.			\$71		\$63		\$54		\$47	\$45	\$43	\$42	\$40	\$36	\$33	\$26	\$23	\$21
	60%	Current	\$144	\$136	\$130	\$122	\$112	\$101	\$95	\$90	\$85	\$81	\$78	\$71	\$59	\$52	\$47	\$36	\$33	\$30
		10yr ave.			\$77		\$69		\$58		\$51	\$49	\$47	\$46	\$44	\$39	\$36	\$29	\$25	\$23
	65%	Current	\$156	\$147	\$140	\$132	\$122	\$110	\$103	\$98	\$92	\$88	\$85	\$77	\$64	\$57	\$51	\$39	\$36	\$33
		10yr ave.			\$84		\$75		\$63		\$55	\$53	\$51	\$50	\$48	\$43	\$39	\$31	\$27	\$24
	70%	Current	\$168	\$159	\$151	\$142	\$131	\$118	\$111	\$105	\$99	\$94	\$91	\$83	\$69	\$61	\$55	\$42	\$38	\$35
		10yr ave.			\$90		\$80		\$68		\$59	\$57	\$55	\$54	\$51	\$46	\$42	\$33	\$29	\$26
	75%	Current	\$180	\$170	\$162	\$153	\$140	\$127	\$119	\$113	\$106	\$101	\$98	\$89	\$74	\$65	\$59	\$45	\$41	\$38
		10yr ave.			\$97		\$86		\$73		\$64	\$61	\$59	\$58	\$55	\$49	\$45	\$36	\$31	\$28
	80%	Current	\$192	\$181	\$173	\$163	\$150	\$135	\$127	\$120	\$113	\$108	\$104	\$95	\$79	\$70	\$63	\$48	\$44	\$40
		10yr ave.			\$103		\$92		\$78		\$68	\$65	\$63	\$61	\$58	\$52	\$48	\$38	\$33	\$30
	85%	Current	\$204	\$193	\$184	\$173	\$159	\$144	\$135	\$128	\$120	\$115	\$111	\$101	\$84	\$74	\$67	\$51	\$47	\$43
		10yr ave.			\$109		\$98		\$83		\$72	\$69	\$67	\$65	\$62	\$56	\$51	\$40	\$35	\$32

The above shows estimated returns per head for skirted fleece wool. These figures do not take into account the value of skirtings and oddments and do not take into account discounts that may apply for faults under individual circumstances. These figures are based on a market index of 100% and should be used as a guide only. Returns over \$30 / head for fleece wool are highlighted.

Source: Australian Wool Exchange, Australian Wool Innovation, Sydney Futures Exchange, x-rates.com

Disclaimer: While all due care has been taken in the preparation of this document, no warranty is made as to its accuracy, reliability or completeness. To the extent permitted by law neither Jemalong or their sources including subsidiaries and staff, accept liability to any person for loss or damage arising from the use of this information.



Table 14: Returns pr head for skirted fleece wool.

Skirted FLC Weight  8 Kg			Micron																	
			16	16.5	17	17.5	18	18.5	19	19.5	20	21	22	23	24	25	26	28	30	32
Yield (Sch Dry)	25%	Current	\$53	\$50	\$48	\$45	\$42	\$38	\$35	\$33	\$31	\$30	\$29	\$26	\$22	\$19	\$18	\$13	\$12	\$11
		10yr ave.			\$29		\$26		\$22		\$19	\$18	\$18	\$17	\$16	\$15	\$13	\$11	\$9	\$8
	30%	Current	\$64	\$60	\$58	\$54	\$50	\$45	\$42	\$40	\$38	\$36	\$35	\$32	\$26	\$23	\$21	\$16	\$15	\$13
		10yr ave.			\$34		\$31		\$26		\$23	\$22	\$21	\$20	\$19	\$17	\$16	\$13	\$11	\$10
	35%	Current	\$75	\$71	\$67	\$63	\$58	\$53	\$49	\$47	\$44	\$42	\$40	\$37	\$31	\$27	\$25	\$19	\$17	\$16
		10yr ave.			\$40		\$36		\$30		\$26	\$25	\$25	\$24	\$23	\$20	\$19	\$15	\$13	\$12
	40%	Current	\$85	\$81	\$77	\$72	\$66	\$60	\$57	\$53	\$50	\$48	\$46	\$42	\$35	\$31	\$28	\$22	\$20	\$18
		10yr ave.			\$46		\$41		\$35		\$30	\$29	\$28	\$27	\$26	\$23	\$21	\$17	\$15	\$13
	45%	Current	\$96	\$91	\$86	\$81	\$75	\$68	\$64	\$60	\$56	\$54	\$52	\$47	\$39	\$35	\$32	\$24	\$22	\$20
		10yr ave.			\$51		\$46		\$39		\$34	\$32	\$32	\$31	\$29	\$26	\$24	\$19	\$17	\$15
	50%	Current	\$107	\$101	\$96	\$90	\$83	\$75	\$71	\$67	\$63	\$60	\$58	\$53	\$44	\$39	\$35	\$27	\$24	\$22
		10yr ave.			\$57		\$51		\$43		\$38	\$36	\$35	\$34	\$32	\$29	\$27	\$21	\$18	\$17
	55%	Current	\$117	\$111	\$106	\$99	\$91	\$83	\$78	\$73	\$69	\$66	\$64	\$58	\$48	\$43	\$39	\$30	\$27	\$25
		10yr ave.			\$63		\$56		\$48		\$41	\$40	\$39	\$38	\$36	\$32	\$29	\$23	\$20	\$18
60%	Current	\$128	\$121	\$115	\$108	\$100	\$90	\$85	\$80	\$75	\$72	\$69	\$63	\$52	\$47	\$42	\$32	\$29	\$27	
	10yr ave.			\$69		\$61		\$52		\$45	\$43	\$42	\$41	\$39	\$35	\$32	\$25	\$22	\$20	
65%	Current	\$139	\$131	\$125	\$118	\$108	\$98	\$92	\$87	\$82	\$78	\$75	\$68	\$57	\$50	\$46	\$35	\$32	\$29	
	10yr ave.			\$74		\$66		\$56		\$49	\$47	\$46	\$44	\$42	\$38	\$35	\$28	\$24	\$22	
70%	Current	\$150	\$141	\$134	\$127	\$116	\$105	\$99	\$93	\$88	\$84	\$81	\$74	\$61	\$54	\$49	\$38	\$34	\$31	
	10yr ave.			\$80		\$71		\$61		\$53	\$50	\$49	\$48	\$45	\$41	\$37	\$30	\$26	\$23	
75%	Current	\$160	\$151	\$144	\$136	\$125	\$113	\$106	\$100	\$94	\$90	\$87	\$79	\$66	\$58	\$53	\$40	\$37	\$34	
	10yr ave.			\$86		\$77		\$65		\$56	\$54	\$53	\$51	\$49	\$44	\$40	\$32	\$28	\$25	
80%	Current	\$171	\$161	\$154	\$145	\$133	\$120	\$113	\$107	\$100	\$96	\$93	\$84	\$70	\$62	\$56	\$43	\$39	\$36	
	10yr ave.			\$92		\$82		\$69		\$60	\$58	\$56	\$55	\$52	\$47	\$43	\$34	\$30	\$27	
85%	Current	\$182	\$171	\$163	\$154	\$141	\$128	\$120	\$113	\$107	\$102	\$98	\$89	\$74	\$66	\$60	\$46	\$42	\$38	
	10yr ave.			\$97		\$87		\$74		\$64	\$61	\$60	\$58	\$55	\$50	\$45	\$36	\$31	\$28	

The above shows estimated returns per head for skirted fleece wool. These figures do not take into account the value of skirtings and oddments and do not take into account discounts that may apply for faults under individual circumstances. These figures are based on a market index of 100% and should be used as a guide only. Returns over \$30 / head for fleece wool are highlighted.

Source: Australian Wool Exchange, Australian Wool Innovation, Sydney Futures Exchange, x-rates.com

Disclaimer: While all due care has been taken in the preparation of this document, no warranty is made as to its accuracy, reliability or completeness. To the extent permitted by law neither Jemalong or their sources including subsidiaries and staff, accept liability to any person for loss or damage arising from the use of this information.



Table 15: Returns pr head for skirted fleece wool.

Skirted FLC Weight		Micron																	
7 Kg		16	16.5	17	17.5	18	18.5	19	19.5	20	21	22	23	24	25	26	28	30	32
Yield (Sch Dry)	25% Current	\$47	\$44	\$42	\$40	\$36	\$33	\$31	\$29	\$27	\$26	\$25	\$23	\$19	\$17	\$15	\$12	\$11	\$10
	10yr ave.			\$25		\$22		\$19		\$16	\$16	\$15	\$15	\$14	\$13	\$12	\$9	\$8	\$7
	30% Current	\$56	\$53	\$50	\$47	\$44	\$39	\$37	\$35	\$33	\$31	\$30	\$28	\$23	\$20	\$18	\$14	\$13	\$12
	10yr ave.			\$30		\$27		\$23		\$20	\$19	\$18	\$18	\$17	\$15	\$14	\$11	\$10	\$9
	35% Current	\$65	\$62	\$59	\$55	\$51	\$46	\$43	\$41	\$38	\$37	\$35	\$32	\$27	\$24	\$21	\$16	\$15	\$14
	10yr ave.			\$35		\$31		\$26		\$23	\$22	\$21	\$21	\$20	\$18	\$16	\$13	\$11	\$10
	40% Current	\$75	\$71	\$67	\$63	\$58	\$53	\$49	\$47	\$44	\$42	\$40	\$37	\$31	\$27	\$25	\$19	\$17	\$16
	10yr ave.			\$40		\$36		\$30		\$26	\$25	\$25	\$24	\$23	\$20	\$19	\$15	\$13	\$12
	45% Current	\$84	\$79	\$76	\$71	\$65	\$59	\$56	\$53	\$49	\$47	\$46	\$41	\$34	\$31	\$28	\$21	\$19	\$18
	10yr ave.			\$45		\$40		\$34		\$30	\$28	\$28	\$27	\$26	\$23	\$21	\$17	\$15	\$13
	50% Current	\$93	\$88	\$84	\$79	\$73	\$66	\$62	\$58	\$55	\$52	\$51	\$46	\$38	\$34	\$31	\$24	\$21	\$20
	10yr ave.			\$50		\$45		\$38		\$33	\$32	\$31	\$30	\$28	\$25	\$23	\$19	\$16	\$15
	55% Current	\$103	\$97	\$92	\$87	\$80	\$72	\$68	\$64	\$60	\$58	\$56	\$51	\$42	\$37	\$34	\$26	\$24	\$22
	10yr ave.			\$55		\$49		\$42		\$36	\$35	\$34	\$33	\$31	\$28	\$26	\$20	\$18	\$16
	60% Current	\$112	\$106	\$101	\$95	\$87	\$79	\$74	\$70	\$66	\$63	\$61	\$55	\$46	\$41	\$37	\$28	\$26	\$24
	10yr ave.			\$60		\$54		\$45		\$40	\$38	\$37	\$36	\$34	\$31	\$28	\$22	\$19	\$18
	65% Current	\$121	\$115	\$109	\$103	\$95	\$85	\$80	\$76	\$71	\$68	\$66	\$60	\$50	\$44	\$40	\$31	\$28	\$25
	10yr ave.			\$65		\$58		\$49		\$43	\$41	\$40	\$39	\$37	\$33	\$30	\$24	\$21	\$19
	70% Current	\$131	\$123	\$118	\$111	\$102	\$92	\$87	\$82	\$77	\$73	\$71	\$64	\$54	\$48	\$43	\$33	\$30	\$27
	10yr ave.			\$70		\$63		\$53		\$46	\$44	\$43	\$42	\$40	\$36	\$33	\$26	\$23	\$20
	75% Current	\$140	\$132	\$126	\$119	\$109	\$99	\$93	\$88	\$82	\$79	\$76	\$69	\$57	\$51	\$46	\$35	\$32	\$29
	10yr ave.			\$75		\$67		\$57		\$49	\$47	\$46	\$45	\$43	\$38	\$35	\$28	\$24	\$22
	80% Current	\$150	\$141	\$134	\$127	\$116	\$105	\$99	\$93	\$88	\$84	\$81	\$74	\$61	\$54	\$49	\$38	\$34	\$31
	10yr ave.			\$80		\$71		\$61		\$53	\$50	\$49	\$48	\$45	\$41	\$37	\$30	\$26	\$23
	85% Current	\$159	\$150	\$143	\$134	\$124	\$112	\$105	\$99	\$93	\$89	\$86	\$78	\$65	\$58	\$52	\$40	\$36	\$33
	10yr ave.			\$85		\$76		\$64		\$56	\$54	\$52	\$51	\$48	\$43	\$40	\$31	\$27	\$25

The above shows estimated returns per head for skirted fleece wool. These figures do not take into account the value of skirtings and oddments and do not take into account discounts that may apply for faults under individual circumstances. These figures are based on a market index of 100% and should be used as a guide only. Returns over \$30 / head for fleece wool are highlighted.

Source: Australian Wool Exchange, Australian Wool Innovation, Sydney Futures Exchange, x-rates.com

Disclaimer: While all due care has been taken in the preparation of this document, no warranty is made as to its accuracy, reliability or completeness. To the extent permitted by law neither Jemalong or their sources including subsidiaries and staff, accept liability to any person for loss or damage arising from the use of this information.



Table 16: Returns pr head for skirted fleece wool.

Skirted FLC Weight		Micron																	
6 Kg		16	16.5	17	17.5	18	18.5	19	19.5	20	21	22	23	24	25	26	28	30	32
Yield (Sch Dry)	25% Current	\$40	\$38	\$36	\$34	\$31	\$28	\$27	\$25	\$24	\$22	\$22	\$20	\$16	\$15	\$13	\$10	\$9	\$8
	10yr ave.			\$21		\$19		\$16		\$14	\$14	\$13	\$13	\$12	\$11	\$10	\$8	\$7	\$6
	30% Current	\$48	\$45	\$43	\$41	\$37	\$34	\$32	\$30	\$28	\$27	\$26	\$24	\$20	\$17	\$16	\$12	\$11	\$10
	10yr ave.			\$26		\$23		\$19		\$17	\$16	\$16	\$15	\$15	\$13	\$12	\$10	\$8	\$8
	35% Current	\$56	\$53	\$50	\$47	\$44	\$39	\$37	\$35	\$33	\$31	\$30	\$28	\$23	\$20	\$18	\$14	\$13	\$12
	10yr ave.			\$30		\$27		\$23		\$20	\$19	\$18	\$18	\$17	\$15	\$14	\$11	\$10	\$9
	40% Current	\$64	\$60	\$58	\$54	\$50	\$45	\$42	\$40	\$38	\$36	\$35	\$32	\$26	\$23	\$21	\$16	\$15	\$13
	10yr ave.			\$34		\$31		\$26		\$23	\$22	\$21	\$20	\$19	\$17	\$16	\$13	\$11	\$10
	45% Current	\$72	\$68	\$65	\$61	\$56	\$51	\$48	\$45	\$42	\$40	\$39	\$35	\$30	\$26	\$24	\$18	\$16	\$15
	10yr ave.			\$39		\$34		\$29		\$25	\$24	\$24	\$23	\$22	\$20	\$18	\$14	\$12	\$11
	50% Current	\$80	\$76	\$72	\$68	\$62	\$56	\$53	\$50	\$47	\$45	\$43	\$39	\$33	\$29	\$26	\$20	\$18	\$17
	10yr ave.			\$43		\$38		\$32		\$28	\$27	\$26	\$26	\$24	\$22	\$20	\$16	\$14	\$13
	55% Current	\$88	\$83	\$79	\$75	\$69	\$62	\$58	\$55	\$52	\$49	\$48	\$43	\$36	\$32	\$29	\$22	\$20	\$18
	10yr ave.			\$47		\$42		\$36		\$31	\$30	\$29	\$28	\$27	\$24	\$22	\$17	\$15	\$14
	60% Current	\$96	\$91	\$86	\$81	\$75	\$68	\$64	\$60	\$56	\$54	\$52	\$47	\$39	\$35	\$32	\$24	\$22	\$20
	10yr ave.			\$51		\$46		\$39		\$34	\$32	\$32	\$31	\$29	\$26	\$24	\$19	\$17	\$15
	65% Current	\$104	\$98	\$94	\$88	\$81	\$73	\$69	\$65	\$61	\$58	\$56	\$51	\$43	\$38	\$34	\$26	\$24	\$22
	10yr ave.			\$56		\$50		\$42		\$37	\$35	\$34	\$33	\$32	\$28	\$26	\$21	\$18	\$16
	70% Current	\$112	\$106	\$101	\$95	\$87	\$79	\$74	\$70	\$66	\$63	\$61	\$55	\$46	\$41	\$37	\$28	\$26	\$24
	10yr ave.			\$60		\$54		\$45		\$40	\$38	\$37	\$36	\$34	\$31	\$28	\$22	\$19	\$18
	75% Current	\$120	\$113	\$108	\$102	\$94	\$84	\$80	\$75	\$71	\$67	\$65	\$59	\$49	\$44	\$39	\$30	\$27	\$25
	10yr ave.			\$64		\$57		\$49		\$42	\$41	\$39	\$38	\$37	\$33	\$30	\$24	\$21	\$19
	80% Current	\$128	\$121	\$115	\$108	\$100	\$90	\$85	\$80	\$75	\$72	\$69	\$63	\$52	\$47	\$42	\$32	\$29	\$27
	10yr ave.			\$69		\$61		\$52		\$45	\$43	\$42	\$41	\$39	\$35	\$32	\$25	\$22	\$20
	85% Current	\$136	\$129	\$122	\$115	\$106	\$96	\$90	\$85	\$80	\$76	\$74	\$67	\$56	\$49	\$45	\$34	\$31	\$29
	10yr ave.			\$73		\$65		\$55		\$48	\$46	\$45	\$44	\$41	\$37	\$34	\$27	\$24	\$21

The above shows estimated returns per head for skirted fleece wool. These figures do not take into account the value of skirtings and oddments and do not take into account discounts that may apply for faults under individual circumstances. These figures are based on a market index of 100% and should be used as a guide only. Returns over \$30 / head for fleece wool are highlighted.

Source: Australian Wool Exchange, Australian Wool Innovation, Sydney Futures Exchange, x-rates.com

Disclaimer: While all due care has been taken in the preparation of this document, no warranty is made as to its accuracy, reliability or completeness. To the extent permitted by law neither Jemalong or their sources including subsidiaries and staff, accept liability to any person for loss or damage arising from the use of this information.





Table 17: Returns pr head for skirted fleece wool.

Skirted FLC Weight		Micron																	
5 Kg		16	16.5	17	17.5	18	18.5	19	19.5	20	21	22	23	24	25	26	28	30	32
Yield (Sch Dry)	25% Current	\$33	\$32	\$30	\$28	\$26	\$23	\$22	\$21	\$20	\$19	\$18	\$16	\$14	\$12	\$11	\$8	\$8	\$7
	10yr ave.			\$18		\$16		\$14		\$12	\$11	\$11	\$11	\$10	\$9	\$8	\$7	\$6	\$5
	30% Current	\$40	\$38	\$36	\$34	\$31	\$28	\$27	\$25	\$24	\$22	\$22	\$20	\$16	\$15	\$13	\$10	\$9	\$8
	10yr ave.			\$21		\$19		\$16		\$14	\$14	\$13	\$13	\$12	\$11	\$10	\$8	\$7	\$6
	35% Current	\$47	\$44	\$42	\$40	\$36	\$33	\$31	\$29	\$27	\$26	\$25	\$23	\$19	\$17	\$15	\$12	\$11	\$10
	10yr ave.			\$25		\$22		\$19		\$16	\$16	\$15	\$15	\$14	\$13	\$12	\$9	\$8	\$7
	40% Current	\$53	\$50	\$48	\$45	\$42	\$38	\$35	\$33	\$31	\$30	\$29	\$26	\$22	\$19	\$18	\$13	\$12	\$11
	10yr ave.			\$29		\$26		\$22		\$19	\$18	\$18	\$17	\$16	\$15	\$13	\$11	\$9	\$8
	45% Current	\$60	\$57	\$54	\$51	\$47	\$42	\$40	\$38	\$35	\$34	\$33	\$30	\$25	\$22	\$20	\$15	\$14	\$13
	10yr ave.			\$32		\$29		\$24		\$21	\$20	\$20	\$19	\$18	\$16	\$15	\$12	\$10	\$9
	50% Current	\$67	\$63	\$60	\$57	\$52	\$47	\$44	\$42	\$39	\$37	\$36	\$33	\$27	\$24	\$22	\$17	\$15	\$14
	10yr ave.			\$36		\$32		\$27		\$24	\$23	\$22	\$21	\$20	\$18	\$17	\$13	\$12	\$10
	55% Current	\$73	\$69	\$66	\$62	\$57	\$52	\$49	\$46	\$43	\$41	\$40	\$36	\$30	\$27	\$24	\$18	\$17	\$15
	10yr ave.			\$39		\$35		\$30		\$26	\$25	\$24	\$23	\$22	\$20	\$18	\$15	\$13	\$11
	60% Current	\$80	\$76	\$72	\$68	\$62	\$56	\$53	\$50	\$47	\$45	\$43	\$39	\$33	\$29	\$26	\$20	\$18	\$17
	10yr ave.			\$43		\$38		\$32		\$28	\$27	\$26	\$26	\$24	\$22	\$20	\$16	\$14	\$13
	65% Current	\$87	\$82	\$78	\$73	\$68	\$61	\$57	\$54	\$51	\$49	\$47	\$43	\$36	\$32	\$28	\$22	\$20	\$18
	10yr ave.			\$46		\$41		\$35		\$31	\$29	\$29	\$28	\$26	\$24	\$22	\$17	\$15	\$14
	70% Current	\$93	\$88	\$84	\$79	\$73	\$66	\$62	\$58	\$55	\$52	\$51	\$46	\$38	\$34	\$31	\$24	\$21	\$20
	10yr ave.			\$50		\$45		\$38		\$33	\$32	\$31	\$30	\$28	\$25	\$23	\$19	\$16	\$15
	75% Current	\$100	\$95	\$90	\$85	\$78	\$70	\$66	\$63	\$59	\$56	\$54	\$49	\$41	\$36	\$33	\$25	\$23	\$21
	10yr ave.			\$54		\$48		\$41		\$35	\$34	\$33	\$32	\$30	\$27	\$25	\$20	\$17	\$16
	80% Current	\$107	\$101	\$96	\$90	\$83	\$75	\$71	\$67	\$63	\$60	\$58	\$53	\$44	\$39	\$35	\$27	\$24	\$22
	10yr ave.			\$57		\$51		\$43		\$38	\$36	\$35	\$34	\$32	\$29	\$27	\$21	\$18	\$17
	85% Current	\$113	\$107	\$102	\$96	\$88	\$80	\$75	\$71	\$67	\$64	\$61	\$56	\$46	\$41	\$37	\$29	\$26	\$24
	10yr ave.			\$61		\$54		\$46		\$40	\$38	\$37	\$36	\$35	\$31	\$28	\$22	\$20	\$18

The above shows estimated returns per head for skirted fleece wool. These figures do not take into account the value of skirtings and oddments and do not take into account discounts that may apply for faults under individual circumstances. These figures are based on a market index of 100% and should be used as a guide only. Returns over \$30 / head for fleece wool are highlighted.

Source: Australian Wool Exchange, Australian Wool Innovation, Sydney Futures Exchange, x-rates.com

Disclaimer: While all due care has been taken in the preparation of this document, no warranty is made as to its accuracy, reliability or completeness. To the extent permitted by law neither Jemalong or their sources including subsidiaries and staff, accept liability to any person for loss or damage arising from the use of this information.



Table 18: Returns pr head for skirted fleece wool.

Skirted FLC Weight		Micron																	
4 Kg		16	16.5	17	17.5	18	18.5	19	19.5	20	21	22	23	24	25	26	28	30	32
Yield (Sch Dry)	25% Current	\$27	\$25	\$24	\$23	\$21	\$19	\$18	\$17	\$16	\$15	\$14	\$13	\$11	\$10	\$9	\$7	\$6	\$6
	10yr ave.			\$14		\$13		\$11		\$9	\$9	\$9	\$9	\$8	\$7	\$7	\$5	\$5	\$4
	30% Current	\$32	\$30	\$29	\$27	\$25	\$23	\$21	\$20	\$19	\$18	\$17	\$16	\$13	\$12	\$11	\$8	\$7	\$7
	10yr ave.			\$17		\$15		\$13		\$11	\$11	\$11	\$10	\$10	\$9	\$8	\$6	\$6	\$5
	35% Current	\$37	\$35	\$34	\$32	\$29	\$26	\$25	\$23	\$22	\$21	\$20	\$18	\$15	\$14	\$12	\$9	\$9	\$8
	10yr ave.			\$20		\$18		\$15		\$13	\$13	\$12	\$12	\$11	\$10	\$9	\$7	\$6	\$6
	40% Current	\$43	\$40	\$38	\$36	\$33	\$30	\$28	\$27	\$25	\$24	\$23	\$21	\$17	\$16	\$14	\$11	\$10	\$9
	10yr ave.			\$23		\$20		\$17		\$15	\$14	\$14	\$14	\$13	\$12	\$11	\$8	\$7	\$7
	45% Current	\$48	\$45	\$43	\$41	\$37	\$34	\$32	\$30	\$28	\$27	\$26	\$24	\$20	\$17	\$16	\$12	\$11	\$10
	10yr ave.			\$26		\$23		\$19		\$17	\$16	\$16	\$15	\$15	\$13	\$12	\$10	\$8	\$8
	50% Current	\$53	\$50	\$48	\$45	\$42	\$38	\$35	\$33	\$31	\$30	\$29	\$26	\$22	\$19	\$18	\$13	\$12	\$11
	10yr ave.			\$29		\$26		\$22		\$19	\$18	\$18	\$17	\$16	\$15	\$13	\$11	\$9	\$8
	55% Current	\$59	\$55	\$53	\$50	\$46	\$41	\$39	\$37	\$34	\$33	\$32	\$29	\$24	\$21	\$19	\$15	\$13	\$12
	10yr ave.			\$31		\$28		\$24		\$21	\$20	\$19	\$19	\$18	\$16	\$15	\$12	\$10	\$9
	60% Current	\$64	\$60	\$58	\$54	\$50	\$45	\$42	\$40	\$38	\$36	\$35	\$32	\$26	\$23	\$21	\$16	\$15	\$13
	10yr ave.			\$34		\$31		\$26		\$23	\$22	\$21	\$20	\$19	\$17	\$16	\$13	\$11	\$10
	65% Current	\$69	\$66	\$62	\$59	\$54	\$49	\$46	\$43	\$41	\$39	\$38	\$34	\$28	\$25	\$23	\$17	\$16	\$15
	10yr ave.			\$37		\$33		\$28		\$24	\$23	\$23	\$22	\$21	\$19	\$17	\$14	\$12	\$11
	70% Current	\$75	\$71	\$67	\$63	\$58	\$53	\$49	\$47	\$44	\$42	\$40	\$37	\$31	\$27	\$25	\$19	\$17	\$16
	10yr ave.			\$40		\$36		\$30		\$26	\$25	\$25	\$24	\$23	\$20	\$19	\$15	\$13	\$12
	75% Current	\$80	\$76	\$72	\$68	\$62	\$56	\$53	\$50	\$47	\$45	\$43	\$39	\$33	\$29	\$26	\$20	\$18	\$17
	10yr ave.			\$43		\$38		\$32		\$28	\$27	\$26	\$26	\$24	\$22	\$20	\$16	\$14	\$13
	80% Current	\$85	\$81	\$77	\$72	\$66	\$60	\$57	\$53	\$50	\$48	\$46	\$42	\$35	\$31	\$28	\$22	\$20	\$18
	10yr ave.			\$46		\$41		\$35		\$30	\$29	\$28	\$27	\$26	\$23	\$21	\$17	\$15	\$13
	85% Current	\$91	\$86	\$82	\$77	\$71	\$64	\$60	\$57	\$53	\$51	\$49	\$45	\$37	\$33	\$30	\$23	\$21	\$19
	10yr ave.			\$49		\$43		\$37		\$32	\$31	\$30	\$29	\$28	\$25	\$23	\$18	\$16	\$14

The above shows estimated returns per head for skirted fleece wool. These figures do not take into account the value of skirtings and oddments and do not take into account discounts that may apply for faults under individual circumstances. These figures are based on a market index of 100% and should be used as a guide only. Returns over \$30 / head for fleece wool are highlighted.

Source: Australian Wool Exchange, Australian Wool Innovation, Sydney Futures Exchange, x-rates.com

Disclaimer: While all due care has been taken in the preparation of this document, no warranty is made as to its accuracy, reliability or completeness. To the extent permitted by law neither Jemalong or their sources including subsidiaries and staff, accept liability to any person for loss or damage arising from the use of this information.



Table 19: Returns pr head for skirted fleece wool.

Skirted FLC Weight		Micron																	
3 Kg		16	16.5	17	17.5	18	18.5	19	19.5	20	21	22	23	24	25	26	28	30	32
Yield (Sch Dry)	25% Current	\$20	\$19	\$18	\$17	\$16	\$14	\$13	\$13	\$12	\$11	\$11	\$10	\$8	\$7	\$7	\$5	\$5	\$4
	10yr ave.			\$11		\$10		\$8		\$7	\$7	\$7	\$6	\$6	\$5	\$5	\$4	\$3	\$3
	30% Current	\$24	\$23	\$22	\$20	\$19	\$17	\$16	\$15	\$14	\$13	\$13	\$12	\$10	\$9	\$8	\$6	\$5	\$5
	10yr ave.			\$13		\$11		\$10		\$8	\$8	\$8	\$8	\$7	\$7	\$6	\$5	\$4	\$4
	35% Current	\$28	\$26	\$25	\$24	\$22	\$20	\$19	\$18	\$16	\$16	\$15	\$14	\$11	\$10	\$9	\$7	\$6	\$6
	10yr ave.			\$15		\$13		\$11		\$10	\$9	\$9	\$9	\$9	\$8	\$7	\$6	\$5	\$4
	40% Current	\$32	\$30	\$29	\$27	\$25	\$23	\$21	\$20	\$19	\$18	\$17	\$16	\$13	\$12	\$11	\$8	\$7	\$7
	10yr ave.			\$17		\$15		\$13		\$11	\$11	\$11	\$10	\$10	\$9	\$8	\$6	\$6	\$5
	45% Current	\$36	\$34	\$32	\$31	\$28	\$25	\$24	\$23	\$21	\$20	\$20	\$18	\$15	\$13	\$12	\$9	\$8	\$8
	10yr ave.			\$19		\$17		\$15		\$13	\$12	\$12	\$12	\$11	\$10	\$9	\$7	\$6	\$6
	50% Current	\$40	\$38	\$36	\$34	\$31	\$28	\$27	\$25	\$24	\$22	\$22	\$20	\$16	\$15	\$13	\$10	\$9	\$8
	10yr ave.			\$21		\$19		\$16		\$14	\$14	\$13	\$13	\$12	\$11	\$10	\$8	\$7	\$6
	55% Current	\$44	\$42	\$40	\$37	\$34	\$31	\$29	\$28	\$26	\$25	\$24	\$22	\$18	\$16	\$14	\$11	\$10	\$9
	10yr ave.			\$24		\$21		\$18		\$16	\$15	\$14	\$14	\$13	\$12	\$11	\$9	\$8	\$7
	60% Current	\$48	\$45	\$43	\$41	\$37	\$34	\$32	\$30	\$28	\$27	\$26	\$24	\$20	\$17	\$16	\$12	\$11	\$10
	10yr ave.			\$26		\$23		\$19		\$17	\$16	\$16	\$15	\$15	\$13	\$12	\$10	\$8	\$8
	65% Current	\$52	\$49	\$47	\$44	\$41	\$37	\$34	\$33	\$31	\$29	\$28	\$26	\$21	\$19	\$17	\$13	\$12	\$11
	10yr ave.			\$28		\$25		\$21		\$18	\$18	\$17	\$17	\$16	\$14	\$13	\$10	\$9	\$8
	70% Current	\$56	\$53	\$50	\$47	\$44	\$39	\$37	\$35	\$33	\$31	\$30	\$28	\$23	\$20	\$18	\$14	\$13	\$12
	10yr ave.			\$30		\$27		\$23		\$20	\$19	\$18	\$18	\$17	\$15	\$14	\$11	\$10	\$9
	75% Current	\$60	\$57	\$54	\$51	\$47	\$42	\$40	\$38	\$35	\$34	\$33	\$30	\$25	\$22	\$20	\$15	\$14	\$13
	10yr ave.			\$32		\$29		\$24		\$21	\$20	\$20	\$19	\$18	\$16	\$15	\$12	\$10	\$9
	80% Current	\$64	\$60	\$58	\$54	\$50	\$45	\$42	\$40	\$38	\$36	\$35	\$32	\$26	\$23	\$21	\$16	\$15	\$13
	10yr ave.			\$34		\$31		\$26		\$23	\$22	\$21	\$20	\$19	\$17	\$16	\$13	\$11	\$10
	85% Current	\$68	\$64	\$61	\$58	\$53	\$48	\$45	\$43	\$40	\$38	\$37	\$34	\$28	\$25	\$22	\$17	\$16	\$14
	10yr ave.			\$36		\$33		\$28		\$24	\$23	\$22	\$22	\$21	\$19	\$17	\$13	\$12	\$11

The above shows estimated returns per head for skirted fleece wool. These figures do not take into account the value of skirtings and oddments and do not take into account discounts that may apply for faults under individual circumstances. These figures are based on a market index of 100% and should be used as a guide only. Returns over \$30 / head for fleece wool are highlighted.

Source: Australian Wool Exchange, Australian Wool Innovation, Sydney Futures Exchange, x-rates.com

Disclaimer: While all due care has been taken in the preparation of this document, no warranty is made as to its accuracy, reliability or completeness. To the extent permitted by law neither Jemalong or their sources including subsidiaries and staff, accept liability to any person for loss or damage arising from the use of this information.



Table 20: Returns pr head for skirted fleece wool.

Skirted FLC Weight		Micron																	
2 Kg		16	16.5	17	17.5	18	18.5	19	19.5	20	21	22	23	24	25	26	28	30	32
Yield (Sch Dry)	25% Current	\$13	\$13	\$12	\$11	\$10	\$9	\$9	\$8	\$8	\$7	\$7	\$7	\$5	\$5	\$4	\$3	\$3	\$3
	10yr ave.			\$7		\$6		\$5		\$5	\$5	\$4	\$4	\$4	\$4	\$3	\$3	\$2	\$2
	30% Current	\$16	\$15	\$14	\$14	\$12	\$11	\$11	\$10	\$9	\$9	\$9	\$8	\$7	\$6	\$5	\$4	\$4	\$3
	10yr ave.			\$9		\$8		\$6		\$6	\$5	\$5	\$5	\$5	\$4	\$4	\$3	\$3	\$3
	35% Current	\$19	\$18	\$17	\$16	\$15	\$13	\$12	\$12	\$11	\$10	\$10	\$9	\$8	\$7	\$6	\$5	\$4	\$4
	10yr ave.			\$10		\$9		\$8		\$7	\$6	\$6	\$6	\$6	\$5	\$5	\$4	\$3	\$3
	40% Current	\$21	\$20	\$19	\$18	\$17	\$15	\$14	\$13	\$13	\$12	\$12	\$11	\$9	\$8	\$7	\$5	\$5	\$4
	10yr ave.			\$11		\$10		\$9		\$8	\$7	\$7	\$7	\$6	\$6	\$5	\$4	\$4	\$3
	45% Current	\$24	\$23	\$22	\$20	\$19	\$17	\$16	\$15	\$14	\$13	\$13	\$12	\$10	\$9	\$8	\$6	\$5	\$5
	10yr ave.			\$13		\$11		\$10		\$8	\$8	\$8	\$8	\$7	\$7	\$6	\$5	\$4	\$4
	50% Current	\$27	\$25	\$24	\$23	\$21	\$19	\$18	\$17	\$16	\$15	\$14	\$13	\$11	\$10	\$9	\$7	\$6	\$6
	10yr ave.			\$14		\$13		\$11		\$9	\$9	\$9	\$9	\$8	\$7	\$7	\$5	\$5	\$4
	55% Current	\$29	\$28	\$26	\$25	\$23	\$21	\$19	\$18	\$17	\$16	\$16	\$14	\$12	\$11	\$10	\$7	\$7	\$6
	10yr ave.			\$16		\$14		\$12		\$10	\$10	\$10	\$9	\$9	\$8	\$7	\$6	\$5	\$5
	60% Current	\$32	\$30	\$29	\$27	\$25	\$23	\$21	\$20	\$19	\$18	\$17	\$16	\$13	\$12	\$11	\$8	\$7	\$7
	10yr ave.			\$17		\$15		\$13		\$11	\$11	\$11	\$10	\$10	\$9	\$8	\$6	\$6	\$5
	65% Current	\$35	\$33	\$31	\$29	\$27	\$24	\$23	\$22	\$20	\$19	\$19	\$17	\$14	\$13	\$11	\$9	\$8	\$7
	10yr ave.			\$19		\$17		\$14		\$12	\$12	\$11	\$11	\$11	\$9	\$9	\$7	\$6	\$5
	70% Current	\$37	\$35	\$34	\$32	\$29	\$26	\$25	\$23	\$22	\$21	\$20	\$18	\$15	\$14	\$12	\$9	\$9	\$8
	10yr ave.			\$20		\$18		\$15		\$13	\$13	\$12	\$12	\$11	\$10	\$9	\$7	\$6	\$6
	75% Current	\$40	\$38	\$36	\$34	\$31	\$28	\$27	\$25	\$24	\$22	\$22	\$20	\$16	\$15	\$13	\$10	\$9	\$8
	10yr ave.			\$21		\$19		\$16		\$14	\$14	\$13	\$13	\$12	\$11	\$10	\$8	\$7	\$6
	80% Current	\$43	\$40	\$38	\$36	\$33	\$30	\$28	\$27	\$25	\$24	\$23	\$21	\$17	\$16	\$14	\$11	\$10	\$9
	10yr ave.			\$23		\$20		\$17		\$15	\$14	\$14	\$14	\$13	\$12	\$11	\$8	\$7	\$7
	85% Current	\$45	\$43	\$41	\$38	\$35	\$32	\$30	\$28	\$27	\$25	\$25	\$22	\$19	\$16	\$15	\$11	\$10	\$10
	10yr ave.			\$24		\$22		\$18		\$16	\$15	\$15	\$15	\$14	\$12	\$11	\$9	\$8	\$7

The above shows estimated returns per head for skirted fleece wool. These figures do not take into account the value of skirtings and oddments and do not take into account discounts that may apply for faults under individual circumstances. These figures are based on a market index of 100% and should be used as a guide only. Returns over \$30 / head for fleece wool are highlighted.

Source: Australian Wool Exchange, Australian Wool Innovation, Sydney Futures Exchange, x-rates.com

Disclaimer: While all due care has been taken in the preparation of this document, no warranty is made as to its accuracy, reliability or completeness. To the extent permitted by law neither Jemalong or their sources including subsidiaries and staff, accept liability to any person for loss or damage arising from the use of this information.