



Table 1: Northern Region Micron Price Guides

CURRENT MARKET			PERCENTILES		AVERAGES						12 MONTH COMPARISONS								TRADING RANGE			
Mic.	8/09/2010	2/09/2010			Now			Now			Now			Now			Clean c/kg					
Price	Current	Weekly	3yr	10yr	<u>3 year</u>	compared		<u>10 year</u>	compared		7/09/2009	Now		12 Month	compared		12 Month	compared		12	3	10
Guides	Price	Change			Average	to 3yr ave	Average	to 10yr ave	Last Year	to Last Year	Low	to Low	High	to High	Mth	Year	Year					
NRI	905	-5 -0.6%	53%	64%	897	+8	1%	865	+40	5%	836	+69	8%	870	+35	4%	974	-69	-7%	104	343	584
16*	1650	0	63%		1616	+34	2%				1470	+180	12%	1345	+305	23%	1650	0	0%	305	645	
16.5*	1540	+40 2.6%	75%		1475	+65	4%				1335	+205	15%	1260	+280	22%	1540	0	0%	280	544	
17*	1390	-10 -0.7%	60%	71%	1355	+35	3%	1436	-46	-3%	1230	+160	13%	1175	+215	18%	1400	-10	-1%	225	498	1850
17.5*	1280	-10 -0.8%	55%		1293	-13	-1%				1170	+110	9%	1155	+125	11%	1290	-10	-1%	135	493	
18	1232	-5 -0.4%	60%	55%	1236	-4	0%	1296	-64	-5%	1124	+108	10%	1113	+119	11%	1238	-6	0%	125	432	1392
18.5	1165	-1 -0.1%	60%		1164	+1	0%				1063	+102	10%	1073	+92	9%	1183	-18	-2%	110	425	
19	1062	+3 0.3%	44%	54%	1073	-11	-1%	1068	-6	-1%	988	+74	7%	1017	+45	4%	1120	-58	-5%	103	443	706
19.5	971	+5 0.5%	42%		989	-18	-2%				912	+59	6%	953	+18	2%	1067	-96	-9%	114	457	
20	917	0	48%	59%	919	-2	0%	909	+8	1%	841	+76	9%	893	+24	3%	1023	-106	-10%	130	464	717
21	893	-3 -0.3%	51%	61%	879	+14	2%	861	+32	4%	817	+76	9%	863	+30	3%	1006	-113	-11%	143	426	786
22	870	-11 -1.3%	52%	61%	854	+16	2%	838	+32	4%	805	+65	8%	828	+42	5%	971	-101	-10%	143	360	830
23	852	-19 -2.2%	53%	62%	831	+21	3%	817	+35	4%	791	+61	8%	806	+46	6%	940	-88	-9%	134	311	831
24	808	-3 -0.4%	56%	62%	783	+25	3%	782	+26	3%	754	+54	7%	760	+48	6%	881	-73	-8%	121	257	804
25	702	+7 1.0%	71%	69%	667	+35	5%	702	0	0%	627	+75	12%	650	+52	8%	725	-23	-3%	75	188	727
26	606	-1 -0.2%	51%	51%	599	+7	1%	644	-38	-6%	594	+12	2%	560	+46	8%	630	-24	-4%	70	155	641
28	452	-7 -1.5%	38%	16%	459	-7	-2%	521	-69	-13%	472	-20	-4%	430	+22	5%	493	-41	-8%	63	119	465
30	398	-5 -1.3%	55%	20%	394	+4	1%	455	-57	-13%	401	-3	-1%	374	+24	6%	434	-36	-8%	60	136	384
32	353	-5 -1.4%	70%	21%	342	+11	3%	413	-60	-15%	341	+12	4%	324	+29	9%	375	-22	-6%	51	108	372
MC	562	-41 -7.3%	55%	76%	539	+23	4%	494	+68	14%	540	+22	4%	562	0	0%	681	-119	-17%	119	289	331

Note:

* Due to the irregular market quoting for some fine wool categories, figures shown relating to micron categories below 18 micron are an estimate based on the AWEX Premium & Discounts Report & other available information.

* For any category, where there is insufficient quantity offered to enable AWEX to quote, a quote will be provided based on the best available information.

* 10 Year data is not available for some micron categories, which may result in blank spaces in the table above.

Definitions:

* A Percentile, is a value on a scale of one hundred that indicates the percent of a distribution that is equal to or below it. In general a percentile between 25% and 75% is considered normal, a percentile below 25% is considered below normal and a percentile above 75% is considered above normal.

Three and ten year percentiles shown in the table above, detail the period of time during the past 3 & 10 years that the market has traded either at or below its current price.

The higher the percentile, the stronger the market.

Source: Australian Wool Exchange, Australian Wool Innovation, Sydney Futures Exchange, x-rates.com

Disclaimer: While all due care has been taken in the preparation of this document, no warranty is made as to its accuracy, reliability or completeness. To the extent permitted by law neither Jemalong or their sources including subsidiaries and staff, accept liability to any person for loss or damage arising from the use of this information.



MARKET COMMENTARY

Australian Dollar 91.00 cents US as of 8/09/2010

NORTHERN REGION – Sale Week 10/10 (40,415 bales offered nationally)

Wednesday

Merino Fleece: Medium to fine microns remained firm with some selected better style and strength lots attracting strong support. 20 microns to 22 microns for the most part were also firm however buyer discounting on the high mid break lots put a softer tone in this area.

Merino Skirting's: The >5% VM types gained support as the sale progressed picking up ground and closing fully firm along with all other descriptions.

Merino Oddments: All categories took significant reductions with lock's 20 cents cheaper, while crutching's and stains 40 cents lower.

Crossbreds: Most microns were just off the pace today closing in buyers favour.

Offering: 7,503 bales were offered in the North with 7% Passed-In.

Thursday

Merino Fleece: Medium microns (19-19.5) tended in sellers favour as did the better strength & low mid break fine lots, however discounting on the large percentage high mid break lots took the shine off the fine wool indicators. 22 microns and broader lacked support and eased 5-10 cents.

Merino Skirting's: All descriptions closed fully firm and unchanged.

Merino Oddments: Fine locks were firm while the broader microns dipped 5 cents. Crutching's were irregular and stains lost 30 cents off their previous value.

Crossbreds: Most microns finished unchanged with 28 micron easing in buyers favour.

Offering: 6,468 bales were offered in the North with 18.5% Passed-In.

Source: AWEX

38,773 bales have been rostered for next weeks sale, Jemalong are selling on Wednesday 15th September.

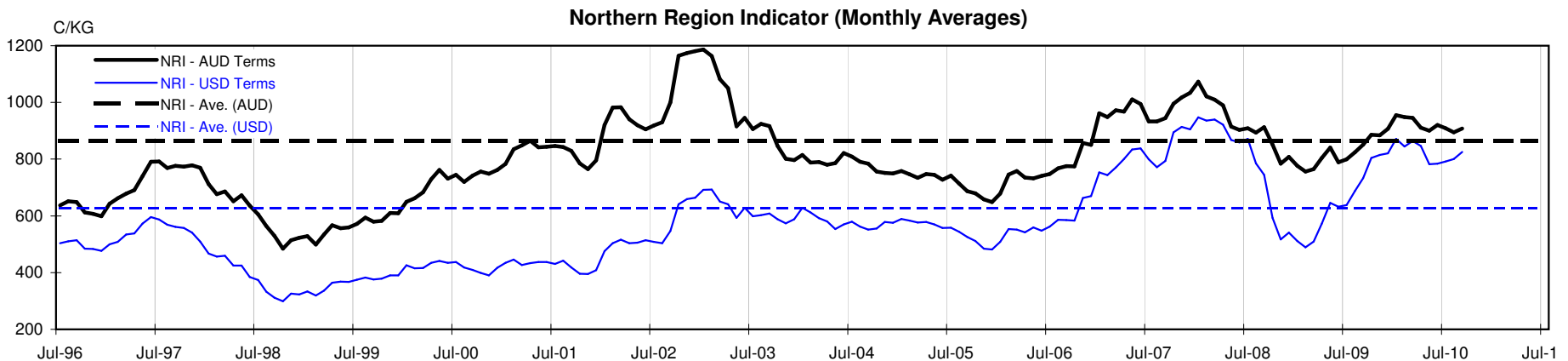




Table 4: 19 micron SFE

Tuesday, 7 September 2010

Delivery Mth	Oct-10	Dec-10	Feb-11	Apr-11	Jun-11	Aug-11	Oct-11	Dec-11	Feb-12
19 Micron SFE	1053	1053	1053	1053	1053	1053	1053	1053	1053
Average	1019	1030	1039	1047	1051	1053	1050	1044	1052
Maximum	1088	1088	1088	1088	1088	1088	1080	1065	1065
Minimum	884	905	936	983	1025	1034	1034	1034	1034

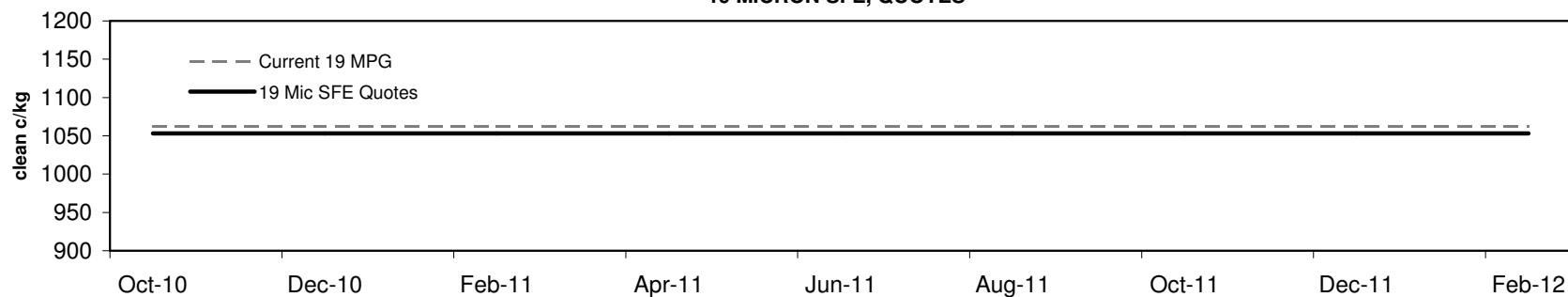
Table 5: 19 micron SFE, as a percentile of the 19 micron MPG

3 Year Percentile	40%	40%	40%	40%	40%	40%	40%	40%	40%
10 Year Percentile	52%	52%	52%	52%	52%	52%	52%	52%	52%

Table 6: 19 micron SFE, compared to MPG

Current 19 MPG	-9	-1%	-9	-1%	-9	-1%	-9	-1%	-9	-1%	-9	-1%	-9	-1%	-9	-1%	-9	-1%
19 MPG, 1 Year Average	-13	-1%	-13	-1%	-13	-1%	-13	-1%	-13	-1%	-13	-1%	-13	-1%	-13	-1%	-13	-1%
19 MPG, 3 Year Average	-20	-2%	-20	-2%	-20	-2%	-20	-2%	-20	-2%	-20	-2%	-20	-2%	-20	-2%	-20	-2%
19 MPG, 10 Year Average	-15	-1%	-15	-1%	-15	-1%	-15	-1%	-15	-1%	-15	-1%	-15	-1%	-15	-1%	-15	-1%

19 MICRON SFE, QUOTES



19 MICRON SFE, FRONT MONTH PRICE MOVEMENT (mthly averages)

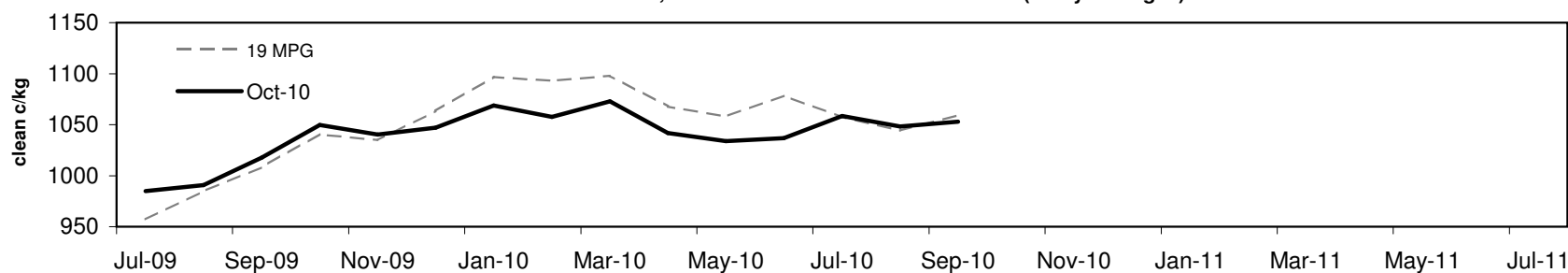




Table 7: 21 micron SFE

Tuesday, 7 September 2010

Delivery Mth	Oct-10	Dec-10	Feb-11	Apr-11	Jun-11	Aug-11	Oct-11	Dec-11	Feb-12
21 Micron SFE	918	915	923	911	908	898	908	898	898
Average	900	913	924	932	937	938	929	911	905
Maximum	1003	1013	1004	1004	1004	1004	992	951	925
Minimum	742	780	818	860	891	890	884	880	880

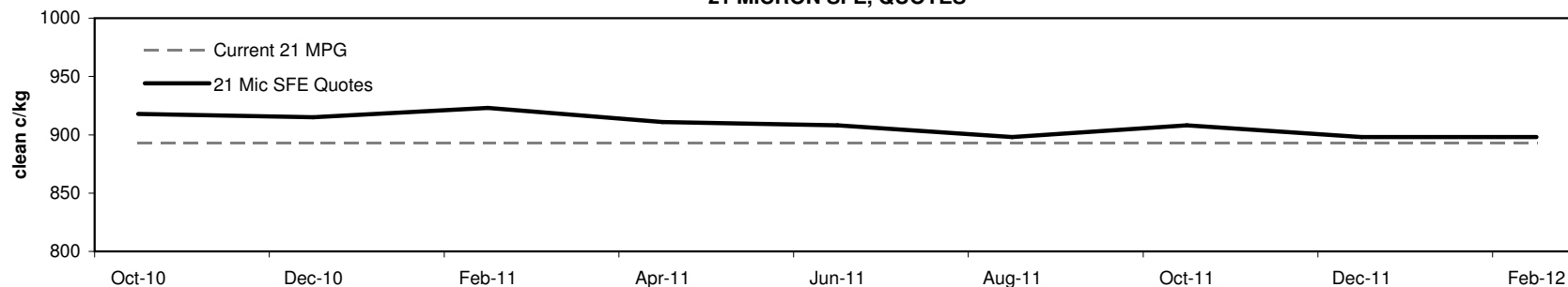
Table 8: 21 micron SFE, as a percentile of the 21 micron MPG

3 Year Percentile	60%	59%	62%	57%	56%	52%	56%	52%	52%
10 Year Percentile	65%	64%	66%	63%	63%	62%	63%	62%	62%

Table 9: 21 micron SFE, compared to MPG

Current 21 MPG	+25	3%	+22	2%	+30	3%	+18	2%	+15	2%	+5	1%	+15	2%	+5	1%	+5	1%
21 MPG, 1 Year Average	-6	-1%	-9	-1%	-1	0%	-13	-1%	-16	-2%	-26	-3%	-16	-2%	-26	-3%	-26	-3%
21 MPG, 3 Year Average	+39	4%	+36	4%	+44	5%	+32	4%	+29	3%	+19	2%	+29	3%	+19	2%	+19	2%
21 MPG, 10 Year Average	+57	7%	+54	6%	+62	7%	+50	6%	+47	5%	+37	4%	+47	5%	+37	4%	+37	4%

21 MICRON SFE, QUOTES



21 MICRON SFE, FRONT MONTH PRICE MOVEMENT (mthly averages)

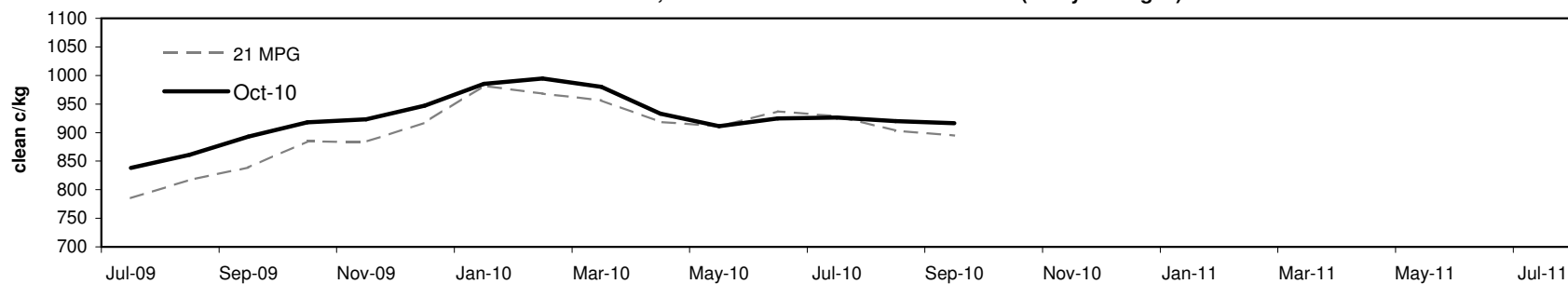




Table 10: 23 micron SFE

Tuesday, 7 September 2010

Delivery Mth	Oct-10	Dec-10	Feb-11	Apr-11	Jun-11	Aug-11	Oct-11	Dec-11	Feb-12
23 Micron SFE	887	887	887	887	887	887	887	887	887
Average	819	835	849	859	870	886	894	884	884
Maximum	927	927	927	927	927	927	927	887	887
Minimum	690	716	760	760	803	803	883	883	883

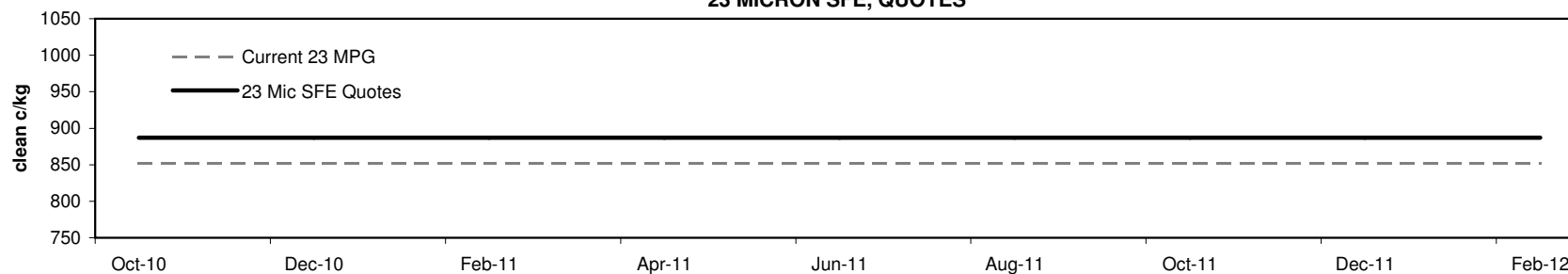
Table 11: 23 micron SFE, as a percentile of the 23 micron MPG

3 Year Percentile	67%	67%	67%	67%	67%	67%	67%	67%	67%
10 Year Percentile	67%	67%	67%	67%	67%	67%	67%	67%	67%

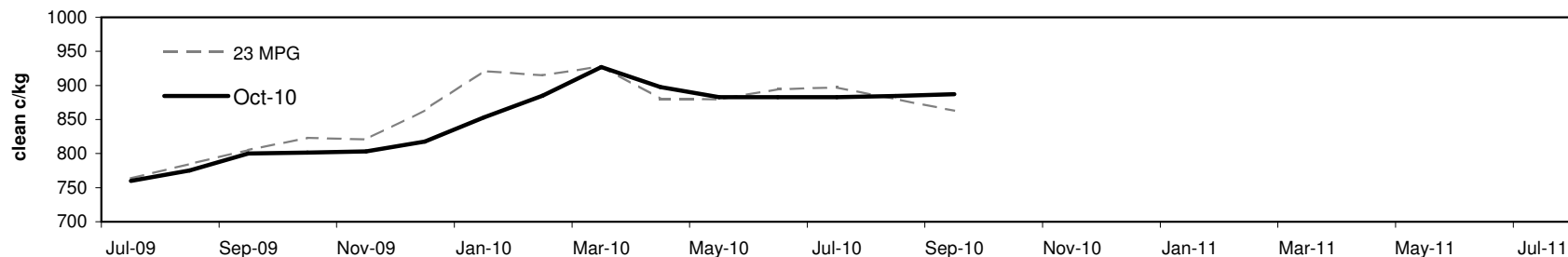
Table 12: 23 micron SFE, compared to MPG

Current 19 MPG	+35	4%	+35	4%	+35	4%	+35	4%	+35	4%	+35	4%	+35	4%	+35	4%	+35	4%
23 MPG, 1 Year Average	+6	1%	+6	1%	+6	1%	+6	1%	+6	1%	+6	1%	+6	1%	+6	1%	+6	1%
23 MPG, 3 Year Average	+56	7%	+56	7%	+56	7%	+56	7%	+56	7%	+56	7%	+56	7%	+56	7%	+56	7%
23 MPG, 10 Year Average	+70	9%	+70	9%	+70	9%	+70	9%	+70	9%	+70	9%	+70	9%	+70	9%	+70	9%

23 MICRON SFE, QUOTES

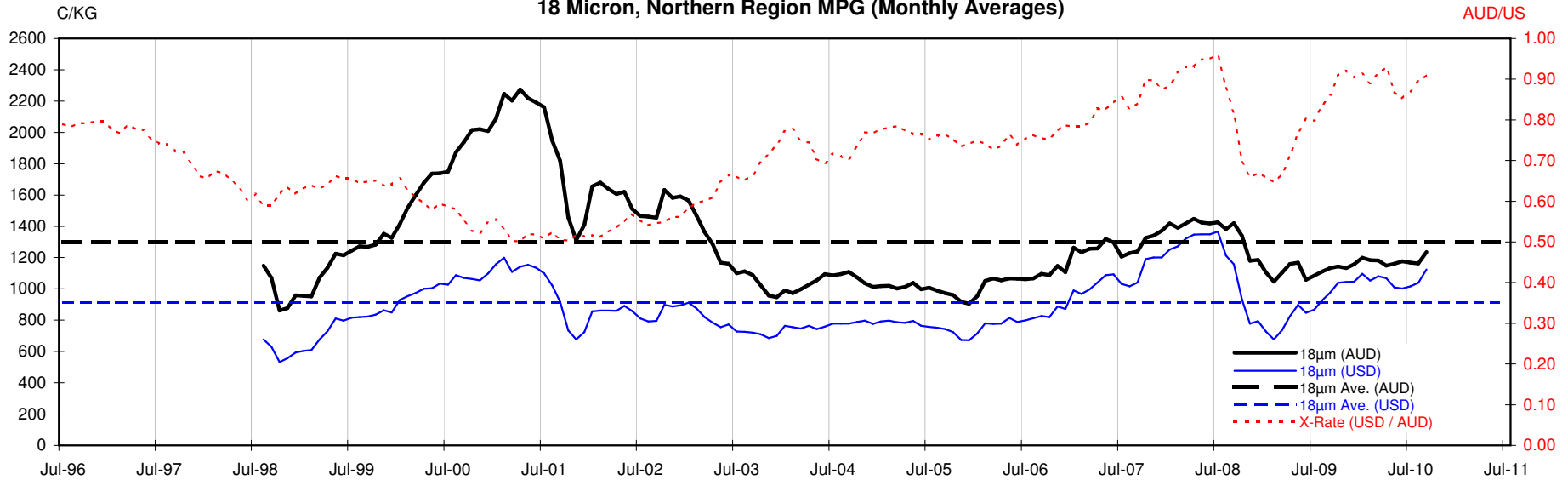


23 MICRON SFE, FRONT MONTH PRICE MOVEMENT (mthly averages)



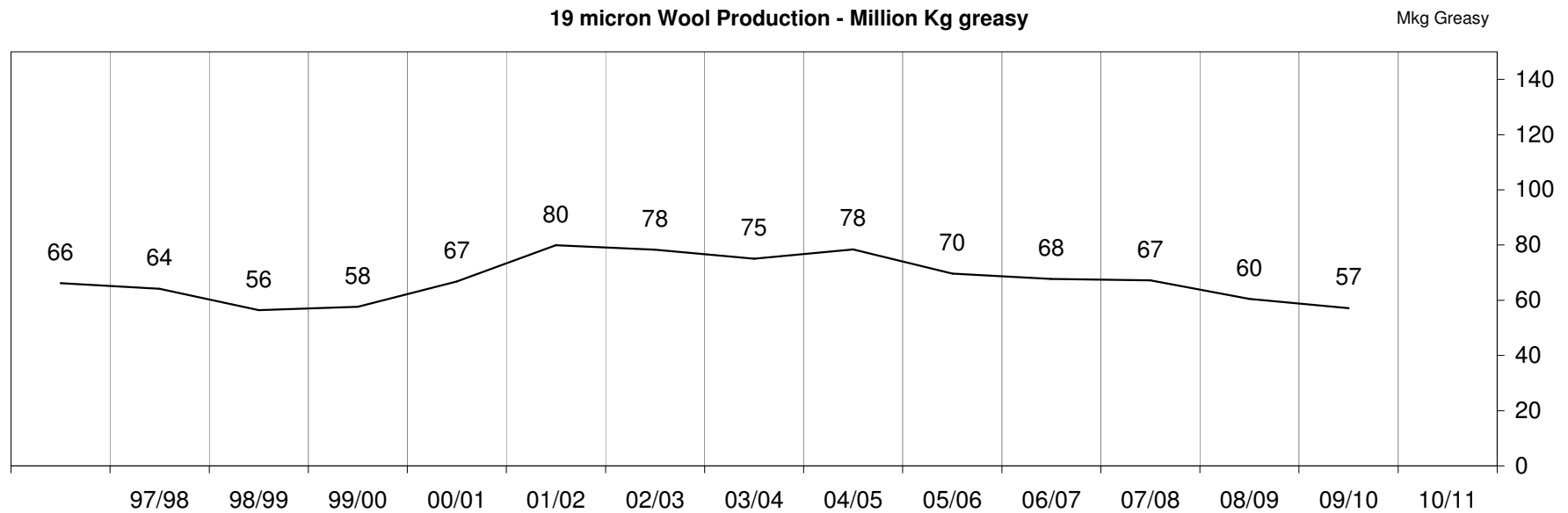
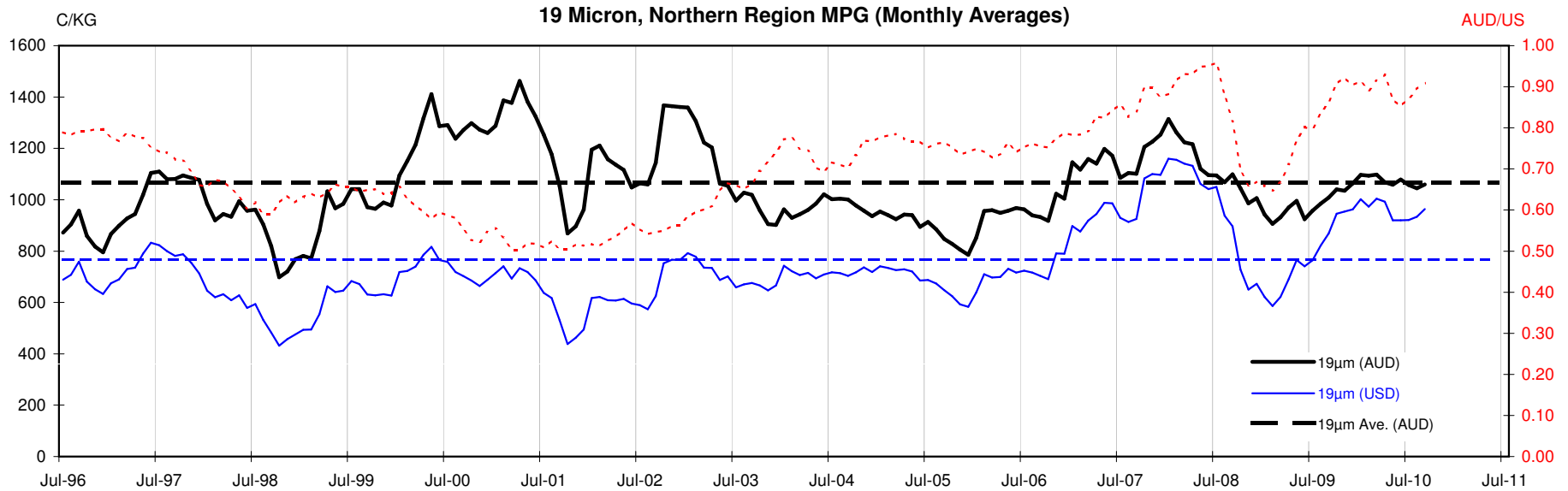


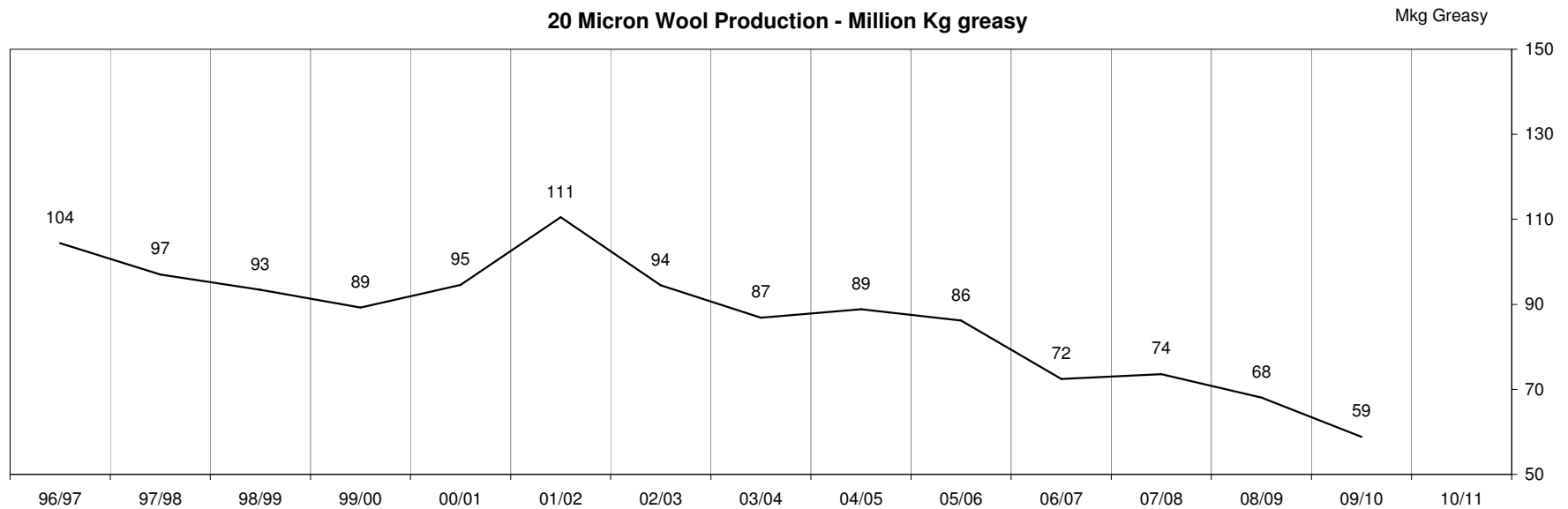
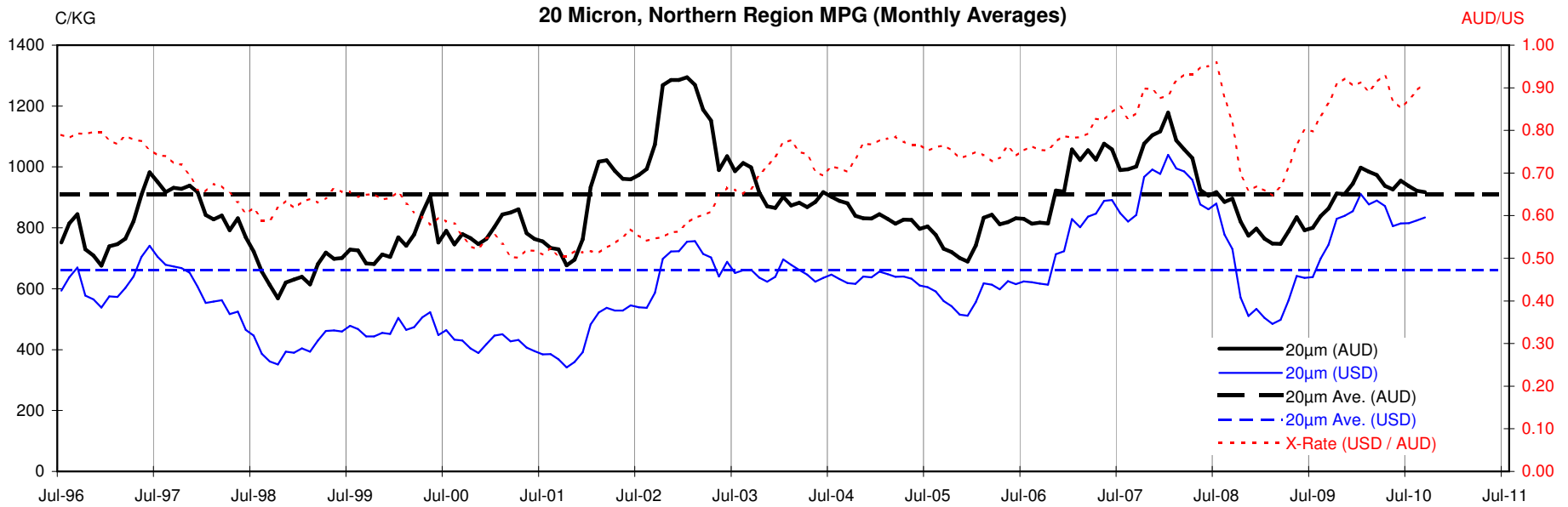
18 Micron, Northern Region MPG (Monthly Averages)

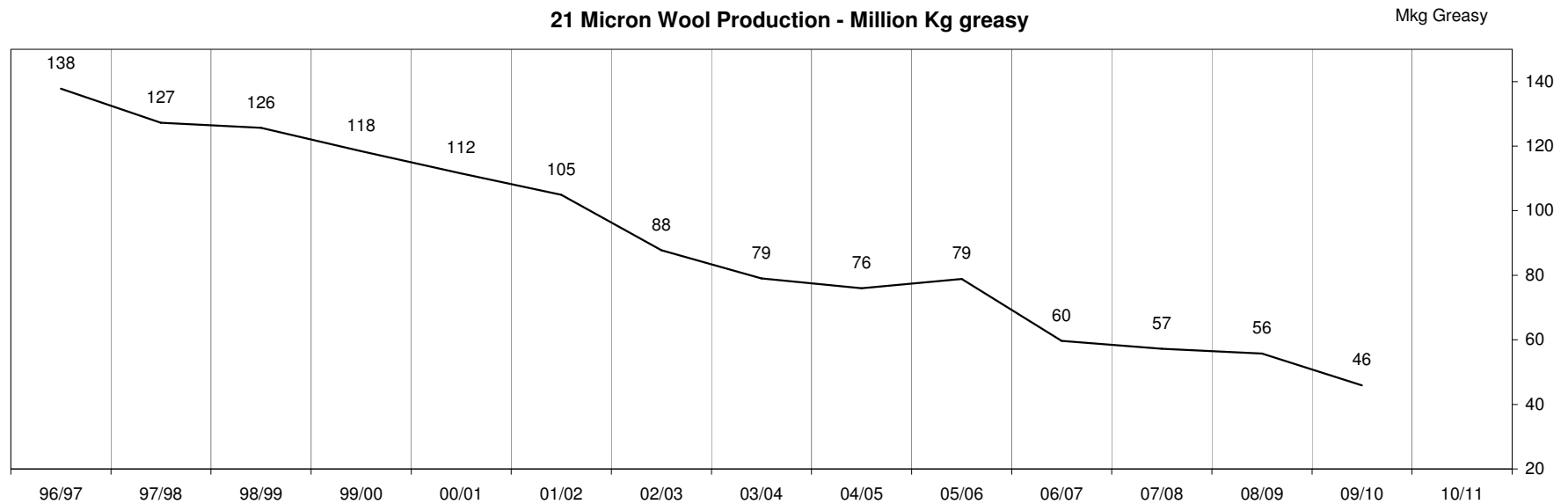
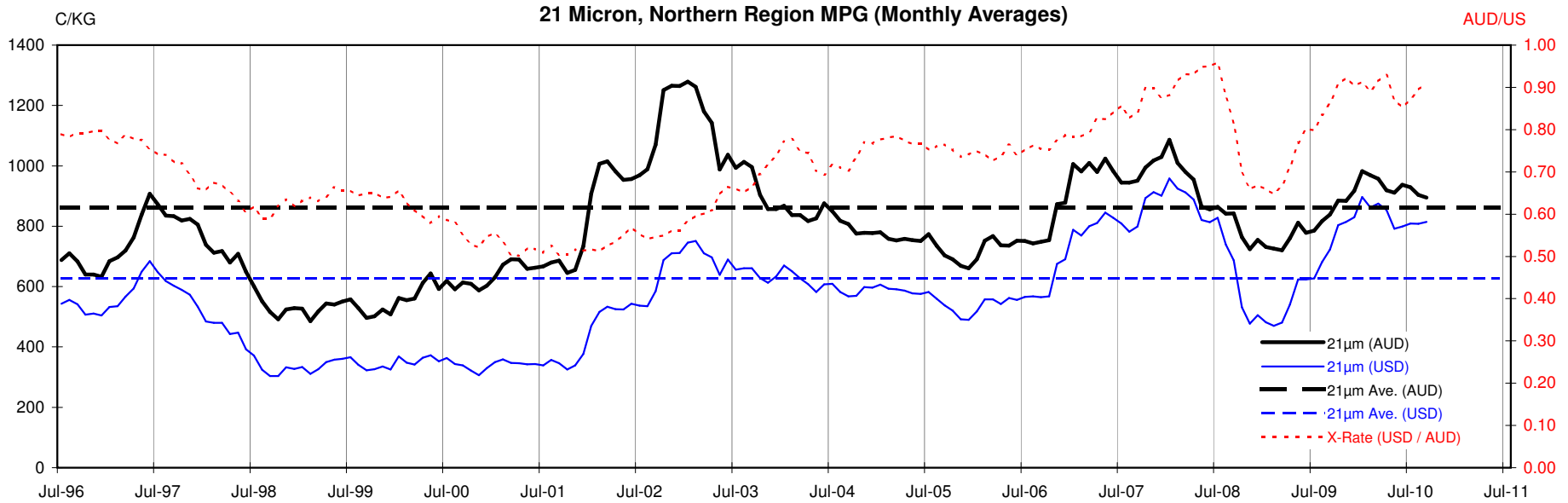


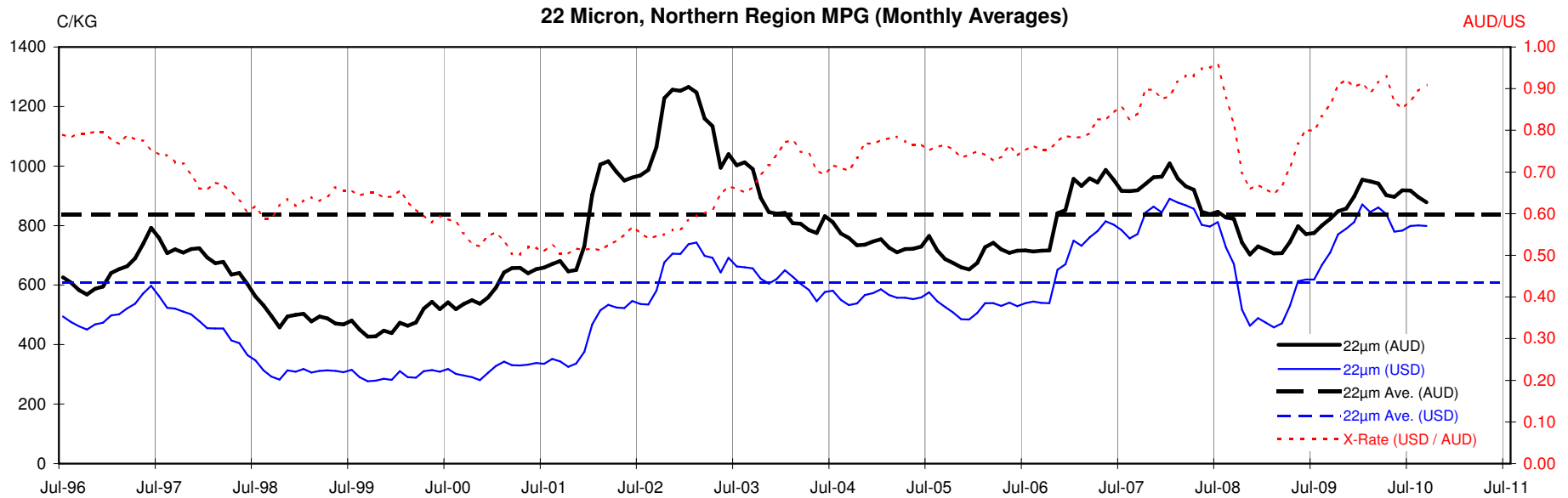
<18.5 micron Wool Production - Million Kg greasy

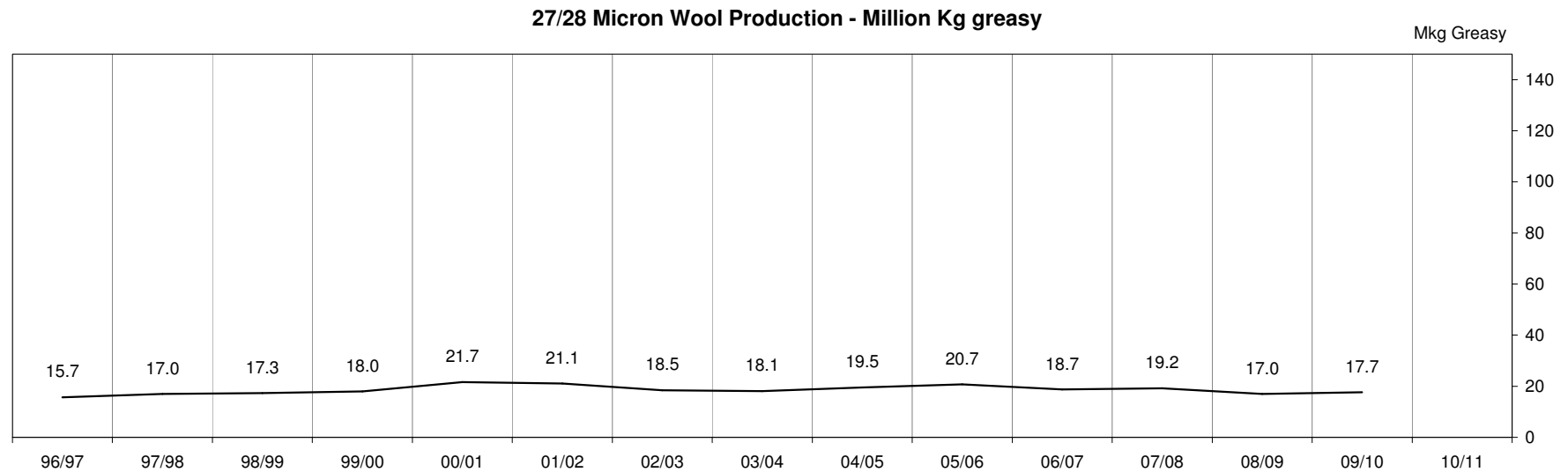
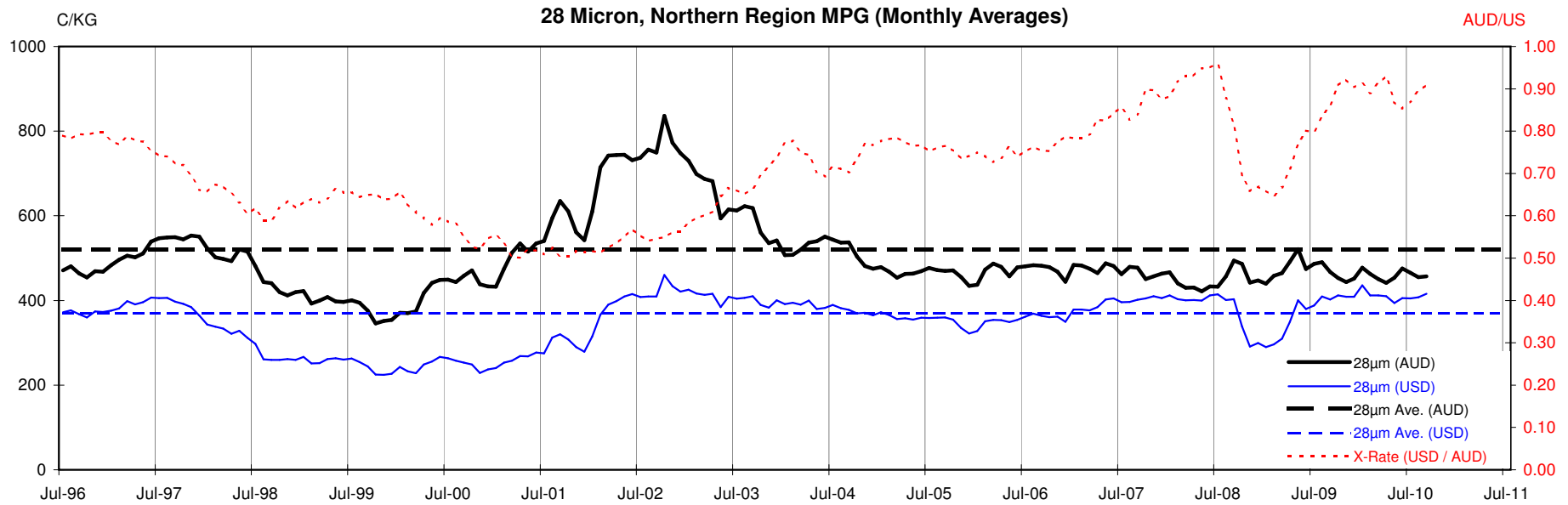












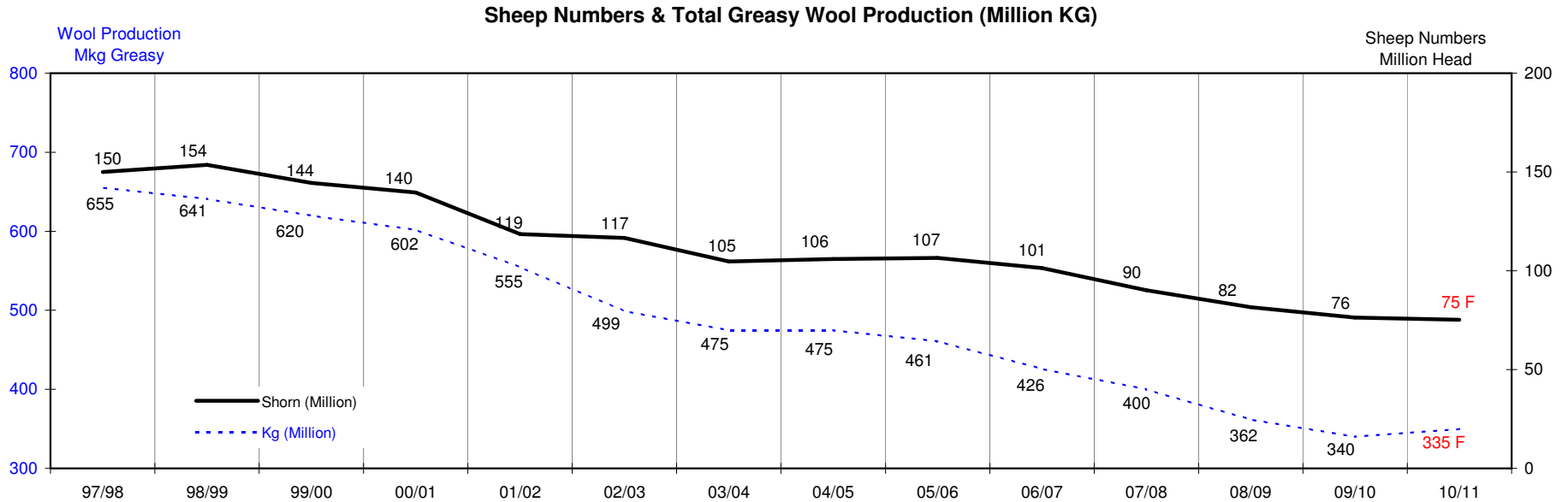
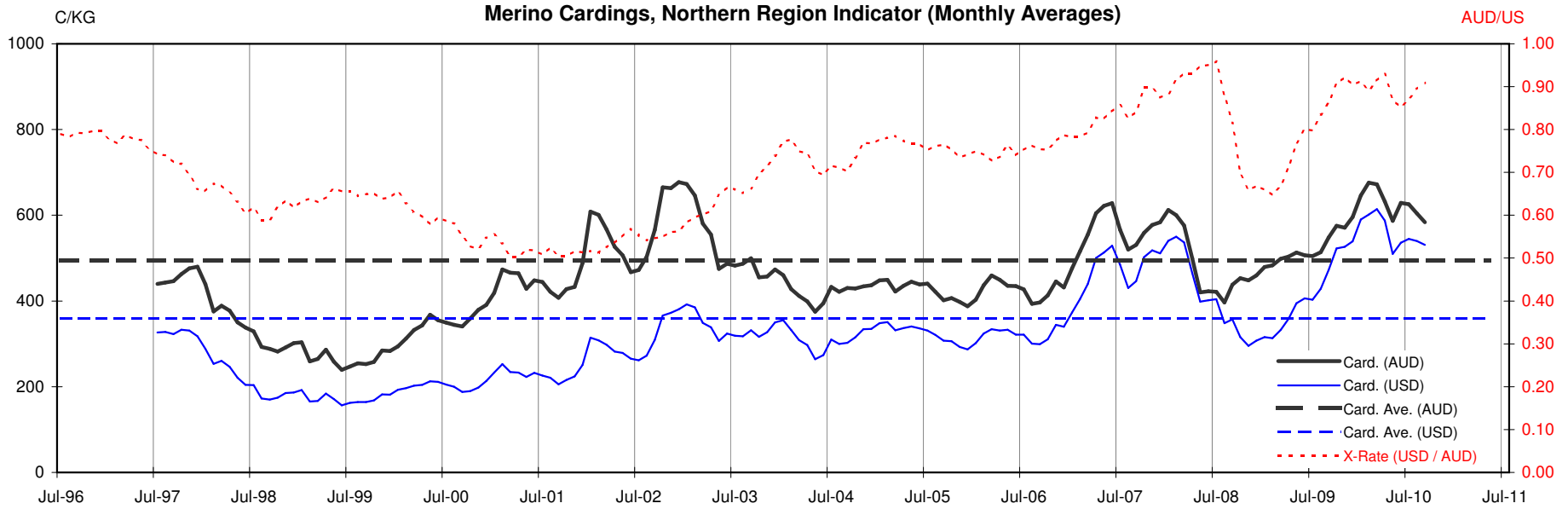




Table 13: Returns pr head for skirted fleece wool.

Skirted FLC Weight		Micron																	
9 Kg		16	16.5	17	17.5	18	18.5	19	19.5	20	21	22	23	24	25	26	28	30	32
Yield (Sch Dry)	25% Current	\$37	\$35	\$31	\$29	\$28	\$26	\$24	\$22	\$21	\$20	\$20	\$19	\$18	\$16	\$14	\$10	\$9	\$8
	10yr ave.			\$32		\$29		\$24		\$20	\$19	\$19	\$18	\$18	\$16	\$14	\$12	\$10	\$9
	30% Current	\$45	\$42	\$38	\$35	\$33	\$31	\$29	\$26	\$25	\$24	\$23	\$23	\$22	\$19	\$16	\$12	\$11	\$10
	10yr ave.			\$39		\$35		\$29		\$25	\$23	\$23	\$22	\$21	\$19	\$17	\$14	\$12	\$11
	35% Current	\$52	\$49	\$44	\$40	\$39	\$37	\$33	\$31	\$29	\$28	\$27	\$27	\$25	\$22	\$19	\$14	\$13	\$11
	10yr ave.			\$45		\$41		\$34		\$29	\$27	\$26	\$26	\$25	\$22	\$20	\$16	\$14	\$13
	40% Current	\$59	\$55	\$50	\$46	\$44	\$42	\$38	\$35	\$33	\$32	\$31	\$31	\$29	\$25	\$22	\$16	\$14	\$13
	10yr ave.			\$52		\$47		\$38		\$33	\$31	\$30	\$29	\$28	\$25	\$23	\$19	\$16	\$15
	45% Current	\$67	\$62	\$56	\$52	\$50	\$47	\$43	\$39	\$37	\$36	\$35	\$35	\$33	\$28	\$25	\$18	\$16	\$14
	10yr ave.			\$58		\$52		\$43		\$37	\$35	\$34	\$33	\$32	\$28	\$26	\$21	\$18	\$17
	50% Current	\$74	\$69	\$63	\$58	\$55	\$52	\$48	\$44	\$41	\$40	\$39	\$38	\$36	\$32	\$27	\$20	\$18	\$16
	10yr ave.			\$65		\$58		\$48		\$41	\$39	\$38	\$37	\$35	\$32	\$29	\$23	\$20	\$19
	55% Current	\$82	\$76	\$69	\$63	\$61	\$58	\$53	\$48	\$45	\$44	\$43	\$42	\$40	\$35	\$30	\$22	\$20	\$17
	10yr ave.			\$71		\$64		\$53		\$45	\$43	\$41	\$40	\$39	\$35	\$32	\$26	\$23	\$20
	60% Current	\$89	\$83	\$75	\$69	\$67	\$63	\$57	\$52	\$50	\$48	\$47	\$46	\$44	\$38	\$33	\$24	\$21	\$19
	10yr ave.			\$78		\$70		\$58		\$49	\$46	\$45	\$44	\$42	\$38	\$35	\$28	\$25	\$22
	65% Current	\$97	\$90	\$81	\$75	\$72	\$68	\$62	\$57	\$54	\$52	\$51	\$50	\$47	\$41	\$35	\$26	\$23	\$21
	10yr ave.			\$84		\$76		\$62		\$53	\$50	\$49	\$48	\$46	\$41	\$38	\$30	\$27	\$24
	70% Current	\$104	\$97	\$88	\$81	\$78	\$73	\$67	\$61	\$58	\$56	\$55	\$54	\$51	\$44	\$38	\$28	\$25	\$22
	10yr ave.			\$90		\$82		\$67		\$57	\$54	\$53	\$51	\$49	\$44	\$41	\$33	\$29	\$26
	75% Current	\$111	\$104	\$94	\$86	\$83	\$79	\$72	\$66	\$62	\$60	\$59	\$58	\$55	\$47	\$41	\$31	\$27	\$24
	10yr ave.			\$97		\$87		\$72		\$61	\$58	\$57	\$55	\$53	\$47	\$43	\$35	\$31	\$28
	80% Current	\$119	\$111	\$100	\$92	\$89	\$84	\$76	\$70	\$66	\$64	\$63	\$61	\$58	\$51	\$44	\$33	\$29	\$25
	10yr ave.			\$103		\$93		\$77		\$65	\$62	\$60	\$59	\$56	\$51	\$46	\$38	\$33	\$30
	85% Current	\$126	\$118	\$106	\$98	\$94	\$89	\$81	\$74	\$70	\$68	\$67	\$65	\$62	\$54	\$46	\$35	\$30	\$27
	10yr ave.			\$110		\$99		\$82		\$70	\$66	\$64	\$63	\$60	\$54	\$49	\$40	\$35	\$32

The above shows estimated returns per head for skirted fleece wool. These figures do not take into account the value of skirtings and oddments and do not take into account discounts that may apply for faults under individual circumstances. These figures are based on a market index of 100% and should be used as a guide only. Returns over \$30 / head for fleece wool are highlighted.

Source: Australian Wool Exchange, Australian Wool Innovation, Sydney Futures Exchange, x-rates.com

Disclaimer: While all due care has been taken in the preparation of this document, no warranty is made as to its accuracy, reliability or completeness. To the extent permitted by law neither Jemalong or their sources including subsidiaries and staff, accept liability to any person for loss or damage arising from the use of this information.



Table 14: Returns pr head for skirted fleece wool.

Skirted FLC Weight 8 Kg			Micron																	
			16	16.5	17	17.5	18	18.5	19	19.5	20	21	22	23	24	25	26	28	30	32
Yield (Sch Dry)	25%	Current	\$37	\$35	\$31	\$29	\$28	\$26	\$24	\$22	\$21	\$20	\$20	\$19	\$18	\$16	\$14	\$10	\$9	\$8
		10yr ave.			\$32		\$29		\$24		\$20	\$19	\$19	\$18	\$18	\$16	\$14	\$12	\$10	\$9
	30%	Current	\$45	\$42	\$38	\$35	\$33	\$31	\$29	\$26	\$25	\$24	\$23	\$23	\$22	\$19	\$16	\$12	\$11	\$10
		10yr ave.			\$39		\$35		\$29		\$25	\$23	\$23	\$22	\$21	\$19	\$17	\$14	\$12	\$11
	35%	Current	\$52	\$49	\$44	\$40	\$39	\$37	\$33	\$31	\$29	\$28	\$27	\$27	\$25	\$22	\$19	\$14	\$13	\$11
		10yr ave.			\$45		\$41		\$34		\$29	\$27	\$26	\$26	\$25	\$22	\$20	\$16	\$14	\$13
	40%	Current	\$59	\$55	\$50	\$46	\$44	\$42	\$38	\$35	\$33	\$32	\$31	\$31	\$29	\$25	\$22	\$16	\$14	\$13
		10yr ave.			\$52		\$47		\$38		\$33	\$31	\$30	\$29	\$28	\$25	\$23	\$19	\$16	\$15
	45%	Current	\$67	\$62	\$56	\$52	\$50	\$47	\$43	\$39	\$37	\$36	\$35	\$35	\$33	\$28	\$25	\$18	\$16	\$14
		10yr ave.			\$58		\$52		\$43		\$37	\$35	\$34	\$33	\$32	\$28	\$26	\$21	\$18	\$17
	50%	Current	\$74	\$69	\$63	\$58	\$55	\$52	\$48	\$44	\$41	\$40	\$39	\$38	\$36	\$32	\$27	\$20	\$18	\$16
		10yr ave.			\$65		\$58		\$48		\$41	\$39	\$38	\$37	\$35	\$32	\$29	\$23	\$20	\$19
	55%	Current	\$82	\$76	\$69	\$63	\$61	\$58	\$53	\$48	\$45	\$44	\$43	\$42	\$40	\$35	\$30	\$22	\$20	\$17
		10yr ave.			\$71		\$64		\$53		\$45	\$43	\$41	\$40	\$39	\$35	\$32	\$26	\$23	\$20
	60%	Current	\$89	\$83	\$75	\$69	\$67	\$63	\$57	\$52	\$50	\$48	\$47	\$46	\$44	\$38	\$33	\$24	\$21	\$19
		10yr ave.			\$78		\$70		\$58		\$49	\$46	\$45	\$44	\$42	\$38	\$35	\$28	\$25	\$22
65%	Current	\$97	\$90	\$81	\$75	\$72	\$68	\$62	\$57	\$54	\$52	\$51	\$50	\$47	\$41	\$35	\$26	\$23	\$21	
	10yr ave.			\$84		\$76		\$62		\$53	\$50	\$49	\$48	\$46	\$41	\$38	\$30	\$27	\$24	
70%	Current	\$104	\$97	\$88	\$81	\$78	\$73	\$67	\$61	\$58	\$56	\$55	\$54	\$51	\$44	\$38	\$28	\$25	\$22	
	10yr ave.			\$90		\$82		\$67		\$57	\$54	\$53	\$51	\$49	\$44	\$41	\$33	\$29	\$26	
75%	Current	\$111	\$104	\$94	\$86	\$83	\$79	\$72	\$66	\$62	\$60	\$59	\$58	\$55	\$47	\$41	\$31	\$27	\$24	
	10yr ave.			\$97		\$87		\$72		\$61	\$58	\$57	\$55	\$53	\$47	\$43	\$35	\$31	\$28	
80%	Current	\$119	\$111	\$100	\$92	\$89	\$84	\$76	\$70	\$66	\$64	\$63	\$61	\$58	\$51	\$44	\$33	\$29	\$25	
	10yr ave.			\$103		\$93		\$77		\$65	\$62	\$60	\$59	\$56	\$51	\$46	\$38	\$33	\$30	
85%	Current	\$126	\$118	\$106	\$98	\$94	\$89	\$81	\$74	\$70	\$68	\$67	\$65	\$62	\$54	\$46	\$35	\$30	\$27	
	10yr ave.			\$110		\$99		\$82		\$70	\$66	\$64	\$63	\$60	\$54	\$49	\$40	\$35	\$32	

The above shows estimated returns per head for skirted fleece wool. These figures do not take into account the value of skirtings and oddments and do not take into account discounts that may apply for faults under individual circumstances. These figures are based on a market index of 100% and should be used as a guide only. Returns over \$30 / head for fleece wool are highlighted.

Source: Australian Wool Exchange, Australian Wool Innovation, Sydney Futures Exchange, x-rates.com

Disclaimer: While all due care has been taken in the preparation of this document, no warranty is made as to its accuracy, reliability or completeness. To the extent permitted by law neither Jemalong or their sources including subsidiaries and staff, accept liability to any person for loss or damage arising from the use of this information.



Table 15: Returns pr head for skirted fleece wool.

Skirted FLC Weight 7 Kg			Micron																	
			16	16.5	17	17.5	18	18.5	19	19.5	20	21	22	23	24	25	26	28	30	32
Yield (Sch Dry)	25%	Current	\$37	\$35	\$31	\$29	\$28	\$26	\$24	\$22	\$21	\$20	\$20	\$19	\$18	\$16	\$14	\$10	\$9	\$8
		10yr ave.			\$32		\$29		\$24		\$20	\$19	\$19	\$18	\$18	\$16	\$14	\$12	\$10	\$9
	30%	Current	\$45	\$42	\$38	\$35	\$33	\$31	\$29	\$26	\$25	\$24	\$23	\$23	\$22	\$19	\$16	\$12	\$11	\$10
		10yr ave.			\$39		\$35		\$29		\$25	\$23	\$23	\$22	\$21	\$19	\$17	\$14	\$12	\$11
	35%	Current	\$52	\$49	\$44	\$40	\$39	\$37	\$33	\$31	\$29	\$28	\$27	\$27	\$25	\$22	\$19	\$14	\$13	\$11
		10yr ave.			\$45		\$41		\$34		\$29	\$27	\$26	\$26	\$25	\$22	\$20	\$16	\$14	\$13
	40%	Current	\$59	\$55	\$50	\$46	\$44	\$42	\$38	\$35	\$33	\$32	\$31	\$31	\$29	\$25	\$22	\$16	\$14	\$13
		10yr ave.			\$52		\$47		\$38		\$33	\$31	\$30	\$29	\$28	\$25	\$23	\$19	\$16	\$15
	45%	Current	\$67	\$62	\$56	\$52	\$50	\$47	\$43	\$39	\$37	\$36	\$35	\$35	\$33	\$28	\$25	\$18	\$16	\$14
		10yr ave.			\$58		\$52		\$43		\$37	\$35	\$34	\$33	\$32	\$28	\$26	\$21	\$18	\$17
	50%	Current	\$74	\$69	\$63	\$58	\$55	\$52	\$48	\$44	\$41	\$40	\$39	\$38	\$36	\$32	\$27	\$20	\$18	\$16
		10yr ave.			\$65		\$58		\$48		\$41	\$39	\$38	\$37	\$35	\$32	\$29	\$23	\$20	\$19
	55%	Current	\$82	\$76	\$69	\$63	\$61	\$58	\$53	\$48	\$45	\$44	\$43	\$42	\$40	\$35	\$30	\$22	\$20	\$17
		10yr ave.			\$71		\$64		\$53		\$45	\$43	\$41	\$40	\$39	\$35	\$32	\$26	\$23	\$20
	60%	Current	\$89	\$83	\$75	\$69	\$67	\$63	\$57	\$52	\$50	\$48	\$47	\$46	\$44	\$38	\$33	\$24	\$21	\$19
		10yr ave.			\$78		\$70		\$58		\$49	\$46	\$45	\$44	\$42	\$38	\$35	\$28	\$25	\$22
65%	Current	\$97	\$90	\$81	\$75	\$72	\$68	\$62	\$57	\$54	\$52	\$51	\$50	\$47	\$41	\$35	\$26	\$23	\$21	
	10yr ave.			\$84		\$76		\$62		\$53	\$50	\$49	\$48	\$46	\$41	\$38	\$30	\$27	\$24	
70%	Current	\$104	\$97	\$88	\$81	\$78	\$73	\$67	\$61	\$58	\$56	\$55	\$54	\$51	\$44	\$38	\$28	\$25	\$22	
	10yr ave.			\$90		\$82		\$67		\$57	\$54	\$53	\$51	\$49	\$44	\$41	\$33	\$29	\$26	
75%	Current	\$111	\$104	\$94	\$86	\$83	\$79	\$72	\$66	\$62	\$60	\$59	\$58	\$55	\$47	\$41	\$31	\$27	\$24	
	10yr ave.			\$97		\$87		\$72		\$61	\$58	\$57	\$55	\$53	\$47	\$43	\$35	\$31	\$28	
80%	Current	\$119	\$111	\$100	\$92	\$89	\$84	\$76	\$70	\$66	\$64	\$63	\$61	\$58	\$51	\$44	\$33	\$29	\$25	
	10yr ave.			\$103		\$93		\$77		\$65	\$62	\$60	\$59	\$56	\$51	\$46	\$38	\$33	\$30	
85%	Current	\$126	\$118	\$106	\$98	\$94	\$89	\$81	\$74	\$70	\$68	\$67	\$65	\$62	\$54	\$46	\$35	\$30	\$27	
	10yr ave.			\$110		\$99		\$82		\$70	\$66	\$64	\$63	\$60	\$54	\$49	\$40	\$35	\$32	

The above shows estimated returns per head for skirted fleece wool. These figures do not take into account the value of skirtings and oddments and do not take into account discounts that may apply for faults under individual circumstances. These figures are based on a market index of 100% and should be used as a guide only. Returns over \$30 / head for fleece wool are highlighted.

Source: Australian Wool Exchange, Australian Wool Innovation, Sydney Futures Exchange, x-rates.com

Disclaimer: While all due care has been taken in the preparation of this document, no warranty is made as to its accuracy, reliability or completeness. To the extent permitted by law neither Jemalong or their sources including subsidiaries and staff, accept liability to any person for loss or damage arising from the use of this information.



Table 16: Returns pr head for skirted fleece wool.

Skirted FLC Weight 6 Kg			Micron																	
			16	16.5	17	17.5	18	18.5	19	19.5	20	21	22	23	24	25	26	28	30	32
Yield (Sch Dry)	25%	Current	\$37	\$35	\$31	\$29	\$28	\$26	\$24	\$22	\$21	\$20	\$20	\$19	\$18	\$16	\$14	\$10	\$9	\$8
		10yr ave.			\$32		\$29		\$24		\$20	\$19	\$19	\$18	\$18	\$16	\$14	\$12	\$10	\$9
	30%	Current	\$45	\$42	\$38	\$35	\$33	\$31	\$29	\$26	\$25	\$24	\$23	\$23	\$22	\$19	\$16	\$12	\$11	\$10
		10yr ave.			\$39		\$35		\$29		\$25	\$23	\$23	\$22	\$21	\$19	\$17	\$14	\$12	\$11
	35%	Current	\$52	\$49	\$44	\$40	\$39	\$37	\$33	\$31	\$29	\$28	\$27	\$27	\$25	\$22	\$19	\$14	\$13	\$11
		10yr ave.			\$45		\$41		\$34		\$29	\$27	\$26	\$26	\$25	\$22	\$20	\$16	\$14	\$13
	40%	Current	\$59	\$55	\$50	\$46	\$44	\$42	\$38	\$35	\$33	\$32	\$31	\$31	\$29	\$25	\$22	\$16	\$14	\$13
		10yr ave.			\$52		\$47		\$38		\$33	\$31	\$30	\$29	\$28	\$25	\$23	\$19	\$16	\$15
	45%	Current	\$67	\$62	\$56	\$52	\$50	\$47	\$43	\$39	\$37	\$36	\$35	\$35	\$33	\$28	\$25	\$18	\$16	\$14
		10yr ave.			\$58		\$52		\$43		\$37	\$35	\$34	\$33	\$32	\$28	\$26	\$21	\$18	\$17
	50%	Current	\$74	\$69	\$63	\$58	\$55	\$52	\$48	\$44	\$41	\$40	\$39	\$38	\$36	\$32	\$27	\$20	\$18	\$16
		10yr ave.			\$65		\$58		\$48		\$41	\$39	\$38	\$37	\$35	\$32	\$29	\$23	\$20	\$19
	55%	Current	\$82	\$76	\$69	\$63	\$61	\$58	\$53	\$48	\$45	\$44	\$43	\$42	\$40	\$35	\$30	\$22	\$20	\$17
		10yr ave.			\$71		\$64		\$53		\$45	\$43	\$41	\$40	\$39	\$35	\$32	\$26	\$23	\$20
	60%	Current	\$89	\$83	\$75	\$69	\$67	\$63	\$57	\$52	\$50	\$48	\$47	\$46	\$44	\$38	\$33	\$24	\$21	\$19
		10yr ave.			\$78		\$70		\$58		\$49	\$46	\$45	\$44	\$42	\$38	\$35	\$28	\$25	\$22
65%	Current	\$97	\$90	\$81	\$75	\$72	\$68	\$62	\$57	\$54	\$52	\$51	\$50	\$47	\$41	\$35	\$26	\$23	\$21	
	10yr ave.			\$84		\$76		\$62		\$53	\$50	\$49	\$48	\$46	\$41	\$38	\$30	\$27	\$24	
70%	Current	\$104	\$97	\$88	\$81	\$78	\$73	\$67	\$61	\$58	\$56	\$55	\$54	\$51	\$44	\$38	\$28	\$25	\$22	
	10yr ave.			\$90		\$82		\$67		\$57	\$54	\$53	\$51	\$49	\$44	\$41	\$33	\$29	\$26	
75%	Current	\$111	\$104	\$94	\$86	\$83	\$79	\$72	\$66	\$62	\$60	\$59	\$58	\$55	\$47	\$41	\$31	\$27	\$24	
	10yr ave.			\$97		\$87		\$72		\$61	\$58	\$57	\$55	\$53	\$47	\$43	\$35	\$31	\$28	
80%	Current	\$119	\$111	\$100	\$92	\$89	\$84	\$76	\$70	\$66	\$64	\$63	\$61	\$58	\$51	\$44	\$33	\$29	\$25	
	10yr ave.			\$103		\$93		\$77		\$65	\$62	\$60	\$59	\$56	\$51	\$46	\$38	\$33	\$30	
85%	Current	\$126	\$118	\$106	\$98	\$94	\$89	\$81	\$74	\$70	\$68	\$67	\$65	\$62	\$54	\$46	\$35	\$30	\$27	
	10yr ave.			\$110		\$99		\$82		\$70	\$66	\$64	\$63	\$60	\$54	\$49	\$40	\$35	\$32	

The above shows estimated returns per head for skirted fleece wool. These figures do not take into account the value of skirtings and oddments and do not take into account discounts that may apply for faults under individual circumstances. These figures are based on a market index of 100% and should be used as a guide only. Returns over \$30 / head for fleece wool are highlighted.

Source: Australian Wool Exchange, Australian Wool Innovation, Sydney Futures Exchange, x-rates.com

Disclaimer: While all due care has been taken in the preparation of this document, no warranty is made as to its accuracy, reliability or completeness. To the extent permitted by law neither Jemalong or their sources including subsidiaries and staff, accept liability to any person for loss or damage arising from the use of this information.



Table 17: Returns pr head for skirted fleece wool.

Skirted FLC Weight 5 Kg			Micron																	
			16	16.5	17	17.5	18	18.5	19	19.5	20	21	22	23	24	25	26	28	30	32
Yield (Sch Dry)	25%	Current	\$37	\$35	\$31	\$29	\$28	\$26	\$24	\$22	\$21	\$20	\$20	\$19	\$18	\$16	\$14	\$10	\$9	\$8
		10yr ave.			\$32		\$29		\$24		\$20	\$19	\$19	\$18	\$18	\$16	\$14	\$12	\$10	\$9
	30%	Current	\$45	\$42	\$38	\$35	\$33	\$31	\$29	\$26	\$25	\$24	\$23	\$23	\$22	\$19	\$16	\$12	\$11	\$10
		10yr ave.			\$39		\$35		\$29		\$25	\$23	\$23	\$22	\$21	\$19	\$17	\$14	\$12	\$11
	35%	Current	\$52	\$49	\$44	\$40	\$39	\$37	\$33	\$31	\$29	\$28	\$27	\$27	\$25	\$22	\$19	\$14	\$13	\$11
		10yr ave.			\$45		\$41		\$34		\$29	\$27	\$26	\$26	\$25	\$22	\$20	\$16	\$14	\$13
	40%	Current	\$59	\$55	\$50	\$46	\$44	\$42	\$38	\$35	\$33	\$32	\$31	\$31	\$29	\$25	\$22	\$16	\$14	\$13
		10yr ave.			\$52		\$47		\$38		\$33	\$31	\$30	\$29	\$28	\$25	\$23	\$19	\$16	\$15
	45%	Current	\$67	\$62	\$56	\$52	\$50	\$47	\$43	\$39	\$37	\$36	\$35	\$35	\$33	\$28	\$25	\$18	\$16	\$14
		10yr ave.			\$58		\$52		\$43		\$37	\$35	\$34	\$33	\$32	\$28	\$26	\$21	\$18	\$17
	50%	Current	\$74	\$69	\$63	\$58	\$55	\$52	\$48	\$44	\$41	\$40	\$39	\$38	\$36	\$32	\$27	\$20	\$18	\$16
		10yr ave.			\$65		\$58		\$48		\$41	\$39	\$38	\$37	\$35	\$32	\$29	\$23	\$20	\$19
	55%	Current	\$82	\$76	\$69	\$63	\$61	\$58	\$53	\$48	\$45	\$44	\$43	\$42	\$40	\$35	\$30	\$22	\$20	\$17
		10yr ave.			\$71		\$64		\$53		\$45	\$43	\$41	\$40	\$39	\$35	\$32	\$26	\$23	\$20
	60%	Current	\$89	\$83	\$75	\$69	\$67	\$63	\$57	\$52	\$50	\$48	\$47	\$46	\$44	\$38	\$33	\$24	\$21	\$19
		10yr ave.			\$78		\$70		\$58		\$49	\$46	\$45	\$44	\$42	\$38	\$35	\$28	\$25	\$22
65%	Current	\$97	\$90	\$81	\$75	\$72	\$68	\$62	\$57	\$54	\$52	\$51	\$50	\$47	\$41	\$35	\$26	\$23	\$21	
	10yr ave.			\$84		\$76		\$62		\$53	\$50	\$49	\$48	\$46	\$41	\$38	\$30	\$27	\$24	
70%	Current	\$104	\$97	\$88	\$81	\$78	\$73	\$67	\$61	\$58	\$56	\$55	\$54	\$51	\$44	\$38	\$28	\$25	\$22	
	10yr ave.			\$90		\$82		\$67		\$57	\$54	\$53	\$51	\$49	\$44	\$41	\$33	\$29	\$26	
75%	Current	\$111	\$104	\$94	\$86	\$83	\$79	\$72	\$66	\$62	\$60	\$59	\$58	\$55	\$47	\$41	\$31	\$27	\$24	
	10yr ave.			\$97		\$87		\$72		\$61	\$58	\$57	\$55	\$53	\$47	\$43	\$35	\$31	\$28	
80%	Current	\$119	\$111	\$100	\$92	\$89	\$84	\$76	\$70	\$66	\$64	\$63	\$61	\$58	\$51	\$44	\$33	\$29	\$25	
	10yr ave.			\$103		\$93		\$77		\$65	\$62	\$60	\$59	\$56	\$51	\$46	\$38	\$33	\$30	
85%	Current	\$126	\$118	\$106	\$98	\$94	\$89	\$81	\$74	\$70	\$68	\$67	\$65	\$62	\$54	\$46	\$35	\$30	\$27	
	10yr ave.			\$110		\$99		\$82		\$70	\$66	\$64	\$63	\$60	\$54	\$49	\$40	\$35	\$32	

The above shows estimated returns per head for skirted fleece wool. These figures do not take into account the value of skirtings and oddments and do not take into account discounts that may apply for faults under individual circumstances. These figures are based on a market index of 100% and should be used as a guide only. Returns over \$30 / head for fleece wool are highlighted.

Source: Australian Wool Exchange, Australian Wool Innovation, Sydney Futures Exchange, x-rates.com

Disclaimer: While all due care has been taken in the preparation of this document, no warranty is made as to its accuracy, reliability or completeness. To the extent permitted by law neither Jemalong or their sources including subsidiaries and staff, accept liability to any person for loss or damage arising from the use of this information.



Table 18: Returns pr head for skirted fleece wool.

Skirted FLC Weight 4 Kg			Micron																	
			16	16.5	17	17.5	18	18.5	19	19.5	20	21	22	23	24	25	26	28	30	32
Yield (Sch Dry)	25%	Current	\$37	\$35	\$31	\$29	\$28	\$26	\$24	\$22	\$21	\$20	\$20	\$19	\$18	\$16	\$14	\$10	\$9	\$8
		10yr ave.			\$32		\$29		\$24		\$20	\$19	\$19	\$18	\$18	\$16	\$14	\$12	\$10	\$9
	30%	Current	\$45	\$42	\$38	\$35	\$33	\$31	\$29	\$26	\$25	\$24	\$23	\$23	\$22	\$19	\$16	\$12	\$11	\$10
		10yr ave.			\$39		\$35		\$29		\$25	\$23	\$23	\$22	\$21	\$19	\$17	\$14	\$12	\$11
	35%	Current	\$52	\$49	\$44	\$40	\$39	\$37	\$33	\$31	\$29	\$28	\$27	\$27	\$25	\$22	\$19	\$14	\$13	\$11
		10yr ave.			\$45		\$41		\$34		\$29	\$27	\$26	\$26	\$25	\$22	\$20	\$16	\$14	\$13
	40%	Current	\$59	\$55	\$50	\$46	\$44	\$42	\$38	\$35	\$33	\$32	\$31	\$31	\$29	\$25	\$22	\$16	\$14	\$13
		10yr ave.			\$52		\$47		\$38		\$33	\$31	\$30	\$29	\$28	\$25	\$23	\$19	\$16	\$15
	45%	Current	\$67	\$62	\$56	\$52	\$50	\$47	\$43	\$39	\$37	\$36	\$35	\$35	\$33	\$28	\$25	\$18	\$16	\$14
		10yr ave.			\$58		\$52		\$43		\$37	\$35	\$34	\$33	\$32	\$28	\$26	\$21	\$18	\$17
	50%	Current	\$74	\$69	\$63	\$58	\$55	\$52	\$48	\$44	\$41	\$40	\$39	\$38	\$36	\$32	\$27	\$20	\$18	\$16
		10yr ave.			\$65		\$58		\$48		\$41	\$39	\$38	\$37	\$35	\$32	\$29	\$23	\$20	\$19
	55%	Current	\$82	\$76	\$69	\$63	\$61	\$58	\$53	\$48	\$45	\$44	\$43	\$42	\$40	\$35	\$30	\$22	\$20	\$17
		10yr ave.			\$71		\$64		\$53		\$45	\$43	\$41	\$40	\$39	\$35	\$32	\$26	\$23	\$20
	60%	Current	\$89	\$83	\$75	\$69	\$67	\$63	\$57	\$52	\$50	\$48	\$47	\$46	\$44	\$38	\$33	\$24	\$21	\$19
		10yr ave.			\$78		\$70		\$58		\$49	\$46	\$45	\$44	\$42	\$38	\$35	\$28	\$25	\$22
65%	Current	\$97	\$90	\$81	\$75	\$72	\$68	\$62	\$57	\$54	\$52	\$51	\$50	\$47	\$41	\$35	\$26	\$23	\$21	
	10yr ave.			\$84		\$76		\$62		\$53	\$50	\$49	\$48	\$46	\$41	\$38	\$30	\$27	\$24	
70%	Current	\$104	\$97	\$88	\$81	\$78	\$73	\$67	\$61	\$58	\$56	\$55	\$54	\$51	\$44	\$38	\$28	\$25	\$22	
	10yr ave.			\$90		\$82		\$67		\$57	\$54	\$53	\$51	\$49	\$44	\$41	\$33	\$29	\$26	
75%	Current	\$111	\$104	\$94	\$86	\$83	\$79	\$72	\$66	\$62	\$60	\$59	\$58	\$55	\$47	\$41	\$31	\$27	\$24	
	10yr ave.			\$97		\$87		\$72		\$61	\$58	\$57	\$55	\$53	\$47	\$43	\$35	\$31	\$28	
80%	Current	\$119	\$111	\$100	\$92	\$89	\$84	\$76	\$70	\$66	\$64	\$63	\$61	\$58	\$51	\$44	\$33	\$29	\$25	
	10yr ave.			\$103		\$93		\$77		\$65	\$62	\$60	\$59	\$56	\$51	\$46	\$38	\$33	\$30	
85%	Current	\$126	\$118	\$106	\$98	\$94	\$89	\$81	\$74	\$70	\$68	\$67	\$65	\$62	\$54	\$46	\$35	\$30	\$27	
	10yr ave.			\$110		\$99		\$82		\$70	\$66	\$64	\$63	\$60	\$54	\$49	\$40	\$35	\$32	

The above shows estimated returns per head for skirted fleece wool. These figures do not take into account the value of skirtings and oddments and do not take into account discounts that may apply for faults under individual circumstances. These figures are based on a market index of 100% and should be used as a guide only. Returns over \$30 / head for fleece wool are highlighted.

Source: Australian Wool Exchange, Australian Wool Innovation, Sydney Futures Exchange, x-rates.com

Disclaimer: While all due care has been taken in the preparation of this document, no warranty is made as to its accuracy, reliability or completeness. To the extent permitted by law neither Jemalong or their sources including subsidiaries and staff, accept liability to any person for loss or damage arising from the use of this information.



Table 19: Returns pr head for skirted fleece wool.

Skirted FLC Weight 3 Kg			Micron																	
			16	16.5	17	17.5	18	18.5	19	19.5	20	21	22	23	24	25	26	28	30	32
Yield (Sch Dry)	25%	Current	\$37	\$35	\$31	\$29	\$28	\$26	\$24	\$22	\$21	\$20	\$20	\$19	\$18	\$16	\$14	\$10	\$9	\$8
		10yr ave.			\$32		\$29		\$24		\$20	\$19	\$19	\$18	\$18	\$16	\$14	\$12	\$10	\$9
	30%	Current	\$45	\$42	\$38	\$35	\$33	\$31	\$29	\$26	\$25	\$24	\$23	\$23	\$22	\$19	\$16	\$12	\$11	\$10
		10yr ave.			\$39		\$35		\$29		\$25	\$23	\$23	\$22	\$21	\$19	\$17	\$14	\$12	\$11
	35%	Current	\$52	\$49	\$44	\$40	\$39	\$37	\$33	\$31	\$29	\$28	\$27	\$27	\$25	\$22	\$19	\$14	\$13	\$11
		10yr ave.			\$45		\$41		\$34		\$29	\$27	\$26	\$26	\$25	\$22	\$20	\$16	\$14	\$13
	40%	Current	\$59	\$55	\$50	\$46	\$44	\$42	\$38	\$35	\$33	\$32	\$31	\$31	\$29	\$25	\$22	\$16	\$14	\$13
		10yr ave.			\$52		\$47		\$38		\$33	\$31	\$30	\$29	\$28	\$25	\$23	\$19	\$16	\$15
	45%	Current	\$67	\$62	\$56	\$52	\$50	\$47	\$43	\$39	\$37	\$36	\$35	\$35	\$33	\$28	\$25	\$18	\$16	\$14
		10yr ave.			\$58		\$52		\$43		\$37	\$35	\$34	\$33	\$32	\$28	\$26	\$21	\$18	\$17
	50%	Current	\$74	\$69	\$63	\$58	\$55	\$52	\$48	\$44	\$41	\$40	\$39	\$38	\$36	\$32	\$27	\$20	\$18	\$16
		10yr ave.			\$65		\$58		\$48		\$41	\$39	\$38	\$37	\$35	\$32	\$29	\$23	\$20	\$19
	55%	Current	\$82	\$76	\$69	\$63	\$61	\$58	\$53	\$48	\$45	\$44	\$43	\$42	\$40	\$35	\$30	\$22	\$20	\$17
		10yr ave.			\$71		\$64		\$53		\$45	\$43	\$41	\$40	\$39	\$35	\$32	\$26	\$23	\$20
	60%	Current	\$89	\$83	\$75	\$69	\$67	\$63	\$57	\$52	\$50	\$48	\$47	\$46	\$44	\$38	\$33	\$24	\$21	\$19
		10yr ave.			\$78		\$70		\$58		\$49	\$46	\$45	\$44	\$42	\$38	\$35	\$28	\$25	\$22
65%	Current	\$97	\$90	\$81	\$75	\$72	\$68	\$62	\$57	\$54	\$52	\$51	\$50	\$47	\$41	\$35	\$26	\$23	\$21	
	10yr ave.			\$84		\$76		\$62		\$53	\$50	\$49	\$48	\$46	\$41	\$38	\$30	\$27	\$24	
70%	Current	\$104	\$97	\$88	\$81	\$78	\$73	\$67	\$61	\$58	\$56	\$55	\$54	\$51	\$44	\$38	\$28	\$25	\$22	
	10yr ave.			\$90		\$82		\$67		\$57	\$54	\$53	\$51	\$49	\$44	\$41	\$33	\$29	\$26	
75%	Current	\$111	\$104	\$94	\$86	\$83	\$79	\$72	\$66	\$62	\$60	\$59	\$58	\$55	\$47	\$41	\$31	\$27	\$24	
	10yr ave.			\$97		\$87		\$72		\$61	\$58	\$57	\$55	\$53	\$47	\$43	\$35	\$31	\$28	
80%	Current	\$119	\$111	\$100	\$92	\$89	\$84	\$76	\$70	\$66	\$64	\$63	\$61	\$58	\$51	\$44	\$33	\$29	\$25	
	10yr ave.			\$103		\$93		\$77		\$65	\$62	\$60	\$59	\$56	\$51	\$46	\$38	\$33	\$30	
85%	Current	\$126	\$118	\$106	\$98	\$94	\$89	\$81	\$74	\$70	\$68	\$67	\$65	\$62	\$54	\$46	\$35	\$30	\$27	
	10yr ave.			\$110		\$99		\$82		\$70	\$66	\$64	\$63	\$60	\$54	\$49	\$40	\$35	\$32	

The above shows estimated returns per head for skirted fleece wool. These figures do not take into account the value of skirtings and oddments and do not take into account discounts that may apply for faults under individual circumstances. These figures are based on a market index of 100% and should be used as a guide only. Returns over \$30 / head for fleece wool are highlighted.

Source: Australian Wool Exchange, Australian Wool Innovation, Sydney Futures Exchange, x-rates.com

Disclaimer: While all due care has been taken in the preparation of this document, no warranty is made as to its accuracy, reliability or completeness. To the extent permitted by law neither Jemalong or their sources including subsidiaries and staff, accept liability to any person for loss or damage arising from the use of this information.



Table 20: Returns pr head for skirted fleece wool.

Skirted FLC Weight 2 Kg			Micron																	
			16	16.5	17	17.5	18	18.5	19	19.5	20	21	22	23	24	25	26	28	30	32
Yield (Sch Dry)	25%	Current	\$37	\$35	\$31	\$29	\$28	\$26	\$24	\$22	\$21	\$20	\$20	\$19	\$18	\$16	\$14	\$10	\$9	\$8
		10yr ave.			\$32		\$29		\$24		\$20	\$19	\$19	\$18	\$18	\$16	\$14	\$12	\$10	\$9
	30%	Current	\$45	\$42	\$38	\$35	\$33	\$31	\$29	\$26	\$25	\$24	\$23	\$23	\$22	\$19	\$16	\$12	\$11	\$10
		10yr ave.			\$39		\$35		\$29		\$25	\$23	\$23	\$22	\$21	\$19	\$17	\$14	\$12	\$11
	35%	Current	\$52	\$49	\$44	\$40	\$39	\$37	\$33	\$31	\$29	\$28	\$27	\$27	\$25	\$22	\$19	\$14	\$13	\$11
		10yr ave.			\$45		\$41		\$34		\$29	\$27	\$26	\$26	\$25	\$22	\$20	\$16	\$14	\$13
	40%	Current	\$59	\$55	\$50	\$46	\$44	\$42	\$38	\$35	\$33	\$32	\$31	\$31	\$29	\$25	\$22	\$16	\$14	\$13
		10yr ave.			\$52		\$47		\$38		\$33	\$31	\$30	\$29	\$28	\$25	\$23	\$19	\$16	\$15
	45%	Current	\$67	\$62	\$56	\$52	\$50	\$47	\$43	\$39	\$37	\$36	\$35	\$35	\$33	\$28	\$25	\$18	\$16	\$14
		10yr ave.			\$58		\$52		\$43		\$37	\$35	\$34	\$33	\$32	\$28	\$26	\$21	\$18	\$17
	50%	Current	\$74	\$69	\$63	\$58	\$55	\$52	\$48	\$44	\$41	\$40	\$39	\$38	\$36	\$32	\$27	\$20	\$18	\$16
		10yr ave.			\$65		\$58		\$48		\$41	\$39	\$38	\$37	\$35	\$32	\$29	\$23	\$20	\$19
	55%	Current	\$82	\$76	\$69	\$63	\$61	\$58	\$53	\$48	\$45	\$44	\$43	\$42	\$40	\$35	\$30	\$22	\$20	\$17
		10yr ave.			\$71		\$64		\$53		\$45	\$43	\$41	\$40	\$39	\$35	\$32	\$26	\$23	\$20
	60%	Current	\$89	\$83	\$75	\$69	\$67	\$63	\$57	\$52	\$50	\$48	\$47	\$46	\$44	\$38	\$33	\$24	\$21	\$19
		10yr ave.			\$78		\$70		\$58		\$49	\$46	\$45	\$44	\$42	\$38	\$35	\$28	\$25	\$22
65%	Current	\$97	\$90	\$81	\$75	\$72	\$68	\$62	\$57	\$54	\$52	\$51	\$50	\$47	\$41	\$35	\$26	\$23	\$21	
	10yr ave.			\$84		\$76		\$62		\$53	\$50	\$49	\$48	\$46	\$41	\$38	\$30	\$27	\$24	
70%	Current	\$104	\$97	\$88	\$81	\$78	\$73	\$67	\$61	\$58	\$56	\$55	\$54	\$51	\$44	\$38	\$28	\$25	\$22	
	10yr ave.			\$90		\$82		\$67		\$57	\$54	\$53	\$51	\$49	\$44	\$41	\$33	\$29	\$26	
75%	Current	\$111	\$104	\$94	\$86	\$83	\$79	\$72	\$66	\$62	\$60	\$59	\$58	\$55	\$47	\$41	\$31	\$27	\$24	
	10yr ave.			\$97		\$87		\$72		\$61	\$58	\$57	\$55	\$53	\$47	\$43	\$35	\$31	\$28	
80%	Current	\$119	\$111	\$100	\$92	\$89	\$84	\$76	\$70	\$66	\$64	\$63	\$61	\$58	\$51	\$44	\$33	\$29	\$25	
	10yr ave.			\$103		\$93		\$77		\$65	\$62	\$60	\$59	\$56	\$51	\$46	\$38	\$33	\$30	
85%	Current	\$126	\$118	\$106	\$98	\$94	\$89	\$81	\$74	\$70	\$68	\$67	\$65	\$62	\$54	\$46	\$35	\$30	\$27	
	10yr ave.			\$110		\$99		\$82		\$70	\$66	\$64	\$63	\$60	\$54	\$49	\$40	\$35	\$32	

The above shows estimated returns per head for skirted fleece wool. These figures do not take into account the value of skirtings and oddments and do not take into account discounts that may apply for faults under individual circumstances. These figures are based on a market index of 100% and should be used as a guide only. Returns over \$30 / head for fleece wool are highlighted.

Source: Australian Wool Exchange, Australian Wool Innovation, Sydney Futures Exchange, x-rates.com

Disclaimer: While all due care has been taken in the preparation of this document, no warranty is made as to its accuracy, reliability or completeness. To the extent permitted by law neither Jemalong or their sources including subsidiaries and staff, accept liability to any person for loss or damage arising from the use of this information.