



Table 1: Northern Region Micron Price Guides

CURRENT MARKET			PERCENTILES		AVERAGES						12 MONTH COMPARISONS								TRADING RANGE		
Mic.	9/12/2010	2/12/2010			Now			Now			8/12/2009		Now		Now		Now		Clean c/kg		
Price	Current	Weekly	3yr	10yr	<u>3 year</u>	compared		<u>10 year</u>	compared		This time	compared	12 Month	compared	12 Month	compared	12 Month	compared	12	3	10
Guides	Price	Change			Average	to 3yr ave		Average	to 10yr ave	Last Year	to Last Year	Low	to Low	High	to High	Mth	Year	Year			
NRI	1053	-9 -0.9%	94%	92%	897	+156	17%	872	+181	21%	901	+152	17%	890	+163	18%	1080	-27 -3%	190	343	584
16*	2020	0	98%		1637	+383	23%				1395	+625	45%	1480	+540	36%	2050	-30 -1%	570	665	
16.5*	1895	+25 1.3%	99%		1499	+396	26%				1300	+595	46%	1365	+530	39%	1980	-85 -4%	615	726	
17*	1785	+15 0.8%	99%	96%	1374	+411	30%	1412	+373	26%	1215	+570	47%	1230	+555	45%	1815	-30 -2%	585	644	1797
17.5*	1670	-10 -0.6%	98%		1308	+362	28%				1180	+490	42%	1175	+495	42%	1725	-55 -3%	550	639	
18	1590	-31 -1.9%	97%	83%	1247	+343	28%	1283	+307	24%	1161	+429	37%	1134	+456	40%	1636	-46 -3%	502	601	1392
18.5	1454	-27 -1.9%	97%		1171	+283	24%				1116	+338	30%	1088	+366	34%	1507	-53 -4%	419	536	
19	1272	-18 -1.4%	93%	87%	1072	+200	19%	1066	+206	19%	1066	+206	19%	1031	+241	23%	1312	-40 -3%	281	443	706
19.5	1105	-16 -1.4%	86%		982	+123	13%				1002	+103	10%	952	+153	16%	1168	-63 -5%	216	457	
20	1008	-9 -0.9%	85%	77%	910	+98	11%	915	+93	10%	942	+66	7%	904	+104	12%	1076	-68 -6%	172	464	717
21	980	-22 -2.2%	88%	77%	875	+105	12%	870	+110	13%	912	+68	7%	878	+102	12%	1039	-59 -6%	161	427	744
22	939	-5 -0.5%	84%	73%	852	+87	10%	847	+92	11%	890	+49	6%	847	+92	11%	990	-51 -5%	143	360	742
23	893	-9 -1.0%	75%	67%	828	+65	8%	826	+67	8%	854	+39	5%	827	+66	8%	940	-47 -5%	113	311	750
24	828	-2 -0.2%	73%	68%	781	+47	6%	790	+38	5%	779	+49	6%	780	+48	6%	881	-53 -6%	101	257	739
25	750	-10 -1.3%	93%	77%	672	+78	12%	709	+41	6%	650	+100	15%	660	+90	14%	781	-31 -4%	121	215	690
26	650	-21 -3.2%	92%	73%	602	+48	8%	650	0	0%	560	+90	16%	576	+74	13%	696	-46 -7%	120	192	636
28	483	-4 -0.8%	84%	49%	461	+22	5%	522	-39 -7%		430	+53	12%	436	+47	11%	502	-19 -4%	66	119	465
30	445	+1 0.2%	96%	61%	400	+45	11%	456	-11 -2%		377	+68	18%	382	+63	16%	447	-2 0%	65	128	384
32	414	0	100%	62%	349	+65	19%	413	+1	0%	331	+83	25%	333	+81	24%	414	0 0%	81	108	372
MC	658	+8 1.2%	92%	94%	544	+114	21%	500	+158	32%	572	+86	15%	561	+97	17%	681	-23 -3%	120	289	304

Note:

* Due to the irregular market quoting for some fine wool categories, figures shown relating to micron categories below 18 micron are an estimate based on the AWEX Premium & Discounts Report & other available information.

* For any category, where there is insufficient quantity offered to enable AWEX to quote, a quote will be provided based on the best available information.

* 10 Year data is not available for some micron categories, which may result in blank spaces in the table above.

Definitions:

* A Percentile, is a value on a scale of one hundred that indicates the percent of a distribution that is equal to or below it. In general a percentile between 25% and 75% is considered normal, a percentile below 25% is considered below normal and a percentile above 75% is considered above normal.

Three and ten year percentiles shown in the table above, detail the period of time during the past 3 & 10 years that the market has traded either at or below its current price.

The higher the percentile, the stronger the market.

Source: Australian Wool Exchange, Australian Wool Innovation, Sydney Futures Exchange, x-rates.com

Disclaimer: While all due care has been taken in the preparation of this document, no warranty is made as to its accuracy, reliability or completeness. To the extent permitted by law neither Jemalong or their sources including subsidiaries and staff, accept liability to any person for loss or damage arising from the use of this information.



MARKET COMMENTARY

Australian Dollar 98.69 cents US as of 9/12/2010

NORTHERN REGION –Sale Week 23/10 (58,257bales offered nationally)

The fine wool market continues to become more and more difficult to quote, with large variations in price between seemingly similar lines of wool. On Wednesday merino fleece were generally 5-10 cents cheaper, however some lots managed to buck to trend to sell 10-20 cents above the previous weeks close. On Thursday the market continued to drift lower with the fine end of the market most affected. Most skirting's & oddments were firm to slightly dearer for the week, while the crossbred market was mixed with the finer end falling up to 20 cents while the broader microns remained firm.

Next weeks sale is the last for the year with 48,476 bales currently rostered. Sales resume in the new year, week commencing 11th January.

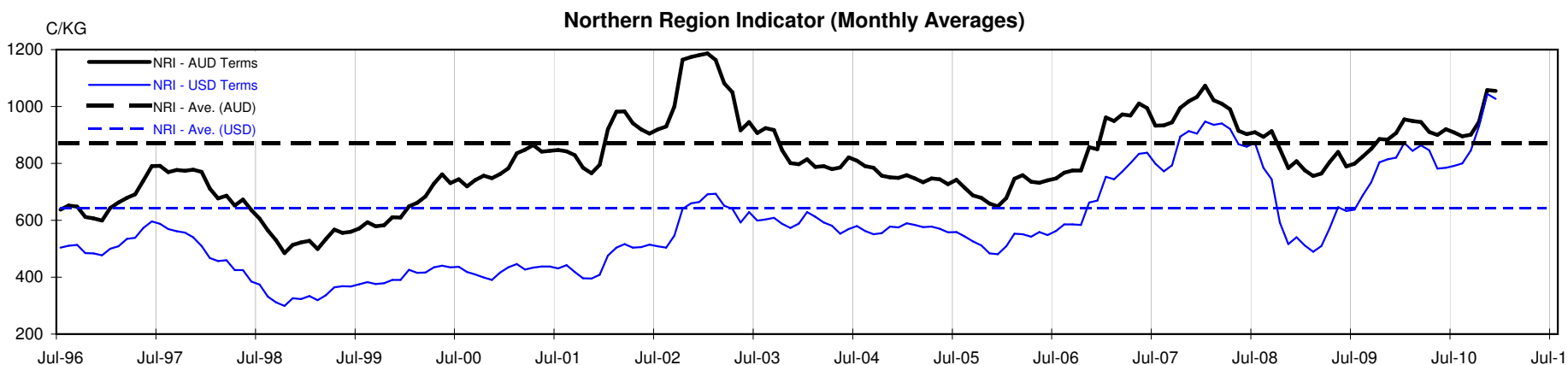




Table 4: 19 micron SFE

Wednesday, 8 December 2010

Delivery Mth	Dec-10	Feb-11	Apr-11	Jun-11	Aug-11	Oct-11	Dec-11	Feb-12	Apr-12
19 Micron SFE	1245	1245	1288	1288	1270	1227	1187	1167	1127
Average	1032	1055	1062	1071	1076	1078	1078	1089	1106
Maximum	1106	1245	1245	1288	1288	1280	1265	1240	1240
Minimum	905	936	983	1025	1034	1034	1034	1034	1053

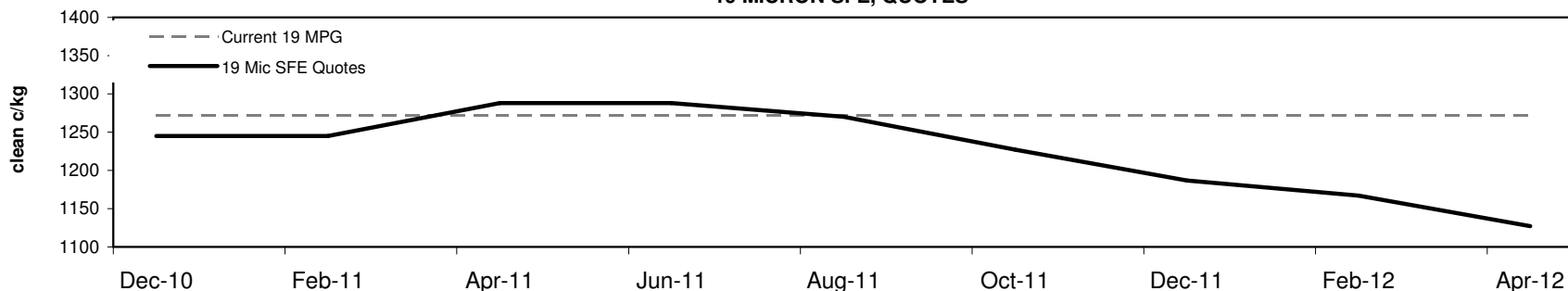
Table 5: 19 micron SFE, as a percentile of the 19 micron MPG

3 Year Percentile	90%	90%	95%	95%	93%	88%	84%	83%	81%
10 Year Percentile	85%	85%	88%	88%	87%	82%	78%	76%	70%

Table 6: 19 micron SFE, compared to MPG

Current 19 MPG	-27	-2%	-27	-2%	+16	1%	+16	1%	-2	0%	-45	-4%	-85	-7%	-105	-8%	-145	-11%
19 MPG, 1 Year Average	+136	12%	+136	12%	+179	16%	+179	16%	+161	15%	+118	11%	+78	7%	+58	5%	+18	2%
19 MPG, 3 Year Average	+173	16%	+173	16%	+216	20%	+216	20%	+198	18%	+155	14%	+115	11%	+95	9%	+55	5%
19 MPG, 10 Year Average	+179	17%	+179	17%	+222	21%	+222	21%	+204	19%	+161	15%	+121	11%	+101	9%	+61	6%

19 MICRON SFE, QUOTES



19 MICRON SFE, FRONT MONTH PRICE MOVEMENT (mthly averages)

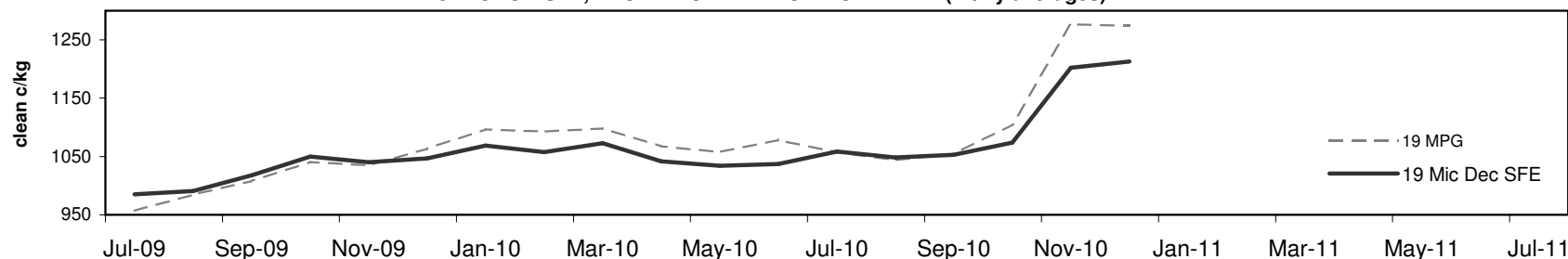




Table 7: 21 micron SFE

Wednesday, 8 December 2010

Delivery Mth	Dec-10	Feb-11	Apr-11	Jun-11	Aug-11	Oct-11	Dec-11	Feb-12	Apr-12
21 Micron SFE	1015	1013	1013	1006	1004	1006	1006	1006	1006
Average	914	931	939	943	943	936	927	928	939
Maximum	1013	1020	1025	1026	1025	1018	1017	1018	1017
Minimum	780	818	860	891	890	880	880	880	880

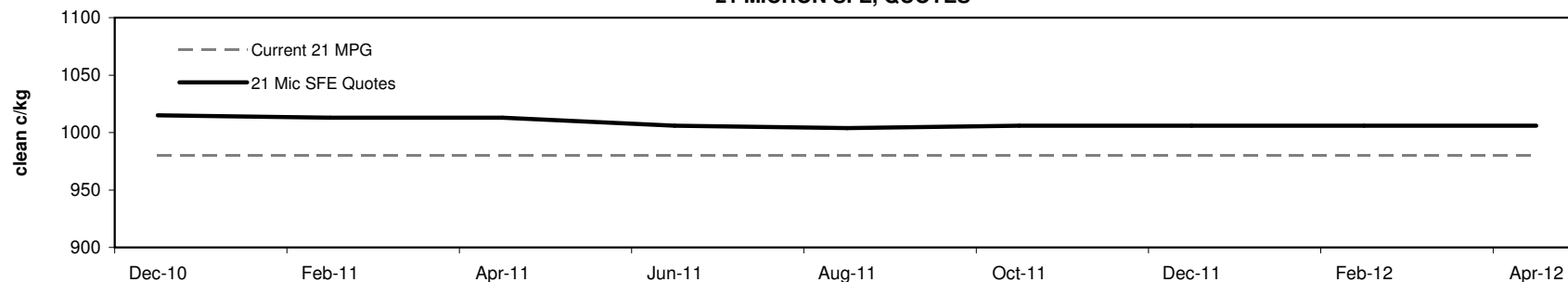
Table 8: 21 micron SFE, as a percentile of the 21 micron MPG

3 Year Percentile	95%	95%	95%	94%	94%	94%	94%	94%	94%
10 Year Percentile	86%	86%	86%	85%	84%	85%	85%	85%	85%

Table 9: 21 micron SFE, compared to MPG

Current 21 MPG	+35	4%	+33	3%	+33	3%	+26	3%	+24	2%	+26	3%	+26	3%	+26	3%	+26	3%
21 MPG, 1 Year Average	+72	8%	+70	7%	+70	7%	+63	7%	+61	6%	+63	7%	+63	7%	+63	7%	+63	7%
21 MPG, 3 Year Average	+140	16%	+138	16%	+138	16%	+131	15%	+129	15%	+131	15%	+131	15%	+131	15%	+131	15%
21 MPG, 10 Year Average	+145	17%	+143	16%	+143	16%	+136	16%	+134	15%	+136	16%	+136	16%	+136	16%	+136	16%

21 MICRON SFE, QUOTES



21 MICRON SFE, FRONT MONTH PRICE MOVEMENT (monthly averages)

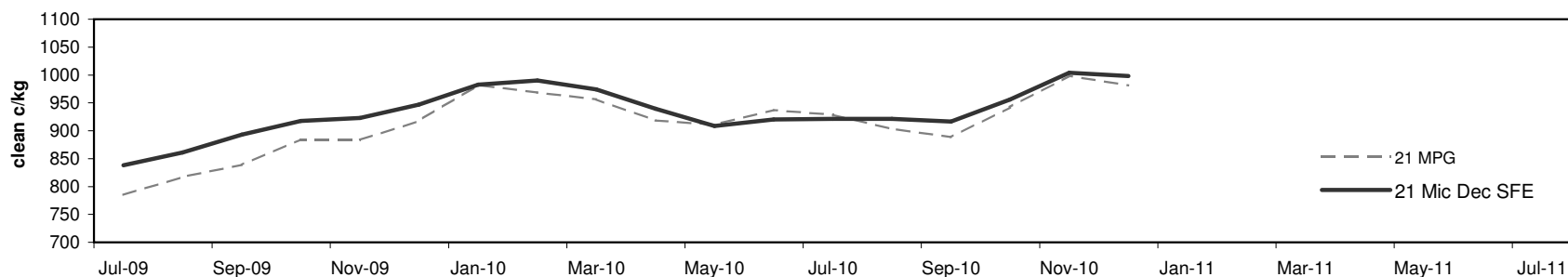




Table 10: 23 micron SFE

Wednesday, 8 December 2010

Delivery Mth	Dec-10	Feb-11	Apr-11	Jun-11	Aug-11	Oct-11	Dec-11	Feb-12	Apr-12
23 Micron SFE	883	883	883	883	883	883	883	883	883
Average	839	856	864	873	886	891	884	884	885
Maximum	927	927	927	927	927	927	887	887	887
Minimum	716	760	760	803	803	883	883	883	883

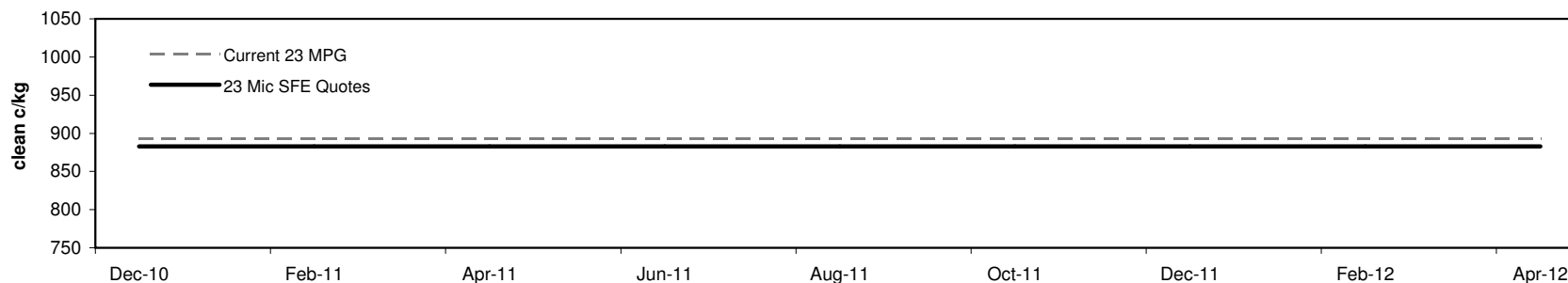
Table 11: 23 micron SFE, as a percentile of the 23 micron MPG

3 Year Percentile	68%	68%	68%	68%	68%	68%	68%	68%	68%
10 Year Percentile	64%	64%	64%	64%	64%	64%	64%	64%	64%

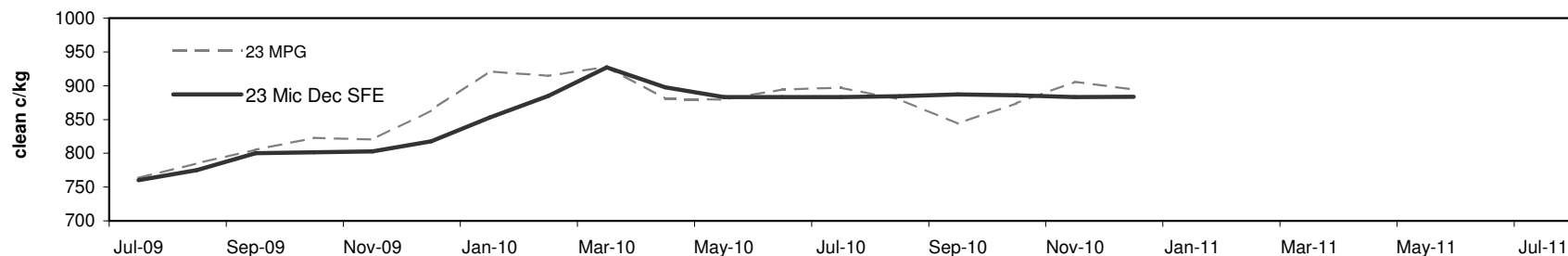
Table 12: 23 micron SFE, compared to MPG

Current 19 MPG	-10	-1%	-10	-1%	-10	-1%	-10	-1%	-10	-1%	-10	-1%	-10	-1%	-10	-1%	-10	-1%	-10	-1%
23 MPG, 1 Year Average	-10	-1%	-10	-1%	-10	-1%	-10	-1%	-10	-1%	-10	-1%	-10	-1%	-10	-1%	-10	-1%	-10	-1%
23 MPG, 3 Year Average	+55	7%	+55	7%	+55	7%	+55	7%	+55	7%	+55	7%	+55	7%	+55	7%	+55	7%	+55	7%
23 MPG, 10 Year Average	+57	7%	+57	7%	+57	7%	+57	7%	+57	7%	+57	7%	+57	7%	+57	7%	+57	7%	+57	7%

23 MICRON SFE, QUOTES

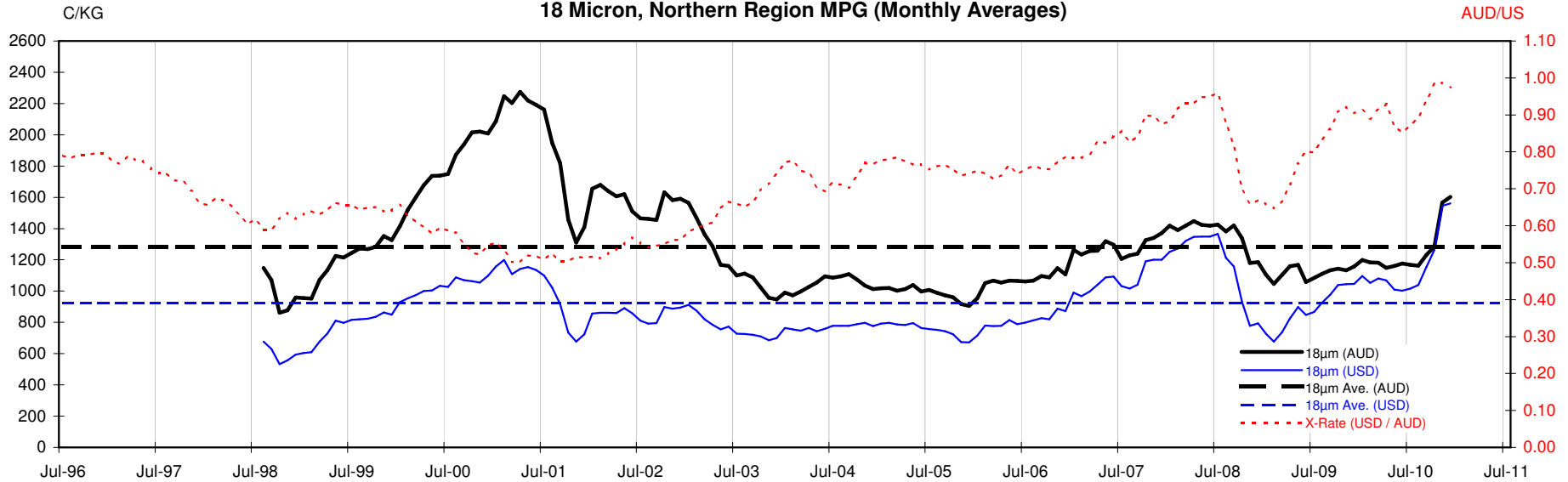


23 MICRON SFE, FRONT MONTH PRICE MOVEMENT (mthly averages)



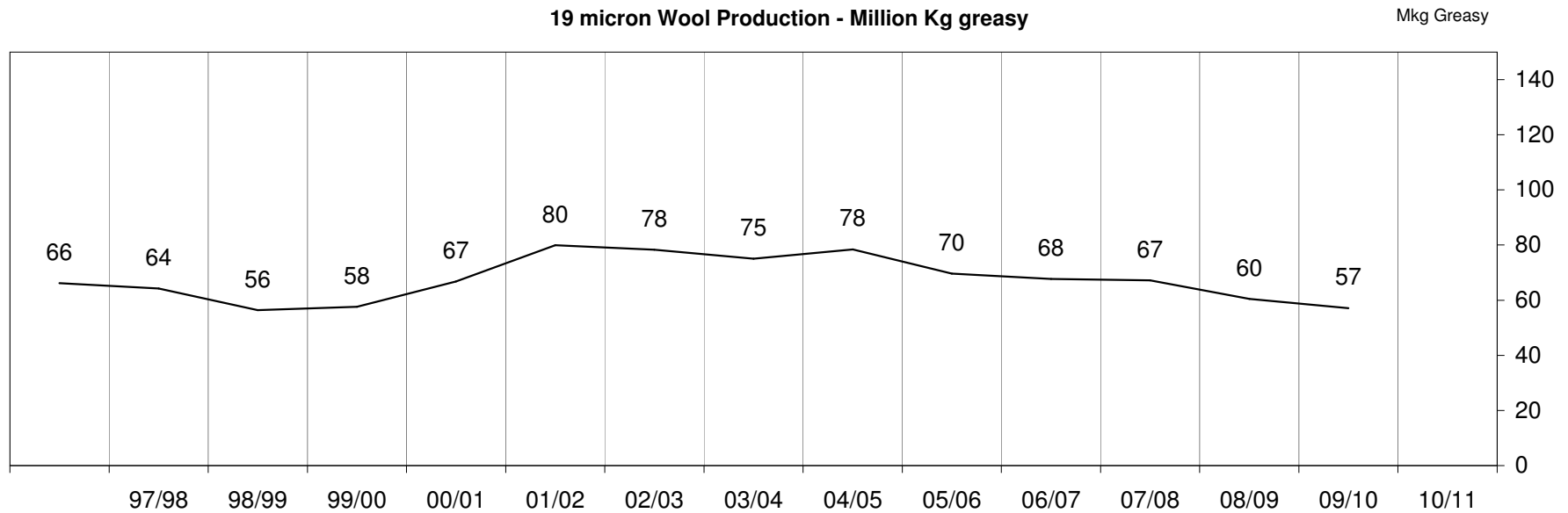
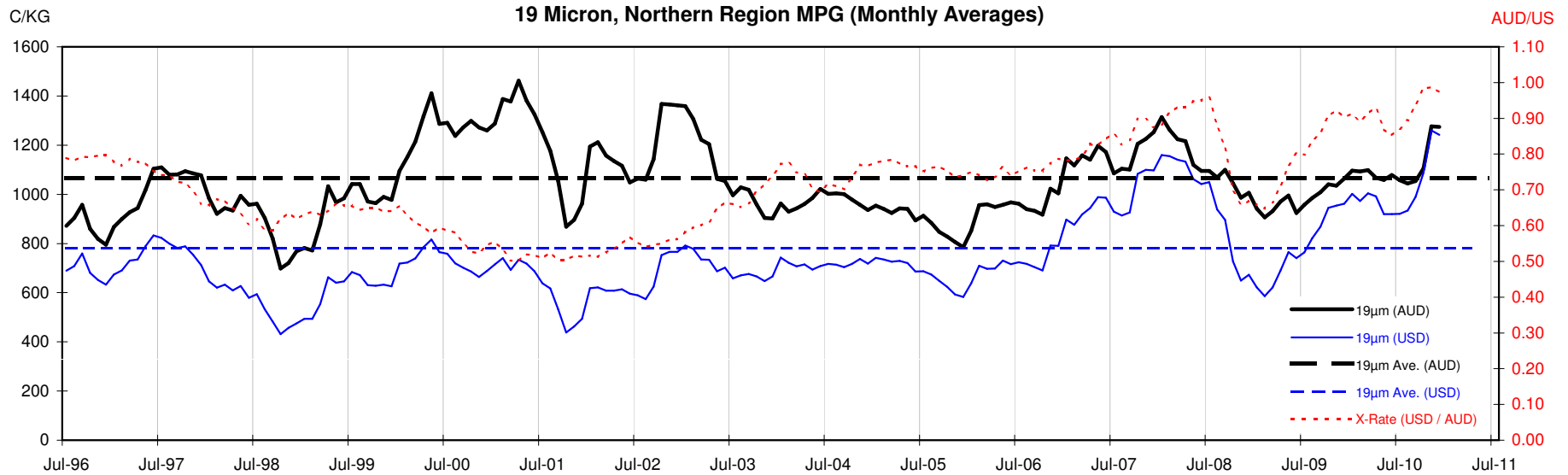


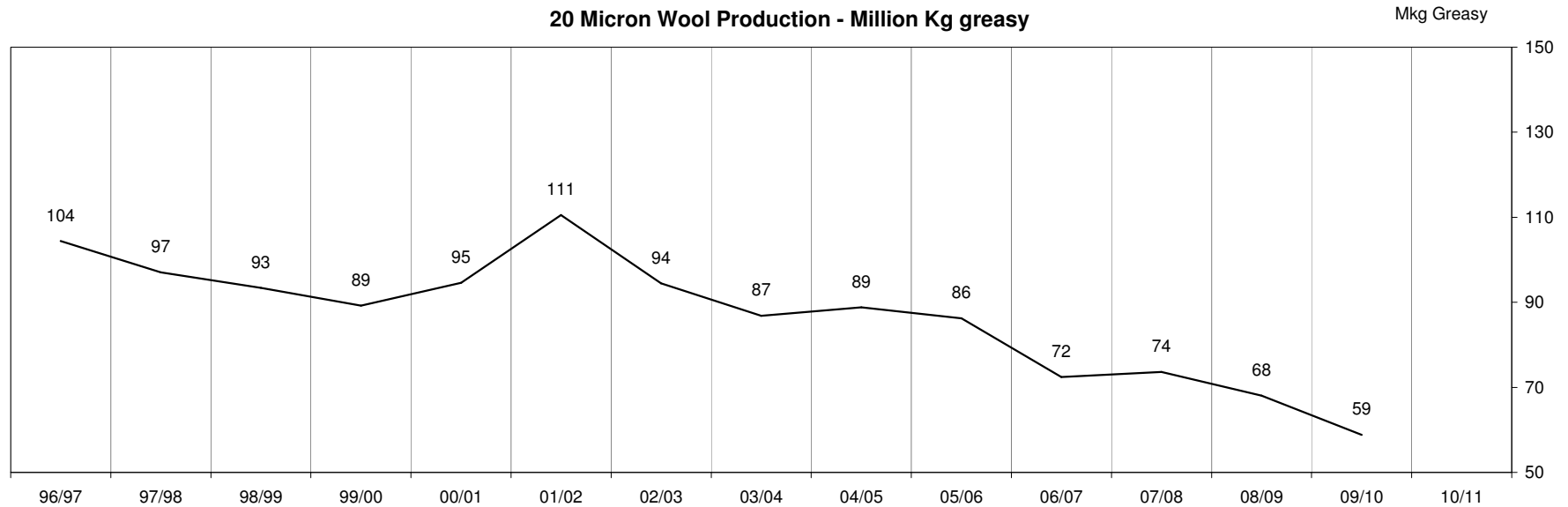
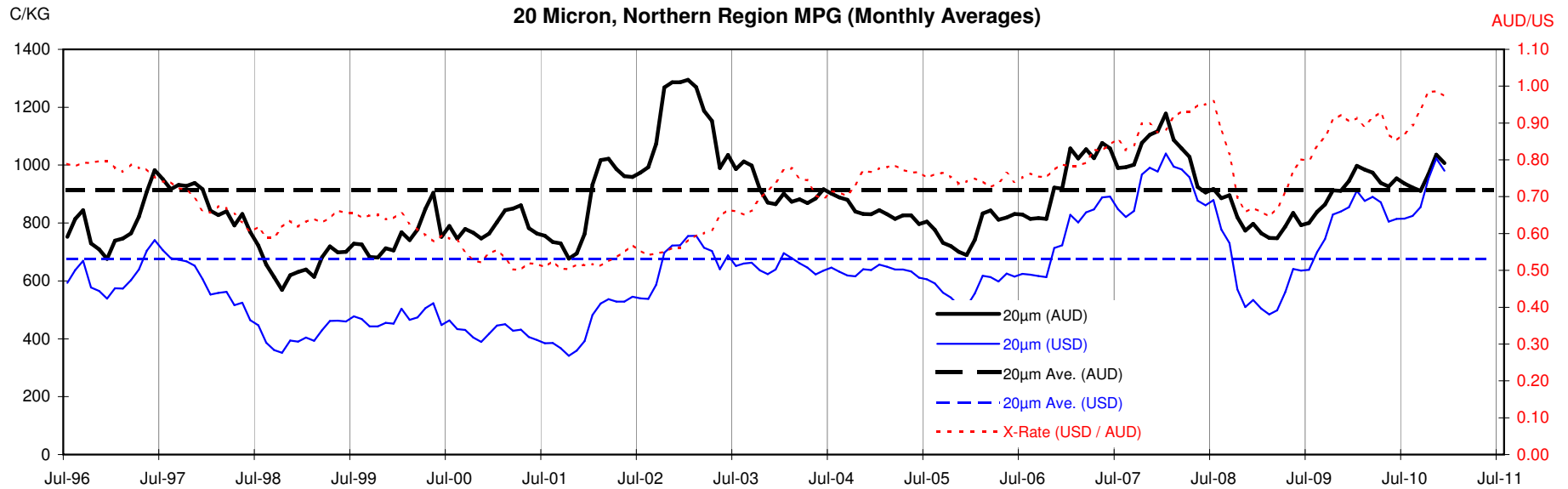
18 Micron, Northern Region MPG (Monthly Averages)

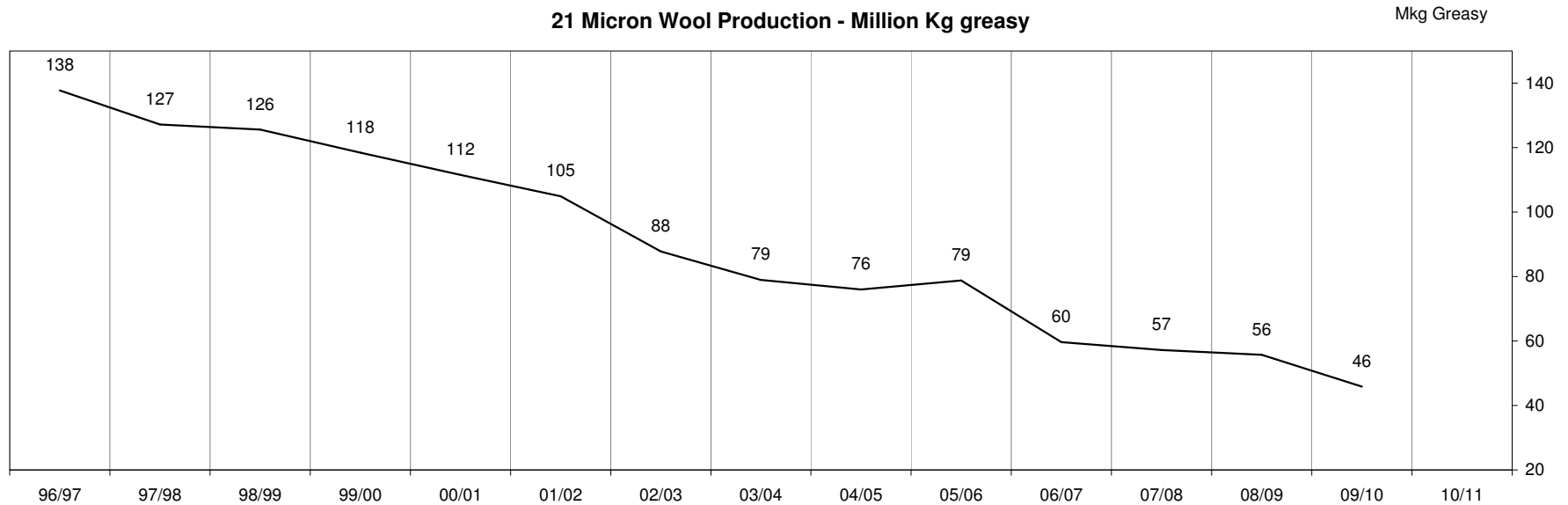
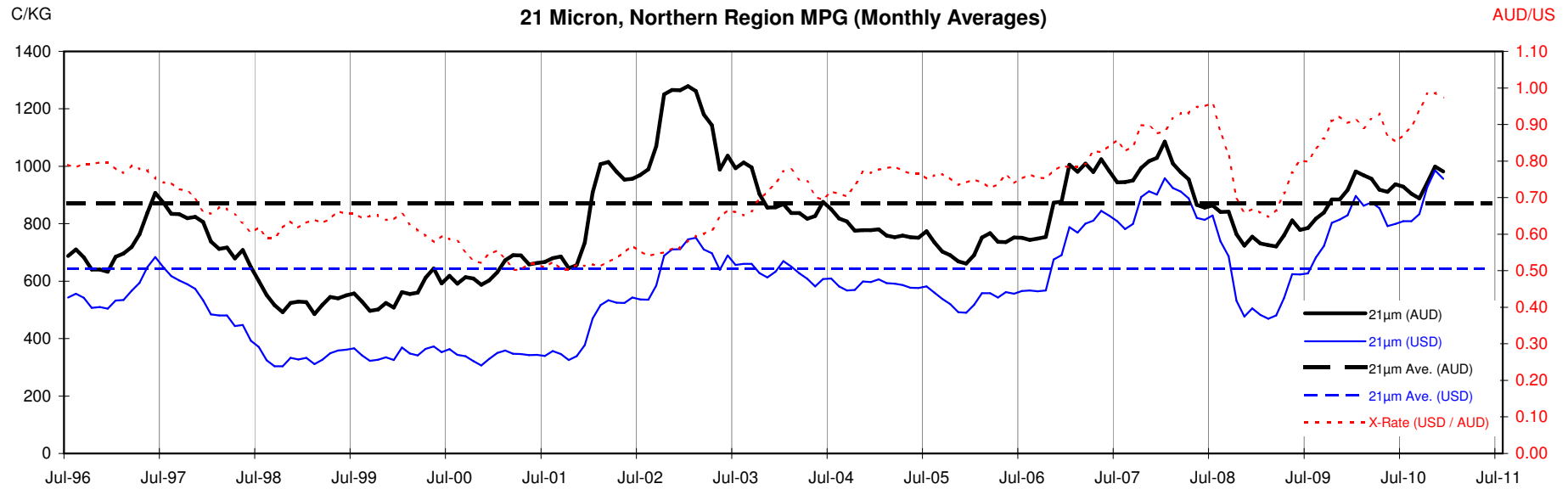


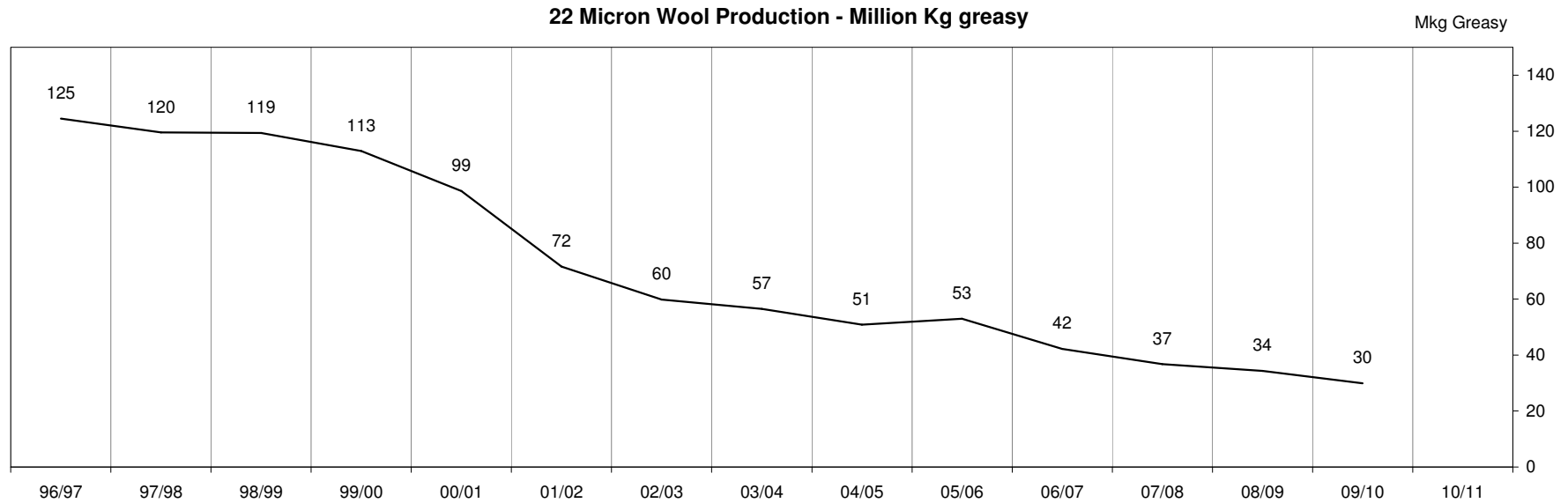
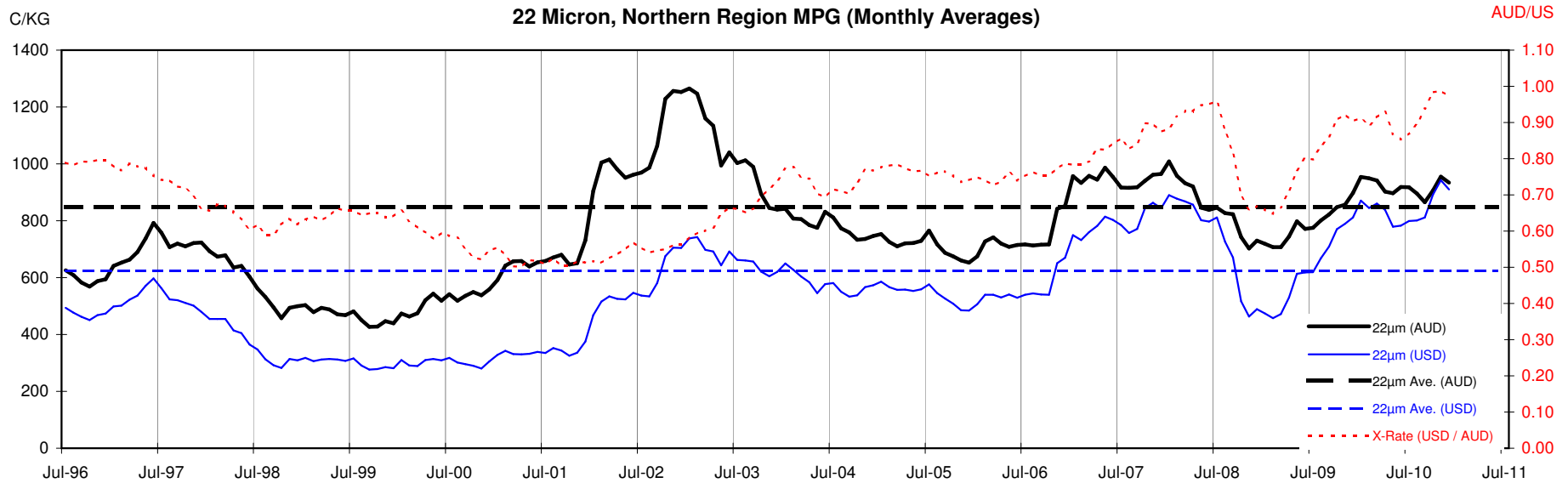
<18.5 micron Wool Production - Million Kg greasy

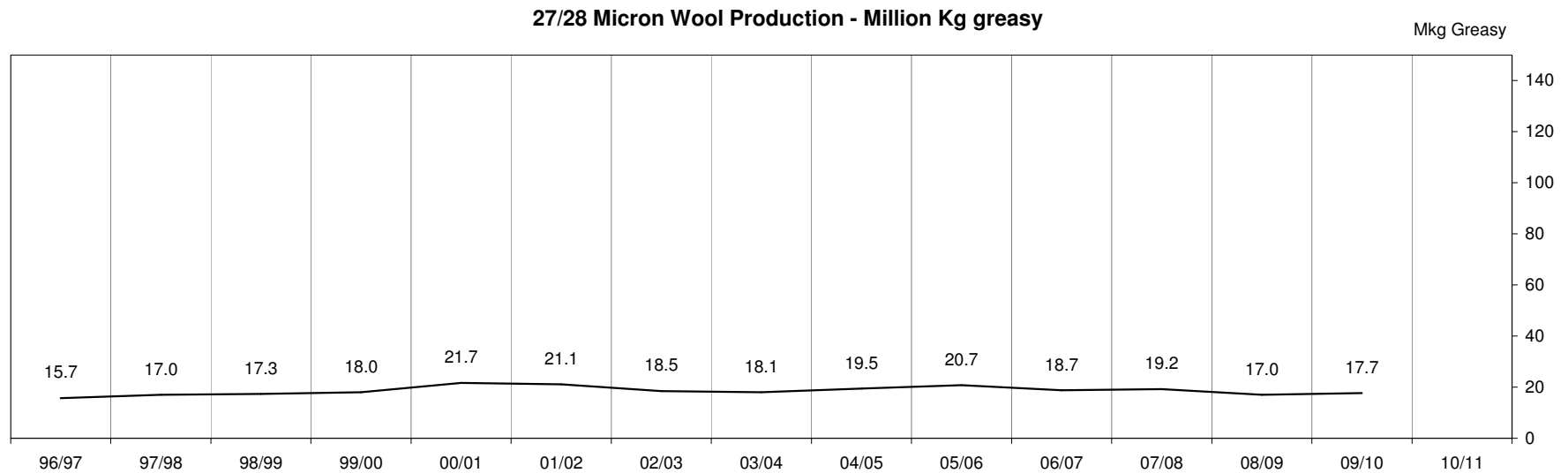
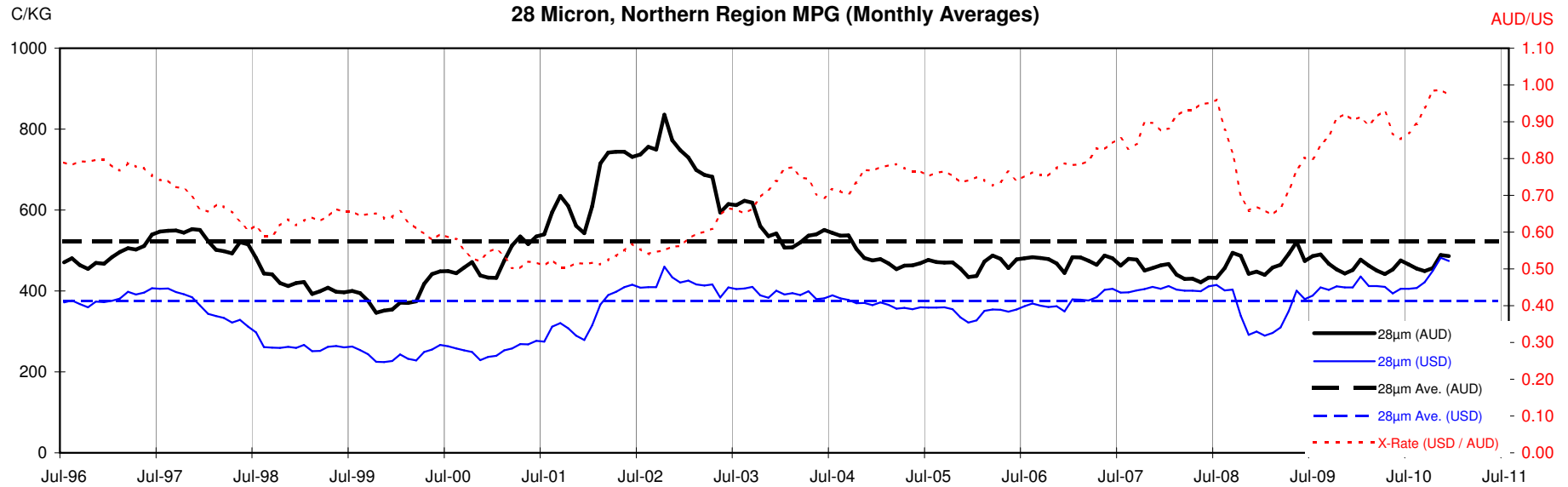












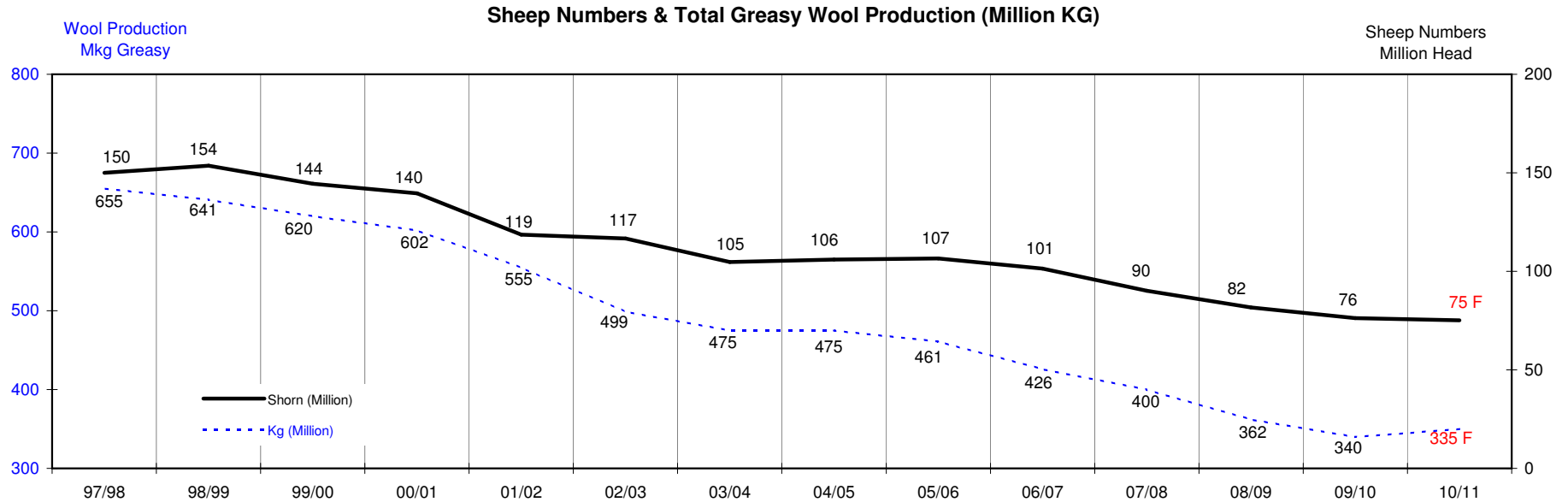
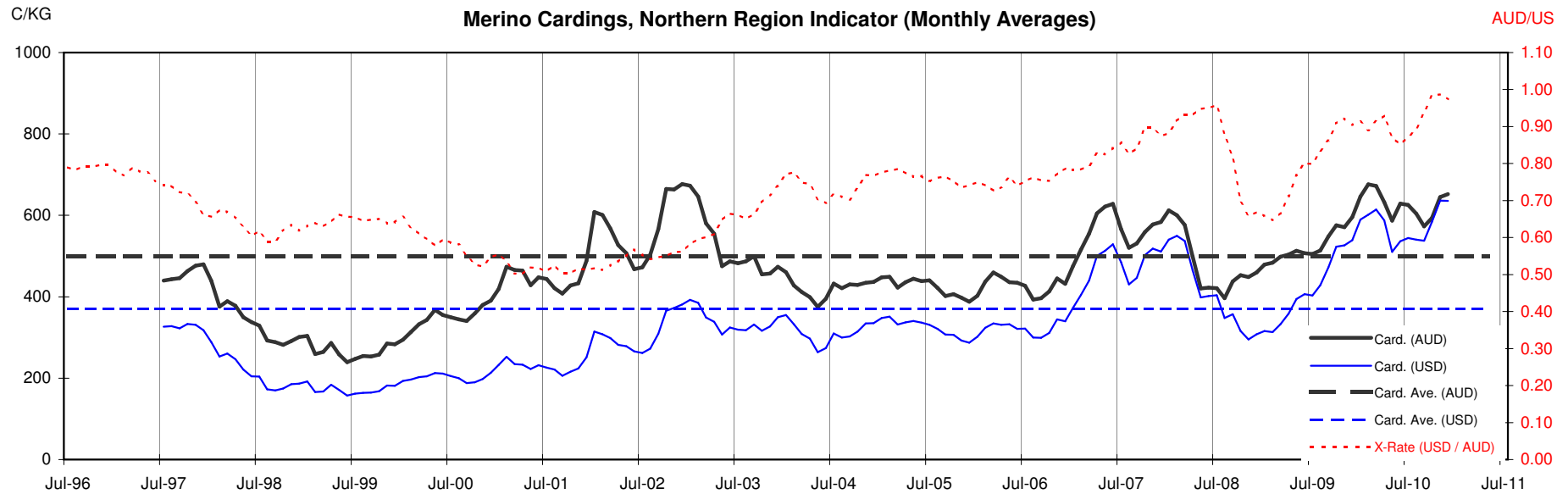




Table 13: Returns pr head for skirted fleece wool.

Skirted FLC Weight 9 Kg		Micron																	
		16	16.5	17	17.5	18	18.5	19	19.5	20	21	22	23	24	25	26	28	30	32
Yield (Sch Dry)	25% Current	\$45	\$43	\$40	\$38	\$36	\$33	\$29	\$25	\$23	\$22	\$21	\$20	\$19	\$17	\$15	\$11	\$10	\$9
	10yr ave.			\$32	\$29			\$24		\$21	\$20	\$19	\$19	\$18	\$16	\$15	\$12	\$10	\$9
	30% Current	\$55	\$51	\$48	\$45	\$43	\$39	\$34	\$30	\$27	\$26	\$25	\$24	\$22	\$20	\$18	\$13	\$12	\$11
	10yr ave.			\$38	\$35			\$29		\$25	\$23	\$23	\$22	\$21	\$19	\$18	\$14	\$12	\$11
	35% Current	\$64	\$60	\$56	\$53	\$50	\$46	\$40	\$35	\$32	\$31	\$30	\$28	\$26	\$24	\$20	\$15	\$14	\$13
	10yr ave.			\$44	\$40			\$34		\$29	\$27	\$27	\$26	\$25	\$22	\$20	\$16	\$14	\$13
	40% Current	\$73	\$68	\$64	\$60	\$57	\$52	\$46	\$40	\$36	\$35	\$34	\$32	\$30	\$27	\$23	\$17	\$16	\$15
	10yr ave.			\$51	\$46			\$38		\$33	\$31	\$30	\$30	\$28	\$26	\$23	\$19	\$16	\$15
	45% Current	\$82	\$77	\$72	\$68	\$64	\$59	\$52	\$45	\$41	\$40	\$38	\$36	\$34	\$30	\$26	\$20	\$18	\$17
	10yr ave.			\$57	\$52			\$43		\$37	\$35	\$34	\$33	\$32	\$29	\$26	\$21	\$18	\$17
	50% Current	\$91	\$85	\$80	\$75	\$72	\$65	\$57	\$50	\$45	\$44	\$42	\$40	\$37	\$34	\$29	\$22	\$20	\$19
	10yr ave.			\$64	\$58			\$48		\$41	\$39	\$38	\$37	\$36	\$32	\$29	\$23	\$21	\$19
	55% Current	\$100	\$94	\$88	\$83	\$79	\$72	\$63	\$55	\$50	\$49	\$46	\$44	\$41	\$37	\$32	\$24	\$22	\$20
	10yr ave.			\$70	\$64			\$53		\$45	\$43	\$42	\$41	\$39	\$35	\$32	\$26	\$23	\$20
	60% Current	\$109	\$102	\$96	\$90	\$86	\$79	\$69	\$60	\$54	\$53	\$51	\$48	\$45	\$41	\$35	\$26	\$24	\$22
	10yr ave.			\$76	\$69			\$58		\$49	\$47	\$46	\$45	\$43	\$38	\$35	\$28	\$25	\$22
	65% Current	\$118	\$111	\$104	\$98	\$93	\$85	\$74	\$65	\$59	\$57	\$55	\$52	\$48	\$44	\$38	\$28	\$26	\$24
	10yr ave.			\$83	\$75			\$62		\$54	\$51	\$50	\$48	\$46	\$41	\$38	\$31	\$27	\$24
	70% Current	\$127	\$119	\$112	\$105	\$100	\$92	\$80	\$70	\$64	\$62	\$59	\$56	\$52	\$47	\$41	\$30	\$28	\$26
	10yr ave.			\$89	\$81			\$67		\$58	\$55	\$53	\$52	\$50	\$45	\$41	\$33	\$29	\$26
	75% Current	\$136	\$128	\$120	\$113	\$107	\$98	\$86	\$75	\$68	\$66	\$63	\$60	\$56	\$51	\$44	\$33	\$30	\$28
	10yr ave.			\$95	\$87			\$72		\$62	\$59	\$57	\$56	\$53	\$48	\$44	\$35	\$31	\$28
	80% Current	\$145	\$136	\$129	\$120	\$114	\$105	\$92	\$80	\$73	\$71	\$68	\$64	\$60	\$54	\$47	\$35	\$32	\$30
	10yr ave.			\$102	\$92			\$77		\$66	\$63	\$61	\$59	\$57	\$51	\$47	\$38	\$33	\$30
	85% Current	\$155	\$145	\$137	\$128	\$122	\$111	\$97	\$85	\$77	\$75	\$72	\$68	\$63	\$57	\$50	\$37	\$34	\$32
	10yr ave.			\$108	\$98			\$82		\$70	\$67	\$65	\$63	\$60	\$54	\$50	\$40	\$35	\$32

The above shows estimated returns per head for skirted fleece wool. These figures do not take into account the value of skirtings and oddments and do not take into account discounts that may apply for faults under individual circumstances. These figures are based on a market index of 100% and should be used as a guide only. Returns over \$30 / head for fleece wool are highlighted.

Source: Australian Wool Exchange, Australian Wool Innovation, Sydney Futures Exchange, x-rates.com

Disclaimer: While all due care has been taken in the preparation of this document, no warranty is made as to its accuracy, reliability or completeness. To the extent permitted by law neither Jemalong or their sources including subsidiaries and staff, accept liability to any person for loss or damage arising from the use of this information.



Table 14: Returns pr head for skirted fleece wool.

Skirted FLC Weight 8 Kg		Micron																	
		16	16.5	17	17.5	18	18.5	19	19.5	20	21	22	23	24	25	26	28	30	32
Yield (Sch Dry)	25% Current	\$40	\$38	\$36	\$33	\$32	\$29	\$25	\$22	\$20	\$20	\$19	\$18	\$17	\$15	\$13	\$10	\$9	\$8
	10yr ave.			\$28		\$26		\$21		\$18	\$17	\$17	\$17	\$16	\$14	\$13	\$10	\$9	\$8
	30% Current	\$48	\$45	\$43	\$40	\$38	\$35	\$31	\$27	\$24	\$24	\$23	\$21	\$20	\$18	\$16	\$12	\$11	\$10
	10yr ave.			\$34		\$31		\$26		\$22	\$21	\$20	\$20	\$19	\$17	\$16	\$13	\$11	\$10
	35% Current	\$57	\$53	\$50	\$47	\$45	\$41	\$36	\$31	\$28	\$27	\$26	\$25	\$23	\$21	\$18	\$14	\$12	\$12
	10yr ave.			\$40		\$36		\$30		\$26	\$24	\$24	\$23	\$22	\$20	\$18	\$15	\$13	\$12
	40% Current	\$65	\$61	\$57	\$53	\$51	\$47	\$41	\$35	\$32	\$31	\$30	\$29	\$26	\$24	\$21	\$15	\$14	\$13
	10yr ave.			\$45		\$41		\$34		\$29	\$28	\$27	\$26	\$25	\$23	\$21	\$17	\$15	\$13
	45% Current	\$73	\$68	\$64	\$60	\$57	\$52	\$46	\$40	\$36	\$35	\$34	\$32	\$30	\$27	\$23	\$17	\$16	\$15
	10yr ave.			\$51		\$46		\$38		\$33	\$31	\$30	\$30	\$28	\$26	\$23	\$19	\$16	\$15
	50% Current	\$81	\$76	\$71	\$67	\$64	\$58	\$51	\$44	\$40	\$39	\$38	\$36	\$33	\$30	\$26	\$19	\$18	\$17
	10yr ave.			\$56		\$51		\$43		\$37	\$35	\$34	\$33	\$32	\$28	\$26	\$21	\$18	\$17
	55% Current	\$89	\$83	\$79	\$73	\$70	\$64	\$56	\$49	\$44	\$43	\$41	\$39	\$36	\$33	\$29	\$21	\$20	\$18
	10yr ave.			\$62		\$56		\$47		\$40	\$38	\$37	\$36	\$35	\$31	\$29	\$23	\$20	\$18
	60% Current	\$97	\$91	\$86	\$80	\$76	\$70	\$61	\$53	\$48	\$47	\$45	\$43	\$40	\$36	\$31	\$23	\$21	\$20
	10yr ave.			\$68		\$62		\$51		\$44	\$42	\$41	\$40	\$38	\$34	\$31	\$25	\$22	\$20
	65% Current	\$105	\$99	\$93	\$87	\$83	\$76	\$66	\$57	\$52	\$51	\$49	\$46	\$43	\$39	\$34	\$25	\$23	\$22
	10yr ave.			\$73		\$67		\$55		\$48	\$45	\$44	\$43	\$41	\$37	\$34	\$27	\$24	\$21
	70% Current	\$113	\$106	\$100	\$94	\$89	\$81	\$71	\$62	\$56	\$55	\$53	\$50	\$46	\$42	\$36	\$27	\$25	\$23
	10yr ave.			\$79		\$72		\$60		\$51	\$49	\$47	\$46	\$44	\$40	\$36	\$29	\$26	\$23
	75% Current	\$121	\$114	\$107	\$100	\$95	\$87	\$76	\$66	\$60	\$59	\$56	\$54	\$50	\$45	\$39	\$29	\$27	\$25
	10yr ave.			\$85		\$77		\$64		\$55	\$52	\$51	\$50	\$47	\$43	\$39	\$31	\$27	\$25
	80% Current	\$129	\$121	\$114	\$107	\$102	\$93	\$81	\$71	\$65	\$63	\$60	\$57	\$53	\$48	\$42	\$31	\$28	\$26
	10yr ave.			\$90		\$82		\$68		\$59	\$56	\$54	\$53	\$51	\$45	\$42	\$33	\$29	\$26
	85% Current	\$137	\$129	\$121	\$114	\$108	\$99	\$86	\$75	\$69	\$67	\$64	\$61	\$56	\$51	\$44	\$33	\$30	\$28
	10yr ave.			\$96		\$87		\$72		\$62	\$59	\$58	\$56	\$54	\$48	\$44	\$35	\$31	\$28

The above shows estimated returns per head for skirted fleece wool. These figures do not take into account the value of skirtings and oddments and do not take into account discounts that may apply for faults under individual circumstances. These figures are based on a market index of 100% and should be used as a guide only. Returns over \$30 / head for fleece wool are highlighted.

Source: Australian Wool Exchange, Australian Wool Innovation, Sydney Futures Exchange, x-rates.com

Disclaimer: While all due care has been taken in the preparation of this document, no warranty is made as to its accuracy, reliability or completeness. To the extent permitted by law neither Jemalong or their sources including subsidiaries and staff, accept liability to any person for loss or damage arising from the use of this information.



Table 15: Returns pr head for skirted fleece wool.

Skirted FLC Weight 7 Kg		Micron																	
		16	16.5	17	17.5	18	18.5	19	19.5	20	21	22	23	24	25	26	28	30	32
Yield (Sch Dry)	25% Current	\$35	\$33	\$31	\$29	\$28	\$25	\$22	\$19	\$18	\$17	\$16	\$16	\$14	\$13	\$11	\$8	\$8	\$7
	10yr ave.			\$25		\$22		\$19		\$16	\$15	\$15	\$14	\$14	\$12	\$11	\$9	\$8	\$7
	30% Current	\$42	\$40	\$37	\$35	\$33	\$31	\$27	\$23	\$21	\$21	\$20	\$19	\$17	\$16	\$14	\$10	\$9	\$9
	10yr ave.			\$30		\$27		\$22		\$19	\$18	\$18	\$17	\$17	\$15	\$14	\$11	\$10	\$9
	35% Current	\$49	\$46	\$44	\$41	\$39	\$36	\$31	\$27	\$25	\$24	\$23	\$22	\$20	\$18	\$16	\$12	\$11	\$10
	10yr ave.			\$35		\$31		\$26		\$22	\$21	\$21	\$20	\$19	\$17	\$16	\$13	\$11	\$10
	40% Current	\$57	\$53	\$50	\$47	\$45	\$41	\$36	\$31	\$28	\$27	\$26	\$25	\$23	\$21	\$18	\$14	\$12	\$12
	10yr ave.			\$40		\$36		\$30		\$26	\$24	\$24	\$23	\$22	\$20	\$18	\$15	\$13	\$12
	45% Current	\$64	\$60	\$56	\$53	\$50	\$46	\$40	\$35	\$32	\$31	\$30	\$28	\$26	\$24	\$20	\$15	\$14	\$13
	10yr ave.			\$44		\$40		\$34		\$29	\$27	\$27	\$26	\$25	\$22	\$20	\$16	\$14	\$13
	50% Current	\$71	\$66	\$62	\$58	\$56	\$51	\$45	\$39	\$35	\$34	\$33	\$31	\$29	\$26	\$23	\$17	\$16	\$14
	10yr ave.			\$49		\$45		\$37		\$32	\$30	\$30	\$29	\$28	\$25	\$23	\$18	\$16	\$14
	55% Current	\$78	\$73	\$69	\$64	\$61	\$56	\$49	\$43	\$39	\$38	\$36	\$34	\$32	\$29	\$25	\$19	\$17	\$16
	10yr ave.			\$54		\$49		\$41		\$35	\$33	\$33	\$32	\$30	\$27	\$25	\$20	\$18	\$16
	60% Current	\$85	\$80	\$75	\$70	\$67	\$61	\$53	\$46	\$42	\$41	\$39	\$38	\$35	\$32	\$27	\$20	\$19	\$17
	10yr ave.			\$59		\$54		\$45		\$38	\$37	\$36	\$35	\$33	\$30	\$27	\$22	\$19	\$17
	65% Current	\$92	\$86	\$81	\$76	\$72	\$66	\$58	\$50	\$46	\$45	\$43	\$41	\$38	\$34	\$30	\$22	\$20	\$19
	10yr ave.			\$64		\$58		\$49		\$42	\$40	\$39	\$38	\$36	\$32	\$30	\$24	\$21	\$19
	70% Current	\$99	\$93	\$87	\$82	\$78	\$71	\$62	\$54	\$49	\$48	\$46	\$44	\$41	\$37	\$32	\$24	\$22	\$20
	10yr ave.			\$69		\$63		\$52		\$45	\$43	\$42	\$40	\$39	\$35	\$32	\$26	\$22	\$20
	75% Current	\$106	\$99	\$94	\$88	\$83	\$76	\$67	\$58	\$53	\$51	\$49	\$47	\$43	\$39	\$34	\$25	\$23	\$22
	10yr ave.			\$74		\$67		\$56		\$48	\$46	\$44	\$43	\$41	\$37	\$34	\$27	\$24	\$22
	80% Current	\$113	\$106	\$100	\$94	\$89	\$81	\$71	\$62	\$56	\$55	\$53	\$50	\$46	\$42	\$36	\$27	\$25	\$23
	10yr ave.			\$79		\$72		\$60		\$51	\$49	\$47	\$46	\$44	\$40	\$36	\$29	\$26	\$23
	85% Current	\$120	\$113	\$106	\$99	\$95	\$87	\$76	\$66	\$60	\$58	\$56	\$53	\$49	\$45	\$39	\$29	\$26	\$25
	10yr ave.			\$84		\$76		\$63		\$54	\$52	\$50	\$49	\$47	\$42	\$39	\$31	\$27	\$25

The above shows estimated returns per head for skirted fleece wool. These figures do not take into account the value of skirtings and oddments and do not take into account discounts that may apply for faults under individual circumstances. These figures are based on a market index of 100% and should be used as a guide only. Returns over \$30 / head for fleece wool are highlighted.

Source: Australian Wool Exchange, Australian Wool Innovation, Sydney Futures Exchange, x-rates.com

Disclaimer: While all due care has been taken in the preparation of this document, no warranty is made as to its accuracy, reliability or completeness. To the extent permitted by law neither Jemalong or their sources including subsidiaries and staff, accept liability to any person for loss or damage arising from the use of this information.



Table 16: Returns pr head for skirted fleece wool.

Skirted FLC Weight 6 Kg		Micron																	
		16	16.5	17	17.5	18	18.5	19	19.5	20	21	22	23	24	25	26	28	30	32
Yield (Sch Dry)	25% Current	\$30	\$28	\$27	\$25	\$24	\$22	\$19	\$17	\$15	\$15	\$14	\$13	\$12	\$11	\$10	\$7	\$7	\$6
	10yr ave.			\$21		\$19		\$16		\$14	\$13	\$13	\$12	\$12	\$11	\$10	\$8	\$7	\$6
	30% Current	\$36	\$34	\$32	\$30	\$29	\$26	\$23	\$20	\$18	\$18	\$17	\$16	\$15	\$14	\$12	\$9	\$8	\$7
	10yr ave.			\$25		\$23		\$19		\$16	\$16	\$15	\$15	\$14	\$13	\$12	\$9	\$8	\$7
	35% Current	\$42	\$40	\$37	\$35	\$33	\$31	\$27	\$23	\$21	\$21	\$20	\$19	\$17	\$16	\$14	\$10	\$9	\$9
	10yr ave.			\$30		\$27		\$22		\$19	\$18	\$18	\$17	\$17	\$15	\$14	\$11	\$10	\$9
	40% Current	\$48	\$45	\$43	\$40	\$38	\$35	\$31	\$27	\$24	\$24	\$23	\$21	\$20	\$18	\$16	\$12	\$11	\$10
	10yr ave.			\$34		\$31		\$26		\$22	\$21	\$20	\$20	\$19	\$17	\$16	\$13	\$11	\$10
	45% Current	\$55	\$51	\$48	\$45	\$43	\$39	\$36	\$30	\$27	\$26	\$25	\$24	\$22	\$20	\$18	\$13	\$12	\$11
	10yr ave.			\$38		\$35		\$29		\$25	\$23	\$23	\$22	\$21	\$19	\$18	\$14	\$12	\$11
	50% Current	\$61	\$57	\$54	\$50	\$48	\$44	\$38	\$33	\$30	\$29	\$28	\$27	\$25	\$23	\$20	\$14	\$13	\$12
	10yr ave.			\$42		\$38		\$32		\$27	\$26	\$25	\$25	\$24	\$21	\$20	\$16	\$14	\$12
	55% Current	\$67	\$63	\$59	\$55	\$52	\$48	\$42	\$36	\$33	\$32	\$31	\$29	\$27	\$25	\$21	\$16	\$15	\$14
	10yr ave.			\$47		\$42		\$35		\$30	\$29	\$28	\$27	\$26	\$23	\$21	\$17	\$15	\$14
	60% Current	\$73	\$68	\$64	\$60	\$57	\$52	\$46	\$40	\$36	\$35	\$34	\$32	\$30	\$27	\$23	\$17	\$16	\$15
	10yr ave.			\$51		\$46		\$38		\$33	\$31	\$30	\$30	\$28	\$26	\$23	\$19	\$16	\$15
	65% Current	\$79	\$74	\$70	\$65	\$62	\$57	\$50	\$43	\$39	\$38	\$37	\$35	\$32	\$29	\$25	\$19	\$17	\$16
	10yr ave.			\$55		\$50		\$42		\$36	\$34	\$33	\$32	\$31	\$28	\$25	\$20	\$18	\$16
	70% Current	\$85	\$80	\$75	\$70	\$67	\$61	\$53	\$46	\$42	\$41	\$39	\$38	\$35	\$32	\$27	\$20	\$19	\$17
	10yr ave.			\$59		\$54		\$45		\$38	\$37	\$36	\$35	\$33	\$30	\$27	\$22	\$19	\$17
	75% Current	\$91	\$85	\$80	\$75	\$72	\$65	\$57	\$50	\$45	\$44	\$42	\$40	\$37	\$34	\$29	\$22	\$20	\$19
	10yr ave.			\$64		\$58		\$48		\$41	\$39	\$38	\$37	\$36	\$32	\$29	\$23	\$21	\$19
	80% Current	\$97	\$91	\$86	\$80	\$76	\$70	\$61	\$53	\$48	\$47	\$45	\$43	\$40	\$36	\$31	\$23	\$21	\$20
	10yr ave.			\$68		\$62		\$51		\$44	\$42	\$41	\$40	\$38	\$34	\$31	\$25	\$22	\$20
	85% Current	\$103	\$97	\$91	\$85	\$81	\$74	\$65	\$56	\$51	\$50	\$48	\$46	\$42	\$38	\$33	\$25	\$23	\$21
	10yr ave.			\$72		\$65		\$54		\$47	\$44	\$43	\$42	\$40	\$36	\$33	\$27	\$23	\$21

The above shows estimated returns per head for skirted fleece wool. These figures do not take into account the value of skirtings and oddments and do not take into account discounts that may apply for faults under individual circumstances. These figures are based on a market index of 100% and should be used as a guide only. Returns over \$30 / head for fleece wool are highlighted.

Source: Australian Wool Exchange, Australian Wool Innovation, Sydney Futures Exchange, x-rates.com

Disclaimer: While all due care has been taken in the preparation of this document, no warranty is made as to its accuracy, reliability or completeness. To the extent permitted by law neither Jemalong or their sources including subsidiaries and staff, accept liability to any person for loss or damage arising from the use of this information.



Table 17: Returns pr head for skirted fleece wool.

Skirted FLC Weight 5 Kg		Micron																	
		16	16.5	17	17.5	18	18.5	19	19.5	20	21	22	23	24	25	26	28	30	32
Yield (Sch Dry)	25% Current	\$25	\$24	\$22	\$21	\$20	\$18	\$16	\$14	\$13	\$12	\$12	\$11	\$10	\$9	\$8	\$6	\$6	\$5
	10yr ave.			\$18		\$16		\$13		\$11	\$11	\$11	\$10	\$10	\$9	\$8	\$7	\$6	\$5
	30% Current	\$30	\$28	\$27	\$25	\$24	\$22	\$19	\$17	\$15	\$15	\$14	\$13	\$12	\$11	\$10	\$7	\$7	\$6
	10yr ave.			\$21		\$19		\$16		\$14	\$13	\$13	\$12	\$12	\$11	\$10	\$8	\$7	\$6
	35% Current	\$35	\$33	\$31	\$29	\$28	\$25	\$22	\$19	\$18	\$17	\$16	\$16	\$14	\$13	\$11	\$8	\$8	\$7
	10yr ave.			\$25		\$22		\$19		\$16	\$15	\$15	\$14	\$14	\$12	\$11	\$9	\$8	\$7
	40% Current	\$40	\$38	\$36	\$33	\$32	\$29	\$25	\$22	\$20	\$20	\$19	\$18	\$17	\$15	\$13	\$10	\$9	\$8
	10yr ave.			\$28		\$26		\$21		\$18	\$17	\$17	\$17	\$16	\$14	\$13	\$10	\$9	\$8
	45% Current	\$45	\$43	\$40	\$38	\$36	\$33	\$29	\$25	\$23	\$22	\$21	\$20	\$19	\$17	\$15	\$11	\$10	\$9
	10yr ave.			\$32		\$29		\$24		\$21	\$20	\$19	\$19	\$18	\$16	\$15	\$12	\$10	\$9
	50% Current	\$51	\$47	\$45	\$42	\$40	\$36	\$32	\$28	\$25	\$23	\$22	\$22	\$21	\$19	\$16	\$12	\$11	\$10
	10yr ave.			\$35		\$32		\$27		\$23	\$22	\$21	\$21	\$20	\$18	\$16	\$13	\$11	\$10
	55% Current	\$56	\$52	\$49	\$46	\$44	\$40	\$35	\$30	\$28	\$27	\$26	\$25	\$23	\$21	\$18	\$13	\$12	\$11
	10yr ave.			\$39		\$35		\$29		\$25	\$24	\$23	\$23	\$22	\$19	\$18	\$14	\$13	\$11
	60% Current	\$61	\$57	\$54	\$50	\$48	\$44	\$38	\$33	\$30	\$29	\$28	\$27	\$25	\$23	\$20	\$14	\$13	\$12
	10yr ave.			\$42		\$38		\$32		\$27	\$26	\$25	\$25	\$24	\$21	\$20	\$16	\$14	\$12
	65% Current	\$66	\$62	\$58	\$54	\$52	\$47	\$41	\$36	\$33	\$32	\$31	\$29	\$27	\$24	\$21	\$16	\$14	\$13
	10yr ave.			\$46		\$42		\$35		\$30	\$28	\$28	\$27	\$26	\$23	\$21	\$17	\$15	\$13
	70% Current	\$71	\$66	\$62	\$58	\$56	\$51	\$45	\$39	\$35	\$34	\$33	\$31	\$29	\$26	\$23	\$17	\$16	\$14
	10yr ave.			\$49		\$45		\$37		\$32	\$30	\$30	\$29	\$28	\$25	\$23	\$18	\$16	\$14
	75% Current	\$76	\$71	\$67	\$63	\$60	\$55	\$48	\$41	\$38	\$37	\$35	\$33	\$31	\$28	\$24	\$18	\$17	\$16
	10yr ave.			\$53		\$48		\$40		\$34	\$33	\$32	\$31	\$30	\$27	\$24	\$20	\$17	\$15
	80% Current	\$81	\$76	\$71	\$67	\$64	\$58	\$51	\$44	\$40	\$39	\$38	\$36	\$33	\$30	\$26	\$19	\$18	\$17
	10yr ave.			\$56		\$51		\$43		\$37	\$35	\$34	\$33	\$32	\$28	\$26	\$21	\$18	\$17
	85% Current	\$86	\$81	\$76	\$71	\$68	\$62	\$54	\$47	\$43	\$42	\$40	\$38	\$35	\$32	\$28	\$21	\$19	\$18
	10yr ave.			\$60		\$55		\$45		\$39	\$37	\$36	\$35	\$34	\$30	\$28	\$22	\$19	\$18

The above shows estimated returns per head for skirted fleece wool. These figures do not take into account the value of skirtings and oddments and do not take into account discounts that may apply for faults under individual circumstances. These figures are based on a market index of 100% and should be used as a guide only. Returns over \$30 / head for fleece wool are highlighted.

Source: Australian Wool Exchange, Australian Wool Innovation, Sydney Futures Exchange, x-rates.com

Disclaimer: While all due care has been taken in the preparation of this document, no warranty is made as to its accuracy, reliability or completeness. To the extent permitted by law neither Jemalong or their sources including subsidiaries and staff, accept liability to any person for loss or damage arising from the use of this information.



Table 18: Returns pr head for skirted fleece wool.

Skirted FLC Weight 4 Kg		Micron																	
		16	16.5	17	17.5	18	18.5	19	19.5	20	21	22	23	24	25	26	28	30	32
Yield (Sch Dry)	25% Current	\$20	\$19	\$18	\$17	\$16	\$15	\$13	\$11	\$10	\$10	\$9	\$9	\$8	\$8	\$7	\$5	\$4	\$4
	10yr ave.			\$14		\$13		\$11		\$9	\$9	\$8	\$8	\$8	\$7	\$7	\$5	\$5	\$4
	30% Current	\$24	\$23	\$21	\$20	\$19	\$17	\$15	\$13	\$12	\$12	\$11	\$11	\$10	\$9	\$8	\$6	\$5	\$5
	10yr ave.			\$17		\$15		\$13		\$11	\$10	\$10	\$10	\$9	\$9	\$8	\$6	\$5	\$5
	35% Current	\$28	\$27	\$25	\$23	\$22	\$20	\$18	\$15	\$14	\$14	\$13	\$13	\$12	\$11	\$9	\$7	\$6	\$6
	10yr ave.			\$20		\$18		\$15		\$13	\$12	\$12	\$12	\$11	\$10	\$9	\$7	\$6	\$6
	40% Current	\$32	\$30	\$29	\$27	\$25	\$23	\$20	\$18	\$16	\$16	\$15	\$14	\$13	\$12	\$10	\$8	\$7	\$7
	10yr ave.			\$23		\$21		\$17		\$15	\$14	\$14	\$13	\$13	\$11	\$10	\$8	\$7	\$7
	45% Current	\$36	\$34	\$32	\$30	\$29	\$26	\$23	\$20	\$18	\$18	\$17	\$16	\$15	\$14	\$12	\$9	\$8	\$7
	10yr ave.			\$25		\$23		\$19		\$16	\$16	\$15	\$15	\$14	\$13	\$12	\$9	\$8	\$7
	50% Current	\$40	\$38	\$36	\$33	\$32	\$29	\$25	\$22	\$20	\$20	\$19	\$18	\$17	\$15	\$13	\$10	\$9	\$8
	10yr ave.			\$28		\$26		\$21		\$18	\$17	\$17	\$17	\$16	\$14	\$13	\$10	\$9	\$8
	55% Current	\$44	\$42	\$39	\$37	\$35	\$32	\$28	\$24	\$22	\$22	\$21	\$20	\$18	\$17	\$14	\$11	\$10	\$9
	10yr ave.			\$31		\$28		\$23		\$20	\$19	\$19	\$18	\$17	\$16	\$14	\$11	\$10	\$9
	60% Current	\$48	\$45	\$43	\$40	\$38	\$35	\$31	\$27	\$24	\$24	\$23	\$21	\$20	\$18	\$16	\$12	\$11	\$10
	10yr ave.			\$34		\$31		\$26		\$22	\$21	\$20	\$20	\$19	\$17	\$16	\$13	\$11	\$10
	65% Current	\$53	\$49	\$46	\$43	\$41	\$38	\$33	\$29	\$26	\$25	\$24	\$23	\$22	\$20	\$17	\$13	\$12	\$11
	10yr ave.			\$37		\$33		\$28		\$24	\$23	\$22	\$21	\$21	\$18	\$17	\$14	\$12	\$11
	70% Current	\$57	\$53	\$50	\$47	\$45	\$41	\$36	\$31	\$28	\$27	\$26	\$25	\$23	\$21	\$18	\$14	\$12	\$12
	10yr ave.			\$40		\$36		\$30		\$26	\$24	\$24	\$23	\$22	\$20	\$18	\$15	\$13	\$12
	75% Current	\$61	\$57	\$54	\$50	\$48	\$44	\$38	\$33	\$30	\$29	\$28	\$27	\$25	\$23	\$20	\$14	\$13	\$12
	10yr ave.			\$42		\$38		\$32		\$27	\$26	\$25	\$25	\$24	\$21	\$20	\$16	\$14	\$12
	80% Current	\$65	\$61	\$57	\$53	\$51	\$47	\$41	\$35	\$32	\$31	\$30	\$29	\$26	\$24	\$21	\$15	\$14	\$13
	10yr ave.			\$45		\$41		\$34		\$29	\$28	\$27	\$26	\$25	\$23	\$21	\$17	\$15	\$13
	85% Current	\$69	\$64	\$61	\$57	\$54	\$49	\$43	\$38	\$34	\$33	\$32	\$30	\$28	\$26	\$22	\$16	\$15	\$14
	10yr ave.			\$48		\$44		\$36		\$31	\$30	\$29	\$28	\$27	\$24	\$22	\$18	\$16	\$14

The above shows estimated returns per head for skirted fleece wool. These figures do not take into account the value of skirtings and oddments and do not take into account discounts that may apply for faults under individual circumstances. These figures are based on a market index of 100% and should be used as a guide only. Returns over \$30 / head for fleece wool are highlighted.

Source: Australian Wool Exchange, Australian Wool Innovation, Sydney Futures Exchange, x-rates.com

Disclaimer: While all due care has been taken in the preparation of this document, no warranty is made as to its accuracy, reliability or completeness. To the extent permitted by law neither Jemalong or their sources including subsidiaries and staff, accept liability to any person for loss or damage arising from the use of this information.



Table 19: Returns pr head for skirted fleece wool.

Skirted FLC Weight 3 Kg		Micron																	
		16	16.5	17	17.5	18	18.5	19	19.5	20	21	22	23	24	25	26	28	30	32
Yield (Sch Dry)	25% Current	\$15	\$14	\$13	\$13	\$12	\$11	\$10	\$8	\$8	\$7	\$7	\$7	\$6	\$6	\$5	\$4	\$3	\$3
	10yr ave.			\$11		\$10		\$8		\$7	\$7	\$6	\$6	\$6	\$5	\$5	\$4	\$3	\$3
	30% Current	\$18	\$17	\$16	\$15	\$14	\$13	\$11	\$10	\$9	\$9	\$8	\$8	\$7	\$7	\$6	\$4	\$4	\$4
	10yr ave.			\$13		\$12		\$10		\$8	\$8	\$8	\$7	\$7	\$6	\$6	\$5	\$4	\$4
	35% Current	\$21	\$20	\$19	\$18	\$17	\$15	\$13	\$12	\$11	\$10	\$10	\$9	\$9	\$8	\$7	\$5	\$5	\$4
	10yr ave.			\$15		\$13		\$11		\$10	\$9	\$9	\$9	\$8	\$7	\$7	\$5	\$5	\$4
	40% Current	\$24	\$23	\$21	\$20	\$19	\$17	\$15	\$13	\$12	\$12	\$11	\$11	\$10	\$9	\$8	\$6	\$5	\$5
	10yr ave.			\$17		\$15		\$13		\$11	\$10	\$10	\$10	\$9	\$9	\$8	\$6	\$5	\$5
	45% Current	\$27	\$26	\$24	\$23	\$21	\$20	\$17	\$15	\$14	\$13	\$13	\$12	\$11	\$10	\$9	\$7	\$6	\$6
	10yr ave.			\$19		\$17		\$14		\$12	\$12	\$11	\$11	\$11	\$10	\$9	\$7	\$6	\$6
	50% Current	\$30	\$28	\$27	\$25	\$24	\$22	\$19	\$17	\$15	\$14	\$13	\$13	\$12	\$12	\$11	\$10	\$7	\$6
	10yr ave.			\$21		\$19		\$16		\$14	\$13	\$13	\$12	\$12	\$11	\$10	\$8	\$7	\$6
	55% Current	\$33	\$31	\$29	\$28	\$26	\$24	\$21	\$18	\$17	\$16	\$15	\$15	\$14	\$12	\$11	\$8	\$7	\$7
	10yr ave.			\$23		\$21		\$18		\$15	\$14	\$14	\$14	\$13	\$12	\$11	\$9	\$8	\$7
	60% Current	\$36	\$34	\$32	\$30	\$29	\$26	\$23	\$20	\$18	\$18	\$17	\$16	\$15	\$14	\$12	\$9	\$8	\$7
	10yr ave.			\$25		\$23		\$19		\$16	\$16	\$15	\$15	\$14	\$13	\$12	\$9	\$8	\$7
	65% Current	\$39	\$37	\$35	\$33	\$31	\$28	\$25	\$22	\$20	\$19	\$18	\$17	\$16	\$15	\$13	\$9	\$9	\$8
	10yr ave.			\$28		\$25		\$21		\$18	\$17	\$17	\$16	\$15	\$14	\$13	\$10	\$9	\$8
	70% Current	\$42	\$40	\$37	\$35	\$33	\$31	\$27	\$23	\$21	\$21	\$20	\$19	\$17	\$16	\$14	\$10	\$9	\$9
	10yr ave.			\$30		\$27		\$22		\$19	\$18	\$18	\$17	\$17	\$15	\$14	\$11	\$10	\$9
	75% Current	\$45	\$43	\$40	\$38	\$36	\$33	\$29	\$25	\$23	\$22	\$21	\$20	\$19	\$17	\$15	\$11	\$10	\$9
	10yr ave.			\$32		\$29		\$24		\$21	\$20	\$19	\$19	\$18	\$16	\$15	\$12	\$10	\$9
	80% Current	\$48	\$45	\$43	\$40	\$38	\$35	\$31	\$27	\$24	\$24	\$23	\$21	\$20	\$18	\$16	\$12	\$11	\$10
	10yr ave.			\$34		\$31		\$26		\$22	\$21	\$20	\$20	\$19	\$17	\$16	\$13	\$11	\$10
	85% Current	\$52	\$48	\$46	\$43	\$41	\$37	\$32	\$28	\$26	\$25	\$24	\$23	\$21	\$19	\$17	\$12	\$11	\$11
	10yr ave.			\$36		\$33		\$27		\$23	\$22	\$22	\$21	\$20	\$18	\$17	\$13	\$12	\$11

The above shows estimated returns per head for skirted fleece wool. These figures do not take into account the value of skirtings and oddments and do not take into account discounts that may apply for faults under individual circumstances. These figures are based on a market index of 100% and should be used as a guide only. Returns over \$30 / head for fleece wool are highlighted.

Source: Australian Wool Exchange, Australian Wool Innovation, Sydney Futures Exchange, x-rates.com

Disclaimer: While all due care has been taken in the preparation of this document, no warranty is made as to its accuracy, reliability or completeness. To the extent permitted by law neither Jemalong or their sources including subsidiaries and staff, accept liability to any person for loss or damage arising from the use of this information.



Table 20: Returns pr head for skirted fleece wool.

Skirted FLC Weight 2 Kg		Micron																	
		16	16.5	17	17.5	18	18.5	19	19.5	20	21	22	23	24	25	26	28	30	32
Yield (Sch Dry)	25% Current	\$10	\$9	\$9	\$8	\$8	\$7	\$6	\$6	\$5	\$5	\$5	\$4	\$4	\$4	\$3	\$2	\$2	\$2
	10yr ave.			\$7		\$6		\$5		\$5	\$4	\$4	\$4	\$4	\$4	\$3	\$3	\$2	\$2
	30% Current	\$12	\$11	\$11	\$10	\$10	\$9	\$8	\$7	\$6	\$6	\$6	\$5	\$5	\$5	\$4	\$3	\$3	\$2
	10yr ave.			\$8		\$8		\$6		\$5	\$5	\$5	\$5	\$5	\$4	\$4	\$3	\$3	\$2
	35% Current	\$14	\$13	\$12	\$12	\$11	\$10	\$9	\$8	\$7	\$7	\$7	\$6	\$6	\$5	\$5	\$3	\$3	\$3
	10yr ave.			\$10		\$9		\$7		\$6	\$6	\$6	\$6	\$6	\$5	\$5	\$4	\$3	\$3
	40% Current	\$16	\$15	\$14	\$13	\$13	\$12	\$10	\$9	\$8	\$8	\$8	\$7	\$7	\$6	\$5	\$4	\$4	\$3
	10yr ave.			\$11		\$10		\$9		\$7	\$7	\$7	\$7	\$6	\$6	\$5	\$4	\$4	\$3
	45% Current	\$18	\$17	\$16	\$15	\$14	\$13	\$11	\$10	\$9	\$9	\$8	\$8	\$7	\$7	\$6	\$4	\$4	\$4
	10yr ave.			\$13		\$12		\$10		\$8	\$8	\$8	\$7	\$7	\$6	\$6	\$5	\$4	\$4
	50% Current	\$20	\$19	\$18	\$17	\$16	\$15	\$13	\$11	\$10	\$10	\$9	\$9	\$8	\$8	\$7	\$5	\$4	\$4
	10yr ave.			\$14		\$13		\$11		\$9	\$9	\$8	\$8	\$8	\$7	\$7	\$5	\$5	\$4
	55% Current	\$22	\$21	\$20	\$18	\$17	\$16	\$14	\$12	\$11	\$11	\$10	\$10	\$9	\$8	\$7	\$5	\$5	\$5
	10yr ave.			\$16		\$14		\$12		\$10	\$10	\$9	\$9	\$9	\$8	\$7	\$6	\$5	\$5
	60% Current	\$24	\$23	\$21	\$20	\$19	\$17	\$15	\$13	\$12	\$12	\$11	\$11	\$10	\$9	\$8	\$6	\$5	\$5
	10yr ave.			\$17		\$15		\$13		\$11	\$10	\$10	\$10	\$9	\$9	\$8	\$6	\$5	\$5
	65% Current	\$26	\$25	\$23	\$22	\$21	\$19	\$17	\$14	\$13	\$13	\$12	\$12	\$11	\$10	\$8	\$6	\$6	\$5
	10yr ave.			\$18		\$17		\$14		\$12	\$11	\$11	\$11	\$10	\$9	\$8	\$7	\$6	\$5
	70% Current	\$28	\$27	\$25	\$23	\$22	\$20	\$18	\$15	\$14	\$14	\$13	\$13	\$12	\$11	\$9	\$7	\$6	\$6
	10yr ave.			\$20		\$18		\$15		\$13	\$12	\$12	\$12	\$11	\$10	\$9	\$7	\$6	\$6
	75% Current	\$30	\$28	\$27	\$25	\$24	\$22	\$19	\$17	\$15	\$15	\$14	\$13	\$12	\$11	\$10	\$7	\$7	\$6
	10yr ave.			\$21		\$19		\$16		\$14	\$13	\$13	\$12	\$12	\$11	\$10	\$8	\$7	\$6
	80% Current	\$32	\$30	\$29	\$27	\$25	\$23	\$20	\$18	\$16	\$16	\$15	\$14	\$13	\$12	\$10	\$8	\$7	\$7
	10yr ave.			\$23		\$21		\$17		\$15	\$14	\$14	\$13	\$13	\$11	\$10	\$8	\$7	\$7
	85% Current	\$34	\$32	\$30	\$28	\$27	\$25	\$22	\$19	\$17	\$17	\$16	\$15	\$14	\$13	\$11	\$8	\$8	\$7
	10yr ave.			\$24		\$22		\$18		\$16	\$15	\$14	\$14	\$13	\$12	\$11	\$9	\$8	\$7

The above shows estimated returns per head for skirted fleece wool. These figures do not take into account the value of skirtings and oddments and do not take into account discounts that may apply for faults under individual circumstances. These figures are based on a market index of 100% and should be used as a guide only. Returns over \$30 / head for fleece wool are highlighted.

Source: Australian Wool Exchange, Australian Wool Innovation, Sydney Futures Exchange, x-rates.com

Disclaimer: While all due care has been taken in the preparation of this document, no warranty is made as to its accuracy, reliability or completeness. To the extent permitted by law neither Jemalong or their sources including subsidiaries and staff, accept liability to any person for loss or damage arising from the use of this information.