



Table 1: Northern Region Micron Price Guides

CURRENT MARKET			PERCENTILES		AVERAGES				12 MONTH COMPARISONS								TRADING RANGE		
Mic.	11/11/2010	4/11/2010	3yr	10yr	3 year		10 year		10/11/2009		12 Month		12 Month		12 Month		Clean c/kg		
Price	Current	Weekly			Average	Now compared to 3yr ave	Average	Now compared to 10yr ave	This time Last Year	Now compared to Last Year	Low	Now compared to Low	High	Now compared to High	High	Now compared to High	12 Mth	3 Year	10 Year
NRI	1071	+45 4.2%	98%	93%	896	+175 20%	869	+202 23%	890	+181 20%	890	+181 20%	1071	0 0%	181	343	584		
16*	2000	+50 2.5%	99%		1627	+373 23%			1405	+595 42%	1345	+655 49%	2000	0 0%	655	645			
16.5*	1825	+45 2.5%	100%		1486	+339 23%			1310	+515 39%	1260	+565 45%	1825	0 0%	565	574			
17*	1705	+45 2.6%	100%	96%	1363	+342 25%	1407	+298 21%	1225	+480 39%	1180	+525 44%	1705	0 0%	525	537	1797		
17.5*	1615	+55 3.4%	100%		1299	+316 24%			1190	+425 36%	1160	+455 39%	1615	0 0%	455	532			
18	1540	+74 4.8%	100%	83%	1239	+301 24%	1285	+255 20%	1138	+402 35%	1134	+406 36%	1540	0 0%	406	505	1392		
18.5	1431	+64 4.5%	100%		1165	+266 23%			1099	+332 30%	1088	+343 32%	1431	0 0%	343	460			
19	1296	+63 4.9%	97%	89%	1071	+225 21%	1066	+230 22%	1047	+249 24%	1031	+265 26%	1296	0 0%	265	443	706		
19.5	1168	+35 3.0%	94%		985	+183 19%			981	+187 19%	952	+216 23%	1168	0 0%	216	457			
20	1076	+33 3.1%	93%	89%	914	+162 18%	913	+163 18%	914	+162 18%	904	+172 19%	1076	0 0%	172	465	717		
21	1039	+43 4.1%	96%	90%	877	+162 18%	867	+172 20%	890	+149 17%	878	+161 18%	1039	0 0%	161	427	737		
22	990	+28 2.8%	97%	85%	853	+137 16%	844	+146 17%	855	+135 16%	847	+143 17%	990	0 0%	143	361	735		
23	929	+20 2.2%	93%	77%	830	+99 12%	823	+106 13%	827	+102 12%	827	+102 12%	940	-11 -1%	113	311	728		
24	857	+18 2.1%	92%	76%	783	+74 9%	787	+70 9%	781	+76 10%	779	+78 10%	881	-24 -3%	102	257	705		
25	781	+16 2.0%	100%	80%	671	+110 16%	707	+74 10%	703	+78 11%	650	+131 20%	781	0 0%	131	215	650		
26	686	+14 2.0%	100%	78%	601	+85 14%	648	+38 6%	592	+94 16%	560	+126 23%	686	0 0%	126	182	589		
28	496	+18 3.6%	91%	56%	460	+36 8%	521	-25 -5%	456	+40 9%	430	+66 15%	496	0 0%	66	119	465		
30	443	+20 4.5%	96%	59%	397	+46 12%	455	-12 -3%	386	+57 15%	377	+66 18%	443	0 0%	66	128	385		
32	407	+19 4.7%	100%	59%	346	+61 18%	412	-5 -1%	335	+72 21%	331	+76 23%	407	0 0%	76	101	372		
MC	639	+12 1.9%	89%	92%	542	+97 18%	498	+141 28%	573	+66 12%	561	+78 14%	681	-42 -6%	120	289	304		

Note:

* Due to the irregular market quoting for some fine wool categories, figures shown relating to micron categories below 18 micron are an estimate based on the AWEX Premium & Discounts Report & other available information.

* For any category, where there is insufficient quantity offered to enable AWEX to quote, a quote will be provided based on the best available information.

* 10 Year data is not available for some micron categories, which may result in blank spaces in the table above.

Definitions:

* A Percentile, is a value on a scale of one hundred that indicates the percent of a distribution that is equal to or below it. In general a percentile between 25% and 75% is considered normal, a percentile below 25% is considered below normal and a percentile above 75% is considered above normal.

Three and ten year percentiles shown in the table above, detail the period of time during the past 3 & 10 years that the market has traded either at or below its current price.

The higher the percentile, the stronger the market.

Source: Australian Wool Exchange, Australian Wool Innovation, Sydney Futures Exchange, x-rates.com

Disclaimer: While all due care has been taken in the preparation of this document, no warranty is made as to its accuracy, reliability or completeness. To the extent permitted by law neither Jemalong or their sources including subsidiaries and staff, accept liability to any person for loss or damage arising from the use of this information.



MARKET COMMENTARY

Australian Dollar 100.60 cents US as of 11/11/2010

NORTHERN REGION – Sale Week 19/10 (52,552 bales offered nationally)

Merino Fleece - After a very strong start, the market lost some of its early momentum towards the close of trade on Wednesday, however it still posted solid gains for the day with 19.5 to 21.5 micron lifting 15-20 cents while the finer microns rose 30-40. On Thursday the market continued its push north, with 19 micron and finer 30-40 cents dearer while 19.5 micron and broader were 20-30 cents dearer.

Merino Skirting's - were in strong demand and got dearer as the sale progressed. On Wednesday the finer microns (<19) were 50-60 cents dearer, while the broader microns (>20) were 30-40 cents dearer. On Thursday all descriptions closed around 30 cents higher excluding the good length finer microns with less than 3% Vm, these types attracted additional attention and closed 50 cents dearer.

Oddments - On Wednesday, locks rose by 20 cents and stains rose 30, while 19 micron and finer crutching's rose by as much as 50 cents. Broader crutching's were not forgotten, closing 30 cents dearer. On Thursday there was a softer tone in the oddments, with finer locks easing by 5-10 cents and crutching's and stains easing by 20-30 cents.

Crossbreds: While not as volatile as the rest of the market, a good selection had 27 to 32 microns generally 10 cents dearer on Wednesday. On Thursday the market continued to rise (on the back of a smaller offering), leaving 27 to 32 microns a further 10-15 cents dearer.

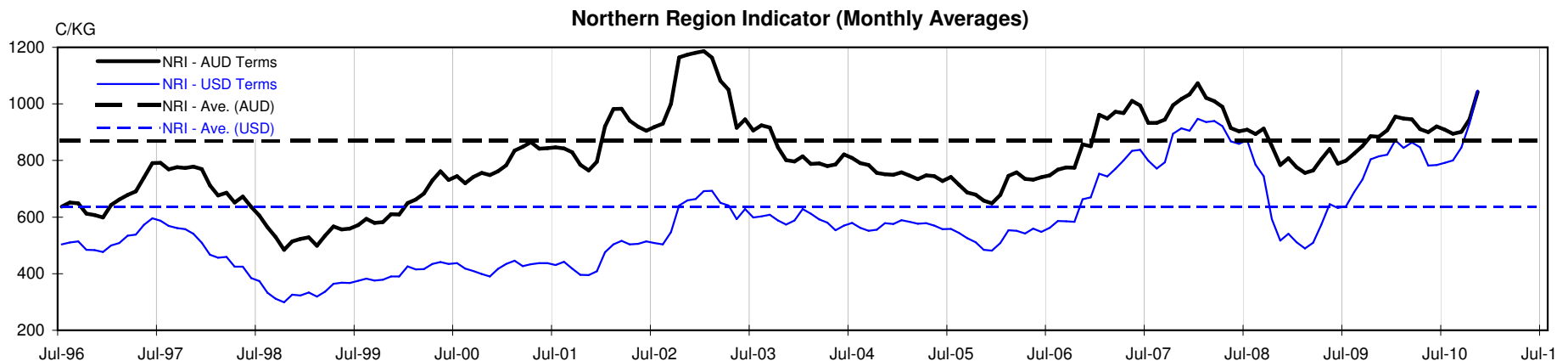




Table 4: 19 micron SFE

Wednesday, 10 November 2010

Delivery Mth	Dec-10	Feb-11	Apr-11	Jun-11	Aug-11	Oct-11	Dec-11	Feb-12	Apr-12
19 Micron SFE	1180	1180	1215	1215	1215	1215	1195	1195	1195
Average	1032	1045	1052	1057	1060	1059	1057	1067	1078
Maximum	1106	1180	1180	1215	1215	1215	1215	1215	1215
Minimum	905	936	983	1025	1034	1034	1034	1034	1053

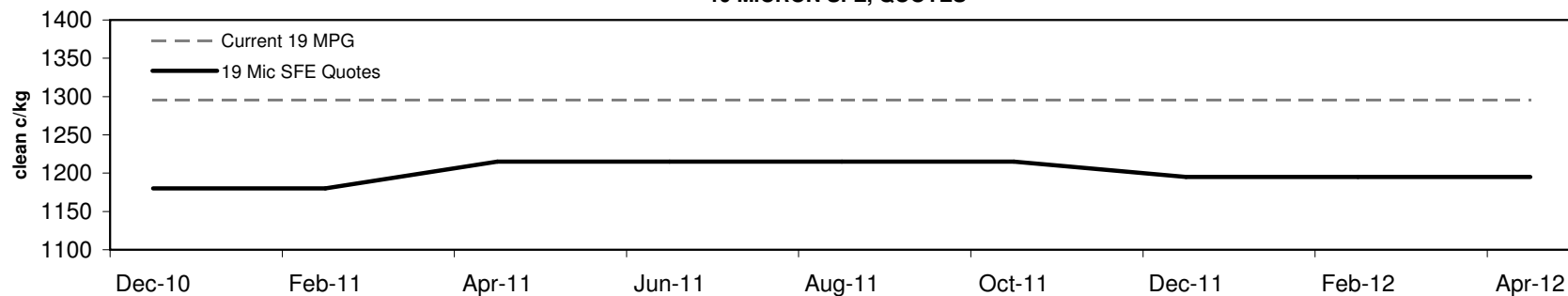
Table 5: 19 micron SFE, as a percentile of the 19 micron MPG

3 Year Percentile	85%	85%	87%	87%	87%	87%	86%	86%	86%
10 Year Percentile	78%	78%	82%	82%	82%	82%	80%	80%	80%

Table 6: 19 micron SFE, compared to MPG

Current 19 MPG	-116	-9%	-116	-9%	-81	-6%	-81	-6%	-81	-6%	-81	-6%	-101	-8%	-101	-8%	-101	-8%
19 MPG, 1 Year Average	+91	8%	+91	8%	+126	12%	+126	12%	+126	12%	+126	12%	+106	10%	+106	10%	+106	10%
19 MPG, 3 Year Average	+109	10%	+109	10%	+144	13%	+144	13%	+144	13%	+144	13%	+124	12%	+124	12%	+124	12%
19 MPG, 10 Year Average	+114	11%	+114	11%	+149	14%	+149	14%	+149	14%	+149	14%	+129	12%	+129	12%	+129	12%

19 MICRON SFE, QUOTES



19 MICRON SFE, FRONT MONTH PRICE MOVEMENT (mthly averages)

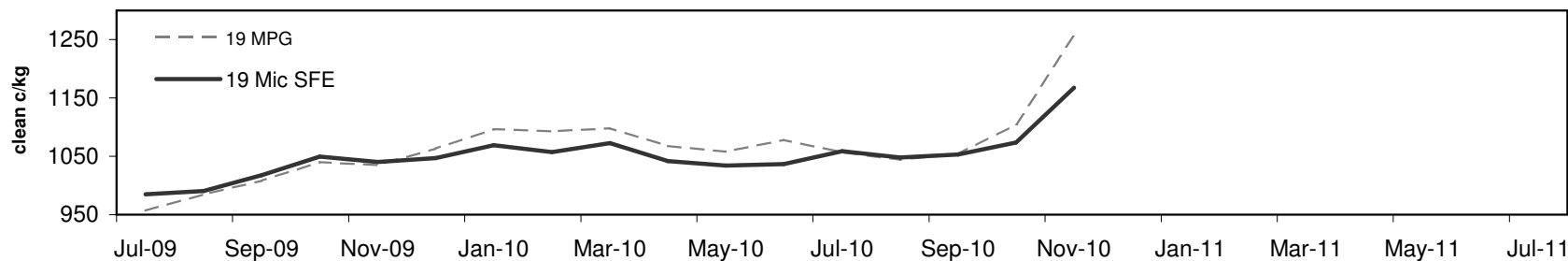




Table 7: 21 micron SFE

Wednesday, 10 November 2010

Delivery Mth	Dec-10	Feb-11	Apr-11	Jun-11	Aug-11	Oct-11	Dec-11	Feb-12	Apr-12
21 Micron SFE	1017	1022	1023	1010	1008	1006	1006	1006	1006
Average	914	927	935	938	938	929	918	915	920
Maximum	1013	1017	1022	1023	1010	1008	1006	1006	1006
Minimum	780	818	860	891	890	880	880	880	880

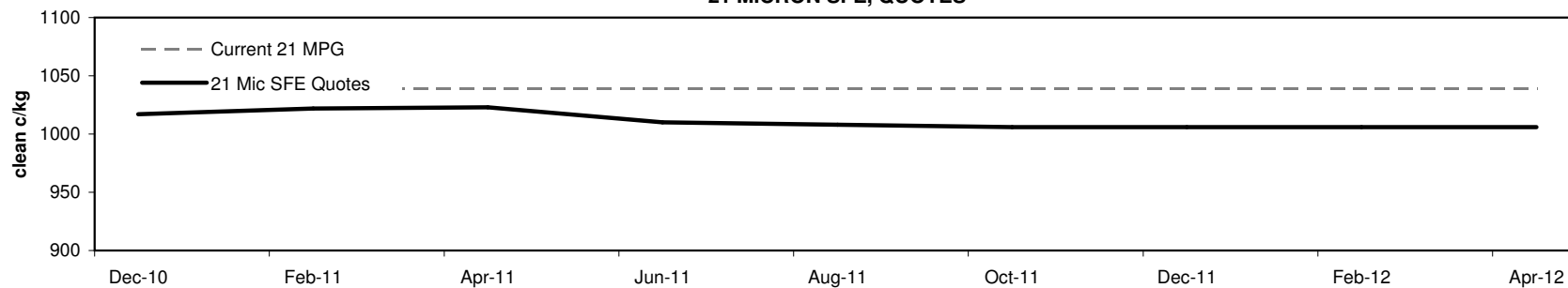
Table 8: 21 micron SFE, as a percentile of the 21 micron MPG

3 Year Percentile	93%	94%	94%	93%	93%	93%	93%	93%	93%
10 Year Percentile	86%	87%	87%	85%	85%	84%	84%	84%	84%

Table 9: 21 micron SFE, compared to MPG

Current 21 MPG	-22	-2%	-17	-2%	-16	-2%	-29	-3%	-31	-3%	-33	-3%	-33	-3%	-33	-3%	-33	-3%
21 MPG, 1 Year Average	+78	8%	+83	9%	+84	9%	+71	8%	+69	7%	+67	7%	+67	7%	+67	7%	+67	7%
21 MPG, 3 Year Average	+140	16%	+145	17%	+146	17%	+133	15%	+131	15%	+129	15%	+129	15%	+129	15%	+129	15%
21 MPG, 10 Year Average	+150	17%	+155	18%	+156	18%	+143	16%	+141	16%	+139	16%	+139	16%	+139	16%	+139	16%

21 MICRON SFE, QUOTES



21 MICRON SFE, FRONT MONTH PRICE MOVEMENT (mthly averages)

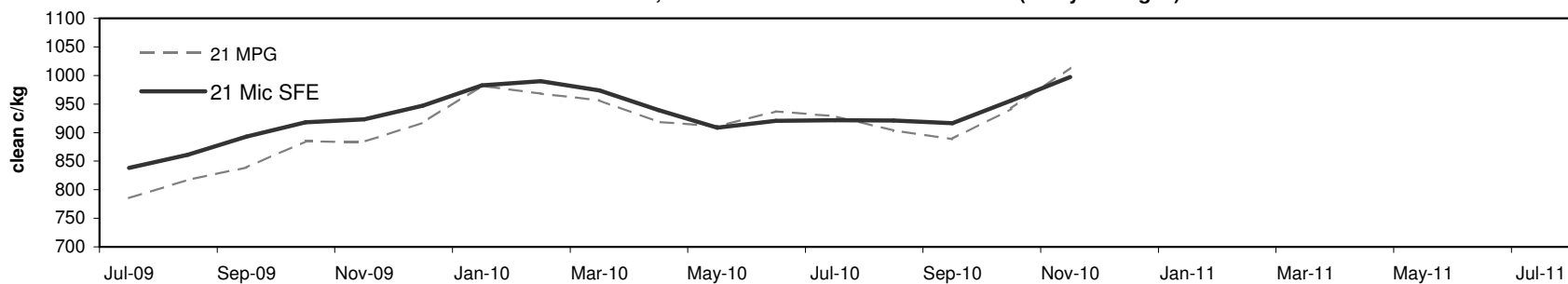




Table 10: 23 micron SFE

Wednesday, 10 November 2010

Delivery Mth	Dec-10	Feb-11	Apr-11	Jun-11	Aug-11	Oct-11	Dec-11	Feb-12	Apr-12
23 Micron SFE	883	883	883	883	883	883	883	883	883
Average	839	854	863	873	886	892	884	885	886
Maximum	927	927	927	927	927	927	887	887	887
Minimum	716	760	760	803	803	883	883	883	883

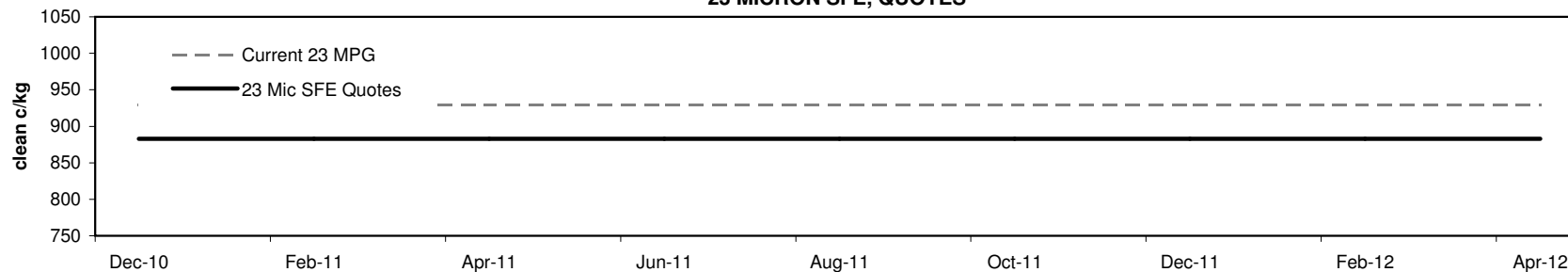
Table 11: 23 micron SFE, as a percentile of the 23 micron MPG

3 Year Percentile	69%	69%	69%	69%	69%	69%	69%	69%	69%
10 Year Percentile	64%	64%	64%	64%	64%	64%	64%	64%	64%

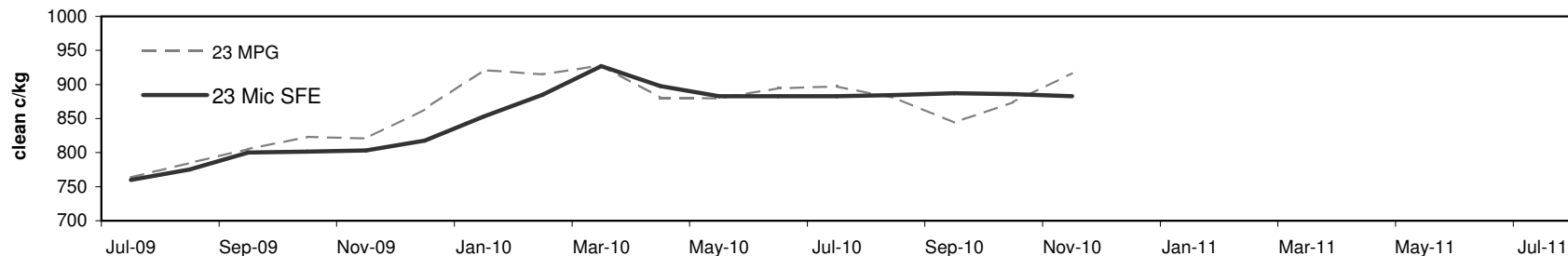
Table 12: 23 micron SFE, compared to MPG

Current 19 MPG	-46	-5%	-46	-5%	-46	-5%	-46	-5%	-46	-5%	-46	-5%	-46	-5%	-46	-5%	-46	-5%
23 MPG, 1 Year Average	-8	-1%	-8	-1%	-8	-1%	-8	-1%	-8	-1%	-8	-1%	-8	-1%	-8	-1%	-8	-1%
23 MPG, 3 Year Average	+53	6%	+53	6%	+53	6%	+53	6%	+53	6%	+53	6%	+53	6%	+53	6%	+53	6%
23 MPG, 10 Year Average	+60	7%	+60	7%	+60	7%	+60	7%	+60	7%	+60	7%	+60	7%	+60	7%	+60	7%

23 MICRON SFE, QUOTES

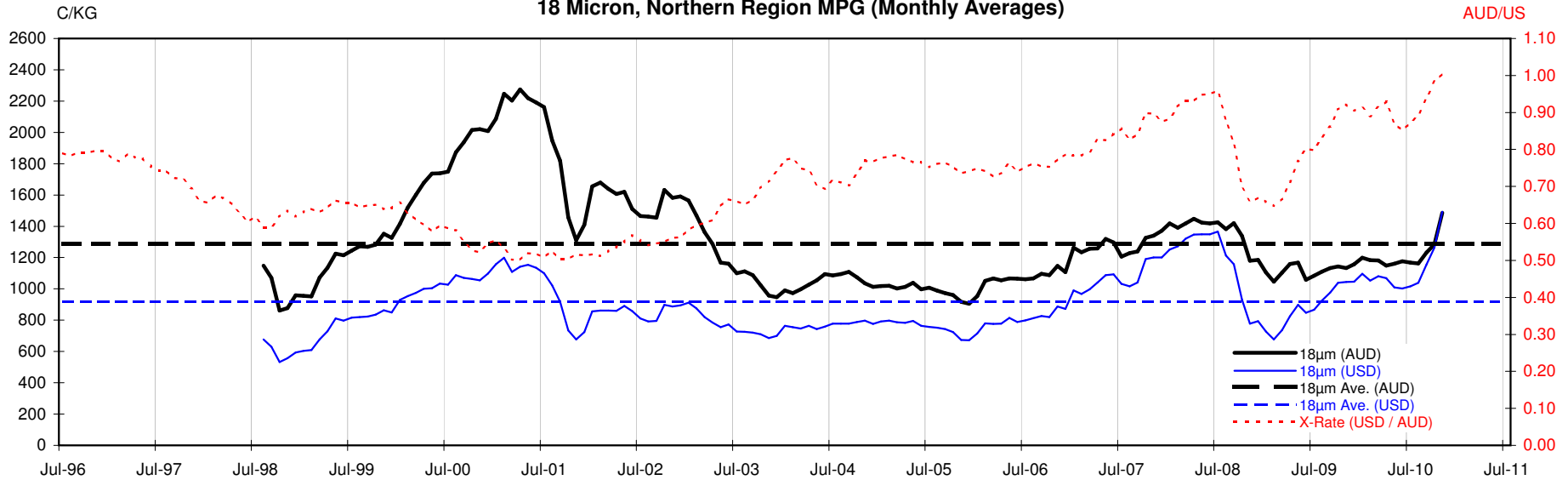


23 MICRON SFE, FRONT MONTH PRICE MOVEMENT (mthly averages)



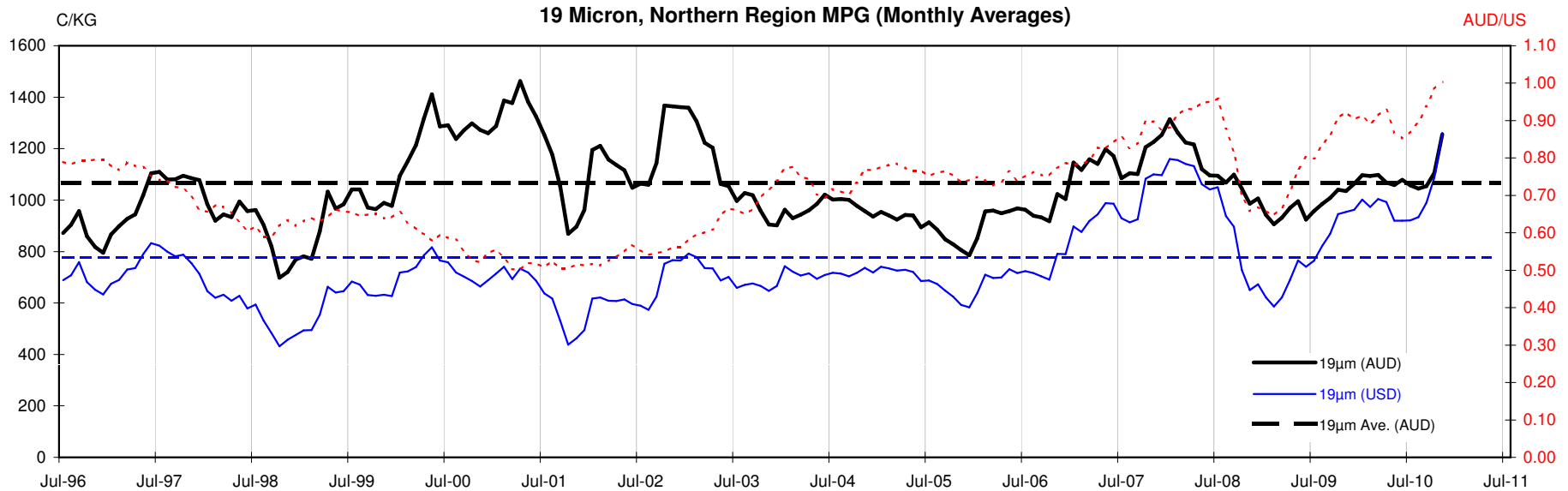


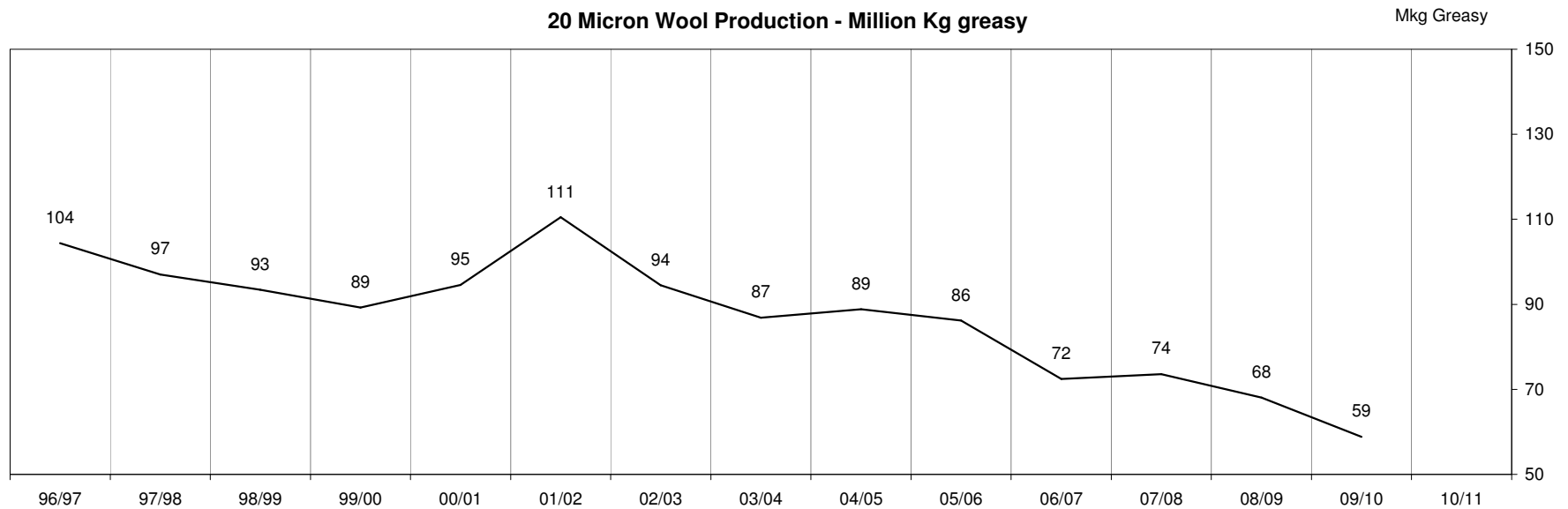
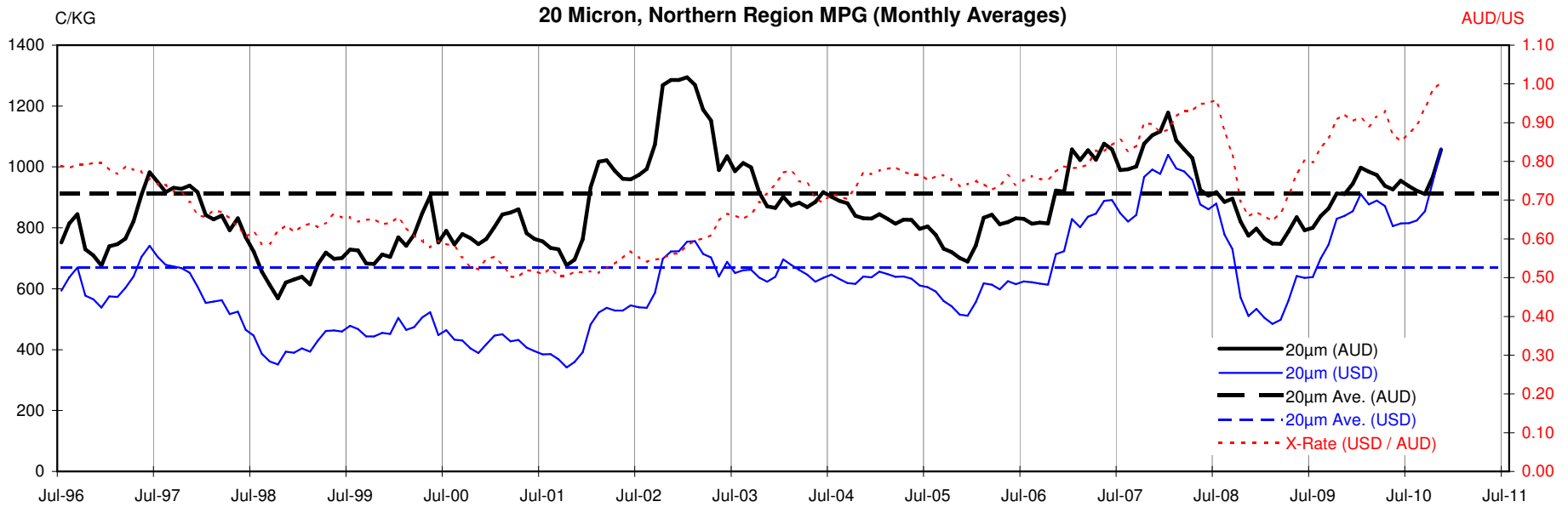
18 Micron, Northern Region MPG (Monthly Averages)

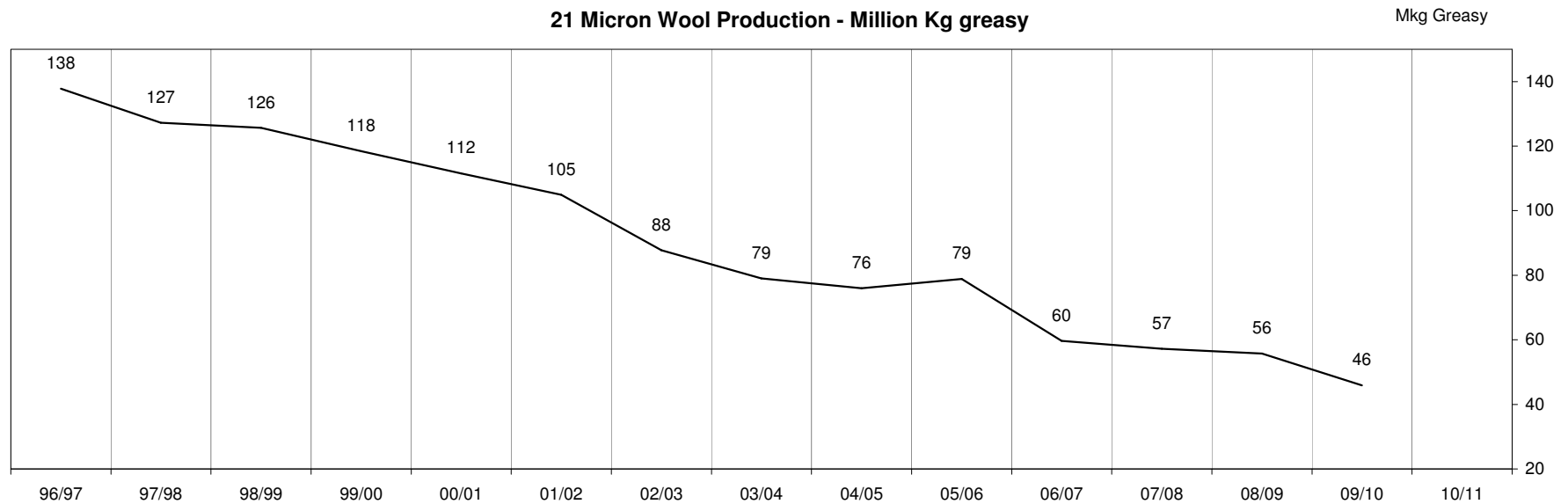
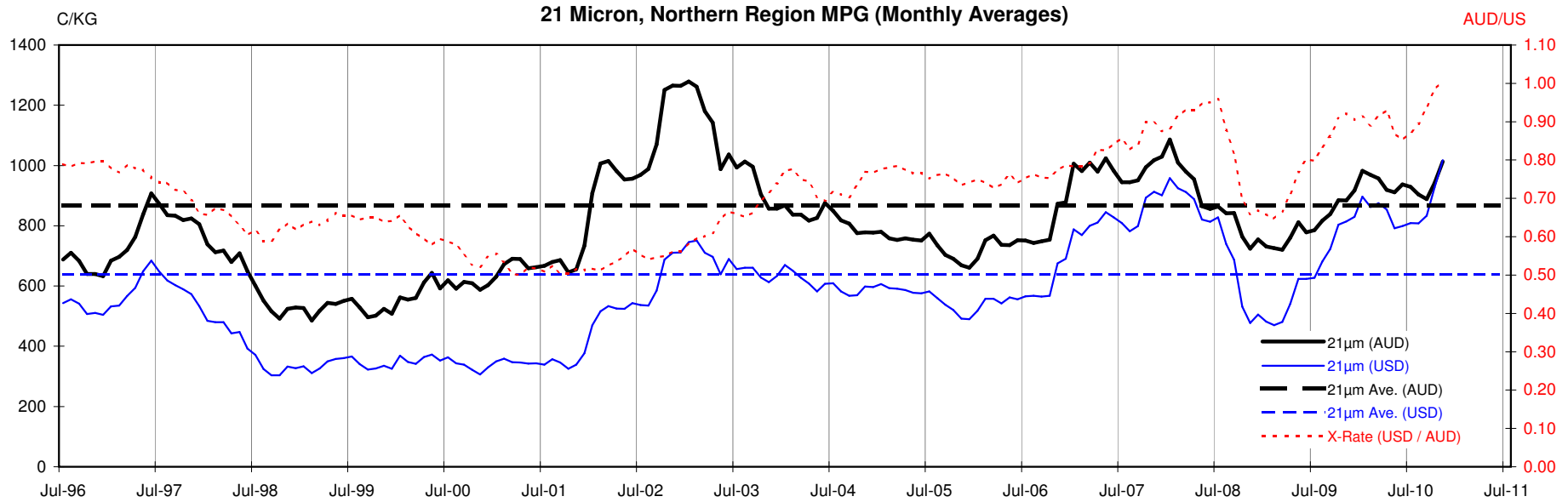


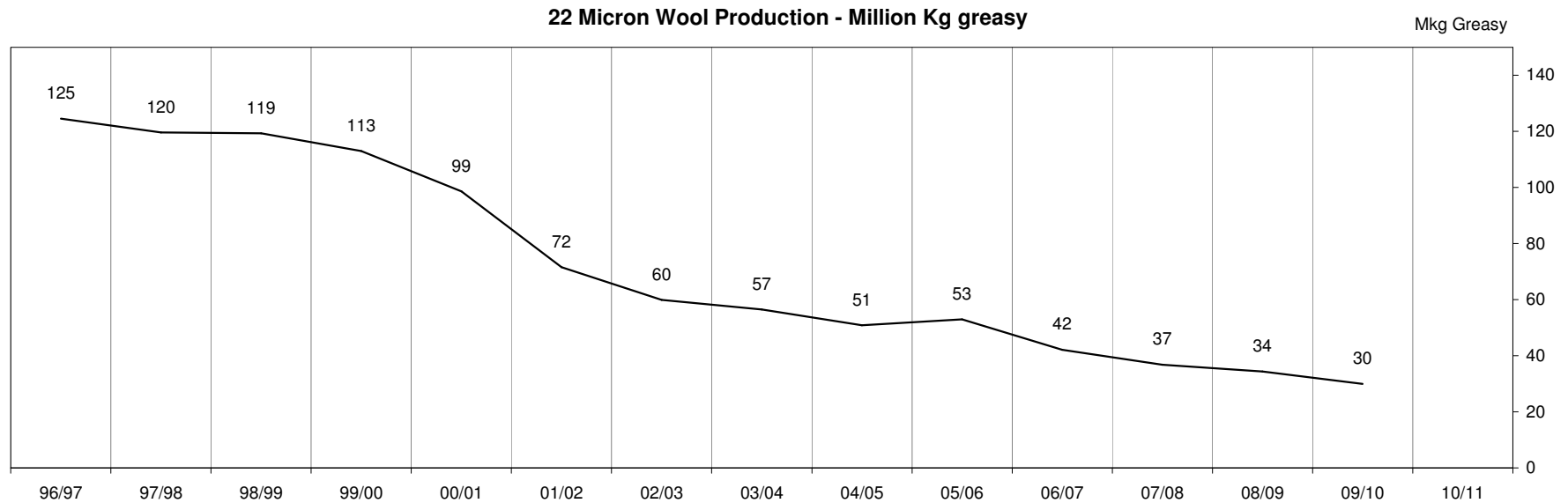
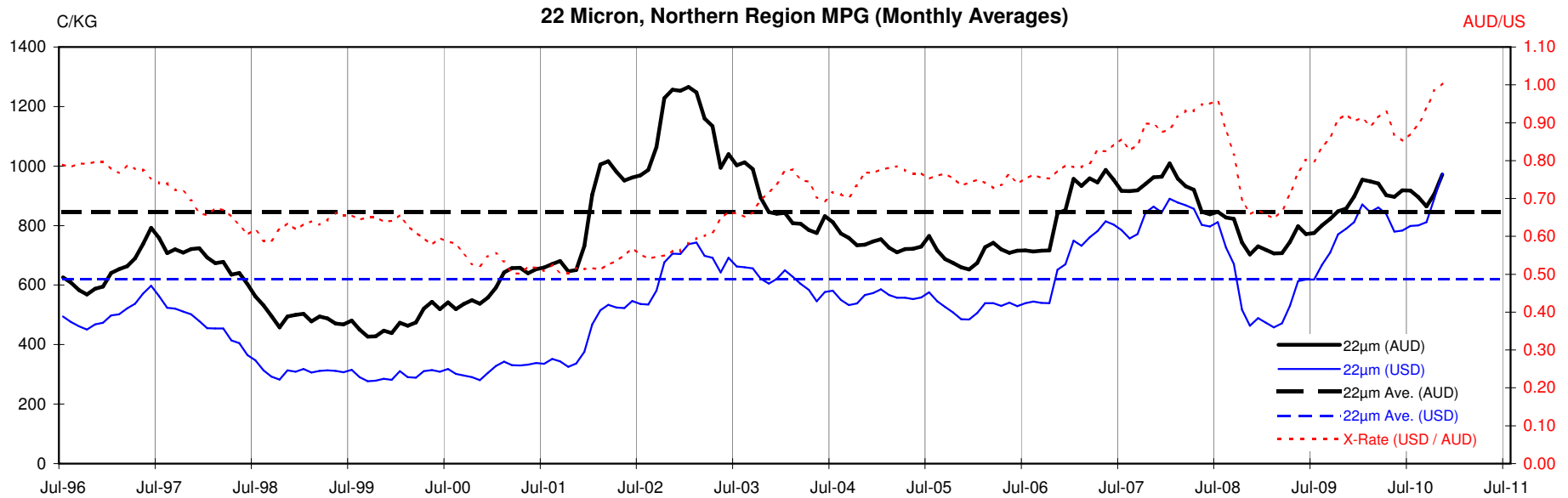
<18.5 micron Wool Production - Million Kg greasy

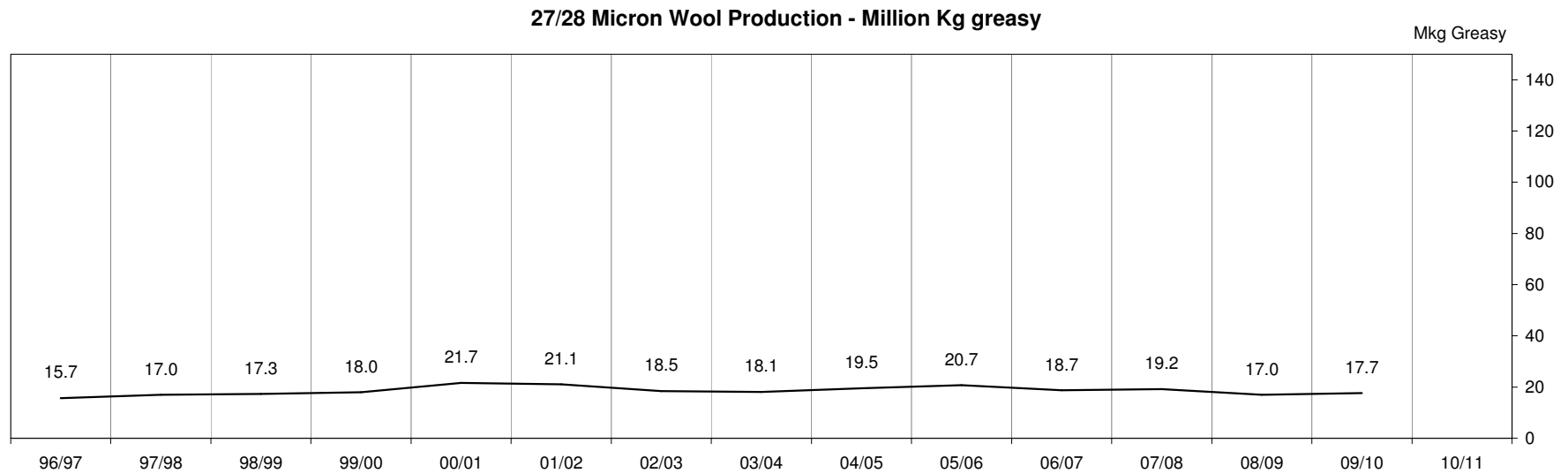
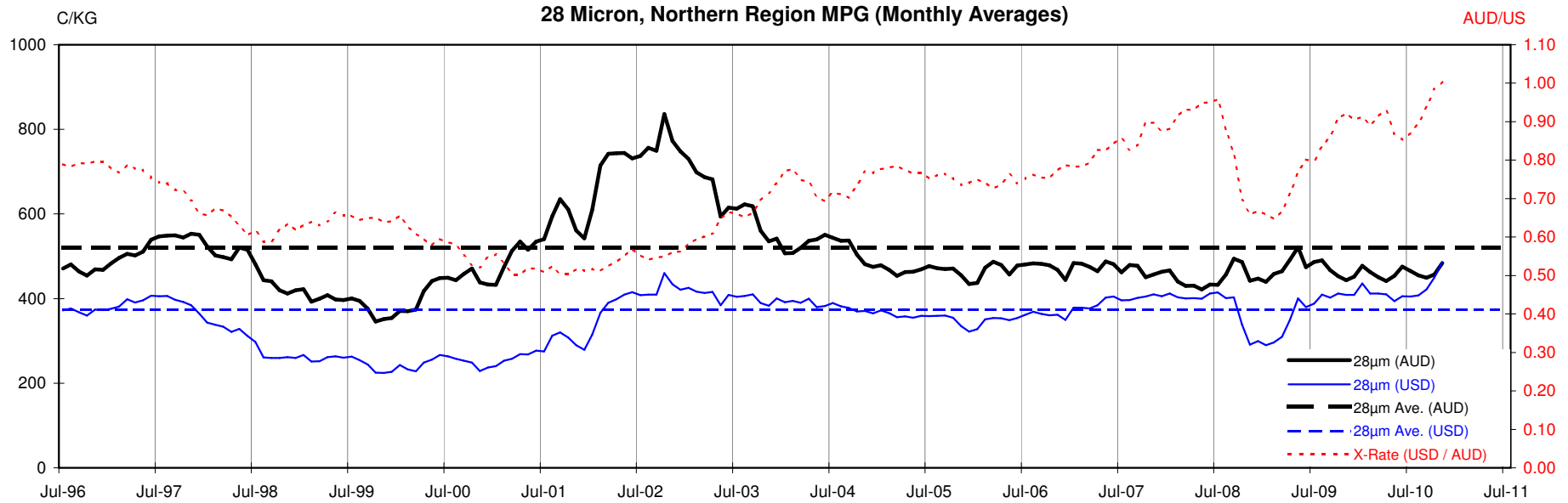












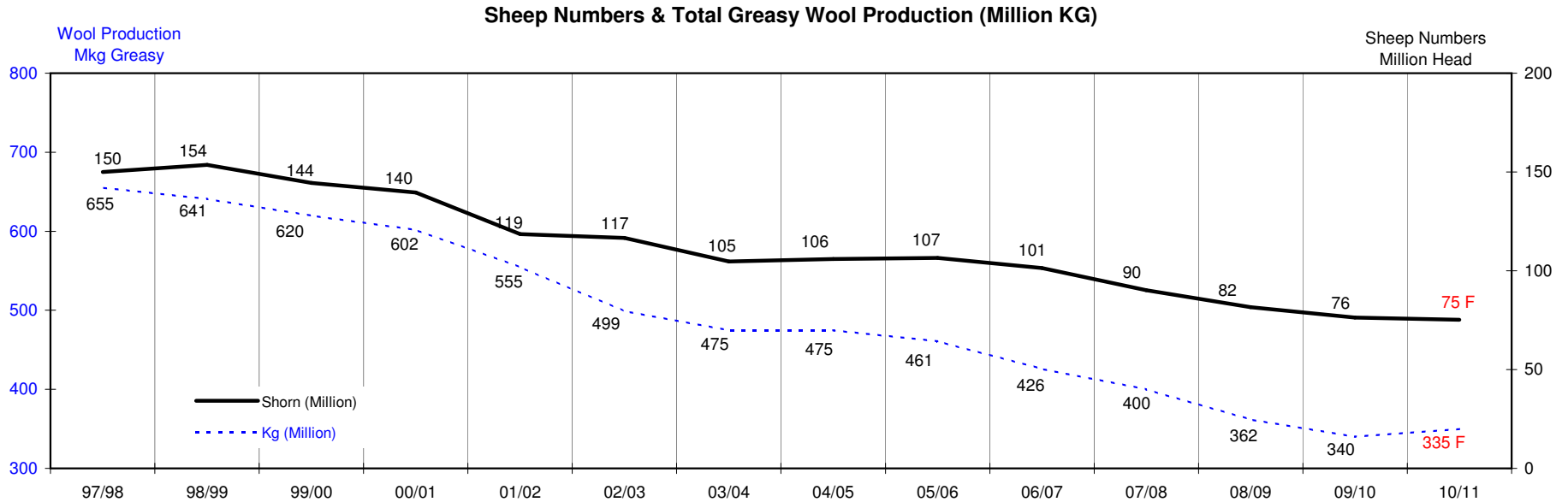
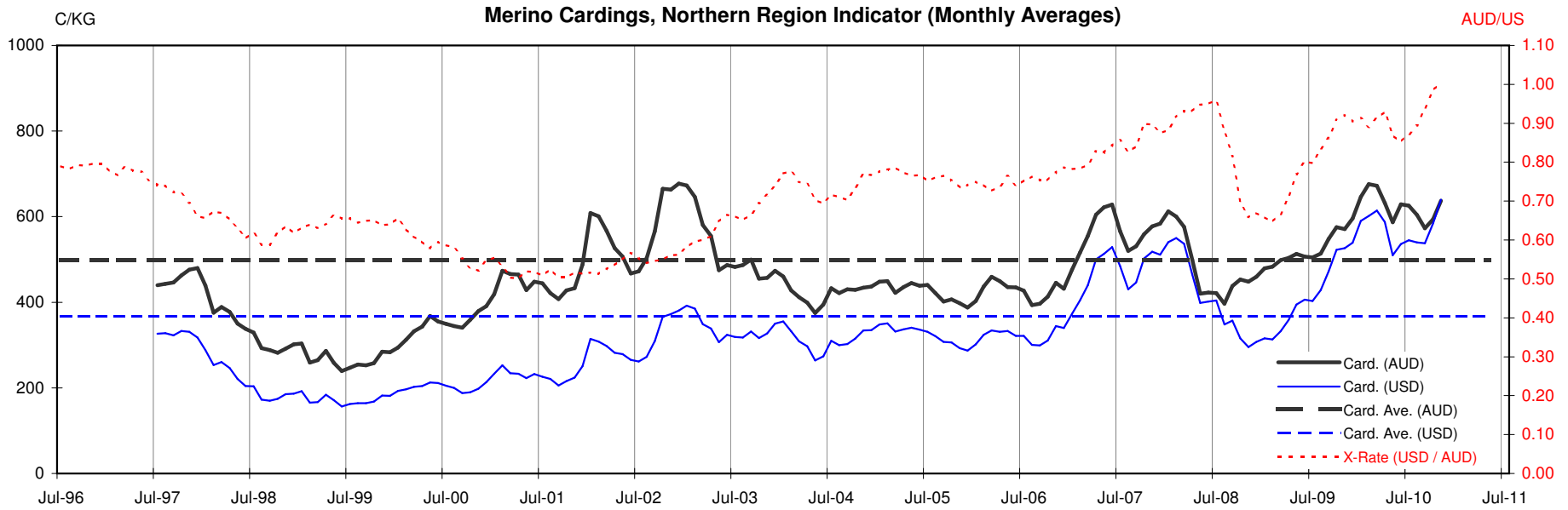




Table 13: Returns pr head for skirted fleece wool.

Skirted FLC Weight 9 Kg		Micron																	
		16	16.5	17	17.5	18	18.5	19	19.5	20	21	22	23	24	25	26	28	30	32
Yield (Sch Dry)	25% Current	\$45	\$41	\$38	\$36	\$35	\$32	\$29	\$26	\$24	\$23	\$22	\$21	\$19	\$18	\$15	\$11	\$10	\$9
	10yr ave.			\$32	\$29	\$29		\$24		\$21	\$20	\$19	\$19	\$18	\$16	\$15	\$12	\$10	\$9
	30% Current	\$54	\$49	\$46	\$44	\$42	\$39	\$35	\$32	\$29	\$28	\$27	\$25	\$23	\$21	\$19	\$13	\$12	\$11
	10yr ave.			\$38	\$35	\$35		\$29		\$25	\$23	\$23	\$22	\$21	\$19	\$17	\$14	\$12	\$11
	35% Current	\$63	\$57	\$54	\$51	\$49	\$45	\$41	\$37	\$34	\$33	\$31	\$29	\$27	\$25	\$22	\$16	\$14	\$13
	10yr ave.			\$44	\$40	\$40		\$34		\$29	\$27	\$27	\$26	\$25	\$22	\$20	\$16	\$14	\$13
	40% Current	\$72	\$66	\$61	\$58	\$55	\$52	\$47	\$42	\$39	\$37	\$36	\$33	\$31	\$28	\$25	\$18	\$16	\$15
	10yr ave.			\$51	\$46	\$46		\$38		\$33	\$31	\$30	\$30	\$28	\$25	\$23	\$19	\$16	\$15
	45% Current	\$81	\$74	\$69	\$65	\$62	\$58	\$52	\$47	\$44	\$42	\$40	\$38	\$35	\$32	\$28	\$20	\$18	\$16
	10yr ave.			\$57	\$52	\$52		\$43		\$37	\$35	\$34	\$33	\$32	\$29	\$26	\$21	\$18	\$17
	50% Current	\$90	\$82	\$77	\$73	\$69	\$64	\$58	\$53	\$48	\$47	\$45	\$42	\$39	\$35	\$31	\$22	\$20	\$18
	10yr ave.			\$63	\$58	\$58		\$48		\$41	\$39	\$38	\$37	\$35	\$32	\$29	\$23	\$20	\$19
	55% Current	\$99	\$90	\$84	\$80	\$76	\$71	\$64	\$58	\$53	\$51	\$49	\$46	\$42	\$39	\$34	\$25	\$22	\$20
	10yr ave.			\$70	\$64	\$64		\$53		\$45	\$43	\$42	\$41	\$39	\$35	\$32	\$26	\$23	\$20
	60% Current	\$108	\$99	\$92	\$87	\$83	\$77	\$70	\$63	\$58	\$56	\$53	\$50	\$46	\$42	\$37	\$27	\$24	\$22
	10yr ave.			\$76	\$69	\$69		\$58		\$49	\$47	\$46	\$44	\$42	\$38	\$35	\$28	\$25	\$22
	65% Current	\$117	\$107	\$100	\$94	\$90	\$84	\$76	\$68	\$63	\$61	\$58	\$54	\$50	\$46	\$40	\$29	\$26	\$24
	10yr ave.			\$82	\$75	\$75		\$62		\$53	\$51	\$49	\$48	\$46	\$41	\$38	\$30	\$27	\$24
	70% Current	\$126	\$115	\$107	\$102	\$97	\$90	\$82	\$74	\$68	\$65	\$62	\$59	\$54	\$49	\$43	\$31	\$28	\$26
	10yr ave.			\$89	\$81	\$81		\$67		\$58	\$55	\$53	\$52	\$50	\$45	\$41	\$33	\$29	\$26
	75% Current	\$135	\$123	\$115	\$109	\$104	\$97	\$87	\$79	\$73	\$70	\$67	\$63	\$58	\$53	\$46	\$33	\$30	\$27
	10yr ave.			\$95	\$87	\$87		\$72		\$62	\$59	\$57	\$56	\$53	\$48	\$44	\$35	\$31	\$28
	80% Current	\$144	\$131	\$123	\$116	\$111	\$103	\$93	\$84	\$77	\$75	\$71	\$67	\$62	\$56	\$49	\$36	\$32	\$29
	10yr ave.			\$101	\$93	\$93		\$77		\$66	\$62	\$61	\$59	\$57	\$51	\$47	\$38	\$33	\$30
	85% Current	\$153	\$140	\$130	\$124	\$118	\$109	\$99	\$89	\$82	\$79	\$76	\$71	\$66	\$60	\$52	\$38	\$34	\$31
	10yr ave.			\$108	\$98	\$98		\$82		\$70	\$66	\$65	\$63	\$60	\$54	\$50	\$40	\$35	\$32

The above shows estimated returns per head for skirted fleece wool. These figures do not take into account the value of skirtings and oddments and do not take into account discounts that may apply for faults under individual circumstances. These figures are based on a market index of 100% and should be used as a guide only. Returns over \$30 / head for fleece wool are highlighted.

Source: Australian Wool Exchange, Australian Wool Innovation, Sydney Futures Exchange, x-rates.com

Disclaimer: While all due care has been taken in the preparation of this document, no warranty is made as to its accuracy, reliability or completeness. To the extent permitted by law neither Jemalong or their sources including subsidiaries and staff, accept liability to any person for loss or damage arising from the use of this information.



Table 14: Returns pr head for skirted fleece wool.

Skirted FLC Weight		Micron																	
8 Kg		16	16.5	17	17.5	18	18.5	19	19.5	20	21	22	23	24	25	26	28	30	32
Yield (Sch Dry)	25% Current	\$45	\$41	\$38	\$36	\$35	\$32	\$29	\$26	\$24	\$23	\$22	\$21	\$19	\$18	\$15	\$11	\$10	\$9
	10yr ave.			\$32		\$29		\$24		\$21	\$20	\$19	\$19	\$18	\$16	\$15	\$12	\$10	\$9
	30% Current	\$54	\$49	\$46	\$44	\$42	\$39	\$35	\$32	\$29	\$28	\$27	\$25	\$23	\$21	\$19	\$13	\$12	\$11
	10yr ave.			\$38		\$35		\$29		\$25	\$23	\$23	\$22	\$21	\$19	\$17	\$14	\$12	\$11
	35% Current	\$63	\$57	\$54	\$51	\$49	\$45	\$41	\$37	\$34	\$33	\$31	\$29	\$27	\$25	\$22	\$16	\$14	\$13
	10yr ave.			\$44		\$40		\$34		\$29	\$27	\$27	\$26	\$25	\$22	\$20	\$16	\$14	\$13
	40% Current	\$72	\$66	\$61	\$58	\$55	\$52	\$47	\$42	\$39	\$37	\$36	\$33	\$31	\$28	\$25	\$18	\$16	\$15
	10yr ave.			\$51		\$46		\$38		\$33	\$31	\$30	\$30	\$28	\$25	\$23	\$19	\$16	\$15
	45% Current	\$81	\$74	\$69	\$65	\$62	\$58	\$52	\$47	\$44	\$42	\$40	\$38	\$35	\$32	\$28	\$20	\$18	\$16
	10yr ave.			\$57		\$52		\$43		\$37	\$35	\$34	\$33	\$32	\$29	\$26	\$21	\$18	\$17
	50% Current	\$90	\$82	\$77	\$73	\$69	\$64	\$58	\$53	\$48	\$47	\$45	\$42	\$39	\$35	\$31	\$22	\$20	\$18
	10yr ave.			\$63		\$58		\$48		\$41	\$39	\$38	\$37	\$35	\$32	\$29	\$23	\$20	\$19
	55% Current	\$99	\$90	\$84	\$80	\$76	\$71	\$64	\$58	\$53	\$51	\$49	\$46	\$42	\$39	\$34	\$25	\$22	\$20
	10yr ave.			\$70		\$64		\$53		\$45	\$43	\$42	\$41	\$39	\$35	\$32	\$26	\$23	\$20
	60% Current	\$108	\$99	\$92	\$87	\$83	\$77	\$70	\$63	\$58	\$56	\$53	\$50	\$46	\$42	\$37	\$27	\$24	\$22
	10yr ave.			\$76		\$69		\$58		\$49	\$47	\$46	\$44	\$42	\$38	\$35	\$28	\$25	\$22
	65% Current	\$117	\$107	\$100	\$94	\$90	\$84	\$76	\$68	\$63	\$61	\$58	\$54	\$50	\$46	\$40	\$29	\$26	\$24
	10yr ave.			\$82		\$75		\$62		\$53	\$51	\$49	\$48	\$46	\$41	\$38	\$30	\$27	\$24
	70% Current	\$126	\$115	\$107	\$102	\$97	\$90	\$82	\$74	\$68	\$65	\$62	\$59	\$54	\$49	\$43	\$31	\$28	\$26
	10yr ave.			\$89		\$81		\$67		\$58	\$55	\$53	\$52	\$50	\$45	\$41	\$33	\$29	\$26
	75% Current	\$135	\$123	\$115	\$109	\$104	\$97	\$87	\$79	\$73	\$70	\$67	\$63	\$58	\$53	\$46	\$33	\$30	\$27
	10yr ave.			\$95		\$87		\$72		\$62	\$59	\$57	\$56	\$53	\$48	\$44	\$35	\$31	\$28
	80% Current	\$144	\$131	\$123	\$116	\$111	\$103	\$93	\$84	\$77	\$75	\$71	\$67	\$62	\$56	\$49	\$36	\$32	\$29
	10yr ave.			\$101		\$93		\$77		\$66	\$62	\$61	\$59	\$57	\$51	\$47	\$38	\$33	\$30
	85% Current	\$153	\$140	\$130	\$124	\$118	\$109	\$99	\$89	\$82	\$79	\$76	\$71	\$66	\$60	\$52	\$38	\$34	\$31
	10yr ave.			\$108		\$98		\$82		\$70	\$66	\$65	\$63	\$60	\$54	\$50	\$40	\$35	\$32

The above shows estimated returns per head for skirted fleece wool. These figures do not take into account the value of skirtings and oddments and do not take into account discounts that may apply for faults under individual circumstances. These figures are based on a market index of 100% and should be used as a guide only. Returns over \$30 / head for fleece wool are highlighted.

Source: Australian Wool Exchange, Australian Wool Innovation, Sydney Futures Exchange, x-rates.com

Disclaimer: While all due care has been taken in the preparation of this document, no warranty is made as to its accuracy, reliability or completeness. To the extent permitted by law neither Jemalong or their sources including subsidiaries and staff, accept liability to any person for loss or damage arising from the use of this information.



Table 15: Returns pr head for skirted fleece wool.

Skirted FLC Weight 7 Kg		Micron																	
		16	16.5	17	17.5	18	18.5	19	19.5	20	21	22	23	24	25	26	28	30	32
Yield (Sch Dry)	25% Current	\$45	\$41	\$38	\$36	\$35	\$32	\$29	\$26	\$24	\$23	\$22	\$21	\$19	\$18	\$15	\$11	\$10	\$9
	10yr ave.			\$32		\$29		\$24		\$21	\$20	\$19	\$19	\$18	\$16	\$15	\$12	\$10	\$9
	30% Current	\$54	\$49	\$46	\$44	\$42	\$39	\$35	\$32	\$29	\$28	\$27	\$25	\$23	\$21	\$19	\$13	\$12	\$11
	10yr ave.			\$38		\$35		\$29		\$25	\$23	\$23	\$22	\$21	\$19	\$17	\$14	\$12	\$11
	35% Current	\$63	\$57	\$54	\$51	\$49	\$45	\$41	\$37	\$34	\$33	\$31	\$29	\$27	\$25	\$22	\$16	\$14	\$13
	10yr ave.			\$44		\$40		\$34		\$29	\$27	\$27	\$26	\$25	\$22	\$20	\$16	\$14	\$13
	40% Current	\$72	\$66	\$61	\$58	\$55	\$52	\$47	\$42	\$39	\$37	\$36	\$33	\$31	\$28	\$25	\$18	\$16	\$15
	10yr ave.			\$51		\$46		\$38		\$33	\$31	\$30	\$30	\$28	\$25	\$23	\$19	\$16	\$15
	45% Current	\$81	\$74	\$69	\$65	\$62	\$58	\$52	\$47	\$44	\$42	\$40	\$38	\$35	\$32	\$28	\$20	\$18	\$16
	10yr ave.			\$57		\$52		\$43		\$37	\$35	\$34	\$33	\$32	\$29	\$26	\$21	\$18	\$17
	50% Current	\$90	\$82	\$77	\$73	\$69	\$64	\$58	\$53	\$48	\$47	\$45	\$42	\$39	\$35	\$31	\$22	\$20	\$18
	10yr ave.			\$63		\$58		\$48		\$41	\$39	\$38	\$37	\$35	\$32	\$29	\$23	\$20	\$19
	55% Current	\$99	\$90	\$84	\$80	\$76	\$71	\$64	\$58	\$53	\$51	\$49	\$46	\$42	\$39	\$34	\$25	\$22	\$20
	10yr ave.			\$70		\$64		\$53		\$45	\$43	\$42	\$41	\$39	\$35	\$32	\$26	\$23	\$20
	60% Current	\$108	\$99	\$92	\$87	\$83	\$77	\$70	\$63	\$58	\$56	\$53	\$50	\$46	\$42	\$37	\$27	\$24	\$22
	10yr ave.			\$76		\$69		\$58		\$49	\$47	\$46	\$44	\$42	\$38	\$35	\$28	\$25	\$22
	65% Current	\$117	\$107	\$100	\$94	\$90	\$84	\$76	\$68	\$63	\$61	\$58	\$54	\$50	\$46	\$40	\$29	\$26	\$24
	10yr ave.			\$82		\$75		\$62		\$53	\$51	\$49	\$48	\$46	\$41	\$38	\$30	\$27	\$24
	70% Current	\$126	\$115	\$107	\$102	\$97	\$90	\$82	\$74	\$68	\$65	\$62	\$59	\$54	\$49	\$43	\$31	\$28	\$26
	10yr ave.			\$89		\$81		\$67		\$58	\$55	\$53	\$52	\$50	\$45	\$41	\$33	\$29	\$26
	75% Current	\$135	\$123	\$115	\$109	\$104	\$97	\$87	\$79	\$73	\$70	\$67	\$63	\$58	\$53	\$46	\$33	\$30	\$27
	10yr ave.			\$95		\$87		\$72		\$62	\$59	\$57	\$56	\$53	\$48	\$44	\$35	\$31	\$28
	80% Current	\$144	\$131	\$123	\$116	\$111	\$103	\$93	\$84	\$77	\$75	\$71	\$67	\$62	\$56	\$49	\$36	\$32	\$29
	10yr ave.			\$101		\$93		\$77		\$66	\$62	\$61	\$59	\$57	\$51	\$47	\$38	\$33	\$30
	85% Current	\$153	\$140	\$130	\$124	\$118	\$109	\$99	\$89	\$82	\$79	\$76	\$71	\$66	\$60	\$52	\$38	\$34	\$31
	10yr ave.			\$108		\$98		\$82		\$70	\$66	\$65	\$63	\$60	\$54	\$50	\$40	\$35	\$32

The above shows estimated returns per head for skirted fleece wool. These figures do not take into account the value of skirtings and oddments and do not take into account discounts that may apply for faults under individual circumstances. These figures are based on a market index of 100% and should be used as a guide only. Returns over \$30 / head for fleece wool are highlighted.

Source: Australian Wool Exchange, Australian Wool Innovation, Sydney Futures Exchange, x-rates.com

Disclaimer: While all due care has been taken in the preparation of this document, no warranty is made as to its accuracy, reliability or completeness. To the extent permitted by law neither Jemalong or their sources including subsidiaries and staff, accept liability to any person for loss or damage arising from the use of this information.



Table 16: Returns pr head for skirted fleece wool.

Skirted FLC Weight 6 Kg		Micron																	
		16	16.5	17	17.5	18	18.5	19	19.5	20	21	22	23	24	25	26	28	30	32
Yield (Sch Dry)	25% Current	\$45	\$41	\$38	\$36	\$35	\$32	\$29	\$26	\$24	\$23	\$22	\$21	\$19	\$18	\$15	\$11	\$10	\$9
	10yr ave.			\$32		\$29		\$24		\$21	\$20	\$19	\$19	\$18	\$16	\$15	\$12	\$10	\$9
	30% Current	\$54	\$49	\$46	\$44	\$42	\$39	\$35	\$32	\$29	\$28	\$27	\$25	\$23	\$21	\$19	\$13	\$12	\$11
	10yr ave.			\$38		\$35		\$29		\$25	\$23	\$23	\$22	\$21	\$19	\$17	\$14	\$12	\$11
	35% Current	\$63	\$57	\$54	\$51	\$49	\$45	\$41	\$37	\$34	\$33	\$31	\$29	\$27	\$25	\$22	\$16	\$14	\$13
	10yr ave.			\$44		\$40		\$34		\$29	\$27	\$27	\$26	\$25	\$22	\$20	\$16	\$14	\$13
	40% Current	\$72	\$66	\$61	\$58	\$55	\$52	\$47	\$42	\$39	\$37	\$36	\$33	\$31	\$28	\$25	\$18	\$16	\$15
	10yr ave.			\$51		\$46		\$38		\$33	\$31	\$30	\$30	\$28	\$25	\$23	\$19	\$16	\$15
	45% Current	\$81	\$74	\$69	\$65	\$62	\$58	\$52	\$47	\$44	\$42	\$40	\$38	\$35	\$32	\$28	\$20	\$18	\$16
	10yr ave.			\$57		\$52		\$43		\$37	\$35	\$34	\$33	\$32	\$29	\$26	\$21	\$18	\$17
	50% Current	\$90	\$82	\$77	\$73	\$69	\$64	\$58	\$53	\$48	\$47	\$45	\$42	\$39	\$35	\$31	\$22	\$20	\$18
	10yr ave.			\$63		\$58		\$48		\$41	\$39	\$38	\$37	\$35	\$32	\$29	\$23	\$20	\$19
	55% Current	\$99	\$90	\$84	\$80	\$76	\$71	\$64	\$58	\$53	\$51	\$49	\$46	\$42	\$39	\$34	\$25	\$22	\$20
	10yr ave.			\$70		\$64		\$53		\$45	\$43	\$42	\$41	\$39	\$35	\$32	\$26	\$23	\$20
	60% Current	\$108	\$99	\$92	\$87	\$83	\$77	\$70	\$63	\$58	\$56	\$53	\$50	\$46	\$42	\$37	\$27	\$24	\$22
	10yr ave.			\$76		\$69		\$58		\$49	\$47	\$46	\$44	\$42	\$38	\$35	\$28	\$25	\$22
	65% Current	\$117	\$107	\$100	\$94	\$90	\$84	\$76	\$68	\$63	\$61	\$58	\$54	\$50	\$46	\$40	\$29	\$26	\$24
	10yr ave.			\$82		\$75		\$62		\$53	\$51	\$49	\$48	\$46	\$41	\$38	\$30	\$27	\$24
	70% Current	\$126	\$115	\$107	\$102	\$97	\$90	\$82	\$74	\$68	\$65	\$62	\$59	\$54	\$49	\$43	\$31	\$28	\$26
	10yr ave.			\$89		\$81		\$67		\$58	\$55	\$53	\$52	\$50	\$45	\$41	\$33	\$29	\$26
	75% Current	\$135	\$123	\$115	\$109	\$104	\$97	\$87	\$79	\$73	\$70	\$67	\$63	\$58	\$53	\$46	\$33	\$30	\$27
	10yr ave.			\$95		\$87		\$72		\$62	\$59	\$57	\$56	\$53	\$48	\$44	\$35	\$31	\$28
	80% Current	\$144	\$131	\$123	\$116	\$111	\$103	\$93	\$84	\$77	\$75	\$71	\$67	\$62	\$56	\$49	\$36	\$32	\$29
	10yr ave.			\$101		\$93		\$77		\$66	\$62	\$61	\$59	\$57	\$51	\$47	\$38	\$33	\$30
	85% Current	\$153	\$140	\$130	\$124	\$118	\$109	\$99	\$89	\$82	\$79	\$76	\$71	\$66	\$60	\$52	\$38	\$34	\$31
	10yr ave.			\$108		\$98		\$82		\$70	\$66	\$65	\$63	\$60	\$54	\$50	\$40	\$35	\$32

The above shows estimated returns per head for skirted fleece wool. These figures do not take into account the value of skirtings and oddments and do not take into account discounts that may apply for faults under individual circumstances. These figures are based on a market index of 100% and should be used as a guide only. Returns over \$30 / head for fleece wool are highlighted.

Source: Australian Wool Exchange, Australian Wool Innovation, Sydney Futures Exchange, x-rates.com

Disclaimer: While all due care has been taken in the preparation of this document, no warranty is made as to its accuracy, reliability or completeness. To the extent permitted by law neither Jemalong or their sources including subsidiaries and staff, accept liability to any person for loss or damage arising from the use of this information.



Table 17: Returns pr head for skirted fleece wool.

Skirted FLC Weight		Micron																	
5 Kg		16	16.5	17	17.5	18	18.5	19	19.5	20	21	22	23	24	25	26	28	30	32
Yield (Sch Dry)	25% Current	\$45	\$41	\$38	\$36	\$35	\$32	\$29	\$26	\$24	\$23	\$22	\$21	\$19	\$18	\$15	\$11	\$10	\$9
	10yr ave.			\$32		\$29		\$24		\$21	\$20	\$19	\$19	\$18	\$16	\$15	\$12	\$10	\$9
	30% Current	\$54	\$49	\$46	\$44	\$42	\$39	\$35	\$32	\$29	\$28	\$27	\$25	\$23	\$21	\$19	\$13	\$12	\$11
	10yr ave.			\$38		\$35		\$29		\$25	\$23	\$23	\$22	\$21	\$19	\$17	\$14	\$12	\$11
	35% Current	\$63	\$57	\$54	\$51	\$49	\$45	\$41	\$37	\$34	\$33	\$31	\$29	\$27	\$25	\$22	\$16	\$14	\$13
	10yr ave.			\$44		\$40		\$34		\$29	\$27	\$27	\$26	\$25	\$22	\$20	\$16	\$14	\$13
	40% Current	\$72	\$66	\$61	\$58	\$55	\$52	\$47	\$42	\$39	\$37	\$36	\$33	\$31	\$28	\$25	\$18	\$16	\$15
	10yr ave.			\$51		\$46		\$38		\$33	\$31	\$30	\$30	\$28	\$25	\$23	\$19	\$16	\$15
	45% Current	\$81	\$74	\$69	\$65	\$62	\$58	\$52	\$47	\$44	\$42	\$40	\$38	\$35	\$32	\$28	\$20	\$18	\$16
	10yr ave.			\$57		\$52		\$43		\$37	\$35	\$34	\$33	\$32	\$29	\$26	\$21	\$18	\$17
	50% Current	\$90	\$82	\$77	\$73	\$69	\$64	\$58	\$53	\$48	\$47	\$45	\$42	\$39	\$35	\$31	\$22	\$20	\$18
	10yr ave.			\$63		\$58		\$48		\$41	\$39	\$38	\$37	\$35	\$32	\$29	\$23	\$20	\$19
	55% Current	\$99	\$90	\$84	\$80	\$76	\$71	\$64	\$58	\$53	\$51	\$49	\$46	\$42	\$39	\$34	\$25	\$22	\$20
	10yr ave.			\$70		\$64		\$53		\$45	\$43	\$42	\$41	\$39	\$35	\$32	\$26	\$23	\$20
	60% Current	\$108	\$99	\$92	\$87	\$83	\$77	\$70	\$63	\$58	\$56	\$53	\$50	\$46	\$42	\$37	\$27	\$24	\$22
	10yr ave.			\$76		\$69		\$58		\$49	\$47	\$46	\$44	\$42	\$38	\$35	\$28	\$25	\$22
	65% Current	\$117	\$107	\$100	\$94	\$90	\$84	\$76	\$68	\$63	\$61	\$58	\$54	\$50	\$46	\$40	\$29	\$26	\$24
	10yr ave.			\$82		\$75		\$62		\$53	\$51	\$49	\$48	\$46	\$41	\$38	\$30	\$27	\$24
	70% Current	\$126	\$115	\$107	\$102	\$97	\$90	\$82	\$74	\$68	\$65	\$62	\$59	\$54	\$49	\$43	\$31	\$28	\$26
	10yr ave.			\$89		\$81		\$67		\$58	\$55	\$53	\$52	\$50	\$45	\$41	\$33	\$29	\$26
	75% Current	\$135	\$123	\$115	\$109	\$104	\$97	\$87	\$79	\$73	\$70	\$67	\$63	\$58	\$53	\$46	\$33	\$30	\$27
	10yr ave.			\$95		\$87		\$72		\$62	\$59	\$57	\$56	\$53	\$48	\$44	\$35	\$31	\$28
	80% Current	\$144	\$131	\$123	\$116	\$111	\$103	\$93	\$84	\$77	\$75	\$71	\$67	\$62	\$56	\$49	\$36	\$32	\$29
	10yr ave.			\$101		\$93		\$77		\$66	\$62	\$61	\$59	\$57	\$51	\$47	\$38	\$33	\$30
	85% Current	\$153	\$140	\$130	\$124	\$118	\$109	\$99	\$89	\$82	\$79	\$76	\$71	\$66	\$60	\$52	\$38	\$34	\$31
	10yr ave.			\$108		\$98		\$82		\$70	\$66	\$65	\$63	\$60	\$54	\$50	\$40	\$35	\$32

The above shows estimated returns per head for skirted fleece wool. These figures do not take into account the value of skirtings and oddments and do not take into account discounts that may apply for faults under individual circumstances. These figures are based on a market index of 100% and should be used as a guide only. Returns over \$30 / head for fleece wool are highlighted.

Source: Australian Wool Exchange, Australian Wool Innovation, Sydney Futures Exchange, x-rates.com

Disclaimer: While all due care has been taken in the preparation of this document, no warranty is made as to its accuracy, reliability or completeness. To the extent permitted by law neither Jemalong or their sources including subsidiaries and staff, accept liability to any person for loss or damage arising from the use of this information.



Table 18: Returns pr head for skirted fleece wool.

Skirted FLC Weight		Micron																	
4 Kg		16	16.5	17	17.5	18	18.5	19	19.5	20	21	22	23	24	25	26	28	30	32
Yield (Sch Dry)	25% Current	\$45	\$41	\$38	\$36	\$35	\$32	\$29	\$26	\$24	\$23	\$22	\$21	\$19	\$18	\$15	\$11	\$10	\$9
	10yr ave.			\$32		\$29		\$24		\$21	\$20	\$19	\$19	\$18	\$16	\$15	\$12	\$10	\$9
	30% Current	\$54	\$49	\$46	\$44	\$42	\$39	\$35	\$32	\$29	\$28	\$27	\$25	\$23	\$21	\$19	\$13	\$12	\$11
	10yr ave.			\$38		\$35		\$29		\$25	\$23	\$23	\$22	\$21	\$19	\$17	\$14	\$12	\$11
	35% Current	\$63	\$57	\$54	\$51	\$49	\$45	\$41	\$37	\$34	\$33	\$31	\$29	\$27	\$25	\$22	\$16	\$14	\$13
	10yr ave.			\$44		\$40		\$34		\$29	\$27	\$27	\$26	\$25	\$22	\$20	\$16	\$14	\$13
	40% Current	\$72	\$66	\$61	\$58	\$55	\$52	\$47	\$42	\$39	\$37	\$36	\$33	\$31	\$28	\$25	\$18	\$16	\$15
	10yr ave.			\$51		\$46		\$38		\$33	\$31	\$30	\$30	\$28	\$25	\$23	\$19	\$16	\$15
	45% Current	\$81	\$74	\$69	\$65	\$62	\$58	\$52	\$47	\$44	\$42	\$40	\$38	\$35	\$32	\$28	\$20	\$18	\$16
	10yr ave.			\$57		\$52		\$43		\$37	\$35	\$34	\$33	\$32	\$29	\$26	\$21	\$18	\$17
	50% Current	\$90	\$82	\$77	\$73	\$69	\$64	\$58	\$53	\$48	\$47	\$45	\$42	\$39	\$35	\$31	\$22	\$20	\$18
	10yr ave.			\$63		\$58		\$48		\$41	\$39	\$38	\$37	\$35	\$32	\$29	\$23	\$20	\$19
	55% Current	\$99	\$90	\$84	\$80	\$76	\$71	\$64	\$58	\$53	\$51	\$49	\$46	\$42	\$39	\$34	\$25	\$22	\$20
	10yr ave.			\$70		\$64		\$53		\$45	\$43	\$42	\$41	\$39	\$35	\$32	\$26	\$23	\$20
	60% Current	\$108	\$99	\$92	\$87	\$83	\$77	\$70	\$63	\$58	\$56	\$53	\$50	\$46	\$42	\$37	\$27	\$24	\$22
	10yr ave.			\$76		\$69		\$58		\$49	\$47	\$46	\$44	\$42	\$38	\$35	\$28	\$25	\$22
	65% Current	\$117	\$107	\$100	\$94	\$90	\$84	\$76	\$68	\$63	\$61	\$58	\$54	\$50	\$46	\$40	\$29	\$26	\$24
	10yr ave.			\$82		\$75		\$62		\$53	\$51	\$49	\$48	\$46	\$41	\$38	\$30	\$27	\$24
	70% Current	\$126	\$115	\$107	\$102	\$97	\$90	\$82	\$74	\$68	\$65	\$62	\$59	\$54	\$49	\$43	\$31	\$28	\$26
	10yr ave.			\$89		\$81		\$67		\$58	\$55	\$53	\$52	\$50	\$45	\$41	\$33	\$29	\$26
	75% Current	\$135	\$123	\$115	\$109	\$104	\$97	\$87	\$79	\$73	\$70	\$67	\$63	\$58	\$53	\$46	\$33	\$30	\$27
	10yr ave.			\$95		\$87		\$72		\$62	\$59	\$57	\$56	\$53	\$48	\$44	\$35	\$31	\$28
	80% Current	\$144	\$131	\$123	\$116	\$111	\$103	\$93	\$84	\$77	\$75	\$71	\$67	\$62	\$56	\$49	\$36	\$32	\$29
	10yr ave.			\$101		\$93		\$77		\$66	\$62	\$61	\$59	\$57	\$51	\$47	\$38	\$33	\$30
	85% Current	\$153	\$140	\$130	\$124	\$118	\$109	\$99	\$89	\$82	\$79	\$76	\$71	\$66	\$60	\$52	\$38	\$34	\$31
	10yr ave.			\$108		\$98		\$82		\$70	\$66	\$65	\$63	\$60	\$54	\$50	\$40	\$35	\$32

The above shows estimated returns per head for skirted fleece wool. These figures do not take into account the value of skirtings and oddments and do not take into account discounts that may apply for faults under individual circumstances. These figures are based on a market index of 100% and should be used as a guide only. Returns over \$30 / head for fleece wool are highlighted.

Source: Australian Wool Exchange, Australian Wool Innovation, Sydney Futures Exchange, x-rates.com

Disclaimer: While all due care has been taken in the preparation of this document, no warranty is made as to its accuracy, reliability or completeness. To the extent permitted by law neither Jemalong or their sources including subsidiaries and staff, accept liability to any person for loss or damage arising from the use of this information.



Table 19: Returns pr head for skirted fleece wool.

Skirted FLC Weight		Micron																	
3 Kg		16	16.5	17	17.5	18	18.5	19	19.5	20	21	22	23	24	25	26	28	30	32
Yield (Sch Dry)	25% Current	\$45	\$41	\$38	\$36	\$35	\$32	\$29	\$26	\$24	\$23	\$22	\$21	\$19	\$18	\$15	\$11	\$10	\$9
	10yr ave.			\$32		\$29		\$24		\$21	\$20	\$19	\$19	\$18	\$16	\$15	\$12	\$10	\$9
	30% Current	\$54	\$49	\$46	\$44	\$42	\$39	\$35	\$32	\$29	\$28	\$27	\$25	\$23	\$21	\$19	\$13	\$12	\$11
	10yr ave.			\$38		\$35		\$29		\$25	\$23	\$23	\$22	\$21	\$19	\$17	\$14	\$12	\$11
	35% Current	\$63	\$57	\$54	\$51	\$49	\$45	\$41	\$37	\$34	\$33	\$31	\$29	\$27	\$25	\$22	\$16	\$14	\$13
	10yr ave.			\$44		\$40		\$34		\$29	\$27	\$27	\$26	\$25	\$22	\$20	\$16	\$14	\$13
	40% Current	\$72	\$66	\$61	\$58	\$55	\$52	\$47	\$42	\$39	\$37	\$36	\$33	\$31	\$28	\$25	\$18	\$16	\$15
	10yr ave.			\$51		\$46		\$38		\$33	\$31	\$30	\$30	\$28	\$25	\$23	\$19	\$16	\$15
	45% Current	\$81	\$74	\$69	\$65	\$62	\$58	\$52	\$47	\$44	\$42	\$40	\$38	\$35	\$32	\$28	\$20	\$18	\$16
	10yr ave.			\$57		\$52		\$43		\$37	\$35	\$34	\$33	\$32	\$29	\$26	\$21	\$18	\$17
	50% Current	\$90	\$82	\$77	\$73	\$69	\$64	\$58	\$53	\$48	\$47	\$45	\$42	\$39	\$35	\$31	\$22	\$20	\$18
	10yr ave.			\$63		\$58		\$48		\$41	\$39	\$38	\$37	\$35	\$32	\$29	\$23	\$20	\$19
	55% Current	\$99	\$90	\$84	\$80	\$76	\$71	\$64	\$58	\$53	\$51	\$49	\$46	\$42	\$39	\$34	\$25	\$22	\$20
	10yr ave.			\$70		\$64		\$53		\$45	\$43	\$42	\$41	\$39	\$35	\$32	\$26	\$23	\$20
	60% Current	\$108	\$99	\$92	\$87	\$83	\$77	\$70	\$63	\$58	\$56	\$53	\$50	\$46	\$42	\$37	\$27	\$24	\$22
	10yr ave.			\$76		\$69		\$58		\$49	\$47	\$46	\$44	\$42	\$38	\$35	\$28	\$25	\$22
	65% Current	\$117	\$107	\$100	\$94	\$90	\$84	\$76	\$68	\$63	\$61	\$58	\$54	\$50	\$46	\$40	\$29	\$26	\$24
	10yr ave.			\$82		\$75		\$62		\$53	\$51	\$49	\$48	\$46	\$41	\$38	\$30	\$27	\$24
	70% Current	\$126	\$115	\$107	\$102	\$97	\$90	\$82	\$74	\$68	\$65	\$62	\$59	\$54	\$49	\$43	\$31	\$28	\$26
	10yr ave.			\$89		\$81		\$67		\$58	\$55	\$53	\$52	\$50	\$45	\$41	\$33	\$29	\$26
	75% Current	\$135	\$123	\$115	\$109	\$104	\$97	\$87	\$79	\$73	\$70	\$67	\$63	\$58	\$53	\$46	\$33	\$30	\$27
	10yr ave.			\$95		\$87		\$72		\$62	\$59	\$57	\$56	\$53	\$48	\$44	\$35	\$31	\$28
	80% Current	\$144	\$131	\$123	\$116	\$111	\$103	\$93	\$84	\$77	\$75	\$71	\$67	\$62	\$56	\$49	\$36	\$32	\$29
	10yr ave.			\$101		\$93		\$77		\$66	\$62	\$61	\$59	\$57	\$51	\$47	\$38	\$33	\$30
	85% Current	\$153	\$140	\$130	\$124	\$118	\$109	\$99	\$89	\$82	\$79	\$76	\$71	\$66	\$60	\$52	\$38	\$34	\$31
	10yr ave.			\$108		\$98		\$82		\$70	\$66	\$65	\$63	\$60	\$54	\$50	\$40	\$35	\$32

The above shows estimated returns per head for skirted fleece wool. These figures do not take into account the value of skirtings and oddments and do not take into account discounts that may apply for faults under individual circumstances. These figures are based on a market index of 100% and should be used as a guide only. Returns over \$30 / head for fleece wool are highlighted.

Source: Australian Wool Exchange, Australian Wool Innovation, Sydney Futures Exchange, x-rates.com

Disclaimer: While all due care has been taken in the preparation of this document, no warranty is made as to its accuracy, reliability or completeness. To the extent permitted by law neither Jemalong or their sources including subsidiaries and staff, accept liability to any person for loss or damage arising from the use of this information.



Table 20: Returns pr head for skirted fleece wool.

Skirted FLC Weight 2 Kg		Micron																	
		16	16.5	17	17.5	18	18.5	19	19.5	20	21	22	23	24	25	26	28	30	32
Yield (Sch Dry)	25% Current	\$45	\$41	\$38	\$36	\$35	\$32	\$29	\$26	\$24	\$23	\$22	\$21	\$19	\$18	\$15	\$11	\$10	\$9
	10yr ave.			\$32		\$29		\$24		\$21	\$20	\$19	\$19	\$18	\$16	\$15	\$12	\$10	\$9
	30% Current	\$54	\$49	\$46	\$44	\$42	\$39	\$35	\$32	\$29	\$28	\$27	\$25	\$23	\$21	\$19	\$13	\$12	\$11
	10yr ave.			\$38		\$35		\$29		\$25	\$23	\$23	\$22	\$21	\$19	\$17	\$14	\$12	\$11
	35% Current	\$63	\$57	\$54	\$51	\$49	\$45	\$41	\$37	\$34	\$33	\$31	\$29	\$27	\$25	\$22	\$16	\$14	\$13
	10yr ave.			\$44		\$40		\$34		\$29	\$27	\$27	\$26	\$25	\$22	\$20	\$16	\$14	\$13
	40% Current	\$72	\$66	\$61	\$58	\$55	\$52	\$47	\$42	\$39	\$37	\$36	\$33	\$31	\$28	\$25	\$18	\$16	\$15
	10yr ave.			\$51		\$46		\$38		\$33	\$31	\$30	\$30	\$28	\$25	\$23	\$19	\$16	\$15
	45% Current	\$81	\$74	\$69	\$65	\$62	\$58	\$52	\$47	\$44	\$42	\$40	\$38	\$35	\$32	\$28	\$20	\$18	\$16
	10yr ave.			\$57		\$52		\$43		\$37	\$35	\$34	\$33	\$32	\$29	\$26	\$21	\$18	\$17
	50% Current	\$90	\$82	\$77	\$73	\$69	\$64	\$58	\$53	\$48	\$47	\$45	\$42	\$39	\$35	\$31	\$22	\$20	\$18
	10yr ave.			\$63		\$58		\$48		\$41	\$39	\$38	\$37	\$35	\$32	\$29	\$23	\$20	\$19
	55% Current	\$99	\$90	\$84	\$80	\$76	\$71	\$64	\$58	\$53	\$51	\$49	\$46	\$42	\$39	\$34	\$25	\$22	\$20
	10yr ave.			\$70		\$64		\$53		\$45	\$43	\$42	\$41	\$39	\$35	\$32	\$26	\$23	\$20
	60% Current	\$108	\$99	\$92	\$87	\$83	\$77	\$70	\$63	\$58	\$56	\$53	\$50	\$46	\$42	\$37	\$27	\$24	\$22
	10yr ave.			\$76		\$69		\$58		\$49	\$47	\$46	\$44	\$42	\$38	\$35	\$28	\$25	\$22
	65% Current	\$117	\$107	\$100	\$94	\$90	\$84	\$76	\$68	\$63	\$61	\$58	\$54	\$50	\$46	\$40	\$29	\$26	\$24
	10yr ave.			\$82		\$75		\$62		\$53	\$51	\$49	\$48	\$46	\$41	\$38	\$30	\$27	\$24
	70% Current	\$126	\$115	\$107	\$102	\$97	\$90	\$82	\$74	\$68	\$65	\$62	\$59	\$54	\$49	\$43	\$31	\$28	\$26
	10yr ave.			\$89		\$81		\$67		\$58	\$55	\$53	\$52	\$50	\$45	\$41	\$33	\$29	\$26
	75% Current	\$135	\$123	\$115	\$109	\$104	\$97	\$87	\$79	\$73	\$70	\$67	\$63	\$58	\$53	\$46	\$33	\$30	\$27
	10yr ave.			\$95		\$87		\$72		\$62	\$59	\$57	\$56	\$53	\$48	\$44	\$35	\$31	\$28
	80% Current	\$144	\$131	\$123	\$116	\$111	\$103	\$93	\$84	\$77	\$75	\$71	\$67	\$62	\$56	\$49	\$36	\$32	\$29
	10yr ave.			\$101		\$93		\$77		\$66	\$62	\$61	\$59	\$57	\$51	\$47	\$38	\$33	\$30
	85% Current	\$153	\$140	\$130	\$124	\$118	\$109	\$99	\$89	\$82	\$79	\$76	\$71	\$66	\$60	\$52	\$38	\$34	\$31
	10yr ave.			\$108		\$98		\$82		\$70	\$66	\$65	\$63	\$60	\$54	\$50	\$40	\$35	\$32

The above shows estimated returns per head for skirted fleece wool. These figures do not take into account the value of skirtings and oddments and do not take into account discounts that may apply for faults under individual circumstances. These figures are based on a market index of 100% and should be used as a guide only. Returns over \$30 / head for fleece wool are highlighted.

Source: Australian Wool Exchange, Australian Wool Innovation, Sydney Futures Exchange, x-rates.com

Disclaimer: While all due care has been taken in the preparation of this document, no warranty is made as to its accuracy, reliability or completeness. To the extent permitted by law neither Jemalong or their sources including subsidiaries and staff, accept liability to any person for loss or damage arising from the use of this information.