



JEMALONG WOOL BULLETIN

(week ending 10/11/2011)

Table 1: Northern Region Micron Price Guides

CURRENT MARKET			12 MONTH COMPARISONS								3 YEAR COMPARISONS						Percentile	10 YEAR COMPARISONS					Percentile
Mic. Price Guides	10/11/2011 Current Price	3/11/2011 Weekly Change	10/11/2010 This time Last Year	Now compared to Last Year	12 Month Low	Now compared to Low	12 Month High	Now compared to High	Low	High	Average	Now compared to 3yr ave	Low	High	10 year Average	Now compared to 10yr ave							
NRI	1261	-6 -0.5%	1051	+210 20%	1023	+238 23%	1491	-230 -15%	749	1491	1023	+238 23%	77%	657	1491	919	+342 37%	93%					
16*	2150	0	2000	+150 8%	1950	+200 10%	2800	-650 -23%	1385	2800	1883	+267 14%	75%										
16.5*	1930	-20 -1.0%	1825	+105 6%	1780	+150 8%	2680	-750 -28%	1252	2680	1734	+196 11%	73%										
17*	1780	-20 -1.1%	1705	+75 4%	1660	+120 7%	2530	-750 -30%	1169	2530	1600	+180 11%	72%										
17.5*	1670	-25 -1.5%	1615	+55 3%	1560	+110 7%	2360	-690 -29%	1084	2360	1501	+169 11%	72%	1100	2530	1443	+337 23%	87%					
18	1589	-13 -0.8%	1506	+83 6%	1433	+156 11%	2193	-604 -28%	1035	2193	1410	+179 13%	72%										
18.5	1543	-10 -0.6%	1396	+147 11%	1357	+186 14%	1963	-420 -21%	971	1963	1317	+226 17%	76%										
19	1473	-27 -1.8%	1267	+206 16%	1228	+245 20%	1776	-303 -17%	894	1776	1215	+258 21%	75%										
19.5	1434	-14 -1.0%	1151	+283 25%	1094	+340 31%	1670	-236 -14%	814	1670	1116	+318 28%	81%	803	1776	1101	+372 34%	93%					
20	1390	-21 -1.5%	1055	+335 32%	986	+404 41%	1588	-198 -12%	739	1588	1037	+353 34%	88%										
21	1326	-14 -1.1%	1014	+312 31%	956	+370 39%	1522	-196 -13%	693	1522	1003	+323 32%	88%										
22	1238	+2 0.2%	962	+276 29%	913	+325 36%	1461	-223 -15%	681	1461	972	+266 27%	83%										
23	1126	+10 0.9%	914	+212 23%	876	+250 29%	1324	-198 -15%	663	1324	930	+196 21%	82%	659	1461	902	+336 37%	91%					
24	1042	+9 0.9%	857	+185 22%	820	+222 27%	1170	-128 -11%	647	1170	858	+184 21%	88%										
25	890	0	781	+109 14%	738	+152 21%	1048	-158 -15%	566	1048	744	+146 20%	80%										
26	770	-24 -3.1%	686	+84 12%	634	+136 21%	928	-158 -17%	504	928	671	+99 15%	78%										
28	632	-11 -1.7%	483	+149 31%	478	+154 32%	734	-102 -14%	431	734	524	+108 21%	77%	532	1088	675	+95 14%	74%					
30	598	-14 -2.3%	435	+163 37%	423	+175 41%	670	-72 -11%	377	670	469	+129 28%	81%										
32	565	-11 -1.9%	397	+168 42%	388	+177 46%	638	-73 -11%	326	638	416	+149 36%	84%										
MC	725	0	651	+74 11%	627	+98 16%	831	-106 -13%	444	831	627	+98 16%	78%										

Note:

* Due to the irregular market quoting for some fine wool categories, figures shown relating to micron categories below 18 micron are an estimate based on the AWEX Premium & Discounts Report & other available information.

* For any category, where there is insufficient quantity offered to enable AWEX to quote, a quote will be provided based on the best available information.

* 10 Year data is not available for some micron categories, which may result in blank spaces in the table above.

Definitions:

* A Percentile, is a value on a scale of one hundred that indicates the percent of a distribution that is equal to or below it. In general a percentile between 25% and 75% is considered normal, a percentile below 25% is considered below normal and a percentile above 75% is considered above normal.

Three and ten year percentiles shown in the table above, detail the period of time during the past 3 & 10 years that the market has traded either at or below its current price.

The higher the percentile, the stronger the market.

Source: Australian Wool Exchange, Australian Wool Innovation, Sydney Futures Exchange, x-rates.com

Disclaimer: While all due care has been taken in the preparation of this document, no warranty is made as to its accuracy, reliability or completeness. To the extent permitted by law neither Jemalong or their sources including subsidiaries and staff, accept liability to any person for loss or damage arising from the use of this information.



MARKET COMMENTARY

One Australian Dollar = \$ 1.01 US, as of 10/11/2011

NORTHERN REGION –Sale Week 19/11 (43,0577 bales offered nationally)

Wednesday - The market seems to be finding its new level, with some areas easing while others firm. 18.5 microns began the day lower but support then increased leaving them par to slightly easier. 19 and 20-21 microns closed 10 cents lower, while 19.5 were firm and 22 to 23 microns gained 20-30 cents. Low Vm merino skirtings (<3%) remained firm, while the higher Vm lots (>5%) found strong buyer support and rose 20-30 cents for most microns. In the oddments, crutchings remained unchanged, stains gained 20, while locks eased 5-10 cents for 19-20 microns and eased 20 cents for the finer microns (<18). Crossbreds closed 10 cents lower for 28 to 32 microns on one of the larger offerings in recent weeks. 7.0% PI

Thursday - A soft market had most microns reduced by 10 cents. 20 to 23 microns ended the day 10 cents cheaper, while 18 to 19.5 microns finished 15 cents cheaper. Fine microns also retreated with the better style and strength types 20 cents cheaper, while the lower style and strength types contracted even further. Unlike the fleece, merino skirtings began at their previous levels, however momentum improved as the sale progressed, leaving 19 micron and broader, 5% Vm types 10-20 cents higher. In the oddments, locks were 10 cents cheaper for 18 micron and broader, while finer locks remained unchanged, as did crutchings and stains. While not as numerous as Wednesday, crossbreds also eased, with 27 to 30 microns closing 5 cents lower. 4.4% PI.

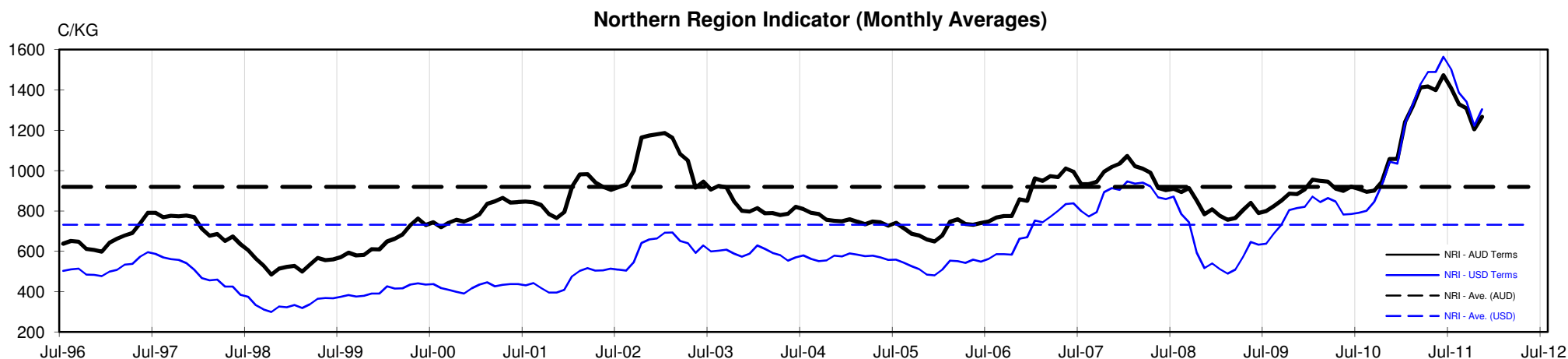




Table 4: 19 micron SFE

Wednesday, 9 November 2011

Delivery Mth	Dec-11	Feb-12	Apr-12	Jun-12	Aug-12	Oct-12	Dec-12	Feb-13	Mar-13
19 Micron SFE	1480	1475	1455	1425	1415	1415	1375	1375	1375
Average	1345	1367	1383	1406	1394	1394	1394	1357	1327
Maximum	1677	1652	1622	1612	1525	1525	1525	1525	1375
Minimum	1034	1053	1106	1210	1285	1285	1285	1265	1265

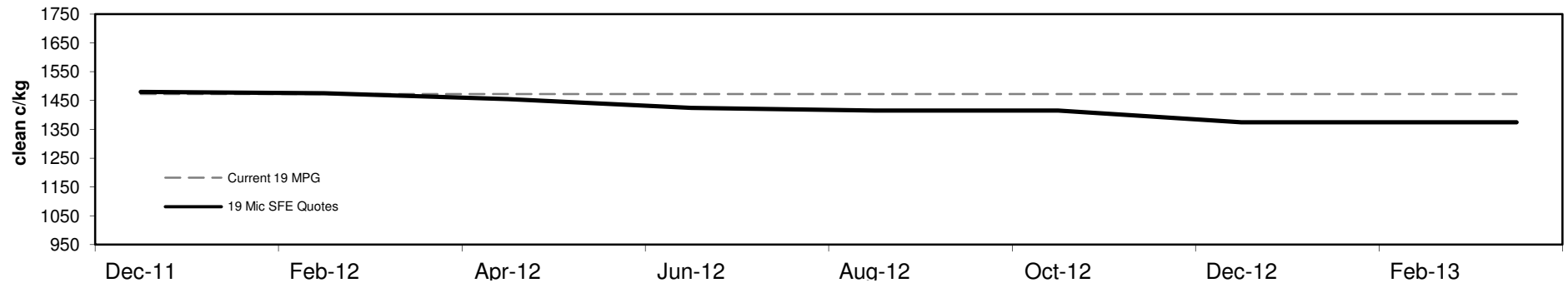
Table 5: 19 micron SFE, as a percentile of the 19 micron MPG

3 Year Percentile	76%	75%	75%	74%	74%	74%	72%	72%	72%
10 Year Percentile	93%	93%	92%	92%	92%	92%	90%	90%	90%

Table 6: 19 micron SFE, compared to MPG

SFE - MPG	+7	0%	+2	0%	-18	-1%	-48	-3%	-58	-4%	-58	-4%	-98	-7%	-98	-7%	-98	-7%
SFE - MPG, 1 year Ave.	-99	-6%	-104	-7%	-124	-8%	-154	-10%	-164	-10%	-164	-10%	-204	-13%	-204	-13%	-204	-13%
SFE - MPG, 3 year Ave.	+265	22%	+260	21%	+240	20%	+210	17%	+200	16%	+200	16%	+160	13%	+160	13%	+160	13%
SFE - MPG, 10 year Ave.	+379	34%	+374	34%	+354	32%	+324	29%	+314	29%	+314	29%	+274	25%	+274	25%	+274	25%

19 MICRON SFE, QUOTES



19 Micron SFE, Front month movement

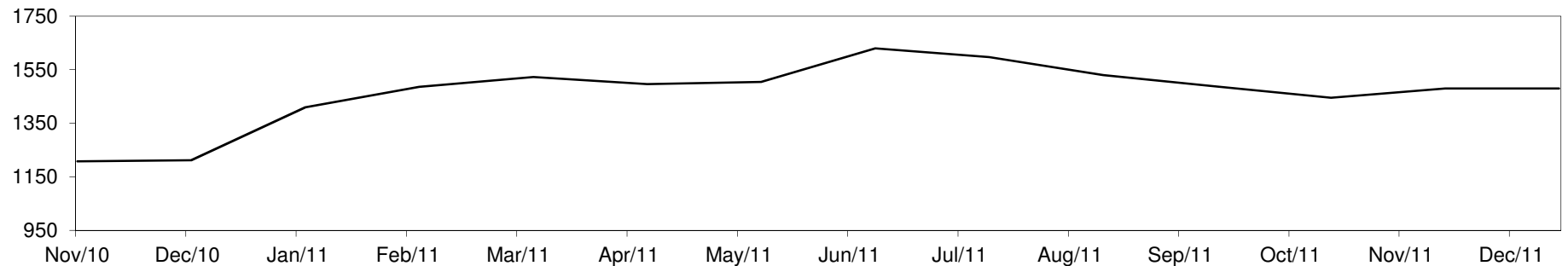




Table 7: 21 micron SFE

Wednesday, 9 November 2011

Delivery Mth	Dec-11	Feb-12	Apr-12	Jun-12	Aug-12	Oct-12	Dec-12	Feb-13	Mar-13
21 Micron SFE	1360	1360	1334	1322	1306	1157	1213	1178	1157
Average	1112	1121	1137	1134	1140	1151	1151	1141	1112
Maximum	1411	1393	1349	1337	1321	1283	1283	1222	1186
Minimum	880	880	934	990	1046	1013	1013	1080	1048

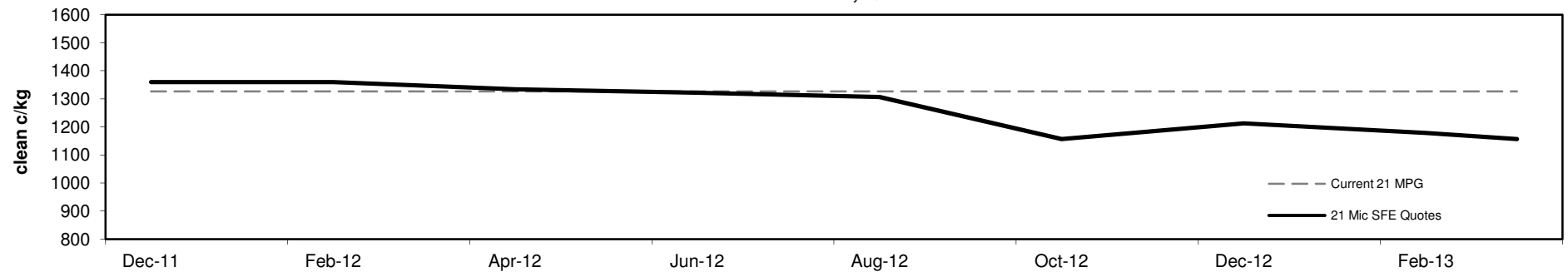
Table 8: 21 micron SFE, as a percentile of the 21 micron MPG

3 Year Percentile	92%	92%	89%	87%	84%	75%	78%	76%	75%
10 Year Percentile	97%	97%	96%	96%	95%	86%	88%	87%	86%

Table 9: 21 micron SFE, compared to MPG

SFE - MPG	+34	3%	+34	3%	+8	1%	-4	0%	-20	-2%	-169	-13%	-113	-9%	-148	-11%	-169	-13%
SFE - MPG, 1 year Ave.	+79	6%	+79	6%	+53	4%	+41	3%	+25	2%	-124	-10%	-68	-5%	-103	-8%	-124	-10%
SFE - MPG, 3 year Ave.	+357	36%	+357	36%	+331	33%	+319	32%	+303	30%	+154	15%	+210	21%	+175	17%	+154	15%
SFE - MPG, 10 year Ave.	+431	46%	+431	46%	+405	44%	+393	42%	+377	41%	+228	25%	+284	31%	+249	27%	+228	25%

21 MICRON SFE, QUOTES



21 Micron SFE, Front month movement

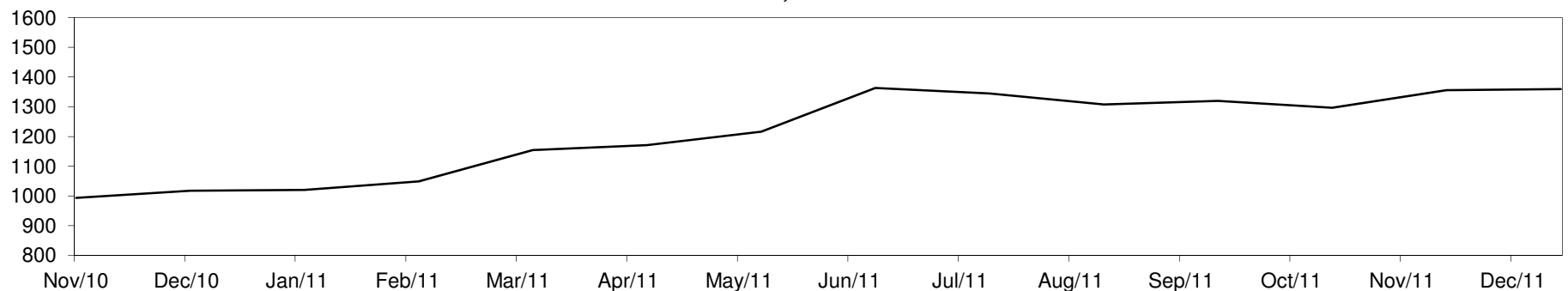




Table 10: 23 micron SFE

Wednesday, 9 November 2011

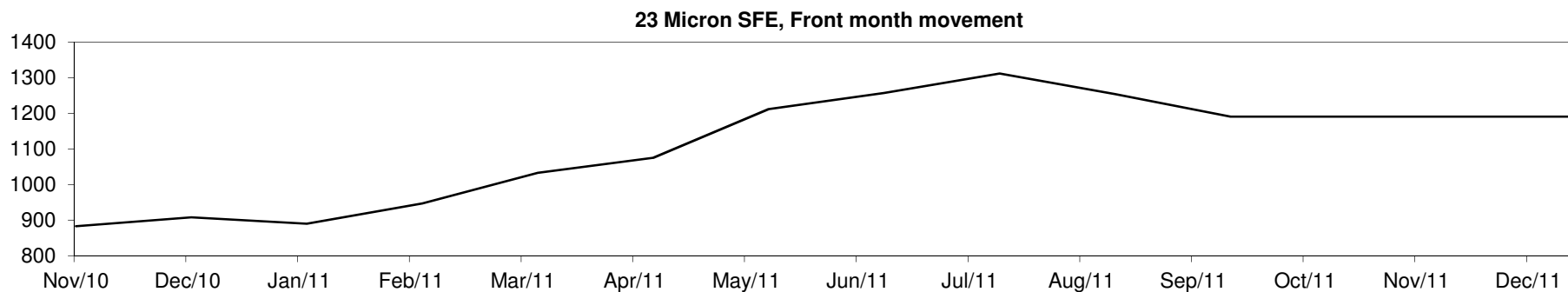
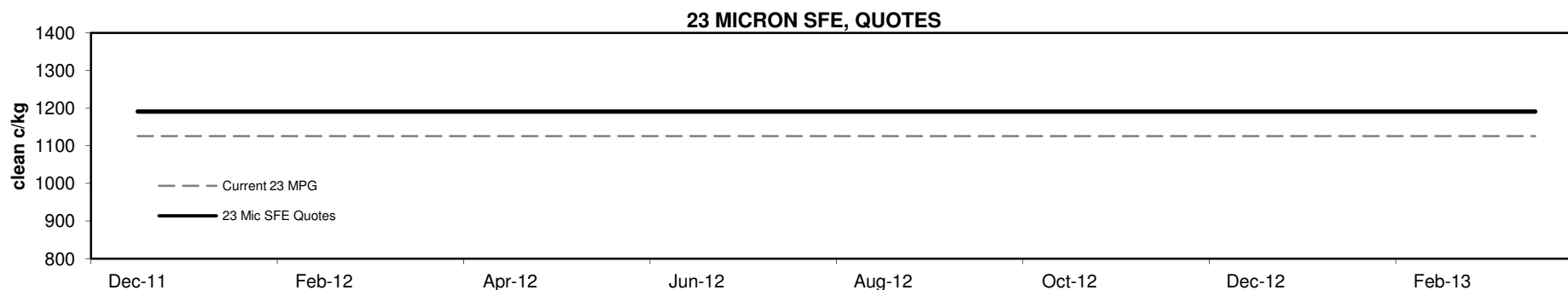
Delivery Mth	Dec-11	Feb-12	Apr-12	Jun-12	Aug-12	Oct-12	Dec-12	Feb-13	Mar-13
23 Micron SFE	1191	1191	1191	1191	1191	1191	1191	1191	1191
Average	1035	1059	1091	1129	1180	1226	1226	1230	1191
Maximum	1312	1312	1312	1312	1312	1312	1312	1312	1191
Minimum	883	883	883	890	1033	1191	1191	1191	1191

Table 11: 23 micron SFE, as a percentile of the 23 micron MPG

3 Year Percentile	87%	87%	87%	87%	87%	87%	87%	87%	87%
10 Year Percentile	91%	91%	91%	91%	91%	91%	91%	91%	91%

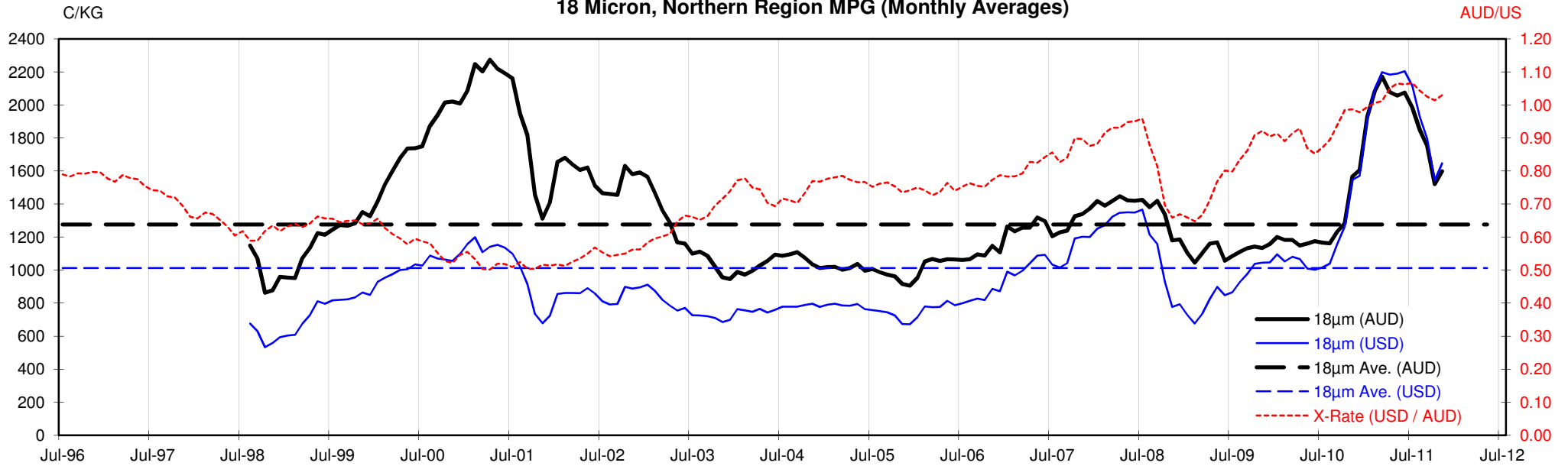
Table 12: 23 micron SFE, compared to MPG

SFE - MPG	+65	6%	+65	6%	+65	6%	+65	6%	+65	6%	+65	6%	+65	6%	+65	6%	+65	6%
SFE - MPG, 1 year Ave.	+47	4%	+47	4%	+47	4%	+47	4%	+47	4%	+47	4%	+47	4%	+47	4%	+47	4%
SFE - MPG, 3 year Ave.	+261	28%	+261	28%	+261	28%	+261	28%	+261	28%	+261	28%	+261	28%	+261	28%	+261	28%
SFE - MPG, 10 year Ave.	+316	36%	+316	36%	+316	36%	+316	36%	+316	36%	+316	36%	+316	36%	+316	36%	+316	36%

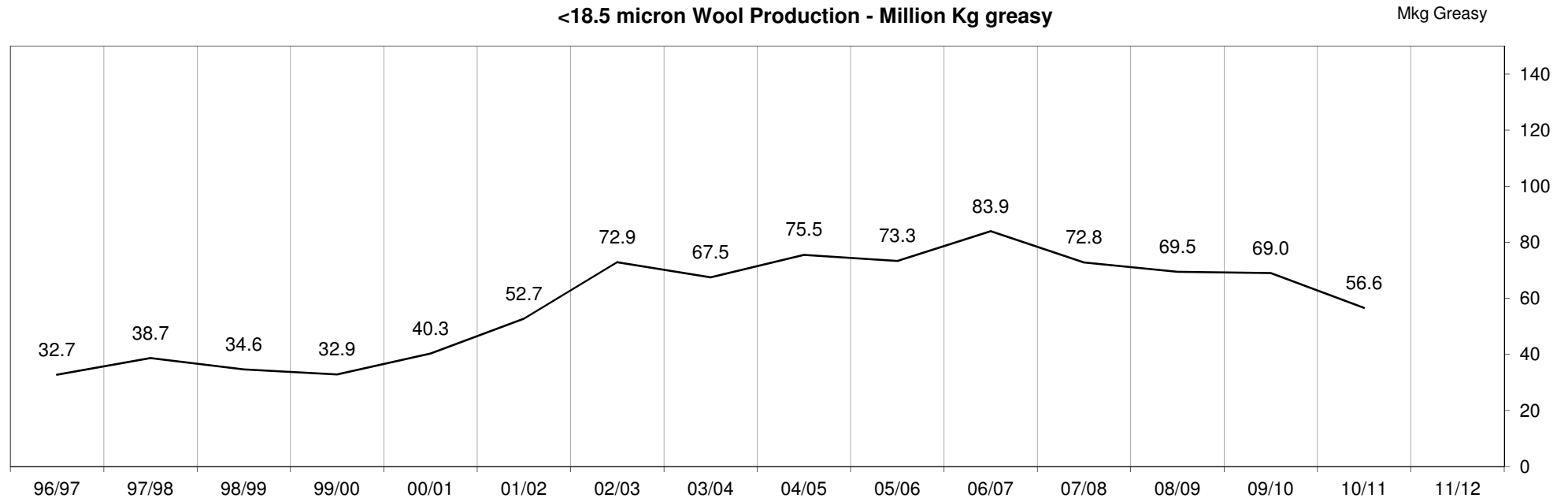


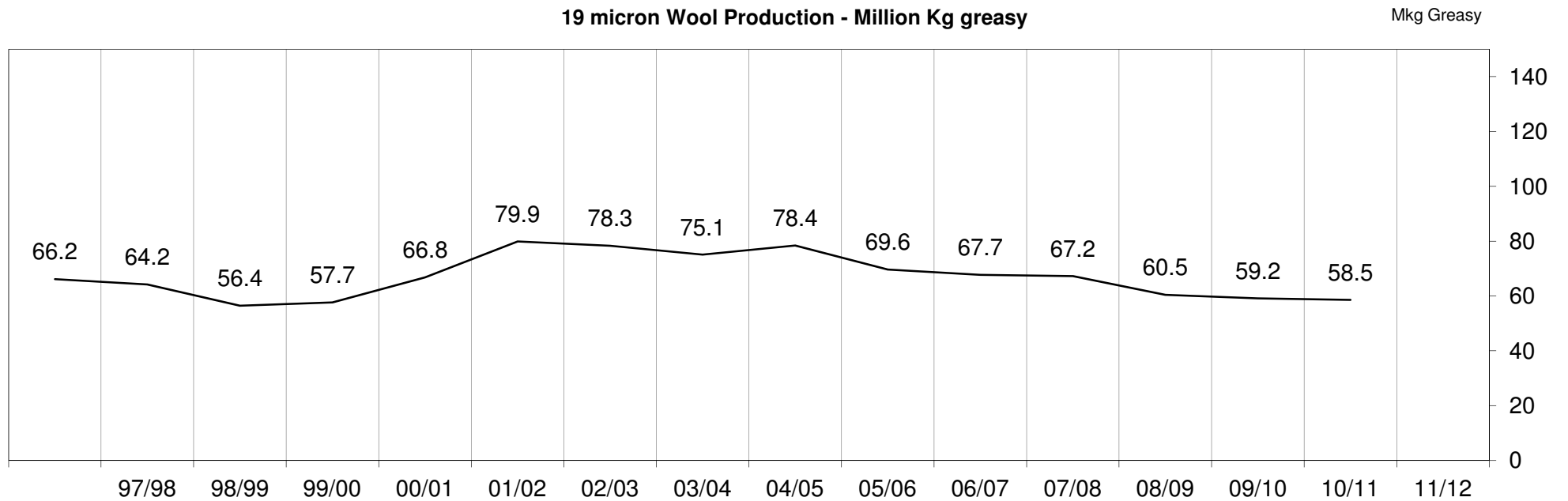
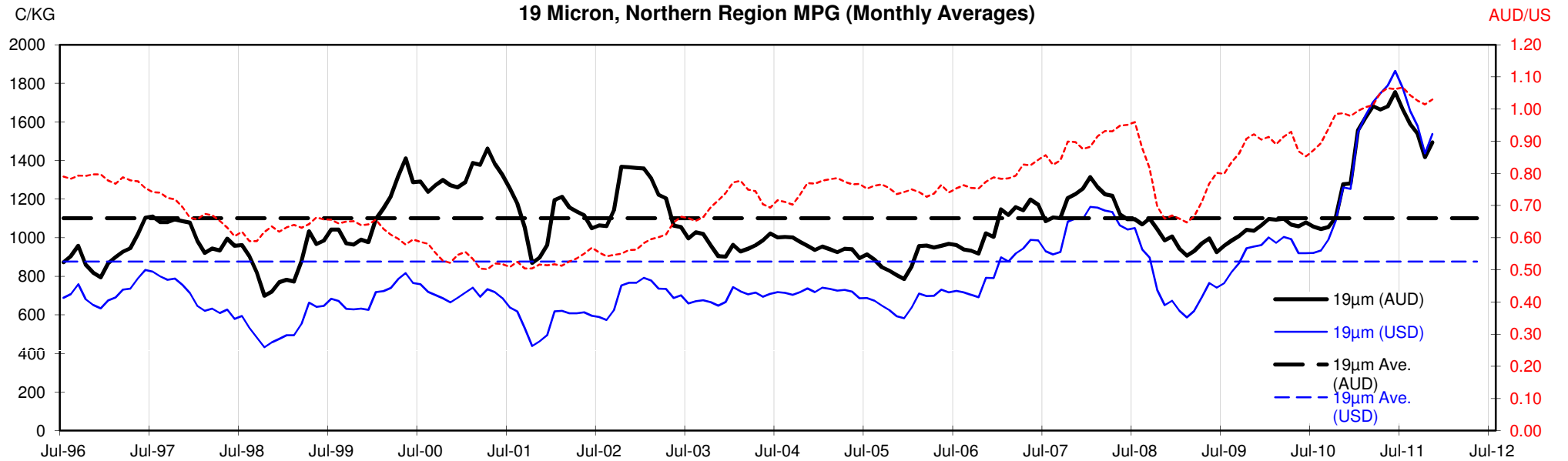


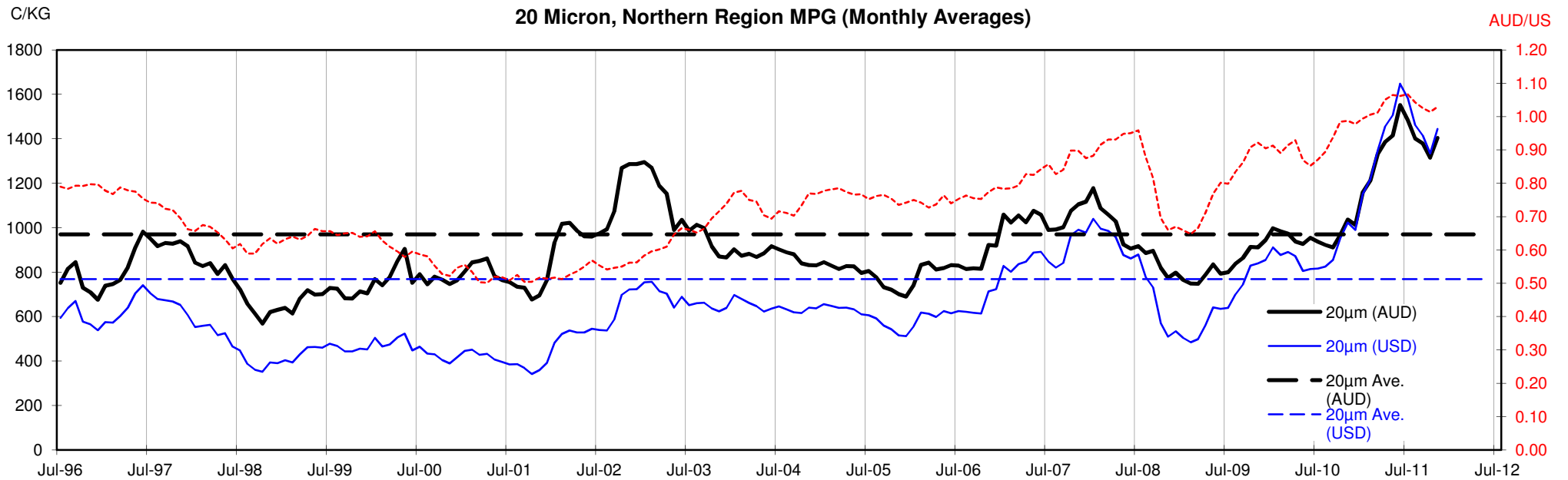
18 Micron, Northern Region MPG (Monthly Averages)

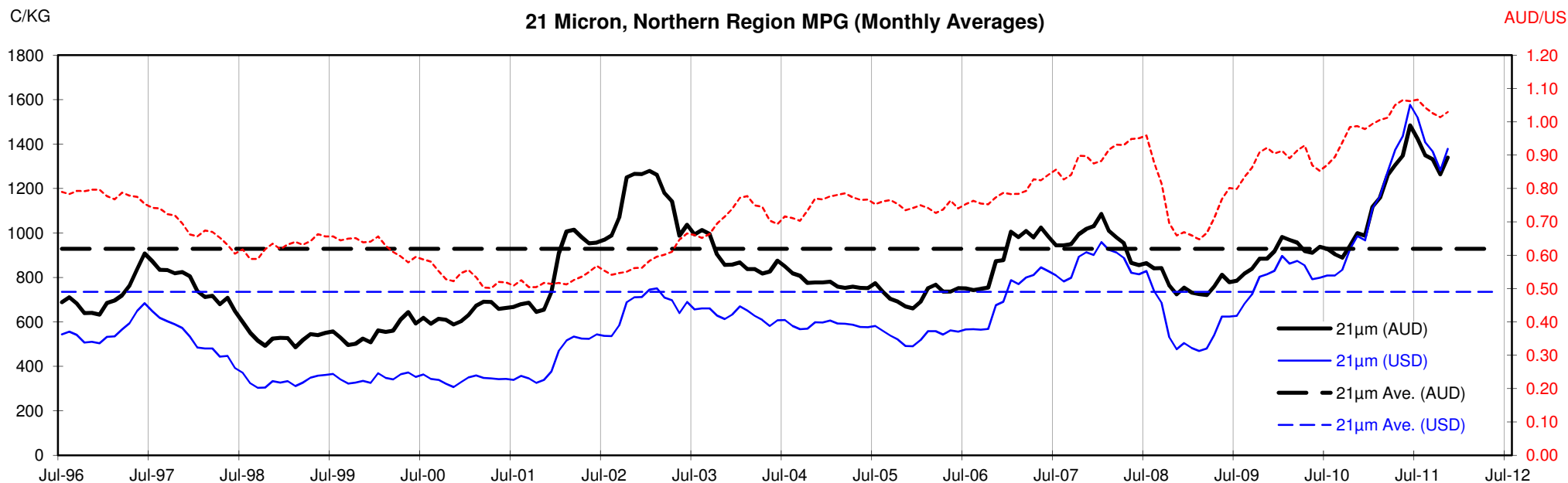


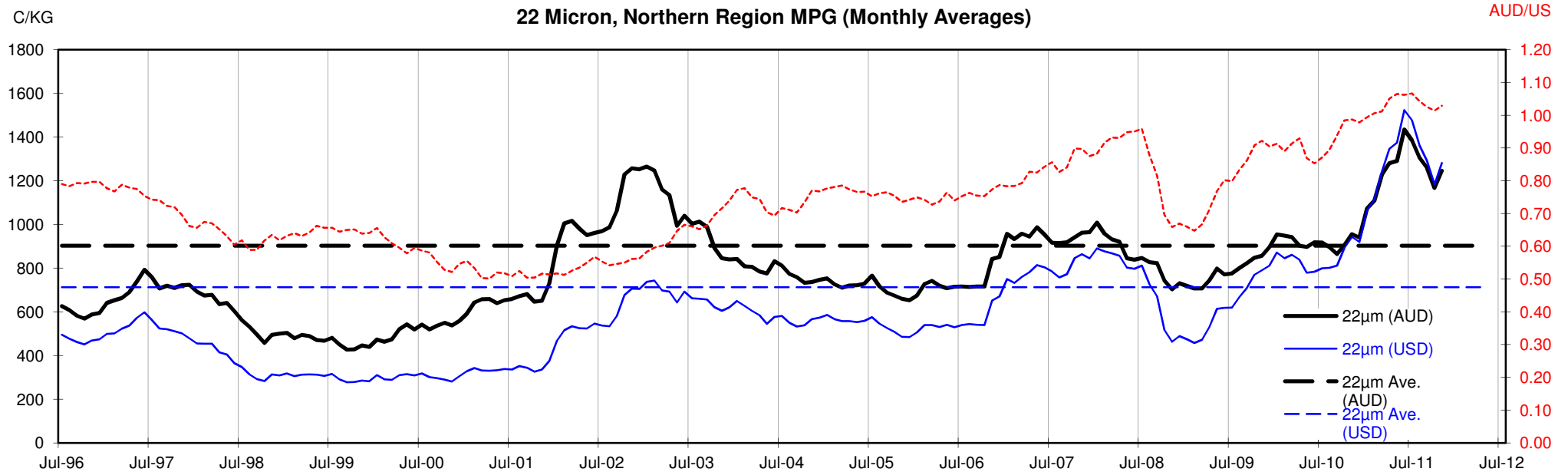
<18.5 micron Wool Production - Million Kg greasy

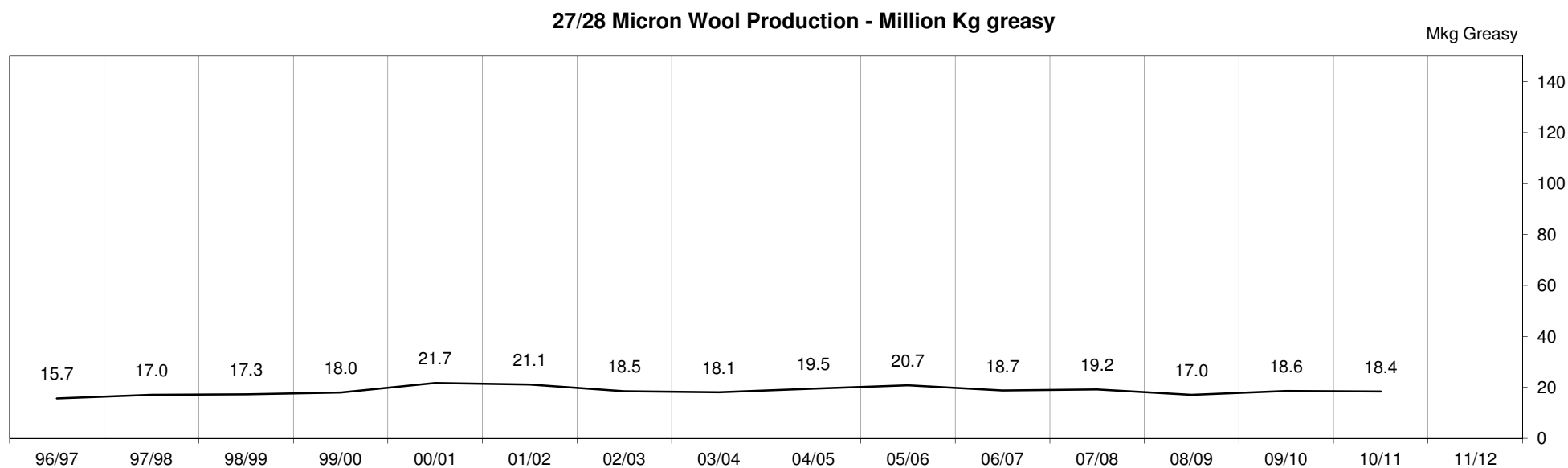
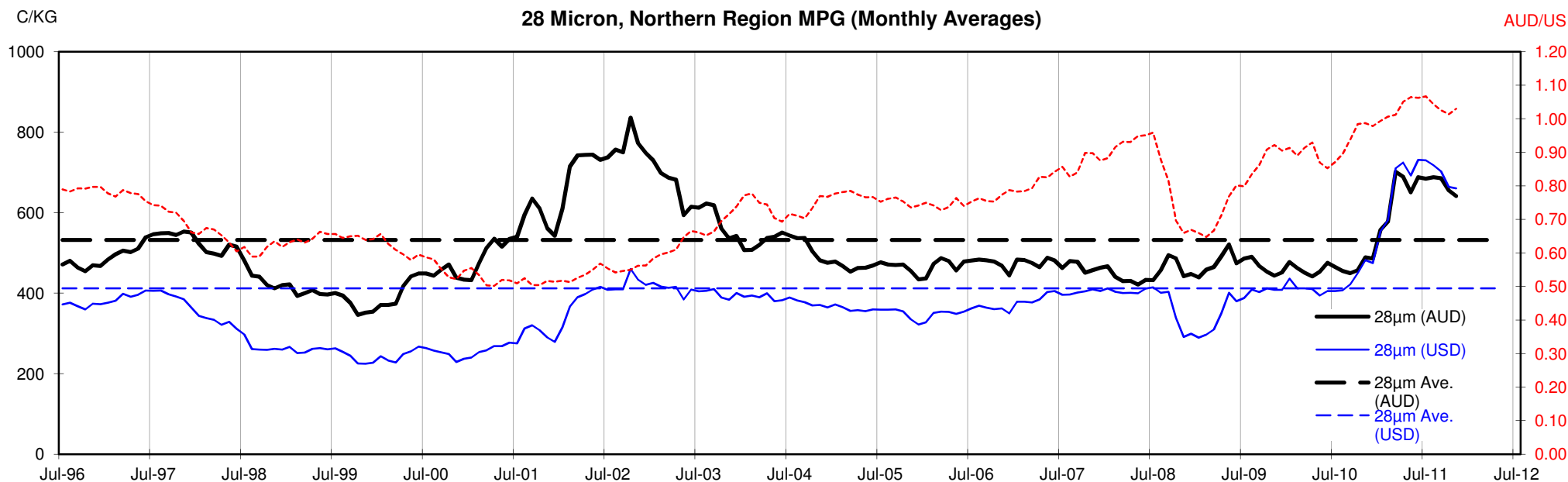












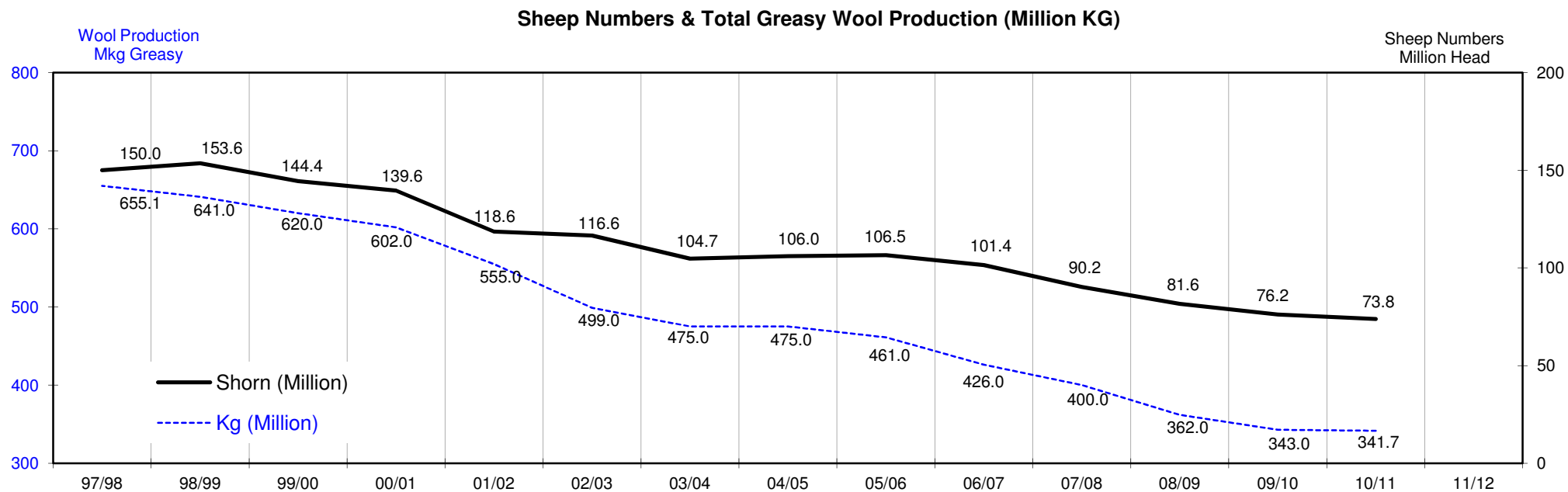
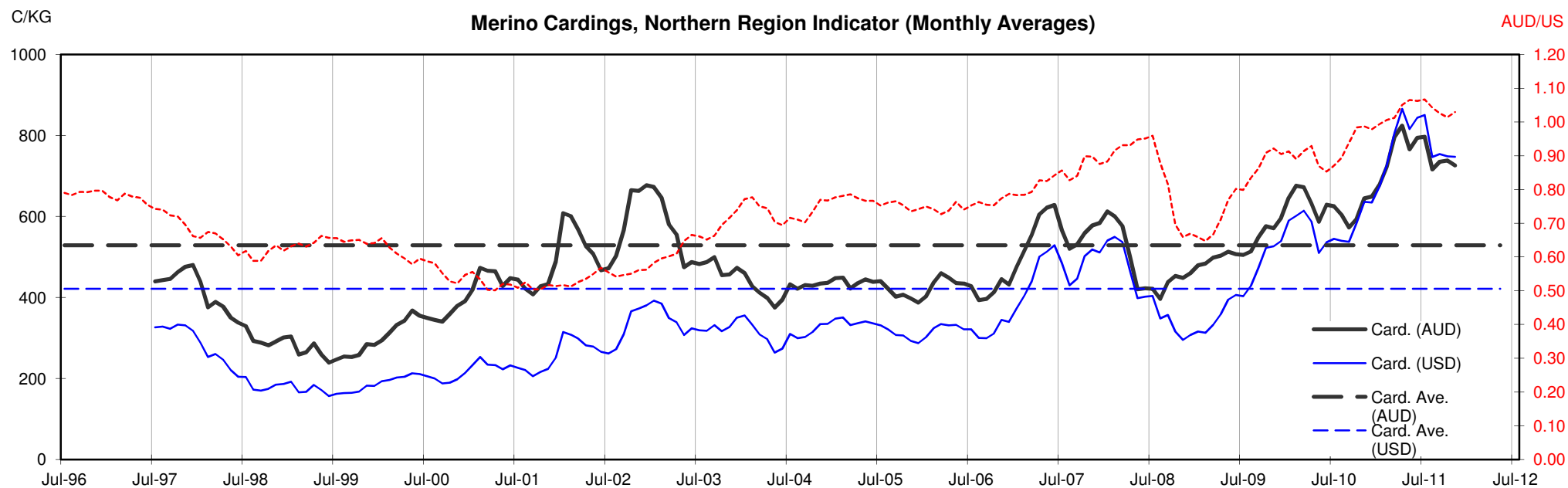




Table 13: Returns pr head for skirted fleece wool.

Skirted FLC Weight		Micron																	
9 Kg		16	16.5	17	17.5	18	18.5	19	19.5	20	21	22	23	24	25	26	28	30	32
Yield (Sch Dry)	25% Current	\$48	\$43	\$40	\$38	\$36	\$35	\$33	\$32	\$31	\$30	\$28	\$25	\$23	\$20	\$17	\$14	\$13	\$13
	10yr ave.			\$32		\$29		\$25		\$22	\$21	\$20	\$20	\$19	\$17	\$15	\$12	\$10	\$9
	30% Current	\$58	\$52	\$48	\$45	\$43	\$42	\$40	\$39	\$38	\$36	\$33	\$30	\$28	\$24	\$21	\$17	\$16	\$15
	10yr ave.			\$39		\$34		\$30		\$26	\$25	\$24	\$24	\$22	\$20	\$18	\$14	\$13	\$11
	35% Current	\$68	\$61	\$56	\$53	\$50	\$49	\$46	\$45	\$44	\$42	\$39	\$35	\$33	\$28	\$24	\$20	\$19	\$18
	10yr ave.			\$45		\$40		\$35		\$31	\$29	\$28	\$28	\$26	\$23	\$21	\$17	\$15	\$13
	40% Current	\$77	\$69	\$64	\$60	\$57	\$56	\$53	\$52	\$50	\$48	\$45	\$41	\$38	\$32	\$28	\$23	\$22	\$20
	10yr ave.			\$52		\$46		\$40		\$35	\$33	\$32	\$32	\$30	\$27	\$24	\$19	\$17	\$15
	45% Current	\$87	\$78	\$72	\$68	\$64	\$62	\$60	\$58	\$56	\$54	\$50	\$46	\$42	\$36	\$31	\$26	\$24	\$23
	10yr ave.			\$58		\$52		\$45		\$39	\$38	\$37	\$35	\$34	\$30	\$27	\$22	\$19	\$17
	50% Current	\$97	\$87	\$80	\$75	\$72	\$69	\$66	\$65	\$63	\$60	\$56	\$51	\$47	\$40	\$35	\$28	\$27	\$25
	10yr ave.			\$65		\$57		\$50		\$44	\$42	\$41	\$39	\$37	\$33	\$30	\$24	\$21	\$19
	55% Current	\$106	\$96	\$88	\$83	\$79	\$76	\$73	\$71	\$69	\$66	\$61	\$56	\$52	\$44	\$38	\$31	\$30	\$28
	10yr ave.			\$71		\$63		\$54		\$48	\$46	\$45	\$43	\$41	\$37	\$33	\$26	\$23	\$21
	60% Current	\$116	\$104	\$96	\$90	\$86	\$83	\$80	\$77	\$75	\$72	\$67	\$61	\$56	\$48	\$42	\$34	\$32	\$31
	10yr ave.			\$78		\$69		\$59		\$52	\$50	\$49	\$47	\$45	\$40	\$36	\$29	\$25	\$23
	65% Current	\$126	\$113	\$104	\$98	\$93	\$90	\$86	\$84	\$81	\$78	\$72	\$66	\$61	\$52	\$45	\$37	\$35	\$33
	10yr ave.			\$84		\$75		\$64		\$57	\$54	\$53	\$51	\$48	\$43	\$39	\$31	\$27	\$24
	70% Current	\$135	\$122	\$112	\$105	\$100	\$97	\$93	\$90	\$88	\$84	\$78	\$71	\$66	\$56	\$49	\$40	\$38	\$36
	10yr ave.			\$91		\$80		\$69		\$61	\$59	\$57	\$55	\$52	\$47	\$43	\$34	\$29	\$26
	75% Current	\$145	\$130	\$120	\$113	\$107	\$104	\$99	\$97	\$94	\$90	\$84	\$76	\$70	\$60	\$52	\$43	\$40	\$38
	10yr ave.			\$97		\$86		\$74		\$65	\$63	\$61	\$59	\$56	\$50	\$46	\$36	\$31	\$28
	80% Current	\$155	\$139	\$128	\$120	\$114	\$111	\$106	\$103	\$100	\$95	\$89	\$81	\$75	\$64	\$55	\$46	\$43	\$41
	10yr ave.			\$104		\$92		\$79		\$70	\$67	\$65	\$63	\$60	\$53	\$49	\$38	\$33	\$30
	85% Current	\$164	\$148	\$136	\$128	\$122	\$118	\$113	\$110	\$106	\$101	\$95	\$86	\$80	\$68	\$59	\$48	\$46	\$43
	10yr ave.			\$110		\$98		\$84		\$74	\$71	\$69	\$67	\$63	\$57	\$52	\$41	\$35	\$32

The above shows estimated returns per head for skirted fleece wool. These figures do not take into account the value of skirtings and oddments and do not take into account discounts that may apply for faults under individual circumstances. These figures are based on a market index of 100% and should be used as a guide only. Returns over \$30 / head for fleece wool are highlighted.

Source: Australian Wool Exchange, Australian Wool Innovation, Sydney Futures Exchange, x-rates.com

Disclaimer: While all due care has been taken in the preparation of this document, no warranty is made as to its accuracy, reliability or completeness. To the extent permitted by law neither Jemalong or their sources including subsidiaries and staff, accept liability to any person for loss or damage arising from the use of this information.



Table 14: Returns pr head for skirted fleece wool.

Skirted FLC Weight			Micron																	
			16	16.5	17	17.5	18	18.5	19	19.5	20	21	22	23	24	25	26	28	30	32
Yield (Sch Dry)	25%	Current	\$43	\$39	\$36	\$33	\$32	\$31	\$29	\$29	\$28	\$27	\$25	\$23	\$21	\$18	\$15	\$13	\$12	\$11
		10yr ave.			\$29		\$26		\$22		\$19	\$19	\$18	\$18	\$17	\$15	\$14	\$11	\$9	\$8
	30%	Current	\$52	\$46	\$43	\$40	\$38	\$37	\$35	\$34	\$33	\$32	\$30	\$27	\$25	\$21	\$18	\$15	\$14	\$14
		10yr ave.			\$35		\$31		\$26		\$23	\$22	\$22	\$21	\$20	\$18	\$16	\$13	\$11	\$10
	35%	Current	\$60	\$54	\$50	\$47	\$44	\$43	\$41	\$40	\$39	\$37	\$35	\$32	\$29	\$25	\$22	\$18	\$17	\$16
		10yr ave.			\$40		\$36		\$31		\$27	\$26	\$25	\$25	\$23	\$21	\$19	\$15	\$13	\$12
	40%	Current	\$69	\$62	\$57	\$53	\$51	\$49	\$47	\$46	\$44	\$42	\$40	\$36	\$33	\$28	\$25	\$20	\$19	\$18
		10yr ave.			\$46		\$41		\$35		\$31	\$30	\$29	\$28	\$26	\$24	\$22	\$17	\$15	\$13
	45%	Current	\$77	\$69	\$64	\$60	\$57	\$56	\$53	\$52	\$50	\$48	\$45	\$41	\$38	\$32	\$28	\$23	\$22	\$20
		10yr ave.			\$52		\$46		\$40		\$35	\$33	\$32	\$32	\$30	\$27	\$24	\$19	\$17	\$15
	50%	Current	\$86	\$77	\$71	\$67	\$64	\$62	\$59	\$57	\$56	\$53	\$50	\$45	\$42	\$36	\$31	\$25	\$24	\$23
		10yr ave.			\$58		\$51		\$44		\$39	\$37	\$36	\$35	\$33	\$30	\$27	\$21	\$19	\$17
	55%	Current	\$95	\$85	\$78	\$73	\$70	\$68	\$65	\$63	\$61	\$58	\$54	\$50	\$46	\$39	\$34	\$28	\$26	\$25
		10yr ave.			\$63		\$56		\$48		\$43	\$41	\$40	\$39	\$36	\$33	\$30	\$23	\$20	\$18
60%	Current	\$103	\$93	\$85	\$80	\$76	\$74	\$71	\$69	\$67	\$64	\$59	\$54	\$50	\$43	\$37	\$30	\$29	\$27	
	10yr ave.			\$69		\$61		\$53		\$47	\$45	\$43	\$42	\$40	\$35	\$32	\$26	\$22	\$20	
65%	Current	\$112	\$100	\$93	\$87	\$83	\$80	\$77	\$75	\$72	\$69	\$64	\$59	\$54	\$46	\$40	\$33	\$31	\$29	
	10yr ave.			\$75		\$66		\$57		\$50	\$48	\$47	\$46	\$43	\$38	\$35	\$28	\$24	\$22	
70%	Current	\$120	\$108	\$100	\$94	\$89	\$86	\$82	\$80	\$78	\$74	\$69	\$63	\$58	\$50	\$43	\$35	\$33	\$32	
	10yr ave.			\$81		\$71		\$62		\$54	\$52	\$51	\$49	\$46	\$41	\$38	\$30	\$26	\$23	
75%	Current	\$129	\$116	\$107	\$100	\$95	\$93	\$88	\$86	\$83	\$80	\$74	\$68	\$63	\$53	\$46	\$38	\$36	\$34	
	10yr ave.			\$87		\$77		\$66		\$58	\$56	\$54	\$53	\$50	\$44	\$41	\$32	\$28	\$25	
80%	Current	\$138	\$124	\$114	\$107	\$102	\$99	\$94	\$92	\$89	\$85	\$79	\$72	\$67	\$57	\$49	\$40	\$38	\$36	
	10yr ave.			\$92		\$82		\$70		\$62	\$59	\$58	\$56	\$53	\$47	\$43	\$34	\$30	\$27	
85%	Current	\$146	\$131	\$121	\$114	\$108	\$105	\$100	\$98	\$95	\$90	\$84	\$77	\$71	\$61	\$52	\$43	\$41	\$38	
	10yr ave.			\$98		\$87		\$75		\$66	\$63	\$61	\$60	\$56	\$50	\$46	\$36	\$32	\$28	

The above shows estimated returns per head for skirted fleece wool. These figures do not take into account the value of skirtings and oddments and do not take into account discounts that may apply for faults under individual circumstances. These figures are based on a market index of 100% and should be used as a guide only. Returns over \$30 / head for fleece wool are highlighted.

Source: Australian Wool Exchange, Australian Wool Innovation, Sydney Futures Exchange, x-rates.com

Disclaimer: While all due care has been taken in the preparation of this document, no warranty is made as to its accuracy, reliability or completeness. To the extent permitted by law neither Jemalong or their sources including subsidiaries and staff, accept liability to any person for loss or damage arising from the use of this information.



Table 15: Returns pr head for skirted fleece wool.

Skirted FLC Weight		Micron																	
7 Kg		16	16.5	17	17.5	18	18.5	19	19.5	20	21	22	23	24	25	26	28	30	32
Yield (Sch Dry)	25% Current	\$38	\$34	\$31	\$29	\$28	\$27	\$26	\$25	\$24	\$23	\$22	\$20	\$18	\$16	\$13	\$11	\$10	\$10
	10yr ave.			\$25		\$22		\$19		\$17	\$16	\$16	\$15	\$14	\$13	\$12	\$9	\$8	\$7
	30% Current	\$45	\$41	\$37	\$35	\$33	\$32	\$31	\$30	\$29	\$28	\$26	\$24	\$22	\$19	\$16	\$13	\$13	\$12
	10yr ave.			\$30		\$27		\$23		\$20	\$20	\$19	\$18	\$17	\$16	\$14	\$11	\$10	\$9
	35% Current	\$53	\$47	\$44	\$41	\$39	\$38	\$36	\$35	\$34	\$32	\$30	\$28	\$26	\$22	\$19	\$15	\$15	\$14
	10yr ave.			\$35		\$31		\$27		\$24	\$23	\$22	\$21	\$20	\$18	\$17	\$13	\$11	\$10
	40% Current	\$60	\$54	\$50	\$47	\$44	\$43	\$41	\$40	\$39	\$37	\$35	\$32	\$29	\$25	\$22	\$18	\$17	\$16
	10yr ave.			\$40		\$36		\$31		\$27	\$26	\$25	\$25	\$23	\$21	\$19	\$15	\$13	\$12
	45% Current	\$68	\$61	\$56	\$53	\$50	\$49	\$46	\$45	\$44	\$42	\$39	\$35	\$33	\$28	\$24	\$20	\$19	\$18
	10yr ave.			\$45		\$40		\$35		\$31	\$29	\$28	\$28	\$26	\$23	\$21	\$17	\$15	\$13
	50% Current	\$75	\$68	\$62	\$58	\$56	\$54	\$52	\$50	\$49	\$46	\$43	\$39	\$36	\$31	\$27	\$22	\$21	\$20
	10yr ave.			\$51		\$45		\$39		\$34	\$33	\$32	\$31	\$29	\$26	\$24	\$19	\$16	\$15
	55% Current	\$83	\$74	\$69	\$64	\$61	\$59	\$57	\$55	\$54	\$51	\$48	\$43	\$40	\$34	\$30	\$24	\$23	\$22
	10yr ave.			\$56		\$49		\$42		\$37	\$36	\$35	\$34	\$32	\$28	\$26	\$20	\$18	\$16
	60% Current	\$90	\$81	\$75	\$70	\$67	\$65	\$62	\$60	\$58	\$56	\$52	\$47	\$44	\$37	\$32	\$27	\$25	\$24
	10yr ave.			\$61		\$54		\$46		\$41	\$39	\$38	\$37	\$35	\$31	\$28	\$22	\$19	\$18
	65% Current	\$98	\$88	\$81	\$76	\$72	\$70	\$67	\$65	\$63	\$60	\$56	\$51	\$47	\$40	\$35	\$29	\$27	\$26
	10yr ave.			\$66		\$58		\$50		\$44	\$42	\$41	\$40	\$38	\$34	\$31	\$24	\$21	\$19
	70% Current	\$105	\$95	\$87	\$82	\$78	\$76	\$72	\$70	\$68	\$65	\$61	\$55	\$51	\$44	\$38	\$31	\$29	\$28
	10yr ave.			\$71		\$63		\$54		\$48	\$46	\$44	\$43	\$41	\$36	\$33	\$26	\$23	\$20
	75% Current	\$113	\$101	\$93	\$88	\$83	\$81	\$77	\$75	\$73	\$70	\$65	\$59	\$55	\$47	\$40	\$33	\$31	\$30
	10yr ave.			\$76		\$67		\$58		\$51	\$49	\$47	\$46	\$43	\$39	\$35	\$28	\$24	\$22
	80% Current	\$120	\$108	\$100	\$94	\$89	\$86	\$82	\$80	\$78	\$74	\$69	\$63	\$58	\$50	\$43	\$35	\$33	\$32
	10yr ave.			\$81		\$71		\$62		\$54	\$52	\$51	\$49	\$46	\$41	\$38	\$30	\$26	\$23
	85% Current	\$128	\$115	\$106	\$99	\$95	\$92	\$88	\$85	\$83	\$79	\$74	\$67	\$62	\$53	\$46	\$38	\$36	\$34
	10yr ave.			\$86		\$76		\$66		\$58	\$55	\$54	\$52	\$49	\$44	\$40	\$32	\$28	\$25

The above shows estimated returns per head for skirted fleece wool. These figures do not take into account the value of skirtings and oddments and do not take into account discounts that may apply for faults under individual circumstances. These figures are based on a market index of 100% and should be used as a guide only. Returns over \$30 / head for fleece wool are highlighted.

Source: Australian Wool Exchange, Australian Wool Innovation, Sydney Futures Exchange, x-rates.com

Disclaimer: While all due care has been taken in the preparation of this document, no warranty is made as to its accuracy, reliability or completeness. To the extent permitted by law neither Jemalong or their sources including subsidiaries and staff, accept liability to any person for loss or damage arising from the use of this information.



Table 16: Returns pr head for skirted fleece wool.

Skirted FLC Weight		Micron																	
6 Kg		16	16.5	17	17.5	18	18.5	19	19.5	20	21	22	23	24	25	26	28	30	32
Yield (Sch Dry)	25% Current	\$32	\$29	\$27	\$25	\$24	\$23	\$22	\$22	\$21	\$20	\$19	\$17	\$16	\$13	\$12	\$9	\$9	\$8
	10yr ave.			\$22		\$19		\$17		\$15	\$14	\$14	\$13	\$12	\$11	\$10	\$8	\$7	\$6
	30% Current	\$39	\$35	\$32	\$30	\$29	\$28	\$27	\$26	\$25	\$24	\$22	\$20	\$19	\$16	\$14	\$11	\$11	\$10
	10yr ave.			\$26		\$23		\$20		\$17	\$17	\$16	\$16	\$15	\$13	\$12	\$10	\$8	\$8
	35% Current	\$45	\$41	\$37	\$35	\$33	\$32	\$31	\$30	\$29	\$28	\$26	\$24	\$22	\$19	\$16	\$13	\$13	\$12
	10yr ave.			\$30		\$27		\$23		\$20	\$20	\$19	\$18	\$17	\$16	\$14	\$11	\$10	\$9
	40% Current	\$52	\$46	\$43	\$40	\$38	\$37	\$35	\$34	\$33	\$32	\$30	\$27	\$25	\$21	\$18	\$15	\$14	\$14
	10yr ave.			\$35		\$31		\$26		\$23	\$22	\$22	\$21	\$20	\$18	\$16	\$13	\$11	\$10
	45% Current	\$58	\$52	\$48	\$45	\$43	\$42	\$40	\$39	\$38	\$36	\$33	\$30	\$28	\$24	\$21	\$17	\$16	\$15
	10yr ave.			\$39		\$34		\$30		\$26	\$25	\$24	\$24	\$22	\$20	\$18	\$14	\$13	\$11
	50% Current	\$65	\$58	\$53	\$50	\$48	\$46	\$44	\$43	\$42	\$40	\$37	\$34	\$31	\$27	\$23	\$19	\$18	\$17
	10yr ave.			\$43		\$38		\$33		\$29	\$28	\$27	\$26	\$25	\$22	\$20	\$16	\$14	\$13
	55% Current	\$71	\$64	\$59	\$55	\$52	\$51	\$49	\$47	\$46	\$44	\$41	\$37	\$34	\$29	\$25	\$21	\$20	\$19
	10yr ave.			\$48		\$42		\$36		\$32	\$31	\$30	\$29	\$27	\$24	\$22	\$18	\$15	\$14
	60% Current	\$77	\$69	\$64	\$60	\$57	\$56	\$53	\$52	\$50	\$48	\$45	\$41	\$38	\$32	\$28	\$23	\$22	\$20
	10yr ave.			\$52		\$46		\$40		\$35	\$33	\$32	\$32	\$30	\$27	\$24	\$19	\$17	\$15
	65% Current	\$84	\$75	\$69	\$65	\$62	\$60	\$57	\$56	\$54	\$52	\$48	\$44	\$41	\$35	\$30	\$25	\$23	\$22
	10yr ave.			\$56		\$50		\$43		\$38	\$36	\$35	\$34	\$32	\$29	\$26	\$21	\$18	\$16
	70% Current	\$90	\$81	\$75	\$70	\$67	\$65	\$62	\$60	\$58	\$56	\$52	\$47	\$44	\$37	\$32	\$27	\$25	\$24
	10yr ave.			\$61		\$54		\$46		\$41	\$39	\$38	\$37	\$35	\$31	\$28	\$22	\$19	\$18
	75% Current	\$97	\$87	\$80	\$75	\$72	\$69	\$66	\$65	\$63	\$60	\$56	\$51	\$47	\$40	\$35	\$28	\$27	\$25
	10yr ave.			\$65		\$57		\$50		\$44	\$42	\$41	\$39	\$37	\$33	\$30	\$24	\$21	\$19
	80% Current	\$103	\$93	\$85	\$80	\$76	\$74	\$71	\$69	\$67	\$64	\$59	\$54	\$50	\$43	\$37	\$30	\$29	\$27
	10yr ave.			\$69		\$61		\$53		\$47	\$45	\$43	\$42	\$40	\$35	\$32	\$26	\$22	\$20
	85% Current	\$110	\$98	\$91	\$85	\$81	\$79	\$75	\$73	\$71	\$68	\$63	\$57	\$53	\$45	\$39	\$32	\$30	\$29
	10yr ave.			\$74		\$65		\$56		\$49	\$47	\$46	\$45	\$42	\$38	\$34	\$27	\$24	\$21

The above shows estimated returns per head for skirted fleece wool. These figures do not take into account the value of skirtings and oddments and do not take into account discounts that may apply for faults under individual circumstances. These figures are based on a market index of 100% and should be used as a guide only. Returns over \$30 / head for fleece wool are highlighted.

Source: Australian Wool Exchange, Australian Wool Innovation, Sydney Futures Exchange, x-rates.com

Disclaimer: While all due care has been taken in the preparation of this document, no warranty is made as to its accuracy, reliability or completeness. To the extent permitted by law neither Jemalong or their sources including subsidiaries and staff, accept liability to any person for loss or damage arising from the use of this information.



Table 17: Returns pr head for skirted fleece wool.

Skirted FLC Weight		Micron																	
5 Kg		16	16.5	17	17.5	18	18.5	19	19.5	20	21	22	23	24	25	26	28	30	32
Yield (Sch Dry)	25% Current	\$27	\$24	\$22	\$21	\$20	\$19	\$18	\$18	\$17	\$17	\$15	\$14	\$13	\$11	\$10	\$8	\$7	\$7
	10yr ave.			\$18		\$16		\$14		\$12	\$12	\$11	\$11	\$10	\$9	\$8	\$7	\$6	\$5
	30% Current	\$32	\$29	\$27	\$25	\$24	\$23	\$22	\$22	\$21	\$20	\$19	\$17	\$16	\$13	\$12	\$9	\$9	\$8
	10yr ave.			\$22		\$19		\$17		\$15	\$14	\$14	\$13	\$12	\$11	\$10	\$8	\$7	\$6
	35% Current	\$38	\$34	\$31	\$29	\$28	\$27	\$26	\$25	\$24	\$23	\$22	\$20	\$18	\$16	\$13	\$11	\$10	\$10
	10yr ave.			\$25		\$22		\$19		\$17	\$16	\$16	\$15	\$14	\$13	\$12	\$9	\$8	\$7
	40% Current	\$43	\$39	\$36	\$33	\$32	\$31	\$29	\$29	\$28	\$27	\$25	\$23	\$21	\$18	\$15	\$13	\$12	\$11
	10yr ave.			\$29		\$26		\$22		\$19	\$19	\$18	\$18	\$17	\$15	\$14	\$11	\$9	\$8
	45% Current	\$48	\$43	\$40	\$38	\$36	\$35	\$33	\$32	\$31	\$30	\$28	\$25	\$23	\$20	\$17	\$14	\$13	\$13
	10yr ave.			\$32		\$29		\$25		\$22	\$21	\$20	\$20	\$19	\$17	\$15	\$12	\$10	\$9
	50% Current	\$54	\$48	\$45	\$42	\$40	\$39	\$37	\$36	\$35	\$33	\$31	\$28	\$26	\$22	\$19	\$16	\$15	\$14
	10yr ave.			\$36		\$32		\$28		\$24	\$23	\$23	\$22	\$21	\$18	\$17	\$13	\$12	\$10
	55% Current	\$59	\$53	\$49	\$46	\$44	\$42	\$41	\$39	\$38	\$36	\$34	\$31	\$29	\$24	\$21	\$17	\$16	\$16
	10yr ave.			\$40		\$35		\$30		\$27	\$26	\$25	\$24	\$23	\$20	\$19	\$15	\$13	\$11
	60% Current	\$65	\$58	\$53	\$50	\$48	\$46	\$44	\$43	\$42	\$40	\$37	\$34	\$31	\$27	\$23	\$19	\$18	\$17
	10yr ave.			\$43		\$38		\$33		\$29	\$28	\$27	\$26	\$25	\$22	\$20	\$16	\$14	\$13
	65% Current	\$70	\$63	\$58	\$54	\$52	\$50	\$48	\$47	\$45	\$43	\$40	\$37	\$34	\$29	\$25	\$21	\$19	\$18
	10yr ave.			\$47		\$41		\$36		\$32	\$30	\$29	\$28	\$27	\$24	\$22	\$17	\$15	\$14
	70% Current	\$75	\$68	\$62	\$58	\$56	\$54	\$52	\$50	\$49	\$46	\$43	\$39	\$36	\$31	\$27	\$22	\$21	\$20
	10yr ave.			\$51		\$45		\$39		\$34	\$33	\$32	\$31	\$29	\$26	\$24	\$19	\$16	\$15
	75% Current	\$81	\$72	\$67	\$63	\$60	\$58	\$55	\$54	\$52	\$50	\$46	\$42	\$39	\$33	\$29	\$24	\$22	\$21
	10yr ave.			\$54		\$48		\$41		\$36	\$35	\$34	\$33	\$31	\$28	\$25	\$20	\$17	\$16
	80% Current	\$86	\$77	\$71	\$67	\$64	\$62	\$59	\$57	\$56	\$53	\$50	\$45	\$42	\$36	\$31	\$25	\$24	\$23
	10yr ave.			\$58		\$51		\$44		\$39	\$37	\$36	\$35	\$33	\$30	\$27	\$21	\$19	\$17
	85% Current	\$91	\$82	\$76	\$71	\$68	\$66	\$63	\$61	\$59	\$56	\$53	\$48	\$44	\$38	\$33	\$27	\$25	\$24
	10yr ave.			\$61		\$54		\$47		\$41	\$39	\$38	\$37	\$35	\$31	\$29	\$23	\$20	\$18

The above shows estimated returns per head for skirted fleece wool. These figures do not take into account the value of skirtings and oddments and do not take into account discounts that may apply for faults under individual circumstances. These figures are based on a market index of 100% and should be used as a guide only. Returns over \$30 / head for fleece wool are highlighted.

Source: Australian Wool Exchange, Australian Wool Innovation, Sydney Futures Exchange, x-rates.com

Disclaimer: While all due care has been taken in the preparation of this document, no warranty is made as to its accuracy, reliability or completeness. To the extent permitted by law neither Jemalong or their sources including subsidiaries and staff, accept liability to any person for loss or damage arising from the use of this information.



Table 18: Returns pr head for skirted fleece wool.

Skirted FLC Weight		Micron																	
4 Kg		16	16.5	17	17.5	18	18.5	19	19.5	20	21	22	23	24	25	26	28	30	32
Yield (Sch Dry)	25% Current	\$22	\$19	\$18	\$17	\$16	\$15	\$15	\$14	\$14	\$13	\$12	\$11	\$10	\$9	\$8	\$6	\$6	\$6
	10yr ave.			\$14		\$13		\$11		\$10	\$9	\$9	\$9	\$8	\$7	\$7	\$5	\$5	\$4
	30% Current	\$26	\$23	\$21	\$20	\$19	\$19	\$18	\$17	\$17	\$16	\$15	\$14	\$13	\$11	\$9	\$8	\$7	\$7
	10yr ave.			\$17		\$15		\$13		\$12	\$11	\$11	\$11	\$10	\$9	\$8	\$6	\$6	\$5
	35% Current	\$30	\$27	\$25	\$23	\$22	\$22	\$21	\$20	\$19	\$19	\$17	\$16	\$15	\$12	\$11	\$9	\$8	\$8
	10yr ave.			\$20		\$18		\$15		\$14	\$13	\$13	\$12	\$12	\$10	\$9	\$7	\$6	\$6
	40% Current	\$34	\$31	\$28	\$27	\$25	\$25	\$24	\$23	\$22	\$21	\$20	\$18	\$17	\$14	\$12	\$10	\$10	\$9
	10yr ave.			\$23		\$20		\$18		\$16	\$15	\$14	\$14	\$13	\$12	\$11	\$9	\$7	\$7
	45% Current	\$39	\$35	\$32	\$30	\$29	\$28	\$27	\$26	\$25	\$24	\$22	\$20	\$19	\$16	\$14	\$11	\$11	\$10
	10yr ave.			\$26		\$23		\$20		\$17	\$17	\$16	\$16	\$15	\$13	\$12	\$10	\$8	\$8
	50% Current	\$43	\$39	\$36	\$33	\$32	\$31	\$29	\$29	\$28	\$27	\$25	\$23	\$21	\$18	\$15	\$13	\$12	\$11
	10yr ave.			\$29		\$26		\$22		\$19	\$19	\$18	\$18	\$17	\$15	\$14	\$11	\$9	\$8
	55% Current	\$47	\$42	\$39	\$37	\$35	\$34	\$32	\$32	\$31	\$29	\$27	\$25	\$23	\$20	\$17	\$14	\$13	\$12
	10yr ave.			\$32		\$28		\$24		\$21	\$20	\$20	\$19	\$18	\$16	\$15	\$12	\$10	\$9
	60% Current	\$52	\$46	\$43	\$40	\$38	\$37	\$35	\$34	\$33	\$32	\$30	\$27	\$25	\$21	\$18	\$15	\$14	\$14
	10yr ave.			\$35		\$31		\$26		\$23	\$22	\$22	\$21	\$20	\$18	\$16	\$13	\$11	\$10
	65% Current	\$56	\$50	\$46	\$43	\$41	\$40	\$38	\$37	\$36	\$34	\$32	\$29	\$27	\$23	\$20	\$16	\$16	\$15
	10yr ave.			\$38		\$33		\$29		\$25	\$24	\$23	\$23	\$22	\$19	\$18	\$14	\$12	\$11
	70% Current	\$60	\$54	\$50	\$47	\$44	\$43	\$41	\$40	\$39	\$37	\$35	\$32	\$29	\$25	\$22	\$18	\$17	\$16
	10yr ave.			\$40		\$36		\$31		\$27	\$26	\$25	\$25	\$23	\$21	\$19	\$15	\$13	\$12
	75% Current	\$65	\$58	\$53	\$50	\$48	\$46	\$44	\$43	\$42	\$40	\$37	\$34	\$31	\$27	\$23	\$19	\$18	\$17
	10yr ave.			\$43		\$38		\$33		\$29	\$28	\$27	\$26	\$25	\$22	\$20	\$16	\$14	\$13
	80% Current	\$69	\$62	\$57	\$53	\$51	\$49	\$47	\$46	\$44	\$42	\$40	\$36	\$33	\$28	\$25	\$20	\$19	\$18
	10yr ave.			\$46		\$41		\$35		\$31	\$30	\$29	\$28	\$26	\$24	\$22	\$17	\$15	\$13
	85% Current	\$73	\$66	\$61	\$57	\$54	\$52	\$50	\$49	\$47	\$45	\$42	\$38	\$35	\$30	\$26	\$21	\$20	\$19
	10yr ave.			\$49		\$43		\$37		\$33	\$32	\$31	\$30	\$28	\$25	\$23	\$18	\$16	\$14

The above shows estimated returns per head for skirted fleece wool. These figures do not take into account the value of skirtings and oddments and do not take into account discounts that may apply for faults under individual circumstances. These figures are based on a market index of 100% and should be used as a guide only. Returns over \$30 / head for fleece wool are highlighted.

Source: Australian Wool Exchange, Australian Wool Innovation, Sydney Futures Exchange, x-rates.com

Disclaimer: While all due care has been taken in the preparation of this document, no warranty is made as to its accuracy, reliability or completeness. To the extent permitted by law neither Jemalong or their sources including subsidiaries and staff, accept liability to any person for loss or damage arising from the use of this information.



Table 19: Returns pr head for skirted fleece wool.

Skirted FLC Weight 3 Kg		Micron																	
		16	16.5	17	17.5	18	18.5	19	19.5	20	21	22	23	24	25	26	28	30	32
Yield (Sch Dry)	25% Current	\$16	\$14	\$13	\$13	\$12	\$12	\$11	\$11	\$10	\$10	\$9	\$8	\$8	\$7	\$6	\$5	\$4	\$4
	10yr ave.			\$11		\$10		\$8		\$7	\$7	\$7	\$7	\$6	\$6	\$5	\$4	\$3	\$3
	30% Current	\$19	\$17	\$16	\$15	\$14	\$14	\$13	\$13	\$13	\$12	\$11	\$10	\$9	\$8	\$7	\$6	\$5	\$5
	10yr ave.			\$13		\$11		\$10		\$9	\$8	\$8	\$8	\$7	\$7	\$6	\$5	\$4	\$4
	35% Current	\$23	\$20	\$19	\$18	\$17	\$16	\$15	\$15	\$15	\$14	\$13	\$12	\$11	\$9	\$8	\$7	\$6	\$6
	10yr ave.			\$15		\$13		\$12		\$10	\$10	\$9	\$9	\$9	\$8	\$7	\$6	\$5	\$4
	40% Current	\$26	\$23	\$21	\$20	\$19	\$19	\$18	\$17	\$17	\$16	\$15	\$14	\$13	\$11	\$9	\$8	\$7	\$7
	10yr ave.			\$17		\$15		\$13		\$12	\$11	\$11	\$11	\$10	\$9	\$8	\$6	\$6	\$5
	45% Current	\$29	\$26	\$24	\$23	\$21	\$21	\$20	\$19	\$19	\$18	\$17	\$15	\$14	\$12	\$10	\$9	\$8	\$8
	10yr ave.			\$19		\$17		\$15		\$13	\$13	\$12	\$12	\$11	\$10	\$9	\$7	\$6	\$6
	50% Current	\$32	\$29	\$27	\$25	\$24	\$23	\$22	\$22	\$21	\$20	\$19	\$17	\$16	\$13	\$12	\$9	\$9	\$8
	10yr ave.			\$22		\$19		\$17		\$15	\$14	\$14	\$13	\$12	\$11	\$10	\$8	\$7	\$6
	55% Current	\$35	\$32	\$29	\$28	\$26	\$25	\$24	\$24	\$23	\$22	\$20	\$19	\$17	\$15	\$13	\$10	\$10	\$9
	10yr ave.			\$24		\$21		\$18		\$16	\$15	\$15	\$14	\$14	\$12	\$11	\$9	\$8	\$7
	60% Current	\$39	\$35	\$32	\$30	\$29	\$28	\$27	\$26	\$25	\$24	\$22	\$20	\$19	\$16	\$14	\$11	\$11	\$10
	10yr ave.			\$26		\$23		\$20		\$17	\$17	\$16	\$16	\$15	\$13	\$12	\$10	\$8	\$8
	65% Current	\$42	\$38	\$35	\$33	\$31	\$30	\$29	\$28	\$27	\$26	\$24	\$22	\$20	\$17	\$15	\$12	\$12	\$11
	10yr ave.			\$28		\$25		\$21		\$19	\$18	\$18	\$17	\$16	\$14	\$13	\$10	\$9	\$8
	70% Current	\$45	\$41	\$37	\$35	\$33	\$32	\$31	\$30	\$29	\$28	\$26	\$24	\$22	\$19	\$16	\$13	\$13	\$12
	10yr ave.			\$30		\$27		\$23		\$20	\$20	\$19	\$18	\$17	\$16	\$14	\$11	\$10	\$9
	75% Current	\$48	\$43	\$40	\$38	\$36	\$35	\$33	\$32	\$31	\$30	\$28	\$25	\$23	\$20	\$17	\$14	\$13	\$13
	10yr ave.			\$32		\$29		\$25		\$22	\$21	\$20	\$20	\$19	\$17	\$15	\$12	\$10	\$9
	80% Current	\$52	\$46	\$43	\$40	\$38	\$37	\$35	\$34	\$33	\$32	\$30	\$27	\$25	\$21	\$18	\$15	\$14	\$14
	10yr ave.			\$35		\$31		\$26		\$23	\$22	\$22	\$21	\$20	\$18	\$16	\$13	\$11	\$10
	85% Current	\$55	\$49	\$45	\$43	\$41	\$39	\$38	\$37	\$35	\$34	\$32	\$29	\$27	\$23	\$20	\$16	\$15	\$14
	10yr ave.			\$37		\$33		\$28		\$25	\$24	\$23	\$22	\$21	\$19	\$17	\$14	\$12	\$11

The above shows estimated returns per head for skirted fleece wool. These figures do not take into account the value of skirtings and oddments and do not take into account discounts that may apply for faults under individual circumstances. These figures are based on a market index of 100% and should be used as a guide only. Returns over \$30 / head for fleece wool are highlighted.

Source: Australian Wool Exchange, Australian Wool Innovation, Sydney Futures Exchange, x-rates.com

Disclaimer: While all due care has been taken in the preparation of this document, no warranty is made as to its accuracy, reliability or completeness. To the extent permitted by law neither Jemalong or their sources including subsidiaries and staff, accept liability to any person for loss or damage arising from the use of this information.



Table 20: Returns pr head for skirted fleece wool.

Skirted FLC Weight		Micron																	
2 Kg		16	16.5	17	17.5	18	18.5	19	19.5	20	21	22	23	24	25	26	28	30	32
Yield (Sch Dry)	25% Current	\$11	\$10	\$9	\$8	\$8	\$8	\$7	\$7	\$7	\$7	\$6	\$6	\$5	\$4	\$4	\$3	\$3	\$3
	10yr ave.			\$7		\$6		\$6		\$5	\$5	\$5	\$4	\$4	\$4	\$3	\$3	\$2	\$2
	30% Current	\$13	\$12	\$11	\$10	\$10	\$9	\$9	\$9	\$8	\$8	\$7	\$7	\$6	\$5	\$5	\$4	\$4	\$3
	10yr ave.			\$9		\$8		\$7		\$6	\$6	\$5	\$5	\$5	\$4	\$4	\$3	\$3	\$3
	35% Current	\$15	\$14	\$12	\$12	\$11	\$11	\$10	\$10	\$10	\$9	\$9	\$8	\$7	\$6	\$5	\$4	\$4	\$4
	10yr ave.			\$10		\$9		\$8		\$7	\$7	\$6	\$6	\$6	\$5	\$5	\$4	\$3	\$3
	40% Current	\$17	\$15	\$14	\$13	\$13	\$12	\$12	\$11	\$11	\$11	\$10	\$9	\$8	\$7	\$6	\$5	\$5	\$5
	10yr ave.			\$12		\$10		\$9		\$8	\$7	\$7	\$7	\$7	\$6	\$5	\$4	\$4	\$3
	45% Current	\$19	\$17	\$16	\$15	\$14	\$14	\$13	\$13	\$13	\$12	\$11	\$10	\$9	\$8	\$7	\$6	\$5	\$5
	10yr ave.			\$13		\$11		\$10		\$9	\$8	\$8	\$8	\$7	\$7	\$6	\$5	\$4	\$4
	50% Current	\$22	\$19	\$18	\$17	\$16	\$15	\$15	\$14	\$14	\$13	\$12	\$11	\$10	\$9	\$8	\$6	\$6	\$6
	10yr ave.			\$14		\$13		\$11		\$10	\$9	\$9	\$9	\$8	\$7	\$7	\$5	\$5	\$4
	55% Current	\$24	\$21	\$20	\$18	\$17	\$17	\$16	\$16	\$15	\$15	\$14	\$12	\$11	\$10	\$8	\$7	\$7	\$6
	10yr ave.			\$16		\$14		\$12		\$11	\$10	\$10	\$10	\$9	\$8	\$7	\$6	\$5	\$5
	60% Current	\$26	\$23	\$21	\$20	\$19	\$19	\$18	\$17	\$17	\$16	\$15	\$14	\$13	\$11	\$9	\$8	\$7	\$7
	10yr ave.			\$17		\$15		\$13		\$12	\$11	\$11	\$11	\$10	\$9	\$8	\$6	\$6	\$5
	65% Current	\$28	\$25	\$23	\$22	\$21	\$20	\$19	\$19	\$18	\$17	\$16	\$15	\$14	\$12	\$10	\$8	\$8	\$7
	10yr ave.			\$19		\$17		\$14		\$13	\$12	\$12	\$11	\$11	\$10	\$9	\$7	\$6	\$5
	70% Current	\$30	\$27	\$25	\$23	\$22	\$22	\$21	\$20	\$19	\$19	\$17	\$16	\$15	\$12	\$11	\$9	\$8	\$8
	10yr ave.			\$20		\$18		\$15		\$14	\$13	\$13	\$12	\$12	\$10	\$9	\$7	\$6	\$6
	75% Current	\$32	\$29	\$27	\$25	\$24	\$23	\$22	\$22	\$21	\$20	\$19	\$17	\$16	\$13	\$12	\$9	\$9	\$8
	10yr ave.			\$22		\$19		\$17		\$15	\$14	\$14	\$13	\$12	\$11	\$10	\$8	\$7	\$6
	80% Current	\$34	\$31	\$28	\$27	\$25	\$25	\$24	\$23	\$22	\$21	\$20	\$18	\$17	\$14	\$12	\$10	\$10	\$9
	10yr ave.			\$23		\$20		\$18		\$16	\$15	\$14	\$14	\$13	\$12	\$11	\$9	\$7	\$7
	85% Current	\$37	\$33	\$30	\$28	\$27	\$26	\$25	\$24	\$24	\$23	\$21	\$19	\$18	\$15	\$13	\$11	\$10	\$10
	10yr ave.			\$25		\$22		\$19		\$16	\$16	\$15	\$15	\$14	\$13	\$11	\$9	\$8	\$7

The above shows estimated returns per head for skirted fleece wool. These figures do not take into account the value of skirtings and oddments and do not take into account discounts that may apply for faults under individual circumstances. These figures are based on a market index of 100% and should be used as a guide only. Returns over \$30 / head for fleece wool are highlighted.

Source: Australian Wool Exchange, Australian Wool Innovation, Sydney Futures Exchange, x-rates.com

Disclaimer: While all due care has been taken in the preparation of this document, no warranty is made as to its accuracy, reliability or completeness. To the extent permitted by law neither Jemalong or their sources including subsidiaries and staff, accept liability to any person for loss or damage arising from the use of this information.