



# JEMALONG WOOL BULLETIN

(week ending 11/08/2011)

**Table 1: Northern Region Micron Price Guides**

CURRENT MARKET			12 MONTH COMPARISONS								3 YEAR COMPARISONS					10 YEAR COMPARISONS				
Mic.	11/08/2011	13/07/2011	10/08/2010	Now		Now	Now													
Price	Current	Weekly	This time	compared		12 Month	compared	12 Month	compared	Low	High	Average	Now	Percentile	Low	High	10 year	Now	Percentile	
Guides	Price	Change	Last Year	to Last Year		Low	to Low	High	to High				compared				Average	to 10yr ave		
NRI	1349	-61 -4.5%	900	+449 50%		892	+457 51%	1491	-142 -10%	749	1491	989	+360 36%	85%	658	1491	908	+441 49%	96%	
16*	2800	+30 1.1%	1540	+1260 82%		1650	+1150 70%	2800	0 0%	1385	2800	1846	+954 52%	100%						
16.5*	2450	-230 -9.4%	1395	+1055 76%		1500	+950 63%	2680	-230 -9%	1251	2680	1696	+754 44%	83%						
17*	2300	-120 -5.2%	1230	+1070 87%		1385	+915 66%	2530	-230 -9%	1168	2530	1566	+734 47%	83%	1100	2659	1449	+851 59%	92%	
17.5*	2100	-100 -4.8%	1185	+915 77%		1280	+820 64%	2360	-260 -11%	1083	2360	1474	+626 42%	83%						
18	1887	-77 -4.1%	1155	+732 63%		1222	+665 54%	2193	-306 -14%	1035	2193	1385	+502 36%	81%	916	2193	1274	+613 48%	94%	
18.5	1707	-86 -5.0%	1128	+579 51%		1152	+555 48%	1963	-256 -13%	971	1963	1289	+418 32%	81%	843	1963				
19	1590	-78 -4.9%	1045	+545 52%		1045	+545 52%	1776	-186 -10%	894	1776	1179	+411 35%	83%	804	1776	1088	+502 46%	95%	
19.5	1498	-72 -4.8%	971	+527 54%		952	+546 57%	1670	-172 -10%	814	1670	1075	+423 39%	89%	749	1670				
20	1426	-67 -4.7%	930	+496 53%		904	+522 58%	1588	-162 -10%	739	1588	994	+432 43%	93%	684	1588	953	+473 50%	98%	
21	1350	-89 -6.6%	922	+428 46%		878	+472 54%	1522	-172 -11%	687	1522	959	+391 41%	93%	645	1522	913	+437 48%	98%	
22	1319	-71 -5.4%	906	+413 46%		847	+472 56%	1461	-142 -10%	674	1461	934	+385 41%	93%	643	1461	888	+431 49%	98%	
23	1220	-46 -3.8%	892	+328 37%		827	+393 48%	1324	-104 -8%	663	1324	900	+320 36%	89%	642	1340	864	+356 41%	93%	
24	1053	-44 -4.2%	842	+211 25%		780	+273 35%	1170	-117 -10%	647	1170	833	+220 26%	90%	637	1299	819	+234 29%	90%	
25	907	-23 -2.5%	700	+207 30%		695	+212 31%	1048	-141 -13%	566	1048	723	+184 25%	88%	567	1198	733	+174 24%	81%	
26	849	-2 -0.2%	615	+234 38%		603	+246 41%	928	-79 -9%	504	928	653	+196 30%	88%	532	1088	671	+178 27%	81%	
28	698	+4 0.6%	462	+236 51%		443	+255 58%	734	-36 -5%	431	734	509	+189 37%	94%	424	889	531	+167 31%	86%	
30	635	+19 3.0%	405	+230 57%		389	+246 63%	670	-35 -5%	377	670	451	+184 41%	95%	344	729	462	+173 37%	94%	
32	577	+12 2.1%	359	+218 61%		353	+224 63%	638	-61 -10%	326	638	398	+179 45%	94%	297	669	417	+160 38%	91%	
MC	734	-67 -9.1%	629	+105 17%		561	+173 31%	831	-97 -12%	440	831	604	+130 22%	85%	380	831	521	+213 41%	95%	

**Note:**

\* Due to the irregular market quoting for some fine wool categories, figures shown relating to micron categories below 18 micron are an estimate based on the AWEX Premium & Discounts Report & other available information.

\* For any category, where there is insufficient quantity offered to enable AWEX to quote, a quote will be provided based on the best available information.

\* 10 Year data is not available for some micron categories, which may result in blank spaces in the table above.

**Definitions:**

\* A Percentile, is a value on a scale of one hundred that indicates the percent of a distribution that is equal to or below it. In general a percentile between 25% and 75% is considered normal, a percentile below 25% is considered below normal and a percentile above 75% is considered above normal.

Three and ten year percentiles shown in the table above, detail the period of time during the past 3 & 10 years that the market has traded either at or below its current price.

The higher the percentile, the stronger the market.

Source: Australian Wool Exchange, Australian Wool Innovation, Sydney Futures Exchange, x-rates.com

Disclaimer: While all due care has been taken in the preparation of this document, no warranty is made as to its accuracy, reliability or completeness. To the extent permitted by law neither Jemalong or their sources including subsidiaries and staff, accept liability to any person for loss or damage arising from the use of this information.



## MARKET COMMENTARY

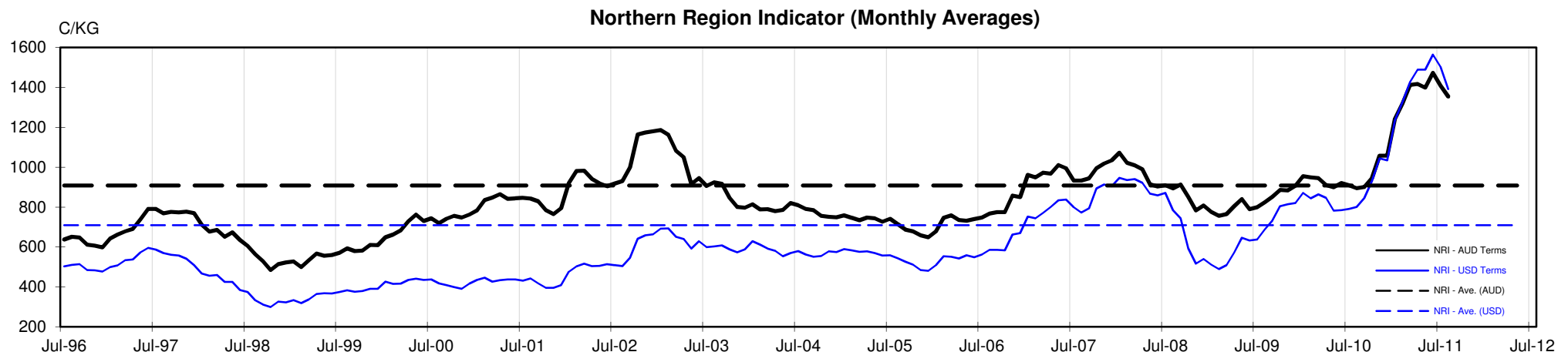
One Australian Dollar = \$ 1.03 US, as of 11/08/2011

NORTHERN REGION –Sale Week 6/11 (56,106 bales offered nationally)

On Tuesday - As a result of the current global economic situation and a wait and see attitude, the market opened 60-100 cents cheaper for merino fleece. However the market steadied thought the course of the day to close in general 50-60 cents lower. Merino skirtings 19 micron and broader closed 30 cents cheaper, while the finer microns retreated by 60-80 cents. Locks and crutchings both lost around 50 cents with stains falling 80 cents. The crossbred market was less affected however still retreated by 15-20 cents for the 27 to 32 micron range. 21.3%

On Wednesday - the market gained a little support, once again the lower Vm lots (<1%) were most affected. 19 microns and broader gained 5-10 cent, however with few lots on offer, the fine wool market remained unchanged. All merino skirtings closed fully firm tending in sellers favour. Locks remained firm while crutchings gained 5-10 cents, stains were insufficient to quote, with the selection consisting predominantly of 10% Vm and higher. The crossbred market also gained support posting rises of 10-15 cents for 27 to 32 microns. 17.3% PI

On Thursday - most fleece types lost ground, particularly the lower style lots which closed up to 20 cents cheaper across most microns. The better specified types attracted reasonable support, including a small number of spinners styles which were in line with the previous days levels. Discounts for the lower styles became more noticeable later in the day with prices dipping further in the last hour of trading. Despite the softer tone in the fleece market, merino skirtings attracted good support and were mostly firm & unchanged. Locks fell a further 10 cents, while crutchings were irregular with some support shown for the better types. Crossbreds once again gained ground with 15-20 cent gains across all microns on offer. 18.8% PI





**Table 4: 19 micron SFE**

Wednesday, 10 August 2011

Delivery Mth	Aug-11	Oct-11	Dec-11	Feb-11	Apr-12	Jun-12	Aug-12	Oct-12	Dec-12
19 Micron SFE	1695	1640	1590	1540	1490	1460	1450	1450	1410
Average	1284	1290	1315	1114	1373	1418	1410	1422	1422
Maximum	1737	1707	1677	1640	1622	1612	1525	1525	1525
Minimum	1034	1034	1034	983	1106	1210	1285	1285	1285

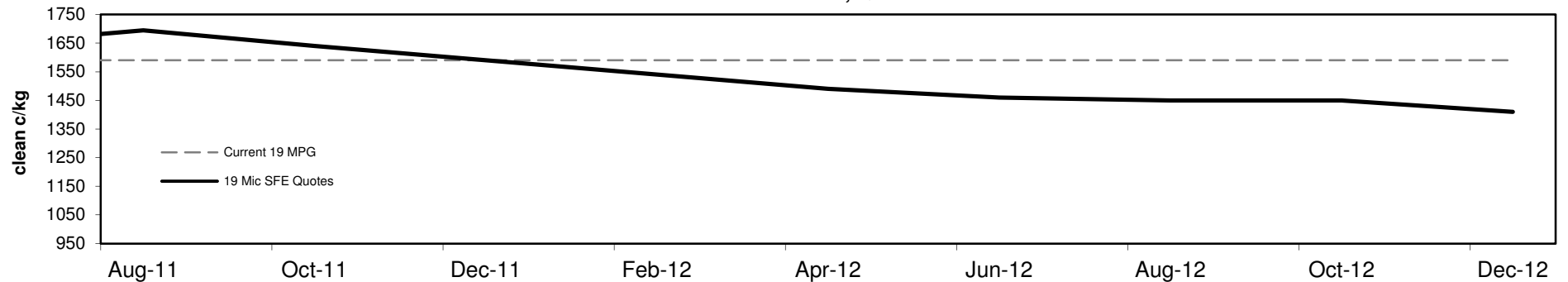
**Table 5: 19 micron SFE, as a percentile of the 19 micron MPG**

3 Year Percentile	93%	87%	83%	81%	80%	80%	80%	80%	80%
10 Year Percentile	98%	96%	95%	94%	94%	94%	94%	94%	94%

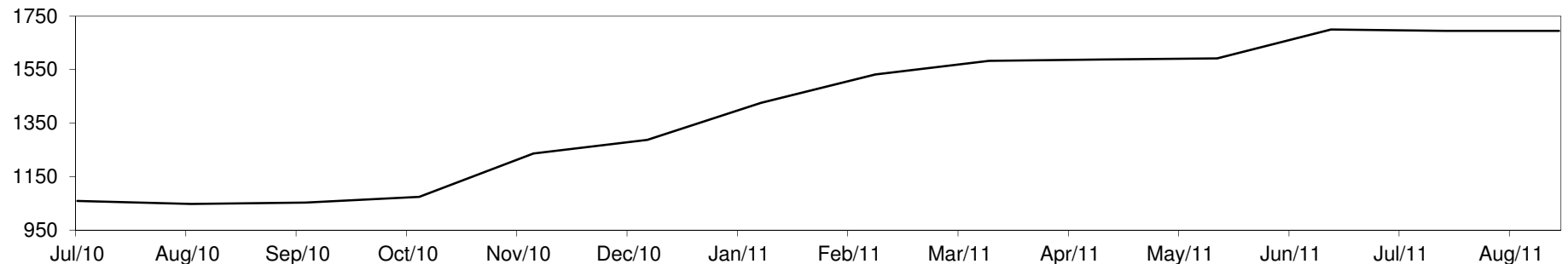
**Table 6: 19 micron SFE, compared to MPG**

SFE - MPG	+105	7%	+50	3%	0	0%	-50	-3%	-100	-6%	-130	-8%	-140	-9%	-140	-9%	-180	-11%
SFE - MPG, 1 year Ave.	+200	13%	+145	10%	+95	6%	+45	3%	-5	0%	-35	-2%	-45	-3%	-45	-3%	-85	-6%
SFE - MPG, 3 year Ave.	+516	44%	+461	39%	+411	35%	+361	31%	+311	26%	+281	24%	+271	23%	+271	23%	+231	20%
SFE - MPG, 10 year Ave.	+607	56%	+552	51%	+502	46%	+452	42%	+402	37%	+372	34%	+362	33%	+362	33%	+322	30%

**19 MICRON SFE, QUOTES**



**19 Micron SFE, Front month movement**





**Table 7: 21 micron SFE**

Wednesday, 10 August 2011

Delivery Mth	Aug-11	Oct-11	Dec-11	Feb-11	Apr-12	Jun-12	Aug-12	Oct-12	Dec-12
21 Micron SFE	1408	1368	1323	1303	1258	1126	1201	1168	1126
Average	1068	1058	1064	962	1097	1098	1137	1151	1151
Maximum	1515	1434	1411	1368	1303	1326	1316	1283	1283
Minimum	880	880	880	860	934	990	1046	1013	1013

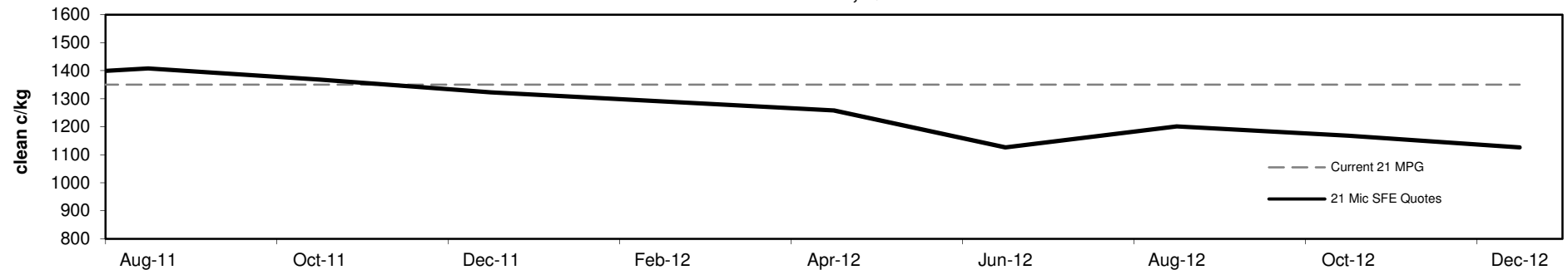
**Table 8: 21 micron SFE, as a percentile of the 21 micron MPG**

3 Year Percentile	95%	93%	91%	89%	87%	82%	86%	84%	82%
10 Year Percentile	98%	98%	97%	97%	93%	88%	91%	89%	88%

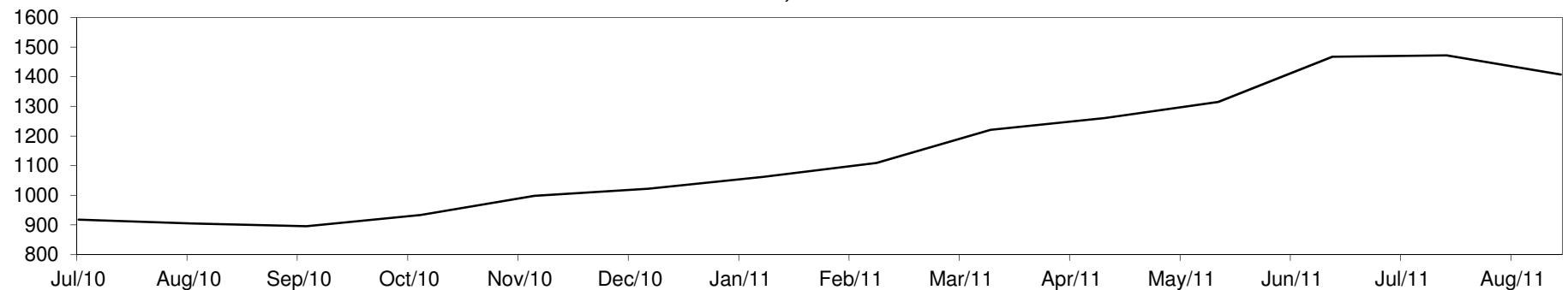
**Table 9: 21 micron SFE, compared to MPG**

SFE - MPG	+58	4%	+18	1%	-27	-2%	-47	-3%	-92	-7%	-224	-17%	-149	-11%	-182	-13%	-224	-17%
SFE - MPG, 1 year Ave.	+217	18%	+177	15%	+132	11%	+112	9%	+67	6%	-65	-5%	+10	1%	-23	-2%	-65	-5%
SFE - MPG, 3 year Ave.	+449	47%	+409	43%	+364	38%	+344	36%	+299	31%	+167	17%	+242	25%	+209	22%	+167	17%
SFE - MPG, 10 year Ave.	+495	54%	+455	50%	+410	45%	+390	43%	+345	38%	+213	23%	+288	32%	+255	28%	+213	23%

**21 MICRON SFE, QUOTES**



**21 Micron SFE, Front month movement**





**Table 10: 23 micron SFE**

Wednesday, 10 August 2011

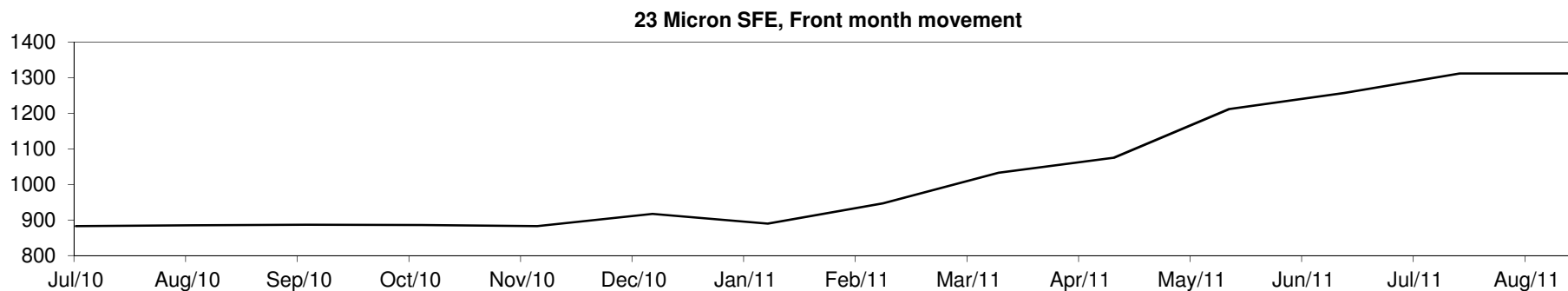
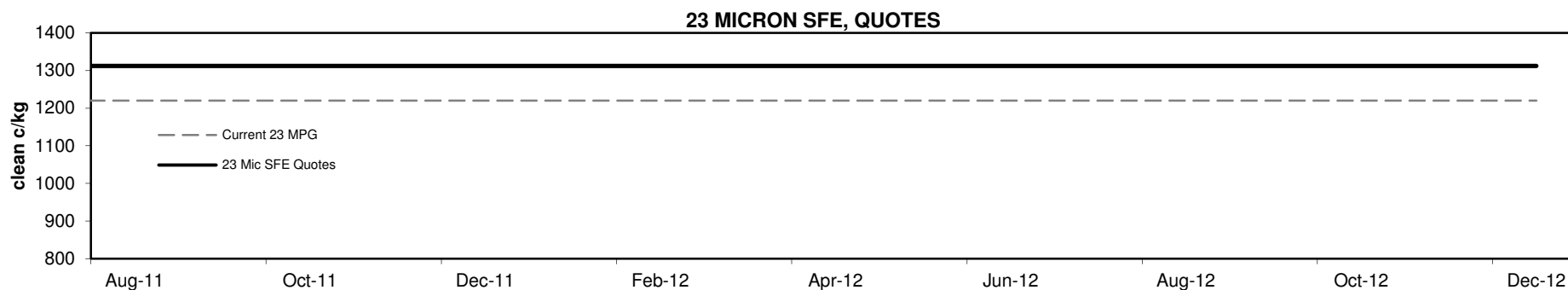
Delivery Mth	Aug-11	Oct-11	Dec-11	Feb-11	Apr-12	Jun-12	Aug-12	Oct-12	Dec-12
23 Micron SFE	1312	1312	1312	1312	1312	1312	1312	1312	1312
Average	974	980	996	870	1052	1095	1168	1252	1252
Maximum	1312	1312	1312	1312	1312	1312	1312	1312	1312
Minimum	883	883	883	760	883	890	1033	1212	1212

**Table 11: 23 micron SFE, as a percentile of the 23 micron MPG**

3 Year Percentile	98%	98%	98%	98%	98%	98%	98%	98%	98%
10 Year Percentile	99%	99%	99%	99%	99%	99%	99%	99%	99%

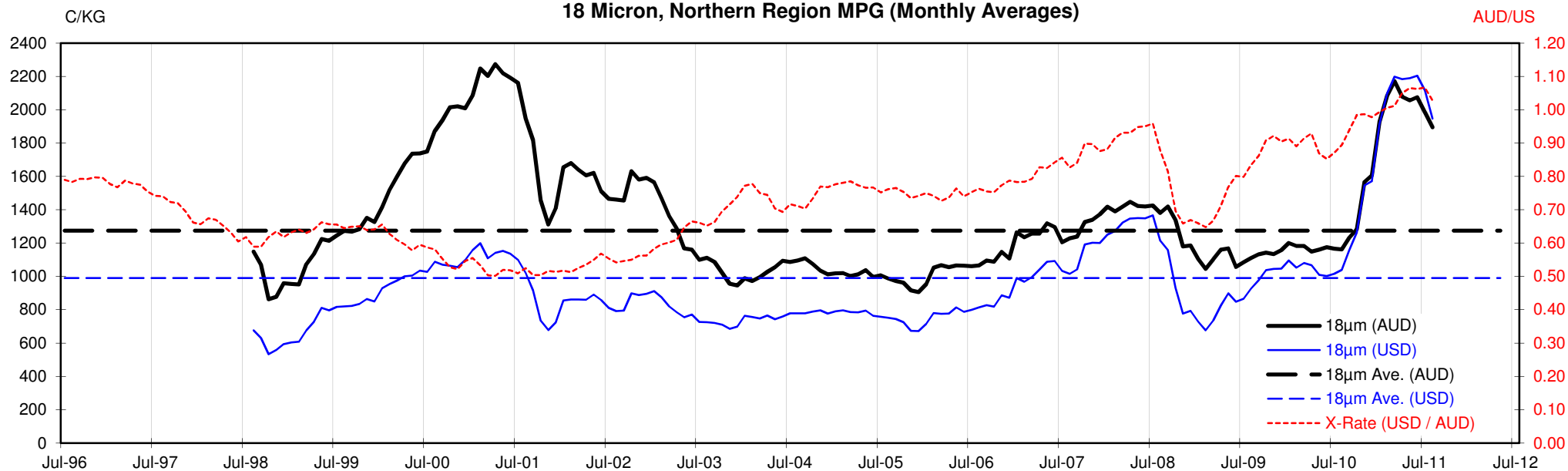
**Table 12: 23 micron SFE, compared to MPG**

SFE - MPG	+92	8%	+92	8%	+92	8%	+92	8%	+92	8%	+92	8%	+92	8%	+92	8%	+92	8%
SFE - MPG, 1 year Ave.	+224	21%	+224	21%	+224	21%	+224	21%	+224	21%	+224	21%	+224	21%	+224	21%	+224	21%
SFE - MPG, 3 year Ave.	+412	46%	+412	46%	+412	46%	+412	46%	+412	46%	+412	46%	+412	46%	+412	46%	+412	46%
SFE - MPG, 10 year Ave.	+448	52%	+448	52%	+448	52%	+448	52%	+448	52%	+448	52%	+448	52%	+448	52%	+448	52%

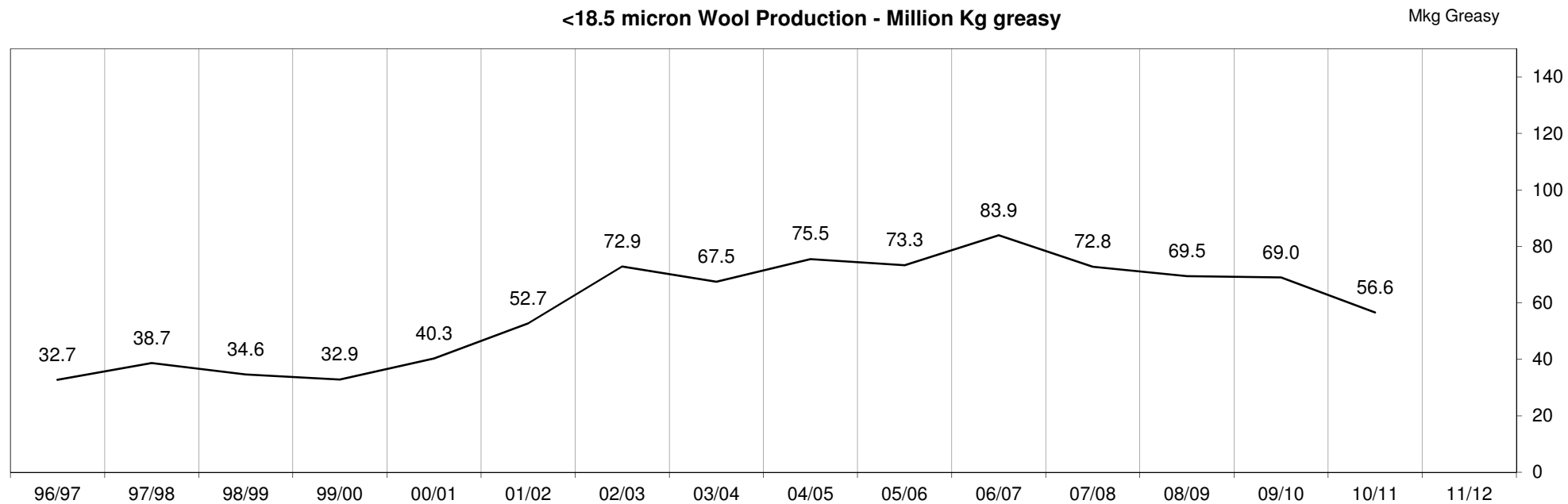


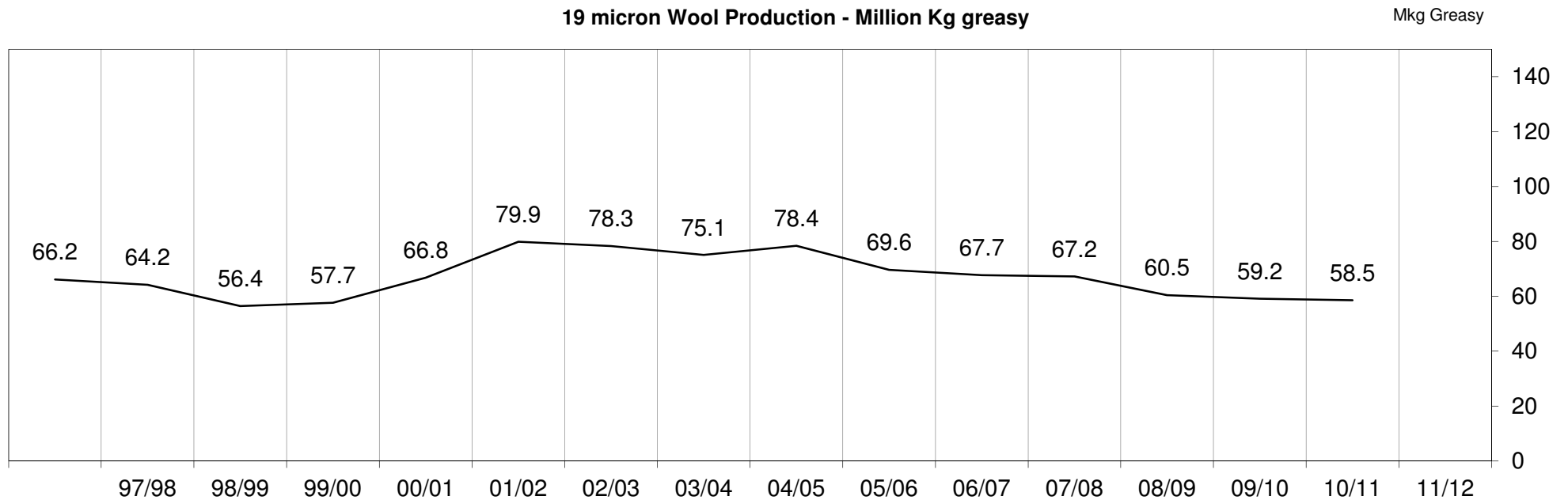
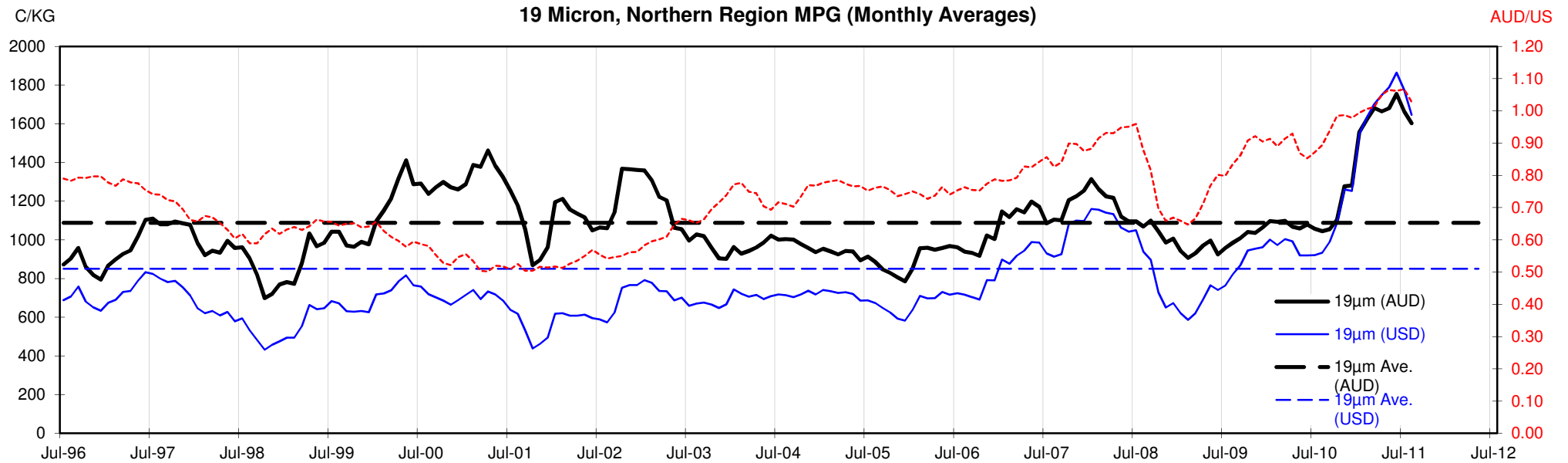


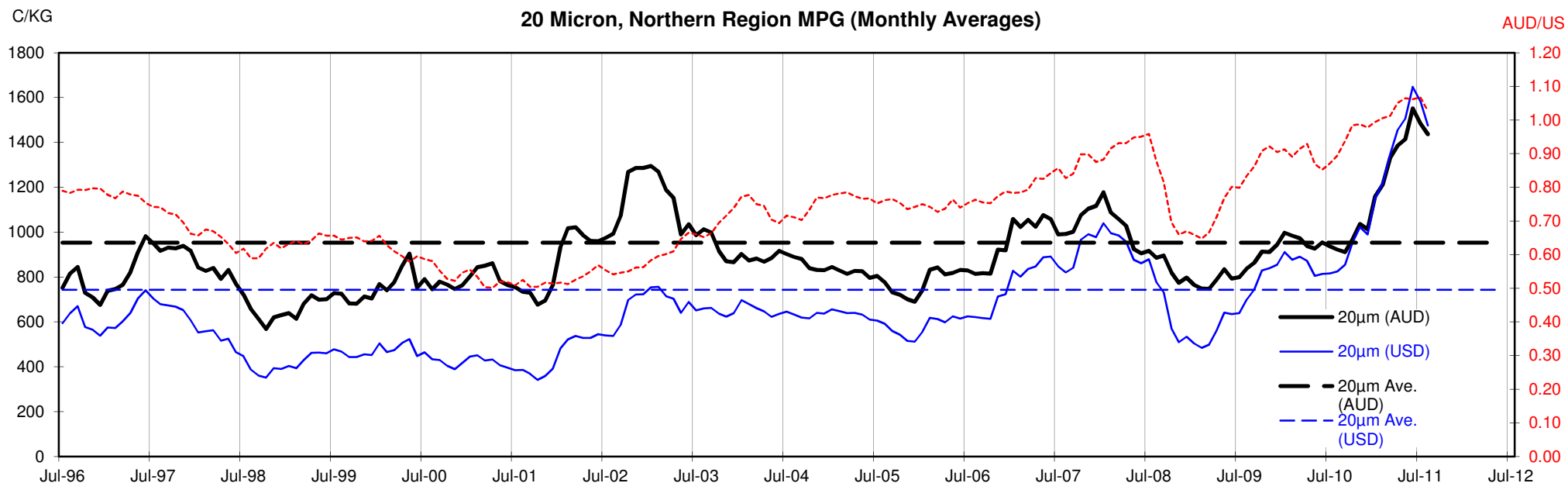
18 Micron, Northern Region MPG (Monthly Averages)



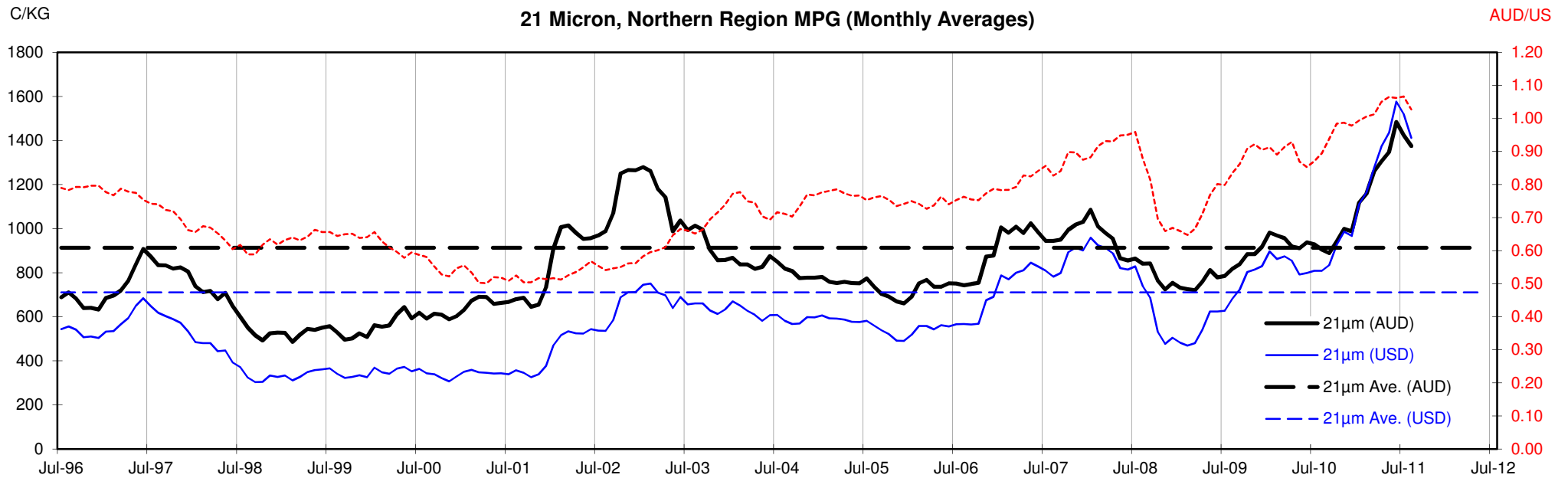
<18.5 micron Wool Production - Million Kg greasy

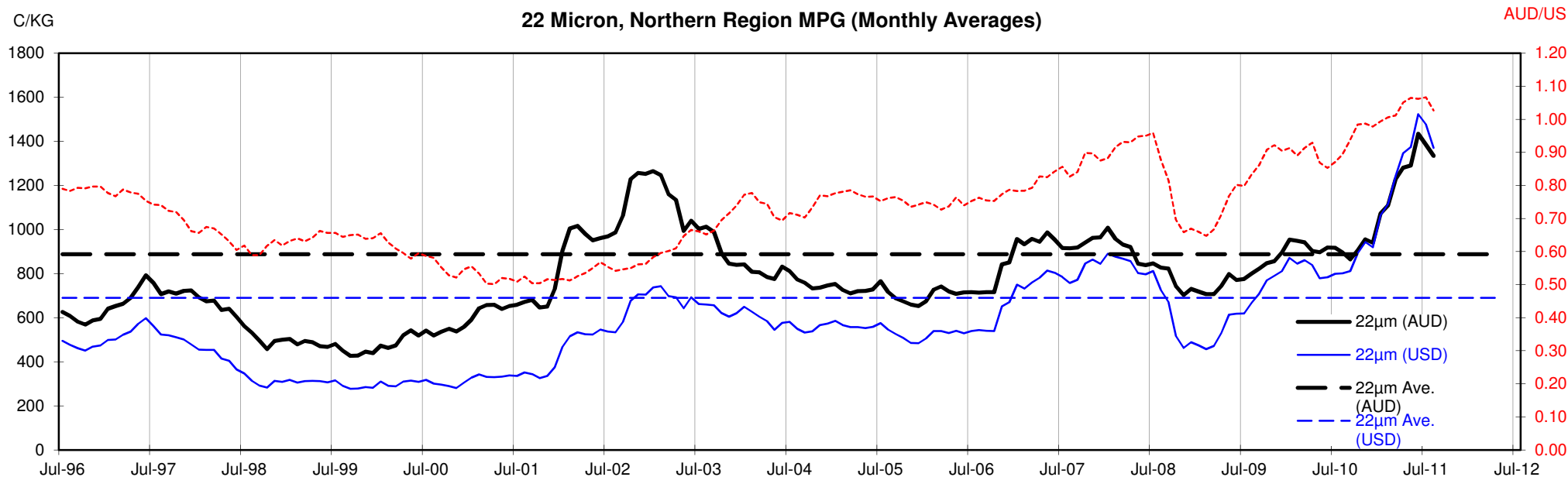


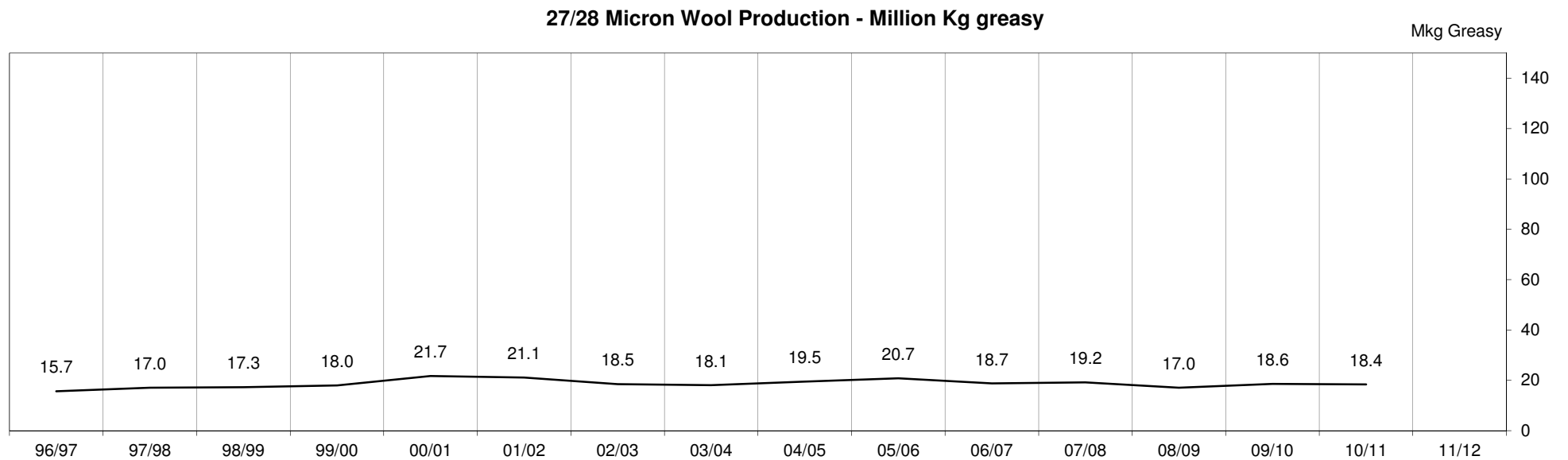
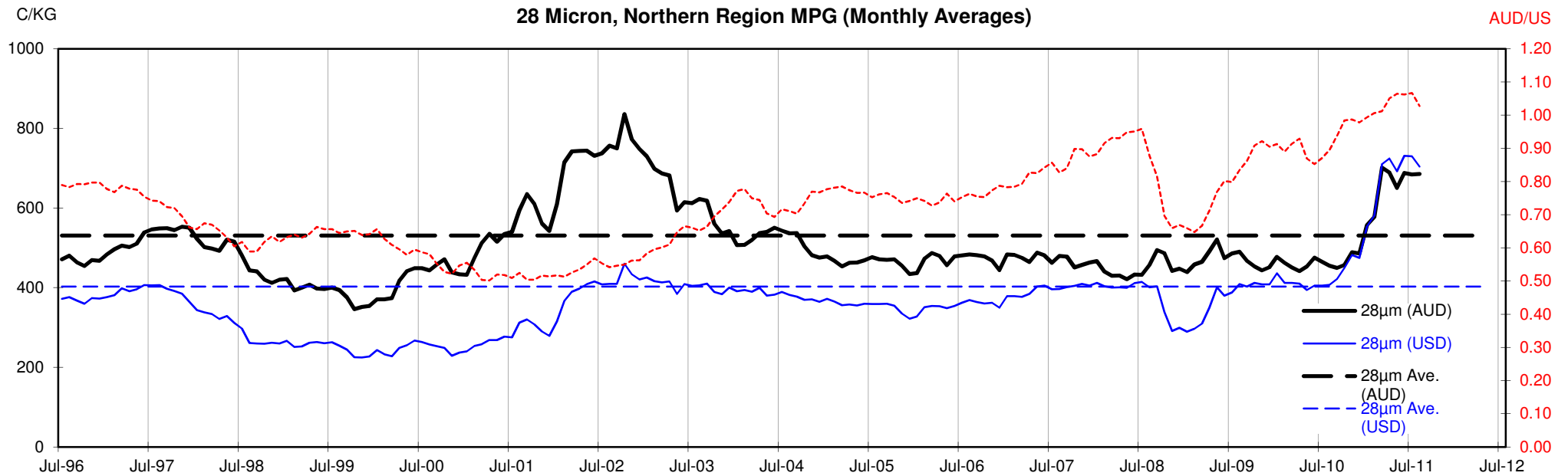












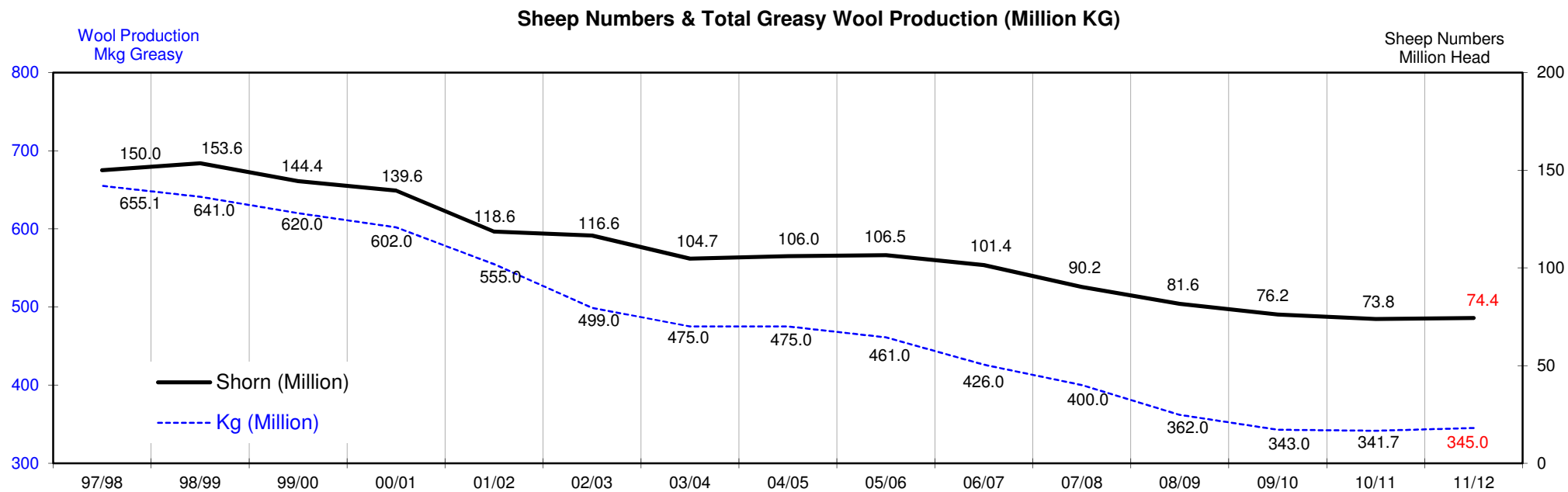
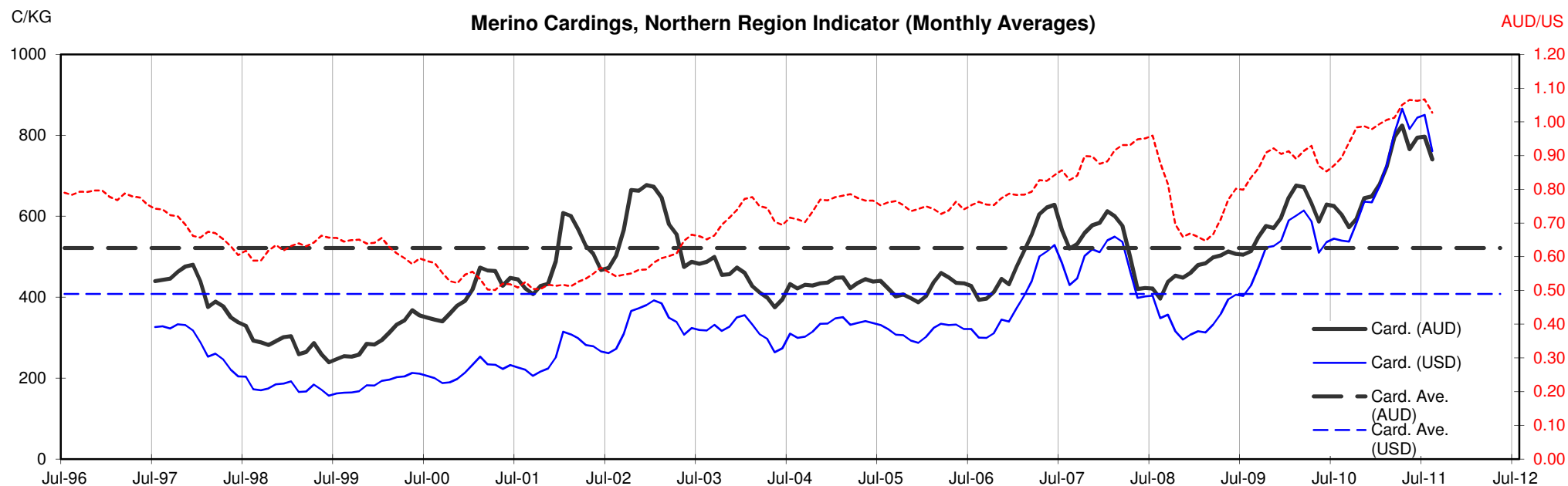




Table 13: Returns pr head for skirted fleece wool.

Skirted FLC Weight			Micron																	
			16	16.5	17	17.5	18	18.5	19	19.5	20	21	22	23	24	25	26	28	30	32
Yield (Sch Dry)	9 Kg																			
	25%	Current	\$63	\$55	\$52	\$47	\$42	\$38	\$36	\$34	\$32	\$30	\$30	\$27	\$24	\$20	\$19	\$16	\$14	\$13
		10yr ave.			\$33		\$29		\$24		\$21	\$21	\$20	\$19	\$18	\$16	\$15	\$12	\$10	\$9
	30%	Current	\$76	\$66	\$62	\$57	\$51	\$46	\$43	\$40	\$39	\$36	\$36	\$33	\$28	\$24	\$23	\$19	\$17	\$16
		10yr ave.			\$39		\$34		\$29		\$26	\$25	\$24	\$23	\$22	\$20	\$18	\$14	\$12	\$11
	35%	Current	\$88	\$77	\$72	\$66	\$59	\$54	\$50	\$47	\$45	\$43	\$42	\$38	\$33	\$29	\$27	\$22	\$20	\$18
		10yr ave.			\$46		\$40		\$34		\$30	\$29	\$28	\$27	\$26	\$23	\$21	\$17	\$15	\$13
	40%	Current	\$101	\$88	\$83	\$76	\$68	\$61	\$57	\$54	\$51	\$49	\$47	\$44	\$38	\$33	\$31	\$25	\$23	\$21
		10yr ave.			\$52		\$46		\$39		\$34	\$33	\$32	\$31	\$29	\$26	\$24	\$19	\$17	\$15
	45%	Current	\$113	\$99	\$93	\$85	\$76	\$69	\$64	\$61	\$58	\$55	\$53	\$49	\$43	\$37	\$34	\$28	\$26	\$23
		10yr ave.			\$59		\$52		\$44		\$39	\$37	\$36	\$35	\$33	\$30	\$27	\$22	\$19	\$17
	50%	Current	\$126	\$110	\$104	\$95	\$85	\$77	\$72	\$67	\$64	\$61	\$59	\$55	\$47	\$41	\$38	\$31	\$29	\$26
		10yr ave.			\$65		\$57		\$49		\$43	\$41	\$40	\$39	\$37	\$33	\$30	\$24	\$21	\$19
	55%	Current	\$139	\$121	\$114	\$104	\$93	\$84	\$79	\$74	\$71	\$67	\$65	\$60	\$52	\$45	\$42	\$35	\$31	\$29
	10yr ave.			\$72		\$63		\$54		\$47	\$45	\$44	\$43	\$41	\$36	\$33	\$26	\$23	\$21	
60%	Current	\$151	\$132	\$124	\$113	\$102	\$92	\$86	\$81	\$77	\$73	\$71	\$66	\$57	\$49	\$46	\$38	\$34	\$31	
	10yr ave.			\$78		\$69		\$59		\$51	\$49	\$48	\$47	\$44	\$40	\$36	\$29	\$25	\$23	
65%	Current	\$164	\$143	\$135	\$123	\$110	\$100	\$93	\$88	\$83	\$79	\$77	\$71	\$62	\$53	\$50	\$41	\$37	\$34	
	10yr ave.			\$85		\$75		\$64		\$56	\$53	\$52	\$51	\$48	\$43	\$39	\$31	\$27	\$24	
70%	Current	\$176	\$154	\$145	\$132	\$119	\$108	\$100	\$94	\$90	\$85	\$83	\$77	\$66	\$57	\$53	\$44	\$40	\$36	
	10yr ave.			\$91		\$80		\$69		\$60	\$58	\$56	\$54	\$52	\$46	\$42	\$33	\$29	\$26	
75%	Current	\$189	\$165	\$155	\$142	\$127	\$115	\$107	\$101	\$96	\$91	\$89	\$82	\$71	\$61	\$57	\$47	\$43	\$39	
	10yr ave.			\$98		\$86		\$73		\$64	\$62	\$60	\$58	\$55	\$49	\$45	\$36	\$31	\$28	
80%	Current	\$202	\$176	\$166	\$151	\$136	\$123	\$114	\$108	\$103	\$97	\$95	\$88	\$76	\$65	\$61	\$50	\$46	\$42	
	10yr ave.			\$104		\$92		\$78		\$69	\$66	\$64	\$62	\$59	\$53	\$48	\$38	\$33	\$30	
85%	Current	\$214	\$187	\$176	\$161	\$144	\$131	\$122	\$115	\$109	\$103	\$101	\$93	\$81	\$69	\$65	\$53	\$49	\$44	
	10yr ave.			\$111		\$97		\$83		\$73	\$70	\$68	\$66	\$63	\$56	\$51	\$41	\$35	\$32	

The above shows estimated returns per head for skirted fleece wool. These figures do not take into account the value of skirtings and oddments and do not take into account discounts that may apply for faults under individual circumstances. These figures are based on a market index of 100% and should be used as a guide only. Returns over \$30 / head for fleece wool are highlighted.

Source: Australian Wool Exchange, Australian Wool Innovation, Sydney Futures Exchange, x-rates.com

Disclaimer: While all due care has been taken in the preparation of this document, no warranty is made as to its accuracy, reliability or completeness. To the extent permitted by law neither Jemalong or their sources including subsidiaries and staff, accept liability to any person for loss or damage arising from the use of this information.



Table 14: Returns pr head for skirted fleece wool.

Skirted FLC Weight  8 Kg			Micron																	
			16	16.5	17	17.5	18	18.5	19	19.5	20	21	22	23	24	25	26	28	30	32
Yield (Sch Dry)	25%	Current	\$56	\$49	\$46	\$42	\$38	\$34	\$32	\$30	\$29	\$27	\$26	\$24	\$21	\$18	\$17	\$14	\$13	\$12
		10yr ave.			\$29		\$25		\$22		\$19	\$18	\$18	\$17	\$16	\$15	\$13	\$11	\$9	\$8
	30%	Current	\$67	\$59	\$55	\$50	\$45	\$41	\$38	\$36	\$34	\$32	\$32	\$29	\$25	\$22	\$20	\$17	\$15	\$14
		10yr ave.			\$35		\$31		\$26		\$23	\$22	\$21	\$21	\$20	\$18	\$16	\$13	\$11	\$10
	35%	Current	\$78	\$69	\$64	\$59	\$53	\$48	\$45	\$42	\$40	\$38	\$37	\$34	\$29	\$25	\$24	\$20	\$18	\$16
		10yr ave.			\$41		\$36		\$30		\$27	\$26	\$25	\$24	\$23	\$21	\$19	\$15	\$13	\$12
	40%	Current	\$90	\$78	\$74	\$67	\$60	\$55	\$51	\$48	\$46	\$43	\$42	\$39	\$34	\$29	\$27	\$22	\$20	\$18
		10yr ave.			\$46		\$41		\$35		\$30	\$29	\$28	\$28	\$26	\$23	\$21	\$17	\$15	\$13
	45%	Current	\$101	\$88	\$83	\$76	\$68	\$61	\$57	\$54	\$51	\$49	\$47	\$44	\$38	\$33	\$31	\$25	\$23	\$21
		10yr ave.			\$52		\$46		\$39		\$34	\$33	\$32	\$31	\$29	\$26	\$24	\$19	\$17	\$15
	50%	Current	\$112	\$98	\$92	\$84	\$75	\$68	\$64	\$60	\$57	\$54	\$53	\$49	\$42	\$36	\$34	\$28	\$25	\$23
		10yr ave.			\$58		\$51		\$44		\$38	\$37	\$36	\$35	\$33	\$29	\$27	\$21	\$18	\$17
	55%	Current	\$123	\$108	\$101	\$92	\$83	\$75	\$70	\$66	\$63	\$59	\$58	\$54	\$46	\$40	\$37	\$31	\$28	\$25
		10yr ave.			\$64		\$56		\$48		\$42	\$40	\$39	\$38	\$36	\$32	\$30	\$23	\$20	\$18
60%	Current	\$134	\$118	\$110	\$101	\$91	\$82	\$76	\$72	\$68	\$65	\$63	\$59	\$51	\$44	\$41	\$34	\$30	\$28	
	10yr ave.			\$70		\$61		\$52		\$46	\$44	\$43	\$41	\$39	\$35	\$32	\$25	\$22	\$20	
65%	Current	\$146	\$127	\$120	\$109	\$98	\$89	\$83	\$78	\$74	\$70	\$69	\$63	\$55	\$47	\$44	\$36	\$33	\$30	
	10yr ave.			\$75		\$66		\$57		\$50	\$47	\$46	\$45	\$43	\$38	\$35	\$28	\$24	\$22	
70%	Current	\$157	\$137	\$129	\$118	\$106	\$96	\$89	\$84	\$80	\$76	\$74	\$68	\$59	\$51	\$48	\$39	\$36	\$32	
	10yr ave.			\$81		\$71		\$61		\$53	\$51	\$50	\$48	\$46	\$41	\$38	\$30	\$26	\$23	
75%	Current	\$168	\$147	\$138	\$126	\$113	\$102	\$95	\$90	\$86	\$81	\$79	\$73	\$63	\$54	\$51	\$42	\$38	\$35	
	10yr ave.			\$87		\$76		\$65		\$57	\$55	\$53	\$52	\$49	\$44	\$40	\$32	\$28	\$25	
80%	Current	\$179	\$157	\$147	\$134	\$121	\$109	\$102	\$96	\$91	\$86	\$84	\$78	\$67	\$58	\$54	\$45	\$41	\$37	
	10yr ave.			\$93		\$82		\$70		\$61	\$58	\$57	\$55	\$52	\$47	\$43	\$34	\$30	\$27	
85%	Current	\$190	\$167	\$156	\$143	\$128	\$116	\$108	\$102	\$97	\$92	\$90	\$83	\$72	\$62	\$58	\$47	\$43	\$39	
	10yr ave.			\$99		\$87		\$74		\$65	\$62	\$60	\$59	\$56	\$50	\$46	\$36	\$31	\$28	

The above shows estimated returns per head for skirted fleece wool. These figures do not take into account the value of skirtings and oddments and do not take into account discounts that may apply for faults under individual circumstances. These figures are based on a market index of 100% and should be used as a guide only. Returns over \$30 / head for fleece wool are highlighted.

Source: Australian Wool Exchange, Australian Wool Innovation, Sydney Futures Exchange, x-rates.com

Disclaimer: While all due care has been taken in the preparation of this document, no warranty is made as to its accuracy, reliability or completeness. To the extent permitted by law neither Jemalong or their sources including subsidiaries and staff, accept liability to any person for loss or damage arising from the use of this information.



Table 15: Returns pr head for skirted fleece wool.

Skirted FLC Weight		Micron																	
7 Kg		16	16.5	17	17.5	18	18.5	19	19.5	20	21	22	23	24	25	26	28	30	32
Yield (Sch Dry)	25% Current	\$49	\$43	\$40	\$37	\$33	\$30	\$28	\$26	\$25	\$24	\$23	\$21	\$18	\$16	\$15	\$12	\$11	\$10
	10yr ave.			\$25		\$22		\$19		\$17	\$16	\$16	\$15	\$14	\$13	\$12	\$9	\$8	\$7
	30% Current	\$59	\$51	\$48	\$44	\$40	\$36	\$33	\$31	\$30	\$28	\$28	\$26	\$22	\$19	\$18	\$15	\$13	\$12
	10yr ave.			\$30		\$27		\$23		\$20	\$19	\$19	\$18	\$17	\$15	\$14	\$11	\$10	\$9
	35% Current	\$69	\$60	\$56	\$51	\$46	\$42	\$39	\$37	\$35	\$33	\$32	\$30	\$26	\$22	\$21	\$17	\$16	\$14
	10yr ave.			\$36		\$31		\$27		\$23	\$22	\$22	\$21	\$20	\$18	\$16	\$13	\$11	\$10
	40% Current	\$78	\$69	\$64	\$59	\$53	\$48	\$45	\$42	\$40	\$38	\$37	\$34	\$29	\$25	\$24	\$20	\$18	\$16
	10yr ave.			\$41		\$36		\$30		\$27	\$26	\$25	\$24	\$23	\$21	\$19	\$15	\$13	\$12
	45% Current	\$88	\$77	\$72	\$66	\$59	\$54	\$50	\$47	\$45	\$43	\$42	\$38	\$33	\$29	\$27	\$22	\$20	\$18
	10yr ave.			\$46		\$40		\$34		\$30	\$29	\$28	\$27	\$26	\$23	\$21	\$17	\$15	\$13
	50% Current	\$98	\$86	\$81	\$74	\$66	\$60	\$56	\$52	\$50	\$47	\$46	\$43	\$37	\$32	\$30	\$24	\$22	\$20
	10yr ave.			\$51		\$45		\$38		\$33	\$32	\$31	\$30	\$29	\$26	\$23	\$19	\$16	\$15
	55% Current	\$108	\$94	\$89	\$81	\$73	\$66	\$61	\$58	\$55	\$52	\$51	\$47	\$41	\$35	\$33	\$27	\$24	\$22
	10yr ave.			\$56		\$49		\$42		\$37	\$35	\$34	\$33	\$32	\$28	\$26	\$20	\$18	\$16
	60% Current	\$118	\$103	\$97	\$88	\$79	\$72	\$67	\$63	\$60	\$57	\$55	\$51	\$44	\$38	\$36	\$29	\$27	\$24
	10yr ave.			\$61		\$54		\$46		\$40	\$38	\$37	\$36	\$34	\$31	\$28	\$22	\$19	\$18
	65% Current	\$127	\$111	\$105	\$96	\$86	\$78	\$72	\$68	\$65	\$61	\$60	\$56	\$48	\$41	\$39	\$32	\$29	\$26
	10yr ave.			\$66		\$58		\$50		\$43	\$42	\$40	\$39	\$37	\$33	\$31	\$24	\$21	\$19
	70% Current	\$137	\$120	\$113	\$103	\$92	\$84	\$78	\$73	\$70	\$66	\$65	\$60	\$52	\$44	\$42	\$34	\$31	\$28
	10yr ave.			\$71		\$62		\$53		\$47	\$45	\$44	\$42	\$40	\$36	\$33	\$26	\$23	\$20
	75% Current	\$147	\$129	\$121	\$110	\$99	\$90	\$83	\$79	\$75	\$71	\$69	\$64	\$55	\$48	\$45	\$37	\$33	\$30
	10yr ave.			\$76		\$67		\$57		\$50	\$48	\$47	\$45	\$43	\$38	\$35	\$28	\$24	\$22
	80% Current	\$157	\$137	\$129	\$118	\$106	\$96	\$89	\$84	\$80	\$76	\$74	\$68	\$59	\$51	\$48	\$39	\$36	\$32
	10yr ave.			\$81		\$71		\$61		\$53	\$51	\$50	\$48	\$46	\$41	\$38	\$30	\$26	\$23
	85% Current	\$167	\$146	\$137	\$125	\$112	\$102	\$95	\$89	\$85	\$80	\$78	\$73	\$63	\$54	\$51	\$42	\$38	\$34
	10yr ave.			\$86		\$76		\$65		\$57	\$54	\$53	\$51	\$49	\$44	\$40	\$32	\$27	\$25

The above shows estimated returns per head for skirted fleece wool. These figures do not take into account the value of skirtings and oddments and do not take into account discounts that may apply for faults under individual circumstances. These figures are based on a market index of 100% and should be used as a guide only. Returns over \$30 / head for fleece wool are highlighted.

Source: Australian Wool Exchange, Australian Wool Innovation, Sydney Futures Exchange, x-rates.com

Disclaimer: While all due care has been taken in the preparation of this document, no warranty is made as to its accuracy, reliability or completeness. To the extent permitted by law neither Jemalong or their sources including subsidiaries and staff, accept liability to any person for loss or damage arising from the use of this information.



Table 16: Returns pr head for skirted fleece wool.

Skirted FLC Weight		Micron																	
6 Kg		16	16.5	17	17.5	18	18.5	19	19.5	20	21	22	23	24	25	26	28	30	32
Yield (Sch Dry)	25% Current	\$42	\$37	\$35	\$32	\$28	\$26	\$24	\$22	\$21	\$20	\$20	\$18	\$16	\$14	\$13	\$10	\$10	\$9
	10yr ave.			\$22		\$19		\$16		\$14	\$14	\$13	\$13	\$12	\$11	\$10	\$8	\$7	\$6
	30% Current	\$50	\$44	\$41	\$38	\$34	\$31	\$29	\$27	\$26	\$24	\$24	\$22	\$19	\$16	\$15	\$13	\$11	\$10
	10yr ave.			\$26		\$23		\$20		\$17	\$16	\$16	\$16	\$15	\$13	\$12	\$10	\$8	\$8
	35% Current	\$59	\$51	\$48	\$44	\$40	\$36	\$33	\$31	\$30	\$28	\$28	\$26	\$22	\$19	\$18	\$15	\$13	\$12
	10yr ave.			\$30		\$27		\$23		\$20	\$19	\$19	\$18	\$17	\$15	\$14	\$11	\$10	\$9
	40% Current	\$67	\$59	\$55	\$50	\$45	\$41	\$38	\$36	\$34	\$32	\$32	\$29	\$25	\$22	\$20	\$17	\$15	\$14
	10yr ave.			\$35		\$31		\$26		\$23	\$22	\$21	\$21	\$20	\$18	\$16	\$13	\$11	\$10
	45% Current	\$76	\$66	\$62	\$57	\$51	\$46	\$43	\$40	\$39	\$36	\$36	\$33	\$28	\$24	\$23	\$19	\$17	\$16
	10yr ave.			\$39		\$34		\$29		\$26	\$25	\$24	\$23	\$22	\$20	\$18	\$14	\$12	\$11
	50% Current	\$84	\$74	\$69	\$63	\$57	\$51	\$48	\$45	\$43	\$41	\$40	\$37	\$32	\$27	\$25	\$21	\$19	\$17
	10yr ave.			\$43		\$38		\$33		\$29	\$27	\$27	\$26	\$25	\$22	\$20	\$16	\$14	\$13
	55% Current	\$92	\$81	\$76	\$69	\$62	\$56	\$52	\$49	\$47	\$45	\$44	\$40	\$35	\$30	\$28	\$23	\$21	\$19
	10yr ave.			\$48		\$42		\$36		\$31	\$30	\$29	\$29	\$27	\$24	\$22	\$18	\$15	\$14
	60% Current	\$101	\$88	\$83	\$76	\$68	\$61	\$57	\$54	\$51	\$49	\$47	\$44	\$38	\$33	\$31	\$25	\$23	\$21
	10yr ave.			\$52		\$46		\$39		\$34	\$33	\$32	\$31	\$29	\$26	\$24	\$19	\$17	\$15
	65% Current	\$109	\$96	\$90	\$82	\$74	\$67	\$62	\$58	\$56	\$53	\$51	\$48	\$41	\$35	\$33	\$27	\$25	\$23
	10yr ave.			\$57		\$50		\$42		\$37	\$36	\$35	\$34	\$32	\$29	\$26	\$21	\$18	\$16
	70% Current	\$118	\$103	\$97	\$88	\$79	\$72	\$67	\$63	\$60	\$57	\$55	\$51	\$44	\$38	\$36	\$29	\$27	\$24
	10yr ave.			\$61		\$54		\$46		\$40	\$38	\$37	\$36	\$34	\$31	\$28	\$22	\$19	\$18
	75% Current	\$126	\$110	\$104	\$95	\$85	\$77	\$72	\$67	\$64	\$61	\$59	\$55	\$47	\$41	\$38	\$31	\$29	\$26
	10yr ave.			\$65		\$57		\$49		\$43	\$41	\$40	\$39	\$37	\$33	\$30	\$24	\$21	\$19
	80% Current	\$134	\$118	\$110	\$101	\$91	\$82	\$76	\$72	\$68	\$65	\$63	\$59	\$51	\$44	\$41	\$34	\$30	\$28
	10yr ave.			\$70		\$61		\$52		\$46	\$44	\$43	\$41	\$39	\$35	\$32	\$25	\$22	\$20
	85% Current	\$143	\$125	\$117	\$107	\$96	\$87	\$81	\$76	\$73	\$69	\$67	\$62	\$54	\$46	\$43	\$36	\$32	\$29
	10yr ave.			\$74		\$65		\$55		\$49	\$47	\$45	\$44	\$42	\$37	\$34	\$27	\$24	\$21

The above shows estimated returns per head for skirted fleece wool. These figures do not take into account the value of skirtings and oddments and do not take into account discounts that may apply for faults under individual circumstances. These figures are based on a market index of 100% and should be used as a guide only. Returns over \$30 / head for fleece wool are highlighted.

Source: Australian Wool Exchange, Australian Wool Innovation, Sydney Futures Exchange, x-rates.com

Disclaimer: While all due care has been taken in the preparation of this document, no warranty is made as to its accuracy, reliability or completeness. To the extent permitted by law neither Jemalong or their sources including subsidiaries and staff, accept liability to any person for loss or damage arising from the use of this information.





Table 17: Returns pr head for skirted fleece wool.

Skirted FLC Weight		Micron																	
5 Kg		16	16.5	17	17.5	18	18.5	19	19.5	20	21	22	23	24	25	26	28	30	32
Yield (Sch Dry)	25% Current	\$35	\$31	\$29	\$26	\$24	\$21	\$20	\$19	\$18	\$17	\$16	\$15	\$13	\$11	\$11	\$9	\$8	\$7
	10yr ave.			\$18		\$16		\$14		\$12	\$11	\$11	\$11	\$10	\$9	\$8	\$7	\$6	\$5
	30% Current	\$42	\$37	\$35	\$32	\$28	\$26	\$24	\$22	\$21	\$20	\$20	\$18	\$16	\$14	\$13	\$10	\$10	\$9
	10yr ave.			\$22		\$19		\$16		\$14	\$14	\$13	\$13	\$12	\$11	\$10	\$8	\$7	\$6
	35% Current	\$49	\$43	\$40	\$37	\$33	\$30	\$28	\$26	\$25	\$24	\$23	\$21	\$18	\$16	\$15	\$12	\$11	\$10
	10yr ave.			\$25		\$22		\$19		\$17	\$16	\$16	\$15	\$14	\$13	\$12	\$9	\$8	\$7
	40% Current	\$56	\$49	\$46	\$42	\$38	\$34	\$32	\$30	\$29	\$27	\$26	\$24	\$21	\$18	\$17	\$14	\$13	\$12
	10yr ave.			\$29		\$25		\$22		\$19	\$18	\$18	\$17	\$16	\$15	\$13	\$11	\$9	\$8
	45% Current	\$63	\$55	\$52	\$47	\$42	\$38	\$36	\$34	\$32	\$30	\$30	\$27	\$24	\$20	\$19	\$16	\$14	\$13
	10yr ave.			\$33		\$29		\$24		\$21	\$21	\$20	\$19	\$18	\$16	\$15	\$12	\$10	\$9
	50% Current	\$70	\$61	\$58	\$53	\$47	\$43	\$40	\$37	\$36	\$34	\$33	\$31	\$26	\$23	\$21	\$17	\$16	\$14
	10yr ave.			\$36		\$32		\$27		\$24	\$23	\$22	\$22	\$20	\$18	\$17	\$13	\$12	\$10
	55% Current	\$77	\$67	\$63	\$58	\$52	\$47	\$44	\$41	\$39	\$37	\$36	\$34	\$29	\$25	\$23	\$19	\$17	\$16
	10yr ave.			\$40		\$35		\$30		\$26	\$25	\$24	\$24	\$23	\$20	\$18	\$15	\$13	\$11
	60% Current	\$84	\$74	\$69	\$63	\$57	\$51	\$48	\$45	\$43	\$41	\$40	\$37	\$32	\$27	\$25	\$21	\$19	\$17
	10yr ave.			\$43		\$38		\$33		\$29	\$27	\$27	\$26	\$25	\$22	\$20	\$16	\$14	\$13
	65% Current	\$91	\$80	\$75	\$68	\$61	\$55	\$52	\$49	\$46	\$44	\$43	\$40	\$34	\$29	\$28	\$23	\$21	\$19
	10yr ave.			\$47		\$41		\$35		\$31	\$30	\$29	\$28	\$27	\$24	\$22	\$17	\$15	\$14
	70% Current	\$98	\$86	\$81	\$74	\$66	\$60	\$56	\$52	\$50	\$47	\$46	\$43	\$37	\$32	\$30	\$24	\$22	\$20
	10yr ave.			\$51		\$45		\$38		\$33	\$32	\$31	\$30	\$29	\$26	\$23	\$19	\$16	\$15
	75% Current	\$105	\$92	\$86	\$79	\$71	\$64	\$60	\$56	\$53	\$51	\$49	\$46	\$39	\$34	\$32	\$26	\$24	\$22
	10yr ave.			\$54		\$48		\$41		\$36	\$34	\$33	\$32	\$31	\$27	\$25	\$20	\$17	\$16
	80% Current	\$112	\$98	\$92	\$84	\$75	\$68	\$64	\$60	\$57	\$54	\$53	\$49	\$42	\$36	\$34	\$28	\$25	\$23
	10yr ave.			\$58		\$51		\$44		\$38	\$37	\$36	\$35	\$33	\$29	\$27	\$21	\$18	\$17
	85% Current	\$119	\$104	\$98	\$89	\$80	\$73	\$68	\$64	\$61	\$57	\$56	\$52	\$45	\$39	\$36	\$30	\$27	\$25
	10yr ave.			\$62		\$54		\$46		\$41	\$39	\$38	\$37	\$35	\$31	\$29	\$23	\$20	\$18

The above shows estimated returns per head for skirted fleece wool. These figures do not take into account the value of skirtings and oddments and do not take into account discounts that may apply for faults under individual circumstances. These figures are based on a market index of 100% and should be used as a guide only. Returns over \$30 / head for fleece wool are highlighted.

Source: Australian Wool Exchange, Australian Wool Innovation, Sydney Futures Exchange, x-rates.com

Disclaimer: While all due care has been taken in the preparation of this document, no warranty is made as to its accuracy, reliability or completeness. To the extent permitted by law neither Jemalong or their sources including subsidiaries and staff, accept liability to any person for loss or damage arising from the use of this information.



Table 18: Returns pr head for skirted fleece wool.

Skirted FLC Weight		Micron																	
4 Kg		16	16.5	17	17.5	18	18.5	19	19.5	20	21	22	23	24	25	26	28	30	32
Yield (Sch Dry)	25% Current	\$28	\$25	\$23	\$21	\$19	\$17	\$16	\$15	\$14	\$14	\$13	\$12	\$11	\$9	\$8	\$7	\$6	\$6
	10yr ave.			\$14		\$13		\$11		\$10	\$9	\$9	\$9	\$8	\$7	\$7	\$5	\$5	\$4
	30% Current	\$34	\$29	\$28	\$25	\$23	\$20	\$19	\$18	\$17	\$16	\$16	\$15	\$13	\$11	\$10	\$8	\$8	\$7
	10yr ave.			\$17		\$15		\$13		\$11	\$11	\$11	\$10	\$10	\$9	\$8	\$6	\$6	\$5
	35% Current	\$39	\$34	\$32	\$29	\$26	\$24	\$22	\$21	\$20	\$19	\$18	\$17	\$15	\$13	\$12	\$10	\$9	\$8
	10yr ave.			\$20		\$18		\$15		\$13	\$13	\$12	\$12	\$11	\$10	\$9	\$7	\$6	\$6
	40% Current	\$45	\$39	\$37	\$34	\$30	\$27	\$25	\$24	\$23	\$22	\$21	\$20	\$17	\$15	\$14	\$11	\$10	\$9
	10yr ave.			\$23		\$20		\$17		\$15	\$15	\$14	\$14	\$13	\$12	\$11	\$8	\$7	\$7
	45% Current	\$50	\$44	\$41	\$38	\$34	\$31	\$29	\$27	\$26	\$24	\$24	\$22	\$19	\$16	\$15	\$13	\$11	\$10
	10yr ave.			\$26		\$23		\$20		\$17	\$16	\$16	\$16	\$15	\$13	\$12	\$10	\$8	\$8
	50% Current	\$56	\$49	\$46	\$42	\$38	\$34	\$32	\$30	\$29	\$27	\$26	\$24	\$21	\$18	\$17	\$14	\$13	\$12
	10yr ave.			\$29		\$25		\$22		\$19	\$18	\$18	\$17	\$16	\$15	\$13	\$11	\$9	\$8
	55% Current	\$62	\$54	\$51	\$46	\$42	\$38	\$35	\$33	\$31	\$30	\$29	\$27	\$23	\$20	\$19	\$15	\$14	\$13
	10yr ave.			\$32		\$28		\$24		\$21	\$20	\$20	\$19	\$18	\$16	\$15	\$12	\$10	\$9
	60% Current	\$67	\$59	\$55	\$50	\$45	\$41	\$38	\$36	\$34	\$32	\$32	\$29	\$25	\$22	\$20	\$17	\$15	\$14
	10yr ave.			\$35		\$31		\$26		\$23	\$22	\$21	\$21	\$20	\$18	\$16	\$13	\$11	\$10
	65% Current	\$73	\$64	\$60	\$55	\$49	\$44	\$41	\$39	\$37	\$35	\$34	\$32	\$27	\$24	\$22	\$18	\$17	\$15
	10yr ave.			\$38		\$33		\$28		\$25	\$24	\$23	\$22	\$21	\$19	\$17	\$14	\$12	\$11
	70% Current	\$78	\$69	\$64	\$59	\$53	\$48	\$45	\$42	\$40	\$38	\$37	\$34	\$29	\$25	\$24	\$20	\$18	\$16
	10yr ave.			\$41		\$36		\$30		\$27	\$26	\$25	\$24	\$23	\$21	\$19	\$15	\$13	\$12
	75% Current	\$84	\$74	\$69	\$63	\$57	\$51	\$48	\$45	\$43	\$41	\$40	\$37	\$32	\$27	\$25	\$21	\$19	\$17
	10yr ave.			\$43		\$38		\$33		\$29	\$27	\$27	\$26	\$25	\$22	\$20	\$16	\$14	\$13
	80% Current	\$90	\$78	\$74	\$67	\$60	\$55	\$51	\$48	\$46	\$43	\$42	\$39	\$34	\$29	\$27	\$22	\$20	\$18
	10yr ave.			\$46		\$41		\$35		\$30	\$29	\$28	\$28	\$26	\$23	\$21	\$17	\$15	\$13
	85% Current	\$95	\$83	\$78	\$71	\$64	\$58	\$54	\$51	\$48	\$46	\$45	\$41	\$36	\$31	\$29	\$24	\$22	\$20
	10yr ave.			\$49		\$43		\$37		\$32	\$31	\$30	\$29	\$28	\$25	\$23	\$18	\$16	\$14

The above shows estimated returns per head for skirted fleece wool. These figures do not take into account the value of skirtings and oddments and do not take into account discounts that may apply for faults under individual circumstances. These figures are based on a market index of 100% and should be used as a guide only. Returns over \$30 / head for fleece wool are highlighted.

Source: Australian Wool Exchange, Australian Wool Innovation, Sydney Futures Exchange, x-rates.com

Disclaimer: While all due care has been taken in the preparation of this document, no warranty is made as to its accuracy, reliability or completeness. To the extent permitted by law neither Jemalong or their sources including subsidiaries and staff, accept liability to any person for loss or damage arising from the use of this information.



Table 19: Returns pr head for skirted fleece wool.

Skirted FLC Weight		Micron																	
3 Kg		16	16.5	17	17.5	18	18.5	19	19.5	20	21	22	23	24	25	26	28	30	32
Yield (Sch Dry)	25% Current	\$21	\$18	\$17	\$16	\$14	\$13	\$12	\$11	\$11	\$10	\$10	\$9	\$8	\$7	\$6	\$5	\$5	\$4
	10yr ave.			\$11	\$10	\$10		\$8		\$7	\$7	\$7	\$6	\$6	\$5	\$5	\$4	\$3	\$3
	30% Current	\$25	\$22	\$21	\$19	\$17	\$15	\$14	\$13	\$13	\$12	\$12	\$11	\$9	\$8	\$8	\$6	\$6	\$5
	10yr ave.			\$13		\$11		\$10		\$9	\$8	\$8	\$8	\$7	\$7	\$6	\$5	\$4	\$4
	35% Current	\$29	\$26	\$24	\$22	\$20	\$18	\$17	\$16	\$15	\$14	\$14	\$13	\$11	\$10	\$9	\$7	\$7	\$6
	10yr ave.			\$15		\$13		\$11		\$10	\$10	\$9	\$9	\$9	\$8	\$7	\$6	\$5	\$4
	40% Current	\$34	\$29	\$28	\$25	\$23	\$20	\$19	\$18	\$17	\$16	\$16	\$15	\$13	\$11	\$10	\$8	\$8	\$7
	10yr ave.			\$17		\$15		\$13		\$11	\$11	\$11	\$10	\$10	\$9	\$8	\$6	\$6	\$5
	45% Current	\$38	\$33	\$31	\$28	\$25	\$23	\$21	\$20	\$19	\$18	\$18	\$16	\$14	\$12	\$11	\$9	\$9	\$8
	10yr ave.			\$20		\$17		\$15		\$13	\$12	\$12	\$12	\$11	\$10	\$9	\$7	\$6	\$6
	50% Current	\$42	\$37	\$35	\$32	\$28	\$26	\$24	\$22	\$21	\$20	\$20	\$18	\$16	\$14	\$13	\$10	\$10	\$9
	10yr ave.			\$22		\$19		\$16		\$14	\$14	\$13	\$13	\$12	\$11	\$10	\$8	\$7	\$6
	55% Current	\$46	\$40	\$38	\$35	\$31	\$28	\$26	\$25	\$24	\$22	\$22	\$20	\$17	\$15	\$14	\$12	\$10	\$10
	10yr ave.			\$24		\$21		\$18		\$16	\$15	\$15	\$14	\$14	\$12	\$11	\$9	\$8	\$7
	60% Current	\$50	\$44	\$41	\$38	\$34	\$31	\$29	\$27	\$26	\$24	\$24	\$22	\$19	\$16	\$15	\$13	\$11	\$10
	10yr ave.			\$26		\$23		\$20		\$17	\$16	\$16	\$16	\$15	\$13	\$12	\$10	\$8	\$8
	65% Current	\$55	\$48	\$45	\$41	\$37	\$33	\$31	\$29	\$28	\$26	\$26	\$24	\$21	\$18	\$17	\$14	\$12	\$11
	10yr ave.			\$28		\$25		\$21		\$19	\$18	\$17	\$17	\$16	\$14	\$13	\$10	\$9	\$8
	70% Current	\$59	\$51	\$48	\$44	\$40	\$36	\$33	\$31	\$30	\$28	\$28	\$26	\$22	\$19	\$18	\$15	\$13	\$12
	10yr ave.			\$30		\$27		\$23		\$20	\$19	\$19	\$18	\$17	\$15	\$14	\$11	\$10	\$9
	75% Current	\$63	\$55	\$52	\$47	\$42	\$38	\$36	\$34	\$32	\$30	\$30	\$27	\$24	\$20	\$19	\$16	\$14	\$13
	10yr ave.			\$33		\$29		\$24		\$21	\$21	\$20	\$19	\$18	\$16	\$15	\$12	\$10	\$9
	80% Current	\$67	\$59	\$55	\$50	\$45	\$41	\$38	\$36	\$34	\$32	\$32	\$29	\$25	\$22	\$20	\$17	\$15	\$14
	10yr ave.			\$35		\$31		\$26		\$23	\$22	\$21	\$21	\$20	\$18	\$16	\$13	\$11	\$10
	85% Current	\$71	\$62	\$59	\$54	\$48	\$44	\$41	\$38	\$36	\$34	\$34	\$31	\$27	\$23	\$22	\$18	\$16	\$15
	10yr ave.			\$37		\$32		\$28		\$24	\$23	\$23	\$22	\$21	\$19	\$17	\$14	\$12	\$11

The above shows estimated returns per head for skirted fleece wool. These figures do not take into account the value of skirtings and oddments and do not take into account discounts that may apply for faults under individual circumstances. These figures are based on a market index of 100% and should be used as a guide only. Returns over \$30 / head for fleece wool are highlighted.

Source: Australian Wool Exchange, Australian Wool Innovation, Sydney Futures Exchange, x-rates.com

Disclaimer: While all due care has been taken in the preparation of this document, no warranty is made as to its accuracy, reliability or completeness. To the extent permitted by law neither Jemalong or their sources including subsidiaries and staff, accept liability to any person for loss or damage arising from the use of this information.



Table 20: Returns pr head for skirted fleece wool.

Skirted FLC Weight		Micron																	
2 Kg		16	16.5	17	17.5	18	18.5	19	19.5	20	21	22	23	24	25	26	28	30	32
Yield (Sch Dry)	25% Current	\$14	\$12	\$12	\$11	\$9	\$9	\$8	\$7	\$7	\$7	\$7	\$6	\$5	\$5	\$4	\$3	\$3	\$3
	10yr ave.			\$7		\$6		\$5		\$5	\$5	\$4	\$4	\$4	\$4	\$3	\$3	\$2	\$2
	30% Current	\$17	\$15	\$14	\$13	\$11	\$10	\$10	\$9	\$9	\$8	\$8	\$7	\$6	\$5	\$5	\$4	\$4	\$3
	10yr ave.			\$9		\$8		\$7		\$6	\$5	\$5	\$5	\$5	\$4	\$4	\$3	\$3	\$3
	35% Current	\$20	\$17	\$16	\$15	\$13	\$12	\$11	\$10	\$10	\$9	\$9	\$9	\$7	\$6	\$6	\$5	\$4	\$4
	10yr ave.			\$10		\$9		\$8		\$7	\$6	\$6	\$6	\$6	\$5	\$5	\$4	\$3	\$3
	40% Current	\$22	\$20	\$18	\$17	\$15	\$14	\$13	\$12	\$11	\$11	\$11	\$10	\$8	\$7	\$7	\$6	\$5	\$5
	10yr ave.			\$12		\$10		\$9		\$8	\$7	\$7	\$7	\$7	\$6	\$5	\$4	\$4	\$3
	45% Current	\$25	\$22	\$21	\$19	\$17	\$15	\$14	\$13	\$13	\$12	\$12	\$11	\$9	\$8	\$8	\$6	\$6	\$5
	10yr ave.			\$13		\$11		\$10		\$9	\$8	\$8	\$8	\$7	\$7	\$6	\$5	\$4	\$4
	50% Current	\$28	\$25	\$23	\$21	\$19	\$17	\$16	\$15	\$14	\$14	\$13	\$12	\$11	\$9	\$8	\$7	\$6	\$6
	10yr ave.			\$14		\$13		\$11		\$10	\$9	\$9	\$9	\$8	\$7	\$7	\$5	\$5	\$4
	55% Current	\$31	\$27	\$25	\$23	\$21	\$19	\$17	\$16	\$16	\$15	\$15	\$13	\$12	\$10	\$9	\$8	\$7	\$6
	10yr ave.			\$16		\$14		\$12		\$10	\$10	\$10	\$10	\$9	\$8	\$7	\$6	\$5	\$5
	60% Current	\$34	\$29	\$28	\$25	\$23	\$20	\$19	\$18	\$17	\$16	\$16	\$15	\$13	\$11	\$10	\$8	\$8	\$7
	10yr ave.			\$17		\$15		\$13		\$11	\$11	\$11	\$10	\$10	\$9	\$8	\$6	\$6	\$5
	65% Current	\$36	\$32	\$30	\$27	\$25	\$22	\$21	\$19	\$19	\$18	\$17	\$16	\$14	\$12	\$11	\$9	\$8	\$8
	10yr ave.			\$19		\$17		\$14		\$12	\$12	\$12	\$11	\$11	\$10	\$9	\$7	\$6	\$5
	70% Current	\$39	\$34	\$32	\$29	\$26	\$24	\$22	\$21	\$20	\$19	\$18	\$17	\$15	\$13	\$12	\$10	\$9	\$8
	10yr ave.			\$20		\$18		\$15		\$13	\$13	\$12	\$12	\$11	\$10	\$9	\$7	\$6	\$6
	75% Current	\$42	\$37	\$35	\$32	\$28	\$26	\$24	\$22	\$21	\$20	\$20	\$18	\$16	\$14	\$13	\$10	\$10	\$9
	10yr ave.			\$22		\$19		\$16		\$14	\$14	\$13	\$13	\$12	\$11	\$10	\$8	\$7	\$6
	80% Current	\$45	\$39	\$37	\$34	\$30	\$27	\$25	\$24	\$23	\$22	\$21	\$20	\$17	\$15	\$14	\$11	\$10	\$9
	10yr ave.			\$23		\$20		\$17		\$15	\$15	\$14	\$14	\$13	\$12	\$11	\$8	\$7	\$7
	85% Current	\$48	\$42	\$39	\$36	\$32	\$29	\$27	\$25	\$24	\$23	\$22	\$21	\$18	\$15	\$14	\$12	\$11	\$10
	10yr ave.			\$25		\$22		\$18		\$16	\$16	\$15	\$15	\$14	\$12	\$11	\$9	\$8	\$7

The above shows estimated returns per head for skirted fleece wool. These figures do not take into account the value of skirtings and oddments and do not take into account discounts that may apply for faults under individual circumstances. These figures are based on a market index of 100% and should be used as a guide only. Returns over \$30 / head for fleece wool are highlighted.

Source: Australian Wool Exchange, Australian Wool Innovation, Sydney Futures Exchange, x-rates.com

Disclaimer: While all due care has been taken in the preparation of this document, no warranty is made as to its accuracy, reliability or completeness. To the extent permitted by law neither Jemalong or their sources including subsidiaries and staff, accept liability to any person for loss or damage arising from the use of this information.