



# JEMALONG WOOL BULLETIN

(week ending 12/05/2011)

**Table 1: Northern Region Micron Price Guides**

CURRENT MARKET					PERCENTILES		AVERAGES					12 MONTH COMPARISONS								TRADING RANGE																																																																																																																																																																																																																																																																																																																																																																																																																																																																																																																																																																																																																																																																																																																																																																																																																																																																																																																																																																																																																																																																																																																																																																																																																																																																																																																																												
Mic.	12/05/2011	5/05/2011					Now			Now			11/05/2010		Now		Now		Now		Clean c/kg																																																																																																																																																																																																																																																																																																																																																																																																																																																																																																																																																																																																																																																																																																																																																																																																																																																																																																																																																																																																																																																																																																																																																																																																																																																																																																																																											
Price	Current	Weekly																																																																																																																																																																																																																																																																																																																																																																																																																																																																																																																																																																																																																																																																																																																																																																																																																																																																																																																																																																																																																																																																																																																																																																																																																																																																																																																																																														

**Note:**

\* Due to the irregular market quoting for some fine wool categories, figures shown relating to micron categories below 18 micron are an estimate based on the AWEX Premium & Discounts Report & other available information.

\* For any category, where there is insufficient quantity offered to enable AWEX to quote, a quote will be provided based on the best available information.

\* 10 Year data is not available for some micron categories, which may result in blank spaces in the table above.

**Definitions:**

\* A Percentile, is a value on a scale of one hundred that indicates the percent of a distribution that is equal to or below it. In general a percentile between 25% and 75% is considered normal, a percentile below 25% is considered below normal and a percentile above 75% is considered above normal.

Three and ten year percentiles shown in the table above, detail the period of time during the past 3 & 10 years that the market has traded either at or below its current price.

The higher the percentile, the stronger the market.

Source: Australian Wool Exchange, Australian Wool Innovation, Sydney Futures Exchange, x-rates.com

Disclaimer: While all due care has been taken in the preparation of this document, no warranty is made as to its accuracy, reliability or completeness. To the extent permitted by law neither Jemalong or their sources including subsidiaries and staff, accept liability to any person for loss or damage arising from the use of this information.



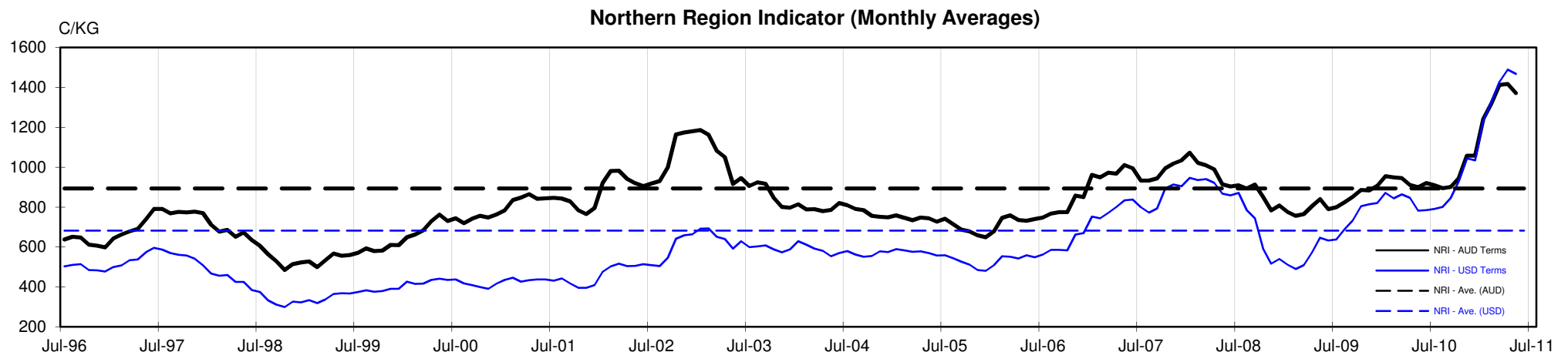
**MARKET COMMENTARY**

**One Australian Dollar = \$ 1.06 US, as of 12/05/2011**

**NORTHERN REGION –Sale Week 45/10 (49,952 bales offered nationally)**

On Wednesday - After a strong start the momentum waned and eased from its early peak but still ended the day in positive territory. 19 micron and finer rose around 20 cents while 19.5 micron and broader finished 15 cents dearer, except for 21 microns, which found some extra support. Good buyer support left all skirtings fully firm, tending in sellers favour, despite significant discounts for col & cot lines. While locks were irregular, 19 micron and broader remained fully firm, crutchings and stains closed unchanged and in the crossbreds 27 to 29 micron finished at similar levels to last week (on a small offering) while 30 micron and broader were up 3-5 cents.

On Thursday - The market was generally 10-20 cents dearer, however price rises were restricted to the better style and lower Vm lots of 19 micron and finer. 19.5 to 22 microns also incurred increases with particular focus on the 20 to 21 micron range. In the oddments, crutchings were firm while locks & stains eased 10 cents. One of the smallest offerings in recent times left 27 to 28 micron crossbreds fully firm and 29 to 30 microns 3-5 cents dearer.





**Table 4: 19 micron SFE**

Wednesday, 11 May 2011

Delivery Mth	Jun-11	Aug-11	Oct-11	Dec-11	Feb-11	Apr-12	Jun-12	Aug-12	Oct-12
19 Micron SFE	1638	1568	1526	1491	1459	1431	1401	1373	1373
Average	1211	1218	1225	1252	1113	1320	1381	1378	1332
Maximum	1670	1637	1595	1560	1605	1458	1450	1450	1373
Minimum	1034	1034	1034	1034	983	1106	1210	1285	1285

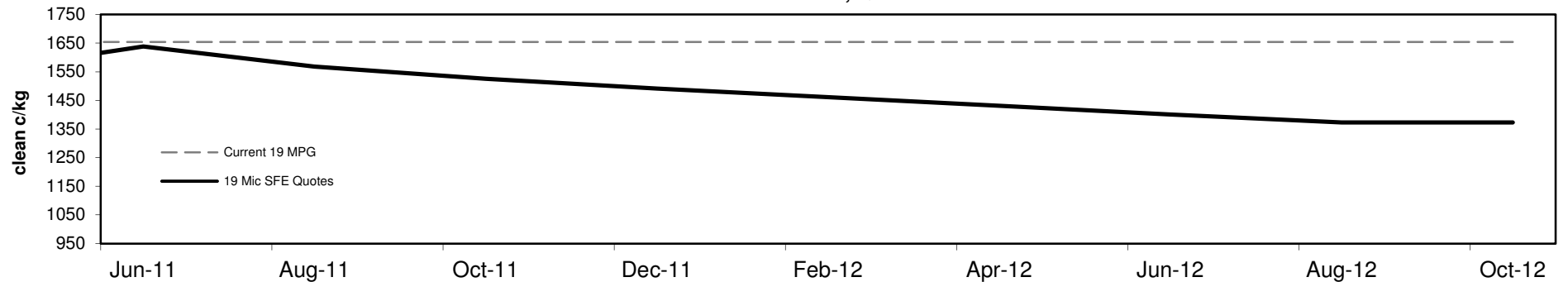
**Table 5: 19 micron SFE, as a percentile of the 19 micron MPG**

3 Year Percentile	93%	89%	88%	88%	88%	88%	87%	87%	87%
10 Year Percentile	98%	97%	96%	96%	96%	96%	96%	95%	95%

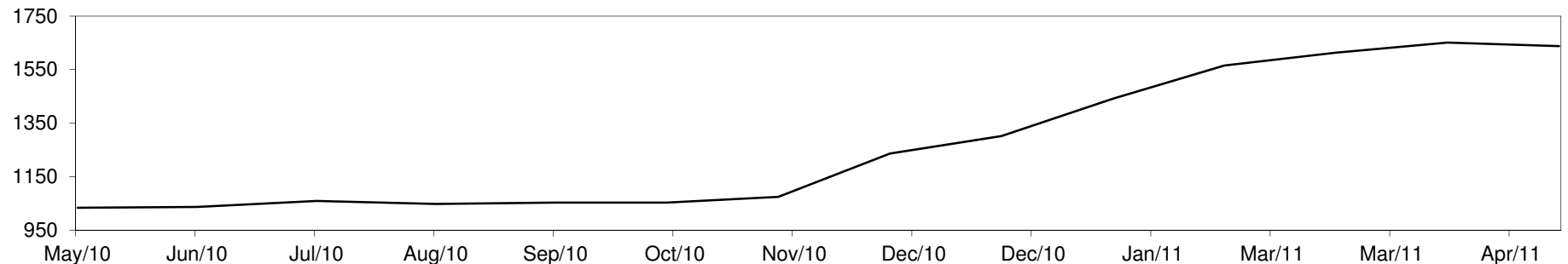
**Table 6: 19 micron SFE, compared to MPG**

Current 19 MPG	-16	-1%	-86	-5%	-128	-8%	-163	-10%	-195	-12%	-223	-13%	-253	-15%	-281	-17%	-281	-17%
19 MPG, 1 Year Average	+300	22%	+230	17%	+188	14%	+153	11%	+121	9%	+93	7%	+63	5%	+35	3%	+35	3%
19 MPG, 3 Year Average	+510	45%	+440	39%	+398	35%	+363	32%	+331	29%	+303	27%	+273	24%	+245	22%	+245	22%
19 MPG, 10 Year Average	+561	52%	+491	46%	+449	42%	+414	38%	+382	35%	+354	33%	+324	30%	+296	27%	+296	27%

**19 MICRON SFE, QUOTES**



**19 Micron SFE, Front month movement**





**Table 7: 21 micron SFE**

Wednesday, 11 May 2011

Delivery Mth	Jun-11	Aug-11	Oct-11	Dec-11	Feb-11	Apr-12	Jun-12	Aug-12	Oct-12
21 Micron SFE	1286	1273	1208	1162	1133	1013	1048	1046	1013
Average	1012	1008	1000	1002	962	1051	1051	1067	1046
Maximum	1327	1287	1240	1200	1273	1149	1093	1093	1068
Minimum	890	880	880	880	860	934	990	1046	1013

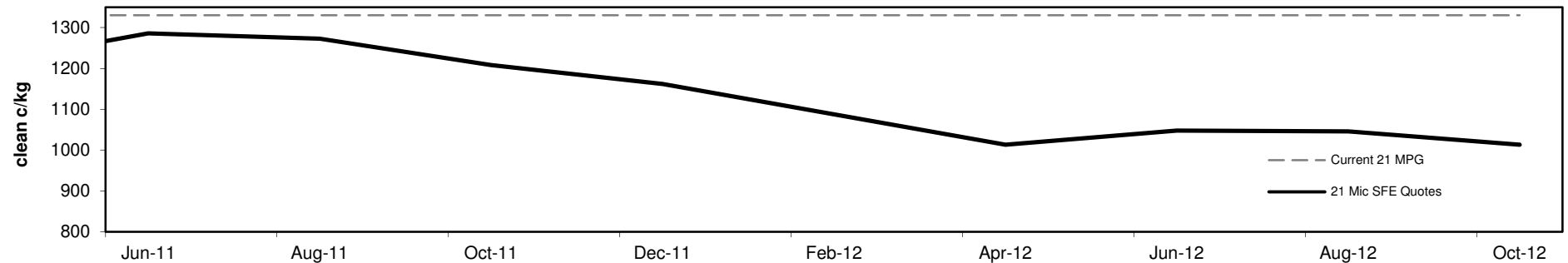
**Table 8: 21 micron SFE, as a percentile of the 21 micron MPG**

3 Year Percentile	96%	95%	93%	91%	89%	87%	87%	87%	87%
10 Year Percentile	98%	97%	93%	91%	90%	83%	88%	88%	83%

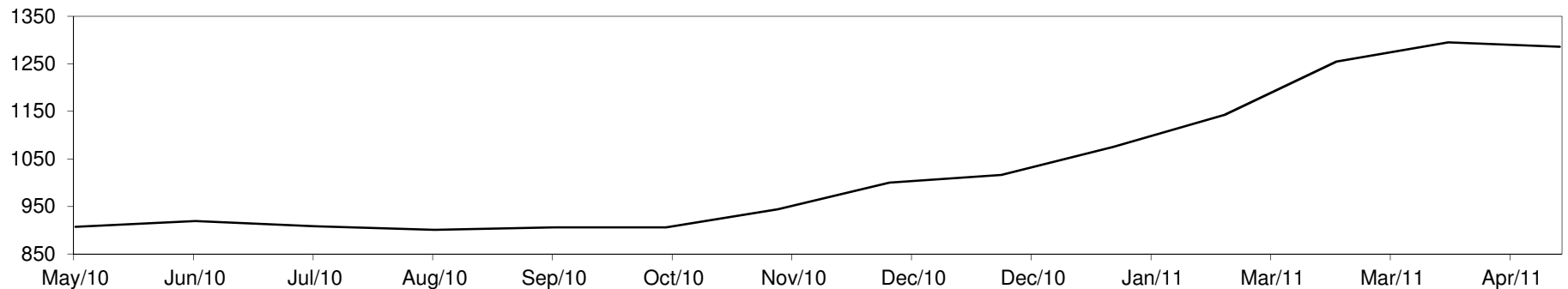
**Table 9: 21 micron SFE, compared to MPG**

Current 21 MPG	-44	-3%	-57	-4%	-122	-9%	-168	-13%	-197	-15%	-317	-24%	-282	-21%	-284	-21%	-317	-24%
21 MPG, 1 Year Average	+225	21%	+212	20%	+147	14%	+101	10%	+72	7%	-48	-5%	-13	-1%	-15	-1%	-48	-5%
21 MPG, 3 Year Average	+376	41%	+363	40%	+298	33%	+252	28%	+223	25%	+103	11%	+138	15%	+136	15%	+103	11%
21 MPG, 10 Year Average	+392	44%	+379	42%	+314	35%	+268	30%	+239	27%	+119	13%	+154	17%	+152	17%	+119	13%

**21 MICRON SFE, QUOTES**



**21 Micron SFE, Front month movement**





**Table 10: 23 micron SFE**

Wednesday, 11 May 2011

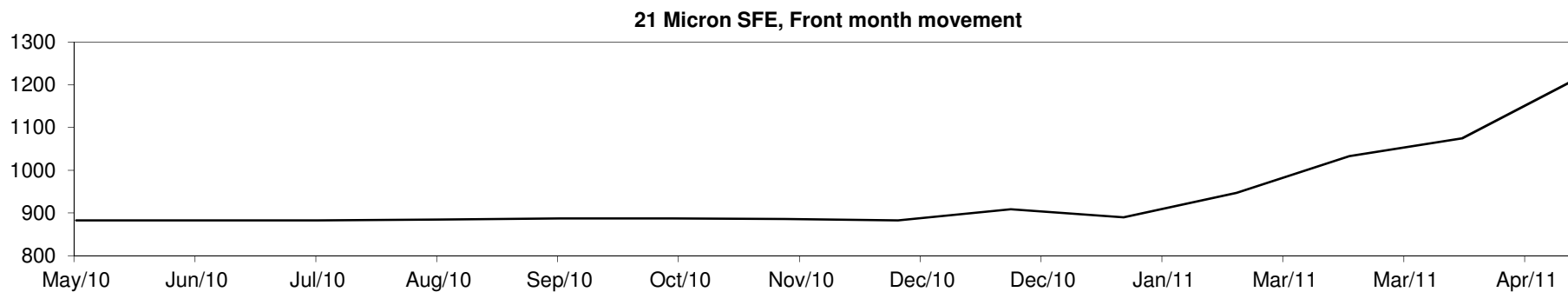
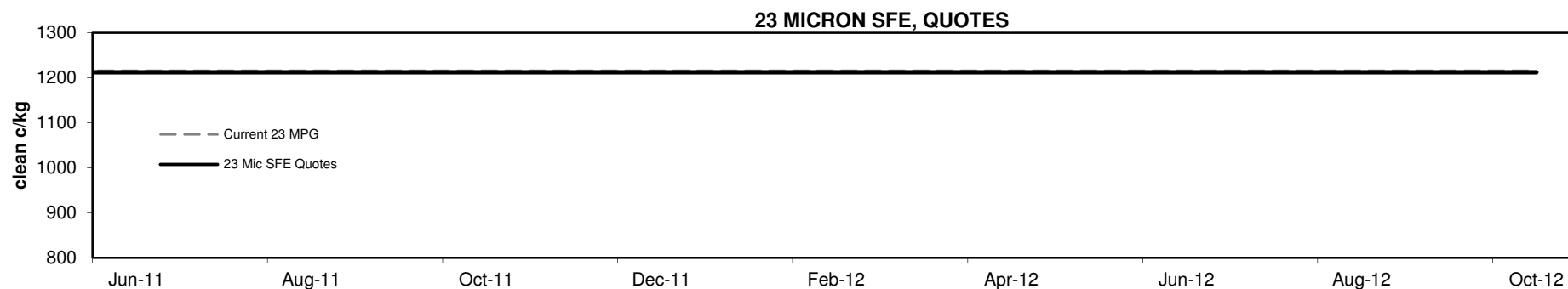
Delivery Mth	Jun-11	Aug-11	Oct-11	Dec-11	Feb-11	Apr-12	Jun-12	Aug-12	Oct-12
23 Micron SFE	1212	1212	1212	1212	1212	1212	1212	1212	1212
Average	918	926	926	935	870	969	1003	1075	1212
Maximum	1212	1212	1212	1212	1212	1212	1212	1212	1212
Minimum	803	883	883	883	760	883	890	1033	1212

**Table 11: 23 micron SFE, as a percentile of the 23 micron MPG**

3 Year Percentile	96%	96%	96%	96%	96%	96%	96%	96%	96%
10 Year Percentile	95%	95%	95%	95%	95%	95%	95%	95%	95%

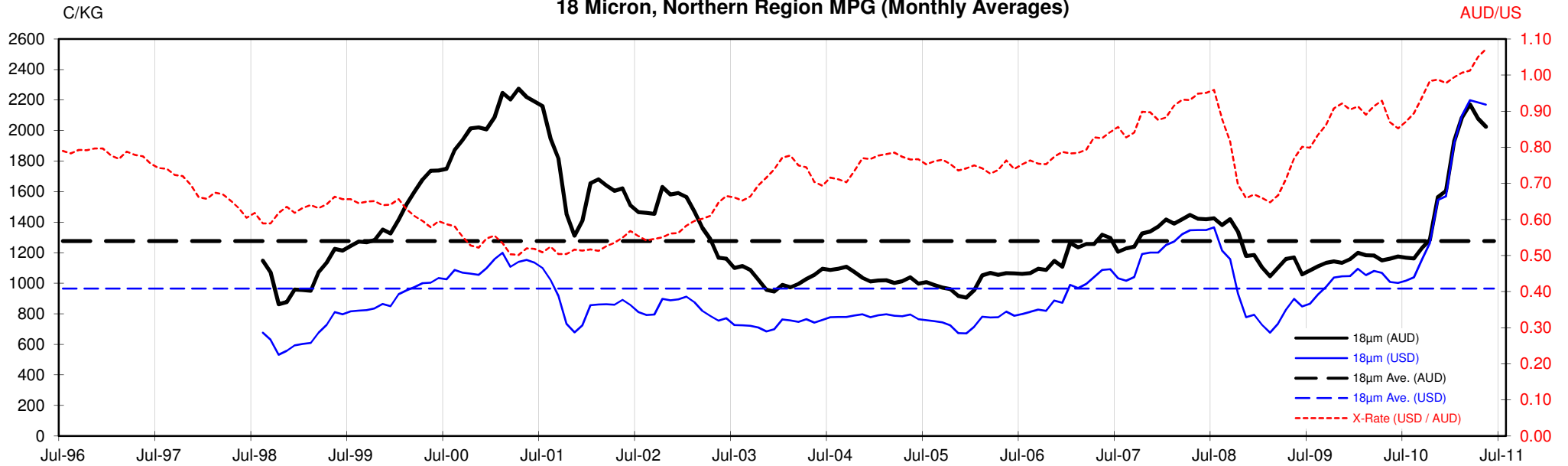
**Table 12: 23 micron SFE, compared to MPG**

Current 23 MPG	-4	0%	-4	0%	-4	0%	-4	0%	-4	0%	-4	0%	-4	0%	-4	0%	-4	0%
23 MPG, 1 Year Average	+220	22%	+220	22%	+220	22%	+220	22%	+220	22%	+220	22%	+220	22%	+220	22%	+220	22%
23 MPG, 3 Year Average	+349	40%	+349	40%	+349	40%	+349	40%	+349	40%	+349	40%	+349	40%	+349	40%	+349	40%
23 MPG, 10 Year Average	+364	43%	+364	43%	+364	43%	+364	43%	+364	43%	+364	43%	+364	43%	+364	43%	+364	43%



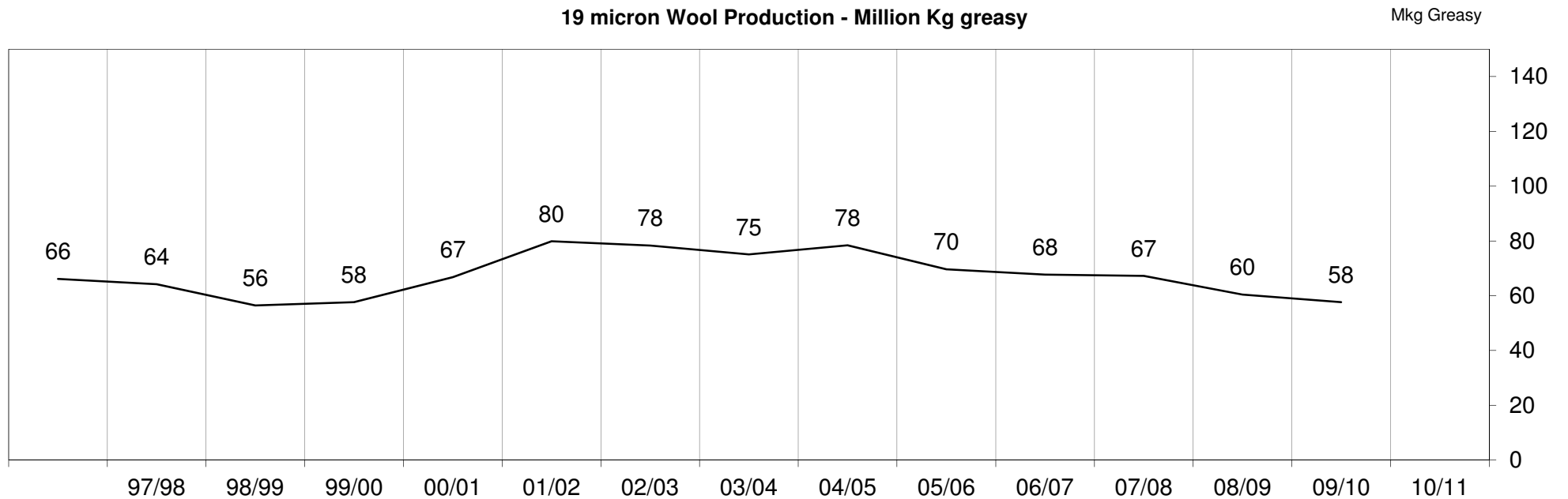
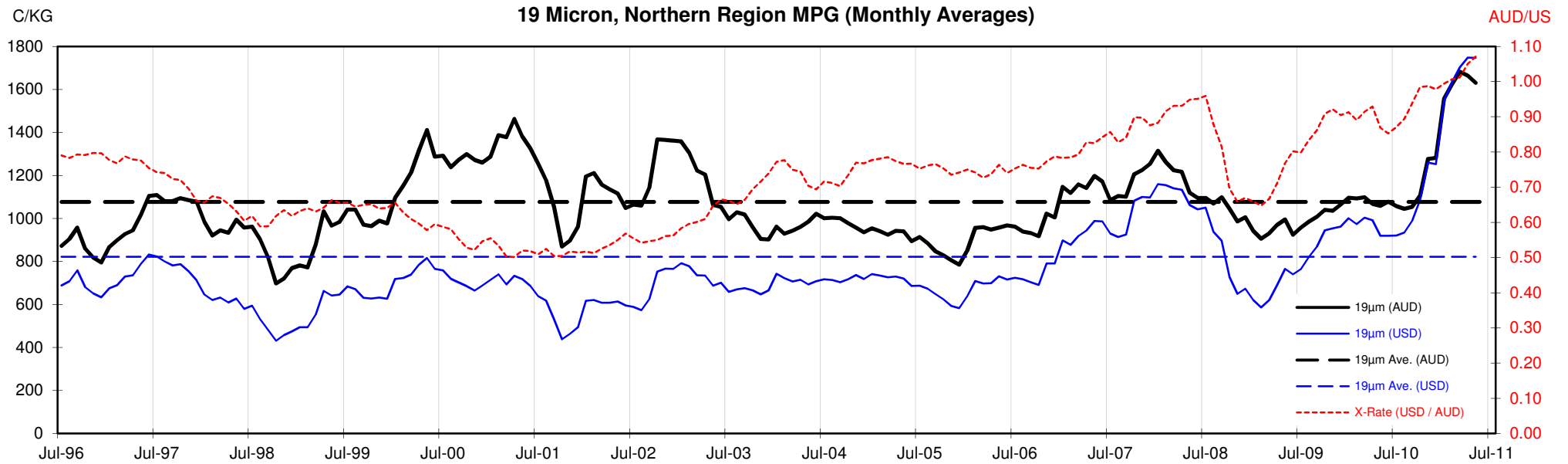


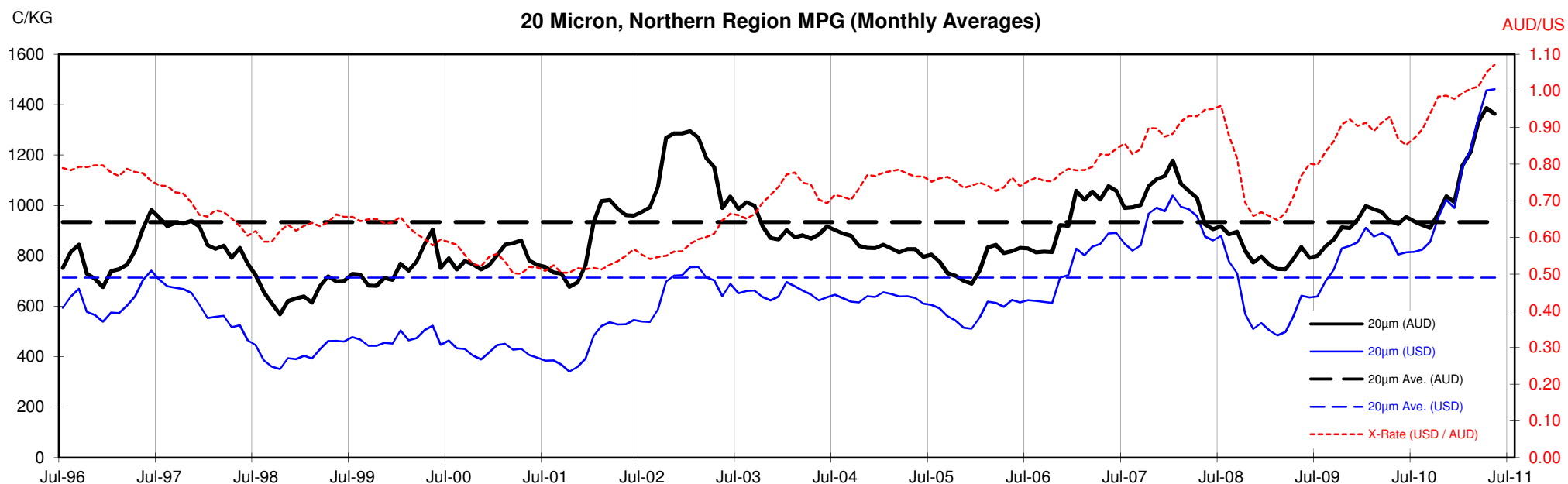
18 Micron, Northern Region MPG (Monthly Averages)

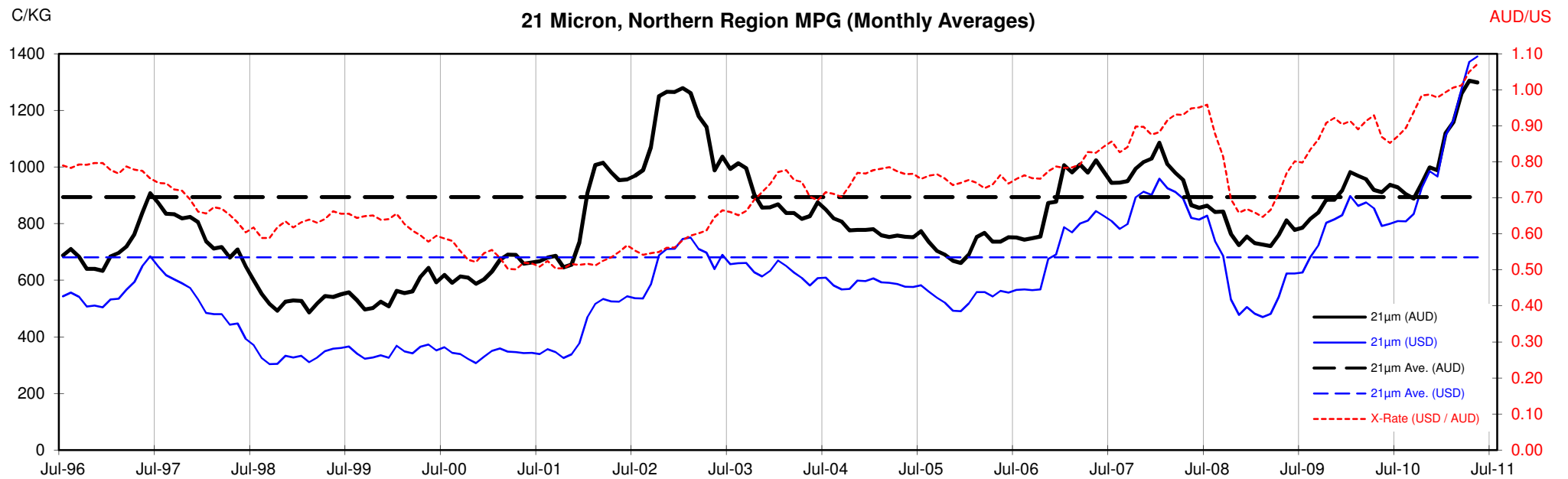


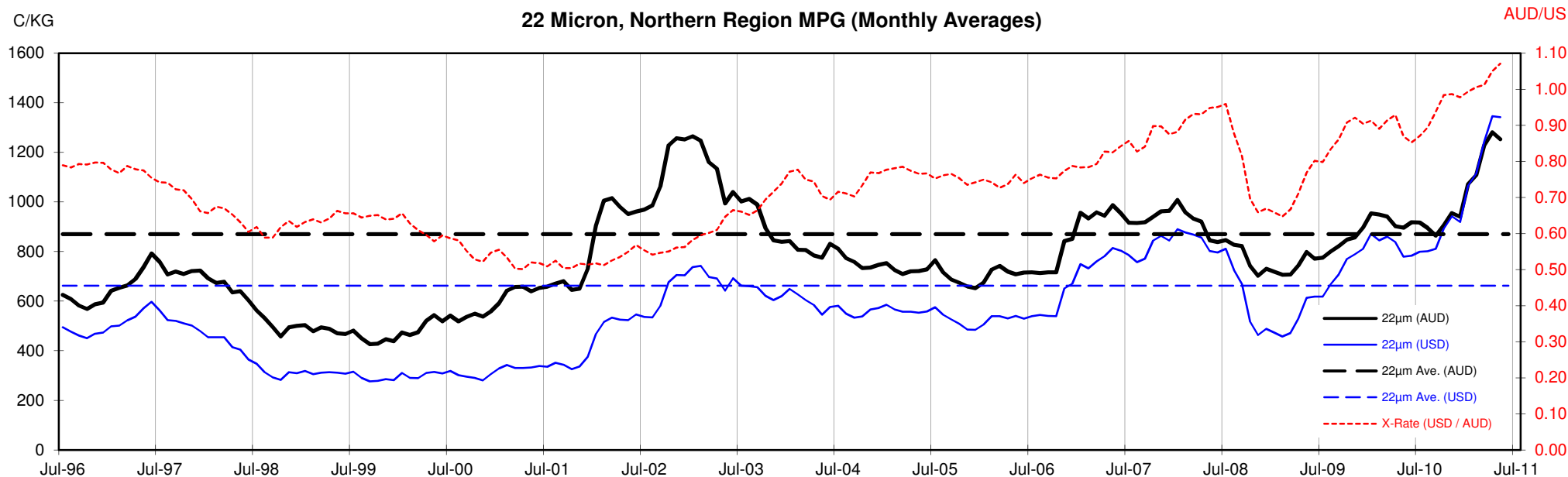
<18.5 micron Wool Production - Million Kg greasy

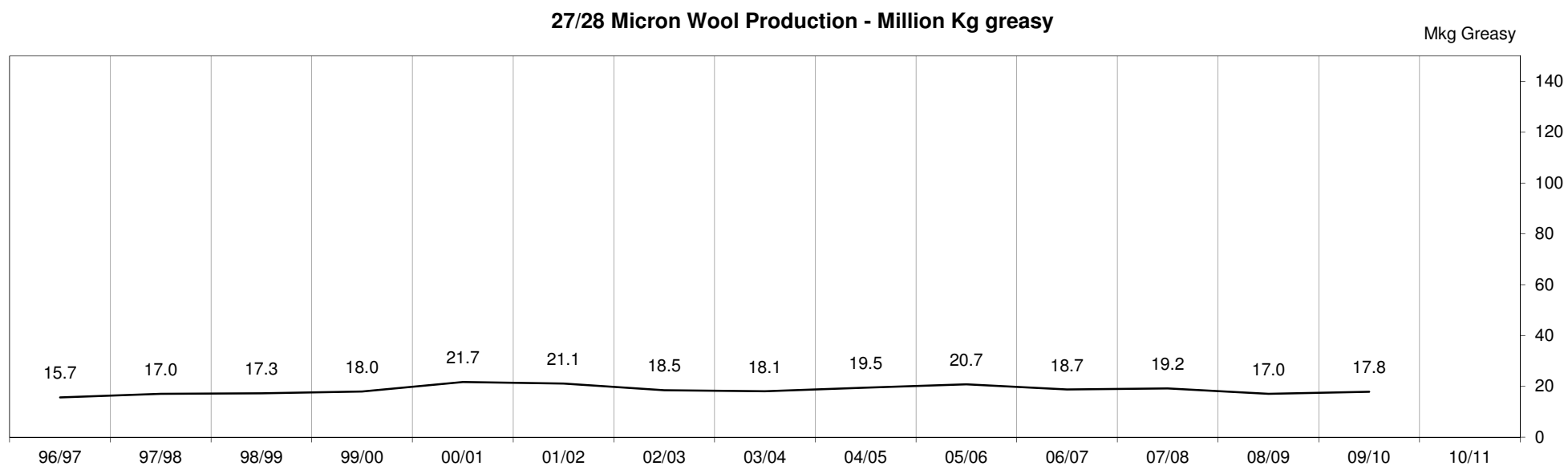
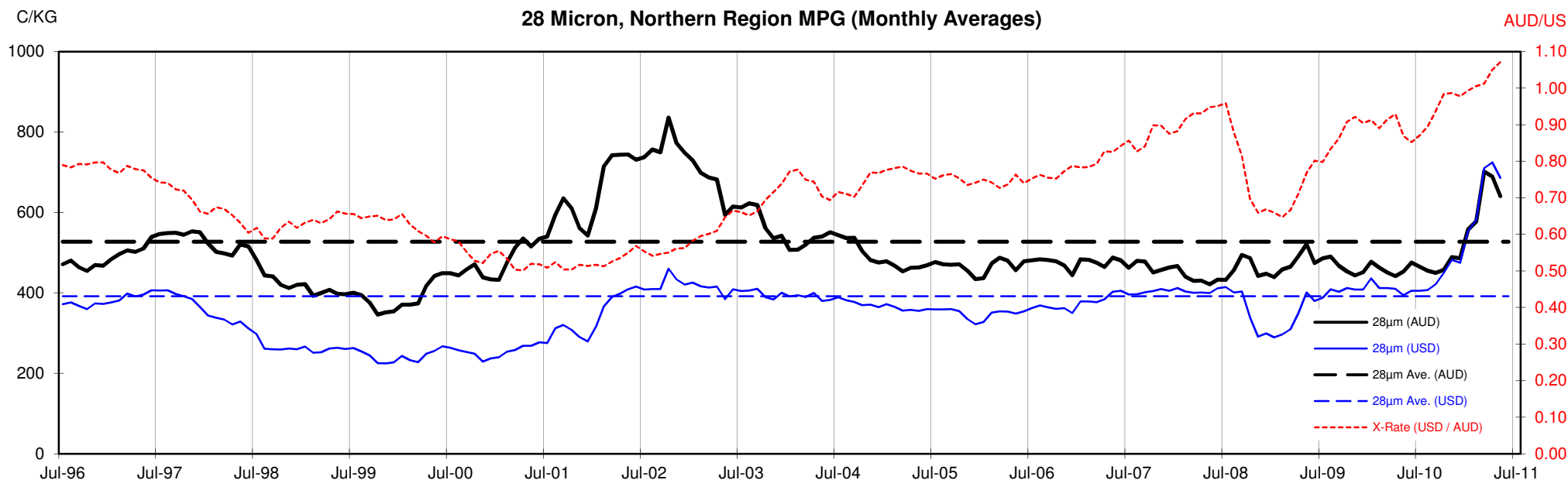












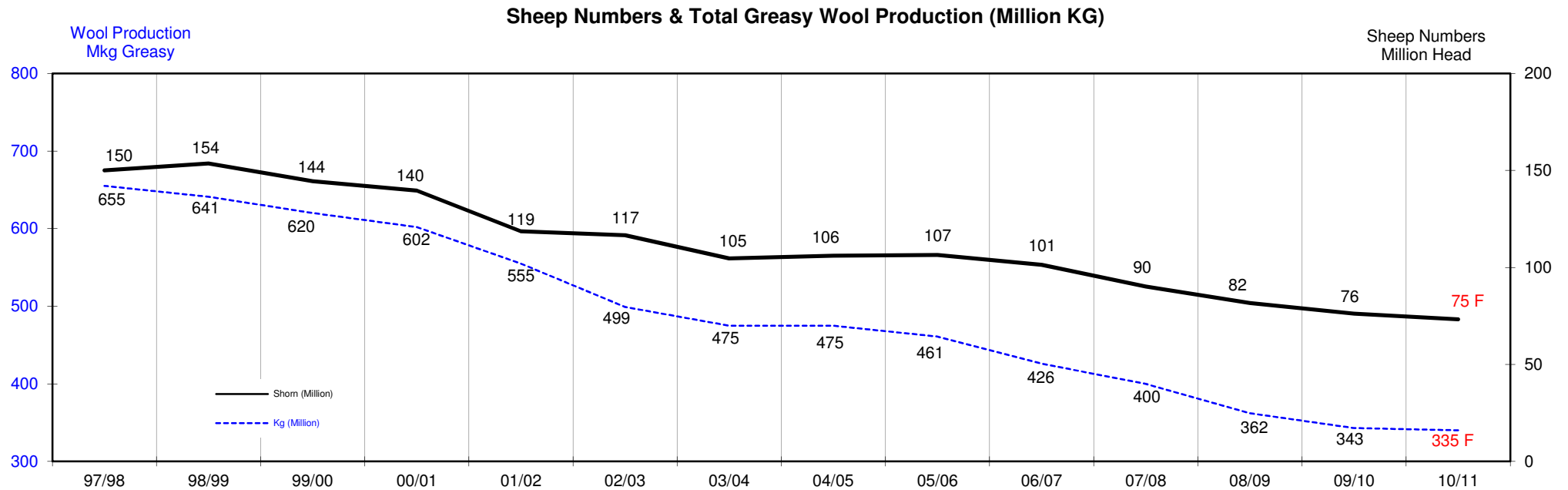
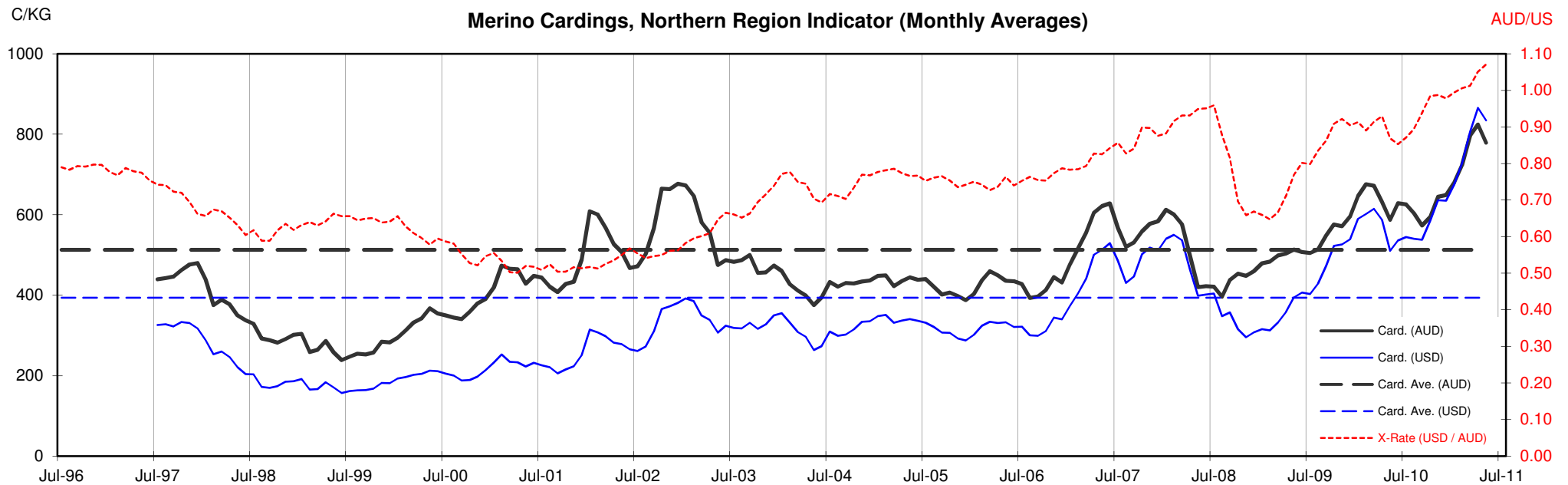




Table 13: Returns pr head for skirted fleece wool.

Skirted FLC Weight		Micron																	
9 Kg		16	16.5	17	17.5	18	18.5	19	19.5	20	21	22	23	24	25	26	28	30	32
Yield (Sch Dry)	25% Current	\$63	\$59	\$54	\$51	\$46	\$41	\$37	\$34	\$31	\$30	\$29	\$27	\$23	\$21	\$19	\$14	\$13	\$12
	10yr ave.			\$32		\$29		\$24		\$21	\$20	\$20	\$19	\$18	\$16	\$15	\$12	\$10	\$9
	30% Current	\$76	\$71	\$65	\$61	\$55	\$49	\$45	\$41	\$38	\$36	\$34	\$33	\$28	\$25	\$23	\$17	\$16	\$14
	10yr ave.			\$38		\$34		\$29		\$25	\$24	\$23	\$23	\$22	\$20	\$18	\$14	\$12	\$11
	35% Current	\$88	\$83	\$76	\$71	\$65	\$58	\$52	\$48	\$44	\$42	\$40	\$38	\$32	\$29	\$27	\$20	\$18	\$17
	10yr ave.			\$45		\$40		\$34		\$29	\$28	\$27	\$27	\$25	\$23	\$21	\$17	\$14	\$13
	40% Current	\$101	\$94	\$87	\$81	\$74	\$66	\$60	\$54	\$50	\$48	\$46	\$44	\$37	\$33	\$31	\$23	\$21	\$19
	10yr ave.			\$51		\$46		\$39		\$34	\$32	\$31	\$31	\$29	\$26	\$24	\$19	\$17	\$15
	45% Current	\$113	\$106	\$98	\$91	\$83	\$74	\$67	\$61	\$56	\$54	\$51	\$49	\$42	\$37	\$35	\$26	\$24	\$22
	10yr ave.			\$58		\$52		\$44		\$38	\$36	\$35	\$34	\$33	\$29	\$27	\$21	\$19	\$17
	50% Current	\$126	\$118	\$109	\$101	\$92	\$82	\$74	\$68	\$63	\$60	\$57	\$55	\$46	\$41	\$39	\$29	\$26	\$24
	10yr ave.			\$64		\$57		\$48		\$42	\$40	\$39	\$38	\$36	\$33	\$30	\$24	\$21	\$19
	55% Current	\$139	\$130	\$120	\$111	\$102	\$91	\$82	\$75	\$69	\$66	\$63	\$60	\$51	\$45	\$42	\$32	\$29	\$26
	10yr ave.			\$70		\$63		\$53		\$46	\$44	\$43	\$42	\$40	\$36	\$33	\$26	\$23	\$21
	60% Current	\$151	\$141	\$131	\$122	\$111	\$99	\$89	\$82	\$75	\$72	\$69	\$66	\$55	\$49	\$46	\$35	\$31	\$29
	10yr ave.			\$77		\$69		\$58		\$50	\$48	\$47	\$46	\$44	\$39	\$36	\$28	\$25	\$22
	65% Current	\$164	\$153	\$142	\$132	\$120	\$107	\$97	\$88	\$81	\$78	\$74	\$71	\$60	\$54	\$50	\$37	\$34	\$31
	10yr ave.			\$83		\$75		\$63		\$55	\$52	\$51	\$50	\$47	\$42	\$39	\$31	\$27	\$24
	70% Current	\$176	\$165	\$152	\$142	\$129	\$115	\$104	\$95	\$88	\$84	\$80	\$77	\$65	\$58	\$54	\$40	\$37	\$33
	10yr ave.			\$89		\$80		\$68		\$59	\$56	\$55	\$53	\$51	\$46	\$42	\$33	\$29	\$26
	75% Current	\$189	\$177	\$163	\$152	\$138	\$124	\$112	\$102	\$94	\$90	\$86	\$82	\$69	\$62	\$58	\$43	\$39	\$36
	10yr ave.			\$96		\$86		\$73		\$63	\$60	\$59	\$57	\$55	\$49	\$45	\$36	\$31	\$28
	80% Current	\$202	\$189	\$174	\$162	\$148	\$132	\$119	\$109	\$100	\$96	\$91	\$88	\$74	\$66	\$62	\$46	\$42	\$38
	10yr ave.			\$102		\$92		\$78		\$67	\$64	\$63	\$61	\$58	\$52	\$48	\$38	\$33	\$30
	85% Current	\$214	\$200	\$185	\$172	\$157	\$140	\$127	\$116	\$106	\$102	\$97	\$93	\$78	\$70	\$65	\$49	\$44	\$41
	10yr ave.			\$109		\$98		\$82		\$71	\$68	\$67	\$65	\$62	\$55	\$51	\$40	\$35	\$32

The above shows estimated returns per head for skirted fleece wool. These figures do not take into account the value of skirtings and oddments and do not take into account discounts that may apply for faults under individual circumstances. These figures are based on a market index of 100% and should be used as a guide only. Returns over \$30 / head for fleece wool are highlighted.

Source: Australian Wool Exchange, Australian Wool Innovation, Sydney Futures Exchange, x-rates.com

Disclaimer: While all due care has been taken in the preparation of this document, no warranty is made as to its accuracy, reliability or completeness. To the extent permitted by law neither Jemalong or their sources including subsidiaries and staff, accept liability to any person for loss or damage arising from the use of this information.



Table 14: Returns pr head for skirted fleece wool.

Skirted FLC Weight		Micron																	
8 Kg		16	16.5	17	17.5	18	18.5	19	19.5	20	21	22	23	24	25	26	28	30	32
Yield (Sch Dry)	25% Current	\$56	\$52	\$48	\$45	\$41	\$37	\$33	\$30	\$28	\$27	\$25	\$24	\$21	\$18	\$17	\$13	\$12	\$11
	10yr ave.			\$28		\$26		\$22		\$19	\$18	\$17	\$17	\$16	\$15	\$13	\$11	\$9	\$8
	30% Current	\$67	\$63	\$58	\$54	\$49	\$44	\$40	\$36	\$33	\$32	\$30	\$29	\$25	\$22	\$21	\$15	\$14	\$13
	10yr ave.			\$34		\$31		\$26		\$22	\$21	\$21	\$20	\$19	\$17	\$16	\$13	\$11	\$10
	35% Current	\$78	\$73	\$68	\$63	\$57	\$51	\$46	\$42	\$39	\$37	\$36	\$34	\$29	\$26	\$24	\$18	\$16	\$15
	10yr ave.			\$40		\$36		\$30		\$26	\$25	\$24	\$24	\$23	\$20	\$19	\$15	\$13	\$12
	40% Current	\$90	\$84	\$77	\$72	\$66	\$59	\$53	\$48	\$44	\$43	\$41	\$39	\$33	\$29	\$27	\$20	\$19	\$17
	10yr ave.			\$45		\$41		\$34		\$30	\$29	\$28	\$27	\$26	\$23	\$21	\$17	\$15	\$13
	45% Current	\$101	\$94	\$87	\$81	\$74	\$66	\$60	\$54	\$50	\$48	\$46	\$44	\$37	\$33	\$31	\$23	\$21	\$19
	10yr ave.			\$51		\$46		\$39		\$34	\$32	\$31	\$31	\$29	\$26	\$24	\$19	\$17	\$15
	50% Current	\$112	\$105	\$97	\$90	\$82	\$73	\$66	\$60	\$56	\$53	\$51	\$49	\$41	\$37	\$34	\$26	\$23	\$21
	10yr ave.			\$57		\$51		\$43		\$37	\$36	\$35	\$34	\$32	\$29	\$27	\$21	\$18	\$17
	55% Current	\$123	\$115	\$106	\$99	\$90	\$81	\$73	\$66	\$61	\$59	\$56	\$54	\$45	\$40	\$38	\$28	\$26	\$23
	10yr ave.			\$62		\$56		\$47		\$41	\$39	\$38	\$37	\$36	\$32	\$29	\$23	\$20	\$18
	60% Current	\$134	\$126	\$116	\$108	\$98	\$88	\$79	\$73	\$67	\$64	\$61	\$58	\$49	\$44	\$41	\$31	\$28	\$25
	10yr ave.			\$68		\$61		\$52		\$45	\$43	\$42	\$41	\$39	\$35	\$32	\$25	\$22	\$20
	65% Current	\$146	\$136	\$126	\$117	\$107	\$95	\$86	\$79	\$72	\$69	\$66	\$63	\$53	\$48	\$45	\$33	\$30	\$28
	10yr ave.			\$74		\$66		\$56		\$49	\$46	\$45	\$44	\$42	\$38	\$34	\$27	\$24	\$22
	70% Current	\$157	\$147	\$136	\$126	\$115	\$103	\$93	\$85	\$78	\$74	\$71	\$68	\$57	\$51	\$48	\$36	\$33	\$30
	10yr ave.			\$80		\$71		\$60		\$52	\$50	\$49	\$47	\$45	\$41	\$37	\$30	\$26	\$23
	75% Current	\$168	\$157	\$145	\$135	\$123	\$110	\$99	\$91	\$83	\$80	\$76	\$73	\$62	\$55	\$51	\$38	\$35	\$32
	10yr ave.			\$85		\$77		\$65		\$56	\$54	\$52	\$51	\$48	\$44	\$40	\$32	\$28	\$25
	80% Current	\$179	\$168	\$155	\$144	\$131	\$117	\$106	\$97	\$89	\$85	\$81	\$78	\$66	\$59	\$55	\$41	\$37	\$34
	10yr ave.			\$91		\$82		\$69		\$60	\$57	\$56	\$54	\$52	\$46	\$42	\$34	\$29	\$27
	85% Current	\$190	\$178	\$165	\$153	\$139	\$125	\$112	\$103	\$95	\$90	\$86	\$83	\$70	\$62	\$58	\$44	\$40	\$36
	10yr ave.			\$97		\$87		\$73		\$64	\$61	\$59	\$58	\$55	\$49	\$45	\$36	\$31	\$28

The above shows estimated returns per head for skirted fleece wool. These figures do not take into account the value of skirtings and oddments and do not take into account discounts that may apply for faults under individual circumstances. These figures are based on a market index of 100% and should be used as a guide only. Returns over \$30 / head for fleece wool are highlighted.

Source: Australian Wool Exchange, Australian Wool Innovation, Sydney Futures Exchange, x-rates.com

Disclaimer: While all due care has been taken in the preparation of this document, no warranty is made as to its accuracy, reliability or completeness. To the extent permitted by law neither Jemalong or their sources including subsidiaries and staff, accept liability to any person for loss or damage arising from the use of this information.



Table 15: Returns pr head for skirted fleece wool.

Skirted FLC Weight		Micron																	
7 Kg		16	16.5	17	17.5	18	18.5	19	19.5	20	21	22	23	24	25	26	28	30	32
Yield (Sch Dry)	25% Current	\$49	\$46	\$42	\$39	\$36	\$32	\$29	\$26	\$24	\$23	\$22	\$21	\$18	\$16	\$15	\$11	\$10	\$9
	10yr ave.			\$25		\$22		\$19		\$16	\$16	\$15	\$15	\$14	\$13	\$12	\$9	\$8	\$7
	30% Current	\$59	\$55	\$51	\$47	\$43	\$38	\$35	\$32	\$29	\$28	\$27	\$26	\$22	\$19	\$18	\$13	\$12	\$11
	10yr ave.			\$30		\$27		\$23		\$20	\$19	\$18	\$18	\$17	\$15	\$14	\$11	\$10	\$9
	35% Current	\$69	\$64	\$59	\$55	\$50	\$45	\$41	\$37	\$34	\$33	\$31	\$30	\$25	\$22	\$21	\$16	\$14	\$13
	10yr ave.			\$35		\$31		\$26		\$23	\$22	\$21	\$21	\$20	\$18	\$16	\$13	\$11	\$10
	40% Current	\$78	\$73	\$68	\$63	\$57	\$51	\$46	\$42	\$39	\$37	\$36	\$34	\$29	\$26	\$24	\$18	\$16	\$15
	10yr ave.			\$40		\$36		\$30		\$26	\$25	\$24	\$24	\$23	\$20	\$19	\$15	\$13	\$12
	45% Current	\$88	\$83	\$76	\$71	\$65	\$58	\$52	\$48	\$44	\$42	\$40	\$38	\$32	\$29	\$27	\$20	\$18	\$17
	10yr ave.			\$45		\$40		\$34		\$29	\$28	\$27	\$27	\$25	\$23	\$21	\$17	\$14	\$13
	50% Current	\$98	\$92	\$85	\$79	\$72	\$64	\$58	\$53	\$49	\$47	\$44	\$43	\$36	\$32	\$30	\$22	\$20	\$19
	10yr ave.			\$50		\$45		\$38		\$33	\$31	\$30	\$30	\$28	\$25	\$23	\$18	\$16	\$15
	55% Current	\$108	\$101	\$93	\$87	\$79	\$70	\$64	\$58	\$54	\$51	\$49	\$47	\$39	\$35	\$33	\$25	\$22	\$20
	10yr ave.			\$55		\$49		\$41		\$36	\$34	\$33	\$33	\$31	\$28	\$26	\$20	\$18	\$16
	60% Current	\$118	\$110	\$102	\$95	\$86	\$77	\$69	\$63	\$58	\$56	\$53	\$51	\$43	\$38	\$36	\$27	\$24	\$22
	10yr ave.			\$60		\$54		\$45		\$39	\$38	\$37	\$36	\$34	\$30	\$28	\$22	\$19	\$17
	65% Current	\$127	\$119	\$110	\$102	\$93	\$83	\$75	\$69	\$63	\$61	\$58	\$55	\$47	\$42	\$39	\$29	\$26	\$24
	10yr ave.			\$65		\$58		\$49		\$42	\$41	\$40	\$39	\$37	\$33	\$30	\$24	\$21	\$19
	70% Current	\$137	\$128	\$119	\$110	\$100	\$90	\$81	\$74	\$68	\$65	\$62	\$60	\$50	\$45	\$42	\$31	\$28	\$26
	10yr ave.			\$70		\$63		\$53		\$46	\$44	\$43	\$42	\$40	\$36	\$32	\$26	\$23	\$20
	75% Current	\$147	\$138	\$127	\$118	\$108	\$96	\$87	\$79	\$73	\$70	\$67	\$64	\$54	\$48	\$45	\$34	\$31	\$28
	10yr ave.			\$75		\$67		\$57		\$49	\$47	\$46	\$45	\$42	\$38	\$35	\$28	\$24	\$22
	80% Current	\$157	\$147	\$136	\$126	\$115	\$103	\$93	\$85	\$78	\$74	\$71	\$68	\$57	\$51	\$48	\$36	\$33	\$30
	10yr ave.			\$80		\$71		\$60		\$52	\$50	\$49	\$47	\$45	\$41	\$37	\$30	\$26	\$23
	85% Current	\$167	\$156	\$144	\$134	\$122	\$109	\$98	\$90	\$83	\$79	\$76	\$72	\$61	\$55	\$51	\$38	\$35	\$32
	10yr ave.			\$84		\$76		\$64		\$56	\$53	\$52	\$50	\$48	\$43	\$39	\$31	\$27	\$25

The above shows estimated returns per head for skirted fleece wool. These figures do not take into account the value of skirtings and oddments and do not take into account discounts that may apply for faults under individual circumstances. These figures are based on a market index of 100% and should be used as a guide only. Returns over \$30 / head for fleece wool are highlighted.

Source: Australian Wool Exchange, Australian Wool Innovation, Sydney Futures Exchange, x-rates.com

Disclaimer: While all due care has been taken in the preparation of this document, no warranty is made as to its accuracy, reliability or completeness. To the extent permitted by law neither Jemalong or their sources including subsidiaries and staff, accept liability to any person for loss or damage arising from the use of this information.



Table 16: Returns pr head for skirted fleece wool.

Skirted FLC Weight		Micron																	
6 Kg		16	16.5	17	17.5	18	18.5	19	19.5	20	21	22	23	24	25	26	28	30	32
Yield (Sch Dry)	25% Current	\$42	\$39	\$36	\$34	\$31	\$27	\$25	\$23	\$21	\$20	\$19	\$18	\$15	\$14	\$13	\$10	\$9	\$8
	10yr ave.			\$21		\$19		\$16		\$14	\$13	\$13	\$13	\$12	\$11	\$10	\$8	\$7	\$6
	30% Current	\$50	\$47	\$44	\$41	\$37	\$33	\$30	\$27	\$25	\$24	\$23	\$22	\$18	\$16	\$15	\$12	\$10	\$10
	10yr ave.			\$26		\$23		\$19		\$17	\$16	\$16	\$15	\$15	\$13	\$12	\$9	\$8	\$7
	35% Current	\$59	\$55	\$51	\$47	\$43	\$38	\$35	\$32	\$29	\$28	\$27	\$26	\$22	\$19	\$18	\$13	\$12	\$11
	10yr ave.			\$30		\$27		\$23		\$20	\$19	\$18	\$18	\$17	\$15	\$14	\$11	\$10	\$9
	40% Current	\$67	\$63	\$58	\$54	\$49	\$44	\$40	\$36	\$33	\$32	\$30	\$29	\$25	\$22	\$21	\$15	\$14	\$13
	10yr ave.			\$34		\$31		\$26		\$22	\$21	\$21	\$20	\$19	\$17	\$16	\$13	\$11	\$10
	45% Current	\$76	\$71	\$65	\$61	\$55	\$49	\$45	\$41	\$38	\$36	\$34	\$33	\$28	\$25	\$23	\$17	\$16	\$14
	10yr ave.			\$38		\$34		\$29		\$25	\$24	\$23	\$23	\$22	\$20	\$18	\$14	\$12	\$11
	50% Current	\$84	\$79	\$73	\$68	\$62	\$55	\$50	\$45	\$42	\$40	\$38	\$36	\$31	\$27	\$26	\$19	\$17	\$16
	10yr ave.			\$43		\$38		\$32		\$28	\$27	\$26	\$25	\$24	\$22	\$20	\$16	\$14	\$12
	55% Current	\$92	\$86	\$80	\$74	\$68	\$60	\$55	\$50	\$46	\$44	\$42	\$40	\$34	\$30	\$28	\$21	\$19	\$18
	10yr ave.			\$47		\$42		\$36		\$31	\$30	\$29	\$28	\$27	\$24	\$22	\$17	\$15	\$14
	60% Current	\$101	\$94	\$87	\$81	\$74	\$66	\$60	\$54	\$50	\$48	\$46	\$44	\$37	\$33	\$31	\$23	\$21	\$19
	10yr ave.			\$51		\$46		\$39		\$34	\$32	\$31	\$31	\$29	\$26	\$24	\$19	\$17	\$15
	65% Current	\$109	\$102	\$94	\$88	\$80	\$71	\$65	\$59	\$54	\$52	\$50	\$47	\$40	\$36	\$33	\$25	\$23	\$21
	10yr ave.			\$55		\$50		\$42		\$36	\$35	\$34	\$33	\$32	\$28	\$26	\$21	\$18	\$16
	70% Current	\$118	\$110	\$102	\$95	\$86	\$77	\$69	\$63	\$58	\$56	\$53	\$51	\$43	\$38	\$36	\$27	\$24	\$22
	10yr ave.			\$60		\$54		\$45		\$39	\$38	\$37	\$36	\$34	\$30	\$28	\$22	\$19	\$17
	75% Current	\$126	\$118	\$109	\$101	\$92	\$82	\$74	\$68	\$63	\$60	\$57	\$55	\$46	\$41	\$39	\$29	\$26	\$24
	10yr ave.			\$64		\$57		\$48		\$42	\$40	\$39	\$38	\$36	\$33	\$30	\$24	\$21	\$19
	80% Current	\$134	\$126	\$116	\$108	\$98	\$88	\$79	\$73	\$67	\$64	\$61	\$58	\$49	\$44	\$41	\$31	\$28	\$25
	10yr ave.			\$68		\$61		\$52		\$45	\$43	\$42	\$41	\$39	\$35	\$32	\$25	\$22	\$20
	85% Current	\$143	\$134	\$123	\$115	\$105	\$93	\$84	\$77	\$71	\$68	\$65	\$62	\$52	\$47	\$44	\$33	\$30	\$27
	10yr ave.			\$72		\$65		\$55		\$48	\$46	\$44	\$43	\$41	\$37	\$34	\$27	\$23	\$21

The above shows estimated returns per head for skirted fleece wool. These figures do not take into account the value of skirtings and oddments and do not take into account discounts that may apply for faults under individual circumstances. These figures are based on a market index of 100% and should be used as a guide only. Returns over \$30 / head for fleece wool are highlighted.

Source: Australian Wool Exchange, Australian Wool Innovation, Sydney Futures Exchange, x-rates.com

Disclaimer: While all due care has been taken in the preparation of this document, no warranty is made as to its accuracy, reliability or completeness. To the extent permitted by law neither Jemalong or their sources including subsidiaries and staff, accept liability to any person for loss or damage arising from the use of this information.



Table 17: Returns pr head for skirted fleece wool.

Skirted FLC Weight		Micron																	
5 Kg		16	16.5	17	17.5	18	18.5	19	19.5	20	21	22	23	24	25	26	28	30	32
Yield (Sch Dry)	25% Current	\$35	\$33	\$30	\$28	\$26	\$23	\$21	\$19	\$17	\$17	\$16	\$15	\$13	\$11	\$11	\$8	\$7	\$7
	10yr ave.			\$18		\$16		\$13		\$12	\$11	\$11	\$11	\$10	\$9	\$8	\$7	\$6	\$5
	30% Current	\$42	\$39	\$36	\$34	\$31	\$27	\$25	\$23	\$21	\$20	\$19	\$18	\$15	\$14	\$13	\$10	\$9	\$8
	10yr ave.			\$21		\$19		\$16		\$14	\$13	\$13	\$13	\$12	\$11	\$10	\$8	\$7	\$6
	35% Current	\$49	\$46	\$42	\$39	\$36	\$32	\$29	\$26	\$24	\$23	\$22	\$21	\$18	\$16	\$15	\$11	\$10	\$9
	10yr ave.			\$25		\$22		\$19		\$16	\$16	\$15	\$15	\$14	\$13	\$12	\$9	\$8	\$7
	40% Current	\$56	\$52	\$48	\$45	\$41	\$37	\$33	\$30	\$28	\$27	\$25	\$24	\$21	\$18	\$17	\$13	\$12	\$11
	10yr ave.			\$28		\$26		\$22		\$19	\$18	\$17	\$17	\$16	\$15	\$13	\$11	\$9	\$8
	45% Current	\$63	\$59	\$54	\$51	\$46	\$41	\$37	\$34	\$31	\$30	\$29	\$27	\$23	\$21	\$19	\$14	\$13	\$12
	10yr ave.			\$32		\$29		\$24		\$21	\$20	\$20	\$19	\$18	\$16	\$15	\$12	\$10	\$9
	50% Current	\$70	\$66	\$61	\$56	\$51	\$46	\$41	\$38	\$35	\$33	\$32	\$30	\$26	\$23	\$21	\$16	\$15	\$13
	10yr ave.			\$36		\$32		\$27		\$23	\$22	\$22	\$21	\$20	\$18	\$17	\$13	\$12	\$10
	55% Current	\$77	\$72	\$67	\$62	\$56	\$50	\$45	\$42	\$38	\$37	\$35	\$33	\$28	\$25	\$24	\$18	\$16	\$15
	10yr ave.			\$39		\$35		\$30		\$26	\$25	\$24	\$23	\$22	\$20	\$18	\$14	\$13	\$11
	60% Current	\$84	\$79	\$73	\$68	\$62	\$55	\$50	\$45	\$42	\$40	\$38	\$36	\$31	\$27	\$26	\$19	\$17	\$16
	10yr ave.			\$43		\$38		\$32		\$28	\$27	\$26	\$25	\$24	\$22	\$20	\$16	\$14	\$12
	65% Current	\$91	\$85	\$79	\$73	\$67	\$60	\$54	\$49	\$45	\$43	\$41	\$40	\$33	\$30	\$28	\$21	\$19	\$17
	10yr ave.			\$46		\$41		\$35		\$30	\$29	\$28	\$28	\$26	\$24	\$22	\$17	\$15	\$14
	70% Current	\$98	\$92	\$85	\$79	\$72	\$64	\$58	\$53	\$49	\$47	\$44	\$43	\$36	\$32	\$30	\$22	\$20	\$19
	10yr ave.			\$50		\$45		\$38		\$33	\$31	\$30	\$30	\$28	\$25	\$23	\$18	\$16	\$15
	75% Current	\$105	\$98	\$91	\$84	\$77	\$69	\$62	\$57	\$52	\$50	\$48	\$46	\$38	\$34	\$32	\$24	\$22	\$20
	10yr ave.			\$53		\$48		\$40		\$35	\$34	\$33	\$32	\$30	\$27	\$25	\$20	\$17	\$16
	80% Current	\$112	\$105	\$97	\$90	\$82	\$73	\$66	\$60	\$56	\$53	\$51	\$49	\$41	\$37	\$34	\$26	\$23	\$21
	10yr ave.			\$57		\$51		\$43		\$37	\$36	\$35	\$34	\$32	\$29	\$27	\$21	\$18	\$17
	85% Current	\$119	\$111	\$103	\$96	\$87	\$78	\$70	\$64	\$59	\$57	\$54	\$52	\$44	\$39	\$36	\$27	\$25	\$23
	10yr ave.			\$60		\$54		\$46		\$40	\$38	\$37	\$36	\$34	\$31	\$28	\$22	\$20	\$18

The above shows estimated returns per head for skirted fleece wool. These figures do not take into account the value of skirtings and oddments and do not take into account discounts that may apply for faults under individual circumstances. These figures are based on a market index of 100% and should be used as a guide only. Returns over \$30 / head for fleece wool are highlighted.

Source: Australian Wool Exchange, Australian Wool Innovation, Sydney Futures Exchange, x-rates.com

Disclaimer: While all due care has been taken in the preparation of this document, no warranty is made as to its accuracy, reliability or completeness. To the extent permitted by law neither Jemalong or their sources including subsidiaries and staff, accept liability to any person for loss or damage arising from the use of this information.



Table 18: Returns pr head for skirted fleece wool.

Skirted FLC Weight		Micron																	
4 Kg		16	16.5	17	17.5	18	18.5	19	19.5	20	21	22	23	24	25	26	28	30	32
Yield (Sch Dry)	25% Current	\$28	\$26	\$24	\$23	\$21	\$18	\$17	\$15	\$14	\$13	\$13	\$12	\$10	\$9	\$9	\$6	\$6	\$5
	10yr ave.			\$14		\$13		\$11		\$9	\$9	\$9	\$8	\$8	\$7	\$7	\$5	\$5	\$4
	30% Current	\$34	\$31	\$29	\$27	\$25	\$22	\$20	\$18	\$17	\$16	\$15	\$15	\$12	\$11	\$10	\$8	\$7	\$6
	10yr ave.			\$17		\$15		\$13		\$11	\$11	\$10	\$10	\$10	\$9	\$8	\$6	\$6	\$5
	35% Current	\$39	\$37	\$34	\$32	\$29	\$26	\$23	\$21	\$19	\$19	\$18	\$17	\$14	\$13	\$12	\$9	\$8	\$7
	10yr ave.			\$20		\$18		\$15		\$13	\$13	\$12	\$12	\$11	\$10	\$9	\$7	\$6	\$6
	40% Current	\$45	\$42	\$39	\$36	\$33	\$29	\$26	\$24	\$22	\$21	\$20	\$19	\$16	\$15	\$14	\$10	\$9	\$8
	10yr ave.			\$23		\$20		\$17		\$15	\$14	\$14	\$14	\$13	\$12	\$11	\$8	\$7	\$7
	45% Current	\$50	\$47	\$44	\$41	\$37	\$33	\$30	\$27	\$25	\$24	\$23	\$22	\$18	\$16	\$15	\$12	\$10	\$10
	10yr ave.			\$26		\$23		\$19		\$17	\$16	\$16	\$15	\$15	\$13	\$12	\$9	\$8	\$7
	50% Current	\$56	\$52	\$48	\$45	\$41	\$37	\$33	\$30	\$28	\$27	\$25	\$24	\$21	\$18	\$17	\$13	\$12	\$11
	10yr ave.			\$28		\$26		\$22		\$19	\$18	\$17	\$17	\$16	\$15	\$13	\$11	\$9	\$8
	55% Current	\$62	\$58	\$53	\$50	\$45	\$40	\$36	\$33	\$31	\$29	\$28	\$27	\$23	\$20	\$19	\$14	\$13	\$12
	10yr ave.			\$31		\$28		\$24		\$21	\$20	\$19	\$19	\$18	\$16	\$15	\$12	\$10	\$9
	60% Current	\$67	\$63	\$58	\$54	\$49	\$44	\$40	\$36	\$33	\$32	\$30	\$29	\$25	\$22	\$21	\$15	\$14	\$13
	10yr ave.			\$34		\$31		\$26		\$22	\$21	\$21	\$20	\$19	\$17	\$16	\$13	\$11	\$10
	65% Current	\$73	\$68	\$63	\$59	\$53	\$48	\$43	\$39	\$36	\$35	\$33	\$32	\$27	\$24	\$22	\$17	\$15	\$14
	10yr ave.			\$37		\$33		\$28		\$24	\$23	\$23	\$22	\$21	\$19	\$17	\$14	\$12	\$11
	70% Current	\$78	\$73	\$68	\$63	\$57	\$51	\$46	\$42	\$39	\$37	\$36	\$34	\$29	\$26	\$24	\$18	\$16	\$15
	10yr ave.			\$40		\$36		\$30		\$26	\$25	\$24	\$24	\$23	\$20	\$19	\$15	\$13	\$12
	75% Current	\$84	\$79	\$73	\$68	\$62	\$55	\$50	\$45	\$42	\$40	\$38	\$36	\$31	\$27	\$26	\$19	\$17	\$16
	10yr ave.			\$43		\$38		\$32		\$28	\$27	\$26	\$25	\$24	\$22	\$20	\$16	\$14	\$12
	80% Current	\$90	\$84	\$77	\$72	\$66	\$59	\$53	\$48	\$44	\$43	\$41	\$39	\$33	\$29	\$27	\$20	\$19	\$17
	10yr ave.			\$45		\$41		\$34		\$30	\$29	\$28	\$27	\$26	\$23	\$21	\$17	\$15	\$13
	85% Current	\$95	\$89	\$82	\$77	\$70	\$62	\$56	\$51	\$47	\$45	\$43	\$41	\$35	\$31	\$29	\$22	\$20	\$18
	10yr ave.			\$48		\$43		\$37		\$32	\$30	\$30	\$29	\$27	\$25	\$23	\$18	\$16	\$14

The above shows estimated returns per head for skirted fleece wool. These figures do not take into account the value of skirtings and oddments and do not take into account discounts that may apply for faults under individual circumstances. These figures are based on a market index of 100% and should be used as a guide only. Returns over \$30 / head for fleece wool are highlighted.

Source: Australian Wool Exchange, Australian Wool Innovation, Sydney Futures Exchange, x-rates.com

Disclaimer: While all due care has been taken in the preparation of this document, no warranty is made as to its accuracy, reliability or completeness. To the extent permitted by law neither Jemalong or their sources including subsidiaries and staff, accept liability to any person for loss or damage arising from the use of this information.



Table 19: Returns pr head for skirted fleece wool.

Skirted FLC Weight		Micron																	
3 Kg		16	16.5	17	17.5	18	18.5	19	19.5	20	21	22	23	24	25	26	28	30	32
Yield (Sch Dry)	25% Current	\$21	\$20	\$18	\$17	\$15	\$14	\$12	\$11	\$10	\$10	\$10	\$9	\$8	\$7	\$6	\$5	\$4	\$4
	10yr ave.			\$11		\$10		\$8		\$7	\$7	\$7	\$6	\$6	\$5	\$5	\$4	\$3	\$3
	30% Current	\$25	\$24	\$22	\$20	\$18	\$16	\$15	\$14	\$13	\$12	\$11	\$11	\$9	\$8	\$8	\$6	\$5	\$5
	10yr ave.			\$13		\$11		\$10		\$8	\$8	\$8	\$8	\$7	\$7	\$6	\$5	\$4	\$4
	35% Current	\$29	\$28	\$25	\$24	\$22	\$19	\$17	\$16	\$15	\$14	\$13	\$13	\$11	\$10	\$9	\$7	\$6	\$6
	10yr ave.			\$15		\$13		\$11		\$10	\$9	\$9	\$9	\$8	\$8	\$7	\$6	\$5	\$4
	40% Current	\$34	\$31	\$29	\$27	\$25	\$22	\$20	\$18	\$17	\$16	\$15	\$15	\$12	\$11	\$10	\$8	\$7	\$6
	10yr ave.			\$17		\$15		\$13		\$11	\$11	\$10	\$10	\$10	\$9	\$8	\$6	\$6	\$5
	45% Current	\$38	\$35	\$33	\$30	\$28	\$25	\$22	\$20	\$19	\$18	\$17	\$16	\$14	\$12	\$12	\$9	\$8	\$7
	10yr ave.			\$19		\$17		\$15		\$13	\$12	\$12	\$11	\$11	\$10	\$9	\$7	\$6	\$6
	50% Current	\$42	\$39	\$36	\$34	\$31	\$27	\$25	\$23	\$21	\$20	\$19	\$18	\$15	\$14	\$13	\$10	\$9	\$8
	10yr ave.			\$21		\$19		\$16		\$14	\$13	\$13	\$13	\$12	\$11	\$10	\$8	\$7	\$6
	55% Current	\$46	\$43	\$40	\$37	\$34	\$30	\$27	\$25	\$23	\$22	\$21	\$20	\$17	\$15	\$14	\$11	\$10	\$9
	10yr ave.			\$23		\$21		\$18		\$15	\$15	\$14	\$14	\$13	\$12	\$11	\$9	\$8	\$7
	60% Current	\$50	\$47	\$44	\$41	\$37	\$33	\$30	\$27	\$25	\$24	\$23	\$22	\$18	\$16	\$15	\$12	\$10	\$10
	10yr ave.			\$26		\$23		\$19		\$17	\$16	\$16	\$15	\$15	\$13	\$12	\$9	\$8	\$7
	65% Current	\$55	\$51	\$47	\$44	\$40	\$36	\$32	\$29	\$27	\$26	\$25	\$24	\$20	\$18	\$17	\$12	\$11	\$10
	10yr ave.			\$28		\$25		\$21		\$18	\$17	\$17	\$17	\$16	\$14	\$13	\$10	\$9	\$8
	70% Current	\$59	\$55	\$51	\$47	\$43	\$38	\$35	\$32	\$29	\$28	\$27	\$26	\$22	\$19	\$18	\$13	\$12	\$11
	10yr ave.			\$30		\$27		\$23		\$20	\$19	\$18	\$18	\$17	\$15	\$14	\$11	\$10	\$9
	75% Current	\$63	\$59	\$54	\$51	\$46	\$41	\$37	\$34	\$31	\$30	\$29	\$27	\$23	\$21	\$19	\$14	\$13	\$12
	10yr ave.			\$32		\$29		\$24		\$21	\$20	\$20	\$19	\$18	\$16	\$15	\$12	\$10	\$9
	80% Current	\$67	\$63	\$58	\$54	\$49	\$44	\$40	\$36	\$33	\$32	\$30	\$29	\$25	\$22	\$21	\$15	\$14	\$13
	10yr ave.			\$34		\$31		\$26		\$22	\$21	\$21	\$20	\$19	\$17	\$16	\$13	\$11	\$10
	85% Current	\$71	\$67	\$62	\$57	\$52	\$47	\$42	\$39	\$35	\$34	\$32	\$31	\$26	\$23	\$22	\$16	\$15	\$14
	10yr ave.			\$36		\$33		\$27		\$24	\$23	\$22	\$22	\$21	\$18	\$17	\$13	\$12	\$11

The above shows estimated returns per head for skirted fleece wool. These figures do not take into account the value of skirtings and oddments and do not take into account discounts that may apply for faults under individual circumstances. These figures are based on a market index of 100% and should be used as a guide only. Returns over \$30 / head for fleece wool are highlighted.

Source: Australian Wool Exchange, Australian Wool Innovation, Sydney Futures Exchange, x-rates.com

Disclaimer: While all due care has been taken in the preparation of this document, no warranty is made as to its accuracy, reliability or completeness. To the extent permitted by law neither Jemalong or their sources including subsidiaries and staff, accept liability to any person for loss or damage arising from the use of this information.



Table 20: Returns pr head for skirted fleece wool.

Skirted FLC Weight		Micron																	
2 Kg		16	16.5	17	17.5	18	18.5	19	19.5	20	21	22	23	24	25	26	28	30	32
Yield (Sch Dry)	25% Current	\$14	\$13	\$12	\$11	\$10	\$9	\$8	\$8	\$7	\$7	\$6	\$6	\$5	\$5	\$4	\$3	\$3	\$3
	10yr ave.			\$7		\$6		\$5		\$5	\$4	\$4	\$4	\$4	\$4	\$3	\$3	\$2	\$2
	30% Current	\$17	\$16	\$15	\$14	\$12	\$11	\$10	\$9	\$8	\$8	\$8	\$7	\$6	\$5	\$5	\$4	\$3	\$3
	10yr ave.			\$9		\$8		\$6		\$6	\$5	\$5	\$5	\$5	\$4	\$4	\$3	\$3	\$2
	35% Current	\$20	\$18	\$17	\$16	\$14	\$13	\$12	\$11	\$10	\$9	\$9	\$9	\$7	\$6	\$6	\$4	\$4	\$4
	10yr ave.			\$10		\$9		\$8		\$7	\$6	\$6	\$6	\$6	\$5	\$5	\$4	\$3	\$3
	40% Current	\$22	\$21	\$19	\$18	\$16	\$15	\$13	\$12	\$11	\$11	\$10	\$10	\$8	\$7	\$7	\$5	\$5	\$4
	10yr ave.			\$11		\$10		\$9		\$7	\$7	\$7	\$7	\$6	\$6	\$5	\$4	\$4	\$3
	45% Current	\$25	\$24	\$22	\$20	\$18	\$16	\$15	\$14	\$13	\$12	\$11	\$11	\$9	\$8	\$8	\$6	\$5	\$5
	10yr ave.			\$13		\$11		\$10		\$8	\$8	\$8	\$8	\$7	\$7	\$6	\$5	\$4	\$4
	50% Current	\$28	\$26	\$24	\$23	\$21	\$18	\$17	\$15	\$14	\$13	\$13	\$12	\$10	\$9	\$9	\$6	\$6	\$5
	10yr ave.			\$14		\$13		\$11		\$9	\$9	\$9	\$8	\$8	\$7	\$7	\$5	\$5	\$4
	55% Current	\$31	\$29	\$27	\$25	\$23	\$20	\$18	\$17	\$15	\$15	\$14	\$13	\$11	\$10	\$9	\$7	\$6	\$6
	10yr ave.			\$16		\$14		\$12		\$10	\$10	\$10	\$9	\$9	\$8	\$7	\$6	\$5	\$5
	60% Current	\$34	\$31	\$29	\$27	\$25	\$22	\$20	\$18	\$17	\$16	\$15	\$15	\$12	\$11	\$10	\$8	\$7	\$6
	10yr ave.			\$17		\$15		\$13		\$11	\$11	\$10	\$10	\$10	\$9	\$8	\$6	\$6	\$5
	65% Current	\$36	\$34	\$31	\$29	\$27	\$24	\$22	\$20	\$18	\$17	\$17	\$16	\$13	\$12	\$11	\$8	\$8	\$7
	10yr ave.			\$18		\$17		\$14		\$12	\$12	\$11	\$11	\$11	\$9	\$9	\$7	\$6	\$5
	70% Current	\$39	\$37	\$34	\$32	\$29	\$26	\$23	\$21	\$19	\$19	\$18	\$17	\$14	\$13	\$12	\$9	\$8	\$7
	10yr ave.			\$20		\$18		\$15		\$13	\$13	\$12	\$12	\$11	\$10	\$9	\$7	\$6	\$6
	75% Current	\$42	\$39	\$36	\$34	\$31	\$27	\$25	\$23	\$21	\$20	\$19	\$18	\$15	\$14	\$13	\$10	\$9	\$8
	10yr ave.			\$21		\$19		\$16		\$14	\$13	\$13	\$13	\$12	\$11	\$10	\$8	\$7	\$6
	80% Current	\$45	\$42	\$39	\$36	\$33	\$29	\$26	\$24	\$22	\$21	\$20	\$19	\$16	\$15	\$14	\$10	\$9	\$8
	10yr ave.			\$23		\$20		\$17		\$15	\$14	\$14	\$14	\$13	\$12	\$11	\$8	\$7	\$7
	85% Current	\$48	\$45	\$41	\$38	\$35	\$31	\$28	\$26	\$24	\$23	\$22	\$21	\$17	\$16	\$15	\$11	\$10	\$9
	10yr ave.			\$24		\$22		\$18		\$16	\$15	\$15	\$14	\$14	\$12	\$11	\$9	\$8	\$7

The above shows estimated returns per head for skirted fleece wool. These figures do not take into account the value of skirtings and oddments and do not take into account discounts that may apply for faults under individual circumstances. These figures are based on a market index of 100% and should be used as a guide only. Returns over \$30 / head for fleece wool are highlighted.

Source: Australian Wool Exchange, Australian Wool Innovation, Sydney Futures Exchange, x-rates.com

Disclaimer: While all due care has been taken in the preparation of this document, no warranty is made as to its accuracy, reliability or completeness. To the extent permitted by law neither Jemalong or their sources including subsidiaries and staff, accept liability to any person for loss or damage arising from the use of this information.