



JEMALONG WOOL BULLETIN

(week ending 13/06/2014)

Page 1/25

Table 1: Northern Region Micron Price Guides

WEEK 50			12 MONTH COMPARISONS								3 YEAR COMPARISONS						*10 YEAR COMPARISONS					
Mic.	12/06/2014	5/06/2014	12/06/2013	Now		Now		Now				Now		Percentile	* 16-17.5um since Aug 05			Now		Percentile		
Price	Current	Weekly	This time	compared	12 Month	compared	12 Month	compared			Average	compared			Low	High	<u>*10 year</u>	compared				
Guides	Price	Change	Last Year	to Last Year	Low	to Low	High	to High	Low	High	Average	to 3yr ave		Low	High	Average	to *10yr ave					
NRI	1046	-7 -0.7%	1084	-38 -4%	1006	+40 4%	1171	-125 -11%	893	1491	1136	-90 -8%	36%	657	1491	953	+93 10%	71%				
16*	1370	-30 -2.2%	1620	-250 -15%	1370	0 0%	1730	-360 -21%	1385	2800	1825	-455 -25%	0%	1390	2800	1731	-361 -21%	0%				
16.5*	1310	-10 -0.8%	1480	-170 -11%	1310	0 0%	1595	-285 -18%	1295	2680	1675	-365 -22%	2%	1280	2680	1589	-279 -18%	5%				
17*	1250	-20 -1.6%	1355	-105 -8%	1250	0 0%	1470	-220 -15%	1215	2530	1535	-285 -19%	7%	1103	2530	1443	-193 -13%	22%				
17.5*	1190	-50 -4.2%	1285	-95 -7%	1190	0 0%	1420	-230 -16%	1175	2360	1459	-269 -18%	5%	1020	2360	1378	-188 -14%	23%				
18	1177	-20 -1.7%	1239	-62 -5%	1170	+7 1%	1394	-217 -16%	1141	2193	1391	-214 -15%	13%	916	2193	1271	-94 -7%	42%				
18.5	1156	-27 -2.3%	1218	-62 -5%	1129	+27 2%	1367	-211 -15%	1096	1963	1342	-186 -14%	21%	843	1963	1205	-49 -4%	48%				
19	1148	-20 -1.7%	1207	-59 -5%	1108	+40 4%	1331	-183 -14%	1045	1776	1307	-159 -12%	29%	803	1776	1135	+13 1%	60%				
19.5	1140	-19 -1.7%	1191	-51 -4%	1092	+48 4%	1317	-177 -13%	958	1670	1273	-133 -10%	34%	749	1670	1069	+71 7%	66%				
20	1141	-6 -0.5%	1179	-38 -3%	1077	+64 6%	1287	-146 -11%	910	1588	1242	-101 -8%	40%	700	1588	1011	+130 13%	73%				
21	1139	-3 -0.3%	1176	-37 -3%	1071	+68 6%	1281	-142 -11%	886	1522	1223	-84 -7%	43%	668	1522	970	+169 17%	75%				
22	1131	0	1178	-47 -4%	1054	+77 7%	1267	-136 -11%	861	1461	1195	-64 -5%	44%	659	1461	941	+190 20%	75%				
23	1120	-4 -0.4%	1196	-76 -6%	1040	+80 8%	1248	-128 -10%	830	1347	1159	-39 -3%	49%	651	1347	912	+208 23%	78%				
24	1060	-8 -0.8%	1093	-33 -3%	983	+77 8%	1140	-80 -7%	779	1213	1064	-4 0%	61%	638	1213	849	+211 25%	83%				
25	911	-12 -1.3%	931	-20 -2%	799	+112 14%	957	-46 -5%	655	1049	913	-2 0%	67%	566	1049	739	+172 23%	85%				
26	825	+37 4.5%	850	-25 -3%	734	+91 12%	887	-62 -7%	571	939	812	+13 2%	71%	532	939	666	+159 24%	87%				
28	678	-7 -1.0%	651	+27 4%	638	+40 6%	694	-16 -2%	436	734	638	+40 6%	88%	424	734	525	+153 29%	94%				
30	636	0	614	+22 4%	591	+45 8%	655	-19 -3%	380	670	593	+43 7%	92%	343	670	470	+166 35%	96%				
32	568	0	488	+80 16%	488	+80 16%	573	-5 -1%	331	638	520	+48 9%	88%	297	638	418	+150 36%	94%				
MC	805	+2 0.2%	805	0 0%	771	+34 4%	874	-69 -8%	535	874	735	+70 10%	79%	390	874	576	+229 40%	90%				
AU BALES OFFERED		34,158	* Due to the irregular market quoting for some fine wool categories, figures shown relating to micron categories below 18 micron are an estimate based on the																			
AU BALES SOLD		29,976	AWEX Premium & Discounts Report & other available information.																			
AU PASSED-IN%		12.2%	* For any category, where there is insufficient quantity offered to enable AWEX to quote, a quote will be provided based on the best available information.																			
AUD/USD		0.93956	* 10 Year data is not available for 16 to 17.5 microns, therefore 10 year statistics for those micron categories only date back as far as August 2005.																			

Source: Australian Wool Exchange, Australian Wool Innovation, Riemann, x-rates.com, Reserve Bank of Australia, Australian Wool Testing Authority.

Disclaimer: Jemalong Wool Pty Ltd make no representations about the content and suitability of the information contained in this report. Specifically, Jemalong Wool does not warrant, guarantee or make any representations regarding the correctness, accuracy, reliability, currency, or any other aspect regarding characteristics or use of information presented in these materials. The user accepts sole responsibility and risk associated with the use and results of these materials, irrespective of the purpose of which such use or results are applied. In no event shall Jemalong Wool be liable for any loss or damages (including without limitation special, or consequential damages), where in an action of contract, negligence,



MARKET COMMENTARY

In line with the normal seasonal supply pattern, this week saw another small sale with 35,158 bales catalogued. The profile of the offering was a little unusual, with superfine types representing a significant portion of the volume offered. AWEX reported that “56% of the national offering was in the 19.5 micron and finer range, the highest proportion since AWEX records began in 1995.”

Due to the continued weakness at the finer end of the market, the Northern Region indicator shed 7 cents for the week. The finer MPG's generally closed 20-30 cents cheaper, with falls of 40 cents for the lower spec types, while some of the better (European) types found buyer support and were less affected. The broader microns, which were less in number saw little movement and closed at similar levels to the previous week. Merino skirtings moved in a similar pattern to the fleece, with the finer microns easing 20-30 cents while the broader microns were generally unchanged.

This week the 18 to 21 micron price differential was reduced to 38 cents, which is the lowest premium for 18 microns since recording commenced in 1998, and is also well below the long term average price differential of 300 cents. The 16 to 21 micron price differential is currently 231 cents when compared to its average of 735 cents

If we look at the change in the profile of the Australian clip, we can better understand why the fine wool premiums have eroded. Production of wool less than 16.5 micron has increased by 363% in the last 10 years and by a staggering 1000% in the last 20 years. At the same time production of medium and broader wools has decreased, with 21 micron production falling by 46% over the past 10 years and by 71% in the past 20 years.

Next week's offering of 24,379 bales will be the smallest offering in 12 months, however with little business being done, the market is not expected to turn around before the break.

Looking ahead, the latest IWTO wool textile business survey, points to an expected rebound in production activity in the 2nd half of 2014. Hopefully this will transpire and the wool market will be on track to follow its usual seasonal pattern, and begin to strengthen in the spring.

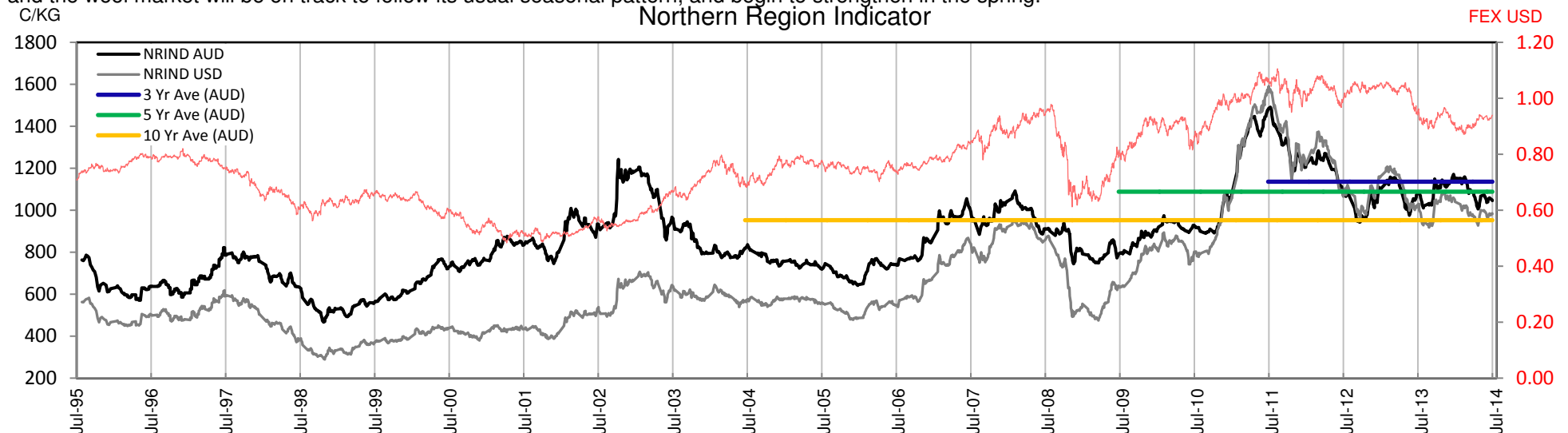




Table 2: Three Year Decile Table, since: 1/06/2011

Decile %	16	16.5	17	17.5	18	18.5	19	19.5	20	21	22	23	24	25	26	28	30	32	MC
1 10%	1495	1400	1260	1200	1170	1131	1070	993	944	927	906	884	823	695	603	455	399	353	589
2 20%	1540	1412	1290	1240	1192	1155	1107	1054	991	975	949	918	843	750	641	480	424	372	625
3 30%	1570	1440	1323	1280	1225	1183	1152	1111	1087	1084	1058	1038	966	845	748	572	529	461	651
4 40%	1620	1480	1380	1310	1273	1234	1206	1164	1141	1131	1105	1074	1001	873	764	600	551	481	692
5 50%	1680	1520	1410	1355	1313	1282	1260	1218	1192	1176	1154	1124	1035	891	790	625	578	493	725
6 60%	1800	1600	1460	1405	1364	1334	1294	1270	1230	1217	1198	1163	1060	902	808	642	588	508	742
7 70%	2000	1850	1674	1565	1498	1437	1368	1323	1266	1250	1220	1189	1081	916	822	653	612	549	758
8 80%	2150	1940	1776	1670	1590	1504	1454	1403	1348	1306	1256	1219	1099	943	849	668	628	559	809
9 90%	2700	2510	2390	2200	2013	1812	1616	1473	1390	1341	1301	1255	1132	984	876	683	634	573	819
10 100%	2800	2680	2530	2360	2193	1963	1776	1670	1588	1522	1461	1347	1213	1049	939	734	670	638	874
MPG	1370	1310	1250	1190	1177	1156	1148	1140	1141	1139	1131	1120	1060	911	825	678	636	568	805
3 Yr Percentile	0%	2%	7%	5%	13%	21%	29%	34%	40%	43%	44%	49%	61%	67%	71%	88%	92%	88%	79%

Table 3: Ten Year Decile Table, sinc 1/06/2004

Decile %	16	16.5	17	17.5	18	18.5	19	19.5	20	21	22	23	24	25	26	28	30	32	MC
1 10%	1461	1340	1200	1150	1014	984	925	850	787	736	709	691	667	596	555	445	377	325	413
2 20%	1520	1390	1250	1180	1075	1016	949	879	823	759	729	705	678	627	571	457	398	348	435
3 30%	1550	1410	1270	1210	1124	1057	999	923	849	800	774	752	711	644	587	467	410	360	451
4 40%	1590	1440	1305	1260	1170	1121	1053	971	912	875	847	825	780	660	601	473	425	382	508
5 50%	1615	1470	1348	1305	1210	1160	1097	1026	977	942	914	886	821	695	618	482	432	395	569
6 60%	1650	1500	1400	1350	1265	1217	1143	1095	1053	992	951	919	844	717	639	497	441	405	604
7 70%	1740	1590	1440	1404	1341	1282	1217	1161	1120	1089	1063	1042	973	846	748	578	530	464	653
8 80%	1850	1724	1550	1490	1407	1332	1283	1245	1211	1195	1173	1137	1043	894	801	631	581	496	730
9 90%	2130	1940	1750	1670	1557	1488	1435	1391	1329	1287	1247	1208	1095	930	835	662	624	554	799
10 100%	2800	2680	2530	2360	2193	1963	1776	1670	1588	1522	1461	1347	1213	1049	939	734	670	638	874
MPG	1370	1310	1250	1190	1177	1156	1148	1140	1141	1139	1131	1120	1060	911	825	678	636	568	805
10 Yr Percentile	0%	5%	22%	23%	42%	48%	60%	66%	73%	75%	75%	78%	83%	85%	87%	94%	96%	94%	90%

Decile Tables are a useful tool for working out price targets.

Percentiles are a more accurate guide to where the market is currently trading (The higher the percentile, the stronger the market).

Definitions:

* A Percentile, is a value on a scale of one hundred that indicates the percent of a distribution that is equal to or below it. In general a percentile between 25% and 75% is considered normal, a percentile below 25% is considered below normal and a percentile above 75% is considered above normal.

Three and ten year percentiles shown on the bottom line of table 2 & 3 (above) and in table 1 (on page 1), detail the amount of time during the past 3 & 10 years where the market has traded either at or below its current price.

* Deciles are a method of sorting ranked data into 10 equal groups. The data may be ranked from largest to smallest or vice versa.

The above Decile tables sort price Percentiles into 10 equal groups (in ascending order), with table 2 ranking the previous 3 years prices, while table 3 ranks prices over the previous 10 year

Example: In Table 2, a Decile Rank of 6 for 19 microns, shows 19 microns have traded at or below 1294 for 60% of the time, over the past three years.

In Table 3, a Decile Rank of 6 for 19 microns, shows 19 microns have traded at or below 1143 for 60% of the time, over the past ten years.



Table 4: Riemann Forwards, latest trades as at: Last Date

Any highlighted in yellow are recent trades, trading since: Friday, 6 June 2014

CONTRACT MICRON		18.5um	19um	19.5um	21um	22um	23um	28um	30um
CONTRACT MONTH	Jun-2014				24/04/14 1175	9/10/13 1200			
	Jul-2014				4/06/14 1160				
	Aug-2014				28/05/14 1170				
	Sep-2014				28/05/14 1140				
	Oct-2014				30/04/14 1150	5/02/14 1170			
	Nov-2014				26/05/14 1170				
	Dec-2014				4/03/14 1185				
	Jan-2015				3/02/14 1190				
	Feb-2015								
	Mar-2015								
	Apr-2015								
	May-2015								
	Jun-2015								
	Jul-2015								
	Aug-2015								
	Sep-2015								
	Oct-2015				12/06/13 1080				
	Nov-2015								
	Dec-2015								
	Jan-2016								
	Feb-2016								
	Mar-2016								
	Apr-2016								

Explanatory Notes: Prices quoted reflect the most recent trades, at time of print.

Disclaimer: While all due care has been taken in the preparation of this document, no warranty is made as to its accuracy, reliability or completeness. To the extent permitted by law neither Jemalong or their sources including subsidiaries and staff, accept liability to any person for loss or damage arising from the use of this information.



JEMALONG WOOL BULLETIN

(week ending 13/06/2014)

Table 5: National Market Share

	Rank	Current Selling Week Week 50			Previous Selling Week Week 49			Last Season 2012-13			2 Years Ago 2011-12			3 Years Ago 2010-11			5 Years Ago 2008-09			10 Years Ago 2003-04		
		Buyer	Bales	MS%	Buyer	Bales	MS%	Buyer	Bales	MS%	Buyer	Bales	MS%	Buyer	Bales	MS%	Buyer	Bales	MS%	Buyer	Bales	MS%
Top 10, Auction Buyers	1	FOX	3,170	11%	FOX	3,243	13%	TEC	179,176	10%	VTR	229,207	14%	VTR	209,391	12%	TEC	207,010	12%	ITOS	235,726	11%
	2	LEMM	2,798	9%	TEC	2,404	10%	VTR	163,810	9%	TEC	153,616	9%	TEC	179,439	10%	FOX	127,295	7%	BWE	158,769	7%
	3	TEC	2,651	9%	LEMM	2,080	9%	FOX	143,826	8%	FOX	136,698	8%	FOX	142,143	8%	ABB	120,742	7%	PLEX	151,168	7%
	4	TIAM	2,084	7%	AMEM	1,974	8%	LEMM	126,564	7%	QCTB	112,745	7%	QCTB	120,699	7%	WIEM	111,432	6%	LEMM	127,649	6%
	5	AMEM	1,914	6%	MODM	1,765	7%	QCTB	98,756	6%	WIEM	100,817	6%	WIEM	99,585	6%	LEMM	103,040	6%	RWRS	126,145	6%
	6	GSAS	1,710	6%	CTXS	1,588	7%	PMWF	96,935	6%	LEMM	88,348	5%	LEMM	85,346	5%	KATS	99,613	6%	MODM	121,461	6%
	7	MCHA	1,675	6%	TIAM	1,324	5%	MODM	84,363	5%	MODM	74,646	4%	MODM	81,981	5%	PMWF	80,995	5%	ADSS	120,262	6%
	8	DAWS	1,571	5%	QCTB	1,079	4%	CTXS	82,166	5%	CTXS	69,266	4%	PMWF	77,588	4%	RWRS	63,736	4%	FOX	84,578	4%
	9	CTXS	1,506	5%	GSAS	1,034	4%	AMEM	77,849	4%	PMWF	64,659	4%	CTXS	75,127	4%	BWE	61,930	4%	GSAS	83,137	4%
	10	PMWF	1,319	4%	MCHA	1,020	4%	KATS	65,782	4%	GSAS	58,233	3%	KATS	67,867	4%	PLEX	60,943	3%	TEC	80,168	4%
MFLC TOP 5	1	FOX	2,163	12%	FOX	2,419	17%	VTR	118,432	12%	VTR	171,425	19%	VTR	169,191	17%	ABB	103,759	10%	ITOS	195,318	15%
	2	LEMM	2,004	11%	LEMM	1,464	10%	LEMM	110,118	11%	QCTB	86,901	10%	QCTB	98,673	10%	TEC	87,221	9%	ADSS	107,535	8%
	3	GSAS	1,542	9%	TEC	1,457	10%	PMWF	93,136	10%	TEC	76,083	8%	TEC	79,395	8%	LEMM	84,758	8%	BWE	95,591	7%
	4	DAWS	1,355	8%	AMEM	1,209	8%	TEC	89,286	9%	LEMM	68,961	8%	PMWF	71,718	7%	PMWF	76,778	8%	LEMM	90,541	7%
	5	PMWF	1,276	7%	CTXS	1,123	8%	QCTB	71,715	7%	PMWF	60,070	7%	LEMM	70,280	7%	KATS	76,726	8%	RWRS	82,647	6%
MSKT TOP 5	1	TIAM	1,425	30%	TIAM	843	22%	MODM	37,284	14%	WIEM	43,156	16%	MODM	39,745	14%	PLEX	37,871	13%	PLEX	63,186	17%
	2	TEC	678	14%	MODM	452	12%	TEC	34,301	13%	MODM	30,285	11%	WIEM	36,566	13%	WIEM	33,859	12%	MODM	47,008	13%
	3	AMEM	456	10%	AMEM	448	12%	WIEM	27,916	10%	TEC	25,264	9%	TEC	28,858	10%	MODM	28,540	10%	GSAS	36,194	10%
	4	LEMM	260	5%	TEC	405	11%	TIAM	24,196	9%	PLEX	21,990	8%	PLEX	23,282	8%	FOX	18,936	7%	BWE	32,347	9%
	5	MCHA	228	5%	LEMM	215	6%	AMEM	23,012	8%	GSAS	16,284	6%	FOX	16,098	6%	GSAS	18,523	6%	LEMM	28,595	8%
XBFS TOP 5	1	TEC	624	15%	CTXS	465	13%	FOX	39,356	14%	FOX	41,689	15%	FOX	48,708	19%	TEC	87,455	38%	BWE	26,673	14%
	2	KATS	516	12%	MODM	385	11%	TEC	30,323	11%	VTR	31,427	12%	TEC	43,133	17%	FOX	42,053	18%	FOX	25,096	13%
	3	FOX	463	11%	FOX	384	11%	VTR	27,832	10%	TEC	31,094	11%	VTR	20,904	8%	KATS	13,002	6%	TEC	20,352	11%
	4	MCHA	426	10%	TEC	318	9%	KATS	26,057	9%	QCTB	22,610	8%	MODM	20,556	8%	WCWF	11,989	5%	ITOS	15,082	8%
	5	CTXS	412	10%	MCHA	316	9%	CTXS	25,631	9%	CTXS	19,985	7%	CTXS	16,667	7%	MOPS	11,051	5%	MODM	12,658	7%
ODDS TOP 5	1	MCHA	989	29%	MCHA	548	21%	MCHA	35,985	16%	FOX	34,603	15%	MCHA	30,570	13%	MCHA	36,454	17%	MCHA	50,531	20%
	2	VWPM	454	13%	FOX	270	10%	FOX	28,185	12%	MCHA	30,689	13%	TEC	28,053	12%	FOX	24,114	11%	FOX	37,097	15%
	3	FOX	334	10%	VWPM	253	10%	TEC	25,266	11%	VWPM	22,219	10%	FOX	27,422	12%	MAFM	18,568	8%	MAFM	20,235	8%
	4	LEMM	322	9%	RWRS	228	9%	VWPM	20,692	9%	VTR	21,495	9%	VWPM	22,267	10%	TEC	17,571	8%	RWRS	11,904	5%
	5	RWRS	244	7%	TEC	224	9%	VTR	13,022	6%	TEC	21,175	9%	RWRS	15,878	7%	RWRS	16,248	7%	ITOS	9,637	4%
Totals		<u>Offered</u>	<u>Sold</u>		<u>Offered</u>	<u>Sold</u>		<u>Auction Bales Sold</u>			<u>Auction Bales Sold</u>			<u>Auction Bales Sold</u>			<u>Auction Bales Sold</u>			<u>Auction Bales Sold</u>		
		34,158	29,976		26,477	24,316		1,742,881			1,683,024			1,786,249			1,755,070			2,130,684		
		<u>Passed-In</u>	<u>PI%</u>		<u>Passed-In</u>	<u>PI%</u>		<u>Export Value</u>			<u>Export Value</u>			<u>Export Value</u>			<u>Export Value</u>			<u>Export Value</u>		
		4,182	12.2%		2,161	8.2%		\$2,272,770,228			\$2,691,010,531			\$2,619,977,188			\$2,008,440,340			\$2,487,625,451		



JEMALONG WOOL BULLETIN

(week ending 13/06/2014)

Page 6/25

Table 6: NSW Production Statistics

2012-13		Auction		+/-		+/-	Yield %	+/-	Length	+/-	Strength	+/-	Ave Price
Statistical Devision, Area Code & Towns		Bales (FH)	Micron	YoY	Vmb %	YoY	Sch Dry	YoY	mm	YoY	Nkt	YoY	c/kg
Northern	N02 Tenterfield, Glen Innes	9,672	19.5	-0.6	1.8	-0.7	72.7	1.6	81	-0.7	41	0.4	829
	N03 Guyra	36,328	18.9	-0.1	1.8	-0.5	73.7	1.5	81	-0.9	42	1.0	948
	N04 Inverell	4,372	19.1	0.2	3.4	-1.3	69.7	0.7	83	-1.6	38	-0.6	759
	N05 Armidale	1,984	19.9	0.1	3.9	-0.7	69.4	1.5	82	-1.2	38	-0.5	710
	N06 Tamworth, Gunnedah, Quirindi	6,492	20.5	0.1	4.0	-0.7	68.5	1.1	84	-0.2	38	-0.7	708
	N07 Moree	6,363	20.0	-0.1	4.2	-1.2	64.5	0.7	87	-1.9	36	0.8	619
	N08 Narrabri	3,263	19.9	0.1	3.6	-1.3	67.3	2.0	88	-0.2	39	1.9	621
North Western & Far West	N09 Cobar, Bourke, Wanaaring	12,329	20.5	-0.2	4.3	-0.8	60.7	0.0	88	0.2	37	0.2	591
	N12 Walgett	8,512	19.9	-0.3	4.3	-1.8	64.1	1.8	86	0.1	37	1.8	616
	N13 Nyngan	18,905	20.5	-0.1	4.9	-2.0	63.7	2.3	88	0.0	37	1.1	597
	N14 Dubbo, Narromine	21,765	21.6	0.0	4.3	-1.0	63.1	1.1	85	0.0	36	0.4	539
	N16 Dunedoo	6,893	20.0	0.0	3.4	-0.2	67.8	-0.6	88	-0.4	34	0.2	678
	N17 Mudgee, Wellington, Gulgong	20,969	19.7	-0.1	3.4	-0.3	68.3	0.4	83	0.2	38	0.7	728
	N33 Coonabarabran	3,677	20.9	0.1	4.6	0.1	67.0	0.4	85	1.7	34	-1.6	611
	N34 Coonamble	8,142	20.4	-0.1	4.4	-2.4	63.4	1.5	87	2.7	35	0.9	605
	N36 Gilgandra, Gulargambone	6,030	21.5	-0.1	3.9	-0.7	65.0	0.3	86	-0.3	36	0.3	580
	N40 Brewarrina	7,487	20.2	0.0	2.3	-0.9	66.6	1.8	86	-1.7	39	4.0	688
	N10 Wilcannia, Broken Hill	25,295	21.3	-0.5	2.8	-0.9	61.1	-0.2	89	-1.4	37	1.1	595
Central West	N15 Forbes, Parkes, Cowra	47,591	21.5	0.0	3.3	-0.8	64.1	0.6	86	-0.2	36	0.1	570
	N18 Lithgow, Oberon	3,402	20.7	-0.2	3.3	-0.3	68.0	0.0	83	1.1	38	0.3	672
	N19 Orange, Bathurst	50,922	22.1	-0.2	2.3	-0.5	69.4	1.0	85	0.3	38	1.4	646
	N25 West Wyalong	25,261	21.0	-0.3	2.9	-0.6	63.4	-0.6	89	-0.5	36	0.8	592
	N35 Condobolin, Lake Cargelligo	10,701	21.0	-0.3	5.3	-1.1	60.1	-9.8	86	0.2	36	-0.8	535
Murrumbidgee	N26 Cootamundra, Temora	26,106	22.1	-0.1	2.1	-0.5	64.1	-0.3	86	-0.8	35	0.6	568
	N27 Adelong, Gundagai	10,213	21.6	-0.5	2.7	-1.0	68.1	0.4	88	0.6	36	0.2	616
	N29 Wagga, Narrandera	32,841	22.7	-0.1	1.6	-0.6	66.2	-0.9	90	0.3	36	1.3	572
	N37 Griffith, Hillston	12,036	22.0	-0.2	4.1	-0.9	61.1	-1.3	84	-2.2	40	1.3	545
	N39 Hay, Coleambally	17,044	21.3	-0.1	3.4	-1.9	64.0	0.1	90	2.4	39	-0.9	614
Murray	N11 Wentworth, Balranald	17,328	21.7	-0.3	4.8	-2.0	60.9	0.9	92	1.5	38	0.3	555
	N28 Albury, Corowa, Holbrook	28,883	21.9	-0.3	1.5	-0.3	67.0	-0.6	89	-0.1	37	1.8	613
	N31 Deniliquin	23,340	21.3	-0.1	2.5	-1.1	65.7	-0.1	88	0.4	39	1.2	622
	N38 Finley, Berrigan, Jerilderie	9,124	21.0	-0.3	2.5	-0.9	65.2	-0.3	88	-1.5	39	1.1	630
South Eastern	N23 Goulburn, Young, Yass	94,784	20.1	-0.1	1.7	-0.7	69.5	0.7	86	0.3	38	1.7	714
	N24 Monaro (Cooma, Bombala)	37,228	20.3	-0.2	1.9	-0.5	69.6	1.5	90	0.5	37	1.5	666
	N32 A.C.T.	183	20.4	0.7	3.1	-1.6	61.7	-2.5	89	9.0	31	-3.0	594
	N43 South Coast (Bega)	409	19.2	0.3	0.8	-1.8	74.3	3.9	84	3.3	42	2.9	862
NSW	AWEX Sale Statistics 12-13	685,519	21.0	-0.1	2.8	-0.8	66.4	0.6	87	0.1	38	1.0	658

AWTA Mthly Key Test Data		Bales Tested	Micron	+/- MoM	VMB	+/- MoM	Yld	+/- MoM	Lth	+/- MoM	Nkt	+/- MoM	POBM +/-
NSW	May-2014	52,558	20.1	-0.4	5.2	-0.3	64.6	1.5	85	0.2	36	-0.2	50 -0.1
Australia	May-2014	150,177	20.7	-0.2	2.5	0.0	63.1	0.7	84	-0.6	35	0.5	45 1.3

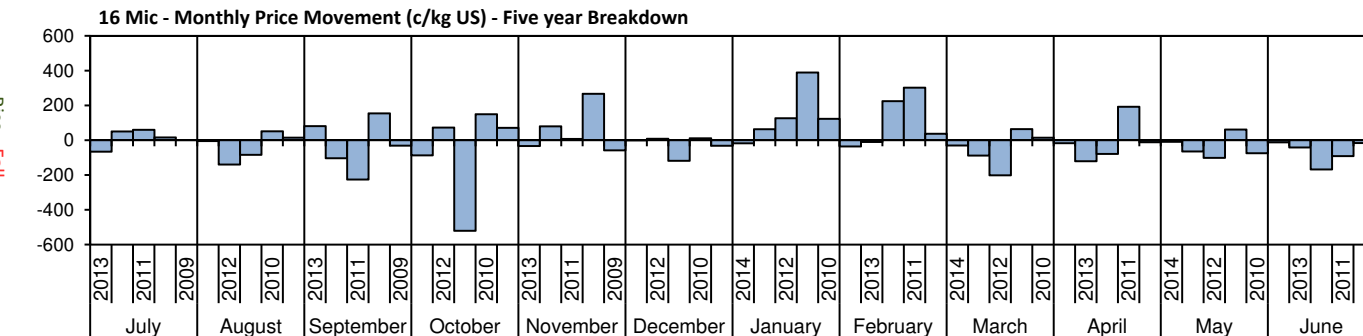
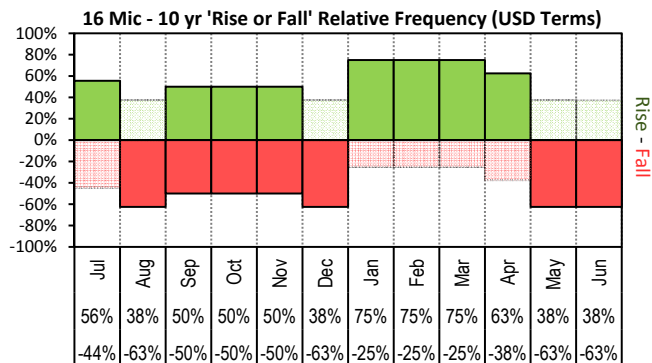
MAX MIN Max Gain Max Reduction



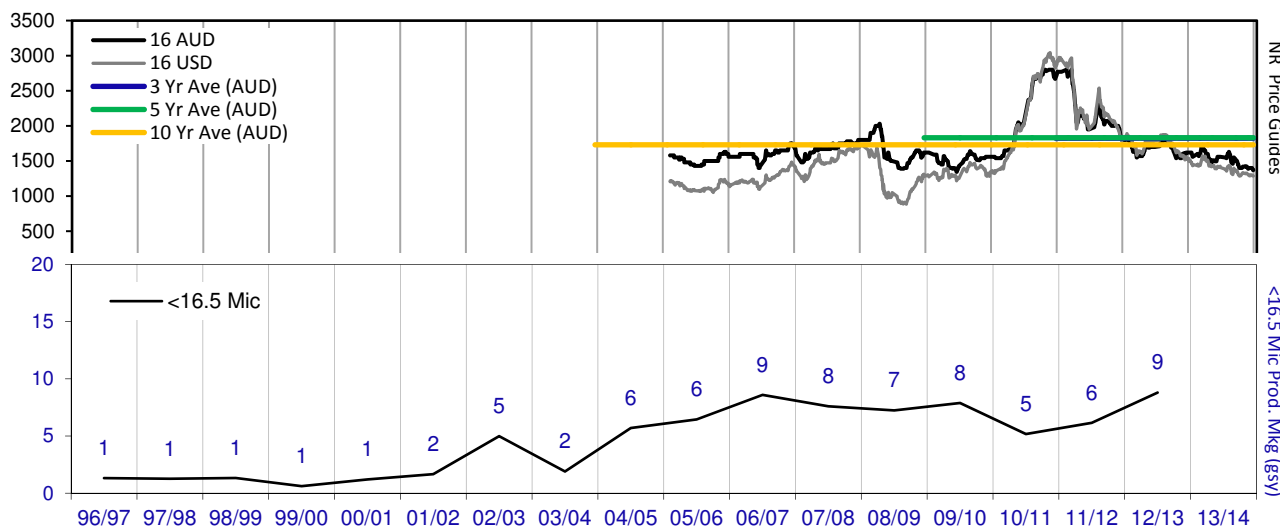
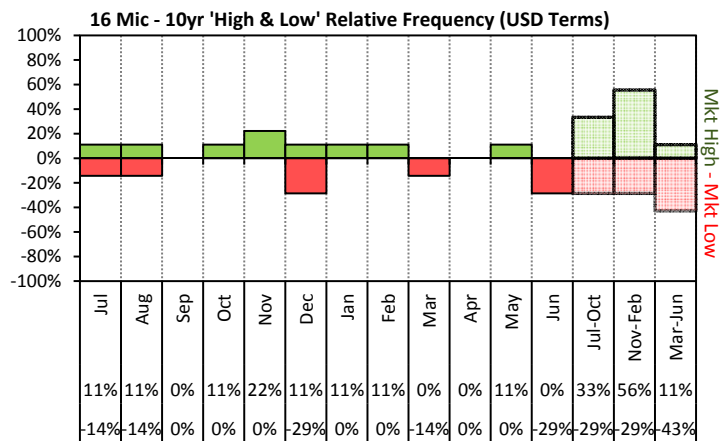
JEMALONG WOOL BULLETIN

(week ending 13/06/2014)

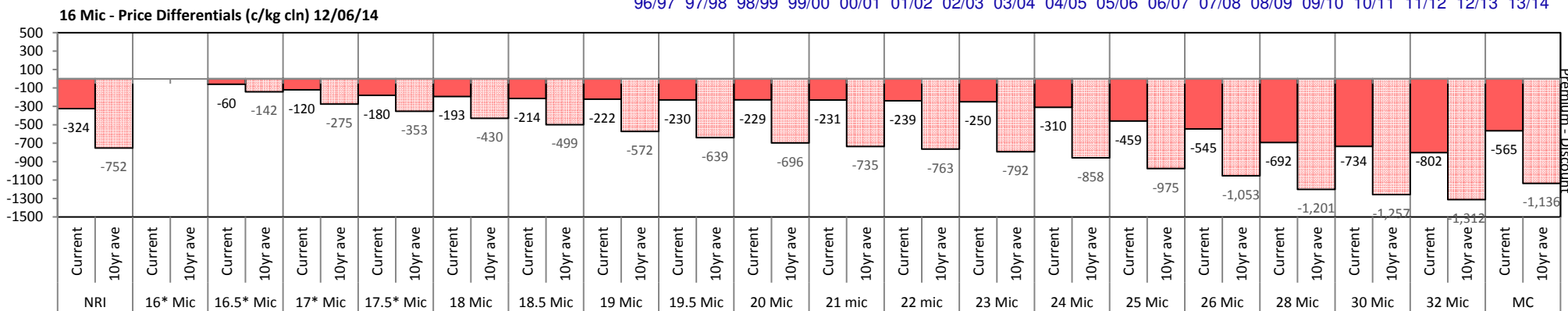
Page 7/25



The above 'Rise or Fall' graph, shows how often the market has risen or fallen in a given month over the past 10 years, it does not show the extent of the movement only the frequency of direction. The 'Monthly Price Movement' graph shows the extent of movement for each month, for the past 5 years.



The above graph, shows how often the '12 month high & low' have been achieved for a given month over the past 10 years. It is not a measure of probability.

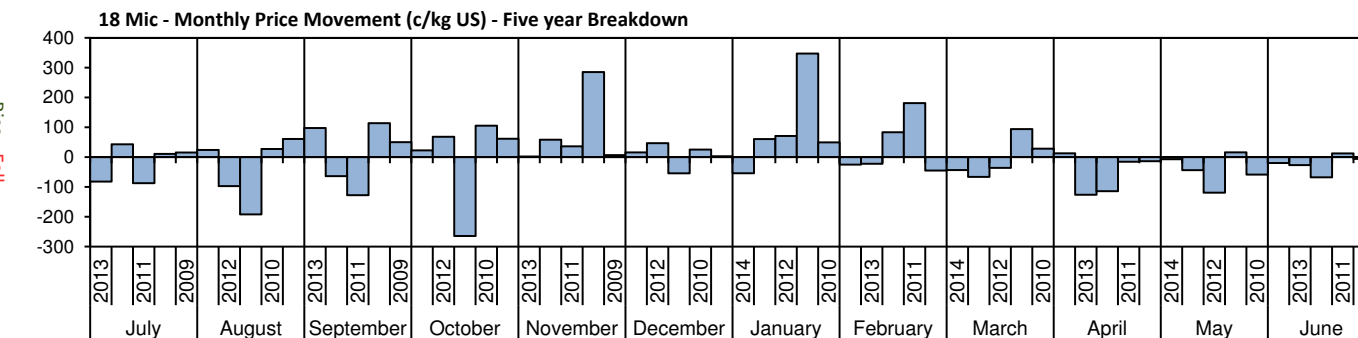
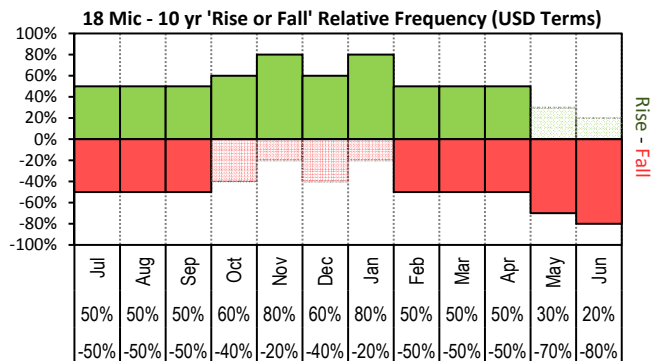




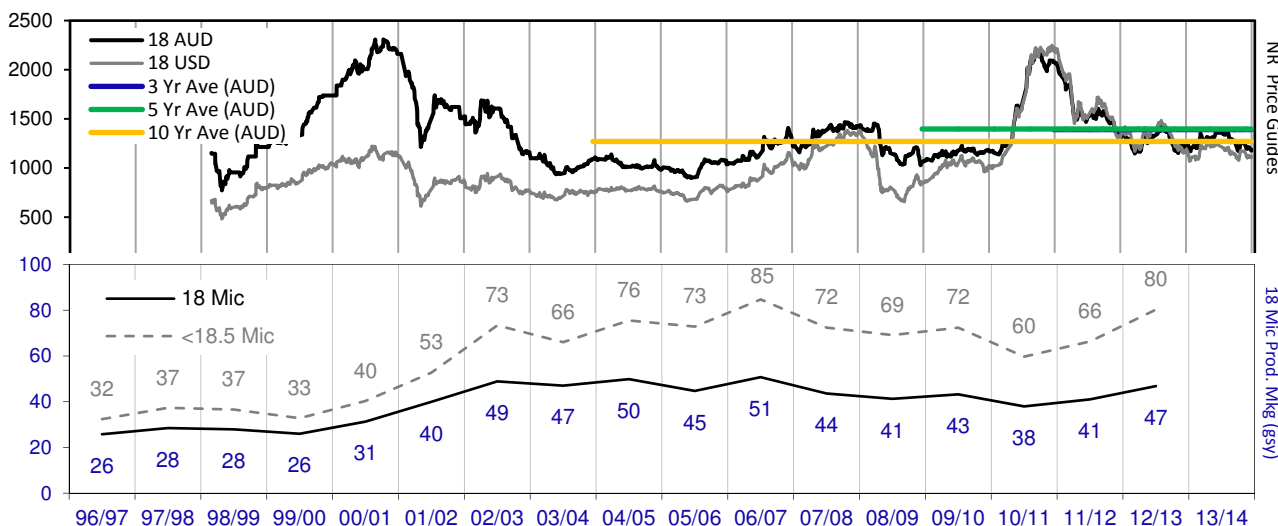
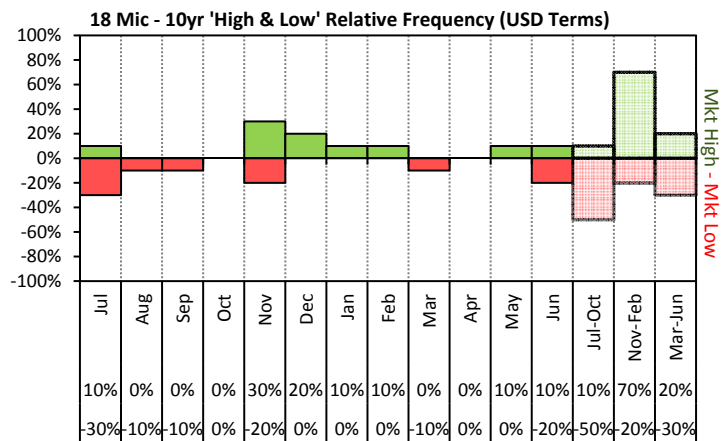
JEMALONG WOOL BULLETIN

(week ending 13/06/2014)

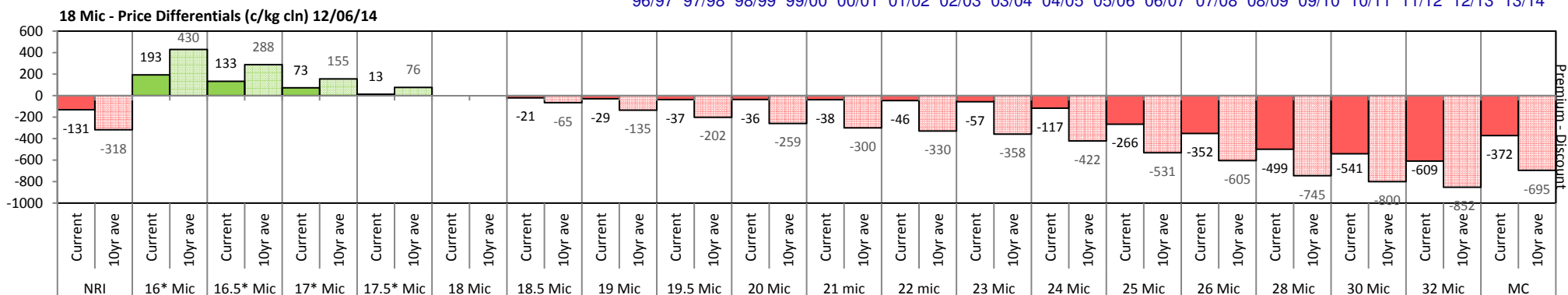
Page 8/25



The above 'Rise or Fall' graph, shows how often the market has risen or fallen in a given month over the past 10 years, it does not show the extent of the movement only the frequency of direction. The 'Monthly Price Movement' graph shows the extent of movement for each month, for the past 5 years.



The above graph, shows how often the '12 month high & low' have been achieved for a given month over the past 10 years. It is not a measure of probability.

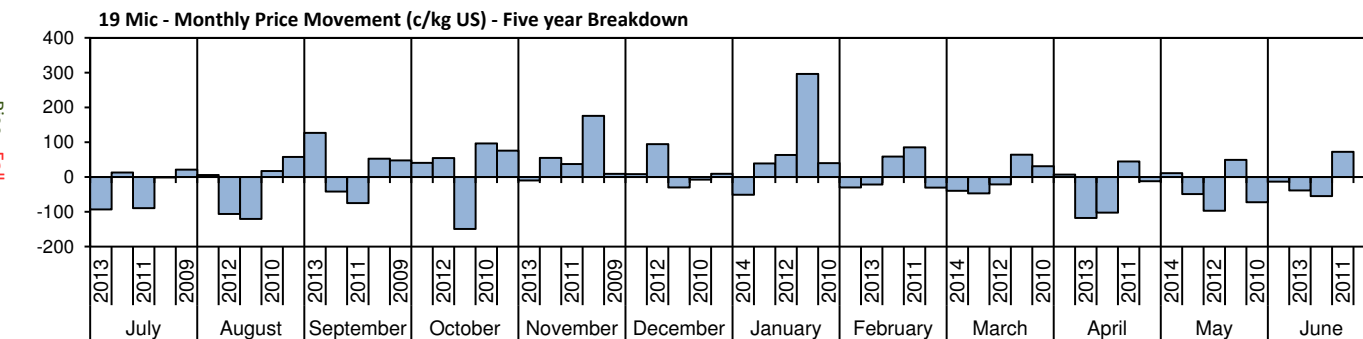
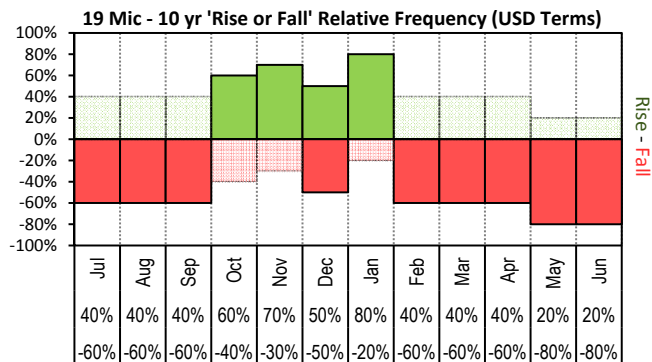




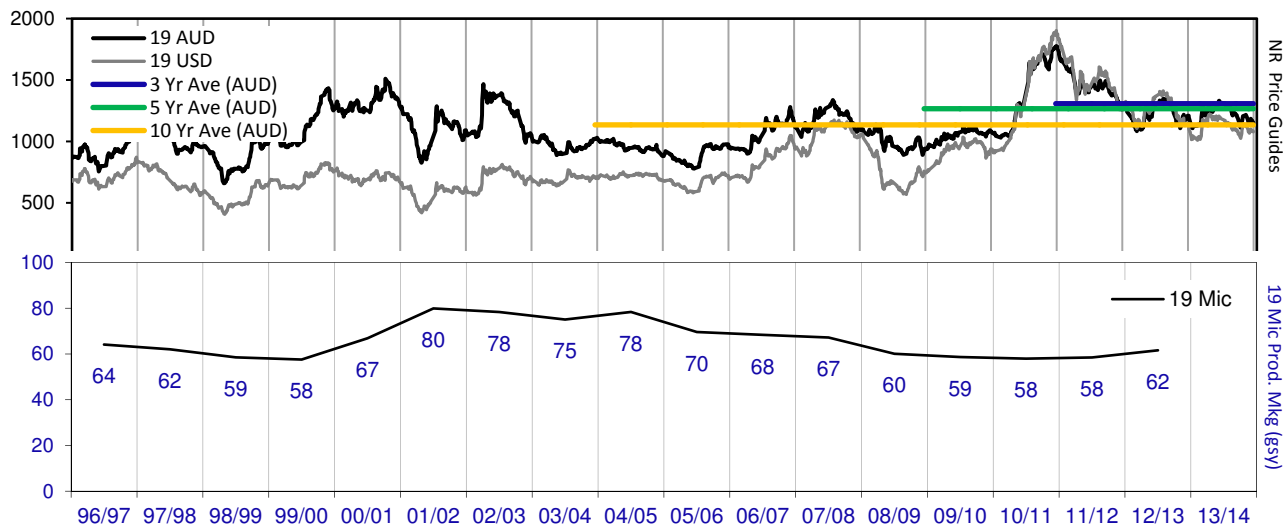
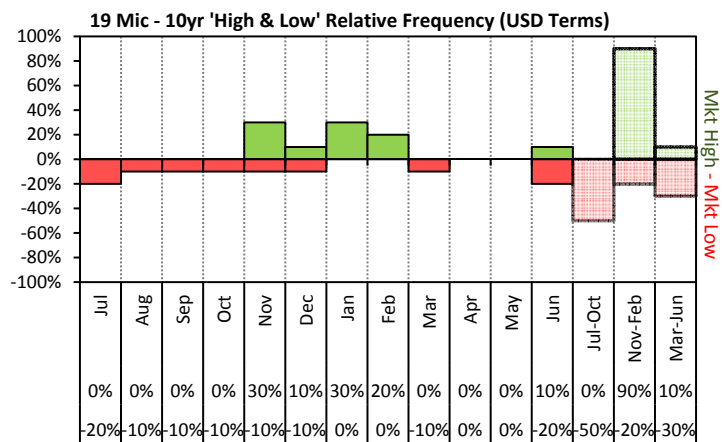
JEMALONG WOOL BULLETIN

(week ending 13/06/2014)

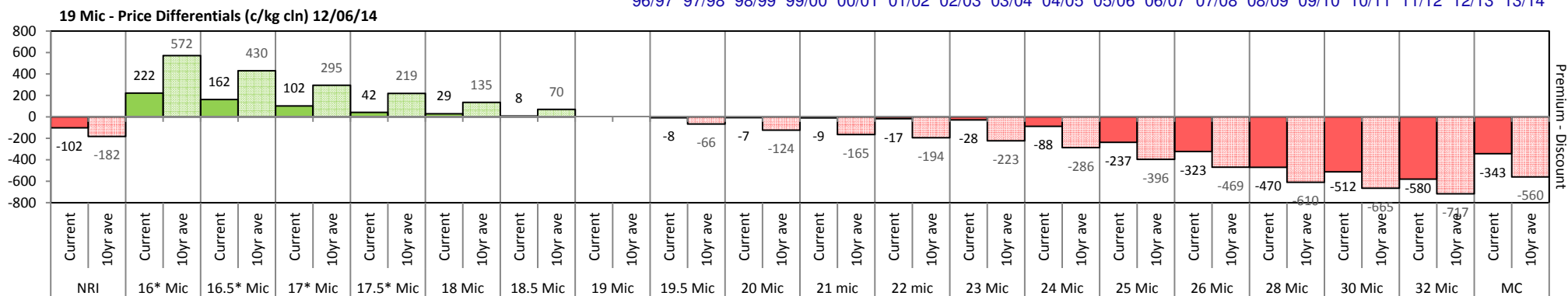
Page 9/25



The above 'Rise or Fall' graph, shows how often the market has risen or fallen in a given month over the past 10 years, it does not show the extent of the movement only the frequency of direction. The 'Monthly Price Movement' graph shows the extent of movement for each month, for the past 5 years.



The above graph, shows how often the '12 month high & low' have been achieved for a given month over the past 10 years. It is not a measure of probability.

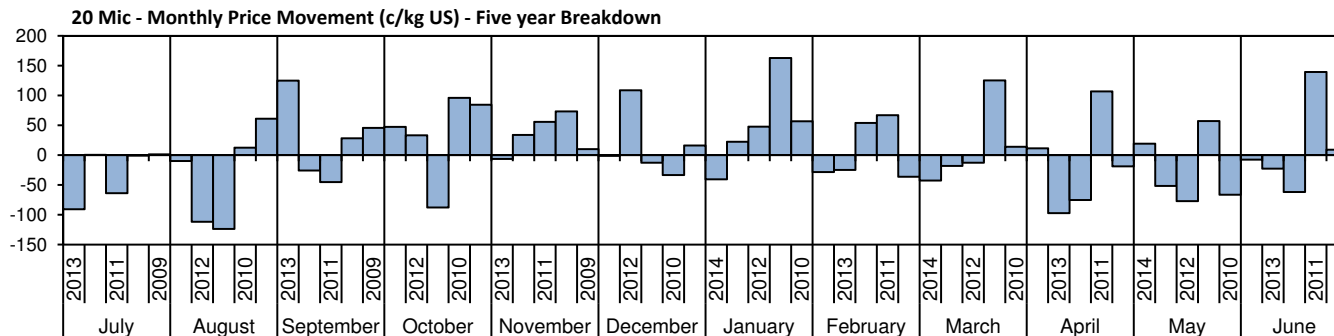
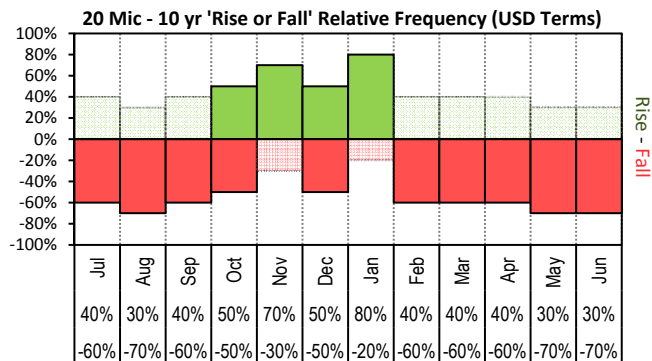




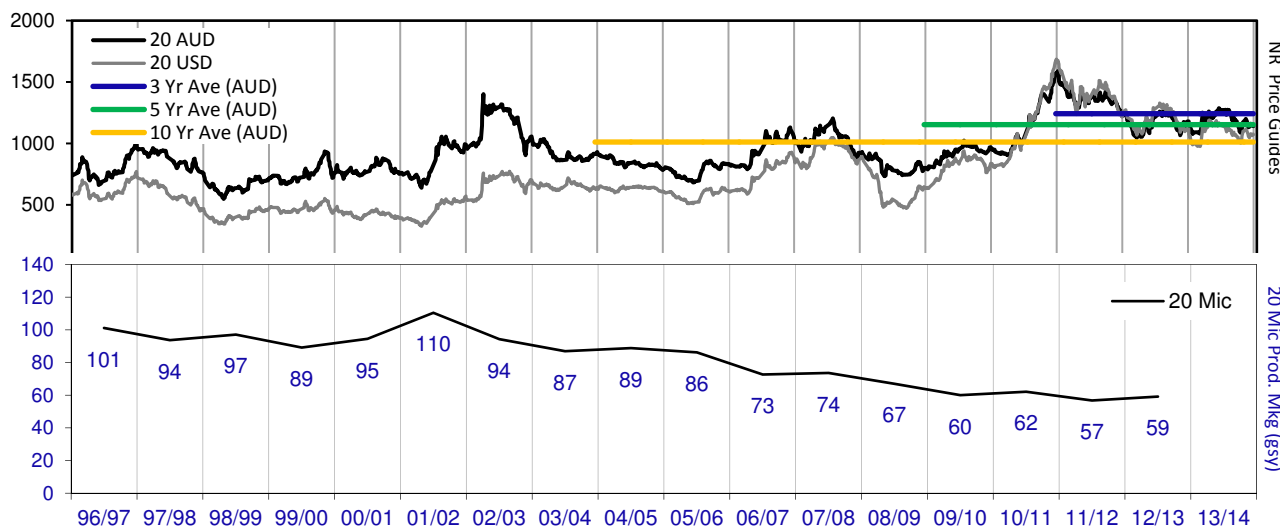
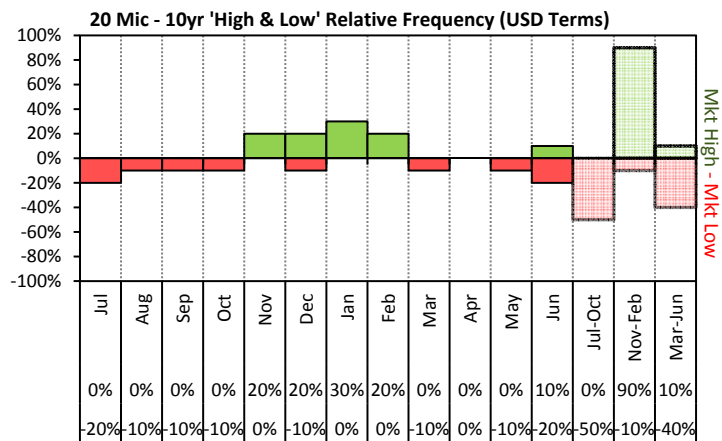
JEMALONG WOOL BULLETIN

(week ending 13/06/2014)

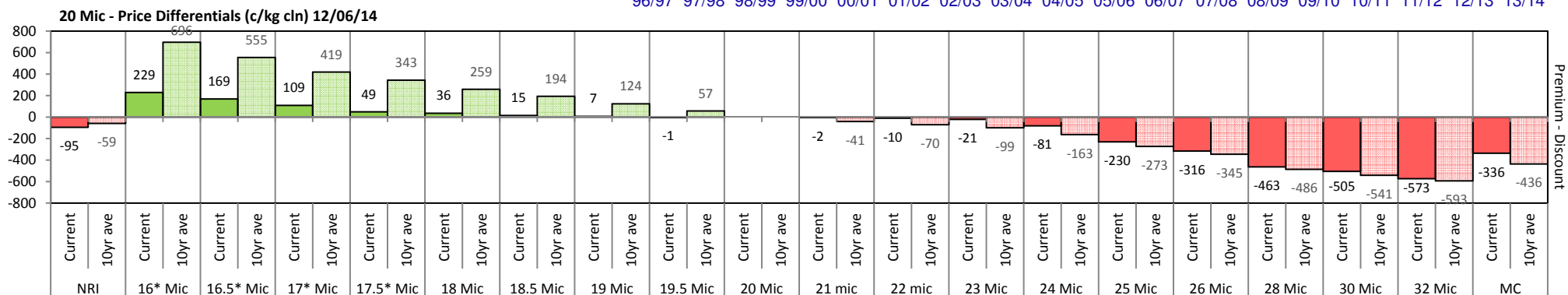
Page 10/25



The above 'Rise or Fall' graph, shows how often the market has risen or fallen in a given month over the past 10 years, it does not show the extent of the movement only the frequency of direction. The 'Monthly Price Movement' graph shows the extent of movement for each month, for the past 5 years.



The above graph, shows how often the '12 month high & low' have been achieved for a given month over the past 10 years. It is not a measure of probability.

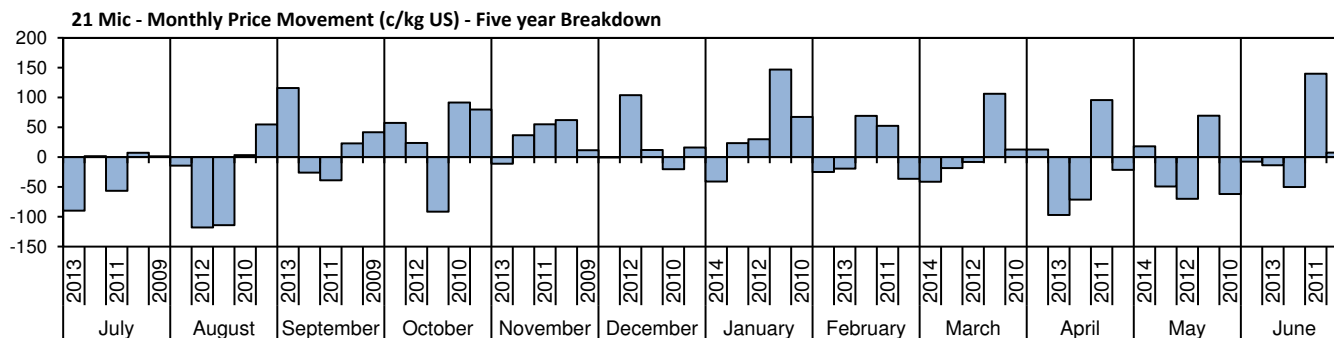
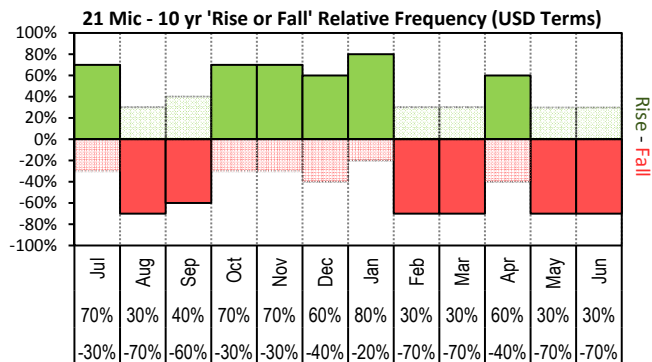




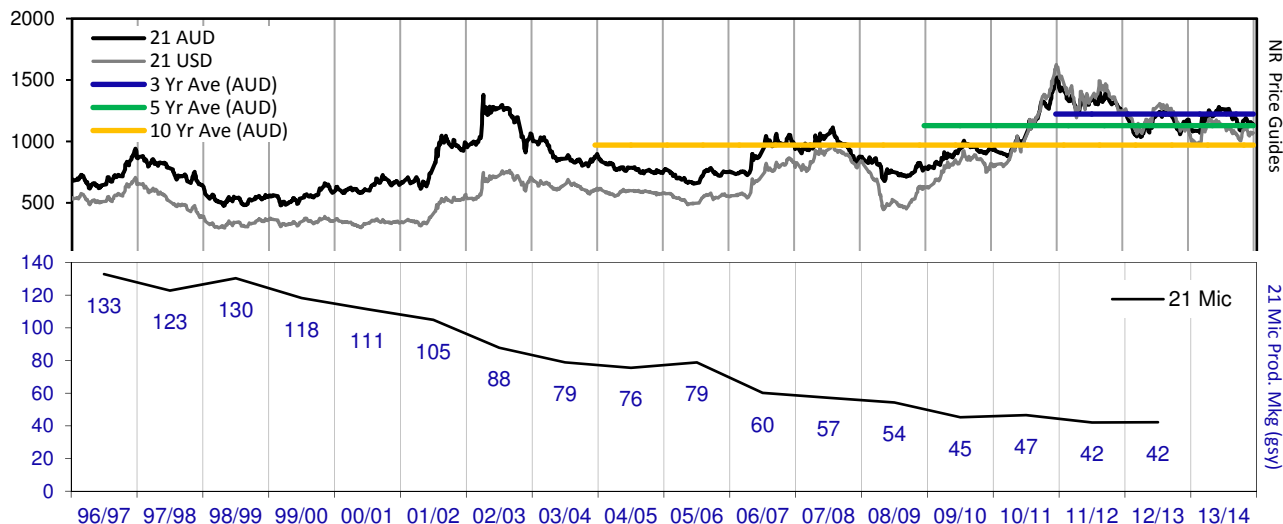
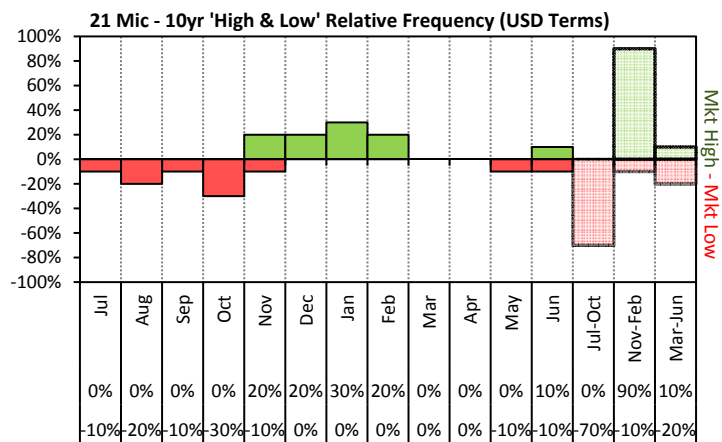
JEMALONG WOOL BULLETIN

(week ending 13/06/2014)

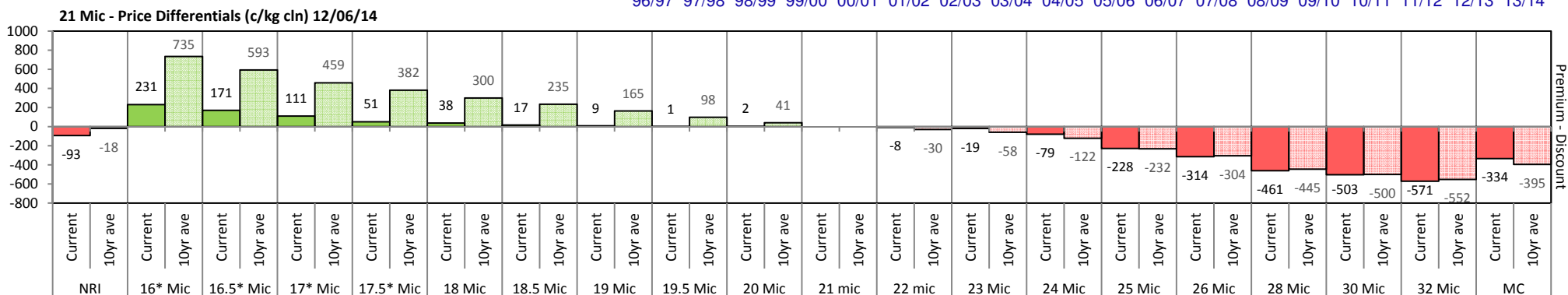
Page 11/25



The above 'Rise or Fall' graph, shows how often the market has risen or fallen in a given month over the past 10 years, it does not show the extent of the movement only the frequency of direction. The 'Monthly Price Movement' graph shows the extent of movement for each month, for the past 5 years.



The above graph, shows how often the '12 month high & low' have been achieved for a given month over the past 10 years. It is not a measure of probability.

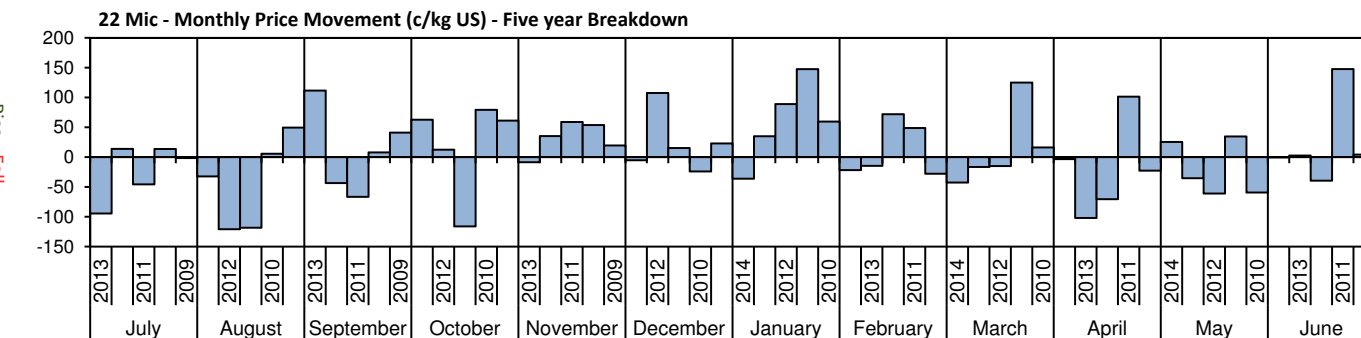
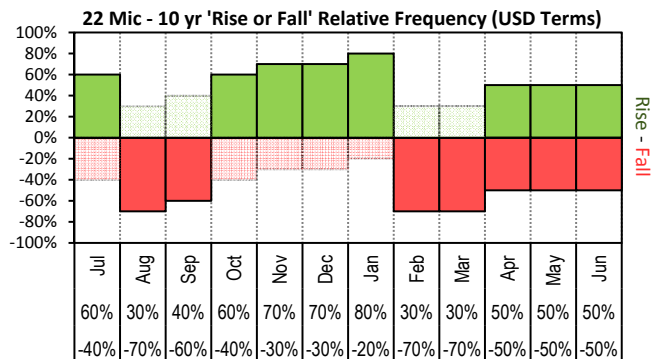




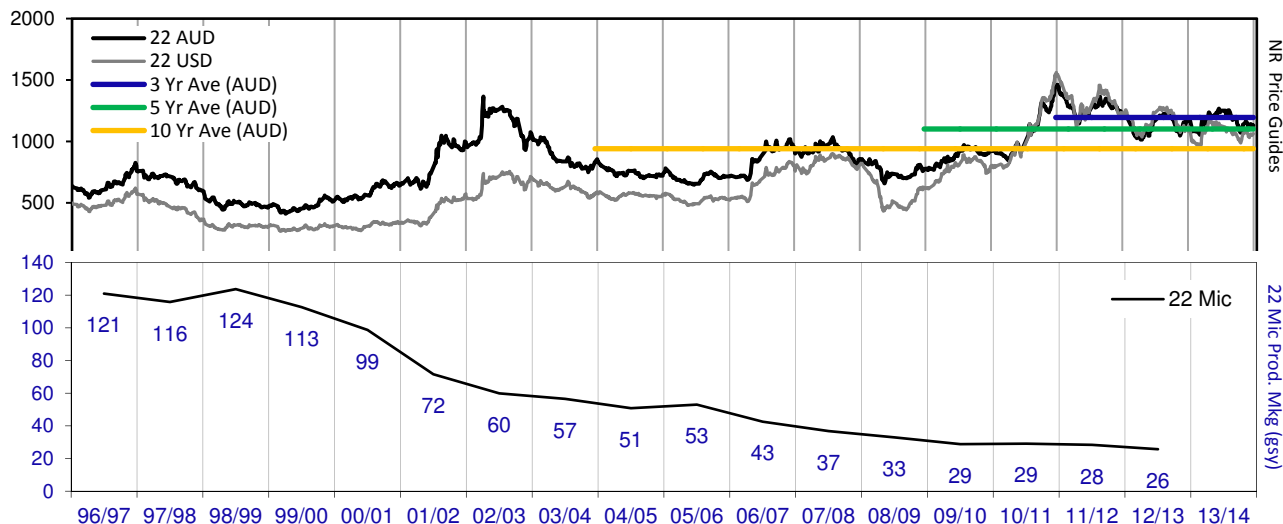
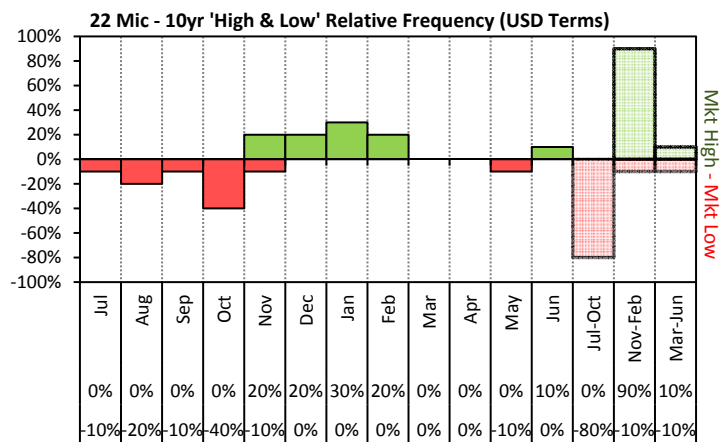
JEMALONG WOOL BULLETIN

(week ending 13/06/2014)

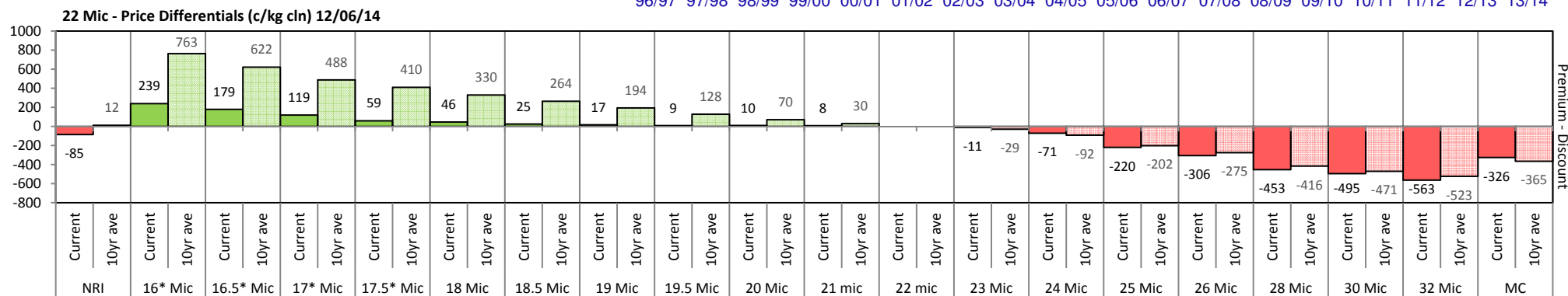
Page 12/25



The above 'Rise or Fall' graph, shows how often the market has risen or fallen in a given month over the past 10 years, it does not show the extent of the movement only the frequency of direction. The 'Monthly Price Movement' graph shows the extent of movement for each month, for the past 5 years.



The above graph, shows how often the '12 month high & low' have been achieved for a given month over the past 10 years. It is not a measure of probability.

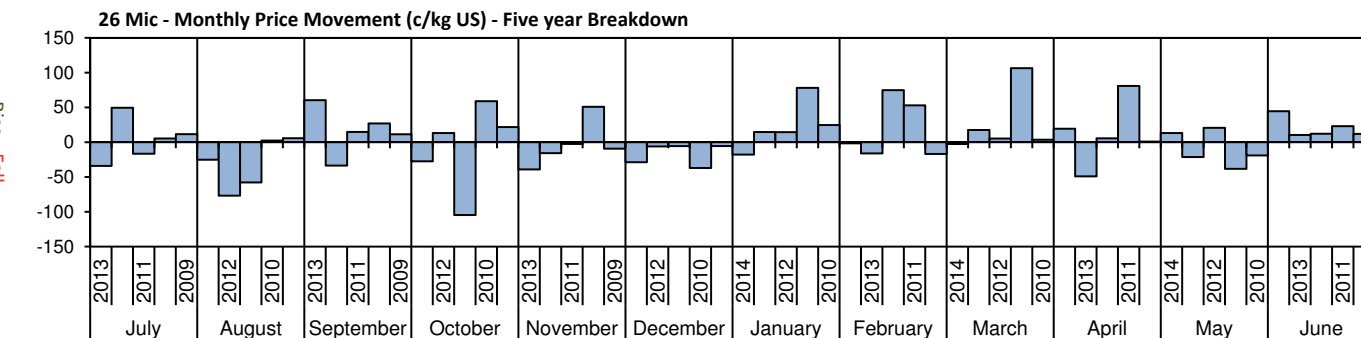
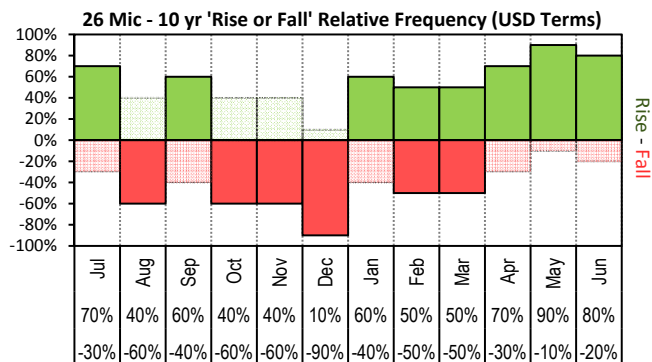




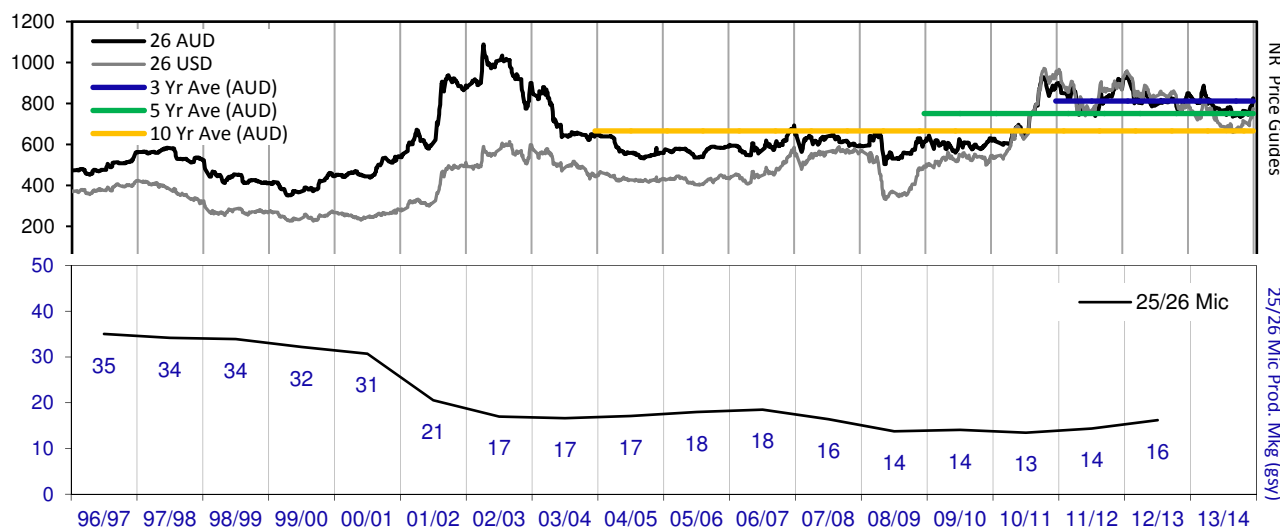
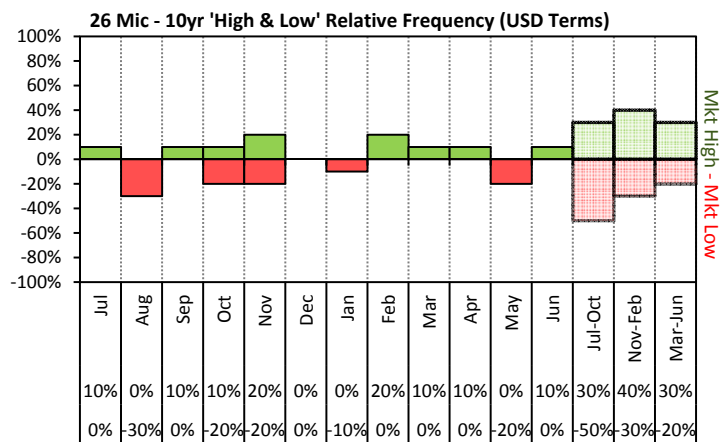
JEMALONG WOOL BULLETIN

(week ending 13/06/2014)

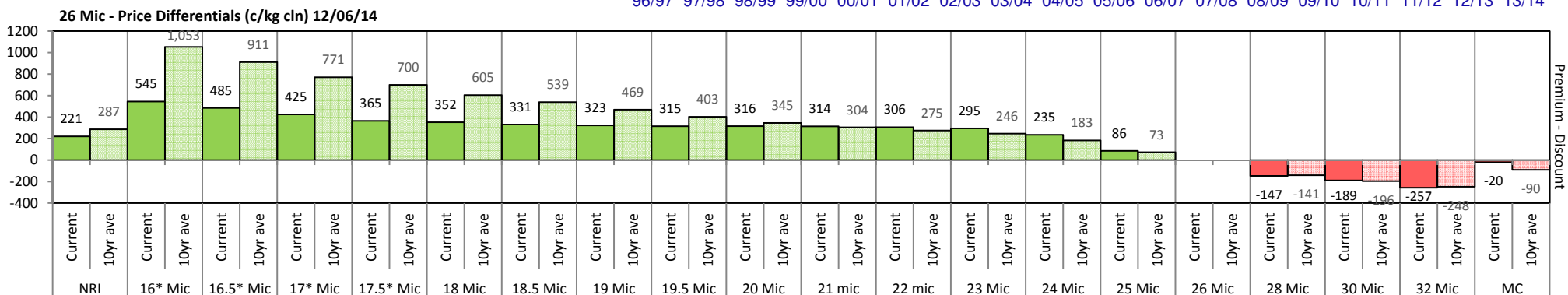
Page 13/25



The above 'Rise or Fall' graph, shows how often the market has risen or fallen in a given month over the past 10 years, it does not show the extent of the movement only the frequency of direction. The 'Monthly Price Movement' graph shows the extent of movement for each month, for the past 5 years.



The above graph, shows how often the '12 month high & low' have been achieved for a given month over the past 10 years. It is not a measure of probability.

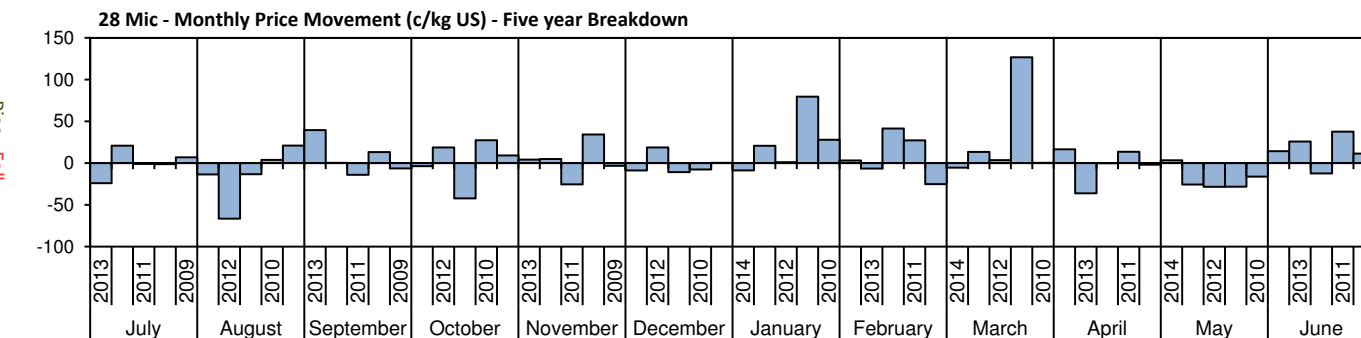
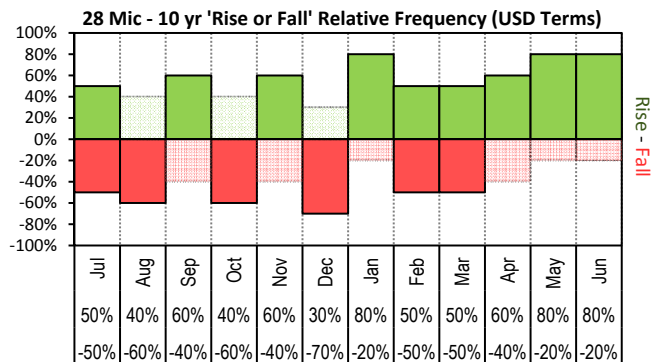




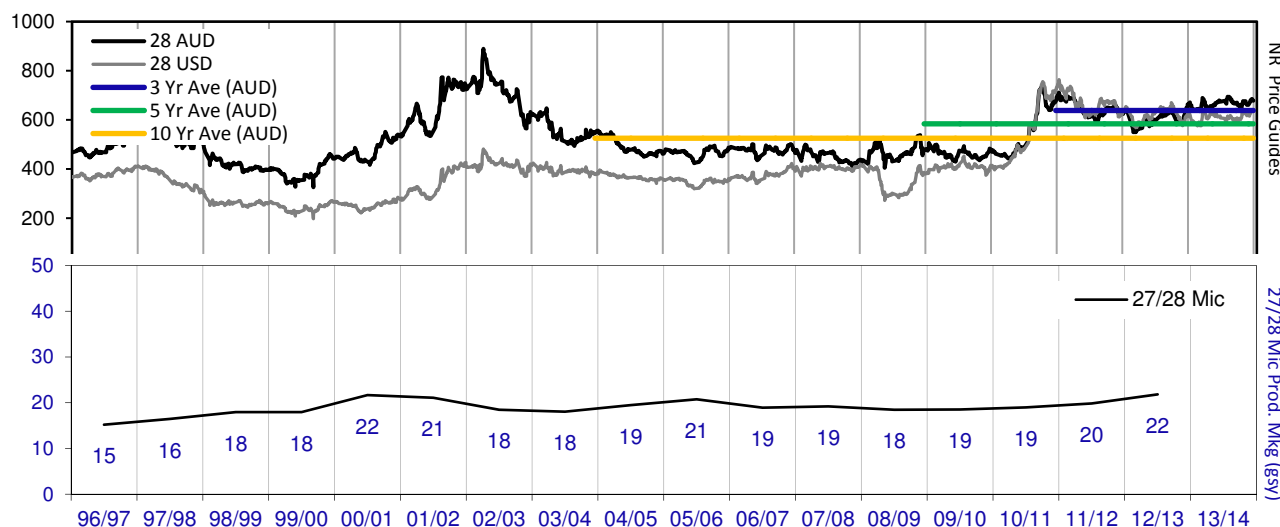
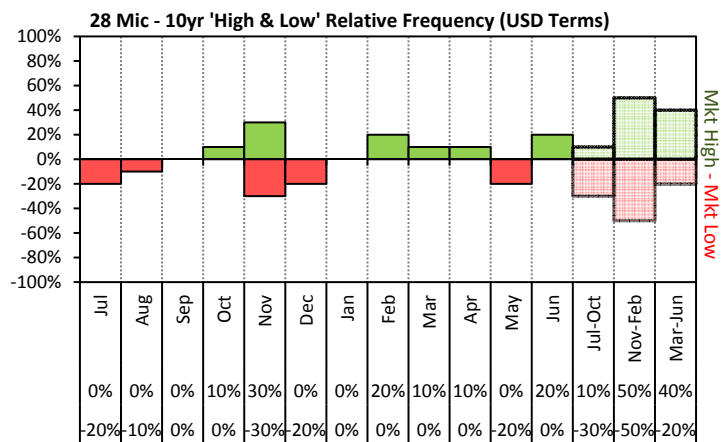
JEMALONG WOOL BULLETIN

(week ending 13/06/2014)

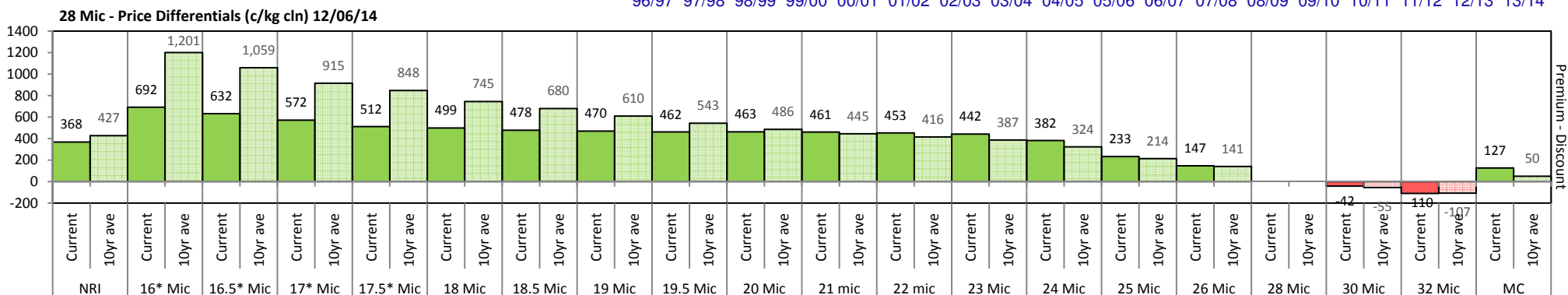
Page 14/25



The above 'Rise or Fall' graph, shows how often the market has risen or fallen in a given month over the past 10 years, it does not show the extent of the movement only the frequency of direction. The 'Monthly Price Movement' graph shows the extent of movement for each month, for the past 5 years.



The above graph, shows how often the '12 month high & low' have been achieved for a given month over the past 10 years. It is not a measure of probability.

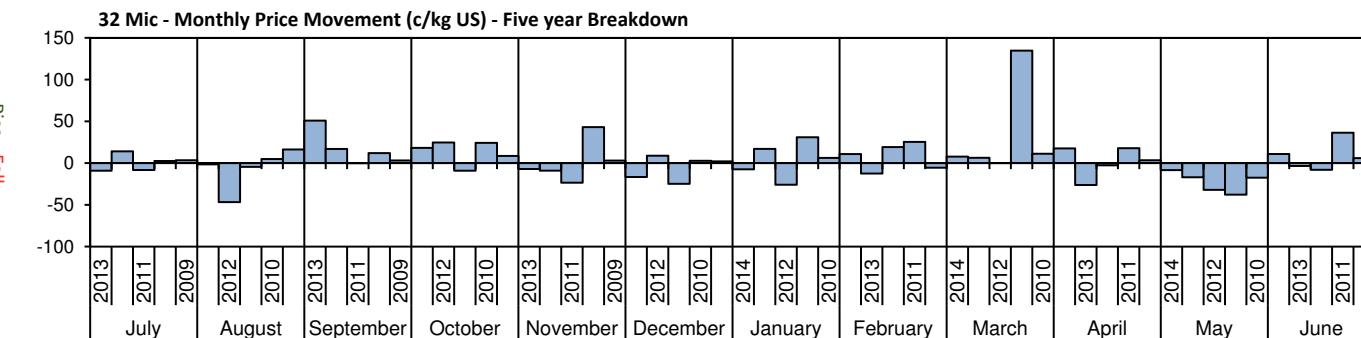
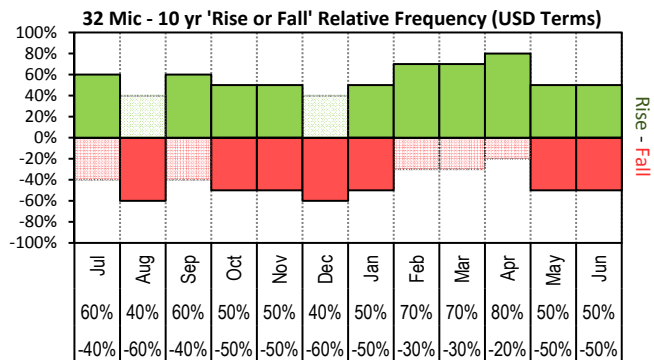




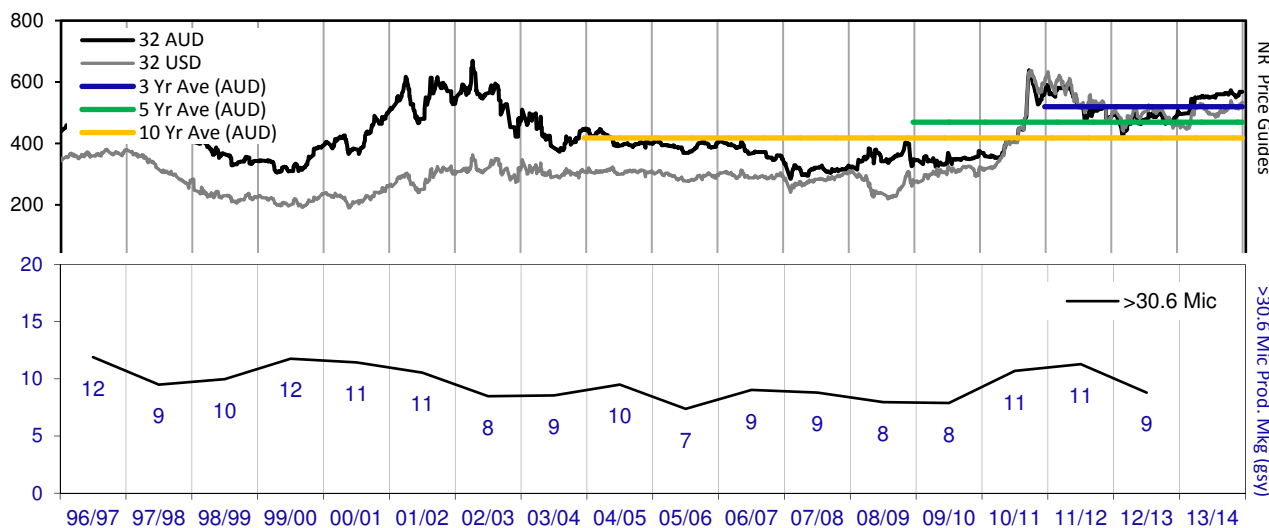
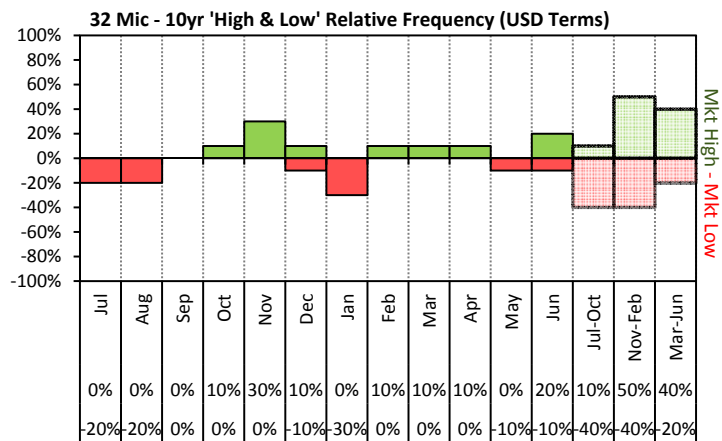
JEMALONG WOOL BULLETIN

(week ending 13/06/2014)

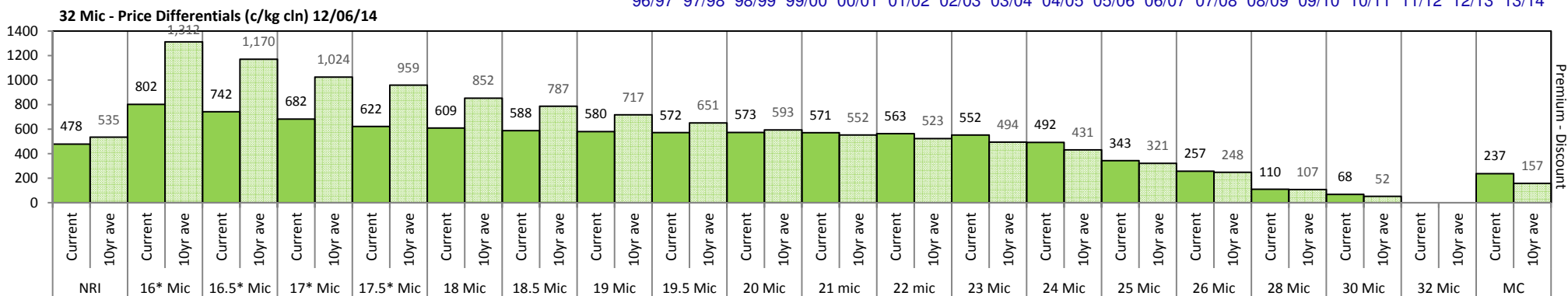
Page 15/25



The above 'Rise or Fall' graph, shows how often the market has risen or fallen in a given month over the past 10 years, it does not show the extent of the movement only the frequency of direction. The 'Monthly Price Movement' graph shows the extent of movement for each month, for the past 5 years.



The above graph, shows how often the '12 month high & low' have been achieved for a given month over the past 10 years. It is not a measure of probability.

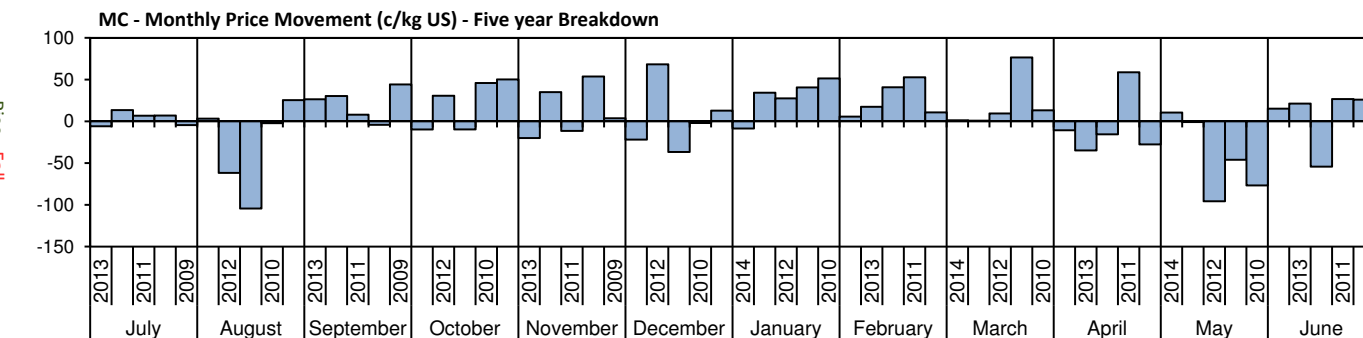
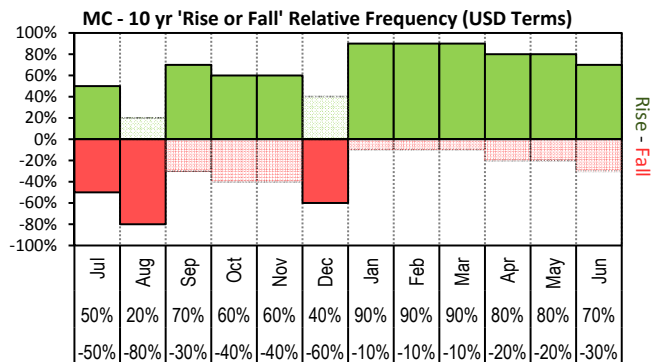




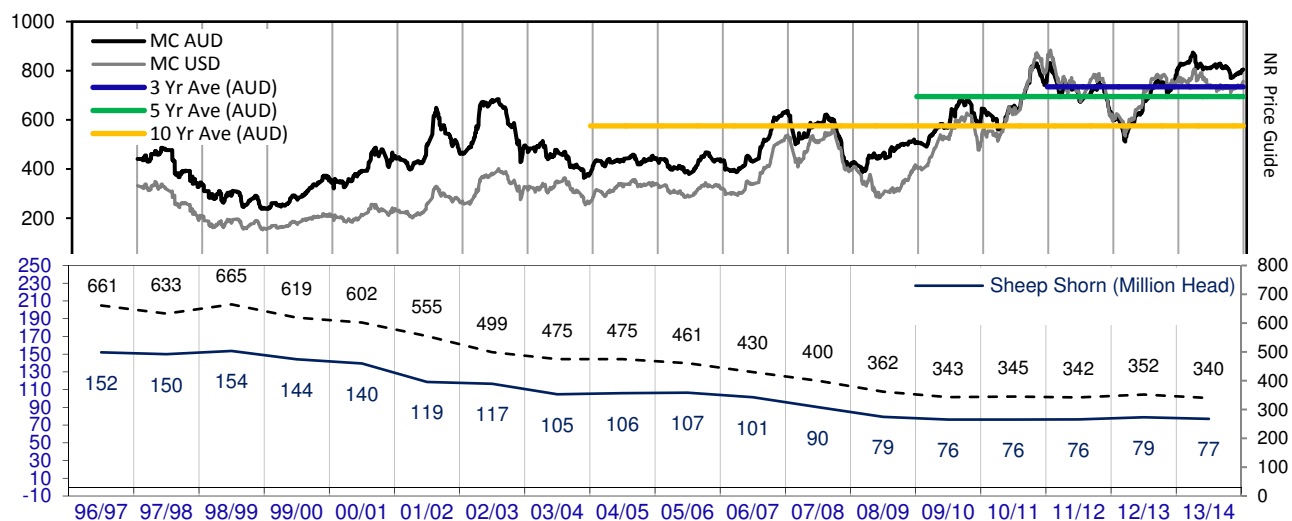
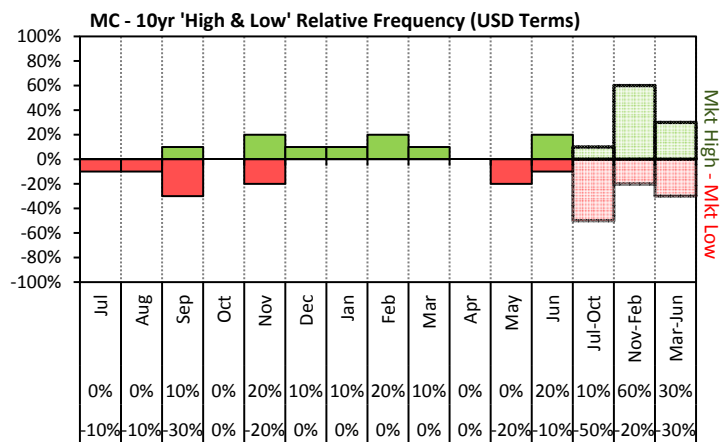
JEMALONG WOOL BULLETIN

(week ending 13/06/2014)

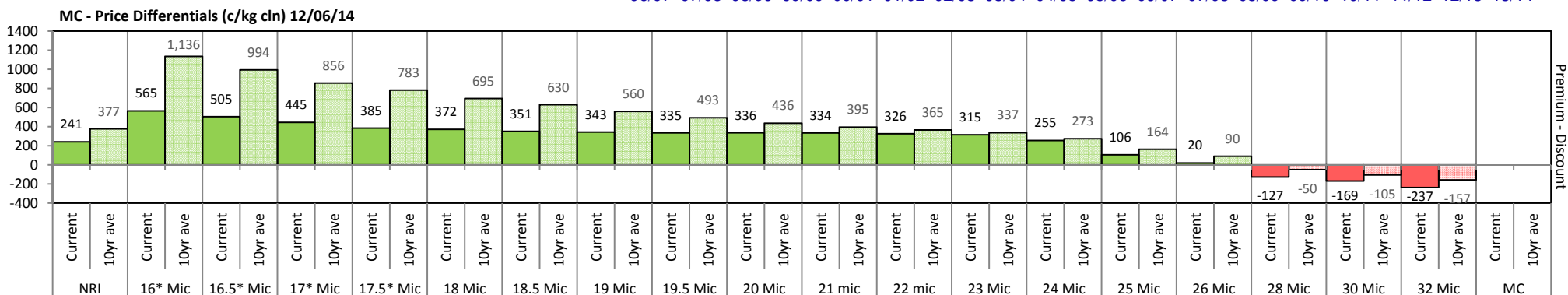
Page 16/25



The above 'Rise or Fall' graph, shows how often the market has risen or fallen in a given month over the past 10 years, it does not show the extent of the movement only the frequency of direction. The 'Monthly Price Movement' graph shows the extent of movement for each month, for the past 5 years.



The above graph, shows how often the '12 month high & low' have been achieved for a given month over the past 10 years. It is not a measure of probability.





Two Year Export Snapshot (Greasy Equivalent - Million Kilos)

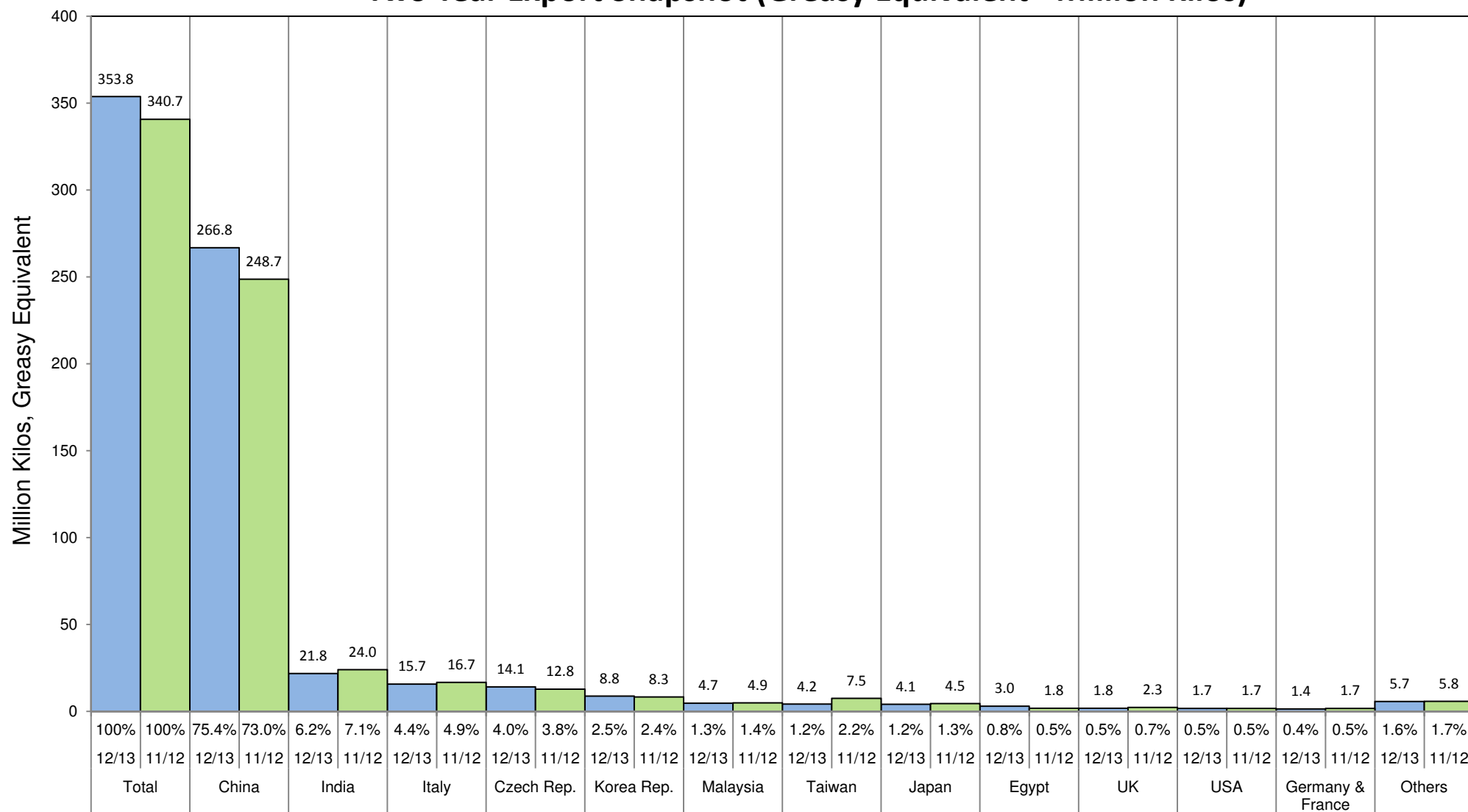




Table 7: Returns pr head for skirted fleece wool.

Skirted FLC Weight		Micron																	
9 Kg		16	16.5	17	17.5	18	18.5	19	19.5	20	21	22	23	24	25	26	28	30	32
Yield (Sch Dry)	25% Current	\$31	\$29	\$28	\$27	\$26	\$26	\$26	\$26	\$26	\$26	\$25	\$25	\$24	\$20	\$19	\$15	\$14	\$13
	10yr ave.	\$39	\$36	\$32	\$31	\$29	\$27	\$26	\$24	\$23	\$22	\$21	\$21	\$19	\$17	\$15	\$12	\$11	\$9
	30% Current	\$37	\$35	\$34	\$32	\$32	\$31	\$31	\$31	\$31	\$31	\$31	\$30	\$29	\$25	\$22	\$18	\$17	\$15
	10yr ave.	\$47	\$43	\$39	\$37	\$34	\$33	\$31	\$29	\$27	\$26	\$25	\$25	\$23	\$20	\$18	\$14	\$13	\$11
	35% Current	\$43	\$41	\$39	\$37	\$37	\$36	\$36	\$36	\$36	\$36	\$36	\$35	\$33	\$29	\$26	\$21	\$20	\$18
	10yr ave.	\$55	\$50	\$45	\$43	\$40	\$38	\$36	\$34	\$32	\$31	\$30	\$29	\$27	\$23	\$21	\$17	\$15	\$13
	40% Current	\$49	\$47	\$45	\$43	\$42	\$42	\$41	\$41	\$41	\$41	\$41	\$40	\$38	\$33	\$30	\$24	\$23	\$20
	10yr ave.	\$62	\$57	\$52	\$50	\$46	\$43	\$41	\$38	\$36	\$35	\$34	\$33	\$31	\$27	\$24	\$19	\$17	\$15
	45% Current	\$55	\$53	\$51	\$48	\$48	\$47	\$46	\$46	\$46	\$46	\$46	\$45	\$43	\$37	\$33	\$27	\$26	\$23
	10yr ave.	\$70	\$64	\$58	\$56	\$51	\$49	\$46	\$43	\$41	\$39	\$38	\$37	\$34	\$30	\$27	\$21	\$19	\$17
	50% Current	\$62	\$59	\$56	\$54	\$53	\$52	\$52	\$51	\$51	\$51	\$51	\$50	\$48	\$41	\$37	\$31	\$29	\$26
	10yr ave.	\$78	\$72	\$65	\$62	\$57	\$54	\$51	\$48	\$45	\$44	\$42	\$41	\$38	\$33	\$30	\$24	\$21	\$19
	55% Current	\$68	\$65	\$62	\$59	\$58	\$57	\$57	\$56	\$56	\$56	\$56	\$55	\$52	\$45	\$41	\$34	\$31	\$28
	10yr ave.	\$86	\$79	\$71	\$68	\$63	\$60	\$56	\$53	\$50	\$48	\$47	\$45	\$42	\$37	\$33	\$26	\$23	\$21
	60% Current	\$74	\$71	\$68	\$64	\$64	\$62	\$62	\$62	\$62	\$62	\$61	\$60	\$57	\$49	\$45	\$37	\$34	\$31
	10yr ave.	\$93	\$86	\$78	\$74	\$69	\$65	\$61	\$58	\$55	\$52	\$51	\$49	\$46	\$40	\$36	\$28	\$25	\$23
	65% Current	\$80	\$77	\$73	\$70	\$69	\$68	\$67	\$67	\$67	\$67	\$66	\$66	\$62	\$53	\$48	\$40	\$37	\$33
	10yr ave.	\$101	\$93	\$84	\$81	\$74	\$70	\$66	\$63	\$59	\$57	\$55	\$53	\$50	\$43	\$39	\$31	\$27	\$24
	70% Current	\$86	\$83	\$79	\$75	\$74	\$73	\$72	\$72	\$72	\$72	\$71	\$71	\$67	\$57	\$52	\$43	\$40	\$36
	10yr ave.	\$109	\$100	\$91	\$87	\$80	\$76	\$72	\$67	\$64	\$61	\$59	\$57	\$53	\$47	\$42	\$33	\$30	\$26
	75% Current	\$92	\$88	\$84	\$80	\$79	\$78	\$77	\$77	\$77	\$77	\$76	\$76	\$72	\$61	\$56	\$46	\$43	\$38
	10yr ave.	\$117	\$107	\$97	\$93	\$86	\$81	\$77	\$72	\$68	\$65	\$64	\$62	\$57	\$50	\$45	\$35	\$32	\$28
	80% Current	\$99	\$94	\$90	\$86	\$85	\$83	\$83	\$82	\$82	\$82	\$81	\$81	\$76	\$66	\$59	\$49	\$46	\$41
	10yr ave.	\$125	\$114	\$104	\$99	\$92	\$87	\$82	\$77	\$73	\$70	\$68	\$66	\$61	\$53	\$48	\$38	\$34	\$30
	85% Current	\$105	\$100	\$96	\$91	\$90	\$88	\$88	\$87	\$87	\$87	\$87	\$86	\$81	\$70	\$63	\$52	\$49	\$43
	10yr ave.	\$132	\$122	\$110	\$105	\$97	\$92	\$87	\$82	\$77	\$74	\$72	\$70	\$65	\$57	\$51	\$40	\$36	\$32

The above shows estimated returns per head for skirted fleece wool. These figures do not take into account the value of skirtings and oddments and do not take into account discounts that may apply for faults under individual circumstances. These figures are based on a market index of 100% and should be used as a guide only. Returns over \$30 / head for fleece wool are highlighted.



Table 8: Returns pr head for skirted fleece wool.

Skirted FLC Weight		Micron																	
8 Kg		16	16.5	17	17.5	18	18.5	19	19.5	20	21	22	23	24	25	26	28	30	32
Yield (Sch Dry)	25% Current	\$27	\$26	\$25	\$24	\$24	\$23	\$23	\$23	\$23	\$23	\$23	\$22	\$21	\$18	\$17	\$14	\$13	\$11
	10yr ave.	\$35	\$32	\$29	\$28	\$25	\$24	\$23	\$21	\$20	\$19	\$19	\$18	\$17	\$15	\$13	\$11	\$9	\$8
	30% Current	\$33	\$31	\$30	\$29	\$28	\$28	\$28	\$27	\$27	\$27	\$27	\$27	\$25	\$22	\$20	\$16	\$15	\$14
	10yr ave.	\$42	\$38	\$35	\$33	\$31	\$29	\$27	\$26	\$24	\$23	\$23	\$22	\$20	\$18	\$16	\$13	\$11	\$10
	35% Current	\$38	\$37	\$35	\$33	\$33	\$32	\$32	\$32	\$32	\$32	\$32	\$31	\$30	\$26	\$23	\$19	\$18	\$16
	10yr ave.	\$48	\$44	\$40	\$39	\$36	\$34	\$32	\$30	\$28	\$27	\$26	\$26	\$24	\$21	\$19	\$15	\$13	\$12
	40% Current	\$44	\$42	\$40	\$38	\$38	\$37	\$37	\$36	\$37	\$36	\$36	\$36	\$34	\$29	\$26	\$22	\$20	\$18
	10yr ave.	\$55	\$51	\$46	\$44	\$41	\$39	\$36	\$34	\$32	\$31	\$30	\$29	\$27	\$24	\$21	\$17	\$15	\$13
	45% Current	\$49	\$47	\$45	\$43	\$42	\$42	\$41	\$41	\$41	\$41	\$41	\$40	\$38	\$33	\$30	\$24	\$23	\$20
	10yr ave.	\$62	\$57	\$52	\$50	\$46	\$43	\$41	\$38	\$36	\$35	\$34	\$33	\$31	\$27	\$24	\$19	\$17	\$15
	50% Current	\$55	\$52	\$50	\$48	\$47	\$46	\$46	\$46	\$46	\$46	\$45	\$45	\$42	\$36	\$33	\$27	\$25	\$23
	10yr ave.	\$69	\$64	\$58	\$55	\$51	\$48	\$45	\$43	\$40	\$39	\$38	\$36	\$34	\$30	\$27	\$21	\$19	\$17
	55% Current	\$60	\$58	\$55	\$52	\$52	\$51	\$51	\$50	\$50	\$50	\$50	\$49	\$47	\$40	\$36	\$30	\$28	\$25
	10yr ave.	\$76	\$70	\$63	\$61	\$56	\$53	\$50	\$47	\$44	\$43	\$41	\$40	\$37	\$33	\$29	\$23	\$21	\$18
	60% Current	\$66	\$63	\$60	\$57	\$56	\$55	\$55	\$55	\$55	\$55	\$54	\$54	\$51	\$44	\$40	\$33	\$31	\$27
	10yr ave.	\$83	\$76	\$69	\$66	\$61	\$58	\$54	\$51	\$49	\$47	\$45	\$44	\$41	\$35	\$32	\$25	\$23	\$20
	65% Current	\$71	\$68	\$65	\$62	\$61	\$60	\$60	\$59	\$59	\$59	\$59	\$58	\$55	\$47	\$43	\$35	\$33	\$30
	10yr ave.	\$90	\$83	\$75	\$72	\$66	\$63	\$59	\$56	\$53	\$50	\$49	\$47	\$44	\$38	\$35	\$27	\$24	\$22
	70% Current	\$77	\$73	\$70	\$67	\$66	\$65	\$64	\$64	\$64	\$64	\$63	\$63	\$59	\$51	\$46	\$38	\$36	\$32
	10yr ave.	\$97	\$89	\$81	\$77	\$71	\$67	\$64	\$60	\$57	\$54	\$53	\$51	\$48	\$41	\$37	\$29	\$26	\$23
	75% Current	\$82	\$79	\$75	\$71	\$71	\$69	\$69	\$68	\$68	\$68	\$68	\$67	\$64	\$55	\$50	\$41	\$38	\$34
	10yr ave.	\$104	\$95	\$87	\$83	\$76	\$72	\$68	\$64	\$61	\$58	\$56	\$55	\$51	\$44	\$40	\$32	\$28	\$25
	80% Current	\$88	\$84	\$80	\$76	\$75	\$74	\$73	\$73	\$73	\$73	\$72	\$72	\$68	\$58	\$53	\$43	\$41	\$36
	10yr ave.	\$111	\$102	\$92	\$88	\$81	\$77	\$73	\$68	\$65	\$62	\$60	\$58	\$54	\$47	\$43	\$34	\$30	\$27
	85% Current	\$93	\$89	\$85	\$81	\$80	\$79	\$78	\$78	\$78	\$77	\$77	\$76	\$72	\$62	\$56	\$46	\$43	\$39
	10yr ave.	\$118	\$108	\$98	\$94	\$86	\$82	\$77	\$73	\$69	\$66	\$64	\$62	\$58	\$50	\$45	\$36	\$32	\$28

The above shows estimated returns per head for skirted fleece wool. These figures do not take into account the value of skirtings and oddments and do not take into account discounts that may apply for faults under individual circumstances. These figures are based on a market index of 100% and should be used as a guide only. Returns over \$30 / head for fleece wool are highlighted.



Table 9: Returns pr head for skirted fleece wool.

Skirted FLC Weight		Micron																	
7 Kg		16	16.5	17	17.5	18	18.5	19	19.5	20	21	22	23	24	25	26	28	30	32
Yield (Sch Dry)	25% Current	\$24	\$23	\$22	\$21	\$21	\$20	\$20	\$20	\$20	\$20	\$20	\$20	\$19	\$16	\$14	\$12	\$11	\$10
	10yr ave.	\$30	\$28	\$25	\$24	\$22	\$21	\$20	\$19	\$18	\$17	\$16	\$16	\$15	\$13	\$12	\$9	\$8	\$7
	30% Current	\$29	\$28	\$26	\$25	\$25	\$24	\$24	\$24	\$24	\$24	\$24	\$24	\$22	\$19	\$17	\$14	\$13	\$12
	10yr ave.	\$36	\$33	\$30	\$29	\$27	\$25	\$24	\$22	\$21	\$20	\$20	\$19	\$18	\$16	\$14	\$11	\$10	\$9
	35% Current	\$34	\$32	\$31	\$29	\$29	\$28	\$28	\$28	\$28	\$28	\$28	\$27	\$26	\$22	\$20	\$17	\$16	\$14
	10yr ave.	\$42	\$39	\$35	\$34	\$31	\$30	\$28	\$26	\$25	\$24	\$23	\$22	\$21	\$18	\$16	\$13	\$12	\$10
	40% Current	\$38	\$37	\$35	\$33	\$33	\$32	\$32	\$32	\$32	\$32	\$32	\$31	\$30	\$26	\$23	\$19	\$18	\$16
	10yr ave.	\$48	\$44	\$40	\$39	\$36	\$34	\$32	\$30	\$28	\$27	\$26	\$26	\$24	\$21	\$19	\$15	\$13	\$12
	45% Current	\$43	\$41	\$39	\$37	\$37	\$36	\$36	\$36	\$36	\$36	\$36	\$35	\$33	\$29	\$26	\$21	\$20	\$18
	10yr ave.	\$55	\$50	\$45	\$43	\$40	\$38	\$36	\$34	\$32	\$31	\$30	\$29	\$27	\$23	\$21	\$17	\$15	\$13
	50% Current	\$48	\$46	\$44	\$42	\$41	\$40	\$40	\$40	\$40	\$40	\$40	\$39	\$37	\$32	\$29	\$24	\$22	\$20
	10yr ave.	\$61	\$56	\$51	\$48	\$44	\$42	\$40	\$37	\$35	\$34	\$33	\$32	\$30	\$26	\$23	\$18	\$16	\$15
	55% Current	\$53	\$50	\$48	\$46	\$45	\$45	\$44	\$44	\$44	\$44	\$44	\$43	\$41	\$35	\$32	\$26	\$24	\$22
	10yr ave.	\$67	\$61	\$56	\$53	\$49	\$46	\$44	\$41	\$39	\$37	\$36	\$35	\$33	\$28	\$26	\$20	\$18	\$16
	60% Current	\$58	\$55	\$53	\$50	\$49	\$49	\$48	\$48	\$48	\$48	\$48	\$47	\$45	\$38	\$35	\$28	\$27	\$24
	10yr ave.	\$73	\$67	\$61	\$58	\$53	\$51	\$48	\$45	\$42	\$41	\$40	\$38	\$36	\$31	\$28	\$22	\$20	\$18
	65% Current	\$62	\$60	\$57	\$54	\$54	\$53	\$52	\$52	\$52	\$52	\$51	\$51	\$48	\$41	\$38	\$31	\$29	\$26
	10yr ave.	\$79	\$72	\$66	\$63	\$58	\$55	\$52	\$49	\$46	\$44	\$43	\$41	\$39	\$34	\$30	\$24	\$21	\$19
	70% Current	\$67	\$64	\$61	\$58	\$58	\$57	\$56	\$56	\$56	\$56	\$55	\$55	\$52	\$45	\$40	\$33	\$31	\$28
	10yr ave.	\$85	\$78	\$71	\$68	\$62	\$59	\$56	\$52	\$50	\$48	\$46	\$45	\$42	\$36	\$33	\$26	\$23	\$20
	75% Current	\$72	\$69	\$66	\$62	\$62	\$61	\$60	\$60	\$60	\$60	\$59	\$59	\$56	\$48	\$43	\$36	\$33	\$30
	10yr ave.	\$91	\$83	\$76	\$72	\$67	\$63	\$60	\$56	\$53	\$51	\$49	\$48	\$45	\$39	\$35	\$28	\$25	\$22
	80% Current	\$77	\$73	\$70	\$67	\$66	\$65	\$64	\$64	\$64	\$64	\$63	\$63	\$59	\$51	\$46	\$38	\$36	\$32
	10yr ave.	\$97	\$89	\$81	\$77	\$71	\$67	\$64	\$60	\$57	\$54	\$53	\$51	\$48	\$41	\$37	\$29	\$26	\$23
	85% Current	\$82	\$78	\$74	\$71	\$70	\$69	\$68	\$68	\$68	\$68	\$67	\$67	\$63	\$54	\$49	\$40	\$38	\$34
	10yr ave.	\$103	\$95	\$86	\$82	\$76	\$72	\$68	\$64	\$60	\$58	\$56	\$54	\$51	\$44	\$40	\$31	\$28	\$25

The above shows estimated returns per head for skirted fleece wool. These figures do not take into account the value of skirtings and oddments and do not take into account discounts that may apply for faults under individual circumstances. These figures are based on a market index of 100% and should be used as a guide only. Returns over \$30 / head for fleece wool are highlighted.



Table 10: Returns pr head for skirted fleece wool.

Skirted FLC Weight		Micron																	
6 Kg		16	16.5	17	17.5	18	18.5	19	19.5	20	21	22	23	24	25	26	28	30	32
Yield (Sch Dry)	25% Current	\$21	\$20	\$19	\$18	\$18	\$17	\$17	\$17	\$17	\$17	\$17	\$17	\$16	\$14	\$12	\$10	\$10	\$9
	10yr ave.	\$26	\$24	\$22	\$21	\$19	\$18	\$17	\$16	\$15	\$15	\$14	\$14	\$13	\$11	\$10	\$8	\$7	\$6
	30% Current	\$25	\$24	\$23	\$21	\$21	\$21	\$21	\$21	\$21	\$21	\$20	\$20	\$19	\$16	\$15	\$12	\$11	\$10
	10yr ave.	\$31	\$29	\$26	\$25	\$23	\$22	\$20	\$19	\$18	\$17	\$17	\$16	\$15	\$13	\$12	\$9	\$8	\$8
	35% Current	\$29	\$28	\$26	\$25	\$25	\$24	\$24	\$24	\$24	\$24	\$24	\$24	\$22	\$19	\$17	\$14	\$13	\$12
	10yr ave.	\$36	\$33	\$30	\$29	\$27	\$25	\$24	\$22	\$21	\$20	\$20	\$19	\$18	\$16	\$14	\$11	\$10	\$9
	40% Current	\$33	\$31	\$30	\$29	\$28	\$28	\$28	\$27	\$27	\$27	\$27	\$27	\$25	\$22	\$20	\$16	\$15	\$14
	10yr ave.	\$42	\$38	\$35	\$33	\$31	\$29	\$27	\$26	\$24	\$23	\$23	\$22	\$20	\$18	\$16	\$13	\$11	\$10
	45% Current	\$37	\$35	\$34	\$32	\$32	\$31	\$31	\$31	\$31	\$31	\$31	\$30	\$29	\$25	\$22	\$18	\$17	\$15
	10yr ave.	\$47	\$43	\$39	\$37	\$34	\$33	\$31	\$29	\$27	\$26	\$25	\$25	\$23	\$20	\$18	\$14	\$13	\$11
	50% Current	\$41	\$39	\$38	\$36	\$35	\$35	\$34	\$34	\$34	\$34	\$34	\$34	\$32	\$27	\$25	\$20	\$19	\$17
	10yr ave.	\$52	\$48	\$43	\$41	\$38	\$36	\$34	\$32	\$30	\$29	\$28	\$27	\$25	\$22	\$20	\$16	\$14	\$13
	55% Current	\$45	\$43	\$41	\$39	\$39	\$38	\$38	\$38	\$38	\$38	\$37	\$37	\$35	\$30	\$27	\$22	\$21	\$19
	10yr ave.	\$57	\$52	\$48	\$45	\$42	\$40	\$37	\$35	\$33	\$32	\$31	\$30	\$28	\$24	\$22	\$17	\$16	\$14
	60% Current	\$49	\$47	\$45	\$43	\$42	\$42	\$41	\$41	\$41	\$41	\$41	\$40	\$38	\$33	\$30	\$24	\$23	\$20
	10yr ave.	\$62	\$57	\$52	\$50	\$46	\$43	\$41	\$38	\$36	\$35	\$34	\$33	\$31	\$27	\$24	\$19	\$17	\$15
	65% Current	\$53	\$51	\$49	\$46	\$46	\$45	\$45	\$44	\$44	\$44	\$44	\$44	\$41	\$36	\$32	\$26	\$25	\$22
	10yr ave.	\$68	\$62	\$56	\$54	\$50	\$47	\$44	\$42	\$39	\$38	\$37	\$36	\$33	\$29	\$26	\$20	\$18	\$16
	70% Current	\$58	\$55	\$53	\$50	\$49	\$49	\$48	\$48	\$48	\$48	\$48	\$47	\$45	\$38	\$35	\$28	\$27	\$24
	10yr ave.	\$73	\$67	\$61	\$58	\$53	\$51	\$48	\$45	\$42	\$41	\$40	\$38	\$36	\$31	\$28	\$22	\$20	\$18
	75% Current	\$62	\$59	\$56	\$54	\$53	\$52	\$52	\$51	\$51	\$51	\$51	\$50	\$48	\$41	\$37	\$31	\$29	\$26
	10yr ave.	\$78	\$72	\$65	\$62	\$57	\$54	\$51	\$48	\$45	\$44	\$42	\$41	\$38	\$33	\$30	\$24	\$21	\$19
	80% Current	\$66	\$63	\$60	\$57	\$56	\$55	\$55	\$55	\$55	\$55	\$54	\$54	\$51	\$44	\$40	\$33	\$31	\$27
	10yr ave.	\$83	\$76	\$69	\$66	\$61	\$58	\$54	\$51	\$49	\$47	\$45	\$44	\$41	\$35	\$32	\$25	\$23	\$20
	85% Current	\$70	\$67	\$64	\$61	\$60	\$59	\$59	\$58	\$58	\$58	\$58	\$57	\$54	\$46	\$42	\$35	\$32	\$29
	10yr ave.	\$88	\$81	\$74	\$70	\$65	\$61	\$58	\$55	\$52	\$49	\$48	\$47	\$43	\$38	\$34	\$27	\$24	\$21

The above shows estimated returns per head for skirted fleece wool. These figures do not take into account the value of skirtings and oddments and do not take into account discounts that may apply for faults under individual circumstances. These figures are based on a market index of 100% and should be used as a guide only. Returns over \$30 / head for fleece wool are highlighted.



Table 11: Returns pr head for skirted fleece wool.

Skirted FLC Weight		Micron																	
5 Kg		16	16.5	17	17.5	18	18.5	19	19.5	20	21	22	23	24	25	26	28	30	32
Yield (Sch Dry)	25% Current	\$17	\$16	\$16	\$15	\$15	\$14	\$14	\$14	\$14	\$14	\$14	\$14	\$13	\$11	\$10	\$8	\$8	\$7
	10yr ave.	\$22	\$20	\$18	\$17	\$16	\$15	\$14	\$13	\$13	\$12	\$12	\$11	\$11	\$9	\$8	\$7	\$6	\$5
	30% Current	\$21	\$20	\$19	\$18	\$18	\$17	\$17	\$17	\$17	\$17	\$17	\$17	\$16	\$14	\$12	\$10	\$10	\$9
	10yr ave.	\$26	\$24	\$22	\$21	\$19	\$18	\$17	\$16	\$15	\$15	\$14	\$14	\$13	\$11	\$10	\$8	\$7	\$6
	35% Current	\$24	\$23	\$22	\$21	\$21	\$20	\$20	\$20	\$20	\$20	\$20	\$20	\$19	\$16	\$14	\$12	\$11	\$10
	10yr ave.	\$30	\$28	\$25	\$24	\$22	\$21	\$20	\$19	\$18	\$17	\$16	\$16	\$15	\$13	\$12	\$9	\$8	\$7
	40% Current	\$27	\$26	\$25	\$24	\$24	\$23	\$23	\$23	\$23	\$23	\$23	\$22	\$21	\$18	\$17	\$14	\$13	\$11
	10yr ave.	\$35	\$32	\$29	\$28	\$25	\$24	\$23	\$21	\$20	\$19	\$19	\$18	\$17	\$15	\$13	\$11	\$9	\$8
	45% Current	\$31	\$29	\$28	\$27	\$26	\$26	\$26	\$26	\$26	\$26	\$25	\$25	\$24	\$20	\$19	\$15	\$14	\$13
	10yr ave.	\$39	\$36	\$32	\$31	\$29	\$27	\$26	\$24	\$23	\$22	\$21	\$21	\$19	\$17	\$15	\$12	\$11	\$9
	50% Current	\$34	\$33	\$31	\$30	\$29	\$29	\$29	\$29	\$29	\$28	\$28	\$28	\$27	\$23	\$21	\$17	\$16	\$14
	10yr ave.	\$43	\$40	\$36	\$34	\$32	\$30	\$28	\$27	\$25	\$24	\$24	\$23	\$21	\$18	\$17	\$13	\$12	\$10
	55% Current	\$38	\$36	\$34	\$33	\$32	\$32	\$32	\$31	\$31	\$31	\$31	\$31	\$29	\$25	\$23	\$19	\$17	\$16
	10yr ave.	\$48	\$44	\$40	\$38	\$35	\$33	\$31	\$29	\$28	\$27	\$26	\$25	\$23	\$20	\$18	\$14	\$13	\$11
	60% Current	\$41	\$39	\$38	\$36	\$35	\$35	\$34	\$34	\$34	\$34	\$34	\$34	\$32	\$27	\$25	\$20	\$19	\$17
	10yr ave.	\$52	\$48	\$43	\$41	\$38	\$36	\$34	\$32	\$30	\$29	\$28	\$27	\$25	\$22	\$20	\$16	\$14	\$13
	65% Current	\$45	\$43	\$41	\$39	\$38	\$38	\$37	\$37	\$37	\$37	\$37	\$36	\$34	\$30	\$27	\$22	\$21	\$18
	10yr ave.	\$56	\$52	\$47	\$45	\$41	\$39	\$37	\$35	\$33	\$32	\$31	\$30	\$28	\$24	\$22	\$17	\$15	\$14
	70% Current	\$48	\$46	\$44	\$42	\$41	\$40	\$40	\$40	\$40	\$40	\$40	\$39	\$37	\$32	\$29	\$24	\$22	\$20
	10yr ave.	\$61	\$56	\$51	\$48	\$44	\$42	\$40	\$37	\$35	\$34	\$33	\$32	\$30	\$26	\$23	\$18	\$16	\$15
	75% Current	\$51	\$49	\$47	\$45	\$44	\$43	\$43	\$43	\$43	\$43	\$42	\$42	\$40	\$34	\$31	\$25	\$24	\$21
	10yr ave.	\$65	\$60	\$54	\$52	\$48	\$45	\$43	\$40	\$38	\$36	\$35	\$34	\$32	\$28	\$25	\$20	\$18	\$16
	80% Current	\$55	\$52	\$50	\$48	\$47	\$46	\$46	\$46	\$46	\$46	\$45	\$45	\$42	\$36	\$33	\$27	\$25	\$23
	10yr ave.	\$69	\$64	\$58	\$55	\$51	\$48	\$45	\$43	\$40	\$39	\$38	\$36	\$34	\$30	\$27	\$21	\$19	\$17
	85% Current	\$58	\$56	\$53	\$51	\$50	\$49	\$49	\$48	\$48	\$48	\$48	\$48	\$45	\$39	\$35	\$29	\$27	\$24
	10yr ave.	\$74	\$68	\$61	\$59	\$54	\$51	\$48	\$45	\$43	\$41	\$40	\$39	\$36	\$31	\$28	\$22	\$20	\$18

The above shows estimated returns per head for skirted fleece wool. These figures do not take into account the value of skirtings and oddments and do not take into account discounts that may apply for faults under individual circumstances. These figures are based on a market index of 100% and should be used as a guide only. Returns over \$30 / head for fleece wool are highlighted.



Table 12: Returns pr head for skirted fleece wool.

Skirted FLC Weight		Micron																	
4 Kg		16	16.5	17	17.5	18	18.5	19	19.5	20	21	22	23	24	25	26	28	30	32
Yield (Sch Dry)	25% Current	\$14	\$13	\$13	\$12	\$12	\$12	\$11	\$11	\$11	\$11	\$11	\$11	\$11	\$9	\$8	\$7	\$6	\$6
	10yr ave.	\$17	\$16	\$14	\$14	\$13	\$12	\$11	\$11	\$10	\$10	\$9	\$9	\$8	\$7	\$7	\$5	\$5	\$4
	30% Current	\$16	\$16	\$15	\$14	\$14	\$14	\$14	\$14	\$14	\$14	\$14	\$13	\$13	\$11	\$10	\$8	\$8	\$7
	10yr ave.	\$21	\$19	\$17	\$17	\$15	\$14	\$14	\$13	\$12	\$12	\$11	\$11	\$10	\$9	\$8	\$6	\$6	\$5
	35% Current	\$19	\$18	\$18	\$17	\$16	\$16	\$16	\$16	\$16	\$16	\$16	\$16	\$15	\$13	\$12	\$9	\$9	\$8
	10yr ave.	\$24	\$22	\$20	\$19	\$18	\$17	\$16	\$15	\$14	\$14	\$13	\$13	\$12	\$10	\$9	\$7	\$7	\$6
	40% Current	\$22	\$21	\$20	\$19	\$19	\$18	\$18	\$18	\$18	\$18	\$18	\$18	\$17	\$15	\$13	\$11	\$10	\$9
	10yr ave.	\$28	\$25	\$23	\$22	\$20	\$19	\$18	\$17	\$16	\$16	\$15	\$15	\$14	\$12	\$11	\$8	\$8	\$7
	45% Current	\$25	\$24	\$23	\$21	\$21	\$21	\$21	\$21	\$21	\$21	\$20	\$20	\$19	\$16	\$15	\$12	\$11	\$10
	10yr ave.	\$31	\$29	\$26	\$25	\$23	\$22	\$20	\$19	\$18	\$17	\$17	\$16	\$15	\$13	\$12	\$9	\$8	\$8
	50% Current	\$27	\$26	\$25	\$24	\$24	\$23	\$23	\$23	\$23	\$23	\$23	\$22	\$21	\$18	\$17	\$14	\$13	\$11
	10yr ave.	\$35	\$32	\$29	\$28	\$25	\$24	\$23	\$21	\$20	\$19	\$19	\$18	\$17	\$15	\$13	\$11	\$9	\$8
	55% Current	\$30	\$29	\$28	\$26	\$26	\$25	\$25	\$25	\$25	\$25	\$25	\$25	\$23	\$20	\$18	\$15	\$14	\$12
	10yr ave.	\$38	\$35	\$32	\$30	\$28	\$27	\$25	\$24	\$22	\$21	\$21	\$20	\$19	\$16	\$15	\$12	\$10	\$9
	60% Current	\$33	\$31	\$30	\$29	\$28	\$28	\$28	\$27	\$27	\$27	\$27	\$27	\$25	\$22	\$20	\$16	\$15	\$14
	10yr ave.	\$42	\$38	\$35	\$33	\$31	\$29	\$27	\$26	\$24	\$23	\$23	\$22	\$20	\$18	\$16	\$13	\$11	\$10
	65% Current	\$36	\$34	\$33	\$31	\$31	\$30	\$30	\$30	\$30	\$30	\$29	\$29	\$28	\$24	\$21	\$18	\$17	\$15
	10yr ave.	\$45	\$41	\$38	\$36	\$33	\$31	\$30	\$28	\$26	\$25	\$24	\$24	\$22	\$19	\$17	\$14	\$12	\$11
	70% Current	\$38	\$37	\$35	\$33	\$33	\$32	\$32	\$32	\$32	\$32	\$32	\$31	\$30	\$26	\$23	\$19	\$18	\$16
	10yr ave.	\$48	\$44	\$40	\$39	\$36	\$34	\$32	\$30	\$28	\$27	\$26	\$26	\$24	\$21	\$19	\$15	\$13	\$12
	75% Current	\$41	\$39	\$38	\$36	\$35	\$35	\$34	\$34	\$34	\$34	\$34	\$34	\$32	\$27	\$25	\$20	\$19	\$17
	10yr ave.	\$52	\$48	\$43	\$41	\$38	\$36	\$34	\$32	\$30	\$29	\$28	\$27	\$25	\$22	\$20	\$16	\$14	\$13
	80% Current	\$44	\$42	\$40	\$38	\$38	\$37	\$37	\$36	\$37	\$36	\$36	\$36	\$34	\$29	\$26	\$22	\$20	\$18
	10yr ave.	\$55	\$51	\$46	\$44	\$41	\$39	\$36	\$34	\$32	\$31	\$30	\$29	\$27	\$24	\$21	\$17	\$15	\$13
	85% Current	\$47	\$45	\$43	\$40	\$40	\$39	\$39	\$39	\$39	\$39	\$38	\$38	\$36	\$31	\$28	\$23	\$22	\$19
	10yr ave.	\$59	\$54	\$49	\$47	\$43	\$41	\$39	\$36	\$34	\$33	\$32	\$31	\$29	\$25	\$23	\$18	\$16	\$14

The above shows estimated returns per head for skirted fleece wool. These figures do not take into account the value of skirtings and oddments and do not take into account discounts that may apply for faults under individual circumstances. These figures are based on a market index of 100% and should be used as a guide only. Returns over \$30 / head for fleece wool are highlighted.



Table 13: Returns pr head for skirted fleece wool.

Skirted FLC Weight 3 Kg		Micron																	
		16	16.5	17	17.5	18	18.5	19	19.5	20	21	22	23	24	25	26	28	30	32
Yield (Sch Dry)	25% Current	\$10	\$10	\$9	\$9	\$9	\$9	\$9	\$9	\$9	\$9	\$8	\$8	\$8	\$7	\$6	\$5	\$5	\$4
	10yr ave.	\$13	\$12	\$11	\$10	\$10	\$9	\$9	\$8	\$8	\$7	\$7	\$7	\$6	\$6	\$5	\$4	\$4	\$3
	30% Current	\$12	\$12	\$11	\$11	\$11	\$10	\$10	\$10	\$10	\$10	\$10	\$10	\$10	\$8	\$7	\$6	\$6	\$5
	10yr ave.	\$16	\$14	\$13	\$12	\$11	\$11	\$10	\$10	\$9	\$9	\$8	\$8	\$8	\$7	\$6	\$5	\$4	\$4
	35% Current	\$14	\$14	\$13	\$12	\$12	\$12	\$12	\$12	\$12	\$12	\$12	\$12	\$11	\$10	\$9	\$7	\$7	\$6
	10yr ave.	\$18	\$17	\$15	\$14	\$13	\$13	\$12	\$11	\$11	\$10	\$10	\$10	\$9	\$8	\$7	\$6	\$5	\$4
	40% Current	\$16	\$16	\$15	\$14	\$14	\$14	\$14	\$14	\$14	\$14	\$14	\$13	\$13	\$11	\$10	\$8	\$8	\$7
	10yr ave.	\$21	\$19	\$17	\$17	\$15	\$14	\$14	\$13	\$12	\$12	\$11	\$11	\$10	\$9	\$8	\$6	\$6	\$5
	45% Current	\$18	\$18	\$17	\$16	\$16	\$16	\$15	\$15	\$15	\$15	\$15	\$15	\$14	\$12	\$11	\$9	\$9	\$8
	10yr ave.	\$23	\$21	\$19	\$19	\$17	\$16	\$15	\$14	\$14	\$13	\$13	\$12	\$11	\$10	\$9	\$7	\$6	\$6
	50% Current	\$21	\$20	\$19	\$18	\$18	\$17	\$17	\$17	\$17	\$17	\$17	\$17	\$16	\$14	\$12	\$10	\$10	\$9
	10yr ave.	\$26	\$24	\$22	\$21	\$19	\$18	\$17	\$16	\$15	\$15	\$14	\$14	\$13	\$11	\$10	\$8	\$7	\$6
	55% Current	\$23	\$22	\$21	\$20	\$19	\$19	\$19	\$19	\$19	\$19	\$19	\$18	\$17	\$15	\$14	\$11	\$10	\$9
	10yr ave.	\$29	\$26	\$24	\$23	\$21	\$20	\$19	\$18	\$17	\$16	\$16	\$15	\$14	\$12	\$11	\$9	\$8	\$7
	60% Current	\$25	\$24	\$23	\$21	\$21	\$21	\$21	\$21	\$21	\$21	\$20	\$20	\$19	\$16	\$15	\$12	\$11	\$10
	10yr ave.	\$31	\$29	\$26	\$25	\$23	\$22	\$20	\$19	\$18	\$17	\$17	\$16	\$15	\$13	\$12	\$9	\$8	\$8
	65% Current	\$27	\$26	\$24	\$23	\$23	\$23	\$22	\$22	\$22	\$22	\$22	\$22	\$21	\$18	\$16	\$13	\$12	\$11
	10yr ave.	\$34	\$31	\$28	\$27	\$25	\$23	\$22	\$21	\$20	\$19	\$18	\$18	\$17	\$14	\$13	\$10	\$9	\$8
	70% Current	\$29	\$28	\$26	\$25	\$25	\$24	\$24	\$24	\$24	\$24	\$24	\$24	\$22	\$19	\$17	\$14	\$13	\$12
	10yr ave.	\$36	\$33	\$30	\$29	\$27	\$25	\$24	\$22	\$21	\$20	\$20	\$19	\$18	\$16	\$14	\$11	\$10	\$9
	75% Current	\$31	\$29	\$28	\$27	\$26	\$26	\$26	\$26	\$26	\$26	\$25	\$25	\$24	\$20	\$19	\$15	\$14	\$13
	10yr ave.	\$39	\$36	\$32	\$31	\$29	\$27	\$26	\$24	\$23	\$22	\$21	\$21	\$19	\$17	\$15	\$12	\$11	\$9
	80% Current	\$33	\$31	\$30	\$29	\$28	\$28	\$28	\$27	\$27	\$27	\$27	\$27	\$25	\$22	\$20	\$16	\$15	\$14
	10yr ave.	\$42	\$38	\$35	\$33	\$31	\$29	\$27	\$26	\$24	\$23	\$23	\$22	\$20	\$18	\$16	\$13	\$11	\$10
	85% Current	\$35	\$33	\$32	\$30	\$30	\$29	\$29	\$29	\$29	\$29	\$29	\$29	\$27	\$23	\$21	\$17	\$16	\$14
	10yr ave.	\$44	\$41	\$37	\$35	\$32	\$31	\$29	\$27	\$26	\$25	\$24	\$23	\$22	\$19	\$17	\$13	\$12	\$11

The above shows estimated returns per head for skirted fleece wool. These figures do not take into account the value of skirtings and oddments and do not take into account discounts that may apply for faults under individual circumstances. These figures are based on a market index of 100% and should be used as a guide only. Returns over \$30 / head for fleece wool are highlighted.



Table 14: Returns pr head for skirted fleece wool.

Skirted FLC Weight		Micron																	
2 Kg		16	16.5	17	17.5	18	18.5	19	19.5	20	21	22	23	24	25	26	28	30	32
Yield (Sch Dry)	25% Current	\$7	\$7	\$6	\$6	\$6	\$6	\$6	\$6	\$6	\$6	\$6	\$6	\$5	\$5	\$4	\$3	\$3	\$3
	10yr ave.	\$9	\$8	\$7	\$7	\$6	\$6	\$6	\$5	\$5	\$5	\$5	\$5	\$4	\$4	\$3	\$3	\$2	\$2
	30% Current	\$8	\$8	\$8	\$7	\$7	\$7	\$7	\$7	\$7	\$7	\$7	\$7	\$6	\$5	\$5	\$4	\$4	\$3
	10yr ave.	\$10	\$10	\$9	\$8	\$8	\$7	\$7	\$6	\$6	\$6	\$6	\$5	\$5	\$4	\$4	\$3	\$3	\$3
	35% Current	\$10	\$9	\$9	\$8	\$8	\$8	\$8	\$8	\$8	\$8	\$8	\$8	\$7	\$6	\$6	\$5	\$4	\$4
	10yr ave.	\$12	\$11	\$10	\$10	\$9	\$8	\$8	\$7	\$7	\$7	\$7	\$6	\$6	\$5	\$5	\$4	\$3	\$3
	40% Current	\$11	\$10	\$10	\$10	\$9	\$9	\$9	\$9	\$9	\$9	\$9	\$9	\$8	\$7	\$7	\$5	\$5	\$5
	10yr ave.	\$14	\$13	\$12	\$11	\$10	\$10	\$9	\$9	\$8	\$8	\$8	\$7	\$7	\$6	\$5	\$4	\$4	\$3
	45% Current	\$12	\$12	\$11	\$11	\$11	\$10	\$10	\$10	\$10	\$10	\$10	\$10	\$10	\$8	\$7	\$6	\$6	\$5
	10yr ave.	\$16	\$14	\$13	\$12	\$11	\$11	\$10	\$10	\$9	\$9	\$8	\$8	\$8	\$7	\$6	\$5	\$4	\$4
	50% Current	\$14	\$13	\$13	\$12	\$12	\$12	\$11	\$11	\$11	\$11	\$11	\$11	\$11	\$9	\$8	\$7	\$6	\$6
	10yr ave.	\$17	\$16	\$14	\$14	\$13	\$12	\$11	\$11	\$10	\$10	\$9	\$9	\$8	\$7	\$7	\$5	\$5	\$4
	55% Current	\$15	\$14	\$14	\$13	\$13	\$13	\$13	\$13	\$13	\$13	\$12	\$12	\$12	\$10	\$9	\$7	\$7	\$6
	10yr ave.	\$19	\$17	\$16	\$15	\$14	\$13	\$12	\$12	\$11	\$11	\$10	\$10	\$9	\$8	\$7	\$6	\$5	\$5
	60% Current	\$16	\$16	\$15	\$14	\$14	\$14	\$14	\$14	\$14	\$14	\$14	\$13	\$13	\$11	\$10	\$8	\$8	\$7
	10yr ave.	\$21	\$19	\$17	\$17	\$15	\$14	\$14	\$13	\$12	\$12	\$11	\$11	\$10	\$9	\$8	\$6	\$6	\$5
	65% Current	\$18	\$17	\$16	\$15	\$15	\$15	\$15	\$15	\$15	\$15	\$15	\$15	\$14	\$12	\$11	\$9	\$8	\$7
	10yr ave.	\$23	\$21	\$19	\$18	\$17	\$16	\$15	\$14	\$13	\$13	\$12	\$12	\$11	\$10	\$9	\$7	\$6	\$5
	70% Current	\$19	\$18	\$18	\$17	\$16	\$16	\$16	\$16	\$16	\$16	\$16	\$16	\$15	\$13	\$12	\$9	\$9	\$8
	10yr ave.	\$24	\$22	\$20	\$19	\$18	\$17	\$16	\$15	\$14	\$14	\$13	\$13	\$12	\$10	\$9	\$7	\$7	\$6
	75% Current	\$21	\$20	\$19	\$18	\$18	\$17	\$17	\$17	\$17	\$17	\$17	\$17	\$16	\$14	\$12	\$10	\$10	\$9
	10yr ave.	\$26	\$24	\$22	\$21	\$19	\$18	\$17	\$16	\$15	\$15	\$14	\$14	\$13	\$11	\$10	\$8	\$7	\$6
	80% Current	\$22	\$21	\$20	\$19	\$19	\$18	\$18	\$18	\$18	\$18	\$18	\$18	\$17	\$15	\$13	\$11	\$10	\$9
	10yr ave.	\$28	\$25	\$23	\$22	\$20	\$19	\$18	\$17	\$16	\$16	\$15	\$15	\$14	\$12	\$11	\$8	\$8	\$7
	85% Current	\$23	\$22	\$21	\$20	\$20	\$20	\$20	\$19	\$19	\$19	\$19	\$19	\$18	\$15	\$14	\$12	\$11	\$10
	10yr ave.	\$29	\$27	\$25	\$23	\$22	\$20	\$19	\$18	\$17	\$16	\$16	\$16	\$14	\$13	\$11	\$9	\$8	\$7

The above shows estimated returns per head for skirted fleece wool. These figures do not take into account the value of skirtings and oddments and do not take into account discounts that may apply for faults under individual circumstances. These figures are based on a market index of 100% and should be used as a guide only. Returns over \$30 / head for fleece wool are highlighted.