



Table 1: Northern Region Micron Price Guides

CURRENT MARKET			PERCENTILES		AVERAGES						12 MONTH COMPARISONS								TRADING RANGE			
Mic.	12/08/2010	14/07/2010			Now			Now			11/08/2009		Now		Now		Now		Clean c/kg			
Price	Current	Weekly	3yr	10yr	<u>3 year</u>	compared		<u>10 year</u>	compared		This time	compared		12 Month	compared		12 Month	compared		12	3	10
Guides	Price	Change			Average	to 3yr ave	Average	to 10yr ave	Last Year	to Last Year	Low	to Low	High	to High	Mth	Year	Year					
NRI	894	-6 -0.7%	42%	61%	898	-4 0%		864	+30 3%		796	+98 12%		827	+67 8%		974	-80 -8%		147	343	584
16*	1540	0	32%		1613	-73 -5%					1590	-50 -3%		1345	+195 14%		1640	-100 -6%		295	645	
16.5*	1395	0	28%		1472	-77 -5%					1360	+35 3%		1260	+135 11%		1490	-95 -6%		230	547	
17*	1230	0	16%	16%	1353	-123 -9%		1451	-221 -15%		1220	+10 1%		1175	+55 5%		1290	-60 -5%		115	500	570
17.5*	1185	0	22%		1293	-108 -8%					1145	+40 3%		1155	+30 3%		1235	-50 -4%		80	495	
18	1146	-9 -0.8%	27%	27%	1236	-90 -7%		1302	-156 -12%		1077	+69 6%		1110	+36 3%		1228	-82 -7%		118	432	432
18.5	1111	-17 -1.5%	38%		1164	-53 -5%					1026	+85 8%		1048	+63 6%		1183	-72 -6%		135	425	
19	1040	-5 -0.5%	35%	49%	1074	-34 -3%		1069	-29 -3%		954	+86 9%		974	+66 7%		1120	-80 -7%		146	443	706
19.5	963	-8 -0.8%	35%		991	-28 -3%					864	+99 11%		900	+63 7%		1067	-104 -10%		167	457	
20	926	-4 -0.4%	53%	62%	921	+5 1%		908	+18 2%		810	+116 14%		830	+96 12%		1023	-97 -9%		193	464	717
21	909	-13 -1.4%	55%	63%	880	+29 3%		859	+50 6%		789	+120 15%		809	+100 12%		1006	-97 -10%		197	427	786
22	906	0	64%	66%	855	+51 6%		835	+71 9%		773	+133 17%		790	+116 15%		971	-65 -7%		181	360	830
23	891	-1 -0.1%	69%	68%	832	+59 7%		814	+77 9%		757	+134 18%		776	+115 15%		940	-49 -5%		164	311	831
24	837	-5 -0.6%	82%	73%	784	+53 7%		779	+58 7%		731	+106 15%		752	+85 11%		881	-44 -5%		129	257	804
25	695	-5 -0.7%	62%	65%	667	+28 4%		701	-6 -1%		630	+65 10%		627	+68 11%		725	-30 -4%		98	188	727
26	604	-11 -1.8%	49%	50%	600	+4 1%		643	-39 -6%		586	+18 3%		560	+44 8%		630	-26 -4%		70	155	641
28	454	-8 -1.8%	41%	18%	460	-6 -1%		521	-67 -13%		480	-26 -5%		430	+24 6%		493	-39 -8%		63	119	465
30	400	-5 -1.3%	59%	22%	393	+7 2%		455	-55 -12%		413	-13 -3%		374	+26 7%		434	-34 -8%		60	136	384
32	356	-3 -0.8%	78%	24%	341	+15 4%		413	-57 -14%		333	+23 7%		324	+32 10%		375	-19 -5%		51	108	372
MC	598	-31 -5.2%	79%	85%	538	+60 11%		492	+106 22%		492	+106 22%		534	+64 12%		681	-83 -12%		147	289	331

Note:

- Due to the irregular market quoting for some fine wool categories, figures shown relating to micron categories below 18 mic, are an estimate based on the 42 nkt AWEX Premium & Discount Report & other available information.
- For any category, where there is insufficient quantity offered to enable AWEX to quote, a quote will be provided based on the best available information.
- 10 year data is not available on some micron categories, which may result in blank spaces in the table above.

Definitions:

- A Percentile, is a value on a scale of one hundred that indicates the percent of a distribution that is equal to or below it. In general, a percentile between 25% & 75% is considered normal, a percentile below 25% is considered below normal and a percentile above 75% is considered above normal. Three and ten year percentiles shown in the table above, detail the period of time during the past 3 & 10 years that the market has traded either at or below it's current level (the higher the percentile, the stronger the market).

Source: Australian Wool Exchange, Australian Wool Innovation, Sydney Futures Exchange, x-rates.com

Disclaimer: While all due care has been taken in the preparation of this document, no warranty is made as to its accuracy, reliability or completeness. To the extent permitted by law neither Jemalong or their sources including subsidiaries and staff, accept liability to any person for loss or damage arising from the use of this information.



## MARKET COMMENTARY

Australian Dollar 90.00 cents US as of 12/08/2010

### NORTHERN REGION – Sale S06/10 (49,509 bales offered nationally)

#### On Wednesday

Merino Fleece: With a higher AUD and larger offering, the first sale back after a three week recess saw the market loose ground. The fine microns of 17 and 17.5 attracted some Italian support for the better style and strength lots which posted some small gains. Most microns closed 10 to 15 cents cheaper with the broader end least affected. Discounting for the higher mid break lots continued, generally by 20 cents.

Merino Skirting's: Most descriptions were 10 cents cheaper with the broader microns finding better support.

Oddments: All categories retreated, with locks and stains 20 cents cheaper and crutching's down by 10.

Crossbreds: 27 to 29 micron were up to 10 cents cheaper, while 30 to 32 microns eased by 5.

Offering: 7,910 bales were offered with 8.0% Passed-In

#### On Thursday

Merino Fleece: As the AUD eased the market recouped some of the previous day's losses. The medium microns picked up around 10 cents with the broader range 5-10 cents dearer.

Merino Skirting's: The finer end remained fully firm while 19 micron and broader rose by 10 cents for all descriptions

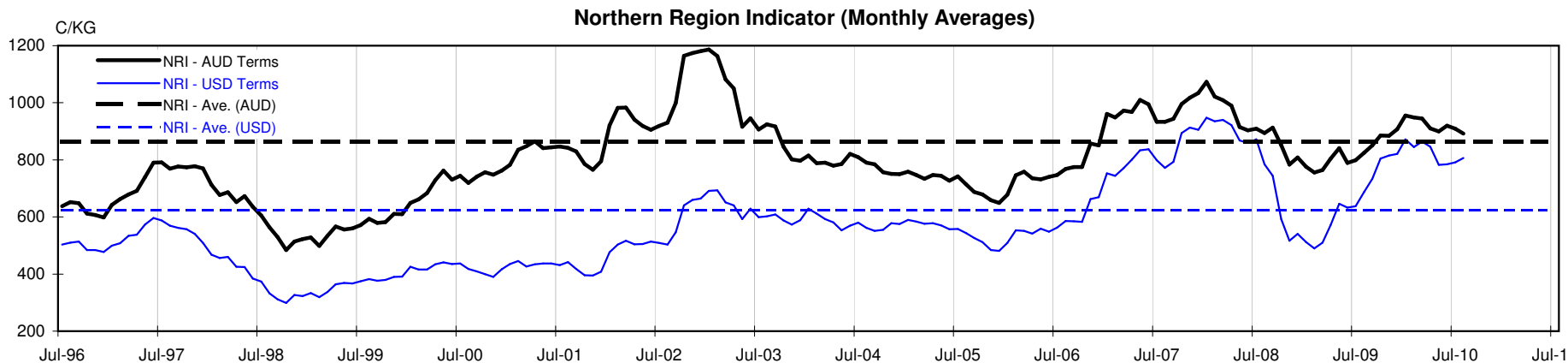
Oddments: Lock's and stains continued to contract reducing by 10 cents, while crutching's were 20 cents cheaper.

Crossbreds: The bulk of the offering was between 27 and 30 microns and this area remained unchanged.

Offering: 9,560 bales were offered with 9.2% Passed-In.

37,561 bales are to be offered for sale next week, Jemalong are selling on Thursday 19<sup>th</sup> August.

Source: AWEX





**Table 4: 19 micron SFE**

Wednesday, 11 August 2010

Delivery Mth	Aug-10	Oct-10	Dec-10	Feb-11	Apr-11	Jun-11	Aug-11	Oct-11	Dec-11
19 Micron SFE	1045	1045	1045	1045	1045	1045	1045	1045	1045
Average	1019	1029	1038	1046	1051	1053	1050	1042	1052
Maximum	1088	1088	1088	1088	1088	1088	1080	1065	1065
Minimum	884	905	936	983	1025	1034	1034	1034	1034

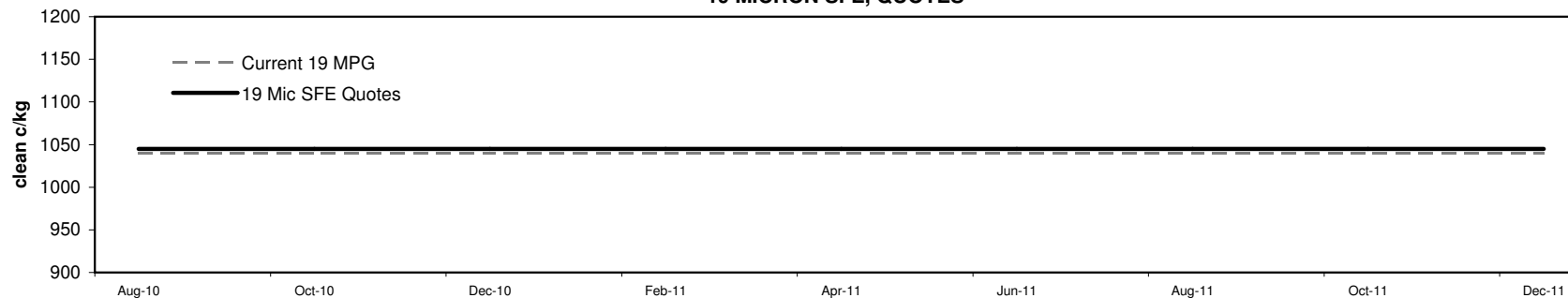
**Table 5: 19 micron SFE, as a percentile of the 19 micron MPG**

3 Year Percentile	36%	36%	36%	36%	36%	36%	36%	36%	36%
10 Year Percentile	50%	50%	50%	50%	50%	50%	50%	50%	50%

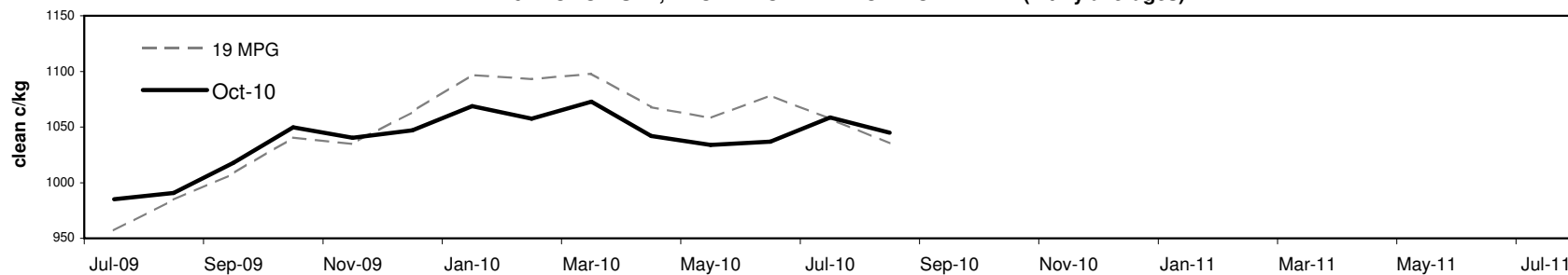
**Table 6: 19 micron SFE, compared to MPG**

Current 19 MPG	+5	0%	+5	0%	+5	0%	+5	0%	+5	0%	+5	0%	+5	0%	+5	0%	+5	0%
19 MPG, 1 Year Average	-16	-2%	-16	-2%	-16	-2%	-16	-2%	-16	-2%	-16	-2%	-16	-2%	-16	-2%	-16	-2%
19 MPG, 3 Year Average	-29	-3%	-29	-3%	-29	-3%	-29	-3%	-29	-3%	-29	-3%	-29	-3%	-29	-3%	-29	-3%
19 MPG, 10 Year Average	-24	-2%	-24	-2%	-24	-2%	-24	-2%	-24	-2%	-24	-2%	-24	-2%	-24	-2%	-24	-2%

**19 MICRON SFE, QUOTES**



**19 MICRON SFE, FRONT MONTH PRICE MOVEMENT (mthly averages)**





**Table 7: 21 micron SFE**

Wednesday, 11 August 2010

Delivery Mth	Aug-10	Oct-10	Dec-10	Feb-11	Apr-11	Jun-11	Aug-11	Oct-11	Dec-11
21 Micron SFE	912	925	927	917	915	910	920	910	910
Average	899	912	924	933	940	942	933	914	910
Maximum	1003	1013	1004	1004	1004	1004	992	951	925
Minimum	742	780	818	860	891	890	891	890	890

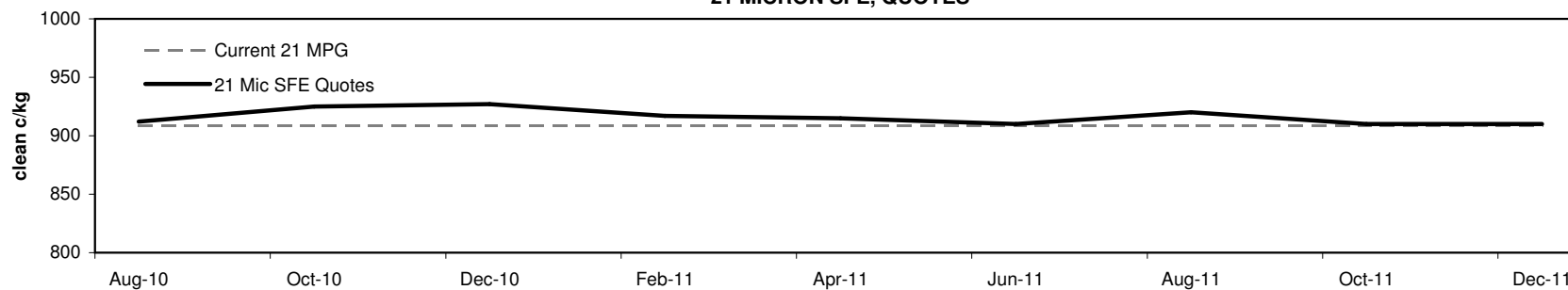
**Table 8: 21 micron SFE, as a percentile of the 21 micron MPG**

3 Year Percentile	57%	62%	63%	59%	59%	56%	60%	56%	56%
10 Year Percentile	64%	66%	66%	65%	64%	63%	65%	63%	63%

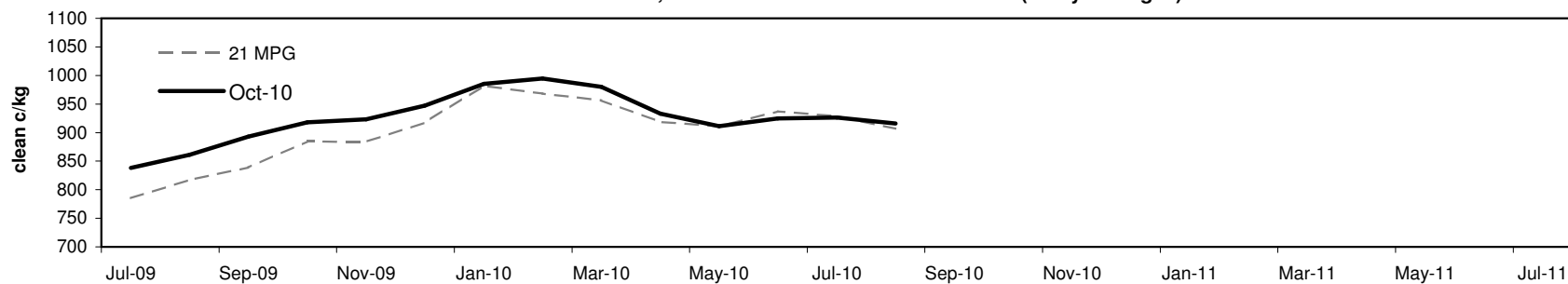
**Table 9: 21 micron SFE, compared to MPG**

Current 21 MPG	+3	0%	+16	2%	+18	2%	+8	1%	+6	1%	+1	0%	+11	1%	+1	0%	+1	0%
21 MPG, 1 Year Average	-8	-1%	+5	1%	+7	1%	-3	0%	-5	-1%	-10	-1%	+0	0%	-10	-1%	-10	-1%
21 MPG, 3 Year Average	+32	4%	+45	5%	+47	5%	+37	4%	+35	4%	+30	3%	+40	5%	+30	3%	+30	3%
21 MPG, 10 Year Average	+53	6%	+66	8%	+68	8%	+58	7%	+56	7%	+51	6%	+61	7%	+51	6%	+51	6%

**21 MICRON SFE, QUOTES**



**21 MICRON SFE, FRONT MONTH PRICE MOVEMENT (mthly averages)**





**Table 10: 23 micron SFE**

Wednesday, 11 August 2010

Delivery Mth	Aug-10	Oct-10	Dec-10	Feb-11	Apr-11	Jun-11	Aug-11	Oct-11	Dec-11
23 Micron SFE	883	883	883	883	883	883	883	883	883
Average	818	832	846	857	868	886	896	883	883
Maximum	927	927	927	927	927	927	927	883	883
Minimum	690	716	760	760	803	803	883	883	883

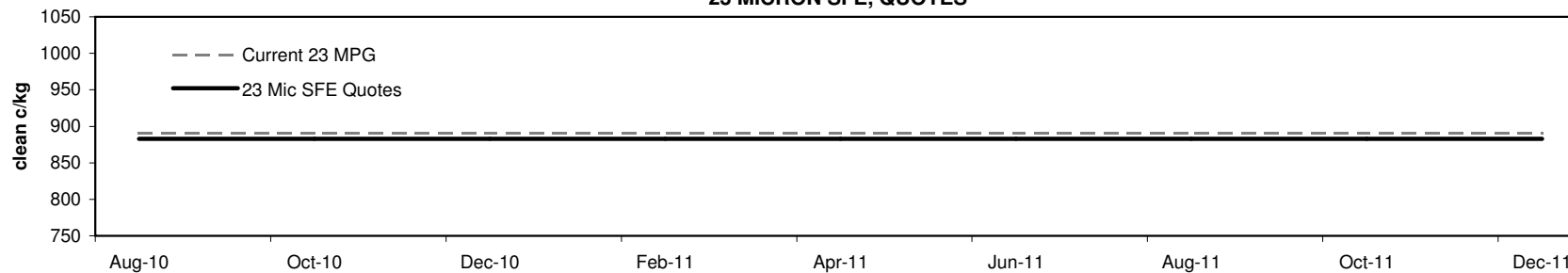
**Table 11: 23 micron SFE, as a percentile of the 23 micron MPG**

3 Year Percentile	64%	64%	64%	64%	64%	64%	64%	64%	64%
10 Year Percentile	66%	66%	66%	66%	66%	66%	66%	66%	66%

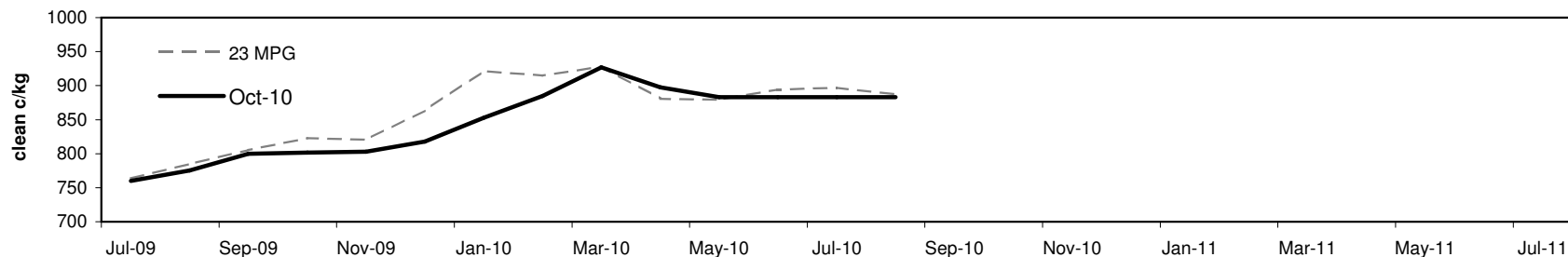
**Table 12: 23 micron SFE, compared to MPG**

Current 19 MPG	-8	-1%	-8	-1%	-8	-1%	-8	-1%	-8	-1%	-8	-1%	-8	-1%	-8	-1%	-8	-1%
23 MPG, 1 Year Average	+7	1%	+7	1%	+7	1%	+7	1%	+7	1%	+7	1%	+7	1%	+7	1%	+7	1%
23 MPG, 3 Year Average	+51	6%	+51	6%	+51	6%	+51	6%	+51	6%	+51	6%	+51	6%	+51	6%	+51	6%
23 MPG, 10 Year Average	+69	8%	+69	8%	+69	8%	+69	8%	+69	8%	+69	8%	+69	8%	+69	8%	+69	8%

**23 MICRON SFE, QUOTES**

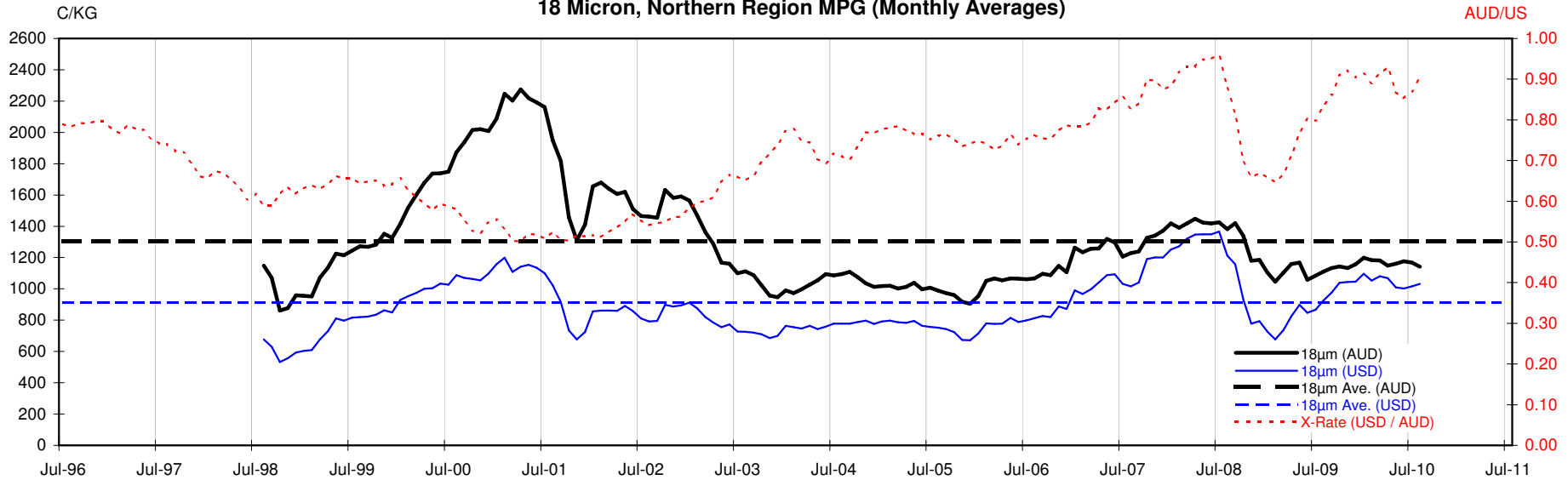


**23 MICRON SFE, FRONT MONTH PRICE MOVEMENT (mthly averages)**

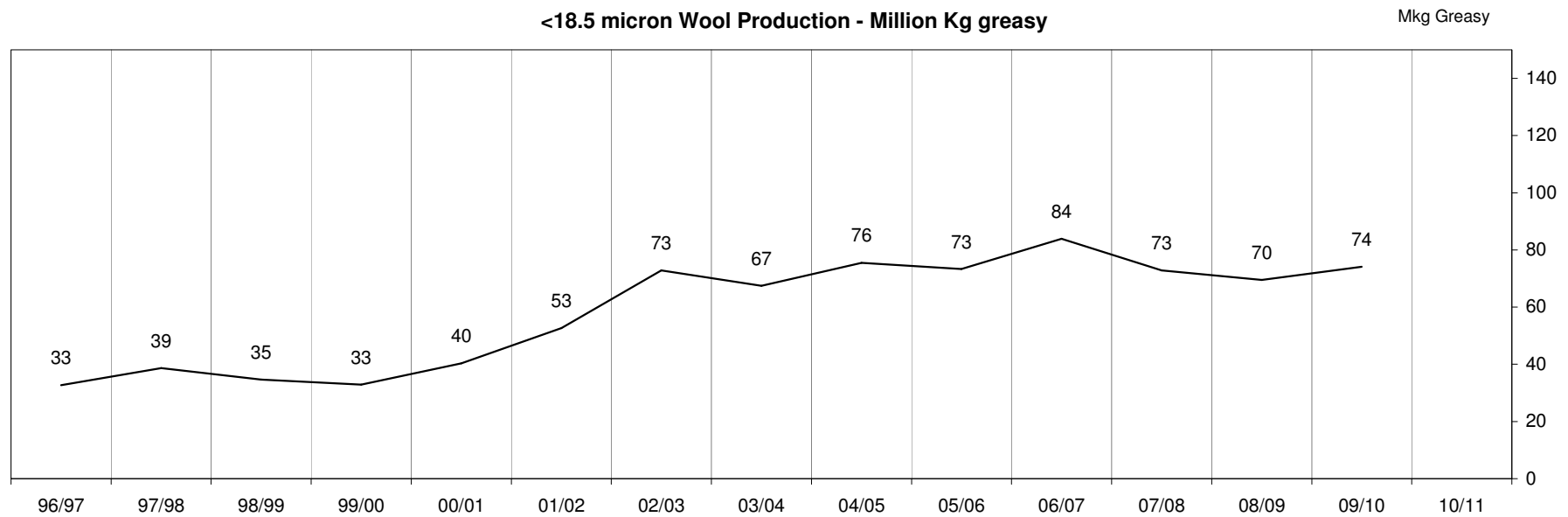


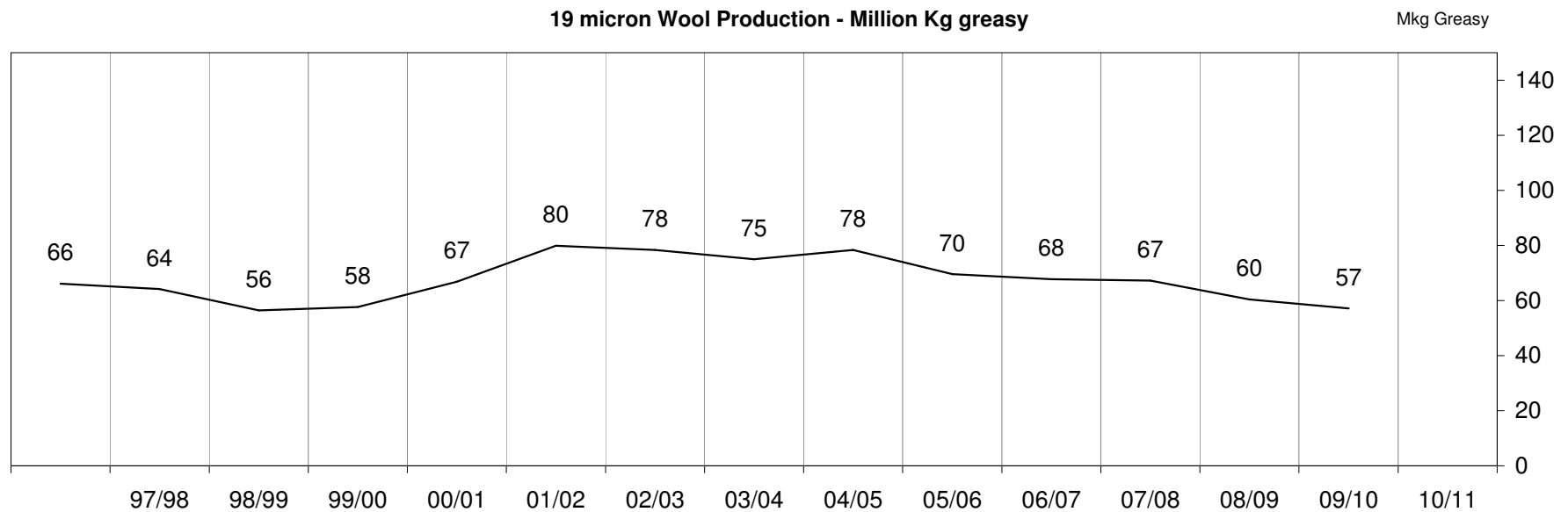
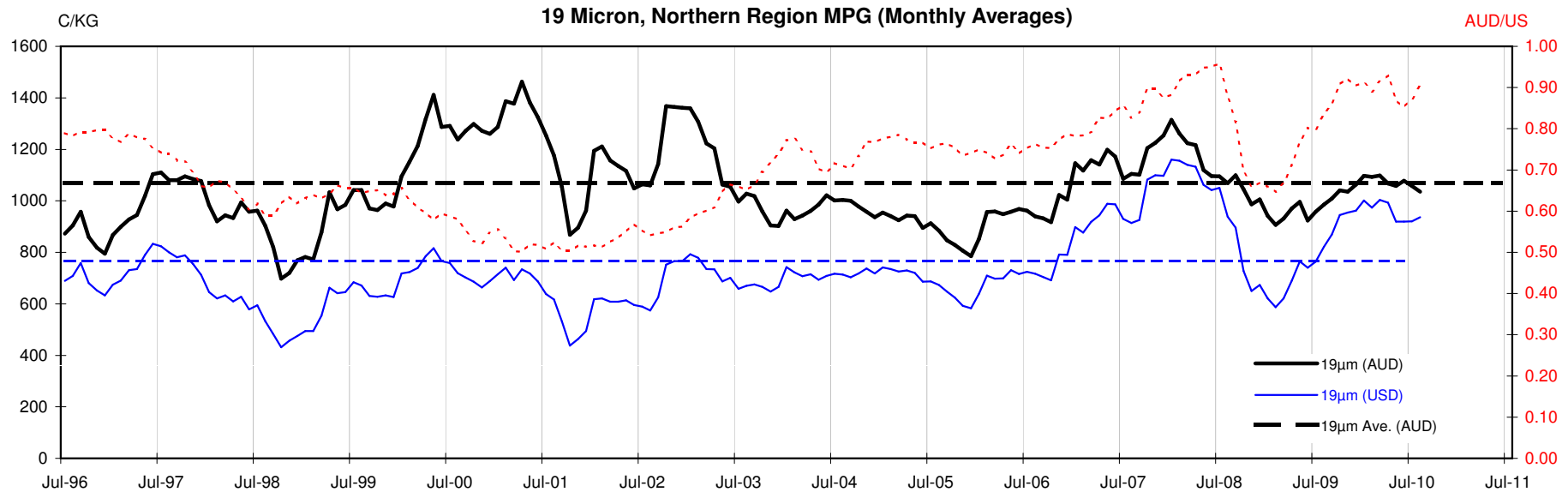


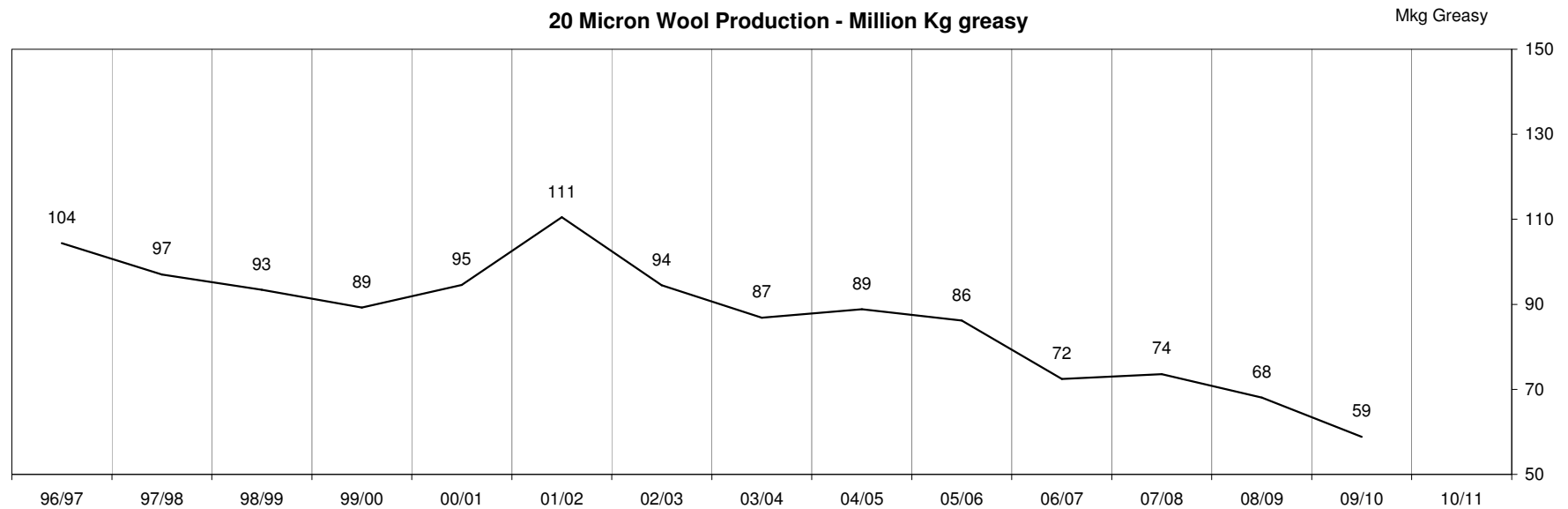
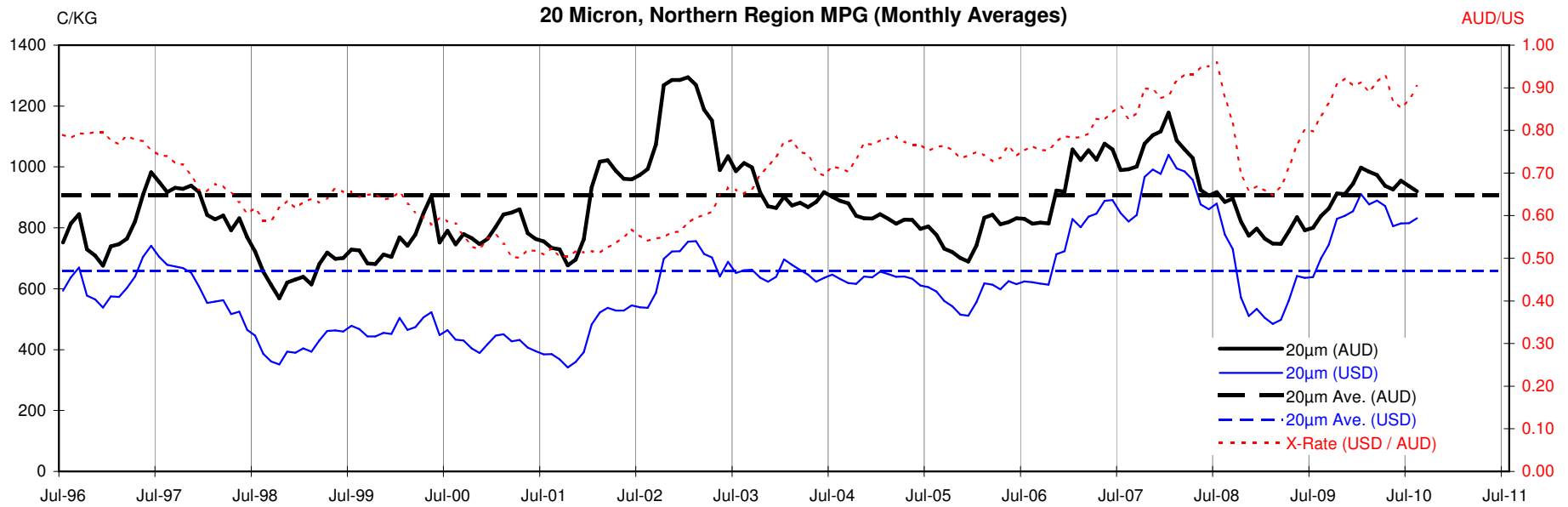
18 Micron, Northern Region MPG (Monthly Averages)



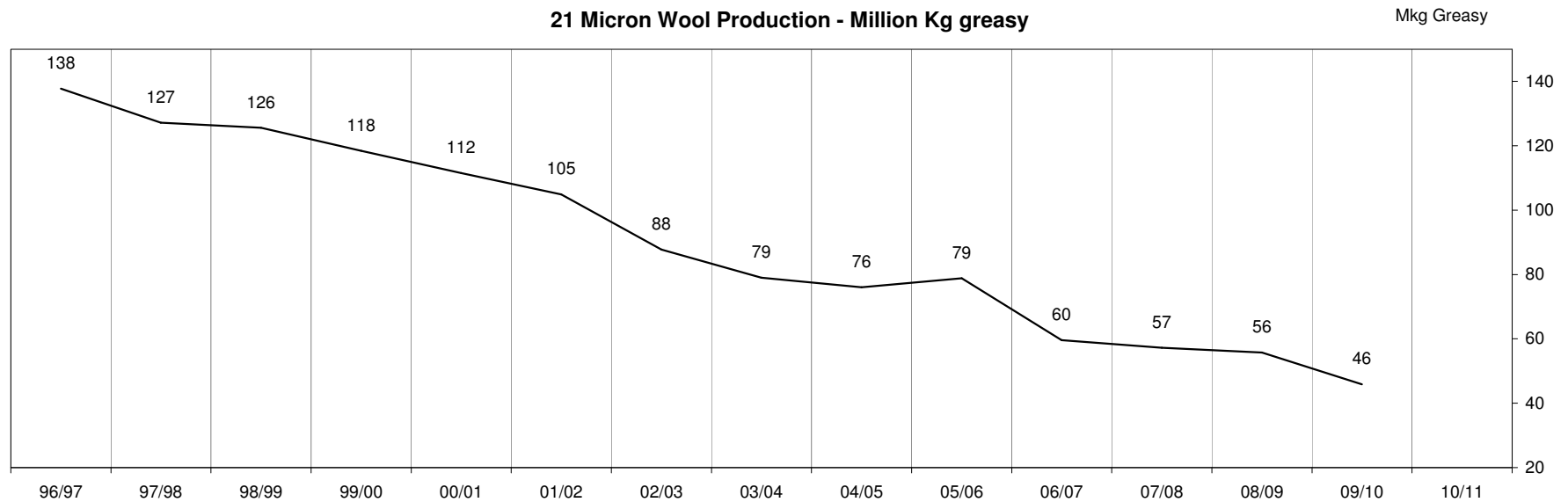
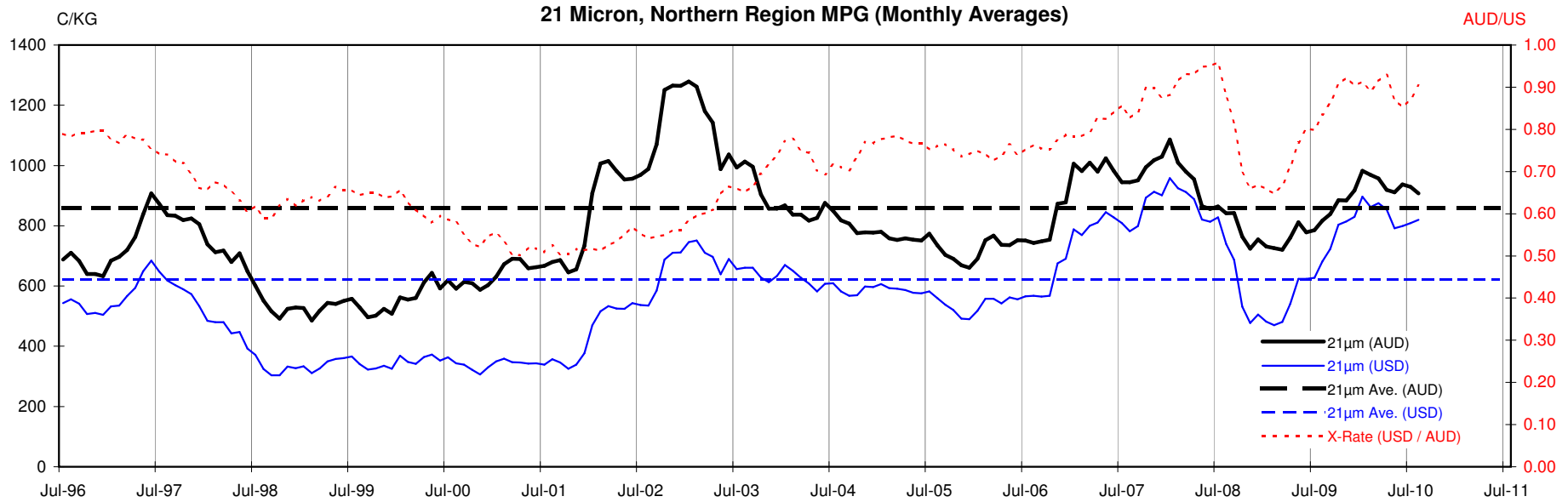
<18.5 micron Wool Production - Million Kg greasy

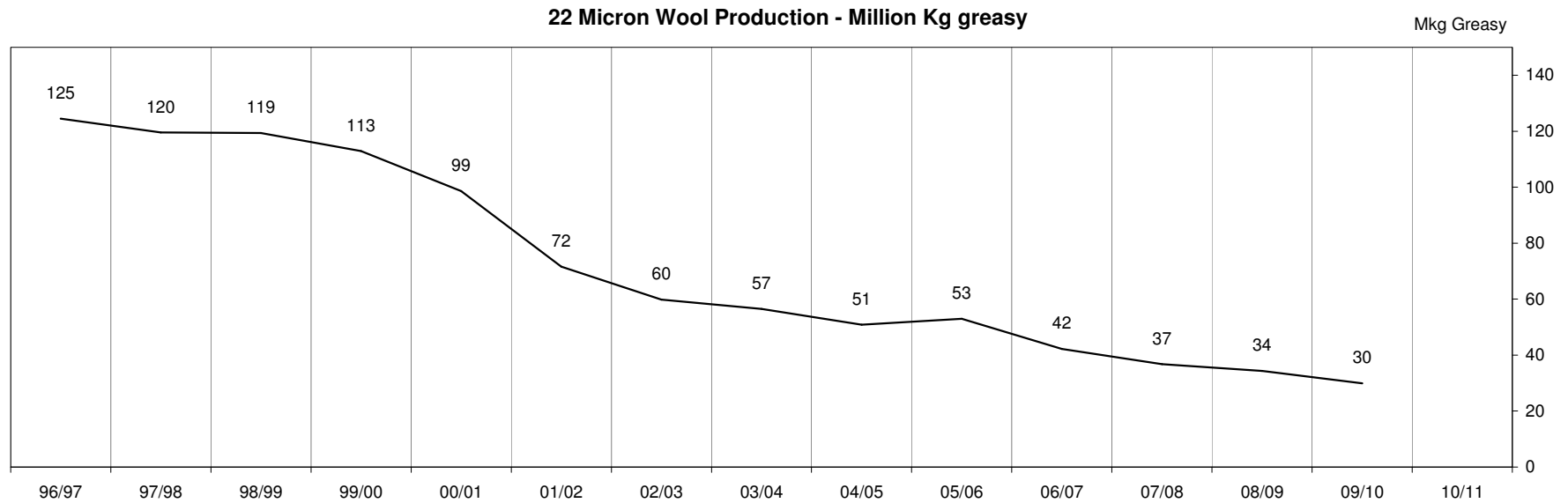
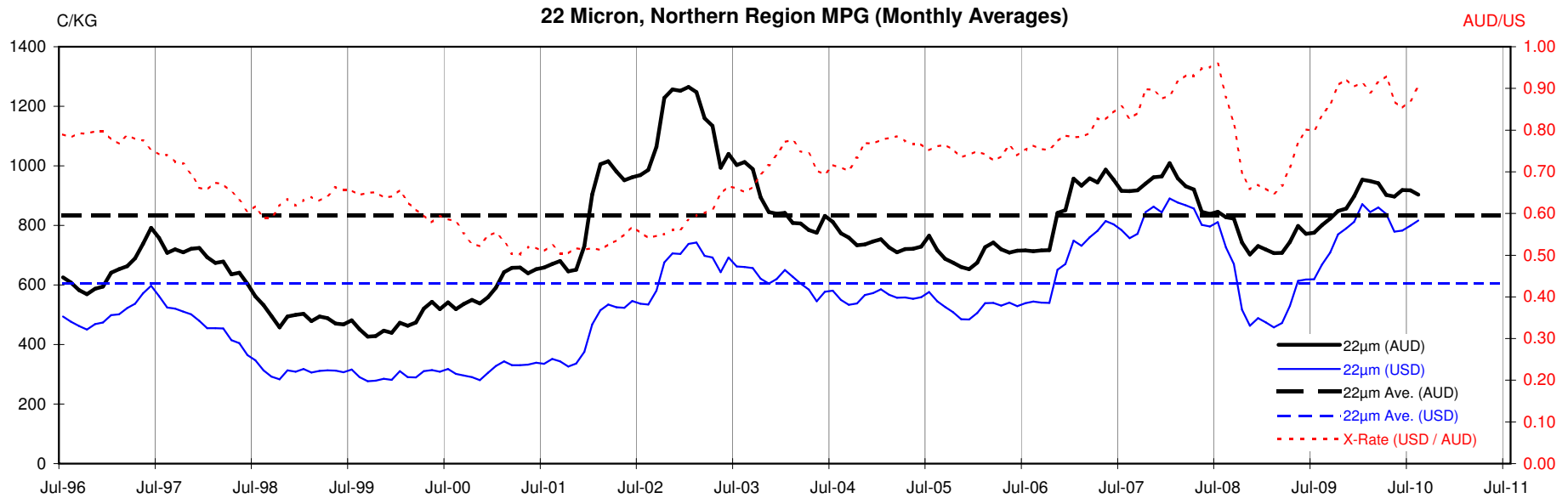


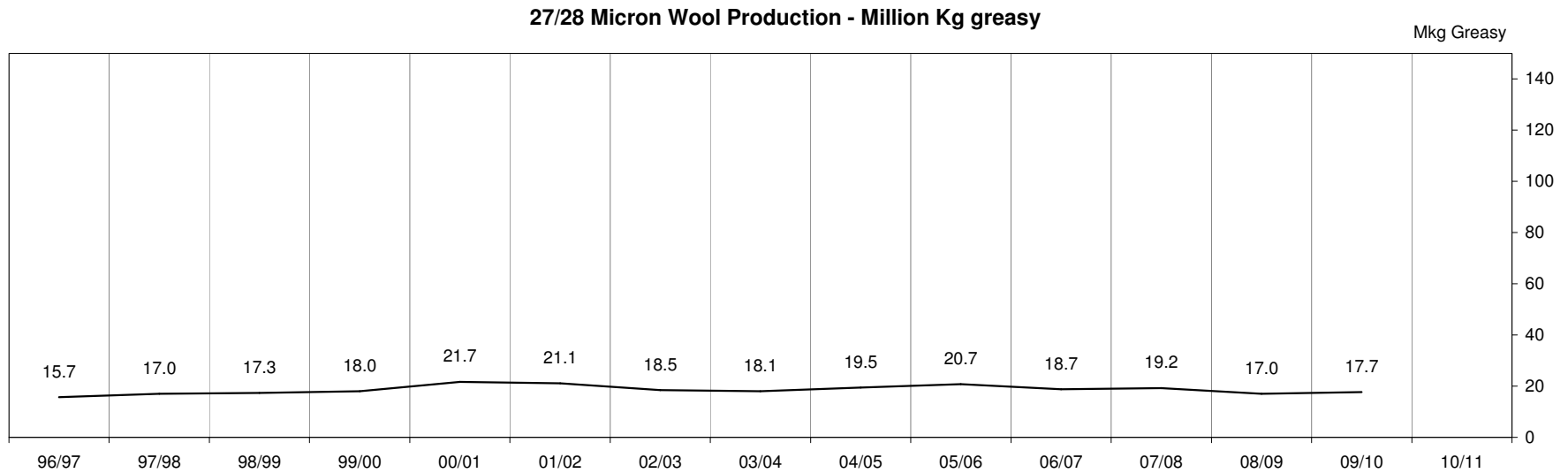
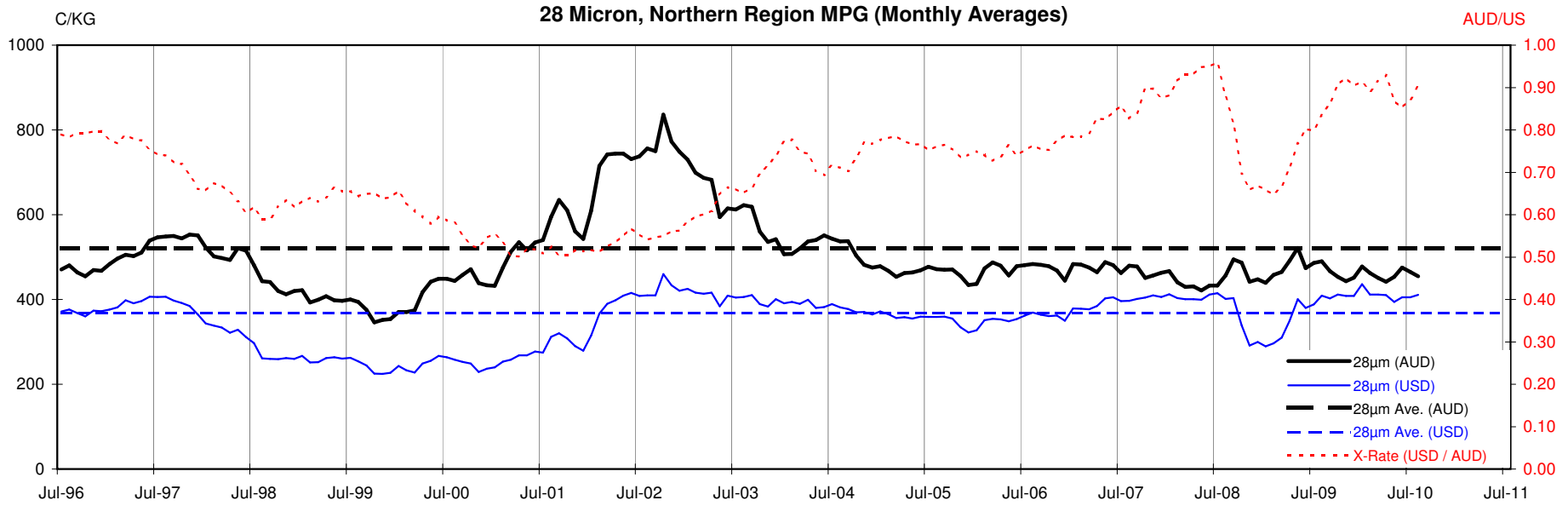












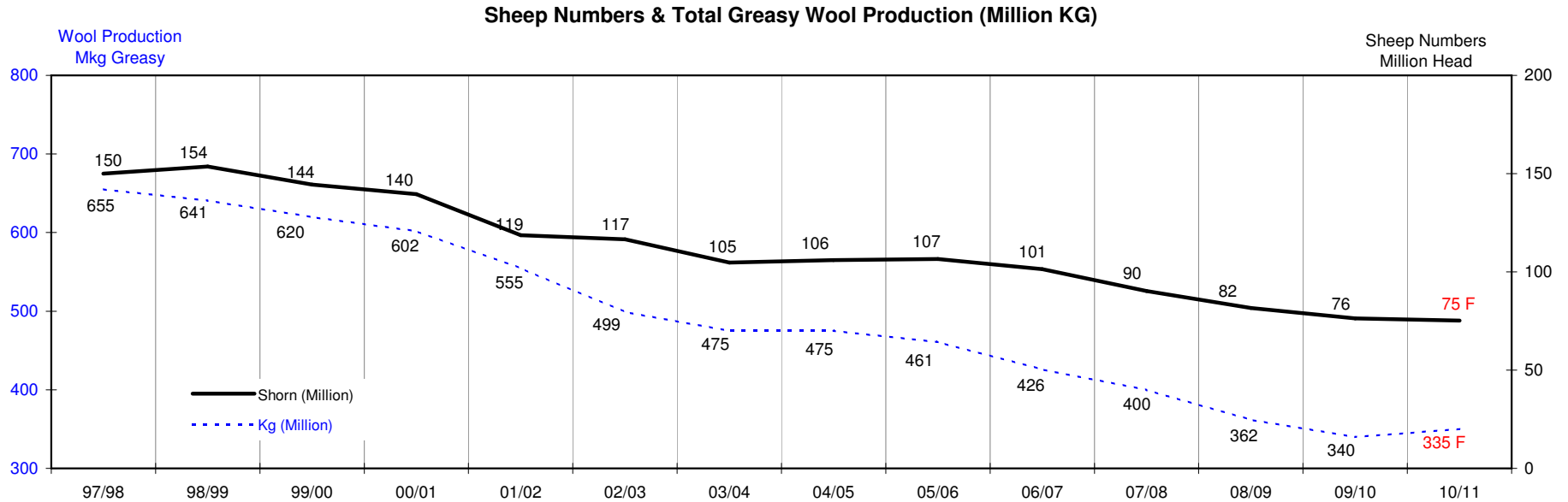
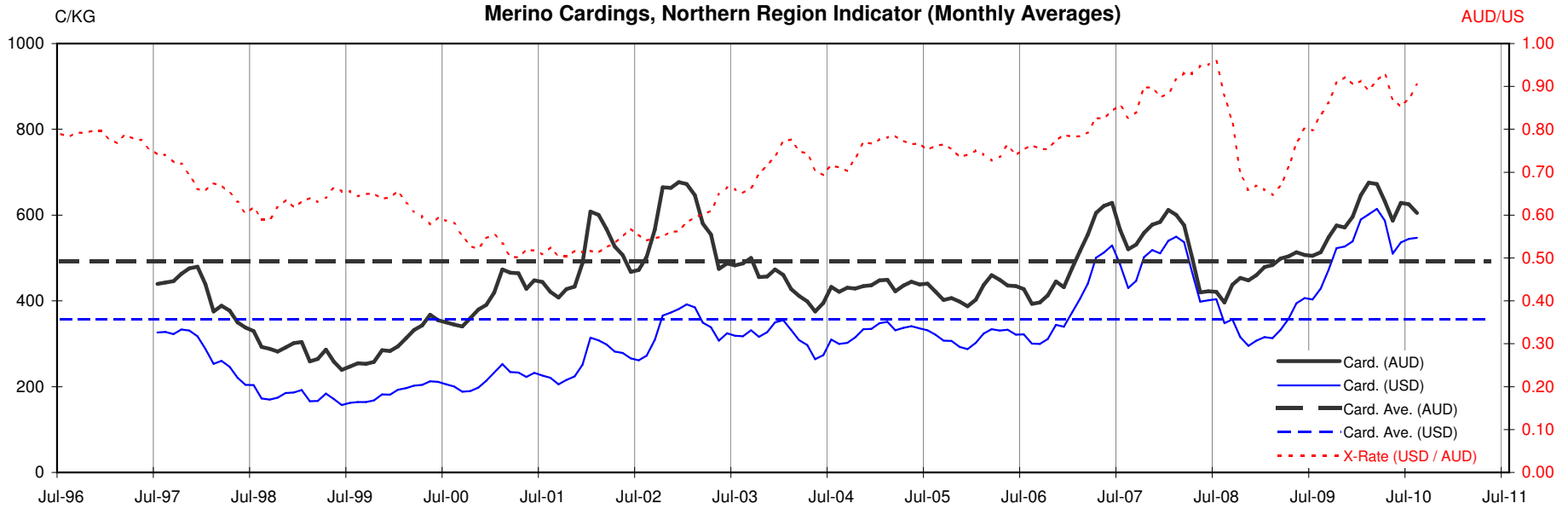




Table 13: Returns pr head for skirted fleece wool.

Skirted FLC Weight  9 Kg			Micron																	
			16	16.5	17	17.5	18	18.5	19	19.5	20	21	22	23	24	25	26	28	30	32
Yield (Sch Dry)	25%	Current	\$35	\$31	\$28	\$27	\$26	\$25	\$23	\$22	\$21	\$20	\$20	\$20	\$19	\$16	\$14	\$10	\$9	\$8
		10yr ave.			\$33	\$33	\$29		\$24		\$20	\$19	\$19	\$18	\$18	\$16	\$14	\$12	\$10	\$9
	30%	Current	\$42	\$38	\$33	\$32	\$31	\$30	\$28	\$26	\$25	\$25	\$24	\$24	\$23	\$19	\$16	\$12	\$11	\$10
		10yr ave.			\$39	\$39	\$35		\$29		\$25	\$23	\$23	\$22	\$21	\$19	\$17	\$14	\$12	\$11
	35%	Current	\$49	\$44	\$39	\$37	\$36	\$35	\$33	\$30	\$29	\$29	\$29	\$28	\$26	\$22	\$19	\$14	\$13	\$11
		10yr ave.			\$46	\$46	\$41		\$34		\$29	\$27	\$26	\$26	\$25	\$22	\$20	\$16	\$14	\$13
	40%	Current	\$55	\$50	\$44	\$43	\$41	\$40	\$37	\$35	\$33	\$33	\$33	\$32	\$30	\$25	\$22	\$16	\$14	\$13
		10yr ave.			\$52	\$52	\$47		\$38		\$33	\$31	\$30	\$29	\$28	\$25	\$23	\$19	\$16	\$15
	45%	Current	\$62	\$56	\$50	\$48	\$46	\$45	\$42	\$39	\$38	\$37	\$37	\$36	\$34	\$28	\$24	\$18	\$16	\$14
		10yr ave.			\$59	\$59	\$53		\$43		\$37	\$35	\$34	\$33	\$32	\$28	\$26	\$21	\$18	\$17
	50%	Current	\$69	\$63	\$55	\$53	\$52	\$50	\$47	\$43	\$42	\$41	\$41	\$40	\$38	\$31	\$27	\$20	\$18	\$16
		10yr ave.			\$65	\$65	\$59		\$48		\$41	\$39	\$38	\$37	\$35	\$32	\$29	\$23	\$20	\$19
	55%	Current	\$76	\$69	\$61	\$59	\$57	\$55	\$51	\$48	\$46	\$45	\$45	\$44	\$41	\$34	\$30	\$22	\$20	\$18
		10yr ave.			\$72	\$72	\$64		\$53		\$45	\$43	\$41	\$40	\$39	\$35	\$32	\$26	\$23	\$20
60%	Current	\$83	\$75	\$66	\$64	\$62	\$60	\$56	\$52	\$50	\$49	\$49	\$48	\$45	\$38	\$33	\$25	\$22	\$19	
	10yr ave.			\$78	\$78	\$70		\$58		\$49	\$46	\$45	\$44	\$42	\$38	\$35	\$28	\$25	\$22	
65%	Current	\$90	\$82	\$72	\$69	\$67	\$65	\$61	\$56	\$54	\$53	\$53	\$52	\$49	\$41	\$35	\$27	\$23	\$21	
	10yr ave.			\$85	\$85	\$76		\$63		\$53	\$50	\$49	\$48	\$46	\$41	\$38	\$30	\$27	\$24	
70%	Current	\$97	\$88	\$77	\$75	\$72	\$70	\$66	\$61	\$58	\$57	\$57	\$56	\$53	\$44	\$38	\$29	\$25	\$22	
	10yr ave.			\$91	\$91	\$82		\$67		\$57	\$54	\$53	\$51	\$49	\$44	\$41	\$33	\$29	\$26	
75%	Current	\$104	\$94	\$83	\$80	\$77	\$75	\$70	\$65	\$63	\$61	\$61	\$60	\$56	\$47	\$41	\$31	\$27	\$24	
	10yr ave.			\$98	\$98	\$88		\$72		\$61	\$58	\$56	\$55	\$53	\$47	\$43	\$35	\$31	\$28	
80%	Current	\$111	\$100	\$89	\$85	\$83	\$80	\$75	\$69	\$67	\$65	\$65	\$64	\$60	\$50	\$43	\$33	\$29	\$26	
	10yr ave.			\$104	\$104	\$94		\$77		\$65	\$62	\$60	\$59	\$56	\$50	\$46	\$38	\$33	\$30	
85%	Current	\$118	\$107	\$94	\$91	\$88	\$85	\$80	\$74	\$71	\$70	\$69	\$68	\$64	\$53	\$46	\$35	\$31	\$27	
	10yr ave.			\$111	\$111	\$100		\$82		\$69	\$66	\$64	\$62	\$60	\$54	\$49	\$40	\$35	\$32	

The above shows estimated returns per head for skirted fleece wool. These figures do not take into account the value of skirtings and oddments and do not take into account discounts that may apply for faults under individual circumstances. These figures are based on a market index of 100% and should be used as a guide only. Returns over \$30 / head for fleece wool are highlighted.

Source: Australian Wool Exchange, Australian Wool Innovation, Sydney Futures Exchange, x-rates.com

Disclaimer: While all due care has been taken in the preparation of this document, no warranty is made as to its accuracy, reliability or completeness. To the extent permitted by law neither Jemalong or their sources including subsidiaries and staff, accept liability to any person for loss or damage arising from the use of this information.



Table 14: Returns pr head for skirted fleece wool.

Skirted FLC Weight  8 Kg		Micron																		
		16	16.5	17	17.5	18	18.5	19	19.5	20	21	22	23	24	25	26	28	30	32	
Yield (Sch Dry)	25%	Current	\$35	\$31	\$28	\$27	\$26	\$25	\$23	\$22	\$21	\$20	\$20	\$20	\$19	\$16	\$14	\$10	\$9	\$8
		10yr ave.			\$33		\$29		\$24		\$20	\$19	\$19	\$18	\$18	\$16	\$14	\$12	\$10	\$9
	30%	Current	\$42	\$38	\$33	\$32	\$31		\$28	\$26	\$25	\$25	\$24	\$24	\$23	\$19	\$16	\$12	\$11	\$10
		10yr ave.			\$39		\$35		\$29		\$25	\$23	\$23	\$22	\$21	\$19	\$17	\$14	\$12	\$11
	35%	Current	\$49	\$44	\$39	\$37	\$36	\$35	\$33	\$30	\$29	\$29	\$29	\$28	\$26	\$22	\$19	\$14	\$13	\$11
		10yr ave.			\$46		\$41		\$34		\$29	\$27	\$26	\$26	\$25	\$22	\$20	\$16	\$14	\$13
	40%	Current	\$55	\$50	\$44	\$43	\$41	\$40	\$37	\$35	\$33	\$33	\$33	\$32	\$30	\$25	\$22	\$16	\$14	\$13
		10yr ave.			\$52		\$47		\$38		\$33	\$31	\$30	\$29	\$28	\$25	\$23	\$19	\$16	\$15
	45%	Current	\$62	\$56	\$50	\$48	\$46	\$45	\$42	\$39	\$38	\$37	\$37	\$36	\$34	\$28	\$24	\$18	\$16	\$14
		10yr ave.			\$59		\$53		\$43		\$37	\$35	\$34	\$33	\$32	\$28	\$26	\$21	\$18	\$17
	50%	Current	\$69	\$63	\$55	\$53	\$52	\$50	\$47	\$43	\$42	\$41	\$41	\$40	\$38	\$31	\$27	\$20	\$18	\$16
		10yr ave.			\$65		\$59		\$48		\$41	\$39	\$38	\$37	\$35	\$32	\$29	\$23	\$20	\$19
	55%	Current	\$76	\$69	\$61	\$59	\$57	\$55	\$51	\$48	\$46	\$45	\$45	\$44	\$41	\$34	\$30	\$22	\$20	\$18
		10yr ave.			\$72		\$64		\$53		\$45	\$43	\$41	\$40	\$39	\$35	\$32	\$26	\$23	\$20
	60%	Current	\$83	\$75	\$66	\$64	\$62	\$60	\$56	\$52	\$50	\$49	\$49	\$48	\$45	\$38	\$33	\$25	\$22	\$19
		10yr ave.			\$78		\$70		\$58		\$49	\$46	\$45	\$44	\$42	\$38	\$35	\$28	\$25	\$22
65%	Current	\$90	\$82	\$72	\$69	\$67	\$65	\$61	\$56	\$54	\$53	\$53	\$52	\$49	\$41	\$35	\$27	\$23	\$21	
	10yr ave.			\$85		\$76		\$63		\$53	\$50	\$49	\$48	\$46	\$41	\$38	\$30	\$27	\$24	
70%	Current	\$97	\$88	\$77	\$75	\$72	\$70	\$66	\$61	\$58	\$57	\$57	\$56	\$53	\$44	\$38	\$29	\$25	\$22	
	10yr ave.			\$91		\$82		\$67		\$57	\$54	\$53	\$51	\$49	\$44	\$41	\$33	\$29	\$26	
75%	Current	\$104	\$94	\$83	\$80	\$77	\$75	\$70	\$65	\$63	\$61	\$61	\$60	\$56	\$47	\$41	\$31	\$27	\$24	
	10yr ave.			\$98		\$88		\$72		\$61	\$58	\$56	\$55	\$53	\$47	\$43	\$35	\$31	\$28	
80%	Current	\$111	\$100	\$89	\$85	\$83	\$80	\$75	\$69	\$67	\$65	\$65	\$64	\$60	\$50	\$43	\$33	\$29	\$26	
	10yr ave.			\$104		\$94		\$77		\$65	\$62	\$60	\$59	\$56	\$50	\$46	\$38	\$33	\$30	
85%	Current	\$118	\$107	\$94	\$91	\$88	\$85	\$80	\$74	\$71	\$70	\$69	\$68	\$64	\$53	\$46	\$35	\$31	\$27	
	10yr ave.			\$111		\$100		\$82		\$69	\$66	\$64	\$62	\$60	\$54	\$49	\$40	\$35	\$32	

The above shows estimated returns per head for skirted fleece wool. These figures do not take into account the value of skirtings and oddments and do not take into account discounts that may apply for faults under individual circumstances. These figures are based on a market index of 100% and should be used as a guide only. Returns over \$30 / head for fleece wool are highlighted.

Source: Australian Wool Exchange, Australian Wool Innovation, Sydney Futures Exchange, x-rates.com

Disclaimer: While all due care has been taken in the preparation of this document, no warranty is made as to its accuracy, reliability or completeness. To the extent permitted by law neither Jemalong or their sources including subsidiaries and staff, accept liability to any person for loss or damage arising from the use of this information.



Table 15: Returns pr head for skirted fleece wool.

Skirted FLC Weight  7 Kg		Micron																		
		16	16.5	17	17.5	18	18.5	19	19.5	20	21	22	23	24	25	26	28	30	32	
Yield (Sch Dry)	25%	Current	\$35	\$31	\$28	\$27	\$26	\$25	\$23	\$22	\$21	\$20	\$20	\$20	\$19	\$16	\$14	\$10	\$9	\$8
		10yr ave.			\$33		\$29		\$24		\$20	\$19	\$19	\$18	\$18	\$16	\$14	\$12	\$10	\$9
	30%	Current	\$42	\$38	\$33	\$32	\$31		\$28	\$26	\$25	\$25	\$24	\$24	\$23	\$19	\$16	\$12	\$11	\$10
		10yr ave.			\$39		\$35		\$29		\$25	\$23	\$23	\$22	\$21	\$19	\$17	\$14	\$12	\$11
	35%	Current	\$49	\$44	\$39	\$37	\$36	\$35	\$33	\$30	\$29	\$29	\$29	\$28	\$26	\$22	\$19	\$14	\$13	\$11
		10yr ave.			\$46		\$41		\$34		\$29	\$27	\$26	\$26	\$25	\$22	\$20	\$16	\$14	\$13
	40%	Current	\$55	\$50	\$44	\$43	\$41	\$40	\$37	\$35	\$33	\$33	\$33	\$32	\$30	\$25	\$22	\$16	\$14	\$13
		10yr ave.			\$52		\$47		\$38		\$33	\$31	\$30	\$29	\$28	\$25	\$23	\$19	\$16	\$15
	45%	Current	\$62	\$56	\$50	\$48	\$46	\$45	\$42	\$39	\$38	\$37	\$37	\$36	\$34	\$28	\$24	\$18	\$16	\$14
		10yr ave.			\$59		\$53		\$43		\$37	\$35	\$34	\$33	\$32	\$28	\$26	\$21	\$18	\$17
	50%	Current	\$69	\$63	\$55	\$53	\$52	\$50	\$47	\$43	\$42	\$41	\$41	\$40	\$38	\$31	\$27	\$20	\$18	\$16
		10yr ave.			\$65		\$59		\$48		\$41	\$39	\$38	\$37	\$35	\$32	\$29	\$23	\$20	\$19
	55%	Current	\$76	\$69	\$61	\$59	\$57	\$55	\$51	\$48	\$46	\$45	\$45	\$44	\$41	\$34	\$30	\$22	\$20	\$18
		10yr ave.			\$72		\$64		\$53		\$45	\$43	\$41	\$40	\$39	\$35	\$32	\$26	\$23	\$20
	60%	Current	\$83	\$75	\$66	\$64	\$62	\$60	\$56	\$52	\$50	\$49	\$49	\$48	\$45	\$38	\$33	\$25	\$22	\$19
		10yr ave.			\$78		\$70		\$58		\$49	\$46	\$45	\$44	\$42	\$38	\$35	\$28	\$25	\$22
65%	Current	\$90	\$82	\$72	\$69	\$67	\$65	\$61	\$56	\$54	\$53	\$53	\$52	\$49	\$41	\$35	\$27	\$23	\$21	
	10yr ave.			\$85		\$76		\$63		\$53	\$50	\$49	\$48	\$46	\$41	\$38	\$30	\$27	\$24	
70%	Current	\$97	\$88	\$77	\$75	\$72	\$70	\$66	\$61	\$58	\$57	\$57	\$56	\$53	\$44	\$38	\$29	\$25	\$22	
	10yr ave.			\$91		\$82		\$67		\$57	\$54	\$53	\$51	\$49	\$44	\$41	\$33	\$29	\$26	
75%	Current	\$104	\$94	\$83	\$80	\$77	\$75	\$70	\$65	\$63	\$61	\$61	\$60	\$56	\$47	\$41	\$31	\$27	\$24	
	10yr ave.			\$98		\$88		\$72		\$61	\$58	\$56	\$55	\$53	\$47	\$43	\$35	\$31	\$28	
80%	Current	\$111	\$100	\$89	\$85	\$83	\$80	\$75	\$69	\$67	\$65	\$65	\$64	\$60	\$50	\$43	\$33	\$29	\$26	
	10yr ave.			\$104		\$94		\$77		\$65	\$62	\$60	\$59	\$56	\$50	\$46	\$38	\$33	\$30	
85%	Current	\$118	\$107	\$94	\$91	\$88	\$85	\$80	\$74	\$71	\$70	\$69	\$68	\$64	\$53	\$46	\$35	\$31	\$27	
	10yr ave.			\$111		\$100		\$82		\$69	\$66	\$64	\$62	\$60	\$54	\$49	\$40	\$35	\$32	

The above shows estimated returns per head for skirted fleece wool. These figures do not take into account the value of skirtings and oddments and do not take into account discounts that may apply for faults under individual circumstances. These figures are based on a market index of 100% and should be used as a guide only. Returns over \$30 / head for fleece wool are highlighted.

Source: Australian Wool Exchange, Australian Wool Innovation, Sydney Futures Exchange, x-rates.com

Disclaimer: While all due care has been taken in the preparation of this document, no warranty is made as to its accuracy, reliability or completeness. To the extent permitted by law neither Jemalong or their sources including subsidiaries and staff, accept liability to any person for loss or damage arising from the use of this information.



Table 16: Returns pr head for skirted fleece wool.

Skirted FLC Weight  6 Kg			Micron																	
			16	16.5	17	17.5	18	18.5	19	19.5	20	21	22	23	24	25	26	28	30	32
Yield (Sch Dry)	25%	Current	\$35	\$31	\$28	\$27	\$26	\$25	\$23	\$22	\$21	\$20	\$20	\$20	\$19	\$16	\$14	\$10	\$9	\$8
		10yr ave.			\$33		\$29		\$24		\$20	\$19	\$19	\$18	\$18	\$16	\$14	\$12	\$10	\$9
	30%	Current	\$42	\$38	\$33	\$32	\$31	\$30	\$28	\$26	\$25	\$25	\$24	\$24	\$23	\$19	\$16	\$12	\$11	\$10
		10yr ave.			\$39		\$35		\$29		\$25	\$23	\$23	\$22	\$21	\$19	\$17	\$14	\$12	\$11
	35%	Current	\$49	\$44	\$39	\$37	\$36	\$35	\$33	\$30	\$29	\$29	\$29	\$28	\$26	\$22	\$19	\$14	\$13	\$11
		10yr ave.			\$46		\$41		\$34		\$29	\$27	\$26	\$26	\$25	\$22	\$20	\$16	\$14	\$13
	40%	Current	\$55	\$50	\$44	\$43	\$41	\$40	\$37	\$35	\$33	\$33	\$33	\$32	\$30	\$25	\$22	\$16	\$14	\$13
		10yr ave.			\$52		\$47		\$38		\$33	\$31	\$30	\$29	\$28	\$25	\$23	\$19	\$16	\$15
	45%	Current	\$62	\$56	\$50	\$48	\$46	\$45	\$42	\$39	\$38	\$37	\$37	\$36	\$34	\$28	\$24	\$18	\$16	\$14
		10yr ave.			\$59		\$53		\$43		\$37	\$35	\$34	\$33	\$32	\$28	\$26	\$21	\$18	\$17
	50%	Current	\$69	\$63	\$55	\$53	\$52	\$50	\$47	\$43	\$42	\$41	\$41	\$40	\$38	\$31	\$27	\$20	\$18	\$16
		10yr ave.			\$65		\$59		\$48		\$41	\$39	\$38	\$37	\$35	\$32	\$29	\$23	\$20	\$19
	55%	Current	\$76	\$69	\$61	\$59	\$57	\$55	\$51	\$48	\$46	\$45	\$45	\$44	\$41	\$34	\$30	\$22	\$20	\$18
		10yr ave.			\$72		\$64		\$53		\$45	\$43	\$41	\$40	\$39	\$35	\$32	\$26	\$23	\$20
	60%	Current	\$83	\$75	\$66	\$64	\$62	\$60	\$56	\$52	\$50	\$49	\$49	\$48	\$45	\$38	\$33	\$25	\$22	\$19
		10yr ave.			\$78		\$70		\$58		\$49	\$46	\$45	\$44	\$42	\$38	\$35	\$28	\$25	\$22
65%	Current	\$90	\$82	\$72	\$69	\$67	\$65	\$61	\$56	\$54	\$53	\$53	\$52	\$49	\$41	\$35	\$27	\$23	\$21	
	10yr ave.			\$85		\$76		\$63		\$53	\$50	\$49	\$48	\$46	\$41	\$38	\$30	\$27	\$24	
70%	Current	\$97	\$88	\$77	\$75	\$72	\$70	\$66	\$61	\$58	\$57	\$57	\$56	\$53	\$44	\$38	\$29	\$25	\$22	
	10yr ave.			\$91		\$82		\$67		\$57	\$54	\$53	\$51	\$49	\$44	\$41	\$33	\$29	\$26	
75%	Current	\$104	\$94	\$83	\$80	\$77	\$75	\$70	\$65	\$63	\$61	\$61	\$60	\$56	\$47	\$41	\$31	\$27	\$24	
	10yr ave.			\$98		\$88		\$72		\$61	\$58	\$56	\$55	\$53	\$47	\$43	\$35	\$31	\$28	
80%	Current	\$111	\$100	\$89	\$85	\$83	\$80	\$75	\$69	\$67	\$65	\$65	\$64	\$60	\$50	\$43	\$33	\$29	\$26	
	10yr ave.			\$104		\$94		\$77		\$65	\$62	\$60	\$59	\$56	\$50	\$46	\$38	\$33	\$30	
85%	Current	\$118	\$107	\$94	\$91	\$88	\$85	\$80	\$74	\$71	\$70	\$69	\$68	\$64	\$53	\$46	\$35	\$31	\$27	
	10yr ave.			\$111		\$100		\$82		\$69	\$66	\$64	\$62	\$60	\$54	\$49	\$40	\$35	\$32	

The above shows estimated returns per head for skirted fleece wool. These figures do not take into account the value of skirtings and oddments and do not take into account discounts that may apply for faults under individual circumstances. These figures are based on a market index of 100% and should be used as a guide only. Returns over \$30 / head for fleece wool are highlighted.

Source: Australian Wool Exchange, Australian Wool Innovation, Sydney Futures Exchange, x-rates.com

Disclaimer: While all due care has been taken in the preparation of this document, no warranty is made as to its accuracy, reliability or completeness. To the extent permitted by law neither Jemalong or their sources including subsidiaries and staff, accept liability to any person for loss or damage arising from the use of this information.





Table 17: Returns pr head for skirted fleece wool.

Skirted FLC Weight  5 Kg			Micron																	
			16	16.5	17	17.5	18	18.5	19	19.5	20	21	22	23	24	25	26	28	30	32
Yield (Sch Dry)	25%	Current	\$35	\$31	\$28	\$27	\$26	\$25	\$23	\$22	\$21	\$20	\$20	\$20	\$19	\$16	\$14	\$10	\$9	\$8
		10yr ave.			\$33		\$29		\$24		\$20	\$19	\$19	\$18	\$18	\$16	\$14	\$12	\$10	\$9
	30%	Current	\$42	\$38	\$33	\$32	\$31	\$30	\$28	\$26	\$25	\$25	\$24	\$24	\$23	\$19	\$16	\$12	\$11	\$10
		10yr ave.			\$39		\$35		\$29		\$25	\$23	\$23	\$22	\$21	\$19	\$17	\$14	\$12	\$11
	35%	Current	\$49	\$44	\$39	\$37	\$36	\$35	\$33	\$30	\$29	\$29	\$29	\$28	\$26	\$22	\$19	\$14	\$13	\$11
		10yr ave.			\$46		\$41		\$34		\$29	\$27	\$26	\$26	\$25	\$22	\$20	\$16	\$14	\$13
	40%	Current	\$55	\$50	\$44	\$43	\$41	\$40	\$37	\$35	\$33	\$33	\$33	\$32	\$30	\$25	\$22	\$16	\$14	\$13
		10yr ave.			\$52		\$47		\$38		\$33	\$31	\$30	\$29	\$28	\$25	\$23	\$19	\$16	\$15
	45%	Current	\$62	\$56	\$50	\$48	\$46	\$45	\$42	\$39	\$38	\$37	\$37	\$36	\$34	\$28	\$24	\$18	\$16	\$14
		10yr ave.			\$59		\$53		\$43		\$37	\$35	\$34	\$33	\$32	\$28	\$26	\$21	\$18	\$17
	50%	Current	\$69	\$63	\$55	\$53	\$52	\$50	\$47	\$43	\$42	\$41	\$41	\$40	\$38	\$31	\$27	\$20	\$18	\$16
		10yr ave.			\$65		\$59		\$48		\$41	\$39	\$38	\$37	\$35	\$32	\$29	\$23	\$20	\$19
	55%	Current	\$76	\$69	\$61	\$59	\$57	\$55	\$51	\$48	\$46	\$45	\$45	\$44	\$41	\$34	\$30	\$22	\$20	\$18
		10yr ave.			\$72		\$64		\$53		\$45	\$43	\$41	\$40	\$39	\$35	\$32	\$26	\$23	\$20
	60%	Current	\$83	\$75	\$66	\$64	\$62	\$60	\$56	\$52	\$50	\$49	\$49	\$48	\$45	\$38	\$33	\$25	\$22	\$19
		10yr ave.			\$78		\$70		\$58		\$49	\$46	\$45	\$44	\$42	\$38	\$35	\$28	\$25	\$22
65%	Current	\$90	\$82	\$72	\$69	\$67	\$65	\$61	\$56	\$54	\$53	\$53	\$52	\$49	\$41	\$35	\$27	\$23	\$21	
	10yr ave.			\$85		\$76		\$63		\$53	\$50	\$49	\$48	\$46	\$41	\$38	\$30	\$27	\$24	
70%	Current	\$97	\$88	\$77	\$75	\$72	\$70	\$66	\$61	\$58	\$57	\$57	\$56	\$53	\$44	\$38	\$29	\$25	\$22	
	10yr ave.			\$91		\$82		\$67		\$57	\$54	\$53	\$51	\$49	\$44	\$41	\$33	\$29	\$26	
75%	Current	\$104	\$94	\$83	\$80	\$77	\$75	\$70	\$65	\$63	\$61	\$61	\$60	\$56	\$47	\$41	\$31	\$27	\$24	
	10yr ave.			\$98		\$88		\$72		\$61	\$58	\$56	\$55	\$53	\$47	\$43	\$35	\$31	\$28	
80%	Current	\$111	\$100	\$89	\$85	\$83	\$80	\$75	\$69	\$67	\$65	\$65	\$64	\$60	\$50	\$43	\$33	\$29	\$26	
	10yr ave.			\$104		\$94		\$77		\$65	\$62	\$60	\$59	\$56	\$50	\$46	\$38	\$33	\$30	
85%	Current	\$118	\$107	\$94	\$91	\$88	\$85	\$80	\$74	\$71	\$70	\$69	\$68	\$64	\$53	\$46	\$35	\$31	\$27	
	10yr ave.			\$111		\$100		\$82		\$69	\$66	\$64	\$62	\$60	\$54	\$49	\$40	\$35	\$32	

The above shows estimated returns per head for skirted fleece wool. These figures do not take into account the value of skirtings and oddments and do not take into account discounts that may apply for faults under individual circumstances. These figures are based on a market index of 100% and should be used as a guide only. Returns over \$30 / head for fleece wool are highlighted.

Source: Australian Wool Exchange, Australian Wool Innovation, Sydney Futures Exchange, x-rates.com

Disclaimer: While all due care has been taken in the preparation of this document, no warranty is made as to its accuracy, reliability or completeness. To the extent permitted by law neither Jemalong or their sources including subsidiaries and staff, accept liability to any person for loss or damage arising from the use of this information.



Table 18: Returns pr head for skirted fleece wool.

Skirted FLC Weight  4 Kg			Micron																	
			16	16.5	17	17.5	18	18.5	19	19.5	20	21	22	23	24	25	26	28	30	32
Yield (Sch Dry)	25%	Current	\$35	\$31	\$28	\$27	\$26	\$25	\$23	\$22	\$21	\$20	\$20	\$20	\$19	\$16	\$14	\$10	\$9	\$8
		10yr ave.			\$33		\$29		\$24		\$20	\$19	\$19	\$18	\$18	\$16	\$14	\$12	\$10	\$9
	30%	Current	\$42	\$38	\$33	\$32	\$31	\$30	\$28	\$26	\$25	\$25	\$24	\$24	\$23	\$19	\$16	\$12	\$11	\$10
		10yr ave.			\$39		\$35		\$29		\$25	\$23	\$23	\$22	\$21	\$19	\$17	\$14	\$12	\$11
	35%	Current	\$49	\$44	\$39	\$37	\$36	\$35	\$33	\$30	\$29	\$29	\$29	\$28	\$26	\$22	\$19	\$14	\$13	\$11
		10yr ave.			\$46		\$41		\$34		\$29	\$27	\$26	\$26	\$25	\$22	\$20	\$16	\$14	\$13
	40%	Current	\$55	\$50	\$44	\$43	\$41	\$40	\$37	\$35	\$33	\$33	\$33	\$32	\$30	\$25	\$22	\$16	\$14	\$13
		10yr ave.			\$52		\$47		\$38		\$33	\$31	\$30	\$29	\$28	\$25	\$23	\$19	\$16	\$15
	45%	Current	\$62	\$56	\$50	\$48	\$46	\$45	\$42	\$39	\$38	\$37	\$37	\$36	\$34	\$28	\$24	\$18	\$16	\$14
		10yr ave.			\$59		\$53		\$43		\$37	\$35	\$34	\$33	\$32	\$28	\$26	\$21	\$18	\$17
	50%	Current	\$69	\$63	\$55	\$53	\$52	\$50	\$47	\$43	\$42	\$41	\$41	\$40	\$38	\$31	\$27	\$20	\$18	\$16
		10yr ave.			\$65		\$59		\$48		\$41	\$39	\$38	\$37	\$35	\$32	\$29	\$23	\$20	\$19
	55%	Current	\$76	\$69	\$61	\$59	\$57	\$55	\$51	\$48	\$46	\$45	\$45	\$44	\$41	\$34	\$30	\$22	\$20	\$18
		10yr ave.			\$72		\$64		\$53		\$45	\$43	\$41	\$40	\$39	\$35	\$32	\$26	\$23	\$20
	60%	Current	\$83	\$75	\$66	\$64	\$62	\$60	\$56	\$52	\$50	\$49	\$49	\$48	\$45	\$38	\$33	\$25	\$22	\$19
		10yr ave.			\$78		\$70		\$58		\$49	\$46	\$45	\$44	\$42	\$38	\$35	\$28	\$25	\$22
65%	Current	\$90	\$82	\$72	\$69	\$67	\$65	\$61	\$56	\$54	\$53	\$53	\$52	\$49	\$41	\$35	\$27	\$23	\$21	
	10yr ave.			\$85		\$76		\$63		\$53	\$50	\$49	\$48	\$46	\$41	\$38	\$30	\$27	\$24	
70%	Current	\$97	\$88	\$77	\$75	\$72	\$70	\$66	\$61	\$58	\$57	\$57	\$56	\$53	\$44	\$38	\$29	\$25	\$22	
	10yr ave.			\$91		\$82		\$67		\$57	\$54	\$53	\$51	\$49	\$44	\$41	\$33	\$29	\$26	
75%	Current	\$104	\$94	\$83	\$80	\$77	\$75	\$70	\$65	\$63	\$61	\$61	\$60	\$56	\$47	\$41	\$31	\$27	\$24	
	10yr ave.			\$98		\$88		\$72		\$61	\$58	\$56	\$55	\$53	\$47	\$43	\$35	\$31	\$28	
80%	Current	\$111	\$100	\$89	\$85	\$83	\$80	\$75	\$69	\$67	\$65	\$65	\$64	\$60	\$50	\$43	\$33	\$29	\$26	
	10yr ave.			\$104		\$94		\$77		\$65	\$62	\$60	\$59	\$56	\$50	\$46	\$38	\$33	\$30	
85%	Current	\$118	\$107	\$94	\$91	\$88	\$85	\$80	\$74	\$71	\$70	\$69	\$68	\$64	\$53	\$46	\$35	\$31	\$27	
	10yr ave.			\$111		\$100		\$82		\$69	\$66	\$64	\$62	\$60	\$54	\$49	\$40	\$35	\$32	

The above shows estimated returns per head for skirted fleece wool. These figures do not take into account the value of skirtings and oddments and do not take into account discounts that may apply for faults under individual circumstances. These figures are based on a market index of 100% and should be used as a guide only. Returns over \$30 / head for fleece wool are highlighted.

Source: Australian Wool Exchange, Australian Wool Innovation, Sydney Futures Exchange, x-rates.com

Disclaimer: While all due care has been taken in the preparation of this document, no warranty is made as to its accuracy, reliability or completeness. To the extent permitted by law neither Jemalong or their sources including subsidiaries and staff, accept liability to any person for loss or damage arising from the use of this information.



Table 19: Returns pr head for skirted fleece wool.

Skirted FLC Weight  3 Kg			Micron																	
			16	16.5	17	17.5	18	18.5	19	19.5	20	21	22	23	24	25	26	28	30	32
Yield (Sch Dry)	25%	Current	\$35	\$31	\$28	\$27	\$26	\$25	\$23	\$22	\$21	\$20	\$20	\$20	\$19	\$16	\$14	\$10	\$9	\$8
		10yr ave.			\$33		\$29		\$24		\$20	\$19	\$19	\$18	\$18	\$16	\$14	\$12	\$10	\$9
	30%	Current	\$42	\$38	\$33	\$32	\$31	\$30	\$28	\$26	\$25	\$25	\$24	\$24	\$23	\$19	\$16	\$12	\$11	\$10
		10yr ave.			\$39		\$35		\$29		\$25	\$23	\$23	\$22	\$21	\$19	\$17	\$14	\$12	\$11
	35%	Current	\$49	\$44	\$39	\$37	\$36	\$35	\$33	\$30	\$29	\$29	\$29	\$28	\$26	\$22	\$19	\$14	\$13	\$11
		10yr ave.			\$46		\$41		\$34		\$29	\$27	\$26	\$26	\$25	\$22	\$20	\$16	\$14	\$13
	40%	Current	\$55	\$50	\$44	\$43	\$41	\$40	\$37	\$35	\$33	\$33	\$33	\$32	\$30	\$25	\$22	\$16	\$14	\$13
		10yr ave.			\$52		\$47		\$38		\$33	\$31	\$30	\$29	\$28	\$25	\$23	\$19	\$16	\$15
	45%	Current	\$62	\$56	\$50	\$48	\$46	\$45	\$42	\$39	\$38	\$37	\$37	\$36	\$34	\$28	\$24	\$18	\$16	\$14
		10yr ave.			\$59		\$53		\$43		\$37	\$35	\$34	\$33	\$32	\$28	\$26	\$21	\$18	\$17
	50%	Current	\$69	\$63	\$55	\$53	\$52	\$50	\$47	\$43	\$42	\$41	\$41	\$40	\$38	\$31	\$27	\$20	\$18	\$16
		10yr ave.			\$65		\$59		\$48		\$41	\$39	\$38	\$37	\$35	\$32	\$29	\$23	\$20	\$19
	55%	Current	\$76	\$69	\$61	\$59	\$57	\$55	\$51	\$48	\$46	\$45	\$45	\$44	\$41	\$34	\$30	\$22	\$20	\$18
		10yr ave.			\$72		\$64		\$53		\$45	\$43	\$41	\$40	\$39	\$35	\$32	\$26	\$23	\$20
	60%	Current	\$83	\$75	\$66	\$64	\$62	\$60	\$56	\$52	\$50	\$49	\$49	\$48	\$45	\$38	\$33	\$25	\$22	\$19
		10yr ave.			\$78		\$70		\$58		\$49	\$46	\$45	\$44	\$42	\$38	\$35	\$28	\$25	\$22
65%	Current	\$90	\$82	\$72	\$69	\$67	\$65	\$61	\$56	\$54	\$53	\$53	\$52	\$49	\$41	\$35	\$27	\$23	\$21	
	10yr ave.			\$85		\$76		\$63		\$53	\$50	\$49	\$48	\$46	\$41	\$38	\$30	\$27	\$24	
70%	Current	\$97	\$88	\$77	\$75	\$72	\$70	\$66	\$61	\$58	\$57	\$57	\$56	\$53	\$44	\$38	\$29	\$25	\$22	
	10yr ave.			\$91		\$82		\$67		\$57	\$54	\$53	\$51	\$49	\$44	\$41	\$33	\$29	\$26	
75%	Current	\$104	\$94	\$83	\$80	\$77	\$75	\$70	\$65	\$63	\$61	\$61	\$60	\$56	\$47	\$41	\$31	\$27	\$24	
	10yr ave.			\$98		\$88		\$72		\$61	\$58	\$56	\$55	\$53	\$47	\$43	\$35	\$31	\$28	
80%	Current	\$111	\$100	\$89	\$85	\$83	\$80	\$75	\$69	\$67	\$65	\$65	\$64	\$60	\$50	\$43	\$33	\$29	\$26	
	10yr ave.			\$104		\$94		\$77		\$65	\$62	\$60	\$59	\$56	\$50	\$46	\$38	\$33	\$30	
85%	Current	\$118	\$107	\$94	\$91	\$88	\$85	\$80	\$74	\$71	\$70	\$69	\$68	\$64	\$53	\$46	\$35	\$31	\$27	
	10yr ave.			\$111		\$100		\$82		\$69	\$66	\$64	\$62	\$60	\$54	\$49	\$40	\$35	\$32	

The above shows estimated returns per head for skirted fleece wool. These figures do not take into account the value of skirtings and oddments and do not take into account discounts that may apply for faults under individual circumstances. These figures are based on a market index of 100% and should be used as a guide only. Returns over \$30 / head for fleece wool are highlighted.

Source: Australian Wool Exchange, Australian Wool Innovation, Sydney Futures Exchange, x-rates.com

Disclaimer: While all due care has been taken in the preparation of this document, no warranty is made as to its accuracy, reliability or completeness. To the extent permitted by law neither Jemalong or their sources including subsidiaries and staff, accept liability to any person for loss or damage arising from the use of this information.



Table 20: Returns pr head for skirted fleece wool.

Skirted FLC Weight  2 Kg			Micron																	
			16	16.5	17	17.5	18	18.5	19	19.5	20	21	22	23	24	25	26	28	30	32
Yield (Sch Dry)	25%	Current	\$35	\$31	\$28	\$27	\$26	\$25	\$23	\$22	\$21	\$20	\$20	\$20	\$19	\$16	\$14	\$10	\$9	\$8
		10yr ave.			\$33		\$29		\$24		\$20	\$19	\$19	\$18	\$18	\$16	\$14	\$12	\$10	\$9
	30%	Current	\$42	\$38	\$33	\$32	\$31	\$30	\$28	\$26	\$25	\$25	\$24	\$24	\$23	\$19	\$16	\$12	\$11	\$10
		10yr ave.			\$39		\$35		\$29		\$25	\$23	\$23	\$22	\$21	\$19	\$17	\$14	\$12	\$11
	35%	Current	\$49	\$44	\$39	\$37	\$36	\$35	\$33	\$30	\$29	\$29	\$29	\$28	\$26	\$22	\$19	\$14	\$13	\$11
		10yr ave.			\$46		\$41		\$34		\$29	\$27	\$26	\$26	\$25	\$22	\$20	\$16	\$14	\$13
	40%	Current	\$55	\$50	\$44	\$43	\$41	\$40	\$37	\$35	\$33	\$33	\$33	\$32	\$30	\$25	\$22	\$16	\$14	\$13
		10yr ave.			\$52		\$47		\$38		\$33	\$31	\$30	\$29	\$28	\$25	\$23	\$19	\$16	\$15
	45%	Current	\$62	\$56	\$50	\$48	\$46	\$45	\$42	\$39	\$38	\$37	\$37	\$36	\$34	\$28	\$24	\$18	\$16	\$14
		10yr ave.			\$59		\$53		\$43		\$37	\$35	\$34	\$33	\$32	\$28	\$26	\$21	\$18	\$17
	50%	Current	\$69	\$63	\$55	\$53	\$52	\$50	\$47	\$43	\$42	\$41	\$41	\$40	\$38	\$31	\$27	\$20	\$18	\$16
		10yr ave.			\$65		\$59		\$48		\$41	\$39	\$38	\$37	\$35	\$32	\$29	\$23	\$20	\$19
	55%	Current	\$76	\$69	\$61	\$59	\$57	\$55	\$51	\$48	\$46	\$45	\$45	\$44	\$41	\$34	\$30	\$22	\$20	\$18
		10yr ave.			\$72		\$64		\$53		\$45	\$43	\$41	\$40	\$39	\$35	\$32	\$26	\$23	\$20
	60%	Current	\$83	\$75	\$66	\$64	\$62	\$60	\$56	\$52	\$50	\$49	\$49	\$48	\$45	\$38	\$33	\$25	\$22	\$19
		10yr ave.			\$78		\$70		\$58		\$49	\$46	\$45	\$44	\$42	\$38	\$35	\$28	\$25	\$22
65%	Current	\$90	\$82	\$72	\$69	\$67	\$65	\$61	\$56	\$54	\$53	\$53	\$52	\$49	\$41	\$35	\$27	\$23	\$21	
	10yr ave.			\$85		\$76		\$63		\$53	\$50	\$49	\$48	\$46	\$41	\$38	\$30	\$27	\$24	
70%	Current	\$97	\$88	\$77	\$75	\$72	\$70	\$66	\$61	\$58	\$57	\$57	\$56	\$53	\$44	\$38	\$29	\$25	\$22	
	10yr ave.			\$91		\$82		\$67		\$57	\$54	\$53	\$51	\$49	\$44	\$41	\$33	\$29	\$26	
75%	Current	\$104	\$94	\$83	\$80	\$77	\$75	\$70	\$65	\$63	\$61	\$61	\$60	\$56	\$47	\$41	\$31	\$27	\$24	
	10yr ave.			\$98		\$88		\$72		\$61	\$58	\$56	\$55	\$53	\$47	\$43	\$35	\$31	\$28	
80%	Current	\$111	\$100	\$89	\$85	\$83	\$80	\$75	\$69	\$67	\$65	\$65	\$64	\$60	\$50	\$43	\$33	\$29	\$26	
	10yr ave.			\$104		\$94		\$77		\$65	\$62	\$60	\$59	\$56	\$50	\$46	\$38	\$33	\$30	
85%	Current	\$118	\$107	\$94	\$91	\$88	\$85	\$80	\$74	\$71	\$70	\$69	\$68	\$64	\$53	\$46	\$35	\$31	\$27	
	10yr ave.			\$111		\$100		\$82		\$69	\$66	\$64	\$62	\$60	\$54	\$49	\$40	\$35	\$32	

The above shows estimated returns per head for skirted fleece wool. These figures do not take into account the value of skirtings and oddments and do not take into account discounts that may apply for faults under individual circumstances. These figures are based on a market index of 100% and should be used as a guide only. Returns over \$30 / head for fleece wool are highlighted.

Source: Australian Wool Exchange, Australian Wool Innovation, Sydney Futures Exchange, x-rates.com

Disclaimer: While all due care has been taken in the preparation of this document, no warranty is made as to its accuracy, reliability or completeness. To the extent permitted by law neither Jemalong or their sources including subsidiaries and staff, accept liability to any person for loss or damage arising from the use of this information.