



Table 1: Northern Region Micron Price Guides

CURRENT MARKET			PERCENTILES		AVERAGES				12 MONTH COMPARISONS								TRADING RANGE		
Mic.	13/01/2011	16/12/2010			Now		Now		12/01/2010		Now		Now		Now		Clean c/kg		
Price	Current	Weekly	3yr	10yr	<u>3 year</u>	compared	<u>10 year</u>	compared	This time	compared	12 Month	compared	12 Month	compared	12	3	10		
Guides	Price	Change			Average	to 3yr ave	Average	to 10yr ave	Last Year	to Last Year	Low	to Low	High	to High	Mth	Year	Year		
NRI	1208	+135 11.2%	100%	99%	901	+307 34%	875	+333 38%	920	+288 31%	890	+318 36%	1208	0 0%	318	343	584		
16*	2370	+340 14.3%	100%		1655	+715 43%			1430	+940 66%	1510	+860 57%	2370	0 0%	860	665			
16.5*	2220	+310 14.0%	100%		1518	+702 46%			1320	+900 68%	1395	+825 59%	2220	0 0%	825	724			
17*	2070	+260 12.6%	100%	96%	1391	+679 49%	1404	+666 47%	1225	+845 69%	1230	+840 68%	2070	0 0%	840	643	1797		
17.5*	1950	+230 11.8%	100%		1322	+628 48%			1190	+760 64%	1175	+775 66%	1950	0 0%	775	638			
18	1857	+226 12.2%	100%	92%	1259	+598 47%	1281	+576 45%	1173	+684 58%	1134	+723 64%	1857	0 0%	723	601	1392		
18.5	1717	+227 13.2%	100%		1180	+537 46%			1129	+588 52%	1088	+629 58%	1717	0 0%	629	536			
19	1555	+249 16.0%	100%	100%	1078	+477 44%	1068	+487 46%	1073	+482 45%	1031	+524 51%	1555	0 0%	524	443	706		
19.5	1318	+174 13.2%	100%		984	+334 34%			986	+332 34%	952	+366 38%	1318	0 0%	366	457			
20	1153	+119 10.3%	97%	93%	910	+243 27%	918	+235 26%	956	+197 21%	904	+249 28%	1153	0 0%	249	464	717		
21	1116	+108 9.7%	100%	93%	876	+240 27%	874	+242 28%	935	+181 19%	878	+238 27%	1116	0 0%	238	427	744		
22	1069	+108 10.1%	100%	93%	853	+216 25%	851	+218 26%	922	+147 16%	847	+222 26%	1069	0 0%	222	360	742		
23	1010	+106 10.5%	100%	91%	830	+180 22%	830	+180 22%	898	+112 12%	827	+183 22%	1010	0 0%	183	311	750		
24	897	+77 8.6%	99%	81%	781	+116 15%	793	+104 13%	820	+77 9%	780	+117 15%	897	0 0%	117	257	739		
25	765	+27 3.5%	97%	79%	672	+93 14%	712	+53 7%	665	+100 15%	660	+105 16%	781	-16 -2%	121	215	690		
26	674	+40 5.9%	96%	77%	603	+71 12%	651	+23 4%	626	+48 8%	576	+98 17%	696	-22 -3%	120	192	636		
28	523	+39 7.5%	97%	65%	462	+61 13%	522	+1 0%	475	+48 10%	436	+87 20%	523	0 0%	87	119	465		
30	464	+28 6.0%	98%	65%	402	+62 15%	456	+8 2%	419	+45 11%	382	+82 21%	464	0 0%	82	128	384		
32	414	+5 1.2%	100%	62%	352	+62 18%	413	+1 0%	369	+45 12%	346	+68 20%	414	0 0%	68	108	372		
MC	658	+26 4.0%	92%	94%	545	+113 21%	502	+156 31%	644	+14 2%	561	+97 17%	681	-23 -3%	120	289	304		

Note:

* Due to the irregular market quoting for some fine wool categories, figures shown relating to micron categories below 18 micron are an estimate based on the AWEX Premium & Discounts Report & other available information.

* For any category, where there is insufficient quantity offered to enable AWEX to quote, a quote will be provided based on the best available information.

* 10 Year data is not available for some micron categories, which may result in blank spaces in the table above.

Definitions:

* A Percentile, is a value on a scale of one hundred that indicates the percent of a distribution that is equal to or below it. In general a percentile between 25% and 75% is considered normal, a percentile below 25% is considered below normal and a percentile above 75% is considered above normal.

Three and ten year percentiles shown in the table above, detail the period of time during the past 3 & 10 years that the market has traded either at or below its current price.

The higher the percentile, the stronger the market.

Source: Australian Wool Exchange, Australian Wool Innovation, Sydney Futures Exchange, x-rates.com

Disclaimer: While all due care has been taken in the preparation of this document, no warranty is made as to its accuracy, reliability or completeness. To the extent permitted by law neither Jemalong or their sources including subsidiaries and staff, accept liability to any person for loss or damage arising from the use of this information.



MARKET COMMENTARY

Australian Dollar 99.67 cents US as of 13/01/2011

NORTHERN REGION –Sale Week 28/10 (51,146 bales offered nationally)

What a week! What a fantastic week to open sales for the calendar year. The wool market has not only risen this week, it has roared. January was tipped to be a good month and the opening sale was forecast to be strong, however the magnitude of the price rise was not expected and was a quick reminder of how volatile and explosive the wool market can be, and how an imbalance in supply & demand can create market records.

At 1208 the AWEX Northern Region indicator is now trading at over 300 cents above its short and long term average. The price spike of 2002/2003 is the only other time the indicator has neared this level in recent history and in USD terms this level is unprecedented (see graph below).

The remainder of January is expected to be strong and with a reasonable amount of Chinese enquiry continuing to come in, further rises. Looking beyond January is more difficult to predict, however the general feeling is that even if a correction does occur (which is very possible), the market will still be at attractive levels for the next few months.

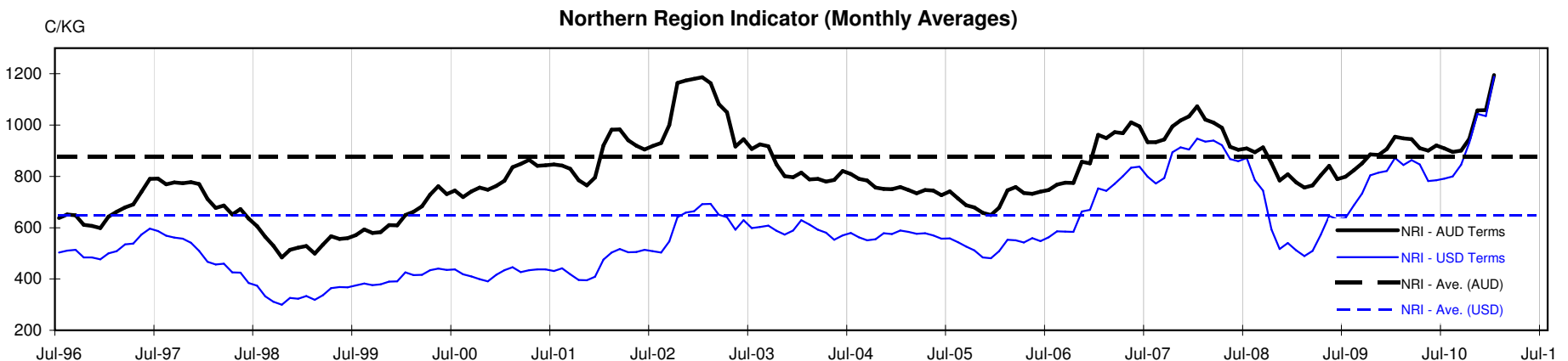




Table 4: 19 micron SFE

Thursday, 13 January 2011

Delivery Mth	Feb-11	Apr-11	Jun-11	Aug-11	Oct-11	Dec-11	Feb-12	Apr-12	Jun-12
19 Micron SFE	1440	1455	1428	1428	1421	1415	1410	1370	1370
Average	1057	1073	1084	1089	1093	1095	1108	1130	1172
Maximum	1269	1440	1455	1428	1428	1421	1415	1410	1370
Minimum	936	983	1025	1034	1034	1034	1034	1053	1053

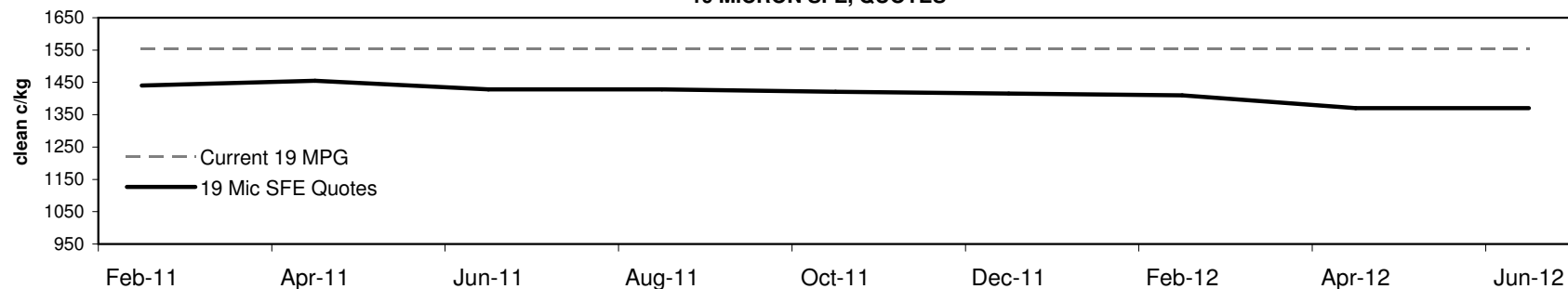
Table 5: 19 micron SFE, as a percentile of the 19 micron MPG

3 Year Percentile	100%	100%	100%	100%	100%	100%	100%	100%	100%
10 Year Percentile	99%	99%	99%	99%	99%	99%	98%	95%	95%

Table 6: 19 micron SFE, compared to MPG

Current 19 MPG	-115	-7%	-100	-6%	-127	-8%	-127	-8%	-134	-9%	-140	-9%	-145	-9%	-185	-12%	-185	-12%
19 MPG, 1 Year Average	+295	26%	+310	27%	+283	25%	+283	25%	+276	24%	+270	24%	+265	23%	+225	20%	+225	20%
19 MPG, 3 Year Average	+362	34%	+377	35%	+350	32%	+350	32%	+343	32%	+337	31%	+332	31%	+292	27%	+292	27%
19 MPG, 10 Year Average	+372	35%	+387	36%	+360	34%	+360	34%	+353	33%	+347	32%	+342	32%	+302	28%	+302	28%

19 MICRON SFE, QUOTES



19 MICRON SFE, FRONT MONTH PRICE MOVEMENT (mthly averages)

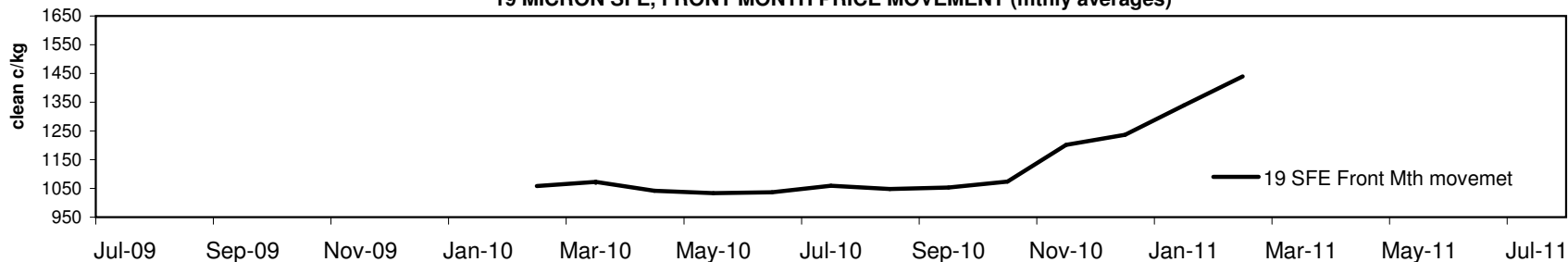




Table 7: 21 micron SFE

Thursday, 13 January 2011

Delivery Mth	Feb-11	Apr-11	Jun-11	Aug-11	Oct-11	Dec-11	Feb-12	Apr-12	Jun-12
21 Micron SFE	1133	1108	1095	1085	1068	1050	1050	1050	1000
Average	932	944	947	948	942	935	936	952	995
Maximum	1020	1133	1108	1095	1085	1068	1050	1058	1058
Minimum	818	860	891	890	880	880	880	880	923

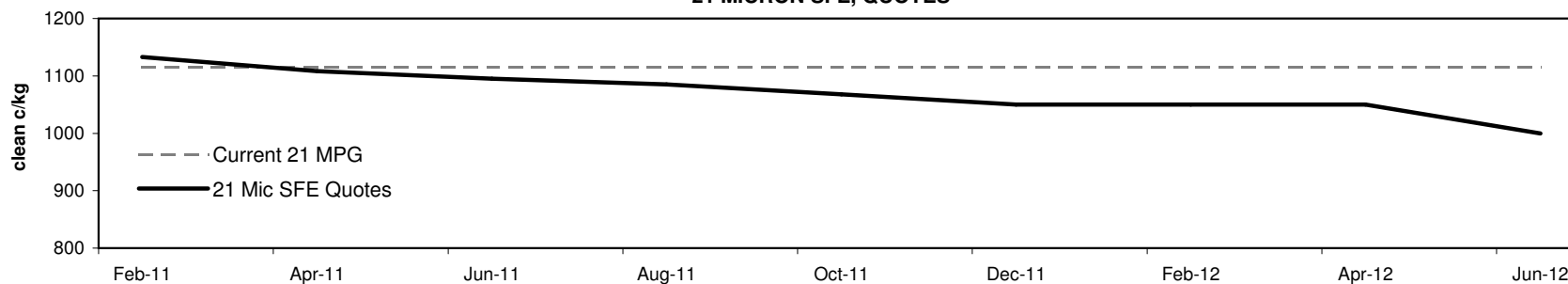
Table 8: 21 micron SFE, as a percentile of the 21 micron MPG

3 Year Percentile	100%	99%	99%	98%	97%	97%	97%	97%	93%
10 Year Percentile	93%	93%	93%	93%	93%	92%	92%	92%	83%

Table 9: 21 micron SFE, compared to MPG

Current 21 MPG	+17	2%	-8	-1%	-21	-2%	-31	-3%	-48	-4%	-66	-6%	-66	-6%	-66	-6%	-116	-10%
21 MPG, 1 Year Average	+179	19%	+154	16%	+141	15%	+131	14%	+114	12%	+96	10%	+96	10%	+96	10%	+46	5%
21 MPG, 3 Year Average	+257	29%	+232	26%	+219	25%	+209	24%	+192	22%	+174	20%	+174	20%	+174	20%	+124	14%
21 MPG, 10 Year Average	+259	30%	+234	27%	+221	25%	+211	24%	+194	22%	+176	20%	+176	20%	+176	20%	+126	14%

21 MICRON SFE, QUOTES



21 MICRON SFE, FRONT MONTH PRICE MOVEMENT (mthly averages)

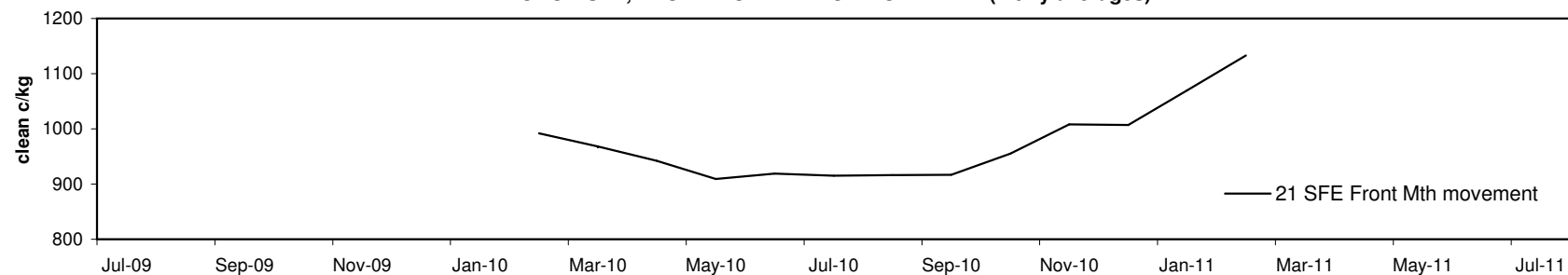




Table 10: 23 micron SFE

Thursday, 13 January 2011

Delivery Mth	Feb-11	Apr-11	Jun-11	Aug-11	Oct-11	Dec-11	Feb-12	Apr-12	Jun-12
23 Micron SFE	890	890	890	890	890	890	890	890	890
Average	856	865	874	886	891	884	885	886	885
Maximum	927	927	927	927	927	890	890	890	890
Minimum	760	760	803	803	883	883	883	883	883

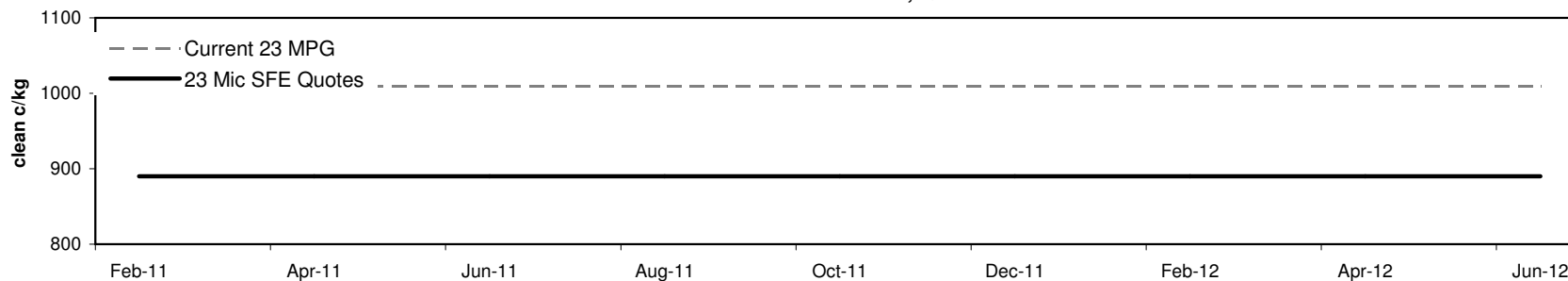
Table 11: 23 micron SFE, as a percentile of the 23 micron MPG

3 Year Percentile	72%	72%	72%	72%	72%	72%	72%	72%	72%
10 Year Percentile	66%	66%	66%	66%	66%	66%	66%	66%	66%

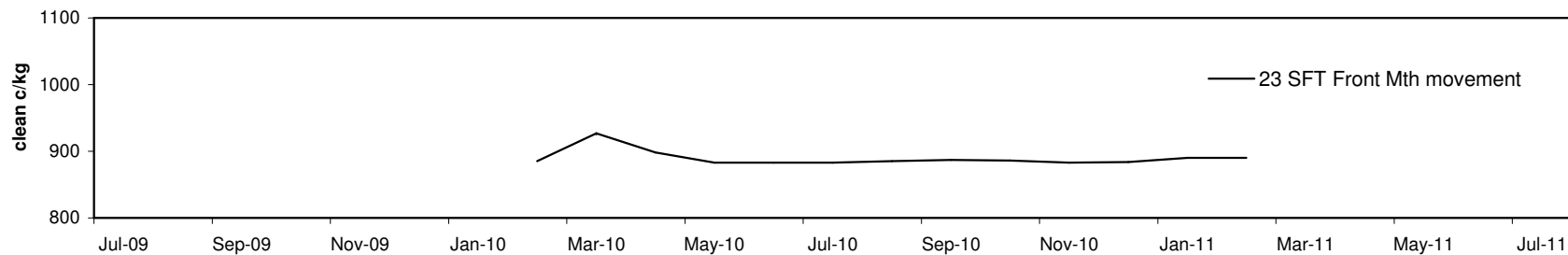
Table 12: 23 micron SFE, compared to MPG

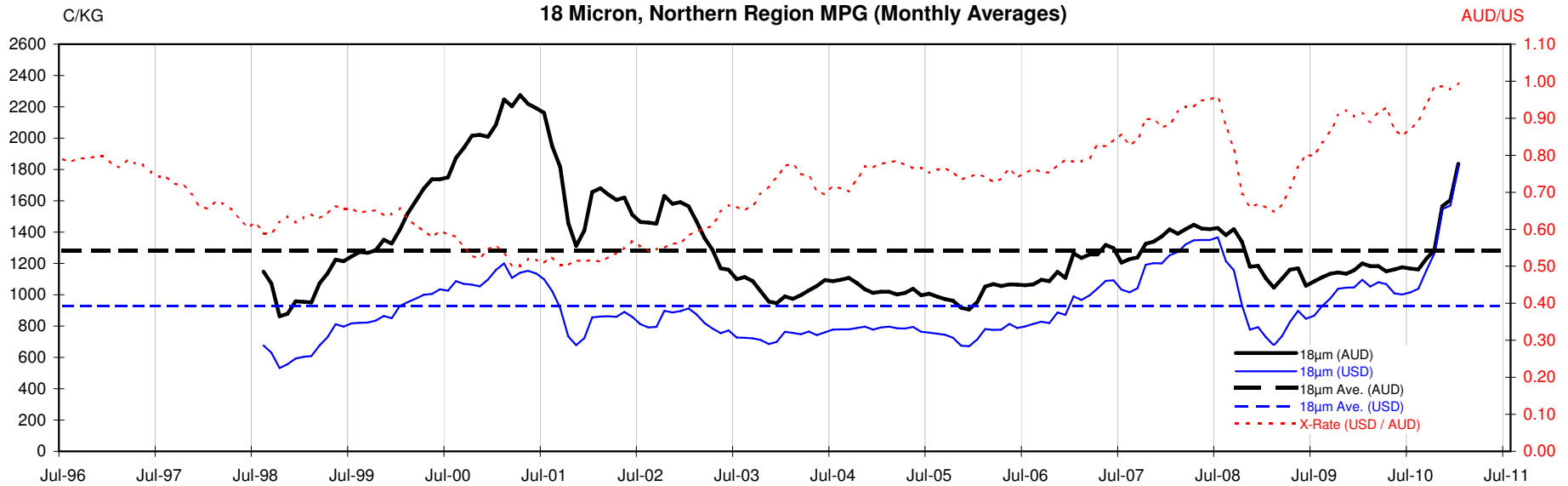
Current 19 MPG	-120	-12%	-120	-12%	-120	-12%	-120	####	-120	-12%	-120	-12%	-120	-12%	-120	-12%	-120	-12%
23 MPG, 1 Year Average	-9	-1%	-9	-1%	-9	-1%	-9	-1%	-9	-1%	-9	-1%	-9	-1%	-9	-1%	-9	-1%
23 MPG, 3 Year Average	+60	7%	+60	7%	+60	7%	+60	7%	+60	7%	+60	7%	+60	7%	+60	7%	+60	7%
23 MPG, 10 Year Average	+60	7%	+60	7%	+60	7%	+60	7%	+60	7%	+60	7%	+60	7%	+60	7%	+60	7%

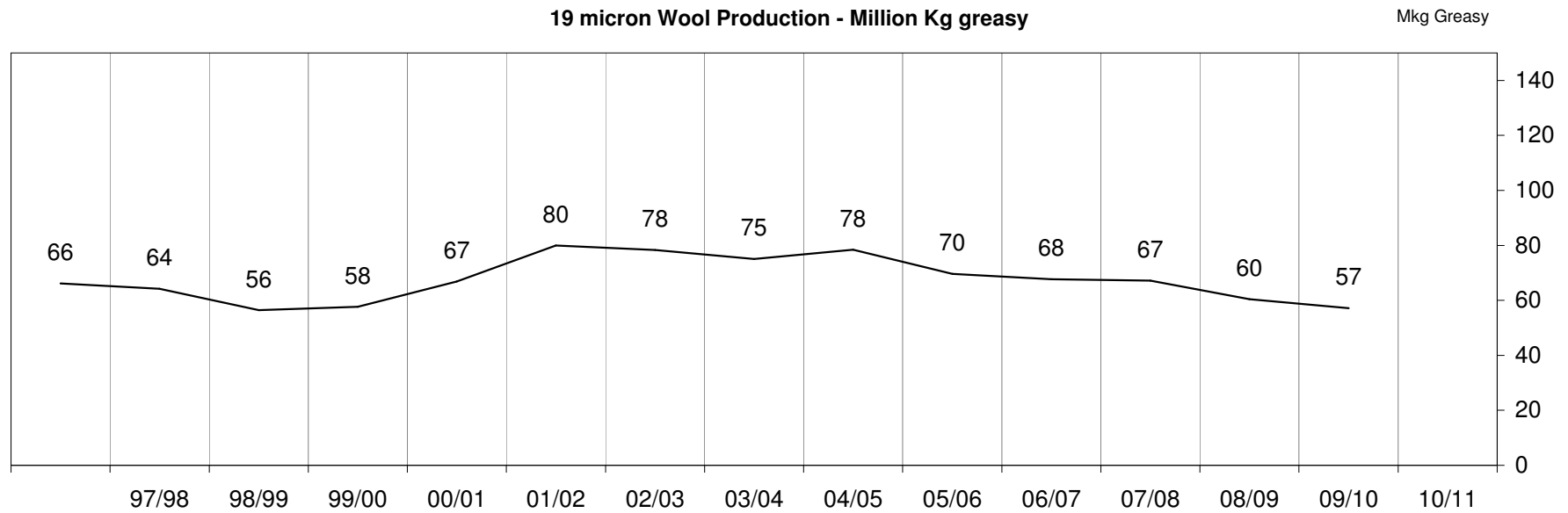
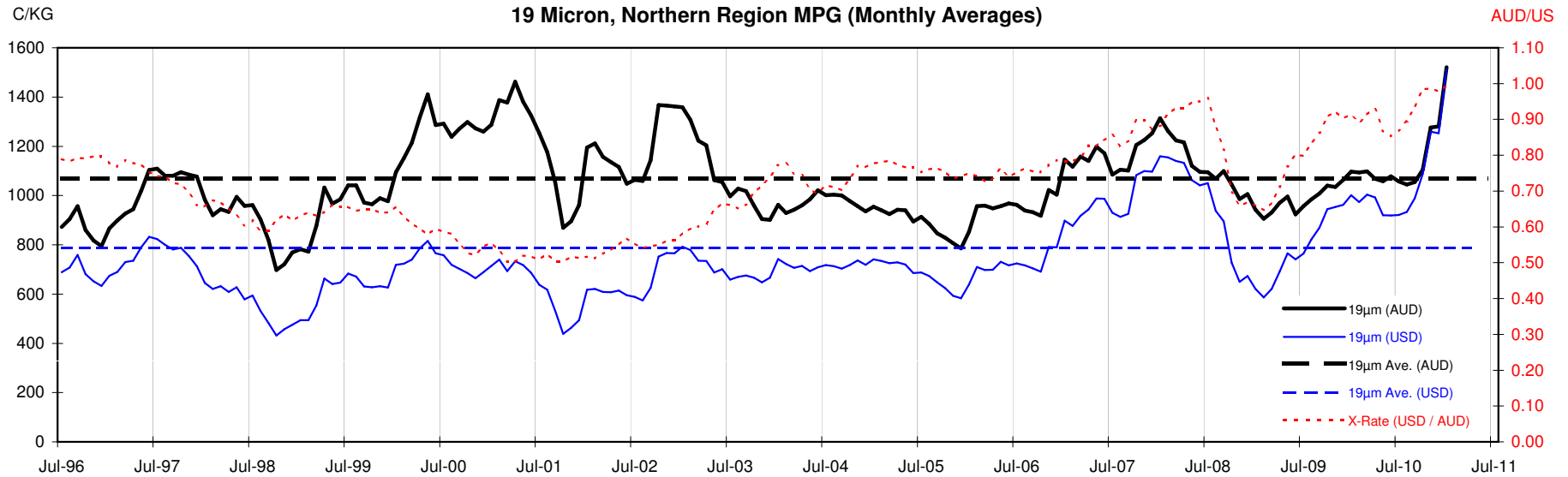
23 MICRON SFE, QUOTES

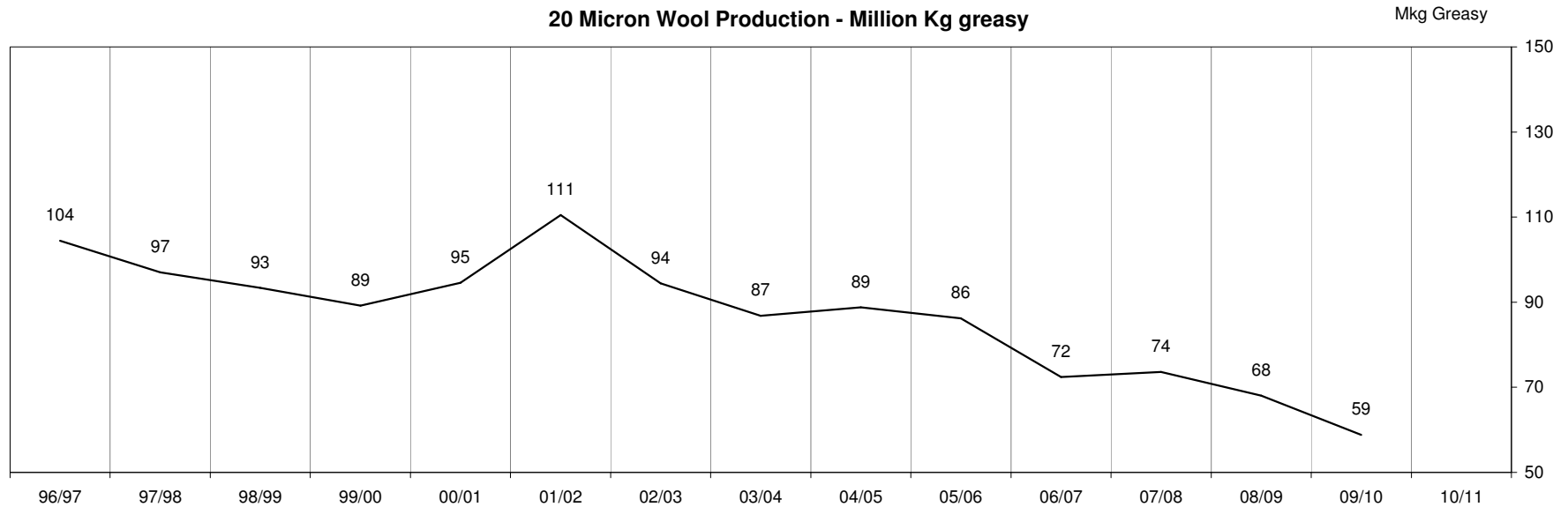
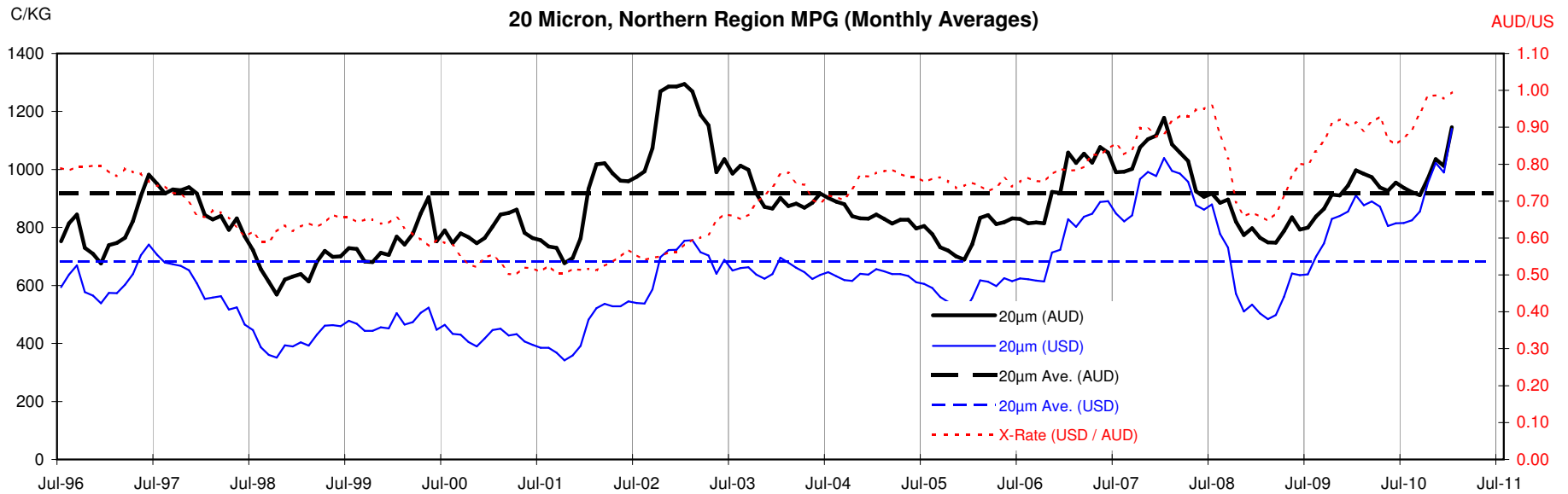


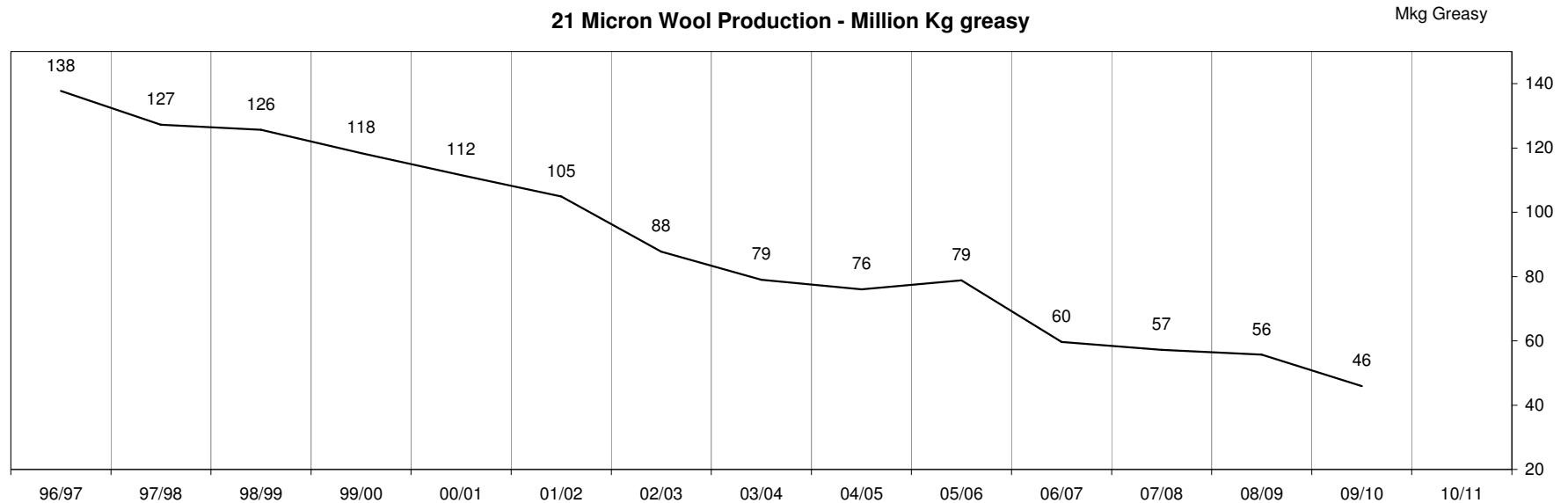
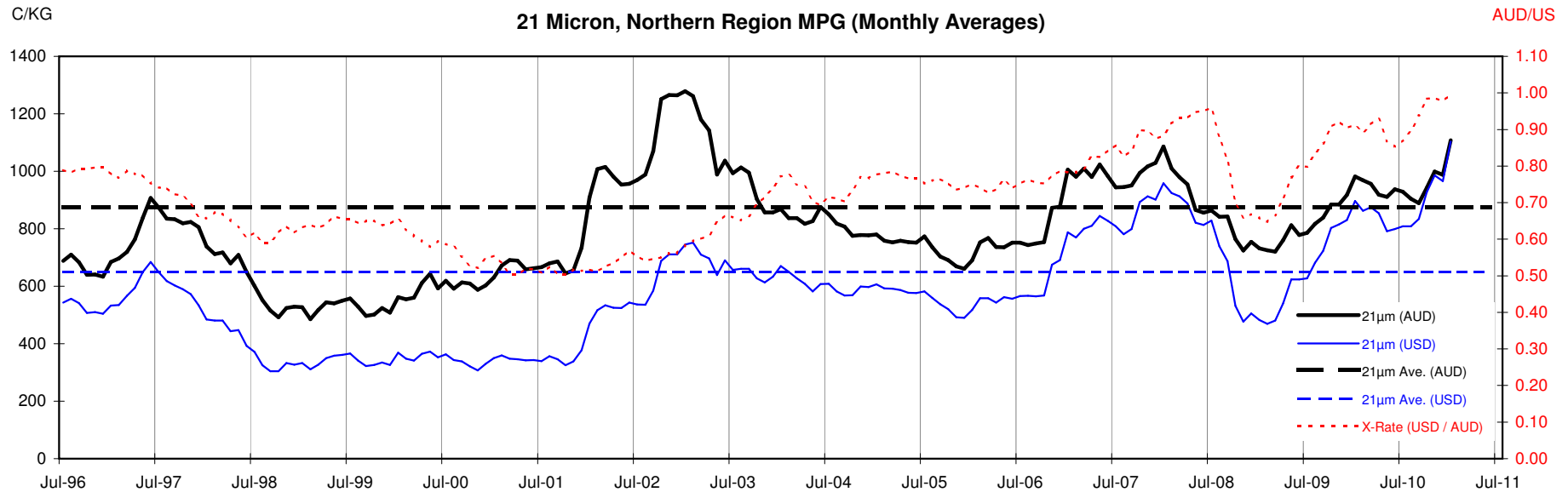
23 MICRON SFE, FRONT MONTH PRICE MOVEMENT (mthly averages)

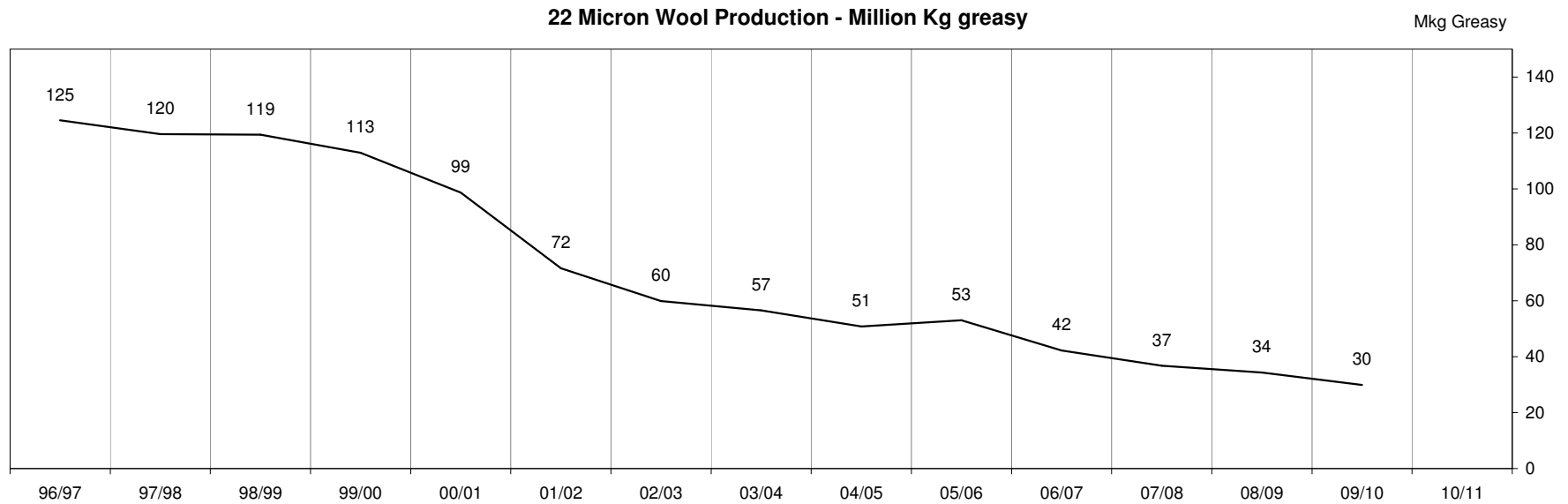
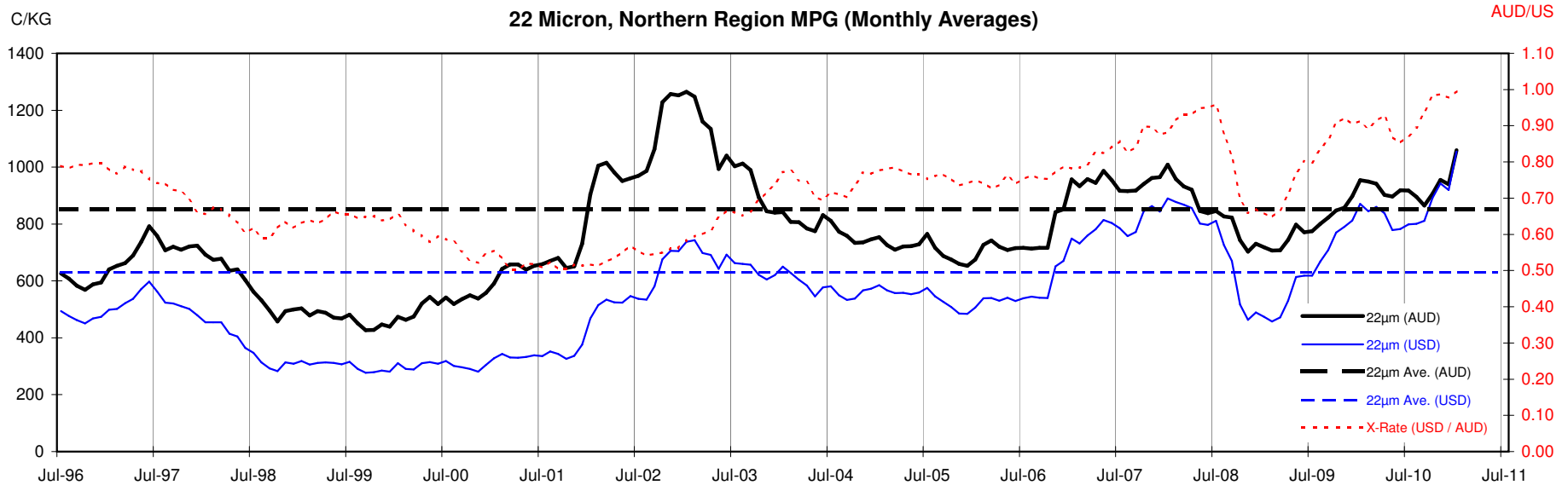


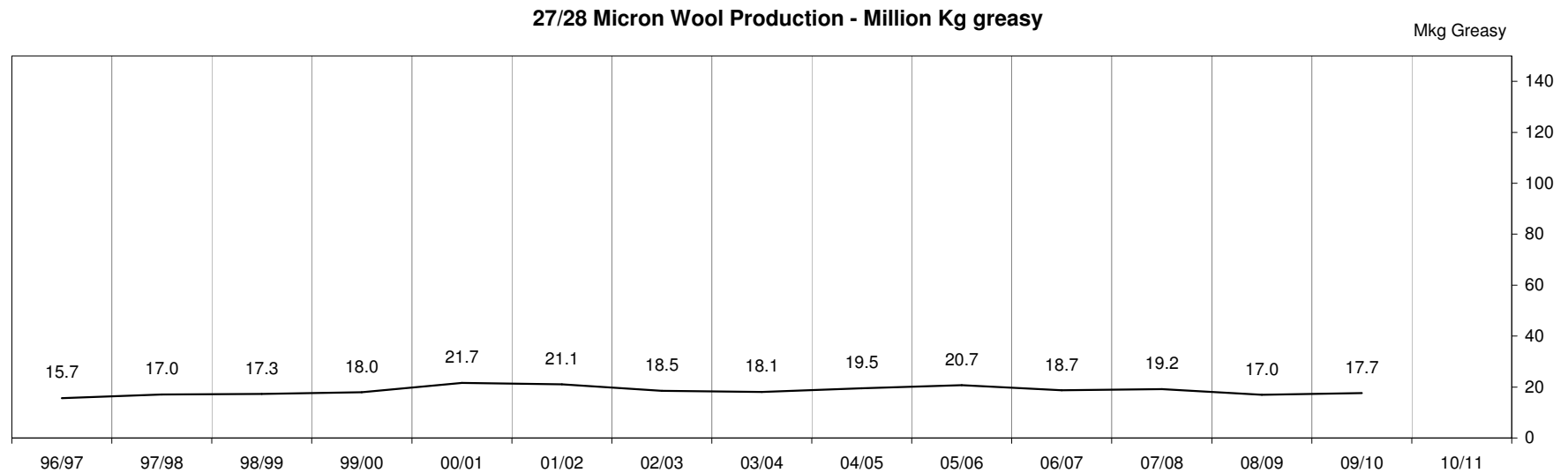
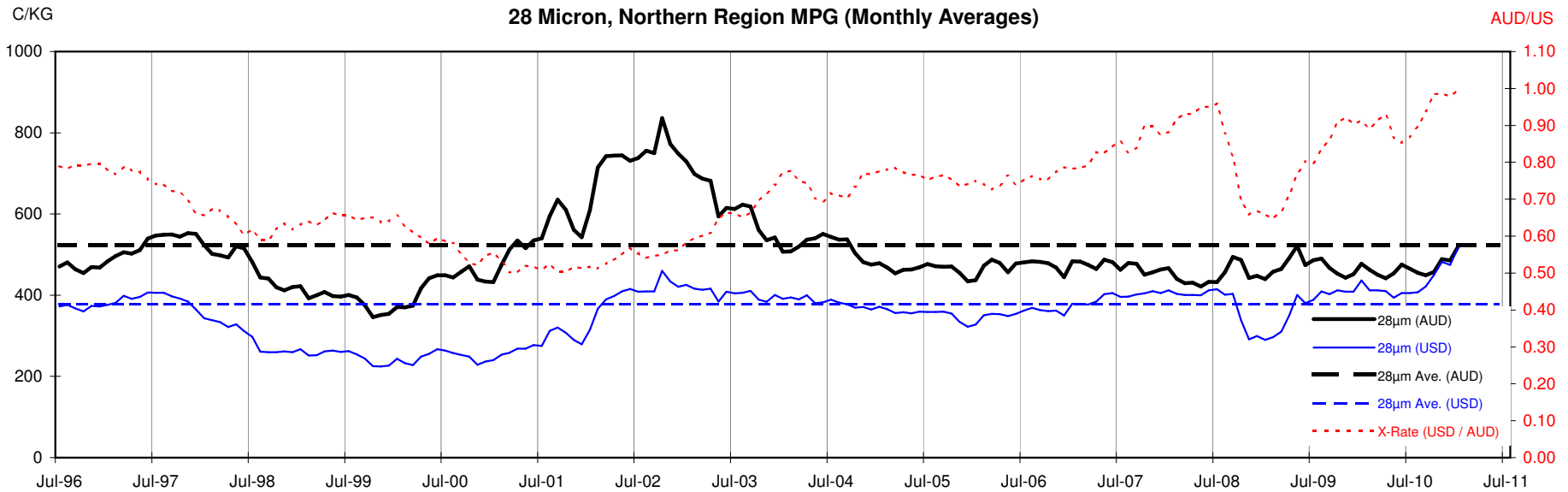












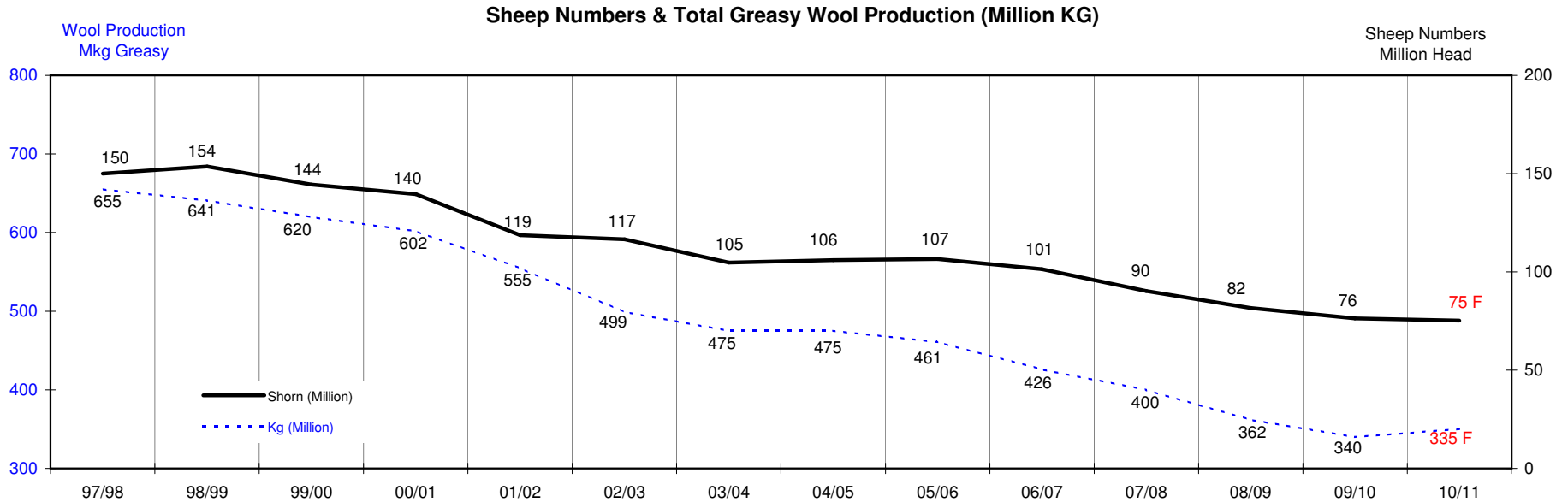
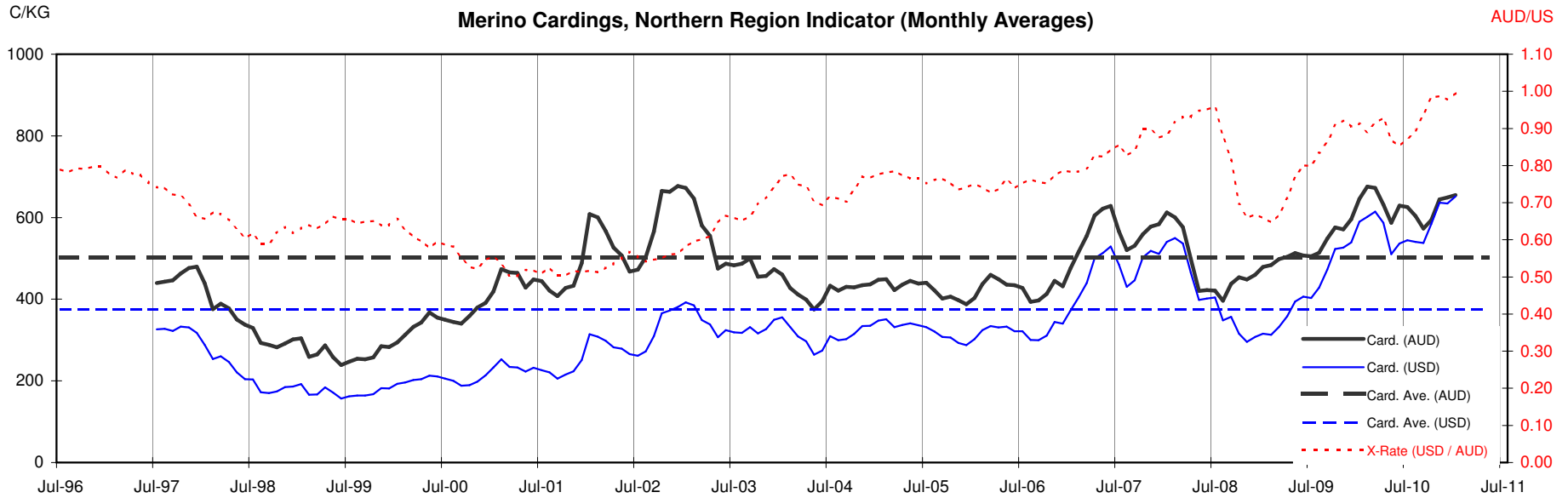




Table 13: Returns pr head for skirted fleece wool.

Skirted FLC Weight 9 Kg		Micron																	
		16	16.5	17	17.5	18	18.5	19	19.5	20	21	22	23	24	25	26	28	30	32
Yield (Sch Dry)	25% Current	\$53	\$50	\$47	\$44	\$42	\$39	\$35	\$30	\$26	\$25	\$24	\$23	\$20	\$17	\$15	\$12	\$10	\$9
	10yr ave.			\$32		\$29		\$24		\$21	\$20	\$19	\$19	\$18	\$16	\$15	\$12	\$10	\$9
	30% Current	\$64	\$60	\$56	\$53	\$50	\$46	\$42	\$36	\$31	\$30	\$29	\$27	\$24	\$21	\$18	\$14	\$13	\$11
	10yr ave.			\$38		\$35		\$29		\$25	\$24	\$23	\$22	\$21	\$19	\$18	\$14	\$12	\$11
	35% Current	\$75	\$70	\$65	\$61	\$58	\$54	\$49	\$42	\$36	\$35	\$34	\$32	\$28	\$24	\$21	\$16	\$15	\$13
	10yr ave.			\$44		\$40		\$34		\$29	\$28	\$27	\$26	\$25	\$22	\$21	\$16	\$14	\$13
	40% Current	\$85	\$80	\$75	\$70	\$67	\$62	\$56	\$47	\$42	\$40	\$38	\$36	\$32	\$28	\$24	\$19	\$17	\$15
	10yr ave.			\$51		\$46		\$38		\$33	\$31	\$31	\$30	\$29	\$26	\$23	\$19	\$16	\$15
	45% Current	\$96	\$90	\$84	\$79	\$75	\$70	\$63	\$53	\$47	\$45	\$43	\$41	\$36	\$31	\$27	\$21	\$19	\$17
	10yr ave.			\$57		\$52		\$43		\$37	\$35	\$34	\$34	\$32	\$29	\$26	\$21	\$18	\$17
	50% Current	\$107	\$100	\$93	\$88	\$84	\$77	\$70	\$59	\$52	\$50	\$48	\$45	\$40	\$34	\$30	\$24	\$21	\$19
	10yr ave.			\$63		\$58		\$48		\$41	\$39	\$38	\$37	\$36	\$32	\$29	\$23	\$21	\$19
	55% Current	\$117	\$110	\$102	\$97	\$92	\$85	\$77	\$65	\$57	\$55	\$53	\$50	\$44	\$38	\$33	\$26	\$23	\$20
	10yr ave.			\$69		\$63		\$53		\$45	\$43	\$42	\$41	\$39	\$35	\$32	\$26	\$23	\$20
	60% Current	\$128	\$120	\$112	\$105	\$100	\$93	\$84	\$71	\$62	\$60	\$58	\$55	\$48	\$41	\$36	\$28	\$25	\$22
	10yr ave.			\$76		\$69		\$58		\$50	\$47	\$46	\$45	\$43	\$38	\$35	\$28	\$25	\$22
	65% Current	\$139	\$130	\$121	\$114	\$109	\$100	\$91	\$77	\$67	\$65	\$63	\$59	\$52	\$45	\$39	\$31	\$27	\$24
	10yr ave.			\$82		\$75		\$62		\$54	\$51	\$50	\$49	\$46	\$42	\$38	\$31	\$27	\$24
	70% Current	\$149	\$140	\$130	\$123	\$117	\$108	\$98	\$83	\$73	\$70	\$67	\$64	\$57	\$48	\$42	\$33	\$29	\$26
	10yr ave.			\$88		\$81		\$67		\$58	\$55	\$54	\$52	\$50	\$45	\$41	\$33	\$29	\$26
	75% Current	\$160	\$150	\$140	\$132	\$125	\$116	\$105	\$89	\$78	\$75	\$72	\$68	\$61	\$52	\$45	\$35	\$31	\$28
	10yr ave.			\$95		\$86		\$72		\$62	\$59	\$57	\$56	\$54	\$48	\$44	\$35	\$31	\$28
	80% Current	\$171	\$160	\$149	\$140	\$134	\$124	\$112	\$95	\$83	\$80	\$77	\$73	\$65	\$55	\$49	\$38	\$33	\$30
	10yr ave.			\$101		\$92		\$77		\$66	\$63	\$61	\$60	\$57	\$51	\$47	\$38	\$33	\$30
	85% Current	\$181	\$170	\$158	\$149	\$142	\$131	\$119	\$101	\$88	\$85	\$82	\$77	\$69	\$59	\$52	\$40	\$35	\$32
	10yr ave.			\$107		\$98		\$82		\$70	\$67	\$65	\$63	\$61	\$54	\$50	\$40	\$35	\$32

The above shows estimated returns per head for skirted fleece wool. These figures do not take into account the value of skirtings and oddments and do not take into account discounts that may apply for faults under individual circumstances. These figures are based on a market index of 100% and should be used as a guide only. Returns over \$30 / head for fleece wool are highlighted.

Source: Australian Wool Exchange, Australian Wool Innovation, Sydney Futures Exchange, x-rates.com

Disclaimer: While all due care has been taken in the preparation of this document, no warranty is made as to its accuracy, reliability or completeness. To the extent permitted by law neither Jemalong or their sources including subsidiaries and staff, accept liability to any person for loss or damage arising from the use of this information.



Table 14: Returns pr head for skirted fleece wool.

Skirted FLC Weight 8 Kg		Micron																	
		16	16.5	17	17.5	18	18.5	19	19.5	20	21	22	23	24	25	26	28	30	32
Yield (Sch Dry)	25% Current	\$47	\$44	\$41	\$39	\$37	\$34	\$31	\$26	\$23	\$22	\$21	\$20	\$18	\$15	\$13	\$10	\$9	\$8
	10yr ave.			\$28		\$26		\$21		\$18	\$17	\$17	\$17	\$16	\$14	\$13	\$10	\$9	\$8
	30% Current	\$57	\$53	\$50	\$47	\$45	\$41	\$37	\$32	\$28	\$27	\$26	\$24	\$22	\$18	\$16	\$13	\$11	\$10
	10yr ave.			\$34		\$31		\$26		\$22	\$21	\$20	\$20	\$19	\$17	\$16	\$13	\$11	\$10
	35% Current	\$66	\$62	\$58	\$55	\$52	\$48	\$44	\$37	\$32	\$31	\$30	\$28	\$25	\$21	\$19	\$15	\$13	\$12
	10yr ave.			\$39		\$36		\$30		\$26	\$24	\$24	\$23	\$22	\$20	\$18	\$15	\$13	\$12
	40% Current	\$76	\$71	\$66	\$62	\$59	\$55	\$50	\$42	\$37	\$36	\$34	\$32	\$29	\$24	\$22	\$17	\$15	\$13
	10yr ave.			\$45		\$41		\$34		\$29	\$28	\$27	\$27	\$25	\$23	\$21	\$17	\$15	\$13
	45% Current	\$85	\$80	\$75	\$70	\$67	\$62	\$56	\$47	\$42	\$40	\$38	\$36	\$32	\$28	\$24	\$19	\$17	\$15
	10yr ave.			\$51		\$46		\$38		\$33	\$31	\$31	\$30	\$29	\$26	\$23	\$19	\$16	\$15
	50% Current	\$95	\$89	\$83	\$78	\$74	\$69	\$62	\$53	\$46	\$45	\$43	\$40	\$36	\$31	\$27	\$21	\$19	\$17
	10yr ave.			\$56		\$51		\$43		\$37	\$35	\$34	\$33	\$32	\$28	\$26	\$21	\$18	\$17
	55% Current	\$104	\$98	\$91	\$86	\$82	\$76	\$68	\$58	\$51	\$49	\$47	\$44	\$39	\$34	\$30	\$23	\$20	\$18
	10yr ave.			\$62		\$56		\$47		\$40	\$38	\$37	\$37	\$35	\$31	\$29	\$23	\$20	\$18
	60% Current	\$114	\$107	\$99	\$94	\$89	\$82	\$75	\$63	\$55	\$54	\$51	\$48	\$43	\$37	\$32	\$25	\$22	\$20
	10yr ave.			\$67		\$61		\$51		\$44	\$42	\$41	\$40	\$38	\$34	\$31	\$25	\$22	\$20
	65% Current	\$123	\$115	\$108	\$101	\$97	\$89	\$81	\$69	\$60	\$58	\$56	\$53	\$47	\$40	\$35	\$27	\$24	\$22
	10yr ave.			\$73		\$67		\$56		\$48	\$45	\$44	\$43	\$41	\$37	\$34	\$27	\$24	\$21
	70% Current	\$133	\$124	\$116	\$109	\$104	\$96	\$87	\$74	\$65	\$62	\$60	\$57	\$50	\$43	\$38	\$29	\$26	\$23
	10yr ave.			\$79		\$72		\$60		\$51	\$49	\$48	\$46	\$44	\$40	\$36	\$29	\$26	\$23
	75% Current	\$142	\$133	\$124	\$117	\$111	\$103	\$93	\$79	\$69	\$67	\$64	\$61	\$54	\$46	\$40	\$31	\$28	\$25
	10yr ave.			\$84		\$77		\$64		\$55	\$52	\$51	\$50	\$48	\$43	\$39	\$31	\$27	\$25
	80% Current	\$152	\$142	\$132	\$125	\$119	\$110	\$100	\$84	\$74	\$71	\$68	\$65	\$57	\$49	\$43	\$33	\$30	\$26
	10yr ave.			\$90		\$82		\$68		\$59	\$56	\$54	\$53	\$51	\$46	\$42	\$33	\$29	\$26
	85% Current	\$161	\$151	\$141	\$133	\$126	\$117	\$106	\$90	\$78	\$76	\$73	\$69	\$61	\$52	\$46	\$36	\$32	\$28
	10yr ave.			\$95		\$87		\$73		\$62	\$59	\$58	\$56	\$54	\$48	\$44	\$35	\$31	\$28

The above shows estimated returns per head for skirted fleece wool. These figures do not take into account the value of skirtings and oddments and do not take into account discounts that may apply for faults under individual circumstances. These figures are based on a market index of 100% and should be used as a guide only. Returns over \$30 / head for fleece wool are highlighted.

Source: Australian Wool Exchange, Australian Wool Innovation, Sydney Futures Exchange, x-rates.com

Disclaimer: While all due care has been taken in the preparation of this document, no warranty is made as to its accuracy, reliability or completeness. To the extent permitted by law neither Jemalong or their sources including subsidiaries and staff, accept liability to any person for loss or damage arising from the use of this information.



Table 15: Returns pr head for skirted fleece wool.

Skirted FLC Weight 7 Kg		Micron																	
		16	16.5	17	17.5	18	18.5	19	19.5	20	21	22	23	24	25	26	28	30	32
Yield (Sch Dry)	25% Current	\$41	\$39	\$36	\$34	\$32	\$30	\$27	\$23	\$20	\$20	\$19	\$18	\$16	\$13	\$12	\$9	\$8	\$7
	10yr ave.			\$25		\$22		\$19		\$16	\$15	\$15	\$15	\$14	\$12	\$11	\$9	\$8	\$7
	30% Current	\$50	\$47	\$43	\$41	\$39	\$36	\$33	\$28	\$24	\$23	\$22	\$21	\$19	\$16	\$14	\$11	\$10	\$9
	10yr ave.			\$29		\$27		\$22		\$19	\$18	\$18	\$17	\$17	\$15	\$14	\$11	\$10	\$9
	35% Current	\$58	\$54	\$51	\$48	\$45	\$42	\$38	\$32	\$28	\$27	\$26	\$25	\$22	\$19	\$17	\$13	\$11	\$10
	10yr ave.			\$34		\$31		\$26		\$22	\$21	\$21	\$20	\$19	\$17	\$16	\$13	\$11	\$10
	40% Current	\$66	\$62	\$58	\$55	\$52	\$48	\$44	\$37	\$32	\$31	\$30	\$28	\$25	\$21	\$19	\$15	\$13	\$12
	10yr ave.			\$39		\$36		\$30		\$26	\$24	\$24	\$23	\$22	\$20	\$18	\$15	\$13	\$12
	45% Current	\$75	\$70	\$65	\$61	\$58	\$54	\$49	\$42	\$36	\$35	\$34	\$32	\$28	\$24	\$21	\$16	\$15	\$13
	10yr ave.			\$44		\$40		\$34		\$29	\$28	\$27	\$26	\$25	\$22	\$21	\$16	\$14	\$13
	50% Current	\$83	\$78	\$72	\$68	\$65	\$60	\$54	\$46	\$40	\$39	\$37	\$35	\$31	\$27	\$24	\$18	\$16	\$14
	10yr ave.			\$49		\$45		\$37		\$32	\$31	\$30	\$29	\$28	\$25	\$23	\$18	\$16	\$14
	55% Current	\$91	\$85	\$80	\$75	\$71	\$66	\$60	\$51	\$44	\$43	\$41	\$39	\$35	\$29	\$26	\$20	\$18	\$16
	10yr ave.			\$54		\$49		\$41		\$35	\$34	\$33	\$32	\$31	\$27	\$25	\$20	\$18	\$16
	60% Current	\$100	\$93	\$87	\$82	\$78	\$72	\$65	\$55	\$48	\$47	\$45	\$42	\$38	\$32	\$28	\$22	\$19	\$17
	10yr ave.			\$59		\$54		\$45		\$39	\$37	\$36	\$35	\$33	\$30	\$27	\$22	\$19	\$17
	65% Current	\$108	\$101	\$94	\$89	\$84	\$78	\$71	\$60	\$52	\$51	\$49	\$46	\$41	\$35	\$31	\$24	\$21	\$19
	10yr ave.			\$64		\$58		\$49		\$42	\$40	\$39	\$38	\$36	\$32	\$30	\$24	\$21	\$19
	70% Current	\$116	\$109	\$101	\$96	\$91	\$84	\$76	\$65	\$56	\$55	\$52	\$49	\$44	\$37	\$33	\$26	\$23	\$20
	10yr ave.			\$69		\$63		\$52		\$45	\$43	\$42	\$41	\$39	\$35	\$32	\$26	\$22	\$20
	75% Current	\$124	\$117	\$109	\$102	\$97	\$90	\$82	\$69	\$61	\$59	\$56	\$53	\$47	\$40	\$35	\$27	\$24	\$22
	10yr ave.			\$74		\$67		\$56		\$48	\$46	\$45	\$44	\$42	\$37	\$34	\$27	\$24	\$22
	80% Current	\$133	\$124	\$116	\$109	\$104	\$96	\$87	\$74	\$65	\$62	\$60	\$57	\$50	\$43	\$38	\$29	\$26	\$23
	10yr ave.			\$79		\$72		\$60		\$51	\$49	\$48	\$46	\$44	\$40	\$36	\$29	\$26	\$23
	85% Current	\$141	\$132	\$123	\$116	\$110	\$102	\$93	\$78	\$69	\$66	\$64	\$60	\$53	\$46	\$40	\$31	\$28	\$25
	10yr ave.			\$84		\$76		\$64		\$55	\$52	\$51	\$49	\$47	\$42	\$39	\$31	\$27	\$25

The above shows estimated returns per head for skirted fleece wool. These figures do not take into account the value of skirtings and oddments and do not take into account discounts that may apply for faults under individual circumstances. These figures are based on a market index of 100% and should be used as a guide only. Returns over \$30 / head for fleece wool are highlighted.

Source: Australian Wool Exchange, Australian Wool Innovation, Sydney Futures Exchange, x-rates.com

Disclaimer: While all due care has been taken in the preparation of this document, no warranty is made as to its accuracy, reliability or completeness. To the extent permitted by law neither Jemalong or their sources including subsidiaries and staff, accept liability to any person for loss or damage arising from the use of this information.



Table 16: Returns pr head for skirted fleece wool.

Skirted FLC Weight 6 Kg		Micron																	
		16	16.5	17	17.5	18	18.5	19	19.5	20	21	22	23	24	25	26	28	30	32
Yield (Sch Dry)	25% Current	\$36	\$33	\$31	\$29	\$28	\$26	\$23	\$20	\$17	\$17	\$16	\$15	\$13	\$11	\$10	\$8	\$7	\$6
	10yr ave.			\$21		\$19		\$16		\$14	\$13	\$13	\$12	\$12	\$11	\$10	\$8	\$7	\$6
	30% Current	\$43	\$40	\$37	\$35	\$33	\$31	\$28	\$24	\$21	\$20	\$19	\$18	\$16	\$14	\$12	\$9	\$8	\$7
	10yr ave.			\$25		\$23		\$19		\$17	\$16	\$15	\$15	\$14	\$13	\$12	\$9	\$8	\$7
	35% Current	\$50	\$47	\$43	\$41	\$39	\$36	\$33	\$28	\$24	\$23	\$22	\$21	\$19	\$16	\$14	\$11	\$10	\$9
	10yr ave.			\$29		\$27		\$22		\$19	\$18	\$18	\$17	\$17	\$15	\$14	\$11	\$10	\$9
	40% Current	\$57	\$53	\$50	\$47	\$45	\$41	\$37	\$32	\$28	\$27	\$26	\$24	\$22	\$18	\$16	\$13	\$11	\$10
	10yr ave.			\$34		\$31		\$26		\$22	\$21	\$20	\$20	\$19	\$17	\$16	\$13	\$11	\$10
	45% Current	\$64	\$60	\$56	\$53	\$50	\$46	\$42	\$36	\$31	\$30	\$29	\$27	\$24	\$21	\$18	\$14	\$13	\$11
	10yr ave.			\$38		\$35		\$29		\$25	\$24	\$23	\$22	\$21	\$19	\$18	\$14	\$12	\$11
	50% Current	\$71	\$67	\$62	\$59	\$56	\$52	\$47	\$40	\$35	\$33	\$32	\$30	\$27	\$23	\$20	\$16	\$14	\$12
	10yr ave.			\$42		\$38		\$32		\$28	\$26	\$26	\$25	\$24	\$21	\$20	\$16	\$14	\$12
	55% Current	\$78	\$73	\$68	\$64	\$61	\$57	\$51	\$43	\$38	\$37	\$35	\$33	\$30	\$25	\$22	\$17	\$15	\$14
	10yr ave.			\$46		\$42		\$35		\$30	\$29	\$28	\$27	\$26	\$23	\$21	\$17	\$15	\$14
	60% Current	\$85	\$80	\$75	\$70	\$67	\$62	\$56	\$47	\$42	\$40	\$38	\$36	\$32	\$28	\$24	\$19	\$17	\$15
	10yr ave.			\$51		\$46		\$38		\$33	\$31	\$31	\$30	\$29	\$26	\$23	\$19	\$16	\$15
	65% Current	\$92	\$87	\$81	\$76	\$72	\$67	\$61	\$51	\$45	\$44	\$42	\$39	\$35	\$30	\$26	\$20	\$18	\$16
	10yr ave.			\$55		\$50		\$42		\$36	\$34	\$33	\$32	\$31	\$28	\$25	\$20	\$18	\$16
	70% Current	\$100	\$93	\$87	\$82	\$78	\$72	\$65	\$55	\$48	\$47	\$45	\$42	\$38	\$32	\$28	\$22	\$19	\$17
	10yr ave.			\$59		\$54		\$45		\$39	\$37	\$36	\$35	\$33	\$30	\$27	\$22	\$19	\$17
	75% Current	\$107	\$100	\$93	\$88	\$84	\$77	\$70	\$59	\$52	\$50	\$48	\$45	\$40	\$34	\$30	\$24	\$21	\$19
	10yr ave.			\$63		\$58		\$48		\$41	\$39	\$38	\$37	\$36	\$32	\$29	\$23	\$21	\$19
	80% Current	\$114	\$107	\$99	\$94	\$89	\$82	\$75	\$63	\$55	\$54	\$51	\$48	\$43	\$37	\$32	\$25	\$22	\$20
	10yr ave.			\$67		\$61		\$51		\$44	\$42	\$41	\$40	\$38	\$34	\$31	\$25	\$22	\$20
	85% Current	\$121	\$113	\$106	\$99	\$95	\$88	\$79	\$67	\$59	\$57	\$55	\$52	\$46	\$39	\$34	\$27	\$24	\$21
	10yr ave.			\$72		\$65		\$54		\$47	\$45	\$43	\$42	\$40	\$36	\$33	\$27	\$23	\$21

The above shows estimated returns per head for skirted fleece wool. These figures do not take into account the value of skirtings and oddments and do not take into account discounts that may apply for faults under individual circumstances. These figures are based on a market index of 100% and should be used as a guide only. Returns over \$30 / head for fleece wool are highlighted.

Source: Australian Wool Exchange, Australian Wool Innovation, Sydney Futures Exchange, x-rates.com

Disclaimer: While all due care has been taken in the preparation of this document, no warranty is made as to its accuracy, reliability or completeness. To the extent permitted by law neither Jemalong or their sources including subsidiaries and staff, accept liability to any person for loss or damage arising from the use of this information.



Table 17: Returns pr head for skirted fleece wool.

Skirted FLC Weight 5 Kg		Micron																	
		16	16.5	17	17.5	18	18.5	19	19.5	20	21	22	23	24	25	26	28	30	32
Yield (Sch Dry)	25% Current	\$30	\$28	\$26	\$24	\$23	\$21	\$19	\$16	\$14	\$14	\$13	\$13	\$11	\$10	\$8	\$7	\$6	\$5
	10yr ave.			\$18		\$16		\$13		\$11	\$11	\$11	\$10	\$10	\$9	\$8	\$7	\$6	\$5
	30% Current	\$36	\$33	\$31	\$29	\$28	\$26	\$23	\$20	\$17	\$17	\$16	\$15	\$13	\$11	\$10	\$8	\$7	\$6
	10yr ave.			\$21		\$19		\$16		\$14	\$13	\$13	\$12	\$12	\$11	\$10	\$8	\$7	\$6
	35% Current	\$41	\$39	\$36	\$34	\$32	\$30	\$27	\$23	\$20	\$20	\$19	\$18	\$16	\$13	\$12	\$9	\$8	\$7
	10yr ave.			\$25		\$22		\$19		\$16	\$15	\$15	\$15	\$14	\$12	\$11	\$9	\$8	\$7
	40% Current	\$47	\$44	\$41	\$39	\$37	\$34	\$31	\$26	\$23	\$22	\$21	\$20	\$18	\$15	\$13	\$10	\$9	\$8
	10yr ave.			\$28		\$26		\$21		\$18	\$17	\$17	\$17	\$16	\$14	\$13	\$10	\$9	\$8
	45% Current	\$53	\$50	\$47	\$44	\$42	\$39	\$35	\$30	\$26	\$25	\$24	\$23	\$20	\$17	\$15	\$12	\$10	\$9
	10yr ave.			\$32		\$29		\$24		\$21	\$20	\$19	\$19	\$18	\$16	\$15	\$12	\$10	\$9
	50% Current	\$59	\$56	\$52	\$49	\$46	\$43	\$39	\$33	\$29	\$28	\$27	\$25	\$22	\$19	\$17	\$13	\$12	\$10
	10yr ave.			\$35		\$32		\$27		\$23	\$22	\$21	\$21	\$20	\$18	\$16	\$13	\$11	\$10
	55% Current	\$65	\$61	\$57	\$54	\$51	\$47	\$43	\$36	\$32	\$31	\$29	\$28	\$25	\$21	\$19	\$14	\$13	\$11
	10yr ave.			\$39		\$35		\$29		\$25	\$24	\$23	\$23	\$22	\$20	\$18	\$14	\$13	\$11
	60% Current	\$71	\$67	\$62	\$59	\$56	\$52	\$47	\$40	\$35	\$33	\$32	\$30	\$27	\$23	\$20	\$16	\$14	\$12
	10yr ave.			\$42		\$38		\$32		\$28	\$26	\$26	\$25	\$24	\$21	\$20	\$16	\$14	\$12
	65% Current	\$77	\$72	\$67	\$63	\$60	\$56	\$51	\$43	\$37	\$36	\$35	\$33	\$29	\$25	\$22	\$17	\$15	\$13
	10yr ave.			\$46		\$42		\$35		\$30	\$28	\$28	\$27	\$26	\$23	\$21	\$17	\$15	\$13
	70% Current	\$83	\$78	\$72	\$68	\$65	\$60	\$54	\$46	\$40	\$39	\$37	\$35	\$31	\$27	\$24	\$18	\$16	\$14
	10yr ave.			\$49		\$45		\$37		\$32	\$31	\$30	\$29	\$28	\$25	\$23	\$18	\$16	\$14
	75% Current	\$89	\$83	\$78	\$73	\$70	\$64	\$58	\$49	\$43	\$42	\$40	\$38	\$34	\$29	\$25	\$20	\$17	\$16
	10yr ave.			\$53		\$48		\$40		\$34	\$33	\$32	\$31	\$30	\$27	\$24	\$20	\$17	\$15
	80% Current	\$95	\$89	\$83	\$78	\$74	\$69	\$62	\$53	\$46	\$45	\$43	\$40	\$36	\$31	\$27	\$21	\$19	\$17
	10yr ave.			\$56		\$51		\$43		\$37	\$35	\$34	\$33	\$32	\$28	\$26	\$21	\$18	\$17
	85% Current	\$101	\$94	\$88	\$83	\$79	\$73	\$66	\$56	\$49	\$47	\$45	\$43	\$38	\$33	\$29	\$22	\$20	\$18
	10yr ave.			\$60		\$54		\$45		\$39	\$37	\$36	\$35	\$34	\$30	\$28	\$22	\$19	\$18

The above shows estimated returns per head for skirted fleece wool. These figures do not take into account the value of skirtings and oddments and do not take into account discounts that may apply for faults under individual circumstances. These figures are based on a market index of 100% and should be used as a guide only. Returns over \$30 / head for fleece wool are highlighted.

Source: Australian Wool Exchange, Australian Wool Innovation, Sydney Futures Exchange, x-rates.com

Disclaimer: While all due care has been taken in the preparation of this document, no warranty is made as to its accuracy, reliability or completeness. To the extent permitted by law neither Jemalong or their sources including subsidiaries and staff, accept liability to any person for loss or damage arising from the use of this information.



Table 18: Returns pr head for skirted fleece wool.

Skirted FLC Weight		Micron																	
4 Kg		16	16.5	17	17.5	18	18.5	19	19.5	20	21	22	23	24	25	26	28	30	32
Yield (Sch Dry)	25% Current	\$24	\$22	\$21	\$20	\$19	\$17	\$16	\$13	\$12	\$11	\$11	\$10	\$9	\$8	\$7	\$5	\$5	\$4
	10yr ave.			\$14		\$13		\$11		\$9	\$9	\$9	\$8	\$8	\$7	\$7	\$5	\$5	\$4
	30% Current	\$28	\$27	\$25	\$23	\$22	\$21	\$19	\$16	\$14	\$13	\$13	\$12	\$11	\$9	\$8	\$6	\$6	\$5
	10yr ave.			\$17		\$15		\$13		\$11	\$10	\$10	\$10	\$10	\$9	\$8	\$6	\$5	\$5
	35% Current	\$33	\$31	\$29	\$27	\$26	\$24	\$22	\$18	\$16	\$16	\$15	\$14	\$13	\$11	\$9	\$7	\$6	\$6
	10yr ave.			\$20		\$18		\$15		\$13	\$12	\$12	\$12	\$11	\$10	\$9	\$7	\$6	\$6
	40% Current	\$38	\$36	\$33	\$31	\$30	\$27	\$25	\$21	\$18	\$18	\$17	\$16	\$14	\$12	\$11	\$8	\$7	\$7
	10yr ave.			\$22		\$20		\$17		\$15	\$14	\$14	\$13	\$13	\$11	\$10	\$8	\$7	\$7
	45% Current	\$43	\$40	\$37	\$35	\$33	\$31	\$28	\$24	\$21	\$20	\$19	\$18	\$16	\$14	\$12	\$9	\$8	\$7
	10yr ave.			\$25		\$23		\$19		\$17	\$16	\$15	\$15	\$14	\$13	\$12	\$9	\$8	\$7
	50% Current	\$47	\$44	\$41	\$39	\$37	\$34	\$31	\$26	\$23	\$22	\$21	\$20	\$18	\$15	\$13	\$10	\$9	\$8
	10yr ave.			\$28		\$26		\$21		\$18	\$17	\$17	\$17	\$16	\$14	\$13	\$10	\$9	\$8
	55% Current	\$52	\$49	\$46	\$43	\$41	\$38	\$34	\$29	\$25	\$25	\$24	\$22	\$20	\$17	\$15	\$12	\$10	\$9
	10yr ave.			\$31		\$28		\$23		\$20	\$19	\$19	\$18	\$17	\$16	\$14	\$11	\$10	\$9
	60% Current	\$57	\$53	\$50	\$47	\$45	\$41	\$37	\$32	\$28	\$27	\$26	\$24	\$22	\$18	\$16	\$13	\$11	\$10
	10yr ave.			\$34		\$31		\$26		\$22	\$21	\$20	\$20	\$19	\$17	\$16	\$13	\$11	\$10
	65% Current	\$62	\$58	\$54	\$51	\$48	\$45	\$40	\$34	\$30	\$29	\$28	\$26	\$23	\$20	\$18	\$14	\$12	\$11
	10yr ave.			\$37		\$33		\$28		\$24	\$23	\$22	\$22	\$21	\$19	\$17	\$14	\$12	\$11
	70% Current	\$66	\$62	\$58	\$55	\$52	\$48	\$44	\$37	\$32	\$31	\$30	\$28	\$25	\$21	\$19	\$15	\$13	\$12
	10yr ave.			\$39		\$36		\$30		\$26	\$24	\$24	\$23	\$22	\$20	\$18	\$15	\$13	\$12
	75% Current	\$71	\$67	\$62	\$59	\$56	\$52	\$47	\$40	\$35	\$33	\$32	\$30	\$27	\$23	\$20	\$16	\$14	\$12
	10yr ave.			\$42		\$38		\$32		\$28	\$26	\$26	\$25	\$24	\$21	\$20	\$16	\$14	\$12
	80% Current	\$76	\$71	\$66	\$62	\$59	\$55	\$50	\$42	\$37	\$36	\$34	\$32	\$29	\$24	\$22	\$17	\$15	\$13
	10yr ave.			\$45		\$41		\$34		\$29	\$28	\$27	\$27	\$25	\$23	\$21	\$17	\$15	\$13
	85% Current	\$81	\$75	\$70	\$66	\$63	\$58	\$53	\$45	\$39	\$38	\$36	\$34	\$30	\$26	\$23	\$18	\$16	\$14
	10yr ave.			\$48		\$44		\$36		\$31	\$30	\$29	\$28	\$27	\$24	\$22	\$18	\$16	\$14

The above shows estimated returns per head for skirted fleece wool. These figures do not take into account the value of skirtings and oddments and do not take into account discounts that may apply for faults under individual circumstances. These figures are based on a market index of 100% and should be used as a guide only. Returns over \$30 / head for fleece wool are highlighted.

Source: Australian Wool Exchange, Australian Wool Innovation, Sydney Futures Exchange, x-rates.com

Disclaimer: While all due care has been taken in the preparation of this document, no warranty is made as to its accuracy, reliability or completeness. To the extent permitted by law neither Jemalong or their sources including subsidiaries and staff, accept liability to any person for loss or damage arising from the use of this information.



Table 19: Returns pr head for skirted fleece wool.

Skirted FLC Weight 3 Kg		Micron																	
		16	16.5	17	17.5	18	18.5	19	19.5	20	21	22	23	24	25	26	28	30	32
Yield (Sch Dry)	25% Current	\$18	\$17	\$16	\$15	\$14	\$13	\$12	\$10	\$9	\$8	\$8	\$8	\$7	\$6	\$5	\$4	\$3	\$3
	10yr ave.			\$11		\$10		\$8		\$7	\$7	\$6	\$6	\$6	\$5	\$5	\$4	\$3	\$3
	30% Current	\$21	\$20	\$19	\$18	\$17	\$15	\$14	\$12	\$10	\$10	\$10	\$9	\$8	\$7	\$6	\$5	\$4	\$4
	10yr ave.			\$13		\$12		\$10		\$8	\$8	\$8	\$7	\$7	\$6	\$6	\$5	\$4	\$4
	35% Current	\$25	\$23	\$22	\$20	\$19	\$18	\$16	\$14	\$12	\$12	\$11	\$11	\$9	\$8	\$7	\$5	\$5	\$4
	10yr ave.			\$15		\$13		\$11		\$10	\$9	\$9	\$9	\$8	\$7	\$7	\$5	\$5	\$4
	40% Current	\$28	\$27	\$25	\$23	\$22	\$21	\$19	\$16	\$14	\$13	\$13	\$12	\$11	\$9	\$8	\$6	\$6	\$5
	10yr ave.			\$17		\$15		\$13		\$11	\$10	\$10	\$10	\$10	\$9	\$8	\$6	\$5	\$5
	45% Current	\$32	\$30	\$28	\$26	\$25	\$23	\$21	\$18	\$16	\$15	\$14	\$14	\$12	\$10	\$9	\$7	\$6	\$6
	10yr ave.			\$19		\$17		\$14		\$12	\$12	\$11	\$11	\$11	\$10	\$9	\$7	\$6	\$6
	50% Current	\$36	\$33	\$31	\$29	\$28	\$26	\$23	\$20	\$17	\$17	\$16	\$15	\$13	\$11	\$10	\$8	\$7	\$6
	10yr ave.			\$21		\$19		\$16		\$14	\$13	\$13	\$12	\$12	\$11	\$10	\$8	\$7	\$6
	55% Current	\$39	\$37	\$34	\$32	\$31	\$28	\$26	\$22	\$19	\$18	\$18	\$17	\$15	\$13	\$11	\$9	\$8	\$7
	10yr ave.			\$23		\$21		\$18		\$15	\$14	\$14	\$14	\$13	\$12	\$11	\$9	\$8	\$7
	60% Current	\$43	\$40	\$37	\$35	\$33	\$31	\$28	\$24	\$21	\$20	\$19	\$18	\$16	\$14	\$12	\$9	\$8	\$7
	10yr ave.			\$25		\$23		\$19		\$17	\$16	\$15	\$15	\$14	\$13	\$12	\$9	\$8	\$7
	65% Current	\$46	\$43	\$40	\$38	\$36	\$33	\$30	\$26	\$22	\$22	\$21	\$20	\$17	\$15	\$13	\$10	\$9	\$8
	10yr ave.			\$27		\$25		\$21		\$18	\$17	\$17	\$16	\$15	\$14	\$13	\$10	\$9	\$8
	70% Current	\$50	\$47	\$43	\$41	\$39	\$36	\$33	\$28	\$24	\$23	\$22	\$21	\$19	\$16	\$14	\$11	\$10	\$9
	10yr ave.			\$29		\$27		\$22		\$19	\$18	\$18	\$17	\$17	\$15	\$14	\$11	\$10	\$9
	75% Current	\$53	\$50	\$47	\$44	\$42	\$39	\$35	\$30	\$26	\$25	\$24	\$23	\$20	\$17	\$15	\$12	\$10	\$9
	10yr ave.			\$32		\$29		\$24		\$21	\$20	\$19	\$19	\$18	\$16	\$15	\$12	\$10	\$9
	80% Current	\$57	\$53	\$50	\$47	\$45	\$41	\$37	\$32	\$28	\$27	\$26	\$24	\$22	\$18	\$16	\$13	\$11	\$10
	10yr ave.			\$34		\$31		\$26		\$22	\$21	\$20	\$20	\$19	\$17	\$16	\$13	\$11	\$10
	85% Current	\$60	\$57	\$53	\$50	\$47	\$44	\$40	\$34	\$29	\$28	\$27	\$26	\$23	\$20	\$17	\$13	\$12	\$11
	10yr ave.			\$36		\$33		\$27		\$23	\$22	\$22	\$21	\$20	\$18	\$17	\$13	\$12	\$11

The above shows estimated returns per head for skirted fleece wool. These figures do not take into account the value of skirtings and oddments and do not take into account discounts that may apply for faults under individual circumstances. These figures are based on a market index of 100% and should be used as a guide only. Returns over \$30 / head for fleece wool are highlighted.

Source: Australian Wool Exchange, Australian Wool Innovation, Sydney Futures Exchange, x-rates.com

Disclaimer: While all due care has been taken in the preparation of this document, no warranty is made as to its accuracy, reliability or completeness. To the extent permitted by law neither Jemalong or their sources including subsidiaries and staff, accept liability to any person for loss or damage arising from the use of this information.



Table 20: Returns pr head for skirted fleece wool.

Skirted FLC Weight 2 Kg		Micron																	
		16	16.5	17	17.5	18	18.5	19	19.5	20	21	22	23	24	25	26	28	30	32
Yield (Sch Dry)	25% Current	\$12	\$11	\$10	\$10	\$9	\$9	\$8	\$7	\$6	\$6	\$5	\$5	\$4	\$4	\$3	\$3	\$2	\$2
	10yr ave.			\$7		\$6		\$5		\$5	\$4	\$4	\$4	\$4	\$4	\$3	\$3	\$2	\$2
	30% Current	\$14	\$13	\$12	\$12	\$11	\$10	\$9	\$8	\$7	\$7	\$6	\$6	\$5	\$5	\$4	\$3	\$3	\$2
	10yr ave.			\$8		\$8		\$6		\$6	\$5	\$5	\$5	\$5	\$4	\$4	\$3	\$3	\$2
	35% Current	\$17	\$16	\$14	\$14	\$13	\$12	\$11	\$9	\$8	\$8	\$7	\$7	\$6	\$5	\$5	\$4	\$3	\$3
	10yr ave.			\$10		\$9		\$7		\$6	\$6	\$6	\$6	\$6	\$5	\$5	\$4	\$3	\$3
	40% Current	\$19	\$18	\$17	\$16	\$15	\$14	\$12	\$11	\$9	\$9	\$9	\$8	\$7	\$6	\$5	\$4	\$4	\$3
	10yr ave.			\$11		\$10		\$9		\$7	\$7	\$7	\$7	\$6	\$6	\$5	\$4	\$4	\$3
	45% Current	\$21	\$20	\$19	\$18	\$17	\$15	\$14	\$12	\$10	\$10	\$10	\$9	\$8	\$7	\$6	\$5	\$4	\$4
	10yr ave.			\$13		\$12		\$10		\$8	\$8	\$8	\$7	\$7	\$6	\$6	\$5	\$4	\$4
	50% Current	\$24	\$22	\$21	\$20	\$19	\$17	\$16	\$13	\$12	\$11	\$11	\$10	\$9	\$8	\$7	\$5	\$5	\$4
	10yr ave.			\$14		\$13		\$11		\$9	\$9	\$9	\$8	\$8	\$7	\$7	\$5	\$5	\$4
	55% Current	\$26	\$24	\$23	\$21	\$20	\$19	\$17	\$14	\$13	\$12	\$12	\$11	\$10	\$8	\$7	\$6	\$5	\$5
	10yr ave.			\$15		\$14		\$12		\$10	\$10	\$9	\$9	\$9	\$8	\$7	\$6	\$5	\$5
	60% Current	\$28	\$27	\$25	\$23	\$22	\$21	\$19	\$16	\$14	\$13	\$13	\$12	\$11	\$9	\$8	\$6	\$6	\$5
	10yr ave.			\$17		\$15		\$13		\$11	\$10	\$10	\$10	\$10	\$9	\$8	\$6	\$5	\$5
	65% Current	\$31	\$29	\$27	\$25	\$24	\$22	\$20	\$17	\$15	\$15	\$14	\$13	\$12	\$10	\$9	\$7	\$6	\$5
	10yr ave.			\$18		\$17		\$14		\$12	\$11	\$11	\$11	\$10	\$9	\$8	\$7	\$6	\$5
	70% Current	\$33	\$31	\$29	\$27	\$26	\$24	\$22	\$18	\$16	\$16	\$15	\$14	\$13	\$11	\$9	\$7	\$6	\$6
	10yr ave.			\$20		\$18		\$15		\$13	\$12	\$12	\$12	\$11	\$10	\$9	\$7	\$6	\$6
	75% Current	\$36	\$33	\$31	\$29	\$28	\$26	\$23	\$20	\$17	\$17	\$16	\$15	\$13	\$11	\$10	\$8	\$7	\$6
	10yr ave.			\$21		\$19		\$16		\$14	\$13	\$13	\$12	\$12	\$11	\$10	\$8	\$7	\$6
	80% Current	\$38	\$36	\$33	\$31	\$30	\$27	\$25	\$21	\$18	\$18	\$17	\$16	\$14	\$12	\$11	\$8	\$7	\$7
	10yr ave.			\$22		\$20		\$17		\$15	\$14	\$14	\$13	\$13	\$11	\$10	\$8	\$7	\$7
	85% Current	\$40	\$38	\$35	\$33	\$32	\$29	\$26	\$22	\$20	\$19	\$18	\$17	\$15	\$13	\$11	\$9	\$8	\$7
	10yr ave.			\$24		\$22		\$18		\$16	\$15	\$14	\$14	\$13	\$12	\$11	\$9	\$8	\$7

The above shows estimated returns per head for skirted fleece wool. These figures do not take into account the value of skirtings and oddments and do not take into account discounts that may apply for faults under individual circumstances. These figures are based on a market index of 100% and should be used as a guide only. Returns over \$30 / head for fleece wool are highlighted.

Source: Australian Wool Exchange, Australian Wool Innovation, Sydney Futures Exchange, x-rates.com

Disclaimer: While all due care has been taken in the preparation of this document, no warranty is made as to its accuracy, reliability or completeness. To the extent permitted by law neither Jemalong or their sources including subsidiaries and staff, accept liability to any person for loss or damage arising from the use of this information.