



# JEMALONG WOOL BULLETIN

(week ending 13/06/2013)

**Table 1: Northern Region Micron Price Guides**

CURRENT MARKET				12 MONTH COMPARISONS								3 YEAR COMPARISONS					*10 YEAR COMPARISONS						
Mic.	13/06/2013	6/06/2013		13/06/2012	Now		Now		Now				Now		Percentile	* 16-17.5um since Aug 05		Now		Percentile			
Price	Current	Weekly		This time	compared	12 Month	compared	12 Month	compared	Low	High	Average	compared	Low		High	*10 year	compared					
Guides	Price	Change		Last Year	to Last Year	Low	to Low	High	to High				to 3yr ave			Average	to *10yr ave						
NRI	1086	+14 1.3%		1081	+5 0%	944	+142 15%	1158	-72 -6%	894	1491	1156	-70 -6%	38%	657	1491	935	+151 16%	83%				
16*	1620	0		1800	-180 -10%	1540	+80 5%	1850	-230 -12%	1540	2800	2031	-411 -20%	14%	1390	2800	1793	-173 -10%	50%				
16.5*	1480	+15 1.0%		1590	-110 -7%	1390	+90 6%	1680	-200 -12%	1395	2680	1870	-390 -21%	17%	1277	2680	1646	-166 -10%	50%				
17*	1355	+25 1.8%		1410	-55 -4%	1250	+105 8%	1530	-175 -11%	1230	2530	1711	-356 -21%	17%	1100	2530	1426	-71 -5%	53%				
17.5*	1285	+10 0.8%		1365	-80 -6%	1200	+85 7%	1465	-180 -12%	1185	2360	1610	-325 -20%	20%	1020	2360	1428	-143 -10%	48%				
18	1247	+24 1.9%		1325	-78 -6%	1148	+99 9%	1416	-169 -12%	1152	2193	1521	-274 -18%	21%	916	2193	1253	-6 0%	63%				
18.5	1222	+15 1.2%		1293	-71 -5%	1116	+106 9%	1378	-156 -11%	1120	1963	1438	-216 -15%	23%	843	1963	1188	+34 3%	67%				
19	1209	+10 0.8%		1281	-72 -6%	1084	+125 12%	1348	-139 -10%	1045	1776	1358	-149 -11%	27%	803	1776	1118	+91 8%	75%				
19.5	1191	+9 0.8%		1255	-64 -5%	1057	+134 13%	1310	-119 -9%	956	1670	1285	-94 -7%	34%	749	1670	1051	+140 13%	80%				
20	1179	+6 0.5%		1236	-57 -5%	1047	+132 13%	1270	-91 -7%	909	1588	1226	-47 -4%	37%	700	1588	993	+186 19%	82%				
21	1176	+7 0.6%		1241	-65 -5%	1036	+140 14%	1265	-89 -7%	886	1522	1196	-20 -2%	40%	668	1522	952	+224 24%	83%				
22	1178	+5 0.4%		1231	-53 -4%	1015	+163 16%	1248	-70 -6%	860	1461	1161	+17 1%	46%	659	1461	922	+256 28%	85%				
23	1196	+29 2.4%		1213	-17 -1%	1002	+194 19%	1227	-31 -3%	833	1347	1116	+80 7%	69%	652	1347	893	+303 34%	91%				
24	1093	+50 4.6%		1101	-8 -1%	940	+153 16%	1141	-48 -4%	780	1213	1018	+75 7%	72%	638	1213	834	+259 31%	92%				
25	931	+15 1.6%		978	-47 -5%	840	+91 11%	1049	-118 -11%	695	1049	892	+39 4%	68%	566	1049	733	+198 27%	90%				
26	850	+22 2.6%		871	-21 -2%	753	+97 13%	939	-89 -9%	603	939	794	+56 7%	73%	532	939	664	+186 28%	91%				
28	663	+14 2.1%		624	+39 6%	550	+113 21%	663	0 0%	444	734	602	+61 10%	83%	424	734	517	+146 28%	95%				
30	604	+8 1.3%		580	+24 4%	506	+98 19%	614	-10 -2%	391	670	549	+55 10%	80%	344	670	459	+145 32%	94%				
32	488	+1 0.2%		485	+3 1%	422	+66 16%	500	-12 -2%	354	638	487	+1 0%	47%	297	638	409	+79 19%	84%				
MC	812	+9 1.1%		599	+213 36%	512	+300 59%	812	0 0%	532	831	693	+119 17%	94%	380	831	548	+264 48%	98%				

**Note:**

\* Due to the irregular market quoting for some fine wool categories, figures shown relating to micron categories below 18 micron are an estimate based on the AWEX Premium & Discounts Report & other available information.

\* For any category, where there is insufficient quantity offered to enable AWEX to quote, a quote will be provided based on the best available information.

\* 10 Year data is not available for some micron categories, which may result in blank spaces in the table above.

**Definitions:**

\* A Percentile, is a value on a scale of one hundred that indicates the percent of a distribution that is equal to or below it. In general a percentile between 25% and 75% is considered normal, a percentile below 25% is considered below normal and a percentile above 75% is considered above normal.

Three and ten year percentiles shown in the table above, detail the period of time during the past 3 & 10 years that the market has traded either at or below its current price.

The higher the percentile, the stronger the market.

Source: Australian Wool Exchange, Australian Wool Innovation, Riemann, x-rates.com

Disclaimer: Jemalong Wool Pty Ltd make no representations about the content and suitability of the information contained in this report. Specifically, Jemalong Wool does not warrant, guarantee or make any representations regarding the correctness, accuracy, reliability, currency, or any other aspect regarding characteristics or use of information presented in these materials. The user accepts sole responsibility and risk associated with the use and results of these materials, irrespective of the purpose of which such use or results are applied. In no event shall Jemalong Wool be liable for any loss or damages (including without limitation special, or consequential damages), where in an action of contract, negligence, or tort, arising out of or in connection with the use of performance of these materials.



MARKET COMMENTARY

One Australian Dollar = 0.950162 US as of: 13/06/2013

NORTHERN REGION –Sale Week 50/12 (33,256 bales offered nationally)

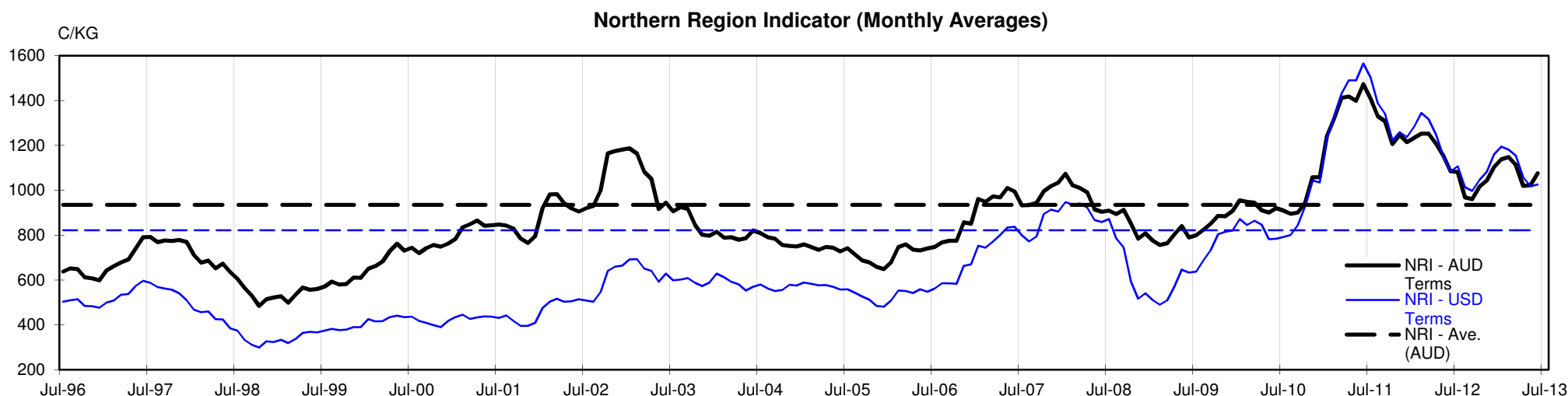
This week's week market saw further gains across all microns categories.

Due to the one day sale in Sydney last week, Wednesdays Northern Region market was quoted generally 20 cents dearer, however when compared to Melbourne's close on Thursday (6th June) the market was more accurately 10-15 cents dearer.

Thursday's market was again solid, with most microns closing firm to slightly dearer in both centres.

With small sales rostered for the remainder of the selling season combined with a depreciating AUD and reports that some Chinese mills having left it a bit late for prompt to August shipments, the market is expected to remain strong.

31 contracts (almost 1000 bales) traded forward on Riemann (for the week) with prices generally firm to 20 cents dearer, for most contracts.





# JEMALONG WOOL BULLETIN

(week ending 13/06/2013)

**Table 2: Riemann Forwards, latest trades as at: Wednesday 12/6/2013 22:14** **Any highlighted in yellow are recent trades, trading since: Friday, 7 June 2013**

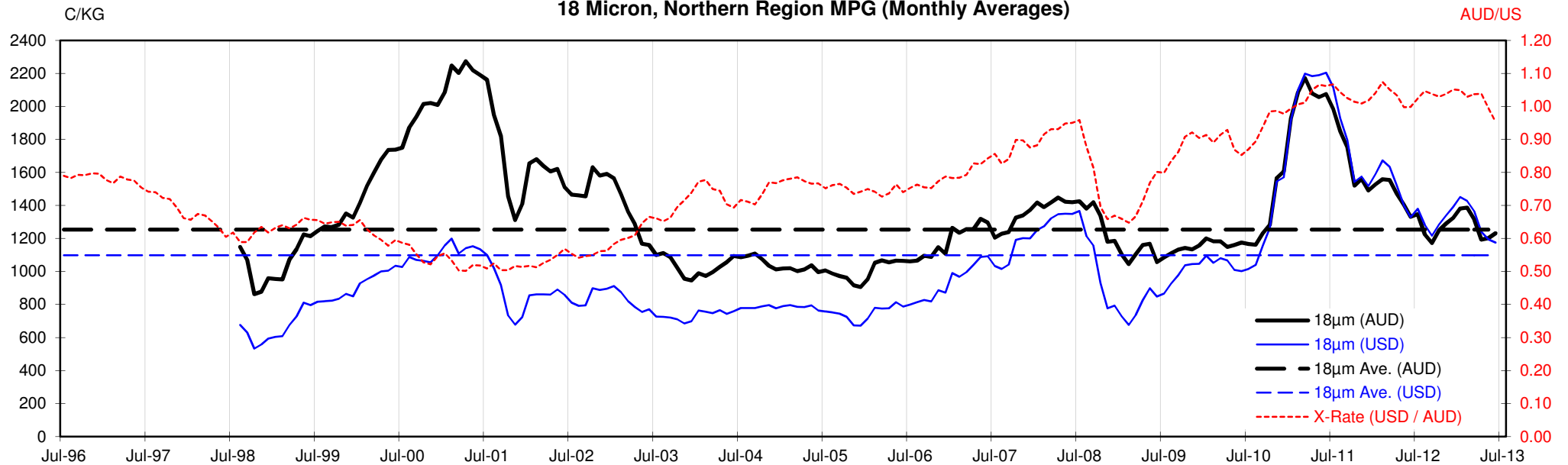
CONTRACT MICRON		18um	19um	20um	21um	22um	23um	28um	30um
CONTRACT MONTH	Jun-2013		22/05/13 1215		11/06/13 1175			18/04/13 555	
	Jul-2013		14/02/13 1315	5/03/13 1205	12/06/13 1155				
	Aug-2013		31/05/13 1170	8/05/13 1110	12/06/13 1150	7/06/13 1125		12/06/13 630	
	Sep-2013	2/05/13 1170	10/05/13 1150		12/06/13 1150	12/06/13 1120			
	Oct-2013		7/06/13 1170		12/06/13 1135	5/03/13 1150	29/01/13 1120		
	Nov-2013		5/03/13 1310		12/06/13 1140				12/06/13 550
	Dec-2013		30/01/13 1320		10/06/13 1130	29/01/13 1150			
	Jan-2014		30/01/13 1280		12/06/13 1135				
	Feb-2014		18/12/12 1250		30/01/13 1180				
	Mar-2014								
	Apr-2014				18/04/13 1100				
	May-2014								
	Jun-2014								
	Jul-2014								
	Aug-2014								
	Sep-2014								
	Oct-2014				12/04/13 1050				
	Nov-2014								
	Dec-2014								
	Jan-2015								
	Feb-2015								
	Mar-2015								
	Apr-2015								

Explanatory Notes: Prices quoted reflect the most recent trades, at time of print.

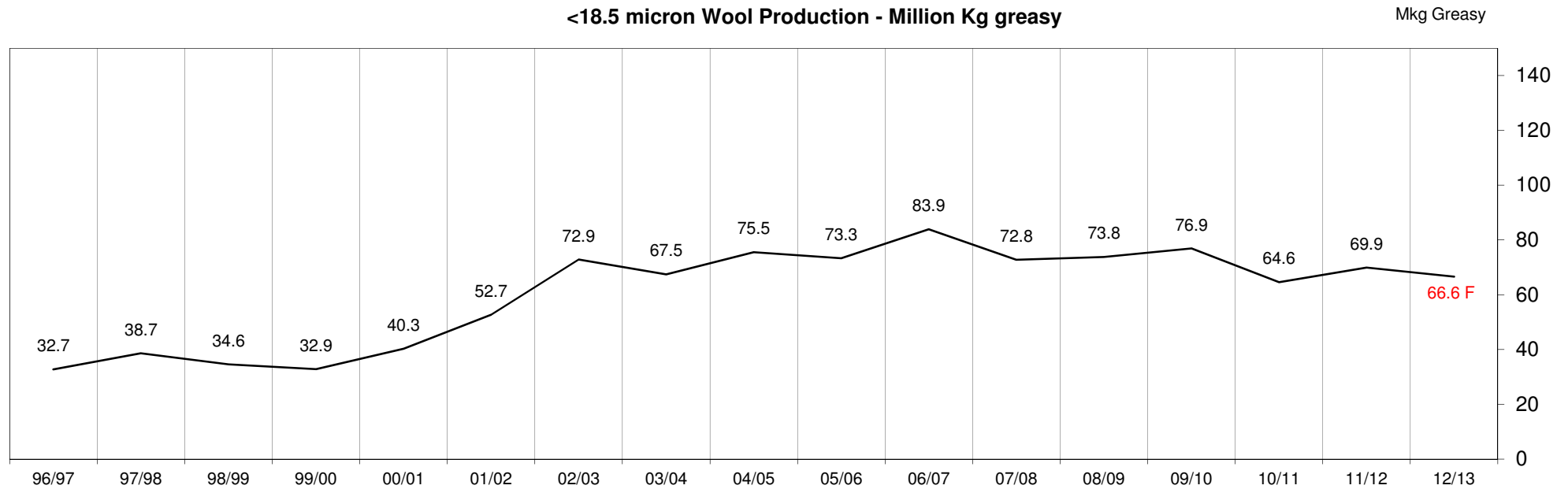
Disclaimer: While all due care has been taken in the preparation of this document, no warranty is made as to its accuracy, reliability or completeness. To the extent permitted by law neither Jemalong or their sources including subsidiaries and staff, accept liability to any person for loss or damage arising from the use of this information.

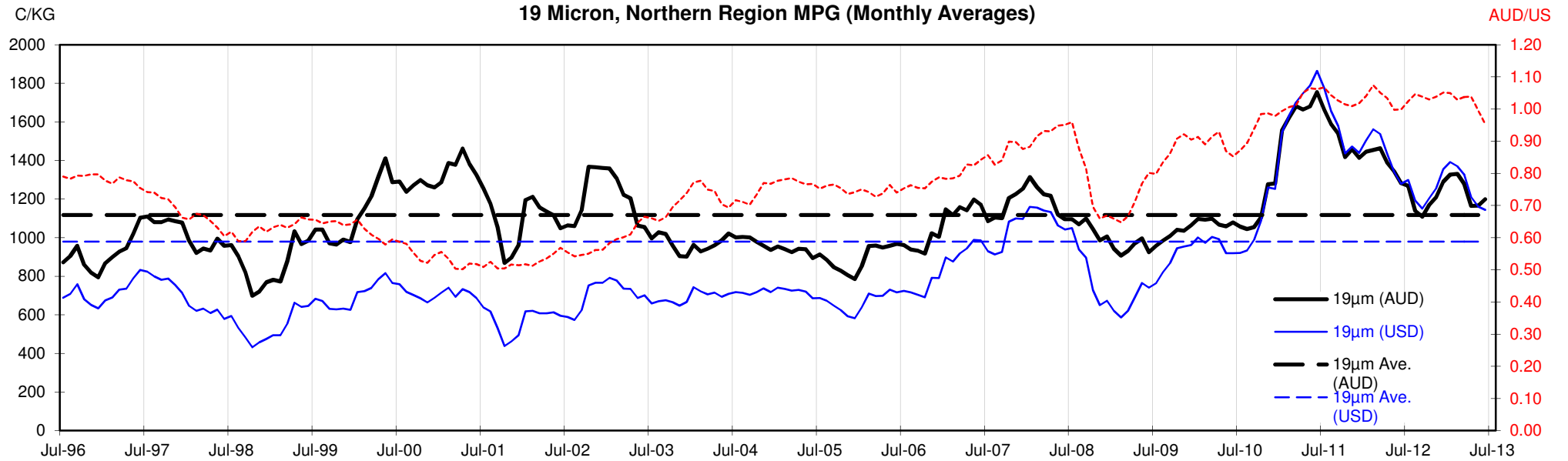


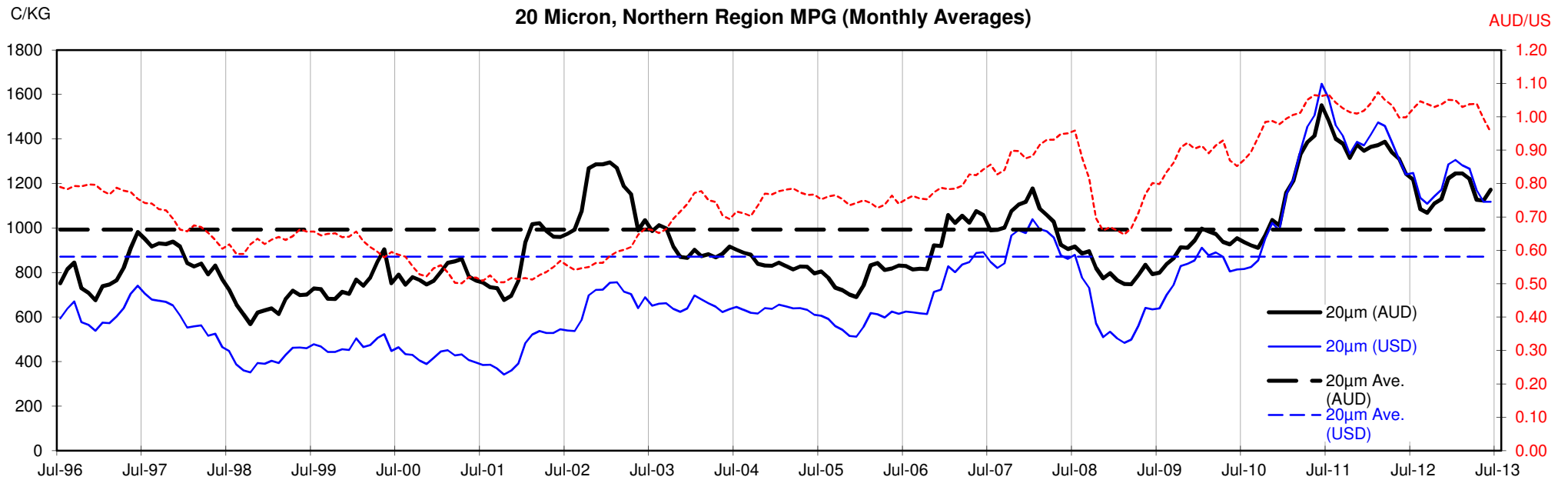
18 Micron, Northern Region MPG (Monthly Averages)

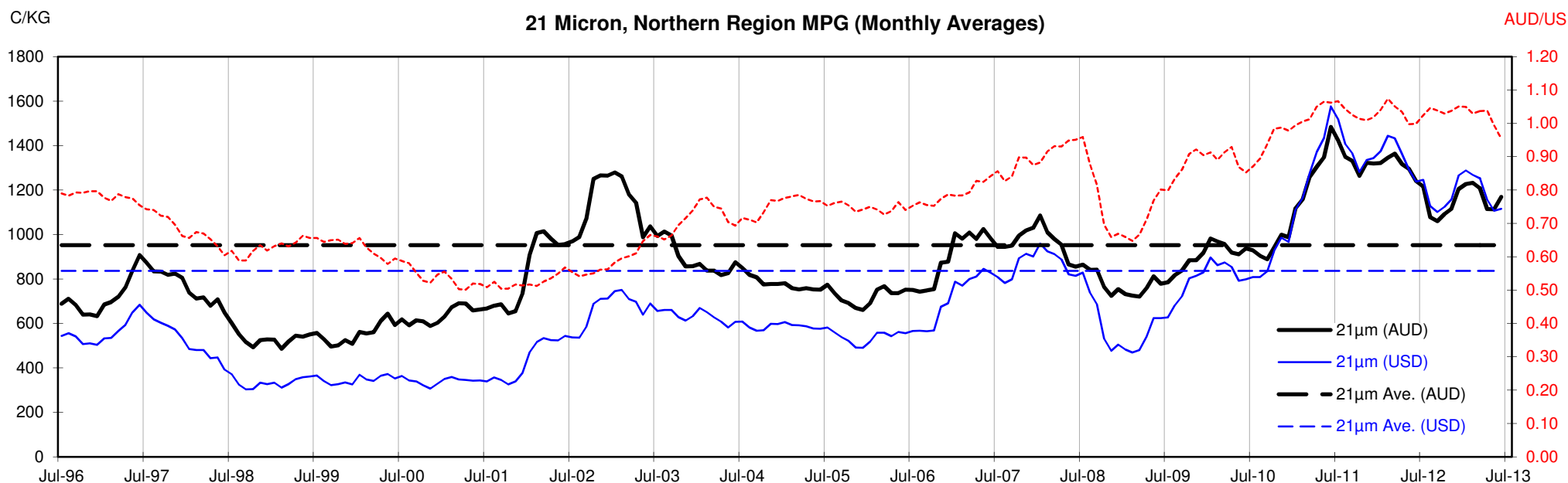


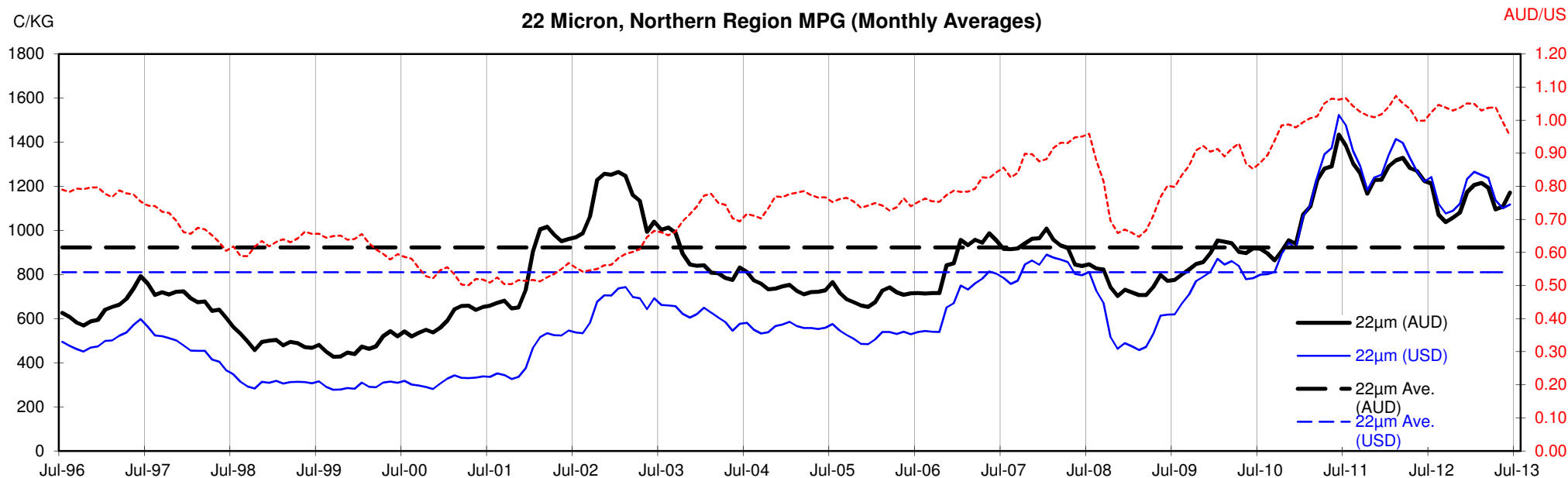
<18.5 micron Wool Production - Million Kg greasy

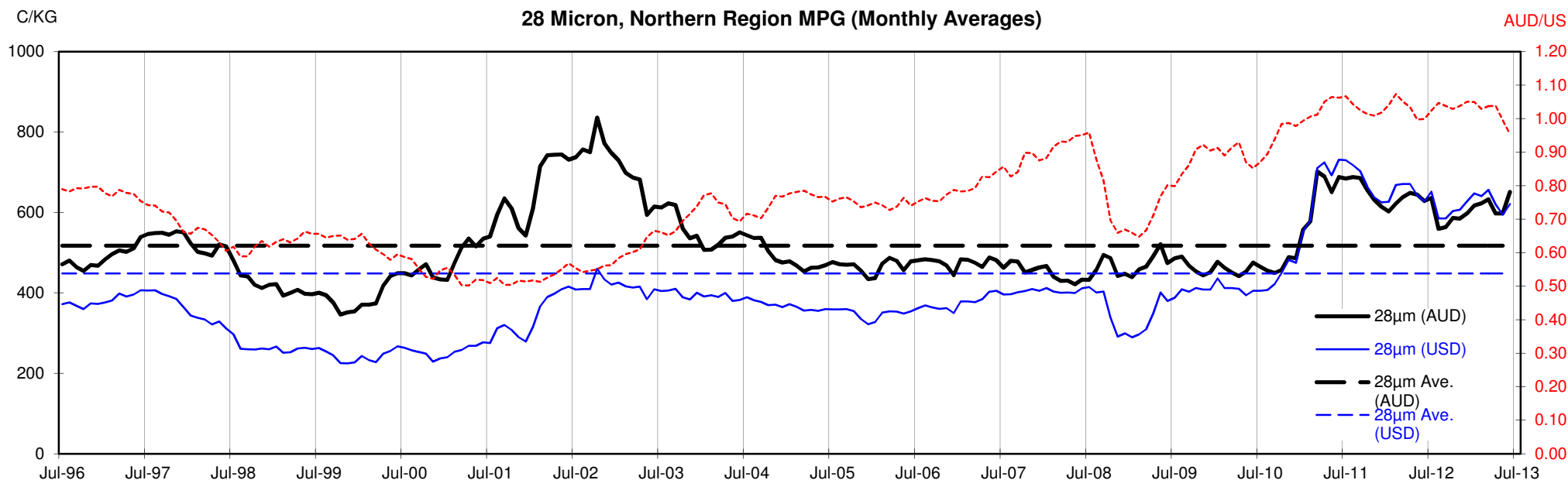












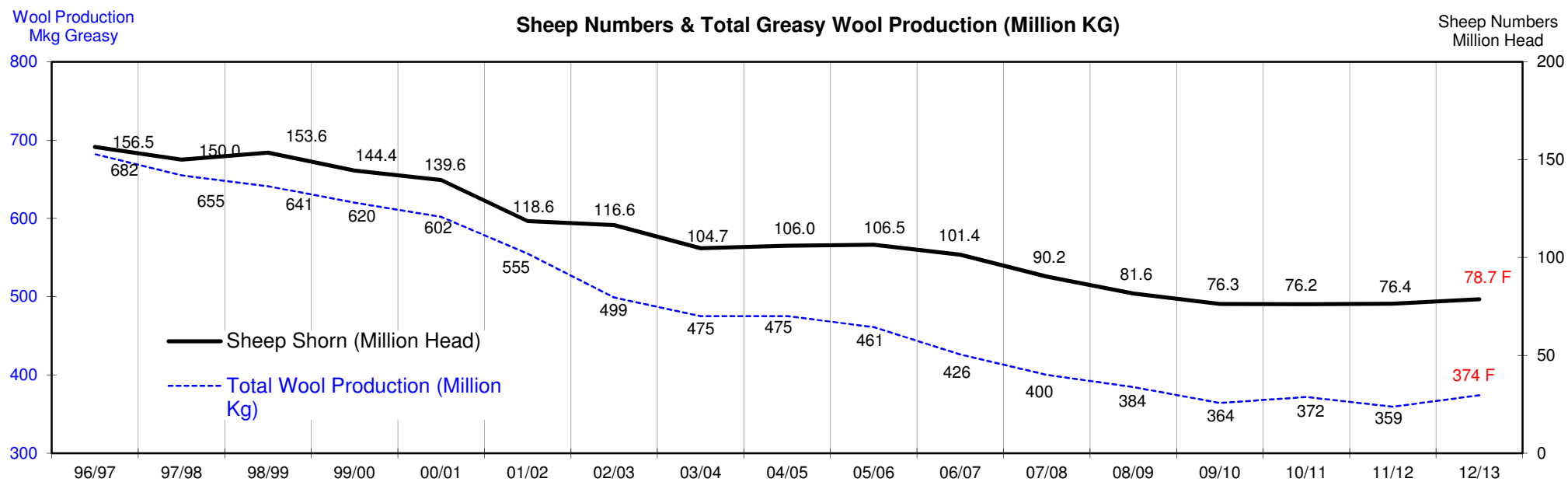
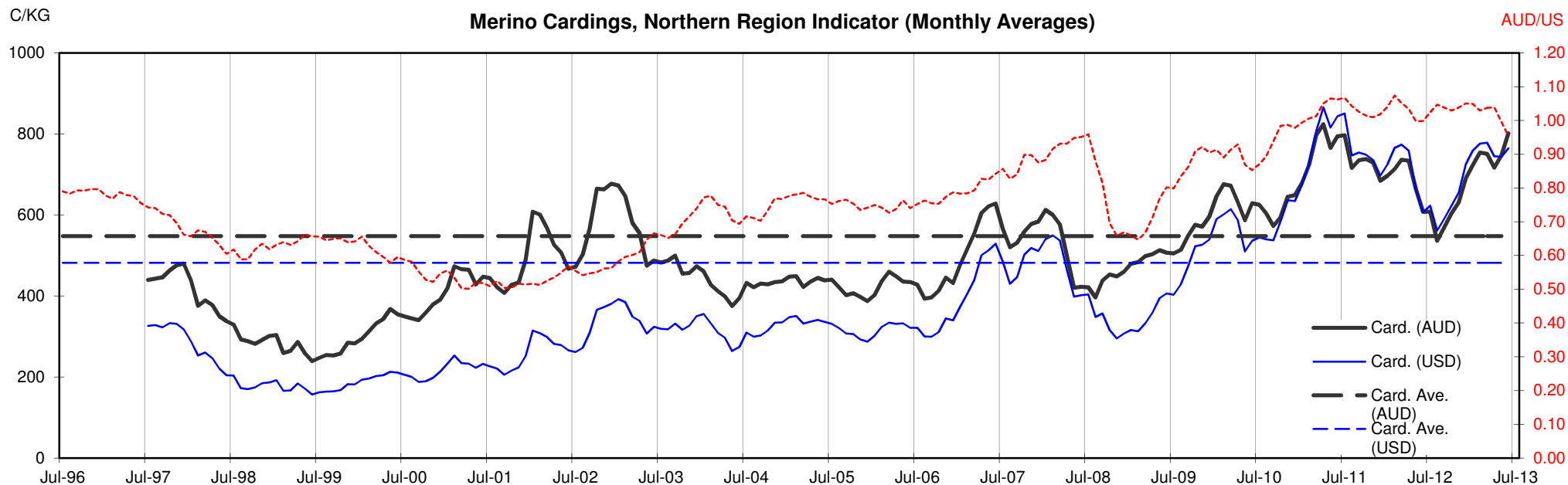




Table 13: Returns pr head for skirted fleece wool.

Skirted FLC Weight			Micron																	
			16	16.5	17	17.5	18	18.5	19	19.5	20	21	22	23	24	25	26	28	30	32
Yield (Sch Dry)	9 Kg																			
	25%	Current	\$36	\$33	\$30	\$29	\$28	\$27	\$27	\$27	\$27	\$26	\$27	\$27	\$25	\$21	\$19	\$15	\$14	\$11
		10yr ave.	\$40	\$37	\$32	\$32	\$28	\$27	\$25	\$24	\$22	\$21	\$21	\$20	\$19	\$16	\$15	\$12	\$10	\$9
	30%	Current	\$44	\$40	\$37	\$35	\$34	\$33	\$33	\$32	\$32	\$32	\$32	\$32	\$30	\$25	\$23	\$18	\$16	\$13
		10yr ave.	\$48	\$44	\$39	\$39	\$34	\$32	\$30	\$28	\$27	\$26	\$25	\$24	\$23	\$20	\$18	\$14	\$12	\$11
	35%	Current	\$51	\$47	\$43	\$40	\$39	\$38	\$38	\$38	\$37	\$37	\$37	\$38	\$34	\$29	\$27	\$21	\$19	\$15
		10yr ave.	\$56	\$52	\$45	\$45	\$39	\$37	\$35	\$33	\$31	\$30	\$29	\$28	\$26	\$23	\$21	\$16	\$14	\$13
	40%	Current	\$58	\$53	\$49	\$46	\$45	\$44	\$44	\$43	\$42	\$42	\$42	\$43	\$39	\$34	\$31	\$24	\$22	\$18
		10yr ave.	\$65	\$59	\$51	\$51	\$45	\$43	\$40	\$38	\$36	\$34	\$33	\$32	\$30	\$26	\$24	\$19	\$17	\$15
	45%	Current	\$66	\$60	\$55	\$52	\$51	\$49	\$49	\$48	\$48	\$48	\$48	\$48	\$44	\$38	\$34	\$27	\$24	\$20
		10yr ave.	\$73	\$67	\$58	\$58	\$51	\$48	\$45	\$43	\$40	\$39	\$37	\$36	\$34	\$30	\$27	\$21	\$19	\$17
	50%	Current	\$73	\$67	\$61	\$58	\$56	\$55	\$54	\$54	\$53	\$53	\$53	\$54	\$49	\$42	\$38	\$30	\$27	\$22
		10yr ave.	\$81	\$74	\$64	\$64	\$56	\$53	\$50	\$47	\$45	\$43	\$41	\$40	\$38	\$33	\$30	\$23	\$21	\$18
	55%	Current	\$80	\$73	\$67	\$64	\$62	\$60	\$60	\$59	\$58	\$58	\$58	\$59	\$54	\$46	\$42	\$33	\$30	\$24
		10yr ave.	\$89	\$81	\$71	\$71	\$62	\$59	\$55	\$52	\$49	\$47	\$46	\$44	\$41	\$36	\$33	\$26	\$23	\$20
	60%	Current	\$87	\$80	\$73	\$69	\$67	\$66	\$65	\$64	\$64	\$64	\$64	\$65	\$59	\$50	\$46	\$36	\$33	\$26
		10yr ave.	\$97	\$89	\$77	\$77	\$68	\$64	\$60	\$57	\$54	\$51	\$50	\$48	\$45	\$40	\$36	\$28	\$25	\$22
	65%	Current	\$95	\$87	\$79	\$75	\$73	\$71	\$71	\$70	\$69	\$69	\$69	\$70	\$64	\$54	\$50	\$39	\$35	\$29
		10yr ave.	\$105	\$96	\$83	\$84	\$73	\$69	\$65	\$61	\$58	\$56	\$54	\$52	\$49	\$43	\$39	\$30	\$27	\$24
	70%	Current	\$102	\$93	\$85	\$81	\$79	\$77	\$76	\$75	\$74	\$74	\$74	\$75	\$69	\$59	\$54	\$42	\$38	\$31
		10yr ave.	\$113	\$104	\$90	\$90	\$79	\$75	\$70	\$66	\$63	\$60	\$58	\$56	\$53	\$46	\$42	\$33	\$29	\$26
	75%	Current	\$109	\$100	\$91	\$87	\$84	\$82	\$82	\$80	\$80	\$79	\$80	\$81	\$74	\$63	\$57	\$45	\$41	\$33
		10yr ave.	\$121	\$111	\$96	\$96	\$85	\$80	\$75	\$71	\$67	\$64	\$62	\$60	\$56	\$49	\$45	\$35	\$31	\$28
	80%	Current	\$117	\$107	\$98	\$93	\$90	\$88	\$87	\$86	\$85	\$85	\$85	\$86	\$79	\$67	\$61	\$48	\$43	\$35
		10yr ave.	\$129	\$119	\$103	\$103	\$90	\$86	\$80	\$76	\$71	\$69	\$66	\$64	\$60	\$53	\$48	\$37	\$33	\$29
	85%	Current	\$124	\$113	\$104	\$98	\$95	\$93	\$92	\$91	\$90	\$90	\$90	\$91	\$84	\$71	\$65	\$51	\$46	\$37
	10yr ave.	\$137	\$126	\$109	\$109	\$96	\$91	\$86	\$80	\$76	\$73	\$71	\$68	\$64	\$56	\$51	\$40	\$35	\$31	

The above shows estimated returns per head for skirted fleece wool. These figures do not take into account the value of skirtings and oddments and do not take into account discounts that may apply for faults under individual circumstances. These figures are based on a market index of 100% and should be used as a guide only. Returns over \$30 / head for fleece wool are highlighted.

Source: Australian Wool Exchange, Australian Wool Innovation, Sydney Futures Exchange, x-rates.com

Disclaimer: While all due care has been taken in the preparation of this document, no warranty is made as to its accuracy, reliability or completeness. To the extent permitted by law neither Jemalong or their sources including subsidiaries and staff, accept liability to any person for loss or damage arising from the use of this information.



Table 14: Returns pr head for skirted fleece wool.

Skirted FLC Weight  8 Kg			Micron																	
			16	16.5	17	17.5	18	18.5	19	19.5	20	21	22	23	24	25	26	28	30	32
Yield (Sch Dry)	25%	Current	\$32	\$30	\$27	\$26	\$25	\$24	\$24	\$24	\$24	\$24	\$24	\$24	\$22	\$19	\$17	\$13	\$12	\$10
		10yr ave.	\$36	\$33	\$29	\$29	\$25	\$24	\$22	\$21	\$20	\$19	\$18	\$18	\$17	\$15	\$13	\$10	\$9	\$8
	30%	Current	\$39	\$36	\$33	\$31	\$30	\$29	\$29	\$29	\$28	\$28	\$28	\$29	\$26	\$22	\$20	\$16	\$14	\$12
		10yr ave.	\$43	\$40	\$34	\$34	\$30	\$29	\$27	\$25	\$24	\$23	\$22	\$21	\$20	\$18	\$16	\$12	\$11	\$10
	35%	Current	\$45	\$41	\$38	\$36	\$35	\$34	\$34	\$33	\$33	\$33	\$33	\$33	\$31	\$26	\$24	\$19	\$17	\$14
		10yr ave.	\$50	\$46	\$40	\$40	\$35	\$33	\$31	\$29	\$28	\$27	\$26	\$25	\$23	\$21	\$19	\$14	\$13	\$11
	40%	Current	\$52	\$47	\$43	\$41	\$40	\$39	\$39	\$38	\$38	\$38	\$38	\$38	\$35	\$30	\$27	\$21	\$19	\$16
		10yr ave.	\$57	\$53	\$46	\$46	\$40	\$38	\$36	\$34	\$32	\$30	\$30	\$29	\$27	\$23	\$21	\$17	\$15	\$13
	45%	Current	\$58	\$53	\$49	\$46	\$45	\$44	\$44	\$43	\$42	\$42	\$42	\$43	\$39	\$34	\$31	\$24	\$22	\$18
		10yr ave.	\$65	\$59	\$51	\$51	\$45	\$43	\$40	\$38	\$36	\$34	\$33	\$32	\$30	\$26	\$24	\$19	\$17	\$15
	50%	Current	\$65	\$59	\$54	\$51	\$50	\$49	\$48	\$48	\$47	\$47	\$47	\$48	\$44	\$37	\$34	\$27	\$24	\$20
		10yr ave.	\$72	\$66	\$57	\$57	\$50	\$48	\$45	\$42	\$40	\$38	\$37	\$36	\$33	\$29	\$27	\$21	\$18	\$16
	55%	Current	\$71	\$65	\$60	\$57	\$55	\$54	\$53	\$52	\$52	\$52	\$52	\$53	\$48	\$41	\$37	\$29	\$27	\$21
		10yr ave.	\$79	\$72	\$63	\$63	\$55	\$52	\$49	\$46	\$44	\$42	\$41	\$39	\$37	\$32	\$29	\$23	\$20	\$18
	60%	Current	\$78	\$71	\$65	\$62	\$60	\$59	\$58	\$57	\$57	\$56	\$57	\$57	\$52	\$45	\$41	\$32	\$29	\$23
		10yr ave.	\$86	\$79	\$68	\$69	\$60	\$57	\$54	\$50	\$48	\$46	\$44	\$43	\$40	\$35	\$32	\$25	\$22	\$20
65%	Current	\$84	\$77	\$70	\$67	\$65	\$64	\$63	\$62	\$61	\$61	\$61	\$62	\$57	\$48	\$44	\$34	\$31	\$25	
	10yr ave.	\$93	\$86	\$74	\$74	\$65	\$62	\$58	\$55	\$52	\$50	\$48	\$46	\$43	\$38	\$35	\$27	\$24	\$21	
70%	Current	\$91	\$83	\$76	\$72	\$70	\$68	\$68	\$67	\$66	\$66	\$66	\$67	\$61	\$52	\$48	\$37	\$34	\$27	
	10yr ave.	\$100	\$92	\$80	\$80	\$70	\$67	\$63	\$59	\$56	\$53	\$52	\$50	\$47	\$41	\$37	\$29	\$26	\$23	
75%	Current	\$97	\$89	\$81	\$77	\$75	\$73	\$73	\$71	\$71	\$71	\$71	\$72	\$66	\$56	\$51	\$40	\$36	\$29	
	10yr ave.	\$108	\$99	\$86	\$86	\$75	\$71	\$67	\$63	\$60	\$57	\$55	\$54	\$50	\$44	\$40	\$31	\$28	\$25	
80%	Current	\$104	\$95	\$87	\$82	\$80	\$78	\$77	\$76	\$75	\$75	\$75	\$77	\$70	\$60	\$54	\$42	\$39	\$31	
	10yr ave.	\$115	\$105	\$91	\$91	\$80	\$76	\$72	\$67	\$64	\$61	\$59	\$57	\$53	\$47	\$42	\$33	\$29	\$26	
85%	Current	\$110	\$101	\$92	\$87	\$85	\$83	\$82	\$81	\$80	\$80	\$80	\$81	\$74	\$63	\$58	\$45	\$41	\$33	
	10yr ave.	\$122	\$112	\$97	\$97	\$85	\$81	\$76	\$71	\$68	\$65	\$63	\$61	\$57	\$50	\$45	\$35	\$31	\$28	

The above shows estimated returns per head for skirted fleece wool. These figures do not take into account the value of skirtings and oddments and do not take into account discounts that may apply for faults under individual circumstances. These figures are based on a market index of 100% and should be used as a guide only. Returns over \$30 / head for fleece wool are highlighted.

Source: Australian Wool Exchange, Australian Wool Innovation, Sydney Futures Exchange, x-rates.com

Disclaimer: While all due care has been taken in the preparation of this document, no warranty is made as to its accuracy, reliability or completeness. To the extent permitted by law neither Jemalong or their sources including subsidiaries and staff, accept liability to any person for loss or damage arising from the use of this information.



Table 15: Returns pr head for skirted fleece wool.

Skirted FLC Weight 7 Kg		Micron																	
		16	16.5	17	17.5	18	18.5	19	19.5	20	21	22	23	24	25	26	28	30	32
Yield (Sch Dry)	25% Current	\$28	\$26	\$24	\$22	\$22	\$21	\$21	\$21	\$21	\$21	\$21	\$21	\$19	\$16	\$15	\$12	\$11	\$9
	10yr ave.	\$31	\$29	\$25	\$25	\$22	\$21	\$20	\$18	\$17	\$17	\$16	\$16	\$15	\$13	\$12	\$9	\$8	\$7
	30% Current	\$34	\$31	\$28	\$27	\$26	\$26	\$25	\$25	\$25	\$25	\$25	\$25	\$23	\$20	\$18	\$14	\$13	\$10
	10yr ave.	\$38	\$35	\$30	\$30	\$26	\$25	\$23	\$22	\$21	\$20	\$19	\$19	\$18	\$15	\$14	\$11	\$10	\$9
	35% Current	\$40	\$36	\$33	\$31	\$31	\$30	\$30	\$29	\$29	\$29	\$29	\$29	\$27	\$23	\$21	\$16	\$15	\$12
	10yr ave.	\$44	\$40	\$35	\$35	\$31	\$29	\$27	\$26	\$24	\$23	\$23	\$22	\$20	\$18	\$16	\$13	\$11	\$10
	40% Current	\$45	\$41	\$38	\$36	\$35	\$34	\$34	\$33	\$33	\$33	\$33	\$33	\$31	\$26	\$24	\$19	\$17	\$14
	10yr ave.	\$50	\$46	\$40	\$40	\$35	\$33	\$31	\$29	\$28	\$27	\$26	\$25	\$23	\$21	\$19	\$14	\$13	\$11
	45% Current	\$51	\$47	\$43	\$40	\$39	\$38	\$38	\$38	\$37	\$37	\$37	\$38	\$34	\$29	\$27	\$21	\$19	\$15
	10yr ave.	\$56	\$52	\$45	\$45	\$39	\$37	\$35	\$33	\$31	\$30	\$29	\$28	\$26	\$23	\$21	\$16	\$14	\$13
	50% Current	\$57	\$52	\$47	\$45	\$44	\$43	\$42	\$42	\$41	\$41	\$41	\$42	\$38	\$33	\$30	\$23	\$21	\$17
	10yr ave.	\$63	\$58	\$50	\$50	\$44	\$42	\$39	\$37	\$35	\$33	\$32	\$31	\$29	\$26	\$23	\$18	\$16	\$14
	55% Current	\$62	\$57	\$52	\$49	\$48	\$47	\$47	\$46	\$45	\$45	\$45	\$46	\$42	\$36	\$33	\$26	\$23	\$19
	10yr ave.	\$69	\$63	\$55	\$55	\$48	\$46	\$43	\$40	\$38	\$37	\$35	\$34	\$32	\$28	\$26	\$20	\$18	\$16
	60% Current	\$68	\$62	\$57	\$54	\$52	\$51	\$51	\$50	\$50	\$49	\$49	\$50	\$46	\$39	\$36	\$28	\$25	\$20
	10yr ave.	\$75	\$69	\$60	\$60	\$53	\$50	\$47	\$44	\$42	\$40	\$39	\$38	\$35	\$31	\$28	\$22	\$19	\$17
	65% Current	\$74	\$67	\$62	\$58	\$57	\$56	\$55	\$54	\$54	\$54	\$54	\$54	\$50	\$42	\$39	\$30	\$27	\$22
	10yr ave.	\$82	\$75	\$65	\$65	\$57	\$54	\$51	\$48	\$45	\$43	\$42	\$41	\$38	\$33	\$30	\$24	\$21	\$19
	70% Current	\$79	\$73	\$66	\$63	\$61	\$60	\$59	\$58	\$58	\$58	\$58	\$59	\$54	\$46	\$42	\$32	\$30	\$24
	10yr ave.	\$88	\$81	\$70	\$70	\$61	\$58	\$55	\$51	\$49	\$47	\$45	\$44	\$41	\$36	\$33	\$25	\$22	\$20
	75% Current	\$85	\$78	\$71	\$67	\$65	\$64	\$63	\$63	\$62	\$62	\$62	\$63	\$57	\$49	\$45	\$35	\$32	\$26
	10yr ave.	\$94	\$86	\$75	\$75	\$66	\$62	\$59	\$55	\$52	\$50	\$48	\$47	\$44	\$38	\$35	\$27	\$24	\$21
	80% Current	\$91	\$83	\$76	\$72	\$70	\$68	\$68	\$67	\$66	\$66	\$66	\$67	\$61	\$52	\$48	\$37	\$34	\$27
	10yr ave.	\$100	\$92	\$80	\$80	\$70	\$67	\$63	\$59	\$56	\$53	\$52	\$50	\$47	\$41	\$37	\$29	\$26	\$23
	85% Current	\$96	\$88	\$81	\$76	\$74	\$73	\$72	\$71	\$70	\$70	\$70	\$71	\$65	\$55	\$51	\$39	\$36	\$29
	10yr ave.	\$107	\$98	\$85	\$85	\$75	\$71	\$67	\$63	\$59	\$57	\$55	\$53	\$50	\$44	\$40	\$31	\$27	\$24

The above shows estimated returns per head for skirted fleece wool. These figures do not take into account the value of skirtings and oddments and do not take into account discounts that may apply for faults under individual circumstances. These figures are based on a market index of 100% and should be used as a guide only. Returns over \$30 / head for fleece wool are highlighted.

Source: Australian Wool Exchange, Australian Wool Innovation, Sydney Futures Exchange, x-rates.com

Disclaimer: While all due care has been taken in the preparation of this document, no warranty is made as to its accuracy, reliability or completeness. To the extent permitted by law neither Jemalong or their sources including subsidiaries and staff, accept liability to any person for loss or damage arising from the use of this information.



Table 16: Returns pr head for skirted fleece wool.

Skirted FLC Weight			Micron																	
			16	16.5	17	17.5	18	18.5	19	19.5	20	21	22	23	24	25	26	28	30	32
Yield (Sch Dry)	6 Kg																			
	25%	Current	\$24	\$22	\$20	\$19	\$19	\$18	\$18	\$18	\$18	\$18	\$18	\$18	\$16	\$14	\$13	\$10	\$9	\$7
		10yr ave.	\$27	\$25	\$21	\$21	\$19	\$18	\$17	\$16	\$15	\$14	\$14	\$13	\$13	\$11	\$10	\$8	\$7	\$6
	30%	Current	\$29	\$27	\$24	\$23	\$22	\$22	\$22	\$21	\$21	\$21	\$21	\$22	\$20	\$17	\$15	\$12	\$11	\$9
		10yr ave.	\$32	\$30	\$26	\$26	\$23	\$21	\$20	\$19	\$18	\$17	\$17	\$16	\$15	\$13	\$12	\$9	\$8	\$7
	35%	Current	\$34	\$31	\$28	\$27	\$26	\$26	\$25	\$25	\$25	\$25	\$25	\$25	\$23	\$20	\$18	\$14	\$13	\$10
		10yr ave.	\$38	\$35	\$30	\$30	\$26	\$25	\$23	\$22	\$21	\$20	\$19	\$19	\$18	\$15	\$14	\$11	\$10	\$9
	40%	Current	\$39	\$36	\$33	\$31	\$30	\$29	\$29	\$29	\$28	\$28	\$28	\$29	\$26	\$22	\$20	\$16	\$14	\$12
		10yr ave.	\$43	\$40	\$34	\$34	\$30	\$29	\$27	\$25	\$24	\$23	\$22	\$21	\$20	\$18	\$16	\$12	\$11	\$10
	45%	Current	\$44	\$40	\$37	\$35	\$34	\$33	\$33	\$32	\$32	\$32	\$32	\$32	\$30	\$25	\$23	\$18	\$16	\$13
		10yr ave.	\$48	\$44	\$39	\$39	\$34	\$32	\$30	\$28	\$27	\$26	\$25	\$24	\$23	\$20	\$18	\$14	\$12	\$11
	50%	Current	\$49	\$44	\$41	\$39	\$37	\$37	\$36	\$36	\$35	\$35	\$35	\$36	\$33	\$28	\$26	\$20	\$18	\$15
		10yr ave.	\$54	\$49	\$43	\$43	\$38	\$36	\$34	\$32	\$30	\$29	\$28	\$27	\$25	\$22	\$20	\$16	\$14	\$12
	55%	Current	\$53	\$49	\$45	\$42	\$41	\$40	\$40	\$39	\$39	\$39	\$39	\$39	\$36	\$31	\$28	\$22	\$20	\$16
		10yr ave.	\$59	\$54	\$47	\$47	\$41	\$39	\$37	\$35	\$33	\$31	\$30	\$29	\$28	\$24	\$22	\$17	\$15	\$13
	60%	Current	\$58	\$53	\$49	\$46	\$45	\$44	\$44	\$43	\$42	\$42	\$42	\$43	\$39	\$34	\$31	\$24	\$22	\$18
		10yr ave.	\$65	\$59	\$51	\$51	\$45	\$43	\$40	\$38	\$36	\$34	\$33	\$32	\$30	\$26	\$24	\$19	\$17	\$15
	65%	Current	\$63	\$58	\$53	\$50	\$49	\$48	\$47	\$46	\$46	\$46	\$46	\$47	\$43	\$36	\$33	\$26	\$24	\$19
		10yr ave.	\$70	\$64	\$56	\$56	\$49	\$46	\$44	\$41	\$39	\$37	\$36	\$35	\$33	\$29	\$26	\$20	\$18	\$16
	70%	Current	\$68	\$62	\$57	\$54	\$52	\$51	\$51	\$50	\$50	\$49	\$49	\$50	\$46	\$39	\$36	\$28	\$25	\$20
		10yr ave.	\$75	\$69	\$60	\$60	\$53	\$50	\$47	\$44	\$42	\$40	\$39	\$38	\$35	\$31	\$28	\$22	\$19	\$17
	75%	Current	\$73	\$67	\$61	\$58	\$56	\$55	\$54	\$54	\$53	\$53	\$53	\$54	\$49	\$42	\$38	\$30	\$27	\$22
		10yr ave.	\$81	\$74	\$64	\$64	\$56	\$53	\$50	\$47	\$45	\$43	\$41	\$40	\$38	\$33	\$30	\$23	\$21	\$18
	80%	Current	\$78	\$71	\$65	\$62	\$60	\$59	\$58	\$57	\$57	\$56	\$57	\$57	\$52	\$45	\$41	\$32	\$29	\$23
		10yr ave.	\$86	\$79	\$68	\$69	\$60	\$57	\$54	\$50	\$48	\$46	\$44	\$43	\$40	\$35	\$32	\$25	\$22	\$20
	85%	Current	\$83	\$75	\$69	\$66	\$64	\$62	\$62	\$61	\$60	\$60	\$60	\$61	\$56	\$47	\$43	\$34	\$31	\$25
	10yr ave.	\$91	\$84	\$73	\$73	\$64	\$61	\$57	\$54	\$51	\$49	\$47	\$46	\$43	\$37	\$34	\$26	\$23	\$21	

The above shows estimated returns per head for skirted fleece wool. These figures do not take into account the value of skirtings and oddments and do not take into account discounts that may apply for faults under individual circumstances. These figures are based on a market index of 100% and should be used as a guide only. Returns over \$30 / head for fleece wool are highlighted.

Source: Australian Wool Exchange, Australian Wool Innovation, Sydney Futures Exchange, x-rates.com

Disclaimer: While all due care has been taken in the preparation of this document, no warranty is made as to its accuracy, reliability or completeness. To the extent permitted by law neither Jemalong or their sources including subsidiaries and staff, accept liability to any person for loss or damage arising from the use of this information.



Table 17: Returns pr head for skirted fleece wool.

Skirted FLC Weight			Micron																	
			16	16.5	17	17.5	18	18.5	19	19.5	20	21	22	23	24	25	26	28	30	32
Yield (Sch Dry)	25%	Current	\$20	\$19	\$17	\$16	\$16	\$15	\$15	\$15	\$15	\$15	\$15	\$15	\$14	\$12	\$11	\$8	\$8	\$6
		10yr ave.	\$22	\$21	\$18	\$18	\$16	\$15	\$14	\$13	\$12	\$12	\$12	\$12	\$11	\$10	\$9	\$8	\$6	\$5
	30%	Current	\$24	\$22	\$20	\$19	\$19	\$18	\$18	\$18	\$18	\$18	\$18	\$18	\$16	\$14	\$13	\$10	\$9	\$7
		10yr ave.	\$27	\$25	\$21	\$21	\$19	\$18	\$17	\$16	\$15	\$14	\$14	\$13	\$13	\$11	\$10	\$8	\$7	\$6
	35%	Current	\$28	\$26	\$24	\$22	\$22	\$21	\$21	\$21	\$21	\$21	\$21	\$21	\$19	\$16	\$15	\$12	\$11	\$9
		10yr ave.	\$31	\$29	\$25	\$25	\$22	\$21	\$20	\$18	\$17	\$17	\$16	\$16	\$15	\$13	\$12	\$9	\$8	\$7
	40%	Current	\$32	\$30	\$27	\$26	\$25	\$24	\$24	\$24	\$24	\$24	\$24	\$24	\$22	\$19	\$17	\$13	\$12	\$10
		10yr ave.	\$36	\$33	\$29	\$29	\$25	\$24	\$22	\$21	\$20	\$19	\$18	\$18	\$17	\$15	\$13	\$10	\$9	\$8
	45%	Current	\$36	\$33	\$30	\$29	\$28	\$27	\$27	\$27	\$27	\$26	\$27	\$27	\$25	\$21	\$19	\$15	\$14	\$11
		10yr ave.	\$40	\$37	\$32	\$32	\$28	\$27	\$25	\$24	\$22	\$21	\$21	\$20	\$19	\$16	\$15	\$12	\$10	\$9
	50%	Current	\$41	\$37	\$34	\$32	\$31	\$31	\$30	\$30	\$29	\$29	\$29	\$30	\$27	\$23	\$21	\$17	\$15	\$12
		10yr ave.	\$45	\$41	\$36	\$36	\$31	\$30	\$28	\$26	\$25	\$24	\$23	\$22	\$21	\$18	\$17	\$13	\$11	\$10
	55%	Current	\$45	\$41	\$37	\$35	\$34	\$34	\$33	\$33	\$32	\$32	\$32	\$33	\$30	\$26	\$23	\$18	\$17	\$13
		10yr ave.	\$49	\$45	\$39	\$39	\$34	\$33	\$31	\$29	\$27	\$26	\$25	\$25	\$23	\$20	\$18	\$14	\$13	\$11
	60%	Current	\$49	\$44	\$41	\$39	\$37	\$37	\$36	\$36	\$35	\$35	\$35	\$36	\$33	\$28	\$26	\$20	\$18	\$15
		10yr ave.	\$54	\$49	\$43	\$43	\$38	\$36	\$34	\$32	\$30	\$29	\$28	\$27	\$25	\$22	\$20	\$16	\$14	\$12
	65%	Current	\$53	\$48	\$44	\$42	\$41	\$40	\$39	\$39	\$38	\$38	\$38	\$39	\$36	\$30	\$28	\$22	\$20	\$16
		10yr ave.	\$58	\$53	\$46	\$46	\$41	\$39	\$36	\$34	\$32	\$31	\$30	\$29	\$27	\$24	\$22	\$17	\$15	\$13
	70%	Current	\$57	\$52	\$47	\$45	\$44	\$43	\$42	\$42	\$41	\$41	\$41	\$42	\$38	\$33	\$30	\$23	\$21	\$17
		10yr ave.	\$63	\$58	\$50	\$50	\$44	\$42	\$39	\$37	\$35	\$33	\$32	\$31	\$29	\$26	\$23	\$18	\$16	\$14
	75%	Current	\$61	\$56	\$51	\$48	\$47	\$46	\$45	\$45	\$44	\$44	\$44	\$45	\$41	\$35	\$32	\$25	\$23	\$18
		10yr ave.	\$67	\$62	\$53	\$54	\$47	\$45	\$42	\$39	\$37	\$36	\$35	\$33	\$31	\$27	\$25	\$19	\$17	\$15
	80%	Current	\$65	\$59	\$54	\$51	\$50	\$49	\$48	\$48	\$47	\$47	\$47	\$48	\$44	\$37	\$34	\$27	\$24	\$20
		10yr ave.	\$72	\$66	\$57	\$57	\$50	\$48	\$45	\$42	\$40	\$38	\$37	\$36	\$33	\$29	\$27	\$21	\$18	\$16
	85%	Current	\$69	\$63	\$58	\$55	\$53	\$52	\$51	\$51	\$50	\$50	\$50	\$51	\$46	\$40	\$36	\$28	\$26	\$21
		10yr ave.	\$76	\$70	\$61	\$61	\$53	\$50	\$48	\$45	\$42	\$40	\$39	\$38	\$35	\$31	\$28	\$22	\$20	\$17

The above shows estimated returns per head for skirted fleece wool. These figures do not take into account the value of skirtings and oddments and do not take into account discounts that may apply for faults under individual circumstances. These figures are based on a market index of 100% and should be used as a guide only. Returns over \$30 / head for fleece wool are highlighted.

Source: Australian Wool Exchange, Australian Wool Innovation, Sydney Futures Exchange, x-rates.com

Disclaimer: While all due care has been taken in the preparation of this document, no warranty is made as to its accuracy, reliability or completeness. To the extent permitted by law neither Jemalong or their sources including subsidiaries and staff, accept liability to any person for loss or damage arising from the use of this information.



Table 18: Returns pr head for skirted fleece wool.

Skirted FLC Weight		Micron																	
4 Kg		16	16.5	17	17.5	18	18.5	19	19.5	20	21	22	23	24	25	26	28	30	32
Yield (Sch Dry)	25% Current	\$16	\$15	\$14	\$13	\$12	\$12	\$12	\$12	\$12	\$12	\$12	\$12	\$11	\$9	\$9	\$7	\$6	\$5
	10yr ave.	\$18	\$16	\$14	\$14	\$13	\$12	\$11	\$11	\$10	\$10	\$9	\$9	\$8	\$7	\$7	\$5	\$5	\$4
	30% Current	\$19	\$18	\$16	\$15	\$15	\$15	\$15	\$14	\$14	\$14	\$14	\$14	\$13	\$11	\$10	\$8	\$7	\$6
	10yr ave.	\$22	\$20	\$17	\$17	\$15	\$14	\$13	\$13	\$12	\$11	\$11	\$11	\$10	\$9	\$8	\$6	\$6	\$5
	35% Current	\$23	\$21	\$19	\$18	\$17	\$17	\$17	\$17	\$17	\$16	\$16	\$17	\$15	\$13	\$12	\$9	\$8	\$7
	10yr ave.	\$25	\$23	\$20	\$20	\$18	\$17	\$16	\$15	\$14	\$13	\$13	\$13	\$12	\$10	\$9	\$7	\$6	\$6
	40% Current	\$26	\$24	\$22	\$21	\$20	\$20	\$19	\$19	\$19	\$19	\$19	\$19	\$17	\$15	\$14	\$11	\$10	\$8
	10yr ave.	\$29	\$26	\$23	\$23	\$20	\$19	\$18	\$17	\$16	\$15	\$15	\$14	\$13	\$12	\$11	\$8	\$7	\$7
	45% Current	\$29	\$27	\$24	\$23	\$22	\$22	\$22	\$21	\$21	\$21	\$21	\$22	\$20	\$17	\$15	\$12	\$11	\$9
	10yr ave.	\$32	\$30	\$26	\$26	\$23	\$21	\$20	\$19	\$18	\$17	\$17	\$16	\$15	\$13	\$12	\$9	\$8	\$7
	50% Current	\$32	\$30	\$27	\$26	\$25	\$24	\$24	\$24	\$24	\$24	\$24	\$24	\$22	\$19	\$17	\$13	\$12	\$10
	10yr ave.	\$36	\$33	\$29	\$29	\$25	\$24	\$22	\$21	\$20	\$19	\$18	\$18	\$17	\$15	\$13	\$10	\$9	\$8
	55% Current	\$36	\$33	\$30	\$28	\$27	\$27	\$27	\$26	\$26	\$26	\$26	\$26	\$24	\$20	\$19	\$15	\$13	\$11
	10yr ave.	\$39	\$36	\$31	\$31	\$28	\$26	\$25	\$23	\$22	\$21	\$20	\$20	\$18	\$16	\$15	\$11	\$10	\$9
	60% Current	\$39	\$36	\$33	\$31	\$30	\$29	\$29	\$29	\$28	\$28	\$28	\$29	\$26	\$22	\$20	\$16	\$14	\$12
	10yr ave.	\$43	\$40	\$34	\$34	\$30	\$29	\$27	\$25	\$24	\$23	\$22	\$21	\$20	\$18	\$16	\$12	\$11	\$10
	65% Current	\$42	\$38	\$35	\$33	\$32	\$32	\$31	\$31	\$31	\$31	\$31	\$31	\$28	\$24	\$22	\$17	\$16	\$13
	10yr ave.	\$47	\$43	\$37	\$37	\$33	\$31	\$29	\$27	\$26	\$25	\$24	\$23	\$22	\$19	\$17	\$13	\$12	\$11
	70% Current	\$45	\$41	\$38	\$36	\$35	\$34	\$34	\$33	\$33	\$33	\$33	\$33	\$31	\$26	\$24	\$19	\$17	\$14
	10yr ave.	\$50	\$46	\$40	\$40	\$35	\$33	\$31	\$29	\$28	\$27	\$26	\$25	\$23	\$21	\$19	\$14	\$13	\$11
	75% Current	\$49	\$44	\$41	\$39	\$37	\$37	\$36	\$36	\$35	\$35	\$35	\$36	\$33	\$28	\$26	\$20	\$18	\$15
	10yr ave.	\$54	\$49	\$43	\$43	\$38	\$36	\$34	\$32	\$30	\$29	\$28	\$27	\$25	\$22	\$20	\$16	\$14	\$12
	80% Current	\$52	\$47	\$43	\$41	\$40	\$39	\$39	\$38	\$38	\$38	\$38	\$38	\$35	\$30	\$27	\$21	\$19	\$16
	10yr ave.	\$57	\$53	\$46	\$46	\$40	\$38	\$36	\$34	\$32	\$30	\$30	\$29	\$27	\$23	\$21	\$17	\$15	\$13
	85% Current	\$55	\$50	\$46	\$44	\$42	\$42	\$41	\$40	\$40	\$40	\$40	\$41	\$37	\$32	\$29	\$23	\$21	\$17
	10yr ave.	\$61	\$56	\$48	\$49	\$43	\$40	\$38	\$36	\$34	\$32	\$31	\$30	\$28	\$25	\$23	\$18	\$16	\$14

The above shows estimated returns per head for skirted fleece wool. These figures do not take into account the value of skirtings and oddments and do not take into account discounts that may apply for faults under individual circumstances. These figures are based on a market index of 100% and should be used as a guide only. Returns over \$30 / head for fleece wool are highlighted.

Source: Australian Wool Exchange, Australian Wool Innovation, Sydney Futures Exchange, x-rates.com

Disclaimer: While all due care has been taken in the preparation of this document, no warranty is made as to its accuracy, reliability or completeness. To the extent permitted by law neither Jemalong or their sources including subsidiaries and staff, accept liability to any person for loss or damage arising from the use of this information.



Table 19: Returns pr head for skirted fleece wool.

Skirted FLC Weight		Micron																	
3 Kg		16	16.5	17	17.5	18	18.5	19	19.5	20	21	22	23	24	25	26	28	30	32
Yield (Sch Dry)	25% Current	\$12	\$11	\$10	\$10	\$9	\$9	\$9	\$9	\$9	\$9	\$9	\$9	\$8	\$7	\$6	\$5	\$5	\$4
	10yr ave.	\$13	\$12	\$11	\$11	\$9	\$9	\$8	\$8	\$7	\$7	\$7	\$7	\$6	\$5	\$5	\$4	\$3	\$3
	30% Current	\$15	\$13	\$12	\$12	\$11	\$11	\$11	\$11	\$11	\$11	\$11	\$11	\$10	\$8	\$8	\$6	\$5	\$4
	10yr ave.	\$16	\$15	\$13	\$13	\$11	\$11	\$10	\$9	\$9	\$9	\$8	\$8	\$8	\$7	\$6	\$5	\$4	\$4
	35% Current	\$17	\$16	\$14	\$13	\$13	\$13	\$13	\$13	\$12	\$12	\$12	\$13	\$11	\$10	\$9	\$7	\$6	\$5
	10yr ave.	\$19	\$17	\$15	\$15	\$13	\$12	\$12	\$11	\$10	\$10	\$10	\$9	\$9	\$8	\$7	\$5	\$5	\$4
	40% Current	\$19	\$18	\$16	\$15	\$15	\$15	\$15	\$14	\$14	\$14	\$14	\$14	\$13	\$11	\$10	\$8	\$7	\$6
	10yr ave.	\$22	\$20	\$17	\$17	\$15	\$14	\$13	\$13	\$12	\$11	\$11	\$11	\$10	\$9	\$8	\$6	\$6	\$5
	45% Current	\$22	\$20	\$18	\$17	\$17	\$16	\$16	\$16	\$16	\$16	\$16	\$16	\$15	\$13	\$11	\$9	\$8	\$7
	10yr ave.	\$24	\$22	\$19	\$19	\$17	\$16	\$15	\$14	\$13	\$13	\$12	\$12	\$11	\$10	\$9	\$7	\$6	\$6
	50% Current	\$24	\$22	\$20	\$19	\$19	\$18	\$18	\$18	\$18	\$18	\$18	\$18	\$16	\$14	\$13	\$10	\$9	\$7
	10yr ave.	\$27	\$25	\$21	\$21	\$19	\$18	\$17	\$16	\$15	\$14	\$14	\$13	\$13	\$11	\$10	\$8	\$7	\$6
	55% Current	\$27	\$24	\$22	\$21	\$21	\$20	\$20	\$20	\$19	\$19	\$19	\$20	\$18	\$15	\$14	\$11	\$10	\$8
	10yr ave.	\$30	\$27	\$24	\$24	\$21	\$20	\$18	\$17	\$16	\$16	\$15	\$15	\$14	\$12	\$11	\$9	\$8	\$7
	60% Current	\$29	\$27	\$24	\$23	\$22	\$22	\$22	\$21	\$21	\$21	\$21	\$22	\$20	\$17	\$15	\$12	\$11	\$9
	10yr ave.	\$32	\$30	\$26	\$26	\$23	\$21	\$20	\$19	\$18	\$17	\$17	\$16	\$15	\$13	\$12	\$9	\$8	\$7
	65% Current	\$32	\$29	\$26	\$25	\$24	\$24	\$24	\$23	\$23	\$23	\$23	\$23	\$21	\$18	\$17	\$13	\$12	\$10
	10yr ave.	\$35	\$32	\$28	\$28	\$24	\$23	\$22	\$20	\$19	\$19	\$18	\$17	\$16	\$14	\$13	\$10	\$9	\$8
	70% Current	\$34	\$31	\$28	\$27	\$26	\$26	\$25	\$25	\$25	\$25	\$25	\$25	\$23	\$20	\$18	\$14	\$13	\$10
	10yr ave.	\$38	\$35	\$30	\$30	\$26	\$25	\$23	\$22	\$21	\$20	\$19	\$19	\$18	\$15	\$14	\$11	\$10	\$9
	75% Current	\$36	\$33	\$30	\$29	\$28	\$27	\$27	\$27	\$27	\$26	\$27	\$27	\$25	\$21	\$19	\$15	\$14	\$11
	10yr ave.	\$40	\$37	\$32	\$32	\$28	\$27	\$25	\$24	\$22	\$21	\$21	\$20	\$19	\$16	\$15	\$12	\$10	\$9
	80% Current	\$39	\$36	\$33	\$31	\$30	\$29	\$29	\$29	\$28	\$28	\$28	\$29	\$26	\$22	\$20	\$16	\$14	\$12
	10yr ave.	\$43	\$40	\$34	\$34	\$30	\$29	\$27	\$25	\$24	\$23	\$22	\$21	\$20	\$18	\$16	\$12	\$11	\$10
	85% Current	\$41	\$38	\$35	\$33	\$32	\$31	\$31	\$30	\$30	\$30	\$30	\$30	\$28	\$24	\$22	\$17	\$15	\$12
	10yr ave.	\$46	\$42	\$36	\$36	\$32	\$30	\$29	\$27	\$25	\$24	\$24	\$23	\$21	\$19	\$17	\$13	\$12	\$10

The above shows estimated returns per head for skirted fleece wool. These figures do not take into account the value of skirtings and oddments and do not take into account discounts that may apply for faults under individual circumstances. These figures are based on a market index of 100% and should be used as a guide only. Returns over \$30 / head for fleece wool are highlighted.

Source: Australian Wool Exchange, Australian Wool Innovation, Sydney Futures Exchange, x-rates.com

Disclaimer: While all due care has been taken in the preparation of this document, no warranty is made as to its accuracy, reliability or completeness. To the extent permitted by law neither Jemalong or their sources including subsidiaries and staff, accept liability to any person for loss or damage arising from the use of this information.



Table 20: Returns pr head for skirted fleece wool.

Skirted FLC Weight		Micron																	
2 Kg		16	16.5	17	17.5	18	18.5	19	19.5	20	21	22	23	24	25	26	28	30	32
Yield (Sch Dry)	25% Current	\$8	\$7	\$7	\$6	\$6	\$6	\$6	\$6	\$6	\$6	\$6	\$6	\$5	\$5	\$4	\$3	\$3	\$2
	10yr ave.	\$9	\$8	\$7	\$7	\$6	\$6	\$6	\$5	\$5	\$5	\$5	\$4	\$4	\$4	\$3	\$3	\$2	\$2
	30% Current	\$10	\$9	\$8	\$8	\$7	\$7	\$7	\$7	\$7	\$7	\$7	\$7	\$7	\$6	\$5	\$4	\$4	\$3
	10yr ave.	\$11	\$10	\$9	\$9	\$8	\$7	\$7	\$6	\$6	\$6	\$6	\$5	\$5	\$4	\$4	\$3	\$3	\$2
	35% Current	\$11	\$10	\$9	\$9	\$9	\$9	\$8	\$8	\$8	\$8	\$8	\$8	\$8	\$7	\$6	\$5	\$4	\$3
	10yr ave.	\$13	\$12	\$10	\$10	\$9	\$8	\$8	\$7	\$7	\$7	\$6	\$6	\$6	\$5	\$5	\$4	\$3	\$3
	40% Current	\$13	\$12	\$11	\$10	\$10	\$10	\$10	\$10	\$9	\$9	\$9	\$10	\$9	\$7	\$7	\$5	\$5	\$4
	10yr ave.	\$14	\$13	\$11	\$11	\$10	\$10	\$9	\$8	\$8	\$8	\$7	\$7	\$7	\$6	\$5	\$4	\$4	\$3
	45% Current	\$15	\$13	\$12	\$12	\$11	\$11	\$11	\$11	\$11	\$11	\$11	\$11	\$10	\$8	\$8	\$6	\$5	\$4
	10yr ave.	\$16	\$15	\$13	\$13	\$11	\$11	\$10	\$9	\$9	\$9	\$8	\$8	\$8	\$7	\$6	\$5	\$4	\$4
	50% Current	\$16	\$15	\$14	\$13	\$12	\$12	\$12	\$12	\$12	\$12	\$12	\$12	\$11	\$9	\$9	\$7	\$6	\$5
	10yr ave.	\$18	\$16	\$14	\$14	\$13	\$12	\$11	\$11	\$10	\$10	\$9	\$9	\$8	\$7	\$7	\$5	\$5	\$4
	55% Current	\$18	\$16	\$15	\$14	\$14	\$13	\$13	\$13	\$13	\$13	\$13	\$13	\$12	\$10	\$9	\$7	\$7	\$5
	10yr ave.	\$20	\$18	\$16	\$16	\$14	\$13	\$12	\$12	\$11	\$10	\$10	\$10	\$9	\$8	\$7	\$6	\$5	\$4
	60% Current	\$19	\$18	\$16	\$15	\$15	\$15	\$15	\$14	\$14	\$14	\$14	\$14	\$13	\$11	\$10	\$8	\$7	\$6
	10yr ave.	\$22	\$20	\$17	\$17	\$15	\$14	\$13	\$13	\$12	\$11	\$11	\$11	\$10	\$9	\$8	\$6	\$6	\$5
	65% Current	\$21	\$19	\$18	\$17	\$16	\$16	\$16	\$15	\$15	\$15	\$15	\$16	\$14	\$12	\$11	\$9	\$8	\$6
	10yr ave.	\$23	\$21	\$19	\$19	\$16	\$15	\$15	\$14	\$13	\$12	\$12	\$12	\$11	\$10	\$9	\$7	\$6	\$5
	70% Current	\$23	\$21	\$19	\$18	\$17	\$17	\$17	\$17	\$17	\$16	\$16	\$17	\$15	\$13	\$12	\$9	\$8	\$7
	10yr ave.	\$25	\$23	\$20	\$20	\$18	\$17	\$16	\$15	\$14	\$13	\$13	\$13	\$12	\$10	\$9	\$7	\$6	\$6
	75% Current	\$24	\$22	\$20	\$19	\$19	\$18	\$18	\$18	\$18	\$18	\$18	\$18	\$16	\$14	\$13	\$10	\$9	\$7
	10yr ave.	\$27	\$25	\$21	\$21	\$19	\$18	\$17	\$16	\$15	\$14	\$14	\$13	\$13	\$11	\$10	\$8	\$7	\$6
	80% Current	\$26	\$24	\$22	\$21	\$20	\$20	\$19	\$19	\$19	\$19	\$19	\$19	\$17	\$15	\$14	\$11	\$10	\$8
	10yr ave.	\$29	\$26	\$23	\$23	\$20	\$19	\$18	\$17	\$16	\$15	\$15	\$14	\$13	\$12	\$11	\$8	\$7	\$7
	85% Current	\$28	\$25	\$23	\$22	\$21	\$21	\$21	\$20	\$20	\$20	\$20	\$20	\$19	\$16	\$14	\$11	\$10	\$8
	10yr ave.	\$30	\$28	\$24	\$24	\$21	\$20	\$19	\$18	\$17	\$16	\$16	\$15	\$14	\$12	\$11	\$9	\$8	\$7

The above shows estimated returns per head for skirted fleece wool. These figures do not take into account the value of skirtings and oddments and do not take into account discounts that may apply for faults under individual circumstances. These figures are based on a market index of 100% and should be used as a guide only. Returns over \$30 / head for fleece wool are highlighted.

Source: Australian Wool Exchange, Australian Wool Innovation, Sydney Futures Exchange, x-rates.com

Disclaimer: While all due care has been taken in the preparation of this document, no warranty is made as to its accuracy, reliability or completeness. To the extent permitted by law neither Jemalong or their sources including subsidiaries and staff, accept liability to any person for loss or damage arising from the use of this information.