



Table 1: Northern Region Micron Price Guides

WEEK 07			12 MONTH COMPARISONS								3 YEAR COMPARISONS					*10 YEAR COMPARISONS						
Mic.	13-08-15	06-08-15	13-08-14	Now		Now	Now					Now		Percentile		* 16-17.5um since Aug 05	Now					
Price	Current	Weekly	This time	compared		12 Month	compared	12 Month	compared			compared				*10 year	compared					
Guides	Price	Change	Last Year	to Last Year		Low	to Low	High	to High		Low	High	Average	to 3yr ave	Percentile	Low	High	Average	to *10yr ave			
NRI	1323	+41 3.2%	1045	+278 27%		1017	+306 30%	1399	-76 -5%		955	1399	1093	+230 21%	97%	657	1491	996	+327 33%		94%	
16*	1640	+40 2.5%	1370	+270 20%		1340	+300 22%	1710	-70 -4%		1340	1810	1547	+93 6%	79%	1350	2800	1704	-64 -4%		59%	
16.5*	1620	+40 2.5%	1320	+300 23%		1310	+310 24%	1660	-40 -2%		1300	1660	1449	+171 12%	95%	1280	2680	1572	+48 3%		75%	
17*	1590	+40 2.6%	1280	+310 24%		1260	+330 26%	1640	-50 -3%		1245	1640	1373	+217 16%	97%	1108	2530	1450	+140 10%		83%	
17.5*	1570	+30 1.9%	1260	+310 25%		1240	+330 27%	1620	-50 -3%		1200	1620	1336	+234 18%	98%	1020	2360	1378	+192 14%		86%	
18	1537	+65 4.4%	1208	+329 27%		1193	+344 29%	1607	-70 -4%		1157	1607	1286	+251 20%	97%	915	2193	1304	+233 18%		88%	
18.5	1494	+54 3.8%	1189	+305 26%		1179	+315 27%	1579	-85 -5%		1128	1579	1257	+237 19%	98%	843	1963	1239	+255 21%		90%	
19	1466	+63 4.5%	1161	+305 26%		1129	+337 30%	1553	-87 -6%		1098	1553	1227	+239 19%	97%	803	1776	1170	+296 25%		90%	
19.5	1442	+70 5.1%	1146	+296 26%		1097	+345 31%	1529	-87 -6%		1073	1529	1203	+239 20%	98%	749	1670	1107	+335 30%		93%	
20	1420	+52 3.8%	1135	+285 25%		1095	+325 30%	1517	-97 -6%		1055	1517	1185	+235 20%	97%	700	1588	1054	+366 35%		97%	
21	1411	+52 3.8%	1135	+276 24%		1090	+321 29%	1500	-89 -6%		1043	1500	1175	+236 20%	98%	668	1522	1019	+392 38%		98%	
22	1394	+58 4.3%	1131	+263 23%		1086	+308 28%	1458	-64 -4%		1024	1458	1159	+235 20%	98%	659	1461	991	+403 41%		98%	
23	1371	+70 5.4%	1125	+246 22%		1081	+290 27%	1396	-25 -2%		1009	1396	1143	+228 20%	98%	651	1396	963	+408 42%		99%	
24	1298	+46 3.7%	1096	+202 18%		1037	+261 25%	1297	+1 0%		946	1298	1065	+233 22%	100%	638	1297	897	+401 45%		100%	
25	1170	+23 2.0%	882	+288 33%		863	+307 36%	1245	-75 -6%		810	1245	924	+246 27%	97%	568	1245	780	+390 50%		99%	
26	1085	+26 2.5%	791	+294 37%		785	+300 38%	1165	-80 -7%		737	1165	835	+250 30%	96%	532	1165	701	+384 55%		99%	
28	927	+15 1.6%	658	+269 41%		639	+288 45%	974	-47 -5%		564	974	685	+242 35%	97%	424	974	556	+371 67%		99%	
30	868	+13 1.5%	638	+230 36%		615	+253 41%	876	-8 -1%		530	876	644	+224 35%	99%	343	876	501	+367 73%		99%	
32	750	+9 1.2%	571	+179 31%		563	+187 33%	746	+4 1%		458	750	562	+188 33%	100%	297	743	443	+307 69%		100%	
MC	1067	+26 2.5%	796	+271 34%		764	+303 40%	1112	-45 -4%		571	1112	800	+267 33%	95%	390	1112	626	+441 70%		98%	
AU BALES OFFERED	28,515		* Due to the irregular market quoting for some fine wool categories, figures shown relating to micron categories below 18 micron are an estimate based on the AWEX Premium & Discounts Report & other available information.																			
AU BALES SOLD	28,194																					
AU PASSED-IN%	1.1%		* For any category, where there is insufficient quantity offered to enable AWEX to quote, a quote will be provided based on the best available information.																			
AUD/USD	0.73367		* 10 Year data is not available for 16 to 17.5 microns, therefore 10 year statistics for those micron categories only date back as far as August 2005.																			

Source: Australian Wool Exchange, Australian Wool Innovation, Riemann, x-rates.com, Reserve Bank of Australia, Australian Wool Testing Authority.

Disclaimer: Jemalong Wool Pty Ltd make no representations about the content and suitability of the information contained in this report. Specifically, Jemalong Wool does not warrant, guarantee or make any representations regarding the correctness, accuracy, reliability, currency, or any other aspect regarding characteristics or use of information presented in these materials. The user accepts sole responsibility and risk associated with the use and results of these materials, irrespective of the purpose of which such use or results are applied. In no event shall Jemalong Wool be liable for any loss or damages (including without limitation special, or consequential damages), where in an action of contract, negligence, or tort, arising out of or in connection with the use of performance of these materials.



MARKET COMMENTARY

The wool market put in another solid performance this week; with the Northern Region Indicator rising a further 41 cents, adding to the 41 cent gain made in the opening sale. 28,515 bales were offered nationally making it the smallest three-centre total in four years.

By the close of trade the overall result was a similar to the previous week, with increases of 50 to 70 cents for the fleece sector. In contrast however, the majority of the movements occurred on the opening day when the 21-MPG rose 80 cents in Melbourne (its largest daily rise in 13 years). Thursday however was more subdued; Sydney continued to firm, bringing its price levels more into line with the South. Meanwhile Melbourne saw buyers change their focus onto the finer microns which firmed slightly at the expense of the 20 to 21-micron range which found less buyer enthusiasm and eased back marginally. Merino Skirtings trailed the fleece sector with their performance but still managed rises each day to close 30 to 50 cents higher. Crossbreds made steady increases to close ahead by 15 cents while Merino Cardings lifted around 20 cents.

In theory, the devaluation of the Renminbi this week (which had its biggest one-day adjustment in 20 years) should have a negative price effect for wool destined for domestic Chinese consumption, while at the same time it should have a positive effect on products manufactured in China that are destined for re-export.

Next week will see 31,332 bales offered for sale.

Source: AWEX

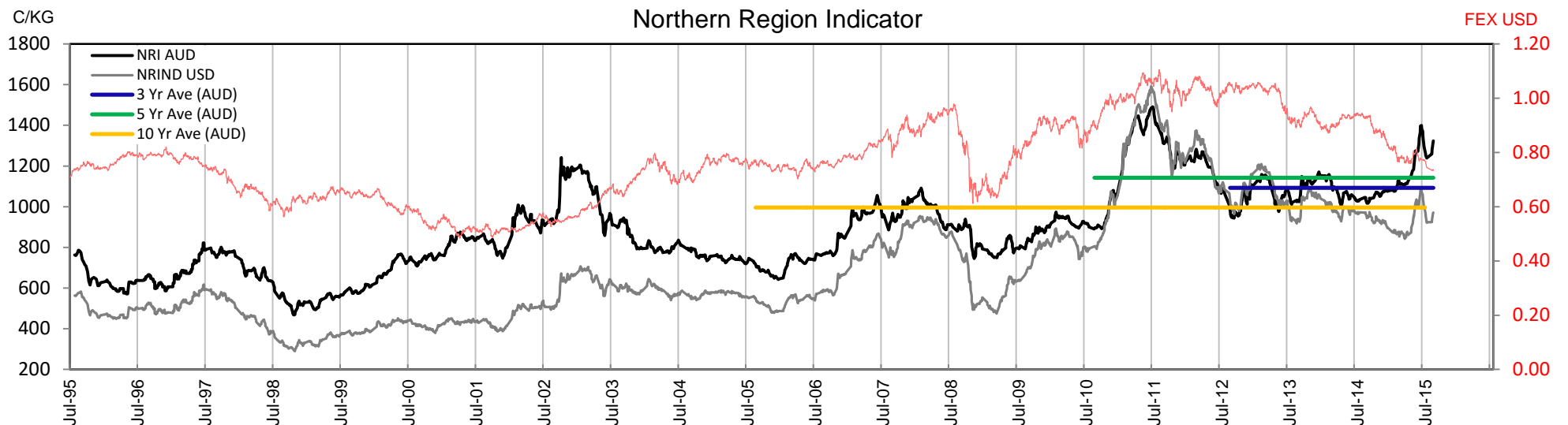




Table 2: Three Year Decile Table, since: 1-08-2012

Decile	%	16	16.5	17	17.5	18	18.5	19	19.5	20	21	22	23	24	25	26	28	30	32	MC
1	10%	1380	1320	1280	1240	1190	1159	1133	1107	1095	1090	1078	1061	989	852	758	590	550	469	661
2	20%	1420	1350	1305	1265	1208	1185	1159	1140	1130	1124	1099	1087	1035	871	780	621	578	489	748
3	30%	1470	1400	1320	1285	1232	1207	1181	1159	1141	1135	1126	1110	1045	887	793	643	603	498	773
4	40%	1500	1415	1340	1310	1260	1234	1199	1174	1159	1147	1136	1126	1058	899	804	655	626	549	787
5	50%	1550	1440	1360	1330	1278	1251	1210	1185	1170	1161	1152	1136	1067	909	813	665	632	558	801
6	60%	1590	1470	1380	1340	1299	1262	1229	1204	1187	1177	1167	1151	1076	915	820	673	638	564	812
7	70%	1600	1490	1410	1370	1316	1290	1263	1242	1220	1210	1194	1180	1088	924	831	682	651	600	826
8	80%	1650	1540	1440	1400	1358	1327	1302	1276	1246	1234	1216	1204	1098	947	855	762	721	637	859
9	90%	1710	1595	1505	1460	1398	1369	1340	1304	1274	1265	1253	1235	1123	1009	951	855	795	698	983
10	100%	1810	1660	1640	1620	1607	1579	1553	1529	1517	1500	1458	1396	1298	1245	1165	974	876	750	1112
MPG		1640	1620	1590	1570	1537	1494	1466	1442	1420	1411	1394	1371	1298	1170	1085	927	868	750	1067
3 Yr Percentile		79%	95%	97%	98%	97%	98%	97%	98%	97%	98%	98%	98%	100%	97%	96%	97%	99%	100%	95%

Table 3: Ten Year Decile Table, since: 1-08-2005

Decile	%	16	16.5	17	17.5	18	18.5	19	19.5	20	21	22	23	24	25	26	28	30	32	MC
1	10%	1423	1340	1225	1150	1058	1002	935	853	786	736	711	696	675	614	565	444	377	325	415
2	20%	1495	1370	1260	1190	1130	1059	983	908	838	784	769	753	728	640	583	457	398	348	451
3	30%	1540	1400	1290	1225	1170	1125	1058	972	916	878	851	829	781	660	597	469	410	359	510
4	40%	1570	1420	1320	1280	1206	1159	1098	1030	978	945	918	889	823	695	614	478	425	380	569
5	50%	1600	1460	1360	1310	1253	1201	1142	1096	1054	995	953	921	848	717	637	488	435	395	604
6	60%	1650	1500	1400	1350	1293	1253	1194	1148	1116	1089	1066	1046	976	847	749	579	531	465	655
7	70%	1700	1550	1440	1400	1358	1294	1236	1186	1164	1150	1135	1115	1040	891	793	631	581	496	730
8	80%	1800	1700	1550	1490	1423	1342	1298	1267	1229	1214	1194	1157	1072	915	820	659	623	553	781
9	90%	2100	1910	1730	1625	1570	1493	1447	1402	1347	1307	1258	1223	1102	968	865	685	643	583	816
10	100%	2800	2680	2530	2360	2193	1963	1776	1670	1588	1522	1461	1396	1297	1245	1165	974	876	743	1112
MPG		1640	1620	1590	1570	1537	1494	1466	1442	1420	1411	1394	1371	1298	1170	1085	927	868	750	1067
10 Yr Percentile		59%	75%	83%	86%	88%	90%	90%	93%	97%	98%	98%	99%	100%	99%	99%	99%	99%	100%	98%

Definitions:

* A Percentile, is a value on a scale of one hundred that indicates the percent of a distribution that is equal to or below it. In general a percentile between 25% and 75% is considered normal, a percentile below 25% is considered below normal and a percentile above 75% is considered above normal.

Three and ten year percentiles shown on the bottom line of table 2 & 3 (above) and in table 1 (on page 1), detail the amount of time during the past 3 & 10 years where the market has traded either at or below its current price.

* Deciles are a method of sorting ranked data into 10 equal groups. The data may be ranked from largest to smallest or vice versa.

The above Decile tables sort price Percentiles into 10 equal groups (in ascending order), with table 2 ranking the previous 3 years prices, while table 3 ranks prices over the previous 10 years.

Example: In Table 2, a Decile Rank of 6 for 19 microns, shows 19 microns have traded at or below 1229 for 60% of the time, over the past three years.

In Table 3, a Decile Rank of 6 for 19 microns, shows 19 microns have traded at or below 1194 for 60% of the time, over the past ten years.



Table 4: Riemann Forwards, latest trades as at: Last Date

Any highlighted in yellow are recent trades, trading since: 7 August, 2015

CONTRACT MICRON		18.5um	19um	19.5um	21um	22um	23um	28um	30um
CONTRACT MONTH	Aug-2015	14-05-15 1400	11-08-15 1400	27-05-15 1350	23-07-15 1290			7-05-15 820	7-05-15 760
	Sep-2015		8-05-15 1320		12-08-15 1380			7-05-15 820	7-05-15 760
	Oct-2015		4-06-15 1390		11-08-15 1350			2-08-15 885	27-05-15 800
	Nov-2015				13-08-15 1345			14-07-15 840	14-05-15 760
	Dec-2015	27-05-15 1425	4-06-15 1400		10-08-15 1300			27-05-15 820	
	Jan-2016	21-05-15 1375	10-07-15 1350		5-08-15 1265			10-07-15 810	13-07-15 760
	Feb-2016		12-08-15 1400		11-08-15 1300			3-06-15 800	
	Mar-2016	28-05-15 1420	12-07-15 1305		12-08-15 1310				
	Apr-2016	3-06-15 1420	12-08-15 1360	25-05-15 1290	13-08-15 1303				
	May-2016	10-07-15 1350			12-08-15 1304				
	Jun-2016		12-08-15 1400		11-08-15 1300				
	Jul-2016		12-08-15 1390		12-08-15 1310				
	Aug-2016				6-08-15 1280				
	Sep-2016				6-08-15 1260				
	Oct-2016		16-07-15 1350		6-08-15 1265				
	Nov-2016				12-08-15 1275				
	Dec-2016				12-08-15 1275				
	Jan-2017				16-07-15 1250				
	Feb-2017								
	Mar-2017								
	Apr-2017								
	May-2017								
	Jun-2017								

Explanatory Notes: Prices quoted reflect the most recent trades, at time of print.

Disclaimer: While all due care has been taken in the preparation of this document, no warranty is made as to its accuracy, reliability or completeness. To the extent permitted by law neither Jemalong or their sources including subsidiaries and staff, accept liability to any person for loss or damage arising from the use of this information.



JEMALONG WOOL BULLETIN

(week ending 13-08-15)

Table 5: National Market Share

		Current Selling Week			Previous Selling Week			Last Season			2 Years Ago			3 Years Ago			5 Years Ago			10 Years Ago		
	Rank	Buyer	Bales	MS%	Buyer	Bales	MS%	Buyer	Bales	MS%	Buyer	Bales	MS%	Buyer	Bales	MS%	Buyer	Bales	MS%	Buyer	Bales	MS%
Top 10, Auction Buyers	1	TECM	1,073	4%	TECM	5,895	15%	TECM	248,371	14%	TECM	205,136	13%	TECM	179,176	10%	VTRA	209,391	12%	ITOS	160,935	7%
	2	MCHA	2,396	8%	LEMM	3,980	10%	FOXN	173,810	10%	FOXN	134,581	8%	VTRA	163,810	9%	TECM	179,439	10%	TECM	143,493	6%
	3	AMEM	2,362	8%	FOXN	3,925	10%	CTXS	167,211	9%	CTXS	122,964	8%	FOXN	143,826	8%	FOXN	142,143	8%	MODM	138,670	6%
	4	LEMM	2,299	8%	MODM	3,033	8%	AMEM	122,220	7%	AMEM	111,263	7%	LEMM	126,564	7%	QCTB	120,699	7%	RWRS	136,029	6%
	5	GWEA	2,095	7%	AMEM	2,797	7%	LEMM	117,153	7%	LEMM	109,224	7%	QCTB	98,756	6%	WIEM	99,585	6%	BWEA	116,533	5%
	6	CTXS	2,066	7%	PMWF	2,021	5%	TIAM	113,797	6%	TIAM	105,736	7%	PMWF	96,935	6%	LEMM	85,346	5%	KATS	112,562	5%
	7	MODM	1,916	7%	TIAM	2,007	5%	PMWF	96,998	5%	QCTB	88,700	5%	MODM	84,363	5%	MODM	81,981	5%	FOXN	107,337	5%
	8	TIAM	1,551	6%	CTXS	1,699	4%	MODM	84,256	5%	MODM	79,977	5%	CTXS	82,166	5%	PMWF	77,588	4%	PLEX	104,556	5%
	9	#N/A	#N/A	#N/A	GWEA	1,665	4%	KATS	74,875	4%	PMWF	77,875	5%	AMEM	77,849	4%	CTXS	75,127	4%	GSAS	91,841	4%
	10	GSAS	1,004	4%	MCHA	1,603	4%	GSAS	64,436	4%	GSAS	54,462	3%	KATS	65,782	4%	KATS	67,867	4%	LEMM	83,238	4%
MFLC TOP 5	1	FOXN	2,655	16%	LEMM	3,258	14%	TECM	139,806	14%	TECM	106,291	12%	VTRA	118,432	12%	VTRA	169,191	17%	ITOS	125,727	9%
	2	LEMM	1,580	9%	TECM	3,066	14%	CTXS	130,004	13%	CTXS	87,889	10%	LEMM	110,118	11%	QCTB	98,673	10%	TECM	110,145	8%
	3	CTXS	1,564	9%	FOXN	2,068	9%	FOXN	103,547	10%	LEMM	82,374	9%	PMWF	93,136	10%	TECM	79,395	8%	BWEA	106,407	8%
	4	AMEM	1,422	8%	PMWF	1,846	8%	PMWF	90,101	9%	FOXN	80,423	9%	TECM	89,286	9%	PMWF	71,718	7%	KATS	97,707	7%
	5	GWEA	1,387	8%	AMEM	1,787	8%	LEMM	79,881	8%	PMWF	69,890	8%	QCTB	71,715	7%	LEMM	70,280	7%	RWRS	83,993	6%
MSKT TOP 5	1	MODM	631	15%	MODM	1,094	18%	TIAM	49,870	18%	TIAM	47,607	19%	MODM	37,284	14%	MODM	39,745	14%	MODM	73,069	20%
	2	AMEM	554	13%	TECM	1,073	17%	AMEM	43,367	16%	TECM	31,474	12%	TECM	34,301	13%	WIEM	36,566	13%	PLEX	54,141	15%
	3	#N/A	#N/A	#N/A	TIAM	763	12%	TECM	39,495	14%	AMEM	29,775	12%	WIEM	27,916	10%	TECM	28,858	10%	GSAS	33,830	9%
	4	LEMM	499	12%	AMEM	617	10%	MODM	23,165	8%	MODM	23,791	9%	TIAM	24,196	9%	PLEX	23,282	8%	RWRS	25,276	7%
	5	TECM	436	10%	LEMM	429	7%	FOXN	17,015	6%	GSAS	13,843	5%	AMEM	23,012	8%	FOXN	16,098	6%	QUWA	21,918	6%
XB TOP 5	1	KATS	537	14%	TECM	1,367	20%	KATS	65,119	22%	TECM	40,364	15%	FOXN	39,356	14%	FOXN	48,708	19%	FOXN	42,688	20%
	2	FOXN	461	12%	KATS	992	15%	TECM	40,231	14%	CTXS	34,779	13%	TECM	30,323	11%	TECM	43,133	17%	TECM	26,464	12%
	3	CTXS	397	10%	MODM	823	12%	CTXS	35,691	12%	FOXN	24,218	9%	VTRA	27,832	10%	VTRA	20,904	8%	MOPS	15,695	7%
	4	TECM	349	9%	FOXN	785	12%	FOXN	34,007	12%	MODM	21,512	8%	KATS	26,057	9%	MODM	20,556	8%	ITOS	15,342	7%
	5	AMEM	336	9%	AMEM	345	5%	AMEM	15,044	5%	AMEM	20,336	7%	CTXS	25,631	9%	CTXS	16,667	7%	MODM	11,602	5%
ODDS TOP 5	1	MCHA	778	26%	MCHA	937	21%	MCHA	38,934	18%	MCHA	36,085	17%	MCHA	35,985	16%	MCHA	30,570	13%	MCHA	43,561	17%
	2	FOXN	383	13%	FOXN	653	14%	TECM	28,839	13%	TECM	27,007	13%	FOXN	28,185	12%	TECM	28,053	12%	FOXN	37,436	14%
	3	GWEA	332	11%	VWPM	591	13%	FOXN	19,241	9%	VWPM	22,432	11%	TECM	25,266	11%	FOXN	27,422	12%	QUWA	19,886	8%
	4	TECM	288	9%	TECM	389	9%	LEMM	12,309	6%	FOXN	18,811	9%	VWPM	20,692	9%	VWPM	22,267	10%	RWRS	18,879	7%
	5	VWPM	237	8%	UWCM	342	8%	MAFM	11,640	5%	RWRS	13,524	6%	VTRA	13,022	6%	RWRS	15,878	7%	DAWS	16,313	6%
Auction Totals		<u>Offered</u>	<u>Sold</u>		<u>Offered</u>	<u>Sold</u>		<u>Bales Sold</u>	<u>\$/Bale</u>		<u>Bales Sold</u>	<u>\$/Bale</u>		<u>Bales Sold</u>	<u>\$/Bale</u>		<u>Bales Sold</u>	<u>\$/Bale</u>		<u>Bales Sold</u>	<u>\$/Bale</u>	
		28,515	28,194		41,832	40,188		1,800,510			1,625,115	\$1,509		1,742,881	\$1,418		1,786,249	\$1,467		2,213,822	\$1,018	
		<u>Passed-In</u>	<u>PI%</u>		<u>Passed-In</u>	<u>PI%</u>		<u>Export Value</u>			<u>Export Value</u>			<u>Export Value</u>			<u>Export Value</u>			<u>Export Value</u>		
		321	1.1%		1,644	3.9%		#N/A			\$2,453,067,610			\$2,470,844,153			\$2,619,977,188			\$2,254,128,782		



Table 6: NSW Production Statistics

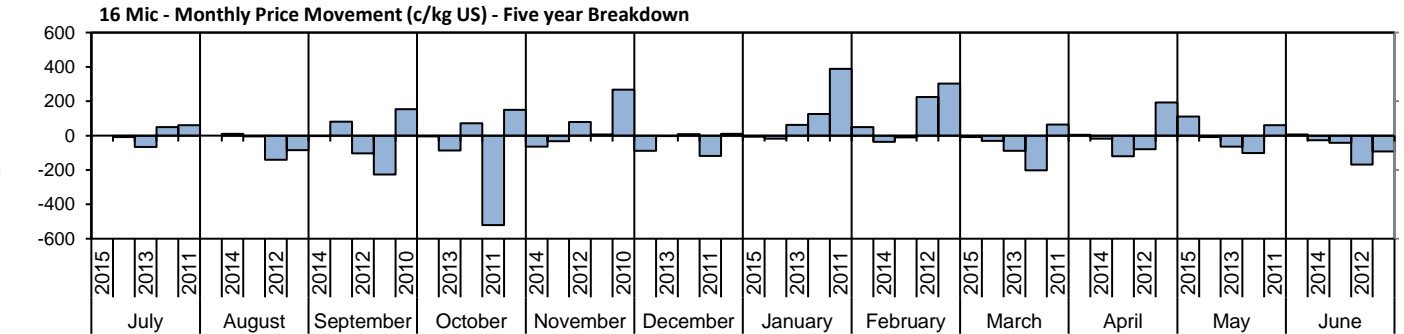
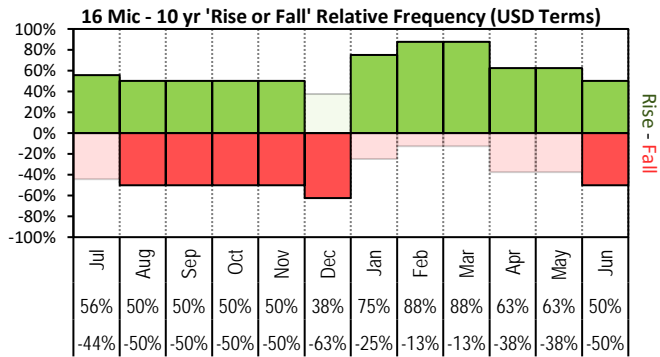
MAX		MIN		MAX GAIN		MAX REDUCTION										
2014-15																
Statistical Devision, Area Code & Towns				Auction Bales (FH)	Micron	+/- YoY	Vmb %	+/- YoY	Yield % Sch Dry	+/- YoY	Length mm	+/- YoY	Strength Nkt	+/- YoY	Ave Price c/kg	
Northern	N02	Tenterfield, Glen Innes		8,433	19.2	-0.2	1.1	-0.9	70.8	-0.8	83	2.5	43	2.6	821	
	N03	Guyra		33,037	18.6	0.0	0.9	-0.9	71.8	-0.3	84	3.7	39	-0.4	877	
	N04	Inverell		4,027	18.3	0.1	2.1	-1.3	70.3	0.8	86	3.5	39	2.0	803	
	N05	Armidale		1,780	20.2	0.4	3.1	-1.1	68.1	0.8	88	2.8	38	3.1	726	
	N06	Tamworth, Gunnedah, Quirindi		5,373	20.3	-0.1	2.7	-0.6	67.9	0.7	86	1.9	39	2.8	747	
	N07	Moree		5,201	19.9	0.3	3.1	-0.1	62.6	-1.1	89	3.2	35	-0.5	661	
	N08	Narrabri		3,273	19.4	0.2	2.3	-0.3	64.4	-1.6	88	2.7	36	0.4	692	
North Western & Far West	N09	Cobar, Bourke, Wanaaring		10,367	19.8	0.1	3.3	-0.4	60.1	0.1	88	2.4	34	-2.4	653	
	N12	Walgett		7,125	19.2	-0.4	3.1	0.0	60.7	-1.8	86	2.4	33	-3.2	663	
	N13	Nyngan		21,678	20.4	0.1	6.2	1.1	60.3	-1.4	90	1.8	37	0.3	623	
	N14	Dubbo, Narromine		23,235	21.3	0.1	4.2	0.5	61.6	-0.5	88	2.3	37	1.3	585	
	N16	Dunedoo		7,687	19.9	0.3	2.7	0.1	65.8	-1.2	91	2.7	37	2.3	708	
	N17	Mudgee, Wellington, Gulgong		24,417	19.8	0.2	2.3	0.1	67.6	-0.7	87	3.8	39	0.9	726	
	N33	Coonabarabran		3,646	20.8	0.4	4.5	0.9	64.1	-1.7	88	3.2	34	-0.2	631	
	N34	Coonamble		7,831	20.1	-0.1	5.7	1.9	59.3	-1.9	88	2.4	36	0.1	626	
	N36	Gilgandra, Gulargambone		6,941	21.1	-0.1	4.6	1.0	62.1	-0.9	87	1.8	36	0.5	617	
	N40	Brewarrina		5,191	19.4	0.1	2.1	0.1	63.8	-1.7	86	4.1	38	-1.3	690	
	N10	Wilcannia, Broken Hill		25,000	21.0	0.4	2.6	0.4	60.5	0.8	90	3.2	34	-1.4	654	
Central West	N15	Forbes, Parkes, Cowra		55,313	21.2	-0.5	2.9	0.2	63.7	0.1	90	2.2	36	1.8	626	
	N18	Lithgow, Oberon		2,584	20.8	0.2	1.2	-0.6	70.3	1.1	86	2.7	37	-0.8	727	
	N19	Orange, Bathurst		57,152	22.1	0.1	1.5	0.1	68.2	-0.7	88	3.0	37	0.1	674	
	N25	West Wyalong		27,332	20.8	0.2	2.2	-0.3	63.1	0.9	91	2.8	36	1.2	646	
	N35	Condobolin, Lake Cargelligo		11,646	20.8	0.2	4.9	0.5	60.1	-0.4	90	4.2	36	0.3	593	
Murrumbidgee	N26	Cootamundra, Temora		28,871	21.7	0.0	1.7	-0.2	63.7	0.6	89	2.9	36	1.7	633	
	N27	Adelong, Gundagai		12,930	21.8	0.4	1.4	-0.2	68.1	0.6	90	1.6	35	0.8	653	
	N29	Wagga, Narrandera		33,397	22.0	0.1	1.3	-0.3	64.4	0.0	90	2.0	36	32.8	633	
	N37	Griffith, Hillston		13,228	21.5	0.2	3.8	-0.3	62.0	0.8	87	1.6	38	0.5	620	
	N39	Hay, Coleambally		17,225	20.8	0.3	3.0	-0.5	63.8	1.5	91	3.9	39	3.2	673	
Murray	N11	Wentworth, Balranald		15,106	21.4	0.7	4.2	0.2	60.8	0.7	92	2.8	37	1.4	628	
	N28	Albury, Corowa, Holbrook		29,800	21.5	-0.1	1.3	-0.2	66.9	0.8	88	1.5	36	2.5	672	
	N31	Deniliquin		24,348	21.3	0.6	2.1	-0.2	66.1	1.5	91	6.1	40	7.4	673	
	N38	Finley, Berrigan, Jerilderie		9,426	20.8	0.4	2.1	-0.5	65.7	1.9	88	2.8	41	5.9	691	
South Eastern	N23	Goulburn, Young, Yass		102,592	20.0	0.3	1.2	0.0	68.4	-0.1	90	4.5	36	-0.6	734	
	N24	Monaro (Cooma, Bombala)		36,484	19.7	-0.1	1.3	-0.2	70.2	0.6	93	4.4	38	2.0	751	
	N32	A.C.T.		220	21.4	1.3	3.3	-0.6	59.4	0.2	86	-2.4	32	0.5	560	
	N43	South Coast (Bega)		474	19.2	0.2	1.0	0.3	73.2	0.2	89	2.0	45	5.9	876	
NSW	AWEX Sale Statistics 14-15			711,134	20.7	0.1	2.3	0.0	65.6	0.1	89	3.2	37	1.0	688	
AWTA Mthly Key Test Data				Bales Tested	+/- YoY	Micron	+/- YoY	VMB	+/- YoY	Yld	+/- YoY	Lth	+/- YoY	Nkt	+/- YoY	POBM +/-
AUSTRALIA	Current	July	95,704	-10,680	20.7	0.2	1.9	-0.3	63.6	0.0	87	-0.2	36	1.5	49	-0.8
	Season	Y.T.D.	2,156,923	2,050,539	20.7	0.2	1.9	-0.3	63.6	0.0	87	0.0	36	1.0	49	-1.0
	Previous	2014-15	106,384	-8506.0	20.5	-0.2	2.2	0.0	63.6	-0.2	87	2.0	35	-1.0	50	1.0
	Seasons	2013-14	114,890	14480.0	20.7	-0.5	2.2	-0.5	63.8	-1.3	85	-2.0	36	0.0	49	-5.0
	Y.T.D.	2012-13	100,410	-2,671	21.2	-0.2	2.7	-0.2	65.1	0.4	87	0.1	36	1.1	44	-6.7



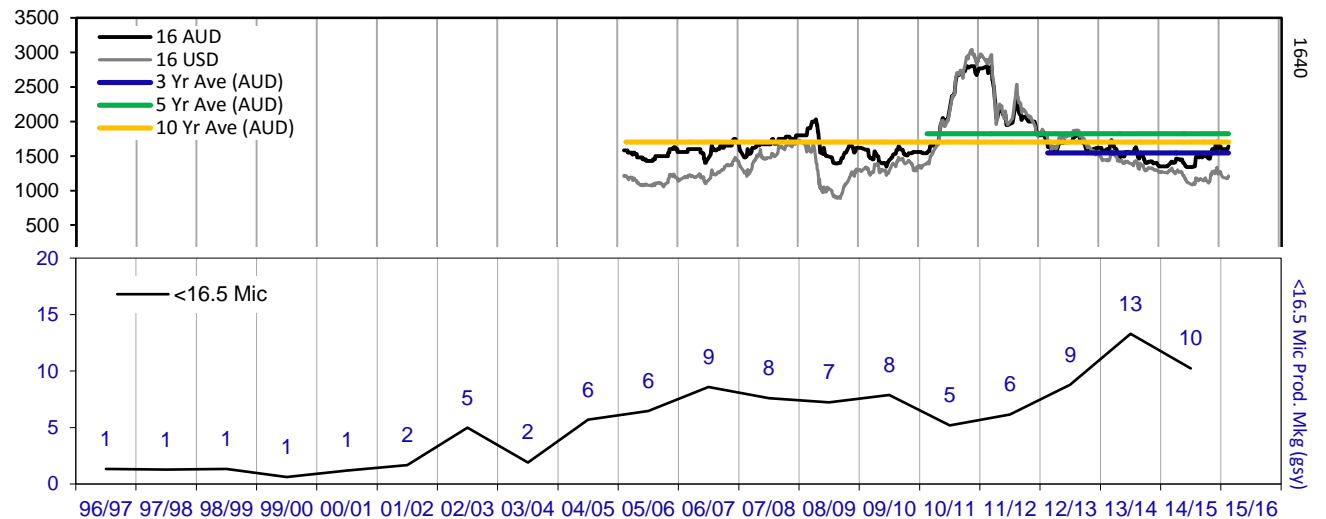
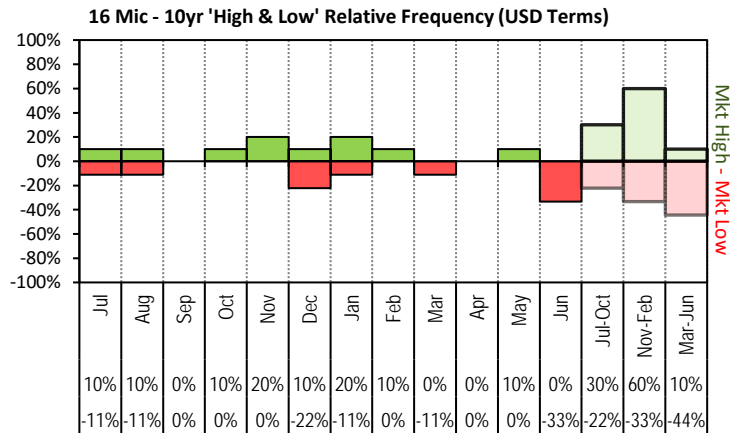
JEMALONG WOOL BULLETIN

(week ending 13-08-15)

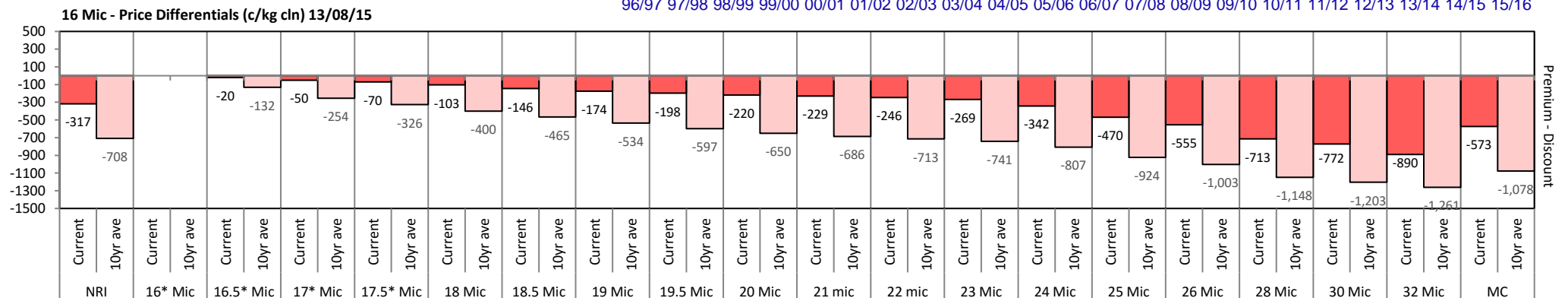
Page 7/25

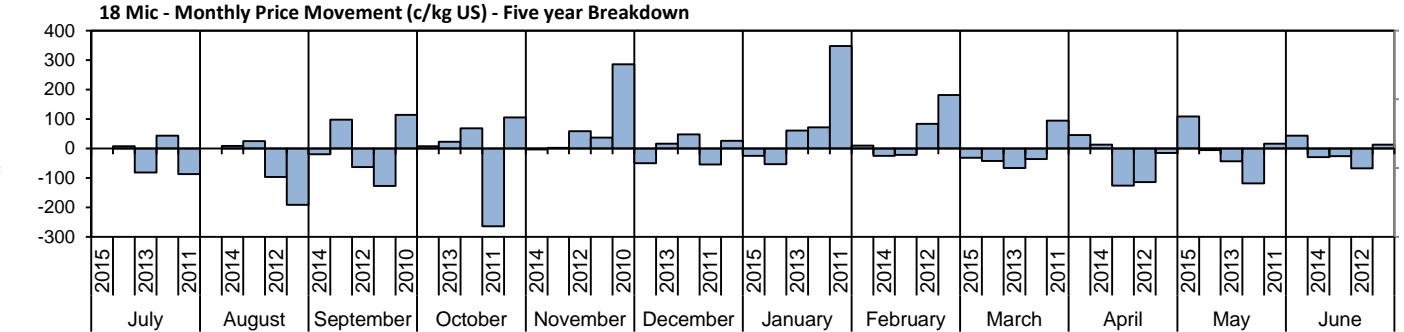
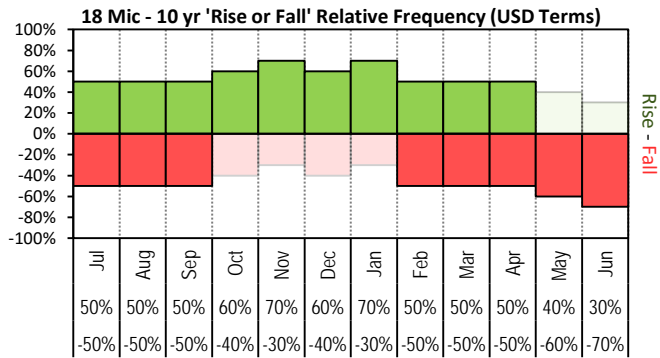


The above 'Rise or Fall' graph, shows how often the market has risen or fallen in a given month over the past 10 years, it does not show the extent of the movement only the frequency of direction. The 'Monthly Price Movement' graph shows the extent of movement for each month, for the past 5 years.

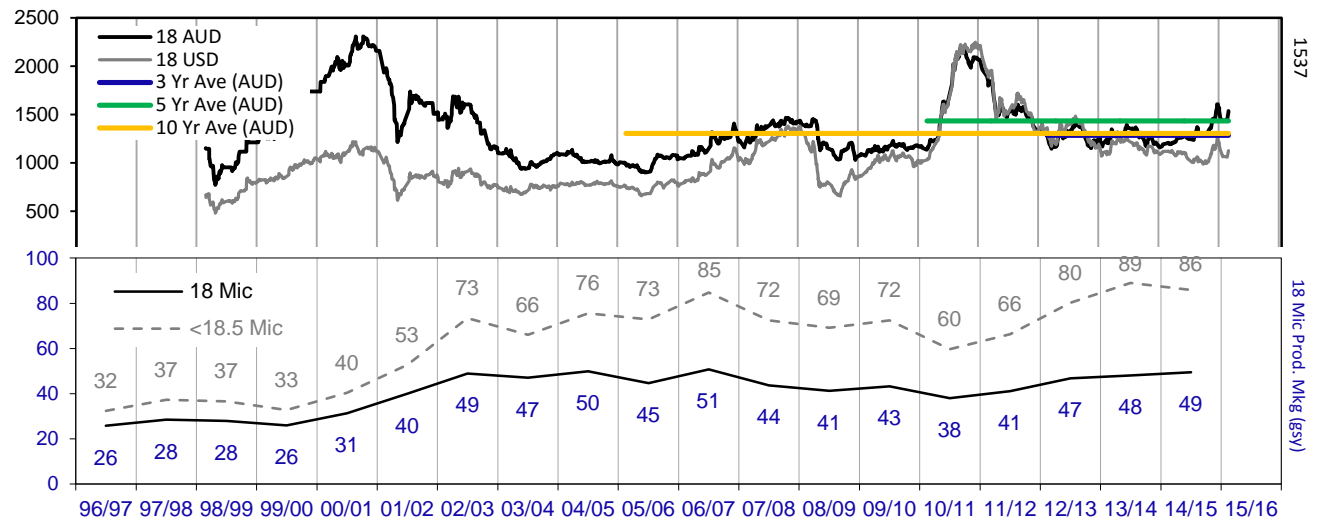
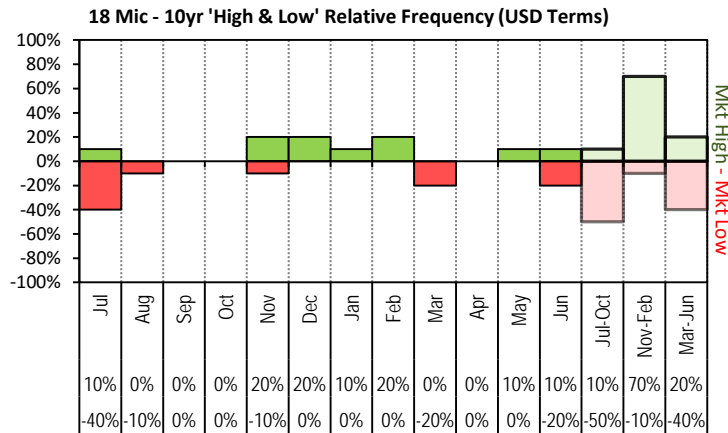


The above graph, shows how often the '12 month high & low' have been achieved for a

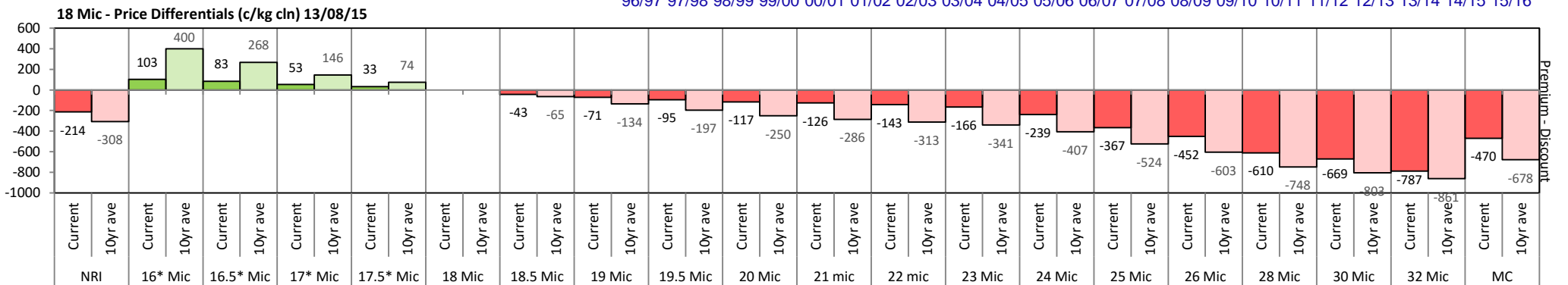




The above 'Rise or Fall' graph, shows how often the market has risen or fallen in a given month over the past 10 years, it does not show the extent of the movement only the frequency of direction. The 'Monthly Price Movement' graph shows the extent of movement for each month, for the past 5 years.



The above graph, shows how often the '12 month high & low' have been achieved for a given month over the past 10 years. It is not a measure of probability.

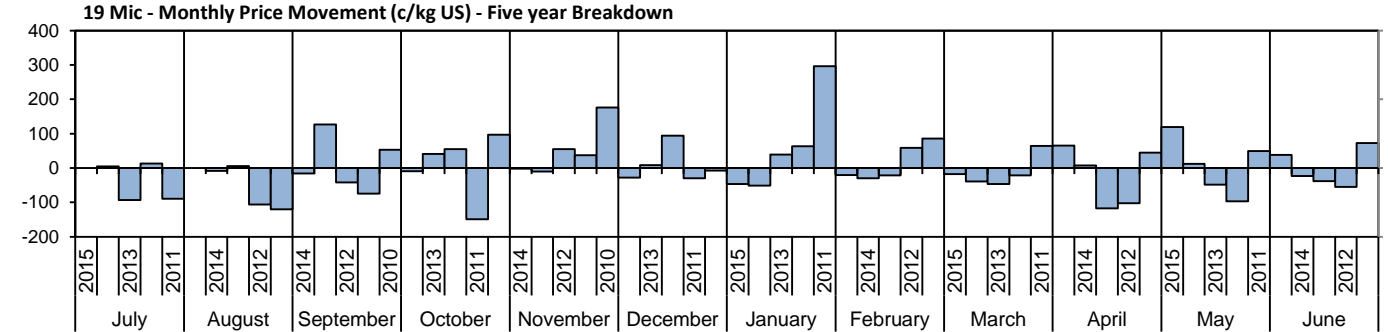
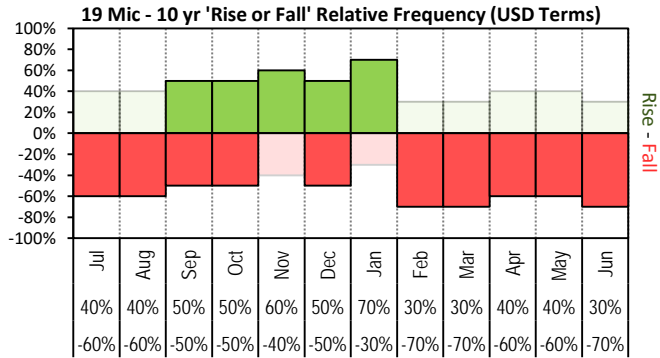




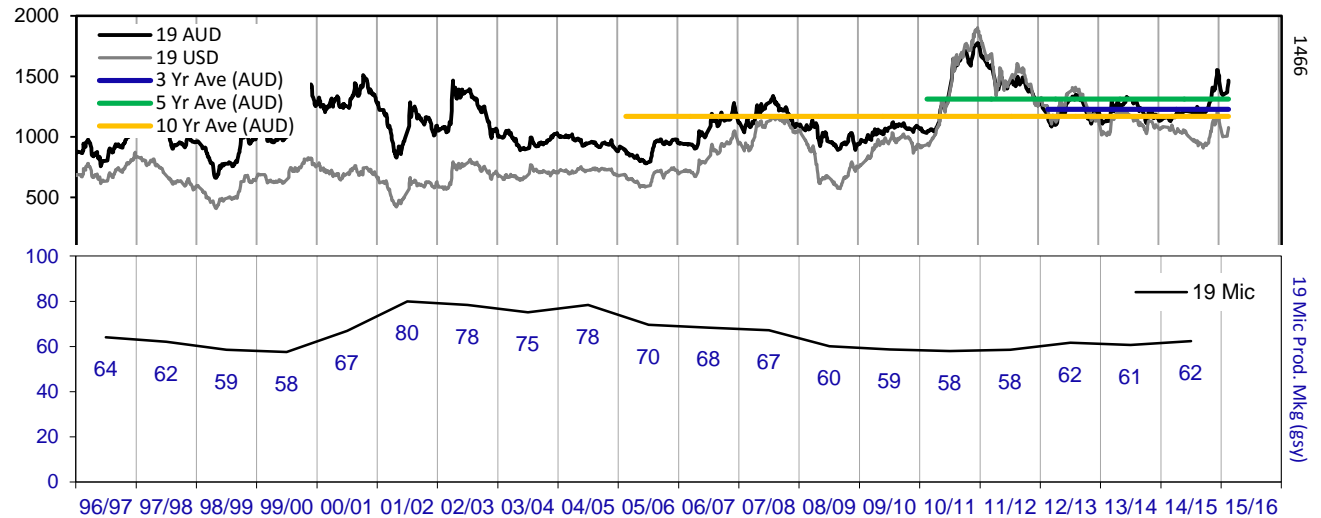
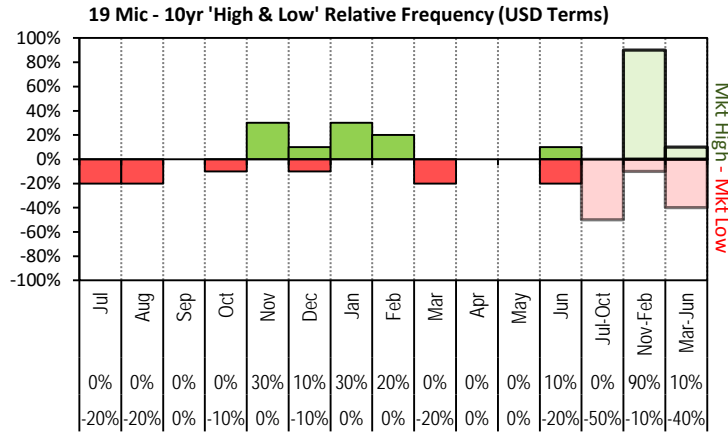
JEMALONG WOOL BULLETIN

(week ending 13-08-15)

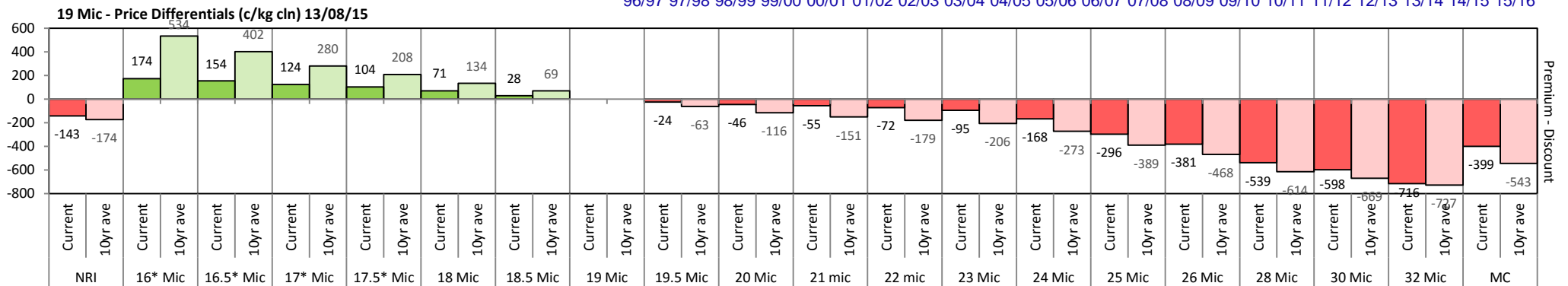
Page 9/25



The above 'Rise or Fall' graph, shows how often the market has risen or fallen in a given month over the past 10 years, it does not show the extent of the movement only the frequency of direction. The 'Monthly Price Movement' graph shows the extent of movement for each month, for the past 5 years.



The above graph, shows how often the '12 month high & low' have been achieved for a given month over the past 10 years. It is not a measure of probability.

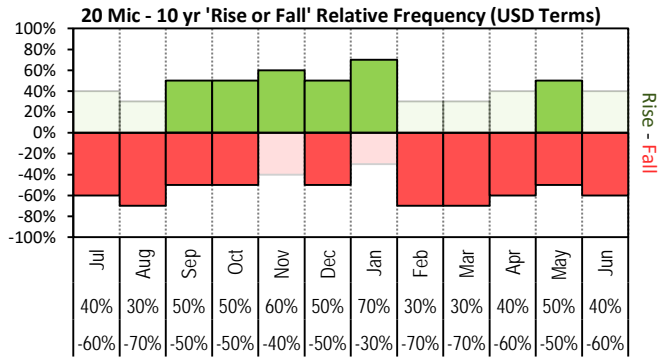




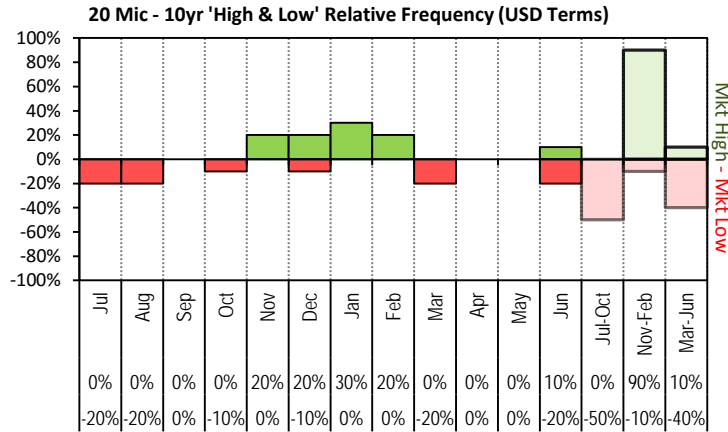
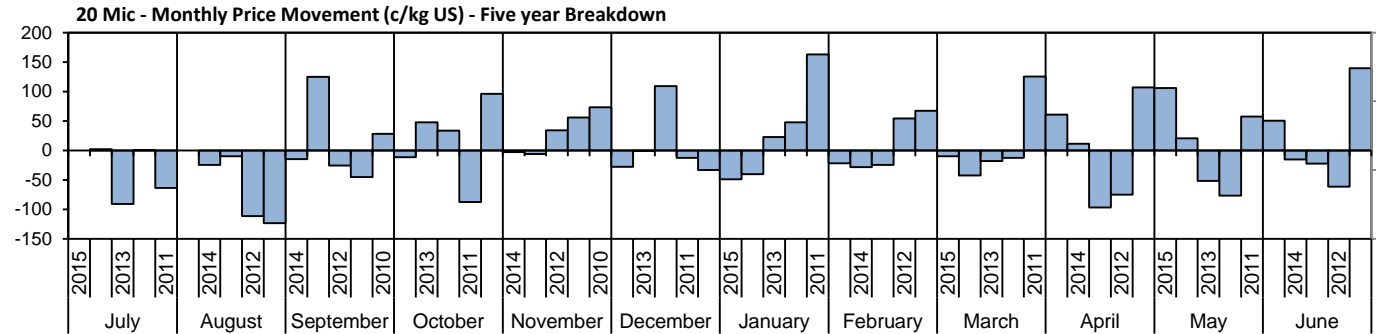
JEMALONG WOOL BULLETIN

(week ending 13-08-15)

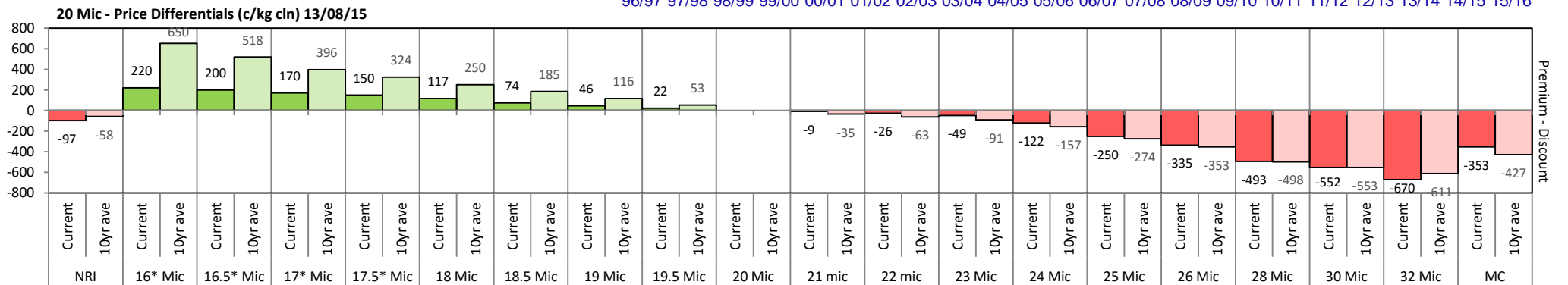
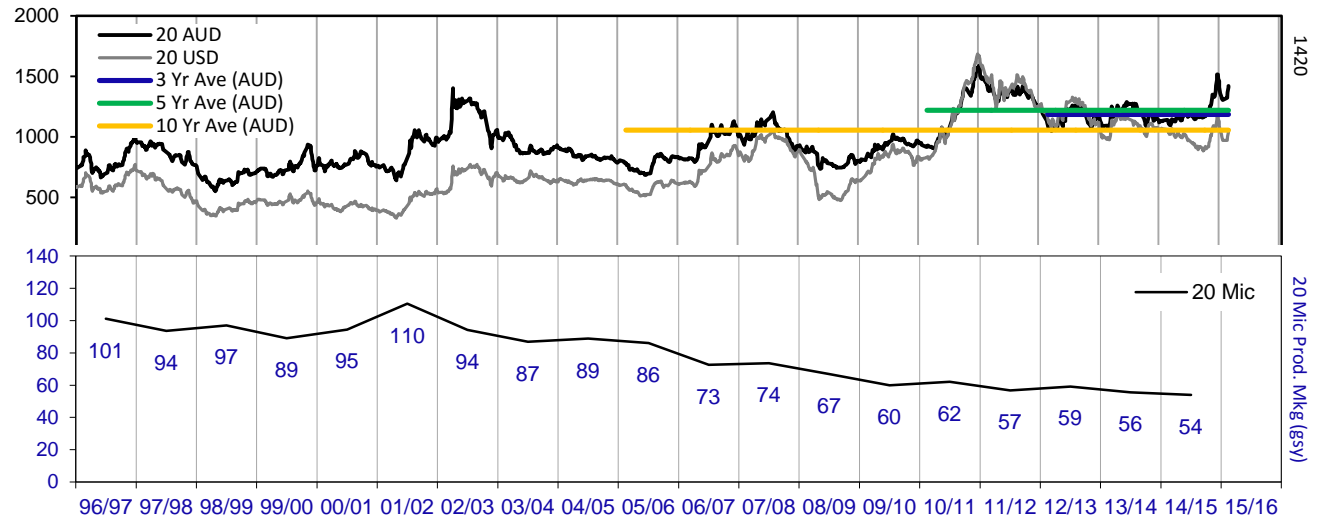
Page 10/25



The above 'Rise or Fall' graph, shows how often the market has risen or fallen in a given month over the past 10 years, it does not show the extent of the movement only the frequency of direction. The 'Monthly Price Movement' graph shows the extent of movement for each month, for the past 5 years.



The above graph, shows how often the '12 month high & low' have been achieved for a given month over the past 10 years. It is not a measure of probability.

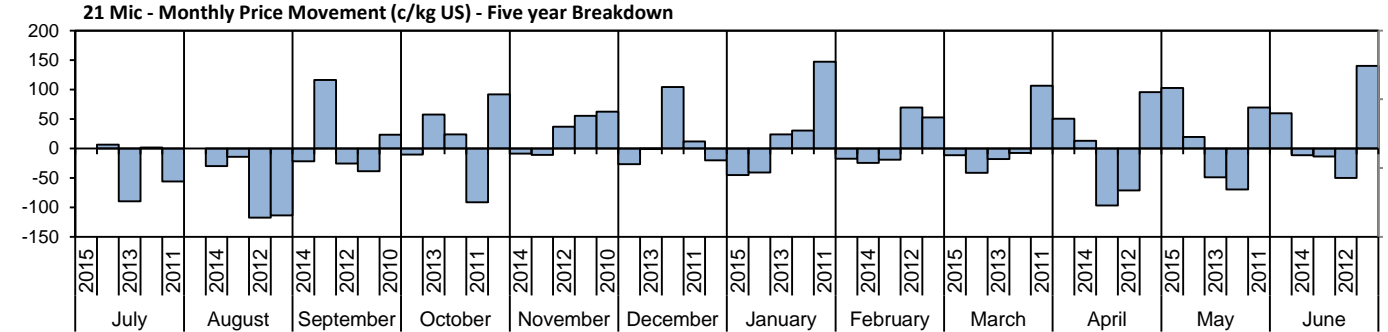
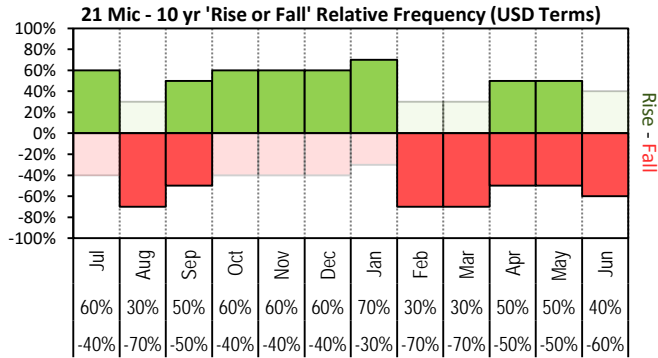




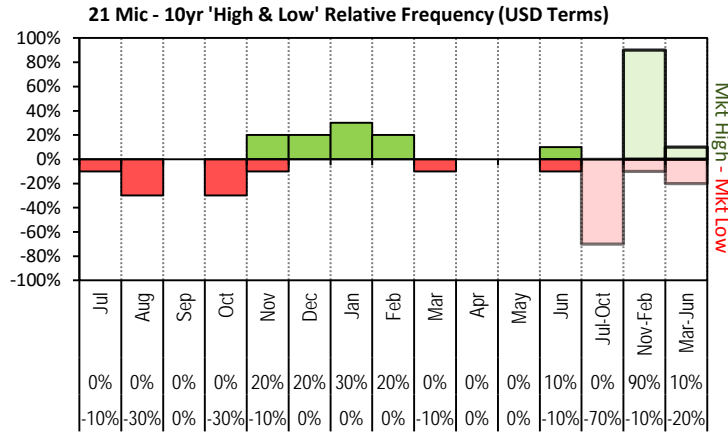
JEMALONG WOOL BULLETIN

(week ending 13-08-15)

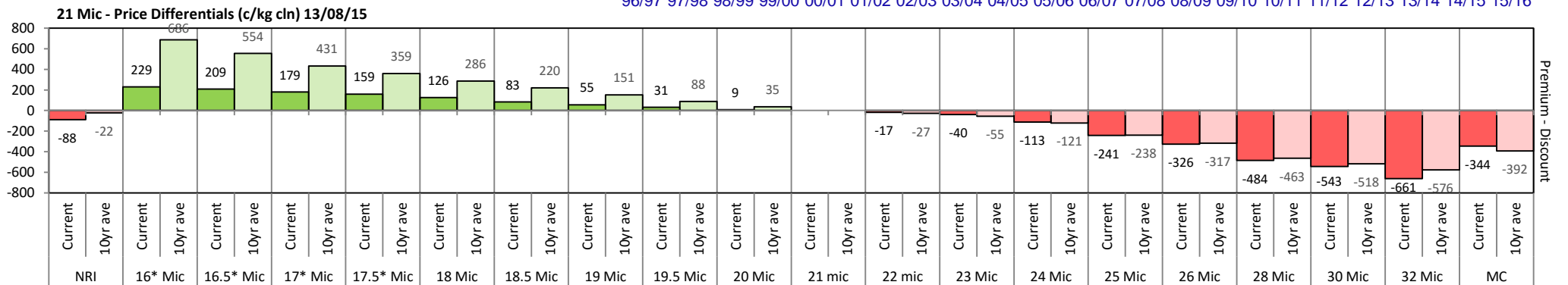
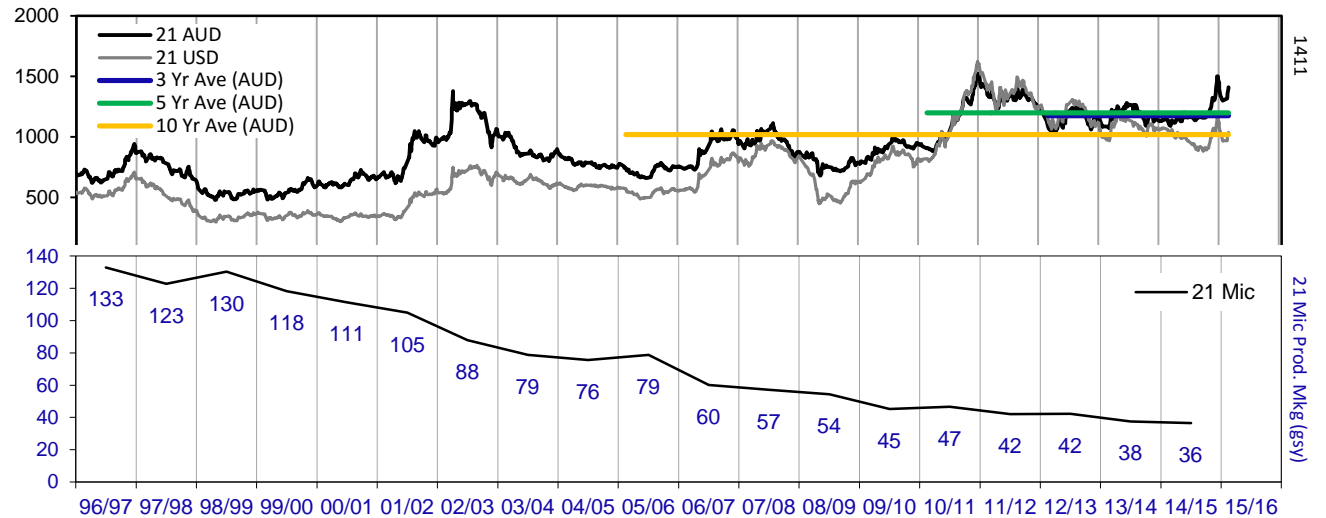
Page 11/25



The above 'Rise or Fall' graph, shows how often the market has risen or fallen in a given month over the past 10 years, it does not show the extent of the movement only the frequency of direction. The 'Monthly Price Movement' graph shows the extent of movement for each month, for the past 5 years.



The above graph, shows how often the '12 month high & low' have been achieved for a given month over the past 10 years. It is not a measure of probability.

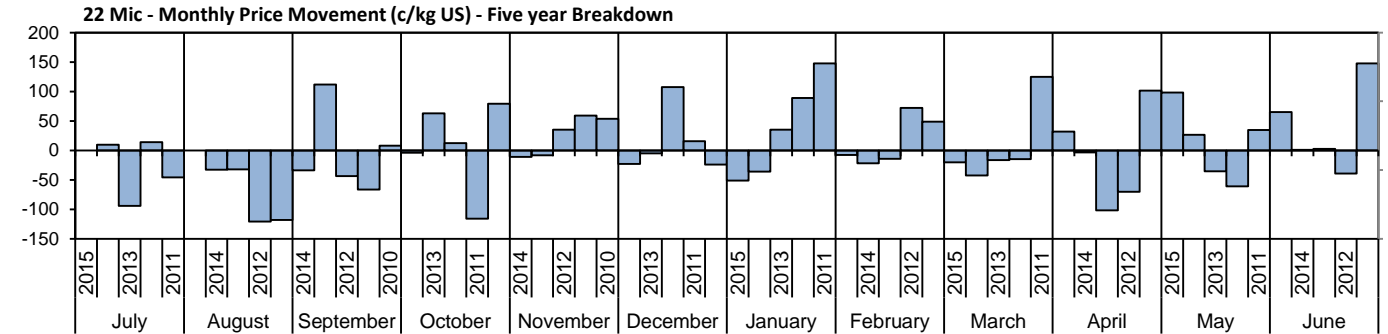
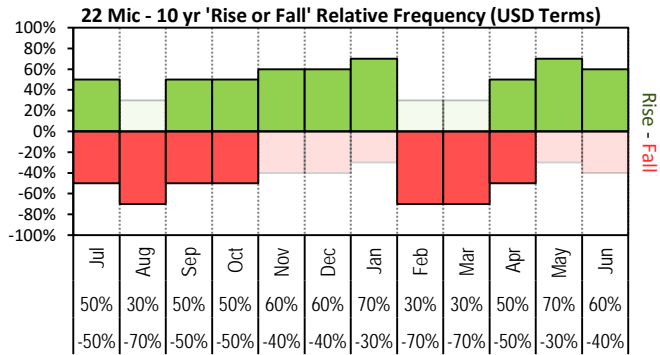




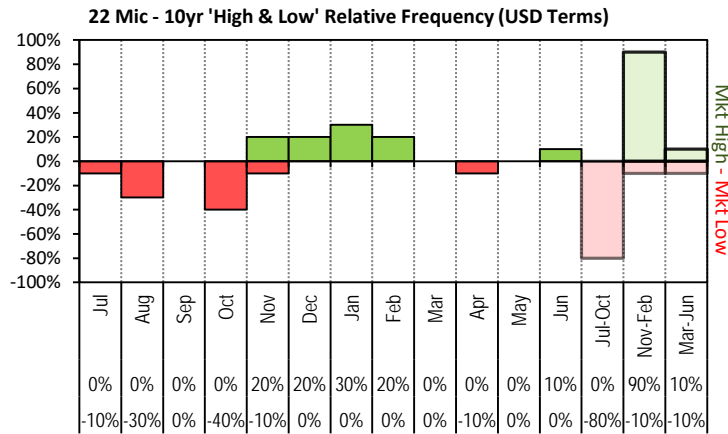
JEMALONG WOOL BULLETIN

(week ending 13-08-15)

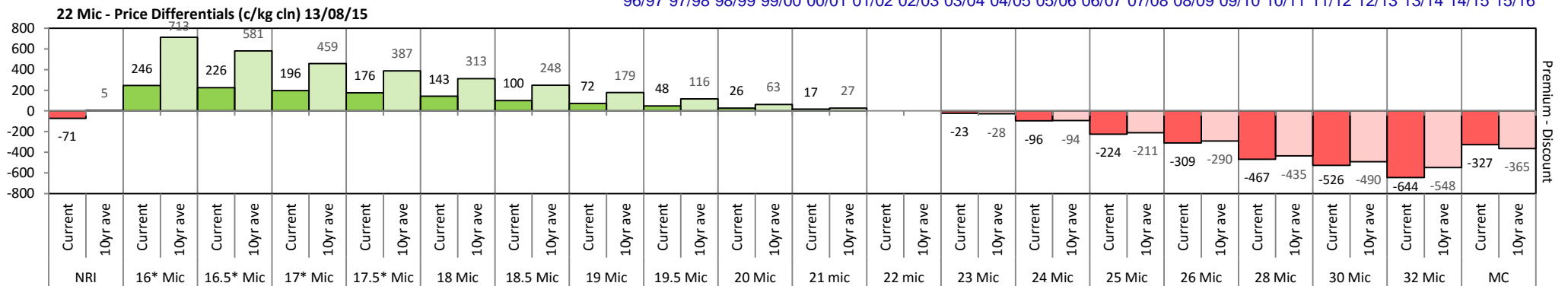
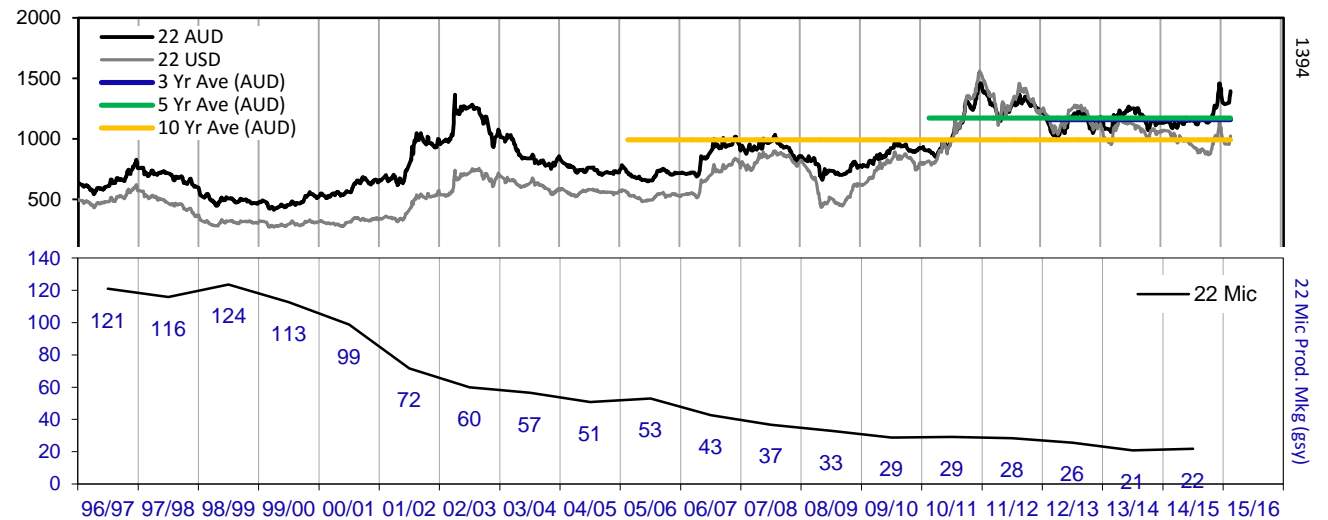
Page 12/25



The above 'Rise or Fall' graph, shows how often the market has risen or fallen in a given month over the past 10 years, it does not show the extent of the movement only the frequency of direction. The 'Monthly Price Movement' graph shows the extent of movement for each month, for the past 5 years.



The above graph, shows how often the '12 month high & low' have been achieved for a given month over the past 10 years. It is not a measure of probability.

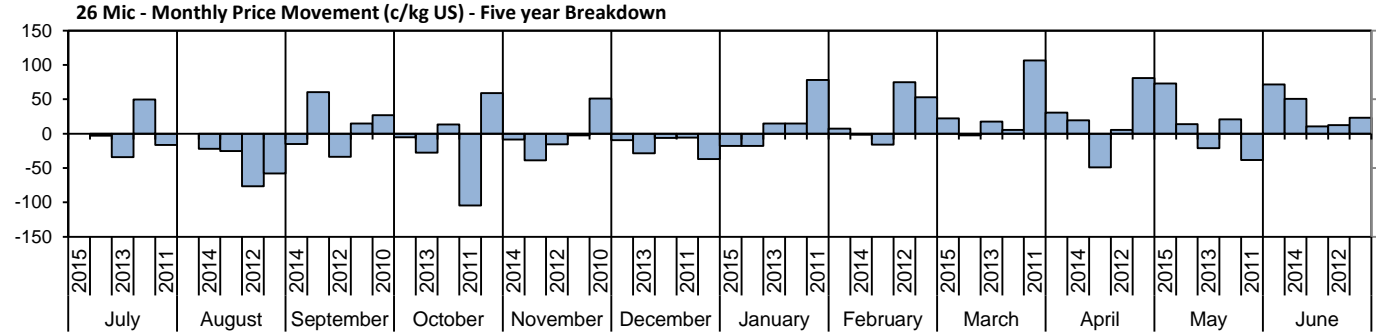
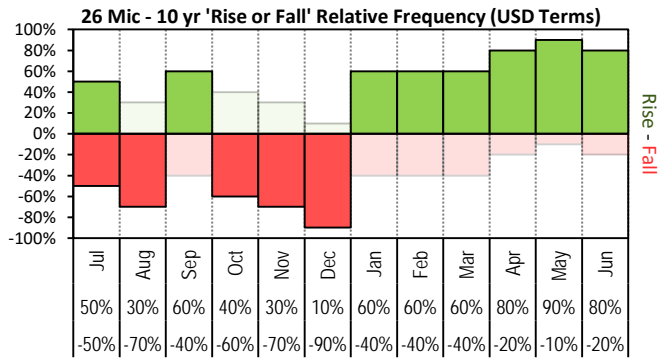




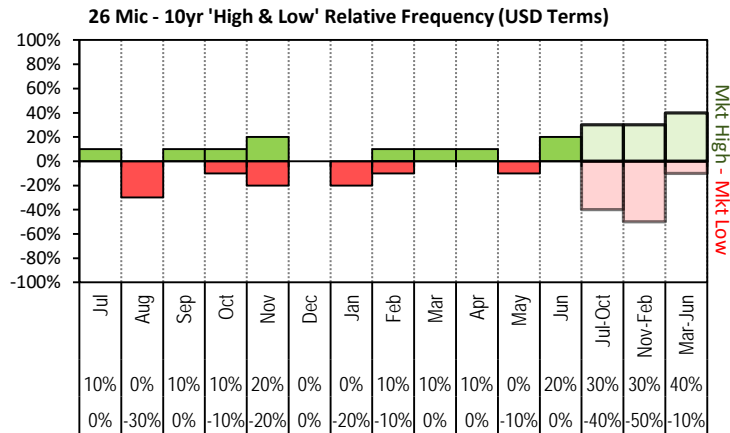
JEMALONG WOOL BULLETIN

(week ending 13-08-15)

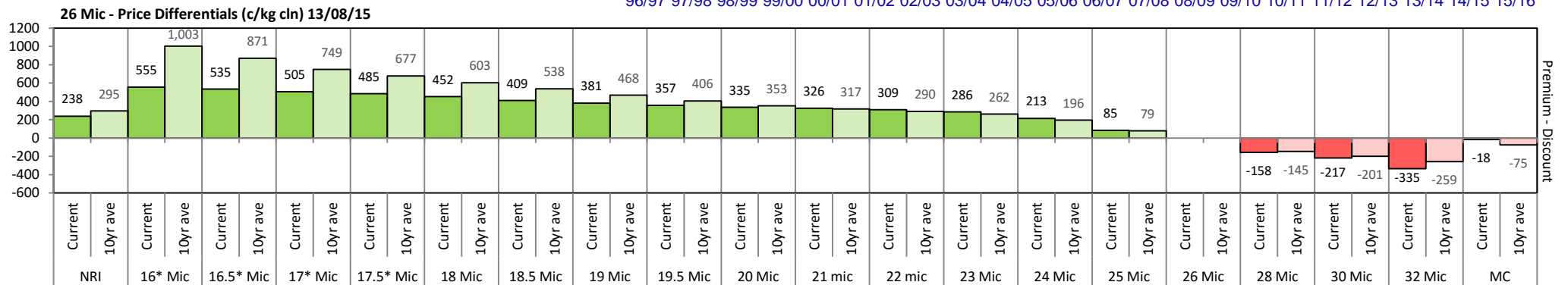
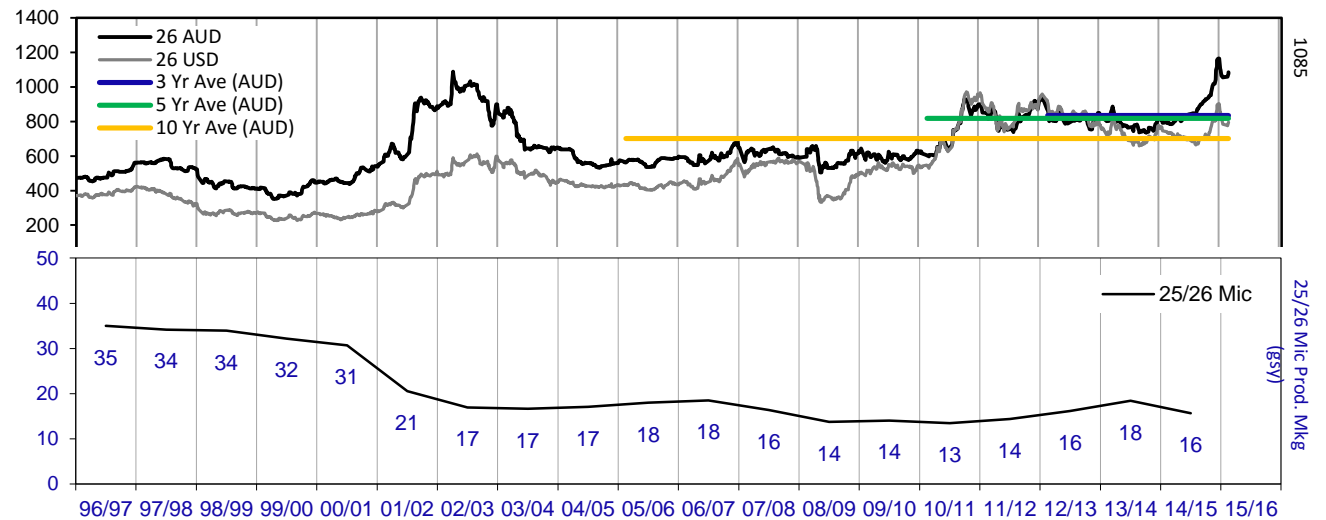
Page 13/25



The above 'Rise or Fall' graph, shows how often the market has risen or fallen in a given month over the past 10 years, it does not show the extent of the movement only the frequency of direction. The 'Monthly Price Movement' graph shows the extent of movement for each month, for the past 5 years.



The above graph, shows how often the '12 month high & low' have been achieved for a given month over the past 10 years. It is not a measure of probability.

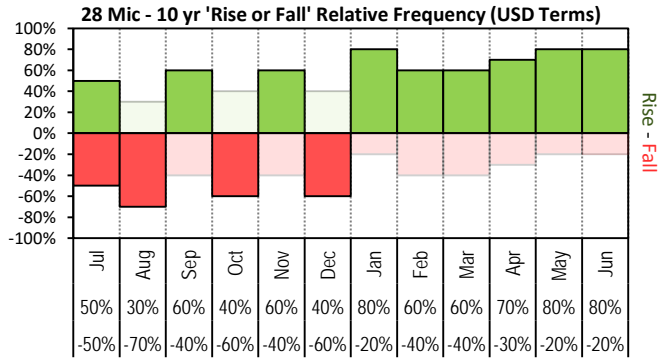




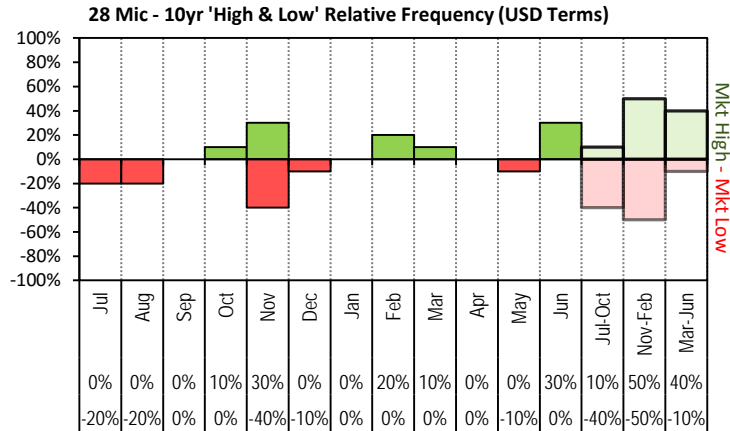
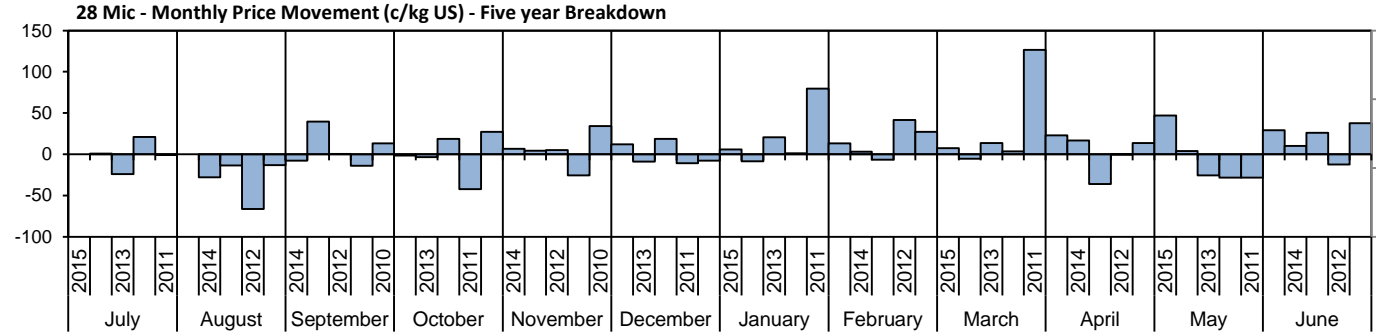
JEMALONG WOOL BULLETIN

(week ending 13-08-15)

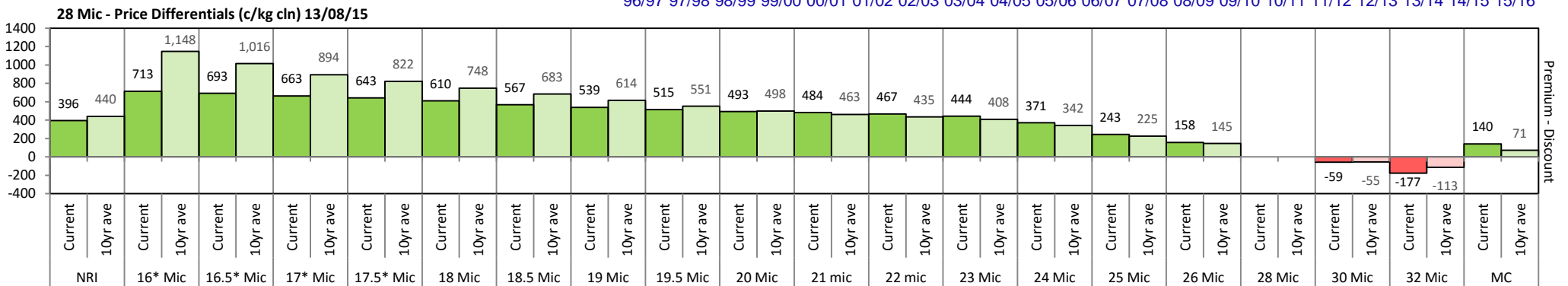
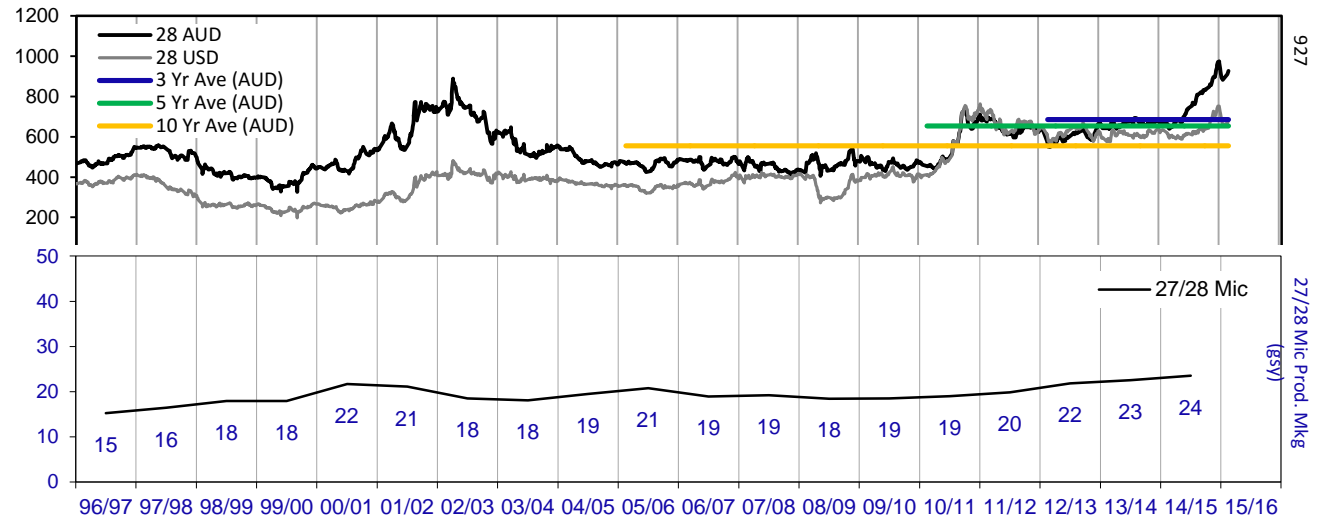
Page 14/25



The above 'Rise or Fall' graph, shows how often the market has risen or fallen in a given month over the past 10 years, it does not show the extent of the movement only the frequency of direction. The 'Monthly Price Movement' graph shows the extent of movement for each month, for the past 5 years.



The above graph, shows how often the '12 month high & low' have been achieved for a given month over the past 10 years. It is not a measure of probability.

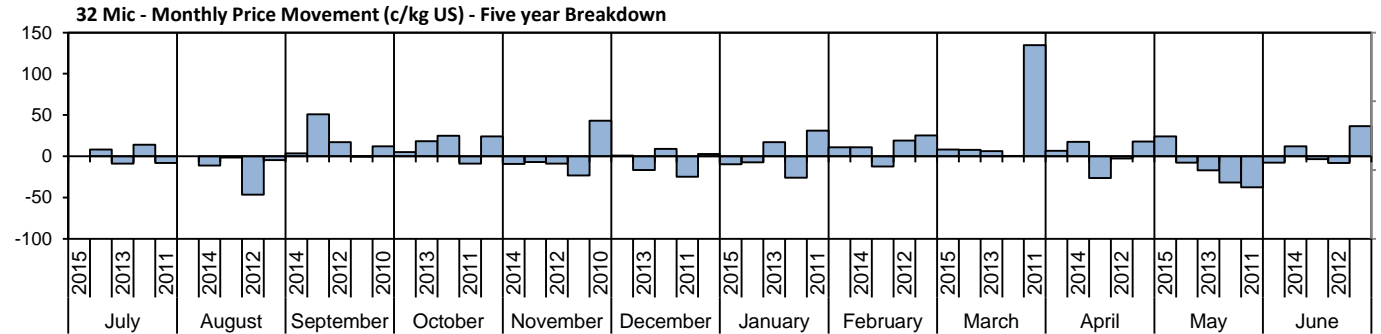
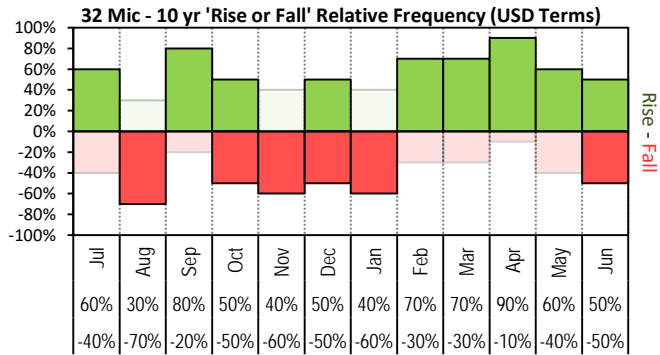




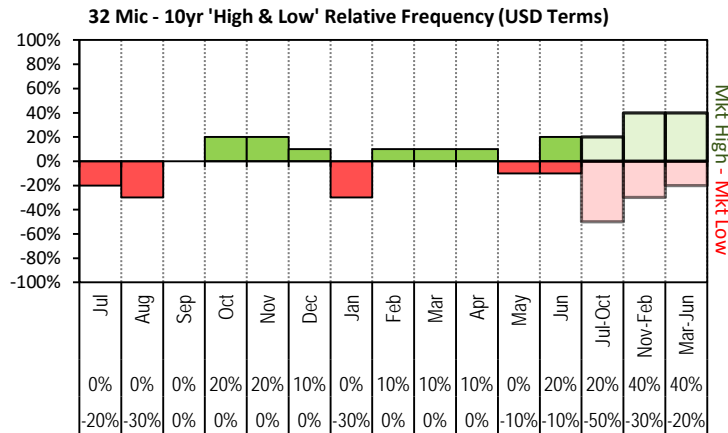
JEMALONG WOOL BULLETIN

(week ending 13-08-15)

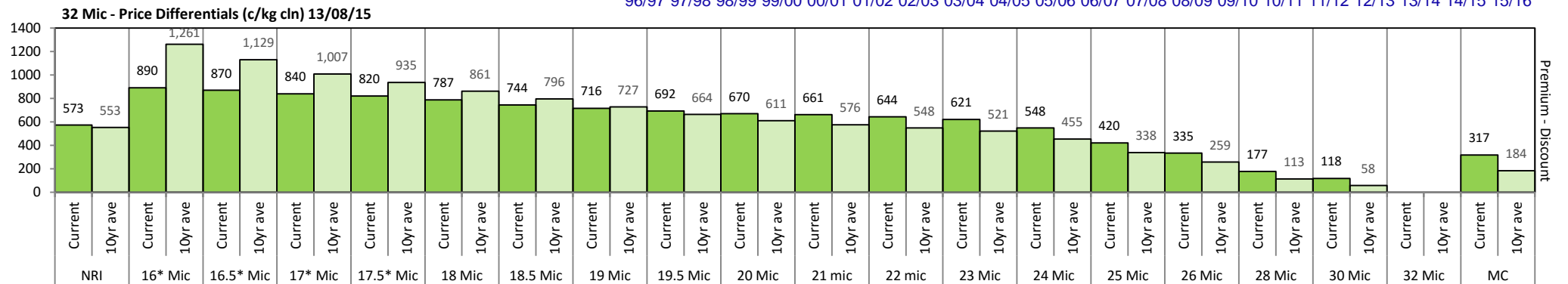
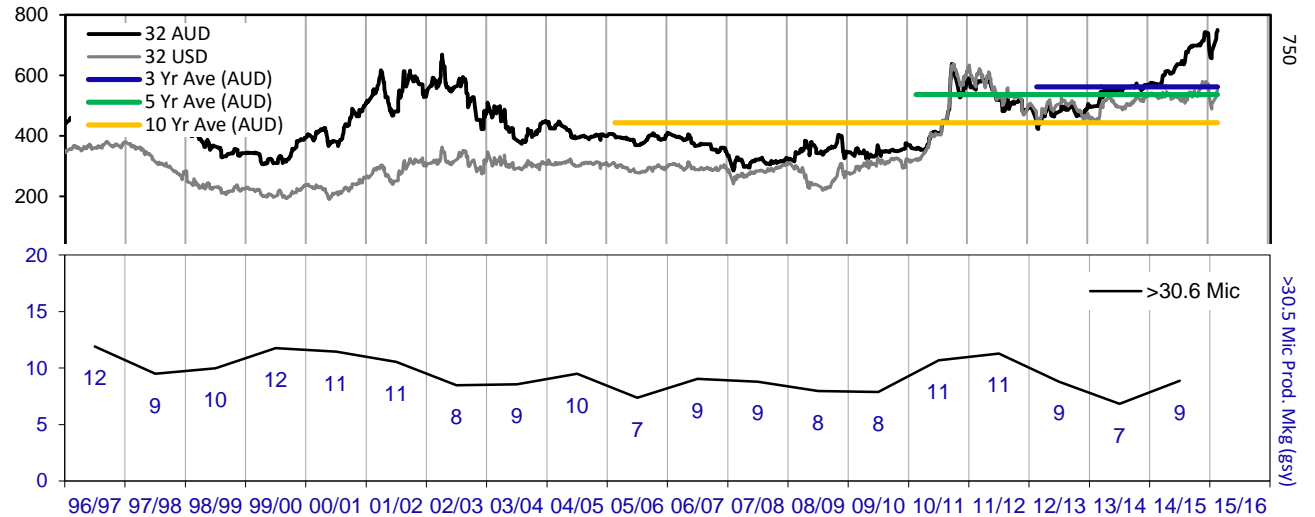
Page 15/25



The above 'Rise or Fall' graph, shows how often the market has risen or fallen in a given month over the past 10 years, it does not show the extent of the movement only the frequency of direction. The 'Monthly Price Movement' graph shows the extent of movement for each month, for the past 5 years.



The above graph, shows how often the '12 month high & low' have been achieved for a given month over the past 10 years. It is not a measure of probability.

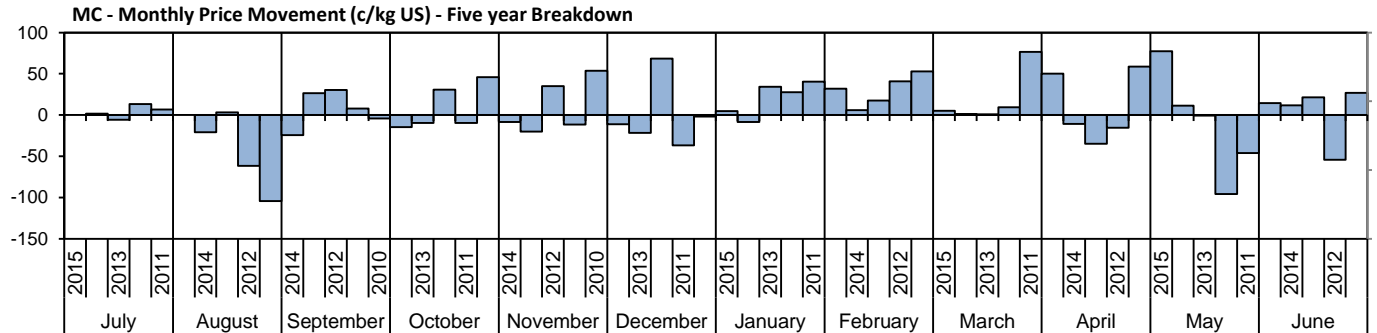
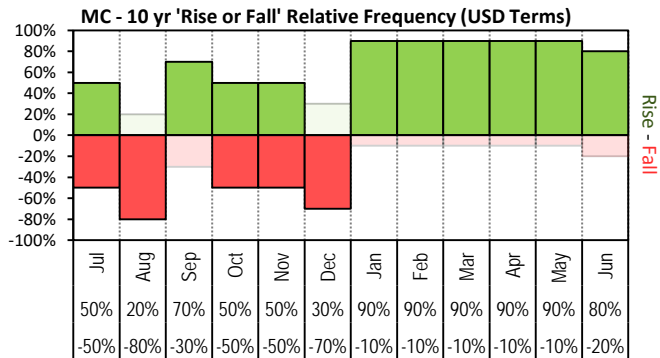




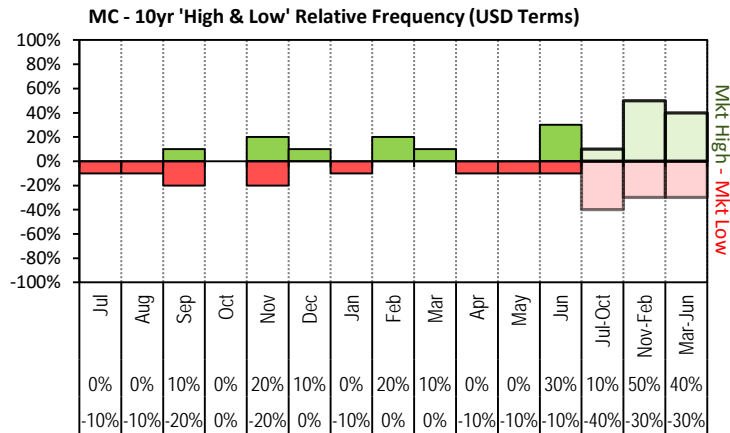
JEMALONG WOOL BULLETIN

(week ending 13-08-15)

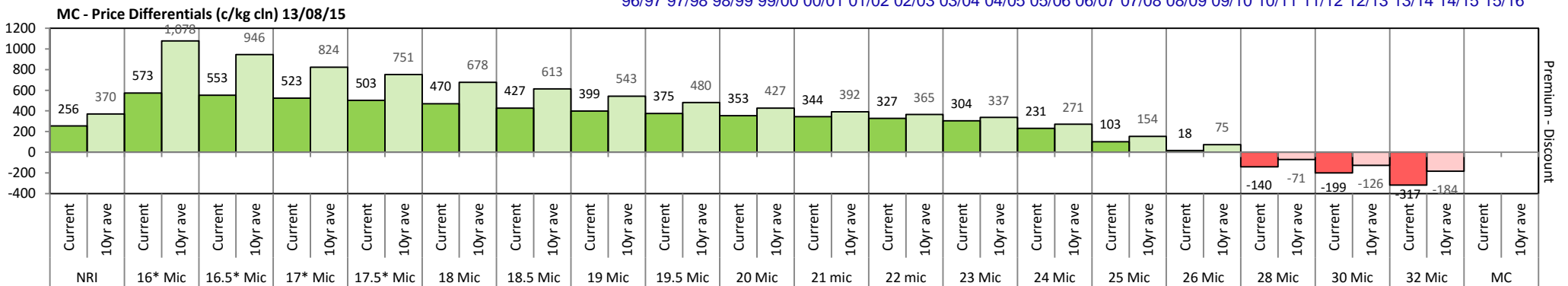
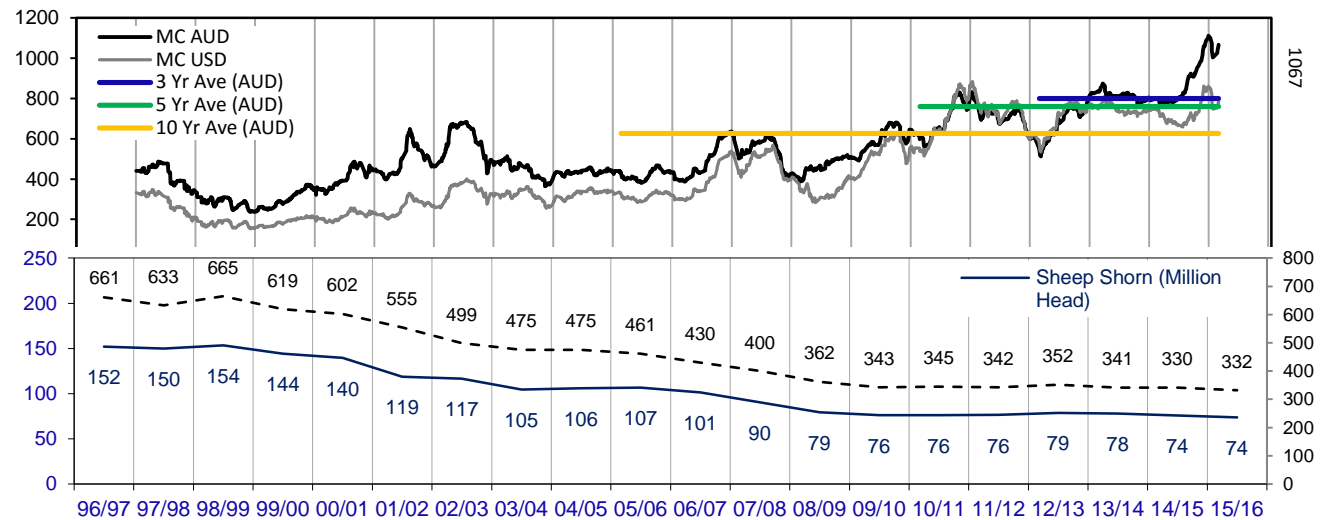
Page 16/25



The above 'Rise or Fall' graph, shows how often the market has risen or fallen in a given month over the past 10 years, it does not show the extent of the movement only the frequency of direction. The 'Monthly Price Movement' graph shows the extent of movement for each month, for the past 5 years.



The above graph, shows how often the '12 month high & low' have been achieved for a given month over the past 10 years. It is not a measure of probability.





Two Year Export Snapshot (Greasy Equivalent - Million Kilos)

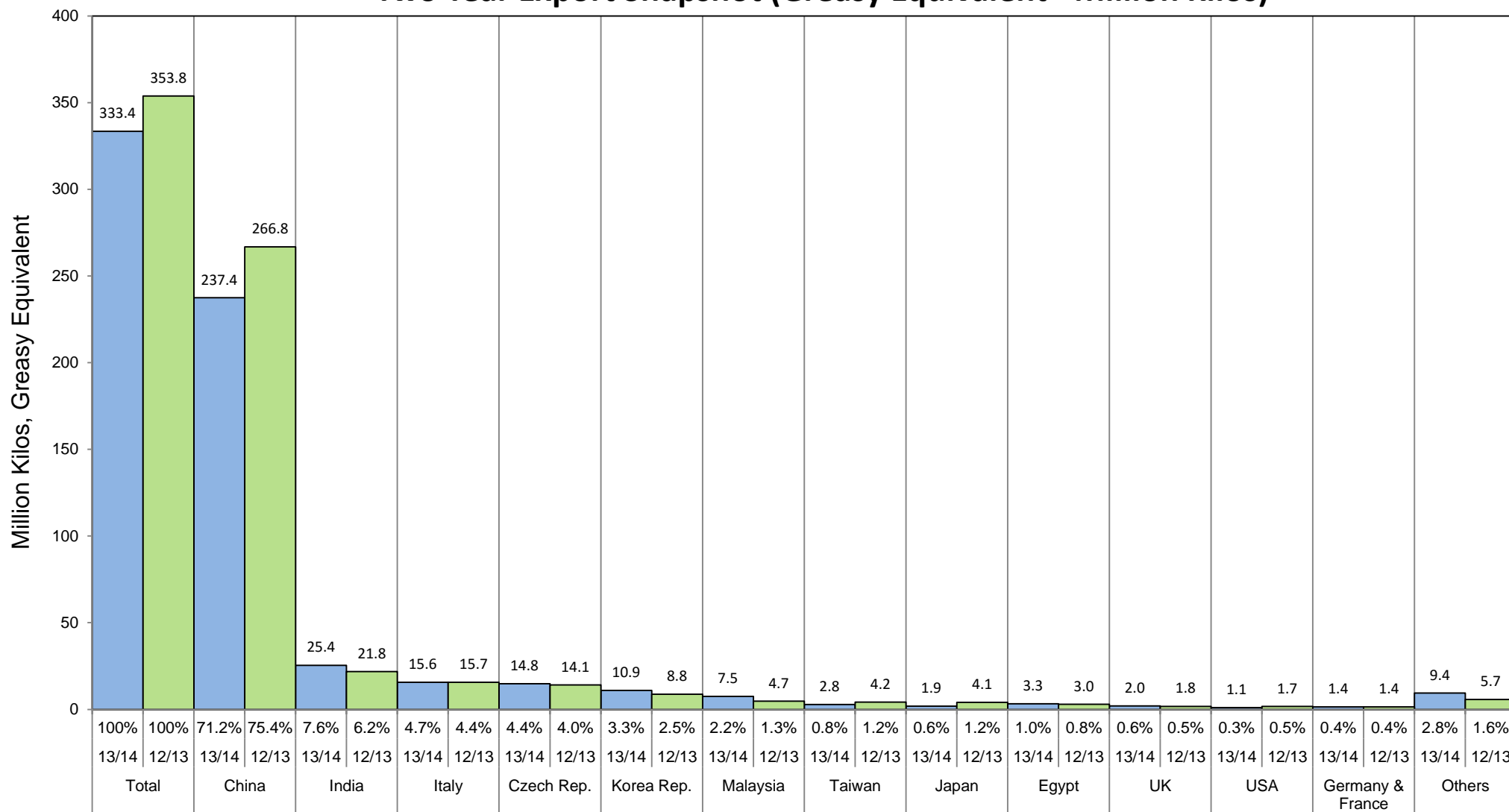




Table 7: Returns pr head for skirted fleece wool.

Skirted FLC Weight		Micron																	
9 Kg		16	16.5	17	17.5	18	18.5	19	19.5	20	21	22	23	24	25	26	28	30	32
Yield (Sch Dry)	25% Current	\$37	\$36	\$36	\$35	\$35	\$34	\$33	\$32	\$32	\$32	\$31	\$31	\$29	\$26	\$24	\$21	\$20	\$17
	10yr ave.	\$38	\$35	\$33	\$31	\$29	\$28	\$26	\$25	\$24	\$23	\$22	\$22	\$20	\$18	\$16	\$13	\$11	\$10
	30% Current	\$44	\$44	\$43	\$42	\$41	\$40	\$40	\$39	\$38	\$38	\$38	\$37	\$35	\$32	\$29	\$25	\$23	\$20
	10yr ave.	\$46	\$42	\$39	\$37	\$35	\$33	\$32	\$30	\$28	\$28	\$27	\$26	\$24	\$21	\$19	\$15	\$14	\$12
	35% Current	\$52	\$51	\$50	\$49	\$48	\$47	\$46	\$45	\$45	\$44	\$44	\$43	\$41	\$37	\$34	\$29	\$27	\$24
	10yr ave.	\$54	\$50	\$46	\$43	\$41	\$39	\$37	\$35	\$33	\$32	\$31	\$30	\$28	\$25	\$22	\$18	\$16	\$14
	40% Current	\$59	\$58	\$57	\$57	\$55	\$54	\$53	\$52	\$51	\$51	\$50	\$49	\$47	\$42	\$39	\$33	\$31	\$27
	10yr ave.	\$61	\$57	\$52	\$50	\$47	\$45	\$42	\$40	\$38	\$37	\$36	\$35	\$32	\$28	\$25	\$20	\$18	\$16
	45% Current	\$66	\$66	\$64	\$64	\$62	\$61	\$59	\$58	\$58	\$57	\$56	\$56	\$53	\$47	\$44	\$38	\$35	\$30
	10yr ave.	\$69	\$64	\$59	\$56	\$53	\$50	\$47	\$45	\$43	\$41	\$40	\$39	\$36	\$32	\$28	\$23	\$20	\$18
	50% Current	\$74	\$73	\$72	\$71	\$69	\$67	\$66	\$65	\$64	\$63	\$63	\$62	\$58	\$53	\$49	\$42	\$39	\$34
	10yr ave.	\$77	\$71	\$65	\$62	\$59	\$56	\$53	\$50	\$47	\$46	\$45	\$43	\$40	\$35	\$32	\$25	\$23	\$20
	55% Current	\$81	\$80	\$79	\$78	\$76	\$74	\$73	\$71	\$70	\$70	\$69	\$68	\$64	\$58	\$54	\$46	\$43	\$37
	10yr ave.	\$84	\$78	\$72	\$68	\$65	\$61	\$58	\$55	\$52	\$50	\$49	\$48	\$44	\$39	\$35	\$28	\$25	\$22
	60% Current	\$89	\$87	\$86	\$85	\$83	\$81	\$79	\$78	\$77	\$76	\$75	\$74	\$70	\$63	\$59	\$50	\$47	\$41
	10yr ave.	\$92	\$85	\$78	\$74	\$70	\$67	\$63	\$60	\$57	\$55	\$54	\$52	\$48	\$42	\$38	\$30	\$27	\$24
	65% Current	\$96	\$95	\$93	\$92	\$90	\$87	\$86	\$84	\$83	\$83	\$82	\$80	\$76	\$68	\$63	\$54	\$51	\$44
	10yr ave.	\$100	\$92	\$85	\$81	\$76	\$72	\$68	\$65	\$62	\$60	\$58	\$56	\$52	\$46	\$41	\$33	\$29	\$26
	70% Current	\$103	\$102	\$100	\$99	\$97	\$94	\$92	\$91	\$89	\$89	\$88	\$86	\$82	\$74	\$68	\$58	\$55	\$47
	10yr ave.	\$107	\$99	\$91	\$87	\$82	\$78	\$74	\$70	\$66	\$64	\$62	\$61	\$57	\$49	\$44	\$35	\$32	\$28
	75% Current	\$111	\$109	\$107	\$106	\$104	\$101	\$99	\$97	\$96	\$95	\$94	\$93	\$88	\$79	\$73	\$63	\$59	\$51
	10yr ave.	\$115	\$106	\$98	\$93	\$88	\$84	\$79	\$75	\$71	\$69	\$67	\$65	\$61	\$53	\$47	\$38	\$34	\$30
	80% Current	\$118	\$117	\$114	\$113	\$111	\$108	\$106	\$104	\$102	\$102	\$100	\$99	\$93	\$84	\$78	\$67	\$62	\$54
	10yr ave.	\$123	\$113	\$104	\$99	\$94	\$89	\$84	\$80	\$76	\$73	\$71	\$69	\$65	\$56	\$50	\$40	\$36	\$32
	85% Current	\$125	\$124	\$122	\$120	\$118	\$114	\$112	\$110	\$109	\$108	\$107	\$105	\$99	\$90	\$83	\$71	\$66	\$57
	10yr ave.	\$130	\$120	\$111	\$105	\$100	\$95	\$90	\$85	\$81	\$78	\$76	\$74	\$69	\$60	\$54	\$43	\$38	\$34

The above shows estimated returns per head for skirted fleece wool. These figures do not take into account the value of skirtings and oddments and do not take into account discounts that may apply for faults under individual circumstances. These figures are based on a market index of 100% and should be used as a guide only. Returns over \$30 / head for fleece wool are highlighted.



Table 8: Returns pr head for skirted fleece wool.

Skirted FLC Weight 8 Kg		Micron																	
		16	16.5	17	17.5	18	18.5	19	19.5	20	21	22	23	24	25	26	28	30	32
Yield (Sch Dry)	25% Current	\$33	\$32	\$32	\$31	\$31	\$30	\$29	\$29	\$28	\$28	\$28	\$27	\$26	\$23	\$22	\$19	\$17	\$15
	10yr ave.	\$34	\$31	\$29	\$28	\$26	\$25	\$23	\$22	\$21	\$20	\$20	\$19	\$18	\$16	\$14	\$11	\$10	\$9
	30% Current	\$39	\$39	\$38	\$38	\$37	\$36	\$35	\$35	\$34	\$34	\$33	\$33	\$31	\$28	\$26	\$22	\$21	\$18
	10yr ave.	\$41	\$38	\$35	\$33	\$31	\$30	\$28	\$27	\$25	\$24	\$24	\$23	\$22	\$19	\$17	\$13	\$12	\$11
	35% Current	\$46	\$45	\$45	\$44	\$43	\$42	\$41	\$40	\$40	\$40	\$39	\$38	\$36	\$33	\$30	\$26	\$24	\$21
	10yr ave.	\$48	\$44	\$41	\$39	\$37	\$35	\$33	\$31	\$30	\$29	\$28	\$27	\$25	\$22	\$20	\$16	\$14	\$12
	40% Current	\$52	\$52	\$51	\$50	\$49	\$48	\$47	\$46	\$45	\$45	\$45	\$44	\$42	\$37	\$35	\$30	\$28	\$24
	10yr ave.	\$55	\$50	\$46	\$44	\$42	\$40	\$37	\$35	\$34	\$33	\$32	\$31	\$29	\$25	\$22	\$18	\$16	\$14
	45% Current	\$59	\$58	\$57	\$57	\$55	\$54	\$53	\$52	\$51	\$51	\$50	\$49	\$47	\$42	\$39	\$33	\$31	\$27
	10yr ave.	\$61	\$57	\$52	\$50	\$47	\$45	\$42	\$40	\$38	\$37	\$36	\$35	\$32	\$28	\$25	\$20	\$18	\$16
	50% Current	\$66	\$65	\$64	\$63	\$61	\$60	\$59	\$58	\$57	\$56	\$56	\$55	\$52	\$47	\$43	\$37	\$35	\$30
	10yr ave.	\$68	\$63	\$58	\$55	\$52	\$50	\$47	\$44	\$42	\$41	\$40	\$39	\$36	\$31	\$28	\$22	\$20	\$18
	55% Current	\$72	\$71	\$70	\$69	\$68	\$66	\$65	\$63	\$62	\$62	\$61	\$60	\$57	\$51	\$48	\$41	\$38	\$33
	10yr ave.	\$75	\$69	\$64	\$61	\$57	\$55	\$51	\$49	\$46	\$45	\$44	\$42	\$39	\$34	\$31	\$24	\$22	\$19
	60% Current	\$79	\$78	\$76	\$75	\$74	\$72	\$70	\$69	\$68	\$68	\$67	\$66	\$62	\$56	\$52	\$44	\$42	\$36
	10yr ave.	\$82	\$75	\$70	\$66	\$63	\$59	\$56	\$53	\$51	\$49	\$48	\$46	\$43	\$37	\$34	\$27	\$24	\$21
	65% Current	\$85	\$84	\$83	\$82	\$80	\$78	\$76	\$75	\$74	\$73	\$72	\$71	\$67	\$61	\$56	\$48	\$45	\$39
	10yr ave.	\$89	\$82	\$75	\$72	\$68	\$64	\$61	\$58	\$55	\$53	\$52	\$50	\$47	\$41	\$36	\$29	\$26	\$23
	70% Current	\$92	\$91	\$89	\$88	\$86	\$84	\$82	\$81	\$80	\$79	\$78	\$77	\$73	\$66	\$61	\$52	\$49	\$42
	10yr ave.	\$95	\$88	\$81	\$77	\$73	\$69	\$66	\$62	\$59	\$57	\$55	\$54	\$50	\$44	\$39	\$31	\$28	\$25
	75% Current	\$98	\$97	\$95	\$94	\$92	\$90	\$88	\$87	\$85	\$85	\$84	\$82	\$78	\$70	\$65	\$56	\$52	\$45
	10yr ave.	\$102	\$94	\$87	\$83	\$78	\$74	\$70	\$66	\$63	\$61	\$59	\$58	\$54	\$47	\$42	\$33	\$30	\$27
	80% Current	\$105	\$104	\$102	\$100	\$98	\$96	\$94	\$92	\$91	\$90	\$89	\$88	\$83	\$75	\$69	\$59	\$56	\$48
	10yr ave.	\$109	\$101	\$93	\$88	\$83	\$79	\$75	\$71	\$67	\$65	\$63	\$62	\$57	\$50	\$45	\$36	\$32	\$28
	85% Current	\$112	\$110	\$108	\$107	\$105	\$102	\$100	\$98	\$97	\$96	\$95	\$93	\$88	\$80	\$74	\$63	\$59	\$51
	10yr ave.	\$116	\$107	\$99	\$94	\$89	\$84	\$80	\$75	\$72	\$69	\$67	\$65	\$61	\$53	\$48	\$38	\$34	\$30

The above shows estimated returns per head for skirted fleece wool. These figures do not take into account the value of skirtings and oddments and do not take into account discounts that may apply for faults under individual circumstances. These figures are based on a market index of 100% and should be used as a guide only. Returns over \$30 / head for fleece wool are highlighted.



Table 9: Returns pr head for skirted fleece wool.

Skirted FLC Weight		Micron																	
7 Kg		16	16.5	17	17.5	18	18.5	19	19.5	20	21	22	23	24	25	26	28	30	32
Yield (Sch Dry)	25% Current	\$29	\$28	\$28	\$27	\$27	\$26	\$26	\$25	\$25	\$25	\$24	\$24	\$23	\$20	\$19	\$16	\$15	\$13
	10yr ave.	\$30	\$28	\$25	\$24	\$23	\$22	\$20	\$19	\$18	\$18	\$17	\$17	\$16	\$14	\$12	\$10	\$9	\$8
	30% Current	\$34	\$34	\$33	\$33	\$32	\$31	\$31	\$30	\$30	\$30	\$29	\$29	\$27	\$25	\$23	\$19	\$18	\$16
	10yr ave.	\$36	\$33	\$30	\$29	\$27	\$26	\$25	\$23	\$22	\$21	\$21	\$20	\$19	\$16	\$15	\$12	\$11	\$9
	35% Current	\$40	\$40	\$39	\$38	\$38	\$37	\$36	\$35	\$35	\$35	\$34	\$34	\$32	\$29	\$27	\$23	\$21	\$18
	10yr ave.	\$42	\$39	\$36	\$34	\$32	\$30	\$29	\$27	\$26	\$25	\$24	\$24	\$22	\$19	\$17	\$14	\$12	\$11
	40% Current	\$46	\$45	\$45	\$44	\$43	\$42	\$41	\$40	\$40	\$40	\$39	\$38	\$36	\$33	\$30	\$26	\$24	\$21
	10yr ave.	\$48	\$44	\$41	\$39	\$37	\$35	\$33	\$31	\$30	\$29	\$28	\$27	\$25	\$22	\$20	\$16	\$14	\$12
	45% Current	\$52	\$51	\$50	\$49	\$48	\$47	\$46	\$45	\$45	\$44	\$44	\$43	\$41	\$37	\$34	\$29	\$27	\$24
	10yr ave.	\$54	\$50	\$46	\$43	\$41	\$39	\$37	\$35	\$33	\$32	\$31	\$30	\$28	\$25	\$22	\$18	\$16	\$14
	50% Current	\$57	\$57	\$56	\$55	\$54	\$52	\$51	\$50	\$50	\$49	\$49	\$48	\$45	\$41	\$38	\$32	\$30	\$26
	10yr ave.	\$60	\$55	\$51	\$48	\$46	\$43	\$41	\$39	\$37	\$36	\$35	\$34	\$31	\$27	\$25	\$19	\$18	\$16
	55% Current	\$63	\$62	\$61	\$60	\$59	\$58	\$56	\$56	\$55	\$54	\$54	\$53	\$50	\$45	\$42	\$36	\$33	\$29
	10yr ave.	\$66	\$61	\$56	\$53	\$50	\$48	\$45	\$43	\$41	\$39	\$38	\$37	\$35	\$30	\$27	\$21	\$19	\$17
	60% Current	\$69	\$68	\$67	\$66	\$65	\$63	\$62	\$61	\$60	\$59	\$59	\$58	\$55	\$49	\$46	\$39	\$36	\$32
	10yr ave.	\$72	\$66	\$61	\$58	\$55	\$52	\$49	\$46	\$44	\$43	\$42	\$40	\$38	\$33	\$29	\$23	\$21	\$19
	65% Current	\$75	\$74	\$72	\$71	\$70	\$68	\$67	\$66	\$65	\$64	\$63	\$62	\$59	\$53	\$49	\$42	\$39	\$34
	10yr ave.	\$78	\$72	\$66	\$63	\$59	\$56	\$53	\$50	\$48	\$46	\$45	\$44	\$41	\$35	\$32	\$25	\$23	\$20
	70% Current	\$80	\$79	\$78	\$77	\$75	\$73	\$72	\$71	\$70	\$69	\$68	\$67	\$64	\$57	\$53	\$45	\$43	\$37
	10yr ave.	\$83	\$77	\$71	\$68	\$64	\$61	\$57	\$54	\$52	\$50	\$49	\$47	\$44	\$38	\$34	\$27	\$25	\$22
	75% Current	\$86	\$85	\$83	\$82	\$81	\$78	\$77	\$76	\$75	\$74	\$73	\$72	\$68	\$61	\$57	\$49	\$46	\$39
	10yr ave.	\$89	\$83	\$76	\$72	\$68	\$65	\$61	\$58	\$55	\$53	\$52	\$51	\$47	\$41	\$37	\$29	\$26	\$23
	80% Current	\$92	\$91	\$89	\$88	\$86	\$84	\$82	\$81	\$80	\$79	\$78	\$77	\$73	\$66	\$61	\$52	\$49	\$42
	10yr ave.	\$95	\$88	\$81	\$77	\$73	\$69	\$66	\$62	\$59	\$57	\$55	\$54	\$50	\$44	\$39	\$31	\$28	\$25
	85% Current	\$98	\$96	\$95	\$93	\$91	\$89	\$87	\$86	\$84	\$84	\$83	\$82	\$77	\$70	\$65	\$55	\$52	\$45
	10yr ave.	\$101	\$94	\$86	\$82	\$78	\$74	\$70	\$66	\$63	\$61	\$59	\$57	\$53	\$46	\$42	\$33	\$30	\$26

The above shows estimated returns per head for skirted fleece wool. These figures do not take into account the value of skirtings and oddments and do not take into account discounts that may apply for faults under individual circumstances. These figures are based on a market index of 100% and should be used as a guide only. Returns over \$30 / head for fleece wool are highlighted.



Table 10: Returns pr head for skirted fleece wool.

Skirted FLC Weight		Micron																	
6 Kg		16	16.5	17	17.5	18	18.5	19	19.5	20	21	22	23	24	25	26	28	30	32
Yield (Sch Dry)	25% Current	\$25	\$24	\$24	\$24	\$23	\$22	\$22	\$22	\$21	\$21	\$21	\$21	\$19	\$18	\$16	\$14	\$13	\$11
	10yr ave.	\$26	\$24	\$22	\$21	\$20	\$19	\$18	\$17	\$16	\$15	\$15	\$14	\$13	\$12	\$11	\$8	\$8	\$7
	30% Current	\$30	\$29	\$29	\$28	\$28	\$27	\$26	\$26	\$26	\$25	\$25	\$25	\$23	\$21	\$20	\$17	\$16	\$14
	10yr ave.	\$31	\$28	\$26	\$25	\$23	\$22	\$21	\$20	\$19	\$18	\$18	\$17	\$16	\$14	\$13	\$10	\$9	\$8
	35% Current	\$34	\$34	\$33	\$33	\$32	\$31	\$31	\$30	\$30	\$30	\$29	\$29	\$27	\$25	\$23	\$19	\$18	\$16
	10yr ave.	\$36	\$33	\$30	\$29	\$27	\$26	\$25	\$23	\$22	\$21	\$21	\$20	\$19	\$16	\$15	\$12	\$11	\$9
	40% Current	\$39	\$39	\$38	\$38	\$37	\$36	\$35	\$35	\$34	\$34	\$33	\$33	\$31	\$28	\$26	\$22	\$21	\$18
	10yr ave.	\$41	\$38	\$35	\$33	\$31	\$30	\$28	\$27	\$25	\$24	\$24	\$23	\$22	\$19	\$17	\$13	\$12	\$11
	45% Current	\$44	\$44	\$43	\$42	\$41	\$40	\$40	\$39	\$38	\$38	\$38	\$37	\$35	\$32	\$29	\$25	\$23	\$20
	10yr ave.	\$46	\$42	\$39	\$37	\$35	\$33	\$32	\$30	\$28	\$28	\$27	\$26	\$24	\$21	\$19	\$15	\$14	\$12
	50% Current	\$49	\$49	\$48	\$47	\$46	\$45	\$44	\$43	\$43	\$42	\$42	\$41	\$39	\$35	\$33	\$28	\$26	\$23
	10yr ave.	\$51	\$47	\$44	\$41	\$39	\$37	\$35	\$33	\$32	\$31	\$30	\$29	\$27	\$23	\$21	\$17	\$15	\$13
	55% Current	\$54	\$53	\$52	\$52	\$51	\$49	\$48	\$48	\$47	\$47	\$46	\$45	\$43	\$39	\$36	\$31	\$29	\$25
	10yr ave.	\$56	\$52	\$48	\$45	\$43	\$41	\$39	\$37	\$35	\$34	\$33	\$32	\$30	\$26	\$23	\$18	\$17	\$15
	60% Current	\$59	\$58	\$57	\$57	\$55	\$54	\$53	\$52	\$51	\$51	\$50	\$49	\$47	\$42	\$39	\$33	\$31	\$27
	10yr ave.	\$61	\$57	\$52	\$50	\$47	\$45	\$42	\$40	\$38	\$37	\$36	\$35	\$32	\$28	\$25	\$20	\$18	\$16
	65% Current	\$64	\$63	\$62	\$61	\$60	\$58	\$57	\$56	\$55	\$55	\$54	\$53	\$51	\$46	\$42	\$36	\$34	\$29
	10yr ave.	\$66	\$61	\$57	\$54	\$51	\$48	\$46	\$43	\$41	\$40	\$39	\$38	\$35	\$30	\$27	\$22	\$20	\$17
	70% Current	\$69	\$68	\$67	\$66	\$65	\$63	\$62	\$61	\$60	\$59	\$59	\$58	\$55	\$49	\$46	\$39	\$36	\$32
	10yr ave.	\$72	\$66	\$61	\$58	\$55	\$52	\$49	\$46	\$44	\$43	\$42	\$40	\$38	\$33	\$29	\$23	\$21	\$19
	75% Current	\$74	\$73	\$72	\$71	\$69	\$67	\$66	\$65	\$64	\$63	\$63	\$62	\$58	\$53	\$49	\$42	\$39	\$34
	10yr ave.	\$77	\$71	\$65	\$62	\$59	\$56	\$53	\$50	\$47	\$46	\$45	\$43	\$40	\$35	\$32	\$25	\$23	\$20
	80% Current	\$79	\$78	\$76	\$75	\$74	\$72	\$70	\$69	\$68	\$68	\$67	\$66	\$62	\$56	\$52	\$44	\$42	\$36
	10yr ave.	\$82	\$75	\$70	\$66	\$63	\$59	\$56	\$53	\$51	\$49	\$48	\$46	\$43	\$37	\$34	\$27	\$24	\$21
	85% Current	\$84	\$83	\$81	\$80	\$78	\$76	\$75	\$74	\$72	\$72	\$71	\$70	\$66	\$60	\$55	\$47	\$44	\$38
	10yr ave.	\$87	\$80	\$74	\$70	\$67	\$63	\$60	\$56	\$54	\$52	\$51	\$49	\$46	\$40	\$36	\$28	\$26	\$23

The above shows estimated returns per head for skirted fleece wool. These figures do not take into account the value of skirtings and oddments and do not take into account discounts that may apply for faults under individual circumstances. These figures are based on a market index of 100% and should be used as a guide only. Returns over \$30 / head for fleece wool are highlighted.



Table 11: Returns pr head for skirted fleece wool.

Skirted FLC Weight		Micron																	
5 Kg		16	16.5	17	17.5	18	18.5	19	19.5	20	21	22	23	24	25	26	28	30	32
Yield (Sch Dry)	25% Current	\$21	\$20	\$20	\$20	\$19	\$19	\$18	\$18	\$18	\$18	\$17	\$17	\$16	\$15	\$14	\$12	\$11	\$9
	10yr ave.	\$21	\$20	\$18	\$17	\$16	\$15	\$15	\$14	\$13	\$13	\$12	\$12	\$11	\$10	\$9	\$7	\$6	\$6
	30% Current	\$25	\$24	\$24	\$24	\$23	\$22	\$22	\$22	\$21	\$21	\$21	\$21	\$19	\$18	\$16	\$14	\$13	\$11
	10yr ave.	\$26	\$24	\$22	\$21	\$20	\$19	\$18	\$17	\$16	\$15	\$15	\$14	\$13	\$12	\$11	\$8	\$8	\$7
	35% Current	\$29	\$28	\$28	\$27	\$27	\$26	\$26	\$25	\$25	\$25	\$24	\$24	\$23	\$20	\$19	\$16	\$15	\$13
	10yr ave.	\$30	\$28	\$25	\$24	\$23	\$22	\$20	\$19	\$18	\$18	\$17	\$17	\$16	\$14	\$12	\$10	\$9	\$8
	40% Current	\$33	\$32	\$32	\$31	\$31	\$30	\$29	\$29	\$28	\$28	\$28	\$27	\$26	\$23	\$22	\$19	\$17	\$15
	10yr ave.	\$34	\$31	\$29	\$28	\$26	\$25	\$23	\$22	\$21	\$20	\$20	\$19	\$18	\$16	\$14	\$11	\$10	\$9
	45% Current	\$37	\$36	\$36	\$35	\$35	\$34	\$33	\$32	\$32	\$32	\$31	\$31	\$29	\$26	\$24	\$21	\$20	\$17
	10yr ave.	\$38	\$35	\$33	\$31	\$29	\$28	\$26	\$25	\$24	\$23	\$22	\$22	\$20	\$18	\$16	\$13	\$11	\$10
	50% Current	\$41	\$41	\$40	\$39	\$38	\$37	\$37	\$36	\$36	\$35	\$35	\$34	\$32	\$29	\$27	\$23	\$22	\$19
	10yr ave.	\$43	\$39	\$36	\$34	\$33	\$31	\$29	\$28	\$26	\$25	\$25	\$24	\$22	\$20	\$18	\$14	\$13	\$11
	55% Current	\$45	\$45	\$44	\$43	\$42	\$41	\$40	\$40	\$39	\$39	\$38	\$38	\$36	\$32	\$30	\$25	\$24	\$21
	10yr ave.	\$47	\$43	\$40	\$38	\$36	\$34	\$32	\$30	\$29	\$28	\$27	\$26	\$25	\$21	\$19	\$15	\$14	\$12
	60% Current	\$49	\$49	\$48	\$47	\$46	\$45	\$44	\$43	\$43	\$42	\$42	\$41	\$39	\$35	\$33	\$28	\$26	\$23
	10yr ave.	\$51	\$47	\$44	\$41	\$39	\$37	\$35	\$33	\$32	\$31	\$30	\$29	\$27	\$23	\$21	\$17	\$15	\$13
	65% Current	\$53	\$53	\$52	\$51	\$50	\$49	\$48	\$47	\$46	\$46	\$45	\$45	\$42	\$38	\$35	\$30	\$28	\$24
	10yr ave.	\$55	\$51	\$47	\$45	\$42	\$40	\$38	\$36	\$34	\$33	\$32	\$31	\$29	\$25	\$23	\$18	\$16	\$14
	70% Current	\$57	\$57	\$56	\$55	\$54	\$52	\$51	\$50	\$50	\$49	\$49	\$48	\$45	\$41	\$38	\$32	\$30	\$26
	10yr ave.	\$60	\$55	\$51	\$48	\$46	\$43	\$41	\$39	\$37	\$36	\$35	\$34	\$31	\$27	\$25	\$19	\$18	\$16
	75% Current	\$62	\$61	\$60	\$59	\$58	\$56	\$55	\$54	\$53	\$53	\$52	\$51	\$49	\$44	\$41	\$35	\$33	\$28
	10yr ave.	\$64	\$59	\$54	\$52	\$49	\$46	\$44	\$42	\$40	\$38	\$37	\$36	\$34	\$29	\$26	\$21	\$19	\$17
	80% Current	\$66	\$65	\$64	\$63	\$61	\$60	\$59	\$58	\$57	\$56	\$56	\$55	\$52	\$47	\$43	\$37	\$35	\$30
	10yr ave.	\$68	\$63	\$58	\$55	\$52	\$50	\$47	\$44	\$42	\$41	\$40	\$39	\$36	\$31	\$28	\$22	\$20	\$18
	85% Current	\$70	\$69	\$68	\$67	\$65	\$63	\$62	\$61	\$60	\$60	\$59	\$58	\$55	\$50	\$46	\$39	\$37	\$32
	10yr ave.	\$72	\$67	\$62	\$59	\$55	\$53	\$50	\$47	\$45	\$43	\$42	\$41	\$38	\$33	\$30	\$24	\$21	\$19

The above shows estimated returns per head for skirted fleece wool. These figures do not take into account the value of skirtings and oddments and do not take into account discounts that may apply for faults under individual circumstances. These figures are based on a market index of 100% and should be used as a guide only. Returns over \$30 / head for fleece wool are highlighted.



Table 12: Returns pr head for skirted fleece wool.

Skirted FLC Weight		Micron																	
4 Kg		16	16.5	17	17.5	18	18.5	19	19.5	20	21	22	23	24	25	26	28	30	32
Yield (Sch Dry)	25% Current	\$16	\$16	\$16	\$16	\$15	\$15	\$15	\$14	\$14	\$14	\$14	\$14	\$13	\$12	\$11	\$9	\$9	\$8
	10yr ave.	\$17	\$16	\$15	\$14	\$13	\$12	\$12	\$11	\$11	\$10	\$10	\$10	\$9	\$8	\$7	\$6	\$5	\$4
	30% Current	\$20	\$19	\$19	\$19	\$18	\$18	\$18	\$17	\$17	\$17	\$17	\$16	\$16	\$14	\$13	\$11	\$10	\$9
	10yr ave.	\$20	\$19	\$17	\$17	\$16	\$15	\$14	\$13	\$13	\$12	\$12	\$12	\$11	\$9	\$8	\$7	\$6	\$5
	35% Current	\$23	\$23	\$22	\$22	\$22	\$21	\$21	\$20	\$20	\$20	\$20	\$19	\$18	\$16	\$15	\$13	\$12	\$11
	10yr ave.	\$24	\$22	\$20	\$19	\$18	\$17	\$16	\$15	\$15	\$14	\$14	\$13	\$13	\$11	\$10	\$8	\$7	\$6
	40% Current	\$26	\$26	\$25	\$25	\$25	\$24	\$23	\$23	\$23	\$23	\$22	\$22	\$21	\$19	\$17	\$15	\$14	\$12
	10yr ave.	\$27	\$25	\$23	\$22	\$21	\$20	\$19	\$18	\$17	\$16	\$16	\$15	\$14	\$12	\$11	\$9	\$8	\$7
	45% Current	\$30	\$29	\$29	\$28	\$28	\$27	\$26	\$26	\$26	\$25	\$25	\$25	\$23	\$21	\$20	\$17	\$16	\$14
	10yr ave.	\$31	\$28	\$26	\$25	\$23	\$22	\$21	\$20	\$19	\$18	\$18	\$17	\$16	\$14	\$13	\$10	\$9	\$8
	50% Current	\$33	\$32	\$32	\$31	\$31	\$30	\$29	\$29	\$28	\$28	\$28	\$27	\$26	\$23	\$22	\$19	\$17	\$15
	10yr ave.	\$34	\$31	\$29	\$28	\$26	\$25	\$23	\$22	\$21	\$20	\$20	\$19	\$18	\$16	\$14	\$11	\$10	\$9
	55% Current	\$36	\$36	\$35	\$35	\$34	\$33	\$32	\$32	\$31	\$31	\$31	\$30	\$29	\$26	\$24	\$20	\$19	\$17
	10yr ave.	\$37	\$35	\$32	\$30	\$29	\$27	\$26	\$24	\$23	\$22	\$22	\$21	\$20	\$17	\$15	\$12	\$11	\$10
	60% Current	\$39	\$39	\$38	\$38	\$37	\$36	\$35	\$35	\$34	\$34	\$33	\$33	\$31	\$28	\$26	\$22	\$21	\$18
	10yr ave.	\$41	\$38	\$35	\$33	\$31	\$30	\$28	\$27	\$25	\$24	\$24	\$23	\$22	\$19	\$17	\$13	\$12	\$11
	65% Current	\$43	\$42	\$41	\$41	\$40	\$39	\$38	\$37	\$37	\$37	\$36	\$36	\$34	\$30	\$28	\$24	\$23	\$20
	10yr ave.	\$44	\$41	\$38	\$36	\$34	\$32	\$30	\$29	\$27	\$26	\$26	\$25	\$23	\$20	\$18	\$14	\$13	\$12
	70% Current	\$46	\$45	\$45	\$44	\$43	\$42	\$41	\$40	\$40	\$40	\$39	\$38	\$36	\$33	\$30	\$26	\$24	\$21
	10yr ave.	\$48	\$44	\$41	\$39	\$37	\$35	\$33	\$31	\$30	\$29	\$28	\$27	\$25	\$22	\$20	\$16	\$14	\$12
	75% Current	\$49	\$49	\$48	\$47	\$46	\$45	\$44	\$43	\$43	\$42	\$42	\$41	\$39	\$35	\$33	\$28	\$26	\$23
	10yr ave.	\$51	\$47	\$44	\$41	\$39	\$37	\$35	\$33	\$32	\$31	\$30	\$29	\$27	\$23	\$21	\$17	\$15	\$13
	80% Current	\$52	\$52	\$51	\$50	\$49	\$48	\$47	\$46	\$45	\$45	\$45	\$44	\$42	\$37	\$35	\$30	\$28	\$24
	10yr ave.	\$55	\$50	\$46	\$44	\$42	\$40	\$37	\$35	\$34	\$33	\$32	\$31	\$29	\$25	\$22	\$18	\$16	\$14
	85% Current	\$56	\$55	\$54	\$53	\$52	\$51	\$50	\$49	\$48	\$48	\$47	\$47	\$44	\$40	\$37	\$32	\$30	\$26
	10yr ave.	\$58	\$53	\$49	\$47	\$44	\$42	\$40	\$38	\$36	\$35	\$34	\$33	\$30	\$27	\$24	\$19	\$17	\$15

The above shows estimated returns per head for skirted fleece wool. These figures do not take into account the value of skirtings and oddments and do not take into account discounts that may apply for faults under individual circumstances. These figures are based on a market index of 100% and should be used as a guide only. Returns over \$30 / head for fleece wool are highlighted.



Table 13: Returns pr head for skirted fleece wool.

Skirted FLC Weight		Micron																	
3 Kg		16	16.5	17	17.5	18	18.5	19	19.5	20	21	22	23	24	25	26	28	30	32
Yield (Sch Dry)	25% Current	\$12	\$12	\$12	\$12	\$12	\$11	\$11	\$11	\$11	\$11	\$10	\$10	\$10	\$9	\$8	\$7	\$7	\$6
	10yr ave.	\$13	\$12	\$11	\$10	\$10	\$9	\$9	\$8	\$8	\$8	\$7	\$7	\$7	\$6	\$5	\$4	\$4	\$3
	30% Current	\$15	\$15	\$14	\$14	\$14	\$13	\$13	\$13	\$13	\$13	\$13	\$12	\$12	\$11	\$10	\$8	\$8	\$7
	10yr ave.	\$15	\$14	\$13	\$12	\$12	\$11	\$11	\$10	\$9	\$9	\$9	\$9	\$8	\$7	\$6	\$5	\$5	\$4
	35% Current	\$17	\$17	\$17	\$16	\$16	\$16	\$15	\$15	\$15	\$15	\$15	\$14	\$14	\$12	\$11	\$10	\$9	\$8
	10yr ave.	\$18	\$17	\$15	\$14	\$14	\$13	\$12	\$12	\$11	\$11	\$10	\$10	\$9	\$8	\$7	\$6	\$5	\$5
	40% Current	\$20	\$19	\$19	\$19	\$18	\$18	\$18	\$17	\$17	\$17	\$17	\$16	\$16	\$14	\$13	\$11	\$10	\$9
	10yr ave.	\$20	\$19	\$17	\$17	\$16	\$15	\$14	\$13	\$13	\$12	\$12	\$12	\$11	\$9	\$8	\$7	\$6	\$5
	45% Current	\$22	\$22	\$21	\$21	\$21	\$20	\$20	\$19	\$19	\$19	\$19	\$19	\$18	\$16	\$15	\$13	\$12	\$10
	10yr ave.	\$23	\$21	\$20	\$19	\$18	\$17	\$16	\$15	\$14	\$14	\$13	\$13	\$12	\$11	\$9	\$8	\$7	\$6
	50% Current	\$25	\$24	\$24	\$24	\$23	\$22	\$22	\$22	\$21	\$21	\$21	\$21	\$19	\$18	\$16	\$14	\$13	\$11
	10yr ave.	\$26	\$24	\$22	\$21	\$20	\$19	\$18	\$17	\$16	\$15	\$15	\$14	\$13	\$12	\$11	\$8	\$8	\$7
	55% Current	\$27	\$27	\$26	\$26	\$25	\$25	\$24	\$24	\$23	\$23	\$23	\$23	\$21	\$19	\$18	\$15	\$14	\$12
	10yr ave.	\$28	\$26	\$24	\$23	\$22	\$20	\$19	\$18	\$17	\$17	\$16	\$16	\$15	\$13	\$12	\$9	\$8	\$7
	60% Current	\$30	\$29	\$29	\$28	\$28	\$27	\$26	\$26	\$26	\$25	\$25	\$25	\$23	\$21	\$20	\$17	\$16	\$14
	10yr ave.	\$31	\$28	\$26	\$25	\$23	\$22	\$21	\$20	\$19	\$18	\$18	\$17	\$16	\$14	\$13	\$10	\$9	\$8
	65% Current	\$32	\$32	\$31	\$31	\$30	\$29	\$29	\$28	\$28	\$28	\$27	\$27	\$25	\$23	\$21	\$18	\$17	\$15
	10yr ave.	\$33	\$31	\$28	\$27	\$25	\$24	\$23	\$22	\$21	\$20	\$19	\$19	\$17	\$15	\$14	\$11	\$10	\$9
	70% Current	\$34	\$34	\$33	\$33	\$32	\$31	\$31	\$30	\$30	\$30	\$29	\$29	\$27	\$25	\$23	\$19	\$18	\$16
	10yr ave.	\$36	\$33	\$30	\$29	\$27	\$26	\$25	\$23	\$22	\$21	\$21	\$20	\$19	\$16	\$15	\$12	\$11	\$9
	75% Current	\$37	\$36	\$36	\$35	\$35	\$34	\$33	\$32	\$32	\$32	\$31	\$31	\$29	\$26	\$24	\$21	\$20	\$17
	10yr ave.	\$38	\$35	\$33	\$31	\$29	\$28	\$26	\$25	\$24	\$23	\$22	\$22	\$20	\$18	\$16	\$13	\$11	\$10
	80% Current	\$39	\$39	\$38	\$38	\$37	\$36	\$35	\$35	\$34	\$34	\$33	\$33	\$31	\$28	\$26	\$22	\$21	\$18
	10yr ave.	\$41	\$38	\$35	\$33	\$31	\$30	\$28	\$27	\$25	\$24	\$24	\$23	\$22	\$19	\$17	\$13	\$12	\$11
	85% Current	\$42	\$41	\$41	\$40	\$39	\$38	\$37	\$37	\$36	\$36	\$36	\$35	\$33	\$30	\$28	\$24	\$22	\$19
	10yr ave.	\$43	\$40	\$37	\$35	\$33	\$32	\$30	\$28	\$27	\$26	\$25	\$25	\$23	\$20	\$18	\$14	\$13	\$11

The above shows estimated returns per head for skirted fleece wool. These figures do not take into account the value of skirtings and oddments and do not take into account discounts that may apply for faults under individual circumstances. These figures are based on a market index of 100% and should be used as a guide only. Returns over \$30 / head for fleece wool are highlighted.



Table 14: Returns pr head for skirted fleece wool.

Skirted FLC Weight		Micron																	
2 Kg		16	16.5	17	17.5	18	18.5	19	19.5	20	21	22	23	24	25	26	28	30	32
Yield (Sch Dry)	25% Current	\$8	\$8	\$8	\$8	\$8	\$7	\$7	\$7	\$7	\$7	\$7	\$7	\$6	\$6	\$5	\$5	\$4	\$4
	10yr ave.	\$9	\$8	\$7	\$7	\$7	\$6	\$6	\$6	\$5	\$5	\$5	\$5	\$4	\$4	\$4	\$3	\$3	\$2
	30% Current	\$10	\$10	\$10	\$9	\$9	\$9	\$9	\$9	\$9	\$8	\$8	\$8	\$8	\$7	\$7	\$6	\$5	\$5
	10yr ave.	\$10	\$9	\$9	\$8	\$8	\$7	\$7	\$7	\$6	\$6	\$6	\$6	\$5	\$5	\$4	\$3	\$3	\$3
	35% Current	\$11	\$11	\$11	\$11	\$11	\$10	\$10	\$10	\$10	\$10	\$10	\$10	\$9	\$8	\$8	\$6	\$6	\$5
	10yr ave.	\$12	\$11	\$10	\$10	\$9	\$9	\$8	\$8	\$7	\$7	\$7	\$7	\$6	\$5	\$5	\$4	\$4	\$3
	40% Current	\$13	\$13	\$13	\$13	\$12	\$12	\$12	\$12	\$11	\$11	\$11	\$11	\$10	\$9	\$9	\$7	\$7	\$6
	10yr ave.	\$14	\$13	\$12	\$11	\$10	\$10	\$9	\$9	\$8	\$8	\$8	\$8	\$7	\$6	\$6	\$4	\$4	\$4
	45% Current	\$15	\$15	\$14	\$14	\$14	\$13	\$13	\$13	\$13	\$13	\$13	\$12	\$12	\$11	\$10	\$8	\$8	\$7
	10yr ave.	\$15	\$14	\$13	\$12	\$12	\$11	\$11	\$10	\$9	\$9	\$9	\$9	\$8	\$7	\$6	\$5	\$5	\$4
	50% Current	\$16	\$16	\$16	\$16	\$15	\$15	\$15	\$14	\$14	\$14	\$14	\$14	\$13	\$12	\$11	\$9	\$9	\$8
	10yr ave.	\$17	\$16	\$15	\$14	\$13	\$12	\$12	\$11	\$11	\$10	\$10	\$10	\$9	\$8	\$7	\$6	\$5	\$4
	55% Current	\$18	\$18	\$17	\$17	\$17	\$16	\$16	\$16	\$16	\$16	\$15	\$15	\$14	\$13	\$12	\$10	\$10	\$8
	10yr ave.	\$19	\$17	\$16	\$15	\$14	\$14	\$13	\$12	\$12	\$11	\$11	\$11	\$10	\$9	\$8	\$6	\$6	\$5
	60% Current	\$20	\$19	\$19	\$19	\$18	\$18	\$18	\$17	\$17	\$17	\$17	\$16	\$16	\$14	\$13	\$11	\$10	\$9
	10yr ave.	\$20	\$19	\$17	\$17	\$16	\$15	\$14	\$13	\$13	\$12	\$12	\$12	\$11	\$9	\$8	\$7	\$6	\$5
	65% Current	\$21	\$21	\$21	\$20	\$20	\$19	\$19	\$19	\$18	\$18	\$18	\$18	\$17	\$15	\$14	\$12	\$11	\$10
	10yr ave.	\$22	\$20	\$19	\$18	\$17	\$16	\$15	\$14	\$14	\$13	\$13	\$13	\$12	\$10	\$9	\$7	\$7	\$6
	70% Current	\$23	\$23	\$22	\$22	\$22	\$21	\$21	\$20	\$20	\$20	\$20	\$19	\$18	\$16	\$15	\$13	\$12	\$11
	10yr ave.	\$24	\$22	\$20	\$19	\$18	\$17	\$16	\$15	\$15	\$14	\$14	\$13	\$13	\$11	\$10	\$8	\$7	\$6
	75% Current	\$25	\$24	\$24	\$24	\$23	\$22	\$22	\$22	\$21	\$21	\$21	\$21	\$19	\$18	\$16	\$14	\$13	\$11
	10yr ave.	\$26	\$24	\$22	\$21	\$20	\$19	\$18	\$17	\$16	\$15	\$15	\$14	\$13	\$12	\$11	\$8	\$8	\$7
	80% Current	\$26	\$26	\$25	\$25	\$25	\$24	\$23	\$23	\$23	\$23	\$22	\$22	\$21	\$19	\$17	\$15	\$14	\$12
	10yr ave.	\$27	\$25	\$23	\$22	\$21	\$20	\$19	\$18	\$17	\$16	\$16	\$15	\$14	\$12	\$11	\$9	\$8	\$7
	85% Current	\$28	\$28	\$27	\$27	\$26	\$25	\$25	\$25	\$24	\$24	\$24	\$23	\$22	\$20	\$18	\$16	\$15	\$13
	10yr ave.	\$29	\$27	\$25	\$23	\$22	\$21	\$20	\$19	\$18	\$17	\$17	\$16	\$15	\$13	\$12	\$9	\$9	\$8

The above shows estimated returns per head for skirted fleece wool. These figures do not take into account the value of skirtings and oddments and do not take into account discounts that may apply for faults under individual circumstances. These figures are based on a market index of 100% and should be used as a guide only. Returns over \$30 / head for fleece wool are highlighted.