



# JEMALONG WOOL BULLETIN

(week ending 14/03/2013)

**Table 1: Northern Region Micron Price Guides**

CURRENT MARKET			12 MONTH COMPARISONS								3 YEAR COMPARISONS					Percentile	*10 YEAR COMPARISONS					Percentile
Mic.	14/03/2013	7/03/2013	14/03/2012	Now		Now		Now				Now		* 16-17.5um since Aug 05			Now					
Price Guides	Current Price	Weekly Change	This time Last Year	compared to Last Year	12 Month Low	compared to Low	12 Month High	compared to High	Low	High	Average	compared to 3yr ave		Low	High	*10 year Average	compared to *10yr ave					
NRI	1119	-22 -2.0%	1263	-144 -11%	944	+175 19%	1270	-151 -12%	894	1491	1146	-27 -2%	44%	657	1491	934	+185 20%					
16*	1690	-50 -3.0%	2070	-380 -18%	1550	+140 9%	2100	-410 -20%	1540	2800	2028	-338 -17%	26%	1390	2800	1801	-111 -6%					
16.5*	1535	-35 -2.3%	1940	-405 -21%	1390	+145 10%	1940	-405 -21%	1395	2680	1867	-332 -18%	28%	1272	2680	1654	-119 -7%					
17*	1420	-25 -1.8%	1750	-330 -19%	1290	+130 10%	1750	-330 -19%	1230	2530	1708	-288 -17%	30%	1100	2530	1429	-9 -1%					
17.5*	1335	-70 -5.2%	1650	-315 -19%	1230	+105 9%	1650	-315 -19%	1185	2360	1606	-271 -17%	28%	1020	2360	1435	-100 -7%					
18	1319	-50 -3.8%	1571	-252 -16%	1148	+171 15%	1580	-261 -17%	1145	2193	1518	-199 -13%	32%	916	2193	1254	+65 5%					
18.5	1296	-42 -3.2%	1525	-229 -15%	1116	+180 16%	1532	-236 -15%	1096	1963	1433	-137 -10%	33%	843	1963	1187	+109 9%					
19	1286	-32 -2.5%	1491	-205 -14%	1084	+202 19%	1492	-206 -14%	1044	1776	1350	-64 -5%	38%	803	1776	1116	+170 15%					
19.5	1255	-33 -2.6%	1455	-200 -14%	1057	+198 19%	1458	-203 -14%	956	1670	1271	-16 -1%	40%	749	1670	1049	+206 20%					
20	1221	-34 -2.8%	1419	-198 -14%	1047	+174 17%	1423	-202 -14%	909	1588	1210	+11 1%	44%	700	1588	992	+229 23%					
21	1211	-26 -2.1%	1393	-182 -13%	1036	+175 17%	1400	-189 -14%	886	1522	1179	+32 3%	47%	668	1522	950	+261 27%					
22	1194	-26 -2.2%	1344	-150 -11%	1015	+179 18%	1349	-155 -11%	860	1461	1143	+51 4%	50%	659	1461	921	+273 30%					
23	1166	-25 -2.1%	1280	-114 -9%	1002	+164 16%	1285	-119 -9%	833	1347	1097	+69 6%	58%	651	1347	891	+275 31%					
24	1083	-18 -1.7%	1188	-105 -9%	940	+143 15%	1213	-130 -11%	780	1213	1002	+81 8%	70%	638	1213	833	+250 30%					
25	931	+7 0.8%	953	-22 -2%	852	+79 9%	1049	-118 -11%	660	1049	876	+55 6%	68%	566	1067	734	+197 27%					
26	826	+3 0.4%	818	+8 1%	786	+40 5%	939	-113 -12%	580	939	777	+49 6%	62%	532	970	665	+161 24%					
28	646	+9 1.4%	638	+8 1%	550	+96 17%	659	-13 -2%	442	734	588	+58 10%	74%	424	734	518	+128 25%					
30	594	-11 -1.9%	571	+23 4%	506	+88 17%	605	-11 -2%	387	670	536	+58 11%	78%	343	670	457	+137 30%					
32	498	+2 0.4%	508	-10 -2%	422	+76 18%	519	-21 -4%	350	638	478	+20 4%	61%	297	638	408	+90 22%					
MC	753	+5 0.7%	727	+26 4%	512	+241 47%	758	-5 -1%	532	831	682	+71 10%	85%	380	831	541	+212 39%					

**Note:**

\* Due to the irregular market quoting for some fine wool categories, figures shown relating to micron categories below 18 micron are an estimate based on the AWEX Premium & Discounts Report & other available information.

\* For any category, where there is insufficient quantity offered to enable AWEX to quote, a quote will be provided based on the best available information.

\* 10 Year data is not available for some micron categories, which may result in blank spaces in the table above.

**Definitions:**

\* A Percentile, is a value on a scale of one hundred that indicates the percent of a distribution that is equal to or below it. In general a percentile between 25% and 75% is considered normal, a percentile below 25% is considered below normal and a percentile above 75% is considered above normal.

Three and ten year percentiles shown in the table above, detail the period of time during the past 3 & 10 years that the market has traded either at or below its current price.

The higher the percentile, the stronger the market.

Source: Australian Wool Exchange, Australian Wool Innovation, Riemann, x-rates.com

Disclaimer: Jemalong Wool Pty Ltd make no representations about the content and suitability of the information contained in this report. Specifically, Jemalong Wool does not warrant, guarantee or make any representations regarding the correctness, accuracy, reliability, currency, or any other aspect regarding characteristics or use of information presented in these materials. The user accepts sole responsibility and risk associated with the use and results of these materials, irrespective of the purpose of which such use or results are applied. In no event shall Jemalong Wool be liable for any loss or damages (including without limitation special, or consequential damages), where in an action of contract, negligence, or tort, arising out of or in connection with the use of performance of these materials.



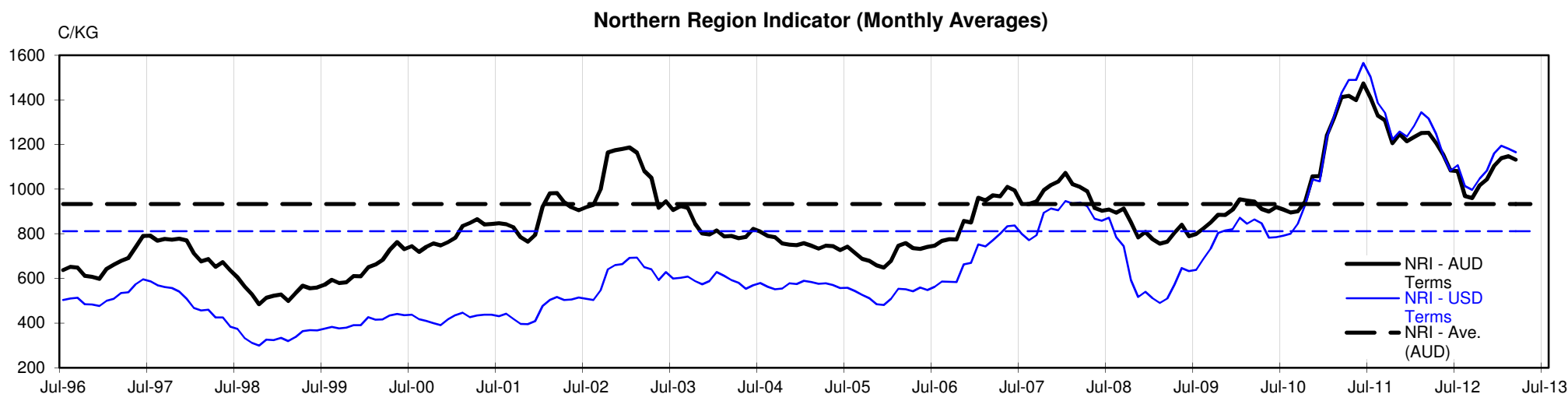
MARKET COMMENTARY

One Australian Dollar = 1.034950 US as of: 14/03/2013

NORTHERN REGION –Sale Week 37/12 (43,560 bales offered nationally)

Wednesdays market eased with the finer microns and higher mid break lots most affected. 17.5 to 18.5 micron fleece lost around 20 cents, while 19 micron and broader were 5-10 cents cheaper. Despite good support 18 to 19 micron skirtings with 5-7% Vm also lost ground, falling by 10 cents, however the broader end remained firm. Locks ended the day 5 cents dearer while stains and crutchings were firm and unchanged. 27 to 30 micron crossbreeds were softer, losing 5-10 cents. 8.7% PI

Thursdays merino fleece market retreated further, with 18 micron and finer finishing 30-40 cents cheaper, with the exception of 17 microns which fell 20 cents. 18.5 micron and broader also shedded 20-25 cents, while good wide spread competition helped maintain the skirting market, leaving all descriptions fully firm. The oddment market remained strong, with locks improving by 5 cents while stains and crutchings were tending in sellers favour. In contrast to the merino fleece market, 26 to 29 micron crossbreeds rose 10-15 cents. 6.1% PI.





# JEMALONG WOOL BULLETIN

(week ending 14/03/2013)

Table 2: Riemann Forwards, latest trades as at: Thursday 14/3/2013 13:58

Any highlighted in yellow are recent trades, trading since: Friday, 8 March 2013

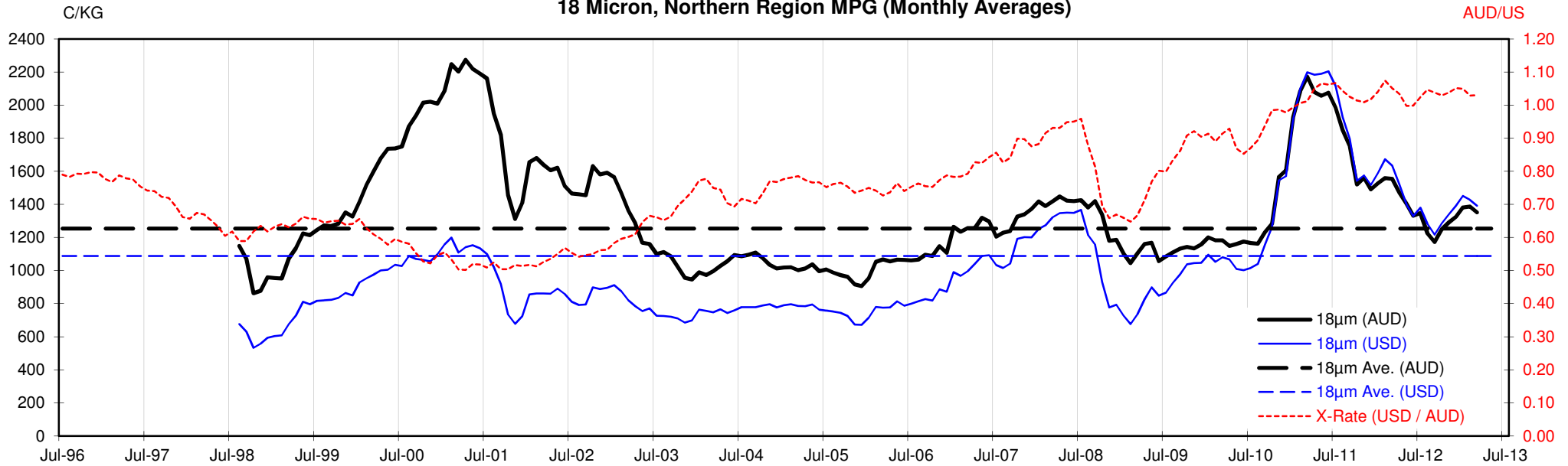
CONTRACT MICRON	18um	19um	20um	21um	22um	23um	28um	30um
Mar-2013		7/03/13 1320	29/11/12 1180	13/02/13 1205			11/10/12 555	
Apr-2013		14/03/13 1290	26/10/12 1185	14/03/13 1210				
May-2013		14/03/13 1290	9/01/13 1250	12/03/13 1245				
Jun-2013		14/03/13 1290		14/03/13 1210				
Jul-2013		14/02/13 1315	5/03/13 1205	14/03/13 1190				
Aug-2013		14/02/13 1300		12/03/13 1200				
Sep-2013		8/03/13 1300		1/02/13 1215				
Oct-2013		18/01/13 1260		6/03/13 1190	5/03/13 1150	29/01/13 1120		
Nov-2013		5/03/13 1310		19/02/13 1200				
Dec-2013		30/01/13 1320		6/03/13 1175	29/01/13 1150			
Jan-2014		30/01/13 1280						
Feb-2014		18/12/12 1250		30/01/13 1180				
Mar-2014								
Apr-2014								
May-2014								
Jun-2014								
Jul-2014								
Aug-2014								
Sep-2014								
Oct-2014								
Nov-2014								
Dec-2014								
Jan-2015								

Explanatory Notes: Prices quoted reflect the most recent trades, at time of print.

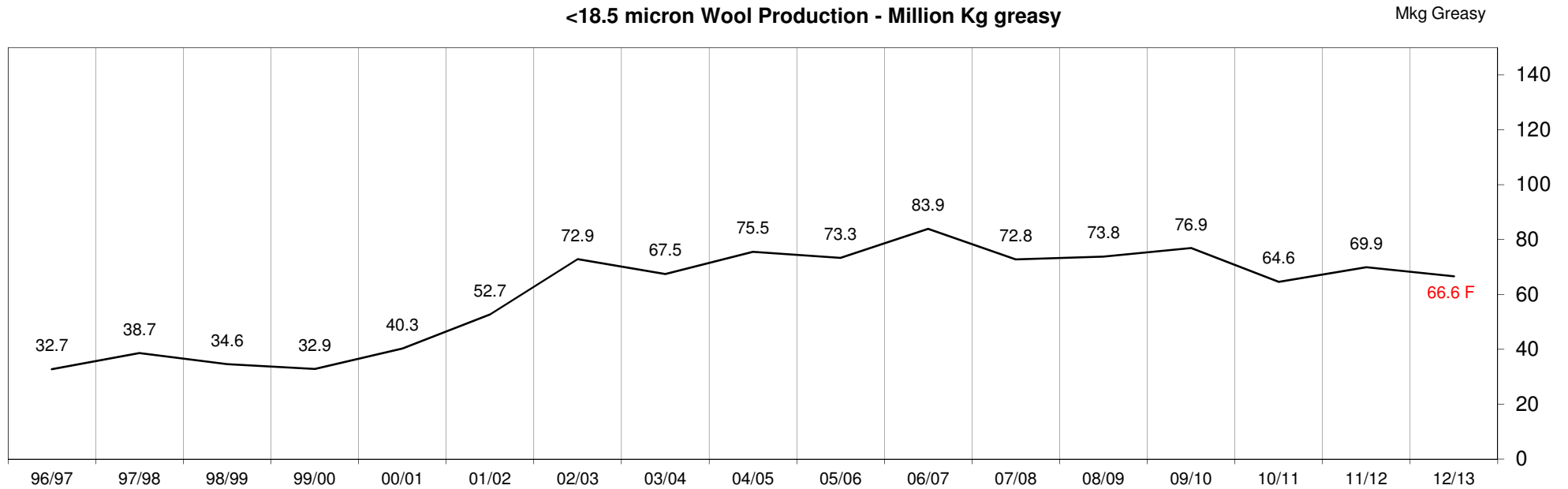
Disclaimer: While all due care has been taken in the preparation of this document, no warranty is made as to its accuracy, reliability or completeness. To the extent permitted by law neither Jemalong or their sources including subsidiaries and staff, accept liability to any person for loss or damage arising from the use of this information.

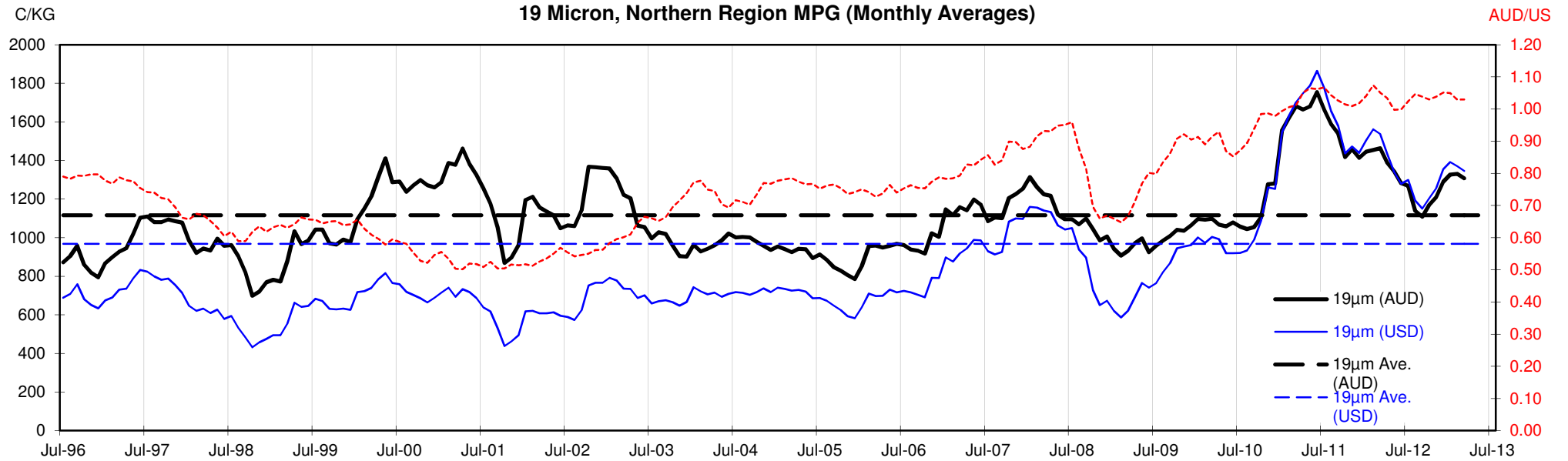


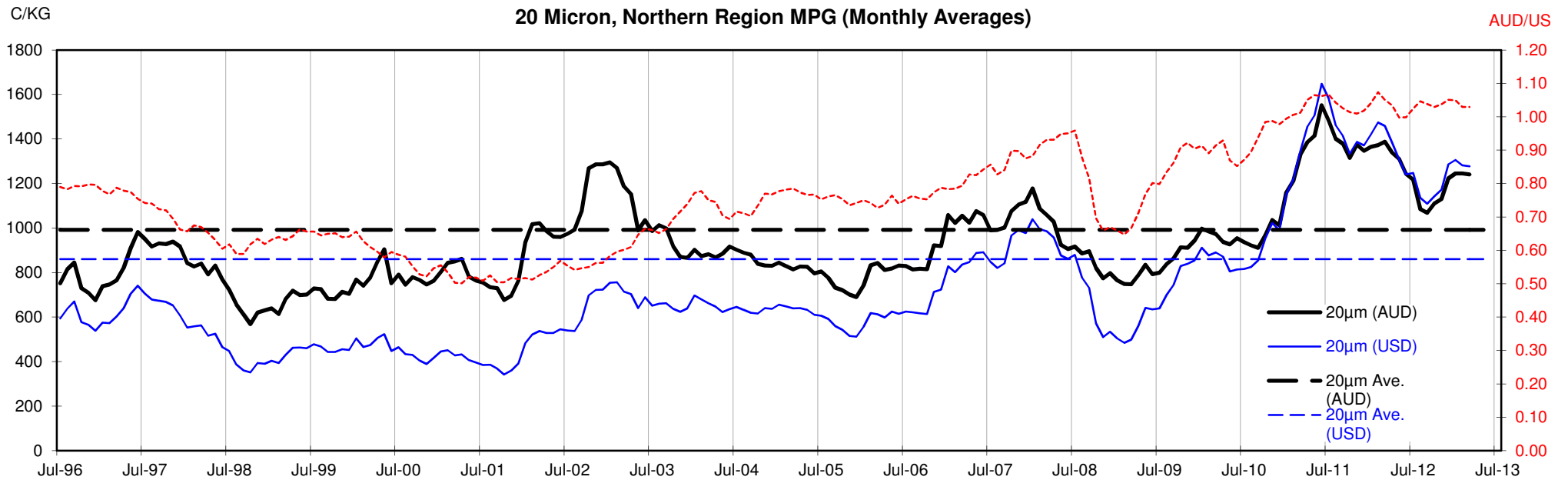
18 Micron, Northern Region MPG (Monthly Averages)

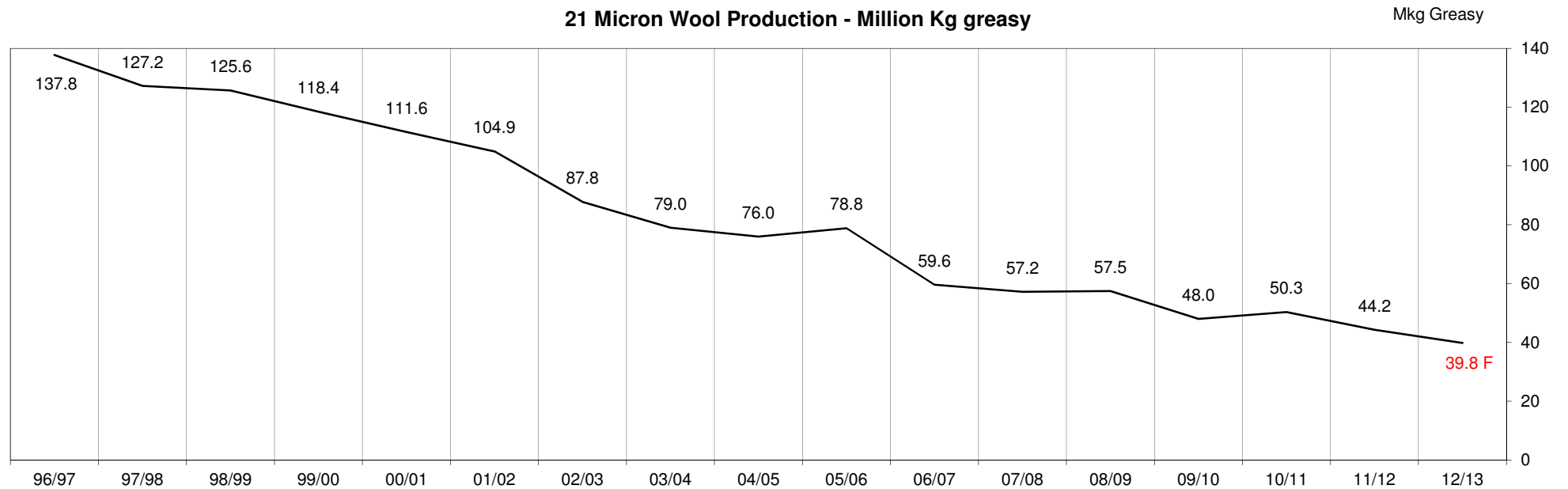
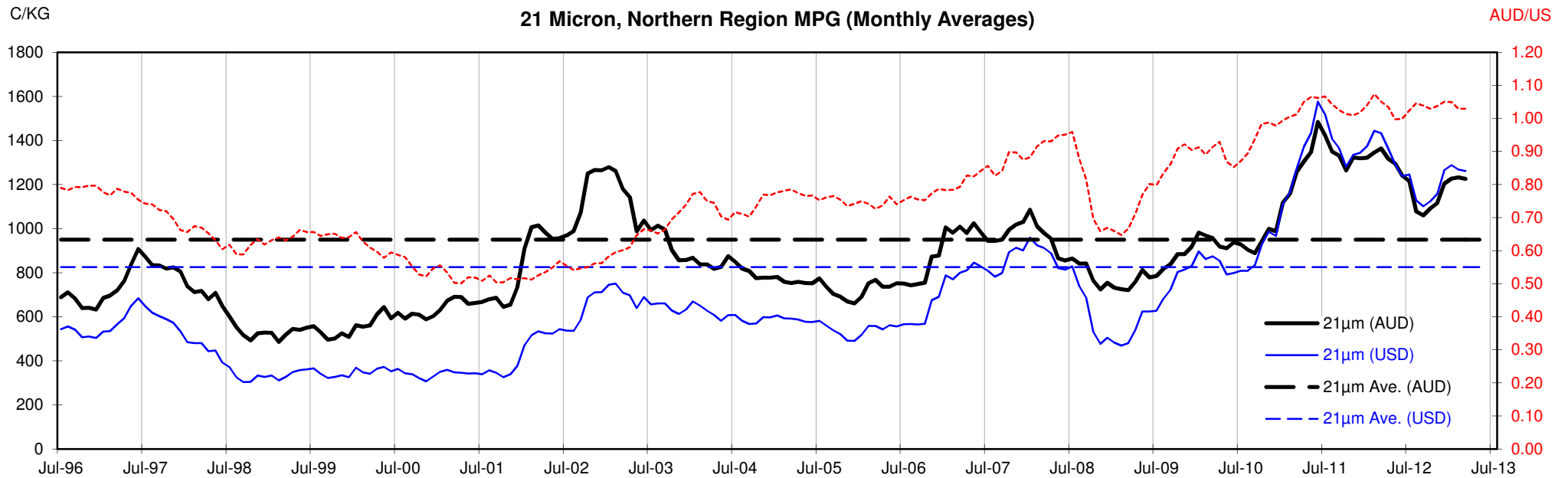


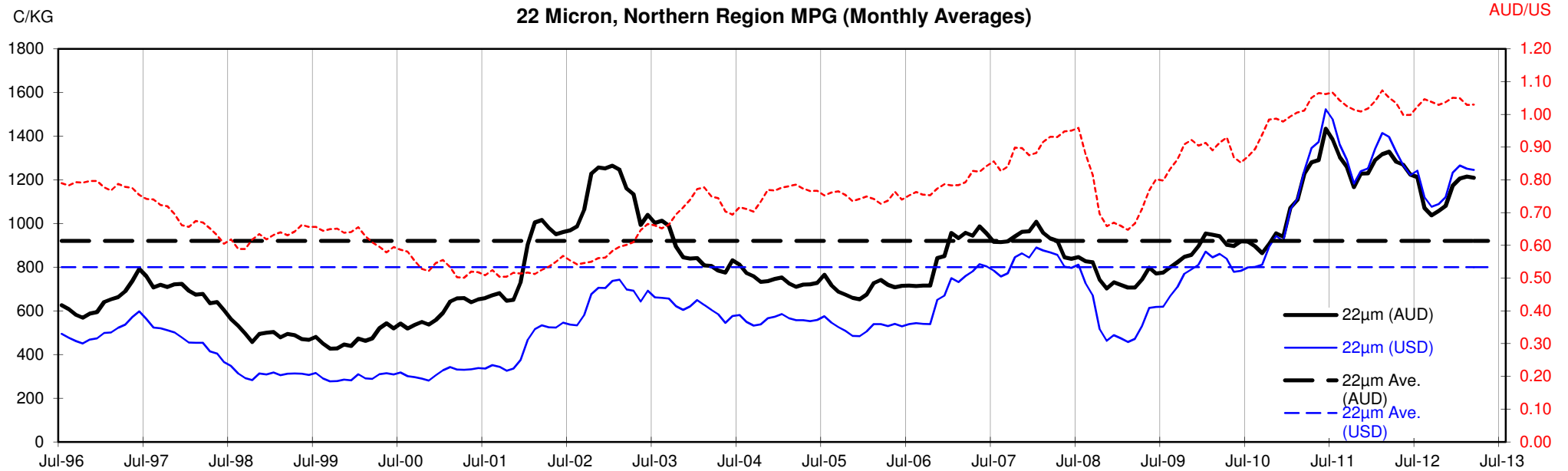
<18.5 micron Wool Production - Million Kg greasy



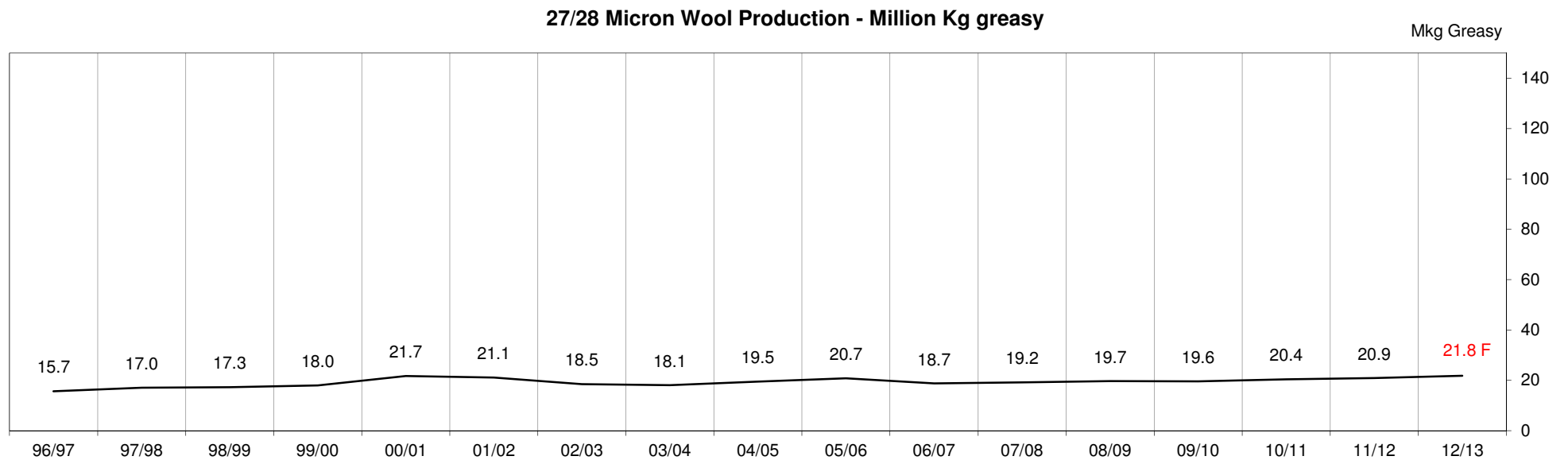
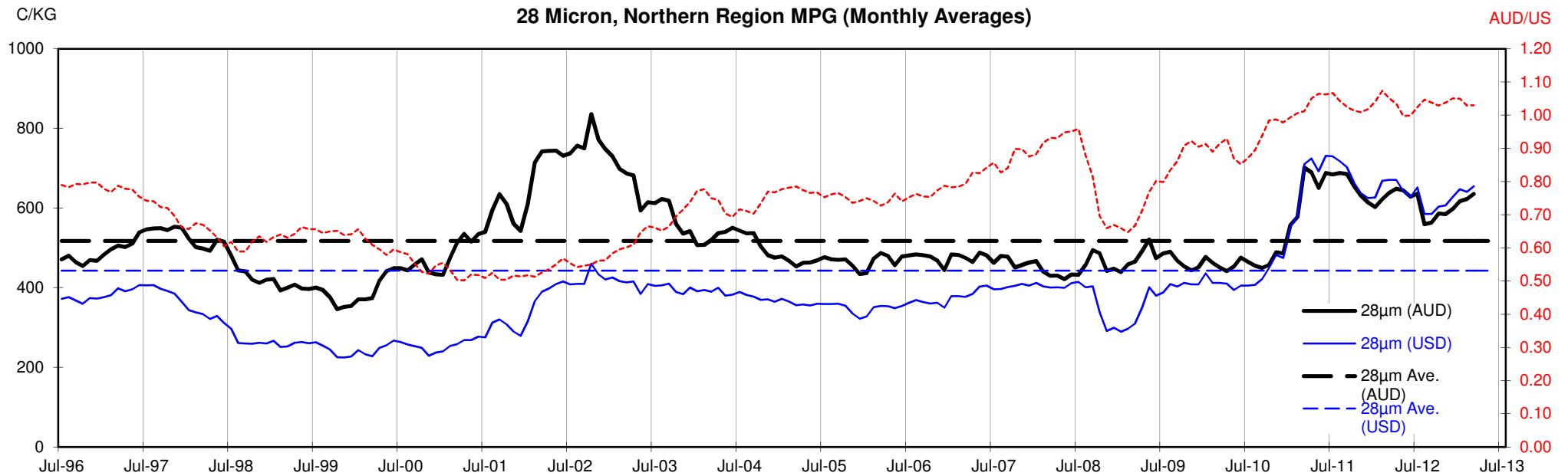












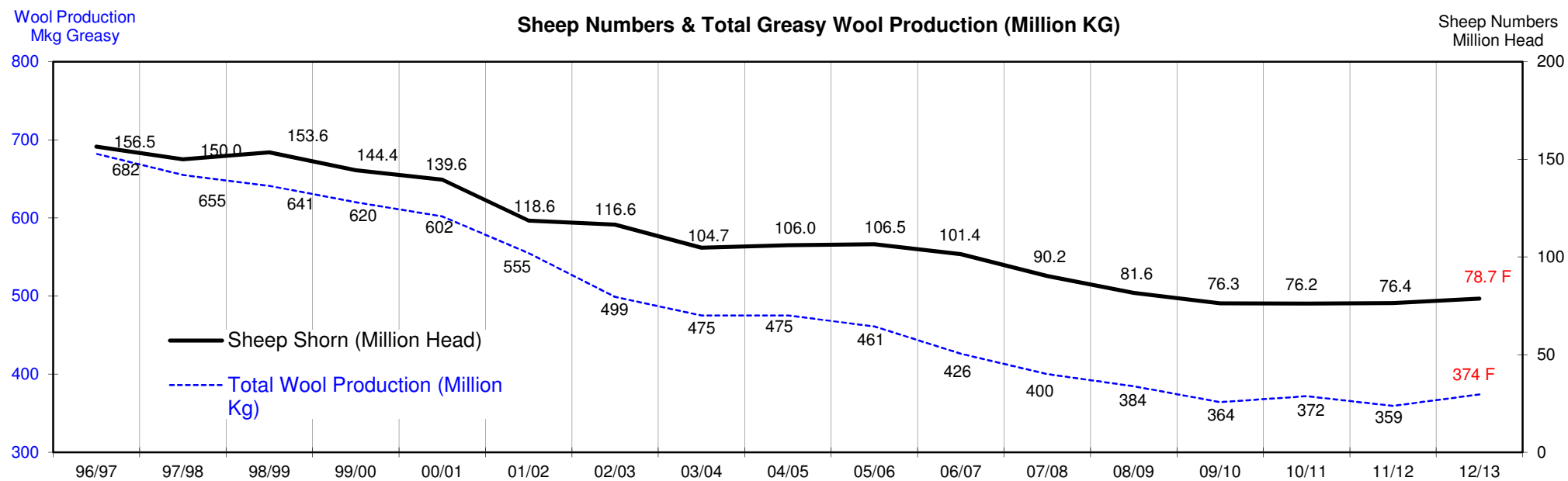
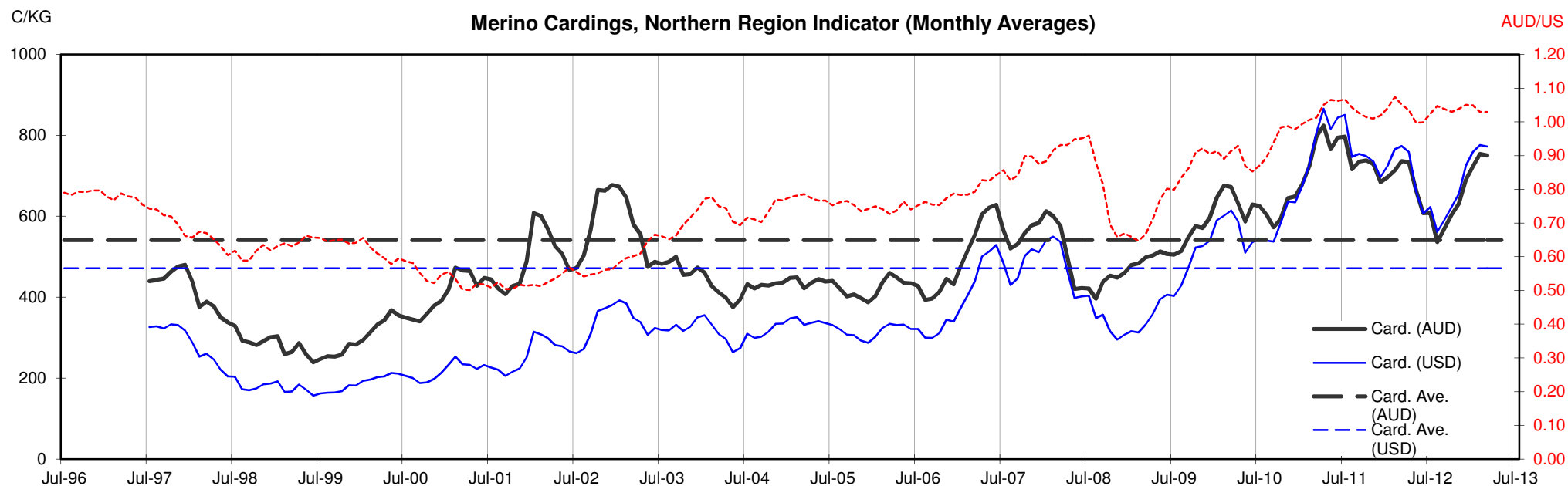




Table 13: Returns pr head for skirted fleece wool.

Skirted FLC Weight			Micron																	
			16	16.5	17	17.5	18	18.5	19	19.5	20	21	22	23	24	25	26	28	30	32
Yield (Sch Dry)	9 Kg																			
	25%	Current 10yr ave.	\$38 \$41	\$35 \$37	\$32 \$32	\$30 \$32	\$30 \$28	\$29 \$27	\$29 \$25	\$28 \$24	\$27 \$22	\$27 \$21	\$27 \$21	\$26 \$20	\$24 \$19	\$21 \$17	\$19 \$15	\$15 \$12	\$13 \$10	\$11 \$9
	30%	Current 10yr ave.	\$46 \$49	\$41 \$45	\$38 \$39	\$36 \$39	\$36 \$34	\$35 \$32	\$35 \$30	\$34 \$28	\$33 \$27	\$33 \$26	\$32 \$25	\$31 \$24	\$29 \$22	\$25 \$20	\$22 \$18	\$17 \$14	\$16 \$12	\$13 \$11
	35%	Current 10yr ave.	\$53 \$57	\$48 \$52	\$45 \$45	\$42 \$45	\$42 \$40	\$41 \$37	\$41 \$35	\$40 \$33	\$38 \$31	\$38 \$30	\$38 \$29	\$37 \$28	\$34 \$26	\$29 \$23	\$26 \$21	\$20 \$16	\$19 \$14	\$16 \$13
	40%	Current 10yr ave.	\$61 \$65	\$55 \$60	\$51 \$51	\$48 \$52	\$47 \$45	\$47 \$43	\$46 \$40	\$45 \$38	\$44 \$36	\$44 \$34	\$43 \$33	\$42 \$32	\$39 \$30	\$34 \$26	\$30 \$24	\$23 \$19	\$21 \$16	\$18 \$15
	45%	Current 10yr ave.	\$68 \$73	\$62 \$67	\$58 \$58	\$54 \$58	\$53 \$51	\$52 \$48	\$52 \$45	\$51 \$42	\$49 \$40	\$49 \$38	\$48 \$37	\$47 \$36	\$44 \$34	\$38 \$30	\$33 \$27	\$26 \$21	\$24 \$19	\$20 \$17
	50%	Current 10yr ave.	\$76 \$81	\$69 \$74	\$64 \$64	\$60 \$65	\$59 \$56	\$58 \$53	\$58 \$50	\$56 \$47	\$55 \$45	\$54 \$43	\$54 \$41	\$52 \$40	\$49 \$37	\$42 \$33	\$37 \$30	\$29 \$23	\$27 \$21	\$22 \$18
	55%	Current 10yr ave.	\$84 \$89	\$76 \$82	\$70 \$71	\$66 \$71	\$65 \$62	\$64 \$59	\$64 \$55	\$62 \$52	\$60 \$49	\$60 \$47	\$59 \$46	\$58 \$44	\$54 \$41	\$46 \$36	\$41 \$33	\$32 \$26	\$29 \$23	\$25 \$20
	60%	Current 10yr ave.	\$91 \$97	\$83 \$89	\$77 \$77	\$72 \$77	\$71 \$68	\$70 \$64	\$69 \$60	\$68 \$57	\$66 \$54	\$65 \$51	\$64 \$50	\$63 \$48	\$58 \$45	\$50 \$40	\$45 \$36	\$35 \$28	\$32 \$25	\$27 \$22
	65%	Current 10yr ave.	\$99 \$105	\$90 \$97	\$83 \$84	\$78 \$84	\$77 \$73	\$76 \$69	\$75 \$65	\$73 \$61	\$71 \$58	\$71 \$56	\$70 \$54	\$68 \$52	\$63 \$49	\$54 \$43	\$48 \$39	\$38 \$30	\$35 \$27	\$29 \$24
	70%	Current 10yr ave.	\$106 \$113	\$97 \$104	\$89 \$90	\$84 \$90	\$83 \$79	\$82 \$75	\$81 \$70	\$79 \$66	\$77 \$62	\$76 \$60	\$75 \$58	\$73 \$56	\$68 \$52	\$59 \$46	\$52 \$42	\$41 \$33	\$37 \$29	\$31 \$26
	75%	Current 10yr ave.	\$114 \$122	\$104 \$112	\$96 \$96	\$90 \$97	\$89 \$85	\$87 \$80	\$87 \$75	\$85 \$71	\$82 \$67	\$82 \$64	\$81 \$62	\$79 \$60	\$73 \$56	\$63 \$50	\$56 \$45	\$44 \$35	\$40 \$31	\$34 \$28
	80%	Current 10yr ave.	\$122 \$130	\$111 \$119	\$102 \$103	\$96 \$103	\$95 \$90	\$93 \$85	\$93 \$80	\$90 \$76	\$88 \$71	\$87 \$68	\$86 \$66	\$84 \$64	\$78 \$60	\$67 \$53	\$59 \$48	\$47 \$37	\$43 \$33	\$36 \$29
	85%	Current 10yr ave.	\$129 \$138	\$117 \$127	\$109 \$109	\$102 \$110	\$101 \$96	\$99 \$91	\$98 \$85	\$96 \$80	\$93 \$76	\$93 \$73	\$91 \$70	\$89 \$68	\$83 \$64	\$71 \$56	\$63 \$51	\$49 \$40	\$45 \$35	\$38 \$31

The above shows estimated returns per head for skirted fleece wool. These figures do not take into account the value of skirtings and oddments and do not take into account discounts that may apply for faults under individual circumstances. These figures are based on a market index of 100% and should be used as a guide only. Returns over \$30 / head for fleece wool are highlighted.

Source: Australian Wool Exchange, Australian Wool Innovation, Sydney Futures Exchange, x-rates.com

Disclaimer: While all due care has been taken in the preparation of this document, no warranty is made as to its accuracy, reliability or completeness. To the extent permitted by law neither Jemalong or their sources including subsidiaries and staff, accept liability to any person for loss or damage arising from the use of this information.



Table 14: Returns pr head for skirted fleece wool.

Skirted FLC Weight		Micron																	
8 Kg		16	16.5	17	17.5	18	18.5	19	19.5	20	21	22	23	24	25	26	28	30	32
Yield (Sch Dry)	25% Current	\$34	\$31	\$28	\$27	\$26	\$26	\$26	\$25	\$24	\$24	\$24	\$23	\$22	\$19	\$17	\$13	\$12	\$10
	10yr ave.	\$36	\$33	\$29	\$29	\$25	\$24	\$22	\$21	\$20	\$19	\$18	\$18	\$17	\$15	\$13	\$10	\$9	\$8
	30% Current	\$41	\$37	\$34	\$32	\$32	\$31	\$31	\$30	\$29	\$29	\$29	\$28	\$26	\$22	\$20	\$16	\$14	\$12
	10yr ave.	\$43	\$40	\$34	\$34	\$30	\$28	\$27	\$25	\$24	\$23	\$22	\$21	\$20	\$18	\$16	\$12	\$11	\$10
	35% Current	\$47	\$43	\$40	\$37	\$37	\$36	\$36	\$35	\$34	\$34	\$33	\$33	\$30	\$26	\$23	\$18	\$17	\$14
	10yr ave.	\$50	\$46	\$40	\$40	\$35	\$33	\$31	\$29	\$28	\$27	\$26	\$25	\$23	\$21	\$19	\$15	\$13	\$11
	40% Current	\$54	\$49	\$45	\$43	\$42	\$41	\$41	\$40	\$39	\$39	\$38	\$37	\$35	\$30	\$26	\$21	\$19	\$16
	10yr ave.	\$58	\$53	\$46	\$46	\$40	\$38	\$36	\$34	\$32	\$30	\$29	\$29	\$27	\$23	\$21	\$17	\$15	\$13
	45% Current	\$61	\$55	\$51	\$48	\$47	\$47	\$46	\$45	\$44	\$44	\$43	\$42	\$39	\$34	\$30	\$23	\$21	\$18
	10yr ave.	\$65	\$60	\$51	\$52	\$45	\$43	\$40	\$38	\$36	\$34	\$33	\$32	\$30	\$26	\$24	\$19	\$16	\$15
	50% Current	\$68	\$61	\$57	\$53	\$53	\$52	\$51	\$50	\$49	\$48	\$48	\$47	\$43	\$37	\$33	\$26	\$24	\$20
	10yr ave.	\$72	\$66	\$57	\$57	\$50	\$47	\$45	\$42	\$40	\$38	\$37	\$36	\$33	\$29	\$27	\$21	\$18	\$16
	55% Current	\$74	\$68	\$62	\$59	\$58	\$57	\$57	\$55	\$54	\$53	\$53	\$51	\$48	\$41	\$36	\$28	\$26	\$22
	10yr ave.	\$79	\$73	\$63	\$63	\$55	\$52	\$49	\$46	\$44	\$42	\$41	\$39	\$37	\$32	\$29	\$23	\$20	\$18
	60% Current	\$81	\$74	\$68	\$64	\$63	\$62	\$62	\$60	\$59	\$58	\$57	\$56	\$52	\$45	\$40	\$31	\$29	\$24
	10yr ave.	\$86	\$79	\$69	\$69	\$60	\$57	\$54	\$50	\$48	\$46	\$44	\$43	\$40	\$35	\$32	\$25	\$22	\$20
	65% Current	\$88	\$80	\$74	\$69	\$69	\$67	\$67	\$65	\$63	\$63	\$62	\$61	\$56	\$48	\$43	\$34	\$31	\$26
	10yr ave.	\$94	\$86	\$74	\$75	\$65	\$62	\$58	\$55	\$52	\$49	\$48	\$46	\$43	\$38	\$35	\$27	\$24	\$21
	70% Current	\$95	\$86	\$80	\$75	\$74	\$73	\$72	\$70	\$68	\$68	\$67	\$65	\$61	\$52	\$46	\$36	\$33	\$28
	10yr ave.	\$101	\$93	\$80	\$80	\$70	\$66	\$62	\$59	\$56	\$53	\$52	\$50	\$47	\$41	\$37	\$29	\$26	\$23
	75% Current	\$101	\$92	\$85	\$80	\$79	\$78	\$77	\$75	\$73	\$73	\$72	\$70	\$65	\$56	\$50	\$39	\$36	\$30
	10yr ave.	\$108	\$99	\$86	\$86	\$75	\$71	\$67	\$63	\$60	\$57	\$55	\$53	\$50	\$44	\$40	\$31	\$27	\$24
	80% Current	\$108	\$98	\$91	\$85	\$84	\$83	\$82	\$80	\$78	\$78	\$76	\$75	\$69	\$60	\$53	\$41	\$38	\$32
	10yr ave.	\$115	\$106	\$91	\$92	\$80	\$76	\$71	\$67	\$63	\$61	\$59	\$57	\$53	\$47	\$43	\$33	\$29	\$26
	85% Current	\$115	\$104	\$97	\$91	\$90	\$88	\$87	\$85	\$83	\$82	\$81	\$79	\$74	\$63	\$56	\$44	\$40	\$34
	10yr ave.	\$122	\$112	\$97	\$98	\$85	\$81	\$76	\$71	\$67	\$65	\$63	\$61	\$57	\$50	\$45	\$35	\$31	\$28

The above shows estimated returns per head for skirted fleece wool. These figures do not take into account the value of skirtings and oddments and do not take into account discounts that may apply for faults under individual circumstances. These figures are based on a market index of 100% and should be used as a guide only. Returns over \$30 / head for fleece wool are highlighted.

Source: Australian Wool Exchange, Australian Wool Innovation, Sydney Futures Exchange, x-rates.com

Disclaimer: While all due care has been taken in the preparation of this document, no warranty is made as to its accuracy, reliability or completeness. To the extent permitted by law neither Jemalong or their sources including subsidiaries and staff, accept liability to any person for loss or damage arising from the use of this information.



Table 15: Returns pr head for skirted fleece wool.

Skirted FLC Weight 7 Kg		Micron																	
		16	16.5	17	17.5	18	18.5	19	19.5	20	21	22	23	24	25	26	28	30	32
Yield (Sch Dry)	25% Current	\$30	\$27	\$25	\$23	\$23	\$23	\$23	\$22	\$21	\$21	\$21	\$20	\$19	\$16	\$14	\$11	\$10	\$9
	10yr ave.	\$32	\$29	\$25	\$25	\$22	\$21	\$20	\$18	\$17	\$17	\$16	\$16	\$15	\$13	\$12	\$9	\$8	\$7
	30% Current	\$35	\$32	\$30	\$28	\$28	\$27	\$27	\$26	\$26	\$25	\$25	\$24	\$23	\$20	\$17	\$14	\$12	\$10
	10yr ave.	\$38	\$35	\$30	\$30	\$26	\$25	\$23	\$22	\$21	\$20	\$19	\$19	\$17	\$15	\$14	\$11	\$10	\$9
	35% Current	\$41	\$38	\$35	\$33	\$32	\$32	\$32	\$31	\$30	\$30	\$29	\$29	\$27	\$23	\$20	\$16	\$15	\$12
	10yr ave.	\$44	\$41	\$35	\$35	\$31	\$29	\$27	\$26	\$24	\$23	\$23	\$22	\$20	\$18	\$16	\$13	\$11	\$10
	40% Current	\$47	\$43	\$40	\$37	\$37	\$36	\$36	\$35	\$34	\$34	\$33	\$33	\$30	\$26	\$23	\$18	\$17	\$14
	10yr ave.	\$50	\$46	\$40	\$40	\$35	\$33	\$31	\$29	\$28	\$27	\$26	\$25	\$23	\$21	\$19	\$15	\$13	\$11
	45% Current	\$53	\$48	\$45	\$42	\$42	\$41	\$41	\$40	\$38	\$38	\$38	\$37	\$34	\$29	\$26	\$20	\$19	\$16
	10yr ave.	\$57	\$52	\$45	\$45	\$40	\$37	\$35	\$33	\$31	\$30	\$29	\$28	\$26	\$23	\$21	\$16	\$14	\$13
	50% Current	\$59	\$54	\$50	\$47	\$46	\$45	\$45	\$44	\$43	\$42	\$42	\$41	\$38	\$33	\$29	\$23	\$21	\$17
	10yr ave.	\$63	\$58	\$50	\$50	\$44	\$42	\$39	\$37	\$35	\$33	\$32	\$31	\$29	\$26	\$23	\$18	\$16	\$14
	55% Current	\$65	\$59	\$55	\$51	\$51	\$50	\$50	\$48	\$47	\$47	\$46	\$45	\$42	\$36	\$32	\$25	\$23	\$19
	10yr ave.	\$69	\$64	\$55	\$55	\$48	\$46	\$43	\$40	\$38	\$37	\$35	\$34	\$32	\$28	\$26	\$20	\$18	\$16
	60% Current	\$71	\$64	\$60	\$56	\$55	\$54	\$54	\$53	\$51	\$51	\$50	\$49	\$45	\$39	\$35	\$27	\$25	\$21
	10yr ave.	\$76	\$69	\$60	\$60	\$53	\$50	\$47	\$44	\$42	\$40	\$39	\$37	\$35	\$31	\$28	\$22	\$19	\$17
	65% Current	\$77	\$70	\$65	\$61	\$60	\$59	\$59	\$57	\$56	\$55	\$54	\$53	\$49	\$42	\$38	\$29	\$27	\$23
	10yr ave.	\$82	\$75	\$65	\$65	\$57	\$54	\$51	\$48	\$45	\$43	\$42	\$41	\$38	\$33	\$30	\$24	\$21	\$19
	70% Current	\$83	\$75	\$70	\$65	\$65	\$64	\$63	\$61	\$60	\$59	\$59	\$57	\$53	\$46	\$40	\$32	\$29	\$24
	10yr ave.	\$88	\$81	\$70	\$70	\$61	\$58	\$55	\$51	\$49	\$47	\$45	\$44	\$41	\$36	\$33	\$25	\$22	\$20
	75% Current	\$89	\$81	\$75	\$70	\$69	\$68	\$68	\$66	\$64	\$64	\$63	\$61	\$57	\$49	\$43	\$34	\$31	\$26
	10yr ave.	\$95	\$87	\$75	\$75	\$66	\$62	\$59	\$55	\$52	\$50	\$48	\$47	\$44	\$39	\$35	\$27	\$24	\$21
	80% Current	\$95	\$86	\$80	\$75	\$74	\$73	\$72	\$70	\$68	\$68	\$67	\$65	\$61	\$52	\$46	\$36	\$33	\$28
	10yr ave.	\$101	\$93	\$80	\$80	\$70	\$66	\$62	\$59	\$56	\$53	\$52	\$50	\$47	\$41	\$37	\$29	\$26	\$23
	85% Current	\$101	\$91	\$84	\$79	\$78	\$77	\$77	\$75	\$73	\$72	\$71	\$69	\$64	\$55	\$49	\$38	\$35	\$30
	10yr ave.	\$107	\$98	\$85	\$85	\$75	\$71	\$66	\$62	\$59	\$57	\$55	\$53	\$50	\$44	\$40	\$31	\$27	\$24

The above shows estimated returns per head for skirted fleece wool. These figures do not take into account the value of skirtings and oddments and do not take into account discounts that may apply for faults under individual circumstances. These figures are based on a market index of 100% and should be used as a guide only. Returns over \$30 / head for fleece wool are highlighted.

Source: Australian Wool Exchange, Australian Wool Innovation, Sydney Futures Exchange, x-rates.com

Disclaimer: While all due care has been taken in the preparation of this document, no warranty is made as to its accuracy, reliability or completeness. To the extent permitted by law neither Jemalong or their sources including subsidiaries and staff, accept liability to any person for loss or damage arising from the use of this information.



Table 16: Returns pr head for skirted fleece wool.

Skirted FLC Weight			Micron																	
			16	16.5	17	17.5	18	18.5	19	19.5	20	21	22	23	24	25	26	28	30	32
Yield (Sch Dry)	25%	Current	\$25	\$23	\$21	\$20	\$20	\$19	\$19	\$19	\$18	\$18	\$18	\$17	\$16	\$14	\$12	\$10	\$9	\$7
		10yr ave.	\$27	\$25	\$21	\$22	\$19	\$18	\$17	\$16	\$15	\$14	\$14	\$13	\$12	\$11	\$10	\$8	\$7	\$6
	30%	Current	\$30	\$28	\$26	\$24	\$24	\$23	\$23	\$23	\$22	\$22	\$21	\$21	\$19	\$17	\$15	\$12	\$11	\$9
		10yr ave.	\$32	\$30	\$26	\$26	\$23	\$21	\$20	\$19	\$18	\$17	\$17	\$16	\$15	\$13	\$12	\$9	\$8	\$7
	35%	Current	\$35	\$32	\$30	\$28	\$28	\$27	\$27	\$26	\$26	\$25	\$25	\$24	\$23	\$20	\$17	\$14	\$12	\$10
		10yr ave.	\$38	\$35	\$30	\$30	\$26	\$25	\$23	\$22	\$21	\$20	\$19	\$19	\$17	\$15	\$14	\$11	\$10	\$9
	40%	Current	\$41	\$37	\$34	\$32	\$32	\$31	\$31	\$30	\$29	\$29	\$29	\$28	\$26	\$22	\$20	\$16	\$14	\$12
		10yr ave.	\$43	\$40	\$34	\$34	\$30	\$28	\$27	\$25	\$24	\$23	\$22	\$21	\$20	\$18	\$16	\$12	\$11	\$10
	45%	Current	\$46	\$41	\$38	\$36	\$36	\$35	\$35	\$34	\$33	\$33	\$32	\$31	\$29	\$25	\$22	\$17	\$16	\$13
		10yr ave.	\$49	\$45	\$39	\$39	\$34	\$32	\$30	\$28	\$27	\$26	\$25	\$24	\$22	\$20	\$18	\$14	\$12	\$11
	50%	Current	\$51	\$46	\$43	\$40	\$40	\$39	\$39	\$38	\$37	\$36	\$36	\$35	\$32	\$28	\$25	\$19	\$18	\$15
		10yr ave.	\$54	\$50	\$43	\$43	\$38	\$36	\$33	\$31	\$30	\$29	\$28	\$27	\$25	\$22	\$20	\$16	\$14	\$12
	55%	Current	\$56	\$51	\$47	\$44	\$44	\$43	\$42	\$41	\$40	\$40	\$39	\$38	\$36	\$31	\$27	\$21	\$20	\$16
		10yr ave.	\$59	\$55	\$47	\$47	\$41	\$39	\$37	\$35	\$33	\$31	\$30	\$29	\$27	\$24	\$22	\$17	\$15	\$13
	60%	Current	\$61	\$55	\$51	\$48	\$47	\$47	\$46	\$45	\$44	\$44	\$43	\$42	\$39	\$34	\$30	\$23	\$21	\$18
		10yr ave.	\$65	\$60	\$51	\$52	\$45	\$43	\$40	\$38	\$36	\$34	\$33	\$32	\$30	\$26	\$24	\$19	\$16	\$15
	65%	Current	\$66	\$60	\$55	\$52	\$51	\$51	\$50	\$49	\$48	\$47	\$47	\$45	\$42	\$36	\$32	\$25	\$23	\$19
		10yr ave.	\$70	\$65	\$56	\$56	\$49	\$46	\$44	\$41	\$39	\$37	\$36	\$35	\$32	\$29	\$26	\$20	\$18	\$16
	70%	Current	\$71	\$64	\$60	\$56	\$55	\$54	\$54	\$53	\$51	\$51	\$50	\$49	\$45	\$39	\$35	\$27	\$25	\$21
		10yr ave.	\$76	\$69	\$60	\$60	\$53	\$50	\$47	\$44	\$42	\$40	\$39	\$37	\$35	\$31	\$28	\$22	\$19	\$17
75%	Current	\$76	\$69	\$64	\$60	\$59	\$58	\$58	\$56	\$55	\$54	\$54	\$52	\$49	\$42	\$37	\$29	\$27	\$22	
	10yr ave.	\$81	\$74	\$64	\$65	\$56	\$53	\$50	\$47	\$45	\$43	\$41	\$40	\$37	\$33	\$30	\$23	\$21	\$18	
80%	Current	\$81	\$74	\$68	\$64	\$63	\$62	\$62	\$60	\$59	\$58	\$57	\$56	\$52	\$45	\$40	\$31	\$29	\$24	
	10yr ave.	\$86	\$79	\$69	\$69	\$60	\$57	\$54	\$50	\$48	\$46	\$44	\$43	\$40	\$35	\$32	\$25	\$22	\$20	
85%	Current	\$86	\$78	\$72	\$68	\$67	\$66	\$66	\$64	\$62	\$62	\$61	\$59	\$55	\$47	\$42	\$33	\$30	\$25	
	10yr ave.	\$92	\$84	\$73	\$73	\$64	\$61	\$57	\$53	\$51	\$48	\$47	\$45	\$42	\$37	\$34	\$26	\$23	\$21	

The above shows estimated returns per head for skirted fleece wool. These figures do not take into account the value of skirtings and oddments and do not take into account discounts that may apply for faults under individual circumstances. These figures are based on a market index of 100% and should be used as a guide only. Returns over \$30 / head for fleece wool are highlighted.

Source: Australian Wool Exchange, Australian Wool Innovation, Sydney Futures Exchange, x-rates.com

Disclaimer: While all due care has been taken in the preparation of this document, no warranty is made as to its accuracy, reliability or completeness. To the extent permitted by law neither Jemalong or their sources including subsidiaries and staff, accept liability to any person for loss or damage arising from the use of this information.



Table 17: Returns pr head for skirted fleece wool.

Skirted FLC Weight			Micron																	
			16	16.5	17	17.5	18	18.5	19	19.5	20	21	22	23	24	25	26	28	30	32
Yield (Sch Dry)	25%	Current	\$21	\$19	\$18	\$17	\$16	\$16	\$16	\$16	\$15	\$15	\$15	\$15	\$14	\$12	\$10	\$8	\$7	\$6
		10yr ave.	\$23	\$21	\$18	\$18	\$16	\$15	\$14	\$13	\$12	\$12	\$12	\$12	\$11	\$10	\$9	\$8	\$6	\$6
	30%	Current	\$25	\$23	\$21	\$20	\$20	\$19	\$19	\$19	\$18	\$18	\$18	\$17	\$16	\$14	\$12	\$10	\$9	\$7
		10yr ave.	\$27	\$25	\$21	\$22	\$19	\$18	\$17	\$16	\$15	\$14	\$14	\$13	\$12	\$11	\$10	\$8	\$7	\$6
	35%	Current	\$30	\$27	\$25	\$23	\$23	\$23	\$23	\$22	\$21	\$21	\$21	\$20	\$19	\$16	\$14	\$11	\$10	\$9
		10yr ave.	\$32	\$29	\$25	\$25	\$22	\$21	\$20	\$18	\$17	\$17	\$16	\$16	\$15	\$13	\$12	\$9	\$8	\$7
	40%	Current	\$34	\$31	\$28	\$27	\$26	\$26	\$26	\$25	\$24	\$24	\$24	\$23	\$22	\$19	\$17	\$13	\$12	\$10
		10yr ave.	\$36	\$33	\$29	\$29	\$25	\$24	\$22	\$21	\$20	\$19	\$18	\$18	\$17	\$15	\$13	\$10	\$9	\$8
	45%	Current	\$38	\$35	\$32	\$30	\$30	\$29	\$29	\$28	\$27	\$27	\$27	\$26	\$24	\$21	\$19	\$15	\$13	\$11
		10yr ave.	\$41	\$37	\$32	\$32	\$28	\$27	\$25	\$24	\$22	\$21	\$21	\$20	\$19	\$17	\$15	\$12	\$10	\$9
	50%	Current	\$42	\$38	\$36	\$33	\$33	\$32	\$32	\$31	\$31	\$30	\$30	\$29	\$27	\$23	\$21	\$16	\$15	\$12
		10yr ave.	\$45	\$41	\$36	\$36	\$31	\$30	\$28	\$26	\$25	\$24	\$23	\$22	\$21	\$18	\$17	\$13	\$11	\$10
	55%	Current	\$46	\$42	\$39	\$37	\$36	\$36	\$35	\$35	\$34	\$33	\$33	\$32	\$30	\$26	\$23	\$18	\$16	\$14
		10yr ave.	\$50	\$45	\$39	\$39	\$34	\$33	\$31	\$29	\$27	\$26	\$25	\$25	\$23	\$20	\$18	\$14	\$13	\$11
	60%	Current	\$51	\$46	\$43	\$40	\$40	\$39	\$39	\$38	\$37	\$36	\$36	\$35	\$32	\$28	\$25	\$19	\$18	\$15
		10yr ave.	\$54	\$50	\$43	\$43	\$38	\$36	\$33	\$31	\$30	\$29	\$28	\$27	\$25	\$22	\$20	\$16	\$14	\$12
	65%	Current	\$55	\$50	\$46	\$43	\$43	\$42	\$42	\$41	\$40	\$39	\$39	\$38	\$35	\$30	\$27	\$21	\$19	\$16
		10yr ave.	\$59	\$54	\$46	\$47	\$41	\$39	\$36	\$34	\$32	\$31	\$30	\$29	\$27	\$24	\$22	\$17	\$15	\$13
	70%	Current	\$59	\$54	\$50	\$47	\$46	\$45	\$45	\$44	\$43	\$42	\$42	\$41	\$38	\$33	\$29	\$23	\$21	\$17
		10yr ave.	\$63	\$58	\$50	\$50	\$44	\$42	\$39	\$37	\$35	\$33	\$32	\$31	\$29	\$26	\$23	\$18	\$16	\$14
75%	Current	\$63	\$58	\$53	\$50	\$49	\$49	\$48	\$47	\$46	\$45	\$45	\$44	\$41	\$35	\$31	\$24	\$22	\$19	
	10yr ave.	\$68	\$62	\$54	\$54	\$47	\$45	\$42	\$39	\$37	\$36	\$35	\$33	\$31	\$28	\$25	\$19	\$17	\$15	\$15
80%	Current	\$68	\$61	\$57	\$53	\$53	\$52	\$51	\$50	\$49	\$48	\$48	\$47	\$43	\$37	\$33	\$26	\$24	\$20	
	10yr ave.	\$72	\$66	\$57	\$57	\$50	\$47	\$45	\$42	\$40	\$38	\$37	\$36	\$33	\$29	\$27	\$21	\$18	\$16	\$16
85%	Current	\$72	\$65	\$60	\$57	\$56	\$55	\$55	\$53	\$52	\$51	\$51	\$50	\$46	\$40	\$35	\$27	\$25	\$21	
	10yr ave.	\$77	\$70	\$61	\$61	\$53	\$50	\$47	\$45	\$42	\$40	\$39	\$38	\$35	\$31	\$28	\$22	\$19	\$17	\$17

The above shows estimated returns per head for skirted fleece wool. These figures do not take into account the value of skirtings and oddments and do not take into account discounts that may apply for faults under individual circumstances. These figures are based on a market index of 100% and should be used as a guide only. Returns over \$30 / head for fleece wool are highlighted.

Source: Australian Wool Exchange, Australian Wool Innovation, Sydney Futures Exchange, x-rates.com

Disclaimer: While all due care has been taken in the preparation of this document, no warranty is made as to its accuracy, reliability or completeness. To the extent permitted by law neither Jemalong or their sources including subsidiaries and staff, accept liability to any person for loss or damage arising from the use of this information.





Table 18: Returns pr head for skirted fleece wool.

Skirted FLC Weight		Micron																	
4 Kg		16	16.5	17	17.5	18	18.5	19	19.5	20	21	22	23	24	25	26	28	30	32
Yield (Sch Dry)	25% Current	\$17	\$15	\$14	\$13	\$13	\$13	\$13	\$13	\$12	\$12	\$12	\$12	\$11	\$9	\$8	\$6	\$6	\$5
	10yr ave.	\$18	\$17	\$14	\$14	\$13	\$12	\$11	\$10	\$10	\$10	\$9	\$9	\$8	\$7	\$7	\$5	\$5	\$4
	30% Current	\$20	\$18	\$17	\$16	\$16	\$16	\$15	\$15	\$15	\$15	\$14	\$14	\$13	\$11	\$10	\$8	\$7	\$6
	10yr ave.	\$22	\$20	\$17	\$17	\$15	\$14	\$13	\$13	\$12	\$11	\$11	\$11	\$10	\$9	\$8	\$6	\$5	\$5
	35% Current	\$24	\$21	\$20	\$19	\$18	\$18	\$18	\$18	\$17	\$17	\$17	\$16	\$15	\$13	\$12	\$9	\$8	\$7
	10yr ave.	\$25	\$23	\$20	\$20	\$18	\$17	\$16	\$15	\$14	\$13	\$13	\$12	\$12	\$10	\$9	\$7	\$6	\$6
	40% Current	\$27	\$25	\$23	\$21	\$21	\$21	\$21	\$20	\$20	\$19	\$19	\$19	\$17	\$15	\$13	\$10	\$10	\$8
	10yr ave.	\$29	\$26	\$23	\$23	\$20	\$19	\$18	\$17	\$16	\$15	\$15	\$14	\$13	\$12	\$11	\$8	\$7	\$7
	45% Current	\$30	\$28	\$26	\$24	\$24	\$23	\$23	\$23	\$22	\$22	\$21	\$21	\$19	\$17	\$15	\$12	\$11	\$9
	10yr ave.	\$32	\$30	\$26	\$26	\$23	\$21	\$20	\$19	\$18	\$17	\$17	\$16	\$15	\$13	\$12	\$9	\$8	\$7
	50% Current	\$34	\$31	\$28	\$27	\$26	\$26	\$26	\$25	\$24	\$24	\$24	\$23	\$22	\$19	\$17	\$13	\$12	\$10
	10yr ave.	\$36	\$33	\$29	\$29	\$25	\$24	\$22	\$21	\$20	\$19	\$18	\$18	\$17	\$15	\$13	\$10	\$9	\$8
	55% Current	\$37	\$34	\$31	\$29	\$29	\$29	\$28	\$28	\$27	\$27	\$26	\$26	\$24	\$20	\$18	\$14	\$13	\$11
	10yr ave.	\$40	\$36	\$31	\$32	\$28	\$26	\$25	\$23	\$22	\$21	\$20	\$20	\$18	\$16	\$15	\$11	\$10	\$9
	60% Current	\$41	\$37	\$34	\$32	\$32	\$31	\$31	\$30	\$29	\$29	\$29	\$28	\$26	\$22	\$20	\$16	\$14	\$12
	10yr ave.	\$43	\$40	\$34	\$34	\$30	\$28	\$27	\$25	\$24	\$23	\$22	\$21	\$20	\$18	\$16	\$12	\$11	\$10
	65% Current	\$44	\$40	\$37	\$35	\$34	\$34	\$33	\$33	\$32	\$31	\$31	\$30	\$28	\$24	\$21	\$17	\$15	\$13
	10yr ave.	\$47	\$43	\$37	\$37	\$33	\$31	\$29	\$27	\$26	\$25	\$24	\$23	\$22	\$19	\$17	\$13	\$12	\$11
	70% Current	\$47	\$43	\$40	\$37	\$37	\$36	\$36	\$35	\$34	\$34	\$33	\$33	\$30	\$26	\$23	\$18	\$17	\$14
	10yr ave.	\$50	\$46	\$40	\$40	\$35	\$33	\$31	\$29	\$28	\$27	\$26	\$25	\$23	\$21	\$19	\$15	\$13	\$11
	75% Current	\$51	\$46	\$43	\$40	\$40	\$39	\$39	\$38	\$37	\$36	\$36	\$35	\$32	\$28	\$25	\$19	\$18	\$15
	10yr ave.	\$54	\$50	\$43	\$43	\$38	\$36	\$33	\$31	\$30	\$29	\$28	\$27	\$25	\$22	\$20	\$16	\$14	\$12
	80% Current	\$54	\$49	\$45	\$43	\$42	\$41	\$41	\$40	\$39	\$39	\$38	\$37	\$35	\$30	\$26	\$21	\$19	\$16
	10yr ave.	\$58	\$53	\$46	\$46	\$40	\$38	\$36	\$34	\$32	\$30	\$29	\$29	\$27	\$23	\$21	\$17	\$15	\$13
	85% Current	\$57	\$52	\$48	\$45	\$45	\$44	\$44	\$43	\$42	\$41	\$41	\$40	\$37	\$32	\$28	\$22	\$20	\$17
	10yr ave.	\$61	\$56	\$49	\$49	\$43	\$40	\$38	\$36	\$34	\$32	\$31	\$30	\$28	\$25	\$23	\$18	\$16	\$14

The above shows estimated returns per head for skirted fleece wool. These figures do not take into account the value of skirtings and oddments and do not take into account discounts that may apply for faults under individual circumstances. These figures are based on a market index of 100% and should be used as a guide only. Returns over \$30 / head for fleece wool are highlighted.

Source: Australian Wool Exchange, Australian Wool Innovation, Sydney Futures Exchange, x-rates.com

Disclaimer: While all due care has been taken in the preparation of this document, no warranty is made as to its accuracy, reliability or completeness. To the extent permitted by law neither Jemalong or their sources including subsidiaries and staff, accept liability to any person for loss or damage arising from the use of this information.





Table 19: Returns pr head for skirted fleece wool.

Skirted FLC Weight		Micron																	
3 Kg		16	16.5	17	17.5	18	18.5	19	19.5	20	21	22	23	24	25	26	28	30	32
Yield (Sch Dry)	25% Current	\$13	\$12	\$11	\$10	\$10	\$10	\$10	\$9	\$9	\$9	\$9	\$9	\$8	\$7	\$6	\$5	\$4	\$4
	10yr ave.	\$14	\$12	\$11	\$11	\$9	\$9	\$8	\$8	\$7	\$7	\$7	\$7	\$6	\$6	\$5	\$4	\$3	\$3
	30% Current	\$15	\$14	\$13	\$12	\$12	\$12	\$12	\$11	\$11	\$11	\$11	\$10	\$10	\$8	\$7	\$6	\$5	\$4
	10yr ave.	\$16	\$15	\$13	\$13	\$11	\$11	\$10	\$9	\$9	\$9	\$8	\$8	\$7	\$7	\$6	\$5	\$4	\$4
	35% Current	\$18	\$16	\$15	\$14	\$14	\$14	\$14	\$13	\$13	\$13	\$13	\$12	\$11	\$10	\$9	\$7	\$6	\$5
	10yr ave.	\$19	\$17	\$15	\$15	\$13	\$12	\$12	\$11	\$10	\$10	\$10	\$9	\$9	\$8	\$7	\$5	\$5	\$4
	40% Current	\$20	\$18	\$17	\$16	\$16	\$16	\$15	\$15	\$15	\$15	\$14	\$14	\$13	\$11	\$10	\$8	\$7	\$6
	10yr ave.	\$22	\$20	\$17	\$17	\$15	\$14	\$13	\$13	\$12	\$11	\$11	\$11	\$10	\$9	\$8	\$6	\$5	\$5
	45% Current	\$23	\$21	\$19	\$18	\$18	\$17	\$17	\$17	\$16	\$16	\$16	\$16	\$15	\$13	\$11	\$9	\$8	\$7
	10yr ave.	\$24	\$22	\$19	\$19	\$17	\$16	\$15	\$14	\$13	\$13	\$12	\$12	\$11	\$10	\$9	\$7	\$6	\$6
	50% Current	\$25	\$23	\$21	\$20	\$20	\$19	\$19	\$19	\$18	\$18	\$18	\$17	\$16	\$14	\$12	\$10	\$9	\$7
	10yr ave.	\$27	\$25	\$21	\$22	\$19	\$18	\$17	\$16	\$15	\$14	\$14	\$13	\$12	\$11	\$10	\$8	\$7	\$6
	55% Current	\$28	\$25	\$23	\$22	\$22	\$21	\$21	\$21	\$20	\$20	\$20	\$19	\$18	\$15	\$14	\$11	\$10	\$8
	10yr ave.	\$30	\$27	\$24	\$24	\$21	\$20	\$18	\$17	\$16	\$16	\$15	\$15	\$14	\$12	\$11	\$9	\$8	\$7
	60% Current	\$30	\$28	\$26	\$24	\$24	\$23	\$23	\$23	\$22	\$22	\$21	\$21	\$19	\$17	\$15	\$12	\$11	\$9
	10yr ave.	\$32	\$30	\$26	\$26	\$23	\$21	\$20	\$19	\$18	\$17	\$17	\$16	\$15	\$13	\$12	\$9	\$8	\$7
	65% Current	\$33	\$30	\$28	\$26	\$26	\$25	\$25	\$24	\$24	\$24	\$23	\$23	\$21	\$18	\$16	\$13	\$12	\$10
	10yr ave.	\$35	\$32	\$28	\$28	\$24	\$23	\$22	\$20	\$19	\$19	\$18	\$17	\$16	\$14	\$13	\$10	\$9	\$8
	70% Current	\$35	\$32	\$30	\$28	\$28	\$27	\$27	\$26	\$26	\$25	\$25	\$24	\$23	\$20	\$17	\$14	\$12	\$10
	10yr ave.	\$38	\$35	\$30	\$30	\$26	\$25	\$23	\$22	\$21	\$20	\$19	\$19	\$17	\$15	\$14	\$11	\$10	\$9
	75% Current	\$38	\$35	\$32	\$30	\$30	\$29	\$29	\$28	\$27	\$27	\$27	\$26	\$24	\$21	\$19	\$15	\$13	\$11
	10yr ave.	\$41	\$37	\$32	\$32	\$28	\$27	\$25	\$24	\$22	\$21	\$21	\$20	\$19	\$17	\$15	\$12	\$10	\$9
	80% Current	\$41	\$37	\$34	\$32	\$32	\$31	\$31	\$30	\$29	\$29	\$29	\$28	\$26	\$22	\$20	\$16	\$14	\$12
	10yr ave.	\$43	\$40	\$34	\$34	\$30	\$28	\$27	\$25	\$24	\$23	\$22	\$21	\$20	\$18	\$16	\$12	\$11	\$10
	85% Current	\$43	\$39	\$36	\$34	\$34	\$33	\$33	\$32	\$31	\$31	\$30	\$30	\$28	\$24	\$21	\$16	\$15	\$13
	10yr ave.	\$46	\$42	\$36	\$37	\$32	\$30	\$28	\$27	\$25	\$24	\$23	\$23	\$21	\$19	\$17	\$13	\$12	\$10

The above shows estimated returns per head for skirted fleece wool. These figures do not take into account the value of skirtings and oddments and do not take into account discounts that may apply for faults under individual circumstances. These figures are based on a market index of 100% and should be used as a guide only. Returns over \$30 / head for fleece wool are highlighted.

Source: Australian Wool Exchange, Australian Wool Innovation, Sydney Futures Exchange, x-rates.com

Disclaimer: While all due care has been taken in the preparation of this document, no warranty is made as to its accuracy, reliability or completeness. To the extent permitted by law neither Jemalong or their sources including subsidiaries and staff, accept liability to any person for loss or damage arising from the use of this information.



Table 20: Returns pr head for skirted fleece wool.

Skirted FLC Weight		Micron																	
2 Kg		16	16.5	17	17.5	18	18.5	19	19.5	20	21	22	23	24	25	26	28	30	32
Yield (Sch Dry)	25% Current	\$8	\$8	\$7	\$7	\$7	\$6	\$6	\$6	\$6	\$6	\$6	\$6	\$5	\$5	\$4	\$3	\$3	\$2
	10yr ave.	\$9	\$8	\$7	\$7	\$6	\$6	\$6	\$5	\$5	\$5	\$5	\$4	\$4	\$4	\$3	\$3	\$2	\$2
	30% Current	\$10	\$9	\$9	\$8	\$8	\$8	\$8	\$8	\$7	\$7	\$7	\$7	\$6	\$6	\$5	\$4	\$4	\$3
	10yr ave.	\$11	\$10	\$9	\$9	\$8	\$7	\$7	\$6	\$6	\$6	\$6	\$5	\$5	\$4	\$4	\$3	\$3	\$2
	35% Current	\$12	\$11	\$10	\$9	\$9	\$9	\$9	\$9	\$9	\$8	\$8	\$8	\$8	\$7	\$6	\$5	\$4	\$3
	10yr ave.	\$13	\$12	\$10	\$10	\$9	\$8	\$8	\$7	\$7	\$7	\$6	\$6	\$6	\$5	\$5	\$4	\$3	\$3
	40% Current	\$14	\$12	\$11	\$11	\$11	\$10	\$10	\$10	\$10	\$10	\$10	\$9	\$9	\$7	\$7	\$5	\$5	\$4
	10yr ave.	\$14	\$13	\$11	\$11	\$10	\$9	\$9	\$8	\$8	\$8	\$7	\$7	\$7	\$6	\$5	\$4	\$4	\$3
	45% Current	\$15	\$14	\$13	\$12	\$12	\$12	\$12	\$11	\$11	\$11	\$11	\$10	\$10	\$8	\$7	\$6	\$5	\$4
	10yr ave.	\$16	\$15	\$13	\$13	\$11	\$11	\$10	\$9	\$9	\$9	\$8	\$8	\$7	\$7	\$6	\$5	\$4	\$4
	50% Current	\$17	\$15	\$14	\$13	\$13	\$13	\$13	\$13	\$12	\$12	\$12	\$12	\$11	\$9	\$8	\$6	\$6	\$5
	10yr ave.	\$18	\$17	\$14	\$14	\$13	\$12	\$11	\$10	\$10	\$10	\$9	\$9	\$8	\$7	\$7	\$5	\$5	\$4
	55% Current	\$19	\$17	\$16	\$15	\$15	\$14	\$14	\$14	\$13	\$13	\$13	\$13	\$12	\$10	\$9	\$7	\$7	\$5
	10yr ave.	\$20	\$18	\$16	\$16	\$14	\$13	\$12	\$12	\$11	\$10	\$10	\$10	\$9	\$8	\$7	\$6	\$5	\$4
	60% Current	\$20	\$18	\$17	\$16	\$16	\$16	\$15	\$15	\$15	\$15	\$14	\$14	\$13	\$11	\$10	\$8	\$7	\$6
	10yr ave.	\$22	\$20	\$17	\$17	\$15	\$14	\$13	\$13	\$12	\$11	\$11	\$11	\$10	\$9	\$8	\$6	\$5	\$5
	65% Current	\$22	\$20	\$18	\$17	\$17	\$17	\$17	\$16	\$16	\$16	\$16	\$15	\$14	\$12	\$11	\$8	\$8	\$6
	10yr ave.	\$23	\$22	\$19	\$19	\$16	\$15	\$15	\$14	\$13	\$12	\$12	\$12	\$11	\$10	\$9	\$7	\$6	\$5
	70% Current	\$24	\$21	\$20	\$19	\$18	\$18	\$18	\$18	\$17	\$17	\$17	\$16	\$15	\$13	\$12	\$9	\$8	\$7
	10yr ave.	\$25	\$23	\$20	\$20	\$18	\$17	\$16	\$15	\$14	\$13	\$13	\$12	\$12	\$10	\$9	\$7	\$6	\$6
	75% Current	\$25	\$23	\$21	\$20	\$20	\$19	\$19	\$19	\$18	\$18	\$18	\$17	\$16	\$14	\$12	\$10	\$9	\$7
	10yr ave.	\$27	\$25	\$21	\$22	\$19	\$18	\$17	\$16	\$15	\$14	\$14	\$13	\$12	\$11	\$10	\$8	\$7	\$6
	80% Current	\$27	\$25	\$23	\$21	\$21	\$21	\$21	\$20	\$20	\$19	\$19	\$19	\$17	\$15	\$13	\$10	\$10	\$8
	10yr ave.	\$29	\$26	\$23	\$23	\$20	\$19	\$18	\$17	\$16	\$15	\$15	\$14	\$13	\$12	\$11	\$8	\$7	\$7
	85% Current	\$29	\$26	\$24	\$23	\$22	\$22	\$22	\$21	\$21	\$21	\$20	\$20	\$18	\$16	\$14	\$11	\$10	\$8
	10yr ave.	\$31	\$28	\$24	\$24	\$21	\$20	\$19	\$18	\$17	\$16	\$16	\$15	\$14	\$12	\$11	\$9	\$8	\$7

The above shows estimated returns per head for skirted fleece wool. These figures do not take into account the value of skirtings and oddments and do not take into account discounts that may apply for faults under individual circumstances. These figures are based on a market index of 100% and should be used as a guide only. Returns over \$30 / head for fleece wool are highlighted.

Source: Australian Wool Exchange, Australian Wool Innovation, Sydney Futures Exchange, x-rates.com

Disclaimer: While all due care has been taken in the preparation of this document, no warranty is made as to its accuracy, reliability or completeness. To the extent permitted by law neither Jemalong or their sources including subsidiaries and staff, accept liability to any person for loss or damage arising from the use of this information.