



JEMALONG WOOL BULLETIN

(week ending 14/04/2011)

Table 1: Northern Region Micron Price Guides

CURRENT MARKET				PERCENTILES		AVERAGES						12 MONTH COMPARISONS								TRADING RANGE		
Mic.	14/04/2011	7/04/2011	Now			Now			13/04/2010	Now			Now			Clean c/kg						
Price	Current	Weekly	3yr	10yr	3 year	compared	10 year	compared	This time	compared	12 Month	compared	12 Month	compared	12	3	10					
Guides	Price	Change			Average	to 3yr ave	Average	to 10yr ave	Last Year	to Last Year	Low	to Low	High	to High	Mth	Year	Year					
NRI	1416	-21 -1.5%	97%	99%	934	+482 52%	889	+527 59%	930	+486 52%	890	+526 59%	1447	-31 -2%	557	698	789					
16*	2800	0	100%		1737	+1063 61%			1515	+1285 85%	1540	+1260 82%	2800	0 0%	1260	1415						
16.5*	2670	+20 0.7%	100%		1599	+1071 67%			1425	+1245 87%	1395	+1275 91%	2670	0 0%	1275	1417						
17*	2490	-10 -0.4%	95%	97%	1473	+1017 69%	1409	+1081 77%	1270	+1220 96%	1230	+1260 102%	2530	-40 -2%	1300	1360	1559					
17.5*	2270	-40 -1.8%	94%		1393	+877 63%			1195	+1075 90%	1185	+1085 92%	2360	-90 -4%	1175	1275						
18	2078	-14 -0.7%	93%	95%	1320	+758 57%	1278	+800 63%	1157	+921 80%	1138	+940 83%	2193	-115 -5%	1055	1158	1353					
18.5	1868	-21 -1.1%	93%		1230	+638 52%			1109	+759 68%	1095	+773 71%	1963	-95 -5%	868	992						
19	1664	-31 -1.9%	96%	98%	1115	+549 49%	1075	+589 55%	1080	+584 54%	1031	+633 61%	1708	-44 -3%	677	814	904					
19.5	1497	-32 -2.1%	97%		1011	+486 48%			1007	+490 49%	952	+545 57%	1529	-32 -2%	577	715						
20	1385	-15 -1.1%	97%	99%	931	+454 49%	930	+455 49%	952	+433 45%	904	+481 53%	1402	-17 -1%	498	663	718					
21	1308	-14 -1.1%	97%	99%	898	+410 46%	888	+420 47%	933	+375 40%	878	+430 49%	1324	-16 -1%	446	637	737					
22	1283	-14 -1.1%	97%	99%	876	+407 46%	865	+418 48%	925	+358 39%	847	+436 51%	1313	-30 -2%	466	639	732					
23	1257	-9 -0.7%	97%	98%	852	+405 48%	844	+413 49%	911	+346 38%	827	+430 52%	1291	-34 -3%	464	628	719					
24	1112	-9 -0.8%	97%	93%	802	+310 39%	805	+307 38%	838	+274 33%	780	+332 43%	1170	-58 -5%	390	523	690					
25	991	-9 -0.9%	97%	93%	693	+298 43%	722	+269 37%	675	+316 47%	668	+323 48%	1048	-57 -5%	380	482	635					
26	919	-9 -1.0%	98%	92%	624	+295 47%	660	+259 39%	587	+332 57%	585	+334 57%	928	-9 -1%	343	424	573					
28	688	-21 -3.1%	96%	86%	482	+206 43%	526	+162 31%	444	+244 55%	443	+245 55%	734	-46 -6%	291	315	465					
30	623	-20 -3.2%	96%	92%	423	+200 47%	460	+163 35%	391	+232 59%	389	+234 60%	670	-47 -7%	281	320	385					
32	583	-10 -1.7%	96%	93%	372	+211 57%	416	+167 40%	350	+233 67%	351	+232 66%	638	-55 -9%	287	323	372					
MC	829	-1 -0.1%	99%	99%	564	+265 47%	510	+319 63%	676	+153 23%	561	+268 48%	830	-1 0%	269	438	450					

Note:

* Due to the irregular market quoting for some fine wool categories, figures shown relating to micron categories below 18 micron are an estimate based on the AWEX Premium & Discounts Report & other available information.

* For any category, where there is insufficient quantity offered to enable AWEX to quote, a quote will be provided based on the best available information.

* 10 Year data is not available for some micron categories, which may result in blank spaces in the table above.

Definitions:

* A Percentile, is a value on a scale of one hundred that indicates the percent of a distribution that is equal to or below it. In general a percentile between 25% and 75% is considered normal, a percentile below 25% is considered below normal and a percentile above 75% is considered above normal.

Three and ten year percentiles shown in the table above, detail the period of time during the past 3 & 10 years that the market has traded either at or below its current price.

The higher the percentile, the stronger the market.

Source: Australian Wool Exchange, Australian Wool Innovation, Sydney Futures Exchange, x-rates.com

Disclaimer: While all due care has been taken in the preparation of this document, no warranty is made as to its accuracy, reliability or completeness. To the extent permitted by law neither Jemalong or their sources including subsidiaries and staff, accept liability to any person for loss or damage arising from the use of this information.



MARKET COMMENTARY

One Australian Dollar = \$ 1.05 US, as of 14/04/2011

NORTHERN REGION –Sale Week 41/10 (41,756 bales offered nationally)

On Wednesday - Finding resistance to the high AUD, the market has lost some ground with most microns losing 15-20 cents, with the exception of 19 and 19.5 which lost 30 cents. Most skirtings were 10-20 cents cheaper for the 5% Vm and less types, while the burrier and poorer style types closed 30 cents lower. Oddments remained fully firm for all categories, while 27 to 30 micron crossbreds were 10 to 15 cents cheaper on a nominal selection.

On Thursday - After a soft start buyer support improved to the point where 20 micron and broader closed in sellers favour, the 19 micron area was only slightly easier, while fine microns on a limited selection found some improvement for the better style & strength types, however the lower Nkt & higher mid break lots continued to fall away. In the skirtings, better length and lower Vm types were a fraction easier, while the burrier lots fell 10-20 cents. Washing locks gained 10 cents, while 19 micron and broader carbo types lost 10 cents. Crutchings & stains remained generally unchanged with the exception of the heavy burrier lots which were further reduced. With a bit more wool on offer, the crossbred market continued to ease, falling 5-10 cents for most micron categories.

Northern Region Indicator (Monthly Averages)

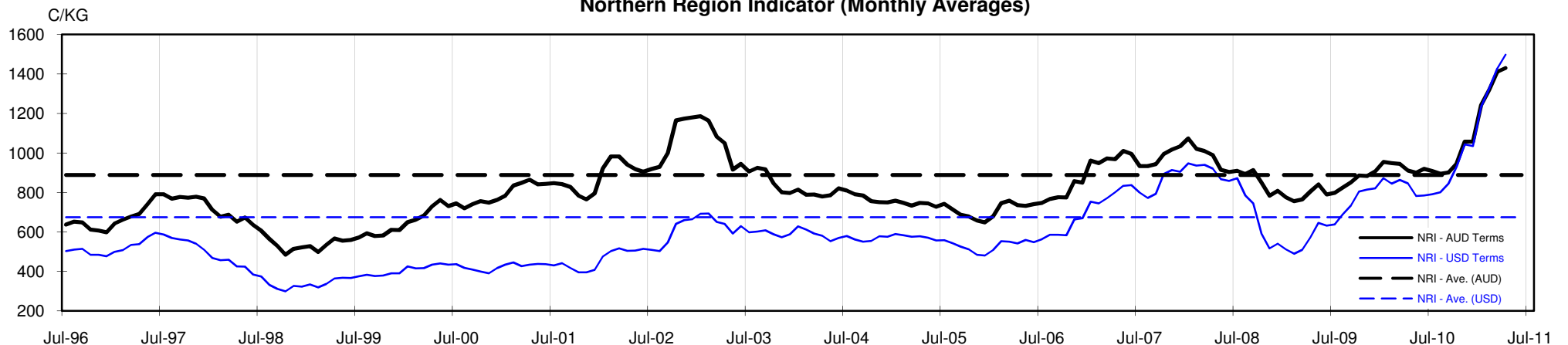




Table 4: 19 micron SFE

Wednesday, 13 April 2011

Delivery Mth	Apr-11	Jun-11	Aug-11	Oct-11	Dec-11	Feb-11	Apr-12	Jun-12	Aug-12
19 Micron SFE	1685	1660	1590	1533	1498	1466	1396	1366	1338
Average	1176	1190	1200	1208	1234	1114	1310	1385	1399
Maximum	1685	1670	1637	1595	1560	1660	1458	1450	1450
Minimum	1025	1034	1034	1034	1034	983	1106	1210	1338

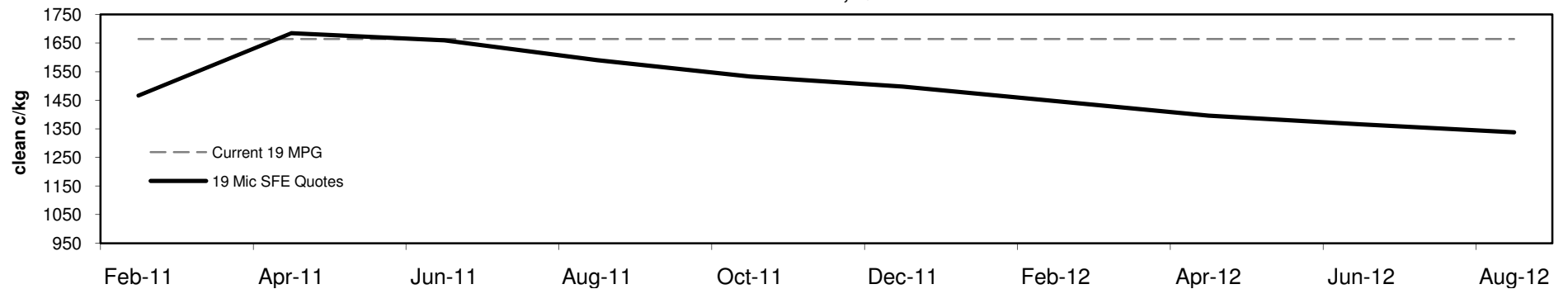
Table 5: 19 micron SFE, as a percentile of the 19 micron MPG

3 Year Percentile	96%	95%	92%	90%	90%	90%	90%	90%	90%
10 Year Percentile	99%	98%	97%	97%	97%	97%	96%	94%	92%

Table 6: 19 micron SFE, compared to MPG

Current 19 MPG	+21	1%	-4	0%	-74	-4%	-131	-8%	-166	-10%	-198	-12%	-268	-16%	-298	-18%	-326	-20%
19 MPG, 1 Year Average	+393	30%	+368	28%	+298	23%	+241	19%	+206	16%	+174	13%	+104	8%	+74	6%	+46	4%
19 MPG, 3 Year Average	+570	51%	+545	49%	+475	43%	+418	37%	+383	34%	+351	31%	+281	25%	+251	23%	+223	20%
19 MPG, 10 Year Average	+610	57%	+585	54%	+515	48%	+458	43%	+423	39%	+391	36%	+321	30%	+291	27%	+263	24%

19 MICRON SFE, QUOTES



19 Micron SFE, Front month movement

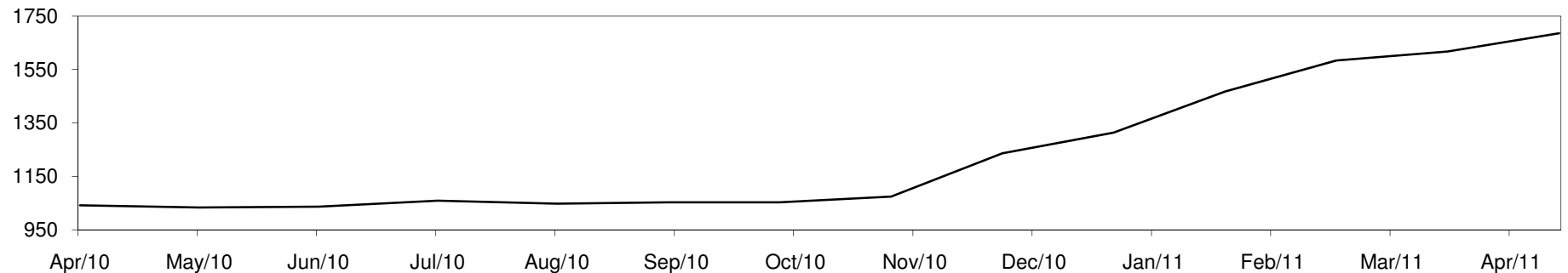




Table 7: 21 micron SFE

Wednesday, 13 April 2011

Delivery Mth	Apr-11	Jun-11	Aug-11	Oct-11	Dec-11	Feb-11	Apr-12	Jun-12	Aug-12
21 Micron SFE	1320	1315	1270	1235	1192	1082	1140	1084	1082
Average	996	999	994	987	990	962	1049	1047	1067
Maximum	1340	1327	1287	1240	1197	1315	1149	1093	1093
Minimum	891	890	880	880	880	860	934	990	1048

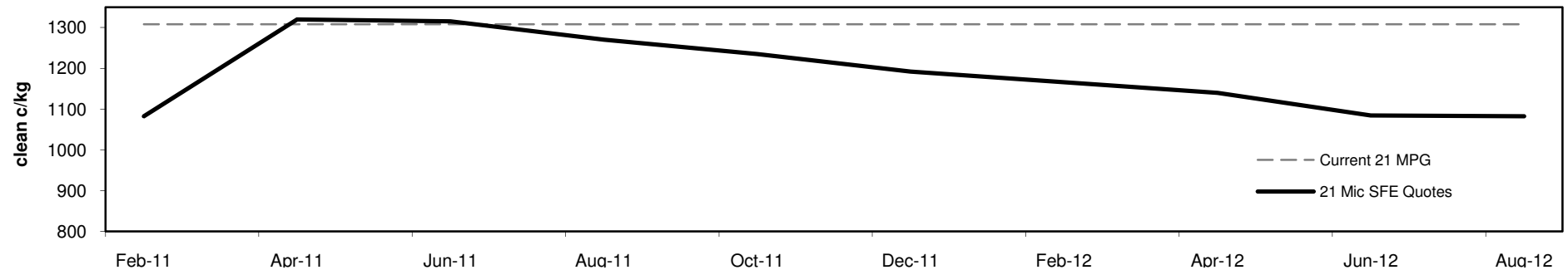
Table 8: 21 micron SFE, as a percentile of the 21 micron MPG

3 Year Percentile	98%	98%	97%	96%	95%	90%	92%	90%	90%
10 Year Percentile	99%	99%	97%	94%	93%	90%	91%	90%	90%

Table 9: 21 micron SFE, compared to MPG

Current 21 MPG	+12	1%	+7	1%	-38	-3%	-73	-6%	-116	-9%	-226	-17%	-168	-13%	-224	-17%	-226	-17%
21 MPG, 1 Year Average	+291	28%	+286	28%	+241	23%	+206	20%	+163	16%	+53	5%	+111	11%	+55	5%	+53	5%
21 MPG, 3 Year Average	+422	47%	+417	46%	+372	41%	+337	38%	+294	33%	+184	20%	+242	27%	+186	21%	+184	20%
21 MPG, 10 Year Average	+432	49%	+427	48%	+382	43%	+347	39%	+304	34%	+194	22%	+252	28%	+196	22%	+194	22%

21 MICRON SFE, QUOTES



21 Micron SFE, Front month movement

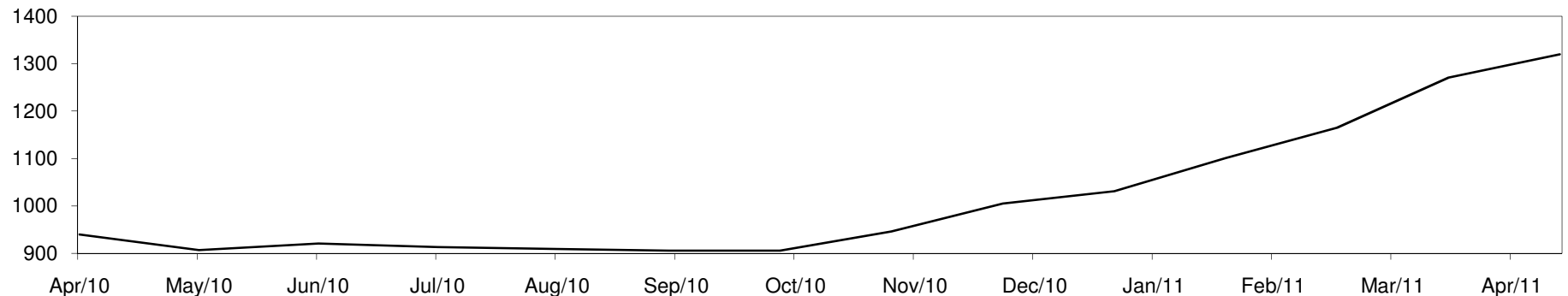




Table 10: 23 micron SFE

Wednesday, 13 April 2011

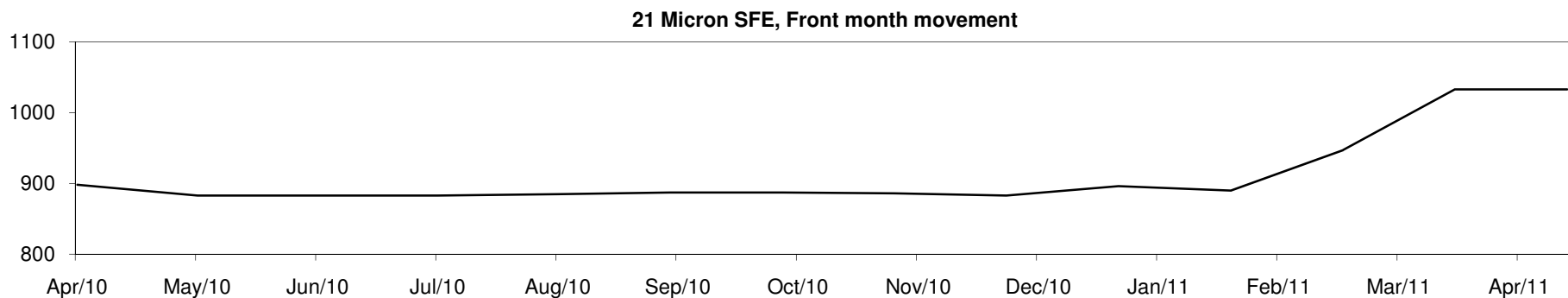
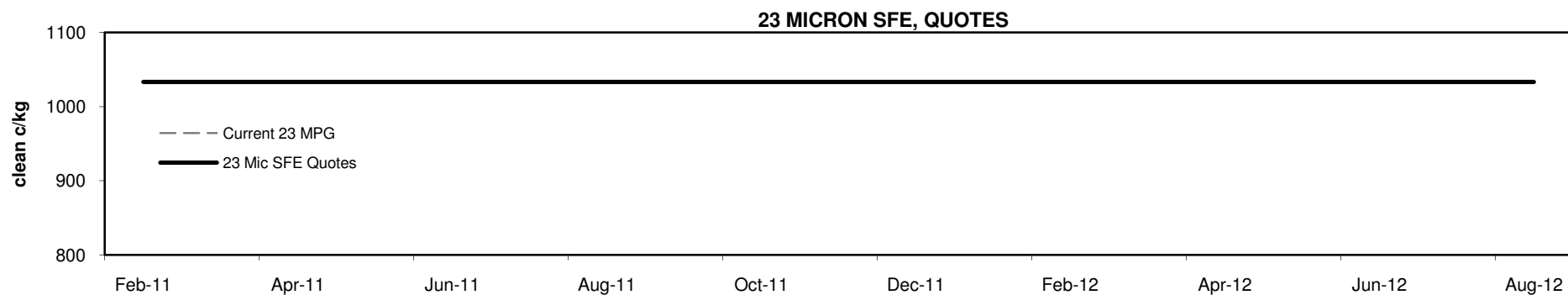
Delivery Mth	Apr-11	Jun-11	Aug-11	Oct-11	Dec-11	Feb-11	Apr-12	Jun-12	Aug-12
23 Micron SFE	1033	1033	1033	1033	1033	1033	1033	1033	1033
Average	893	905	912	909	915	870	940	967	1033
Maximum	1033	1033	1033	1033	1033	1033	1033	1033	1033
Minimum	803	803	883	883	883	760	883	890	1033

Table 11: 23 micron SFE, as a percentile of the 23 micron MPG

3 Year Percentile	92%	92%	92%	92%	92%	92%	92%	92%	92%
10 Year Percentile	90%	90%	90%	90%	90%	90%	90%	90%	90%

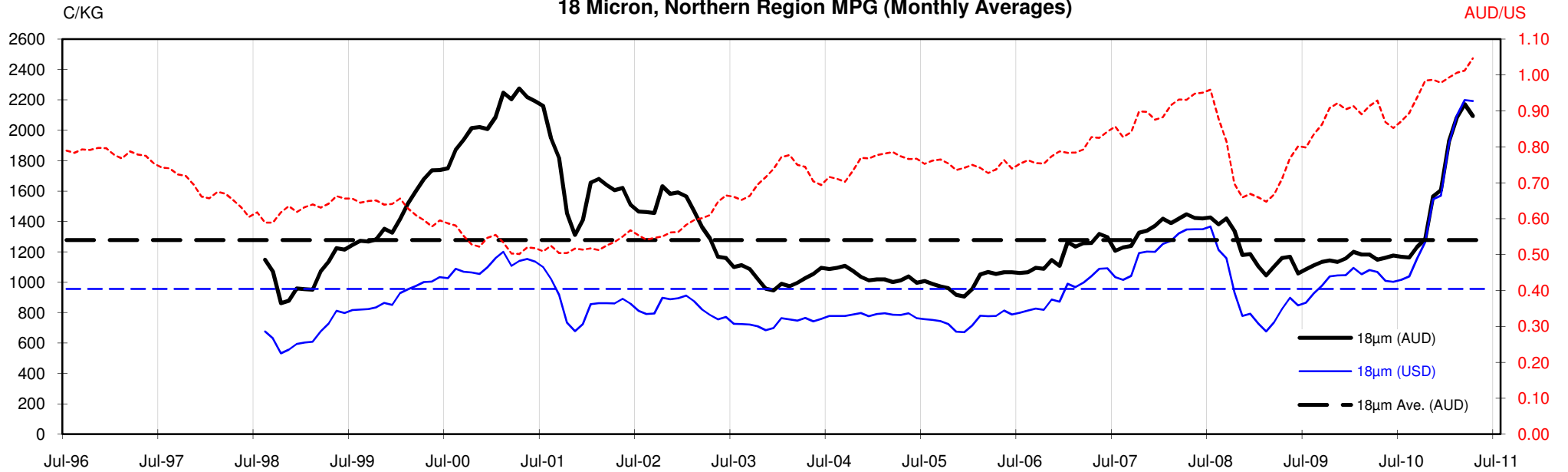
Table 12: 23 micron SFE, compared to MPG

Current 23 MPG	-224	-18%	-224	-18%	-224	-18%	-224	-18%	-224	-18%	-224	-18%	-224	-18%	-224	-18%	-224	-18%
23 MPG, 1 Year Average	+67	7%	+67	7%	+67	7%	+67	7%	+67	7%	+67	7%	+67	7%	+67	7%	+67	7%
23 MPG, 3 Year Average	+181	21%	+181	21%	+181	21%	+181	21%	+181	21%	+181	21%	+181	21%	+181	21%	+181	21%
23 MPG, 10 Year Average	+189	22%	+189	22%	+189	22%	+189	22%	+189	22%	+189	22%	+189	22%	+189	22%	+189	22%

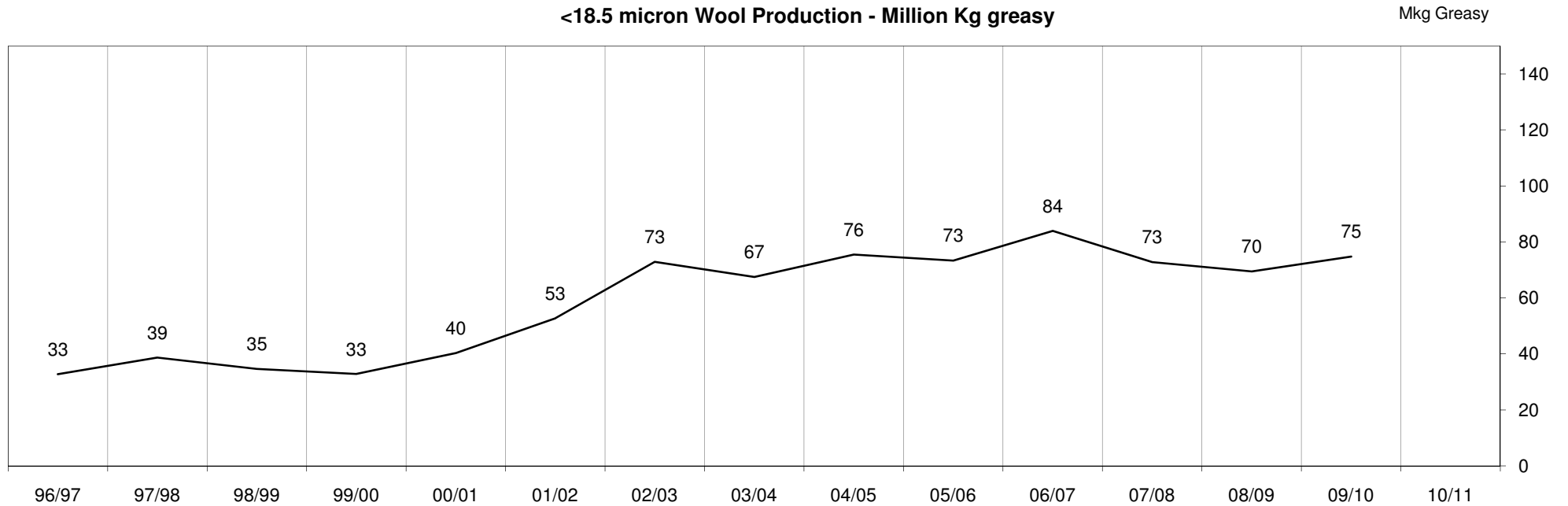


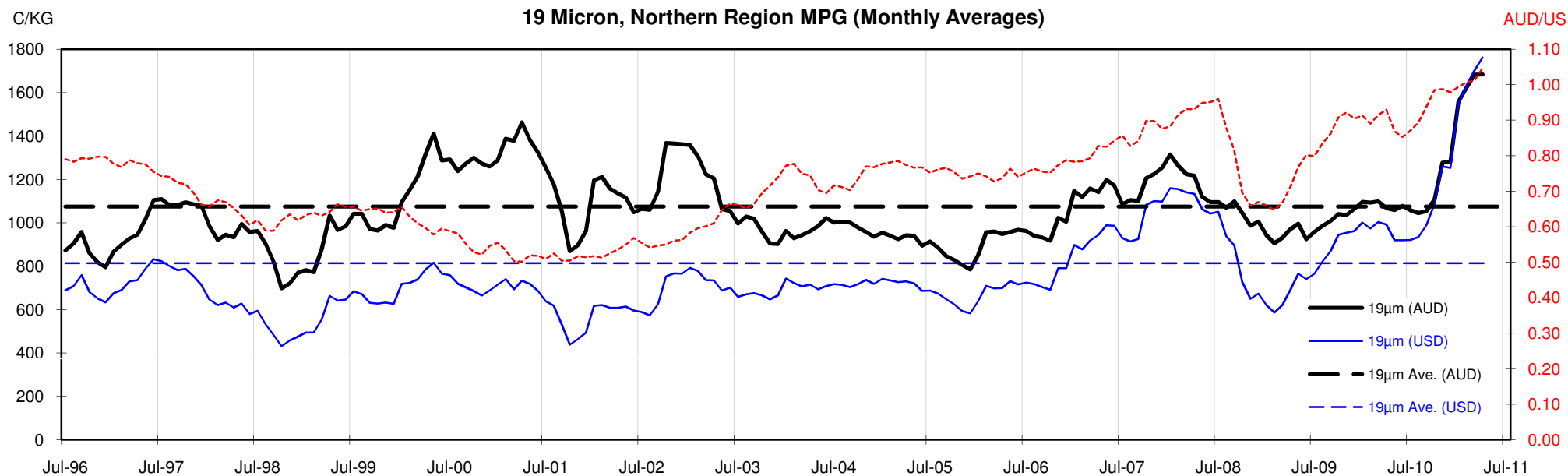


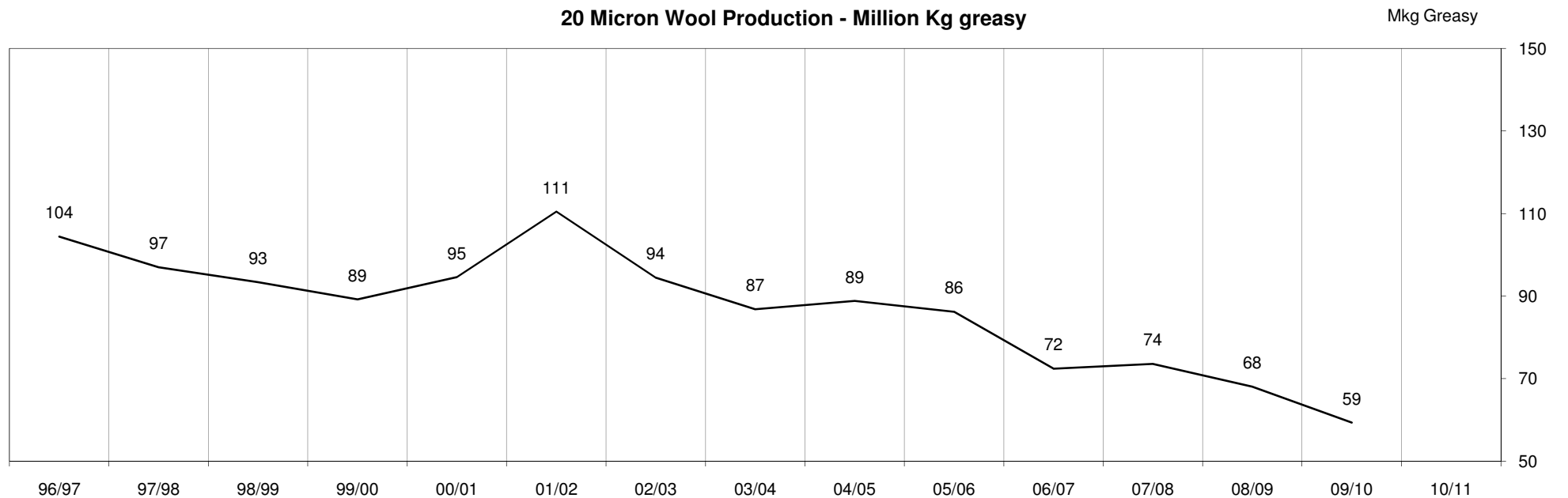
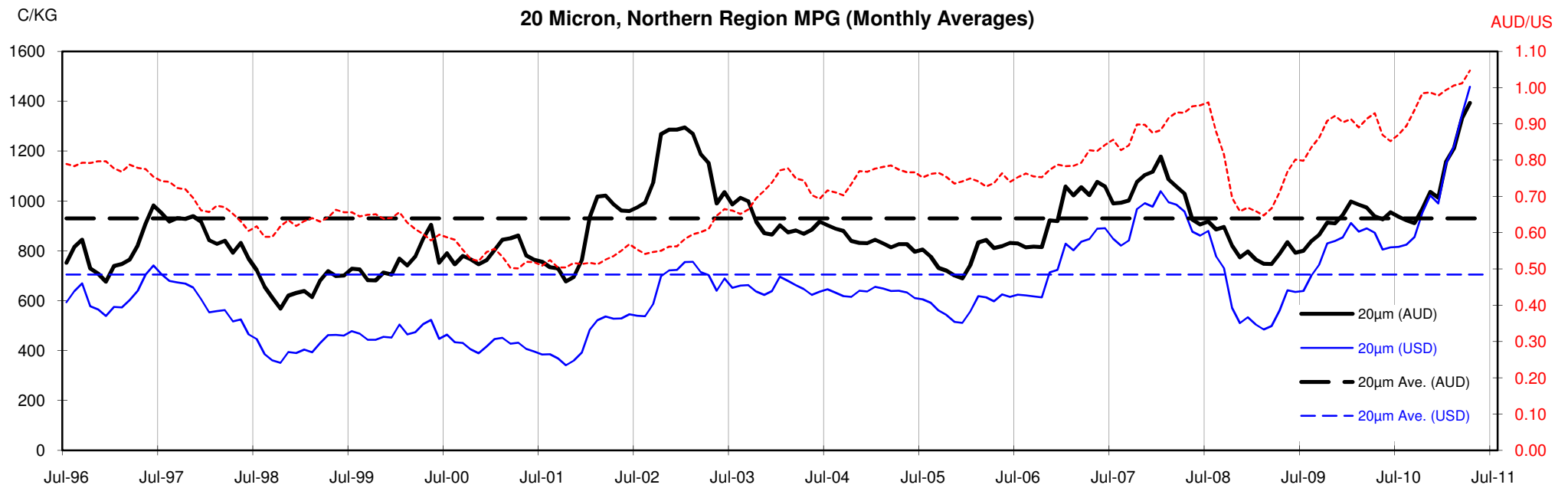
18 Micron, Northern Region MPG (Monthly Averages)

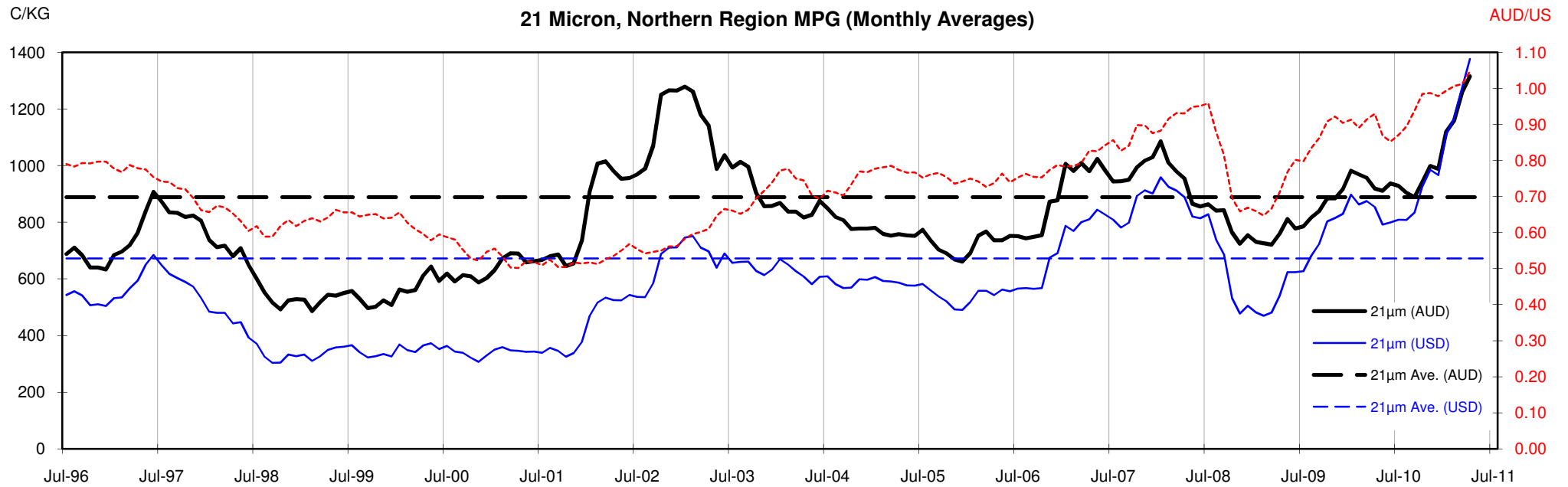


<18.5 micron Wool Production - Million Kg greasy



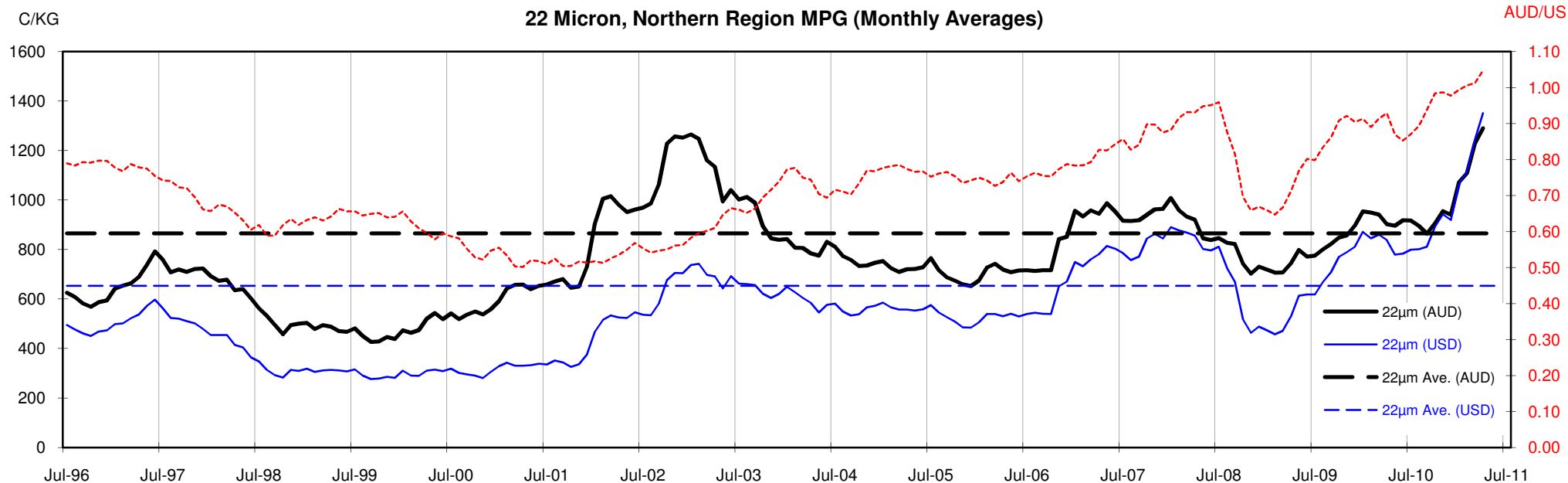






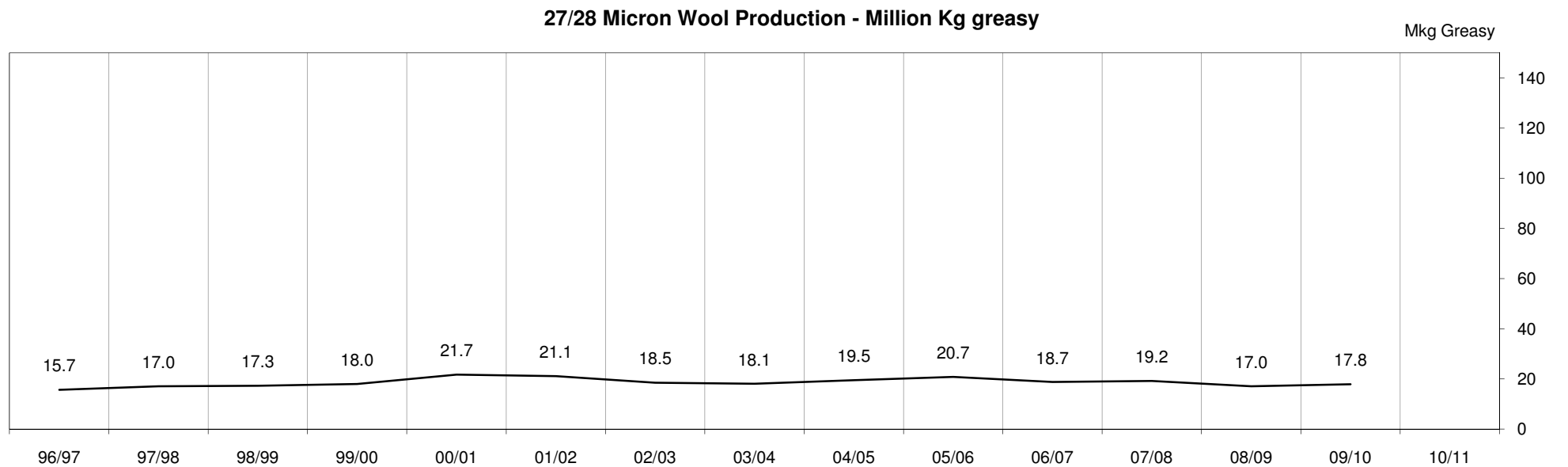
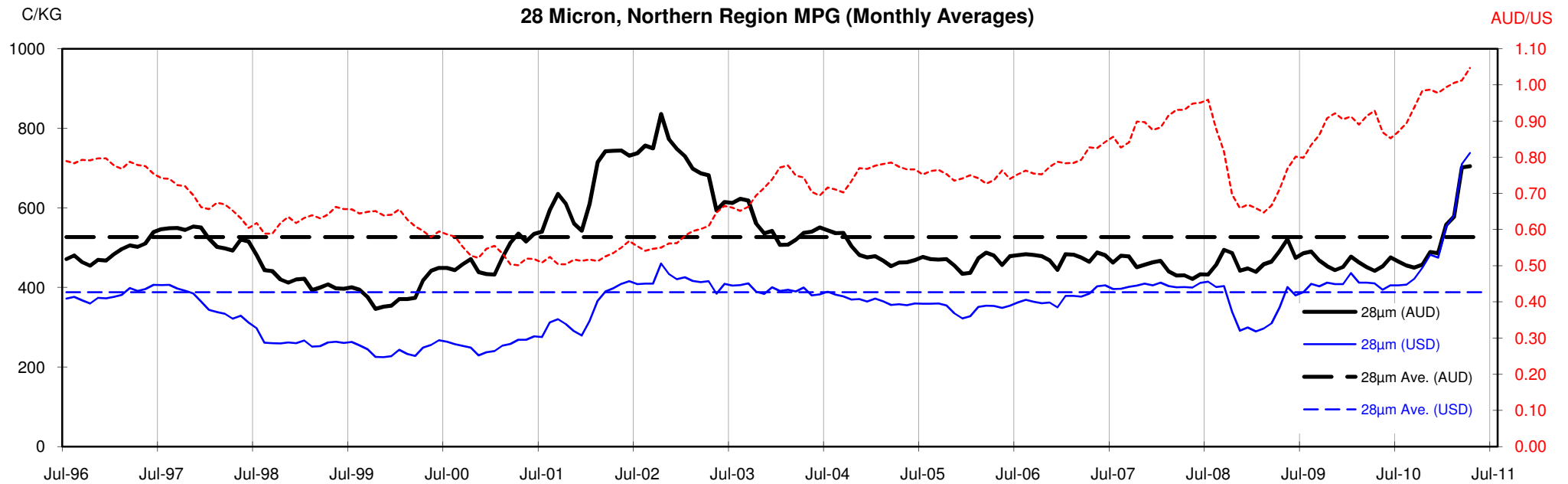


22 Micron, Northern Region MPG (Monthly Averages)



22 Micron Wool Production - Million Kg greasy





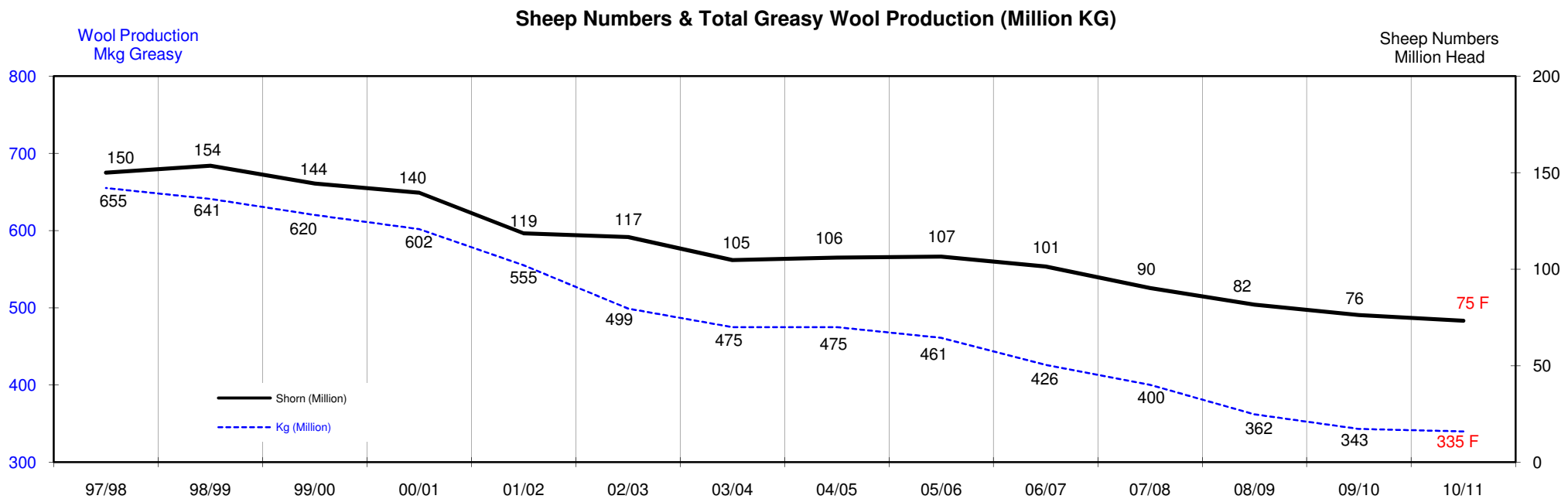
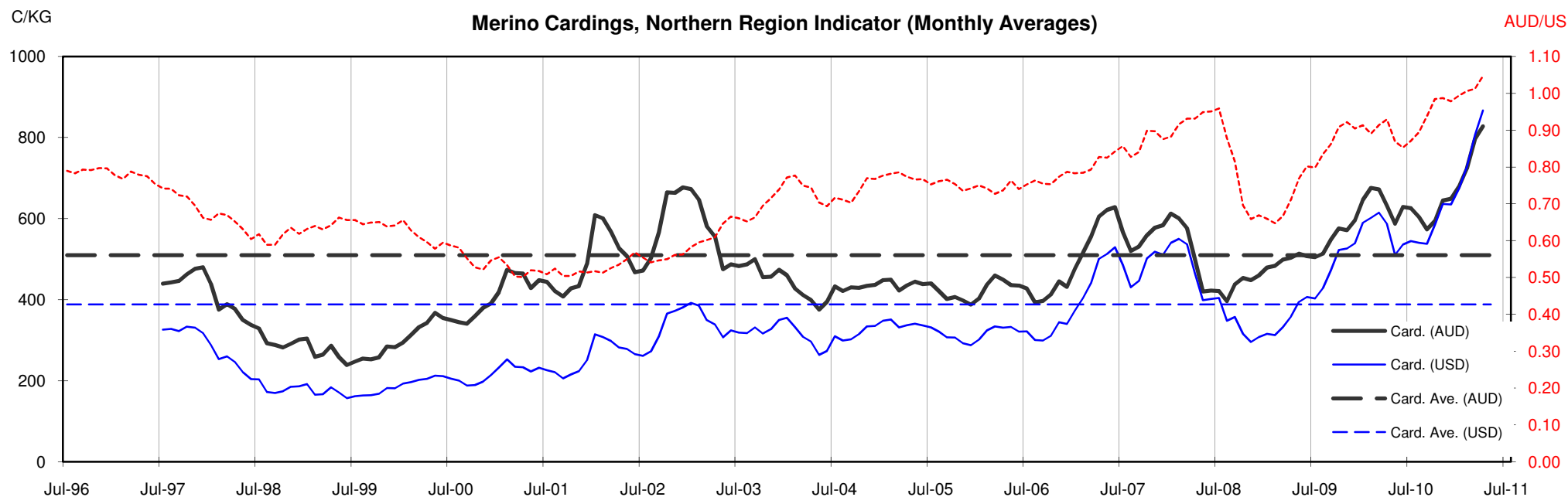




Table 13: Returns pr head for skirted fleece wool.

Skirted FLC Weight		Micron																	
9 Kg		16	16.5	17	17.5	18	18.5	19	19.5	20	21	22	23	24	25	26	28	30	32
Yield (Sch Dry)	25% Current	\$63	\$60	\$56	\$51	\$47	\$42	\$37	\$34	\$31	\$29	\$29	\$28	\$25	\$22	\$21	\$15	\$14	\$13
	10yr ave.			\$32		\$29		\$24		\$21	\$20	\$19	\$19	\$18	\$16	\$15	\$12	\$10	\$9
	30% Current	\$76	\$72	\$67	\$61	\$56	\$50	\$45	\$40	\$37	\$35	\$35	\$34	\$30	\$27	\$25	\$19	\$17	\$16
	10yr ave.			\$38		\$35		\$29		\$25	\$24	\$23	\$23	\$22	\$19	\$18	\$14	\$12	\$11
	35% Current	\$88	\$84	\$78	\$72	\$65	\$59	\$52	\$47	\$44	\$41	\$40	\$40	\$35	\$31	\$29	\$22	\$20	\$18
	10yr ave.			\$44		\$40		\$34		\$29	\$28	\$27	\$27	\$25	\$23	\$21	\$17	\$14	\$13
	40% Current	\$101	\$96	\$90	\$82	\$75	\$67	\$60	\$54	\$50	\$47	\$46	\$45	\$40	\$36	\$33	\$25	\$22	\$21
	10yr ave.			\$51		\$46		\$39		\$33	\$32	\$31	\$30	\$29	\$26	\$24	\$19	\$17	\$15
	45% Current	\$113	\$108	\$101	\$92	\$84	\$76	\$67	\$61	\$56	\$53	\$52	\$51	\$45	\$40	\$37	\$28	\$25	\$24
	10yr ave.			\$57		\$52		\$44		\$38	\$36	\$35	\$34	\$33	\$29	\$27	\$21	\$19	\$17
	50% Current	\$126	\$120	\$112	\$102	\$94	\$84	\$75	\$67	\$62	\$59	\$58	\$57	\$50	\$45	\$41	\$31	\$28	\$26
	10yr ave.			\$63		\$58		\$48		\$42	\$40	\$39	\$38	\$36	\$32	\$30	\$24	\$21	\$19
	55% Current	\$139	\$132	\$123	\$112	\$103	\$92	\$82	\$74	\$69	\$65	\$64	\$62	\$55	\$49	\$45	\$34	\$31	\$29
	10yr ave.			\$70		\$63		\$53		\$46	\$44	\$43	\$42	\$40	\$36	\$33	\$26	\$23	\$21
	60% Current	\$151	\$144	\$134	\$123	\$112	\$101	\$90	\$81	\$75	\$71	\$69	\$68	\$60	\$54	\$50	\$37	\$34	\$31
	10yr ave.			\$76		\$69		\$58		\$50	\$48	\$47	\$46	\$43	\$39	\$36	\$28	\$25	\$22
	65% Current	\$164	\$156	\$146	\$133	\$122	\$109	\$97	\$88	\$81	\$77	\$75	\$74	\$65	\$58	\$54	\$40	\$36	\$34
	10yr ave.			\$82		\$75		\$63		\$54	\$52	\$51	\$49	\$47	\$42	\$39	\$31	\$27	\$24
	70% Current	\$176	\$168	\$157	\$143	\$131	\$118	\$105	\$94	\$87	\$82	\$81	\$79	\$70	\$62	\$58	\$43	\$39	\$37
	10yr ave.			\$89		\$81		\$68		\$59	\$56	\$54	\$53	\$51	\$45	\$42	\$33	\$29	\$26
	75% Current	\$189	\$180	\$168	\$153	\$140	\$126	\$112	\$101	\$93	\$88	\$87	\$85	\$75	\$67	\$62	\$46	\$42	\$39
	10yr ave.			\$95		\$86		\$73		\$63	\$60	\$58	\$57	\$54	\$49	\$45	\$36	\$31	\$28
	80% Current	\$202	\$192	\$179	\$163	\$150	\$134	\$120	\$108	\$100	\$94	\$92	\$91	\$80	\$71	\$66	\$50	\$45	\$42
	10yr ave.			\$101		\$92		\$77		\$67	\$64	\$62	\$61	\$58	\$52	\$48	\$38	\$33	\$30
	85% Current	\$214	\$204	\$190	\$174	\$159	\$143	\$127	\$115	\$106	\$100	\$98	\$96	\$85	\$76	\$70	\$53	\$48	\$45
	10yr ave.			\$108		\$98		\$82		\$71	\$68	\$66	\$65	\$62	\$55	\$50	\$40	\$35	\$32

The above shows estimated returns per head for skirted fleece wool. These figures do not take into account the value of skirtings and oddments and do not take into account discounts that may apply for faults under individual circumstances. These figures are based on a market index of 100% and should be used as a guide only. Returns over \$30 / head for fleece wool are highlighted.

Source: Australian Wool Exchange, Australian Wool Innovation, Sydney Futures Exchange, x-rates.com

Disclaimer: While all due care has been taken in the preparation of this document, no warranty is made as to its accuracy, reliability or completeness. To the extent permitted by law neither Jemalong or their sources including subsidiaries and staff, accept liability to any person for loss or damage arising from the use of this information.



Table 14: Returns pr head for skirted fleece wool.

Skirted FLC Weight		Micron																	
8 Kg		16	16.5	17	17.5	18	18.5	19	19.5	20	21	22	23	24	25	26	28	30	32
Yield (Sch Dry)	25% Current	\$56	\$53	\$50	\$45	\$42	\$37	\$33	\$30	\$28	\$26	\$26	\$25	\$22	\$20	\$18	\$14	\$12	\$12
	10yr ave.			\$28		\$26		\$22		\$19	\$18	\$17	\$17	\$16	\$14	\$13	\$11	\$9	\$8
	30% Current	\$67	\$64	\$60	\$54	\$50	\$45	\$40	\$36	\$33	\$31	\$31	\$30	\$27	\$24	\$22	\$17	\$15	\$14
	10yr ave.			\$34		\$31		\$26		\$22	\$21	\$21	\$20	\$19	\$17	\$16	\$13	\$11	\$10
	35% Current	\$78	\$75	\$70	\$64	\$58	\$52	\$47	\$42	\$39	\$37	\$36	\$35	\$31	\$28	\$26	\$19	\$17	\$16
	10yr ave.			\$39		\$36		\$30		\$26	\$25	\$24	\$24	\$23	\$20	\$18	\$15	\$13	\$12
	40% Current	\$90	\$85	\$80	\$73	\$66	\$60	\$53	\$48	\$44	\$42	\$41	\$40	\$36	\$32	\$29	\$22	\$20	\$19
	10yr ave.			\$45		\$41		\$34		\$30	\$28	\$28	\$27	\$26	\$23	\$21	\$17	\$15	\$13
	45% Current	\$101	\$96	\$90	\$82	\$75	\$67	\$60	\$54	\$50	\$47	\$46	\$45	\$40	\$36	\$33	\$25	\$22	\$21
	10yr ave.			\$51		\$46		\$39		\$33	\$32	\$31	\$30	\$29	\$26	\$24	\$19	\$17	\$15
	50% Current	\$112	\$107	\$100	\$91	\$83	\$75	\$67	\$60	\$55	\$52	\$51	\$50	\$44	\$40	\$37	\$28	\$25	\$23
	10yr ave.			\$56		\$51		\$43		\$37	\$36	\$35	\$34	\$32	\$29	\$26	\$21	\$18	\$17
	55% Current	\$123	\$117	\$110	\$100	\$91	\$82	\$73	\$66	\$61	\$58	\$56	\$55	\$49	\$44	\$40	\$30	\$27	\$26
	10yr ave.			\$62		\$56		\$47		\$41	\$39	\$38	\$37	\$35	\$32	\$29	\$23	\$20	\$18
	60% Current	\$134	\$128	\$120	\$109	\$100	\$90	\$80	\$72	\$66	\$63	\$62	\$60	\$53	\$48	\$44	\$33	\$30	\$28
	10yr ave.			\$68		\$61		\$52		\$45	\$43	\$42	\$41	\$39	\$35	\$32	\$25	\$22	\$20
	65% Current	\$146	\$139	\$129	\$118	\$108	\$97	\$87	\$78	\$72	\$68	\$67	\$65	\$58	\$52	\$48	\$36	\$32	\$30
	10yr ave.			\$73		\$66		\$56		\$48	\$46	\$45	\$44	\$42	\$38	\$34	\$27	\$24	\$22
	70% Current	\$157	\$150	\$139	\$127	\$116	\$105	\$93	\$84	\$78	\$73	\$72	\$70	\$62	\$55	\$51	\$39	\$35	\$33
	10yr ave.			\$79		\$72		\$60		\$52	\$50	\$48	\$47	\$45	\$40	\$37	\$29	\$26	\$23
	75% Current	\$168	\$160	\$149	\$136	\$125	\$112	\$100	\$90	\$83	\$78	\$77	\$75	\$67	\$59	\$55	\$41	\$37	\$35
	10yr ave.			\$85		\$77		\$65		\$56	\$53	\$52	\$51	\$48	\$43	\$40	\$32	\$28	\$25
	80% Current	\$179	\$171	\$159	\$145	\$133	\$120	\$106	\$96	\$89	\$84	\$82	\$80	\$71	\$63	\$59	\$44	\$40	\$37
	10yr ave.			\$90		\$82		\$69		\$60	\$57	\$55	\$54	\$52	\$46	\$42	\$34	\$29	\$27
	85% Current	\$190	\$182	\$169	\$154	\$141	\$127	\$113	\$102	\$94	\$89	\$87	\$85	\$76	\$67	\$62	\$47	\$42	\$40
	10yr ave.			\$96		\$87		\$73		\$63	\$60	\$59	\$57	\$55	\$49	\$45	\$36	\$31	\$28

The above shows estimated returns per head for skirted fleece wool. These figures do not take into account the value of skirtings and oddments and do not take into account discounts that may apply for faults under individual circumstances. These figures are based on a market index of 100% and should be used as a guide only. Returns over \$30 / head for fleece wool are highlighted.

Source: Australian Wool Exchange, Australian Wool Innovation, Sydney Futures Exchange, x-rates.com

Disclaimer: While all due care has been taken in the preparation of this document, no warranty is made as to its accuracy, reliability or completeness. To the extent permitted by law neither Jemalong or their sources including subsidiaries and staff, accept liability to any person for loss or damage arising from the use of this information.



Table 15: Returns pr head for skirted fleece wool.

Skirted FLC Weight		Micron																	
7 Kg		16	16.5	17	17.5	18	18.5	19	19.5	20	21	22	23	24	25	26	28	30	32
Yield (Sch Dry)	25% Current	\$49	\$47	\$44	\$40	\$36	\$33	\$29	\$26	\$24	\$23	\$22	\$22	\$19	\$17	\$16	\$12	\$11	\$10
	10yr ave.			\$25		\$22		\$19		\$16	\$16	\$15	\$15	\$14	\$13	\$12	\$9	\$8	\$7
	30% Current	\$59	\$56	\$52	\$48	\$44	\$39	\$35	\$31	\$29	\$27	\$27	\$26	\$23	\$21	\$19	\$14	\$13	\$12
	10yr ave.			\$30		\$27		\$23		\$20	\$19	\$18	\$18	\$17	\$15	\$14	\$11	\$10	\$9
	35% Current	\$69	\$65	\$61	\$56	\$51	\$46	\$41	\$37	\$34	\$32	\$31	\$31	\$27	\$24	\$23	\$17	\$15	\$14
	10yr ave.			\$35		\$31		\$26		\$23	\$22	\$21	\$21	\$20	\$18	\$16	\$13	\$11	\$10
	40% Current	\$78	\$75	\$70	\$64	\$58	\$52	\$47	\$42	\$39	\$37	\$36	\$35	\$31	\$28	\$26	\$19	\$17	\$16
	10yr ave.			\$39		\$36		\$30		\$26	\$25	\$24	\$24	\$23	\$20	\$18	\$15	\$13	\$12
	45% Current	\$88	\$84	\$78	\$72	\$65	\$59	\$52	\$47	\$44	\$41	\$40	\$40	\$35	\$31	\$29	\$22	\$20	\$18
	10yr ave.			\$44		\$40		\$34		\$29	\$28	\$27	\$27	\$25	\$23	\$21	\$17	\$14	\$13
	50% Current	\$98	\$93	\$87	\$79	\$73	\$65	\$58	\$52	\$48	\$46	\$45	\$44	\$39	\$35	\$32	\$24	\$22	\$20
	10yr ave.			\$49		\$45		\$38		\$33	\$31	\$30	\$30	\$28	\$25	\$23	\$18	\$16	\$15
	55% Current	\$108	\$103	\$96	\$87	\$80	\$72	\$64	\$58	\$53	\$50	\$49	\$48	\$43	\$38	\$35	\$26	\$24	\$22
	10yr ave.			\$54		\$49		\$41		\$36	\$34	\$33	\$32	\$31	\$28	\$25	\$20	\$18	\$16
	60% Current	\$118	\$112	\$105	\$95	\$87	\$78	\$70	\$63	\$58	\$55	\$54	\$53	\$47	\$42	\$39	\$29	\$26	\$24
	10yr ave.			\$59		\$54		\$45		\$39	\$37	\$36	\$35	\$34	\$30	\$28	\$22	\$19	\$17
	65% Current	\$127	\$121	\$113	\$103	\$95	\$85	\$76	\$68	\$63	\$60	\$58	\$57	\$51	\$45	\$42	\$31	\$28	\$27
	10yr ave.			\$64		\$58		\$49		\$42	\$40	\$39	\$38	\$37	\$33	\$30	\$24	\$21	\$19
	70% Current	\$137	\$131	\$122	\$111	\$102	\$92	\$82	\$73	\$68	\$64	\$63	\$62	\$54	\$49	\$45	\$34	\$31	\$29
	10yr ave.			\$69		\$63		\$53		\$46	\$44	\$42	\$41	\$39	\$35	\$32	\$26	\$23	\$20
	75% Current	\$147	\$140	\$131	\$119	\$109	\$98	\$87	\$79	\$73	\$69	\$67	\$66	\$58	\$52	\$48	\$36	\$33	\$31
	10yr ave.			\$74		\$67		\$56		\$49	\$47	\$45	\$44	\$42	\$38	\$35	\$28	\$24	\$22
	80% Current	\$157	\$150	\$139	\$127	\$116	\$105	\$93	\$84	\$78	\$73	\$72	\$70	\$62	\$55	\$51	\$39	\$35	\$33
	10yr ave.			\$79		\$72		\$60		\$52	\$50	\$48	\$47	\$45	\$40	\$37	\$29	\$26	\$23
	85% Current	\$167	\$159	\$148	\$135	\$124	\$111	\$99	\$89	\$82	\$78	\$76	\$75	\$66	\$59	\$55	\$41	\$37	\$35
	10yr ave.			\$84		\$76		\$64		\$55	\$53	\$51	\$50	\$48	\$43	\$39	\$31	\$27	\$25

The above shows estimated returns per head for skirted fleece wool. These figures do not take into account the value of skirtings and oddments and do not take into account discounts that may apply for faults under individual circumstances. These figures are based on a market index of 100% and should be used as a guide only. Returns over \$30 / head for fleece wool are highlighted.

Source: Australian Wool Exchange, Australian Wool Innovation, Sydney Futures Exchange, x-rates.com

Disclaimer: While all due care has been taken in the preparation of this document, no warranty is made as to its accuracy, reliability or completeness. To the extent permitted by law neither Jemalong or their sources including subsidiaries and staff, accept liability to any person for loss or damage arising from the use of this information.



Table 16: Returns pr head for skirted fleece wool.

Skirted FLC Weight		Micron																	
6 Kg		16	16.5	17	17.5	18	18.5	19	19.5	20	21	22	23	24	25	26	28	30	32
Yield (Sch Dry)	25% Current	\$42	\$40	\$37	\$34	\$31	\$28	\$25	\$22	\$21	\$20	\$19	\$19	\$17	\$15	\$14	\$10	\$9	\$9
	10yr ave.			\$21		\$19		\$16		\$14	\$13	\$13	\$13	\$12	\$11	\$10	\$8	\$7	\$6
	30% Current	\$50	\$48	\$45	\$41	\$37	\$34	\$30	\$27	\$25	\$24	\$23	\$23	\$20	\$18	\$17	\$12	\$11	\$10
	10yr ave.			\$25		\$23		\$19		\$17	\$16	\$16	\$15	\$14	\$13	\$12	\$9	\$8	\$7
	35% Current	\$59	\$56	\$52	\$48	\$44	\$39	\$35	\$31	\$29	\$27	\$27	\$26	\$23	\$21	\$19	\$14	\$13	\$12
	10yr ave.			\$30		\$27		\$23		\$20	\$19	\$18	\$18	\$17	\$15	\$14	\$11	\$10	\$9
	40% Current	\$67	\$64	\$60	\$54	\$50	\$45	\$40	\$36	\$33	\$31	\$31	\$30	\$27	\$24	\$22	\$17	\$15	\$14
	10yr ave.			\$34		\$31		\$26		\$22	\$21	\$21	\$20	\$19	\$17	\$16	\$13	\$11	\$10
	45% Current	\$76	\$72	\$67	\$61	\$56	\$50	\$45	\$40	\$37	\$35	\$35	\$34	\$30	\$27	\$25	\$19	\$17	\$16
	10yr ave.			\$38		\$35		\$29		\$25	\$24	\$23	\$23	\$22	\$19	\$18	\$14	\$12	\$11
	50% Current	\$84	\$80	\$75	\$68	\$62	\$56	\$50	\$45	\$42	\$39	\$38	\$38	\$33	\$30	\$28	\$21	\$19	\$17
	10yr ave.			\$42		\$38		\$32		\$28	\$27	\$26	\$25	\$24	\$22	\$20	\$16	\$14	\$12
	55% Current	\$92	\$88	\$82	\$75	\$69	\$62	\$55	\$49	\$46	\$43	\$42	\$41	\$37	\$33	\$30	\$23	\$21	\$19
	10yr ave.			\$46		\$42		\$35		\$31	\$29	\$29	\$28	\$27	\$24	\$22	\$17	\$15	\$14
	60% Current	\$101	\$96	\$90	\$82	\$75	\$67	\$60	\$54	\$50	\$47	\$46	\$45	\$40	\$36	\$33	\$25	\$22	\$21
	10yr ave.			\$51		\$46		\$39		\$33	\$32	\$31	\$30	\$29	\$26	\$24	\$19	\$17	\$15
	65% Current	\$109	\$104	\$97	\$89	\$81	\$73	\$65	\$58	\$54	\$51	\$50	\$49	\$43	\$39	\$36	\$27	\$24	\$23
	10yr ave.			\$55		\$50		\$42		\$36	\$35	\$34	\$33	\$31	\$28	\$26	\$21	\$18	\$16
	70% Current	\$118	\$112	\$105	\$95	\$87	\$78	\$70	\$63	\$58	\$55	\$54	\$53	\$47	\$42	\$39	\$29	\$26	\$24
	10yr ave.			\$59		\$54		\$45		\$39	\$37	\$36	\$35	\$34	\$30	\$28	\$22	\$19	\$17
	75% Current	\$126	\$120	\$112	\$102	\$94	\$84	\$75	\$67	\$62	\$59	\$58	\$57	\$50	\$45	\$41	\$31	\$28	\$26
	10yr ave.			\$63		\$58		\$48		\$42	\$40	\$39	\$38	\$36	\$32	\$30	\$24	\$21	\$19
	80% Current	\$134	\$128	\$120	\$109	\$100	\$90	\$80	\$72	\$66	\$63	\$62	\$60	\$53	\$48	\$44	\$33	\$30	\$28
	10yr ave.			\$68		\$61		\$52		\$45	\$43	\$42	\$41	\$39	\$35	\$32	\$25	\$22	\$20
	85% Current	\$143	\$136	\$127	\$116	\$106	\$95	\$85	\$76	\$71	\$67	\$65	\$64	\$57	\$51	\$47	\$35	\$32	\$30
	10yr ave.			\$72		\$65		\$55		\$47	\$45	\$44	\$43	\$41	\$37	\$34	\$27	\$23	\$21

The above shows estimated returns per head for skirted fleece wool. These figures do not take into account the value of skirtings and oddments and do not take into account discounts that may apply for faults under individual circumstances. These figures are based on a market index of 100% and should be used as a guide only. Returns over \$30 / head for fleece wool are highlighted.

Source: Australian Wool Exchange, Australian Wool Innovation, Sydney Futures Exchange, x-rates.com

Disclaimer: While all due care has been taken in the preparation of this document, no warranty is made as to its accuracy, reliability or completeness. To the extent permitted by law neither Jemalong or their sources including subsidiaries and staff, accept liability to any person for loss or damage arising from the use of this information.



Table 17: Returns pr head for skirted fleece wool.

Skirted FLC Weight		Micron																		
		16	16.5	17	17.5	18	18.5	19	19.5	20	21	22	23	24	25	26	28	30	32	
Yield (Sch Dry)	25%	Current	\$35	\$33	\$31	\$28	\$26	\$23	\$21	\$19	\$17	\$16	\$16	\$16	\$14	\$12	\$11	\$9	\$8	\$7
	10yr ave.			\$18		\$16		\$13		\$12	\$11	\$11	\$11	\$10	\$9	\$8	\$7	\$6	\$5	
	30%	Current	\$42	\$40	\$37	\$34	\$31	\$28	\$25	\$22	\$21	\$20	\$19	\$19	\$17	\$15	\$14	\$10	\$9	\$9
	10yr ave.			\$21		\$19		\$16		\$14	\$13	\$13	\$13	\$12	\$11	\$10	\$8	\$7	\$6	
	35%	Current	\$49	\$47	\$44	\$40	\$36	\$33	\$29	\$26	\$24	\$23	\$22	\$22	\$19	\$17	\$16	\$12	\$11	\$10
	10yr ave.			\$25		\$22		\$19		\$16	\$16	\$15	\$15	\$14	\$13	\$12	\$9	\$8	\$7	
	40%	Current	\$56	\$53	\$50	\$45	\$42	\$37	\$33	\$30	\$28	\$26	\$26	\$25	\$22	\$20	\$18	\$14	\$12	\$12
	10yr ave.			\$28		\$26		\$22		\$19	\$18	\$17	\$17	\$16	\$14	\$13	\$11	\$9	\$8	
	45%	Current	\$63	\$60	\$56	\$51	\$47	\$42	\$37	\$34	\$31	\$29	\$29	\$28	\$25	\$22	\$21	\$15	\$14	\$13
	10yr ave.			\$32		\$29		\$24		\$21	\$20	\$19	\$19	\$18	\$16	\$15	\$12	\$10	\$9	
	50%	Current	\$70	\$67	\$62	\$57	\$52	\$47	\$42	\$37	\$35	\$33	\$32	\$31	\$28	\$25	\$23	\$17	\$16	\$15
	10yr ave.			\$35		\$32		\$27		\$23	\$22	\$22	\$21	\$20	\$18	\$17	\$13	\$12	\$10	
	55%	Current	\$77	\$73	\$68	\$62	\$57	\$51	\$46	\$41	\$38	\$36	\$35	\$35	\$31	\$27	\$25	\$19	\$17	\$16
	10yr ave.			\$39		\$35		\$30		\$26	\$24	\$24	\$23	\$22	\$20	\$18	\$14	\$13	\$11	
60%	Current	\$84	\$80	\$75	\$68	\$62	\$56	\$50	\$45	\$42	\$39	\$38	\$38	\$33	\$30	\$28	\$21	\$19	\$17	
10yr ave.			\$42		\$38		\$32		\$28	\$27	\$26	\$25	\$24	\$22	\$20	\$16	\$14	\$12		
65%	Current	\$91	\$87	\$81	\$74	\$68	\$61	\$54	\$49	\$45	\$43	\$42	\$41	\$36	\$32	\$30	\$22	\$20	\$19	
10yr ave.			\$46		\$42		\$35		\$30	\$29	\$28	\$27	\$26	\$23	\$21	\$17	\$15	\$14		
70%	Current	\$98	\$93	\$87	\$79	\$73	\$65	\$58	\$52	\$48	\$46	\$45	\$44	\$39	\$35	\$32	\$24	\$22	\$20	
10yr ave.			\$49		\$45		\$38		\$33	\$31	\$30	\$30	\$28	\$25	\$23	\$18	\$16	\$15		
75%	Current	\$105	\$100	\$93	\$85	\$78	\$70	\$62	\$56	\$52	\$49	\$48	\$47	\$42	\$37	\$34	\$26	\$23	\$22	
10yr ave.			\$53		\$48		\$40		\$35	\$33	\$32	\$32	\$30	\$27	\$25	\$20	\$17	\$16		
80%	Current	\$112	\$107	\$100	\$91	\$83	\$75	\$67	\$60	\$55	\$52	\$51	\$50	\$44	\$40	\$37	\$28	\$25	\$23	
10yr ave.			\$56		\$51		\$43		\$37	\$36	\$35	\$34	\$32	\$29	\$26	\$21	\$18	\$17		
85%	Current	\$119	\$113	\$106	\$96	\$88	\$79	\$71	\$64	\$59	\$56	\$55	\$53	\$47	\$42	\$39	\$29	\$26	\$25	
10yr ave.			\$60		\$54		\$46		\$40	\$38	\$37	\$36	\$34	\$31	\$28	\$22	\$20	\$18		

The above shows estimated returns per head for skirted fleece wool. These figures do not take into account the value of skirtings and oddments and do not take into account discounts that may apply for faults under individual circumstances. These figures are based on a market index of 100% and should be used as a guide only. Returns over \$30 / head for fleece wool are highlighted.

Source: Australian Wool Exchange, Australian Wool Innovation, Sydney Futures Exchange, x-rates.com

Disclaimer: While all due care has been taken in the preparation of this document, no warranty is made as to its accuracy, reliability or completeness. To the extent permitted by law neither Jemalong or their sources including subsidiaries and staff, accept liability to any person for loss or damage arising from the use of this information.



Table 18: Returns pr head for skirted fleece wool.

Skirted FLC Weight		Micron																	
4 Kg		16	16.5	17	17.5	18	18.5	19	19.5	20	21	22	23	24	25	26	28	30	32
Yield (Sch Dry)	25% Current	\$28	\$27	\$25	\$23	\$21	\$19	\$17	\$15	\$14	\$13	\$13	\$13	\$11	\$10	\$9	\$7	\$6	\$6
	10yr ave.			\$14		\$13		\$11		\$9	\$9	\$9	\$8	\$8	\$7	\$7	\$5	\$5	\$4
	30% Current	\$34	\$32	\$30	\$27	\$25	\$22	\$20	\$18	\$17	\$16	\$15	\$15	\$13	\$12	\$11	\$8	\$7	\$7
	10yr ave.			\$17		\$15		\$13		\$11	\$11	\$10	\$10	\$10	\$9	\$8	\$6	\$6	\$5
	35% Current	\$39	\$37	\$35	\$32	\$29	\$26	\$23	\$21	\$19	\$18	\$18	\$18	\$16	\$14	\$13	\$10	\$9	\$8
	10yr ave.			\$20		\$18		\$15		\$13	\$12	\$12	\$12	\$11	\$10	\$9	\$7	\$6	\$6
	40% Current	\$45	\$43	\$40	\$36	\$33	\$30	\$27	\$24	\$22	\$21	\$21	\$20	\$18	\$16	\$15	\$11	\$10	\$9
	10yr ave.			\$23		\$20		\$17		\$15	\$14	\$14	\$14	\$13	\$12	\$11	\$8	\$7	\$7
	45% Current	\$50	\$48	\$45	\$41	\$37	\$34	\$30	\$27	\$25	\$24	\$23	\$23	\$20	\$18	\$17	\$12	\$11	\$10
	10yr ave.			\$25		\$23		\$19		\$17	\$16	\$16	\$15	\$14	\$13	\$12	\$9	\$8	\$7
	50% Current	\$56	\$53	\$50	\$45	\$42	\$37	\$33	\$30	\$28	\$26	\$26	\$25	\$22	\$20	\$18	\$14	\$12	\$12
	10yr ave.			\$28		\$26		\$22		\$19	\$18	\$17	\$17	\$16	\$14	\$13	\$11	\$9	\$8
	55% Current	\$62	\$59	\$55	\$50	\$46	\$41	\$37	\$33	\$30	\$29	\$28	\$28	\$24	\$22	\$20	\$15	\$14	\$13
	10yr ave.			\$31		\$28		\$24		\$20	\$20	\$19	\$19	\$18	\$16	\$15	\$12	\$10	\$9
	60% Current	\$67	\$64	\$60	\$54	\$50	\$45	\$40	\$36	\$33	\$31	\$31	\$30	\$27	\$24	\$22	\$17	\$15	\$14
	10yr ave.			\$34		\$31		\$26		\$22	\$21	\$21	\$20	\$19	\$17	\$16	\$13	\$11	\$10
	65% Current	\$73	\$69	\$65	\$59	\$54	\$49	\$43	\$39	\$36	\$34	\$33	\$33	\$29	\$26	\$24	\$18	\$16	\$15
	10yr ave.			\$37		\$33		\$28		\$24	\$23	\$22	\$22	\$21	\$19	\$17	\$14	\$12	\$11
	70% Current	\$78	\$75	\$70	\$64	\$58	\$52	\$47	\$42	\$39	\$37	\$36	\$35	\$31	\$28	\$26	\$19	\$17	\$16
	10yr ave.			\$39		\$36		\$30		\$26	\$25	\$24	\$24	\$23	\$20	\$18	\$15	\$13	\$12
	75% Current	\$84	\$80	\$75	\$68	\$62	\$56	\$50	\$45	\$42	\$39	\$38	\$38	\$33	\$30	\$28	\$21	\$19	\$17
	10yr ave.			\$42		\$38		\$32		\$28	\$27	\$26	\$25	\$24	\$22	\$20	\$16	\$14	\$12
	80% Current	\$90	\$85	\$80	\$73	\$66	\$60	\$53	\$48	\$44	\$42	\$41	\$40	\$36	\$32	\$29	\$22	\$20	\$19
	10yr ave.			\$45		\$41		\$34		\$30	\$28	\$28	\$27	\$26	\$23	\$21	\$17	\$15	\$13
	85% Current	\$95	\$91	\$85	\$77	\$71	\$64	\$57	\$51	\$47	\$44	\$44	\$43	\$38	\$34	\$31	\$23	\$21	\$20
	10yr ave.			\$48		\$43		\$37		\$32	\$30	\$29	\$29	\$27	\$25	\$22	\$18	\$16	\$14

The above shows estimated returns per head for skirted fleece wool. These figures do not take into account the value of skirtings and oddments and do not take into account discounts that may apply for faults under individual circumstances. These figures are based on a market index of 100% and should be used as a guide only. Returns over \$30 / head for fleece wool are highlighted.

Source: Australian Wool Exchange, Australian Wool Innovation, Sydney Futures Exchange, x-rates.com

Disclaimer: While all due care has been taken in the preparation of this document, no warranty is made as to its accuracy, reliability or completeness. To the extent permitted by law neither Jemalong or their sources including subsidiaries and staff, accept liability to any person for loss or damage arising from the use of this information.



Table 19: Returns pr head for skirted fleece wool.

Skirted FLC Weight		Micron																	
3 Kg		16	16.5	17	17.5	18	18.5	19	19.5	20	21	22	23	24	25	26	28	30	32
Yield (Sch Dry)	25% Current	\$21	\$20	\$19	\$17	\$16	\$14	\$12	\$11	\$10	\$10	\$10	\$9	\$8	\$7	\$7	\$5	\$5	\$4
	10yr ave.			\$11		\$10		\$8		\$7	\$7	\$6	\$6	\$6	\$5	\$5	\$4	\$3	\$3
	30% Current	\$25	\$24	\$22	\$20	\$19	\$17	\$15	\$13	\$12	\$12	\$12	\$11	\$10	\$9	\$8	\$6	\$6	\$5
	10yr ave.			\$13		\$12		\$10		\$8	\$8	\$8	\$8	\$7	\$6	\$6	\$5	\$4	\$4
	35% Current	\$29	\$28	\$26	\$24	\$22	\$20	\$17	\$16	\$15	\$14	\$13	\$13	\$12	\$10	\$10	\$7	\$7	\$6
	10yr ave.			\$15		\$13		\$11		\$10	\$9	\$9	\$9	\$8	\$8	\$7	\$6	\$5	\$4
	40% Current	\$34	\$32	\$30	\$27	\$25	\$22	\$20	\$18	\$17	\$16	\$15	\$15	\$13	\$12	\$11	\$8	\$7	\$7
	10yr ave.			\$17		\$15		\$13		\$11	\$11	\$10	\$10	\$10	\$9	\$8	\$6	\$6	\$5
	45% Current	\$38	\$36	\$34	\$31	\$28	\$25	\$22	\$20	\$19	\$18	\$17	\$17	\$15	\$13	\$12	\$9	\$8	\$8
	10yr ave.			\$19		\$17		\$15		\$13	\$12	\$12	\$11	\$11	\$10	\$9	\$7	\$6	\$6
	50% Current	\$42	\$40	\$37	\$34	\$31	\$28	\$25	\$22	\$21	\$20	\$19	\$19	\$17	\$15	\$14	\$10	\$9	\$9
	10yr ave.			\$21		\$19		\$16		\$14	\$13	\$13	\$13	\$12	\$11	\$10	\$8	\$7	\$6
	55% Current	\$46	\$44	\$41	\$37	\$34	\$31	\$27	\$25	\$23	\$22	\$21	\$21	\$18	\$16	\$15	\$11	\$10	\$10
	10yr ave.			\$23		\$21		\$18		\$15	\$15	\$14	\$14	\$13	\$12	\$11	\$9	\$8	\$7
	60% Current	\$50	\$48	\$45	\$41	\$37	\$34	\$30	\$27	\$25	\$24	\$23	\$23	\$20	\$18	\$17	\$12	\$11	\$10
	10yr ave.			\$25		\$23		\$19		\$17	\$16	\$16	\$15	\$14	\$13	\$12	\$9	\$8	\$7
	65% Current	\$55	\$52	\$49	\$44	\$41	\$36	\$32	\$29	\$27	\$26	\$25	\$25	\$22	\$19	\$18	\$13	\$12	\$11
	10yr ave.			\$27		\$25		\$21		\$18	\$17	\$17	\$16	\$16	\$14	\$13	\$10	\$9	\$8
	70% Current	\$59	\$56	\$52	\$48	\$44	\$39	\$35	\$31	\$29	\$27	\$27	\$26	\$23	\$21	\$19	\$14	\$13	\$12
	10yr ave.			\$30		\$27		\$23		\$20	\$19	\$18	\$18	\$17	\$15	\$14	\$11	\$10	\$9
	75% Current	\$63	\$60	\$56	\$51	\$47	\$42	\$37	\$34	\$31	\$29	\$29	\$28	\$25	\$22	\$21	\$15	\$14	\$13
	10yr ave.			\$32		\$29		\$24		\$21	\$20	\$19	\$19	\$18	\$16	\$15	\$12	\$10	\$9
	80% Current	\$67	\$64	\$60	\$54	\$50	\$45	\$40	\$36	\$33	\$31	\$31	\$30	\$27	\$24	\$22	\$17	\$15	\$14
	10yr ave.			\$34		\$31		\$26		\$22	\$21	\$21	\$20	\$19	\$17	\$16	\$13	\$11	\$10
	85% Current	\$71	\$68	\$63	\$58	\$53	\$48	\$42	\$38	\$35	\$33	\$33	\$32	\$28	\$25	\$23	\$18	\$16	\$15
	10yr ave.			\$36		\$33		\$27		\$24	\$23	\$22	\$22	\$21	\$18	\$17	\$13	\$12	\$11

The above shows estimated returns per head for skirted fleece wool. These figures do not take into account the value of skirtings and oddments and do not take into account discounts that may apply for faults under individual circumstances. These figures are based on a market index of 100% and should be used as a guide only. Returns over \$30 / head for fleece wool are highlighted.

Source: Australian Wool Exchange, Australian Wool Innovation, Sydney Futures Exchange, x-rates.com

Disclaimer: While all due care has been taken in the preparation of this document, no warranty is made as to its accuracy, reliability or completeness. To the extent permitted by law neither Jemalong or their sources including subsidiaries and staff, accept liability to any person for loss or damage arising from the use of this information.



Table 20: Returns pr head for skirted fleece wool.

Skirted FLC Weight		Micron																	
2 Kg		16	16.5	17	17.5	18	18.5	19	19.5	20	21	22	23	24	25	26	28	30	32
Yield (Sch Dry)	25% Current	\$14	\$13	\$12	\$11	\$10	\$9	\$8	\$7	\$7	\$7	\$6	\$6	\$6	\$5	\$5	\$3	\$3	\$3
	10yr ave.			\$7		\$6		\$5		\$5	\$4	\$4	\$4	\$4	\$4	\$3	\$3	\$2	\$2
	30% Current	\$17	\$16	\$15	\$14	\$12	\$11	\$10	\$9	\$8	\$8	\$8	\$8	\$7	\$6	\$6	\$4	\$4	\$3
	10yr ave.			\$8		\$8		\$6		\$6	\$5	\$5	\$5	\$5	\$4	\$4	\$3	\$3	\$2
	35% Current	\$20	\$19	\$17	\$16	\$15	\$13	\$12	\$10	\$10	\$9	\$9	\$9	\$8	\$7	\$6	\$5	\$4	\$4
	10yr ave.			\$10		\$9		\$8		\$7	\$6	\$6	\$6	\$6	\$5	\$5	\$4	\$3	\$3
	40% Current	\$22	\$21	\$20	\$18	\$17	\$15	\$13	\$12	\$11	\$10	\$10	\$10	\$9	\$8	\$7	\$6	\$5	\$5
	10yr ave.			\$11		\$10		\$9		\$7	\$7	\$7	\$7	\$6	\$6	\$5	\$4	\$4	\$3
	45% Current	\$25	\$24	\$22	\$20	\$19	\$17	\$15	\$13	\$12	\$12	\$12	\$11	\$10	\$9	\$8	\$6	\$6	\$5
	10yr ave.			\$13		\$12		\$10		\$8	\$8	\$8	\$8	\$7	\$6	\$6	\$5	\$4	\$4
	50% Current	\$28	\$27	\$25	\$23	\$21	\$19	\$17	\$15	\$14	\$13	\$13	\$13	\$11	\$10	\$9	\$7	\$6	\$6
	10yr ave.			\$14		\$13		\$11		\$9	\$9	\$9	\$8	\$8	\$7	\$7	\$5	\$5	\$4
	55% Current	\$31	\$29	\$27	\$25	\$23	\$21	\$18	\$16	\$15	\$14	\$14	\$14	\$12	\$11	\$10	\$8	\$7	\$6
	10yr ave.			\$15		\$14		\$12		\$10	\$10	\$10	\$9	\$9	\$8	\$7	\$6	\$5	\$5
	60% Current	\$34	\$32	\$30	\$27	\$25	\$22	\$20	\$18	\$17	\$16	\$15	\$15	\$13	\$12	\$11	\$8	\$7	\$7
	10yr ave.			\$17		\$15		\$13		\$11	\$11	\$10	\$10	\$10	\$9	\$8	\$6	\$6	\$5
	65% Current	\$36	\$35	\$32	\$30	\$27	\$24	\$22	\$19	\$18	\$17	\$17	\$16	\$14	\$13	\$12	\$9	\$8	\$8
	10yr ave.			\$18		\$17		\$14		\$12	\$12	\$11	\$11	\$10	\$9	\$9	\$7	\$6	\$5
	70% Current	\$39	\$37	\$35	\$32	\$29	\$26	\$23	\$21	\$19	\$18	\$18	\$18	\$16	\$14	\$13	\$10	\$9	\$8
	10yr ave.			\$20		\$18		\$15		\$13	\$12	\$12	\$12	\$11	\$10	\$9	\$7	\$6	\$6
	75% Current	\$42	\$40	\$37	\$34	\$31	\$28	\$25	\$22	\$21	\$20	\$19	\$19	\$17	\$15	\$14	\$10	\$9	\$9
	10yr ave.			\$21		\$19		\$16		\$14	\$13	\$13	\$13	\$12	\$11	\$10	\$8	\$7	\$6
	80% Current	\$45	\$43	\$40	\$36	\$33	\$30	\$27	\$24	\$22	\$21	\$21	\$20	\$18	\$16	\$15	\$11	\$10	\$9
	10yr ave.			\$23		\$20		\$17		\$15	\$14	\$14	\$14	\$13	\$12	\$11	\$8	\$7	\$7
	85% Current	\$48	\$45	\$42	\$39	\$35	\$32	\$28	\$25	\$24	\$22	\$22	\$21	\$19	\$17	\$16	\$12	\$11	\$10
	10yr ave.			\$24		\$22		\$18		\$16	\$15	\$15	\$14	\$14	\$12	\$11	\$9	\$8	\$7

The above shows estimated returns per head for skirted fleece wool. These figures do not take into account the value of skirtings and oddments and do not take into account discounts that may apply for faults under individual circumstances. These figures are based on a market index of 100% and should be used as a guide only. Returns over \$30 / head for fleece wool are highlighted.

Source: Australian Wool Exchange, Australian Wool Innovation, Sydney Futures Exchange, x-rates.com

Disclaimer: While all due care has been taken in the preparation of this document, no warranty is made as to its accuracy, reliability or completeness. To the extent permitted by law neither Jemalong or their sources including subsidiaries and staff, accept liability to any person for loss or damage arising from the use of this information.