



Table 1: Northern Region Micron Price Guides

WEEK 46			12 MONTH COMPARISONS								3 YEAR COMPARISONS					10 YEAR COMPARISONS				
13/05/2026		6/05/2026	13/05/2025	Now	Now	Now	Now	Now	Now			Now		Percentile			Now		Percentile	
MPG	Price	Weekly Change	This time Last Year	compared to Last Year	12 Month Low	compared to Low	12 Month High	compared to High	Low	High	Average	to 3yr ave	Low		High	Average	to 10yr ave			
NRI	1956	-8 -0.4%	1231	+725 59%	1224	+732 60%	1977	-21 -1%	1117	1977	1313	+643 49%	98%	1021	2163	1482	+474 32%	91%		
15*	2870 n	+20 0.7%	2280	+590 26%	2275	+595 26%	2870	0 0%	2275	2975	2507	+363 14%	98%	1717	3750	2565	+305 12%	72%		
15.5*	2762 n	+10 0.4%	2070	+692 33%	2070	+692 33%	2762	0 0%	2070	2800	2296	+466 20%	99%	1653	3450	2468	+294 12%	72%		
16*	2632 n	-32 -1.2%	1762	+870 49%	1762	+870 49%	2687	-55 -2%	1762	2687	2033	+599 29%	97%	1575	3300	2352	+280 12%	72%		
16.5	2660 n	-23 -0.9%	1680	+980 58%	1680	+980 58%	2683	-23 -1%	1670	2683	1945	+715 37%	98%	1546	3187	2240	+420 19%	81%		
17	2625	-13 -0.5%	1663	+962 58%	1648	+977 59%	2658	-33 -1%	1600	2658	1856	+769 41%	97%	1478	3008	2134	+491 23%	87%		
17.5	2567	-26 -1.0%	1622	+945 58%	1609	+958 60%	2612	-45 -2%	1508	2612	1778	+789 44%	98%	1383	2845	2029	+538 27%	93%		
18	2538	-20 -0.8%	1573	+965 61%	1558	+980 63%	2568	-30 -1%	1432	2568	1702	+836 49%	98%	1272	2708	1918	+620 32%	97%		
18.5	2448	-7 -0.3%	1557	+891 57%	1532	+916 60%	2474	-26 -1%	1358	2474	1633	+815 50%	97%	1174	2591	1815	+633 35%	97%		
19	2331	-17 -0.7%	1516	+815 54%	1482	+849 57%	2356	-25 -1%	1327	2356	1575	+756 48%	97%	1116	2465	1721	+610 35%	95%		
19.5	2215	-30 -1.3%	1497	+718 48%	1453	+762 52%	2277	-62 -3%	1289	2277	1532	+683 45%	97%	1079	2404	1651	+564 34%	90%		
20	2130 n	-34 -1.6%	1451	+679 47%	1432	+698 49%	2212	-82 -4%	1262	2212	1496	+634 42%	96%	1047	2391	1591	+539 34%	88%		
21	2080 n	-34 -1.6%	1400	+680 49%	1400	+680 49%	2180	-100 -5%	1232	2180	1466	+614 42%	96%	1016	2368	1542	+538 35%	88%		
22	2050 n	-60 -2.8%	1394	+656 47%	1380	+670 49%	2150	-100 -5%	1200	2150	1436	+614 43%	97%	1009	2342	1508	+542 36%	88%		
23	1630 n	-47 -2.8%	1195	+435 36%	1195	+435 36%	1700	-70 -4%	960	1700	1208	+422 35%	96%	957	2316	1376	+254 18%	79%		
24	1365 n	+51 3.9%	900	+465 52%	900	+465 52%	1365	0 0%	766	1365	932	+433 46%	100%	770	2114	1191	+174 15%	73%		
25	1105 n	+45 4.2%	732	+373 51%	732	+373 51%	1105	0 0%	635	1105	773	+332 43%	100%	635	1801	1008	+97 10%	64%		
26	960 n	+24 2.6%	594	+366 62%	594	+366 62%	960	0 0%	465	960	627	+333 53%	100%	465	1545	870	+90 10%	63%		
28	755 n	+20 2.7%	425	+330 78%	425	+330 78%	755	0 0%	290	755	452	+303 67%	100%	310	1318	611	+144 24%	69%		
30	630 n	+30 5.0%	370	+260 70%	358	+272 76%	635	-5 -1%	260	635	400	+230 58%	99%	285	998	498	+132 27%	76%		
32	520 n	+17 3.4%	322	+198 61%	322	+198 61%	520	0 0%	227	520	340	+180 53%	100%	210	659	363	+157 43%	92%		
MC	1154 n	+18 1.6%	711	+443 62%	700	+454 65%	1154	0 0%	689	1154	761	+393 52%	100%	656	1563	960	+194 20%	80%		
AU BALES OFFERED	29,705		* 16.5 is the lowest Micron Price Guide (MPG) published by The Australian Wool Exchange (AWEX). Therefore MPG's below 16.5 micron are an estimate based on the best available information at the time of publication. Likewise, for any category where there is insufficient quantity offered to enable AWEX to quote, a quote will also be provided.																	
AU BALES SOLD	27,620		* Recording of 15 & 15.5 micron commenced in October 2017, and as a result some historic data is not yet available for those MPG's. Where historic data is not available an estimate based on '16 micron statistics' and incorporating the existing 15 & 15.5 micron data, will be provided as a guide.																	
AU PASSED-IN%	7.0%																			
AUD/USD	0.7240	-0.1%																		

Source: Australian Wool Exchange, Australian Wool Innovation, Riemann, x-rates.com, Reserve Bank of Australia, Australian Wool Testing Authority, Australian Bureau Statistics (ABS), Woolmark.

Disclaimer: Jemalong Wool Pty Ltd make no representations about the content and suitability of the information contained in this report. Specifically, Jemalong Wool does not warrant, guarantee or make any representations regarding the correctness, accuracy, reliability, currency, or any other aspect regarding characteristics or use of information presented in these materials. The user accepts sole responsibility and risk associated with the use and results of these materials, irrespective of the purpose of which such use or results are applied. In no event shall Jemalong Wool be liable for any loss or damages arising out of or in connection with the use of these materials.

Copyright © Jemalong Wool Pty Ltd, 2006-2026. Apart from any use permitted under the Copyright Act 1968, no part may be copied or reproduced by any process nor stored electronically without the written permission of Jemalong Wool Pty Ltd. This report has been compiled by Jemalong Wool Pty Ltd for internal use and for the benefit of Jemalong Wool clients. You should only read this report if you are authorised to do so, if you are not authorised then you must destroy all electronic and paper copies immediately. Under no circumstance are you permitted to forward this report to a third-party.

MARKET COMMENTARY Source: AWI

The wool market eased this week, with the EMI falling 10 cents in both AU & US dollar terms, closing at 1,876 AUD & 1,358 US

Across the catalogue, Merino fleece softened, particularly through the medium Merino segment, where buyer resistance was most evident. Fine Merino types (16.5–19.0µm) generally eased by 15–20 cents, while the broader medium Merino categories (19.5–21.0µm) experienced heavier losses of 25–30 cents across most selling centres. Despite the softer tone in fleece wool, the market remained selective rather than broadly weak.

Crossbred wool (25–32µm) continued its recent positive momentum, posting gains of 20–25 cents in several categories, with Southern 25 micron rising as much as 50 cents on the week. Carding indicators also strengthened, increasing between 5 and 18 cents depending on region, highlighting continued demand for lower-cost processing and blending wool. The resilience in these broader wool types helped offset further downside pressure in the Merino fleece market and prevented a larger fall in the EMI.

The market is not retreating from wool broadly — buyers are instead becoming more selective at current fine wool price levels. This week's result suggests mills are rotating into cheaper fibre blend categories such as crossbreds and cardings while resisting expensive fine Merino purchases, reflecting ongoing manufacturing margin pressure and a preference for lower input risk. The continued strength of the Australian dollar is also providing additional headwinds for exporters and offshore buyers, adding further caution to purchasing activity.

Next week has 31,334 bales of wool, with Fremantle selling on Tuesday only, while Sydney and Melbourne sell on Tuesday – Wednesday.

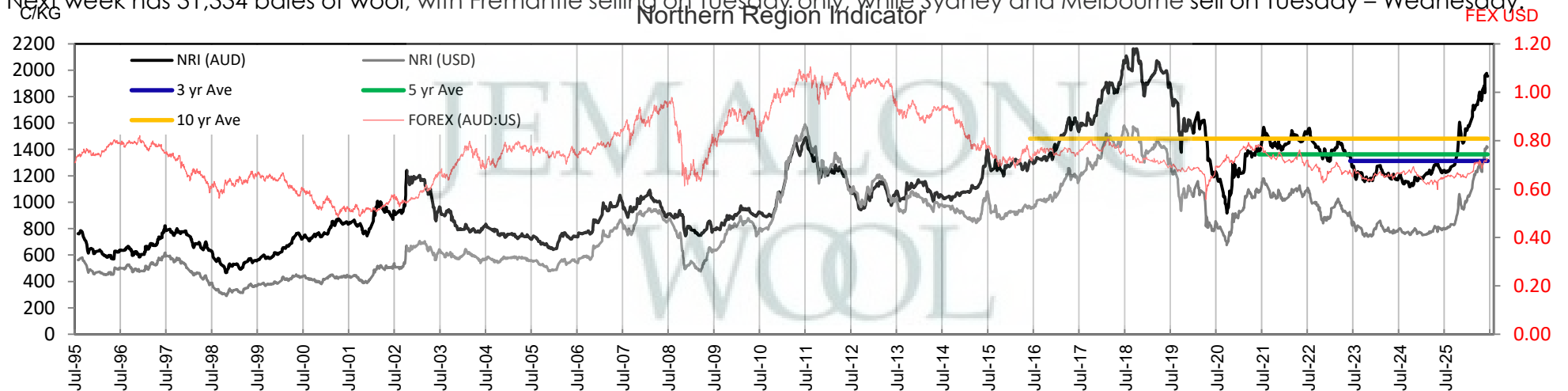




Table 2: Three Year Decile Table, since: 1/05/2023

Decile %	16	16.5	17	17.5	18	18.5	19	19.5	20	21	22	23	24	25	26	28	30	32	MC
1 10%	1825	1726	1658	1580	1494	1430	1387	1343	1307	1275	1221	1016	800	670	507	345	320	276	699
2 20%	1845	1762	1680	1605	1520	1450	1405	1360	1324	1288	1250	1080	820	687	533	355	330	285	701
3 30%	1890	1790	1700	1622	1539	1467	1413	1376	1336	1306	1271	1100	858	697	552	370	335	295	707
4 40%	1912	1806	1712	1634	1562	1492	1434	1389	1354	1316	1287	1120	878	708	564	375	345	300	711
5 50%	1927	1827	1730	1658	1586	1521	1466	1422	1385	1335	1315	1151	896	730	588	395	358	310	721
6 60%	2000	1887	1769	1680	1612	1553	1502	1470	1442	1413	1394	1192	934	736	600	425	370	330	730
7 70%	2062	1980	1858	1732	1645	1590	1535	1517	1478	1464	1450	1220	981	795	645	458	403	340	746
8 80%	2200	2110	2050	1963	1888	1813	1732	1695	1662	1656	1640	1406	1000	861	755	645	550	430	805
9 90%	2377	2317	2258	2234	2180	2123	2067	2030	2000	1989	1976	1540	1146	1000	852	683	586	490	877
10 100%	2687	2683	2658	2612	2568	2474	2356	2277	2212	2180	2150	1700	1365	1105	960	755	635	520	1154
MPG	2632	2660	2625	2567	2538	2448	2331	2215	2130	2080	2050	1630	1365	1105	960	755	630	520	1154
3 Yr Percentile	97%	98%	97%	98%	98%	97%	97%	97%	96%	96%	97%	96%	100%	100%	100%	100%	99%	100%	100%

Table 3: Ten Year Decile Table, since: 1/05/2016

Decile %	16	16.5	17	17.5	18	18.5	19	19.5	20	21	22	23	24	25	26	28	30	32	MC
1 10%	1816	1720	1652	1586	1514	1448	1392	1351	1312	1259	1212	1079	859	697	550	350	320	240	706
2 20%	1912	1796	1708	1633	1567	1505	1452	1408	1347	1290	1250	1106	900	732	592	377	335	253	730
3 30%	2025	1913	1792	1704	1622	1569	1523	1472	1382	1315	1285	1129	951	801	652	411	355	276	805
4 40%	2145	2050	1993	1926	1816	1688	1592	1498	1427	1361	1328	1158	979	845	726	460	380	295	869
5 50%	2300	2235	2148	2036	1922	1807	1664	1542	1468	1423	1390	1220	1010	876	772	531	440	332	904
6 60%	2460	2358	2265	2165	2017	1869	1734	1636	1541	1477	1444	1356	1226	1041	901	680	560	396	988
7 70%	2600	2527	2393	2257	2118	1964	1832	1747	1665	1633	1565	1450	1337	1173	1065	756	593	435	1079
8 80%	2810	2639	2525	2392	2233	2119	2008	1939	1889	1814	1800	1636	1490	1251	1140	819	663	465	1149
9 90%	3060	2862	2665	2519	2404	2320	2249	2197	2166	2140	2121	1962	1811	1504	1321	933	710	507	1275
10 100%	3300	3187	3008	2845	2708	2591	2465	2404	2391	2368	2342	2316	2114	1801	1545	1318	998	659	1563
MPG	2632	2660	2625	2567	2538	2448	2331	2215	2130	2080	2050	1630	1365	1105	960	755	630	520	1154
10 Yr Percentile	72%	81%	87%	93%	97%	97%	95%	90%	88%	88%	88%	79%	73%	64%	63%	69%	76%	92%	80%

Definitions:

* A Percentile, is a value on a scale of one hundred that indicates the percent of a distribution that is equal to or below it. In general a percentile between 25% and 75% is considered normal, a percentile below 25% is considered below normal and a percentile above 75% is considered above normal.

Three and ten year percentiles shown on the bottom line of table 2 & 3 (above) and in table 1 (on page 1), detail the amount of time during the past 3 & 10 years where the market has traded either at or below its current price.

* Deciles are a method of sorting ranked data into 10 equal groups. The data may be ranked from largest to smallest or vice versa.

The above Decile tables sort price Percentiles into 10 equal groups (in ascending order), with table 2 ranking the previous 3 years prices, while table 3 ranks prices over the previous 10 years

Example: In Table 2, a Decile Rank of 6 for 19 microns, shows 19 microns have traded at or below 1502 for 60% of the time, over the past three years.

In Table 3, a Decile Rank of 6 for 19 microns, shows 19 microns have traded at or below 1734 for 60% of the time, over the past ten years.



Table 4: Riemann Forwards, as at: **13/05/26** **Any highlighted in yellow are recent trades, trading since: Thursday, 7 May 2026**

MICRON (Total Traded = 37)	18um (2 Traded)	18.5um (2 Traded)	19um (16 Traded)	19.5um (3 Traded)	21um (14 Traded)	22um (0 Traded)	23um (0 Traded)	28um (0 Traded)	30um (0 Traded)
May-2026 (8)	11/02/26 2225 (1)		13/01/26 1950 (2)	23/02/26 2070 (2)	20/02/26 2020 (3)				
Jun-2026 (13)		1/04/26 2200 (2)	25/03/26 2020 (8)		1/04/26 1950 (3)				
Jul-2026 (4)			14/04/26 2100 (2)	20/04/26 2100 (1)	14/04/26 2055 (1)				
Aug-2026 (1)			21/04/26 2235 (1)						
Sep-2026 (2)					27/04/26 2045 (2)				
Oct-2026 (7)	20/04/26 2280 (1)		1/05/26 2225 (3)		21/04/26 2000 (3)				
Nov-2026 (2)					21/04/26 2005 (2)				
Dec-2026									
Jan-2027									
Feb-2027									
Mar-2027									
Apr-2027									
May-2027									
Jun-2027									
Jul-2027									
Aug-2027									
Sep-2027									
Oct-2027									
Nov-2027									
Dec-2027									
Jan-2028									
Feb-2028									
Mar-2028									

Explanatory Notes: Prices quoted reflect the most recent trades, at time of print.

Disclaimer: While all due care has been taken in the preparation of this document, no warranty is made as to its accuracy, reliability or completeness. To the extent permitted by law neither Jemalong or their sources including subsidiaries and staff, accept liability to any person for loss or damage arising from the use of this information.



Table 5: Riemann Options, as at: **13/05/26** **Any highlighted in yellow are recent trades, trading since: Friday, 8 May 2026**

MICRON (Total Traded = 0)	18um Strike - Premium (0 Traded)	18.5um Strike - Premium (0 Traded)	19um Strike - Premium (0 Traded)	19.5um Strike - Premium (0 Traded)	21um Strike - Premium (0 Traded)	22um Strike - Premium (0 Traded)	23um Strike - Premium (0 Traded)	28um Strike - Premium (0 Traded)	30um Strike - Premium (0 Traded)
May-2026									
Jun-2026									
Jul-2026									
Aug-2026									
Sep-2026									
Oct-2026									
Nov-2026									
Dec-2026									
Jan-2027									
Feb-2027									
Mar-2027									
Apr-2027									
May-2027									
Jun-2027									
Jul-2027									
Aug-2027									
Sep-2027									
Oct-2027									
Nov-2027									
Dec-2027									
Jan-2028									
Feb-2028									
Mar-2028									

OPTIONS CONTRACT MONTH

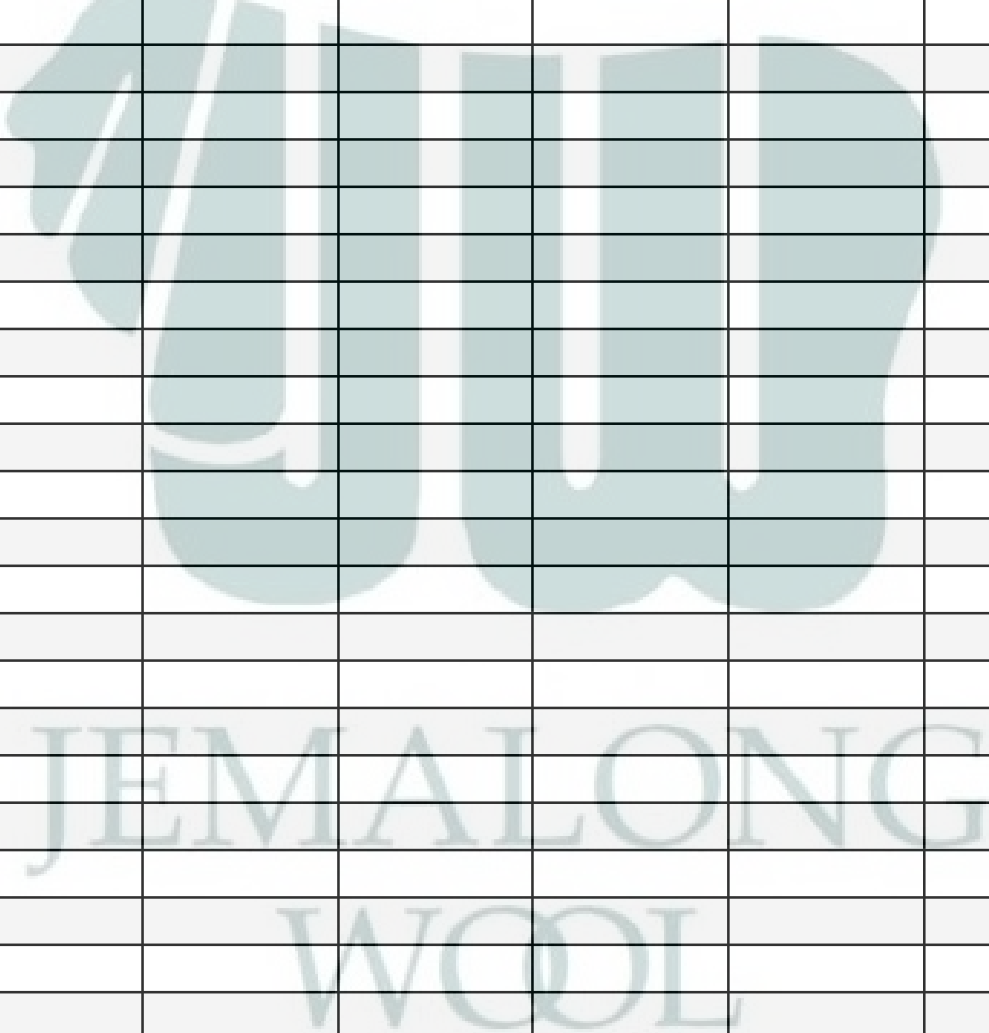




Table 6: National Market Share

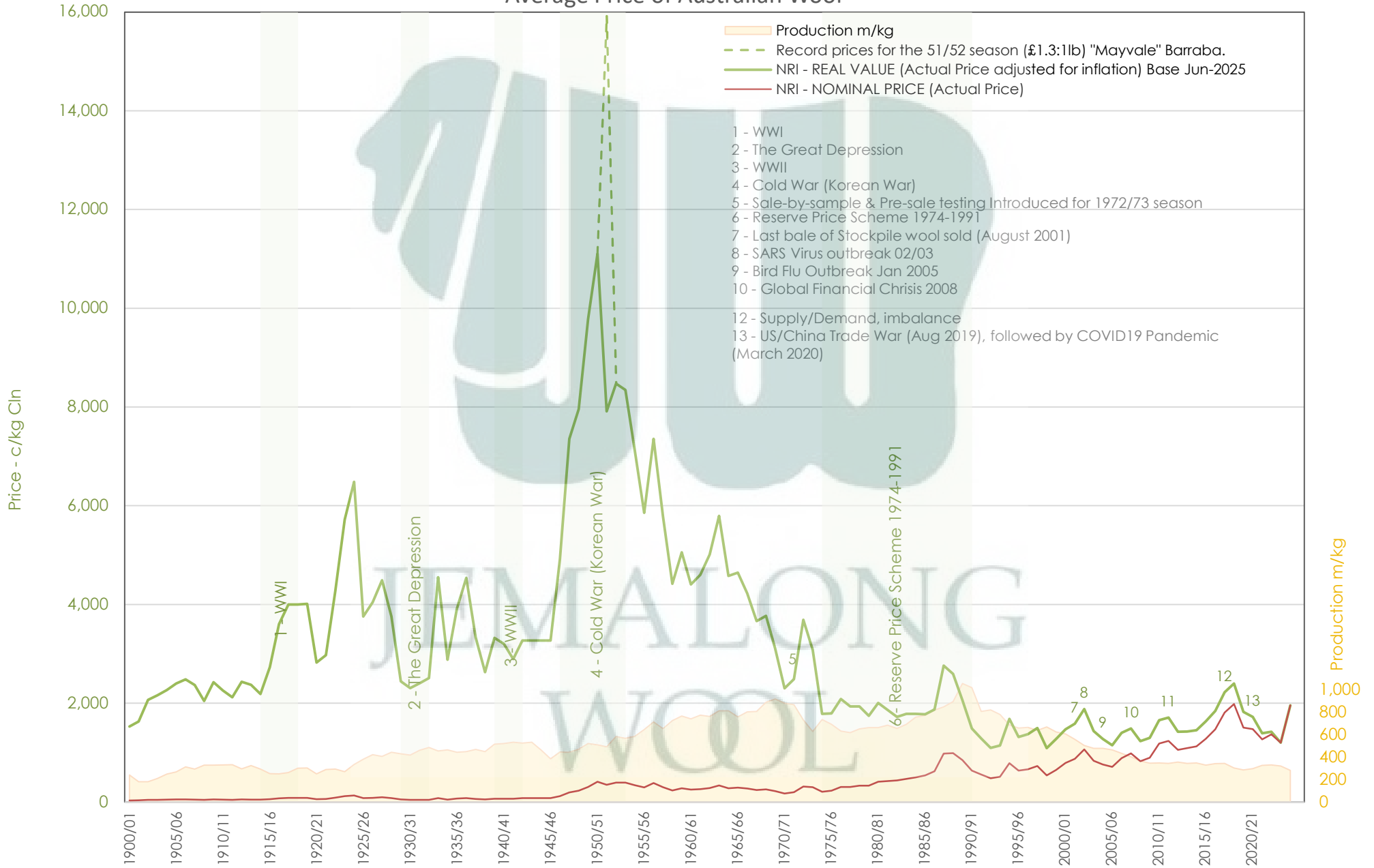
	Current Selling Week Week 46			Previous Selling Week Week 45			Last Season 2024-25			2 Years Ago 2023-24			3 Years Ago 2022-23			5 Years Ago 2020-21			10 Years Ago 2015-16			
	Rank	Buyer	Bales	MS%	Buyer	Bales	MS%	Buyer	Bales	MS%	Buyer	Bales	MS%	Buyer	Bales	MS%	Buyer	Bales	MS%	Buyer	Bales	MS%
Top 10, Auction Buyers	1	TECM	4,823	17%	TECM	5,154	17%	TECM	229,513	16%	TECM	269,885	16%	TECM	236,574	15%	TECM	228,018	15%	TECM	223,011	13%
	2	PMWF	3,650	13%	EWES	4,202	14%	EWES	183,456	13%	EWES	200,309	12%	EWES	184,465	11%	EWES	159,908	10%	CTXS	158,343	10%
	3	EWES	2,706	10%	PMWF	2,906	9%	TIAM	155,816	11%	TIAM	163,248	10%	TIAM	165,940	10%	FOXM	129,251	8%	FOXM	151,685	9%
	4	UWCM	2,134	8%	SMAM	2,438	8%	FOXM	115,227	8%	PMWF	130,958	8%	FOXM	114,903	7%	TIAM	121,176	8%	LEMM	124,422	8%
	5	SMAM	1,961	7%	PEAM	2,355	8%	SMAM	102,067	7%	FOXM	112,236	7%	AMEM	94,128	6%	UWCM	100,677	6%	TIAM	105,610	6%
	6	TIAM	1,861	7%	UWCM	2,340	8%	PMWF	101,929	7%	PEAM	110,013	7%	PMWF	92,939	6%	LEMM	98,471	6%	AMEM	104,017	6%
	7	FOXM	1,711	6%	TIAM	1,806	6%	AMEM	79,894	6%	AMEM	103,230	6%	UWCM	81,113	5%	AMEM	90,244	6%	GWEA	91,407	6%
	8	AMEM	1,676	6%	AMEM	1,768	6%	PEAM	78,127	6%	UWCM	90,284	5%	SMAM	81,046	5%	PMWF	84,389	5%	MODM	83,453	5%
	9	PEAM	1,537	6%	FOXM	1,570	5%	UWCM	73,595	5%	SMAM	76,401	5%	PEAM	76,571	5%	MODM	70,426	4%	PMWF	82,132	5%
	10	GSAS	623	2%	GSAS	725	2%	MEWS	41,323	3%	MEWS	67,040	4%	MEWS	64,650	4%	KATS	63,487	4%	MCHA	64,453	4%
MFLC TOP 5	1	PMWF	2,965	20%	PMWF	2,657	16%	TIAM	113,479	15%	TECM	147,611	16%	TECM	128,047	15%	TECM	131,264	15%	CTXS	124,326	13%
	2	TECM	2,585	17%	TECM	2,554	15%	TECM	108,786	14%	PMWF	124,594	14%	TIAM	115,988	14%	TIAM	93,870	10%	TECM	112,996	12%
	3	SMAM	1,682	11%	SMAM	2,000	12%	PMWF	95,314	12%	TIAM	117,878	13%	EWES	93,911	11%	EWES	83,559	9%	LEMM	91,475	10%
	4	TIAM	1,574	10%	EWES	1,920	11%	EWES	94,695	12%	EWES	103,468	12%	PMWF	87,904	10%	LEMM	81,281	9%	FOXM	84,992	9%
	5	EWES	921	6%	PEAM	1,677	10%	SMAM	79,384	10%	MEWS	65,151	7%	MEWS	63,681	7%	PMWF	80,872	9%	PMWF	77,550	8%
MSKT TOP 5	1	TECM	878	21%	EWES	1,212	25%	TECM	52,792	24%	TECM	51,028	20%	EWES	46,781	18%	TECM	42,521	18%	TIAM	41,055	17%
	2	AMEM	695	16%	TECM	1,077	22%	EWES	40,704	18%	EWES	50,301	20%	TECM	45,453	17%	UWCM	34,928	14%	TECM	39,290	16%
	3	EWES	643	15%	AMEM	598	12%	TIAM	26,993	12%	TIAM	34,378	14%	TIAM	36,973	14%	EWES	34,884	14%	AMEM	29,982	12%
	4	PMWF	541	13%	UWCM	388	8%	AMEM	18,460	8%	AMEM	26,328	10%	SMAM	18,671	7%	WCWF	21,915	9%	MODM	26,227	11%
	5	FOXM	415	10%	FOXM	308	6%	SMAM	17,308	8%	FOXM	13,839	5%	FOXM	17,752	7%	TIAM	18,193	8%	FOXM	18,153	7%
XB TOP 5	1	TECM	988	20%	TECM	1,064	19%	TECM	43,969	17%	PEAM	68,181	22%	PEAM	54,447	18%	MODM	34,090	15%	TECM	46,757	17%
	2	UWCM	772	16%	UWCM	956	17%	PEAM	43,966	17%	TECM	48,337	15%	TECM	41,194	14%	TECM	33,794	15%	KATS	27,734	10%
	3	EWES	758	15%	EWES	618	11%	EWES	30,639	12%	KATS	28,741	9%	MODM	28,282	9%	PEAM	30,636	13%	FOXM	27,096	10%
	4	PEAM	558	11%	KATS	554	10%	UWCM	24,901	9%	EWES	27,305	9%	EWES	25,981	9%	EWES	22,525	10%	CTXS	22,768	8%
	5	KATS	405	8%	PEAM	546	10%	KATS	20,772	8%	UWCM	24,830	8%	UWCM	23,318	8%	UWCM	18,968	8%	MODM	21,130	8%
ODDS TOP 5	1	UWCM	975	29%	UWCM	815	25%	UWCM	25,237	16%	UWCM	31,740	16%	MCHA	29,569	16%	FOXM	25,868	13%	MCHA	39,964	20%
	2	EWES	384	11%	TECM	459	14%	TECM	23,966	15%	TECM	22,909	12%	UWCM	29,451	16%	MCHA	23,579	12%	VWPM	30,258	15%
	3	TECM	372	11%	EWES	452	14%	FOXM	19,320	12%	FOXM	19,823	10%	TECM	21,880	12%	UWCM	21,008	11%	TECM	23,968	12%
	4	MCHA	342	10%	MCHA	337	10%	EWES	17,418	11%	EWES	19,235	10%	EWES	17,792	9%	TECM	20,439	11%	FOXM	21,444	11%
	5	AMEM	231	7%	AMEM	217	7%	MCHA	13,272	8%	MCHA	16,141	8%	FOXM	16,585	9%	EWES	18,940	10%	GWEA	10,802	5%
Auction Totals	<u>Bales Sold</u>	<u>\$/Bale</u>	<u>Bales Sold</u>		<u>\$/Bale</u>		<u>Bales Sold</u>		<u>\$/Bale</u>		<u>Bales Sold</u>		<u>\$/Bale</u>		<u>Bales Sold</u>		<u>\$/Bale</u>		<u>Bales Sold</u>		<u>\$/Bale</u>	
	27,620	\$ 2,119	30,638	\$ 2,145	1,419,576	\$1,362	1,659,483	\$1,348	1,607,799	\$1,503	1,558,820	\$1,455	1,652,727	\$1,424								
	<u>Auction Value</u>		<u>Auction Value</u>		<u>Auction Value</u>		<u>Auction Value</u>		<u>Auction Value</u>		<u>Auction Value</u>		<u>Auction Value</u>		<u>Auction Value</u>		<u>Auction Value</u>		<u>Auction Value</u>		<u>Auction Value</u>	
	\$58,520,000		\$65,730,000		\$1,933,603,248		\$2,236,630,000		\$2,416,900,000		\$2,267,750,000		\$2,354,185,590									

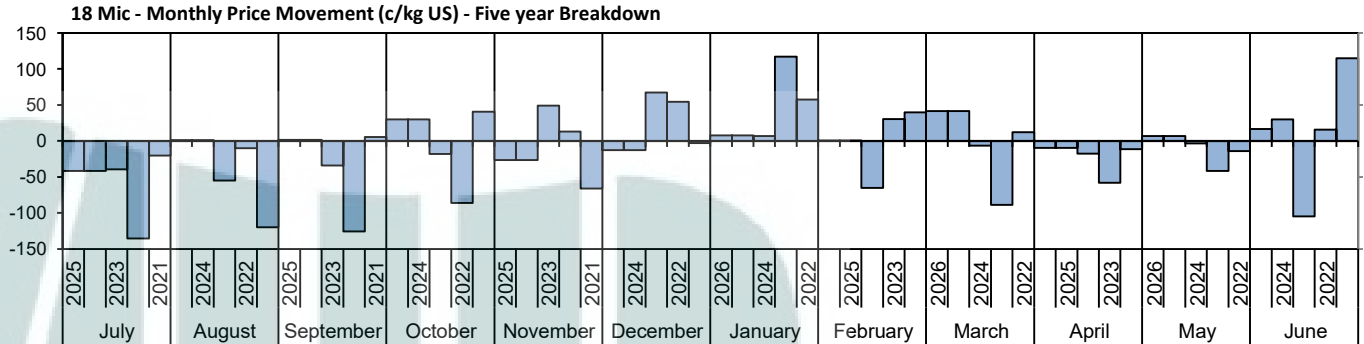
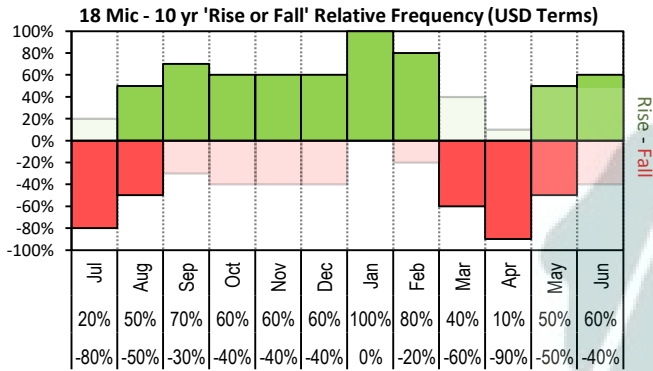


Table 7: NSW Production Statistics

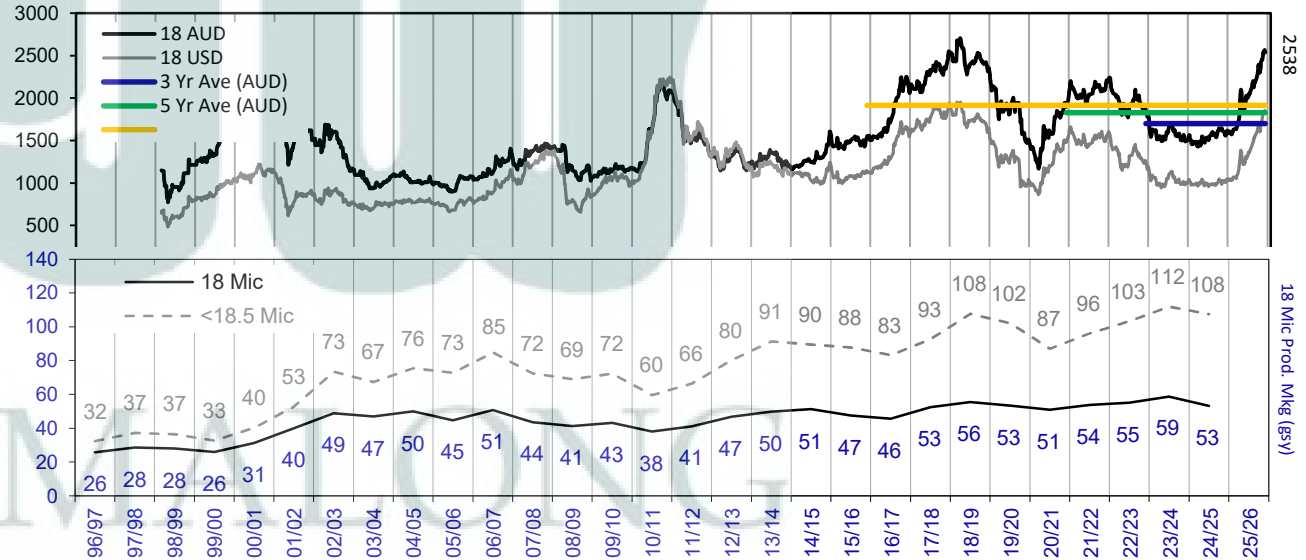
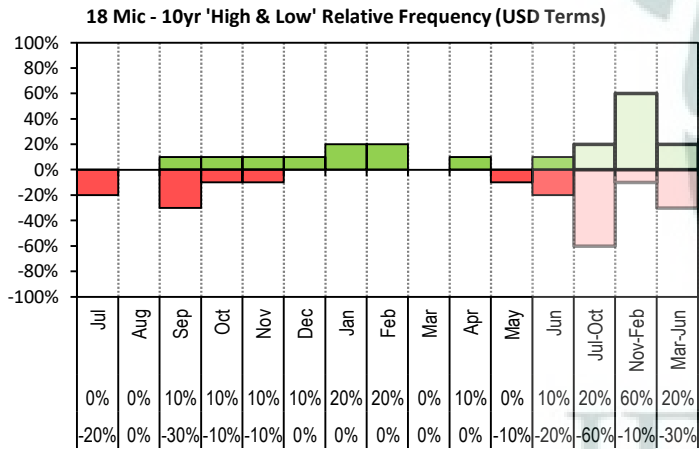
			MAX	MIN	MAX GAIN	MAX REDUCTION												
2024-25																		
Statistical Devision, Area Code & Towns			Auction Bales (FH)	Micron	+/- YoY	Vmb %	+/- YoY	Yield % Sch Dry	+/- YoY	Length mm	+/- YoY	Strength Nkt	+/- YoY	Ave Price c/kg				
Northern	N02	Tenterfield, Glen Innes	5,110	18.8	-0.8	2.1	0.5	70.5	-0.5	84	2.8	40	-2.6	1016				
	N03	Guyra	36,593	20.2	-0.7	2.2	0.4	66.0	-2.4	83	1.3	37	-3.4	926				
	N04	Inverell	3,277	19.0	0.4	3.7	0.4	67.4	-0.5	87	3.6	36	-2.6	846				
	N05	Armidale	543	19.2	0.6	3.3	-1.0	69.8	1.5	85	0.9	38	-0.8	889				
	N06	Tamworth, Gunnedah, Quirindi	4,430	20.3	-0.1	4.2	0.2	66.2	-1.2	85	1.8	41	-0.2	802				
	N07	Moree	2,863	19.5	0.5	5.4	-0.4	60.2	-1.1	91	5.6	37	-0.5	668				
	N08	Narrabri	2,091	19.7	0.7	4.6	-1.2	63.5	0.6	86	4.9	41	-0.2	740				
	North Western & Far West	N09	Cobar, Bourke, Wanaaring	7,005	19.5	0.1	4.7	-0.4	59.4	0.5	90	2.7	38	-1.7	688			
N12		Walgett	8,652	19.3	0.0	6.4	-1.4	60.1	1.0	90	4.4	36	-2.2	676				
N13		Nyngan	16,258	19.6	0.1	6.9	-0.2	59.3	-0.9	89	2.6	39	0.9	659				
N14		Dubbo, Narromine	17,475	21.5	0.5	4.3	0.0	62.5	-0.5	87	2.9	39	0.5	590				
N16		Dunedoo	5,160	20.5	0.4	3.8	0.4	65.8	-0.1	85	1.8	39	1.1	714				
N17		Mudgee, Wellington, Gulgong	18,133	19.9	0.4	2.7	0.0	67.4	-0.5	85	3.6	40	-0.7	847				
N33		Coonabarabran	2,372	20.1	-0.3	4.3	0.3	65.4	-0.3	87	2.4	38	0.1	717				
N34		Coonamble	6,020	20.3	0.2	5.8	0.9	62.3	-0.7	88	2.0	39	2.3	664				
N36		Gilgandra, Gulargambone	5,501	21.2	0.2	4.0	0.0	63.7	-0.7	89	3.5	39	-0.4	647				
N40		Brewarrina	5,860	19.8	0.2	5.8	-0.9	59.6	-0.2	91	3.7	39	-0.2	687				
N10	Wilcannia, Broken Hill	17,987	20.1	0.0	4.1	-0.3	57.7	0.4	93	2.7	37	0.1	660					
Central West	N15	Forbes, Parkes, Cowra	32,103	20.6	0.1	3.1	-0.2	64.6	-0.3	88	3.6	38	-1.6	693				
	N18	Lithgow, Oberon	1,860	22.2	0.0	1.5	0.0	70.8	-0.3	90	5.0	39	-3.6	824				
	N19	Orange, Bathurst	44,594	21.8	-0.1	2.2	0.2	68.3	-0.8	88	3.0	38	-2.0	730				
	N25	West Wyalong	17,602	19.8	-0.1	2.8	-0.3	63.5	-0.3	91	3.5	37	-1.4	730				
	N35	Condobolin, Lake Cargelligo	7,253	20.7	0.3	5.1	-0.8	61.0	0.4	90	6.4	40	1.4	611				
Murrumbidgee	N26	Cootamundra, Temora	22,208	20.9	-0.3	1.8	0.0	64.5	-1.9	90	0.9	36	-2.2	678				
	N27	Adelong, Gundagai	11,481	20.7	-1.0	2.2	0.4	66.2	-2.6	89	0.6	36	-2.6	746				
	N29	Wagga, Narrandera	30,930	21.4	-0.3	2.0	-0.1	63.5	-1.8	88	-0.7	35	-2.9	647				
	N37	Griffith, Hillston	10,676	21.0	-0.3	4.0	-1.3	63.0	1.4	88	5.0	41	-1.6	651				
	N39	Hay, Coleambally	18,427	20.0	0.0	4.2	-2.1	63.4	1.4	88	1.6	41	-0.5	740				
Murray	N11	Wentworth, Balranald	12,070	20.8	0.2	5.3	-1.2	60.2	1.6	94	1.5	38	1.6	635				
	N28	Albury, Corowa, Holbrook	27,445	21.0	-0.5	1.5	0.0	64.4	-2.9	85	-1.8	35	-3.9	725				
	N31	Deniliquin	21,720	20.5	-0.2	3.2	-1.0	64.9	0.3	90	2.5	37	-3.2	710				
	N38	Finley, Berrigan, Jerilderie	8,139	20.0	0.1	2.6	-1.0	64.6	0.1	87	2.1	40	-0.5	762				
South Eastern	N23	Goulburn, Young, Yass	95,490	19.8	-0.2	1.7	0.2	68.3	-1.3	88	0.9	37	-1.5	851				
	N24	Monaro (Cooma, Bombala)	28,406	19.2	-0.3	1.4	-0.2	70.1	-0.4	90	1.1	36	-0.8	911				
	N32	A.C.T.	214	18.8	1.2	1.8	0.6	67.1	-4.6	88	2.1	35	-3.9	871				
	N43	South Coast (Bega)	279	18.4	-0.2	1.1	0.3	74.3	-0.2	86	-2.1	40	-4.3	1099				
NSW	AWEX Sale Statistics 24-25		612,559	20.4	-0.2	2.8	-0.1	65.3	-0.9	88	1.8	38	-1.3	773				
AWTA Mthly Key Test Data			Bales Tested	+/- YoY	Micron	+/- YoY	VMB	+/- YoY	Yld	+/- YoY	Lth	+/- YoY	Nkt	+/- YoY	POBM +/-			
AUSTRALIA	Current Season	April Y.T.D	134,391	-2,612	20.4	0.0	2.8	0.3	61.5	-0.3	85	0.5	33	-0.1	44 -2.1			
	Previous Seasons	2024-25	1,301,133	-125,413	20.5	0.0	2.3	0.0	63.8	-0.6	88	1.0	33	0.0	46 0.0			
	2023-24	1,426,546	-168,437	20.5	-0.3	2.3	0.1	64.4	-1.1	87	0.0	33	-2.0	46 -4.0				
	2022-23	1,594,983	-5078	20.8	0.0	2.2	-0.1	65.5	-0.7	87	-2.0	35	1.0	50 -2.0				
			1,600,061	19,652	20.8	-0.1	2.3	0.0	66.2	1.1	89	0.9	34	-0.3	48 -0.5			

Average Price of Australian Wool

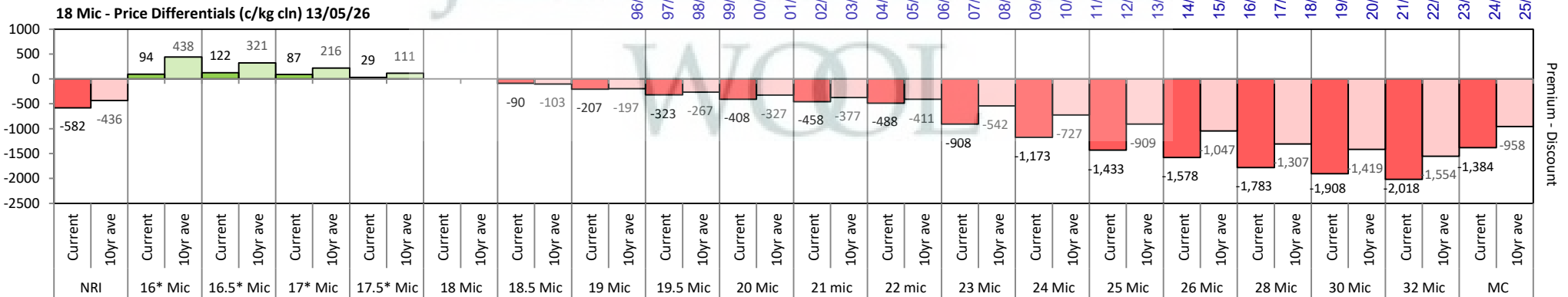


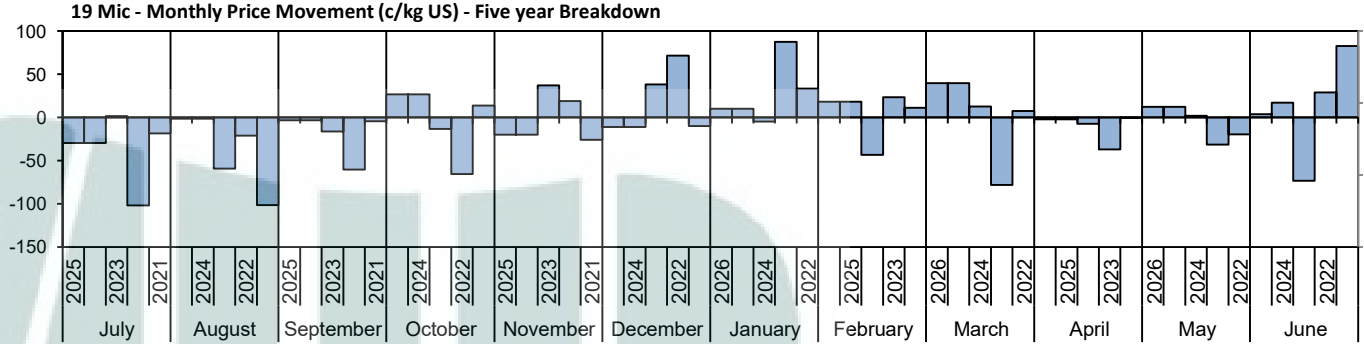
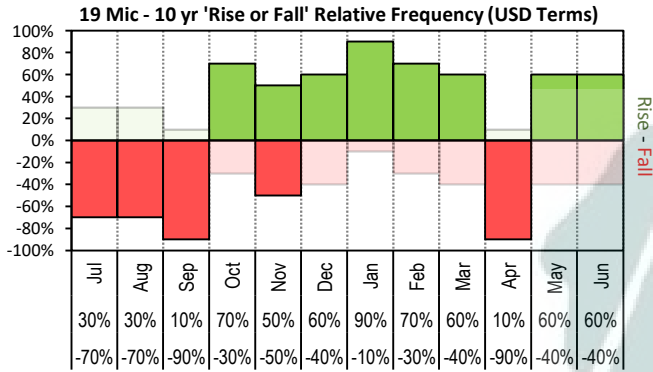


The above 'Rise or Fall' graph, shows how often the market has risen or fallen in a given month over the past 10 years, it does not show the extent of the movement only the frequency of direction. The 'Monthly Price Movement' graph shows the extent of movement for each month, for the past 5 years.

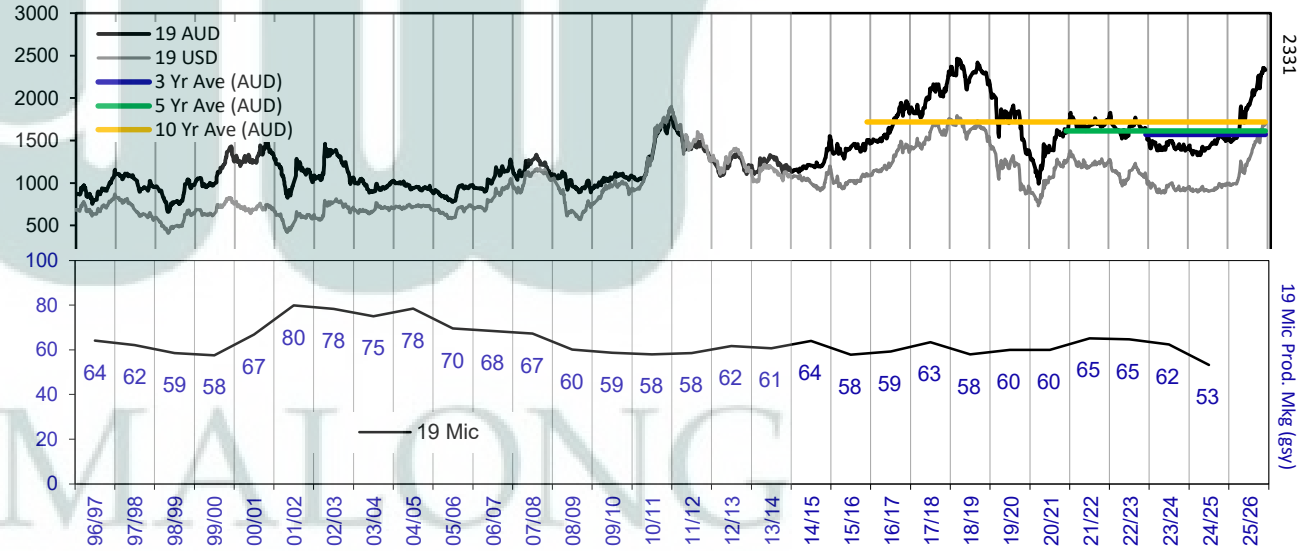
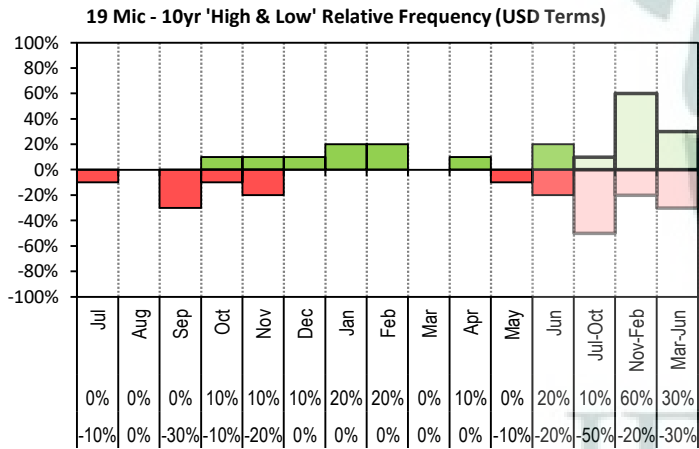


The above graph, shows how often the '12 month high & low' have been achieved for a given month over the past 10 years. It is not a measure of probability.

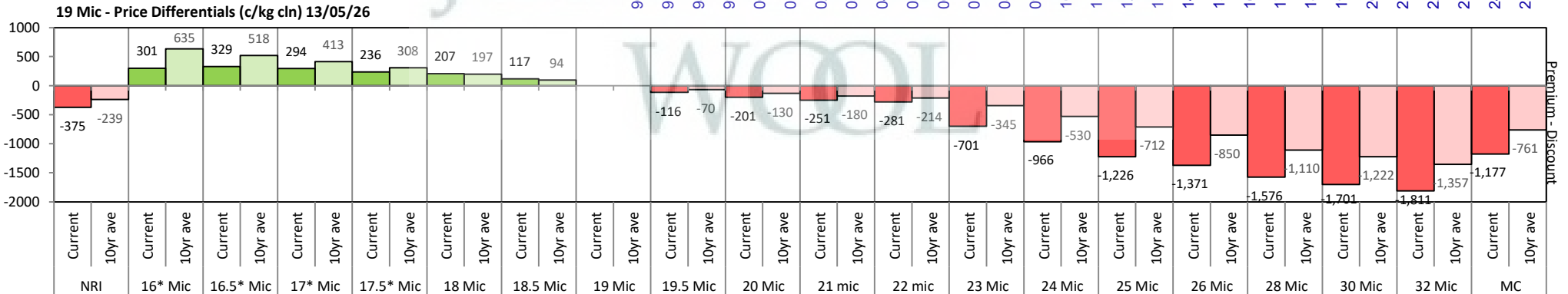


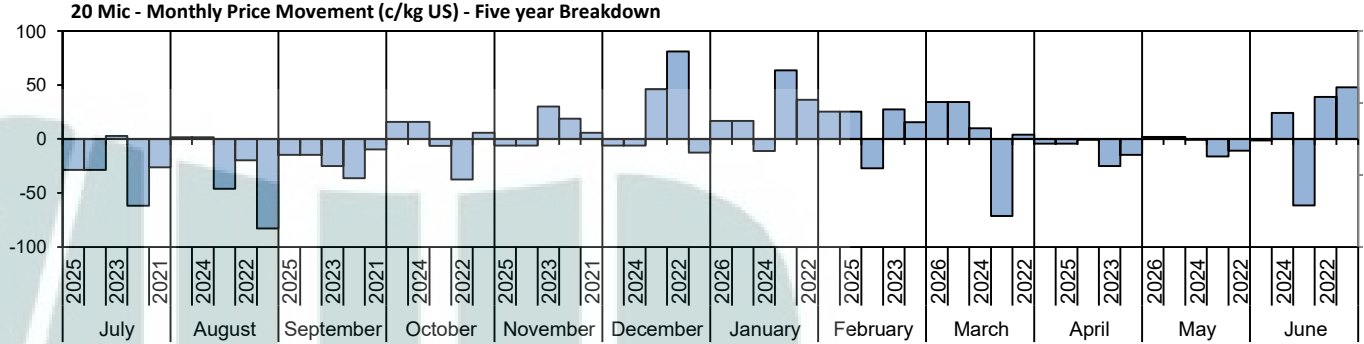
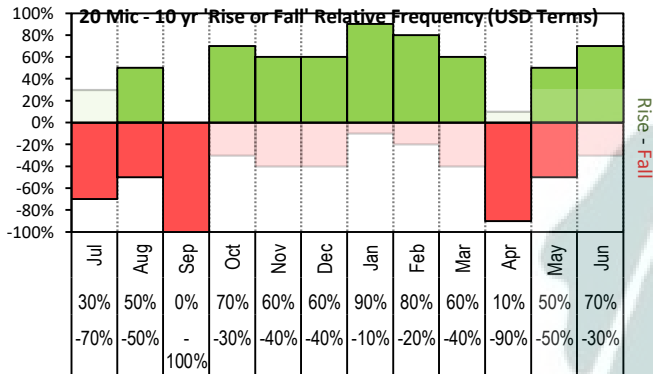


The above 'Rise or Fall' graph, shows how often the market has risen or fallen in a given month over the past 10 years, it does not show the extent of the movement only the frequency of direction. The 'Monthly Price Movement' graph shows the extent of movement for each month, for the past 5 years.

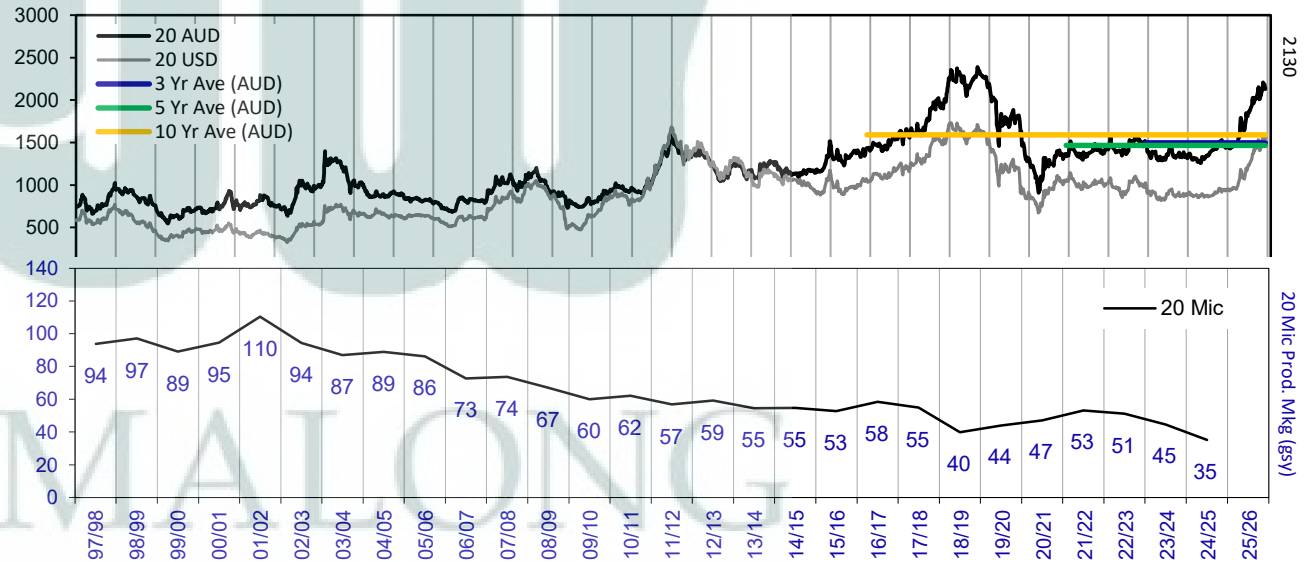
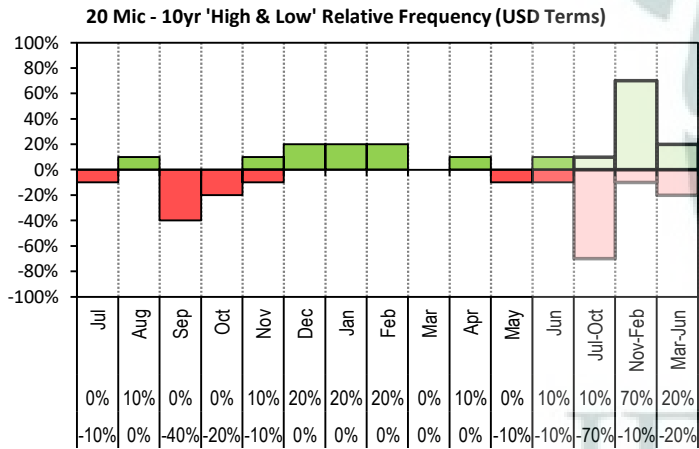


The above graph, shows how often the '12 month high & low' have been achieved for a given month over the past 10 years. It is not a measure of probability.

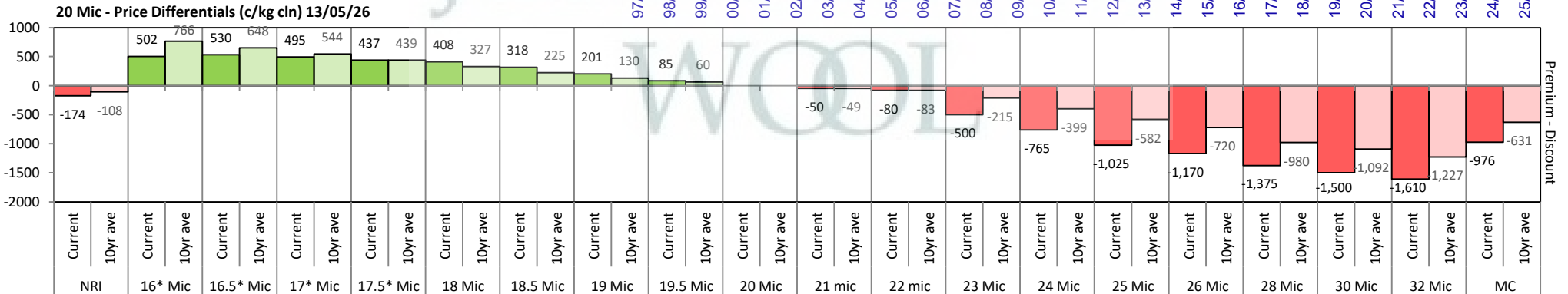


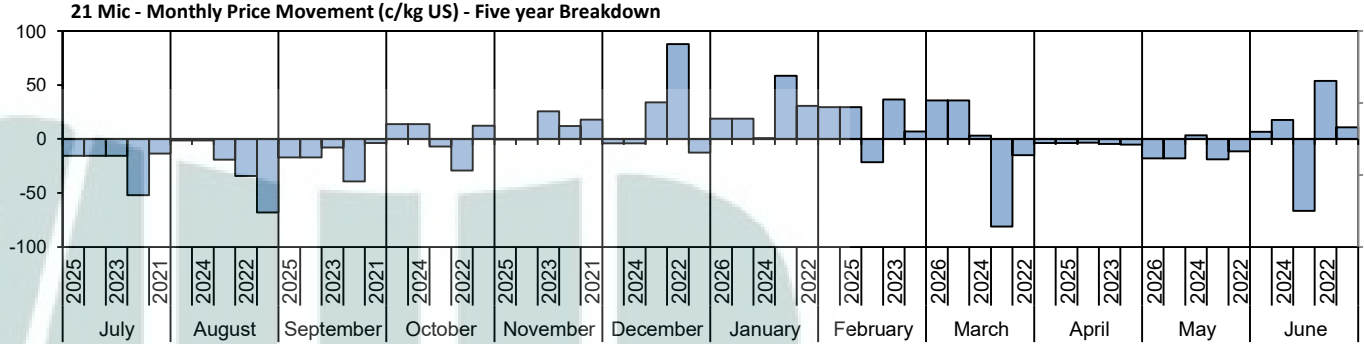
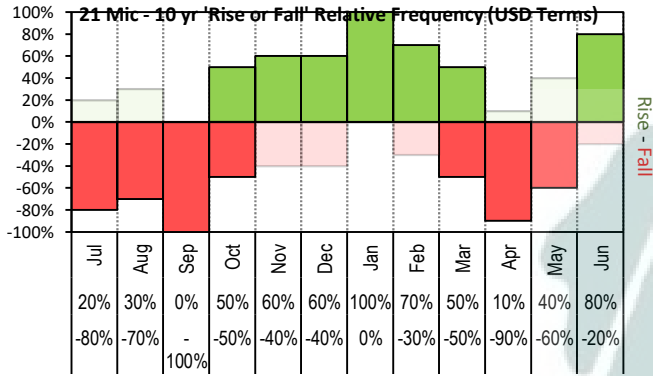


The above 'Rise or Fall' graph, shows how often the market has risen or fallen in a given month over the past 10 years, it does not show the extent of the movement only the frequency of direction. The 'Monthly Price Movement' graph shows the extent of movement for each month, for the past 5 years.

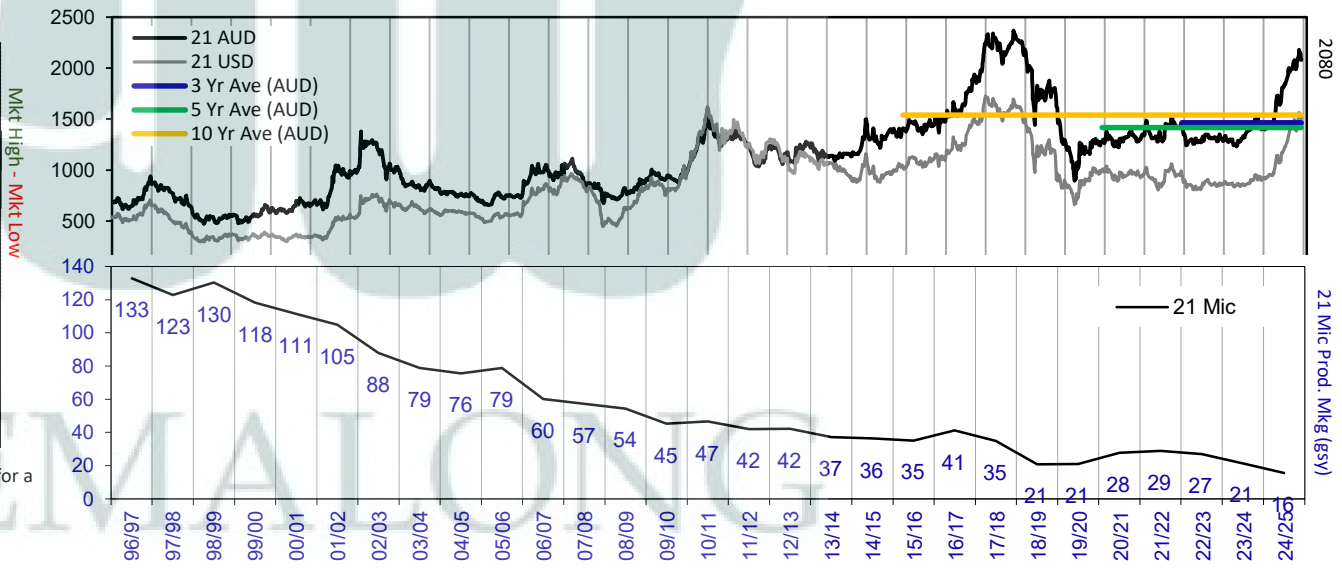
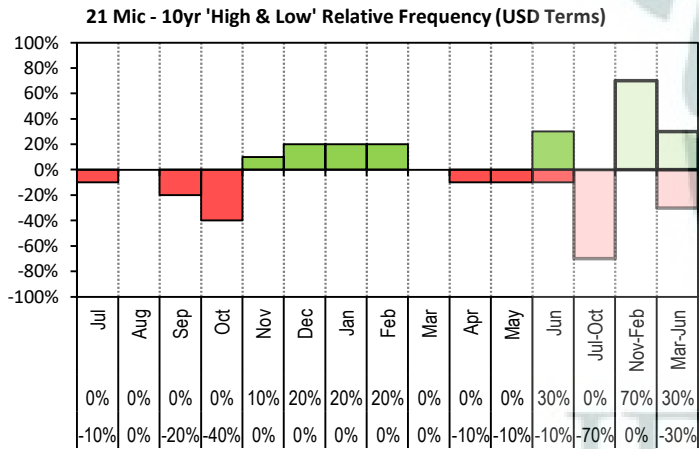


The above graph, shows how often the '12 month high & low' have been achieved for a given month over the past 10 years. It is not a measure of probability.

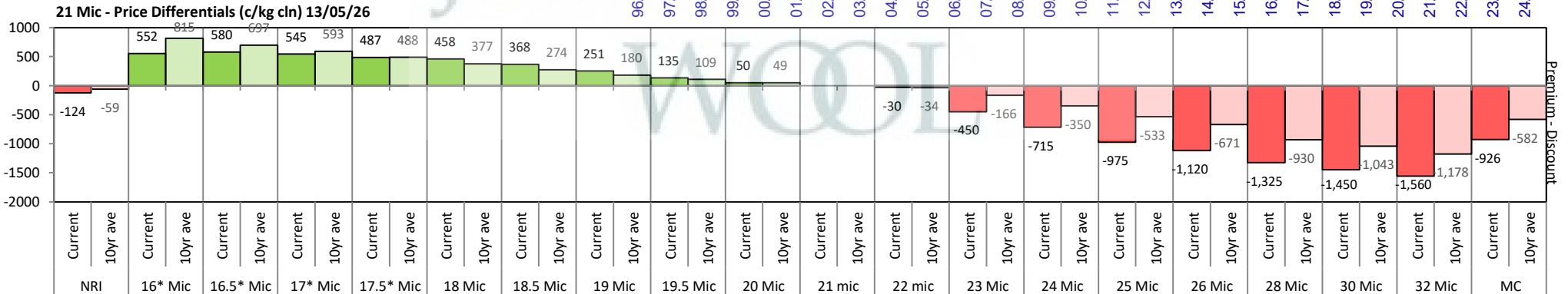


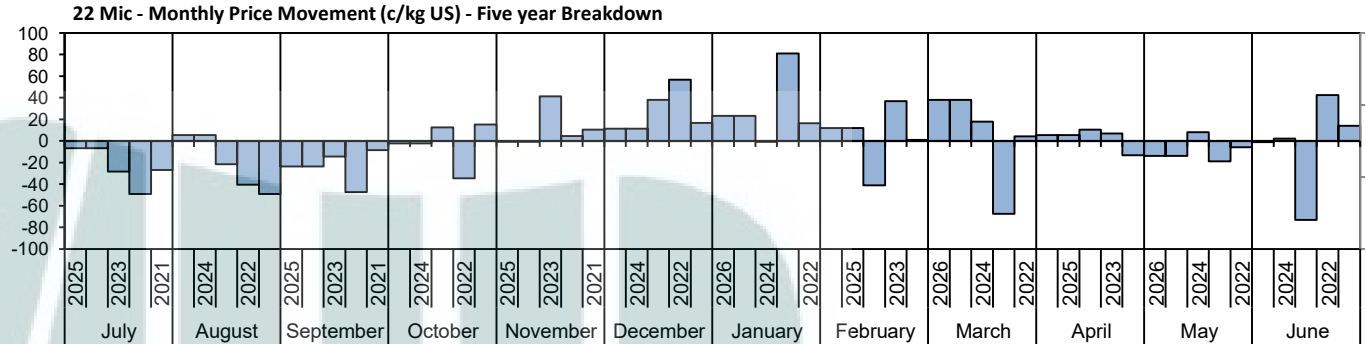
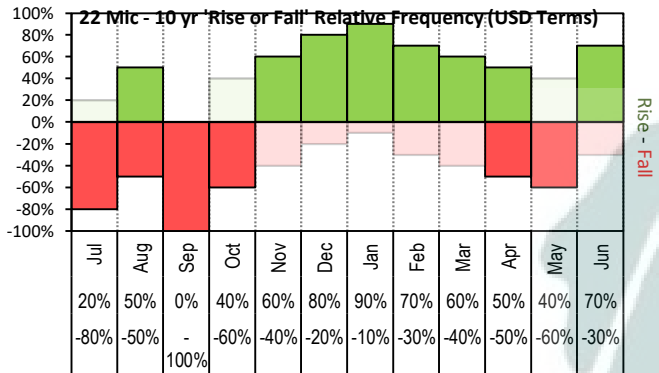


The above 'Rise or Fall' graph, shows how often the market has risen or fallen in a given month over the past 10 years, it does not show the extent of the movement only the frequency of direction. The 'Monthly Price Movement' graph shows the extent of movement for each month, for the past 5 years.

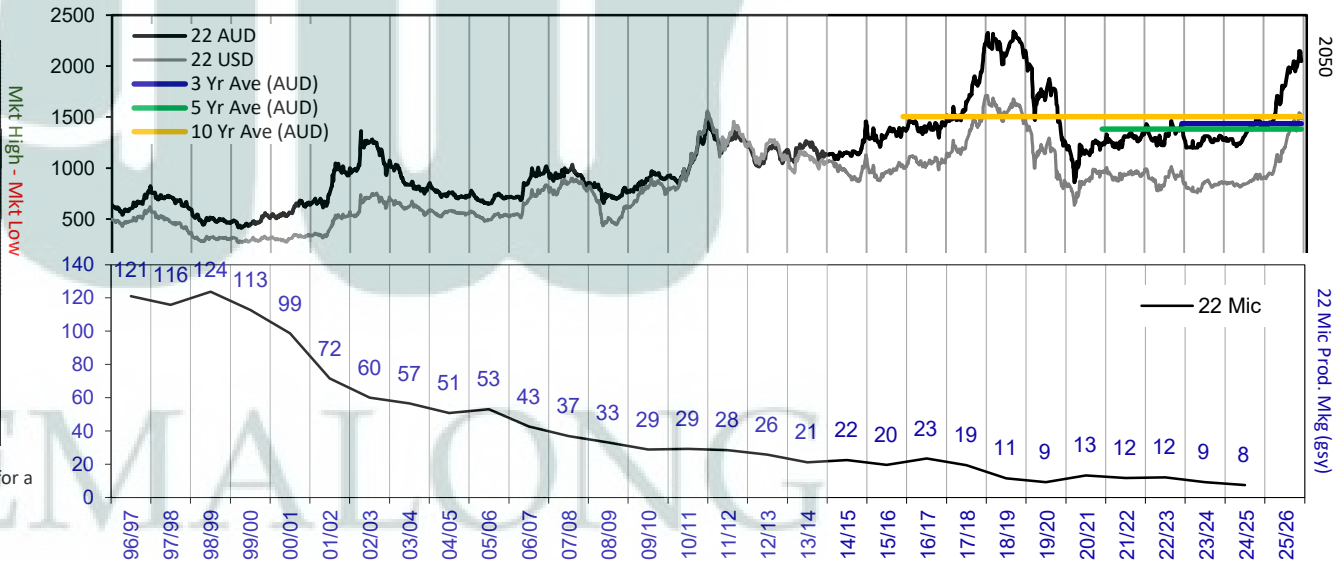
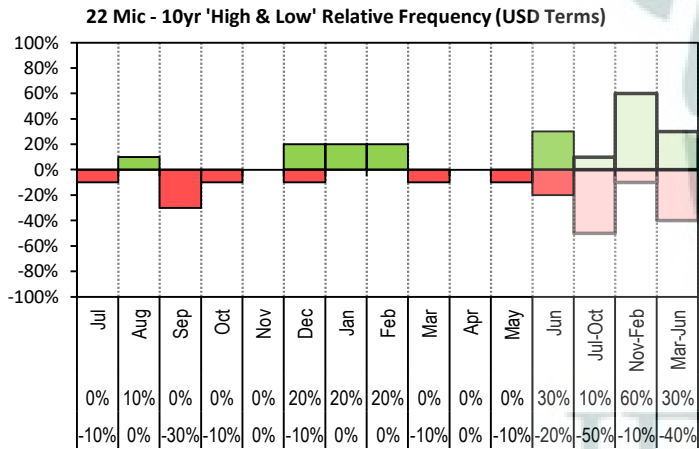


The above graph, shows how often the '12 month high & low' have been achieved for a given month over the past 10 years. It is not a measure of probability.

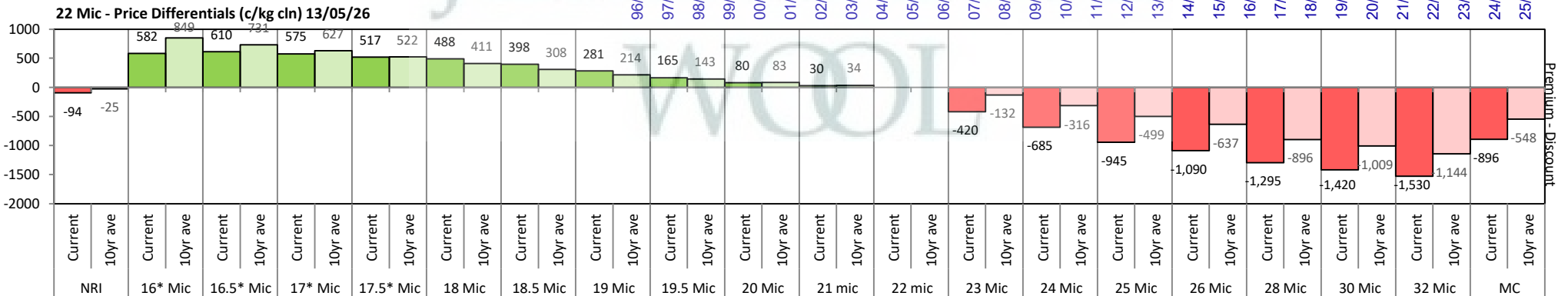


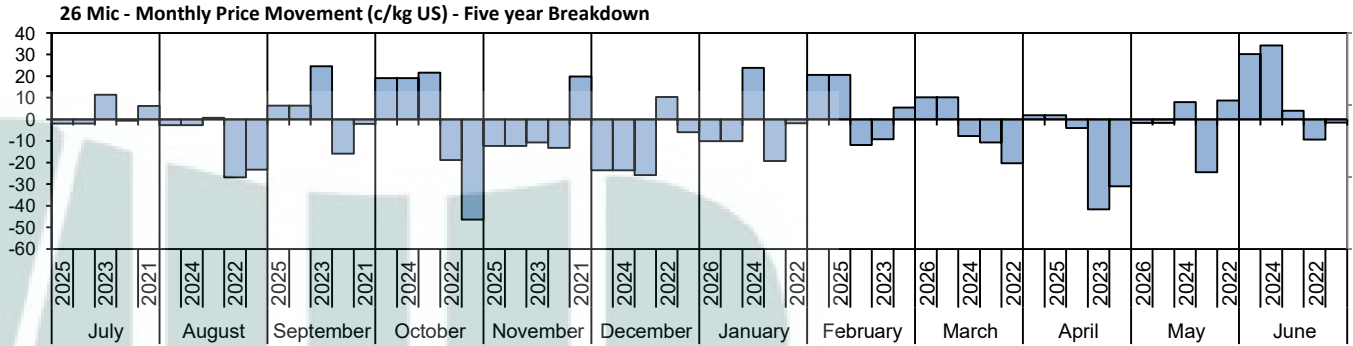
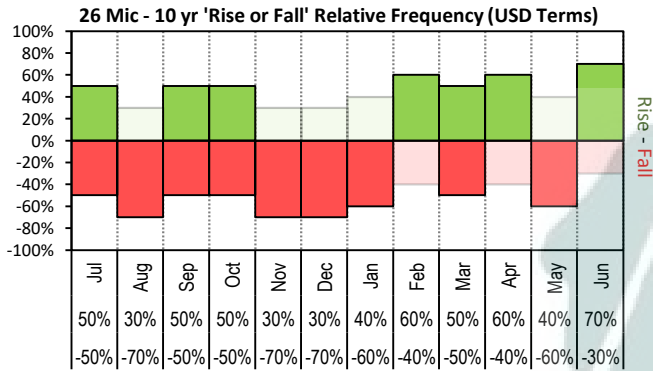


The above 'Rise or Fall' graph, shows how often the market has risen or fallen in a given month over the past 10 years, it does not show the extent of the movement only the frequency of direction. The 'Monthly Price Movement' graph shows the extent of movement for each month, for the past 5 years.

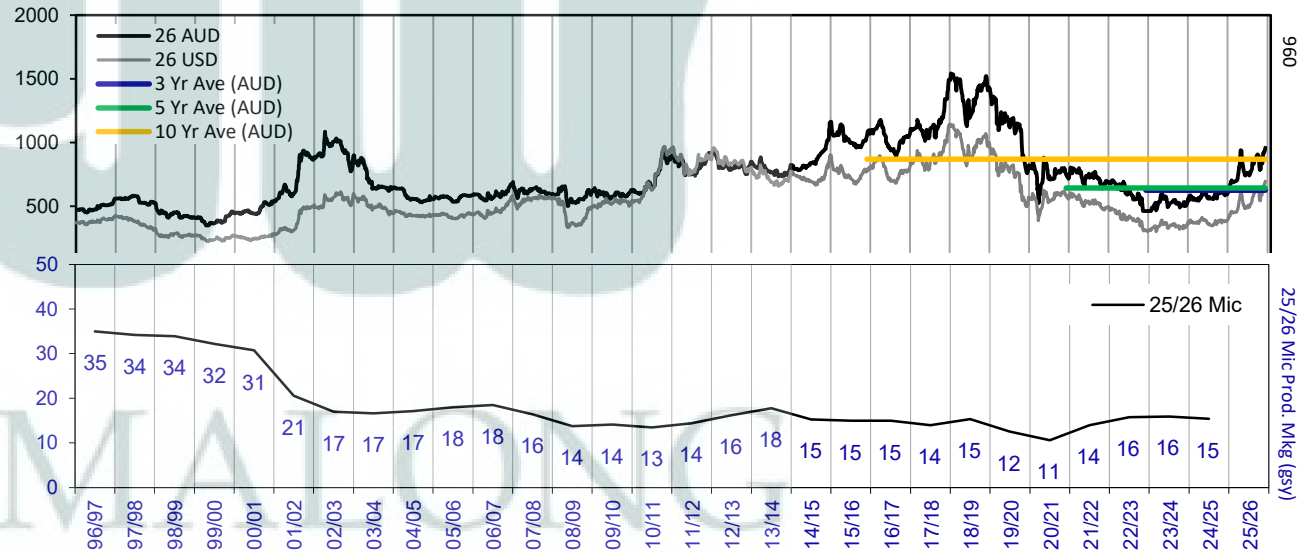
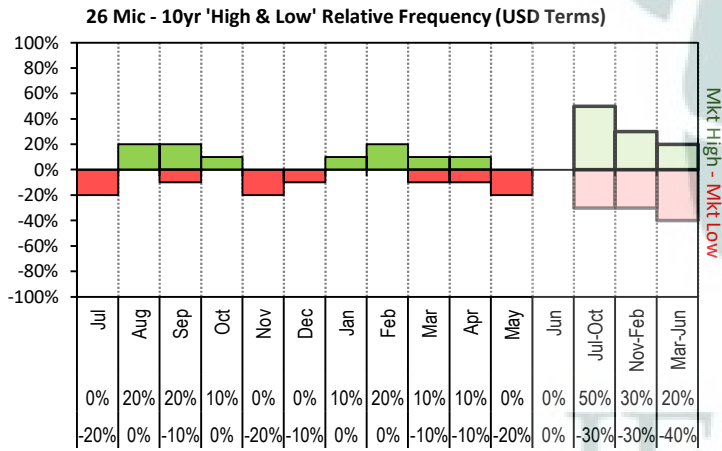


The above graph, shows how often the '12 month high & low' have been achieved for a given month over the past 10 years. It is not a measure of probability.

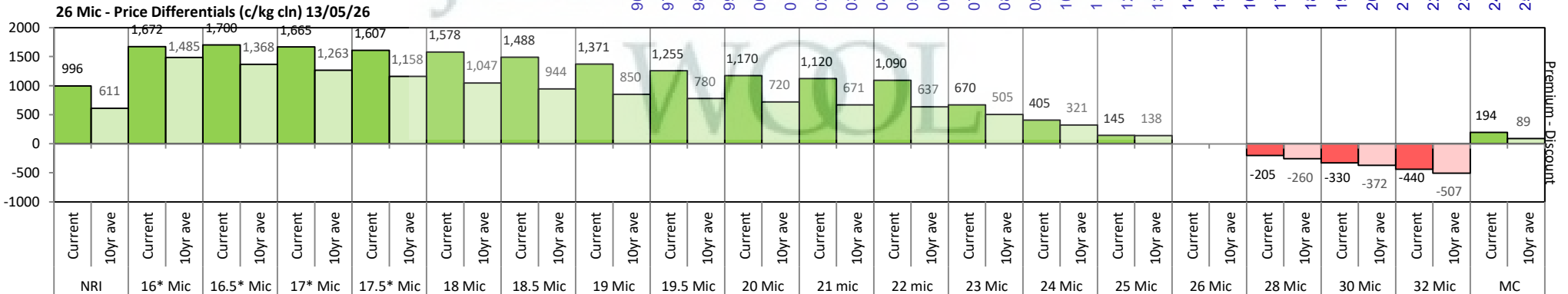


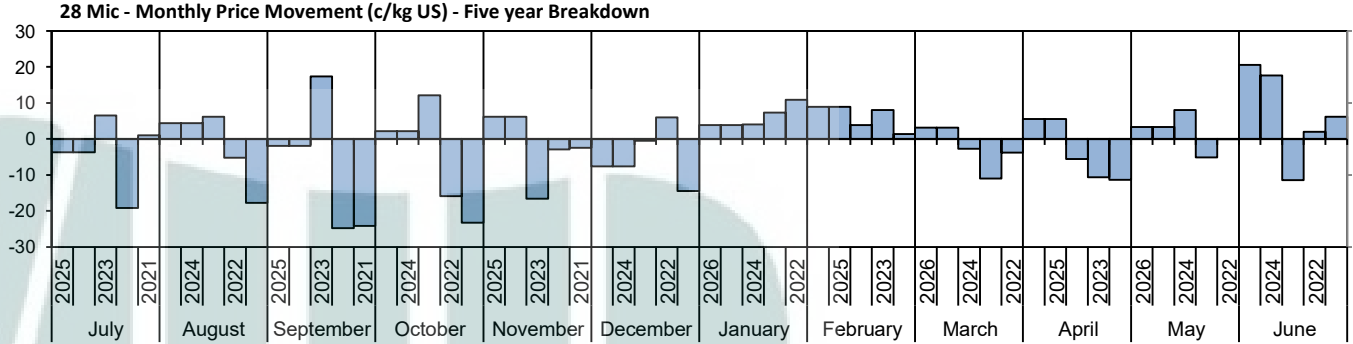
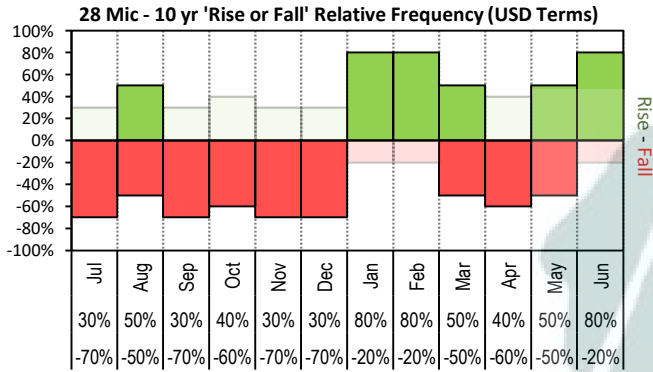


The above 'Rise or Fall' graph, shows how often the market has risen or fallen in a given month over the past 10 years, it does not show the extent of the movement only the frequency of direction. The 'Monthly Price Movement' graph shows the extent of movement for each month, for the past 5 years.

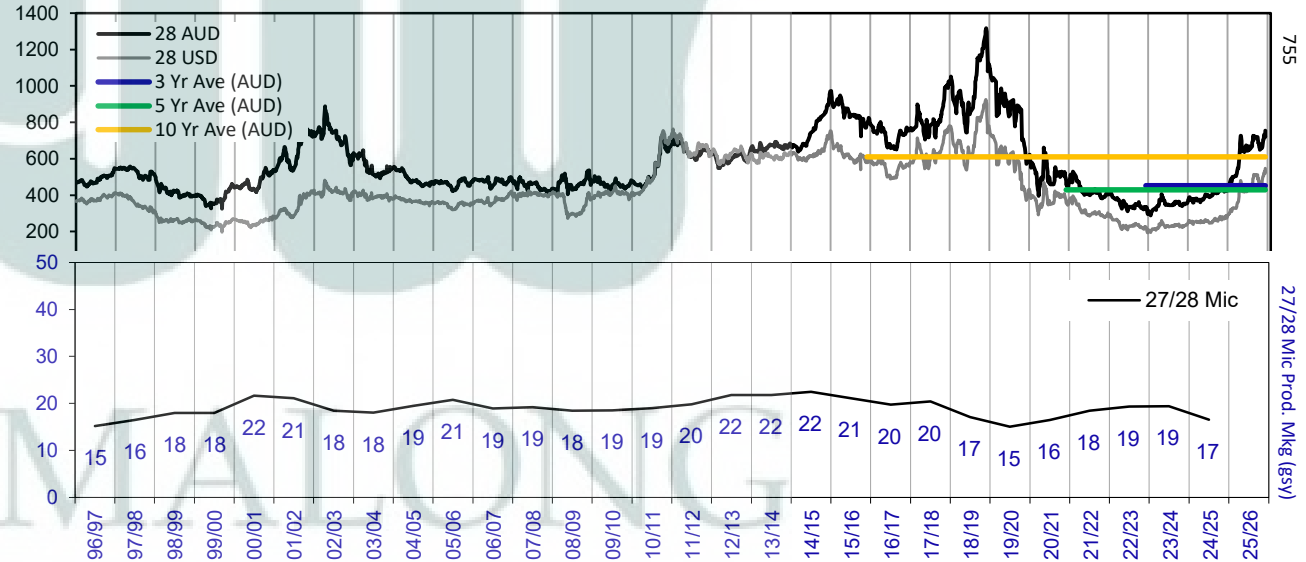
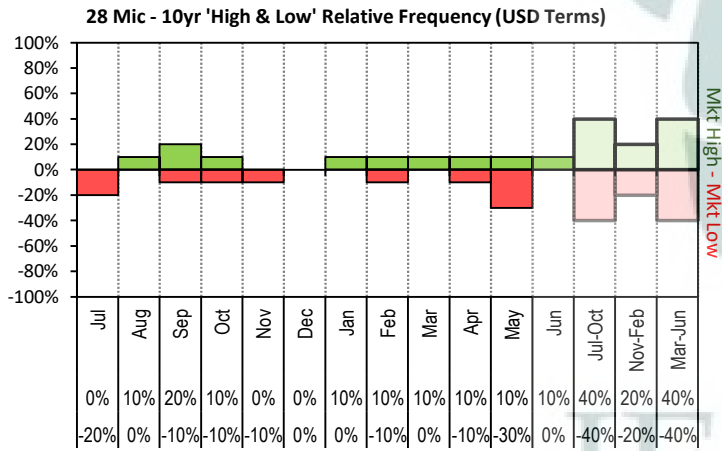


The above graph, shows how often the '12 month high & low' have been achieved for a given month over the past 10 years. It is not a measure of probability.

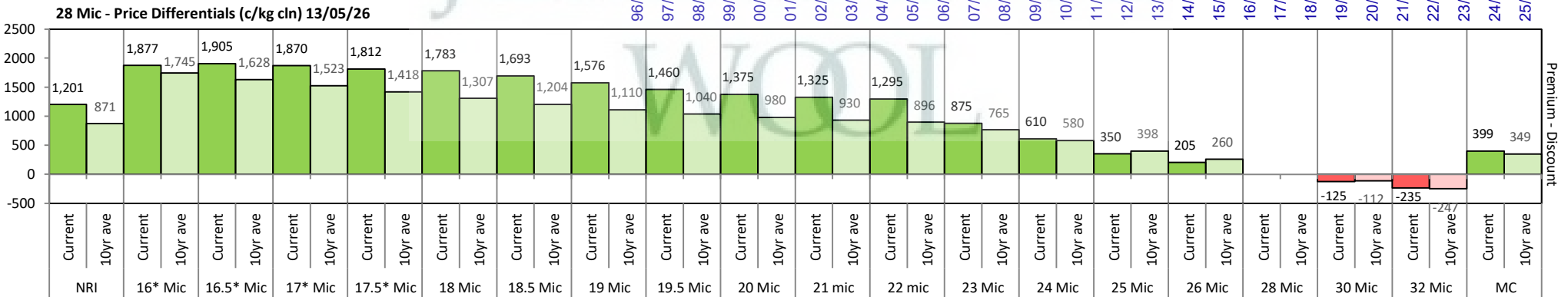


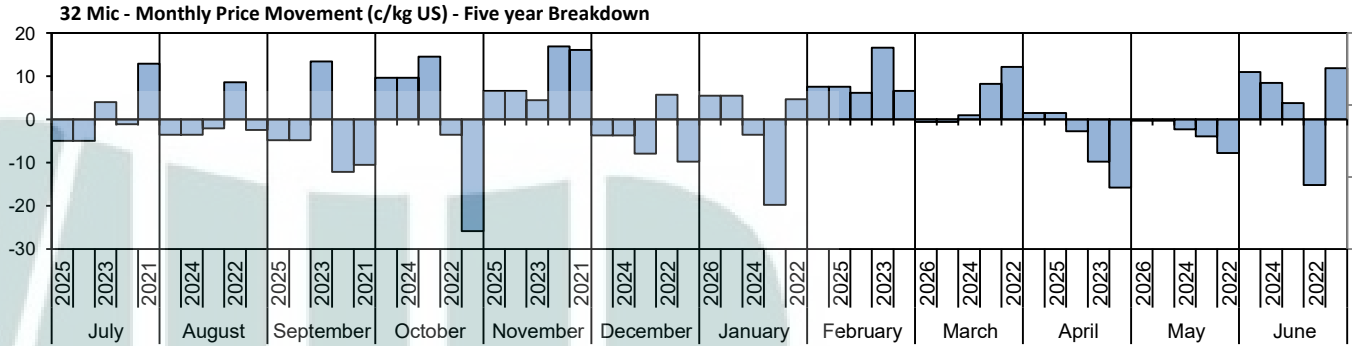
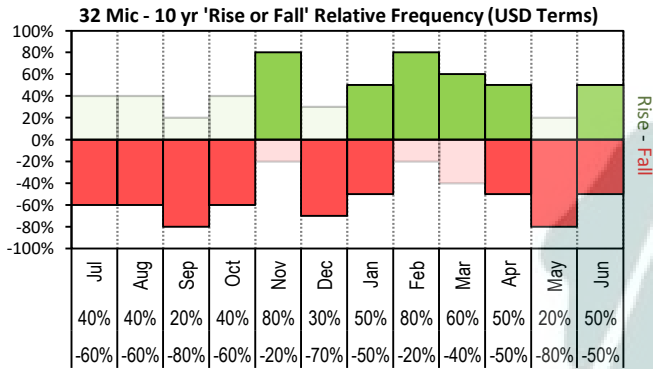


The above 'Rise or Fall' graph, shows how often the market has risen or fallen in a given month over the past 10 years, it does not show the extent of the movement only the frequency of direction. The 'Monthly Price Movement' graph shows the extent of movement for each month, for the past 5 years.

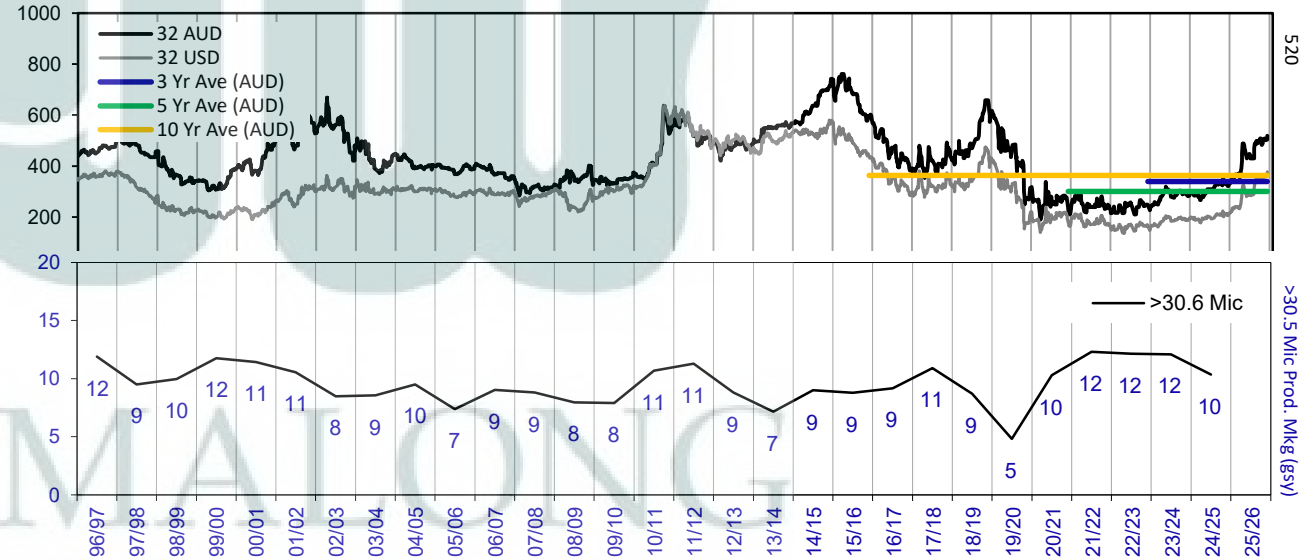
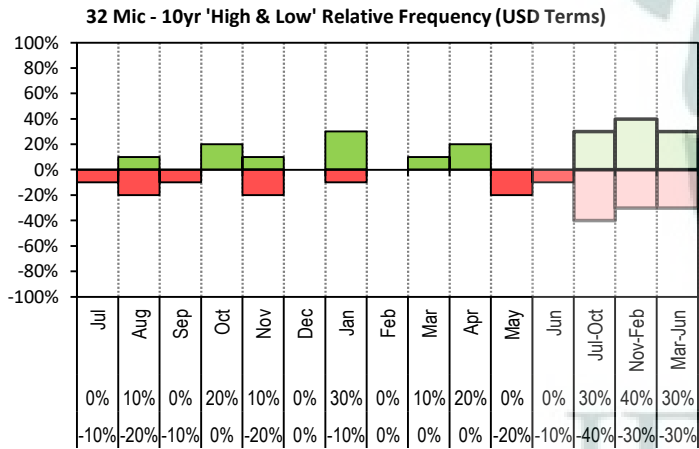


The above graph, shows how often the '12 month high & low' have been achieved for a given month over the past 10 years. It is not a measure of probability.

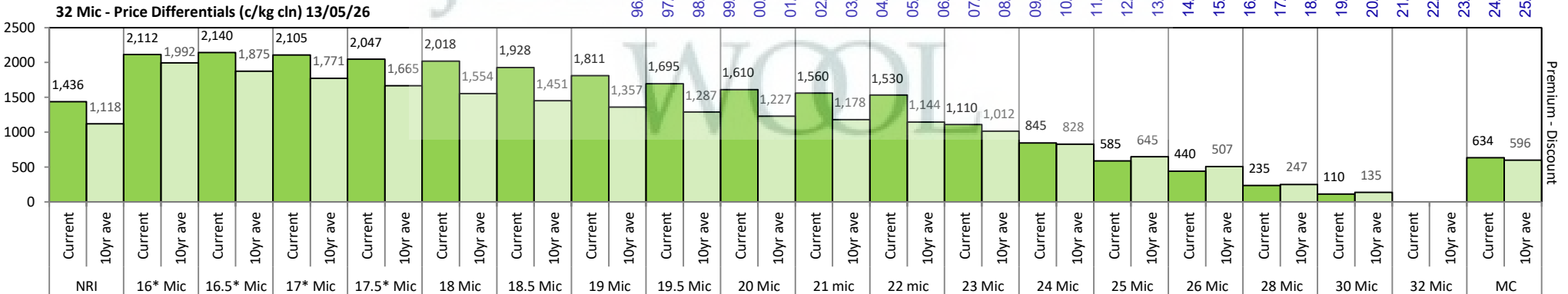


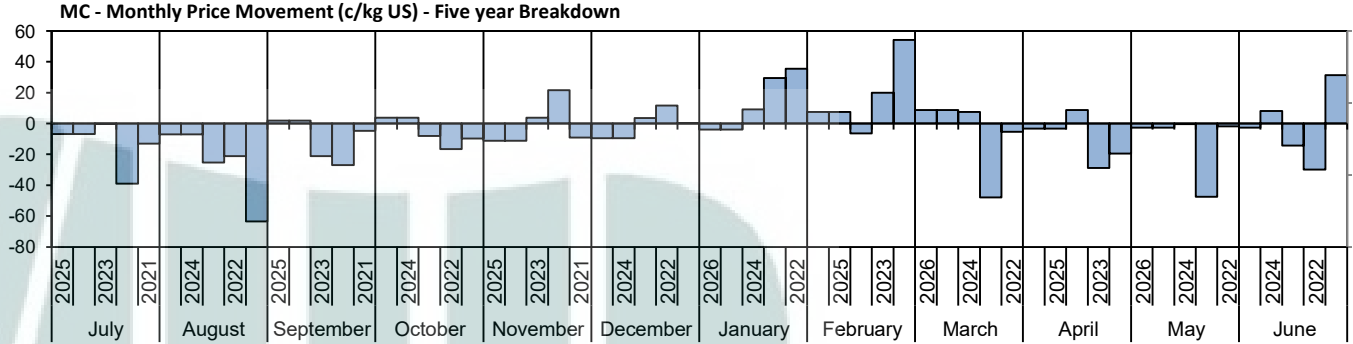
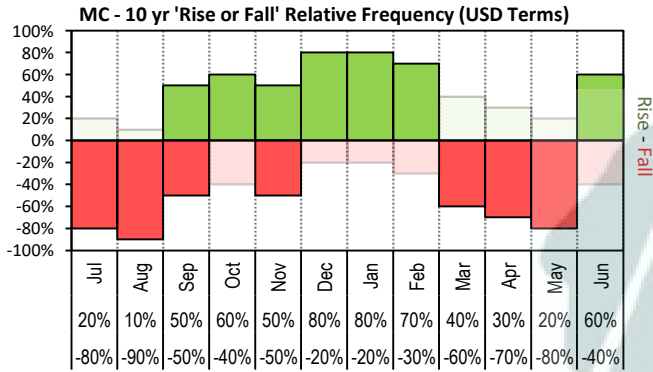


The above 'Rise or Fall' graph, shows how often the market has risen or fallen in a given month over the past 10 years, it does not show the extent of the movement only the frequency of direction. The 'Monthly Price Movement' graph shows the extent of movement for each month, for the past 5 years.

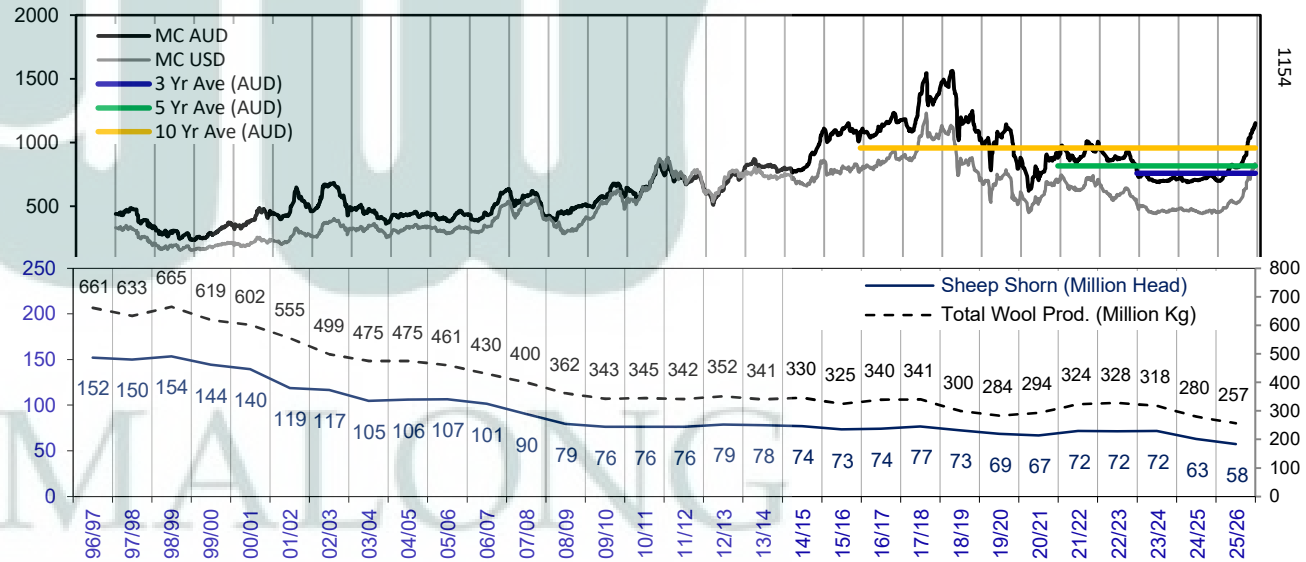
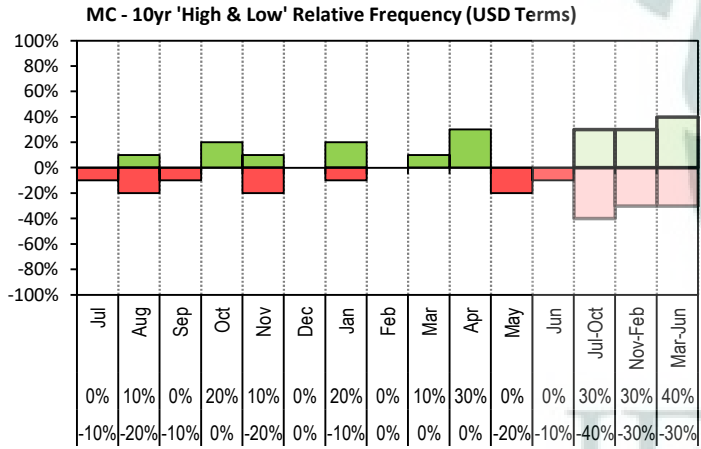


The above graph, shows how often the '12 month high & low' have been achieved for a given month over the past 10 years. It is not a measure of probability.

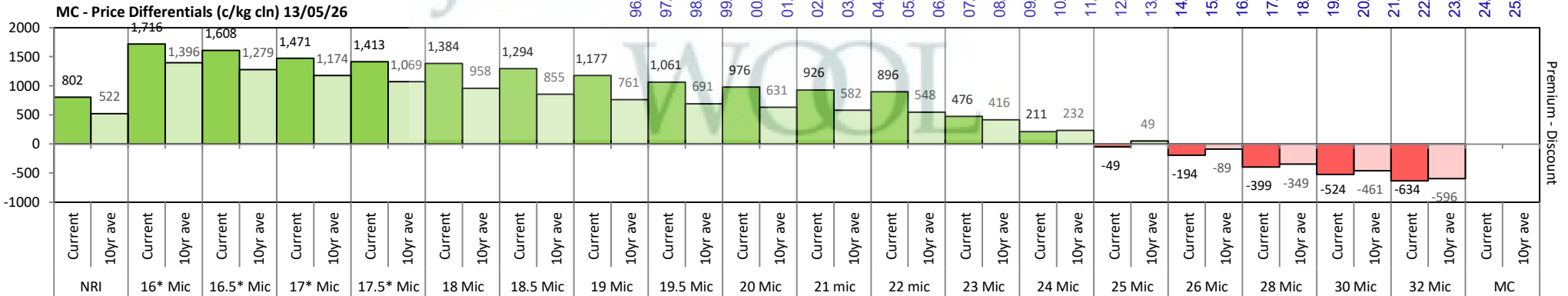




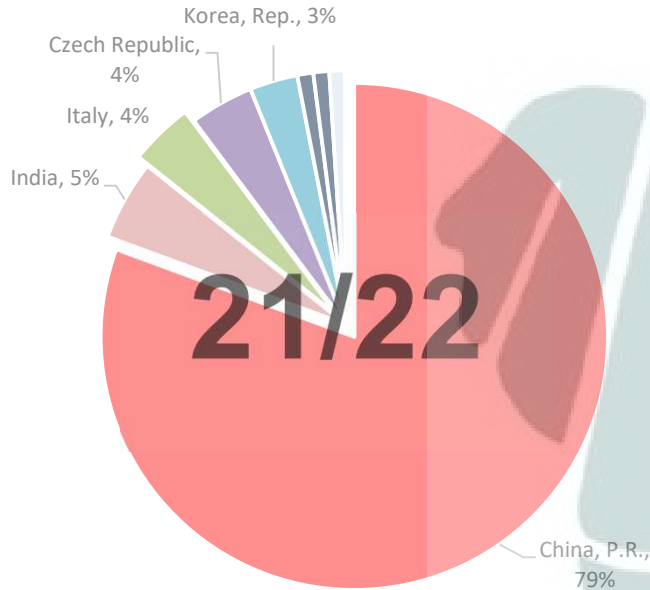
The above 'Rise or Fall' graph, shows how often the market has risen or fallen in a given month over the past 10 years, it does not show the extent of the movement only the frequency of direction. The 'Monthly Price Movement' graph shows the extent of movement for each month, for the past 5 years.



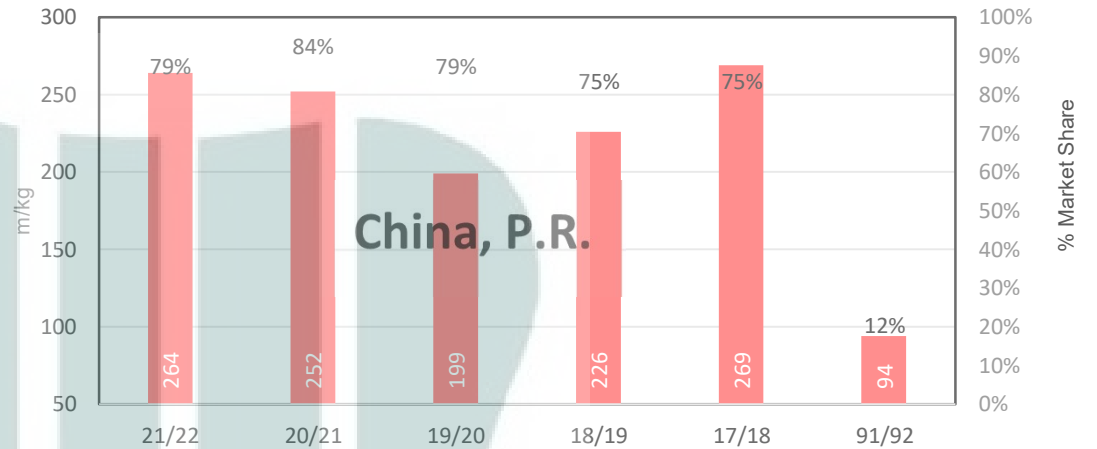
The above graph, shows how often the '12 month high & low' have been achieved for a given month over the past 10 years. It is not a measure of probability.



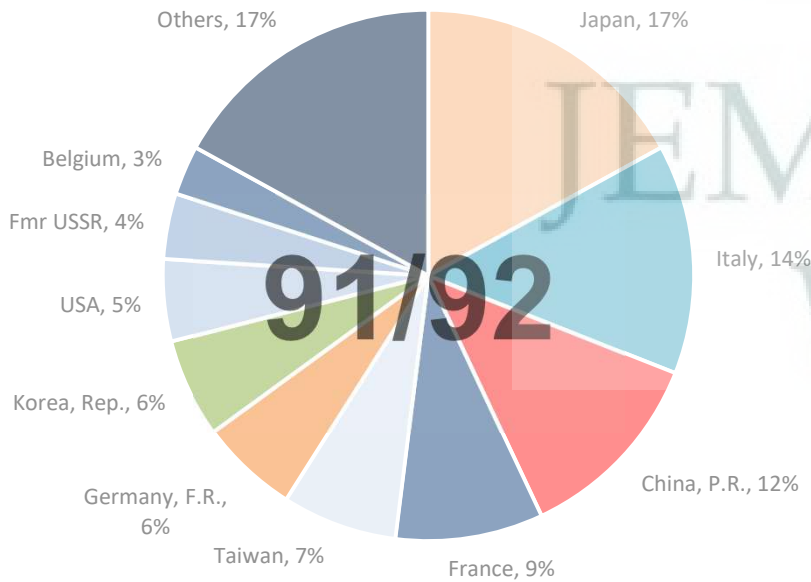
21/22 - Export Snap Shot (335.46 m/kg greasy equivalent)



China, P.R. (Largest Market Share)



91/92 - Export Snap Shot (784.7 m/kg greasy equivalent)



Seasonal Change m/kg

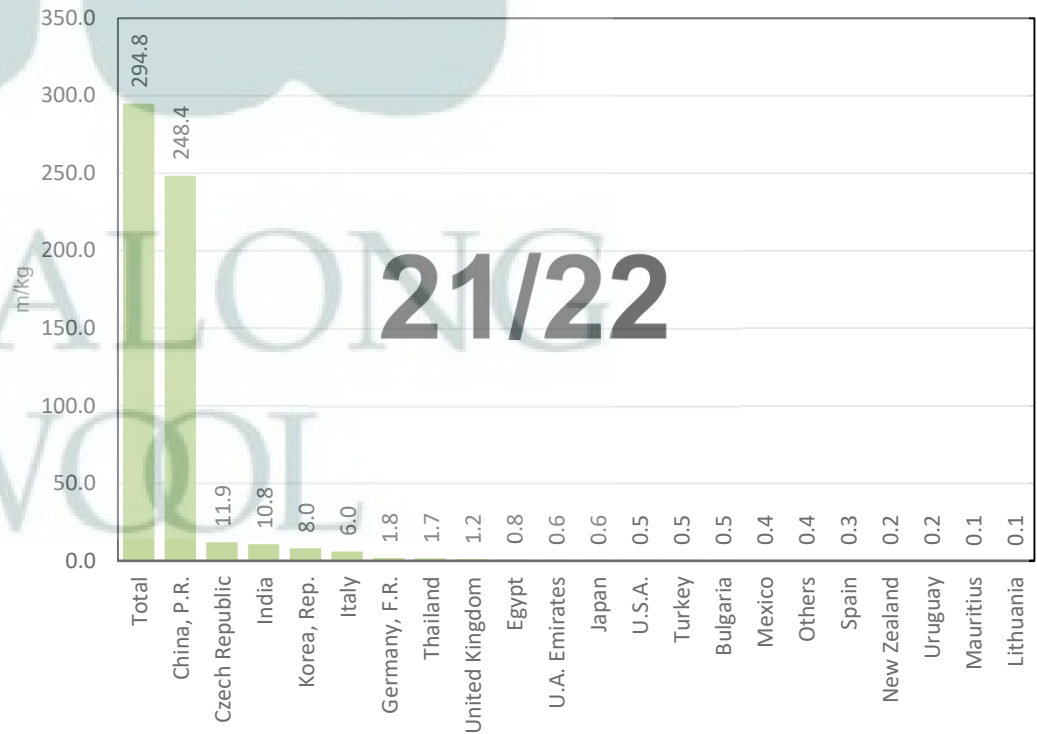


Table 8: Returns pr head for skirted fleece wool.

Skirted FLC Weight 9 Kg		Micron																	
		16	16.5	17	17.5	18	18.5	19	19.5	20	21	22	23	24	25	26	28	30	32
Yield (Sch Dry)	25% Current	\$59	\$60	\$59	\$58	\$57	\$55	\$52	\$50	\$48	\$47	\$46	\$37	\$31	\$25	\$22	\$17	\$14	\$12
	10yr ave.	\$53	\$50	\$48	\$46	\$43	\$41	\$39	\$37	\$36	\$35	\$34	\$31	\$27	\$23	\$20	\$14	\$11	\$8
	30% Current	\$71	\$72	\$71	\$69	\$69	\$66	\$63	\$60	\$58	\$56	\$55	\$44	\$37	\$30	\$26	\$20	\$17	\$14
	10yr ave.	\$64	\$60	\$58	\$55	\$52	\$49	\$46	\$45	\$43	\$42	\$41	\$37	\$32	\$27	\$23	\$16	\$13	\$10
	35% Current	\$83	\$84	\$83	\$81	\$80	\$77	\$73	\$70	\$67	\$66	\$65	\$51	\$43	\$35	\$30	\$24	\$20	\$16
	10yr ave.	\$74	\$71	\$67	\$64	\$60	\$57	\$54	\$52	\$50	\$49	\$48	\$43	\$38	\$32	\$27	\$19	\$16	\$11
	40% Current	\$95	\$96	\$95	\$92	\$91	\$88	\$84	\$80	\$77	\$75	\$74	\$59	\$49	\$40	\$35	\$27	\$23	\$19
	10yr ave.	\$85	\$81	\$77	\$73	\$69	\$65	\$62	\$59	\$57	\$56	\$54	\$50	\$43	\$36	\$31	\$22	\$18	\$13
	45% Current	\$107	\$108	\$106	\$104	\$103	\$99	\$94	\$90	\$86	\$84	\$83	\$66	\$55	\$45	\$39	\$31	\$26	\$21
	10yr ave.	\$95	\$91	\$86	\$82	\$78	\$74	\$70	\$67	\$64	\$62	\$61	\$56	\$48	\$41	\$35	\$25	\$20	\$15
	50% Current	\$118	\$120	\$118	\$116	\$114	\$110	\$105	\$100	\$96	\$94	\$92	\$73	\$61	\$50	\$43	\$34	\$28	\$23
	10yr ave.	\$106	\$101	\$96	\$91	\$86	\$82	\$77	\$74	\$72	\$69	\$68	\$62	\$54	\$45	\$39	\$27	\$22	\$16
	55% Current	\$130	\$132	\$130	\$127	\$126	\$121	\$115	\$110	\$105	\$103	\$101	\$81	\$68	\$55	\$48	\$37	\$31	\$26
	10yr ave.	\$116	\$111	\$106	\$100	\$95	\$90	\$85	\$82	\$79	\$76	\$75	\$68	\$59	\$50	\$43	\$30	\$25	\$18
	60% Current	\$142	\$144	\$142	\$139	\$137	\$132	\$126	\$120	\$115	\$112	\$111	\$88	\$74	\$60	\$52	\$41	\$34	\$28
	10yr ave.	\$127	\$121	\$115	\$110	\$104	\$98	\$93	\$89	\$86	\$83	\$81	\$74	\$64	\$54	\$47	\$33	\$27	\$20
	65% Current	\$154	\$156	\$154	\$150	\$148	\$143	\$136	\$130	\$125	\$122	\$120	\$95	\$80	\$65	\$56	\$44	\$37	\$30
	10yr ave.	\$138	\$131	\$125	\$119	\$112	\$106	\$101	\$97	\$93	\$90	\$88	\$80	\$70	\$59	\$51	\$36	\$29	\$21
70% Current	\$166	\$168	\$165	\$162	\$160	\$154	\$147	\$140	\$134	\$131	\$129	\$103	\$86	\$70	\$60	\$48	\$40	\$33	
10yr ave.	\$148	\$141	\$134	\$128	\$121	\$114	\$108	\$104	\$100	\$97	\$95	\$87	\$75	\$64	\$55	\$38	\$31	\$23	
75% Current	\$178	\$180	\$177	\$173	\$171	\$165	\$157	\$150	\$144	\$140	\$138	\$110	\$92	\$75	\$65	\$51	\$43	\$35	
10yr ave.	\$159	\$151	\$144	\$137	\$129	\$123	\$116	\$111	\$107	\$104	\$102	\$93	\$80	\$68	\$59	\$41	\$34	\$25	
80% Current	\$190	\$192	\$189	\$185	\$183	\$176	\$168	\$159	\$153	\$150	\$148	\$117	\$98	\$80	\$69	\$54	\$45	\$37	
10yr ave.	\$169	\$161	\$154	\$146	\$138	\$131	\$124	\$119	\$115	\$111	\$109	\$99	\$86	\$73	\$63	\$44	\$36	\$26	
85% Current	\$201	\$203	\$201	\$196	\$194	\$187	\$178	\$169	\$163	\$159	\$157	\$125	\$104	\$85	\$73	\$58	\$48	\$40	
10yr ave.	\$180	\$171	\$163	\$155	\$147	\$139	\$132	\$126	\$122	\$118	\$115	\$105	\$91	\$77	\$67	\$47	\$38	\$28	

The above shows estimated returns per head for skirted fleece wool. These figures do not take into account the value of skirtings and oddments and do not take into account discounts that may apply for faults under individual circumstances. These figures are based on a market index of 100% and should be used as a guide only. Returns over \$30 / head for fleece wool are highlighted.

Table 9: Returns pr head for skirted fleece wool.

Skirted FLC Weight 8 Kg		Micron																	
		16	16.5	17	17.5	18	18.5	19	19.5	20	21	22	23	24	25	26	28	30	32
Yield (Sch Dry)	25% Current	\$53	\$53	\$53	\$51	\$51	\$49	\$47	\$44	\$43	\$42	\$41	\$33	\$27	\$22	\$19	\$15	\$13	\$10
	10yr ave.	\$47	\$45	\$43	\$41	\$38	\$36	\$34	\$33	\$32	\$31	\$30	\$28	\$24	\$20	\$17	\$12	\$10	\$7
	30% Current	\$63	\$64	\$63	\$62	\$61	\$59	\$56	\$53	\$51	\$50	\$49	\$39	\$33	\$27	\$23	\$18	\$15	\$12
	10yr ave.	\$56	\$54	\$51	\$49	\$46	\$44	\$41	\$40	\$38	\$37	\$36	\$33	\$29	\$24	\$21	\$15	\$12	\$9
	35% Current	\$74	\$74	\$74	\$72	\$71	\$69	\$65	\$62	\$60	\$58	\$57	\$46	\$38	\$31	\$27	\$21	\$18	\$15
	10yr ave.	\$66	\$63	\$60	\$57	\$54	\$51	\$48	\$46	\$45	\$43	\$42	\$39	\$33	\$28	\$24	\$17	\$14	\$10
	40% Current	\$84	\$85	\$84	\$82	\$81	\$78	\$75	\$71	\$68	\$67	\$66	\$52	\$44	\$35	\$31	\$24	\$20	\$17
	10yr ave.	\$75	\$72	\$68	\$65	\$61	\$58	\$55	\$53	\$51	\$49	\$48	\$44	\$38	\$32	\$28	\$20	\$16	\$12
	45% Current	\$95	\$96	\$95	\$92	\$91	\$88	\$84	\$80	\$77	\$75	\$74	\$59	\$49	\$40	\$35	\$27	\$23	\$19
	10yr ave.	\$85	\$81	\$77	\$73	\$69	\$65	\$62	\$59	\$57	\$56	\$54	\$50	\$43	\$36	\$31	\$22	\$18	\$13
	50% Current	\$105	\$106	\$105	\$103	\$102	\$98	\$93	\$89	\$85	\$83	\$82	\$65	\$55	\$44	\$38	\$30	\$25	\$21
	10yr ave.	\$94	\$90	\$85	\$81	\$77	\$73	\$69	\$66	\$64	\$62	\$60	\$55	\$48	\$40	\$35	\$24	\$20	\$15
	55% Current	\$116	\$117	\$116	\$113	\$112	\$108	\$103	\$97	\$94	\$92	\$90	\$72	\$60	\$49	\$42	\$33	\$28	\$23
	10yr ave.	\$103	\$99	\$94	\$89	\$84	\$80	\$76	\$73	\$70	\$68	\$66	\$61	\$52	\$44	\$38	\$27	\$22	\$16
	60% Current	\$126	\$128	\$126	\$123	\$122	\$118	\$112	\$106	\$102	\$100	\$98	\$78	\$66	\$53	\$46	\$36	\$30	\$25
	10yr ave.	\$113	\$108	\$102	\$97	\$92	\$87	\$83	\$79	\$76	\$74	\$72	\$66	\$57	\$48	\$42	\$29	\$24	\$17
	65% Current	\$137	\$138	\$137	\$133	\$132	\$127	\$121	\$115	\$111	\$108	\$107	\$85	\$71	\$57	\$50	\$39	\$33	\$27
	10yr ave.	\$122	\$116	\$111	\$106	\$100	\$94	\$89	\$86	\$83	\$80	\$78	\$72	\$62	\$52	\$45	\$32	\$26	\$19
70% Current	\$147	\$149	\$147	\$144	\$142	\$137	\$131	\$124	\$119	\$116	\$115	\$91	\$76	\$62	\$54	\$42	\$35	\$29	
10yr ave.	\$132	\$125	\$120	\$114	\$107	\$102	\$96	\$92	\$89	\$86	\$84	\$77	\$67	\$56	\$49	\$34	\$28	\$20	
75% Current	\$158	\$160	\$158	\$154	\$152	\$147	\$140	\$133	\$128	\$125	\$123	\$98	\$82	\$66	\$58	\$45	\$38	\$31	
10yr ave.	\$141	\$134	\$128	\$122	\$115	\$109	\$103	\$99	\$95	\$93	\$90	\$83	\$71	\$60	\$52	\$37	\$30	\$22	
80% Current	\$168	\$170	\$168	\$164	\$162	\$157	\$149	\$142	\$136	\$133	\$131	\$104	\$87	\$71	\$61	\$48	\$40	\$33	
10yr ave.	\$151	\$143	\$137	\$130	\$123	\$116	\$110	\$106	\$102	\$99	\$97	\$88	\$76	\$65	\$56	\$39	\$32	\$23	
85% Current	\$179	\$181	\$179	\$175	\$173	\$166	\$159	\$151	\$145	\$141	\$139	\$111	\$93	\$75	\$65	\$51	\$43	\$35	
10yr ave.	\$160	\$152	\$145	\$138	\$130	\$123	\$117	\$112	\$108	\$105	\$103	\$94	\$81	\$69	\$59	\$42	\$34	\$25	

The above shows estimated returns per head for skirted fleece wool. These figures do not take into account the value of skirtings and oddments and do not take into account discounts that may apply for faults under individual circumstances. These figures are based on a market index of 100% and should be used as a guide only. Returns over \$30 / head for fleece wool are highlighted.

Table 10: Returns pr head for skirted fleece wool.

Skirted FLC Weight 7 Kg		Micron																	
		16	16.5	17	17.5	18	18.5	19	19.5	20	21	22	23	24	25	26	28	30	32
Yield (Sch Dry)	25% Current	\$46	\$47	\$46	\$45	\$44	\$43	\$41	\$39	\$37	\$36	\$36	\$29	\$24	\$19	\$17	\$13	\$11	\$9
	10yr ave.	\$41	\$39	\$37	\$36	\$34	\$32	\$30	\$29	\$28	\$27	\$26	\$24	\$21	\$18	\$15	\$11	\$9	\$6
	30% Current	\$55	\$56	\$55	\$54	\$53	\$51	\$49	\$47	\$45	\$44	\$43	\$34	\$29	\$23	\$20	\$16	\$13	\$11
	10yr ave.	\$49	\$47	\$45	\$43	\$40	\$38	\$36	\$35	\$33	\$32	\$32	\$29	\$25	\$21	\$18	\$13	\$10	\$8
	35% Current	\$64	\$65	\$64	\$63	\$62	\$60	\$57	\$54	\$52	\$51	\$50	\$40	\$33	\$27	\$24	\$18	\$15	\$13
	10yr ave.	\$58	\$55	\$52	\$50	\$47	\$44	\$42	\$40	\$39	\$38	\$37	\$34	\$29	\$25	\$21	\$15	\$12	\$9
	40% Current	\$74	\$74	\$74	\$72	\$71	\$69	\$65	\$62	\$60	\$58	\$57	\$46	\$38	\$31	\$27	\$21	\$18	\$15
	10yr ave.	\$66	\$63	\$60	\$57	\$54	\$51	\$48	\$46	\$45	\$43	\$42	\$39	\$33	\$28	\$24	\$17	\$14	\$10
	45% Current	\$83	\$84	\$83	\$81	\$80	\$77	\$73	\$70	\$67	\$66	\$65	\$51	\$43	\$35	\$30	\$24	\$20	\$16
	10yr ave.	\$74	\$71	\$67	\$64	\$60	\$57	\$54	\$52	\$50	\$49	\$48	\$43	\$38	\$32	\$27	\$19	\$16	\$11
	50% Current	\$92	\$93	\$92	\$90	\$89	\$86	\$82	\$78	\$75	\$73	\$72	\$57	\$48	\$39	\$34	\$26	\$22	\$18
	10yr ave.	\$82	\$78	\$75	\$71	\$67	\$64	\$60	\$58	\$56	\$54	\$53	\$48	\$42	\$35	\$30	\$21	\$17	\$13
	55% Current	\$101	\$102	\$101	\$99	\$98	\$94	\$90	\$85	\$82	\$80	\$79	\$63	\$53	\$43	\$37	\$29	\$24	\$20
	10yr ave.	\$91	\$86	\$82	\$78	\$74	\$70	\$66	\$64	\$61	\$59	\$58	\$53	\$46	\$39	\$33	\$24	\$19	\$14
	60% Current	\$111	\$112	\$110	\$108	\$107	\$103	\$98	\$93	\$89	\$87	\$86	\$68	\$57	\$46	\$40	\$32	\$26	\$22
	10yr ave.	\$99	\$94	\$90	\$85	\$81	\$76	\$72	\$69	\$67	\$65	\$63	\$58	\$50	\$42	\$37	\$26	\$21	\$15
	65% Current	\$120	\$121	\$119	\$117	\$115	\$111	\$106	\$101	\$97	\$95	\$93	\$74	\$62	\$50	\$44	\$34	\$29	\$24
	10yr ave.	\$107	\$102	\$97	\$92	\$87	\$83	\$78	\$75	\$72	\$70	\$69	\$63	\$54	\$46	\$40	\$28	\$23	\$17
70% Current	\$129	\$130	\$129	\$126	\$124	\$120	\$114	\$109	\$104	\$102	\$100	\$80	\$67	\$54	\$47	\$37	\$31	\$25	
10yr ave.	\$115	\$110	\$105	\$99	\$94	\$89	\$84	\$81	\$78	\$76	\$74	\$67	\$58	\$49	\$43	\$30	\$24	\$18	
75% Current	\$138	\$140	\$138	\$135	\$133	\$129	\$122	\$116	\$112	\$109	\$108	\$86	\$72	\$58	\$50	\$40	\$33	\$27	
10yr ave.	\$123	\$118	\$112	\$107	\$101	\$95	\$90	\$87	\$84	\$81	\$79	\$72	\$63	\$53	\$46	\$32	\$26	\$19	
80% Current	\$147	\$149	\$147	\$144	\$142	\$137	\$131	\$124	\$119	\$116	\$115	\$91	\$76	\$62	\$54	\$42	\$35	\$29	
10yr ave.	\$132	\$125	\$120	\$114	\$107	\$102	\$96	\$92	\$89	\$86	\$84	\$77	\$67	\$56	\$49	\$34	\$28	\$20	
85% Current	\$157	\$158	\$156	\$153	\$151	\$146	\$139	\$132	\$127	\$124	\$122	\$97	\$81	\$66	\$57	\$45	\$37	\$31	
10yr ave.	\$140	\$133	\$127	\$121	\$114	\$108	\$102	\$98	\$95	\$92	\$90	\$82	\$71	\$60	\$52	\$36	\$30	\$22	

The above shows estimated returns per head for skirted fleece wool. These figures do not take into account the value of skirtings and oddments and do not take into account discounts that may apply for faults under individual circumstances. These figures are based on a market index of 100% and should be used as a guide only. Returns over \$30 / head for fleece wool are highlighted.

Table 11: Returns pr head for skirted fleece wool.

Skirted FLC Weight 6 Kg		Micron																	
		16	16.5	17	17.5	18	18.5	19	19.5	20	21	22	23	24	25	26	28	30	32
Yield (Sch Dry)	25% Current	\$39	\$40	\$39	\$39	\$38	\$37	\$35	\$33	\$32	\$31	\$31	\$24	\$20	\$17	\$14	\$11	\$9	\$8
	10yr ave.	\$35	\$34	\$32	\$30	\$29	\$27	\$26	\$25	\$24	\$23	\$23	\$21	\$18	\$15	\$13	\$9	\$7	\$5
	30% Current	\$47	\$48	\$47	\$46	\$46	\$44	\$42	\$40	\$38	\$37	\$37	\$29	\$25	\$20	\$17	\$14	\$11	\$9
	10yr ave.	\$42	\$40	\$38	\$37	\$35	\$33	\$31	\$30	\$29	\$28	\$27	\$25	\$21	\$18	\$16	\$11	\$9	\$7
	35% Current	\$55	\$56	\$55	\$54	\$53	\$51	\$49	\$47	\$45	\$44	\$43	\$34	\$29	\$23	\$20	\$16	\$13	\$11
	10yr ave.	\$49	\$47	\$45	\$43	\$40	\$38	\$36	\$35	\$33	\$32	\$32	\$29	\$25	\$21	\$18	\$13	\$10	\$8
	40% Current	\$63	\$64	\$63	\$62	\$61	\$59	\$56	\$53	\$51	\$50	\$49	\$39	\$33	\$27	\$23	\$18	\$15	\$12
	10yr ave.	\$56	\$54	\$51	\$49	\$46	\$44	\$41	\$40	\$38	\$37	\$36	\$33	\$29	\$24	\$21	\$15	\$12	\$9
	45% Current	\$71	\$72	\$71	\$69	\$69	\$66	\$63	\$60	\$58	\$56	\$55	\$44	\$37	\$30	\$26	\$20	\$17	\$14
	10yr ave.	\$64	\$60	\$58	\$55	\$52	\$49	\$46	\$45	\$43	\$42	\$41	\$37	\$32	\$27	\$23	\$16	\$13	\$10
	50% Current	\$79	\$80	\$79	\$77	\$76	\$73	\$70	\$66	\$64	\$62	\$62	\$49	\$41	\$33	\$29	\$23	\$19	\$16
	10yr ave.	\$71	\$67	\$64	\$61	\$58	\$54	\$52	\$50	\$48	\$46	\$45	\$41	\$36	\$30	\$26	\$18	\$15	\$11
	55% Current	\$87	\$88	\$87	\$85	\$84	\$81	\$77	\$73	\$70	\$69	\$68	\$54	\$45	\$36	\$32	\$25	\$21	\$17
	10yr ave.	\$78	\$74	\$70	\$67	\$63	\$60	\$57	\$54	\$53	\$51	\$50	\$45	\$39	\$33	\$29	\$20	\$16	\$12
	60% Current	\$95	\$96	\$95	\$92	\$91	\$88	\$84	\$80	\$77	\$75	\$74	\$59	\$49	\$40	\$35	\$27	\$23	\$19
	10yr ave.	\$85	\$81	\$77	\$73	\$69	\$65	\$62	\$59	\$57	\$56	\$54	\$50	\$43	\$36	\$31	\$22	\$18	\$13
	65% Current	\$103	\$104	\$102	\$100	\$99	\$95	\$91	\$86	\$83	\$81	\$80	\$64	\$53	\$43	\$37	\$29	\$25	\$20
	10yr ave.	\$92	\$87	\$83	\$79	\$75	\$71	\$67	\$64	\$62	\$60	\$59	\$54	\$46	\$39	\$34	\$24	\$19	\$14
	70% Current	\$111	\$112	\$110	\$108	\$107	\$103	\$98	\$93	\$89	\$87	\$86	\$68	\$57	\$46	\$40	\$32	\$26	\$22
	10yr ave.	\$99	\$94	\$90	\$85	\$81	\$76	\$72	\$69	\$67	\$65	\$63	\$58	\$50	\$42	\$37	\$26	\$21	\$15
75% Current	\$118	\$120	\$118	\$116	\$114	\$110	\$105	\$100	\$96	\$94	\$92	\$73	\$61	\$50	\$43	\$34	\$28	\$23	
10yr ave.	\$106	\$101	\$96	\$91	\$86	\$82	\$77	\$74	\$72	\$69	\$68	\$62	\$54	\$45	\$39	\$27	\$22	\$16	
80% Current	\$126	\$128	\$126	\$123	\$122	\$118	\$112	\$106	\$102	\$100	\$98	\$78	\$66	\$53	\$46	\$36	\$30	\$25	
10yr ave.	\$113	\$108	\$102	\$97	\$92	\$87	\$83	\$79	\$76	\$74	\$72	\$66	\$57	\$48	\$42	\$29	\$24	\$17	
85% Current	\$134	\$136	\$134	\$131	\$129	\$125	\$119	\$113	\$109	\$106	\$105	\$83	\$70	\$56	\$49	\$39	\$32	\$27	
10yr ave.	\$120	\$114	\$109	\$103	\$98	\$93	\$88	\$84	\$81	\$79	\$77	\$70	\$61	\$51	\$44	\$31	\$25	\$19	

The above shows estimated returns per head for skirted fleece wool. These figures do not take into account the value of skirtings and oddments and do not take into account discounts that may apply for faults under individual circumstances. These figures are based on a market index of 100% and should be used as a guide only. Returns over \$30 / head for fleece wool are highlighted.



Table 12: Returns pr head for skirted fleece wool.

Skirted FLC Weight 5 Kg		Micron																	
		16	16.5	17	17.5	18	18.5	19	19.5	20	21	22	23	24	25	26	28	30	32
Yield (Sch Dry)	25% Current	\$33	\$33	\$33	\$32	\$32	\$31	\$29	\$28	\$27	\$26	\$26	\$20	\$17	\$14	\$12	\$9	\$8	\$7
	25% 10yr ave.	\$29	\$28	\$27	\$25	\$24	\$23	\$22	\$21	\$20	\$19	\$19	\$17	\$15	\$13	\$11	\$8	\$6	\$5
	30% Current	\$39	\$40	\$39	\$39	\$38	\$37	\$35	\$33	\$32	\$31	\$31	\$24	\$20	\$17	\$14	\$11	\$9	\$8
	30% 10yr ave.	\$35	\$34	\$32	\$30	\$29	\$27	\$26	\$25	\$24	\$23	\$23	\$21	\$18	\$15	\$13	\$9	\$7	\$5
	35% Current	\$46	\$47	\$46	\$45	\$44	\$43	\$41	\$39	\$37	\$36	\$36	\$29	\$24	\$19	\$17	\$13	\$11	\$9
	35% 10yr ave.	\$41	\$39	\$37	\$36	\$34	\$32	\$30	\$29	\$28	\$27	\$26	\$24	\$21	\$18	\$15	\$11	\$9	\$6
	40% Current	\$53	\$53	\$53	\$51	\$51	\$49	\$47	\$44	\$43	\$42	\$41	\$33	\$27	\$22	\$19	\$15	\$13	\$10
	40% 10yr ave.	\$47	\$45	\$43	\$41	\$38	\$36	\$34	\$33	\$32	\$31	\$30	\$28	\$24	\$20	\$17	\$12	\$10	\$7
	45% Current	\$59	\$60	\$59	\$58	\$57	\$55	\$52	\$50	\$48	\$47	\$46	\$37	\$31	\$25	\$22	\$17	\$14	\$12
	45% 10yr ave.	\$53	\$50	\$48	\$46	\$43	\$41	\$39	\$37	\$36	\$35	\$34	\$31	\$27	\$23	\$20	\$14	\$11	\$8
	50% Current	\$66	\$67	\$66	\$64	\$63	\$61	\$58	\$55	\$53	\$52	\$51	\$41	\$34	\$28	\$24	\$19	\$16	\$13
	50% 10yr ave.	\$59	\$56	\$53	\$51	\$48	\$45	\$43	\$41	\$40	\$39	\$38	\$34	\$30	\$25	\$22	\$15	\$12	\$9
	55% Current	\$72	\$73	\$72	\$71	\$70	\$67	\$64	\$61	\$59	\$57	\$56	\$45	\$38	\$30	\$26	\$21	\$17	\$14
	55% 10yr ave.	\$65	\$62	\$59	\$56	\$53	\$50	\$47	\$45	\$44	\$42	\$41	\$38	\$33	\$28	\$24	\$17	\$14	\$10
	60% Current	\$79	\$80	\$79	\$77	\$76	\$73	\$70	\$66	\$64	\$62	\$62	\$49	\$41	\$33	\$29	\$23	\$19	\$16
	60% 10yr ave.	\$71	\$67	\$64	\$61	\$58	\$54	\$52	\$50	\$48	\$46	\$45	\$41	\$36	\$30	\$26	\$18	\$15	\$11
	65% Current	\$86	\$86	\$85	\$83	\$82	\$80	\$76	\$72	\$69	\$68	\$67	\$53	\$44	\$36	\$31	\$25	\$20	\$17
65% 10yr ave.	\$76	\$73	\$69	\$66	\$62	\$59	\$56	\$54	\$52	\$50	\$49	\$45	\$39	\$33	\$28	\$20	\$16	\$12	
70% Current	\$92	\$93	\$92	\$90	\$89	\$86	\$82	\$78	\$75	\$73	\$72	\$57	\$48	\$39	\$34	\$26	\$22	\$18	
70% 10yr ave.	\$82	\$78	\$75	\$71	\$67	\$64	\$60	\$58	\$56	\$54	\$53	\$48	\$42	\$35	\$30	\$21	\$17	\$13	
75% Current	\$99	\$100	\$98	\$96	\$95	\$92	\$87	\$83	\$80	\$78	\$77	\$61	\$51	\$41	\$36	\$28	\$24	\$20	
75% 10yr ave.	\$88	\$84	\$80	\$76	\$72	\$68	\$65	\$62	\$60	\$58	\$57	\$52	\$45	\$38	\$33	\$23	\$19	\$14	
80% Current	\$105	\$106	\$105	\$103	\$102	\$98	\$93	\$89	\$85	\$83	\$82	\$65	\$55	\$44	\$38	\$30	\$25	\$21	
80% 10yr ave.	\$94	\$90	\$85	\$81	\$77	\$73	\$69	\$66	\$64	\$62	\$60	\$55	\$48	\$40	\$35	\$24	\$20	\$15	
85% Current	\$112	\$113	\$112	\$109	\$108	\$104	\$99	\$94	\$91	\$88	\$87	\$69	\$58	\$47	\$41	\$32	\$27	\$22	
85% 10yr ave.	\$100	\$95	\$91	\$86	\$82	\$77	\$73	\$70	\$68	\$66	\$64	\$58	\$51	\$43	\$37	\$26	\$21	\$15	

The above shows estimated returns per head for skirted fleece wool. These figures do not take into account the value of skirtings and oddments and do not take into account discounts that may apply for faults under individual circumstances. These figures are based on a market index of 100% and should be used as a guide only. Returns over \$30 / head for fleece wool are highlighted.

Table 13: Returns pr head for skirted fleece wool.

Skirted FLC Weight 4 Kg		Micron																	
		16	16.5	17	17.5	18	18.5	19	19.5	20	21	22	23	24	25	26	28	30	32
Yield (Sch Dry)	25% Current	\$26	\$27	\$26	\$26	\$25	\$24	\$23	\$22	\$21	\$21	\$21	\$16	\$14	\$11	\$10	\$8	\$6	\$5
	10yr ave.	\$24	\$22	\$21	\$20	\$19	\$18	\$17	\$17	\$16	\$15	\$15	\$14	\$12	\$10	\$9	\$6	\$5	\$4
	30% Current	\$32	\$32	\$32	\$31	\$30	\$29	\$28	\$27	\$26	\$25	\$25	\$20	\$16	\$13	\$12	\$9	\$8	\$6
	10yr ave.	\$28	\$27	\$26	\$24	\$23	\$22	\$21	\$20	\$19	\$19	\$18	\$17	\$14	\$12	\$10	\$7	\$6	\$4
	35% Current	\$37	\$37	\$37	\$36	\$36	\$34	\$33	\$31	\$30	\$29	\$29	\$23	\$19	\$15	\$13	\$11	\$9	\$7
	10yr ave.	\$33	\$31	\$30	\$28	\$27	\$25	\$24	\$23	\$22	\$22	\$21	\$19	\$17	\$14	\$12	\$9	\$7	\$5
	40% Current	\$42	\$43	\$42	\$41	\$41	\$39	\$37	\$35	\$34	\$33	\$33	\$26	\$22	\$18	\$15	\$12	\$10	\$8
	10yr ave.	\$38	\$36	\$34	\$32	\$31	\$29	\$28	\$26	\$25	\$25	\$24	\$22	\$19	\$16	\$14	\$10	\$8	\$6
	45% Current	\$47	\$48	\$47	\$46	\$46	\$44	\$42	\$40	\$38	\$37	\$37	\$29	\$25	\$20	\$17	\$14	\$11	\$9
	10yr ave.	\$42	\$40	\$38	\$37	\$35	\$33	\$31	\$30	\$29	\$28	\$27	\$25	\$21	\$18	\$16	\$11	\$9	\$7
	50% Current	\$53	\$53	\$53	\$51	\$51	\$49	\$47	\$44	\$43	\$42	\$41	\$33	\$27	\$22	\$19	\$15	\$13	\$10
	10yr ave.	\$47	\$45	\$43	\$41	\$38	\$36	\$34	\$33	\$32	\$31	\$30	\$28	\$24	\$20	\$17	\$12	\$10	\$7
	55% Current	\$58	\$59	\$58	\$56	\$56	\$54	\$51	\$49	\$47	\$46	\$45	\$36	\$30	\$24	\$21	\$17	\$14	\$11
	10yr ave.	\$52	\$49	\$47	\$45	\$42	\$40	\$38	\$36	\$35	\$34	\$33	\$30	\$26	\$22	\$19	\$13	\$11	\$8
	60% Current	\$63	\$64	\$63	\$62	\$61	\$59	\$56	\$53	\$51	\$50	\$49	\$39	\$33	\$27	\$23	\$18	\$15	\$12
	10yr ave.	\$56	\$54	\$51	\$49	\$46	\$44	\$41	\$40	\$38	\$37	\$36	\$33	\$29	\$24	\$21	\$15	\$12	\$9
	65% Current	\$68	\$69	\$68	\$67	\$66	\$64	\$61	\$58	\$55	\$54	\$53	\$42	\$35	\$29	\$25	\$20	\$16	\$14
	10yr ave.	\$61	\$58	\$55	\$53	\$50	\$47	\$45	\$43	\$41	\$40	\$39	\$36	\$31	\$26	\$23	\$16	\$13	\$9
	70% Current	\$74	\$74	\$74	\$72	\$71	\$69	\$65	\$62	\$60	\$58	\$57	\$46	\$38	\$31	\$27	\$21	\$18	\$15
	10yr ave.	\$66	\$63	\$60	\$57	\$54	\$51	\$48	\$46	\$45	\$43	\$42	\$39	\$33	\$28	\$24	\$17	\$14	\$10
75% Current	\$79	\$80	\$79	\$77	\$76	\$73	\$70	\$66	\$64	\$62	\$62	\$49	\$41	\$33	\$29	\$23	\$19	\$16	
10yr ave.	\$71	\$67	\$64	\$61	\$58	\$54	\$52	\$50	\$48	\$46	\$45	\$41	\$36	\$30	\$26	\$18	\$15	\$11	
80% Current	\$84	\$85	\$84	\$82	\$81	\$78	\$75	\$71	\$68	\$67	\$66	\$52	\$44	\$35	\$31	\$24	\$20	\$17	
10yr ave.	\$75	\$72	\$68	\$65	\$61	\$58	\$55	\$53	\$51	\$49	\$48	\$44	\$38	\$32	\$28	\$20	\$16	\$12	
85% Current	\$89	\$90	\$89	\$87	\$86	\$83	\$79	\$75	\$72	\$71	\$70	\$55	\$46	\$38	\$33	\$26	\$21	\$18	
10yr ave.	\$80	\$76	\$73	\$69	\$65	\$62	\$59	\$56	\$54	\$52	\$51	\$47	\$40	\$34	\$30	\$21	\$17	\$12	

The above shows estimated returns per head for skirted fleece wool. These figures do not take into account the value of skirtings and oddments and do not take into account discounts that may apply for faults under individual circumstances. These figures are based on a market index of 100% and should be used as a guide only. Returns over \$30 / head for fleece wool are highlighted.

Table 14: Returns pr head for skirted fleece wool.

Skirted FLC Weight 3 Kg		Micron																	
		16	16.5	17	17.5	18	18.5	19	19.5	20	21	22	23	24	25	26	28	30	32
Yield (Sch Dry)	25% Current	\$20	\$20	\$20	\$19	\$19	\$18	\$17	\$17	\$16	\$16	\$15	\$12	\$10	\$8	\$7	\$6	\$5	\$4
	10yr ave.	\$18	\$17	\$16	\$15	\$14	\$14	\$13	\$12	\$12	\$12	\$11	\$10	\$9	\$8	\$7	\$5	\$4	\$3
	30% Current	\$24	\$24	\$24	\$23	\$23	\$22	\$21	\$20	\$19	\$19	\$18	\$15	\$12	\$10	\$9	\$7	\$6	\$5
	10yr ave.	\$21	\$20	\$19	\$18	\$17	\$16	\$15	\$15	\$14	\$14	\$14	\$12	\$11	\$9	\$8	\$5	\$4	\$3
	35% Current	\$28	\$28	\$28	\$27	\$27	\$26	\$24	\$23	\$22	\$22	\$22	\$17	\$14	\$12	\$10	\$8	\$7	\$5
	10yr ave.	\$25	\$24	\$22	\$21	\$20	\$19	\$18	\$17	\$17	\$16	\$16	\$14	\$13	\$11	\$9	\$6	\$5	\$4
	40% Current	\$32	\$32	\$32	\$31	\$30	\$29	\$28	\$27	\$26	\$25	\$25	\$20	\$16	\$13	\$12	\$9	\$8	\$6
	10yr ave.	\$28	\$27	\$26	\$24	\$23	\$22	\$21	\$20	\$19	\$19	\$18	\$17	\$14	\$12	\$10	\$7	\$6	\$4
	45% Current	\$36	\$36	\$35	\$35	\$34	\$33	\$31	\$30	\$29	\$28	\$28	\$22	\$18	\$15	\$13	\$10	\$9	\$7
	10yr ave.	\$32	\$30	\$29	\$27	\$26	\$25	\$23	\$22	\$21	\$21	\$20	\$19	\$16	\$14	\$12	\$8	\$7	\$5
	50% Current	\$39	\$40	\$39	\$39	\$38	\$37	\$35	\$33	\$32	\$31	\$31	\$24	\$20	\$17	\$14	\$11	\$9	\$8
	10yr ave.	\$35	\$34	\$32	\$30	\$29	\$27	\$26	\$25	\$24	\$23	\$23	\$21	\$18	\$15	\$13	\$9	\$7	\$5
	55% Current	\$43	\$44	\$43	\$42	\$42	\$40	\$38	\$37	\$35	\$34	\$34	\$27	\$23	\$18	\$16	\$12	\$10	\$9
	10yr ave.	\$39	\$37	\$35	\$33	\$32	\$30	\$28	\$27	\$26	\$25	\$25	\$23	\$20	\$17	\$14	\$10	\$8	\$6
	60% Current	\$47	\$48	\$47	\$46	\$46	\$44	\$42	\$40	\$38	\$37	\$37	\$29	\$25	\$20	\$17	\$14	\$11	\$9
	10yr ave.	\$42	\$40	\$38	\$37	\$35	\$33	\$31	\$30	\$29	\$28	\$27	\$25	\$21	\$18	\$16	\$11	\$9	\$7
	65% Current	\$51	\$52	\$51	\$50	\$49	\$48	\$45	\$43	\$42	\$41	\$40	\$32	\$27	\$22	\$19	\$15	\$12	\$10
	10yr ave.	\$46	\$44	\$42	\$40	\$37	\$35	\$34	\$32	\$31	\$30	\$29	\$27	\$23	\$20	\$17	\$12	\$10	\$7
70% Current	\$55	\$56	\$55	\$54	\$53	\$51	\$49	\$47	\$45	\$44	\$43	\$34	\$29	\$23	\$20	\$16	\$13	\$11	
10yr ave.	\$49	\$47	\$45	\$43	\$40	\$38	\$36	\$35	\$33	\$32	\$32	\$29	\$25	\$21	\$18	\$13	\$10	\$8	
75% Current	\$59	\$60	\$59	\$58	\$57	\$55	\$52	\$50	\$48	\$47	\$46	\$37	\$31	\$25	\$22	\$17	\$14	\$12	
10yr ave.	\$53	\$50	\$48	\$46	\$43	\$41	\$39	\$37	\$36	\$35	\$34	\$31	\$27	\$23	\$20	\$14	\$11	\$8	
80% Current	\$63	\$64	\$63	\$62	\$61	\$59	\$56	\$53	\$51	\$50	\$49	\$39	\$33	\$27	\$23	\$18	\$15	\$12	
10yr ave.	\$56	\$54	\$51	\$49	\$46	\$44	\$41	\$40	\$38	\$37	\$36	\$33	\$29	\$24	\$21	\$15	\$12	\$9	
85% Current	\$67	\$68	\$67	\$65	\$65	\$62	\$59	\$56	\$54	\$53	\$52	\$42	\$35	\$28	\$24	\$19	\$16	\$13	
10yr ave.	\$60	\$57	\$54	\$52	\$49	\$46	\$44	\$42	\$41	\$39	\$38	\$35	\$30	\$26	\$22	\$16	\$13	\$9	

The above shows estimated returns per head for skirted fleece wool. These figures do not take into account the value of skirtings and oddments and do not take into account discounts that may apply for faults under individual circumstances. These figures are based on a market index of 100% and should be used as a guide only. Returns over \$30 / head for fleece wool are highlighted.



Table 15: Returns pr head for skirted fleece wool.

Skirted FLC Weight 2 Kg		Micron																	
		16	16.5	17	17.5	18	18.5	19	19.5	20	21	22	23	24	25	26	28	30	32
Yield (Sch Dry)	25% Current	\$13	\$13	\$13	\$13	\$13	\$12	\$12	\$11	\$11	\$10	\$10	\$8	\$7	\$6	\$5	\$4	\$3	\$3
	10yr ave.	\$12	\$11	\$11	\$10	\$10	\$9	\$9	\$8	\$8	\$8	\$8	\$7	\$6	\$5	\$4	\$3	\$2	\$2
	30% Current	\$16	\$16	\$16	\$15	\$15	\$15	\$14	\$13	\$13	\$12	\$12	\$10	\$8	\$7	\$6	\$5	\$4	\$3
	10yr ave.	\$14	\$13	\$13	\$12	\$12	\$11	\$10	\$10	\$10	\$9	\$9	\$8	\$7	\$6	\$5	\$4	\$3	\$2
	35% Current	\$18	\$19	\$18	\$18	\$18	\$17	\$16	\$16	\$15	\$15	\$14	\$11	\$10	\$8	\$7	\$5	\$4	\$4
	10yr ave.	\$16	\$16	\$15	\$14	\$13	\$13	\$12	\$12	\$11	\$11	\$11	\$10	\$8	\$7	\$6	\$4	\$3	\$3
	40% Current	\$21	\$21	\$21	\$21	\$20	\$20	\$19	\$18	\$17	\$17	\$16	\$13	\$11	\$9	\$8	\$6	\$5	\$4
	10yr ave.	\$19	\$18	\$17	\$16	\$15	\$15	\$14	\$13	\$13	\$12	\$12	\$11	\$10	\$8	\$7	\$5	\$4	\$3
	45% Current	\$24	\$24	\$24	\$23	\$23	\$22	\$21	\$20	\$19	\$19	\$18	\$15	\$12	\$10	\$9	\$7	\$6	\$5
	10yr ave.	\$21	\$20	\$19	\$18	\$17	\$16	\$15	\$15	\$14	\$14	\$14	\$12	\$11	\$9	\$8	\$5	\$4	\$3
	50% Current	\$26	\$27	\$26	\$26	\$25	\$24	\$23	\$22	\$21	\$21	\$21	\$16	\$14	\$11	\$10	\$8	\$6	\$5
	10yr ave.	\$24	\$22	\$21	\$20	\$19	\$18	\$17	\$17	\$16	\$15	\$15	\$14	\$12	\$10	\$9	\$6	\$5	\$4
	55% Current	\$29	\$29	\$29	\$28	\$28	\$27	\$26	\$24	\$23	\$23	\$23	\$18	\$15	\$12	\$11	\$8	\$7	\$6
	10yr ave.	\$26	\$25	\$23	\$22	\$21	\$20	\$19	\$18	\$18	\$17	\$17	\$15	\$13	\$11	\$10	\$7	\$5	\$4
	60% Current	\$32	\$32	\$32	\$31	\$30	\$29	\$28	\$27	\$26	\$25	\$25	\$20	\$16	\$13	\$12	\$9	\$8	\$6
	10yr ave.	\$28	\$27	\$26	\$24	\$23	\$22	\$21	\$20	\$19	\$19	\$18	\$17	\$14	\$12	\$10	\$7	\$6	\$4
	65% Current	\$34	\$35	\$34	\$33	\$33	\$32	\$30	\$29	\$28	\$27	\$27	\$21	\$18	\$14	\$12	\$10	\$8	\$7
10yr ave.	\$31	\$29	\$28	\$26	\$25	\$24	\$22	\$21	\$21	\$20	\$20	\$18	\$15	\$13	\$11	\$8	\$6	\$5	
70% Current	\$37	\$37	\$37	\$36	\$36	\$34	\$33	\$31	\$30	\$29	\$29	\$23	\$19	\$15	\$13	\$11	\$9	\$7	
10yr ave.	\$33	\$31	\$30	\$28	\$27	\$25	\$24	\$23	\$22	\$22	\$21	\$19	\$17	\$14	\$12	\$9	\$7	\$5	
75% Current	\$39	\$40	\$39	\$39	\$38	\$37	\$35	\$33	\$32	\$31	\$31	\$24	\$20	\$17	\$14	\$11	\$9	\$8	
10yr ave.	\$35	\$34	\$32	\$30	\$29	\$27	\$26	\$25	\$24	\$23	\$23	\$21	\$18	\$15	\$13	\$9	\$7	\$5	
80% Current	\$42	\$43	\$42	\$41	\$41	\$39	\$37	\$35	\$34	\$33	\$33	\$26	\$22	\$18	\$15	\$12	\$10	\$8	
10yr ave.	\$38	\$36	\$34	\$32	\$31	\$29	\$28	\$26	\$25	\$25	\$24	\$22	\$19	\$16	\$14	\$10	\$8	\$6	
85% Current	\$45	\$45	\$45	\$44	\$43	\$42	\$40	\$38	\$36	\$35	\$35	\$28	\$23	\$19	\$16	\$13	\$11	\$9	
10yr ave.	\$40	\$38	\$36	\$34	\$33	\$31	\$29	\$28	\$27	\$26	\$26	\$23	\$20	\$17	\$15	\$10	\$8	\$6	

The above shows estimated returns per head for skirted fleece wool. These figures do not take into account the value of skirtings and oddments and do not take into account discounts that may apply for faults under individual circumstances. These figures are based on a market index of 100% and should be used as a guide only. Returns over \$30 / head for fleece wool are highlighted.