



Table 1: Northern Region Micron Price Guides

CURRENT MARKET				PERCENTILES		AVERAGES						12 MONTH COMPARISONS								TRADING RANGE		
Mic.	14/10/2010	7/10/2010	Now			Now			13/10/2009		Now		Now		Now		Clean c/kg					
Price	Current	Weekly	3yr	10yr	<u>3 year</u>	compared	10 year	compared	13/10/2009	compared	12 Month	compared	12 Month	compared	12 Month	compared	12	3	10			
Guides	Price	Change			Average	to 3yr ave		Average		to 10yr ave		This time		to Last Year		Low				to Low	High	to High
NRI	936	+15 1.6%	74%	75%	895	+41 5%	867	+69 8%	874	+62 7%	872	+64 7%	974	-38 -4%	102	343	584					
16*	1700	+30 1.8%	74%		1617	+83 5%			1530	+170 11%	1345	+355 26%	1700	0 0%	355	645						
16.5*	1510	+10 0.7%	71%		1476	+34 2%			1310	+200 15%	1260	+250 20%	1540	-30 -2%	280	548						
17*	1400	+10 0.7%	64%	74%	1355	+45 3%	1420	-20 -1%	1215	+185 15%	1175	+225 19%	1400	0 0%	225	501	1850					
17.5*	1310	+10 0.8%	65%		1291	+19 1%			1175	+135 11%	1155	+155 13%	1310	0 0%	155	496						
18	1251	+14 1.1%	65%	58%	1234	+17 1%	1289	-38 -3%	1132	+119 11%	1116	+135 12%	1251	0 0%	135	432	1392					
18.5	1181	+13 1.1%	66%		1161	+20 2%			1094	+87 8%	1073	+108 10%	1183	-2 0%	110	425						
19	1086	+9 0.8%	66%	61%	1069	+17 2%	1066	+20 2%	1017	+69 7%	1021	+65 6%	1120	-34 -3%	99	443	706					
19.5	1003	+19 1.9%	69%		985	+18 2%			966	+37 4%	952	+51 5%	1067	-64 -6%	115	457						
20	963	+14 1.5%	73%	68%	915	+48 5%	910	+53 6%	903	+60 7%	893	+70 8%	1023	-60 -6%	130	465	717					
21	943	+16 1.7%	74%	69%	877	+66 8%	864	+79 9%	870	+73 8%	870	+73 8%	1006	-63 -6%	136	427	786					
22	905	+13 1.4%	69%	65%	852	+53 6%	840	+65 8%	833	+72 9%	846	+59 7%	971	-66 -7%	125	361	822					
23	873	+17 1.9%	63%	63%	830	+43 5%	820	+53 6%	816	+57 7%	816	+57 7%	940	-67 -7%	124	311	826					
24	803	+16 2.0%	59%	60%	782	+21 3%	784	+19 2%	767	+36 5%	760	+43 6%	881	-78 -9%	121	257	800					
25	754	+34 4.5%	100%	79%	668	+86 13%	705	+49 7%	701	+53 8%	650	+104 16%	754	0 0%	104	188	725					
26	653	+30 4.6%	99%	76%	599	+54 9%	646	+7 1%	580	+73 13%	560	+93 17%	653	0 0%	93	155	641					
28	450	+1 0.2%	37%	15%	459	-9 -2%	521	-71 -14%	448	+2 0%	430	+20 5%	493	-43 -9%	63	119	465					
30	399	+8 2.0%	55%	22%	395	+4 1%	455	-56 -12%	387	+12 3%	374	+25 7%	434	-35 -8%	60	136	384					
32	356	0	75%	25%	344	+12 3%	412	-56 -14%	338	+18 5%	331	+25 8%	375	-19 -5%	44	108	372					
MC	581	+10 1.7%	68%	81%	540	+41 8%	495	+86 17%	570	+11 2%	561	+20 4%	681	-100 -15%	120	289	308					

Note:

* Due to the irregular market quoting for some fine wool categories, figures shown relating to micron categories below 18 micron are an estimate based on the AWEX Premium & Discounts Report & other available information.

* For any category, where there is insufficient quantity offered to enable AWEX to quote, a quote will be provided based on the best available information.

* 10 Year data is not available for some micron categories, which may result in blank spaces in the table above.

Definitions:

* A Percentile, is a value on a scale of one hundred that indicates the percent of a distribution that is equal to or below it. In general a percentile between 25% and 75% is considered normal, a percentile below 25% is considered below normal and a percentile above 75% is considered above normal.

Three and ten year percentiles shown in the table above, detail the period of time during the past 3 & 10 years that the market has traded either at or below its current price.

The higher the percentile, the stronger the market.

Source: Australian Wool Exchange, Australian Wool Innovation, Sydney Futures Exchange, x-rates.com

Disclaimer: While all due care has been taken in the preparation of this document, no warranty is made as to its accuracy, reliability or completeness. To the extent permitted by law neither Jemalong or their sources including subsidiaries and staff, accept liability to any person for loss or damage arising from the use of this information.



MARKET COMMENTARY

Australian Dollar 99.63 cents US as of 14/10/2010

NORTHERN REGION – Sale Week 15/10 (41,070 bales offered nationally)

Merino Fleece:

On Wednesday – A strong push from buyers in the face of a strong AUD, had all microns gaining ground. Fine to medium microns lifted 5 to 10 cents while 19.5 microns and broader were 15 cents dearer.

On Thursday – As the AUD marches towards parity the Merino fleece market is unwavering. Fine microns are up to 10 cents dearer while 19 microns and broader closed par to 5 cents dearer (with lower style & strength lots most affected).

Merino Skirting's:

On Wednesday – All descriptions finished 10-20 cents dearer with < 5% Vm types most affected.

On Thursday – All descriptions remained well supported, gaining 15 cents with some better length and low VM lots even higher.

Oddments:

On Wednesday – Strong competition had Carbo locks, crutching's and stains all closing 10 cents dearer.

On Thursday – A solid market had all categories closing strongly.

Crossbreds:

On Wednesday – After a strong start the market steadied leaving the finer end 15 cents dearer and the broader end only slightly dearer.

On Thursday – Fine crossbreds ended 15 cents dearer while 27 to 30 microns remained firm tending in sellers favour.

44,421 Bales are rostered for next week, Jemalong are selling on Wednesday 20th October.

Source AWEX

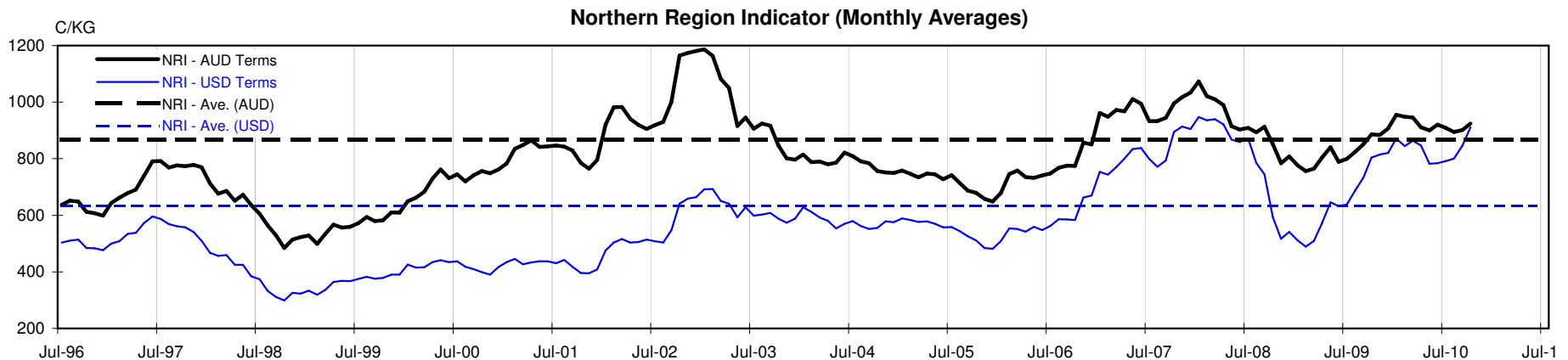




Table 4: 19 micron SFE

Wednesday, 13 October 2010

Delivery Mth	Oct-10	Dec-10	Feb-11	Apr-11	Jun-11	Aug-11	Oct-11	Dec-11	Feb-12
19 Micron SFE	1053	1053	1053	1053	1053	1053	1053	1053	1053
Average	1019	1032	1040	1047	1051	1053	1051	1046	1052
Maximum	1088	1088	1088	1088	1088	1088	1080	1065	1065
Minimum	884	905	936	983	1025	1034	1034	1034	1034

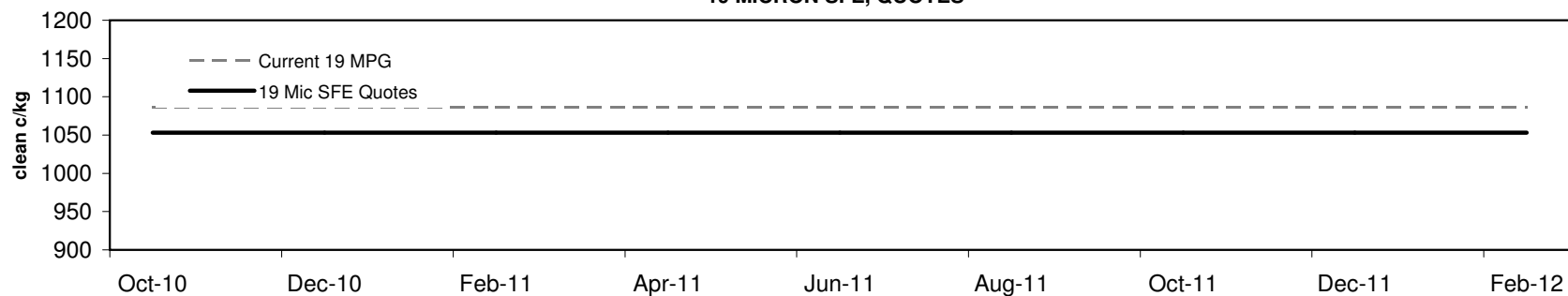
Table 5: 19 micron SFE, as a percentile of the 19 micron MPG

3 Year Percentile	43%	43%	43%	43%	43%	43%	43%	43%	43%
10 Year Percentile	53%	53%	53%	53%	53%	53%	53%	53%	53%

Table 6: 19 micron SFE, compared to MPG

Current 19 MPG	-33	-3%	-33	-3%	-33	-3%	-33	-3%	-33	-3%	-33	-3%	-33	-3%	-33	-3%	-33	-3%
19 MPG, 1 Year Average	-16	-1%	-16	-1%	-16	-1%	-16	-1%	-16	-1%	-16	-1%	-16	-1%	-16	-1%	-16	-1%
19 MPG, 3 Year Average	-16	-1%	-16	-1%	-16	-1%	-16	-1%	-16	-1%	-16	-1%	-16	-1%	-16	-1%	-16	-1%
19 MPG, 10 Year Average	-13	-1%	-13	-1%	-13	-1%	-13	-1%	-13	-1%	-13	-1%	-13	-1%	-13	-1%	-13	-1%

19 MICRON SFE, QUOTES



19 MICRON SFE, FRONT MONTH PRICE MOVEMENT (mthly averages)

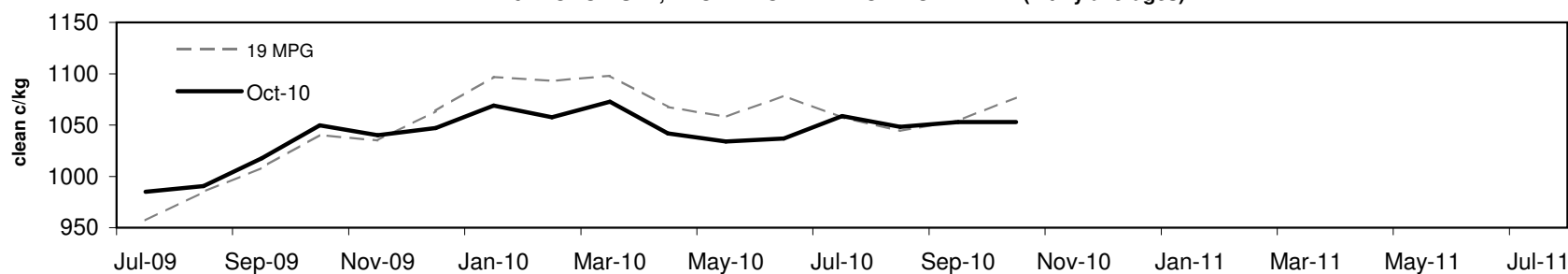




Table 7: 21 micron SFE

Wednesday, 13 October 2010

Delivery Mth	Oct-10	Dec-10	Feb-11	Apr-11	Jun-11	Aug-11	Oct-11	Dec-11	Feb-12
21 Micron SFE	958	952	940	942	938	923	933	923	923
Average	900	914	924	931	935	935	925	912	905
Maximum	1003	1013	1004	1004	1004	1004	992	951	925
Minimum	742	780	818	860	891	890	880	880	880

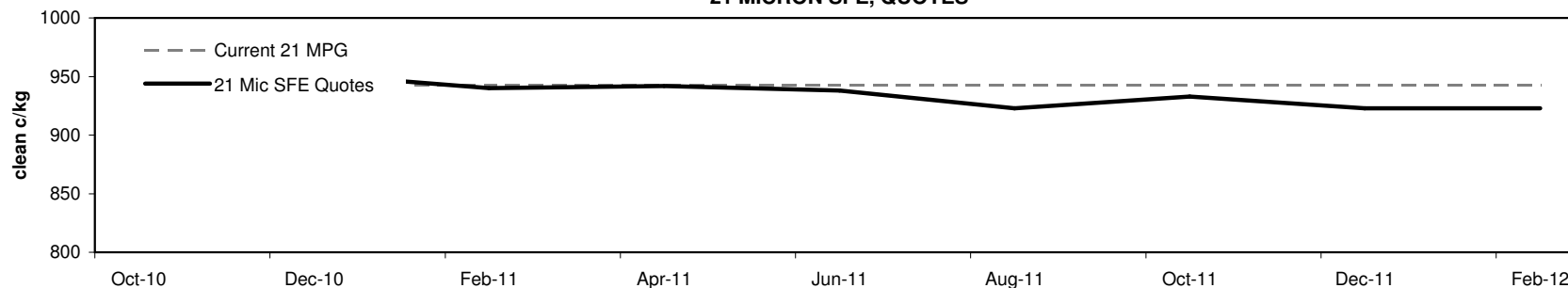
Table 8: 21 micron SFE, as a percentile of the 21 micron MPG

3 Year Percentile	78%	76%	74%	74%	73%	68%	71%	68%	68%
10 Year Percentile	71%	70%	68%	68%	68%	65%	66%	65%	65%

Table 9: 21 micron SFE, compared to MPG

Current 21 MPG	+15	2%	+9	1%	-3	0%	-1	0%	-5	-1%	-20	-2%	-10	-1%	-20	-2%	-20	-2%
21 MPG, 1 Year Average	+31	3%	+25	3%	+13	1%	+15	2%	+11	1%	-4	0%	+6	1%	-4	0%	-4	0%
21 MPG, 3 Year Average	+81	9%	+75	9%	+63	7%	+65	7%	+61	7%	+46	5%	+56	6%	+46	5%	+46	5%
21 MPG, 10 Year Average	+94	11%	+88	10%	+76	9%	+78	9%	+74	9%	+59	7%	+69	8%	+59	7%	+59	7%

21 MICRON SFE, QUOTES



21 MICRON SFE, FRONT MONTH PRICE MOVEMENT (mthly averages)

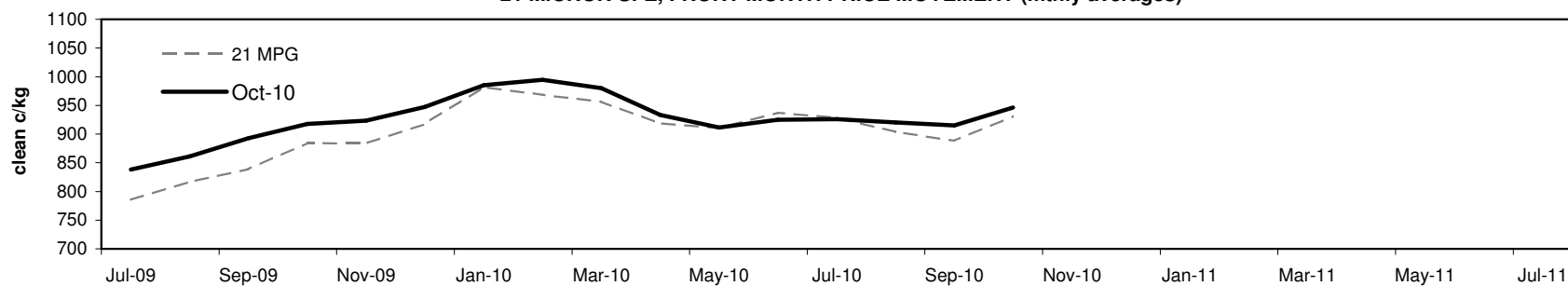




Table 10: 23 micron SFE

Wednesday, 13 October 2010

Delivery Mth	Oct-10	Dec-10	Feb-11	Apr-11	Jun-11	Aug-11	Oct-11	Dec-11	Feb-12
23 Micron SFE	887	887	887	887	887	887	887	887	887
Average	819	839	852	862	872	886	893	884	885
Maximum	927	927	927	927	927	927	927	887	887
Minimum	690	716	760	760	803	803	883	883	883

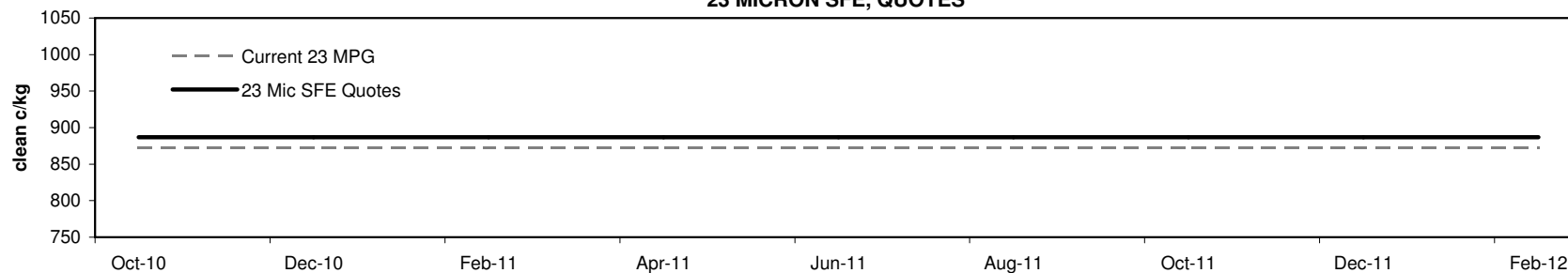
Table 11: 23 micron SFE, as a percentile of the 23 micron MPG

3 Year Percentile	71%	71%	71%	71%	71%	71%	71%	71%	71%
10 Year Percentile	66%	66%	66%	66%	66%	66%	66%	66%	66%

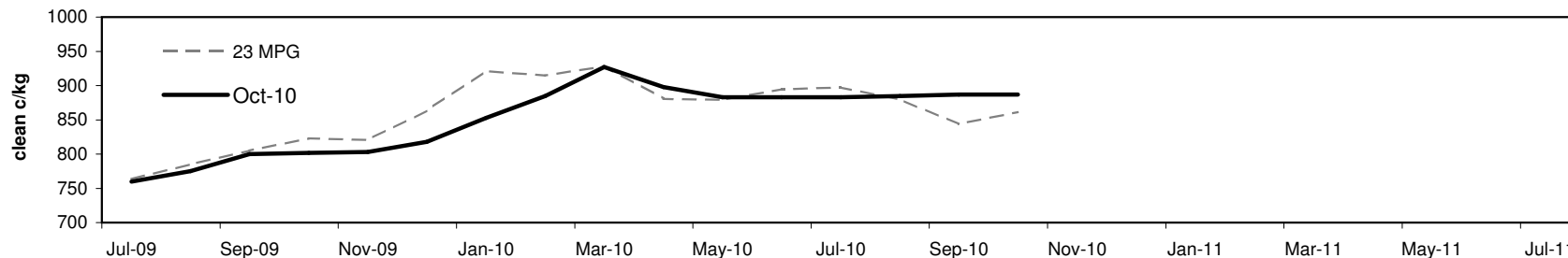
Table 12: 23 micron SFE, compared to MPG

Current 19 MPG	+14	2%	+14	2%	+14	2%	+14	2%	+14	2%	+14	2%	+14	2%	+14	2%	+14	2%
23 MPG, 1 Year Average	+5	1%	+5	1%	+5	1%	+5	1%	+5	1%	+5	1%	+5	1%	+5	1%	+5	1%
23 MPG, 3 Year Average	+57	7%	+57	7%	+57	7%	+57	7%	+57	7%	+57	7%	+57	7%	+57	7%	+57	7%
23 MPG, 10 Year Average	+67	8%	+67	8%	+67	8%	+67	8%	+67	8%	+67	8%	+67	8%	+67	8%	+67	8%

23 MICRON SFE, QUOTES

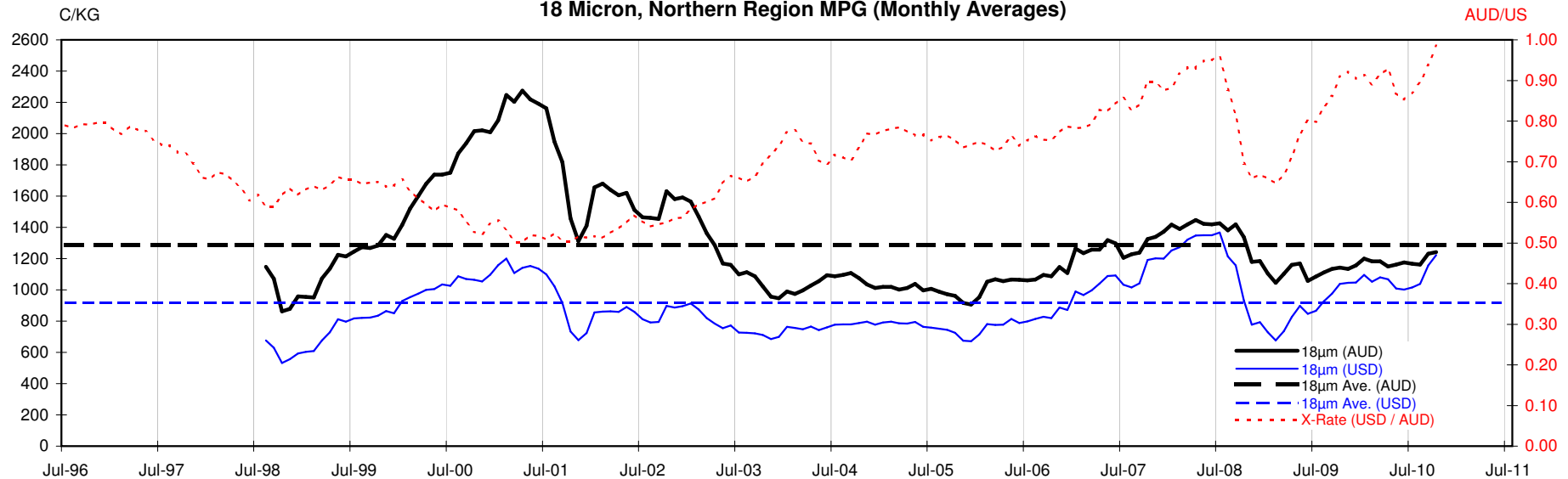


23 MICRON SFE, FRONT MONTH PRICE MOVEMENT (mthly averages)

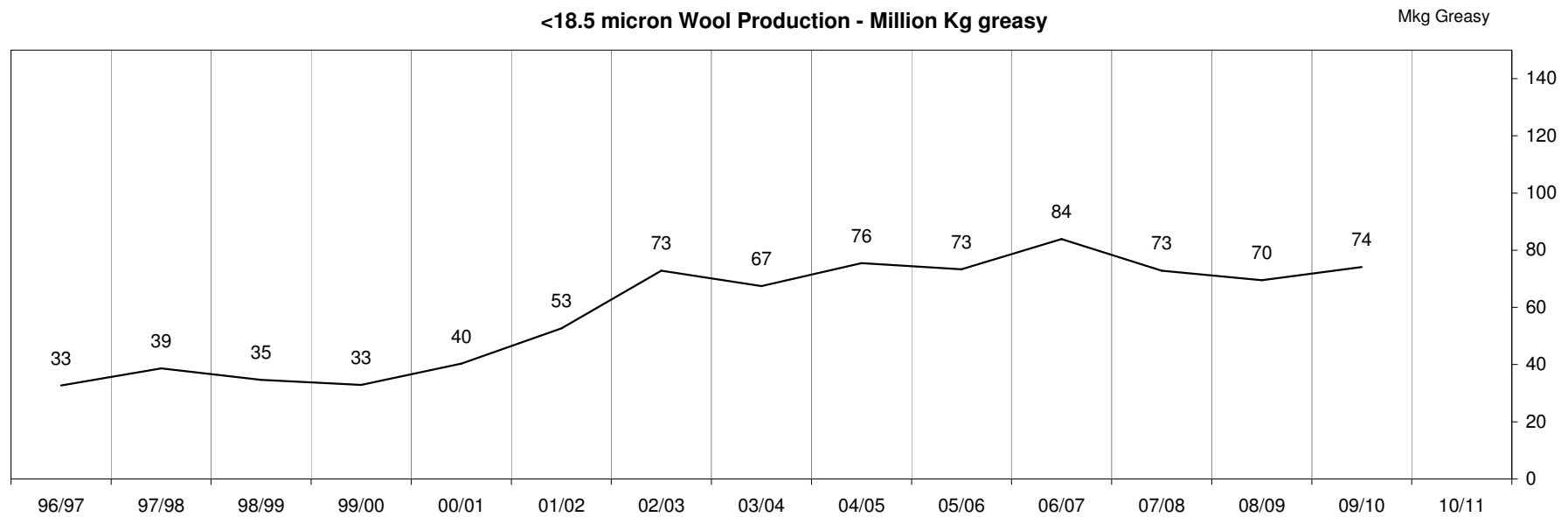


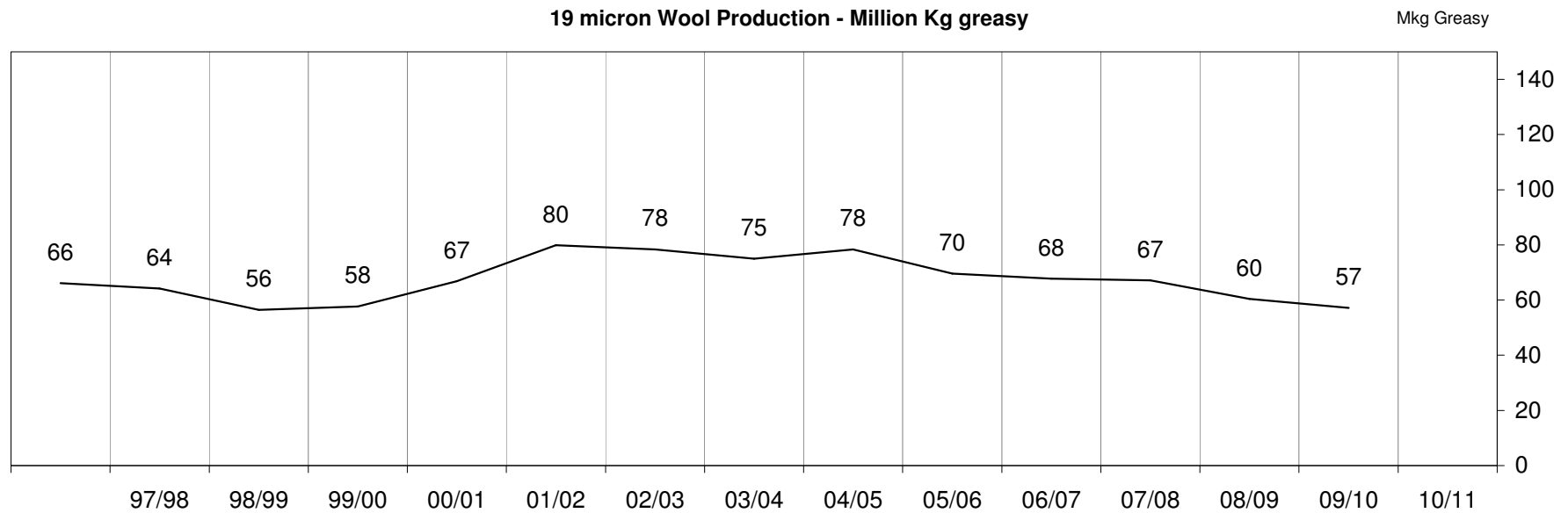
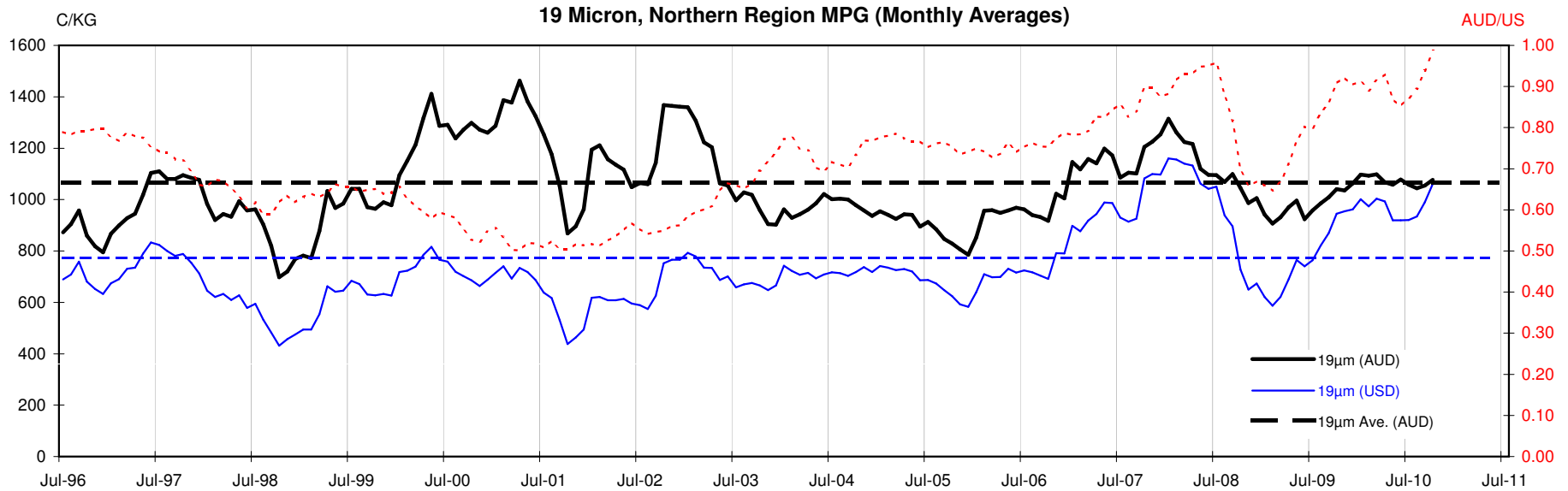


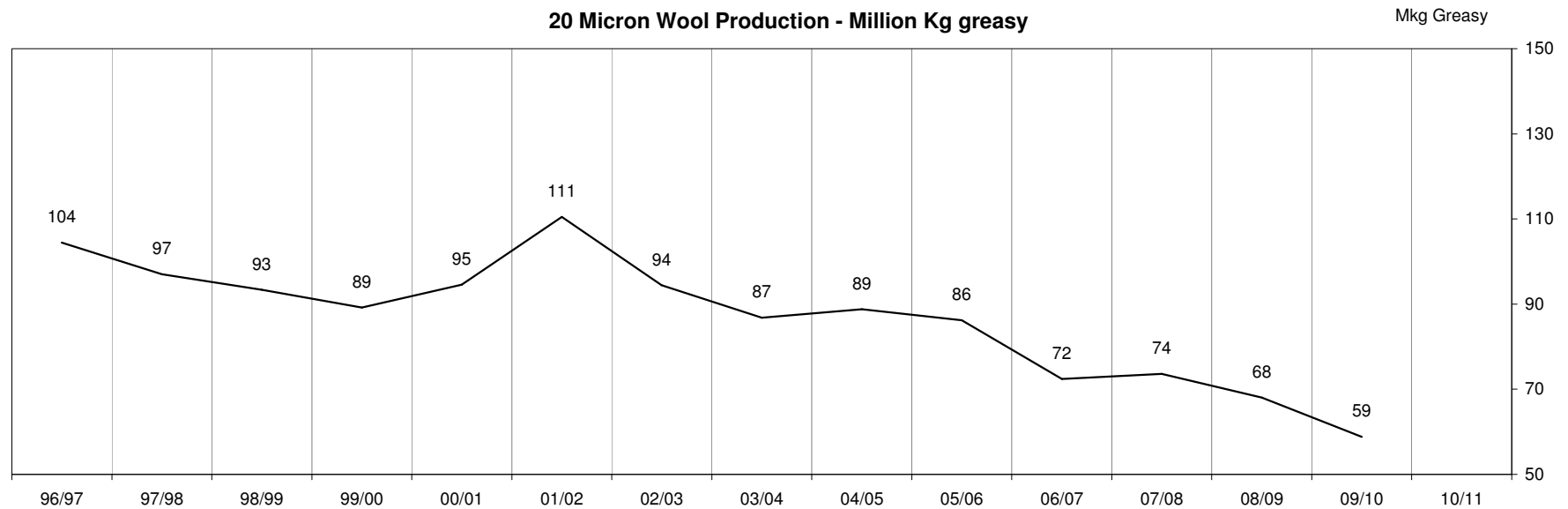
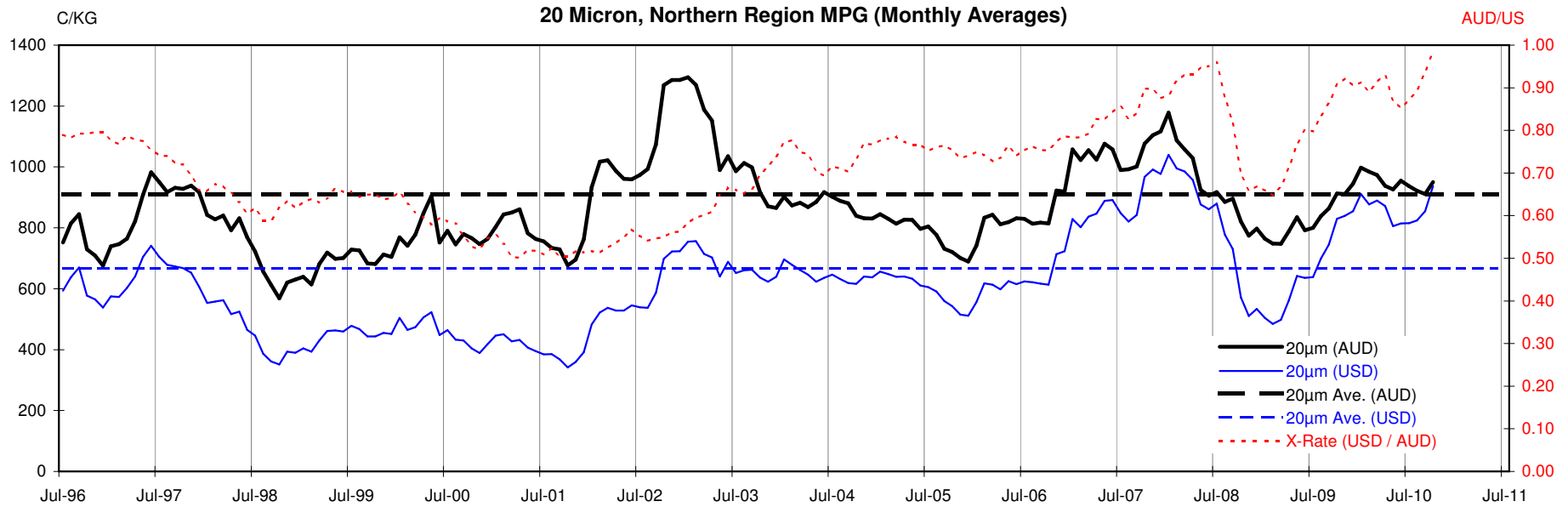
18 Micron, Northern Region MPG (Monthly Averages)

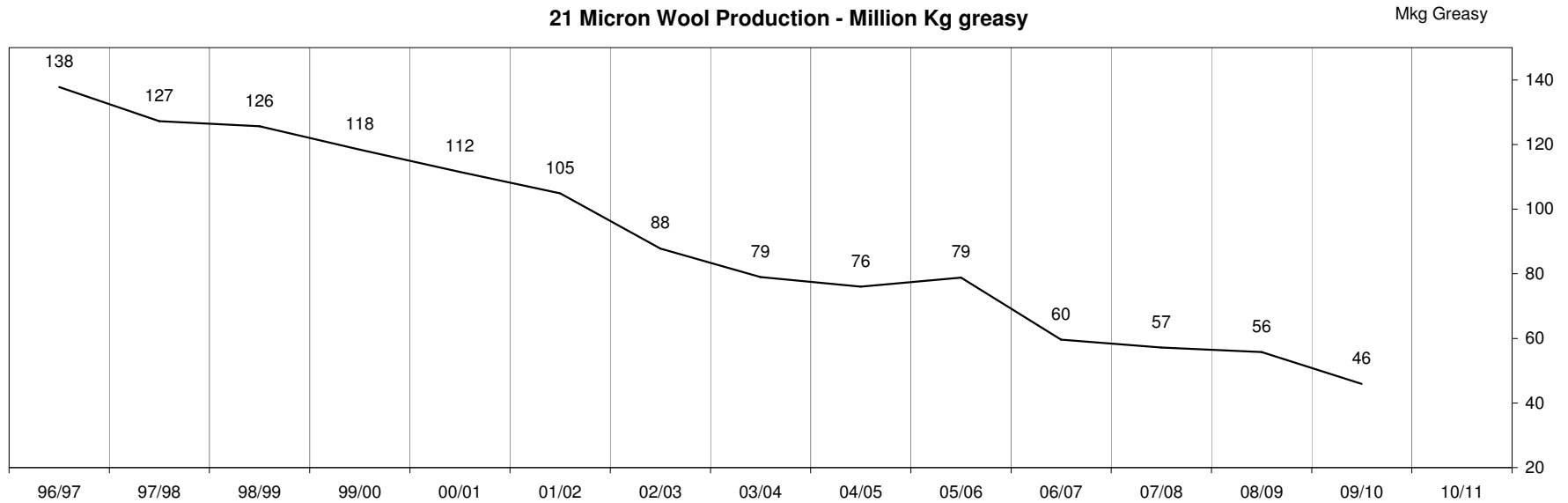
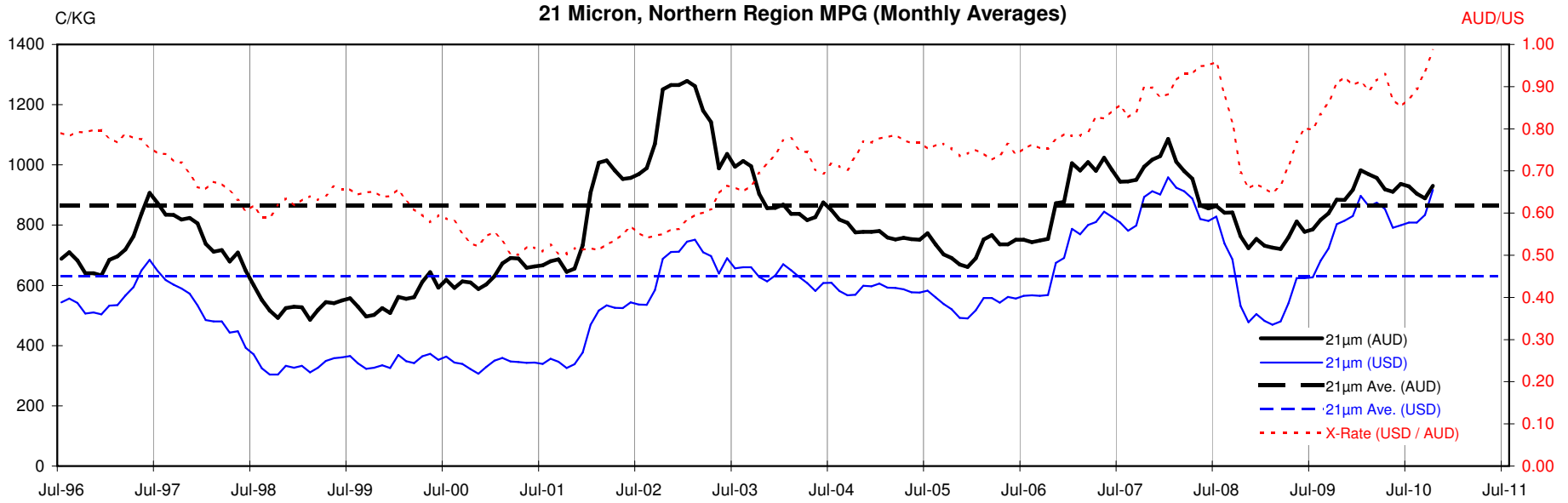


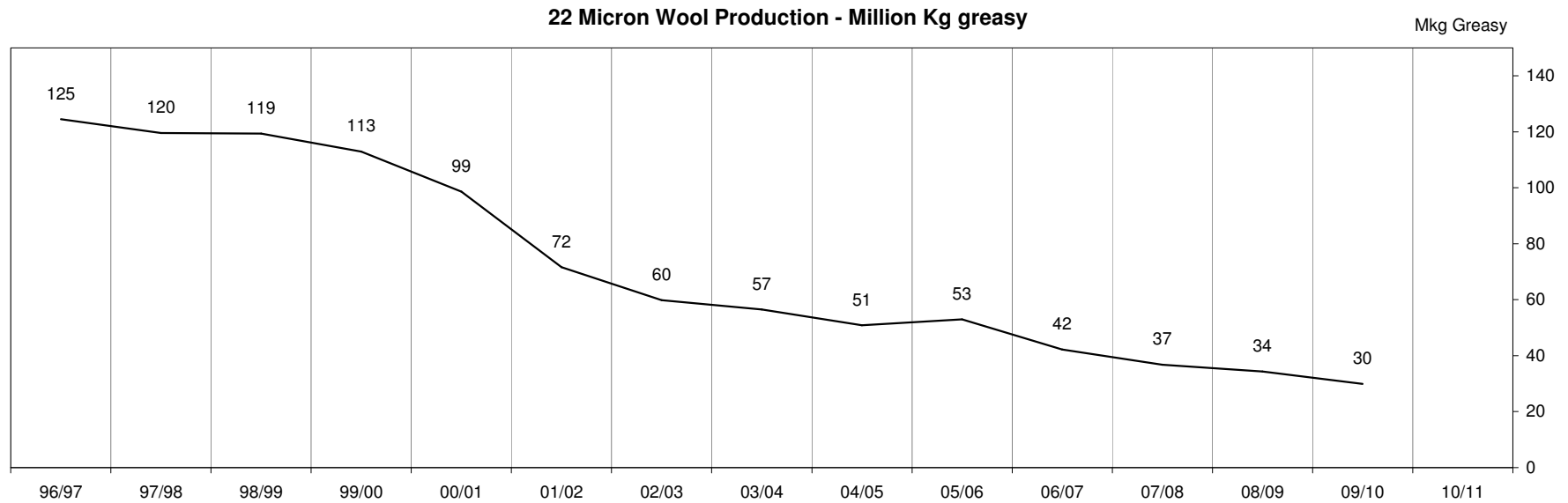
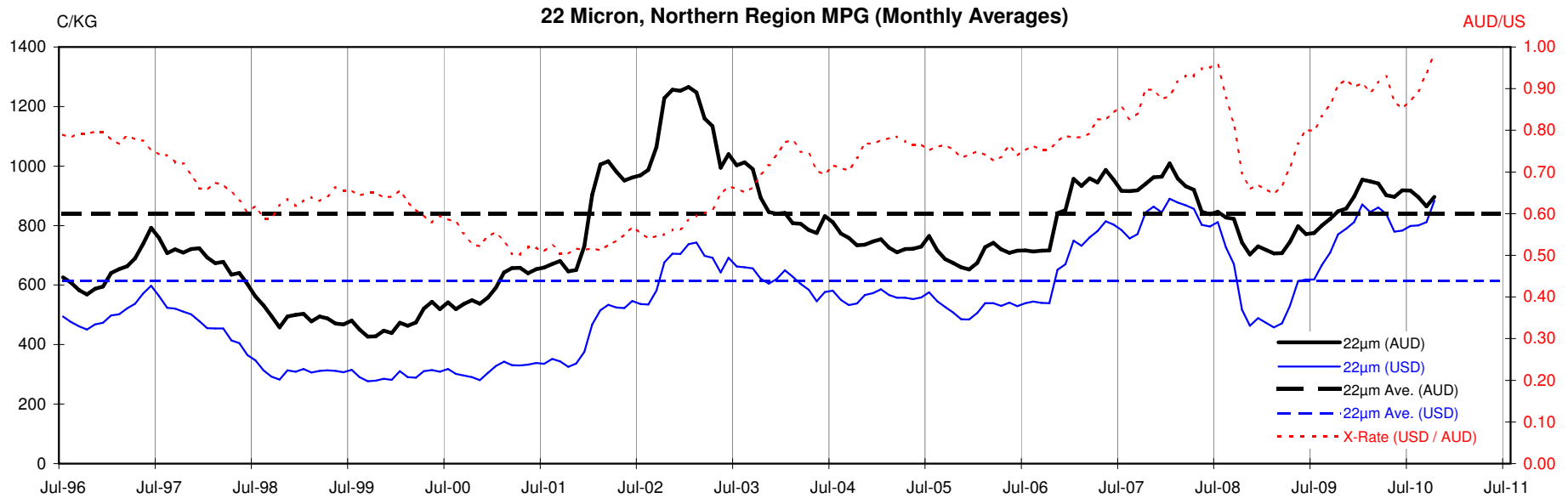
<18.5 micron Wool Production - Million Kg greasy

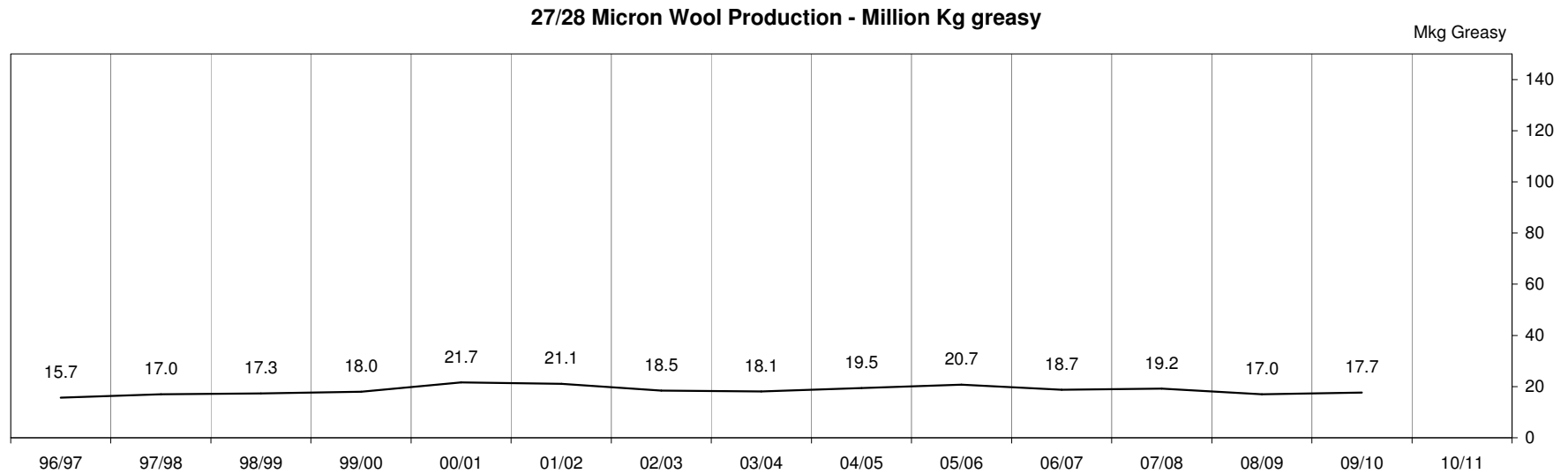
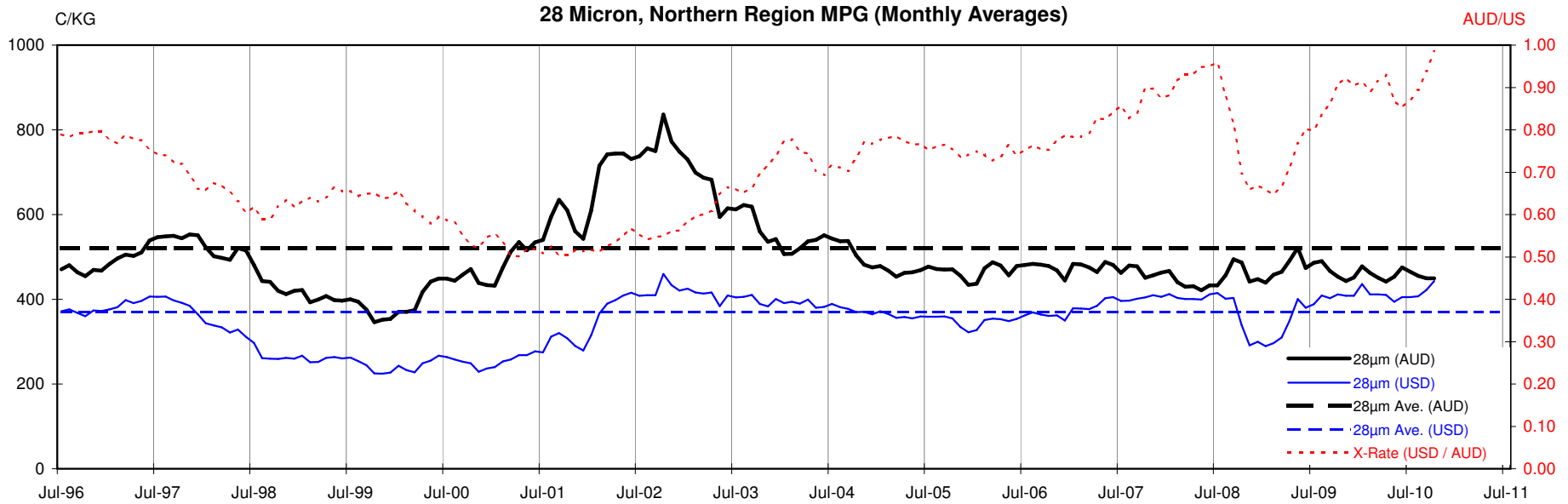












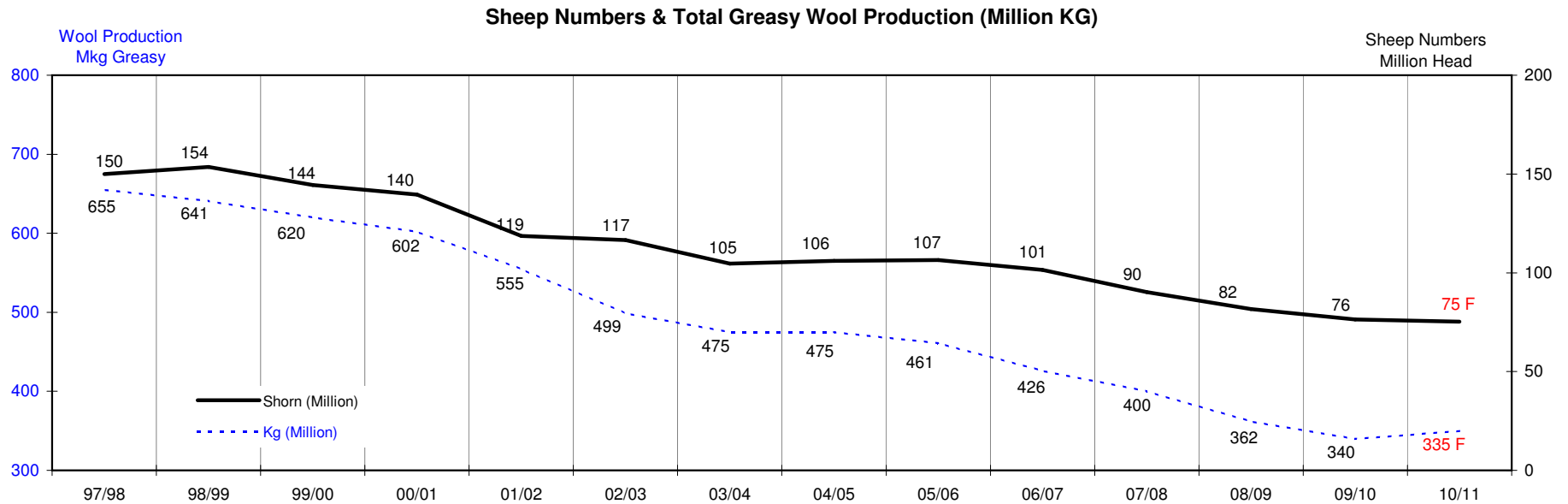
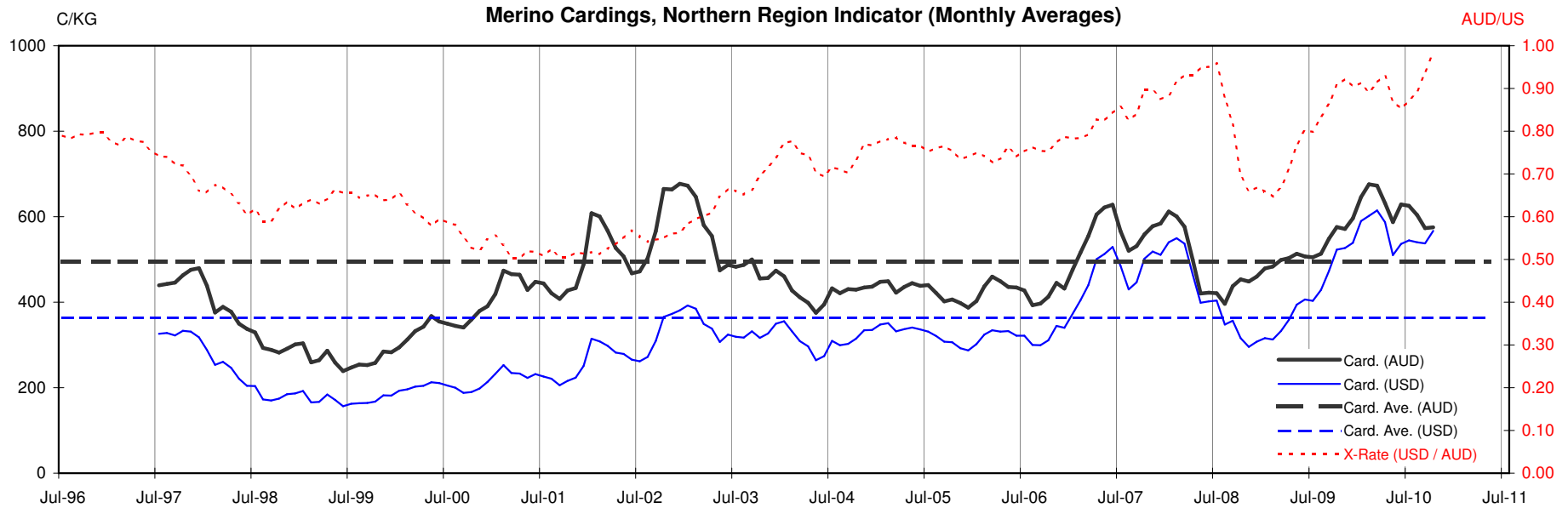




Table 13: Returns pr head for skirted fleece wool.

Skirted FLC Weight 9 Kg			Micron																	
			16	16.5	17	17.5	18	18.5	19	19.5	20	21	22	23	24	25	26	28	30	32
Yield (Sch Dry)	25%	Current	\$38	\$34	\$32	\$29	\$28	\$27	\$24	\$23	\$22	\$21	\$20	\$20	\$18	\$17	\$15	\$10	\$9	\$8
		10yr ave.			\$32		\$29		\$24		\$20	\$19	\$19	\$18	\$18	\$16	\$15	\$12	\$10	\$9
	30%	Current	\$46	\$41	\$38	\$35	\$34	\$32	\$29	\$27	\$26	\$25	\$24	\$24	\$22	\$20	\$18	\$12	\$11	\$10
		10yr ave.			\$38		\$35		\$29		\$25	\$23	\$23	\$22	\$21	\$19	\$17	\$14	\$12	\$11
	35%	Current	\$54	\$48	\$44	\$41	\$39	\$37	\$34	\$32	\$30	\$30	\$29	\$27	\$25	\$24	\$21	\$14	\$13	\$11
		10yr ave.			\$45		\$41		\$34		\$29	\$27	\$26	\$26	\$25	\$22	\$20	\$16	\$14	\$13
	40%	Current	\$61	\$54	\$50	\$47	\$45	\$43	\$39	\$36	\$35	\$34	\$33	\$31	\$29	\$27	\$24	\$16	\$14	\$13
		10yr ave.			\$51		\$46		\$38		\$33	\$31	\$30	\$30	\$28	\$25	\$23	\$19	\$16	\$15
	45%	Current	\$69	\$61	\$57	\$53	\$51	\$48	\$44	\$41	\$39	\$38	\$37	\$35	\$33	\$31	\$26	\$18	\$16	\$14
		10yr ave.			\$58		\$52		\$43		\$37	\$35	\$34	\$33	\$32	\$29	\$26	\$21	\$18	\$17
	50%	Current	\$77	\$68	\$63	\$59	\$56	\$53	\$49	\$45	\$43	\$42	\$41	\$39	\$36	\$34	\$29	\$20	\$18	\$16
		10yr ave.			\$64		\$58		\$48		\$41	\$39	\$38	\$37	\$35	\$32	\$29	\$23	\$20	\$19
	55%	Current	\$84	\$75	\$69	\$65	\$62	\$58	\$54	\$50	\$48	\$47	\$45	\$43	\$40	\$37	\$32	\$22	\$20	\$18
		10yr ave.			\$70		\$64		\$53		\$45	\$43	\$42	\$41	\$39	\$35	\$32	\$26	\$23	\$20
	60%	Current	\$92	\$82	\$76	\$71	\$68	\$64	\$59	\$54	\$52	\$51	\$49	\$47	\$43	\$41	\$35	\$24	\$22	\$19
		10yr ave.			\$77		\$70		\$58		\$49	\$47	\$45	\$44	\$42	\$38	\$35	\$28	\$25	\$22
65%	Current	\$99	\$88	\$82	\$77	\$73	\$69	\$64	\$59	\$56	\$55	\$53	\$51	\$47	\$44	\$38	\$26	\$23	\$21	
	10yr ave.			\$83		\$75		\$62		\$53	\$51	\$49	\$48	\$46	\$41	\$38	\$30	\$27	\$24	
70%	Current	\$107	\$95	\$88	\$83	\$79	\$74	\$68	\$63	\$61	\$59	\$57	\$55	\$51	\$48	\$41	\$28	\$25	\$22	
	10yr ave.			\$89		\$81		\$67		\$57	\$54	\$53	\$52	\$49	\$44	\$41	\$33	\$29	\$26	
75%	Current	\$115	\$102	\$95	\$88	\$84	\$80	\$73	\$68	\$65	\$64	\$61	\$59	\$54	\$51	\$44	\$30	\$27	\$24	
	10yr ave.			\$96		\$87		\$72		\$61	\$58	\$57	\$55	\$53	\$48	\$44	\$35	\$31	\$28	
80%	Current	\$122	\$109	\$101	\$94	\$90	\$85	\$78	\$72	\$69	\$68	\$65	\$63	\$58	\$54	\$47	\$32	\$29	\$26	
	10yr ave.			\$102		\$93		\$77		\$66	\$62	\$60	\$59	\$56	\$51	\$47	\$38	\$33	\$30	
85%	Current	\$130	\$116	\$107	\$100	\$96	\$90	\$83	\$77	\$74	\$72	\$69	\$67	\$61	\$58	\$50	\$34	\$31	\$27	
	10yr ave.			\$109		\$99		\$82		\$70	\$66	\$64	\$63	\$60	\$54	\$49	\$40	\$35	\$32	

The above shows estimated returns per head for skirted fleece wool. These figures do not take into account the value of skirtings and oddments and do not take into account discounts that may apply for faults under individual circumstances. These figures are based on a market index of 100% and should be used as a guide only. Returns over \$30 / head for fleece wool are highlighted.

Source: Australian Wool Exchange, Australian Wool Innovation, Sydney Futures Exchange, x-rates.com

Disclaimer: While all due care has been taken in the preparation of this document, no warranty is made as to its accuracy, reliability or completeness. To the extent permitted by law neither Jemalong or their sources including subsidiaries and staff, accept liability to any person for loss or damage arising from the use of this information.



Table 14: Returns pr head for skirted fleece wool.

Skirted FLC Weight 8 Kg			Micron																	
			16	16.5	17	17.5	18	18.5	19	19.5	20	21	22	23	24	25	26	28	30	32
Yield (Sch Dry)	25%	Current	\$38	\$34	\$32	\$29	\$28	\$27	\$24	\$23	\$22	\$21	\$20	\$20	\$18	\$17	\$15	\$10	\$9	\$8
		10yr ave.			\$32		\$29		\$24		\$20	\$19	\$19	\$18	\$18	\$16	\$15	\$12	\$10	\$9
	30%	Current	\$46	\$41	\$38	\$35	\$34	\$32	\$29	\$27	\$26	\$25	\$24	\$24	\$22	\$20	\$18	\$12	\$11	\$10
		10yr ave.			\$38		\$35		\$29		\$25	\$23	\$23	\$22	\$21	\$19	\$17	\$14	\$12	\$11
	35%	Current	\$54	\$48	\$44	\$41	\$39	\$37	\$34	\$32	\$30	\$30	\$29	\$27	\$25	\$24	\$21	\$14	\$13	\$11
		10yr ave.			\$45		\$41		\$34		\$29	\$27	\$26	\$26	\$25	\$22	\$20	\$16	\$14	\$13
	40%	Current	\$61	\$54	\$50	\$47	\$45	\$43	\$39	\$36	\$35	\$34	\$33	\$31	\$29	\$27	\$24	\$16	\$14	\$13
		10yr ave.			\$51		\$46		\$38		\$33	\$31	\$30	\$30	\$28	\$25	\$23	\$19	\$16	\$15
	45%	Current	\$69	\$61	\$57	\$53	\$51	\$48	\$44	\$41	\$39	\$38	\$37	\$35	\$33	\$31	\$26	\$18	\$16	\$14
		10yr ave.			\$58		\$52		\$43		\$37	\$35	\$34	\$33	\$32	\$29	\$26	\$21	\$18	\$17
	50%	Current	\$77	\$68	\$63	\$59	\$56	\$53	\$49	\$45	\$43	\$42	\$41	\$39	\$36	\$34	\$29	\$20	\$18	\$16
		10yr ave.			\$64		\$58		\$48		\$41	\$39	\$38	\$37	\$35	\$32	\$29	\$23	\$20	\$19
	55%	Current	\$84	\$75	\$69	\$65	\$62	\$58	\$54	\$50	\$48	\$47	\$45	\$43	\$40	\$37	\$32	\$22	\$20	\$18
		10yr ave.			\$70		\$64		\$53		\$45	\$43	\$42	\$41	\$39	\$35	\$32	\$26	\$23	\$20
	60%	Current	\$92	\$82	\$76	\$71	\$68	\$64	\$59	\$54	\$52	\$51	\$49	\$47	\$43	\$41	\$35	\$24	\$22	\$19
		10yr ave.			\$77		\$70		\$58		\$49	\$47	\$45	\$44	\$42	\$38	\$35	\$28	\$25	\$22
65%	Current	\$99	\$88	\$82	\$77	\$73	\$69	\$64	\$59	\$56	\$55	\$53	\$51	\$47	\$44	\$38	\$26	\$23	\$21	
	10yr ave.			\$83		\$75		\$62		\$53	\$51	\$49	\$48	\$46	\$41	\$38	\$30	\$27	\$24	
70%	Current	\$107	\$95	\$88	\$83	\$79	\$74	\$68	\$63	\$61	\$59	\$57	\$55	\$51	\$48	\$41	\$28	\$25	\$22	
	10yr ave.			\$89		\$81		\$67		\$57	\$54	\$53	\$52	\$49	\$44	\$41	\$33	\$29	\$26	
75%	Current	\$115	\$102	\$95	\$88	\$84	\$80	\$73	\$68	\$65	\$64	\$61	\$59	\$54	\$51	\$44	\$30	\$27	\$24	
	10yr ave.			\$96		\$87		\$72		\$61	\$58	\$57	\$55	\$53	\$48	\$44	\$35	\$31	\$28	
80%	Current	\$122	\$109	\$101	\$94	\$90	\$85	\$78	\$72	\$69	\$68	\$65	\$63	\$58	\$54	\$47	\$32	\$29	\$26	
	10yr ave.			\$102		\$93		\$77		\$66	\$62	\$60	\$59	\$56	\$51	\$47	\$38	\$33	\$30	
85%	Current	\$130	\$116	\$107	\$100	\$96	\$90	\$83	\$77	\$74	\$72	\$69	\$67	\$61	\$58	\$50	\$34	\$31	\$27	
	10yr ave.			\$109		\$99		\$82		\$70	\$66	\$64	\$63	\$60	\$54	\$49	\$40	\$35	\$32	

The above shows estimated returns per head for skirted fleece wool. These figures do not take into account the value of skirtings and oddments and do not take into account discounts that may apply for faults under individual circumstances. These figures are based on a market index of 100% and should be used as a guide only. Returns over \$30 / head for fleece wool are highlighted.

Source: Australian Wool Exchange, Australian Wool Innovation, Sydney Futures Exchange, x-rates.com

Disclaimer: While all due care has been taken in the preparation of this document, no warranty is made as to its accuracy, reliability or completeness. To the extent permitted by law neither Jemalong or their sources including subsidiaries and staff, accept liability to any person for loss or damage arising from the use of this information.



Table 15: Returns pr head for skirted fleece wool.

Skirted FLC Weight 7 Kg			Micron																	
			16	16.5	17	17.5	18	18.5	19	19.5	20	21	22	23	24	25	26	28	30	32
Yield (Sch Dry)	25%	Current	\$38	\$34	\$32	\$29	\$28	\$27	\$24	\$23	\$22	\$21	\$20	\$20	\$18	\$17	\$15	\$10	\$9	\$8
		10yr ave.			\$32		\$29		\$24		\$20	\$19	\$19	\$18	\$18	\$16	\$15	\$12	\$10	\$9
	30%	Current	\$46	\$41	\$38	\$35	\$34	\$32	\$29	\$27	\$26	\$25	\$24	\$24	\$22	\$20	\$18	\$12	\$11	\$10
		10yr ave.			\$38		\$35		\$29		\$25	\$23	\$23	\$22	\$21	\$19	\$17	\$14	\$12	\$11
	35%	Current	\$54	\$48	\$44	\$41	\$39	\$37	\$34	\$32	\$30	\$30	\$29	\$27	\$25	\$24	\$21	\$14	\$13	\$11
		10yr ave.			\$45		\$41		\$34		\$29	\$27	\$26	\$26	\$25	\$22	\$20	\$16	\$14	\$13
	40%	Current	\$61	\$54	\$50	\$47	\$45	\$43	\$39	\$36	\$35	\$34	\$33	\$31	\$29	\$27	\$24	\$16	\$14	\$13
		10yr ave.			\$51		\$46		\$38		\$33	\$31	\$30	\$30	\$28	\$25	\$23	\$19	\$16	\$15
	45%	Current	\$69	\$61	\$57	\$53	\$51	\$48	\$44	\$41	\$39	\$38	\$37	\$35	\$33	\$31	\$26	\$18	\$16	\$14
		10yr ave.			\$58		\$52		\$43		\$37	\$35	\$34	\$33	\$32	\$29	\$26	\$21	\$18	\$17
	50%	Current	\$77	\$68	\$63	\$59	\$56	\$53	\$49	\$45	\$43	\$42	\$41	\$39	\$36	\$34	\$29	\$20	\$18	\$16
		10yr ave.			\$64		\$58		\$48		\$41	\$39	\$38	\$37	\$35	\$32	\$29	\$23	\$20	\$19
	55%	Current	\$84	\$75	\$69	\$65	\$62	\$58	\$54	\$50	\$48	\$47	\$45	\$43	\$40	\$37	\$32	\$22	\$20	\$18
		10yr ave.			\$70		\$64		\$53		\$45	\$43	\$42	\$41	\$39	\$35	\$32	\$26	\$23	\$20
	60%	Current	\$92	\$82	\$76	\$71	\$68	\$64	\$59	\$54	\$52	\$51	\$49	\$47	\$43	\$41	\$35	\$24	\$22	\$19
		10yr ave.			\$77		\$70		\$58		\$49	\$47	\$45	\$44	\$42	\$38	\$35	\$28	\$25	\$22
65%	Current	\$99	\$88	\$82	\$77	\$73	\$69	\$64	\$59	\$56	\$55	\$53	\$51	\$47	\$44	\$38	\$26	\$23	\$21	
	10yr ave.			\$83		\$75		\$62		\$53	\$51	\$49	\$48	\$46	\$41	\$38	\$30	\$27	\$24	
70%	Current	\$107	\$95	\$88	\$83	\$79	\$74	\$68	\$63	\$61	\$59	\$57	\$55	\$51	\$48	\$41	\$28	\$25	\$22	
	10yr ave.			\$89		\$81		\$67		\$57	\$54	\$53	\$52	\$49	\$44	\$41	\$33	\$29	\$26	
75%	Current	\$115	\$102	\$95	\$88	\$84	\$80	\$73	\$68	\$65	\$64	\$61	\$59	\$54	\$51	\$44	\$30	\$27	\$24	
	10yr ave.			\$96		\$87		\$72		\$61	\$58	\$57	\$55	\$53	\$48	\$44	\$35	\$31	\$28	
80%	Current	\$122	\$109	\$101	\$94	\$90	\$85	\$78	\$72	\$69	\$68	\$65	\$63	\$58	\$54	\$47	\$32	\$29	\$26	
	10yr ave.			\$102		\$93		\$77		\$66	\$62	\$60	\$59	\$56	\$51	\$47	\$38	\$33	\$30	
85%	Current	\$130	\$116	\$107	\$100	\$96	\$90	\$83	\$77	\$74	\$72	\$69	\$67	\$61	\$58	\$50	\$34	\$31	\$27	
	10yr ave.			\$109		\$99		\$82		\$70	\$66	\$64	\$63	\$60	\$54	\$49	\$40	\$35	\$32	

The above shows estimated returns per head for skirted fleece wool. These figures do not take into account the value of skirtings and oddments and do not take into account discounts that may apply for faults under individual circumstances. These figures are based on a market index of 100% and should be used as a guide only. Returns over \$30 / head for fleece wool are highlighted.

Source: Australian Wool Exchange, Australian Wool Innovation, Sydney Futures Exchange, x-rates.com

Disclaimer: While all due care has been taken in the preparation of this document, no warranty is made as to its accuracy, reliability or completeness. To the extent permitted by law neither Jemalong or their sources including subsidiaries and staff, accept liability to any person for loss or damage arising from the use of this information.



Table 16: Returns pr head for skirted fleece wool.

Skirted FLC Weight 6 Kg			Micron																	
			16	16.5	17	17.5	18	18.5	19	19.5	20	21	22	23	24	25	26	28	30	32
Yield (Sch Dry)	25%	Current	\$38	\$34	\$32	\$29	\$28	\$27	\$24	\$23	\$22	\$21	\$20	\$20	\$18	\$17	\$15	\$10	\$9	\$8
		10yr ave.			\$32		\$29		\$24		\$20	\$19	\$19	\$18	\$18	\$16	\$15	\$12	\$10	\$9
	30%	Current	\$46	\$41	\$38	\$35	\$34	\$32	\$29	\$27	\$26	\$25	\$24	\$24	\$22	\$20	\$18	\$12	\$11	\$10
		10yr ave.			\$38		\$35		\$29		\$25	\$23	\$23	\$22	\$21	\$19	\$17	\$14	\$12	\$11
	35%	Current	\$54	\$48	\$44	\$41	\$39	\$37	\$34	\$32	\$30	\$30	\$29	\$27	\$25	\$24	\$21	\$14	\$13	\$11
		10yr ave.			\$45		\$41		\$34		\$29	\$27	\$26	\$26	\$25	\$22	\$20	\$16	\$14	\$13
	40%	Current	\$61	\$54	\$50	\$47	\$45	\$43	\$39	\$36	\$35	\$34	\$33	\$31	\$29	\$27	\$24	\$16	\$14	\$13
		10yr ave.			\$51		\$46		\$38		\$33	\$31	\$30	\$30	\$28	\$25	\$23	\$19	\$16	\$15
	45%	Current	\$69	\$61	\$57	\$53	\$51	\$48	\$44	\$41	\$39	\$38	\$37	\$35	\$33	\$31	\$26	\$18	\$16	\$14
		10yr ave.			\$58		\$52		\$43		\$37	\$35	\$34	\$33	\$32	\$29	\$26	\$21	\$18	\$17
	50%	Current	\$77	\$68	\$63	\$59	\$56	\$53	\$49	\$45	\$43	\$42	\$41	\$39	\$36	\$34	\$29	\$20	\$18	\$16
		10yr ave.			\$64		\$58		\$48		\$41	\$39	\$38	\$37	\$35	\$32	\$29	\$23	\$20	\$19
	55%	Current	\$84	\$75	\$69	\$65	\$62	\$58	\$54	\$50	\$48	\$47	\$45	\$43	\$40	\$37	\$32	\$22	\$20	\$18
		10yr ave.			\$70		\$64		\$53		\$45	\$43	\$42	\$41	\$39	\$35	\$32	\$26	\$23	\$20
	60%	Current	\$92	\$82	\$76	\$71	\$68	\$64	\$59	\$54	\$52	\$51	\$49	\$47	\$43	\$41	\$35	\$24	\$22	\$19
		10yr ave.			\$77		\$70		\$58		\$49	\$47	\$45	\$44	\$42	\$38	\$35	\$28	\$25	\$22
65%	Current	\$99	\$88	\$82	\$77	\$73	\$69	\$64	\$59	\$56	\$55	\$53	\$51	\$47	\$44	\$38	\$26	\$23	\$21	
	10yr ave.			\$83		\$75		\$62		\$53	\$51	\$49	\$48	\$46	\$41	\$38	\$30	\$27	\$24	
70%	Current	\$107	\$95	\$88	\$83	\$79	\$74	\$68	\$63	\$61	\$59	\$57	\$55	\$51	\$48	\$41	\$28	\$25	\$22	
	10yr ave.			\$89		\$81		\$67		\$57	\$54	\$53	\$52	\$49	\$44	\$41	\$33	\$29	\$26	
75%	Current	\$115	\$102	\$95	\$88	\$84	\$80	\$73	\$68	\$65	\$64	\$61	\$59	\$54	\$51	\$44	\$30	\$27	\$24	
	10yr ave.			\$96		\$87		\$72		\$61	\$58	\$57	\$55	\$53	\$48	\$44	\$35	\$31	\$28	
80%	Current	\$122	\$109	\$101	\$94	\$90	\$85	\$78	\$72	\$69	\$68	\$65	\$63	\$58	\$54	\$47	\$32	\$29	\$26	
	10yr ave.			\$102		\$93		\$77		\$66	\$62	\$60	\$59	\$56	\$51	\$47	\$38	\$33	\$30	
85%	Current	\$130	\$116	\$107	\$100	\$96	\$90	\$83	\$77	\$74	\$72	\$69	\$67	\$61	\$58	\$50	\$34	\$31	\$27	
	10yr ave.			\$109		\$99		\$82		\$70	\$66	\$64	\$63	\$60	\$54	\$49	\$40	\$35	\$32	

The above shows estimated returns per head for skirted fleece wool. These figures do not take into account the value of skirtings and oddments and do not take into account discounts that may apply for faults under individual circumstances. These figures are based on a market index of 100% and should be used as a guide only. Returns over \$30 / head for fleece wool are highlighted.

Source: Australian Wool Exchange, Australian Wool Innovation, Sydney Futures Exchange, x-rates.com

Disclaimer: While all due care has been taken in the preparation of this document, no warranty is made as to its accuracy, reliability or completeness. To the extent permitted by law neither Jemalong or their sources including subsidiaries and staff, accept liability to any person for loss or damage arising from the use of this information.



Table 17: Returns pr head for skirted fleece wool.

Skirted FLC Weight		Micron																	
5 Kg		16	16.5	17	17.5	18	18.5	19	19.5	20	21	22	23	24	25	26	28	30	32
Yield (Sch Dry)	25% Current	\$38	\$34	\$32	\$29	\$28	\$27	\$24	\$23	\$22	\$21	\$20	\$20	\$18	\$17	\$15	\$10	\$9	\$8
	10yr ave.			\$32		\$29		\$24		\$20	\$19	\$19	\$18	\$18	\$16	\$15	\$12	\$10	\$9
	30% Current	\$46	\$41	\$38	\$35	\$34	\$32	\$29	\$27	\$26	\$25	\$24	\$24	\$22	\$20	\$18	\$12	\$11	\$10
	10yr ave.			\$38		\$35		\$29		\$25	\$23	\$23	\$22	\$21	\$19	\$17	\$14	\$12	\$11
	35% Current	\$54	\$48	\$44	\$41	\$39	\$37	\$34	\$32	\$30	\$30	\$29	\$27	\$25	\$24	\$21	\$14	\$13	\$11
	10yr ave.			\$45		\$41		\$34		\$29	\$27	\$26	\$26	\$25	\$22	\$20	\$16	\$14	\$13
	40% Current	\$61	\$54	\$50	\$47	\$45	\$43	\$39	\$36	\$35	\$34	\$33	\$31	\$29	\$27	\$24	\$16	\$14	\$13
	10yr ave.			\$51		\$46		\$38		\$33	\$31	\$30	\$30	\$28	\$25	\$23	\$19	\$16	\$15
	45% Current	\$69	\$61	\$57	\$53	\$51	\$48	\$44	\$41	\$39	\$38	\$37	\$35	\$33	\$31	\$26	\$18	\$16	\$14
	10yr ave.			\$58		\$52		\$43		\$37	\$35	\$34	\$33	\$32	\$29	\$26	\$21	\$18	\$17
	50% Current	\$77	\$68	\$63	\$59	\$56	\$53	\$49	\$45	\$43	\$42	\$41	\$39	\$36	\$34	\$29	\$20	\$18	\$16
	10yr ave.			\$64		\$58		\$48		\$41	\$39	\$38	\$37	\$35	\$32	\$29	\$23	\$20	\$19
	55% Current	\$84	\$75	\$69	\$65	\$62	\$58	\$54	\$50	\$48	\$47	\$45	\$43	\$40	\$37	\$32	\$22	\$20	\$18
	10yr ave.			\$70		\$64		\$53		\$45	\$43	\$42	\$41	\$39	\$35	\$32	\$26	\$23	\$20
	60% Current	\$92	\$82	\$76	\$71	\$68	\$64	\$59	\$54	\$52	\$51	\$49	\$47	\$43	\$41	\$35	\$24	\$22	\$19
	10yr ave.			\$77		\$70		\$58		\$49	\$47	\$45	\$44	\$42	\$38	\$35	\$28	\$25	\$22
	65% Current	\$99	\$88	\$82	\$77	\$73	\$69	\$64	\$59	\$56	\$55	\$53	\$51	\$47	\$44	\$38	\$26	\$23	\$21
	10yr ave.			\$83		\$75		\$62		\$53	\$51	\$49	\$48	\$46	\$41	\$38	\$30	\$27	\$24
	70% Current	\$107	\$95	\$88	\$83	\$79	\$74	\$68	\$63	\$61	\$59	\$57	\$55	\$51	\$48	\$41	\$28	\$25	\$22
	10yr ave.			\$89		\$81		\$67		\$57	\$54	\$53	\$52	\$49	\$44	\$41	\$33	\$29	\$26
	75% Current	\$115	\$102	\$95	\$88	\$84	\$80	\$73	\$68	\$65	\$64	\$61	\$59	\$54	\$51	\$44	\$30	\$27	\$24
	10yr ave.			\$96		\$87		\$72		\$61	\$58	\$57	\$55	\$53	\$48	\$44	\$35	\$31	\$28
	80% Current	\$122	\$109	\$101	\$94	\$90	\$85	\$78	\$72	\$69	\$68	\$65	\$63	\$58	\$54	\$47	\$32	\$29	\$26
	10yr ave.			\$102		\$93		\$77		\$66	\$62	\$60	\$59	\$56	\$51	\$47	\$38	\$33	\$30
	85% Current	\$130	\$116	\$107	\$100	\$96	\$90	\$83	\$77	\$74	\$72	\$69	\$67	\$61	\$58	\$50	\$34	\$31	\$27
	10yr ave.			\$109		\$99		\$82		\$70	\$66	\$64	\$63	\$60	\$54	\$49	\$40	\$35	\$32

The above shows estimated returns per head for skirted fleece wool. These figures do not take into account the value of skirtings and oddments and do not take into account discounts that may apply for faults under individual circumstances. These figures are based on a market index of 100% and should be used as a guide only. Returns over \$30 / head for fleece wool are highlighted.

Source: Australian Wool Exchange, Australian Wool Innovation, Sydney Futures Exchange, x-rates.com

Disclaimer: While all due care has been taken in the preparation of this document, no warranty is made as to its accuracy, reliability or completeness. To the extent permitted by law neither Jemalong or their sources including subsidiaries and staff, accept liability to any person for loss or damage arising from the use of this information.



Table 18: Returns pr head for skirted fleece wool.

Skirted FLC Weight 4 Kg			Micron																	
			16	16.5	17	17.5	18	18.5	19	19.5	20	21	22	23	24	25	26	28	30	32
Yield (Sch Dry)	25%	Current	\$38	\$34	\$32	\$29	\$28	\$27	\$24	\$23	\$22	\$21	\$20	\$20	\$18	\$17	\$15	\$10	\$9	\$8
		10yr ave.			\$32		\$29		\$24		\$20	\$19	\$19	\$18	\$18	\$16	\$15	\$12	\$10	\$9
	30%	Current	\$46	\$41	\$38	\$35	\$34	\$32	\$29	\$27	\$26	\$25	\$24	\$24	\$22	\$20	\$18	\$12	\$11	\$10
		10yr ave.			\$38		\$35		\$29		\$25	\$23	\$23	\$22	\$21	\$19	\$17	\$14	\$12	\$11
	35%	Current	\$54	\$48	\$44	\$41	\$39	\$37	\$34	\$32	\$30	\$30	\$29	\$27	\$25	\$24	\$21	\$14	\$13	\$11
		10yr ave.			\$45		\$41		\$34		\$29	\$27	\$26	\$26	\$25	\$22	\$20	\$16	\$14	\$13
	40%	Current	\$61	\$54	\$50	\$47	\$45	\$43	\$39	\$36	\$35	\$34	\$33	\$31	\$29	\$27	\$24	\$16	\$14	\$13
		10yr ave.			\$51		\$46		\$38		\$33	\$31	\$30	\$30	\$28	\$25	\$23	\$19	\$16	\$15
	45%	Current	\$69	\$61	\$57	\$53	\$51	\$48	\$44	\$41	\$39	\$38	\$37	\$35	\$33	\$31	\$26	\$18	\$16	\$14
		10yr ave.			\$58		\$52		\$43		\$37	\$35	\$34	\$33	\$32	\$29	\$26	\$21	\$18	\$17
	50%	Current	\$77	\$68	\$63	\$59	\$56	\$53	\$49	\$45	\$43	\$42	\$41	\$39	\$36	\$34	\$29	\$20	\$18	\$16
		10yr ave.			\$64		\$58		\$48		\$41	\$39	\$38	\$37	\$35	\$32	\$29	\$23	\$20	\$19
	55%	Current	\$84	\$75	\$69	\$65	\$62	\$58	\$54	\$50	\$48	\$47	\$45	\$43	\$40	\$37	\$32	\$22	\$20	\$18
		10yr ave.			\$70		\$64		\$53		\$45	\$43	\$42	\$41	\$39	\$35	\$32	\$26	\$23	\$20
60%	Current	\$92	\$82	\$76	\$71	\$68	\$64	\$59	\$54	\$52	\$51	\$49	\$47	\$43	\$41	\$35	\$24	\$22	\$19	
	10yr ave.			\$77		\$70		\$58		\$49	\$47	\$45	\$44	\$42	\$38	\$35	\$28	\$25	\$22	
65%	Current	\$99	\$88	\$82	\$77	\$73	\$69	\$64	\$59	\$56	\$55	\$53	\$51	\$47	\$44	\$38	\$26	\$23	\$21	
	10yr ave.			\$83		\$75		\$62		\$53	\$51	\$49	\$48	\$46	\$41	\$38	\$30	\$27	\$24	
70%	Current	\$107	\$95	\$88	\$83	\$79	\$74	\$68	\$63	\$61	\$59	\$57	\$55	\$51	\$48	\$41	\$28	\$25	\$22	
	10yr ave.			\$89		\$81		\$67		\$57	\$54	\$53	\$52	\$49	\$44	\$41	\$33	\$29	\$26	
75%	Current	\$115	\$102	\$95	\$88	\$84	\$80	\$73	\$68	\$65	\$64	\$61	\$59	\$54	\$51	\$44	\$30	\$27	\$24	
	10yr ave.			\$96		\$87		\$72		\$61	\$58	\$57	\$55	\$53	\$48	\$44	\$35	\$31	\$28	
80%	Current	\$122	\$109	\$101	\$94	\$90	\$85	\$78	\$72	\$69	\$68	\$65	\$63	\$58	\$54	\$47	\$32	\$29	\$26	
	10yr ave.			\$102		\$93		\$77		\$66	\$62	\$60	\$59	\$56	\$51	\$47	\$38	\$33	\$30	
85%	Current	\$130	\$116	\$107	\$100	\$96	\$90	\$83	\$77	\$74	\$72	\$69	\$67	\$61	\$58	\$50	\$34	\$31	\$27	
	10yr ave.			\$109		\$99		\$82		\$70	\$66	\$64	\$63	\$60	\$54	\$49	\$40	\$35	\$32	

The above shows estimated returns per head for skirted fleece wool. These figures do not take into account the value of skirtings and oddments and do not take into account discounts that may apply for faults under individual circumstances. These figures are based on a market index of 100% and should be used as a guide only. Returns over \$30 / head for fleece wool are highlighted.

Source: Australian Wool Exchange, Australian Wool Innovation, Sydney Futures Exchange, x-rates.com

Disclaimer: While all due care has been taken in the preparation of this document, no warranty is made as to its accuracy, reliability or completeness. To the extent permitted by law neither Jemalong or their sources including subsidiaries and staff, accept liability to any person for loss or damage arising from the use of this information.



Table 19: Returns pr head for skirted fleece wool.

Skirted FLC Weight 3 Kg			Micron																	
			16	16.5	17	17.5	18	18.5	19	19.5	20	21	22	23	24	25	26	28	30	32
Yield (Sch Dry)	25%	Current	\$38	\$34	\$32	\$29	\$28	\$27	\$24	\$23	\$22	\$21	\$20	\$20	\$18	\$17	\$15	\$10	\$9	\$8
		10yr ave.			\$32		\$29		\$24		\$20	\$19	\$19	\$18	\$18	\$16	\$15	\$12	\$10	\$9
	30%	Current	\$46	\$41	\$38	\$35	\$34	\$32	\$29	\$27	\$26	\$25	\$24	\$24	\$22	\$20	\$18	\$12	\$11	\$10
		10yr ave.			\$38		\$35		\$29		\$25	\$23	\$23	\$22	\$21	\$19	\$17	\$14	\$12	\$11
	35%	Current	\$54	\$48	\$44	\$41	\$39	\$37	\$34	\$32	\$30	\$30	\$29	\$27	\$25	\$24	\$21	\$14	\$13	\$11
		10yr ave.			\$45		\$41		\$34		\$29	\$27	\$26	\$26	\$25	\$22	\$20	\$16	\$14	\$13
	40%	Current	\$61	\$54	\$50	\$47	\$45	\$43	\$39	\$36	\$35	\$34	\$33	\$31	\$29	\$27	\$24	\$16	\$14	\$13
		10yr ave.			\$51		\$46		\$38		\$33	\$31	\$30	\$30	\$28	\$25	\$23	\$19	\$16	\$15
	45%	Current	\$69	\$61	\$57	\$53	\$51	\$48	\$44	\$41	\$39	\$38	\$37	\$35	\$33	\$31	\$26	\$18	\$16	\$14
		10yr ave.			\$58		\$52		\$43		\$37	\$35	\$34	\$33	\$32	\$29	\$26	\$21	\$18	\$17
	50%	Current	\$77	\$68	\$63	\$59	\$56	\$53	\$49	\$45	\$43	\$42	\$41	\$39	\$36	\$34	\$29	\$20	\$18	\$16
		10yr ave.			\$64		\$58		\$48		\$41	\$39	\$38	\$37	\$35	\$32	\$29	\$23	\$20	\$19
	55%	Current	\$84	\$75	\$69	\$65	\$62	\$58	\$54	\$50	\$48	\$47	\$45	\$43	\$40	\$37	\$32	\$22	\$20	\$18
		10yr ave.			\$70		\$64		\$53		\$45	\$43	\$42	\$41	\$39	\$35	\$32	\$26	\$23	\$20
	60%	Current	\$92	\$82	\$76	\$71	\$68	\$64	\$59	\$54	\$52	\$51	\$49	\$47	\$43	\$41	\$35	\$24	\$22	\$19
		10yr ave.			\$77		\$70		\$58		\$49	\$47	\$45	\$44	\$42	\$38	\$35	\$28	\$25	\$22
65%	Current	\$99	\$88	\$82	\$77	\$73	\$69	\$64	\$59	\$56	\$55	\$53	\$51	\$47	\$44	\$38	\$26	\$23	\$21	
	10yr ave.			\$83		\$75		\$62		\$53	\$51	\$49	\$48	\$46	\$41	\$38	\$30	\$27	\$24	
70%	Current	\$107	\$95	\$88	\$83	\$79	\$74	\$68	\$63	\$61	\$59	\$57	\$55	\$51	\$48	\$41	\$28	\$25	\$22	
	10yr ave.			\$89		\$81		\$67		\$57	\$54	\$53	\$52	\$49	\$44	\$41	\$33	\$29	\$26	
75%	Current	\$115	\$102	\$95	\$88	\$84	\$80	\$73	\$68	\$65	\$64	\$61	\$59	\$54	\$51	\$44	\$30	\$27	\$24	
	10yr ave.			\$96		\$87		\$72		\$61	\$58	\$57	\$55	\$53	\$48	\$44	\$35	\$31	\$28	
80%	Current	\$122	\$109	\$101	\$94	\$90	\$85	\$78	\$72	\$69	\$68	\$65	\$63	\$58	\$54	\$47	\$32	\$29	\$26	
	10yr ave.			\$102		\$93		\$77		\$66	\$62	\$60	\$59	\$56	\$51	\$47	\$38	\$33	\$30	
85%	Current	\$130	\$116	\$107	\$100	\$96	\$90	\$83	\$77	\$74	\$72	\$69	\$67	\$61	\$58	\$50	\$34	\$31	\$27	
	10yr ave.			\$109		\$99		\$82		\$70	\$66	\$64	\$63	\$60	\$54	\$49	\$40	\$35	\$32	

The above shows estimated returns per head for skirted fleece wool. These figures do not take into account the value of skirtings and oddments and do not take into account discounts that may apply for faults under individual circumstances. These figures are based on a market index of 100% and should be used as a guide only. Returns over \$30 / head for fleece wool are highlighted.

Source: Australian Wool Exchange, Australian Wool Innovation, Sydney Futures Exchange, x-rates.com

Disclaimer: While all due care has been taken in the preparation of this document, no warranty is made as to its accuracy, reliability or completeness. To the extent permitted by law neither Jemalong or their sources including subsidiaries and staff, accept liability to any person for loss or damage arising from the use of this information.



Table 20: Returns pr head for skirted fleece wool.

Skirted FLC Weight 2 Kg			Micron																	
			16	16.5	17	17.5	18	18.5	19	19.5	20	21	22	23	24	25	26	28	30	32
Yield (Sch Dry)	25%	Current	\$38	\$34	\$32	\$29	\$28	\$27	\$24	\$23	\$22	\$21	\$20	\$20	\$18	\$17	\$15	\$10	\$9	\$8
		10yr ave.			\$32		\$29		\$24		\$20	\$19	\$19	\$18	\$18	\$16	\$15	\$12	\$10	\$9
	30%	Current	\$46	\$41	\$38	\$35	\$34	\$32	\$29	\$27	\$26	\$25	\$24	\$24	\$22	\$20	\$18	\$12	\$11	\$10
		10yr ave.			\$38		\$35		\$29		\$25	\$23	\$23	\$22	\$21	\$19	\$17	\$14	\$12	\$11
	35%	Current	\$54	\$48	\$44	\$41	\$39	\$37	\$34	\$32	\$30	\$30	\$29	\$27	\$25	\$24	\$21	\$14	\$13	\$11
		10yr ave.			\$45		\$41		\$34		\$29	\$27	\$26	\$26	\$25	\$22	\$20	\$16	\$14	\$13
	40%	Current	\$61	\$54	\$50	\$47	\$45	\$43	\$39	\$36	\$35	\$34	\$33	\$31	\$29	\$27	\$24	\$16	\$14	\$13
		10yr ave.			\$51		\$46		\$38		\$33	\$31	\$30	\$30	\$28	\$25	\$23	\$19	\$16	\$15
	45%	Current	\$69	\$61	\$57	\$53	\$51	\$48	\$44	\$41	\$39	\$38	\$37	\$35	\$33	\$31	\$26	\$18	\$16	\$14
		10yr ave.			\$58		\$52		\$43		\$37	\$35	\$34	\$33	\$32	\$29	\$26	\$21	\$18	\$17
	50%	Current	\$77	\$68	\$63	\$59	\$56	\$53	\$49	\$45	\$43	\$42	\$41	\$39	\$36	\$34	\$29	\$20	\$18	\$16
		10yr ave.			\$64		\$58		\$48		\$41	\$39	\$38	\$37	\$35	\$32	\$29	\$23	\$20	\$19
	55%	Current	\$84	\$75	\$69	\$65	\$62	\$58	\$54	\$50	\$48	\$47	\$45	\$43	\$40	\$37	\$32	\$22	\$20	\$18
		10yr ave.			\$70		\$64		\$53		\$45	\$43	\$42	\$41	\$39	\$35	\$32	\$26	\$23	\$20
60%	Current	\$92	\$82	\$76	\$71	\$68	\$64	\$59	\$54	\$52	\$51	\$49	\$47	\$43	\$41	\$35	\$24	\$22	\$19	
	10yr ave.			\$77		\$70		\$58		\$49	\$47	\$45	\$44	\$42	\$38	\$35	\$28	\$25	\$22	
65%	Current	\$99	\$88	\$82	\$77	\$73	\$69	\$64	\$59	\$56	\$55	\$53	\$51	\$47	\$44	\$38	\$26	\$23	\$21	
	10yr ave.			\$83		\$75		\$62		\$53	\$51	\$49	\$48	\$46	\$41	\$38	\$30	\$27	\$24	
70%	Current	\$107	\$95	\$88	\$83	\$79	\$74	\$68	\$63	\$61	\$59	\$57	\$55	\$51	\$48	\$41	\$28	\$25	\$22	
	10yr ave.			\$89		\$81		\$67		\$57	\$54	\$53	\$52	\$49	\$44	\$41	\$33	\$29	\$26	
75%	Current	\$115	\$102	\$95	\$88	\$84	\$80	\$73	\$68	\$65	\$64	\$61	\$59	\$54	\$51	\$44	\$30	\$27	\$24	
	10yr ave.			\$96		\$87		\$72		\$61	\$58	\$57	\$55	\$53	\$48	\$44	\$35	\$31	\$28	
80%	Current	\$122	\$109	\$101	\$94	\$90	\$85	\$78	\$72	\$69	\$68	\$65	\$63	\$58	\$54	\$47	\$32	\$29	\$26	
	10yr ave.			\$102		\$93		\$77		\$66	\$62	\$60	\$59	\$56	\$51	\$47	\$38	\$33	\$30	
85%	Current	\$130	\$116	\$107	\$100	\$96	\$90	\$83	\$77	\$74	\$72	\$69	\$67	\$61	\$58	\$50	\$34	\$31	\$27	
	10yr ave.			\$109		\$99		\$82		\$70	\$66	\$64	\$63	\$60	\$54	\$49	\$40	\$35	\$32	

The above shows estimated returns per head for skirted fleece wool. These figures do not take into account the value of skirtings and oddments and do not take into account discounts that may apply for faults under individual circumstances. These figures are based on a market index of 100% and should be used as a guide only. Returns over \$30 / head for fleece wool are highlighted.

Source: Australian Wool Exchange, Australian Wool Innovation, Sydney Futures Exchange, x-rates.com

Disclaimer: While all due care has been taken in the preparation of this document, no warranty is made as to its accuracy, reliability or completeness. To the extent permitted by law neither Jemalong or their sources including subsidiaries and staff, accept liability to any person for loss or damage arising from the use of this information.