



Table 1: Northern Region Micron Price Guides

CURRENT MARKET				12 MONTH COMPARISONS								3 YEAR COMPARISONS					Percentile	10 YEAR COMPARISONS					Percentile
Mic. Price Guides	13/10/2011 Current Price	6/10/2011 Weekly Change		13/10/2010 This time Last Year	Now compared to Last Year		12 Month Low	Now compared to Low		12 Month High	Now compared to High		Low	High	Average	Now compared to 3yr ave			Low	High	10 year Average	Now compared to 10yr ave	
NRI	1201	+3 0.2%		929	+272 29%		911	+290 32%		1491	-290 -19%		749	1491	1009	+192 19%	75%	658	1491	915	+286 31%	92%	
16*	2050	0		1700	+350 21%		1670	+380 23%		2800	-750 -27%		1385	2800	1865	+185 10%	75%						
16.5*	1910	0		1510	+400 26%		1500	+410 27%		2680	-770 -29%		1249	2680	1719	+191 11%	74%						
17*	1710	-20 -1.2%		1400	+310 22%		1390	+320 23%		2530	-820 -32%		1167	2530	1587	+123 8%	70%	1100	2530	1439	+271 19%	86%	
17.5*	1590	-10 -0.6%		1310	+280 21%		1300	+290 22%		2360	-770 -33%		1082	2360	1489	+101 7%	69%						
18	1506	-27 -1.8%		1240	+266 21%		1237	+269 22%		2193	-687 -31%		1035	2193	1398	+108 8%	69%	916	2193	1273	+233 18%	82%	
18.5	1452	-20 -1.4%		1176	+276 23%		1163	+289 25%		1963	-511 -26%		971	1963	1304	+148 11%	69%	843	1963				
19	1407	-6 -0.4%		1086	+321 30%		1058	+349 33%		1776	-369 -21%		894	1776	1201	+206 17%	74%	804	1776	1096	+311 28%	92%	
19.5	1359	+2 0.1%		998	+361 36%		973	+386 40%		1670	-311 -19%		814	1670	1100	+259 24%	76%	749	1670				
20	1304	+9 0.7%		960	+344 36%		931	+373 40%		1588	-284 -18%		739	1588	1019	+285 28%	80%	696	1588	964	+340 35%	94%	
21	1256	+6 0.5%		940	+316 34%		914	+342 37%		1522	-266 -17%		692	1522	986	+270 27%	81%	660	1522	923	+333 36%	91%	
22	1161	-2 -0.2%		904	+257 28%		885	+276 31%		1461	-300 -21%		680	1461	957	+204 21%	79%	656	1461	897	+264 29%	88%	
23	1059	-1 -0.1%		869	+190 22%		849	+210 25%		1324	-265 -20%		663	1324	918	+141 15%	77%	644	1340	871	+188 22%	87%	
24	996	0		802	+194 24%		787	+209 27%		1170	-174 -15%		647	1170	847	+149 18%	79%	637	1299	825	+171 21%	85%	
25	881	-42 -4.8%		738	+143 19%		716	+165 23%		1048	-167 -16%		565	1048	735	+146 20%	78%	567	1198	737	+144 20%	77%	
26	755	-63 -8.3%		639	+116 18%		613	+142 23%		928	-173 -19%		504	928	664	+91 14%	77%	532	1088	674	+81 12%	74%	
28	656	-9 -1.4%		450	+206 46%		449	+207 46%		734	-78 -11%		431	734	519	+137 26%	81%	424	889	532	+124 23%	81%	
30	620	-4 -0.6%		395	+225 57%		390	+230 59%		670	-50 -7%		377	670	463	+157 34%	86%	344	729	463	+157 34%	88%	
32	583	-2 -0.3%		356	+227 64%		354	+229 65%		638	-55 -9%		326	638	411	+172 42%	92%	297	669	418	+165 39%	93%	
MC	744	+1 0.1%		579	+165 28%		569	+175 31%		831	-87 -10%		444	831	620	+124 20%	84%	380	831	526	+218 41%	95%	

Note:

* Due to the irregular market quoting for some fine wool categories, figures shown relating to micron categories below 18 micron are an estimate based on the AWEX Premium & Discounts Report & other available information.

* For any category, where there is insufficient quantity offered to enable AWEX to quote, a quote will be provided based on the best available information.

* 10 Year data is not available for some micron categories, which may result in blank spaces in the table above.

Definitions:

* A Percentile, is a value on a scale of one hundred that indicates the percent of a distribution that is equal to or below it. In general a percentile between 25% and 75% is considered normal, a percentile below 25% is considered below normal and a percentile above 75% is considered above normal.

Three and ten year percentiles shown in the table above, detail the period of time during the past 3 & 10 years that the market has traded either at or below its current price.

The higher the percentile, the stronger the market.

Source: Australian Wool Exchange, Australian Wool Innovation, Sydney Futures Exchange, x-rates.com

Disclaimer: While all due care has been taken in the preparation of this document, no warranty is made as to its accuracy, reliability or completeness. To the extent permitted by law neither Jemalong or their sources including subsidiaries and staff, accept liability to any person for loss or damage arising from the use of this information.



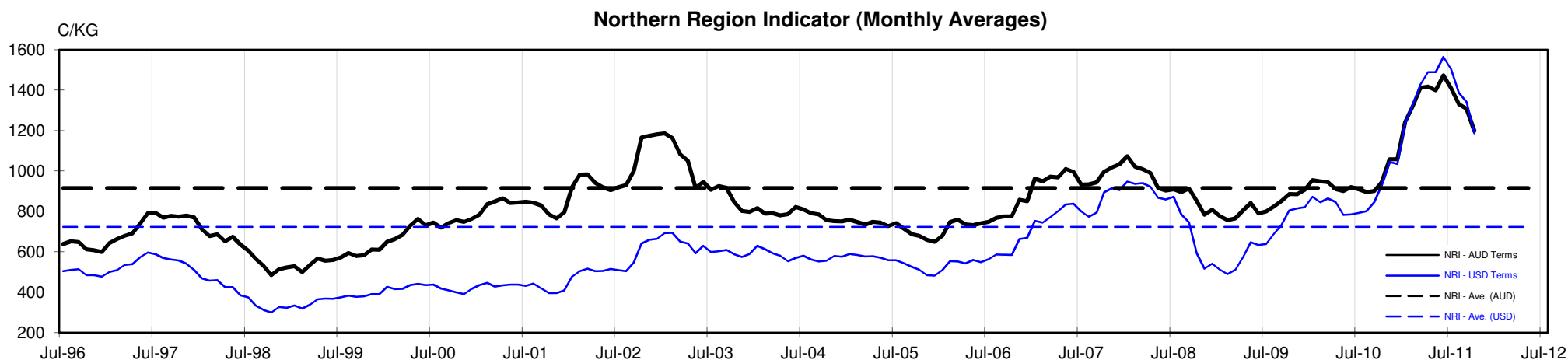
MARKET COMMENTARY

One Australian Dollar = \$ 1.02 US, as of 13/10/2011

NORTHERN REGION –Sale Week 15/11 (44,255 bales offered nationally)

On Wednesday - An encouraging market had 20 to 21.5 microns gaining 10 cents, 22 to 23 microns remained firm, while 19 microns ended in buyers favour. The fine end however remained soft, with the 18 micron area 20-30 cents cheaper while 17 micron and finer eased by up to 10 cents. A solid market in the skirtings, had all descriptions full firm, with the better length 19 micron and stronger (5% Vm) types, up to 10 cents dearer. Oddments were well supported, with locks improving by 5-10 cents (washing types most affected), crutchings were in sellers favour and stains remained unchanged. Crossbreds only just held their ground closing par to 5 cents easier for 27 to 30 microns. 6.8% PI

On Thursday - The fine end of the market remained generally unchanged, 20 micron and broader opened cheaper, however found support as the sale progressed, to end the day only slightly easier. Solid competition had merino skirtings fully firm for all descriptions, once again 19 micron and broader (5% Vm) were up to 10 cents dearer. Locks & crutchings retained their previous levels while stains were 10 cents cheaper. 26-28 micron crossbred eased 10 cents today where as 29 microns and broader remained unchanged. 10.6% PI





JEMALONG WOOL BULLETIN

(week ending 13/10/2011)

Table 4: 19 micron SFE

Wednesday, 12 October 2011

Delivery Mth	Oct-11	Dec-11	Feb-11	Apr-12	Jun-12	Aug-12	Oct-12	Dec-12	Feb-12
19 Micron SFE	1465	1420	1415	1395	1365	1355	1355	1315	1315
Average	1320	1338	1113	1378	1406	1395	1395	1395	1361
Maximum	1707	1677	1605	1622	1612	1525	1525	1525	1652
Minimum	1034	1034	983	1106	1210	1285	1285	1285	1053

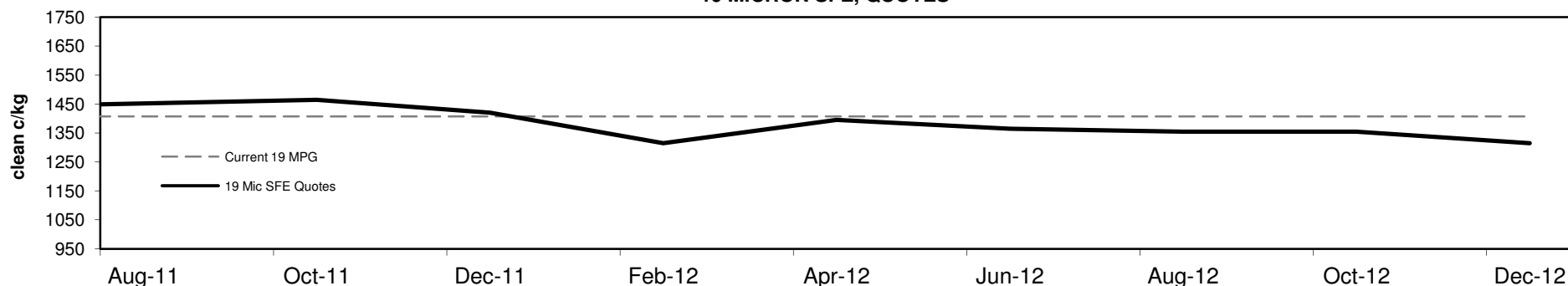
Table 5: 19 micron SFE, as a percentile of the 19 micron MPG

3 Year Percentile	75%	75%	75%	73%	73%	73%	73%	73%	73%
10 Year Percentile	93%	93%	93%	92%	91%	90%	90%	88%	88%

Table 6: 19 micron SFE, compared to MPG

SFE - MPG	+58	4%	+13	1%	+8	1%	-12	-1%	-42	-3%	-52	-4%	-52	-4%	-92	-7%	-92	-7%
SFE - MPG, 1 year Ave.	-95	-6%	-140	-9%	-145	-9%	-165	-11%	-195	-13%	-205	-13%	-205	-13%	-245	-16%	-245	-16%
SFE - MPG, 3 year Ave.	+264	22%	+219	18%	+214	18%	+194	16%	+164	14%	+154	13%	+154	13%	+114	9%	+114	9%
SFE - MPG, 10 year Ave.	+369	34%	+324	30%	+319	29%	+299	27%	+269	25%	+259	24%	+259	24%	+219	20%	+219	20%

19 MICRON SFE, QUOTES



19 Micron SFE, Front month movement

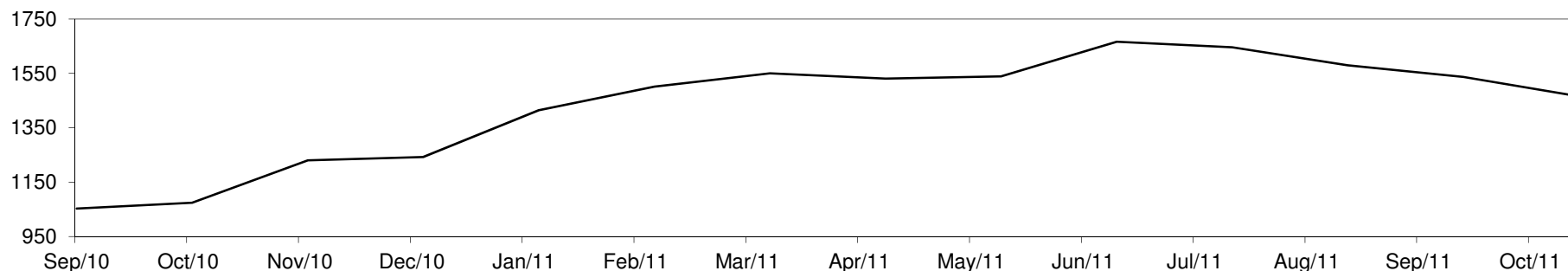




Table 7: 21 micron SFE

Wednesday, 12 October 2011

Delivery Mth	Oct-11	Dec-11	Feb-11	Apr-12	Jun-12	Aug-12	Oct-12	Dec-12	Feb-12
21 Micron SFE	1294	1283	1258	1213	1184	1073	1141	1108	1073
Average	1093	1098	962	1123	1118	1127	1150	1150	1105
Maximum	1434	1411	1283	1303	1326	1316	1283	1283	1393
Minimum	880	880	860	934	990	1046	1013	1013	880

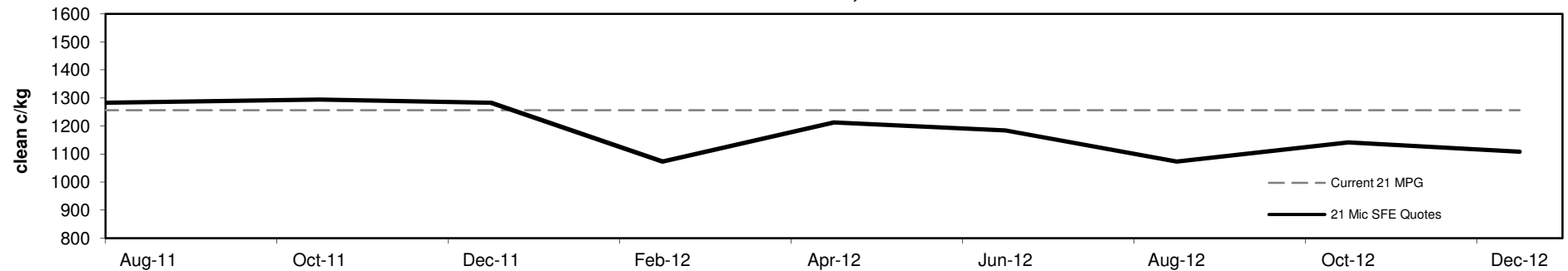
Table 8: 21 micron SFE, as a percentile of the 21 micron MPG

3 Year Percentile	84%	83%	81%	79%	78%	73%	76%	74%	73%
10 Year Percentile	95%	95%	91%	89%	88%	86%	87%	86%	86%

Table 9: 21 micron SFE, compared to MPG

SFE - MPG	+38	3%	+27	2%	+2	0%	-43	-3%	-72	-6%	-183	-15%	-115	-9%	-148	-12%	-183	-15%
SFE - MPG, 1 year Ave.	+43	3%	+32	3%	+7	1%	-38	-3%	-67	-5%	-178	-14%	-110	-9%	-143	-11%	-178	-14%
SFE - MPG, 3 year Ave.	+308	31%	+297	30%	+272	28%	+227	23%	+198	20%	+87	9%	+155	16%	+122	12%	+87	9%
SFE - MPG, 10 year Ave.	+371	40%	+360	39%	+335	36%	+290	31%	+261	28%	+150	16%	+218	24%	+185	20%	+150	16%

21 MICRON SFE, QUOTES



21 Micron SFE, Front month movement

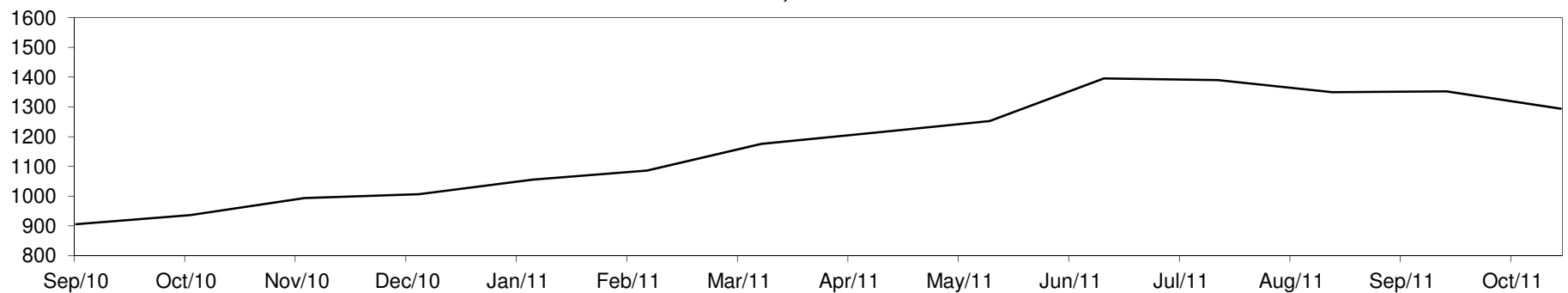




Table 10: 23 micron SFE

Wednesday, 12 October 2011

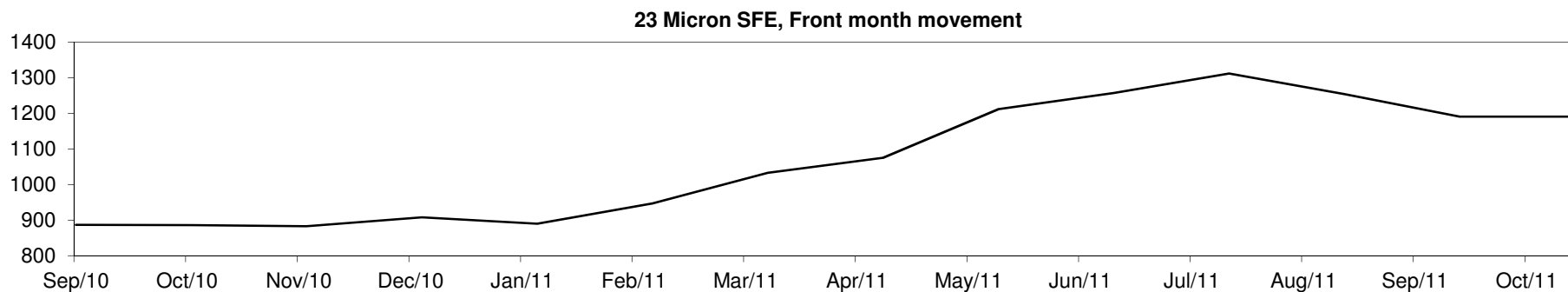
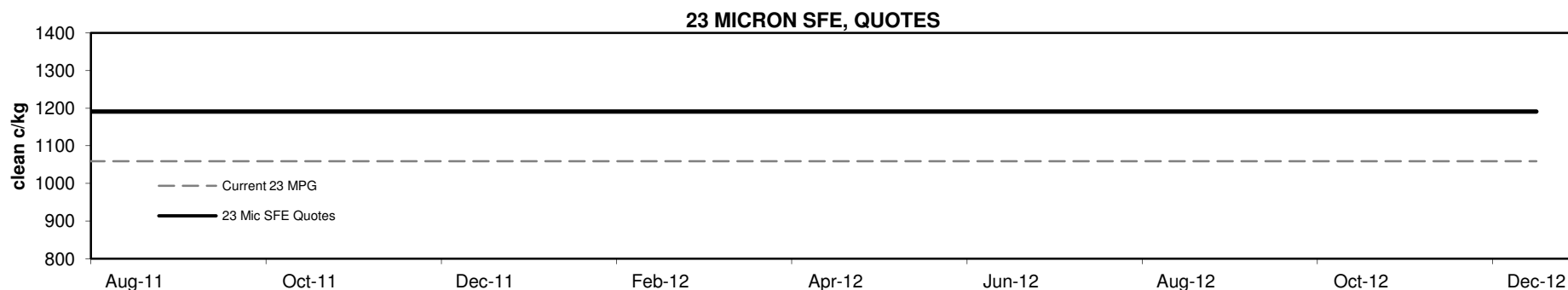
Delivery Mth	Oct-11	Dec-11	Feb-11	Apr-12	Jun-12	Aug-12	Oct-12	Dec-12	Feb-12
23 Micron SFE	1191	1191	1191	1191	1191	1191	1191	1191	1191
Average	1007	1025	870	1082	1122	1179	1232	1232	1049
Maximum	1312	1312	1191	1312	1312	1312	1312	1312	1312
Minimum	883	883	760	883	890	1033	1191	1191	883

Table 11: 23 micron SFE, as a percentile of the 23 micron MPG

3 Year Percentile	87%	87%	87%	87%	87%	87%	87%	87%	87%
10 Year Percentile	91%	91%	91%	91%	91%	91%	91%	91%	91%

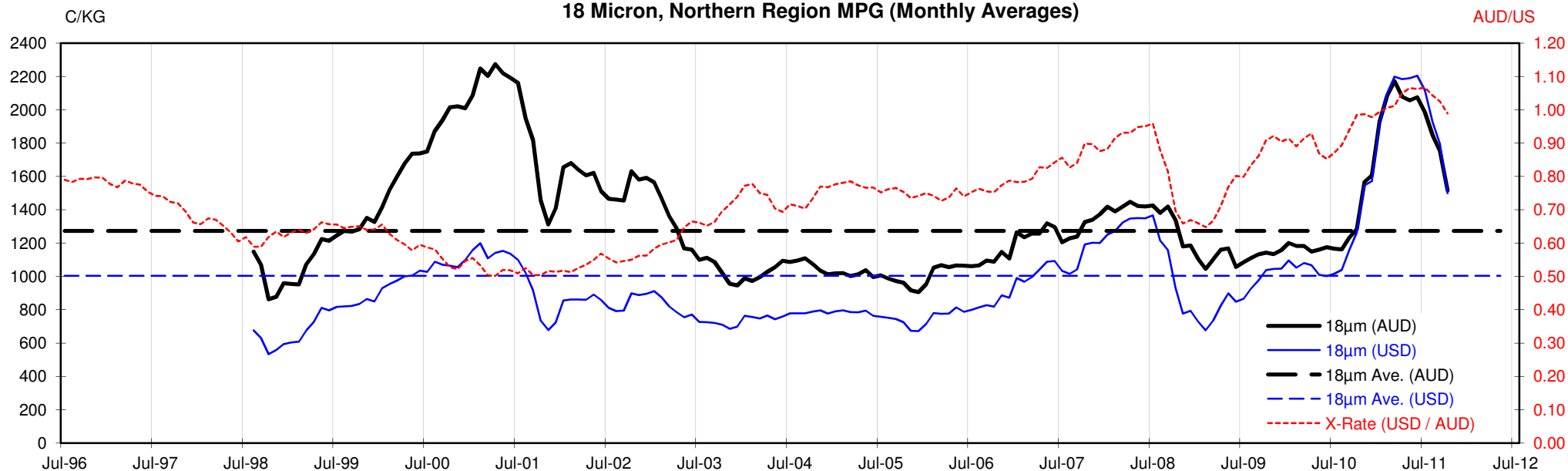
Table 12: 23 micron SFE, compared to MPG

SFE - MPG	+132	12%	+132	12%	+132	12%	+132	12%	+132	12%	+132	12%	+132	12%	+132	12%	+132	12%
SFE - MPG, 1 year Ave.	+65	6%	+65	6%	+65	6%	+65	6%	+65	6%	+65	6%	+65	6%	+65	6%	+65	6%
SFE - MPG, 3 year Ave.	+273	30%	+273	30%	+273	30%	+273	30%	+273	30%	+273	30%	+273	30%	+273	30%	+273	30%
SFE - MPG, 10 year Ave.	+320	37%	+320	37%	+320	37%	+320	37%	+320	37%	+320	37%	+320	37%	+320	37%	+320	37%

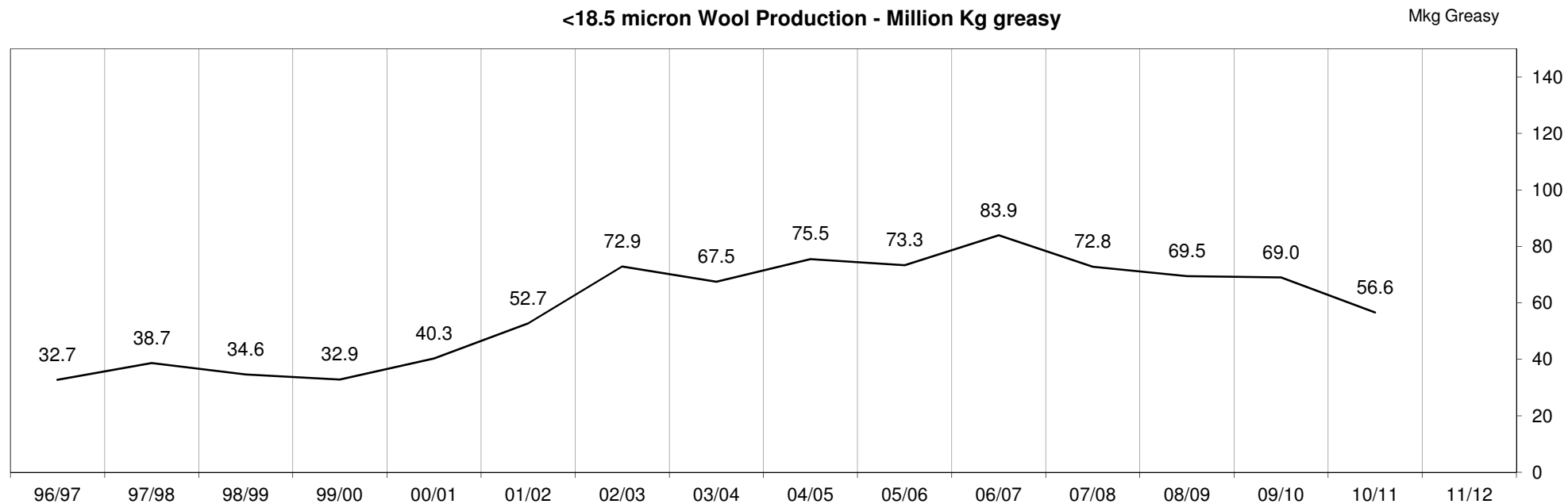


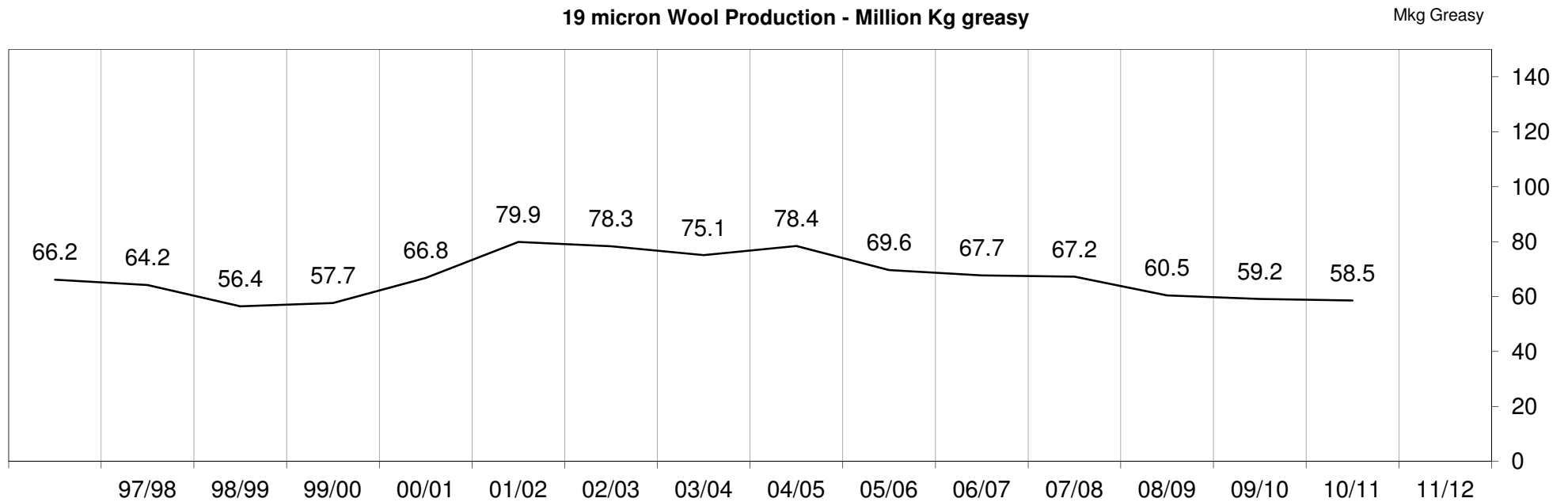
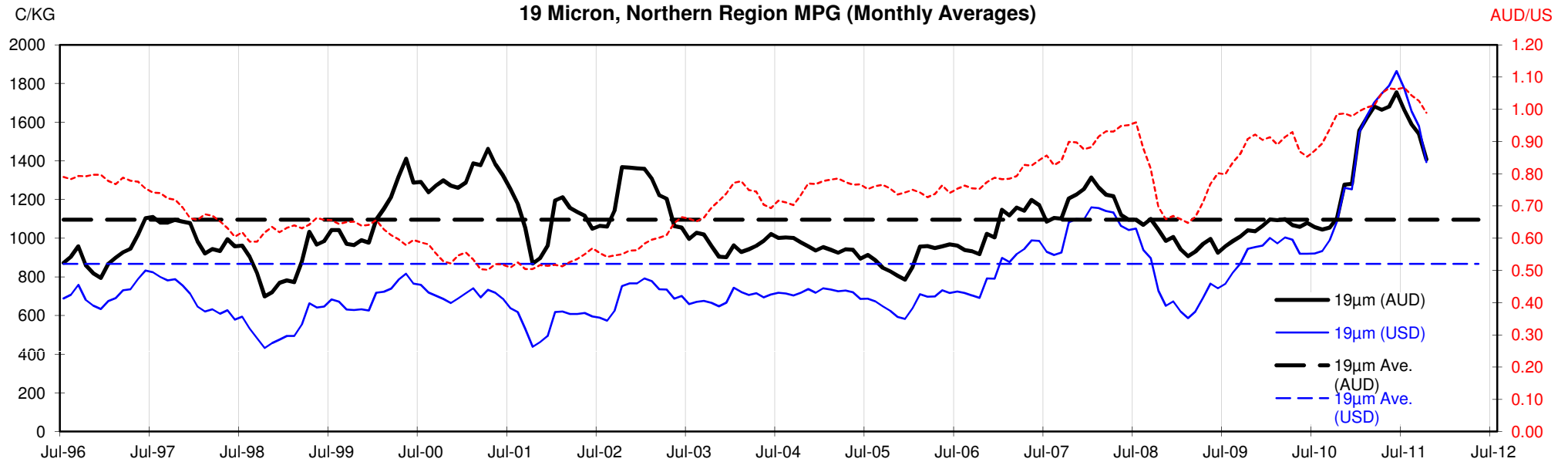


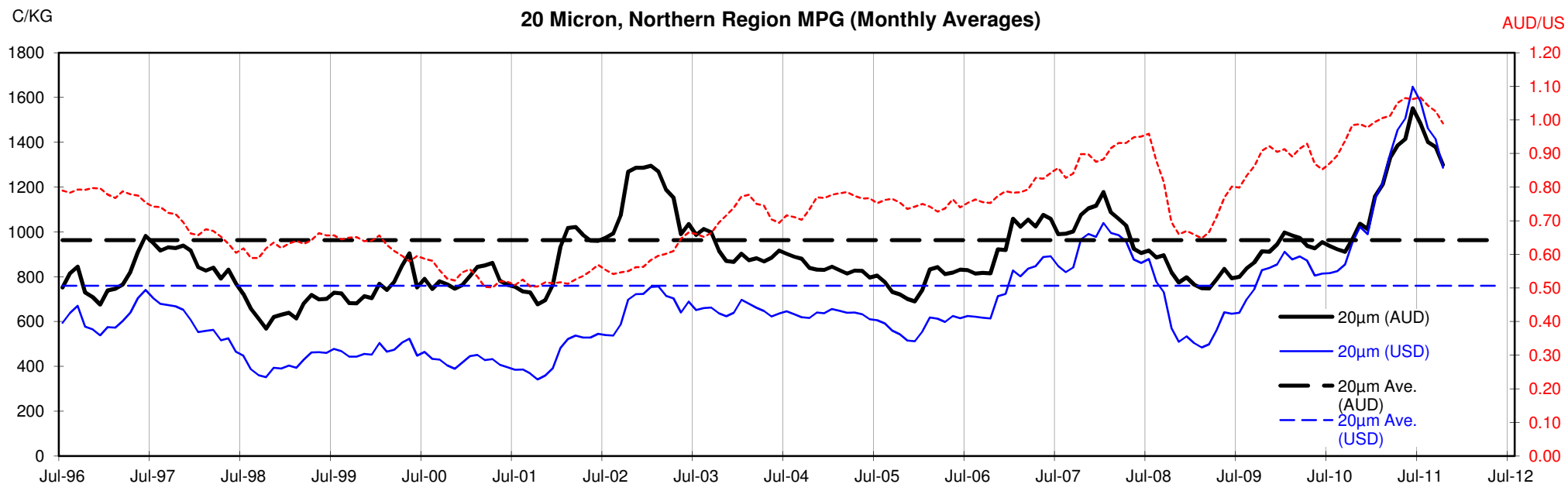
18 Micron, Northern Region MPG (Monthly Averages)

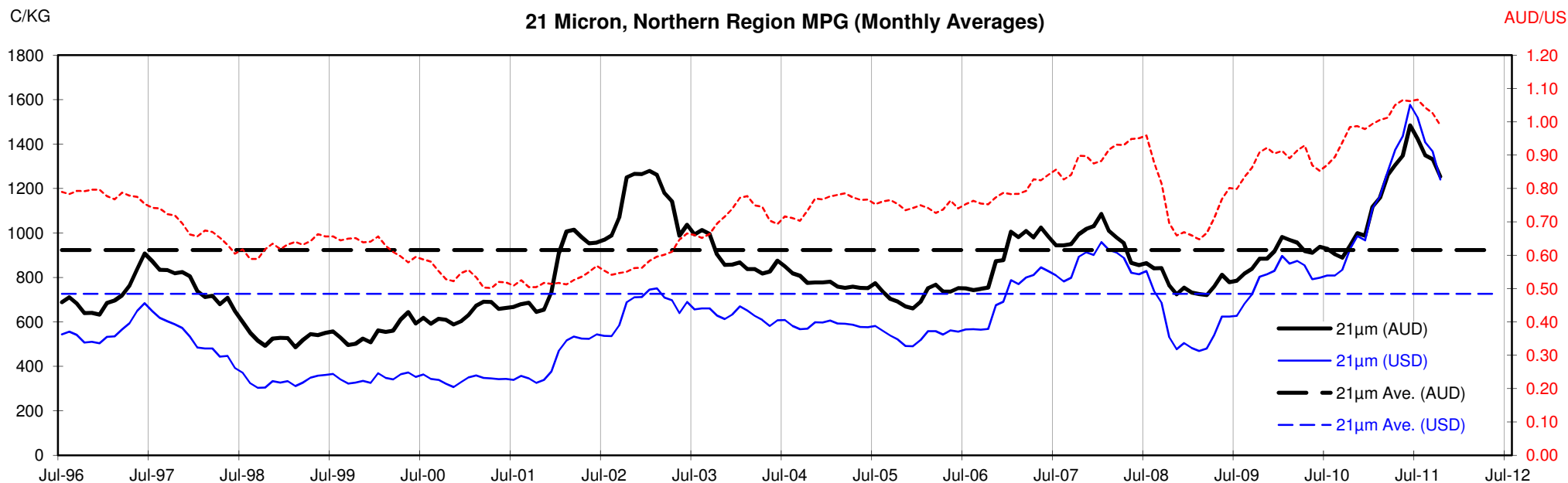


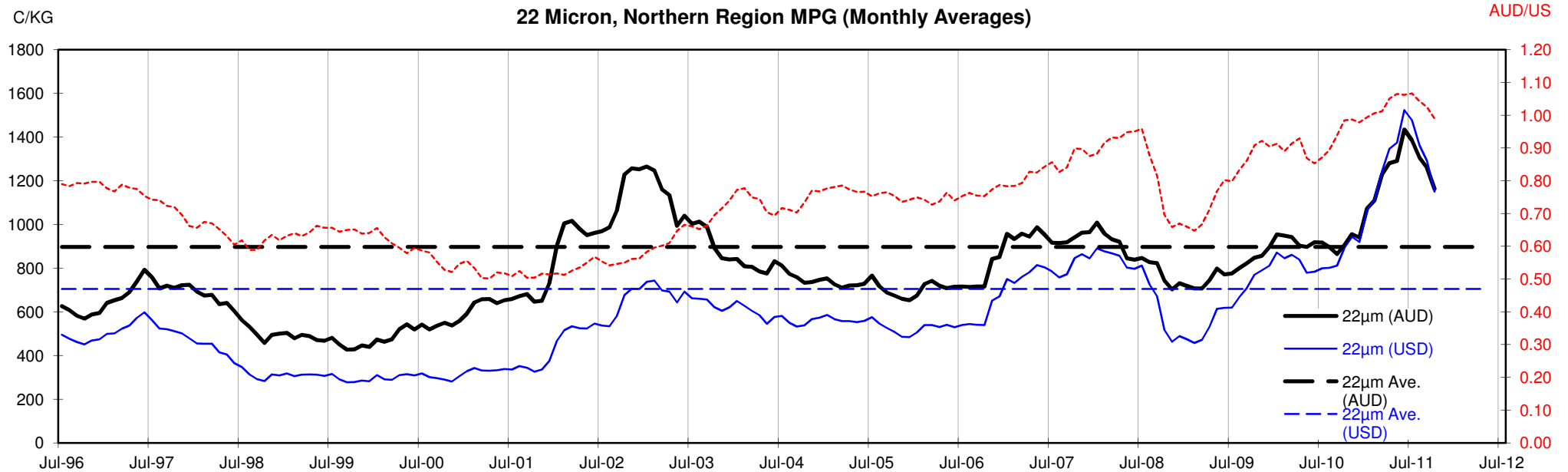
<18.5 micron Wool Production - Million Kg greasy

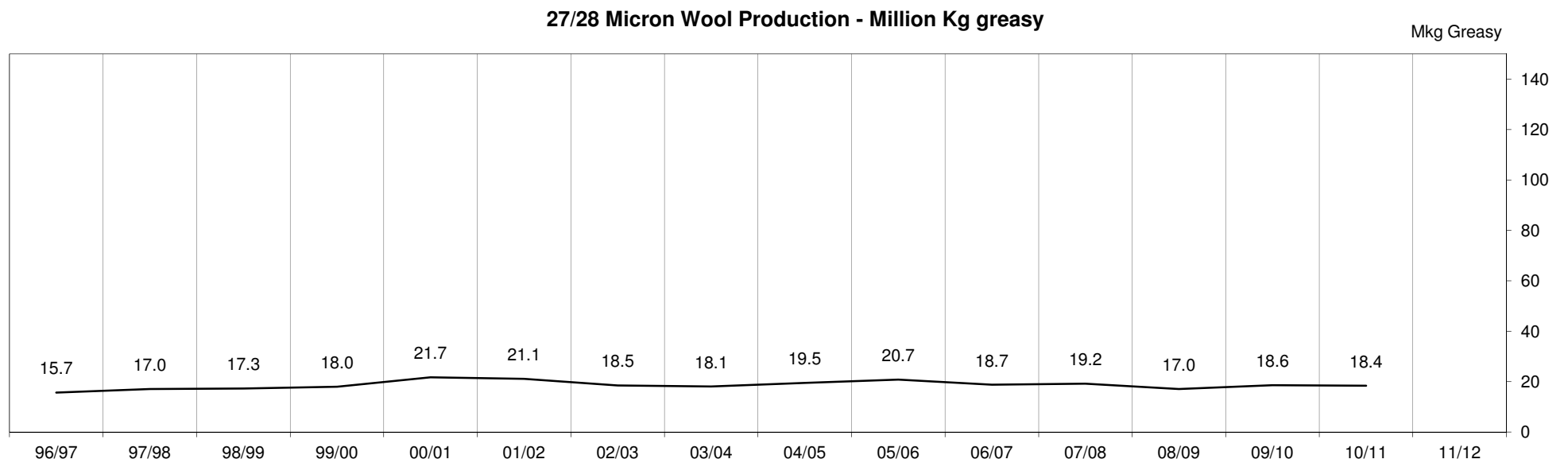
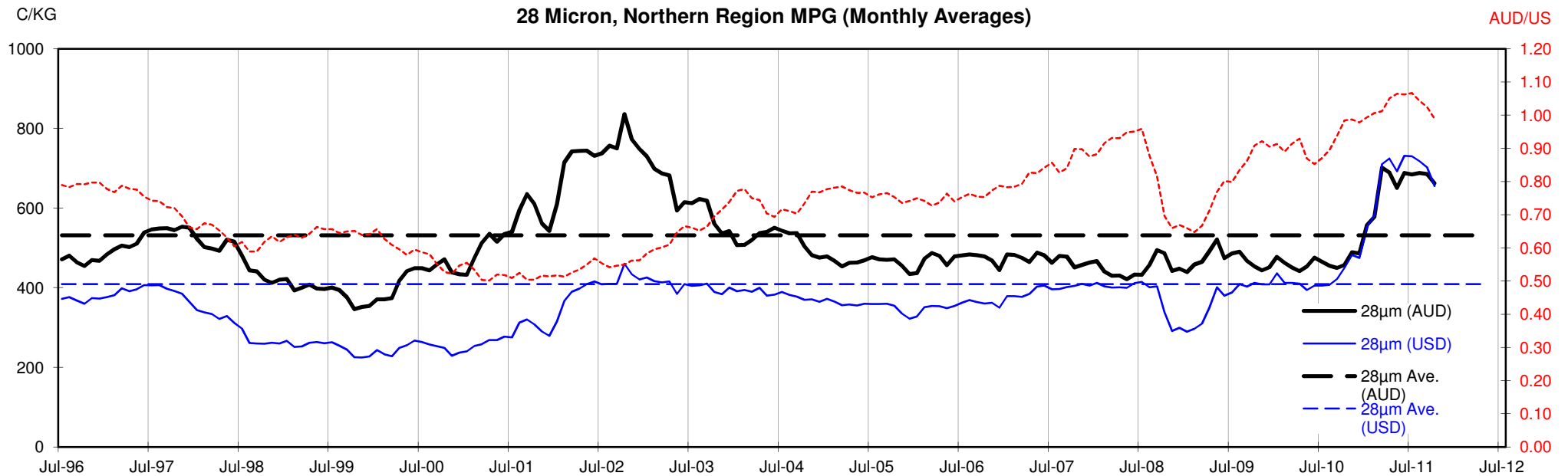












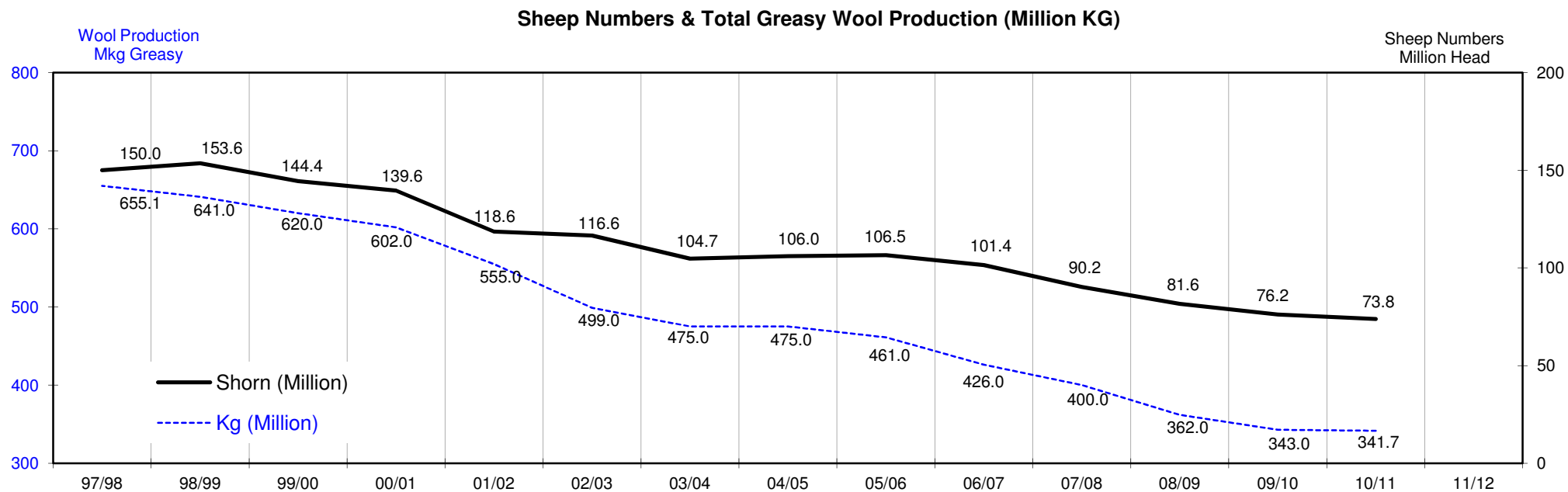
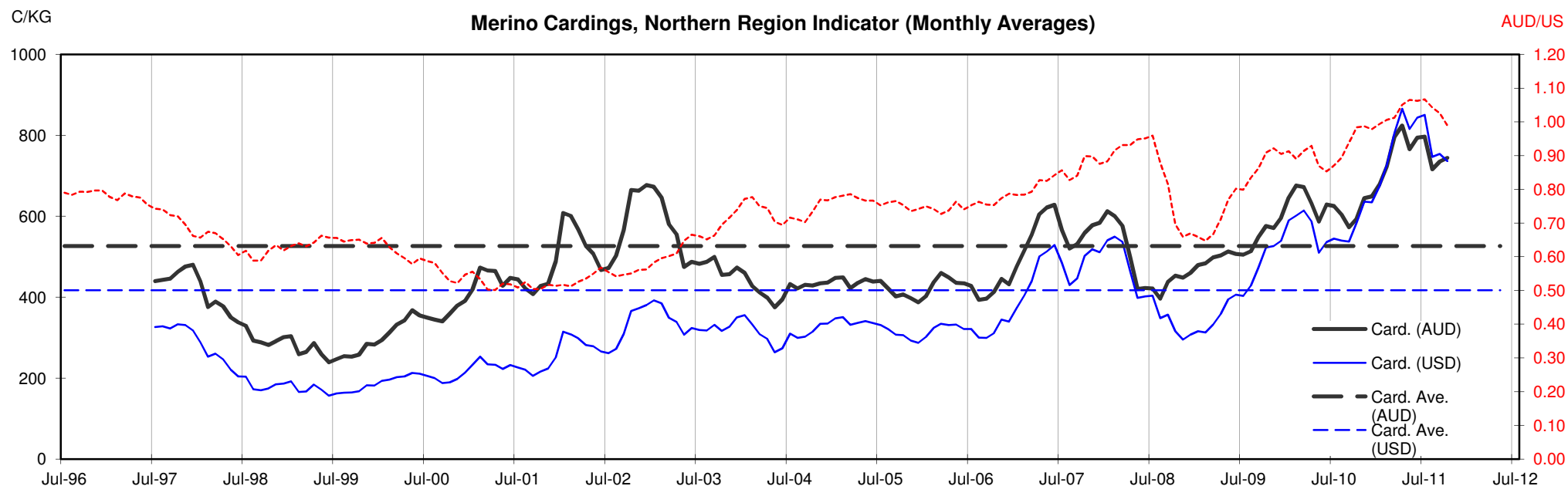




Table 13: Returns pr head for skirted fleece wool.

Skirted FLC Weight		Micron																	
9 Kg		16	16.5	17	17.5	18	18.5	19	19.5	20	21	22	23	24	25	26	28	30	32
Yield (Sch Dry)	25% Current	\$46	\$43	\$38	\$36	\$34	\$33	\$32	\$31	\$29	\$28	\$26	\$24	\$22	\$20	\$17	\$15	\$14	\$13
	10yr ave.			\$32		\$29		\$25		\$22	\$21	\$20	\$20	\$19	\$17	\$15	\$12	\$10	\$9
	30% Current	\$55	\$52	\$46	\$43	\$41	\$39	\$38	\$37	\$35	\$34	\$31	\$29	\$27	\$24	\$20	\$18	\$17	\$16
	10yr ave.			\$39		\$34		\$30		\$26	\$25	\$24	\$24	\$22	\$20	\$18	\$14	\$13	\$11
	35% Current	\$65	\$60	\$54	\$50	\$47	\$46	\$44	\$43	\$41	\$40	\$37	\$33	\$31	\$28	\$24	\$21	\$20	\$18
	10yr ave.			\$45		\$40		\$35		\$30	\$29	\$28	\$27	\$26	\$23	\$21	\$17	\$15	\$13
	40% Current	\$74	\$69	\$62	\$57	\$54	\$52	\$51	\$49	\$47	\$45	\$42	\$38	\$36	\$32	\$27	\$24	\$22	\$21
	10yr ave.			\$52		\$46		\$39		\$35	\$33	\$32	\$31	\$30	\$27	\$24	\$19	\$17	\$15
	45% Current	\$83	\$77	\$69	\$64	\$61	\$59	\$57	\$55	\$53	\$51	\$47	\$43	\$40	\$36	\$31	\$27	\$25	\$24
	10yr ave.			\$58		\$52		\$44		\$39	\$37	\$36	\$35	\$33	\$30	\$27	\$22	\$19	\$17
	50% Current	\$92	\$86	\$77	\$72	\$68	\$65	\$63	\$61	\$59	\$57	\$52	\$48	\$45	\$40	\$34	\$30	\$28	\$26
	10yr ave.			\$65		\$57		\$49		\$43	\$42	\$40	\$39	\$37	\$33	\$30	\$24	\$21	\$19
	55% Current	\$101	\$95	\$85	\$79	\$75	\$72	\$70	\$67	\$65	\$62	\$57	\$52	\$49	\$44	\$37	\$32	\$31	\$29
	10yr ave.			\$71		\$63		\$54		\$48	\$46	\$44	\$43	\$41	\$36	\$33	\$26	\$23	\$21
	60% Current	\$111	\$103	\$92	\$86	\$81	\$78	\$76	\$73	\$70	\$68	\$63	\$57	\$54	\$48	\$41	\$35	\$33	\$31
	10yr ave.			\$78		\$69		\$59		\$52	\$50	\$48	\$47	\$45	\$40	\$36	\$29	\$25	\$23
	65% Current	\$120	\$112	\$100	\$93	\$88	\$85	\$82	\$80	\$76	\$73	\$68	\$62	\$58	\$52	\$44	\$38	\$36	\$34
	10yr ave.			\$84		\$74		\$64		\$56	\$54	\$52	\$51	\$48	\$43	\$39	\$31	\$27	\$24
	70% Current	\$129	\$120	\$108	\$100	\$95	\$91	\$89	\$86	\$82	\$79	\$73	\$67	\$63	\$56	\$48	\$41	\$39	\$37
	10yr ave.			\$91		\$80		\$69		\$61	\$58	\$57	\$55	\$52	\$46	\$42	\$34	\$29	\$26
	75% Current	\$138	\$129	\$115	\$107	\$102	\$98	\$95	\$92	\$88	\$85	\$78	\$71	\$67	\$59	\$51	\$44	\$42	\$39
	10yr ave.			\$97		\$86		\$74		\$65	\$62	\$61	\$59	\$56	\$50	\$45	\$36	\$31	\$28
	80% Current	\$148	\$138	\$123	\$114	\$108	\$105	\$101	\$98	\$94	\$90	\$84	\$76	\$72	\$63	\$54	\$47	\$45	\$42
	10yr ave.			\$104		\$92		\$79		\$69	\$66	\$65	\$63	\$59	\$53	\$49	\$38	\$33	\$30
	85% Current	\$157	\$146	\$131	\$122	\$115	\$111	\$108	\$104	\$100	\$96	\$89	\$81	\$76	\$67	\$58	\$50	\$47	\$45
	10yr ave.			\$110		\$97		\$84		\$74	\$71	\$69	\$67	\$63	\$56	\$52	\$41	\$35	\$32

The above shows estimated returns per head for skirted fleece wool. These figures do not take into account the value of skirtings and oddments and do not take into account discounts that may apply for faults under individual circumstances. These figures are based on a market index of 100% and should be used as a guide only. Returns over \$30 / head for fleece wool are highlighted.

Source: Australian Wool Exchange, Australian Wool Innovation, Sydney Futures Exchange, x-rates.com

Disclaimer: While all due care has been taken in the preparation of this document, no warranty is made as to its accuracy, reliability or completeness. To the extent permitted by law neither Jemalong or their sources including subsidiaries and staff, accept liability to any person for loss or damage arising from the use of this information.



Table 14: Returns pr head for skirted fleece wool.

Skirted FLC Weight		Micron																	
8 Kg		16	16.5	17	17.5	18	18.5	19	19.5	20	21	22	23	24	25	26	28	30	32
Yield (Sch Dry)	25% Current	\$41	\$38	\$34	\$32	\$30	\$29	\$28	\$27	\$26	\$25	\$23	\$21	\$20	\$18	\$15	\$13	\$12	\$12
	10yr ave.			\$29		\$25		\$22		\$19	\$18	\$18	\$17	\$17	\$15	\$13	\$11	\$9	\$8
	30% Current	\$49	\$46	\$41	\$38	\$36	\$35	\$34	\$33	\$31	\$30	\$28	\$25	\$24	\$21	\$18	\$16	\$15	\$14
	10yr ave.			\$35		\$31		\$26		\$23	\$22	\$22	\$21	\$20	\$18	\$16	\$13	\$11	\$10
	35% Current	\$57	\$53	\$48	\$45	\$42	\$41	\$39	\$38	\$37	\$35	\$33	\$30	\$28	\$25	\$21	\$18	\$17	\$16
	10yr ave.			\$40		\$36		\$31		\$27	\$26	\$25	\$24	\$23	\$21	\$19	\$15	\$13	\$12
	40% Current	\$66	\$61	\$55	\$51	\$48	\$46	\$45	\$43	\$42	\$40	\$37	\$34	\$32	\$28	\$24	\$21	\$20	\$19
	10yr ave.			\$46		\$41		\$35		\$31	\$30	\$29	\$28	\$26	\$24	\$22	\$17	\$15	\$13
	45% Current	\$74	\$69	\$62	\$57	\$54	\$52	\$51	\$49	\$47	\$45	\$42	\$38	\$36	\$32	\$27	\$24	\$22	\$21
	10yr ave.			\$52		\$46		\$39		\$35	\$33	\$32	\$31	\$30	\$27	\$24	\$19	\$17	\$15
	50% Current	\$82	\$76	\$68	\$64	\$60	\$58	\$56	\$54	\$52	\$50	\$46	\$42	\$40	\$35	\$30	\$26	\$25	\$23
	10yr ave.			\$58		\$51		\$44		\$39	\$37	\$36	\$35	\$33	\$29	\$27	\$21	\$19	\$17
	55% Current	\$90	\$84	\$75	\$70	\$66	\$64	\$62	\$60	\$57	\$55	\$51	\$47	\$44	\$39	\$33	\$29	\$27	\$26
	10yr ave.			\$63		\$56		\$48		\$42	\$41	\$39	\$38	\$36	\$32	\$30	\$23	\$20	\$18
	60% Current	\$98	\$92	\$82	\$76	\$72	\$70	\$68	\$65	\$63	\$60	\$56	\$51	\$48	\$42	\$36	\$31	\$30	\$28
	10yr ave.			\$69		\$61		\$53		\$46	\$44	\$43	\$42	\$40	\$35	\$32	\$26	\$22	\$20
	65% Current	\$107	\$99	\$89	\$83	\$78	\$76	\$73	\$71	\$68	\$65	\$60	\$55	\$52	\$46	\$39	\$34	\$32	\$30
	10yr ave.			\$75		\$66		\$57		\$50	\$48	\$47	\$45	\$43	\$38	\$35	\$28	\$24	\$22
	70% Current	\$115	\$107	\$96	\$89	\$84	\$81	\$79	\$76	\$73	\$70	\$65	\$59	\$56	\$49	\$42	\$37	\$35	\$33
	10yr ave.			\$81		\$71		\$61		\$54	\$52	\$50	\$49	\$46	\$41	\$38	\$30	\$26	\$23
	75% Current	\$123	\$115	\$103	\$95	\$90	\$87	\$84	\$82	\$78	\$75	\$70	\$64	\$60	\$53	\$45	\$39	\$37	\$35
	10yr ave.			\$86		\$76		\$66		\$58	\$55	\$54	\$52	\$50	\$44	\$40	\$32	\$28	\$25
	80% Current	\$131	\$122	\$109	\$102	\$96	\$93	\$90	\$87	\$83	\$80	\$74	\$68	\$64	\$56	\$48	\$42	\$40	\$37
	10yr ave.			\$92		\$81		\$70		\$62	\$59	\$57	\$56	\$53	\$47	\$43	\$34	\$30	\$27
	85% Current	\$139	\$130	\$116	\$108	\$102	\$99	\$96	\$92	\$89	\$85	\$79	\$72	\$68	\$60	\$51	\$45	\$42	\$40
	10yr ave.			\$98		\$87		\$75		\$66	\$63	\$61	\$59	\$56	\$50	\$46	\$36	\$31	\$28

The above shows estimated returns per head for skirted fleece wool. These figures do not take into account the value of skirtings and oddments and do not take into account discounts that may apply for faults under individual circumstances. These figures are based on a market index of 100% and should be used as a guide only. Returns over \$30 / head for fleece wool are highlighted.

Source: Australian Wool Exchange, Australian Wool Innovation, Sydney Futures Exchange, x-rates.com

Disclaimer: While all due care has been taken in the preparation of this document, no warranty is made as to its accuracy, reliability or completeness. To the extent permitted by law neither Jemalong or their sources including subsidiaries and staff, accept liability to any person for loss or damage arising from the use of this information.



Table 15: Returns pr head for skirted fleece wool.

Skirted FLC Weight		Micron																	
7 Kg		16	16.5	17	17.5	18	18.5	19	19.5	20	21	22	23	24	25	26	28	30	32
Yield (Sch Dry)	25% Current	\$36	\$33	\$30	\$28	\$26	\$25	\$25	\$24	\$23	\$22	\$20	\$19	\$17	\$15	\$13	\$11	\$11	\$10
	10yr ave.			\$25		\$22		\$19		\$17	\$16	\$16	\$15	\$14	\$13	\$12	\$9	\$8	\$7
	30% Current	\$43	\$40	\$36	\$33	\$32	\$30	\$30	\$29	\$27	\$26	\$24	\$22	\$21	\$19	\$16	\$14	\$13	\$12
	10yr ave.			\$30		\$27		\$23		\$20	\$19	\$19	\$18	\$17	\$15	\$14	\$11	\$10	\$9
	35% Current	\$50	\$47	\$42	\$39	\$37	\$36	\$34	\$33	\$32	\$31	\$28	\$26	\$24	\$22	\$18	\$16	\$15	\$14
	10yr ave.			\$35		\$31		\$27		\$24	\$23	\$22	\$21	\$20	\$18	\$17	\$13	\$11	\$10
	40% Current	\$57	\$53	\$48	\$45	\$42	\$41	\$39	\$38	\$37	\$35	\$33	\$30	\$28	\$25	\$21	\$18	\$17	\$16
	10yr ave.			\$40		\$36		\$31		\$27	\$26	\$25	\$24	\$23	\$21	\$19	\$15	\$13	\$12
	45% Current	\$65	\$60	\$54	\$50	\$47	\$46	\$44	\$43	\$41	\$40	\$37	\$33	\$31	\$28	\$24	\$21	\$20	\$18
	10yr ave.			\$45		\$40		\$35		\$30	\$29	\$28	\$27	\$26	\$23	\$21	\$17	\$15	\$13
	50% Current	\$72	\$67	\$60	\$56	\$53	\$51	\$49	\$48	\$46	\$44	\$41	\$37	\$35	\$31	\$26	\$23	\$22	\$20
	10yr ave.			\$50		\$45		\$38		\$34	\$32	\$31	\$30	\$29	\$26	\$24	\$19	\$16	\$15
	55% Current	\$79	\$74	\$66	\$61	\$58	\$56	\$54	\$52	\$50	\$48	\$45	\$41	\$38	\$34	\$29	\$25	\$24	\$22
	10yr ave.			\$55		\$49		\$42		\$37	\$36	\$35	\$34	\$32	\$28	\$26	\$20	\$18	\$16
	60% Current	\$86	\$80	\$72	\$67	\$63	\$61	\$59	\$57	\$55	\$53	\$49	\$44	\$42	\$37	\$32	\$28	\$26	\$24
	10yr ave.			\$60		\$53		\$46		\$40	\$39	\$38	\$37	\$35	\$31	\$28	\$22	\$19	\$18
	65% Current	\$93	\$87	\$78	\$72	\$69	\$66	\$64	\$62	\$59	\$57	\$53	\$48	\$45	\$40	\$34	\$30	\$28	\$27
	10yr ave.			\$65		\$58		\$50		\$44	\$42	\$41	\$40	\$38	\$34	\$31	\$24	\$21	\$19
	70% Current	\$100	\$94	\$84	\$78	\$74	\$71	\$69	\$67	\$64	\$62	\$57	\$52	\$49	\$43	\$37	\$32	\$30	\$29
	10yr ave.			\$71		\$62		\$54		\$47	\$45	\$44	\$43	\$40	\$36	\$33	\$26	\$23	\$20
	75% Current	\$108	\$100	\$90	\$83	\$79	\$76	\$74	\$71	\$68	\$66	\$61	\$56	\$52	\$46	\$40	\$34	\$33	\$31
	10yr ave.			\$76		\$67		\$58		\$51	\$48	\$47	\$46	\$43	\$39	\$35	\$28	\$24	\$22
	80% Current	\$115	\$107	\$96	\$89	\$84	\$81	\$79	\$76	\$73	\$70	\$65	\$59	\$56	\$49	\$42	\$37	\$35	\$33
	10yr ave.			\$81		\$71		\$61		\$54	\$52	\$50	\$49	\$46	\$41	\$38	\$30	\$26	\$23
	85% Current	\$122	\$114	\$102	\$95	\$90	\$86	\$84	\$81	\$78	\$75	\$69	\$63	\$59	\$52	\$45	\$39	\$37	\$35
	10yr ave.			\$86		\$76		\$65		\$57	\$55	\$53	\$52	\$49	\$44	\$40	\$32	\$28	\$25

The above shows estimated returns per head for skirted fleece wool. These figures do not take into account the value of skirtings and oddments and do not take into account discounts that may apply for faults under individual circumstances. These figures are based on a market index of 100% and should be used as a guide only. Returns over \$30 / head for fleece wool are highlighted.

Source: Australian Wool Exchange, Australian Wool Innovation, Sydney Futures Exchange, x-rates.com

Disclaimer: While all due care has been taken in the preparation of this document, no warranty is made as to its accuracy, reliability or completeness. To the extent permitted by law neither Jemalong or their sources including subsidiaries and staff, accept liability to any person for loss or damage arising from the use of this information.



Table 16: Returns pr head for skirted fleece wool.

Skirted FLC Weight		Micron																	
6 Kg		16	16.5	17	17.5	18	18.5	19	19.5	20	21	22	23	24	25	26	28	30	32
Yield (Sch Dry)	25% Current	\$31	\$29	\$26	\$24	\$23	\$22	\$21	\$20	\$20	\$19	\$17	\$16	\$15	\$13	\$11	\$10	\$9	\$9
	10yr ave.			\$22		\$19		\$16		\$14	\$14	\$13	\$13	\$12	\$11	\$10	\$8	\$7	\$6
	30% Current	\$37	\$34	\$31	\$29	\$27	\$26	\$25	\$24	\$23	\$23	\$21	\$19	\$18	\$16	\$14	\$12	\$11	\$10
	10yr ave.			\$26		\$23		\$20		\$17	\$17	\$16	\$16	\$15	\$13	\$12	\$10	\$8	\$8
	35% Current	\$43	\$40	\$36	\$33	\$32	\$30	\$30	\$29	\$27	\$26	\$24	\$22	\$21	\$19	\$16	\$14	\$13	\$12
	10yr ave.			\$30		\$27		\$23		\$20	\$19	\$19	\$18	\$17	\$15	\$14	\$11	\$10	\$9
	40% Current	\$49	\$46	\$41	\$38	\$36	\$35	\$34	\$33	\$31	\$30	\$28	\$25	\$24	\$21	\$18	\$16	\$15	\$14
	10yr ave.			\$35		\$31		\$26		\$23	\$22	\$22	\$21	\$20	\$18	\$16	\$13	\$11	\$10
	45% Current	\$55	\$52	\$46	\$43	\$41	\$39	\$38	\$37	\$35	\$34	\$31	\$29	\$27	\$24	\$20	\$18	\$17	\$16
	10yr ave.			\$39		\$34		\$30		\$26	\$25	\$24	\$24	\$22	\$20	\$18	\$14	\$13	\$11
	50% Current	\$62	\$57	\$51	\$48	\$45	\$44	\$42	\$41	\$39	\$38	\$35	\$32	\$30	\$26	\$23	\$20	\$19	\$17
	10yr ave.			\$43		\$38		\$33		\$29	\$28	\$27	\$26	\$25	\$22	\$20	\$16	\$14	\$13
	55% Current	\$68	\$63	\$56	\$52	\$50	\$48	\$46	\$45	\$43	\$41	\$38	\$35	\$33	\$29	\$25	\$22	\$20	\$19
	10yr ave.			\$47		\$42		\$36		\$32	\$30	\$30	\$29	\$27	\$24	\$22	\$18	\$15	\$14
	60% Current	\$74	\$69	\$62	\$57	\$54	\$52	\$51	\$49	\$47	\$45	\$42	\$38	\$36	\$32	\$27	\$24	\$22	\$21
	10yr ave.			\$52		\$46		\$39		\$35	\$33	\$32	\$31	\$30	\$27	\$24	\$19	\$17	\$15
	65% Current	\$80	\$74	\$67	\$62	\$59	\$57	\$55	\$53	\$51	\$49	\$45	\$41	\$39	\$34	\$29	\$26	\$24	\$23
	10yr ave.			\$56		\$50		\$43		\$38	\$36	\$35	\$34	\$32	\$29	\$26	\$21	\$18	\$16
	70% Current	\$86	\$80	\$72	\$67	\$63	\$61	\$59	\$57	\$55	\$53	\$49	\$44	\$42	\$37	\$32	\$28	\$26	\$24
	10yr ave.			\$60		\$53		\$46		\$40	\$39	\$38	\$37	\$35	\$31	\$28	\$22	\$19	\$18
	75% Current	\$92	\$86	\$77	\$72	\$68	\$65	\$63	\$61	\$59	\$57	\$52	\$48	\$45	\$40	\$34	\$30	\$28	\$26
	10yr ave.			\$65		\$57		\$49		\$43	\$42	\$40	\$39	\$37	\$33	\$30	\$24	\$21	\$19
	80% Current	\$98	\$92	\$82	\$76	\$72	\$70	\$68	\$65	\$63	\$60	\$56	\$51	\$48	\$42	\$36	\$31	\$30	\$28
	10yr ave.			\$69		\$61		\$53		\$46	\$44	\$43	\$42	\$40	\$35	\$32	\$26	\$22	\$20
	85% Current	\$105	\$97	\$87	\$81	\$77	\$74	\$72	\$69	\$67	\$64	\$59	\$54	\$51	\$45	\$39	\$33	\$32	\$30
	10yr ave.			\$73		\$65		\$56		\$49	\$47	\$46	\$44	\$42	\$38	\$34	\$27	\$24	\$21

The above shows estimated returns per head for skirted fleece wool. These figures do not take into account the value of skirtings and oddments and do not take into account discounts that may apply for faults under individual circumstances. These figures are based on a market index of 100% and should be used as a guide only. Returns over \$30 / head for fleece wool are highlighted.

Source: Australian Wool Exchange, Australian Wool Innovation, Sydney Futures Exchange, x-rates.com

Disclaimer: While all due care has been taken in the preparation of this document, no warranty is made as to its accuracy, reliability or completeness. To the extent permitted by law neither Jemalong or their sources including subsidiaries and staff, accept liability to any person for loss or damage arising from the use of this information.



Table 17: Returns pr head for skirted fleece wool.

Skirted FLC Weight		Micron																	
5 Kg		16	16.5	17	17.5	18	18.5	19	19.5	20	21	22	23	24	25	26	28	30	32
Yield (Sch Dry)	25% Current	\$26	\$24	\$21	\$20	\$19	\$18	\$18	\$17	\$16	\$16	\$15	\$13	\$12	\$11	\$9	\$8	\$8	\$7
	10yr ave.			\$18		\$16		\$14		\$12	\$12	\$11	\$11	\$10	\$9	\$8	\$7	\$6	\$5
	30% Current	\$31	\$29	\$26	\$24	\$23	\$22	\$21	\$20	\$20	\$19	\$17	\$16	\$15	\$13	\$11	\$10	\$9	\$9
	10yr ave.			\$22		\$19		\$16		\$14	\$14	\$13	\$13	\$12	\$11	\$10	\$8	\$7	\$6
	35% Current	\$36	\$33	\$30	\$28	\$26	\$25	\$25	\$24	\$23	\$22	\$20	\$19	\$17	\$15	\$13	\$11	\$11	\$10
	10yr ave.			\$25		\$22		\$19		\$17	\$16	\$16	\$15	\$14	\$13	\$12	\$9	\$8	\$7
	40% Current	\$41	\$38	\$34	\$32	\$30	\$29	\$28	\$27	\$26	\$25	\$23	\$21	\$20	\$18	\$15	\$13	\$12	\$12
	10yr ave.			\$29		\$25		\$22		\$19	\$18	\$18	\$17	\$17	\$15	\$13	\$11	\$9	\$8
	45% Current	\$46	\$43	\$38	\$36	\$34	\$33	\$32	\$31	\$29	\$28	\$26	\$24	\$22	\$20	\$17	\$15	\$14	\$13
	10yr ave.			\$32		\$29		\$25		\$22	\$21	\$20	\$20	\$19	\$17	\$15	\$12	\$10	\$9
	50% Current	\$51	\$48	\$43	\$40	\$38	\$36	\$35	\$34	\$33	\$31	\$29	\$26	\$25	\$22	\$19	\$16	\$16	\$15
	10yr ave.			\$36		\$32		\$27		\$24	\$23	\$22	\$22	\$21	\$18	\$17	\$13	\$12	\$10
	55% Current	\$56	\$53	\$47	\$44	\$41	\$40	\$39	\$37	\$36	\$35	\$32	\$29	\$27	\$24	\$21	\$18	\$17	\$16
	10yr ave.			\$40		\$35		\$30		\$27	\$25	\$25	\$24	\$23	\$20	\$19	\$15	\$13	\$11
	60% Current	\$62	\$57	\$51	\$48	\$45	\$44	\$42	\$41	\$39	\$38	\$35	\$32	\$30	\$26	\$23	\$20	\$19	\$17
	10yr ave.			\$43		\$38		\$33		\$29	\$28	\$27	\$26	\$25	\$22	\$20	\$16	\$14	\$13
	65% Current	\$67	\$62	\$56	\$52	\$49	\$47	\$46	\$44	\$42	\$41	\$38	\$34	\$32	\$29	\$25	\$21	\$20	\$19
	10yr ave.			\$47		\$41		\$36		\$31	\$30	\$29	\$28	\$27	\$24	\$22	\$17	\$15	\$14
	70% Current	\$72	\$67	\$60	\$56	\$53	\$51	\$49	\$48	\$46	\$44	\$41	\$37	\$35	\$31	\$26	\$23	\$22	\$20
	10yr ave.			\$50		\$45		\$38		\$34	\$32	\$31	\$30	\$29	\$26	\$24	\$19	\$16	\$15
	75% Current	\$77	\$72	\$64	\$60	\$56	\$54	\$53	\$51	\$49	\$47	\$44	\$40	\$37	\$33	\$28	\$25	\$23	\$22
	10yr ave.			\$54		\$48		\$41		\$36	\$35	\$34	\$33	\$31	\$28	\$25	\$20	\$17	\$16
	80% Current	\$82	\$76	\$68	\$64	\$60	\$58	\$56	\$54	\$52	\$50	\$46	\$42	\$40	\$35	\$30	\$26	\$25	\$23
	10yr ave.			\$58		\$51		\$44		\$39	\$37	\$36	\$35	\$33	\$29	\$27	\$21	\$19	\$17
	85% Current	\$87	\$81	\$73	\$68	\$64	\$62	\$60	\$58	\$55	\$53	\$49	\$45	\$42	\$37	\$32	\$28	\$26	\$25
	10yr ave.			\$61		\$54		\$47		\$41	\$39	\$38	\$37	\$35	\$31	\$29	\$23	\$20	\$18

The above shows estimated returns per head for skirted fleece wool. These figures do not take into account the value of skirtings and oddments and do not take into account discounts that may apply for faults under individual circumstances. These figures are based on a market index of 100% and should be used as a guide only. Returns over \$30 / head for fleece wool are highlighted.

Source: Australian Wool Exchange, Australian Wool Innovation, Sydney Futures Exchange, x-rates.com

Disclaimer: While all due care has been taken in the preparation of this document, no warranty is made as to its accuracy, reliability or completeness. To the extent permitted by law neither Jemalong or their sources including subsidiaries and staff, accept liability to any person for loss or damage arising from the use of this information.



Table 18: Returns pr head for skirted fleece wool.

Skirted FLC Weight		Micron																	
4 Kg		16	16.5	17	17.5	18	18.5	19	19.5	20	21	22	23	24	25	26	28	30	32
Yield (Sch Dry)	25% Current	\$21	\$19	\$17	\$16	\$15	\$15	\$14	\$14	\$13	\$13	\$12	\$11	\$10	\$9	\$8	\$7	\$6	\$6
	10yr ave.			\$14		\$13		\$11		\$10	\$9	\$9	\$9	\$8	\$7	\$7	\$5	\$5	\$4
	30% Current	\$25	\$23	\$21	\$19	\$18	\$17	\$17	\$16	\$16	\$15	\$14	\$13	\$12	\$11	\$9	\$8	\$7	\$7
	10yr ave.			\$17		\$15		\$13		\$12	\$11	\$11	\$10	\$10	\$9	\$8	\$6	\$6	\$5
	35% Current	\$29	\$27	\$24	\$22	\$21	\$20	\$20	\$19	\$18	\$18	\$16	\$15	\$14	\$12	\$11	\$9	\$9	\$8
	10yr ave.			\$20		\$18		\$15		\$13	\$13	\$13	\$12	\$12	\$10	\$9	\$7	\$6	\$6
	40% Current	\$33	\$31	\$27	\$25	\$24	\$23	\$23	\$22	\$21	\$20	\$19	\$17	\$16	\$14	\$12	\$10	\$10	\$9
	10yr ave.			\$23		\$20		\$18		\$15	\$15	\$14	\$14	\$13	\$12	\$11	\$9	\$7	\$7
	45% Current	\$37	\$34	\$31	\$29	\$27	\$26	\$25	\$24	\$23	\$23	\$21	\$19	\$18	\$16	\$14	\$12	\$11	\$10
	10yr ave.			\$26		\$23		\$20		\$17	\$17	\$16	\$16	\$15	\$13	\$12	\$10	\$8	\$8
	50% Current	\$41	\$38	\$34	\$32	\$30	\$29	\$28	\$27	\$26	\$25	\$23	\$21	\$20	\$18	\$15	\$13	\$12	\$12
	10yr ave.			\$29		\$25		\$22		\$19	\$18	\$18	\$17	\$17	\$15	\$13	\$11	\$9	\$8
	55% Current	\$45	\$42	\$38	\$35	\$33	\$32	\$31	\$30	\$29	\$28	\$26	\$23	\$22	\$19	\$17	\$14	\$14	\$13
	10yr ave.			\$32		\$28		\$24		\$21	\$20	\$20	\$19	\$18	\$16	\$15	\$12	\$10	\$9
	60% Current	\$49	\$46	\$41	\$38	\$36	\$35	\$34	\$33	\$31	\$30	\$28	\$25	\$24	\$21	\$18	\$16	\$15	\$14
	10yr ave.			\$35		\$31		\$26		\$23	\$22	\$22	\$21	\$20	\$18	\$16	\$13	\$11	\$10
	65% Current	\$53	\$50	\$44	\$41	\$39	\$38	\$37	\$35	\$34	\$33	\$30	\$28	\$26	\$23	\$20	\$17	\$16	\$15
	10yr ave.			\$37		\$33		\$28		\$25	\$24	\$23	\$23	\$21	\$19	\$18	\$14	\$12	\$11
	70% Current	\$57	\$53	\$48	\$45	\$42	\$41	\$39	\$38	\$37	\$35	\$33	\$30	\$28	\$25	\$21	\$18	\$17	\$16
	10yr ave.			\$40		\$36		\$31		\$27	\$26	\$25	\$24	\$23	\$21	\$19	\$15	\$13	\$12
	75% Current	\$62	\$57	\$51	\$48	\$45	\$44	\$42	\$41	\$39	\$38	\$35	\$32	\$30	\$26	\$23	\$20	\$19	\$17
	10yr ave.			\$43		\$38		\$33		\$29	\$28	\$27	\$26	\$25	\$22	\$20	\$16	\$14	\$13
	80% Current	\$66	\$61	\$55	\$51	\$48	\$46	\$45	\$43	\$42	\$40	\$37	\$34	\$32	\$28	\$24	\$21	\$20	\$19
	10yr ave.			\$46		\$41		\$35		\$31	\$30	\$29	\$28	\$26	\$24	\$22	\$17	\$15	\$13
	85% Current	\$70	\$65	\$58	\$54	\$51	\$49	\$48	\$46	\$44	\$43	\$39	\$36	\$34	\$30	\$26	\$22	\$21	\$20
	10yr ave.			\$49		\$43		\$37		\$33	\$31	\$30	\$30	\$28	\$25	\$23	\$18	\$16	\$14

The above shows estimated returns per head for skirted fleece wool. These figures do not take into account the value of skirtings and oddments and do not take into account discounts that may apply for faults under individual circumstances. These figures are based on a market index of 100% and should be used as a guide only. Returns over \$30 / head for fleece wool are highlighted.

Source: Australian Wool Exchange, Australian Wool Innovation, Sydney Futures Exchange, x-rates.com

Disclaimer: While all due care has been taken in the preparation of this document, no warranty is made as to its accuracy, reliability or completeness. To the extent permitted by law neither Jemalong or their sources including subsidiaries and staff, accept liability to any person for loss or damage arising from the use of this information.



Table 19: Returns pr head for skirted fleece wool.

Skirted FLC Weight		Micron																	
3 Kg		16	16.5	17	17.5	18	18.5	19	19.5	20	21	22	23	24	25	26	28	30	32
Yield (Sch Dry)	25% Current	\$15	\$14	\$13	\$12	\$11	\$11	\$11	\$10	\$10	\$9	\$9	\$8	\$7	\$7	\$6	\$5	\$5	\$4
	10yr ave.			\$11		\$10		\$8		\$7	\$7	\$7	\$7	\$6	\$6	\$5	\$4	\$3	\$3
	30% Current	\$18	\$17	\$15	\$14	\$14	\$13	\$13	\$12	\$12	\$11	\$10	\$10	\$9	\$8	\$7	\$6	\$6	\$5
	10yr ave.			\$13		\$11		\$10		\$9	\$8	\$8	\$8	\$7	\$7	\$6	\$5	\$4	\$4
	35% Current	\$22	\$20	\$18	\$17	\$16	\$15	\$15	\$14	\$14	\$13	\$12	\$11	\$10	\$9	\$8	\$7	\$7	\$6
	10yr ave.			\$15		\$13		\$12		\$10	\$10	\$9	\$9	\$9	\$8	\$7	\$6	\$5	\$4
	40% Current	\$25	\$23	\$21	\$19	\$18	\$17	\$17	\$16	\$16	\$15	\$14	\$13	\$12	\$11	\$9	\$8	\$7	\$7
	10yr ave.			\$17		\$15		\$13		\$12	\$11	\$11	\$10	\$10	\$9	\$8	\$6	\$6	\$5
	45% Current	\$28	\$26	\$23	\$21	\$20	\$20	\$19	\$18	\$18	\$17	\$16	\$14	\$13	\$12	\$10	\$9	\$8	\$8
	10yr ave.			\$19		\$17		\$15		\$13	\$12	\$12	\$12	\$11	\$10	\$9	\$7	\$6	\$6
	50% Current	\$31	\$29	\$26	\$24	\$23	\$22	\$21	\$20	\$20	\$19	\$17	\$16	\$15	\$13	\$11	\$10	\$9	\$9
	10yr ave.			\$22		\$19		\$16		\$14	\$14	\$13	\$13	\$12	\$11	\$10	\$8	\$7	\$6
	55% Current	\$34	\$32	\$28	\$26	\$25	\$24	\$23	\$22	\$22	\$21	\$19	\$17	\$16	\$15	\$12	\$11	\$10	\$10
	10yr ave.			\$24		\$21		\$18		\$16	\$15	\$15	\$14	\$14	\$12	\$11	\$9	\$8	\$7
	60% Current	\$37	\$34	\$31	\$29	\$27	\$26	\$25	\$24	\$23	\$23	\$21	\$19	\$18	\$16	\$14	\$12	\$11	\$10
	10yr ave.			\$26		\$23		\$20		\$17	\$17	\$16	\$16	\$15	\$13	\$12	\$10	\$8	\$8
	65% Current	\$40	\$37	\$33	\$31	\$29	\$28	\$27	\$27	\$25	\$24	\$23	\$21	\$19	\$17	\$15	\$13	\$12	\$11
	10yr ave.			\$28		\$25		\$21		\$19	\$18	\$17	\$17	\$16	\$14	\$13	\$10	\$9	\$8
	70% Current	\$43	\$40	\$36	\$33	\$32	\$30	\$30	\$29	\$27	\$26	\$24	\$22	\$21	\$19	\$16	\$14	\$13	\$12
	10yr ave.			\$30		\$27		\$23		\$20	\$19	\$19	\$18	\$17	\$15	\$14	\$11	\$10	\$9
	75% Current	\$46	\$43	\$38	\$36	\$34	\$33	\$32	\$31	\$29	\$28	\$26	\$24	\$22	\$20	\$17	\$15	\$14	\$13
	10yr ave.			\$32		\$29		\$25		\$22	\$21	\$20	\$20	\$19	\$17	\$15	\$12	\$10	\$9
	80% Current	\$49	\$46	\$41	\$38	\$36	\$35	\$34	\$33	\$31	\$30	\$28	\$25	\$24	\$21	\$18	\$16	\$15	\$14
	10yr ave.			\$35		\$31		\$26		\$23	\$22	\$22	\$21	\$20	\$18	\$16	\$13	\$11	\$10
	85% Current	\$52	\$49	\$44	\$41	\$38	\$37	\$36	\$35	\$33	\$32	\$30	\$27	\$25	\$22	\$19	\$17	\$16	\$15
	10yr ave.			\$37		\$32		\$28		\$25	\$24	\$23	\$22	\$21	\$19	\$17	\$14	\$12	\$11

The above shows estimated returns per head for skirted fleece wool. These figures do not take into account the value of skirtings and oddments and do not take into account discounts that may apply for faults under individual circumstances. These figures are based on a market index of 100% and should be used as a guide only. Returns over \$30 / head for fleece wool are highlighted.

Source: Australian Wool Exchange, Australian Wool Innovation, Sydney Futures Exchange, x-rates.com

Disclaimer: While all due care has been taken in the preparation of this document, no warranty is made as to its accuracy, reliability or completeness. To the extent permitted by law neither Jemalong or their sources including subsidiaries and staff, accept liability to any person for loss or damage arising from the use of this information.



Table 20: Returns pr head for skirted fleece wool.

Skirted FLC Weight		Micron																	
2 Kg		16	16.5	17	17.5	18	18.5	19	19.5	20	21	22	23	24	25	26	28	30	32
Yield (Sch Dry)	25% Current	\$10	\$10	\$9	\$8	\$8	\$7	\$7	\$7	\$7	\$6	\$6	\$5	\$5	\$4	\$4	\$3	\$3	\$3
	10yr ave.			\$7		\$6		\$5		\$5	\$5	\$4	\$4	\$4	\$4	\$3	\$3	\$2	\$2
	30% Current	\$12	\$11	\$10	\$10	\$9	\$9	\$8	\$8	\$8	\$8	\$7	\$6	\$6	\$5	\$5	\$4	\$4	\$3
	10yr ave.			\$9		\$8		\$7		\$6	\$6	\$5	\$5	\$5	\$4	\$4	\$3	\$3	\$3
	35% Current	\$14	\$13	\$12	\$11	\$11	\$10	\$10	\$10	\$9	\$9	\$8	\$7	\$7	\$6	\$5	\$5	\$4	\$4
	10yr ave.			\$10		\$9		\$8		\$7	\$6	\$6	\$6	\$6	\$5	\$5	\$4	\$3	\$3
	40% Current	\$16	\$15	\$14	\$13	\$12	\$12	\$11	\$11	\$10	\$10	\$9	\$8	\$8	\$7	\$6	\$5	\$5	\$5
	10yr ave.			\$12		\$10		\$9		\$8	\$7	\$7	\$7	\$7	\$6	\$5	\$4	\$4	\$3
	45% Current	\$18	\$17	\$15	\$14	\$14	\$13	\$13	\$12	\$12	\$11	\$10	\$10	\$9	\$8	\$7	\$6	\$6	\$5
	10yr ave.			\$13		\$11		\$10		\$9	\$8	\$8	\$8	\$7	\$7	\$6	\$5	\$4	\$4
	50% Current	\$21	\$19	\$17	\$16	\$15	\$15	\$14	\$14	\$13	\$13	\$12	\$11	\$10	\$9	\$8	\$7	\$6	\$6
	10yr ave.			\$14		\$13		\$11		\$10	\$9	\$9	\$9	\$8	\$7	\$7	\$5	\$5	\$4
	55% Current	\$23	\$21	\$19	\$17	\$17	\$16	\$15	\$15	\$14	\$14	\$13	\$12	\$11	\$10	\$8	\$7	\$7	\$6
	10yr ave.			\$16		\$14		\$12		\$11	\$10	\$10	\$10	\$9	\$8	\$7	\$6	\$5	\$5
	60% Current	\$25	\$23	\$21	\$19	\$18	\$17	\$17	\$16	\$16	\$15	\$14	\$13	\$12	\$11	\$9	\$8	\$7	\$7
	10yr ave.			\$17		\$15		\$13		\$12	\$11	\$11	\$10	\$10	\$9	\$8	\$6	\$6	\$5
	65% Current	\$27	\$25	\$22	\$21	\$20	\$19	\$18	\$18	\$17	\$16	\$15	\$14	\$13	\$11	\$10	\$9	\$8	\$8
	10yr ave.			\$19		\$17		\$14		\$13	\$12	\$12	\$11	\$11	\$10	\$9	\$7	\$6	\$5
	70% Current	\$29	\$27	\$24	\$22	\$21	\$20	\$20	\$19	\$18	\$18	\$16	\$15	\$14	\$12	\$11	\$9	\$9	\$8
	10yr ave.			\$20		\$18		\$15		\$13	\$13	\$13	\$12	\$12	\$10	\$9	\$7	\$6	\$6
	75% Current	\$31	\$29	\$26	\$24	\$23	\$22	\$21	\$20	\$20	\$19	\$17	\$16	\$15	\$13	\$11	\$10	\$9	\$9
	10yr ave.			\$22		\$19		\$16		\$14	\$14	\$13	\$13	\$12	\$11	\$10	\$8	\$7	\$6
	80% Current	\$33	\$31	\$27	\$25	\$24	\$23	\$23	\$22	\$21	\$20	\$19	\$17	\$16	\$14	\$12	\$10	\$10	\$9
	10yr ave.			\$23		\$20		\$18		\$15	\$15	\$14	\$14	\$13	\$12	\$11	\$9	\$7	\$7
	85% Current	\$35	\$32	\$29	\$27	\$26	\$25	\$24	\$23	\$22	\$21	\$20	\$18	\$17	\$15	\$13	\$11	\$11	\$10
	10yr ave.			\$24		\$22		\$19		\$16	\$16	\$15	\$15	\$14	\$13	\$11	\$9	\$8	\$7

The above shows estimated returns per head for skirted fleece wool. These figures do not take into account the value of skirtings and oddments and do not take into account discounts that may apply for faults under individual circumstances. These figures are based on a market index of 100% and should be used as a guide only. Returns over \$30 / head for fleece wool are highlighted.

Source: Australian Wool Exchange, Australian Wool Innovation, Sydney Futures Exchange, x-rates.com

Disclaimer: While all due care has been taken in the preparation of this document, no warranty is made as to its accuracy, reliability or completeness. To the extent permitted by law neither Jemalong or their sources including subsidiaries and staff, accept liability to any person for loss or damage arising from the use of this information.