



JEMALONG WOOL BULLETIN

(week ending 14/12/2011)

Table 1: Northern Region Micron Price Guides

CURRENT MARKET				12 MONTH COMPARISONS								3 YEAR COMPARISONS						10 YEAR COMPARISONS					
Mic.	14/12/2011	8/12/2011		14/12/2010	Now		Now	Now					Now										
Price	Current	Weekly		This time	compared		compared	compared					compared										
Guides	Price	Change		Last Year	to Last Year		to Low	to High		Low	High	Average	to 3yr ave	Percentile			10 year	compared					
																	Average	to 10yr ave					
NRI	1217	+13 1.1%		1053	+164 16%		1043	+174 17%		1491	-274 -18%		751 1491	1034	+183 18%	71%	658 1491	923	+294 32%		92%		
16*	1950	0		2020	-70 -3%		1950	0 0%		2800	-850 -30%		1385 2800	1895	+55 3%	63%							
16.5*	1800	-20 -1.1%		1895	-95 -5%		1800	0 0%		2680	-880 -33%		1251 2680	1745	+55 3%	62%							
17*	1655	+35 2.1%		1785	-130 -7%		1620	+35 2%		2530	-875 -35%		1168 2530	1608	+47 3%	62%	1100 2530	1445	+210 15%		83%		
17.5*	1575	+45 2.9%		1670	-95 -6%		1530	+45 3%		2360	-785 -33%		1083 2360	1507	+68 5%	65%							
18	1509	+40 2.7%		1590	-81 -5%		1469	+40 3%		2193	-684 -31%		1035 2193	1417	+92 6%	65%	916 2193	1276	+233 18%		81%		
18.5	1467	+36 2.5%		1454	+13 1%		1431	+36 3%		1963	-496 -25%		971 1963	1326	+141 11%	67%							
19	1426	+26 1.8%		1272	+154 12%		1257	+169 13%		1776	-350 -20%		894 1776	1225	+201 16%	71%	804 1776	1105	+321 29%		92%		
19.5	1402	+28 2.0%		1105	+297 27%		1094	+308 28%		1670	-268 -16%		816 1670	1128	+274 24%	76%							
20	1356	+28 2.1%		1008	+348 35%		986	+370 38%		1588	-232 -15%		745 1588	1052	+304 29%	80%	700 1588	974	+382 39%		94%		
21	1320	+21 1.6%		980	+340 35%		956	+364 38%		1522	-202 -13%		721 1522	1018	+302 30%	83%	669 1522	934	+386 41%		95%		
22	1243	+22 1.8%		939	+304 32%		913	+330 36%		1461	-218 -15%		702 1461	986	+257 26%	82%	659 1461	906	+337 37%		91%		
23	1160	+22 1.9%		893	+267 30%		889	+271 30%		1324	-164 -12%		690 1324	942	+218 23%	82%	652 1340	879	+281 32%		89%		
24	1078	+35 3.2%		828	+250 30%		820	+258 31%		1170	-92 -8%		665 1170	868	+210 24%	92%	638 1299	831	+247 30%		91%		
25	900	+16 1.8%		750	+150 20%		738	+162 22%		1048	-148 -14%		566 1048	753	+147 20%	82%	567 1198	741	+159 21%		78%		
26	754	-2 -0.3%		650	+104 16%		634	+120 19%		928	-174 -19%		532 928	676	+78 12%	71%	532 1088	677	+77 11%		73%		
28	613	+3 0.5%		483	+130 27%		483	+130 27%		734	-121 -16%		434 734	529	+84 16%	72%	424 889	533	+80 15%		75%		
30	555	-3 -0.5%		445	+110 25%		434	+121 28%		670	-115 -17%		378 670	472	+83 18%	72%	344 729	464	+91 20%		78%		
32	518	-15 -2.9%		414	+104 25%		405	+113 28%		638	-120 -19%		326 638	421	+97 23%	73%	297 669	419	+99 24%		78%		
MC	673	-5 -0.7%		658	+15 2%		632	+41 6%		831	-158 -19%		477 831	634	+39 6%	63%	380 831	531	+142 27%		89%		

Note:

* Due to the irregular market quoting for some fine wool categories, figures shown relating to micron categories below 18 micron are an estimate based on the AWEX Premium & Discounts Report & other available information.

* For any category, where there is insufficient quantity offered to enable AWEX to quote, a quote will be provided based on the best available information.

* 10 Year data is not available for some micron categories, which may result in blank spaces in the table above.

Definitions:

* A Percentile, is a value on a scale of one hundred that indicates the percent of a distribution that is equal to or below it. In general a percentile between 25% and 75% is considered normal, a percentile below 25% is considered below normal and a percentile above 75% is considered above normal.

Three and ten year percentiles shown in the table above, detail the period of time during the past 3 & 10 years that the market has traded either at or below its current price.

The higher the percentile, the stronger the market.

Source: Australian Wool Exchange, Australian Wool Innovation, Sydney Futures Exchange, x-rates.com

Disclaimer: While all due care has been taken in the preparation of this document, no warranty is made as to its accuracy, reliability or completeness. To the extent permitted by law neither Jemalong or their sources including subsidiaries and staff, accept liability to any person for loss or damage arising from the use of this information.



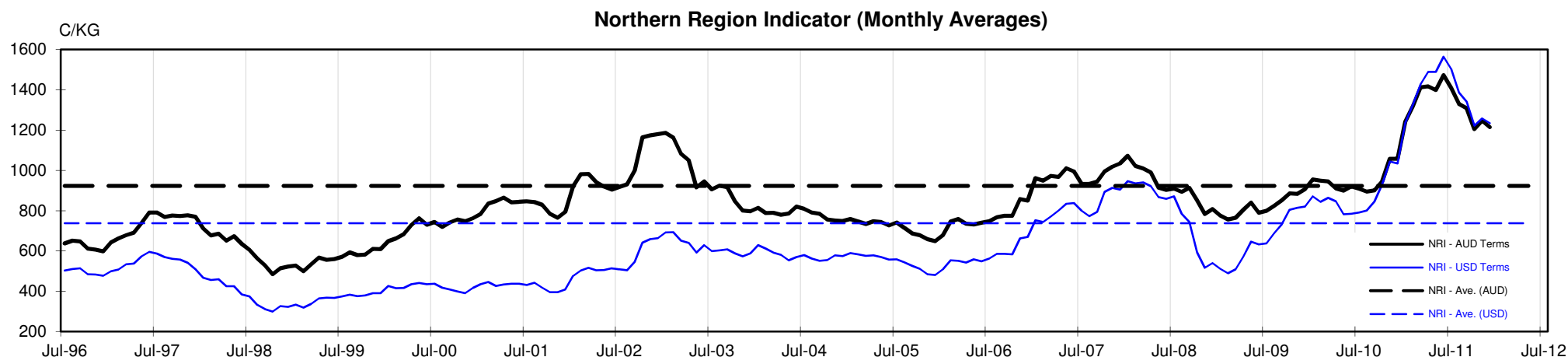
MARKET COMMENTARY

One Australian Dollar = \$ 1.00 US, as of 14/12/2011

NORTHERN REGION –Sale Week 24/11 (48,496 bales offered nationally)

Tuesdays One of the smallest Northern Region room 1 offerings on record, had the market well supported with 19 micron and broader fully firm. The finer range gained ground with 18.5 microns 10-15 cents dearer and 17.5 to 18 microns 20-30 cents dearer, with the lower style & strength types most affected (closing the differential gap). Merino skirtings on the other hand saw 18 to 19 micron, drift 10 cents lower, for the lower Vm types, while the 17 micron area closed 20 cents lower an the burrier types generally remained unchanged. Locks were 5-10 cents dearer while crutchings and stains have remained unchanged. Crossbreds eased 5-10 cents for most microns, with exception of 18 microns which remained firm. 13.9% PI

Wednesdays market took a Christmas bonus with increases of 20-30 cents across most microns. After a solid start momentum increased and buyers pushed the fine end of 17 to 18 microns and the broader end of <21 microns a further 20 cents higher, while 18.5 to 20.5 closed 30 cents dearer Burrier skirtings with 6% Vm and greater, attracted strong competition across all microns lifting 10-20 cents, while the lower Vm lots were irregular for 18 microns and finer, however 19 micron and broader remained firm. Locks were irregular and were generally 10 cents cheaper, crutchings remained unchanged on a limited offering, while stains eased by 20. Crossbreds opened up to 10 cents dearer, however eased slightly through the day to close fully firm tending in sellers favour for 27-30 microns . 9.9% PI





JEMALONG WOOL BULLETIN

(week ending 14/12/2011)

Table 4: 19 micron SFE

Tuesday, 13 December 2011

Delivery Mth	Dec-11	Feb-12	Apr-12	Jun-12	Aug-12	Oct-12	Dec-12	Feb-13	Mar-13
19 Micron SFE	1480	1450	1420	1390	1380	1380	1340	1340	1340
Average	1354	1374	1386	1405	1393	1393	1393	1355	1333
Maximum	1677	1652	1622	1612	1525	1525	1525	1525	1375
Minimum	1034	1053	1106	1210	1285	1285	1285	1265	1265

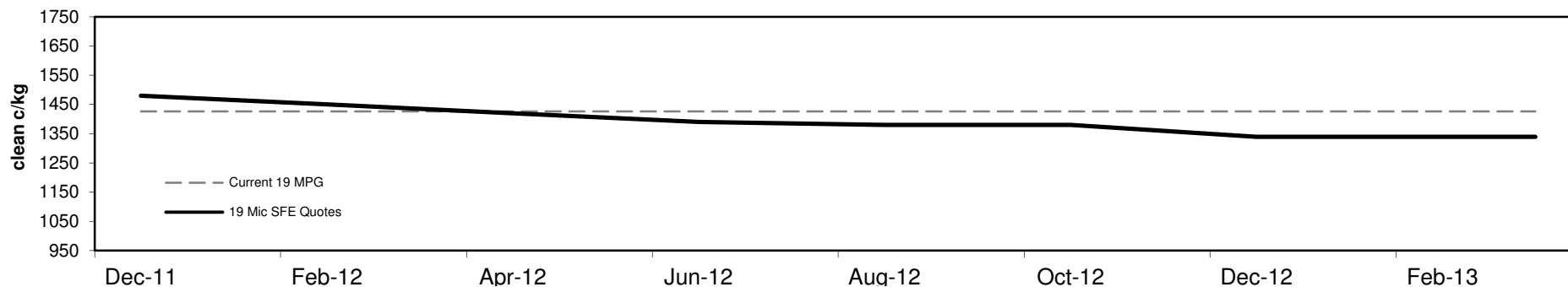
Table 5: 19 micron SFE, as a percentile of the 19 micron MPG

3 Year Percentile	74%	73%	71%	67%	67%	67%	67%	67%	67%
10 Year Percentile	93%	92%	92%	90%	89%	89%	87%	87%	87%

Table 6: 19 micron SFE, compared to MPG

SFE - MPG	+54	4%	+24	2%	-6	0%	-36	-3%	-46	-3%	-46	-3%	-86	-6%	-86	-6%	-86	-6%
SFE - MPG, 1 year Ave.	-107	-7%	-137	-9%	-167	-11%	-197	-12%	-207	-13%	-207	-13%	-247	-16%	-247	-16%	-247	-16%
SFE - MPG, 3 year Ave.	+255	21%	+225	18%	+195	16%	+165	13%	+155	13%	+155	13%	+115	9%	+115	9%	+115	9%
SFE - MPG, 10 year Ave.	+375	34%	+345	31%	+315	29%	+285	26%	+275	25%	+275	25%	+235	21%	+235	21%	+235	21%

19 MICRON SFE, QUOTES



19 Micron SFE, Front month movement

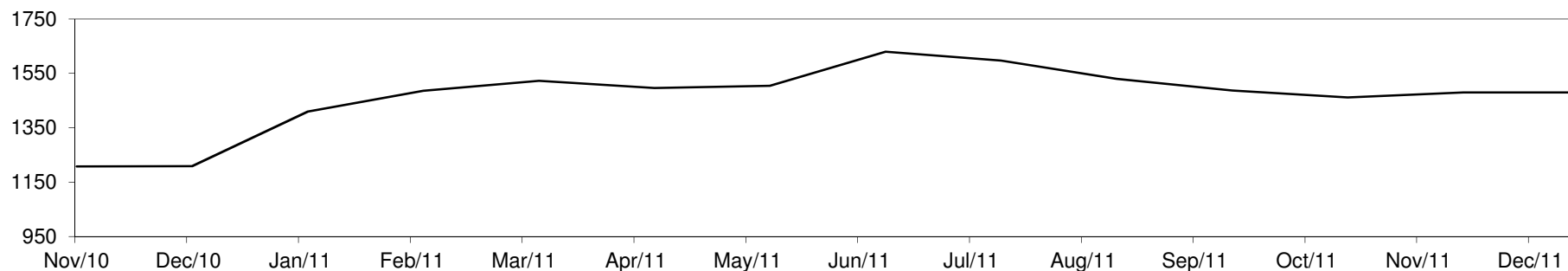




Table 7: 21 micron SFE

Tuesday, 13 December 2011

Delivery Mth	Dec-11	Feb-12	Apr-12	Jun-12	Aug-12	Oct-12	Dec-12	Feb-13	Mar-13
21 Micron SFE	1340	1327	1288	1243	1211	1062	1118	1083	1062
Average	1126	1136	1151	1148	1154	1143	1143	1144	1114
Maximum	1411	1393	1349	1337	1321	1283	1283	1222	1186
Minimum	880	880	934	990	1046	1013	1013	1080	1048

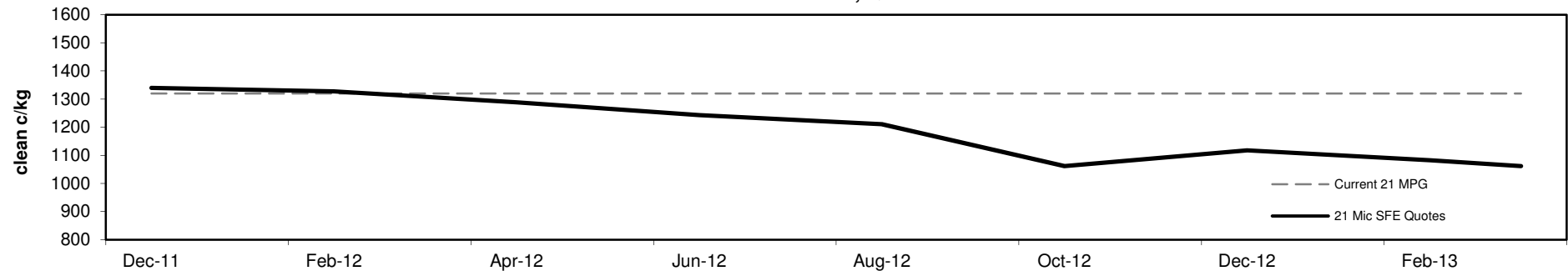
Table 8: 21 micron SFE, as a percentile of the 21 micron MPG

3 Year Percentile	89%	86%	78%	74%	73%	67%	68%	67%	67%
10 Year Percentile	97%	96%	93%	89%	87%	83%	85%	84%	83%

Table 9: 21 micron SFE, compared to MPG

SFE - MPG	+20	2%	+7	1%	-32	-2%	-77	-6%	-109	-8%	-258	-20%	-202	-15%	-237	-18%	-258	-20%
SFE - MPG, 1 year Ave.	+33	3%	+20	2%	-19	-1%	-64	-5%	-96	-7%	-245	-19%	-189	-14%	-224	-17%	-245	-19%
SFE - MPG, 3 year Ave.	+322	32%	+309	30%	+270	27%	+225	22%	+193	19%	+44	4%	+100	10%	+65	6%	+44	4%
SFE - MPG, 10 year Ave.	+406	43%	+393	42%	+354	38%	+309	33%	+277	30%	+128	14%	+184	20%	+149	16%	+128	14%

21 MICRON SFE, QUOTES



21 Micron SFE, Front month movement

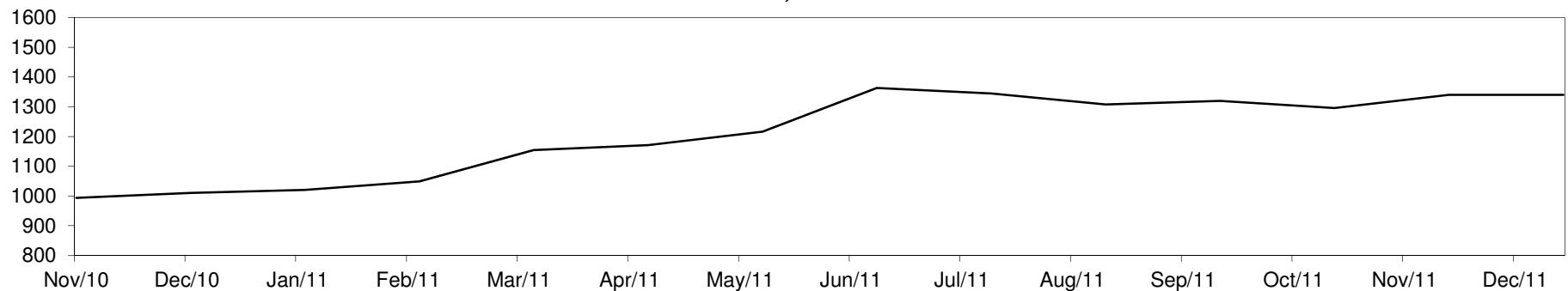




Table 10: 23 micron SFE

Tuesday, 13 December 2011

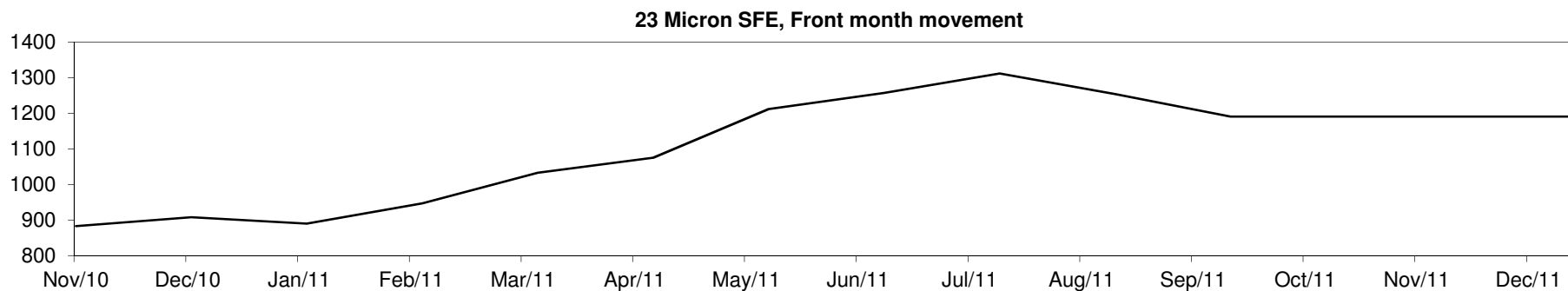
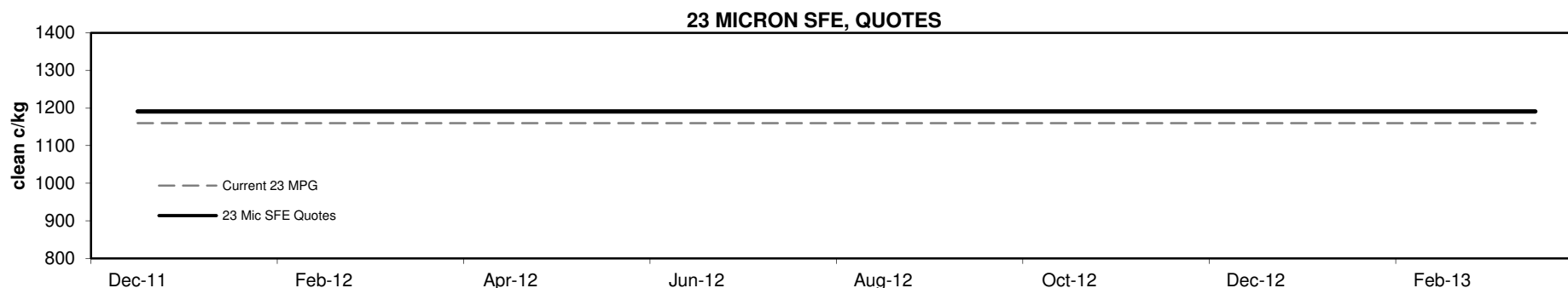
Delivery Mth	Dec-11	Feb-12	Apr-12	Jun-12	Aug-12	Oct-12	Dec-12	Feb-13	Mar-13
23 Micron SFE	1191	1191	1191	1191	1191	1191	1191	1191	1191
Average	1046	1069	1100	1135	1182	1220	1220	1222	1191
Maximum	1312	1312	1312	1312	1312	1312	1312	1312	1191
Minimum	883	883	883	890	1033	1191	1191	1191	1191

Table 11: 23 micron SFE, as a percentile of the 23 micron MPG

3 Year Percentile	87%	87%	87%	87%	87%	87%	87%	87%	87%
10 Year Percentile	91%	91%	91%	91%	91%	91%	91%	91%	91%

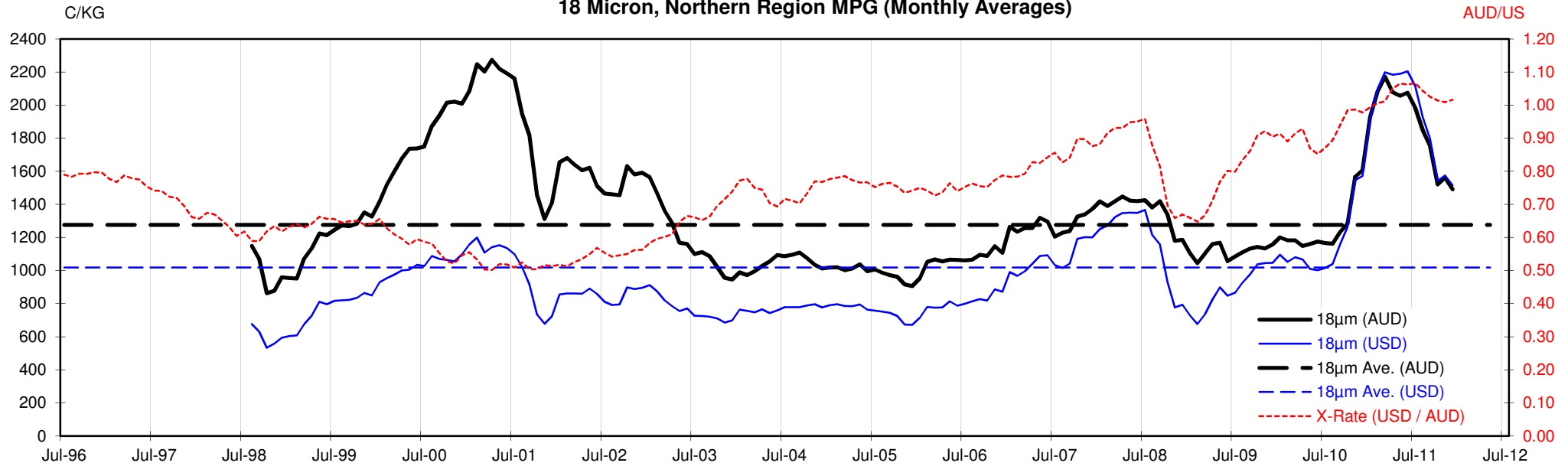
Table 12: 23 micron SFE, compared to MPG

SFE - MPG	+31	3%	+31	3%	+31	3%	+31	3%	+31	3%	+31	3%	+31	3%	+31	3%	+31	3%
SFE - MPG, 1 year Ave.	+26	2%	+26	2%	+26	2%	+26	2%	+26	2%	+26	2%	+26	2%	+26	2%	+26	2%
SFE - MPG, 3 year Ave.	+249	26%	+249	26%	+249	26%	+249	26%	+249	26%	+249	26%	+249	26%	+249	26%	+249	26%
SFE - MPG, 10 year Ave.	+312	36%	+312	36%	+312	36%	+312	36%	+312	36%	+312	36%	+312	36%	+312	36%	+312	36%

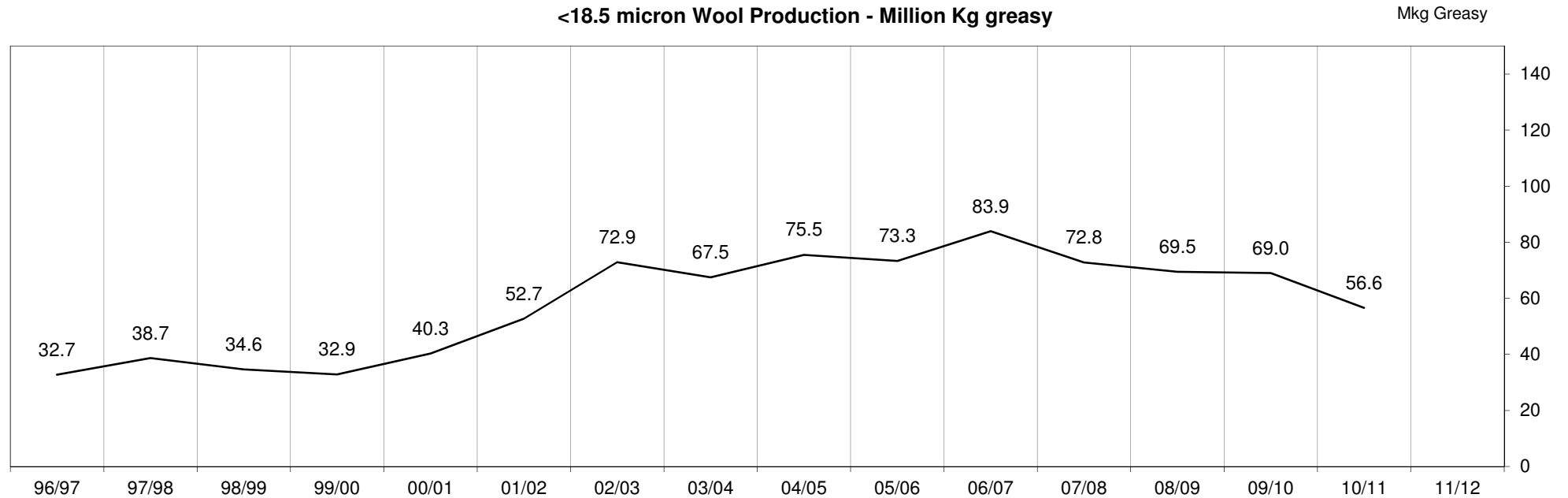


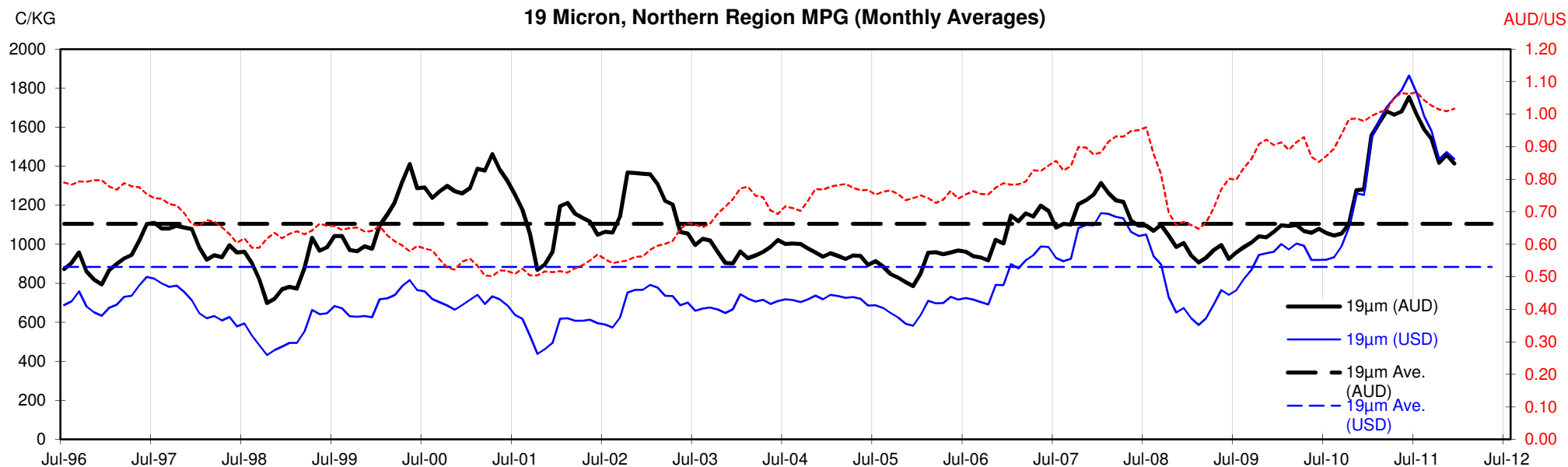


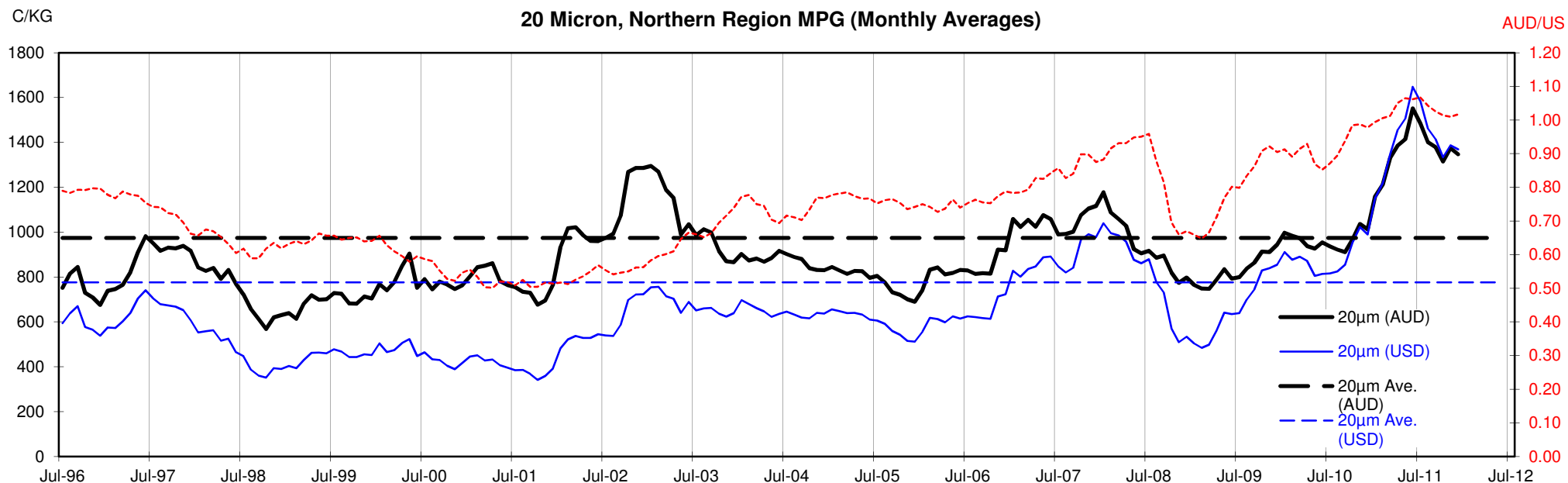
18 Micron, Northern Region MPG (Monthly Averages)

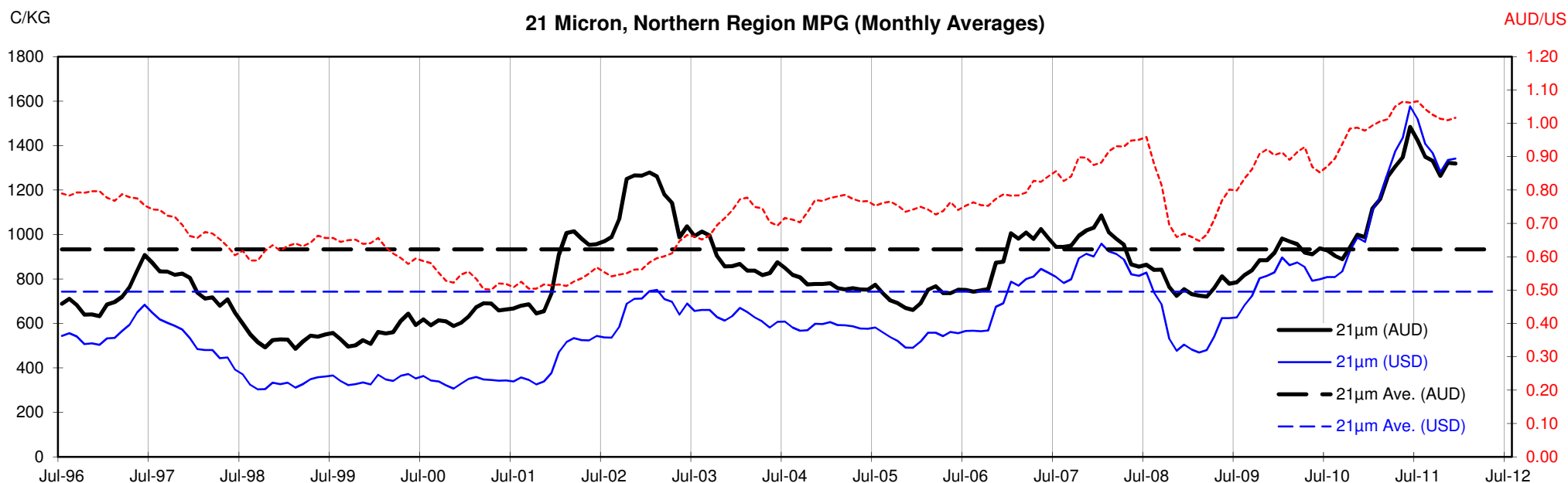


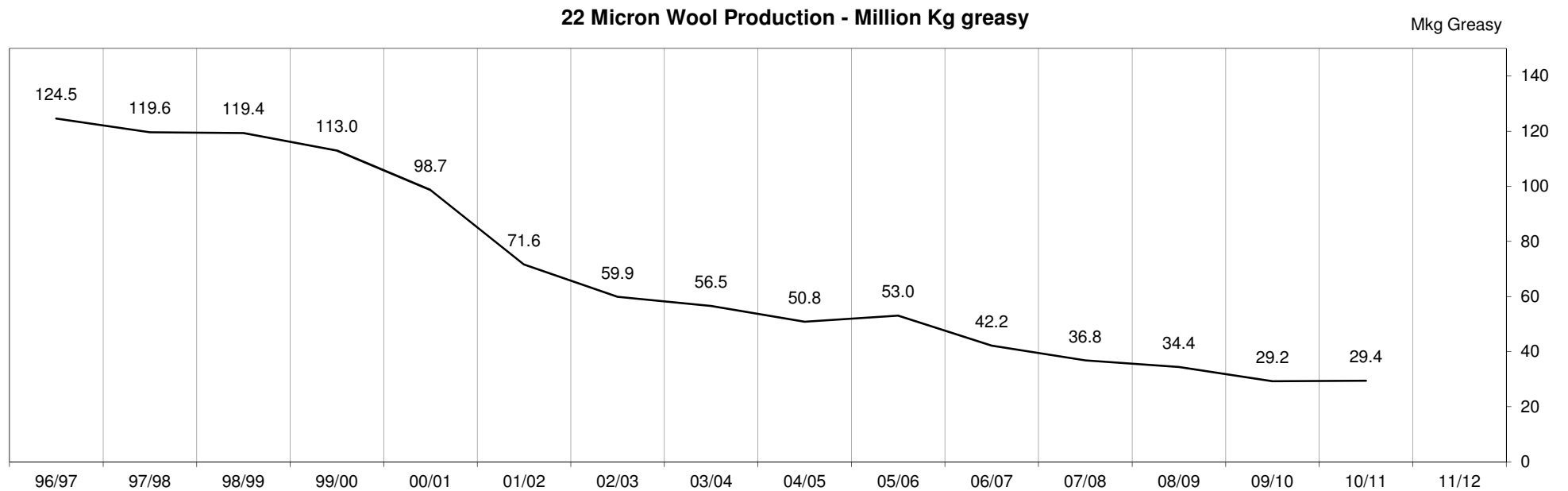
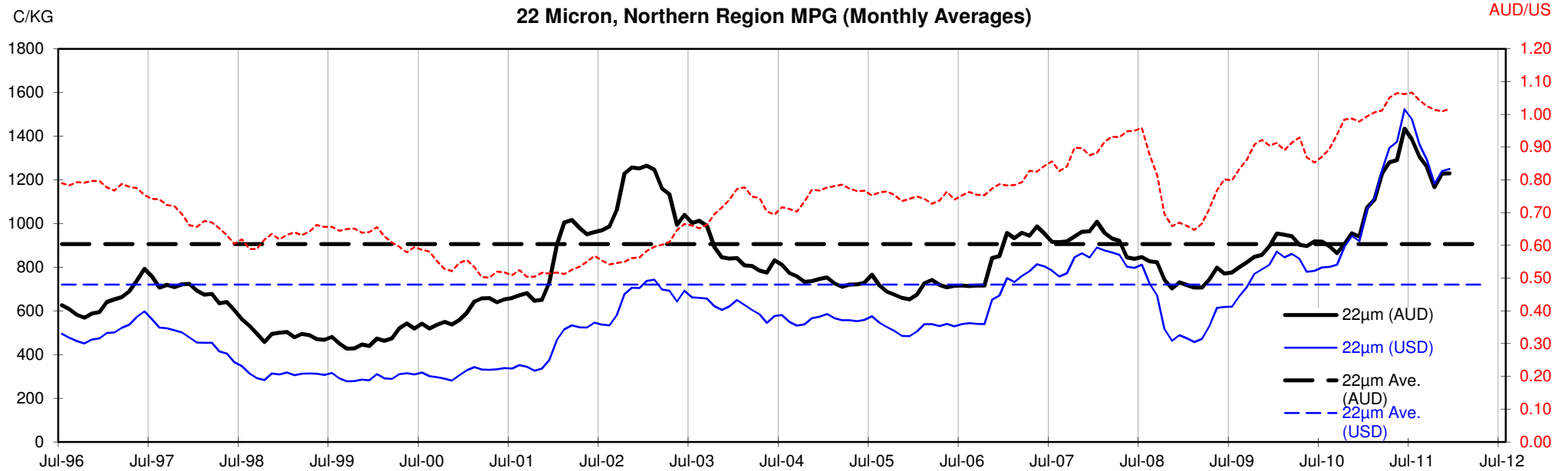
<18.5 micron Wool Production - Million Kg greasy

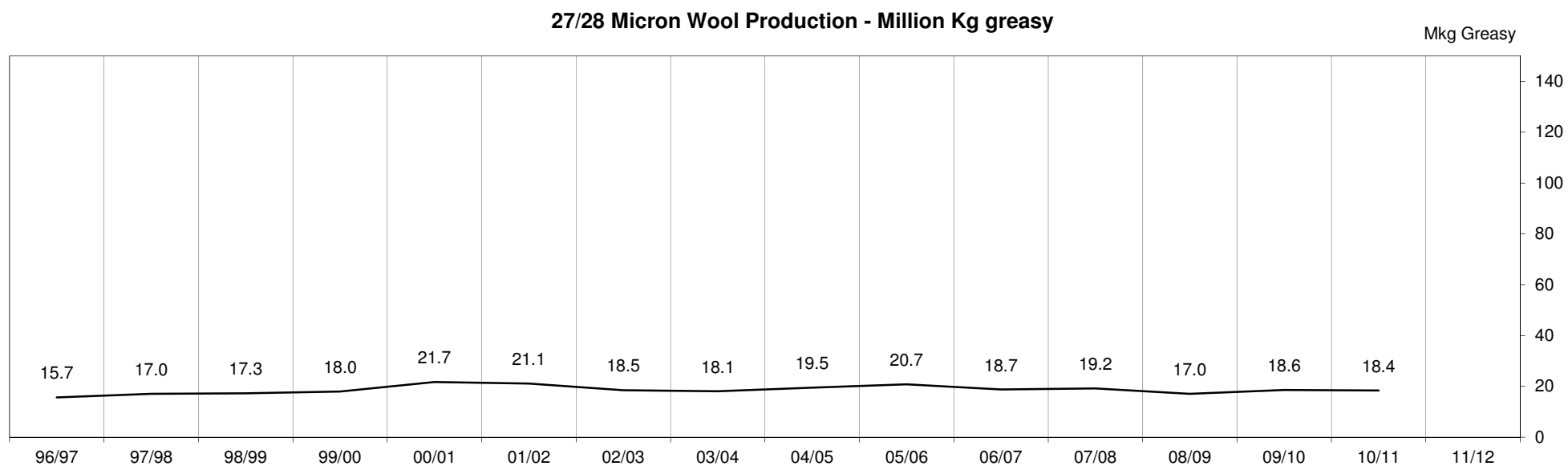
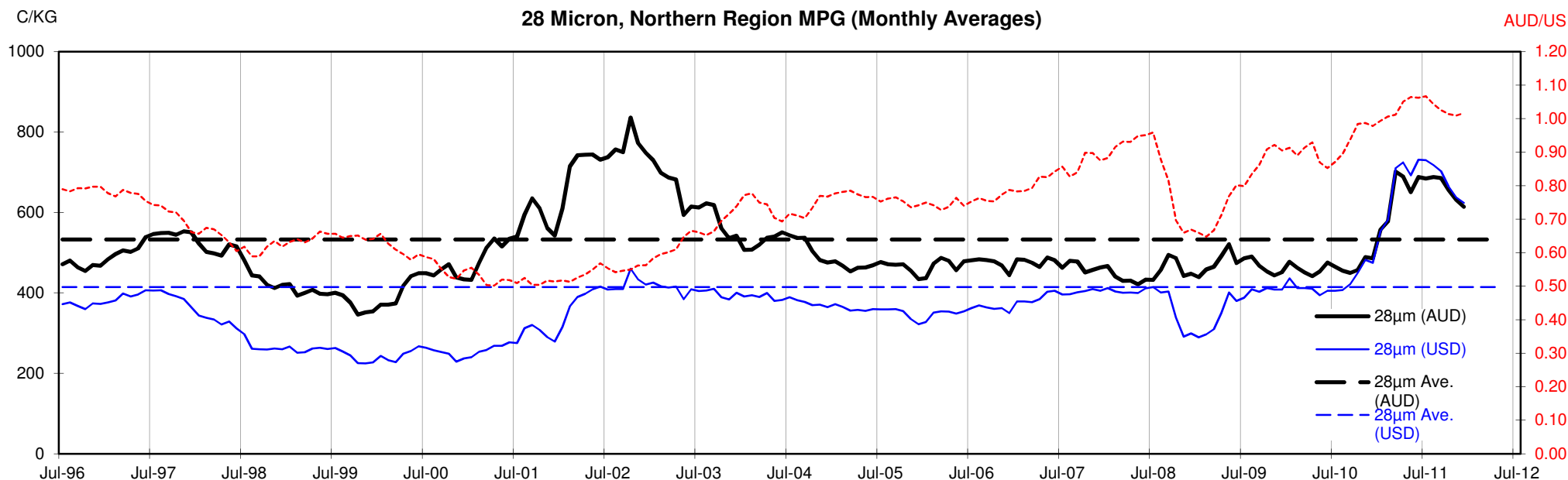












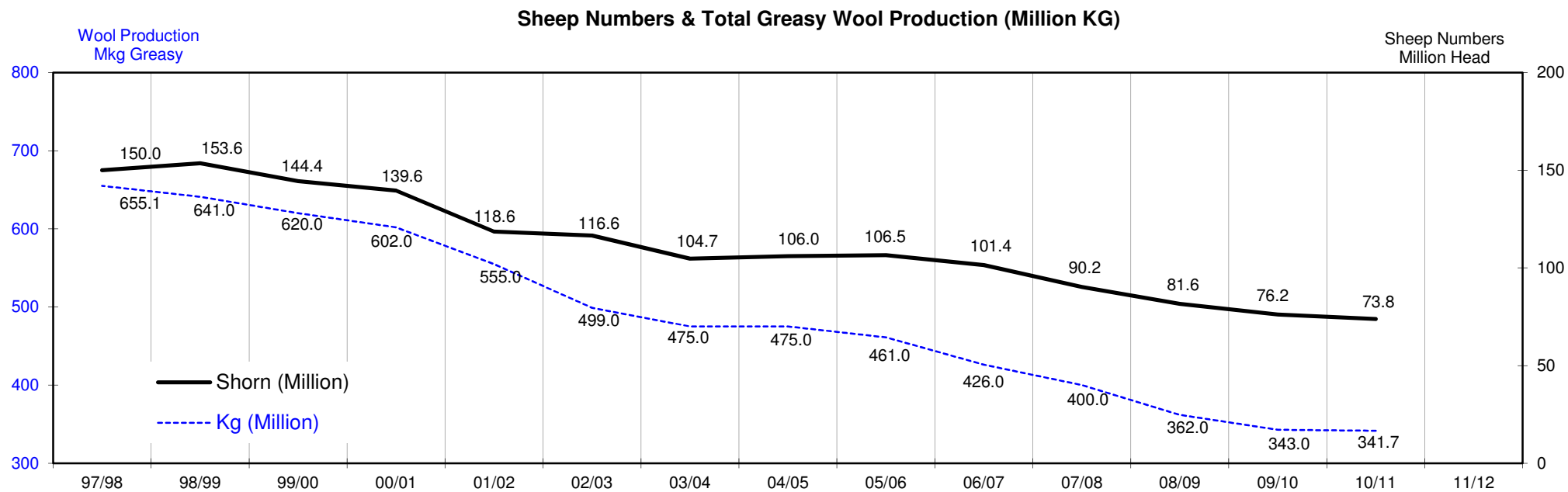
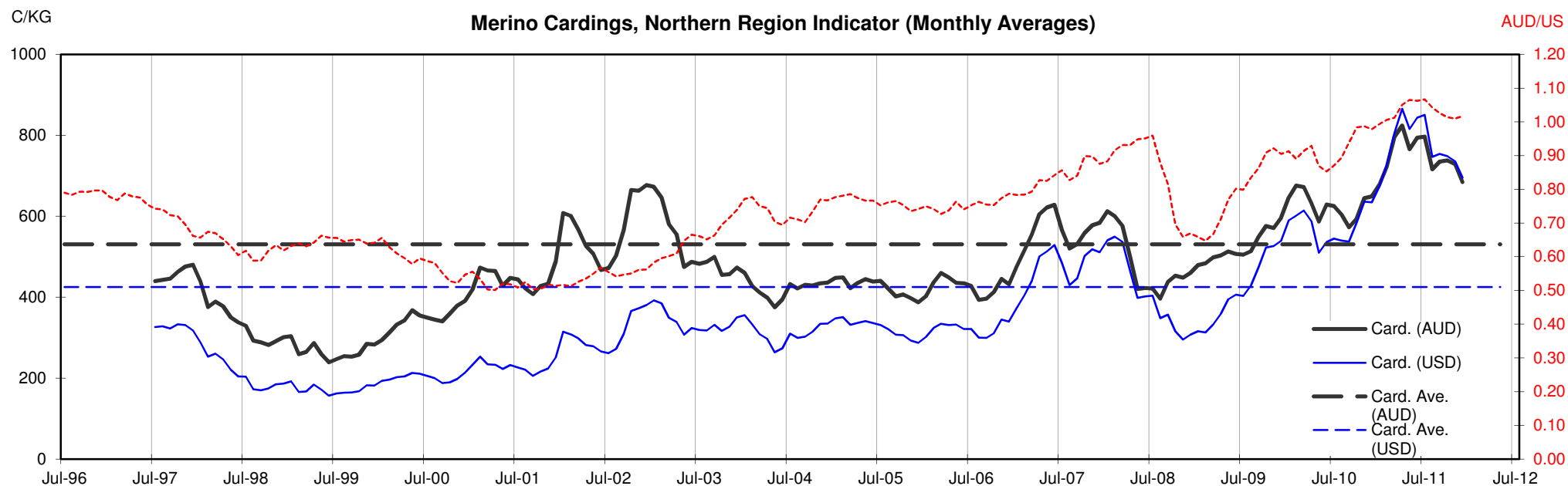




Table 13: Returns pr head for skirted fleece wool.

Skirted FLC Weight		Micron																	
9 Kg		16	16.5	17	17.5	18	18.5	19	19.5	20	21	22	23	24	25	26	28	30	32
Yield (Sch Dry)	25% Current	\$44	\$41	\$37	\$35	\$34	\$33	\$32	\$32	\$31	\$30	\$28	\$26	\$24	\$20	\$17	\$14	\$12	\$12
	10yr ave.			\$33		\$29		\$25		\$22	\$21	\$20	\$20	\$19	\$17	\$15	\$12	\$10	\$9
	30% Current	\$53	\$49	\$45	\$43	\$41	\$40	\$39	\$38	\$37	\$36	\$34	\$31	\$29	\$24	\$20	\$17	\$15	\$14
	10yr ave.			\$39		\$34		\$30		\$26	\$25	\$24	\$24	\$22	\$20	\$18	\$14	\$13	\$11
	35% Current	\$61	\$57	\$52	\$50	\$48	\$46	\$45	\$44	\$43	\$42	\$39	\$37	\$34	\$28	\$24	\$19	\$17	\$16
	10yr ave.			\$46		\$40		\$35		\$31	\$29	\$29	\$28	\$26	\$23	\$21	\$17	\$15	\$13
	40% Current	\$70	\$65	\$60	\$57	\$54	\$53	\$51	\$50	\$49	\$48	\$45	\$42	\$39	\$32	\$27	\$22	\$20	\$19
	10yr ave.			\$52		\$46		\$40		\$35	\$34	\$33	\$32	\$30	\$27	\$24	\$19	\$17	\$15
	45% Current	\$79	\$73	\$67	\$64	\$61	\$59	\$58	\$57	\$55	\$53	\$50	\$47	\$44	\$36	\$31	\$25	\$22	\$21
	10yr ave.			\$59		\$52		\$45		\$39	\$38	\$37	\$36	\$34	\$30	\$27	\$22	\$19	\$17
	50% Current	\$88	\$81	\$74	\$71	\$68	\$66	\$64	\$63	\$61	\$59	\$56	\$52	\$49	\$41	\$34	\$28	\$25	\$23
	10yr ave.			\$65		\$57		\$50		\$44	\$42	\$41	\$40	\$37	\$33	\$30	\$24	\$21	\$19
	55% Current	\$97	\$89	\$82	\$78	\$75	\$73	\$71	\$69	\$67	\$65	\$62	\$57	\$53	\$45	\$37	\$30	\$27	\$26
	10yr ave.			\$72		\$63		\$55		\$48	\$46	\$45	\$44	\$41	\$37	\$34	\$26	\$23	\$21
	60% Current	\$105	\$97	\$89	\$85	\$81	\$79	\$77	\$76	\$73	\$71	\$67	\$63	\$58	\$49	\$41	\$33	\$30	\$28
	10yr ave.			\$78		\$69		\$60		\$53	\$50	\$49	\$47	\$45	\$40	\$37	\$29	\$25	\$23
	65% Current	\$114	\$105	\$97	\$92	\$88	\$86	\$83	\$82	\$79	\$77	\$73	\$68	\$63	\$53	\$44	\$36	\$32	\$30
	10yr ave.			\$85		\$75		\$65		\$57	\$55	\$53	\$51	\$49	\$43	\$40	\$31	\$27	\$25
	70% Current	\$123	\$113	\$104	\$99	\$95	\$92	\$90	\$88	\$85	\$83	\$78	\$73	\$68	\$57	\$48	\$39	\$35	\$33
	10yr ave.			\$91		\$80		\$70		\$61	\$59	\$57	\$55	\$52	\$47	\$43	\$34	\$29	\$26
	75% Current	\$132	\$122	\$112	\$106	\$102	\$99	\$96	\$95	\$92	\$89	\$84	\$78	\$73	\$61	\$51	\$41	\$37	\$35
	10yr ave.			\$98		\$86		\$75		\$66	\$63	\$61	\$59	\$56	\$50	\$46	\$36	\$31	\$28
	80% Current	\$140	\$130	\$119	\$113	\$109	\$106	\$103	\$101	\$98	\$95	\$89	\$84	\$78	\$65	\$54	\$44	\$40	\$37
	10yr ave.			\$104		\$92		\$80		\$70	\$67	\$65	\$63	\$60	\$53	\$49	\$38	\$33	\$30
	85% Current	\$149	\$138	\$127	\$120	\$115	\$112	\$109	\$107	\$104	\$101	\$95	\$89	\$82	\$69	\$58	\$47	\$42	\$40
	10yr ave.			\$111		\$98		\$85		\$75	\$71	\$69	\$67	\$64	\$57	\$52	\$41	\$35	\$32

The above shows estimated returns per head for skirted fleece wool. These figures do not take into account the value of skirtings and oddments and do not take into account discounts that may apply for faults under individual circumstances. These figures are based on a market index of 100% and should be used as a guide only. Returns over \$30 / head for fleece wool are highlighted.

Source: Australian Wool Exchange, Australian Wool Innovation, Sydney Futures Exchange, x-rates.com

Disclaimer: While all due care has been taken in the preparation of this document, no warranty is made as to its accuracy, reliability or completeness. To the extent permitted by law neither Jemalong or their sources including subsidiaries and staff, accept liability to any person for loss or damage arising from the use of this information.



Table 14: Returns pr head for skirted fleece wool.

Skirted FLC Weight		Micron																	
8 Kg		16	16.5	17	17.5	18	18.5	19	19.5	20	21	22	23	24	25	26	28	30	32
Yield (Sch Dry)	25% Current	\$39	\$36	\$33	\$32	\$30	\$29	\$29	\$28	\$27	\$26	\$25	\$23	\$22	\$18	\$15	\$12	\$11	\$10
	10yr ave.			\$29		\$26		\$22		\$19	\$19	\$18	\$18	\$17	\$15	\$14	\$11	\$9	\$8
	30% Current	\$47	\$43	\$40	\$38	\$36	\$35	\$34	\$34	\$33	\$32	\$30	\$28	\$26	\$22	\$18	\$15	\$13	\$12
	10yr ave.			\$35		\$31		\$27		\$23	\$22	\$22	\$21	\$20	\$18	\$16	\$13	\$11	\$10
	35% Current	\$55	\$50	\$46	\$44	\$42	\$41	\$40	\$39	\$38	\$37	\$35	\$32	\$30	\$25	\$21	\$17	\$16	\$15
	10yr ave.			\$40		\$36		\$31		\$27	\$26	\$25	\$25	\$23	\$21	\$19	\$15	\$13	\$12
	40% Current	\$62	\$58	\$53	\$50	\$48	\$47	\$46	\$45	\$43	\$42	\$40	\$37	\$34	\$29	\$24	\$20	\$18	\$17
	10yr ave.			\$46		\$41		\$35		\$31	\$30	\$29	\$28	\$27	\$24	\$22	\$17	\$15	\$13
	45% Current	\$70	\$65	\$60	\$57	\$54	\$53	\$51	\$50	\$49	\$48	\$45	\$42	\$39	\$32	\$27	\$22	\$20	\$19
	10yr ave.			\$52		\$46		\$40		\$35	\$34	\$33	\$32	\$30	\$27	\$24	\$19	\$17	\$15
	50% Current	\$78	\$72	\$66	\$63	\$60	\$59	\$57	\$56	\$54	\$53	\$50	\$46	\$43	\$36	\$30	\$25	\$22	\$21
	10yr ave.			\$58		\$51		\$44		\$39	\$37	\$36	\$35	\$33	\$30	\$27	\$21	\$19	\$17
	55% Current	\$86	\$79	\$73	\$69	\$66	\$65	\$63	\$62	\$60	\$58	\$55	\$51	\$47	\$40	\$33	\$27	\$24	\$23
	10yr ave.			\$64		\$56		\$49		\$43	\$41	\$40	\$39	\$37	\$33	\$30	\$23	\$20	\$18
	60% Current	\$94	\$86	\$79	\$76	\$72	\$70	\$68	\$67	\$65	\$63	\$60	\$56	\$52	\$43	\$36	\$29	\$27	\$25
	10yr ave.			\$69		\$61		\$53		\$47	\$45	\$43	\$42	\$40	\$36	\$32	\$26	\$22	\$20
	65% Current	\$101	\$94	\$86	\$82	\$78	\$76	\$74	\$73	\$71	\$69	\$65	\$60	\$56	\$47	\$39	\$32	\$29	\$27
	10yr ave.			\$75		\$66		\$57		\$51	\$49	\$47	\$46	\$43	\$39	\$35	\$28	\$24	\$22
	70% Current	\$109	\$101	\$93	\$88	\$85	\$82	\$80	\$79	\$76	\$74	\$70	\$65	\$60	\$50	\$42	\$34	\$31	\$29
	10yr ave.			\$81		\$71		\$62		\$55	\$52	\$51	\$49	\$47	\$41	\$38	\$30	\$26	\$23
	75% Current	\$117	\$108	\$99	\$95	\$91	\$88	\$86	\$84	\$81	\$79	\$75	\$70	\$65	\$54	\$45	\$37	\$33	\$31
	10yr ave.			\$87		\$77		\$66		\$58	\$56	\$54	\$53	\$50	\$44	\$41	\$32	\$28	\$25
	80% Current	\$125	\$115	\$106	\$101	\$97	\$94	\$91	\$90	\$87	\$84	\$80	\$74	\$69	\$58	\$48	\$39	\$36	\$33
	10yr ave.			\$92		\$82		\$71		\$62	\$60	\$58	\$56	\$53	\$47	\$43	\$34	\$30	\$27
	85% Current	\$133	\$122	\$113	\$107	\$103	\$100	\$97	\$95	\$92	\$90	\$85	\$79	\$73	\$61	\$51	\$42	\$38	\$35
	10yr ave.			\$98		\$87		\$75		\$66	\$64	\$62	\$60	\$57	\$50	\$46	\$36	\$32	\$28

The above shows estimated returns per head for skirted fleece wool. These figures do not take into account the value of skirtings and oddments and do not take into account discounts that may apply for faults under individual circumstances. These figures are based on a market index of 100% and should be used as a guide only. Returns over \$30 / head for fleece wool are highlighted.

Source: Australian Wool Exchange, Australian Wool Innovation, Sydney Futures Exchange, x-rates.com

Disclaimer: While all due care has been taken in the preparation of this document, no warranty is made as to its accuracy, reliability or completeness. To the extent permitted by law neither Jemalong or their sources including subsidiaries and staff, accept liability to any person for loss or damage arising from the use of this information.



Table 15: Returns pr head for skirted fleece wool.

Skirted FLC Weight		Micron																	
7 Kg		16	16.5	17	17.5	18	18.5	19	19.5	20	21	22	23	24	25	26	28	30	32
Yield (Sch Dry)	25% Current	\$34	\$32	\$29	\$28	\$26	\$26	\$25	\$25	\$24	\$23	\$22	\$20	\$19	\$16	\$13	\$11	\$10	\$9
	10yr ave.			\$25		\$22		\$19		\$17	\$16	\$16	\$15	\$15	\$13	\$12	\$9	\$8	\$7
	30% Current	\$41	\$38	\$35	\$33	\$32	\$31	\$30	\$29	\$28	\$28	\$26	\$24	\$23	\$19	\$16	\$13	\$12	\$11
	10yr ave.			\$30		\$27		\$23		\$20	\$20	\$19	\$18	\$17	\$16	\$14	\$11	\$10	\$9
	35% Current	\$48	\$44	\$41	\$39	\$37	\$36	\$35	\$34	\$33	\$32	\$30	\$28	\$26	\$22	\$18	\$15	\$14	\$13
	10yr ave.			\$35		\$31		\$27		\$24	\$23	\$22	\$22	\$20	\$18	\$17	\$13	\$11	\$10
	40% Current	\$55	\$50	\$46	\$44	\$42	\$41	\$40	\$39	\$38	\$37	\$35	\$32	\$30	\$25	\$21	\$17	\$16	\$15
	10yr ave.			\$40		\$36		\$31		\$27	\$26	\$25	\$25	\$23	\$21	\$19	\$15	\$13	\$12
	45% Current	\$61	\$57	\$52	\$50	\$48	\$46	\$45	\$44	\$43	\$42	\$39	\$37	\$34	\$28	\$24	\$19	\$17	\$16
	10yr ave.			\$46		\$40		\$35		\$31	\$29	\$29	\$28	\$26	\$23	\$21	\$17	\$15	\$13
	50% Current	\$68	\$63	\$58	\$55	\$53	\$51	\$50	\$49	\$47	\$46	\$44	\$41	\$38	\$32	\$26	\$21	\$19	\$18
	10yr ave.			\$51		\$45		\$39		\$34	\$33	\$32	\$31	\$29	\$26	\$24	\$19	\$16	\$15
	55% Current	\$75	\$69	\$64	\$61	\$58	\$56	\$55	\$54	\$52	\$51	\$48	\$45	\$42	\$35	\$29	\$24	\$21	\$20
	10yr ave.			\$56		\$49		\$43		\$37	\$36	\$35	\$34	\$32	\$29	\$26	\$21	\$18	\$16
	60% Current	\$82	\$76	\$70	\$66	\$63	\$62	\$60	\$59	\$57	\$55	\$52	\$49	\$45	\$38	\$32	\$26	\$23	\$22
	10yr ave.			\$61		\$54		\$46		\$41	\$39	\$38	\$37	\$35	\$31	\$28	\$22	\$19	\$18
	65% Current	\$89	\$82	\$75	\$72	\$69	\$67	\$65	\$64	\$62	\$60	\$57	\$53	\$49	\$41	\$34	\$28	\$25	\$24
	10yr ave.			\$66		\$58		\$50		\$44	\$42	\$41	\$40	\$38	\$34	\$31	\$24	\$21	\$19
	70% Current	\$96	\$88	\$81	\$77	\$74	\$72	\$70	\$69	\$66	\$65	\$61	\$57	\$53	\$44	\$37	\$30	\$27	\$25
	10yr ave.			\$71		\$63		\$54		\$48	\$46	\$44	\$43	\$41	\$36	\$33	\$26	\$23	\$21
	75% Current	\$102	\$95	\$87	\$83	\$79	\$77	\$75	\$74	\$71	\$69	\$65	\$61	\$57	\$47	\$40	\$32	\$29	\$27
	10yr ave.			\$76		\$67		\$58		\$51	\$49	\$48	\$46	\$44	\$39	\$36	\$28	\$24	\$22
	80% Current	\$109	\$101	\$93	\$88	\$85	\$82	\$80	\$79	\$76	\$74	\$70	\$65	\$60	\$50	\$42	\$34	\$31	\$29
	10yr ave.			\$81		\$71		\$62		\$55	\$52	\$51	\$49	\$47	\$41	\$38	\$30	\$26	\$23
	85% Current	\$116	\$107	\$98	\$94	\$90	\$87	\$85	\$83	\$81	\$79	\$74	\$69	\$64	\$54	\$45	\$36	\$33	\$31
	10yr ave.			\$86		\$76		\$66		\$58	\$56	\$54	\$52	\$49	\$44	\$40	\$32	\$28	\$25

The above shows estimated returns per head for skirted fleece wool. These figures do not take into account the value of skirtings and oddments and do not take into account discounts that may apply for faults under individual circumstances. These figures are based on a market index of 100% and should be used as a guide only. Returns over \$30 / head for fleece wool are highlighted.

Source: Australian Wool Exchange, Australian Wool Innovation, Sydney Futures Exchange, x-rates.com

Disclaimer: While all due care has been taken in the preparation of this document, no warranty is made as to its accuracy, reliability or completeness. To the extent permitted by law neither Jemalong or their sources including subsidiaries and staff, accept liability to any person for loss or damage arising from the use of this information.



Table 16: Returns pr head for skirted fleece wool.

Skirted FLC Weight		Micron																	
6 Kg		16	16.5	17	17.5	18	18.5	19	19.5	20	21	22	23	24	25	26	28	30	32
Yield (Sch Dry)	25% Current	\$29	\$27	\$25	\$24	\$23	\$22	\$21	\$21	\$20	\$20	\$19	\$17	\$16	\$14	\$11	\$9	\$8	\$8
	10yr ave.			\$22		\$19		\$17		\$15	\$14	\$14	\$13	\$12	\$11	\$10	\$8	\$7	\$6
	30% Current	\$35	\$32	\$30	\$28	\$27	\$26	\$26	\$25	\$24	\$24	\$22	\$21	\$19	\$16	\$14	\$11	\$10	\$9
	10yr ave.			\$26		\$23		\$20		\$18	\$17	\$16	\$16	\$15	\$13	\$12	\$10	\$8	\$8
	35% Current	\$41	\$38	\$35	\$33	\$32	\$31	\$30	\$29	\$28	\$28	\$26	\$24	\$23	\$19	\$16	\$13	\$12	\$11
	10yr ave.			\$30		\$27		\$23		\$20	\$20	\$19	\$18	\$17	\$16	\$14	\$11	\$10	\$9
	40% Current	\$47	\$43	\$40	\$38	\$36	\$35	\$34	\$34	\$33	\$32	\$30	\$28	\$26	\$22	\$18	\$15	\$13	\$12
	10yr ave.			\$35		\$31		\$27		\$23	\$22	\$22	\$21	\$20	\$18	\$16	\$13	\$11	\$10
	45% Current	\$53	\$49	\$45	\$43	\$41	\$40	\$39	\$38	\$37	\$36	\$34	\$31	\$29	\$24	\$20	\$17	\$15	\$14
	10yr ave.			\$39		\$34		\$30		\$26	\$25	\$24	\$24	\$22	\$20	\$18	\$14	\$13	\$11
	50% Current	\$59	\$54	\$50	\$47	\$45	\$44	\$43	\$42	\$41	\$40	\$37	\$35	\$32	\$27	\$23	\$18	\$17	\$16
	10yr ave.			\$43		\$38		\$33		\$29	\$28	\$27	\$26	\$25	\$22	\$20	\$16	\$14	\$13
	55% Current	\$64	\$59	\$55	\$52	\$50	\$48	\$47	\$46	\$45	\$44	\$41	\$38	\$36	\$30	\$25	\$20	\$18	\$17
	10yr ave.			\$48		\$42		\$36		\$32	\$31	\$30	\$29	\$27	\$24	\$22	\$18	\$15	\$14
	60% Current	\$70	\$65	\$60	\$57	\$54	\$53	\$51	\$50	\$49	\$48	\$45	\$42	\$39	\$32	\$27	\$22	\$20	\$19
	10yr ave.			\$52		\$46		\$40		\$35	\$34	\$33	\$32	\$30	\$27	\$24	\$19	\$17	\$15
	65% Current	\$76	\$70	\$65	\$61	\$59	\$57	\$56	\$55	\$53	\$51	\$48	\$45	\$42	\$35	\$29	\$24	\$22	\$20
	10yr ave.			\$56		\$50		\$43		\$38	\$36	\$35	\$34	\$32	\$29	\$26	\$21	\$18	\$16
	70% Current	\$82	\$76	\$70	\$66	\$63	\$62	\$60	\$59	\$57	\$55	\$52	\$49	\$45	\$38	\$32	\$26	\$23	\$22
	10yr ave.			\$61		\$54		\$46		\$41	\$39	\$38	\$37	\$35	\$31	\$28	\$22	\$19	\$18
	75% Current	\$88	\$81	\$74	\$71	\$68	\$66	\$64	\$63	\$61	\$59	\$56	\$52	\$49	\$41	\$34	\$28	\$25	\$23
	10yr ave.			\$65		\$57		\$50		\$44	\$42	\$41	\$40	\$37	\$33	\$30	\$24	\$21	\$19
	80% Current	\$94	\$86	\$79	\$76	\$72	\$70	\$68	\$67	\$65	\$63	\$60	\$56	\$52	\$43	\$36	\$29	\$27	\$25
	10yr ave.			\$69		\$61		\$53		\$47	\$45	\$43	\$42	\$40	\$36	\$32	\$26	\$22	\$20
	85% Current	\$99	\$92	\$84	\$80	\$77	\$75	\$73	\$72	\$69	\$67	\$63	\$59	\$55	\$46	\$38	\$31	\$28	\$26
	10yr ave.			\$74		\$65		\$56		\$50	\$48	\$46	\$45	\$42	\$38	\$35	\$27	\$24	\$21

The above shows estimated returns per head for skirted fleece wool. These figures do not take into account the value of skirtings and oddments and do not take into account discounts that may apply for faults under individual circumstances. These figures are based on a market index of 100% and should be used as a guide only. Returns over \$30 / head for fleece wool are highlighted.

Source: Australian Wool Exchange, Australian Wool Innovation, Sydney Futures Exchange, x-rates.com

Disclaimer: While all due care has been taken in the preparation of this document, no warranty is made as to its accuracy, reliability or completeness. To the extent permitted by law neither Jemalong or their sources including subsidiaries and staff, accept liability to any person for loss or damage arising from the use of this information.



Table 17: Returns pr head for skirted fleece wool.

Skirted FLC Weight		Micron																	
5 Kg		16	16.5	17	17.5	18	18.5	19	19.5	20	21	22	23	24	25	26	28	30	32
Yield (Sch Dry)	25% Current	\$24	\$23	\$21	\$20	\$19	\$18	\$18	\$18	\$17	\$17	\$16	\$15	\$13	\$11	\$9	\$8	\$7	\$6
	10yr ave.			\$18		\$16		\$14		\$12	\$12	\$11	\$11	\$10	\$9	\$8	\$7	\$6	\$5
	30% Current	\$29	\$27	\$25	\$24	\$23	\$22	\$21	\$21	\$20	\$20	\$19	\$17	\$16	\$14	\$11	\$9	\$8	\$8
	10yr ave.			\$22		\$19		\$17		\$15	\$14	\$14	\$13	\$12	\$11	\$10	\$8	\$7	\$6
	35% Current	\$34	\$32	\$29	\$28	\$26	\$26	\$25	\$25	\$24	\$23	\$22	\$20	\$19	\$16	\$13	\$11	\$10	\$9
	10yr ave.			\$25		\$22		\$19		\$17	\$16	\$16	\$15	\$15	\$13	\$12	\$9	\$8	\$7
	40% Current	\$39	\$36	\$33	\$32	\$30	\$29	\$29	\$28	\$27	\$26	\$25	\$23	\$22	\$18	\$15	\$12	\$11	\$10
	10yr ave.			\$29		\$26		\$22		\$19	\$19	\$18	\$18	\$17	\$15	\$14	\$11	\$9	\$8
	45% Current	\$44	\$41	\$37	\$35	\$34	\$33	\$32	\$32	\$31	\$30	\$28	\$26	\$24	\$20	\$17	\$14	\$12	\$12
	10yr ave.			\$33		\$29		\$25		\$22	\$21	\$20	\$20	\$19	\$17	\$15	\$12	\$10	\$9
	50% Current	\$49	\$45	\$41	\$39	\$38	\$37	\$36	\$35	\$34	\$33	\$31	\$29	\$27	\$23	\$19	\$15	\$14	\$13
	10yr ave.			\$36		\$32		\$28		\$24	\$23	\$23	\$22	\$21	\$19	\$17	\$13	\$12	\$10
	55% Current	\$54	\$50	\$46	\$43	\$41	\$40	\$39	\$39	\$37	\$36	\$34	\$32	\$30	\$25	\$21	\$17	\$15	\$14
	10yr ave.			\$40		\$35		\$30		\$27	\$26	\$25	\$24	\$23	\$20	\$19	\$15	\$13	\$12
	60% Current	\$59	\$54	\$50	\$47	\$45	\$44	\$43	\$42	\$41	\$40	\$37	\$35	\$32	\$27	\$23	\$18	\$17	\$16
	10yr ave.			\$43		\$38		\$33		\$29	\$28	\$27	\$26	\$25	\$22	\$20	\$16	\$14	\$13
	65% Current	\$63	\$59	\$54	\$51	\$49	\$48	\$46	\$46	\$44	\$43	\$40	\$38	\$35	\$29	\$25	\$20	\$18	\$17
	10yr ave.			\$47		\$41		\$36		\$32	\$30	\$29	\$29	\$27	\$24	\$22	\$17	\$15	\$14
	70% Current	\$68	\$63	\$58	\$55	\$53	\$51	\$50	\$49	\$47	\$46	\$44	\$41	\$38	\$32	\$26	\$21	\$19	\$18
	10yr ave.			\$51		\$45		\$39		\$34	\$33	\$32	\$31	\$29	\$26	\$24	\$19	\$16	\$15
	75% Current	\$73	\$68	\$62	\$59	\$57	\$55	\$53	\$53	\$51	\$50	\$47	\$44	\$40	\$34	\$28	\$23	\$21	\$19
	10yr ave.			\$54		\$48		\$41		\$37	\$35	\$34	\$33	\$31	\$28	\$25	\$20	\$17	\$16
	80% Current	\$78	\$72	\$66	\$63	\$60	\$59	\$57	\$56	\$54	\$53	\$50	\$46	\$43	\$36	\$30	\$25	\$22	\$21
	10yr ave.			\$58		\$51		\$44		\$39	\$37	\$36	\$35	\$33	\$30	\$27	\$21	\$19	\$17
	85% Current	\$83	\$77	\$70	\$67	\$64	\$62	\$61	\$60	\$58	\$56	\$53	\$49	\$46	\$38	\$32	\$26	\$24	\$22
	10yr ave.			\$61		\$54		\$47		\$41	\$40	\$39	\$37	\$35	\$31	\$29	\$23	\$20	\$18

The above shows estimated returns per head for skirted fleece wool. These figures do not take into account the value of skirtings and oddments and do not take into account discounts that may apply for faults under individual circumstances. These figures are based on a market index of 100% and should be used as a guide only. Returns over \$30 / head for fleece wool are highlighted.

Source: Australian Wool Exchange, Australian Wool Innovation, Sydney Futures Exchange, x-rates.com

Disclaimer: While all due care has been taken in the preparation of this document, no warranty is made as to its accuracy, reliability or completeness. To the extent permitted by law neither Jemalong or their sources including subsidiaries and staff, accept liability to any person for loss or damage arising from the use of this information.



Table 18: Returns pr head for skirted fleece wool.

Skirted FLC Weight 4 Kg		Micron																	
		16	16.5	17	17.5	18	18.5	19	19.5	20	21	22	23	24	25	26	28	30	32
Yield (Sch Dry)	25% Current	\$20	\$18	\$17	\$16	\$15	\$15	\$14	\$14	\$14	\$13	\$12	\$12	\$11	\$9	\$8	\$6	\$6	\$5
	10yr ave.			\$14		\$13		\$11		\$10	\$9	\$9	\$9	\$8	\$7	\$7	\$5	\$5	\$4
	30% Current	\$23	\$22	\$20	\$19	\$18	\$18	\$17	\$17	\$16	\$16	\$15	\$14	\$13	\$11	\$9	\$7	\$7	\$6
	10yr ave.			\$17		\$15		\$13		\$12	\$11	\$11	\$11	\$10	\$9	\$8	\$6	\$6	\$5
	35% Current	\$27	\$25	\$23	\$22	\$21	\$21	\$20	\$20	\$19	\$18	\$17	\$16	\$15	\$13	\$11	\$9	\$8	\$7
	10yr ave.			\$20		\$18		\$15		\$14	\$13	\$13	\$12	\$12	\$10	\$9	\$7	\$6	\$6
	40% Current	\$31	\$29	\$26	\$25	\$24	\$23	\$23	\$22	\$22	\$21	\$20	\$19	\$17	\$14	\$12	\$10	\$9	\$8
	10yr ave.			\$23		\$20		\$18		\$16	\$15	\$14	\$14	\$13	\$12	\$11	\$9	\$7	\$7
	45% Current	\$35	\$32	\$30	\$28	\$27	\$26	\$26	\$25	\$24	\$24	\$22	\$21	\$19	\$16	\$14	\$11	\$10	\$9
	10yr ave.			\$26		\$23		\$20		\$18	\$17	\$16	\$16	\$15	\$13	\$12	\$10	\$8	\$8
	50% Current	\$39	\$36	\$33	\$32	\$30	\$29	\$29	\$28	\$27	\$26	\$25	\$23	\$22	\$18	\$15	\$12	\$11	\$10
	10yr ave.			\$29		\$26		\$22		\$19	\$19	\$18	\$18	\$17	\$15	\$14	\$11	\$9	\$8
	55% Current	\$43	\$40	\$36	\$35	\$33	\$32	\$31	\$31	\$30	\$29	\$27	\$26	\$24	\$20	\$17	\$13	\$12	\$11
	10yr ave.			\$32		\$28		\$24		\$21	\$21	\$20	\$19	\$18	\$16	\$15	\$12	\$10	\$9
	60% Current	\$47	\$43	\$40	\$38	\$36	\$35	\$34	\$34	\$33	\$32	\$30	\$28	\$26	\$22	\$18	\$15	\$13	\$12
	10yr ave.			\$35		\$31		\$27		\$23	\$22	\$22	\$21	\$20	\$18	\$16	\$13	\$11	\$10
	65% Current	\$51	\$47	\$43	\$41	\$39	\$38	\$37	\$36	\$35	\$34	\$32	\$30	\$28	\$23	\$20	\$16	\$14	\$13
	10yr ave.			\$38		\$33		\$29		\$25	\$24	\$24	\$23	\$22	\$19	\$18	\$14	\$12	\$11
	70% Current	\$55	\$50	\$46	\$44	\$42	\$41	\$40	\$39	\$38	\$37	\$35	\$32	\$30	\$25	\$21	\$17	\$16	\$15
	10yr ave.			\$40		\$36		\$31		\$27	\$26	\$25	\$25	\$23	\$21	\$19	\$15	\$13	\$12
	75% Current	\$59	\$54	\$50	\$47	\$45	\$44	\$43	\$42	\$41	\$40	\$37	\$35	\$32	\$27	\$23	\$18	\$17	\$16
	10yr ave.			\$43		\$38		\$33		\$29	\$28	\$27	\$26	\$25	\$22	\$20	\$16	\$14	\$13
	80% Current	\$62	\$58	\$53	\$50	\$48	\$47	\$46	\$45	\$43	\$42	\$40	\$37	\$34	\$29	\$24	\$20	\$18	\$17
	10yr ave.			\$46		\$41		\$35		\$31	\$30	\$29	\$28	\$27	\$24	\$22	\$17	\$15	\$13
	85% Current	\$66	\$61	\$56	\$54	\$51	\$50	\$48	\$48	\$46	\$45	\$42	\$39	\$37	\$31	\$26	\$21	\$19	\$18
	10yr ave.			\$49		\$43		\$38		\$33	\$32	\$31	\$30	\$28	\$25	\$23	\$18	\$16	\$14

The above shows estimated returns per head for skirted fleece wool. These figures do not take into account the value of skirtings and oddments and do not take into account discounts that may apply for faults under individual circumstances. These figures are based on a market index of 100% and should be used as a guide only. Returns over \$30 / head for fleece wool are highlighted.

Source: Australian Wool Exchange, Australian Wool Innovation, Sydney Futures Exchange, x-rates.com

Disclaimer: While all due care has been taken in the preparation of this document, no warranty is made as to its accuracy, reliability or completeness. To the extent permitted by law neither Jemalong or their sources including subsidiaries and staff, accept liability to any person for loss or damage arising from the use of this information.



Table 19: Returns pr head for skirted fleece wool.

Skirted FLC Weight 3 Kg			Micron																	
			16	16.5	17	17.5	18	18.5	19	19.5	20	21	22	23	24	25	26	28	30	32
Yield (Sch Dry)	25%	Current	\$15	\$14	\$12	\$12	\$11	\$11	\$11	\$11	\$10	\$10	\$9	\$9	\$8	\$7	\$6	\$5	\$4	\$4
		10yr ave.			\$11		\$10		\$8		\$7	\$7	\$7	\$7	\$6	\$6	\$5	\$4	\$3	\$3
	30%	Current	\$18	\$16	\$15	\$14	\$14	\$13	\$13	\$13	\$12	\$12	\$11	\$10	\$10	\$8	\$7	\$6	\$5	\$5
		10yr ave.			\$13		\$11		\$10		\$9	\$8	\$8	\$8	\$7	\$7	\$6	\$5	\$4	\$4
	35%	Current	\$20	\$19	\$17	\$17	\$16	\$15	\$15	\$15	\$14	\$14	\$13	\$12	\$11	\$9	\$8	\$6	\$6	\$5
		10yr ave.			\$15		\$13		\$12		\$10	\$10	\$10	\$9	\$9	\$8	\$7	\$6	\$5	\$4
	40%	Current	\$23	\$22	\$20	\$19	\$18	\$18	\$17	\$17	\$16	\$16	\$15	\$14	\$13	\$11	\$9	\$7	\$7	\$6
		10yr ave.			\$17		\$15		\$13		\$12	\$11	\$11	\$11	\$10	\$9	\$8	\$6	\$6	\$5
	45%	Current	\$26	\$24	\$22	\$21	\$20	\$20	\$19	\$19	\$18	\$18	\$17	\$16	\$15	\$12	\$10	\$8	\$7	\$7
		10yr ave.			\$20		\$17		\$15		\$13	\$13	\$12	\$12	\$11	\$10	\$9	\$7	\$6	\$6
	50%	Current	\$29	\$27	\$25	\$24	\$23	\$22	\$21	\$21	\$20	\$20	\$19	\$17	\$16	\$14	\$11	\$9	\$8	\$8
		10yr ave.			\$22		\$19		\$17		\$15	\$14	\$14	\$13	\$12	\$11	\$10	\$8	\$7	\$6
	55%	Current	\$32	\$30	\$27	\$26	\$25	\$24	\$24	\$23	\$22	\$22	\$21	\$19	\$18	\$15	\$12	\$10	\$9	\$9
		10yr ave.			\$24		\$21		\$18		\$16	\$15	\$15	\$15	\$14	\$12	\$11	\$9	\$8	\$7
	60%	Current	\$35	\$32	\$30	\$28	\$27	\$26	\$26	\$25	\$24	\$24	\$22	\$21	\$19	\$16	\$14	\$11	\$10	\$9
		10yr ave.			\$26		\$23		\$20		\$18	\$17	\$16	\$16	\$15	\$13	\$12	\$10	\$8	\$8
65%	Current	\$38	\$35	\$32	\$31	\$29	\$29	\$28	\$27	\$26	\$26	\$24	\$23	\$21	\$18	\$15	\$12	\$11	\$10	
	10yr ave.			\$28		\$25		\$22		\$19	\$18	\$18	\$17	\$16	\$14	\$13	\$10	\$9	\$8	
70%	Current	\$41	\$38	\$35	\$33	\$32	\$31	\$30	\$29	\$28	\$28	\$26	\$24	\$23	\$19	\$16	\$13	\$12	\$11	
	10yr ave.			\$30		\$27		\$23		\$20	\$20	\$19	\$18	\$17	\$16	\$14	\$11	\$10	\$9	
75%	Current	\$44	\$41	\$37	\$35	\$34	\$33	\$32	\$32	\$31	\$30	\$28	\$26	\$24	\$20	\$17	\$14	\$12	\$12	
	10yr ave.			\$33		\$29		\$25		\$22	\$21	\$20	\$20	\$19	\$17	\$15	\$12	\$10	\$9	
80%	Current	\$47	\$43	\$40	\$38	\$36	\$35	\$34	\$34	\$33	\$32	\$30	\$28	\$26	\$22	\$18	\$15	\$13	\$12	
	10yr ave.			\$35		\$31		\$27		\$23	\$22	\$22	\$21	\$20	\$18	\$16	\$13	\$11	\$10	
85%	Current	\$50	\$46	\$42	\$40	\$38	\$37	\$36	\$36	\$35	\$34	\$32	\$30	\$27	\$23	\$19	\$16	\$14	\$13	
	10yr ave.			\$37		\$33		\$28		\$25	\$24	\$23	\$22	\$21	\$19	\$17	\$14	\$12	\$11	

The above shows estimated returns per head for skirted fleece wool. These figures do not take into account the value of skirtings and oddments and do not take into account discounts that may apply for faults under individual circumstances. These figures are based on a market index of 100% and should be used as a guide only. Returns over \$30 / head for fleece wool are highlighted.

Source: Australian Wool Exchange, Australian Wool Innovation, Sydney Futures Exchange, x-rates.com

Disclaimer: While all due care has been taken in the preparation of this document, no warranty is made as to its accuracy, reliability or completeness. To the extent permitted by law neither Jemalong or their sources including subsidiaries and staff, accept liability to any person for loss or damage arising from the use of this information.



Table 20: Returns pr head for skirted fleece wool.

Skirted FLC Weight		Micron																	
2 Kg		16	16.5	17	17.5	18	18.5	19	19.5	20	21	22	23	24	25	26	28	30	32
Yield (Sch Dry)	25% Current	\$10	\$9	\$8	\$8	\$8	\$7	\$7	\$7	\$7	\$7	\$6	\$6	\$5	\$5	\$4	\$3	\$3	\$3
	10yr ave.			\$7		\$6		\$6		\$5	\$5	\$5	\$4	\$4	\$4	\$3	\$3	\$2	\$2
	30% Current	\$12	\$11	\$10	\$9	\$9	\$9	\$9	\$8	\$8	\$8	\$7	\$7	\$6	\$5	\$5	\$4	\$3	\$3
	10yr ave.			\$9		\$8		\$7		\$6	\$6	\$5	\$5	\$5	\$4	\$4	\$3	\$3	\$3
	35% Current	\$14	\$13	\$12	\$11	\$11	\$10	\$10	\$10	\$9	\$9	\$9	\$8	\$8	\$6	\$5	\$4	\$4	\$4
	10yr ave.			\$10		\$9		\$8		\$7	\$7	\$6	\$6	\$6	\$5	\$5	\$4	\$3	\$3
	40% Current	\$16	\$14	\$13	\$13	\$12	\$12	\$11	\$11	\$11	\$11	\$10	\$9	\$9	\$7	\$6	\$5	\$4	\$4
	10yr ave.			\$12		\$10		\$9		\$8	\$7	\$7	\$7	\$7	\$6	\$5	\$4	\$4	\$3
	45% Current	\$18	\$16	\$15	\$14	\$14	\$13	\$13	\$13	\$12	\$12	\$11	\$10	\$10	\$8	\$7	\$6	\$5	\$5
	10yr ave.			\$13		\$11		\$10		\$9	\$8	\$8	\$8	\$7	\$7	\$6	\$5	\$4	\$4
	50% Current	\$20	\$18	\$17	\$16	\$15	\$15	\$14	\$14	\$14	\$13	\$12	\$12	\$11	\$9	\$8	\$6	\$6	\$5
	10yr ave.			\$14		\$13		\$11		\$10	\$9	\$9	\$9	\$8	\$7	\$7	\$5	\$5	\$4
	55% Current	\$21	\$20	\$18	\$17	\$17	\$16	\$16	\$15	\$15	\$15	\$14	\$13	\$12	\$10	\$8	\$7	\$6	\$6
	10yr ave.			\$16		\$14		\$12		\$11	\$10	\$10	\$10	\$9	\$8	\$7	\$6	\$5	\$5
	60% Current	\$23	\$22	\$20	\$19	\$18	\$18	\$17	\$17	\$16	\$16	\$15	\$14	\$13	\$11	\$9	\$7	\$7	\$6
	10yr ave.			\$17		\$15		\$13		\$12	\$11	\$11	\$11	\$10	\$9	\$8	\$6	\$6	\$5
	65% Current	\$25	\$23	\$22	\$20	\$20	\$19	\$19	\$18	\$18	\$17	\$16	\$15	\$14	\$12	\$10	\$8	\$7	\$7
	10yr ave.			\$19		\$17		\$14		\$13	\$12	\$12	\$11	\$11	\$10	\$9	\$7	\$6	\$5
	70% Current	\$27	\$25	\$23	\$22	\$21	\$21	\$20	\$20	\$19	\$18	\$17	\$16	\$15	\$13	\$11	\$9	\$8	\$7
	10yr ave.			\$20		\$18		\$15		\$14	\$13	\$13	\$12	\$12	\$10	\$9	\$7	\$6	\$6
	75% Current	\$29	\$27	\$25	\$24	\$23	\$22	\$21	\$21	\$20	\$20	\$19	\$17	\$16	\$14	\$11	\$9	\$8	\$8
	10yr ave.			\$22		\$19		\$17		\$15	\$14	\$14	\$13	\$12	\$11	\$10	\$8	\$7	\$6
	80% Current	\$31	\$29	\$26	\$25	\$24	\$23	\$23	\$22	\$22	\$21	\$20	\$19	\$17	\$14	\$12	\$10	\$9	\$8
	10yr ave.			\$23		\$20		\$18		\$16	\$15	\$14	\$14	\$13	\$12	\$11	\$9	\$7	\$7
	85% Current	\$33	\$31	\$28	\$27	\$26	\$25	\$24	\$24	\$23	\$22	\$21	\$20	\$18	\$15	\$13	\$10	\$9	\$9
	10yr ave.			\$25		\$22		\$19		\$17	\$16	\$15	\$15	\$14	\$13	\$12	\$9	\$8	\$7

The above shows estimated returns per head for skirted fleece wool. These figures do not take into account the value of skirtings and oddments and do not take into account discounts that may apply for faults under individual circumstances. These figures are based on a market index of 100% and should be used as a guide only. Returns over \$30 / head for fleece wool are highlighted.

Source: Australian Wool Exchange, Australian Wool Innovation, Sydney Futures Exchange, x-rates.com

Disclaimer: While all due care has been taken in the preparation of this document, no warranty is made as to its accuracy, reliability or completeness. To the extent permitted by law neither Jemalong or their sources including subsidiaries and staff, accept liability to any person for loss or damage arising from the use of this information.