



Table 1: Northern Region Micron Price Guides

CURRENT MARKET				12 MONTH COMPARISONS						3 YEAR COMPARISONS					10 YEAR COMPARISONS				
Mic.	15/02/2012	9/02/2012		15/02/2011	Now		Now		Now										
Price	Current	Weekly		This time	compared		compared		compared		Low	High	Average	compared	Percentile	Low	High	10 year	Now
Guides	Price	Change		Last Year	to Last Year		to Last Year		to Last Year					to 3yr ave				Average	to 10yr ave
NRI	1280	+10 0.8%		1308	-28 -2%		-2%		-2%		1188	+92 8%	1491	-211 -14%	77%	657	1491	928	+352 38%
16*	2200	-150 -6.8%		2670	-470 -18%		-18%		-18%		1950	+250 13%	2800	-600 -21%	73%				
16.5*	2020	-30 -1.5%		2500	-480 -19%		-19%		-19%		1800	+220 12%	2680	-660 -25%	74%				
17*	1790	+5 0.3%		2420	-630 -26%		-26%		-26%		1620	+170 10%	2530	-740 -29%	72%	1100	2530	1450	+340 23%
17.5*	1680	0		2290	-610 -27%		-27%		-27%		1530	+150 10%	2360	-680 -29%	72%				
18	1603	+13 0.8%		2072	-469 -23%		-23%		-23%		1469	+134 9%	2193	-590 -27%	72%	916	2193	1274	+329 26%
18.5	1540	+2 0.1%		1896	-356 -19%		-19%		-19%		1431	+109 8%	1963	-423 -22%	73%				
19	1490	+3 0.2%		1589	-99 -6%		-6%		-6%		1391	+99 7%	1776	-286 -16%	74%	803	1776	1109	+381 34%
19.5	1448	+1 0.1%		1371	+77 6%		6%		6%		1344	+104 8%	1670	-222 -13%	81%				
20	1398	-2 -0.1%		1192	+206 17%		17%		17%		1186	+212 18%	1588	-190 -12%	89%	700	1588	981	+417 43%
21	1379	-4 -0.3%		1137	+242 21%		21%		21%		1137	+242 21%	1522	-143 -9%	92%	668	1522	940	+439 47%
22	1351	+2 0.1%		1087	+264 24%		24%		24%		1086	+265 24%	1461	-110 -8%	94%	659	1461	912	+439 48%
23	1341	-2 -0.1%		1038	+303 29%		29%		29%		1037	+304 29%	1347	-6 0%	99%	652	1347	884	+457 52%
24	1165	0		988	+177 18%		18%		18%		983	+182 19%	1170	-5 0%	99%	638	1299	834	+331 40%
25	1015	+24 2.4%		845	+170 20%		20%		20%		840	+175 21%	1048	-33 -3%	98%	567	1198	742	+273 37%
26	833	+47 5.6%		760	+73 10%		10%		10%		739	+94 13%	928	-95 -10%	83%	532	1088	677	+156 23%
28	637	+22 3.5%		558	+79 14%		14%		14%		558	+79 14%	734	-97 -13%	76%	424	889	532	+105 20%
30	583	+36 6.2%		500	+83 17%		17%		17%		500	+83 17%	670	-87 -13%	77%	344	729	463	+120 26%
32	516	+23 4.5%		445	+71 16%		16%		16%		445	+71 16%	638	-122 -19%	71%	297	669	418	+98 23%
MC	714	+7 1.0%		721	-7 -1%		-1%		-1%		673	+41 6%	831	-117 -14%	72%	380	831	532	+182 34%

Note:

* Due to the irregular market quoting for some fine wool categories, figures shown relating to micron categories below 18 micron are an estimate based on the AWEX Premium & Discounts Report & other available information.

* For any category, where there is insufficient quantity offered to enable AWEX to quote, a quote will be provided based on the best available information.

* 10 Year data is not available for some micron categories, which may result in blank spaces in the table above.

Definitions:

* A Percentile, is a value on a scale of one hundred that indicates the percent of a distribution that is equal to or below it. In general a percentile between 25% and 75% is considered normal, a percentile below 25% is considered below normal and a percentile above 75% is considered above normal.

Three and ten year percentiles shown in the table above, detail the period of time during the past 3 & 10 years that the market has traded either at or below its current price.

The higher the percentile, the stronger the market.

Source: Australian Wool Exchange, Australian Wool Innovation, Sydney Futures Exchange, x-rates.com

Disclaimer: While all due care has been taken in the preparation of this document, no warranty is made as to its accuracy, reliability or completeness. To the extent permitted by law neither Jemalong or their sources including subsidiaries and staff, accept liability to any person for loss or damage arising from the use of this information.



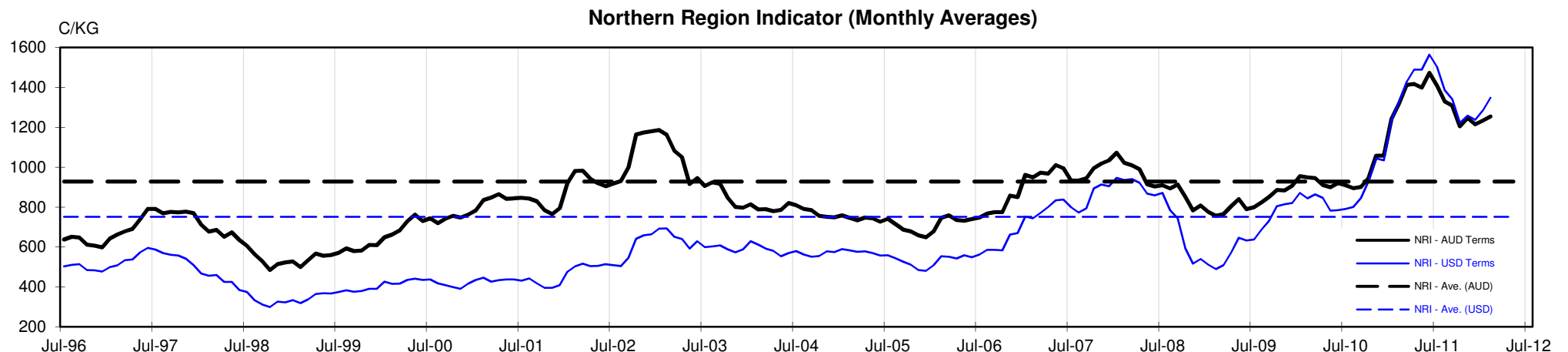
MARKET COMMENTARY

One Australian Dollar = \$ 1.08 US, as of 15/02/2012

NORTHERN REGION –Sale Week 33/11 (48,605 bales offered nationally)

Tuesdays market had 19 to 22 microns 10 to 15 cents dearer, with odd lots 20 cents higher, while a limited selection of finer microns remained very firm (tending in sellers favour). Strong competition through out all merino skirtings had the 3-8% VMB types 10 to 20 cents dearer (with the better length lots attracting the most attention). All oddment categories gained ground, with crutchings, stains & <19 micron locks finishing par to 5 cents dearer, while the broader locks lifted 20 to 30 cents. Crossbreds opened strong and remained so through out the sale, closing 15 to 20 cents dearer for 28 to 30 microns. 7.6% PI

Wednesdays market was unable to hold the previous days levels (despite a promising start) and as a result drifted lower as the sale progressed. 19 microns were 5-10 cents easier, while 20 to 22 micron area fell 15 cents. The finer microns did however find support for the better style and strength lots (as evident in the 18 MPG) while the lower style & strength lots retreated. After some initial gains, the skirting market also leveled out, with 5-8% VMB types ending the day par to sellers favour, while 18 micron and finer with less than 4% VMB continued to command solid premiums. Buyer pressure eased off the locks, leaving them 5 cents cheaper, while crutchings & stains remained unchanged. In the crossbreds, 28 micron finished unchanged while 27 rose 10 cents and 30-32 microns gained 20. 3.4% PI. 48,577 are currently rostered for next weeks sale, Jemalong are selling on Wednesday.





JEMALONG WOOL BULLETIN

(week ending 15/02/2012)

Table 4: 19 micron SFE

Tuesday, 14 February 2012

Delivery Mth	Feb-12	Apr-12	Jun-12	Aug-12	Oct-12	Dec-12	Feb-13	Mar-13	Apr-13
19 Micron SFE	1397	1367	1337	1327	1327	1287	1287	1287	1287
Average	1375	1384	1397	1384	1382	1382	1340	1320	1320
Maximum	1652	1622	1612	1525	1525	1525	1525	1375	1375
Minimum	1053	1106	1210	1285	1285	1285	1265	1265	1265

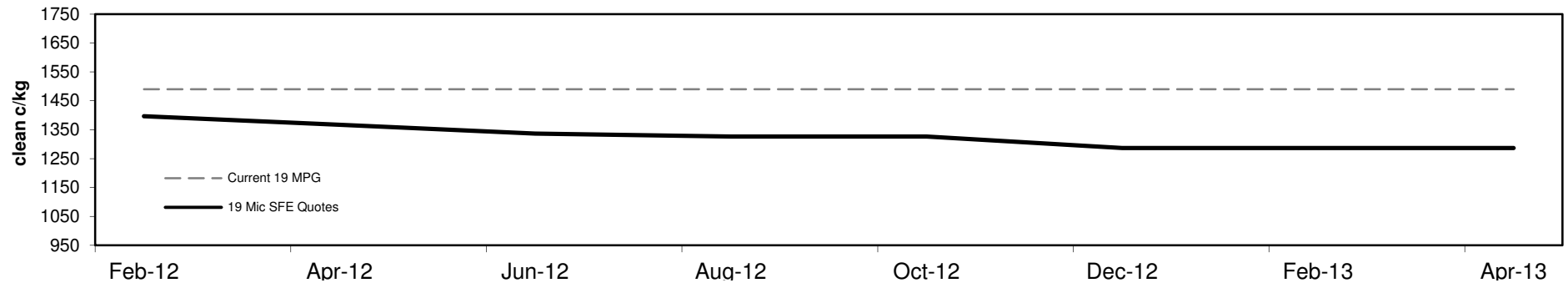
Table 5: 19 micron SFE, as a percentile of the 19 micron MPG

3 Year Percentile	63%	62%	62%	62%	62%	59%	59%	59%	59%
10 Year Percentile	89%	88%	86%	86%	86%	83%	83%	83%	83%

Table 6: 19 micron SFE, compared to MPG

SFE - MPG	-93	-6%	-123	-8%	-153	-10%	-163	-11%	-163	-11%	-203	-14%	-203	-14%	-203	-14%
SFE - MPG, 1 year Ave.	-167	-11%	-197	-13%	-227	-15%	-237	-15%	-237	-15%	-277	-18%	-277	-18%	-277	-18%
SFE - MPG, 3 year Ave.	+142	11%	+112	9%	+82	7%	+72	6%	+72	6%	+32	3%	+32	3%	+32	3%
SFE - MPG, 10 year Ave.	+288	26%	+258	23%	+228	21%	+218	20%	+218	20%	+178	16%	+178	16%	+178	16%

19 MICRON SFE, QUOTES



19 Micron SFE, Front month movement

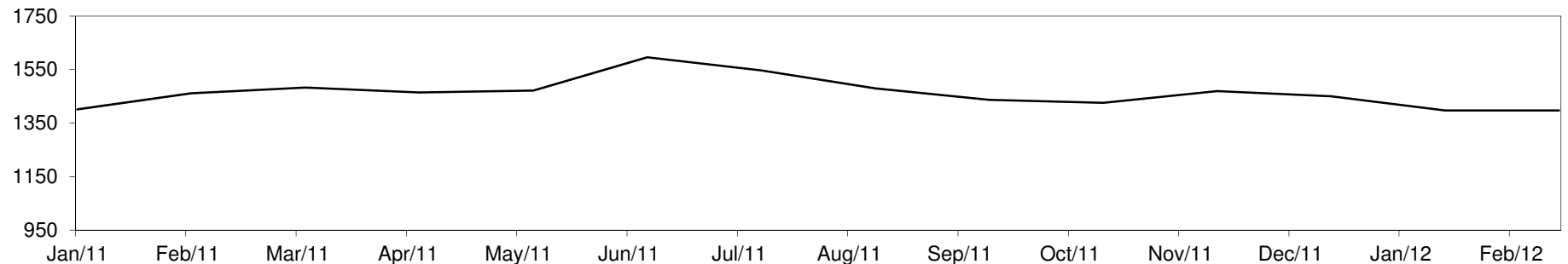




Table 7: 21 micron SFE

Tuesday, 14 February 2012

Delivery Mth	Feb-12	Apr-12	Jun-12	Aug-12	Oct-12	Dec-12	Feb-13	Mar-13	Apr-13
21 Micron SFE	1463	1350	1325	1320	1290	1214	1235	1214	1214
Average	1153	1169	1166	1171	1155	1155	1144	1129	1129
Maximum	1463	1360	1347	1321	1290	1290	1222	1235	1235
Minimum	880	934	990	1046	1013	1013	1075	1048	1048

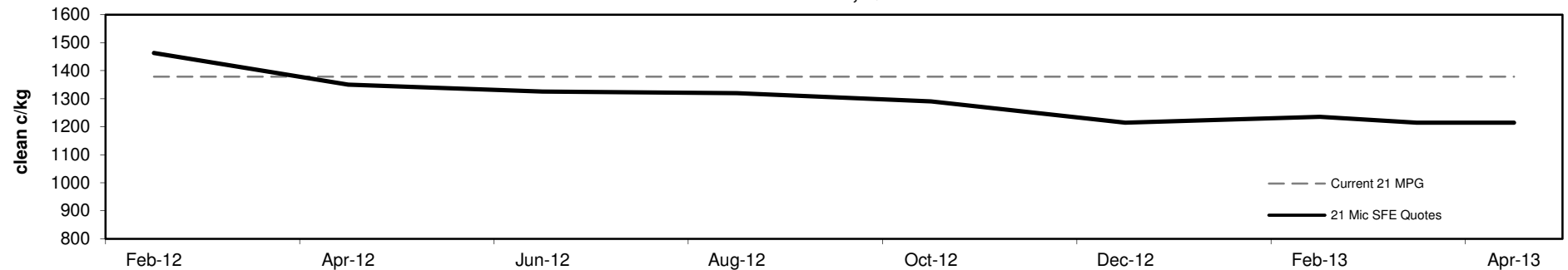
Table 8: 21 micron SFE, as a percentile of the 21 micron MPG

3 Year Percentile	97%	89%	83%	81%	74%	68%	69%	68%	68%
10 Year Percentile	99%	97%	95%	94%	92%	86%	87%	86%	86%

Table 9: 21 micron SFE, compared to MPG

SFE - MPG	+84	6%	-29	-2%	-54	-4%	-59	-4%	-89	-6%	-165	-12%	-144	-10%	-165	-12%	-165	-12%
SFE - MPG, 1 year Ave.	+123	9%	+10	1%	-15	-1%	-20	-1%	-50	-4%	-126	-9%	-105	-8%	-126	-9%	-126	-9%
SFE - MPG, 3 year Ave.	+411	39%	+298	28%	+273	26%	+268	25%	+238	23%	+162	15%	+183	17%	+162	15%	+162	15%
SFE - MPG, 10 year Ave.	+523	56%	+410	44%	+385	41%	+380	40%	+350	37%	+274	29%	+295	31%	+274	29%	+274	29%

21 MICRON SFE, QUOTES



21 Micron SFE, Front month movement

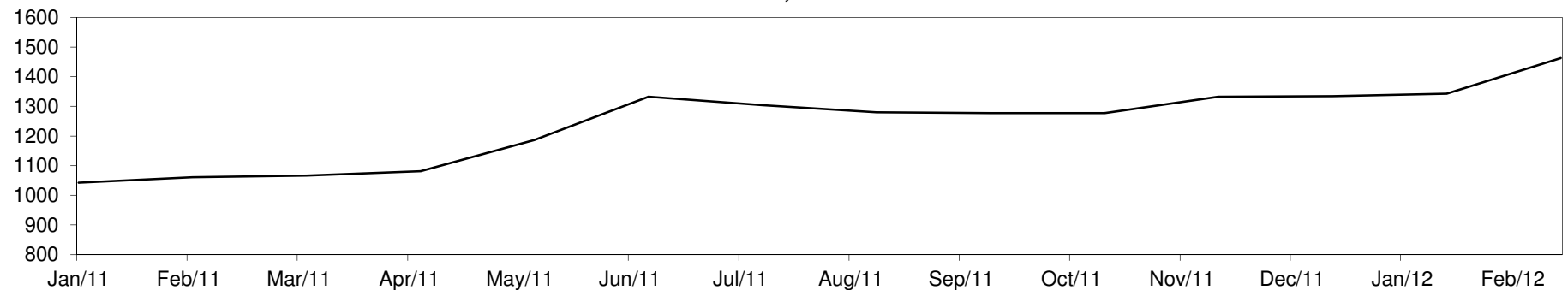




Table 10: 23 micron SFE

Tuesday, 14 February 2012

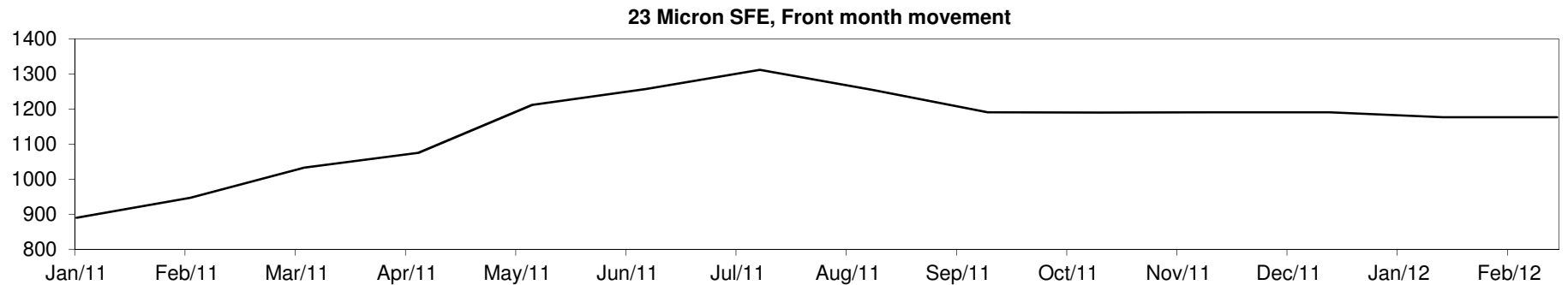
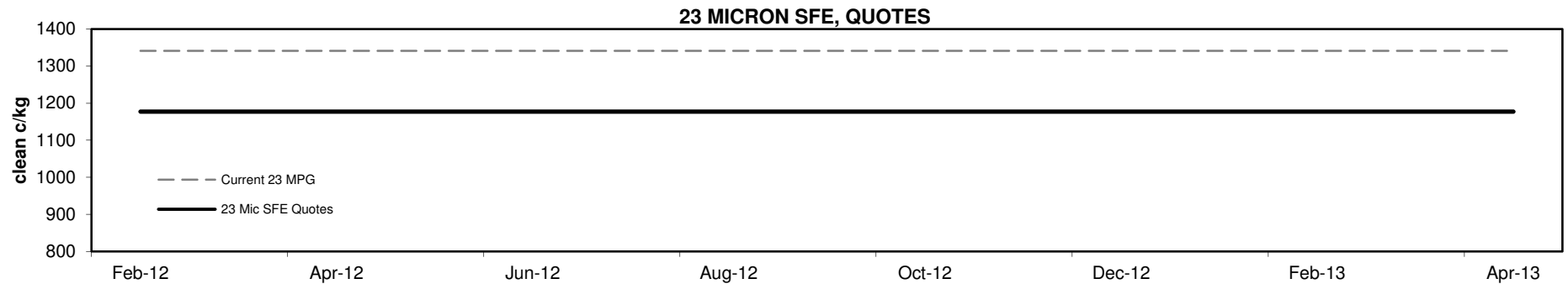
Delivery Mth	Feb-12	Apr-12	Jun-12	Aug-12	Oct-12	Dec-12	Feb-13	Mar-13	Apr-13
23 Micron SFE	1177	1177	1177	1177	1177	1177	1177	1177	1177
Average	1078	1107	1140	1181	1213	1213	1212	1187	1187
Maximum	1312	1312	1312	1312	1312	1312	1312	1191	1191
Minimum	883	883	890	1033	1177	1177	1177	1177	1177

Table 11: 23 micron SFE, as a percentile of the 23 micron MPG

3 Year Percentile	81%	81%	81%	81%	81%	81%	81%	81%	81%
10 Year Percentile	89%	89%	89%	89%	89%	89%	89%	89%	89%

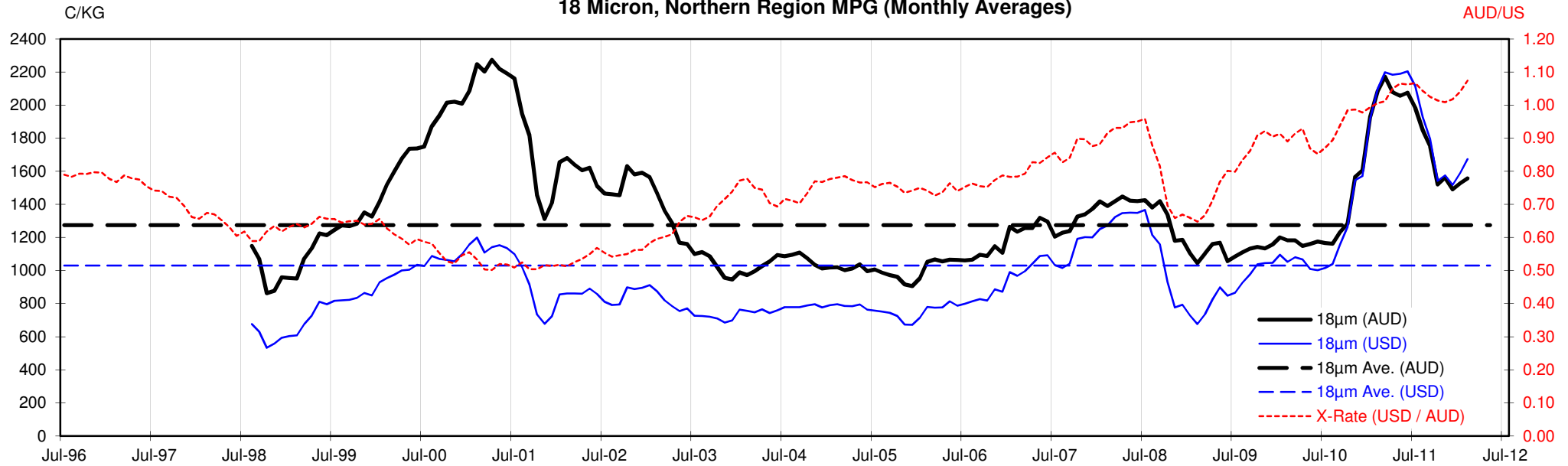
Table 12: 23 micron SFE, compared to MPG

SFE - MPG	-164	-12%	-164	-12%	-164	-12%	-164	-12%	-164	-12%	-164	-12%	-164	-12%	-164	-12%	-164	-12%
SFE - MPG, 1 year Ave.	-27	-2%	-27	-2%	-27	-2%	-27	-2%	-27	-2%	-27	-2%	-27	-2%	-27	-2%	-27	-2%
SFE - MPG, 3 year Ave.	+203	21%	+203	21%	+203	21%	+203	21%	+203	21%	+203	21%	+203	21%	+203	21%	+203	21%
SFE - MPG, 10 year Ave.	+293	33%	+293	33%	+293	33%	+293	33%	+293	33%	+293	33%	+293	33%	+293	33%	+293	33%

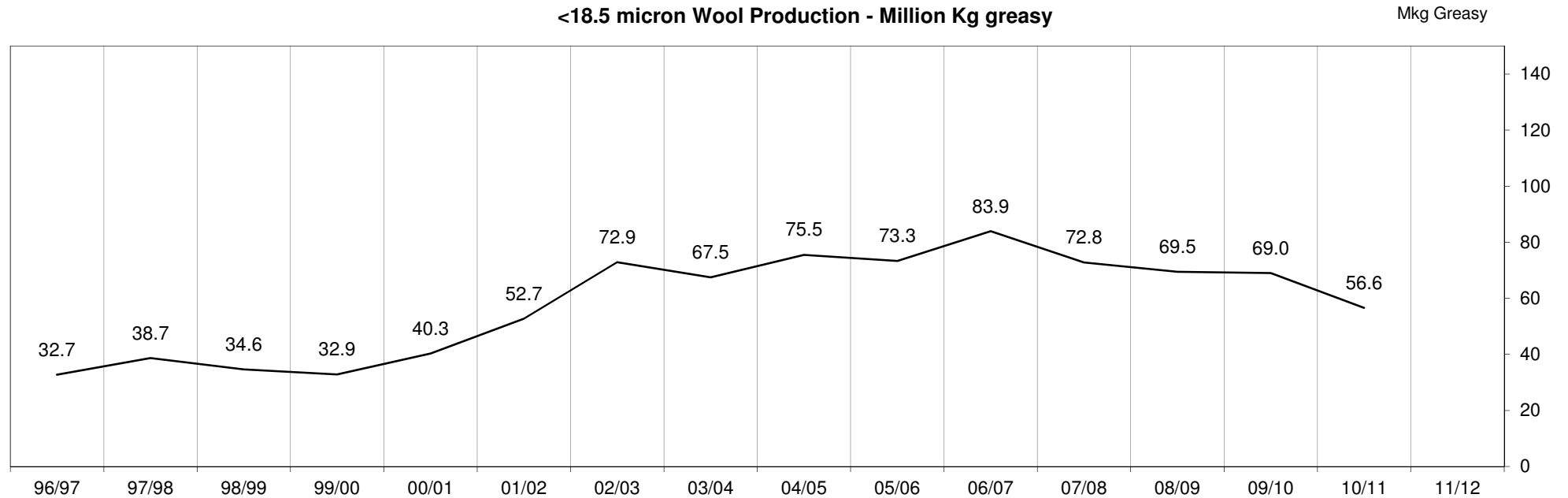


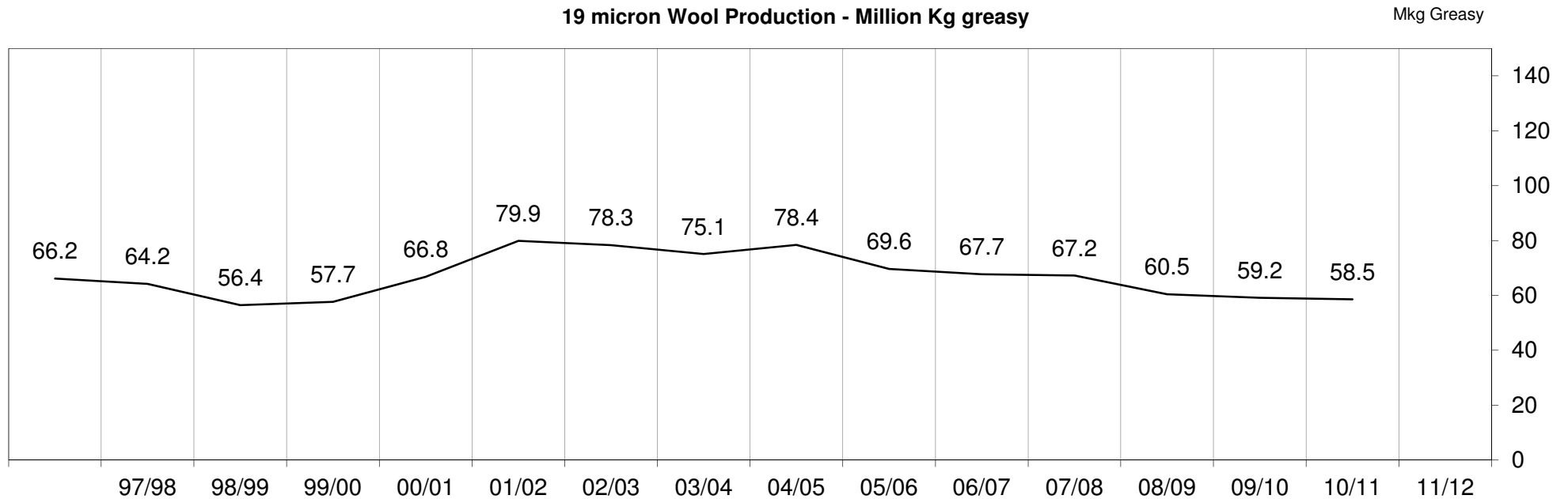
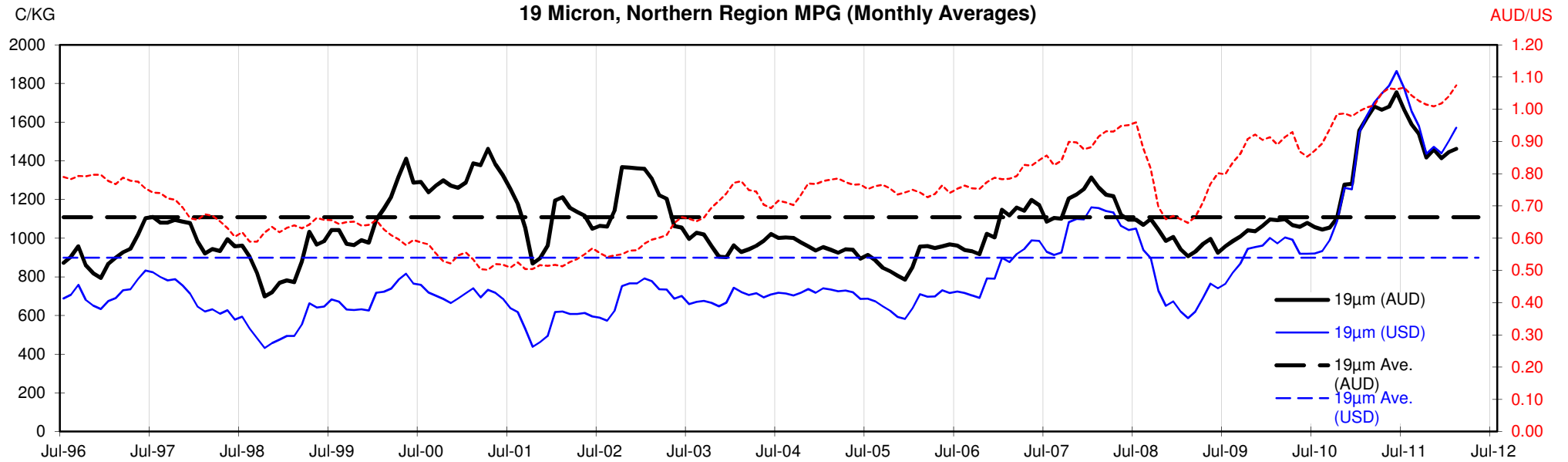


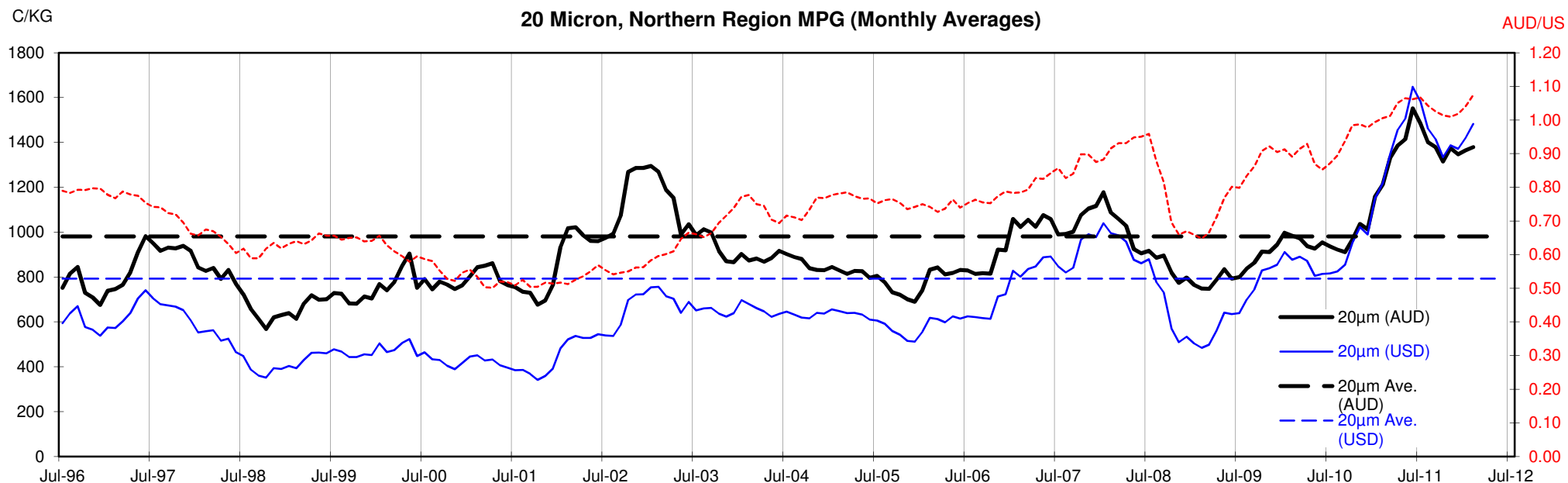
18 Micron, Northern Region MPG (Monthly Averages)

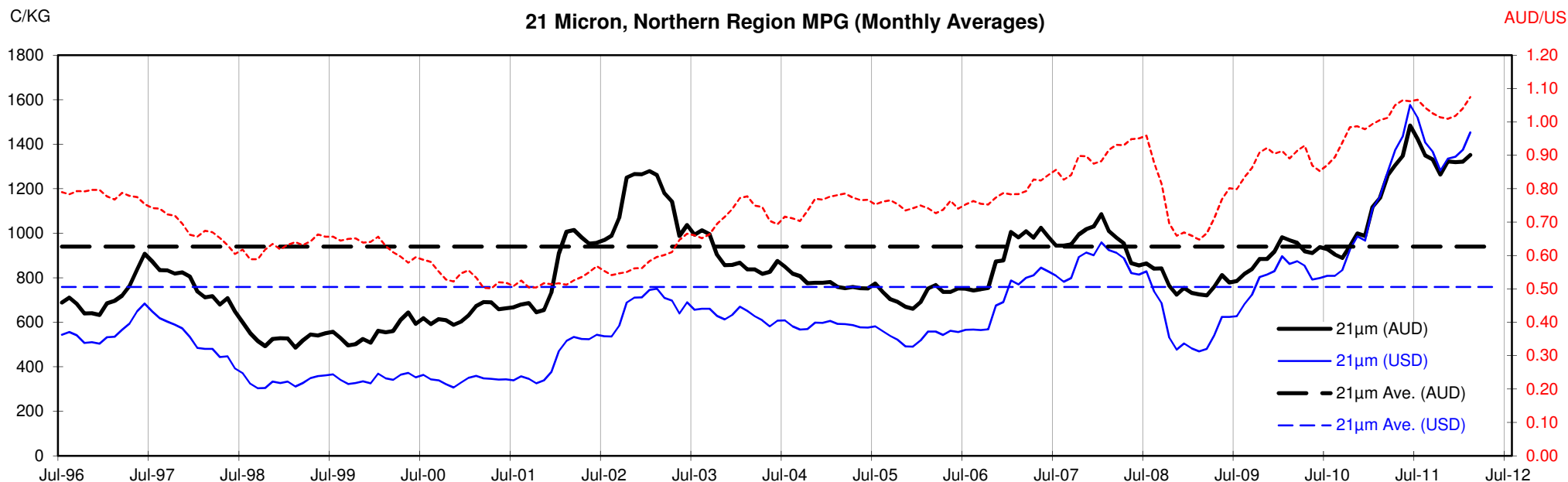


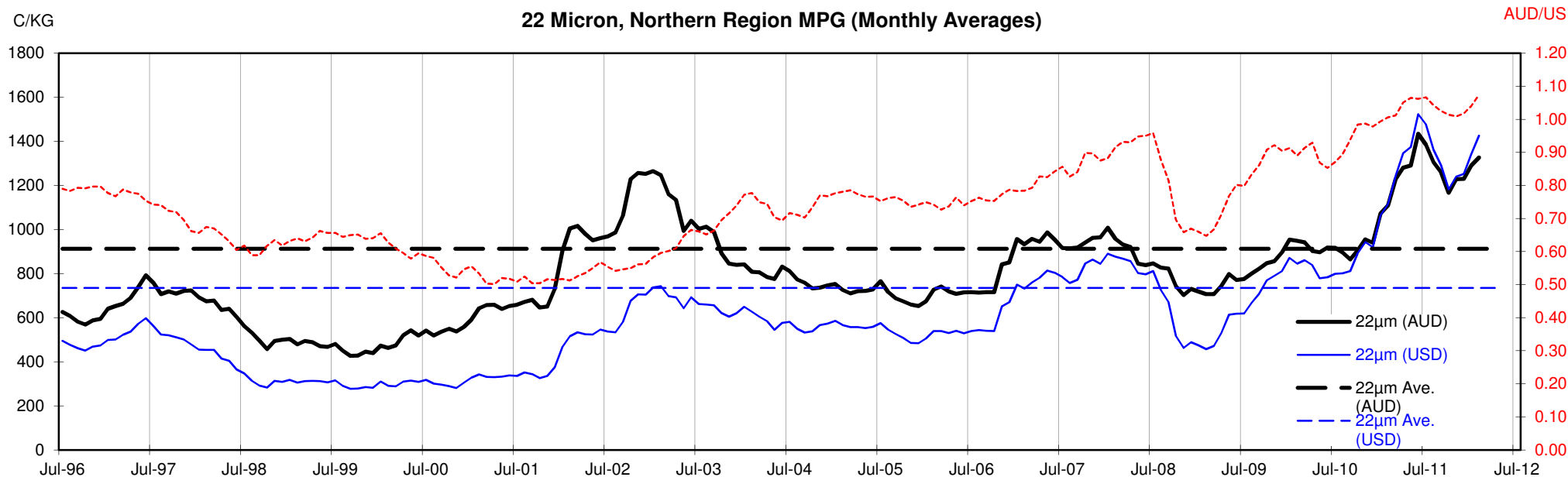
<18.5 micron Wool Production - Million Kg greasy

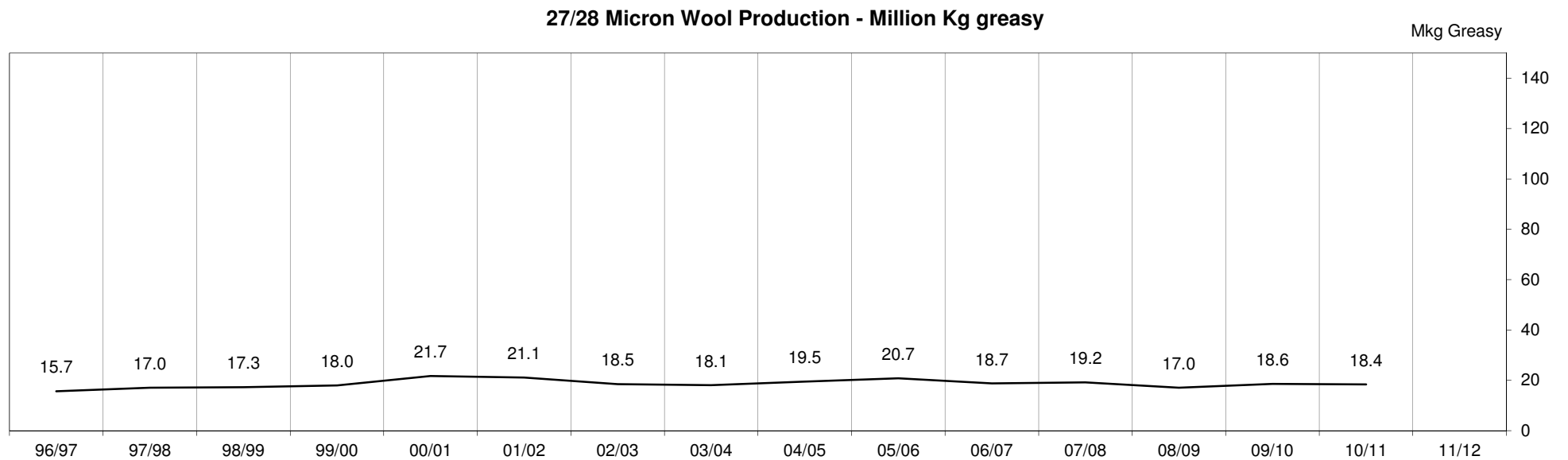
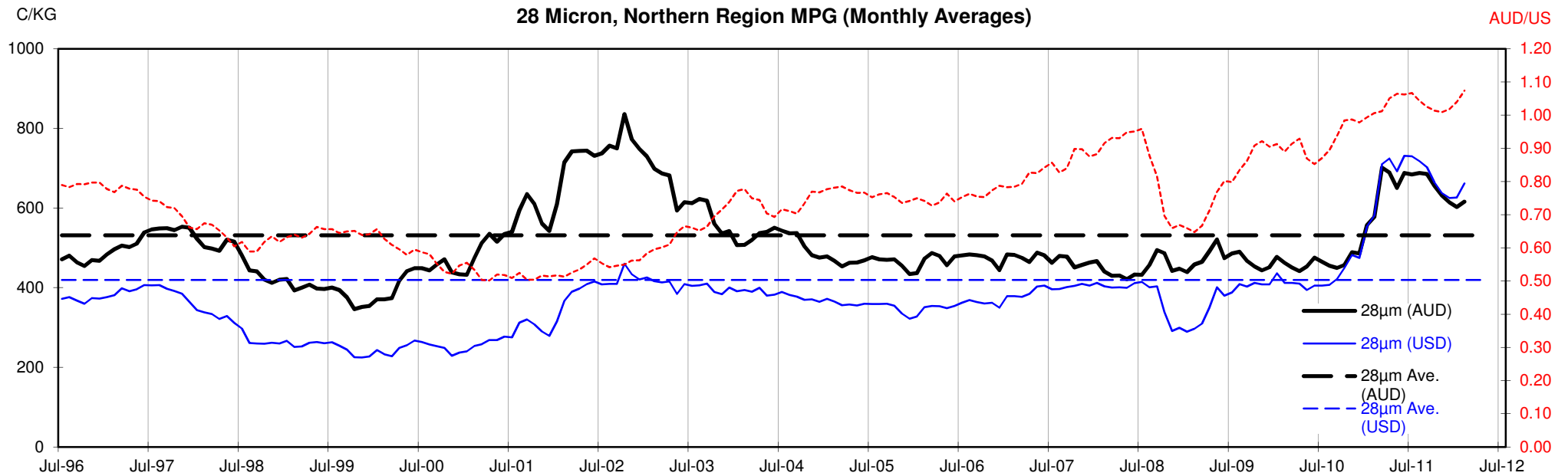












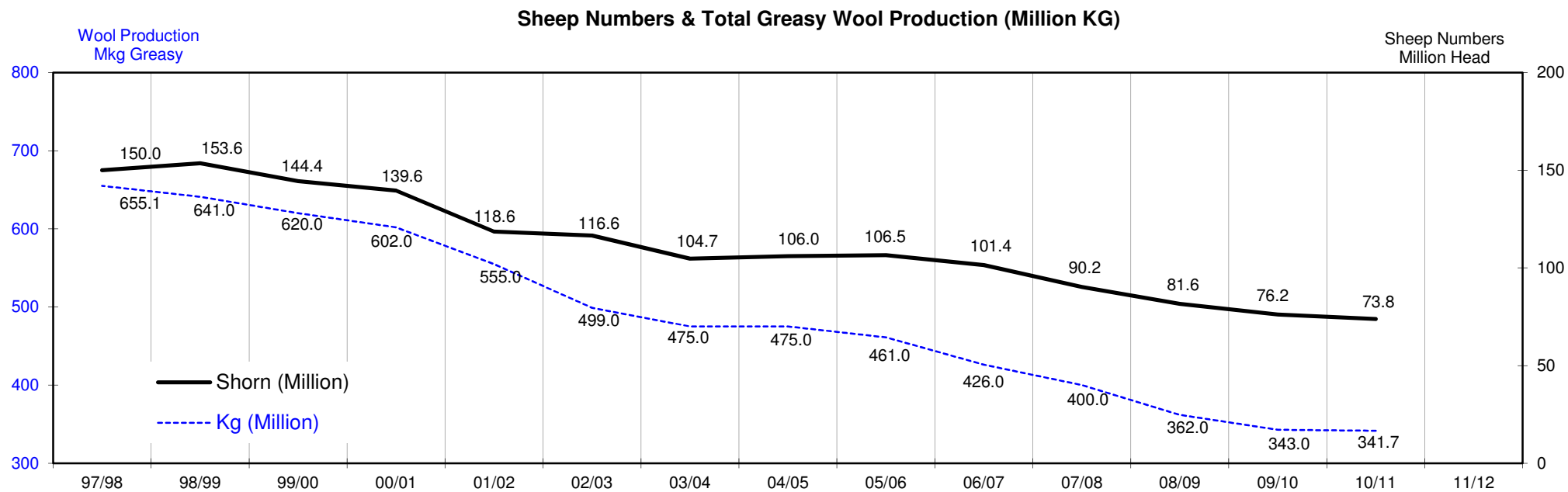
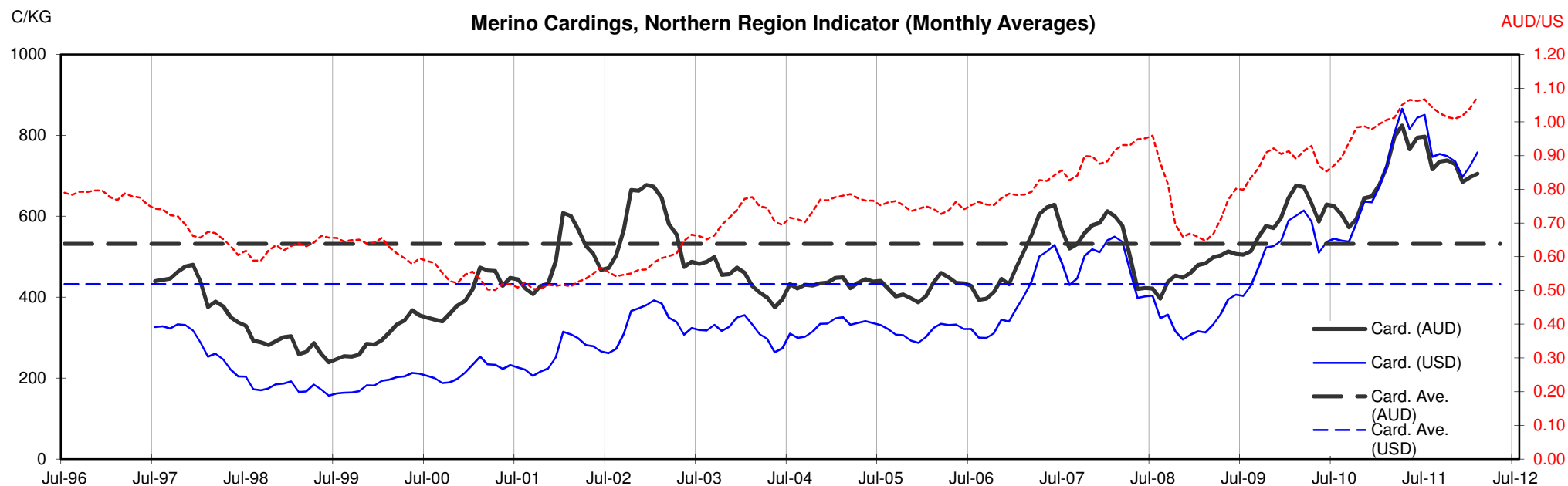




Table 13: Returns pr head for skirted fleece wool.

Skirted FLC Weight		Micron																	
9 Kg		16	16.5	17	17.5	18	18.5	19	19.5	20	21	22	23	24	25	26	28	30	32
Yield (Sch Dry)	25% Current	\$50	\$45	\$40	\$38	\$36	\$35	\$34	\$33	\$31	\$31	\$30	\$30	\$26	\$23	\$19	\$14	\$13	\$12
	10yr ave.			\$33		\$29		\$25		\$22	\$21	\$21	\$20	\$19	\$17	\$15	\$12	\$10	\$9
	30% Current	\$59	\$55	\$48	\$45	\$43	\$42	\$40	\$39	\$38	\$37	\$36	\$36	\$31	\$27	\$22	\$17	\$16	\$14
	10yr ave.			\$39		\$34		\$30		\$26	\$25	\$25	\$24	\$23	\$20	\$18	\$14	\$13	\$11
	35% Current	\$69	\$64	\$56	\$53	\$50	\$49	\$47	\$46	\$44	\$43	\$43	\$42	\$37	\$32	\$26	\$20	\$18	\$16
	10yr ave.			\$46		\$40		\$35		\$31	\$30	\$29	\$28	\$26	\$23	\$21	\$17	\$15	\$13
	40% Current	\$79	\$73	\$64	\$60	\$58	\$55	\$54	\$52	\$50	\$50	\$49	\$48	\$42	\$37	\$30	\$23	\$21	\$19
	10yr ave.			\$52		\$46		\$40		\$35	\$34	\$33	\$32	\$30	\$27	\$24	\$19	\$17	\$15
	45% Current	\$89	\$82	\$72	\$68	\$65	\$62	\$60	\$59	\$57	\$56	\$55	\$54	\$47	\$41	\$34	\$26	\$24	\$21
	10yr ave.			\$59		\$52		\$45		\$40	\$38	\$37	\$36	\$34	\$30	\$27	\$22	\$19	\$17
	50% Current	\$99	\$91	\$81	\$76	\$72	\$69	\$67	\$65	\$63	\$62	\$61	\$60	\$52	\$46	\$37	\$29	\$26	\$23
	10yr ave.			\$65		\$57		\$50		\$44	\$42	\$41	\$40	\$38	\$33	\$30	\$24	\$21	\$19
	55% Current	\$109	\$100	\$89	\$83	\$79	\$76	\$74	\$72	\$69	\$68	\$67	\$66	\$58	\$50	\$41	\$32	\$29	\$26
	10yr ave.			\$72		\$63		\$55		\$49	\$47	\$45	\$44	\$41	\$37	\$34	\$26	\$23	\$21
	60% Current	\$119	\$109	\$97	\$91	\$87	\$83	\$80	\$78	\$75	\$74	\$73	\$72	\$63	\$55	\$45	\$34	\$31	\$28
	10yr ave.			\$78		\$69		\$60		\$53	\$51	\$49	\$48	\$45	\$40	\$37	\$29	\$25	\$23
	65% Current	\$129	\$118	\$105	\$98	\$94	\$90	\$87	\$85	\$82	\$81	\$79	\$78	\$68	\$59	\$49	\$37	\$34	\$30
	10yr ave.			\$85		\$75		\$65		\$57	\$55	\$53	\$52	\$49	\$43	\$40	\$31	\$27	\$24
	70% Current	\$139	\$127	\$113	\$106	\$101	\$97	\$94	\$91	\$88	\$87	\$85	\$84	\$73	\$64	\$52	\$40	\$37	\$33
	10yr ave.			\$91		\$80		\$70		\$62	\$59	\$57	\$56	\$53	\$47	\$43	\$34	\$29	\$26
	75% Current	\$149	\$136	\$121	\$113	\$108	\$104	\$101	\$98	\$94	\$93	\$91	\$91	\$79	\$69	\$56	\$43	\$39	\$35
	10yr ave.			\$98		\$86		\$75		\$66	\$63	\$62	\$60	\$56	\$50	\$46	\$36	\$31	\$28
	80% Current	\$158	\$145	\$129	\$121	\$115	\$111	\$107	\$104	\$101	\$99	\$97	\$97	\$84	\$73	\$60	\$46	\$42	\$37
	10yr ave.			\$104		\$92		\$80		\$71	\$68	\$66	\$64	\$60	\$53	\$49	\$38	\$33	\$30
	85% Current	\$168	\$155	\$137	\$129	\$123	\$118	\$114	\$111	\$107	\$105	\$103	\$103	\$89	\$78	\$64	\$49	\$45	\$39
	10yr ave.			\$111		\$97		\$85		\$75	\$72	\$70	\$68	\$64	\$57	\$52	\$41	\$35	\$32

The above shows estimated returns per head for skirted fleece wool. These figures do not take into account the value of skirtings and oddments and do not take into account discounts that may apply for faults under individual circumstances. These figures are based on a market index of 100% and should be used as a guide only. Returns over \$30 / head for fleece wool are highlighted.

Source: Australian Wool Exchange, Australian Wool Innovation, Sydney Futures Exchange, x-rates.com

Disclaimer: While all due care has been taken in the preparation of this document, no warranty is made as to its accuracy, reliability or completeness. To the extent permitted by law neither Jemalong or their sources including subsidiaries and staff, accept liability to any person for loss or damage arising from the use of this information.



Table 14: Returns pr head for skirted fleece wool.

Skirted FLC Weight		Micron																	
8 Kg		16	16.5	17	17.5	18	18.5	19	19.5	20	21	22	23	24	25	26	28	30	32
Yield (Sch Dry)	25% Current	\$44	\$40	\$36	\$34	\$32	\$31	\$30	\$29	\$28	\$28	\$27	\$27	\$23	\$20	\$17	\$13	\$12	\$10
	10yr ave.			\$29		\$25		\$22		\$20	\$19	\$18	\$18	\$17	\$15	\$14	\$11	\$9	\$8
	30% Current	\$53	\$48	\$43	\$40	\$38	\$37	\$36	\$35	\$34	\$33	\$32	\$32	\$28	\$24	\$20	\$15	\$14	\$12
	10yr ave.			\$35		\$31		\$27		\$24	\$23	\$22	\$21	\$20	\$18	\$16	\$13	\$11	\$10
	35% Current	\$62	\$57	\$50	\$47	\$45	\$43	\$42	\$41	\$39	\$39	\$38	\$38	\$33	\$28	\$23	\$18	\$16	\$14
	10yr ave.			\$41		\$36		\$31		\$27	\$26	\$26	\$25	\$23	\$21	\$19	\$15	\$13	\$12
	40% Current	\$70	\$65	\$57	\$54	\$51	\$49	\$48	\$46	\$45	\$44	\$43	\$43	\$37	\$32	\$27	\$20	\$19	\$17
	10yr ave.			\$46		\$41		\$35		\$31	\$30	\$29	\$28	\$27	\$24	\$22	\$17	\$15	\$13
	45% Current	\$79	\$73	\$64	\$60	\$58	\$55	\$54	\$52	\$50	\$50	\$49	\$48	\$42	\$37	\$30	\$23	\$21	\$19
	10yr ave.			\$52		\$46		\$40		\$35	\$34	\$33	\$32	\$30	\$27	\$24	\$19	\$17	\$15
	50% Current	\$88	\$81	\$72	\$67	\$64	\$62	\$60	\$58	\$56	\$55	\$54	\$54	\$47	\$41	\$33	\$25	\$23	\$21
	10yr ave.			\$58		\$51		\$44		\$39	\$38	\$36	\$35	\$33	\$30	\$27	\$21	\$19	\$17
	55% Current	\$97	\$89	\$79	\$74	\$71	\$68	\$66	\$64	\$62	\$61	\$59	\$59	\$51	\$45	\$37	\$28	\$26	\$23
	10yr ave.			\$64		\$56		\$49		\$43	\$41	\$40	\$39	\$37	\$33	\$30	\$23	\$20	\$18
	60% Current	\$106	\$97	\$86	\$81	\$77	\$74	\$72	\$70	\$67	\$66	\$65	\$64	\$56	\$49	\$40	\$31	\$28	\$25
	10yr ave.			\$70		\$61		\$53		\$47	\$45	\$44	\$42	\$40	\$36	\$32	\$26	\$22	\$20
	65% Current	\$114	\$105	\$93	\$87	\$83	\$80	\$77	\$75	\$73	\$72	\$70	\$70	\$61	\$53	\$43	\$33	\$30	\$27
	10yr ave.			\$75		\$66		\$58		\$51	\$49	\$47	\$46	\$43	\$39	\$35	\$28	\$24	\$22
	70% Current	\$123	\$113	\$100	\$94	\$90	\$86	\$83	\$81	\$78	\$77	\$76	\$75	\$65	\$57	\$47	\$36	\$33	\$29
	10yr ave.			\$81		\$71		\$62		\$55	\$53	\$51	\$50	\$47	\$42	\$38	\$30	\$26	\$23
	75% Current	\$132	\$121	\$107	\$101	\$96	\$92	\$89	\$87	\$84	\$83	\$81	\$80	\$70	\$61	\$50	\$38	\$35	\$31
	10yr ave.			\$87		\$76		\$67		\$59	\$56	\$55	\$53	\$50	\$45	\$41	\$32	\$28	\$25
	80% Current	\$141	\$129	\$115	\$108	\$103	\$99	\$95	\$93	\$89	\$88	\$86	\$86	\$75	\$65	\$53	\$41	\$37	\$33
	10yr ave.			\$93		\$82		\$71		\$63	\$60	\$58	\$57	\$53	\$47	\$43	\$34	\$30	\$27
	85% Current	\$150	\$137	\$122	\$114	\$109	\$105	\$101	\$98	\$95	\$94	\$92	\$91	\$79	\$69	\$57	\$43	\$40	\$35
	10yr ave.			\$99		\$87		\$75		\$67	\$64	\$62	\$60	\$57	\$50	\$46	\$36	\$31	\$28

The above shows estimated returns per head for skirted fleece wool. These figures do not take into account the value of skirtings and oddments and do not take into account discounts that may apply for faults under individual circumstances. These figures are based on a market index of 100% and should be used as a guide only. Returns over \$30 / head for fleece wool are highlighted.

Source: Australian Wool Exchange, Australian Wool Innovation, Sydney Futures Exchange, x-rates.com

Disclaimer: While all due care has been taken in the preparation of this document, no warranty is made as to its accuracy, reliability or completeness. To the extent permitted by law neither Jemalong or their sources including subsidiaries and staff, accept liability to any person for loss or damage arising from the use of this information.



Table 15: Returns pr head for skirted fleece wool.

Skirted FLC Weight		Micron																	
7 Kg		16	16.5	17	17.5	18	18.5	19	19.5	20	21	22	23	24	25	26	28	30	32
Yield (Sch Dry)	25% Current	\$39	\$35	\$31	\$29	\$28	\$27	\$26	\$25	\$24	\$24	\$24	\$23	\$20	\$18	\$15	\$11	\$10	\$9
	10yr ave.			\$25		\$22		\$19		\$17	\$16	\$16	\$15	\$15	\$13	\$12	\$9	\$8	\$7
	30% Current	\$46	\$42	\$38	\$35	\$34	\$32	\$31	\$30	\$29	\$29	\$28	\$28	\$24	\$21	\$17	\$13	\$12	\$11
	10yr ave.			\$30		\$27		\$23		\$21	\$20	\$19	\$19	\$18	\$16	\$14	\$11	\$10	\$9
	35% Current	\$54	\$49	\$44	\$41	\$39	\$38	\$37	\$35	\$34	\$34	\$33	\$33	\$29	\$25	\$20	\$16	\$14	\$13
	10yr ave.			\$36		\$31		\$27		\$24	\$23	\$22	\$22	\$20	\$18	\$17	\$13	\$11	\$10
	40% Current	\$62	\$57	\$50	\$47	\$45	\$43	\$42	\$41	\$39	\$39	\$38	\$38	\$33	\$28	\$23	\$18	\$16	\$14
	10yr ave.			\$41		\$36		\$31		\$27	\$26	\$26	\$25	\$23	\$21	\$19	\$15	\$13	\$12
	45% Current	\$69	\$64	\$56	\$53	\$50	\$49	\$47	\$46	\$44	\$43	\$43	\$42	\$37	\$32	\$26	\$20	\$18	\$16
	10yr ave.			\$46		\$40		\$35		\$31	\$30	\$29	\$28	\$26	\$23	\$21	\$17	\$15	\$13
	50% Current	\$77	\$71	\$63	\$59	\$56	\$54	\$52	\$51	\$49	\$48	\$47	\$47	\$41	\$36	\$29	\$22	\$20	\$18
	10yr ave.			\$51		\$45		\$39		\$34	\$33	\$32	\$31	\$29	\$26	\$24	\$19	\$16	\$15
	55% Current	\$85	\$78	\$69	\$65	\$62	\$59	\$57	\$56	\$54	\$53	\$52	\$52	\$45	\$39	\$32	\$25	\$22	\$20
	10yr ave.			\$56		\$49		\$43		\$38	\$36	\$35	\$34	\$32	\$29	\$26	\$20	\$18	\$16
	60% Current	\$92	\$85	\$75	\$71	\$67	\$65	\$63	\$61	\$59	\$58	\$57	\$56	\$49	\$43	\$35	\$27	\$24	\$22
	10yr ave.			\$61		\$54		\$47		\$41	\$39	\$38	\$37	\$35	\$31	\$28	\$22	\$19	\$18
	65% Current	\$100	\$92	\$81	\$76	\$73	\$70	\$68	\$66	\$64	\$63	\$61	\$61	\$53	\$46	\$38	\$29	\$27	\$23
	10yr ave.			\$66		\$58		\$50		\$45	\$43	\$41	\$40	\$38	\$34	\$31	\$24	\$21	\$19
	70% Current	\$108	\$99	\$88	\$82	\$79	\$75	\$73	\$71	\$69	\$68	\$66	\$66	\$57	\$50	\$41	\$31	\$29	\$25
	10yr ave.			\$71		\$62		\$54		\$48	\$46	\$45	\$43	\$41	\$36	\$33	\$26	\$23	\$20
	75% Current	\$116	\$106	\$94	\$88	\$84	\$81	\$78	\$76	\$73	\$72	\$71	\$70	\$61	\$53	\$44	\$33	\$31	\$27
	10yr ave.			\$76		\$67		\$58		\$52	\$49	\$48	\$46	\$44	\$39	\$36	\$28	\$24	\$22
	80% Current	\$123	\$113	\$100	\$94	\$90	\$86	\$83	\$81	\$78	\$77	\$76	\$75	\$65	\$57	\$47	\$36	\$33	\$29
	10yr ave.			\$81		\$71		\$62		\$55	\$53	\$51	\$50	\$47	\$42	\$38	\$30	\$26	\$23
	85% Current	\$131	\$120	\$107	\$100	\$95	\$92	\$89	\$86	\$83	\$82	\$80	\$80	\$69	\$60	\$50	\$38	\$35	\$31
	10yr ave.			\$86		\$76		\$66		\$58	\$56	\$54	\$53	\$50	\$44	\$40	\$32	\$28	\$25

The above shows estimated returns per head for skirted fleece wool. These figures do not take into account the value of skirtings and oddments and do not take into account discounts that may apply for faults under individual circumstances. These figures are based on a market index of 100% and should be used as a guide only. Returns over \$30 / head for fleece wool are highlighted.

Source: Australian Wool Exchange, Australian Wool Innovation, Sydney Futures Exchange, x-rates.com

Disclaimer: While all due care has been taken in the preparation of this document, no warranty is made as to its accuracy, reliability or completeness. To the extent permitted by law neither Jemalong or their sources including subsidiaries and staff, accept liability to any person for loss or damage arising from the use of this information.



Table 16: Returns pr head for skirted fleece wool.

Skirted FLC Weight		Micron																	
6 Kg		16	16.5	17	17.5	18	18.5	19	19.5	20	21	22	23	24	25	26	28	30	32
Yield (Sch Dry)	25% Current	\$33	\$30	\$27	\$25	\$24	\$23	\$22	\$22	\$21	\$21	\$20	\$20	\$17	\$15	\$12	\$10	\$9	\$8
	10yr ave.			\$22		\$19		\$17		\$15	\$14	\$14	\$13	\$13	\$11	\$10	\$8	\$7	\$6
	30% Current	\$40	\$36	\$32	\$30	\$29	\$28	\$27	\$26	\$25	\$25	\$24	\$24	\$21	\$18	\$15	\$11	\$10	\$9
	10yr ave.			\$26		\$23		\$20		\$18	\$17	\$16	\$16	\$15	\$13	\$12	\$10	\$8	\$8
	35% Current	\$46	\$42	\$38	\$35	\$34	\$32	\$31	\$30	\$29	\$29	\$28	\$28	\$24	\$21	\$17	\$13	\$12	\$11
	10yr ave.			\$30		\$27		\$23		\$21	\$20	\$19	\$19	\$18	\$16	\$14	\$11	\$10	\$9
	40% Current	\$53	\$48	\$43	\$40	\$38	\$37	\$36	\$35	\$34	\$33	\$32	\$32	\$28	\$24	\$20	\$15	\$14	\$12
	10yr ave.			\$35		\$31		\$27		\$24	\$23	\$22	\$21	\$20	\$18	\$16	\$13	\$11	\$10
	45% Current	\$59	\$55	\$48	\$45	\$43	\$42	\$40	\$39	\$38	\$37	\$36	\$36	\$31	\$27	\$22	\$17	\$16	\$14
	10yr ave.			\$39		\$34		\$30		\$26	\$25	\$25	\$24	\$23	\$20	\$18	\$14	\$13	\$11
	50% Current	\$66	\$61	\$54	\$50	\$48	\$46	\$45	\$43	\$42	\$41	\$41	\$40	\$35	\$30	\$25	\$19	\$17	\$15
	10yr ave.			\$44		\$38		\$33		\$29	\$28	\$27	\$27	\$25	\$22	\$20	\$16	\$14	\$13
	55% Current	\$73	\$67	\$59	\$55	\$53	\$51	\$49	\$48	\$46	\$46	\$45	\$44	\$38	\$33	\$27	\$21	\$19	\$17
	10yr ave.			\$48		\$42		\$37		\$32	\$31	\$30	\$29	\$28	\$24	\$22	\$18	\$15	\$14
	60% Current	\$79	\$73	\$64	\$60	\$58	\$55	\$54	\$52	\$50	\$50	\$49	\$48	\$42	\$37	\$30	\$23	\$21	\$19
	10yr ave.			\$52		\$46		\$40		\$35	\$34	\$33	\$32	\$30	\$27	\$24	\$19	\$17	\$15
	65% Current	\$86	\$79	\$70	\$66	\$63	\$60	\$58	\$56	\$55	\$54	\$53	\$52	\$45	\$40	\$32	\$25	\$23	\$20
	10yr ave.			\$57		\$50		\$43		\$38	\$37	\$36	\$34	\$33	\$29	\$26	\$21	\$18	\$16
	70% Current	\$92	\$85	\$75	\$71	\$67	\$65	\$63	\$61	\$59	\$58	\$57	\$56	\$49	\$43	\$35	\$27	\$24	\$22
	10yr ave.			\$61		\$54		\$47		\$41	\$39	\$38	\$37	\$35	\$31	\$28	\$22	\$19	\$18
	75% Current	\$99	\$91	\$81	\$76	\$72	\$69	\$67	\$65	\$63	\$62	\$61	\$60	\$52	\$46	\$37	\$29	\$26	\$23
	10yr ave.			\$65		\$57		\$50		\$44	\$42	\$41	\$40	\$38	\$33	\$30	\$24	\$21	\$19
	80% Current	\$106	\$97	\$86	\$81	\$77	\$74	\$72	\$70	\$67	\$66	\$65	\$64	\$56	\$49	\$40	\$31	\$28	\$25
	10yr ave.			\$70		\$61		\$53		\$47	\$45	\$44	\$42	\$40	\$36	\$32	\$26	\$22	\$20
	85% Current	\$112	\$103	\$91	\$86	\$82	\$79	\$76	\$74	\$71	\$70	\$69	\$68	\$59	\$52	\$42	\$32	\$30	\$26
	10yr ave.			\$74		\$65		\$57		\$50	\$48	\$47	\$45	\$43	\$38	\$35	\$27	\$24	\$21

The above shows estimated returns per head for skirted fleece wool. These figures do not take into account the value of skirtings and oddments and do not take into account discounts that may apply for faults under individual circumstances. These figures are based on a market index of 100% and should be used as a guide only. Returns over \$30 / head for fleece wool are highlighted.

Source: Australian Wool Exchange, Australian Wool Innovation, Sydney Futures Exchange, x-rates.com

Disclaimer: While all due care has been taken in the preparation of this document, no warranty is made as to its accuracy, reliability or completeness. To the extent permitted by law neither Jemalong or their sources including subsidiaries and staff, accept liability to any person for loss or damage arising from the use of this information.



Table 17: Returns pr head for skirted fleece wool.

Skirted FLC Weight		Micron																	
5 Kg		16	16.5	17	17.5	18	18.5	19	19.5	20	21	22	23	24	25	26	28	30	32
Yield (Sch Dry)	25% Current	\$28	\$25	\$22	\$21	\$20	\$19	\$19	\$18	\$17	\$17	\$17	\$17	\$15	\$13	\$10	\$8	\$7	\$6
	10yr ave.			\$18		\$16		\$14		\$12	\$12	\$11	\$11	\$10	\$9	\$8	\$7	\$6	\$5
	30% Current	\$33	\$30	\$27	\$25	\$24	\$23	\$22	\$22	\$21	\$21	\$20	\$20	\$17	\$15	\$12	\$10	\$9	\$8
	10yr ave.			\$22		\$19		\$17		\$15	\$14	\$14	\$13	\$13	\$11	\$10	\$8	\$7	\$6
	35% Current	\$39	\$35	\$31	\$29	\$28	\$27	\$26	\$25	\$24	\$24	\$24	\$23	\$20	\$18	\$15	\$11	\$10	\$9
	10yr ave.			\$25		\$22		\$19		\$17	\$16	\$16	\$15	\$15	\$13	\$12	\$9	\$8	\$7
	40% Current	\$44	\$40	\$36	\$34	\$32	\$31	\$30	\$29	\$28	\$28	\$27	\$27	\$23	\$20	\$17	\$13	\$12	\$10
	10yr ave.			\$29		\$25		\$22		\$20	\$19	\$18	\$18	\$17	\$15	\$14	\$11	\$9	\$8
	45% Current	\$50	\$45	\$40	\$38	\$36	\$35	\$34	\$33	\$31	\$31	\$30	\$30	\$26	\$23	\$19	\$14	\$13	\$12
	10yr ave.			\$33		\$29		\$25		\$22	\$21	\$21	\$20	\$19	\$17	\$15	\$12	\$10	\$9
	50% Current	\$55	\$51	\$45	\$42	\$40	\$39	\$37	\$36	\$35	\$34	\$34	\$34	\$29	\$25	\$21	\$16	\$15	\$13
	10yr ave.			\$36		\$32		\$28		\$25	\$24	\$23	\$22	\$21	\$19	\$17	\$13	\$12	\$10
	55% Current	\$61	\$56	\$49	\$46	\$44	\$42	\$41	\$40	\$38	\$38	\$37	\$37	\$32	\$28	\$23	\$18	\$16	\$14
	10yr ave.			\$40		\$35		\$30		\$27	\$26	\$25	\$24	\$23	\$20	\$19	\$15	\$13	\$11
	60% Current	\$66	\$61	\$54	\$50	\$48	\$46	\$45	\$43	\$42	\$41	\$41	\$40	\$35	\$30	\$25	\$19	\$17	\$15
	10yr ave.			\$44		\$38		\$33		\$29	\$28	\$27	\$27	\$25	\$22	\$20	\$16	\$14	\$13
	65% Current	\$72	\$66	\$58	\$55	\$52	\$50	\$48	\$47	\$45	\$45	\$44	\$44	\$38	\$33	\$27	\$21	\$19	\$17
	10yr ave.			\$47		\$41		\$36		\$32	\$31	\$30	\$29	\$27	\$24	\$22	\$17	\$15	\$14
	70% Current	\$77	\$71	\$63	\$59	\$56	\$54	\$52	\$51	\$49	\$48	\$47	\$47	\$41	\$36	\$29	\$22	\$20	\$18
	10yr ave.			\$51		\$45		\$39		\$34	\$33	\$32	\$31	\$29	\$26	\$24	\$19	\$16	\$15
	75% Current	\$83	\$76	\$67	\$63	\$60	\$58	\$56	\$54	\$52	\$52	\$51	\$50	\$44	\$38	\$31	\$24	\$22	\$19
	10yr ave.			\$54		\$48		\$42		\$37	\$35	\$34	\$33	\$31	\$28	\$25	\$20	\$17	\$16
	80% Current	\$88	\$81	\$72	\$67	\$64	\$62	\$60	\$58	\$56	\$55	\$54	\$54	\$47	\$41	\$33	\$25	\$23	\$21
	10yr ave.			\$58		\$51		\$44		\$39	\$38	\$36	\$35	\$33	\$30	\$27	\$21	\$19	\$17
	85% Current	\$94	\$86	\$76	\$71	\$68	\$65	\$63	\$62	\$59	\$59	\$57	\$57	\$50	\$43	\$35	\$27	\$25	\$22
	10yr ave.			\$62		\$54		\$47		\$42	\$40	\$39	\$38	\$35	\$32	\$29	\$23	\$20	\$18

The above shows estimated returns per head for skirted fleece wool. These figures do not take into account the value of skirtings and oddments and do not take into account discounts that may apply for faults under individual circumstances. These figures are based on a market index of 100% and should be used as a guide only. Returns over \$30 / head for fleece wool are highlighted.

Source: Australian Wool Exchange, Australian Wool Innovation, Sydney Futures Exchange, x-rates.com

Disclaimer: While all due care has been taken in the preparation of this document, no warranty is made as to its accuracy, reliability or completeness. To the extent permitted by law neither Jemalong or their sources including subsidiaries and staff, accept liability to any person for loss or damage arising from the use of this information.



Table 18: Returns pr head for skirted fleece wool.

Skirted FLC Weight		Micron																	
4 Kg		16	16.5	17	17.5	18	18.5	19	19.5	20	21	22	23	24	25	26	28	30	32
Yield (Sch Dry)	25% Current	\$22	\$20	\$18	\$17	\$16	\$15	\$15	\$14	\$14	\$14	\$14	\$13	\$12	\$10	\$8	\$6	\$6	\$5
	10yr ave.			\$15		\$13		\$11		\$10	\$9	\$9	\$9	\$8	\$7	\$7	\$5	\$5	\$4
	30% Current	\$26	\$24	\$21	\$20	\$19	\$18	\$18	\$17	\$17	\$17	\$16	\$16	\$14	\$12	\$10	\$8	\$7	\$6
	10yr ave.			\$17		\$15		\$13		\$12	\$11	\$11	\$11	\$10	\$9	\$8	\$6	\$6	\$5
	35% Current	\$31	\$28	\$25	\$24	\$22	\$22	\$21	\$20	\$20	\$19	\$19	\$19	\$16	\$14	\$12	\$9	\$8	\$7
	10yr ave.			\$20		\$18		\$16		\$14	\$13	\$13	\$12	\$12	\$10	\$9	\$7	\$6	\$6
	40% Current	\$35	\$32	\$29	\$27	\$26	\$25	\$24	\$23	\$22	\$22	\$22	\$21	\$19	\$16	\$13	\$10	\$9	\$8
	10yr ave.			\$23		\$20		\$18		\$16	\$15	\$15	\$14	\$13	\$12	\$11	\$9	\$7	\$7
	45% Current	\$40	\$36	\$32	\$30	\$29	\$28	\$27	\$26	\$25	\$25	\$24	\$24	\$21	\$18	\$15	\$11	\$10	\$9
	10yr ave.			\$26		\$23		\$20		\$18	\$17	\$16	\$16	\$15	\$13	\$12	\$10	\$8	\$8
	50% Current	\$44	\$40	\$36	\$34	\$32	\$31	\$30	\$29	\$28	\$28	\$27	\$27	\$23	\$20	\$17	\$13	\$12	\$10
	10yr ave.			\$29		\$25		\$22		\$20	\$19	\$18	\$18	\$17	\$15	\$14	\$11	\$9	\$8
	55% Current	\$48	\$44	\$39	\$37	\$35	\$34	\$33	\$32	\$31	\$30	\$30	\$30	\$26	\$22	\$18	\$14	\$13	\$11
	10yr ave.			\$32		\$28		\$24		\$22	\$21	\$20	\$19	\$18	\$16	\$15	\$12	\$10	\$9
	60% Current	\$53	\$48	\$43	\$40	\$38	\$37	\$36	\$35	\$34	\$33	\$32	\$32	\$28	\$24	\$20	\$15	\$14	\$12
	10yr ave.			\$35		\$31		\$27		\$24	\$23	\$22	\$21	\$20	\$18	\$16	\$13	\$11	\$10
	65% Current	\$57	\$53	\$47	\$44	\$42	\$40	\$39	\$38	\$36	\$36	\$35	\$35	\$30	\$26	\$22	\$17	\$15	\$13
	10yr ave.			\$38		\$33		\$29		\$26	\$24	\$24	\$23	\$22	\$19	\$18	\$14	\$12	\$11
	70% Current	\$62	\$57	\$50	\$47	\$45	\$43	\$42	\$41	\$39	\$39	\$38	\$38	\$33	\$28	\$23	\$18	\$16	\$14
	10yr ave.			\$41		\$36		\$31		\$27	\$26	\$26	\$25	\$23	\$21	\$19	\$15	\$13	\$12
	75% Current	\$66	\$61	\$54	\$50	\$48	\$46	\$45	\$43	\$42	\$41	\$41	\$40	\$35	\$30	\$25	\$19	\$17	\$15
	10yr ave.			\$44		\$38		\$33		\$29	\$28	\$27	\$27	\$25	\$22	\$20	\$16	\$14	\$13
	80% Current	\$70	\$65	\$57	\$54	\$51	\$49	\$48	\$46	\$45	\$44	\$43	\$43	\$37	\$32	\$27	\$20	\$19	\$17
	10yr ave.			\$46		\$41		\$35		\$31	\$30	\$29	\$28	\$27	\$24	\$22	\$17	\$15	\$13
	85% Current	\$75	\$69	\$61	\$57	\$55	\$52	\$51	\$49	\$48	\$47	\$46	\$46	\$40	\$35	\$28	\$22	\$20	\$18
	10yr ave.			\$49		\$43		\$38		\$33	\$32	\$31	\$30	\$28	\$25	\$23	\$18	\$16	\$14

The above shows estimated returns per head for skirted fleece wool. These figures do not take into account the value of skirtings and oddments and do not take into account discounts that may apply for faults under individual circumstances. These figures are based on a market index of 100% and should be used as a guide only. Returns over \$30 / head for fleece wool are highlighted.

Source: Australian Wool Exchange, Australian Wool Innovation, Sydney Futures Exchange, x-rates.com

Disclaimer: While all due care has been taken in the preparation of this document, no warranty is made as to its accuracy, reliability or completeness. To the extent permitted by law neither Jemalong or their sources including subsidiaries and staff, accept liability to any person for loss or damage arising from the use of this information.



Table 19: Returns pr head for skirted fleece wool.

Skirted FLC Weight		Micron																	
3 Kg		16	16.5	17	17.5	18	18.5	19	19.5	20	21	22	23	24	25	26	28	30	32
Yield (Sch Dry)	25% Current	\$17	\$15	\$13	\$13	\$12	\$12	\$11	\$11	\$10	\$10	\$10	\$10	\$9	\$8	\$6	\$5	\$4	\$4
	10yr ave.			\$11		\$10		\$8		\$7	\$7	\$7	\$7	\$6	\$6	\$5	\$4	\$3	\$3
	30% Current	\$20	\$18	\$16	\$15	\$14	\$14	\$13	\$13	\$13	\$12	\$12	\$12	\$10	\$9	\$7	\$6	\$5	\$5
	10yr ave.			\$13		\$11		\$10		\$9	\$8	\$8	\$8	\$8	\$7	\$6	\$5	\$4	\$4
	35% Current	\$23	\$21	\$19	\$18	\$17	\$16	\$16	\$15	\$15	\$14	\$14	\$14	\$12	\$11	\$9	\$7	\$6	\$5
	10yr ave.			\$15		\$13		\$12		\$10	\$10	\$10	\$9	\$9	\$8	\$7	\$6	\$5	\$4
	40% Current	\$26	\$24	\$21	\$20	\$19	\$18	\$18	\$17	\$17	\$17	\$16	\$16	\$14	\$12	\$10	\$8	\$7	\$6
	10yr ave.			\$17		\$15		\$13		\$12	\$11	\$11	\$11	\$10	\$9	\$8	\$6	\$6	\$5
	45% Current	\$30	\$27	\$24	\$23	\$22	\$21	\$20	\$20	\$19	\$19	\$18	\$18	\$16	\$14	\$11	\$9	\$8	\$7
	10yr ave.			\$20		\$17		\$15		\$13	\$13	\$12	\$12	\$11	\$10	\$9	\$7	\$6	\$6
	50% Current	\$33	\$30	\$27	\$25	\$24	\$23	\$22	\$22	\$21	\$21	\$20	\$20	\$17	\$15	\$12	\$10	\$9	\$8
	10yr ave.			\$22		\$19		\$17		\$15	\$14	\$14	\$13	\$13	\$11	\$10	\$8	\$7	\$6
	55% Current	\$36	\$33	\$30	\$28	\$26	\$25	\$25	\$24	\$23	\$23	\$22	\$22	\$19	\$17	\$14	\$11	\$10	\$9
	10yr ave.			\$24		\$21		\$18		\$16	\$16	\$15	\$15	\$14	\$12	\$11	\$9	\$8	\$7
	60% Current	\$40	\$36	\$32	\$30	\$29	\$28	\$27	\$26	\$25	\$25	\$24	\$24	\$21	\$18	\$15	\$11	\$10	\$9
	10yr ave.			\$26		\$23		\$20		\$18	\$17	\$16	\$16	\$15	\$13	\$12	\$10	\$8	\$8
	65% Current	\$43	\$39	\$35	\$33	\$31	\$30	\$29	\$28	\$27	\$27	\$26	\$26	\$23	\$20	\$16	\$12	\$11	\$10
	10yr ave.			\$28		\$25		\$22		\$19	\$18	\$18	\$17	\$16	\$14	\$13	\$10	\$9	\$8
	70% Current	\$46	\$42	\$38	\$35	\$34	\$32	\$31	\$30	\$29	\$29	\$28	\$28	\$24	\$21	\$17	\$13	\$12	\$11
	10yr ave.			\$30		\$27		\$23		\$21	\$20	\$19	\$19	\$18	\$16	\$14	\$11	\$10	\$9
	75% Current	\$50	\$45	\$40	\$38	\$36	\$35	\$34	\$33	\$31	\$31	\$30	\$30	\$26	\$23	\$19	\$14	\$13	\$12
	10yr ave.			\$33		\$29		\$25		\$22	\$21	\$21	\$20	\$19	\$17	\$15	\$12	\$10	\$9
	80% Current	\$53	\$48	\$43	\$40	\$38	\$37	\$36	\$35	\$34	\$33	\$32	\$32	\$28	\$24	\$20	\$15	\$14	\$12
	10yr ave.			\$35		\$31		\$27		\$24	\$23	\$22	\$21	\$20	\$18	\$16	\$13	\$11	\$10
	85% Current	\$56	\$52	\$46	\$43	\$41	\$39	\$38	\$37	\$36	\$35	\$34	\$34	\$30	\$26	\$21	\$16	\$15	\$13
	10yr ave.			\$37		\$32		\$28		\$25	\$24	\$23	\$23	\$21	\$19	\$17	\$14	\$12	\$11

The above shows estimated returns per head for skirted fleece wool. These figures do not take into account the value of skirtings and oddments and do not take into account discounts that may apply for faults under individual circumstances. These figures are based on a market index of 100% and should be used as a guide only. Returns over \$30 / head for fleece wool are highlighted.

Source: Australian Wool Exchange, Australian Wool Innovation, Sydney Futures Exchange, x-rates.com

Disclaimer: While all due care has been taken in the preparation of this document, no warranty is made as to its accuracy, reliability or completeness. To the extent permitted by law neither Jemalong or their sources including subsidiaries and staff, accept liability to any person for loss or damage arising from the use of this information.



Table 20: Returns pr head for skirted fleece wool.

Skirted FLC Weight		Micron																	
2 Kg		16	16.5	17	17.5	18	18.5	19	19.5	20	21	22	23	24	25	26	28	30	32
Yield (Sch Dry)	25% Current	\$11	\$10	\$9	\$8	\$8	\$8	\$7	\$7	\$7	\$7	\$7	\$7	\$6	\$5	\$4	\$3	\$3	\$3
	10yr ave.			\$7		\$6		\$6		\$5	\$5	\$5	\$4	\$4	\$4	\$3	\$3	\$2	\$2
	30% Current	\$13	\$12	\$11	\$10	\$10	\$9	\$9	\$9	\$8	\$8	\$8	\$8	\$7	\$6	\$5	\$4	\$3	\$3
	10yr ave.			\$9		\$8		\$7		\$6	\$6	\$5	\$5	\$5	\$4	\$4	\$3	\$3	\$3
	35% Current	\$15	\$14	\$13	\$12	\$11	\$11	\$10	\$10	\$10	\$10	\$9	\$9	\$8	\$7	\$6	\$4	\$4	\$4
	10yr ave.			\$10		\$9		\$8		\$7	\$7	\$6	\$6	\$6	\$5	\$5	\$4	\$3	\$3
	40% Current	\$18	\$16	\$14	\$13	\$13	\$12	\$12	\$12	\$11	\$11	\$11	\$11	\$9	\$8	\$7	\$5	\$5	\$4
	10yr ave.			\$12		\$10		\$9		\$8	\$8	\$7	\$7	\$7	\$6	\$5	\$4	\$4	\$3
	45% Current	\$20	\$18	\$16	\$15	\$14	\$14	\$13	\$13	\$13	\$12	\$12	\$12	\$10	\$9	\$7	\$6	\$5	\$5
	10yr ave.			\$13		\$11		\$10		\$9	\$8	\$8	\$8	\$8	\$7	\$6	\$5	\$4	\$4
	50% Current	\$22	\$20	\$18	\$17	\$16	\$15	\$15	\$14	\$14	\$14	\$14	\$13	\$12	\$10	\$8	\$6	\$6	\$5
	10yr ave.			\$15		\$13		\$11		\$10	\$9	\$9	\$9	\$8	\$7	\$7	\$5	\$5	\$4
	55% Current	\$24	\$22	\$20	\$18	\$18	\$17	\$16	\$16	\$15	\$15	\$15	\$15	\$13	\$11	\$9	\$7	\$6	\$6
	10yr ave.			\$16		\$14		\$12		\$11	\$10	\$10	\$10	\$9	\$8	\$7	\$6	\$5	\$5
	60% Current	\$26	\$24	\$21	\$20	\$19	\$18	\$18	\$17	\$17	\$17	\$16	\$16	\$14	\$12	\$10	\$8	\$7	\$6
	10yr ave.			\$17		\$15		\$13		\$12	\$11	\$11	\$11	\$10	\$9	\$8	\$6	\$6	\$5
	65% Current	\$29	\$26	\$23	\$22	\$21	\$20	\$19	\$19	\$18	\$18	\$18	\$17	\$15	\$13	\$11	\$8	\$8	\$7
	10yr ave.			\$19		\$17		\$14		\$13	\$12	\$12	\$11	\$11	\$10	\$9	\$7	\$6	\$5
	70% Current	\$31	\$28	\$25	\$24	\$22	\$22	\$21	\$20	\$20	\$19	\$19	\$19	\$16	\$14	\$12	\$9	\$8	\$7
	10yr ave.			\$20		\$18		\$16		\$14	\$13	\$13	\$12	\$12	\$10	\$9	\$7	\$6	\$6
	75% Current	\$33	\$30	\$27	\$25	\$24	\$23	\$22	\$22	\$21	\$21	\$20	\$20	\$17	\$15	\$12	\$10	\$9	\$8
	10yr ave.			\$22		\$19		\$17		\$15	\$14	\$14	\$13	\$13	\$11	\$10	\$8	\$7	\$6
	80% Current	\$35	\$32	\$29	\$27	\$26	\$25	\$24	\$23	\$22	\$22	\$22	\$21	\$19	\$16	\$13	\$10	\$9	\$8
	10yr ave.			\$23		\$20		\$18		\$16	\$15	\$15	\$14	\$13	\$12	\$11	\$9	\$7	\$7
	85% Current	\$37	\$34	\$30	\$29	\$27	\$26	\$25	\$25	\$24	\$23	\$23	\$23	\$20	\$17	\$14	\$11	\$10	\$9
	10yr ave.			\$25		\$22		\$19		\$17	\$16	\$16	\$15	\$14	\$13	\$12	\$9	\$8	\$7

The above shows estimated returns per head for skirted fleece wool. These figures do not take into account the value of skirtings and oddments and do not take into account discounts that may apply for faults under individual circumstances. These figures are based on a market index of 100% and should be used as a guide only. Returns over \$30 / head for fleece wool are highlighted.

Source: Australian Wool Exchange, Australian Wool Innovation, Sydney Futures Exchange, x-rates.com

Disclaimer: While all due care has been taken in the preparation of this document, no warranty is made as to its accuracy, reliability or completeness. To the extent permitted by law neither Jemalong or their sources including subsidiaries and staff, accept liability to any person for loss or damage arising from the use of this information.